

# Shoaled glacial AMOC despite vigorous tidal Dissipation: Vertical Stratification matters

Yugeng Chen<sup>1,2</sup>, Pengyang Song<sup>1</sup>, Xianyao Chen<sup>2,3</sup>, Gerrit Lohmann<sup>1,4</sup>

<sup>1</sup>Alfred Wegener Institute, Helmholtz Center for Polar and Marine Research, Bremerhaven, 27570, Germany

5 <sup>2</sup>Frontier Science Center for Deep Ocean Multispheres and Earth System / Physical Oceanography Laboratory, Ocean University of China, Qingdao, 266100, China

<sup>3</sup>Laoshan Laboratory, Qingdao, 266100, China

<sup>4</sup>University of Bremen, Bremen, 28334, Germany

*Correspondence to:* Yugeng Chen (yugeng.chen@awi.de)

10 **Abstract.** During the Last Glacial Maximum (LGM), tidal dissipation was about threefold higher than today, which could have led to a considerable increase in vertical mixing. This would enhance the glacial Atlantic Meridional Overturning Circulation (AMOC), contradicting the shoaled AMOC as indicated by paleo proxies. Here, we conduct ocean model simulations to investigate the impact of background climate conditions and tidal mixing on the AMOC during LGM. We successfully reproduce the stratified ocean characteristic of the LGM by accurately simulating the elevated salinity of the deep  
15 sea and the rapid temperature decrease in the ocean's upper layers. Our findings indicate that the shoaled glacial AMOC is mainly due to strong glacial ocean stratification, irrespective of enhanced tidal dissipation. However, glacial tidal dissipation plays a critical role in the intensification of the AABW during the LGM. Given the critical role of the AMOC in (de-)glacial climate evolution, our results highlight the complex interactions of ocean stratification and tidal dissipation that have been neglected so far.

## 20 1 Introduction

The Atlantic meridional overturning circulation (AMOC) transports heat over large distances and is therefore an essential component of the Earth's climate system, both today and in the past (Ganopolski and Rahmstorf, 2001; Gordon, 1986; Rahmstorf, 1996; Stute et al., 2001). It is a major focus of paleoceanography to understand the contribution of the AMOC to glacial-interglacial climate change (Boyle and Keigwin, 1987; Broecker and Hemming, 2001; Clark et al., 2002; Knorr and  
25 Lohmann, 2003; Knorr et al., 2021).

The state of deep-water formation during the Last Glacial Maximum (LGM) has been discussed in the paleoclimate literature. Based on water mass properties, North Atlantic Deep Water (NADW) formation was shallower (Butzin et al., 2005; Curry and Oppo, 2005; Duplessy et al., 1988; Ferrari et al., 2014; Hesse et al., 2011; Lippold et al., 2012; Lund et al., 2011; Lynch-Stieglitz et al., 2007; Muglia et al., 2018; Skinner et al., 2017), but not much weaker (Mcmanus et al., 2004; Sarthein  
30 et al., 1994). At the same time, Antarctic Bottom Water (AABW) export from the Southern Ocean increased (Ledbetter and

Johnson, 1976; Negre et al., 2010; Robinson et al., 2005). The salinity of glacial AABW could have been much greater than today, leading to an enhanced stratification of the glacial ocean between the upper and lower cells (Adkins et al., 2002; Bouttes et al., 2009; Francois et al., 1997; Jansen, 2017; Knorr et al., 2021; Lund et al., 2011; Stein et al., 2020; Watson and Garabato, 2006; Klockmann et al., 2016). Several modeling studies provide a physical basis for the shoaled glacial AMOC, likely to be  
35 caused by changes in Southern Ocean sea ice (Baker et al., 2020; Butzin et al., 2005; Ferrari et al., 2014; Jansen and Nadeau, 2016; Marzocchi and Jansen, 2017; Nadeau et al., 2019; Sun et al., 2018; Sun et al., 2020; Watson et al., 2015) or terrestrial ice input (Miller et al., 2012).

Coupled ocean-atmosphere model simulations of LGM climate reveal a broad spectrum of results, showing considerable disagreement regarding whether the AMOC was weaker or stronger compared to present-day (PD) conditions (Kageyama et al., 2021; Knorr et al., 2021; Otto-Bliesner et al., 2007; Weber et al., 2007; Zhang et al., 2013). However, a critical factor often  
40 overlooked in these analyses is the significantly enhanced tidal dissipation during the LGM (Arbic et al., 2004b; Egbert et al., 2004; Green, 2010; Griffiths and Peltier, 2008; Griffiths and Peltier, 2009; Wilmes and Green, 2014). Incorporating this element into the models, as demonstrated in the research by Schmittner et al. (2015) and Wilmes et al. (2019), leads to a notable finding: both the depth and the strength of the AMOC during the LGM are substantially increased when the changes in tidal  
45 dissipation are taken into account. This suggests a pivotal role of tidal mixing in shaping the LGM's ocean circulation dynamics.

Currently, tides provide about half, or 1 TW (1 TW =  $10^{12}$  W), of the energy to maintain the global meridional overturning circulation (MOC) (Wunsch and Ferrari, 2004; Ferrari and Wunsch, 2009). Numerous studies have suggested a significant intensification of tides due to the 120-130 m drop in global mean sea level and exposure of continental shelves during the LGM (Arbic et al., 2004b; Egbert et al., 2004; Green, 2010; Griffiths and Peltier, 2008; Griffiths and Peltier, 2009; Wilmes  
50 and Green, 2014). This exposure reduces the effective damping, leading to an increase in tides. Additionally, there is greater tidal dissipation in the deep ocean interior rather than on the continental shelves during the LGM. This amplified tidal dissipation may have been a critical factor in driving a more vigorous glacial AMOC compared to current levels, as postulated by Green et al. (2009), Schmittner et al. (2015), and Wilmes et al. (2019). Therefore, changes in tidal dissipation do play an important role and should not be neglected in paleoclimate simulations (Schmittner et al., 2015). It is noteworthy that Wilmes  
55 et al. (2021) achieves a relatively shoaled AMOC through the artificial reduction of meridional moisture flux and precipitation at high latitudes. However, to date, no research has directly demonstrated a shoaled AMOC under the real LGM forcing conditions, despite the presence of enhanced glacial tidal dissipation.

The primary objectives of this study are threefold: (1) to reproduce a stratified glacial ocean and a shoaled AMOC under actual LGM forcing conditions, considering both increased glacial local and far-field tidal dissipation, (2) to analyze the  
60 reasons for a shoaled AMOC despite the presence of enhanced tidal dissipation during the LGM, and (3) to confront modeled ocean circulation with paleoclimate reconstructions. To achieve these goals, we employ a global ocean general circulation model to generate a series of ocean circulation scenarios. These scenarios are driven by both LGM and PD surface forcing, as well as varying degrees of tidal mixing. Previous studies have already explored the role of increased glacial ocean stratification in causing a shallower AMOC during the LGM (Jansen and Nadeau, 2016; Jansen, 2017). In this context, our analysis

65 underscores that despite the nearly threefold intensification of tidal dissipation during the LGM, enhanced stratification still plays a dominant role in maintaining a shoaled glacial AMOC.

## 2 Materials and Methods

### 2.1 Tidal model

The global tidal model is based on the Finite Volume Community Ocean Model (FVCOM), which is based on an  
70 unstructured finite-volume model with triangular meshes (Chen et al., 2003). The tidal model solves the equations

$$\frac{\partial \mathbf{u}}{\partial t} + f \times \mathbf{U} + \mathbf{U} \cdot \nabla \mathbf{u} = -gH\nabla(\zeta - \alpha\zeta_{EQ} - \zeta_{SAL}) - a_H \nabla^2 \mathbf{U} + \mathbf{D}_{BL} + \mathbf{D}_{IT}, \quad (1)$$

where  $\mathbf{u}$  is the horizontal velocity,  $\mathbf{U} = \mathbf{u}H$  is the horizontal transport speed,  $f$  is the Coriolis parameter,  $g$  is the gravitational acceleration,  $\zeta$  is the instantaneous tide level;  $\zeta_{EQ}$  is the equilibrium tide level (Hendershott, 1972);  $\alpha$  is the body tide Love number;  $\zeta_{SAL}$  is the gravitational self-attraction and loading tide term, which has been implemented using an iterative method  
75 (Arbic et al., 2004a; Egbert et al., 2004).  $a_H$  is the horizontal turbulent eddy viscosity coefficient. Momentum is dissipated through two processes: first, a quadratic (in velocity) bottom friction term

$$\mathbf{D}_{BL} = -C_d \mathbf{u} |\mathbf{u}|, \quad (2)$$

in which the bottom friction coefficient  $C_d$  is taken as 0.0025.  $\mathbf{D}_{IT}$  is the internal wave drag, the linear transfer of energy to internal waves, based on Zaron and Egbert (2006):

$$80 \quad \mathbf{D}_{IT} = \Gamma H (\nabla H)^2 \frac{N_b \bar{N}}{8\pi^2 \omega} \mathbf{u}. \quad (3)$$

Here,  $\Gamma = 50$  is a scaling factor.  $N_b$  and  $\bar{N}$  are buoyancy frequency at the seafloor and depth-averaged vertical value, respectively, both derived from our Finite-volume Sea ice-Ocean Model 2.0 (FESOM 2.0, see description in section 2.2) simulations. It is noteworthy that the tidal dissipation obtained from the tidal model may further influence the  $N^2$  obtained in FESOM 2.0, leading to certain sensitivities. We have employed an iterative process to eliminate these sensitivities, with the  
85 detailed iterative process provided in Appendix A1.  $\omega$  is the tidal frequency of M2 tide. The tidal model utilizes four major tidal constituents forcing (M2, S2, K1, and O1), accounting for more than 94 % of today's dissipation (Egbert and Ray, 2003). The experiments are executed for a total of 30 days, with the final 20 days used for harmonic analysis.

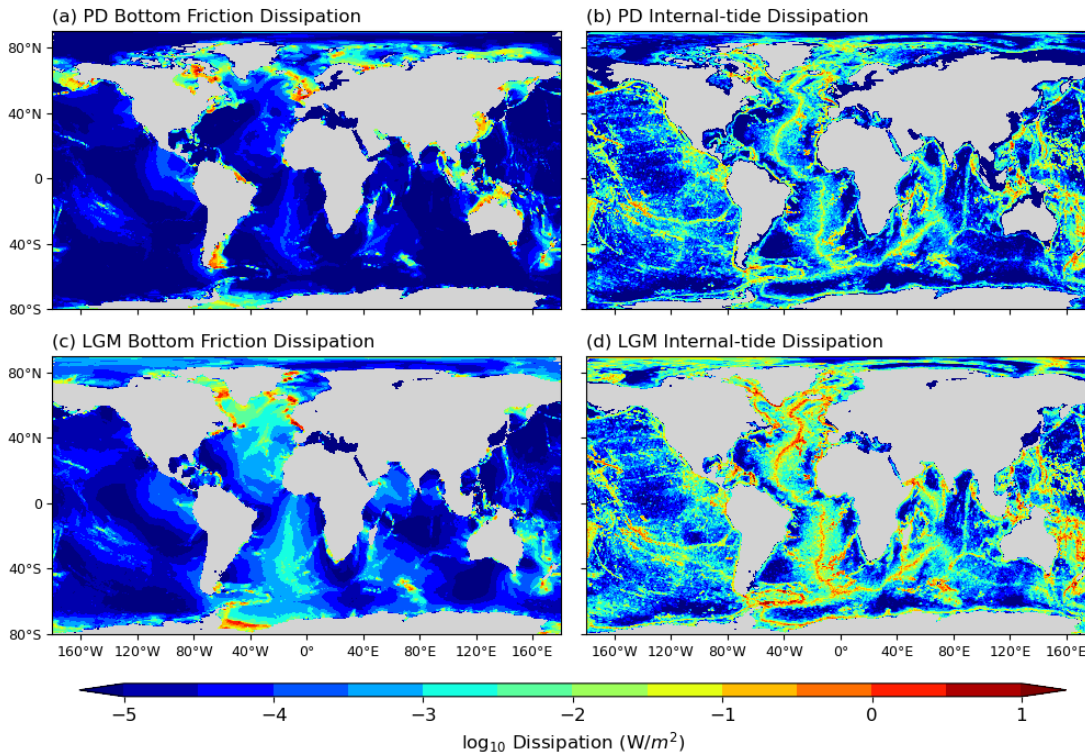
The resolution of the model ranges from 10 km to 40 km, and the resolution is higher in the shallow waters and areas with significant water depth changes. For the PD triangular mesh, the node number is 422,932, and the cell number is 817,641.  
90 For the LGM, the numbers are 323,101 and 624,641, respectively. The term "node" refers to the vertices of the unstructured triangular mesh, whereas "cell" denotes the triangles formed by connecting these nodes.

Here, we calculate the bottom friction dissipation  $D_{BL}$  and the internal-tide dissipation  $D_{IT}$  due to linear transfer of energy to internal waves:

$$D_{IT} = \langle \rho_0 \mathbf{u} \cdot \mathbf{D}_{IT} \rangle, D_{BL} = \langle \rho_0 \mathbf{u} \cdot \mathbf{D}_{BL} \rangle, \quad (4)$$

95 where we set the reference density to 1,035 kg/m<sup>3</sup>,  $\langle \rangle$  denote the tide period of the respective tidal constituent.

Figure 1 presents the bottom friction dissipation ( $D_{BL}$ ) and internal-tide dissipation ( $D_{IT}$ ) during the PD and LGM. A significant difference in their distributions is observed: bottom friction dissipation ( $D_{BL}$ ) is mainly concentrated in shallow sea areas, while internal-tide dissipation ( $D_{IT}$ ) is primarily found in deep-sea regions with notable topographic variations, such as mid-ocean ridges. Moreover, compared to the PD, the primary regions of energy dissipation during the LGM shifted from shallow to deep seas. During the PD, dissipation below 500 meters depth accounted for 1.86 TW, which is 62% of the total dissipation. In contrast, during the LGM, dissipation below 500 meters is 1.35 TW, accounting for only 29% of the total dissipation (Table 1). These data are consistent with previous research findings (Arbic et al., 2004a; Egbert et al., 2004; Green, 2010; Griffiths and Peltier, 2008; Griffiths and Peltier, 2009; Wilmes and Green, 2014).



105

**Figure 1.** Global distributions of bottom friction dissipation ( $D_{BL}$ ) and internal-tide dissipation ( $D_{IT}$ ) during PD and LGM.

**Table 1.** Global and Sub-500m Distribution of  $D_{IT}$  and  $D_{BL}$  during PD and LGM (TW).

Time	$D_{IT}$	$D_{IT} (<500 \text{ m})$	$D_{BL}$	$D_{BL} (<500 \text{ m})$	$D_{Total}$	$D_{Total} (<500 \text{ m})$
PD	1.31	0.21	1.69	1.65	3.00	1.86
LGM	3.41	0.36	1.17	0.99	4.58	1.35

110 **2.1.1 Bathymetry**

The PD bathymetry comes from the 1-min RTOPO2 database (Schaffer et al., 2016). For the LGM bathymetry, we use sea level from the ICE-5G (VM2 L90) version 1.2 (Peltier, 2004). Notably, the tidal dissipation derived using ICE-6G is actually weaker than that obtained using ICE-5G (Wilmes et al., 2019; Wilmes et al., 2021). Here, we have chosen to use ICE-5G to investigate whether the AMOC during the LGM would be affected under these stronger tidal conditions. The sea-level difference between PD and LGM is calculated by subtracting the PD from the LGM sea levels in the respective ICE-5G dataset. The low-resolution paleo sea level changes (1° horizontal resolution) are then interpolated to the grid of RTOPO2 and added to PD RTOPO2 bathymetry in order to retain the high-resolution topographic features. Finally, we interpolate the high-resolution bathymetry to the unstructured triangular mesh of the tidal model.

**2.1.2 Tide model validation**

120 The harmonically analyzed amplitudes (complex notation sinusoids) are used to evaluate the elevations. Simulated sinusoids  $\hat{\zeta}$  were interpolated to the 1/6 ° grid of TPXO9.v1 and compared to the reference sinusoids  $\hat{\zeta}_R$  by evaluating the spatially averaged root mean square (RMS) error  $\Delta\zeta$

$$\Delta\zeta = \sqrt{\frac{\iint |\hat{\zeta} - \hat{\zeta}_R|^2 dA}{2\iint dA}}. \quad (5)$$

125 The RMS errors were calculated for four tidal constituents and separately for deep water regions (depths > 500 m) and shallow shelf seas. The results are presented in Table 2. Meanwhile, Table 3 provides a comparison of the M2 tide RMS with other forward tidal models.

**Table 2.** Tide model RMS Error for four tidal constituents (Units: cm)

	Deep water regions	Shallow shelf seas
M2	4.87	15.14
S2	1.85	6.34
K1	1.67	5.23
O1	1.31	3.71

130

135

**Table 3.** Comparison of M2 RMS error in Forward Tide Models

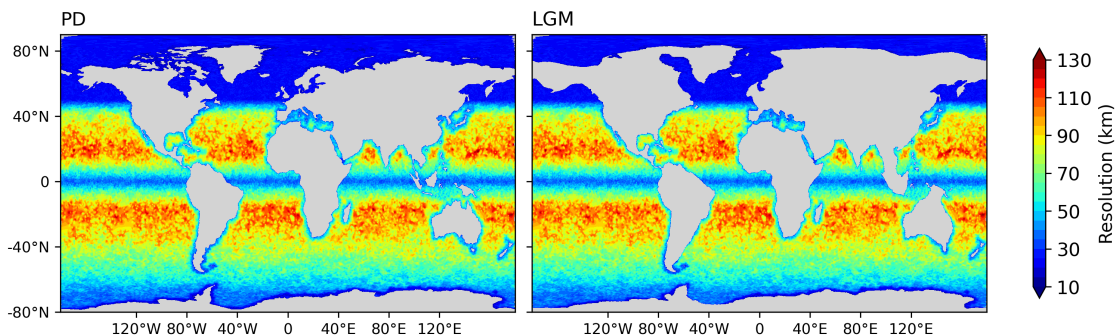
Model	Deep Water (cm)	Shallow Water (cm)	Global (cm)
Our Tidal Model	4.87	15.14	6.54
Egbert et al. (2004)	< 5	NA	NA
Arbic et al. (2004a)	7.26	NA	NA
Griffiths and Peltier (2009)	NA	NA	13.6
Wilmes and Green (2014)	3.86	NA	6.67
Schindelegger et al. (2018)	4.4	14.6	NA

\*Note: Differences in the observed models selected across different studies may influence the results.

## 2.2 Ocean model

140 The FESOM 2.0 (Danilov et al., 2017), which is the ocean component of the AWI Earth System Model (Sidorenko et al., 2019), is employed in our experiments. FESOM 2.0 solves the primitive equations in the Boussinesq and hydrostatic approximations. It adopts an unstructured triangular mesh framework, with scalar degrees of freedom located at vertices and horizontal velocities at triangle centers. Additionally, the Finite Element Sea Ice Model (Danilov et al., 2015) is incorporated into FESOM 2.0 as a set of subroutines. FESIM solves the modified elastic-viscous-plastic (mEVP) dynamical equations, enabling a reduction in subcycling steps while maintaining numerical stability (Kimmritz et al., 2017; Koldunov et al., 2019).  
 145 Figure 2 presents the horizontal resolution of the PD and LGM mesh configurations used in this study. The PD mesh consists of 126,858 nodes and 244,659 cells, while the LGM mesh comprises 104,425 nodes and 203,142 cells. Both meshes have the same nominal resolution of  $1^\circ$  in most parts of the global ocean, approximately 25 km north of  $50^\circ$  N, about  $1/3^\circ$  at the Equator, and 10 km for the Arctic Ocean and Bering Sea.

150



**Figure 2.** Horizontal resolution of PD (left) and LGM (right) mesh configurations used in this study.

The K-profile parameterization (Large et al., 1994) is utilized universally, targeting surface ocean mixing, whereas a constant vertical background diffusivity  $k_{bg}$  is employed to manage the effects of various background mixing mechanisms.

155 In FESOM 2.0, the default value for  $k_{bg}$  is set to  $0.1 \times 10^{-4} \text{ m}^2/\text{s}$ . Furthermore, the tidal mixing parameterization by Schmittner and Egbert (2014), drawing on the foundational work of Jayne and St. Laurent (2001) and Simmons et al. (2004), is incorporated. This parameterization uniquely accounts for the influence of subgrid-scale bathymetry on the penetration depth of energy inputs and differentiates between diurnal and semidiurnal tidal effects. The tidal diapycnal diffusivity,  $k_{v\_tidal}$ , is given by

$$160 \quad k_{v\_tidal} = \frac{\Gamma \epsilon}{N^2}. \quad (6)$$

$\Gamma$  is the mixing efficiency which is set to 0.2 and  $N^2$  is the buoyancy frequency. The rate of tidal energy dissipation,  $\epsilon$ , is

$$\epsilon = \frac{1}{\rho} \sum_{z' > z}^H \sum^{\text{TC}} q_{\text{TC}} D_{\text{IT,TC}}(x, y) F(z, z'), \quad (7)$$

where  $D_{\text{IT,TC}}(x, y)$  is the internal-tide energy flux from barotropic tides to the internal tides from the tidal model,  $F$  is the vertical decay function using an e-folding depth of 500 m above the seafloor  $H$ . The local dissipation efficiency  $q_{\text{TC}}$ , accounts

165 for the critical latitude  $y_c$  of diurnal and semidiurnal tidal constituents (TC)

$$q_{\text{TC}} = \begin{cases} 1, & \text{for } |y| > y_{c,\text{TC}} \\ 0.33, & \text{otherwise} \end{cases} \quad (8)$$

$y_c$  is  $30^\circ$  for the diurnal constituents (K1 and O1) and  $72^\circ$  for the semidiurnal constituents (M2 and S2).

### 3 Model and Experiments

In the Methods section, we extract the internal-tide dissipation, denoted as  $D_{IT}$ , from the global tide model. In  
 170 comparison to the PD values, the  $D_{IT}$  of the four principal tidal constituents (M2, S2, K1, and O1) during the LGM shows a nearly threefold increase, escalating from 1.31 TW to 3.41 TW (Table 1). The predominant contributor to this shift is the M2 tide, with a period of 12.42 hours, which closely matches the North Atlantic basin's period of 12.66 hours (Muller, 2008), creating resonance. During the LGM, the removal of continental shelves decreased damping, causing a significant increase in the M2 tide. Its value surged from a PD level of 0.89 TW to reach 2.94 TW during the LGM. These values are in close  
 175 agreement with previous research findings (Arbic et al., 2004a; Egbert et al., 2004; Green, 2010; Griffiths and Peltier, 2008; Griffiths and Peltier, 2009; Wilmes and Green, 2014). The horizontal distributions of  $D_{IT}$  (Figure 1) are used as input to a tidal mixing parameterization in FESOM 2.0.

The experiments are designed to explore how tidal mixing impacts the glacial AMOC, with specifics outlined in Table 4. For PD simulations are each forced by the 1958-2020 period in the Reanalysis dataset (JRA55-do 1.4.0) by Kobayashi et al.  
 180 (2015): it represents the second global atmospheric reanalysis conducted by the Japan Meteorological Agency (JMA). Spanning from 1958 onwards, it employs the TL319 version of JMA's operational data assimilation system as of December 2009. JRA-55 addresses several issues identified in previous reanalyses and enhances the temporal consistency of temperature analysis, thereby suitable for examining multidecadal variability and conducting climate simulations. We repeatedly conducted each PD case simulation using the 1958-2020 JRA-55 data five times to achieve simulation stability. No significant trend was

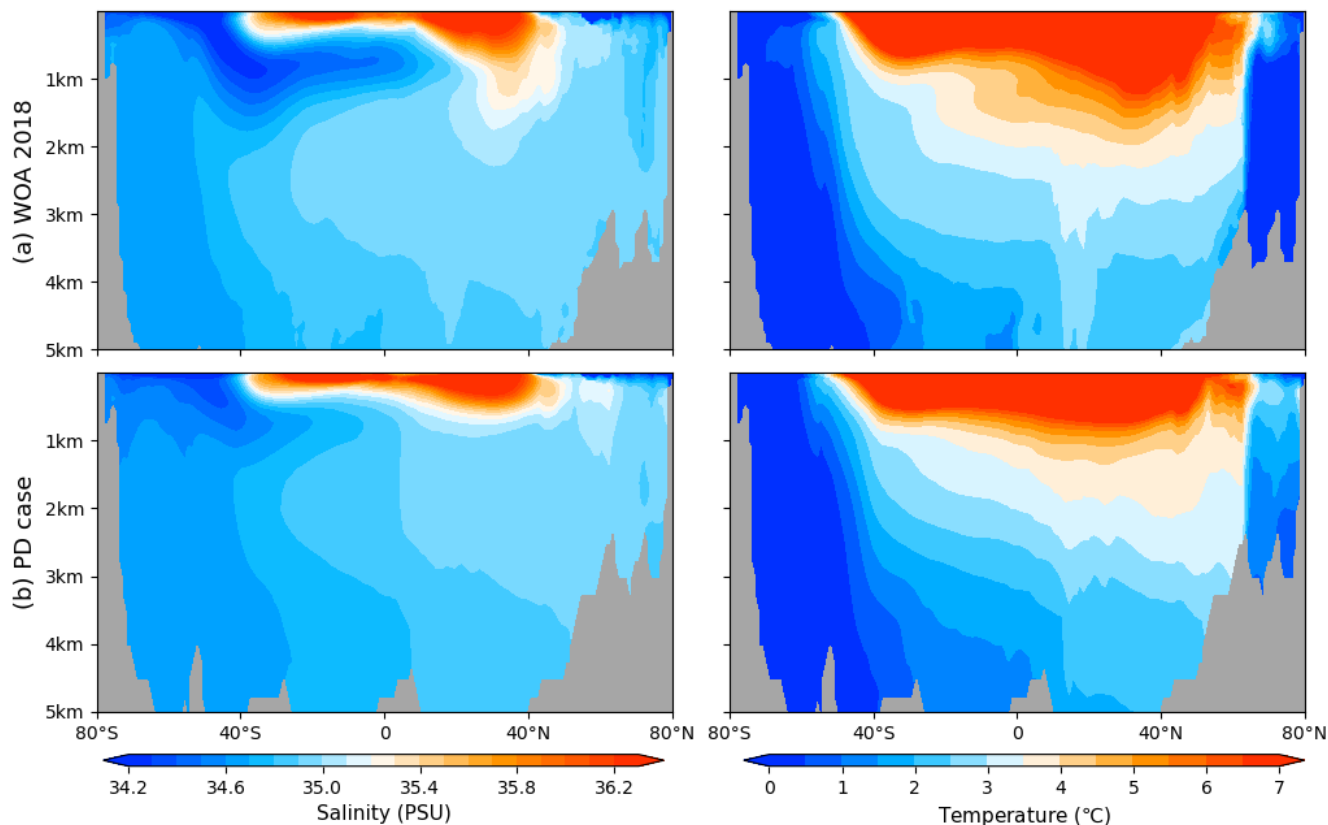
185 detected, and we utilized the average results from the final cycle for our analysis. The simulations conducted for the PD  
 scenario using FESOM 2.0 have been thoroughly validated. Detailed assessments and descriptions of the PD case's  
 configuration can be found in Scholz et al. (2019) and Scholz et al. (2022). Figure 3 depicts a comparison of the temperature  
 and salinity in the Atlantic Ocean from our PD case with the WOA (World Ocean Atlas) 2018 data. The results indicate that  
 our model accurately reproduces the temperature and salinity structures of the modern ocean. This lays a solid foundation for  
 190 further simulations of the LGM ocean and the study of the role of tides.

Regarding the LGM simulations, the differences in model configuration are attributed to surface forcing and initial  
 conditions. Both of these two are taken from the LGMW case in Zhang et al. (2013). It is worth noting that selecting an  
 appropriate forcing for the LGM simulations is crucial. In Knorr et al. (2021), a comparison of the LGM simulations of Atlantic  
 Ocean temperature and salinity structure was conducted among different models from the Paleoclimate Model Intercomparison  
 195 Project (PMIP, Braconnot et al., 2007; Weber et al., 2007) and Coupled Model Intercomparison Project (CMIP, Braconnot et  
 al., 2012; Kageyama et al., 2017). From these, we selected the simulation results of the well-performing climate model  
 COSMOS (Zhang et al., 2013) as the surface forcing for the LGM simulations in this study, this provides a solid foundation  
 for accurately simulating the glacial ocean. The LGM simulations are executed over a duration of 600 years to achieve a quasi-  
 equilibrium state. A time series depicting the strength of AMOC for LGM cases is presented in Figure S1. The concluding 62  
 200 years of this period were selected. The simulations are summarized in Table 3.

**Table 4.** Experimental design of the simulations in this study.

Simulation	Surface forcing	Tidal mixing	Initial conditions
PD	PD	No	PD
PD_tidal	PD	PD	PD
PD_glacial_tidal	PD	LGM	PD
LGM	LGM	No	LGM
LGM_tidal	LGM	LGM	LGM





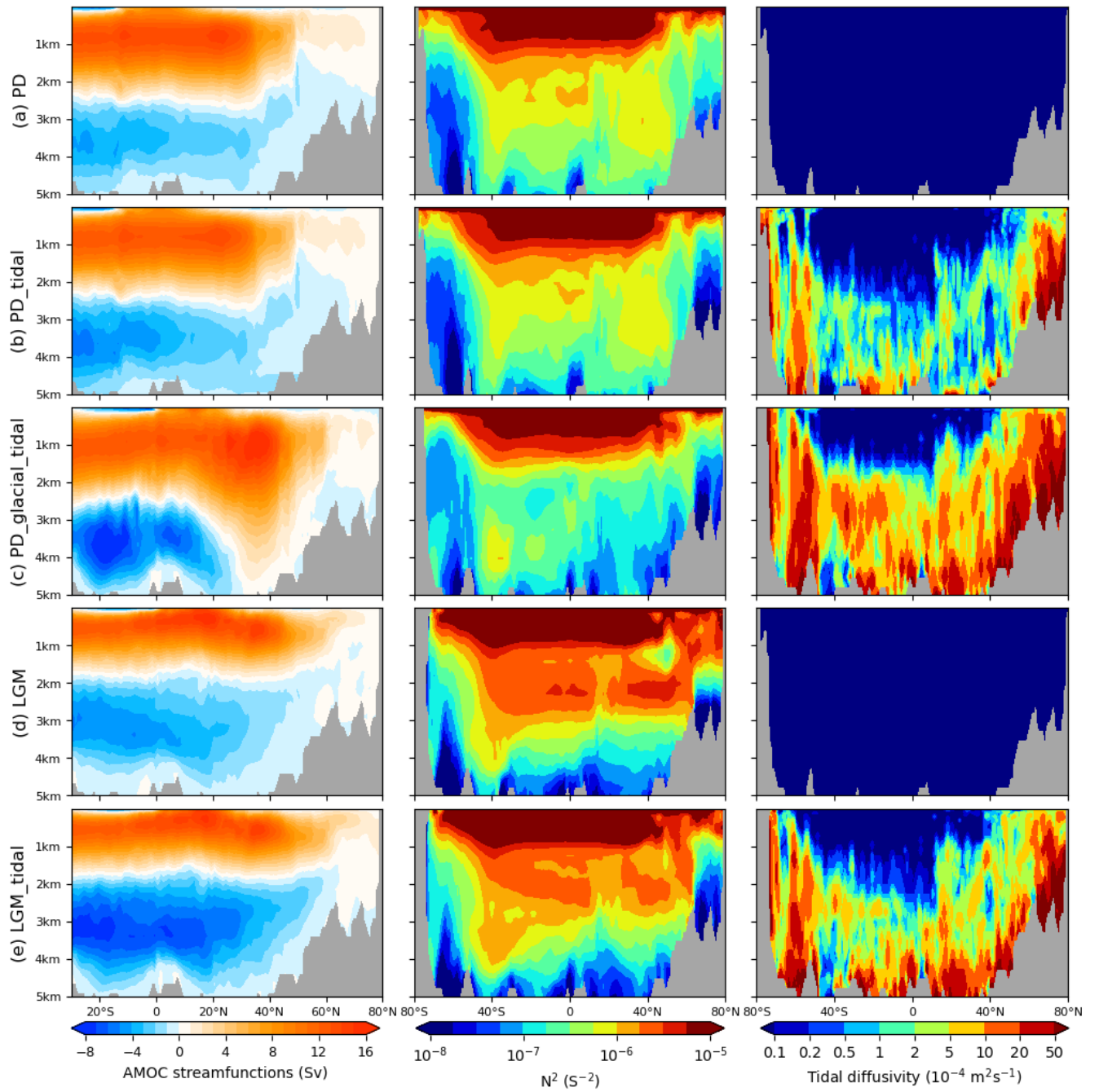
205 **Figure 3.** Comparison of salinity and temperature between WOA 18 data and PD simulation in the Atlantic Ocean.

## 4 Results

The AMOC strength varies within a range of 11.6 to 15.5 Sv for PD and 13.3 to 13.9 Sv for LGM, respectively (Figure 4, Table S1). It is noteworthy that both LGM simulations (LGM and LGM\_tidal) exhibit a shoaled AMOC, identified at approximately 1700 meters depth. This suggests that the inclusion of tidal mixing does not affect the glacial AMOC's configuration. Instead, stratification is identified as a crucial factor contributing to the shoaled AMOC, which is more pronounced in upper and middle glacial ocean. Stratification, on one hand, signifies the buoyancy forces encountered by the water masses during their descent. On the other hand, it exerts a notable influence on the model tidal diffusivities, as outlined in equation (6). Our tidal model results indicate that internal-tide dissipation  $D_{IT}$  in the North Atlantic during the LGM reached 0.81 TW, a significant increase compared to the 0.13 TW observed in the PD, representing a sixfold increase. Additionally, the average squared buoyancy frequency  $N^2$  at depths of 1000-3000 meters in the Atlantic during the LGM is  $1.89 \times 10^{-6} \text{ s}^{-2}$ , compared to  $1.02 \times 10^{-6} \text{ s}^{-2}$  in the PD. These changes do not suggest tidal dominance but rather imply stronger vertical tidal

diffusivity (shown in Figure 4b, e). This enhanced vertical mixing aligns with the observed reductions in the vertical gradients of radiocarbon and  $\delta^{13}\text{C}$  in the deep Atlantic during the LGM (Skinner et al., 2017; Muglia et al., 2018; Peterson et al., 2014; 220 Molina-Kescher et al., 2016; Sikes et al., 2016).

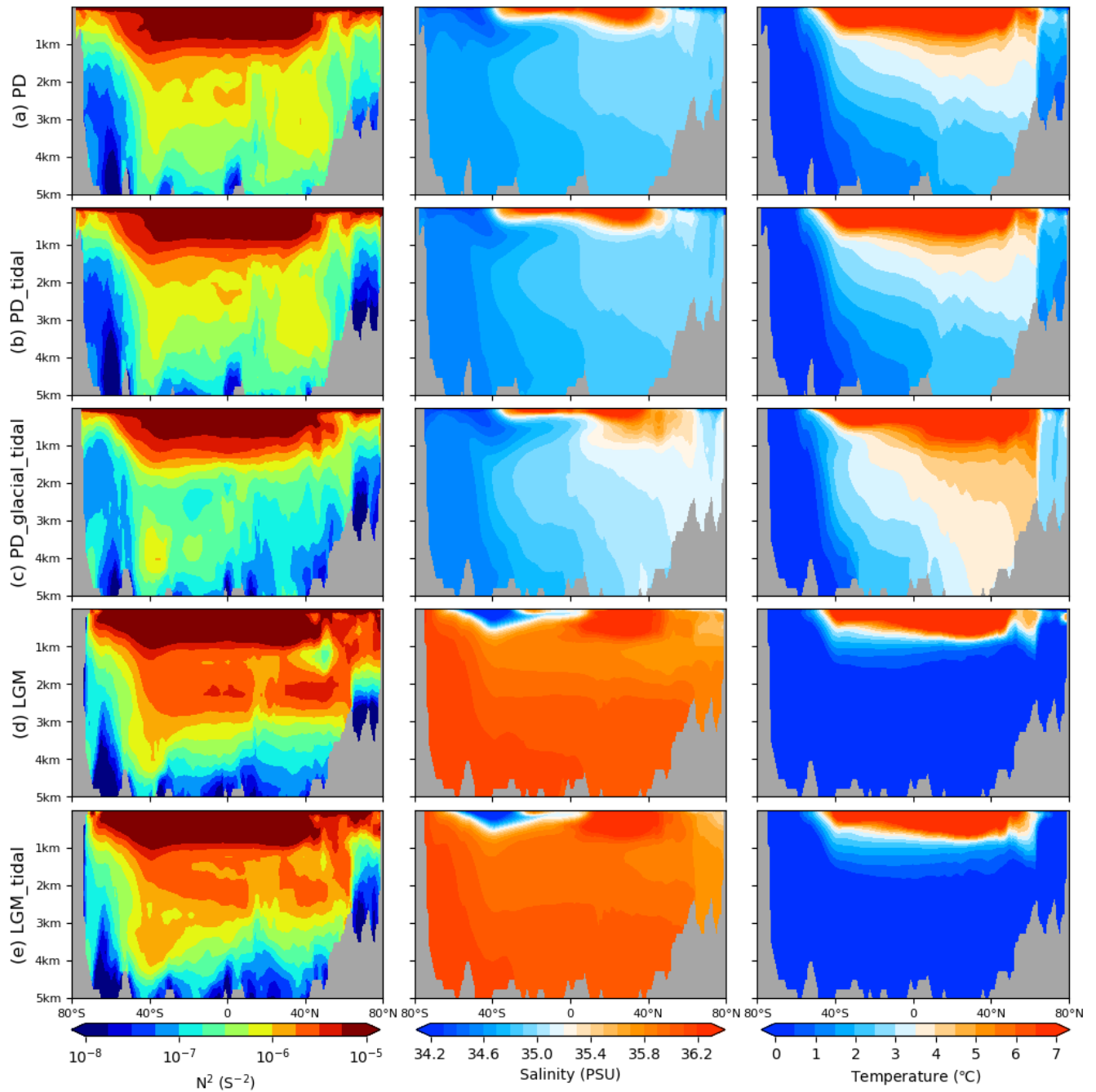
However, the incorporation of tidal mixing processes results in a substantial increase in the generation of AABW, with a magnitude of -7.9 Sv, significantly exceeding the PD estimate of -4.2 Sv. This enhancement is in agreement with the results derived from paleo-proxy data, which indicate an intensified glacial Atlantic AABW (Curry and Oppo, 2005; Zhang et al., 2017). Consequently, while LGM tides may not modify the AMOC, they exert a significant influence on AABW formation. 225 Thus, accounting for tidal effects remains essential in climate modeling for the LGM period.



**Figure 4.** AMOC (left) and zonally averaged distributions for the squared buoyancy frequency (middle), and tidal diffusivity (right) in the Atlantic Ocean. Simulations as listed in Table 2.

230 In the PD\_tidal experiment, incorporating tidal mixing parameterization does not alter the geometry of the AMOC. However, the PD\_glacial\_tidal simulation, which includes LGM tidal dissipation, reveals distinct dynamics. This simulation demonstrates a significant increase in both the strength and depth of the AMOC, extending to near-benthic layers at approximately 35°N (Figure 4c and Table S1), and is accompanied by notably reduced stratification. These observations suggest that the effects and dynamics of enhanced tidal dissipation differ substantially under the varying ocean stratification intensities during the LGM and PD periods.

235 To investigate the origins of various stratifications from the perspectives of temperature and salinity, we conduct a further analysis of the temperature and salinity distributions in the Atlantic Ocean across different cases (Figure 5). Under PD forcing, the surface salinity below 40 degrees latitude is significantly higher than in the mid and lower layers, which weakens ocean stratification. This is in stark contrast with the abyssal high salinity observed during the LGM, a defining feature of the glacial ocean (Knorr et al., 2021; Adkins et al., 2002). Regarding temperature, a decrease from the surface to the seabed is observed in both PD and LGM scenarios. Notably, during the LGM, the simulated temperature exhibits a pronounced decrease above a depth of 2 km, descending to 0°C at this level. Beneath 2 km, the ocean is relatively homogeneous and close to the freezing point, indicating a cold and well-mixed deep ocean, consistent with paleo-proxy data (Adkins et al., 2002). This steeper temperature gradient enhances the stratification in the upper layers of the glacial ocean. Collectively, the abyssal high salinity alongside the swift vertical temperature decline significantly contributes to a more pronounced stratification within the glacial ocean. Accurately replicating these temperature and salinity features is crucial in the climate modeling of the LGM.



**Figure 5.** Zonally averaged distributions in the Atlantic Ocean for the simulations listed in Table 2: Squared buoyancy frequency (left), salinity (middle), and potential temperature (right).

250 Regarding our similar consideration of enhanced tidal mixing during the LGM, the reason our results differ from those of previous studies (Schmittner et al., 2015; Wilmes et al., 2019) is believed to be because Schmittner et al. (2015) and Wilmes

et al. (2019) do not reproduce the high abyssal salinity and enhanced stratification in the LGM Atlantic, which have an opposite effect on the AMOC compared to the stronger tidal mixing.

#### 4 Discussion

255 Tides play a pivotal role in climate dynamics, such as facilitating the release of iceberg armadas during Heinrich events (Arbic et al., 2004b), and serving as the primary driving force behind both vertical and horizontal ice sheet movements at their marine peripheries (Padman et al., 2018). Focusing on the LGM period reveals that glacial tidal dissipation was approximately three times greater than present levels. This increase, combined with the closure of the Bering Strait (Hu et al., 2010), led to reduced freshwater transport to the Atlantic, ostensibly resulting in a strengthened glacial AMOC. However, paleoclimatic  
260 proxy data indicate a significant shoaling of the AMOC during the LGM, with an estimated reduction in depth of about 1,000 m compared to contemporary conditions (Burke et al., 2015; Lund et al., 2011). The primary aim of this study is to identify the reasons for the shoaled glacial AMOC, given the complex interplay of these factors.

Our results indicate that the integration of additional tidal mixing parameterization does not significantly influence the AMOC in either the PD or LGM. In the PD scenario, the relatively weak tides can be adequately accounted for by background  
265 diffusivity  $k_{bg}$ , thereby negating the necessity for an additional tidal parameterization. Furthermore, during the LGM, tides are unlikely to play a substantial role in influencing glacial AMOC due to pronounced ocean stratification. This stratification hampers the mixing of water masses, on one hand, and, on the other, it leads to a decrease in the effectiveness of tidal mixing. This is because the buoyancy frequency, which appears in the denominator in the parameterization of tidal mixing (as detailed in equation (6) in the Method section), suggests that stronger stratification significantly reduces the impact of tidal dissipation.  
270 However, in the abyssal ocean with relatively weak stratification, the pronounced tidal dissipation during the LGM notably enhances the formation of AABW.

The tidal mixing parameterization considers only locally dissipated energy, which accounts only for one-third of the total energy (Jayne, 2009; Schmittner and Egbert, 2014). The remaining two-thirds of the energy is dissipated in the far-field, where the background diffusivity  $k_{bg}$  is employed to represent this dissipation. Consequently, we calculated the far-field dissipation  
275 due to  $k_{bg}$  and the local tidal dissipation due to  $k_{v\_tidal}$  for each simulation using the Osborn (1980) formula:

$$P = \int \rho \epsilon \, dV = \frac{1}{\Gamma} \int \rho k N^2 \, dV.$$

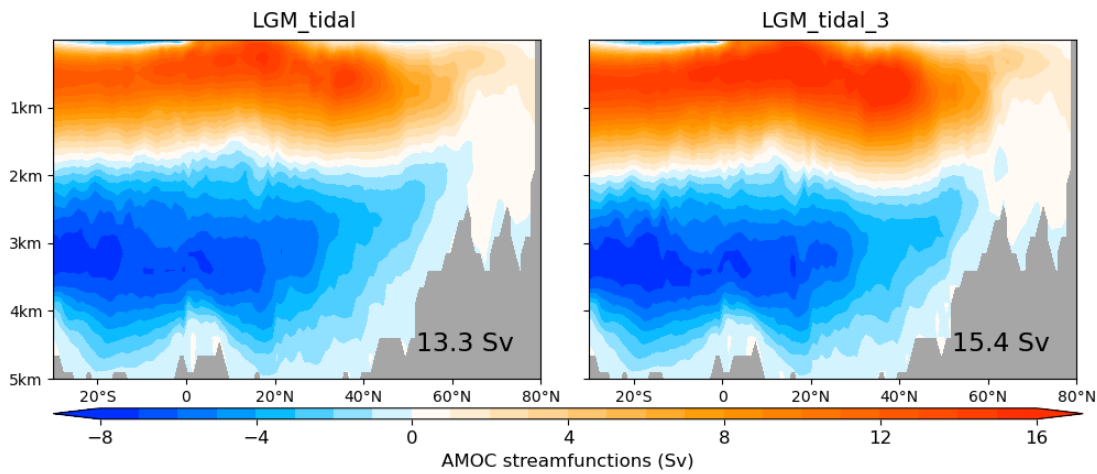
The results are presented in Table 5. Additionally, we conducted another experiment, LGM\_tidal\_3, in which  $k_{bg}$  increased from  $1 \cdot 10^{-5} \, \text{m}^2\text{s}^{-1}$  to  $3 \cdot 10^{-5} \, \text{m}^2\text{s}^{-1}$  for comparison. The results indicate that the LGM\_tidal experiment underestimates the total energy contribution from tides by only 2.05 TW, whereas LGM\_tidal\_3 reaches 3.92 TW.

280 Figure 6 presents the AMOC geometry for LGM\_tidal and LGM\_tidal\_3. The geometry of the AMOC in LGM\_tidal\_3 remains relatively shallow without significant changes, which further supports our study's conclusions. The only notable change is in the AMOC strength, which increased from 13.3 Sv to 15.4 Sv. This underscores the necessity of employing tidal mixing parameterization and also the importance of appropriately adjusting the background diffusivity ( $k_{bg}$ ). Additionally, this

285 result is the first to demonstrate that the glacial shallower AMOC geometry during the LGM remains unchanged, even when considering far-field tidal dissipation.

**Table 5.** Summary of energy consumption due to diapycnal mixing

Simulation	$k_{bg}$ ( $1 \cdot 10^{-5} \text{ m}^2 \text{ s}^{-1}$ )	Far-field contribution (TW)	Local contribution (TW)	Total (TW)
PD	1	0.79	0	0.79
PD_tidal	1	0.78	0.38	1.16
LGM	1	1.05	0	1.05
LGM_tidal	1	1.02	1.03	2.05
LGM_tidal_3	3	2.86	1.06	3.92



290 **Figure 6.** AMOC streamfunctions (Sv) between LGM\_tidal and LGM\_tidal\_3.

The application of enhanced LGM tidal dissipation to PD conditions (in the case of PD\_glacial\_tidal), where ocean stratification is significantly weaker than LGM, yields entirely different results. In this scenario, the amplified tidal dissipation induces a deeper and more potent AMOC. We propose a potential positive feedback mechanism accounting for the increased AMOC during termination. A reduced ocean stratification during the initial phase of termination enhances the effectiveness of tidal mixing, a process analogous to the one discussed above. This increased tidal mixing will affect the ocean more efficiently, further weakening ocean stratification, which in turn increases tidal mixing. This initiates a positive feedback loop that culminates in reduced stratification and a more vigorous and deeper AMOC.

295

## 5 Conclusions

The concept of enhanced glacial ocean stratification, potentially resulting from cooling and salinification of glacial AABW, which could lead to a shoaled AMOC during the LGM has previously been discussed (Jansen and Nadeau, 2016;

300

Jansen, 2017; Klockmann et al., 2016). However, until now, no research has directly demonstrated a shoaled AMOC under real LGM forcing conditions, including the impact of increased glacial tidal dissipation. Montenegro et al. (2007) proposes that LGM tides have a minimal impact on the AMOC, attributing this to a potential underestimation of tidal dissipation during the LGM. In contrast, Schmittner et al. (2015) and Wilmes et al. (2019) suggests a significant enhancement and deepening of the North Atlantic overturning cell under vigorous glacial tidal dissipation. It is noteworthy that Wilmes et al. (2021) obtained a relatively shoaled LGM AMOC through the artificial reduction of meridional moisture flux and precipitation at high latitudes.

Our study is the first to directly demonstrate a stratified ocean and shoaled AMOC under a real LGM forcing conditions without any artificial modifications, despite the context of increased glacial tidal dissipation. We suggest that accurately simulating the high salinity of the deep sea and the rapid temperature changes in the ocean's upper layers is crucial for correctly reproducing a glacial stratified ocean. In such an environment, the significant tidal dissipation during the LGM was insufficient to counter the increased ocean stratification, leading to a shoaled AMOC. Furthermore, we emphasize that this notable glacial tidal dissipation plays a critical role in strengthening the AABW during the LGM.

Our results highlight the dominance of background conditions and mixing on ocean circulation dynamics, with possible complex feedbacks in the Earth system (Lohmann et al., 2020). Here, we use ocean-only model, which means the LGM atmospheric forcing is kept constant. Consequently, this approach has a limitation: it does not account for interactions between the ocean or sea ice and the atmosphere. As a logical next step, we incorporate tidal energy dissipation into fully coupled Earth system models (Zhang et al., 2014; Liu et al., 2009) to elaborate AMOC dynamics during deglaciation.

## **Appendix A: Detailed Iterative Process for Eliminating $N^2$ Sensitivities between the Tidal Model and FESOM 2.0**

320

To address the  $N^2$  sensitivities and interactions between FESOM2.0 and tidal model, we employed an iterative process for PD\_tidal and LGM\_tidal simulations. Here, we provide a detailed description of this process, using the LGM\_tidal simulation as an example.

325 Iterative Process Steps:

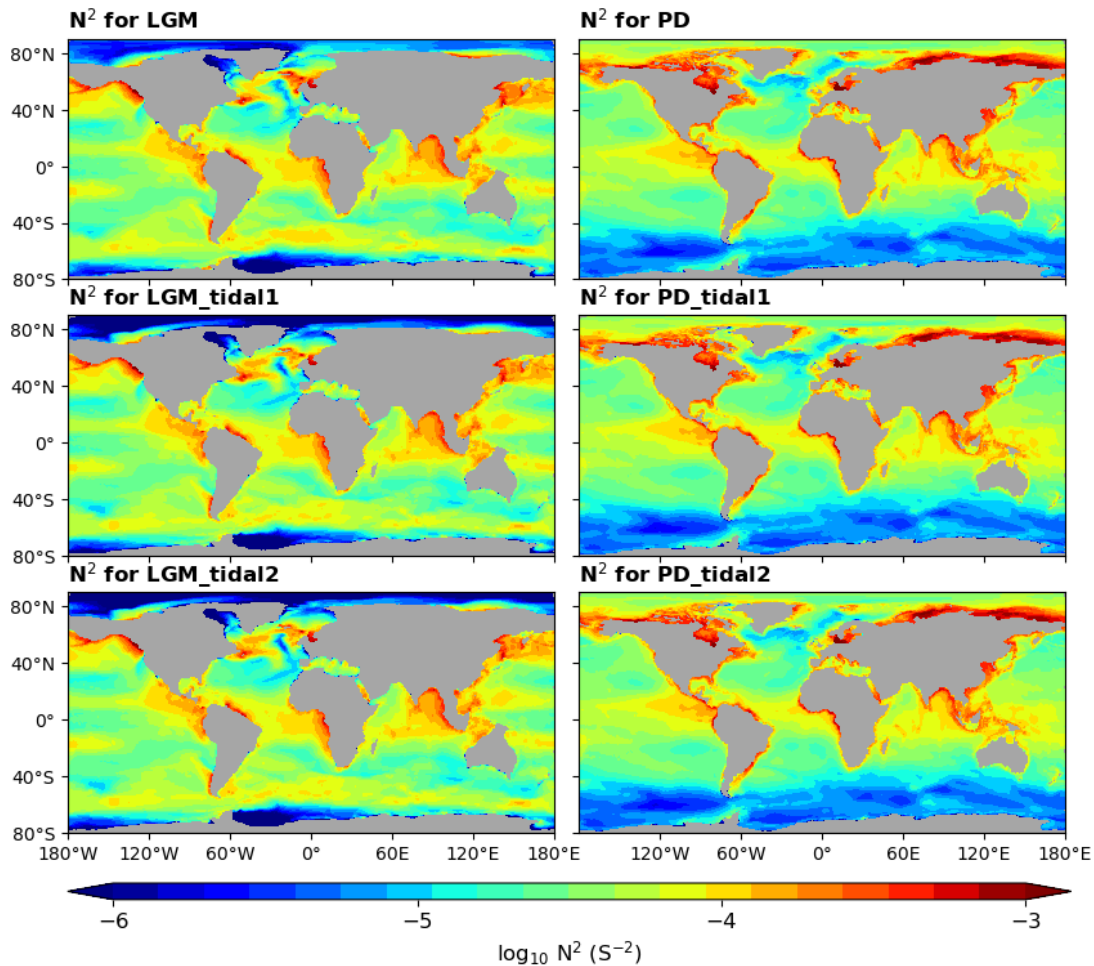
1. Initial Input: We begin by obtaining the  $N^2$  from the LGM simulation which is without tidal mixing, and this initial  $N^2$  is then used as input for the tidal model.
- 330 2. First Iteration (LGM\_tidal1): The tidal model, using the initial  $N^2$ , runs for the tidal dissipation, which is then fed back into the FESOM2.0, producing the first experimental result, termed LGM\_tidal1.
3. Second Iteration (LGM\_tidal2): The  $N^2$  from the LGM\_tidal1 simulation is input into the tidal model again to generate a new tidal dissipation, which is incorporated into the FESOM2.0, and the model is run to obtain LGM\_tidal2.



4. Final Output (LGM\_tidal2): The LGM\_tidal2 simulation represents the second iteration and is the LGM\_tidal experiment presented in our manuscript.

The Figure A1 illustrates the changes in depth-averaged vertical  $N^2$  during these iterations for both the PD and LGM scenarios, showing that for the LGM simulations, the primary change from the initial LGM to LGM\_tidal1 involves a decrease in  $N^2$  in the Arctic, and from LGM\_tidal1 to LGM\_tidal2, there is minimal change observed, whereas for the PD simulations, there were no significant changes in  $N^2$  throughout the iterations, thus effectively minimizing the mutual influences between  $N^2$  in the tidal model and the OGCM after the iterative process.

This iterative approach ensures the stability and accuracy of our model results, reducing the sensitivity of  $N^2$  to tidal dissipation feedbacks.



**Figure A1.** Changes in depth-averaged vertical  $N^2$  Across Iterations for LGM and PD Simulations.

350 **Code availability.** The FESOM 2.0 source code used for simulations in this study is available at <https://github.com/FESOM/fesom2.git>. The reanalysis data used for PD forcing in this study is the JRA-55 (the Japanese 55-year Reanalysis), which can be downloaded at [https://jra.kishou.go.jp/JRA-55/index\\_en.html](https://jra.kishou.go.jp/JRA-55/index_en.html). The model output data used for LGM forcing in this study is available through Zhang et al. (2013, <https://cp.copernicus.org/articles/9/2319/2013/>).

355 **Author Contributions.** Y.C. and G.L. conceived and designed the study. Y.C. developed and performed the model simulations under the guidance of P.S., G.L., and X.C. And all authors contributed to the writing and revising of the manuscript.

**Competing interests.** The authors declare that they have no conflict of interest.

360 **Financial support.** This research has been supported by CSC (grant no. 202106330037) and by BMBF through the Program “Changing Earth - Sustaining our Future” and PalMod.

**Acknowledgments.** The authors wish to express their profound gratitude to Dehai Song for his invaluable assistance in the development of the tide model. We are also grateful for the guidance provided by Hu Yang. Furthermore, our sincere thanks  
365 go to the HPC department of AWI for their support.

## References

- Adkins, J. F., McIntyre, K., and Schrag, D. P.: The salinity, temperature, and delta O-18 of the glacial deep ocean, *Science*, 298, 1769-1773, DOI 10.1126/science.1076252, 2002.
- Arbic, B. K., Garner, S. T., Hallberg, R. W., and Simmons, H. L.: The accuracy of surface elevations in forward global  
370 barotropic and baroclinic tide models, *Deep Sea Research Part II: Topical Studies in Oceanography*, 51, 3069-3101, 10.1016/j.dsr2.2004.09.014, 2004a.
- Arbic, B. K., Macayeal, D. R., Mitrovica, J. X., and Milne, G. A.: Palaeoclimate - Ocean tides and Heinrich events, *Nature*, 432, 460-460, 10.1038/432460a, 2004b.
- Baker, J. A., Watson, A. J., and Vallis, G. K.: Meridional Overturning Circulation in a Multibasin Model. Part I:  
375 Dependence on Southern Ocean Buoyancy Forcing, *J Phys Oceanogr*, 50, 1159-1178, 10.1175/Jpo-D-19-0135.1, 2020.
- Bouttes, N., Roche, D. M., and Paillard, D.: Impact of strong deep ocean stratification on the glacial carbon cycle, *Paleoceanography*, 24, Artn Pa3203  
10.1029/2008pa001707, 2009.

- Boyle, E. A. and Keigwin, L.: North-Atlantic Thermohaline Circulation during the Past 20,000 Years Linked to High-  
380 Latitude Surface-Temperature, *Nature*, 330, 35-40, DOI 10.1038/330035a0, 1987.
- Braconnot, P., Harrison, S. P., Kageyama, M., Bartlein, P. J., Masson-Delmotte, V., Abe-Ouchi, A., Otto-Bliesner, B.,  
and Zhao, Y.: Evaluation of climate models using palaeoclimatic data, *Nat Clim Change*, 2, 417-424, 10.1038/Nclimate1456,  
2012.
- Braconnot, P., Otto-Bliesner, B., Harrison, S., Joussaume, S., Peterchmitt, J. Y., Abe-Ouchi, A., Crucifix, M.,  
385 Driesschaert, E., Fichefet, T., Hewitt, C. D., Kageyama, M., Kitoh, A., Loutre, M. F., Marti, O., Merkel, U., Ramstein, G.,  
Valdes, P., Weber, L., Yu, Y., and Zhao, Y.: Results of PMIP2 coupled simulations of the Mid-Holocene and Last Glacial  
Maximum - Part 2: feedbacks with emphasis on the location of the ITCZ and mid- and high latitudes heat budget, *Clim Past*,  
3, 279-296, DOI 10.5194/cp-3-279-2007, 2007.
- Broecker, W. S. and Hemming, S.: Paleoclimate - Climate swings come into focus, *Science*, 294, 2308-2309, DOI  
390 10.1126/science.1068389, 2001.
- Burke, A., Stewart, A. L., Adkins, J. F., Ferrari, R., Jansen, M. F., and Thompson, A. F.: The glacial mid-depth  
radiocarbon bulge and its implications for the overturning circulation, *Paleoceanography*, 30, 1021-1039,  
10.1002/2015pa002778, 2015.
- Butzin, M., Prange, M., and Lohmann, G.: Radiocarbon simulations for the glacial ocean: The effects of wind stress,  
395 Southern Ocean sea ice and Heinrich events, *Earth Planet Sc Lett*, 235, 45-61, 10.1016/j.epsl.2005.03.003, 2005.
- Chen, C. S., Liu, H. D., and Beardsley, R. C.: An unstructured grid, finite-volume, three-dimensional, primitive equations  
ocean model: Application to coastal ocean and estuaries, *J Atmos Ocean Tech*, 20, 159-186, Doi 10.1175/1520-  
0426(2003)020<0159:Augfvt>2.0.Co;2, 2003.
- Clark, P. U., Pisias, N. G., Stocker, T. F., and Weaver, A. J.: The role of the thermohaline circulation in abrupt climate  
400 change, *Nature*, 415, 863-869, DOI 10.1038/415863a, 2002.
- Curry, W. B. and Oppo, D. W.: Glacial water mass geometry and the distribution of delta C-13 of Sigma CO2 in the  
western Atlantic Ocean, *Paleoceanography*, 20, Artn Pa1017  
10.1029/2004pa001021, 2005.
- Danilov, S., Sidorenko, D., Wang, Q., and Jung, T.: The Finite-volume Sea ice–Ocean Model (FESOM2), *Geoscientific  
405 Model Development*, 10, 765-789, 10.5194/gmd-10-765-2017, 2017.
- Danilov, S., Wang, Q., Timmermann, R., Iakovlev, N., Sidorenko, D., Kimmritz, M., Jung, T., and Schröter, J.: Finite-  
Element Sea Ice Model (FESIM), version 2, *Geoscientific Model Development*, 8, 1747-1761, 10.5194/gmd-8-1747-2015,  
2015.
- Duplessy, J. C., Shackleton, N. J., Fairbanks, R. G., Labeyrie, L., Oppo, D., and Kallel, N.: Deepwater source variations  
410 during the last climatic cycle and their impact on the global deepwater circulation, *Paleoceanography*, 3, 343-360,  
10.1029/PA003i003p00343, 1988.

- Egbert, G. D. and Ray, R. D.: Semi-diurnal and diurnal tidal dissipation from TOPEX/Poseidon altimetry, *Geophys Res Lett*, 30, Artn 1907  
10.1029/2003gl017676, 2003.
- 415 Egbert, G. D., Ray, R. D., and Bills, B. G.: Numerical modeling of the global semidiurnal tide in the present day and in the last glacial maximum, *Journal of Geophysical Research: Oceans*, 109, 10.1029/2003jc001973, 2004.
- Ferrari, R. and Wunsch, C.: Ocean Circulation Kinetic Energy: Reservoirs, Sources, and Sinks, *Annual Review of Fluid Mechanics*, 41, 253-282, 10.1146/annurev.fluid.40.111406.102139, 2009.
- 420 Ferrari, R., Jansen, M. F., Adkins, J. F., Burke, A., Stewart, A. L., and Thompson, A. F.: Antarctic sea ice control on ocean circulation in present and glacial climates, *Proceedings of the National Academy of Sciences of the United States of America*, 111, 8753-8758, 10.1073/pnas.1323922111, 2014.
- Francois, R., Altabet, M. A., Yu, E. F., Sigman, D. M., Bacon, M. P., Frank, M., Bohrmann, G., Bareille, G., and Labeyrie, L. D.: Contribution of Southern Ocean surface-water stratification to low atmospheric CO<sub>2</sub> concentrations during the last glacial period, *Nature*, 389, 929-935, Doi 10.1038/40073, 1997.
- 425 Ganopolski, A. and Rahmstorf, S.: Rapid changes of glacial climate simulated in a coupled climate model, *Nature*, 409, 153-158, Doi 10.1038/35051500, 2001.
- Gordon, A. L.: Interocean exchange of thermocline water, *Journal of Geophysical Research*, 91, 10.1029/JC091iC04p05037, 1986.
- Green, J. A. M.: Ocean tides and resonance, *Ocean Dynam*, 60, 1243-1253, 10.1007/s10236-010-0331-1, 2010.
- 430 Green, J. A. M., Green, C. L., Bigg, G. R., Rippeth, T. P., Scourse, J. D., and Uehara, K.: Tidal mixing and the Meridional Overturning Circulation from the Last Glacial Maximum, *Geophys Res Lett*, 36, 10.1029/2009gl039309, 2009.
- Griffiths, S. D. and Peltier, W. R.: Megatides in the Arctic Ocean under glacial conditions, *Geophys Res Lett*, 35, Artn L08605  
10.1029/2008gl033263, 2008.
- 435 Griffiths, S. D. and Peltier, W. R.: Modeling of Polar Ocean Tides at the Last Glacial Maximum: Amplification, Sensitivity, and Climatological Implications, *Journal of Climate*, 22, 2905-2924, 10.1175/2008jcli2540.1, 2009.
- Hendershott, M. C.: Effects of Solid Earth Deformation on Global Ocean Tides, *Geophys J Roy Astr S*, 29, 389+, DOI 10.1111/j.1365-246X.1972.tb06167.x, 1972.
- 440 Hesse, T., Butzin, M., Bickert, T., and Lohmann, G.: A model-data comparison of  $\delta^{13}C$  in the glacial Atlantic Ocean, *Paleoceanography*, 26, n/a-n/a, 10.1029/2010pa002085, 2011.
- Hu, A. X., Meehl, G. A., Otto-Bliesner, B. L., Waelbroeck, C., Han, W. Q., Loutre, M. F., Lambeck, K., Mitrovica, J. X., and Rosenbloom, N.: Influence of Bering Strait flow and North Atlantic circulation on glacial sea-level changes, *Nat Geosci*, 3, 118-121, 10.1038/Ngeo729, 2010.
- 445 Jansen, M. F.: Glacial ocean circulation and stratification explained by reduced atmospheric temperature, *Proceedings of the National Academy of Sciences of the United States of America*, 114, 45-50, 10.1073/pnas.1610438113, 2017.

- Jansen, M. F. and Nadeau, L. P.: The Effect of Southern Ocean Surface Buoyancy Loss on the Deep-Ocean Circulation and Stratification, *J Phys Oceanogr*, 46, 3455-3470, 10.1175/Jpo-D-16-0084.1, 2016.
- Jayne, S. R.: The Impact of Abyssal Mixing Parameterizations in an Ocean General Circulation Model, *J Phys Oceanogr*, 39, 1756-1775, 10.1175/2009jpo4085.1, 2009.
- 450 Jayne, S. R. and St. Laurent, L. C.: Parameterizing tidal dissipation over rough topography, *Geophys Res Lett*, 28, 811-814, 10.1029/2000gl012044, 2001.
- Kageyama, M., Harrison, S. P., Kapsch, M.-L., Lofverstrom, M., Lora, J. M., Mikolajewicz, U., Sherriff-Tadano, S., Vadsaria, T., Abe-Ouchi, A., Bouttes, N., Chandan, D., Gregoire, L. J., Ivanovic, R. F., Izumi, K., LeGrande, A. N., Lhardy, F., Lohmann, G., Morozova, P. A., Ohgaito, R., Paul, A., Peltier, W. R., Poulsen, C. J., Quiquet, A., Roche, D. M., Shi, X.,
- 455 Tierney, J. E., Valdes, P. J., Volodin, E., and Zhu, J.: The PMIP4 Last Glacial Maximum experiments: preliminary results and comparison with the PMIP3 simulations, *Clim Past*, 17, 1065-1089, 10.5194/cp-17-1065-2021, 2021.
- Kageyama, M., Albani, S., Braconnot, P., Harrison, S. P., Hopcroft, P. O., Ivanovic, R. F., Lambert, F., Marti, O., Peltier, W. R., Peterschmitt, J. Y., Roche, D. M., Tarasov, L., Zhang, X., Brady, E. C., Haywood, A. M., LeGrande, A. N., Lunt, D. J., Mahowald, N. M., Mikolajewicz, U., Nisancioglu, K. H., Otto-Bliesner, B. L., Renssen, H., Tomas, R. A., Zhang, Q., Abe-
- 460 Ouchi, A., Bartlein, P. J., Cao, J., Li, Q., Lohmann, G., Ohgaito, R., Shi, X. X., Volodin, E., Yoshida, K., Zhang, X., and Zheng, W. P.: The PMIP4 contribution to CMIP6-Part 4: Scientific objectives and experimental design of the PMIP4-CMIP6 Last Glacial Maximum experiments and PMIP4 sensitivity experiments, *Geoscientific Model Development*, 10, 4035-4055, 10.5194/gmd-10-4035-2017, 2017.
- Kimmritz, M., Losch, M., and Danilov, S.: A comparison of viscous-plastic sea ice solvers with and without replacement
- 465 pressure, *Ocean Modelling*, 115, 59-69, 10.1016/j.ocemod.2017.05.006, 2017.
- Klockmann, M., Mikolajewicz, U., and Marotzke, J.: The effect of greenhouse gas concentrations and ice sheets on the glacial AMOC in a coupled climate model, *Clim Past*, 12, 1829-1846, 10.5194/cp-12-1829-2016, 2016.
- Knorr, G. and Lohmann, G.: Southern Ocean origin for the resumption of Atlantic thermohaline circulation during deglaciation, *Nature*, 424, 532-536, 10.1038/nature01855, 2003.
- 470 Knorr, G., Barker, S., Zhang, X., Lohmann, G., Gong, X., Gierz, P., Stepanek, C., and Stap, L. B.: A salty deep ocean as a prerequisite for glacial termination, *Nat Geosci*, 14, 930+, 10.1038/s41561-021-00857-3, 2021.
- Kobayashi, S., Ota, Y., Harada, Y., Ebata, A., Moriya, M., Onoda, H., Onogi, K., Kamahori, H., Kobayashi, C., Endo, H., Miyaoka, K., and Takahashi, K.: The JRA-55 Reanalysis: General Specifications and Basic Characteristics, *J Meteorol Soc Jpn*, 93, 5-48, 10.2151/jmsj.2015-001, 2015.
- 475 Koldunov, N. V., Aizinger, V., Rakowsky, N., Scholz, P., Sidorenko, D., Danilov, S., and Jung, T.: Scalability and some optimization of the Finite-volumE Sea ice–Ocean Model, Version 2.0 (FESOM2), *Geoscientific Model Development*, 12, 3991-4012, 10.5194/gmd-12-3991-2019, 2019.
- Large, W. G., McWilliams, J. C., and Doney, S. C.: Oceanic Vertical Mixing - a Review and a Model with a Nonlocal Boundary-Layer Parameterization, *Rev Geophys*, 32, 363-403, Doi 10.1029/94rg01872, 1994.

- 480 Ledbetter, M. T. and Johnson, D. A.: INCREASED TRANSPORT OF ANTARCTIC BOTTOM WATER IN VEMA CHANNEL DURING LAST ICE AGE, *Science*, 194, 837-839, 10.1126/science.194.4267.837, 1976.
- Lippold, J., Luo, Y. M., Francois, R., Allen, S. E., Gherardi, J., Pichat, S., Hickey, B., and Schulz, H.: Strength and geometry of the glacial Atlantic Meridional Overturning Circulation, *Nat Geosci*, 5, 813-816, 10.1038/Ngeo1608, 2012.
- Liu, Z., Otto-Bliesner, B. L., He, F., Brady, E. C., Tomas, R., Clark, P. U., Carlson, A. E., Lynch-Stieglitz, J., Curry, W.,  
485 Brook, E., Erickson, D., Jacob, R., Kutzbach, J., and Cheng, J.: Transient Simulation of Last Deglaciation with a New Mechanism for Bolling-Allerod Warming, *Science*, 325, 310-314, 10.1126/science.1171041, 2009.
- Lohmann, G., Butzin, M., Eissner, N., Shi, X. X., and Stepanek, C.: Abrupt Climate and Weather Changes Across Time Scales, *Paleoceanography and Paleoclimatology*, 35, ARTN e2019PA003782  
10.1029/2019PA003782, 2020.
- 490 Lund, D. C., Adkins, J. F., and Ferrari, R.: Abyssal Atlantic circulation during the Last Glacial Maximum: Constraining the ratio between transport and vertical mixing, *Paleoceanography*, 26, 10.1029/2010pa001938, 2011.
- Lynch-Stieglitz, J., Adkins, J. F., Curry, W. B., Dokken, T., Hall, I. R., Herguera, J. C., Hirschi, J. J. M., Ivanova, E. V., Kissel, C., Marchal, O., Marchitto, T. M., McCave, I. N., McManus, J. F., Mulitza, S., Ninnemann, U., Peeters, F., Yu, E. F., and Zahn, R.: Atlantic meridional overturning circulation during the Last Glacial Maximum, *Science*, 316, 66-69,  
495 10.1126/science.1137127, 2007.
- Marzocchi, A. and Jansen, M. F.: Connecting Antarctic sea ice to deep-ocean circulation in modern and glacial climate simulations, *Geophys Res Lett*, 44, 6286-6295, 10.1002/2017gl073936, 2017.
- McManus, J. F., Francois, R., Gherardi, J. M., Keigwin, L. D., and Brown-Leger, S.: Collapse and rapid resumption of Atlantic meridional circulation linked to deglacial climate changes, *Nature*, 428, 834-837, 10.1038/nature02494, 2004.
- 500 Miller, M. D., Adkins, J. F., Menemenlis, D., and Schodlok, M. P.: The role of ocean cooling in setting glacial southern source bottom water salinity, *Paleoceanography*, 27, Artn Pa3207  
10.1029/2012pa002297, 2012.
- Molina-Kescher, M., Frank, M., Tapia, R., Ronge, T. A., Nürnberg, D., and Tiedemann, R.: Reduced admixture of North Atlantic Deep Water to the deep central South Pacific during the last two glacial periods, *Paleoceanography*, 31, 651-668,  
505 10.1002/2015pa002863, 2016.
- Montenegro, A., Eby, M., Weaver, A. J., and Jayne, S. R.: Response of a climate model to tidal mixing parameterization under present day and last glacial maximum conditions, *Ocean Modelling*, 19, 125-137, 10.1016/j.ocemod.2007.06.009, 2007.
- Muglia, J., Skinner, L. C., and Schmittner, A.: Weak overturning circulation and high Southern Ocean nutrient utilization maximized glacial ocean carbon, *Earth Planet Sc Lett*, 496, 47-56, 10.1016/j.epsl.2018.05.038, 2018.
- 510 Muller, M.: Synthesis of forced oscillations, Part I: Tidal dynamics and the influence of the loading and self-attraction effect, *Ocean Modelling*, 20, 207-222, 10.1016/j.ocemod.2007.09.001, 2008.
- Nadeau, L. P., Ferrari, R., and Jansen, M. F.: Antarctic Sea Ice Control on the Depth of North Atlantic Deep Water, *Journal of Climate*, 32, 2537-2551, 10.1175/Jcli-D-18-0519.1, 2019.

- Negre, C., Zahn, R., Thomas, A. L., Masque, P., Henderson, G. M., Martinez-Mendez, G., Hall, I. R., and Mas, J. L.:  
515 Reversed flow of Atlantic deep water during the Last Glacial Maximum, *Nature*, 468, 84+, 10.1038/nature09508, 2010.
- Osborn, T. R.: Estimates of the Local-Rate of Vertical Diffusion from Dissipation Measurements, *J Phys Oceanogr*, 10,  
83-89, Doi 10.1175/1520-0485(1980)010<0083:Eotlro>2.0.Co;2, 1980.
- Otto-Bliesner, B. L., Hewitt, C. D., Marchitto, T. M., Brady, E., Abe-Ouchi, A., Crucifix, M., Murakami, S., and Weber,  
520 S. L.: Last Glacial Maximum ocean thermohaline circulation: PMIP2 model intercomparisons and data constraints, *Geophys  
Res Lett*, 34, 10.1029/2007gl029475, 2007.
- Padman, L., Siegfried, M. R., and Fricker, H. A.: Ocean Tide Influences on the Antarctic and Greenland Ice Sheets, *Rev  
Geophys*, 56, 142-184, 10.1002/2016rg000546, 2018.
- Peltier, W. R.: Global glacial isostasy and the surface of the ice-age earth: The ice-5G (VM2) model and grace, *Annu Rev  
Earth Pl Sc*, 32, 111-149, 10.1146/annurev.earth.32.082503.144359, 2004.
- 525 Peterson, C. D., Lisiecki, L. E., and Stern, J. V.: Deglacial whole-ocean  $\delta$   
C change estimated from 480 benthic foraminiferal records, *Paleoceanography*, 29, 549-563, 10.1002/2013pa002552,  
2014.
- Rahmstorf, S.: On the freshwater forcing and transport of the Atlantic thermohaline circulation, *Climate Dynamics*, 12,  
799-811, DOI 10.1007/s003820050144, 1996.
- 530 Robinson, L. F., Adkins, J. F., Keigwin, L. D., Southon, J., Fernandez, D. P., Wang, S. L., and Scheirer, D. S.:  
Radiocarbon variability in the western North Atlantic during the last deglaciation, *Science*, 310, 1469-1473,  
10.1126/science.1114832, 2005.
- Sarnthein, M., Winn, K., Jung, S. J. A., Duplessy, J. C., Labeyrie, L., Erlenkeuser, H., and Ganssen, G.: Changes in East  
Atlantic Deep-Water Circulation over the Last 30,000 Years - 8 Time Slice Reconstructions, *Paleoceanography*, 9, 209-267,  
535 Doi 10.1029/93pa03301, 1994.
- Schaffer, J., Timmermann, R., Arndt, J. E., Kristensen, S. S., Mayer, C., Morlighem, M., and Steinhage, D.: A global,  
high-resolution data set of ice sheet topography, cavity geometry, and ocean bathymetry, *Earth Syst Sci Data*, 8, 543-557,  
10.5194/essd-8-543-2016, 2016.
- Schindelegger, M., Green, J. A. M., Wilmes, S. B., and Haigh, I. D.: Can We Model the Effect of Observed Sea Level  
540 Rise on Tides?, *J Geophys Res-Oceans*, 123, 4593-4609, 10.1029/2018jc013959, 2018.
- Schmittner, A. and Egbert, G. D.: An improved parameterization of tidal mixing for ocean models, *Geoscientific Model  
Development*, 7, 211-224, 10.5194/gmd-7-211-2014, 2014.
- Schmittner, A., Green, J. A. M., and Wilmes, S. B.: Glacial ocean overturning intensified by tidal mixing in a global  
circulation model, *Geophys Res Lett*, 42, 4014-4022, 10.1002/2015gl063561, 2015.
- 545 Scholz, P., Sidorenko, D., Danilov, S., Wang, Q., Koldunov, N., Sein, D., and Jung, T.: Assessment of the Finite-VolumE  
Sea ice-Ocean Model (FESOM2.0) - Part 2: Partial bottom cells, embedded sea ice and vertical mixing library CVMix,  
*Geoscientific Model Development*, 15, 335-363, 10.5194/gmd-15-335-2022, 2022.

- Scholz, P., Sidorenko, D., Gurses, O., Danilov, S., Koldunov, N., Wang, Q., Sein, D., Smolentseva, M., Rakowsky, N., and Jung, T.: Assessment of the Finite-volume Sea ice-Ocean Model (FESOM2.0) - Part 1: Description of selected key model elements and comparison to its predecessor version, *Geoscientific Model Development*, 12, 4875-4899, 10.5194/gmd-12-4875-2019, 2019.
- Sidorenko, D., Goessling, H. F., Koldunov, N. V., Scholz, P., Danilov, S., Barbi, D., Cabos, W., Gurses, O., Harig, S., Hinrichs, C., Juricke, S., Lohmann, G., Losch, M., Mu, L., Rackow, T., Rakowsky, N., Sein, D., Semmler, T., Shi, X., Stepanek, C., Streffing, J., Wang, Q., Wekerle, C., Yang, H., and Jung, T.: Evaluation of FESOM2.0 Coupled to ECHAM6.3: Preindustrial and HighResMIP Simulations, *Journal of Advances in Modeling Earth Systems*, 11, 3794-3815, 10.1029/2019ms001696, 2019.
- Sikes, E. L., Cook, M. S., and Guilderson, T. P.: Reduced deep ocean ventilation in the Southern Pacific Ocean during the last glaciation persisted into the deglaciation, *Earth Planet Sc Lett*, 438, 130-138, 10.1016/j.epsl.2015.12.039, 2016.
- Simmons, H. L., Hallberg, R. W., and Arbic, B. K.: Internal wave generation in a global baroclinic tide model, *Deep-Sea Res Pt II*, 51, 3043-3068, 10.1016/j.dsr2.2004.09.015, 2004.
- Skinner, L. C., Primeau, F., Freeman, E., de la Fuente, M., Goodwin, P. A., Gottschalk, J., Huang, E., McCave, I. N., Noble, T. L., and Scrivner, A. E.: Radiocarbon constraints on the glacial ocean circulation and its impact on atmospheric CO<sub>2</sub>, *Nature Communications*, 8, 10.1038/ncomms16010, 2017.
- Stein, K., Timmermann, A., Kwon, E. Y., and Friedrich, T.: Timing and magnitude of Southern Ocean sea ice/carbon cycle feedbacks, *Proc Natl Acad Sci U S A*, 117, 4498-4504, 10.1073/pnas.1908670117, 2020.
- Stute, M., Clement, A., and Lohmann, G.: Global climate models: Past, present, and future, *Proceedings of the National Academy of Sciences of the United States of America*, 98, 10529-10530, DOI 10.1073/pnas.191366098, 2001.
- Sun, S. T., Eisenman, I., and Stewart, A. L.: Does Southern Ocean Surface Forcing Shape the Global Ocean Overturning Circulation?, *Geophys Res Lett*, 45, 2413-2423, 10.1002/2017gl076437, 2018.
- Sun, S. T., Eisenman, I., Zanna, L., and Stewart, A. L.: Surface Constraints on the Depth of the Atlantic Meridional Overturning Circulation: Southern Ocean versus North Atlantic, *Journal of Climate*, 33, 3125-3149, 10.1175/Jcli-D-19-0546.1, 2020.
- Watson, A. J. and Garabato, A. C. N.: The role of Southern Ocean mixing and upwelling in glacial-interglacial atmospheric CO<sub>2</sub> change, *Tellus B*, 58, 73-87, 10.1111/j.1600-0889.2005.00167.x, 2006.
- Watson, A. J., Vallis, G. K., and Nikurashin, M.: Southern Ocean buoyancy forcing of ocean ventilation and glacial atmospheric CO<sub>2</sub>, *Nat Geosci*, 8, 861-+, 10.1038/Ngeo2538, 2015.
- Weber, S. L., Drijfhout, S. S., Abe-Ouchi, A., Crucifix, M., Eby, M., Ganopolski, A., Murakami, S., Otto-Bliesner, B., and Peltier, W. R.: The modern and glacial overturning circulation in the Atlantic Ocean in PMIP coupled model simulations, *Clim Past*, 3, 51-64, DOI 10.5194/cp-3-51-2007, 2007.
- Wilmes, S. B. and Green, J. A. M.: The evolution of tides and tidal dissipation over the past 21,000 years, *J Geophys Res-Oceans*, 119, 4083-4100, 10.1002/2013jc009605, 2014.



- Wilmes, S. B., Green, J. A. M., and Schmittner, A.: Enhanced vertical mixing in the glacial ocean inferred from sedimentary carbon isotopes, *Commun Earth Environ*, 2, ARTN 166  
10.1038/s43247-021-00239-y, 2021.
- 585 Wilmes, S. B., Schmittner, A., and Green, J. A. M.: Glacial Ice Sheet Extent Effects on Modeled Tidal Mixing and the Global Overturning Circulation, *Paleoceanography and Paleoclimatology*, 34, 1437-1454, 10.1029/2019pa003644, 2019.
- Wunsch, C. and Ferrari, R.: Vertical mixing, energy and the general circulation of the oceans, *Annual Review of Fluid Mechanics*, 36, 281-314, 10.1146/annurev.fluid.36.050802.122121, 2004.
- Zaron, E. D. and Egbert, G. D.: Estimating open-ocean barotropic tidal dissipation: The Hawaiian Ridge, *J Phys Oceanogr*,  
590 36, 1019-1035, Doi 10.1175/Jpo2878.1, 2006.
- Zhang, J. X., Liu, Z. Y., Brady, E. C., Oppo, D. W., Clark, P. U., Jahn, A., Marcott, S. A., and Lindsay, K.: Asynchronous warming and  $\delta$   
O evolution of deep Atlantic water masses during the last deglaciation, *Proceedings of the National Academy of Sciences of the United States of America*, 114, 11075-11080, 10.1073/pnas.1704512114, 2017.
- 595 Zhang, X., Lohmann, G., Knorr, G., and Purcell, C.: Abrupt glacial climate shifts controlled by ice sheet changes, *Nature*, 512, 290+, 10.1038/nature13592, 2014.
- Zhang, X., Lohmann, G., Knorr, G., and Xu, X.: Different ocean states and transient characteristics in Last Glacial Maximum simulations and implications for deglaciation, *Clim Past*, 9, 2319-2333, 10.5194/cp-9-2319-2013, 2013.