

The Spatial-Temporal Evolution of the Chongzhen Drought (1627-1644) in China and its Impact on Famine

Siying Chen^{1,2}, Yun Su¹, Xudong Chen¹, Liang Emlyn Yang²

1 Faculty of Geographical Science, Beijing Normal University, Beijing 100875, PR China

2 Department of Geography, Ludwig Maximilian University of Munich (LMU), Munich 80333, Germany

Correspondence to: Yun Su (suyun@bnu.edu.cn)

ABSTRACT. Investigations of past extreme climate events offer insights into the interactions between natural forces, ecosystems, and human societies. The Chongzhen Drought, which occurred from 1627 to 1644 CE, stands as possibly the most severe drought in central and eastern China over the last 1500 years, remarkable for its duration, extent, and the vast number of people affected. Concurrently, a widespread famine emerged, triggering peasant uprisings that were argued as having contributed to the Ming Dynasty's downfall. This study extracted 1,802 drought records and 1,977 famine records from Chinese historical documents to reconstruct the spatial-temporal progression of the drought and its impact on famine. The records provided drought information of season, duration, and intensity, which enabled a classification of four drought severity levels. Then kernel density estimation reconstructed the spatial pattern of drought and the Drought Kernel Density Index (DKDI) series in sub-regions. Between 1627 and 1644, the drought affected most of central and eastern China. The severe drought zone was mainly located north of 29°N, shifting from the Northwest Region to the Northern Region and then expanding to the south. The development of drought in different regions was not synchronized. Northwest Region faced the earliest drought outbreak, which eased in the middle period and peaked in 1640. Northern Region's DKDI series forms a single-peaked curve, indicating a gradual aggravation of the drought from 1633 to 1640. The Yangtze-Huai Region's DKDI series shows a multi-peaked curve, with repeated cycles of worsening and easing drought, peaking in 1641. Furthermore, the reconstruction of the spatio-temporal progression of famine revealed overlapped ranges and similar development trends to that of the drought. The years marking the peak of the Famine Kernel Density Index (FKDI) in the Northwest Region, Northern Region, and Yangtze-Huai Region coincided with those of the DKDI. Regression analysis identified drought as the primary factor triggering famine, accounting for approximately 67.3% of its occurrence. In the Northern Region, the contribution of drought was higher, at 73.4%. Series and correlation analyses indicate a continuity in drought's impacts on famine. The paper further clarified the dominant pathway of climate impact transmission in this case: extreme drought → declining agricultural harvest → food shortage → famine. Other natural and socio-economic factors, such as locust infestations, nomadic invasions, and economic decline, also played a role in the occurrence of famine. Human response measures were instrumental in regulating the transmission of climate change impacts.

Climate change, as the most dynamic component of the earth system, serves as a crucial backdrop for the evolution of human civilization. Numerous studies have highlighted the profound impacts of climate change on agricultural production (Wright and Thorpe, 2003; Yin et al., 2015; Zhang et al., 2021; Chen et al., 2021), human health (Anthony et al., 2006), migration (Büntgen et al., 2016), economic development (Pei et al., 2013), social rise and fall (Pederson et al., 2014; Yancheva et al., 2007; Zhang and Lu, 2007; Yin et al., 2016), and the collapse of civilizations (Harvey and Raymond, 2001; Cullen et al., 2000; Buckley et al., 2010; Haug et al., 2003). The interaction between climate change and human societies on different time scales represents a vital research area of global change. Investigations into significant historical extreme weather events and their societal impacts are instrumental in understanding such interactions (PAGES, 2009; Yang et al., 2019).

Drought, characterized as an extreme climatic event, may intensify the conflicts between humans and the environment at different time scales, influencing the trajectory of civilizational development. Prolonged droughts contributed to the collapse of the Classic Maya civilization (Medina-Elizalde and Rohling, 2012; Douglas et al., 2015), the migration of the Anasazi population (Benson et al., 2007), and the demise of Angkor, the capital of the Khmer Empire (Buckley et al., 2014). In China, drought is the most frequent natural disaster, with 1,074 recorded drought disasters from 1766 BCE to 1937 CE (Li et al., 2003; Deng, 2012). In historical times when agricultural harvests depended heavily on climatic conditions, long-lasting and widespread drought events declined food production and thus were likely to trigger famine (Teng et al., 2014). Defined as a state of extensive hunger resulting from a lack of food, famine denotes a crisis in food security. Famines may further lead to consequences like displacement, plague outbreaks, and social unrest. Historically, the large-scale peasantry uprisings in China in the late Eastern Han (180s), late Sui (610s), late Tang (860-880s), late Ming (1620-1640s), and late Qing dynasties (1840-1860s, 1890-1900s) all erupted in the context of extreme drought and famines (Ge, 2011; Fang et al., 2024), most of which played a critical role in dynasties changing. In sum, famine is a significant manifestation of the adverse effects of climate change reaching the human system. It also serves as a vital link in the chain of transmission of these effects to the economic, political, and military domains, which is particularly evident in agrarian societies.

1627-1644 CE saw an extraordinary and extreme drought in China, known as the "Chongzhen Drought" because it coincided with the last period of the Ming Dynasty (1368-1644 CE), the Chongzhen Emperor's reign. This drought has been corroborated by natural evidence of stalagmites, tree rings, sporopollenin, and historical documents (Zhang et al. 2008; Tan et al. 2011a; Fang et al. 2012; Zhang et al. 2017). This period is characterized by weak monsoon activity and a dry climate, likely influenced by phenomena such as El Niño events and violent volcanic eruptions (Shen et al. 2007; Liu et al. 2014). The Chongzhen Megadrought is potentially the most severe drought in eastern China during the past 1500 years, and its duration and geographical extent, as well as the number of affected people, were rare in history (Tan 2003; Zheng et al. 2006; Peng and Xu 2009). The drought led to a decline in food production, which triggered a widespread and enduring famine, manifesting as food shortages, food substitution, displacement, starving to death, and the breakdown of social order. A large number of famine victims joined the peasant uprising army, which played a pivotal role in the collapse of the Ming Dynasty (Zheng et al., 2014; Fang et al., 2024). The progression of the Peasants' War was also closely related to the development of the famine (Cao, 2019).

Several studies have examined the duration, extent, and progression of the Chongzhen Drought (Chinese Academy of Meteorological Sciences, 1981; Chen, 1991b; Fang, 2006; Liu et al., 2014; Tan, 2001; Guo, 2014), yet many of these lacked detailed spatial and temporal resolution, or they concentrated solely on limited areas. There is still a shortfall in research offering yearly temporal resolution for drought reconstruction, and at the same time, encompasses the entire affected region. Regarding the impacts of the Chongzhen Drought, existing research has mainly focused on historical accounts, particularly highlighting the drought as a catalyst for peasantry uprising (Cao, 2019; Chen, 2006; Zheng et al., 2014; Wang et al., 2010;

Chen and Zhu, 2003; Li, 1999). However, the specific processes and mechanisms through which drought impacts were transmitted to the human system remain poorly understood, with an absence of quantitative or semi-quantitative analyses.

In the case of the Chongzhen Drought, the drought represented a manifestation of the natural system, whereas famine emerged as a typical manifestation of the human system. This study, therefore, concentrates on these two critical aspects to investigate the transmission of extreme climate impacts. We extracted drought records from Chinese historical documents from 1627 to 1644 and divided them into different levels based on semantic differences. To illustrate the spatial and temporal development, we employed kernel density estimation, creating a year-by-year spatial pattern of drought and the series of Drought Kernel Density Index (DKDI) across various regions. A similar approach was taken for famine records. By comparing the spatial-temporal patterns of drought and famine and conducting statistical analysis, we investigate their interconnection and how drought precipitates famine. The study area is the region of China with recorded droughts during this period, represented by the colored portion in Fig. 1(a), which was further divided into five subregions based on physical geography and socio-economic distinctions. Figure 1(b) shows the natural overview of the study area.

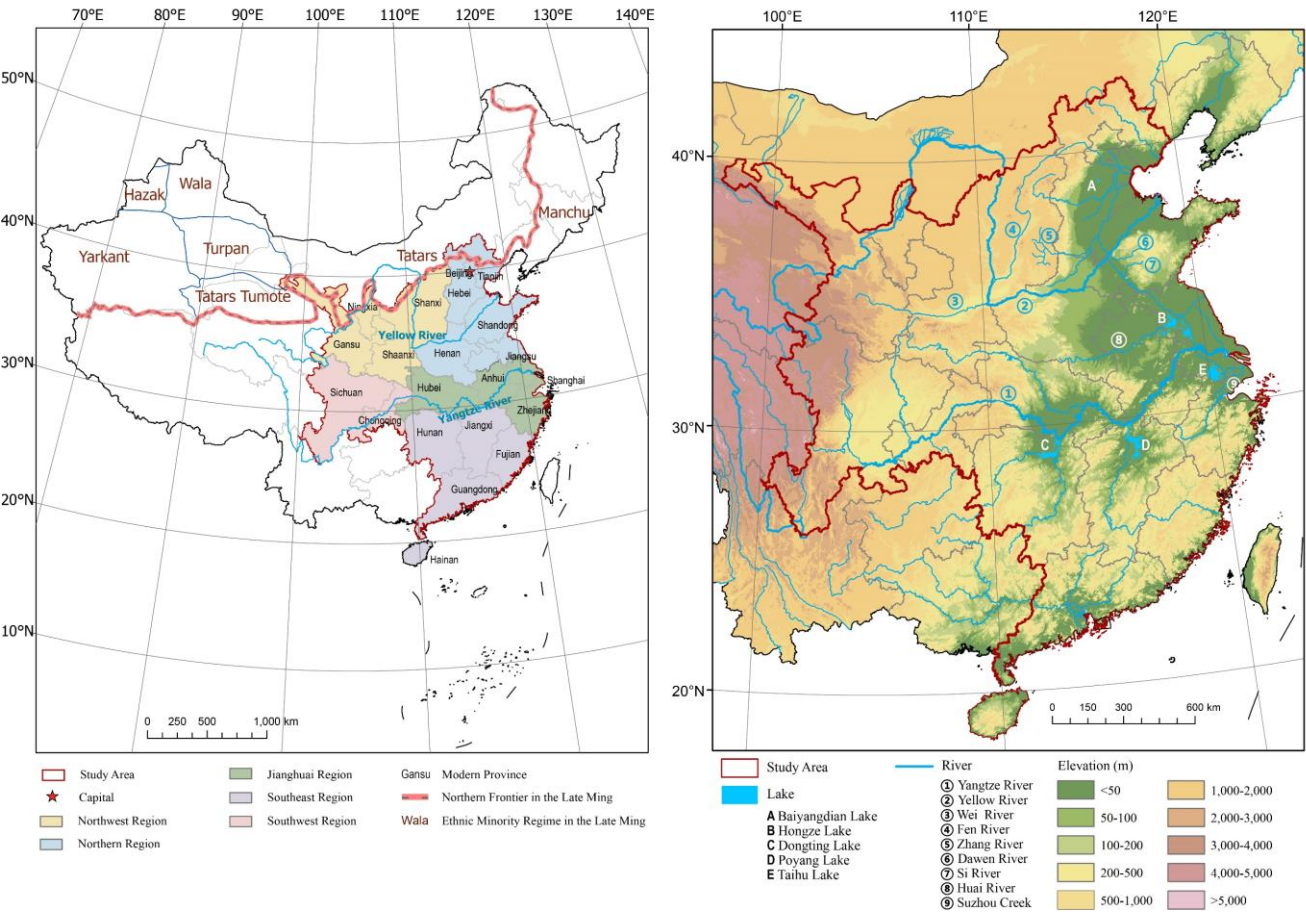


Figure 1: Map of the study area
(a) The location of the study area and subregions; (b) DEM of the study area with main rivers and lakes

2 Data and methods

2.1 Data source

Historical documents are invaluable proxies for reconstructing past climate change, with the advantages of high temporal resolution, location accuracy, and clarity of climatic significance (Pfister, 2008). China owns a wealth of historical documents lasting for thousands of years without interruption. In recent decades, meteorological departments and scholars have mined these documents for climate and disaster-related records, assembling them into comprehensive historical data

collections. Records related to disasters within the study area during 1627-1644 were extracted from 24 collections (see Appendix A). The records were organized in six fields: year, location, province, content, source, and original document provenance, thereby establishing a detailed database of disasters in east-central China from 1627 to 1644. The "year" field was standardized to the Common Era notation of the Gregorian calendar. The "location" was updated to reflect current place names, guided by *the Historical Atlas of China* (Tan, 1982), with counties serving as the basic geographic administrative units. For the "province" field, the current administrative divisions of the People's Republic of China were applied. **For example, there is an item of record with the ancient place name Wuding, corresponding to modern Huimin County in Shandong Province. Hence, the "location" of this record is noted as Huimin County and the "province" as Shandong Province.** The "content" is the text description regarding disasters. The "source" refers to the name of the collection where the record came from. The "original document provenance" mainly includes local chronicles, *the History of Ming*, and *Ming Shilu*. Records sharing the same year and location were merged, resulting in a database comprising 6,282 entries.

2.2 Processing of drought records

All records directly related to drought were extracted from the database, totaling 1,802 entries. The contents of these drought records can be divided into four categories: (1) Precipitation, which often includes details about the season or month, e.g., "late spring rains", "no rain in June"; (2) Hydrology concerning rivers, lakes, springs, and groundwater, e.g., "the river is shallow enough to walk through", "wells dry up", "the lake's bottom is bursting"; (3) Plant growth, e.g., "the grass is withered", "no grass in the wild"; and (4) Comprehensive descriptions of drought conditions, e.g., "drought", "severe drought". To study the relationship between drought and famine, it is crucial to maintain the independence of these two sets of data. Therefore, drought records were extracted and graded based on the manifestations in natural systems—such as the atmosphere, hydrosphere, and biosphere—while deliberately excluding records on the social damages and losses caused by drought.

Based on semantic differences, we distinguish the meanings of qualitative text within the historical records to categorize drought events into various levels and thus measure drought. It is worth noting that the study area is characterized by a typical monsoon climate, with precipitation highly concentrated in the summer and autumn. Consequently, droughts occurring in the wet seasons (summer and autumn) are indicative of greater precipitation anomalies compared to those in the dry seasons (spring and winter). The criteria for rating droughts were established by considering the season of occurrence, duration, and intensity of drought events (Table 1). **The basic time unit for drought events is the year, while the basic spatial unit is the county.**

Table 1: Criteria for classifying drought levels

	Criteria	Keyword Examples
Level-1	1) Drought in the dry season and no drought in the wet season	Winter drought/ great drought/ no rain in winter (冬旱/冬大旱/冬无雨). Spring drought/ great drought/ no rain in spring (春旱/春大旱/春无雨)
	2) One-month drought	Drought/ great drought/ no rain in a certain month (某月旱/大旱/无雨)
Level-2	1) Drought in one wet season	Summer drought (夏旱). Autumn drought (秋旱).
	2) “Drought” occurred in a certain year is recorded (without accurate seasons or months)	Drought in the third year of Chongzhen period (崇祯三年旱).
	3) Plant wilting	The grass and trees are withered and scorched (草木为焦).
	4) The river and lake levels have dropped significantly, but have not dried up completely	The river is shallow and walkable (河水浅可步). The rivers run dry with only a small stream remaining (江流涸如带).

Level-3	1) Drought in two wet seasons, or severe drought in one wet season	Summer-autumn drought (夏秋旱). Great summer drought/ no rain in the summer (夏大旱/夏无雨). Great autumn drought/no rain in the autumn (秋大旱/秋无雨).
	2) “Great drought” occurred in a certain year is recorded (without accurate seasons or months)	Great drought in the tenth year of Chongzhen period (崇祯十年大旱)
	3) Complete drying up or ceasing to flow of rivers and lakes, or lowering of groundwater levels	Drying up of wells (井泉竭). Long rivers cease to flow (长河断流). River bottoms are cracked (河底皆龟裂). No springs from wells (凿井不得泉)
	4) Extensive plant mortality	No grass in the wild (野无青草). Without the slightest bit of grass growing (寸草不生).
Level-4	1) Drought throughout the year, or severe drought in two wet seasons	Year-round drought/ great drought/ no rain in the whole year (全年旱/大旱/无雨). Drought in all months (十二月俱旱). Great drought/ no rain in summer and autumn (夏秋大旱/夏秋无雨).

All drought records were rated according to Table 1. Finally, the classification yielded 210 records for Level 1, 631 records for Level 2, 905 records for Level 3, and 56 records for Level 4.

2.3 Processing of famine records

125 A total of 1977 records directly related to famine were extracted from the database. Famine records were rated according to the criteria in Table 2, yielding 430 records for Level 1, 791 records for Level 2, and 756 records for Level 3.

Table 2: Criteria for classifying famine levels

	Criteria	Keyword Examples
Level-1	Mild famine: food shortages, but can be sustained by scrimping or receiving relief; sporadic population migrations.	Famine/ Hunger (饥/荒/殍/殍). Relief (赈). Tax exemption (蠲). Hard to get enough food (民艰于食). Eat chaff (食豆饼糟糠). Homeless people on the road (路有流民). The price of rice became expensive (米价涌贵).
Level-2	Moderate famine: extreme food shortages, affecting all populations in the region; search for alternative foods; large-scale migration and sporadic deaths; social disorder.	Great famine/ Great hunger (大饥/大荒/大殍). Eat bark/ grass roots/ soil (人食树皮/草根/观音土). The roads are full of displaced people (流亡载道). Nine out of ten houses were empty (十室九空). Occasionally dead people (间有死者). Starving people in the wild (野有饿殍). Thieves rising (盗蜂起). Robberies (聚众抢夺). Selling children (卖儿鬻女). People's livelihood is difficult (民不聊生).
Level-3	Severe famine: extremely severe disaster and famine resulting in large numbers of deaths; cannibalism; breakdown of morality, ethics, and social order.	Cannibalism (人相食). Countless people starved to death (饿死者无算). Thousands of dead (死者数万). Roads strewn with overlapping corpses (死者枕藉). Four or five out of ten starved to death (饿死者十之四五). An unprecedented famine (亘古奇荒).

Note: the criteria were adapted from (Xiao, 2020) and (Wei, 2020).

2.4 Methods for reconstructing the spatial-temporal progression of drought and famine

130 Kernel Density Estimation (KDE) is a non-parametric method employed in spatial analysis to delineate trends in the spatial distribution of discrete point elements (Wang, 2006). This technique was utilized to reconstruct the spatial patterns of drought on an annual basis, as well as cumulatively, for the period 1627-1644. The locations of drought occurrences were identified and represented as point elements. These points were subsequently analyzed using the KDE tool, with the drought

level as the attribute value (termed the "population" field). Given that the basic spatial unit of the drought records was the county, a search radius of 65 km was selected, which equals the mean distance between adjacent administrative counties during the late Ming Dynasty (Zhou, 2007). The value of kernel density for a given raster is influenced by the quantity of surrounding drought events and their respective levels. Consequently, it can be inferred that a higher kernel density value signifies a more severe drought condition within the area. Employing the same methodology, the spatial distribution of famine was also reconstructed.

To examine the evolution of drought, the Drought Kernel Density Index (DKDI) series for each region was reconstructed with an annual temporal resolution. Initially, the average drought kernel density value for each region was calculated based on the kernel density distribution map. The results were then normalized to obtain DKDI values. The normalization was conducted by Eq. (1):

$$DKDI_{ij} = \frac{d_{ij} - \min(d)}{\max(d) - \min(d)} \quad (1)$$

where $DKDI_{ij}$ is the Drought Kernel Density Index for region j in year i , d_{ij} is the mean value of drought kernel density for region j in year i , $\min(d)$ is the minimum value of the annual kernel density mean for each region, and $\max(d)$ is the maximum value of the annual kernel density mean for each region. Thus, the DKDI series for the period 1627-1644 were obtained for each region. The same method was employed to reconstruct the Famine Kernel Density Index (FKDI) series.

Compare the spatial patterns and temporal series of drought and famine to investigate their relationship. Statistical analyses, including Spearman correlation and regression analysis, were conducted on the DKDI and FKDI to examine the contribution of drought to famine.

3 The evolution of drought

The Chongzhen Drought is characterized by its extensive spatial coverage and prolonged duration. Figure 2(a) presents the general distribution of drought from 1627-1644. The drought affected a vast area across central and eastern China. The majority of the severe drought zone appeared north of 29°N, mainly consisting of three parts: (1) the area encompassing Beijing, southern Hebei, northern Henan, and western Shandong, which was the political heart and seat of the capital of China at the time; (2) the area along the Yellow, Wei, and Fen Rivers in the central Shaanxi and southwestern Shanxi; and (3) the Yangtze River delta, which was the most economically advanced area in the late Ming, contributing over 17% to the nation's total tax revenue (Liang, 2008). These areas belonged to Northern Region, Northwest Region, and the Yangtze-Huai Region, respectively.

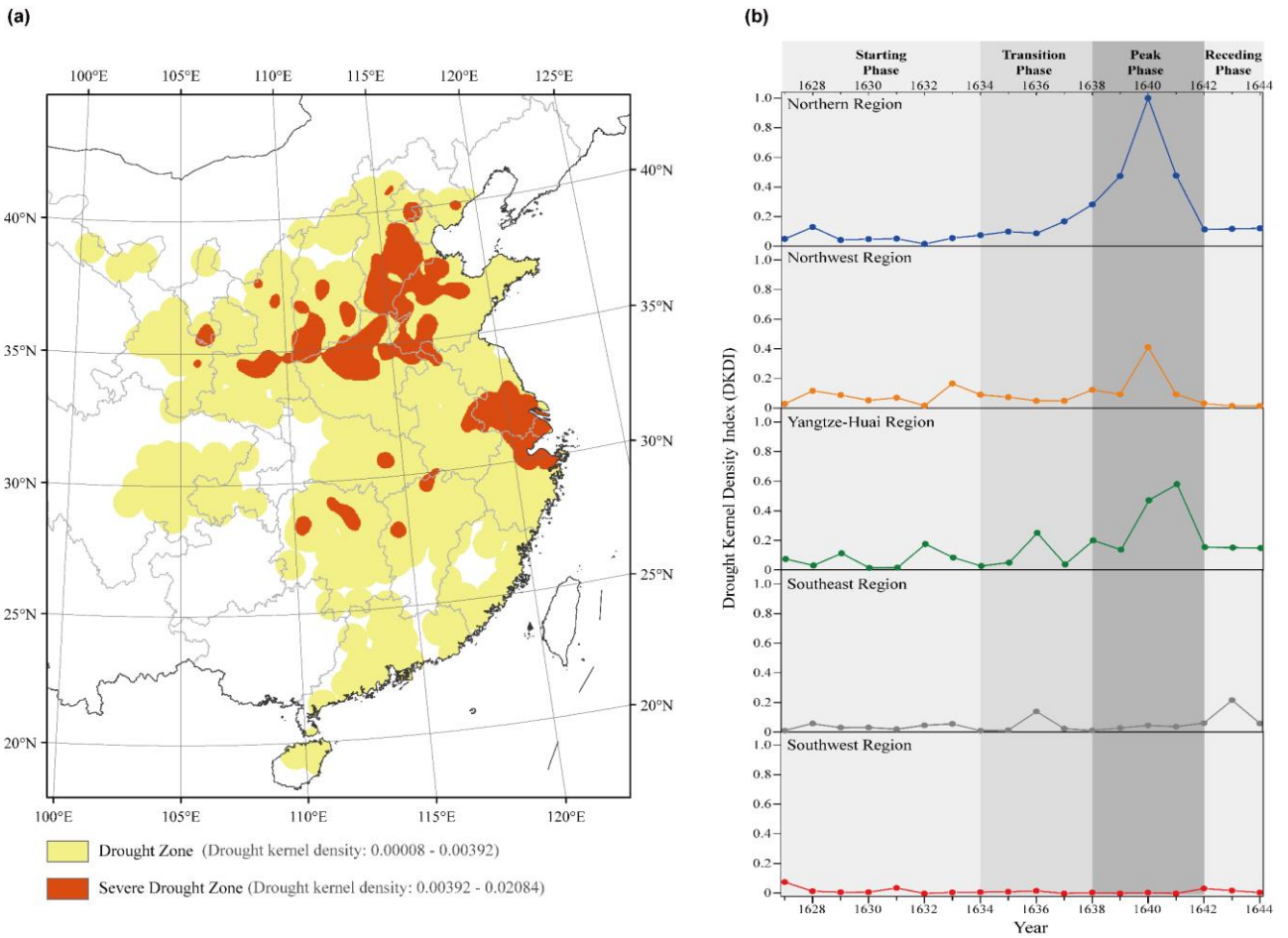


Figure 2: Spatial and Temporal Patterns of Drought, 1627-1644

(a) Overall spatial distribution of drought, 1627-1644. (b) Drought Kernel Density Index (DKDI) series for five regions

Figure 2(b) presents the DKDI series for the five subregions within the study area. The data reveal that the Northern Region, Northwest Region, and Yangtze-Huai Region were primarily affected by the drought. **In contrast, the DKDI values for the Southeast and Southwest Regions were comparatively low, suggesting these areas experienced less severe drought conditions.**

Notably, the progression of drought exhibits significant regional variations, indicating diverse evolutionary patterns across the different regions. The DKDI series for the Northern Region resembles a single-peaked curve. Between 1633 and 1638, the DKDI gradually increased each year, although at a slow pace; after 1638, there was a marked surge. The peak of this series appeared in 1640, a year characterized by both the maximum spatial extent and the highest intensity of the drought. From 1638 to 1641, drought affected the entire region almost annually, with a notable decline after 1642. During the early Chongzhen period, the Northwest Region, particularly Shaanxi Province, faced severe and prolonged drought until 1634. The DKDI gradually decreased afterward but surged again after 1638, also peaking in 1640. The DKDI series for the Yangtze-Huai Region depicted a multi-peaked curve, reflecting continuous cycles of drought aggravation and alleviation. Before 1638, significant fluctuations occurred, with peaks in 1629, 1632, and 1636. Each drought event lasted one year, followed by relief. After 1638, the DKDI rose again, and the drought lasted for a long time. The DKDI reached its top in 1641, a year later than the Northern and Northwest Regions.

Focusing on the three predominantly impacted regions—the Northwest Region, Northern Region, and Yangtze-Huai Region—it's obvious that, from 1627 to 1644, the DKDI exhibited a low-high-low fluctuating pattern. Furthermore, there

was a shift in the region experiencing the most acute drought conditions. Thus, the Chongzhen Drought is divided into four phases by analyzing its spatial-temporal evolution (Fig. 2b):

(1) Starting Phase (1627-1633): The primary drought zone was situated in the Northwest Region, particularly in Shaanxi and Shanxi provinces.

(2) Transition Phase (1634-1637): There was a gradual shift in the main drought zones from the Northwest Region to Northern Region.

(3) Peak Phase (1638-1641): The drought zones in both the north and south became interconnected, extending across all areas north of 29°N.

(4) Receding Phase (1642-1644): The drought contracted in scope and weakened in intensity.

The delineation of the four phases is informed by key events: declining DKDI in the Northwest Region while increasing DKDI in the Northern Region in 1634; the beginning of an increase in DKDI in all three regions mainly affected in 1638; and a remarkable decline and following stabilization in DKDI in those three regions in 1642.

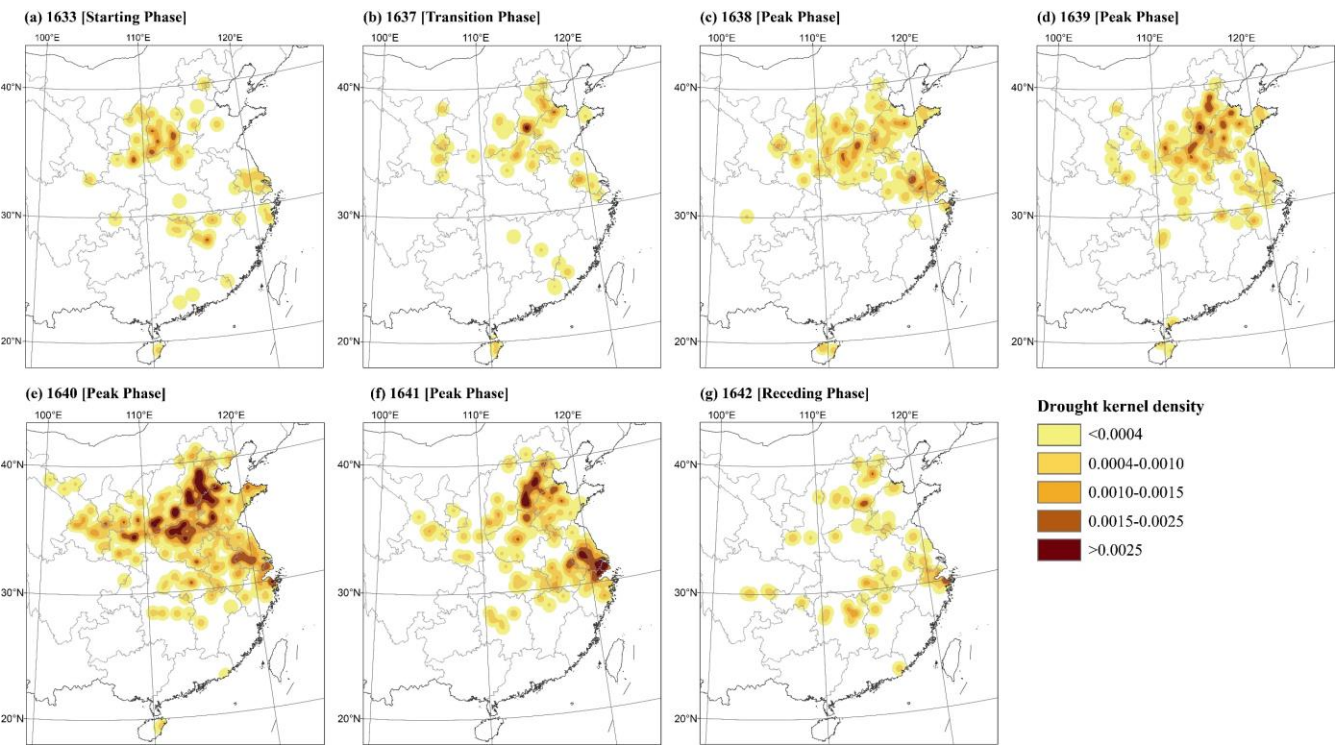


Figure 3: Spatial distribution of drought during representative years of each phase

We also reconstructed the spatial distribution pattern of drought at annual resolution (see Appendix B for details). Figure 3 illustrates these patterns across select years, highlighting the drought's progression through its distinct phases. In the starting phase, the drought was concentrated in the northern part, particularly around Shaanxi Province in the Northwest Region, where it was extensive, intense, and prolonged. During the transition phase, the drought in the Northwest Region eased, while in the Northern Region, especially in Henan and Hebei provinces, the drought's extent grew annually. During the peak phase (1638-1641), the drought area in the north merged with that in the Yangtze River basin, continuously expanding. Meanwhile, the drought intensity markedly increased, with a greater proportion of Level 3 and 4 drought events. The year 1640 witnessed the broadest and most intense drought conditions, with 367 counties reporting droughts, 69% of which in Level 3 or 4. Significant water bodies dried up, including sections of the Yellow River in Henan and Jiangsu¹, the Fen and Zhang Rivers in Shanxi, and the Dawen and Si Rivers in Shandong, as well as Baiyangdian, the Northern Region's

¹In the 17th century, the Yellow River flowed through Jiangsu Province into the sea. However, after a breach at Tongwagang, Henan Province, in 1855, its course changed. Currently, it does not flow through Jiangsu Province, as illustrated in Fig. 1.

largest freshwater lake. In 1641, the drought slightly eased in the north but intensified in the south. In the Yangtze River Delta, records indicated more than four months without rain during the summer and autumn—highly unusual for the area's climatic norms. Rivers such as the Suzhou Creek dried up. The record "no water even when drilling a well at the bottom of the river" indicated that the groundwater levels had dropped significantly. The receding phase began in 1642, with a notable reduction in drought severity and a contraction of the affected areas. Overall, from 1627 to 1644, the primary zone of extreme drought shifted from the Northwest Region to the Northern Region and then expanded southwards.

It is important to note that the drought zones identified in this study were reconstructed using historical document records. However, the northern and northwestern parts of the study area were near the borders of the Ming Dynasty at that time, as illustrated in Fig. 1(a). Conflicts are frequent here during the Chongzhen era, contributing to social instability. The unrest resulted in a significant scarcity of historical documentation in these areas. Consequently, the actual extent of the drought may have been more widespread towards the west and north than the historical records suggest.

4 The evolution of famine and comparison with drought

Figure 4(a) presents the general spatial distribution of famine during 1627-1644, indicating that famine affected most areas of central and eastern China. The extent of the famine zone closely matched that of the drought zone. All severe famine zones located north of 29°N, largely overlapped with the three areas experiencing severe drought.

Figure 4(b) presents the Famine Kernel Density Index (FKDI) series for five regions from 1627 to 1644. The Northern Region, Northwest Region, and Yangtze-Huai Region were significantly affected by famine, exhibiting higher FKDI values. In contrast, the Southeast and Southwest Regions experienced milder famine conditions, with FKDI peaks not exceeding 0.2. A comparison of the FKDI and DKDI series reveals a generally consistent trend in the development of famine and drought across the regions. In the starting phase of the drought, FKDI was comparatively high in Northwest Region. During the transition phase, FKDI in Northern Region grew, but at a slow pace. The peak phase saw the FKDI reaching its maximum in Northern Region, Northwest Region, and the Yangtze-Huai Region in the years 1640, 1640, and 1641, respectively, coinciding with the peak years of DKDI in these regions. In the receding phase, FKDI showed a downward trend as the drought eased.

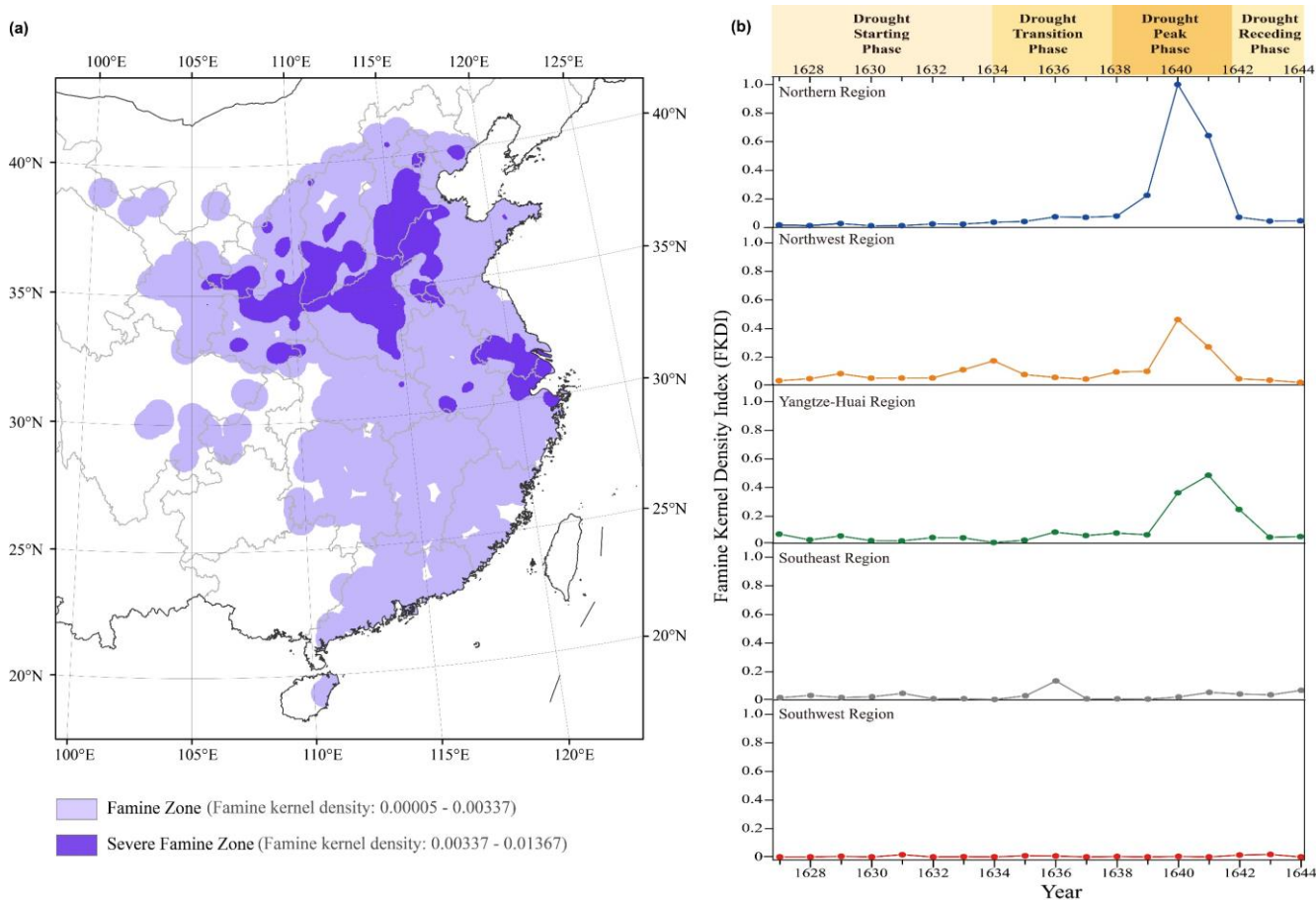


Figure 4: Spatial and Temporal Patterns of Famine, 1627-1644

(a) Overall spatial distribution of famine, 1627-1644. (b) Famine Kernel Density Index (FKDI) series for five regions

Although the trends exhibit similarities, it is important to recognize that the FKDI and DKDI series differ significantly in two key aspects.

Firstly, the FKDI series is smoother than the DKDI series, characterized by fewer fluctuations. Specifically, several peaks observed in the DKDI series before 1640 are absent in the FKDI series. For example, the DKDI series for the Northern Region peaks in 1628, and the DKDI for the Yangtze-Huai Region peaks in 1629, 1632, and 1636, yet these peaks have no equivalents in the FKDI series. This discrepancy suggests that not all drought events escalate into famines.

Secondly, while the highest peaks of the FKDI and DKDI series occurred in the same years for the Northwest Region, Northern Region, and Yangtze-Huai Region (1640, 1640, and 1641, respectively), the FKDI peaks were broader and exhibited a right-skew. It means that although both DKDI and FKDI values decreased in the year following their peak, the decline in FKDI was less pronounced than that of the DKDI. Despite the reduction in drought intensity, society was unable to promptly recover from its devastated state, resulting in the continued prevalence of famine. This pattern indicates a continuity in the impact of drought on famine.

5 The statistical relationship between drought and famine

To examine if there is a statistically significant relationship between drought and famine, a Spearman correlation analysis was conducted on the DKDI and FKDI data from the Northwest Region, Northern Region, and Yangtze-Huai Region. The results, presented in Table 3, reveal a significant positive correlation between DKDI and FKDI, with a correlation coefficient of 0.710. This indicates that the severity of drought is closely associated with the likelihood of severe famine. Additionally, the DKDI and FKDI of the subsequent year also exhibit a significant positive correlation, though the

correlation coefficient decreases to 0.583. However, the correlation between DKDI and FKDI in the third year is not significant. These results underscore the ongoing impact of drought on famine, lasting until the following year, albeit at a reduced intensity.

Table 3: The correlation coefficients between DKDI and FKDI at the regional scale

	FKDI _(t)	FKDI _(t+1)	FKDI _(t+2)
DKDI _(t)	0.710**	0.583**	0.268

** indicates significant correlation (two-tailed, p<0.01)

To further explore the contribution of drought to famine and whether there are regional differences, the Northern Region, Northwest Region, and Yangtze-Huai Region were subdivided into 16, 14, and 11 sub-provincial zones, respectively, for downscaling studies (detailed in Appendix C). This subdivision considered both physical and human geographical features, referencing China's provincial regionalization schemes. The methodology described in Sect.2.4 was employed to calculate the DKDI and FKDI for each sub-provincial zone. Then regression analysis was carried out using DKDI as the independent variable and FKDI as the dependent variable. Since both scatter plots and correlation analysis showed a linear relationship between the two variables, a unary linear regression model was selected. The obtained regression equation is presented as Eq. (2):

$$FKDI = 0.668DKDI + 0.001 \tag{2}$$

The regression model demonstrates statistical significance ($p < 0.001$), with a coefficient of determination (R^2) of 0.673. This indicates that approximately 67.3% of the variation in the FKDI series can be explained by changes in the DKDI. Consequently, drought is the primary factor influencing famine, accounting for roughly two-thirds of its variability.

Table 4 presents the results of regression analyses across different regions. No matter which region, the regression equations achieved statistical significance at the 99.9% level, all with positive regression coefficients. Based on the coefficient of determination (R^2), the contribution of DKDI to FKDI in the Northern Region, Northwest Region, and Yangtze-Huai Region is 73.4%, 69.3%, and 63.3%, respectively. Among the three principal disaster-affected regions, drought had the highest impact on famine in the Northern Region.

Table 4: The regression analysis results of DKDI and FKDI at the sub-provincial scale

Region	Regression equation	R ²	P-value
Northern Region	$FKDI = 0.764DKDI - 0.007$	0.734	<0.001
Northwest Region	$FKDI = 0.822DKDI + 0.006$	0.693	<0.001
Yangtze-Huai Region	$FKDI = 0.446DKDI + 0.005$	0.633	<0.001

6 Discussion

6.1 The transmission process of extreme drought impacts

In ancient China, agriculture was pivotal to the nation's foundation, and also a critical link in the transmission of climate change impacts to human society. The severity of drought's impact on agriculture largely depends on the season it occurs. In this study, 886 drought records provided specific seasonal or monthly details. This facilitated an analysis of the seasonal distribution of droughts in the Northern Region, Northwest Region, and Yangtze-Huai Region from 1627 to 1644 (Fig. 5). In the Northern Region, summer experienced the highest frequency of droughts, constituting 73% of the total occurrences, followed by spring and autumn with 34% and 23%, respectively. Consecutive droughts spanning spring to summer or summer to autumn were also common. The region primarily cultivates two types of food crops: cereals like millet and sorghum, planted in spring and harvested in autumn; and winter wheat, sown in autumn and harvested in the next

summer (Han, 2000). Summer serves as the critical growth period for cereals, whereas autumn and spring cover the tillering and grain-filling stages of winter wheat with huge water requirements (Zhong et al., 2000). That is to say, most drought events coincided with the crucial crop growth periods in the Northern Region, resulting in inadequate water supply for crops. A similar situation is observed in other regions. The most drought-prone seasons in the Northwest Region are summer (62%) and autumn (36%), which meet the primary growth periods for spring wheat. In the Yangtze-Huai Region, the majority of droughts occurred in summer (73%) and autumn (41%). The main food crop in the region is rice, which is cultivated in spring, transplanted in summer, and harvested in autumn, with a huge water demand. Droughts during these growth seasons often lead to diminished crop yields or complete failures, subsequently reducing the per capita food availability. Famine ensues when the food holding of most people fails to meet their basic needs for survival and health. Hence, the dominant pathway through which climate change impacts translate into social consequences is as follows: extreme drought → declining agricultural harvest → food shortage → famine.

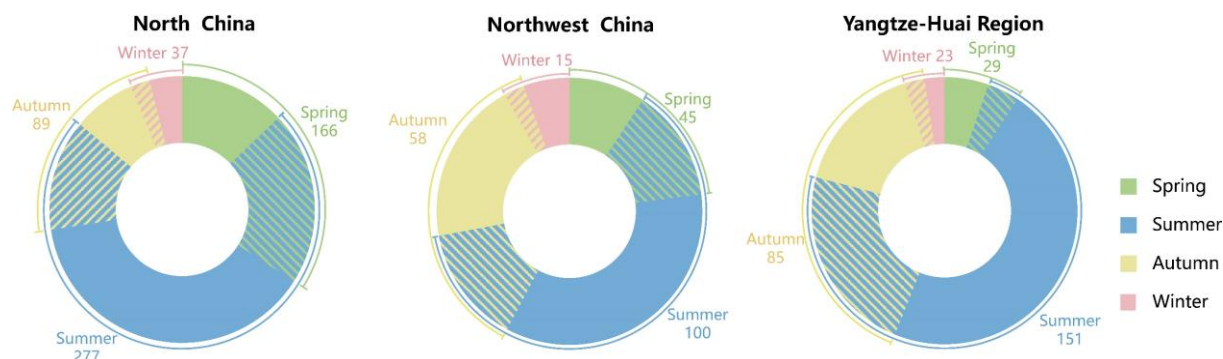


Figure 5: Seasonal distribution of drought records

Series and correlation analyses reveal that droughts have continuous impacts on famine, although these effects diminish over time. The reason is that the impacts of drought, once transmitted to societal levels, disrupt the production, population, and economic systems to various extents. Even as the drought eased and precipitation normalized, the society remained damaged, hindering the immediate restoration of production and life order. Historical records underscore this phenomenon. For instance, in 1641, there was a record that "at that time, there was land, but no people and cattle, so the land was out of cultivation and turned back barren" in Neihuang, Henan Province. As many people died and cattle were sold or eaten, there was a shortage of both labor and production means, so it was hard to resume agricultural activities. Similarly, a record from Xinzheng, Henan Province said: "In spring, famine followed by plague, the dead seven out of ten. In May, although the wheat is ripe, no one to harvest". These examples illustrate that the societal devastation led by drought is a persistent process. When drought is over, it takes some time for the society to return to normalcy from disaster damage.

The comparison of the DKDI and FKDI series indicates that not all drought events turn into famine. It is particularly evident in the Yangtze-Huai Region, where the DKDI series identifies peaks in 1629, 1632, 1636, and 1638, but the FKDI series does not present corresponding peaks. This discrepancy suggests that although extreme droughts occurred in the Yangtze-Huai Region in these years, their impacts decreased or even dissipated before reaching the famine level, largely due to human societies being active in developing various coping measures (Yang et al., 2021). Between 1627 and 1644, the Yangtze-Huai Region documented at least 16 categories of response measures (Table 5), the most varied and frequent across all regions studied. Individual people initiated measures (1) to (6). Measures (1) ~ (2) operated in the production subsystem, aiming to reduce the impacts of droughts and locusts on food production. Measures (3) to (6) sought to enhance food accessibility to cope with shortages caused by crop failures. On the other hand, measures (7) ~ (16) were government-driven. Measures (7) ~ (9) distributed grain to the hungry in different ways. These grains were mainly sourced from warehousing storage, which in the Ming Dynasty included various types such as disaster-preparing granaries, price-stabilizing granaries, community granaries, and charity granaries (Chen, 1991a). The first two were managed by local governments, while civilian

groups operated the latter two. Donations, represented by measure (10), also made a great contribution to food supply in disaster years. Measures (11) ~ (12) left a greater proportion of grain to producers through tax reductions. All measures (7) ~ (12) were essentially aimed at increasing the per capita share of food of local people, to ensure individual food security (Fang et al., 2024). Furthermore, measures (13) ~ (15) dealt with the social influences of famine, such as plague, displacement, and population mortality, while measure (16) could appease the populace to some degree, so as to maintain a stable social order. These measures worked on different segments of the socio-ecological system, effectively mitigating the impacts of the droughts and preventing, or at least curtailing, their spread to higher-level subsystems, demonstrating the Yangtze-Huai Region's resilience to the drought impacts. While all regions have certainly tried to make use of all their capacities and possible measures, the limits of social resilience were challenged when the drought impacts exceeded the system's threshold (Xu et al., 2021). From 1640 to 1641, 110 counties within the Yangtze-Huai Region reported drought, with Level 3 and 4 drought events accounting for more than 65%. The Yangtze River Delta even recorded "little rain for the whole year". While the above response measures still exist, they were only a drop in the bucket for local people. Severe famine swept through the region, and there were even instances of cannibalism.

Table 5: Response measures in the Yangtze-Huai Region from 1627 to 1644

	Response Measure	Main Actor	Meaning
(1)	Reseeding	Farmer	After the crop dies due to drought, re-plant some if rainfall occurs
(2)	Locust catching	Farmer	Catch locusts to prevent them from destroying crops. Sometimes local government also encouraged people to do so and gave them some grain or money as an award.
(3)	Food substitution	Famine victim	Eat wild herbs, chaff, grass roots, tree bark, soil, and so on to satisfy their hunger. The most extreme case is cannibalism (i.e. some people kill others and eat corpses).
(4)	Selling property	Famine victim	Selling property such as houses, land, cattle, agricultural tools, etc., in exchange for money to buy food. The most extreme case is trafficking women and children.
(5)	Displacement	Famine victim	Leave their hometown and flee to surrounding areas in search of food
(6)	Robbery	Famine victim	Rob on the road, or rob the homes of the wealthy, landlords, and gentries to obtain food or money.
(7)	Giving porridge	Local government, officials, gentries	Open porridge factories to feed famine victims
(8)	Selling grain at low price	Local government	Sell stored grain at low prices to prevent excessive increases in grain prices on the market due to shortages.
(9)	Financial or food relief	Local government, central government	Distribute food or money to the victims directly.
(10)	Donation	Local officials, gentries	Donate money or grain to support measures (7)~(9).
(11)	Tax exemption	Central government	A discretionary exemption from taxes or corvees.
(12)	Tax substitution	Central government	Allow disaster areas to convert the tax grain into money or other items to hand in.
(13)	Treatment	Doctors, local government	Distribute medicine to the population if a plague occurred, or hire doctors to treat the patients.
(14)	Corpse management	Local government, officials, gentries	Distribute coffins to the families of the deceased, or bury the corpses together.
(15)	Hosting of orphans	Local government	Set up shelters to take in abandoned kids.

(16)	Praying for rain	Emperor, central officials, local officials	Offer sacrifices to gods and pray for rain.
------	------------------	---------------------------------------------	---------------------------------------------

6.2 Other factors triggering and exacerbating famine

Regression analysis indicates that drought was the primary cause of famine in this case, contributing about two-thirds.

However, it was not the only cause; other natural and social factors also played significant roles. (1) On a long-time scale, the late Ming was a period of climate cooling in the Little Ice Age. Between the 1550s and 1650s, the mean temperature of China decreased by about 0.4°C/100 yr; the mean temperature in North China was about 0.7°C lower than the 1951-2000 average (Ge et al., 2013). This cooling shortened the growing season for crops and reduced arable land in the north. As a result, there had been an overall decline in per capita food availability, making society more sensitive to external forcings, including climate extremes (Fang et al., 2014). (2) Other disasters, such as localized floods, windstorms, frosts, and large-scale locust infestations in the context of persistent droughts (Fig.6a). These disasters, compounded with droughts, exacerbated the damage to agricultural production. Against the backdrop of massive famine, there was a severe plague during the Chongzhen period (Fig. 6b), which led to numerous deaths and made the resumption of social order more difficult (Cao, 1997). (3) The Ming government's declining governance capacity evidenced both politically and economically. Political issues included the emperor's negligence, abuse of power by eunuchs, power struggles among central officials, and corruption among local officials. Economic problems included revenue shortages, overspending, and reduced warehousing (Bai, 2004; Twitchett and Fairbank, 1998). These issues limited the government's ability to respond to large-scale droughts effectively. (4) The growing border crisis. From the 16th century onwards, wars between the Mongols and the Ming Dynasty increased significantly (Fu et al., 1986). At the same time, the Manchu in the northeast gradually developed under the leadership of Nurhaci, and in 1618 declared war on the Ming Dynasty. The prolonged war strained financial resources and diverted funds from disaster relief. It's notable that climate change also played a role in the border crisis. Climate cooling led to grassland degeneration and desertification in the north, reducing the production capacity of the Mongols and Manchus and pushing them to invade the Ming Dynasty's territory for resources (Ge, 2011). (5) The increasing taxes. Due to the Manchu invasion and peasant uprisings, the Ming government imposed additional taxes to meet the escalating military expenditures. The most notable examples were the "Three Extra Levies": the Liao levy (initiated in 1618 for the war in the northeast), the Suppression levy (initiated in 1637 to quell peasantry uprisings), and the Training levy (initiated in 1639 for training the new army). By 1639, the total amount of these additional levies even exceeded the regular tax revenue of normal years (Guo, 1983). These increasing taxes further lowered the living standards of the populace and exacerbated social conflicts. These factors, in conjunction with the primary impact of drought, illustrate a complex web of causes behind the famine, highlighting the interplay between natural events and human society.

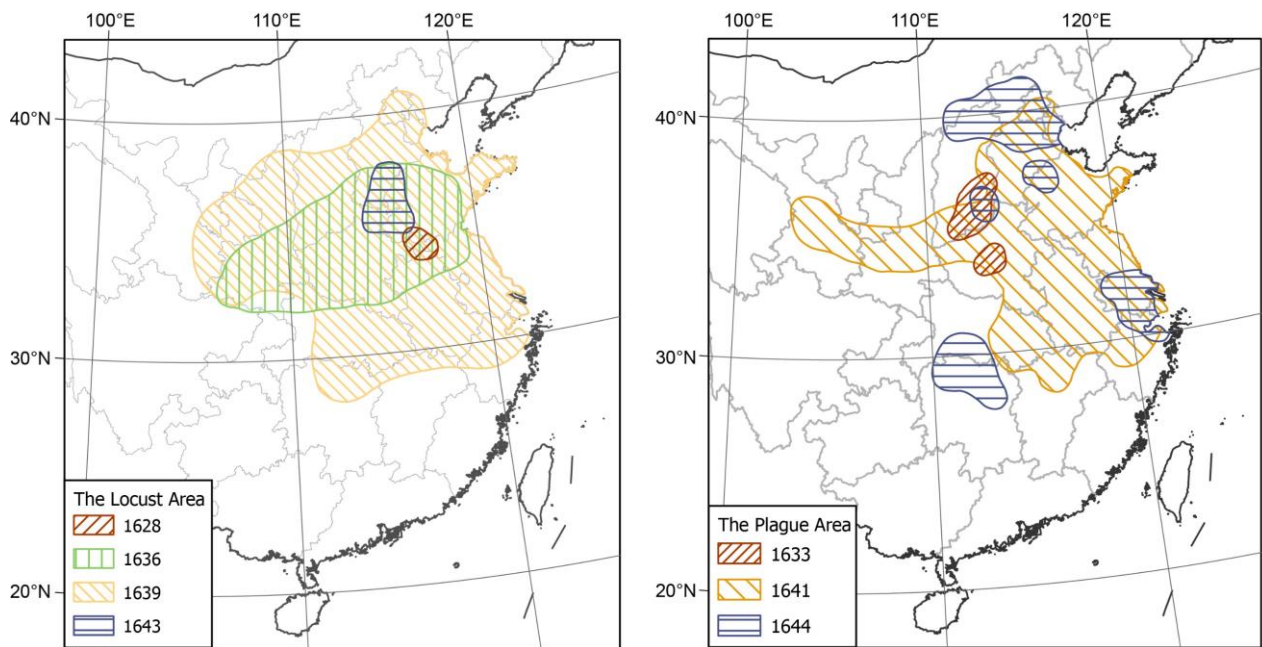


Figure 6: Areas affected by the locust infestation and plague

(a) Locust infestation (b)Plague

365 A coupled socio-ecological system (Gallopin, 2006) comprises three tiers: natural system, support system, and human system (Bossel,1999; Fang et al., 2014). Typically, the effects of climate change propagate through these levels sequentially (Fig. 7). Yet, this transmission does not follow a simple cause-and-effect pattern. Instead, climate change acts as an external force on the socio-ecological system, interacting with the vulnerability of society and triggering a cascade of feedback mechanisms. In the case of Chongzhen Drought, the core event in the natural system was the persistent extreme droughts; the core event in the support system was the decline in food production; and the initial core event in the human system was famine. 370 Famine further triggered a sequence of social consequences, including peasantry uprisings, plagues, widespread mortality, decreased social stability, and ultimately contributed to the collapse of the Ming Dynasty (Zheng et al., 2014; Tan et al., 2011b). As can be seen, when the effects of climate change ascend to higher levels, the outcomes tend to be more complex and regulated by more non-climatic factors (e.g. economy, policy).

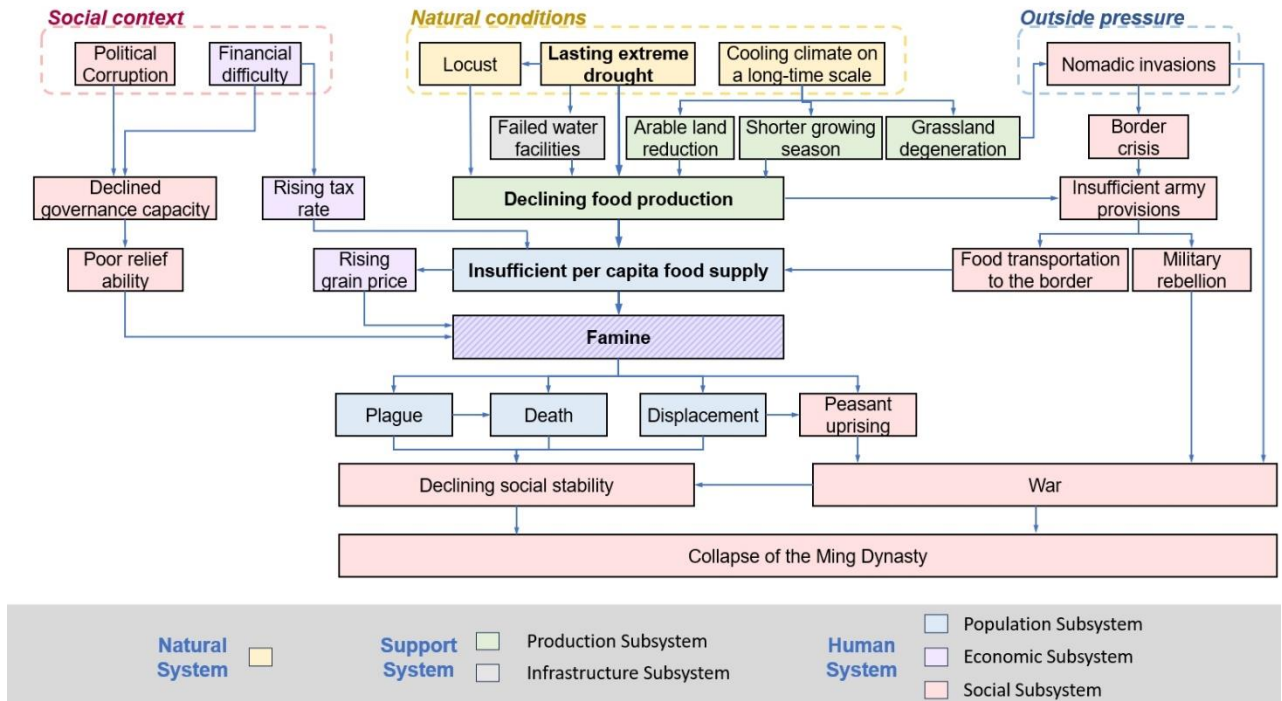


Figure 7: The cascading transmission paths of the impact of the Chongzhen Drought

7 Conclusion

Based on historical records and employing kernel density estimation, this study has reconstructed the spatial distribution patterns of drought from 1627 to 1644, alongside developing the Drought Kernel Density Index (DKDI) series for five regions in China. This extreme drought event lasted for 18 years and affected most of central and eastern China spatially. Drought is relatively severe in the Northern Region, Northwest Region, and Yangtze-Huai Region, mainly located north of 29°N. The analysis reveals notable regional differences in drought evolution. In the Northern Region, the DKDI followed a single-peaked trajectory, with drought intensifying from 1633 and reaching its peak in 1640. Northwest Region experienced the earliest onset of drought, which eased in the middle period before peaking again in 1640. The Yangtze-Huai Region displayed a multi-peaked DKDI, undergoing several cycles of worsening and easing drought, with the most severe drought occurring in 1641, a year later than in the north. The temporal and spatial progression of the Chongzhen Drought can be divided into four phases: the starting phase (1627-1633), where the main drought zone was in the Northwest Region; the transition phase (1634-1637), during which the drought zone gradually shifted to the Northern Region; the peak phase (1638-1641), where drought zones in the north and south converged and expanded to all areas north of 29°N; and the receding phase (1642-1644), marked by a weakening of the drought. The year 1640 witnessed the broadest and most intense drought conditions, during which numerous significant water bodies, including sections of the Yellow River, dried up. From 1627 to 1644, there was a shift of the primary drought zones from the Northwest Region to the Northern Region, and then expanding southwards. Summer and autumn, the critical crop-growing seasons in the study area, experienced the highest frequencies of drought, significantly impacting food production.

In the case of the Chongzhen Drought, drought was the primary factor in triggering famine, with the spatial and temporal patterns of both phenomena displaying remarkable similarities. Spatially, the area affected by famine from 1627 to 1644 significantly overlapped with that experiencing drought. Temporally, the progression of drought and famine exhibited a general consistent. The years when the Famine Kernel Density Index (FKDI) reached its peak in the Northern Region, Northwest Region, and Yangtze-Huai Region coincided with the peaks of the DKDI series. Moreover, a significant positive

correlation between DKDI and FKDI was observed. Regression analysis revealed that, on a sub-provincial scale, drought
400 accounted for approximately 67.3% of the famine's causation, increasing to as much as 73.4% in the Northern Region. Series
and correlation analyses further demonstrated the continuous impacts of drought on famine, which could persist for 2-3
years.

Extreme drought → declining agricultural harvest → food shortage → famine is the dominant transmission pathway in
which the climate change impacts reached the human system in this case. However, the transmission of climate change
405 impacts is characterized by a non-linear process with multiple feedback mechanisms. In addition to extreme drought, other
natural factors and socio-economic contexts also play significant roles in the occurrence and development of famines.
Moreover, human responses regulated the transmission of drought impacts. In the Yangtze-Huai Region, particularly,
multiple response measures curtailed the spread of drought impacts to the human system before 1640. This thorough study
deepens our understanding of historical extreme climate events and their social impacts, while also underscoring the
410 significance of grasping the interaction between natural dynamics and human actions when dealing with climate challenges.

Data Availability

All the data used in this study are described in Appendix A.

Author Contribution

SC and YS contributed to the study conception and methodology design. SC collected data, performed most of the analysis,
415 and wrote the initial draft. YS performed the funding acquisition and supervised the whole study. XC drafted the writing
outline and contributed to the data visualization. LEY participated in writing the discussion section and revised the
manuscript. All authors read and approved the final manuscript.

Competing Interests

The authors declare that they have no conflict of interest.

420 **Acknowledgements**

We would like to thank all colleagues in our research group from Beijing Normal University in China and Ludwig
Maximilian University of Munich (LMU) in Germany. We would like to thank Yixin Jin for her help with the language. We
would like to thank the reviewers and editors for their comments.

Financial Support

425 This work was supported by the Major Program of National Fund of Philosophy and Social Science of China [grant number:
22&ZD223].

References

Anthony, J.M., Rosalie, E.W., and Simon, H.: Climate change and human health: present and future risks, The Lancet,
367(9513), 859-869, [https://doi.org/10.1016/s0140-6736\(06\)68079-3](https://doi.org/10.1016/s0140-6736(06)68079-3), 2006.

- 430 Bai, S.: An outline history of China: the Ming dynasty (in Chinese). Shanghai People's Publishing House, Shanghai, China, 1999.
- Benson, L., Petersen, K., Stein, J.: Anasazi (pre-Columbian native-American) migrations during the middle-12th and late-13th centuries -were they drought induced?, *Clim. Change*, 83(1), 187-213, <https://doi.org/10.1007/s10584-006-9065-y>, 2007.
- 435 Bossel, H.: Indicators for Sustainable Development: Theory, Method, Applications. International Institute for Sustainable Development, Winnipeg, Canada, 1999.
- Buckley, B.M., Anchukaitis, K.J., Penny, D., Fletcher, R., Cook, E.R., Sano, M., Nam, L.C., Wichienkeo, A., Minh, T.T., and Hong, T.M.: Climate as a contributing factor in the demise of Angkor, Cambodia, *Proc. Natl. Acad. Sci. U.S.A.*, 107, 6748-6752, <https://doi.org/10.1073/pnas.0910827107>, 2010.
- 440 Buckley, B.M., Fletcher, R., Wang, S.Y.S, Zottoli, B., and Pottier, C.: Monsoon extremes and society over the past millennium on mainland Southeast Asia, *Quaternary Science Reviews.*, 95(7), 1-19, <https://doi.org/10.1016/j.quascirev.2014.04.022>, 2014.
- Büntgen, U., Myglan, V.S., Ljungqvist, F.C., McCormick, M., Cosmo, N.D., Sigl, M., Jungclauss, J., Wagner, S., Krusic, P.J., Esper, J., Kaplan, J.O., Vaan, M.A.C., Luterbacher, J., Wacker, L., Tegel, W., and Kirdyanov, A.V.: Cooling and societal change during the Late Antique Little Ice Age from 536 to around 660 AD, *Nat. Geosci.*, 9(3), 231-236, <https://doi.org/10.1038/NGEO2652>, 2016.
- 445 Cao, S.: Plague epidemic and social changes in North China (1580-1644 AD) (in Chinese), *Historical Research*, (1), 17-32, 1997.
- Cao, S.: Grain and army: the relationship between great drought and peasant war in late Ming (in Chinese with English abstract), *Historical Review*, (2), 76-87, 2019.
- 450 Chen, C.: Brief analysis of natural disasters in Zhejiang Province during Chongzhen 13 and 14 years of Ming Dynasty (in Chinese with English abstract), *Journal of Qinghai Normal University (Philosophy and Social Sciences Edition)*, (2), 61-64, 2006.
- Chen, G.: *Research on the warehouse system and famine preparation in the Ming Dynasty (in Chinese)*, *Seeker*, (5), 1991a.
- 455 Chen, Y.: A study on the droughts and their impacts from 1470 to 1979 in North China (in Chinese with English abstract), *Meteorological Monthly*, (3), 17-21, 1991b.
- Chen, G., and Zhu, C.: Influence of natural disasters on people's behaviors (in Chinese with English abstract), *Journal of Catastrophology*, (4), 90-95, 2003.
- Chen, Q., Yang, L.E., Luo, J., Liu, F., Zhang, Y., Zhou, Q., Guo, R., and Gu, X.: The 300-year cropland changes reflecting climate impacts and social resilience at the Yellow River-Huangshui River Valley, China, *Environ. Res. Lett.*, 16(6), 065006, <https://doi.org/10.1088/1748-9326/abe82a>, 2021.
- 460 Chinese Academy of Meteorological Sciences: Yearly charts of dryness/wetness in China for the last 500-year period (in Chinese), China Cartographic Publishing House, Beijing, China, 1981.
- Cullen, H.M., deMenocal, P.B., Hemming, S., Hemming, G., Brown, F.H., Guilderson, T., and Sirocko, F.: Climate change and the collapse of the Akkadian empire: Evidence from the deep sea, *Geology*, 28, 379-382, [https://doi.org/10.1130/0091-7613\(2000\)28<379:CCATCO>2.0.CO;2](https://doi.org/10.1130/0091-7613(2000)28<379:CCATCO>2.0.CO;2), 2000.
- 465 Deng, Y., *The History of famine relief in China (in Chinese)*, Wuhan University Press, Wuhan, China, 2012.
- Douglas, P.M., Pagani, M., Canuto, M.A., Brenner, M., Hodell, D.A., Eglinton, T.I., and Curtis, J.H.: Drought, agricultural adaptation, and sociopolitical collapse in the Maya Lowlands. *Proc. Natl. Acad. Sci. U.S.A.*, 112(18), 5607-5612, <https://doi.org/10.1073/pnas.1419133112>, 2015.
- 470 Fang, A.: The disaster and the society to help oneself in the Zhejiang area Chongzhen years in the Ming dynasty (in Chinese with English abstract), Doctoral thesis, Jilin University, Changchun, China, 56pp., 2006.

- Fang, K., Gou, X., Chen, F., Frank, D., Liu, C., Li, J., and Kazmer, M.: Precipitation variability during the past 400 years in the Xiaolong Mountain (central China) inferred from tree rings, *Clim. Dyn.*, 39, 1697-1707, <http://dx.doi.org/10.1007/s00382-012-1371-7>, 2012.
- Fang, X., Zheng, J., and Ge, Q.: Historical climate change impact-response processes under the framework of food security in China (in Chinese with English abstract), *Scientia Geographica Sinica*, 34(11), 1291-1298, 2014.
- Fang, X., Su, Y., Zheng, J., Xiao, L., Wei, Z., and Yin, J.: The Social Impact of Climate Change in China over the Past 2000 Years, Science Press, Beijing, China & Springer, New York, USA, [https://doi-org.emedien.ub.uni-](https://doi-org.emedien.ub.uni-muenchen.de/10.1007/978-981-97-0202-2)
- 480 [muenchen.de/10.1007/978-981-97-0202-2](https://doi-org.emedien.ub.uni-muenchen.de/10.1007/978-981-97-0202-2), 2024.
- Fu, Z., Zhang, X., Tian, Z., and Yang, B.: Chinese Military History: Chronology of War in Past Dynasties (in Chinese), Liberation Army Press, Beijing, China, 1986.
- Gallopin, G.C.: Linkages between vulnerability, resilience, and adaptive capacity, *Glob. Environ. Change.*, 16(3), 293-303, <https://doi.org/10.1016/j.gloenvcha.2006.02.004>, 2006.
- 485 Ge, Q.: Climate change in China's past dynasties (in Chinese), Science Press, Beijing, China, 2011.
- Ge, Q., Hao, Z., Zheng, J., and Shao, X.: Temperature changes over the past 2000 yr in China and comparison with the Northern Hemisphere, *Clim. Past.*, 9, 1153–1160, <https://doi.org/10.5194/cp-9-1153-2013>, 2013.
- Guo, C.: Research on the drought and famine and social responses in Shaanxi during the Chongzhen Period of the Ming Dynasty (in Chinese with English abstract), Doctoral thesis, Shaanxi Normal University, Xi'an, China, 195pp., 2014.
- 490 Guo, S.: Three extra levies in the late Ming Dynasty (in Chinese), *Essays in Ming History*. 220-245, 1983.
- Han, M.: A brief discussion of the crop cultivation system in ancient China (in Chinese), *Agricultural History of China*, (3), 91-99+64, 2000.
- Harvey, W., and Bradley, R.S.: What Drives Societal Collapse? *Science*, 291, 609-610, <https://doi.org/10.1126/science.1058775>, 2001.
- 495 Haug, G.H., Günther, D., Peterson, L.C., Sigman, D.M., Hughen, K.A., and Aeschlimann, B.: Climate and the collapse of Maya civilization, *Science*, 299(5613), 1731-1735, <https://doi.org/10.1126/science.1080444>, 2003.
- Li, B.: Climate change and several ups and downs of population in China's history (in Chinese), *Population Research*, (1), 15-19, 1999.
- Li, M., Li, S., Li, Y.: Studies on drought in the past 50 years in China (in Chinese with English abstract), *Chinese Journal of Agrometeorology*, 24(1), 7-10, 2003.
- 500 Liang, F.: Statistics on household, land, and tax in China's past dynasties (in Chinese), Zhonghua Book Company, Beijing, China, 2008.
- Liu, Q., Li, G., and Yang, X.: The extreme drought event at the end of Ming Dynasty during 1637-1643 AD (in Chinese with English abstract), *Journal of Northwest University (Natural Science Edition)*, 44, 833-837, 2014.
- 505 Medina-Elizalde, M., and Rohling, E.J.: Collapse of Classic Maya civilization related to modest reduction in precipitation, *Science*, 335(6071), 956-959, <https://doi.org/10.1126/science.1216629>, 2012.
- PAGES: Science Plan and Implementation Strategy, IGBP Report No. 57. IGBP Secretariat, Stockholm, Sweden, 2009.
- Pederson, N., Hessel, A.E., Baatarbileg, N., Anchukaitis, K.J., and Cosmo, N.D.: Pluvials, droughts, the Mongol Empire, and modern Mongolia, *Proc. Natl. Acad. Sci. U.S.A.*, 111(12), 4375-4379, <https://doi.org/10.1073/pnas.1318677111>, 2014.
- 510 Pei, Q., Zhang, D., Li, G., and Lee, H.: Short-and long-term impacts of climate variations on the agrarian economy in pre-industrial Europe, *Clim. Res.*, 56(2), 169-180, <https://doi.org/10.3354/cr01145>, 2013.
- Peng, Y., and Xu, Y.: A preliminary study on the simulation of drought and flood events in eastern China during the past 530 years (in Chinese with English abstract), *Quaternary Sciences*, 29, 1095-1103, 2009.

- Pfister, C., Luterbacher, J., Wanner, H., Wheeler, D., Brázdil, R., Ge, Q., Hao, Z., Moberg, A., Grab, S., and Rosario del Prieto, M.: Documentary evidence as climate proxies, PAGES/CLIVAR Proxy Uncertainty Workshop, Trieste, Italy, 2008.
- Shen, C., Wang, W., Hao, Z., and Gong, W.: Exceptional drought events over eastern china during the last five centuries, *Clim. Change.*, 85, 453-471, <http://dx.doi.org/10.1007/s10584-007-9283-y>, 2007.
- Tan, L., Cai, Y., An, Z., Edwards, R.L., Cheng, H., Shen, C., and Zhang, H.: Centennial- to decadal-scale monsoon precipitation variability in the semi-humid region, northern China during the last 1860 years: Records from stalagmites in Huangye Cave, *The Holocene*, 21, 287-296, <http://dx.doi.org/10.1177/0959683610378880>, 2011a.
- Tan, L., Cai, Y., An, Z., Yi, L., Zhang, H., and Qin, S.: Climate patterns in north central China during the last 1800 yr and their possible driving force, *Clim. Past.*, 7, 685–692, <https://doi.org/10.5194/cp-7-685-2011>, 2011b.
- Tan, Q.: The historical atlas of China (Volume 7): the Yuan dynasty period and the Ming dynasty period (in Chinese), China Cartographic Publishing House, Beijing, China, 1982.
- Tan, X.: Study of major drought catastrophes in China in recent 500 years (in Chinese with English abstract), *Journal of Disaster Prevention and Mitigation Engineering*, 23, 77-83, 2003.
- Tan, X.: Drought disaster trends shown by drought statistics in the past 500 years (in Chinese), *China Water Resources*, (7), 51-53+21, 2011.
- Teng, J., Su, Y., and Fang, X.: The reconstruction and analysis of famine sequence from the Western Han to the Qing Dynasty (206BC~1911AD) (in Chinese with English abstract), *Journal of Chinese Historical Geography*, 29(4), 26-32, 2014.
- Twitchett, D., and Fairbank, J.K.: The Cambridge History of China (Vol.7:The Ming dynasty, 1368~1644, Part 1), Cambridge University Press, Cambridge, UK, 1998.
- Wang, F.: Quantitative methods and applications in GIS, CRC Press, New York, USA, 2006.
- Wang, X., Chen, F., Zhang, J., Yang, Y., Li, J., Hasi, E., Zhang, C., and Xia, D.: Climate, desertification, and the rise and collapse of China's historical dynasties, *Hum. Ecol.*, 38,157-172, <https://doi.org/10.1007/s10745-009-9298-2>, 2010.
- Wei, Z.: Spatio-temporal characteristics of famine and its environmental causes in the Jiangsu-Shanghai region during the Qing Dynasty (1644-1911) (in Chinese with English abstract), *Progress in Geography*, 39(8), 1333-1344, 2020.
- Wright, H.E., and Thorpe, J.L.: Climatic change and the origin of agriculture in the Near East, in: *Global Change in the Holocene*, edited by Mackay, A., Battarbee, R., Birks, J., and Oldfield, F., Routledge, London, UK, 49-62, 2003.
- Xiao, L.: Spatio-temporal distribution of famine and its relationship with climate, disaster, harvest in North China during 1736-1911 (in Chinese with English abstract), *Advances in Earth Science*, 35(5), 478-487, 2020.
- Xu, A., Yang, L.E., Yang, W., and Chen, H.: Water conservancy projects enhanced local resilience to floods and droughts over the past 300 years at the Erhai Lake basin, Southwest China, *Environ. Res. Lett.*, 15(12), 125009, <https://doi.org/10.1088/1748-9326/abc588>, 2021.
- Yancheva, G., Nowaczyk, N.R., Mingham, J., Dulski, P., Schettler, G., Negendank, J.F.W., Liu, J.Q., Sigman, D.M., Peterson, L.C., and Haug, G.H.: Influence of the intertropical convergence zone on the East Asian monsoon, *Nature*, 445, 74-77, <https://doi.org/10.1038/nature05431>, 2007.
- Yang, L.E., Bork, H.R., Fang, X., and Mischke, S.: Socio-Environmental Dynamics along the Historical Silk Road, *Springer-Nature*, Cham., <https://doi.org/10.1007/978-3-030-00728-7>, 2019.
- Yang, L.E., Chen, J., Geng, J., Fang, Y., and Yang, W.: Social resilience and its scale effects along the historical Tea-Horse Road. *Environ. Res. Lett.*, 16(4), 045001, <https://doi.org/10.1088/1748-9326/abea35>, 2021.
- Yin, J., Su, Y., and Fang, X.: Relationships between temperature change and grain harvest fluctuations in China from 210 BC to 1910 AD, *Quat. Int.*, 355, 153-163, 2015.

- 555 Yin, J., Fang, X., and Su, Y.: Correlation between climate and grain harvest fluctuations and the dynastic transitions and prosperity in China over the past two millennia, *The Holocene*, 26(12), 1914-1923, <https://doi.org/10.1177/0959683616646186>, 2016.
- Zhang, D., and Lu, L.: Anti-correlation of summer/winter monsoons? *Nature*, 450, E7-E8, <https://doi.org/10.1038/nature06338>, 2007.
- 560 Zhang, P., Cheng, H., Edwards, R.L., Chen, F., Wang, Y., Yang, X., Liu, J., Tan, M., Wang, X., Liu, J., An, C., Dai, Z., Zhou, J., Zhang, D., Jia, J., Jin, L., and Johnson, K.R.: A Test of Climate, Sun, and Culture Relationships from an 1810-Year Chinese Cave Record, *Science*, 322(5903), 940-942, <https://doi.org/10.1126/science.1163965>, 2008.
- Zhang, Y., Tian, Q., Guillet, S., Stoffel, M.: 500-yr. precipitation variability in Southern Taihang Mountains, China, and its linkages to ENSO and PDO, *Clim. Change.*, 144, 419-432, <http://dx.doi.org/10.1007/s10584-016-1695-0>, 2017.
- 565 Zhang, D., Fang, X., and Yang, L.E.: Comparison of the HYDE cropland data over the past millennium with regional historical evidence from Germany, *Reg. Environ. Change*, 21, 1-15, <https://doi.org/10.1007/s10113-020-01735-1>, 2021.
- Zheng, J., Wang, W., Ge, Q., Man, Z., and Zhang, P.: Precipitation variability and extreme events in eastern China during the past 1500 years, *Terr. Atmos. Ocean. Sci.*, 17, 579-592, [https://doi.org/10.3319/TAO.2006.17.3.579\(A\)](https://doi.org/10.3319/TAO.2006.17.3.579(A)), 2006.
- 570 Zheng, J., Xiao, L., Fang, X., Hao, Z., Ge, Q., and Li, B.: How climate change impacted the collapse of the Ming dynasty, *Clim. Change*, 127, 169-182, <https://doi.org/10.1007/s10584-014-1244-7>, 2014.
- Zhong, Z., Zhao, J., Yu, X., and Ju, H.: Calculation and Analysis on Water Requirements of Major Crops in Northern China (in Chinese with English abstract), *Chinese Journal of Agrometeorology*, (2), 2-5+53, 2000.
- Zhou, Z., Guo, H., and Jin, R.: General history of Chinese administrative regions: the Ming Dynasty volume (in Chinese), Fudan University Press, Shanghai, China, 2007.

Appendix A. Sources of historical records used in this study

Table A1 Sources of historical records used in this study

No.	Title of the source	Provinces involved	Author and time	The number of records
1	A compendium of Chinese meteorological records of the last 3000 years (中国三千年气象记录总集)	The whole study area	Zhang De'er (张德二), 2004	5006
2	Historical materials of drought and flood in North China and Northeast China for the past 500 years (华北、东北近五百年旱涝史料)	Beijing, Tianjin, Hebei, Shandong, Henan, Shanxi	Chinese Academy of Meteorological Sciences (中央气象局研究所) et al., 1975	127
3	Climatic historical materials for the last 500 years in East China (华东地区近五百年气候历史资料)	Shanghai, Jiangsu, Anhui, Zhejiang, Jiangxi, Fujian	Shanghai Meteorological Administration (上海市气象局) et al., 1978	201
4	Climatic historical materials of Hubei province for the last 500 years (湖北省近五百年气候历史资料)	Hubei	Wuhan Regional Climate Center (武汉区域气候中心), 2018	55
5	Climatic historical data of Jiangxi province (江西省气候史料)	Jiangxi	Reference room of Jiangxi provincial meteorological administration (江西省气象局资料室), 1978	45
6	Historical materials of drought and flood in Sichuan province for the past 500 years (四川省近五百年旱涝史料)	Sichuan, Chongqing	Reference room of Sichuan Provincial Meteorological Administration (四川省气象局资料室), 1978	29
7	Chronology of large floods and droughts in Henan Province in past dynasties (河南省历代大水大旱年表)	Henan	Henan provincial hydrologic general station (河南省水文总站), 1982	174
8	Hydrologic and climatic data of Henan Province in past dynasties: including drought, flood, locust, wind, hail, frost, snow, cold, heat (河南省历代旱涝等水文气候资料: 包括旱、涝、蝗、风、雹、霜、大雪、寒、暑)	Henan	Henan provincial hydrologic general station (河南省水文总站), 1982	25
9	Historical famine and disaster records in Beijing: from 80 BC to 1948 AD (北京历史灾荒灾害纪年: 公元前 80 年-公元 1948 年)	Beijing	Yu Deyuan (于德源), 2004	15
10	History of Natural disasters in Shanghai (上海自然灾害史)	Shanghai	Liu Changsen (刘昌森) et al., 2010	41
11	Historical materials of natural disasters in Shaanxi Province (陕西省自然灾害史料)	Shaanxi	Meteorological Station of the Shaanxi Provincial Meteorological Administration (陕西省气象局气象台), 1976	21
12	A brief chronicle of disasters in Zhejiang. Zhejiang People's Publishing House (浙江灾异简志)	Zhejiang	Chen Qiaoyi (陈桥驿), 1991	21

13	History of Disasters in Shanxi (山西灾害史)	Shanxi	Wang Jianhua (王建华), 2014	66
14	Chronology of natural disasters in Hunan (湖南自然灾害年表)	Hunan	Hunan provincial institute of cultural relics and archaeology (湖南历史考古研究所), 1961	25
15	History of natural disasters in Shandong province (山东省自然灾害史)	Shandong	Wei Guangxing (魏光兴), 2000	30
16	Historical materials of natural disasters in Guangdong Province_ the revised and enlarged edition (广东省自然灾害史料·增订本)	Guangdong, Hainan	Guangdong research institute of culture and history (广东省文史研究馆), 1963	27
17	The literature and history data of Gansu Province (甘肃文史资料)	Gansu	Information Research Committee of Gansu Provincial Committee of the Chinese People's Political Consultative Conference (中国人民政治协商甘肃省委资料研究委员会), 1985	33
18	The history of disasters and famines in Northwest China (西北灾荒史)	Shaanxi, Gansu, Ningxia	Yuan Lin (袁林), 1994	86
19	Historical materials of natural disasters in Haihe River basin (海河流域历代自然灾害史料)	Beijing, Tianjin, Hebei	Hebei provincial drought and flood forecasting team (河北省旱涝预报课题组), 1985	117
20	Chinese Meteorological Disasters Ceremony: Shandong Volume (中国气象灾害大典·山东卷)	Shandong	Wen Kegang (温克刚) et al., 2006	60
21	Chinese Meteorological Disasters Ceremony: Hunan Volume (中国气象灾害大典·湖南卷)	Hunan	Wen Kegang (温克刚) et al., 2006	35
22	Chinese Meteorological Disasters Ceremony: Gansu Volume (中国气象灾害大典·甘肃卷)	Gansu	Wen Kegang (温克刚) et al., 2005	23
23	Chinese Meteorological Disasters Ceremony: Ningxia Volume (中国气象灾害大典·宁夏卷)	Ningxia	Wen Kegang (温克刚) et al., 2007	15
24	Chinese Meteorological Disasters Ceremony: Hainan Volume (中国气象灾害大典·海南卷)	Hainan	Wen Kegang (温克刚) et al., 2008	5

Appendix B. Year-by-year spatial distribution of drought during 1627-1644

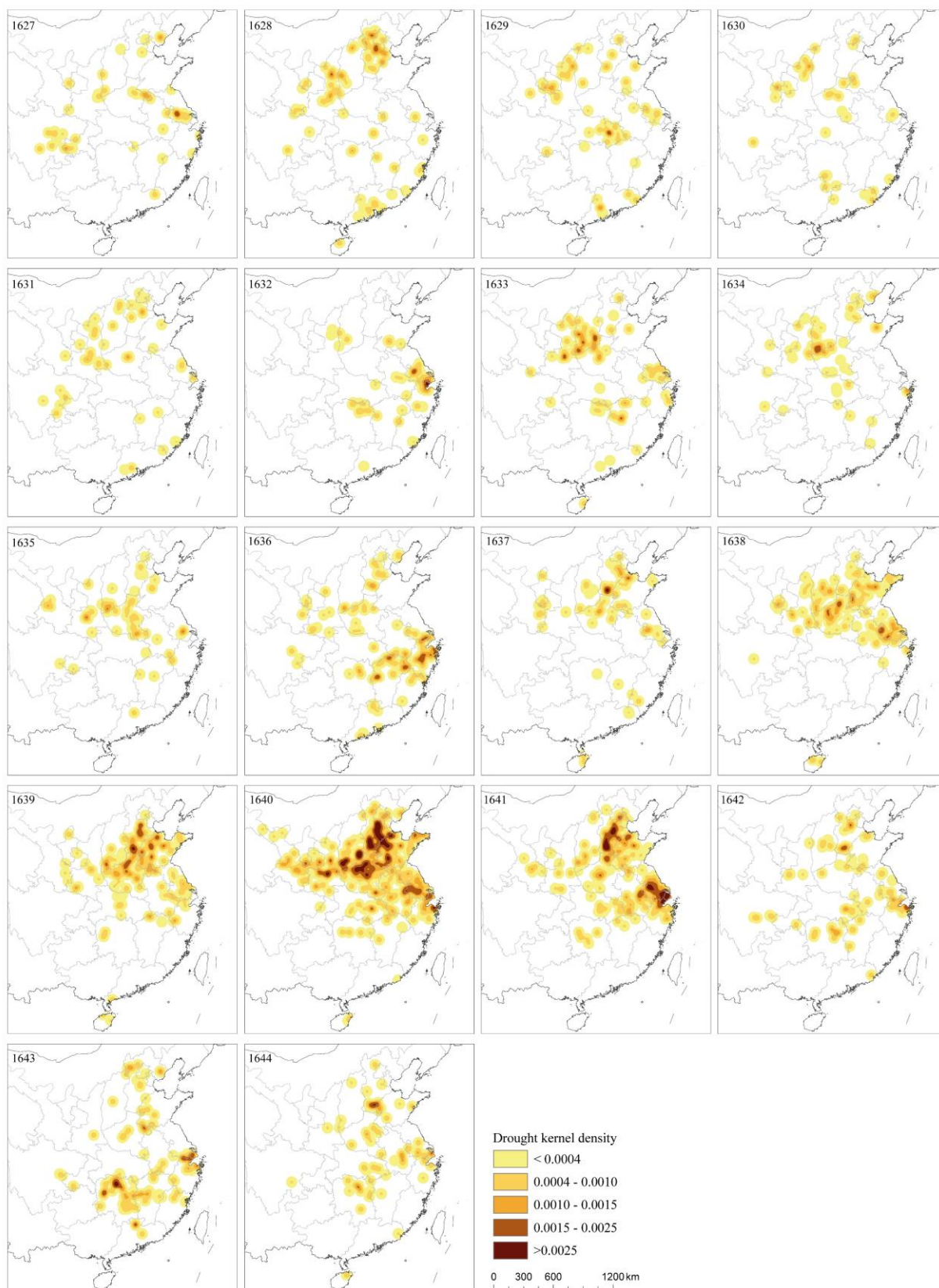


Figure B1 Year-by-year spatial distribution of drought during 1627-1644

Appendix C. The division of sub-provincial zones

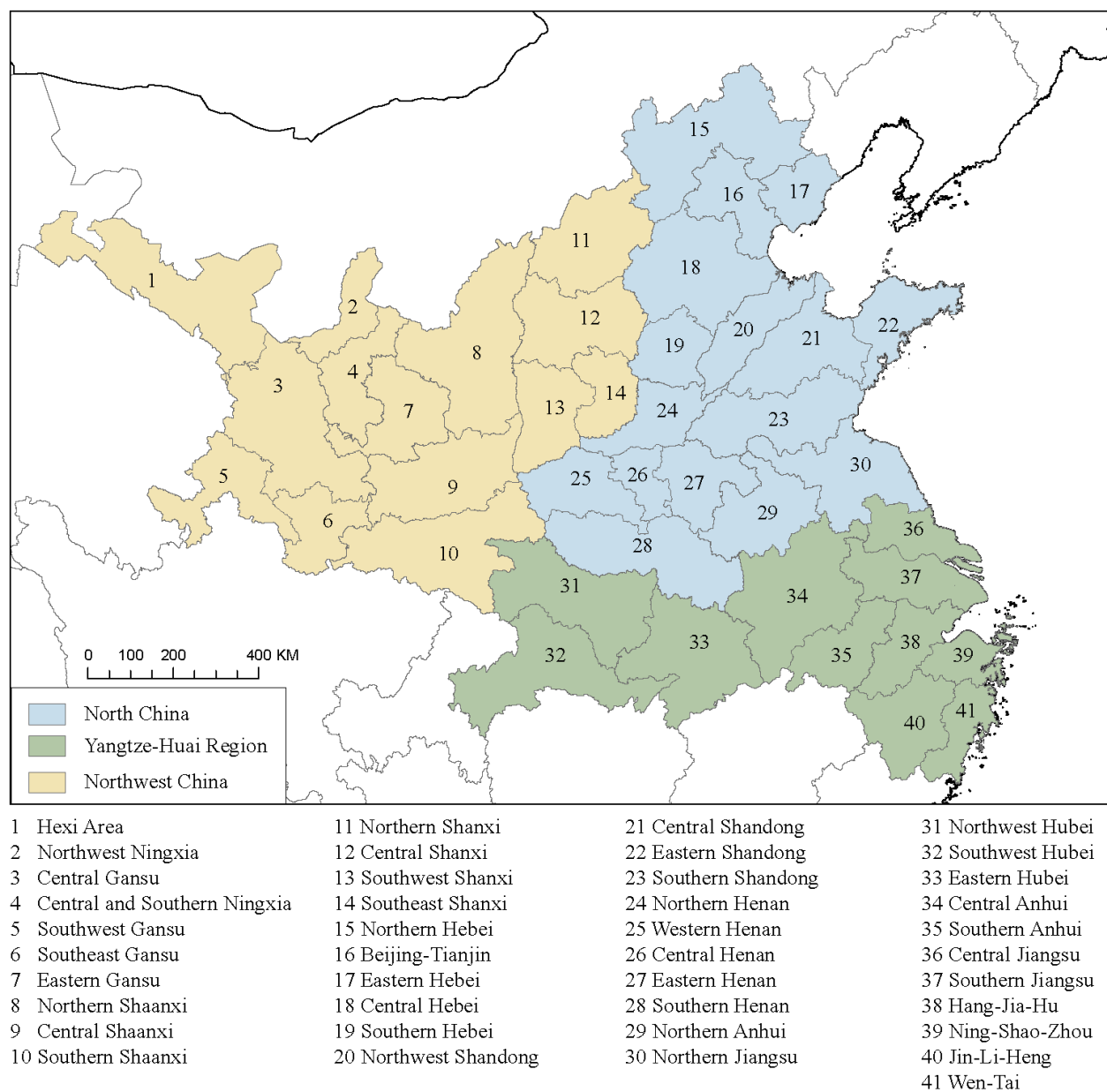


Figure C1 The division of sub-provincial zones

Appendix D. Year-by-year spatial distribution of famine during 1627-1644

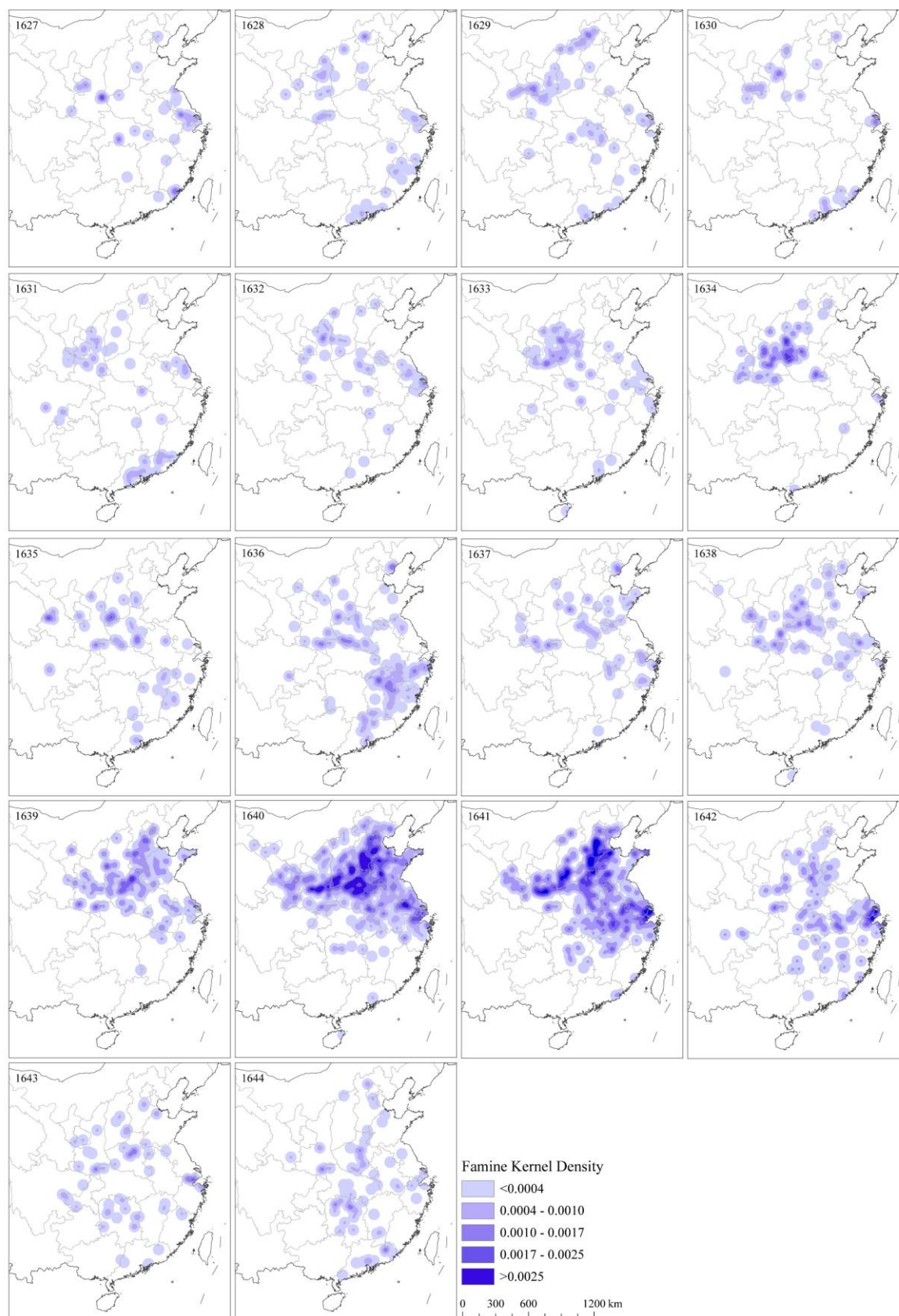


Figure D1 Year-by-year spatial distribution of famine during 1627-1644