

600 years of wine must quality and April to August temperatures in Western Europe 1420–2019

Christian Pfister¹, Stefan Brönnimann², Andreas Altwegg³, Rudolf Brázdil⁴, Laurent Litzénburger⁵, Daniele Lorusso⁶, Thomas Pliemon⁷

¹Oeschger Centre for Climate Change Research, University of Bern, Switzerland, christian.pfister@unibe.ch

²Oeschger Centre for Climate Change Research, Institute of Geography, University of Bern, Switzerland, stefan.broennimann@unibe.ch

³Dr. Ing. Agr. ETH, Brugg, Switzerland, altwegg@greenmail.ch

⁴Institute of Geography, Masaryk University, ~~Brno~~, and Global Change Research Institute of the Czech Academy of Sciences Brno, Czech Republic, brazdil@geogr.muni.cz

⁵Université de Lorraine, Nancy, CRULH, France, l.litzenburger@free.fr

⁶Università degli Studi di Milano, Italy, danielelorusso.unimi@gmail.com

⁷Institute of Physics, Department of Astrophysics and Geophysics, University of Graz, Austria, thomas.pliemon@uni-graz.at

Correspondence to: Christian Pfister (christian.pfister@unibe.ch)

Abstract. This study investigates the validity of wine must quality as a April to August summer (JJA)-temperature proxy between 1420 and 2019 based on expert ratings and quality measurements from Germany, Luxembourg, Eastern France and the Swiss Plateau. This is highly relevant as uncertainties remain on past climate variations during this period. The evidence was reviewed according to the best practice of historical climatology. Expert ratings tended to agree with Oechsle density measurements that gradually replaced them from the 1840s. A statistical model calibrated to predict wine must quality from climate data explains 75% of the variance, underlining the potential value of wine must quality as a climate proxy. Premium crops were collected in years of early harvest involving high insolation during maturation, while poor crops resulted from very late harvests in cold and wet summers. An analysis of daily weather types for high and low-quality years after 1763 shows marked differences. On a decadal timescale, average quality was highest from 1470 to 1479, from 1536 to 1545 and from 1945 to 1954. Poor crops were collected in periods prevailing cold and wet summers such as 1453 to 1466, 1485 to 1494, 1585 to 1614, 1685 to 1703, 1812 to 1821 and 1876 to 1936. In the period of enhanced warming after 1990, high qualities became the rule.

1 Introduction

Viticulture in the mid-latitudes of Europe is known to be closely linked to weather and climate. Due to the sensitivity of grape yields to the weather in the growing season, the revenues of wine producers (i.e., price multiplied by quantity) and grape quality also vary considerably (Ashenfelter and Storchman, 2016). With only minor other influences, temperature controls the

hat formatiert: Deutsch (Schweiz)

Feldfunktion geändert

Feldfunktion geändert

hat formatiert: Schriftart: 10 Pt., Nicht Fett

35 rate of physiological development of the vine (*Vitis vinifera* L.) through budbreak to flowering, setting, veraison and berry
ripening (Gladstones, 2011). Grape harvest dates (GHD) from archives of societies are thus essential for the high-resolution
reconstruction of past climate during the warm season. Pejml (1974) using 19th century wine quality data [for Velké Žernoseky](#)
[in Bohemia for Moravia](#) (Czech Republic) concluded that for years with good or excellent wine, the probability of above-mean
temperatures in the vegetation period achieved 73%, while in the years with low quality the probability of below-mean
40 temperatures was 77%. Brázdil et al. (2008) analysed wine quality from three 19th and early 20th century series from [South](#)
Moravia (Czech Republic), suggesting that the relations between grape quality and harvest together with climatic conditions
could build an additional proxy to reconstruct the temperature conditions in past times. [Andrea-Kiss et al. \(2011\)](#) included
grape quality data from the late 18th century in [their](#) May–August temperature reconstructions for western Hungary. In
fact, whereas the longest homogeneous GHD series goes back to the mid-14th century (Labbé et al., 2019), proxies using the
45 quantity and the quality of wine must are available back to the 11th century for extreme years. In 1043, for example, chroniclers
from north-eastern and southern Germany and what is now Belgium complained of “cold, almost wintry rains with strong
winds”, which led to a poor harvest of sour grapes and a wet grain crop, resulting in famine (Alexandre, 1987). In recent
decades, the relationship between drought and temperature in Western Europe has weakened, because enhanced warming from
anthropogenic greenhouse gases can generate the high temperatures needed for early harvests without drought (Cook and
50 Wolkovich, 2016).

This article investigates grapevine-must quality with weather and climate, connecting historical with oenological and
climatological research over the past 600 years. The term “grapevine-must” originates from the Latin “vinum mustum”
meaning “young wine” ([Wikipedia](#)).<https://www.winenium.com/must-grape-juice> — (retrieved — 5th — Ja 23).
<https://en.wikipedia.org/wiki/Must> (last access 5th Ja 23). In the historical past, grapes were crushed manually by foot or by a
55 hand operated wooden press while the freshly pressed juice flowed into a receptacle. “Quality” denotes the amount of sugar
in the wine must. To become proper wine, the wine must needs to be stored in barrels, of which the material (oak or metal)
contributes to the final quality of the bottled wine.

The German physician and natural scientist Gustav Schübler (1787– 1834) was the pioneer of historical oenology in
Europe, as this field of research may be called. As a professor of botany and natural history at the German University of
60 Tübingen, he investigated the influence of weather on cultivated plants (Loose, 2022). He compiled information on GHD along
with the quantity and quality of wine must harvests in historical documents back to the late Middle Ages to explore “whether
the climate of Germany has changed for centuries, whether it has remained the same, or whether these conditions are perhaps
due to greater periods that have so far escaped observation” (Schübler, 1831:3). He thus already considered the three
oenological parameters that are used today for climate reconstructions. [Grape harvest data were also compiled and discussed](#)
65 [in northern Italy and France around this time, although without a climate-historical focus \(Bonardi et al. 2020\).](#)

After the warm summers in the late 1940s arousing fear of desertification, climate change became an issue again.
Looking for evidence in the past millennium, Karl Müller (1953), who then was director of the State Viticulture Institute in
Freiburg Br, compiled the climatologically relevant oeno-climatic sources known for southern Germany standing on

hat formatiert: Schriftart: Nicht Fett

Schübler's shoulders. For the same reasons, the Luxembourg professor Eugène Lahr (1950) may have drawn on ancient data on the quality and quantity of Moselle wines in the Grand Duchy of Luxembourg. Alessandro Rima (1963) investigated the periodicities in a long time-series of grapevine quality and quantity from the Johannisberg Castle situated in Geisenheim (Hesse). Lauer and Frankenberg (1986) analysed the climatic parameters affecting grape quality and harvest amount in the German federal state of Palatinate (west of the Rhine) over the period 1948–1980 using multiple regression and a principal component analysis (in German). Their results are summarized as follows: The months from May to August of the harvest year explain the highest variance among all significant influencing factors. In May, soil temperatures matter, in June sunshine becomes important, in July also temperature, while in August drought is the main factor. Conditions in autumn, on the other hand, fall off. In general, cold, low-radiation and damp weather in the phase from May to July of the harvest year increases the acidity of the wine at the expense of the sugar content. Molitor et al. (2016) investigated the impact of seasonal heat on grapevine must quality and quantity in the vine growing region in Luxembourg for the reference period 1854–1885. While wine must quality was highly significant, vine must quantity as an additional predictor variable did not improve model output.

The US oenologist Gregory V. Jones specializing in the climatology of viticulture enologist Gregory V. Jones and the environmental scientist Robert E. Davis investigated records of harvest date, harvest quantity and quality using vineyard observations kept from 1938 to 1995 in Bordeaux (France). The two authors concluded that a large part of the annual fluctuations in the three above-mentioned oeno-climatic proxies was controlled by a few large-scale weather events. Cyclonic weather conditions with strong winds and cold fronts reduce grape quantity and quality also delaying the ripening of the berries. On the other hand, warm high-pressure conditions allow early large harvests with high sugar content to mature. In other words, late harvests were always small and sour, while early harvests were often large and of high quality (Jones and Davis, 2000).

The Italian historian Daniele Lorusso (2013, 2018) investigated the extent to which GHD can be climatically complemented and differentiated through information on wine must quality. In his innovative PhD, he compiled 26 relevant vintage expert rating time-series for the period of the 18th and 19th centuries. His results tend to agree with those of Jones and Davis (2000), according to which early harvests generally correspond to good and very good wines, and late harvests to sour and poor crops. For “average” observations ~~eases~~ in the middle time intervals of seasonal differentiations, he obtained information on rainfall and short-term shocks on grape quality besides temperatures. Lorusso also demonstrated significant correlations between grape quality and wine prices for the 19th and 20th centuries. In Germany, there is a society for the history of wine (*Gesellschaft für Geschichte des Weines e.V.*) that organizes thematic conferences twice a year and publishes relevant articles (<https://www.geschichte-des-weines.de/>). Outside Europe, wine studies in the humanities and social sciences are just a part of food history, alcohol history or both (McIntyre, 2017).

The present study extends the above-mentioned investigations of wine must quality in a western European setting back into the early 15th century. The study raises the question of whether the reconstruction of summer temperatures based on GHD can be improved by including evidence of wine-must quality. The paper is structured as follows. Section 2 presents the sources and discusses their reliability and validity. In section 3 we analyse the statistical properties of regional series before they are merged into an overall series. Section 4 on methods focusses on the climatic interpretation of the overall series. Section 5

hat formatiert: Schriftart: Kursiv

Feldfunktion geändert

reviews the main results and discusses their limitations. The paper closes with a view to further research.

105 2 Sources

2.1 Overview of sources

As early as the 11th century, chronicles refer to the sugar content of the wine-must and the size of the harvest in exceptional years by reference to a proxy that had a close connection to their experience (Pfister and Wanner, 2021). Wine was in the past at the same time an everyday drink, a religious symbol, and a cash crop, and its sugar content already mattered for its price (Lorusso, 2018). Reports on wine-must quality became more continuous from the 13th century onwards. Starting in the early 19th century, they were systematically collected for documenting past climate fluctuations.

Location	Alt m	Type	Period	%	References
1. Baden-Württemberg De	200	E	1420–1950	3	Schübler, 1831, Pfaff, 1865, Müller, 1953
2. Remich Lu	160	E	1627–1989	3	Lahr, 1950, S5, S17, 1950–1989
3. Briedel De	118	E	1644–1989	32	Source S6
4. Johannisbg De	95	E	1700–1989	0	Rima, 1968, Staab et al., 2001
5. Swiss Plateau	380–450	E	1529–1880	1	DOI https://doi.org/10.48620/317 provided
6. Remich Lu	160	°Oe/Bx	1839–2019	0	Statec, 1989, Source S17, 1988–2019
7. Ct Schaffhausen Ch	400–430	°Oe	1970–2019	0	BLW, 1970–2019
8. Neustadt De	136	E	1420–1867	3	Source S4
9. Eastern France	200–300	E	1720–1879	1	Lorusso, 2013
10. Canton Zürich (1) Ch	420–450	°Oe/Bx	1938–2019	0	Source S5 1961–69, BLW 1970–2019
Series 1 to 10			1420–2019		

Legend; Alt Altitude above sea level. E = Expert opinions, °Oe = degrees Oechsle, Bx: Brix, % = % gaps

115 1) 1938–1960 District Meilen

Table 1 presents the temporal coverage of the used sources. Following Schübler's (1831) approach, the educationalist Karl Pfaff (1795–1866) published a "Württemberg Wine Chronicle" including quality and quantity data since the 13th century

Feldfunktion geändert

120 (Source S3). Two years later, the German naturalist and oenologist Friedrich August Dochnahl published a [wine] chronicle
for the town of Neustadt an der Weinstrasse (Rhineland-Palatinate, Germany) covering the long period from 1420 to 1867
(Source S4). The most reliable data for the period 1420 to 1537 were drawn from the study for Metz by Laurent Litzenburger
(2015). Eugène Lahr (1950) compiled a wine chronicle from 1627 onwards for the Luxembourgish vine growing region located
at the northern border of viticulture in Europe at that time (Fig. 1). His grape quality chronicle was continued up to 1989
125 (Source S13). After the hot-dry summers of the late 1940s, Karl Müller (1953) supplemented the data collected by Pfaff up to
1950 (Source S2). For verification, a wine chronicle of the wine village of Briedel (Rhineland-Palatinate) from 1644 to present
was consulted (Source 6). The longest must quality series based on expert ratings known so far was drawn from the winery of
the [Johannisberg-Johannisberg](#) - Castle from 1700 to 2000 (Staab et al., 2001). Most Swiss sources originate from the cantons
Zürich (Source S7), Schaffhausen (Source S8), Thurgau (Source S9) and St. Gallen (Source S10) situated in the North-eastern
130 part of the Swiss Plateau. The estimated annual qualities for Germany, France and Luxembourg and for the Swiss Plateau are
contained in the repositiorium <https://doi.org/10.48620/317> (provided).

From the mid-19th century, expert ratings were gradually replaced by measurements of sugar content. [Appropriate
devices](#) ~~This device~~ measures the density of the unfermented wine-must before it is stored in barrels. It corresponds to the
proportion of dissolved substances (mainly sugar). Weighing the wine-must yields a standardized quality criterion comparable
135 across regions and continents. According to current knowledge, the mechanic and goldsmith Ferdinand Oechsle (1774 –1852)
from Pforzheim (Baden, Germany) invented the must scale in 1836. However, he was not the forerunner. In fact, must weighing
was practised in southern Germany since 1754. Schübler (1831) quotes a relevant treatise by the Stuttgart city physician J.J.
Reuss (1773). The device was regularly used from 1839 in the Duchy of Luxembourg for purposes of quality control (Statec,
1989). In the Swiss cantons, the method was introduced at different times starting in the late 19th century. In Canton
140 Schaffhausen, for example, it is documented from 1853. Starting in 1874, the communities had to report the results of the
annual must weighing to the authorities (Source S8), whereas this regulation was introduced in Canton Zürich only after 1938
(Altwegg et al., 2023). From 1970 onwards, the Swiss Federal Office for Agriculture published the cantonal averages of must
weighing according to cultivar (Source S9). Starting in 1995, results are given in degrees Brix (°Bx) (Source S14)

Based on geographical location (Fig. 1), three groups of sources can be identified. Metz (France), Remich
145 (Luxembourg) as well as Briedel, Neustadt an der Weinstrasse and Johannisberg (Germany) are located at the historical
northern wine-growing border, where the vines are particularly sensitive to warm and cold summers. The Rhineland,
Württemberg and the Swiss Plateau are located farther south, whereas the French communities are situated more to the west.

2.2 Source reliability

The best practice of historical source evaluation was applied to assess the reliability of notations on vintage expert ratings. In
150 addition to transcriptional and printing errors, wine chronicles are likely to have included flawed information from
uncontemporary sources. However, such flaws are difficult to detect. At least, flawed quality data may be tracked down
indirectly, be it by contradiction of added weather reports in the chronicles with those from contemporary sources, or by cross-

checking with evidence from neighbouring regions. Some gaps and inconsistencies were filled with Schübler's (1831) original data as well as with evidence from the comprehensive study for Metz by Litzenburger (2015). Quasi continuous contemporary data are available for Swiss cantons from the official annual assessment of wine must prices. In the town of Zürich, from 1421 onwards, the authorities used to take a sample of wine must from a vineyard near the lake on the eve of Martinmas (Nov 11th) to estimate the price of wine per bucket, often also specifying the quality (Nabholz, 1908). The vineyards owned by the authority were cultivated by sharecroppers, who had to give half of the yield as rent, while they sold their half on the market and to creditors. The authorities tried to prevent speculation, stabilizing their income in record years by setting a takeover price while accommodating the sharecroppers in case of crop failures (Sonderegger 1994 Source S18). Corresponding official price and quality indications are documented for the cantons of Schaffhausen, Thurgau, St. Gallen and Zurich from different points in time (Sources SA8, SA9, SA10, SA 47 DOI <https://doi.org/10.48620/317> (last access 5 Jan 2023) provided).

hat formatiert: Hochgestellt

2.3 Source validity

Wine [must] quality can be defined as the average rating assigned by wine experts to a vintage (Almaraz et al., 2015). At present, the cross-correlation between different sets of expert ratings is usually large (Jones et al., 2005; Baciocco et al., 2014). It is assumed that ratings were made by consensus among guilds (?) of local vine-growers who had the necessary knowledge and experience.

To assess the validity of documentary data as climate proxies, the evidence from different independent sources is compared. Correlation of regional vintage rating time-series allows certain conclusions to be drawn in this respect, but the uncertainties involved cannot be quantified. As chroniclers used quite similar terms to refer to wine-must quality, the source information could be standardized. Following Bassermann-Jordan (1907), it became commonplace to distinguish five quality classes of wine must from 1 (premium) to 5 (nearly undrinkable), often adding a summary description of relevant growing-season weather spells (Lauer Frankenberg, 1986; Lorusso, 2018; Molitor, 2016).

Class	N	%	N	%	N	%	N	%	N	%	Total	%
1	45	16	51	16	56	11	20	12	23	7	195	12
2	64	23	83	26	141	29	30	20	121	33	439	27
3	94	28	71	22	140	27	39	24	101	31	445	28
4	48	22	73	23	139	27	37	23	75	23	372	23
5	38	11	38	12	38	6	33	21	18	6	165	10

Total	289	100	31	100	514	100	159	100	334	100	1616	100
			6									
	Joh.berg De	Remich Lu		Germany	East France	Swiss Plateau						
	1700–1989	1627–1964		1420–1950	1720–1896	1525–1880						

175

Table 2 Size of regional quality classes (expert ratings) 1420–1989.

The allows to compare the relative size of the quality classes among regions according to expert ratings. Overall, the proportion of premium and poor wines is the lowest. On the other hand, the proportion of good wines tends to be overestimated.

180

The differences involved in table 2 point to the fact that expert ratings may be classified as acceptable approximations.

Number and region	1	2	3	4	5	6	7	8	9
1. Baden-Württ. De 1420–1950									
2. Remich Lu 1627–1964	0.70								
3. Briedel De 1644–1989	0.63	0.74							
4. Johannisberg De 1700–1989	0.66	0.75	0.66						
5. Swiss Plateau 1525–1880	0.58	0.51	0.45	0.49					
6. Remich Lu 1839–1989	-0.68	-0.90	-0.71	-0.64	-0.54				
7. Schaffhausen Ch 1938–1989	N.A.	0.55	0.40	0.48	N.A.	-0.53			
8. Neustadt De 1420–1867	0.84	0.67	0.59	0.61	0.54	N.A.	N.A.		
9. Eastern France 1720–1896	0.61	0.53	0.50	0.51	0.52	-0.56	N.A.	0.64	
10. Zürich(1) Ch 1938–1989	N.A.	N.A.	0.43	0.48	N.A.	-0.54	0.68	N.A.	N.A.

Table 3. Correlations between regional series of expert ratings, 1420–1989

Probability rho all correlations p<0.01

Legend: Bold Oechsle density measurements

(1) Meilen 1938–1980

185

Table 3 presents a statistical comparison of the classified regional series. Values show the coefficient of correlation among regional series that are all significant. The correspondence among the German, Luxembourg and Swiss expert ratings is highly significant, while the values for the French municipalities located farther West are somewhat lower. It is concluded that the good spatial agreement of the evidence speaks for its validity as a climatic proxy. Note that, measured °Oechsle values are highly correlated with expert ratings from the same location, as the example of the Upper Mosel valley (r -0.92) and that of

190

French data (Lorusso, 2013) shows. Starting from the mid-19th century, expert ratings were gradually abandoned in favour of Oechsle density measurements. In Switzerland, this was done by canton at different times, whereas in Luxembourg expert ratings were maintained in parallel to measurements until 1989.

3 Methods

To check the quality of climate reconstruction over time, the regional expert ratings were compared with grape harvest dates (GHD). This proxy is available in the form of long time-series (Daux et al., 2012). However, it should be noted that the setting of the vintage date is based on a decision-making process. Due to severe frost or long rains, vintners may start harvesting before the grapes have reached full maturity or in the case of plague or military threats the harvest may be skipped altogether (Garnier et al., 2011). Taking the example of the highly cited “Dijon series” (Chuine et al., 2004), a critical source review may even be needed for contemporary data. The two historians, Thomas Labbé and Fabien Gaveau (2011), discovered that the extremely early harvest date set by the prefect of the department Côte d’Or in the hot summer of 2003 was in fact a bureaucratic artefact. According to the local press, the grape harvest in the Burgundian wine metropolis of Beaune actually began 19 days after the official date.

To compensate for local effects, two long GHD series were used, namely that of Beaune (France) from 1354 to 2018 based on the red Pinot Noir cultivar (Labbé et al., 2019) and that of the Swiss Plateau from 1461 to 2011 (Wetter and Pfister, 2013) based on traditional white grape cultivars, mostly Elbling and Räuschling (Aeberhard, 2005). The vines in Beaune are grown at altitudes between 220 m and 300 m (a.s.l.), whereas those in the Swiss Plateau are grown at altitudes between 370 m and 500 m. Both series were standardized homogenized by dividing the anomalies from the mean by the standard deviation and averaging the result. The resulting composite series named “GHD+” starts in 1461. In addition to GHD, the highly cited 1,250 years long series of maximum latewood density (MXD) data from the Löttschental (Canton Valais) (Büntgen et al., 2006) was integrated as an independent proxy.

Table 4	Correlation of GHD+ with must quality and tree-rings					
	1420–1530	1531–1626	1627–1750	1751–1880	1881–1989	Mean
Must quality-GHD+	rho	rho	rho	rho	rho	rho
Germany-Luxembg	0.54	0.42	0.56	0.75	0.50	0.56
Swiss Plateau		0.67	0.56	0.61	0.36	0.52
Eastern France				0.74		
Mean	0.54	0.59	0.64	0.83	0.46	0.61

Formatiert: Standard

Tree Rings-GHD+	rho	rho	rho	rho	rho	rho
MXD Lötschental	-0.37	-0.26	-0.41	-0.37	-0.38	-0.36

Table 4 Correlation of GHD+ series with wine must quality and MXD tree ring data over time

Probability: rho all correlations $p < 0.01$

Legend: GHD+ mean standard deviation of the GHD series of Beaune (France)

(from 1420) and of the Swiss Plateau series (from 1460)

Data: Tree-ring MXD data Büntgen et al., 2006

Table 4 shows the degree of agreement between the GHD+ series with regional wine must quality and MXD tree ring data over time. Coefficients in table 4 are lowest from 1420 to 1524, due to a small number of observationseases per year and the fact that until 1460 only the GHD series from Beaune is available. The correlation of must quality with tree ring MXD do not show a clear pattern. It is generally lower prior to 1880 and remains at the same level between 1881 and 1989. No interpretation is provided for this. The correlation of mean quality with GHD+ is lower between 1881 and 1989 than in the two preceding time periods, while the correlation of GHD+ with tree ring MXD is at the same level. This points to inaccurate assessment of vine must quality due to low quality in face of the breakdown of the harvest amount which in Switzerland coincided with a long period of transition from expert evaluation to density measurement. For Luxembourg where the transition took place starting in the mid nineteenth century, correlations are higher (not shown). Coefficients rise until reaching a maximum in the period 1750 to 1880. Between 1881 and 1989 they are lower, mainly due to a high frequency of wetness-related harvest failures (Fig. 6) aggravated by Powdery Mildew. This fungal disease, not to be confused with Phylloxera, was brought in from North America causing severe crop loss in wet summers until the fungus could be treated starting in the 1930s (Altwegg, 2023).

hat formatiert: Schriftart: 10 Pt., Nicht Fett

Figure 2 shows scatterplots of GHD+ and wine must quality 1420–1989 (right) and 1751–1880 (left). Correlations between GHD+ and wine must quality over the whole period of investigation show a relatively large scattering, which is mainly due to low case numbers and the availability of a single GHD series before 1460. On the other hand, the correlation for the period between 1781 and 1880 (Fig. 2) reaches a maximum of 69% whereby the outliers are due to extreme weather events (Table 5).

4 The statisticalclimatic model

A validation of the data against modern climate observations was not attempted because the data on wine must quality between 1881 and 1989 are of lower quality than those between 1751 and 1880 (Table 4). Starting in 1990 the quality values are no longer meaningful in terms of climate history because of a substantial quality improvement. In the field of climate reconstruction, data assimilation methods (or other inverse methods) are increasingly used, and these methods require a forward model such as the statistical model presented in this paper. The inversion approaches range from simple Bayesian methods such as weighted analogs sampled from climate model simulations (Reichen et al., 2022) to off-line Ensemble Kalman

Filters (Valler et al., 2022). The series shown can be used in any of these approaches, together with other series, to obtain a climate reconstruction.

A statistical model for investigating the influence of growing-season weather on wine must quality needs to build on the vegetation cycle of the vines. The blossoms, after flowering in early summer, develop into berries after fruit set in midsummer. Up to this stage, the development of the vine is essentially controlled by the temperature between April and July. At the beginning of the ripening period, called veraison, in August the berries are still small and hard. Subsequently they soften, change colour and their sugar content increases at the expense of acidity. The ripening process takes about three to four weeks (Combe and Smart et al., 2015). Dry and sunny conditions matter during this period (Lauer and Frankenberg, 1986). The earlier the ripening begins, the greater the chance to get a good crop, as the insolation decreases relatively quickly from mid-August. On the other hand, the berries hardly ripen in a late year.

Based on this information, we used a statistical model for wine must quality based on monthly local temperature and precipitation. We started by considering temperature and precipitation of all months from April to August as predictor variables and then proceeded with a backward selection. Variables that were not statistically significant ($p < 0.05$) were excluded from the model.

The meteorological variables were taken from the ModE-RA re-analysis (Valler et al., 2023). The meteorological variables for the regression model were taken from the re-analysis (Valler et al., 2023). This is a global monthly climate reconstruction of the period 1421–2008 based on assimilating natural proxy data, documentary data, and instrumental observations into an ensemble of global atmospheric model simulations (Bhend et al. 2023). The generation of the product closely follows the predecessor product EKF400v2 (Valler et al., 2022), but uses a greatly expanded set of documentary data (Burgdorf et al., 2023) and instrumental observations (Lundstad et al., 2023) and a new ensemble of statistical climate-model simulations (Hand et al., 2023). From this data set, which consists of 20 ensemble members, we used the ensemble mean of the grid point 5.6° E and 47.6° N (see Fig. 1) to represent the area of interest. We calibrated the model in the period 1781–1880, because instrumental data coverage over Europe for this period is excellent, so that the reconstruction is of high quality. The remaining years were used for independent evaluation.

Further, we used daily weather type reconstructions for Switzerland back to 1763 from Schwander et al. (2017). The weather types are based on the official MeteoSwiss weather types CAP9 (Weusthoff et al., 2011), which encompass nine weather types. For the reconstruction, these were reduced to seven types as there were two pairs of two weather types that were not easily distinguishable. The weather types were successfully used for addressing, e.g., the decadal variability of floods (Brönnimann et al., 2019). A brief description of the types is given in Table 6.

#	Abbreviation.	Description
1	NE	Northeast, indifferent
2	WSW	West-Southwest, cyclonic, flat pressure
3	W	Westerly flow over Northern Europe

4	E	East, indifferent
5	HP	High Pressure over Europe
6	N	North, cyclonic
7	WC	Westerly flow over Southern Europe, cyclonic

Table 6. Description of CAP7 weather types (Schwander et al., 2017). CAP7 Cluster Analysis of Principal Components with 7 types

280 Daily weather type reconstructions offer an additional way to explore the relation between wine must quality and climate. In this study, we analysed weather type frequency since 1763 for years with particularly high and low quality of wine must.

Figure 3 shows the average sea-level pressure patterns: Types WSW cyclonic, N cyclonic and WSW over S Europe are cyclonic weather types that are often associated with the passage of a weather system. Types NE indifferent, E indifferent and HP over Europe (which is rather rare) are anticyclonic weather types expected to be related to comparably warm and dry conditions. (According to Schwander et al., 2017)

285 CAP7 Cluster Analysis of Principal Components with 7 types

5 Results

The presentation of the results begins with an overview of the climatic analysis and then discusses the final wine must quality series and its changes over time. The relation of wine must quality with climate was investigated with the regression model. The backward selection resulted in a statistical model that retained temperature and precipitation of all relevant months April to August. Temperatures in this period were all significant according to the results of Lauer, Frankenberg (1986) and Lorusso (2013), as well as precipitation in April and August. Precipitations in May, June and July were below the selection criteria. Admittedly, contemporary observers only discussed conditions in the summer months.

295 The results are summarized in Table 7.

Series	R ² _{calib}	R ² _{verif}	T _{Apr}	T _{May}	T _{Jun}	T _{Jul}	T _{Aug}	RR _{Apr}	RR _{Aug}
Wine Must Quality	0.75	0.43	***	***	***	***	***	**	**
Grape Harvest Dates	0.87	0.73	***	***	***	***	*	**	**

Table 7. Results from the statistical modelling approach for series of wine must quality and grape harvest date. Columns indicate the explained variance in the calibration period (1751–1880), in the verification period (1525 to 1750) as well as the significance of the coefficients (*** denotes p<0.001, ** denotes p<0.01, * . p<0.05).

300

The regression model provides an excellent fit to the data, with an explained variance of 75%. The performance in the verification period (1525 to 1750) is lower. This could be due to fewer series contributing to the average in earlier years, or a lower quality of the reconstruction (see also Table 4). Nevertheless, the agreement is still good.

305

In Fig. 4, we show the observed and reconstructed wine must quality series back to 1420. The reconstruction fits well with the observations also outside the calibration window. However, the model overestimates extremes, which is arguably due to the linearity of the model. It predicts values outside the restricted quality scale. A simple truncation to the interval [1,5] already increases correlations. Variable transformations as in Labbé et al. (2019) might further increase the accuracy.

310

For comparison, we also applied the same regression model to grape harvest dates and found an even better performance (87% explained variance in the calibration, 73% in the verification period). It should be noted, however, that grape harvest dates entered the reconstructions and thus the two data sets are not entirely independent, although the amount of instrumental data in the calibration period is massive, such that the influence of grape harvest dates on the reconstruction is arguably small.

315

In Fig. 5, we analysed the daily weather types for five years with excellent wine must quality and five years with very low quality in the period 1763 to 1947. The years were selected according to specific thresholds. A slight increase in the threshold would greatly increase the number of cases thus weakening the robustness of the conclusion. The cyclonic weather types 2 (WSW cyclonic), 6 (N cyclonic) and 7 (W flow over Southern Europe, cyclonic) were more frequent in years with low wine must quality than in years with high quality. Conversely, types 1 (NE indifferent), 3 (westerly flow over Northern Europe) and 4 (E indifferent) dominated during years with high must quality. This follows the expected pattern, except that one might also have suspected more abundant high-pressure days over central Europe (type 5) in the good quality years. We find almost the same number (19 versus 20). This is perhaps due to the fact that this type is rare. We find almost the same number of #5 weather type in both vintages identified with either low or high must quality. This might be due to the fact that this type is rare.

320

325

Figure 6 presents the average annual wine must quality in Western Europe 1420 to 2019. The data are identical to those in Figure 4 but are presented in a different context. Prior to 1888, years with high and low quality fluctuated around the long-term average (2.94). 42% of the top-quality wines were obtained between 1471 and 1616, 36% between 1834 and 1983, while only 5 vintages achieved top marks in the 195 years between 1616 and 1811. In three periods (1469–1513, 1656–1674 and 1940–1978), high qualities were slightly more frequent, whereas poor qualities predominated in the three periods (1559–1589, 1800–1853 and 1888–1929). On a decadal time-scale, quality was highest in the three decades from 1470 to 1479, from 1536 to 1545 and from 1945 to 1954. Each decade culminated in a remarkable hot extreme, namely 1473, 1540 and 1947. 1473 was probably the hottest year in the Millennium (Camenisch et al., 2020), whereas 1947 was the hottest year between 1719 and

330

Formatiert: Abstand Vor: Automatisch, Nach: Automatisch

hat formatiert: Schriftart: 10 Pt., Nicht Fett

hat formatiert: Schriftart: Nicht Fett

hat formatiert: Schriftart: Nicht Fett

2002 (Pfister and Wanner, 2021). Wines were often undrinkable between 1491 and 1542 and during the 237 year long period between 1713 and 1939. Between 1782 and 1821 this applies to one in five harvests.

335 Premium grape musts were obtained in the 30 years 1442, 1471, 1473, 1479, 1483, 1484, 1516, 1536, 1540, 1590, 1599, 1615, 1616, 1669, 1676, 1706, 1753, 1811, 1834, 1846, 1865, 1895, 1911, 1921, 1929, 1947, 1949, 1959, 1971 and 1983, whereas 1947 was probably on top. A bottle of Château d'Yquem was on sale for 2950 euros in 2021 (Pfister and Wanner, 2021). In 1540, grapes were ripe in early August albeit severely suffering from water stress. In many vineyards, the picking of grapes was interrupted and resumed after a rain-spell in September (Wetter and Pfister, 2013). The late vintage yielded a great
340 amount of honeysweet dirt-cheap wine which led to excessive drinking. Apparently, hundreds of people drank themselves to death (Dochnahl, 1867). In the Prince Bishopric residence in Würzburg, the 1540 premium wine was reserved for guests and members of the Court. The last bottle still survives in the city's civic hospital (Glaser, 2013).

345 Terrible wines were obtained in the 30 years 1428, 1465, 1491, 1517, 1527, 1529, 1538, 1542, 1627, 1675, 1713, 1716, 1725, 1740, 1763, 1782, 1785, 1792, 1799, 1805, 1809, 1813, 1816, 1817, 1821, 1843, 1860, 1879, 1913 and 1939. Some of them got nicknames. The wine in 1529 was called "Türkenwein" (Turkish wine) because the Turks besieged Vienna in that year, and the sour drink in 1860 became known as "Garibaldi" after the Italian freedom fighter of the time (Müller 1953).

The striking characteristic of the entire series (Fig. 6) is the almost continuous increase in must weights with the transition from slow to rapid anthropogenic warming in 1988. Besides the effect of climate change, the increase in quality in the Swiss Plateau is also due to quantity restrictions imposed by the authorities after several bumper harvests and the delaying
350 of the harvest date due to good weather conditions (Altwegg et al., 2023). ~~most wine musts obtained in the past 20 years can be classified top~~ Most wine musts obtained in the past 20 years must be classified top compared with those in preceding past centuries.

355 Figure 7 compares the evolution of must quality, summer days and hot days 1970–2019. A meaningful comparison of meteorological parameters with wine must quality since 1970 requires focusing upon a single cultivar. Riesling-(Müller-Thurgau) was selected because it was grown in Remich for a long time. The average must weight of this cultivar increased by 24% from the period 1970–1989 to 2000–2019. The number of summer days increased by 75% and the number of hot days tripled over this time-period. Due to enhanced warming, new cultivars were grown at the expense of traditional varieties. The downside of this development includes the spread of heat-loving pests, the higher frequency of ~~rot-mould~~ due to more warm
360 and humid weather in late summer and drought stress and water shortage in hot summers (Source S17, Weinjahr 2007–2018).

5 Conclusions

The study demonstrated that evidence on wine must quality based on expert ratings is a valid summer temperature proxy so long as the documentary evidence is critically evaluated. Considering the effort spent on this task, the question of the added climatic value of wine must evidence for historical climatology arises. Where GHD are lacking or questionable, wine-must

hat formatiert: Schriftart: Nicht Fett

365 quality may be the most reliable highly-resolved summer temperature proxy, invaluable for establishing drought summers and
cold-wet seasons. Prior to the late 15th century, it supports and complements the long Beaune GHD series starting in 1354
(Labbé et al., 2019). Further research should focus on the size of grape harvests which is also related to weather and climate.
Economic historians might be interested in wine prices which depended on both the quantity and quality of grape harvests.

Author contributions

370 Christian Pfister was responsible for conceptualization, data curation, formal analysis, investigation, methodology, resources,
validation and writing, original draft preparation, as well as review and editing. Stefan Brönnimann was responsible for
meteorological and statistical analysis, modelling, validation, visualization, writing and review. Andres Altwegg was
responsible for data acquisition, data analysis, writing and review. Rudolf Brázdil was responsible for resources and writing.
Laurent Litzenburger was responsible for data acquisition and writing. Daniele Lorusso was responsible for data acquisition
375 and writing. Thomas Pliemon was responsible for draft preparation, visualization, and editing.

Funding

Rudolf Brázdil was supported by AdAgriF – Advanced methods of greenhouse gases emission reduction and sequestration in
agriculture and forest landscape for climate change mitigation (CZ.02.01.01/00/22_008/0004635). Stefan Brönnimann was
funded by the European Commission (ERC Grant PALAEO-RA, 787574)"

hat formatiert: Schriftart: (Standard) +Textkörper (Times
New Roman)

380 **Data Availability Statement**

Christian Pfister, Stefan Brönnimann, Andres Altwegg, Rudolf Brázdil, Laurent Litzenburger), Daniele Lorusso, Thomas
Pliemon. Annual wine must quality data from Germany, Luxembourg, France and the Swiss Plateau for 1420 to 2019. BORIS
<https://doi.org/10.48620/317> (provided), 2023.

385 **Acknowledgements**

Stefan Doktor, managing director, Schloss Johannisberg (Germany)
Christian Sieber, Staatsarchiv des Kantons Zürich

Conflict of Interest

390 The authors declare no conflict of interest.

Abbreviations

The following abbreviations are used in this manuscript:

BLW: (Swiss) Bundesamt für Landwirtschaft.

395 °Brix: a measure commonly used to measure dissolved sugar content of an aqueous solution (Wikipedia). Conversion:
<https://pdfslide.net/documents/tabelle-di-comparazione-dei-valori-di-comparazione-sim-jaulmes-tabelle.html?page=1> (4 Feb 2023).

CAP7: Cluster Analysis of Principal Components with 7 types.

CAP9: Cluster Analysis of Principal Components with 9 types.

400 De: Germany.

Ch: Switzerland.

Fr: France

°Oechsle: A measure commonly used to measure dissolved sugar content of an aqueous solution.

GHD: Grape harvest date.

405 GHD+: mean standard deviation of the GHD series of Beaune (France) (from 1420) and of the Swiss Plateau series (from 1460).

Lu: Luxembourg.

MXD: Maximum Tree Ring Density

Formatiert: Zeilenabstand: einfach

410 References

The list of historical sources is provided below

Aeberhard, M.: *Geschichte der alten Traubensorten*, Arcadia Verlag, Solothurn, ISBN 9783941595026, 2005.

Alexandre, P. : *Le climat en Europe au moyen âge: contribution à l'histoire des variations climatiques de 1000 à 1425, d'après les narratives de l'Europe Occidentale*, Ecole des hautes études en sciences sociales. Paris, 827 pp. 1987.

415 Almaraz, P: Bordeaux wine quality and climate fluctuations during the last century: Changing temperatures and changing industry. *Clim Res*, 64,187, DOI: [10.3354/cr01314](https://doi.org/10.3354/cr01314), 2015.

Feldfunktion geändert

Altwegg, A.: Der Falsche Mehltau – Geissel des Weinbaus, *Schweizerische Zeitschrift für Obst- und Weinbau*, 1, 17-20, 2023.

420 Altwegg A.: Pfister, C. and Schumacher, P., Klimaerwärmung und Weinqualität am Zürichsee. *Schweizerische Zeitschrift für Obst- und Weinbau*, 8, 10-13, <https://doi.org/10.21256/zhaw-28141> (8 July 2023), 2023.

Feldfunktion geändert

Ashenfelter, O. and Storchman, K.: The Economics of Wine, Weather, and Climate Change, *Review of Environmental Economics and Policy*, 10,1,-. DOI:[10.1093/reep/rev018](https://doi.org/10.1093/reep/rev018), (8 Sep 2022), 2016.

Baciocco, K. A., Davis, R. E. and Jones, G. V.: Climate and Bordeaux wine quality: identifying the key factors that differentiate vintages based on consensus rankings, *J. Wine Res.* 25, 75-90, DOI:[10.1080/09571264.2014.888649](https://doi.org/10.1080/09571264.2014.888649), (8 Sep 2022), 2014

Bassermann-Jordan, F.: *Geschichte des Weinbaus*, Keller, Frankfurt/M., 1907.

Bhend, J., Franke, J., Folini, D., Wild, M., and Brönnimann, S.: An ensemble-based approach to climate reconstructions, *Clim. Past*, 8, 963–976, DOI <https://doi.org/10.5194/cp-8-963-2012>, (4th April 2023), 2023

Bider, M., Schüepf, M. and von Rudloff, H.: Die Reduktion der 200jährigen Basler Temperaturreihe. *Archiv für Meteorologie, Geophysik und Bioklimatologie*, Serie B, 9, 460-512, 1958. <https://doi.org/10.1007/BF02243047> (5th July 2023)

[Bonardi, L., Lorusso, D., de Mastrovito, D.: Vins, vendanges et fluctuations climatiques. Enquête en Italie. Les Rencontres du Clos Vougeot \(3-5 octobre 2019\), Dijon, Centre Georges Chevrier, 2020, 113-127.](#)

Brázdil, R., Zahradníček, P. Dobrovolný, P, Kotyza, O. and Valášek, H.: Historical and recent viticulture as a source of climatological knowledge in the Czech Republic, *Geografie*, 113, 351-371, DOI:[10.37040/geografie2008113040351](https://doi.org/10.37040/geografie2008113040351) (7th Oct 2022), 2008.

Brönnimann, S., Frigerio, L., Schwander, M., Rohrer, M, Stucki, P. and Franke, J.: Causes for increased flood frequency in central Europe in the 19th century. *Clim Past* 15, 1395–1409, DOI:[10.5194/cp-2019-17](https://doi.org/10.5194/cp-2019-17), (19th Oct 2022), 2019.

Büntgen, U., Frank, D. and Nievergelt C.: Summer temperature variations in the European Alps, A.D. 755–2004. *J. of Climate*, 19, 5606–5623, DOI:[10.1175/JCLI3917.1](https://doi.org/10.1175/JCLI3917.1), 10th Nov 2022, 2006.

Burgdorf, A.-M., Brönnimann, S., Adamson, G., Amano, T., Aono, Y., Barriopedro, D., Bullon, T., Camenisch, C., Camuffo, D., Daux, V., del Rosario Prieto, M., Dobrovolny, P., Gallego, D., Garcia-Herrera, R., Gergis, J., Grab, S., Hannaford, M. J., Holopainen, J., Kelso, C., Kern, Z., Kiss, A., Lin Kuan-Hui, E., Loader, N. J., Mozny, M., Nash, D., Nicholson, S. E., Pfister, C., Rodrigo, F. S., Rutishauser, T., Sharma, S., Takacs, K., Vargas, E. T. and Vega, I. DOCU-CLIM: A global documentary climate dataset for climate reconstructions. *Scientific Data* (accepted), data link: <https://boris-portal.unibe.ch/handle/20.500.12422/207> (12 Dec 2022), 2023.

Feldfunktion geändert

hat formatiert: Deutsch (Schweiz)

Feldfunktion geändert

hat formatiert: Französisch (Schweiz)

hat formatiert: Französisch (Schweiz)

hat formatiert: Französisch (Schweiz)

hat formatiert: Französisch (Schweiz)

hat formatiert: Französisch (Schweiz)

450 Camenisch, C, Brázdil, R., Kiss, A. Pfister, C, Wetter ,O., Rohr, C., Contino, A. and Retsö, D.; Extreme heat and drought in 1473 and their impacts in Europe in the context of the early 1470s, *Regional Environmental Change* 20,19, DOI <https://doi.org/10.1007/s10113-020-01601-0>, 17th July 2022, 2020.

Chuine, I., Yiou, P., Viovy, N., Seguin, B., Daux, V., and Le Roy Ladurie, E.: Grape ripening as a past climate indicator, *Nature*, 432, 89–290, DOI: [10.1038/432289a](https://doi.org/10.1038/432289a), 18th Nov. 2021, 2004.

Combe B. and Smart R., *Veraison* edited by Robinson J., *The Oxford Companion to Wine*, 4. ed. Oxford, 2015, 26-27. ISBN 9780198705383, 2015.

455

Cook, B. and Wolkovich, E.: Climate change decouples drought from early wine grape harvests in France. *Nature Climate Change*, 6, 715 - 720, DOI <https://doi.org/10.1038/nclimate2960>, 20th Oct 2022, 2016.

460

Daux, V., Garcia de Cortazar-Atauri, I., Yiou, P., Chuine, I., Garnier, E., Le Roy Ladurie, E., Mestre, O., and Tardaguila, J.: An open access database of grape harvest dates for climate research: data description and quality assessment, *Clim. Past*, 8, 1403–1418, DOI <https://doi.org/10.5194/cp-8-1403-2012>, 12th May 2021, 2012

465

Garnier E., Daux V. and Yiou, P.: Grapevine harvest dates in Besançon (France) between 1525 and 1847: social outcomes or climatic evidence? *Climatic Change* 104, 703–727, DOI:[10.1007/s10584-010-9810-0](https://doi.org/10.1007/s10584-010-9810-0), 14th Jun 2020, 2011.

Gladstones, J. S.: *Wine, terroir and climate change*, Hyde Park Press, Adelaide, ISBN 1862549249, 2011.

470

Glaser R.: *Klimageschichte Mitteleuropas*, 1200 Jahre Wetter, Klima, Katastrophen. Darmstadt: Wiss. Buchges, Darmstadt, ISBN 3896786040, 2013.

Hand, R., E. Samakinwa, L. Lipfert, and S. Brönnimann (2023) ModE-Sim – A medium size AGCM ensemble to study climate variability during the modern era (1420 to 2009). *Geoscientific Model Development* (accepted).

475

Jones, G.V. and Davis, R. E.: Using a synoptic climatological approach to understand climate-viticulture relationships. *Int. J. Climatology* 20, 813–837, DOI [https://doi.org/10.1002/1097-0088\(20000630\)20:8<813::AID-JOC495>3.0.CO;2-W](https://doi.org/10.1002/1097-0088(20000630)20:8<813::AID-JOC495>3.0.CO;2-W) , 12th July 2020, 2000.

Jones, G.V., White, M.A., Cooper, O.A. and Storchmann, K.: Climate Change and Global Wine Quality, *Climatic Change* 73, 319–343, DOI: <https://doi.org/10.1007/s10584-005-4704-2> , 2005.

Formatiert: Abstand Vor: 8 Pt.

480

Kiss, A.; Wilson, R. and Bariska, I.: An experimental 392-year documentary-based multi-proxy (vine and grain) reconstruction of May-July temperatures for Kőszeg, West-Hungary. *Int. J. Biometeorol.* 55, 595-611, DOI:[10.1007/s00484-010-0367-4](https://doi.org/10.1007/s00484-010-0367-4), (13th Feb 2015), 2011.

Feldfunktion geändert

485

Labbé, T. and Gaveau, F.: Les dates de vendange à Dijon: établissement critique et révision archivistique d'une série ancienne, *Revue Historique*, 657, 19–51, DOI:[10.2307/23015202](https://doi.org/10.2307/23015202), (5th March, 2018), 2011.

Feldfunktion geändert

Labbé, T., Pfister, C. and Brönnimann S.: The longest homogeneous series of grape harvest dates, Beaune 1354–2018, and its significance for the understanding of past and present climate. *Clim. Past* 15, 1–17, DOI : <https://doi.org/10.5194/cp-15-1485-2019>, (8th Nov 2018), 2019.

Feldfunktion geändert

490

Lahr, E.: *Un siècle d'Observations météorologiques appliquée à l'étude du Climat Luxembourgeois*. Gran-Duché de Luxembourg. Service météorologique et hydrographique. Imprimerie Bourg-Bourger, Luxembourg, 1950.

495

Lauer, W. and Frankenberg, P.; *Zur Rekonstruktion des Klimas im Bereich der Rheinpfalz seit Mitte des 16. Jahrhunderts mit Hilfe von Zeitreihen der Weinquantität und Weinqualität*, Gustav Fischer, Stuttgart, 1-52, 1986.

Litzenburger L.: *Une ville face au climat. Metz à la fin du Moyen Âge (1400-1530)*, Presses Universitaires de Nancy, Nancy, ISBN 2814302256, 2015.

500

Loose, R.: *Gustav Schübler (1787–1834): Professor für Naturgeschichte und Botanik in Tübingen*, Franz Steiner, Stuttgart, ISBN 978-3-515-13254-1, 2022.

505

Lorusso, D.: *Il clima del Vino. Metodi di Ricostruzione e impatti economici delle fluttuazioni climatiche nelle regioni vitivinicole (Secoli XVII-XX)*, Ph D, Università di Milano 2013, https://air.unimi.it/retrieve/dfa8b991-0f57-748b-e053-3a05fe0a3a96/phd_unimi_R09333.pdf, (4th Aug 2022), 2013.

Feldfunktion geändert

Lorusso, D.: Dates de vendanges et qualité des millésimes en Bourgogne entre XVIII et XXI siècle, edited by Wolikow S. et Jacquet O., *Bourgogne(s) viticole(s): enjeux et perspectives historiques d'un territoire*, Dijon, EUD, 63 – 77, ISBN 978-2364412637, 2018.

510

Lundstad, E., Brugnara, Y., Pappert, D., Kopp, J., Hürzeler, A., Andersson, A., Chimani, B., Cornes, R., Demarée, G., Filipiak, J., Gates, L. Ives, G.L., Jones, J., M., Jourdain, S., Kiss, A., Nicholson, S.E., Przybylak, R., Jones, P., Rousseau, D., Tinz, B., Rodrigo, F.S., Grab, S., Fernando Domínguez-Castro, F., Slonosky, V., Cooper, J., Brunet, M., and S. Brönnimann

(2023) Global historical climate database - HCLIM. *Scientific Data*, 10, 44, DOI: <https://doi.org/10.1038/s41597-022-01919-w>, (5th May 2023), 2023.

515

McIntyre, J: Wine studies in the humanities and social sciences: a report on symposia and the state of the field, *J. Wine Research*, 28:2, 159-164 DOI: [10.1080/09571264.2017.1309645](https://doi.org/10.1080/09571264.2017.1309645), (7th June 2020), 2017.

520

Molitor, D., Udelhoven, T., Ney, S., Hoffmann I. and Pfister, L: Historical vintage descriptions from Luxembourg - an indicator for the climatic conditions in the past? *Vitis* 55, 23–30, [doi:10.5073/vitis.2016.55.23-30](https://doi.org/10.5073/vitis.2016.55.23-30), (27th Oct 2021), 2016.

Feldfunktion geändert

Müller K., *Geschichte des Badischen Weinbaus. Mit einer badischen Weinchronik und einer Darstellung der Klimaschwankungen im letzten Jahrtausend*. Lahr, Schauenburg 1953.

525

Nabholz, H., *Zürcher Stadtbücher des XIV. und XV. Jahrhunderts*. Vol. 3, Hirzel, Zürich, 1908.

~~Pejml, K.: Příspěvek ke znalosti kolísání klimatu v Čechách v 16. až 18. stol. (Contribution to the knowledge of climate fluctuations in Bohemia from the 16th to 18th centuries), *Meteorologické zprávy*, 27, 90-95, 1974.~~

hat formatiert: Englisch (Belize)

530

~~Pejml, K.: Příspěvek ke znalosti kolísání klimatu v Čechách v 16. až 18. stol. *Meteorologické zprávy*, 27, 3, pp. 90-95, 1974.~~

hat formatiert: Englisch (Vereinigtes Königreich)

hat formatiert: Englisch (Belize), Durchgestrichen

hat formatiert: Deutsch (Schweiz), Durchgestrichen

~~Pfaff K.: *Württembergische Weinchronik. Ein Bericht über die Quantität und Qualität des Weins und die darauf einwirkenden Witterungsverhältnisse* [...]. Konrad Meyhardt, Esslingen, 1865.~~

hat formatiert: Deutsch (Schweiz)

535

Pfister C. and Wanner H.: *Climate and Society in Europe. The last thousand years*. Bern, Haupt, 2021. ISBN 978-3-258-08234-9, 2021.

~~Reichen, L., Burgdorf, A. M., Brönnimann, S., Franke, J., Hand, R., Valler, V., Samakinwa, E., Brugnara, Y., Rutishauser, T. A decade of cold Eurasian winters reconstructed for the early 19th century. *Nat Commun* 13, 2116 (2022). <https://doi.org/10.1038/s41467-022-29677-8>~~

540

Reuss, J.J.: *Musta et vina nectarina examine hydrostatica explorata*, Dissertation. University of Tübingen, 1773.

545

Rima, A.: Considerazioni su una serie agraria bisecolare: la produzione di di vino nel Rheingau (1791-1950), *Geofisica e Meteorologia* 12, 1-11, 1963.

Rousseau, D.: Les températures mensuelles en région parisienne de 1676 à 2008, *La Météorologie*, 67, 43–55, 9.
<http://geoprodig.cnrs.fr/items/show/36398> (16 Ap. 2018), 2009.

Feldfunktion geändert

550 Schübler, [G.]: *Über die Verhältnisse des Weinbaues in Württemberg [sic!] vom Jahr 1236-1830 und [...]sich darauf beziehende Witterungserscheinungen*, Stuttgart und Tübingen, Cottasche Buchhandlung, 1831.
<https://books.google.it/books?id=S2E7AAAACAAJ&ots=M6aYiW3HBj&lr&hl=it&pg=PA1#v=onepage&q&f=false> 1831.
(2nd July 2022). 1831.

Feldfunktion geändert

555 Schwander M., Brönnimann S. and Delaygue G.: Reconstruction of Central European daily weather types back to 1763. *Int. J. Climatology* 37 (S1), 30–44, <https://doi.org/10.1002/joc.4974>, (15th Sep 2019), 2017.

hat formatiert: Englisch (Belize)

▲
Sonderegger S.: Landwirtschaftliche Entwicklung in der spätmittelalterlicher Nordostschweiz, St. Gallen 1994. ISBN, 3908048222

hat formatiert: Deutsch (Schweiz)

560 ▲
Staab, J., Seeliger, H.R. and Schleicher, W.: *Schloss Johannisberg - Neun Jahrhunderte Weinkultur am Rhein*. Gütersloh, Woschek, ISBN 978-3924744359, 2001.

hat formatiert: Deutsch (Schweiz)

565 Valler, V., J. Franke, Y. Brugnara, and S. Brönnimann: An updated global atmospheric paleo-reanalysis covering the last 400 years. *Geosc. Data J.*, 9, 89–107, <https://doi.org/10.1002/gdj3.121>, (23 Feb 2023), 2022.

Valler, V., J. Franke, Y. Brugnara, E. Samakinwa, R. Hand, E. Lundstad, A.-M. Burgdorf, L. Lipfert, A. R. Friedman, and S. Brönnimann: ModE-RA - a global monthly paleo-reanalysis of the modern era (1421-2008). *Scientific Data* (**submitted**) **accepted**, 2023.

570 Wein plus, <https://www.wein.plus/de> (retrieved 21. Jan. 2023)

575 Wetter, O. and Pfister, C.: Spring-summer temperatures reconstructed for northern Switzerland and southwestern Germany from winter rye harvest dates, 1454–1970, *Clim. Past*, 7, 1307–1326, <https://doi.org/10.5194/cp-7-1307-2011>, (17 May 2013), 2011.

Wetter O. and Pfister C.: An underestimated record breaking event – why summer 1540 was likely warmer than 2003. *Clim Past* 9:41–56, <https://doi.org/10.5194/cp-9-41-2013>, (9 Jan 2015), 2013.

580 Weusthoff T.: *Weather type classification at MeteoSwiss: introduction of new automatic classification schemes. Arbeitsberichte der MeteoSchweiz* 235: 46, 2011.

Sources quoted in the text:

585 S1 Schübler, [Gustav]: Über die Verhältnisse des Weinbaues in Württemberg [sic!] vom Jahr 1236-1830 und wichtigere sich darauf beziehende Witterungserscheinungen, Stuttgart und Tübingen, Cottasche Buchhandlung, 1831, 80pp, <https://books.google.it/books?id=S2E7AAAACAAJ&ots=M6aYiW3HBj&lr&hl=it&pg=PA1#v=onepage&q&f=false> (17th March 2023)

590 S2 Müller Karl, *Geschichte des Badischen Weinbaus. Mit einer badischen Weinchronik und einer Darstellung der Klimaschwankungen im letzten Jahrtausend.* Lahr, Schauenburg 1953.

S3 Pfaff K.: *Württembergische Weinchronik. Ein Bericht über die Quantität und Qualität des Weins und die darauf einwirkenden Witterungsverhältnisse [...].* Konrad Meyhardt, Esslingen 1865.

595 S4 Dochnahl, F.A., *Chronik von Neustadt an der Haardt und den umliegenden Orten [...] unter besonderer Berücksichtigung der Weinjahre,* Neustadt an der Haard, Verlag von Gottschick Witters Buchhandlung, 1867. <https://www.digitale-sammlungen.de/de/view/bsb10482125?page=5> (17th March 2023)

S5 Gloden, N.: *Weinbauchronik der Luxemburger Mosel von 1900 bis 1964 [...] reprint from «De Letzeburger Wönzer»,* <https://agriculture.public.lu/dam-assets/publications/ivv/archiv/moststat-weinjahr/1900bis1964.pdf> (23th June 2023).

600 S6 Briedel *Weinchronik 1644-1989* (<http://www.briedeler-geschichte.de/chronik/geschichten/aus-dem-leben/13-geschichten/aus-dem-leben/72-weinchronik>) (5.6.2022)

S7 Müller, C[aspar] K[arl], ed. Joh[ann] Heinrich Waser [...] und sein statistischer Nachlass. Fortgeführt bis zur Gegenwart.
605 *Zürcher Jahrbuch für Gemeinnützigkeit* 1877, Zürich 1878, 88-167.

S8 Wildberger W. 1896: *Schaffhauser Martinischlag. Obrigkeitliche Schatzungen von Getreide und Wein auf Martini der Jahre 1466 bis 1895 mit landwirtschaftlich-historischen Nachrichten [...]* Schaffhausen, Carl Schochs Buchhandlung, 1896. https://www.google.ch/books/edition/Schaffhauser_Martinschlag/Hx01AQAAIAAJ?hl=de&gbpv=1&dq=inauthor:%22W.+Wildberger%22&printsec=frontcover

Feldfunktion geändert

Feldfunktion geändert

Feldfunktion geändert

Feldfunktion geändert

S9 *Wein Schatzung, so alle Jahr auff Martiny gemacht wird. Steckborn am Under Seh (1569-1817)*. In: Zürich, Zentralbibliothek Zürich, Ms 2091.

615 S10 *Rheintalisches Weinbüchlein* [...] des sogenannten Weinlaufs nebst einem Anhang der Weinpreise von Weinfeldern und Konstanz, St. Gallen, 1803.

S11 Statec Luxembourg (Service Central de la Statistique et des Etudes Economiques (Luxembourg)) Ed), *Statistiques Historiques 1839-1989*, Luxembourg 1990,pdf, 636pp, pdf, viticulture, p. 129-136 . [https://agriculture.public.lu/dam-](https://agriculture.public.lu/dam-assets/publications/ivv/archiv/geschichte/Statistiques-historiques-1839-1989.pdf)
620 [assets/publications/ivv/archiv/geschichte/Statistiques-historiques-1839-1989.pdf](https://agriculture.public.lu/dam-assets/publications/ivv/archiv/geschichte/Statistiques-historiques-1839-1989.pdf)

Feldfunktion geändert

S12 Weinbaustatistik, 1874-1973, Staatsarchiv Schaffhausen HZ 6036

S13 BLW Bundesamt für Landwirtschaft, *Das Weinjahr 1970-2021*,

625 <https://www.blw.admin.ch/blw/de/home/suche.html#weinjahr> (4th Feb 2023)

Feldfunktion geändert

S14 Brix is a measure commonly used to measure dissolved sugar content of an aqueous solution, mostly on the American continent (Wikipedia). Conversion table : "Tabelle di comparazione dei valori rifrattometrici", densimetrici ed alcool probabilmente nei mosti di uva [https://pdfslide.net/documents/tabelle-di-comparazione-dei-valori-di-comparazione-sim-](https://pdfslide.net/documents/tabelle-di-comparazione-dei-valori-di-comparazione-sim-jaulmes-tabelle.html?page=1)

630 [jaulmes-tabelle.html?page=1](https://pdfslide.net/documents/tabelle-di-comparazione-dei-valori-di-comparazione-sim-jaulmes-tabelle.html?page=1) (4rd Feb 2023)

Feldfunktion geändert

S15 Châtelain J. : *Chronique de la noble cité de Metz de Jean* In: *Preuves servant à l'histoire de Lorraine*, edited by Calmet A, *Histoire de Lorraine*, tome III, Editions du Palais Royal, Paris 1973.

S16 *Mostwägungen Luxemburg 1910 bis 2020*, parallel dazu Weinbauchronik mit qualitativen Qualitätsschätzungen-Moststatistiken detailliert 1910 bis 2020 in

635 <https://agriculture.public.lu/de/weinbau-oenologie/publikationen/online-archiv.html>

Feldfunktion geändert

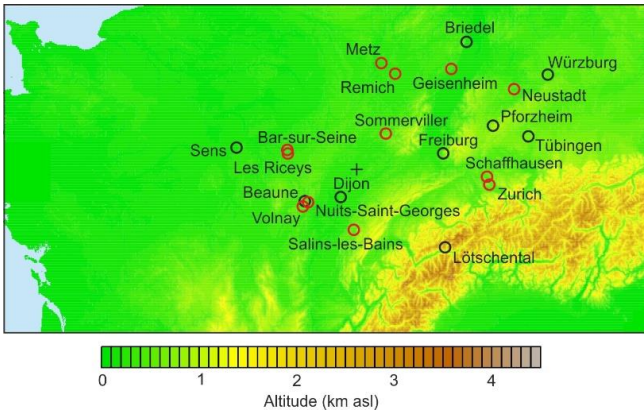
S17 «*Das Weinjahr NNNN und seine Ernteergebnisse*», Veröffentlichung der Staatlichen Weinbaustation 1966-2020.

<https://agriculture.public.lu/dam-assets/publications/ivv/archiv/moststat-weinjahr/weinjahr-1967.pdf> (23rd Jan 2023)

Feldfunktion geändert

640 S18 Article "Winrechnung" [Wine account settlement] in *Idiotikon*

<https://digital.idiotikon.ch/idtkn/idmobil.htm#!page/60136/mode/1up> which is the Dictionary of Swiss German Language



645

Figure 1: Spatial layout of sources and locations
 Red circles: location of sources; black circles: other locations mentioned
 in the text. The cross + marks the location of the grid point used for the
 climatic model (Sect 3).

650

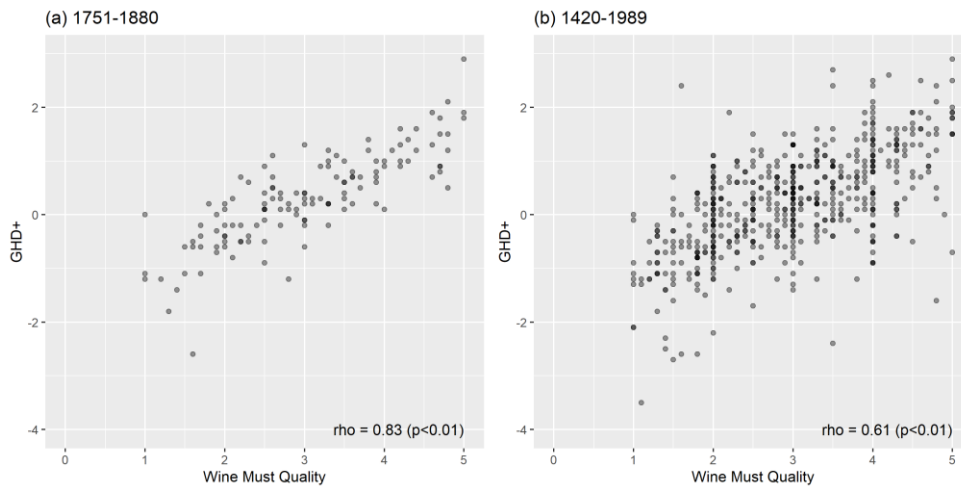
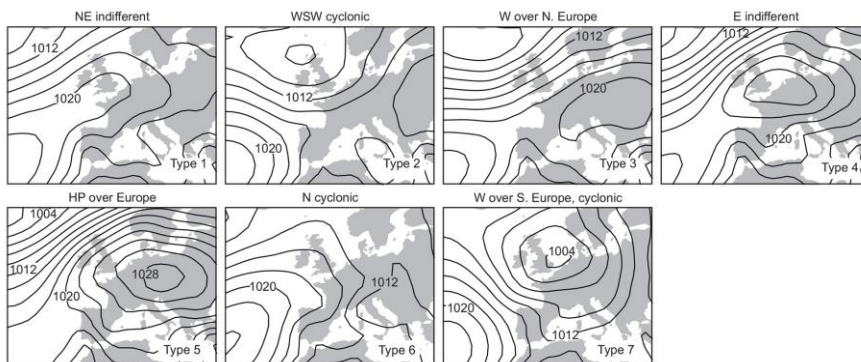
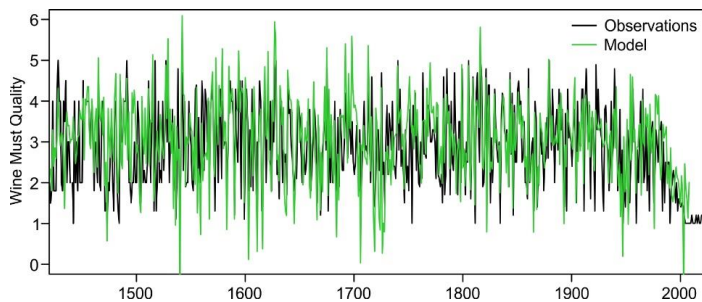


Figure 2. Scatterplots of GHD+ with average wine must quality 1751 to 1880 and 1420 to 1989.

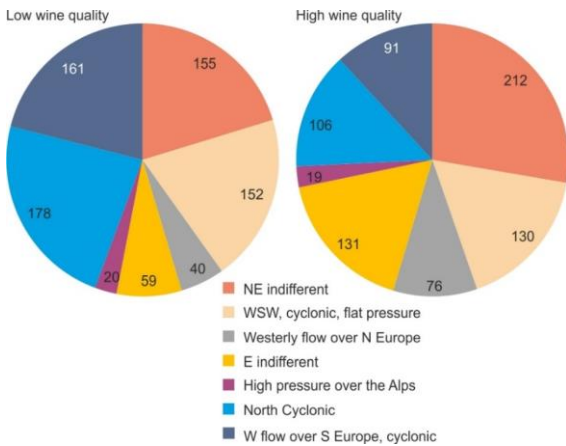
655 GHD+: mean standard deviation of the GHD series of Beaune (France) (from 1420) and of the Swiss Plateau series (from 1460). Correlations between GHD+ and wine must quality over the whole period of investigation (right, 1420–1989) show a relatively large scattering, which is mainly due to low case numbers and the availability of a single GHD series prior to 1460. On the other hand, the correlation for the period between 1751 and 1880 (left), reaches a high coefficient of determination of 69% whereby the outliers are due to effects of extreme weather (Table 5).



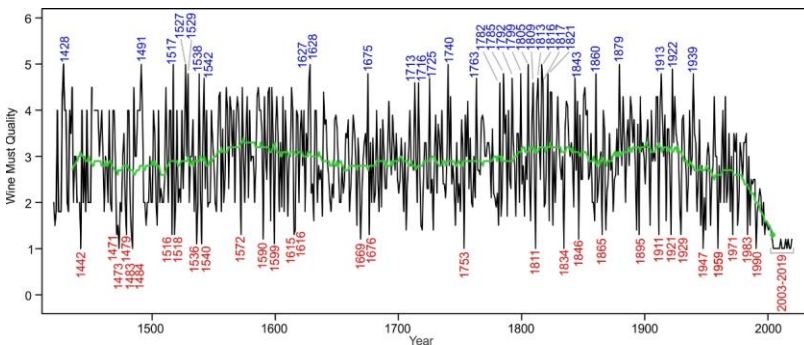
660 Figure 3. Sea-level pressure averaged for each of the 7 weather types in CAP7 over the warm season (May–October) for the period 1958–1998 based on 20CRv2c (from Brönnimann et al., 2019)
CAP 7 Cluster Analysis of Principal Components with 7 types.



665 Figure 4. Observed series of wine quality (average) (black) from 1420 to 2019 and series obtained with a statistical model calibrated in 1781–1800 (green). The model is explained in Sect 3.



670 Figure 5. Frequency of Swiss weather types from April to August for years with low and high wine must quality
 Years with low wine must quality (left, 1785, 1799, 1816, 1860 and 1879)
 Years with high wine must quality (right, 1811, 1834, 1846, 1947, and 1949)



675 Figure 6. Annual average wine must quality in Western Europe 1420 to 2019 ranking from 1 top quality to 5 poor quality. The multidecadal trend is highlighted by a 31-year low pass filter (green). The 5% top wine musts and the 5% poorest ones are indicated in red and in blue, respectively. The almost complete lack of top wine must qualities between 1676 and 1811 and the high frequency of poor qualities between 1782 and 1821 is striking.

680

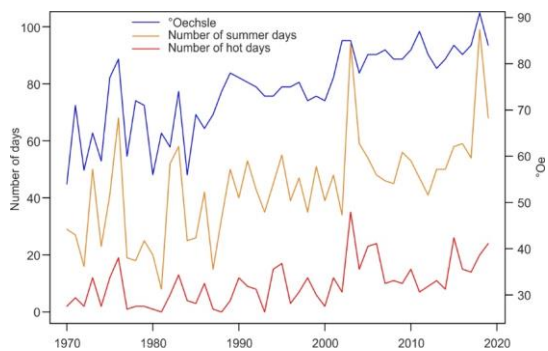


Figure 7. Riesling must quality, number of summer-
 days and hot days in Remich (Lu) 1970–2019
 Summer days: Days reaching 25°C. Hot days
 (reaching 30° C).

Data: Oechsle density of the Riesling cultivar
 and temperature measurements

685
 690 at the viticultural research station of Remich (Lu)
 Data: Mostwägungen, Luxemburg 1970–2019.