

# Climate and ice sheet dynamics in Patagonia during the Last Glacial Maximum

Andrés Castillo-Llarena<sup>1,2,\*</sup>, Franco Retamal-Ramírez<sup>3,4,5,\*</sup>, Jorge Bernales<sup>6</sup>, Martín Jacques-Coper<sup>4,5,7</sup>, Matthias Prange<sup>1</sup>, and Irina Rogozhina<sup>2,8,9</sup>

<sup>1</sup>MARUM - Center for Marine Environmental Sciences and Faculty of Geosciences, University of Bremen, Bremen, Germany

<sup>2</sup>Department of Geography, Norwegian University of Science and Technology, Trondheim, Norway

<sup>3</sup>Centro de Investigación Gaia Antártica, Universidad de Magallanes, Punta Arenas, Chile

<sup>4</sup>Departamento de Geofísica, Universidad de Concepción, Concepción, Chile

<sup>5</sup>Center for Climate and Resilience Research (CR)2, Universidad de Concepción, Concepción, Chile

<sup>6</sup>Institute for Marine and Atmospheric Research Utrecht, Utrecht University, Utrecht, Netherlands

<sup>7</sup>Center for Oceanographic Research COPAS COASTAL, Universidad de Concepción, Concepción, Chile

<sup>8</sup>Centro de Estudios Avanzados en Zonas Áridas (CEAZA), La Serena, Chile

<sup>9</sup>Departamento de Ciencias de la Tierra, Universidad de Concepción, Concepción, Chile

\*These authors contributed equally to this work.

**Correspondence:** Andrés Castillo-Llarena (acastillollarena@marum.de) and Franco Retamal-Ramírez (fretamal@umag.cl)

**Abstract.** During the Last Glacial Maximum (LGM,  $\sim 23,000$  to  $19,000$  years ago), the Patagonian Ice Sheet (PIS) covered the central chain of the Andes between  $\sim 38^\circ$  S to  $55^\circ$  S. Existing paleoclimatic evidence —mostly derived from glacial landforms— suggests that maximum ice sheet expansions in the Southern and Northern Hemispheres were not synchronized. However, large uncertainties still exist in the timing of the onset of regional deglaciation as well as its major drivers. Here we present an ensemble of numerical simulations of the PIS during the LGM. We assess the skill of paleoclimate model products in reproducing the range of atmospheric conditions needed to enable an ice sheet growth in concordance with geomorphological and geochronological evidence. The resulting best-fitted climate product is then applied as forcing in transient simulations during the last 70 ka using a glacial index approach based on offshore records and Antarctic ice cores. Our analysis suggests a strong dependence of the PIS geometry on near-surface air temperature forcing. Most ensemble members underestimate the ice cover in the northern part of Patagonia, while tending to expand beyond its constrained boundaries in south-eastern Patagonia. We largely attribute these discrepancies between the model-based ice geometries and geological evidence to the low resolution of paleoclimate models and their prescribed ice mask. We conclude that among all tested climate products, the forcing data from the MPI-ESM1-2-LR model produces conditions for ice sheet growth across Patagonia that best align with the available evidence. Our transient simulations reveal that the distinct local glacial peak in Patagonia leave a discernible mark on off-shore records along the region. In the southernmost sector, evidence suggests full glacial conditions during Marine Isotope Stage 3 (MIS3), succeeded by a warming trend towards MIS2. However, in northern Patagonia, this deglacial trend is absent, indicating a relatively consistent signal throughout MIS3 and MIS2. Notably, Antarctic cores do not reflect a glacial history consistent with the geochronological observations. Therefore, investigations of the glacial history of the PIS should take into account southern midlatitudes records to capture effectively its past climatic variability.

## 20 1 Introduction

At present, there are only two ice sheets on Earth. The Antarctic ice Sheet is the largest, with an ice volume of  $26.04 \pm 0.4 \times 10^6$  km<sup>3</sup> that can be translated into a sea-level equivalent (SLE) of  $57.0 \pm 0.9$  m (Morlighem et al., 2020). The Greenland Ice Sheet contains  $2.99 \pm 0.2 \times 10^6$  km<sup>3</sup> of ice, which corresponds to a SLE of  $7.42 \pm 0.05$  m (Morlighem et al., 2017). However, during the last glacial period, especially during the global Last Glacial Maximum (LGM, 23,000 to 19,000 years before present, ka),  
25 much of North America was buried under the North American Ice Sheet complex, the Eurasian Ice Sheet complex stretched across most of Northern Europe, and the Patagonian Ice Sheet (PIS) covered the western part of southern South America. The ice locked away in these former ice sheets represented a SLE of around 113.9 m (Simms et al., 2019). When the contributions from Antarctica and Greenland are added on top, this results in an estimated total sea-level drop at of 120-134 m below present between 29 and 21 ka (Lambeck et al., 2014). This period was marked by partly exposed continental shelves, strong winds,  
30 dry conditions, and a total greenhouse gas concentration lower than during the Pre-Industrial (PI; Monnin et al., 2001; Bartlein et al., 2011; Kohfeld et al., 2013; Simms et al., 2019); lowering of the global mean surface air temperature by 3.2 °C to 6.7 °C with respect to the pre-industrial level (Schneider von Deimling et al., 2006; Holden et al., 2010; Annan and Hargreaves, 2013; Tierney et al., 2020; Kageyama et al., 2021).

The PIS was a relatively small ice sheet, comparable in size to the former Celtic Ice Sheet that covered the British Isles during the LGM (Hughes et al., 2016). Its former evolution is still subject to considerable uncertainties regarding ice extent, ice  
35 volume, and contribution to sea level variations, mainly due to the scarcity of geological evidence (Hulton et al., 2002; Davies et al., 2020; Wolff et al., 2023). Only recently, Davies et al. (2020) succeeded in building a geochronological data set of a reasonable size and robustness, arriving at the conclusion that the PIS reached its maximum extent during the Marine Isotope Stage (MIS) 3 at  $\sim 35$  ka. This state remained nearly unchanged until 27 ka, which is much earlier than the global timing  
40 estimates for LGM. This is a generic estimate because the evidence suggests that the timing of its maximum extent changed with latitude: the northern sector located between of 38° S to 48° S is thought to have reached its largest area between 33 to 28 ka, while its southern counterpart (between 48° S to 56° S) peaked much earlier, at around 47 ka. Based on simplifying assumptions, Davies et al. (2020) estimated a uniform maximum PIS extent of 492,600 km<sup>2</sup> at 35 ka, corresponding to a SLE of around 1.5 m.

45 Recently, Yan et al. (2022) modelled the PIS extent during the LGM combining the temperature and precipitation from 21 PMIP outputs from phases 2, 3 and 4, to analyse the degree of agreement between their modelled geometries and the PATICE reconstruction (Davies et al., 2020). One of the main findings of their study is that most of the uncertainty in the modelled PIS geometry is associated with the PMIP forcing, producing an overestimation of the ice-covered extent over vast regions, while showcasing an underestimation of ice in other areas. These results reflect the inability of most PMIP model products to provide  
50 climate conditions that allow for ice sheet advance in the northernmost sectors of Patagonia during the LGM, even under a somewhat extreme choice of model parameters. Only some of the PMIP4 models seem to present the climate conditions needed to trigger ice sheet inception and growth in this region. However, Yan et al. (2022) did not provide potential reasons for these discrepancies.

In this study, we use the numerical ice sheet model SICOPOLIS (Greve, 1997; Sato and Greve, 2012) to explore the range of climate conditions that leads to a good match between the modelled PIS and field-derived geometries during the global LGM. The resulting best-fitted climate model is then used to perform transient simulations throughout the MIS4 and MIS2 to explore the timing of the local maximum ice extension and the consequent deglaciation. Our ice sheet modelling experiments are driven by climate products from phases 3 and 4 of PMIP and employ the glacial index method derived from off-shore records and Antarctic cores. Furthermore, we assess the relative performance of our simulations against the geochronological reconstruction of Davies et al. (2020).

## 2 Methods

### 2.1 Model set-up

All numerical simulations of the PIS in this study are performed using the open source, three-dimensional, thermomechanical ice sheet model SICOPOLIS (SIMulation COde for POLythermal Ice Sheets; Greve, 1997; Sato and Greve, 2012) and cover the area between 80° W and 62° W and between 36° S and 58° S (Fig. 1). This model domain is discretised using an equidistant grid with a horizontal resolution that ranges between 4 and 8 km, for equilibrium and transient simulations, respectively (see Sections 2.2 and 2.3). In the vertical dimension, the grid is extruded into 81 terrain-following layers that densify towards the base, from which 3 are allocated to accommodate the potential presence of temperate ice. Within this three-dimensional grid, the model discretises and approximates the Stoke equations for ice velocities using a combination of the shallow ice and shelfy stream approximations (SIA and SStA, respectively) following the hybrid approach of Bueler and Brown (2009), as described in Bernales et al. (2017). This hybrid model solves for an ice velocity field that corresponds to a given ice geometry, mass balance, and thermal state. The resulting velocity field is then used to compute the evolution of ice within the domain by integrating the model forward in time under a time step that ranges between 1 and 0.5 years, depending on the horizontal grid resolution applied.

At the beginning of each simulation, an ice-free topography is prescribed and mapped onto the horizontal model grid based on the ETOPO1 data set (Amante and Eakins, 2009). Within this bedrock, a lithospheric model layer is represented by an extension of the extruded horizontal grid spanning 41 additional vertical points. At the base of this layer, a constant, spatially homogeneous geothermal heat flux of  $100 \text{ mW m}^{-2}$  is applied—in agreement with averaged values observed in Patagonia (Hamza and Vieira, 2018)—, which serves as the lower thermodynamical boundary condition for the model. Glacial isostatic adjustment of this bedrock produced by temporal variations of the ice mass load is accounted for through an elastic-lithosphere, relaxing-asthenosphere (ELRA) model (e.g., Greve and Blatter, 2009) using standard parameter values (see Table 1).

This initialisation assumes a global sea level drop of 120 m, based on reconstructions for the LGM (Lambeck et al., 2014), which is applied homogeneously over the entire model domain. The ice is only allowed to advance on land, being immediately calved out on the coast. Ocean temperature and dynamics beyond the sea level change have no implication whatsoever in our simulations.

The inception and evolution of the PIS in our model is driven by the surface mass balance (SMB), which is calculated as the

difference between applied fields of accumulated precipitation and surface ablation. The latter is computed using a positive-degree-day (PDD) model following Calov and Greve (2005), based on a given near-surface air temperature field and the parameters in Table 1. PDD values have been selected based on contemporary and paleo studies in the area (Fernández and Mark, 2016; Yan et al., 2022; Cuzzone et al., 2023). Surface mass accumulation is assumed to depend on monthly precipitation and temperature fields, such that the transition between solid and liquid precipitation is linearly proportional to variations in air temperature (Marsiat, 1994). Here we use a transition range of 0 °C to 2 °C, producing purely solid or purely liquid precipitation below or above this temperature range, respectively. As the model domain surface evolves due to the advance and retreat of the PIS during a simulation, discrepancies between the prescribed (fixed) topography used in the PMIP climate model snapshots and the dynamic one in SICOPOLIS are accounted for by implementing a near-surface air temperature lapse-rate correction of  $-6.5 \text{ K km}^{-1}$ . The precipitation has been reduced as function of the temperature (Huybrechts, 2002). The resulting atmospheric temperatures near the surface of the ice are then applied as the upper thermodynamical boundary conditions.

## 2.2 Equilibrium simulations at the global LGM

Starting from the ice-free conditions described in Section 2.1, an ensemble of model simulations is run forward in time, each member forced by a different pair of matching near-surface air temperatures and total precipitation fields from 15 climate models that participated in the LGM experiments during phases 3 and 4 of PMIP. A list of these climate models is presented in Table 2. The forcing fields contained in a given LGM climate snapshot are applied in a constant manner, i.e., without any temporal variations as the domain evolves, except for the lapse-rate correction and elevation desertification described in Section 2.1. In areas where a temperature-precipitation pair results in a positive SMB, inception of ice will occur. The ice mass will then grow and advect outwards, leading to an advance of the emerging PIS. The extent of this advance will be limited by areas where a negative SMB fully compensates for the advected ice from upstream. As the PIS thickens, the amount of ice transported downstream increases, while surface ablation decreases due to the cooling of near-surface temperatures as a result of the lapse-rate correction. This positive feedback is then balanced by a reduction in the available precipitation as elevation desertification sets in. As the model is integrated forward in time, these competing effects shape the advancing PIS until a balance between the accumulation and ablation zones of the entire ice sheet is reached. Each equilibrium simulation in this study spans 10,000 model-years, which is enough to bring the domain to a steady state under each of the time-invariant climate conditions. The resulting PIS geometry for each of the ensemble members is evaluated against the LGM snapshot (20 ka) from the PATICE geological reconstruction (Davies et al., 2020) in Section 3.

## 2.3 Transient simulations through the MIS3 and MIS2

The equilibrium simulations described in Section 2.2 assume constant, peak glacial conditions from PIS inception to steady-state. These assumptions introduce a cold bias both in the internal thermal regime of the ice sheet and in the applied SMB. For the former, the influence of warmer or colder past climates on englacial conditions can last for tens of thousands of years after such conditions have disappeared, given the slow response time-scales of ice sheets (Rogozhina et al., 2011).

With the aim of reducing the biases mentioned above and explore the glacial history of the PIS before the global LGM, we



120 perform a second ensemble of simulations using transient climate forcing. This forcing is derived by first selecting a well-  
performing member from the equilibrium ensemble of simulations (see Section 3). Then, the LGM climate snapshot from the  
same climate model is complemented by a corresponding PI snapshot, representing peak glacial and interglacial conditions,  
respectively. In order to generate a climate state at any given model time, these two snapshots are then subjected to a weighted  
125 interpolation following a glacial index (henceforth GI) approach (e.g., Mas e Braga et al., 2021). Here, the time-dependent  
weight is in turn derived from a list of ice and offshore sediment cores (see Table 3). For all core records, the computation of  
the GI uses the 19-23 ka mean of either d18O (for ice cores) or sea-surface temperature (SST; for sediment cores) to define  
peak glacial conditions. Likewise, peak interglacial conditions are defined against a near-PI period by averaging over the last  
3 ka. The latter is, however, not possible for the GeoB3327-5 and PS75/034-2 sediments cores, which lack late Holocene data.  
For these two cores, values from the centennial time-scale SST reconstruction COBEV2 (Ishii et al., 2005) have been used to  
130 fill the data gap. With this range of far- and near-field core locations, we investigate whether the offshore records along the  
Pacific margin contain any imprints of an earlier, local glacial maximum in the Patagonian region. Each of the simulations in  
the transient ensemble is initialised from ice-free conditions and keeping the setup of the equilibrium ensemble as described in  
Section 2.2, except for the climate forcing. Then, each member is run under a different record-derived GI spanning the period  
between 70 ka and PI, encompassing both the MIS 3 and 2.

## 135 **3 Results**

### **3.1 Performance of the PMIP models at the LGM in Patagonia**

Our equilibrium model experiments produce a wide range of PIS geometries, some of which are generally comparable with the  
geologically constrained ice extents, while others yield considerably reduced and/or overextended ice cover (Fig. 4). We have  
divided the former PIS extent into 3 distinct latitudinal ranges based on their model sensitivity and response to the imposed  
140 climate. Each of these areas is described and analysed in detail in the following sections. First, south of 52° S, most ensemble  
members exhibit an unrealistic build-up of ice in south-eastern Patagonia, with a much larger ice-covered area than inferred  
from the geological evidence. Second, between 44° S and 52° S, a continuous ice sheet growth is reached by nearly all ensemble  
members with an overall good match for both eastern and western margins of PATICE. Finally, in the third zone between 38°  
S and 44° S, PIS growth is not uniformly captured by the ensemble members, with most of them failing to build a consistent  
145 ice cover.

Among the PMIP climate model products tested in this study, AWI-ESM-1-1-LR and MPI-ESM1-2-LR models (both from  
PMIP4) produce the most consistent ice sheet extents relative to the PATICE reconstruction (Fig. 1). The near-surface air  
temperature and precipitation patterns derived from these two climate models enable the modelled ice sheet to reach as far  
north as 39° S and 40° S, respectively, and occupy total areas of 467,776 and 564,096 km<sup>2</sup>. This is in broad agreement with the  
150 earlier estimations by Davies et al. (2020). Total ice volumes produced by these two simulations are 347,020 and 471,859 km<sup>3</sup>,  
corresponding to SLEs of 1.04 and 1.37 m (Fig. 4), respectively. In the following, we zoom in on the drivers of the dissimilar  
model performances across these three distinct zones.

### 3.1.1 Excessive Patagonian ice cover in south-eastern Patagonia

Our model experiments show that across southern Patagonia (52° S to 56° S), most ensemble members exhibit an unrealistic build-up of ice, with a much larger eastern ice extent than inferred from the geological evidence (Fig. 4). In some cases (e.g., ensemble members driven by CCSM4, GISS-E2-R, MIROC-ESM, Trace21ka, CESM2-FV2 and CESM2-WACCM-FV2), this excessive ice cover reaches what is at present the Atlantic coast. We associate the excessive growth towards the eastern side with relatively cold conditions on the leeward side of the Andes, accompanied by relatively larger precipitation amounts when compared with the multi-model mean. These climate conditions reduce the ablation, allowing the ice sheet to advance beyond the margins of the PATICE reconstruction.

Ensemble members that reproduce an extension comparable with the geological reconstruction of PATICE showcase positive LGM temperature anomalies of around 2 °C, combined with drier conditions when compared with multi-model mean (Fig. 2, 3, see climate models AWI-ESM-1-1-LR, MPI-ESM1-2-LR, CNRM-CM5).

### 3.1.2 Ice sheet extents and climate uncertainty in mid-Patagonia

Between 44° S and 52° S, the model ensemble shows a relatively low sensitivity to the climatic uncertainty provided by the PMIP models used in this study. A continuous ice sheet build-up is reached by most ensemble members, with an overall good match along both the eastern and western margins constrained by the PATICE data. Although temperature and precipitation within the margins of the geologically reconstructed PIS at these latitudes show a large spread (Fig. 2, 3), this does not lead to drastic changes in the resulting ice sheet extents. The eastern expansion of the modelled PIS seems to be linked to the summer temperature in eastern Patagonia, inhibiting the melting during the summer season, despite the reduced precipitation (Fig. 3). The forcing from MIROC-ES2L generates LGM climate conditions that lead to the smallest PIS in the ensemble. Due to relatively high air temperatures, all ice accumulated during a model year is lost during the ablation season, preventing ice sheet growth and thus an extent that matches the PATICE reconstruction.

### 3.1.3 Drivers of the lack of ice in northern Patagonia

The PIS growth towards its northern confines is not uniformly captured by the ensemble. Most of the PMIP climate products tested here do not allow for an ice sheet expansion north of 44° S (Fig. 4), while the geologically constrained northern ice sheet margin is placed at 38° S (Davies et al., 2020). As stated earlier, positions of the former PIS margins derived using the AWI-ESM-1-1-LR, INM-CM4-8, MPI-ESM-P and MPI-ESM1-2-LR products are closer to those inferred from the PATICE data set on its northern margin. However, the forcing from MPI-ESM-P in this area produces a fragmented ice cover that resembles an isolated ice cap disconnected from the main ice sheet (Fig. 4).

The modelled climate from INM-CM4-8 showcases a pronounced reduction in precipitation rates during the LGM, with a decline of up to -50 % around 40° S, leading to significantly drier LGM conditions (Fig. 3). Conversely, AWI-ESM-1-1-LR, MPI-ESM-P and MPI-ESM1-2-LR indicate relatively wetter conditions than INM-CM-8, accompanied by a comparable ice sheet extent. Meanwhile, MRI-CGCM3 depicts the highest precipitation amounts in the zone, however with ice-free conditions.

185 Despite these significantly wetter conditions (25 to 50 % larger precipitation rates than in the INM-CM4-8 model), these ensemble members fail to initiate an ice sheet in this region.

In the same latitude range, models with ice extent comparable to the geological reconstruction consistently depict colder LGM summer mean temperatures than the multi-model mean, with temperature anomalies ranging from -3 to -6 °C relative to the multi-model mean. INM-CM4-8 shows a much larger temperature anomaly, reaching -10 °C around 40° S. However, this  
190 anomaly diminishes towards the northernmost margin of the PIS, preventing ice sheet growth there under precipitation-starved conditions (Fig. 3). In this part of Patagonia, climate forcings from AWI-ESM-1-1-LR, INM-CM4-8 and MPI-ESM1-2-LR thus stand out as the only PMIP model products providing atmospheric conditions that enable the growth of an ice sheet in agreement with the PATICE data set.

Our results highlight the critical role of the summer mean temperatures in the inception and expansion of the PIS over the  
195 northern sector. Drier but colder climate states can foster ice sheet advance, while wetter yet warmer climates tend to impede ice accumulation despite relatively high precipitation rates (Fig. 2, 3). These results underscore the importance of minimizing modelled temperature biases for robust model-based reconstructions of Patagonian glacial history.

### 3.2 Evolution of the PIS through MIS3 and MIS2

The timing of the local maximum in the ice volume and the subsequent deglaciation has been documented at multiple locations  
200 in Patagonia and recently compiled in Davies et al. (2020). This data set indicates that the former PIS reached its maximum extent at around 35 ka, preserving relatively stable conditions until 25 ka. Here we use the PMIP4 climate model MPI-ESM1-2-LR as the best fitted model to perm our transient simulations (See sec. 2.3).

For a better spatial comparison, we show the modelled extension of the PIS at 35, 30, 25 and 20 ka to enable a direct evaluation against the corresponding time slices from the PATICE reconstruction (See section 2.3, Fig. 5).

205 The cores ODP-1233 and MD07-3128 show a quite similar pattern, with a low glacial index during the beginning of MIS3, and then reaching  $\sim 1.3$  during 45 and 50 ka, respectively. Subsequently, both records demonstrate local fluctuations ranging between 0.6 to 1.3. The glacial index derived from MD07-3128 exhibits a slightly negative trend from 50 to 25 ka before experiencing an increase, reaching peak values at 20 ka. Despite their geographical separation, both cores depict transitions from glacial to interglacial conditions almost concurrently, indicating a robust regional capture of PIS dynamics (Fig. 5). Both  
210 simulations lack ice in northern Patagonia (at the northern tip) and are generally smaller than the geological reconstruction of PATICE at 35, 30 and 25 ka. Nevertheless, during the LGM, the ice volume range between the estimates by Wolff et al. (2023) and PATICE (Davies et al., 2020).

The off-shore record GeoB3327-5 shows the highest glacial index prior the LGM, reaching maximum values of 3.3 at  $\sim 45$  ka, declining until it reaches values below 1 at around 18 ka (Fig. 5). Our transient simulations forced by this offshore core record  
215 showcase similar ice volumes for the time slices at 35, 30, and 25 ka to those proposed by PATICE (Fig. 5). However, the region covered by the ice sheet does not match completely the geological reconstruction, overestimating the extent in northeast Patagonia in several time slices (Fig. 6).

The off-shore record PS75/034-2 shows a glacial index in the range 0.3–0.6 between 70 and 40 ka, with a steady increase

between 38 and 30 ka that brings the glacial index to a value above 1, reaching a maximum at  $\sim 18$  ka, and finally followed  
220 by a rapid drop (Fig. 5). These conditions lead to a small ice sheet at 35 ka, which is still growing by 30 ka, with a more stable  
condition during 25 and 20 ka when it reached a closer extent to the PATICE reconstruction (Fig. 6) with an ice volume of  
400.000 km<sup>3</sup> which is between the two most recent estimations (Fig. 5).

Our results using Antarctic records suggest a maximum ice volume of PIS closer to the global LGM, characterized by con-  
tinuous ice mass growth between the MIS3 and the MIS2 (Fig. 5). On the one hand, the Siple Dome ice core shows glacial  
225 index values below 0.5 during most of MIS3, with an increase that begins at 30 ka, reaching a value of 1 around 20 ka, and a  
maximum even later closer to 15 ka. These conditions lead to a small PIS during MIS3 with an ice volume of 100.000 km<sup>3</sup>  
until 25 ka, when the ice sheet starts to increase, reaching 400.000 km<sup>3</sup> at 20 ka. However, the maximum extension and volume  
are reached even later at 15 ka. On the other hand, EDC shows a glacial index that starts to increase during the beginning of  
MIS3, reaching a maximum at 25 ka, with values that keep closer to 1 until 18 ka, marking a change in its trend with an abrupt  
230 decrease. In terms of ice volume, our simulation achieves stable conditions between 25 to 18 ka with 380.000 km<sup>3</sup>. While the  
extension reproduced at 20 ka is reasonable, both cores exhibit a completely different glacial history when compared with the  
geochronological dataset of PIS (Fig 6).

## 4 Discussion

### 4.1 Performance of PMIP models in Patagonia

235 At the sub-regional scale, most PMIP models fail to reproduce the climate conditions required to simulate the extent of the  
northernmost sector of the PIS during the LGM as suggested by reconstructions. As we show in Sect. 3, the models that  
produce the most realistic extents of the PIS between 38-44° S are those that exhibit the coldest LGM temperature during  
the melting season. The models AWI-ESM-1-1-LR, INM-CM4-8, and MPI-ESM1-2-LR generate larger negative temperature  
anomalies during the melting season when compared against the multi-model mean. In particular, INM-CM4-8 stands out by  
240 producing very cold conditions during the LGM nearly throughout the entire year, with a higher amplitude during January and  
February (austral summer) (Fig. 2, 7). Lower temperatures inferred from INM-CM4-8 act as a driving mechanism for an ice  
sheet growth between 38-44° S. Although the forcing fields from other models such as MPI-ESM-P and CNRM-CM5 manage  
to build up ice towards the north of the domain — again due to relatively colder conditions —, the resulting glaciated areas  
resemble isolated ice caps rather than an extension of the PIS (Fig. 2). Despite colder conditions, the simulations driven by  
245 these models are still unable to reconstruct the formerly PIS-covered territories north of 39° S.

Similarly, the eastern expansion is consistently associated with a negative temperature anomaly when compared with a multi-  
model summer mean (Fig. 2). As shown by the simulation driven by CNRM-CM5, relatively warmer conditions in the southern-  
east sector of Patagonia are required to restrict the extension of the PIS within its geologically reconstructed margins (Fig. 2),  
coincidentally being the model that shows the best fit in this zone. Compared to air temperatures, precipitation does not seem  
250 to play a dominant role when analysing the causes for PIS over-expansion in this region.

The forcing from MIROC-ES2L produces the smallest modelled ice sheet geometry among all the climate models considered

in this study (Fig. 4). Its summer mean temperature is the warmest, only comparable with MRI-CGCM3. Differences between the two resulting ice sheets can be explained by dissimilar winter temperatures, which in the case of MIROC-ES2L restrict accumulation during the cold season, preventing a realistic build-up (Fig. 2, 3).

255 Previously, Yan et al. (2022) analysed 21 PMIP model outputs of phases 2, 3, and 4, to infer the climate conditions for ice sheet growth. Despite efforts to fuse PMIP models with present-day data, models struggled to reproduce ice sheet extent accurately, showing lack of ice in the north and overexpansion in the south east. Cuzzone et al. (2023) investigated PMIP4 models in a narrower domain, finding similar issues despite higher resolution. Both studies fused paleoclimate anomalies with present-day data, inducing artefacts in heterogeneous climates. However, the lack of grounded-based validation data in southern  
260 mid-latitudes limits the skill of reanalysis data in Patagonia (Masiokas et al., 2020; Sauter, 2020). Several factors might be responsible for the large regional scattering among model results from different PMIP phases, including significant updates between model versions, the treatment of vegetation, atmospheric dust loading, and prescribed ice thickness and topography (Kageyama et al., 2017). The latter in particular, exposes a circularity problem in which model reconstructions of the PIS are driven by climate conditions that include a poorly resolved (or inexistent) ice sheet (Section 4.2). This highlights a need for  
265 studies providing a benchmark for the effects of topographic and albedo feedback between the PIS and the regional climate dynamics.

#### 4.2 Impacts of the PMIP topography and resolution

The ice sheet forcing itself is an important component of paleo experiments, introducing regional-scale climate feedback through additional topographic barriers and the albedo effect (Löfverström et al., 2014; Beghin et al., 2015; Liakka et al.,  
270 2016). PMIP participants used different ice sheet reconstructions: PMIP3 ice sheet reconstruction (Abe-Ouchi et al., 2015), ICE-6G\_C (Peltier et al., 2015), and GLAC-1D (Tarasov et al., 2012). The difference between these topographic forcings led to a large spread in climate model results (Abe-Ouchi et al., 2015).

PMIP4 models used in our study vary in topographic forcing due to the spatial resolution imposed in each of them. All models simplified the topography, shifting the position of the Andes and flattening the observed topography, which exceeds 3000 m  
275 above sea level in the north (Fig. 8) but only reaches a maximum of 1500 m when applied. To compare the native PMIP4 ice sheet thicknesses and coverage, we compute the difference between the LGM and the PI topographies, assuming LGM sea level was 120 m lower. Ice sheet geometries prescribed in the AWI-ESM-1-1-LR, INM-CM4-8 and MPI-ESM1-2-LR climate experiments broadly align with the former PIS extent derived from the geological evidence (Davies et al., 2020). However, this alignment does not guarantee an accurate PIS representation. MIROC-ES2L and CESM-WACCM-FV2, the coarsest climate  
280 models analyzed, fail to reproduce LGM climate conditions that enable our ice sheet model to build an ice sheet extension consistent with PIS north of 44° S (Fig. 4). For example, INM-CM4-8 prescribes an ice thickness of 300 m north of 46° S, whereas MIROC-ES2L includes no ice sheet at all.

Towards the south-eastern sectors of the PIS, our findings reveal a consistent overestimation of ice sheet extents relative to the geological evidence. We partially attribute this to the discrepancies between reconstructed PIS coverage and the prescribed  
285 topography in climate models. Ice sheets invade formerly ice-free territories, potentially inducing extra cooling and reduced

ablation through a stronger albedo forcing. Inaccurate representation of the orographic effect on precipitation likely exacerbates mismatches between the modelled and reconstructed ice sheets, as topographic forcing is flattened (Fig. 8), hindering the imposition of the rain-shadow effect under coarse resolutions (Lofverstrom and Liakka, 2018; Bozkurt et al., 2019; Almazroui et al., 2021). This deficiency results in reduced precipitation on the windward side but much higher precipitation on the leeward side of the Andes, fostering PIS expansion beyond its geologically constrained eastern margin.

Studies of former Northern Hemisphere ice masses demonstrate that under the same orbital and greenhouse forcings, differences in the ice sheet boundary conditions yield significant impacts on the atmospheric circulation and temperature (Ullman et al., 2014; Löffverström et al., 2014; Bakker et al., 2020; Izumi et al., 2023). PMIP models generally capture temperature and precipitation conditions over South America during the LGM (Berman et al., 2016), yet lack the resolution needed for detailed regional climate responses (Bozkurt et al., 2019). Thus, coarse resolution impedes modelling of Patagonia's narrow ice sheet. Higher climate model resolution is crucial for studying the influence of Andean topography on past regional climate dynamics, which requires capturing the longitudinal gradient from the windward to the leeward side.

### 4.3 Glacial history of southern South America

A recent study has proposed the earlier LGM in Patagonia (Davies et al., 2020) and its consequent earlier deglaciation when compared against the Northern Hemisphere ice mass or Antarctica (Hughes et al., 2016; Batchelor et al., 2019; Gowan et al., 2021). However, the timing of the deglaciation along the PIS is not uniform (Darvill et al., 2015; Peltier et al., 2021; Lira et al., 2022; Hodgson et al., 2023; Peltier et al., 2023). In the northern part, the geochronological reconstruction proposed a relatively stable margin, with several readvances, between the local and the global LGM (Davies et al., 2020; Leger et al., 2021), with a rapid deglaciation that started at around 20 ka (Moreno et al., 2015; Davies et al., 2020). Conversely, in the southern counterpart, the deglaciation signal is more pronounced before the global LGM, suggesting an earlier local LGM occurring between 30 and 45 ka (Kaplan et al., 2007; Darvill et al., 2015; Davies et al., 2020; Peltier et al., 2021).

As shown in our transient simulations in Sect 3, the glacial index signal based on Antarctic ice cores drives a progressive growth of the modelled PIS through the MIS3 to the MIS2, reaching the maximum extension of the PIS towards the global LGM. In contrast, local off-shore records seem to capture a signal that drives a PIS evolution in agreement with the geochronological reconstruction (Davies et al., 2020). On the one hand, ODP-1233, located near the coast in northern Patagonia, reproduces relatively stable climate conditions between 35 and 20 ka. On the other hand, MD07-3128 exhibits a negative trend during the same period, in correspondence with the reconstructed PIS behaviour south of 52°S.

The offshore record GeoB3327-5 suggests a climate condition that enables a more extensive ice sheet towards the MIS3. However, it should be taken into account the coarse sampling resolution and the consequent not well-resolved history proposed by them. The extreme glacial index factor induces a large drop in the summer mean temperatures during LGM. The precipitation shows a pronounced decrease in eastern Patagonia, even to zero in some places. This combination does not allow the ice sheet to over expand towards the east.

The southernmost off-shore records analyzed in this study, PS75/034-2, shows a similar behaviour to the Antarctic ice core

320 records. We hypothesize that this core captures a transitional signal between the climatic behaviour of southern mid-latitudes and the Antarctic cores.

#### 4.4 Potential implications of dissimilar LGM timings in the Southern and Northern Hemispheres

The first challenge in this study is related to the assumption of climate and ice sheet equilibrium states during the global LGM. It is, however, an open question whether it is fair to generate PIS model reconstructions assuming that the ice sheet was in a  
325 steady-state under global LGM climate conditions and, if not, how to treat the lack of reliable climate forcing for the earlier periods of the last glacial cycle. The second challenge is related to the interpretation of major planetary drivers that enabled an asynchronous glacial response of the two hemispheres to changes in the orbital and greenhouse gas forcings (Doughty et al., 2015).

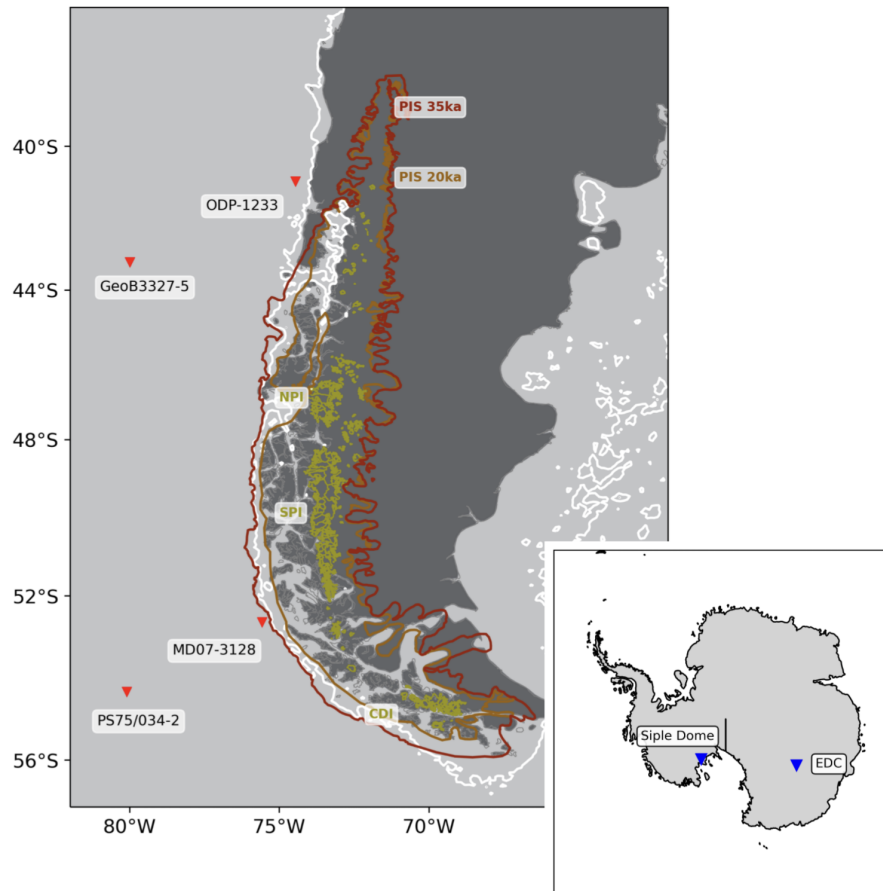
The geologically constrained gap between local LGM timings in Patagonia and different parts of the Northern Hemisphere  
330 raises an important question about the drivers behind this asynchronicity. These drivers potentially involve climatic feedback mechanisms, hemispheric climate sensitivities to orbital and greenhouse gas forcings and teleconnections between the two hemispheres (Darvill et al., 2016). The current evidence suggests that the local glacial peak in the southern Andes and Patagonia happened at about 35 ka (Zech et al., 2011; Davies et al., 2020), which is much earlier than the local LGM inferred for most of the paleo ice sheets in the Northern Hemisphere. Aside from the Barents-Kara Sea Ice Sheet and smaller glaciations in Asia,  
335 ice masses of the last glacial cycle attained their maximum extents and were driven towards maximum ice volumes during the MIS 2, at about 24-18 ka, (Hughes et al., 2016; Patton et al., 2016; Gowan et al., 2021) by a strong cooling between 30 and 20 ka. According to the current state of knowledge, these massive ice sheets only began disintegrating at around 18 ka (Patton et al., 2017; Stokes, 2017; Gowan et al., 2021). The situation is different for the Southern Hemisphere. Due to a  
340 lack of large-scale paleo ice sheets and scarce information about past fluctuations of the Antarctic Ice Sheet, it is necessary to look at the existing evidence for the advance and retreat history of smaller ice bodies to contextualise the situation in the Southern Hemisphere during the last glacial cycle. For example, records coming from an icefield located in the Southern Alps in New Zealand indicate that this ice mass reached its maximum extent at around 28 ka (Rother et al., 2014). According to recent studies, its growth towards 28 ka was influenced by a slight decrease in temperatures in the preceding two millennia (Darvill et al., 2016). The reconstructed air temperature cooling at this location is estimated to be between 6 and 6.5 °C below  
345 present, accompanied by a precipitation reduction of up to 25 % (Golledge et al., 2012b). During the period between 26 and 20 ka, this icefield is thought to have undergone a slow and continuous retreat, followed by a standstill at around 19 ka. This coincides with the time when most of the Northern Hemisphere ice sheets began retreating from their maximum positions due to slowly increasing solar radiation and activation of positive climate feedback mechanisms. Arguably, the Antarctic Ice Sheet seems to have been stable until about 18 ka, after which it experienced an increase in air temperatures synchronised with the  
350 increase in  $CO_2$  concentrations (Parrenin et al., 2013; Brook and Buizert, 2018). This triggered the retreat of ice margins in Antarctica, New Zealand, and South America, where the PIS experienced an accelerated retreat starting from 18 ka (Davies et al., 2020). The current evidence of an early local LGM in Antarctica is inconclusive, partly due to an extreme sensitivity of the Antarctic Ice Sheet to the ocean forcing as opposed to the thermal atmospheric forcing playing the largest role in the

deglaciation of formerly ice sheet-covered areas (Golledge et al., 2012a). However, pieces of evidence from Patagonia and New Zealand suggest that the Southern Hemisphere might have responded very differently to the global cooling of the last glacial period compared to the Northern Hemisphere (Darvill et al., 2016; Shulmeister et al., 2019).

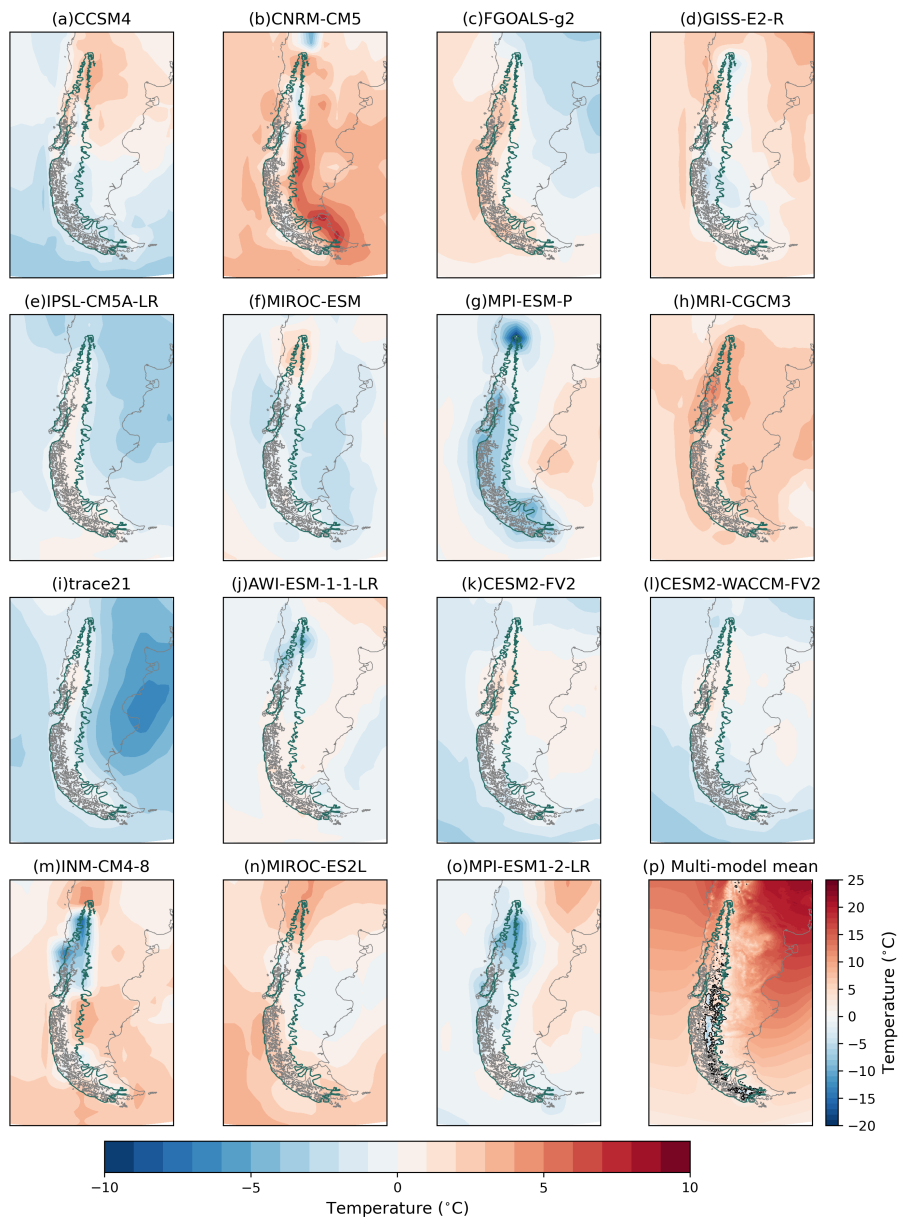
## 5 Conclusions

Using a combination of ice sheet modelling, paleoclimate model output, ice and sediment core records, and a recent geomorphological reconstruction, we explore the glacial history of the former ice sheet in Patagonia, with a focus on the timing of its maximum advance. As an initial assessment, we generate an ensemble of ice sheet model simulations driven by downscaled, constant paleoclimate reconstructions to get a first-order approximation of the extent the PIS can attain under peak global glacial conditions. By evaluating our ensemble against the PATICE reconstruction, we observe that most paleoclimate model products provide conditions that prevent the inception of the PIS at its northernmost margins while boosting an overestimated growth in the southeast, in alignment with earlier studies that implement different modelling choices. We perform a latitudinal analysis that reveals a narrow envelope of air temperature and precipitation rate pairs that foster a northern PIS growth in agreement with PATICE, while PMIP models typically showcase much warmer conditions. In contrast, cold air temperatures in the southern PIS and the associated lack of surface ablation prompt an unchallenged advance under too-wet conditions that seem to ignore the Andean topographic barrier. By investigating the original representation of the region within the PMIP models we find a topography that is severely flattened along the Andes, which points to the possibility of a diminished rain-shadow effect and subsequent overestimation of precipitation on the leeward side of the mountain range. Our findings highlight the need for a significantly higher climate model resolution to properly capture the complex longitudinal gradients of the Patagonian region. To account for the seemingly asynchronous peak glacial advance of the PIS relative to the Northern Hemisphere ice sheets, we additionally produce an ensemble of transient ice sheet simulations driven by time-evolving climate conditions derived from a variety of ice core and off-shore sediment records. Our results show that the climate forcing based on local sedimentary records is capable of driving a PIS advance that peaks around MIS3. In addition, we find latitudinal differences in the evolution of the PIS between this local peak and the global LGM: southern Patagonia and far-off-shore records exhibit a warming trend during this period, whereas the northern sectors remain relatively stable. In a stark contrast, our experiments reveal that none of these patterns can be reproduced by ensemble members driven by climate conditions based on Antarctic records. This strong connection between the glacial history and regional circulation patterns in Patagonia suggests that the local paleoclimatic signal represents a key component in studies of PIS evolution.

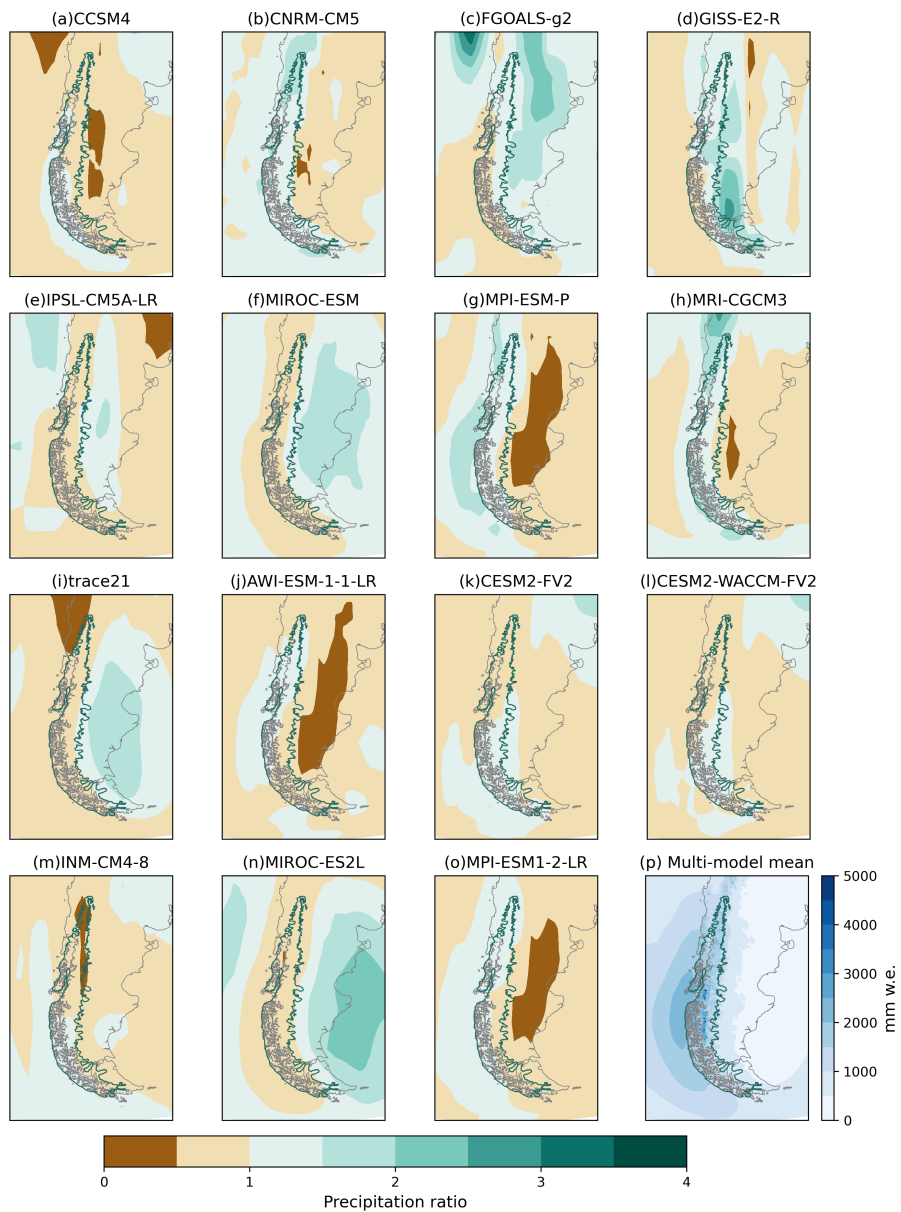




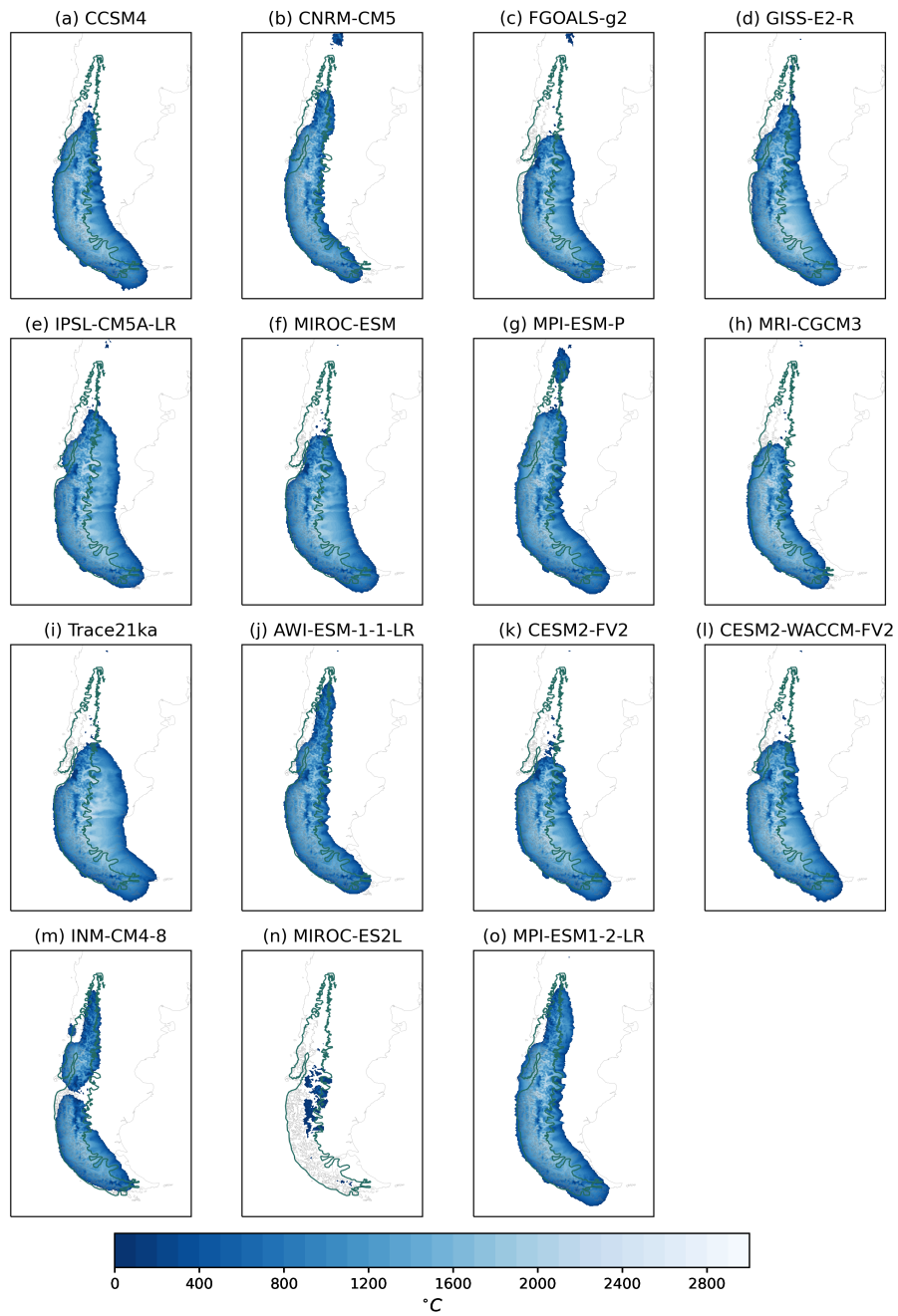
**Figure 1.** PIS reconstruction of (Davies et al., 2020) for 35 and 20 ka. Present-day ice fields are indicated and correspond to the Northern Patagonian Icefield (NPI), Southern Patagonian Icefield (SPI) and Cordillera Darwin Icefield (CDI). LGM coastal lines marking lower sea level (-120 m) are shown in white.



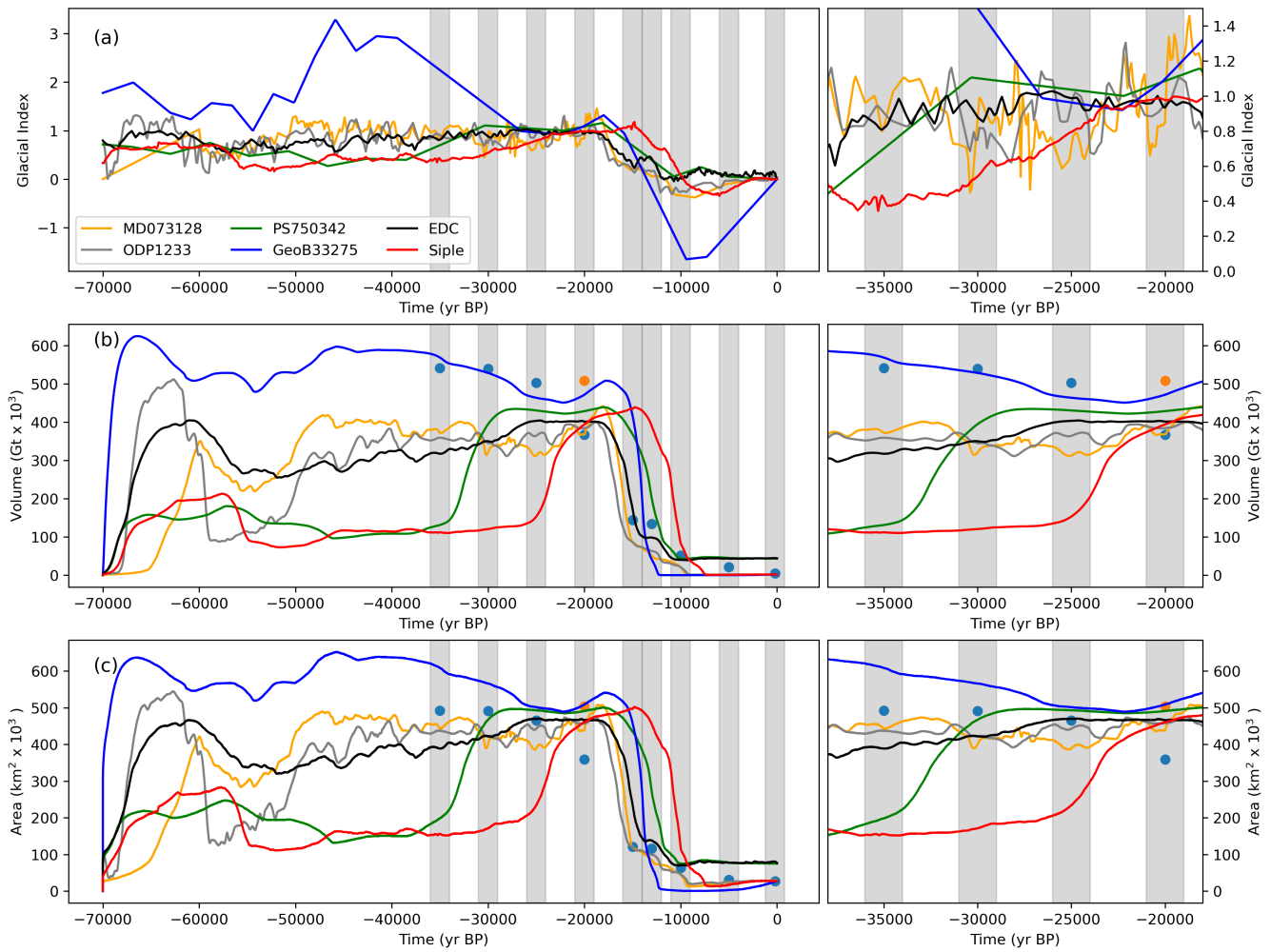
**Figure 2.** LGM summer mean temperature anomaly with respect to the multi-model summer mean temperature.



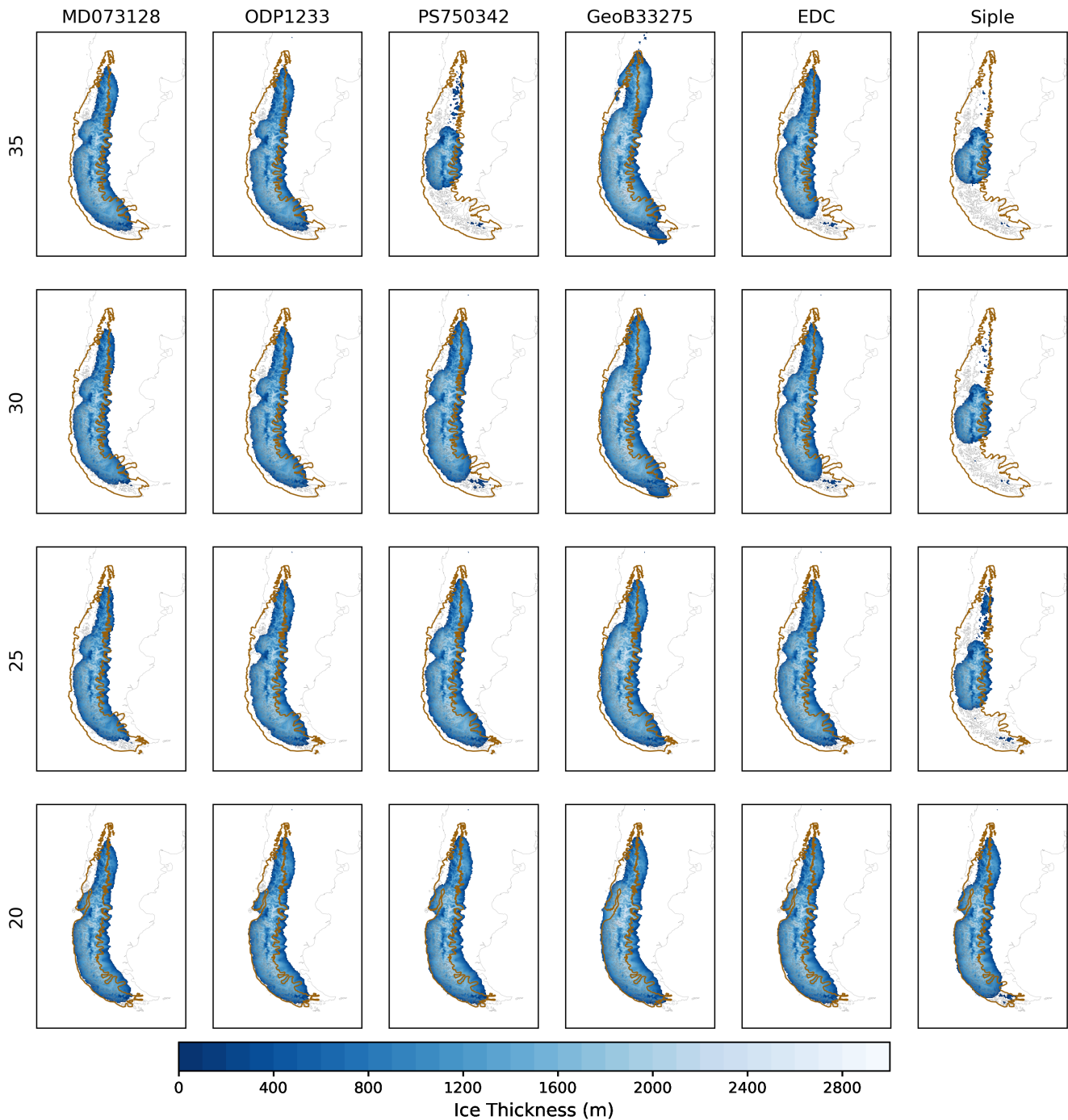
**Figure 3.** LGM total annual precipitation ratio with respect to the multi-model mean of the total annual precipitation.



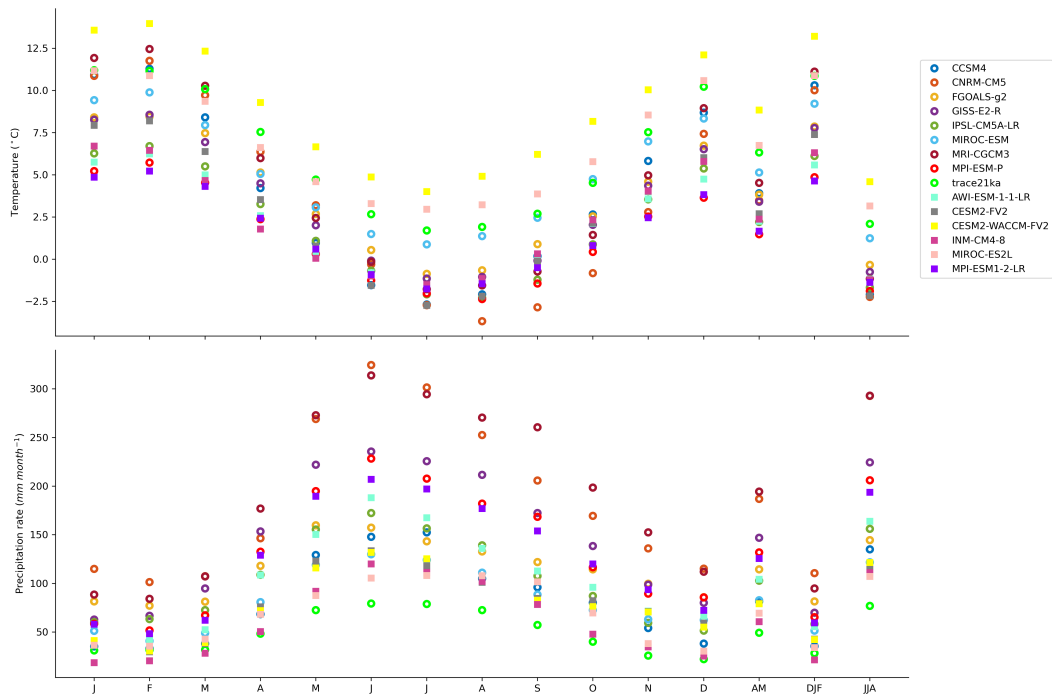
**Figure 4.** Modelled thickness of the PIS (m). The green line shows the reconstructed glacier extent from the empirical evidence at 20 ka (Davies et al., 2020). The present-day coastline is shown for reference.



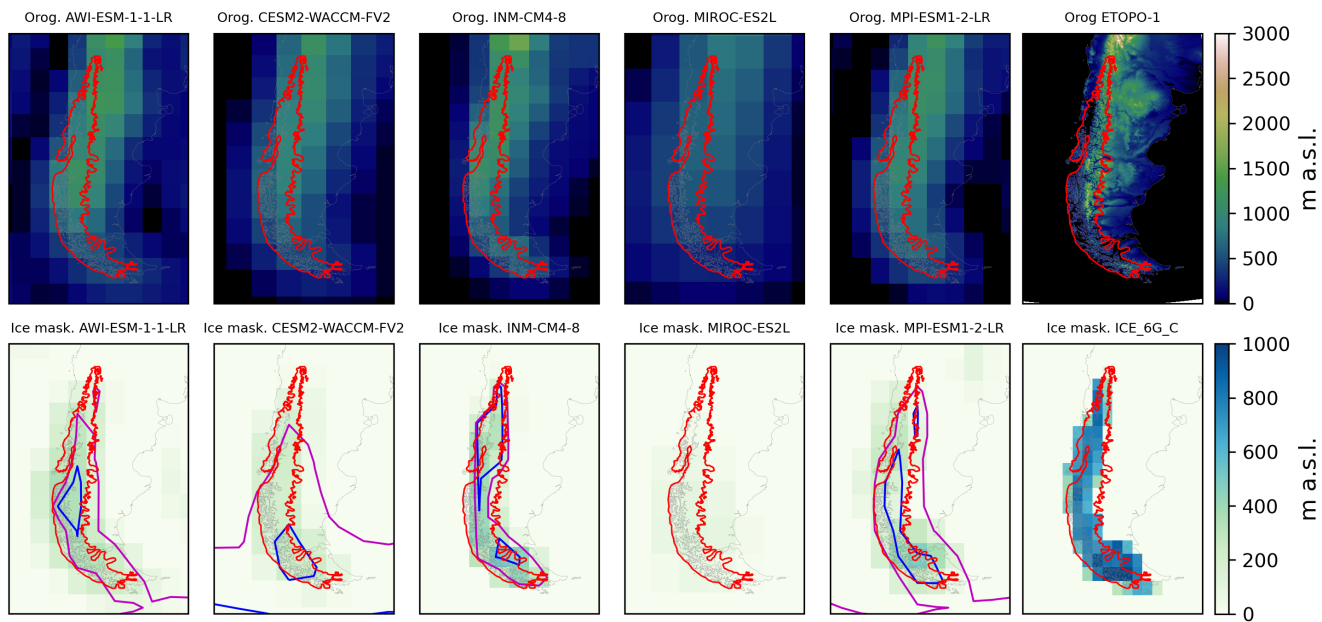
**Figure 5.** Time series of the glacial indexes used in this study. Modelled ice volumes and glaciated area using MPI-ESM1-2-LR combined with the different cores used in this study (Tab. 3).



**Figure 6.** Modelled thickness of the PIS (m) and ice base velocity streamlines for the LGM forced by the different cores used in this study. The green line shows the reconstructed glacier extent from the empirical evidence at 20 ka (Davies et al., 2020). The present-day coastline is shown for reference.



**Figure 7.** LGM temperatures (upper panel) and precipitation (bottom panel) for the monthly output of CMIP5-PMIP3 and CMIP6-PMIP4 calculated of the northernmost sector of the former PIS. Calculations are made over the grid points that match the reconstructed PIS extents by Davies et al. (2020) within the 38-44° S study zone.



**Figure 8.** Prescribed topography (upper panel) and ice thickness (bottom panel) the PMIP4 models considered in this study. Etopo-1 (Amante and Eakins, 2009) and the ICE-6G\_C reconstruction (Peltier et al., 2015) included as of the ice sheet forcings in PMIP4. The Red line shows the PIS extension for 20 ka (Davies et al., 2020). Blue and purple lines show the isotherm  $0^{\circ}\text{C}$  for summer and the annual mean, respectively. Present-day ocean-continent limits are shown for interpretation.



**Table 1.** Most important parameters in the model set-up. (\*) For transient simulations, the Specmap sea-level reconstruction has been used.

Description	Value	Units
Ice density	910.00	kg m <sup>-3</sup>
Gravity acceleration	9.81	m s <sup>-2</sup>
Glen's flow law exponent	3.00	-
Ice specific heat capacity	4170.00	J kg <sup>-1</sup> K <sup>-1</sup>
Ice thermal conductivity	2.10	J kg <sup>-1</sup> K <sup>-1</sup>
Water latent heat of fusion	$3.34 \times 10^5$	J kg <sup>-1</sup> K <sup>-1</sup>
Enhancement factor for the SIA and SSA	1, 0.5	-
Geothermal heat flux	100.00	mW m <sup>-2</sup>
Lithosphere density	3300.00	kg m <sup>-3</sup>
Sea level	-120.00 (*)	m
PDD standard deviation	3	°C
Temperature of snow precipitation	0	°C
Temperature of rain precipitation	2	°C
Degree day factor for snow	6	mm d <sup>-1</sup> °C <sup>-1</sup>
Degree day factor for ice	3	mm d <sup>-1</sup> °C <sup>-1</sup>

**Table 2.** Climate models analysed in the present study.

Model name	PMIP phase	Atmospheric model resolution (°)
CCSM4	III	1.25 x 0.9
CNRM-CM5	III	1.4 x 1.4
FGOALS-g2	III	2.8 x 3-6
GISS-E2-R	III	2.5 x 2.0
IPSL-CM5A-LR	III	3.8 x 1.9
MIROC-ESM	III	2.8 x 2.8
MPI-ESM-P	III	1.88 x 1.9
MRI-CGCM3	III	1.18 x 1.1
Trace21	-	3.7 x 3.7
AWI-ESM-1-1-LR	IV	1.88 x 1.88
CESM-FV2	IV	~ 2.0 x ~ 2.0
CESM-WACCM-FV2	IV	~ 2.0 x ~ 2.0
INM-CM4	IV	1.5 x 2.0
MIROC-ES2L	IV	2.8 x 2.8
MPI-ESM1-2-LR	IV	1.88 x 1.88

**Table 3.** Core records used for the glacial indexes.

Core name	Latitude	Longitude	Proxy
EDC	75.10°S	123.35°W	d18O
Siple Dome	81.64°S	148.77°W	d18O
ODP-1233	41.00°S	74.45°W	UK'37
MD07-3128	52.69°S	74.56°W	UK'37
GeoB3327-5	43.24°S	79.99°W	UK'37
PS75/034-2	54.37°S	80.09°W	UK'37

*Code and data availability.* SICOPOLIS is a free and open-source software, which can be found at <http://sicopolis.net> (last access 8th of June, 2023). All simulations in this study were run using SICOPOLIS version 5.2. The PMIP output used in this study can be found on the Earth System Grid Federation website, in particular, CMIP5-PMIP3 (<https://esgf-node.ipsl.upmc.fr/search/cmip5-ipsl>) and CMIP6-PMIP4 (<https://esgf-node.ipsl.upmc.fr/search/cmip6-ipsl>). Data will be available once the manuscript has been accepted for publication through

385 zenodo repository

*Author contributions.* ACL and FRR have contributed equally to this work. The original concept has been conceived by FRR under the supervision of IR and has been further developed by ACL, again under the supervision of IR, with inputs from all authors. All authors contributed to the writing process.

*Competing interests.* At least one of the (co-)authors is a member of the editorial board of *Climate of the Past*.

390 *Acknowledgements.* ACL acknowledges support from the Agencia Nacional de Investigación y Desarrollo (ANID) Programa Becas de Doctorado en el Extranjero, Becas Chile for the doctoral scholarship. FRR acknowledges support from the "FONDAP 15110009" Centro de Ciencia del Clima y la Resiliencia (CR)2 (DGF-UCHile) and the Ministerio de Educación, Fortalecimiento de la Investigación en Cambio Climático y Conservación Antártica y Subantártica (IES20992). This article is partially based on FRR's undergraduate thesis at the University of Concepcion under IR's and MJC's supervision.

## 395 References

- Abe-Ouchi, A., Saito, F., Kageyama, M., Braconnot, P., Harrison, S. P., Lambeck, K., Otto-Bliesner, B. L., Peltier, W., Tarasov, L., Peter-schmitt, J.-Y., et al.: Ice-sheet configuration in the CMIP5/PMIP3 Last Glacial Maximum experiments, *Geoscientific Model Development*, 8, 3621–3637, <https://doi.org/10.5194/gmd-8-3621-2015>, 2015.
- Almazroui, M., Ashfaq, M., Islam, M. N., Rashid, I. U., Kamil, S., Abid, M. A., O’Brien, E., Ismail, M., Reboita, M. S., Sörensson, A. A.,  
400 et al.: Assessment of CMIP6 performance and projected temperature and precipitation changes over South America, *Earth Systems and Environment*, 5, 155–183, <https://doi.org/10.1007/s41748-021-00233-6>, 2021.
- Amante, C. and Eakins, B. W.: ETOPO1 arc-minute global relief model: procedures, data sources and analysis, NOAA Technical Memorandum NESDIS NGDC-24, <https://doi.org/10.7289/V5C8276M>, 2009.
- Annan, J. and Hargreaves, J. C.: A new global reconstruction of temperature changes at the Last Glacial Maximum, *Climate of the Past*, 9,  
405 367–376, <https://doi.org/10.5194/cp-9-367-2013>, 2013.
- Bakker, P., Rogozhina, I., Merkel, U., and Prange, M.: Hypersensitivity of glacial summer temperatures in Siberia, *Climate of the Past*, 16, 371–386, <https://doi.org/10.5194/cp-16-371-2020>, 2020.
- Bartlein, P. J., Harrison, S., Brewer, S., Connor, S., Davis, B., Gajewski, K., Guiot, J., Harrison-Prentice, T., Henderson, A., Pey-ron, O., et al.: Pollen-based continental climate reconstructions at 6 and 21 ka: a global synthesis, *Climate Dynamics*, 37, 775–802,  
410 <https://doi.org/10.1007/s00382-010-0904-1>, 2011.
- Batchelor, C. L., Margold, M., Krapp, M., Murton, D. K., Dalton, A. S., Gibbard, P. L., Stokes, C. R., Murton, J. B., and Manica, A.: The con-figuration of Northern Hemisphere ice sheets through the Quaternary, *Nature communications*, 10, 3713, <https://doi.org/10.1038/s41467-019-11601-2>, 2019.
- Beghin, P., Charbit, S., Dumas, C., Kageyama, M., and Ritz, C.: How might the North American ice sheet influence the northwestern Eurasian  
415 climate?, *Climate of the Past*, 11, 1467–1490, <https://doi.org/10.5194/cp-11-1467-2015>, 2015.
- Berman, A. L., Silvestri, G. E., and Tonello, M. S.: Differences between Last Glacial Maximum and present-day temperature and precipitation in southern South America, *Quaternary Science Reviews*, 150, 221–233, <https://doi.org/10.1016/j.quascirev.2016.08.025>, 2016.
- Bernales, J., Rogozhina, I., Greve, R., and Thomas, M.: Comparison of hybrid schemes for the combination of shallow approximations in numerical simulations of the Antarctic Ice Sheet, *The Cryosphere*, 11, 247–265, <https://doi.org/10.5194/tc-11-247-2017>, 2017.
- 420 Bozkurt, D., Rojas, M., Boisier, J. P., Rondanelli, R., Garreaud, R., and Gallardo, L.: Dynamical downscaling over the complex terrain of southwest South America: present climate conditions and added value analysis, *Climate Dynamics*, 53, 6745–6767, <https://doi.org/10.1007/s00382-019-04959-y>, 2019.
- Brook, E. J. and Buizert, C.: Antarctic and global climate history viewed from ice cores, *Nature*, 558, 200–208, <https://doi.org/10.1038/s41586-018-0172-5>, 2018.
- 425 Bueler, E. and Brown, J.: Shallow shelf approximation as a “sliding law” in a thermomechanically coupled ice sheet model, *Journal of Geophysical Research: Earth Surface*, 114, 2009.
- Calov, R. and Greve, R.: A semi-analytical solution for the positive degree-day model with stochastic temperature variations, *Journal of Glaciology*, 51, 173–175, <https://doi.org/10.3189/172756505781829601>, 2005.
- Cuzzone, J., Romero, M., and Marcott, S.: Modeling the timing of Patagonian Ice Sheet retreat in the Chilean Lake District from 23–10 ka,  
430 *The Cryosphere Discussions*, 2023, 1–26, <https://doi.org/10.5194/tc-2023-68>, 2023.

- Darvill, C. M., Bentley, M. J., Stokes, C. R., Hein, A. S., and Rodés, Á.: Extensive MIS 3 glaciation in southernmost Patagonia revealed by cosmogenic nuclide dating of outwash sediments, *Earth and Planetary Science Letters*, 429, 157–169, <https://doi.org/10.1016/j.epsl.2015.07.030>, 2015.
- 435 Darvill, C. M., Bentley, M. J., Stokes, C. R., and Shulmeister, J.: The timing and cause of glacial advances in the southern mid-latitudes during the last glacial cycle based on a synthesis of exposure ages from Patagonia and New Zealand, *Quaternary Science Reviews*, 149, 200–214, <https://doi.org/10.1016/j.quascirev.2016.07.024>, 2016.
- Davies, B. J., Darvill, C. M., Lovell, H., Bendle, J. M., Dowdeswell, J. A., Fabel, D., García, J.-L., Geiger, A., Glasser, N. F., Gheorghiu, D. M., et al.: The evolution of the Patagonian Ice Sheet from 35 ka to the present day (PATICE), *Earth-Science Reviews*, 204, 103–152, <https://doi.org/10.1016/j.earscirev.2020.103152>, 2020.
- 440 Doughty, A. M., Schaefer, J. M., Putnam, A. E., Denton, G. H., Kaplan, M. R., Barrell, D. J., Andersen, B. G., Kelley, S. E., Finkel, R. C., and Schwartz, R.: Mismatch of glacier extent and summer insolation in Southern Hemisphere mid-latitudes, *Geology*, 43, 407–410, <https://doi.org/10.1130/G36477.1>, 2015.
- Fernández, A. and Mark, B. G.: Modeling modern glacier response to climate changes along the Andes Cordillera: A multiscale review, *Journal of Advances in Modeling Earth Systems*, 8, 467–495, <https://doi.org/10.1002/2015MS000482>, 2016.
- 445 Golledge, N. R., Fogwill, C. J., Mackintosh, A. N., and Buckley, K. M.: Dynamics of the last glacial maximum Antarctic ice-sheet and its response to ocean forcing, *Proceedings of the National Academy of Sciences*, 109, 16 052–16 056, <https://doi.org/10.1073/pnas.1205385109>, 2012a.
- Golledge, N. R., Mackintosh, A. N., Anderson, B. M., Buckley, K. M., Doughty, A. M., Barrell, D. J., Denton, G. H., Vandergoes, M. J., Andersen, B. G., and Schaefer, J. M.: Last Glacial Maximum climate in New Zealand inferred from a modelled Southern Alps icefield, *Quaternary Science Reviews*, 46, 30–45, <https://doi.org/10.1016/j.quascirev.2012.05.004>, 2012b.
- 450 Gowan, E. J., Zhang, X., Khosravi, S., Rovere, A., Stocchi, P., Hughes, A. L., Gyllencreutz, R., Mangerud, J., Svendsen, J.-I., and Lohmann, G.: A new global ice sheet reconstruction for the past 80 000 years, *Nature communications*, 12, 1199, <https://doi.org/10.1038/s41467-021-21469-w>, 2021.
- Greve, R.: Application of a polythermal three-dimensional ice sheet model to the Greenland ice sheet: response to steady-state and transient climate scenarios, *Journal of Climate*, 10, 901–918, [https://doi.org/10.1175/1520-0442\(1997\)010<0901:AOAPTD>2.0.CO;2](https://doi.org/10.1175/1520-0442(1997)010<0901:AOAPTD>2.0.CO;2), 1997.
- 455 Greve, R. and Blatter, H.: Dynamics of ice sheets and glaciers, Springer Science & Business Media, <https://doi.org/10.1007/978-3-642-03415-2>, 2009.
- Hamza, V. M. and Vieira, F.: Global heat flow: new estimates using digital maps and GIS techniques, *International Journal of Terrestrial Heat Flow and Applied Geothermics*, 1, 6–13, <https://doi.org/10.31214/ijthfa.v1i1.6>, 2018.
- 460 Hodgson, D. A., Roberts, S. J., Izagirre, E., Perren, B. B., De Vleeschouwer, F., Davies, S. J., Bishop, T., McCulloch, R. D., and Aravena, J.-C.: Southern limit of the Patagonian Ice Sheet, *Quaternary Science Reviews*, 321, 108–136, <https://doi.org/10.1016/j.quascirev.2023.108346>, 2023.
- Holden, P. B., Edwards, N., Oliver, K., Lenton, T., and Wilkinson, R.: A probabilistic calibration of climate sensitivity and terrestrial carbon change in GENIE-1, *Climate Dynamics*, 35, 785–806, <https://doi.org/10.1007/s00382-009-0630-8>, 2010.
- 465 Hughes, A. L., Gyllencreutz, R., Lohne, Ø. S., Mangerud, J., and Svendsen, J. I.: The last Eurasian ice sheets—a chronological database and time-slice reconstruction, *DATED-1, Boreas*, 45, 1–45, <https://doi.org/10.1111/bor.12142>, 2016.
- Hulton, N. R., Purves, R., McCulloch, R., Sugden, D. E., and Bentley, M. J.: The last glacial maximum and deglaciation in southern South America, *Quaternary Science Reviews*, 21, 233–241, [https://doi.org/10.1016/S0277-3791\(01\)00103-2](https://doi.org/10.1016/S0277-3791(01)00103-2), 2002.

- Huybrechts, P.: Sea-level changes at the LGM from ice-dynamic reconstructions of the Greenland and Antarctic ice sheets during the glacial cycles, *Quaternary Science Reviews*, 21, 203–231, [https://doi.org/10.1016/S0277-3791\(01\)00082-8](https://doi.org/10.1016/S0277-3791(01)00082-8), 2002.
- Ishii, M., Shouji, A., Sugimoto, S., and Matsumoto, T.: Objective analyses of sea-surface temperature and marine meteorological variables for the 20th century using ICOADS and the Kobe collection, *International Journal of Climatology: A Journal of the Royal Meteorological Society*, 25, 865–879, <https://doi.org/https://doi.org/10.1002/joc.1169>, 2005.
- Izumi, K., Valdes, P., Ivanovic, R., and Gregoire, L.: Impacts of the PMIP4 ice sheets on Northern Hemisphere climate during the last glacial period, *Climate Dynamics*, 60, 2481–2499, <https://doi.org/10.1007/s00382-022-06456-1>, 2023.
- Kageyama, M., Albani, S., Braconnot, P., Harrison, S. P., Hopcroft, P. O., Ivanovic, R. F., Lambert, F., Marti, O., Peltier, W. R., Peterschmitt, J.-Y., et al.: The PMIP4 contribution to CMIP6–Part 4: Scientific objectives and experimental design of the PMIP4-CMIP6 Last Glacial Maximum experiments and PMIP4 sensitivity experiments, *Geoscientific Model Development*, 10, 4035–4055, <https://doi.org/10.5194/gmd-10-4035-2017>, 2017.
- Kageyama, M., Harrison, S. P., Kapsch, M.-L., Lofverstrom, M., Lora, J. M., Mikolajewicz, U., Sherriff-Tadano, S., Vadsaria, T., Abe-Ouchi, A., Bouttes, N., et al.: The PMIP4 Last Glacial Maximum experiments: preliminary results and comparison with the PMIP3 simulations, *Climate of the Past*, 17, 1065–1089, <https://doi.org/10.5194/cp-17-1065-2021>, 2021.
- Kaplan, M., Coronato, A., Hulton, N., Rabassa, J. O., Kubik, P., and Freeman, S.: Cosmogenic nuclide measurements in southernmost South America and implications for landscape change, *Geomorphology*, 87, 284–301, <https://doi.org/https://doi.org/10.1016/j.geomorph.2006.10.005>, 2007.
- Kohfeld, K. E., Graham, R. M., De Boer, A. M., Sime, L. C., Wolff, E. W., Le Quéré, C., and Bopp, L.: Southern Hemisphere westerly wind changes during the Last Glacial Maximum: paleo-data synthesis, *Quaternary Science Reviews*, 68, 76–95, <https://doi.org/10.1016/j.quascirev.2013.01.017>, 2013.
- Lambeck, K., Rouby, H., Purcell, A., Sun, Y., and Sambridge, M.: Sea level and global ice volumes from the Last Glacial Maximum to the Holocene, *Proceedings of the National Academy of Sciences*, 111, 15 296–15 303, <https://doi.org/10.1073/pnas.1411762111>, 2014.
- Leger, T. P., Hein, A. S., Bingham, R. G., Rodés, Á., Fabel, D., and Smedley, R. K.: Geomorphology and  $^{10}\text{Be}$  chronology of the Last Glacial Maximum and deglaciation in northeastern Patagonia,  $43^\circ\text{ S}$ – $71^\circ\text{ W}$ , *Quaternary Science Reviews*, 272, 107 194, <https://doi.org/10.1016/j.quascirev.2021.107194>, 2021.
- Liakka, J., Löffverström, M., and Colleoni, F.: The impact of the North American glacial topography on the evolution of the Eurasian ice sheet over the last glacial cycle, *Climate of the Past*, 12, 1225–1241, <https://doi.org/10.5194/cp-12-1225-2016>, 2016.
- Lira, M.-P., García, J.-L., Bentley, M. J., Jamieson, S. S., Darvill, C. M., Hein, A. S., Fernández, H., Rodés, Á., Fabel, D., Smedley, R. K., et al.: The Last Glacial Maximum and Deglacial History of the Seno Skyring Ice Lobe ( $52^\circ\text{ S}$ ), Southern Patagonia, *Frontiers in Earth Science*, 10, 892 316, <https://doi.org/10.3389/feart.2022.892316>, 2022.
- Lofverstrom, M. and Liakka, J.: The influence of atmospheric grid resolution in a climate model-forced ice sheet simulation, *The Cryosphere*, 12, 1499–1510, <https://doi.org/10.5194/tc-12-1499-2018>, 2018.
- Löffverström, M., Caballero, R., Nilsson, J., and Kleman, J.: Evolution of the large-scale atmospheric circulation in response to changing ice sheets over the last glacial cycle, *Climate of the Past*, 10, 1453–1471, <https://doi.org/10.5194/cp-10-1453-2014>, 2014.
- Marsiat, I.: Simulation of the Northern Hemisphere continental ice sheets over the last glacial-interglacial cycle: experiments with a latitude-longitude vertically integrated ice sheet model coupled to a zonally averaged climate model, 1994.
- Mas e Braga, M., Bernales, J., Prange, M., Stroeven, A. P., and Rogozhina, I.: Sensitivity of the Antarctic ice sheets to the warming of marine isotope substage 11c, *The Cryosphere*, 15, 459–478, <https://doi.org/10.5194/tc-15-459-2021>, 2021.

- Masiokas, M. H., Rabatel, A., Rivera, A., Ruiz, L., Pitte, P., Ceballos, J., Barcaza, G., Soruco, A., Bown, F., Berthier, E., et al.: A review of the current state and recent changes of the Andean cryosphere, *Frontiers in Earth Science*, 8, 99, <https://doi.org/10.3389/feart.2020.00099>, 2020.
- 510 Monnin, E., Indermuhle, A., Dallenbach, A., Fluckiger, J., Stauffer, B., Stocker, T. F., Raynaud, D., and Barnola, J.-M.: Atmospheric CO<sub>2</sub> concentrations over the last glacial termination, *science*, 291, 112–114, <https://doi.org/10.1126/science.291.5501.112>, 2001.
- Moreno, P. I., Denton, G. H., Moreno, H., Lowell, T. V., Putnam, A. E., and Kaplan, M. R.: Radiocarbon chronology of the last glacial maximum and its termination in northwestern Patagonia, *Quaternary Science Reviews*, 122, 233–249, 2015.
- Morlighem, M., Williams, C., Rignot, E., An, L., Bamber, J., Chauche, N., Dowdeswell, J., Dorschel, B., Holland, D., Holland, D., et al.:  
515 BedMachine v3: Complete bed topography and ocean bathymetry mapping of Greenland from multi-beam radar sounding combined with mass conservation, <https://doi.org/10.1002/2017GL074954>, 2017.
- Morlighem, M., Rignot, E., Binder, T., Blankenship, D., Drews, R., Eagles, G., Eisen, O., Ferraccioli, F., Forsberg, R., Fretwell, P., et al.: Deep glacial troughs and stabilizing ridges unveiled beneath the margins of the Antarctic ice sheet, *Nature Geoscience*, 13, 132–137, <https://doi.org/10.1038/s41561-019-0510-8>, 2020.
- 520 Parrenin, F., Masson-Delmotte, V., Köhler, P., Raynaud, D., Paillard, D., Schwander, J., Barbante, C., Landais, A., Wegner, A., and Jouzel, J.: Synchronous change of atmospheric CO<sub>2</sub> and Antarctic temperature during the last deglacial warming, *Science*, 339, 1060–1063, <https://doi.org/10.1126/science.1226368>, 2013.
- Patton, H., Hubbard, A., Andreassen, K., Winsborrow, M., and Stroeven, A. P.: The build-up, configuration, and dynamical sensitivity of the Eurasian ice-sheet complex to Late Weichselian climatic and oceanic forcing, *Quaternary Science Reviews*, 153, 97–121,  
525 <https://doi.org/10.1016/j.quascirev.2016.10.009>, 2016.
- Patton, H., Hubbard, A., Andreassen, K., Auriac, A., Whitehouse, P. L., Stroeven, A. P., Shackleton, C., Winsborrow, M., Heyman, J., and Hall, A. M.: Deglaciation of the Eurasian ice sheet complex, *Quaternary Science Reviews*, 169, 148–172, <https://doi.org/10.1016/j.quascirev.2017.05.019>, 2017.
- Peltier, C., Kaplan, M. R., Birkel, S. D., Soteres, R. L., Sagredo, E. A., Aravena, J. C., Araos, J., Moreno, P. I., Schwartz, R., and Schaefer,  
530 J. M.: The large MIS 4 and long MIS 2 glacier maxima on the southern tip of South America, *Quaternary Science Reviews*, 262, 106 858, <https://doi.org/10.1016/j.quascirev.2021.106858>, 2021.
- Peltier, C., Kaplan, M. R., Sagredo, E. A., Moreno, P. I., Araos, J., Birkel, S. D., Villa-Martínez, R., Schwartz, R., Reynhout, S. A., and Schaefer, J. M.: The last two glacial cycles in central Patagonia: A precise record from the Ñirehuao glacier lobe, *Quaternary Science Reviews*, 304, 107 873, 2023.
- 535 Peltier, W. R., Argus, D., and Drummond, R.: Space geodesy constrains ice age terminal deglaciation: The global ICE-6G\_C (VM5a) model, *Journal of Geophysical Research: Solid Earth*, 120, 450–487, <https://doi.org/10.1002/2014JB011176>, 2015.
- Rogozhina, I., Martinec, Z., Hagedoorn, J., Thomas, M., and Fleming, K.: On the long-term memory of the Greenland Ice Sheet, *Journal of Geophysical Research: Earth Surface*, 116, <https://doi.org/10.1029/2010JF001787>, 2011.
- Rother, H., Fink, D., Shulmeister, J., Mifsud, C., Evans, M., and Pugh, J.: The early rise and late demise of New Zealand’s last glacial  
540 maximum, *Proceedings of the National Academy of Sciences*, 111, 11 630–11 635, <https://doi.org/10.1073/pnas.1401547111>, 2014.
- Sato, T. and Greve, R.: Sensitivity experiments for the Antarctic ice sheet with varied sub-ice-shelf melting rates, *Annals of Glaciology*, 53, 221–228, <https://doi.org/10.3189/2012AoG60A042>, 2012.
- Sauter, T.: Revisiting extreme precipitation amounts over southern South America and implications for the Patagonian Icefields, *Hydrology and Earth System Sciences*, 24, 2003–2016, 2020.

- 545 Schneider von Deimling, T., Ganopolski, A., Held, H., and Rahmstorf, S.: How cold was the last glacial maximum?, *Geophysical Research Letters*, 33, <https://doi.org/10.1029/2006GL026484>, 2006.
- Shulmeister, J., Thackray, G. D., Rittenour, T. M., Fink, D., and Patton, N. R.: The timing and nature of the last glacial cycle in New Zealand, *Quaternary Science Reviews*, 206, 1–20, <https://doi.org/https://doi.org/10.1016/j.quascirev.2018.12.020>, 2019.
- Simms, A. R., Lisiecki, L., Gebbie, G., Whitehouse, P. L., and Clark, J. F.: Balancing the last glacial maximum (LGM) sea-level budget, *Quaternary Science Reviews*, 205, 143–153, <https://doi.org/10.1016/j.quascirev.2018.12.018>, 2019.
- 550 Stokes, C. R.: Deglaciation of the Laurentide Ice Sheet from the Last Glacial Maximum., *Cuadernos de investigación geográfica.*, 43, 377–428, <https://doi.org/10.18172/cig.3237>, 2017.
- Tarasov, L., Dyke, A. S., Neal, R. M., and Peltier, W. R.: A data-calibrated distribution of deglacial chronologies for the North American ice complex from glaciological modeling, *Earth and Planetary Science Letters*, 315, 30–40, <https://doi.org/10.1016/j.epsl.2011.09.010>, 2012.
- 555 Tierney, J. E., Zhu, J., King, J., Malevich, S. B., Hakim, G. J., and Poulsen, C. J.: Glacial cooling and climate sensitivity revisited, *Nature*, 584, 569–573, <https://doi.org/10.1038/s41586-020-2617-x>, 2020.
- Ullman, D., LeGrande, A., Carlson, A. E., Anslow, F., and Licciardi, J.: Assessing the impact of Laurentide Ice Sheet topography on glacial climate, *Climate of the Past*, 10, 487–507, <https://doi.org/10.5194/cp-10-487-2014>, 2014.
- Wolff, I. W., Glasser, N. F., Harrison, S., Wood, J. L., and Hubbard, A.: A steady-state model reconstruction of the Patagonian ice sheet during the last glacial maximum, *Quaternary Science Advances*, 12, 100–103, <https://doi.org/10.1016/j.qsa.2023.100103>, 2023.
- 560 Yan, Q., Wei, T., and Zhang, Z.: Modeling the climate sensitivity of Patagonian glaciers and their responses to climatic change during the global last glacial maximum, *Quaternary Science Reviews*, 288, 107–152, <https://doi.org/10.1016/j.quascirev.2022.107582>, 2022.
- Zech, R., Zech, J., Kull, C., Kubik, P. W., and Veit, H.: Early last glacial maximum in the southern Central Andes reveals northward shift of the westerlies at ~ 39 ka, *Climate of the Past*, 7, 41–46, <https://doi.org/10.5194/cp-7-41-2011>, 2011.