

1750 years of hydrological change in southern Australia: a bivalve oxygen isotope record from the Coorong Lagoon

Briony K. Chamberlayne¹, Jonathan J. Tyler¹, Deborah Haynes^{1,2}, Yuexiao Shao¹, John Tibby², Bronwyn Gillanders³

5 ¹ Department of Earth Sciences and Sprigg Geobiology Centre, The University of Adelaide, Adelaide, 5005, Australia

² Department of Geography, Environment and Population, The University of Adelaide, Adelaide, 5005, Australia

³ Southern Seas Ecology Laboratories and the Environment Institute, School of Biological Sciences, The University of Adelaide, Adelaide, 5005, Australia

10 Correspondence to: Jonathan J. Tyler (Jonathan.tyler@adelaide.edu.au)

Abstract. Multi-centennial records of past hydroclimate change are essential ~~for~~ understanding the resilience of ecosystems to climatic events, in addition to guiding conservation and restoration efforts. Such data are also crucial for examining the long-term controls over regional hydroclimate, and the inherent variability in extreme droughts and floods. Here, we present a 1750-year record of hydroclimate variability in The Coorong South Lagoon, South Australia, part of an internationally significant wetland system at the mouth of Australia's largest river, the Murray River. Oxygen isotope ratios were measured ~~from~~ *Arthritica helmsi* bivalve shells preserved in sediments. The oxygen isotope record shows periods of persistent low and high moisture balance from ~500–1050 years and ~1300–1800, respectively, which is consistent with other hydroclimate reconstructions from the region. The range of oxygen isotope values in the sedimentary shells do not differ significantly from the estimated range of modern specimens from the present day lagoon. These data suggest that the restricted and highly evaporated modern day conditions are not markedly different to the pre-impacted state over the last 1750 years, although the absence of *A. helmsi* in the contemporary lagoon is likely a response to increased salinity, nutrient loading, and anoxia during the last century. These insights are potentially useful both in guiding management efforts ~~to conserve and restore the Coorong Lagoon~~, as well as for understanding long term water resource availability in the region.

Deleted: to

Deleted: aquatic

Deleted: in

Formatted: Font: Italic

Formatted: Font: Italic

Formatted: Font: Italic

Deleted: in the currently degraded South

25 1 Introduction

Multi-decadal to centennial records of past hydroclimate variability are crucial for understanding long term climate drivers, for calibrating and validating climate models, for assessing hydroclimate sensitivity to external drivers and for estimating the probability of multi-decadal climate extremes (Ault et al., 2014; Barr et al., 2014, 2019; Cook et al., 2016; Ho et al., 2015; Kiem et al., 2016; Verdon and Franks, 2007). ~~These data can provide a temporal perspective to setting realistic benchmarks for ecological management not provided by instrumental data (Saunders and Taffs, 2009).~~ Such data are particularly important for the economic and environmental sustainability of the arid and semi-arid regions on the continents of the Southern Hemisphere. In addition, the inherent links between Southern Hemisphere hydroclimate and variability in the Southern Westerly Winds (SWW) affect oceanographic circulation and carbon cycling between the ocean and atmosphere. Recently,

the vegetation and soils in semi-arid landscapes of Australia and Africa have been shown to be major carbon sinks (Haverd et al., 2013; Ma et al., 2016; Poulter et al., 2014), placing further demand upon long term hydroclimate data in these regions.

40 To date, decadal scale records of hydroclimate variability in southern Australia covering the last two millennia are relatively rare, mostly due to a scarcity of sufficiently long tree ring chronologies and the geographically narrow distribution of lake and speleothem archives (Dixon et al., 2017; Jansen et al., 2007; Neukom and Gergis, 2011). A recent review of hydroclimate records for the past 2000 years in Australasia identified only eight 'high-quality' records from Australia, i.e. meeting the criteria for the PAGES2k network (Dixon et al., 2019). Alternative reconstructions of Australian hydroclimate variability have
45 utilised distal archives, such as Antarctic ice cores and Chinese speleothems (McGowan et al., 2009; Tozer et al., 2016; Vance et al., 2013), however major uncertainties exist concerning the stationarity of climate teleconnections when applied beyond the calibration period and geographic range (Dätwyler et al., 2018; Gallant et al., 2013). The relatively low number of high-quality records in Australia limits our understanding of the long-term influence of remote drivers of rainfall, namely the ocean-atmosphere interactions El Niño Southern Oscillation (ENSO), Interdecadal Pacific Oscillation (IPO), Indian Ocean Dipole
50 (IOD) and Southern Annular Mode (SAM) indices (Gallant et al., 2012; Risbey et al., 2009). A better understanding of natural, low frequency climate variability associated with these climate drivers, along with the reconstruction of **drought or flood dominated epochs**, could assist in placing recent events into context and aid in assessing the risks associated with future climate events (e.g. O'Donnell et al., 2021). This is especially relevant for economically important estuaries with populous catchments that are highly sensitive to climatic extremes (e.g. Scanes et al., 2020).

55 The Coorong Lagoon in South Australia is one such estuarine ecosystem for which there is limited knowledge of past hydroclimate variability (Kingsford et al., 2011; Reeves et al., 2015). The Coorong, along with Lakes Alexandrina and Albert (the Lower Lakes), form a large wetland at the mouth of the Murray River, which along with the Darling River drains the >1,000,000 km² Murray-Darling Basin (MDB). The MDB is Australia's most important agricultural region, providing around 40% of Australia's produce, while the region generally is of great economic, cultural and environmental importance to
60 Australia (MDBA, 2021). The Coorong, along with 15 other wetlands in the MDB, was recognised as a wetland of global significance by inclusion in the Ramsar Convention for Globally Significant Wetlands (Department of Agriculture, Water and the Environment, 2021) primarily due to its biodiversity, especially for waterbird species (Paton et al., 2009). Furthermore, The Coorong and Lower Lakes are a culturally important site for the Ngarrindjeri people (Ngarrindjeri Nation & Hemming, 2019). In recent years, the condition of The Coorong Lagoon has deteriorated, with rising salinity, eutrophication and declining
65 biodiversity all linked to declining river discharge due to agricultural and consumptive water extraction (Dittmann et al., 2019; Mosley et al., 2020, 2023; Priestley et al., 2022). Current management efforts are focussed on increasing system flushing and reversing eutrophication (Mosley et al., 2020, 2023) including consideration of proposals to open the South Lagoon of The Coorong to the Indian Ocean. However, as an inverse estuary, the South Lagoon of The Coorong is a unique environmental system and despite its proximity to the ocean, its natural (pre-impacted) hydrological state is not well understood (Reeves et

Deleted: 7

Deleted: , New Zealand tree rings

Deleted: : Palmer et al., 2015

Deleted: decadal to multi-decadal climate extremes such as drought or flood

Formatted: Superscript

Deleted: Kingsford et al., 2011

Deleted: :

al., 2015). In this respect, palaeo-environmental studies can provide context regarding the long-term condition of The Coorong, including the range of and resilience to natural hydroclimate variability (Saunders and Taffs, 2009).

Several studies have been undertaken to understand the palaeo-environment of The Coorong Lagoon. Many of these investigated fossil invertebrate and algal assemblages (Dick et al., 2011; Fluin et al., 2007; Krull et al., 2009; Lower et al., 2013; Reeves et al., 2015) and have concluded that the current state of the wetland is unusual in its history. However, many of the dominant species found in the assemblages have broad environmental tolerances and hence give rise to ambiguity in the interpretations. Other studies have included investigations of the carbon, nitrogen and hydrogen isotope composition of organic matter as well as lipid biomarkers as proxies for variations in the source of organic matter and salinity (McKirdy et al., 2010; Tulipani et al., 2014). These methods have found that the North and South Lagoons have been separate chemical systems for millennia (McKirdy et al., 2010) although both lagoons have experienced increased salinity levels more recently (McKirdy et al., 2010; Tulipani et al., 2014). Modern sediments have been well dated using Lead-210 (²¹⁰Pb), fallout product Caesium-137 (¹³⁷Cs), Plutonium (^{238/239/240}Pu) and the first arrival of exotic *Pinus radiata* pollen (Fluin et al. 2007; Krull et al., 2009). However, several previous studies have encountered challenges related to radiocarbon dating uncertainty, largely due to a relatively small number of dates, which make it difficult to place long term changes into a regional context (e.g McKirdy et al., 2010).

Deleted: Moreover

Deleted: ga

Formatted: Superscript

Formatted: Superscript

Formatted: Superscript

Formatted: Font: Italic

Deleted: -

Deleted: ,

Deleted: whic

Deleted: v

Formatted: Font: Italic

Deleted: sediments

Formatted: Font: Italic

Here, we use the geochemistry of the bivalve *Arthritica helmsi*, which are abundantly preserved in the sediments of The Coorong's South Lagoon, to add to the growing body of research investigating the palaeoenvironmental history of this significant wetland. A modern study of oxygen isotope fractionation in *A. helmsi* demonstrated the sensitivity of bivalve geochemistry from this species to environmental change (Chamberlayne et al., 2021). In this study, we analyse oxygen isotope ratios in shells preserved in a sediment core from the South Lagoon to (i) assess the drivers of hydrological change in the context of regional climate variability; and (ii) understand hydrological change in the South Lagoon through time.

2 Methods

2.1 Site description

The Coorong Lagoon and the Goolwa Channel comprise the River Murray estuary (Figure 1). The Coorong is separated from the Indian Ocean by Holocene dunes (Murray-Wallace, 2018) through which the Murray Mouth provides the drainage for the Murray-Darling River system. The Coorong Lagoon is a single entity; however, the constriction at Parnka Point effectively divides The Coorong into two separate basins. While the basins do not have specific names, from a hydrological, geochemical and ecological perspective they are quite distinct from each other, and recent scientific and management efforts have had a specific focus on the southern basin. As a consequence, as is the case with several other studies on The Coorong, this study adopts the informal nomenclature of the North Lagoon and South Lagoon (Figure 1). The Coorong is characterised by a north-

Deleted:

Deleted: Formally speaking,

Deleted: s

south salinity gradient of fresh to hypersaline waters (Gillanders and Munro, 2012; Shao et al., 2021). A series of barrages constructed in the 1930s to restrict marine incursions and retain freshwater in Lake Alexandrina now regulate freshwater discharges from Lake Alexandrina into The Coorong and Murray Mouth (Maheshwari et al., 1995). Currently, water in the North Lagoon is recharged by outflow from Lake Alexandrina and inflows from the Indian Ocean, while the South Lagoon is primarily recharged by direct rainfall, groundwater and continental run-off from wetlands in the southeast of the state (Chamberlayne et al., 2021; Shao et al., 2018)

2.2 Sample collection and preparation

Core C18 was extracted from the South Lagoon (Figure 1) in 2005 using a percussion corer with 50 mm internal diameter PVC pipe (Chambers and Cameron, 2001) and stored at 4°C in refrigerated facilities at The University of Adelaide. The 130 cm long core was sliced longitudinally and one half was sampled for diatom and preliminary radiocarbon analyses (Krull et al., 2009). The remaining half of the core was then cut into 1 cm intervals and freeze dried. *Arthritica helmsi* shells were picked for analysis from the dried sediment and cleaned using a brush and distilled water before being oven dried at 40 °C for 12 hours.

2.3 Chronology

The chronology for the C18 record was established via a combination of accelerator mass spectrometry (AMS ¹⁴C) radiocarbon dating and the first appearance of *Pinus radiata* pollen. Seventeen ¹⁴C dates were obtained from bivalve shells sampled throughout the core (Table S1). The exotic *Pinus radiata* pollen was first introduced to Australia by Europeans and its detection in sediments can be used as a chronostratigraphic marker for post-colonial expansion of European settlement and agriculture in the region (Tibby et al., 2003). ²¹⁰Pb and ¹³⁷Cs dating of adjacent cores in The Coorong Lagoon indicates that the first detection of *Pinus* is representative of ~1955 CE (Krull et al., 2009). In core C18, *Pinus* first appears at 9 cm depth (Krull et al., 2009). Further details of the collection, preparation and identification of *Pinus* can be found in Krull et al. (2009).

To assess the presence of 'old carbon' from groundwater which has affected radiocarbon dating in other southeast Australian lakes (Barr et al., 2014; Gouramanis et al., 2010; Wilkins et al., 2012), the ¹⁴C age for the depth corresponding to *Pinus* arrival was compared to a ²¹⁰Pb inferred ¹⁴C age (¹⁴C_{210Pb}), with uncertainty, following Barr et al. (2014). This was achieved by projecting a probability density curve based on the mean ²¹⁰Pb age and standard deviations derived from Krull et al. (2009) against the Southern Hemisphere ¹⁴C calibration curve (Hogg et al., 2020). The mean ¹⁴C age within the error bracket was used to estimate ¹⁴C_{210Pb}, weighted by its probability. The reservoir age was then estimated by subtracting ¹⁴C_{210Pb} from measured ¹⁴C, and the resulting uncertainty was calculated using following equation:

$$\sigma = \sqrt{\sigma_{res}^2 + \sigma_{atm}^2} \quad (1)$$

where σ_{res} and σ_{atm} are the errors associated with the ¹⁴C age of the reservoir-derived and atmosphere-derived objects respectively (Soulet, 2015). This old carbon effect was then subtracted from all ¹⁴C measurements from core C18 prior to

Deleted: c

calibration with the Southern Hemisphere calibration curve (Hogg et al., 2020) using the program Bacon (Blaauw and Christen, 2011) in RStudio (R Core Team, 2021).

2.4 Stable isotope analysis

In order to obtain a representative sample of the past environment, multiple individuals were combined for each analysis. Five pre-cleaned shells, collected in the 1 cm sample intervals throughout core C18 were crushed to a fine powder using an agate mortar and pestle. A sub-sample of approximately 100 µg from this carbonate powder was used for stable isotope analysis. Five valves was found to be representative of trace element variability in a larger sample (Chamberlayne, 2015) and allowed the sample size to remain consistent throughout the core. In addition, to assess the degree of intra-sample variability, multiple individual shells of *A. helmsi* were also analysed from samples taken at five depths, namely 11 cm (n=30 shells), 26 cm (n=29), 57 cm (n=27), 92 cm (n=30) and 119 cm (n=27). Data from these intervals were integrated into the final record by calculating the weighted mean of the bulk sample and replicate samples from particular depths. Samples were flushed with helium and then acidified with 105% phosphoric acid at 70°C using a Nu Instruments GasPrep device, before isotope analysis of the resulting CO₂ with a Nu Instruments Horizon isotope ratio mass spectrometer in continuous flow mode. Two aragonite laboratory standards, ANU-P3 (δ¹⁸O = -0.3‰) and UAC-1 (δ¹⁸O = -18.4‰), accounted for 27 of each 100 analyses, the precision was better than 0.12 ‰ for δ¹⁸O based on replicate analyses of these standards. Oxygen isotope data are reported as δ¹⁸O_s relative to Vienna Pee Dee Belemnite (VPDB) standard using the standard delta (δ) notation in parts per thousand (‰):

$$\delta = \left(\frac{R_{\text{sample}} - R_{\text{standard}}}{R_{\text{standard}}} \right) \times 1000 \quad (2)$$

where R is the isotope ratio (¹⁸O/¹⁶O).

2.5 Comparison of oxygen isotope ratios in core C18 and modern *Arthritica helmsi*

The oxygen isotope ratios measured on *A. helmsi* shells in core C18 were compared to both measured and predicted oxygen isotope ratios of shell carbonate in the modern North and South Lagoons. Oxygen isotope ratios for live collected individuals of *A. helmsi* from the North Lagoon were sourced from Chamberlayne et al. (2021) who measured δ¹⁸O on shells from five locations throughout the North Lagoon from 2016–2018. As there are currently no living populations of *A. helmsi* in the South Lagoon (Dittmann et al., 2019), the oxygen isotope ratio of shell carbonate was predicted using measured temperature and oxygen isotope ratios in water reported by Chamberlayne et al. (2021). Using this approach, oxygen isotope ratios of shells (δ¹⁸O_s) were predicted for hypothetical populations at Parnka Point and Jack Point using the temperature-dependent oxygen isotope fractionation equation developed for *A. helmsi* by Chamberlayne et al. (2021):

$$T \text{ (°C)} = (21.39 \pm 0.45) - (4.43 \pm 0.38) * (\delta^{18}\text{O}_{\text{shell}} - \delta^{18}\text{O}_{\text{water}}) \quad (3)$$

To determine whether the oxygen isotope compositions varied between sites, we first tested if the data sets were normally distributed using a Shapiro-Wilk test. As the data from core C18 were not normally distributed (w = 0.977, p = 0.037), Wilcoxon µ-tests were used to compare groups.

Deleted: L

Deleted: ions were made

Deleted: shell

3 Results

3.1 Chronology

185 The age offset due to ‘old carbon’ in the South Lagoon was calculated by comparing the ^{14}C age of bivalves from the depth
corresponding with the first occurrence of *Pinus* pollen in core C18. In other South Lagoon cores, alpha and gamma
spectrometry-based ^{210}Pb analyses indicate that the first occurrence of *Pinus* in the sediments dates to 1955 ± 5 CE (-5 ± 5
years BP; Fluin et al., 2007; Krull et al., 2009). This ^{210}Pb derived age was estimated to equate to 169 ± 10 ^{14}C years BP which
was subtracted from the equivalent measured radiocarbon age (985 ± 30 ^{14}C years BP) to produce an age offset of 816 ± 32
190 ^{14}C years BP. The results of AMS radiocarbon dating are summarised in Table S1. The age-depth model produced following
the application of this offset to measured radiocarbon ages is shown in Figure 2. Three samples were found to be more than
500 years older than the above or below samples and were therefore deemed to be outliers and excluded from the age-depth
model (Table S1). The weighted mean basal age for core C18 is 1755 cal yr BP (195 CE).

3.2 Oxygen isotope ratios

195 The $\delta^{18}\text{O}_s$ values measured from each centimetre of core C18 ($n=123$) ranged from 2.86 ‰ at 104 cm to 5.20 ‰ at 61 cm with
a mean of 3.95 ‰ (Figure 3a). $\delta^{18}\text{O}_s$ values were above average from ~269–439, 529–1065, 1218–1321 and 1789–2005 CE
and below average for the time periods ~195–275, 439–529, 1065–1218 and 1299–1789 CE (Figure 3a). The oxygen isotope
compositions of multiple individual *A. helmsi* shells from five intervals showed high variability (Figure 3b). The median $\delta^{18}\text{O}_s$
ranged from 4.61 ± 0.69 ‰ at 119 cm (300 CE) to 3.84 ± 0.64 ‰ at 57 cm (1321 CE; Figure 3b). Excluding outliers, the range
200 of values measured was highest at 119 cm (2.66 ‰; 300 CE) and lowest at 92 cm (0.99 ‰; 631 CE).

A Wilcoxon test indicated that the distribution of oxygen isotope values measured on aggregate samples of shells of *A. helmsi*
extracted from core C18 were not significantly different from the $\delta^{18}\text{O}_s$ values predicted by the modern water $\delta^{18}\text{O}$ and
temperature at Jacks Point ($p = 0.15$) and Parnka Point ($p = 0.18$) in the South Lagoon (Figure 5a). The range of $\delta^{18}\text{O}_s$ values
measured from core C18 was, however, narrower than that predicted for modern carbonates. When the range of measured
205 $\delta^{18}\text{O}_s$ values from the North Lagoon was compared to the values from core C18, the two populations were significantly different
($p < 0.001$; Figure 5b). To assess sampling bias, oxygen isotope values for individual *A. helmsi* shells were compared to the
 $\delta^{18}\text{O}_s$ values predicted for the modern South Lagoon and the range of measured $\delta^{18}\text{O}_s$ values from the modern North Lagoon.
In agreement with the aggregate $\delta^{18}\text{O}_s$ samples, individual $\delta^{18}\text{O}_s$ values are distinctly different from the modern North Lagoon,
yet consistent within the range of estimated $\delta^{18}\text{O}_s$ values for the South Lagoon (Figure S1).

210 4 Discussion

Proxy records of hydroclimate are required to understand variability extending past Australia’s short instrumental climate
record. This study presents variation in the oxygen isotope ratios of shells of *A. helmsi* spanning the last ~1750 years in the

South Lagoon of The Coorong. This record is constrained by 17 radiocarbon dates allowing accurate identification of the timing of hydrological change, albeit subject to the need to correct radiocarbon dates for a substantial ‘old carbon’ effect. Here, we interpret the record in context of previous studies of Coorong palaeohydrology, in addition to regional hydroclimate reconstructions. Furthermore, the possible drivers of hydrological change in The Coorong’s South Lagoon are considered.

Deleted: t

4.1 Interpreting $\delta^{18}\text{O}_s$ in South Lagoon sediments

The processes that control the fractionation of oxygen isotopes in the carbonate of *A. helmsi* were examined in a previous study of modern populations in The Coorong Lagoon (Chamberlayne et al. 2021). A temperature-dependent fractionation equation was developed in that study which determined that an increase in $\delta^{18}\text{O}_s$ by 1 ‰ corresponds to a decrease in temperature by $\sim 4.43\text{ }^\circ\text{C}$ (Chamberlayne et al., 2021; Equation 3). Alternatively, a change in water temperature by $1\text{ }^\circ\text{C}$ would be expressed as a $\sim 0.23\text{ }‰$ change in the oxygen isotope value of *A. helmsi*. As this study sampled multiple shells per sample to reduce seasonal and inter-annual bias in the signal captured by the oxygen isotope composition of shells, we interpret this record to be more heavily influenced by the isotopic composition of water rather than temperature. This interpretation is based, in part, by the relatively low variance in regional temperature reconstructions for the last 2000 years (Kaufman et al., 2020) whilst acknowledging that mainland Australia remains very poorly represented by global temperature reconstructions for recent millennia. The oxygen isotopic composition of modern Coorong waters showed a positive linear relationship with salinity, demonstrating an overriding dominance of evaporation over isotopic variability within the lagoon, although the slope and strength of this relationship varied spatially (Chamberlayne et al., 2021). As such, the oxygen isotope record developed in this study is primarily interpreted as reflecting the inflow:evaporation (I:E) water balance of the South Lagoon.

Deleted:

Deleted: the

Deleted: to

4.2 Palaeohydrology of The Coorong Lagoon and south-eastern Australia

The oxygen isotope record from *A. helmsi* implies a relatively stable hydrological state over the last ~ 1750 years, superimposed by periods of both enhanced and reduced I:E (Figure 3a). In particular, between 500-1050 CE, higher $\delta^{18}\text{O}_s$ is interpreted to reflect a period of prolonged, relatively low I:E (Figure 3a). A relatively brief period of low $\delta^{18}\text{O}_s$ occurred between ~ 1050 –1200 CE, prior to another period of high $\delta^{18}\text{O}_s$ between 1200–1300 CE (Figure 3a). This overall period of relatively dry climate in this record largely coincides with records from western Victoria, approximately 300–500 km south-east of The Coorong (Barr et al., 2014; Dixon et al., 2019; Tyler et al., 2015; Wilkins et al., 2013). Two diatom-inferred conductivity (salinity) records from Lake Surprise and Lake Elingamite indicate both drier and more variable climate during this period (Figure 4; Barr et al. 2014). Diatom-based ecological indicators, such as a greater proportion of shallow water diatom taxa suggestive of lower lake levels at these and two other lakes (Tower Hill and Lake Purrumbete) also indicate dryer climates prior to 1300 AD (Barr et al. 2014; Tyler et al. 2015). Warmer temperatures and lower lake-levels were also inferred from the increased frequency of aragonite laminae in the sediments of Lake Keilambete and Lake Gnotuk in western Victoria (Figure 4; Wilkins et al., 2013). Off the coast of South Australia proximal to the River Murray Mouth, alkenone-derived sea surface temperatures

Deleted: Oxygen isotope values measured from individual shells at

250 (SST) in the Great Australian Bight suggest a warm water anomaly from 650 to 950 CE, despite an overall cooling trend in the late Holocene (Perner et al., 2018). Chronological uncertainties preclude the precise alignment of these records, however the broad agreement suggests that a period of relatively dry climate occurred between ~ 500 to 1200 CE across south-eastern Australia (Figure 4).

Excursions in compound specific hydrogen isotope ratios of *n*-alkanes in South Lagoon sediments, alongside diatom-inferred reductions in salinity, suggested two major freshening events at ~1100 and ~1410 CE (McKirdy et al., 2010). The timing of these events, which were attributed to increased surface runoff and groundwater inflow (McKirdy et al., 2010) are broadly coincident with negative excursions in $\delta^{18}\text{O}_s$ derived in this study, although additional freshening events are inferred at around 250, 500, 1500 and 1750 CE (Figure 3a), likely artefacts of higher resolution sampling in the C18 record. Beyond this, the period between ~1300–1800 CE appears to have experienced higher I:E compared to the preceding millennium, with a possible shift towards drier conditions after ~1800 CE (Figure 3a). The timing of this wetter phase corresponds with the Little Ice Age, a period of significant global climate change including cooling over the Northern Hemisphere continents (Gebbie and Huybers, 2019). Several sites in south-eastern Australia have also recorded climates with high effective moisture during this period. Lakes in western Victoria showed reduced variability with high inferred precipitation:evaporation prior to 1840 CE (Jones et al., 2001; Tibby et al., 2018; Tyler et al., 2015). At Lake Surprise, the period is marked by a prolonged phase of low diatom-inferred conductivity (Figure 4; Barr et al., 2014) and higher lake levels are inferred for Lake Keilambete after 1500 CE (Wilkins et al., 2013). Furthermore, oxygen isotope ratios in the planktonic foraminifer species *Globigerina bulloides* from sediments in the Murray Canyons offshore South Australia indicate that the Little Ice Age was possibly a prominent cold phase (Figure 4; Moros et al., 2009).

A recent study examining coherent variability in proxy records of south-eastern Australia hydroclimate during the last 1200 years has identified two vectors interpreted to reflect hydroclimate changes (Dixon et al., 2019). The statistical analysis included eight proxy records which met stringent criteria for inclusion in the PAGES Aus2k database (Dixon et al. 2019). The analysis suggests an increase in effective moisture between 900 and 1750 CE and generally wetter conditions between 1400 and 1750 CE (Dixon et al., 2019). The agreement of the results of this regional synthesis with the interpretation of The Coorong oxygen isotope record suggests that hydroclimate variability in the South Lagoon may have been consistent with broader, regional scale variability and climate forcing.

275 Comparison of this record with others from the region is aided by the construction of the age-depth model constrained by 17 radiocarbon dates. However, three dates were excluded from the model due to being out of sequence with those above and below. One possibility is that the carbon offset applied in the model may not be constant through time due to varying inputs of 'young carbon'. Other possibilities include mixing of top sediments by storm activity or that older shells were washed into the lagoon from older shorelines. Further radiocarbon dating of adjacent cores would greatly improve the confidence in the timing of change in this record in addition to addressing these uncertainties.

Deleted: the

Deleted: 7

Deleted: This outcome is not necessarily surprising, given the size and geographic range of the Murray-Darling Basin (Gingele et al., 2007). ...

4.3 Drivers of regional hydroclimate in The Coorong and south-eastern Australia

Deleted: 2

Rainfall in south-eastern Australia is driven by multiple large-scale ocean-atmosphere interactions including ENSO, IOD and SAM which can affect autumn, summer and spring rainfall on different timescales (Gallant et al., 2012; [Holgate et al., 2022](#); Risbey et al., 2009). As such, the moisture balance in The Coorong is controlled by multiple and co-varying drivers and so is difficult to attribute to a single climate process. Of those drivers, the effect of ENSO on hydroclimate in south-eastern Australia during the last two millennia presents a conundrum, since the transition from the Medieval Climate Anomaly to Little Ice Age in the Northern Hemisphere (e.g. Wanamaker et al., 2012) is often inferred to have coincided with a shift from a more La Niña-like climate towards El Niño dominance (Mann et al., 2009; Perner et al., 2018). In south-eastern Australia, however, this shift is one towards wetter climate during the Little Ice Age in agreement with records from the western Pacific (Emile-Geay et al., 2013), thus contrasting with the expected relationship between El Niño-like climates and drought (Wang and Hendon, 2007). In a recent review of palaeoclimate informed IOD trends, variability and interactions, Abram et al. (2020b) propose that changes in mean hydroclimate from prolonged periods of drier or wetter than average conditions could be explained by changes in the strength of interannual IOD and ENSO variability rather than changes in the mean state of either forcing. Furthermore, studies of recent droughts in Australia have concluded that the lack of La Niña and negative IOD events, hence reduced interannual variability, is responsible for prolonged drought conditions (King et al., 2020; Ummenhofer et al., 2009). The shift from dry to wet conditions observed in the South Lagoon of The Coorong and other south-eastern Australian records around 1300 CE broadly coincides with a mid-millennium increase in the variability of IOD and ENSO in the eastern equatorial Indian Ocean (Abram et al., 2020a), and amplified ENSO variability in the tropical Pacific Ocean (Rustic et al., 2015).

Deleted: p

The southern westerly winds (SWW), which are largely described by the SAM index, also impact hydroclimate in south-eastern Australia (Marshall, 2003; Risbey et al., 2009), particularly the generation of frontal rainfall during the winter, albeit over shorter timescales than ENSO and the IOD (King et al., 2020). Positive phases of SAM, in association with a southerly shift of the SWW, have been related to reduced rainfall in south-eastern Australia in several studies (Cai and Cowan, 2006; Hendon et al., 2007; Risbey et al., 2009). Proxy data based reconstructions of SAM show a negative trend from ~1300 CE (Abram et al., 2014; Dätwyler et al., 2018) coinciding with the shift from dry to wet hydroclimate in the South Lagoon (Figure 4). This observation contrasts with an inferred period of dry conditions recorded by pollen and charcoal data from lake sediments in Tasmania however, which are interpreted to reflect a positive SAM anomaly between 950–1450 CE (Fletcher et al., 2018). In contrast, this period is inferred to have been a period of both wet (~1000–1200 CE) and dry (1200–1300) conditions in the South Lagoon (Figure 4). It is possible that the timing of positive SAM events could cause this variation. A high index polarity of SAM during winter has been found to result in decreased daily rainfall over southeast and southwest Australia, whereas during summer it is associated with decreased rainfall in western Tasmania but increased rainfall in the south-eastern region of mainland Australia (Hendon et al., 2007). As a consequence, differences in the seasonal effects of SAM on the climate of mainland Australia and western Tasmania may explain the apparent differences in timing of wet and dry periods between the two regions. Reconstructions of SAM during the last millennium suggest increased Austral summer

Deleted: Furthermore, low ENSO variability from 0–1000 CE (Tardif et al., 2019) corresponds with mostly dry conditions in the South Lagoon of The Coorong and in south-eastern Australia.

325 anomalies at ~1150 CE, which were not evident in annual SAM anomalies which instead peak at ~1300 CE (Figure 4; Dätwyler
et al., 2018). The temporal similarities in summer and annual positive SAM events and the wet and dry phases in the C18
record suggest that the season of SAM anomalies may therefore be an influential driver of multi-decadal to centennial scale
hydroclimate variability in the South Lagoon, and possibly over regional south-eastern Australia.

330 4.4 The pre-impacted hydrology of the South Lagoon: implications for restoration targets

The ecological demise of the South Lagoon has led to calls for drastic action to reduce salinity and nutrient loading in the
lagoon (Department for Environment and Water, 2019). The solutions considered include improvements to the connectivity
between the North and South Lagoons, and maintaining the Murray Mouth to provide greater sea-water exchange with The
Coorong (Department for Environment and Water, 2019). Such proposed actions highlight an urgent need to understand the
335 pre-impacted hydrological state of The Coorong, which in turn led to the development of this unique and iconic ecosystem.

The ubiquitous presence of *A. helmsi* in core C18, and in general in South Lagoon sediments, suggests that the lagoon provided
favourable conditions for this species prior to the 1950s (salinity <55 Wells and Threlfall, 1982). This finding is in agreement
with the evidence that the aquatic plant *Ruppia megacarpa*, which has a salinity tolerance of 2 to 50, was the dominant species
of macrophyte in the South Lagoon for the 3000 years prior to European impact (Dick et al., 2011). In addition, analyses of
340 foraminifera (Dick et al., 2011) and diatom assemblages (McKirdy et al., 2010) suggest that water salinity in the South Lagoon
was relatively stable for at least 3000 years prior to the 1950s. Estimates of the pre-European salinity of the South Lagoon
from microfossil and geochemical evidence range from estuarine (~5-30) (Dick et al., 2011) to slightly above that of seawater
(>35) (Reeves et al., 2015) based on microfauna and microflora fossil assemblages. The range of oxygen isotope values in
individual *A. helmsi* shown in Figure 3 also suggest a high range of water salinity in the past. Previous work has highlighted
345 the effect of 20th century hydrological alteration, land clearance and water abstraction in the MDB upon salinity and ecological
conditions in The Coorong (Fluin et al., 2007; Krull et al., 2009). It is during this period that *A. helmsi* disappear from core
C18 (~1965) and a black, clay-rich monosulfidic ooze appears - the result of anoxia and highly reducing conditions (Figure 2;
Krull et al., 2009). The combination of high salinity and anoxia in the South Lagoon made conditions unsuitable for *A. helmsi*
(Dittmann et al., 2019) and this, along with other environmental indicators, suggests a departure from the conditions that
350 prevailed prior to this time (Kingsford et al., 2011).

Despite the loss of *A. helmsi* shells from the sediment core, it appears that the I:E in The Coorong has remained relatively
stable for the last ~1750 years. The oxygen isotope values measured from sedimentary shells do not significantly differ from
values estimated for modern populations calculated from measured water temperature and oxygen isotope composition in the
South Lagoon (Figure 5a). While the range of the predicted modern values is broader for both Parnka Point and Jack Point
355 than those observed in core C18, the overlap in values suggests that the South Lagoon had been an isolated, highly evaporative
system for the last ~1750 years. In addition to falling within the range of predicted South Lagoon populations, the $\delta^{18}\text{O}_s$ values
from core C18 are statistically different from the $\delta^{18}\text{O}_s$ values measured from modern populations in the North Lagoon (Figure

Deleted: Ruppia

Formatted: Font: Not Italic

Deleted: water balance

360 5b), which is subject to a greater influence of seawater and river water in the past and in the modern system. The waters in which the shells from the North Lagoon were collected range in salinity from 0 to 46 and in $\delta^{18}\text{O}$ from -2.81 ‰ to 3.87 ‰ (Chamberlayne et al., 2021). The higher $\delta^{18}\text{O}_s$ values from core C18 compared to those from the modern North Lagoon suggest the South Lagoon has for the past 1750 years been a more isolated and evaporated system compared to the contemporary North Lagoon. Evidence of the North and South Lagoons being separate geochemical systems through time has also been inferred through the analysis of carbon and nitrogen isotope ratios from sediment cores from the two lagoons (McKirdy et al., 2010). Furthermore, microfauna assemblages point to the South Lagoon being more saline than the North Lagoon for at least the last millennium (Reeves et al., 2015).

While it is evident that the South Lagoon has undergone an increase in salinity over the last century, a consequence of both climate change and direct human impact, it appears that the hydrological balance of the lagoon has been relatively constant, and that additional stressors – namely eutrophication and anoxia – may have played a major role in the recent loss of biodiversity in the system. A relatively constant hydrological balance in concert with an increase in salinity also implies that the salinity of inflowing water to the South Lagoon must have changed. Such changes may have arisen due to an increase in the flux of saline groundwater, either directly into the South Lagoon along its margins (Haese et al., 2009) or into the Salt Creek tributary, which flows into the South Lagoon. While the flow of River Murray water into Lake Alexandrina and The Coorong may have been relatively unchanged prior to human impacts, the salinity of inflowing waters has increased since that time (Hart et al., 2020), which when subjected to intense evaporation may have enhanced the hypersalinity of the modern South Lagoon. This study did not analyse $\delta^{18}\text{O}$ in *A. helmsi* shells in sediments of the North Lagoon, though this would allow a comparison of the hydrology of each lagoon through time and therefore be an interesting avenue for future research.

5 Conclusions

380 This study examined hydrological change over the last 1750 years in The Coorong South Lagoon, South Australia, through the analysis of oxygen isotopes of bivalve shells preserved in lagoonal sediments. Variability in $\delta^{18}\text{O}_s$ was interpreted as an inverse function of the balance of inflow over evaporation in the South Lagoon catchment. The overall range of $\delta^{18}\text{O}_s$ values measured from shells of *A. helmsi* suggest that the modern-day hydrological balance of the South Lagoon is not markedly different to that inferred for the last 1750 years, indicating the southern basin was always a highly evaporated water body. Furthermore, the sedimentary $\delta^{18}\text{O}_s$ values differ significantly from those in the modern day North Lagoon, reinforcing previous suggestions that the two lagoons have evolved as separate systems and that the modern North Lagoon is not an analogue for the pre-impacted South Lagoon. Studies employing similar chronological and geochemical techniques on other sediment cores from the Coorong Lagoons would greatly strengthen the interpretation of this record.

390 Two extended periods of low and high inflow:evaporation were inferred from ~500 to 1050 and ~1300 to 1800 CE respectively, consistent with other hydroclimate records in the region, in turn suggesting a common driver for multi-decadal to centennial

Deleted: 4

Moved (insertion) [1]

Deleted: Two extended periods of low and high inflow:evaporation were inferred from ~500 to 1050 and ~1300 to 1800 CE respectively, consistent with other hydroclimate records in the region, in turn suggesting a common driver for multi-decadal to centennial scale hydroclimate variability in south-eastern Australia

Deleted:

400 [scale hydroclimate variability in south-eastern Australia](#). Comparison with reconstructed indices for major ocean-atmosphere
interactions suggest the importance of the timing of SAM anomalies on hydroclimate in The Coorong, [where negative SAM
405 phases corresponded to wet periods in the Coorong in agreement with previous studies](#). Changes in the variability of IOD and
ENSO may have contributed to changes in mean hydrological state. ~~Consequently, this study contributes both to our~~
understanding of the mechanisms of natural hydrological variability in south-eastern Australia, and to our knowledge of the
pre-impacted state of the South Lagoon in particular, and the ecologically significant Coorong Lagoon system generally. Such
410 data can assist in understanding the resilience of hydrological systems to long term climate change trajectories.

Data availability Statement

The original data used in this research study are archived in the Mendeley Data Repository ([Chamberlayne, Briony \(2022\),
415 "1750 years of hydrological change in southern Australia: a bivalve oxygen isotope record from The Coorong Lagoon"](#),
Mendeley Data, V1, doi: 10.17632/4vktdpckhv.1)

Acknowledgements

We acknowledge The Coorong, Lower Lakes and Murray Mouth region and surrounding areas as Ngarrindjeri Country and
415 thank the Ngarrindjeri Regional Authority for permission to undertake the coring. We would like to thank Mark Rollog for his
assistance with stable isotope analyses. This project was undertaken while BC and YS were recipients of an Australian
Postgraduate Award and Australian Graduate Research Scholarship respectively. Coring and radiocarbon dating at Waikato
University obtained by DH was funded by Australian Research Council Project LP0667819. Radiocarbon dating at the
420 Australian Nuclear Science and Technology Organisation (ANSTO) was funded by an Australian Institute of Nuclear Science
and Engineering (AINSE) Honours Scholarship to BC and an Australian National Collaborative Research Infrastructure
Strategy (NCRIS) grant to YS (ANSTO portal No. 12390).

References

- Abram, N. J., Mulvaney, R., Vimeux, F., Phipps, S. J., Turner, J. and England, M. H.: Evolution of the Southern Annular Mode
425 during the past millennium, *Nat. Clim. Chang.*, 4(7), 564–569, doi:10.1038/nclimate2235, 2014.
- Abram, N. J., Wright, N. M., Ellis, B., Dixon, B. C., Wurtzel, J. B., England, M. H., Ummenhofer, C. C., Philibosian, B., Cahyarini,
S. Y., Yu, T. L., Shen, C. C., Cheng, H., Edwards, R. L. and Heslop, D.: Coupling of Indo-Pacific climate variability over the last
millennium, *Nature*, 579(7799), 385–392, doi:10.1038/s41586-020-2084-4, 2020a.
- Abram, N. J., Hargreaves, J. A., Wright, N. M., Thirumalai, K., Ummenhofer, C. C. and England, M. H.: Palaeoclimate
430 perspectives on the Indian Ocean Dipole, *Quat. Sci. Rev.*, 237, 106302, doi:10.1016/j.quascirev.2020.106302, 2020b.

Deleted: while c

Moved up [1]: The overall range of $\delta^{18}\text{O}_s$ values measured from shells of *A. helmsi* suggest that the modern-day hydrological balance of the South Lagoon is not markedly different to that inferred for the last 1750 years, indicating the southern basin was always a highly evaporated water body. Furthermore, the sedimentary $\delta^{18}\text{O}_s$ values differ significantly from those in the modern day North Lagoon, reinforcing previous suggestions that the two lagoons have evolved as separate systems and that the modern North Lagoon is not an analogue for the pre-impacted South Lagoon.

Formatted: Font: (Default) Times New Roman

Deleted: t

- Ault, T. R., Cole, J. E., Overpeck, J. T., Pederson, G. T. and Meko, D. M.: Assessing the risk of persistent drought using climate model simulations and paleoclimate data, *J. Clim.*, 27(20), 7529–7549, doi:10.1175/JCLI-D-12-00282.1, 2014.
- 445 Barr, C., Tibby, J., Gell, P., Tyler, J., Zawadzki, A. and Jacobsen, G. E.: Climate variability in south-eastern Australia over the last 1500 years inferred from the high-resolution diatom records of two crater lakes, *Quat. Sci. Rev.*, 95, 115–131, doi:10.1016/j.quascirev.2014.05.001, 2014.
- Barr, C., Tibby, J., Leng, M. J., Tyler, J. J., Henderson, A. C. G., Overpeck, J. T., Simpson, G. L., Cole, J. E., Phipps, S. J., Marshall, J. C., McGregor, G. B., Hua, Q. and McRobie, F. H.: Holocene El Niño–Southern Oscillation variability reflected in subtropical Australian precipitation, *Sci. Rep.*, 9(1), 1–9, doi:10.1038/s41598-019-38626-3, 2019.
- 450 Blaauw, M. and Christen, J. A.: Flexible Paleoclimate Age-Depth Models Using an Autoregressive Gamma Process, *Bayesian Anal.*, 6(3), 457–474, doi:10.1214/11-BA618, 2011.
- Cai, W. and Cowan, T.: SAM and regional rainfall in IPCC AR4 models: Can anthropogenic forcing account for southwest Western Australian winter rainfall reduction?, *Geophys. Res. Lett.*, 33(24), 1–5, doi:10.1029/2006GL028037, 2006.
- 455 [Chamberlayne, B.: Late Holocene seasonal and multicentennial hydroclimate variability in the Coorong Lagoon, South Australia: Evidence from stable isotopes and trace element profiles of bivalve molluscs, Honours thesis. University of Adelaide, 2015.](#)
- Chamberlayne, B. K., Tyler, J. J. and Gillanders, B. M.: Controls Over Oxygen Isotope Fractionation in the Waters and Bivalves (*Arthritica helmsi*) of an Estuarine Lagoon System, *Geochemistry, Geophys. Geosystems*, 22(6), 1–18, doi:10.1029/2021gc009769, 2021.
- 460 Chambers, J. W. and Cameron, N. G.: A rod-less piston corer for lake sediments: An improved, rope-operated percussion corer, *J. Paleolimnol.*, 25(1), 117–122, doi:10.1023/A:1008181406301, 2001.
- Cook, B. I., Palmer, J. G., Cook, E. R., Turney, C. S. M., Allen, K., Fenwick, P., O'Donnell, A., Lough, J. M., Grierson, P. F., Ho, M. and Baker, P. J.: The paleoclimate context and future trajectory of extreme summer hydroclimate in eastern Australia, *J. Geophys. Res.*, 121(21), 12,820–12,838, doi:10.1002/2016JD024892, 2016.
- 465 Dätwyler, C., Neukom, R., Abram, N. J., Gallant, A. J. E., Grosjean, M., Jacques-Coper, M., Karoly, D. J. and Villalba, R.: Teleconnection stationarity, variability and trends of the Southern Annular Mode (SAM) during the last millennium, *Clim. Dyn.*, 51(5–6), 2321–2339, doi:10.1007/s00382-017-4015-0, 2018.
- Dick, J., Haynes, D., Tibby, J., Garcia, A. and Gell, P.: A history of aquatic plants in the Coorong, a Ramsar-listed coastal

Formatted: Font: (Default) Calibri, 10 pt

Formatted: Font: (Default) Calibri, 10 pt

Formatted: Font: (Default) Calibri, 10 pt

Formatted: Font: (Default) Calibri, 10 pt

Formatted: Font: 10.5 pt

- wetland, South Australia, *J. Paleolimnol.*, 46(4), 623–635, doi:10.1007/s10933-011-9510-4, 2011.
- 470 Dittmann, S., Gordillo, O. L. and Baring, R.: Benthic Macroinvertebrate survey 2018-2019 report Coorong, Lower Lakes and Murray Mouth Icon Site, Adelaide, SA., 2019.
- Dixon, B., Tyler, J., Henley, B. J. and Drysdale, R.: Regional patterns of hydroclimate variability in southeastern Australia over the past 1200 years, *Earth Sp. Sci. Open Arch.*, 2019.
- Dixon, B. C., Tyler, J. J., Lorrey, A. M., Goodwin, I. D., Gergis, J. and Drysdale, R. N.: Low-resolution Australasian palaeoclimate records of the last 2000 years, *Clim. Past*, 13(10), 1403–1433, doi:10.5194/cp-13-1403-2017, 2017.
- 475 Emile-Geay, J., Cobb, K. M., Mann, M. E. and Wittenberg, A. T.: Estimating central equatorial pacific SST variability over the past millennium. part II: Reconstructions and implications, *J. Clim.*, 26(7), 2329–2352, doi:10.1175/JCLI-D-11-00511.1, 2013.
- Fletcher, M. S., Benson, A., Bowman, D. M. J. S., Gadd, P. S., Heijnis, H., Mariani, M., Saunders, K. M., Wolfe, B. B. and Zawadzki, A.: Centennial-scale trends in the Southern Annular Mode revealed by hemisphere-wide fire and hydroclimatic trends over the past 2400 years, *Geology*, 46(4), 363–366, doi:10.1130/G39661.1, 2018.
- 480 Fluin, J., Gell, P., Haynes, D., Tibby, J. and Hancock, G.: Palaeolimnological evidence for the independent evolution of neighbouring terminal lakes, the Murray Darling Basin, Australia, *Hydrobiologia*, 591(1), 117–134, doi:10.1007/s10750-007-0799-y, 2007.
- Gallant, A. J. E., Kiem, A. S., Verdon-Kidd, D. C., Stone, R. C. and Karoly, D. J.: Understanding hydroclimate processes in the Murray-Darling Basin for natural resources management, *Hydrol. Earth Syst. Sci.*, 16(7), 2049–2068, doi:10.5194/hess-16-2049-2012, 2012.
- 485 Gallant, A. J. E., Phipps, S. J., Karoly, D. J., Mullan, A. B. and Lorrey, A. M.: Nonstationary Australasian teleconnections and implications for paleoclimate reconstructions, *J. Clim.*, 26(22), 8827–8849, doi:10.1175/JCLI-D-12-00338.1, 2013.
- Gebbie, G. and Huybers, P.: The little ice age and 20th-century deep pacific cooling, *Science* (80-.), 363, 70–74, doi:10.1126/science.aar8413, 2019.
- 490 Gillanders, B. M. and Munro, A. R.: Hypersaline waters pose new challenges for reconstructing environmental histories of fish based on otolith chemistry, *Limnol. Oceanogr.*, 57(4), 1136–1148, doi:10.4319/lo.2012.57.4.1136, 2012.
- Gingele, F., De Deckker, P. and Norman, M.: Late Pleistocene and Holocene climate of SE Australia reconstructed from dust and river loads deposited offshore the River Murray Mouth, *Earth Planet. Sci. Lett.*, 255(3–4), 257–272, doi:10.1016/j.epsl.2006.12.019, 2007.

- Gouramanis, C., Wilkins, D. and De Deckker, P.: 6000 years of environmental changes recorded in Blue Lake, South Australia, based on ostracod ecology and valve chemistry, *Palaeogeogr. Palaeoclimatol. Palaeoecol.*, 297(1), 223–237, doi:10.1016/j.palaeo.2010.08.005, 2010.
- Haese, R., Murray, E. and Wallace, L.: Nutrient sources, water quality, and biogeochemical processes in the Coorong, South Australia. [online] Available from: <http://scholar.google.com/scholar?hl=en&btnG=Search&q=intitle:Nutrient+sources+,+water+quality+and+biogeochemical+processes+in+the+Coorong+,+South+Australia#1>, 2009.
- Hart, B., Walker, G., Katupitiya, A. and Doolan, J.: Salinity management in the Murray-Darling Basin, *Water*, 12(6), 1829, 2020.
- Haverd, V., Raupach, M. R., Briggs, P. R., Canadell, J. G., Davis, S. J., Law, R. M., Meyer, C. P., Peters, G. P., Pickett-Heaps, C. and Sherman, B.: The Australian terrestrial carbon budget, *Biogeosciences*, 10(2), 851–869, doi:10.5194/bg-10-851-2013, 2013.
- Hendon, H. H., Thompson, D. W. J. and Wheeler, M. C.: Australian rainfall and surface temperature variations associated with the Southern Hemisphere annular mode, *J. Clim.*, 20(11), 2452–2467, doi:10.1175/JCLI4134.1, 2007.
- Ho, M., Kiem, A. S. and Verdon-Kidd, D. C.: A paleoclimate rainfall reconstruction in the Murray-Darling Basin (MDB), Australia: 2. Assessing hydroclimatic risk using paleoclimate records of wet and dry epochs, *Water Resour. Res.*, 51, 8380–8396, doi:10.1111/j.1752-1688.1969.tb04897.x, 2015.
- Hogg, A. G., Heaton, T. J., Hua, Q., Palmer, J. G., Turney, C. S., Southon, J., Bayliss, A., Blackwell, P. G., Boswijk, G., Bronk Ramsey, C., Pearson, C., Petchey, F., Reimer, P., Reimer, R. and Wacker, L.: SHCal20 SOUTHERN HEMISPHERE CALIBRATION, 0–55,000 YEARS CAL BP, *Radiocarbon*, 00(00), 1–20, doi:10.1017/rdc.2020.59, 2020.
- 515 [Holgate, C., Evans, J.P., Taschetto, A.S., Gupta, A.S., Santoso, A.: The Impact of Interacting Climate Modes on East Australian Precipitation Moisture Sources, *J. Clim.*, 35\(10\), 3147-3159, doi: 10.1175/JCLI-D-21-0750.1, 2022.](#)
- Jansen, E., Overpeck, J., Briffa, K. R., Duplessy, J.-C., Joos, F., Masson-Delmotte, V., Olago, D., Otto-Bliesner, B., Peltier, W. R., Rahmstorf, S., Ramesh, R., Raynaud, D., Rind, D., Solomina, O., Villalba, R. and Zhang, D.: Paleoclimate, in *Climate Change 2007: The Physical Science Basis. Contribution of Working Group I to the Fourth Assessment Report of the Intergovernmental Panel on Climate Change*, edited by S. Solomon, D. Qin, M. Manning, Z. Chen, M. Marquis, K. . Averyt, M. Tignor, and H. . Miller, pp. 433–497, Cambridge University Press, Cambridge, United Kingdom and New York, NY, USA., 2007.
- Jones, R. N., McMahon, T. A. and Bowler, J. M.: Modelling historical lake levels and recent climate change at three closed lakes, Western Victoria, Australia (c.1840-1990), *J. Hydrol.*, 246(1–4), 159–180, doi:10.1016/S0022-1694(01)00369-9, 2001.

- 525 Kaufman, D., McKay, N., Routson, C., Erb, M., Dätwyler, C., Sommer, P. S., Heiri, O. and Davis, B.: Holocene global mean surface temperature, a multi-method reconstruction approach, *Sci. Data*, 7(1), 1–13, doi:10.1038/s41597-020-0530-7, 2020.
- Kiem, A. S., Johnson, F., Westra, S., van Dijk, A., Evans, J. P., O'Donnell, A., Rouillard, A., Barr, C., Tyler, J., Thyer, M., Jakob, D., Woldemeskel, F., Sivakumar, B. and Mehrotra, R.: Natural hazards in Australia: droughts, *Clim. Change*, 139(1), 37–54, doi:10.1007/s10584-016-1798-7, 2016.
- King, A. D., Pitman, A. J., Henley, B. J., Ukkola, A. M. and Brown, J. R.: The role of climate variability in Australian drought, 530 *Nat. Clim. Chang.*, 10(3), 173–183, doi:10.1038/s41558-020-0712-5, 2020.
- Kingsford, R. T., Walker, K. F., Lester, R. E., Young, W. J., Fairweather, P. G., Sammut, J. and Geddes, M. C.: A Ramsar wetland in crisis the Coorong, lower lakes and Murray mouth, Australia, *Mar. Freshw. Res.*, 62(3), 255–265, doi:10.1071/MF09315, 2011.
- Krull, E., Haynes, D., Lamontagne, S., Gell, P., McKirdy, D., Hancock, G., McGowan, J. and Smernik, R.: Changes in the chemistry 535 of sedimentary organic matter within the Coorong over space and time, *Biogeochemistry*, 92(1–2), 9–25, doi:10.1007/s10533-008-9236-1, 2009.
- Lower, C. S., Cann, J. H. and Haynes, D.: Microfossil evidence for salinity events in the Holocene Coorong Lagoon, South Australia, *Aust. J. Earth Sci.*, 60(5), 573–587, doi:10.1080/08120099.2013.823112, 2013.
- Ma, X., Huete, A., Cleverly, J., Eamus, D., Chevallier, F., Joiner, J., Poulter, B., Zhang, Y., Guanter, L., Meyer, W., Xie, Z. and 540 Ponce-Campos, G.: Drought rapidly diminishes the large net CO₂ uptake in 2011 over semi-arid Australia, *Sci. Rep.*, 6(July), 1–9, doi:10.1038/srep37747, 2016.
- Maheshwari, B. L., Walker, K. F. and McMahon, T. A.: Effects of regulation on the flow regime of the river Murray, Australia, *Regul. Rivers Res. Manag.*, 10(1), 15–38, doi:10.1002/rrr.3450100103, 1995.
- Mann, M. E., Zhang, Z., Rutherford, S., Bradley, R. S., Hughes, M. K., Shindell, D., Ammann, C., Faluvegi, G. and Fenbair, N.: 545 Global Signatures and Dynamical Origins of the Little Ice Age and Medieval Climate Anomaly, *Science* (80-.), 326(November), 1256–1260 [online] Available from: <http://www.pages-igbp.org/products/2011-03-28-16-23-06/249-pages-news-vol-19-no-1>, 2009.
- Marshall, G. J.: Trends in the Southern Annular Mode from observations and reanalyses, *J. Clim.*, 16(24), 4134–4143, doi:10.1175/1520-0442(2003)016<4134:TITSAM>2.0.CO;2, 2003.
- 550 McGowan, H. A., Marx, S. K., Denholm, J., Soderholm, J. and Kamber, B. S.: Reconstructing annual inflows to the headwater

catchments of the Murray River, Australia, using the Pacific Decadal Oscillation, *Geophys. Res. Lett.*, 36(6), 1–5, doi:10.1029/2008GL037049, 2009.

McKirdy, D. M., Thorpe, C. S., Haynes, D. E., Grice, K., Krull, E., Halverson, G. P. and Webster, L. J.: The biogeochemical evolution of the Coorong during the mid- to late Holocene: An elemental, isotopic and biomarker perspective, *Org. Geochem.*, 41, 96–110, 2010.

Moros, M., De Deckker, P., Jansen, E., Perner, K. and Telford, R. J.: Holocene climate variability in the Southern Ocean recorded in a deep-sea sediment core off South Australia, *Quat. Sci. Rev.*, 28(19–20), 1932–1940, doi:10.1016/j.quascirev.2009.04.007, 2009.

Mosley, L., Priestley, S., Brookes, J., Dittmann, S., Farkaš, J., Farrell, M., Ferguson, A., Gibbs, M., Hipsey, M., Leslie, J., Huang, O., Lam-Gordillo, O., Simpson, S., Teasdale, P., Tyler, J., Waycott, M. and Welsh, D.: Coorong water quality synthesis with a focus on the drivers of eutrophication. [online] Available from: www.goyderinstitute.org, 2020.

Deleted: (

Deleted:)

[Mosley, L., Priestley, S., Brookes, J., Dittmann, S., Farkaš, J., Farrell, M., Ferguson, A., Gibbs, M., Hipsey, M., Huang, O., Lam-Gordillo, O., Simpson, S., Tyler, J., Waycott, M. and Welsh, D.: Extreme eutrophication and salinisation in the Coorong estuarine-lagoon ecosystem of Australia's largest river basin \(Murray-Darling\), *Mar Pollut. Bull.*, 188, doi.org/10.1016/j.marpolbul.2023.114648, 2023](https://doi.org/10.1016/j.marpolbul.2023.114648)

Murray-Wallace, C. V.: Quaternary History of the Coorong Coastal Plain, Southern Australia., 2018.

Neukom, R. and Gergis, J.: Southern Hemisphere high-resolution palaeoclimate records of the last 2000 years, *The Holocene*, 22(5), 501–524, doi:10.1177/0959683611427335, 2011.

O'Donnell, A. J., Mccaw, W. L., Cook, E. R. and Grierson, P. F.: Megadroughts and pluvials in southwest Australia : 1350 – 2017 CE, *Clim. Dyn.*, doi:10.1007/s00382-021-05782-0, 2021.

Palmer, J. G., Cook, E. R., Turney, C. S. M., Allen, K., Fenwick, P., Cook, B. I., O'Donnell, A., Lough, J., Grierson, P. and Baker, P.: Drought variability in the eastern Australia and New Zealand summer drought atlas (ANZDA, CE 1500-2012) modulated by the Interdecadal Pacific Oscillation, *Environ. Res. Lett.*, 10(12), doi:10.1088/1748-9326/10/12/124002, 2015.

Paton, D. C., Rogers, D. J., Hill, B. M., Bailey, C. P. and Ziembecki, M.: Temporal changes to spatially stratified waterbird communities of the Coorong, South Australia: Implications for the management of heterogenous wetlands, *Anim. Conserv.*, 12(5), 408–417, doi:10.1111/j.1469-1795.2009.00264.x, 2009.

Perner, K., Moros, M., De Deckker, P., Blanz, T., Wacker, L., Telford, R., Siegel, H., Schneider, R. and Jansen, E.: Heat export

580 from the tropics drives mid to late Holocene palaeoceanographic changes offshore southern Australia, *Quat. Sci. Rev.*, 180,
96–110, doi:10.1016/j.quascirev.2017.11.033, 2018.

Poulter, B., Frank, D., Ciais, P., Myneni, R. B., Andela, N., Bi, J., Broquet, G., Canadell, J. G., Chevallier, F., Liu, Y. Y., Running,
S. W., Sitch, S. and Van Der Werf, G. R.: Contribution of semi-arid ecosystems to interannual variability of the global carbon
cycle, *Nature*, 509(7502), 600–603, doi:10.1038/nature13376, 2014.

585 [Priestley, S.C., Tyler, J., Liebelt, S.R., Mosley, L.M., Wong, W.W., Shao, Y., Woolston, Z., Farrell, M., Welsh, D.T., Brookes, J.D.
and Collins, A.S.: N and C isotope variations along an extreme eutrophication and salinity gradient in the Coorong Lagoon,
South Australia. *Front. Earth Sci.*, 9, 1345, doi.org/10.3389/feart.2021.727971, 2022.](#)

Reeves, J. M., Haynes, D., García, A. and Gell, P. A.: Hydrological Change in the Coorong Estuary, Australia, Past and Present:
Evidence from Fossil Invertebrate and Algal Assemblages, *Estuaries and Coasts*, 38(6), 2101–2116, doi:10.1007/s12237-014-
590 9920-4, 2015.

Risbey, J. S., Pook, M. J., McIntosh, P. C., Wheeler, M. C. and Hendon, H. H.: On the remote drivers of rainfall variability in
Australia, *Mon. Weather Rev.*, 137(10), 3233–3253, doi:10.1175/2009MWR2861.1, 2009.

Rustic, G. T., Koutavas, A., Marchitto, T. M. and Linsley, B. K.: Dynamical excitation of the tropical Pacific Ocean and ENSO
variability by Little Ice Age cooling, *Science* (80-.), 350(6267), 1537–1541, doi:10.1126/science.aac9937, 2015.

595 Saunders, K. M. and Taffs, K. H.: Palaeoecology: A tool to improve the management of Australian estuaries, *J. Environ.
Manage.*, 90(8), 2730–2736, doi:10.1016/j.jenvman.2009.03.001, 2009.

Scanes, E., Scanes, P. R. and Ross, P. M.: Climate change rapidly warms and acidifies Australian estuaries, *Nat. Commun.*,
11(1), 1–11, doi:10.1038/s41467-020-15550-z, 2020.

600 Shao, Y., Farkaš, J., Holmden, C., Mosley, L., Kell-Duivesteyn, I., Izzo, C., Reis-Santos, P., Tyler, J., Törber, P., Frýda, J., Taylor,
H., Haynes, D., Tibby, J. and Gillanders, B. M.: Calcium and strontium isotope systematics in the lagoon-estuarine
environments of South Australia: Implications for water source mixing, carbonate fluxes and fish migration, *Geochim.
Cosmochim. Acta*, 239, 90–108, doi:10.1016/j.gca.2018.07.036, 2018.

605 Shao, Y., Farkaš, J., Mosley, L., Tyler, J., Wong, H., Chamberlayne, B. K., Raven, M., Samanta, M., Holmden, C., Gillanders, B.
M., Kolevica, A. and Eisenhauer, A.: Impact of salinity and carbonate saturation on stable Sr isotopes ($\delta^{88}/^{86}\text{Sr}$) in a lagoon-
estuarine system, *Geochim. Cosmochim. Acta*, 293, 461–476, doi:10.1016/j.gca.2020.11.014, 2021.

[Tibby, J., Reid, M. A., Fluin, J., Hart, B. T. and Kershaw, A. P.: Assessing long-term pH change in an Australian river catchment](#)

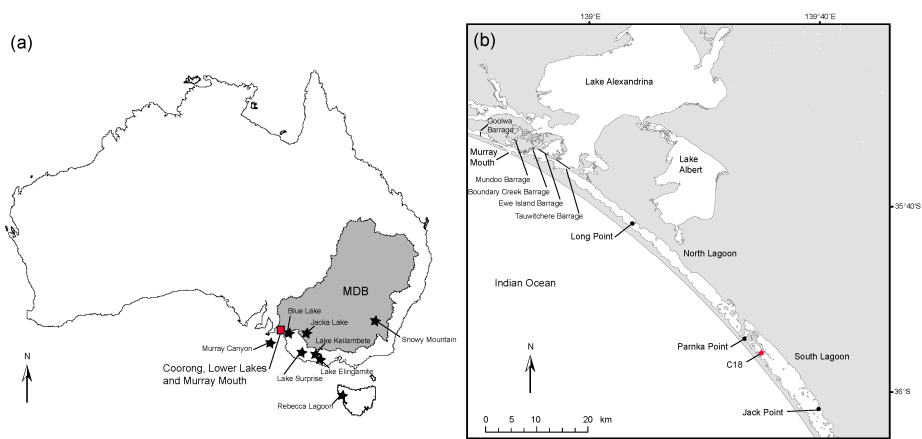
Deleted: Tardif, R., Hakim, G. J., Perkins, W. A., Horlick, K. A., Erb,
M. P., Emile-Geay, J., Anderson, D. M., Steig, E. J. and Noone, D.: Last
Millennium Reanalysis with an expanded proxy database and
seasonal proxy modeling, *Clim. Past*, 15(4), 1251–1273,
doi:10.5194/cp-15-1251-2019, 2019. [↗](#)

- using monitoring and palaeolimnological data, *Environ. Sci. Technol.*, 37(15), 3250–3255, doi:10.1021/es0263644, 2003.
- Tibby, J., Tyler, J. J. and Barr, C.: Post little ice age drying of eastern Australia conflates understanding of early settlement impacts, *Quat. Sci. Rev.*, 202, 45–52, doi:10.1016/j.quascirev.2018.10.033, 2018.
- 615 Tozer, C. R., Vance, T. R., Roberts, J. L., Kiem, A. S., Curran, M. A. J. and Moy, A. D.: An ice core derived 1013-year catchment-scale annual rainfall reconstruction in subtropical eastern Australia, *Hydrol. Earth Syst. Sci.*, 20(5), 1703–1717, doi:10.5194/hess-20-1703-2016, 2016.
- Tulipani, S., Grice, K., Krull, E., Greenwood, P. and Revill, A. T.: Salinity variations in the norther Coorong Lagoon, South Australia: Significant changes in the ecosystem following human alteration to the natural water regime, *Org. Geochem.*, 75, 620 74–86, 2014.
- Tyler, J. J., Mills, K., Barr, C., Sniderman, J. M. K., Gell, P. A. and Karoly, D. J.: Identifying coherent patterns of environmental change between multiple, multivariate records: an application to four 1000-year diatom records from Victoria, Australia, *Quat. Sci. Rev.*, 119, 94–105, doi:10.1016/j.quascirev.2015.04.010, 2015.
- Ummenhofer, C. C., England, M. H., McIntosh, P. C., Meyers, G. A., Pook, M. J., Risbey, J. S., Gupta, A. Sen and Taschetto, A. 625 S.: What causes southeast Australia’s worst droughts?, *Geophys. Res. Lett.*, 36(4), 1–5, doi:10.1029/2008GL036801, 2009.
- Vance, T. R., Van Ommen, T. D., Curran, M. A. J., Plummer, C. T. and Moy, A. D.: A millennial proxy record of ENSO and eastern Australian rainfall from the law dome ice core, east Antarctica, *J. Clim.*, 26(3), 710–725, doi:10.1175/JCLI-D-12-00003.1, 2013.
- Verdon, D. and Franks, S. W.: Long-term drought risk assessment in the Lachlan River Valley – a paleoclimate perspective, *Australas. J. Water Resour.*, 11(2), 145–152, doi:10.1080/13241583.2007.11465319, 2007.
- 630 Wanamaker, A. D., Butler, P. G., Scourse, J. D., Heinemeier, J., Eiriksson, J., Knudsen, K. L. and Richardson, C. A.: Surface changes in the North Atlantic meridional overturning circulation during the last millennium, *Nat. Commun.*, 3(May), doi:10.1038/ncomms1901, 2012.
- Wang, G. and Hendon, H. H.: Sensitivity of Australian rainfall to inter-El Niño variations, *J. Clim.*, 20(16), 4211–4226, doi:10.1175/JCLI4228.1, 2007.
- 635 Wilkins, D., De Deckker, P., Fifield, L. K., Gouramanis, C. and Olley, J.: Comparative optical and radiocarbon dating of laminated Holocene sediments in two maar lakes: Lake Keilambete and Lake Gnotuk, south-western Victoria, Australia, *Quat. Geochronol.*, 9, 3–15, doi:10.1016/j.quageo.2012.01.008, 2012.
- Wilkins, D., Gouramanis, C., De Deckker, P., Fifield, L. K. and Olley, J.: Holocene lake-level fluctuations in Lakes Keilambete

and Gnotuk, southwestern Victoria, Australia, *The Holocene*, 23(6), 784–795, doi:10.1177/0959683612471983, 2013.

640

645



650

Figure 1: (a) Map of Australia showing the location of: the Murray-Darling Basin (MDB); Coorong, Lower Lakes and Murray Mouth (red box); and proxy records included in the synthesis of south-eastern Australian hydroclimate records by Dixon et al. (2019; black stars). (b) Map of The Coorong, Lower Lakes and Murray Mouth, with the location for core C18 highlighted with a red star.

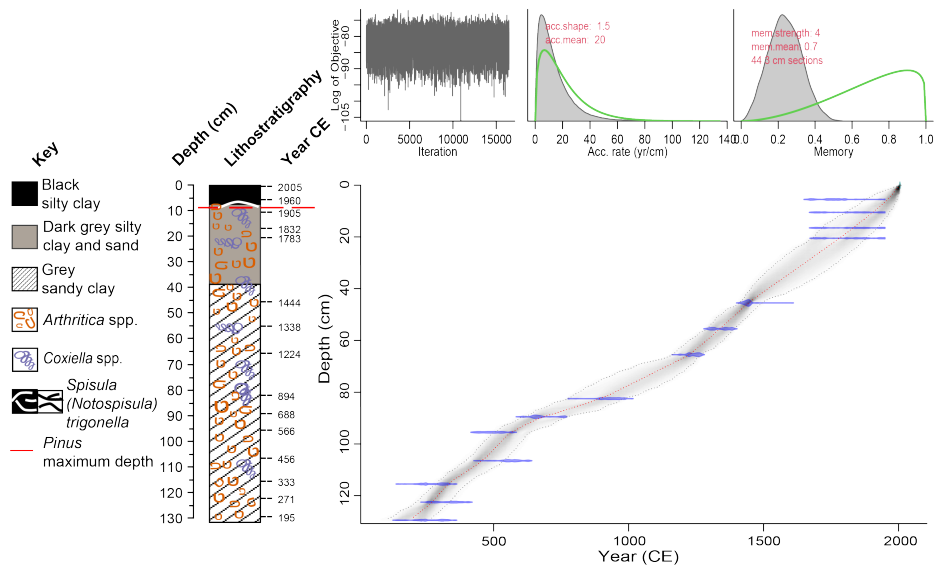
655

Deleted: <object>

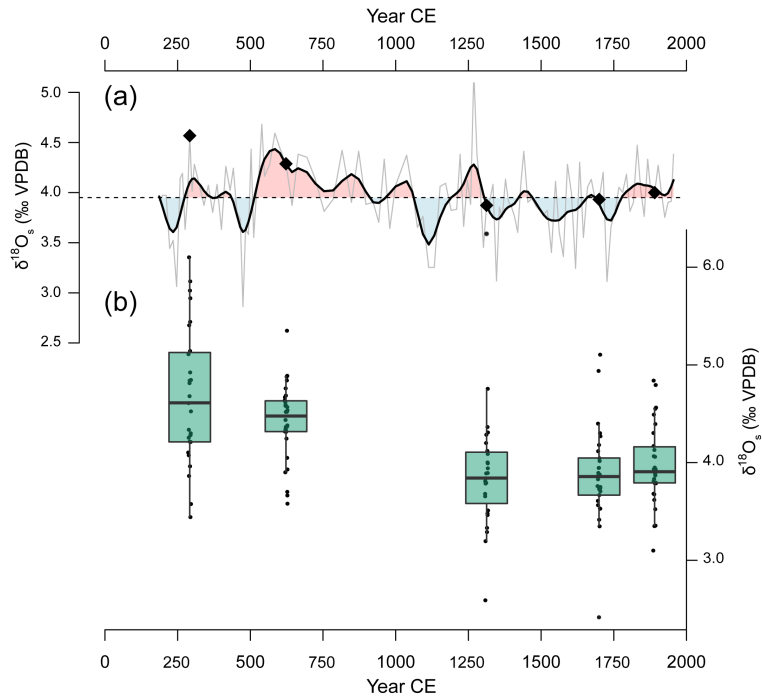
Deleted: – the wetland at the terminus of the Murray-Darling River system in the Murray-Darling Basin (MDB) highlighted in blue

Deleted: . T

Deleted: is

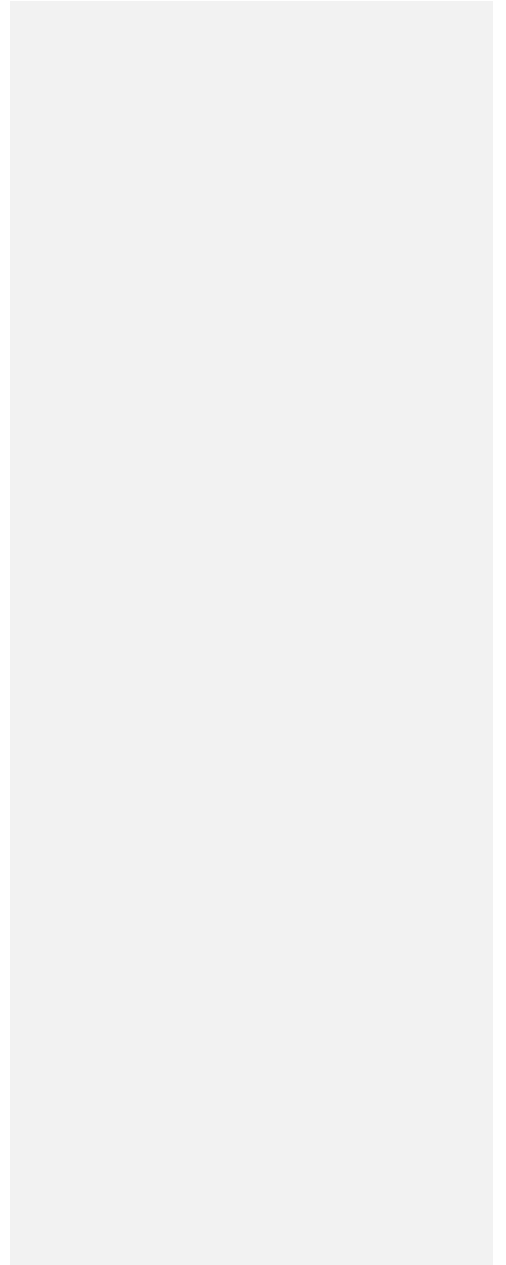


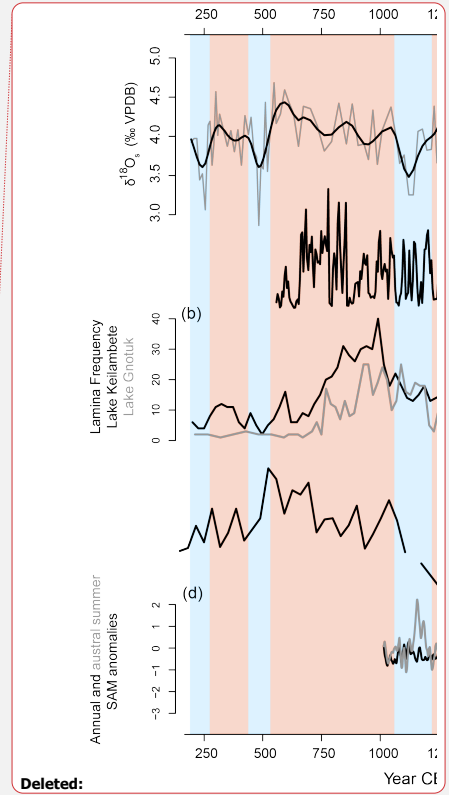
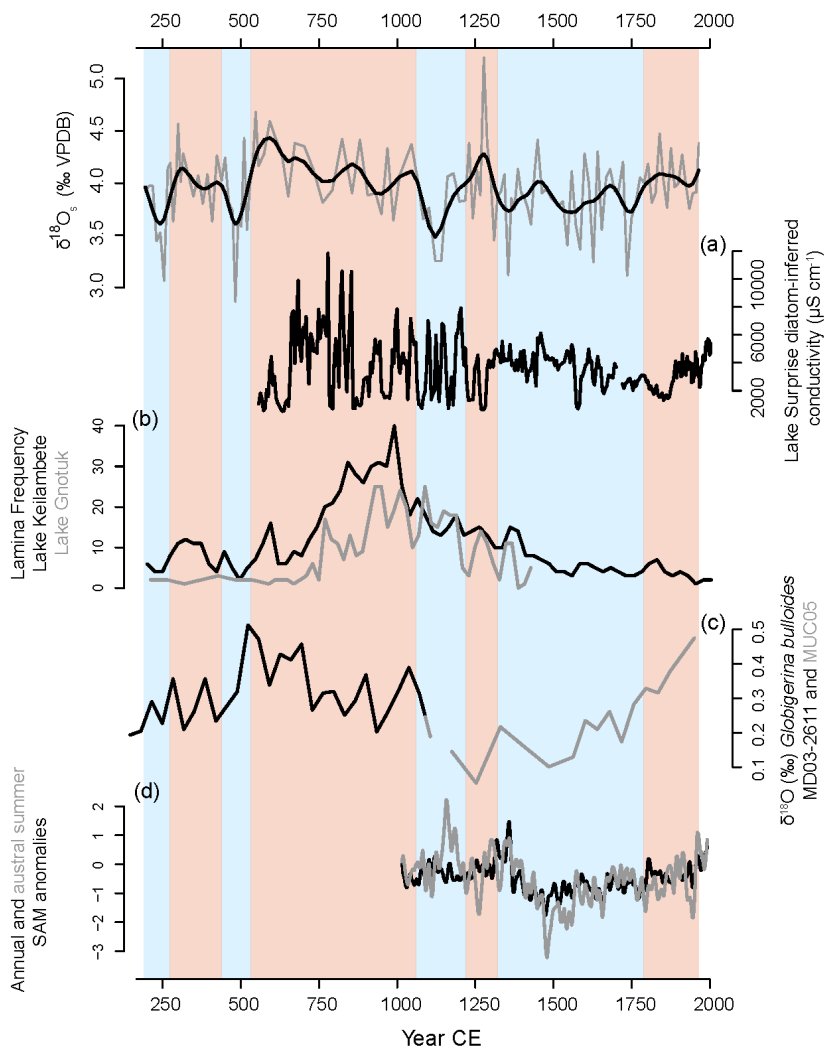
665 Figure 2: Age-depth model and lithostratigraphy for core C18. Blue markers show the probability distributions for each dated sample. Grey dotted lines indicate modelled 95% confidence intervals, where darker shading indicate more likely ages. The modelled weighted mean age is shown by the red dotted line. Upper panels indicate the iterations performed, accumulation rate and memory used to construct the model.



670 Figure 3: *Arthritica helmsi* oxygen isotope ratios from core C18 plotted against time. In (a) the grey line represents a bulk
 675 measurement (n = 5) from each centimetre of C18. The dashed line indicates the mean of all values and the bold line is a smooth
 spline (spar = 0.4). Blue shading indicates periods of below mean $\delta^{18}\text{O}_s$, while the red shading indicates periods of above mean $\delta^{18}\text{O}_s$.
 Black diamonds indicate where data from multiple individuals (n ≥ 27) are incorporated into the bulk curve. (b) Boxplots of oxygen
 isotope ratios of *A. helmsi* shells. Data are obtained from analyses of multiple individual shells from depths corresponding to age 300
 (n = 30), 631 (n = 29), 1321 (n = 27), 1708 (n = 30) and 1899 years CE (n = 27).

680



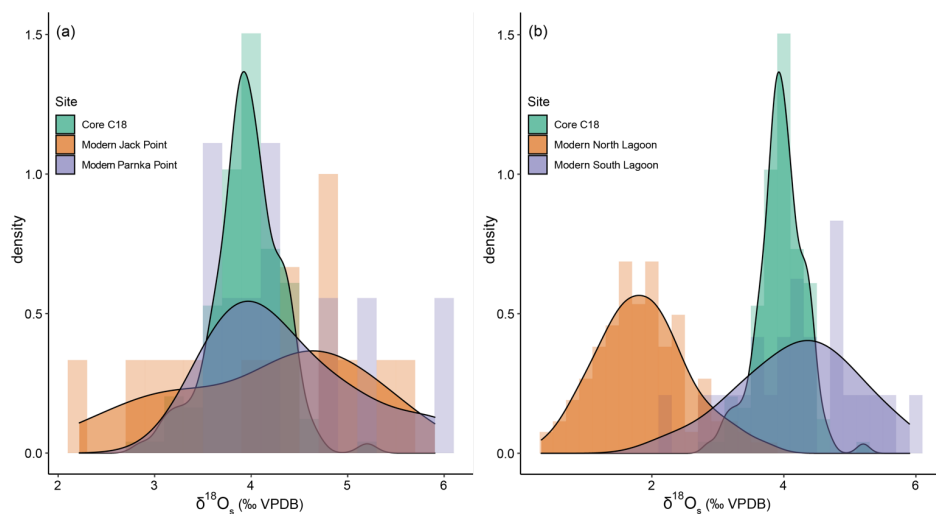


Deleted:

690

Figure 4: $\delta^{18}\text{O}_s$ from core C18 *A. helmsi* shells compared against: (a) Diatom-inferred lake conductivity from Lake Surprise, SEA* (Barr et al., 2014); (b) lamina frequency in Lakes Keilambete and Gnotuk, SEA* (Wilkins et al., 2013); (c) $\delta^{18}\text{O}$ *Globigerina bulloides* Murray Canyon cores MD03-2611 and MUC05* (Moros et al., 2009); (d) Austral summer and annual mean SAM index reconstructions (Dätwyler et al., 2018). Red and blue shading represents periods of higher and lower than average *A. helmsi* $\delta^{18}\text{O}_s$, respectively. Records with a * were included in the synthesis by Dixon et al. (2019).

695



700

Figure 5: Density plots with histograms of *A. helmsi* $\delta^{18}\text{O}_s$, comparing values from core C18 with (a) modern locations in the South Lagoon and (b) the North and South Lagoon. Modern $\delta^{18}\text{O}_s$ values for the North Lagoon are sourced from Chamberlayne et al. (2021). $\delta^{18}\text{O}_s$ values for the modern South Lagoon sites Jack Point and Parnka Point are calculated from temperature and $\delta^{18}\text{O}_w$ values from Chamberlayne et al. (2021) using the oxygen isotope fractionation equation developed in that study.

Supplementary information

705

Table S1. Results from the AMS ^{14}C analyses used to construct the age model in Bacon (Blaauw and Christen, 2011). Italicised samples were identified as outliers and excluded from the age model. Calibrated years BP (Cal yr BP) represents the 'best' estimation of calibrated age calculated in the age model where present is 1950 CE. Samples with prefix '-Wk' were dated at Waikato University,

those with the prefix 'OZ' were dated at the Australian Nuclear Science and Technology Organisation (ANSTO) AMS facility (Fink et al. 2004).

Laboratory ID	Sample type	¹⁴ C age	¹⁴ C age with offset applied	1σ error	Depth (cm)	Cal yr BP	710
surface		-55	-55	1	0	-55	
OZZ021	<i>A. helmsi</i> shell	1030	214	32	5.5	-10	
OZS803	<i>A. helmsi</i> shell	1720	904	27	9.5	33	
OZZ022	<i>A. helmsi</i> shell	985	169	32	10.5	45	
OZZ023	<i>A. helmsi</i> shell	985	169	32	16.5	117.5	715
OZS804	<i>A. helmsi</i> shell	985	169	27	20.5	167.5	
Wk-24750	<i>A. helmsi</i> shell	1584	768	32	30.5	302.5	
OZZ024	<i>A. helmsi</i> shell	1575	759	36	30.5	302.5	
OZS805	<i>A. helmsi</i> shell	1320	504	27	45.5	506	
OZZ025	<i>A. helmsi</i> shell	1505	689	32	55.5	612.5	
OZS806	<i>A. helmsi</i> shell	1665	849	22	65.5	726	720
Wk-24751	<i>A. helmsi</i> shell	1987	1171	32	82.5	1056.5	
OZZ026	<i>A. helmsi</i> shell	2235	1419	35	89.5	1262	
OZS807	<i>A. helmsi</i> shell	2420	1604	27	95.5	1384	
OZZ027	<i>A. helmsi</i> shell	2365	1549	32	106.5	1494	
OZS808	<i>A. helmsi</i> shell	2630	1814	27	115.5	1617.5	
OZZ028	<i>A. helmsi</i> shell	2565	1749	36	122.5	1679	
Wk-24752	<i>A. helmsi</i> shell	2638	1822	32	129.5	1755	