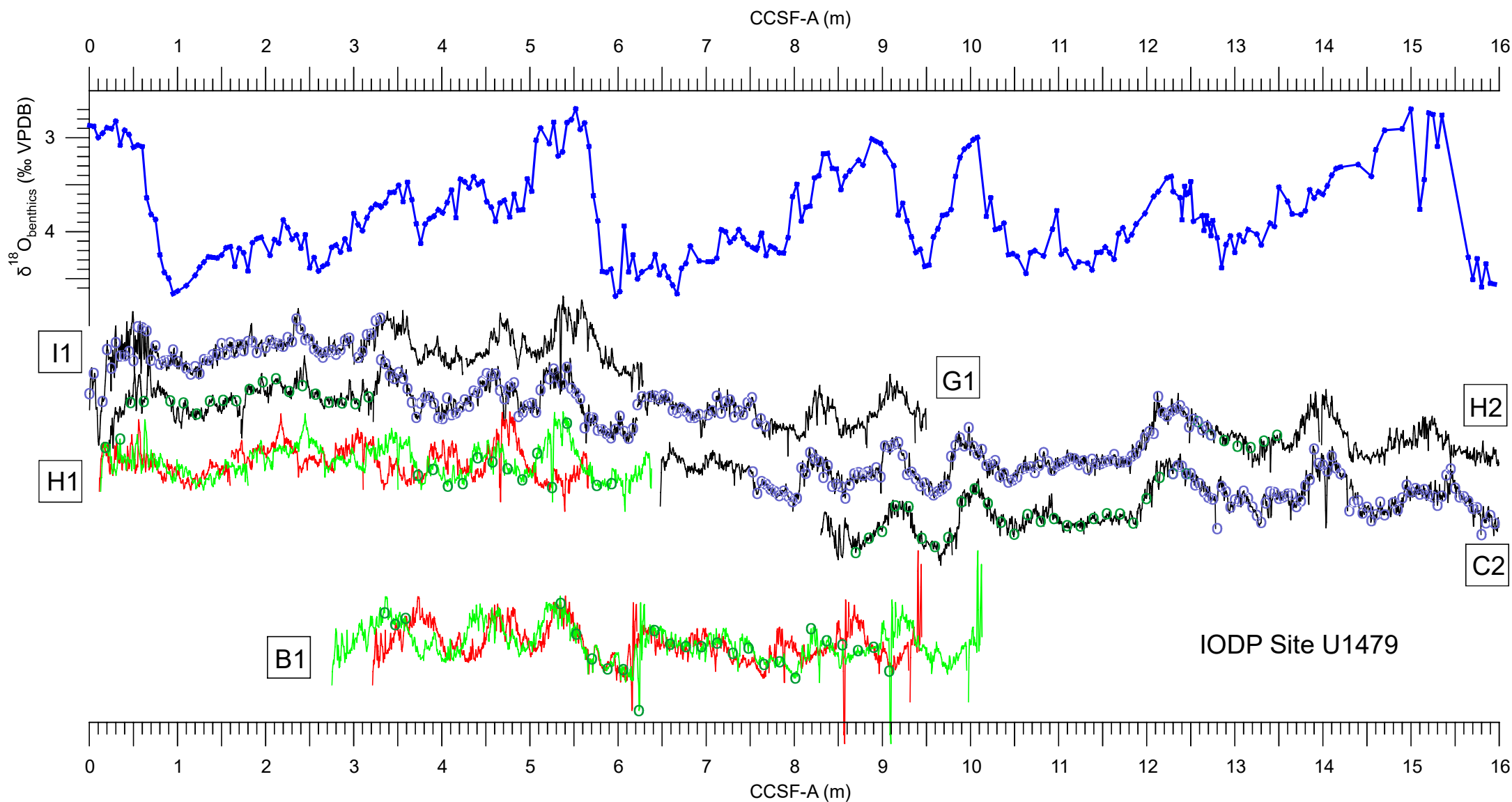


Supplementary Figure 1. Correlation of upper cores of Holes C, B, G, H and I of IODP Site U1479 using the green channel of the color scan (Hall et al., 2017 and Shipboard data). On top the stable oxygen isotopes of *Planulina wuellerstorfi*. VPDB, Vienna standard PeeDee Belemnite.



Green channel

Original CCSF Cores C2, G1, I1, H2

Original CCSF Cores B1 & H1

New CCSF Cores B1 & H1

$B1 = 6.5/5.49 \cdot (B1-3) + 2.5$

$H1 = 6.76 / (H1 \cdot 6)$

$\delta^{18}\text{O}_{\text{benthics}}$  Cores I1, G1, H2 C2 (splice)

o pollen samples

o isotope samples