

# Carbon accumulation rates of Holocene peatlands in central-eastern Europe document the driving role of human impact for the past 4000 years

Jack Longman<sup>1</sup>, Daniel Veres<sup>2</sup>, Aritina Haliuc<sup>2,3</sup>, Walter Finsinger<sup>4</sup>, Vasile Ersek<sup>5</sup>, Daniela Pascal<sup>6,7</sup>,  
5 Tiberiu Sava<sup>6</sup>, Robert Begy<sup>8</sup>

<sup>1</sup>Marine Isotope Geochemistry, Institute for Chemistry and Biology of the Marine Environment (ICBM), University of Oldenburg, 26129, Oldenburg, Germany

<sup>2</sup>Romanian Academy, Institute of Speleology, 400006 Cluj-Napoca, Romania

<sup>3</sup>EPOC, UMR 5805, Université de Bordeaux, Pessac, France

10 <sup>4</sup>ISEM, University of Montpellier, CNRS, EPHE, IRD, 34095, Montpellier, France

<sup>5</sup>Department of Geography and Environmental Sciences, Northumbria University, Newcastle-upon-Tyne, NE1 8ST, UK

<sup>6</sup>RoAMS Laboratory, Horia Hulubei National Institute for Physics and Nuclear Engineering, Reactorului 30, 077125, Măgurele-Bucharest, Romania

<sup>7</sup>University of Bucharest, Faculty of Geography, Bd. Nicolae Bălcescu 1, 030018, Bucharest, Romania

15 <sup>8</sup>Interdisciplinary Research Institute on Bio-Nano-Science, Babes-Bolyai University, Treboniu Laurian 42, 400271, Cluj-Napoca, Romania

*Correspondence to:* Jack Longman (jack.longman@uni-oldenburg.de)

**Abstract.** Peatlands are one of the largest terrestrial carbon sinks on the planet, yet little is known about carbon accumulation rates (CARs) of mountainous peatlands. The long-term variability in the size of the associated carbon sink and its drivers  
20 remain largely unconstrained, especially when long-term anthropogenic impact is also considered. Here we present a composite CAR record of nine peatlands from central-eastern Europe (Romania and Serbia) detailing variability in rates of carbon accumulation during the Holocene. We show examples of extremely high long-term rates of carbon accumulation (LORCA  $>120 \text{ g C m}^{-2} \text{ yr}^{-1}$ ), indicating that at times, mountain peatlands constitute an efficient regional carbon sink. By comparing our data to modelled palaeoclimatic indices and to measures of anthropogenic impact we disentangle the drivers of  
25 peat carbon accumulation in the area. Variability in early and mid-Holocene CARs is linked to hydroclimatic controls, with high CARs occurring during the early Holocene and lower CARs associated with the transition to cooler and moister mid-Holocene conditions. By contrast, after 4000 years (calibrated) before present (yr BP) the trends in CARs indicate a divergence from hydroclimate proxies, suggesting that other processes became the dominant drivers of peat CARs. We propose that enhanced erosion following tree cover reduction as well as increased rates of long-distance atmospheric dust fallout might  
30 have played a role as both processes would result in enhanced mineral and nutrient supply to bog surfaces, stimulating peatland productivity. Surprisingly though, for the last 1000 years, reconstructed temperature is significantly correlated with CARs, with rising temperatures linked to higher CARs. We suggest under future climate conditions, predicted to be warmer in the region, peat growth may expand, but that this is entirely dependent upon the scale of human impact directly affecting the sensitive hydrological budget of these peatlands.

35

## 1 Introduction

Peatlands are some of the most proficient mediums for long-term carbon (C) sequestration in the terrestrial environment (Loisel et al., 2014), with the C sink in globally distributed peatlands estimated to be as high as c.600 gigatonnes (Gt) C (Dargie et al., 2017; Yu et al., 2010). This carbon sink has developed primarily during the Holocene, but rates of development vary both  
40 temporally and spatially, driven by shifts in nutrient availability (Kylander et al., 2018; Ratcliffe et al., 2020), moisture and temperature (Charman et al., 2013; Loisel et al., 2014; Yu et al., 2010), and the speed at which accumulated peat decomposes (Clymo et al., 1998). Specifically, warmer and wetter climates tend to lead to higher peat carbon accumulation rates (CARs) (Loisel et al., 2014), as warmer temperatures stimulate peat growth more than organic matter decomposition (Charman et al., 2013, 2015; Yu et al., 2010).

45 As such, understanding the history of carbon accumulation in peatlands is important for critically assessing the terrestrial carbon cycle in our anthropogenically altered world (Hugelius et al., 2020; Loisel et al., 2021). Model-derived estimates of future climatic change suggest that peatlands will act as an efficient carbon sink as climate warms (Gallego-Sala et al., 2018), as observed in reconstructions of warm periods in Earth's past (Treat et al., 2019). However, this conclusion is far from certain, as land-use driven degradation of peat since the 1960s have led to peatlands acting as a net source of carbon (Leifeld et al.,  
50 2019). Land use and peatland degradation played a major role in anthropogenic carbon release long before the 1960s, with evidence that humans progressively altered the terrestrial carbon cycle for the last 7000 years (Kaplan et al., 2011; Ruddiman et al., 2011). Greater land exploitation leads to enhanced carbon release, so this trend will likely continue as human pressure on land use is expected to increase (Kaplan et al., 2011; Ruddiman and Ellis, 2009).

For individual peatlands, fire and grazing disturbances negatively impact peatland development (Nieveen et al., 2005; Worrall  
55 and Clay, 2012), due to the loss of surface peat or changes to local vegetation (Garnett et al., 2000; Kuhry, 1994). Furthermore, draining of wetlands and the extraction of peat plays a major role in both long-term carbon accumulation in peat and its short-term release back into the atmosphere (Holden et al., 2011; Turetsky et al., 2011), with hydrological shifts potentially altering the ecology of bogs (Tahvanainen, 2011). Furthermore, climate change also influences the stability of the extensive northern hemisphere boreal peatlands, potentially resulting in the enhanced release of methane, thus further exacerbating the effects of  
60 rising global temperatures (Schaefer et al., 2014; Schuur et al., 2015). Finally, it is possible that increased erosion as a result of forest removal either by human actions or natural causes may lead to increased mineral in-wash (Longman et al., 2017a), with dust deposition potentially stimulating peat growth (Kylander et al., 2018). Due to the complex relations between these factors, and the equally complex response of peat environments, the interaction of anthropogenic disturbances and peat growth over long timescales, and on peat CARs is as yet unclear.

65 Mountain bogs are rarely considered in estimates of carbon storage (Chen et al., 2014), likely due to their limited extent when compared to tropical and boreal marshes and peatlands (Dargie et al., 2017; Loisel et al., 2014). This lack of studies extends to the Carpathian Mountains, the second largest European mountain range, which stretches for nearly 1500 km from Czechia to Serbia (Fig. 1). In the Carpathians, only one high-resolution study of CARs has been completed at Tăul Muced, Romania,

indicating that about 250 tonnes (t) C may have been sequestered over the past 7000 years (Panait et al., 2017). This is  
70 insignificant in isolation, but when all mountain peatlands from this mountain range (Pop, 1960), which include substantially  
larger bogs such as Mohos in eastern Romania, roughly 40 times larger (Longman et al., 2017b), are considered, it may be that  
Carpathian bogs constitute an important carbon sink for the overall carbon budget, one which may represent a regionally  
important carbon stock.

Here we present CARs for nine bogs in central-eastern Europe, reconstructing variability of carbon accumulation for the past  
75 10,000 years. By combining these reconstructions with changepoint-modelling and proxies of past hydroclimatic variability,  
we assess the drivers of carbon accumulation in mountain regions. We provide a first estimate of carbon storage in these  
environments, and investigate the extent to which human activity in mountain regions may have impacted on the peatland  
accumulation rates throughout the Holocene.

## 2 Methods and Materials

### 80 2.1 Site Locations and Coring

We analysed the organic matter content of 8 bogs in Romania (n=6) and Serbia (n=2) (see Figure 1 and Table 1), and combined  
it with data from the previously published CAR from Tăul Muced (TM) bog (Panait et al., 2017). All new sites in this study  
were cored using a Russian corer, with samples immediately wrapped in cling film and shipped to laboratories for description  
and analysis.

### 85 2.2 Age Modelling

For all bogs, radiocarbon accelerator mass spectrometry (AMS  $^{14}\text{C}$ ) dating analyses were completed to estimate the age of peat  
accumulation. The majority of samples were taken from 1cm slices of bulk sediment/peat, an approach which has been shown  
to yield reliable age information (Holmquist et al., 2016). The samples from Despotovac (DES), Mluha (MLH) and Iezerul  
Mare (IZM) sites were pre-treated and measured at RoAMS laboratory in IFIN-HH according to the protocols described in  
90 Sava et al. (2019). Samples from Sureanu (SUR), Zanoaga Rosie (ZNG), MLH and Mohos (MOH) bogs were measured at the  
HEKAL AMS Laboratory, MTA ATOMKI Institute for Nuclear Research of the Hungarian Academy of Sciences in Debrecen.  
5 dates from SUR were analysed by the  $^{14}\text{C}$  Centre at Queen's University Belfast (Longman et al., 2017a). Samples from  
Crveni Potok (CP) were analysed on extracted plant macrofossils at the Poznan Radiocarbon Laboratory (Finsinger et al.,  
2017). Samples from Baia Vulturilor (BVU) were measured at the Center for Physical Sciences and Technology Vilnius,  
95 Lithuania. A summary of the radiocarbon dates and laboratory procedures for each investigated bog is found in Supplementary  
Table 1. Age-depth modelling was completed using Bacon (Blaauw and Christen, 2011), with ages calibrated using IntCal20  
(Reimer et al., 2020), and the models presented in Supplementary Figures 1-8. For TM, we used the published age model of  
Panait et al. (2017).

### 2.3 Carbon Accumulation Rate (CARs) Calculations

100 For each bog samples of exactly 1cm<sup>3</sup> were taken and dried before being weighed to estimate dry bulk density. Organic content was then measured via loss-on-ignition, performed in a muffle furnace at 550°C, and calculated by comparing the weight pre- and post-ignition (Heiri et al., 2001; Veres, 2002). Organic content was converted to carbon density by assuming 50% carbon (c.f. Turunen et al., 2002). Samples from Sureanu (SUR; Longman et al., 2017a) and Mohos (MOH; Longman et al., 2017b) were analysed at the University of Northumbria. Samples from Baia Vulturilor (BVU), Zanoaga Rosie (ZNG), Despotovac  
105 (DES), Mluha (MLH) and Iezerul Mare (IZM) were analysed at the Institute for Speleology, Romanian Academy in Cluj-Napoca, whilst samples from Crveni Potok (CP; Finsinger et al., 2017) were analysed at the University of Montpellier. Carbon accumulation rates (CAR) were calculated by dividing the carbon content of each sample by the modelled peat accumulation rate following Ratcliffe et al. (2020) (Fig. 2).

To estimate the size of the carbon sink represented by the studied bogs, we calculate long-term apparent carbon accumulation  
110 rates (LORCA) (Clymo et al., 1998; Turunen et al., 2002) and the amount of carbon stocked by the bogs. LORCA (the cumulative carbon in the core divided by the basal age) is calculated by multiplying the median carbon (C) content by the median density and the depth of the peat accumulation, before dividing through by the basal age of the bog. This provides a first order estimate of the rate at which each bog accumulated carbon on a long-term scale, and can be used to calculate the carbon stock (in gigatonnes, Gt), represented by each bog using the following equation:

$$115 \quad C \text{ stock (Gt)} = (A \times h) \times \bar{\rho} \times \bar{c} / 10^9 \quad (\text{Eq. 1})$$

Where  $A$  is the peatland area (in km<sup>2</sup>),  $h$  is the peat depth (in cm),  $\bar{\rho}$  is the median peat density (in g cm<sup>-3</sup>) and  $\bar{c}$  is the median carbon content (in %) (Page et al., 2011). As we do not account for decomposition, all rates presented here (e.g. LORCA, RERCA and CAR) are apparent and not calculated from a net carbon balance.

### 2.4 Statistical Analysis

120 To investigate the time series data generated by this approach, we use changepoint-modelling (Gallagher et al., 2011). This allows for the inference of statistically significant shifts in the dataset, meaning we can better investigate the drivers of change. To investigate the impact of past climate and moisture variability on the CARs of individual sites in discreet periods, we calculate average CARs for three periods of both climatic and human-impact interest: the Roman Warm Period (RWP; 2200 – 1550 yr BP), the Medieval Warm Period (MWP; 950 – 1250 CE) and the Little Ice Age (LIA; 1300 – 1850 CE). We also  
125 calculated the apparent recent rate of carbon accumulation (RERCA) for the period from 50 yr BP to present (Table 1). However, the RERCA values should be treated with caution because CAR values in the uppermost layers of peat may vary due to the exponential nature of peat decay (Clymo et al., 1998; Young et al., 2019). Further, the resolution of radiocarbon dating for the most recent 100 years is too low for meaningful conclusions for a number of the bogs. Therefore, we also quantified the amount of carbon accumulation for the past 1000 years (see Table 2 for all average values), following Gallego-  
130 Sala et al. (2018), and focus our discussion on longer-term CAR variability.

To estimate the total size of peatland carbon sink in the Romanian Carpathians selected due to the availability of data survey on peatland extent, we used the mean carbon content and the mean bulk density from the 8 peat bogs, and total bog area and bog depth from Pop (1960), and applied Equation 1 to these data. To account for uncertainties, we used a 1-SD for our new data, and applied a 10% error to Pop (1960) prior to estimating the peatland carbon sink with Monte Carlo simulations (Supplementary Table 2). Repeat Monte Carlo simulations (n=10,000) were employed to estimate each of the variables, using the R package truncnorm, and boundaries dictated by the data (Supplementary Figure 9).

## 2.5 Composite CAR record and data-model comparison

To interpret the effect of past hydroclimatic drivers on the Romanian Carpathian mountain peatlands, we synthesise all datasets, resulting in a representative record of CAR across the Middle and Late Holocene in the region (Fig. 3). To achieve this, for each individual site, we bin all data at 50-year intervals. For these bins, we consider the 25 years either side of the bin age (i.e., the 0 yr BP bin covers the period 26 to -25 yr BP). To allow for comparison across sites, we convert these raw binned CAR data into z-scores. We then calculate mean and standard deviation values for each of the bins, for all studied sites. This approach allows for the interpretation of large-scale changes in CAR for a region across a long time period. As individual CARs are highly variable, with numerous stochastic and site-specific forcing factors, averaging multiple records provides insights into broad scale factors controlling regional CARs (Loisel et al., 2021; Marlon et al., 2016).

To compare our composite CAR output to modelled palaeoclimatic indices, we use data from PaleoView (Fordham et al., 2017). From PaleoView, we extracted 6 parameters related to past precipitation and temperature variability, with each temperature variable expressed as a z-score relative to recent (i.e., present day set as 1975 CE, or -25 yr BP in the model). For each variable, we use the mean area extracted from the region  $40^{\circ} - 47.5^{\circ}$  N,  $17.5^{\circ} - 27.5^{\circ}$  E, which covers all sites in this study (Fig. 1).

To investigate the effect of other potential drivers, we compare the composite output to three measures of human impact and land use (population, area of pasture and area of cropland) derived from the HYDE dataset (Goldewijk et al., 2017). Due to the nature of the dataset, we use the “Central Europe” region, as it contains both Romania and Serbia (Goldewijk et al., 2017). We also explore an estimate of the intensity of land use in the region, from Kaplan et al., (2011), which represents a proportion of the 5 degree grid square (centred on  $46^{\circ}$  N,  $24^{\circ}$  E) utilised for any type of human activity on the landscape. To investigate the impact of dust deposition, we used two regionally representative reconstructions of dust deposition through the Holocene, from MOH (Longman et al., 2017b), and TM (Panait et al., 2019). To investigate the impact of biomass burning on the record, we compare with the compilation of eastern European charcoal deposition from Feurdean et al. (2020), from which we extract the boreal (BOR) record, as this covers all sites in this study. We used linear interpolation to bring all datasets onto a 50-year timescale for comparison with our binned composite CAR record.

### 3 Results

#### 3.1 Basic peat bog information

Where possible, the basal peat layer was reached, allowing for a reliable estimate of the total C stock. This varied from 940 cm at MOH to 193 cm at BVU, reflected in variable accumulation rates among records (Table 1). For example, ZNG in the Semenic Mountains, containing a long hiatus or very low accumulation rates in peat accumulation, yielded accumulation rates (ARs) as low as 0.02 cm yr<sup>-1</sup>. In contrast, IZM and DES displayed ARs of greater than 0.1 cm yr<sup>-1</sup>, corresponding to c. 800 cm of peat deposition in c. 6200 years at IZM and c. 200 cm in ~2000 years at DES (Table 1). The lowest average density is 0.07 g cm<sup>-3</sup> at MOH (see Supplementary Figure 10), reflecting the pure *Sphagnum* moss composition of the peat stock. In contrast, the highest density is observed at DES (0.35 g cm<sup>-3</sup>), where minerogenic material has been delivered to the mire from the surrounding slopes impacted by agriculture. See Supplementary Figure 11 for minerogenic matter from all bogs. In terms of median carbon content, all records show values around 50 % C other than DES, where minerogenic input leads to a C content of c. 20% (Table 1). The highest median C values are recorded at ZNG, where C represents 49.6 % of the peat content (Supplementary Figure 12).

#### 3.2 LORCA, period CARs and estimates of total carbon storage

Calculations of LORCA indicate a wide range of long-term accumulation of carbon between records. The lowest LORCA values are from ZNG (17 g C m<sup>-2</sup> yr<sup>-1</sup>), and at CP, which is a slowly accumulating bog (21 g C m<sup>-2</sup> yr<sup>-1</sup>). In contrast, the highest LORCA values are reconstructed from the mountain bogs MLH and IZM, with values of 92 g C m<sup>-2</sup> yr<sup>-1</sup> and 121 g C m<sup>-2</sup> yr<sup>-1</sup>, respectively (Table 2). When combined with estimates of the thickness and spatial extent of the bogs, we can calculate total carbon storage in each location. Of our studied locations, MOH contains the most carbon, with an estimate of 0.0003 Pg C, whilst the remainder of the sites contain between 0.00005 and 0.0001 Pg C (Table 2).

CARs for the Roman Warm Period (RWP) vary from 8 g C m<sup>-2</sup> yr<sup>-1</sup> at DES to 74 g C m<sup>-2</sup> yr<sup>-1</sup> at MLH, with the majority of sites between 15 – 25 g C m<sup>-2</sup> yr<sup>-1</sup> (Table 2). For the Medieval Warm Period (MWP), the lowest average CAR is 20 g C m<sup>-2</sup> yr<sup>-1</sup> at BVU, with MLH displaying the greatest CAR (191 g C m<sup>-2</sup> yr<sup>-1</sup>). For the LIA, values range from 21 g C m<sup>-2</sup> yr<sup>-1</sup> (CP) to 236 g C m<sup>-2</sup> yr<sup>-1</sup> (MLH). For the period 1000 – 100 yr BP, all values other than MLH are between 25 and 75 g C m<sup>-2</sup> yr<sup>-1</sup>. The RERCA calculations indicate CARs between 15 – 50 g C m<sup>-2</sup> yr<sup>-1</sup> for most sites, but with IZM (121 g C m<sup>-2</sup> yr<sup>-1</sup>) and MLH (92 g C m<sup>-2</sup> yr<sup>-1</sup>) well above that range (Table 2).

#### 3.3 Carbon Accumulation Rates throughout the Holocene

We developed for each site a time series displaying how CARs varied through the Holocene and combined them into a composite time series (Fig. 3), which shows changes in CAR at broader spatial scales. For the period 7000 – 4000 yr BP, z-scores show a slow decrease until a low point of -1 by 4000 yr BP. This is followed by rapid and sustained increases in CARs, reaching a value of 1 by 2100 yr BP, primarily driven by the large rise in CAR at SUR during this time (Fig. 3). This is followed

by a rapid drop to a period of low values between 2000 – 1300 yr BP, before another sustained period of increasing CARs between 1500 yr BP and present (Fig. 3).

## 4 Discussion

### 195 4.1 Long term carbon accumulation, and an estimate of the Carpathian peatland carbon sink

Our data indicate that CAR rates vary greatly both spatially and temporally in the Carpathian Mountains (Fig. 2, 3). Our LORCA estimates also reflect this trend, with slow-growing peat bogs such as CP accumulating peat at an average of 21 g C m<sup>-2</sup> yr<sup>-1</sup>, whilst fast accumulating records such as IZM reach LORCA values as high as 121 g C m<sup>-2</sup> yr<sup>-1</sup> (Table 2). IZM and MLH display some of the highest LORCA values reported in the literature (Loisel et al., 2014), and indicate that raised ombrotrophic mountain bog environments may be extremely effective carbon sinks. This is supported by comparable LORCA from bogs in the Andes, where they may reach 250 g C m<sup>-2</sup> yr<sup>-1</sup> (Chimner and Karberg, 2008) and the Falkand Islands (Payne et al., 2019). Further, eddy covariance data regularly indicates carbon accumulation rates greater than 100 g C m<sup>-2</sup> yr<sup>-1</sup> (e.g. Roulet et al., 2007). Typical lowland bogs sequester carbon at rates of below 30 g C m<sup>-2</sup> yr<sup>-1</sup> (Loisel et al., 2014), and so rates of over 100 g C m<sup>-2</sup> yr<sup>-1</sup> are notably high. Indeed, such high CARs are similar to measurements of recent peat accumulation rates which have not been corrected for peat decomposition (Young et al., 2019). It is possible the location of some mountain bogs at the base of scree slopes, means that some could be well-supplied with regards to nutrients via minerogenic input, such as for SUR (Longman et al., 2017a, 2019). This is analogous to nutrients supplied from volcanic ash deposition, which has been observed to stimulate greater peat accumulation in bogs in New Zealand (Ratcliffe et al., 2020) and Japan (Hughes et al., 2013). In other locations, such as the true raised bogs MLH, IZM and MOH, or blanket bogs BVU and ZNG, a more likely explanation is that the frequency of long-term atmospheric dust deposition in the Carpathian region (Longman et al., 2017b; Panait et al., 2019; Varga et al., 2013, 2016) helps to supply nutrients, a process known to stimulate considerable peat growth (Kylander et al., 2018). In each potential scenario, nutrients would likely be supplied in pulses, shown to be important for peat growth (Schillereff et al., 2021).

We use our measurements of carbon content and peat density in combination with published estimates of the extent of Romanian Carpathian peatlands to estimate the size of this regional carbon sink (Pop, 1960) (Supplementary Table 2). In Pop (1960), Carpathian peatlands were separated into two main types; oligotrophic (primarily raised bogs, covering c. 15 km<sup>2</sup>, with an average depth of ~2 m) and eutrophic (including fens and marshes, covering c. 60 km<sup>2</sup>, with an average depth of 1 m). It must be noted this estimate only includes bogs located in the Carpathian Mountains, and does not include the extensive lowland wetlands of areas like the Danube valley and its delta (Pop, 1960).

220 Our modelling suggests oligotrophic bogs, the class in which most mountain bogs fall, represent a mean carbon sink of 2 megatonnes (Mt) C in the Romanian Carpathians, with the uppermost models (95<sup>th</sup> percentile) indicating 10 Mt C is stored. Eutrophic bogs represent a mean carbon sink of 4 Mt C, with the 95<sup>th</sup> percentile at 0.008 Gt C. Combined, the peatland sink of the Romanian Carpathians most likely comprises a value of 6 Mt C, reaching 0.012 Gt in the 95<sup>th</sup> percentile of models (Fig.

5). It should be noted that this upper estimate is four times the amount of carbon sequestered by forests in Romania per year  
225 (2.5 Mt C/yr) (Olofsson et al., 2009), and represents 13% of the yearly Romanian anthropogenic carbon emissions (circa 80  
Mt C/yr) (Crippa et al., 2021). In isolation, these estimates of mountain bogs comprise a small proportion (c. 0.002%) of the  
global peatland carbon sink (roughly 600 Gt) with individual tropical wetland areas comprising orders of magnitude greater  
carbon stores (Dargie et al., 2017; Warren et al., 2017). However, the rapid nature of carbon accumulation in the Carpathian  
bogs studied here, and in other mountainous regions such as Tibet (Chen et al., 2014), suggests they may be more efficient  
230 sinks than tropical bogs, which accumulate more slowly and decompose faster (e.g., Dargie et al., 2017; Hapsari et al., 2017).

#### 4.2 Changing rates of carbon accumulation during the Holocene

By investigating the changepoint models of each individual peatland CAR, and the composite CAR record, we explore  
changing rates of accumulation through the Holocene (Figs. 2, 3). In the studied region, three peatlands (CP, MOH and ZNG)  
were established in the early Holocene (10,000 – 7000 BP). For this period, average CARs are above the LORCA of each bog  
235 (see Fig. 2), indicating rapid accumulation. This is in agreement with other studies of European peatlands (Ratcliffe et al.,  
2018), where rapid CARs are reconstructed in the early Holocene as a result of warm temperatures, a reflection of the key role  
temperature plays in CARs (Charman et al., 2009). Regionally, our data reflect the impact of warmer than present conditions  
and lower than present precipitation levels and higher seasonality reconstructed from multi-proxy records (Buczko et al., 2013;  
Davis et al., 2003; Feurdean et al., 2008; Magyari et al., 2009; Tóth et al., 2015, 2018) and modelled data which coincided  
240 with higher than present (summer) insolation (Berger and Loutre, 1991).

During the mid-Holocene (7000 – 3000 yr BP), CARs were generally low, with our composite record reconstructing a  
decreasing trend until 4000 yr BP (Fig. 3) and supported by a series of negative changepoints in individual records (Figs. 2,3).  
CAR rates for this period are below the LORCA for all sites (Fig. 2), indicating a period of slow peat growth on a regional  
scale. This may be linked to colder and wetter than today climatic conditions which progressively established in the region  
245 (Davis et al., 2003; Feurdean et al., 2008; Perşoiu et al., 2017), following a peak in temperatures prior to 8500 yr BP (Tóth et  
al., 2015). Cooler conditions and higher lake levels are reconstructed from chironomid records from different parts of the  
southern Carpathians (Tóth et al., 2015) while pronounced depositional changes and increased lake levels are observed in both  
the eastern and western Romanian Carpathians (Haliuc et al., 2017; Magyari et al., 2009), and fluvial records indicate greater  
river flows (Perşoiu, 2010). Around 5000 yr BP, a major shift in atmospheric circulation towards a variable NAO-index is  
250 shown in water isotope data from Scărişoara cave (Romania; Perşoiu et al., 2017), reflecting continental-scale changes (Olsen  
et al., 2012). This coincides with changes in insolation, with strong contrasts between December and June insolation (Berger  
and Loutre, 1991).

At ZNG, peat accumulation ceased almost entirely for this period (Fig. 2), and BVU started accumulating peat only after 4000  
yr BP reflecting the extent to which cold environmental conditions impacted on CARs in the Southern Carpathians. The local  
255 nature of CAR responses, however, may indicate local climatic variability, with peat CARs stable at higher elevation (SUR),  
and even rising at slightly lower elevation (MLH) during this time (Fig. 2). In our composite record, the lowest levels of carbon



accumulation are reflected in the period 4200 – 3800 BP, which coincides with the 4.2 kyr event (Fig. 4). This was a roughly 100-year long period of Europe-wide dry and cool climate (Bini et al., 2019), reflected in the Carpathians by increased dust deposition (Longman et al., 2017b), and evidence for cold and dry (winter) conditions (Constantin et al., 2007; Drăgușin et al., 2014; Perșoiu et al., 2019; Tóth et al., 2015), which appear to have led to region-wide decreases in peat growth (Figs. 2, 3). However, short-term local increases in precipitation are reconstructed in a mid-latitude lake record (Haliuc et al., 2017), and low-altitude fluvial records (Howard et al., 2004). These conclusions are supported by other parameters such as chironomid-based summer temperatures and testate-amoeba derived measures of wetness (Onac et al., 2002; Schnitchen et al., 2006; Tóth et al., 2015). These contrasting trends reflect seasonal responses to changing local moisture sources, not only in the Carpathians but also throughout the Balkans (Haliuc et al., 2017; Perșoiu et al., 2019), indicating the particularities and dynamics of the regional climatic variability in southeastern Europe (see Haliuc et al., 2017; 2020; Longman et al., 2019).

After this period of low carbon accumulation, CARs rebound, with widespread increases observed, and a series of positive changepoints recorded, notably at MOH, SUR, IZM and CP from 3000 BP onwards (Fig. 2). This is reflected by a rapid increase in our composite of CAR measurements, where a long-term CAR increase is reconstructed between 3400 – 2000 BP (Fig. 4). It is possible this is linked to higher variability of the climatic conditions during this period, as evidence suggests the period 3500 – 2000 BP was generally cool and wet across the region (Magyari et al., 2009; Schnitchen et al., 2006; Tóth et al., 2015). The specific atmospheric circulation regime of the Carpathians (Haliuc et al., 2017; Longman et al., 2017a), which drives significant lateral hydrological variability across the wider region (Longman et al., 2019; Magyari et al., 2013), may explain why some pollen-based climatic indices suggest a warming between 3000 – 2400 BP (Feurdean et al., 2008), and carbon isotopes in peat indicating high climatic variability (Cristea et al., 2013). However, instead of considering only a climatic control on CARs over this period, it is possible the increasing impact of human activity on the region (Longman et al., 2017a) contributed to the contradictory proxy reconstructions of climate at this time, with vegetation-based climate reconstructions potentially impacted by anthropogenic disturbances (Chevalier et al., 2020; Finsinger et al., 2010).

A steady increase in land-use in the Carpathian area has been reconstructed for the last 7000 years using modelled deforestation rates (Giosan et al., 2012). Since 3000 yr BP increasing land-use has been demonstrated, tracking demographic variability (Kaplan et al., 2011). Enhanced land use and tree felling in the mid-to-high mountain environments (Hughes and Thirgood, 1982; Longman et al., 2017a) would have increased erosion (Longman et al., 2019), with increased erosion observed in lake records from the Balkans at this time (Wagner et al., 2012), and the onset of minerogenic input to SUR bog (Longman et al., 2017a). Greater erosion would result in increased nutrient supply, in turn stimulating peat growth in a similar manner to the increased deposition of mineral dust (Kylander et al., 2018), or volcanic ash (Ratcliffe et al., 2020). This hypothesis is supported by the decreasing CARs reconstructed after 2000 BP during the Migration period denoting lower levels of land use and less anthropogenic disturbance of the environment (Kaplan et al., 2011; Longman et al., 2018),.

The period of low CARs (2000 – 1300 yr BP) is followed by a series of positive changepoints and a gradual rise in the composite CAR record until the present day (Figs. 2, 3). The climate during this interval was characterised by a warming trend in both summer and winter temperatures but with regionally specific hydroclimate patterns (Perșoiu and Perșoiu, 2019). The

lack of any relationship between CARs and the apparent warmth of the RWP (2200 – 1500 yr BP) and MWP (1000 – 700 yr BP) and the cool LIA (650 – 100 yr BP) in the region further support the theory that peat accumulation rates were impacted by human activity (Fig. 3, Table 2). Indeed, in 6 of our 9 sites, the LIA displays higher CARs than during the MWP, despite the apparent controlling nature of temperature change on peat accumulation (Charman et al., 2013, 2015). This may be a feature of the low latitude nature of our sites where, unlike Arctic sites where low temperatures and high moisture lead to lower CARs, lower temperatures and high moisture stimulate peat growth. However, it is also possible the lack of any correlation is due to the variable expression of these transient periods of climatic change (MWP and LIA) on the climate of central-eastern Europe (Roberts et al., 2012; Magyari et al., 2013). There is evidence which suggests climate in southeastern Europe in the last 1000 years did not mirror that of western Europe, with a lack of correlation between tree ring derived summer temperatures in the eastern Carpathians (Popa and Kern, 2009) and central European records (Buntgen et al., 2011). This is further supported by the disconnection between southeastern European pollen reconstructions of temperature and those from central and western Europe in the Holocene (Davis et al., 2003; Mauri et al., 2015). But, other work suggests the MWP was indeed warm and dry in Romania (Feurdean et al., 2011), whilst the LIA was overall cooler (Cleary et al., 2018), with regional expressions of hydroclimate variability. For the MWP, contrasting hydroclimate conditions are reconstructed from records across Romania. Warm and dry conditions are evident in records from the north and northwest Romanian Carpathians (Cleary et al., 2018; Cristea et al., 2013; Forray et al., 2015; Popa and Kern, 2009) whilst records in the north, south and east Carpathians show wet conditions (Diaconu et al., 2017; Feurdean et al., 2015; Gałka et al., 2016; Panait et al., 2017, 2019). These apparently contrasting results further indicate the complexity of climate in the region, located as it is at the confluence of three major atmospheric systems (Longman et al., 2017b; Obreht et al., 2016). As such, the range of CARs may be the result of still unexplored local hydroclimatic gradients. As a result, unpicking exactly which features of a climatic record in central-eastern Europe may be attributed to climatic forces, and which may be human impact-related remains a challenge.

#### **4.1 Data-model comparison**

One way in which potential drivers of change in peat accumulation may be elucidated is by comparing our data to model reconstructions of climatic variables such as temperature and precipitation, and investigating their relationship with the observed shifts in CAR (Fig. 4). Here we compare the results of our composite record (binned at 50-year resolution) to a number of climatic indices extracted at 50-year timesteps from modelling reconstructions of the last 5000 years (Fordham et al., 2017).

When comparing the full datasets, several statistically significant correlations are revealed (Table 3, Fig. 4). These include both temperature and precipitation seasonality, and diurnal and annual temperature range (Table 3). Strong negative correlations between both precipitation and temperature seasonality and CARs indicate that as seasonality increases, CARs decrease. This is in direct contrast to high latitude bogs from Alaska, where it has been shown that increased seasonality during the middle Holocene led to higher CARs (Jones and Yu, 2010). The anticorrelation we observed here suggests that in more temperate bog locations, seasonality, and implied higher summer temperatures, proposed to be the driver of carbon

accumulation in Alaska, are less important, potentially explaining the apparently incongruous (high CAR) response to cold  
325 conditions during the LIA (Figs. 2, 3, 4). This is supported by the strong negative correlation between annual temperature  
range and CARs (Table 3). The strongest correlation is observed between CAR and isothermality, a measure of the difference  
between the annual range in temperature and the diurnal (daily) range in temperature (O'Donnell and Ignizio, 2012). In the  
Carpathians, a strong isothermality leads to high CARs, in line with measurements of carbon flux from peatlands, where strong  
isothermality has been linked to the shift of a bog to a net carbon sink (Webster et al., 2018). This may be related to the strong  
330 impact isothermality has on bryophyte distributions, with evidence to suggest range expansion of some species may occur  
under increasingly greater isothermality, especially in humid regions (Kou et al., 2020).

To investigate the impact of long-term hydroclimate variability on CARs we separate the model outputs into five 1000-year  
sections, compared to the composite record CARs for the same period (Table 3). From this exercise the strongest agreements  
appear between hydroclimate and CAR in the period 5000 – 4000 yr BP, with statistically significant correlations between  
335 CARs and the seasonality of precipitation, mean temperature, and maximum temperature, respectively. The strongest  
correlation is with maximum temperature (Fig. 4), supporting previous evidence that in the pre-anthropogenic world the  
strongest control over peat growth in this region has been linked to temperature variability (Charman et al., 2013, 2015).  
Laboratory, and field-based experiments have shown this to be the case, with greater temperatures leading to growth of larger  
*Sphagnum* plants, and an increase in the amount of biomass produced (Asada et al., 2003; Breeuwer et al., 2008; Gunnarsson,  
340 2005). In Romania, temperature was listed as the most important climatic variable for peat growth, as it led to the development  
to *Sphagnum*-dominated high-biomass peat for the TM record, rather than sedge-dominated (Panait et al., 2017). Strong  
correlations also exist between PAR0, a measure of photosynthetically active solar radiation, and *Sphagnum* growth (Loisel et  
al., 2012). The correlation with precipitation seasonality is also in line with previous work, which has suggested that the  
availability of moisture during the growing season is a key control on peat growth (Jassey and Signarbieux, 2019; Oke and  
345 Hager, 2017), with seasonality linked to the total peat carbon stock preserved (Kurnianto et al., 2015). In this case, we assume  
the increase in seasonality results in a rise in summer precipitation, rather than winter (Fig. 4, Table 3). In addition to general  
climatic controls, it is also possible that smaller-term fluctuations and local configurations may impact CARs. For example,  
CARs of some peatlands along the St. Lawrence River in Canada are strongly impacted by the level of sheltering from cold  
winter winds (Magnan and Garneau, 2014). Such local climatic controls are challenging to evaluate on the scales studied here  
350 but may play a role in some of the bogs.

No further statistically significant correlations are observed during any of the three subsequent 1000-year periods (3950 –  
3000, 2950 – 2000 and 1950 – 1000 yr BP), indicating that climate is not playing the major forcing role on peat growth through  
this time (Fig. 4, Table 3). Such a finding supports our earlier assertion that human impact has become a primary driver of peat  
growth in the Carpathians, with our model-data comparison suggesting the shift occurs after 4000 yr BP, further supporting  
355 estimates of enhanced human pressure on the mid to high mountain environments (Giosan et al., 2012; Schumacher et al.,  
2016), which led to widespread soil erosion (Longman et al., 2017a).

Between 950 yr BP and present, there are strong positive correlations between CAR and mean and minimum temperatures, denoting a primarily climatic control on peat accumulation (Fig. 4, Table 4). However, the correlation in this period is driven by the last 200 years, where recent warm temperatures reflect recent high CARs (Figs. 2-4). These recent high temperatures largely reflect anthropogenic activity and climate change associated with greenhouse gas emissions, and it might be asserted that higher CAR over this period is not linked with natural climatic fluctuations, but rather to an increase in human emissions. It must also be noted that it is possible recent CAR increases are also related to the speed of peat decomposition. Recent peat has undergone less decomposition resulting in higher levels of apparent carbon (Young et al., 2019).

#### 4.1 Comparison with other potential driving forces

Some previous work also highlighted a range of other drivers behind peat accumulation rates, with mineral dust input listed as the primary driver of peat growth in a Swedish peatland (Kylander et al., 2018), and with fluctuations in supply of dust from the Loess Plateau in China important in controlling local peat development (Pratte et al., 2020). We use the two existing peat records of Holocene dust deposition in the Romanian Carpathians to investigate this connection (Longman et al., 2017b; Panait et al., 2019) in our studied region (Fig. 5). A weak positive correlation between TM dust flux and our composite CAR record may be representative of this linkage, but the MOH dust flux record appears to show little or no correlation with the composite CAR (Fig. 5, Table 4). This positive correlation is enhanced when the dust flux of Panait et al. (2019) is compared to the individual CAR of TM (Fig. 5), with a highly significant positive correlation observed (Table 4). For MOH a weaker, but still statistically significant correlation is present (Table 4) between the dust flux of Longman et al. (2017b) and our CAR (Fig. 5). These findings indicate that dust may be a local control on carbon accumulation, but that each site must be treated individually, since dust may be local in source, with certain sources potentially much more nutrient-rich than others (Kylander et al., 2018; Longman et al., 2017b). In particular, dust from Saharan sources is likely to contain primarily quartz and carbonate clasts, which will not contain large quantities of phosphorous or nitrogen (Varga et al., 2016). Another factor in the control of CAR by dust deposition is peat type, with ombrotrophic bogs considered very nutrient poor, and generally phosphorous and nitrogen limited (Damman, 1986; Ratcliffe et al., 2020; Wang and Moore, 2014). This may explain the lack of strong correlation between our CAR composite and two regionally representative dust flux records (Table 4).

We showed that both dust input and variability in hydroclimate may have played a role in controlling CARs in the study region, but we hypothesise that human impact may have become the major controlling factor after 3000 yr BP. To investigate this, we compare the CAR composite record with several land use and human impact-related proxies from the HYDE dataset (Fig. 6). We focus on the last 2000 years of the record due to data availability, as prior to 2000 yr BP, only a single data point for every thousand years is available from the HYDE dataset. However, these data are sufficient to indicate the strong positive correlations between population and land use, and CARs in central-eastern Europe (Table 4). This is further supported by the comparison with land use as reconstructed by Kaplan et al. (2011), and the strong positive correlation between the two datasets (Fig. 6, Table 4). To supplement this, we also compare to a synthesis of eastern European biomass burning (Feurdean et al., 2020). In the studied period, it appears biomass burning was controlled primarily by human-driven tree felling and burning,

390 and so may be used to estimate levels of land exploitation (Feurdean et al., 2020). There are strong positive correlations  
between CARs and biomass burning in the last 2000 years (Fig. 6, Table 4). This finding suggests biomass burning and  
associated forest removal has a positive impact on central and eastern European peatland CARs. As described earlier, increased  
human impact (logging, use of fire) lead to reduced forest cover (Feurdean et al., 2020) and increased weathering (Longman  
et al., 2017a). Greater biomass burning suggests greater deforestation, and the possibility of more soil entrainment. This links  
395 to our assertion of a dust-related control, as local dust sources may be linked to local deforestation and periodic topsoil exposure  
(Longman et al., 2017b; Panait et al., 2019). However, it has been proposed changing dust flux is purely related to climatic  
controls (e.g. Marx et al., 2009), and so to further investigate a potential controlling impact of local dust and erosion, we  
compare the model data to the reconstruction of dust flux from Mohos (Supplementary Table 3). This exercise clearly indicates  
the covariance of dust and climatic forcing factors (and especially precipitation) when considering the whole record. However,  
400 for the periods in which we infer local erosion and dust supply stimulating peat growth, there are either very weak, or not  
statistically significant correlations between climate and dust (Supplementary Table 3). Such a finding indicates the  
disconnection of climate and dust flux in the last 2000 years, and supports our assertion of local dust drivers in this period.  
This data comparison exercise clearly indicates the complexity of factors controlling mountain peat CARs, and prediction of  
the behaviour of the peatland carbon sink is a challenge. Considering climate indices, it appears there is a relationship between  
405 mean temperature and CAR, and potentially in the availability of moisture during the growing season (Table 4). In Romania,  
average temperatures are predicted to increase in the next decades, with concurrent increases in summer and spring  
precipitation, and decreases in winter (Ministry of Environment and Climate Change, 2013). As such, it is likely that these  
conditions will lead to increased peat growth, and enhanced CARs. However, as we have shown, the primary control on CARs  
for much of the last 4000 years has been the combination of human impact, local soil erosion and periodic deposition of long-  
410 range transported dust. Changes in erosion are reliant upon a range of local factors, and dust fluxes are often controlled by  
distal droughts, so it is not possible to predict how erosion rates will change in the future for each individual bog location. Our  
work clearly demonstrates that CARs are not purely controlled by climate and indicates that predictions of the future size of  
the global peatland carbon sink must be adjusted to take into account local factors relating to human activities (Gallego-Sala  
et al., 2018).

## 415 **5 Conclusions**

Using nine peatbog records from the Carpathians, we compiled a detailed record of changing carbon accumulation rates  
(CARs) through the Holocene. Our data indicates that CARs for bogs located in the Carpathian Mountains are potentially very  
efficient carbon sinks, with the long-term apparent carbon accumulation rates amongst the highest in the published literature,  
and comparable to high mountain bogs in South America. As a result, the peatland carbon sink in the Carpathians and  
420 throughout central-eastern Europe may be large, despite the small area of peatland coverage. Our work suggests that mountain

bogs should be considered in future estimates of the peatland carbon sink, and that further studies are needed to refine estimates of carbon accumulation in such environments.

From our reconstructions, CARs varied throughout the Holocene, with high rates recorded in the early Holocene (10000 – 7000 yr BP), before a slow decline culminating in CAR nadir around 4000 yr BP. These results may be linked to the warm climate of the early Holocene stimulating peat growth before gradual cooling and the possible impact of the cold 4.2 kyr event. This is supported by comparison to palaeoclimatic model data from the period 5000 – 4000 yr BP, with strong correlations between temperature and CAR. After 3000 yr BP, there is a clear shift in controls on peat accumulation, with no apparent correlations between CARs and temperatures. Instead, we suggest late Holocene CARs are controlled by a combination of human activity and dust input. A clear peak in CARs occurs at the same time as the Roman Warm Period and the rise of the Roman Empire, who would have introduced greater land use, and resulted in increased erosion and mineral input into bogs, supplying nutrient and resulting in increased CARs. Alongside this, increases in dust flux correlate well with individual CAR reconstructions, indicating changing dust sources and levels of dust to the region may have led to local CAR responses. In the most recent part of the records, sharp rises in CARs are reconstructed, potentially indicating the impact warmer temperatures because of greenhouse gas emissions are having on peat growth.

Our work indicates the potentially large carbon sink represented by mountainous peatlands in Romania and Serbia. To better constrain their importance in the regional carbon cycle, more work is necessary to investigate other carbon sinks in Romania and Serbia, such as lake sediments, forest soils and lowland peatlands. Work in these environments should help to better understand the size of the current carbon sink, and how it has varied in the past. This would help in determining exactly how important mountain bogs are in the regional carbon balance, and, when combined management and monitoring exercises, may help to mitigate the worst of the impacts of anthropogenic climate change.

### **Data Availability**

All data generated in the course of this study is available at the following Figshare links; [10.6084/m9.figshare.16930987](https://doi.org/10.6084/m9.figshare.16930987) and [10.6084/m9.figshare.16930867](https://doi.org/10.6084/m9.figshare.16930867).

### **Author contributions**

Conceptualization, JL, DV, AH, VE, WF; Methodology, JL, DV, WF; Formal analysis, JL, DV, VE, AH, WF, DP; Investigation, JL, DV, AH, WF, TS, DP, RB; Resources, DV, VE, TS, DP, RB; Writing – Original Draft, JL, DV, WF; Writing – Review & Editing, JL, DV, AH, VE, WF, TS; Visualisation, JL, AH; Funding acquisition, DV.

## Competing Interests

The authors declare that they have no conflict of interest.

## 450 Acknowledgements

We are indebted to S.B. Marković, N. Tomić, I. Obreht and Sz. Kelemen for fieldwork support. This work was supported by a grant of the Romanian Ministry of Education and Research, CNCS - UEFISCDI, project number PN-III-P4-ID-PCE-2020-0914, within PNCDI III. We are grateful for the insightful comments of the two reviewers, who helped improve the manuscript.

## References

- 455 Asada, T., Warner, B. G. and Banner, A.: Growth of Mosses in Relation to Climate Factors in a Hypermaritime Coastal Peatland in British Columbia, Canada, *Bryologist*, 106(4), 516–527, doi:10.1639/0007-2745(2003)106[516:GOMIRT]2.0.CO;2, 2003.
- Berger, A. and Loutre, M. F.: Insolation values for the climate of the last 10 million years, *Quat. Sci. Rev.*, 10(4), 297–317, doi:10.1016/0277-3791(91)90033-Q, 1991.
- 460 Bini, M., Zanchetta, G., Perşoiu, A., Cartier, R., Català, A., Cacho, I., Dean, J. R., Di Rita, F., Drysdale, R. N., Finnè, M., Isola, I., Jalali, B., Lirer, F., Magri, D., Masi, A., Marks, L., Mercuri, A. M., Peyron, O., Sadori, L., Sicre, M. A., Welc, F., Zielhofer, C. and Brisset, E.: The 4.2 ka BP Event in the Mediterranean region: An overview, *Clim. Past*, 15(2), 555–577, doi:10.5194/cp-15-555-2019, 2019.
- Breeuwer, A., Heijmans, M. M. P. D., Robroek, B. J. M. and Berendse, F.: The effect of temperature on growth and competition  
465 between Sphagnum species, *Oecologia*, 156(1), 155–167, doi:10.1007/s00442-008-0963-8, 2008.
- Buczko, K., Magyari, E. K., Braun, M. and Bálint, M.: Diatom-inferred lateglacial and Holocene climatic variability in the South Carpathian Mountains (Romania), *Quat. Int.*, 293, 123–135, doi:10.1016/j.quaint.2012.04.042, 2013.
- Buntgen, U., Tegel, W., Nicolussi, K., McCormick, M., Frank, D., Trouet, V., Kaplan, J. O., Herzig, F., Heussner, K.-U., Wanner, H., Luterbacher, J. and Esper, J.: 2500 Years of European Climate Variability and Human Susceptibility, *Science*  
470 (80-. ), 331(6017), 578–582, doi:10.1126/science.1197175, 2011.
- Change, M. of E. and C.: Romania's Sixth National Communication on Climate Change and First Biennial Report., 2013.
- Charman, D. J., Barber, K. E., Blaauw, M., Langdon, P. G., Mauquoy, D., Daley, T. J., Hughes, P. D. M. and Karofeld, E.: Climate drivers for peatland palaeoclimate records, *Quat. Sci. Rev.*, 28(19), 1811–1819, doi:10.1016/j.quascirev.2009.05.013, 2009.
- 475 Charman, D. J., Beilman, D. W., Blaauw, M., Booth, R. K., Brewer, S., Chambers, F. M., Christen, J. A., Gallego-Sala, A., Harrison, S. P., Hughes, P. D. M., Jackson, S. T., Korhola, A., Mauquoy, D., Mitchell, F. J. G., Prentice, I. C., Van Der Linden, M., De Vleeschouwer, F., Yu, Z. C., Alm, J., Bauer, I. E., Corish, Y. M. C., Garneau, M., Hohl, V., Huang, Y., Karofeld, E.,

- Le Roux, G., Loisel, J., Moschen, R., Nichols, J. E., Nieminen, T. M., MacDonald, G. M., Phadtare, N. R., Rausch, N., Sillasoo, U., Swindles, G. T., Tuittila, E. S., Ukonmaanaho, L., Väiliranta, M., Van Bellen, S., Van Geel, B., Vitt, D. H. and Zhao, Y.:  
 480 Climate-related changes in peatland carbon accumulation during the last millennium, *Biogeosciences*, 10(2), 929–944, doi:10.5194/bg-10-929-2013, 2013.
- Charman, D. J., Amesbury, M. J., Hinchliffe, W., Hughes, P. D. M., Mallon, G., Blake, W. H., Daley, T. J., Gallego-Sala, A. V. and Mauquoy, D.: Drivers of Holocene peatland carbon accumulation across a climate gradient in northeastern North America, *Quat. Sci. Rev.*, 121, 110–119, doi:10.1016/j.quascirev.2015.05.012, 2015.
- 485 Chen, H., Yang, G., Peng, C., Zhang, Y., Zhu, D., Zhu, Q., Hu, J., Wang, M., Zhan, W., Zhu, E., Bai, Z., Li, W., Wu, N., Wang, Y., Gao, Y., Tian, J., Kang, X., Zhao, X. and Wu, J.: The carbon stock of alpine peatlands on the Qinghai-Tibetan Plateau during the Holocene and their future fate, *Quat. Sci. Rev.*, 95, 151–158, doi:10.1016/j.quascirev.2014.05.003, 2014.
- Chevalier, M., Davis, B. A. S., Heiri, O., Seppä, H., Chase, B. M., Gajewski, K., Lacourse, T., Telford, R. J., Finsinger, W., Guiot, J., Köhl, N., Maezumi, S. Y., Tipton, J. R., Carter, V. A., Brussel, T., Phelps, L. N., Dawson, A., Zanon, M., Vallé, F.,  
 490 Nolan, C., Mauri, A., de Vernal, A., Izumi, K., Holmström, L., Marsicek, J., Goring, S., Sommer, P. S., Chaput, M. and Kupriyanov, D.: Pollen-based climate reconstruction techniques for late Quaternary studies, *Earth-Science Rev.*, 210, 103384, doi:10.1016/j.earscirev.2020.103384, 2020.
- Chimner, R. A. and Karberg, J. M.: Long-term carbon accumulation in two tropical mountain peatlands, Andes Mountains, Ecuador, *Mires Peat*, 3(4), 1–10 [online] Available from: <http://www.mires-and-peat.net/>, (Accessed 19 March 2021), 2008.
- 495 Cleary, D. M., Onac, B. P., Tanțău, I., Forray, F. L., Wynn, J. G., Ionita, M. and Tămaș, T.: A guano-derived  $\delta^{13}\text{C}$  and  $\delta^{15}\text{N}$  record of climate since the Medieval Warm Period in north-west Romania, *J. Quat. Sci.*, 33(6), 677–688, doi:10.1002/jqs.3044, 2018.
- Clymo, R. S., Turunen, ; J and Tolonen, ; K: Carbon Accumulation in Peatland., 1998.
- Constantin, S., Bojar, A.-V., Lauritzen, S.-E. and Lundberg, J.: Holocene and Late Pleistocene climate in the sub-  
 500 Mediterranean continental environment: A speleothem record from Poleva Cave (Southern Carpathians, Romania), *Palaeogeogr. Palaeoclimatol. Palaeoecol.*, 243(3–4), 322–338, doi:10.1016/j.palaeo.2006.08.001, 2007.
- Crippa, M., Guizzardi, D., Solazzo, E., Muntean, M., Schaaf, E., Monforti-Ferrario, F., Banja, M., Olivier, J. G. J., Grassi, G., Rossi, S. and Vignati, E.: GHG emissions of all world countries - 2021 Report, Luxembourg., 2021.
- Cristea, G., Cuna, S. M., Farcas, S., Tantau, I., Dordai, E. and Magdas, D. A.: Carbon isotope composition as indicator for  
 505 climatic changes during the middle and late Holocene in a peat bog from Maramures Mountains (Romania), *The Holocene*, 24, 15–23, doi:10.1177/0959683613512166, 2013.
- Damman, A. W. H.: Hydrology, development, and biogeochemistry of ombrogenous peat bogs with special reference to nutrient relocation in a western Newfoundland bog., *Can. J. Bot.*, 64(2), 384–394, doi:10.1139/b86-055, 1986.
- Dargie, G. C., Lewis, S. L., Lawson, I. T., Mitchard, E. T. A., Page, S. E., Bocko, Y. E. and Ifo, S. A.: Age, extent and carbon  
 510 storage of the central Congo Basin peatland complex, *Nature*, 542(7639), 86–90, doi:10.1038/nature21048, 2017.
- Davis, B. A. S., Brewer, S., Stevenson, A. C. and Guiot, J.: The temperature of Europe during the Holocene reconstructed



- from pollen data, *Quat. Sci. Rev.*, 22(15–17), 1701–1716, doi:10.1016/S0277-3791(03)00173-2, 2003.
- Diaconu, A. C., Tóth, M., Lamentowicz, M., Heiri, O., Kuske, E., Tanțău, I., Panait, A. M., Braun, M. and Feurdean, A.: How warm? How wet? Hydroclimate reconstruction of the past 7500 years in northern Carpathians, Romania, *Palaeogeogr. Palaeoclimatol. Palaeoecol.*, 482, 1–12, doi:10.1016/j.palaeo.2017.05.007, 2017.
- Drăgușin, V., Staubwasser, M., Hoffmann, D. L., Ersek, V., Onac, B. P. and Veres, D.: Constraining Holocene hydrological changes in the Carpathian–Balkan region using speleothem  $\delta^{18}\text{O}$  and pollen-based temperature reconstructions, *Clim. Past*, 10(4), 1363–1380, doi:10.5194/cp-10-1363-2014, 2014.
- Feurdean, A., Klotz, S., Mosbrugger, V. and Wohlfarth, B.: Pollen-based quantitative reconstructions of Holocene climate variability in NW Romania, *Palaeogeogr. Palaeoclimatol. Palaeoecol.*, 260(3–4), 494–504, doi:10.1016/j.palaeo.2007.12.014, 2008.
- Feurdean, A., Tanțău, I. and Fărcaș, S.: Holocene variability in the range distribution and abundance of *Pinus*, *Picea abies*, and *Quercus* in Romania; implications for their current status, *Quat. Sci. Rev.*, 30(21–22), 3060–3075, doi:10.1016/j.quascirev.2011.07.005, 2011.
- Feurdean, A., Galka, M., Kuske, E., Tantau, I., Lamentowicz, M., Florescu, G., Liakka, J., Hutchinson, S. M., Mulch, A. and Hickler, T.: Last Millennium hydro-climate variability in Central-Eastern Europe (Northern Carpathians, Romania), *The Holocene*, 25(7), 1179–1192, doi:10.1177/0959683615580197, 2015.
- Feurdean, A., Vanni ere, B., Finsinger, W., Warren, D., Connor, S. C., Forrest, M., Liakka, J., Panait, A., Werner, C., Andri c, M., Bobek, P., Carter, V. A., Davis, B., Diaconu, A. C., Dietze, E., Feeser, I., Florescu, G., Ga ka, M., Giesecke, T., Jahns, S., Jamrichova, E., Kajuka o, K., Kaplan, J., Karpi nska-Ko aczek, M., Ko aczek, P., Kuneš, P., Kupriyanov, D., Lamentowicz, M., Lemmen, C., Magyari, E. K., Marcisz, K., Marinova, E., Niamir, A., Novenko, E., Obremaska, M., P dziszewska, A., Pfeiffer, M., Poska, A., R sch, M., S owi nski, M., Stan ikaite, M., Szal, M., Őwi ta-Musznicka, J., Tanțău, I., Theuerkauf, M., Tonkov, S., Valk o, O., Vassiljev, J., Veski, S., Vincze, I., Wacnik, A., Wiethold, J. and Hickler, T.: Fire hazard modulation by long-term dynamics in land cover and dominant forest type in eastern and central Europe, *Biogeosciences*, 17(5), 1213–1230, doi:10.5194/bg-17-1213-2020, 2020.
- Finsinger, W., Colombaroli, D., De Beaulieu, J.-L., Valsecchi, V., Vanni ere, B., Vescovi, E., Chapron, E., Lotter, A. F., Magny, M. and Tinner, W.: Early to mid-Holocene climate change at Lago dell’Accesa (central Italy): climate signal or anthropogenic bias?, *J. Quat. Sci.*, 25(8), 1239–1247, doi:10.1002/jqs.1402, 2010.
- Finsinger, W., Morales-Molino, C., Ga ka, M., Valsecchi, V., Bojovic, S. and Tinner, W.: Holocene vegetation and fire dynamics at Crveni Potok, a small mire in the Dinaric Alps (Tara National Park, Serbia), *Quat. Sci. Rev.*, 167, 63–77, doi:10.1016/j.quascirev.2017.04.032, 2017.
- Fordham, D. A., Saltr e, F., Haythorne, S., Wigley, T. M. L., Otto-Bliesner, B. L., Chan, K. C. and Brook, B. W.: PaleoView: a tool for generating continuous climate projections spanning the last 21 000 years at regional and global scales, *Ecography (Cop.)*, 40(11), 1348–1358, doi:10.1111/ecog.03031, 2017.
- Forray, F. L., Onac, B. P., Tanțău, I., Wynn, J. G., Tamaș, T., Coroiu, I. and Giurgiu, A. M.: A Late Holocene environmental

- history of a bat guano deposit from Romania: an isotopic, pollen and microcharcoal study, *Quat. Sci. Rev.*, 127, 141–154, doi:10.1016/j.quascirev.2015.05.022, 2015.
- Gaika, M., Tanțău, I., Ersek, V. and Feurdean, A.: A 9000year record of cyclic vegetation changes identified in a montane peatland deposit located in the Eastern Carpathians (Central-Eastern Europe): Autogenic succession or regional climatic influences?, *Palaeogeogr. Palaeoclimatol. Palaeoecol.*, 449, 52–61, doi:10.1016/j.palaeo.2016.02.007, 2016.
- 550 Gallego-Sala, A. V., Charman, D. J., Brewer, S., Page, S. E., Prentice, I. C., Friedlingstein, P., Moreton, S., Amesbury, M. J., Beilman, D. W., Björck, S., Blyakharchuk, T., Bochicchio, C., Booth, R. K., Bunbury, J., Camill, P., Carless, D., Chimner, R. A., Clifford, M., Cressey, E., Courtney-Mustaphi, C., De Vleeschouwer, F., de Jong, R., Fialkiewicz-Koziel, B., Finkelstein, S. A., Garneau, M., Githumbi, E., Hribljan, J., Holmquist, J., Hughes, P. D. M., Jones, C., Jones, M. C., Karofeld, E., Klein, E. S., Kokfelt, U., Korhola, A., Lacourse, T., Le Roux, G., Lamentowicz, M., Large, D., Lavoie, M., Loisel, J., Mackay, H., MacDonald, G. M., Makila, M., Magnan, G., Marchant, R., Marcisz, K., Martínez Cortizas, A., Massa, C., Mathijssen, P., Mauquoy, D., Mighall, T., Mitchell, F. J. G., Moss, P., Nichols, J., Oksanen, P. O., Orme, L., Packalen, M. S., Robinson, S., Roland, T. P., Sanderson, N. K., Sannel, A. B. K., Silva-Sánchez, N., Steinberg, N., Swindles, G. T., Turner, T. E., Uglow, J., Väiranta, M., van Bellen, S., van der Linden, M., van Geel, B., Wang, G., Yu, Z., Zaragoza-Castells, J. and Zhao, Y.:
- 560 Latitudinal limits to the predicted increase of the peatland carbon sink with warming, *Nat. Clim. Chang.*, 8(10), 907–913, doi:10.1038/s41558-018-0271-1, 2018.
- Garnett, M. H., Ineson, P. and Stevenson, A. C.: Effects of burning and grazing on carbon sequestration in a Pennine blanket bog, UK, *The Holocene*, 10(6), 729–736, doi:10.1191/09596830094971, 2000.
- Giosan, L., Coolen, M. J. L., Kaplan, J. O., Constantinescu, S., Filip, F., Filipova-Marinova, M., Kettner, A. J. and Thom, N.:
- 565 Early Anthropogenic Transformation of the Danube-Black Sea System, *Sci. Rep.*, 2, 1–6, doi:10.1038/srep00582, 2012.
- Goldewijk, K. K., Beusen, A., Doelman, J. and Stehfest, E.: Anthropogenic land use estimates for the Holocene - HYDE 3.2, *Earth Syst. Sci. Data*, 9(2), 927–953, doi:10.5194/essd-9-927-2017, 2017.
- Gunnarsson, U.: Global patterns of Sphagnum productivity, *J. Bryol.*, 27(3), 269–279, doi:10.1179/174328205X70029, 2005.
- Haliuc, A., Veres, D., Hubay, K., Brauer, A., Hutchinson, S. M., Begy, R., Hubay, K., Hutchinson, S. M., Begy, R. and Braun, M.:
- 570 Palaeohydrological changes over mid and late Holocene in the Carpathian area , central-eastern Europe, *Glob. Planet. Change*, 1–43, doi:10.1016/j.gloplacha.2017.02.010, 2017.
- Hapsari, K. A., Biagioni, S., Jennerjahn, T. C., Reimer, P. M., Saad, A., Achnopha, Y., Sabiham, S. and Behling, H.: Environmental dynamics and carbon accumulation rate of a tropical peatland in Central Sumatra, Indonesia, *Quat. Sci. Rev.*, 169, 173–187, doi:10.1016/j.quascirev.2017.05.026, 2017.
- 575 Holden, A. S., Sullivan, A. P., Munchak, L. a., Kreidenweis, S. M., Schichtel, B. a., Malm, W. C. and Collett, J. L.: Determining contributions of biomass burning and other sources to fine particle contemporary carbon in the western United States, *Atmos. Environ.*, 45(11), 1986–1993, doi:10.1016/j.atmosenv.2011.01.021, 2011.
- Holmquist, J. R., Finkelstein, S. A., Garneau, M., Massa, C., Yu, Z. and MacDonald, G. M.: A comparison of radiocarbon ages derived from bulk peat and selected plant macrofossils in basal peat cores from circum-arctic peatlands, *Quat.*

- 580 Geochronol., 31, 53–61, doi:10.1016/j.quageo.2015.10.003, 2016.
- Howard, A. J., Macklin, M. G., Bailey, D. W., Mills, S. and Andreescu, R.: Late-glacial and Holocene river development in the Teleorman Valley on the southern Romanian Plain, *J. Quat. Sci.*, 19(3), 271–280, doi:10.1002/jqs.805, 2004.
- Hugelius, G., Loisel, J., Chadburn, S., Jackson, R. B., Jones, M., MacDonald, G., Marushchak, M., Olefeldt, D., Packalen, M., Siewert, M. B., Treat, C., Turetsky, M., Voigt, C. and Yu, Z.: Large stocks of peatland carbon and nitrogen are vulnerable to  
585 permafrost thaw, *Proc. Natl. Acad. Sci. U. S. A.*, 117(34), 20438–20446, doi:10.1073/pnas.1916387117, 2020.
- Hughes, J. D. and Thirgood, J. V.: Deforestation, Erosion, and Forest Management in Ancient Greece and Rome, *J. For. Hist.*, 26(2), 60–75, doi:10.2307/4004530, 1982.
- Hughes, P. D. M., Mallon, G., Brown, A., Essex, H. J., Stanford, J. D. and Hotes, S.: The impact of high tephra loading on late-Holocene carbon accumulation and vegetation succession in peatland communities, *Quat. Sci. Rev.*, 67, 160–175,  
590 doi:10.1016/j.quascirev.2013.01.015, 2013.
- Jassey, V. E. J. and Signarbieux, C.: Effects of climate warming on *Sphagnum* photosynthesis in peatlands depend on peat moisture and species-specific anatomical traits, *Glob. Chang. Biol.*, 25(11), 3859–3870, doi:10.1111/gcb.14788, 2019.
- Jones, M. C. and Yu, Z.: Rapid deglacial and early Holocene expansion of peatlands in Alaska, *Proc. Natl. Acad. Sci.*, 107(16), 7347–7352, doi:10.1073/pnas.0911387107, 2010.
- 595 Kaplan, J. O., Krumhardt, K. M., Ellis, E. C., Ruddiman, W. F., Lemmen, C. and Goldewijk, K. K.: Holocene carbon emissions as a result of anthropogenic land cover change, *The Holocene*, 21(5), 775–791, doi:10.1177/0959683610386983, 2011.
- Kou, J., Wang, T., Yu, F., Sun, Y., Feng, C. and Shao, X.: The moss genus *Didymodon* as an indicator of climate change on the Tibetan Plateau, *Ecol. Indic.*, 113, 106204, doi:10.1016/j.ecolind.2020.106204, 2020.
- Kuhry, P.: The Role of Fire in the Development of *Sphagnum*-Dominated Peatlands in Western Boreal Canada, *J. Ecol.*, 82(4),  
600 899, doi:10.2307/2261453, 1994.
- Kurnianto, S., Warren, M., Talbot, J., Kauffman, B., Murdiyarso, D. and Frolking, S.: Carbon accumulation of tropical peatlands over millennia: a modeling approach, *Glob. Chang. Biol.*, 21(1), 431–444, doi:10.1111/gcb.12672, 2015.
- Kylander, M. E., Martínez-Cortizas, A., Bindler, R., Kaal, J., Sjöström, J. K., Hansson, S. V., Silva-Sánchez, N., Greenwood, S. L., Gallagher, K., Rydberg, J., Mörth, C. M. and Rauch, S.: Mineral dust as a driver of carbon accumulation in northern  
605 latitudes, *Sci. Rep.*, 8(1), 1–10, doi:10.1038/s41598-018-25162-9, 2018.
- Leifeld, J., Wüst-Galley, C. and Page, S.: Intact and managed peatland soils as a source and sink of GHGs from 1850 to 2100, *Nat. Clim. Chang.*, 9(12), 945–947, doi:10.1038/s41558-019-0615-5, 2019.
- Loisel, J., Gallego-Sala, A. V. and Yu, Z.: Global-scale pattern of peatland *Sphagnum* growth driven by photosynthetically active radiation and growing season length, *Biogeosciences*, 9, 2737–2746, doi:10.5194/bg-9-2737-2012, 2012.
- 610 Loisel, J., Yu, Z., Beilman, D. W., Camill, P., Alm, J., Amesbury, M. J., Anderson, D., Andersson, S., Bochicchio, C., Barber, K., Belyea, L. R., Bunbury, J., Chambers, F. M., Charman, D. J., De Vleeschouwer, F., Fiałkiewicz-Kozieł, B., Finkelstein, S. A., Gałka, M., Garneau, M., Hammarlund, D., Hinchcliffe, W., Holmquist, J., Hughes, P., Jones, M. C., Klein, E. S., Kokfelt, U., Korhola, A., Kuhry, P., Lamarre, A., Lamentowicz, M., Large, D., Lavoie, M., MacDonald, G., Magnan, G., Mäkilä, M.,

- Mallon, G., Mathijssen, P., Mauquoy, D., McCarroll, J., Moore, T. R., Nichols, J., O'Reilly, B., Oksanen, P., Packalen, M.,  
615 Peteet, D., Richard, P. J., Robinson, S., Ronkainen, T., Rundgren, M., Sannel, A. B. K., Tarnocai, C., Thom, T., Tuittila, E.-  
S., Turetsky, M., Väliiranta, M., van der Linden, M., van Geel, B., van Bellen, S., Vitt, D., Zhao, Y. and Zhou, W.: A database  
and synthesis of northern peatland soil properties and Holocene carbon and nitrogen accumulation, *The Holocene*, 24(9), 1028–  
1042, doi:10.1177/0959683614538073, 2014.
- Loisel, J., Gallego-Sala, A. V., Amesbury, M. J., Magnan, G., Anshari, G., Beilman, D. W., Benavides, J. C., Blewett, J.,  
620 Camill, P., Charman, D. J., Chawchai, S., Hedgpeth, A., Kleinen, T., Korhola, A., Large, D., Mansilla, C. A., Müller, J., van  
Bellen, S., West, J. B., Yu, Z., Bubier, J. L., Garneau, M., Moore, T., Sannel, A. B. K., Page, S., Väliiranta, M., Bechtold, M.,  
Brovkin, V., Cole, L. E. S., Chanton, J. P., Christensen, T. R., Davies, M. A., De Vleeschouwer, F., Finkelstein, S. A., Frolking,  
S., Galka, M., Gandois, L., Girkin, N., Harris, L. I., Heinemeyer, A., Hoyt, A. M., Jones, M. C., Joos, F., Juutinen, S., Kaiser,  
K., Lacourse, T., Lamentowicz, M., Larmola, T., Leifeld, J., Lohila, A., Milner, A. M., Minkinen, K., Moss, P., Naafs, B. D.  
625 A., Nichols, J., O'Donnell, J., Payne, R., Philben, M., Piilo, S., Quillet, A., Ratnayake, A. S., Roland, T. P., Sjögersten, S.,  
Sonnentag, O., Swindles, G. T., Swinnen, W., Talbot, J., Treat, C., Valach, A. C. and Wu, J.: Expert assessment of future  
vulnerability of the global peatland carbon sink, *Nat. Clim. Chang.*, 11(1), 70–77, doi:10.1038/s41558-020-00944-0, 2021.
- Longman, J., Ersek, V., Veres, D. and Salzmann, U.: Detrital events and hydroclimate variability in the Romanian Carpathians  
during the Mid-to-Late Holocene, *Quat. Sci. Rev.*, 167, 78–95, doi:10.1016/j.quascirev.2017.04.029, 2017a.
- 630 Longman, J., Veres, D., Ersek, V., Salzmann, U., Hubay, K., Bormann, M., Wennrich, V. and Schäbitz, F.: Periodic input of  
dust over the Eastern Carpathians during the Holocene linked with Saharan desertification and human impact, *Clim. Past*,  
13(7), 897–917, doi:10.5194/cp-13-897-2017, 2017b.
- Longman, J., Veres, D., Finsinger, W. and Ersek, V.: Exceptionally high levels of lead pollution in the Balkans from the Early  
Bronze Age to the Industrial Revolution., *Proc. Natl. Acad. Sci. U. S. A.*, 115(25), E5661–E5668,  
635 doi:10.1073/pnas.1721546115, 2018.
- Longman, J., Veres, D., Ersek, V., Haliuc, A. and Wennrich, V.: Runoff events and related rainfall variability in the Southern  
Carpathians during the last 2000 years, *Sci. Reports* 2019 91, 9(1), 5334, doi:10.1038/s41598-019-41855-1, 2019.
- Magnan, G. and Garneau, M.: Climatic and autogenic control on Holocene carbon sequestration in ombrotrophic peatlands of  
maritime Quebec, eastern Canada., <http://dx.doi.org/10.1177/0959683614540727>,  
24(9), 1054–1062,  
640 doi:10.1177/0959683614540727, 2014.
- Magyari, E., Buczkó, K., Jakab, G., Braun, M., Pál, Z., Karátson, D. and Pap, I.: Palaeolimnology of the last crater lake in the  
Eastern Carpathian Mountains: a multiproxy study of Holocene hydrological changes., 2009.
- Magyari, E. K., Demény, A., Buczkó, K., Kern, Z., Vennemann, T., Fórizs, I., Vincze, I., Braun, M., Kovács, J. I., Udvardi,  
B. and Veres, D.: A 13,600-year diatom oxygen isotope record from the South Carpathians (Romania): Reflection of winter  
645 conditions and possible links with North Atlantic circulation changes, *Quat. Int.*, 293, 136–149,  
doi:10.1016/j.quaint.2012.05.042, 2013.
- Marlon, J. R., Kelly, R., Daniau, A.-L., Vannièrè, B., Power, M. J., Bartlein, P., Higuera, P., Blarquez, O., Brewer, S., Brücher,

- T., Feurdean, A., Romera, G. G., Iglesias, V., Maezumi, S. Y., Magi, B., Courtney Mustaphi, C. J. and Zhihai, T.: Reconstructions of biomass burning from sediment-charcoal records to improve data-model comparisons, *Biogeosciences*, 13, 3225–3244, doi:10.5194/bg-13-3225-2016, 2016.
- Marx, S. K., McGowan, H. A. and Kamber, B. S.: Long-range dust transport from eastern Australia: A proxy for Holocene aridity and ENSO-type climate variability, *Earth Planet. Sci. Lett.*, 282(1–4), 167–177, doi:10.1016/j.epsl.2009.03.013, 2009.
- Mauri, A., Davis, B. A. S., Collins, P. M. and Kaplan, J. O.: The climate of Europe during the Holocene: a gridded pollen-based reconstruction and its multi-proxy evaluation, *Quat. Sci. Rev.*, 112, 109–127, doi:10.1016/j.quascirev.2015.01.013, 2015.
- Nieveen, J. P., Campbell, D. I., Schipper, L. A. and Blair, I. J.: Carbon exchange of grazed pasture on a drained peat soil, *Glob. Chang. Biol.*, 11(4), 607–618, doi:10.1111/j.1365-2486.2005.00929.x, 2005.
- O'Donnell, M. S. and Ignizio, D. A.: Bioclimatic Predictors for Supporting Ecological Applications in the Conterminous United States, Reston. [online] Available from: <https://pubs.usgs.gov/ds/691/> (Accessed 22 March 2021), 2012.
- Obrecht, I., Zeeden, C., Hambach, U., Veres, D., Marković, S. b., Böskén, J., Svirčev, Z., Bačević, N., Gavrilov, M. B. and Lehmkuhl, F.: Tracing the influence of Mediterranean climate on Southeastern Europe during the past 350,000 years, *Sci. Rep.*, 6, 36334, doi:10.1038/srep36334, 2016.
- Oke, T. A. and Hager, H. A.: Assessing environmental attributes and effects of climate change on Sphagnum peatland distributions in North America using single- and multi-species models, edited by R. Bussmann, *PLoS One*, 12(4), e0175978, doi:10.1371/journal.pone.0175978, 2017.
- Olofsson, P., Woodcock, C. E., Baccini, A., Houghton, R. A., Ozdogan, M., Gancz, V., Blujdea, V., Torchinava, P., Tufekcioglu, A. and Baskent, E. Z.: The Effects of Land Use Change on Terrestrial Carbon Dynamics in the Black Sea Region, in *Regional Aspects of Climate-Terrestrial-Hydrologic Interactions in Non-boreal Eastern Europe*, edited by P. Groisman and S. Ivanov, pp. 175–182, Springer Netherlands, Dordrecht., 2009.
- Olsen, J., Anderson, N. J. and Knudsen, M. F.: Variability of the North Atlantic Oscillation over the past 5,200 years, *Nat. Geosci.*, 5(September), 1–14, doi:10.1038/ngeo1589, 2012.
- Onac, B. P., Constantin, S., Lundberg, J. and Lauritzen, S. E.: Isotopic climate record in a Holocene stalagmite from Ursilor Cave (Romania), *J. Quat. Sci.*, 17(4), 319–327, doi:10.1002/jqs.685, 2002.
- Page, S. E., Rieley, J. O. and Banks, C. J.: Global and regional importance of the tropical peatland carbon pool, *Glob. Chang. Biol.*, 17(2), 798–818, doi:10.1111/j.1365-2486.2010.02279.x, 2011.
- Panait, A., Diaconu, A., Galka, M., Grindean, R., Hutchinson, S., Hickler, T., Lamentowicz, M., Mulch, A., Tanțău, I., Werner, C. and Feurdean, A.: Hydrological conditions and carbon accumulation rates reconstructed from a mountain raised bog in the Carpathians: A multi-proxy approach, *CATENA*, 152, 57–68, doi:10.1016/j.catena.2016.12.023, 2017.
- Panait, A. M., Hutchinson, S. M., Diaconu, A. C., Tanțău, I. and Feurdean, A.: Disentangling dust and sand deposition using a peat record in CE Europe (northern Romania): A multiproxy approach, *Palaeogeogr. Palaeoclimatol. Palaeoecol.*, 532, 109257, doi:10.1016/j.palaeo.2019.109257, 2019.

- Payne, R. J., Ring-Hrubesh, F., Rush, G., Sloan, T. J., Evans, C. D. and Mauquoy, D.: Peatland initiation and carbon accumulation in the Falkland Islands, *Quat. Sci. Rev.*, 212, 213–218, doi:10.1016/J.QUASCIREV.2019.03.022, 2019.
- Persoiu, A., Ionita, M. and Weiss, H.: Atmospheric blocking induced by the strengthened Siberian High led to drying in west  
685 Asia during the 4.2 ka BP event—a hypothesis, *Clim. Past*, 15(2), 781–793, doi:10.5194/cp-15-781-2019, 2019.
- Perşoiu, A., Onac, B. P., Wynn, J. G., Blaauw, M., Ionita, M. and Hansson, M.: Holocene winter climate variability in Central and Eastern Europe, *Sci. Rep.*, 7(1), doi:10.1038/s41598-017-01397-w, 2017.
- Persoiu, I.: Reconstituirea evoluției geomorfologice a văii Someșul Mic în Holocen, Universitatea Al. I. Cuza Iași., 2010.
- Perşoiu, I. and Perşoiu, A.: Flood events in Transylvania during the Medieval Warm Period and the Little Ice Age, *The  
690 Holocene*, 29(1), 85–96, doi:10.1177/0959683618804632, 2019.
- Pop, E.: Mlaștinile de turbă din Republica Populară Română (Peat bogs from Romania), Editura Academiei Republicii Populare Române, Bucharest., 1960.
- Popa, I. and Kern, Z. Z.: Long-term summer temperature reconstruction inferred from tree-ring records from the Eastern Carpathians, *Clim. Dyn.*, 32(7–8), 1107–1117, doi:10.1007/s00382-008-0439-x, 2009.
- 695 Pratte, S., Bao, K., Sapkota, A., Zhang, W., Shen, J., Le Roux, G. and De Vleeschouwer, F.: 14 kyr of atmospheric mineral dust deposition in north-eastern China: A record of palaeoclimatic and palaeoenvironmental changes in the Chinese dust source regions, *The Holocene*, 30(4), 492–506, doi:10.1177/0959683619892661, 2020.
- Ratcliffe, J. L., Payne, R. J., Sloan, T. J., Smith, B., Waldron, S., Mauquoy, D., Newton, A., Anderson, A. R., Henderson, A. and Andersen, R.: Holocene carbon accumulation in the peatlands of northern Scotland, *Mires Peat*, 23, 1–30,  
700 doi:10.19189/MaP.2018.OMB.347, 2018.
- Ratcliffe, J. L., Lowe, D. J., Schipper, L. A., Gehrels, M. J., French, A. D. and Campbell, D. I.: Rapid carbon accumulation in a peatland following Late Holocene tephra deposition, New Zealand, *Quat. Sci. Rev.*, 246, 106505, doi:10.1016/j.quascirev.2020.106505, 2020.
- Reimer, P. J., Austin, W. E. N., Bard, E., Bayliss, A., Blackwell, P. G., Bronk Ramsey, C., Butzin, M., Cheng, H., Edwards,  
705 R. L., Friedrich, M., Grootes, P. M., Guilderson, T. P., Hajdas, I., Heaton, T. J., Hogg, A. G., Hughen, K. A., Kromer, B., Manning, S. W., Muscheler, R., Palmer, J. G., Pearson, C., Van Der Plicht, J., Reimer, R. W., Richards, D. A., Scott, E. M., Southon, J. R., Turney, C. S. M., Wacker, L., Adolphi, F., Büntgen, U., Capano, M., Fahrni, S. M., Fogtmann-Schulz, A., Friedrich, R., Köhler, P., Kudsk, S., Miyake, F., Olsen, J., Reinig, F., Sakamoto, M., Sookdeo, A. and Talamo, S.: The IntCal20 Northern Hemisphere Radiocarbon Age Calibration Curve (0–55 cal kBP), *Radiocarbon*, 62(4), 725–757,  
710 doi:10.1017/RDC.2020.41, 2020.
- Roberts, N., Moreno, A., Valero-Garcés, B. L., Corella, J. P., Jones, M., Allcock, S., Woodbridge, J., Morellón, M., Luterbacher, J., Xoplaki, E. and Türkeş, M.: Palaeolimnological evidence for an east-west climate see-saw in the Mediterranean since AD 900, *Glob. Planet. Change*, 84–85, 23–34, doi:10.1016/j.gloplacha.2011.11.002, 2012.
- Roulet, N. T., Lafleur, P. M., Richard, P. J. H., Moore, T. R., Humphreys, E. R. and Bubier, J.: Contemporary carbon balance  
715 and late Holocene carbon accumulation in a northern peatland, *Glob. Chang. Biol.*, 13(2), 397–411, doi:10.1111/j.1365-

2486.2006.01292.x, 2007.

Ruddiman, W. F. and Ellis, E. C.: Effect of per-capita land use changes on Holocene forest clearance and CO<sub>2</sub> emissions, *Quat. Sci. Rev.*, 28(27–28), 3011–3015, doi:10.1016/j.quascirev.2009.05.022, 2009.

720 Ruddiman, W. F., Kutzbach, J. E. and Vavrus, S. J.: Can natural or anthropogenic explanations of late-holocene CO<sub>2</sub> and CH<sub>4</sub> increases be falsified?, edited by W. F. Ruddiman, M. C. Crucifix, and F. A. Oldfield, *Holocene*, 21(5), 865–879, doi:10.1177/0959683610387172, 2011.

Schaefer, K., Lantuit, H., Romanovsky, V. E., Schuur, E. A. G. and Witt, R.: The impact of the permafrost carbon feedback on global climate, *Environ. Res. Lett.*, 9(8), doi:10.1088/1748-9326/9/8/085003, 2014.

725 Schillereff, D., Chiverrell, R., Sjöström, J., Kylander, M., Boyle, J., Davies, J., Toberman, H. and Tipping, E.: Phosphorus supply controls the long-term functioning of mid-latitude ombrotrophic peatlands, *EarthArXiv Prepr.* [online] Available from: <https://eartharxiv.org/repository/view/2165/> (Accessed 19 August 2021), 2021.

Schnitchen, C., Charman, D. J., Magyari, E., Braun, M., Grigorszky, I., Tóthmérész, B., Molnár, M. and Szántó, Z.: Reconstructing hydrological variability from testate amoebae analysis in Carpathian peatlands, *J. Paleolimnol.*, 36(1), 1–17, doi:10.1007/s10933-006-0001-y, 2006.

730 Schumacher, M., Schier, W. and Schmitt, B.: Mid-Holocene vegetation development and herding-related interferences in the Carpathian region, *Quat. Int.*, 415, 253–267, doi:10.1016/j.quaint.2015.09.074, 2016.

Schuur, E. A. G., McGuire, A. D., Schädel, C., Grosse, G., Harden, J. W., Hayes, D. J., Hugelius, G., Koven, C. D., Kuhry, P., Lawrence, D. M., Natali, S. M., Olefeldt, D., Romanovsky, V. E., Schaefer, K., Turetsky, M. R., Treat, C. C. and Vonk, J. E.: Climate change and the permafrost carbon feedback, *Nature*, 520(7546), 171–179, doi:10.1038/nature14338, 2015.

735 Tahvanainen, T.: Abrupt ombrotrophication of a boreal peat mire triggered by hydrological disturbance in the catchment, *J. Ecol.*, 99(2), no-no, doi:10.1111/j.1365-2745.2010.01778.x, 2011.

Tóth, M., Magyari, E. K., Buczkó, K., Braun, M., Panagiotopoulos, K. and Heiri, O.: Chironomid-inferred Holocene temperature changes in the South Carpathians (Romania), *The Holocene*, 25(4), 569–582, doi:10.1177/0959683614565953, 2015.

740 Tóth, M., Buczkó, K., Specziár, A., Heiri, O., Braun, M., Hubay, K., Czakó, D. and Magyari, E. K.: Limnological changes in South Carpathian glacier-formed lakes (Retezat Mountains, Romania) during the Late Glacial and the Holocene: A synthesis, *Quat. Int.*, 477, 138–152, doi:10.1016/j.quaint.2017.05.023, 2018.

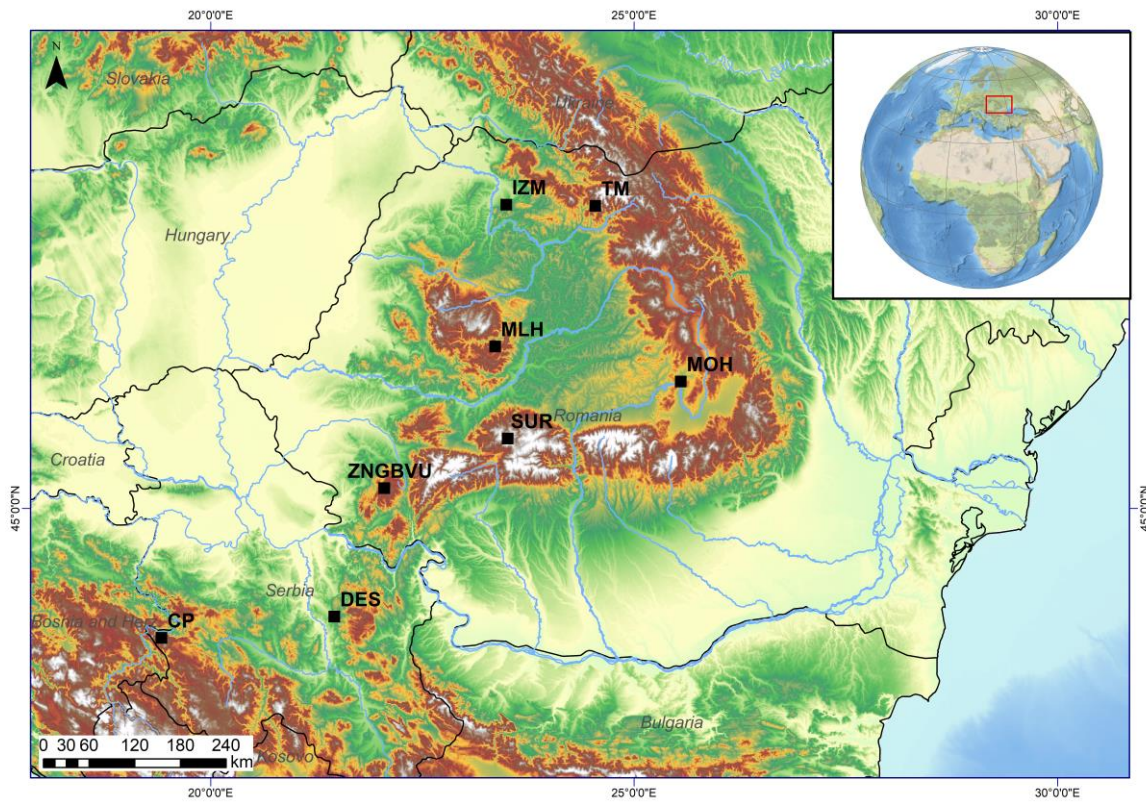
Treat, C. C., Kleinen, T., Brothoerts, N., Dalton, A. S., Dommaine, R., Douglas, T. A., Drexler, J. Z., Finkelstein, S. A., Grosse, G., Hope, G., Hutchings, J., Jones, M. C., Kuhry, P., Lacourse, T., Lähteenoja, O., Loisel, J., Notebaert, B., Payne, R. J., Peteet, D. M., Sannel, A. B. K., Stelling, J. M., Strauss, J., Swindles, G. T., Talbot, J., Tarnocai, C., Verstraeten, G., Williams, C. J., Xia, Z., Yu, Z., Väliranta, M., Hätteland, M., Alexanderson, H. and Brovkin, V.: Widespread global peatland establishment and persistence over the last 130,000 y, *Proc. Natl. Acad. Sci. U. S. A.*, 116(11), 4822–4827, doi:10.1073/pnas.1813305116, 2019.

Turetsky, M. R., Donahue, W. F. and Benscoter, B. W.: Experimental drying intensifies burning and carbon losses in a northern

- 750 peatland, *Nat. Commun.*, 2(1), 1–5, doi:10.1038/ncomms1523, 2011.
- Varga, G., Kovács, J. and Újvári, G.: Analysis of Saharan dust intrusions into the Carpathian Basin (Central Europe) over the period of 1979–2011, *Glob. Planet. Change*, 100, 333–342, doi:10.1016/j.gloplacha.2012.11.007, 2013.
- Varga, G., Cserháti, C., Kovács, J. and Szalai, Z.: Saharan dust deposition in the Carpathian Basin and its possible effects on interglacial soil formation, *Aeolian Res.*, 22, 1–12, doi:10.1016/j.aeolia.2016.05.004, 2016.
- 755 Wagner, B., Aufgebauer, A., Vogel, H., Zanchetta, G., Sulpizio, R. and Damaschke, M.: Late Pleistocene and Holocene contourite drift in Lake Prespa (Albania/F.Y.R. of Macedonia/Greece), *Quat. Int.*, 274, 112–121, doi:10.1016/j.quaint.2012.02.016, 2012.
- Wang, M. and Moore, T. R.: Carbon, Nitrogen, Phosphorus, and Potassium Stoichiometry in an Ombrotrophic Peatland Reflects Plant Functional Type, *Ecosystems*, 17(4), 673–684, doi:10.1007/s10021-014-9752-x, 2014.
- 760 Warren, M., Hergoualc’h, K., Kauffman, J. B., Murdiyarso, D. and Kolka, R.: An appraisal of Indonesia’s immense peat carbon stock using national peatland maps: Uncertainties and potential losses from conversion, *Carbon Balance Manag.*, 12(1), 12, doi:10.1186/s13021-017-0080-2, 2017.
- Webster, K. L., Bhatti, J. S., Thompson, D. K., Nelson, S. A., Shaw, C. H., Bona, K. A., Hayne, S. L. and Kurz, W. A.: Spatially-integrated estimates of net ecosystem exchange and methane fluxes from Canadian peatlands, *Carbon Balance*
- 765 *Manag.*, 13(1), 1–21, doi:10.1186/s13021-018-0105-5, 2018.
- Worrall, F. and Clay, G. D.: The impact of sheep grazing on the carbon balance of a peatland, *Sci. Total Environ.*, 438, 426–434, doi:10.1016/j.scitotenv.2012.08.084, 2012.
- Young, D. M., Baird, A. J., Charman, D. J., Evans, C. D., Gallego-Sala, A. V., Gill, P. J., Hughes, P. D. M., Morris, P. J. and Swindles, G. T.: Misinterpreting carbon accumulation rates in records from near-surface peat, *Sci. Rep.*, 9(1), 1–8,
- 770 doi:10.1038/s41598-019-53879-8, 2019.
- Yu, Z., Loisel, J., Brosseau, D. P., Beilman, D. W. and Hunt, S. J.: Global peatland dynamics since the Last Glacial Maximum, *Geophys. Res. Lett.*, 37(13), n/a-n/a, doi:10.1029/2010GL043584, 2010.



## Figures



775 **Figure 1:** Map of central-eastern Europe, indicating where all the sites used in this study are located. Study sites are marked by filled squares, with site codes indicating the site name: Iezerul Mare (IZM), Tăul Muced (TM), Mohos (MOH), Mluha (MLH), Sureanu (SUR), Zănoaga Roșie (ZNG), Baia Vulturilor (BVU), Despotovac (DES) and Crveni Potok (CP).

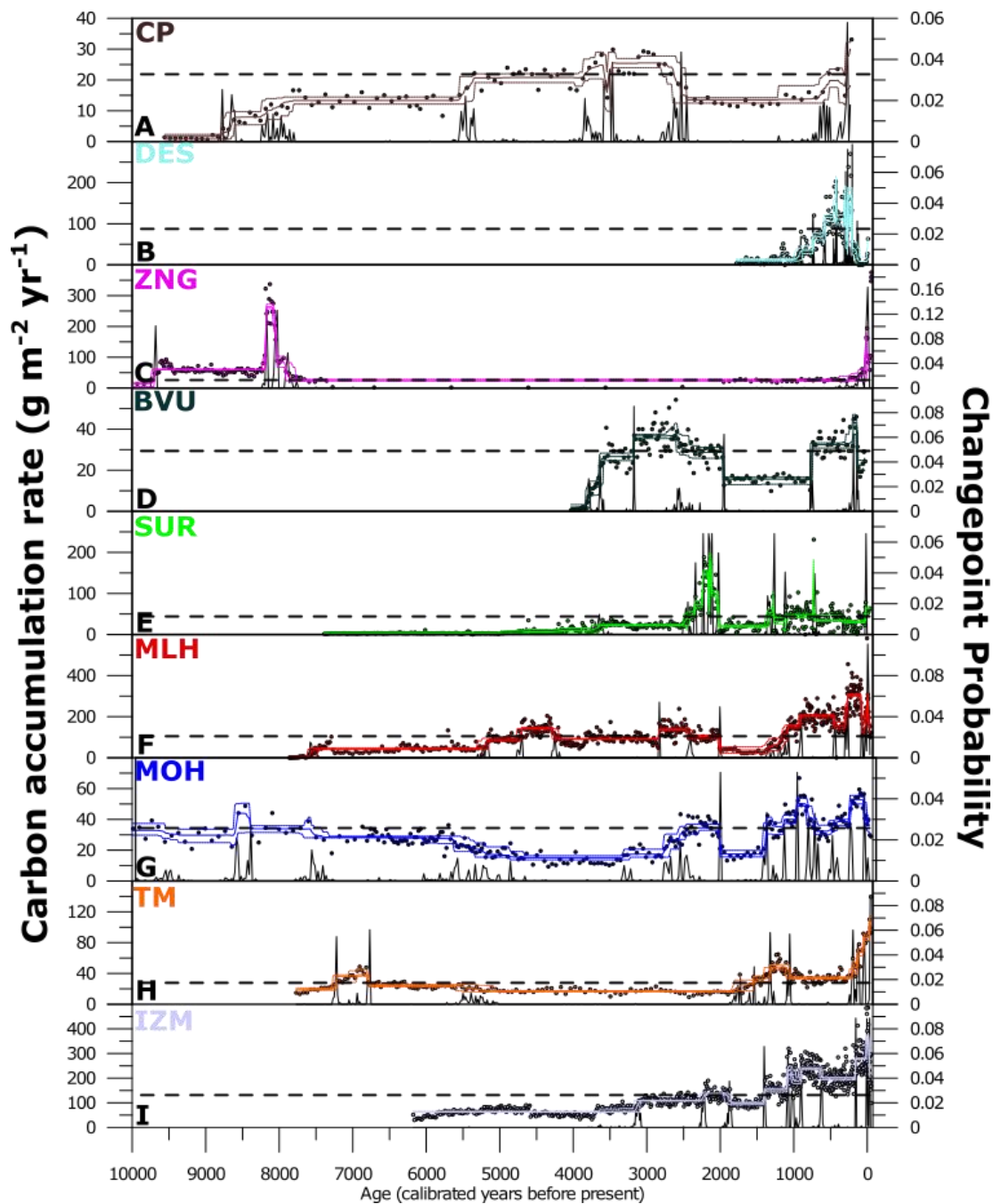
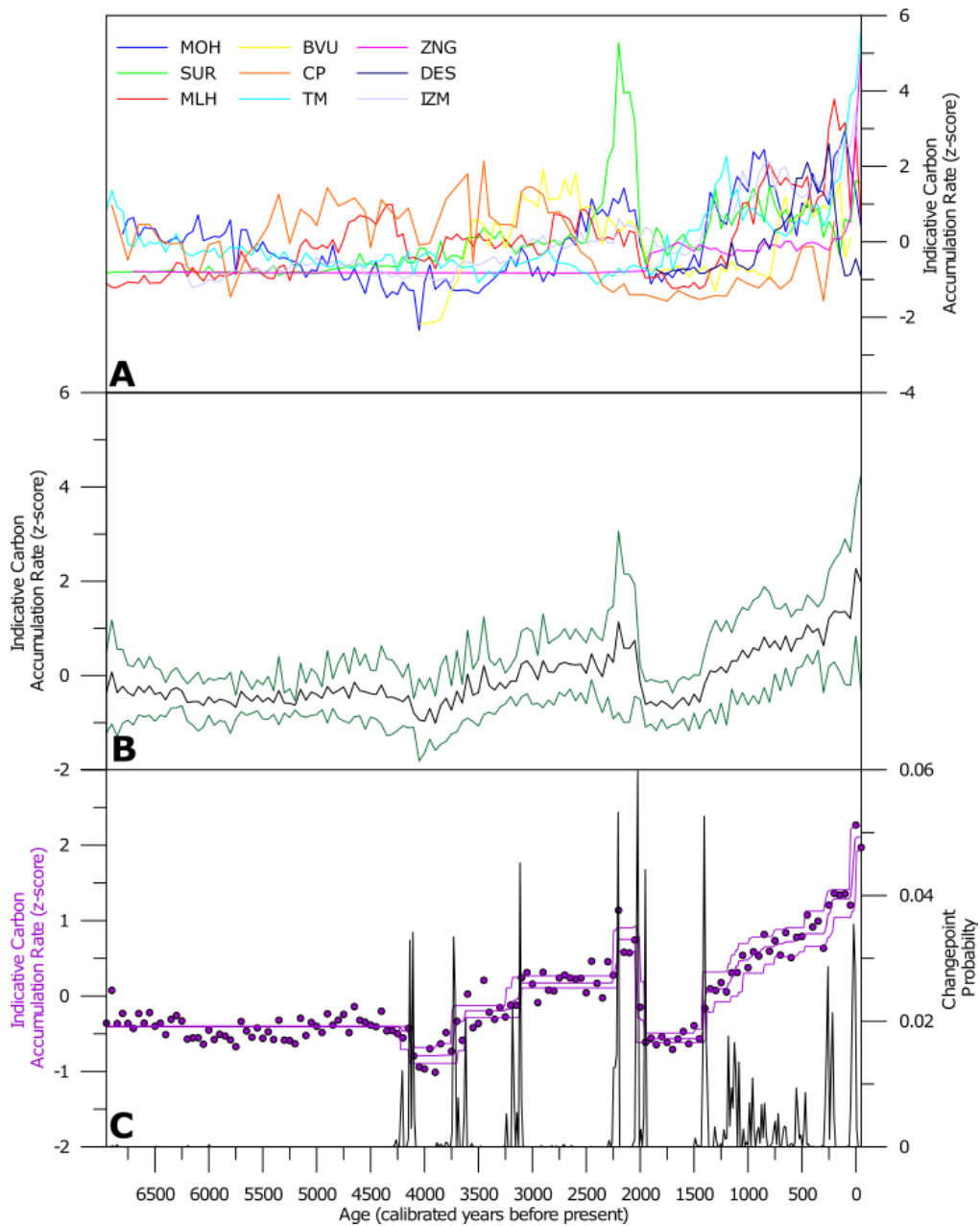


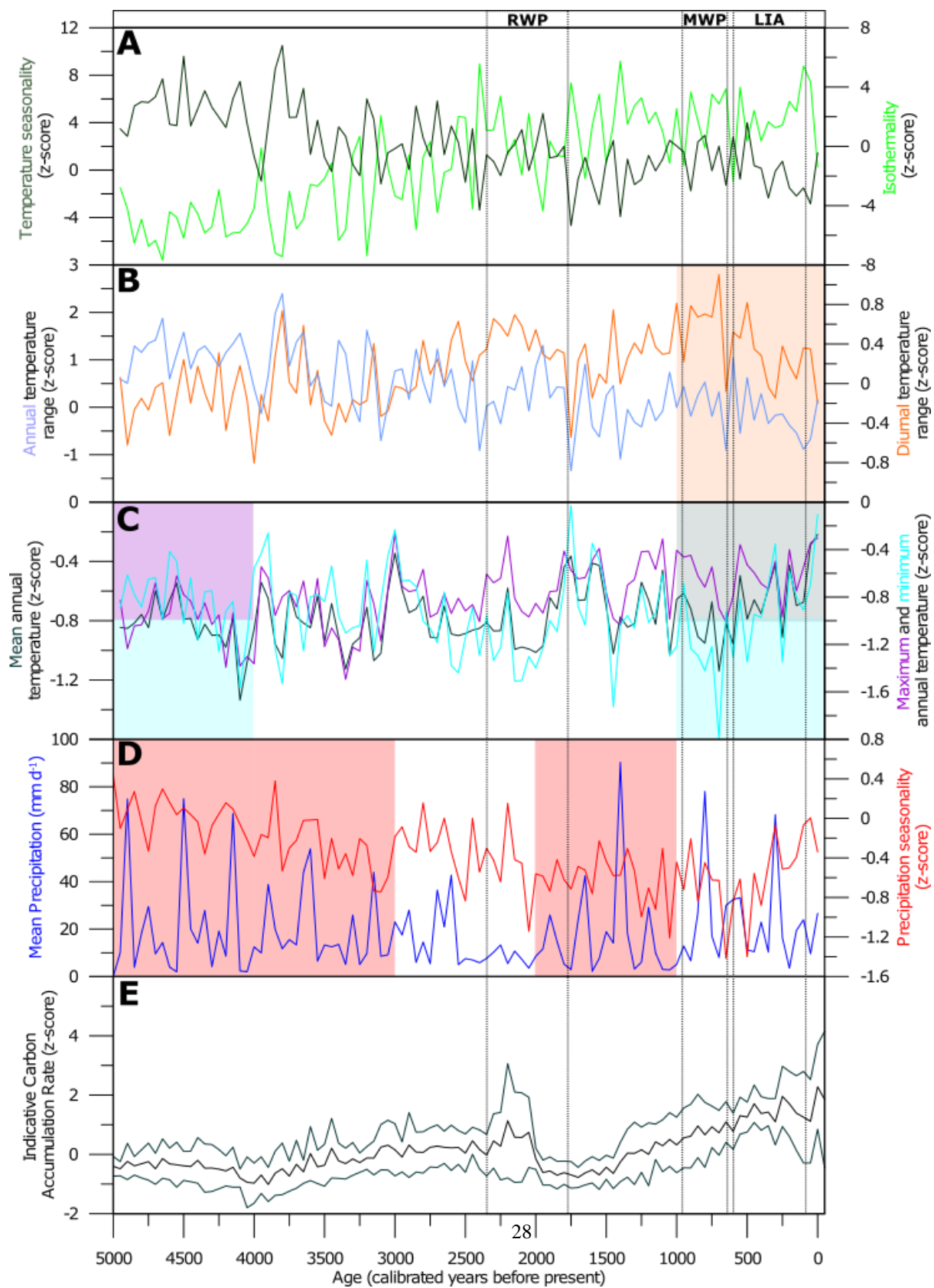
Figure 2: Changing carbon accumulation rates (CARs) through time for all sites in this study, alongside the results of changepoint modelling. Each panel denotes a single peat bog CAR record, moving south to north; A) Crveni Potok (CP), B) Despotovac (DES), C) Zănoaga Roşie (ZNG), D) Baia Vulturilor (BVU), E) Sureanu (SUR), F) Mluha (MLH), G) Mohos (MOH), H) Tăul Muced (TM) and I) Iezerul Mare (IZM). In each panel, individual measurements are denoted by filled circles. Changepoint model outputs are shown by the solid coloured line indicating the mean and the 5% and 95% percentiles. Horizontal dashed lines indicate the long-term carbon accumulation (LORCA) values. In each panel, the black solid line denotes the likelihood of changepoint occurrence.



785

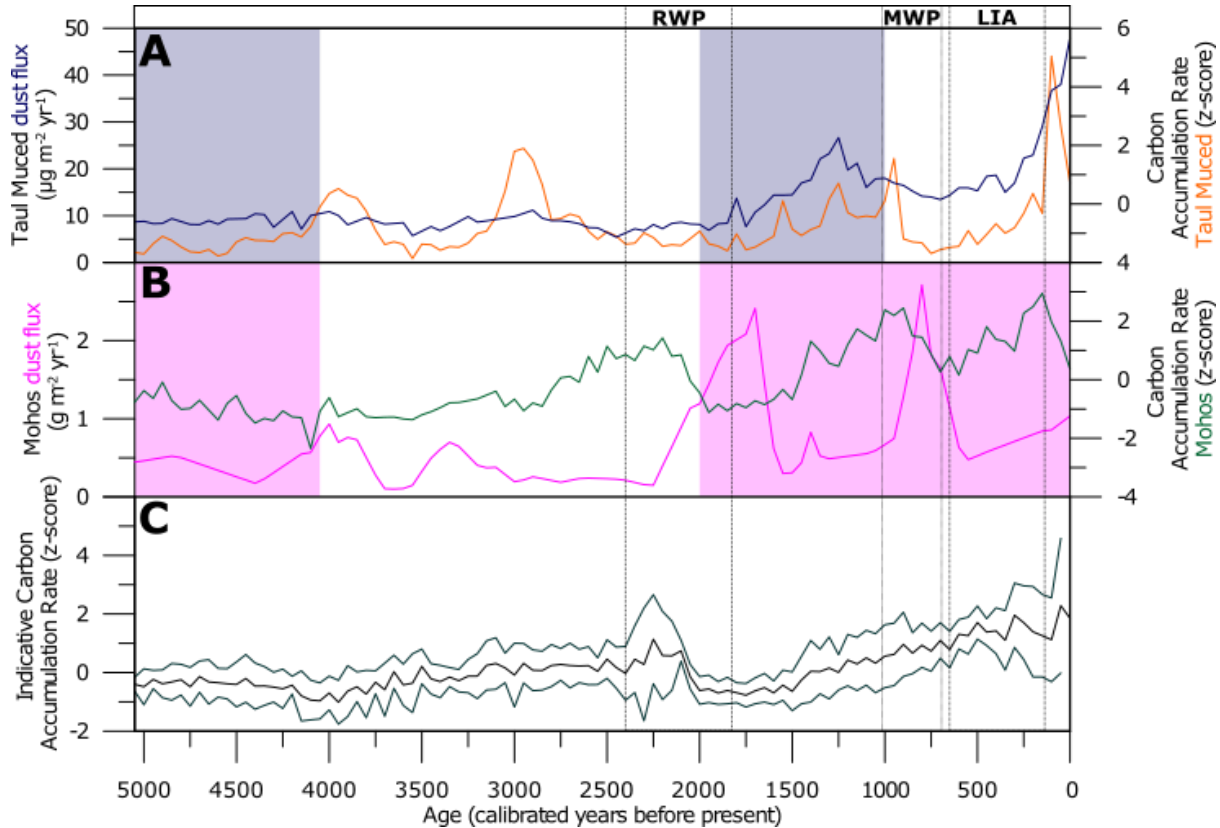
**Figure 3: Collated normalised carbon accumulation rates, and composite of data. Panel A displays the 50-year binned, z-score converted raw data from each site. Panel B shows the synthesis of all data in panel A, with the mean z-score indicated with a solid black line. 1 standard deviation is indicated with solid green lines. Panel C is changepoint modelling of the composite time series. As before, filled circles indicate datapoints. Changepoint model outputs are shown by the solid purple line indicating the mean and dashed purple lines indicating the 5% and 95% percentiles. The black solid line denotes the likelihood of changepoint occurrence.**

790



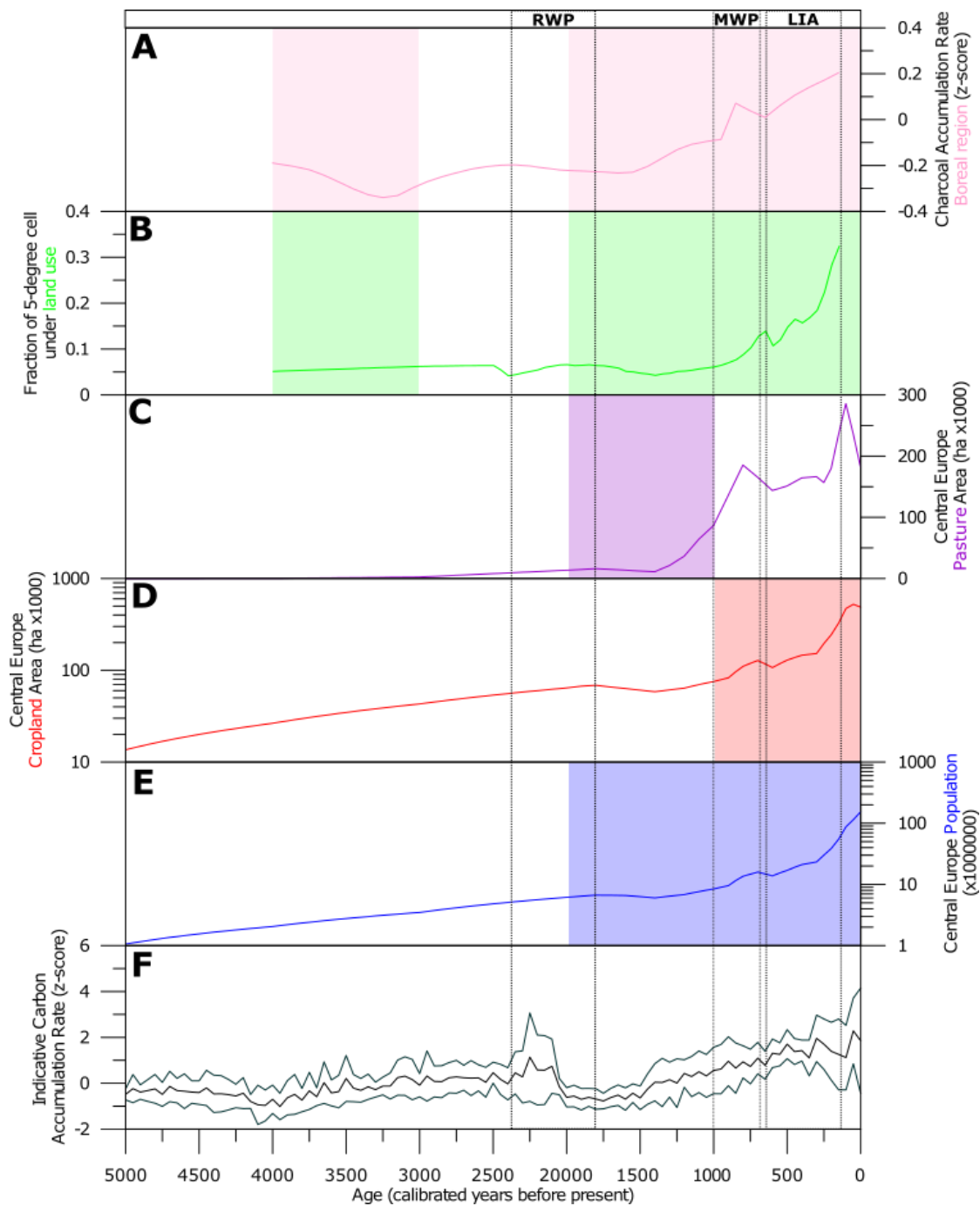
795

Figure 4: Comparison of carbon accumulation rate (CAR) composite with climatic variables as extracted from our modelling approach. In panels A-D are the variables of climate used in this study to compare with the reconstructed CAR for central-eastern Europe (panel E). Highlighted with coloured rectangles are 1000-year periods in which a statistically significant correlation between CAR and the variable of that colour are observed (e.g. precipitation seasonality and CAR in the period 1950 – 1000 yr BP, in the panel D). When two variables significantly correlate with CARs, both colours are indicated by rectangles (e.g., mean and minimum temperature, and CAR in the period 1000 yr BP to present in panel C). Also indicated and denoted by dashed lines are the Roman Warm Period (RWP), Medieval Warm Period (MWP) and Little Ice Age (LIA).



800

Figure 5: Comparison of dust fluxes and our reconstruction of carbon accumulation rate (CAR). Panel A shows the dust flux reconstructed from Taul Muced, alongside the corresponding CAR. Panel B shows the dust flux reconstructed from Mohos, alongside the corresponding CAR. Panel C shows the CAR composite record. Coloured rectangles indicate significant correlation between the variable indicated by the colour and the CAR reconstruction, as in Figure 4. Also indicated and denoted by dashed lines are the Roman Warm Period (RWP), Medieval Warm Period (MWP) and Little Ice Age (LIA).



805

**Figure 6: Comparison of reconstructed carbon accumulation rate (CAR) for central-eastern Europe with four variables associated with land use and human impact. Panels A-E display the land use variables, with charcoal deposition in panel A (Feurdean et al., 2020), an estimate of total land use in panel B (from Kaplan et al., 2011), and three metrics of human impact (area of pasture, cropland and total population) in panels C-E (Goldewijk et al., 2017). Panel F displays the CAR reconstruction from this study. Coloured rectangles indicate correlation between the variable indicated by the colour and the CAR reconstruction, as in Figure 4.**

810

## Tables

**Table 1: Main results of this study. Listed here are the details of each bog involved in this work, their location, type (O=ombrotrophic, B=blanket, F=fen) size, depth and age. In addition, where known, a coring date is indicated. Also presented are the average carbon content, bulk density and peat growth.**

Peat Bog	Code	Longitude	Latitude	Altitude	Bog Type	Mire area (km <sup>2</sup> )	Coring Date	Median C content (%)	Median density (g cm <sup>-3</sup> )	Basal Age (yr BP)	Basal Depth (cm)	Peat Growth (cm yr <sup>-1</sup> )
Crveni Potok	CP	43.91	19.42	1090	O	0.19	10-2012	44.93	0.14	9560	270	0.028
Despotovac	DES	44.09	21.46	100	F	0.001	08-2015	17.47	0.35	1779	200	0.112
Zanoaga Rosie	ZNG	45.17	22.05	1400	B	1	2015	49.58	0.18	11936	200	0.016
Baia Vulturilor	BVU	45.17	22.05	1400	B	1	2015	45.83	0.11	4030	193	0.047
Sureauu	SUR	45.58	23.51	1840	O	0.009	10-2014	42.16	0.095	7390	594	0.080
Mluha	MLH	46.34	23.36	1240	O	0.1	2014	49.04	0.204	7863	620	0.078
Mohos	MOH	46.05	25.55	1050	O	0.8	2014	45.69	0.071	10849	940	0.086
Taul Muced	TM	47.47	24.54	1360	O	0.02	Unknown	48.95	0.074	7769	450	0.057
Iezerul Mare	IZM	47.48	23.49	1005	O	0.1	2021	45.53	0.18	6177	750	0.121

815

**Table 2: Average carbon accumulation rates for a selection of times periods (in g C m<sup>-2</sup> yr<sup>-1</sup>). Also displayed are the LORCA value and an estimate of carbon storage. See text for details.**

Peat Bog	Code	RERCA (50 yr BP to Present)	Gallego-Sala approach (1000 - 100 yr BP)	Medieval Warm Period (1000- 700 yr BP)	Little Ice Age (650- 100 yr BP)	Roman Warm Period (2200- 1550 yr BP)	LORCA (g C m <sup>-2</sup> yr <sup>-1</sup> )	Estimate of C storage (Gt)
Crveni Potok	CP		29.89	41.19	20.85	47.77	20.99	0.00004
Despotovac	DES	15.39	74.18	35.46	96.94	7.57	81.11	0.00000
Zanoaga Rosie	ZNG	159.61	27.06	24.99	28.58	17.36	17.12	0.00021
Baia Vulturilor	BVU	26.67	29.34	20.44	33.19	21.79	28.08	0.00011
Sureauu	SUR	51.59	40.80	49.60	34.61	58.50	37.45	0.00000
Mluha	MLH	228.56	217.67	191.24	235.78	74.03	91.74	0.00007
Mohos	MOH	39.29	42.18	46.45	40.88	25.32	32.61	0.00028
Taul Muced	TM	96.45	37.02	33.99	39.28	19.22	24.32	0.00000
Iezerul Mare	IZM	283.45	217.47	224.64	211.18	115.57	120.59	0.00007

820

**Table 3: Correlation coefficients and p-values between bioclimatic parameters of climate change and reconstructed carbon accumulation rates, for a selection of times periods. P-values significant at the 0.05 level are highlighted in bold, with those significant at the 0.01 level italicised.**

<b>Whole period (5000 yr BP to present)</b>	<b>Pearson's r</b>	<b>p-value</b>
Mean Precipitation	0.017	0.87
Precipitation Seasonality	-0.326	<0.01
Mean Temperature	0.141	0.16
Minimum Temperature	-0.073	0.46
Maximum Temperature	0.371	<0.01
Diurnal range	0.339	<0.01
Annual range	-0.421	<0.01
Isothermality	0.505	<0.01
Temperature seasonality	-0.382	<0.01
<b>5000-4000 yr BP</b>	<b>Pearson's r</b>	<b>p-value</b>
Mean Precipitation	0.304	0.17
Precipitation Seasonality	0.477	<b>0.03</b>
Mean Temperature	0.52	<b>0.01</b>
Minimum Temperature	0.263	0.24
Maximum Temperature	0.547	<b>0.01</b>
Diurnal range	0.169	0.45
Annual range	0.251	0.26
Isothermality	-0.183	0.42
Temperature seasonality	0.307	0.17
<b>3950-3000 yr BP</b>	<b>Pearson's r</b>	<b>p-value</b>
Mean Precipitation	-0.119	0.60
Precipitation Seasonality	-0.397	<b>0.07</b>
Mean Temperature	-0.007	0.97
Minimum Temperature	0.159	0.48
Maximum Temperature	-0.179	0.43
Diurnal range	-0.326	0.14
Annual range	-0.259	0.25
Isothermality	0.366	0.10
Temperature seasonality	-0.35	0.11
<b>2950-2000 yr BP</b>	<b>Pearsons' r?</b>	<b>p-value</b>
Mean Precipitation	-0.168	0.46
Precipitation Seasonality	0.038	0.87
Mean Temperature	-0.025	0.91
Minimum Temperature	-0.095	0.68
Maximum Temperature	0.264	0.24
Diurnal range	0.283	0.20
Annual range	-0.034	0.88
Isothermality	0.101	0.66



Temperature seasonality	-0.022	0.92
<b>1950-1000 yr BP</b>	<b>Pearson's r</b>	<b>p-value</b>
Mean Precipitation	-0.169	0.45
Precipitation Seasonality	-0.365	<b>0.10</b>
Mean Temperature	-0.258	0.25
Minimum Temperature	-0.185	0.41
Maximum Temperature	0.171	0.45
Diurnal range	0.355	0.11
Annual range	-0.061	0.79
Isothermality	0.203	0.37
Temperature seasonality	0.143	0.53
<b>950 yr BP to present</b>	<b>Pearson's r</b>	<b>p-value</b>
Mean Precipitation	-0.206	0.36
Precipitation Seasonality	0.103	0.65
Mean Temperature	0.465	<b>0.03</b>
Minimum Temperature	0.497	<b>0.02</b>
Maximum Temperature	0.12	0.60
Diurnal range	-0.533	<b>0.01</b>
Annual range	-0.295	0.18
Isothermality	-0.016	0.94
Temperature seasonality	-0.184	0.41

**Table 4: Correlation coefficients and p-values between indicators of human impact, and of dust input and reconstructed carbon accumulation rates, for a selection of times periods. <sup>a</sup> Correlation of dust flux from Mohos and Tăul Muced bogs with composite CAR record. <sup>b</sup> Correlation of dust flux from Mohos and Tăul Muced with individual CARs. P-values significant at the 0.05 level are highlighted in bold, with those significant at the 0.01 level italicised.**

<b>Whole period (5000 yr BP to present)</b>	<b>Pearson's r</b>	<b>p-value</b>
HYDE Population	0.584	< <i><b>0.01</b></i>
HYDE Cropland	0.652	< <i><b>0.01</b></i>
HYDE Pasture	0.881	< <i><b>0.01</b></i>
Kaplan land use	0.673	< <i><b>0.01</b></i>
MOH Dust Flux and CAR composite <sup>a</sup>	0.042	0.67
TM Dust Flux and CAR composite <sup>a</sup>	0.240	<b>0.02</b>
MOH Dust and MOH CAR <sup>b</sup>	0.220	<b>0.03</b>
TM Dust and TM CAR <sup>b</sup>	0.598	< <i><b>0.01</b></i>
Charcoal and composite CAR <sup>c</sup>	0.774	< <i><b>0.01</b></i>
<b>5000-4000 yr BP</b>	<b>Pearson's r</b>	<b>p-value</b>
HYDE Population	n/a	n/a
HYDE Cropland	n/a	n/a
HYDE Pasture	n/a	n/a
Kaplan land use	n/a	n/a
MOH Dust Flux and CAR composite <sup>a</sup>	-0.518	<i><b>0.01</b></i>
TM Dust Flux and CAR composite <sup>a</sup>	-0.691	< <i><b>0.01</b></i>
MOH Dust and MOH CAR <sup>b</sup>	0.052	0.82
TM Dust and TM CAR <sup>b</sup>	0.398	0.07
Charcoal and composite CAR <sup>c</sup>	n/a	n/a
<b>3950-3000 yr BP</b>	<b>Pearson's r</b>	<b>p-value</b>
HYDE Population	n/a	n/a
HYDE Cropland	n/a	n/a
HYDE Pasture	n/a	n/a
Kaplan land use	0.826	< <i><b>0.01</b></i>
MOH Dust Flux and CAR composite <sup>a</sup>	-0.418	<b>0.05</b>
TM Dust Flux and CAR composite <sup>a</sup>	-0.216	0.33
MOH Dust and MOH CAR <sup>b</sup>	0.472	0.03
TM Dust and TM CAR <sup>b</sup>	0.684	< <i><b>0.01</b></i>
Charcoal and composite CAR <sup>c</sup>	-0.733	< <i><b>0.01</b></i>

<b>2950-2000 yr BP</b>	<b>Pearson's r</b>	<b>p-value</b>
HYDE Population	n/a	n/a
HYDE Cropland	n/a	n/a
HYDE Pasture	n/a	n/a
Kaplan land use MOH Dust Flux and CAR composite <sup>a</sup>	-0.218	0.33
TM Dust Flux and CAR composite <sup>a</sup>	-0.632	<0.01
MOH Dust and MOH CAR <sup>b</sup>	0.658	<0.01
TM Dust and TM CAR <sup>b</sup>	-0.057	0.80
Charcoal and composite CAR <sup>c</sup>	0.760	<0.01
	0.369	<b>0.09</b>

<b>1950-1000 yr BP</b>	<b>Pearson's r</b>	<b>p-value</b>
HYDE Population	0.480	0.02
HYDE Cropland	0.019	0.93
HYDE Pasture	0.731	<0.01
Kaplan land use MOH Dust Flux and CAR composite <sup>a</sup>	-0.470	<b>0.03</b>
TM Dust Flux and CAR composite <sup>a</sup>	-0.460	<b>0.03</b>
MOH Dust and MOH CAR <sup>b</sup>	0.243	0.28
TM Dust and TM CAR <sup>b</sup>	-0.538	<b>0.01</b>
Charcoal and composite CAR <sup>c</sup>	0.807	<0.01
	0.948	<0.01

<b>950 yr BP to present</b>	<b>Pearson's r</b>	<b>p-value</b>
HYDE Population	0.571	<b>0.01</b>
HYDE Cropland	0.569	<b>0.01</b>
HYDE Pasture	0.465	<b>0.03</b>
Kaplan land use MOH Dust Flux and CAR composite <sup>a</sup>	0.598	<0.01
TM Dust Flux and CAR composite <sup>a</sup>	0.497	<b>0.02</b>
MOH Dust and MOH CAR <sup>b</sup>	0.120	0.60
TM Dust and TM CAR <sup>b</sup>	-0.142	0.53
Charcoal and composite CAR <sup>c</sup>	0.717	<0.01
	0.721	<0.01