

Supplementary Materials to

North Atlantic marine biogenic silica accumulation through the early-to-mid Paleogene: implications for ocean circulation and silicate weathering feedback

by

Jakub Witkowski*, Karolina Bryłka, Steven M. Bohaty, Elżbieta Mydlowska, Donald E. Penman, Bridget S. Wade

*e-mail: jakub.witkowski@usz.edu.pl; ORCID: 0000-0002-5635-7880

Contents:

Supplementary Text

Supplementary References

Supplementary Tables

Supplementary Figures

Supplementary Text

Stable isotope and pCO₂ data

Benthic stable isotope records from Leg 171B sites are mostly restricted to narrow intervals (Wade and Kroon, 2002; Quillévèrè et al. 2008; Edgar et al., 2010; Katz et al., 2011; Borrelli et al., 2014; Barnet et al., 2019). Bulk-sediment or fine-fraction $\delta^{13}\text{C}$ and $\delta^{18}\text{O}$ are available for longer intervals at multiple sites (e.g., Faul et al., 2003; Cramer et al., 2003; Bohaty et al., 2009; Luciani et al., 2017). These generally parallel the stratigraphic trends in global compilations (Cramer et al., 2009), and in single-site Atlantic records (Westerhold et al., 2018). In order to explore the links between bioSiO_2 and paleoenvironmental factors such as ocean circulation and carbon cycle perturbations, we use published global benthic foraminiferal carbon and oxygen ($\delta^{13}\text{C}$, $\delta^{18}\text{O}$) stable isotope records of Cramer et al. (2009). The original compilation of Cramer et al. (2009) was plotted relative to the Cande and Kent (1995) timescale. In the present study, we use linear interpolation between the ages of basal Paleocene through uppermost Eocene magnetic reversals to rescale the Cramer et al. (2009) records to Gradstein et al. (2012, abbreviated as GTS2012)

Deep-time $p\text{CO}_2$ estimates are based on a range of proxies, including alkenones, stomata, paleosols, and boron isotopes (e.g., Beerling and Royer, 2011; Anagnostou et al., 2016; Cui and Schubert, 2017; Foster et al., 2017; Henehan et al., 2020). For statistical treatment, we use the $p\text{CO}_2$ estimates from Foster et al. (2017), which represent the geologically longest perspective on atmospheric greenhouse gas level variations.

$^{87}\text{Sr}/^{86}\text{Sr}$, $^{187}\text{Os}/^{188}\text{Os}$ and $\delta^7\text{Li}$ are commonly interpreted as isotopic proxies for continental weathering (e.g., Ravizza and Zachos, 2003; Misra and Froelich, 2012; Renaudie, 2016). It is beyond the scope of this study to question the validity of any of these proxies (see Caves et al., 2016, for a possible alternative interpretation of these traditional isotopic weathering proxies), and consequently we use all three for comparative purposes. We utilize $^{87}\text{Sr}/^{86}\text{Sr}$ and $\delta^7\text{Li}$ from Misra and Froelich (2012). $^{187}\text{Os}/^{188}\text{Os}$ values for the Paleocene and Eocene were compiled from Ravizza et al. (2001), Ravizza and Peucker-Ehrenbrink (2003), and Klemm et al. (2005).

Supplementary references

- Anagnostou, E., John, E.H., Edgar, K.M., Foster, G.L., Ridgwell, A., Inglis, G.N., Pancost, R.D., Lunt, D.J., and Pearson, P.N.: Changing atmospheric CO₂ concentration was the primary driver of early Cenozoic climate, *Nature*, 533, 380-384, <https://doi.org/10.1038/nature17423>, 2016.
- Barnet, J.S.K., Littler, K., Westerhold, T., Kroon, D., Leng, M.J., Bailey, I., Röhl, U., and Zachos, J.C.: A High-Fidelity Benthic Stable Isotope Record of Late Cretaceous–Early Eocene Climate Change and Carbon-Cycling, *Paleoceanography and Paleoclimatology*, 34, 672-691, <https://doi.org/10.1029/2019PA003556>, 2019.
- Beerling, D. and Royer, D.: Convergent Cenozoic CO₂ history, *Nat. Geosci.*, 4, 418–420, <https://doi.org/10.1038/ngeo1186>, 2011.
- Bohaty, S. M., Zachos, J. C., Florindo, F., and Delaney, M. L.: Coupled greenhouse warming and deep-sea acidification in the middle Eocene, *Paleoceanography*, 24, PA2207, <https://doi.org/10.1029/2008PA001676>, 2009.
- Borrelli, C., Cramer, B.S., and Katz, M.E.: Bipolar Atlantic deepwater circulation in the middle-late Eocene: effects of Southern Ocean gateway openings, *Paleoceanography*, 29, 308-327, <https://doi.org/10.1002/2012PA002444>, 2009.
- Cande, S.C. and Kent, D.V.: Revised calibration of the geomagnetic polarity timescale for the Late Cretaceous and Cenozoic, *J. Geophys. Res.*, 100(B4), 6093– 6095, <https://doi.org/10.1029/94JB03098>, 1995.
- Caves, J.K., Jost, A.B., Lau, K.V., and Maher, K.: Cenozoic carbon cycle imbalances and a variable weathering feedback, *Earth Planet. Sci. Lett.*, 450, 152-163, <https://doi.org/10.1016/j.epsl.2016.06.035>, 2016.
- Cramer, B.S., Wright, J.D., Kent, D.V., and Aubry, M.-P.: Orbital climate forcing of $\delta^{13}\text{C}$ excursions in the late Paleocene-early Eocene (chrons C24n-C25n), *Paleoceanography*, 18, 1097, <https://doi.org/10.1029/2003PA000909>, 2003.
- Cramer, B.S., Toggweiler, J.R., Wright, J.D., Katz, M.E., and Miller, K.G.: Ocean overturning since the Late Cretaceous: Inferences from a new benthic foraminiferal isotope compilation, *Paleoceanography*, 24, PA4216, <https://doi.org/10.1029/2008PA001683>, 2009.
- Cramwinckel, M.J., Huber, M., Kocken, I.J., Agnini, C., Bijl, P.K., Bohaty, S.M., Frieling, J., Goldner, A., Hilgen, F.J., Kip, E.L., Peterse, F., van der Ploeg, R., Röhl, U., Schouten, S., and Sluijs, A.: Synchronous tropical and polar temperature evolution in the Eocene, *Nature*, 559, 382-386, <https://doi.org/10.1038/s41586-018-0272-2>, 2018.
- Cui, Y. and Schubert, B.A.: Atmospheric pCO₂ reconstructed across five early Eocene global warming events, *Earth Planet. Sci. Lett.*, 478, 225-235, <https://doi.org/10.1016/j.epsl.2017.08.038>, 2017.
- Edgar, K.M., Wilson, P.A., Sexton, P.F., Gibbs, S.J., Roberts, A.P., and Norris, R.D.: New biostratigraphic, magnetostratigraphic and isotopic insights into the Middle Eocene Climatic Optimum in low latitudes: *Palaeogeogr. Palaeoclimatol. Palaeoecol.*, 297, 670-682, <https://doi.org/10.1016/j.palaeo.2010.09.016>, 2010.
- Faul, K.L., Anderson, L.D., and Delaney, M.L.: Late Cretaceous and early Paleogene nutrient and paleoproductivity records from Blake Nose, western North Atlantic Ocean, *Paleoceanography*, 18, 1042, <https://doi.org/10.1029/2001PA000722>, 2003.
- Foster, G., Royer, D., and Lunt, D.: Future climate forcing potentially without precedent in the last 420 million years, *Nat. Commun.*, 8, 14845, <https://doi.org/10.1038/ncomms14845>, 2017.
- Gradstein, F.M., Ogg, J.G., Schmitz, M.D., and Ogg, G.M. (editors): *The Geologic Time Scale 2012*, Elsevier, Amsterdam, The Netherlands, 2 vols, 1144 pp., <https://doi.org/10.1016/C2011-1-08249-8>, 2012.
- Henehan, M.J., Edgar, K.M., Foster, G.L., Penman, D.E., Hull, P.M., Greenop, R., Anagnostou, E. and Pearson, P.N.: Revisiting the Middle Eocene Climatic Optimum ‘Carbon Cycle Conundrum ’ with new estimates of atmospheric pCO₂ from boron isotopes, *Paleoceanography and Paleoclimatology*, 35, e2019PA003713, <https://doi.org/10.1029/2019PA003713>, 2020.
- Katz, M.E., Cramer, B.S., Toggweiler, J.R., Esmay, G., Liu, Ch., Miller, K.G., Rosenthal, Y., Wade, B.S., and Wright, J.D.: Impact of Antarctic Circumpolar Current Development on Late Paleogene Ocean Structure, *Science*, 332, 1076-1079, <https://doi.org/10.1126/science.1202122>, 2011.

Klemm, V., Levasseur, S., Frank, M., Hein, J.R., and Halliday, A.N.: Osmium isotope stratigraphy of a marine ferromanganese crust, *Earth Planet. Sci. Lett.*, 238, 42-48, <https://doi.org/10.1016/j.epsl.2005.07.016>, 2005.

Luciani, V., D'Onofrio, R., Dickens, G.R., and Wade, B.S.: Did Photosymbiont Bleaching Lead to the Demise of Planktic Foraminifer *Morozovella* at the Early Eocene Climatic Optimum?, *Paleoceanography*, 32, 1115–1136, <https://doi.org/10.1002/2017PA003138>, 2017.

Misra, S. and Froelich, N., Lithium isotope history of Cenozoic seawater: changes in silicate weathering and reverse weathering, *Science*, 335, 818-823, <https://doi.org/10.1126/science.1214697>, 2012.

Quillèvère, F., Norris, R.D., Kroon, D., and Wilson, P.A.: Transient ocean warming and shifts in carbon reservoirs during the early Danian: *Earth Planet. Sci. Lett.*, 265, 600-615, <https://doi.org/10.1016/j.epsl.2007.10.040>, 2008.

Ravizza, G. and Peucker-Ehrenbrink, B.: The marine $^{187}\text{Os}/^{188}\text{Os}$ record of the Eocene–Oligocene transition: the interplay of weathering and glaciation, *Earth Planet. Sci. Lett.*, 210, 151-165, [https://doi.org/10.1016/S0012-821X\(03\)00137-7](https://doi.org/10.1016/S0012-821X(03)00137-7), 2003.

Ravizza, G.E. and Zachos, J.C.: Records of Cenozoic Ocean Chemistry, in: *Treatise on Geochemistry*, edited by Elderfield, H., Elsevier, Amsterdam, The Netherlands, 6, 551-581, <https://doi.org/10.1016/B0-08-043751-6/06121-1>, 2003.

Ravizza, G., Norris, R. N., Blusztajn, J., and Aubry, M.-P.: An osmium isotope excursion associated with the Late Paleocene thermal maximum: Evidence of intensified chemical weathering, *Paleoceanography*, 16, 155–163, <https://doi.org/10.1029/2000PA000541>, 2001.

Renaudie, J., Quantifying the Cenozoic marine diatom deposition history: links to the C and Si cycles, *Biogeosciences*, 13, 6003-6014, <https://doi.org/10.5194/bg-13-6003-2016>, 2016.

Wade, B.S. and Kroon, D.: Middle Eocene regional climate instability: Evidence from the western North Atlantic, *Geology*, 30, 1011-1014, [https://doi.org/10.1130/0091-7613\(2002\)030<1011:MERCIE>2.0.CO;2](https://doi.org/10.1130/0091-7613(2002)030<1011:MERCIE>2.0.CO;2), 2002.

Wade, B.S., Kroon, D., Norris, R.D.: Orbitally forced climate change in late mid-Eocene time at Blake Nose (Leg 171B): Evidence from stable isotopes in foraminifera, in: *Western North Atlantic Palaeogene and Cretaceous Palaeoceanography*, edited by Kroon, D., Norris, R.D., and Klaus, A., Geological Society, London, United Kingdom, Geological Society Special Publications, 183, 273-291, <https://doi.org/10.1144/GSL.SP.2001.183.01.13>, 2001.

Westerhold, T., Röhl, U., Donner, B., and Zachos, J. C.: Global extent of early Eocene hyperthermal events: A new Pacific benthic foraminiferal isotope record from Shatsky Rise (ODP Site 1209), *Paleoceanography and Paleoclimatology*, 33, 626–642, <https://doi.org/10.1029/2017PA003306>, 2018.

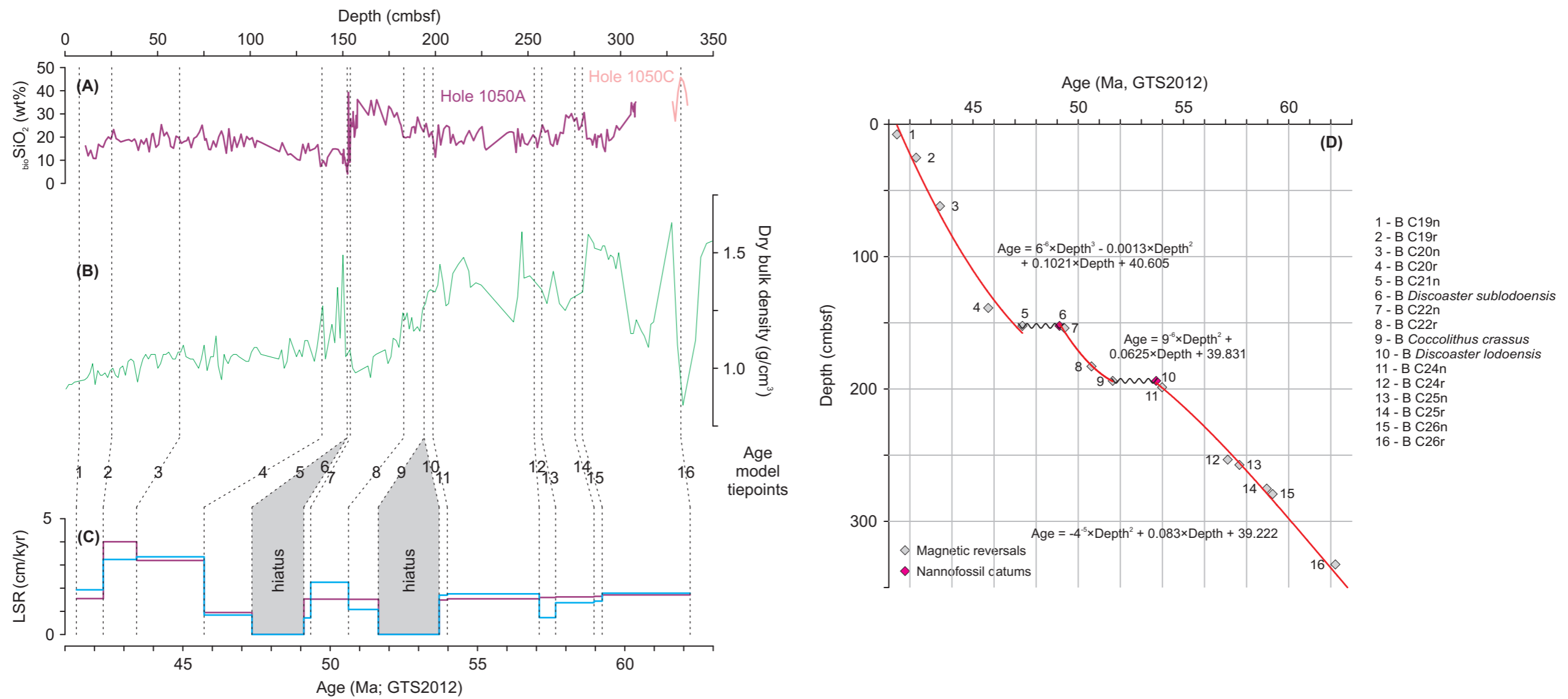


Fig. S1. Data used for $_{\text{bio}}\text{SiO}_2$ flux calculation for Holes 1050A and 1050C. (A) $_{\text{bio}}\text{SiO}_2$ concentrations; (B) shipboard discrete dry bulk density (DBD) measurements; (C) linear sedimentation rates (LSR) derived directly from age model tiepoints (blue) and from polynomial regression fitted to age model tiepoints (purple); hiatuses are highlighted in grey; (D) Age vs depth plot (for details, see Witkowski et al., 2020) with polynomial curves and regression equations for the sections above, between and below the hiatuses. Abbreviations: cmbsf = compacted meters below sea floor; wt% = weight per cent; GTS2012 = Gradstein et al. (2012); B = base.

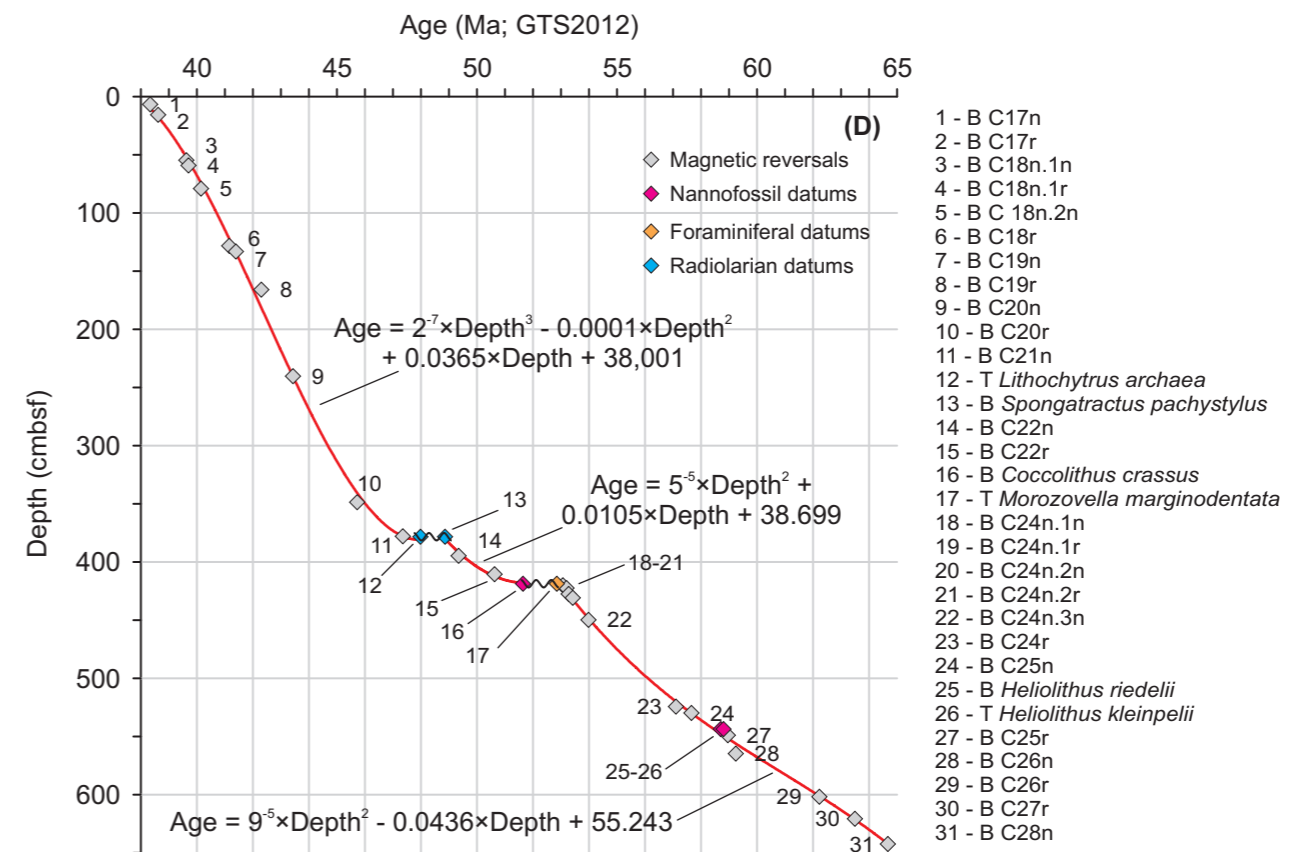
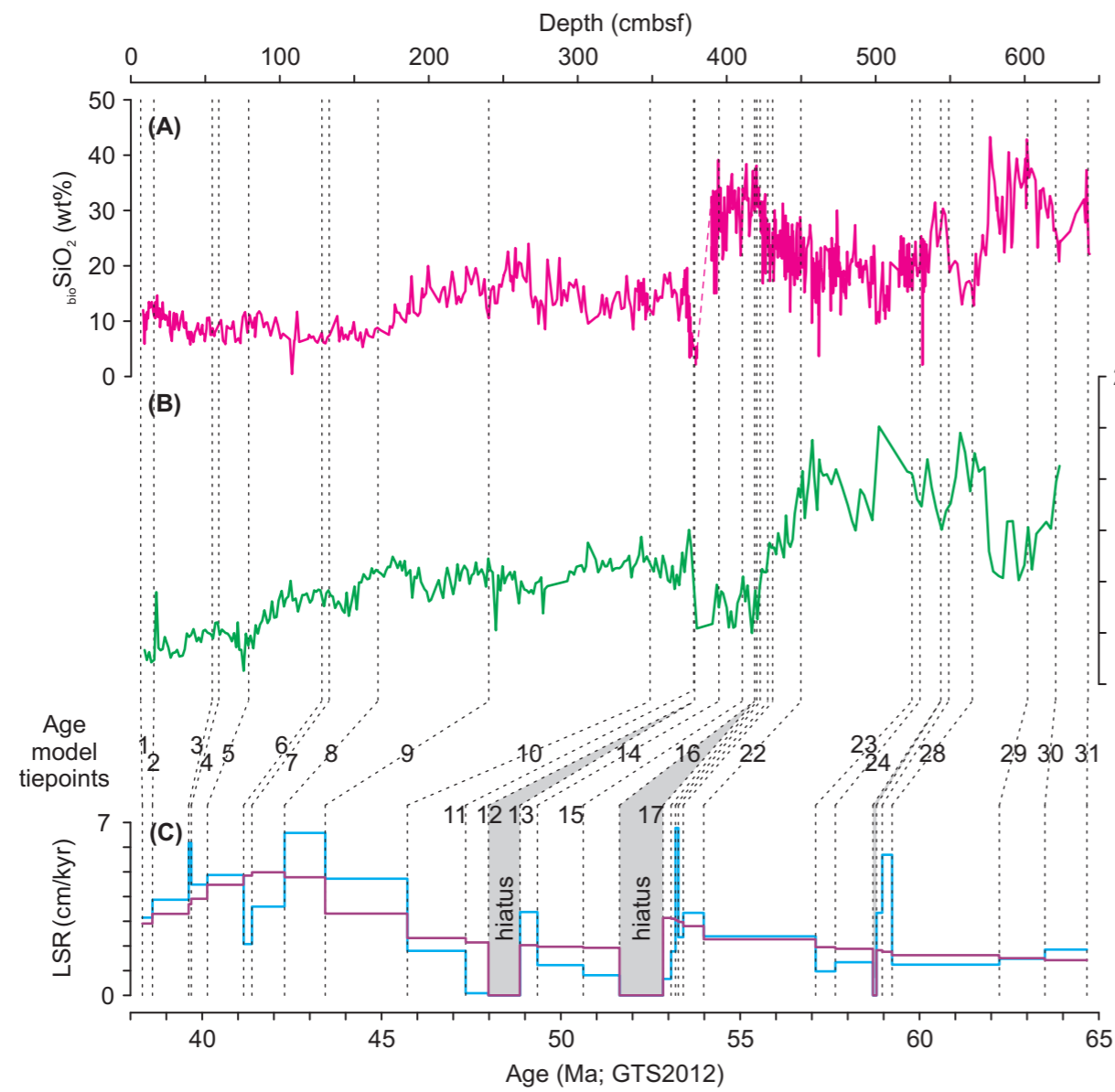


Fig. S2. Data used for bioSiO₂ flux calculation for Holes 1051A. (A) bioSiO₂ concentrations; (B) shipboard discrete dry bulk density (DBD) measurements; (C) linear sedimentation rates (LSR) derived directly from age model tiepoints (blue) and from polynomial regression fitted to age model tiepoints (purple); hiatuses are highlighted in grey; (D) Age vs depth plot (for details, see Witkowski et al., 2020) with polynomial regression and formulae for the sections above, between and below the hiatuses. Abbreviations: cmbsf = compacted meters below sea floor; wt% = weight per cent; GTS2012 = Gradstein et al. (2012); B = base; T = top.

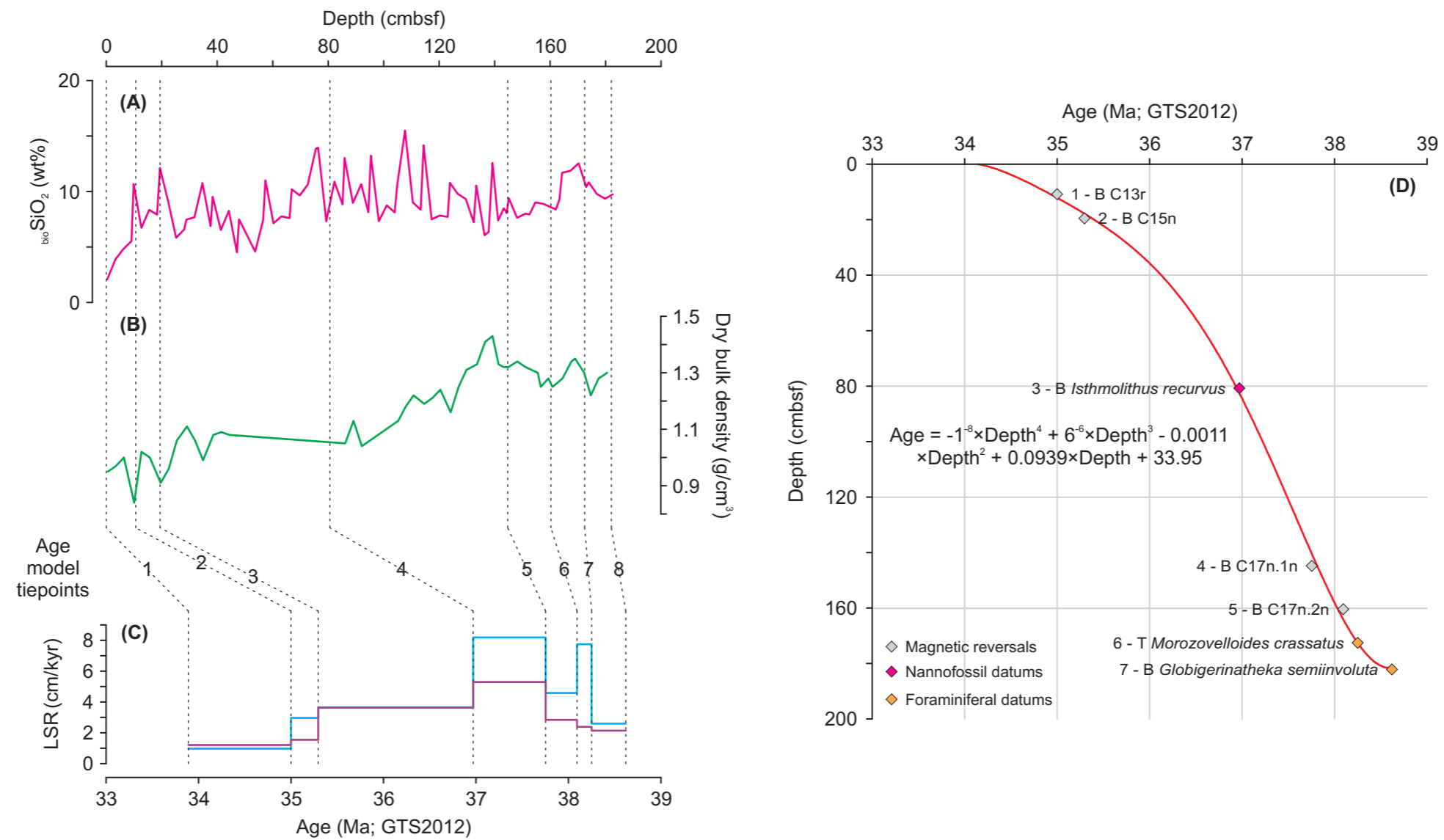
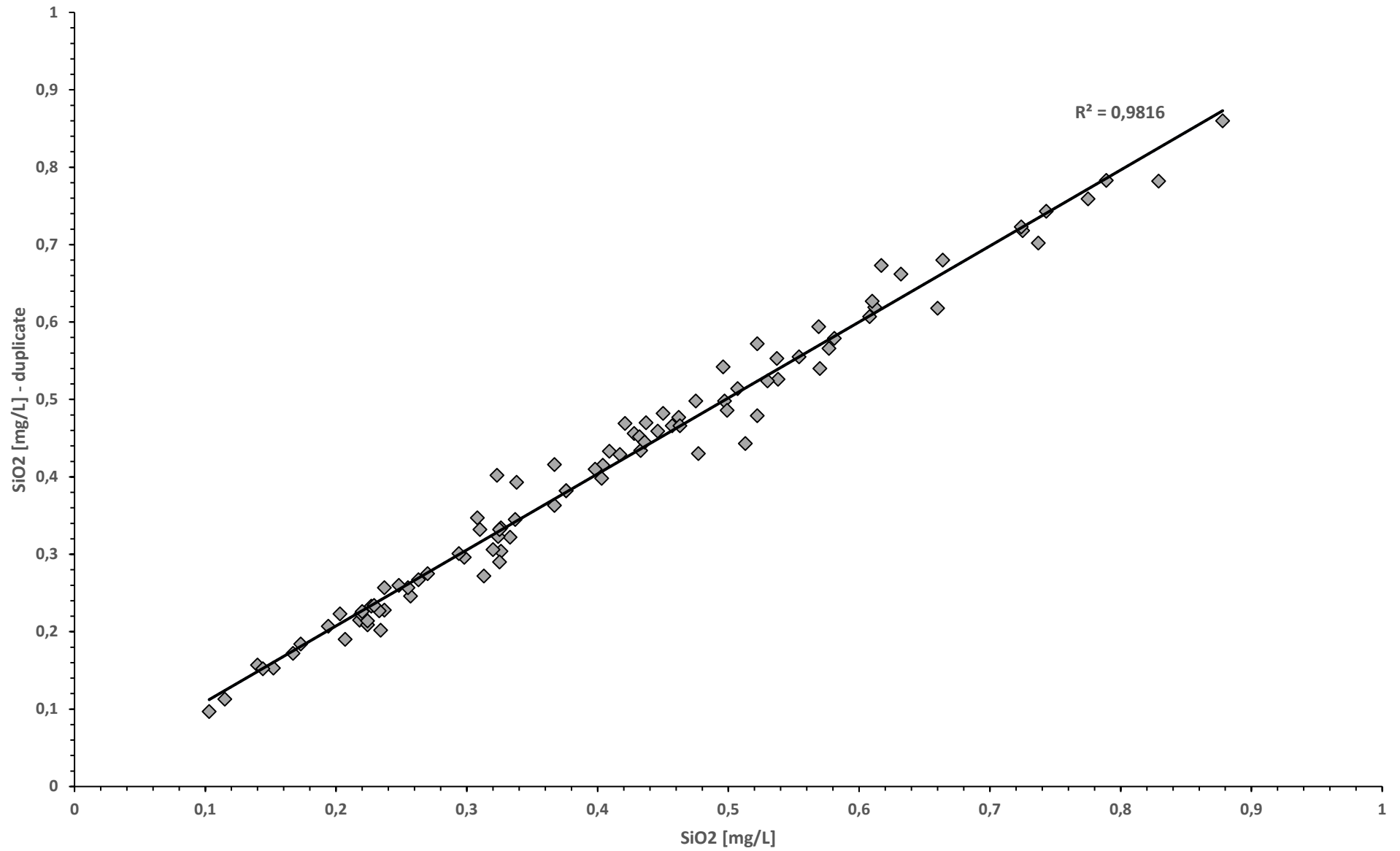


Fig. S3. Data used for $_{\text{bio}}\text{SiO}_2$ flux calculation for Hole 1053A. (A) $_{\text{bio}}\text{SiO}_2$ concentrations; (B) shipboard discrete dry bulk density (DBD) measurements; (C) linear sedimentation rates (LSR) derived directly from age model tiepoints (blue) and from polynomial regression fitted to age model tiepoints (purple); (D) Age vs depth plot (for details, see Borrelli et al., 2014) with polynomial curve and regression equation. Abbreviations: cmbsf = compacted meters below sea floor; wt% = weight per cent; GTS2012 = Gradstein et al. (2012); B = base; T = top

Fig. S4. Analytical precision scatter plot.



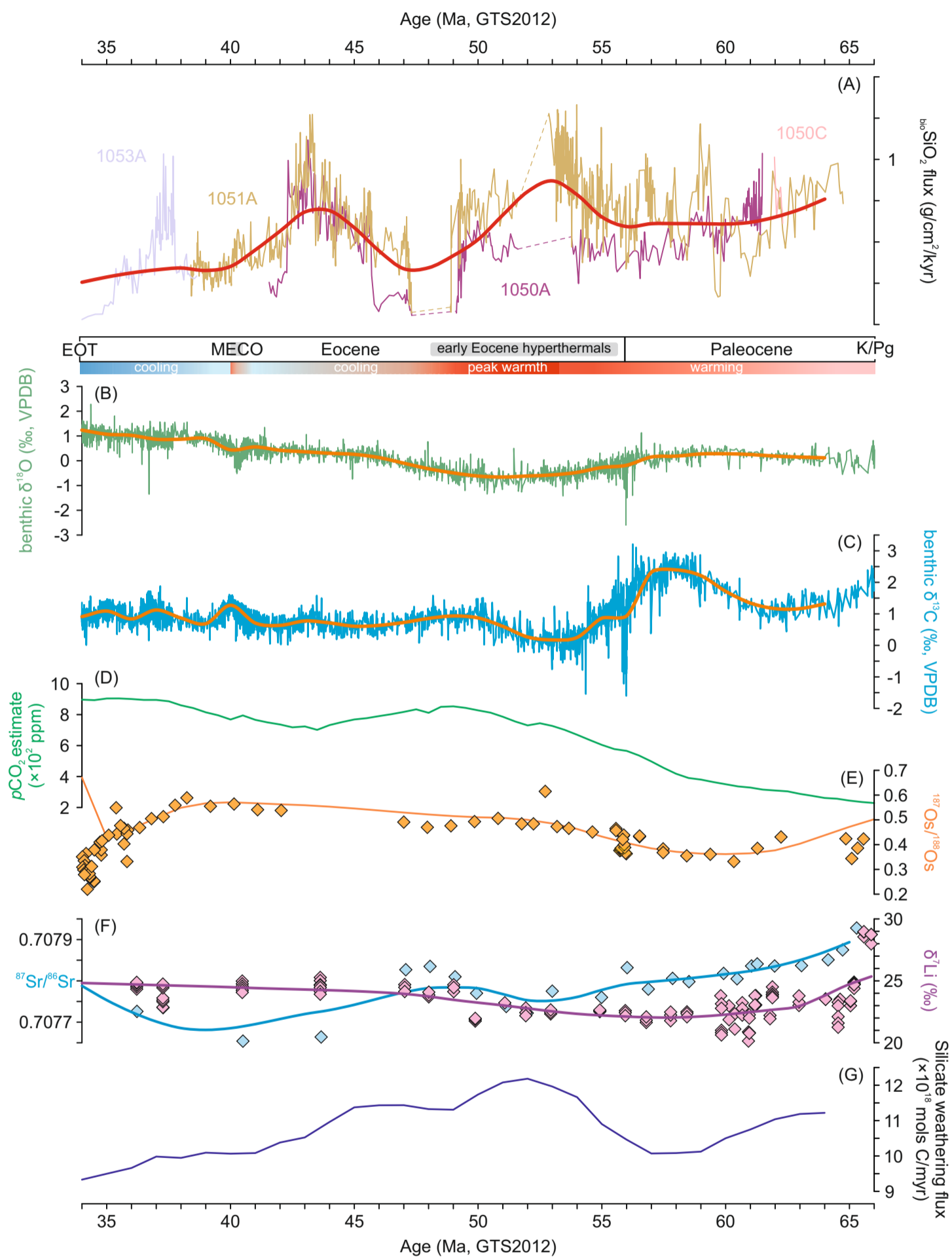


Fig. S5. Stable isotope and model data used for statistical treatment plotted in time domain: Blake Nose biogenic silica fluxes with overall trends highlighted in red (A); smoothed oxygen ($\delta^{18}\text{O}$) and carbon ($\delta^{13}\text{C}$) stable isotope records from Cramer et al. (2009), rescaled to GTS2012) (B-C); $p\text{CO}_2$ estimate from Foster et al. (2017) (D); smoothed $^{187}\text{Os}/^{188}\text{Os}$ based on a compilation described in Supplementary Text (E); smoothed $^{87}\text{Sr}/^{86}\text{Sr}$ and $\delta^7\text{Li}$ records from Misra and Froelich (2012) (F); modelled silicate weathering flux (SWF) from Caves et al. (2016). Schematic representation of climatic trends next to chronostratigraphy panel is consistent with Cramwinckel et al. (2018). Abbreviations: bioSiO_2 = biogenic silica; GTS2012 = Geologic Time Scale 2012, see Gradstein et al. (2012).

Chronostratigraphy Biostratigraphy

Lithology vs siliceous microfossil relative abundance

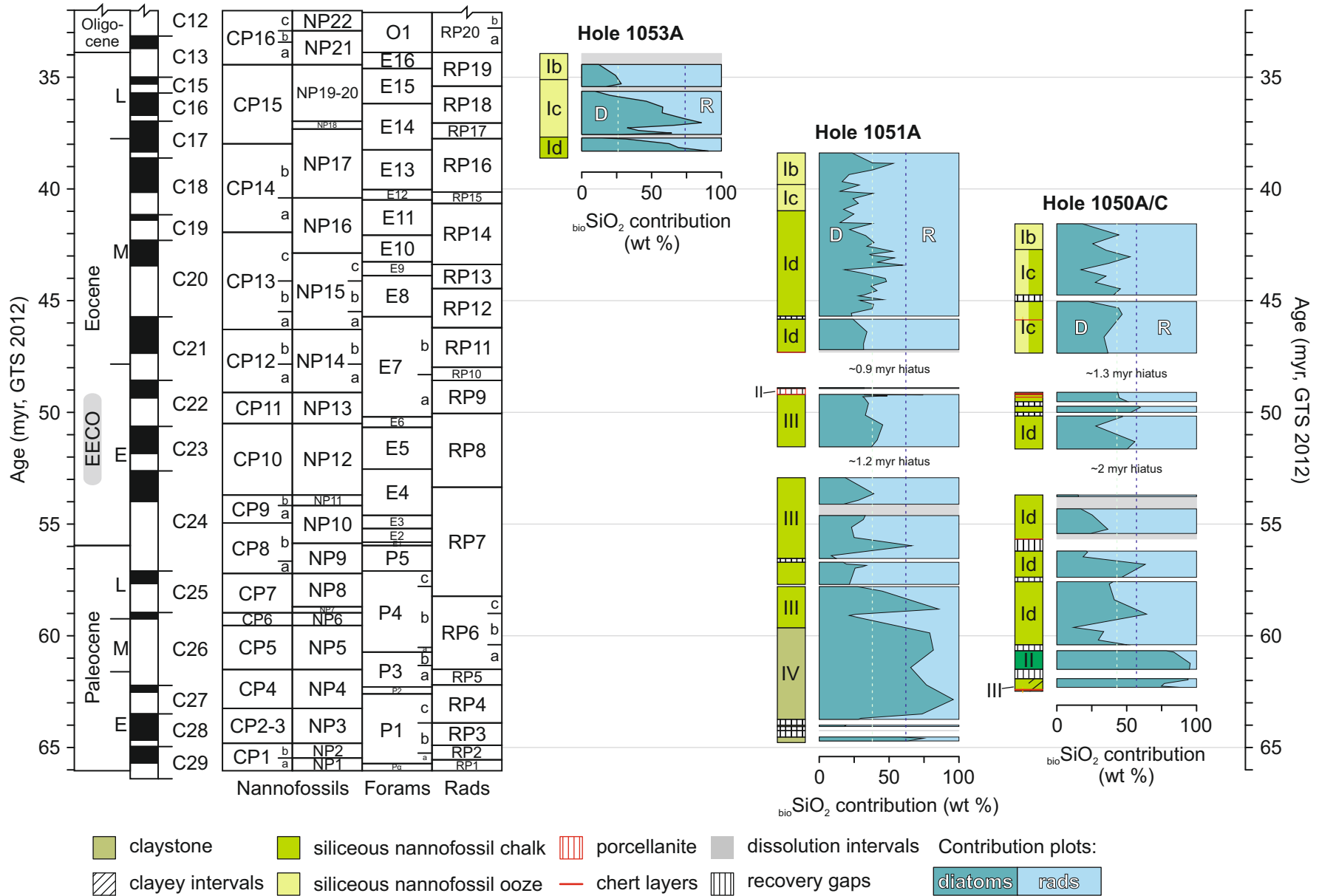


Fig. S6. Volumetric estimate of diatom versus radiolarian contribution to total at biogenic silica at Blake Nose sites, plotted against lithology and stratigraphy of Holes 1050A/C, 1051A, and 1053A. An order-of-magnitude difference in radiolarian test to diatom valve mass is assumed. Abbreviations: _{bio}SiO₂ = biogenic silica; wt% = weight per cent; GTS2012 = Geologic Time Scale 2012, see Gradstein et al. (2012). EECO = Early Eocene Climatic Optimum; E / M / L = Early / Middle / Late.

Table S1. Hole 1049A bioSiO₂ concentrations (weight %).

Leg	Site	Hole	Core	Type	Section	Top (cm)	Bot (cm)	Depth (mbsf)	Compacted depth (cmbsf)	Age (Ma; GTS2012)	wt% SiO ₂
171B	1049 A		3 H		1	50	51	21,10	21,10	39,70	6,18%
171B	1049 A		3 H		2	50	51	22,60	22,60	40,30	5,38%
171B	1049 A		3 H		3	50	51	24,10	24,10	40,90	7,29%
171B	1049 A		3 H		4	50	51	25,60	25,60	41,50	5,92%
171B	1049 A		3 H		5	50	51	27,10	27,10	42,10	9,88%
171B	1049 A		3 H		6	50	51	28,60	28,60	42,41	9,90%
171B	1049 A		3 H		7	50	51	30,10	30,10	42,57	18,14%
171B	1049 A		4 H		1	50	51	30,60	30,57	42,63	17,23%
171B	1049 A		4 H		2	50	51	32,10	32,00	42,78	19,47%
171B	1049 A		4 H		3	50	51	33,60	33,42	42,94	15,60%
171B	1049 A		4 H		4	50	51	35,10	34,85	43,09	19,66%
171B	1049 A		4 H		5	50	51	36,60	36,27	43,25	17,32%
171B	1049 A		4 H		6	50	51	38,10	37,69	43,41	16,59%
171B	1049 A		4 H		7	50	51	39,60	39,12	43,56	14,75%
171B	1049 A		5 H		1	50	51	40,10	40,08	43,67	16,89%
171B	1049 A		5 H		2	50	51	41,60	41,50	43,83	18,03%
171B	1049 A		5 H		3	50	51	43,10	42,93	43,99	16,89%
171B	1049 A		5 H		4	50	51	44,60	44,36	44,15	16,35%
171B	1049 A		5 H		5	50	51	46,10	45,79	44,31	17,41%
171B	1049 A		5 H		6	50	51	47,60	47,22	44,47	17,88%
171B	1049 A		5 H		7	50	51	49,10	48,64	44,63	20,54%
171B	1049 A		6 H		1	50	51	49,60	49,58	44,73	17,36%
171B	1049 A		6 H		2	50	51	51,10	51,00	44,89	17,27%
171B	1049 A		6 H		3	50	51	52,60	52,43	45,05	18,62%
171B	1049 A		6 H		4	50	51	54,10	53,86	45,21	18,88%
171B	1049 A		6 H		5	50	51	55,60	55,29	45,37	18,05%
171B	1049 A		6 H		6	50	51	57,10	56,72	45,53	11,51%
171B	1049 A		6 H		7	50	51	58,60	58,14	45,69	6,04%
171B	1049 A		7 H		1	60	61	59,20	59,20	45,95	7,13%
171B	1049 A		9 H		1	1	2	61,91	61,91	48,85	21,19%
171B	1049 A		9 H		1	30	31	62,20	62,20	48,90	9,94%
171B	1049 A		9 H		1	50	51	62,40	62,40	48,93	6,77%
171B	1049 A		9 H		1	90	91	62,80	62,80	49,00	19,00%
171B	1049 A		9 H		1	120	121	63,10	63,10	49,04	17,21%
171B	1049 A		9 H		2	1	2	63,41	63,40	49,09	14,31%
171B	1049 A		9 H		2	30	31	63,70	63,69	49,14	15,40%
171B	1049 A		9 H		2	50	51	63,90	63,89	49,17	18,84%
171B	1049 A		9 H		2	90	91	64,30	64,29	49,23	16,56%
171B	1049 A		9 H		2	120	121	64,60	64,59	49,28	19,47%
171B	1049 A		9 H		3	1	2	64,91	64,90	49,33	19,06%
171B	1049 A		9 H		3	30	31	65,20	65,19	49,38	16,31%
171B	1049 A		9 H		3	50	51	65,40	65,39	49,41	18,91%
171B	1049 A		9 H		3	90	91	65,80	65,78	49,47	28,18%
171B	1049 A		9 H		3	120	121	66,10	66,08	49,52	17,97%
171B	1049 A		9 H		4	1	2	66,41	66,39	49,57	19,68%
171B	1049 A		9 H		4	30	31	66,70	66,68	49,61	16,31%
171B	1049 A		9 H		4	50	51	66,90	66,88	49,65	22,01%
171B	1049 A		9 H		4	90	91	67,30	67,28	49,71	14,74%
171B	1049 A		9 H		4	120	121	67,60	67,58	49,76	12,16%
171B	1049 A		9 H		5	1	2	67,91	67,89	49,81	4,66%
171B	1049 A		9 H		5	30	31	68,20	68,17	49,85	3,93%
171B	1049 A		9 H		5	50	51	68,40	68,37	49,88	7,02%
171B	1049 A		9 H		5	90	91	68,80	68,77	49,95	5,88%
171B	1049 A		9 H		5	120	121	69,10	69,07	50,00	4,09%
171B	1049 A		10 X		1	1	2	69,41	69,41	50,05	12,43%
171B	1049 A		10 X		1	30	31	69,70	69,70	50,10	25,58%
171B	1049 A		10 X		1	50	51	69,90	69,90	50,13	18,02%
171B	1049 A		10 X		1	90	91	70,30	70,30	50,19	16,82%
171B	1049 A		10 X		1	120	121	70,60	70,60	50,24	10,33%
171B	1049 A		10 X		2	1	2	70,91	70,91	50,29	17,84%
171B	1049 A		10 X		2	30	31	71,20	71,20	50,34	16,54%
171B	1049 A		10 X		2	50	51	71,40	71,40	50,37	7,00%
171B	1049 A		10 X		2	90	91	71,80	71,80	50,43	36,43%
171B	1049 A		10 X		2	93	93	71,83	71,83	50,44	41,25%
171B	1049 A		10 X		2	120	121	72,10	72,10	50,48	31,45%
171B	1049 A		10 X		3	1	2	72,41	72,41	50,70	38,72%
171B	1049 A		10 X		3	30	31	72,70	72,70	50,76	11,78%
171B	1049 A		10 X		3	50	51	72,90	72,90	50,80	28,19%
171B	1049 A		12 X		1	50	51	86,60	86,60	53,52	12,31%
171B	1049 A		12 X		2	50	51	88,10	88,10	53,96	14,64%

Table S2. Holes 1050A and 1050C bioSiO₂ concentrations (weight %) and bioSiO₂ flux (g/cm²/kyr).

Leg	Site	Hole	Core	Type	Section	Top (cm)	Bot (cm)	Depth (mbsf)	Compacted depth (cmbsf)	Age (Ma; GTS2012)	wt% SiO ₂	SiO ₂ flux (g/cm ² /kyr)
171B	1050 A		2 H		1	100	101	11,10	11,04	41,56	16,20%	0,239
171B	1050 A		2 H		2	100	101	12,60	12,45	41,64	11,88%	0,177
171B	1050 A		2 H		3	100	101	14,10	13,86	41,71	14,31%	0,219
171B	1050 A		2 H		4	100	101	15,60	15,27	41,78	10,80%	0,168
171B	1050 A		2 H		5	100	101	17,10	16,68	41,85	10,72%	0,156
171B	1050 A		2 H		6	100	101	18,60	18,09	41,93	16,91%	0,258
171B	1050 A		2 H		7	83	84	19,93	19,34	41,99	16,04%	0,241
171B	1050 A		3 H		1	100	101	20,60	20,55	42,06	15,61%	0,235
171B	1050 A		3 H		2	100	101	22,10	21,97	42,13	18,49%	0,280
171B	1050 A		3 H		3	100	101	23,60	23,38	42,20	20,08%	0,300
171B	1050 A		3 H		4	100	101	25,10	24,80	42,28	19,08%	0,293
171B	1050 A		3 H		5	100	101	26,60	26,22	42,33	23,29%	0,928
171B	1050 A		3 H		6	100	101	28,10	27,64	42,37	19,30%	0,748
171B	1050 A		3 H		7	76	77	29,36	28,84	42,41	18,75%	0,721
171B	1050 A		4 H		1	100	101	30,10	30,09	42,45	17,93%	0,719
171B	1050 A		4 H		2	100	101	31,60	31,56	42,50	18,29%	0,735
171B	1050 A		4 H		3	100	101	33,10	33,04	42,54	18,71%	0,734
171B	1050 A		4 H		4	100	101	34,60	34,52	42,59	18,91%	0,781
171B	1050 A		4 H		5	100	101	36,10	36,00	42,63	18,16%	0,755
171B	1050 A		4 H		6	100	101	37,60	37,48	42,68	19,18%	0,783
171B	1050 A		4 H		7	20	21	38,30	38,17	42,70	18,13%	0,719
171B	1050 A		5 H		1	100	101	39,60	39,57	42,74	14,27%	0,543
171B	1050 A		5 H		2	100	101	41,10	41,04	42,79	18,76%	0,756
171B	1050 A		5 H		3	100	101	42,60	42,50	42,83	16,97%	0,709
171B	1050 A		5 H		4	100	101	44,10	43,96	42,88	19,36%	0,819
171B	1050 A		5 H		5	100	101	45,60	45,42	42,92	13,63%	0,569
171B	1050 A		5 H		6	100	101	47,10	46,88	42,97	21,24%	0,901
171B	1050 A		5 H		7	20	21	47,80	47,56	42,99	21,59%	0,916
171B	1050 A		6 H		1	100	101	49,10	49,07	43,04	15,57%	0,655
171B	1050 A		6 H		2	100	101	50,60	50,53	43,08	16,81%	0,675
171B	1050 A		6 H		3	100	101	52,10	51,99	43,13	25,39%	1,043
171B	1050 A		6 H		4	100	101	53,60	53,45	43,17	20,54%	0,872
171B	1050 A		6 H		5	100	101	55,10	54,91	43,22	22,08%	0,939
171B	1050 A		6 H		6	100	101	56,60	56,37	43,26	19,36%	0,827
171B	1050 A		6 H		7	20	21	57,30	57,05	43,28	16,01%	0,678
171B	1050 A		7 H		1	100	101	58,60	58,56	43,33	15,15%	0,631
171B	1050 A		7 H		2	100	101	60,10	59,99	43,37	20,40%	0,853
171B	1050 A		7 H		3	100	101	61,60	61,43	43,42	19,74%	0,845
171B	1050 A		7 H		4	100	101	63,10	62,86	43,46	17,31%	0,594
171B	1050 A		7 H		5	100	101	64,60	64,30	43,50	18,09%	0,631
171B	1050 A		7 H		6	100	101	66,10	65,73	43,55	18,48%	0,619
171B	1050 A		7 H		7	30	31	66,90	66,50	43,57	19,98%	0,667
171B	1050 A		8 H		1	100	101	68,10	68,09	43,62	15,41%	0,512
171B	1050 A		8 H		2	100	101	69,60	69,58	43,66	19,45%	0,644
171B	1050 A		8 H		3	100	101	71,10	71,06	43,71	20,19%	0,656
171B	1050 A		8 H		4	100	101	72,60	72,55	43,75	22,16%	0,713
171B	1050 A		8 H		5	100	101	74,10	74,03	43,79	25,15%	0,844
171B	1050 A		8 H		6	100	101	75,60	75,52	43,84	18,64%	0,645
171B	1050 A		8 H		7	20	21	76,30	76,21	43,86	19,32%	0,639
171B	1050 A		9 H		1	100	101	77,60	77,58	43,90	14,71%	0,475
171B	1050 A		9 H		2	100	101	78,67	78,62	43,93	14,57%	0,486
171B	1050 A		9 H		3	100	101	80,17	80,09	43,97	18,35%	0,615
171B	1050 A		9 H		4	100	101	81,67	81,55	44,02	15,72%	0,567
171B	1050 A		9 H		5	100	101	83,17	83,01	44,06	20,15%	0,647
171B	1050 A		9 H		6	100	101	84,67	84,48	44,10	22,66%	0,692
171B	1050 A		9 H		7	50	51	85,67	85,45	44,13	20,41%	0,659
171B	1050 A		10 H		1	100	101	87,10	87,06	44,18	13,01%	0,431
171B	1050 A		10 H		2	100	101	88,60	88,51	44,23	23,62%	0,773
171B	1050 A		10 H		3	100	101	90,10	89,96	44,27	14,00%	0,470
171B	1050 A		10 H		4	100	101	91,60	91,40	44,31	20,09%	0,680
171B	1050 A		10 H		5	100	101	93,10	92,85	44,35	15,57%	0,527
171B	1050 A		10 H		6	100	101	94,60	94,30	44,40	18,95%	0,635
171B	1050 A		10 H		7	30	31	95,40	95,07	44,42	21,30%	0,711
171B	1050 A		11 X		1	100	101	96,60	96,60	44,47	15,89%	0,526
171B	1050 A		11 X		2	100	101	98,10	98,10	44,51	20,28%	0,667
171B	1050 A		11 X		3	100	101	99,60	99,60	44,56	18,91%	0,627
171B	1050 A		11 X		4	100	101	101,10	101,10	44,60	19,76%	0,678
171B	1050 A		11 X		5	100	101	102,60	102,60	44,65	15,55%	0,541
171B	1050 A		11 X		6	50	51	103,60	103,60	44,68	18,49%	0,644
171B	1050 A		12 X		1	80	81	106,00	106,00	44,75	17,63%	0,597
171B	1050 A		13 X		1	100	101	115,80	115,80	45,04	13,72%	0,459

171B	1050 A	13 X	2	100	101	117,30	117,30	45,08	17,58%	0,599
171B	1050 A	13 X	3	100	101	118,80	118,80	45,13	14,74%	0,473
171B	1050 A	13 X	4	100	101	120,30	120,30	45,17	12,33%	0,412
171B	1050 A	13 X	5	100	101	121,80	121,80	45,22	12,78%	0,459
171B	1050 A	14 X	1	100	101	125,40	125,40	45,33	10,33%	0,348
171B	1050 A	14 X	2	100	101	126,90	126,90	45,37	10,02%	0,344
171B	1050 A	14 X	3	100	101	128,40	128,40	45,41	16,88%	0,572
171B	1050 A	14 X	4	100	101	129,90	129,90	45,46	12,97%	0,464
171B	1050 A	14 X	5	100	101	131,40	131,40	45,50	17,27%	0,614
171B	1050 A	14 X	6	20	21	132,10	132,10	45,52	14,09%	0,493
171B	1050 A	15 X	1	100	101	135,00	135,00	45,61	15,13%	0,502
171B	1050 A	15 X	2	100	101	136,50	136,50	45,66	16,76%	0,591
171B	1050 A	15 X	3	100	101	138,00	138,00	45,70	7,30%	0,279
171B	1050 A	15 X	4	100	101	139,50	139,50	45,81	9,83%	0,115
171B	1050 A	15 X	5	99	100	140,99	140,99	45,99	7,46%	0,074
171B	1050 A	15 X	6	30	31	141,30	141,80	46,08	11,26%	0,116
171B	1050 A	16 X	1	100	101	144,60	144,58	46,42	14,86%	0,166
171B	1050 A	16 X	2	100	101	146,10	146,05	46,59	14,90%	0,162
171B	1050 A	16 X	3	100	101	147,60	147,52	46,77	14,65%	0,183
171B	1050 A	16 X	4	100	101	149,10	148,99	46,94	12,50%	0,141
171B	1050 A	16 X	5	2	3	149,62	149,50	47,00	12,42%	0,155
171B	1050 A	16 X	5	32	33	149,92	149,79	47,04	12,80%	0,169
171B	1050 A	16 X	5	62	63	150,22	150,08	47,07	8,59%	0,119
171B	1050 A	16 X	5	92	93	150,52	150,38	47,11	10,75%	0,146
171B	1050 A	16 X	5	100	101	150,60	150,46	47,12	14,74%	0,197
171B	1050 A	16 X	5	122	123	150,82	150,67	47,14	11,07%	0,141
171B	1050 A	16 X	6	2	3	151,12	150,97	47,18	11,38%	0,136
171B	1050 A	16 X	6	32	33	151,42	151,26	47,21	9,96%	0,111
171B	1050 A	16 X	6	62	63	151,72	151,55	47,25	7,75%	0,080
171B	1050 A	16 X	6	92	93	152,02	151,85	47,28	8,67%	0,087
171B	1050 A	16 X	6	100	101	152,10	151,93	47,29	8,12%	0,081
171B	1050 A	16 X	6	122	123	152,32	152,14	47,32	5,16%	0,052
171B	1050 A	16 X	7	2	3	152,62	152,44	49,12	4,68%	0,076
171B	1050 A	16 X	7	12	13	152,72	152,53	49,13	4,05%	0,066
171B	1050 A	16 X	7	20	21	152,80	152,61	49,14	8,06%	0,131
171B	1050 A	16 X	7	32	33	152,92	152,73	49,16	8,75%	0,143
171B	1050 A	16 X	7	42	43	153,02	152,83	49,17	9,91%	0,162
171B	1050 A	16 X	8	10	11	153,17	152,98	49,19	7,75%	0,127
171B	1050 A	16 X	8	20	21	153,27	153,08	49,21	39,30%	0,643
171B	1050 A	17 X	1	2	3	153,22	153,22	49,23	15,21%	0,249
171B	1050 A	17 X	1	32	33	153,52	153,52	49,27	23,79%	0,391
171B	1050 A	17 X	1	62	63	153,82	153,82	49,31	9,14%	0,151
171B	1050 A	17 X	1	92	93	154,12	154,12	49,35	21,44%	0,351
171B	1050 A	17 X	1	100	101	154,20	154,20	49,35	28,01%	0,457
171B	1050 A	17 X	1	122	123	154,42	154,42	49,36	24,38%	0,393
171B	1050 A	17 X	2	2	3	154,72	154,72	49,37	25,75%	0,409
171B	1050 A	17 X	2	32	33	155,02	155,02	49,39	26,05%	0,407
171B	1050 A	17 X	2	62	63	155,32	155,32	49,40	24,54%	0,377
171B	1050 A	17 X	2	92	93	155,62	155,62	49,41	31,02%	0,472
171B	1050 A	17 X	2	100	101	155,70	155,70	49,42	28,30%	0,430
171B	1050 A	17 X	2	122	123	155,92	155,92	49,43	26,54%	0,403
171B	1050 A	17 X	3	2	3	156,22	156,22	49,44	19,93%	0,301
171B	1050 A	17 X	3	32	33	156,52	156,52	49,45	20,76%	0,312
171B	1050 A	17 X	3	62	63	156,82	156,82	49,47	23,28%	0,349
171B	1050 A	17 X	3	92	93	157,12	157,12	49,48	26,95%	0,403
171B	1050 A	17 X	3	100	101	157,20	157,20	49,48	29,36%	0,440
171B	1050 A	17 X	3	122	123	157,42	157,42	49,49	23,83%	0,357
171B	1050 A	17 X	4	10	11	157,79	157,80	49,51	24,11%	0,362
171B	1050 A	17 X	4	20	21	157,89	157,90	49,51	36,24%	0,544
171B	1050 A	18 X	1	100	101	163,80	163,80	49,78	29,50%	0,453
171B	1050 A	18 X	2	100	101	165,30	165,30	49,84	35,82%	0,533
171B	1050 A	18 X	3	100	101	166,80	166,80	49,91	29,40%	0,472
171B	1050 A	18 X	4	100	101	168,30	168,30	49,98	36,15%	0,585
171B	1050 A	19 X	1	80	81	173,20	173,18	50,19	25,25%	0,414
171B	1050 A	19 X	2	100	101	174,90	174,85	50,27	33,34%	0,522
171B	1050 A	19 X	3	70	71	176,10	176,03	50,32	32,16%	0,514
171B	1050 A	19 X	4	100	101	177,90	177,79	50,40	28,64%	0,493
171B	1050 A	19 X	5	100	101	179,40	179,26	50,46	30,55%	0,520
171B	1050 A	19 X	6	100	101	180,90	180,74	50,53	26,35%	0,445
171B	1050 A	19 X	7	20	21	181,60	181,42	50,56	25,18%	0,444
171B	1050 A	20 X	1	80	81	182,80	182,62	50,61	20,13%	0,381
171B	1050 A	20 X	2	100	101	184,50	183,93	50,71	19,70%	0,363
171B	1050 A	20 X	3	100	101	186,00	185,09	50,82	20,10%	0,374
171B	1050 A	20 X	4	100	101	187,50	186,25	50,93	19,80%	0,354
171B	1050 A	20 X	5	90	91	188,90	187,33	51,03	24,17%	0,447

171B	1050 A	20 X	6	100	101	190,50	188,57	51,14	24,55%	0,433
171B	1050 A	20 X	7	20	21	191,20	189,11	51,19	21,70%	0,384
171B	1050 A	21 X	1	80	81	190,40	190,39	51,31	28,64%	0,513
171B	1050 A	21 X	2	100	101	192,10	192,07	51,47	24,49%	0,439
171B	1050 A	21 X	3	100	101	193,60	193,55	51,61	22,28%	0,427
171B	1050 A	21 X	4	100	101	195,10	195,04	53,77	25,90%	0,496
171B	1050 A	21 X	5	100	101	196,60	196,52	53,85	20,11%	0,398
171B	1050 A	21 X	6	100	101	198,10	198,00	53,94	22,27%	0,443
171B	1050 A	21 X	7	20	21	198,80	198,70	53,98	19,12%	0,379
171B	1050 A	22 X	1	80	81	200,00	199,98	54,05	11,31%	0,232
171B	1050 A	22 X	2	100	101	201,70	201,65	54,15	25,23%	0,535
171B	1050 A	22 X	3	70	71	202,90	202,82	54,22	16,59%	0,368
171B	1050 A	22 X	4	100	101	204,70	204,59	54,32	23,54%	0,489
171B	1050 A	22 X	5	100	101	206,20	206,06	54,40	24,98%	0,489
171B	1050 A	22 X	6	100	101	207,70	207,53	54,48	24,28%	0,484
171B	1050 A	22 X	7	20	21	208,40	208,21	54,52	17,39%	0,357
171B	1050 A	23 X	1	70	71	209,50	209,48	54,60	21,13%	0,457
171B	1050 A	23 X	2	100	101	211,30	211,22	54,70	16,47%	0,364
171B	1050 A	23 X	3	100	101	212,80	212,67	54,78	17,77%	0,397
171B	1050 A	23 X	4	100	101	214,30	214,12	54,86	18,30%	0,414
171B	1050 A	23 X	5	60	61	215,40	215,19	54,92	17,05%	0,388
171B	1050 A	23 X	6	30	31	216,60	216,35	54,99	19,93%	0,448
171B	1050 A	23 X	7	80	81	218,00	218,28	55,10	22,79%	0,496
171B	1050 A	24 X	2	80	81	220,70	220,64	55,23	18,45%	0,387
171B	1050 A	24 X	3	100	101	222,40	222,30	55,33	21,42%	0,452
171B	1050 A	24 X	4	100	101	223,90	223,77	55,41	23,38%	0,491
171B	1050 A	24 X	5	100	101	225,40	225,23	55,49	24,50%	0,512
171B	1050 A	24 X	6	100	101	226,90	226,69	55,58	15,59%	0,323
171B	1050 A	24 X	7	20	21	227,60	227,38	55,62	14,48%	0,298
171B	1050 A	26 X	1	100	101	238,70	238,62	56,26	21,75%	0,413
171B	1050 A	26 X	2	100	101	240,20	240,01	56,34	22,23%	0,418
171B	1050 A	26 X	3	80	81	241,50	241,21	56,41	22,27%	0,415
171B	1050 A	27 X	1	70	71	242,40	242,23	56,46	21,95%	0,406
171B	1050 A	27 X	2	100	101	244,20	243,58	56,54	13,37%	0,260
171B	1050 A	27 X	3	70	71	245,40	244,48	56,59	23,62%	0,476
171B	1050 A	27 X	4	100	101	247,20	245,83	56,67	16,07%	0,364
171B	1050 A	27 X	5	80	81	248,50	246,81	56,73	21,39%	0,524
171B	1050 A	28 X	1	90	91	248,20	248,20	56,80	17,28%	0,370
171B	1050 A	28 X	2	100	101	249,80	249,80	56,90	16,63%	0,357
171B	1050 A	28 X	3	90	91	251,20	251,20	56,98	18,71%	0,403
171B	1050 A	28 X	4	100	101	252,80	252,80	57,07	20,95%	0,447
171B	1050 A	28 X	5	100	101	254,30	254,30	57,23	19,47%	0,426
171B	1050 A	28 X	6	20	21	255,00	255,00	57,32	15,46%	0,337
171B	1050 A	29 X	1	91	92	257,81	257,78	57,68	25,25%	0,546
171B	1050 A	29 X	2	100	101	259,40	259,31	57,79	22,06%	0,465
171B	1050 A	29 X	3	100	101	260,90	260,76	57,90	22,92%	0,482
171B	1050 A	29 X	4	100	101	262,40	262,21	58,00	17,06%	0,375
171B	1050 A	29 X	5	90	91	263,80	263,56	58,10	16,07%	0,367
171B	1050 A	29 X	6	100	101	265,40	265,11	58,22	21,11%	0,467
171B	1050 A	29 X	7	20	21	266,10	265,79	58,27	16,80%	0,364
171B	1050 A	30 X	1	100	101	267,50	267,50	58,39	22,05%	0,456
171B	1050 A	30 X	2	100	101	269,00	268,99	58,50	21,54%	0,441
171B	1050 A	30 X	3	100	101	270,50	270,48	58,61	29,54%	0,601
171B	1050 A	30 X	4	100	101	272,00	271,98	58,72	28,24%	0,586
171B	1050 A	30 X	5	100	101	273,50	273,47	58,83	30,06%	0,634
171B	1050 A	30 X	6	100	101	275,00	274,96	58,93	26,80%	0,568
171B	1050 A	30 X	7	30	31	275,80	275,76	58,99	27,87%	0,601
171B	1050 A	31 X	1	20	21	276,30	276,29	59,03	28,33%	0,612
171B	1050 A	31 X	2	100	101	277,46	277,41	59,11	23,07%	0,501
171B	1050 A	31 X	3	100	101	278,96	278,87	59,21	25,10%	0,547
171B	1050 A	31 X	4	100	101	280,46	280,33	59,29	30,61%	0,725
171B	1050 A	31 X	5	100	101	281,96	281,78	59,38	19,15%	0,494
171B	1050 A	31 X	6	100	101	283,46	283,24	59,46	19,46%	0,523
171B	1050 A	31 X	7	50	51	284,46	284,21	59,51	18,87%	0,503
171B	1050 A	31 X	8	20	21	285,14	284,89	59,55	16,53%	0,438
171B	1050 A	32 X	1	100	101	286,70	286,23	59,63	21,22%	0,551
171B	1050 A	32 X	2	100	101	288,20	287,02	59,67	15,49%	0,402
171B	1050 A	32 X	3	100	101	289,70	287,81	59,71	20,59%	0,533
171B	1050 A	32 X	4	100	101	291,20	288,60	59,76	19,98%	0,516
171B	1050 A	33 X	1	90	91	289,80	289,52	59,81	21,35%	0,551
171B	1050 A	33 X	2	100	101	291,40	290,63	59,87	15,95%	0,417
171B	1050 A	33 X	3	100	101	292,90	291,67	59,93	13,72%	0,358
171B	1050 A	33 X	4	100	101	294,40	292,71	59,99	23,27%	0,595
171B	1050 A	33 X	5	100	101	295,90	293,75	60,05	18,44%	0,464
171B	1050 A	33 X	6	100	101	297,40	294,79	60,11	18,89%	0,481

171B	1050 A	34 X	1	96	97	296,26	296,26	60,19	20,24%	0,510
171B	1050 A	34 X	2	100	101	297,80	297,80	60,27	24,90%	0,612
171B	1050 A	34 X	3	100	101	299,30	299,30	60,36	23,04%	0,586
171B	1050 A	35 X	1	60	61	305,50	305,49	60,70	29,80%	0,589
171B	1050 A	35 X	1	80	81	305,70	305,69	60,72	33,54%	0,659
171B	1050 A	35 X	1	100	101	305,90	305,89	60,73	34,88%	0,685
171B	1050 A	35 X	1	130	131	306,20	306,18	60,74	33,26%	0,654
171B	1050 A	35 X	2	1	2	306,41	306,39	60,76	33,30%	0,654
171B	1050 A	35 X	2	30	31	306,70	306,67	60,77	31,98%	0,628
171B	1050 A	35 X	2	60	61	307,00	306,97	60,79	30,97%	0,608
171B	1050 A	35 X	2	100	101	307,40	307,36	60,81	34,25%	0,681
171B	1050 A	35 X	2	130	131	307,70	307,66	60,83	28,72%	0,577
171B	1050 A	35 X	3	1	2	307,91	307,87	60,84	34,71%	0,702
171B	1050 A	35 X	3	30	31	308,20	308,15	60,85	35,14%	0,717
171B	1050 A	35 X	3	60	61	308,50	308,45	60,87	29,32%	0,604
171B	1050 A	35 X	3	100	101	308,90	308,84	60,89	36,59%	0,754
171B	1050 A	35 X	3	130	131	309,20	309,14	60,91	32,79%	0,672
171B	1050 A	35 X	4	1	2	309,41	309,35	60,92	36,58%	0,748
171B	1050 A	35 X	4	30	31	309,70	309,63	60,94	37,89%	0,771
171B	1050 A	35 X	4	60	61	310,00	309,93	60,95	33,01%	0,669
171B	1050 A	35 X	4	100	101	310,40	310,32	60,98	34,06%	0,686
171B	1050 A	35 X	4	130	131	310,70	310,62	60,99	28,96%	0,581
171B	1050 A	35 X	5	1	2	310,91	310,82	61,00	31,84%	0,637
171B	1050 A	35 X	5	30	31	311,20	311,11	61,02	33,65%	0,670
171B	1050 A	35 X	5	60	61	311,50	311,41	61,04	28,09%	0,557
171B	1050 A	35 X	5	100	101	311,90	311,80	61,06	36,29%	0,716
171B	1050 A	35 X	5	130	131	312,20	312,10	61,08	29,46%	0,580
171B	1050 A	35 X	6	1	2	312,41	312,30	61,09	30,05%	0,590
171B	1050 A	35 X	6	30	31	312,70	312,59	61,10	29,63%	0,580
171B	1050 A	35 X	6	60	61	313,00	312,88	61,12	32,30%	0,630
171B	1050 A	35 X	6	100	101	313,40	313,28	61,14	41,84%	0,810
171B	1050 A	35 X	6	130	131	313,70	313,57	61,16	29,02%	0,558
171B	1050 A	35 X	7	1	2	313,91	313,78	61,17	29,36%	0,563
171B	1050 A	35 X	7	30	31	314,20	314,07	61,19	38,57%	0,735
171B	1050 A	36 X	1	1	2	314,51	314,51	61,21	29,76%	0,562
171B	1050 A	36 X	1	30	31	314,80	314,80	61,23	30,09%	0,565
171B	1050 A	36 X	1	40	41	314,90	314,90	61,23	42,94%	0,804
171B	1050 A	36 X	1	60	61	315,10	315,10	61,24	35,41%	0,661
171B	1050 A	36 X	1	120	121	315,70	315,70	61,28	27,49%	0,531
171B	1050 A	36 X	2	1	2	316,01	316,01	61,29	27,53%	0,543
171B	1050 A	36 X	2	30	31	316,30	316,30	61,31	30,28%	0,609
171B	1050 A	36 X	2	60	61	316,60	316,60	61,33	29,14%	0,593
171B	1050 A	36 X	2	100	101	317,00	317,00	61,35	43,16%	0,880
171B	1050 A	36 X	2	130	131	317,30	317,30	61,37	30,85%	0,630
171B	1050 A	36 X	3	1	2	317,51	317,51	61,38	27,85%	0,570
171B	1050 A	36 X	3	30	31	317,80	317,80	61,39	24,76%	0,507
171B	1050 A	36 X	3	60	61	318,10	318,10	61,41	29,95%	0,617
171B	1050 A	36 X	3	100	101	318,50	318,50	61,43	34,47%	0,721
171B	1050 A	36 X	3	130	131	318,80	318,80	61,45	29,46%	0,623
171B	1050 A	36 X	4	1	2	319,01	319,01	61,46	33,04%	0,703
171B	1050 A	36 X	4	20	21	319,20	319,20	61,47	34,81%	0,746
171B	1050 A	36 X	4	30	31	319,30	319,30	61,48	44,98%	0,967
171B	1050 C	2 R	1	100	101	328,10	328,07	61,97	35,23%	0,946
171B	1050 C	2 R	2	100	101	329,60	329,53	62,05	26,90%	0,605
171B	1050 C	2 R	3	100	101	331,10	330,98	62,13	39,37%	0,726
171B	1050 C	2 R	4	100	101	332,60	332,44	62,22	45,75%	0,776
171B	1050 C	2 R	5	100	101	334,10	333,89	62,25	43,97%	0,670
171B	1050 C	2 R	6	100	101	335,60	335,35	62,29	39,11%	0,639
171B	1050 C	2 R	7	30	31	336,40	336,13	62,31	33,79%	0,572

Table S3. Hole 1051A bioSiO2 concentrations (weight %) and bioSiO2 flux (g/cm2/kyr).

Leg	Site	Hole	Core	Type	Section	Top (cm)	Bot (cm)	Depth (mbsf)	Compacted depth (cmbsf)	Age (Ma; GTS2012)	wt% SiO2	SiO2 flux (g/cm2/kyr)
171B	1051 A		2 H		2	120	121	8,50	8,50	38,39	12,02%	0,336
171B	1051 A		2 H		3	5	6	8,85	8,85	38,40	10,69%	0,296
171B	1051 A		2 H		3	65	66	9,45	9,45	38,42	5,91%	0,161
171B	1051 A		2 H		3	125	126	10,05	10,05	38,44	11,20%	0,300
171B	1051 A		2 H		4	35	36	10,65	10,65	38,46	8,48%	0,223
171B	1051 A		2 H		4	95	96	11,25	11,25	38,48	11,68%	0,305
171B	1051 A		2 H		5	5	6	11,85	11,85	38,50	10,49%	0,278
171B	1051 A		2 H		5	64	65	12,44	12,44	38,52	13,49%	0,362
171B	1051 A		2 H		5	125	126	13,05	13,05	38,54	12,43%	0,330
171B	1051 A		2 H		6	35	36	13,65	13,65	38,56	12,79%	0,333
171B	1051 A		2 H		6	95	96	14,25	14,25	38,58	13,47%	0,347
171B	1051 A		2 H		7	35	36	14,65	14,65	38,59	12,98%	0,335
171B	1051 A		3 H		1	5	6	15,35	15,35	38,61	11,63%	0,302
171B	1051 A		3 H		1	65	66	15,95	15,92	38,63	10,83%	0,320
171B	1051 A		3 H		1	125	126	16,55	16,48	38,64	10,52%	0,341
171B	1051 A		3 H		2	5	6	16,85	16,77	38,65	13,49%	0,461
171B	1051 A		3 H		2	35	36	17,15	17,05	38,66	10,66%	0,383
171B	1051 A		3 H		2	95	96	17,75	17,62	38,67	11,60%	0,433
171B	1051 A		3 H		2	125	126	18,05	17,90	38,68	14,67%	0,526
171B	1051 A		3 H		3	5	6	18,35	18,19	38,68	12,65%	0,435
171B	1051 A		3 H		3	65	66	18,95	18,75	38,70	10,72%	0,338
171B	1051 A		3 H		3	124	125	19,54	19,31	38,71	10,98%	0,340
171B	1051 A		3 H		4	5	6	19,85	19,61	38,72	12,29%	0,380
171B	1051 A		3 H		4	35	36	20,15	19,89	38,73	8,90%	0,274
171B	1051 A		3 H		4	95	96	20,75	20,46	38,74	11,05%	0,340
171B	1051 A		3 H		5	5	6	21,35	21,02	38,76	10,39%	0,320
171B	1051 A		3 H		5	35	36	21,65	21,31	38,77	10,39%	0,321
171B	1051 A		3 H		5	65	66	21,95	21,59	38,77	13,41%	0,415
171B	1051 A		3 H		5	126	127	22,56	22,17	38,79	10,53%	0,331
171B	1051 A		3 H		6	5	6	22,85	22,44	38,79	10,59%	0,336
171B	1051 A		3 H		6	35	36	23,15	22,73	38,80	11,20%	0,359
171B	1051 A		3 H		6	95	96	23,75	23,30	38,82	10,25%	0,332
171B	1051 A		3 H		7	5	6	24,35	23,86	38,83	11,09%	0,355
171B	1051 A		4 H		1	5	6	24,85	24,85	38,86	10,28%	0,324
171B	1051 A		4 H		1	35	36	25,15	25,14	38,86	9,23%	0,289
171B	1051 A		4 H		2	5	6	26,35	26,31	38,89	11,75%	0,357
171B	1051 A		4 H		2	35	36	26,65	26,60	38,90	8,04%	0,242
171B	1051 A		4 H		3	5	6	27,85	27,77	38,93	6,42%	0,193
171B	1051 A		4 H		3	35	36	28,15	28,06	38,94	8,78%	0,266
171B	1051 A		4 H		4	5	6	29,35	29,23	38,97	11,50%	0,350
171B	1051 A		4 H		4	34	35	29,64	29,51	38,98	8,52%	0,259
171B	1051 A		4 H		5	5	6	30,85	30,69	39,01	10,14%	0,311
171B	1051 A		4 H		5	35	36	31,15	30,98	39,02	11,31%	0,348
171B	1051 A		4 H		6	5	6	32,35	32,15	39,05	8,80%	0,267
171B	1051 A		4 H		6	35	36	32,65	32,44	39,05	8,37%	0,253
171B	1051 A		4 H		7	5	6	33,85	33,61	39,08	10,05%	0,302
171B	1051 A		4 H		7	35	36	34,15	33,90	39,09	10,69%	0,321
171B	1051 A		5 H		1	65	66	34,95	34,93	39,12	11,77%	0,354
171B	1051 A		5 H		2	5	6	35,85	35,80	39,14	9,02%	0,275
171B	1051 A		5 H		2	65	66	36,45	36,38	39,15	8,77%	0,270
171B	1051 A		5 H		3	5	6	37,35	37,25	39,18	9,81%	0,314
171B	1051 A		5 H		3	65	66	37,95	37,83	39,19	7,84%	0,257
171B	1051 A		5 H		4	5	6	38,85	38,70	39,21	6,86%	0,224
171B	1051 A		5 H		4	65	66	39,45	39,28	39,23	8,09%	0,263
171B	1051 A		5 H		5	5	6	40,35	40,15	39,25	5,75%	0,188
171B	1051 A		5 H		5	65	66	40,95	40,73	39,27	8,08%	0,264
171B	1051 A		5 H		6	5	6	41,85	41,60	39,29	7,20%	0,239
171B	1051 A		5 H		6	65	66	42,45	42,18	39,30	6,23%	0,208
171B	1051 A		5 H		7	5	6	43,35	43,05	39,33	7,67%	0,253
171B	1051 A		5 H		7	35	36	43,65	43,34	39,33	8,11%	0,266
171B	1051 A		6 H		1	5	6	43,85	43,85	39,35	8,27%	0,268
171B	1051 A		6 H		1	35	36	44,15	44,14	39,36	8,46%	0,272
171B	1051 A		6 H		2	5	6	45,35	45,29	39,38	9,64%	0,310
171B	1051 A		6 H		2	35	36	45,65	45,58	39,39	8,81%	0,284
171B	1051 A		6 H		3	5	6	46,85	46,74	39,42	7,65%	0,245
171B	1051 A		6 H		3	35	36	47,15	47,03	39,43	7,55%	0,242
171B	1051 A		6 H		4	5	6	48,35	48,19	39,46	9,35%	0,305
171B	1051 A		6 H		4	35	36	48,65	48,48	39,47	7,85%	0,258
171B	1051 A		6 H		5	5	6	49,85	49,64	39,50	7,50%	0,250
171B	1051 A		6 H		5	35	36	50,15	49,92	39,50	6,36%	0,212
171B	1051 A		6 H		6	5	6	51,35	51,08	39,53	8,67%	0,288

171B	1051 A	6 H	6	35	36	51,65	51,37	39,54	10,62%	0,352
171B	1051 A	6 H	7	5	6	52,85	52,53	39,57	10,20%	0,336
171B	1051 A	6 H	7	35	36	53,15	52,82	39,58	10,69%	0,352
171B	1051 A	7 H	1	5	6	53,35	53,35	39,59	9,82%	0,323
171B	1051 A	7 H	1	35	36	53,65	53,65	39,60	7,52%	0,247
171B	1051 A	7 H	2	5	6	54,85	54,83	39,63	7,53%	0,274
171B	1051 A	7 H	2	35	36	55,15	55,13	39,63	8,77%	0,318
171B	1051 A	7 H	3	5	6	56,35	56,31	39,65	7,31%	0,273
171B	1051 A	7 H	3	35	36	56,65	56,60	39,66	7,91%	0,299
171B	1051 A	7 H	6	5	6	60,85	60,75	39,74	10,23%	0,401
171B	1051 A	7 H	7	5	6	62,35	62,23	39,77	6,46%	0,255
171B	1051 A	8 H	2	16	17	63,25	63,25	39,79	6,12%	0,240
171B	1051 A	8 H	2	66	67	63,76	63,73	39,80	5,84%	0,229
171B	1051 A	8 H	3	16	17	64,75	64,70	39,82	9,11%	0,356
171B	1051 A	8 H	4	17	18	66,26	66,16	39,86	8,72%	0,338
171B	1051 A	8 H	5	16	17	67,75	67,60	39,89	8,59%	0,327
171B	1051 A	8 H	6	17	18	69,26	69,06	39,92	9,96%	0,384
171B	1051 A	8 H	7	16	17	70,75	70,50	39,95	6,26%	0,237
171B	1051 A	9 H	1	16	17	72,46	72,46	40,00	6,93%	0,270
171B	1051 A	9 H	2	6	7	73,86	73,86	40,03	6,02%	0,220
171B	1051 A	9 H	2	16	17	73,96	73,96	40,03	7,59%	0,277
171B	1051 A	9 H	3	16	17	75,46	75,46	40,06	10,79%	0,373
171B	1051 A	9 H	4	16	17	76,96	76,96	40,10	11,66%	0,429
171B	1051 A	9 H	5	16	17	78,46	78,46	40,13	7,93%	0,301
171B	1051 A	9 H	6	17	18	79,97	79,97	40,16	11,11%	0,485
171B	1051 A	10 H	1	16	17	81,96	81,96	40,20	8,79%	0,376
171B	1051 A	10 H	2	16	17	83,46	83,46	40,23	10,64%	0,474
171B	1051 A	10 H	2	36	37	83,66	83,66	40,24	7,14%	0,322
171B	1051 A	10 H	3	16	17	84,96	84,96	40,27	11,28%	0,510
171B	1051 A	10 H	4	16	17	86,46	86,46	40,30	11,79%	0,537
171B	1051 A	10 H	4	146	147	87,76	87,76	40,32	11,21%	0,522
171B	1051 A	10 H	6	16	17	89,46	89,46	40,36	8,93%	0,429
171B	1051 A	10 H	7	16	17	90,96	90,96	40,39	9,74%	0,464
171B	1051 A	11 H	1	51	52	91,81	91,81	40,41	9,77%	0,456
171B	1051 A	11 H	1	100	101	92,30	92,30	40,42	9,29%	0,433
171B	1051 A	11 H	2	126	127	94,06	94,06	40,45	7,38%	0,356
171B	1051 A	11 H	5	7	8	97,37	97,37	40,52	10,69%	0,508
171B	1051 A	11 H	6	7	8	98,87	98,87	40,55	9,40%	0,462
171B	1051 A	12 H	1	6	7	100,86	100,86	40,59	6,89%	0,355
171B	1051 A	12 H	2	6	7	102,36	102,35	40,62	7,75%	0,393
171B	1051 A	12 H	5	20	21	107,00	106,94	40,72	6,71%	0,355
171B	1051 A	12 H	7	20	21	110,00	109,91	40,78	6,53%	0,330
171B	1051 A	13 H	1	6	7	110,36	110,36	40,79	6,61%	0,335
171B	1051 A	13 H	2	6	7	111,86	111,84	40,82	11,71%	0,580
171B	1051 A	13 H	3	6	7	113,36	113,31	40,85	6,25%	0,308
171B	1051 A	13 H	7	8	9	119,38	119,24	40,97	6,83%	0,348
171B	1051 A	14 H	1	6	7	119,86	119,86	40,98	7,58%	0,383
171B	1051 A	14 H	2	6	7	121,36	121,28	41,01	7,00%	0,352
171B	1051 A	14 H	3	6	7	122,86	122,70	41,04	7,26%	0,373
171B	1051 A	14 H	4	6	7	124,36	124,12	41,07	6,44%	0,335
171B	1051 A	14 H	5	6	7	125,86	125,54	41,10	6,11%	0,318
171B	1051 A	14 H	7	6	7	128,86	128,38	41,16	7,92%	0,440
171B	1051 A	15 H	1	6	7	129,36	129,36	41,21	6,19%	0,337
171B	1051 A	15 H	2	6	7	130,86	130,83	41,28	5,98%	0,328
171B	1051 A	15 H	3	6	7	132,36	132,30	41,35	7,09%	0,399
171B	1051 A	15 H	4	6	7	133,86	133,77	41,41	7,50%	0,432
171B	1051 A	15 H	5	6	7	135,36	135,24	41,45	8,49%	0,484
171B	1051 A	16 H	1	6	7	138,86	138,86	41,55	10,95%	0,608
171B	1051 A	16 H	2	6	7	140,36	140,27	41,59	6,34%	0,352
171B	1051 A	16 H	3	6	7	141,86	141,68	41,63	8,88%	0,486
171B	1051 A	16 H	4	6	7	143,36	143,09	41,67	6,78%	0,366
171B	1051 A	16 H	5	6	7	144,86	144,50	41,71	7,58%	0,424
171B	1051 A	16 H	6	6	7	146,36	145,91	41,74	6,63%	0,366
171B	1051 A	16 H	7	6	7	147,86	147,32	41,78	8,16%	0,442
171B	1051 A	17 X	1	6	7	148,36	148,36	41,81	7,79%	0,434
171B	1051 A	17 X	2	6	7	149,86	149,86	41,85	9,86%	0,571
171B	1051 A	17 X	3	6	7	151,36	151,36	41,90	6,82%	0,383
171B	1051 A	17 X	4	6	7	152,86	152,86	41,94	6,50%	0,374
171B	1051 A	17 X	5	6	7	154,36	154,36	41,98	7,96%	0,475
171B	1051 A	17 X	6	6	7	155,86	155,86	42,02	5,31%	0,322
171B	1051 A	18 X	1	6	7	158,26	158,26	42,09	8,54%	0,517
171B	1051 A	18 X	2	6	7	159,76	159,76	42,13	7,39%	0,446
171B	1051 A	18 X	3	6	7	161,26	161,26	42,17	7,19%	0,442
171B	1051 A	18 X	4	6	7	162,76	162,76	42,21	7,06%	0,436
171B	1051 A	18 X	5	6	7	164,26	164,26	42,26	8,55%	0,529

171B	1051 A	18 X	6	6	7	165,76	165,76	42,30	8,80%	0,545
171B	1051 A	19 X	1	6	7	167,86	167,86	42,33	8,38%	0,494
171B	1051 A	19 X	4	126	127	173,56	173,47	42,42	7,54%	0,453
171B	1051 A	19 X	5	50	51	174,30	174,19	42,43	9,10%	0,547
171B	1051 A	19 X	6	50	51	175,80	175,67	42,45	8,80%	0,542
171B	1051 A	19 X	7	20	21	177,00	176,85	42,47	9,91%	0,610
171B	1051 A	20 X	1	6	7	177,46	177,46	42,48	13,05%	0,799
171B	1051 A	20 X	2	6	7	178,96	178,93	42,50	11,56%	0,697
171B	1051 A	20 X	3	6	7	180,46	180,40	42,52	11,52%	0,699
171B	1051 A	20 X	4	6	7	181,96	181,88	42,54	10,63%	0,639
171B	1051 A	20 X	6	6	7	184,96	184,82	42,59	9,80%	0,582
171B	1051 A	20 X	7	6	7	186,46	186,29	42,61	13,13%	0,774
171B	1051 A	21 X	1	20	21	187,20	187,20	42,62	11,36%	0,674
171B	1051 A	21 X	2	20	21	188,70	188,66	42,65	18,13%	1,023
171B	1051 A	21 X	3	20	21	190,20	190,13	42,67	11,61%	0,660
171B	1051 A	21 X	4	6	7	191,56	191,46	42,69	11,42%	0,664
171B	1051 A	21 X	5	6	7	193,06	192,92	42,71	10,94%	0,647
171B	1051 A	21 X	6	6	7	194,56	194,39	42,73	11,61%	0,680
171B	1051 A	21 X	7	6	7	196,06	195,86	42,76	15,93%	0,906
171B	1051 A	22 X	1	6	7	196,66	196,66	42,77	14,28%	0,806
171B	1051 A	22 X	2	25	26	198,35	198,35	42,79	15,04%	0,838
171B	1051 A	22 X	3	25	26	199,85	199,85	42,82	19,99%	1,086
171B	1051 A	22 X	4	6	7	201,16	201,16	42,84	16,20%	0,873
171B	1051 A	23 X	1	105	106	207,25	207,23	42,93	13,45%	0,771
171B	1051 A	23 X	2	105	106	208,75	208,70	42,95	15,19%	0,843
171B	1051 A	23 X	3	85	86	210,05	209,97	42,97	16,10%	0,881
171B	1051 A	23 X	4	30	31	211,00	210,90	42,99	16,18%	0,922
171B	1051 A	23 X	5	30	31	212,50	212,37	43,01	12,57%	0,748
171B	1051 A	23 X	6	30	31	214,00	213,84	43,03	14,71%	0,863
171B	1051 A	24 X	1	6	7	215,86	215,86	43,06	18,97%	1,064
171B	1051 A	24 X	2	6	7	217,36	217,35	43,08	16,84%	0,944
171B	1051 A	24 X	3	6	7	218,86	218,84	43,11	13,10%	0,773
171B	1051 A	24 X	4	6	7	220,36	220,34	43,13	14,50%	0,857
171B	1051 A	24 X	5	6	7	221,86	221,83	43,15	13,38%	0,783
171B	1051 A	24 X	6	6	7	223,36	223,32	43,17	14,77%	0,884
171B	1051 A	24 X	7	6	7	224,86	224,81	43,20	15,44%	0,928
171B	1051 A	25 X	1	6	7	225,46	225,46	43,21	19,83%	1,186
171B	1051 A	25 X	3	50	51	228,90	228,80	43,26	16,67%	0,971
171B	1051 A	25 X	4	50	51	230,40	230,26	43,28	17,97%	1,058
171B	1051 A	25 X	5	50	51	231,90	231,72	43,30	19,60%	1,188
171B	1051 A	25 X	6	50	51	233,40	233,18	43,32	17,96%	1,060
171B	1051 A	25 X	7	45	46	234,85	234,59	43,35	14,65%	0,867
171B	1051 A	26 X	1	100	101	236,00	235,99	43,37	14,99%	0,892
171B	1051 A	26 X	2	100	101	237,50	237,49	43,39	17,61%	1,026
171B	1051 A	26 X	3	100	101	239,00	238,98	43,41	12,40%	0,711
171B	1051 A	26 X	4	100	101	240,50	240,47	43,44	10,52%	0,447
171B	1051 A	26 X	5	100	101	242,00	241,96	43,47	15,51%	0,638
171B	1051 A	26 X	6	100	101	243,50	243,46	43,50	16,32%	0,654
171B	1051 A	26 X	7	50	51	244,50	243,95	43,51	16,16%	0,619
171B	1051 A	27 X	1	10	11	244,70	244,70	43,53	13,24%	0,473
171B	1051 A	27 X	2	10	11	246,20	246,15	43,56	13,25%	0,494
171B	1051 A	27 X	3	10	11	247,70	247,61	43,59	16,64%	0,658
171B	1051 A	27 X	4	10	11	249,20	249,07	43,62	16,22%	0,650
171B	1051 A	27 X	5	10	11	250,70	250,52	43,65	18,28%	0,741
171B	1051 A	27 X	6	10	11	252,20	251,98	43,68	19,35%	0,774
171B	1051 A	27 X	7	10	11	253,70	253,43	43,71	22,59%	0,916
171B	1051 A	28 X	1	100	101	255,20	255,18	43,75	17,23%	0,703
171B	1051 A	28 X	2	5	6	255,75	255,72	43,76	18,19%	0,736
171B	1051 A	28 X	2	130	131	257,00	256,94	43,78	15,45%	0,623
171B	1051 A	28 X	3	130	131	258,50	258,41	43,82	23,22%	0,933
171B	1051 A	28 X	4	69	70	259,39	259,28	43,83	17,85%	0,694
171B	1051 A	28 X	5	69	70	260,89	260,75	43,87	20,68%	0,765
171B	1051 A	28 X	6	72	73	262,42	262,25	43,90	20,40%	0,809
171B	1051 A	28 X	7	39	40	263,59	263,40	43,92	18,18%	0,713
171B	1051 A	29 X	1	50	51	264,30	264,30	43,94	17,75%	0,688
171B	1051 A	29 X	2	50	51	265,80	265,79	43,97	17,07%	0,659
171B	1051 A	29 X	3	50	51	267,30	267,29	44,00	24,00%	0,919
171B	1051 A	29 X	4	50	51	268,80	268,78	44,04	14,77%	0,569
171B	1051 A	29 X	5	50	51	270,30	270,27	44,07	12,50%	0,477
171B	1051 A	29 X	6	50	51	271,80	271,77	44,10	14,42%	0,567
171B	1051 A	29 X	7	39	40	273,19	273,15	44,13	13,38%	0,530
171B	1051 A	30 X	1	50	51	273,90	273,90	44,14	9,51%	0,378
171B	1051 A	30 X	2	50	51	275,40	275,40	44,18	13,73%	0,552
171B	1051 A	30 X	3	50	51	276,90	276,90	44,21	12,73%	0,457
171B	1051 A	30 X	4	50	51	278,40	278,40	44,24	8,54%	0,331

171B	1051 A	30 X	5	50	51	279,90	279,90	44,27	21,14%	0,827
171B	1051 A	31 X	1	50	51	283,50	283,49	44,35	12,92%	0,508
171B	1051 A	31 X	2	50	51	285,00	284,96	44,38	13,09%	0,516
171B	1051 A	31 X	3	50	51	286,50	286,42	44,41	14,01%	0,553
171B	1051 A	31 X	4	50	51	288,00	287,89	44,44	21,44%	0,847
171B	1051 A	31 X	5	50	51	289,50	289,35	44,47	12,83%	0,508
171B	1051 A	31 X	6	50	51	291,00	290,82	44,50	15,63%	0,620
171B	1051 A	32 X	1	50	51	293,10	293,10	44,55	13,65%	0,543
171B	1051 A	32 X	2	50	51	294,60	294,60	44,58	16,99%	0,694
171B	1051 A	32 X	3	50	51	296,10	296,10	44,61	16,60%	0,680
171B	1051 A	32 X	4	50	51	297,60	297,60	44,65	16,08%	0,654
171B	1051 A	32 X	5	50	51	299,10	299,10	44,68	17,53%	0,726
171B	1051 A	33 X	1	50	51	302,80	302,70	44,75	11,63%	0,487
171B	1051 A	33 X	2	50	51	304,30	304,20	44,79	16,33%	0,672
171B	1051 A	33 X	3	50	51	305,80	305,70	44,82	11,97%	0,499
171B	1051 A	33 X	4	50	51	307,30	307,20	44,85	9,55%	0,427
171B	1051 A	34 X	1	50	51	312,30	312,29	44,96	10,67%	0,454
171B	1051 A	34 X	2	50	51	313,80	313,75	44,99	10,88%	0,448
171B	1051 A	34 X	3	50	51	315,30	315,22	45,02	11,60%	0,480
171B	1051 A	34 X	4	50	51	316,80	316,68	45,05	14,77%	0,624
171B	1051 A	34 X	5	50	51	318,30	318,15	45,08	11,19%	0,468
171B	1051 A	34 X	6	50	51	319,80	319,61	45,11	14,20%	0,592
171B	1051 A	35 X	1	50	51	322,00	322,00	45,16	10,59%	0,451
171B	1051 A	35 X	2	50	51	323,50	323,50	45,19	13,11%	0,540
171B	1051 A	35 X	3	50	51	325,00	325,00	45,23	14,23%	0,589
171B	1051 A	35 X	4	50	51	326,50	326,50	45,26	15,23%	0,631
171B	1051 A	35 X	5	50	51	328,00	328,00	45,29	15,24%	0,632
171B	1051 A	35 X	6	50	51	329,50	329,50	45,32	12,21%	0,508
171B	1051 A	36 X	1	50	51	331,60	331,59	45,37	12,46%	0,527
171B	1051 A	36 X	2	50	51	333,10	333,06	45,40	18,18%	0,771
171B	1051 A	36 X	3	50	51	334,60	334,53	45,43	14,11%	0,606
171B	1051 A	36 X	4	50	51	336,10	335,99	45,46	12,53%	0,512
171B	1051 A	36 X	5	50	51	337,60	337,46	45,49	8,48%	0,352
171B	1051 A	36 X	6	50	51	339,10	338,93	45,52	15,90%	0,667
171B	1051 A	37 X	1	2	3	340,72	340,72	45,56	15,38%	0,658
171B	1051 A	37 X	1	30	31	341,00	341,00	45,56	17,38%	0,746
171B	1051 A	37 X	1	50	51	341,20	341,20	45,57	12,00%	0,516
171B	1051 A	37 X	1	90	91	341,60	341,60	45,58	14,25%	0,618
171B	1051 A	37 X	1	120	122	341,90	341,90	45,58	14,84%	0,650
171B	1051 A	37 X	2	1	2	342,21	342,21	45,59	13,56%	0,601
171B	1051 A	37 X	2	30	31	342,50	342,50	45,60	16,90%	0,757
171B	1051 A	37 X	2	50	51	342,70	342,70	45,60	13,89%	0,626
171B	1051 A	37 X	2	90	91	343,10	343,10	45,61	15,75%	0,713
171B	1051 A	37 X	2	120	122	343,40	343,40	45,62	16,88%	0,754
171B	1051 A	37 X	3	1	2	343,71	343,71	45,62	12,93%	0,569
171B	1051 A	37 X	3	30	31	344,00	344,00	45,63	14,73%	0,640
171B	1051 A	37 X	3	50	51	344,20	344,20	45,63	13,88%	0,597
171B	1051 A	37 X	3	90	91	344,60	344,60	45,64	17,65%	0,746
171B	1051 A	37 X	3	120	122	344,90	344,90	45,65	15,05%	0,638
171B	1051 A	37 X	4	1	2	345,21	345,21	45,65	13,88%	0,590
171B	1051 A	37 X	4	30	31	345,50	345,50	45,66	13,08%	0,557
171B	1051 A	37 X	4	50	51	345,70	345,70	45,66	10,30%	0,439
171B	1051 A	37 X	4	90	91	346,10	346,10	45,67	10,96%	0,469
171B	1051 A	37 X	4	120	122	346,40	346,40	45,68	15,05%	0,645
171B	1051 A	37 X	5	1	2	346,71	346,71	45,69	11,78%	0,505
171B	1051 A	37 X	5	10	11	346,80	346,80	45,69	11,68%	0,501
171B	1051 A	37 X	5	20	21	346,90	346,90	45,69	14,27%	0,611
171B	1051 A	37 X	6	0	1	346,93	346,95	45,69	14,93%	0,639
171B	1051 A	37 X	6	10	11	347,03	347,05	45,69	12,81%	0,548
171B	1051 A	38 X	1	50	51	350,90	350,90	45,85	11,18%	0,323
171B	1051 A	38 X	2	50	51	352,40	352,40	45,94	15,59%	0,466
171B	1051 A	38 X	3	50	51	353,90	353,90	46,02	13,58%	0,396
171B	1051 A	38 X	4	50	51	355,40	355,40	46,10	14,42%	0,410
171B	1051 A	38 X	5	50	51	356,90	356,90	46,19	14,21%	0,422
171B	1051 A	38 X	6	50	51	358,40	358,40	46,27	18,45%	0,548
171B	1051 A	39 X	1	50	51	360,60	360,60	46,39	16,78%	0,473
171B	1051 A	39 X	2	50	51	362,10	362,09	46,48	18,78%	0,523
171B	1051 A	39 X	3	50	51	363,60	363,58	46,56	14,36%	0,417
171B	1051 A	39 X	4	50	51	365,10	365,07	46,64	15,68%	0,432
171B	1051 A	39 X	5	50	51	366,60	366,57	46,72	14,90%	0,422
171B	1051 A	39 X	6	50	51	368,10	368,06	46,81	10,10%	0,280
171B	1051 A	40 X	1	3	4	369,73	369,73	46,90	13,91%	0,410
171B	1051 A	40 X	1	30	31	370,00	370,00	46,91	15,78%	0,471
171B	1051 A	40 X	1	50	51	370,20	370,20	46,93	13,12%	0,395
171B	1051 A	40 X	1	90	91	370,60	370,60	46,95	14,82%	0,450

171B	1051 A	40 X	1	120	122	370,90	370,90	46,96	15,83%	0,475
171B	1051 A	40 X	2	3	4	371,23	371,23	46,98	15,38%	0,455
171B	1051 A	40 X	2	30	31	371,50	371,50	47,00	17,66%	0,517
171B	1051 A	40 X	2	50	51	371,70	371,70	47,01	14,76%	0,428
171B	1051 A	40 X	2	90	91	372,10	372,10	47,03	19,21%	0,557
171B	1051 A	40 X	2	120	122	372,40	372,40	47,05	16,13%	0,474
171B	1051 A	40 X	3	3	4	372,73	372,73	47,07	16,60%	0,495
171B	1051 A	40 X	3	30	31	373,00	373,00	47,08	16,74%	0,506
171B	1051 A	40 X	3	50	51	373,20	373,20	47,09	10,65%	0,325
171B	1051 A	40 X	3	90	91	373,60	373,60	47,11	19,65%	0,609
171B	1051 A	40 X	3	120	122	373,90	373,90	47,13	12,30%	0,386
171B	1051 A	40 X	4	3	4	374,23	374,23	47,15	12,18%	0,387
171B	1051 A	40 X	4	30	31	374,50	374,50	47,16	14,58%	0,467
171B	1051 A	40 X	4	50	51	374,70	374,70	47,18	8,06%	0,260
171B	1051 A	40 X	4	91	92	375,11	375,11	47,20	13,27%	0,430
171B	1051 A	40 X	4	120	122	375,40	375,40	47,21	3,40%	0,109
171B	1051 A	40 X	5	0	1	375,70	375,70	47,23	10,82%	0,344
171B	1051 A	40 X	5	10	11	375,80	375,80	47,24	8,74%	0,277
171B	1051 A	40 X	5	20	22	375,90	375,90	47,24	6,63%	0,209
171B	1051 A	40 X	5	31	32	376,01	376,01	47,25	4,83%	0,152
171B	1051 A	40 X	5	40	41	376,10	376,10	47,25	6,03%	0,189
171B	1051 A	40 X	5	50	51	376,20	376,20	47,26	6,87%	0,215
171B	1051 A	40 X	5	60	61	376,30	376,30	47,26	5,79%	0,180
171B	1051 A	40 X	5	70	71	376,40	376,40	47,27	3,73%	0,116
171B	1051 A	40 X	5	80	81	376,50	376,50	47,27	4,11%	0,127
171B	1051 A	40 X	5	91	92	376,61	376,61	47,28	4,48%	0,137
171B	1051 A	40 X	5	100	101	376,70	376,70	47,29	7,83%	0,238
171B	1051 A	40 X	6	0	1	376,80	376,80	47,29	5,28%	0,160
171B	1051 A	40 X	6	10	11	376,90	376,90	47,30	7,29%	0,219
171B	1051 A	40 X	6	20	22	377,00	377,00	47,30	5,87%	0,175
171B	1051 A	40 X	6	30	31	377,10	377,10	47,31	6,05%	0,179
171B	1051 A	41 X	1	10	11	379,40	379,40	48,89	4,59%	0,101
171B	1051 A	41 X	1	20	21	379,50	379,50	48,89	2,17%	0,047
171B	1051 A	41 X	1	41	42	379,71	379,71	48,90	4,44%	0,095
171B	1051 A	41 X	1	50	51	379,80	379,80	48,90	4,78%	0,102
171B	1051 A	41 X	1	61	62	379,91	379,91	48,91	4,17%	0,088
171B	1051 A	41 X	1	70	71	380,00	380,00	48,91	3,42%	0,072
171B	1051 A	41 X	1	80	81	380,10	380,10	48,91	5,44%	0,113
171B	1051 A	41 X	1	90	91	380,20	380,20	48,91	3,31%	0,068
171B	1051 A	41 X	1	100	101	380,30	380,30	48,92	4,04%	0,084
171B	1051 A	41 X	1	110	111	380,40	380,40	48,92	4,93%	0,102
171B	1051 A	42 X	1	5	7	389,95	389,95	49,20	32,47%	0,683
171B	1051 A	42 X	1	37	39	390,27	390,26	49,21	20,93%	0,440
171B	1051 A	42 X	1	50	51	390,40	390,38	49,22	23,49%	0,494
171B	1051 A	42 X	1	96	98	390,86	390,83	49,23	23,37%	0,495
171B	1051 A	42 X	1	123	125	391,13	391,09	49,24	33,57%	0,720
171B	1051 A	42 X	2	4	6	391,44	391,39	49,25	30,27%	0,659
171B	1051 A	42 X	2	34	36	391,74	391,68	49,25	28,46%	0,628
171B	1051 A	42 X	2	50	51	391,90	391,84	49,26	15,00%	0,333
171B	1051 A	42 X	2	96	98	392,36	392,28	49,27	32,15%	0,730
171B	1051 A	42 X	2	124,5	126,5	392,65	392,56	49,28	31,47%	0,724
171B	1051 A	42 X	3	4	6	392,94	392,84	49,29	28,65%	0,669
171B	1051 A	42 X	3	36	38	393,26	393,15	49,30	33,54%	0,794
171B	1051 A	42 X	3	50	51	393,40	393,29	49,30	15,05%	0,359
171B	1051 A	42 X	3	94	96	393,84	393,72	49,31	28,67%	0,688
171B	1051 A	42 X	3	123	125	394,13	394,00	49,32	31,10%	0,735
171B	1051 A	42 X	4	4	6	394,44	394,30	49,33	25,29%	0,587
171B	1051 A	42 X	4	34	36	394,74	394,59	49,34	39,17%	0,894
171B	1051 A	42 X	4	50	51	394,90	394,74	49,35	26,98%	0,591
171B	1051 A	42 X	4	95	97	395,35	395,18	49,38	33,54%	0,732
171B	1051 A	42 X	4	123	125	395,63	395,45	49,40	28,51%	0,628
171B	1051 A	42 X	5	5	7	395,95	395,76	49,43	28,92%	0,644
171B	1051 A	42 X	5	35	37	396,25	396,05	49,45	34,14%	0,769
171B	1051 A	42 X	5	50	51	396,40	396,20	49,46	26,17%	0,592
171B	1051 A	42 X	5	64	66	396,54	396,33	49,48	28,88%	0,656
171B	1051 A	42 X	5	95	97	396,85	396,63	49,50	27,79%	0,636
171B	1051 A	42 X	5	123	125	397,13	396,90	49,52	29,16%	0,666
171B	1051 A	42 X	6	6	8	397,46	397,22	49,55	29,56%	0,674
171B	1051 A	42 X	6	34	36	397,74	397,49	49,57	21,16%	0,482
171B	1051 A	42 X	6	50	51	397,90	397,65	49,58	21,47%	0,489
171B	1051 A	42 X	6	94	96	398,34	398,08	49,62	22,29%	0,504
171B	1051 A	42 X	6	126	128	398,66	398,39	49,64	30,40%	0,684
171B	1051 A	42 X	7	5	7	398,95	398,67	49,67	32,38%	0,724
171B	1051 A	42 X	7	34	36	399,24	398,95	49,69	28,95%	0,644
171B	1051 A	43 X	1	4	6	399,54	399,54	49,74	27,33%	0,600

171B	1051 A	43 X	1	50	51	400,00	399,98	49,77	22,76%	0,495
171B	1051 A	43 X	2	4	6	401,04	400,98	49,86	34,39%	0,716
171B	1051 A	43 X	2	50	51	401,50	401,42	49,89	30,11%	0,612
171B	1051 A	43 X	3	4	6	402,54	402,42	49,97	29,59%	0,615
171B	1051 A	43 X	3	50	51	403,00	402,87	50,01	34,40%	0,728
171B	1051 A	43 X	4	4	6	404,04	403,87	50,09	36,62%	0,759
171B	1051 A	43 X	4	50	51	404,50	404,31	50,13	30,20%	0,615
171B	1051 A	43 X	5	5	7	405,55	405,32	50,21	32,03%	0,645
171B	1051 A	43 X	5	50	51	406,00	405,75	50,24	33,64%	0,679
171B	1051 A	43 X	6	5	7	407,05	406,76	50,33	25,95%	0,548
171B	1051 A	43 X	6	50	51	407,50	407,20	50,36	29,32%	0,635
171B	1051 A	43 X	7	5	7	408,55	408,21	50,45	34,12%	0,758
171B	1051 A	44 X	1	3	5	409,13	409,13	50,52	27,57%	0,621
171B	1051 A	44 X	1	50	51	409,60	409,59	50,56	21,87%	0,495
171B	1051 A	44 X	2	5	7	410,65	410,60	50,65	28,51%	0,653
171B	1051 A	44 X	2	50	51	411,10	411,04	50,70	34,01%	0,793
171B	1051 A	44 X	3	5	7	412,15	412,06	50,83	32,05%	0,720
171B	1051 A	44 X	3	50	51	412,60	412,50	50,88	34,84%	0,764
171B	1051 A	44 X	4	5	7	413,65	413,52	51,01	38,40%	0,853
171B	1051 A	44 X	4	50	51	414,10	413,95	51,06	31,81%	0,718
171B	1051 A	44 X	5	4	6	415,14	414,96	51,18	32,23%	0,707
171B	1051 A	44 X	5	50	51	415,60	415,41	51,24	25,36%	0,542
171B	1051 A	44 X	6	5	7	416,65	416,43	51,36	29,58%	0,594
171B	1051 A	44 X	6	50	51	417,10	416,87	51,42	29,03%	0,568
171B	1051 A	44 X	7	5	7	418,15	417,88	51,54	37,19%	0,754
171B	1051 A	45 X	1	3	5	418,73	418,73	52,86	30,21%	1,056
171B	1051 A	45 X	1	50	51	419,20	419,18	52,93	29,80%	1,073
171B	1051 A	45 X	2	6	8	420,26	420,21	53,08	38,12%	1,310
171B	1051 A	45 X	2	50	51	420,70	420,64	53,10	32,79%	1,094
171B	1051 A	45 X	2	63	65	420,83	420,77	53,11	31,68%	1,048
171B	1051 A	45 X	2	96	98	421,16	421,09	53,13	30,63%	1,013
171B	1051 A	45 X	2	126	128	421,46	421,38	53,14	32,15%	1,089
171B	1051 A	45 X	3	5	7	421,75	421,66	53,16	34,11%	1,182
171B	1051 A	45 X	3	36	38	422,06	421,96	53,17	31,23%	1,109
171B	1051 A	45 X	3	50	51	422,20	422,09	53,18	31,48%	1,130
171B	1051 A	45 X	3	95	97	422,65	422,53	53,20	29,06%	1,047
171B	1051 A	45 X	3	127	129	422,97	422,84	53,21	30,99%	1,130
171B	1051 A	45 X	4	5	7	423,25	423,11	53,21	26,18%	0,965
171B	1051 A	45 X	4	33	35	423,53	423,38	53,21	31,62%	1,177
171B	1051 A	45 X	4	50	51	423,70	423,55	53,22	27,41%	1,027
171B	1051 A	45 X	4	96	98	423,86	423,99	53,22	25,71%	0,976
171B	1051 A	45 X	4	122	124	424,42	424,25	53,23	31,57%	1,196
171B	1051 A	45 X	5	4	6	424,74	424,56	53,23	16,81%	0,635
171B	1051 A	45 X	5	50	51	425,20	425,00	53,24	27,21%	1,025
171B	1051 A	45 X	5	65	67	425,35	425,15	53,24	25,59%	0,963
171B	1051 A	45 X	5	93	95	425,63	425,42	53,24	31,66%	1,191
171B	1051 A	45 X	5	122	124	425,92	425,70	53,25	31,30%	1,177
171B	1051 A	45 X	6	5	7	426,25	426,02	53,25	32,97%	1,240
171B	1051 A	45 X	6	33	35	426,53	426,29	53,26	24,76%	0,931
171B	1051 A	45 X	6	50	51	426,70	426,46	53,26	18,61%	0,699
171B	1051 A	45 X	6	65	67	426,85	426,60	53,26	26,26%	0,987
171B	1051 A	45 X	6	96	98	427,16	426,90	53,27	28,62%	1,084
171B	1051 A	45 X	7	4	6	427,74	427,47	53,27	24,21%	0,938
171B	1051 A	46 X	1	3	4	428,33	428,33	53,31	24,14%	0,945
171B	1051 A	46 X	1	33	34	428,63	428,62	53,32	21,75%	0,861
171B	1051 A	46 X	1	50	51	428,80	428,79	53,33	27,62%	1,100
171B	1051 A	46 X	1	66	68	428,96	428,94	53,34	26,68%	1,069
171B	1051 A	46 X	1	93	95	429,23	429,20	53,35	17,24%	0,691
171B	1051 A	46 X	2	3	5	429,83	429,79	53,37	22,73%	0,906
171B	1051 A	46 X	2	34	36	430,14	430,09	53,38	23,61%	0,938
171B	1051 A	46 X	2	50	51	430,30	430,24	53,39	20,28%	0,805
171B	1051 A	46 X	2	65	67	430,45	430,39	53,40	20,59%	0,816
171B	1051 A	46 X	2	95	97	430,75	430,68	53,41	23,76%	0,940
171B	1051 A	46 X	2	126	128	431,06	430,98	53,42	22,59%	0,844
171B	1051 A	46 X	3	3	5	431,33	431,24	53,43	26,07%	0,974
171B	1051 A	46 X	3	50	51	431,80	431,70	53,44	17,28%	0,646
171B	1051 A	46 X	3	95	97	432,25	432,14	53,46	21,95%	0,819
171B	1051 A	46 X	3	122	124	432,52	432,40	53,46	30,05%	1,117
171B	1051 A	46 X	4	4	6	432,84	432,71	53,47	27,46%	1,016
171B	1051 A	46 X	4	34	36	433,14	433,00	53,48	24,36%	0,898
171B	1051 A	46 X	4	50	51	433,30	433,16	53,49	28,34%	1,043
171B	1051 A	46 X	4	64	66	433,44	433,29	53,49	24,68%	0,906
171B	1051 A	46 X	4	95	97	433,75	433,60	53,50	23,09%	0,851
171B	1051 A	46 X	5	3	5	434,33	434,16	53,52	25,18%	0,952
171B	1051 A	46 X	5	34	36	434,64	434,46	53,53	23,87%	0,915

171B	1051 A	46 X	5	50	51	434,80	434,62	53,53	21,51%	0,830
171B	1051 A	46 X	5	64	66	434,94	434,75	53,53	25,55%	0,992
171B	1051 A	46 X	5	123	125	435,53	435,33	53,55	25,18%	0,972
171B	1051 A	46 X	6	3	5	435,83	435,62	53,56	23,34%	0,896
171B	1051 A	46 X	6	34	36	436,14	435,92	53,57	24,90%	0,950
171B	1051 A	46 X	6	50	51	436,30	436,07	53,57	25,74%	0,980
171B	1051 A	46 X	6	65	67	436,45	436,22	53,58	26,42%	1,003
171B	1051 A	46 X	6	96	98	436,76	436,52	53,59	21,72%	0,820
171B	1051 A	46 X	7	4	6	437,34	437,08	53,60	23,91%	0,893
171B	1051 A	46 X	7	33	35	437,63	437,37	53,61	21,33%	0,793
171B	1051 A	47 X	1	3	5	437,93	437,93	53,63	31,27%	1,150
171B	1051 A	47 X	1	34	36	438,24	438,23	53,64	28,96%	1,060
171B	1051 A	47 X	1	50	51	438,40	438,39	53,64	28,04%	1,023
171B	1051 A	47 X	1	63	64	438,53	438,51	53,65	25,88%	0,942
171B	1051 A	47 X	1	126	127	439,16	439,12	53,66	18,07%	0,684
171B	1051 A	47 X	2	5	6	439,45	439,41	53,67	21,54%	0,835
171B	1051 A	47 X	2	32	34	439,72	439,67	53,68	17,52%	0,694
171B	1051 A	47 X	2	50	51	439,90	439,84	53,69	29,09%	1,170
171B	1051 A	47 X	2	67	69	440,07	440,01	53,69	17,67%	0,720
171B	1051 A	47 X	2	93	94	440,33	440,26	53,70	22,86%	0,924
171B	1051 A	47 X	3	3	5	440,93	440,84	53,72	20,04%	0,786
171B	1051 A	47 X	3	32	34	441,22	441,13	53,72	18,97%	0,733
171B	1051 A	47 X	3	50	51	441,40	441,30	53,73	27,71%	1,060
171B	1051 A	47 X	3	61	63	441,51	441,41	53,73	25,12%	0,955
171B	1051 A	47 X	3	123	125	442,13	442,01	53,75	21,52%	0,813
171B	1051 A	47 X	4	4	6	442,44	442,31	53,76	25,22%	0,950
171B	1051 A	47 X	4	36	37,5	442,76	442,62	53,77	19,73%	0,741
171B	1051 A	47 X	4	50	51	442,90	442,76	53,77	16,70%	0,627
171B	1051 A	47 X	4	62	64	443,02	442,87	53,78	11,68%	0,438
171B	1051 A	47 X	4	93	95	443,33	443,18	53,79	17,69%	0,664
171B	1051 A	47 X	5	8	10	443,98	443,81	53,80	25,21%	0,956
171B	1051 A	47 X	5	50	51	444,40	444,22	53,82	27,49%	1,049
171B	1051 A	47 X	5	63	65	444,53	444,34	53,82	18,44%	0,705
171B	1051 A	47 X	5	93	95	444,83	444,63	53,83	26,29%	1,015
171B	1051 A	47 X	5	121	123	445,11	444,91	53,84	21,85%	0,855
171B	1051 A	47 X	6	3	4	445,43	445,22	53,85	22,28%	0,886
171B	1051 A	47 X	6	32	34	445,72	445,50	53,86	17,64%	0,711
171B	1051 A	47 X	6	50	51	445,90	445,67	53,86	16,51%	0,671
171B	1051 A	47 X	6	62	64	446,02	445,79	53,86	17,37%	0,710
171B	1051 A	47 X	6	93	94	446,33	446,09	53,87	18,85%	0,778
171B	1051 A	47 X	6	125	127	446,65	446,40	53,88	18,97%	0,789
171B	1051 A	47 X	7	4	5	446,94	446,68	53,89	24,95%	1,046
171B	1051 A	48 X	1	4	8	447,54	447,54	53,92	27,76%	1,189
171B	1051 A	48 X	1	35	37	447,85	447,84	53,93	17,61%	0,760
171B	1051 A	48 X	1	50	51	448,00	447,99	53,93	18,82%	0,815
171B	1051 A	48 X	1	93	95	448,43	448,41	53,94	21,29%	0,932
171B	1051 A	48 X	1	122	124	448,72	448,70	53,95	19,18%	0,839
171B	1051 A	48 X	2	5	7	449,05	449,02	53,96	20,77%	0,903
171B	1051 A	48 X	2	35	37	449,35	449,31	53,97	18,34%	0,794
171B	1051 A	48 X	2	49	50	449,50	449,45	53,97	19,00%	0,821
171B	1051 A	48 X	2	65	66	449,65	449,61	53,98	28,84%	1,242
171B	1051 A	48 X	3	5	7	450,55	450,49	54,01	21,24%	0,761
171B	1051 A	48 X	3	48	49	451,00	450,91	54,03	19,71%	0,722
171B	1051 A	48 X	4	3	5	452,03	451,94	54,07	25,12%	0,873
171B	1051 A	48 X	4	50	51	452,50	452,40	54,09	15,19%	0,509
171B	1051 A	48 X	5	5	7	453,55	453,43	54,14	18,92%	0,641
171B	1051 A	48 X	5	50	51	454,00	453,87	54,16	23,13%	0,796
171B	1051 A	48 X	6	6	7	455,06	454,91	54,20	24,03%	0,856
171B	1051 A	48 X	6	50	51	455,50	455,34	54,22	25,17%	0,910
171B	1051 A	48 X	7	3	4	456,23	455,89	54,24	25,44%	0,940
171B	1051 A	48 X	7	20	21	457,00	456,05	54,25	27,43%	1,020
171B	1051 A	49 X	1	4	6	457,04	457,14	54,29	24,44%	0,948
171B	1051 A	49 X	1	35	37	457,45	457,42	54,30	9,67%	0,379
171B	1051 A	49 X	1	50	51	457,60	457,56	54,31	11,70%	0,461
171B	1051 A	49 X	1	92	94	458,02	457,94	54,33	15,05%	0,593
171B	1051 A	49 X	1	125	127	458,35	458,25	54,34	21,34%	0,822
171B	1051 A	49 X	2	33	35	458,93	458,78	54,36	16,79%	0,621
171B	1051 A	49 X	2	48	49	459,10	458,92	54,37	19,84%	0,727
171B	1051 A	49 X	2	65	66	459,25	459,07	54,37	20,06%	0,730
171B	1051 A	49 X	2	94	96	459,54	459,34	54,38	14,16%	0,510
171B	1051 A	49 X	3	19	20	459,80	459,58	54,39	20,50%	0,730
171B	1051 A	50 X	1	5	7	460,25	460,25	54,42	13,30%	0,461
171B	1051 A	50 X	1	34	36	460,54	460,51	54,43	19,72%	0,676
171B	1051 A	50 X	1	50	51	460,70	460,66	54,44	22,44%	0,764
171B	1051 A	50 X	1	64	66	460,84	460,79	54,44	22,36%	0,757

171B	1051 A	50 X	1	121	123	461,41	461,31	54,47	19,81%	0,687
171B	1051 A	50 X	2	5	7	461,76	461,62	54,48	20,72%	0,740
171B	1051 A	50 X	2	35,5	37,5	462,07	461,90	54,49	11,17%	0,410
171B	1051 A	50 X	2	50	51	462,20	462,03	54,50	20,01%	0,742
171B	1051 A	50 X	2	93	95	462,64	462,42	54,51	16,85%	0,639
171B	1051 A	50 X	2	127	127	462,98	462,74	54,53	17,25%	0,651
171B	1051 A	50 X	3	3	4	463,24	462,97	54,54	20,95%	0,786
171B	1051 A	50 X	3	36	38	463,57	463,28	54,55	19,73%	0,736
171B	1051 A	50 X	3	50	51	463,70	463,40	54,55	23,30%	0,867
171B	1051 A	50 X	3	64	66	463,85	463,53	54,56	18,93%	0,702
171B	1051 A	50 X	3	93	95	464,14	463,80	54,57	19,41%	0,717
171B	1051 A	50 X	4	5	7	464,76	464,37	54,59	17,75%	0,653
171B	1051 A	50 X	4	35	37	465,06	464,64	54,61	16,03%	0,588
171B	1051 A	50 X	4	50	51	465,20	464,78	54,61	15,35%	0,563
171B	1051 A	50 X	4	61,5	63,5	465,33	464,88	54,62	16,63%	0,609
171B	1051 A	50 X	4	121	123	465,92	465,43	54,64	15,75%	0,577
171B	1051 A	50 X	5	50	51	466,71	466,15	54,67	23,56%	0,864
171B	1051 A	51 X	2	63	65	468,93	468,91	54,78	22,49%	0,817
171B	1051 A	51 X	2	98	100	469,28	469,26	54,80	19,54%	0,708
171B	1051 A	51 X	2	100	101	469,30	469,28	54,80	23,08%	0,836
171B	1051 A	51 X	2	122	124	469,52	469,50	54,81	18,06%	0,653
171B	1051 A	51 X	3	3	5	469,83	469,81	54,82	17,97%	0,648
171B	1051 A	51 X	3	34	36	470,14	470,11	54,83	11,90%	0,428
171B	1051 A	51 X	3	62	64	470,42	470,39	54,85	19,65%	0,705
171B	1051 A	51 X	3	95	97	470,75	470,72	54,86	21,48%	0,772
171B	1051 A	51 X	3	100	101	470,80	470,77	54,86	25,07%	0,901
171B	1051 A	51 X	3	122	124	471,02	470,99	54,87	22,38%	0,807
171B	1051 A	51 X	4	5	7	471,35	471,31	54,88	15,13%	0,548
171B	1051 A	51 X	4	35	36	471,65	471,61	54,90	15,05%	0,547
171B	1051 A	51 X	4	64	65	471,94	471,90	54,91	15,55%	0,567
171B	1051 A	51 X	4	93	95	472,23	472,19	54,92	23,16%	0,847
171B	1051 A	51 X	4	100	101	472,30	472,26	54,92	22,00%	0,805
171B	1051 A	51 X	4	122	124	472,52	472,47	54,93	18,28%	0,671
171B	1051 A	51 X	5	3	5	472,83	472,78	54,95	19,12%	0,704
171B	1051 A	51 X	5	38	40	473,18	473,13	54,96	20,39%	0,754
171B	1051 A	51 X	5	68	70	473,48	473,43	54,97	16,35%	0,607
171B	1051 A	51 X	5	92	94	473,72	473,66	54,98	24,00%	0,891
171B	1051 A	51 X	5	100	101	473,80	473,74	54,99	19,00%	0,705
171B	1051 A	51 X	5	123	125	474,03	473,97	55,00	23,47%	0,869
171B	1051 A	51 X	6	6	8	474,36	474,30	55,01	30,01%	1,107
171B	1051 A	51 X	6	35	37	474,65	474,59	55,02	28,18%	1,037
171B	1051 A	51 X	6	67	69	474,97	474,90	55,03	20,90%	0,766
171B	1051 A	51 X	6	97	99	475,27	475,20	55,05	23,54%	0,860
171B	1051 A	51 X	6	100	101	475,30	475,23	55,05	18,10%	0,661
171B	1051 A	51 X	6	124	126	475,54	475,47	55,06	19,29%	0,703
171B	1051 A	51 X	7	3	5	475,83	475,76	55,07	20,72%	0,753
171B	1051 A	52 X	1	4	6	476,54	476,54	55,10	19,60%	0,706
171B	1051 A	52 X	1	34	36	476,84	476,83	55,12	11,18%	0,401
171B	1051 A	52 X	1	65	67	477,15	477,13	55,13	14,91%	0,534
171B	1051 A	52 X	1	95	97	477,45	477,42	55,14	17,32%	0,618
171B	1051 A	52 X	1	100	101	477,50	477,47	55,14	17,50%	0,624
171B	1051 A	52 X	1	123	125	477,73	477,69	55,15	17,48%	0,622
171B	1051 A	52 X	2	3	5	478,03	477,98	55,16	18,92%	0,671
171B	1051 A	52 X	2	33	35	478,33	478,27	55,18	16,68%	0,590
171B	1051 A	52 X	2	65	67	478,65	478,58	55,19	17,38%	0,612
171B	1051 A	52 X	2	94	96	478,94	478,86	55,20	19,14%	0,672
171B	1051 A	52 X	2	100	101	479,00	478,92	55,20	15,25%	0,535
171B	1051 A	52 X	2	123	125	479,23	479,14	55,21	17,52%	0,613
171B	1051 A	52 X	3	35	36	479,85	479,74	55,24	14,84%	0,515
171B	1051 A	52 X	3	95	96	480,45	480,32	55,26	14,11%	0,487
171B	1051 A	52 X	4	33	34	481,33	481,17	55,30	22,57%	0,771
171B	1051 A	52 X	4	95	96	481,95	481,77	55,32	18,09%	0,613
171B	1051 A	52 X	5	33	34	482,83	482,62	55,36	16,54%	0,554
171B	1051 A	52 X	5	94	95	483,44	483,21	55,38	20,05%	0,666
171B	1051 A	52 X	6	33	34	484,33	484,07	55,42	21,20%	0,695
171B	1051 A	52 X	6	92	93	484,92	484,64	55,44	20,75%	0,674
171B	1051 A	52 X	7	35	36	485,85	485,54	55,48	22,94%	0,738
171B	1051 A	53 X	1	35	36	486,45	486,44	55,52	27,38%	0,872
171B	1051 A	53 X	1	95	96	487,05	487,02	55,54	20,09%	0,645
171B	1051 A	53 X	2	35	36	487,96	487,90	55,58	19,85%	0,657
171B	1051 A	53 X	2	95	96	488,56	488,48	55,60	20,17%	0,682
171B	1051 A	53 X	2	125	126	488,86	488,77	55,62	20,62%	0,703
171B	1051 A	53 X	3	35	36	489,46	489,36	55,64	17,86%	0,621
171B	1051 A	53 X	3	93	94	490,04	489,92	55,66	21,19%	0,750
171B	1051 A	53 X	4	33	34	490,94	490,80	55,70	19,06%	0,671

171B	1051 A	53 X	4	92	93	491,53	491,37	55,72	17,01%	0,597
171B	1051 A	53 X	5	35	36	492,46	492,28	55,76	19,96%	0,697
171B	1051 A	53 X	5	93	94	493,04	492,84	55,79	19,36%	0,673
171B	1051 A	53 X	6	33	34	493,94	493,72	55,82	20,91%	0,719
171B	1051 A	53 X	6	96	97	494,57	494,33	55,85	19,83%	0,677
171B	1051 A	54 X	1	45	47	496,15	496,15	55,92	12,51%	0,418
171B	1051 A	54 X	1	73	75	496,43	496,43	55,94	16,95%	0,564
171B	1051 A	54 X	1	103	105	496,73	496,73	55,95	14,19%	0,470
171B	1051 A	54 X	1	135	137	497,05	497,05	55,96	16,98%	0,561
171B	1051 A	54 X	2	5	6	497,25	497,25	55,97	21,62%	0,712
171B	1051 A	54 X	2	14	16	497,34	497,34	55,97	18,53%	0,610
171B	1051 A	54 X	2	93	94	498,13	498,13	56,01	16,77%	0,554
171B	1051 A	54 X	3	34	35	499,04	499,04	56,04	23,67%	0,820
171B	1051 A	54 X	3	93	94	499,63	499,63	56,07	21,02%	0,751
171B	1051 A	54 X	4	33	34	500,53	500,53	56,11	9,54%	0,357
171B	1051 A	54 X	4	95	96	501,15	501,15	56,13	10,85%	0,419
171B	1051 A	54 X	5	35	36	502,05	502,05	56,17	11,69%	0,471
171B	1051 A	54 X	5	95	96	502,65	502,65	56,20	9,79%	0,400
171B	1051 A	54 X	6	35	36	503,55	503,55	56,23	14,41%	0,587
171B	1051 A	53 X	7	34	35	495,45	505,04	56,30	20,63%	0,834
171B	1051 A	55 X	1	45	46	505,75	505,75	56,33	11,89%	0,479
171B	1051 A	55 X	1	80	81	506,10	506,10	56,34	12,99%	0,522
171B	1051 A	55 X	1	100	101	506,30	506,30	56,35	14,70%	0,590
171B	1051 A	55 X	1	110	111	506,40	506,40	56,35	12,66%	0,508
171B	1051 A	55 X	1	140	141	506,70	506,70	56,36	10,41%	0,417
171B	1051 A	55 X	2	21	23	507,01	507,01	56,38	13,02%	0,521
171B	1051 A	55 X	2	49	51	507,29	507,29	56,39	14,44%	0,577
171B	1051 A	55 X	2	80	81	507,60	507,60	56,40	12,85%	0,513
171B	1051 A	55 X	2	100	101	507,80	507,80	56,41	13,15%	0,524
171B	1051 A	55 X	2	111	113	507,91	507,91	56,42	16,37%	0,652
171B	1051 A	55 X	2	140	142	508,20	508,20	56,43	12,67%	0,503
171B	1051 A	55 X	3	42	43	508,72	508,72	56,45	12,69%	0,503
171B	1051 A	55 X	3	95	96	509,25	509,25	56,47	11,88%	0,470
171B	1051 A	55 X	4	35	36	510,15	510,15	56,51	20,63%	0,812
171B	1051 A	56 X	1	65	67	515,55	515,53	56,73	19,19%	0,733
171B	1051 A	56 X	1	94	96	515,84	515,82	56,75	16,20%	0,618
171B	1051 A	56 X	1	123	125	516,13	516,10	56,76	16,74%	0,638
171B	1051 A	56 X	2	3,5	5,5	516,44	516,40	56,77	22,13%	0,842
171B	1051 A	56 X	2	33,5	35,5	516,74	516,69	56,78	22,86%	0,868
171B	1051 A	56 X	2	50	51	516,90	516,85	56,79	20,57%	0,781
171B	1051 A	56 X	2	64	66	517,04	516,99	56,80	20,30%	0,769
171B	1051 A	56 X	2	95	97	517,35	517,29	56,81	25,38%	0,961
171B	1051 A	56 X	2	123	125	517,63	517,56	56,82	18,37%	0,694
171B	1051 A	56 X	3	5	7	517,95	517,88	56,83	21,08%	0,795
171B	1051 A	56 X	3	33	35	518,23	518,15	56,84	23,64%	0,890
171B	1051 A	56 X	3	50	51	518,40	518,31	56,85	22,19%	0,835
171B	1051 A	56 X	3	65	67	518,55	518,46	56,86	18,46%	0,694
171B	1051 A	56 X	3	92	94	518,82	518,72	56,87	18,49%	0,694
171B	1051 A	56 X	3	123	125	519,13	519,03	56,88	25,00%	0,937
171B	1051 A	56 X	4	3	5	519,43	519,32	56,89	20,44%	0,765
171B	1051 A	56 X	4	34	36	519,74	519,62	56,91	20,96%	0,783
171B	1051 A	56 X	4	50	51	519,90	519,78	56,91	16,26%	0,607
171B	1051 A	56 X	4	65	66	520,05	519,92	56,92	18,87%	0,704
171B	1051 A	56 X	4	93	95	520,33	520,20	56,93	17,75%	0,661
171B	1051 A	56 X	4	123	125	520,63	520,49	56,94	20,81%	0,774
171B	1051 A	56 X	5	6	8	520,96	520,81	56,96	21,52%	0,798
171B	1051 A	56 X	5	34	36	521,24	521,09	56,97	16,47%	0,610
171B	1051 A	56 X	5	50	51	521,40	521,24	56,97	23,80%	0,881
171B	1051 A	56 X	5	64,5	66,5	521,55	521,38	56,98	19,35%	0,716
171B	1051 A	56 X	5	93	95	521,83	521,66	56,99	15,31%	0,566
171B	1051 A	56 X	5	126	128	522,16	521,98	57,00	23,75%	0,877
171B	1051 A	56 X	6	5	7	522,45	522,27	57,02	21,75%	0,803
171B	1051 A	56 X	6	36	38	522,76	522,57	57,03	24,04%	0,887
171B	1051 A	56 X	6	95	96	523,35	523,14	57,05	16,23%	0,599
171B	1051 A	56 X	7	4	5	523,94	523,72	57,08	21,29%	0,785
171B	1051 A	57 X	1	3	4	524,53	524,53	57,12	18,73%	0,592
171B	1051 A	57 X	1	34	35	524,84	524,83	57,16	15,58%	0,491
171B	1051 A	57 X	1	98	99	525,48	525,45	57,22	22,11%	0,691
171B	1051 A	57 X	2	35	36	526,35	526,29	57,31	20,09%	0,618
171B	1051 A	57 X	2	95	96	526,95	526,88	57,37	24,38%	0,741
171B	1051 A	57 X	3	35	36	527,85	527,75	57,46	19,35%	0,578
171B	1051 A	57 X	3	96	97	528,46	528,34	57,52	18,12%	0,537
171B	1051 A	57 X	4	6	7	529,06	528,92	57,58	19,57%	0,578
171B	1051 A	57 X	4	50	51	529,50	529,35	57,62	18,82%	0,554
171B	1051 A	57 X	4	80	81	529,80	529,64	57,65	18,89%	0,555

171B	1051 A	57 X	4	110	112	530,10	529,93	57,67	20,30%	0,576
171B	1051 A	57 X	4	140	142	530,40	530,22	57,69	20,82%	0,589
171B	1051 A	57 X	5	20	22	530,70	530,51	57,72	24,60%	0,695
171B	1051 A	57 X	5	50	51	531,00	530,80	57,74	25,39%	0,716
171B	1051 A	57 X	5	80	82	531,30	531,09	57,76	20,78%	0,587
171B	1051 A	57 X	5	110	112	531,60	531,38	57,78	19,33%	0,551
171B	1051 A	57 X	6	20	22	532,20	531,97	57,83	24,84%	0,721
171B	1051 A	57 X	6	50	51	532,50	532,26	57,85	16,77%	0,491
171B	1051 A	57 X	6	80	82	532,80	532,55	57,87	15,27%	0,451
171B	1051 A	57 X	6	110	112	533,10	532,84	57,89	24,46%	0,729
171B	1051 A	57 X	6	140	142	533,40	533,13	57,91	18,79%	0,565
171B	1051 A	57 X	7	20	21	534,00	533,42	57,93	16,29%	0,494
171B	1051 A	58 X	1	20	21	534,30	534,30	58,00	23,89%	0,743
171B	1051 A	58 X	2	21	22	535,81	535,77	58,11	18,78%	0,583
171B	1051 A	58 X	3	25	26	537,35	537,27	58,22	26,11%	0,782
171B	1051 A	58 X	4	21	22	538,81	538,70	58,33	28,39%	0,826
171B	1051 A	58 X	5	21	22	540,31	540,16	58,44	31,46%	0,892
171B	1051 A	58 X	6	20	21	541,80	541,62	58,55	23,52%	0,651
171B	1051 A	58 X	7	21	22	543,31	543,09	58,66	25,45%	0,689
171B	1051 A	59 X	1	20	21	543,90	543,90	58,81	26,83%	0,694
171B	1051 A	59 X	2	21	22	545,41	545,41	58,85	30,34%	0,789
171B	1051 A	59 X	3	20	21	546,90	546,90	58,90	29,26%	0,781
171B	1051 A	59 X	4	21	22	548,41	548,41	58,94	24,60%	0,667
171B	1051 A	59 X	5	21	22	549,91	549,91	58,97	18,86%	0,499
171B	1051 A	59 X	6	21	22	551,41	551,41	59,00	20,00%	0,541
171B	1051 A	60 X	1	20	21	553,50	553,50	59,04	20,88%	0,587
171B	1051 A	60 X	2	21	22	555,01	555,01	59,06	20,36%	0,598
171B	1051 A	60 X	3	21	22	556,03	556,03	59,08	18,04%	0,548
171B	1051 A	61 X	1	20	21	556,60	556,60	59,09	16,53%	0,512
171B	1051 A	61 X	2	21	22	558,11	558,11	59,12	13,02%	0,403
171B	1051 A	61 X	3	21	22	559,61	559,61	59,15	15,47%	0,470
171B	1051 A	61 X	4	20	21	561,10	561,10	59,17	16,98%	0,499
171B	1051 A	62 X	1	20	21	563,10	563,10	59,21	17,28%	0,481
171B	1051 A	62 X	2	20	21	564,60	564,57	59,23	16,48%	0,465
171B	1051 A	62 X	3	20	21	566,10	566,05	59,34	12,80%	0,349
171B	1051 A	62 X	4	20	21	567,60	567,53	59,45	22,18%	0,606
171B	1051 A	62 X	5	20	21	569,10	569,00	59,57	16,51%	0,441
171B	1051 A	62 X	6	20	21	570,60	570,48	59,69	21,50%	0,572
171B	1051 A	62 X	7	20	21	571,60	571,48	59,77	23,18%	0,618
171B	1051 A	62 X	8	20	21	572,23	572,12	59,82	25,60%	0,684
171B	1051 A	63 X	1	20	21	572,70	572,70	59,87	23,61%	0,632
171B	1051 A	63 X	2	20	21	574,20	574,16	59,99	21,90%	0,551
171B	1051 A	63 X	3	20	21	575,70	575,63	60,11	27,63%	0,625
171B	1051 A	63 X	4	20	21	577,20	577,09	60,22	43,28%	0,914
171B	1051 A	63 X	5	20	21	578,70	578,56	60,34	37,79%	0,773
171B	1051 A	63 X	6	20	21	580,20	580,03	60,46	35,30%	0,710
171B	1051 A	63 X	7	20	21	581,70	581,49	60,58	29,96%	0,599
171B	1051 A	63 X	8	20	21	582,16	581,96	60,62	32,37%	0,646
171B	1051 A	64 X	1	20	21	582,30	582,29	60,64	29,11%	0,581
171B	1051 A	64 X	2	20	21	583,80	583,73	60,76	25,78%	0,512
171B	1051 A	64 X	3	19	20	585,29	585,17	60,87	32,51%	0,643
171B	1051 A	64 X	4	20	21	586,80	586,62	60,99	22,41%	0,469
171B	1051 A	64 X	5	20	21	588,30	588,06	61,11	29,18%	0,662
171B	1051 A	64 X	6	20	21	589,80	589,50	61,22	40,55%	0,947
171B	1051 A	64 X	7	20	21	591,30	590,94	61,34	33,88%	0,792
171B	1051 A	64 X	8	20	21	591,73	591,38	61,37	23,32%	0,545
171B	1051 A	65 X	1	20	21	592,00	592,00	61,42	24,32%	0,569
171B	1051 A	65 X	2	20	21	593,50	593,47	61,54	34,81%	0,774
171B	1051 A	65 X	3	20	21	595,00	594,94	61,66	39,40%	0,822
171B	1051 A	65 X	4	20	21	596,50	596,42	61,78	35,93%	0,706
171B	1051 A	65 X	5	20	21	598,00	597,89	61,90	34,11%	0,684
171B	1051 A	65 X	6	20	21	599,50	599,37	62,01	35,15%	0,717
171B	1051 A	65 X	7	20	21	601,00	600,84	62,13	39,37%	0,841
171B	1051 A	65 X	8	20	21	601,47	601,31	62,17	30,39%	0,662
171B	1051 A	66 X	1	20	21	601,70	601,70	62,20	42,86%	0,950
171B	1051 A	66 X	2	20	21	603,20	603,16	62,30	35,93%	0,744
171B	1051 A	66 X	3	25	26	604,75	604,67	62,41	37,58%	0,724
171B	1051 A	66 X	4	20	21	606,20	606,09	62,50	36,74%	0,713
171B	1051 A	66 X	5	20	21	607,70	607,55	62,60	35,44%	0,726
171B	1051 A	66 X	6	20	21	609,20	609,02	62,70	23,29%	0,488
171B	1051 A	66 X	7	20	21	610,70	610,48	62,80	33,58%	0,709
171B	1051 A	66 X	8	20	21	611,08	610,88	62,83	30,30%	0,641
171B	1051 A	67 X	1	19	20	611,29	611,29	62,85	33,51%	0,710
171B	1051 A	67 X	2	20	21	612,80	612,80	62,96	34,05%	0,727
171B	1051 A	67 X	3	23	24	614,33	614,33	63,06	30,73%	0,662

171B	1051 A	67 X	4	20	21	615,80	615,80	63,16	28,68%	0,614
171B	1051 A	67 X	5	20	21	617,30	617,30	63,26	32,64%	0,693
171B	1051 A	67 X	6	20	21	618,80	618,80	63,36	30,88%	0,678
171B	1051 A	67 X	7	20	21	619,69	619,69	63,42	26,35%	0,597
171B	1051 A	68 X	1	23	24	620,93	620,90	63,50	26,60%	0,595
171B	1051 A	68 X	2	20	21	622,40	622,17	63,57	24,52%	0,564
171B	1051 A	68 X	3	19	20	623,89	623,47	63,64	20,76%	0,487
171B	1051 A	68 X	4	20	21	624,56	624,05	63,67	24,49%	0,580
171B	1051 A	69 X	1	10	11	624,40	624,40	63,69	24,39%	0,581
171B	1051 A	70 X	1	17	18	630,57	630,57	64,02	26,23%	0,684
171B	1051 A	71 X	1	3	4	634,53	634,53	64,24	29,42%	0,809
171B	1051 A	72 X	1	12	13	640,12	640,08	64,54	32,03%	0,946
171B	1051 A	72 X	2	8	9	641,58	641,02	64,59	27,83%	0,831
171B	1051 A	73 X	1	12	13	641,72	641,72	64,63	37,31%	1,124
171B	1051 A	73 X	2	10	11	643,20	643,20	64,71	22,33%	0,685
171B	1051 A	73 X	3	10	11	643,85	643,85	64,74	22,13%	0,684

Table S4. Holes 1052B,F bioSiO2 concentrations (weight %).

Leg	Site	Hole	Core	Type	Section	Top (cm)	Bot (cm)	Depth (mcd)	Age (Ma; GTS2012)	wt% SiO2
171B	1052 B		10 H		1	83	86	77,26	37,89	5,97%
171B	1052 B		10 H		2	3	6	77,96	37,90	7,32%
171B	1052 B		10 H		2	73	76	78,66	37,92	5,71%
171B	1052 B		10 H		3	3	6	79,46	37,94	6,58%
171B	1052 B		10 H		3	63	66	80,06	37,95	7,95%
171B	1052 F		10 H		2	83	86	85,09	38,07	5,85%
171B	1052 F		10 H		3	83	86	86,59	38,10	7,97%
171B	1052 F		10 H		4	83	86	88,09	38,13	7,67%
171B	1052 F		10 H		5	83	86	89,59	38,17	6,43%
171B	1052 B		11 H		3	73	76	90,85	38,20	7,93%
171B	1052 B		11 H		4	73	76	92,35	38,25	7,62%
171B	1052 B		11 H		5	73	76	93,85	38,29	9,40%
171B	1052 F		11 H		2	73	76	95,21	38,33	9,97%
171B	1052 F		11 H		3	73	76	96,71	38,36	8,10%
171B	1052 F		11 H		4	73	76	98,21	38,39	8,26%
171B	1052 F		11 H		5	73	76	99,71	38,43	9,19%
171B	1052 F		11 H		6	73	76	101,21	38,46	10,13%
171B	1052 F		11 H		7	23	26	102,21	38,48	7,17%
171B	1052 B		12 H		4	83	86	102,98	38,50	7,43%
171B	1052 B		12 H		5	63	66	104,28	38,52	8,93%
171B	1052 F		12 H		2	73	76	105,14	38,54	9,83%
171B	1052 F		12 H		3	83	86	106,74	38,58	8,29%
171B	1052 F		12 H		4	73	76	108,14	38,61	8,71%
171B	1052 F		12 H		5	73	76	109,64	38,68	7,81%
171B	1052 F		12 H		6	73	76	111,14	38,75	8,79%
171B	1052 F		12 H		7	23	26	112,14	38,81	7,95%
171B	1052 F		13 H		1	113	116	113,54	38,88	6,95%
171B	1052 F		13 H		2	73	76	114,64	38,94	7,85%
171B	1052 F		13 H		3	73	76	116,14	39,01	7,98%
171B	1052 F		13 H		4	73	76	117,64	39,09	7,28%
171B	1052 F		13 H		5	73	76	119,14	39,17	8,50%
171B	1052 F		13 H		6	73	76	120,64	39,25	8,70%
171B	1052 B		14 H		4	73	76	121,78	39,31	6,98%
171B	1052 B		14 H		5	73	76	123,28	39,38	7,90%
171B	1052 B		14 H		6	63	66	124,68	39,46	11,24%
171B	1052 F		14 H		3	63	66	126,09	39,53	9,28%
171B	1052 F		14 H		4	83	86	127,79	39,62	9,69%
171B	1052 F		14 H		5	73	76	129,19	39,69	5,33%
171B	1052 F		14 H		6	73	76	130,69	39,77	6,14%

Table S5. Hole 1053A bioSiO2 concentrations (weight %) and bioSiO2 flux (g/cm2/kyr).

Leg	Site	Hole	Core	Type	Section	Top (cm)	Bot (cm)	Depth (mbsf)	Compacted depth (cmbsf)	Age (Ma; GTS2012)	wt% SiO2	SiO2 flux (g/cm2/kyr)
171B	1053 A		1 H		1	50	51	0,5	0,48	33,94	2,09%	0,024
171B	1053 A		1 H		3	50	51	3,5	3,39	34,24	3,87%	0,045
171B	1053 A		1 H		5	50	51	6,5	6,29	34,54	4,82%	0,058
171B	1053 A		1 H		7	50	51	9,5	9,20	34,84	5,53%	0,059
171B	1053 A		2 H		1	50	51	10	9,97	34,92	10,67%	0,110
171B	1053 A		2 H		3	50	51	13	12,79	35,07	6,73%	0,106
171B	1053 A		2 H		5	50	51	16	15,61	35,16	8,34%	0,129
171B	1053 A		2 H		7	50	51	19	18,44	35,26	7,91%	0,115
171B	1053 A		3 H		1	50	51	19,5	19,48	35,29	12,11%	0,172
171B	1053 A		3 H		3	50	51	22,5	22,39	35,37	9,12%	0,316
171B	1053 A		3 H		5	50	51	25,5	25,30	35,45	5,83%	0,223
171B	1053 A		3 H		7	50	51	28,5	28,21	35,53	6,59%	0,262
171B	1053 A		4 H		1	50	51	29	28,98	35,55	7,47%	0,300
171B	1053 A		4 H		3	50	51	32	31,89	35,63	7,68%	0,296
171B	1053 A		4 H		5	50	51	35	34,79	35,71	10,76%	0,389
171B	1053 A		4 H		7	50	51	38	37,70	35,79	6,88%	0,263
171B	1053 A		5 H		1	50	51	38,5	38,48	35,81	9,52%	0,371
171B	1053 A		5 H		3	50	51	41,5	41,39	35,89	6,53%	0,258
171B	1053 A		5 H		5	50	51	44,5	44,30	35,97	8,26%	0,324
171B	1053 A		5 H		7	50	51	47,5	47,21	36,05	4,51%	0,177
171B	1053 A		6 H		1	50	51	48	47,98	36,07	7,48%	0,293
171B	1053 A		6 H		3	50	51	51	50,88	36,15	6,04%	0,236
171B	1053 A		6 H		5	50	51	54	53,78	36,23	4,58%	0,178
171B	1053 A		6 H		7	50	51	57	56,68	36,31	7,46%	0,290
171B	1053 A		7 H		1	50	51	57,5	57,48	36,33	11,00%	0,428
171B	1053 A		7 H		3	50	51	60,5	60,38	36,41	7,14%	0,277
171B	1053 A		7 H		5	50	51	63,5	63,27	36,49	7,76%	0,300
171B	1053 A		7 H		7	50	51	66,5	66,16	36,57	7,59%	0,293
171B	1053 A		8 H		1	50	51	67	66,98	36,59	10,20%	0,394
171B	1053 A		8 H		3	50	51	70	69,87	36,67	9,64%	0,371
171B	1053 A		8 H		5	50	51	73	72,75	36,75	10,62%	0,409
171B	1053 A		8 H		7	50	51	76	75,63	36,83	13,85%	0,532
171B	1053 A		9 H		1	50	51	76,5	76,49	36,85	13,94%	0,535
171B	1053 A		9 H		3	50	51	79,5	79,42	36,93	7,32%	0,280
171B	1053 A		9 H		5	50	51	82,5	82,35	36,99	10,88%	0,607
171B	1053 A		9 H		7	50	51	85,5	85,28	37,03	8,83%	0,491
171B	1053 A		10 H		1	50	51	86	86,00	37,03	13,01%	0,724
171B	1053 A		10 H		3	50	51	89	89,00	37,07	8,97%	0,534
171B	1053 A		10 H		5	50	51	92	92,00	37,11	10,67%	0,592
171B	1053 A		10 H		7	9	10	94,59	94,59	37,14	8,13%	0,455
171B	1053 A		11 H		1	50	51	95,5	95,48	37,15	13,23%	0,744
171B	1053 A		11 H		3	50	51	98,5	98,35	37,19	7,32%	0,419
171B	1053 A		11 H		5	50	51	101,5	101,21	37,22	8,75%	0,510
171B	1053 A		11 H		7	50	51	104,5	104,08	37,26	8,11%	0,482
171B	1053 A		12 H		1	50	51	105	104,97	37,27	10,55%	0,630
171B	1053 A		12 H		3	50	51	108	107,79	37,30	15,49%	0,964
171B	1053 A		12 H		5	50	51	111	110,61	37,33	9,01%	0,580
171B	1053 A		12 H		7	50	51	114	113,44	37,37	8,36%	0,531
171B	1053 A		13 H		1	50	51	114,5	114,48	37,38	14,17%	0,894
171B	1053 A		13 H		3	50	51	117,5	117,39	37,42	7,49%	0,479
171B	1053 A		13 H		5	50	51	120,5	120,29	37,45	7,83%	0,513
171B	1053 A		13 H		7	50	51	123,5	123,19	37,49	7,71%	0,483
171B	1053 A		14 H		1	50	51	124	123,98	37,50	10,78%	0,665
171B	1053 A		14 H		3	50	51	127	126,83	37,53	9,78%	0,643
171B	1053 A		14 H		5	50	51	130	129,69	37,57	9,32%	0,644
171B	1053 A		14 H		7	50	51	133	132,54	37,60	7,22%	0,506
171B	1053 A		15 H		1	50	51	133,5	133,50	37,61	10,53%	0,741
171B	1053 A		15 H		3	50	51	136,5	136,47	37,65	6,06%	0,450
171B	1053 A		15 H		4	50	51	138	137,96	37,67	6,35%	0,478
171B	1053 A		16 X		1	50	51	139,5	139,34	37,69	12,57%	0,952
171B	1053 A		16 X		3	50	51	142,5	141,37	37,71	7,39%	0,523
171B	1053 A		16 X		5	50	51	145,5	143,40	37,74	8,49%	0,593
171B	1053 A		16 X		6	50	51	147	144,42	37,75	8,05%	0,563
171B	1053 A		17 X		1	50	51	145,2	145,20	37,76	9,39%	0,352
171B	1053 A		17 X		3	50	51	148,2	148,20	37,83	7,62%	0,290
171B	1053 A		17 X		5	50	51	151,2	151,20	37,89	8,00%	0,300
171B	1053 A		17 X		6	50	51	152,7	152,70	37,92	7,93%	0,296
171B	1053 A		18 X		1	50	51	154,8	154,79	37,97	9,03%	0,334
171B	1053 A		18 X		3	50	51	157,8	157,75	38,03	8,87%	0,318
171B	1053 A		18 X		6	50	51	162,3	162,18	38,12	8,38%	0,252
171B	1053 A		18 X		7	30	31	163,6	163,46	38,13	9,30%	0,282

171B	1053 A	19 X	1	50	51	164,4	164,40	38,14	11,69%	0,356
171B	1053 A	19 X	3	50	51	167,4	167,40	38,18	11,86%	0,377
171B	1053 A	19 X	5	50	51	170,4	170,40	38,22	12,54%	0,398
171B	1053 A	19 X	7	20	21	172,9	173,10	38,27	10,41%	0,284
171B	1053 A	20 X	1	50	51	174	173,99	38,30	10,83%	0,289
171B	1053 A	20 X	3	50	51	177	176,95	38,42	9,78%	0,265
171B	1053 A	20 X	5	50	51	180	179,91	38,53	9,35%	0,259
171B	1053 A	20 X	7	30	31	182,8	182,68	38,64	9,75%	0,274