

Extreme Historical droughts and floods in the Hanjiang River basin since 1426

Xiaodan Zhang¹, Guoyu Ren^{1,2}, Yuda Yang³, He Bing⁴, Zhixin Hao² and Panfeng Zhang^{1,5}

¹Department of Atmospheric Science, School of Environmental Studies, China University of Geosciences, Wuhan, 430070, China

²Laboratory for Climate Studies, National Climate Center, China Meteorological Administration, Beijing, 100081, China

³Center for Chinese Historical Geographical Studies, Fudan University, Shanghai, 200433, China

⁴School of Urban Design, Wuhan University, Wuhan, 430070, China

⁵School of Tourism and Geographical Sciences, Jilin Normal University, Siping, 136000, China

Correspondence to: Guoyu Ren (guoyoo@cma.gov.cn)

Abstract: The major droughts and floods in the Hanjiang River basin have a significant impact on the flood prevention and control in the middle reaches of the Yangtze River and water resources management in the areas of the South-North Water Diversion Middle Line Project of China. However, there is a lack of understanding of the multi-decadal to century-scale patterns of extreme droughts and floods in the river basin. Applying the yearly drought and flood records from historical documents, and the criteria developed for identifying extreme droughts and floods in historical periods, this paper constructs

a time series of extreme droughts and floods in the Hanjiang River basin from 1426-2017, and analyzes the temporal and spatial characteristics of the extreme drought and flood events variations. The results show that there were 45 extreme droughts and 52 extreme floods in the river basin over the past 592 years. The frequency of extreme droughts was high during the 15th century, early 16th century, the 17th, and the 20th centuries, with the 20th century being the highest. For extreme floods, the frequency was high in the 16th century, the 17th century, the 19th century, and the 20th century, with the 19th to 20th centuries being the highest. The 18th century was a common low period of extreme droughts and floods, while the 20th century saw a high frequency of both. The frequency of extreme droughts and floods is generally higher in the middle and lower reaches than in the upper reaches. The Ankang region, located in the upper reaches of the Hanjiang River basin, has the highest sensitivity to droughts and floods. It was also found that there is a good correlation between droughts and floods frequencies between the upper Hanjiang River basin and North China. In contrast, the middle and lower Hanjiang River basin is more sensitive to floods in the middle and lower Yangtze River basin. These results are informative for the study of mechanisms and predictability of decadal to century scale variability of extreme hydro-climatic events in the Hanjiang River basin.

1 Introduction

Extreme droughts and floods often severely impact agricultural production, people's livelihoods, and socio-economic development. Throughout the history of human development, there have been "almost no years without disaster" (Deng, 1958). In the historical records of natural disasters in China, droughts and floods dominate in particular, showing their tremendous impact on the society and economy.

According to the IPCC Fifth Assessment Report (AR5), the global mean surface temperature showed a significant upward trend from 1880 to 2012, increasing by 0.85°C, and the global temperature increase in the 21st century will probably exceed 1.5-2.5°C (IPCC, 2013). The climate warming not only directly affects changes in temperature extremes but also lead to changes in the frequency of regional droughts and floods (Dai, 2013.; Goswami et al., 2006; Aiken and Rauscher, 2019; Krysanova et al., 2008). Observational studies have shown an increasing trend in precipitation over much of the mid to high latitudes during 1901-2010. However, decreasing trends of precipitation have been observed in other regions including

northern Africa, the Mediterranean, southern Africa, and much of eastern and southern Asia (IPCC, 2013). In China, since the late 1970s, the eastern region showed a pattern of "south floods and north droughts" (Sun and Chen, 2003; Hsu et al., 2014), with precipitation in Northern China, Southwest China and southern Northeast China going to decrease. In contrast, precipitation and heavy rainfall in the Yangtze River basin and southeast coastal areas increased (Ding et al., 2008; Zhang et al., 2008; Wang and Fan, 2013; Chen et al., 2012). However, since the beginning of the 21st century, the precipitation pattern in the eastern part has shown a reversal trend, with the precipitation in the Yangtze River Basin decreasing significantly, the precipitation in North China and southwestern Northeast China beginning to increase, and the drought in Southwest China intensified (Ren et al., 2015a; Ding et al., 2020).

An essential scientific question currently facing the academic community is how extreme precipitation, droughts and floods will change in East Asia in the future under global climate warming, and what are the differences in future extreme precipitation events in different large river basins in eastern China's monsoon region. Climate model simulations and observational studies based on historical series of precipitation, drought and flood data are the primary means for understanding the patterns and mechanisms of decadal to century scale variability in precipitation and droughts/floods. Meanwhile, understanding the patterns and mechanisms of past precipitation variability is a prerequisite for predicting future precipitation and extreme precipitation. In particular, the long series of climate data can be used to study patterns of historical precipitation and drought/flood variation, and they are also essential for testing the climate models used for projecting future climate. Therefore, the long-term observations or proxy data of the past hundred to several hundred years at different spatial scales are first required to meet the demand of the studies.

In most parts of the world, especially in eastern China's monsoon region, however, the duration of instrumental meteorological data is less than 100 years. Furthermore, instrumental observations are extremely scarce in the early 20th and late 19th centuries, and only sporadic climatic records before the mid-19th century were available, making it impossible to satisfy studies of historical precipitation and droughts/floods variability. Therefore, using long-term high-resolution historical drought and flood records to reconstruct the sequence of extreme precipitation, drought and flood events at basin and regional scales are scientifically essential for studying the patterns and mechanisms of climate variation in historical periods (IPCC, 2012, 2013; Cook et al., 2010; Ge et al., 2016; Mikami, 2008; Fenby and Gergis, 2013; Machado et al., 2011).

China has a wealth of continuous historical documents that provided precious material for studying climate change in historical periods, with the wealthiest records of historical droughts and floods (Zheng et al., 1993). Since the 1970s, Chinese scholars have used historical data on droughts and floods to reconstruct the time series of the past climate and extreme climate, achieving fruitful research results (Central Meteorological Bureau, 1981; Zhao and Wang, 1979; Zhang and Gong, 1979; Zhang, 1989; Hao et al., 2010; Han and Yang, 2017; Zheng et al., 2020). These studies laid a good foundation for further investigating into the multi- to centennial scale variability of historical droughts and floods in the country. However, most of the above studies only examined characteristics of precipitation or drought/flood variations from a large spatial perspective. There are few studies using historical drought and flood records to explore the extreme precipitation patterns and mechanisms at a regional level, particularly in a medium to small scale river basin (e.g., Chen, 1987; Zhang et al., 2004; Ren et al., 2015b). Due to the comprehensive influence of multiple factors such as topography and geomorphology, long-term precipitation variation characteristics in different regions and basins are usually not similar. Even within a medium to small scale basin, there are big spatial differences in precipitation and drought/flood events in historical periods. In the climatic transition zones, the spatial characteristics of climate change and variability are more complex (Zheng et al., 1993; Wan et al., 2018; Mei et al., 2019; Liu et al., 2010).

Hanjiang River is one of the major tributaries of the Yangtze River. Located in the northern subtropical climate zone to the south of the Qinling Mountains, and in the transition zone between China's northern and southern climates, Hanjiang River Basin (HRB) is sensitive to climate and environmental change (Zhu, 1958; Miao et al., 2009). On the other hand, the drought/flood control and water supply in the basin are of great importance in the national socio-economic development and ecological restoration. As the water source area of the South-North Water Diversion Middle Line Project and a key river basin for flood control in the middle reaches of the Yangtze River, the Hanjiang River has a wide range of socio-economic

impacts in terms of precipitation and drought/flood variability (Liu et al., 2018; Wang et al., 2021). Therefore, there is an urgent need for research on precipitation and drought/flood variability at the time scales of decadal to ~~century~~ ^{centennial} in the HRB.

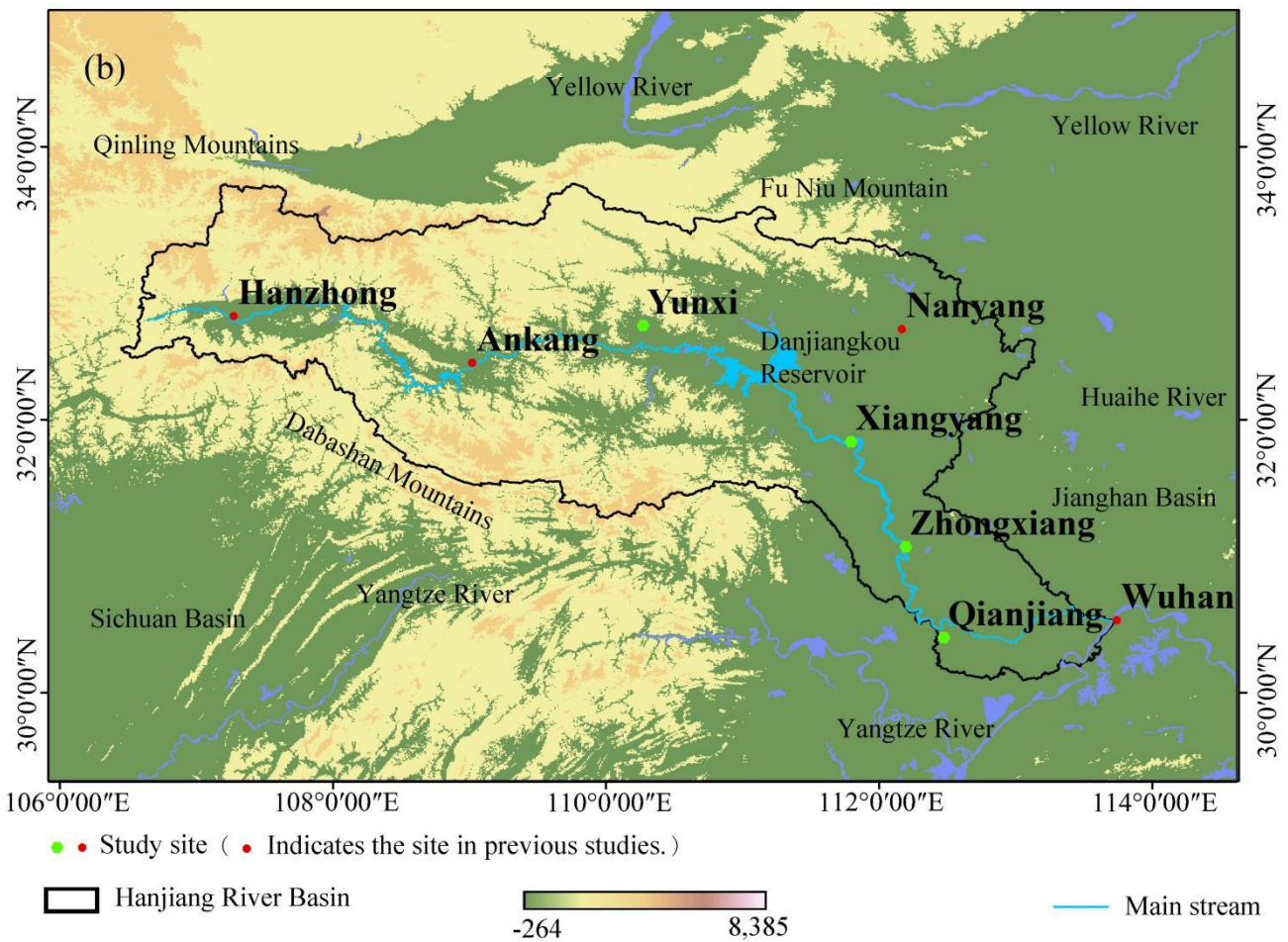
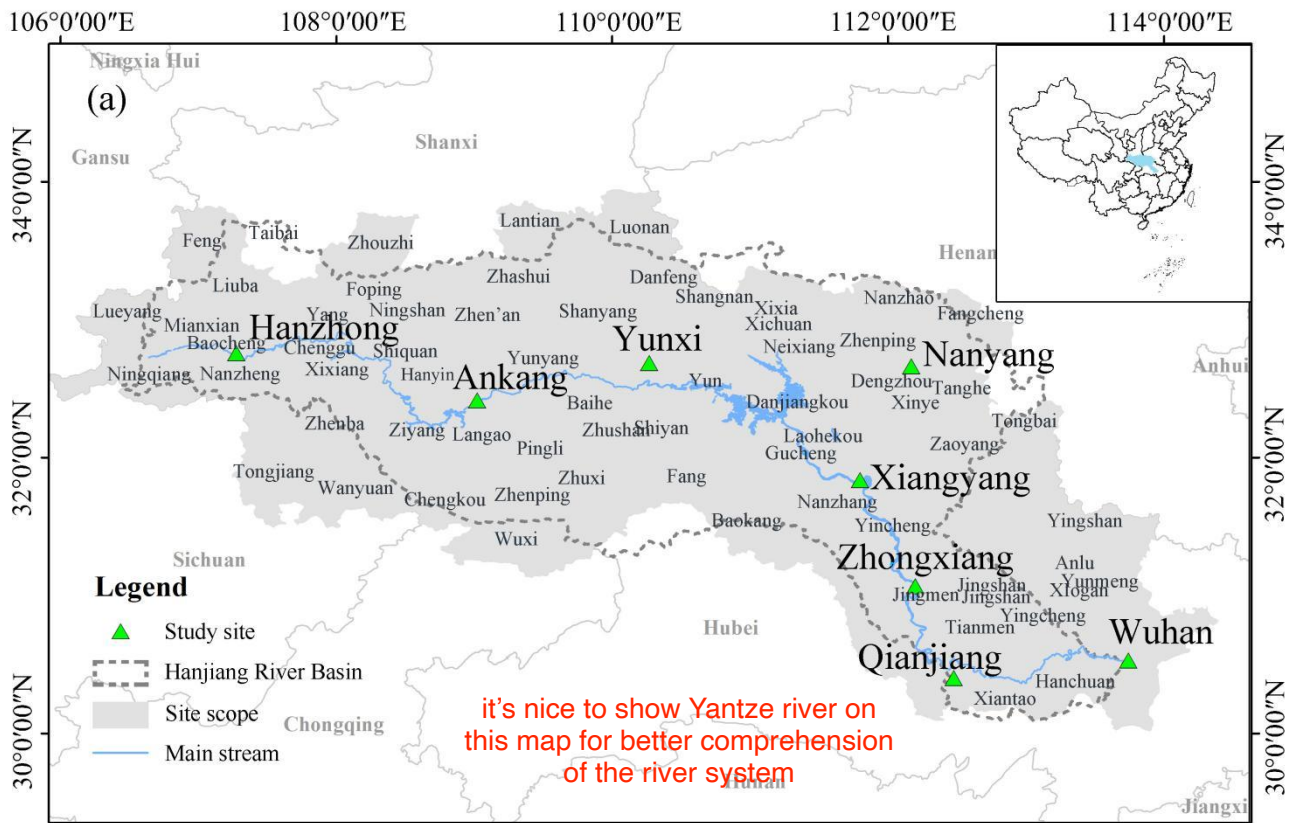
95 There were a few of previous studies on the HRB's historical precipitation, but most of them were focused on the upper Hanjiang River region (Yin et al., 2010; Yin et al., 2013; Huang et al., 2013; Peng et al., 2013; Zhou et al., 2014; Yin et al., 2015; Mao et al., 2016; Zhou et al., 2016; Tan et al., 2018; Zhou et al., 2014); there were relatively few relevant studies on the entire basin (Zhou et al., 2006; Ding and Zheng, 2020). An in-depth understanding of the ~~multi-~~ ^{multi-decadal?} scale variability of historical drought/flood is lacking. Therefore, research on the reconstruction of the high-resolution
100 drought/flood series and their variation patterns in the HRB's historical period still needs deepening and refinement.

This paper reports a reconstruction and analysis of high-resolution historical extreme drought and flood time series over the HRB from 1426 to 2017. The results presented in the paper would be helpful for understanding the decadal to multi-decadal variability of extreme precipitation and drought/flood events in the important branch of the Yangtze River.

105 **2 Research area, data and methods**

2.1 Research area

110 The study area is the HRB (Figure 1). The Hanjiang River originated at the southern foot of the Qinling Mountains. It flows through Shaanxi, Henan and Hubei provinces before merging into the Yangtze River at Wuhan, with a total length of 1,577km, a basin area of 159,000km², average annual precipitation of 700-1300mm and an average annual runoff of 51.7 billion m³ (Yin et al., 2015). HRB has a humid subtropical monsoon climate with a pronounced spatial difference of precipitation. The annual precipitation increases from northwest to southeast and mainly concentrates in summer and autumn,
115 with July to September accounting for about 70% of the annual total precipitation. Droughts and floods are both severe in the HRB, mainly because the river's upper reaches (above the Danjiangkou) are mountainous, with narrow, deep, meandering channels and fast currents. Flash floods and prolonged droughts can cause severe impacts. In the middle and lower reaches (Danjiangkou to Zhongxiang is the midstream and below Zhongxiang is the downstream) of the Hanjiang River, the slow currents flow due to the low slope of the Jiangnan Plain leads to unstable channels and inadequate discharge capacity,
120 resulting in frequent floods. Since the 1990s, the HRB has been experiencing continuous drought, severely impact the ecological environment, the rational allocation of water resources, and water supply in the basin (Chen et al., 2006; Wang and Guo, 2010; Yin et al., 2015).



125 **Figure 1: Study area and locations of the eight prefecture capitals used for reconstruction of drought and flood (a, b). Study sites in previous work (Central Meteorological Bureau, 1981) are marked as red points in (b). The inset in (a) indicates the relative location of the study area in China.**

2.2 Data

Four datasets were used in this work. These include the historical drought and flood records of the HRB (this study), the drought and flood index series in North China (the Yellow River and the North China Plain, 1470-2000), the Asian Monsoon Index series, and the chronologies of strong ENSO events.

(1) Historical drought and flood data series and documentation

The information used in this study to reconstruct the drought and flood sequences was divided into two parts: historical data and instrumental data. Sources of historical data included local chronicles, Qing Dynasty archives (memorials, Shangyu) etc. Primary historical data source was "A Compendium of Chinese Meteorological Records of the Last 3000 Years" (Zhang, 2004). This collection of materials systematically compiled various kinds of written records on weather and climate in China for more than 3000 years from the 13th century AD to 1911 AD. In addition, other datasets were also collected and used, including "The historical Documents on Flood and Waterlogging of Southwest International Rivers in the Yangtze River Basin in Qing Dynasty "(Yang and Guo, 1991), "The Disaster Annals in Modern China" and "The Continuation of Disaster Annals in Modern China (1919-1949)" (Li et al., 1990; 1993), "Zaixu Xingshuijinjain-Yangtze River Volume" (Wu and Zhao, 2004), and "Compilation of the Memorials to the Throne in Qing Dynasty: Agriculture·Environment " (Ge, 2005). The data were mainly derived from official documents, notes, letters, local chronicles, inscriptions, newspapers, magazines and river worker file transcripts of the Qing dynasty. Moreover, drought and flood records from 1911 to 1949 AD in "The China Meteorological Disaster Dictionary" (Shanxi Volume, 2005; Henan Volume, 2005; Hubei Volume, 2007) were also collected and used as supplementary data.

In terms of the overall distribution of information, the records of drought/flood in the local chronicles are more continuous and complete. They can also reflect information on the extent of disasters and disaster relief in each prefecture and county, effectively showing disaster's spatial distribution and temporal change. The archival information is of the highest credibility (Ge and Zhang, 1990). It provides a primary basin-wide picture of droughts/floods with a clearer spatial and temporal resolution accurate to the county level.

The instrumental data (started in 1951) comes from the monthly precipitation dataset "China National Ground Meteorological Station Homogenized Precipitation Data Set (V1.0)". This set of precipitation observations were quality controlled and tested, and adjusted for inhomogeneities caused by non-climatic factors such as the relocation of stations and instrumentation. This study uses precipitation data from 8 sites (Hanzhong, Ankang, Yunxi, Nanyang, Xiangyang, Zhongxiang, Qianjiang and Wuhan) in and around the HRB (Figure 1).

(2) Other historical data series

Drought and flood index series in North China (the Yellow River and the North China Plain, 1470-2000) were used to compare the result of this analysis with those of other regions. The data were from "The Atlas of Drought and Flood Distribution in China in the Last 500 Years" (Hereafter referred to as Atlas; Central Meteorological Bureau, 1981), and the drought and flood grades of North China were read out from the Atlas.

Asian monsoon index. The East Asian summer monsoon index dataset (1426-1949) reconstructed by the $\delta^{18}\text{O}$ content of Vientiane Cave by Zhang et al. (2008) and the South Asian summer monsoon index dataset (1426-2000) reconstructed using Indian tree ring data by Shi et al. (2017) were used in this study.

ENSO Sequence Chronology (1525-2002). The El Niño and La Niña events in the historical ENSO chronology reconstructed by Gergis and Fowler (2009) from tree-ring, ice-core, coral records and historical documents were used. These El Niño and La Niña events were divided into five grades as extreme (E), very strong (VS), strong (S), medium (M), and weak (W). This study selected VS and E grades as strong ENSO events. There were 45 strong El Niño and 56 strong La Niña events identified during 1525-2002.

(1) Reconstruction method of historical drought and flood grade

Based on the criteria provided in the Atlas, single-station and regional drought/flood series were established using the grading method. The degree of drought/flood or precipitation was divided into five grades: Grade 1-Flood, Grade 2-Mild Flood, Grade 3-Normal, Grade 4-Mild Drought, Grade 5-Drought. The drought and flood grades at each site indicated the degree of regional precipitation anomalies within a specific range represented by that site. Historical drought/flood grades were mainly based on historical records. In assessing the drought/flood grades for a region based on several drought/flood records for a given year, the primary considerations were the precipitation conditions in spring, summer and autumn, as well as the timing, extent and severity of their occurrence. If there were droughts and floods within the representative area, the judgment would be based on most counties' situation. If a site has a gap in records of less than 3 years, it is considered to have no drought or flood and was graded 3; a site with a gap in records of more than 3 years was not graded.

In order to take into account the frequency of occurrence of each grade, the ideal frequency criteria of 10% (Grade 1-Flood; Grade 5-Drought), 20%-30% (Grade 2 Mild-Flood; Grade 4-Mild-Drought), 30%-40% (Grade 3-Normal) (Central Meteorological Bureau, 1981) were used to adjust the classification of drought and flood grades in the HRB throughout the study period. When precipitation records were available, the May-September precipitation for the area where the site is located was used to be consistent with the frequency of drought and flood grades obtained from historical data (Central Meteorological Bureau, 1981). Table 1 shows the division criteria in the HRB into various grades and their typical descriptions in historical sources (the criteria for judging the historical sources according to the Atlas) and the criteria for grading precipitation (Central Meteorological Bureau, 1981).

Table 1: Criteria for classifying droughts and floods in the HRB and their typical descriptions in historical sources and criteria for grading precipitation in modern time

Event grade	Event Type	Criteria for historical records	Criteria for modern precipitation
1	Flood	Intense and prolonged precipitation, widespread floods and very heavy storms, such as: "Houses were swept away and overflowed, and countless people died in the floods"; "The torrential rain continued for more than half a month and still did not stop. Houses and fields were flooded, people had to rely on boats to get in and out of the city" etc.	$R_i > (R + 1.7\sigma)$
2	Mild Flood	Sustained precipitation, local floods and hurricane rains that are not very severe and occurred in a single-season or single-month, such as: "It has been raining in the autumn, resulting in the crop failure or growing affected negatively"; "There was a flood in May" etc.	$(\bar{R} + 0.33\sigma) > R_i \leq (\bar{R} + 1.7\sigma)$
3	Normal	It is recorded as a harvest year, or droughts and floods are not recorded, such as: "The autumn harvest"; "A year of great harvest" etc.	$(\bar{R} - 0.33\sigma) < R_i \leq (\bar{R} + 0.33\sigma)$

4	Mild Drought	Single-season or single-month droughts that are less severe or localised, such as: “There was a drought this spring”; “The lack of rain in spring, in March, made seeding difficult” etc.	$(\bar{R}-1.17\sigma) < Ri \leq (\bar{R}-0.33\sigma)$ please justify if this is correct?
5	Drought	Drought lasting several months or inter-seasonal drought, widespread severe drought, such as: “Wells run dry, rivers cut off”; “There was a great drought, and people began to eat human flesh” etc.	$Ri \leq (\bar{R}-1.7\sigma)$

200 Ri means May-September precipitation in a year, \bar{R} means May-September average precipitation in a reference period, σ means standard deviation.

205 Based on the above methods and the characteristics of the spatial and temporal distribution of drought/flood historical data in HRB, and following the principle of uniform spatial distribution and the ~~enough amount~~ ^{abundance} of historical data, a total of eight sites were determined for constructing drought/flood grade series. These sites are Hanzhong, Ankang, Yunxi, Nanyang, Xiangyang, Qianjiang, Zhongxiang, and Wuhan (Figure 1). Among them, four were ever used in the Atlas, but the data have been renewed with additional records from the documents. The grade data of the four new sites were completely developed in this study. The name of each site is the name of the county and municipality within the basin. However, the drought and flood it represents were not limited to the administrative area to which the site name refers and encompass a particular geographical area around it.

210 A total of 4328 records of droughts and floods in the HRB from 1426-1950 were collected from the above-mentioned historical documents. Historical documents have the common feature of "the closer to the present day, the more detailed and richer the record; the further from the present day, the less documented" (Zheng et al., 2014). Simultaneously, there are also sudden jumps in the number of records, which were mainly due to dynastic changes and technological progresses. In order to evaluate and correct the non-uniformity of the number of records over time, we counted the number of local chronicles and archives of the Ming and Qing dynasties in the study area with reference to the method reported in Yang and Han (2014). On this basis, the homogeneity test of the number of available data at 95% confidence level was performed to determine whether there was systematic bias in the available records. It was revealed that there was a significant abrupt change in the number of records in 1812, indicating a significant increase in the number of local records and archival materials in the 1810s.

220 Furthermore, after 1951, with the construction and development of the modern meteorological observation network, the number of meteorological observation stations in the HRB increased significantly, and precipitation observation began to enter the period of instrumental measurement, which represents a radical change in data category. Therefore, 1812 and 1951 were regarded as the time nodes of discontinuity in the temporal distribution of the data, respectively. The whole period of 1426-2017 were thus divided into three time stages: 1426-1812, 1813-1950, and 1951-2017. The eight sites' average recording rates during these three time periods were 61.11%, 91.28% and 100%, respectively (Figure 2). The key to this method is a phased evaluation approach, which constructs a platform for comparison between historical periods, and historical and instrumental data. That is, because of the nature of "concerning only disasters but not normal conditions" in the historical documents (Zheng et al., 2014), the average recording rates suggest that a significant proportion of drought and flood events were recorded in the HRB from 1426-1950. Even in the period when the average rate of data recording at a single site was lowest (42.6% of the Ankang during 1426-1812), it was greater than 20% and therefore still met the needs of the study.

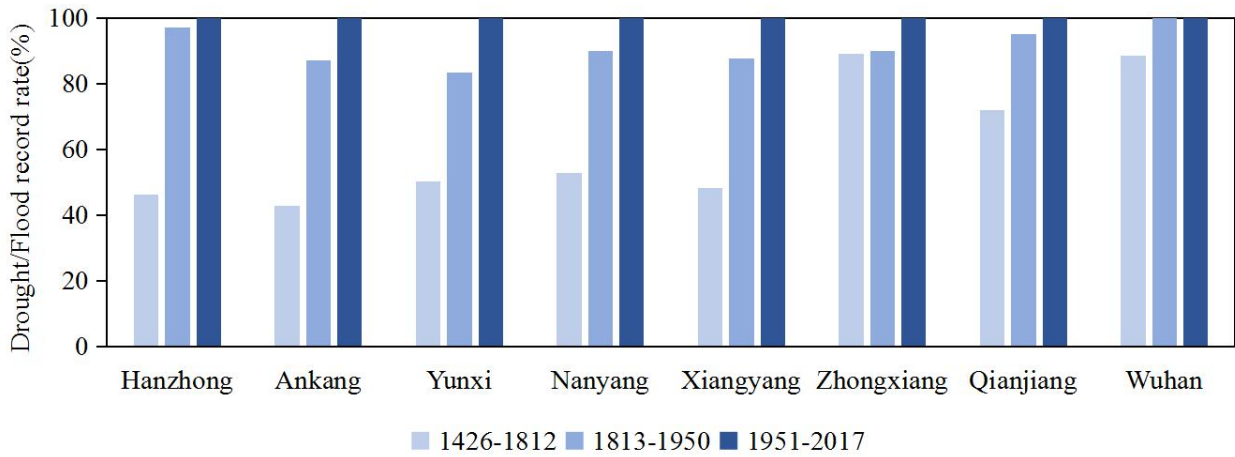


Figure: 2 Proportion of drought and flood records in different periods of various sites

235

Precipitation anomaly percentages were calculated for May-September of 1951-2017 and compared to the drought and flood grades established in this study (Figure 3). The comparison showed that the drought and flood grades and the precipitation anomaly percentages were highly consistent on inter-annual to decadal variability, and their correlation passed the 0.01 significance test. Therefore, the drought and flood grades of the instrumental measurement period calculated using the method in the Atlas can be connected with the drought and flood grades of the historical period for analysis. The applicability of the procedure was also confirmed in previous studies (Wang and Zhao, 1979; Fang et al., 2014).

240

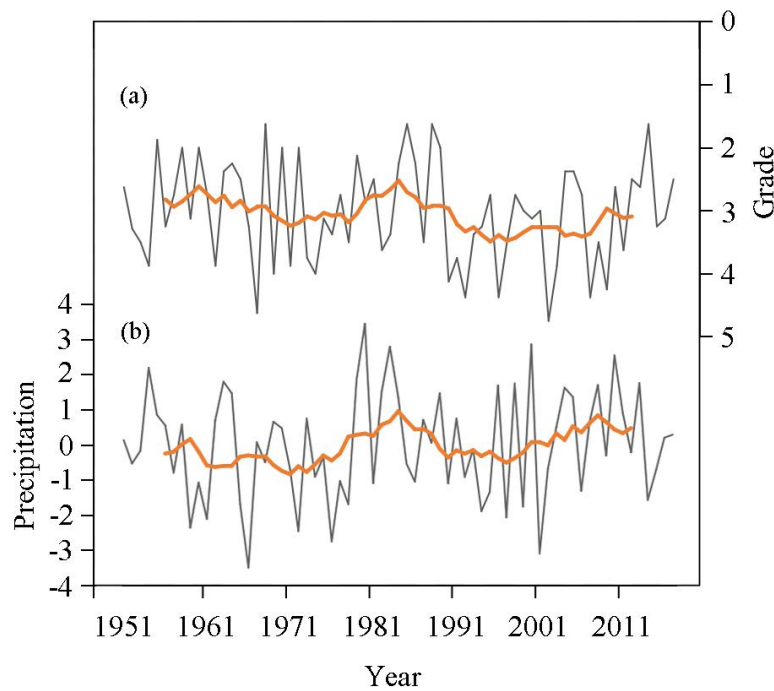


Figure 3: A comparison of drought and flood grades (a) and precipitation anomaly percentage (b) in the HRB during 1951-2017.

245

Furthermore, since there were missing data records at each site in historical periods, the more documented periods have richer records of droughts/floods, and vice versa. However, the lack of data should not significantly impact the proportion of droughts/floods in the available drought/flood records. Therefore, the following standards were used to identify extreme drought/flood events in the basin (Hao et al., 2010): Firstly, the number of sites with a drought or flood grade of 3 (i.e. a normal year) out of the total number of sites recorded in the same year does not exceed 25% of the total number of sites

250

255 recorded. Secondly, among the sites with records of droughts and floods (i.e. except for sites with a drought/flood grade of 3), at least 75% of the sites have droughts or floods at the same time, meanwhile, at least 2 of these adjacent sites were experiencing either severe drought (i.e. grade 5 drought) or severe flood (i.e. grade 1 flood) at the same time. If the above two conditions were met, the year could be identified as a year of extreme drought or flood in the basin.

(2) **Inverse Distance Weighted (IDW)** IDW is for interpolation purpose but inevitably brings a certain degree of errors from statistics. You may like to explain here why you need to use IDW for analysis.

260 The Inverse Distance Weighted (IDW) is a weighted average using the distance between the interpolation point and the sample point. The closer the sample point to the interpolation point, the greater the weight given. In this study, we used ArcGIS10.6 to map the data of the study sites with the IDW and to visualize the spatial variability of the droughts and floods grades (Vicente-Serrano et al., 2003; Xie et al., 2018).

265 3 Results and discussion

3.1 Variation characteristics of extreme drought and flood events

270 There were 45 extreme drought events and 52 extreme flood events identified (Table 2) in the period 1426-2017. They account for 7.6% and 8.8% of the total number of years, respectively, equivalent to an extreme drought event per 13 years and an extreme flood event per 11 years. The occurrence probability of extreme flood years is marginally higher than that of extreme drought years. During this period, extreme drought/flood events had prominent phased and clustering characteristics of occurrences. Figure 4 shows the statistical results (frequency) of the extreme drought and flood events per decade, and following features can be generalized:

275 **Table 2: Statistics on historical extreme drought/flood per century, 1426-2017**

Century	Extreme drought	Total (year)	Extreme flood	Total (year)
15th (1426-)	1433, 1441, 1442, 1444, 1450, 1458, 1479, 1480, 1485, 1489, 1498	11	1460, 1474	2
16th	1509, 1522, 1528, 1544	4	1500, 1516, 1517, 1519, 1551, 1560, 1566, 1569, 1591, 1593	10
17th	1617, 1644, 1640, 1652, 1674, 1684, 1698, 1690, 1692	9	1607, 1608, 1613, 1631, 1647, 1650, 1653, 1658, 1676, 1677	10
18th	1768, 1778, 1785	3	1724, 1742	2
19th	1813, 1856, 1877	3	1822, 1831, 1832, 1848, 1852, 1870, 1883, 1887, 1889, 1897	10
20th	1900, 1914, 1928, 194, 1942, 1944, 1959, 1961, 1966, 1972, 1976, 1978, 1994, 1999	14	1906, 1909, 1910, 1919, 1921, 1924, 1931, 1933, 1935, 1954, 1979, 1980, 1983, 1996, 1998	15
21th (-2017)	2001	1	2000, 2010, 2013	3

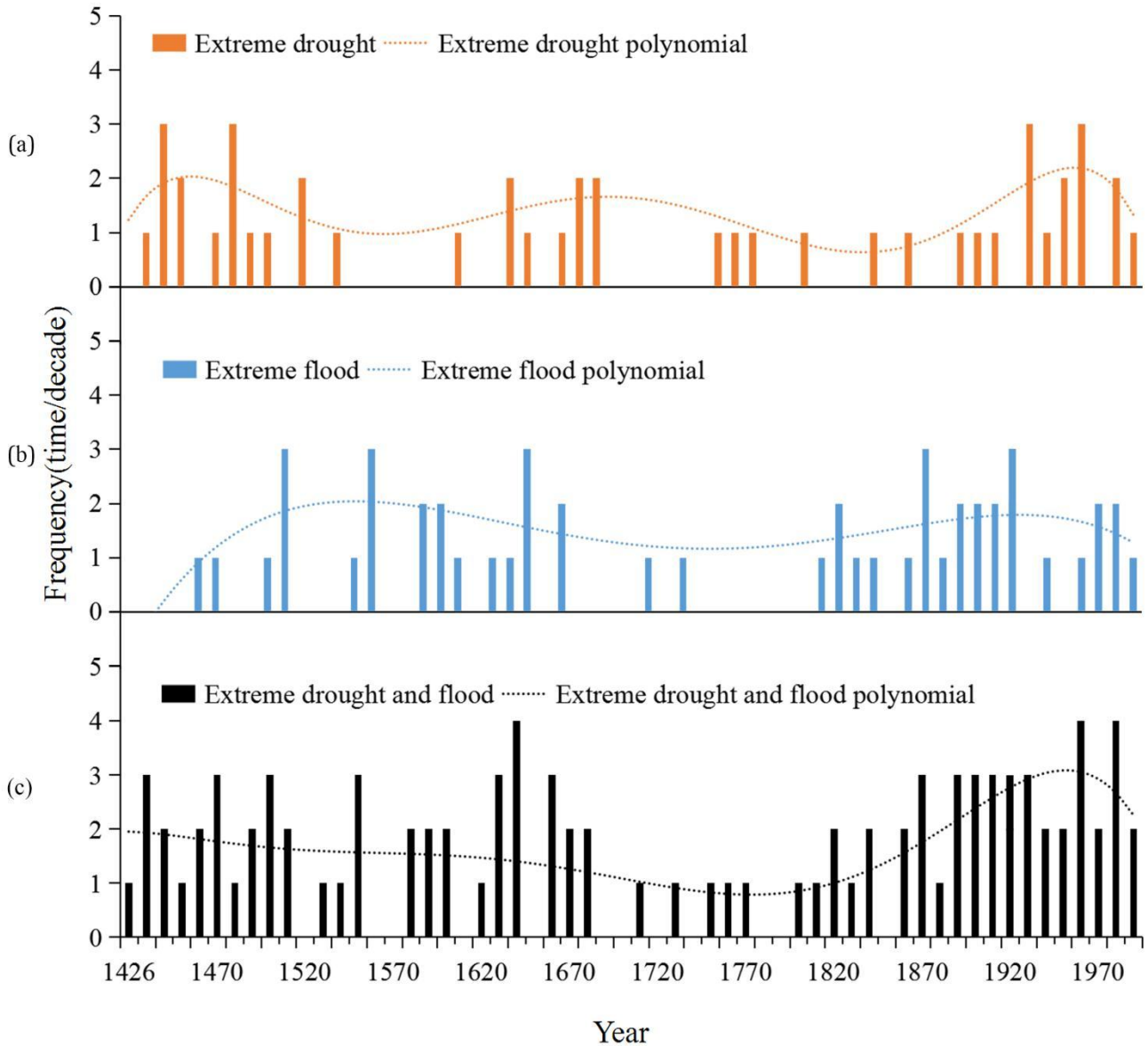


Figure 4: Change in frequency of extreme droughts/floods during 1430-2000 (times/decade). (a) Years of extreme droughts; (b) Years of extreme floods; (c) Years of extreme droughts/floods. The dashed line is the 6th order polynomial fit curve.

(1) The high-incidence period of extreme drought events occurred in the 15th to early 16th, 17th, and 20th centuries; both lasted around 100 years. Previous studies showed that the frequency of drought disasters in the HRB was highest in the 1580s and 1730s (Wang and Guo, 2010); 1628-1641 and 1900-1970 were the two periods of the high occurrence of mega-drought disasters in the upper HRB, occurring once every 1.67 years and 3.33 years respectively on average (Yin et al., 2015). Furthermore, 1441-1442, 1479-1480, 1689-1690, and 1941-1942 were consecutive years of extreme droughts. These continuous extreme drought events have had a more severe impact on agricultural and social life. For example, during 1941-1942, the HRB suffered a summer and autumn drought without rain, and the seedlings withered without harvest. This tremendous northern drought, centred on Henan Province (Dong et al., 2014), not only led to food failures and shortages but also caused millions of refugees to die as a result of the famine (Li, 2019). The 20th century saw the highest incidence of extreme drought events, occurring about once per seven years. There was a severe drought in Northwestern China in 1928, with annual precipitation comparable to that during the Ming Chongzhen drought (Tan, 2003). There were many records in the HRB regarding the drought in 1928, such as: "The sun is harsh in the summer, and the rivers are parched", " The victims

295 had eaten all the bark and grass within hundreds of miles and recently had to dig the soil in the mountains to eat, causing
many of them to die from dry stools ", "Last year (1928), a severe drought affected thousands of miles within a radius from
spring to summer", etc. The upper reaches of the Danjiangkou Reservoir had been in drought for years during the late 20th
century, especially since the mid 1990s. The average precipitation in the 1990s was 11.6% less than the multi-year average
(Chen et al., 2006); in 1997, the HRB was in continuous drought in summer and autumn, and the annual rainfall was only
300 605mm (Wang and Guo, 2010). However, there were no extreme drought events in some of the historical periods, including
the 1460s, 1510s, 1530s, 1550-1660s, 1620-1630s, 1660s, 1700-1750s, 1790-1800s, 1820-1840s, 1860s, 1880-1890s, 1930s
and 1980s.

pls correct

(2) The high-incidence period of extreme flood events occurred in the 16th to 17th centuries and the 19th to 20th centuries,
both lasted around 200 years. The 19th to 20th centuries saw the highest incidence of extreme flood events, occurring once
305 per eight years. The recently more frequent extreme floods have been reported in previous studies Yin and Huang (2012)
showed that severe floods with flow rates greater than 15,000 m³/s occurred 20 times in the Ankang area only from 1960 to
2010. From 1822 to 1955, there were 130 breaches of the mainstream embankments during 73 years in the middle and lower
reaches of the HRB, with an average of about one breach in two years (Guo et al., 2020). In 1870, an most enormous flood in
the Yangtze River Basin in more than 800 years occurred (Yao, 1991), flooding 30,000km² of the Jiangnan Plain (Shi et al.,
310 2004), including the downstream areas of the HRB. In the extreme flood of 1931, Hankou (Wuhan) reached record high
water level (28.28m), with a peak flow of 50,000m³/s at Danjiangkou and 145,000 deaths across the Yangtze River Basin
(Shi et al., 2004). Lake Taibai, the largest lake in the Jiangnan Plain in the 17th century, was silted up to a low-lying swamp
by the end of the 19th century due to the Yangtze and Hanjiang rivers' frequent floods, which led to a sharp increase in
sediment (Yao, 1991). Furthermore, consecutive years of extreme floods occurred in the history, and they includes the years
315 of 1516-1517, 1607-1608, 1631-1632, 1676-1677, 1831-1832, 1909-1910 and 1979-1980. However, there were no extreme
flood events in the years of 1430s-1450s, 1480-1490s, 1520-1540s, 1570-1580s, 1620s, 1660s, 1680-1710s, 1730s,
1750-1810s, 1860s, 1940s and 1960s.

(3) The 18th century was a period of relatively few extreme drought/flood events, with 3 extreme drought events, 2
extreme flood events and approximately 1 extreme drought or flood event per two decades. The sparsity of extreme droughts
320 and floods in this century was reported in a previous study applying historical documents (Wang and Guo, 2010). The
stalagmite records from Central China and the hydrographic stonework from the Three Gorges area of the Yangtze River also
suggested fewer droughts and floods in the 18th century. For example, Liu et al. (2011) used high-resolution stalagmite $\delta^{18}\text{O}$
and high-precision ²³⁰Th dating data from Wanxiang Cave, Wudu County, and combined with historical drought and flood
index series from the surrounding area. They found that 1701-1780 was a stable period for precipitation, with above-average
325 precipitation and no extreme drought or flood events. Qin et al. (2020) analyzed the frequency of severe drought events in
the Yangtze River's upper reaches through the hydrographic stone carvings of Baiheliang stonefish in the Three Gorges
Reservoir area of the Yangtze River. They found that there were significantly fewer records of extreme drought events in the
18th century. Studies combining ice cores, tree ring index, lake sediments, and historical climate records indicated that the
18th century was a relatively warm period during the Little Ice Age, when temperatures in China began to rise and climatic
330 conditions improved significantly relative to the previous period (Yang et al., 2002).

(4) The 20th century was a common high period of extreme drought/flood events, with 14 extreme droughts and 15
extreme floods occurred, and approximately 1 extreme drought or flood event average 3-4 years. Previous studies showed
that annual precipitation in the Hanjiang River valley had decreased since 1960, and drought disasters had increased. At the
same time, flood disasters had become more frequent because precipitation was more concentrated in the summer, and
335 inter-annual fluctuations in precipitation had also increased significantly (Yin et al., 2010). For example, floods occurred in
the Tangbai River basin, a tributary of the HRB, in 1919 and 1953, but the floods were followed by two months of no rain
and then a severe drought (Institute of Geography, Chinese Academy of Sciences, 1957). Tree-ring reconstruction studies
(Zhang et al., 2005; Liang et al., 2003) indicated that the monsoon precipitation variability in Northern China over the last
100 years has been high, with significant wet and dry changes and widespread extreme drought events. Ding et al. (2006)
340 and Ren et al. (2010) pointed out that in the context of global warming, the frequency and intensity of extreme precipitation
events and the extent of drought in China increased during the 20th century, especially in the past half-century, the extreme

precipitation in Northwest China has increased significantly. However, the drought events in Northern China, northeast and southwest China have increased significantly. The analysis results of this study are in good agreement with previous research conclusions.

345 (5) The frequency of extreme droughts was relatively high in the 20th century, especially after the 1930s. Historically, however, the frequency of extreme drought in the 20th century does not appear to be the highest, with a similar frequency of extreme drought events occurring in the mid-15th century. The decline in the frequency of extreme droughts during the 18th-19th centuries amid the Little Ice Age is equally evident in Figure 4. However, extreme flood frequency appears to have been higher in the 20th century and significantly more frequent than in the 18th and early 19th centuries.

350

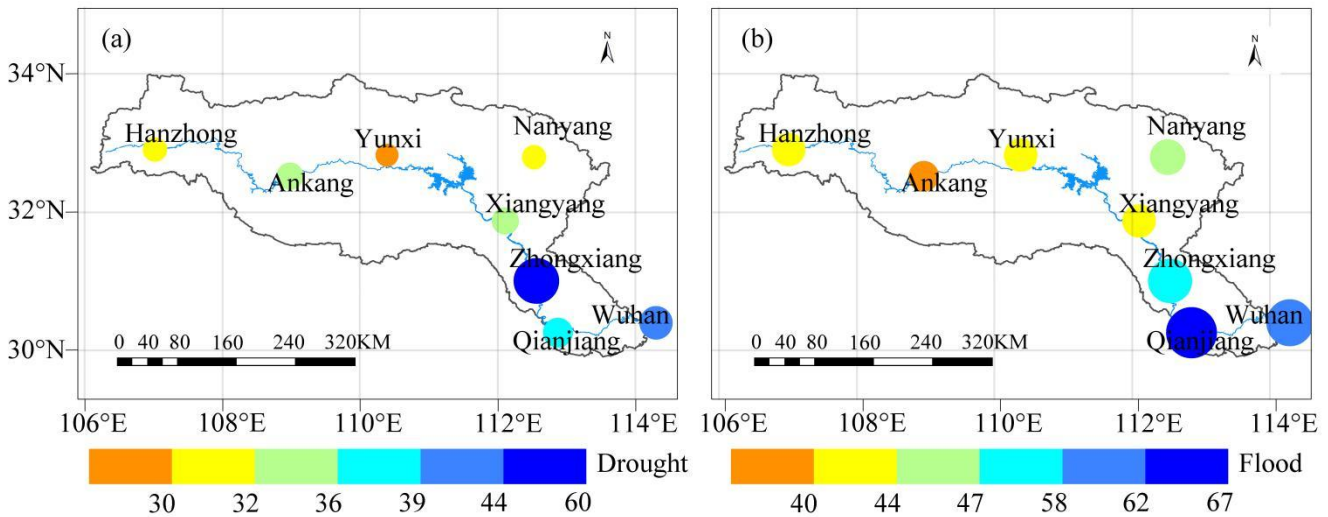
3.2 Spatial characteristics of historical extreme droughts and floods I wonder if Table 5 was made through IDW since IDW is mainly used for interpolation and this doesn't look like a case for this map

Frequency of Grade 1 floods and Grade 5 droughts at each site was shown in Table 3, and the distributions of frequency were plotted using the inverse distance weighted in ArcGIS 10.6 (Figure 5). The results showed that the spatial distribution of the frequency of the extreme droughts and floods in the HRB varied significantly. The high-frequency centers of Grade 1 floods and Grade 5 droughts are both distributed in the middle and lower reaches of the HRB. Zhongxiang site in the middle reaches of HRB had a total of 60 Grade 5 droughts, while those at the Nanyang site are relatively less frequent, with 30. Qianjiang site in the lower reaches of HRB had a total of 67 Grade 1 floods, and the Ankang site, which is in the upper reaches, experienced relatively fewer Grade 1 floods with 40. The frequency of both Grade 1 floods and Grade 5 droughts is generally higher in the middle and lower reaches than that in the upper reaches.

360

Table 3: Frequency of Grade 1 floods and Grade 5 droughts at each site in the HRB

Site	Frequency (extreme drought/extreme flood)	Site	Frequency (extreme drought/extreme flood)
Hanzhong	32/44	Xiangyang	36/44
Ankang	36/40	Zhongxiang	60/58
Yunxi	30/44	Qianjiang	39/67
Nanyang	32/47	Wuhan	44/62



365 **Figure 5: Spatial distribution of the frequency of Grade 5 droughts (a) and Grade 1 floods (b) in the HRB.**

According to the previous study (Institute of Geography, Chinese Academy of Sciences, 1957; Commission Water Resources Commission of the Ministry of Water Resources, 2002), the upper reaches of the HRB are more water-scarce and relatively less resistant to drought than the middle and lower reaches. However, the frequency of drought is highest in the hilly and mountainous areas in the middle reaches of the HRB. That is because the the hilly and mountainous areas in the

370

need to cite reference(s) for this

middle reaches have high arable land, but low water table and river surface, and also fewer springs, so in the event of drought, the damage is more serious. That is the reason why the drought near the Zhongxiang site in the historical period is relatively more abundantly documented. From the figure 5 it can also be seen that the frequency of droughts and floods is both higher in the middle and lower HRB and plain areas, and lower in the mountainous areas in the upper. This is probably because of the earlier economic development in the middle and lower reaches of the HRB, the number of recorded data from the historical period is larger and more detailed than in the upper reaches, so this can make some impact on the statistical results.

need to further explain here:

Furthermore, the sensitivity of different regions to droughts and floods cannot be ignored. The most severe droughts and floods years in the HRB were identified for each of the 15th-20th centuries, respectively. Each site's drought and flood grades were then averaged and plotted using ArcGIS10.6 (Figure 6). It was found that the sites of Ankang, Nanyang, and Qianjiang were relatively more sensitive to drought, while those of Ankang, Xiangyang, and Zhongxiang were relatively more sensitive to flood. In particular, the sensitivity of the Ankang to both droughts and floods is high. Previous studies have shown that the Ankang region is one of the most frequently flooded regions in the northwest (Ankang City Local History Compilation Committee, 2004; Department of Geography, Shanxi Normal University, 1986), with a highly uneven distribution of precipitation over four seasons. After 1950, although the overall upper HRB was drought-prone and the frequency of floods tended to decrease, the frequency of large floods increased significantly, among which the flood events with peak flows exceeding 19,000 m³/s occurred in 1965, 1968, 1974, 1983, 1984, 1987 and 2005 in Ankang (Yin et al., 2010). In comparison, although droughts in the Ankang area are less frequent than floods, they often last longer and have a huge impact on agriculture, making it the most vulnerable area for agricultural droughts in Shanxi Province (Zhang and Yin, 2012; Xu, 2016).

Figure 6-8 look like using IDW

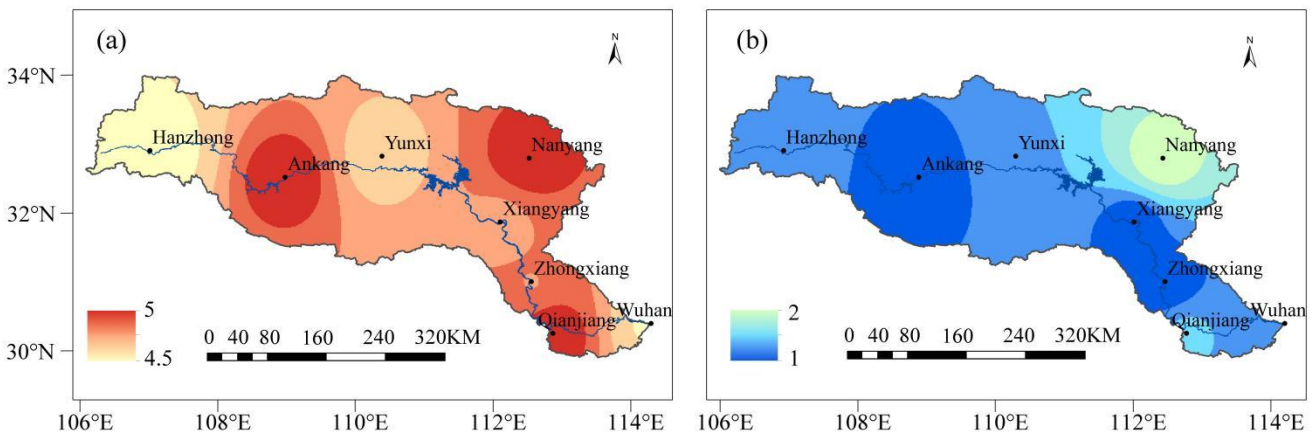


Figure 6: Distribution of average drought and flood grades for each site corresponding to the severest drought and flood years in each century (15th-20th century). The years of the severest floods in each century are 1474, 1516, 1647, 1742, 1889, and 1931; the years of the severest droughts are: 1433, 1528, 1690, 1768, 1877, and 1928.

In order to examine the association of the droughts and floods of the HRB with the severe droughts and floods in other regions, we made a compound analysis of droughts and floods grades in the HRB when severe droughts occurred in North China (inc. the Yellow River and North China Plain) and severe floods occurred in the Yangtze River. Table 4 and Figure 7 shows the analysis results for 5 representative severe droughts of North China (1637-1643, 1689-1692, 1877-1878, 1928-1930 and 1942-1943 were selected, respectively; Qu et al., 2018; Tan, 2003; Wang, 1999), and 5 representative severe floods in the Yangtze River (1788, 1849, 1953, 1954 and 1998 were selected, respectively; Luo, 2006; Li and Zhou, 2020; Tao et al., 1998; Yang and Zheng, 2008). It was found that the upper HRB was more correlated with droughts in North China, and the middle and lower HRB was more sensitive to floods in the middle and lower Yangtze River basin. In order to verify the above findings, the drought and flood grades of the 8 sites in the HRB were correlated with the average grade series of North China (Figure 8; Central Meteorological Bureau, 1981). Among them, all the other 7 sites passed the correlation test of 0.01 except for Wuhan, which passed the correlation test of 0.05. The drought and flood grades of Wuhan would be more

related to the variation of the whole middle and lower Yangtze River basin.

410

Table 4: Average of drought and flood grades of the HRB when severe droughts occurred in North China, and severe floods occurred in the Yangtze River.

Time Site	Hanzhong	Ankang	Yunxi	Nanyang	Xiangyang	Zhongxiang	Qianjiang	Wuhan
1637-1643	3.3	3.7	3.6	3.3	2.7	3.3	2.7	3.4
1689-1692	4.3	4.7	4.5	3.8	4	3.5	2	3.8
1877-1878	4.5	3.5	4.5	4.5	5	5	4.5	3
1928-1930	4	5	3	4.3	3.7	3.3	3.3	3.7
1942-1943	2.5	4	4	4.5	3.5	3.5	3.5	4
1788	3	4	3		2	1	1	1
1849	2		3	4	3	1	1	1
1935	4	5	1	1	1	1	1	1
1954	4	2	1	1	2	1	1	1
1998	2	4	4	1	2	1	1	1

Looks like drought has higher agreement btw this study and others than flood. This can be understandable because drought reflects a higher degree of climatological factor while flood can often reflect a smaller scale weather and geographical effect. Interestingly, the lower reaches of HRB has lesser agreement with other flood studies in Yangtze River

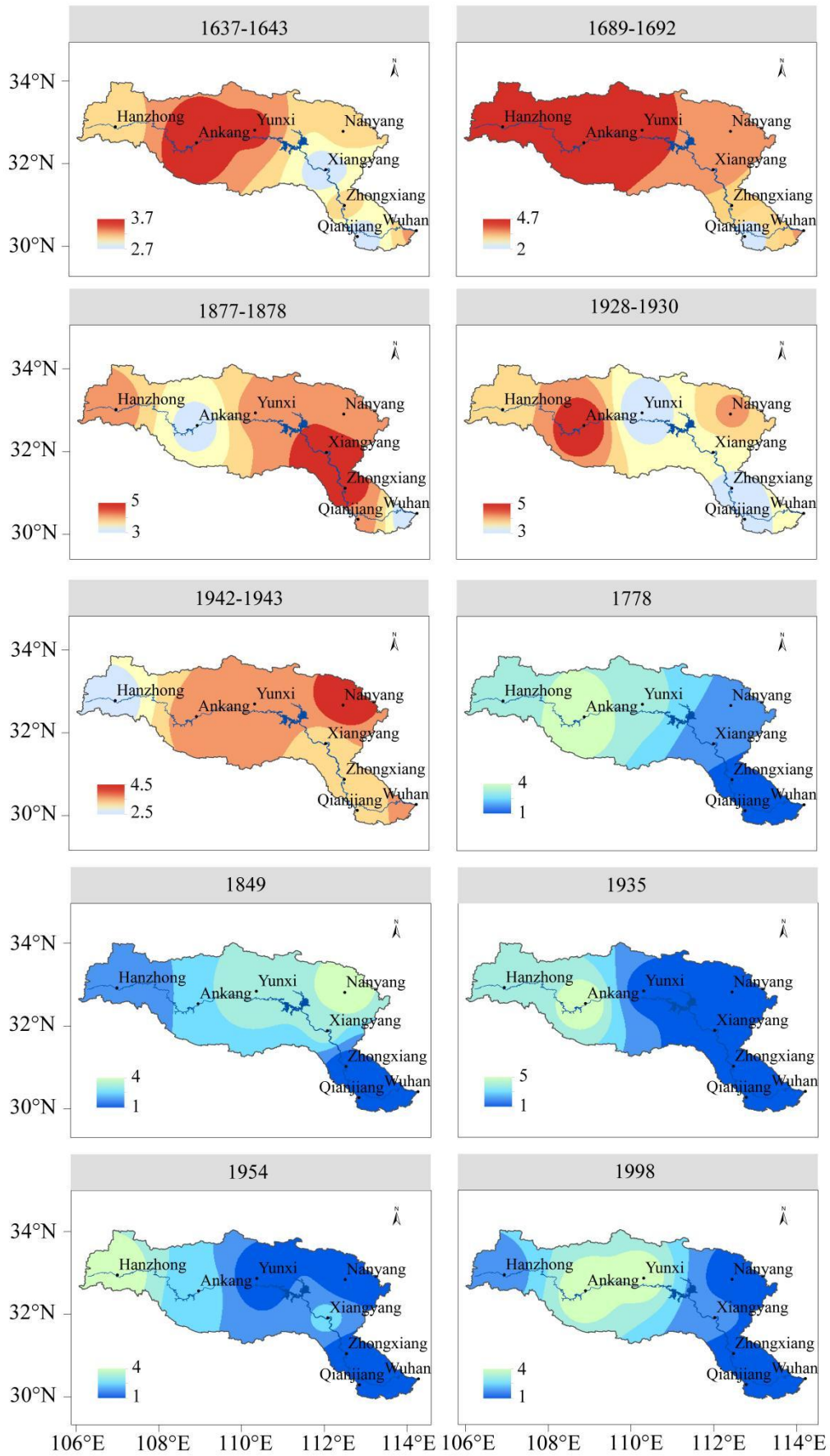


Figure 7: The spatial distribution of average drought and flood grades in the HRB during severe droughts in North China (1637-1643, 1689-1692, 1877-1878, 1928-1930 and 1942-1943) and severe floods in the Yangtze River basin (1788, 1849, 1953, 1954 and 1998).

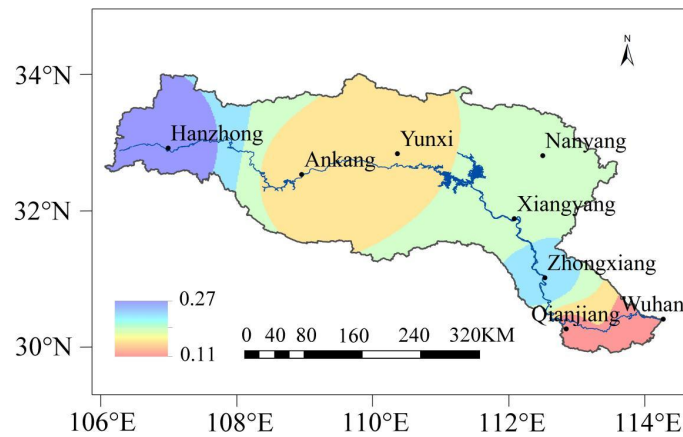


Figure 8: Spatial distribution of correlation coefficients of drought grades between 8 sites of the HRB and North China (1470-2000), Hanzhong, Ankang, Yuxi, Nanyang, Xiangyang, Zhongxiang, and Qianjiang passed the significance test of 0.01, and Wuhan passed the significance test of 0.05..

420

The South-North Water Diversion Middle-Route Project, which transfers water from the Danjiangkou Reservoir in the upper HRB to the North China Plain, is a huge hydro-project for supporting North China's sustainable development. Therefore, the encounter probability of rich-poor precipitation between the water source area in the upper HRB and the receiving area in North China Plain is an important issue for inter-basin water resources deployment, directly related to the reliability of the South-North Water Diversion Project (Chen et al., 2007; Gu et al., 2012). Previous studies have shown that the frequency of synchronization between the water source and the water receiving area is highest in the non-flood season. However, the precipitation in the water source area in the non-flood season is much smaller than the precipitation in the flood season, so the amount of water that can be transferred north is minimal (Yan et al., 2007). In addition, on an annual scale, when the most desirable water transfer scenarios were taken as a premise, the encounter probability of rich-poor precipitation in North China and the upper HRB was only 24% (Zheng and Liu, 2000). Meanwhile, since the 20th century, the HRB has experienced continuous dry years. If this phenomenon continues, it will create a severe threat to the water transfer safety of the South-North Water Diversion Project and have a great impact on the water consumption of the middle and lower reaches of the HRB (Wang and Guo, 2010). However, most of the results of previous studies were centered on precipitation data, and only a comparative study of nearly 100 years was conducted. This study shows that drought conditions in the upper HRB, and North China also had a positive correlation on a long time period of nearly 600 years. Therefore, it is urgent and necessary to take measures for scientific regulation and reasonable configuration of the South-North Water Diversion Central Project, so that the impact of unfavorable rich-poor precipitation encounters could be reduced as much as possible.

425

430

435

rich-poor precipitation encounter is vague in meaning to me. can you modify with clearer phrase?

440

4 Discussion

4.1 Factors influencing the variability of extreme droughts and floods

445

It is generally accepted that the amount of precipitation over most of China is clearly influenced by the variability of the Asian monsoon (i.e., East Asian monsoon and South Asian monsoon) and by ENSO (i.e., El Niño and La Niña) events (Zhu, 1934; Niu et al., 2004; Hao et al., 2008; Wang et al., 2020; Gao et al., 2017). Because the HRB is located at the junction of Central, North and Northwest China, it may be influenced by both of these factors (Su, 1981; Yin et al., 2015).

450

Figure 9 shows a visual comparison of extreme drought and flood events of the HRB with the East Asia-South Asia Summer monsoon Index. Following correspondence can be found that:

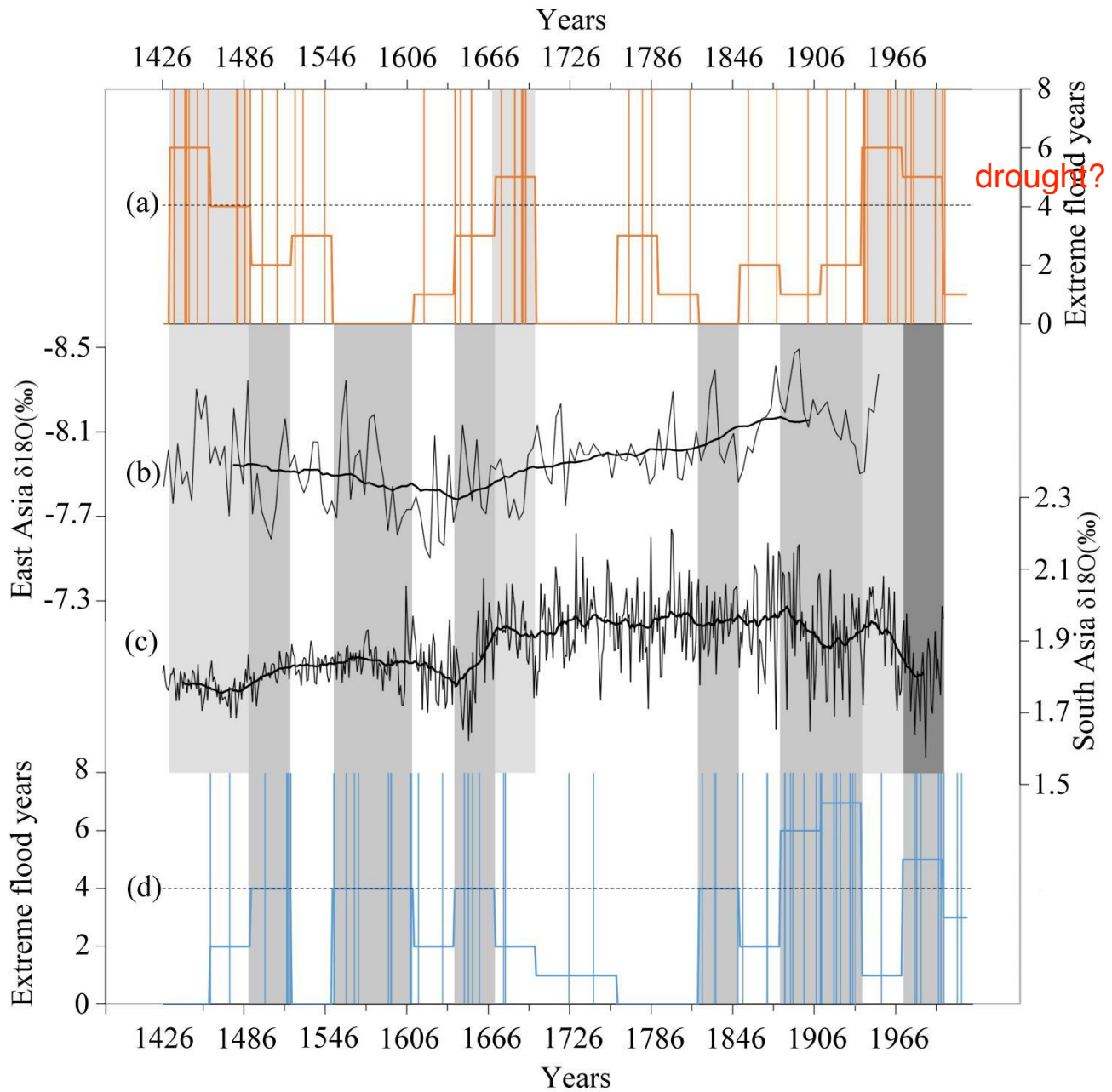


Figure 9: Comparison of the HRB extreme drought/flood years with the Asian monsoon index. (a) Vertical line shows the extreme drought years, and the ladder is the number of extreme drought years per 30 years. (b) East Asian summer monsoon index, 1426-1949 (Zhang et al., 2008). (c) South Asian summer monsoon index, 1426-2000 (Shi et al., 2017). (d) The vertical line shows the extreme flood years, and the ladder is the number of extreme flood years per 30 years.

(1) In the 15th-17th century, the summer monsoon was generally weak, with 24 extreme drought events and 22 extreme flood events occurring in the HRB, and extreme drought events were relatively more likely to occur.

(2) In the 18th-19th century, the summer monsoon gradually strengthened, and there were 6 extreme drought events and 12 extreme flood events in the HRB. Specifically, there were relatively few extreme events in the 18th century and an increase in extreme events in the 19th century, with 10 extreme floods and 3 extreme droughts in the 19th century, more than 3 times as many extreme floods as extreme droughts. This phenomenon further illustrates the complexity of the mechanisms by which extreme drought and flood events occur.

(3) The second half of the 19th century and the 20th century saw a significant strength of summer monsoon and a marked increase in extreme drought and flood events, with 14 extreme drought events and 21 extreme flood events occurring in the

study region. As revealed by other studies (Huang et al., 1999; Lu, 2002; Niu et al., 2004), in the second half of the 20th century, abrupt changes in global atmospheric circulation and an unusual weakening of the summer monsoon led to an increase in drought events, with a total of 8 extreme drought events. Extreme droughts and floods in the 20th century have broadly evolved through a process of major floods followed by a shift from floods to droughts, which is consistent with the results of previous analyses (Ye and Zhao, 1995).

The correlation analysis of extreme drought and flood grade: index at a 30-year time window all passed the significance test: the frequency of extreme drought/flood events of the HRB are monsoon, with more prone to extreme drought events when the monsoon is weak and extreme flood events when the monsoon is strong. The water vapor that affects most of China originates from the warm and humid air currents brought by the Asian summer monsoon, the strength of which is closely related to precipitation and drought/flood anomalies in China (Su, 1981; Yin et al., 2015).

The correlation coefficients between the frequencies of strong ENSO events (per 30 years) and extreme droughts/floods (per 30 years) in the HRB was calculated for the period of 1525-2002. We found that extreme floods are significantly positively correlated with strong El Niño events at a multi-decadal scale, and the correlation passed the significance test (Figure 10). Extreme droughts and strong El Niño/La Niña events and extreme floods and strong La Niña events also showed positive correlations, but they did not pass the significance test. The upper and mid Hanjiang River is located in higher latitude, and the inter-annual to decadal climate variability bears much similarity with those of the Yellow River and North China Plain. In the present and following year of strong El Niño event, these regions usually have lower than usual precipitation, while the Yangtze River basin at the same time generally has abnormally high precipitation and flooding risks (Liu and Ding, 1995; Huang et al., 1999).

If this is true, then there should be a lot more flood in the 18th century when monsoon index is high. Generally, I agree there can be a correlation. But I suggest you to tone down and give more precise explanations/descriptions.

This is confusing. So HRB flood can correlate with strong El Niño and La Niña. And the last two sentences you first said HRB bears similarity with Yellow river plain and then you seemed to indicate HRB flood is related to Yangtze River basin precipitation. Need more explanation!

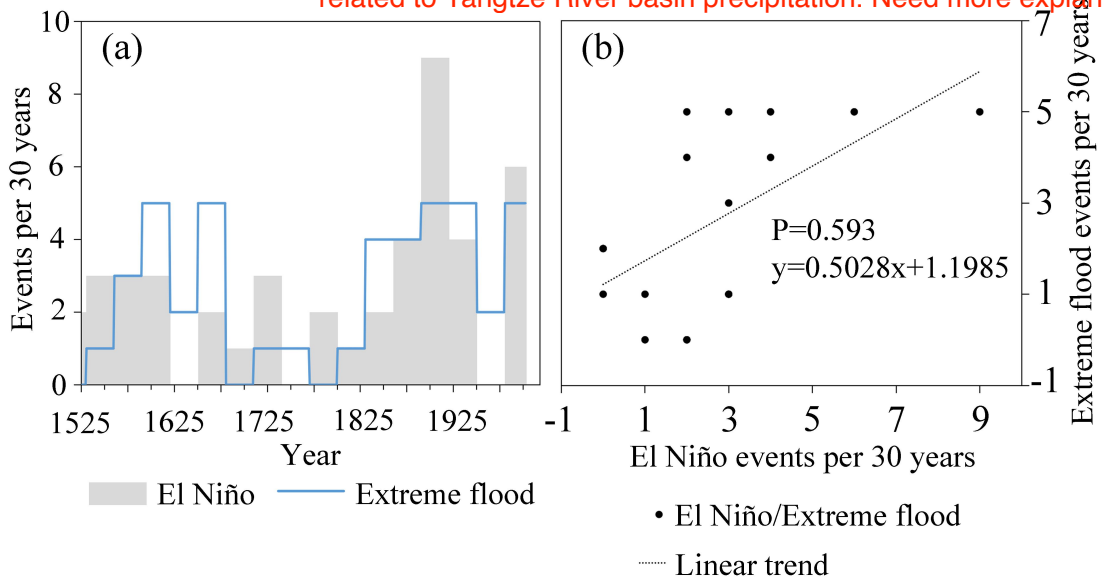


Figure 10: Correlation of extreme floods in the HRB and strong El Niño frequency (per 30 years) during 1525-2002. a. Frequency distribution of extreme floods in the HRB and strong El Niño events; b. Correlation between frequencies of extreme floods and strong El Niño events.

Previous studies reported similar findings (e.g. Yin et al., 2015; Su, 1981). Yin et al. (2015) found that the upper Hanjiang River was more prone to flood disasters in years with stronger El Niño at the end of the previous year or at the beginning of the same year, and in years when El Niño was switched to La Niña. They found that during the weak East Asian monsoon, the rain belt hovers over the Yangtze River and its south, and drought is more likely to occur in the HRB, especially in the upper reaches. Conversely, during the strong East Asian monsoon, the upper HRB is prone to heavy rainfall, even floods in summer, and continuous rain or floods in autumn. Moreover, the South Asian monsoon has also an impact on precipitation in

the HRB. When the South Asian monsoon is stronger, the HRB is more prone to floods.

Therefore, as a transitional zone between northern and southern China and between the subtropical and warm temperate zones, the HRB is susceptible to the variability of Asian monsoon strength. In addition, as one of the strong signals of inter-annual variability in sea-air interactions, the ENSO events strongly influence the strength of the Asian summer monsoon (Wang et al., 2020), leading to large variability of the HRB summer rainfall. However, precipitation and extreme droughts/floods are also affected by other environmental factors and the complex interactions among the different factors, such as volcanic eruptions, AMO and PDO. Meanwhile, there may also be a difference in the monsoon's impact on precipitation between the upper and lower reaches of the Hanjiang River. Therefore, the relationship of historical basin-based extreme droughts/floods in the HRB with the Asian Monsoon Index and ENSO events on decadal to multi-decadal scales may not be a one-to-one correspondence.

4.2 Limitations of the method

Although a great effort has been made to collect historical documents and reconstruct the extreme droughts and floods of almost last six centuries in the HRB, the methods used in this study to reconstruct the drought and flood grade series of historical periods has the following two limitations:

First of all, the reconstruction method of the Atlas is to take the year as the unit, combine the drought and flood disasters in spring, summer, and autumn within that year, and base the grading on the most severe disaster. When both droughts and floods occur in a given year, the disaster situation in summer is dominant. This definition is consistent with the climate in most of China, but droughts and floods are also frequent in the HRB in other seasons (Ding and Zheng, 2020), which results in the neglect of climate abnormality in other seasons. Meanwhile, not all drought and flood disasters in historical documents clearly indicate the time of occurrence (season, month, etc.), so it is easy to be misremembered that this disaster occurred in summer (Chen, 2020). **unclear sentence and the paragraph overall. you mean this is the limitation of Atlas or this study? do you use summer as main season for the judgement? so a year can only**

Secondly, the method of dividing time points according to the number of historical period materials also suffers from the unavoidable uncertainty of using proxy data for reconstruction work. In this study, the uncertainties are mainly in the subjective description of historical information, which is unavoidable in grading. Because historical materials include a variety of information, there are complex relationships between different carriers and different records, which may lead to subjectivity and ambiguity. This cannot be avoided entirely even if we do not base the grading on the linguistic descriptions of historical materials alone when selecting the available historical materials (Yang and Han, 2014). **be judged as either dry or humid based on the grade rule.**

5 Conclusions

the era is an unclear time scale. please modify.

This study investigated the era to multi-decade scale variation of extreme drought and flood over HRB based on the 8-site precipitation grade reconstruction for 1426-2017. The main conclusions are as follows:

1) A total of 45 extreme drought events and 51 extreme flood events occurred from 1426-2017, equivalent to an extreme drought event per 13 years and an extreme flood event per 12 years. Extreme flood events occurred slightly more frequently than extreme drought events. **pls correct the number to be consistent with line 268 on page 9**

2) The relatively frequent periods of extreme drought events occurred in the 15th century to the early 16th century, the 17th century, and the 20th century. The highest frequency of extreme drought events occurred in the 20th century, while the 18th century saw the lowest frequency of extreme drought events.

3) The relatively frequent periods of extreme flood events occurred in the 16th to 17th centuries and the 19th to 20th centuries. The highest frequency of extreme flood events occurred in the 19th and 20th centuries, while the 18th century saw the lowest frequency of extreme flood events.

4) The frequency of both extreme drought and flood events was low in the 18th century, and there were probably fewer droughts and floods. However, the 20th century saw a high frequency of both extreme drought and flood events and an

I suggest to rephrases the sentence starting with 'The spatial distribution of the high frequency extreme drought centered in....'. And better add a sentence in the end to explain possible human influence of record frequency on the sites to deter spatial analysis

5) ~~The high-frequency centers of the~~ historical extreme droughts in the HRB occurred both the upper and lower reaches of the river. The high-frequency centers of extreme floods were mostly in the lower reaches of the river, and the frequency of droughts and floods was higher in the middle and lower reaches than those in the upper reaches.

6) Occurrence of extreme droughts and floods in the upper HRB are more strongly correlated with those in North China, while the extreme droughts and floods in the lower HRB are more strongly correlated with those in the middle and lower Yangtze River region.

Data availability. All reconstructed data for the identification of extreme drought and flood events used in this study are available in the Supplement. Dataset of East Asian summer monsoon are available at <https://www.ncdc.noaa.gov/paleo/study/8629> (NOAA, 2008) and South Asian summer monsoon are available at <http://www.ncdc.noaa.gov/paleo/study/17369> (NOAA, 2014). Chronology of El Niño and La Niña events are available at <https://www.ncdc.noaa.gov/paleo-search/study/8408> (NOAA, 2018). The "China National Ground Meteorological Station Homogenized Precipitation Data Set (V1.0)" is non-public.

Author contributions. GR and BH designed the research and guided the writing; YY and ZH guided the development of the methods; XZ conducted the analysis and; PZ guided the technical part; XZ reconstructed the drought and flood grade series, analysed the data, drew the figures and drafted the manuscript.

Competing interests. The authors declare that they have no conflict of interest.

Acknowledgements. This study was supported by the National Key R&D Program of China (2018YFA0605603). Thanks are due to Prof. XQ Fang for his instructive advice. The authors also thank to Guowei Yang, Yun Qin and Jiajun He for their technical assistance in the research of this paper.

Financial support. This research has been supported by the National Key R&D Program of China (grant no. 2018YFA0605603).

References

- Aiken, E. K., and Rauscher, S. A.: Evaluation of the Climate Extremes Index over the United States using 20th and mid-21st century North American Regional Climate Change Assessment Program data, *Int. J. Climatol.*, 40, 1542-1560, 10.1002/joc.6286, 2019.
- Ankang City Local History Compilation Committee, Ankang Regional Journal, Shanxi, China, 2004 (in Chinese).
- Cook, E. R., Seager, R., Heim, R. R., Vose, R. S., Herweijer, C., and Woodhouse, C.: Megadroughts in North America: Placing IPCC projections of hydroclimatic change in a long-term palaeoclimate context, *J. Quaternary Sci.*, 25, 48-61, 2010.
- Chen, J.: Viewing historical climate information processing from historical data on droughts and floods in the Taihu Lake Basin, *Acta Geogr. Sin.*, 3, 231-242, CNKI:SUN:DLXB.0.1987-03-004, 1987 (in Chinese).
- Chen, Y., Yin, Y. X., Chen, X. W., and Xu, W. C.: Change and future pattern of provincial flood affected areas in China: possible relationship with climate change, *Disaster Adv.*, 5, 321-326, 10.5405/jmbe.993, 2012.
- Chen, H., Guo S., Guo, H., Xu, G., and Xu, D.: Analysis of spatial and temporal trends of precipitation and temperature in

- 595 the Hanjiang River basin from 1951 to 2003, *Resour. Environ. Yangtze Basin*, 3, 340-345, CNKI:SUN:CJLY.0.2006-03-013, 2006 (in Chinese).
- Chen, Y.: A discussion on the method of quantifying the level of water and drought disaster information in the historical period: the Atlas of Drought and Flood Distribution in China in the Last 500 Years as an example, *Journal of Shanghai Jiaotong University*, 28, 107-115+128, 10.13806/j.cnki.issn1008-7095.2020.01.014, 2020 (in Chinese).
- 600 Central Meteorological Bureau: The Atlas of Drought and Flood Distribution in China in the Last 500 Years, Book publisher, Beijing, China, 1981(in Chinese).
- Commission Water Resources Commission of the Ministry of Water Resources, China Water Conservancy and Hydropower Publishing House, Beijing, China, 2002 (in Chinese).
- Chen, H., Guo, S., Xu, C., and Singh, V.: Historical temporal trends of hydro-climatic variables and runoff response to climate variability and their relevance in water resource management in the Hanjiang basin, *J. Hydrol.*, 344, 171-184, 10.1016/j.jhydrol.2007.06.034, 2007.
- 605 Dai, A.: Increasing drought under global warming in observations and models, *NAT. CLIM. CHANGE.*, 3, 52-58, 2013.
- Deng, Y: A History of Chinese Salvation, Life. Reading. Xin Zhi San Lian Bookstore, Shanghai, China, 1958.
- Ding, Y., and Liu, Y.: Telecorrelation Study in the Asian-Pacific Monsoon Region, *Acta Meteor. Sinica*, 5, 670-682, CNKI:SUN:QXXB.0.2008-05-002, 2008 (in Chinese).
- 610 Ding, Y., Liu, Y., and Song, Y.: The East Asian Summer Monsoon Water Vapor Conveyor Belt and Its Impact on China's Heavy Rainstorms and Waterlogging Disasters, *Adv. Water Sci.*, 5, 629-643, 10.14042/j.cnki.32.1309.2020.05.001, 2020 (in Chinese).
- Ding, Y., Ren, G., Shi, G., Gong, P., Zheng, X., Zhai, P., Zhang, D., Zhao Z., Wang, S., Wang, H., Luo, Y., Chen, D., Gao, X., and Dai, X.: National Climate Change Assessment Report (I): The history and future trends of climate change in China, *Climate Change Research*, 1, 3-8+50, CNKI:SUN:QHBH.0.2006-01-001, 2006 (in Chinese).
- 615 Ding, L., and Zheng, J.: Reconstruction and Characteristic Analysis of Seasonal Drought and Flood Grade Series in Hanjiang River Basin from 1735 to 1911, *Geogr. Res.*, 3, 721-734, 2020 (in Chinese).
- Dong, A., Li, Y., and Zhang, Y.: The Causes of the Drought in Eight Provinces and Cities in North China in 1942, *Scientia Geographica Sinica*, 2, 205-210, 0.13249/j.cnki.sgs.2014.01.004, 2014 (in Chinese).
- 620 Department of Geography, Shanxi Normal University, Geography of the Ankang Region, Beijing, People's Education Press, 1986 (in Chinese).
- Fenby, C., and Gergis, J.: Rainfall variations in south-eastern Australia part 1: consolidating evidence from pre-instrumental documentary sources, *Int. J. Climatol.*, 33, 2956-2972, 10.1002/joc.3640, 2013.
- 625 Fang, X., Su, Y., Yi, J., Wei, Z., and Zheng, J.: Exploring the method of reconstructing socio-economic hierarchical series in historical climate change impact studies, *Quat. Sci.*, 34, 1204-1214, CNKI:SUN:DSJJ.0.2014-06-009, 2014 (in Chinese).
- Goswami, B. N., Venugopal, V., and Sengupta, D.: Increasing trend of extreme rain events over India in a warming environment, *Science*, 314, 1442-1445, 10.1126/science.1132027, 2006.
- Ge, Q.: Compilation of the Memorials to the Throne in Qing Dynasty: Agriculture •Environment , Commercial Press, Beijing, China, 2005(in Chinese).
- 630 Ge, Q., and Zhang, P.: Evaluation of Climate Information in Historical Documents, *Acta Geogr. Sin.*, 1, 22-30, CNKI:SUN:DLXB.0.1990-01-002, 1990 (in Chinese).
- Gergis, J. L., and Fowler, A. M.: A history of ENSO events since AD 1525: implications for future climate change, *Climatic Change*, 92, 343-387, 2009.
- 635 Guo, S., Tian, J., Yang, G., Duan, W., and Deng, L.: Hydrological Simulation and Forecasting in the Hanjiang River Basin and Optimal Scheduling and Allocation of Reservoir Water Resources, China Water Conservancy and Hydropower Publishing House, Beijing, China, 2020 (in Chinese).
- Gao, T., Wang, H. X. J., and Zhou, T. J.: Changes of extreme precipitation and nonlinear influence of climate variables over monsoon region in China, *Atmospheric Research*, 197, 379-389, 10.1016/j.atmosres.2017.07.017; 379-389, 2017.
- 640 Gu, W., Shao, D., and Jiang, Y.: Risk Evaluation of Water Shortage in Source Area of Middle Route Project for South-to-North Water Transfer in China, *Int. Ser. Prog. Waters*, 26, 3479-3493, 10.1007/s11269-012-0086-1, 2012.

- Hsu, H. H., Zhou, T. J., and Matsumoto, J.: East Asian, Indochina and Western North Pacific Summer Monsoon - An update, *ASIA-PAC. J. ATMOS. SCI.*, 50, 45-68, 2014.
- 645 Han, J., and Yang, Y.: The dry-wet changes and extreme drought events of the Loess Plateau in the past millennia and the Pacific interdecadal oscillation, *Collections of Essays On Chinese Historical Geography*, 32, 55-12, CNKI:SUN:ZGLD.0.2017-02-002, 2017 (in Chinese).
- Huang, C., Pang, J., and Zha, Xiaochun, et al. Extraordinary hydro-climatic events during the period AD 200-300 recorded by slackwater deposits in the upper Hanjiang River valley, China. *Palaeogeogr., Palaeoclimatol., Palaeoecol.*, 374, 274-283, 10.1016/j.palaeo.2013.02.001, 2013.
- 650 Huang, R., Xu, Y., and Zhou, L.: The interdecadal variation of summer precipitation in China and the trend of aridification in North China, *Plateau Meteorology*, 4, 465-476, CNKI:SUN:GYQX.0.1999-04-000, 1999 (in Chinese).
- Hao, Z. X., Zheng, J. Y., and Ge, Q. S.: Precipitation cycles in the middle and lower reaches of the Yellow River (1736–2000), *J. Geogr. +Sci.*, 18, 17–25, 2008.
- Hao, Z., Ge, Q., and Zheng, J.: Changes in extreme drought and flood events in eastern China in the past 2000 years, *Climatic and Environmental Research*, 4, 388-394, CNKI:SUN:QHYH.0.2010-04-008, 2010 (in Chinese).
- 655 IPCC: *Climate Change 2013: The Physical Science Basis*, Contribution of Working Group I to the Fifth Assessment Report of the Intergovernmental Panel on Climate Change, edited by: Stocker, T.F., Qin, D., Plattner, G.-K., Tignor, M., Allen, S.K., Boschung, J., Nauels, A., Xia, Bex, V., and Midgley, P.M., Cambridge University Press, UK and New York, USA, 153500., 2013.
- 660 IPCC: *Managing the Risks of Extreme Events and Disasters to Advance Climate Change Adaptation*, A Special Report of Working Groups I and II of the Intergovernmental Panel on Climate Change, edited by: Field, C. B., Barros, V., Stocker, T. F., Qin, D., Dokken, D. J., Ebi, K.L., Mastrandrea, M. D., Mach, K. J., Plattner, G.-K., Allen, S. K., Tignor, M., and Midgley, P. M., Cambridge University Press, Cambridge, UK and New York, USA, 582 pp., 2012.
- Institute of Geography, Chinese Academy of Sciences, *Geographical Survey Report on Hanjiang River Basin*, Science Publishing House, Beijing, China, 1957(in Chinese).
- 665 Krysanova, V., Buiteveld, H., Haase., Hattermann, F. F., van Niekerk, K., Roest, K., Martinez-Santos, P. and Schluter, M.: Practices and Lessons Learned in Coping with Climatic Hazards at the River-Basin Scale: Floods and Droughts, *Ecol. Soc.*, 13, 10.5751/ES-02345-130232, 2008.
- Li, W.: *The Disaster Annals in Modern China*, Hunan Education Press, Hunan, China, 1990 (in Chinese).
- 670 Li, W.: *The Continuation of Disaster Annals in Modern China (1919-1949)*, Hunan Education Press, Hunan, China, 1993 (in Chinese).
- Li, W.: *Ten Famines in Modern China*, People's Publishing House, Beijing, China, 2019 (in Chinese)..
- Liu, J., Zhang, P., Meng, C., Zhang, D., and Yang, X.: Characteristics of Precipitation Changes at the Edge of Monsoon Region in the Past 500 Year, *Scientia Geographica Sinica*, 4, 401-407, 10.13249/j.cnki.sgs.2011.04.014, 2011 (in Chinese).
- 675 Liang, E. Y., Shao, X. M., Kong, Z. C., and Lin, J. X.: The extreme drought in the 1920s and its effect on tree growth deduced from tree ring analysis: a case study in North China, *Ann. Forest Sci.*, 60, 145-152, 10.1051/forest:2003007, 2003.
- Lu, R.: Separation of Interdecadal and Interannual Scales in Rainfall Changes in North China during the Rainy Season, *Chinese Journal of Atmospheric Sciences*, 5, 611-624, CNKI:SUN:DQXK.0.2002-05-002, 2002 (in Chinese).
- 680 Liu, Y., and Ding, Y.: The Impact of ENSO Events on China's Seasonal Precipitation and Temperature, *Chinese Journal of Atmospheric Sciences*, 2, CNKI:SUN:DQXK.0.1995-02-008, 1995 (in Chinese).
- Liu, D. D., Guo, S. L., Shao, Q. X., Liu, P., Xiong, L. H., Wang, L., Hong, X. J., Xu, Y., and Wang, Z. L.: Assessing the effects of adaptation measures on optimal water resources allocation under varied water availability conditions, *J. Hydrol.*, 556, 759-774, 10.1016/j.jhydrol.2017.12.002; 759-774, 2018.
- 685 Liu, Y., Sun, J., Song, H., Cai, Q., Bao, G., and Li, X.: Tree-ring hydrologic reconstructions for the Heihe River watershed, western China since AD 1430, *Water Res.*, 44, 2781-2792, 10.1016/j.watres.2010.02.013, 2010.
- Li, W., and Zhou, Y.: *Disaster and famine: 1840-1919*, People's Publishing House, Beijing, China, 2020 (in Chinese).
- Luo, Z.: *Great Flood of Chinese History*, Chinese Bookstore, Beijing, China, 2006 (in Chinese).

- 690 Mikami, T.: Climatic variations in Japan reconstructed from historical documents, *Weather*, 63, 190-103, 10.1002/wea.281, 2008.
- Miao, Q., Ding, Y., and Wang, Y.: The impact of climate warming on the northern boundary of China's subtropical zone, *Geogr. Res.*, 3, 634-642, CNKI:SUN:DLYJ.0.2009-03-007, 2009 (in Chinese).
- Machado, M. J., Benito, G., Barriendos, M., and Rodrigo, F. S.: 500 Years of rainfall variability and extreme hydrological events in southeastern Spain drylands, *J. Arid Environ.*, 75, 1244-1253, 10.1016/j.jaridenv.2011.02.002, 2011.
- 695 Mei, R., Song, H., Liu, Y., Payomrat, P., Cai, Q., Sun, C., and Fang, C.: Tree-ring width-based precipitation reconstruction in Zhaogaoguan, China since 1805 AD, *Quatern. Int.*, 510, 44-51, 10.1016/j.quaint.2018.12.015, 2019.
- Mao, P., Pang, J., Huang, C., Zha, X., Zhou, Y., Guo, Y., and Zhou, L.: A multi-index analysis of the extraordinary paleoflood events recorded by slackwater deposits in the Yunxi Reach of the upper Hanjiang River, China, *Catena*, 145, 1-14, 10.1016/j.catena.2016.05.016, 2016.
- 700 Niu, T., Chen, L. X., and Zhou, Z. J., The characteristics of climate change over the Tibetan Plateau in the last 40 years and the detection of climatic jumps , *Adv. Atmos. Sci.*, 21, 193-203, 10.1007/BF02915705, 2004.
- Peng, W., Yin, S., Zhu, Y., Bao, X., and Ren, L.: Study of floods in the upper Hanjiang River since the historical period, *Bull. Soil Water Conserv.*, 33, 289-294, 10.13961/j.cnki.stbctb.2013.04.011, 2013 (in Chinese).
- Qu, Y., Lv, J., Zhang, W., Su, Z., and Li, Z.: Advances in the study of historical extreme droughts in China, *Adv Water Sci*, 29, 283-292, 10.14042/j.cnki.32.1309.2018.02.016, 2018 (in Chinese).
- 705 Qin, J., Shi, A. L., Ren, G. Y., Chen, Z. H., Yang, Y. D., Zou, X. K., and Zhang, P. F: Severe Historical Droughts Carved on Rock in the Yangtze, *Bull. American Meteor. Soc.*, 101, E905-E916, 10.1175/BAMS-D-19-0126.1, 2020.
- Ren, G., Feng, G., and Yan, Z.: Retrospect and Prospect of Observational Research on Extreme Climate Change in China, *Climatic and Environmental Research*, 4, 337-353, CNKI:SUN:QHYH.0.2010-04-003, 2010 (in Chinese).
- 710 Ren, G., Ren, Y., Zhan, Y., Sun, X., Liu, Y., Chen, Y., Wang, T.: Temporal and Spatial Variation of Precipitation in Mainland China—II. Modern Trends, *Advances in Science and Technology of Water Resources*, 4, 451-465, 10.14042/j.cnki.32.1309.2015.04.001, 2015a (in Chinese).
- Ren, G., Wang, T., Guo, J., and Zhan, Y.: Several characteristics of precipitation changes in the Haihe River Basin in modern times, *Adv. Sci. Tech. Water Resources*, 35, 103-111, CNKI:SUN:SLSD.0.2015-05-016, 2015b (in Chinese).
- 715 Sun, L., and Chen X.: Chronological characteristics and forming conditions of flood in the south and drought in the north, *Journal of Applied Meteorological Science*, 6, 641-647, CNKI:SUN:YYQX.0.2003-06-000, 2003 (in Chinese).
- Shi, F., Fang, K. Y., Xu, C. X., Guo, Z. T., Borgaonkar, H.P.: Interannual to centennial variability of the South Asian summer monsoon over the past millennium, *Clim. Dynam.*, 49, 2803-2814, 10.1007/s00382-016-3493-9, 2017.
- Shi, Y., Jiang, T., Su, B., Chen, J., and Qin, N.: A preliminary study on the relationship between the evolution of the Yangtze River floods and climate change since 1840, *Journal of Lake Sciences*, 4, 289-297, CNKI:SUN:FLKX.0.2004-04-001, 2004 (in Chinese).
- 720 Su, L.: The Causes of Hanjiang Flood and Its Appearance Law, *Yangze River*, 4, 82-87, 10.16232/j.cnki.1001-4179.1981.04.013, 1981 (in Chinese).
- Tan, X.: Research on the Catastrophic Drought in China in the Past 500 Years, *Journal of Disaster Prevention and Mitigation Engineering*, 2, 77-83, CNKI:SUN:DZXK.0.2003-02-010, 2003 (in Chinese).
- 725 Tan, L. C., Cai, Y. J., Cheng, H., Edwards, L. R., Gao, Y. L., Xu, H., Zhang, H. W., and An, Z. S.: Centennial- to decadal-scale monsoon precipitation variations in the upper Hanjiang River region, China over the past 6650 years, *Earth Planet. SC. Lett.*, 482, 580-590, 10.1016/j.epsl.2017.11.044, 2018.
- Tao, S., Zhang, Q., and Zhang, S.: Climatic background and large-scale circulation conditions of the 1998 Yangtze River basin floods, *Climatic and Environmental Research*, 04, CNKI:SUN:QHYH.0.1998-04-000, 1998 (in Chinese).
- 730 Vicente-Serrano, S., Saz-Sanchez, M., and Cuadrat, J.: Comparative analysis of interpolation methods in the middle Ebro Valley (Spain): application to annual precipitation and temperature, *Clim. Res.*, 24, 161-180, 10.3354/cr024161, 2003.
- Wang, F.: The 1934 drought in the middle and lower reaches of the Yangtze River, *Modern China*, 00, 163-184, CNKI:SUN:JDCH.0.1999-00-013, 1999 (in Chinese).
- 735 Wang, H., and Fan, K.: Main features of the East Asian monsoon changes in recent decades, *Chinese Journal of Atmospheric*

- Sciences, 2, 313-318, CNKI:SUN:DQXK.0.2013-02-009, 2013 (in Chinese).
- Wu, T., and Zhao, S.: *Zaixu Xingshuijinjain-Yangtze River Volume*, Hubei People's Publishing House, Hubei, China, 2004 (in Chinese).
- 740 Wen, K.: *The China Meteorological Disaster Dictionary-Shanxi Volume*, Meteorological Press, Beijing, China, 2005 (in Chinese).
- Wen, K.: *The China Meteorological Disaster Dictionary-Henan Volume*, Meteorological Press, Beijing, China, 2005 (in Chinese).
- Wen, K.: *The China Meteorological Disaster Dictionary-Hubei Volume*, Meteorological Press, Beijing, China, 2007 (in Chinese).
- 745 Wang, L., Zhang, J. Y., Elmahdi, A., Shu, Z. K., Wu, Y. H., and Wang, G. Q.: Evolution characteristics and relationship of meteorological and hydrological droughts from 1961 to 2018 in Hanjiang River Basin, China, *J. Water Clim. Change*, 10.2166/wcc.2021.267, 2021.
- Wang, L. C., Yang, Z. N., Gu, X. H., and Li, J. F.: Linkages Between Tropical Cyclones and Extreme Precipitation over China and the Role of ENSO, *Int. J. Disast. Risk Sc.*, 11, 538-553, 10.1007/s13753-020-00285-8; 538-553, 2020.
- 750 Wan, H., Song, H., Zhu, C., Zhang, B., and Zhang, M.: Spatio-temporal evolution of drought and flood disaster chains in Baoji area from 1368 to 1911, *J. Geogr. Sci.*, 28. 03, 337-350, CNKI:SUN:ZGDE.0.2018-03-006, 2018.
- Wang, S., and Zhao, Z.: Analysis of the historical data of droughts and floods in China in the last 500 years, *J. Geogr. Sci.*, 4, 329-341, CNKI:SUN:DLXB.0.1979-04-006, 1979 (in Chinese).
- 755 Wang, J., and Guo, S.: *South-to-North Water Transfer Project Water Source Area: Research and Application of Key Technologies for Hydrological and Water Resources Analysis of Hanjiang River*, China Water Conservancy and Hydropower Publishing House, Beijing, China, 2010 (in Chinese).
- Xie, H., Zhang, S., Hou, S., and Zheng, X.: A comparative study of spatial interpolation methods of precipitation in a small sample area, *Research of Soil and Water Conservation*, 25, 117-121, 10.13869/j.cnki.rswc.2018.03.017, 2018 (in Chinese).
- 760 Xu, H.: Application of improved TOPSIS model in agricultural drought vulnerability zoning in Shanxi Province, *Agricultural Research in the Arid Areas*, 34, 251-258, CNKI:SUN:GHDQ.0.2016-04-039, 2016 (in Chinese).
- Yin, S.: *Research on Extreme Climate and Hydrological Events and Their Social Impacts in the Upper Hanjiang River Since Historical Periods*, Science Press, Beijing, China, 2015 (in Chinese).
- Yang, Y., and Han, J.: A study of screening methods for extreme climatic events in historical periods - an example of extreme drought sequences in the northwest millennium, *Historical Geography*, 30, 10-29, CNKI:SUN:LSDL.0.2014-02-002, 2014 (in Chinese).
- 765 Yang, Y., and Zheng, W.: Spatial and temporal distribution and weather and climate characteristics of the 1849 floods in the middle and lower reaches of the Yangtze River, *Journal of Palaeogeography (Chinese Edition)*, 6, 657-664, CNKI:SUN:GDLX.0.2008-06-016, 2008 (in Chinese).
- Yang, G., and Guo, S.: *The historical Documents on Flood and Waterlogging of Southwest International Rivers in the Yangtze River Basin in Qing Dynasty*, Zhonghua Book Company, Beijing, China, 1991(in Chinese).
- 770 Yao, L.: The 19th century was a period of extreme rainstorms and floods in China, *Journal of Catastrophology*, 3, 25-30. doi:CNKI:SUN:ZHXU.0.1991-03-004, 1991 (in Chinese).
- Yang, B., Braeuning, A., Johnson, K. R., and Shi, Y. F.: General characteristics of temperature variation in China during the last two millennia, *Geophys. Res. Lett.*, 29, 10.1029/2001GL014485, 2002.
- 775 Ye, Y., and Zhao, W.: Changes of drought and flood in the middle reaches of the Yangtze River in recent 100 years, *Journal of Tropical Meteorology*, 2, CNKI:SUN:RDQX.0.1995-02-010, 1995 (in Chinese).
- Yin, S., Wang, H., Wang, D., and Huang, C.: Historical flood disasters and climate change in the upper Hanjiang River, southern Shanxi, *Arid Zone Res.*, 27, 522-528, 10.13866/j.azr.2010.04.011, 2010 (in Chinese).
- 780 Yin, S., Meng, C., and Huang, C.: A comparative study of historical great floods in the upper Hanjiang River and the Jin-Shaan Valley of the Yellow River, *J. Arid Land Resour. Environ.*, 27, 96-101, 10.13448/j.cnki.jalre.2013.07.032, 2013 (in Chinese).
- Yin, S., and Huang, C.: Precipitation changes and the occurrence pattern of heavy rainfall and floods in the upper reaches of

- the Hanjiang River over the past 50 years, *Bull. Soil Water Conserv.*, 32, 19-25, 10.13961/j.cnki.stbctb.2012.01.006, 2012 (in Chinese).
- 785 Yan, B., Guo, S., and Xiao, Y.: Study on the encounter between precipitation abundance and depletion in the water source and receiving areas of the South-North Water Transfer Central Line, *J. Hydraul. Eng.*, 10, 1178-1185, CNKI:SUN:SLXB.0.2007-10-006, 2007 (in Chinese).
- Zhang, P. Z., Cheng, H., Edwards, R. L., Chen, F. H., Wang, Y. J., Yang, X. L., Liu, J., Tan, M., Wang, X. F., Liu, J. H., An, C. L., Dai, Z. B., Zhou, J., Zhang, D. Z., Jia, J. H., Jin, L. Y., and Johnson, K. P.: A Test of Climate, Sun, and Culture Relationships from an 1810-Year Chinese Cave Record, *Science*, 322, 940-942, 10.1126/science.1163965, 2008.
- 790 Zhang, R., Wu, B., Zhao, Ping., and Han J.: Interdecadal transition of summer climate in eastern China in the late 1980s and its possible causes, *Acta. Meteor. Sinica.*, 5, 697-706, CNKI:SUN:QXXB.0.2008-05-004, 2008 (in Chinese).
- Zhao, Z., and Wang, S.: The periodicity of drought and flood evolution in China in the past century, *Meteorological Monthly*, 1, 19-22, CNKI:SUN:QXXX.0.1979-01-006, 1979 (in Chinese).
- 795 Zhang, P., and Gong, G.: Several characteristics of climate change in China since the 16th century, *Acta Geogr. Sin.*, 3, 238-247, CNKI:SUN:DLXB.0.1979-03-004, 1979 (in Chinese).
- Zhang, D.: Reconstruction of the eighteenth century summer monthly precipitation series of Nanjing, Suzhou, and Hangzhou using the clear and rain records of Qing Dynasty, *Acta Geogr. Sin.*, 3, 261-278, CNKI:SUN:QXXW.0.1989-03-000, 1989.
- Zheng, J., Ge, Q., Hao, Z., Liu, H., Man, Z., Hou, Y., and Fang, X.: Meteorological records in historical documents and quantitative reconstruction methods of climate change, *Quat. Sci.*, 6, 1186-1196, CNKI:SUN:DSJJ.0.2014-06-007, 2014
- 800 (in Chinese).
- Zheng, J., Zhang, X., Liu, Y., and Hao, Z.: Assessment of the characteristics of multi-scale changes in dryness and wetness in different regions of China in the past millennium, *Acta. Geogr. Sin.*, 7, 1432-1450, CNKI:SUN:DLXB.0.2020-07-009, 2020 (in Chinese).
- 805 Zheng, J., Zhang, P., and Zhou, Y.: Experiment on Establishing Drought and Flood Index Sequence in Historical Period by Using the Times of Drought and Flood Counties, *Geogr. Res.*, 3, 1-9, CNKI:SUN:DLYJ.0.1993-03-000, 1993 (in Chinese).
- Zhu, K.: Southeast Monsoon and Rainfall in China, *Acta Geogr. Sin.*, 1, 1-27+197, CNKI:SUN:DLXB.0.1934-01-000, 1934.
- Zhang, Q., Jiang, T., Liu, C., and Cheng, J.: Climate change and flood disasters in Haian area in the past 1000 years, *J. Nat. Disaster*, 3, 127-132, CNKI:SUN:ZRZH.0.2004-03-023, 2004 (in Chinese).
- 810 Zhu, K.: Subtropics of China, *Chinese Sci. Bull.*, 17, 524-528, CNKI:SUN:KXTB.0.1958-17-003, 1958 (in Chinese).
- Zhou, L., Huang, C., Zhou, Y., Pang, J., Cha, X., Mao, P., and Zhang, Y.: Optical luminescence dating of paleo-flood events in Yunxi Yunxian section of the upper Hanjiang River and its response to climate change, *Geogr. Res.*, 6, 1178-1192, CNKI:SUN:DLYJ.0.2014-06-018, 2014 (in Chinese).
- 815 Zhou, Y., Wang, H., and Gao, X.: A Preliminary Study on the Changes of Water Resources in the Upper and Middle Reaches of the Yangtze River and Hanjiang River Basin in the Past 531, *Plateau Meteorology*, 4, 744-749, CNKI:SUN:GYQX.0.2006-04-024, 2006 (in Chinese).
- Zhang, D.: A Compendium of Chinese Meteorological Records of the Last 3000 Years, Jiangsu Education Press, Nanjing, China, 2004 (in Chinese).
- 820 Zhang, Y., Gou, X., Hu, W., Peng, J., and Liu, P.: Drought events in the Helan Mountains recorded by tree rings in the past 100 years, *Acta Ecologica Sinica*, 8, 2121-2126, CNKI:SUN:STXB.0.2005-08-041, 2005 (in Chinese).
- Zhou, L., Huang, C., Zhou, Y., Pang, J., and Cha X.: Photoluminescence dating of ancient flood events and their response to climate change in the Utopia County section of the upper Hanjiang River, *Geogr. Res.*, 33, 1178-1192, CNKI:SUN:DLYJ.0.2014-06-018, 2014 (in Chinese).
- 825 Zhou, L., Huang, C., Zhou, Y., Pang, J., Zha, X., Xu, J., and Zhang, Y., Guo, Y.: Late Pleistocene and Holocene extreme hydrological event records from slackwater flood deposits of the Ankang east reach in the upper Hanjiang River valley, China, *Boreas*, 45, 673-687, 10.1111/bor.12181, 2016.
- Zhang, Y., and Yin, S.: Study on flood and drought disasters and urban relocation and reconstruction in Ankang area during the historical period, *Research of Soil and Water Conservation*, 32, 19-25, 10.13961/j.cnki.stbctb.2012.01.006, 2012 (in

830 Chinese).

Zheng, H., and Liu, C.: Analysis of precipitation abundance encounter in different hydrological zones of South-North Water Transfer East and Central Lines, *J. Geogr. Sci.*, 5, 523-532, CNKI:SUN:DLXB.0.2000-05-002, 2000 (in Chinese).