

Mid-Holocene monsoons in South and Southeast Asia: dynamically downscaled simulations and the influence of the Green Sahara

Yiling Huo¹, ~~William W.~~ Richard Peltier¹, and Deepak Chandan¹

¹ Department of Physics, University of Toronto, Toronto, M5S 1A7, Canada

Correspondence to: Yiling Huo (yhuo@physics.utoronto.ca)

Abstract. Proxy records suggest ~~that~~ the Northern Hemisphere during the mid-Holocene (MH), to be assumed herein to correspond to 6,000 years ago, was generally warmer than today during summer and colder in the winter due to the enhanced seasonal contrast in the amount of solar radiation reaching the top of the atmosphere. The complex orography of both India and Southeast Asia (SEA), which includes the Himalayas and the Tibetan Plateau (TP) in the north and the Western Ghats mountains along the west coast of India in the south, renders the regional climate complex and the simulation of the intensity and spatial variability of the MH summer monsoon technically challenging. In order to more accurately capture important regional features of the monsoon system in these regions, we have completed a series of regional climate simulations using a coupled modeling system ~~consisting to dynamically downscale MH global simulations. This regional coupled modeling system consists of the University of Toronto version of the CoupledCommunity Climate System Model version 4 (UofT-CCSM4), the Weather Research and Forecasting (WRF) regional climate model and the 3D Coastal and Regional Ocean Community model (CROCO) to dynamically downscale MH global simulations constructed using UofT-CCSM4.~~ In the global model, we have taken care to incorporate Green Sahara (GS) boundary conditions in order to compare with standard MH simulations and to capture interactions between the GS and the monsoon circulations in India and SEA. ~~In both the global and the regional models, the response of the South Asia (SA) and SEA monsoons to MH orbital forcing is intensified and accompanies lower surface temperature which is likely related to the increased reflectance of shortwave flux at high levels from the greater cloud cover.~~ Comparison of simulated and reconstructed climates suggest that the dynamically downscaled simulations produce significantly more realistic anomalies in the Asian monsoon than the global climate model, although they both continue to underestimate the inferred changes in precipitation based upon reconstructions using climate proxy information. Monsoon precipitation over SA and SEA is also greatly influenced by the inclusion of a GS, with a large increase in particular being predicted over northern SA and SEA, and a lengthening of the monsoon

season. Data-model comparison with downscaled simulations outperform those with the coarser global model, highlighting the crucial role of downscaling in paleo data-model comparison.

1 Introduction

The climate over both South and Southeast Asia (SA and SEA) is ~~marked by distinctly different surface temperature, lower tropospheric wind direction and precipitation between summer and winter, resulting in a wet summer and a dry winter, characterized by rainy summers and cold dry winters.~~ During summer, warm and moist air originating from the Indian Ocean is transported northeast towards the Indian subcontinent and the Indochina peninsula where the air-mass organizes into the South and Southeast Asian monsoons (SAM and SEAM, respectively) circulations. ~~The strengths of these circulations and their onset, maintenance and withdrawal are to a significant extent influenced by the contiguous Tibetan Plateau (TP) Apart from the external forcing of the land-sea heating contrast that is essential for initiating SAM and SEAM (Webster et al., 1998), that serves an elevated heat source for the atmosphere in summer that intensifies the thermal contrast between the continent and ocean in the region influenced by the Asian monsoons (Wu et al., 2007). The intensity and variability of precipitation from these two monsoonal systems greatly affect the population inhabiting this region, which relies upon the monsoon rainfall as their primary freshwater source (Turner and Annamalai, 2012). Understanding changes in monsoon circulation and precipitation on different time scales is thus of great scientific and socioeconomic importance.~~

~~As with any monsoon circulation, seasonal and latitudinal differences in the incoming solar radiation and the land-ocean thermal contrasts caused by the heat capacities difference between the land and sea, which cause a phase lag between the period of peak surface heating between land and sea, are fundamental to the formation of SAM and SEAM (Webster et al., 1998). Whereas this external forcing is essential for initiating SAM and SEAM,~~ internal feedback processes, which have been recognized as changing over the recent decades (Mishra et al., 2018; Endo et al., 2009), play a crucial role in amplifying their strength. Since monsoon systems are characterized by a strong temporal variability (Ding, 2007; Kutzbach, 1987; Prell and Kutzbach, 1987), the limited modern observational datasets are insufficient to constrain the expected future response of these systems to climate change. Additionally, projections of monsoon evolution from climate modeling of future conditions remain highly uncertain (Huang et al., 2020). Therefore, analysis of past changes of monsoon circulation systems under significantly different forcing conditions for both SAM and SEAM is potentially of great value in contributing to the understanding of these monsoons and their expected future changes.

The mid-Holocene (MH), ~~approximately 6000 years ago; 6 ka BP~~, is characteristic of a typical interglacial period during which the insolation distribution was significantly different from that of the present-day (Fig. 1). ~~For this reason, the period offers an excellent opportunity for investigating the response of the Asian monsoon to the precessionally~~ During the MH, differences in the Earth's orbital configuration compared to present-day enhanced Northern Hemisphere insolation which in the latitudinal range of these monsoons induces a top-of-the-atmosphere insolation increase of $\sim 20 \text{ W m}^{-2}$ in summer ~~due to differences in the Earth's orbital configuration compared to present day~~ (Fig. 1; Laskar et al., 2004; Berger, 1978). Nearly all of the earliest reconstructions for the MH Asian monsoons were based on palaeoceanographic evidence, including the distribution of planktonic fauna (Hutson and Prell, 1980; Prell, 1984a, b; Cullen and Prell, 1984) and wind-transported pollen (Prell and Van Campo, 1986) in deep sea sedimentary cores obtained from the Indian Ocean. Subsequently, much progress in ~~studying~~understanding these paleomonsoons has been achieved through continuing studies of the Tibetan ice cores (Thompson et al., 2000), Chinese Loess Plateau data (An, 2000; Porter, 2001) and stalagmites from the Hulu Cave (Wang et al., 2001) and the Dongge Cave (Fig. 1; Dykoski et al., 2005). Paleoclimatic reconstructions reveal significant changes in Asian monsoon intensity during the MH. During ~~the MH~~this period, the Indian monsoon penetrated deeper into the Indian subcontinent (Wang et al., 2010; Herzschuh, 2006; Kutzbach and Street-Perrott, 1985), although detailed knowledge is still limited by the absence of high-resolution proxy information. Furthermore, owing to a lack of paleoclimate proxies from SEA, little is known about the incursion and variability of the SEAM.

To better understand orbital-scale monsoon changes, various numerical experiments have been performed, primarily using global climate models (GCMs) to simulate the large-scale atmospheric circulation and the related monsoon circulation (Jalihal et al., 2019a; Jiang et al., 2013; Dallmeyer et al., 2013). The earliest modeling studies of the MH monsoons focused only on the direct effect of insolation forcing (Kutzbach and Otto-Bliesner, 1982; Kutzbach and Guetter, 1986; Kutzbach and Gallimore, 1988). These studies generally produced strengthened monsoons and increased precipitation in Asia in response to the increased land–sea surface temperature contrast in summer caused by the enhanced seasonal cycle of MH insolation. Although the early GCM simulations were based on prescribed SSTs and land vegetation, recent studies have shown that land and ocean feedbacks can enhance the orbitally-forced monsoon changes (Zhao and Harrison, 2012; Kutzbach et al., 2001). In addition, the strengths of SAM and SEAM circulations and their onset, maintenance and withdrawal are greatly influenced by the contiguous Tibetan Plateau (TP; Fig. 1) that serves an elevated heat source for the atmosphere in summer that intensifies the thermal contrast between the continent and ocean in the region influenced by the Asian monsoons

(Wu et al., 2007). ~~However, due to their coarse horizontal resolutions~~ However, due to the coarse horizontal resolutions of the global models, the TP, as well as the local mountains over SA and SEA, is poorly represented in GCMs. As a result, GCMs are incapable of realistically capturing local-scale atmospheric circulation and precipitation processes, which are strongly influenced by the orography. In order to ~~fill~~respond to the need for high quality climate information on regional scales while maintaining the computational tractability of the problem, this study employs the same dynamical downscaling pipeline described in Huo and Peltier (2021), ~~in which a regional climate model—the Weather Research and Forecasting (WRF) Model is coupled to a regional ocean model—the 3D Coastal and Regional Ocean Community model (CROCO) and both are forced with the output from a GCM—the University of Toronto version of the NCAR Coupled Climate System Model version 4 (UoT CCSM4)—at the lateral boundaries (Fig. 2) to dynamically downscale MH global simulations.~~ This pipeline has been applied in the projection of modern global warming impacts for SEAM and results verified to be in good agreement in the general monsoon patterns compared to instrumental era observations (Huo and Peltier, 2021). Similar simulations have also been carried out for the Indian monsoon region for present day and future climate projections by Huo and Peltier (2019, 2020) with a somewhat simplified pipeline, that didn't include the CROCO regional ocean model and utilized an older version of WRF (V3.9.1).

~~The MH period was also characterized by one of the greatest climate differences compared to the preindustrial (PI) and present day climate—namely the existence of a Green Sahara (GS), wherein northern Africa~~ During the MH, north Africa (Fig. 1) was considerably wetter than today and was covered to a great extent by a mixture of shrubland, grassland, trees, and wetlands ~~—a period referred to as the Green Sahara (GS; Pausata et al., 2020; Holmes and Hoelzmann, 2017; Chandan and Peltier, 2020)— or the African Humid Period.~~ While it is well established that the Sahara existed in a state very different from that of today during the MH (Hély et al., 2014; Harrison and Bartlein, 2012) and had far-reaching local and global climatic influences (Chandan and Peltier, 2020; Pausata et al., 2017a, 2017b), most studies investigating the Asian monsoon variability during the MH have employed the same global vegetation distribution as that characteristic of the ~~PI~~preindustrial (PI) period, and have been demonstrated to significantly underestimate the strength and extent of the SAM and SEAM (Zhao and Harrison, 2012; Braconnot et al., 2012). Since other key factors, including remote changes in vegetation cover have been shown to modify the climate response to the insolation forcing (Piao et al., 2020; Sun et al., 2019), we have taken care ~~in the current study~~ to incorporate GS boundary conditions (Chandan and Peltier, 2020) in the analyses to be described ~~in the current paper~~herein in order to compare with the standard MH simulations and to capture interactions between the African Humid Period Monsoon and that in India and SEA. Our intention is to

construct a high resolution representation of the teleconnection between these two regions. Pausata et al. (2017) and Sun et al. (2019) pointed out that the presence of GS conditions in northern Africa shifts the Walker Circulation westward through changes in equatorial Atlantic SSTs and warmed the Indian Ocean, which enhances the SAM and SEAM. Griffiths et al. (2020) have also suggested that the transition out of the African ~~humid period~~Humid Period led to an amplification of mid- to late Holocene megadroughts in mainland Southeast Asia via ocean-atmospheric teleconnections. Moreover, some recent studies have projected future increases in Sahelian precipitation, as well as a surface greening in the Sahel (Giannini and Kaplan, 2019; Evan et al., 2016). Hence, understanding the influence of African vegetation on the SAM and SEAM may also help us better appreciate the changes in the Asian monsoon system to be expected from ongoing climate change ~~and~~associated with human activity.

This paper presents an analysis of the MH monsoon using high-resolution coupled RCM simulations. The key questions are: (1) How do SAM and SEAM precipitation respond to the MH orbital forcing on regional scales? (2) Do simulations produced by the ~~UoT-CCSM4 WRF CROCO~~ coupled modeling system agree both qualitatively and quantitatively with proxy data during the monsoon season? (3) What are the impacts of the GS boundary conditions on SAM and SEAM? The coupled model system and the simulation configurations are described in Sect. 2. A synthesis of major monsoon changes is provided in Sect. 3, ~~including which also includes~~ a discussion of the sensitivity of the SAM and SEAM to MH Sahara vegetation changes. In Section 4 ~~offers we offer~~ a summary of our conclusions.

2 Model descriptions and experimental design

The dynamical downscaling methodology employed for the analyses to follow (Fig. 2) is the same as that in Huo and Peltier (2021), which further ~~develops~~developed the dynamical downscaling “pipeline” originally introduced in Gula and Peltier (2012) and then applied in d’Orgeville et al. (2014), Erler and Peltier (2016) and Peltier et al. (2018) for the purpose of investigating the expected precipitation changes over the Great Lakes Basin of North America and over western Canada, upstream and downstream of the Rocky Mountains topographic barrier. In the present version of this pipeline, a regional climate model—the Weather Research and Forecasting (WRF) Model is coupled to a regional ocean model—the 3D Coastal and Regional Ocean Community model (CROCO) and both are forced with the output from a GCM—the University of Toronto version of the NCAR Community Climate System Model version 4 (UoT-CCSM4)—at the lateral boundaries (Fig. 2). This pipeline has been

145 applied in the projection of modern global warming impacts for SEAM and results verified to be in good agreement in the general monsoon patterns compared to instrumental era observations (Huo and Peltier, 2021). Similar simulations have also been carried out for the Indian monsoon region for present-day and future climate projections by Huo and Peltier (2019, 2020) with a somewhat simplified pipeline, that didn't include the CROCO regional ocean model and utilized an older version of WRF (V3.9.1).

150 The regional atmospheric model component of the pipeline is the WRF model Version 4.1 (Skamarock et al., 2008), with the same choice of major physics parameterizations as in Huo and Peltier (2021) except for the cloud microphysics parameterization. Unlike Huo and Peltier (2021), who employed two different microphysics schemes, this study uses a single microphysics parameterization scheme (the single-moment 6-class scheme; Hong and Lim, 2006) for all ~~the~~ experiments because the choice of ~~the~~ microphysics scheme was found to have
155 much smaller impact on the simulated monsoon precipitation compared to the cumulus scheme in the modern day simulations of both SAM (Huo and Peltier, 2020) and SEAM (Huo and Peltier, 2021). The same four cumulus parameterization schemes as in Huo and Peltier (2021), namely the Tiedtke scheme (Tiedtke, 1989), the Grell–Freitas ensemble scheme (GF; Grell and Freitas, 2014), the Betts–Miller–Janjic scheme (BMJ; Janjic, 1994) and the Kain-Fritsch scheme (KF; Kain, 2004) are employed in this study in order to construct a mini-physics
160 ensemble-~~(Table 1)~~ for the SAM and the SEAM, which enables us to study the sensitivity of model performance to different cumulus ~~parameterization schemes~~parameterizations and thereby to estimate the uncertainty associated with these parameterizations on the simulated MH climate. In the radiation module of WRF, we have applied trace gases and orbital parameters based on the Paleoclimate Modeling Intercomparison Project Phase 4 (PMIP4; Otto-Bliesner et al., 2017) protocol for the MH simulations. The WRF domain covers most of the Asian
165 landmass (shaded in Fig. 3) at 30 km resolution. Note here that most PMIP4 models have a resolution of approximately 1° (Otto-Bliesner et al., 2017), which is close to that of our GCM, the UofT-CCSM4 model and is considerably coarser than the resolution of our regional model.

The 3D CROCO ocean model has also been coupled to the WRF domain using the OASIS 3 coupler (Valcke, 2013) through which hourly prognostic fields are exchanged (Fig. 2). This study employs the same ocean domain
170 as in Huo and Peltier (2021), which covers most of the oceanic area in the WRF domain including the Bay of Bengal (BOB), the eastern part of the Arabian Sea and the western part of the South China Sea (the white rectangular area in Fig. 3) and operates at a horizontal resolution of 0.2 ° (approximately 20 km) with 32 vertical levels.

Both WRF and CROCO are forced at their lateral boundaries by the atmospheric and oceanic fields obtained from simulations with a global model. The global simulations have been generated using a fully coupled atmosphere-ocean-land-sea-ice GCM: the University of Toronto version of the National Center for Atmospheric Research (NCAR) CoupledCommunity Climate System Model version 4 (UofT-CCSM4; Peltier and Vettoretti, 2014; Chandan and Peltier, 2017, 2018, 2020). It is based on the standard CCSM4 model (Gent et al., 2011) with modifications of the ocean component for paleoclimate simulations. The UofT-CCSM4 simulations were produced in its coupled configuration and with a horizontal resolution of 1° . ~~More details regarding these simulations can be found in Chandan and Peltier (2020).~~ For the analyses reported herein, WRF-CROCO was driven by three distinct GCM simulations, including one for the PI climate, and two for the MH climate, the latter being forced by the PMIP4 mandated concentrations of greenhouse gases (GHGs) and orbital parameters (Otto-Bliesner et al., 2017). One of the MH experiments, ~~henceforth referred to as the reference MH simulation and denoted as MH_{REF},~~ employs a preindustrial land surface and a vegetation prescribed to PI values, and therefore differs from the PI only with regards to the orbital configuration and trace gas concentrations; the other MH experiment, ~~henceforth referred to as MH_{GS},~~ also incorporates GS boundary conditions by including vegetation, soil and lake modifications over Africa and Arabia. Both of these simulations were recently described in detail in Chandan and Peltier (2020), where they were referred to as MH_{REF} and MH_{VSL} respectively. Each UofT-CCSM4 experiment was integrated for several hundred years and the last 15 years of output of each were downscaled using WRF-CROCO for the purpose of the analyses to be reported below. The two sets of MH experiments, both including results for each member of the four member mini-ensemble, can be compared to investigate the role of the Saharan landscape in altering the SAM and SEAM. We will also compare the simulated changes in precipitation in the two sets of experiments to pollen-based climate reconstructions (Bartlein et al., 2011; Herzschuh et al., 2019) to help us evaluate the degree to which the incorporation of GS boundary conditions will lead to a diminution of the previously obtained misfits of global model-based climate reconstructions of SAM and SEAM rainfall. In the following analysis, the set of MH experiments (both global and regional) including no specific land surface changes over north Africa is referred to as the reference MH simulation and denoted as MH_{REF}, while the other set of MH simulations which incorporates GS boundary conditions is referred to as MH_{GS}.

3 Results and discussion

We begin by discussing the sea surface temperature (SST) and surface air temperature anomalies simulated for MH_{REF} before turning our attention to precipitation changes realized in the same simulation. Following this, we

discuss the impact of including the full GS boundary conditions on the simulated MH SAM and SEAM. All spatially-averaged anomalies reported here are calculated over the land surface of the Indian subcontinent or mainland SEA south of the TP (the two black rectangles in Fig. 3). These two analysis regions are identical to the inner WRF domains in Huo and Peltier (2020, 2021) wherein two levels of downscaling were employed.

3.1 Ocean SST and surface atmospheric temperature changes in MH_{REF}

The establishment of the Asian monsoon circulations is determined by the seasonal cycle of SSTs of the Indian Ocean and the contrast with the surface temperature variation over the land mass to the north and east. Seasonal variations in the strength of the monsoon are therefore closely connected with variations in SSTs (Clark et al., 2000). Figure 4 shows the SST anomalies, with respect to the preindustrial, simulated for MH_{REF} by the GCM and ~~by the first four WRF-CROCO ensemble member (Table 1). The simulated SSTs from the other three members (ensemble members (not shown) are not significantly different mean).~~ In the downscaled MH_{REF} simulation, SSTs in JJAS (June-July-August-September) are 0.5° C colder than in the PI in the northeastern Arabian Sea (Fig. 4b), whereas the global model produces larger negative anomalies (up to -0.8° C) across the eastern Arabian Sea. Regional Mg/Ca (Banakar et al., 2010; Govil and Naidu, 2010) and alkenones (Böll et al., 2015) indicate 0 to 1° C cooling in the northern and eastern Arabian Sea during the MH, which is consistent with both global and regional model results. In contrast, the JJAS SST anomalies of up to -1° C that are simulated for the BOB in the downscaled simulations produced with CROCO are larger than those in the global model. This extended cooling all along the eastern coastline of India is likely the result of stronger coastal upwelling driven by the strengthened MH monsoonal winds. CROCO also simulates warm SST anomalies (up to ~~+0.5~~° C) around the southern tip of India, whereas UoFT-CCSM4 simulates cold SST anomalies over the entire ocean domain. Proxy records also suggest slight warming off the coast of south India (Saraswat et al., 2013; Gaye et al., 2018), which is more consistent with the results of CROCO.

In response to the MH changes in the orbital parameters and GHG concentrations, the 2 m air temperature over land in summer also changes significantly compared to the preindustrial (Fig. ~~54~~). During JJAS, land temperatures in the MH are warmer by up to 2° C northward of the TP and the largest warming center occurs at around 45° N. The intensity of this warming center as well as its spatial extent in the downscaled simulation (Fig. ~~5b4b~~) is larger than that in the GCM (Fig. ~~5a4a~~). The Indian subcontinent itself experiences a small cooling (approximately 0.5° C), whose expression does not differ significantly between the GCM and WRF. A summer cooling over SA of similar magnitude was also found in PMIP4 MH simulations (Brierley et al., 2020). The Indochinese Peninsula

features small temperature anomalies of opposite signs in the western and eastern regions, leading to no significant average temperature change over the peninsula (Fig. 5b4b). As a result of these changes, the MH summer land meridional temperature gradient decreases through the low to mid-latitudes. At the same time, the land–ocean thermal contrast increases due to the rise in the spatially averaged JJAS temperature over the continent and decrease in temperature over the sea, which intensified the moisture transport towards the continent within the low-level monsoonal wind field (see sect. 3.4). Moreover, the MH insolation forcing yields a climate that is ~~colder~~cooler over SA and SEA during three quarters of the year (Fig. 5e4c) and warmer only from midsummer to early fall.

3.2 Average precipitation changes in MH_{REF}

These changes in the SST and the temperature distribution over land and sea have a large impact on the summer monsoon wind field, moisture transport towards the Eurasian landmass, as well as the regional precipitation distribution. Figure 65 shows the annual mean precipitation difference between the MH_{REF} and the PI and its comparison to proxy-inferred precipitation changes. Under modern climate conditions, the SAM has highest precipitation rates over the west coast of the Indian subcontinent associated with the Western Ghats mountains and in the north along the Himalayan foothills (Fig. 4 in Huo and Peltier, 2020), whereas the SEAM produces the most intense precipitation over the west coast of Myanmar (Fig. 5 in Huo and Peltier, 2021). For MH_{REF}, most of SA experiences a wetter climate compared to the PI, (Fig. 5b), which is consistent with the results obtained in other PMIP3 and PMIP4 model experiments (e.g. Zhao and Harrison, 2012; Brierley et al., 2020). Annual mean rainfall is increased by up to 1 mm day⁻¹ in the northwestern part of SEA, northeastern India and along the windward side of the Western Ghats foothills ~~and by approximately 1 mm day⁻¹ in the northern part of SEA~~ in WRF-CROCO simulations (Fig. 6e5c). These increases are much weaker in the global UofT-CCSM4 model, while the locations of increased precipitation along the Himalayan Range differs from WRF-CROCO: in the global model the largest precipitation increase occurs over the Hindu Kush and Pamir mountain ranges in the western Himalayas, whereas in the downscaled model precipitation increases over a broad region of the Himalayan foothills extending from ~~Nepal~~Hindu Kush to the India-China-Myanmar border in the east. The global model on the other hand simulates drying over the eastern Himalayas. These substantial differences between the global and the regional model results attest to the importance of high resolution modeling over regions of complex land surface. Over SEA, decreased precipitation (approximately 0.5 mm day⁻¹) is delivered by both global and regional models over the southern region, which is consistent with the results obtained in other PMIP4 simulations (Brierley et al., 2020). Over Southern India, the global model produces a decrease in annual precipitation while

the WRF-CROCO simulation shows an increase. ~~This is likely related to the differences in the simulated SST anomalies in these simulations around the southern tip of India, where UoFT-CCSM4 produces a negative anomaly while the higher resolution ocean model shows warmer SSTs in MH (Fig. 4).~~

Figure 65 also compares the simulated annual precipitation anomalies with the pollen-based paleoclimatic reconstructions (Bartlein et al., 2011; [Herzschuh et al., 2019](#)) in order to evaluate the degree to which the dynamical downscaling-based analysis is able to improve the simulation of MH monsoon rainfall. Overall, there is qualitative agreement between the palynology-based reconstructions [by Bartlein et al. \(2011\)](#) and the model predictions with wetter conditions in the northern region of SEA and along the windward slopes of the western and central Himalayas. However, the model MH prediction disagrees with the reconstructions in the eastern part of the TP, where the model produces a negative precipitation anomaly while the reconstructions indicate increased rainfall in the MH. Overall, the downscaled model simulation displays a slightly greater similarity in pattern to reconstructions [by Bartlein et al. \(2011\) and Herzschuh et al. \(2019\)](#) than the GCM in the northern part of SEA and south-western China, although they both continue to significantly underestimate the inferred changes in precipitation. Both the GCM and downscaled simulations generally suggest a drier climate [north of the TP and](#) in central and eastern China during the MH, while the pollen-based reconstructions suggest predominantly wetter conditions. However, even the proxy-based reconstructions are somewhat contradictory from site to site, which may result from topographic differences or local hydrological processes. [To quantify the fit to the reconstructions, Mean Relative Error \(MRE\) is calculated using the following Eq\(1\):](#)

$$\text{MRE} = \frac{1}{n} \sum_{i=1}^n \frac{|p_i - d_i|}{|d_i|} \quad (1)$$

[where n is the number of data points, d_i stands for the proxy data, p_i for the model prediction. Considering all the points that have proxy data by Bartlein et al., \(2011\) in the WRF domain, dynamical downscaling reduced MRE of the global model by 10%. For the points north of the TP, both the GCM and the downscaled simulation fail to simulate the same sign of precipitation anomalies as indicated by the proxy data. Considering only the points south of 40° N, MRE of the downscaled simulation is 33 % smaller than that of the GCM. The pollen-based data set by Herzschuh et al. \(2019\), however, suggests much larger precipitation enhancement during the MH especially over East China and is therefore less consistent with both global and regional model results.](#) Additionally, stalagmite records from seven caves in Asia (Cai et al., 2012; Dykoski et al., 2005; Cai et al., 2010; Cosford et al., 2008; Hu et al., 2008; Dong et al., 2010; Zhang et al., 2004) all indicate generally high monsoon

precipitation during the MH. The locations of the seven caves (Tianmen, Dongge, Jiuxian, Lianhua, Heshang, Sanbao and Xiangshui Caves) are shown as “*” in Figs. ~~6b6a~~ and ~~6c. All six6b.~~ The stalagmite records from Donge, Sanbao and Xiangshui Caves over East China are qualitatively in accord with results from the coupled WRF-CROCO simulation, while the GCM simulates a wetter climate at the locations of ~~five~~two of the caves but a drier climate at the location of Xiangshui Cave (25.3° N, 110.9° E). At the location of the Tianmen ~~record over the TP,~~ Jiuxian and Lianhua records, both UofT-CCSM4 ~~simulates~~and WRF-CROCO simulate no significant change ~~while the downscaled simulation indicates a slightly drier climate~~($< 0.1 \text{ mm day}^{-1}$) during the MH. Since regional precipitation is characterized by high spatial variability and reconstructions inherently have large uncertainties, more proxy data would be needed for a more comprehensive comparison between the model simulations and the reconstructions, particularly over India and SEA.

Annual precipitation is strongly controlled by summer rainfall, so the JJAS precipitation anomaly patterns (~~Fig. 7Figs. 6 and A1~~) resemble those of the annual mean. However, compared with the distribution of annual rainfall changes (Fig. ~~65~~), monsoon rainfall increase is greater (up to 3 mm day^{-1}) during the monsoon season over northern SA and SEA. The intensification of the monsoon results in increased cloudiness and evaporation, thereby contributing to the lower temperature over northern SA and SEA (Fig. ~~54~~).

~~Comparing different ensemble members, all physics configurations provide generally consistent signals for both SA and SEA during JJAS, with greater monsoon precipitation increase over northern SA and SEA and along the windward slope of the Western Ghats (Fig. 7). Among all the ensemble members, the GF scheme in the second ensemble member produces the largest JJAS precipitation increase (1.4 mm day^{-1}), while the first ensemble member based on the KF cumulus scheme produces the smallest wet anomaly over SEA (0.3 mm day^{-1}), which is a result of the large dry anomaly in the south compensating the rainfall increase in the north (Fig. 7d). Over SA, however, the KF cumulus scheme produces the largest wet anomaly among all ensemble members (1.3 mm day^{-1}), while the third ensemble member using the Tiedtke cumulus scheme has the smallest precipitation change (0.8 mm day^{-1}). Furthermore, the GF scheme produces the second largest JJAS rainfall increase over SA (1.2 mm day^{-1}). Such different JJAS rainfall signals over SA and SEA indicate the impact of the choice of different cumulus schemes on the spatial distribution of moisture. In our simulations of SA and SEA for the present day (Huo and Peltier, 2020, 2021), the KF cumulus scheme performed the best in terms of reproducing the mean SAM precipitation of all cumulus schemes, while it significantly overestimated precipitation over nearly all of SEA. The Tiedtke scheme has a general dry bias over SA, while it can be considered the best in terms of the SEAM~~

~~average precipitation simulation during instrumental era. The BMJ cumulus scheme generally produces a moist bias in both the Indian and SEA cases under modern climate conditions.~~

Based on the annual cycle of precipitation over SEA (FigsFig. 6d-and-7f), monsoon intensity is actually weaker during the early stage (June) in both the global model and all WRF-CROCO ensemble members, although the decrease is much greater in downscaled simulations than in the GCM. This rainfall reduction during the early stage of the monsoon indicates that SEAM starts later in the MH than in PI, which is consistent with previous studies (Dallmeyer, 2013). The late monsoon onset is likely related to the lower temperature on the Indochina peninsula during spring and early summer (Fig. 5e4c). On the other hand, the maximum precipitation increase over SEA occurs in September, which is near the end of the Asian monsoon season. Furthermore, the precipitation increase in October suggests that the withdrawal of the summer monsoon is postponed in Indochina. Over SA, the peak monthly rainfall increase occurs in August and September in all ensemble members, and October experiences a very small increase ~~according to three of the ensemble members, with the ensemble member employing the GF cumulus scheme being the exception.~~ Although the monthly rainfall changes due to MH forcing are more drastic over SEA, the overall monsoon (JJAS) rainfall increase is actually smaller over SEA than SA due to the large dry anomaly in June that compensates the increased precipitation during late summer. Furthermore, all of these monthly monsoon rainfall changes discussed above are stronger in the downscaled simulations than in the GCM (Figs. ~~6b, 6e, 7e5, 6~~ and ~~7fA1~~). The spatially-averaged JJAS precipitation increases produced by the WRF-CROCO ensemble mean (UofT-CCCSM4) are ~~only 1.2 mm day⁻¹ (0.56 mm day⁻¹)~~ over SA and 0.2 mm day⁻¹ (0.9 mm day⁻¹) over SEA.

3.3 Impact of the GS boundary conditions

To investigate the land-ocean-atmosphere feedbacks and teleconnections between GS boundary conditions, that existed over ~~northern~~north Africa and Asian monsoons, another four-member physics ensemble, forced with global simulations that included GS boundary conditions was constructed.

In the MH_{GS} simulations, the influence of GS surface boundary conditions (Chandan and Peltier, 2020) leads to a JJAS temperature anomaly over Asia that has ~~a lot~~much in common with MH_{REF}, with higher latitudes serving as the primary center of warming (Fig. 5bFigs. 4b and Fig. 8a7a). However, except over India, the warming in MH_{GS} is more pronounced than that in MH_{REF} over the majority of the WRF domain, with the largest increase over the TP and East Asia (Fig. 8b7b). Such enhanced warming is conducive to increasing the northward moisture flux to

SA and SEA by increasing the strength of the low-pressure center over the continental interior. JJAS temperature over northeastern India is cooler than in the experiment without GS forcing, which may be linked to the further increase in albedo resulting from the greater increase in cloud fraction and JJAS rainfall over the region (Fig. 9) and is similar to previous modeling results (Pausata et al., 2020). Over SEA, inclusion of a GS leads to increased warming year round with the ~~largest~~greatest increase in January-October (up to 0.97°C ; Fig. 8e7c). With a GS the climate becomes warmer than present over most of SEA by approximately 0.32°C during JJAS (Fig. 8a7a), whereas the MH orbital and trace gas forcing alone (MH_{REF}) produces a small cooling over western SEA (Fig. 5b-4b). Such warming is directly related to the increase in the SSTs since regions with the most pronounced warming (west coast of SA and south and west SEA) also have the largest increase in SST (Fig. 7b). Compared to MH_{REF} , the SSTs over the Indian ~~ocean~~Ocean and the South China Sea (Fig.1) are now warmer everywhere by at least 0.5°C , with pockets of even warmer SSTs to the south of India and Vietnam. As a result of this warming, the warm SST center south of India that was present in MH_{REF} intensifies in strength (up to 2°C warmer than PI, Fig. 81-while7a) and the cooling over the northeastern Arabian Sea and ~~southern~~-BOB is reduced. The increase in SST favors more evaporation over the Arabian Sea and BOB, thus contributing to the SAM and SEAM precipitation increase.

The inclusion of a GS significantly reinforces the precipitation anomaly pattern that was simulated over SA only in the presence of MH orbital insolation and GHG forcings (Fig. 9e-Figs. 8b, 9b and A2). The positive rainfall anomaly is particularly large in northeastern India and along the Western Ghats (up to 3 mm day^{-1}). In south India, whereas there were no significant precipitation changes in the rain shadow east of the Western Ghats in MH_{REF} (Fig. 6e5b), there is now a strong increase in precipitation in the simulations with GS forcing (Fig. 9e8b). Over SEA, feedbacks from land surface changes over ~~northern~~north Africa also lead to a precipitation intensification relative to MH_{REF} , (Figs. 8b and 9d), albeit with a smaller amplitude than that over SA (Fig. Figs. 8b and 9c). The positive rainfall anomaly in the northern region of the Indochina peninsula extends southward, reducing the negative precipitation anomaly that was modeled over the southern region in MH_{REF} . The decrease in precipitation over the ~~northern~~western BOB in MH_{REF} is also reduced.

Generally, when the north African land surface changes in the MH are included, the modeled annual mean precipitation change over most of the Asian monsoon regions shows a significantly improved agreement with proxy records, particularly over the ~~northern and western~~-TP and ~~over northeastern~~North China (Fig. 98), compared to that which is obtained only in the presence of MH orbital and GHG forcings (Fig. 65). Comparing MH_{REF} and MH_{GS} from the UofT-CCSM4 (Figs. 6a5a and 9a8a), inclusion of a vegetated Sahara during the MH

enhances precipitation along the Himalayas and produces a positive anomaly band stretching from the western TP to northeastern China, which leads to an improvement of model-proxy agreement and is consistent with Tabor et al. (2020). With dynamical downscaling, the model better captures both the sign and magnitude of the local-scale response characteristics of the MH proxy records (Figs. 9a by both Bartlein et al. (2011) and 9b Herzschuh et al., 2019 (Fig. 8), especially the precipitation enhancement along the Tian Shan (Fig.1) north of the TP and from the northern SEA to North China, thus further improving the proxy-data comparison. For all the points in the WRF domain, inclusion of a GS into the downscaled simulation leads to a 11% reduction of the MRE relative to the reconstructions by Bartlein et al. (2011). However, the precipitation increase over the eastern TP and southeastern China that is revealed by ~~proxy data~~the two sproxy datasets is still not captured by dynamical downscaling or by incorporating the influence of the greening of the Sahara.

~~The JJAS precipitation anomalies in the experiments with GS boundary conditions are generally consistent among different WRF CROCO ensemble members: both the SAM and SEAM rainfall significantly increase compared to the PI climate as well as to MH_{REF} (Fig. 10). All ensemble members are characterized by increased wet anomalies in the north than in the south in both SA and SEA. In terms of the spatially averaged JJAS precipitation over SA, in almost all ensemble members the presence of GS conditions leads to a doubling of the precipitation increase produced by MH_{REF}. On the other hand, over SEA, the amplitude of the increase in MH_{GS} is less consistent between the ensemble members. The first ensemble member, which is characterized by small overall JJAS rainfall changes over SEA in MH_{REF} due to the opposite signs of anomalies simulated in the south and the north, triples the wet anomaly in MH_{GS} by reducing the widespread drying over southern SEA. In the fourth ensemble member using the BMI cumulus scheme, feedbacks from the Sahara greening leads to the smallest precipitation intensification compared to the simulation with only the orbital/GHG forcing (0.3 mm day⁻¹) among all ensemble members, which is only 30% of the averaged wet anomaly in MH_{REF} (0.9 mm day⁻¹).~~

While JJAS average rainfall determines the overall amount of water supply, shifts in monsoon onset and withdrawal play an important role in determining the length and thus the net precipitation that falls during the monsoon season. In the PI experiment, the SAM starts in late May, and then develops until August and ~~retreats~~starts to retreat in September (Fig. 44a10a). In MH_{REF}, the monsoon onset is delayed and the precipitation reduction is greater at lower latitudes (Fig. 44b10b). The impact of the late onset is offset by a delayed withdrawal, which lengthens the SAM duration. Inclusion of the GS boundary conditions results in a further lengthening of the monsoon season to November (Fig. 44e10c). The delay of the monsoon onset in MH_{REF} is also eliminated by including a vegetated Sahara, although the region at lower latitudes is still characterized by a relatively smaller

precipitation increase in June. On the contrary, SEA has a much stronger delay of the monsoon onset and ~~shows is~~ characterized by a greater decrease in rainfall in early summer in MH_{REF} (Fig. ~~44e10e~~). The withdrawal of the SEAM is also delayed by ~~about~~approximately one month. MH_{GS} displays a weaker decrease in precipitation than MH_{REF} in spring and early summer. The Sahara greening also increases the rainfall at the end of the monsoon season (September and October) especially at the higher latitudes, further postponing the monsoon withdrawal.

3.4 Changes in the large-scale moisture flux

The JJAS precipitation over SA and SEA is closely related to the summer monsoonal winds transporting moisture from the ocean to the Eurasian continent (Fig. ~~42d11d~~). The enhanced Northern Hemisphere insolation during the MH (Fig. 1) and enhanced land-sea temperature gradients (Fig. 54) results in an intensification of the westward flow around the southern tip of India and the ~~eastward wind~~westerly across SA and SEA, intensifying the simulated Asian monsoonal circulation and strengthening the moisture flux to SA and SEA (Fig. ~~42e11k~~). This spatial pattern of wind anomaly agrees well with previous studies (Pausata et al., 2020; Piao et al., 2020) and explains the rainfall changes in Fig. 6. Furthermore, the negative SST anomalies over the northern Arabian Sea probably results from the enhanced upwelling caused by the intensified monsoonal flow and the increased SSTs south of the Indian subcontinent (Fig. 4) are likely related to the weakened westerlies over that region (~~Fig. 4~~). The convergence of the simulated low-level moisture flux has a positive anomaly over northern SA and South China, while the water vapor flux becomes slightly more divergent over southern SEA and southern ~~and central~~ SA in MH_{REF}. As a consequence, the enhanced moisture flux and convergence over northern India lead to a greater JJAS precipitation increase than in southern India during the MH. Conversely, the reduction of JJAS precipitation in the southern part of SEA is connected to the decreased moisture flux convergence in that region. In mid-latitudes, the high-level moisture flux above the Eurasian continent becomes more divergent in MH_{REF} than in the PI (Fig. ~~42b~~11h). In the global model, the GS enhances the northward expansion of the North African monsoon (Fig. 11c). Under the GS boundary conditions, the low-level westerlies over the ~~BOB~~northern Indo-Pacific Ocean becomes ~~slightly~~ weaker than in MH_{REF} (Fig. ~~42f11f~~), which decreases the upwelling and hence increases the SSTs of that region (Fig. 54). ~~Although the south westerlies~~7), favouring more evaporation. Anomalous easterlies induced by GS over the ~~BOB weaken, the~~North Pacific carry more moisture ~~divergence over the southern part of the Indochinese Peninsula is reduced (Fig. 12f), which explains~~into SA and SEA, intensifying the smaller monsoon precipitation decrease of that region (Figs. 6c and 9e). Over there. In the rest of the Asian monsoon domain regional model, the inclusion of a vegetated Sahara intensifies the anomaly pattern characteristic of the MH_{REF} experiment

over the entire domain, in particular over north India, which explains the strong precipitation increase over most of SA (~~Fig~~Figs. 9 and A2).

4 Conclusions

In this study, we have reported on paleoclimate experiments with dynamical downscaling simulations that we have conducted using the coupled WRF-CROCO model driven by the output from the global coupled model UofT-CCSM4 GCM, to investigate the MH Asian regional climate. We have focused attention on the summer monsoon circulations of this region, reconstructing these at much higher resolution than is possible with a global model by employing a dynamical downscaling procedure. By employing a downscaling pipeline in which the regional climate model WRF is coupled to the regional ocean model CROCO we have been able not-only to capture the effects of the complex surface orography and land-sea contrast of the region but also achieve a much higher-fidelity data-model comparison than has been achieved previously. Furthermore, and in contrast to the common protocol for climate simulations of the MH Asian monsoon system (Otto-Bliesner et al., 2016), which only includes the impact of solar insolation changes and ignores the potential for teleconnection effects on the Asian monsoons, our study also incorporates a set of downscaled simulations that include Green Sahara (GS) boundary conditions through which we have been able to assess the remote response of the MH SAM and SEAM systems to the greening of the Sahara. These effects have been shown to be of first order in importance. The magnitude of the impacts are significantly enhanced by the high spatial resolution delivered by the downscaling pipeline.

Compared to the pre-industrial, all physics ensemble members, downscaled from the reference MH climate which does not include a GS, consistently exhibit a strengthened summer monsoon intensity during the MH over both SA and SEA. The increase in summer rainfall is particularly strong over northern India and northern Indochina, while monsoon precipitation decreases over the southern part of SEA and the western BOB. MH monsoon intensity is weaker during early summer, particularly over SEA, which is likely linked to the lower SSTs in the east Arabian Sea and the BOB. A late monsoon onset and a delay in the monsoon withdrawal over both SA and SEA are also found in our analysis. All of these changes are stronger in the downscaled simulations than in the GCM.

Comparison with paleoclimatic reconstructions ~~from the Bartlein et al. (2011)~~ demonstrates that over northern Indochina and along the Himalayas, the simulated annual rainfall anomalies agree well with the reconstructions from a qualitative perspective. However, over the eastern TP, the model simulations are characterized by a drier

climate while wetter conditions are indicated by proxy data for the MH. Overall the WRF results are in better agreement with proxy inferences especially in the northern part of SEA and the ~~south-western~~southwestern China than the predictions of the UofT-CCSM4 global model which is much coarser in resolution and does not resolve the regional orography accurately. Given that climate models using coarse spatial resolutions generally reproduce the direction and large-scale patterns of the MH monsoon system changes, but tend to underestimate the regional response (Hargreaves et al., 2013; Zhao and Harrison, 2012; Braconnot et al., 2012), this study clearly demonstrates the added value of using dynamical downscaling in paleoclimate studies of the Asian monsoon system. However, since proxy data are scarce both geographically and temporally, particularly over SEA and the southern part of SA, more reconstruction work based on various proxies and methods will be required to draw more robust conclusions.

~~Among the individual physics ensemble members, there remains a non-trivial degree of uncertainty in the simulated changes to the magnitude and spatial distribution of the MH SEAM and SAM. The first ensemble member based on the KF-cumulus scheme produces the smallest wet anomaly over SEA (0.3 mm day^{-1}) and the largest wet anomaly over SA among all ensemble members (1.3 mm day^{-1}). The GF scheme in the second ensemble member, however, produces the largest JJAS precipitation increase over SEA (1.4 mm day^{-1}), and the Tiedtke scheme applied in the third ensemble member has the smallest precipitation change over SA (0.8 mm day^{-1}).~~

Comparison between simulations with and without GS boundary conditions demonstrates that greening of the Sahara amplifies the response of SAM and SEAM and leads to a further increase in MH monsoon precipitation, which is likely related to increased heating over the interior of the Eurasian continent. Over SA under GS conditions, the water vapor flux from the Arabian Sea to the northern Indian subcontinent is enhanced compared to the case when only the orbital forcing is considered. Over the southern part of SEA, although a Green Sahara weakens the low-level westerly moisture flux, it also reduces the moisture divergence. With a GS, the JJAS rainfall increases are more than twice as large as those caused by the orbital and GHG forcings in all WRF-CROCO physics ensemble members over SA. ~~Compared with MH_{REF}, the KF-cumulus parameterization scheme exhibits the largest JJAS precipitation increase over SEA among all the ensemble members from including the Saharan vegetation, while the fourth ensemble based on the BMJ-cumulus scheme has the smallest JJAS rainfall enhancement (30%) in MH_{GS}. The precipitation increase in response to the GS forcing is associated with a drop in surface temperature over SA and SEAM (Fig. 7), which reduces the sensible heat flux. On the other hand, the substantially increased SAM and SEAM precipitation leads to a release of latent heat, which warms the middle~~

and upper troposphere and adds to the temperature difference between land and ocean (Fig. 7), thus driving stronger winds and moisture advection, which in turn leads to enhanced precipitation. The duration of monsoon season is also lengthened by several months over both regions by extending its withdrawal phase. Comparison of downscaled results including a GS with paleoclimate reconstructions points to significant improvements in simulating precipitation, especially over the ~~north and west sides of~~ TP and ~~in northeastern~~ North China, when the influence of a vegetated Sahara is taken into account. These results highlight the climate sensitivity of Saharan vegetation changes via ocean-atmosphere teleconnections and emphasized the importance of incorporating MH vegetation feedbacks.

Finally, the precipitation anomalies reported in this study are subject to uncertainties associated with the parts of the global simulations used to force the WRF-CROCO simulations. Since the precipitation results are strongly affected by large interannual variability associated with ENSO, further simulations with different initial conditions will be needed to characterize the internal variability and confirm the robustness of this result. Besides, in this study we have only considered the impact of land surface changes over ~~northern~~ north Africa on SAM and SEAM using one coupled regional modeling system. However, some recent studies also argue for the impact on the MH Asian monsoon arising from a reduced dust over ~~northern~~ north Africa (Pausata et al., 2020; Sun et al., 2019). Additionally, proxy data from the MH indicate widespread vegetation changes everywhere, particularly the greater vegetation coverage over Eurasia (Tarasov et al., 1998) and South and East Asia (Zhang et al., 2014). It has already been shown that the higher Eurasian forest cover during the MH can shift the intertropical convergence zone northward and has remote impact on global climate (Swann et al., 2014). These results call for further investigations using both diverse numerical models and more realistic vegetation distributions and dust concentrations to enable further improvements in reconstructions of the MH Asian monsoon systems.

Appendix A

Sensitivity to cumulus parameterization schemes

Comparing different ensemble members, all physics configurations provide generally consistent signals for both SA and SEA during JJAS, with greater monsoon precipitation increase over northern SA and SEA and along the windward slope of the Western Ghats (Fig. A1). Among all the ensemble members, the GF scheme in the second ensemble member produces the largest JJAS precipitation increase (1.5 mm day⁻¹), while the first ensemble member based on the KF cumulus scheme produces the smallest wet anomaly over SEA (0.2 mm day⁻¹), which

is a result of the large dry anomaly in the south compensating the rainfall increase in the north. Over SA, however, the KF cumulus scheme produces the largest wet anomaly among all ensemble members (1.4 mm day^{-1}), while the third ensemble member using the Tiedtke cumulus scheme has the smallest precipitation change (0.8 mm day^{-1}). Furthermore, the GF scheme produces the second largest JJAS rainfall increase over SA (1.3 mm day^{-1}). Such different JJAS rainfall signals over SA and SEA indicate the impact of the choice of different cumulus schemes on the spatial distribution of moisture. In our simulations of SA and SEA for the present day (Huo and Peltier, 2020, 2021), the KF cumulus scheme performed the best in terms of reproducing the mean SAM precipitation of all cumulus schemes, while it significantly overestimated precipitation over nearly all of SEA. The Tiedtke scheme has a general dry bias over SA, while it can be considered the best in terms of the SEAM average precipitation simulation during instrumental era. The BMJ cumulus scheme generally produces a moist bias in both the Indian and SEA cases under modern climate conditions.

The JJAS precipitation anomalies in the experiments with GS boundary conditions are generally consistent among different WRF-CROCO ensemble members: both the SAM and SEAM rainfall significantly increase compared to the PI climate as well as to MH_{REF} (Fig. A2). All ensemble members are characterized by increased wet anomalies in the north than in the south in both SA and SEA. In terms of the spatially averaged JJAS precipitation over SA, in almost all ensemble members the presence of GS conditions leads to a doubling of the precipitation increase produced by MH_{REF} . On the other hand, over SEA, the amplitude of the increase in MH_{GS} is less consistent between the ensemble members. The first ensemble member, which is characterized by small overall JJAS rainfall changes over SEA in MH_{REF} due to the opposite signs of anomalies simulated in the south and the north, triples the wet anomaly in MH_{GS} by reducing the widespread drying over southern SEA. In the fourth ensemble member using the BMJ cumulus scheme, feedbacks from the Sahara greening leads to the smallest precipitation intensification compared to the simulation with only the orbital/GHG forcing (0.3 mm day^{-1}) among all ensemble members, which is only 30% of the averaged wet anomaly in MH_{REF} (0.9 mm day^{-1}).

JJAS precipitation anomalies

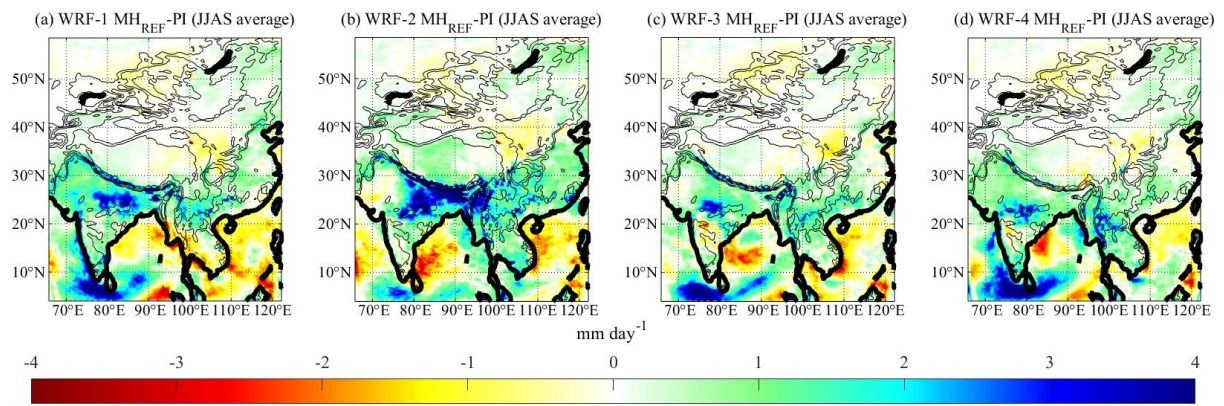


Figure A1: JJAS average precipitation anomalies (mm day⁻¹) for MH_{REF} in four WRF physics ensemble members. The topography contours of 500 m, 1000 m, 2000 m and 4000 m are also shown in (a-d).

JJAS precipitation anomalies

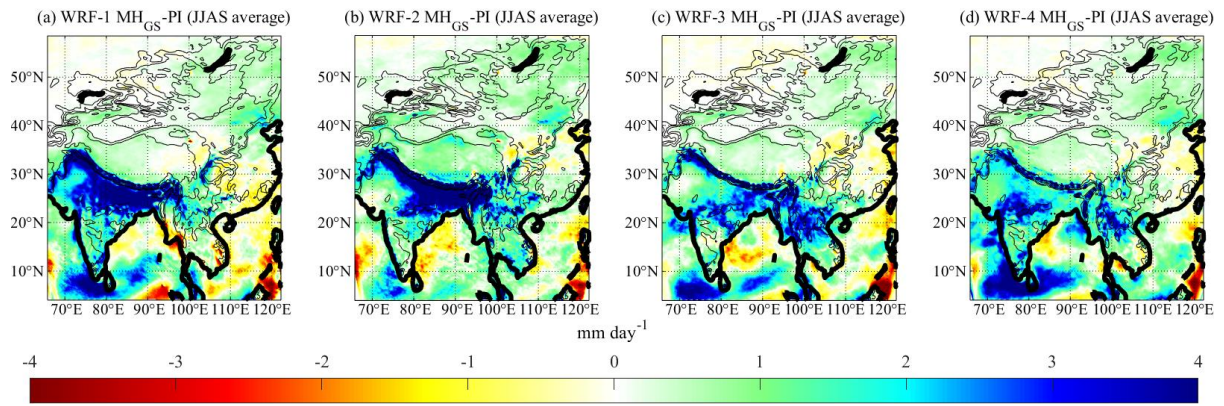


Figure A2: Same as Fig. A1, but for MH_{GS}.

Code/Data availability

Code and Data for reproducing each of the figures in the paper can be obtained from Y. Huo.

Author contribution

W.R. Peltier and Y. Huo designed the experiments and Y. Huo carried them out. W.R Peltier worked to
555 integrate CROCO into the UofT downscaling pipeline together with SciNet colleagues. D. Chandan designed
the Green Sahara simulation and performed the UofT-CCSM4 global experiments. Y. Huo adapted the WRF
radiation module for the MH experiments with the help of D. Chandan. Y. Huo prepared the manuscript with
contributions from both co-authors.

Competing interests

560 The authors declare that they have no conflict of interest.

Acknowledgments

Mr. F. Xie consulted on the CROCO coupled WRF pipeline and his inputs are also gratefully acknowledged.
The simulations presented in this paper were performed at the SciNet High Performance Computing facility at
the University of Toronto, which is a component of the Compute Canada HPC platform. The research of WRP
565 at the University of Toronto is supported by NSERC Discovery Grant A9627.

References

An, Z.: The history and variability of the East Asian paleomonsoon climate, *Quaternary Science Reviews*, 19,
171–187, [https://doi.org/10.1016/S0277-3791\(99\)00060-8](https://doi.org/10.1016/S0277-3791(99)00060-8), 2000.

570 [Banakar, V. K., Mahesh, B. S., Burr, G. and Chodankar, A. R.: Climatology of the Eastern Arabian Sea during
the last glacial Cycle reconstructed from paired measurement of foraminiferal \$\delta\$ 18 O and Mg/Ca, *Quat. Res.*,
73\(3\), 535–540, <https://doi.org/10.1016/j.yqres.2010.02.002>, 2010.](#)

Bartlein, P. J., Harrison, S. P., Brewer, S., Connor, S., Davis, B. A. S., Gajewski, K., Guiot, J., Harrison-Prentice,
T. I., Henderson, A., Peyron, O., Prentice, I. C., Scholze, M., Seppä, H., Shuman, B., Sugita, S., Thompson, R. S.,

Viau, A. E., Williams, J. and Wu, H.: Pollen-based continental climate reconstructions at 6 and 21 ka: a global synthesis, *Clim. Dyn.*, 37, 775–802, <https://doi.org/10.1007/s00382-010-0904-1>, 2011.

Berger, A.: Long-term variations of daily insolation and quater-nary climatic changes, *J. Atmos. Sci.*, 35(12), 2362–2367, [https://doi.org/10.1175/1520-0469\(1978\)035<2362:LTVODI>2.0.CO;2](https://doi.org/10.1175/1520-0469(1978)035<2362:LTVODI>2.0.CO;2), 1978.

Böll, A., Schulz, H., Munz, P., Rixen, T., Gaye, B. and Emeis, K.-C.: Contrasting sea surface temperature of summer and winter monsoon variability in the northern Arabian Sea over the last 25 ka, *Palaeogeogr. Palaeoclimatol. Palaeoecol.*, 426, 10–21, <https://doi.org/10.1016/J.PALAEO.2015.02.036>, 2015.

Brierley, C. M., Zhao, A., Harrison, S. P., Braconnot, P., Williams, C. J. R., Thornalley, D. J. R., Shi, X., Peterschmitt, J.-Y., Ohgaito, R., Kaufman D., S., Kageyama, M., Hargreaves, J. C., Erb, M. P., Emile-Geay, J., D'Agostino, R., Chandan, D., Carré, M., Bartlein, P., Zheng, W., Zhang, Z., Zhang, Q., Yang, H., Volodin E., M., Tomas, R. A., Routson, C., Peltier, W.R., Otto-Bliesner, B., Morozova, P. A., McKay, N. P., Lohmann, G., LeGrande, A. N., Guo, C., Cao, J., Brady, E., Annan J. D., and Abe-Ouchi, A.: Large-scale features and evaluation of the PMIP4-CMIP6 midHolocene simulations, *Clim. Past*, 16, no. 5, 1847–1872., <https://doi.org/10.5194/cp-16-1847-2020>, 2020.

Braconnot, P., Harrison, S. P., Kageyama, M., Bartlein, P. J., Masson-Delmotte, V., Abe-Ouchi, A., Otto-Bliesner, B., and Zhao, Y.: Evaluation of climate models using palaeoclimatic data, *Nature Climate Change*, 2(6), 417–424, <https://doi.org/10.1038/nclimate1456>, 2012.

Cai, Y., Tan, L., Cheng, H., An, Z., Edwards, R. L., Kelly, M. J., Kong, X., and Wang, X.: The variation of summer monsoon precipitation in central China since the last deglaciation, *Earth and Planetary Science Letters*, 291(1–4), 21–31, <https://doi.org/10.1016/j.epsl.2009.12.039>, 2010.

Cai, Y., Zhang, H., Cheng, H., An, Z., Edwards, R. L., Wang, X., Tan, L., Liang, F., Wang, J., and Kelly, M.: The Holocene Indian monsoon variability over the southern Tibetan Plateau and its teleconnections, *Earth and Planetary Science Letters*, 335, 135–144, <https://doi.org/10.1016/j.epsl.2012.04.035>, 2012.

Chandan, D., and Peltier, W. R.: Regional and global climate for the mid-Pliocene using the University of Toronto version of CCSM4 and PlioMIP2 boundary conditions, *Clim. Past*, 13(7), 919–942, <https://doi.org/10.5194/cp-13-919-2017>, 2017.

Chandan, D. and Peltier, W. R.: On the mechanisms of warming the mid-Pliocene and the inference of a hierarchy of climate sensitivities with relevance to the understanding of climate futures, *Clim. Past*, 14(6), 825–856, <https://doi.org/10.5194/cp-14-825-2018>, 2018.

Chandan, D., and Peltier, W. R.: African Humid Period precipitation sustained by robust vegetation, soil, and lake feedbacks. *Geophysica Research Letters*, 47, e2020GL088728, <https://doi.org/10.1029/2020GL088728>, 2020.

605 Clark, C. O., Cole, J. E. and Webster, P. J.: Indian Ocean SST and Indian summer rainfall: predictive relationships and their decadal variability, *J. Clim.*, 13, 4452–4452, [https://doi.org/10.1175/1520-0442\(2000\)013<2503:IOSAIS>2.0.CO;2](https://doi.org/10.1175/1520-0442(2000)013<2503:IOSAIS>2.0.CO;2), 2000.

Cosford, J., Qing, H., Eglington, B., Matthey, D., Yuan, D., Zhang, M., and Cheng, H.: East Asian monsoon variability since the mid-Holocene recorded in a high-resolution, absolute-dated aragonite speleothem from eastern China, *Earth and Planetary Science Letters*, 275(3–4), 296–307, <https://doi.org/10.1016/j.epsl.2008.08.018>, 2008.

Cullen, J. L. and Prell, W. L.: Planktonic Foraminifera of the northern Indian Ocean: distribution and preservation in surface sediments, *Marine Micropaleontology*, 9, 1–52, [https://doi.org/10.1016/0377-8398\(84\)90022-7](https://doi.org/10.1016/0377-8398(84)90022-7), 1984.

Dallmeyer, A., Claussen, M., Wang, Y. and Herzschuh, U.: Spatial variability of Holocene changes in the annual precipitation pattern: a model-data synthesis for the Asian monsoon region, *Clim. Dyn.*, 40(11–12), 2919–2936, <https://doi.org/10.1007/s00382-012-1550-6>, 2013.

615 Ding, Y. H.: The variability of the Asian summer monsoon, *J. Meteor. Soc. Jpn.*, 85, 21–54, <https://doi.org/10.2151/jmsj.85B.21>, 2007.

Doherty, R., Kutzbach, J., Foley, J. and Pollard, D.: Fully coupled climate/dynamical vegetation model simulations over Northern Africa during the mid-Holocene, *Clim. Dyn.*, 16, 561–573, <https://doi.org/10.1007/s003820000065>, 2000.

620 Dong, J., Wang, Y., Cheng, H., et al.: A high-resolution stalagmite record of the Holocene East Asian monsoon from Mt Shennongjia, central China, *The Holocene*, 20, 257–264, <https://doi.org/10.1177/0959683609350393>, 2010.

d'Orgeville, M., Peltier, W. R., Erler, A. R., and Gula, J.: Climate change impacts on Great Lakes Basin precipitation extremes, *J. Geophys. Res.*, 119 (18), 10 799–10 812, <https://doi.org/10.1002/2014JD021855>, 2014.

Dykoski, C. A., Revenaugh, J., Edwards, R. L. et al.: A high-resolution, absolute-dated Holocene and deglacial Asian monsoon record from Dongge Cave, China, *Earth and Planetary Science Letters*, 233, 71–86, <https://doi.org/10.1016/j.epsl.2005.01.036>, 2005.

625 Endo, N., Matsumoto, J., and Lwin T.: Trends in precipitation extremes over Southeast Asia, *Sola*, 5:168–171, <https://doi.org/10.2151/sola.2009-043>, 2009.

Erler, A. R. and Peltier, W. R.: Projected Changes in Precipitation Extremes for Western Canada based on High-resolution Regional Climate Simulations, *J. Climate*, 29, 8841–8863, <https://doi.org/10.1175/JCLI-D-15-0530.1>, 2016.

- 635 Evan, A. T., Flamant, C., Gaetani, M. and Guichard, F.: The past, present and future of African dust, *Nature*, 531(7595), 493–495, <https://doi.org/10.1038/nature17149>, 2016.
- Gaye, B., Böll, A., Segschneider, J., Burdanowitz, N., Emeis, K.-C., Ramaswamy, V., Lahajnar, N., Lückge, A. and Rixen, T.: Glacial-interglacial changes and Holocene variations in Arabian Sea denitrification, *Biogeosciences*, 15(2), 507–527, <https://doi.org/10.5194/bg-15-507-2018>, 2018.
- 640 Gent, P. R., Danabasoglu, G., Donner, L. J., Holland, M. M., Hunke, E. C., Jayne, S. R., Lawrence, D. M., Neale, R. B., Rasch, P. J., Vertenstein, M., Worley, P. H., Yang, Z-L, Zhang, M.: The community climate system model version 4. *J Clim*, 24(19), 4973–4991, <https://doi.org/10.1175/2011JCLI4083.1>, 2011.
- Giannini, A. and Kaplan, A.: The role of aerosols and greenhouse gases in Sahel drought and recovery, *Clim. Change*, 152(3–4), 449–466, <https://doi.org/10.1007/s10584-018-2341-9>, 2019.
- 645 Govil, P. and Naidu, P. D.: Evaporation-precipitation changes in the eastern Arabian Sea for the last 68 ka: Implications on monsoon variability, *Paleoceanography*, 25(1), <https://doi.org/10.1029/2008PA001687>, 2010.
- Grell, G. A., Freitas, S. R.: A scale and aerosol aware stochastic convective parameterization for weather and air quality modeling, *Atmos. Chem. Phys.*, 14, 5233–5250, <https://doi.org/10.5194/acp-14-5233-2014>, 2014.
- Griffiths, M. L., Johnson, K. R., Pausata, F. S. R. et al.: End of Green Sahara amplified mid- to late Holocene megadroughts in mainland Southeast Asia, *Nat. Commun.*, 11, 4204, <https://doi.org/10.1038/s41467-020-17927-6>, 2020.
- 650 Gula, J., and Peltier, W. R.: Dynamical downscaling over the Great Lakes Basin of North America using the WRF regional climate model: The impact of the Great Lakes system on regional greenhouse warming, *J. Climate*, 25, 7723–7742, <https://doi.org/10.1175/JCLI-D-11-00388.1>, 2012.
- 655 Hargreaves, J. C., Annan, J. D., Ohgaito, R., Paul, A. and Abe-Ouchi, A.: Skill and reliability of climate model ensembles at the last glacial maximum and mid-Holocene, *Clim. Past*, 9, 811–823, <https://doi.org/10.5194/cp-9-811-2013>, 2013.
- Harrison, S. P. and Bartlein, P. J.: Records from the past, lessons for the future: what the palaeo-record implies about mechanisms of global change, in: *The future of the world’s climates*, edited by Henderson-Sellers, A. and McGuffie, K., Elsevier, Amsterdam, 403–436, <https://doi.org/10.1016/B978-0-12-386917-3.00014-2>, 2012.
- 660 Hély, C., Lézine, A. M., and Contributors, A.: Holocene changes in African vegetation: Tradeoff between climate and water availability, *Climate of the Past*, 10(2), 681–686, <https://doi.org/10.5194/cp-10-681-2014>, 2014.
- Herzschuh, U.: Palaeo-moisture evolution in monsoonal Central Asia during the last 50.000 years, *Quaternary Sci. Rev.*, 25 (1/2), 163–78, <https://doi.org/10.1016/j.quascirev.2005.02.006>, 2006;

- 665 Holmes, J., and Hoelzmann, P.: The late Pleistocene-Holocene African Humid Period as evident in lakes, Oxford
<https://doi.org/10.1093/acrefore/9780190228620.013.531>, 2017.
- Hong, Y. and Lim, J. O. J.: The WRF single-moment 6-class microphysics scheme (WSM6), J. Korean Meteor.
 Soc., 42, 129–151, 2006.
- Hu, C., Henderson, G. M., Huang, J., Xie, S., Sun, Y., and Johnson, K. R.: Quantification of Holocene Asian
 670 monsoon rainfall from spatially separated cave records, Earth and Planetary Science Letters, 266(3–4), 221–232,
<https://doi.org/10.1016/j.epsl.2007.10.015>, 2008.
- Huang, X., Zhou, T., Dai, A., Li, H., Li, C., Chen, X., Lu, J., Von storch, J.-S. and Wu, B.: South Asian summer
 monsoon projections constrained by the interdecadal Pacific oscillation, Sci. Adv., 6(11), eaay6546,
<https://doi.org/10.1126/sciadv.aay6546>, 2020.
- 675 Huo, Y., Peltier, W. R.: Dynamically Downscaled Climate Simulations of the Indian Monsoon in the Instrumental
 Era: Physics Parameterization Impacts and Precipitation Extremes, Journal of Applied Meteorology and
 Climatology, 58(4), 831–852, <https://doi.org/10.1175/JAMC-D-18-0226.1>, 2019.
- Huo, Y., Peltier, W. R.: Dynamically Downscaled Climate Change Projections for the South Asian Monsoon:
 Mean and Extreme Precipitation Changes and Physics Parameterization Impacts, J. Climate, 33, 2311–2331,
 680 <https://doi.org/10.1175/JCLI-D-19-0268.1>, 2020.
- Huo, Y., Peltier, W. R.: The Southeast Asian Monsoon: Dynamically Downscaled Climate Change Projections
 and High Resolution Regional Ocean Modelling on the Effects of the Tibetan Plateau, Clim. Dyn., ~~in press~~,
[2021-56, 2597–2616, https://doi.org/10.1007/s00382-020-05604-9](https://doi.org/10.1007/s00382-020-05604-9), 2021.
- Hutson, W. H. and Prell, W. L.: A paleoecologic al transfer function, FI-2, for Indian Ocean planktonic
 685 foraminifera, Journal of Paleontology, 54, 381–399, <https://www.jstor.org/stable/1304070>, 1980.
- Jalihal, C., Srinivasan, J. and Chakraborty, A.: Modulation of Indian monsoon by water vapor and cloud feedback
 over the past 22,000 years, Nat. Commun., 10(1), 5701, <https://doi.org/10.1038/s41467-019-13754-6>, 2019a.
- Jalihal, C., Bosmans, J. H. C., Srinivasan, J. and Chakraborty, A.: The response of tropical precipitation to Earth's
 precession: the role of energy fluxes and vertical stability, Clim. Past, 15(2), 449–462, [https://doi.org/10.5194/cp-](https://doi.org/10.5194/cp-15-449-2019)
 690 15-449-2019, 2019b.
- Janjic, Z. I.: The Step-Mountain Eta Coordinate Model: Further developments of the convection, viscous sublayer,
 and turbulence closure schemes, Mon. Wea. Rev., 122, 927–945, [https://doi.org/10.1175/1520-](https://doi.org/10.1175/1520-0493(1994)122<0927:TSMECM>2.0.CO;2)
 0493(1994)122<0927:TSMECM>2.0.CO;2, 1994.

695 Jiang, D., Lang, X., Tian, Z. and Ju, L.: Mid-Holocene East Asian summer monsoon strengthening: insights from
Paleoclimate Modeling Intercomparison Project (PMIP) simulations, *Paleogeog Paleoclimatol Paleoecol*,
369:422–429, <https://doi.org/10.1016/j.palaeo.2012.11.007>, 2013.

Kain, J. S.: The Kain–Fritsch convective parameterization: An update, *J. Appl. Meteor.*, 43, 170–181,
[https://doi.org/10.1175/1520-0450\(2004\)043<0170:TKCPAU>2.0.CO;2](https://doi.org/10.1175/1520-0450(2004)043<0170:TKCPAU>2.0.CO;2), 2004.

700 Kutzbach, J. E.: The changing pulse of the Monsoon, in: *Monsoon*, edited by Fein, J.S., Stephens, P. L., John
Wiley, New York, 247–268, 1987.

Kutzbach, J. E., and Otto-Bliesner, B. I.: The sensitivity of the African–Asian monsoonal climate to orbital
parameter changes for 9000 yr B. P. in a low-resolution general circulation model, *J. Atmos. Sci.*, 39, 1177–1188,
[https://doi.org/10.1175/1520-0469\(1982\)039<1177:TSOTAA>2.0.CO;2](https://doi.org/10.1175/1520-0469(1982)039<1177:TSOTAA>2.0.CO;2), 1982

705 Kutzbach, J. E., and Street-Perrott, F. A.: Milankovitch forcing of fluctuations in the level of tropical lakes from
18 to 0 kyr BP, *Nature*, 317, 130–140, <https://doi.org/10.1038/317130a0>, 1985.

Kutzbach, J. E., Harrison, S. P. and Coe, M. T.: Land–Ocean–Atmosphere Interactions and Monsoon Climate
Change: A Paleo-Perspective, in: *Global Biogeochemical Cycles in the Climate System*, edited by Schulze, E. D.,
Heimann, M., Harrison, S. P., Holland, E., Lloyd, J., Prentice, I. C. and Schimel, D., Academic Press, San Diego,
London, 73–83, <https://doi.org/10.1016/B978-012631260-7/50008-X>, 2001.

710 Kutzbach, J. E., and Guetter, P.: The influence of changing orbital parameters and surface boundary conditions
on climate simulations for the past 18 000 years, *J. Atmos. Sci.*, 43, 1726–1759, [https://doi.org/10.1175/1520-0469\(1986\)043<1726:TIOCOP>2.0.CO;2](https://doi.org/10.1175/1520-0469(1986)043<1726:TIOCOP>2.0.CO;2), 1986.

Kutzbach, J. E., and Gallimore, R. G.: Sensitivity of a coupled atmosphere/mixed layer ocean model to changes
in orbital forcing at 9000 years B. P., *J. Geophys. Res.*, 93, 803–821, <https://doi.org/10.1029/JD093iD01p00803>,
715 1988.

Laskar, J., Robutel, P., Joutel, F., Gastineau, M., Correia, A. C. M. and Levrard, B.: A long-term numerical
solution for the insolation quantities of the Earth, *Astronomy Astrophys.*, 428, 261–85,
<https://doi.org/10.1051/0004-6361:20041335>, 2004.

Mishra, A. K., Nagaraju, V., Rafiq, M., and Chandra, S.: Evidence of links between regional climate change and
720 precipitation extremes over India, *Weather*, 74, 281–221, <https://doi.org/10.1002/WEA.3259>, 2018.

Otto-Bliesner, B. L., Braconnot, P., Harrison, S. P., Lunt, D. J., Abe-Ouchi, A., Albani, S., Bartlein, P. J., Capron,
E., Carlson, A. E., Dutton, A., Fischer, H., Goelzer, H., Govin, A., Haywood, A., Joos, F., Legrande, A. N.,
Lipscomb, W. H., Lohmann, G., Mahowald, N., Nehrbass-Ahles, C., Pausata, F. S. R., Peterschmitt, J.-Y., Phipps,
S. and Renssen, H.: The PMIP4 contribution to CMIP6. Part 2: Two Interglacials, Scientific Objective and

- 725 Experimental Design for Holocene and Last Interglacia Simulations, *Geosci. Model Dev.*, 10, 3979–4003, <https://doi.org/10.5194/gmd-2016-279>, 2016.
- Pausata, F. S. R. et al: The Greening of the Sahara: Past Changes and Future Implications, *One Earth*, 2, 235–250, <https://doi.org/10.1016/j.oneear.2020.03.002>, 2020.
- Pausata, F. S. R., Emanuel, K. A., Chiacchio, M., Diro, G. T., Zhang, Q., Sushama, L., Stager, J. C. and Donnelly, J. P.: Tropical cyclone activity enhanced by Sahara greening and reduced dust emissions during the African Humid Period, *Proc. Natl. Acad. Sci. U. S. A.*, 114(24), 6221–6226, <https://doi.org/10.1073/pnas.1619111114>, 2017a.
- 730 Pausata, F. S. R., Zhang, Q., Muschitiello, F., Lu, Z., Chafik, L., Niedermeyer, E. M., Stager, J. C., Cobb, K. M. and Liu, Z.: Greening of the Sahara suppressed ENSO activity during the mid-Holocene, *Nat. Commun.*, 8, <https://doi.org/10.1038/ncomms16020>, 2017b.
- 735 Peltier, W. R., d’Orgeville, M., Erler, A. R. and Xie, F.: Uncertainty in Future Summer Precipitation in the Laurentian Great Lakes Basin: Dynamical Downscaling and the Influence of Continental Scale Processes on Regional Climate Change, *J. Climate*, 31, 2651–2673, <https://doi.org/10.1175/JCLI-D-17-0416.1>, 2018.
- Peltier, W. R., and Vettoretti, G.: Dansgaard-Oeschger oscillations predicted in a comprehensive model of glacial climate: A “kicked” salt oscillator in the Atlantic, *Geophysical Research Letters*, 41, 7306–7313, <https://doi.org/10.1002/2014GL061413>, 2014.
- 740 Piao, J., Chen, W., Wang, L., Pausata, F. S., and Zhang, Q.: Northward extension of the east Asian summer monsoon during the mid-Holocene. *Global and Planetary Change*, 184, 103046, <https://doi.org/10.1016/j.gloplacha.2019.103046>, 2020.
- Porter, S. C.: Chinese loess record of monsoon climate during the last glacial–interglacial cycle, *Earth-Science Reviews*, 54, 115–128, [https://doi.org/10.1016/S0012-8252\(01\)00043-5](https://doi.org/10.1016/S0012-8252(01)00043-5), 2001..
- 745 Prell, W. L.: Monsoonal climate of the Arabian Sea during the Late Quaternary: a response to changing solar radiation, in: *Milankovitch and Climate*, edited by Berger, A. L., Imbrie, J., Hays, J., Kukla, G. and Saltzman, B., D. Riedel, Hingham, 349–366, 1984a.
- Prell, W. L.: Variation of monsoonal upwelling: a response to changing solar radiation, in: *Climate Processes and Climate Sensitivity*, edited by Hansen, J. and Takahashi, T., AGU, 48–57, <https://doi.org/10.1029/GM029p0048>, 1984b.
- 750 Prell, W. L. and Kutzbach, J. E.: Monsoon variability over the past 150 000 years, *J. Geophys. Res.*, 82, 8411–8425, <https://doi.org/10.1029/JD092iD07p08411>, 1987.
- Prell, W. L., and Van Campo, E.: Coherent response of Arabian Sea upwelling and pollen transport to late Quaternary monsoonal winds, *Nature*, 323, 526–528, <https://doi.org/10.1038/323526a0>, 1986.
- 755

Saraswat, R., Lea, D. W., Nigam, R., Mackensen, A. and Naik, D. K.: Deglaciation in the tropical Indian Ocean driven by interplay between the regional monsoon and global teleconnections., Earth and Planetary Science Letters, 375, 166-175, <https://doi.org/10.1016/j.epsl.2013.05.022>, 2013.

Skamarock, W. C. and Klemp, J. B.: A time-split nonhydrostatic atmospheric model for weather research and forecasting applications, J. Comput. Phys., 227, 3465–3485, <https://doi.org/10.1016/j.jcp.2007.01.037>, 2008.

Sun, W., Wang, B., Zhang, Q., Pausata, F. S. R., Chen, D., Lu, G., Yan, M., Ning, L. and Liu, J.: Northern Hemisphere Land Monsoon Precipitation Increased by the Green Sahara During Middle Holocene, Geophys. Res. Lett., 46(16), 9870–9879, <https://doi.org/10.1029/2019GL082116>, 2019.

Swann, A. L. S., Fung, I. Y., Liu, Y. and Chiang, J. C. H.: Remote Vegetation Feedbacks and the Mid-Holocene Green Sahara, J. Clim., 27(13), 4857–4870, <https://doi.org/10.1175/JCLI-D-13-00690.1>, 2014.

Tabor, C., Otto-Bliesner, B., and Liu, Z.: Speleothems of South American and Asian monsoons ~~in- uenced~~influenced by a Green Sahara, Geophysical Research Letters, 47, e2020GL089695, <https://doi.org/10.1029/2020GL089695>, 2020.

Tarasov, P. E., Webb III, T., Andreev, A. A., Afanas’eva, N. B., Berezina, N. A., Bezusko, L. G., Blyakharchuk, T. A., Bolikhovskaya, N. S., Cheddadi, R., Chernavskaya, M. M., Chernova, G. M., Dorofeyuk, N. I., Dirksen, V. G., Elina, G. A., Filimonova, L. V., Glebov, F. Z., Guiot, J., Gunova, V. S., Harrison, S. P., Jolly, D., Khomutova, V. I., Kvavadze, E. V., Osipova, I. M., Panova, N. K., Prentice, I. C., Saarse, L., Sevastyanov, D. V., Volkova, V. S. and Zernitskaya, V. P.: Present-day and mid-Holocene biomes reconstructed from pollen and plant macrofossil data from the former Soviet Union and Mongolia, J. Biogeogr., 25(6), 1029–1053, <https://doi.org/10.1046/j.1365-2699.1998.00236.x>, 1998.

Thompson, L. G., Yao, T., Mosley-Thompson, E., Davis, M. E., Henderson, K. A., Lin, P.-N.: A high-resolution millennial record of the South Asian monsoon from Himalayan ice cores, Science, 289, 1916–1919, <https://doi.org/10.1126/science.289.5486.1916> 2000.

Tiedtke, M.: A comprehensive mass flux scheme for cumulus parameterization in large-scale models, Mon. Wea. Rev., 117, 1779–1800, [https://doi.org/10.1175/1520-0493\(1989\)117<1779:ACMFSF>2.0.CO;2](https://doi.org/10.1175/1520-0493(1989)117<1779:ACMFSF>2.0.CO;2), 1989.

Turner, A. G., and Annamalai, H.: Climate change and the South Asian summer monsoon, Nature Climate Change, 2, 587–595, <https://doi.org/10.1038/nclimate1495>, 2012.

Valcke, S.: The OASIS3 coupler: a European climate modelling community software, Geosci. Model Dev., 6(2), 373–388, <https://doi.org/doi:10.5194/gmd-6-373-2013>, 2013.

785 Wang, Y.-J., Cheng, H., Edwards, R. L., An, Z. S., Wu, J. Y., Shen, C.-C. and Dorale, J. A.: A high-resolution absolute-dated late Pleistocene monsoon record from Hulu Cave, China, *Science*, 294, 2345–2348, <https://doi.org/10.1126/science.1064618>, 2001.

Wang, Y., Liu, X. and Herzschuh, U.: Asynchronous evolution of the Indian and East Asian Summer Monsoon indicated by Holocene moisture pattern in monsoonal central Asia, *Earth-Science Rev.*, 103, 135-53, 790 <https://doi.org/10.1016/j.earscirev.2010.09.004>, 2010.

Webster, P. J., Magaña, V. O., Palmer, T. N., Shukla, J., Tomas, R. A., Yanai, M. and Yasunari, T.: Monsoons: processes, predictability, and the prospects for prediction, *J. Geophys. Res.*, 103(C7), 14451–14510, <https://doi.org/10.1029/97JC02719>, 1998.

Wu, G. X., Liu, Y. M., Wang, T. M., Wan, R., Liu, X., Li, W., Wang, Z., Zhang, Q., Duan, A. and Liang, X.: The 795 influence of the mechanical and thermal forcing of the Tibetan plateau on the Asian climate, *J. Hydrometeorol.*, 8, 770–789, <https://doi.org/10.1175/JHM609.1>, 2007

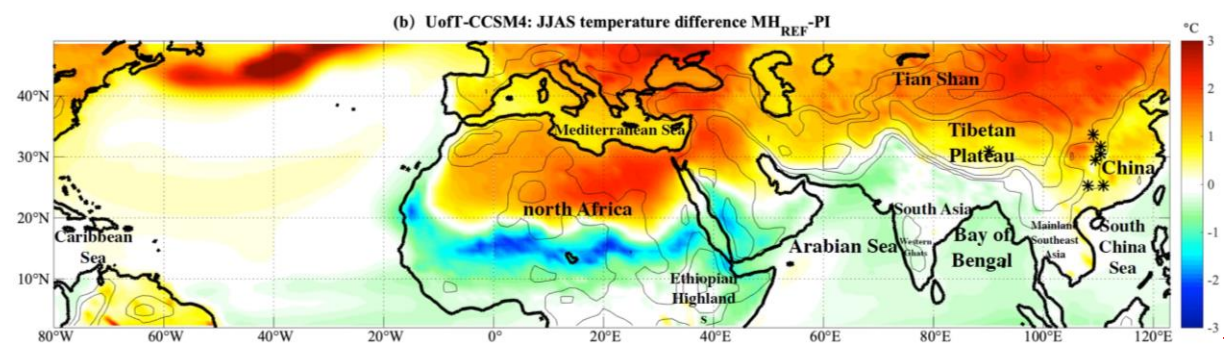
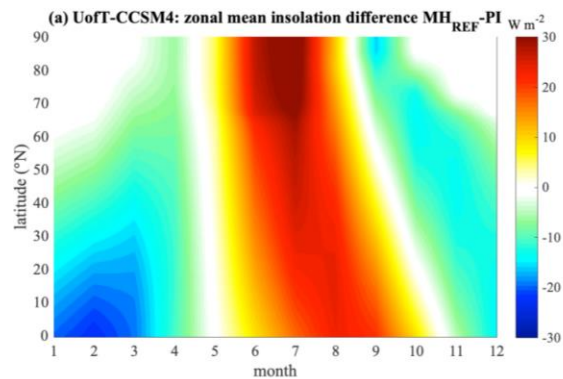
Zhang, W., Ming, Q., Shi, Z., Chen, G., Niu, J., Lei, G., Chang, F. and Zhang, H.: Lake Sediment Records on Climate Change and Human Activities in the Xingyun Lake Catchment, SW China, *PLoS One*, 9(7), e102167, <https://doi.org/10.1371/journal.pone.0102167>, 2014.

800 Zhang, M. L., Yuan, D. X., Lin, Y. S., Qin, J. M., Bin, L., Cheng, H. and Edwards, R. L.: A 6000-year high-resolution climatic record from a stalagmite in Xiangshui Cave, Guilin, China, *The Holocene*, 14, 697–702, <https://doi.org/10.1191/0959683604hl748rp>, 2004.

Zhao, Y. and Harrison, S. P.: Mid-Holocene monsoons: a multi-model analysis of the inter-hemispheric differences in the responses to orbital forcing and ocean feedbacks, *Clim. Dyn.*, 39, 1457–1487, 805 <https://doi.org/10.1007/s00382-011-1193-z>, 2012.

Table 1. ~~Simulations comprising the physics ensemble and their selected cumulus schemes.~~

Simulation	1	2	3	4
Cumulus Scheme	KF	GF	Tiedtke	BMJ



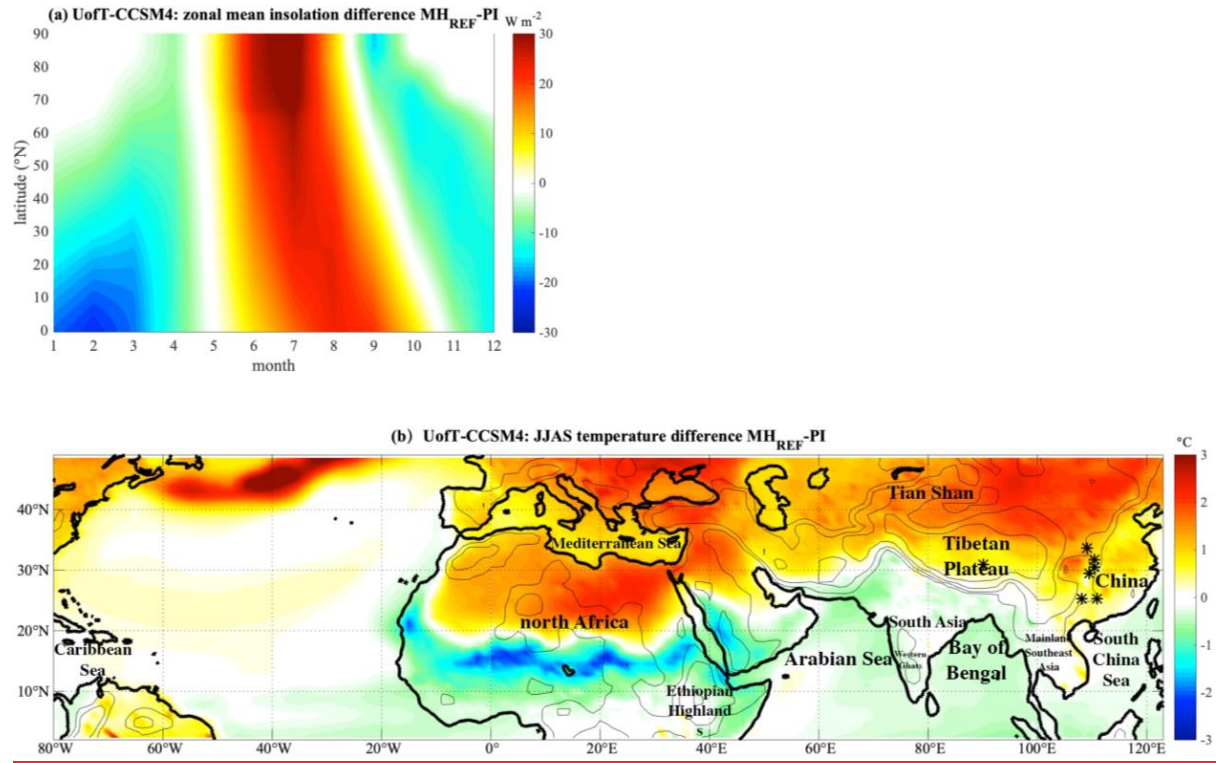
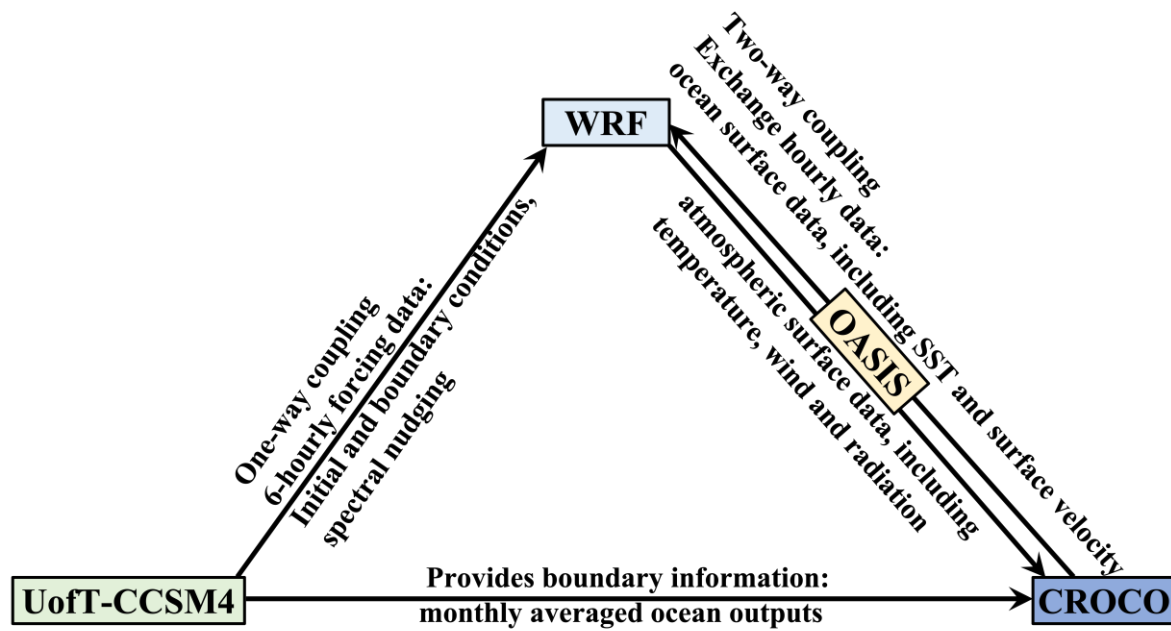
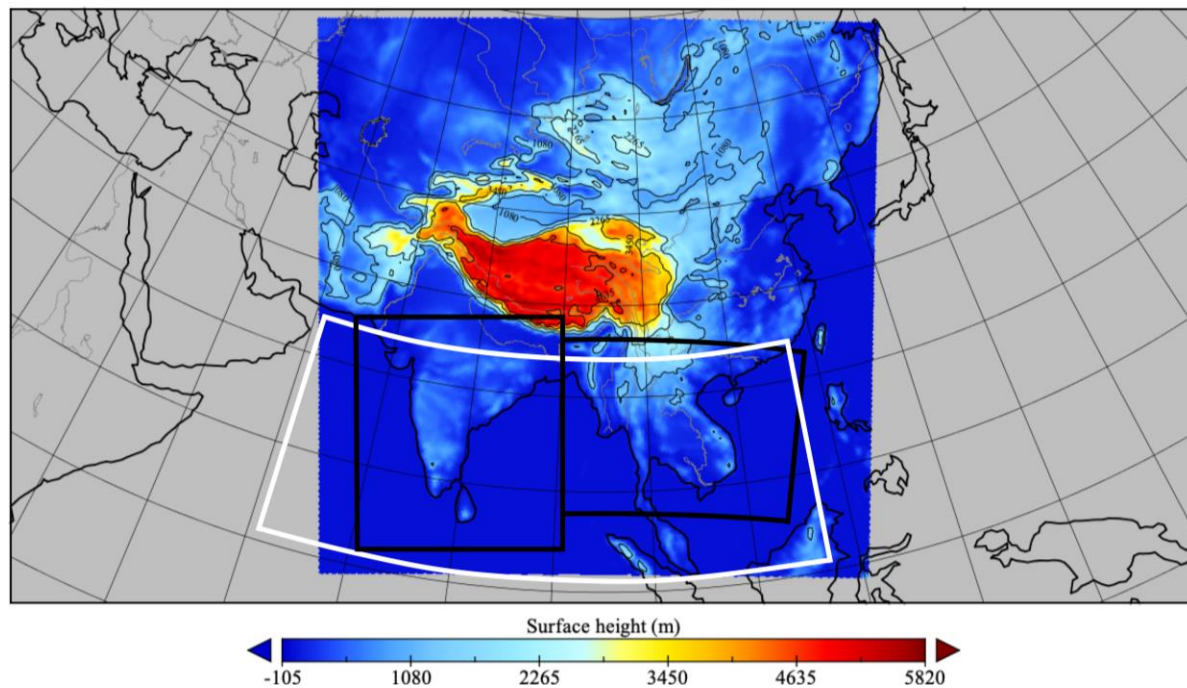


Figure 1: a. Zonal mean insolation difference per month between MH and PI at the top of the atmosphere in W m^{-2} for MH_{REF} from the UoT-CCSM4; b. JJAS temperature difference between MH_{REF} and PI from the UoT-CCSM4 with the names of the geographic regions of interest. The locations of Tianmen (30.9° N , 90.1° E), Dongge (25.3° N , 108.1° E), Jiuxian (33.6° N , 109.1° E), Lianhua (109.5° E , 29.5° N), Heshang Cave (30.5° N , 110.4° E), Sanbao (31.7° N , 110.4° E) and Xiangshui (25.3° N , 110.9° E) Caves are indicated by “*”. The topography contours of 500 m, 1000 m, 2000 m and 4000 m are also shown.



820 Figure 2: Data-flow schematic of the coupling system

Topography contours and outline of the WRF and the CROCO domains



Topography contours and outline of the WRF and the CROCO domains

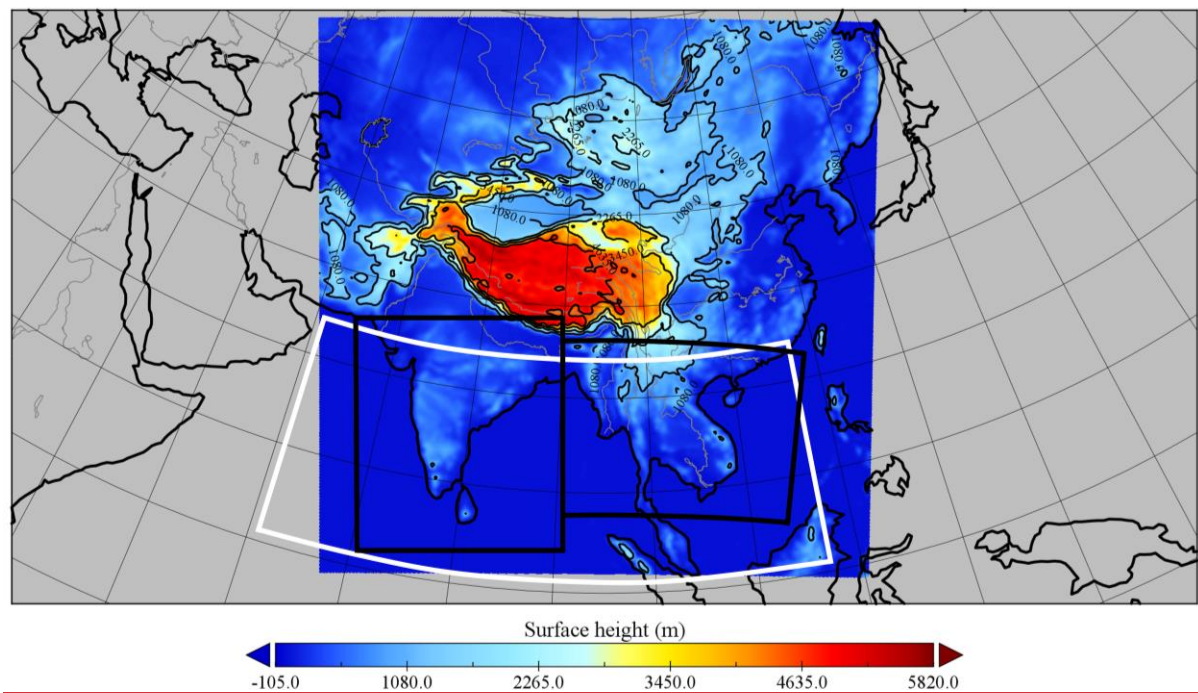


Figure 3: Shaded topography along with the outlines of the (shaded region) WRF and (white rectangle) CROCO domains. The two black rectangles denote the regions used to calculate spatial averages over SA and SEA. Major rivers and lakes are shown in grey contours and selected topographic heights in thin black contours.

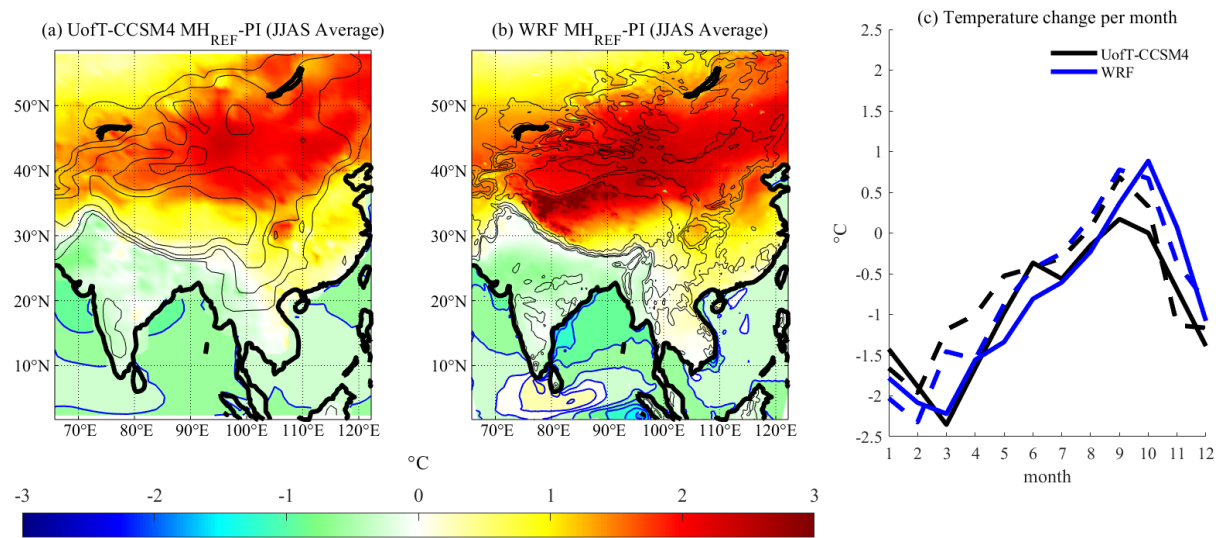
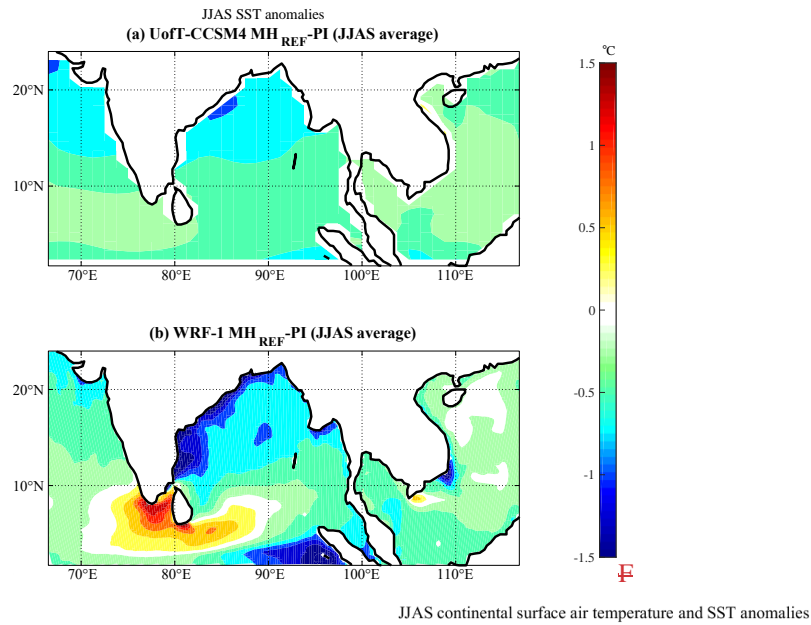


Figure 4: JJAS SST anomalies (MH minus PI) for MH_{REF} simulated by (a) UofT-CCSM4 (contour interval 0.3° C) and (b) CROCO. Shifts in calendar are not accounted for, i.e. the model calendar is used for the calculation of all anomalies.

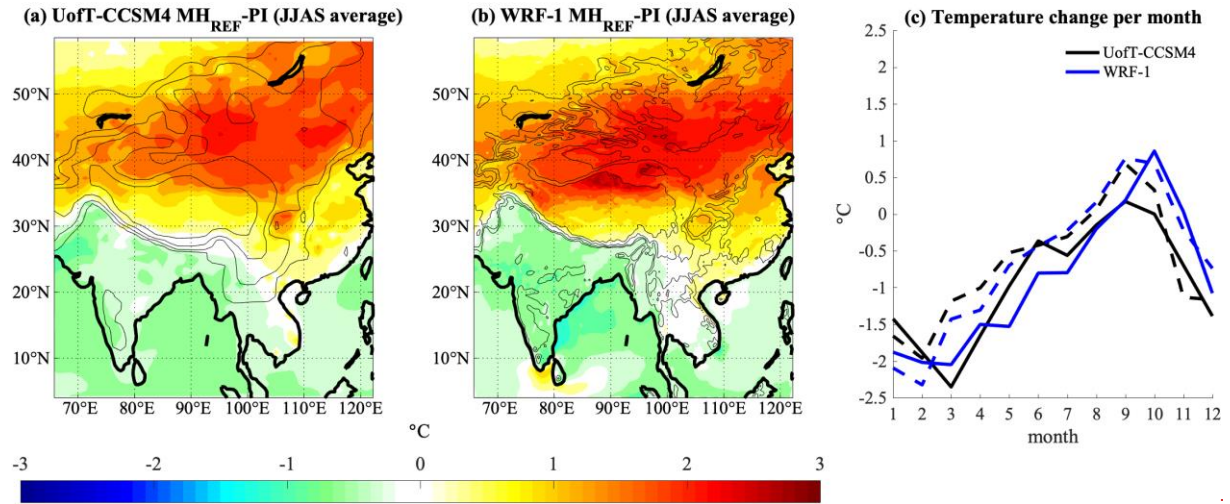


Figure 5: JJAS continental surface air temperature anomalies (in °C) for MH_{REF} in (a) UoT-CCSM4 and (b) WRF-ensemble mean. (c) shows monthly continental air temperature anomalies over SA (solid) and SEA (dashed). Shifts in calendar are not accounted for, i.e. the model calendar is used for the calculation of all anomalies. The topography contours (black) of 500 m, 1000 m, 2000 m and 4000 m are also shown in (a, b).

Annual mean precipitation anomalies

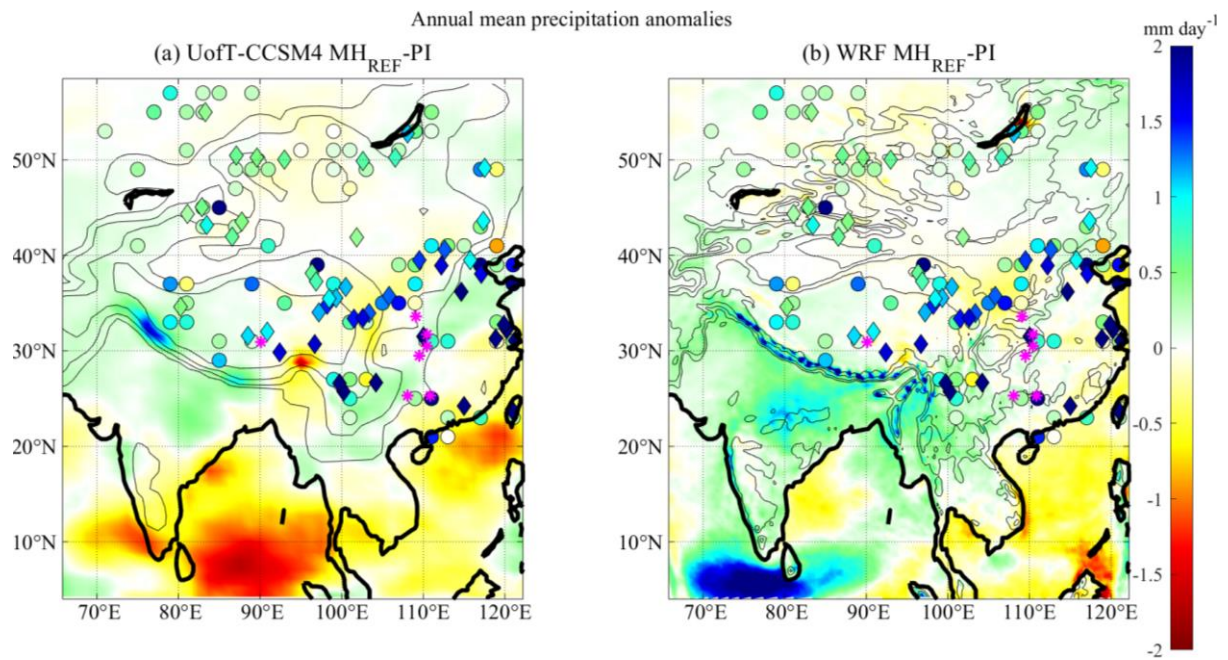
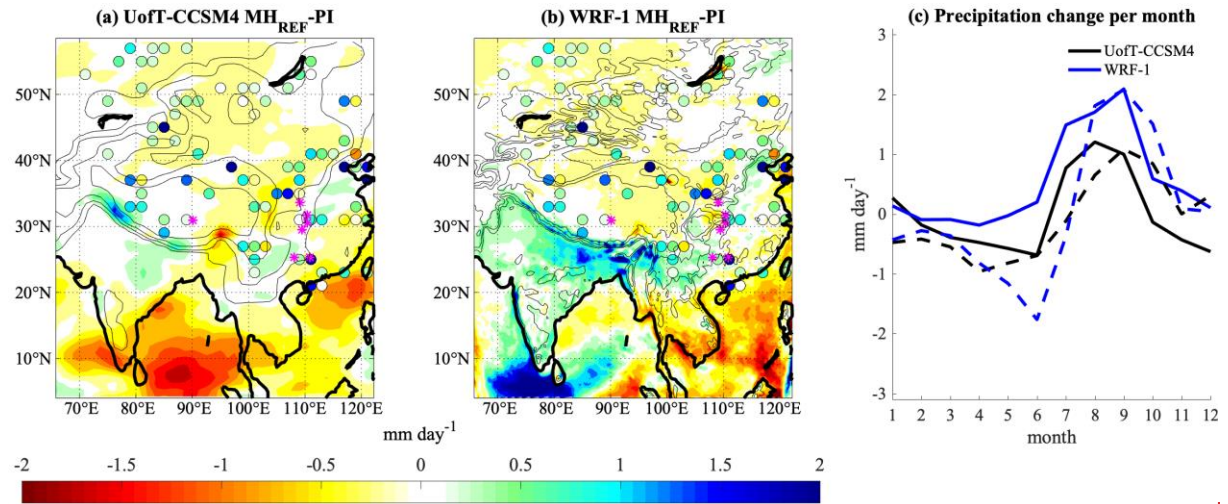
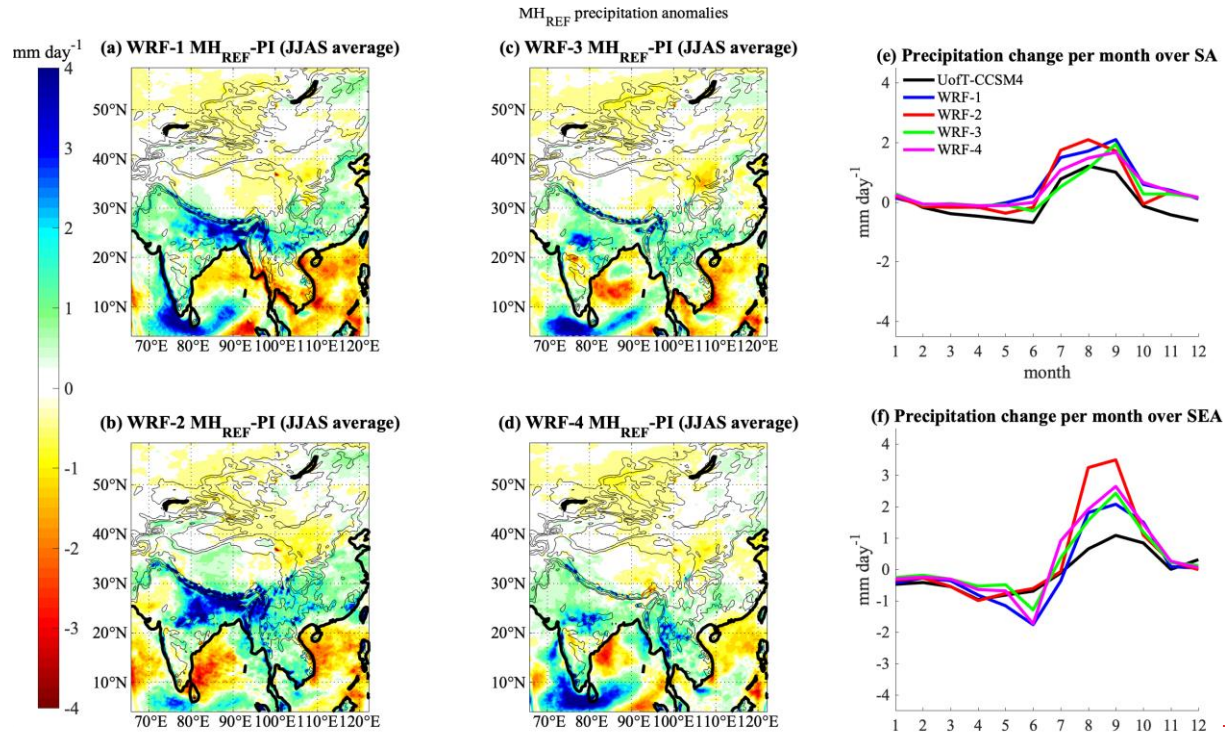


Figure 6: (a) Reconstructed precipitation difference between MH and present-day from Bartlein et al. (2011). (b) Annual mean precipitation anomalies (mm day⁻¹) for MH_{REF} in (b_a) UofT-CCSM4 and (b_b) WRF ensemble member 1. (c) shows monthly mean. Reconstructed precipitation anomalies over SA (solid) and SEA (dashed). Shifts in calendar are not accounted for, i.e. the model calendar is used for the calculation of all anomalies. Herzschuh et al. (2019) are plotted as circles and diamonds, respectively. The locations of Tianmen (30.9° N, 90.1° E), Dongge (25.3° N, 108.1° E), Jiuxian (33.6° N, 109.1° E), Lianhua (29.5° N, 109.5° E), Heshang Cave (30.5° N, 110.4° E), Sanbao (31.7° N, 110.4° E) and Xiangshui (25.3° N, 110.9° E) Caves are indicated by “*” in (b, c). The topography contours of 500 m, 1000 m, 2000 m and 4000 m are also shown in (a, b). (c) shows monthly precipitation anomalies over SA (solid) and SEA (dashed).



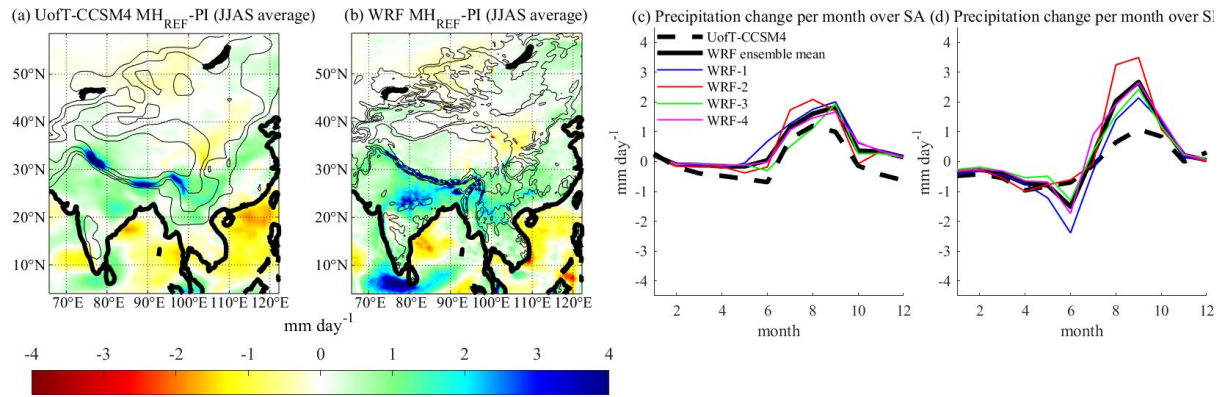


Figure 76: (a-d, b) JJAS average precipitation anomalies (mm day^{-1}) for MHREF in ~~four~~UofT-CCSM4 and WRF physics ensemble ~~mean~~. Monthly precipitation anomalies (mm day^{-1}) for MHREF in UofT-CCSM4 and four physics ensemble members over (e) SA and (f) SEA. ~~Shifts in calendar are not accounted for, i.e. the model calendar is used for the calculation of all anomalies.~~c) SA and (d) SEA. ~~The topography contours of 500 m, 1000 m, 2000 m and 4000 m are also shown in (a-d).~~

855

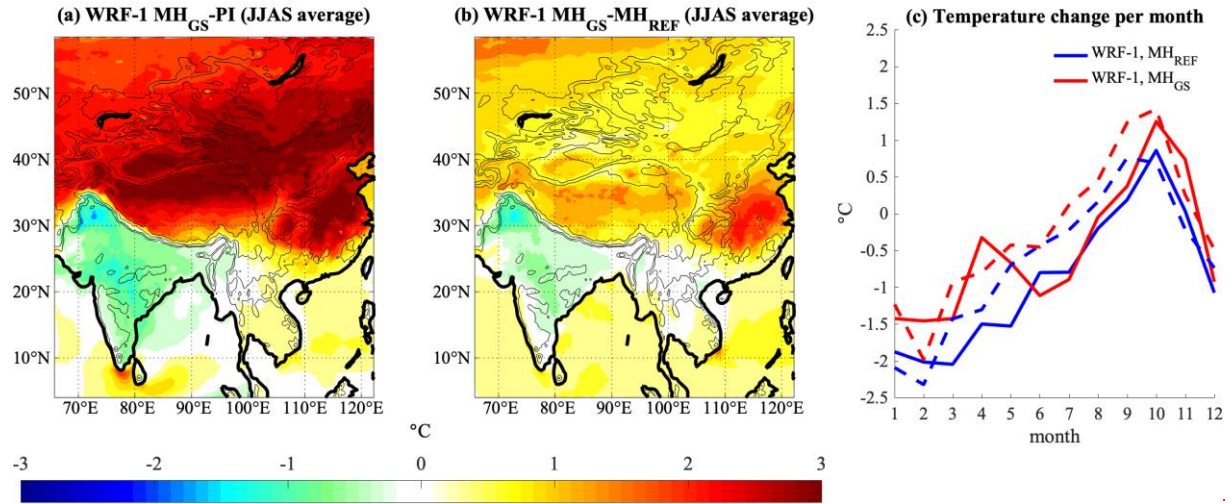


Figure 8: JJAS surface air temperature anomalies (in °C) for MH_{GS} (a), and differences between MH_{GS} and MH_{REF} (b) in WRF. (c) shows monthly temperature anomalies over SA (solid) and SEA (dashed). Shifts in calendar are not accounted for, i.e. the model calendar is used for the calculation of all anomalies. The topography contours of 500 m, 1000 m, 2000 m and 4000 m are also shown in (a, b).

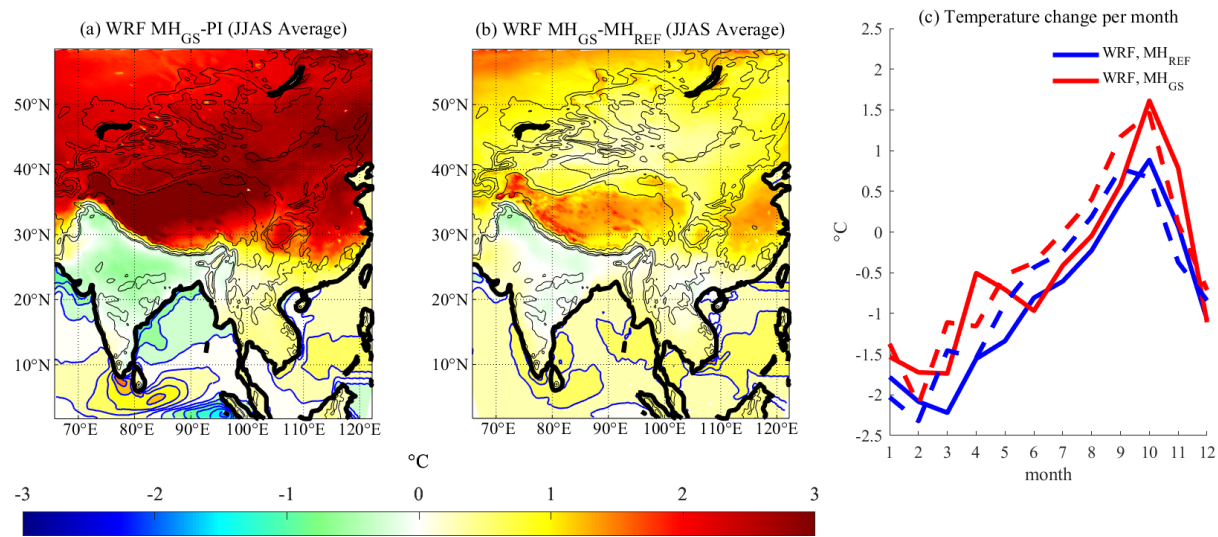
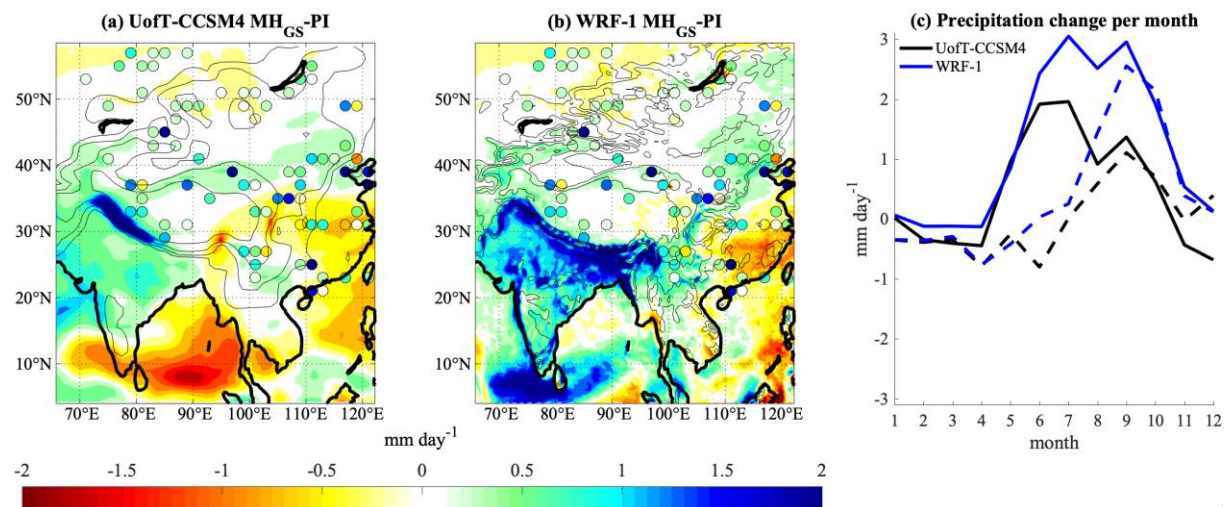


Figure 7: JJAS SST (contour interval 0.3° C) and continental surface air temperature anomalies (in ° C) for (a) MH_{GS}, and (b) differences between MH_{GS} and MH_{REF} in WRF ensemble mean. (c) shows monthly continental air temperature anomalies over SA (solid) and SEA (dashed). Shifts in calendar are not accounted for, i.e. the model calendar is used for the



The topography contours (black) of 500 m, 1000 m, 2000 m and 4000 m are also shown in (a, b).

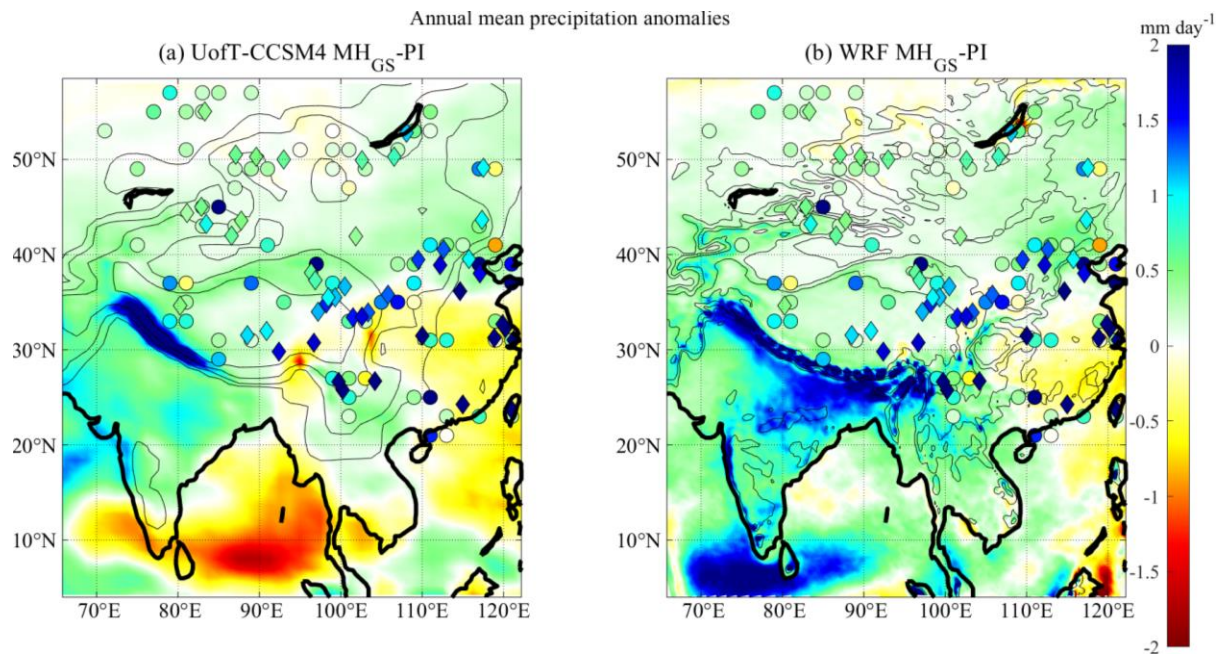


Figure 8: Same as Fig. 5, but for MH_{GS} .

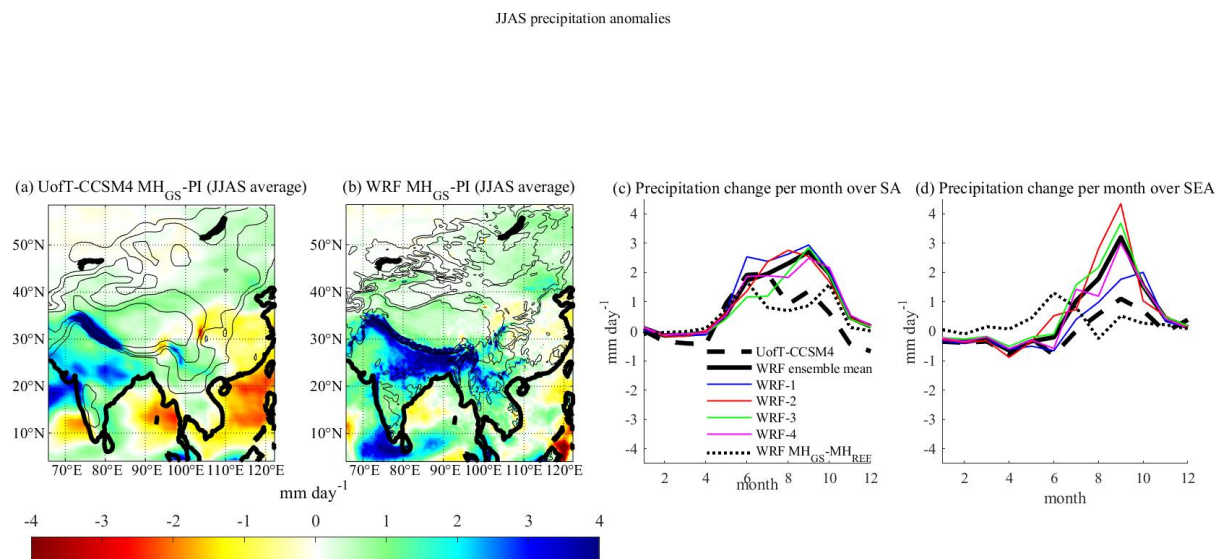
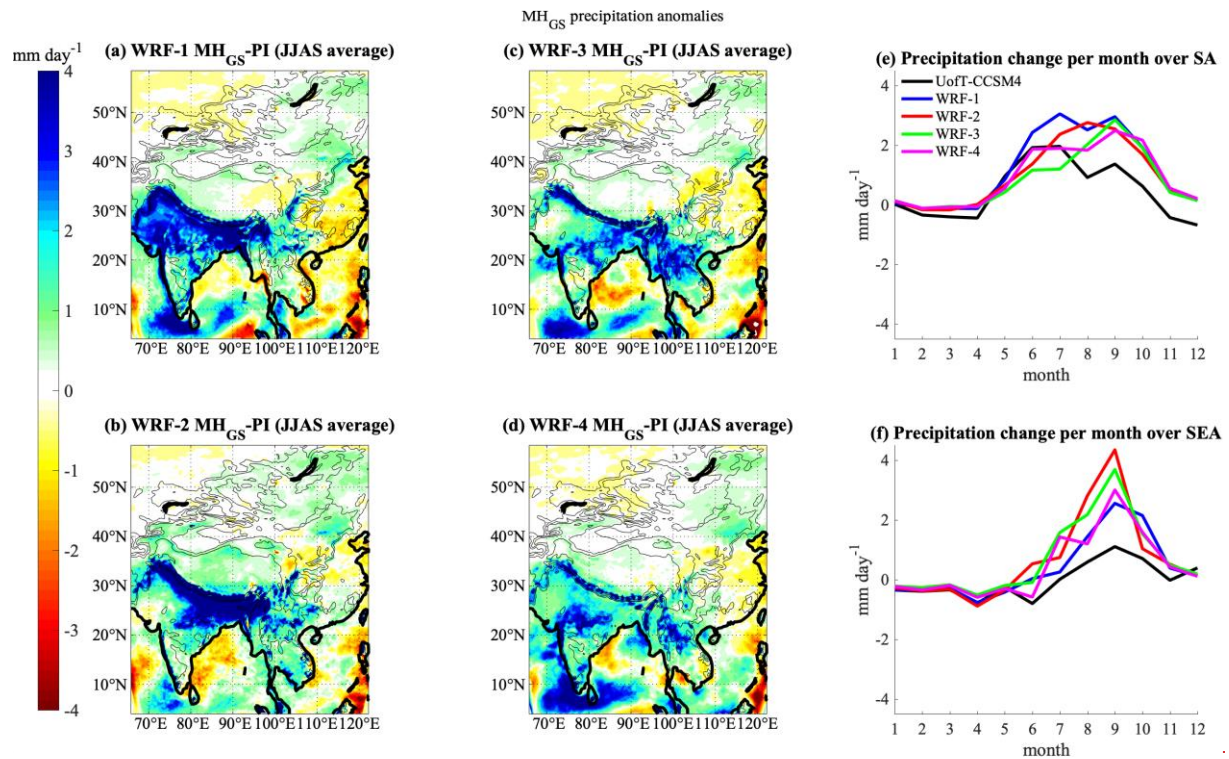


Figure 9: Same as Fig. 6, but for MH_{GS} . The dotted lines in (c) and (d) represent the MH_{GS} - MH_{REF} anomalies in WRF ensemble mean.



875

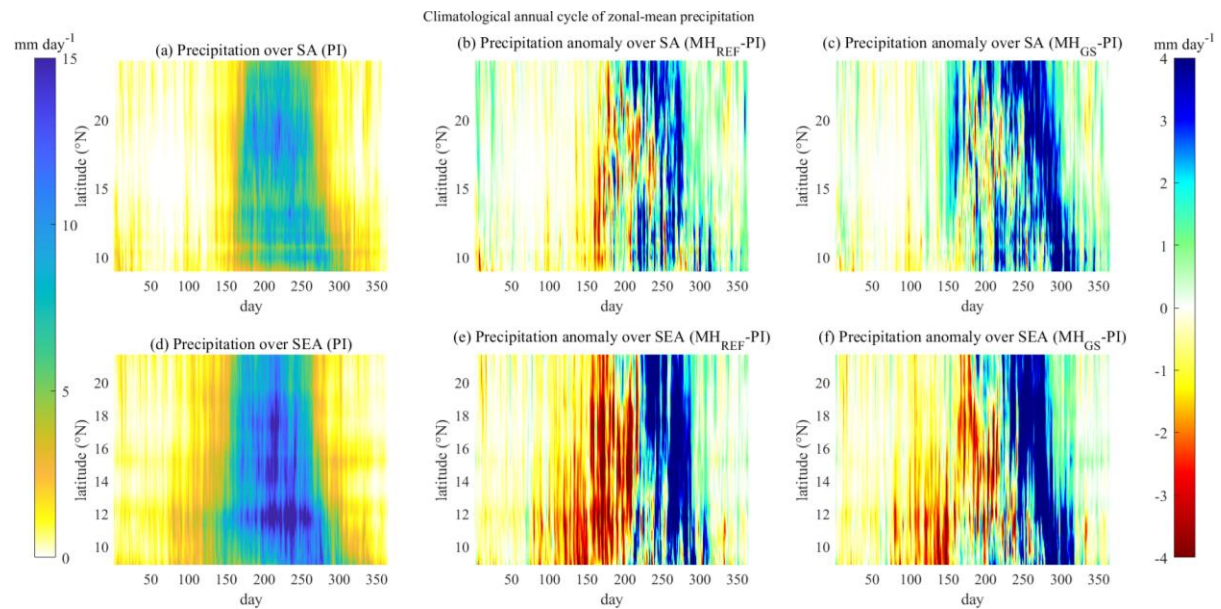


Figure 10: Same as Fig. 7, but for MHGs.

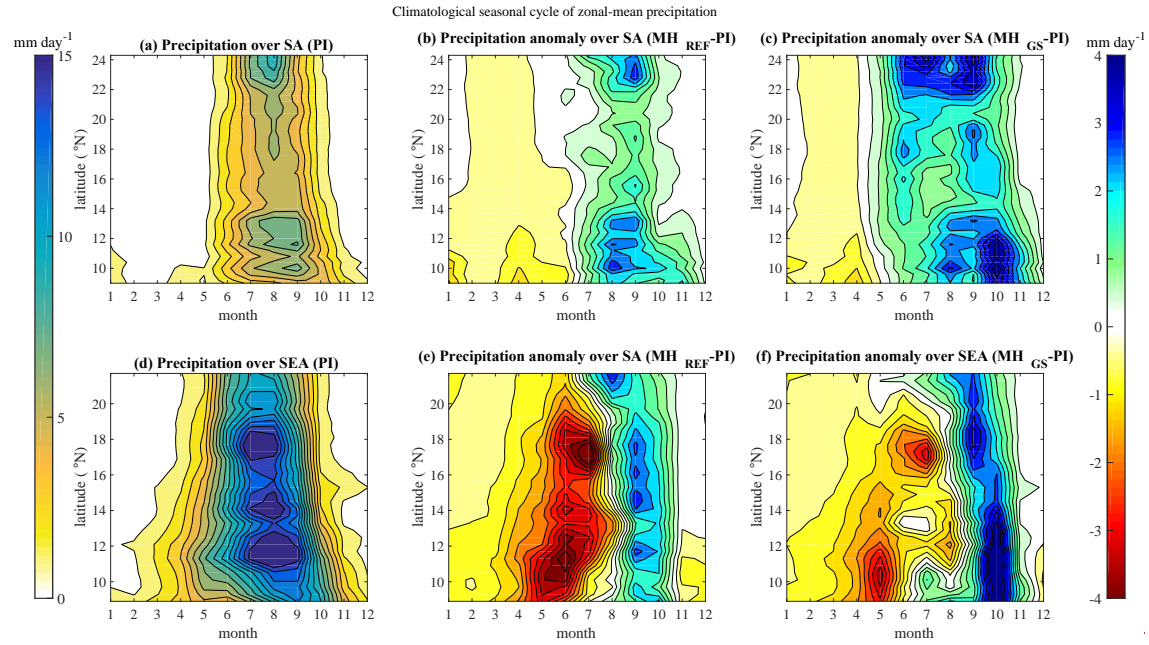


Figure 11: Climatological seasonal cycle of zonal-mean precipitation (mm day^{-1}) for the PI simulations of the **first** WRF-CROCO ensemble **membermean** over (a) SA and (d) SEA. Zonal-mean precipitation anomalies for (b, e) MH_{REF} and (c, f) MH_{GS} over (b, c) SA and (e, f) SEA.

The JJAS mean moisture flux and its convergence

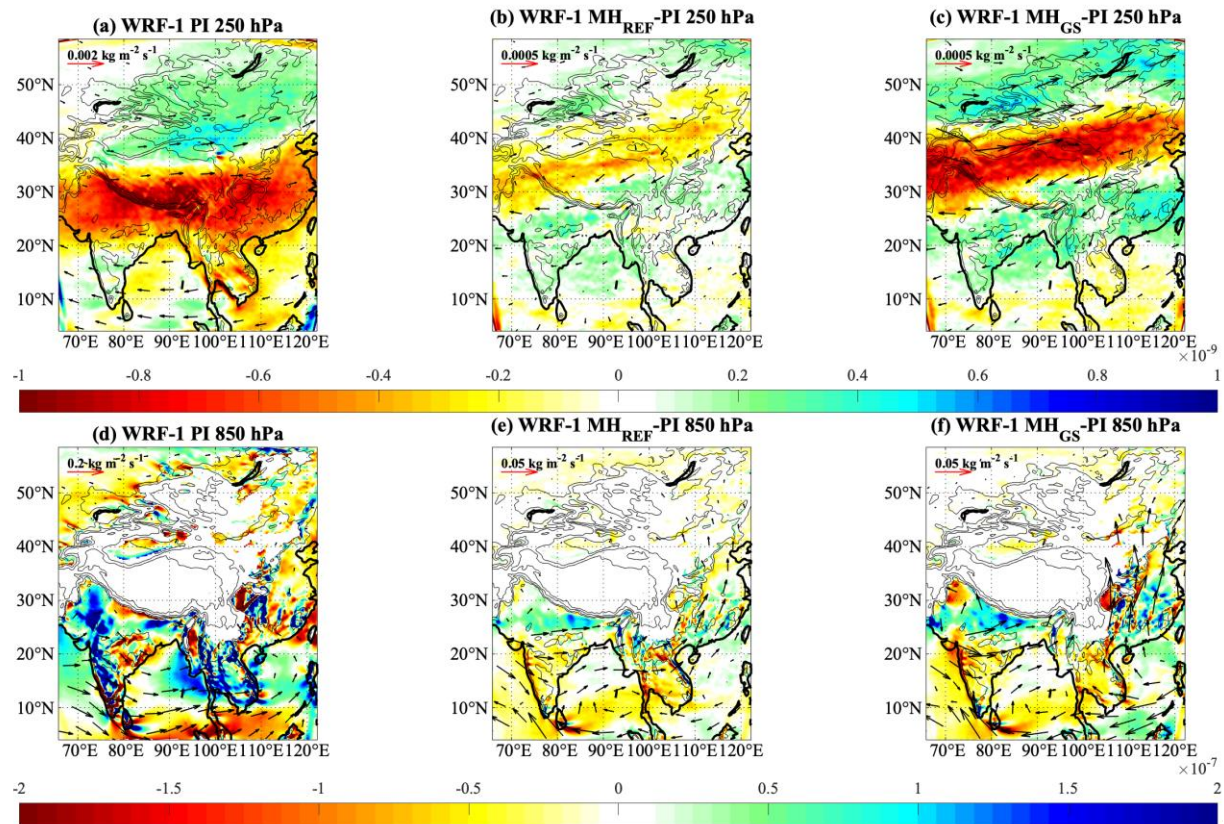
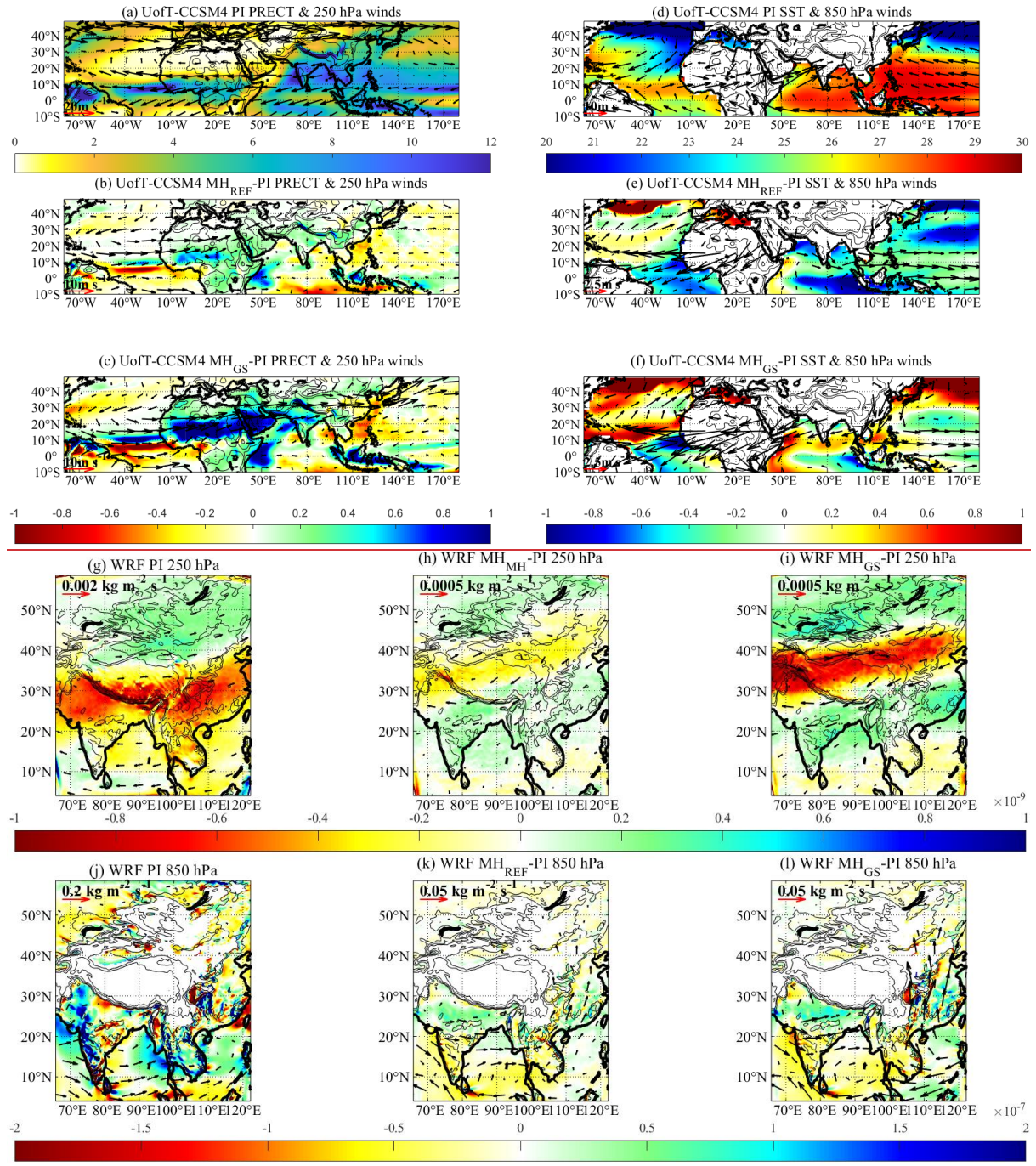


Figure 12:

JJAS atmospheric circulation



885

890

Figure 11: 250 hPa winds (vector, m s^{-1}) and precipitation (shaded, mm day^{-1}) from the UofT-CCSM4 for (a) the PI simulations and anomalies in (b) MHREF and (c) MHGS. 850 hPa winds (vector, m s^{-1}) and SST (shaded, $^{\circ}\text{C}$) from the UofT-CCSM4 for (d) the PI simulations and anomalies in (e) MHREF and (f) MHGS. Moisture flux (vector, $\text{kg m}^{-2} \text{s}^{-1}$) and its convergence (shaded, $\text{kg m}^{-3} \text{s}^{-1}$), convergence = blue (moisture sink), divergence = red (moisture source) for the PI simulations of the first WRF-CROCO ensemble member at (a) 250 hPa and (d) 850 hPa. Anomalies of moisture flux (vector, $\text{kg m}^{-2} \text{s}^{-1}$) and its convergence (shaded, $\text{kg m}^{-3} \text{s}^{-1}$) for (b, e, h, k) MHREF and (c, f, i, l) MHGS at (b, e, h, i) 250 hPa and (c, f, k, l) 850 hPa. The topography contours of 500 m, 1000 m, 2000 m and 4000 m are also shown.