

On the economic impact of droughts in Central Europe. The decade from 1531 to 1540 from the Polish perspective

Tomasz Związek^{1*}, Piotr Guzowski^{2*}, Radosław Poniak², Maciej T. Radomski³, Monika Kozłowska-Szyc², Tomasz Panecki⁴, Sandra Słowińska¹, Bogusława Kruczkowska⁵, Michał Targowski^{6, 8}, Dagmara Adamska⁷

¹Stanisław Leszczycki Institute of Geography and Spatial Organization, Polish Academy of Sciences, Warsaw, 00-818, Poland

²Faculty of History and International Relations, University of Białystok, Białystok, 15-420, Poland

³Institute of Archaeology and Ethnology, Polish Academy of Sciences, Warsaw, 00-140, Poland

⁴Tadeusz Manteuffel Institute of History, Polish Academy of Sciences, Warsaw, 00-272, Poland

10 ⁵Department of Soil Science, Institute of Agriculture, Warsaw University of Life Sciences – SGGW, 02-776 Warsaw, Poland

⁶Faculty of History, Nicolaus Copernicus University in Toruń, W. Bojarskiego 1, 87-100, Toruń, Poland

⁷Faculty of Historical and Pedagogical Sciences, History Department, University of Wrocław Szewska 49, 50-139 Wrocław, Poland

⁸Centre for Climate Change Research, Nicolaus Copernicus University in Toruń, Lwowska 1, 87-100 Toruń, Poland

15 *Correspondence to:* Tomasz Związek (tzwiazek@twarda.pan.pl)

** Both authors contributed equally.*

Abstract. The period from around 1450 to 1550 in Europe is extremely interesting from the perspective of research on extreme weather events. It was a period of events that strongly influenced the societies and economies of the Old Continent. So far, the literature has been more focused on Western and Northern Europe. Concerning the region of Central Europe, the greatest attention was paid to the Czech Republic or Hungary. This article revolves around the Polish lands, which experienced their greatest economic boom in the 16th century. We consider whether and how the droughts of the decade from 1531 to 1540 might have affected the country's economic development. We analyze a number of written sources which are the product of the treasury apparatus of the time (tax registers, data from water customs, tax exemptions, inventories of land estates etc.), but also information on fluctuations in product prices in the most important cities in this part of Europe. The work not only provides a detailed account of economic data, but also attempts to reflect on the relevance of linking information on fires in urban centres in the period characterized by weather extremes.

1 Introduction

In the most recent two decades research in the field of historical climatology has made a significant advance in our knowledge of how societies functioned in the past, and how they dealt with climate variability throughout the centuries (Brázdil et al., 2013a; Brázdil et al., 2013b; Brázdil et al., 2018; Camenisch et al., 2016; Camenisch et al., 2020; Kiss, 2014, 2017, 2018, 2019; Kiss and Nikolić, 2015; Kiss and Pribyl, 2019; Huhtamaa and Helama, 2017; Ljungqvist et al., 2021). However, much

still remains to be done. In this paper, we focus on the one, but important decade and discuss the economic effects of droughts in Early Modern Poland. A direct inspiration for this study can be found in the article published in 2020 in the “Climate of the Past” entitled *Central Europe, 1531–1540 CE: The driest summer decade of the past five centuries?* (Brázdil et al., 2020).

35 The researchers attempted to combine climatological data on droughts with the socio-economic response of past societies to them. Our study should possibly be treated as a comprehensive historical supplement of the abovementioned paper in which we focus in particular on macro-economic issues in the sixteenth-century Kingdom of Poland. We aim to deeply understand the reactions of the economic system of the Early Modern state to extreme weather events. With a bird's eye view of past economics, it is important to capture more accurately how society/economy (as a whole) dealt with climate crises. However,

40 focusing on the Polish lands one must be remembered that, in the 16th century Polish Crown had become a part of the global economic system and was undergoing a modernization process.

Drought is a recurring extreme weather event and affects both ecosystems and various sectors of the economy. Therefore, drought can be defined from different perspectives. *Meteorological drought* occurs when the atmospheric conditions result in the absence or reduction of precipitation. Atmospheric conditions that result in rainfall deficit depend on the geographic

45 location and water resources; therefore, the understanding and scale of meteorological drought may differ from region to region. In turn, *agricultural drought* (or *soil moisture drought*) refers to a deficit of (mostly root zone) soil moisture. It is usually associated with meteorological drought, and this relationship is complex and dependent on many factors and determinants. The final effect of agricultural drought is a crop yield reduction. *Hydrological drought* is associated with the effects of periods of precipitation shortfalls on surface or subsurface water supply (i.e. streamflow, lake levels, groundwater).

50 Socioeconomic drought is associated with the supply and demand of some economic goods with elements of all the above-mentioned types of drought (Heim, 2002; Łabędzki and Bąk, 2017; Wilhite and Glantz, 1985; Seneviratne et al., 2012).

Addressing the economic significance of droughts is important in the context of the current discussion on adaptation factors and methods with regard to changing climatic conditions (Degroot et al., 2021). Of particular relevance are the potential agricultural consequences associated with the occurrence of droughts. They can pose a serious threat to soil functions and

55 productivity, especially in agricultural ecosystems (Liu et al., 2010; Geng et al., 2014). Soil moisture, despite climatic conditions, depends i.a. on soil organic matter (SOM) content, texture, porosity, relief and land use. Sandy soils, poor in organic matter, located on terrain elevations without access to groundwater, are particularly exposed to rapid drying. Soils devoid of vegetation are exposed to accelerated evaporation of the soil surface, leading to overdrying. If reduced, soil water content, a prerequisite for plant growth, limits the solubility and availability of nutrients for plants, lowers the biological and chemical

60 activity of the soil and may contribute to disturbances in soil temperature regulation (He and Dijkstra, 2014; Wang et al., 2012; Mahajan et al., 2018; Siebielec et al., 2020; Al-Kayssi et al., 1990).

If the decade from 1531 to 1540 is placed in a broad context, it can be seen that several years (1531, 1534, 1535, 1538 and 1540) can be distinguished for which dendrochronological data provide evidence of the occurrence of droughts in Central Europe (Cook et al., 2015). Similarly, data for eastern Europe (1531, 1532 and 1533) show that periods of severe droughts

65 occurred mostly at the beginning of the studied decade (Cook et al., 2020). Rudolf Brázdil and his collaborators indicated that

droughts occurring in the years 1534, 1536, 1538 and 1540 had a pan-European character (Brázdil et al., 2020). Nevertheless, the year 1540, because of its importance in current discourse, should be treated separately (Wetter and Pfister, 2013; Wetter et al., 2014; Büntgen et al., 2015; Pfister et al., 2015; Orth et al., 2016; Pfister, 2017, 2018; Nowosad and Oliński, 2020). On the other hand, looking more specifically at the Polish context of climatological research one can observe that in the 16th century the smallest number of droughts in the Polish lands were recorded, and their intensity was not substantial (Przybylak et al., 2020).

Nevertheless, it should be remembered that all the phenomena described here fall within what in Polish historiography is called the “Polish Golden Age”. In a broader sense, this concept can refer to the issues of art, culture, statehood, religious tolerance and even the significant development of philosophical thought. However, at this point we are especially interested in the economic factors. We also want to see how the Polish state got rich in exporting crops and forest products to Western Europe (Małowist, 2006). In this aspect, we assume that the Polish state has not been affected by any major crisis in the decade from 1531 to 1540. The period from the end of the 15th century to the middle of the 17th century can therefore be regarded as a period of fundamental economic development.

1.2 Historical data set

We refer to data collected by the Polish economic historians, but also we use the archival materials related to the functioning of the Jagiellonian state and royal treasury apparatus. While selecting the final dataset, we tried to use as much information as possible related to the decade from 1531 to 1540. Sources were selected on the basis of three factors:

- a) their mass character, i.e. they record the course of economic processes, recurring and common, as well as everyday economic activity rather than the individual experience of, for instance, the chronicle’s author;
- b) broad spatial coverage;
- c) the homogeneity of the material, i.e. its standardized form resulting from its quantitative nature and a particular type of land ownership.

Three oldest records of state tax revenues (so-called tax summaries, in Polish *sumariusze podatkowe*) that have been preserved up to now were analysed (Boroda, 2013; Boroda, 2016). They come from the years 1533, 1535 and 1543 (Archival Sources 1–3). These sources were a synthesis of tax sums collected from individual territories of the former Poland. Thus, they portray the economic totality of the state at that time. For the purposes of this article we were able to compare only data from four lands (Latin: *terrae*) included in preserved registers: Brześć Kujawski (*terra Brestensis*), Płock (*terra Plocensis*), Dobrzyń (*terra Dobrinensis*), and Sochaczew (*terra Sochaczoviensis*).

Additionally, in order to consider the relationship between climatic conditions and the spread of cities and towns fires we used the chancellery books of Polish kings (so-called Crown Metric) (Archival Sources 4 and Wierzbowski, 1910, 1912, 1915, 1917, 1919). These books consist of many tax exemptions documents granted by monarchs due to the occurrence of fire in a particular town or its part, which is particularly relevant in the context of observing the effects of an exceptional drought.

We consider cereals (mainly rye) to be the most reliable export commodity in the agricultural economy of that time. Therefore, we have analysed the data on harvests in ecclesiastical manors of the Cuyavia bishopric (Żytkowicz, 1962) and royal estates (Wawrzyńczyk, 1974), where we have focused in particular on the Malbork estates of Eastern Prussia in northern Poland (Szpak, 1971).

Sets of historical prices from the largest Polish cities of the period like: Kraków, Gdańsk or Lviv (Pelc, 1935, 1937; Hoszowski, 1928) were also used. We have also analysed the average annual and quarterly prices of key agricultural products, i.e. various kinds of grain, as well as beer, hence the basic product of the processing sector connected with both agriculture and water management. Due to the large devaluation of money, the prices were converted into grams of silver in our analyses.

An important supplement to the above data was the information on the grain exports from Baltic ports. We have taken into account both the production from Eastern Pomerania and that sent down the Vistula River from inland based on the lists of the water duty in Włocławek from the 16th century (Kutrzeba and Duda, 1915). Also Sundtoll data were used (Ellinger and Korst, 1906).

In addition to the above-mentioned sources recording the course of economic processes, the most popular early modern Polish agricultural handbooks were used in our text, showing the reflections of the contemporaries on the weather conditions affecting farming.

1.3 Methodology

The set of historical data used in this research have been collected in a form that permits a quantitative analysis. All economic datasets were collected as databases aggregated to the level of the individual royal or ecclesiastical estates (in the case of inventories). Data on fires were extracted from narrative documents. Based on these, a table was developed containing information on the town where the fire occurred, its date, description and length of exemption.

An important element in the process of organizing the obtained information was to divide it into three time periods, which were classified as those relating to the period before, during and after the decade we are interested in (White et al., 2021). This approach resulted from the desire to capture as broad a view as possible of the phenomena occurring in the economy at the time. We have carried out the main part of our work looking at the decade from 1531 to 1540 as a coherent epoch. However, the observations may be heavily influenced by the climatic events of the 1540 mega-drought (see section 1.1)

The available source material did not allow us to analyze data from inventories related to the cultivation of perennial crops (e.g. vine bushes) as is the case in research in other parts of Central Europe (Chuine et al., 2004; Krieger et al., 2011; Labbé et al., 2019). The sources were related to the most important economic products of Poland at that time, i.e. various types of cereals, which formed the basis of the diet of people of all social groups, and were predominantly exported to Western Europe during the 16th century (Wyczański, 1985; Boroda, 2016). We hypothesized that intense weather- and climate-induced economic crises should have a significant impact on the macroeconomics of a given region.

Statistical analysis were performed with the use of the R language and visualized with its ggplot2 library. Since our data were limited and came from sources with different quality, we decided to restrict statistical analysis to the comparison of decadal

means and their 95% confidence intervals. Those intervals are represented in the figure with the areas of different colors while the means are represented with the black lines. In addition, although those results are not reported in the paper, we have run one-way ANOVA analysis to further confirm our results.

2 Results and discussion

135 The majority of our analysis is based on indicators related to the production, trade and exports of cereal products. These were the signs that accounted for the economic strength of the country in the period under scrutiny. Cereals in Early Modern Poland should be divided into winter (rye, wheat, barley) and spring (oats, barley, buckwheat, rye, and wheat). Among them, winter rye was the leading crop, followed by spring oats, spring barley, and winter wheat. Spring rye and spring wheat played a secondary role in the economy. Their sowing was recommended by the authors of farming handbooks only if winter sowing
140 failed (Gostomski, 1951; Rostafiński, 1891). The said authors wrote that the time of spring sowing was in March (very close to St. Bartholomew's Day – 12 March). In turn, the time of sowing rye and winter wheat fell between the end of August and the beginning of October (Gostomski, 1951; Piprek, 1954; Chomętowski, 1878; Rostafiński, 1891). Agricultural literature, however, does not provide precise dates for sowing rye and spring wheat.

There is much less information about the harvesting period, which was a direct result of the local conditions. According to the
145 recommendations in agricultural literature of the period the harvest of winter crops should end in August (Chomętowski, 1878). Winter barley ripened earliest (approx. 25 June), followed by winter rye (approx. 4 July). The authors reported that rye was harvested earlier than wheat (Piprek, 1954). On the other hand, the harvest of spring cereals began in the last days of August (Chomętowski, 1878; Rostafiński, 1891). Some of the writers pointed out that harvesting should be done in dry and sunny weather, but they also warned against harvesting during the rain (Gostomski, 1951; Rostafiński, 1891).

150 Manuring of the fields was also important in the cultivation of the cereals. Writers of the studied period treated manuring as a matter of fact and at the same time as a necessity, which is evidenced by numerous pieces of advice concerning methods of increasing the amount of manure (e.g. mixing the manure with rotten weeds or sheaves of old ploughing), ways of its storage, time and technique of soil manuring. What is more, they were well aware of the existence of relations not only between manuring and improvement of soil quality, but they also made the sowing of particular plant species dependent on soil types
155 (Gostomski, 1951; Piprek, 1954; Legatowicz, 1823). However, there are indications suggesting that the world of farming in the Middle Ages and Early Modern period suffered from a chronic shortage of manure (Newman and Harvey, 1997). Hence, cereals requiring less organic material were probably grown on Polish soils (as a result of the shortage of manure and the condition of the soil). Nevertheless, it is extremely interesting that the authors of agrarian textbooks more often paid attention to excessive soil moisture than to drought (Piprek, 1954). Observations made on the basis of agrarian textbooks therefore show
160 that wet periods were far more of an issue for the agriculture of the time than dry ones.

2.1 Data derived from tax registers and inventories of land estates

The beginning of the modern era was associated with the vast development of bureaucracy and written documentation both at the level of state institutions and of a society engaged in an increasingly commercialized economy. Prominent, among the surviving materials, are tax records maintained and economic inventories conducted at the time by both ecclesiastical and royal estates. Unfortunately, the materials relating to the estates of the gentry survived in a fragmentary and very dispersed form, and for this very reason they were not taken into account in our work (Leskiewiczowa, 1953; Maciejewska, 1959). In order to observe the economic consequences of droughts, one should focus on looking for any disturbances related to factors such as the size of the cultivated agricultural area or, finally, the prices of agricultural products. In analysing the economic factor, we assumed that any significant fluctuation in the number of cultivated fields, number of watermills or yields could potentially indicate the occurrence of a climatic extreme - in this case drought. However, time is an important factor here. The longer a decline in crop yields, uncultivated land etc. is observed, the more likely we are to be dealing with the real effects of climate action.

2.1.1 Tax registers

During the 16th century the treasury apparatus in the Kingdom of Poland witnessed a period of intensive modernization (Boroda and Guzowski, 2016). One of its features was the increase in revenue coming from taxes, and one of the most important sources of money was taxation of the area of land cultivated by the peasants (Boroda, 2007). The source materials exhibit a different degree of preservation. Some confirm only the amount of money collected in the country in a given year, others give an idea of the taxed land area in the region, and some make it possible to reconstruct the level of agriculture in each locality. From the perspective of the central state finances, it can be noted that at the beginning of the 16th century taxes yielded on average only about 10,000 florins per year; with the reforms, more revenue was achieved, reaching 55.000-60.000 florins per year (1514, 1520), and the exceptionally dry decade did not change this trend. In 1533, more than 70.000 florins were collected, which is as much as was also collected in 1552-1553 (Rutkowski, 1909; Wyczański, 1952; Weyman, 1956). The surviving fiscal materials produced by the central government apparatus thus make it possible to compare, within certain regions, key economic information such as the size of the taxed agricultural acreage or the scale of the milling industry. The number of cultivated fields shows general economic trends in this context. On the other hand the number of watermills can be taken as a indicator related not only to the overall condition of the economy, but also to water levels, which may have been related to the climate changes and weather conditions.

FIGURE 1. Distribution of areas analyzed in the text in the spatial context of Vistula river exports in the 16th century (before the Union of Lublin of 1569). Map made by Tomasz Panecki based on data collected while writing the article and files from www.atlasfontium.pl website.

195 In this study we have focused on Płock, Brześć, Dobrzyń and Sochaczew lands (Fig. 1), which should be considered particularly economically important in Poland. They were located on the Vistula River and therefore had to actively participate in trans-regional trade (Żaboklicka, 1958). The economic information extracted from the summaries was primarily:

- a) the acreage of cultivated land where the amount of land cultivated by peasants (*lanei kmethonum*), village representatives (*lanei scultetorum*), and land cultivated directly by local gentry (*aratura sua*) were counted together;
- 200 b) the number of watermills divided by ownership structure into mills inherited by miller families (*molendina hereditaria*) and those leased under temporary contracts (*molendina annualia*).

It should be noted that the summaries that we have used prevent an analysis of the specific and detailed economic structure of a given region. However, they can be considered a significant support in building a general economic portrait of each region, which is important in the context of the lack of adequate treasury sources from the first half of the 16th century. We believe
205 that it was the time of dynamic agricultural growth. In the case of the Brześć Kujawski Land the acreage of arable land increased from 1,928 mansi in 1489 to 2,505.5 in 1533 (Senkowski, 1961). In the Sochaczew Land the growth was even more spectacular – from 752 mansi in 1496 to 2,002.25 in 1533 (Archival Sources 5). It is likely that in the remaining two regions, for which the data are not available, the situation was similar.

210 **FIGURE 2.** Changes in cultivated land based on surviving tax summaries from 1533, 1535 and 1543. Sources: Archival Sources 1–3.

The 1530s and 1540s were characterized by relative stability in terms of the acreage of arable land, although a slight downward trend was visible in most regions.

215 It can be inferred from the tax source data that the highest decrease in arable land (comparing the first and the last summary) was observed in the Brześć Land (8.04%); in the Dobrzyń Land it was 6.22% and in the Sochaczew Land 2.88% (Fig. 2). This gradual decrease in cultivated land could be interpreted as an effect of land degradation and settlement processes related to the three-field system economy (Newman and Harvey, 1997). The only increase in land acreage took place in the Płock Land and amounted to 1.68%, which should be interpreted as a modest attempt to acquire new land, probably at the expense of the forest
220 network (Gidaszewski et al., 2013). Unfortunately, the summaries from the areas discussed here did not include any information on deserted fields. The lack of this information prevents us from fully confirming these observations. Statistics related to the number of watermills in each of the mentioned lands can also be an important tool (Fig.2). The variation in the number of watermills was usually closely related to the amount of acreage under cultivation (Związek, 2014). In the Brześć and Płock lands, an increase in the number of watermills was observed, ranging from 4 to 8%; in the Dobrzyń Land, the
225 increase was the most spectacular and amounted to 100% (from 44 to 88 mills). Only in the Sochaczew Land the number of watermills decreased by about 4%. Additionally, data from the summaries provide us with information showing the ongoing

reconstruction of the economic structure of water mill ownership from hereditary to leased (in the Brześć, Dobrzyń, and Płock lands) and from leased to hereditary in the Sochaczew Land. With the present state of our knowledge, it should be assumed that the system based on temporary leases was more advantageous from the point of view of land ownership (Kaczmarczyk, 1910; Trawkowski, 1960; Guzowski, 2020). It enabled better management and adaptation to various fluctuations – probably including economic ones resulting from climate change during the Little Ice Age. However, this issue requires further and more detailed research.

2.1.2 Great estate inventories

The 16th century was a period of development of manorial economy in estates belonging to large landowners in the Polish Kingdom (Cerman, 2012; Słoń, 2014). Data concerning inventories of landed estates from the first half of the 16th century can be divided into three main types. First, there is information concerning the economic status of the Malbork Royal Economy (MRE), for which the longest and most complete series of data has been preserved (Szpak, 1971). These data were supplemented by eight series of inventories of manors that were part of the royal estates (Wawrzyńczyk, 1974). We also used two series of data on the inventories of the bishops of Włocławek from the early 1530s. (Żytkowicz, 1962).

Most of the estates used in our analyses were located in the basin of the Vistula River, which was then the most important navigable trade route. We presented our data in the form of sets expressed in so-called *kopy*, and using the grain yield ratio (GYR). The GYR gives us an idea of the economic level of the goods concerned and, on a broader scale, of the overall level of agricultural production in the period in question. It also gave us the possibility to compare the cereal production between particular regions (Wawrzyńczyk, 1960; Wyczański, 1968). All data under scrutiny were also placed in a wider time context.

Therefore, we used all information from before and after the studied decade from 1531 to 1540 to track the changes within the economy of kings' and ecclesiastical estates. In this view, all later inventories from the mid-1560s have been treated as reference points in our analysis. However, we were forced to omit the Red Ruthenian lands and partially Greater Poland, whose level of description at the time was far from perfection (Wawrzyńczyk, 1974).

2.1.2.1 Malbork Royal Economy (MRE) and other royal estates

The first area for which we have an extant and abundant set of inventory sources is the area of MRE covering a large part of Vistula Fens (Pol. *Żuławy Wiślane*) surrounding the former capital of the Teutonic State – Marienburg (Pol. *Malbork*). As a result of intensive German colonization in this region between the late 13th and the late 14th centuries, this area underwent intensive landscape changes involving adaptation of the site for agricultural purposes. Protected from floods by dikes constructed before the end of the 14th century, it was abundant in water and rich in river silts, which were ideally suited to arable farming and animal husbandry (Bertram et al., 1923); this is confirmed by rather laconic references in sources describing the land there as 'good' or 'comely' (Hoszowski, 1961). High profits obtained by royal administrators from fields and pastures situated mainly between the Vistula and Nogat rivers were one of most important reasons for establishing the royal economy in that area in 1511. Its agricultural potential was effectively used in subsequent decades, especially since the late 1550s, when

the area became subject to intensive Hollander (Dutch-type) colonization and, consequently, turned to a technical revolution, which involved the construction of drainage canals in the Vistula Fens and subjecting the water flows to strict control (Ludwig, 1961).

FIGURE 3. Vistula Fens settlement. Map made by Tomasz Panecki based on data collected while writing the article and files from atlasfontium.pl website.

Comparing the state of preservation of source materials with other areas of the Crown at that time the source information on the economic condition of the MRE is extremely rich (Szpak, 1971). It should be noted, however, that in the estate, unlike in other parts of the Crown, rye did not play the main role in agricultural production. Wheat and barley were definitely in the lead. Jan Szpak (1972) claimed that it was probably a direct result of a deliberate policy of the estate management based on environmental experiments. The researcher pointed out that the administrators of manor estates were to a large extent guided by the natural fertility of particular soils, and adjusted the appropriate share of particular crops to their quality. Wheat and barley grew mainly on better soils, whereas rye and oats on weaker ones. The agricultural potential of this area was supported by the occurrence of fertile soils like Dystric/Eutric Fluvisols and Cambisols (Dobrzański et al., 1974; IUSS Working Group WRB, 2015).

Our data on crop yields from the MRE concern basic crops and peas. They show that the decade from 1531 to 1540 was a time of exceptionally abundant wheat, barley, rye and oats harvests, much more abundant than in the early 16th century as well as in the following decades (Figure 4). Peas harvests were growing consistently over the first half of the 16th century, including the ‘drought decade’ and the ensuing one.

FIGURE 4. Grain yield ratio of main crops in Malbork Royal Economy. Sources: (Szpak, 1971).

The increase in agricultural productivity can also be seen in the growing volume of cereal harvests. In the period from 1531 to 1540 they were significantly more abundant than at the beginning of the century. Despite some decline at the beginning of the 1540s, also at the end of this decade they were better than in the years preceding the ‘drought decade’ (Figure 5). The increase took place in spite of reductions in the acreage of arable land. In the years 1521–1530 the acreage fell to 97% of the area from the beginning of the century, and in the decade from 1531 to 1540 to 85.7%, with a gradual increase in the amount of land lying fallow (Szpak, 1971).

FIGURE 5. Volume of grain harvests in Malbork Royal Economy (calculated in coreti; 1 coretus = 55 litres). Sources: (Szpak, 1971)

Unfortunately, our data from other royal estates are less complete than the ones cited above. Some fragmentary information comes from eight estates which were owned by Polish monarchs at the time (Wawrzyńczyk, 1974). What is available does not permit any conclusive estimates of harvests before the ‘drought decade’. The data do show that the 1530s were characterized by lower harvests than the consecutive decades of the 16th century. However, this does not necessarily have to be the result of dry weather, but may simply reflect a lower level of development of manorial farms and less advanced manuring than in the 1560s (Fig 6.).

FIGURE 6. Grain yield ratio of main crops in the royal estates. Sources: (Wawrzyńczyk, 1974).

2.1.2.2 Estates of Włocławek bishops

The last series of inventory data is information on sowings and yields on the estates of the bishops of Włocławek in two complexes located in Kuyavia (Raciążek, Włocławek). These data, together with a basic historical and economic analysis, come from a compilation published many years ago by Leonid Żytkowicz (1962). When describing the inventories of the estates of the bishops of Włocławek, Żytkowicz paid special attention to the source context. For the 1530s, very detailed accounts concerning grain from the manors of various estates have been preserved (*Regestra rationis factae de frumentis praediorum*). According to this researcher, they can be treated as a firm source concerning the ways in which the bishops of Włocławek managed their estates. This naturally reflects on the degree of reliability of our analysis. In the present work we have used all the data preserved and published by Żytkowicz from the 1530s and subsequent years (1565, 1566 and 1582).

The analyses conducted by Żytkowicz show relatively high proportion of manorial farms in relation to peasant holdings, especially in the Włocławek and Raciążek estates. This is probably directly related to the fact that these estates were located close to the Vistula river, which was the main export artery at the time.

Żytkowicz also pointed out that in the estates of the bishops of Włocławek the most frequently cultivated cereals were rye and oats, which (depending on the period) constituted 85-89% of all production. He explains such a structure of cultivation mainly by two factors: 1) the permanent shortage of manure, and 2) the relatively poor soils, which became sterile very quickly. The main soil types in this area are the sandy Brunic Arenosols and Podzols, the more fertile Luvisols and the locally encountered Gleyic/Stagnic Phaeozems or Gleyic/Stagnic Chernozems (IUSS Working Group WRB, 2015). It can be inferred from the yields obtained in both estates of the bishops of Włocławek that they were the lowest in comparison with royal estates at that time, which was also pointed out by Żytkowicz. Perhaps this was the reason why they were leased out in 1584, when the economy of these estates suffered a serious collapse. It should be noted, however, that fragmentary data from the years 1531–1534 indicate a slight increase in yields in the estates belonging to the bishops of Włocławek situated in Cuyavia.

FIGURE 7. Grain yield ratio in the estates of the bishops of Włocławek. Source: (Żytkowicz, 1962).

2.2 Data on fires in cities and towns

325 Recently, it has been argued that there is a strong causal correlation between extreme droughts and occurrence of fires in cities
and towns of the pre-industrial era (Mauelshagen, 2010; Parker, 2013; Nowosad and Oliński, 2020). To verify this hypothesis,
we have collected data on urban fires from the reign of Sigismund the Old (1507–1548) using the so-called Crown Metric
(Pol. *Metryka Koronna*, hereinafter CM), i.e. the royal chancery registers recording charters, privileges, acts, letters and other
documents issued in the name of the king by royal officials (Sułkowska, 1961; Sułkowska-Kurasiowa, 1966). As by the 16th
330 century, it had become mandatory to record all the issued documents in the CM, it is assumed that its volumes from that time
contain the vast majority of royal grants. We have focused on tax exemptions and concessions given to towns affected by fires
as they were awarded on request (made mostly by town councils but in some cases also by town owners or individual burghers).
Assuming that almost all urban centres impacted by a fire applied for such a privilege, we argue that this type of data provides
the most consistent (both temporally and geographically) and reliable evidence for the quantitative analysis. Moreover, a
335 comparison of the length of exemption periods allows us to evaluate, to some extent, the severity of a particular incident. Some
inconsistencies might be caused by the initial lack of tax exemptions for towns of the Duchy of Mazovia, which until its
incorporation into the Crown of Poland in 1526 had a different administrative, fiscal and economic system (Senkowski, 1965).
In most cases, the documents contain no extensive direct information about the fires. Only incidentally do they describe the
area of a town that was damaged or provide an exact date of the incident. Nonetheless, common expressions such as ‘nuper’ –
340 ‘recently’ (e.g. CM 31:230–231, CM 48:80–81), ‘non pridem’ – ‘not long ago’ (e.g. CM 48:61–62; CM 70:562), ‘novissima
ignis voragine’ – ‘the newest blaze’ (CM 50:400–402) and relative efficiency of the official apparatus lead to the conclusion
that the privileges were granted soon after a fire occurred. For instance, when a part of Cracow burnt down on 24 April 1528,
the relevant exemption was issued on 28 May by the king, who was then in Vilnius (630 km in a straight line from Cracow)
(Piekosiński, 1885). Similarly, the concession for Wschowa, which was destroyed with its suburbs by a conflagration on 6 June
345 of the next year, was granted about a month later also in Vilnius (ca 670 km away from the town) (CM 44:387–389).
Between 1507 and 1548, we identified 226 individual instances of urban fires which resulted in granting a tax exemption. The
number of documents relating to them was higher as some privileges were repeated or recorded more than once, different
concessions were given by more than one deed or the time of exemption was later extended by another act. In four cases there
is no information about the length of the liberty period (CM 47: 408; CM 35: 746–747; CM 70: 223–223a). Formulae of the
350 exemption clause varied from quite general (‘liberty from a contribution called *schoss* for six years’, CM 51:216, transl. from
Latin) to very detailed (‘liberty from all rents, charges, contributions and levies which for us or the commonwealth were
constituted or in future will be constituted’, CM 23:215, transl. from Latin). They commonly consisted of more than one
stipulation, often with a different free period for particular provisions: ‘liberty from the rents that they pay for their dwelling
plots or houses as well as from the civil levies, commonly called *schoss*, and from all the other public levies and contributions
355 that were constituted or will be constituted for ten years; from the rents paid for fields for four years; from civic transport
duties for three years; from the liquor tax (Pol. *czopowe*) for two quarters of a year’ (CM 36:165–166, transl. from Latin).

FIGURE 8. Number of fires registered in Crown Metric. Source: Archival Sources 4.

360 The number of tax exemptions connected with fires between 1531 and 1540 was greater than in the earlier and later periods, although the growth by 30% was not alarming. Moreover, data show that the single year with the largest number of fires in the first half of the 16th century was not any year in the 'drought decade' but 1522. Meanwhile, in 1540, which was seen as exceptionally dry, there were only five tax exemptions related to damage caused by fire.

For the comparative analysis, we used the highest number of years of liberty granted for each incident, regardless of the

365 concession type. In the vast majority of cases, however, the longest liberty period was granted for *schooss*, which was the basic tax (wealth tax) paid by burghers in Poland. Moreover, the longer the primary exemption period, the more of various stipulations were typically included. Although some municipal authorities or town owners were probably able to obtain a longer exemption or a greater number of concessions owing to better relations with the royal apparatus, it seems that those variations were not extreme and not common. Therefore, the length of the principal liberty is a good indicator of the fire

370 severity, as it was mainly determined by the destruction caused by each incident. Using that measure, we have divided the recorded fires into three fire severity categories (FSC) (Figure 9). The year range of each category was defined taking into account the types of stipulations and the context provided by the documents. FSC 1 – localized/small fires: a short period of exemption (0*-5 years, *0 denoting a period shorter than a year), in the majority of cases only one type of concession granted, the liberty given predominantly to those affected by the fire, mentions of individual burghers who lost their property or terms

375 such as 'in quadam parte conflagravit' – 'a certain [suggesting non-substantial] part [of a town] burnt down' (e.g. CM 36:815); FSC 2 – substantial fires affecting a large part of a town: a medium period of exemption (6-9 years), commonly more than one type of concessions, some liberties granted to the whole urban community, terms such as 'in magna parte' – '[burnt] in a great part' (e.g. CM 45:295–296), 'in non mediocre et maxima parte' – '[burnt] in not an insubstantial, in the greatest part' (e.g. CM 23:50); FSC 3 – major/severe fires affecting the majority of the urban fabric: a long period of exemption (more than 10 years),

380 several different concessions, some period of liberty given to the whole community, additional stipulations providing means for rebuilding municipal buildings and private property (e.g. timber from royal forests), terms such as 'totius civitatis conflagratio' – 'conflagration of the whole city' (CM 35:924–925), 'totum conflagravit' – 'the whole [town] burnt down' (CM 33: 349–350).

The analysis reveals that the decade from 1531 to 1540 did not exhibit any exceptional fire severity. On the contrary, it can be

385 concluded that in spite of a larger number of fire outbreaks, their severity was lesser than in the preceding and following decades.

FIGURE 9. Index of fire severity categories. Source: Archival Sources 4.

390 **FIGURE 10.** Spatial distribution of tax exemptions for cities and towns due to the fires. Source: Archival Sources 4.

2.2.1 Can we treat urban fires as a climate proxy?

As pointed out in the previous chapter, it became common to associate fires of the pre-industrial period with climate factors. Even short spells of extremely high temperatures, droughts and wind are described as critical causes of conflagrations in medieval and early urban centres (Mauelshagen, 2010). We argue, however, that our analyses show that there is little or no correlation between dry and hot periods of weather and the occurrence of urban fires (Fig. 11). These climate factors were not the source of conflagrations.

FIGURE 11. Number of fires and PDSI. Source: Archival Sources 4 and (Cook et al., 2015).

There were instances in which a blaze was started by a natural phenomenon, i.e. a lightning strike (e.g. Biała in 1518, CM 31: 329; Stężyca 1540, CM 57: 291); yet, fires cannot be linked with the direct influence of the climate change. In most cases, a fire was directly caused by human activity and negligence. In the CM, there are safe-conduct documents issued for burghers who were accused of starting a blaze or in whose property a fire originated (e.g. CM 37: 453v–454, CM 23:523, CM 31:499). Involuntary conflagrations were very common, especially as daily home activities (e.g. cooking) as well as the majority of crafts (e.g. baking, brewing, smithing, textile and leather production) were related to dealing with fire, and often with the open one. It is reflected in the substantial share of municipal regulations relating to fire hazards, prescribing specific ways of dealing with the open fire, regulating times and circumstances of using artificial light, etc. (Zajęcki, 2014; Modrzyński, 2017). Some urban fires also resulted from hostilities and war. In the case of 16th century Poland, this concerned mainly the south-eastern part of the country, but it could have a huge impact on the total number of fires recorded for a particular year. For instance, in 1524, out of ten tax exemptions granted to towns in relation to fires, at least four were connected with the Tatars' invasion (Leżajsk, CM 38: 66–70; Mościcka, CM 44: 475; Stryj, CM 38: 71; Strzecz CM 29: 400, CM 38: 95 and CM 47: 246v-247). A similar situation occurred in 1509 (2 of 10 – Dobrotwór, CM 23: 574; Kamionka, CM 23: 575 and CM 63: 154) and 1538 (2 of 12 – Satanów, CM 55: 23; Zinków, CM 39: 765–766; CM 55: 23). Our observations were consistent with the data collected for the Polish-Lithuanian Commonwealth in 16th-18th centuries (Karpiński and Nowosiela, 2021).

High temperatures, low humidity and prolonged lack of rain were not among the major factors contributing to fire spread and acceleration. Weather could impact fire conditions to some extent. Garrioch points out (after S.J. Pyne) that in northern and central Europe, raging fires broke out during winter months, when it was cold and wet (Garrioch, 2019). In his examples of Stockholm and Vienna, however, the disparity in the number and severity of fires should be attributed to a snow cover acting as a natural insulation layer rather than to simply wet conditions. Nonetheless, we, as did Garrioch, argue that the dominant element affecting the flammability of towns was the characteristic of the urban built environment. Medieval and early modern towns, especially the larger ones, were often densely built up, with the majority of urban fabric consisting of timber buildings (with wooden shingles and thatching as the most common roofing) (Schofield and Vince, 2005; Samsonowicz and Bogucka, 1986; Karpiński and Nowosiela, 2021) and large quantities of combustible materials stored on each dwelling plot (e.g.

firewood, hay). Even the Polish royal capital city of Cracow is considered to be predominantly built of timber in the 16th century – houses on the plots adjacent to the main square were constructed of stones or bricks, but the greater the distance from the city centre, the more dominant wood became (Follprecht and Noga, 2014). Moreover, masonry structures commonly occupied only the front parts of the dwelling plots of European urban centres, while their rear areas were often covered with wooden sheds, storages, fences and facilities such as kilns, hearths and ovens (Schofield and Vince, 2005; Karpiński and Nowosiela, 2021). The main role of the building materials in the combustibility of the urban fabric was recognized by municipal authorities in their ordinances. They obliged burghers to construct firewalls and prohibited storing of highly flammable materials in the towns. They also stipulated that each property had to be furnished with leather buckets and pike poles used for knocking the burning structures down to prevent the further spread of a fire as well as compelled town inhabitants to participate in firefighting (Sowina, 2002; Modrzyński, 2017; Karpiński and Nowosiela, 2021). The importance of improving the building materials was also underlined in the royal tax exemptions, with substantial extension of the liberty period for burghers willing to rebuild their property in stone or brick (e.g. Oświęcim 1519, CM 31: 501-503; Poznań 1536, CM 51: 237v-238; respectively, from 14 to 18 years and from 10 to 20 years). It should be stressed that although droughts and high temperatures may affect the flammability of timber structures, their impact on acceleration and spreading of flames is marginal – buildings and whole towns could have easily burnt down during thunderstorms accompanied by heavy rain. The only weather factor that played a critical role in the acceleration and spreading of flames was wind.

2.3 Product prices

Data on grain and beer prices in the largest Polish cities compiled by historians reflect the market situation prevailing in them. In the case of the Kingdom of Poland, the grain market, which was also the basis for beer production – the basic drink of society at the time – was a free market in which all social groups could participate. In the first half of the 16th century the Polish grain market became increasingly integrated with the European market, but in the years under review the economic base of Gdańsk (and its exports) was mainly Pomerania and its immediate neighbours: Cuyavia and Mazovia, connected to the largest Polish port by a waterway, the Vistula River (Mielczarski, 1962; Guzowski, 2011). First of all, the prices of oats and rye were taken into account (Fig. 12), i.e. the most important cereals on the Polish market, being the basic feed cereal (oats) and the main element of human diet (rye). Oats were produced and sold on local markets, so their prices reflect the situation undisturbed by export impulses. Rye was exported to a greater extent (wheat as well), although it can be concluded that external demand in the period under review influenced only prices in Gdańsk, while prices in Cracow and Lviv represent a regional situation. In the case of the three large cities for which data are available, we can assume that the market situation in the period from 1520 to 1550 was enduring. The hottest decade is not distinguished by an exceptional rise in the prices of either rye or oats, rather a gentle upward trend can be observed throughout the period which can be linked to an increase in demand due to population growth.

FIGURE 12. Prices in Cracow, Gdańsk and Lviv. Source: (Pelc, 1935, 1937; Hoszowski, 1928).

However, quarterly prices are more important for determining the seasonal fluctuations of agricultural production. For the purposes of our research, we have analyzed how the value of agricultural products changed in the fourth quarter relative to the average price in the preceding quarters. An increase in the prices after the harvest, when most of the crop was coming to market, would indicate a poor harvest and a definite excess of demand over supply. The data shown in the graph usually indicate the opposite situation, where prices tend to fall, with the exception of years with extraordinary increases. It should be noted at this point that in the decade from 1531 to 1540 there were no more such seasons than in the preceding and following decade; moreover, if a certain decline in production should be referred to, it occurred in different years for different regions, which means that in the case of a potential crisis in production, regional variations must be taken into account. As regards the grain prices in the case of Cracow (because the gathered prices made it possible only there), an observation was added on the price trend of pea, characterized by different weather requirements than for grain (Fig. 13). In order for pea to yield well, they had to be sown in the spring into moist, undrained soil. The prices of pea in Cracow point to a potentially successful harvest of this crop. The years 1532 and 1533 (market in Cracow, rye prices) and 1549–1550 (market in Cracow and Lviv, pea, rye, oats) are considered less fertile years.

FIGURE 13. Quarterly prices in Cracow. Source: (Pelc, 1935).

Consequently, an upward trend in beer prices or at least a stable situation over the years 1521–1550 are by no means surprising; in Lviv, even a decline can be observed in the 1530s, although this conclusion may be distorted by the quality of data (prices recorded for only two years) (Fig. 12). More pronounced is the increase in the prices of wine imported to Poland from abroad (from Hungary and Germany), although even in this case, an upward trend characteristic of the entire period under consideration can be seen, in which the decade from 1531 to 1540 does not stand out (Fig. 14). On the contrary, a slight decline in prices on the large Wrocław market can be observed. At that time, the Wrocław market was dominated by the consumption of imported wine. From the mid-15th century, along with the change in Silesia's affiliation to the monarchy of Matthias Corvinus, the share of Hungarian wines and small-medium wines imported via Hungary gradually increased, while the popularity of Alpine wines continued unabated (Myśliwski, 2009). To a small extent, domestic wines were present on the market, as most of the crops had already declined in the 15th century. Single vineyards (near Środa Śląska or near Wrocław) satisfied only liturgical needs, and the must found its way to the tables of monasteries (Adamska, 2017). The decade from 1531 to 1540 also saw stable wine prices at a level not exceeding 2 grosze per 1 quart. What is more, even a slight decline in prices in the years 1532–1536 can be observed, along with an equally slight increase in subsequent years (Wolański, 1996).

FIGURE 14. Wine prices. Source: (Pelc, 1935; Hoszowski, 1928; Wolański, 1996).

490 **2.4 Polish grain exports in Gdańsk**

In the 16th century Gdańsk was a monopolist in the exports of Polish products to the west of Europe, participating successfully in international trade and maintaining close contacts with the main Dutch and English centres (Bogucka, 1970). The city benefited from the fact that Poland of the 16th century became the ‘granary of Europe’, which means that most of the grain arriving in Gdańsk down the Vistula River was traded on the markets of Western Europe (Batou and Szlajfer, 2010; 495 Samsonowicz, 1956). Apart from grain (mainly rye), the Gdańsk market also exported industrially important raw materials (wood, ash, tar, pitch, wax and wool). Unfortunately, for the first half of the 16th century only rudimentary data are available on the volume of Polish grain exported by Gdańsk, although it seems that from the end of the Middle Ages there was an upward trend (Fig. 15).

500 **FIGURE 15.** Grain exports from Gdańsk. Source: (Samsonowicz, 1956; Kutrzeba and Duda, 1915).

Slightly more information on the development of trade contacts between the ports of the south-eastern Baltic is provided by the registers of the Sundtolls recording the number of ships from individual ports crossing the Danish straits (Ellinger and Korst, 1906) (Fig.16). In the fourth decade of the 16th century, despite a visible slump in 1540 (and the following year), on 505 average slightly more ships sailed annually from Gdańsk and Ducal Prussia than in the earlier and later periods. Thus, a decade-long crisis in trade cannot be referred to based largely on agricultural products, although the crisis years of 1540-1541 certainly stand out in a negative fashion. A similar trend is also evidenced by the registers of the water chamber in Włocławek, surviving from 1537. They too imply a decline in both the number of ships and their capacity after 1540 (Fig 17).

510 **FIGURE 16.** Ships from Polish and Prussian ports registered in the Sundtolls. Source: (Ellinger and Korst, 1906).

FIGURE 17. Number of ships registered in the Włocławek water chamber. Source: (Kutrzeba and Duda, 1915).

515 **3. Conclusions**

Narrative texts, which have so far been used in many works on historical climatology, should not be used as the only indicator for studying the resilience of ancient societies to weather and climate change. By using different series of economic data we were able to show that the former economy of the Polish lands, based mainly on the production and exports of cereals, coped quite well with periods of drought in the decade from 1531 to 1540. The set of individual phenomena captured in the Brázdil 520 et al. (2020), and coming from different places in Europe at the time, did not allow us to find the potentially fundamental economic changes that could have been triggered by the prolonged periods of droughts at the time. In this dimension, the

research presented here complements significantly the picture obtained by previous researchers and shows that a macroeconomic analysis of the available historical data can provide a slightly different perspective on the issues of the long-term consequences of climate extremes in the past. Written sources recording the condition of the core branch of the preindustrial Polish economy do not show signs of any particular agricultural crisis in the ‘drought decade’. It can be explained by the fact that the most commonly grown and consumed crops were rye and oats, which are resistant to difficult winter conditions and dry weather (winter rye in particular). Additionally, winter rye has a well-developed root system (up to 2.5 meters), and its greatest demand for water occurs in April-May, when the soil usually has horizontal water reserves, therefore it is resistant to short-term droughts. Neither of the cereals requires good soils or much manure, either. This made it possible not only to obtain relatively high yields, but also to better manage the valuable manure, which could then be used to enrich wheat, barley or garden crops with nutrients.

The climate in the regional (mesoscale) or local scale, i.e. the one directly affecting human activity, can be significantly modified by many factors. Some of them are independent of humans, such as the proximity of water reservoirs, height above sea level or topography, while an important anthropogenic factor is human modification of land cover. In turn, the land cover significantly affects the local, regional, and global water and energy balance at the land surface (Foken, 2008) and thus the surface and air temperature, the rate of evapotranspiration and, indirectly, the amount of precipitation. For instance, according to model studies, deforestation in temperate region amplify the diurnal temperature variation and increase the mean and maximum air temperature and annual precipitation, and afforestation has the opposite effect (Alkama and Cescatti, 2016; Perugini et al., 2017). Also, undrained wetlands will have different thermal properties than drained and cultivated lands. Considering it, the type of land cover and the way of its use in regional scale, may be of great importance in buffering or deepening meteorological drought, which is very complex and difficult topic, therefore underestimated. That the pre-industrial landscape had a buffer character is evidenced by numerous maps dating from the late 18th and early 19th centuries. The presence of large areas of species-diverse forests and numerous (and undisturbed) peatlands and wetlands resulted in water being retained in the environmental cycle. This probably made it easier for ancient societies to cope with the consequences of upcoming droughts.

Concerning the historical sources the system based mostly on lump-sum levies in individual tax categories was not too burdensome for peasants, gentry or clergy. It left quite a lot of money on the market, allowing the accumulated capital to be effectively used on local markets and providing a sufficiently large economic security in case of possible crises.

Our observations have also shown that the automatic linking of dry periods with urban fires present in the literature is a gross oversimplification of the situation at the time. Previous researchers writing on the subject have not taken into account several of the obvious issues with the functioning of cities and towns in the Middle Ages and Early Modern times in the context of the history of material culture, e.g. the type of construction material from which the buildings were made. Observations made on the basis of a series of detailed data preserved in the CM indicate that there was no relationship between droughts and the occurrence of town fires. But does this mean that droughts did not cause fires during dry periods? They did, but first of all, people were to blame for the outbreak of fires in urban centres, and next, nature could be blamed (e.g. the outbreak of fire in

the city or town due to a lightning). The weather conditions could have a much stronger impact on non-urban fires – forests, fields and meadows; yet, at this stage of the research into this topic, quantitative evidence is lacking.

It must also be added that the only crisis actually visible in the collected source material concerns the consequences related to the drought of 1540. In our opinion, this opens up completely new possibilities of interpretation related to this event, and potential new research questions should be asked about how the extreme weather events of 1540 affected the economic stability of Europe in the long term. Our research has also shown that in-depth economic analyses inspired by climatological studies make it possible to better understand the complex relationship between humans and the environment in the past.

Acknowledgements

Our sincere thanks are due to: Stephen Gadd, Andrzej Gliwa, Dorota Dias-Lewandowska, Niels Petersen, András Vadas, Michał Słowiński, Edyta Regulska, Marta Piber-Zbieranowska, Andrzej Buczyło, Mark Whelan and Michał Gochna for the comments, suggestions and support that we received while working on this article.

Funding

TZ and PG are grateful for the financial support from National Science Centre (NCN) grant no. 2017/27/L/HS3/03242. MK-S funded her research from National Science Centre (NCN) grant no. 2018/31/HS3/02187.

Authors' contribution

TZ and PG designed the study. RP provided the statistical analysis and prepared all statistical graphs. TZ, PG, MTR, MK-S, MT, and DA provided the historical analysis. TP prepared all cartographical figures. SS and BK supplemented the text with regard to the soil and climate context. All authors discussed the methods and results, and commented on the manuscript.

Competing interests

The authors declare that they have no conflict of interest.

Archival Sources

- AS 1 – Ratio facta cum omnibus exactoribus de omnibus et singulis exactionibus publicis [1533] in: AGAD, Archiwum Skarbu Koronnego I 35, ff. 202–255.
- 585 AS 2 – Ratio facta cum omnibus exactoribus de omnibus et singulis exactionibus publicis [1535] in: AGAD, Archiwum Skarbu Koronnego I 2, ff. 145–166.
- AS 3 – Suscepcio rationum ab exactoribus Regni anni Domini 1543 in: AGAD, Archiwum Skarbu Koronnego I 61, ff. 766–805.
- AS 4 – Kings' tax exemption privileges in: AGAD, Metryka Koronna (Crown's Metric), No. 23, 24, 25, 26, 28, 30, 31, 35,
590 36, 38, 39, 40, 42, 46, 47, 48, 49, 50, 51, 52, 61, 63, 70.
- AS 5 – Sochaczew tax register from 1496 in: AGAD, Archiwum Skarbu Koronnego I 48, ff. 49–53.

References

- Adamska, D.: Winnice na Przedgórzu Sudeckim. W sprawie uprawy winorośli na średniowiecznym Śląsku, in: Cum gratia et amicitia. Studia z dziejów osadnictwa dedykowane Pani Profesor Marcie Młynarskiej-Kaletynowej z okazji 65-lecia
595 działalności naukowej, Adamska, D., Chrzan, K., Pankiewicz, A. (Eds.), Wrocław, 253–267, 2017.
- Alkama, R. and Cescatti, A.: Biophysical climate impacts of recent changes in global forest cover, *Science*, 351, 600–604, doi:10.1126/science.aac8083, 2016.
- Al-Kayssi, A. W., Al-Karaghoul, A. A., Hasson, A. M., and Beker, S. A.: Influence of soil moisture content on soil temperature and heat storage under greenhouse conditions, *Journal of Agricultural Engineering Research*, 45, 241–252,
600 doi:10.1016/S0021-8634(05)80152-0, 1990.
- Batou, J. and Szlajfer, H. (Eds.): *Western Europe, Eastern Europe and world development, 13th-18th centuries: collection of essays of Marian Małowist*, Brill, Leiden, 2010.
- Bertram, H., La Baume, W., and Klöppel, O.: *Das Weichsel-Nogat-Delta. Beiträge zur Geschichte seiner landschaftlichen Entwicklung, vorgeschichtlichen Besiedelung und bäuerlichen Haus- und Hofanlage*, Danzig, 1923.
- 605 Bogucka, M.: Gdańsk - Polski czy międzynarodowy ośrodek gospodarczy?, in: *Polska w epoce odrodzenia. Państwo - społeczeństwo - kultura*, Wyczański, A. (Ed.), Warszawa, 100–125, 1970.
- Boroda, K.: Kmieć, łan czy profit? Co było podstawą poboru łanowego w XV i XVI wieku?, in: *Człowiek wobec miar i czasu w przeszłości*, Guzowski, P., Liedke, M. (Eds.), Kraków, 152–170, 2007.
- Boroda, K.: Komu i do czego potrzebne były w XVI wieku sumariusze podatkowe? O narodzinach planowania budżetowego
610 we wczesnonowozytnym Królestwie Polskim, *Roczniki Dziejów Społecznych i Gospodarczych*, 73, 29–50, 2013.
- Boroda, K.: *Geografia gospodarcza Królestwa Polskiego w XVI wieku*, Białystok, 2016.
- Boroda, K. and Guzowski, P.: From King's Finance to Public Finance. Different Strategies of Fighting Financial Crisis in the Kingdom of Poland under Jagiellonian Rule (1386–1572), in: *La fiscalità nell'economia Europea secc. XIII-XVIII*.

- Fiscal systems in the European economy from the 13th to the 18th centuries, Cavaciocchi, S. (Ed.), Firenze, 451–470, 2016.
- Brázdil, R., Dobrovolný, P., Bauch, M., Camenisch, C., Kiss, A., Kotyza, O., Oliński, P., and Řezníčková, L.: Central Europe, 1531–1540 CE: The driest summer decade of the past five centuries?, *Clim. Past*, 16, 2125–2151, doi:10.5194/cp-16-2125-2020, 2020.
- Brázdil, R., Dobrovolný, P., Trnka, M., Kotyza, O., Řezníčková, L., Valášek, H., Zahradníček, P., and Štěpánek, P.: Droughts in the Czech Lands, 1090–2012 AD, *Climate and Past*, 9, 1987–2002, 2013a.
- Brázdil, R., Kiss, A., Luterbracher, J., Nash, D. J., and Rezníčková, L.: Documentary data and the study of past droughts: a global state of the art, *Climate of the Past*, 14, 1915–1960, 2018.
- Brázdil, R., Kotyza, O., Dobrovolný, P., Řezníčková, L., and Valášek, H.: History of weather and climate in the Czech lands, *History of Weather and Climate in the Czech Lands*, 10, Masaryk University, Brno, 285 pp., 2013b.
- Büntgen, U., Tegel, W., Carrer, M., Krusic, P. J., Hayes, M., and Esper, J.: Commentary to Wetter et al. (2014): Limited tree-ring evidence for a 1540 European ‘Megadrought’, *Climatic Change*, 131, 183–190, doi:10.1007/s10584-015-1423-1, 2015.
- Camenisch, C., Brázdil, R., Kiss, A., Pfister, C., Wetter, O., Rohr, C., Contino, A., and Retsö, D.: Extreme heat and drought in 1473 and their impacts in Europe in the context of the early 1470s, *Reg Environ Change*, 20, doi:10.1007/s10113-020-01601-0, 2020.
- Camenisch, C., Keller, K. M., Salvisberg, M., Amann, B., Bauch, M., Blumer, S., Brázdil, R., Brönnimann, S., Büntgen, U., Campbell, B. M. S., Fernández-Donado, L., Fleitmann, D., Glaser, R., González-Rouco, F., Grosjean, M., Hoffmann, R. C., Huhtamaa, H., Joos, F., Kiss, A., Kotyza, O., Lehner, F., Luterbacher, J., Maughan, N., Neukom, R., Novy, T., Pribyl, K., Raible, C. C., Riemann, D., Schuh, M., Slavin, P., Werner, J. P., and Wetter, O.: The 1430s: a cold period of extraordinary internal climate variability during the early Spörer Minimum with social and economic impacts in north-western and central Europe, *Clim. Past*, 12, 2107–2126, doi:10.5194/cp-12-2107-2016, 2016.
- Cerman, M.: Villagers and lords in Eastern Europe, 1300-1800, *Studies in European History*, Palgrave Macmillan, Basingstoke, New York, XVII, [1], 155 s., 2012.
- Chomętowski, W.: Materiały do dziejów rolnictwa w Polsce XVI i XVII wieku. Poprzedzone wiadomością o życiu i pismach Jana Ostroroga wojewody poznańskiego, Warszawa, 1878.
- Chuine, I., Yiou, P., Viovy, N., Seguin, B., Daux, V., and Le Roy Ladurie, E.: Historical phenology: grape ripening as a past climate indicator, *Nature*, 432, 289–290, doi:10.1038/432289a, 2004.
- Cook, E. R., Seager, R., Kushnir, Y., Briffa, K. R., Büntgen, U., Frank, D., Krusic, P. J., Tegel, W., van der Schrier, G., Andreu-Hayles, L., Baillie, M., Baittinger, C., Bleicher, N., Bonde, N., Brown, D., Carrer, M., Cooper, R., Čufar, K., Dittmar, C., Esper, J., Griggs, C., Gunnarson, B., Günther, B., Gutierrez, E., Haneca, K., Helama, S., Herzig, F., Heussner, K.-U., Hofmann, J., Janda, P., Kontic, R., Köse, N., Kyncl, T., Levanič, T., Linderholm, H., Manning, S., Melvin, T. M., Miles, D., Neuwirth, B., Nicolussi, K., Nola, P., Panayotov, M., Popa, I., Rothe, A., Seftigen, K., Seim,

- A., Svarva, H., Svoboda, M., Thun, T., Timonen, M., Touchan, R., Trotsiuk, V., Trouet, V., Walder, F., Ważny, T., Wilson, R., and Zang, C.: Old World megadroughts and pluvials during the Common Era, *Science advances*, 1, e1500561, doi:10.1126/sciadv.1500561, 2015.
- 650 Cook, E. R., Solomina, O., Matskovsky, V., Cook, B. I., Agafonov, L., Berdnikova, A., Dolgova, E., Karpukhin, A., Knysht, N., Kulakova, M., Kuznetsova, V., Kyncl, T., Kyncl, J., Maximova, O., Panyushkina, I., Seim, A., Tishin, D., Ważny, T., and Yermokhin, M.: The European Russia Drought Atlas (1400–2016 CE), *Clim Dyn*, 54, 2317–2335, doi:10.1007/s00382-019-05115-2, 2020.
- 655 Degroot, D., Anchukaitis, K., Bauch, M., Burnham, J., Carnegie, F., Cui, J., Luna, K. de, Guzowski, P., Hambrecht, G., Huhtamaa, H., Izdebski, A., Kleemann, K., Moesswilde, E., Neupane, N., Newfield, T., Pei, Q., Xoplaki, E., and Zappia, N.: Towards a rigorous understanding of societal responses to climate change, *Nature*, 591, 539–550, doi:10.1038/s41586-021-03190-2, 2021.
- Dobrzański, B., Kowaliński, S., Kuźnicki, F., Witek, T., and Zawadzki, S.: *Mapa gleb Polski. Skala 1.000.000*, Warszawa, 1974.
- 660 Ellinger, N. and Korst, K.: *Tabeller over Skibsfart og Varetransport gennem Øresund 1497—1660: del. Tabeller over skibsfarten*, 1, 1906.
- Foken, T.: *Micrometeorology*, Springer, Berlin, 2008.
- Follprecht, K. and Noga, Z.: Cracow in 1598, in: *Historical atlas of Poland in the 2nd half of the 16th century voivodeships of Cracow, Sandomierz, Lublin, Sieradz, Łęczyca, Rawa, Płock and Mazovia*, Słoń, M. (Ed.), Peter Lang, Frankfurt am Main, 692–764, 2014.
- 665 Garrioch, D.: Towards a fire history of European cities (late Middle Ages to late nineteenth century), *Urban History*, 46, 202–224, doi:10.1017/S0963926818000275, 2019.
- Geng, S. M., Yan, D. H., Zhang, T. X., Weng, B. S., Zhang, Z. B., and Gang, W.: Effects of extreme drought on agriculture soil and sustainability of different drought soil, 2014.
- 670 Gidaszewski, T., Piber-Zbieranowska, M., Suproniuk, J., and Zbieranowski, M.: Transformation of the natural landscapes of the Middle Noteć Region from tenth to the sixteenth century, in: *Landscapes and societies in medieval Europe east of the Elbe: interactions between environmental settings and cultural transformations*, Kleingärtner, S., Newfield, T. P., Rossignol, S., Wehner, D. (Eds.), *Papers in Medieval Studies*, 3, Toronto, 245–273, 2013.
- 675 Gostomski, A.: *Gospodarstwo*, Wrocław, 1951.
- Guzowski, P.: The influence of exports on grain production on Polish royal demesne farms in the second half of the sixteenth century, *Agricultural History Review*, 59, 312–327, 2011.
- Guzowski, P.: Chłopi, czynsze i pieniądze w marksistowskich opisach kolonizacji niemieckiej, in: *Marxismus a Medievistika: Společné osudy?*, Nodl, M., Węcowski, P. (Eds.), Praha, 143–158, 2020.
- 680 He, M. and Dijkstra, F. A.: Drought effect on plant nitrogen and phosphorus: a meta-analysis, *The New phytologist*, 204, 924–931, doi:10.1111/nph.12952, 2014.

- Heim, R. R.: A Review of Twentieth-Century Drought Indices Used in the United States, *Bull. Amer. Meteor. Soc.*, 83, 1149–1166, doi:10.1175/1520-0477-83.8.1149, 2002.
- Hoszowski, S.: *Ceny we Lwowie w XVI i XVII wieku*, Lwów, 1928.
- 685 Hoszowski, S.: *Lustracja województwa malborskiego i chełmińskiego 1565*, Gdańsk, 1961.
- Huhtamaa, H. and Helama, S.: Distant impact: tropical volcanic eruptions and climate-driven agricultural crises in seventeenth-century Ostrobothnia, Finland, *Journal of historical geography*, 57, 40–51, doi:10.1016/j.jhg.2017.05.011, 2017.
- IUSS Working Group WRB: World Reference Base for Soil Resources 2014, update 2015. International soil classification system for naming soils and creating legends for soil maps., *World Soil Resources Reports*, 106, Rome, 2015.
- 690 Kaczmarczyk, K.: Ciężary ludności wiejskiej i miejskiej na prawie niemieckim w Polsce XIII i XIV w., *Przegląd Historyczny*, 11, 12–30, 1910.
- Karpiński, A. and Nowosiela, E.: *Pożary w miastach Rzeczypospolitej w XVI-XVIII wieku i ich następstwa ekonomiczne, społeczne i kulturowe*, Warszawa, 2021.
- 695 Kiss, A.: Weather and weather-related natural hazards in medieval Hungary II: documentary evidence on the 13th century, *Medium Aevum Quotidianum*, 68, 5–46, 2014.
- Kiss, A.: Droughts and low water levels in Late Medieval Hungary II: 1361, 1439, 1443–4, 1455, 1473, 1480, 1482(?), 1502–3, 1506: documentary versus three-ring (owda) evidence, *Journal of Environmental Geography*, 10, 43–56, 2017.
- Kiss, A.: Before and after the Great Heat and Drought of 1540: multiannual trends of grape and grain harvest dates in the Vienna Hospital Accounts, in: *Genius loci. Laszlovszky 60, Drosztmér, Á., Lyublyanovics, K., Rasson, J., Papp Reed, Z., Vadas, A., Zatykó, C. (Eds.), Budapest*, 117–120, 2018.
- 700 Kiss, A.: A dynamic interplay of weather, biological factors and socio-economic interactions: Late 15th-century - early 16th century crises in Hungary, in: *The Dance of Death in Late Medieval and Renaissance Europe: Environmental Stress, Mortality and Social Response*, Kiss, A., Pribyl, K. (Eds.), London-New York, 125–145, 2019.
- 705 Kiss, A. and Nikolić, Z.: Droughts, Dry Spells and Low water Levels in Medieval Hungary (and Croatia) I: The Great Droughts of 1362, 1474, 1479, 1494 and 1507, *Journal of Environmental Geography*, 8, 11–22, 2015.
- Kiss, A. and Pribyl, K. (Eds.): *The Dance of Death in Late Medieval and Renaissance Europe: Environmental Stress, Mortality and Social Response*, London-New York, 2019.
- Krieger, M., Lohmann, G., and Laepple, T.: Seasonal climate impacts on the grape harvest date in Burgundy (France), *Clim. Past*, 7, 425–435, doi:10.5194/cp-7-425-2011, 2011.
- 710 Kutrzeba, S. and Duda, F.: *Regestra thelonei aquatici Wladislaviensis: saeculi XVI*, Księgarnia G. Gebethnera, Kraków, 1915.
- Labbé, T., Pfister, C., Brönnimann, S., Rousseau, D., Franke, J., and Bois, B.: The longest homogeneous series of grape harvest dates, Beaune 1354–2018, and its significance for the understanding of past and present climate, *Clim. Past*, 15, 1485–1501, doi:10.5194/cp-15-1485-2019, 2019.
- 715

- Legatowicz, I.: *Jana Hermana z Neydenburku Ziemianin albo Gospodarz inflandski: w roku M.D.C.LXII do druku podany, a teraz z niemieckiego na polski język przetłumaczony w roku 1671 i powtórny raz w druk podany w Słucku w drukarni roku 1673, a z tego przedrukowany znowu r. 1823, Mińsk, 1823.*
- Leskiewiczowa, J.: Znaczenie inwentarzy dóbr ziemskich dla badań historii wsi w Polsce XVIII w., *Kwartalnik Historyczny*, 60, 363–378, 1953.
- Liu, Z., Fu, B., Zheng, X., and Liu, G.: Plant biomass, soil water content and soil N:P ratio regulating soil microbial functional diversity in a temperate steppe: A regional scale study, *Soil Biology and Biochemistry*, 42, 445–450, doi:10.1016/j.soilbio.2009.11.027, 2010.
- Ljungqvist, F. C., Seim, A., and Huhtamaa, H.: Climate and society in European history, *WIREs Clim Change*, 12, doi:10.1002/wcc.691, 2021.
- Ludwig, K.-H.: *Zur Besiedlung des Weichseldeltas durch die Mennoniten: die Siedlungen der Mennoniten im Territorium der Stadt Elbing und in der Ökonomie Marienburg bis zur Übernahme der Gebiete durch Preußen 1772, Marburg-Lahn, 1961.*
- Łabędzki, L. Ł. and Bąk, B.: Impact of meteorological drought on crop water deficit and crop yield reduction in Polish agriculture, *Journal of Water and Land Development*, 34, 181–190, doi:10.1515/jwld-2017-0052, 2017.
- Maciejewska, W. (Ed.): *Katalog inwentarzy dóbr ziemskich XVI-XVIII wieku sporządzony na podstawie ksiąg grodzkich i ziemskich*, Warszawa, 1959.
- Mahajan, G., George-Jaeggli, B., Walsh, M., and Chauhan, B. S.: Effect of Soil Moisture Regimes on Growth and Seed Production of Two Australian Biotypes of *Sisymbrium thellungii* O. E. Schulz, *Frontiers in plant science*, 9, 1241, doi:10.3389/fpls.2018.01241, 2018.
- Małowist, M.: *Wschód a zachód Europy w XIII-XVI wieku. Konfrontacja struktur społeczno-gospodarczych*, Wydawnictwo Naukowe PWN, Warszawa, 2006.
- Mauelshagen, F.: *Klimageschichte der Neuzeit*, Darmstadt, 2010.
- Mielczarski, S.: Rynek zbożowy na ziemiach polskich w drugiej połowie XVI i pierwszej połowie XVII wieku: próba rejonizacji, Gdańsk, 1962.
- Modrzyński, P. M.: Ochrona przeciwpożarowa w Toruniu w świetle ustawodawstwa wilkierzowego (XIII–XVI w.), *Rocznik Toruński*, 44, 7–22, 2017.
- Myśliwski, G.: *Wrocław w przestrzeni gospodarczej Europy (XIII-XV wiek): centrum czy peryferie?*, Wrocław, 2009.
- Newman, I. E. and Harvey, P. D. A.: Did Soil Fertility Decline in Medieval English Farms? Evidence from Cuxham, Oxfordshire, 1320-1340, *Agricultural History Review*, 45, 119–136, 1997.
- Nowosad, W. and Oliński, P.: The extreme year of 1540 in terms of climate variation from the perspective of historical sources derived from the Polish and Baltic territories, in: *The dance of death in Late Medieval and Renaissance Europe, environmental stress, mortality and social response*, Kiss, A., Pribyl, K. (Eds.), Routledge, London, 146–155, 2020.

- Orth, R., Vogel, M. M., Luterbacher, J., Pfister, C., and Seneviratne, S. I.: Did European temperatures in 1540 exceed present-day records?, *Environ. Res. Lett.*, 11, 114021, doi:10.1088/1748-9326/11/11/114021, 2016.
- Parker, G.: *Global crisis: war, climate change and catastrophe in the seventeenth century*, Yale University Press, New Haven, 2013.
- Pelc, J.: *Ceny w Krakowie w latach 1396-1600*, Lwów, 1935.
- Pelc, J.: *Ceny w Gdańsku w XVI i XVII wieku*, Warszawa, 1937.
- 755 Perugini, L., Caporaso, L., Marconi, S., Cescatti, A., Quesada, B., Noblet-Ducoudré, N. de, House, J. I., and Arneth, A.: Biophysical effects on temperature and precipitation due to land cover change, *Environ. Res. Lett.*, 12, 53002, doi:10.1088/1748-9326/aa6b3f, 2017.
- Pfister, C.: When Europe was burning. The multi-seasonal drought of 1540 and the arsonist paranoia, in: *Disasters, Risks and Cultures. A Disaster, Risks and Cultures. Comparative and Transcultural Survey of Historical Disaster Experiences between Asia and Europe*, Schenk, G. J. (Ed.), Springer, Cham, 155–185, 2017.
- 760 Pfister, C.: The "Black Swan" of 1540. Aspects of a European Megadrought, in: *Climatic Change and Cultural Transition in Europe*, Leggewie, K., Mauelshagen, F. (Eds.), Brill, Leiden, 156–196, 2018.
- Pfister, C., Wetter, O., Brázdil, R., Dobrovolný, P., Glaser, R., Luterbacher, J., Seneviratne, S. I., Zorita, E., Alcoforado, M.-J., Barriendos, M., Bieber, U., Burmeister, K. H., Camenisch, C., Contino, A., Grünewald, U., Herget, J., Himmelsbach, I., Labbé, T., Limanówka, D., Litzenburger, L., Kiss, A., Kotyza, O., Nordli, Ø., Pribyl, K., Retsö, D., Riemann, D., 765 Rohr, C., Siegfried, W., Spring, J.-L., Söderberg, J., Wagner, S., and Werner, J. P.: Tree-rings and people – different views on the 1540 Megadrought. Reply to Büntgen et al. 2015, *Climatic Change*, 131, 191–198, doi:10.1007/s10584-015-1429-8, 2015.
- Piekosiński, F.: *Prawa, przywileje i statuta miasta Krakowa (1507-1795)*, 1, Kraków, 1885.
- 770 Pipek, J.: (M. Grossner) *Krótkie wprowadzenie do gospodarstwa wiejskiego*, Wrocław, 1954.
- Przybylak, R., Oliński, P., Koprowski, M., Filipiak, J., Pospieszyńska, A., Chorażyczewski, W., Puchałka, R., and Dąbrowski, H. P.: Droughts in the area of Poland in recent centuries in the light of multi-proxy data, *Clim. Past*, 16, 627–661, doi:10.5194/cp-16-627-2020, 2020.
- Rostański, J.: *Teodora Zawadzkiego "Memoriale oeconomicum"*, 1616, Kraków, 1891.
- 775 Rutkowski, J.: *Skarbowość polska za Aleksandra Jagiellończyka*, *Kwartalnik Historyczny*, 23, 1909.
- Samsonowicz, H.: *Handel zagraniczny Gdańska w drugiej połowie XV wieku: rejonizacja handlu na podstawie ksiąg cłapalowego*, *Przegląd Historyczny*, 47, 283–352, 1956.
- Samsonowicz, H. and Bogucka, M.: *Dzieje miast i mieszczaństwa w Polsce przedrozbiorowej*, Wrocław, 1986.
- Schofield, J. and Vince, A.: *Medieval Towns. The Archaeology of British Towns in their European Setting*, London-Oakville, 2005.
- 780 Seneviratne, S. I., Nicholls, N., Easterling, D., Goodess, C. M., Kanae, S., Kossin, J., Luo, Y., Marengo, J., McInnes, K., Rahimi, M., Reichstein, M., Sorteberg, A., Vera, C., and Zhang, X.: Changes in climate extremes and their impacts on

- the natural physical environment, in: *Managing the Risks of Extreme Events and Disasters to Advance Climate Change Adaptation*, Field, C. B., Barros, V., Stocker, T. F., Qin, D., Dokken, D. J., Ebi, K. L., Mastrandrea, M. D., Mach, K. J., Plattner, G.-K., Allen, S. K., Tingor, M., Midgley, P. M. (Eds.), *Special Report of the Intergovernmental Panel on Climate Change (IPCC)*, Cambridge University Press, Cambridge, 109–230, 2012.
- 785 Senkowski, J.: *Lustracja poradnego i rejestr łąnów województw brzesko-kujawskiego i inowrocławskiego z roku 1489*, *Teki Archiwalne*, 7, 69–214, 1961.
- Senkowski, J.: *Skarbowość Mazowsza od końca XIV wieku do 1526 roku*, Warszawa, 1965.
- 790 Siebielec, S., Siebielec, G., Klimkowicz-Pawlas, A., Gałązka, A., Grządziel, J., and Stuczyński, T.: *Impact of Water Stress on Microbial Community and Activity in Sandy and Loamy Soils*, *Agronomy*, 10, 1429, doi:10.3390/agronomy10091429, 2020.
- Słoń, M. (Ed.): *Historical atlas of Poland in the 2nd half of the 16th century voivodeships of Cracow, Sandomierz, Lublin, Sieradz, Łęczyca, Rawa, Płock and Mazovia*, Peter Lang, Frankfurt am Main, 2014.
- 795 Sowina, U.: *Les eaux qui charrient la mort et les désastres: inondations et pollution des eaux dans les villes polonaises aux XV et XVI siècles*, in: *Cities and catastrophes*, Platt, H. L., Schott, D. (Eds.), Peter Lang, Frankfurt am Main, 43–61, 2002.
- Sułkowska, I.: *Księgi polskiej kancelarii koronnej w drugiej połowie XV w.*, *Studia Źródłoznawcze*, 6, 81–101, 1961.
- Sułkowska-Kurasiowa, I.: *Księgi Wpisów Metryki Koronnej (1447-1794) w Archiwum Głównym Akt Dawnych w*
- 800 *Warszawie*, Archeion, 44, 1966.
- Szpak, J.: *Kierunki produkcji dworskiej w ekonomii malborskiej w XVI wieku*, Zakład Narodowy im. Ossolińskich – Wydawnictwo PAN, Wrocław, 1971.
- Trawkowski, S.: *W sprawie roli kolonizacji niemieckiej w przemianach kultury materialnej na ziemiach polskich w XIII w.*, *Kwartalnik Historii Kultury Materialnej*, 8, 185–205, 1960.
- 805 Wang, M., Shi, S., Lin, F., Hao, Z., Jiang, P., and Dai, G.: *Effects of soil water and nitrogen on growth and photosynthetic response of Manchurian ash (Fraxinus mandshurica) seedlings in northeastern China*, *PloS one*, 7, e30754, doi:10.1371/journal.pone.0030754, 2012.
- Wawrzyńczyk, A.: *Stan badań nad wysokością plonów w rolnictwie Polskim XVI-XVIII w.*, *Kwartalnik Historii Kultury Materialnej*, 8, 103–117, 1960.
- 810 Wawrzyńczyk, A.: *Studia nad wydajnością produkcji rolnej dóbr kólewskich w drugiej połowie XVI wieku*, Wrocław-Warszawa-Kraków, 1974.
- Wetter, O. and Pfister, C.: *An underestimated record breaking event – why summer 1540 was likely warmer than 2003*, *Clim. Past*, 9, 41–56, doi:10.5194/cp-9-41-2013, 2013.
- Wetter, O., Pfister, C., Werner, J. P., Zorita, E., Wagner, S., Seneviratne, S. I., Herget, J., Grünewald, U., Luterbacher, J., Alcoforado, M.-J., Barriendos, M., Bieber, U., Brázdil, R., Burmeister, K. H., Camenisch, C., Contino, A., Dobrovolný, P., Glaser, R., Himmelsbach, I., Kiss, A., Kotyza, O., Labbé, T., Limanówka, D., Litzenburger, L., Nordl, Ø., Pribyl, K.,

- Retsö, D., Riemann, D., Rohr, C., Siegfried, W., Söderberg, J., and Spring, J.-L.: The year-long unprecedented European heat and drought of 1540 – a worst case, *Climatic Change*, 125, 349–363, doi:10.1007/s10584-014-1184-2, 2014.
- Weyman, S.: Pierwsze ustawy pogłównego generalnego w Polsce na tle ówczesnego systemu podatkowego, *Roczniki
820 Dziejów Społecznych i Gospodarczych*, 18, 1956.
- White, S., Moreno-Chamarro, E., Zanchettin, D., Huhtamaa, H., Degroot, D., Stoffel, M., and Corona, C.: The 1600 Huaynaputina Eruption as Possible Trigger for Persistent Cooling in the North Atlantic Region, *Clim. Past*, doi:10.5194/cp-2021-82, 2021.
- Wierzbowski, T.: Sigismundi I regis tempora complectens (1507-1548): Vol. 1, *Acta cancellariorum 1507-1548*, Varsoviae,
825 1910.
- Wierzbowski, T.: Sigismundi I regis tempora complectens (1507-1548): Vol. 2, *Acta vicecancellariorum 1507-1535*, Varsoviae, 1912.
- Wierzbowski, T.: Sigismundi I regis tempora complectens (1507-1548): Vol. 3, *Acta vicecancellariorum 1533-1548*, Varsoviae, 1915.
- 830 Wierzbowski, T.: Sigismundi I regis tempora complectens (1507-1548): Vol. 4, *Indices rerum, personarum et locorum 1507-1548*, Varsoviae, 1917.
- Wierzbowski, T.: Sigismundi Augusti regis tempora complectens (1548-1572): Vol. 1, *Acta cancellariorum 1548-1572*, Varsoviae, 1919.
- Wilhite, D. A. and Glantz, M. H.: Understanding: the Drought Phenomenon: The Role of Definitions, *Water International*,
835 10, 111–120, doi:10.1080/02508068508686328, 1985.
- Wolański, M.: *Ceny we Wrocławiu w latach 1506-1618*, Wrocław, 1996.
- Wyczański, A.: Z dziejów reform skarbowo-wojskowych za. Zygmunta I. Próby relucji pospolitego ruszenia, *Przegląd Historyczny*, 43, 287–304, 1952.
- Wyczański, A.: O badaniu plonów zbóż w dawnej Polsce, *Kwartalnik Historii Kultury Materialnej*, 16, 251–271, 1968.
- 840 Wyczański, A.: *La Consommation alimentaire en Pologne aux XVIe et XVIIe siècles.*, Publications de la Sorbonne, Paris, 1985.
- Zajęcki, M.: *Instrumenty prawne ochrony przeciwpożarowej w miastach Polski przedrozbiorowej*, Poznań, 2014.
- Związek, T.: Kształtowanie sieci młynów wodnych na przykładzie powiatu konińskiego (ok. 1300-1550), *Studia Geohistorica*, 2, 118–142, 2014.
- 845 Żaboklicka, A.: Zmiany w strukturze drobnej własności szlacheckiej w XV-XVI w. na przykładzie ziemi liwskiej, *Przegląd Historyczny*, 49, 250–260, 1958.
- Żytkowicz, L.: *Studia nad gospodarstwem wiejskim w dobrach kościelnych w XVI w.*, Warszawa, 1962.

FIGURE 1. Distribution of areas analyzed in the text in the spatial context of Vistula river exports in the 16th century (before the Union of Lublin of 1569).

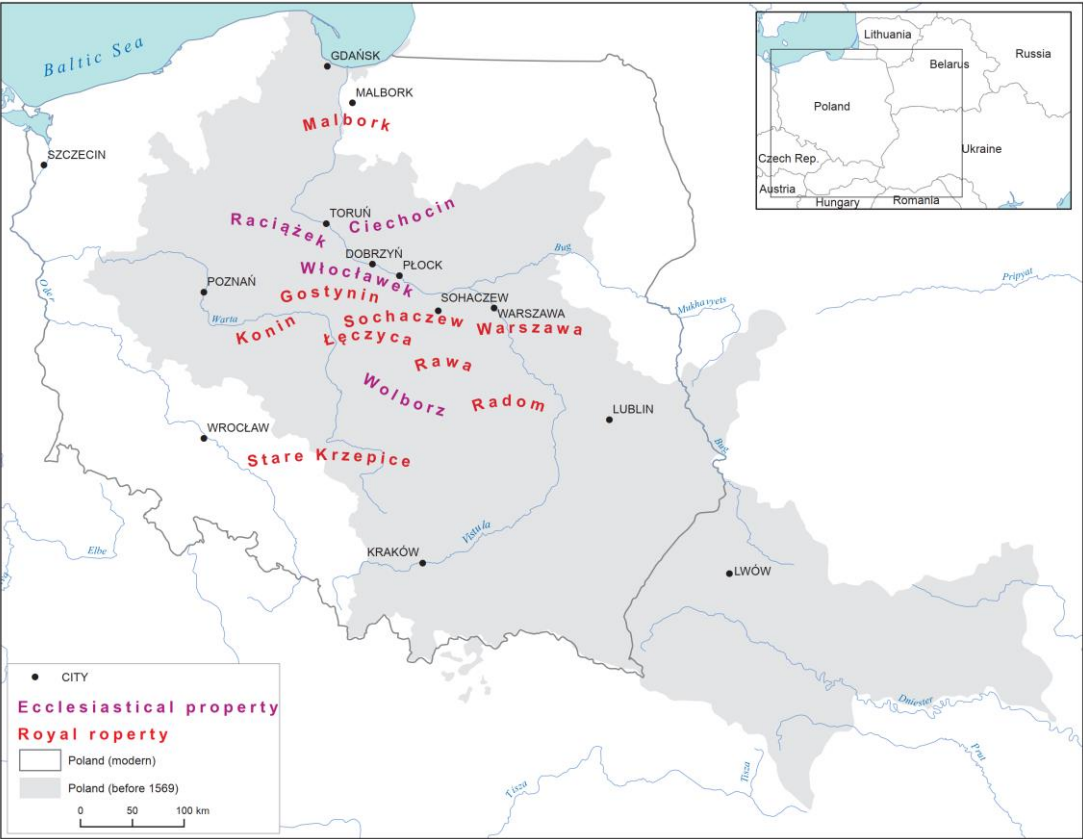


FIGURE 2. Changes in cultivated land based on surviving tax summaries from 1533, 1535 and 1543. Sources: Archival
865 Sources 1–3.

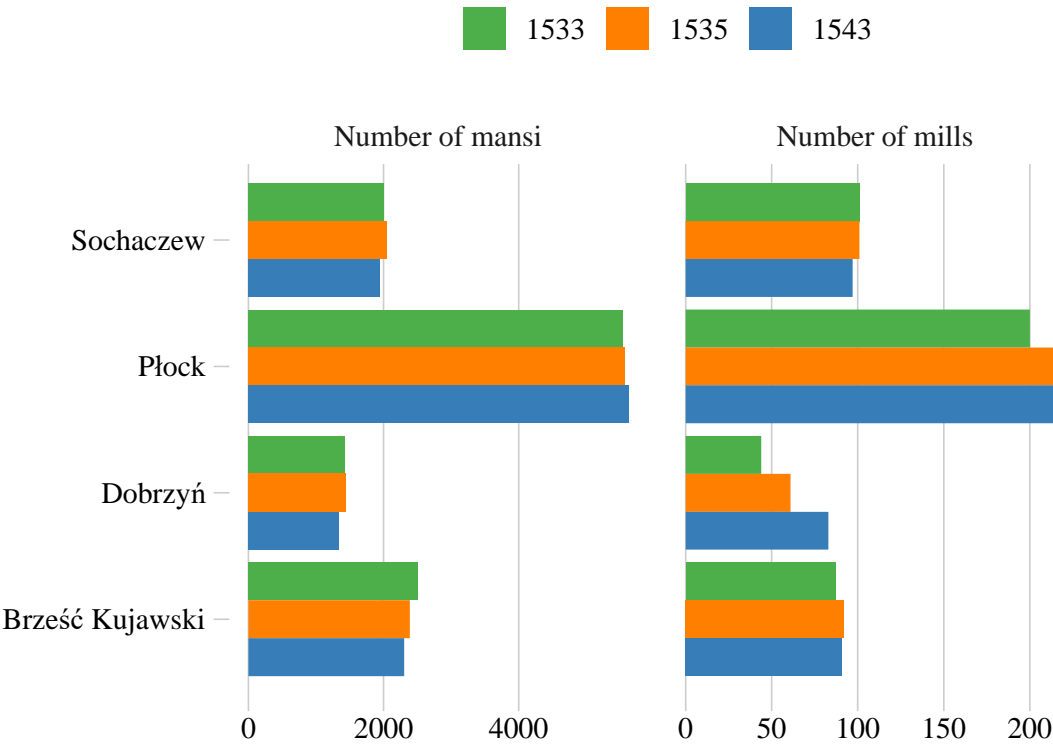


FIGURE 3. Vistula Fens settlement

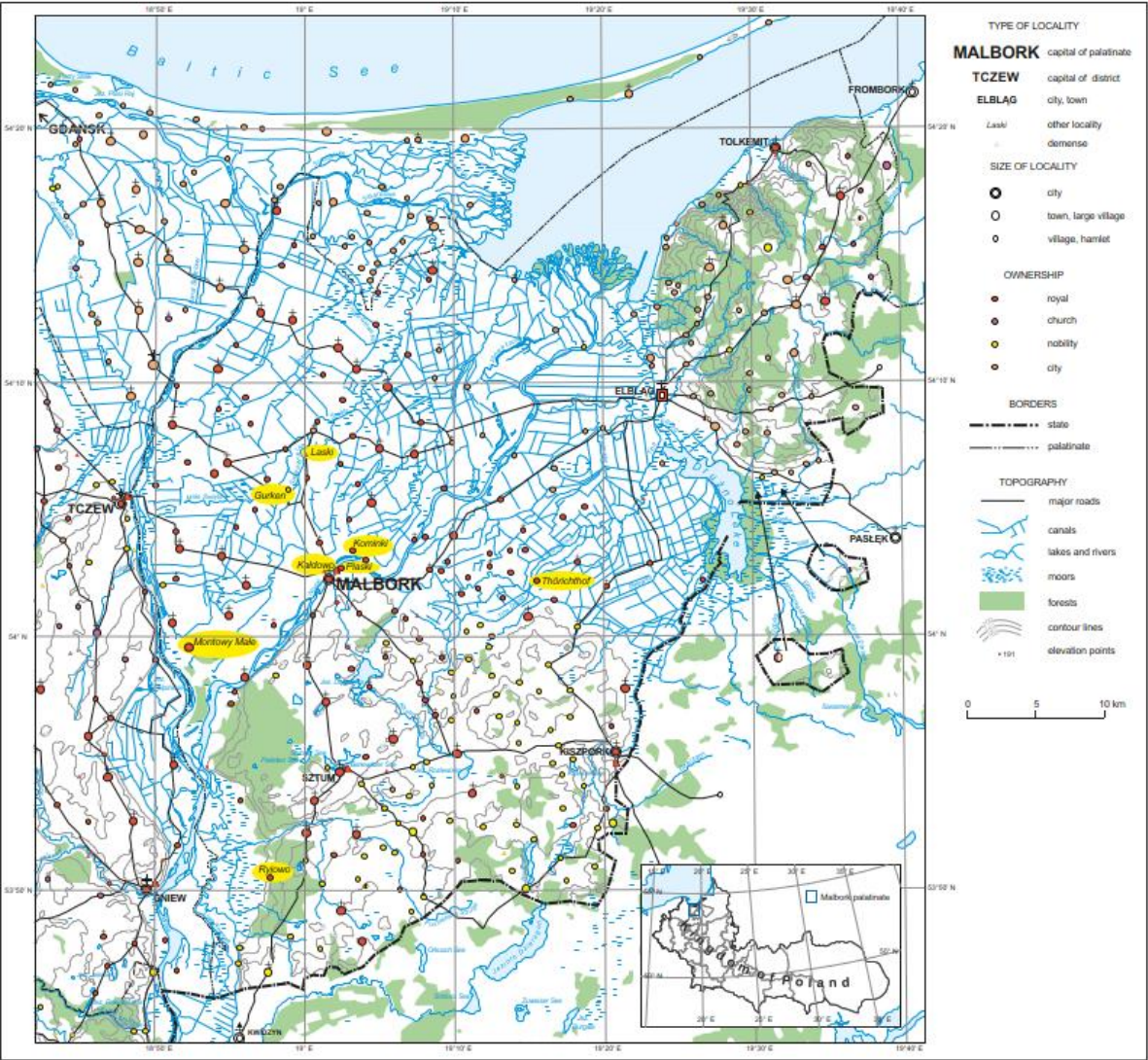


FIGURE 4. Grain yield ratio of main crops in Malbork Royal Economy. Sources: (Szpak, 1971).

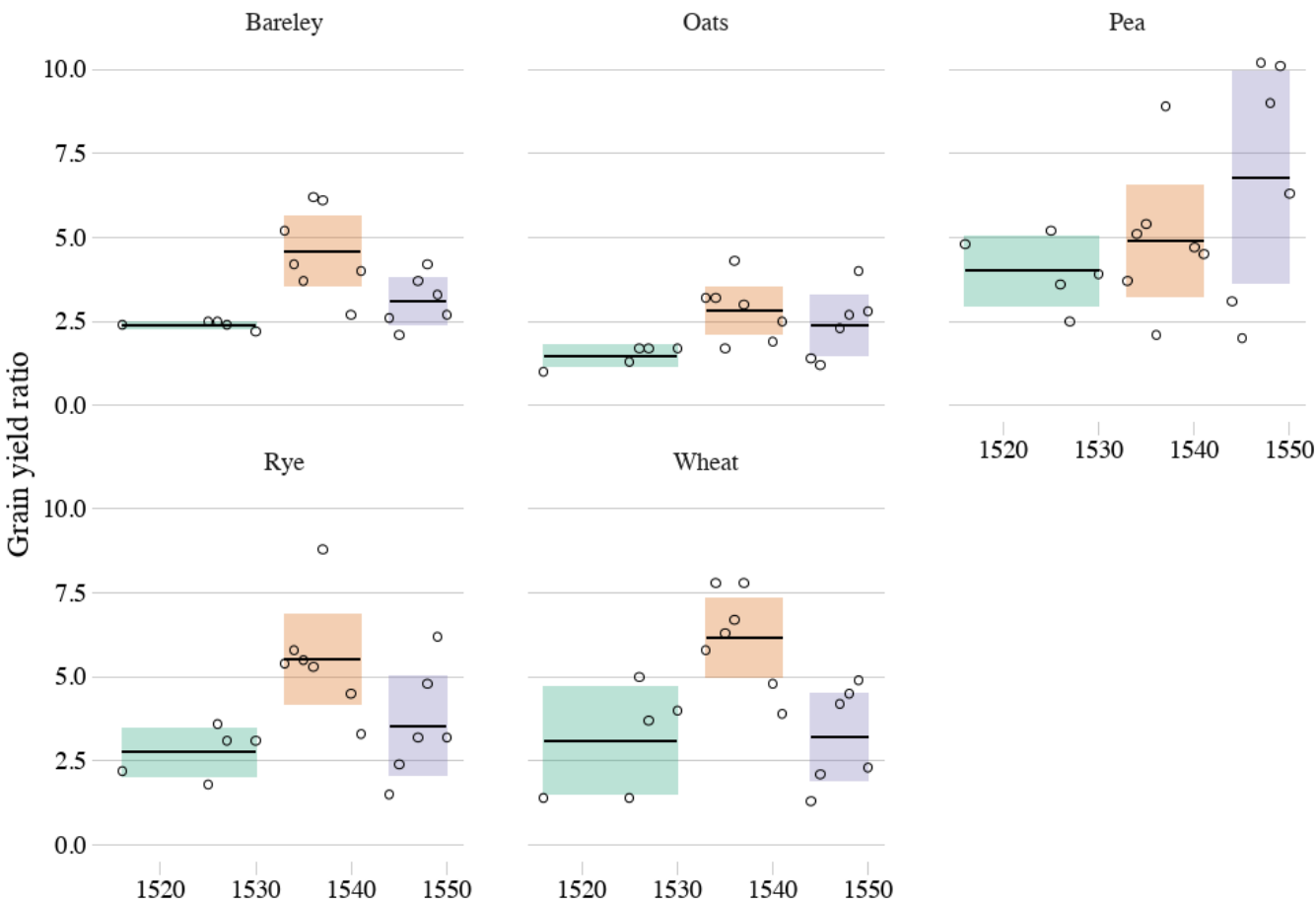
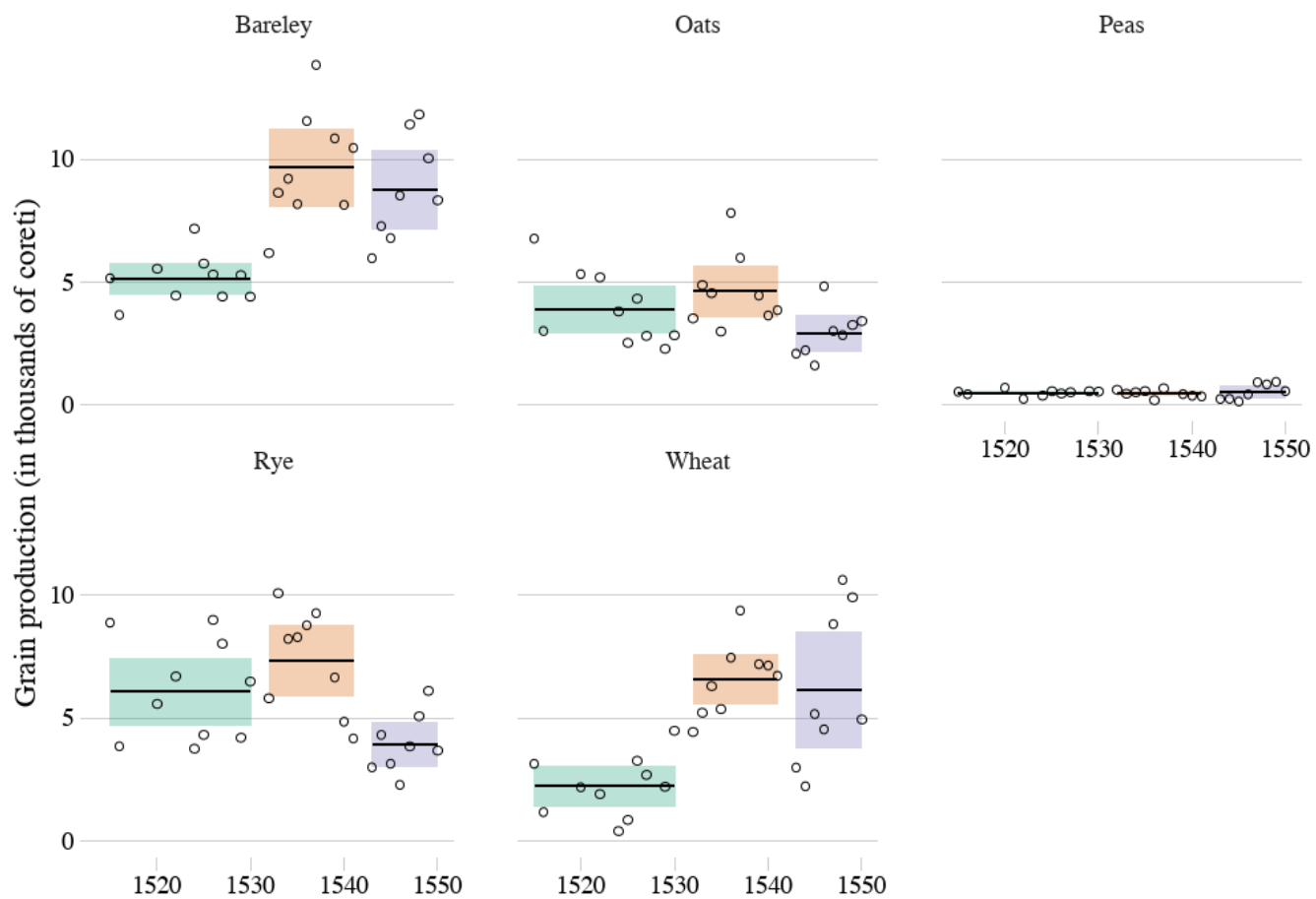


FIGURE 5. Volume of grain harvests in Malbork Royal Economy (calculated in coreti; 1 coretus = 55 kg). Sources: (Szpak, 1971)



885

FIGURE 6. Grain yield ratio of main crops in the royal estates. Sources: (Wawrzyńczyk, 1974).

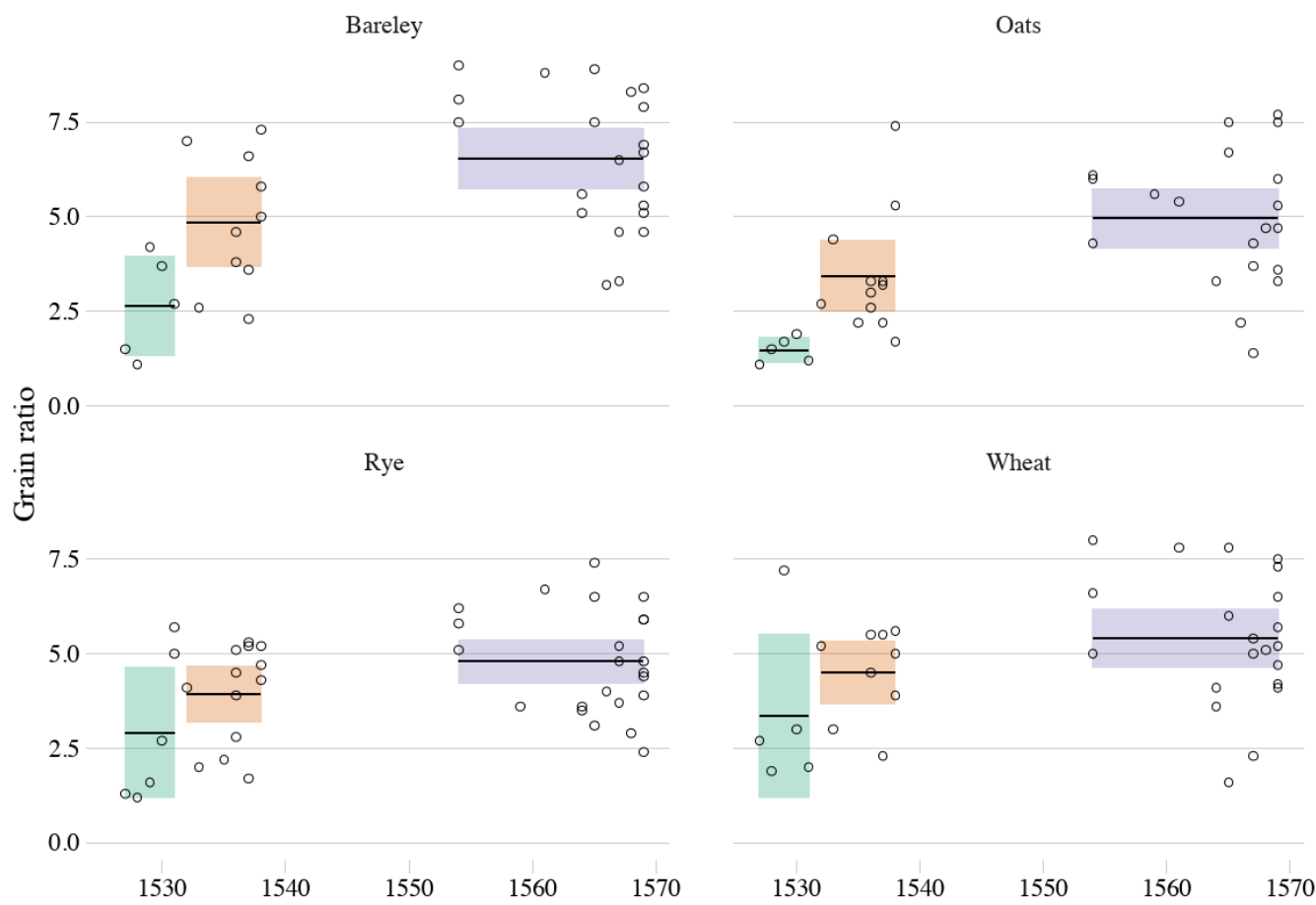


FIGURE 7. Grain yield ratio in the estates of Bishops of Włocławek. Source: (Żytkowicz, 1962).

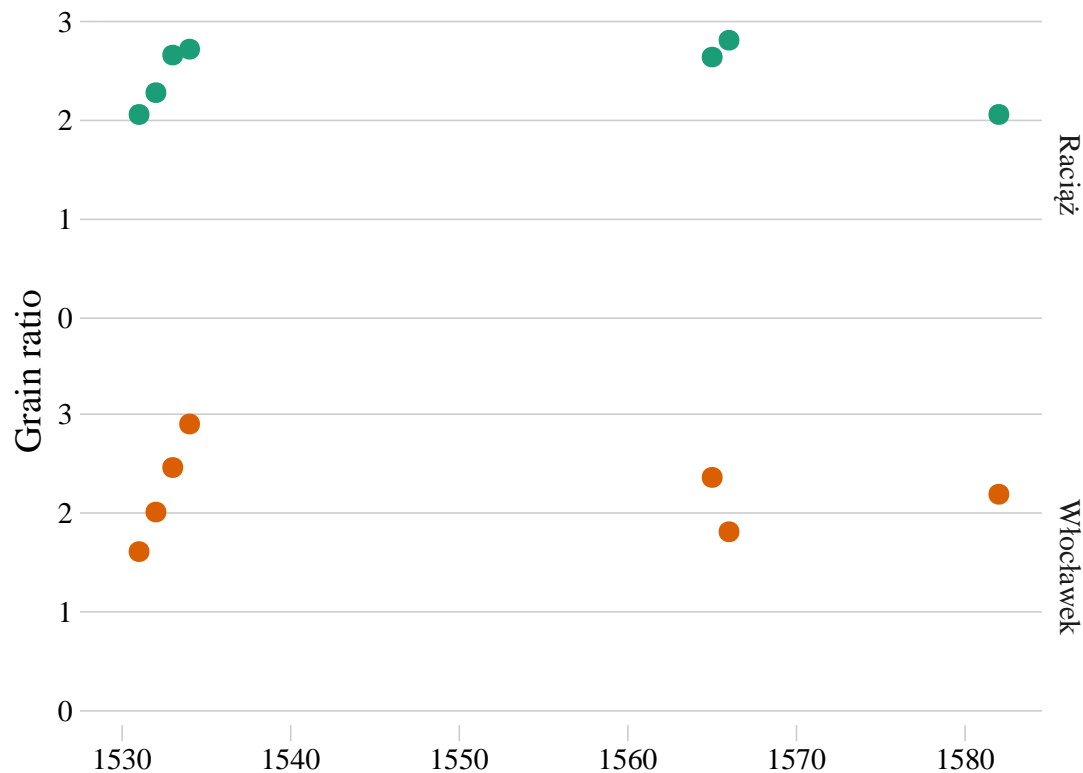


FIGURE 8. Number of fires registered in Crown Metric. Source: Archival Sources 4.

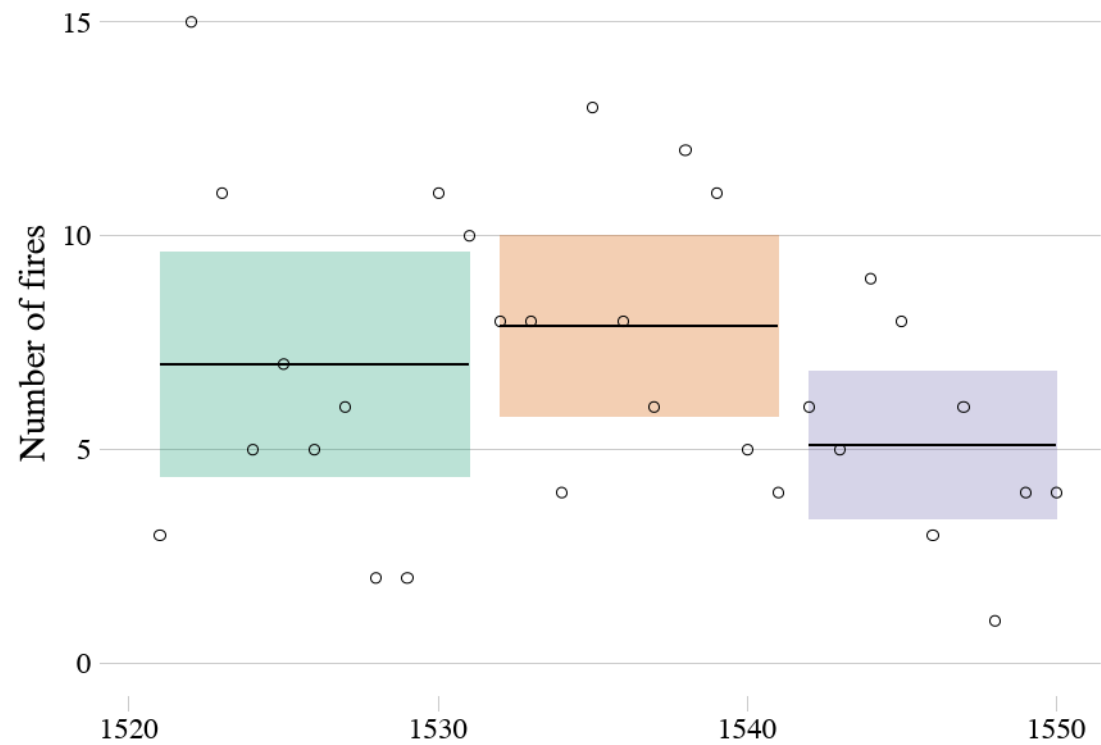


FIGURE 9. Index of fire severity categories. Source: Archival Sources 4.



FIGURE 10. Spatial distribution of tax exemptions for cities and towns due to the fires. Source: Archival Sources 4.

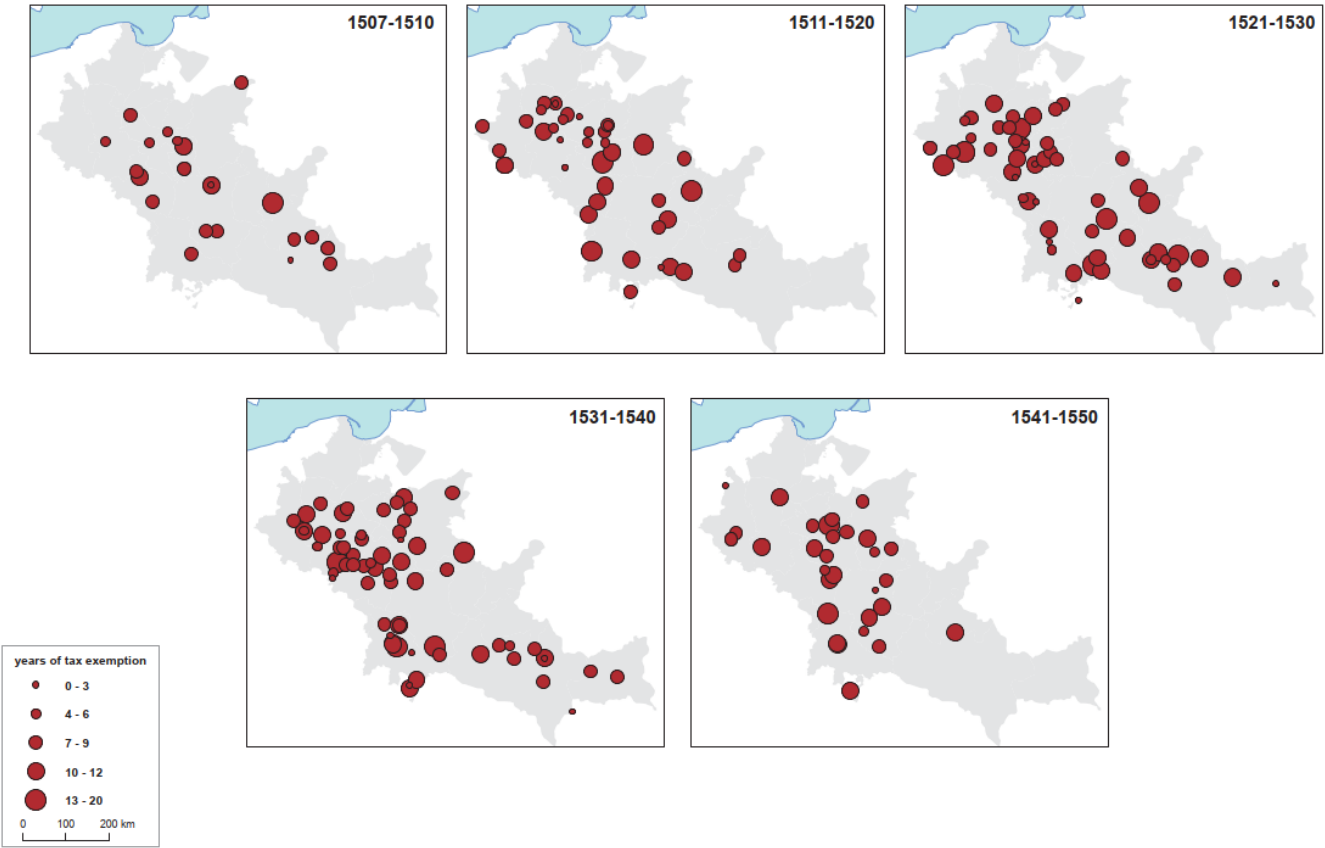


FIGURE 11. Number of fires and PDSI. Source: Archival Sources 4 and (Cook et al., 2015).

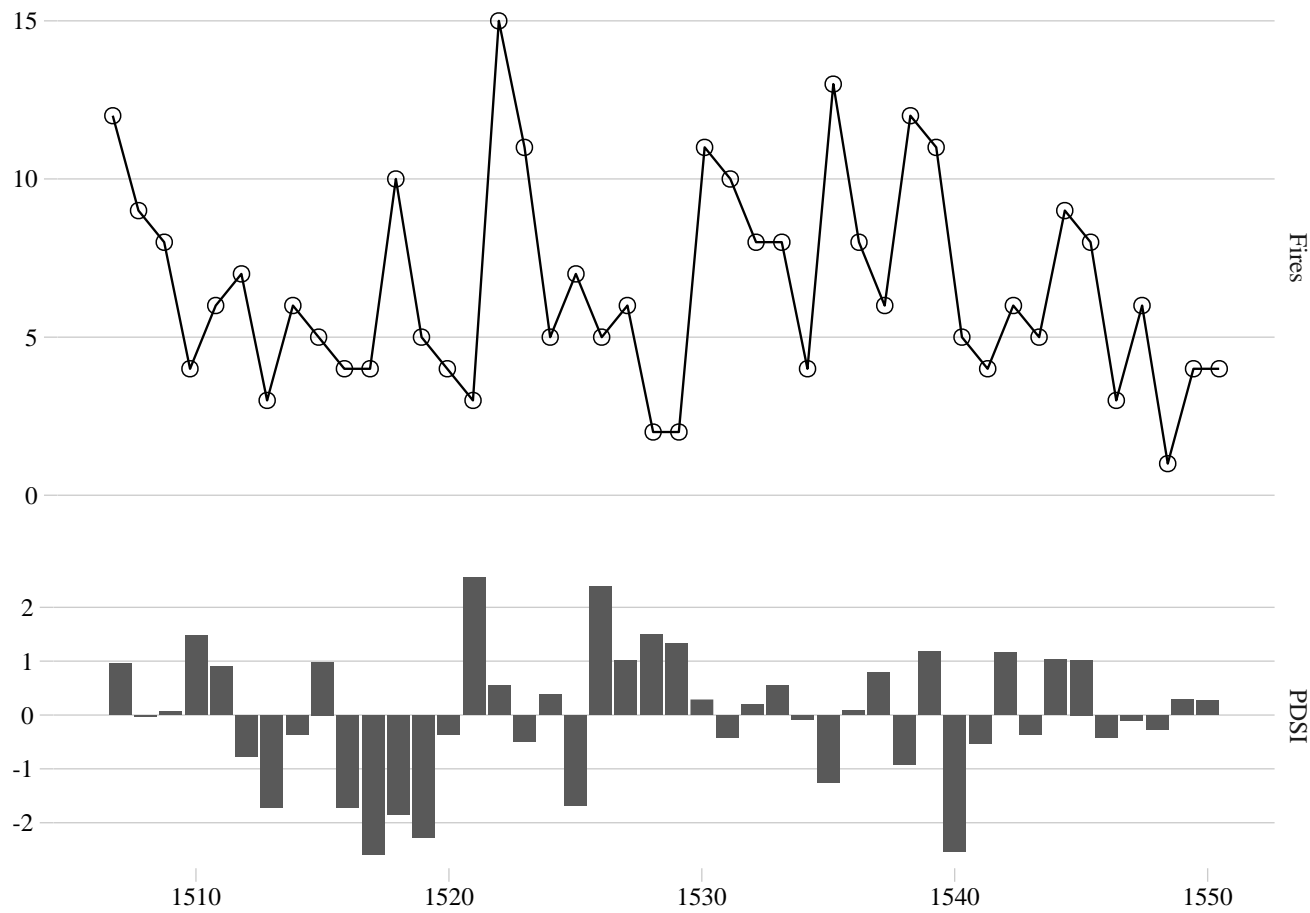


FIGURE 12. Prices in Cracow, Gdańsk and Lviv. Source: (Pelc, 1935, 1937; Hoszowski, 1928).

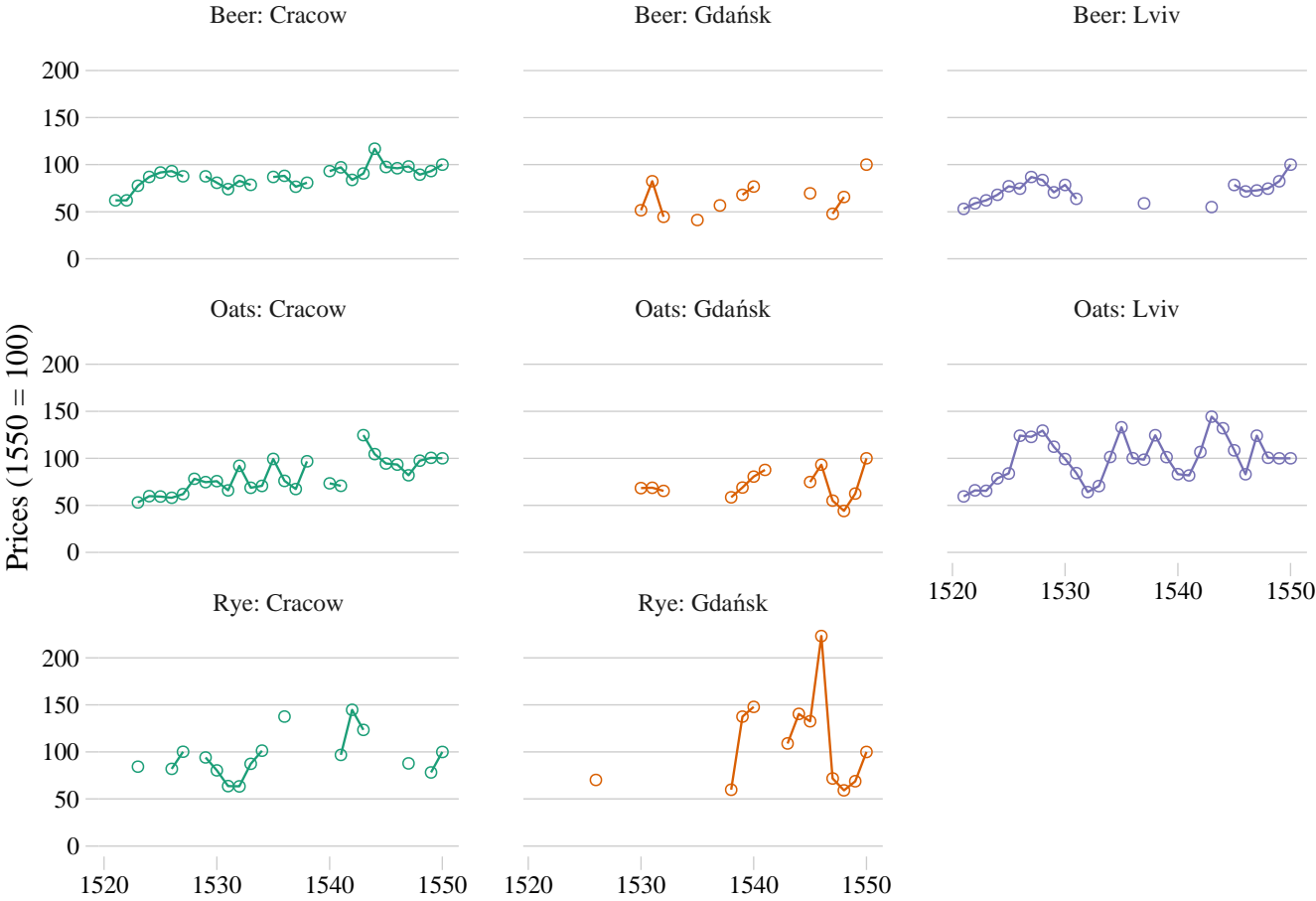


FIGURE 13. Quarterly prices in Cracow. Source: (Pelc, 1935).

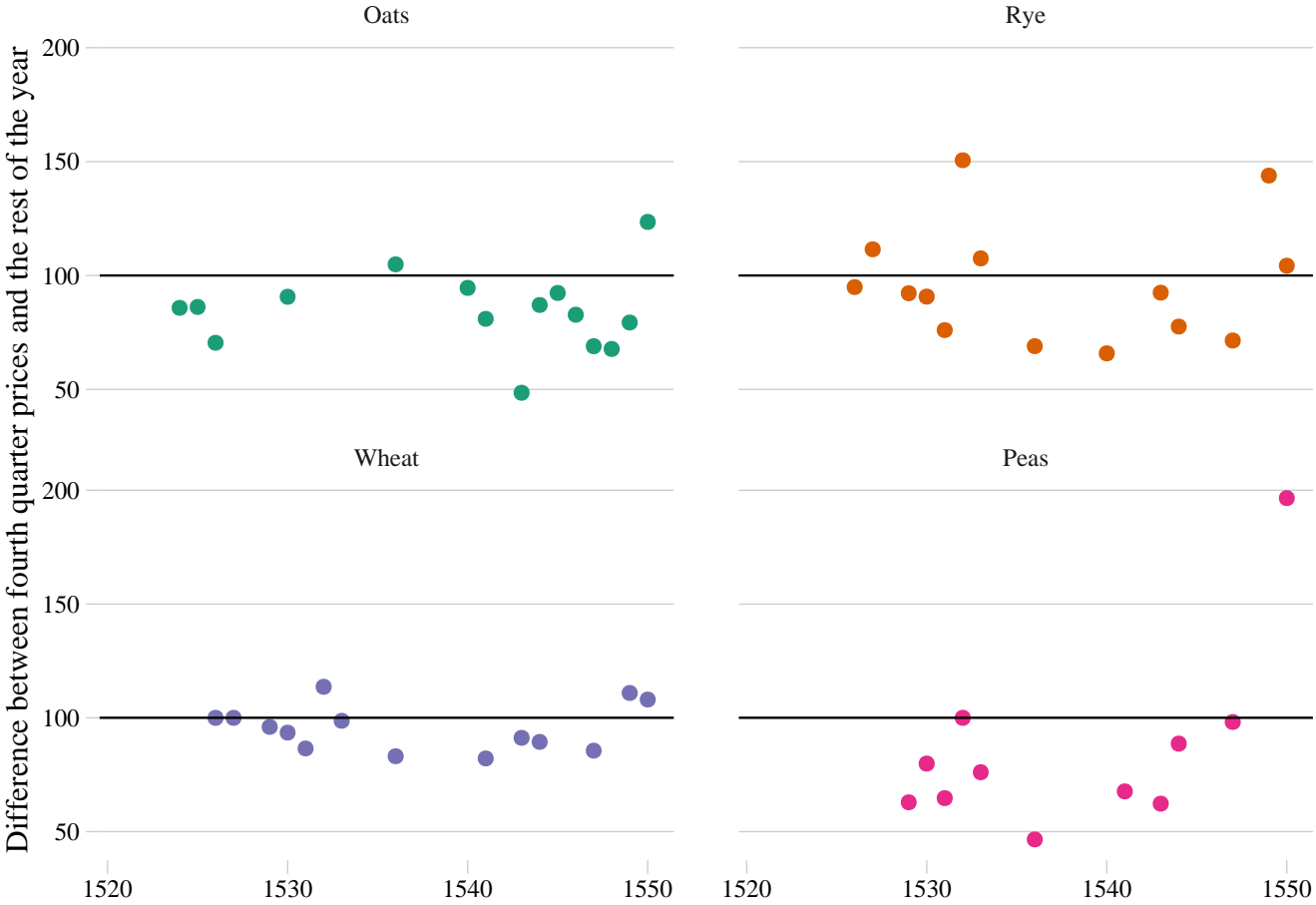


FIGURE 14. Wine prices. Source: (Pelc, 1935; Hoszowski, 1928; Wolański, 1996).

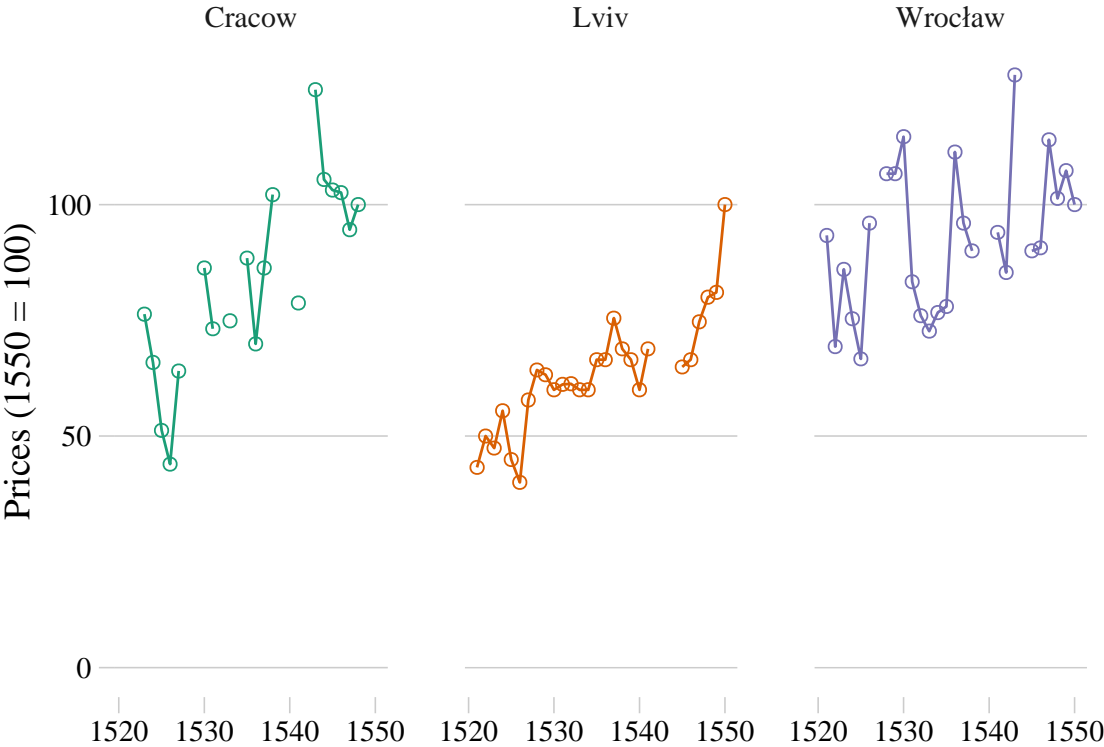


FIGURE 15. Grain exports from Gdańsk. Source: (Samsonowicz, 1956; Kutrzeba and Duda, 1915).



FIGURE 16. Ships from Polish and Prussian ports registered in the Sundtolls. Source: (Ellinger and Korst, 1906).

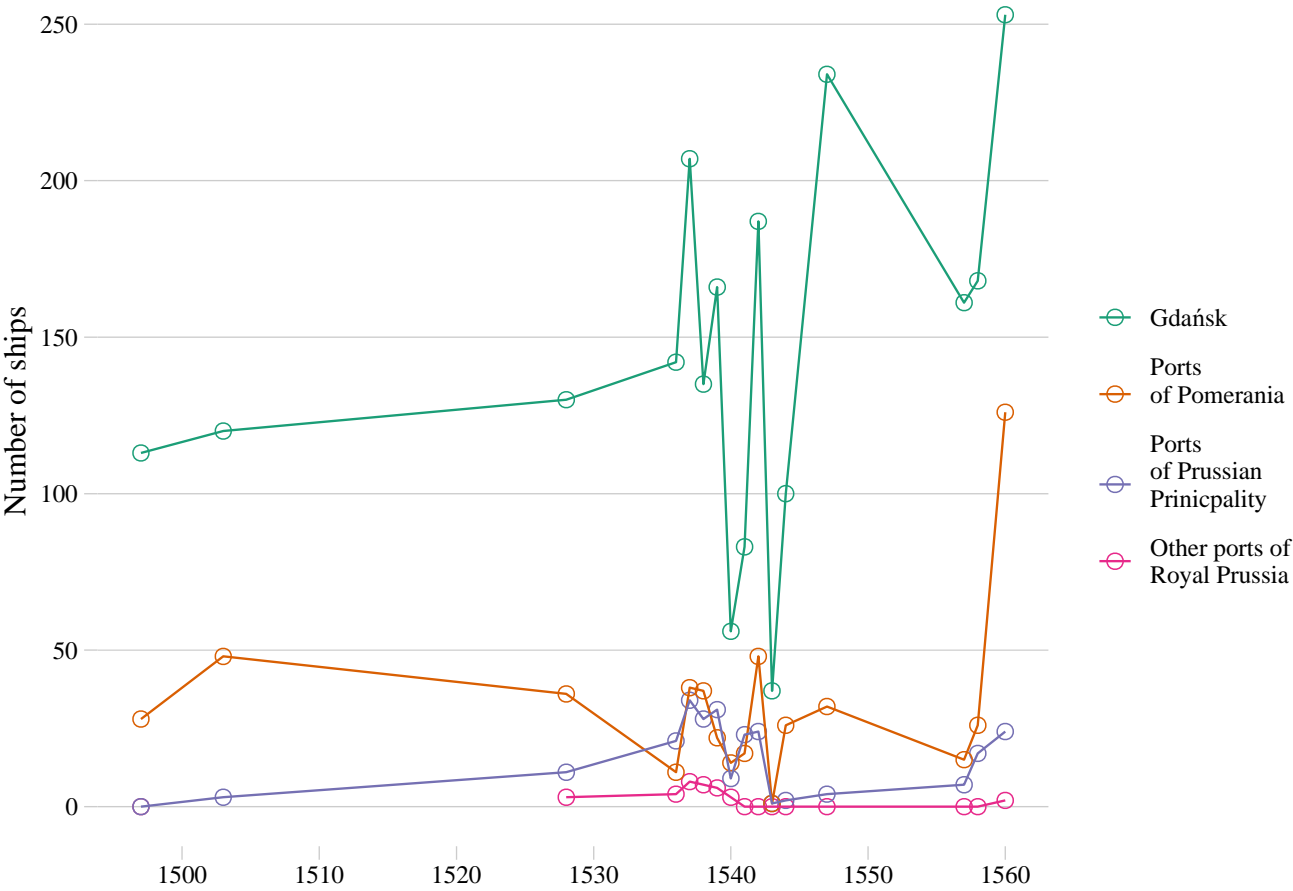


FIGURE 17. Number of ships registered in Włocławek water chamber. Source: (Kutrzeba and Duda, 1915).

