

A multi-ice-core, annual-layer-counted Greenland ice-core chronology for the last 3800 years: GICC21

Giulia Sinnl¹, Mai Winstrup², Tobias Erhardt^{3,4}, Eliza Cook¹, Camilla Jensen⁴, Anders Svensson¹, Bo Møllersø Vinther¹, Raimund Muscheler⁵, and Sune Olander Rasmussen¹

¹ Physics of Ice, Climate, and Earth, Niels Bohr Institute, University of Copenhagen, Denmark.

² DTU Space, National Space Institute, Technical University of Denmark, Kongens Lyngby, Denmark

³ Alfred Wegener Institute, Helmholtz Centre for Polar and Marine Research, Bremerhaven, Germany

⁴ Climate and Environmental Physics, Physics Institute and Oeschger Center for Climate Change Research, University of Bern, Switzerland

⁵ Quaternary Sciences, Department of Geology, Lund University, Sweden

Correspondence: Giulia Sinnl (giulia.sinnl@nbi.ku.dk)

Abstract

Ice-core timescales are vital for the understanding of past climate; hence they should be updated whenever significant amounts of new data become available. Here, the Greenland ice-core chronology GICC05 was revised for the last 3835 years by synchronizing six deep ice-cores and three shallow ice-cores from the central Greenland ice sheet. A new method was applied by combining automated counting of annual layers on multiple parallel proxies and manual fine-tuning. A layer-counting bias was found in all ice cores because of site-specific signal disturbances, therefore the manual comparison of all ice cores was deemed necessary to increase timescale accuracy. After examining sources of error and their correlation lengths, the uncertainty rate was quantified to be one year per century.

The new timescale is younger than GICC05 by about 13 years at 3835 years ago. The most recent 800 years are largely unaffected by the revision. Between 800 and 2000 years ago, the offset between timescales increases steadily, with the steepest offset occurring between 800 and 1100 years ago. Moreover, offset-oscillations of about 5 years around the average are observed between 2500 and 3800 years ago. The non-linear offset behavior is attributed to previous mismatches of volcanic eruptions, to the much more extensive data set available to this study, and to the finer resolution of the new ice-core ammonium matching. By analysis of the common variations of cosmogenic radionuclides, the new ice-core timescale is found to be in alignment with the IntCal20 curve.

1. Introduction

Paleoclimatic chronologies allow the comparison of proxy records from different geographic locations, thereby providing a fundamental tool for the understanding of the Earth's climate. In the Late Holocene, from 4.2 thousand years ago to today (Walker et al., 2012), the large amount of well-resolved data makes it possible to construct very precise and accurate timescales. Late Holocene timescales are constructed by a large variety of methods depending on the typology of the sample, from dendrochronology to radio-isotopic measurements, from tephrochronology to chemical analysis of ice cores. Timescale methods fall into two main categories: absolute methods providing an absolute age of the sample, such as radiocarbon dating (Bronk-Ramsey, 2008), and relative or comparative methods, such as stratigraphic comparison of isochrones in ice cores (Rasmussen et al., 2008). For the case of ice core dating in Greenland, annual-layer counting is a privileged method for the construction of a relative sequence of events, thanks to well-resolved annual layers recognizable well into the last glacial in the chemical and optical measurements of the ice (Andersen et al., 2006).

Once the independent timescales from different geographic locations are set up and compared, it may be possible to investigate lead-lag dynamics within the broader climate system. In the Holocene, recent studies investigated the comprehensive impact of volcanic eruptions, suggesting for example a 10-year cooling in European summer temperatures (Sigl et al., 2015) or a 5-year positive North Atlantic Oscillation (NAO) (Sjolte et al., 2018), both observed after tropical eruptions. Other examples of such inter-regional comparative studies, dependent on timescale accuracy, are the study of bi-polar timing of climate changes in the last glacial (WAIS Members, 2015; Pedro et al., 2018; Svensson et al., 2020) or the relative timing of the Holocene onset over Greenland and Asia (Nakagawa et al., 2021).

1.1. Annual layers in Greenlandic ice cores

Ice cores from Greenland contain high-quality climatic information thanks to the steady deposition of snow and impurities and to the inclusion of air bubbles in the ice, processes which have occurred continuously since the formation of the ice sheet. The

deposited snow contains a variety of chemical compounds, such as sodium, calcium, or ammonium ions, and water-insoluble particles, like dust and volcanic ashes, which may all be interpreted as proxies for climatic conditions and processes (Fuhrer, Wolff, & Johnsen, 1999; Rhodes, Yang, & Wolff, 2018). Moreover, the isotopic composition of the deposited snow is an important indication for temperature and moisture at the drill sites, although the link between climate and isotopes is intrinsically complex, especially on shorter timescales (Dansgaard, 1964; Johnsen, Dansgaard, & White, 1989; Laepple et al., 2018).

Some proxies follow a clear annual cycle that can be observed if the layer thickness and the analytical measurement method provide sufficient resolution. The seasonal patterns of ice-core proxies are determined by complex depositional dynamics that control the transport from the sources to the ice sheet (Gfeller et al., 2014, Whitlow et al., 1992, Beer et al., 1991, Fischer et al., 1998, Fuhrer et al., 1996). For example, sodium (Na^+) has a strong winter peak because of increased advection of marine air masses (Herron, 1982), which can be used to define the start of the ice-core layer. Relative to sodium, calcium (Ca^{2+}) peaks in the spring because of enhanced transport from terrestrial reservoirs (Whitlow et al., 1992); ammonium (NH_4^+) has a maximum in the late spring/summer because of enhanced biogenic activity in the North American continent (Fischer et al., 2015); nitrate (NO_3^-), which is also related to biogenic processes, peaks in the summer (Herron, 1982; Röthlisberger et al., 2002). Water isotopes ($\delta^{18}\text{O}$ and δD) show a sinusoidal pattern with winter valleys and summer peaks, mainly representing temperature variations at the drill site (Jouzel et al., 1997).

The quality of the retrieved signals is highest during high-accumulation periods and especially at high-accumulation sites, since, for example, isotopes are heavily affected by diffusion (Johnsen, 1977). To correct for the isotopic diffusion, it may be necessary to apply deconvolution techniques to reconstruct the original annual layers (Vinther06). At the Holocene onset, the accumulation rates are about double as high as in the glacial-stadial (Rasmussen et al., 2006). Furthermore, the Holocene ice roughly comprises the upper half of the central Greenland ice sheet and is not affected by ice thinning at the same level as the older, much thinner, glacial layers (Vinther et al., 2009; Gkinis et al., 2014; Gerber et al., 2021). In the Late Holocene, the isotopic signal was quite stable, an indication of a relatively constant layer record (Vinther et al., 2009). Overall, the shape and thickness of Late Holocene layers in all ice cores is expected to be stable and well-recognizable. However, the data quality for parts of the Holocene is hampered by the brittle ice zone, which is found at depths at which high-pressure gas bubbles in the ice make the core very fragile (Neff, 2014).

1.2. Annual layer counting methods

Annual layers in ice cores can be counted manually, a process that has always been a challenging part of ice-core timescale reconstructions (Vinther et al., 2006, referred to as Vinther06 in the rest of this article; Rasmussen et al., 2006; Sigl et al., 2013; Sigl et al., 2016). Manual identification of annual layers is a time-consuming and inherently subjective task, and attempts have been made to automate the process (McGwire et al., 2008; Smith et al., 2009). StratiCounter (SC) is a software package that computes the most likely sequence of annual layers in an ice-core multi-proxy dataset (Winstrup M., 2011; Winstrup M. et al., 2012; Winstrup, 2016). Starting from example data provided by the user and applying a Hidden Semi-Markov Model, the algorithm learns to recognize the specific annual pattern. SC provides a layer count and a probability distribution of the recognized layer boundaries. Some initial settings determine if the program should, for example, reduce the resolution of the original data, apply some pre-processing, or give different weight to the different data series in the analysis. These requirements are both ice-core and proxy dependent.

1.3. Holocene stratigraphic markers

Short-term events may be used to synchronize ice cores if the corresponding horizons can be unambiguously seen in several ice cores. Volcanic eruptions constitute the most robust base for matching ice cores because they often leave a clear imprint in the ice-core signal. When available, sulfate (SO_4^{2-}) measurements are used to identify individual eruptions, because of the associated emission of sulfur compounds to the atmosphere that precipitate onto the ice sheet (Lin et al., 2021). Thanks to the acidic nature of sulfate, eruptions are also recorded as prominent peaks in the Electrical Conductivity Measurements (ECM) and in the dielectric permittivity (DEP) (Hammer, 1980; Clausen et al., 1997; Wilhelms et al., 1998; Mojtabavi et al., 2020). However, ECM and DEP volcanic peaks might be weakened or eliminated by the opposite effect of alkaline dust, hence sulfate remains the most reliable indicator of volcanic spikes (Rasmussen et al., 2008).

The identity of the volcano can be confirmed when volcanic ash layers (tephra) are found in the ice cores, and geochemically and stratigraphically matched to reference deposits from the origin site (Zielinski et al., 1994; Abbott and Davies, 2012; Bourne et al., 2015; Cook et al., 2018a). Otherwise, if the source volcano has not yet been identified, geochemical similarity of layers found in different ice cores provides evidence of synchronicity (Cook et al., 2018b, Mojtabavi et al., 2020). However, for the most part, there is no tephra associated with acidity peaks of assumed volcanic origin, and thus, for those tephra-free sections, the matching of the cores relies entirely on identification of corresponding patterns of acidity peaks.

The volcanic-eruption signal usually spans more than one year, so that one can identify the start, the maximum, and the end of the event (Clausen et al., 1997). However, the chemo-stratigraphic response to volcanic eruptions can vary between ice cores due to different depositional dynamics. The recorded shape and delay of the volcanic signal depends, for example, on the

distance from the eruption site, on the balance between dry and wet deposition of sulfate, on snow redistribution, and on different noise levels at the ice core site (Robock and Free, 1995, and references therein; Gautier et al., 2016). Therefore, it can happen that a very strong eruption signal at GRIP from e.g. an Alaskan eruption will only appear as a minor signal in the DYE-3 core, because the two drilling sites received snowfall during different meteorological situations (Clausen et al., 1997). Hence the matching cannot rely only on the position of single peaks, but must also depend on patterns of closely-spaced eruptions. Still, the link between many historical eruptions and the corresponding ice-core acidity spikes is well-established and serves as an exact time reference (Sigl et al., 2015, referred to as Sigl15 in the rest of this paper).

Ammonium (NH_4^+) is a proxy for biogenic activity (Fuhrer et al., 1996), and ammonium spikes have been directly linked to biomass burning events, i.e. wildfires (Fischer et al., 2015). Wildfires are also recorded in other chemical species, such as black carbon and vanillic acid (Grieman et al., 2018; Zdanowicz et al., 2018). Because of the alkaline nature of NH_4^+ , the ECM will record marked dips in correspondence with ammonium spikes (Taylor et al., 1993; Rasmussen et al., 2006). Sometimes nitrate (NO_3^-) peaks are observed to coincide with NH_4^+ spikes, but they do not provide a reliable proxy for wildfires on their own (Legrand et al., 2016). The quality of these species as a unique proxy for wildfires is debated since they are not always consistent with each other and likely reflect different aspects of the source, the event intensity, and the trajectory to Greenland. It is not possible to find the origin of wildfires with the same certainty as for volcanic eruptions, because there is no “fingerprinting” technique for wildfires, but patterns of ammonium-rich layers can nonetheless be identified across the Greenlandic ice cores, providing an additional tool for synchronization (Rasmussen et al., 2008; Legrand et al., 2016).

Other events that serve as tie points between ice cores include variability of cosmogenic radionuclides, which are caused by solar storms or by other forms of solar variability (Muscheler et al., 2014). By measuring the co-registration of two tie-points such as the 775 CE and the 994 CE events, Sigl15 showed that Beryllium-10 enhancements (^{10}Be) provide precise constraints of alignment between tree-ring and ice-core timescales. In the recent work by O’Hare et al. (2019), the signature of an intense solar storm was identified in ice cores, at an age of 660 BCE, which provides an added alignment point between ice cores and tree-ring timescales in the late Holocene. As a conclusive remark, the radioactive fallout from nuclear bomb testing, which peaked in 1963, provides a reliable and very recent chronostratigraphic marker in the form of a tritium or ^{36}Cl peak, which is especially useful for shallow ice cores (Qiao et al., 2021).

1.4. The GICC05 timescale in the Holocene

The Greenland Ice Core Chronology 2005 (GICC05) is the most widely recognized timescale for Greenland ice-core studies (Vinther06, Svensson et al., 2008). In the Holocene, GICC05 is based on three ice cores: the DYE-3 ice core from southern Greenland (Johnsen et al., 2001), the GRIP ice core from Summit/central Greenland (Dansgaard et al., 1993), and the NorthGRIP ice core from north-western Greenland (NGRIP members, 2004). The ice cores were matched by recognizing common volcanic eruptions in the ECM signal, and the annual layers were manually counted using water isotopes ($\delta^{18}\text{O}$ and δD are available in overlapping sections and are equally suited for annual layer identification). In the older part of the Holocene, high-resolution impurity records were also included in the layer counting, but at the time they were not available for reconstructing the timescale for the Late Holocene (Rasmussen et al., 2006).

When the ice-core data quality was not equal between the three cores, a master chronology was produced on the best resolved record, which was then transferred to the other ice cores. Until 1813 years b2k (years before 2000 CE, same convention applied in the rest of this paper), the count was produced on isotopes from DYE-3 and deconvoluted isotopes from GRIP and NorthGRIP. From 1813 until 3835 years b2k, NorthGRIP ages were transferred from DYE-3 and GRIP, because of lacking isotope data.

In the construction of GICC05, an acidity spike attributed to the Vesuvius eruption (79 CE, Italy) was considered an exact time-marker carrying no age uncertainty, based on a tephra deposit found in GRIP (Vinther06; Barbante et al., 2013). However, recent analysis of the NEEM-S1-2011 ice core shows that the tephra associated with the acidity peak in this core is geochemically distinct from the shards found in GRIP (Plunkett et al., 2022), and most likely originates from an Alaskan eruption, thus leaving the GICC05 chronology with a significant chronological weakness. As another discussion point, Hammer (1980) and Vinther 06 attributed a prominent ECM peak in GICC05 to the massive Hekla 1104 CE eruption. Later, Coulter et al. (2012) attempted to find confirmation in the tephra found close to this ECM peak, but neither DYE-3 nor GRIP and NorthGRIP supported the identification with Hekla 1104 CE. Recently, Guillet et al. (2020) proposed that the signal represents a cluster of eruptions, one of them possibly originating from Mount Asama, Japan. Recent comparisons between Greenlandic ice cores and ^{14}C chronologies have exposed other issues with the layer count in selected sections of the timescale (Baillie, 2008, 2010; Lohne et al., 2013; Torbenson et al., 2015; Muscheler et al., 2014; Sigl15; Adolphi & Muscheler, 2016; Adolphi et al., 2018; McAneney & Baillie, 2019). In this work we aim to expand on the causes of the GICC05 mismatches and to investigate other recurring problems to be resolved, such as, for example, the uncertainty question of ice core timescales.

A special mention for the Greenland timescale has to be made for the GISP2 ice core, drilled at Summit in the vicinity of the GRIP site. Meese et al. (1997) constructed a timescale for this ice core that remained a widely-used standard until GICC05 was

released. Annual-layer counting was done manually using a combination of visual stratigraphy, ECM, dust laser scattering, isotopes, and ion chemistry. A number of tephra samples was collected in the Holocene ice, confirming the identity of, among others, the Laki eruption of 1783 CE (Fiacco et al., 1994), the Samalas eruption of 1257 CE (Palais et al., 1992; Lavigne et al., 2013), and the Eldj eruption of 939 CE (Zielinski et al., 1995). Of these three eruptions, only the first two have an independent historical estimate of the age, the Samalas eruption being dated by indirect evidence of its occurrence in 1257 CE (Vidal et al., 2016). In addition, authors of GISP2 also used Vesuvius to constrain the timescale. Over the rest of the Holocene, the agreement with GICC05 has previously been found to be rather poor, according to the match with GRIP and NorthGRIP (Seierstad et al., 2014).

1.4.1. Uncertainty estimates of GICC05 in the Holocene

The uncertainty associated with a timescale is essential for correct interpretation of the climatic data. The most important source of uncertainty in GICC05 was considered to be the misinterpretation of annual layers by the observers. By defining uncertain layers to be features in the ice core that could neither be dismissed nor confirmed (Vinther06), the GICC05 uncertainty was estimated from the Maximum Counting Error (MCE), defined as half the sum of the uncertain layers accumulated until the corresponding age (Rasmussen et al., 2006). Thus, each uncertain layer contributes with $\frac{1}{2} \pm \frac{1}{2}$ years to the age scale, whereas certain layers contribute 1 ± 0 years.

A fundamental choice in uncertainty estimation is whether one assumes uncorrelated errors. In case the errors are uncorrelated, they should be summed in quadrature. If, on the other hand, all errors are fully correlated, then the total uncertainty is a linear sum of the individual errors. Acknowledging that for the case of ice cores the errors are likely neither fully correlated nor uncorrelated, the authors of GICC05 opted for a conservative approach and summed the MCE linearly, but in turn did not include contributions from other sources than misinterpretation of annual layers. The authors also observed that the count between 1362 CE (rfajkull, Iceland) and 79 CE (Vesuvius) was correct within one year, corresponding to $\sim 0.1\%$ of the interval. As this number was smaller than the MCE it was considered negligible. Hence the MCE does not consider the bias one can introduce because of e.g. misleading assumptions on the tie points or abruptly changing layer shapes.

In summary, GICC05 was considered exact for the part younger than the Vesuvius eruption, because many well-known historical eruptions tied the chronology together. Therefore, the published uncertainty until about 2.7 ka b2k is only 2 years, increasing to 5 years at 3.9 ka b2k.

1.5. The NS1-2011 timescale

A more recent Greenland ice-core timescale for the past 2500 years was based on new bipolar tie-points, such as volcanic tephra and solar storm data, and on new high-resolution multi-parameter impurity records (Sigl15). This timescale will be referred to as the NS1-2011 chronology, as it was designed on the NEEM-2011-S1 ice core by lifting the Vesuvius and Hekla constraints and replacing them with newer historical evidence about volcanic tie-points at 536, 626, and 939 CE and a solar proton event at 775 CE. StratiCounter was employed to count annual layers on the NEEM-2011-S1 shallow core and on the NEEM main/deep ice core. These ice cores were matched to NorthGRIP via numerous volcanic tie-points to allow for comparison to GICC05. Moreover, a manual count on the NEEM main core was conducted until 500 BCE. For most of the timescale, SC was run in constrained mode using volcanic tie-points of known age. The earliest exact time marker applied for the chronology is the 536 CE eruption, prominent in the acidity and sulfate records. For ice older than 536 CE, the authors analyzed detailed records of historical, literary, and climatic evidence and found that the timescale aligns with most of the validation points, providing statistical tests to evaluate the significance of the result. Moreover, the timescale was compared to the Antarctic timescale WD2014 (Sigl et al., 2016) and to tree ring records to verify the overall good agreement of Greenland with other climatic archives.

The NS1-2011 offset to GICC05 at around 79 CE was quantified to be 8 years and the age of the layer formerly attributed to Vesuvius was changed to 87/88 CE.

The uncertainty estimate of the NS1-2011 timescale was based on the SC probability estimate. The age of volcanic eruptions is reported as a weighted average of the SC-counts in NEEM-2011-S1, the NEEM main core, and WDC (West Antarctic Ice Sheet Divide Ice Core). For example, the age of the Indonesian Samalas eruption (Vidal et al., 2016) is given as 1258 ± 2 years CE. Moreover, the comparison between the manual and the automated count in NEEM amounted to a difference of 1 year over the 500-year time interval. The timescale was estimated to have a 5 year uncertainty at 2500 years b2k.

1.6. The need for a revised and unified Greenland ice-core chronology in the Holocene

Given the known inconsistencies between existing Greenland Holocene timescales, we find it timely to revise the GICC05 timescale to provide a new unified ice-core chronology that includes most available data from Greenlandic deep ice cores. Our dataset includes, amongst others, the new high-resolution dataset from the recent EastGRIP ice core (Mojtabavi et al., 2020; Erhardt et al., In Prep.: see ice-core data availability section at the end). Our method relies on parallel dating of multiple cores with well-resolved annual data back to 3835 years b2k, a period which ensures data coverage from at least four ice cores until the brittle ice zone starts affecting the data quality.

SC cannot presently be applied to multiple ice cores together. Hence, SC cannot at this time provide a fully automated multi-core timescale. Nevertheless, SC can be applied separately to each ice core, on their own depth scale, after which the resulting counts can be combined between cores. Furthermore, SC cannot be used to assess whether the ice-core signal is affected by disturbances that might have altered its shape, such as snow redistribution, melt layers, and multiple seasonal peaks in the proxies (Mosley-Thompson et al., 2001; Westhoff et al., 2021; Lei Geng et al., 2014). These observations rely on a comparison of records from several ice cores. Hence, an extensive manual effort is still required to identify problematic layers and to bring a multi-ice-core timescale to a final state.

We find the MCE unsuited to apply to our timescale, since by nature it is a single-record uncertainty estimate that does not capture the complexity of the multi-core chronology: an uncertain layer in one core may be certain or absent in another, and thus a comparison of the two can solve many chronological issues. Based on the combination of statistical estimates and empirical observation, we propose a simple formula to provide the new timescale, named GICC21, with a robust, consistent, and user-friendly uncertainty estimation.

2. Data

Data from six deep and three shallow ice cores provide the basis for GICC21; details about each drilling site are given in Table 1. Resolution and quality of the data reflect not only the local climatic conditions but also the state of the technology at the time of ice-core retrieval and measurement. Moreover, data is only available, or of sufficient resolution and quality for layer counting, at selected ice-core depth ranges (Figure 1b).

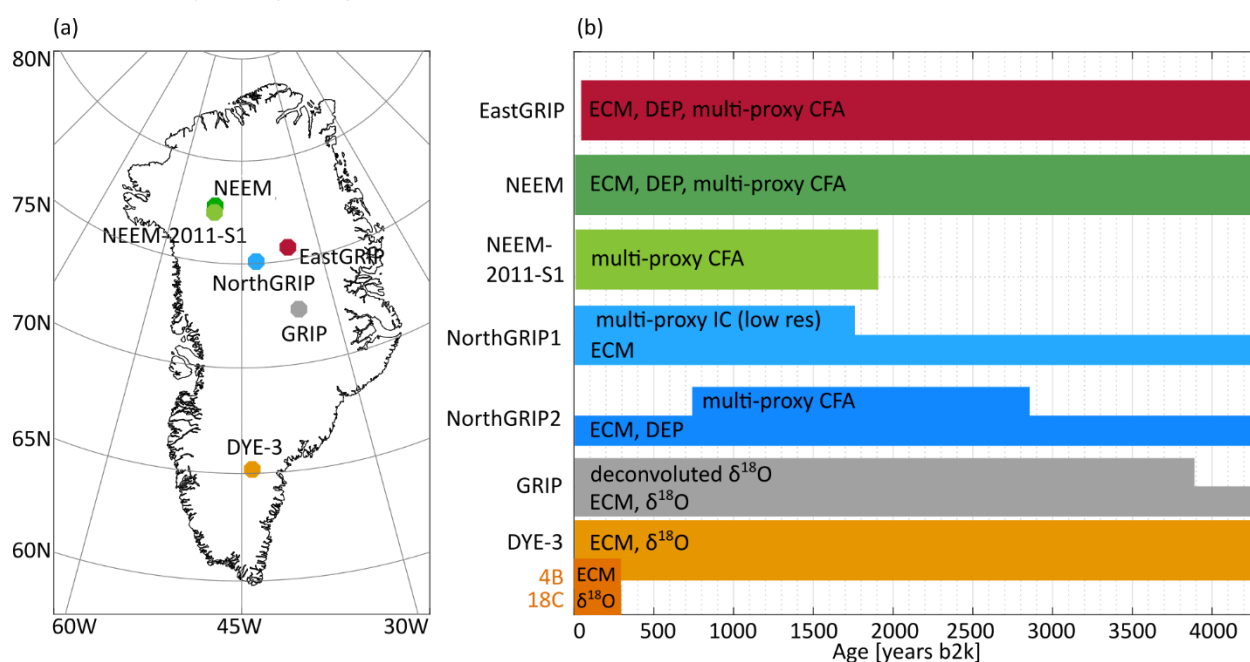


Figure 1 Overview of the data used for this study. (a) Geographic locations of the ice cores, for which Table 1 contains the site specifications. (b) The colored patches summarize the available datasets used for annual-layer counting (e.g. Continuous flow analysis - CFA) and inter-core matching (e.g. ECM), plotted on their approximate age-range.

Table 1 Specifications about the ice cores included in this study, ordered by coring location, North to South.

Ice Core	Elevation, m	Lat., °N	Long., °W	Mean Air Temp., °C	Accumulation, m ice per year	Length, m	Years of Drilling	Brittle ice zone, m
EastGRIP	2458	75.38	36.00	-29 ^a	0.12 ^e	2150	2017–2019 (ongoing)	650-950 ^l
NEEM	2479	77.25	51.09	-29 ^a	0.22 ^a	2540	2008–2012 ^b	609-1281 ^k
NEEM-2011-S1	2450	77.45	51.06	-21 ^c	0.22 ^d	410 [*]	2011 ^d	
NorthGRIP1	2917	75.10	42.32	-32 ^f	0.19 ^f	1351	1996–1997 ^g	790-1200 ^f
NorthGRIP2	2921	75.10	42.32	-32 ^f	0.19 ^f	3085	1997–2004 ^g	790-1200 ^f
GRIP	3230	72.58	37.64	-32 ^f	0.23 ^f	3027	1989–1992 ^h	800-1300 ^f
DYE-3	2480	65.18	43.83	-20 ^f	0.56 ⁱ	2037	1979–1981 ^j	800-1200 ^f
DYE-3 4B	2491	65.17	43.93	-20 [*]	0.535 ^f	174 [*]	1983 ^j	
DYE-3 18C	2620	65.03	44.39	-20 [*]	0.44 ^f	113 [*]	1984 ^j	

* Shallow ice cores. ^a(NEEM community members, 2013)^b(Rasmussen et al., 2013)^c(Faïn, et al., 2014)^d(Sigl, et al., 2013)^e(Gerber, et al., 2021)^f(Vinther, et al., 2010) ^g(Dahl-Jensen et al., 2002) ^h(Johnsen et al., 1992) ⁱ(Vinther06) ^j(Clausen & Hammer, 1988)^k(Warming et al., 2013) ^l(Westhoff et al., 2021)^{*}estimated from PROMICE data (Ahlstrøm et al., 2008) ^{*}Assumed same as DYE-3

2.1. EastGRIP

The East Greenland Ice-core Project (EastGRIP) is an ongoing drilling effort which in the latest field season (2019) reached a depth of about 2150 m. The ECM and DEP measurements were made in the field camp on 1.65 m long pieces of ice (Mojtabavi et al., 2020). Chemistry records of aerosol impurities were measured in Bern using the proven Continuous Flow Analysis (CFA) Setup (Kaufmann et al. 2008) coupled to an ICP-TOFMS (Erhardt, Jensen, Borovinskaya, & Fischer, 2019). The chemistry data include a vast range of different species measured continuously at high sampling resolution (1 mm), with a resolving power of about 1 cm, making this dataset among the most detailed available. However, the annual accumulation rate at this site is also the lowest of the records included (Table 1). A detailed description of the CFA setup and the data used in this study can be found in Erhardt et al. (in prep, see Ice-core data availability section). For counting layers, we used Na, Ca, NH₄⁺, and NO₃⁻ concentrations from 13.82 to 460.30 m depth. Water isotope records were also measured continuously but, due to the low annual accumulation, the annual signal does not survive diffusion in the firn, and therefore cannot be used for annual layer identification.

2.1. NEEM and NEEM-2011-S1

The North Greenland Eemian Ice Drilling (NEEM) was completed in 2012 (NEEM community members, 2013). ECM and DEP were measured in the field at 1 mm resolution (Rasmussen et al., 2013). Impurity records, measured by an international team coordinated by the University of Bern, were as well obtained in the field and have a depth resolution similar to the EastGRIP data set (Kaufmann et al., 2008) but, due to brittle ice, suffer from increasingly wide data gaps that make annual-layer identification difficult below around 750 m. Hence, we used ECM, Na⁺, Ca²⁺, NH₄⁺, and NO₃⁻ for layer counting between 7.6 m and 727.3 m depth. A detailed description of the NEEM CFA measurements and the dataset can be found in Erhardt et al. (2021). An additional CFA-dataset was measured at DRI by Sigl15 and provides additional data from 399 m to 500m. This dataset was not used for the SC count, but the quality of the layer count was later verified considering this additional data. Moreover, the Sigl15 dataset contains black carbon (BC), which we used to consolidate the ammonium match.

The NEEM-2011-S1 ice core is a 410 m shallow core that was drilled about 100 m away from the NEEM main core (Sigl et al., 2013). This core reaches back until the volcanic layer attributed in GICC05 to the Vesuvius eruption (79 CE). Chemistry data was measured at DRI for the entire core length, but the ECM of the shallow core was not measured, hence we relied on non-sea-salt sulfate (nss-S) for volcanic matching (Sigl et al., 2013). The species Na, nss-Ca, nss-Na, NH₄⁺, NO₃⁻, and BC were used for layer counting between 6.1 m and 410.8 m, in order to achieve a similar SC output as in Sigl15. BC was also used to consolidate the ammonium match.

2.2. NorthGRIP

The NorthGRIP drilling was completed in 2004 and is composed of two ice cores: NorthGRIP1 and NorthGRIP2 (Dahl-Jensen et al., 2002). For NorthGRIP1, ECM data are available until the core ends, at about 1351 m, and discrete chemical measurements (5 cm resolution) are available uninterruptedly until 350 m and in short fragments below this (Vinther06). Despite the resolution

of only 4-5 samples per year, the annual layer pattern is clearly recognizable, and we used ECM, Na⁺, Ca²⁺, NH₄⁺, NO₃⁻, Cl⁻, Mg²⁺, SO₄²⁻, and δ¹⁸O for layer counting between 9.9 m and 349.1 m depth.

For the upper part (159-582m?) of NorthGRIP2, a continuous chemistry dataset was later measured at the Desert Research Institute (DRI) with a resolution of 1 cm (McConnell et al., 2018). The dataset includes a vast range of species, of which we used Na, Ca, NH₄⁺, and NO₃⁻ for layer counting between 159.6 m to 582.4 m depth (approximately from 730 to 3200 years b2k). For volcanic matching, we mainly used a combination of ECM and DEP signals. This new record constitutes an important addition to the chronology, since it allows coverage of the NorthGRIP site until almost the end of our timescale.

2.3. GRIP

The drilling of the GRIP ice core (or Summit ice core) was completed in 1992 (Johnsen et al., 1992). Only ECM and isotope data are available for counting layers in this core in the late Holocene. The annual signal in the isotope data (2.5 cm resolution) is moderately affected by diffusion, but deconvolution restores a very strong sinusoidal pattern that can be used for annual counting (Johnsen et al., 2000; Vinther et al., 2003). ECM also shows an annual signal, analogous to GISP2, with a summer peak caused by enhanced acid deposition (Meese et al., 1997). Hence, we used ECM (1 mm resolution), δ¹⁸O, and deconvoluted δ¹⁸O to count annual layers between 5.3 m and 770.1 m depth. The deconvolution is sensitive both to melt layers and to unusually wide layers. The first contain sharp gradients which create artefacts in the data, typically resulting in a series of high-amplitude oscillations that do not correspond to real annual layers, while the second result in spurious low-amplitude oscillations. The width of these perturbations is usually 2-5 years, and they are not difficult to spot for a trained investigator (Supplementary Information Fig. S6).

2.4. DYE-3

The oldest ice core in this chronology is DYE-3 whose drilling was completed in 1981 (Clausen & Hammer, 1988). The data available to our study are mainly ECM (~7mm resolution) and water isotopes (1 cm resolution) (Langway et al., 1985). The isotope record resolves the annual layers very well thanks to the high accumulation rate which provides wide layers that are safe from diffusion, and is used for counting from 0.9 to 1271.7 m depth. The ECM signal also appears to have an annual pattern (Neftel et al., 1985), hence we also used ECM to count layers from 136 m to 1271.7 m. Because of lacking setup in the first year of drilling, the ECM measurements only start after 136 m. Therefore, to construct the top chronology of DYE-3, we included two shallow cores named 4B and 18C located close to the deep core site, for which ECM and water isotopes were available for counting (Vinther et al., 2010).

3. Methods

The first objective of this study is the construction of a common chronology for several ice cores with data suitable for annual layer counting.

Our timescale construction method relies on three main steps:

- Automated annual-layer boundary identification using SC;
- Ice-core matching using volcanic and ammonium tie-points;
- Multi-core layer comparison by multiple observers (called fine-tuning).

We subsequently perform a study of the uncertainty of the resulting timescale.

3.1. The raw output: counting annual-layers on each ice core with StratiCounter

To avoid the lengthy and likely somewhat inconsistent process of manual layer counting, GICC21 was based on a multi-core set of annual layers identified on each ice core by SC, which also returns an uncertainty distribution of the number of layers in each individual ice core. SC has better performances with multiple proxies, but including more than four species did not prove to make a substantial difference for the final result, because some species are not independent of each other (e.g. those dominated by minerals with dust as primary source) and some have similar seasonal patterns. As training data, SC requires a set of annual layers manually placed by the user. We chose to place the annual layer mark on the annual sodium maximum as the best indicator of the start of a new year, except for ice cores without impurity data, where we chose the isotope annual minimum, since the two methods are roughly equivalent (Supplementary Information Fig. S7).

Measurement gaps should be minimized using all available data to obtain an accurate layer count. Since DEP is generally measured on the full ice core, and ECM is measured on the first longitudinal cut of the core, they are both less affected by ice core breaks than the subsequent measurements made on smaller samples or obtained from a continuous stream of melted sample. So, although the yearly pattern in the ECM signal is not always discernible and cannot be the basis of reliable annual layer identification, it proved useful for ice cores with many small gaps, like NEEM and EastGRIP. In addition, the ECM records of

DYE-3 and, to some degree, GRIP exhibit an annual ECM cycle, which helps improve the SC result. When data gaps cannot be avoided, SC makes a probabilistic estimate of the layer count considering the neighboring data.

305 To facilitate the pattern recognition process by SC, the datasets were preprocessed using the appropriate settings for each ice core (see Stratcounter Supplement about pre-processing). The best pre-processing settings were established after testing if SC was able to accurately estimate the layers between the Laki and Samalas eruptions, within a tolerance of a few years. Elemental and ionic concentrations were treated identically, as the differences should not matter for layer identification. Even though it is possible to constrain SC to historical age markers, we chose to run SC in unconstrained mode to be able to quantify any possible 310 biases of the algorithm. In order to account for changes in layer thickness or data quality in each ice core, a variant of SC was implemented to count on independent stretches of data (more details can be found in the Stratcounter Supplement).

We observed that SC tends to under-count over data gaps, especially within longer gaps. This issue was fixed *a posteriori* by evaluating the average layer thickness around each gap and inserting the missing layers. However, too large data gaps make the timescale inaccurate. Around 3.8 ka b2k, the length of data gaps in NEEM and EastGRIP increases as both ice cores enter the brittle ice zone. Around the same time, the effects of isotopic diffusion in GRIP gradually make recognition of the annual signal difficult, and the high-resolution sampling was discontinued (Vinther06). Therefore, we stopped the timescale revision at 3835 315 years b2k in order to abide to the multi-core data requirement.

3.2. Ice-core matching using synchronous events

Ice cores were matched to each other by finding patterns of assumed synchronous events that will be referred to as tie points. 320 Previously published ice-core matches (Rasmussen et al., 2013; Seierstad et al., 2014; Sigl15; Mojtabavi et al., 2020) were extended to all cores considering the new data sets. The manual match is facilitated using a MATLAB GUI called Matchmaker that allows for the insertion of visual bars to place stratigraphic markers on top of the data and to align data according to these markers (Rasmussen et al., 2008), of which an example is given in Figure 2.

The Laki eruption that happened between June 1783 and February 1784 CE is easily detected in all ice cores thanks to a pronounced acidity spike and a corresponding tephra deposit (Clausen & Hammer, 1988; Fiacco et al., 1994). Hence, we use Laki as a reference datum to calculate relative ages for the rest of the timescale. For DYE-3, however, we tie the timescale to the Öräfajökull eruption of 1362 CE, because the DYE-3 ECM measurements start below the Laki layer. Although the tephra identification of this eruption is elusive (Coulter et al., 2012), the associated peak is visible in DYE-3 and hence constitutes the most recent available candidate to tie DYE-3 to the other ice cores. Furthermore, the top chronology of DYE-3 was confirmed by 330 comparing to two nearby shallow cores that record Laki in their ECM signal (see also the section provided in the Supplementary Information about the DYE-3 top chronology).

When reporting historical events, we find it most convenient to use CE/BCE years (avoiding year 0). When talking about the ice-core timescale, we will use years b2k. The conversion between the age units is easily done for rounded years:

$$Y_{CE} = 2000 - Y_{b2k}; Y_{BCE} = 2000 - Y_{b2k} - 1$$

335 More details about the age conversion are provided in the Timescale Supplement, and is similar to the one explained by McConnell et al. (2020). Since years b2k increase going back in time, we remark that decimal ages correspond to the inverted month order. However, we note that it may not be possible to accurately perform sub-annual dating of events, since accumulation throughout the year is not constant.

3.2.1. Ammonium matching patterns

340 A chemical species that shows good potential for inter-ice-core matching is ammonium, since it is regarded as a good tracer of North-American wildfires. The lifetime of ammonium in the atmosphere is very short, on the order of days, so the origin of the signal is rarely further away than Canada (Legrand et al., 2016). However, the shape of the ammonium peaks might vary across the ice sheet because of different trajectories from the source. Rasmussen et al. (2008) report on using a number of ammonium tie points in the transfer of GICC05 from NorthGRIP to GRIP and GISP2 in the glacial. Although Legrand et al. (2016) provided a 345 200-year long ammonium match between NEEM and GRIP, they only identify 9 possible historical events that could have originated the peaks.

To test the applicability of the ammonium matching, we examined ammonium data between sections of closely spaced volcanic eruptions and found many cases where ammonium, confirmed by black carbon, had a clear correspondence across ice cores (some examples are shown in Figure 2). We used black carbon data of NEEM and NEEM-2011-S1, reaching until 2500 ka b2k, to 350 select the ammonium spikes best suited for matching, since this provides an additional criterion for the attribution of a peak to a wildfire event (Sigl15; Legrand et al., 2016). In some cases, we observe a strong spatial variability, thus we confirmed that the ammonium matching can only have a supporting role of the volcanic match. Ammonium spikes neutralize the ECM signal, producing minima in the ECM (Robock & Free, 1995; Taylor et al., 1992). Therefore, we inverted and log-transformed the ECM record and used it as an ammonium substitute, whenever NH_4^+ was lacking for an ice core.

355 Beyond 2500 years b2k, patterns of NH_4^+ spikes were used to supplement the volcanic match, especially when volcanic tie points
were widely spaced by many decades (Supplementary Information Fig. S 10). Here, we only select ammonium tie points that left
an imprint in the ECM signal of the corresponding ice core. Overall, ammonium peaks constitute 63% of our 290 tie points over
the last 3835 years, the proportion being higher in the region beyond 2500 years b2k (70%). The reason of the higher number
of ammonium tie points is that we use patterns instead of single peaks. The frequency of the ammonium spikes is on the order
360 of one in 20 years, so that, by including ammonium, we have effectively increased the resolution of the multi-core match with
respect to a purely volcanic match, this latter having only 35 years average resolution.

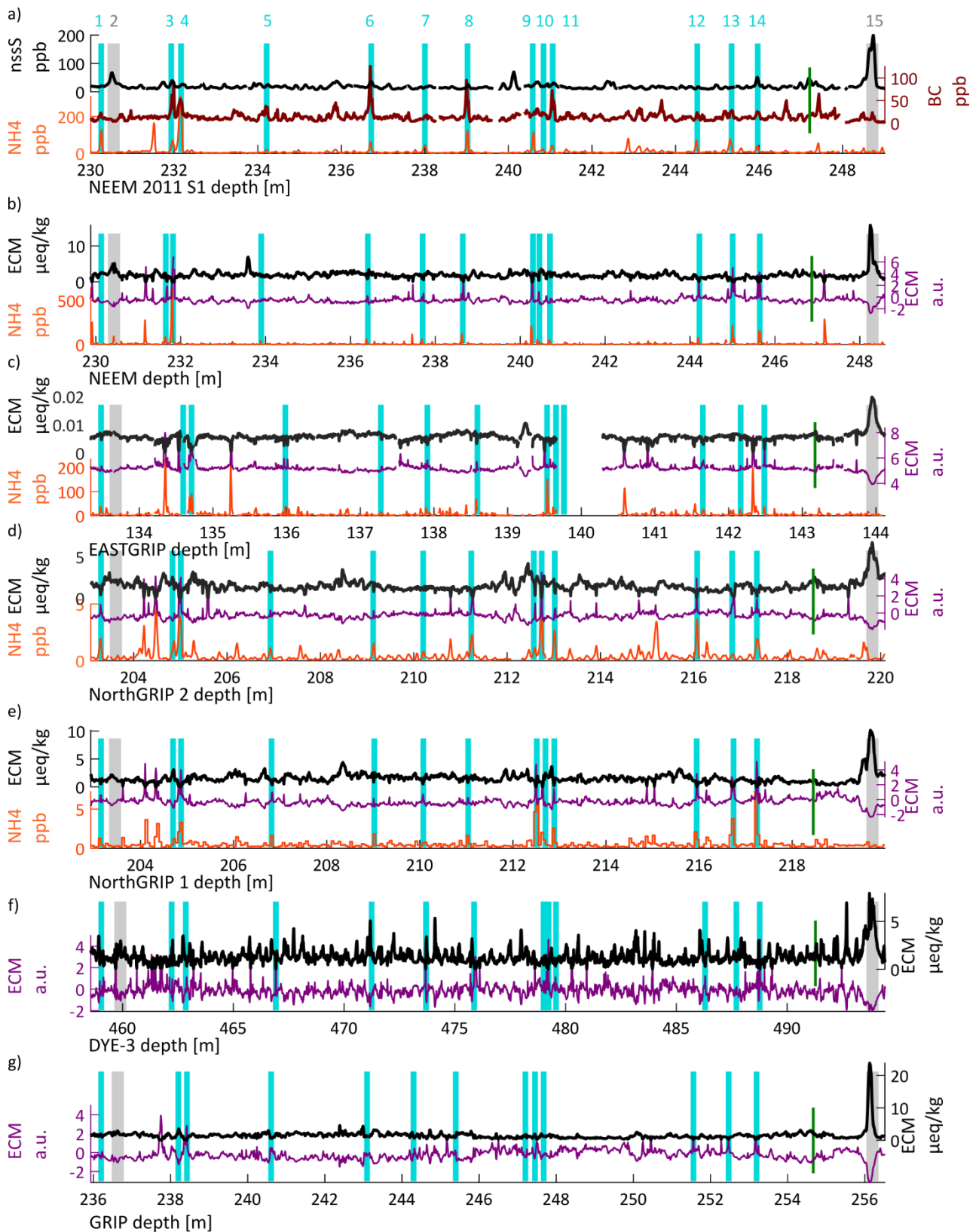


Figure 2 Tie points of GICC21 between two eruptions, which are highlighted by the grey vertical bars no. 2 and no. 15 (Eldj , 939 CE). Volcanic proxies are shown in black and the inverted log-ECM for each ice core is shown in purple. Ammonium (where available) is shown in orange and the turquoise bars highlight the patterns of ammonium that were used as supporting tie points for GICC21. a) NEEM-2011-S1: The black-carbon peaks (brown) support the choice of this subset of ammonium tie points. b-e) The co-occurrence of ammonium peaks and peaks in the log-inverted ECM provides another criterion for tie-point selection. f-g) For DYE-3 and GRIP, lack of ammonium data means that we can only use the log-inverted ECM to provide indication for the tie-points, of which nr. 3, 4, 5, 6, 11, 12, 14 are best recognizable. The green bar between 14 and 15 highlights the very subtle ECM peak associated to the Tianchi tephra (Sun et al. 2014).

370

3.3. Requirements for the manual fine-tuning procedure

The number of layers between synchronous tie points must be the same across ice cores. Hence, we assessed the quality of the SC output by evaluating the number of layers counted by the algorithm between historically known volcanic eruptions. Even after having chosen the best settings for SC, we observed a general tendency of under-counting in some ice cores and over-counting in others (Table 2). This is a result of the algorithm being run without age constraints, which was considered to be appropriate for using the algorithm in older sections of data, where no age constraints are known. We conclude that, although SC correctly identifies almost all annual layers, it fails to assign a sufficiently high probability to some of the thin or otherwise unusual annual layers in each ice core, which are thereby not counted. Also, it assigns an excessive probability to other layers, which upon closer inspection cannot be confirmed as annual layers, but being due to abnormal events that can be manually recognized from comparison of the chemistry records, especially after comparison with the age of historically known eruptions. The cause of the under-count may be related not only to data gaps but also to partially wind-eroded layers of snow, to unusual impurity loading, or to other site-specific perturbances. In the case of DYE-3, the high accumulation makes it unlikely to miss layers in the count but, in turn, gives a higher risk of multiple isotope oscillations within one year (Supplementary Information Fig. S 8), leaving more opportunities for an over-count of the layers, which could also result from the relatively high occurrence of melt layers in this ice core. Therefore, we resort to a manual processing of the timescale, which in the following we will refer to as “fine-tuning”.

Table 2 Evaluation of the SC bias of each ice core in the timescale sections constrained by historical evidence on eruption ages. The eruptions chosen for the overview were all, except for one, Icelandic: Laki (1783 CE), Bárðarbunga (1477 CE), Oræfajökull (1367 CE), and Samalas (1258 CE, Indonesia, considering a 1-year depositional delay). Within each interval, the number of expected layer boundaries is indicated by *N*. For each ice core, the difference from the raw SC-count indicates the amount and direction of bias. A positive value means that SC layers had to be added in order to reach the expected *N*, while a negative value means that they had to be removed. The longest interval (Laki-Samalas) shows the total layer-modifications required by each ice core. The values indicate that the ‘CFA-cores’ (EastGRIP, NEEM, NEEM-2011-S1) are mostly under-counted, partly because of measurement gaps, while the ‘GICC05-cores’ (NorthGRIP1, GRIP, DYE-3) were mostly in need of removing layers. This evaluation of bias is what eventually justifies the fine-tuning process over a purely statistical combination of SC results.

390

Event	Age [b2k]	Event	Age [b2k]	N	Difference from the raw SC-count					
					EastGRIP	NEEM	NorthGRIP1	NEEM-2011-S1	GRIP	DYE-3
Laki	216.5	Hekla	487.4	306	8	7	-4	-1	-1	-3
Bárða.	522.8	Oræf.	637.3	115	0	3	-1	3	0	0
Oræf.	637.3	Samal.	741.1	104	2	0	2	0	1	-2
Laki	216.5	Samal.	741.1	525	10	10	-3	2	0	-5
		Of which layers added in gaps			2	5	0	2	0	0

395

We remark that our fine-tuning is not in contradiction with SC, since the algorithm attempts to derive the best layers based on the available data of each single ice core. The SC raw layers are accompanied by a probability distribution which represents the likelihood of the placement of each single layer. The fine-tuning was guided by observing where the likelihood of the layer placement is most unsure, since the SC uncertainty increases locally where the annual-layer detection quality is low. Here, the 95%-percentiles of the probability distribution register a 1-year “jump” that can be used to detect the layers that SC deemed to be most uncertain. On the other hand, we also identified the placement of “ghost layers” where the SC-assigned probability was just below the threshold required for SC to assign an annual layer, and which may be included in the fine-tuned timescale.

400

The fine-tuning is performed by comparing all ice cores in parallel and using an iterative protocol. To ensure reproducibility, we adopted a ruleset to the fine-tuning process: we added layers in gaps according to the local layer thickness; we removed low-probability layers that conflicted between parallel cores; we upgraded ghost layers to full annual layers when indicated by parallel-core comparison. Some examples of how the fine-tuning was done can be found in Supplementary Information Fig. S 1.

405

Minor similarities between the records, such as minor ECM or NH_4^+ features, $\delta^{18}\text{O}$ patterns, and in some cases similar peak-shape sequences in Na^+ or Ca^{2+} for geographically-close ice cores, were used to support or reject changes in the layer count. As a consequence, some tie-points had to be re-examined because of now-apparent misalignments, and the fine-tuning was repeated to ensure consistency between the ice cores.

410

As a further step, two to three observers were engaged in detailed review of each section of the timescale aiming to reduce the impact of potential confirmation bias by each investigator. Whenever unanimity was lacking, the main observer (Sinnl) examined the different opinions to propose a final solution, which was then accepted or rejected again. In the end, unanimity

was reached in all sections. Moreover, no previous knowledge about age was initially used to fine-tune the timescale, except for Laki and Oræfajökull. Later, the historical part of the timescale (until Samalas) was verified with knowledge about the ages of some eruptions, finding that the fine-tuned layer count had already reached very accurate ages. Finally, we tested the correlation between DYE-3 and GRIP in the top 400 years and found an improvement of 17 % (see Supplementary Information Table S 1), which we take as an indication of the fine-tuning procedure reaching accurate results in the top of the timescale.

3.4. Uncertainty of the GICC21 chronology

An important part of our objectives for this study is to provide a simple yet empirically justified estimation of the uncertainty associated with the GICC21 timescale. Uncertainties in the layer count arise from two main sources: data issues and misinterpretation of layers (Vinther06). In our study, data gaps are a prevailing issue because the ends of each ice-core piece are trimmed to prevent contamination during CFA measurements. This, combined with removal of small pieces around core-breaks from the drilling process, causes frequent but brief interruptions in the records. On the other hand, the misinterpretation of layers is largely accounted for by the fine-tuning of multiple parallel ice-core records.

Many factors increase the complexity of the uncertainty estimation for our new ice core timescale. We find ourselves in a mixed scenario between automated counting by SC, an algorithm that provides its own probability estimates, and our manual intervention by fine-tuning. Moreover, we have to account for possible correlations between errors, at least within a certain correlation length. A data-based error can be caused, as mentioned, by measurement gaps or also by short-term accumulation changes, unsure tie-point placement (i.e. a marker placed differently across ice cores), or a disturbed layer pattern. These errors might influence the local distribution of layers, at least within neighboring tie-points, but are very likely unrelated to errors arising elsewhere in the timescale.

Because of transport and deposition dynamics, the volcanic signals in the ice cores are affected by delays, which we quantify to be within 1 year after the event started (Robock and Free, 1995). Furthermore, we estimate that an additional contribution to the uncertainty of up to 1 year originating from possible variations in the precise position of annual layer markers relative to the tie points. We use the linear sum of these contributions as a conservative minimum uncertainty for our timescale: although some tie points are very certain because of tephra and historical reference, these represent a minority in the timescale. Moreover, any layer could have been placed too early or too late so that, although the number of layers between tie points is correct, the actual age at any given depth is ± 1 year uncertain because of the misplacement, even though the error might get re-absorbed later on.

Until the Samalas eruption (742 years b2k), the fine-tuning is constrained by well-established historical evidence on volcanic eruptions. Therefore, for the youngest part of the timescale, the uncertainty is quantified as a constant value of 2 years even though it is likely smaller near good tie points. For the rest of the timescale, we argue that the uncertainty is never below 2 years because of the aforementioned effects, and also increases with depth.

For the older part of the timescale, we quantified a time-dependent uncertainty based on the SC uncertainty and on the information from the fine-tuning. SC provides a probability distribution of the likely layer count between age markers for each of the ice cores, which may be averaged by a convolution. Without fine tuning, the convolution's width, which is strongly depth/age dependent because of data quality and coverage, would be a suitable candidate for the uncertainty. As described in Sec. 3.3, the SC probabilities need, in any case, to be calibrated for the gap undercount, in order to reduce the width of the convolution. After correcting for the gap bias, the maximum likelihood layer number derived from the SC-convolution is expected to be closer to the fine-tuned layer count, however we observe that SC is misinterpreting some layers. We believe that fine-tuning improves the timescale, hence we regard the discrepancy between the SC result (corrected for the gap bias) and the fine-tuned result to be a conservative estimate of the age uncertainty arising from layer interpretation and data issues.

To estimate the correlation length of the uncertainties, we observed that a tie point is typically found once every 20 years. Because a layer-identification error is not likely to affect sections separated by several tie points, we find it reasonable to assume that, beyond 100 layers, errors in the fine-tuning are uncorrelated. Conversely, because the number of years between tie points must match, errors in layer identification are likely correlated over shorter intervals.

We compared the SC output in sections of 100 fine-tuned years, at continuous intervals covering the entire study period older than Samalas. In each section, we performed a SC run for every ice core, acquiring the independent probability distribution of the layer count, for which plots can be found in Supplementary Information Fig. S3. We manually added layers in the data gaps, mostly found in EastGRIP, NEEM, and NEEM-2011-S1 (Stratcounter Supplement). The ice-core distributions were convolved to provide the multi-core average and a Gaussian curve was fitted to the convolution to obtain a mean and a standard deviation. By subtracting these means from the expected value of 100 years, we obtain the values we call δt_i^{SC} (Figure 3a), where i indicates the century.

The average of all δt_i^{SC} is -0.70 ± 0.04 years/century (average of absolute values: 0.84 ± 0.04 years/century; all values are reported in the Stratcounter Supplement). The negative average indicates a bias towards under-counting by SC, probably

related to disturbances in the layer pattern and leftover gap undercount. However, this bias appears to be reabsorbed after 2500 years, where more balanced values around 0 appear in the dataset of Figure 3a. This more balanced StratiCounter bias is not related to any particular horizon in the data availability and hence we exclude this effect to be caused by some lacking data. At least for the part of GICC21 exceeding NS1-2011, we can say that the effects of over- and under-counting by SC balance out, which could be a consequence of our manual gap intervention or our fine-tuning process.

The fine-tuning process leads to an added uncertainty, which is difficult to quantify independently, but very likely smaller than δt_i^{SC} , since we believe that the fine-tuning solves problems arising from single-core layer identification, and thus brings us closer to the true age. Still, based on the values obtained above, we suggest a conservative empirical uncertainty of 1 year/century.

On the base of our tests, we hypothesize that our uncertainty can be represented by the following empirical formula, where the uncertainty between Samalas ($t_s = 1258$ CE = 742 years b2k) and any older age t will have an absolute uncertainty of:

$$\delta t(t; t > t_s) = 2 + \sqrt{\frac{t - t_s}{100}} \text{ Years} \quad (1)$$

This formula is composed by a constant term of 2 years, which we have previously set as a conservative, lower boundary to our uncertainty, and a time-dependent term. Since we have argued that the century-errors are uncorrelated, we apply a quadrature sum to evaluate the accumulated uncertainty over time: $\delta t(t_i) = 2 + \sqrt{(1)^2 + (1)^2 + \dots + (1)^2} = 2 + \sqrt{N_{centuries}}(1)^2$. For convenience, we hypothesize that the formula can be made continuous, obtaining equation (1), which compares well to our measured uncertainties (Figure 3b). In the Supplement, we also provide an alternative demonstration of the correlation length.

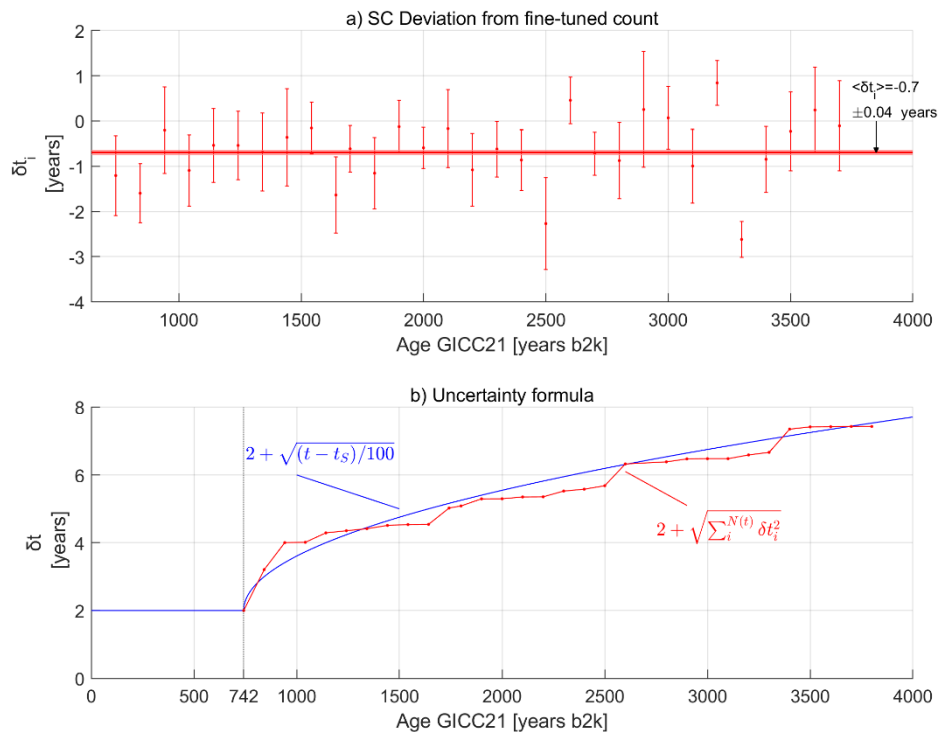
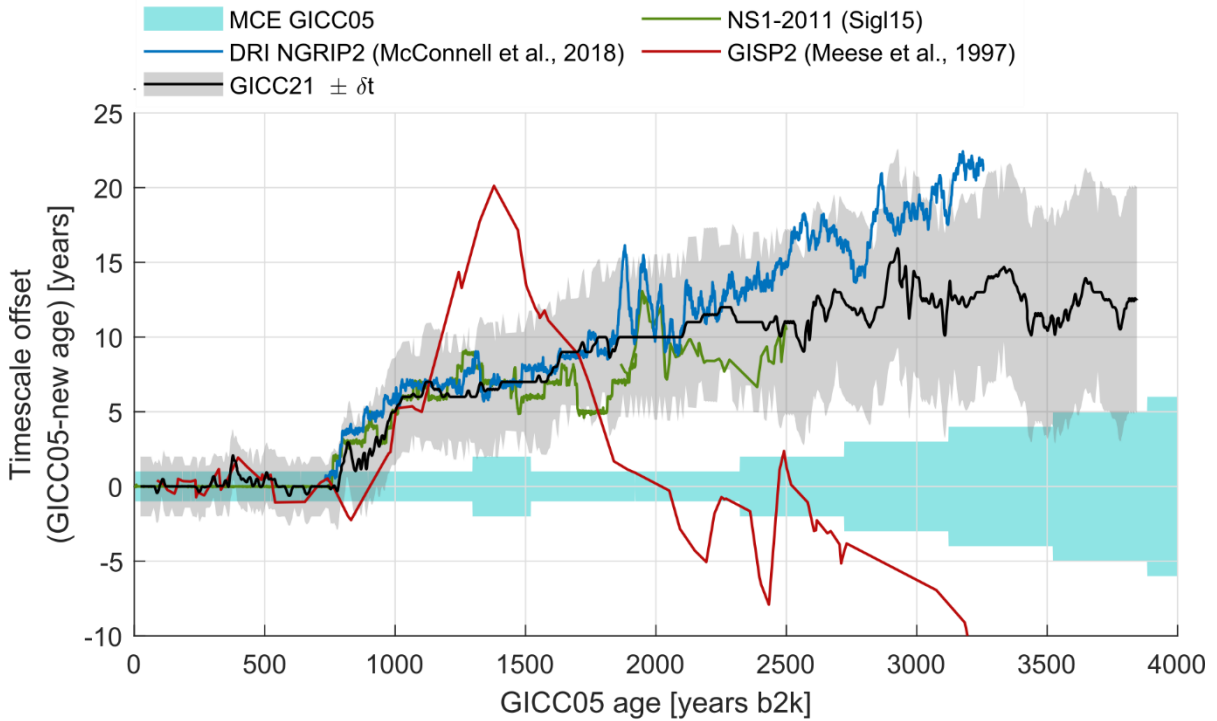


Figure 3 Empirical uncertainty estimation. (a) Deviation of the gap-corrected convolutions from the expected value of 100 years. Error bars indicate the $\pm\sigma$ of each convolution. (b) The sum in quadrature of the measured deviations is well reproduced by our uncertainty formula.

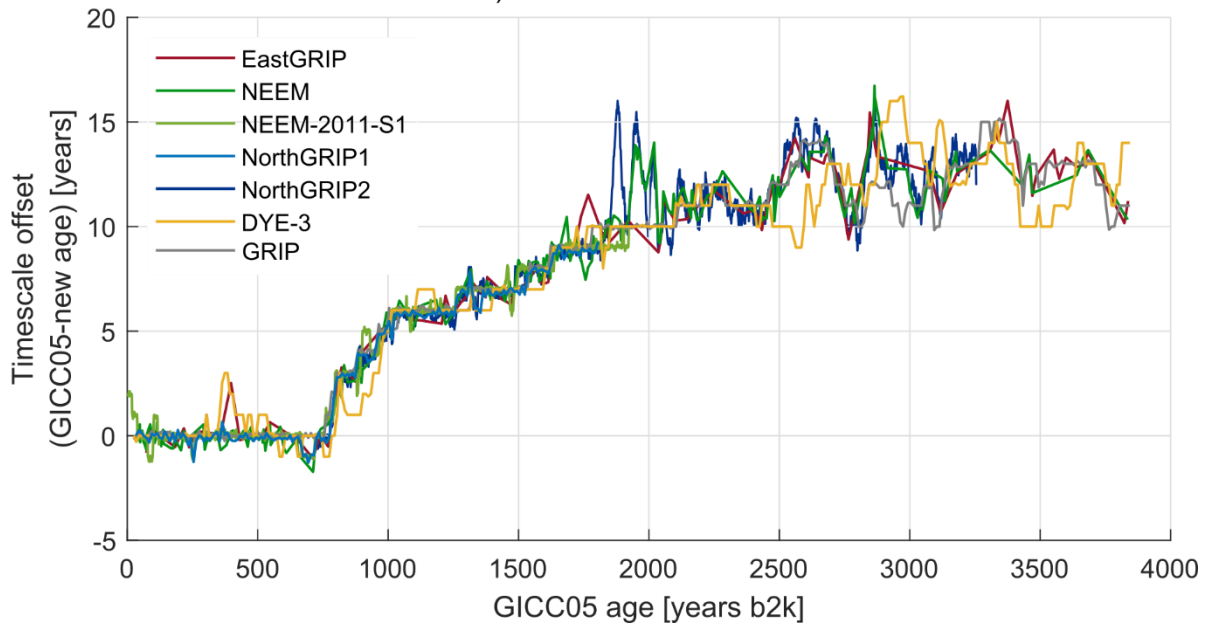
4. The timescale offset curve

490 We now present a comparison between the new GICC21 timescale and the existing ice-core chronologies GICC05 (Vinther06),
 GISP2 (Meese et al., 1997), DRI_NGRIP2 (McConnell et al., 2018) and NS1-2011 (Sigl15), with the aim of investigating any
 dating offsets (Figure 4a). To calculate the GICC21 ages at reported GICC05 depths and infer the correct offset, we linearly
 interpolated the GICC21-ages on the GICC05-layers of DYE-3, GRIP, and NorthGRIP1 (Vinther06). The published volcanic
 matches of EastGRIP to NorthGRIP (Mojtabavi et al., 2020) and of NEEM to NorthGRIP (Rasmussen et al., 2013) allows us to
 495 find the GICC21-ages for these two cores at the published tie-points. The timescale offset of each individual ice core from
 GICC05 was averaged to obtain an overall transfer function of GICC21 from GICC05. The transfer function can be used to
 translate any age previously matched to GICC05 to the new revised GICC21 ages (provided in Timescale Supplement, see
 Appendix A for more details on the transfer curve).

a) Transfer functions to GICC05



b) Ice core individual offsets

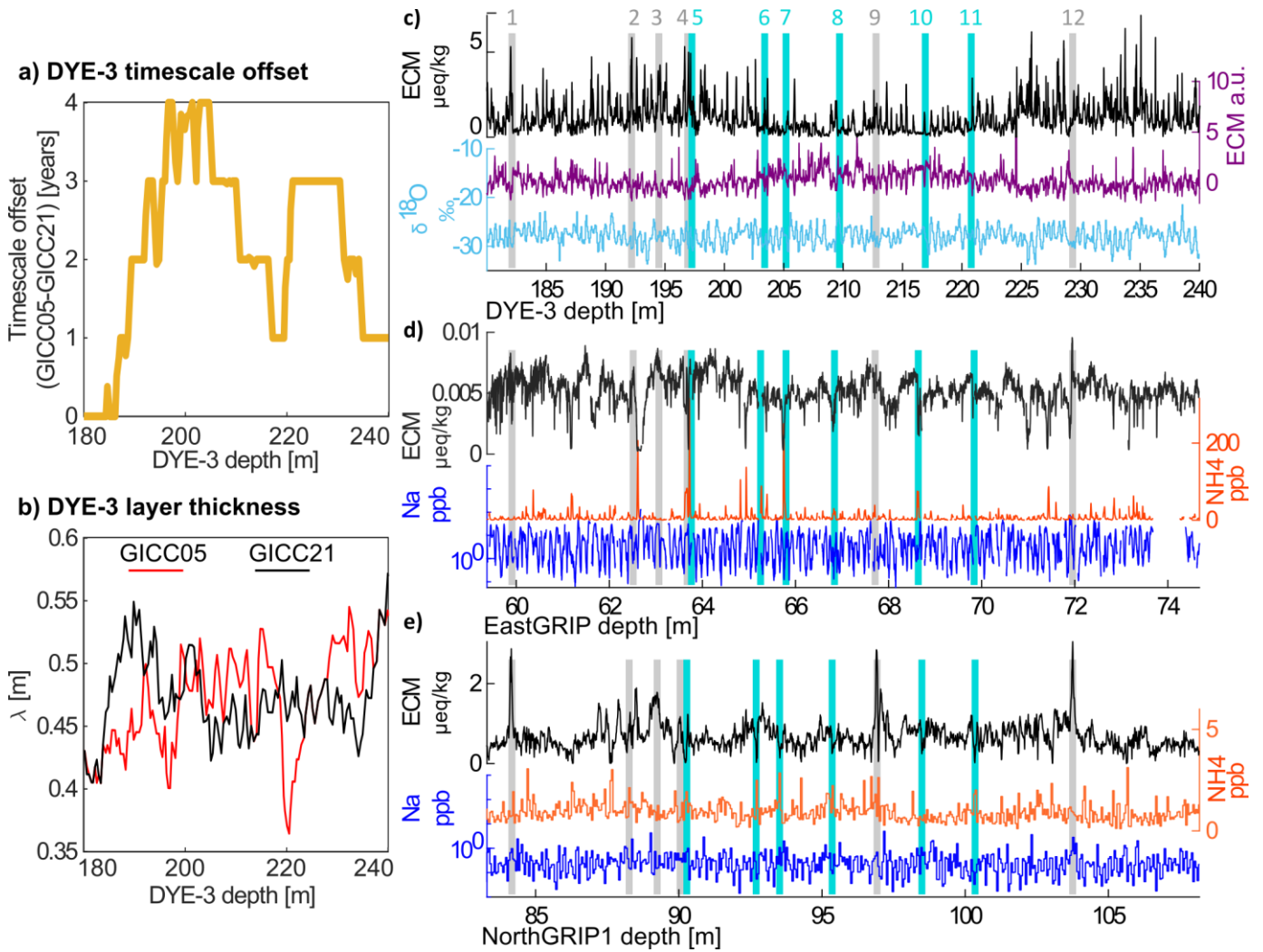


500 Figure 4 Timescale comparison. a) Published timescales and GICC21 compared to GICC05. The shaded areas highlight the uncertainty of both
 GICC05 (light blue) and GICC21 (grey). The GISP2 timescale was compared using the published match with GICC05 (Seierstad et al., 2014); it
 agrees with GICC05 at the former Vesuvius tie point, but we observe how it also agrees with the recent revisions until the 1109 b2k eruption,
 before it spreads to wider offsets. The NS1-2011 timescale (Sigl15) agrees with our revision within uncertainties, as well as the DRI_NGRIP2
 505 timescale (McConnell et al., 2018). b) The individual ice cores have different offsets from GICC05 depending both on the volcanic match and
 on the layer counting differences. A direct comparison with GICC05 is possible for the ice cores NorthGRIP, GRIP, and DYE-3, for which both
 GICC05 and GICC21 are annual-layer counted. The NorthGRIP 1 layer comparison stops at 1813 years b2k, corresponding to the end of the IC
 dataset, but the NorthGRIP 2 comparison continues thanks to the DRI CFA dataset. An indirect comparison was possible for EastGRIP and
 NEEM, for which published match-point ages were used to interpolate to the new layer-counted ages (Rasmussen et al., 2013; Mojtabavi et
 510 al., 2020). The comparison for NEEM-2011-S1 was possible using the matching of the ice core onto GICC05 using the tie points provided in Sigl
 et al. (2013).

In Figure 4b, all ice-core individual offsets from GICC05 tend to stay close to each other, making it possible to identify a common
 behavior, which illustrates the result of the timescale revision: an increasing offset from GICC05. Therefore, we recommend a
 timescale-calibration offset toward younger ages, when using GICC05 beyond 3835 years b2k. The amount of calibration needed
 is 14 years for DYE-3, 12 years for EastGRIP, 11 years for GRIP, and 12 years for any other ice core based on the average transfer
 515 curve (Appendix A).

A drift of one ice core away from the others can mean two things: either the ice-core match is different, or there have been
 interpolation problems in GICC05, e.g. in the case of NorthGRIP1 beyond 1813 years b2k (see Fig. 5 caption). No offsets are
 observed in the section younger than about 750 years b2k, right after the prominent Samalas eruption of 742 years b2k, except
 around 390-490 years b2k, where DYE-3 and EastGRIP differ by about 2 years from the other cores. We confirm the observation,
 520 made by Vinther06, that DYE-3 displays a layer thickness fluctuation at 400-600 years b2k (Supplementary Information Fig. S 2)
 that makes the layers thicker and possibly perturbed by upstream flow effects. As shown in Figure 5, this period proved hard to
 match for DYE-3. Because EastGRIP was matched to one particular broad tie point, a divergence also arises there.

The erroneous attribution of Hekla (1104 CE) explains the steep 4-year offset which was introduced between the Samalas
 eruption and 1104 CE. In hindsight, the 4 annual layers appear poorly supported by the DYE-3, GRIP and NorthGRIP 1 data (Figure
 525 6). After 1100 years b2k, a steady increase is observed until about 2000 years b2k at the age of the previously assigned Vesuvius
 layer.



530

535

Figure 5 a) The first divergence of the timescale offset, at 390-490 years b2k, reported on the DYE-3 depth scale. Four layers were removed between 190 and 200 m, but they were gradually added back in the earlier part of the timescale. b) The layer thickness in this interval presents a fluctuation towards thicker layers, possibly because of upstream flow effects (Vinther06). Between 180 and 240 m, the layer thickness according to GICC05 presents a more gradual increase than according to GICC21, but in turn has a sharp dip at 220 m, which is not present in the GICC21 layer count. c, d, e) By looking at the actual data, it becomes clear that DYE-3 is very hard to match in this depth range. The fact that the stratigraphy of DYE-3 has been lightly disturbed could have affected the signals, so that both the ECM dips and peaks become almost unrecognizable. The layers present many irregularities that make the fine-tuning more uncertain than usual. d) For EastGRIP, we observed that the broad shape of tie point no.9 caused the match to be revised and placed 2 years later than what was done by Mojtabavi et al. (2020).

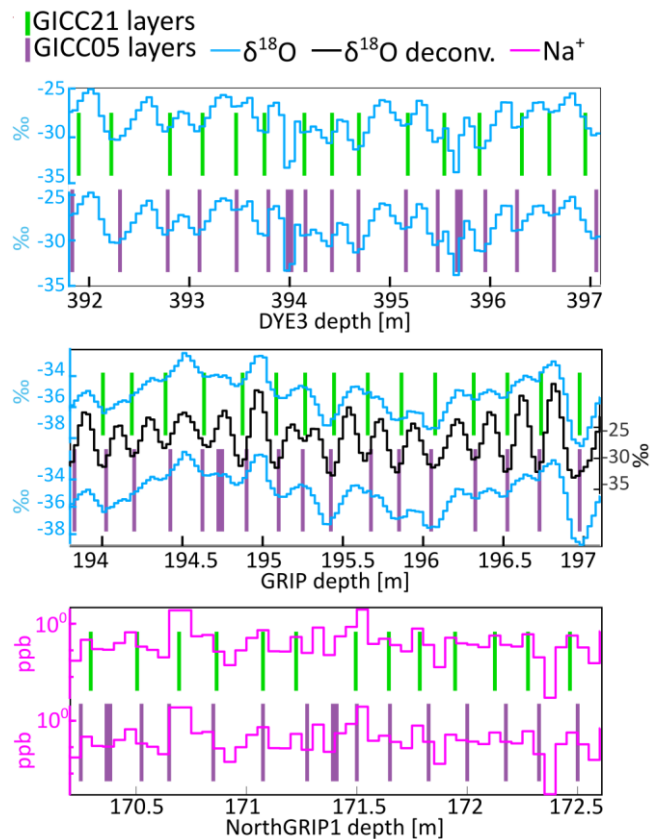


Figure 6 Example of GICC05 overcounting between Samalas and 1108 CE in sections of DYE-3, GRIP, and NorthGRIP1. The top, green bars represent the GICC21 layer boundaries. The bottom, purple bars represent GICC05 layers: they include more layers (thicker purple bars) that are not included in GICC21. For DYE-3, the doubtful features of the isotopes, possibly corresponding to melt layers or measurement issues, suggest that these are not annual layer boundaries. For GRIP, it seems unlikely that a year is found at a local maximum of the isotopes. For NorthGRIP, discrete sodium measurements are not always easy to interpret due to the marginal resolution, however the placement of a layer boundary at a sodium minimum is unlikely.

4.1. The offset behavior between 2000 and 3835 years b2k

Beyond 2000 years b2k, the offset stays above 10 years, reaching an average of around 13 years in the last centuries of the timescale. We speculate that the reason for the overall increase in offset is related to a confirmation bias in GICC05 after having acquired the initial 10 years offset, meaning that by deciding to include more layers before Vesuvius, the authors possibly continued to lean towards interpreting melt layers or isotopic fluctuations in DYE-3 as annual layers.

Around the previously attributed Vesuvius match, the NEEM ice core exhibits a divergence from the other ice cores, which was also documented in Sig15. NEEM was matched to NorthGRIP1, which in turn was matched to DYE-3 and GRIP, as the section sits just below where the NorthGRIP1 IC-data stops. We observe that both the DRI_NGRIP2 timescale and our revision of NorthGRIP 2 present a similar feature. We thus conclude that the likely reason for the fluctuation is a previously erroneous transfer of GICC05, because the problem must lie in the ages previously assigned to the NorthGRIP1 match points. Since EastGRIP was matched with fewer match points in this section, the divergence does not arise in the EastGRIP curve.

Between 2500 and 3500 years b2k, three centennial-scale fluctuations are observed, with two notable offset-peaks above 15 years at around 2900 and 3400 years b2k. We argue that these large wiggles in the timescale offset are to be attributed to a difference in layer count within widely separated volcanic markers. The spacing of adequate volcanic tie-points can be as high as 130 years, a fact that called for a heavier use of NH_4^+ markers in our work, and which were not used in GICC05 in this section. For the timespan 2800-3100 years b2k, we analyzed in detail the matching differences between GICC05 and GICC21 (Supplementary Information Fig. S 4) finding that the offset wiggle is explained by shifts of the tie-points, by layer thickness fluctuations of DYE-3, and by interpolated NorthGRIP 1 ages being used to date EastGRIP and NEEM.

4.2. The comparison with published ice-core timescales and Holocene chronostratigraphic markers

We found that both GICC21, DRI_NGRIP2 and NS1-2011 have a similar offset to GICC05 within their respective time periods (Figure 4a). On the other hand, the GISP2 timescale presents a large divergence from our revision. The GISP2 timescale,

565 however, agrees with our revision until 1109 years b2k, after which the assumption about the Vesuvius tie point produces a large offset-fluctuation, caused by the need to insert and remove layers in order to compensate for the erroneous tie point. The offset of GISP2 from GICC05 after 3000 years b2k becomes very large and we chose not to plot it.

570 For the DRI_NGRIP2 timescale (McConnell et al., 2020), we notice a very good agreement until 2250 years b2k, after which DRI_NGRIP2 displays a linear increasing trend in offset, whereas than GICC21 shows a more constant offset. On the other hand, the NS1-2011 timescale shows a lower offset between 2000 and 2500 years b2k. Although both are well within the GICC21 uncertainties, the two counteracting offsets between the two timescales might be a sign of widely spaced eruptions and lack of multi-core comparison. Therefore, we conclude that, at least for Greenlandic ice cores, a multi-core comparison is favorable for timescale reconstructions, especially in the case of widely-spaced tie points.

575 We also highlighted the ages proposed by GICC21 of some events detected in ice cores in order to compare to historical ages (Table 3). The oldest event is the eruption formerly attributed to Thera (Santorini) by the GICC05 authors, who placed the layer in 1645 BCE. Since then, the origin of the tephra was determined to be Alaskan and the dating of the corresponding acidity peak was questioned, also in relation to comparison to tree-ring data (Pearce et al., 2004; McAneney and Baillie, 2019). According to GICC21, we state the age of this acidity peak to be 1629 BCE (3627.5 years b2k) and we endorse the future search for cryptotephra in ice cores that might indicate a more accurate age for the Thera eruption, which is going to be vital for the
580 archaeological framework of the Late Bronze Age.

585 Table 3 GICC21 ages of chronostratigraphic markers in the Holocene which were important for this study. Tephra from eruptions and ¹⁰Be from solar proton events (SPE) both provide chronological references when the age of the event is known from historical evidence or other accurate timescales, such as dendrochronology. ^a Only two of the events are used to anchor our timescale. ^b GICC21 ages are reported at the peak of the signal identifying the event, a delay in deposition might occur. ^c Not used as tie point across ice cores. ^d Age from NS1-2011 chronology. ^e Age from indirect historical evidence and tree rings (McConnell, et al., 2020) ^f Age from tree rings (Park et al., 2017; Sakurai et al., 2020) ^g GICC05 age of acidity layer * TUNU13 was not used for this study but we verified the match with NEEM-2011-S1 and NorthGRIP to be the same as ours.

Name, Location	Historical Age (CE/BCE)	GICC21 age ($\pm \delta t$) ^b (CE/BCE)	Reference	Tephra/ ¹⁰ Be found in ice core
Katmai, Iceland	1912 CE	1912 \pm 2 CE	Coulter et al., 2012	NorthGRIP
^a Laki, Iceland	1783 CE	1783 \pm 2 CE	Fiacco et al., 1994	GISP2
Veiðivötn-Bárðarbunga, Iceland	1477 CE	1477 \pm 2 CE	Abbott et al., 2020	TUNU13*
^a Öraefajökull	1362 CE	1362 \pm 2 CE	Palais et al., 1991	GISP2
			Coulter et al., 2012	GRIP
Samalas, Indonesia	1257 CE	1259 \pm 2 CE	Palais et al. 1992; Lavigne et al., 2013	GISP2
^c 994 CE SPE (¹⁰ Be)	994 CE	992 \pm 3.6 CE	Sigl et al., 2015	NEEM 2011 S1
			Mekhaldi et al., 2015	NorthGRIP, GRIP
Tianchi, Japan	946 CE	946 \pm 3.7 CE	Sun et al., 2014	NorthGRIP
Katla, Eldjá, Iceland	939 CE	939 \pm 3.8 CE	Zielinski et al., 1995	GISP2
Bárðarbunga, Settlement, Iceland	~877 CE	877 \pm 3.9 CE	Grönvold et al 1995; Zielinski et al 1997	GRIP
				GISP2
775 CE SPE (¹⁰ Be)	774/775 CE	774 \pm 4.1 CE	Sigl et al., 2015	NorthGRIP, NEEM 2011 S1
			Mekhaldi et al., 2015	GRIP
UE 88 (former. Vesuvius 79 CE)	~88 CE ^d	89 \pm 5.4 CE	Plunkett et al., 2022	NEEM-2011-S1
Okmok, Alaska	~43 BCE ^e	43 \pm 5.6 BCE	McConnell et al., 2020	NorthGRIP 2
660 BCE SPE (¹⁰ Be)	665-660 BCE ^f	663 \pm 6.8 BCE	O'Hare et al., 2019	NorthGRIP, GRIP

Aniakchak, Alaska (former Thera, Santorini)	~1430 BCE [§]	1629 ± 7.3 BCE	Pearce et al., 2004	GRIP
---	------------------------	----------------	---------------------	------

4.3. Comparison of GICC21 to the tree-ring timescale and the IntCal20 curve

590 The ice-core timescale can be compared to other timescales and climatic archives to verify their relative consistency and infer leads and lags in the climatic system. The fact that GICC21 was created as independently as possible from other archives makes it possible, for example, to compare to the tree-ring chronology.

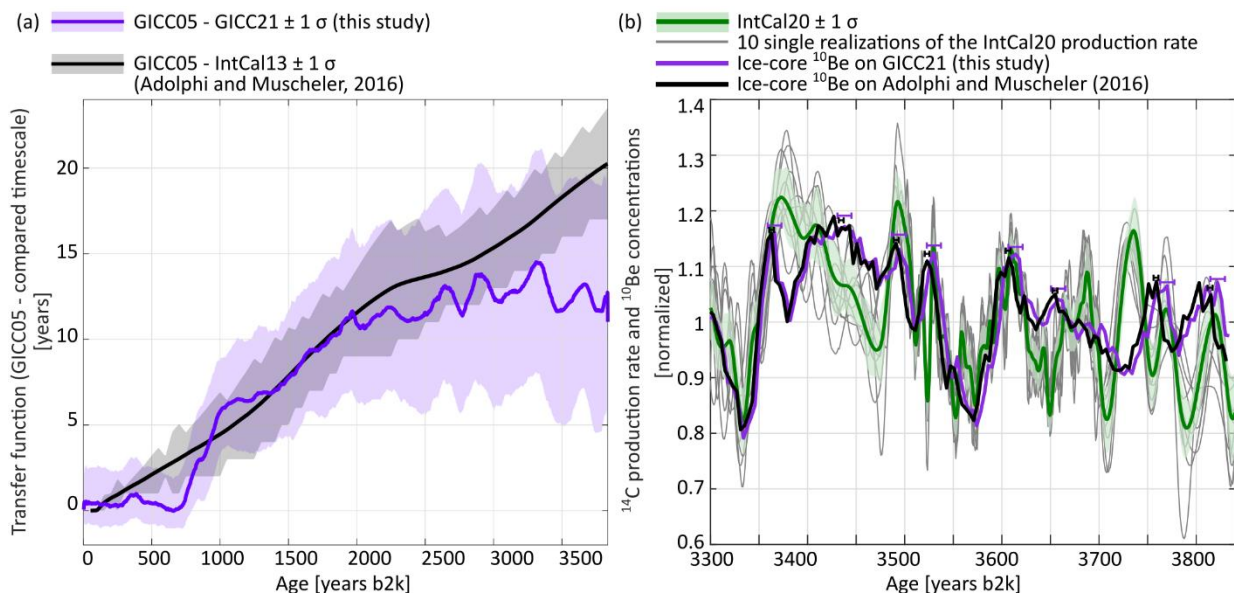
600 In Sig15, a composite of five northern Hemispheric tree-ring chronologies, called 'N-Tree', was created to describe tree-growth anomalies over the last 2500 years in the Northern Hemisphere. Another recent reconstruction of temperature changes from tree rings (Büntgen et al., 2021) can also be used as a comparison until 2000 years ago. These chronologies have virtually no uncertainty since the vast availability of old wood makes tree-ring timescales very accurate thanks to many iterations of cross-dating. By looking at the alignment of ECM with the two reconstructions (Supplementary Information Fig. S 5 a and b), we observe that Greenland eruptions align very accurately with some periods of abrupt cooling, providing an indication of the timescale accuracy with respect to tree rings. A comparison to another tree-ring growth reconstruction reaching until 3835 years b2k (Helama, Seppä, Bjune, & Birks, 2012) did not lead to conclusive evidence for a better alignment of GICC21 to growth minima with respect to GICC05, either because the resolution of the tree ring data was too low or because no clear minima were seen in the vicinity of the ECM peaks.

605 We furthermore compared to the bristlecone pine-growth minima record, compiled by Salzer & Hughes (2007). We found very good correspondence between two growth minima of North-American trees, at 3626 and 3649 years b2k, the first of them corresponding to the Alaskan Aniakchak eruption (Pearce et al., 2004), which again confirms the alignment of the eruptions in ice cores and tree-growth minima (Supplementary Information Fig. S 5 c). Finally, a calcium anomaly was reported in tree rings by Pearson et al. (2020) at 3560 years b2k, speculated to be linked to the eruption of Thera, Santorini, which we find to align with a modest ECM peak in some ice cores (e.g. EastGRIP) (Supplementary Information Fig. S 5 c).

610 Synchronous deposition of cosmogenic radionuclides (¹⁰Be and ¹⁴C) provides an additional tool for the comparison of ice cores to other archives at lower latitudes. However, the ¹⁴C signal is dampened by the carbon cycle and therefore the comparison can only be conducted by backward modelling the ¹⁴C to retrieve the original production rates. In this way, GICC05 was compared to the radiocarbon calibration curve IntCal13 (Reimer et al., 2013) by Adolphi & Muscheler (2016), who found that the offset between the timescales increased steadily over the Holocene, reaching about 20 years at 4 ka b2k. This conclusion is supported by GICC21, at least until 3400 years b2k, by observing that the transfer function of GICC21 behaves similarly to the one produced by Adolphi & Muscheler (Figure 7a). Furthermore, the solar proton event identified by O'Hare et al. (2019) in NorthGRIP and GRIP, dated through tree-ring evidence, keeps its alignment under the GICC21 timescale and is confirmed at an age of 663 ± 7 years b2k (Table 3), providing independent proof for the accuracy of GICC21 for that period.

620 The transfer curve to IntCal13 is smoothed as a result of the statistical wiggle-matching approach between ¹⁰Be and ¹⁴C, designed to match unstretched 1000-year long windows in order to avoid over-fitting of spurious peaks (Adolphi & Muscheler, 2016). This implies that beyond 3500 years b2k, the wiggle-matching algorithm is influenced by data older than 4000 years b2k, which could cause the increase in observed offset in the 3500-3800 years window. Since the differences between IntCal13 and IntCal20 are thought to be marginal in the Late Holocene, at least for the purpose of timescale comparisons (Reimer et al., 2020; Muscheler et al., 2020) we refrain from repeating the wiggle-matching. Therefore, after 3500 years b2k, the IntCal-GICC21 offset can be quantified as 7±6 years, which is almost negligible.

625 To address the finer structure of the offset in the last 500 years of the GICC21 revision, we directly compare the ice-core ¹⁰Be concentration measured in the GRIP ice core (Muscheler et al., 2009) and the ¹⁴C production signal of the IntCal20 curve, which is obtained by carbon-cycle modelling (Muscheler et al., 2005). Since the underlying production mechanisms are the same, the two radionuclides show common variability. After detrending the signals, we compare the ¹⁴C of IntCal20 and the ice-core ¹⁰Be, according to GICC21 and to the transfer function by Adolphi & Muscheler. Upon visual inspection (Figure 7b), we conclude that there is good agreement between all production signals and that until 3835 years b2k, the offset between IntCal20 and GICC21 is resolved within uncertainties. However, we remark that between 3700 and 3800 years b2k comparative studies of tree-ring and ice core data should address the inconsistencies observed in the radionuclide production signal. In conclusion, there is no compelling evidence to suggest an offset of GICC21 versus IntCal20.



635 Figure 7 (a) Comparison of the transfer function GICC21-GICC05 with the transfer function modelled by Adolphi & Muscheler (2016), based on ¹⁰Be data from the GRIP ice core and converted to $\Delta^{14}\text{C}$ by modelling, and compared it to the $\Delta^{14}\text{C}$ variations in IntCal13. The agreement between GICC21 and IntCal is supported by the closeness of the two transfer curves. We observe two notable differences between the transfer curves: between 500 and 1000 years b2k, where the effect of the 1000-year smoothing of the Adolphi & Muscheler approach is evident (used in the ¹⁰Be-¹⁴C comparison to avoid matching spurious peaks), and possibly between 3400 and 3835 years b2k, where some offset (7 ± 6 years) towards older GICC21-ages is still observed. (b) ¹⁰Be concentrations measured in the GRIP ice core (Muscheler et al., 2009) are shown in purple for GICC21 and black for the Adolphi & Muscheler timescales, with horizontal bars highlighting the uncertainties in the peak positioning. The data were smoothed with a 20-year running average and detrended to remove the long term trend. The ¹⁴C production rate (green), based on the tree-ring timescale, is obtained from carbon-cycle modelling of the ¹⁴C data of IntCal20 (methods outlined in Muscheler et al., 2005). Single realizations of the IntCal20-based production curve show that the position of the peaks underlying IntCal20 can vary slightly, so that the average curve should be handled with care when performing timescale studies (Muscheler et al., 2020). The alignment with IntCal20 is kept within uncertainties throughout the period shown, with possibly GICC21 better aligned in the last century. Any production rate differences between tree-ring data and ice-cores that cannot be resolved within realistic dating offsets (e.g. the period 3700-3740 years b2k) could be explained by under-estimated data uncertainties or by transport and deposition effects on ¹⁰Be, since major carbon-cycle changes in this period are unlikely (Muscheler et al., 2004).

640 5. Conclusions

645 Compared to GICC05, the new GICC21 ice-core timescale shows higher potential for climatic studies and comparison to distant records in the Late Holocene, such as radiocarbon-dated evidence proximal to eruption sites. The timescale offset to GICC05 shows a non-linear behavior, as a consequence of local issues with the layer count and the ice-core comparison. Until 742 years b2k, the two timescales agree with uncertainties, which is convenient for shallow ice-core studies. However, beyond the Samalas eruption (1258 CE, 742 years b2k), the offset increases rapidly because of the mismatch of the Hekla (1104 CE) and the Vesuvius (79 CE) eruptions.

660 The automated-counting algorithm StratiCounter was applied with success to recognize layers in the ice cores, using the new available proxy data from EastGRIP and NEEM, but nonetheless showed some intrinsic issues, since the algorithm was under-counting layers in some ice cores (EastGRIP, NEEM, and NEEM-S1-2011) and over-counting layers in others (GRIP, NorthGRIP, and especially DYE-3), as demonstrated in the well-constrained age range younger than the Samalas eruption. Hence, we demonstrated the need for a multi-observer manual fine-tuning and applied an empirical statistical approach to show that the rate of the timescale uncertainty envelope can be estimated as about 1 year per century, going back in time from Samalas. A lower bound of 2 years needs to be added to the uncertainty, to account for uncertainties in displacement and delays in the volcanic acidity deposition on the ice sheet. We remark that the existence of a counting bias in each ice core is not a failure of SC, as the task of recognizing layers is challenging regardless of the methodology applied. That is to say that the algorithm cannot overcome the bias which is as much an intrinsic problem with the annual layer record as it is an issue with the layer identification method. Since we demonstrated that ice cores do have site-specific disturbances that affect the layer count, it is clear that a multi-core comparison such as the one conducted in this work is favorable to increase the accuracy of the Greenland ice-core timescale.

The offset of the timescale from GICC05 reaches 13 years at 3835 years b2k, which is significant considering the small timescale uncertainty at this age. The offset has an oscillating behavior between 2000 years b2k and 3835 years b2k, with three important excursions from the mean with amplitudes of about 5 years. This fact we attribute to matching issues related to widely-spaced volcanic eruptions, a finer ammonium-based match in GICC21, and layer thickness fluctuations in DYE-3.

675 The revision of the timescale was stopped at 3835 years b2k to ensure multi-core comparison. However, since NEEM data improves again for depths larger than 1200 m (corresponding to roughly 8 ka b2k), there is a possibility for a revised Early-Holocene ice-core chronology based on data from EastGRIP, NEEM, and DYE-3, made by a method similar to the one provided here. In contrast, between 3.8 and 8 ka b2k, i.e. within the typical brittle ice section of the cores where data quality is lower, any timescale revision will have to be constructed by different means or by acquisition of new data from new and old ice cores. We
680 remark that the record of EastGRIP CFA data was acquired with the goal of covering the brittle ice zone part of the Holocene in Greenland, hence this dataset will be key to improving the ice-core timescale in future studies. In the meantime, a timescale-calibration offset should be added when using GICC05 beyond 3835 years b2k (Appendix A).

Comparisons of GICC21 to other timescales provided new insights on some debated issues of ice-core timescales, such as the offset to the IntCal calibration curve. A comparison between several tree-ring growth minima and volcanic acidity spikes supports
685 the conclusion that GICC21 is in good alignment with tree-ring chronologies. Moreover, thanks to the modelling of cosmogenic radionuclides, we were able to compare IntCal20 and GICC21 until 3835 years b2k, concluding that the offset between the two timescales is negligible within uncertainties.

In conclusion, thanks to a good geographical coverage of the central Greenlandic ice sheet provided by the dataset, our improved synchronization of Greenlandic ice cores will allow more precise investigations of the relative timing of climatic events, such as,
690 for example, the climatic response to Holocene volcanic eruptions as reflected in the ice-core signal.

Appendix A

The transfer function was calculated by, first, acquiring the timescale offsets of each of the ice cores involved in this study. Then, we computed the uncertainty using equation (1). For each year between 0 and 3835 years b2k, a weighted mean of the offset was calculated with the corresponding weighted uncertainty. The transfer function is reported in the Timescale
695 Supplement. For the ice cores EastGRIP, NEEM, NorthGRIP1, NorthGRIP2, and DYE-3 we advise the direct use of the GICC21 layers and of equation (1) for the uncertainty, in order to convert ages from GICC05. For other cores, which were matched to one or a combination of these ice cores (e.g. GISP2, Rasmussen et al., 2008), we recommend the use of the average transfer function to translate ages from GICC05 to GICC21 until 3835 years b2k. For sections older than 3835 years b2k, we recommend ages of GICC05 to be calibrated by a shift towards younger ages. The amount of calibration needed is 14 years for DYE-3, 12
700 years for EastGRIP, 11 years for GRIP, and 12 years for any other ice core based on the average transfer curve.

6. Supplementary Information

The following documents are provided with the online version of this paper:

1. The GICC21 timescale layer boundaries, the volcanic/ammonium tie-points, and the GICC05-GICC21 transfer function are available in the Timescale Supplement.
- 705 2. For more information about the pre-processing and the uncertainty study (sec. 3.4) we provide a Straticounter Supplement.

Moreover:

3. Straticounter is available at: <https://github.com/maiwinstrup/StratiCounter>
4. Matchmaker can be obtained by direct communication with SOR.

710 7. Ice-core data availability

All data underlying GICC21 is available for use. As many of the data sets were also used for GICC05 but not released at that time, we have decided to release all hitherto unpublished data and information related to GICC05 and GICC21 together. The publication plans were split according to the ice core project and are still ongoing.

715 The CFA data sets from NorthGRIP and NEEM have been documented in a paper by Erhardt et al. (2021) (accepted). The corresponding data files are available at Pangea (<https://doi.pangaea.de/10.1594/PANGAEA.935838>). EastGRIP CFA data are in the process of being released in a similar way, and a preliminary data file can be obtained from TE until the data files are available at Pangea.

In addition, the following data files have been documented and are currently in review and undergoing curation at Pangea: ECM from DYE-3 (main core, 4B, 18C) and GRIP; yearly resolved isotope data from DYE-3 (main core, 4B, 18C) and GRIP; impurity CFA data from GRIP; impurity IC data from NorthGRIP1; linescan profile from NorthGRIP2; the GICC05 annual layer markings for all cores. The full metadata and documentation for these files are being compiled as a manuscript for ESSD, and the data files are available (with the current preliminary metadata) from SOR until they appear at Pangea in their final form.

Other data underlying the timescale, and where to find it, is listed below:

- 1) NorthGRIP DEP data from the top are at <https://doi.pangaea.de/10.1594/PANGAEA.922308> (Mojtabavi et al., 2022, accepted)
- 2) NEEM DEP is available at <https://doi.pangaea.de/10.1594/PANGAEA.922139> (Mojtabavi et al., 2020)
- 3) EastGRIP, NorthGRIP, and NEEM Acidity (ECM) are published on the CIC website: <https://www.iceandclimate.nbi.ku.dk/data/>

8. Author contributions

G.S. drafted the paper with comments and corrections from all co-authors. G.S. produced the StratiCounter raw counts and led the fine-tuning, which was performed together with M.W. and S.O.R, who provided guidance on methodology and on layer recognition. M.W. provided supervision on the use of StratiCounter. S.O.R. produced the manual gap count for the uncertainty study, supervised the general content of the work, and provided ideas regarding the uncertainty formula.

B.V. produced the correlation study for DYE-3, GRIP, and SWG temperatures. A.S. provided suggestions for the IntCal comparison and the tree-ring minima comparison and guidance about volcanic matching and tephra. T.E. and C.J. provided information about the EastGRIP data. C.J. helped with research on ammonium signal in ice cores. T.E. provided useful insight and ideas about the uncertainty and the statistical framework. E.C. provided information about tephra evidence in the Holocene. R.M. produced the single realizations of the IntCal20 ¹⁴C production rates by carbon-modelling, as well as providing guidance for the IntCal comparison.

9. Conflicts of interest

The authors declare that they have no conflict of interest.

10. Acknowledgements

10.1. Funding

G.S. and S.O.R. acknowledge support via the ChronoClimate project funded by the Carlsberg Foundation.

T.E. and C.M.J. acknowledge the long-term support of ice core research at the University of Bern by the Swiss National Science Foundation (SNSF) (#20Fi21_164190) and the Oeschger Center for Climate Change Research.

10.2. People

G.S. thanks Hubertus Fischer for his useful comments to the manuscript. Many thanks to the three anonymous referees and to M. Sigl who provided essential comments for the improvement of the manuscript. A special thank you to Joe McConnell for providing the DRI_NGRIP2 timescale and NGRIP2 data and a useful reminder about the importance of b2k/CE age conversions.

References:

- Abbott, P. M., & Davies, S. M. (2012). Volcanism and the Greenland ice-cores: the tephra record. *Earth-Science Reviews*, 115(3), 173-191. <https://doi.org/10.1016/j.earscirev.2012.09.001>
- Abbott, P. M., Jensen, B. J., Lowe, D. J., Suzuki, T., & Veres, D. (2020). Crossing new frontiers: extending tephrochronology as a global geoscientific research tool. *Quaternary*, 10.1002/jqs.3184
- Adolphi, F., & Muscheler, R. (2016). Synchronizing the Greenland ice core and radiocarbon timescales over the Holocene—Bayesian wiggle-matching of cosmogenic radionuclide records. *Climate of the Past*, 12, 15–30. doi:10.5194/cp-12-15-2016
- Adolphi, F., Bronk Ramsey, C., Erhardt, T., Edwards, R. L., Cheng, H., Turney, C. S., . . . others. (2018). Connecting the Greenland ice-core and U/Th timescales via cosmogenic radionuclides: testing the synchronicity of Dansgaard–Oeschger events. *Climate of the Past*, 14, 1755–1781. <https://doi.org/10.5194/cp-14-1755-2018>

- Ahlstrøm, A. P., van As, D., Citterio, M., Andersen, S. B., Fausto, R. S., Andersen, M. L., ... & Kristensen, S. S. (2007, December). A new Programme for Monitoring the Mass Loss of the Greenland Ice Sheet. In *AGU Fall Meeting Abstracts* (Vol. 2007, pp. C11A-0083). <https://doi.org/10.34194/geusb.v15.5045>
- 765 Andersen, K. K., Svensson, A., Johnsen, S. J., Rasmussen, S. O., Bigler, M., Röthlisberger, R., . . . others. (2006). The Greenland ice core chronology 2005, 15–42 ka. Part 1: constructing the time scale. *Quaternary Science Reviews*, 25, 3246–3257. <https://doi.org/10.1016/j.quascirev.2006.08.002>
- Baillie, M. G. (2008). Proposed re-dating of the European ice core chronology by seven years prior to the 7th century AD. *Geophysical Research Letters*, 35(15). <https://doi.org/10.1029/2008GL034755>
- 770 Baillie, M. G. (2010). Volcanoes, ice-cores and tree-rings: one story or two? *Antiquity*, 84(323), 202-215. <https://doi.org/10.1017/S0003598X00099877>
- Barbante, C., Kehrwald, N. M., Marianelli, P., Vinther, B. M., Steffensen, J. P., Cozzi, G., . . . Siggaard-Andersen, M.-L. (2013). Greenland ice core evidence of the 79 AD Vesuvius eruption. *Climate of the Past*, 9, 1221–1232. <https://doi.org/10.5194/cp-9-1221-2013>
- 775 Beer, J., Finkel, R. C., Bonani, G., Gäggeler, H., Görlach, U., Jacob, P., ... & Wöflfi, W. (1991). Seasonal variations in the concentration of ^{10}Be , Cl^- , NO_3^- , SO_4^{2-} , H_2O_2 , ^{210}Pb , ^3H , mineral dust, and $\sigma^{18}\text{O}$ in Greenland snow. *Atmospheric Environment. Part A. General Topics*, 25(5-6), 899-904. [https://doi.org/10.1016/0960-1686\(91\)90131-P](https://doi.org/10.1016/0960-1686(91)90131-P)
- Büntgen, U., Allen, K., Anchukaitis, K. J., Arseneault, D., Boucher, É., Bräuning, A., ... & Esper, J. (2021). The influence of decision-making in tree ring-based climate reconstructions. *Nature communications*, 12(1), 1-10. <https://doi.org/10.1038/s41467-021-23627-6>
- 780 Bourne, A. J., Cook, E., Abbott, P. M., Seierstad, I. K., Steffensen, J. P., Svensson, A., ... & Davies, S. M. (2015). A tephra lattice for Greenland and a reconstruction of volcanic events spanning 25–45 ka b2k. *Quaternary Science Reviews*, 118, 122-141. <https://doi.org/10.1016/j.jvolgeores.2014.09.006>
- Bronk Ramsey, C. (2008). Radiocarbon dating: revolutions in understanding. *Archaeometry*, 50(2), 249-275. <https://doi.org/10.1111/j.1475-4754.2008.00394.x>
- 785 Clausen, H. B., & Hammer, C. U. (1988). The Laki and Tambora eruptions as revealed in Greenland ice cores from 11 locations. *Annals of Glaciology*, 10, 16-22. <https://doi.org/10.1017/s0260305500004092>
- Clausen, H. B., Hammer, C. U., Hvidberg, C. S., Dahl-Jensen, D., Steffensen, J. P., Kipfstuhl, J., & Legrand, M. (1997). A comparison of the volcanic records over the past 4000 years from the Greenland Ice Core Project and Dye 3 Greenland ice cores. *Journal of Geophysical Research: Oceans*, 102(C12), 26707-26723. <https://doi.org/10.1029/97JC00587>
- 790 Cook, E., Portnyagin, M., Ponomareva, V., Bazanova, L., Svensson, A., & Garbe-Schönberg, D. (2018a). First identification of cryptotephra from the Kamchatka Peninsula in a Greenland ice core: Implications of a widespread marker deposit that links Greenland to the Pacific northwest. *Quaternary Science Reviews*, 181, 200-206. <https://doi.org/10.1016/j.quascirev.2017.11.036>
- 795 Cook, E., Davies, S. M., Guðmundsdóttir, E. R., Abbott, P. M., & Pearce, N. J. (2018b). First identification and characterization of Borrobol-type tephra in the Greenland ice cores: new deposits and improved age estimates. *Journal of quaternary science*, 33(2), 212-224. <https://doi.org/10.1002/jqs.3016>
- 800 Coulter, S. E., Pilcher, J. R., Plunkett, G., Baillie, M., Hall, V. A., Steffensen, J. P., . . . Johnsen, S. J. (2012). Holocene tephras highlight complexity of volcanic signals in Greenland ice cores. *Journal of Geophysical Research: Atmospheres*, 117. <https://doi.org/10.1029/2012jd017698>
- Dahl-Jensen, D., Gundestrup, N. S., Miller, H., Watanabe, O., Johnsen, S. J., Steffensen, J. P., . . . Larsen, L. B. (2002). The NorthGRIP deep drilling programme. *Annals of Glaciology*, 35, 1–4. <https://doi.org/10.3189/172756402781817275>
- 805 Dahl-Jensen, D., Albert, M. R., Aldahan, A., Azuma, N., Balslev-Clausen, D., Baumgartner, M., ... & Zheng, J. (2013). Eemian interglacial reconstructed from a Greenland folded ice core. *Nature*, 493(7433), 489-494. <https://doi.org/10.1038/nature11789>
- Dansgaard, W., Johnsen, S. J., Clausen, H. B., Dahl-Jensen, D., Gundestrup, N. S., Hammer, C. U., ... & Bond, G. (1993). Evidence for general instability of past climate from a 250-kyr ice-core record. *nature*, 364(6434), 218-220. <https://doi.org/10.1038/364218a0>

- 810 Erhardt, T., Jensen, C. M., Borovinskaya, O., & Fischer, H. (2019). Single particle characterization and total elemental concentration measurements in polar ice using continuous flow analysis-inductively coupled plasma time-of-flight mass spectrometry. *Environmental science & technology*, 53, 13275–13283. <https://doi.org/10.1021/acs.est.9b03886>
- Erhardt, T., Bigler, M., Federer, U., Gfeller, G., Leuenberger, D., Stowasser, O., ... & Fischer, H. (2021). High resolution aerosol concentration data from the Greenland NorthGRIP and NEEM deep ice cores. *Earth System Science Data Discussions*, 1-25. <https://doi.org/10.5194/essd-2021-324>
- 815 Faïn, X., Chappellaz, J., Rhodes, R. H., Stowasser, C., Blunier, T., McConnell, J. R., . . . others. (2014). High resolution measurements of carbon monoxide along a late Holocene Greenland ice core: evidence for in situ production. *Climate of the Past*, 10, 987–1000. <https://doi.org/10.5194/cp-10-987-2014>
- Fiacco Jr, R. J., Thordarson, T., Germani, M. S., Self, S., Palais, J. M., Whitlow, S., & Grootes, P. M. (1994). Atmospheric aerosol loading and transport due to the 1783-84 Laki eruption in Iceland, interpreted from ash particles and acidity in the GISP2 ice core. *Quaternary Research*, 42(3), 231-240. [10.1006/qres.1994.1074](https://doi.org/10.1006/qres.1994.1074)
- 820 Fischer, H., Werner, M., Wagenbach, D., Schwager, M., Thorsteinsson, T., Wilhelms, F., ... & Sommer, S. (1998). Little ice age clearly recorded in northern Greenland ice cores. *Geophysical Research Letters*, 25(10), 1749-1752. <https://doi.org/10.1029/98GL01177>
- Fischer, H., Schüpbach, S., Gfeller, G., Bigler, M., Röthlisberger, R., Erhardt, T., . . . Wolff, E. (2015, 10). Millennial changes in North American wildfire and soil activity over the last glacial cycle. *Nature Geoscience*, 8(9), 723-727. <https://doi.org/10.1038/ngeo2495>
- 825 Fuhrer, K., Neftel, A., Anklin, M., Staffelbach, T., & Legrand, M. (1996). High-resolution ammonium ice core record covering a complete glacial-interglacial cycle. *Journal of Geophysical Research: Atmospheres*, 101(D2), 4147-4164. <https://doi.org/10.1029/95JD02903>
- 830 Fuhrer, K., Wolff, E. W., & Johnsen, S. J. (1999). Timescales for dust variability in the Greenland Ice Core Project (GRIP) ice core in the last 100,000 years. *Journal of Geophysical Research: Atmospheres*, 104, 31043–31052. <https://doi.org/10.1029/1999jd900929>
- Gautier, E., Savarino, J., Erbland, J., Lanciki, A., & Possenti, P. (2016). Variability of sulfate signal in ice core records based on five replicate cores. *Climate of the Past*, 12(1), 103-113. <https://doi.org/10.5194/cp-12-103-2016>
- 835 Gerber, T. A., Hvidberg, C. S., Rasmussen, S. O., Franke, S., Sinnl, G., Grinsted, A., . . . Dahl-Jensen, D. (2021). Upstream flow effects revealed in the EastGRIP ice core using a Monte Carlo inversion of a two-dimensional ice-flow model. *The Cryosphere Discussions*, 1–32. <https://doi.org/10.5194/tc-15-3655-2021>
- Gfeller, G., Fischer, H., Bigler, M., Schüpbach, S., Leuenberger, D., & Mini, O. (2014). Representativeness and seasonality of major ion records derived from NEEM firn cores. *The Cryosphere*, 8(5), 1855-1870. <https://doi.org/10.5194/tc-8-1855-2014>
- 840 Gkinis, V., Simonsen, S. B., Buchardt, S. L., White, J. W. C. and Vinther, B. M. (2014) Water isotope diffusion rates from the NorthGRIP ice core for the last 16 000 years – Glaciological and paleoclimatic implications. *Earth and Planetary Science Letters* 405(0), 132–141. doi: 10.1016/j.epsl.2014.08.022
- 845 Grieman, M. M., Aydin, M., Isaksson, E., Schwikowski, M., & Saltzman, E. S. (2018). Aromatic acids in an Arctic ice core from Svalbard: a proxy record of biomass burning. *Climate of the Past*, 14(5), 637-651. <https://doi.org/10.5194/cp-14-637-2018>
- Grönvold, K., Óskarsson, N., Johnsen, S. J., Clausen, H. B., Hammer, C. U., Bond, G., & Bard, E. (1995). Ash layers from Iceland in the Greenland GRIP ice core correlated with oceanic and land sediments. *Earth and Planetary Science Letters*, 135(1-4), 149-155. [https://doi.org/10.1016/0012-821X\(95\)00145-3](https://doi.org/10.1016/0012-821X(95)00145-3)
- 850 Guillet, S., Corona, C., Ludlow, F., Oppenheimer, C., & Stoffel, M. (2020). Climatic and societal impacts of a “forgotten” cluster of volcanic eruptions in 1108-1110 CE. *Scientific reports*, 10(1), 1-10. <https://doi.org/10.1038/s41598-020-63339-3>
- Hammer, C. U. (1980). Acidity of polar ice cores in relation to absolute dating, past volcanism, and radio-echoes. *Journal of Glaciology*, 25(93), 359-372. <https://doi.org/10.1017/s0022143000015227>
- 855 Helama, S., Seppä, H., Bjune, A. E., & Birks, H. J. (2012). Fusing pollen-stratigraphic and dendroclimatic proxy data to reconstruct summer temperature variability during the past 7.5 ka in subarctic Fennoscandia. *Journal of Paleolimnology*, 48, 275–286. <https://doi.org/10.1007/s10933-012-9598-1>

- Herron, M. M. (1982). Impurity sources of F⁻, Cl⁻, NO₃⁻ and SO₄²⁻ in Greenland and Antarctic precipitation. *Journal of Geophysical Research: Oceans*, 87(C4), 3052-3060. <https://doi.org/10.1029/JC087iC04p03052>
- 860 Johnsen, S. J., Dansgaard, W., & White, J. W. (1989). The origin of Arctic precipitation under present and glacial conditions. *Tellus B: Chemical and Physical Meteorology*, 41, 452-468. <https://doi.org/10.1111/j.1600-0889.1989.tb00321.x>
- Johnsen, S. J., Clausen, H. B., Dansgaard, W., Fuhrer, K., Gundestrup, N., Hammer, C. U., . . . others. (1992). Irregular glacial interstadials recorded in a new Greenland ice core. *Nature*, 359, 311-313. <https://doi.org/10.1038/359311a0>
- 865 Johnsen, S. J., Clausen, H. B., Cuffey, K. M., Hoffmann, G., Schwander, J., & Creyts, T. (2000). Diffusion of stable isotopes in polar firn and ice: the isotope effect in firn diffusion. *Physics of ice core records*, (pp. 121-140). DOI:10.1144/jgs2013-113
- Johnsen, S. J., Dahl-Jensen, D., Gundestrup, N., Steffensen, J. P., Clausen, H. B., Miller, H., . . . White, J. (2001). Oxygen isotope and palaeotemperature records from six Greenland ice-core stations: Camp Century, Dye-3, GRIP, GISP2, Renland and NorthGRIP. *Journal of Quaternary Science: Published for the Quaternary Research Association*, 16, 299-307. <https://doi.org/10.1002/jqs.622>
- 870 Johnsen, S. (1977). Stable isotope homogenization of polar firn and ice. *Proc. of Symp. on Isotopes and Impurities in Snow and Ice*, Int. Ass. of Hydrol. Sci., Commission of Snow and Ice, I.U.G.G. XVI, General Assembly, Grenoble Aug. -Sept, 1975, IAHS-AISH Publ., 388-392.
- Jouzel, J., Alley, R. B., Cuffey, K. M., Dansgaard, W., Grootes, P., Hoffmann, G., ... & White, J. (1997). Validity of the temperature reconstruction from water isotopes in ice cores. *Journal of Geophysical Research: Oceans*, 102(C12), 26471-26487. <https://doi.org/10.1029/97JC01283>
- 875 Kaufmann, P. R., Federer, U., Hutterli, M. A., Bigler, M., Schüpbach, S., Ruth, U., ... & Stocker, T. F. (2008). An improved continuous flow analysis system for high-resolution field measurements on ice cores. *Environmental science & technology*, 42(21), 8044-8050. <https://doi.org/10.1021/es8007722>
- 880 Laepple, T., Münch, T., Casado, M., Hoerhold, M., Landais, A., & Kipfstuhl, S. (2018). On the similarity and apparent cycles of isotopic variations in East Antarctic snow pits. *The Cryosphere*, 12(1), 169-187. <https://doi.org/10.5194/tc-12-169-2018>
- Langway, C.C., Oeschger, H. and Dansgaard, W. (1985). In: *The Greenland Ice Sheet Program in perspective*. American Geophysical Union, Washington D.C. 33: 5-8. doi: 10.1029/GM033p0001.
- 885 Lavigne, F., Degeai, J. P., Komorowski, J. C., Guillet, S., Robert, V., Lahitte, P., ... & de Belizal, E. (2013). Source of the great AD 1257 mystery eruption unveiled, Samalas volcano, Rinjani Volcanic Complex, Indonesia. *Proceedings of the National Academy of Sciences*, 110(42), 16742-16747. <https://doi.org/10.1073/pnas.1307520110>
- Legrand, M., McConnell, J., Fischer, H., Wolff, E. W., Preunkert, S., Arienzo, M., ... & Flannigan, M. (2016). Boreal fire records in Northern Hemisphere ice cores: a review. *Climate of the Past*, 12(10), 2033-2059. <https://doi.org/10.5194/cp-12-2033-2016>
- 890 Geng, L., Alexander, B., Cole-Dai, J., Steig, E. J., Savarino, J., Sofen, E. D., & Schauer, A. J. (2014). Nitrogen isotopes in ice core nitrate linked to anthropogenic atmospheric acidity change. *Proceedings of the National Academy of Sciences*, 111(16), 5808-5812. <https://doi.org/10.1073/pnas.1319441111>
- 895 Lin, J., Svensson, A., Hvidberg, C. S., Lohmann, J., Kristiansen, S., Dahl-Jensen, D., ... & Mulvaney, R. (2021). Magnitude, frequency and climate forcing of global volcanism during the last glacial period as seen in Greenland and Antarctic ice cores (60-9 ka). *Climate of the Past Discussions*, 1-45. <https://doi.org/10.5194/cp-2021-100>
- Lohne, Ø. S., Mangerud, J. A. N., & Birks, H. H. (2013). Precise 14 C ages of the Vedde and Saksunarvatn ashes and the Younger Dryas boundaries from western Norway and their comparison with the Greenland Ice Core (GICC 05) chronology. *Journal of Quaternary Science*, 28(5), 490-500. <https://doi.org/10.1002/jqs.2640>
- 900 McAneney, J., & Baillie, M. (2019). Absolute tree-ring dates for the Late Bronze Age eruptions of Aniakchak and Thera in light of a proposed revision of ice-core chronologies. *Antiquity*, 93(367), 99-112. <https://doi.org/10.15184/aqy.2018.165>
- 905 McConnell, R. J., Wilson, A. I., Stohl, A., Arienzo, M. M., Chellman, N. J., Eckhardt, S., . . . Steffensen, J. P. (2018). Lead pollution recorded in Greenland ice indicates European emissions tracked plagues, wars, and imperial expansion during antiquity. *Proceedings of the National Academy of Sciences*, 115, 5726-5731. <https://doi.org/10.1073/pnas.1721818115>

- McConnell, J. R., Sigl, M., Plunkett, G., Burke, A., Kim, W. M., Raible, C. C., ... & Steffensen, J. P. (2020). Extreme climate after massive eruption of Alaska's Okmok volcano in 43 BCE and effects on the late Roman Republic and Ptolemaic Kingdom. *Proceedings of the National Academy of Sciences*, 117(27), 15443-15449. <https://doi.org/10.1073/pnas.2002722117>
- 910 McGwire, K. C., McConnell, J. R., Alley, R. B., Banta, J. R., Hargreaves, G. M., & Taylor, K. C. (2008). Dating annual layers of a shallow Antarctic ice core with an optical scanner. *Journal of Glaciology*, 54(188), 831-838. <https://doi.org/10.3189/002214308787780021t>
- Meese, D. A., Gow, A. J., Alley, R. B., Zielinski, G. A., Grootes, P. M., Ram, M., ... & Bolzan, J. F. (1997). The Greenland Ice Sheet Project 2 depth-age scale: methods and results. *Journal of Geophysical Research: Oceans*, 102(C12), 26411-26423. <https://doi.org/10.1029/97JC00269>
- 915 Mekhaldi, F., Muscheler, R., Adolphi, F., Aldahan, A., Beer, J., McConnell, J. R., ... & Woodruff, T. E. (2015). Multiradionuclide evidence for the solar origin of the cosmic-ray events of AD 774/5 and 993/4. *Nature communications*, 6(1), 1-8. <https://doi.org/10.1038/ncomms9611>
- Mojtabavi, S., Wilhelms, F., Cook, E., Davies, S., Sinnl, G., Skov Jensen, M., . . . Rasmussen, S. (2020, 11). A first chronology for the East Greenland Ice-core Project (EGRIP) over the Holocene and last glacial termination. *Climate of the Past*, 16(6). <https://doi.org/10.5194/cp-16-2359-2020>
- 920 Mojtabavi, S., Eisen, O., Franke, S., Jansen, D., Steinhage, D., Paden, J., . . . Wilhelms, F. (2022). Origin of englacial stratigraphy at three deep ice core sites of the Greenland Ice Sheet by synthetic radar modelling. *Journal of Glaciology*, 1-13. doi:10.1017/jog.2021.137
- 925 Mosley-Thompson, E., McConnell, J. R., Bales, R. C., Li, Z., Lin, P. N., Steffen, K., ... & Bathke, D. (2001). Local to regional-scale variability of annual net accumulation on the Greenland ice sheet from PARCA cores. *Journal of Geophysical Research: Atmospheres*, 106(D24), 33839-33851. <https://doi.org/10.1029/2001JD900067>
- Muscheler, R., Beer, J., Wagner, G., Laj, C., Kissel, C., Raisbeck, G. M., ... & Kubik, P. W. (2004). Changes in the carbon cycle during the last deglaciation as indicated by the comparison of 10Be and 14C records. *Earth and Planetary Science Letters*, 219(3-4), 325-340. doi:10.1016/s0012-821x(03)00722-2"
- 930 Muscheler, R., Beer, J., Kubik, P. W., & Synal, H. A. (2005). Geomagnetic field intensity during the last 60,000 years based on 10Be and 36Cl from the Summit ice cores and 14C. *Quaternary Science Reviews*, 24(16-17), 1849-1860. <https://doi.org/10.1016/j.quascirev.2005.01.012>
- Muscheler, R. (2009). 14C and 10Be around 1650 cal BC. In W. David A. (Ed.), *Time's up!: dating the Minoan eruption of Santorini* (Vol. 10, pp. 275-284). Danish Institute at Athens.
- 935 Muscheler, R., Adolphi, F., & Knudsen, M. (2014). Assessing the differences between the IntCal and Greenland ice-core time scales for the last 14,000 years via the common cosmogenic radionuclide variations. *Quaternary Science Reviews*, 106, 81-87. <http://dx.doi.org/10.1016/j.quascirev.2014.08.017>
- Muscheler, R., Adolphi, F., Heaton, T. J., Ramsey, C. B., Svensson, A., Van Der Plicht, J., & Reimer, P. J. (2020). Testing and improving the IntCal20 calibration curve with independent records. *Radiocarbon*, 62, 1079-1094. <https://doi.org/10.1017/rdc.2020.54>
- 940 Nakagawa, T., Tarasov, P., Staff, R., Ramsey, C. B., Marshall, M., Scholaut, G., ... & Yasuda, Y. (2021). The spatio-temporal structure of the Lateglacial to early Holocene transition reconstructed from the pollen record of Lake Suigetsu and its precise correlation with other key global archives: Implications for palaeoclimatology and archaeology. *Global and Planetary Change*, 103493. <https://doi.org/10.1016/j.gloplacha.2021.103493>
- 945 NEEM community members. Eemian interglacial reconstructed from a Greenland folded ice core. *Nature* 493, 489-494 (2013). <https://doi.org/10.1038/nature11789>
- Neff, P. D. (2014). A review of the brittle ice zone in polar ice cores. *Annals of Glaciology*, 55(68), 72-82. doi:10.3189/2014AoG68A023
- 950 Neftel, A., Moor, E., Oeschger, H., & Stauffer, B. (1985). Evidence from polar ice cores for the increase in atmospheric CO2 in the past two centuries. *Nature*, 315(6014), 45-47. <https://doi.org/10.1038/315045a0>
- North Greenland Ice Core Project members. (2004). High resolution record of Northern Hemisphere climate extending into the last interglacial period. *Nature*, 431(7005), 147-151. <https://doi.org/10.1038/nature02805>

- O'Hare, P., Mekhaldi, F., Adolphi, F., Raisbeck, G., Aldahan, A., Anderberg, E., ... & ASTER Team. (2019). Multiradionuclide evidence for an extreme solar proton event around 2,610 BP (~ 660 BC). *Proceedings of the National Academy of Sciences*, 116(13), 5961-5966. <https://doi.org/10.1073/pnas.1815725116>
- Palais, J. M., Taylor, K., Mayewski, P. A., & Grootes, P. (1991). Volcanic ash from the 1362 AD Oraefajokull eruption (Iceland) in the Greenland ice sheet. *Geophysical Research Letters*, 18(7), 1241-1244. <https://doi.org/10.1029/91GL01557>
- Palais, J. M., Germani, M. S., & Zielinski, G. A. (1992). Inter-hemispheric transport of volcanic ash from a 1259 AD volcanic eruption to the Greenland and Antarctic ice sheets. *Geophysical Research Letters*, 19(8), 801-804. <https://doi.org/10.1029/92GL00240>
- Park, J., Southon, J., Fahrni, S., Creasman, P., & Mewaldt, R. (2017). Relationship between solar activity and $\Delta^{14}\text{C}$ peaks in AD 775, AD 994, and 660 BC. *Radiocarbon*, 59(4), 1147-1156. doi:10.1017/RDC.2017.59
- Pearce, N. J., Westgate, J. A., Preece, S. J., Eastwood, W. J., & Perkins, W. T. (2004). Identification of Aniakchak (Alaska) tephra in Greenland ice core challenges the 1645 BC date for Minoan eruption of Santorini. *Geochemistry, Geophysics, Geosystems*, 5. <https://doi.org/10.1029/2003gc000672>
- Pearson, C., Salzer, M., Wacker, L., Brewer, P., Sookdeo, A., & Kuniholm, P. (2020). Securing timelines in the ancient Mediterranean using multiproxy annual tree-ring data. *Proceedings of the National Academy of Sciences*, 117(15), 8410-8415. <https://doi.org/10.1073/pnas.1917445117>
- Pedro, J. B., Jochum, M., Buizert, C., He, F., Barker, S., & Rasmussen, S. O. (2018). Beyond the bipolar seesaw: Toward a process understanding of interhemispheric coupling. *Quaternary Science Reviews*, 192, 27-46. <https://doi.org/10.1016/j.quascirev.2018.05.005>
- Plunkett, G., Sigl, M., Schwaiger, H., Tomlinson, E., Toohey, M., McConnell, J. R., . . . Siebe, C. (2021). No evidence for tephra in Greenland from the historic eruption of Vesuvius in 79 CE: Implications for geochronology and paleoclimatology. *Climate of the Past Discussions*, 1-37. <https://doi.org/10.5194/cp-2021-63>
- Qiao, J., Colgan, W., Jakobs, G., & Nielsen, S. (2021). High-Resolution Tritium Profile in an Ice Core from Camp Century, Greenland. *Environmental Science & Technology*, 55(20), 13638-13645. <https://doi.org/10.1021/acs.est.1c01975>
- Rasmussen, S. O., Andersen, K. K., Svensson, A. M., Steffensen, J. P., Vinther, B. M., Clausen, H. B., . . . others. (2006). A new Greenland ice core chronology for the last glacial termination. *Journal of Geophysical Research: Atmospheres*, 111. <https://doi.org/10.1029/2005JD006079>
- Rasmussen, S. O., Seierstad, I. K., Andersen, K. K., Bigler, M., Dahl-Jensen, D., & Johnsen, S. J. (2008). Synchronization of the NGRIP, GRIP, and GISP2 ice cores across MIS 2 and palaeoclimatic implications. *Quaternary Science Reviews*, 27, 18-28. <https://doi.org/10.1016/j.quascirev.2007.01.016>
- Rasmussen, S. O., Abbott, P. M., Blunier, T., Bourne, A. J., Brook, E., Buchardt, S. L., . . . others. (2013). A first chronology for the North Greenland Eemian Ice Drilling (NEEM) ice core. *Climate of the Past*, 9, 2713-2730. <https://doi.org/10.5194/cp-9-2713-2013>
- Reimer, P. J., Bard, E., Bayliss, A., Beck, J. W., Blackwell, P. G., Ramsey, C. B., ... & Van Der Plicht, J. (2013). IntCal13 and Marine13 radiocarbon age calibration curves 0-50,000 years cal BP. *radiocarbon*, 55(4), 1869-1887. doi:10.2458/azu_js_rc.55.16947
- Reimer, P. J., Austin, W. E., Bard, E., Bayliss, A., Blackwell, P. G., Ramsey, C. B., . . . others. (2020). The IntCal20 Northern Hemisphere radiocarbon age calibration curve (0-55 cal kBP). *Radiocarbon*, 62, 725-757. <https://doi.org/10.1017/rdc.2020.41>
- Rhodes, R. H., Yang, X., & Wolff, E. W. (2018). Sea ice versus storms: what controls sea salt in arctic ice cores? *Geophysical Research Letters*, 45, 5572-5580. <https://doi.org/10.1029/2018gl077403>
- Robock, A., & Free, M. P. (1995). Ice cores as an index of global volcanism from 1850 to the present. *Journal of Geophysical Research: Atmospheres*, 100(D6), 11549-11567. <https://doi.org/10.1029/95JD00825>
- Röthlisberger, R., Mulvaney, R., Wolff, E. W., Hutterli, M. A., Bigler, M., Sommer, S., & Jouzel, J. (2002). Dust and sea salt variability in central East Antarctica (Dome C) over the last 45 kyrs and its implications for southern high-latitude climate. *Geophysical Research Letters*, 29(20), 24-1. <https://doi.org/10.1029/2002GL015186>
- Sakurai, H., Tokanai, F., Miyake, F., Horiuchi, K., Masuda, K., Miyahara, H., ... & Moriya, T. (2020). Prolonged production of ^{14}C during the ~ 660 BCE solar proton event from Japanese tree rings. *Scientific reports*, 10(1), 1-7. <https://doi.org/10.1038/s41598-019-57273-2>

- Salzer, M. W., & Hughes, M. K. (2007). Bristlecone pine tree rings and volcanic eruptions over the last 5000 yr. *Quaternary Research*, 67, 57–68. <https://doi.org/10.1016/j.yqres.2006.07.004>
- 1005 Seierstad, I. K., Abbott, P. M., Bigler, M., Blunier, T., Bourne, A. J., Brook, E., ... & Vinther, B. M. (2014). Consistently dated records from the Greenland GRIP, GISP2 and NGRIP ice cores for the past 104 ka reveal regional millennial-scale $\delta^{18}O$ gradients with possible Heinrich event imprint. *Quaternary Science Reviews*, 106, 29–46. <https://doi.org/10.1016/j.quascirev.2014.10.032>
- 1010 Sigl, M., McConnell, J. R., Layman, L., Maselli, O., McGwire, K., Pasteris, D., . . . others. (2013). A new bipolar ice core record of volcanism from WAIS Divide and NEEM and implications for climate forcing of the last 2000 years. *Journal of Geophysical Research: Atmospheres*, 118, 1151–1169. <https://doi.org/10.1029/2012jd018603>
- Sigl, M., Winstrup, M., McConnell, J. R., Welten, K. C., Plunkett, G., Ludlow, F., ... Woodruff, T. E. (2015). Timing and climate forcing of volcanic eruptions for the past 2,500 years. *Nature*, 523(7562), 543–549. <https://doi.org/10.1038/nature14565>
- 1015 Sigl, M., Fudge, T. J., Winstrup, M., Cole-Dai, J., Ferris, D., McConnell, J. R., ... & Sowers, T. A. (2016). The WAIS Divide deep ice core WD2014 chronology—Part 2: Annual-layer counting (0–31 ka BP). *Climate of the Past*, 12(3), 769–786. <https://doi.org/10.5194/cp-12-769-2016>
- Sjolte, J., Sturm, C., Adolphi, F., Vinther, B. M., Werner, M., Lohmann, G., & Muscheler, R. (2018). Solar and volcanic forcing of North Atlantic climate inferred from a process-based reconstruction. *Climate of the Past*, 14(8), 1179–1194. <https://doi.org/10.5194/cp-14-1179-2018>
- 1020 Smith, C. L., Fairchild, I. J., Spötl, C., Frisia, S., Borsato, A., Moreton, S. G., & Wynn, P. M. (2009). Chronology building using objective identification of annual signals in trace element profiles of stalagmites. *Quaternary Geochronology*, 4(1), 11–21. <http://dx.doi.org/10.1016/j.quageo.2008.06.005>
- Sun, C., Plunkett, G., Liu, J., Zhao, H., Sigl, M., McConnell, J. R., ... & Hall, V. (2014). Ash from Changbaishan Millennium eruption recorded in Greenland ice: implications for determining the eruption's timing and impact. *Geophysical Research Letters*, 41(2), 694–701. <https://doi.org/10.1002/2013GL058642>
- 1025 Svensson, A., Andersen, K. K., Bigler, M., Clausen, H. B., Dahl-Jensen, D., Davies, S. M., ... & Vinther, B. M. (2008). A 60 000 year Greenland stratigraphic ice core chronology. *Climate of the Past*, 4(1), 47–57. <https://doi.org/10.5194/cp-4-47-2008>
- Svensson, A., Dahl-Jensen, D., Steffensen, J. P., Blunier, T., Rasmussen, S. O., Vinther, B. M., ... & Bigler, M. (2020). Bipolar volcanic synchronization of abrupt climate change in Greenland and Antarctic ice cores during the last glacial period. *Climate of the Past*, 16(4), 1565–1580. <https://doi.org/10.5194/cp-16-1565-2020>
- 1030 Taylor, K., Alley, R., Fiacco, J., Grootes, P., Lamorey, G., Mayewski, P., & Spencer, M. (1992). Ice-core dating and chemistry by direct-current electrical conductivity. *Journal of Glaciology*, 38(130), 325–332. doi:10.3189/S0022143000002215
- Taylor, K. C., Lamorey, G. W., Doyle, G. A., Alley, R. B., Grootes, P. M., Mayewski, P. A., ... & Barlow, L. K. (1993). The ‘flickering switch’ of late Pleistocene climate change. *Nature*, 361(6411), 432–436. <https://doi.org/10.1038/366549a0>
- 1035 Torbenson, M. C., Plunkett, G., Brown, D. M., Pilcher, J. R., & Leuschner, H. H. (2015). Asynchrony in key Holocene chronologies: Evidence from Irish bog pines. *Geology*, 43(9), 799–802. <https://doi.org/10.1130/G36914.1>
- Vidal, C., Métrich, N., Komorowski, J. C. et al. The 1257 Samalas eruption (Lombok, Indonesia): the single greatest stratospheric gas release of the Common Era. *Sci Rep* 6, 34868 (2016). <https://doi.org/10.1038/srep34868>
- 1040 Vinther, B. M., Johnsen, S. J., Andersen, K. K., Clausen, H. B., & Hansen, A. W. (2003). NAO signal recorded in the stable isotopes of Greenland ice cores. *Geophysical Research Letters*, 30(7). <https://doi.org/10.1029/2002GL016193>
- Vinther, B., Clausen, H., Johnsen, S., Rasmussen, S., Andersen, K., Buchardt, S., . . . Heinemeier, J. (2006). A synchronized dating of three Greenland ice cores throughout the Holocene. *Journal of Geophysical Research Atmospheres*. <https://doi.org/10.1029/2005jd006921>
- 1045 Vinther, B. M., Buchardt, S. L., Clausen, H. B., Dahl-Jensen, D., Johnsen, S. J., Fisher, D. A., ... & Svensson, A. M. (2009). Holocene thinning of the Greenland ice sheet. *Nature*, 461(7262), 385–388. <https://doi.org/10.1038/nature08355>
- Vinther, B. M., Jones, P. D., Briffa, K. R., Clausen, H. B., Andersen, K. K., Dahl-Jensen, D., & Johnsen, S. J. (2010). Climatic signals in multiple highly resolved stable isotope records from Greenland. *Quaternary Science Reviews*, 29(3–4), 522–538. <https://doi.org/10.1016/j.quascirev.2009.11.002>
- 1050 WAIS Divide Project Members. (2015). Precise inter-polar phasing of abrupt climate change during the last ice age. *Nature*, 520(7549), 661–665. <https://doi.org/10.1038/nature14401>

- Walker, M. J., Berkelhammer, M., Björck, S., Cwynar, L. C., Fisher, D. A., Long, A. J., ... & Weiss, H. (2012). Formal subdivision of the Holocene Series/Epoch: A Discussion Paper by a Working Group of INTIMATE (Integration of ice-core, marine and terrestrial records) and the Subcommission on Quaternary Stratigraphy (International Commission on Stratigraphy). *Journal of Quaternary Science*, 27(7), 649-659. <https://doi.org/10.1002/jqs.2565>
- 1055
- Warming, E., Svensson, A., Vallenga, P., & Bigler, M. (2013). A technique for continuous detection of drill liquid in ice cores. *Journal of glaciology*, 59(215), 503-506. doi:10.3189/2013JoG12J124
- Westhoff, J., Sinnl, G., Svensson, A., Freitag, J., Kjær, H. A., Vallenga, P., ... & Weikusat, I. (2022, in review). Melt in the Greenland EastGRIP ice core reveals Holocene warming events. *Climate of the Past Discussions*, 1-36. <https://doi.org/10.5194/cp-2021-89>
- 1060
- Whitlow, S., Mayewski, P. A., & Dibb, J. E. (1992). A comparison of major chemical species seasonal concentration and accumulation at the South Pole and Summit, Greenland. *Atmospheric Environment. Part A. General Topics*, 26(11), 2045-2054. [https://doi.org/10.1016/0960-1686\(92\)90089-4](https://doi.org/10.1016/0960-1686(92)90089-4)
- Wilhelms, F., Kipfstuhl, J., Miller, H., Heinloth, K., & Firestone, J. (1998). Precise dielectric profiling of ice cores: a new device with improved guarding and its theory. *Journal of Glaciology*, 44(146), 171-174. <https://doi.org/10.3189/S002214300000246X>
- 1065
- Winstrup, M. (2011). An automated method for annual layer counting in ice cores: and an application to visual stratigraphy data from the ngrip ice core (Doctoral dissertation, Københavns Universitet. Niels Bohr Institutet).
- Winstrup, M., Svensson, A. M., Rasmussen, S. O., Winther, O., Steig, E. J., & Axelrod, A. E. (2012). An automated approach for annual layer counting in ice cores. *Climate of the Past*, 8(6), 1881-1895. <https://doi.org/10.5194/cp-8-1881-2012>
- 1070
- Winstrup, M., A Hidden Markov Model Approach to Infer Timescales for High-Resolution Climate Archives, Proceedings of the 30th AAAI Conference on Artificial Intelligence and the 28th Innovative Applications of Artificial Intelligence Conference, February 12 – 17, 2016, Phoenix, Arizona USA, Vol. VI, 4053 (2016), 8 pages. Retrieved from <https://ojs.aaai.org/index.php/AAAI/article/view/19084>
- 1075
- Zdanowicz, C. M., Proemse, B. C., Edwards, R., Feiteng, W., Hogan, C. M., Kinnard, C., & Fisher, D. (2018). Historical black carbon deposition in the Canadian High Arctic: a >250-year long ice-core record from Devon Island. *Atmospheric Chemistry and Physics*, 18(16), 12345-12361. <https://doi.org/10.5194/acp-18-12345-2018>
- Zielinski, G. A., Mayewski, P. A., Meeker, L. D., Whitlow, S., Twickler, M. S., Morrison, M., ... & Alley, R. B. (1994). Record of volcanism since 7000 BC from the GISP2 Greenland ice core and implications for the volcano-climate system. *Science*, 264(5161), 948-952. DOI: 10.1126/science.264.5161.948
- 1080
- Zielinski, G. A., Germani, M. S., Larsen, G., Baillie, M. G., Whitlow, S., Twickler, M. S., & Taylor, K. (1995). Evidence of the Eldgjá (Iceland) eruption in the GISP2 Greenland ice core: relationship to eruption processes and climatic conditions in the tenth century. *The Holocene*, 5(2), 129-140. <https://doi.org/10.1177/095968369500500201>
- Zielinski, G. A., Mayewski, P. A., Meeker, L. D., Grönvold, K., Germani, M. S., Whitlow, S., ... & Taylor, K. (1997). Volcanic aerosol records and tephrochronology of the Summit, Greenland, ice cores. *Journal of Geophysical Research: Oceans*, 102(C12), 26625-26640. <https://doi.org/10.1029/96JC03547>
- 1085