

# Clumped-isotope-derived climate trends leading up to the end-Cretaceous mass extinction in northwest Europe

Heidi E. O’Hora<sup>1</sup>, Sierra V. Petersen<sup>1</sup>, Johan Vellekoop<sup>2,3</sup>, Matthew M. Jones<sup>1,4</sup>, Serena R. Scholz<sup>1</sup>

<sup>1</sup>Department of Earth and Environmental Sciences, University of Michigan, Ann Arbor, MI 48104, USA

5 <sup>2</sup>Analytical, Environmental, and Geo-Chemistry, Vrije Universiteit Brussel, B-1050 Brussels, Belgium

<sup>3</sup>Department of Earth and Environmental Sciences, KU Leuven, 3000 Leuven, Belgium

<sup>4</sup>Smithsonian Institute, Washington, D.C., 20013, USA

*Correspondence to:* Sierra V. Petersen (sierravp@umich.edu)

10 **Abstract.** Paleotemperature reconstructions linked to Deccan traps volcanic greenhouse gas emissions and associated  
feedbacks in the lead-up to the end-Cretaceous meteorite impact and extinction document local and global climate trends  
during a key interval of geologic history. Here, we present a new clumped-isotope-based paleotemperature record derived from  
fossil bivalves from the Maastrichtian type region, in southeast Netherlands and northeast Belgium. Clumped isotope data  
documents a mean temperature of  $20.4 \pm 3.8$  °C, consistent with other Maastrichtian temperature estimates, and an average  
15 seawater  $\delta^{18}\text{O}$  value of  $0.2 \pm 0.8\text{‰}$  VSMOW for the region during the latest Cretaceous (67.1–66.0 Ma). A notable temperature  
increase at  $\sim 66.4$  Ma is interpreted to be a regional manifestation of the globally-defined Late Maastrichtian Warming Event,  
linking Deccan Traps volcanic  $\text{CO}_2$  emissions to climate change in the Maastricht region. Fluctuating seawater  $\delta^{18}\text{O}$  values  
coinciding with temperature changes suggest alternating influences of warm, salty southern-sourced waters and cooler, fresher  
northern-sourced waters from the Arctic Ocean. This new paleotemperature record contributes to the understanding of regional  
20 and global climate response to large-scale volcanism and ocean circulation changes leading up to a catastrophic mass  
extinction.

## 1 Introduction

During the late Maastrichtian, greenhouse gas emissions from the emplacement of the vast Deccan Traps large igneous  
province (LIP) on the Indian subcontinent resulted in global warming (see Hull et al., 2020 and references therein). This  
25 warming event (termed the Late Maastrichtian Warming Event or LMWE; Woelders et al., 2018) has been observed in multiple  
locations and has been dated to approximately coincide with the onset of major Deccan volcanism ( $66.413 \pm 0.067$  Ma; Sprain  
et al., 2019). Anomalous mercury concentrations in sediments (e.g., Font et al., 2016; Sial et al., 2016; Percival et al., 2018;  
Zhao et al., 2021) and fossil shells (Meyer et al., 2019) link the warming to a volcanic source, while modeling of the climate  
impacts of hypothesized volcanic  $\text{CO}_2$  and Hg emissions result in warming consistent with observations (Tobin et al., 2017;  
30 Fendley et al., 2019; Nava et al., 2021).

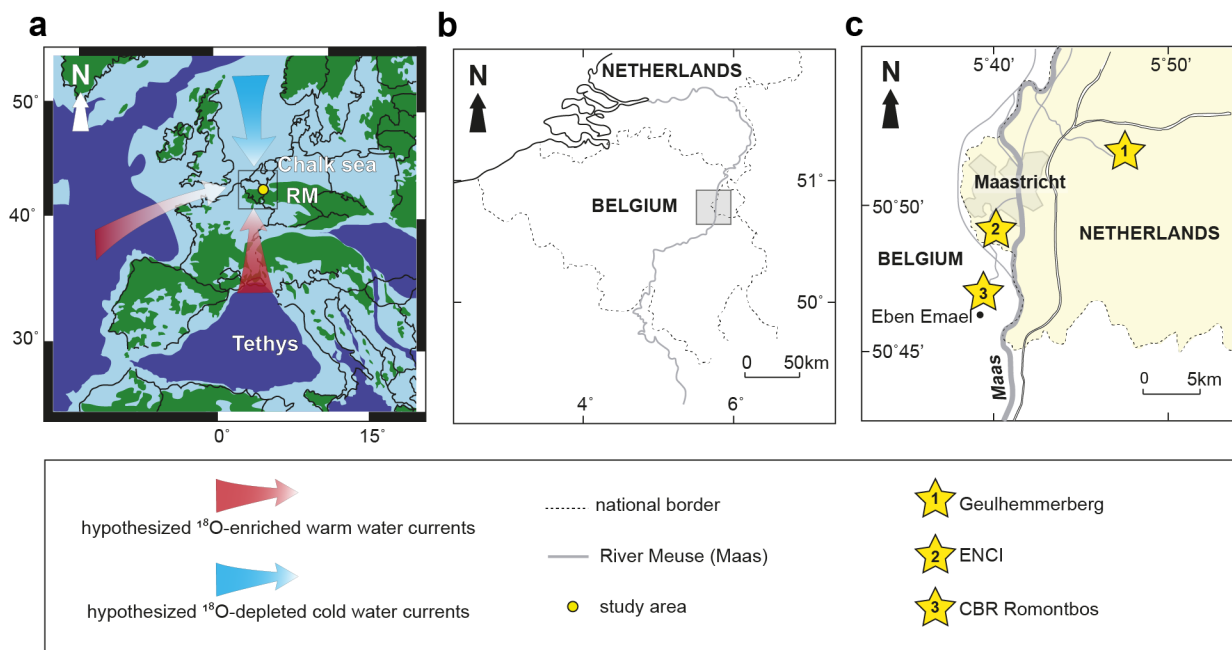
Prior to the LMWE, global climate was in a “cool greenhouse” state (Scotese, 2021), with climate models (Miller et al., 2005; Ladant and Donnadieu, 2016), sea-ice-indicating dinoflagellate cysts (Bowman et al., 2013), and coastal Antarctic temperatures near the freezing point (Petersen et al., 2016a) indicating the possible existence of land ice on the Antarctic continent. The LMWE may have caused such an ice cap to melt (Bowman et al., 2013; Petersen et al., 2016a) and, subsequently, global sea level to rise. This is potentially visible in the global sea level curve of Haq (2014), but the resolution of this sea level record is too coarse to confidently link cycles to the short-term LMWE.

After the Late Maastrichtian Warming Event, climate cooled again gradually, potentially due to silicate weathering feedbacks (Petersen et al., 2016a; Tobin et al., 2017), before being thrown into upheaval by the arrival of the Chicxulub meteorite impact, defining the Cretaceous-Paleogene (K-Pg) boundary (Molina et al., 2006). Ejecta from the impact covered the planet and resulted in a short-lived “impact winter” event (Vellekoop et al., 2014; Vellekoop et al., 2016). Taken together, Deccan Traps volcanism and associated feedbacks and the Chicxulub bolide impact create a complex pattern of paleoenvironmental disturbances through the end-Cretaceous, ultimately leading to the rapid extinction of ~70 % of species on Earth (Schulte et al., 2010).

Previous studies have reconstructed Maastrichtian marine temperatures at sites around the globe using several different proxies, including  $\delta^{18}\text{O}$  of foraminifera, molluscs, tooth enamel, and bulk carbonate material (e.g., Pucéat et al., 2007; Tobin et al., 2012; Hull et al., 2020);  $\text{TEX}_{86}$  measurements (e.g., Vellekoop et al., 2016; Woelders et al., 2017); Mg/Ca ratios (e.g., Woelders et al., 2018); and clumped isotope thermometry (Dennis et al., 2013; Tobin et al., 2014; Petersen et al., 2016a; Petersen et al., 2016b, Meyer et al., 2018; Zhang et al., 2018; Meyer et al., 2019; Tagliavento et al., 2019) (Table S1). Taken together, these records clearly show a late Maastrichtian warming (summarized by Hull et al., 2020), although the magnitude of warming differs from site to site. At any given site, ocean temperatures across the LMWE may be influenced by the primary  $\text{CO}_2$ -driven global warming, which may have manifested with amplified warming at high latitudes similar to modern Arctic amplification (Petersen et al., 2016a), and also by local changes in ocean circulation, sea level, upwelling, runoff, etc. (changes which may themselves be driven indirectly by global climate change, e.g., sea level rise due to melting of the Antarctic ice caps during the LMWE). Therefore, it is important to consider the local paleogeographic context when interpreting paleoclimate trends during this tumultuous period.

Here, we produce a new climate record for a site in northwest Europe using the clumped and stable isotopic composition of bivalve fossils to better constrain the magnitude of climate change and possible ocean circulation fluctuations during this key geologic transition interval. We focus on the Maastrichtian type area (Jagt and Jagt-Yazykova, 2012) in the Belgium-Netherlands border region near Maastricht, Netherlands. The reconstructed paleogeography of this locality—a shallow epicontinental sea surrounded by several low-lying landmasses (Fig. 1a)—makes this site sensitive, not only to global climate

65 changes, but to local variations in sea level and ocean circulation. We interpret our data in terms of previously described and modeled estimates for local, regional, and global climate changes during this time. Our study adds to a growing body of literature documenting the impacts of volcanism and ocean circulation on climate, especially leading up to the K-Pg extinction.



70 **Figure 1: Paleogeography and sample localities used in this study.** (a) Late Cretaceous paleogeographic reconstruction of Europe and surrounding regions based on Vellekoop et al. (2022) with the study area (yellow dot) and hypothesized cold and warm water currents (blue and red arrows) marked. (b) A map of modern national borders showing the position of the study area. (c) A zoomed-in map of the Maastricht region, showing the location of the ENCI Quarry, CBR Romontbos quarry, and Geulhemmerberg subterranean galleries relative to each other and to the city center of Maastricht.

## 2 Locality and Sample Collection

75 Shell specimens were collected from three locations in the Liège-Maastricht region of northeastern Belgium and southeastern Netherlands: the Maastrichtian type section at ENCI quarry, the CBR Romontbos quarry, and the K-Pg boundary (KPB) section at the Geulhemmerberg subterranean galleries (GSGs) (Jagt and Jagt-Yazykova, 2012) (Fig. 1c). The ENCI quarry is located ~3.3 km south of the city of Maastricht in South Limburg, Netherlands (Fig. 1c). Maastrichtian-aged strata at this location include the Gulpen Formation (~67.1–78.9 Ma) overlain by the Maastricht Formation (~66.0–66.8 Ma) (Vellekoop et al., 2022.), the latter of which was sampled for this study of the uppermost Maastrichtian Stage. At this location, the stratigraphically highest exposure of the Maastricht Formation in the Meerssen Member predates the KPB by less than 100 kyr (Keutgen, 2018). The CBR Romontbos quarry is located ~4 km to the southwest of ENCI quarry, near Eben Emael, Liège, Belgium (Fig. 1c). The Maastricht Formation is also exposed at this location, and samples from here were correlated to align

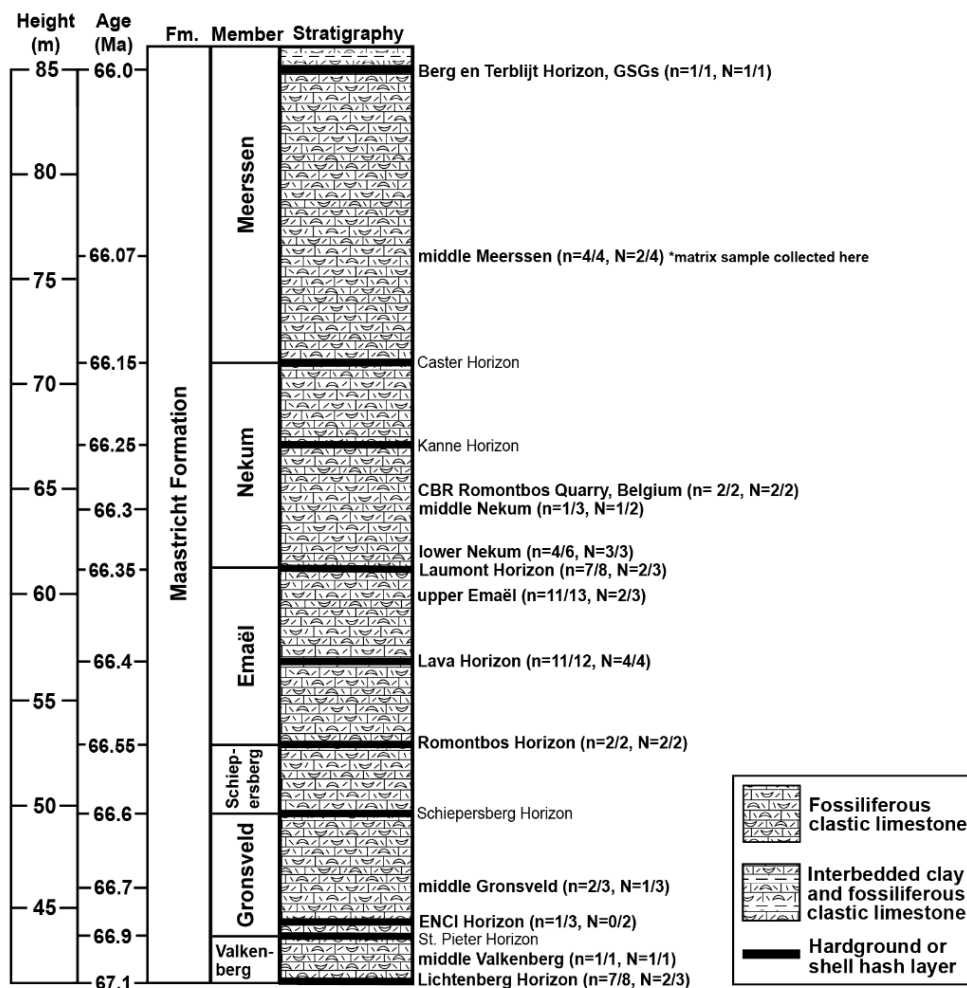
with the Maastricht Formation at ENCI quarry (Felder et al., 1975). We also include a specimen from the nearby  
85 Geulhemmerberg subterranean galleries, located ~7 km east-northeast of ENCI quarry (Fig. 1c). The exposed section in the  
GSGs lies stratigraphically above the ENCI quarry and preserves the uppermost section of the Meerssen Member, including  
the KPB itself (Felder et al., 1998; Keutgen et al., 2018). Between the top of the ENCI section and the short KPB interval  
recorded in the GSGs, a time gap exists of no more than several tens of thousands of years (Vellekoop et al., 2022).

90 At ENCI quarry and in the surrounding region, the Maastricht Formation contains multiple conspicuous fossiliferous horizons  
(Felder, 1975; Zijlstra, 1988; Schiøler, 1997), including nine horizons in the Maastricht Formation at ENCI quarry (Fig. 2).  
Fossil shell specimens were collected from five of these horizons (Lichtenberg, ENCI, Romontbos, Lava, and Laumont), as  
well as from the top of the Emaël Member, the basal and middle intervals of the Nekum Member, and the basal interval of the  
Meerssen Member (Fig. 2). Ages for all stratigraphic horizons, lithostratigraphic boundaries, and specimens were determined  
95 by updating the Keutgen (2018) age model using known biostratigraphic markers and bulk carbon isotope data (Vellekoop et  
al., 2022) (Table S2). Most horizon/unit ages have an uncertainty of  $\pm 0.05$  Ma, with the exception of the Lichtenberg Horizon  
(uncertainty of  $\pm 0.2$  Ma), Valkenburg Member and St. Pieter Horizon (both  $\pm 0.1$  Ma) (Table S2). Two samples were collected  
from the middle Nekum Member at the CBR Romontbos quarry, from an interval correlated to be above the middle Nekum  
Member samples from ENCI but below the Kanne Horizon.

100

The K-Pg boundary is positively identified in the Maastricht region, and in particular in the GSGs, through several lines of  
evidence (Smit and Brinkhuis, 1996; Vellekoop et al., 2020). The typical planktonic foraminiferal “disaster” assemblage (Smit  
and Zachariasse, 1996), the presence of the earliest Paleocene dinocyst marker taxon *Senoniasphaera inornata* (Brinkhuis and  
Schiøler, 1996; Herngreen et al. 1998), and  $^{87}\text{Sr}/^{86}\text{Sr}$  analyses of well-preserved foraminifera from the clay layers of the  
105 Geulhemmerberg underground galleries (Vonhof and Smit 1996) have all demonstrated that the K-Pg boundary occurs at the  
base of IVf-7 of the Meerssen Member, at the hardground known as the Berg en Terblijt Horizon (Fig. 2). Directly above this  
horizon, a sequence of interbedded layers of shell hash and clays represent a period of unique deposition, interpreted to  
represent a series of high energy events (storms or seismites) in the 100–300 years immediately following the Chicxulub  
meteorite impact (Roep and Smit, 1996; Smit and Brinkhuis, 1996; Vellekoop et al., 2020). The one oyster sample collected  
110 from these shell hash layers was inferred to have been alive either within this short interval following the KPB, or be reworked  
from just underneath the Berg en Terblijt Horizon, and was thus assigned an age of 66.0 Ma (Clyde et al., 2016; Sprain et al.,  
2018) with an uncertainty of  $\pm 0.01$  Ma (Vellekoop et al., 2022), equivalent to the KPB at the scale of our time series (Table  
S2).

115

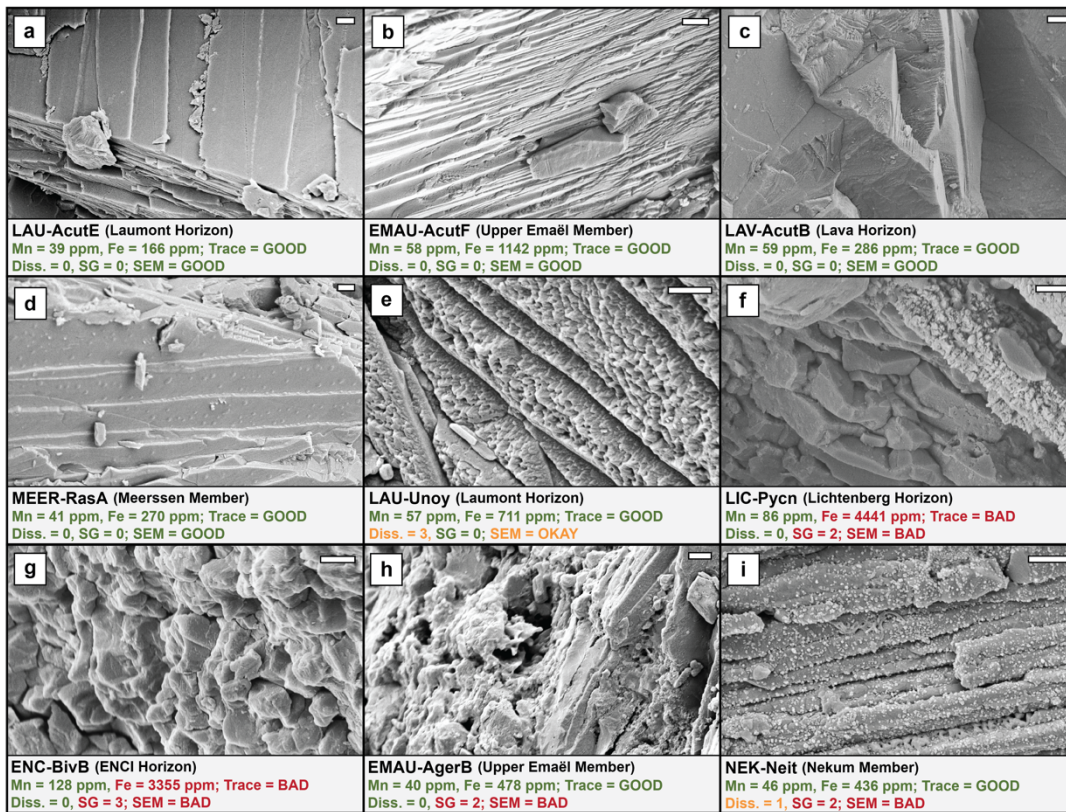


120 **Figure 2: Composite stratigraphic section through the Maastricht Formation at ENCI quarry, Romontbos quarry, and**  
**Geulhemmerberg subterranean galleries.** Samples collected in the Romontbos quarry and GSGs were placed on the ENCI quarry  
stratigraphic framework using the age model from Vellekoop et al. (2022) (Table S2). From each collection horizon or zone, the number of  
specimens collected, the number that passed diagenesis screening, the number of well-preserved specimens successfully analyzed for  
clumped isotopes and the total number attempted for clumped isotopes (including some poorly-preserved) are listed as follows  
(n=passed/collected, N=good clumped/attempted). Out of 66 shells sample, 54 shells passed screening, 33 were attempted, and 27 well-  
125 well-preserved shells were successful for  $\Delta_{47}$ , plus one sample of matrix material from the Meerossen Member.

Fossil shell specimens collected from the Maastricht Formation at the ENCI quarry, the CBR Romontbos quarry, and the GSGs  
included 66 bivalve specimens representing eleven identified taxa of mostly oysters, with a few scallops and clams (from most  
to least common: *Acutostrea uncinella*, *Agerostrea ungulata*, *Pycnodonte vesicularis*, *Gryphaeostrea canaliculate*, *Entolium*  
130 *membranaceum*, *Neithea regularis*, *Pinna* sp., *Pseudoptera* sp., *Ceratostreon* sp., and *Rastellum* sp. and indet. Ostreida). Six  
of the samples were only identified as some type of bivalve or oyster. The majority (40 of 66) are either *Acutostrea uncinella*

or *Agerostrea ungulata*. All identified specimens were sessile epifaunal suspension feeders and are assumed to have avoided significant lateral postmortem transport. In these units, all biogenic aragonite has dissolved, leaving behind hollowed molds. All taxa sampled here originally formed calcite shells which continue to be preserved as calcite today (Fig. 3). Water depths 135 for this location are estimated to be less than 20 m at all times, and often shallower (Hart et al., 2016), so water temperatures reconstructed from bottom-dwelling mollusks are reasonably interpreted to approximate mean annual surface air temperatures.

One sample of carbonate-rich matrix material from the Meerssen Member was analyzed for comparison to fossil shells. The carbonate in this specimen represents a combination of calcitic microfossils and possibly secondary, diagenetic calcite. As 140 such, comparison between its isotopic and trace element composition and that of fossil shells can help assess the potential for diagenetic alteration of shell samples.



145 **Figure 3. SEM images of nine shell specimens representing varying levels of calcite preservation.** Scale bars represent 1  $\mu$ m. Images were adjusted for brightness in Adobe Photoshop 2022. Trace element concentrations (in ppm) and SEM preservation indices quantifying the level and prevalence of dissolution and secondary growth (SG) on a scale of 0–3 are shown below each image for comparison. Samples (a) through (e) were interpreted. Samples (f) through (i) were not interpreted further, due to too much evidence of secondary growth and/or trace elements exceeding thresholds (see Fig. 4).

**3.1 Sample preparation**

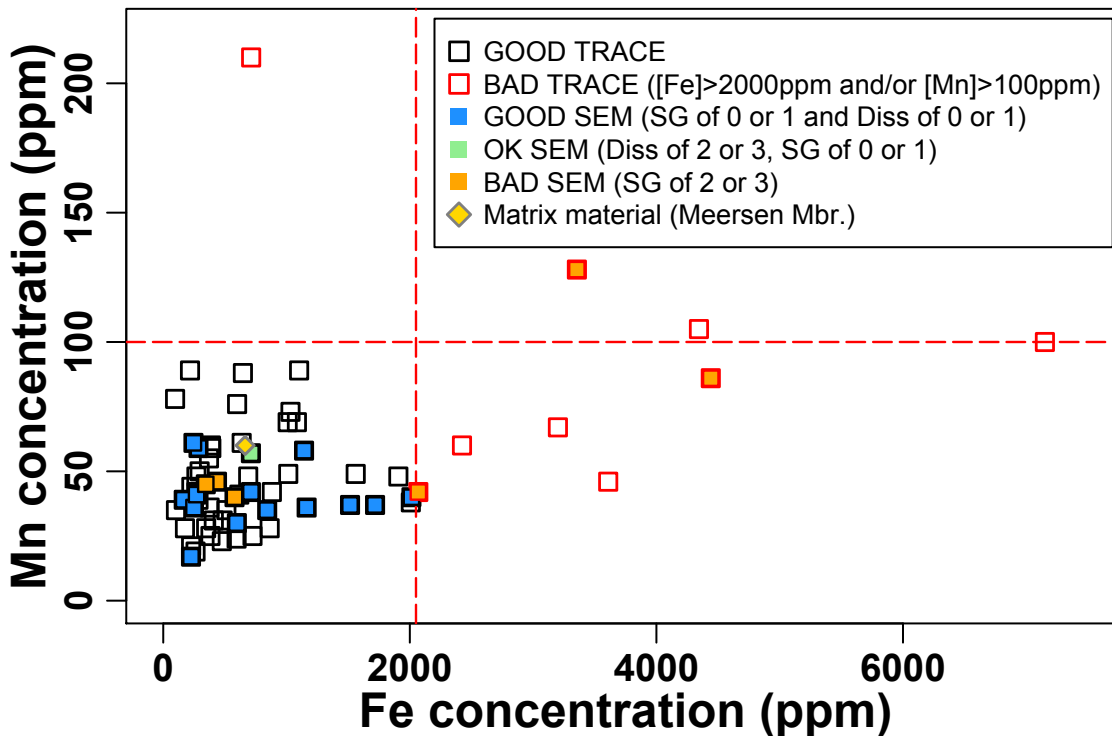
After removal of matrix material through dionized water rinses and scrubbing with a toothbrush, fossil shell specimens were sampled by either hand-drilling powder from larger fragments or manually crushing smaller fragments in their entirety in a mortar and pestle. The one sample of matrix material from the Meerssen Member was scraped off a fossil and powdered in a mortar and pestle to achieve roughly uniform grain size. The sample powders were divided for trace element analysis and isotopic analysis. Fragments of some shell specimens were mounted for SEM observation to assess their preservation state (Fig. 3).

Taxa-specific clumped isotope vital effects in bivalves are considered uncommon, based on studies of modern bivalve taxa (Eagle et al., 2013; Henkes et al., 2013; Came et al., 2014), although one recent study documented apparent vital effects in the juvenile portion only of the oyster *Magellana gigas* (Huyghe et al., 2022). In shells sampled for this study, we estimate that juvenile shell material made up a volumetrically small fraction of sampled shell areas. Combined with the fact that our selected species differ from the taxa demonstrating vital effects (Huyghe et al. 2022), we interpret well-preserved specimens as faithful recorders of paleoenvironmental temperatures at the time of life.

**3.2 Preservation assessment (SEM and trace elements)**

The isotopic composition of fossil shells is susceptible to post-depositional alteration via recrystallization, which can skew interpreted formation temperatures (Brand and Morrison 1987). Elevated levels of trace elements (Mn and Fe especially) in calcitic fossil material may indicate diagenesis/recrystallization of the calcite (Land, 1967; Möller and Kubanek, 1976; Brand and Morrison, 1987; de Winter et al., 2018). Additionally, the prevalence of diagenetic calcite overgrowth on a sample can be identified easily under scanning electron microscopy (SEM) (Fig. 3), as diagenetic calcite does not show the same microstructures as molluscan calcite. All but one of the fossil shells collected for this study were screened for recrystallization using a combination of SEM imaging and trace element detection methods (Fig. 3, Fig. 4, Table S3).

All but one of the 66 shells (as well as one matrix sample) were analyzed in the Michigan Elemental Analysis Laboratory at the University of Michigan for Mn and Fe concentrations (Fig. 3) using a Thermo Scientific Quadrupole-ICP-MS (iCAP Q) equipped with an Elemental Scientific PrepFAST 2 Automation System. KED mode (He gas) was utilized for all isotopes. All samples were analyzed in 2 % HNO<sub>3</sub> (w/v) (Optima grade), and sensitivity drift was corrected for with standard-sample bracketing methods (Table S4). A subset of 21 specimens representing most horizons were photographed under SEM using a JEOL JSM-7800FLV field-emission SEM in the Robert B. Mitchell Electron Microbeam Analysis Lab at the University of Michigan Ann Arbor (Fig. 3). The prevalence of dissolution and secondary growth (SG) of calcite were quantified by assigning a score in each of these criteria on a scale of 0–3 (Fig. 3, Fig. 4, Table S3).



185 **Figure 4: Iron and manganese concentrations of all samples, used for diagenesis screening.** Samples with Fe concentrations above 2500 ppm or Mn concentrations above 100 ppm, or both, were not considered for further interpretation. These thresholds were chosen based on prior studies (see text), then adjusted to lower, more conservative levels to screen out most samples showing secondary growth while keeping all samples showing good preservation or solely dissolution under SEM (see Fig. 4).

### 3.3 Stable and clumped isotope analysis

190 Powders drilled or crushed from all shell specimens and one matrix sample were analyzed for oxygen ( $\delta^{18}\text{O}$ ) and carbon ( $\delta^{13}\text{C}$ ) stable isotope compositions (Fig. S1, Fig. S2, Fig. S3, Table 1). Powders from 39 shells were analyzed using a Thermo-Finnigan Kiel IV automated carbonate device coupled to a MAT 253 gas source dual inlet mass spectrometer in the University of Michigan Stable Isotope Laboratory. Data were corrected for acid fractionation and normalized to the VPDB scale using a single-step transfer function between two anchor points, the NBS-18 and NBS-19 standards. Precision was maintained at less than 0.1 ‰ for both  $\delta^{18}\text{O}$  and  $\delta^{13}\text{C}$  (Table S4).

195

The remaining 27 samples plus seven of the above 39 were analyzed for  $\delta^{18}\text{O}$  and  $\delta^{13}\text{C}$  in conjunction with clumped isotope analysis in the University of Michigan Stable and Clumped Isotopes for Paleoclimatology and Paleoceanography (SCIPP) Laboratory (Fig. S1, Fig. S2, Fig. S3, Table 1). During clumped isotope analysis, one measurement simultaneously acquires  $\Delta_{47}$ , which is a function of carbonate formation temperature (or past seawater temperature in the case of fossil shells),  $\delta^{13}\text{C}$ ,



200 and  $\delta^{18}\text{O}$  of  $\text{CO}_2$  gas evolved from  $\text{CaCO}_3$  (Eiler, 2011). Samples are typically replicated a minimum of three times, and the mean of all good replicates is taken. A total of 108 replicates representing 34 unique samples were analyzed over a span of seven years using two different machines and procedures, as follows.

205 Between 2016 and 2020, a first set of fossil shell powders were measured for clumped isotopic composition ( $\Delta_{47}$ ) in the University of Michigan Stable Isotope Lab using a Thermo-Finnigan MAT 253 dual inlet isotope ratio mass spectrometer and a manual sample preparation device described in detail by Defliese et al. (2015), with updates to Porapak temperature outlined by Petersen et al. (2016c). Briefly, 3.5–5 mg of powder is reacted at 75 °C in a common acid bath, and evolved  $\text{CO}_2$  is cryogenically separated from water and other contaminants through two -80 °C ethanol-liquid nitrogen traps and one PorapakQ/silver wool trap. Clean  $\text{CO}_2$  is measured for five acquisitions of 12 cycles at a major beam ( $m/z$  44) voltage of 16  
210 V. Raw voltages of masses 44 to 49 were converted to bulk isotopic values ( $\delta^{45}$  to  $\delta^{49}$ ) and clumped isotopic values ( $\Delta_{47}$ ,  $\Delta_{48}$ , and  $\Delta_{49}$ ) using IUPAC/Brand parameters using an R code presented in Petersen et al. (2019). Raw  $\Delta_{47}$  values were placed in a gas-based absolute reference frame following methods introduced by Dennis et al. (2011), using theoretical equilibrium values for heated (1000 °C) and water-equilibrated (25 °C) standard gases (0.0266 and 0.9198, respectively) and the 75 °C acid fractionation factor of +0.072 ‰ from Petersen et al. (2019). Boundaries between each one-to-three-week-long correction  
215 window were selected to account for drift in equilibrium gas line slopes and to maintain consistent values of in-house carbonate standards through time.  $\delta^{18}\text{O}$  of carbonate ( $\delta^{18}\text{O}_{\text{carb}}$ ) was calculated from  $\delta^{18}\text{O}$  of evolved  $\text{CO}_2$  using an empirical acid fractionation factor defined using in-house carbonate standards independently calibrated to NBS-18 and NBS-19 ( $\alpha = 1.007888$  for calcite at 75 °C) (Table S4). Long-term standard deviation of  $\delta^{13}\text{C}$ ,  $\delta^{18}\text{O}$ , and  $\Delta_{47}$  on the MAT253 were consistent across time at approximately 0.1 ‰, 0.3 ‰, and 0.020 ‰, respectively, based on in-house carbonate standards run many times  
220 over the measurement interval (Table S4).

In 2021 and 2022, additional powders were analyzed in the University of Michigan SCIPP lab using a Nu Perspective isotope dual inlet ratio mass spectrometer connected to a NuCarb automated sample preparation device. This device reacts sample powders in individual vials under vacuum at 70 °C by slowly injecting 150  $\mu\text{L}$  of 103 % phosphoric acid. Vials are isolated  
225 for the first five minutes of the reaction to reduce excess bubbling, then opened to a variable temperature trap held at -160 °C for 15 additional minutes, continuously collecting evolved  $\text{CO}_2$ . Next, this variable-temperature trap is elevated to -60 °C, releasing  $\text{CO}_2$  to pass through a static trap filled with Porapak Q material held at -30 °C.  $\text{CO}_2$  is frozen on the far size in another variable temperature trap set at -160 °C for 800 seconds.  $\text{CO}_2$  is warmed up to the gas phase, and the yield is recorded with a transducer. The Nu Perspective and NuCarb can handle both larger (3–6 mg) and smaller (350–450  $\mu\text{g}$ ) samples. Following  
230 purification, depending on the transducer reading, the automated sequence directs  $\text{CO}_2$  from a larger sample to equilibrate into the bellows or freezes  $\text{CO}_2$  from a smaller sample into a cold finger between the bellows and the change-over block. All sample replicates in this study were between 3–5 mg in size and were therefore analysed in “bellows mode”. Previous studies using a Nu Perspective and NuCarb for clumped isotope analysis described “cold-finger mode” (Mackey et al., 2020). In bellows

mode, the bellows are compressed until a desired beam strength of 80 nA is achieved on the major ( $m/z$  44) ion beam. Gas is  
235 analyzed for four blocks of 20 reference-sample cycles, with 20 seconds of integration on each half cycle. Bellows are  
continually adjusted between each cycle to maintain the initial beam strength at all times.

As above, raw beam intensities of masses 44–49 were converted to bulk isotopic values ( $\delta^{45}$  to  $\delta^{49}$ ) and clumped isotopic values  
( $\Delta_{47}$ ,  $\Delta_{48}$ , and  $\Delta_{49}$ ) using IUPAC/Brand parameters using an R code presented in Petersen et al. (2019), adjusted slightly to  
240 accommodate differing data formats from the Nu instrument. Isotopic values were converted into the Intercarb Carbon Dioxide  
Equilibrium Scale (I-CDES25) absolute reference frame using  $\Delta_{47}$  values for four ETH standards defined by the Intercarb  
project (Meckler et al., 2014; Bernasconi et al., 2021) and an acid fractionation factor of +0.066 ‰ for 70 °C from Petersen et  
al. (2019). First, a single slope was fitted through ETH 1 and ETH 2 (adjusted by 0.0033 ‰) in  $\delta^{47}$  vs.  $\Delta_{47}$  space, then all four  
ETH standards were used for the empirical transfer function step. Some heated gases (1000 °C and 200 °C) and equilibrated  
245 gases (25 °C) were analyzed for cross comparison but were not used in reference frame calculations. Carbonate  $\delta^{18}\text{O}$  and  $\delta^{13}\text{C}$   
were each calculated using a single-step transfer function defined by the four ETH standards, using values published in  
Bernasconi et al. (2018). Long-term standard deviation of  $\delta^{13}\text{C}$ ,  $\delta^{18}\text{O}$ , and  $\Delta_{47}$  on this instrument were consistent across time  
at better than 0.05 ‰, 0.1 ‰, and 0.018 ‰, respectively (Table S4).

250 Clumped isotope ( $\Delta_{47}$ ) values for between two and five in-house carbonate standards were tracked to ensure consistency and  
comparability of isotope values through time and across machines. Stable isotope ( $\delta^{13}\text{C}$  and  $\delta^{18}\text{O}$ ) values for these three  
standards were determined relative to NBS-18 and NBS-19 on the Kiel (Table S4).  $\Delta_{47}$  values for these standards were defined  
based on comparison to gas standards over multiple years (2015 and 2018–2019 for standards CM, OO, and CORS) or  
comparison to ETH standards over a six-month measurement session in 2020 (for all five) (Table S4). Close agreement in  $\Delta_{47}$ ,  
255  $\delta^{18}\text{O}$ , and  $\delta^{13}\text{C}$  between long-term values and session specific values on all three instruments confirms that data from different  
measurement sessions and instruments can be directly compared (Table S4). Comparison of replicates of the same sample  
powder run on each machine support this.

Finally, acid-corrected  $\Delta_{47}$  values (CDES25) from both measurement periods were converted to temperature using the  
260 composite calibration of synthetic carbonates from Petersen et al. (2019) [ $Temp(^\circ\text{C}) = (0.0383 \cdot 10^6) / (\Delta_{47} - 0.258) - 273.15$ ]. This  
equation was chosen in favor of the ETH-standard-based calibration of Anderson et al. (2021) due to the use of a gas-based  
reference frame for the early measurements and the fact that calibration data acquired on the MAT 253 by Defliese et al. (2015)  
and Winkelstern et al. (2016) are included in the Petersen et al. (2019) composite calibration equation. Seawater  $\delta^{18}\text{O}$  ( $\delta^{18}\text{O}_{\text{sw}}$ )  
was calculated for shell specimens using measured carbonate  $\delta^{18}\text{O}$  and  $\Delta_{47}$ -derived temperatures and the calcite-water  
265 relationship described by Kim and O'Neil (1997). All  $\delta^{18}\text{O}_{\text{sw}}$  values are reported on the VSMOW scale. Use of the Anderson  
et al. (2021) equation results in temperatures 1.5–2.5 °C cooler and  $\delta^{18}\text{O}_{\text{sw}}$  values proportionally lower, but doesn't change any  
of the conclusions in this study.

After combining samples replicates for each sample, replicates were deemed to be outliers if they fell more than four standard deviations outside of the mean of the remaining three to four replicates for a given sample. Only samples with at least three acceptable replicates were considered ( $n = 27$  shells + one matrix sample prior to preservation screening) (Table 1). Long-term reproducibility (1sd) of  $\Delta_{47}$  in carbonate standards (0.020 ‰ for MAT253 and 0.018 ‰ for Nu) was used to calculate a long-term standard error in  $\Delta_{47}$  for each sample. For temperature and  $\delta^{18}\text{O}_{\text{sw}}$  values, a long-term standard error was calculated using the long-term standard error in  $\Delta_{47}$  and the pseudo-linear relationship between internal 1SE on  $\Delta_{47}$  and either temperature or  $\delta^{18}\text{O}_{\text{sw}}$  in all samples [for this study: long-term 1SE in temperature =  $306.7 * (\text{long-term 1SE in } \Delta_{47}) + 0.1778$ , and long-term 1SE in  $\delta^{18}\text{O}_{\text{sw}} = 66.33 * (\text{long-term 1SE in } \Delta_{47}) + 0.0461$ ]. The external 1SE for all three parameters was selected as the larger of the internal and long-term standard error. All replicate-level clumped isotope and stable isotope data has been submitted to the permanent data archive EarthChem as part of the ClumpDB database.

## 280 4 Results

### 4.1 Preservation and sample screening

Isotopic signatures may be affected by both bulk chemical alteration (dissolution and recrystallization replacing original shell material and/or overgrowth of secondary material changing the bulk isotopic composition) and solid-state bond reordering (changes in the number of heavy isotope clumps in the crystal lattice and overprints the original recorded temperature without any mass transfer). Overall, SEM preservation ratings and trace element concentrations were low in most samples (Fig. 3, Fig. 4, Table S3), ruling out significant chemical alteration, and a mild thermal history suggests reordering is not a concern.

Bond reordering without exchange of mass can occur if samples are heated above 100–150 °C (Henkes et al., 2014; Winkelstern and Lohmann, 2016), such as during burial. Heating breaks and reforms bonds between atoms in the carbonate lattice and changes the clumped isotopic composition—and therefore interpreted temperature—without affecting the bulk  $\delta^{18}\text{O}$  or  $\delta^{13}\text{C}$  composition appreciably. Regional geologic evidence suggests a relatively shallow burial history for these strata. In the southern Netherlands, the Roer Valley Graben contains several basin-wide unconformities dated to the Late Cretaceous and middle Paleocene that signify two basin inversions, leaving the Maastrichtian and Danian strata relatively undisturbed (Luijendijk et al., 2011 and references therein). Outstandingly well-preserved mosasaur skeletons and hollow aragonitic molds in the Maastricht Formation further indicate a lack of burial or significant diagenetic fluid flow during this time (Dortangs et al., 2002; Jagt et al., 2016). Overall, these burial conditions are not expected to result in bond reordering in any samples.

300 **Table 1: All isotope results.** Sample names created following a convention of 3–4 capital letters relating to the horizon, followed by 3–4  
 305 letters relating to the taxa, and then one capital letter to separate multiple shells of the same taxa from that horizon. Age model from Vellekoop  
 et al. (2022) (see Table S2). The preservation index (P. index) column combines the results of trace element analysis (GT = good trace, flag  
 for either Fe, Mn, both (FeMn), or NA = no measurement) and SEM imagery (GOOD, OK, BAD, or NA = no SEM imagery) in the format  
 of trace/SEM. Any sample that fails one screening criteria was not considered further. Errors for  $\Delta_{47}$ , temperature, and  $\delta^{18}\text{O}_{\text{sw}}$  are external  
 1SE (see text).

Sample Name	Age (Ma)	Height (m)	P. Index	$\delta^{18}\text{O}$	$\delta^{18}\text{O}$ SD	$\delta^{13}\text{C}$	$\delta^{13}\text{C}$ SD	N	$\Delta_{47}$	$\Delta_{47}$ SE	Temp (°C)	Temp SE (°C)	$\delta^{18}\text{O}_{\text{sw}}$	$\delta^{18}\text{O}_{\text{sw}}$ SE
LIC-Psop	67.1	41.45	GT/NA	-1.3	0.04	2.4	0.02	-	-	-	-	-	-	-
LIC-Pycn	67.1	41.45	Fe/BAD	-1.3	0.1	2.2	0.1	3	0.698	0.012	22.0	3.7	0.4	0.8
LIC-AcutA	67.1	41.45	GT/GOOD	-1.2	0.1	2.7	0.1	3	0.699	0.012	21.7	3.7	0.5	0.8
LIC-Gry	67.1	41.45	GT/NA	-1.2	0.2	2.5	0.1	4	0.695	0.013	23.1	4.4	0.7	0.9
LIC-AcutB	67.1	41.45	GT/NA	-1.1	0.1	2.9	0.03	-	-	-	-	-	-	-
LIC-Ager	67.1	41.45	GT/NA	-1.0	0.02	2.5	0.01	-	-	-	-	-	-	-
LIC-Biv	67.1	41.45	GT/NA	-1.7	0.04	1.8	0.01	-	-	-	-	-	-	-
LIC-Ento	67.1	41.45	GT/NA	-2.3	0.01	1.4	0.04	-	-	-	-	-	-	-
VAL-Ager	67.0	42.5	GT/NA	-1.7	0.1	1.7	0.05	3	0.707	0.015	19.2	5.1	-0.5	1.1
ENC-Pinna	66.85	44.4	GT/NA	-0.7	0.1	2.6	0.03	-	-	-	-	-	-	-
ENC-BivA	66.85	44.4	FeMn/NA	-1.5	0.1	1.4	0.04	3	0.692	0.012	24.0	3.7	0.7	0.8
ENC-BivB	66.85	44.4	FeMn/BAD	-1.8	0.1	1.0	0.1	3	0.664	0.012	34.1	3.7	2.4	0.8
GRO-Biv	66.7	46	Mn/NA	-1.6	0.1	1.7	0.04	3	0.701	0.011	20.9	3.6	0	0.8
GRO-Ost	66.7	46	GT/NA	-1.4	0.04	2.5	0.05	3	0.698	0.010	22.0	3.4	0.4	0.7
ROT-Acut	66.55	52.7	GT/NA	-1.4	0.2	2.6	0.1	3	0.710	0.012	17.8	3.7	-0.5	0.8
ROT-Ento	66.55	52.7	GT/NA	-1.0	0.1	1.7	0.03	3	0.695	0.012	22.9	3.9	1.0	0.8
LAV-AcutG	66.4	56.75	GT/GOOD	-1.4	0.1	3.2	0.03	-	-	-	-	-	-	-
LAV-NeitA	66.4	56.75	Fe/NA	-1.3	0.1	1.1	0.03	-	-	-	-	-	-	-
LAV-NeitB	66.4	56.75	GT/GOOD	-1.3	0.02	1.6	0.01	-	-	-	-	-	-	-
LAV-AcutA	66.4	56.75	GT/NA	-0.6	0.2	2.8	0.1	5	0.704	0.019	20.8	6.4	0.8	1.4
LAV-AcutB	66.4	56.75	GT/GOOD	-0.8	0.1	2.8	0.2	4	0.699	0.022	22.3	6.9	0.9	1.5
LAV-AcutC	66.4	56.75	GT/NA	-1.2	0.1	3.2	0.02	-	-	-	-	-	-	-
LAV-AcutD	66.4	56.75	GT/NA	-1.2	0.04	2.9	0.02	-	-	-	-	-	-	-
LAV-AcutE	66.4	56.75	GT/NA	0.0	0.05	3.3	0.03	3	0.738	0.013	9.5	3.9	-0.9	0.8
LAV-AcutF	66.4	56.75	GT/NA	-1.0	0.04	2.4	0.03	-	-	-	-	-	-	-
LAV-Ost	66.4	56.75	GT/NA	0.7	0.1	3.0	0.04	-	-	-	-	-	-	-
LAV-Ager	66.4	56.75	GT/NA	-0.9	0.2	2.5	0.1	5	0.724	0.016	14.2	4.9	-0.9	1.1
LAV-Psop	66.4	56.75	GT/NA	-1.7	0.1	2.9	0.1	-	-	-	-	-	-	-
EMAU-AgerA	66.375	60	GT/NA	-1.2	0.04	3.3	0.04	-	-	-	-	-	-	-
EMAU-AgerB	66.375	60	GT/BAD	-1.4	0.1	3.3	0.1	-	-	-	-	-	-	-
EMAU-AgerC	66.375	60	GT/GOOD	-1.2	0.3	3.1	0.2	3	0.704	0.012	19.8	3.7	0.2	0.8
EMAU-AcutA	66.375	60	NA/NA	-1.3	0.2	3.1	0.1	3	0.704	0.014	20.1	4.4	0.1	1.0
EMAU-AcutC	66.375	60	GT/NA	-1.0	0.04	2.8	0.02	-	-	-	-	-	-	-
EMAU-AcutD	66.375	60	GT/NA	-1.4	0.1	2.9	0.01	-	-	-	-	-	-	-
EMAU-AcutE	66.375	60	GT/NA	-1.3	0.1	3.0	0.04	-	-	-	-	-	-	-
EMAU-AcutF	66.375	60	GT/GOOD	-0.5	0.01	3.4	0.01	-	-	-	-	-	-	-
EMAU-AgerD	66.375	60	GT/NA	-1.3	0.01	3.3	0.01	-	-	-	-	-	-	-
EMAU-AcutG	66.375	60	GT/GOOD	-1.5	0.03	3.0	0.02	-	-	-	-	-	-	-
EMAU-AcutH	66.375	60	GT/NA	-1.3	0.03	4.0	0.01	-	-	-	-	-	-	-
EMAU-Cer	66.375	60	GT/NA	-0.7	0.01	1.9	0.01	-	-	-	-	-	-	-
LAU-Unoy	66.35	61.15	GT/OK	-1.3	0.02	3.2	0.02	-	-	-	-	-	-	-
LAU-AcutA	66.35	61.15	FeMn/NA	-0.8	0.1	3.2	0.04	-	-	-	-	-	-	-
LAU-AcutB	66.35	61.15	GT/NA	-1.3	0.03	3.2	0.02	-	-	-	-	-	-	-
LAU-AcutC	66.35	61.15	GT/NA	-1.2	0.02	3.2	0.01	-	-	-	-	-	-	-
LAU-AcutD	66.35	61.15	GT/NA	-1.0	0.1	3.3	0.01	-	-	-	-	-	-	-
LAU-AcutE	66.35	61.15	GT/GOOD	-0.7	0.1	3.4	0.04	-	-	-	-	-	-	-
LAU-AcutF	66.35	61.15	GT/NA	-1.1	0.3	2.8	0.2	3	0.717	0.014	15.8	4.3	-0.7	1.1
LAU-AcutG	66.35	61.15	GT/GOOD	-1.3	0.1	3.3	0.03	3	0.698	0.010	21.8	3.4	0.4	0.7
NEKB-AcutA	66.325	62	GT/NA	-0.7	0.2	3.4	0.1	3	0.683	0.012	27.2	3.7	2.1	0.8
NEKB-AcutBC	66.325	62	GT/GOOD	-1.2	0.1	3.3	0.1	-	-	-	-	-	-	-
NEKB-AcutD	66.325	62	GT/GOOD	-1.7	0.01	3.1	0.01	3	0.690	0.010	24.7	3.4	0.7	0.7
NEKB-AcutE	66.325	62	GT/BAD	-0.9	0.03	2.7	0.04	-	-	-	-	-	-	-
NEKB-AcutF	66.325	62	Fe/NA	-0.5	0.02	2.8	0.01	-	-	-	-	-	-	-
NEKB-Ager	66.325	62	GT/NA	-1.2	0.1	2.6	0.03	3	0.689	0.012	25.1	3.7	1.2	0.8
NEK-Neit	66.3	64	GT/BAD	-1.4	0.1	1.8	0.1	-	-	-	-	-	-	-
NEK-NeitB	66.3	64	GT/NA	-1.7	0.2	1.6	0.03	3	0.697	0.013	22.3	4.3	0.1	0.8
CBR-Acut	66.275	65	GT/NA	-2.1	0.1	2.8	0.05	3	0.702	0.013	20.8	4.4	-0.5	1.0
CBR-Biv	66.275	65	GT/NA	-1.2	0.1	3.1	0.1	3	0.706	0.010	19.4	3.4	0	0.7
MEER-RasA	66.07	76	GT/GOOD	-2.0	0.02	2.3	0.05	3	0.698	0.010	21.9	3.4	-0.2	0.7
MEER-RasB	66.07	76	GT/GOOD	-1.3	0.2	2.1	0.1	5	0.719	0.019	15.9	5.6	-0.9	1.2
MEER-mat	66.07	76	GT/NA	-0.1	1.3	0.04	0.3	3	0.705	0.012	19.8	3.7	1.2	0.8
GCAV-OyStA	66.0	85	GT/GOOD	-2.3	0.1	2.7	0.02	3	0.699	0.012	21.6	3.7	-0.6	0.8

Evidence of dissolution of original shell material and/or overgrowth of non-biogenic calcite can be observed in SEM textures (Fig. 3), and elevated trace element concentrations reflect addition of carbonate material in a diagenetic environment (Fig. 4).  
310 SEM images were used to assign 21 selected samples a score of 0–3 for both prevalence of dissolution and secondary growth (SG) (Table S3). Samples that scored a two or three for SG were deemed “bad” (n=6) and not considered for isotopic interpretation as the addition of diagenetic calcite with a (presumably) different isotopic composition than the base shell would skew environmental interpretations (Table S3). Samples with some evidence of dissolution (score of two or three) but no  
315 secondary growth were deemed “okay” and were still considered further because the material that remained likely still represented inhabited environmental conditions (n=1) (Table S3). Samples with scores of zero or one for both SG and dissolution were deemed “good” and were fully considered (n=14) (Table S3).

In the 65 shell specimens tested for trace elements, Mn concentration ranges from 17–210 ppm, while Fe concentration ranges from 96–7151 ppm. The matrix sample was measured to have 60 ppm Mn and 664 ppm Fe. Threshold values of 100 ppm and  
320 2050 ppm were selected for Mn and Fe, respectively, to exclude most samples that failed SEM screening, while including all samples that exhibited only original material under SEM (Fig. 3, Fig. 4). These thresholds are more conservative than those proposed by other studies (Morrison and Brand, 1987; Voigt et al., 2003; Ullmann et al., 2013, de Winter et al., 2018), but, in total, still only result in the flagging of nine specimens out of the total of 65 (Fig. 4, Table S3).

325 Isotopic evidence supports that selected trace element and SEM thresholds are conservative and that overall diagenetic alteration in this region is mild to absent. Despite being excluded based on trace element and/or SEM results, the isotopic values of excluded samples were often not substantially different than other shells that passed diagenesis screening (e.g., only one of four measured for clumped isotopes had a higher-than-normal  $\Delta_{47}$ -derived temperature) (Fig. 5). Additionally, the matrix sample taken from the Meerssen Member showed trace element concentrations below thresholds (Fig. 4) and a  
330 temperature of  $19.8 \pm 3.7$  °C (Fig. 5), very similar to temperatures from fossil shells, indicating that the bulk matrix—which is more likely to be affected by recrystallization or reordering than a dense calcite shell—has also not undergone noticeable isotopic or geochemical alteration. This also explains how three samples failed SEM screening (Fig. 3) but showed low trace element concentrations (Fig. 4). We infer that in these samples, although some secondary growth was seen under SEM (Fig. 3), it must have been volumetrically insignificant in the total powdered sample, not present in the portion of the shell that was  
335 powdered (which differed from the portion imaged under SEM), and/or did not have elevated trace element concentrations.

In total, 12 of 65 shell samples failed one or both screening technique, with nine failing trace element thresholds, six failing SEM criteria, and three failing both. The one sample that was not measured was assumed to pass screening, based on the majority of samples passing screening. An additional three samples failed stable isotope measurements for analytical reasons,  
340 and two more failed to achieve the three good replicates necessary for  $\Delta_{47}$  but were still used for  $\delta^{18}\text{O}$  and  $\delta^{13}\text{C}$ . In the six samples that were measured on both the Kiel and one of the clumped isotope machines, clumped isotope derived  $\delta^{18}\text{O}$  and

$\delta^{13}\text{C}$  values were used (but only differed by 0.1–0.2 ‰). After removing poorly-preserved and insufficiently analyzed samples, the dataset includes 51 well-preserved shell samples analyzed for  $\delta^{18}\text{O}$  and  $\delta^{13}\text{C}$ , and 23 well-preserved shell samples with acceptable  $\Delta_{47}$  analyses (Table 1). All further interpretation excludes discussion of removed samples.

## 345 4.2 Stable isotopes

The 51 shell specimens exhibit a range of carbonate  $\delta^{18}\text{O}$  ( $\delta^{18}\text{O}_{\text{carb}}$ ) values between -2.3 ‰ and -0.5 ‰ VPDB, with the exception of two outliers that measured +0.4 ‰ VPDB and +0.7 ‰ VPDB (Fig. S1). Excluding these outliers, the average  $\delta^{18}\text{O}_{\text{carb}}$  value throughout the section is  $-1.3 \pm 0.4$  ‰ (1sd) VPDB. In contrast, the carbonate fraction of bulk matrix in the one sample from the Meerssen Member measured here and in a high-resolution record from the Lichtenberg Horizon to the top of the Nekum Member (Vellekoop et al., 2022) fall anywhere from ~0 to ~1 ‰ higher than molluscan carbonate (Fig. S1), with a mean value of  $-0.6 \pm 0.4$  ‰ (1sd) VPDB through the section.

Carbonate  $\delta^{13}\text{C}$  ( $\delta^{13}\text{C}_{\text{carb}}$ ) values range from +1.4 ‰ to +3.4 ‰ VPDB, with one outlier at +4.0 ‰ VPDB (Fig. S2). The average  $\delta^{13}\text{C}_{\text{carb}}$  value is  $2.7 \pm 0.5$  ‰ (1sd) VPDB, excluding the single outlier. Bulk matrix  $\delta^{13}\text{C}$  is clearly lower than molluscan carbonate, by anywhere from 1 to 2 ‰ VPDB (Fig. S2). The average bulk matrix  $\delta^{13}\text{C}$  value is  $+1.7 \pm 0.1$  ‰ (1sd) VPDB through the section.

In most cases, the number of specimens representing each taxon is too small and/or the stratigraphic range is too limited to make reliable inter-species comparisons (e.g., *Rastellum* sp.). Even considering this, the pectinids *Entolium membranaceum* and *Neithea regularis* appear to record carbon isotope compositions ~1–1.5 ‰ more depleted relative to other species, mainly representing Ostreida, while oxygen isotopic compositions appear similar (Fig. S3). This inter-order difference may represent differing use of metabolic (respired) carbon vs. environmental carbon between these two orders of bivalvia. Between the two most common taxa (*Acutostrea uncinella* and *Agerostrea unguulate*—both oysters), there does not appear to be any systematic offset in oxygen or carbon isotopic compositions (Fig. S3).

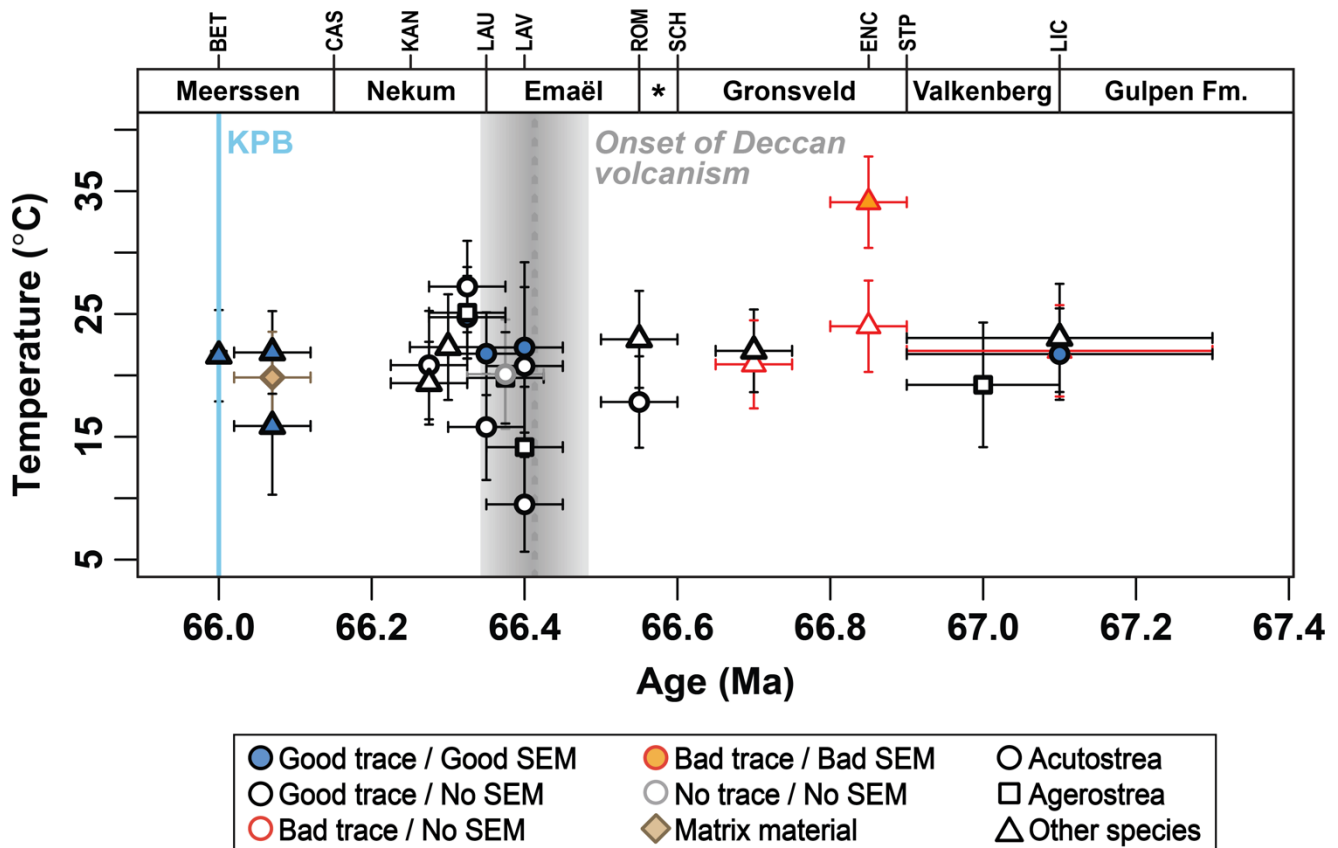
## 365 4.3 Temperature estimates

Four of the 27 shell specimens successfully measured for  $\Delta_{47}$  were excluded from further interpretation due to evidence of diagenesis (described above). The 23 samples that pass diagenetic screening criteria exhibit paleotemperatures ranging from 9.5–27.2 °C, with a mean value of  $20.4 \pm 3.8$  °C (1sd) (Fig. 5). In all instances where multiple taxa were sampled from the same horizon, measured temperatures are within error of each other, suggesting no inter-species offset due to vital effects. In the absence of vital effects in any taxa, all species are expected to record the same temperature due to their common benthic habitat. The high agreement between taxa from the same horizon seen here is similar to that seen in other deposits of the same age from the Gulf Coastal Plain (Meyer et al., 2018). In most horizons with multiple samples, estimated temperatures overlap within error for all samples (Fig. 5). The exception is the Lava Horizon (66.4 Ma), which shows a large spread in temperatures

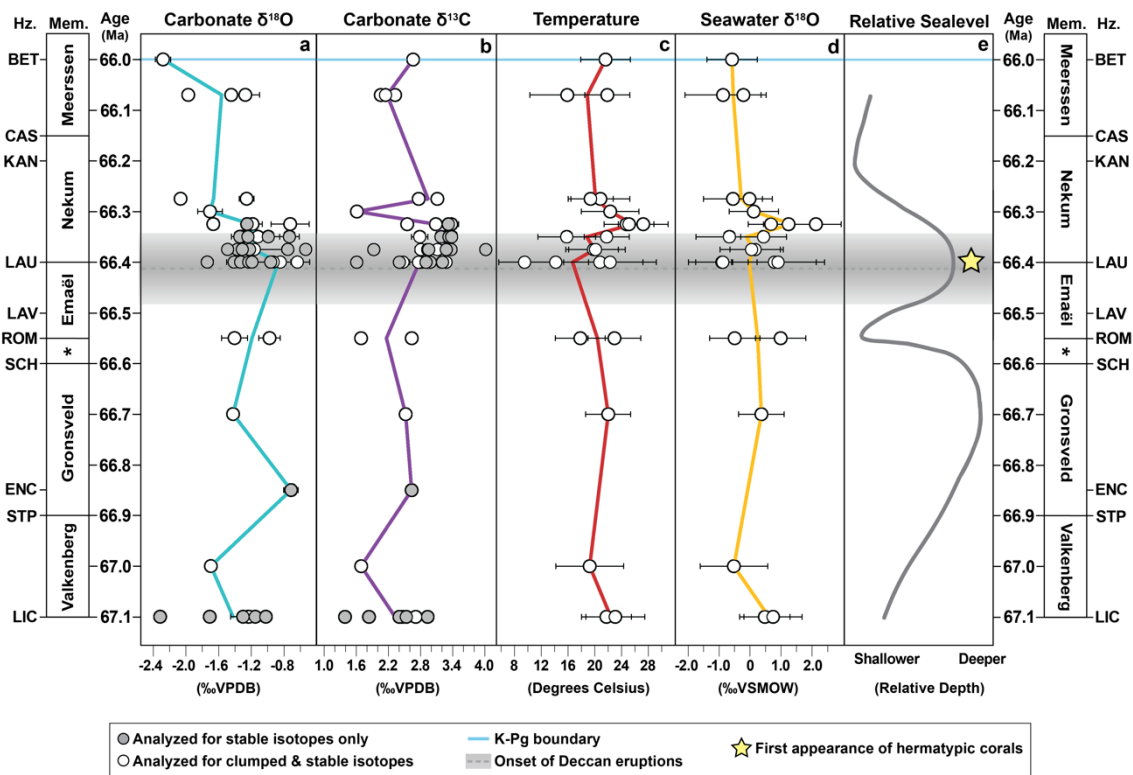
from  $9.5 \pm 3.8$  °C (external 1SE) to  $22.3 \pm 6.9$  °C (external 1SE) (Fig. 5). This may represent seasonal aliasing in samples  
 375 (e.g., powdering a portion of shell representing wintertime growth vs. summertime growth), although these samples were not  
 treated any differently than other horizons where this is not observed. This may also represent long-term time averaging into  
 a single horizon, where individual shells may have lived thousands of years apart. It is not a species-related offset, as the  
 highest and lowest temperatures both occur in *Acutostrea uncinella* (Fig. 5).

380 A fluctuating temporal trend is observed in which paleotemperatures rise from a low at 66.4 Ma to a peak in the basal Nekum  
 Member at 66.325 Ma, followed by a decrease by 66.275 Ma that persists through the KPB (Fig. 5). The onset of warming  
 coincides with the onset of Deccan volcanism  $66.413 \pm 0.067$  Ma (Sprain et al., 2019) (Fig. 5), within the error of our age  
 model (Table S1). We therefore identify this warming event as the named “Late Maastrichtian Warming Event” (LMWE)  
 (Woelders et al., 2018, Hull et al., 2020).

385



390 **Figure 5: Maastrichtian  $\Delta_{47}$ -derived paleotemperatures for all samples.** Samples shown in red (n=4) did not pass screening thresholds  
 and were not included in further interpretation. Error bars represent the larger of either the internal or long-term 1SE (see text). Onset of the  
 main Deccan Traps eruptions (grey shading) at  $66.413 \pm 0.067$  Ma (Sprain et al., 2019). Member names and horizon abbreviations are  
 labeled across top of figure (see Fig. 2). \*Schiepersberg Member



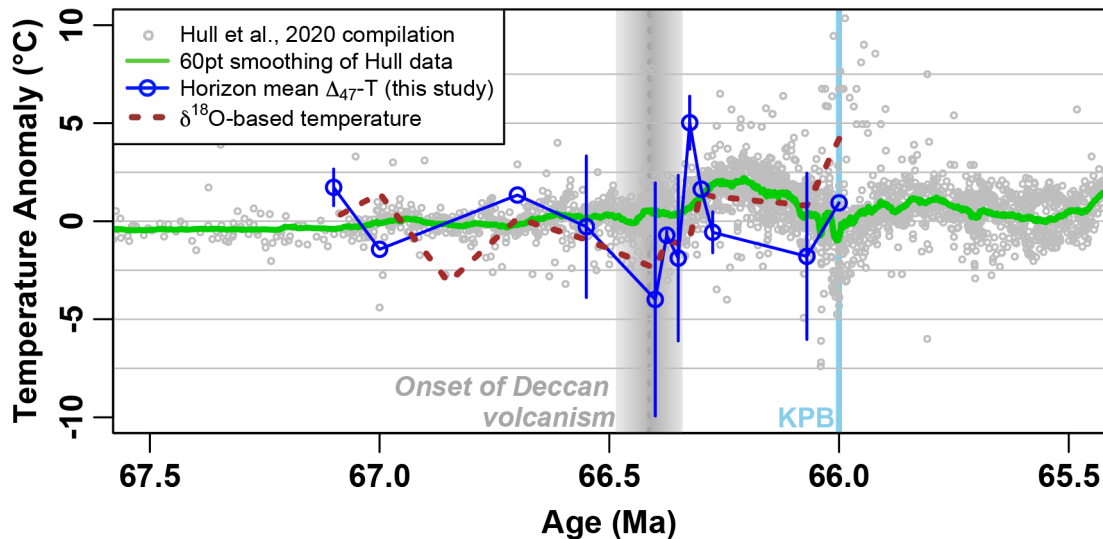
**Figure 6: Isotopic compositions and paleotemperatures of fossil shells compared to inferred relative sea level in the Maastricht Formation.** Error bars represent 1sd for  $\delta^{18}\text{O}$  (a) and  $\delta^{13}\text{C}$  (b), and external 1SE for temperature (c) and  $\delta^{18}\text{O}_{\text{sw}}$  (d) (see text). All samples failing diagenetic screening criteria have been removed. Colored lines pass through horizon means. Age model from Vellekoop et al. (2022.) (Table S3). The relative sea level curve (e) is based on Schiøler et al. (1997), adjusted to the age model used in this study. Hermatypic coral appearance data (e) is from Leloux (1999). Onset of the main Deccan Traps eruptions (grey dotted line) at  $66.413 \pm 0.067$  Ma (Sprain et al., 2019).

#### 400 4.4 Seawater $\delta^{18}\text{O}$ estimates

Calculated  $\delta^{18}\text{O}_{\text{sw}}$  values ranged from -0.9 to +2.1 ‰ VSMOW (Fig. S4). The average  $\delta^{18}\text{O}_{\text{sw}}$  value is  $+0.2 \pm 0.8$  ‰ (1sd) VSMOW, above the ice-free mean ocean water estimate of -1.0 ‰ VSMOW. This heavier average  $\delta^{18}\text{O}_{\text{sw}}$  value is consistent with the presence of some continental ice volume (presumed to be located on the Antarctic continent) during the “cool greenhouse” Maastrichtian interval (Miller et al., 2005; Petersen et al., 2016a; Ladant and Donnadieu, 2016). Just like with temperature, where multiple taxa were sampled within a given horizon,  $\delta^{18}\text{O}_{\text{sw}}$  values are within error of each other, although there is fairly large spread in the Lava Horizon again (Fig. S4).



Sea water  $\delta^{18}\text{O}$  values show a similar temporal trend to that of temperature (Fig. 6c, d). We observe peak  $\delta^{18}\text{O}_{\text{sw}}$  values at the base of the Nekum Member ( $1.4 \pm 0.7$  ‰ VSMOW, horizon mean and 1sd of three samples) and the lowest  $\delta^{18}\text{O}_{\text{sw}}$  values occur at the Lava Horizon in the Emaël Member ( $-1.0 \pm 1.8$  ‰ VSMOW, horizon mean and 1sd of three samples) (Fig. 6d, Fig. 4S). This relationship is not a function of calculations of temperature or  $\delta^{18}\text{O}_{\text{sw}}$  and, instead, falls naturally out of the  $\delta^{18}\text{O}_{\text{carb}}-\delta^{18}\text{O}_{\text{sw}}$ -temperature relationship. Across the entire dataset, both temperature and  $\delta^{18}\text{O}_{\text{sw}}$  show weak correlation with  $\delta^{18}\text{O}_{\text{carb}}$  with neither as the primary, sole driver (Fig. S5).



415

**Figure 7: Temperature evolution through the Late Maastrichtian Warming Event.** Comparison of new temperature data to the compilation of late Maastrichtian temperatures by Hull et al. (2020). Grey and light blue vertical bars indicate onset of Deccan volcanism and the KPB, as in Fig. 5. Error on horizon averages represents 1sd of all temperatures from a given horizon. Horizons with no error had only one sample. Brown dashed line indicates a temperature profile calculated from  $\delta^{18}\text{O}_{\text{carb}}$  assuming a fixed  $\delta^{18}\text{O}_{\text{sw}}$  value, and shows peak temperatures delayed relative to the  $\Delta_{47}$ -based temperature peak.

420

## 5 Discussion

### 5.1 Further evidence for a warmer Maastrichtian world and a Late Maastrichtian Warming Event

New data presented here indicate that mean annual ocean temperatures in the Maastricht region (paleolatitude  $\sim 40^\circ$  N; van Hinsbergen et al., 2015) varied from  $9.5 \pm 3.9$  °C to  $27.2 \pm 3.7$  °C between 67.1 and 66.0 Ma, with a mean temperature of  $20.4 \pm 3.8$  °C (1sd) over this interval. This is much warmer than the modern-day climate of Maastricht, which has a mean annual air temperature of 9.8 °C (Maastricht Climate, 2021). Warmer-than-modern temperatures in the Maastrichtian have been seen before in many studies (Table S1) and are expected due to elevated atmospheric  $\text{CO}_2$  levels during the Maastrichtian of  $\sim 1000$  ppm on average over the study interval (Zhang et al., 2018; Henahan et al., 2019; Hoenisch, 2021). Reconstructed Maastrichtian marine temperatures from sites located between  $30\text{--}50^\circ$  N show an average temperature of  $19.8 \pm 5.2$  °C ( $n =$

430

23 studies; Table S1), in close agreement with our site mean. Outside the marine realm, Maastrichtian-aged fossil plants also suggest that terrestrial temperatures at 40° N were warmer, measuring around 15 °C (Golovneva, 2000), and that near 49° N, air temperatures varied from 10–18 °C during this time interval (Wilf et al., 2003). General circulation models using Late Cretaceous paleogeography and elevated atmospheric pCO<sub>2</sub> levels also display similarly warmer climate globally as a result of CO<sub>2</sub>-induced warming (Tabor et al., 2016; Ladant et al., 2020). Modeled zonal mean temperatures at a paleolatitude of 40° N are 20.2 °C for a 2xCO<sub>2</sub> (560 ppm) Maastrichtian scenario or 21.4 °C for a 4xCO<sub>2</sub> (1120 ppm) Maastrichtian scenario (Tabor et al., 2016).

Multiple paleoclimate records document a Late Maastrichtian Warming Event (LMWE) (e.g., Stott and Kennett, 1990; Li and Keller, 1998; Petersen et al., 2016a; Woelders et al., 2017; Woelders et al., 2018; Barnet et al., 2019; Gao et al., 2021; Nava et al., 2021), beginning gradually at 66.4 Ma with more rapid warming at 66.3 Ma (Hull et al., 2020) (Fig. 7). The timing of this LMWE appears to closely follow the onset of LIP volcanism in the Indian subcontinent, based on <sup>40</sup>Ar-<sup>39</sup>Ar ages for the oldest basalts of the Deccan Traps (66.413 ± 0.067 Ma from the Jawhar Formation; Sprain et al., 2019) and shifts in marine osmium isotope ratios towards mantle values beginning ~400 kyr prior to the KPBB (Ravizza and Peucker-Ehrenbrink, 2003; Hull et al., 2020), although others argue for a slightly later onset around 66.311 ± 0.051 Ma (Schoene et al., 2019; Nava et al., 2021). Volcanically-derived CO<sub>2</sub> is widely considered to be the cause of this warming.

The Δ<sub>47</sub>-derived temperature record generated here documents a warming in the Nekum Member, beginning from a temperature low in the Lava Horizon at 66.4 ± 0.05 Ma (16.6 ± 5.9 °C, 1sd, N=4) and increasing to the basal Nekum at 66.325 ± 0.05 Ma (25.7 ± 1.4 °C, 1sd, N=3) over 75 kyrs (Fig. 5). The magnitude of this warming is calculated as 9.1 °C going from these listed horizons or, more conservatively, 5.8 °C comparing the warmest horizon (basal Nekum) to a pre-event baseline averaging the preceding seven horizons (19.9 ± 2.0 °C, N=14). Although this warming event is only barely statistically distinguishable as differing from the mean of the full record when considering the size and meaning of the 1SE error bars and the fairly small number of samples representing peak warmth (n=3) (Fig. 5), the close agreement between all three points from this horizon and the following additional lines of evidence support the interpretation of this warming as an expression of the LMWE.

Based on a newly updated age model (Vellekoop et al., 2022) (Fig. S1), the warmest Δ<sub>47</sub>-derived temperatures slightly follow or align with the onset of earliest Deccan eruptions (depending on whether a date of 66.413 Ma or 66.3 Ma is used) and the general age of the globally defined LMWE (Hull et al., 2020) (Fig. 7). The dinocyst *Palynodinium grallator*—a marker for the LMWE at northern mid-latitudes (Vellekoop et al., 2018; 2019)—first appears in the Maastricht Formation in the Nekum Member (Schioler et al., 1997; Vellekoop et al., 2019). Thermophilic hermatypic scleratinian macrofossils also first emerge in high abundances in the Nekum Member (Liebau, 1978; Leloux, 1999) (Fig. 6e). Together, these records suggest that the

LMWE is preserved in the Nekum Member at ENCI quarry and that the warmer  $\Delta_{47}$ -derived temperatures found there are  
465 likely real.

Interestingly, a  $\delta^{18}\text{O}_{\text{carb}}$ -based temperature reconstruction assuming constant  $\delta^{18}\text{O}_{\text{sw}}$  (red dashed line, Fig. 7) incorrectly shows  
a slightly later peak in temperature. The true peak, as indicated by the  $\Delta_{47}$ -derived record, is hidden in  $\delta^{18}\text{O}_{\text{carb}}$  due to  
simultaneous increases in temperature and enrichment in  $\delta^{18}\text{O}_{\text{sw}}$  (Fig. 5, Fig. 6, Fig. S4). The timing of warming in our  $\Delta_{47}$ -  
470 derived record appears to predate that of the composite record of Hull et al. (2020) as well (Fig. 7), although uncertainty in age  
in both records may not sustain this relationship. If age models hold as shown, the later timing seen in the composite record  
may reflect the same issue of a hidden LMWE peak, as many of the records included are based on foraminiferal  $\delta^{18}\text{O}_{\text{carb}}$  and  
include an assumption of constant  $\delta^{18}\text{O}_{\text{sw}}$ . Another  $\Delta_{47}$ -derived temperature record across this period from Seymour Island,  
Antarctica (Petersen et al., 2016a) also shows simultaneous increases in temperature and  $\delta^{18}\text{O}_{\text{sw}}$  and a delayed apparent  
475 warming in a  $\delta^{18}\text{O}_{\text{carb}}$ -based temperature reconstruction, although the absolute timing of the LMWE in that record is apparently  
later (~66.24–66.2 Ma). Faulty assumptions of constant sedimentation rate between magnetostratigraphic datums could  
potentially explain the difference in absolute timing.

Following on the assumed identification of the LMWE in the basal Nekum Member, our temperature record indicates that  
480 seawater temperatures in this region returned to baseline levels by the middle Nekum Member, within ~100kyr (Fig. 5). This  
is consistent with the timing of silicate weathering feedbacks, as previously suggested (Caldiera and Rampino, 1990; Dessert  
et al., 2001; Petersen et al., 2016a; Tobin et al., 2017; Hull et al., 2020), further supporting the volcanically-derived  $\text{CO}_2$  as the  
source of the initial warming event. Others have suggested that the emplacement of large igneous provinces can actually be a  
long-term  $\text{CO}_2$  sink and lead to longer-term global climate cooling (Schaller et al., 2012; Johansson et al., 2018). This is  
485 possibly visible in the slight cooling between the middle Nekum and Meerssen Members (Fig. 5), although the uncertainty in  
the Meerssen Member is large.

## 5.2 Ocean circulation, sea level, and/or precipitation changes

Paleogeographic reconstructions (Engelke et al., 2017; Scotese, 2021) (Fig. 1a) and presence of seagrass fossils (Hart et al.,  
2016; van der Ham et al., 2017) indicate that during the Campanian-Maastrichtian, the study site was located on a large,  
490 shallowly submerged carbonate platform. Over the Late Cretaceous, eustatic sea level fluctuated multiple times, including one  
sea level transgression (KMa5) in the latest Maastrichtian at 66.8 Ma (Haq, 2014). Sea level based on the relative abundance  
of the palynomorph *Paralecaniella* in ENCI quarry sediments—the same section as our fossils—indicate local sea level  
fluctuations that differ from the global eustatic curve (Schiøler et al., 1997) (Fig. 6e). Since high relative abundances of this  
acritarch taxon are suggested to reflect marginal-marine to restricted-marine conditions under high hydrodynamic conditions  
495 (Brinkhuis and Schiøler 1996; Schiøler et al., 1997), observed fluctuations are interpreted as local sea level changes.  
Alternatively, environmental factors other than sea level might have driven the observed high abundances of *Paralecaniella*

in the type-Maastrichtian, such as biological responses to local changes in hydrodynamic conditions and salinity, which would also be reflected in the  $\delta^{18}\text{O}_{\text{sw}}$  record presented here. Nevertheless, seagrass and foraminifera indicate that water depths remained less than 20 m at all times, and often shallower (Hart et al., 2016).

500

Although this local sea level record derived from palynological abundances may have some issues at a fine scale related to minimal consideration of sedimentology and geochemistry (Vellekoop et al., 2022), we see a notable correlation between it and many of our isotopic parameters (Fig. 6). Peak  $\delta^{18}\text{O}_{\text{sw}}$  values, high temperatures, and, to a lesser degree, higher  $\delta^{13}\text{C}_{\text{carb}}$  values correlate to periods of maximum sea level, while lower  $\delta^{18}\text{O}_{\text{sw}}$  values, cooler temperatures, and lower  $\delta^{13}\text{C}_{\text{carb}}$  values correspond to periods of relatively lower sea level (Fig. 6). In particular, sea level is interpreted to rise from the Lava Horizon up to the Laumont Horizon, peaking around the base of the Nekum Member and then declining again by the Kanne Horizon (Fig. 6e). This aligns with the temperature and  $\delta^{18}\text{O}_{\text{sw}}$  peak in the basal Nekum highlighted above (Fig. 6c, d), coinciding with the onset of Deccan volcanism. A second interval of peak sea level occurs during the Gronsveld Member (Fig. 6e), which also displays temperatures and  $\delta^{18}\text{O}_{\text{sw}}$  values slightly higher than preceding and following horizons (Fig. 6c, d).  $\delta^{13}\text{C}_{\text{carb}}$  values also rise into the Gronsveld Member, and again rise from the Lava to Laumont Horizons (Fig. 6b).

510

We propose that the observed correlation between environmental conditions and reconstructed local sea level is the result of fluctuating ocean circulation patterns. Paleogeographic reconstructions suggest the presence of a seaway connecting the Arctic Ocean to this study site during the late Maastrichtian (Engelke et al., 2017; Scotese, 2021) (Fig. 1a). Modeling studies show that increased isolation of the Arctic made it fresher during the Maastrichtian (Ladant et al., 2020), suggesting that this boreal water mass was both cooler in temperature and depleted in  $\delta^{18}\text{O}_{\text{sw}}$ . As a result, the Maastrichtian type region would have been under the influence of relatively cool, depleted water masses. Our study site was situated on a shallow carbonate platform surrounded by small landmasses, the exact size and position of which are difficult to define (Engelke et al., 2017; Scotese, 2021) (Fig. 1a). During periods of low relative sea level, the land masses of the Rhenohercynian Zone (Rhenish Massif, London-Brabant Massif) would have blocked southern currents originating in warmer regions, which would likely be saltier and have higher  $\delta^{18}\text{O}_{\text{sw}}$  values due to evaporative enrichment (e.g. the semi-restricted Western Tethys) (Fig. 1a). However, as large parts of these land masses were relatively flat and low-lying during the Upper Cretaceous (Vandenberghé et al., 2014), relatively minor increases in sea level could potentially breach sills or island barriers, changing both the position of ocean currents and the dominant water mass in a given area. Indeed, lithostratigraphic studies in the region have shown that during various phases in the Campanian-Maastrichtian, the structural highs of the nearby London-Brabant Massif were fully submerged (e.g., Dusaar and Lagrou, 2007). As a result, during sea level lows, the Maastrichtian type region would have been predominantly under the influence of colder, depleted water masses sourcing from the north, while during sea level highs, the influence of warmer, more enriched water masses sourcing from the south likely increased (Fig. 1a).

525

530 Similar interactions between cooler and warmer water masses have been called upon to explain unexpected distributions in  
warm-water ammonite fauna in the Coniacian-Santonian of Europe (Remin et al., 2016) and remarkably southerly occurrences  
of cold-water belemnites in late Cenomanian France (Gale and Christensen, 1996). In this case, the authors suggest that warm  
waters flowing east to west from the proto-Tethys competed with cooler waters flowing southward between Greenland and  
Scandinavia (see their Fig. 10). We suggest a similar mechanism applied to late Maastrichtian paleogeography and water  
535 masses (Fig. 1a). Ostracod assemblage changes indicate increasing contribution of warm Mediterranean/Tethyan waters in the  
latest Maastrichtian (Bless, 1988). Faunal abundance differences along the US East Coast indicate the presence of an ancient  
Gulf Stream-like current as far back in time as the Maastrichtian (Watkins and Self-Trail, 2005), which would have warmed  
the Maastricht region above its expected temperature for latitude when bathed in water from the south, as the modern-day Gulf  
Stream does for western Europe.

540

Fluctuations in  $\delta^{13}\text{C}$  appear to correlate with changes in temperature and  $\delta^{18}\text{O}_{\text{sw}}$  (Fig. 6). In this hypothetical model of  
alternating influence of southern and northern source waters, this could indicate different  $\delta^{13}\text{C}$  of dissolved inorganic carbon  
( $\delta^{13}\text{C}_{\text{DIC}}$ ) in the two water masses. The exact values of  $\delta^{13}\text{C}_{\text{DIC}}$  in either water mass are difficult to define because of  
overprinting by  $\delta^{13}\text{C}$  vital effects in some taxa (*Neithia* sp., *Entolium* sp.) (Fig. S2, Fig. S3). Looking at the most common  
545 taxa (*Acutostrea*), variations on the order of 0.5 ‰ VPDB—or possibly as much as 1 ‰—are possible between horizons. This  
is similar to variability seen in the modern Atlantic Ocean (Eide et al., 2017) and is therefore plausibly driven by alternating  
water masses of differing  $\delta^{13}\text{C}_{\text{DIC}}$ . In this scenario, the colder, northern (Arctic) water mass would be more depleted in  $\delta^{13}\text{C}_{\text{DIC}}$   
than the southern-source water.

550 This dataset is not capable of distinguishing between the above, preferred hypothesis and a temporally variable input of  
isotopically depleted freshwater. During times of lower sea level, partial basin restriction may have occurred, allowing local  
freshwater inputs to lower  $\delta^{18}\text{O}_{\text{sw}}$  values. In maritime regions such as modern Bermuda, despite lack of elevation or substantial  
landmass, precipitation and precipitation-derived runoff is depleted in  $\delta^{18}\text{O}$  by 4–5 ‰ VSMOW relative to seawater (Zhang et  
al., 2021). Additionally, surface runoff may contain dissolved terrestrial organic matter depleted in  $\delta^{13}\text{C}$ , which could explain  
555 the correlation between  $\delta^{18}\text{O}_{\text{sw}}$  and  $\delta^{13}\text{C}$  through our study period. However, it is difficult to explain how local freshwater in a  
subtropical environment surrounded by low-lying landmasses could be substantially colder than local seawater, so we favor  
the variable water mass hypothesis over a local freshwater contribution.

Yet another possible interpretation of the co-variation between fluctuating temperature and  $\delta^{18}\text{O}_{\text{sw}}$  trends is via climate-related  
560 reorganization of atmospheric circulation, moving broad precipitation bands north and south over the study region. An  
enhanced hydrological cycle has been hypothesized for the latest Cretaceous (e.g., Woelders et al., 2017) due to increased  
zonal surface winds and ~20 % stronger Hadley circulation in the Northern Hemisphere (Bush and Philander, 1997). If, during  
warmer climates, precipitation bands moved such that the Maastrichtian type region experienced less rainfall,  $\delta^{18}\text{O}$  enrichment

of surface waters would coincide with warmer temperatures and vice versa. This is difficult to assess, even in global climate  
565 model simulations, as model proficiency in reconstructing paleo-precipitation regimes is difficult to validate/calibrate. The  
rough correlation with  $\delta^{13}\text{C}$  is also difficult to explain in this scenario.

## 6 Conclusions

This study presents a new clumped isotope-based paleotemperature time series from the latest Cretaceous in northwestern  
Europe. The  $\Delta_{47}$  analyses from the Maastrichtian type section and surrounding outcrops reveal a mean temperature of  $20.4 \pm$   
570  $3.8$  °C and an average  $\delta^{18}\text{O}_{\text{sw}}$  of  $+0.2 \pm 0.8$  ‰ VSMOW, consistent with a subtropical shallow marine environment. This  
average temperature aligns well with other paleothermometry studies from similar paleolatitudes and with modeled  
Maastrichtian paleotemperatures. Increasing  $\Delta_{47}$ -based temperatures at  $\sim 66.4$  Ma, in conjunction with other indicators, are  
interpreted to reflect a regional manifestation of the global LMWE and directly link pre-KPB warming in northwest Europe to  
 $\text{CO}_2$  emissions from Deccan Traps volcanism. Simultaneous increases in temperature and  $\delta^{18}\text{O}_{\text{sw}}$  during the LMWE mask the  
575 timing of warming in  $\delta^{18}\text{O}_{\text{carb}}$ -based temperature reconstructions, which may explain a more delayed apparent timing of the  
LMWE in other studies. Seen now in two spatially-distant records, this deserves further exploration and emphasizes the need  
for using paleothermometry tools that take into account variations in  $\delta^{18}\text{O}_{\text{sw}}$ .

Covariations in temperature,  $\delta^{18}\text{O}_{\text{sw}}$ , and (to a lesser degree)  $\delta^{13}\text{C}$  from horizon to horizon may reflect the varying influences  
580 of different water mass at different times. We hypothesize that colder waters with lower  $\delta^{18}\text{O}_{\text{sw}}$  and  $\delta^{13}\text{C}_{\text{DIC}}$  may have originated  
from the Arctic and reached the study site via a passageway between Greenland and Scandinavia (Fig. 1a) during periods of  
lower sea level when emergent landmasses to the south acted as barriers. Warmer waters with higher  $\delta^{18}\text{O}_{\text{sw}}$  and  $\delta^{13}\text{C}_{\text{DIC}}$  may  
have been sourced from a proto-Tethys to the southeast or proto-Atlantic to the southwest (Fig. 1a) and flushed the study  
region during intervals of higher sea level.

585

Overall, the fossils of the Maastricht Formation are effective paleotemperature archives that reveal linkages between local sea  
level changes, Deccan Traps volcanism, and ocean temperature on the European continent in the lead-up to the end-Cretaceous.

## Data availability

All data presented in this paper are available in the EarthChem database at <https://doi.org/10.26022/IEDA/112046>.

590 Further data are available in the Supplement:

- **Figure S1:** oxygen isotope values of shell specimens and bulk carbonate;
- **Figure S2:** carbon isotope values of shell specimens and bulk carbonate;
- **Figure S3:** carbon isotopic composition vs. oxygen isotopic composition in well-preserved shells and bulk matrix;
- **Figure S4:** reconstructed seawater oxygen isotopic composition through time;

- 595
- **Figure S5:** covariation of oxygen isotopic composition of carbonate, water, and temperature;
  - **Table S1:** published paleotemperature data for other studies reconstructing Maastrichtian marine temperatures;
  - **Table S2:** age model of Vellekoop et al. (2022);
  - **Table S3:** preservation data for all samples, including SEM preservation determinations and trace element concentrations;
- 600
- **Table S4:** summary of in-house carbonate standards.

### **Author contribution**

SVP, JV, and HEO designed the study. SVP and JV collected the samples. HEO, SVP, MMJ, and SRS measured and analysed the data. HEO and SVP prepared the manuscript, with contributions from all co-authors.

### **Competing interests**

605 The authors declare that they have no conflicts of interest.

### **Acknowledgements**

We thank Ashling Neary (SCIPP lab), Angela Dial (MEAL), Lora Wingate and Kacey Lohmann (SIL) for assisting in sample preparation and measurements at the University of Michigan. We also thank UM's Department of Earth and Environmental Sciences for the Turner Research Award and the Geologic Society of America for the Graduate Student Research Grant, both of which helped to fund this project. This work was also funded by grant 12Z6621N of the Research Foundation Flanders (FWO) to JV. The GSG sample was collected as part of a field trip related to the International Conference on Paleoceanography in 2014 and we thank the organizers and co-participants.

610

### **References**

Anderson, N. T., Kelson J. R., Kele S., Daëron M., Bonifacie M., Horita J., et al.: A unified clumped isotope thermometer calibration (0.5-1000C) using carbonate-based standardization. *Geophysical Research Letters*, 48(7), <http://doi.org/10.1029/2020GL092069>, 2021.

615

Barnet, J. S. K., Littler, K., Westerhold, T., Kroon, D., Leng, M. J., Bailey, I., Röhl, U., and Zachos, J. C.: A High-fidelity benthic stable isotope record of Late Cretaceous–Early Eocene climate change and carbon-cycling, *Paleoceanogr. Paleoclimatol.*, 34, 672–691, <https://doi.org/10.1029/2019PA003556>, 2019.

620

Bernasconi, S. M., Mueller, I., Bergmann, K. D., Breitenbach, S. F. M., Fernandez, A., Hodell, D. A., et al.: Reducing uncertainties in carbonate clumped isotope analysis through consistent carbonate-based standardization, *Geochem., Geophys., Geosy.*, 19(9), 2895-2914, <https://doi.org/10.1029/2017GC007385>, 2018.

625

Bernasconi, S. M., Daëron, M., Bergmann, K. D., Bonifacie, M., Meckler, A. N., Affek, H. P., et al.: InterCarb: A community effort to improve interlaboratory standardization of the carbonate clumped isotope thermometer using carbonate standards. *Geochem., Geophys., Geosy.*, 22(5), <https://doi.org/10.1029/2020GC009588>, 2021.

630 Bless, M. J. M.: Possible causes for the change in ostracod assemblages at the Maastrichtian-Palaeocene boundary in southern Limburg, The Netherlands, *Meded. Werkgr. Tert. Kwart. Geol.*, 25, 197–211, 1988.

Bowman, V. C., Riding, J. B., Francis, J. E., Crame, J. A., and Hannah, M. J.: The taxonomy and palaeobiogeography of small chorate dinoflagellate cysts from the Late Cretaceous to Quaternary of Antarctica, *Palynology*, 37, 151–169, <https://doi.org/10.1080/01916122.2012.750898>, 2013.

635

Brand, W. A., Assonov, S. S., and Coplen, T. B.: Correction for the  $^{17}\text{O}$  interference in  $\text{d}^{13}\text{C}$  measurements when analyzing  $\text{CO}_2$  with stable isotope mass spectrometry (IUPAC Technical Report), *Pure and Applied Chemistry*, 82(8), 1719-1733, 2010.

640 Brand, U. and Morrison, J. O.: Biogeochemistry of fossil marine invertebrates. *Geosci. Can.*, 14, 1987.

Brinkhuis, H. and Schiøler, P.: Palynology of the Geulhemmerberg Cretaceous/Tertiary boundary section (Limburg, SE Netherlands), *Geol. Mijnbouw*, 75, 193–213, 1996.

645 Bush, A. B. G. and Philander, S. G. H.: The Late Cretaceous: Simulation with a coupled atmosphere-ocean general circulation model, *Paleoceanography*, 12, 495–516, <https://doi.org/10.1029/97PA00721>, 1997.

Came, R. E., Brand, U., and Affek, H. P.: Clumped isotope signatures in modern brachiopod carbonate, *Chem. Geol.*, 377, 20–30, <https://doi.org/10.1016/j.chemgeo.2014.04.004>, 2014.

650

Caldeira, K. and Rampino, M. R.: Carbon dioxide emissions from Deccan volcanism and a K/T boundary greenhouse effect, *Geophys. Res. Lett.*, 17, 1299–1302, <https://doi.org/10.1029/GL017i009p01299>, 1990.



- Clyde, W. C., Ramezani, J., Johnson, K. R., Bowring, S. A., and Jones, M. M.: Direct high-precision U–Pb geochronology of the end-Cretaceous extinction and calibration of Paleocene astronomical timescales, *Earth Planet. Sci. Lett.*, 452, 272–280, <https://doi.org/10.1016/j.epsl.2016.07.041>, 2016.
- de Winter, N. J. D., Vellekoop, J., Vorrsselmans, R., Golreihan, A., Soete, J., Petersen, S. V., Meyer, K. W., Casadio, S., Speijer, R. P., Claeys, P.: An assessment of latest Cretaceous *Pycnodonte vesicularis* (Lamarck, 1806) shells as records for palaeoseasonality: a multi-proxy investigation, *Clim. Past*, 14, 725–749, <https://doi.org/10.5194/cp-14-725-2018>, 2018.
- Defliese, W. F., Hren, M. T., and Lohmann, K. C.: Compositional and temperature effects of phosphoric acid fractionation on  $\Delta_{47}$  analysis and implications for discrepant calibrations, *Chem. Geol.*, 396, 51–60, <https://doi.org/10.1016/j.chemgeo.2014.12.018>, 2015.
- Dennis, K. J., Affek, H. P., Passey, B. H., Schrag, D. P., and Eiler, J. M.: Defining an absolute reference frame for ‘clumped’ isotope studies of CO<sub>2</sub>, *Geochim. Cosmochim. Ac.*, 75, 7117–7131, <https://doi.org/10.1016/j.gca.2011.09.025>, 2011.
- Dennis, K. J., Cochran, J. K., Landman, N. H., and Schrag, D. P.: The climate of the Late Cretaceous: New insights from the application of the carbonate clumped isotope thermometer to Western Interior Seaway macrofossil, *Earth Planet. Sci. Lett.*, 362, 51–65, <https://doi.org/10.1016/j.epsl.2012.11.036>, 2013.
- Dessert, C., Dupré, B., François, L. M., Schott, J., Gaillardet, J., Chakrapani, G., and Bajpai, S.: Erosion of Deccan Traps determined by river geochemistry: impact on the global climate and the <sup>87</sup>Sr/<sup>86</sup>Sr ratio of seawater, *Earth Planet. Sc. Lett.*, 188, 459–474, [https://doi.org/10.1016/S0012-821X\(01\)00317-X](https://doi.org/10.1016/S0012-821X(01)00317-X), 2001.
- Dortangs, R. W., Schulp, A. S., Mulder, E. W., Jagt, J. W., Peeters, H. H., and De Graaf, D. T.: A large new mosasaur from the Upper Cretaceous of The Netherlands, *Neth. J. Geosci.*, 81, 1–8, <https://doi.org/10.1017/S0016774600020515>, 2002.
- Dusar, M. and Lagrou, D.: Cretaceous flooding of the Brabant Massif and the lithostratigraphic characteristics of its chalk cover in northern Belgium, *Geol. Belg.*, 10, 27–38, 2007.
- Eagle, R. A., Eiler, J. M., Tripathi, A. K., Ries, J. B., Freitas, P. S., Hiebenthal, C., Wanamaker Jr, A. D., Taviani, M., Elliot, M., and Marensi, S.: The influence of temperature and seawater carbonate saturation state on <sup>13</sup>C–<sup>18</sup>O bond ordering in bivalve mollusks, *Biogeosciences*, 10, 4591–4606, <https://doi.org/10.5194/bg-10-4591-2013>, 2013.

- Eide, M., Olsen, A., Ninnemann, U. S., and Johannessen, T.: A global ocean climatology of preindustrial and modern ocean  $\delta^{13}\text{C}$ , *Global Biogeochem. Cy.*, 31, 515–534, <https://doi.org/10.1002/2016GB005472>, 2017.
- 690 Eiler, J. M.: Paleoclimate reconstruction using carbonate clumped isotope thermometry, *Quaternary Sci. Rev.*, 30, 3575–3588, <https://doi.org/10.1016/j.quascirev.2011.09.001>, 2011.
- Engelke, J., Linnert, C., Mutterlose, J., and Wilmsen, M.: Early Maastrichtian benthos of the chalk at Krons Moor, northern Germany: implications for Late Cretaceous environmental change, *Palaeobio. Palaeoenv.*, 97, 703–722, 695 <https://doi.org/10.1007/s12549-017-0283-2>, 2017.
- Felder, W. M.: Lithostratigrafie van het Boven-Krijt en het Dano-Montien in Zuid-Limburg en het aangrenzende gebied, *Rijks Geologische Dienst (Haarlem)*, 63–72, 1975.
- 700 Felder, W. M., Bosch, P. W.: Geologie van de St. Pietersberg bij Maastricht, *Grondboor & Hamer*, 52, p. 53-63, 1998.
- Fendley, I. M., Mittal, T., Sprain, C. J., Marvin-DiPasquale, M., Tobin, T. S., and Renne, P. R.: Constraints on the volume and rate of Deccan Traps flood basalt eruptions using a combination of high-resolution terrestrial mercury records and geochemical box models, *Earth Planet. Sci. Lett.*, 524, <https://doi.org/10.1016/j.epsl.2019.115721>, 2019. 705
- Font, E., Adatte, T., Sial, A. N., de Lacerda, L. D., Keller, G., and Punekar, J.: Mercury anomaly, Deccan volcanism, and the end-Cretaceous mass extinction, *Geology*, 44, 171–174, <https://doi.org/10.1130/G37451.1>, 2016.
- Gale, A. S. and Christensen, W. K.: Occurrence of the belemnite *Actinocamax plenus* in the, *B. Geol. Soc. Denmark*, 43, 68– 710 77, 1996.
- Gao, Y., Ibarra, D. E., Rugenstein, J. K. C., Chen, J., Kukla, T., Methner, K., Gao, Y., Huang, H., Lin, Z., and Zhang, L.: Terrestrial climate in mid-latitude East Asia from the latest Cretaceous to the earliest Paleogene: A multiproxy record from the Songliao Basin in northeastern China, *Earth-Sci. Rev.*, 216, <https://doi.org/10.1016/j.earscirev.2021.103572>, 2021. 715
- Golovneva, L. B.: The Maastrichtian (Late Cretaceous) climate in the northern hemisphere, *Geol. Soc. London Spec. Publ.*, 181, 43–54, <https://doi.org/10.1144/GSL.SP.2000.181.01.05>, 2000.
- Haq, B. U.: Cretaceous eustasy revisited, *Global Planet. Change*, 113, 44–58, <https://doi.org/10.1016/j.gloplacha.2013.12.007>, 720 2014.

- Hart, M. B., FitzPatrick, M. E., and Smart, C. W.: The Cretaceous/Paleogene boundary: Foraminifera, sea grasses, sea level change and sequence stratigraphy, *Palaeogeogr. Palaeoclimatol.*, 441, 420–429, <https://doi.org/10.1016/j.palaeo.2015.06.046>, 2016.
- 725 Henehan, M. J., Ridgwell, A., Thomas, E., Zhang, S., Alegret, L., Schmidt, D. N., Rae, J. W., Witts, J. D., Landman, N. H., Greene, S. E., and Huber, B. T.: Rapid ocean acidification and protracted Earth system recovery followed the end-Cretaceous Chicxulub impact, *P. Natl. Acad. Sci. USA*, 116, 22500–22504, <https://doi.org/10.1073/pnas.1905989116>, 2019.
- Henkes, G. A., Passey, B. H., Wanamaker Jr, A. D., Grossman, E. L., Ambrose Jr, W. G., and Carroll, M. L.: Carbonate  
730 clumped isotope compositions of modern marine mollusk and brachiopod shells, *Geochim. Cosmochim. Ac.*, 106, 307–325, <https://doi.org/10.1016/j.gca.2012.12.020>, 2013.
- Henkes, G. A., Passey, B. H., Grossman, E. L., Shenton, B. J., Pérez-Huerta, A., and Yancey, T. E.: Temperature limits for  
735 preservation of primary calcite clumped isotope paleotemperatures, *Geochim. Cosmochim. Ac.*, 139, 362–382, <https://doi.org/10.1016/j.gca.2014.04.040>, 2014.
- Herngreen, G.F.W., Schuurman, H.A.H.M., Verbeek, J.W., Brinkhuis, H., Burnett, J.A., Felder, W. M., and Kedves, M.:  
Biostratigraphy of Cretaceous/Tertiary boundary strata in the Curfs quarry, Netherlands Institute of Applied Geoscience TNO,  
61, 1–58, 1998.
- 740 Hoenisch, B.: Paleo-CO<sub>2</sub> data archive (Version 1), Zenodo [data set], <https://doi.org/10.5281/zenodo.5777278>, 2021.
- Hull, P. M., Bornemann, A., Penman, D. E., Henehan, M. J., Norris, R. D., Wilson, P. A., Blum, P., Alegret, L., Batenburg, S.  
745 J., and Bown, P. R.: On impact and volcanism across the Cretaceous-Paleogene boundary, *Science*, 367, 266–272, <https://doi.org/10.1126/science.aay5055>, 2020.
- Huyghe, D., Daëron, M., de Rafelis, M., Blamart, D., Sébilo, M., Paulet, Y. M., and Lartaud, F.: Clumped isotopes in  
modern marine bivalves, *Geochim. Cosmochim. Ac.*, 316, 41-58, <https://doi.org/10.1016/j.gca.2021.09.109>, 2022.
- 750 Jagt, J. W. M. and Jagt-Yazykova, E. A.: Stratigraphy of the type Maastrichtian—a synthesis, *Scripta Geologica Special Issue*,  
8, 5–32, 2012.

- Jagt, J. W., Donovan, S. K., Fraaije, R., Mulder, E. W., Nieuwenhuis, E., Stroucken, J., van Bakel, B., and van Knippenberg, P.: Remarkable preservation of selected latest Cretaceous macrofossils from the Maastrichtian type area (the Netherlands, Belgium), *Fossil Record 4: Bulletin*, 67, 75, 2016.
- 755
- Johansson, L., Zahirovic, S., and Müller, R. D.: The interplay between the eruption and weathering of large igneous provinces and the deep-time carbon cycle, *Geophys. Res. Lett.*, 45, 5380–5389, <https://doi.org/10.1029/2017GL076691>, 2018.
- 760
- Keutgen, N.: A bioclast-based astronomical timescale for the Maastrichtian in the type area (southeast Netherlands, northeast Belgium) and stratigraphic implications: the legacy of PJ Felder, *Neth. J. Geosci.*, 97, 229–260, <https://doi.org/10.1017/njg.2018.15>, 2018.
- Kim, S. T. and O’Neil, J. R.: Equilibrium and nonequilibrium oxygen isotope effects in synthetic carbonates, *Geochim. Cosmochim. Ac.*, 61, 3461–3475, [https://doi.org/10.1016/S0016-7037\(97\)00169-5](https://doi.org/10.1016/S0016-7037(97)00169-5), 1997.
- 765
- Ladant, J. B. and Donnadieu, Y.: Palaeogeographic regulation of glacial events during the Cretaceous supergreenhouse, *Nat. Commun.*, 7, 1–9, <https://doi.org/10.1038/ncomms12771>, 2016.
- 770
- Ladant, J. B., Poulsen, C. J., Fluteau, F., Tabor, C. R., MacLeod, K. G., Martin, E. E., Haynes, S. J., and Rostami, M. A.: Paleogeographic controls on the evolution of Late Cretaceous ocean circulation, *Clim. Past*, 16, 973–1006, <https://doi.org/10.5194/cp-16-973-2020>, 2020.
- Land, L. S.: Diagenesis of skeletal carbonates, *J. Sediment Res.*, 37, 914–930, <https://doi.org/10.1306/74D717D5-2B21-11D7-8648000102C1865D>, 1967.
- 775
- Leloux, J.: Numerical distribution of Santonian to Danian corals (*Scleractinia*, *Octocorallia*) of southern Limburg, the Netherlands, *Geol. Mijnbouw*, 78, 191–195, <https://doi.org/10.1023/A:1003743301625>, 1999.
- 780
- Li, L. and Keller, G.: Abrupt deep-sea warming at the end of the Cretaceous, *Geology*, 26, 995–998, [https://doi.org/10.1130/0091-7613\(1998\)026%3C0995:ADSWAT%3E2.3.CO;2](https://doi.org/10.1130/0091-7613(1998)026%3C0995:ADSWAT%3E2.3.CO;2), 1998.
- Liebau, A.: Paläobathymetrische und paläoklimatische Veränderungen im Mikrofaunenbild der Maastrichter Tuffkreide, *Neues Jahrb. Geol. P. A.*, 157, 233–237, 1978.
- 785

- Luijendijk, E., Van Balen, R. T., Ter Voorde, M., and Andriessen, P. A. M.: Reconstructing the Late Cretaceous inversion of the Roer Valley Graben (southern Netherlands) using a new model that integrates burial and provenance history with fission track thermochronology, *J. Geophys. Res.-Sol. Ea.*, 116, <https://doi.org/10.1029/2010JB008071>, 2011.
- 790 Maastricht Climate: <https://en.climate-data.org/europe/the-netherlands/limburg/maastricht-893/#temperature-graph>, last access: 14 June 2021.
- Mackey, T. J., Jost, A. B., Creveling, J. R., Bergmann, K. D.: A Decrease to Low Carbonate Clumped Isotope temperatures in Cryogenian Strata, *AGU Advances*, 1, e2019AV000159, <https://doi.org/10.1029/2019AV000159>, 2020.
- 795 Meckler, A. N., Ziegler, M., Millán, M. I., Breitenbach, S. F. M., and Bernasconi, S. M.: Long-term performance of the Kiel carbonate device with a new correction scheme for clumped isotope measurements, *Rapid Commun. Mass Sp.*, 28, 1705–1715, <https://doi.org/10.1002/rem.6949>, 2014.
- 800 Meyer, K. W., Petersen, S. V., Lohmann, K. C., and Winkelstern, I. Z.: Climate of the Late Cretaceous North American Gulf and Atlantic Coasts, *Cretaceous Res.*, 89, 160–173, <https://doi.org/10.1016/j.cretres.2018.03.017>, 2018.
- Meyer, K. W., Petersen, S. V., Lohmann, K. C., Blum, J. D., Washburn, S. J., Johnson, M. W., Gleason, J. D., Kurz, A. Y., and Winkelstern, I. Z.: Biogenic carbonate mercury and marine temperature records reveal global influence of Late Cretaceous
- 805 Deccan Traps, *Nat. Commun.*, 10, 1–8, <https://doi.org/10.1038/s41467-019-13366-0>, 2019.
- Miller, K. G., Wright, J. D., and Browning, J. V.: Visions of ice sheets in a greenhouse world, *Mar. Geol.*, 217, 215–231, <https://doi.org/10.1016/j.margeo.2005.02.007>, 2005.
- 810 Molina, E., Alegret, L., Arenillas, I., Arz, J. A., Gallala, N., Hardenbol, J., Salis, K. von, Steurbaut, E., Vandenberghe, N., and Zaghib-Turki, D.: The global boundary stratotype section and point for the base of the Danian stage (Paleocene, Paleogene, "Tertiary", Cenozoic) at El Kef, Tunisia-original definition and revision, *Episodes*, 29, 263–273, 2006.
- Möller, P. and Kubanek, F.: Role of magnesium in nucleation processes of calcite, aragonite and dolomite, *Neues Jb. Miner. Abh.*, 126, 199–220, 1976.
- 815 Nava, A. H., Black, B. A., Gibson, S. A., Bodnar, R. J., Renne, P. R., and Vanderkluyzen, L.: Reconciling early Deccan Traps CO<sub>2</sub> outgassing and pre-KPB global climate, *P. Natl. Acad. Sci. USA*, 118, <https://doi.org/10.1073/pnas.2007797118>, 2021.

- 820 Percival, L. M., Jenkyns, H. C., Mather, T. A., Dickson, A. J., Batenburg, S. J., Ruhl, M., Hesselbo, S. P., Barclay, R., Jarvis, I., and Robinson, S. A.: Does large igneous province volcanism always perturb the mercury cycle? Comparing the records of Oceanic Anoxic Event 2 and the end-Cretaceous to other Mesozoic events, *Am. J. Sci.*, 318, 799–860, <https://doi.org/10.2475/08.2018.01>, 2018.
- 825 Petersen, S. V., Dutton, A., and Lohmann, K. C.: End-Cretaceous extinction in Antarctica linked to both Deccan volcanism and meteorite impact via climate change, *Nat. Commun.*, 7, 1–9, <https://doi.org/10.1038/ncomms12079>, 2016a.
- Petersen, S. V., Tabor, C. R., Lohmann, K. C., Poulsen, C. J., Meyer, K. W., Carpenter, S. J., Erickson, J. M., Matsunaga, K. K., Smith, S. Y., and Sheldon, N. D.: Temperature and salinity of the Late Cretaceous western interior seaway, *Geology*, 44, 903–906, <https://doi.org/10.1130/G38311.1>, 2016b.
- 830 Petersen, S. V., Winkelstern, I. Z., Lohmann, K. C., and Meyer, K. W.: The effects of Porapak™ trap temperature on  $\delta^{18}\text{O}$ ,  $\delta^{13}\text{C}$ , and  $\Delta_{47}$  values in preparing samples for clumped isotope analysis, *Rapid Commun. Mass Sp.*, 30, 199–208, <https://doi.org/10.1002/rcm.7438>, 2016c.
- 835 Petersen, S. V., Defliese, W. F., Saenger, C., Daëron, M., Huntington, K. W., John, C. M., Kelson, J. R., Bernasconi, S. M., Colman, A. S., Kluge, T. et al.: Effects of improved  $^{17}\text{O}$  correction on interlaboratory agreement in clumped isotope calibrations, estimates of mineral-specific offsets, and temperature dependence of acid digestion fractionation, *Geochem., Geophys., Geosy.*, 20, 3495–3519, <https://doi.org/10.1029/2018GC008127>, 2019.
- 840 Pucéat, E., Lécuyer, C., Donnadiou, Y., Naveau, P., Cappetta, H., Ramstein, G., Huber, B. T., and Kriwet, J.: Fish tooth  $\delta^{18}\text{O}$  revising Late Cretaceous meridional upper ocean water temperature gradients, *Geology*, 35, 107–110, <https://doi.org/10.1130/G23103A.1>, 2007.
- 845 Ravizza, G. and Peucker-Ehrenbrink, B.: Chemostratigraphic evidence of Deccan volcanism from the marine osmium isotope record, *Science*, 302, 1392–1395, <https://doi.org/10.1126/science.1089209>, 2003.
- Remin, Z., Gruszczyński, M., and Marshall, J. D.: Changes in paleo-circulation and the distribution of ammonite faunas at the Coniacian–Santonian transition in central Poland and western Ukraine, *Acta Geol. Pol.*, 66, <https://doi.org/10.1515/agp-2016-0006>, 2016.
- 850 Roep, T.B. and Smit, J.: Sedimentological aspects of the K/T boundary at Geulhemmerberg, Zuid Limburg, the Netherlands. *Geol. Mijnbouw*, 75, 119–131, 1996.

- 855 Schaller, M. F., Wright, J. D., Kent, D. V., and Olsen, P. E.: Rapid emplacement of the Central Atlantic Magmatic Province as a net sink for CO<sub>2</sub>, *Earth Planet. Sc. Lett.*, 323, 27–39, <https://doi.org/10.1016/j.epsl.2011.12.028>, 2012.
- Schiøler, P., Brinkhuis, H., Roncaglia, L., and Wilson, G. J.: Dinoflagellate biostratigraphy and sequence stratigraphy of the type Maastrichtian (Upper Cretaceous), ENCI Quarry, The Netherlands, *Mar. Micropaleontol.*, 31, 65–95,  
860 [https://doi.org/10.1016/S0377-8398\(96\)00058-8](https://doi.org/10.1016/S0377-8398(96)00058-8), 1997.
- Schoene, B., Eddy, M. P., Samperton, K. M., Keller, C. B., Keller, G., Adatte, T., and Khadri, S. F.: U-Pb constraints on pulsed eruption of the Deccan Traps across the end-Cretaceous mass extinction, *Science*, 363, 862–866,  
<https://doi.org/10.1126/science.aau2422>, 2019.
- 865
- Schulte, P., Alegret, L., Arenillas, I., Arz, J. A., Barton, P. J., Bown, P. R., Bralower, T. J., Christeson, G. L., Claeys, P., and Cockell, C. S.: The Chicxulub asteroid impact and mass extinction at the Cretaceous-Paleogene boundary, *Science*, 327, 1214–1218, <https://doi.org/10.1126/science.1177265>, 2010.
- 870 Scotese, C. R.: An Atlas of Phanerozoic Paleogeographic Maps: The Seas Come In and the Seas Go Out, *Annu. Rev. Earth Pl. Sc.*, 49, 669–718, <https://doi.org/10.1146/annurev-earth-081320-064052>, 2021.
- Sial, A. N., Chen, J., Lacerda, L. D., Frei, R., Tewari, V. C., Pandit, M. K., Gaucher, C., Ferreira, V. P., Cirilli, S., and Peralta, S.: Mercury enrichment and Hg isotopes in Cretaceous–Paleogene boundary successions: Links to volcanism and  
875 palaeoenvironmental impacts, *Cretaceous Res.*, 66, 60–81, <https://doi.org/10.1016/j.cretres.2016.05.006>, 2016.
- Smit, J. and Brinkhuis, H.: The Geulhemmerberg Cretaceous/Tertiary boundary section (Maastrichtian type area, SE Netherlands); summary of results and a scenario of events. *Geol. Mijnbouw*, 75, 283–293, 1996.
- 880 Smit, J. and Zachariasse, W.J.: Planktic foraminifera in the Cretaceous/Tertiary boundary clays of the Geulhemmerberg (Netherlands). *Geol. Mijnbouw*, 75, 187–191, 1996.
- Sprain, C. J., Renne, P. R., Clemens, W. A., and Wilson, G. P.: Calibration of chron C29r: New high-precision geochronologic and paleomagnetic constraints from the Hell Creek region, Montana, *Geol. Soc. Am. Bull.*, 130, 1615–1644,  
885 <https://doi.org/10.1130/B31890.1>, 2018.

- Sprain, C. J., Renne, P. R., Vanderkluyzen, L., Pande, K., Self, S., and Mittal, T.: The eruptive tempo of Deccan volcanism in relation to the Cretaceous-Paleogene boundary, *Science*, 363, 866–870, <https://doi.org/10.1126/science.aav1446>, 2019.
- 890 Stott, L. D. and Kennett, J. P.: The paleoceanographic and paleoclimatic signature of the Cretaceous/Paleogene boundary in the Antarctic: stable isotopic results from ODP Leg 113, in: *Proceedings of the Ocean Drilling Program, Scientific Results*, 113, 829–848, 1990.
- Tabor, C. R., Poulsen, C. J., Lunt, D. J., Rosenbloom, N. A., Otto-Bliesner, B. L., Markwick, P. J., Brady, E. C., Farnsworth, 895 A., and Feng, R.: The cause of Late Cretaceous cooling: A multimodel-proxy comparison, *Geology*, 44, 963–966, <https://doi.org/10.1130/G38363.1>, 2016.
- Tagliavento, M., John, C. M., and Stemmerik, L.: Tropical temperature in the Maastrichtian Danish Basin: Data from coccolith  $\Delta_{47}$  and  $\delta^{18}\text{O}$ , *Geology*, 47, 1074–1078, <https://doi.org/10.1130/G46671.1>, 2019.
- 900 Tobin, T. S., Ward, P. D., Steig, E. J., Olivero, E. B., Hilburn, I. A., Mitchell, R. N., Diamond, M. R., Raub, T. D., and Kirschvink, J. L.: Extinction patterns,  $\delta^{18}\text{O}$  trends, and magnetostratigraphy from a southern high-latitude Cretaceous–Paleogene section: Links with Deccan volcanism, *Palaeogeogr. Palaeocl.*, 350, 180–188, <https://doi.org/10.1016/j.palaeo.2012.06.029>, 2012.
- 905 Tobin, T. S., Wilson, G. P., Eiler, J. M., and Hartman, J. H.: Environmental change across a terrestrial Cretaceous-Paleogene boundary section in eastern Montana, USA, constrained by carbonate clumped isotope paleothermometry, *Geology*, 42, 351–354, <https://doi.org/10.1130/G35262.1>, 2014.
- 910 Tobin, T. S., Bitz, C. M., and Archer, D.: Modeling climatic effects of carbon dioxide emissions from Deccan Traps volcanic eruptions around the Cretaceous–Paleogene boundary, *Palaeogeogr. Palaeocl.*, 478, 139–148, <https://doi.org/10.1016/j.palaeo.2016.05.028>, 2017.
- Ullmann, C. V., Campbell, H. J., Frei, R., Hesselbo, S. P., Pogge von Strandmann, P. A. E., and Korte, C.: Partial diagenetic 915 overprint of Late Jurassic belemnites from New Zealand: Implications for the preservation potential of  $\delta^7\text{Li}$  values in calcite fossils, *Geochim. Cosmochim. Ac.*, 120, 80–96, <https://doi.org/10.1016/j.gca.2013.06.029>, 2013.
- Vandenbergh, N., Craen, M. D., and Beerten, K.: Geological framework of the Campine Basin, *SCK•CEN*, 112, 2014.



- 920 van der Ham, R. W. J. M., van Konijnenburg-van Cittert, J. H. A., Jagt, J. W. M., Indeherberge, L., Meuris, R., Deckers, M. J. M., Renkens, S., and Laffineur, J.: Seagrass stems with attached roots from the type area of the Maastrichtian Stage (NE Belgium, SE Netherlands): Morphology, anatomy, and ecological aspects, *Rev. Palaeobot. and Palyno.*, 241, 49–69, <https://doi.org/10.1016/j.revpalbo.2017.02.001>, 2017.
- 925 van Hinsbergen, D. J., de Groot, L. V., van Schaik, S. J., Spakman, W., Bijl, P. K., Sluijs, A., Langereis, C. G., and Brinkhuis, H.: A paleolatitude calculator for paleoclimate studies. *PLoS ONE*, 10, 2015.
- Vellekoop, J., Sluijs, A., Smit, J., Schouten, S., Weijers, J. W. H., Sinninghe Damste, J. S., and Brinkhuis, H.: Rapid short-term cooling following the Chicxulub impact at the Cretaceous–Paleogene boundary, *Proceedings of the National Academy of Sciences, P. Natl. Acad. Sci. USA*, 111, 7537–7541, <https://doi.org/10.1073/pnas.1319253111>, 2014.
- 930 Vellekoop, J., Esmeray-Senlet, S., Miller, K. G., Browning, J. V., Sluijs, A., Schootbrugge, B. van de, Damsté, J. S. S., and Brinkhuis, H.: Evidence for Cretaceous–Paleogene boundary bolide “impact winter” conditions from New Jersey, USA, *Geology*, 44, 619–622, <https://doi.org/10.1130/G37961.1>, 2016.
- 935 Vellekoop, J., Sluijs, A., Speijer, R.P.: An acme of the dinoflagellate cyst *Palynodinium grallator*, Gocht, 1970; a marker for the late Maastrichtian warming event at Northern mid-latitudes?, *Geol. Belg.* [accepted manuscript], 2018.
- Vellekoop, J., Woelders, L., Sluijs, A., Miller, K. G., and Speijer, R. P.: Phytoplankton community disruption caused by latest  
940 Cretaceous global warming, *Biogeosciences*, 16, 4201–4210, <https://doi.org/10.5194/bg-16-4201-2019>, 2019.
- Vellekoop, J., van Tilborgh, K. H. V., Knippenberg, P. V., Jagt, J. W. M., Stassen, P., Goolaerts, S., and Speijer, R. P.: Type-Maastrichtian gastropod faunas show rapid ecosystem recovery following the Cretaceous–Palaeogene boundary catastrophe, *Palaeontology*, 63, 349–367, <https://doi.org/10.1111/pala.12462>, 2020.
- 945 Vellekoop, J., Kaskes, P., Sinnesael, M., Dehais, T., Huygh, J., Jagt, J., Speijer, R. P., Claey, P.: A new age model and chemostratigraphic framework for the Maastrichtian type area (southeastern Netherlands, northeastern Belgium), *Newsletters on Stratigraphy* [accepted manuscript], 2022.
- 950 Voigt, S., Wilmsen, M., Mortimore, R. N., Voigt, T.: Cenomanian palaeotemperatures derived from the oxygen isotopic composition of brachiopods and belemnites: evaluation of Cretaceous palaeotemperature proxies. *Int. J. Earth Sci.*, 92, 285–299, <https://doi.org/10.1007/s00531-003-0315-1>, 2003.

- Vonhof, H.B. and Smit, J.: Strontium-isotope stratigraphy of the type Maastrichtian and the Cretaceous/Tertiary boundary in the Maastricht area (SE Netherlands). *Geol. Mijnbouw*, 75, 275–282, 1996.
- 955
- Watkins, D. K. and Self-Trail, J. M.: Calcareous nannofossil evidence for the existence of the Gulf Stream during the late Maastrichtian, *Paleoceanography*, 20, <https://doi.org/10.1029/2004PA001121>, 2005.
- 960
- Wilf, P., Johnson, K. R., and Huber, B. T.: Correlated terrestrial and marine evidence for global climate changes before mass extinction at the Cretaceous-Paleogene boundary, *P. Natl. Acad. Sci. USA*, 100, 599–604, <https://doi.org/10.1073/pnas.0234701100>, 2003.
- 965
- Winkelstern, I. Z. and Lohmann, K. C.: Shallow burial alteration of dolomite and limestone clumped isotope geochemistry, *Geology*, 44, 467–470, <https://doi.org/10.1130/G37809.1>, 2016.
- Woelders, L., Vellekoop, J., Kroon, D., Smit, J., Casadío, S., Prámparo, M. B., Dinarès-Turell, J., Peterse, F., Sluijs, A., Lenaerts, J. T. M., and Speijer, R. P.: Latest Cretaceous climatic and environmental change in the South Atlantic region, *Paleoceanography*, 32, 466–483, <https://doi.org/10.1002/2016PA003007>, 2017.
- 970
- Woelders, L., Vellekoop, J., Weltje, G. J., de Nooijer, L., Reichart, G.-J., Peterse, F., Claeys, P., and Speijer, R. P.: Robust multi-proxy data integration, using late Cretaceous paleotemperature records as a case study, *Earth Planet. Sci. Lett.*, 500, 215–224, <https://doi.org/10.1016/j.epsl.2018.08.010>, 2018.
- 975
- Zhang, L., Wang, C., Wignall, P. B., Kluge, T., Wan, X., Wang, Q., and Gao, Y.: Deccan volcanism caused coupled pCO<sub>2</sub> and terrestrial temperature rises, and pre-impact extinctions in northern China, *Geology*, 46, 271–274, <https://doi.org/10.1130/G39992.1>, 2018.
- 980
- Zhang, J. Z., Petersen, S. V., Winkelstern, I. Z., Lohmann, K. C.: Seasonally variable aquifer discharge and cooler climate in Bermuda during the Last Interglacial revealed by subannual clumped isotope analysis, *Paleoceanogr. Paleoclimatol.* [accepted manuscript], <https://doi.org/10.1029/2020PA004145>, 2021.
- 985
- Zhao, M., Ma, M., He, M., Qiu, Y., Liu, X.: Evaluation of the four potential Cretaceous-Paleogene (K-Pg) boundaries in the Nanxiong Basin based on evidences from volcanic activity and paleoclimatic evolution, *Sci. China Earth Sci.*, 64, 631–641, <https://doi.org/10.1007/s11430-020-9736-0>, 2021.

Zijlstra, J. J. P.: The sedimentology of upper Maastrichtian shelf carbonates in quarry ENCI (Maastricht, The Netherlands).  
9th IAS Regional Meeting, Belgium, Excursion Guide 29 [unpublished], 1988.