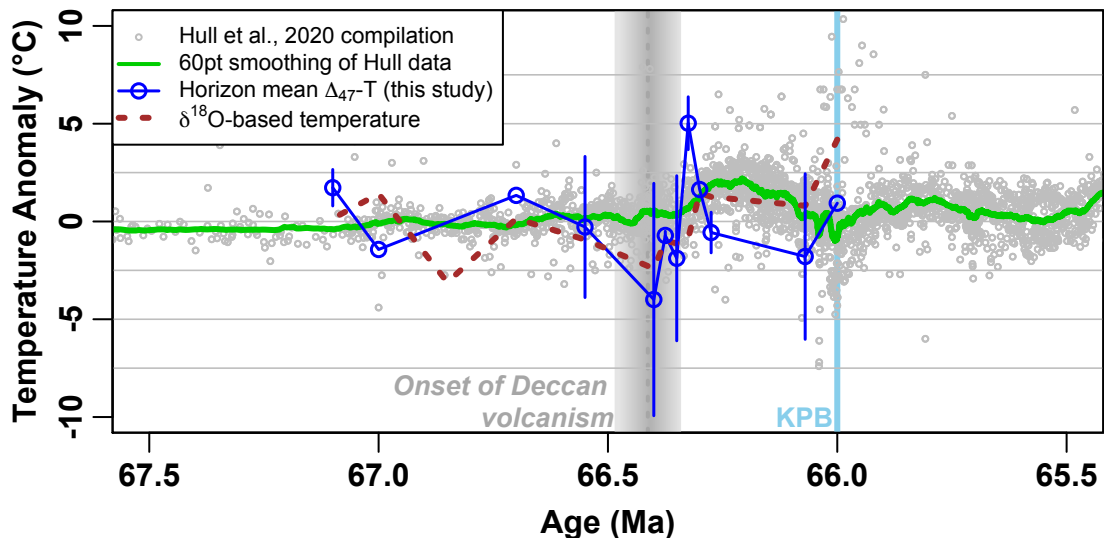


Figure showing SEM preservation (and associated trace element concentrations) of 9 samples from the study. Any sample determined to fail either trace element or SEM screening would not be included in further interpretations.



A figure comparing our temperature time series determined by D47 measurements (blue) to the composite time series of Hull et al. (2020) (grey points and green solid line). Also shown is the time series that would have been interpreted from our d18Ocarb alone, assuming a constant d18Oseawater, as is done in many records included in Hull et al. In this case, the peak temperatures implied by d18Ocarb occur later than the peak temperatures implied by the D47 results.