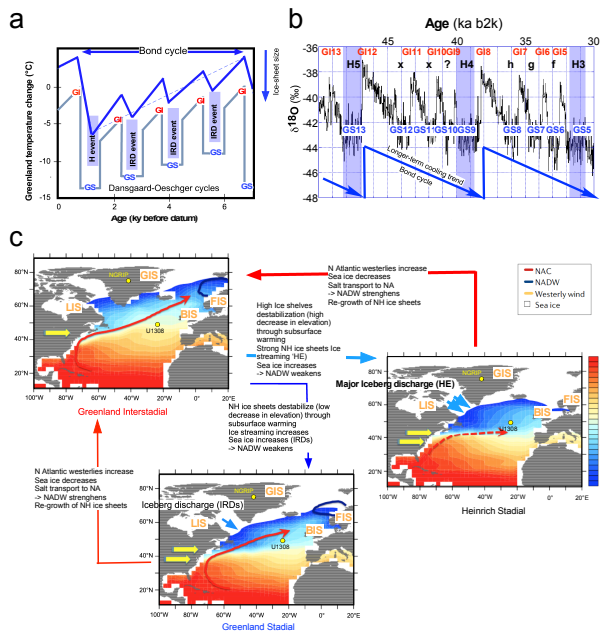


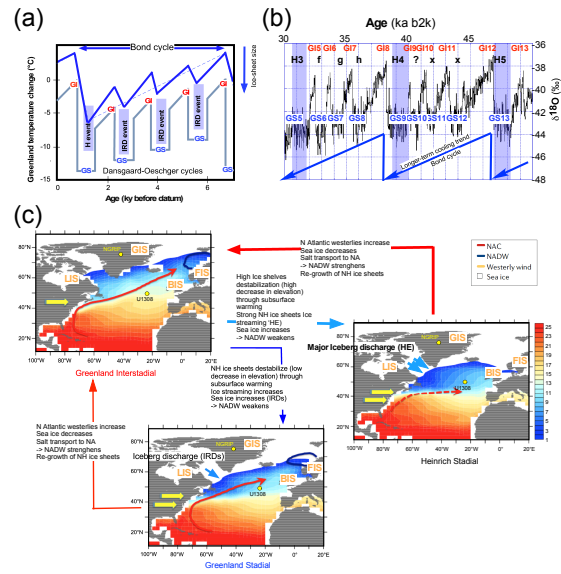
Dear Marie-France,

When reading the proofs of our paper, cp-2021-103, I noticed that the time evolution in panel (b) of figure 7 was not oriented the same way than in figures 1 to 6. On panel b of figure 7 times decreases from left to right while on the other figures, time decreases from right to left. This is the reason why I have provided Copernicus with a new version of that figure, with just panel "b" being horizontally flipped to make all figures homogeneous (see below).

Present version:



New proposed version



As Copernicus process requires the approval of the handling editor, I wish you will agree with this minor correction

All the very best

Denis-Didier Rousseau
On behalf of W. Bagniewski and M. Ghil