

Dear Editor,

Thank you for your consideration and useful comments. In reply to your comments, we have added (an estimate of) the amplitudes of the pCO₂ records to the main text. A comparison of our Ti/Al record with the wet-dry index from Grant et al (2017) show that events align rather well. A main difference is the large (400-kyr eccentricity) as we already mentioned in the text. Concerning the colours, we have changed the colour of the 23-kyr power to green, both in the new Figure 4 and 9.

Attached are our replies to the reviews and a marked-up version of the manuscript that highlights the changes.

Kind regards, on behalf of my co-authors,

Bas de Boer

Reply to the anonymous reviewer 1

We would like to thank the reviewer for his/her comments. The remarks have definitely improved the manuscript. Below you will find a point-by-point reply, with the review given in **black** and our reply given in **blue**. We hope that we have answered all questions sufficiently. The line numbers we included in our answers refer to the marked changes document.

Major comments

My major concern about this paper is that it is at least partially based on a comparison between apples and pears. Runoff from the CLIMBER-2 model is compared to sediment records representing a combination of runoff and dust deposition (Ti/Al record of site ODP 967) and dust deposition (ODP 659). Since dust emissions are a strongly non-linear function of ground cover, wind and soil moisture, comparing runoff with dust deposition is hardly justified. They are of course related, during dry periods you expect less runoff and more dust, but their relation is probably far from linear. A direct comparison of runoff with the Ti/Al record is partly justified, because the Ti/Al record is expected to be also a proxy for runoff. This could also be the reason for the higher correlation of CLIMBER-2 runoff with the Ti/Al record compared to the correlation with the dust record at ODP 659. In principle the CLIMBER-2 model output probably includes all variables needed to diagnose the dust emission flux using e.g. the simple model described in Bauer & Ganopolski, 2010. This would allow a more straightforward comparison between model and the sedimentary records presented in the paper.

Non-linearity can clearly be seen when comparing peaks of Dust and Runoff. We thank the reviewer for putting this forward and have added this to the discussion of the results. We will discuss the non-linearity nature of the coupling in more detail, including referring to the Bauer & Ganopolski 2010 paper (thank you for the reference). We do not have the possibility to run the dust model ourselves, because not all CLIMBER-2 output is available to us at this stage. Added changes are:

at lines 232-238: "Although correlation is high for some time intervals, there is a non-linear behaviour between runoff, which results from precipitation and evaporation, and dust peaks from Site 967 and the Ti/Al record from Site 659. High runoff peaks do not always correspond to high dust or Ti/Al signatures in the records. We have illustrated this by comparing the high and low peaks of Ti/Al and the dust records with the corresponding peaks of the runoff records (Figure 8c,d). For both the high (orange) and low (blue) peaks of Ti/Al (Figure 8c) a clear trend is visible. On the contrary, for the dust record (Figure 8d), the high peaks (red) show a more linear trend compared to the low peaks (blue). Nonetheless, correlation coefficients are moderate too low for all comparisons."

And lines 287-289: "The lower correlation with the dust could be expected since dust emissions are a strongly non-linear function of ground cover, wind and soil moisture (e.g. Bauer and Ganopolski, 2010)."

Because of its important effect on both the water cycle and dust emissions, I'm missing a description of what happens to the vegetation over the Sahara and Sahel in the model over the simulation period and how that could have affected runoff and dust and therefore the comparison with the sediment records.

Yes, we understand. This was included in a first version of the manuscript, but the most outstanding result was the link between runoff and the sediment records. We of course agree that it is important to mention. We have included a new figure (now figure 3), which shows the vegetation fraction, either grass, trees or desert, over the two grid boxes. A short discussion is included in Section 3 (line 137 - 141) and the vegetation fractions are now included in the discussion of the results (line 290 - 293):

"The vegetation shows a high correlation for trees and desert with Ti/AL for the Sahel region (-0.734 and 0.781, respectively), and grass and desert for the Sahara region (-0.783 and 0.783). On the contrary, the correlations between vegetation coverage over the two regions is generally poor compared to the dust of Site 659, illustrating the strong non-linear relationship between vegetation and dust outside of the African continent."

A discussion of uncertainties in the forcings is missing. There are for example large uncertainties in the atmospheric CO₂ concentration. Proxy reconstructions show a large uncertainty, particularly in the amplitude of 'glacial-interglacial' CO₂ variability. The paper by Stap et al. 2016, just to name a model-based reconstruction where two of the authors of this paper are co-authors, shows a very different CO₂ trajectory across the Pliocene-Pleistocene transition than that used in the simulations presented in this paper. I'm not saying that CLIMBER-2 should be re-run with all these alternative forcings, but a critical discussion of the possible impact that the choice of a particular forcing could have on the results presented in the paper is needed.

Yes, we agree. There are a couple of CO₂ reconstructions in the current literature that show a different behaviour. The same hold for proxy reconstructions, albeit these are not continuous records. The simulations with the Climber-2 run have been run prior to the work by Stap et al. (as the reviewer pointed out we were involved in both studies) and both come from different methodologies. We have added an additional paragraph in the discussion on this, also referring to a recent paper (still in discussion) which nicely shows a comparison of different CO₂ reconstructions (Figure 6 in Berends et al., CPD, 2020; doi: 10.5194/cp-2020-52). Added text (line 275 - 282):

" The climatic variability in the model is largely determined by changes in the forcing records; NH and Antarctic ice sheets, atmospheric greenhouse gas forcing of CO₂, and orbital variations (Laskar et al., 2004). Both timing and magnitude of the forcing will have an impact on the changes shown by the model. The ice-sheet forcing imposed here is based on a 3-D ice-sheet model constraint by the LR04 benthic d¹⁸O stack by Lisiecki and Raymo (2005), which also determined the age scale of the CO₂ reconstructions. Ice-sheet changes can be different, but are constraint by the locations. On the other hand, CO₂ is much less constraint since proxy data over this time period are sparse, and model-based reconstructions can be quite different (see for example Figure 6 in Berends et al., 2020). Particularly, the reconstruction from Stap et al. (2016) shows a much larger amplitude in CO₂, whereas that from Willeit et al. (2019) employs a smaller amplitude over our time period."

Minor comments

lines 27-29: What is meant by 'completely'? There are plenty of other studies that could be cited here, showing that, at least if CO₂ is low enough, orbital variations are enough to get pronounced glacial cycles: e.g. Abe-Ouchi et al., 2013 and Ganopolski & Calov 2011.

We meant that it can induce ice sheet growth, but not large ice sheet as seen during glacial maxima. This is the same as for example Ganopolski & Calov (2011) showed, for which large ice sheets do occur but only with low enough CO₂ concentrations. We have revised the wording to (lines 28-30):

"Although radiative forcing of orbital variations is too small to force the world into or out of a glacial state with significant ice sheets, they are key to initiate ice-sheet growth and to pace glaciations (e.g. Bintanja and Van de Wal, 2008; Ganopolski and Calov, 2011)."

line 88: what does 'quality' mean here?

This mean how healthy the layer is, i.e. water content and thus prone to grow vegetation on it. We revised the sentence to (line 96-97):

"On the contrary, runoff and precipitation also depends on the water content and amount of vegetation that grows on the upper soil layer. "

lines 104-106: sentence is unclear

The sentence is revised to (line 116-117):

"When forcing records are kept constant we use the present-day ice sheet and a pre-industrial level of 280 ppm for CO₂."

lines 126-127: how has the tuning been done? Moreover, that the LR04 stack has almost no precession for the early Pleistocene.

As mentioned in Wang et al., 2010 (where the same data is used), the data for the last 2.6 Myr follow the same age scale, which is actually included in the LR04 stack (for benthic d18O). Between 5.2 and 2.6 Myr ago the data is retuned to minima in the Laskar et al. (2004) 65N insolation curve. This has been added to the text (line 138 - 140).

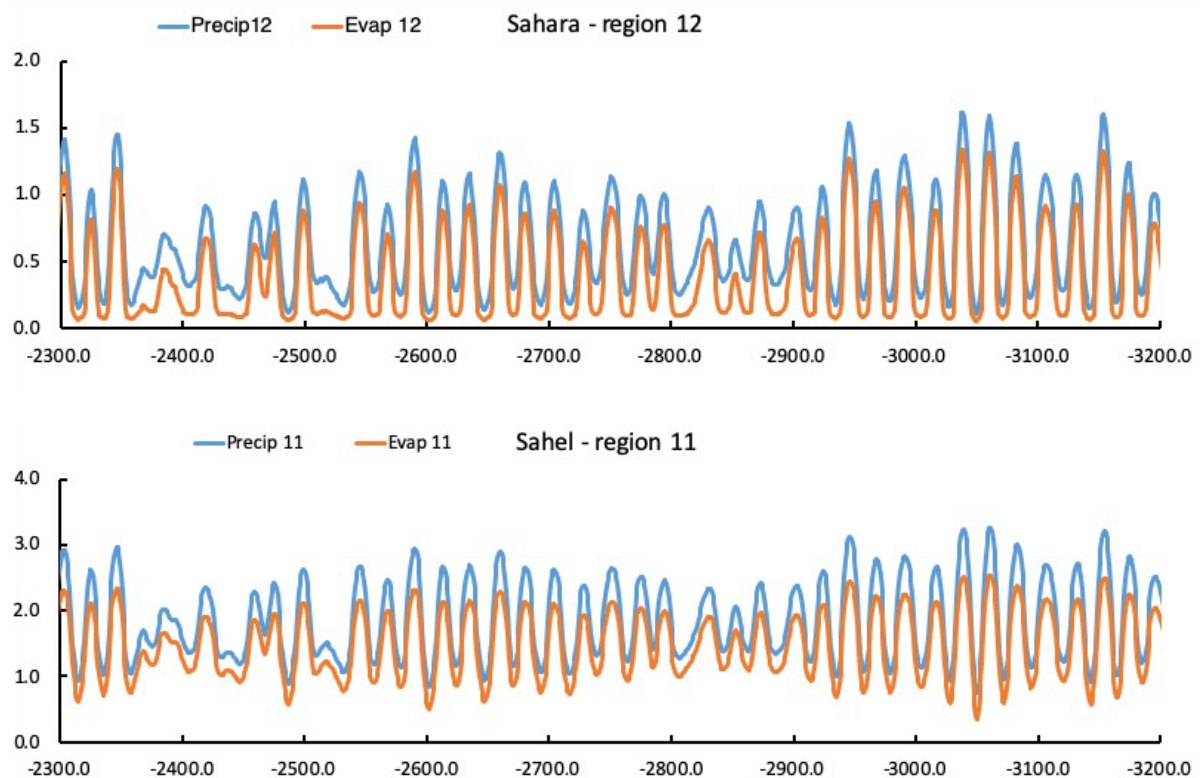
lines 136-139: Would be interesting to see the time series for precipitation, evaporation and runoff for the two grid cells. Also, what is happening to vegetation in these grid cells? Could it be that the increase in evaporation is related to an expansion of vegetation in the Sahara grid cell? If vegetation is growing over the Sahara I guess that more water should be available to evaporate because roots have access to deeper soil layers...?

We have added an additional figure (now Figure 3) that shows the vegetation fractions over time from 3.2 to 2.3 Myr ago. Figures of precipitation and evaporation are shown below.

We have revised the text (line 155 - 162) as follows:

"For the Sahel region the runoff is strengthening following the African summer monsoon, driven by an increase in NH insolation. The increase in precipitation causes an increase in

trees, which replaces desert and grass (Figure 3b). This enhances evaporation, which is stronger than for grassland, causing the peaks in runoff. In contrast, the runoff values of grid box 12 (Sahara Desert) do not increase by the strengthened monsoon, but show peaks of low runoff during precession maxima. Although precipitation is enhanced during the summer monsoon when the air from the Atlantic Ocean reaches land, higher temperatures provide more room for water to evaporate, in combination with an increase of grass cover (Figure 3a) In the case of grid box 12, this additional precipitation is therefore compensated by an increase in evaporation. Also, during precession maxima precipitation is reduced and vegetation disappears, which leads to a strong decrease of evaporation and minima in the runoff."



lines 142-143: is this possibly related to changes in Atlantic meridional heat transport and subsequent changes in the position of the ITCZ when NH ice sheets start to grow and decay?

There is a link there, because increased precipitation is related to a northward shift of the ITCZ, but this holds for precession as well. With the data we have from the model we cannot fully investigate the link with heat transport and obliquity. The figure below shows the obliquity frequency (filtered at 0.0245 ± 0.003) of the four climatic forcing runs: orbit only (O: orange), orbit + CO₂ (OG: green), orbit + ice sheets (OI: blue) and orbit + CO₂ + ice sheets (OIG: red). The obliquity strength (i.e. amplitude) is mostly equal prior to 3.0 Myr ago for all 4 runs, when ice-sheet are included (OI: blue and OIG: red), there is a clear strengthening of the obliquity frequency in the Runoff. We have added a note on this in the paragraph that follows (line 176 - 177):

" Also, the power of the obliquity frequency of runoff is increased in the OI and OIG relative to the O and OG simulations."

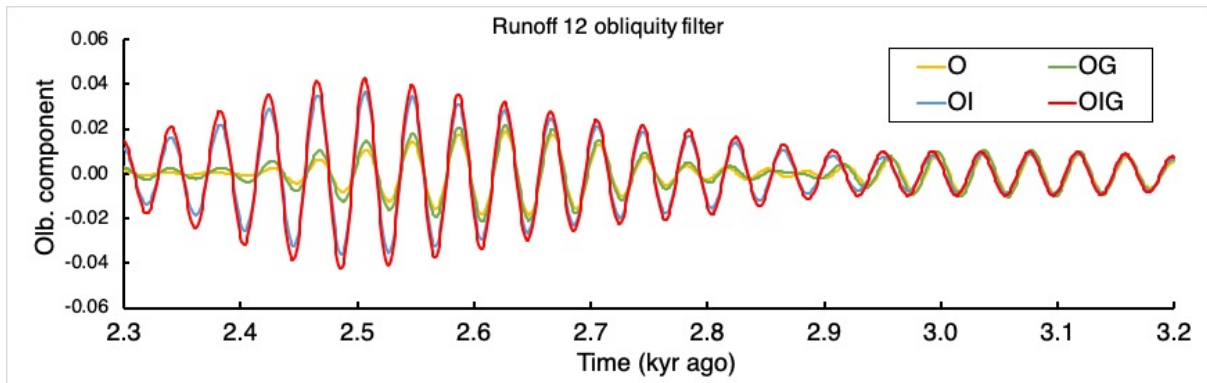


Fig. 3: Please mention in the caption that the y-axis for precession is reversed in 3a. It took me a while to figure out that maxima were actually minima.

This is now Figure 4, this has been added, the same for other figures where it was missing.

lines 149-152: I have read this sentence 10 times, but still do not understand what it means.

We understand, the sentence is changed to (line 172 - 176):

"This shift can be attributed to the imposed lag in the tuning of the LR04 benthic $d_{18}O$ data when calibrating the depth-age scale. The time lag between obliquity (41-kyr) and its related frequency component in the LR04 stack is gradually increased from 3 kyr prior to 3 Myr ago towards 5-6 kyr up to 1.2 Myr ago. This follows from an anticipated slower response time of the growth of larger Pleistocene ice sheets (Lisiecki and Raymo, 2005)."

line 155: 're-tuned age model of Sites 659'. It is not a spectrum of the age model, but of the dust record, right?

Yes correct, sentence is changed to (line 180):

".. and the dust record on the re-tuned age model of Site 659."

line 254: 'we correlation combined': rewrite

Changed to:

"Following, we correlated the combined runoff output of grid box 11 and 12 with the Ti/Al record."

line 257: 'which representing' -> representing

Agreed, removed 'which'

line 259: 'that indicating' -> indicating

Agreed, removed 'that'

Fig. 9d: and how are lags and leads represented? Please add a legend with arrow directions to clarify. Color scale is missing in d.

Yes, the colour scale is missing, but not needed for the interpretation, with orange-yellow within black lines as significant and strong power. Arrow direction is also explained in the caption. We have changed the caption accordingly.

References

Stap, L. B., de Boer, B., Ziegler, M., Bintanja, R., Lourens, L. J. and van de Wal, R. S. W.: CO₂ over the past 5 million years: Continuous simulation and new d¹¹B-based proxy data, *Earth Planet. Sci. Lett.*, 439(April), 1–10, doi:10.1016/j.epsl.2016.01.022, 2016.

Bauer, E. and Ganopolski, A.: Aeolian dust modeling over the past four glacial cycles with CLIMBER-2, *Glob. Planet. Change*, 74(2), 49–60, doi:10.1016/j.gloplacha.2010.07.009, 2010.

Abe-Ouchi, A., Saito, F., Kawamura, K., Raymo, M. E., Okuno, J., Takahashi, K. and Blatter, H.: Insolation driven 100,000-year glacial cycles and hysteresis of ice-sheet volume., *Nature*, 500(7461), 190–3, doi:10.1038/nature12374, 2013.

Ganopolski, A. and Calov, R.: The role of orbital forcing, carbon dioxide and regolith in 100 kyr glacial cycles, *Clim. Past*, 7(4), 1415–1425, doi:10.5194/cp-7-1415-2011, 2011.

Reply to the anonymous reviewer 2

We would like to thank the reviewer for his/her comments. The remarks have definitely improved the manuscript. Below you will find a point-by-point reply, with the review given in **black** and our reply given in **blue**. We hope that we have answered all questions sufficiently. The line numbers we included in our answers refer to the marked changes document.

General Comments

The paper by de Boer and coauthors compares transient records of runoff from the Sahara and the Sahel that is produced by an intermediate complexity model with the dust record from 659 and the Ti/Al XRF record from 967 across the intensification of Northern Hemisphere glaciation. They find there these is strong precession-scale variability in all of the records, and that obliquity, thought to be driven by the high latitude ice sheets, has more of an impact on the Sahara following the intensification of NH glaciation. Authors also use a clever technique of correlating the empirical records with a range of combinations of grid cells to find the most likely combination of regional impact on the sediment and look at how this combination changes through time. The methodological steps are laid out in a fairly clear way with useful figures, but often the details of the model and time series bog down the interpretation. There is little conclusion on what the lags, relationship between runoff and dust, and the change in regional input to the Mediterranean really means in terms of climate dynamics, and also what it means for humans evolving in East Africa. Please find my specific comments with more detail, as well as some technical comments on the text and figures, below.

We thank the reviewer for his comments, please find below our reply to the specific comments.

Specific Comments

There needs to be more background in the first paragraph of the introduction. There are newer studies that have good enough age constraints to examine the phase relationships between orbital properties and the MPT and other transitions. I think authors also need to make it clear that the 100 kyr cycle after the MPT is likely an average of 120 and 80, as many have recently shown. Further, the MPT is not studied in this research, so perhaps removing that from the introduction would leave more room to provide better detail on other arguments.

Yes, we agree with the MPT characteristics. We will adjust the introduction accordingly, and mention the onset of NH glaciation instead at this stage of the introduction. This is also a key point of our paper, and will be more elaborately discussed in the introduction.

There also need to be far more citations for a sentence like line 39-41, where the authors link orbitally induced variability in the tropics. This has been seen in Africa in many different records by Tierney, Lupien (both Pliocene and Pleistocene), Rose, etc. In the conclusions (line 239-241) there is a vague sentence on this as well – orbital induced variations of what? If authors are talking about precession in climate records from Africa, there need to be many more citations.

Yes, we have extended this part of the introduction by showing that the changes are far broader. The new part is (lines 41-46):

"The orbital-induced variability is not limited to the high latitudes, it is also seen over the entire African continent. North African monsoonal records are linked with runoff and precipitation (e.g. Lourens et al., 2010), which persisted throughout the Pleistocene (Wagner et al., 2019). Changes are seen during the late Pliocene and mid-Pleistocene in vegetation in northeast Africa (Rose et al., 2016), during the Pleistocene in Kenya (Lupien et al., 2018), the West African monsoon (Kuechler et al., 2018) and hydroclimate variability in southeastern Africa over the past 2 million years (Caley et al., 2018)."

In the conclusions the sentence is revised to (lines 276-277):

"Previous studies have shown the strong presence of orbital induced variations of the African monsoon, that could .."

Similarly, the third paragraph of the intro on hominin evolution is very light in citations and seems to pick specific details from Joordens 2019 rather than focusing on the evidence and mechanisms for hominin transitions at the onset of NH glaciation or the variability selection hypothesis (Potts).

Yes, this bit is indeed weighting on the paper of Joordens et al, since she was involved in the earlier part of this project, as an expert on this specific topic. Therefore, also the reasoning for this paragraph. We have tried to extend it a bit more with adding more references, although the mentioned is rather general, since not our expertise (lines 49-57) :

"Specific climate transitions, among which the Plio-Pleistocene transition, coincide with the possible emergence or extinction of hominin species (Donges et al., 2011). ...

Condition of highly variable climate and strong seasonality during eccentricity maxima would result in isolated refugium for early hominins, that would be conclusive for evolution (Trauth et al., 2007). ...

However, the evolution of the hominin species throughout the Pleistocene is a highly complex process (Mounier and Mirazón Lahr, 2019)."

'Continental runoff (i.e. p-e)' is a bit misleading. This p-e balance is not equivalent to runoff as water can be stored in soil, lakes, and groundwater, which is fully stated in the description of the model. This is brought up again in line 129 and onward and needs to be explained more clearly and thoroughly before the interpretations are stated.

Yes, we understand that this relationship is not as straightforward as we imply here. We will explain this in better detail in the introduction, changes are made in lines 58-59:

" In this paper we focus on the connection between the African monsoon, using continental runoff (linked to precipitation, evaporation, and water storage in the soil, lakes and groundwater)."

And lines 142-144:

" Runoff over the Northern African continent as modelled in CLIMBER-2 largely results from the difference between precipitation and evaporation over land, although water can also be stored in the soil, lakes and groundwater."

Figure 1 has the model grid cells, but they are not plotted over a map based on the 6 potential surfaces. This would be helpful.

Yes, we understand that could be helpful, but we would like to focus the map on Africa, since potential surfaces also include ice sheets and sea ice, which can only be viewed on a global map.

Why not use the principal component analysis, based on Ti/Al, from Grant 2017 for the 967 comparison? This is brought up later, and perhaps is a better estimate of different line types for the different frequencies, and in c, use blue.

The main reason behind this is that we are presenting an extension of the Ti/Al record of Site 967. The Grant (2017) wet-dry index also does not extend before 3.0 Myr ago. Secondly, the wet-dry index is a product of XRF scanning and a PC analysis, so less straightforward as the terrigenous Ti/Al data.

Line 131: the location of the Sahel today is shown in Figure 1, but the location, spread, vegetation may well have been very different in the past, particularly in the Pliocene. How does this affect the grid cell coverage?

Following from a comment of Reviewer 1, we have added a figure that shows the distribution of the vegetation fractions over time from 3.2 to 2.3 Myr ago. This figure clearly shows that gridbox 11 shows a vegetation distribution consistent with the Sahel. When introducing the figure we will mention this, referring to Figure 1 (lines 149-151):

" Both gridboxes show high variability of the vegetation fraction, but do show a clear linkage to the present-day coverage of partially desert and vegetation for gridbox 11 and desert for gridbox 12 (Figure 1)."

The discussion surrounding the lags seems a bit tangential and perhaps unnecessary. If the lag is due to a choice in the LR04 tuning, then does this analysis tell us anything new?

Yes, a large part of the records being in phase is due to the tuning (relative to LR04). We do think it is important to inform the reviewer that when including the ice-sheet forcing an additional lag is introduced in the system. This lag is than even seen in low latitude records, we do think that that is worth mentioning.

Line 207: the power spectra should not be influenced by lack of data. Either resample the data appropriately, or put the constraints up front in the methods section. Can authors resolve precession throughout the records? If not, then conclusions based on evolutive spectra shouldn't be made, or should be modified.

Yes, we agree. this sentence has been changed to (lines 241-245):

"For the dust record of Site 659, besides the eccentricity minima a dip in the 23-kyr power around ~2.6 Myr ago is seen (Figure 7b,d), for which we would expect 23-kyr power to stay high following the 400-kyr eccentricity maximum (Figure 2a). This also underlines the non-linear link between dust and runoff as illustrated in Figure 8."

What are the conclusions of the mechanisms linking the ice sheet inception to the change in runoff region source? The conclusions section appears to be more of a summary. Try to utilize this space for connections back to the topics brought up in the introduction – what about human evolution? Would this shift, and other aspects of the findings, impact humans, and how?

Following a comment of reviewer 1 we have added a full paragraph in the Discussion on the forcing records, naturally influencing the outcome of the CLIMBER-2 model simulations. We have added additional sentences on the link to the shift after NH ice sheets increase in size, and the link to human evolution (lines 291-292):

"Although the evolution and dispersal of hominin species during this time could be linked to orbital variations (Joordens et al., 2019), a direct link with the climatic variations shown by CLIMBER-2 cannot directly be established."

Technical Corrections

"Myr age" can be replaced by "Ma" in every circumstance
We would rather stick to our common usage of Myr ago.

Line 42: replace 'deterioration'
Replaced with 'variability'

Line 42: 'central' Africa? Do authors mean East Africa?
Yes, corrected

Figure 3: the colors need to match better for clarity. Perhaps in b, use orange with different line types for the different frequencies, and in c, use blue.

We would like to stick to the colours as is, since we use the same colours in Figure 7 (which in the new version is the new figure 9).

If Table 1 could be shown in a figure, I think the point of lags would be much easier to comprehend by the reader. Perhaps use phase wheels.

Since it is only a minor part of the discussion, we would keep Table 1 as is.

Figure 6: the legend should be changed to either show the location or the proxy, not the proxy for one site, and the site number for the other.

[Changed](#)

Try not to conflate the Plio-Pleistocene transition with the onset of NH glaciation – authors have cited these at two distinct times (2.6 vs 2.8 Ma), so try to keep the wording consistent.

[Yes, we have checked this through the text](#)

There are multiple instances of awkward phrasing, run-on sentences, and misused gerunds, so further editing for grammar could benefit the clarity of the manuscript.

[Yes, we will go through the new version of the manuscript thoroughly.](#)

The transient impact of the African monsoon on Plio-Pleistocene Mediterranean sediments

Bas de Boer¹, Marit Peters^{2,3}, and Lucas J. Lourens²

¹Earth and Climate Cluster, Faculty of Science, Vrije Universiteit Amsterdam, Amsterdam, the Netherlands

²Department of Earth Sciences, Faculty of Geosciences, Utrecht University, Utrecht, the Netherlands

³Now at: United Experts cvba, Beringen, Belgium

Correspondence: Lucas Lourens (l.j.lourens@uu.nl)

Abstract. Over the Plio-Pleistocene interval a strong linkage exists between Northern African climate changes with the supply of dust over the surrounding oceans and continental runoff towards the Mediterranean Sea. Both these signatures in the sedimentary record are determined by orbital cycles influencing on the one hand glacial variability and on the other hand Northern African monsoon intensity. In this paper, we use the intermediate complexity model CLIMBER-2 to simulate African climate during the Plio-Pleistocene between 3.2 and 2.3 million years ago (Myr-agoMa) and compare our simulations with existing and new climate reconstructions. The CLIMBER-2 model is externally forced with atmospheric CO₂ concentrations, ice-sheet topography and orbital variations, all of which strongly influence climate during the Pliocene and Pleistocene. Our simulations indicate that the records of Northern Africa climate oscillate in phase with climatic precession. For the Earth's obliquity cycle, the time lag between the 41,000-year component in insolation forcing and the climatic response increased after inception of Northern Hemisphere (NH) glaciation around 2.8 Myr-agoMa. To test the outcome of our simulations, we have put emphasis on the comparison between the simulated runoff of grid boxes encompassing the Sahara desert and the Sahel region and the sedimentary records of marine sediment cores ODP Site 659 (Atlantic Ocean) and ODP Site 967 (Mediterranean). In this study we will show for the first time an extended Ti/Al record of Site 967 down to 3.2 Myr-agoMa. This record strongly correlates with runoff in the Sahara and Sahel regions, whereas correlation with the dust record of Site 659 is moderate and slightly improves after NH ice-sheet inception. We investigated the transient variability of the individual and combined contributions of the Sahel and Sahara regions and found significant transient behaviour, overlapping with the Plio-Pleistocene transition and inception of NH ice sheets. Prior to 2.8 Myr-agoMa, a larger contribution from the Sahara region is required to explain variability of Mediterranean dust input. After this transition, we found that a more equal contribution of the two regions is required, representing an increased influence of Sahel runoff and wet periods.

20 1 Introduction

It is generally accepted that climate is influenced by the orbital parameters precession, obliquity, and eccentricity, after Milankovitch laid a vital foundation still used today. Ever since, astronomical calibration of climatic proxy records and sedimentary cyclicity have been used to reconstruct and understand past climatic variability over the globe (e.g. Hays et al., 1976; Hilgen, 1991; Lisiecki and Raymo, 2005). With use of the astronomical solutions of Laskar et al. (2004), the climatic response

25 to orbital variations can be determined. Several past climate transitions are strongly linked ~~-,or driven-by, to~~ orbital changes, such as the ~~Mid-Pleistocene transition marking the change in periodicity from 41,000 to 100,000 (41 to 100 kyr) glacial cycles in benthic $\delta^{18}\text{O}$ records (Imbrie et al., 1993)~~ inception of NH glaciation (Lisiecki and Raymo, 2007; Bartoli et al., 2011; Bailey et al., 2013; W
30 . Although radiative forcing of orbital variations are is too small to completely force the world into or out of a glacial state with significant ice sheets, they are key to initiate ice-sheet growth and to pace glaciations (e.g. Bintanja and Van de Wal, 2008; de Boer et al., 2008; Ganopolski and Calov, 2011). If orbital variations can be seen as triggers of glaciation, internal feedback mechanisms causing changes in atmospheric concentrations of greenhouse gases (GHG) and the enhanced growth of Northern Hemisphere (NH) ice sheets are the main amplifiers of glacial-interglacial climate change. A key driver of intensification of ice-sheet changes is the atmospheric concentrations of CO_2 ~~(e.g. van de Wal et al., 2011; Willeit et al., 2019)~~ (e.g. Bartoli et al., 2011; van de Wal et al., 2011; Willeit et al., 2019), which over the past 800 kyr, 000 years (800 kyr) is largely
35 in sync with atmospheric temperature and ice volume (e.g. Lüthi et al., 2008; Stap et al., 2014).

A main transition in the recent geological past is the Plio-Pleistocene transition at ~ 2.6 ~~million years ago (Myr ago), marking~~ Ma, close to the inception of Northern Hemispheric glaciation (~ 2.8 Ma) (e.g. Flesche Kleiven et al., 2002), largely related to a drawdown of atmospheric CO_2 concentrations (e.g. Willeit et al., 2015; Tan et al., 2018). Although driven largely by the NH, the transition is a global feature, leading to Arctic cooling (Brigham-Grette et al., 2013) and cooling of tropical sea surface
40 temperatures (Herbert et al., 2010). At that time, Earth's climate followed obliquity periodicity with symmetric glacial cycles of ~ 41 kyr, driven by high latitude climate variability (e.g. Venti et al., 2013). ~~Orbital-induced~~ The orbital-induced variability is not limited to the high latitudes, it is also seen ~~at mid and low latitudes, linking over the entire African continent.~~ North African monsoonal records are linked with runoff and precipitation (e.g. Lourens et al., 2010), which persisted throughout the Pleistocene (Wagner et al., 2019). Changes are seen during the late Pliocene and mid-Pleistocene in vegetation in northeast Africa
45 (Rose et al., 2016), during the Pleistocene in Kenya (Lupien et al., 2018), the West African monsoon (Kuechler et al., 2018) and hydroclimate variability in southeastern Africa over the past 2 million years (Caley et al., 2018).

Another common association with African Plio-Pleistocene climate ~~deterioration variability~~ is early hominin evolution in ~~central-East~~ East Africa. Orbital forcing, and its role on climate variability, has long been assumed in many paleoanthropological studies to be a strong influence on early hominins (e.g. deMenocal, 1995; Maslin et al., 2014; Joordens et al., 2019). Specific
50 climate transitions, among which the Plio-Pleistocene transition, coincide with the possible emergence or extinction of hominin species (Donges et al., 2011). The earliest hominins appear ~ 4.5 ~~Myr ago~~ Ma in Africa, and the first occurrence of the genus *Homo* appears around 2.8 ~~Myr ago~~ Ma (DiMaggio et al., 2015). For example, Joordens et al. (2019) includes the role of spatial distribution and geography in the study of hominin evolution and dispersal. Condition of highly variable climate and strong seasonality during eccentricity maxima would result in isolated refugium for early hominins, that would be conclusive
55 for evolution (Trauth et al., 2007). From these refuges, the evolved hominins would then disperse inland through vegetated corridors during periods of stable climate with low seasonality during eccentricity minima (Joordens et al., 2019). However, the evolution of the hominin species throughout the Pleistocene is a highly complex process (Mounier and Mirazón Lahr, 2019)

In this paper we focus on the connection between the African monsoon, using continental runoff (*i.e.* ~~precipitation minus~~ evaporation linked to precipitation, evaporation, and water storage in the soil, lakes and groundwater) and sediment- and dust-deposition from the African continent between 3.2 to 2.3 Myr agoMa, during the Plio-Pleistocene transition. Here, we use a model of intermediate complexity; CLIMBER-2 (Petoukhov et al., 2000) to simulate climate variability. Due to its relatively low resolution and low computational costs, the model is particularly useful to simulate transient climate variability (e.g. Tuenter et al., 2005). More recent work resulted in a 5 million years simulation (Stap et al., 2018), for which this CLIMBER-2 simulation was driven by orbital variations, ice-sheet change and atmospheric CO₂ concentrations (Laskar et al., 2004; van de Wal et al., 2011; de Boer et al., 2014; Stap et al., 2018). We will compare Northern African continental runoff reconstructions of CLIMBER-2 with dust records associated to the North African monsoon (ODP Sites 659 (Tiedemann et al., 1994) and 967 (Lourens et al., 2001)). For this purpose we will show for the first time the extended dust record of ODP Site 967 (Wehausen and Brumsack, 2000; Lourens et al., 2001) down to 3.2 Myr agoMa.

70 2 Methodology

2.1 CLIMBER-2 description

The CLIMBER-2 (CLIMate-BiosphERE model) is an Earth system climate model of intermediate complexity (Petoukhov et al., 2000). The model contains simplified governing equations for processes and feedback systems of the atmosphere, oceans, sea ice and terrestrial vegetation. This allows the model to be used for global reconstructions over very long time scales. 75 The CLIMBER-2 model has a low spatial resolution, where the longitude is divided into seven sectors each consisting of approximately 51° longitude, and the latitude into steps of 10° each (Figure 1). The land-ocean fraction for each grid box varies accordingly to the shape of each continent. The CLIMBER-2 model has a temporal resolution of one day, which are averaged to capture annual averaged output. For the analysis we have used 1-kyr running mean output of CLIMBER-2.

The atmosphere component of CLIMBER-2 shares many features with more sophisticated models (Petoukhov et al., 2000). 80 The model comprises of vertically averaged prognostic equations to model temperature and water vapour, and to reconstruct horizontal transport and radiative fluxes. Specific humidity is assumed to be exponential in the vertical profile, and the wind velocity is based on both geostrophic and ageostrophic components. It is assumed that the Hadley, Ferrel and polar cells are robust, and must also have existed under different climatic conditions. Within CLIMBER-2 six surface types can exist: sea ice or open water for ocean, and ice sheets, grassland, forest, and desert for land. These are all calculated separately and multiple 85 types can coexist within one grid box. For example, grid box 11 and 12 are completely land boxes, but grid box 10 is 40% ocean and 60% land (Figure 1). CLIMBER-2 further includes a three-basin ocean model based on (Stocker et al., 1992). It describes the zonally averaged flow of water, as well as the evolution of temperature and salinity in the Atlantic, Indian, and Pacific basins, which are connected through the Southern Ocean. It consists of 20 uneven levels and an upper mixed layer of 50 meters, using a time step of 5 days and a latitudinal resolution of 2.5°.

90 The vegetation module VECODE is a dynamical global vegetation model that is based on the classification by Brovkin et al. (1997), who provided a continuous bioclimatic classification. This component describes the spatial behaviour of vegetation

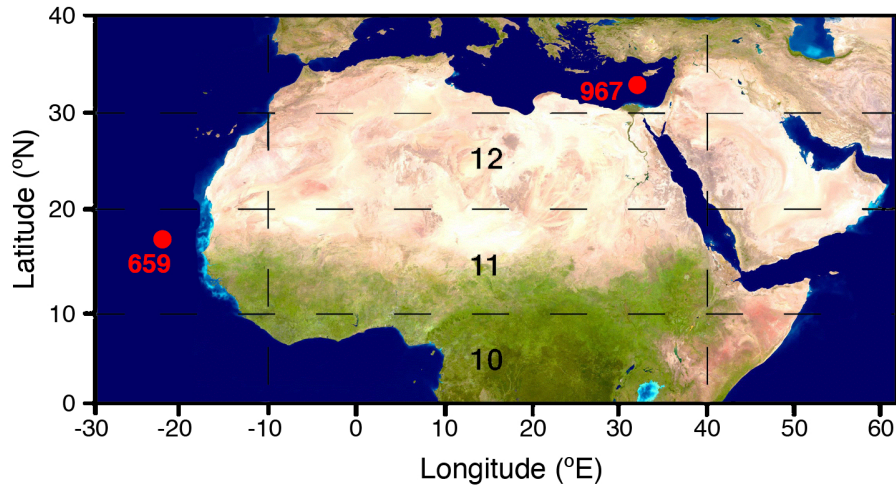


Figure 1. Map of the study area, with the background showing vegetation cover. Dashed lines indicate the grid boxes of CLIMBER-2, with the number the grid boxes used in this study. Red dots indicate the location of the sites.

and its corresponding carbon fluxes. It is assumed that vegetation cover is in equilibrium with climate. Therefore, changes in vegetation will affect the albedo, roughness length, and transpiration of the grid box, resulting into a changing climate. The temporal resolution of the vegetation module is one year. The planetary albedo of a grid box is calculated based on the amount of snow- and vegetation cover, as well as the degree of cloudiness for every grid box. A two-layer soil model is also incorporated, in which the upper soil layer is determined by precipitation, evaporation, and transpiration, the melting of snow, and runoff and drainage. Similarly, runoff On the contrary, runoff and precipitation also depends on the quality of water content and amount of vegetation that grows on the upper soil layer as well as precipitation.

2.2 Setup of CLIMBER-2 experiments

This study focuses specifically on the Northern African continent (Figure 1), for which we have used output of a 5 million year simulations of CLIMBER-2. To achieve such a long simulation, the model is forced with changes in orbital parameters, atmospheric CO₂ and ice sheets (Stap et al., 2018). For the orbital variations the solution from Laskar et al. (2004) is used, describing variations of eccentricity, climatic precession and obliquity (Figure 2a,b). Ice volume reconstructions are enforced on land surface points of CLIMBER-2 influencing albedo and surface elevation. The ice sheets are taken from a global simulation by de Boer et al. (2014), who calculated global ice volume changes based on the LR04 benthic $\delta^{18}\text{O}$ stack by Lisiecki and Raymo (2005), shown here in Figure 2c. They used an inverse modelling approach to derive ice volume (Figure 2d) and surface-air and deep-ocean temperature. For the CLIMBER-2 model, an updated version of the proxy data composition by van de Wal et al. (2011) is used for CO₂ concentrations (Stap et al., 2018). To reconstruct CO₂ variations (Figure 2e) the same approach was used as in van de Wal et al. (2011), by calibrating CO₂ records against global temperature change. Instead the calibration here is based on the temperature simulation associated with the ice sheet simulation also used in the CLIMBER-2

model. Other variations in greenhouse gases are not taken into account in the model. This way the simulation of CLIMBER-2 is consistent with the forcing, driven by Laskar et al. (2004) insolation and climatic forcing records on the LR04 age scale (Lisiecki and Raymo, 2005).

115 Using the three different climatic records, four different climate model simulations are performed using only i) orbital variations (indicated with 'O'), ii) orbital and the greenhouse gas CO₂ (OG), iii) orbital and ice sheets (OI) and iv) all records (OIG). These four different simulations are used here as well to analyse variations in African runoff. ~~For the climate model~~ When forcing records are kept constant we use the present-day ~~solar insolation and geography, when kept constant present-day ice sheets are used and/or~~ ice sheets and a pre-industrial level of 280 ppm for CO₂.

2.3 Climatic dust records

120 We will compare the output of CLIMBER-2 with three different sites presenting dust or terrestrial variations driven by climate variability over the African continent (Figure 1). The core drilled at ODP Site 967 is an exceptional record of paleoclimate with detailed cyclic variability (Lourens et al., 2001). It is located in the eastern Mediterranean Sea, south of Cyprus. The interval consists of six sapropels, also analysed through colour reflectance (Lourens et al., 2001). The sapropels are cyclostratigraphically correlated to the sections of Hilgen (1991), Lourens et al. (1996), and Kroon et al. (1998), which all originate from
125 different sites within the Mediterranean. The Ti/Al ratio proxy is used to reconstruct variations in climate, whereas variability in Ti/Al represents variation in relative contribution of aeolian (i.e. Ti-rich dust particles) and fluvial (i.e. Al-rich suspended clay components) terrigenous input in the sediment core (Wehausen and Brumsack, 2000; Lourens et al., 2001; Konijnendijk et al., 2014; Grant et al., 2017). It is suggested that Sahara dust is a prior contributor to the aeolian flux, while a large proportion of the fluvial input originates from the river Nile. Hence, low Ti/Al values indicate humid conditions, for example during
130 periods of sapropel formation in the eastern Mediterranean, and high Ti/Al values correspond to more arid conditions at the northern part of the African continent (Wehausen and Brumsack, 2000; Lourens et al., 2001). An astronomically-tuned Ti/Al time series was established for the 2.9-2.4 ~~Myr ago~~ Ma time interval by correlating minimum (maximum) values in the Ti/Al record to their representative maximum (minimum) values in the Laskar et al. (2004) summer insolation curve at 65°N latitude (Lourens et al., 2001). Here we extend the tuned Ti/Al time series down to 3.2 ~~Myr ago~~ Ma, using up to now unpublished Ti/Al
135 data that has been generated using similar procedures as described in Lourens et al. (2001).

ODP Site 659 is located on top of the Cape Verde Plateau, northwest of Africa (Figure 1). Its dust record encompasses the past 5 Myr, and is mostly influenced by the African easterly jet stream, which transports dust from the Sahara-Sahel region towards the Atlantic Ocean (Tiedemann et al., 1994). We have re-tuned the dust record of ODP ~~Sites~~ Site 659 (Wang et al., 2010) to the LR04 benthic stable isotope stack (Lisiecki and Raymo, 2005). As mentioned in Wang et al. (2010), the data for the last 2.6 Myr follow the same age scale, which is actually included in the LR04 stack (for benthic $\delta^{18}\text{O}$). Between 5.2 and 2.6 Ma the data is returned to minima in the Laskar et al. (2004) 65°N insolation curve.

140

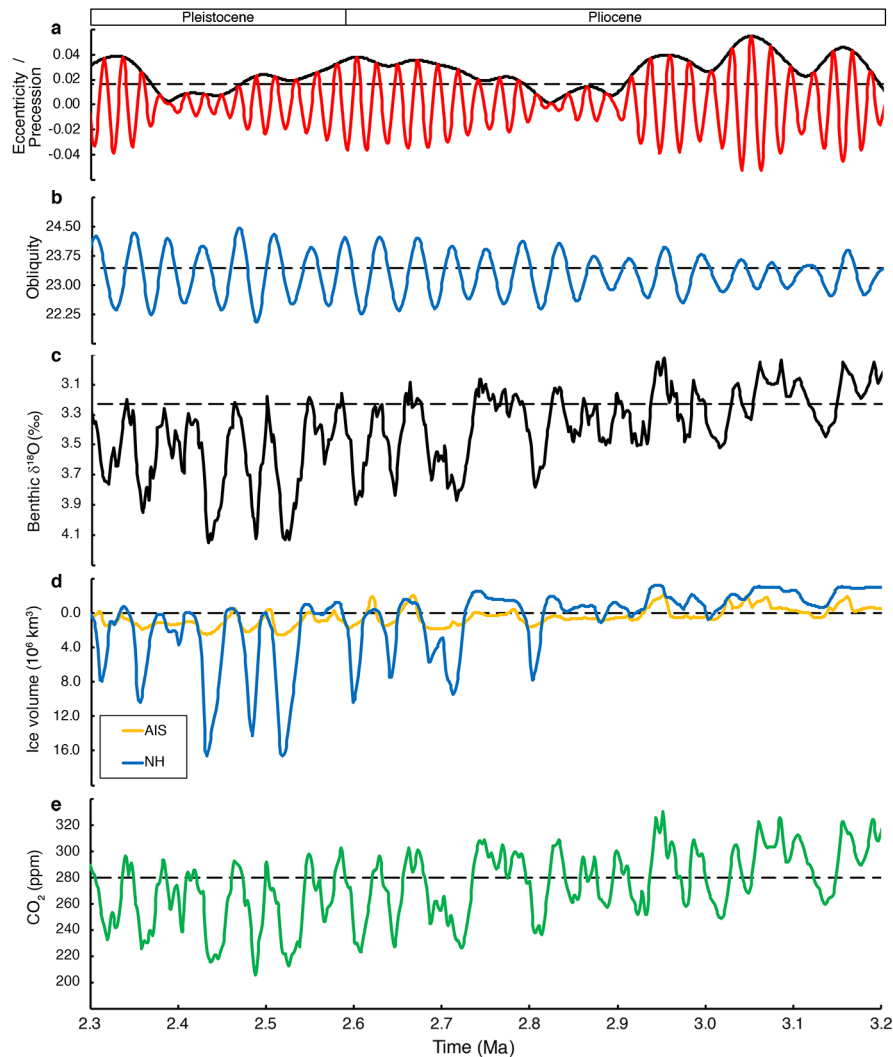


Figure 2. Climatic forcing records used as input for CLIMBER-2 over the time studies from 3.2 to 2.3 Myr ago Ma. a) Eccentricity in black, climatic precession in red and b) obliquity in blue (Laskar et al., 2004). c) The benthic LR04 $\delta^{18}\text{O}$ record (Lisiecki and Raymo, 2005) used for reference. d) Global ice volume reconstruction (in 10^6 km^3 on land) for the Antarctic ice sheet (AIS) in orange and the total NH in blue from de Boer et al. (2014). The y-axis are reversed for c and d, with cold climate below. e) Atmospheric CO_2 concentrations (in parts per million; ppm) generated using the methodology described in van de Wal et al. (2011).

3 Orbital pacing of CLIMBER-2 modelled runoff

Runoff over the Northern African continent as modelled in CLIMBER-2 largely results from the difference between precipitation (P) and evaporation (E), i.e. $\text{Runoff} = P - E$ over land and evaporation over land, although water can also be stored

145 in the soil, lakes and groundwater. As can be seen in Figure 1, grid box 12 is mainly covering the Sahara desert, whereas

grid box 11 includes the Sahel region, which is more dominated by grassland. ~~This difference~~ The variations of vegetation coverage for both grid boxes over time is showing a similar patterns as illustrated in Figure 3. Clearly, during the studied time interval from 3.2 to 2.3 Ma the Sahara region (Figure 3a) is dominated by desert, which is largely replaced with grassland when precipitation is high. Although the Sahel region (Figure 3b) is largely covered with grassland, it is partially covered with trees and a reduction in desert during precession minima. Both grid boxes show high variability of the vegetation fraction, but do show a clear linkage to the present-day coverage of partially desert and vegetation for grid box 11 and desert for grid box 12 (Figure 1).

The difference between the two grid boxes is clearly represented by the variation in runoff over the Plio-Pleistocene transition (Figure 4a). It is evident that the minimum runoff of grid box 11 is approximately the equivalent of the maximum runoff of grid box 12. Grid box 11 has large variations in amplitude, with runoff maxima occurring during precession minima (Figure 4a). For the Sahel region, the runoff is ~~strengthening~~ strengthened following the African summer monsoon, driven by an increase in NH insolation. The increase in precipitation causes an increase in trees, which replaces desert and grass (Figure 3b). This enhances evaporation, which is stronger than for grassland, causing the peaks in runoff. In contrast, the runoff values of grid box 12 (Sahara desert) do not increase by the strengthened monsoon, but show peaks of low runoff during precession maxima. Although precipitation is enhanced during the summer monsoon when the air from the Atlantic Ocean reaches land, higher temperatures provide more room for water to evaporate, ~~in combination with an increase of grass cover (Figure 3a)~~ in combination with an increase of grass cover (Figure 3a) In the case of grid box 12, this additional precipitation is therefore compensated by an increase in evaporation. Also, during precession maxima precipitation is reduced and vegetation disappears, which leads to a strong decrease of evaporation and minima in the runoff.

The clear dominance of precession variability during this time interval is well depicted by the global power spectra of both regions (Figure 5a). Over time, the evolutive power spectra confirm the dominance of precession, although it is lower during eccentricity minima (Figure 4b,c). Clearly high latitude influence is more present for the Sahara (grid box 12), showing an increased obliquity power after inception of NH glaciation (Figure 4b).

The influence of precession variability on African runoff on both regions is strongly present in all four CLIMBER-2 experiments (O, OG, OI and OIG) over the Plio-Pleistocene transition (Table 1). For all runs the lag to climatic precession is minimal, showing that for this particular frequency and interval, the modelled runoff is largely in sync with climatic precession. In the case of obliquity, the lag is also small for the O and OG experiments, not including ice-sheet changes. However, when ice-sheet changes are included in the CLIMBER-2 OI and OIG simulations, we see an increase in the lag by about 1.5-2 kyr relative to the runs with constant ice-sheet topography. This shift can be attributed to the imposed lag in the tuning of the LR04 benthic $\delta^{18}\text{O}$ data ~~to ice-sheet growth, who assumed a gradual increase in the~~ when calibrating the depth-age scale. The time lag between obliquity (41-kyr) obliquity and its related frequency component in the LR04 stack from is gradually increased from 3 kyr prior to 3 Myr ago towards 5-6 kyr up to 1.2 Myr ago, due to Ma. This follows from an anticipated slower response time of the growth of larger Pleistocene ice sheets (Lisiecki and Raymo, 2005). Also, the power of the obliquity frequency of runoff is increased in the OI and OIG relative to the O and OG simulations.

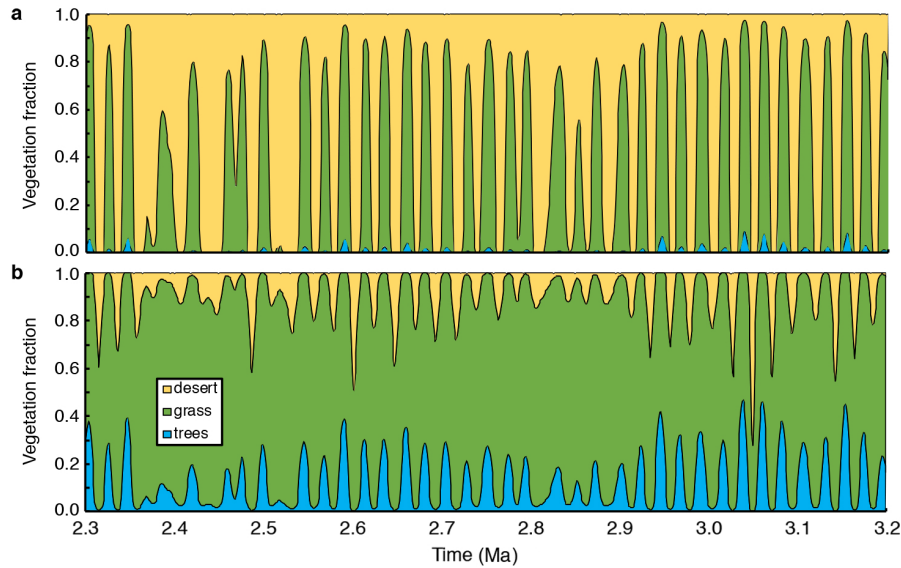


Figure 3. OIG [Runoff-Vegetation fractions](#) over a) grid box [11](#) (blue) and [12](#) (orange) [Sahara](#) , as given in [Figure 1](#) in mm per day. The background shows climatic precession (Laskar et al., 2004) with scale given on the right y-axis (grey). Evolutive normalised power spectrum is given for [and](#) b) grid box [12](#) and c) grid box [11](#) , for 23 kyr (blue) [Sahel](#) and 41 kyr (grey) [Sahel](#) (Fraction of desert is given in yellow), using a time window of 100 kyr grass is green and trees is blue.

Table 1. Calculated time lags in kyrs between orbital frequencies and runoff over grid box 11 and 12 for the full period 3.2 to 2.3 [Myr ago](#) [Ma](#). Frequencies are extracted from the data with a Gaussian filter for precession at 23 kyr (0.0435 ± 0.003) and for obliquity at 41 kyr (0.0245 ± 0.003). Data analysed with AnalySeries (Paillard et al., 1996), using a Blackman-Tukey spectral analysis with a Parzen window with 90% lags. CLIMBER-2 experiments are O: orbital, OG: orbital and CO₂, OI: orbital and ice sheets, OIG: orbital, CO₂ and ice sheets.

Period	R11-O	R11-OG	R11-OI	R11-OIG	R12-O	R12-OG	R12-OI	R12-OIG
Precession (23 kyr)	0.194	0.221	0.230	0.248	-0.188	-0.163	0.184	0.228
Obliquity (41 kyr)	0.728	1.135	2.697	2.604	0.497	0.772	2.390	2.667

180 4 Comparison of North African runoff with offshore sediment records

The orbital periodicity is presented by the power spectra of Sites 967 and 659 (Figure 5b). A strong presence of precession and obliquity is seen for both the Ti/Al record of Site 967 (Lourens et al., 2001) and the [dust record on the](#) re-tuned age model of [Sites](#) [Site](#) 659. We have also analysed the coherence and phase lag for the precession frequencies from the runoff and the dust records. For this we have filtered the precession frequency of $1/23 \text{ kyr}^{-1}$ ($0.0435 \pm 0.003 \text{ kyr}^{-1}$) for each record and compared it relative to precession during the full time interval from 3.2 to 2.3 [Myr ago](#) [Ma](#). Coherence is high for Runoff from grid box 11 and 12 and for the Ti/Al record (all above 0.99), with a phase lag of about 200 years. For the re-tuned dust record

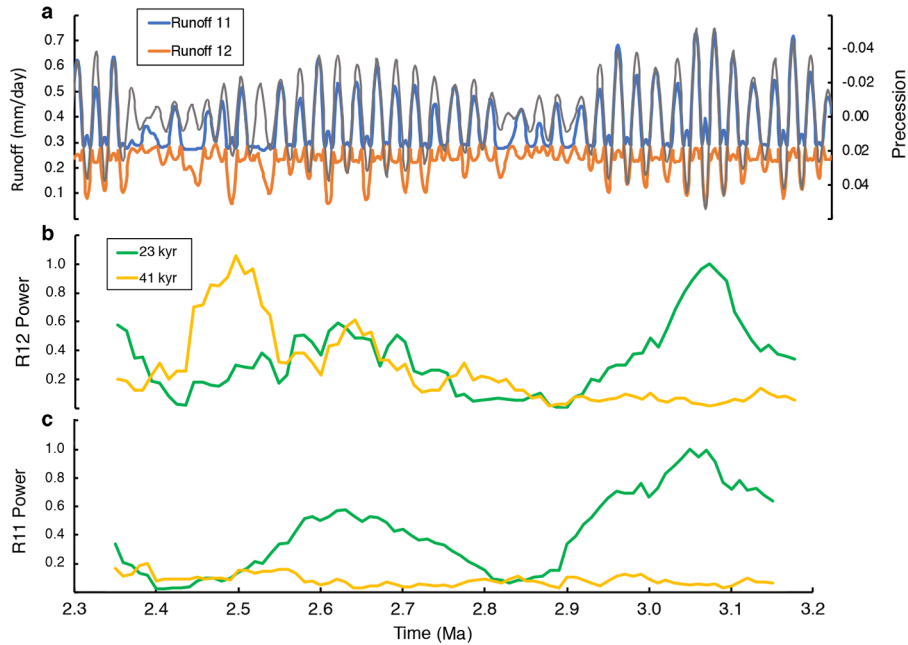


Figure 4. OIG Runoff over grid box 11 (blue) and 12 (orange), as given in Figure 1 in mm per day. The background shows climatic precession (Laskar et al., 2004) with the scale given on the right y-axis that is reversed (grey). Evolutive normalised power spectrum is given for b) grid box 12 and c) grid box 11, for 23 kyr (green) and 41 kyr (yellow), using a time window of 100 kyr.

Table 2. Correlation of runoff from grid box 11 and 12 with the sedimentary records at Site 967 and 659 Correlation is performed over the full period 3.2 to 2.3 Myr agoMa, all data is interpolated on a 1 kyr time step.

Region	Ti/Al 967	Dust 659
Runoff 12 (Sahara)	0.586	0.560
Runoff 11 (Sahel)	0.662	0.361

of Site 659 the coherence is 0.95 and the phase lag is ~ 800 years. The correlation with the runoff output from CLIMBER-2 is strongest with the Ti/Al record from the Mediterranean (Table 2). The dust record from Site 659 shows on the contrary a good correlation with runoff from box 12 (Sahara) and a much weaker correlation with box 11 (Sahel). Note that for the correlation we have used the inverse relationship, correlating high runoff with low dust output, and corrected for the time lags of 1 kyr for the chronologies of ODP Site 659.

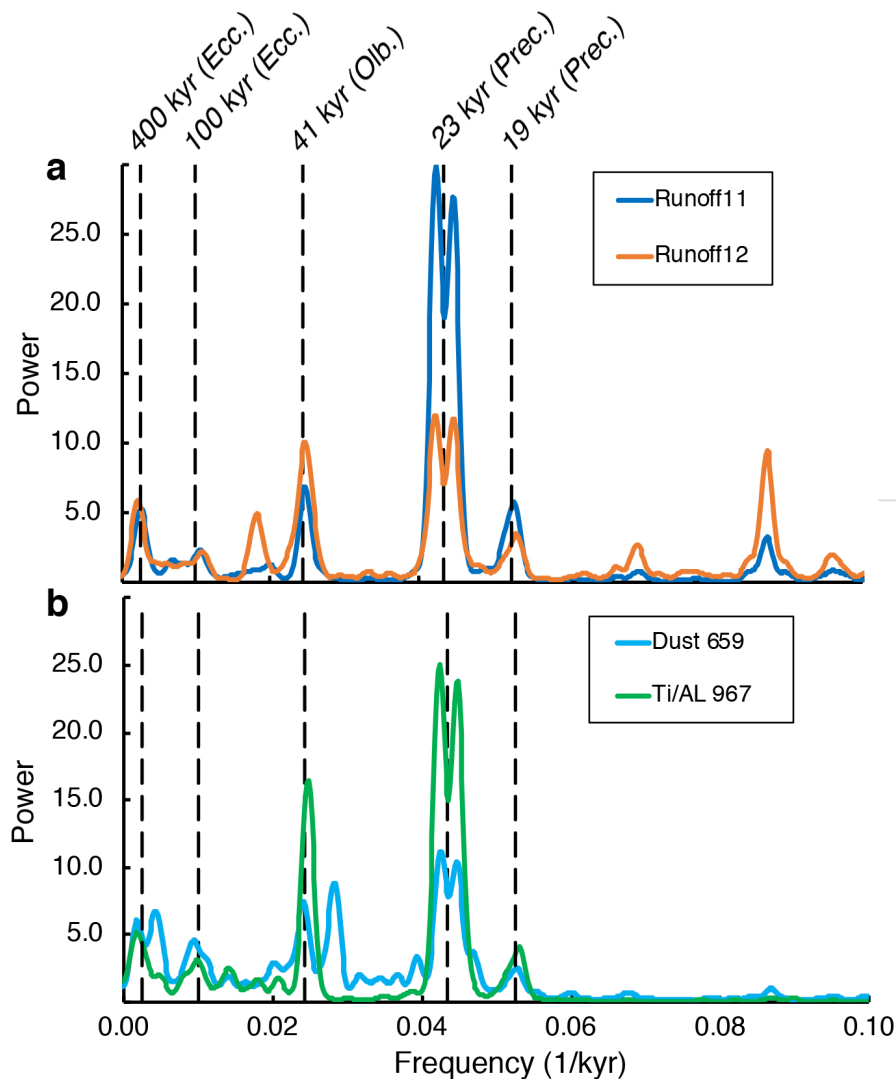


Figure 5. Normalised power spectra over the period 3.2 to 2.3 Myr-ago-Ma of a) runoff of grid box 11 (blue) and 12 (orange), and b) of Ti/Al of Site 967 (green) and dust of Site 659 (light blue). Site 659 dust record is re-tuned to the LR04 benthic stable isotope stack (Lisiecki and Raymo, 2005). Power spectra are created with AnalySeries (Paillard et al., 1996), using a Blackman-Tukey spectral analysis with a Parzen window with 90% lags. Vertical dashed lines indicate the dominant orbital periods of 400 and 100 kyr (eccentricity), 41 kyr (obliquity) and 23 and 19 kyr (precession).

4.1 North African runoff and sapropel formation in the Mediterranean

The influence of the North African monsoon and its relation with orbital forcing is also clear through the presence of Mediterranean sapropels (e.g. Hilgen, 1991; Lourens et al., 2001). Sapropels are organic-rich sedimentary layers, resulting from anoxic

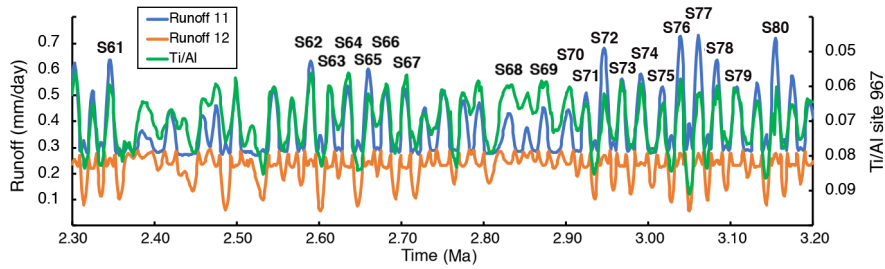


Figure 6. A comparison between CLIMBER-2 runoff from grid box 11 (blue) and 12 (orange) and the Ti/Al record from Site 967 (green) from 3.2 to 2.3 Myr ago. Sapropel layers are labeled (S61 to S80) as adopted from Kroon et al. (1998) and Lourens et al. (2001) corresponding to Ti/Al minima and runoff maxima. Note that the left y-axis for the Ti/Al is reversed, with wet phases on top.

195 events caused by an increase in runoff that is associated with a strong summer monsoon. Over the Plio-Pleistocene transition we compare the Ti/Al record with CLIMBER-2 runoff from grid box 11 and 12 (Figure 6). Clearly, both the wet- and dry periods correspond well with the simulated runoff, although the runoff maxima from grid box 11 (Sahel) largely link to low Ti/Al peaks, and runoff minima of grid box 12 (Sahara) overlay with maxima of the Ti/Al record. The sapropel layers that have been found in ODP Site 967 (Emeis et al., 1996; Kroon et al., 1998; Lourens et al., 2001) can be correlated with the high
 200 runoff peaks of grid box 11. This shows that the Sahel region does not only indicate the increased African monsoon phases, but also correlates to the corresponding sapropel layers in the Mediterranean Sea. The Sahara region correlates with the high Ti/Al values, indicating dry phases. These dry phases of the Sahara region can therefore be correlated to the marls, i.e. periods of high dust flux, in between the sapropel layers of ODP Site 967 Lourens et al. (2001).

Although the general pattern correlates very well (Table 2), there are also clear differences between the CLIMBER-2 simulations and the Ti/Al record. For example, the relative amplitude variations of the humid phases are not always the same. Sapropel
 205 64, is clearly enhanced by obliquity, whereas the runoff at this time has a relatively low maximum. On the other hand, runoff is significantly high during the formation of sapropel 65, which is one of the less distinct sapropel layers. This is remarkable, as a large runoff in Northern Africa would suggest a lower Ti/Al ratio due to more riverine input in the Mediterranean Sea. The most apparent discrepancy between the Ti/Al record and the CLIMBER-2 simulated runoff is shown during the 400-kyr related
 210 eccentricity minimum around 2.8 and 2.4 Myr ago. During these long-term eccentricity nodes, the Ti/Al record suggests on average drier climate conditions in northern Africa than indicated by the model simulations. At this time interval, both the runoff amplitudes are significantly lower and the variations for grid box 12 are even out of phase with the sapropel layers S68 and S69 (Figure 6).

4.2 Combined runoff and overall correlation

215 It appears that the influence of wetter periods (grid box 11) overshadows the effect of dry periods (grid box 12), given that the amplitude variations of grid box 12 (Sahara) are a lot less than runoff from grid box 11 (Sahel). Both regions include the

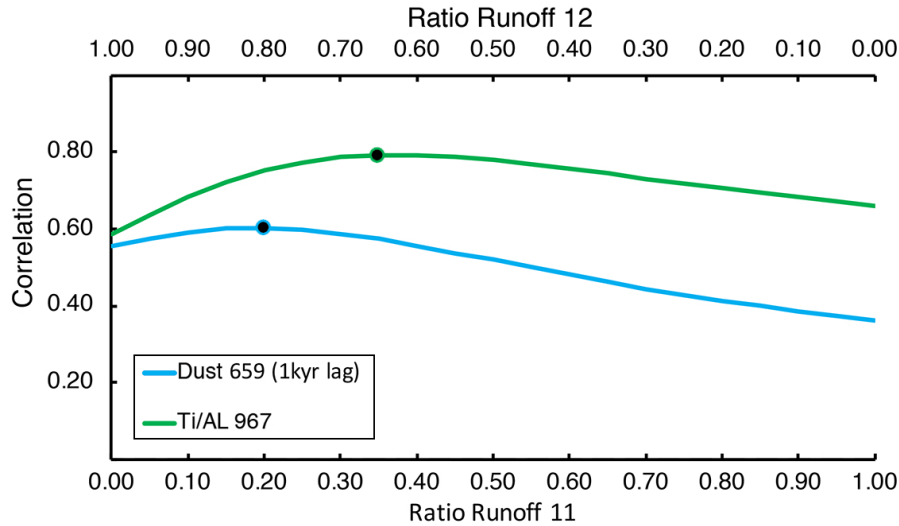


Figure 7. Correlation of combined output of runoff from grid box 12 (top x-axis) and 11 (lower x-axis). For example, 0.5 and 0.5 means a runoff record consisting of 50% runoff 11 and 50% runoff 12. For each created record the correlation is computed over the full time period of 3.2 to 2.3 [Myr-ago-Ma](#). In green with Ti/Al of Site 967, in [light blue](#) with dust from Site 659 (lag of 1 kyr). The dots indicate the maximum correlation: for Ti/Al the record of 0.35R11 + 0.65R12 (0.792) and for Site 659: 0.2R11 + 0.8R12 (0.602).

catchment area of the river Nile (e.g. Bosmans et al., 2015b), and hence a combination of runoff of the two sites would be more suited for a comparison with the Ti/Al record.

We have investigated multiple combinations of runoff from grid box 11 and 12 and compared these with the two sedimentary records of Sites 967 and 659 over the full period from 3.2 to 2.3 [Myr-ago-Ma](#) (Figure 7). For each grid box, we have used a scaling varying between 0.0 and 1.0, in order to cover all possible combinations of the two records, including the individual correlation. For both the Mediterranean (Site 967) and the Atlantic Ocean (Site 659) a combined runoff record provides the best correlation with the data.

The combination of 35% runoff 11 plus 65% runoff 12 has a correlation of 0.792 with the Ti/Al record, and 20% runoff 11 plus 80% runoff 12 has a correlation of 0.602 with the dust record of Site 659. For both sites this correlation is higher than with the individual grid boxes, as shown in Table 2 and Figure 7. The correspondence between the combined runoff record and the Ti/Al data is high throughout the Plio-Pleistocene time interval (Figure 8a). For separate time windows of 100 kyr the correlation is consistently high, with a maximum value of 0.930 between 2.6 and 2.5 [Myr-ago-Ma](#), and a minimum value of 0.749 between 2.5 and 2.4 [Myr-ago-Ma](#). For the dust record of Site 659 the correlation is less pronounced for the individual records (Table 2). When we analyse the 100-kyr time window the correlation with the combined runoff record (Figure 8b) varies between -0.103 and 0.873, with only shows a negative correlation between 2.9 and 2.8 [Myr-ago-Ma](#) and an overall high correlation between 0.524 for 2.7 - 2.6 [Myr-ago-Ma](#) and 0.873 for 2.8 to 2.7 [Myr-ago-Ma](#).

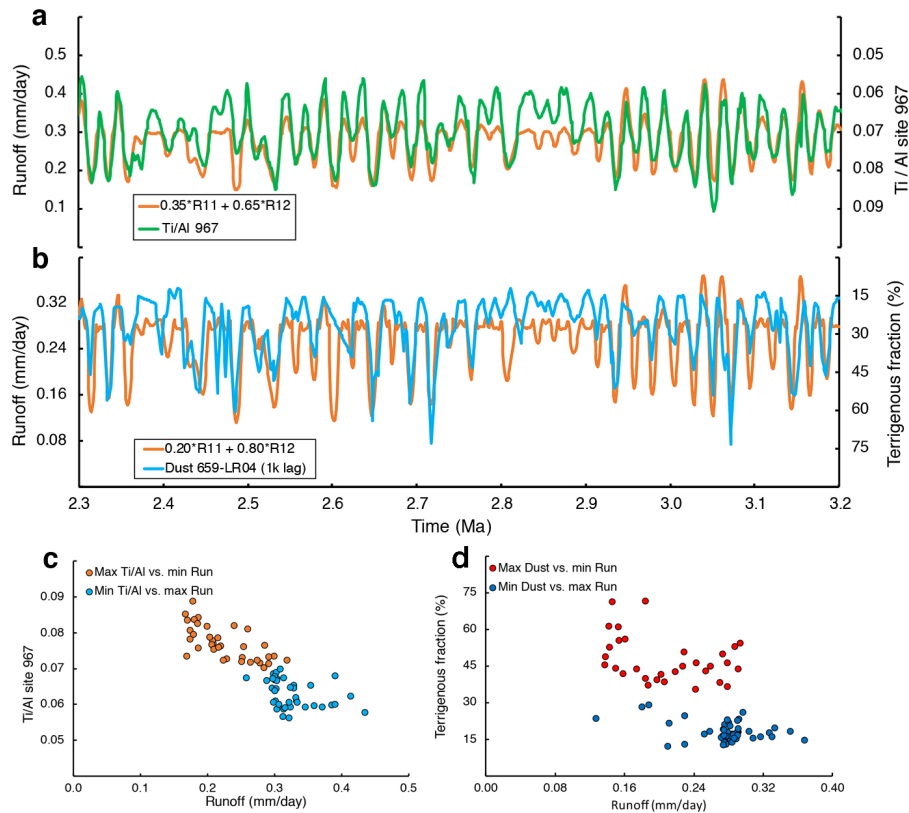


Figure 8. A comparison between CLIMBER-2 combined runoff output, that correlates the highest as given in Figure 7. a) Combined runoff of 35% runoff 11 plus 65% runoff 12 (orange) and the Ti/Al record of Site 967 (green). b) Combined runoff of 20% runoff 11 plus 80% runoff 12 (orange) and the dust record of Site 659 (light blue) re-tuned to the LR04 age scale. In a and b, for both sedimentary records the y-axis is given on the right and is reversed. c) A comparison of the high (orange) and low (light blue) peaks of Ti/Al versus runoff from panel a. peaks are selected for Ti/Al values above and below 0.07. d) A comparison of the high (red) and low (blue) peaks of Dust versus runoff from panel b. peaks are selected for Dust values above and below 35.

235 Although correlation is high for some time intervals, there is a non-linear behaviour between runoff, which results from precipitation and evaporation, and dust peaks from Site 967 and Ti/Al from Site 659. High runoff peaks do not always correspond to high dust or Ti/Al signatures in the records. We have illustrated this by comparing the high and low peaks of Ti/Al and the dust records with the corresponding peaks of the runoff records (Figure 8c,d). For both the high (orange) and low (light blue) peaks of Ti/Al (Figure 8c) a clear trend is visible. On the contrary, for the dust record (Figure 8d), the high peaks (red) show a more linear trend compared to the low peaks (blue). Nonetheless, correlation coefficients are moderate too low for all comparisons.

240 Besides the good correlation during most 100-kyr intervals also the evolutive power of especially the precession frequency (blue curve in Figure 8e,d9a,b) shows a strong similarity with the precession power in CLIMBER-2 runoff (Figure 4b,c). A

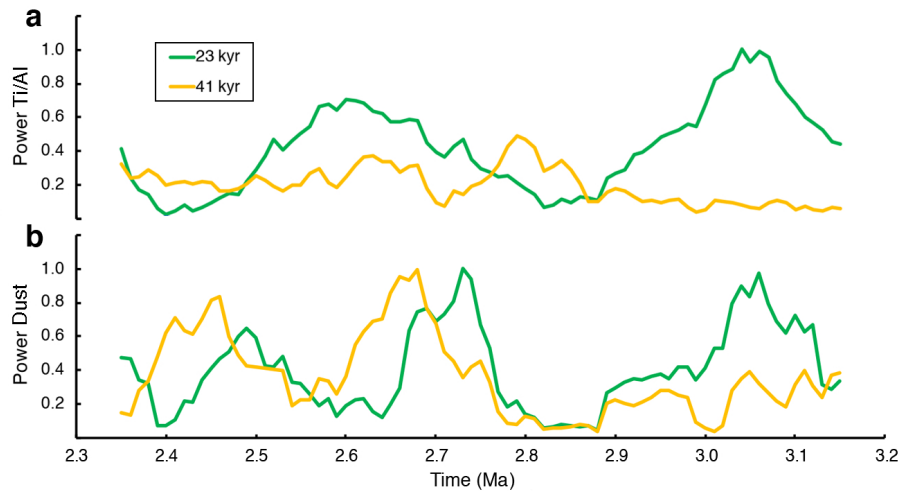


Figure 9. A comparison between CLIMBER-2 combined runoff output, that correlates the highest as given in Figure 7. Evulsive normalised power spectrum for a) Combined runoff of 35% runoff 11 plus 65% runoff 12 (orange) and the Ti/Al record of Site 967 (green). and b) Combined runoff Dust of 20% runoff 11 plus 80% runoff 12 (orange) and the dust record of Site 659 (blue) re-tuned to the LR04 age scale. In a and b, for both sedimentary records the y-axis is given on the right and is reversed. Evulsive normalised power spectrum is given for c) Site 967 Ti/Al and d) Site 659 Dust, for 23 kyr (bluegreen) and 41 kyr (yellow), using a time window of 100 kyr.

clear lowering is seen for the eccentricity minimum from 2.8 to 2.9 Myr ago. Ma. For the dust record of Site 659, besides the eccentricity minima a dip in the 23-kyr power around ~2.6 Myr ago is linked to a lack of data. Ma is seen (Figure 8b,d9b), for which obliquity power is also relatively strong in the later half of the time interval. we would expect 23-kyr power to stay high following the 400-kyr eccentricity maximum (Figure 2a). This also underlines the non-linear link between dust and runoff as illustrated in Figure 8.

4.3 Transient impact of runoff to the Mediterranean

The strong link between simulated runoff and the Ti/Al record of the Mediterranean is a feature that is very persistent through the Plio-Pleistocene transition (Figure 8a). Although the strongest correlation over the whole period is found for the combination of 35% runoff 11 plus 65% runoff 12, correlation is generally high for other combinations as well. This provides us an opportunity to not only look at the temporal correlation of individual sites, but also how the contributions of runoff from the regions impacts the Ti/Al record over time. Figure 10a presents this for 100-kyr time windows, showing for each window separately the combination of runoff from grid box 11 and 12 with the highest correlation (illustrated in Figure 10b by the grey line), depicting the transient relationship of runoff over Northern Africa to sediment deposition in the Mediterranean.

There is a clear transition present, coinciding with the increase of NH glaciation (Figure 2d), at around 2.8 Myr ago. Ma. Before this time, the correlation is highest for a more dominant contribution of the Sahara region (grid box 12 in orange), close

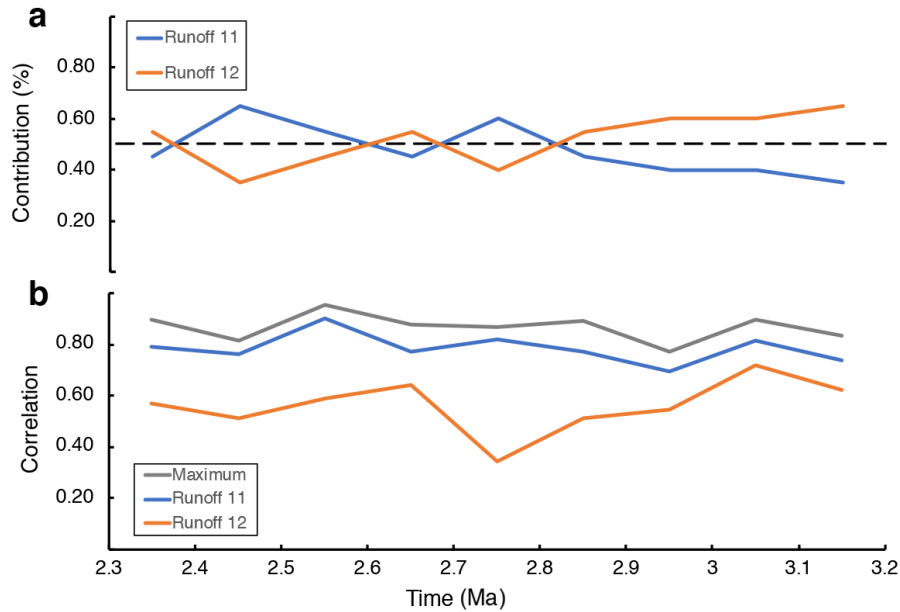


Figure 10. Transient contribution of runoff from grid box 11 and 12 to Mediterranean dust input. For each time window of 100 kyr, all combinations of the two grid boxes (as in Figure 7) are correlated with the Ti/Al record of Site 967. a) The contribution of both grid boxes, blue for runoff 11 and orange for runoff 12, is given corresponding to the maximum correlation within that time frame (grey line in panel b). b) the maximum correlation within each 100-kyr time window is given in grey, corresponding to the contributions shown in panel a. Correlation of the individual grid boxes is given in blue for runoff 11 and in orange for runoff 12.

to the overall coherence with 35% of grid box 11 and 65% grid box 12. After 2.8 [Myr ago Ma](#), the highest correlation is found for a more equal contribution of 50% each of the two regions. We found no strong trends in runoff of both regions.

The catchment area of the river Nile stretches more south than regions 12 and 11, starting around lake Victoria (the blue lake in Figure 1 at the equator, 33°E). Therefore, we also checked correlation with runoff from region 10, using combinations with runoff from regions 11 and 12. Surprisingly, the individual correlation of runoff from region 10 with the Ti/Al record from 3.2 to 2.3 [Myr ago Ma](#) is higher (0.720) than that of regions 11 and 12 (Table 2). Before 2.8 [Myr ago Ma](#), correlation is highest for different combinations of all three regions, but after 2.8 [Myr ago Ma](#) again a 50% contribution from regions 11 and 12 is strongest, with no contribution from region 10. Since region 10 is (far) more south and largely contains the African tropical forest, drainage from central Africa is also towards the Atlantic Ocean through the Congo river, which might clarify the lower influence of region 10 when combining the regions.

5 Discussion and conclusions

In this paper we have used simulations of the climate model CLIMBER-2, and analysed reconstructed climate variables from 3.2 to 2.3 [Myr ago Ma](#), a period that includes the Plio-Pleistocene transition. The model has been used previously to link orbital

270 and climatic variability and is well suited for long-term transient climate simulations (e.g. Tuentner et al., 2005). During this
time interval, the world experienced a large increase in NH glaciation, concurrent with a draw down in atmospheric CO₂
concentrations (Figure 2). The CLIMBER-2 simulations have been run over 5 million years, and it included ice-sheet changes,
atmospheric CO₂ variations and orbital parameters (Stap et al., 2018). We have looked at climate variability over the Northern
African continent and have linked transient variations of continental runoff to sedimentary records in the Mediterranean Sea
275 and Atlantic Ocean.

The climatic variability in the model is largely determined by changes in the forcing records; NH and Antarctic ice sheets,
atmospheric greenhouse gas forcing of CO₂, and orbital variations (Laskar et al., 2004). Both timing and magnitude of the
forcing will have an impact on the changes shown by the model. The ice-sheet forcing imposed here is based on a 3-D
ice-sheet model constraint by the LR04 benthic $\delta^{18}\text{O}$ stack by Lisiecki and Raymo (2005), which also determined the age scale
280 of the CO₂ reconstructions. Ice-sheet changes can be different, but are constraint by the locations. On the other hand, CO₂ is
much less constraint since proxy data over this time period are sparse, and model-based reconstructions can be quite different
(see for example Figure 6 in Berends et al., 2020). Particularly, the reconstruction from Stap et al. (2016) shows a much larger
amplitude in CO₂ (80-150 ppm), whereas that from Willeit et al. (2019) employs a smaller amplitude (40-50 ppm) over our
time period compared to our forcing record (60-80 ppm).

285 Simulated runoff over the Northern African continent shows periodic behaviour largely related to the orbital frequencies of
precession, although obliquity influence is also present, especially after inception of NH ice (~ 2.8 Myr ago). Previous
studies have shown the strong presence of orbital induced variations of the African monsoon, that could originate from en-
hanced moisture transport from the tropical Atlantic (Bosmans et al., 2015a). From 3.2 to 2.3 Myr ago the variations are
largely in sync with climatic precession. Obliquity variations are much less pronounced but do show an increase in the lag after
290 inception of NH ice sheets at about 2.8 Myr ago. This is also related to the induced time-lag increase in the LR04 age scale
(Lisiecki and Raymo, 2005), which is the origin of the ice-sheet and CO₂ reconstructions used in the CLIMBER-2 simulations
(de Boer et al., 2014; Stap et al., 2018).

Although the evolution and dispersal of hominin species during this time could be linked to orbital variations (Joordens et al., 2019)
, a direct link with the climatic variations shown by CLIMBER-2 cannot directly be established.

295 The runoff output of Northern Africa correlate exceptionally well with the Ti/Al record of ODP Site 967, resulting in the
correlation of sapropels S61-S80 to the corresponding wet runoff phases (Figure 6). Although the correlation is high, peak
values of T/Al do not cooling exactly with low runoff, illustrating the non-linearity in the system that is for example depending
on wind transportation of aeolian dust, and variable river flux of the Nile. Correlation with the dust record of ODP Site 659,
which we re-tuned to the LR04 age scale, is moderate compared to that with the Ti/Al record. The lower correlation with
300 the dust could be expected since dust emissions are a strongly non-linear function of ground cover, wind and soil moisture
(e.g. Bauer and Ganopolski, 2010). Moreover, the hydrological cycle over the grid boxes is also clearly linked to the vegetation
(Figure 3). The vegetation shows a high correlation for trees and desert with Ti/AL for the Sahel region (-0.734 and 0.781,
respectively), and grass and desert for the Sahara region (-0.783 and 0.783). On the contrary, the correlations between vegetation

coverage over the two regions is generally poor compared to the dust of Site 659, illustrating the strong non-linear relationship
305 between vegetation and dust outside of the African continent.

The Ti/Al record of the Mediterranean represents variation in relative contribution of aeolian and fluvial dust input in the sediment core, relating high continental runoff from the African continent to lower values of the Ti/Al record. Although overall correlation is best represented by runoff from the Sahel region, we found that a combined runoff from the Sahel (grid box 11) and the Sahara (grid box 12) gives the highest correlation with the record. Henceforth, a high fluvial input corresponds
310 well with high runoff from the Sahel region, whereas a more aeolian input corresponds to dry periods of the Sahara desert, corresponding to both low runoff and possible higher dust transport from the desert.

Following, we ~~correlation~~ correlated the combined runoff output of grid box 11 and 12 with the Ti/Al record. Over the entire period the correlation is highest for a record that combines 65% of grid box 12 (Sahara) with 35% of grid box 11 (Sahel) as presented in Figure 11b. Although the data correlates fairly well with the wet-dry index reconstructed from the same Site 967
315 (Grant et al., 2017) (Figure 11a; correlation with Ti/Al is 0.49, with the combined runoff is 0.45), the wet-dry index, ~~which~~ representing Northwest and East Africa climate, does show a much larger long-term (eccentricity) component not present in the Ti/Al or runoff data. Furthermore, we have calculated a wavelet coherence diagram (Figure 11d) ~~that~~ indicating coherence of frequencies between the combined runoff from CLIMBER-2 and the Ti/Al record of Site 967 (Figure 11b and c, respectively). The arrows indicate that for precessional periods (~23 kyr) the records vary largely in phase from 3.2 to 2.3 ~~Myr-ago~~ Ma.
320 Moreover, obliquity change do increase slightly after 2.8 ~~Myr-ago~~ Ma.

We have shown that there is a clear uninterrupted impact of runoff on the Mediterranean, for which we showed that prior to 2.8 ~~Myr-ago~~ Ma a higher contribution from the Sahara region is required for a better correlation with the Ti/Al record. However, after inception of NH glaciation a 50% contribution of each of the regions represents the highest fit. It seems that prior to a more high latitude influence of global climate, dry periods over the Sahara have more impact on the Ti/Al record,
325 i.e. during relative warm climate of the Late Pliocene. After ~2.8 ~~Myr-ago~~ Ma, the global cooling trend gives way to a more equal impact from the Sahel and the Sahara regions, whereas equatorial regions are much less linked to the variations seen in the Mediterranean. Moreover, it has already been shown previously that river runoff from the south, in this case largely dominated by the river Nile, is related to the strength of the North African monsoon (e.g. Bosmans et al., 2015b). There is a clear connection between greater parts of Northern African climate and the Mediterranean. Although the CLIMBER-2 model
330 is of low resolution, it also shows to have a strong coherence with sedimentary records from the Mediterranean especially for precessional frequencies.

Author contributions. BdB and MP carried out the analysis, BdB wrote the paper, with contributions from all authors. All authors contributed equally to the discussion and interpretation of the results.

Competing interests. The authors declare that they have no conflict of interest.

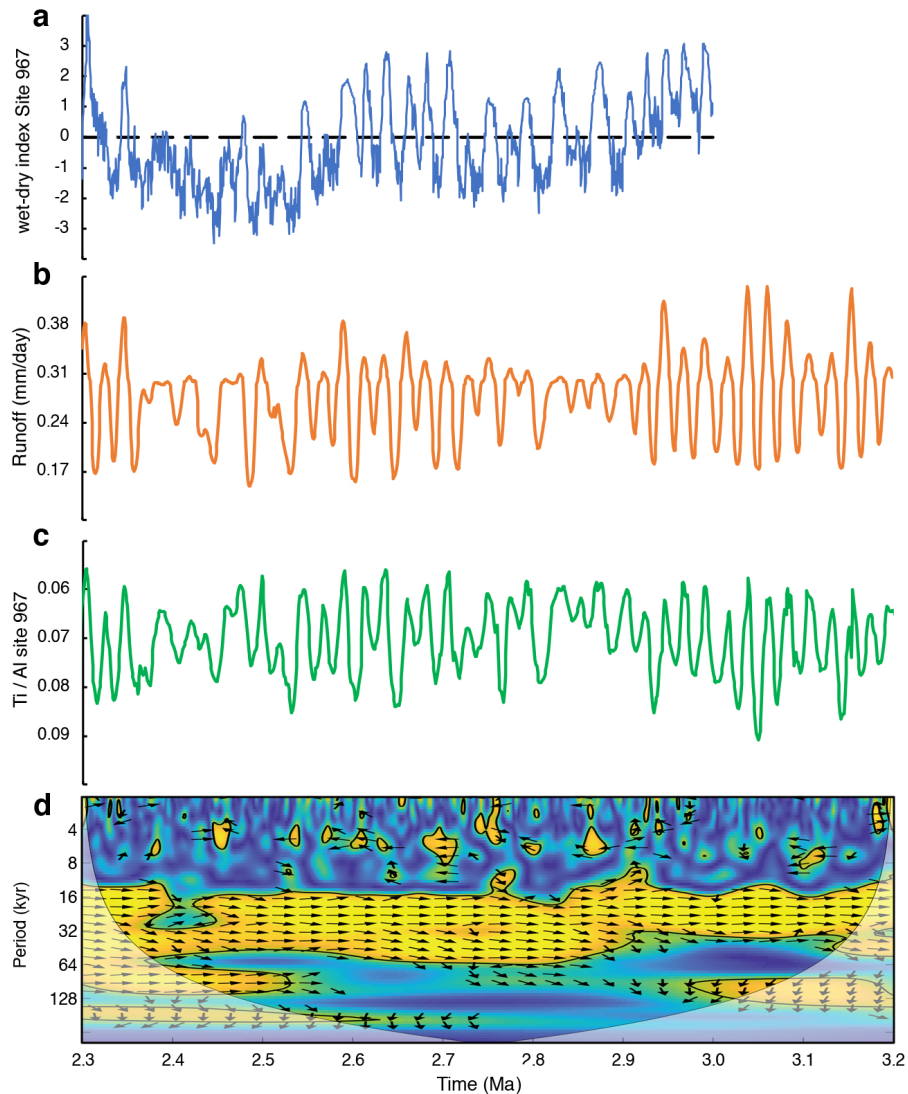


Figure 11. Records of African climate and Mediterranean sediments. a) The wet-dry index as calculated by Grant et al. (2017) from Site 967, indicating wet and dry phases of Northwest and East Africa. b) The optimal runoff combined record of 35% runoff 11 plus 65% runoff 12 from CLIMBER-2. c) The Ti/Al record from Site 967, with the y-axis reversed and d) a Wavelet coherence diagram (Grinsted et al., 2004) of Runoff (panel b) with Ti/Al (panel c). Arrows The colour scale indicates coherence, with >95% confidence levels indicated with the black lines (orange to yellow colours). The arrows indicate the phase, with right pointing meaning in phase, and upward pointing mean a lead of runoff relative to Ti/Al.

335 *Acknowledgements.* B. de Boer is funded through a grant from the SCOR Corporate foundation for Science. This research was funded by NWO-ALW grant (project number 865.10.001) and Netherlands Earth System Science Centre Gravitation (Grant 024.002.001) to L. J.

Lourens. We would like to thank Erik Tuenter for running the CLIMBER-2 simulations and making the data available. We would like to thank Hans Brumsack and Rolf Wehausen for making the data of Site 967 available.

References

- 340 Bailey, I., Hole, G. M., Foster, G. L., Wilson, P. A., Storey, C. D., Trueman, C. N., and Raymo, M. E.: An alternative suggestion for the Pliocene onset of major northern hemisphere glaciation based on the geochemical provenance of North Atlantic Ocean ice-rafted debris, *Quaternary Science Reviews*, 75, 181–194, 2013.
- Bartoli, G., Hönisch, B., and Zeebe, R. E.: Atmospheric CO₂ decline during the Pliocene intensification of Northern Hemisphere glaciations, *Paleoceanography*, 26, 2011.
- 345 Bauer, E. and Ganopolski, A.: Aeolian dust modeling over the past four glacial cycles with CLIMBER-2, *Global and Planetary Change*, 74, 49–60, 2010.
- Berends, C. J., de Boer, B., and van de Wal, R. S. W.: Reconstructing the Evolution of Ice Sheets, Sea Level and Atmospheric CO₂ During the Past 3.6 Million Years, *Climate of the Past Discussions*, in review, <https://doi.org/10.5194/cp-2020-52>, 2020.
- Bintanja, R. and Van de Wal, R. S. W.: North American ice-sheet dynamics and the onset of 100,000-year glacial cycles, *Nature*, 454, 350 869–872, <https://doi.org/10.1038/nature07158>, 2008.
- Bosmans, J. H. C., Drijfhout, S. S., Tuenter, E., Hilgen, F. J., and Lourens, L. J.: Response of the North African summer monsoon to precession and obliquity forcings in the EC-Earth GCM, *Climate Dynamics*, 44, 279–297, <https://doi.org/10.1007/s00382-014-2260-z>, 2015a.
- Bosmans, J. H. C., Drijfhout, S. S., Tuenter, E., Hilgen, F. J., Lourens, L. J., and Rohling, E. J.: Precession and obliquity forcing of the 355 freshwater budget over the Mediterranean, *Quaternary Science Reviews*, 123, 16–30, <https://doi.org/10.1016/j.quascirev.2015.06.008>, 2015b.
- Brigham-Grette, J., Melles, M., Minyuk, P., Andreev, A., Tarasov, P., DeConto, R., Koenig, S., Nowaczyk, N., Wennrich, V., Rosén, P., Haltia, E., Cook, T., Gebhardt, C., Meyer-Jacob, C., Snyder, J., and Herzschuh, U.: Pliocene Warmth, Polar Amplification, and Stepped Pleistocene Cooling Recorded in NE Arctic Russia, *Science*, 340, 1421–1427, <https://doi.org/10.1126/science.1233137>, 2013.
- 360 Brovkin, V., Ganopolski, A., and Svirezhev, Y.: A continuous climate-vegetation classification for use in climate-biosphere studies, *Ecol. Model.*, 101, 251–261, 1997.
- Caley, T., Extier, T., Collins, J. A., Schefuß, E., Dupont, L., Malaizé, B., Rossignol, L., Souron, A., McClymont, E. L., Jimenez-Espejo, F. J., García-Comas, C., Eynaud, F., Martinez, P., Roche, D. M., Jorry, S. J., Charlier, K., Wary, M., Gourves, P.-Y., Billy, I., and Giraudeau, J.: A two-million-year-long hydroclimatic context for hominin evolution in southeastern Africa, *Nature*, 560, 76–79, 2018.
- 365 de Boer, B., Lourens, L. J., and van de Wal, R. S. W.: Persistent 400,000-year variability of Antarctic ice volume and the carbon cycle is revealed throughout the Plio-Pleistocene, *Nat Commun*, 5:2999, <https://doi.org/10.1038/ncomms3999>, 2014.
- deMenocal, P. B.: Plio-Pleistocene African Climate, *Science*, 270, 53–59, 1995.
- DiMaggio, E., Campisano, C., Rowan, J., Dupont-Nivet, G., Deino, A., Bibi, F., Lewis, M., Souron, A., Garello, D., Werdelin, L., Reed, K., and Arrowsmith, J.: Late Pliocene fossiliferous sedimentary record and the environmental context of early Homo from Afar, Ethiopia, 370 *Science*, 347, 1355–1359, <https://doi.org/10.1126/science.aaa1415>, 2015.
- Donges, J. F., Donner, R. V., Trauth, M. H., Marwan, N., Schellnhuber, H.-J., and Kurths, J.: Nonlinear detection of paleoclimate-variability transitions possibly related to human evolution, *Proceedings of the National Academy of Sciences of the United States of America*, 108, 20422–20427, 2011.
- Emeis, K., Robertson, A., and Richter, C.: Proceedings of the Ocean Drilling Program, Initial Reports, ODP, College Station (TX), 160, 375 1996.

- Flesche Kleiven, H., Jansen, E., Fronval, T., and Smith, T.: Intensification of Northern Hemisphere glaciations in the circum Atlantic region (3.5–2.4 Ma) – ice-rafted detritus evidence, *Palaeogeography, Palaeoclimatology, Palaeoecology*, 184, 213 – 223, [https://doi.org/10.1016/S0031-0182\(01\)00407-2](https://doi.org/10.1016/S0031-0182(01)00407-2), 2002.
- Ganopolski, A. and Calov, R.: The role of orbital forcing, carbon dioxide and regolith in 100 kyr glacial cycles, *Climate of the Past*, 7, 1415–1425, 2011.
- Grant, K. M., Rohling, E. J., Westerhold, T., Zabel, M., Heslop, D., Konijnendijk, T., and Lourens, L.: A 3 million year index for North African humidity/aridity and the implication of potential pan-African Humid periods, *Quaternary Science Reviews*, 171, 100 – 118, 2017.
- Grinsted, A., Moore, J. C., and Jevrejeva, S.: Application of the cross wavelet transform and wavelet coherence to geophysical time series, *Nonlin. Process. Geophys.*, 11, 561566, 2004.
- 385 Hays, J., Imbrie, J., and Shackleton, N.: Variation in the Earth’s orbit: pacemakers of the ice ages, *Science*, 194, 1121–1132, 1976.
- Herbert, T. D., Peterson, L. C., Lawrence, K. T., and Liu, Z.: Tropical Ocean Temperatures Over the Past 3.5 Million Years, *Science*, 328, 1530–1534, <https://doi.org/10.1126/science.1185435>, 2010.
- Hilgen, F.: Astronomical calibration of Gauss to Matuyama sapropels in the Mediterranean and implication for the geomagnetic polarity time scale, *Earth Planet. Sci. Lett.*, 104, 226–244, 1991.
- 390 Imbrie, J., Berger, A., Boyle, E. A., Clemens, S. C., Duffy, A., Howard, W. R., Kukla, G., Kutzback, J., Martinson, D. G., McIntyre, A., Mix, A. C., Molino, B., Morley, J. J., Peterson, L. C., Pisias, N. G., Prell, W. L., Raymo, M. E., Shackleton, N. J., and Toggweiler, J. R.: On the structure and origin of major glaciation cycles 2. The 100,000-year cycle, *Paleoceanography*, 8, 699–735, <https://doi.org/10.1029/93PA02751>, 1993.
- Joordens, J. C. A., Feibel, C. S., Vonhof, H. B., Schulp, A. S., and Kroon, D.: Relevance of the eastern African coastal forest for early hominin biogeography, *Journal of Human Evolution*, 131, 176–202, <https://doi.org/10.1016/j.jhevol.2019.03.012>, 2019.
- 395 Konijnendijk, T., Ziegler, M., and Lourens, L.: Chronological constraints on Pleistocene spropel depositions from high-resolution geochemical records of ODP Sites 967 and 968, *Newsletters on Stratigraphy*, 47, 263–282, <https://doi.org/10.1127/0078-0421/2014/0047>, 2014.
- Kroon, D., Alexander, I., Little, M., Lourens, L. J., Matthewson, A., Robertson, A. H. F., and Sakamoto, T.: Oxygen isotope and sapropel stratigraphy in the eastern Mediterranean during the last 3.2 million years, *Proceedings of the Ocean Drilling Program, Scientific Results*, 400 160, 181–189, 1998.
- Kuechler, R. R., Dupont, L. M., and Schefuß, E.: Hybrid insolation forcing of Pliocene monsoon dynamics in West Africa, *Climate of the Past*, 14, 73–84, 2018.
- Laskar, J., Robutel, P., Joutel, F., Gastineau, M., Correia, A., and Levrard, B.: A long-term numerical solution for the insolation quantities of the Earth, *Astron. Astroph.*, 428, 261–285, <https://doi.org/10.1051/0004-6361:20041335>, 2004.
- 405 Lisiecki, L. and Raymo, M.: A Pliocene-Pleistocene stack of 57 globally distributed benthic $\delta^{18}\text{O}$ records, *Paleoceanography*, 20, <https://doi.org/10.1029/2004PA001071>, PA1003, 2005.
- Lisiecki, L. and Raymo, M.: Plio-Pleistocene climate evolution: trends and transitions in glacial cycle dynamics, *Quat. Sci. Rev.*, 26, 56–69, 2007.
- Lourens, L. J., Antonarakou, A., Hilgen, F. J., Hoof, A. A. M. V., Vergnaud-Grazzini, C., and Zachariasse, W. J.: Evolution of the Plio-Pleistocene astronomical timescale, *Paleoceanography*, 11, 391–413, 1996.
- 410 Lourens, L. J., Wehausen, R., and Brumsack, H. J.: Geological constraints on tidal dissipation and dynamical ellipticity of the Earth over the past three million years, *Nature*, 409, 1029–1033, <https://doi.org/10.1038/35059062>, 2001.

- Lourens, L. J., Becker, J., Bintanja, R., Hilgen, F. J., Tuenter, E., de Wal, R. S. V., and Ziegler, M.: Linear and non-linear response of late Neogene glacial cycles to obliquity forcing and implications for the Milankovitch theory, *Quat. Sci. Rev.*, 29, 352 – 365, 415 <https://doi.org/10.1016/j.quascirev.2009.10.018>, 2010.
- Lupien, R. L., Russell, J. M., Feibel, C., Beck, C., Castañeda, I., Deino, A., and Cohen, A. S.: A leaf wax biomarker record of early Pleistocene hydroclimate from West Turkana, Kenya, *Quaternary Science Reviews*, 186, 225–235, 2018.
- Lüthi, D., Le Flock, M., Bereiter, B., Blunier, T., Barnola, J.-M., Siegenthaler, U., Raynaud, D., Jouzel, J., Fischer, H., Kawamura, K., and Stocker, T.: High-resolution carbon dioxide concentration record 650,000–800,000 years before present, *Nature*, 453, 379–382, 420 <https://doi.org/10.1038/nature06949>, 2008.
- Maslin, M. A., Brierley, C. M., Milner, A. M., Shultz, S., Trauth, M. H., and Wilson, K. E.: East African climate pulses and early human evolution, *Quat. Sci. Rev.*, 101, 1–17, <https://doi.org/10.1016/j.quascirev.2014.06.012>, 2014.
- Mounier, A. and Mirazón Lahr, M.: Deciphering African late middle Pleistocene hominin diversity and the origin of our species, *Nature Communications*, 10, 3406, 2019.
- 425 Paillard, D., Labeyrie, L., and Yiou, P.: Macintosh program performs time-series analysis, *Eos Trans. AGU*, 77, 379, 1996.
- Petoukhov, V., Ganopolski, A., Brovkin, V., Claussen, M., Eliseev, A., Kubatzki, C., and Rahmstorf, S.: CLIMBER-2: A climate system model of intermediate complexity, part I: Model description and performance for present climate, *Climate Dynamics*, 16, 1–17, <https://doi.org/10.1038/nature06949>, 2000.
- Rose, C., Polissar, P. J., Tierney, J. E., Filley, T., and deMenocal, P. B.: Changes in northeast African hydrology and vegetation associated with Pliocene–Pleistocene sapropel cycles, *Philosophical Transactions of the Royal Society B: Biological Sciences*, 371, 20150243, 2016.
- 430 Stap, L. B., van de Wal, R. S. W., de Boer, B., Bintanja, R., and Lourens, L. J.: Interaction of ice sheets and climate during the past 800 000 years, *Climate of the Past*, 10, 2135–2152, <https://doi.org/10.5194/cp-10-2135-2014>, 2014.
- Stap, L. B., de Boer, B., Ziegler, M., Bintanja, R., Lourens, L. J., and van de Wal, R. S. W.: CO₂ over the past 5 million years: Continuous simulation and new $\delta^{11}\text{B}$ -based proxy data, *Earth and Planetary Science Letters*, 439, 1–10, 2016.
- 435 Stap, L. B., van de Wal, R. S. W., de Boer, B., Köhler, P., Hoencamp, J. H., Lohmann, G., Tuenter, E., and Lourens, L. J.: Modeled Influence of Land Ice and CO₂ on Polar Amplification and Paleoclimate Sensitivity During the Past 5 Million Years, *Paleoceanography and Paleoclimatology*, 33, 381–394, <https://doi.org/10.1002/2017PA003313>, 2018.
- Stocker, T. F., Wright, D. G., and Mysak, L. A.: A zonally averaged, coupled ocean-atmosphere model for paleoclimate studies, *Journal of Climate*, 5, 773–797, 1992.
- 440 Tan, N., Ladant, J.-B., Ramstein, G., Dumas, C., Bachem, P., and Jansen, E.: Dynamic Greenland ice sheet driven by pCO₂ variations across the Pliocene Pleistocene transition, *Nature Communications*, 9, 4755, <https://doi.org/10.1038/s41467-018-07206-w>, 2018.
- Tiedemann, R., Samthein, M., and Shackleton, N. J.: Astronomic timescale for the Pliocene Atlantic $\delta^{18}\text{O}$ and dust flux records of Ocean Drilling Program site 659, *Paleoceanography*, 9, 619–638, 1994.
- Trauth, M., Maslin, M., Deino, A., Strecker, M., Bergner, A., and Duhnforth, M.: High- and low-latitude forcing of Plio-Pleistocene East 445 African climate and human evolution, *Journal of Human Evolution*, 53, 475–486, 2007.
- Tuenter, E., Weber, S. L., Hilgen, F. J., Lourens, L. J., and Ganopolski, A.: Simulation of climate phase lags in response to precession and obliquity forcing and the role of vegetation., *Climate Dynamics*, 24, 279–295, <https://doi.org/10.1007/s00382-004-0490-1>, 2005.
- van de Wal, R. S. W., de Boer, B., Lourens, L. J., Köhler, P., and Bintanja, R.: Reconstruction of a continuous high-resolution CO₂ record over the past 20 million years, *Climate of the Past*, 7, 1459–1469, <https://doi.org/10.5194/cp-7-1459-2011>, 2011.

- 450 Venti, N. L., Billups, K., and Herbert, T. D.: Increased sensitivity of the Plio-Pleistocene northwest Pacific to obliquity forcing, *Earth and Planetary Science Letters*, 384, 121–131, <https://doi.org/10.1016/j.epsl.2013.10.007>, 2013.
- Wagner, B., Vogel, H., Francke, A., Friedrich, T., Donders, T., Lacey, J. H., Leng, M. J., Regattieri, E., Sadori, L., Wilke, T., Zanchetta, G., Albrecht, C., Bertini, A., Combourieu-Nebout, N., Cvetkoska, A., Giaccio, B., Grazhdani, A., Hauffe, T., Holtvoeth, J., Joannin, S., Jovanovska, E., Just, J., Kouli, K., Kousis, I., Koutsodendris, A., Krastel, S., Lagos, M., Leicher, N., Levkov, Z., Lindhorst, K., Masi, A.,
455 Melles, M., Mercuri, A. M., Nomade, S., Nowaczyk, N., Panagiotopoulos, K., Peyron, O., Reed, J. M., Sagnotti, L., Sinopoli, G., Stelbrink, B., Sulpizio, R., Timmermann, A., Tofilovska, S., Torri, P., Wagner-Cremer, F., Wonik, T., and Zhang, X.: Mediterranean winter rainfall in phase with African monsoons during the past 1.36 million years, *Nature*, 573, 256–260, <https://doi.org/10.1038/s41586-019-1529-0>, 2019.
- Wang, P., Tian, J., and Lourens, L. J.: Obscuring of long eccentricity cyclicity in Pleistocene oceanic carbon isotope records, *Earth and*
460 *Planetary Science Letters*, 290, 319–330, 2010.
- Wehausen, R. and Brumsack, H.-J.: Chemical cycles in Pliocene sapropel-bearing and sapropel-barren eastern Mediterranean sediments, *Palaeogeogr. Palaeoclimatol. Palaeoecol.*, 158, 325–352, 2000.
- Willeit, M., Ganopolski, A., Calov, R., Robinson, A., and Maslin, M.: The role of CO₂ decline for the onset of Northern Hemisphere glaciation, *Quaternary Science Reviews*, 119, 22–34, <https://doi.org/10.1016/j.quascirev.2015.04.015>, 2015.
- 465 Willeit, M., Ganopolski, A., Calov, R., and Brovkin, V.: Mid-Pleistocene transition in glacial cycles explained by declining CO₂ and regolith removal, *Science Advances*, 5, <https://doi.org/10.1126/sciadv.aav7337>, 2019.