

In addition to the comments, questions, requests, and suggestions from the reviewers in the public review period, please respond to and make changes or additions as appropriate to the following items from the guest editor Kevin Anchukaitis:

Line 23: 'emit' instead of 'pour'

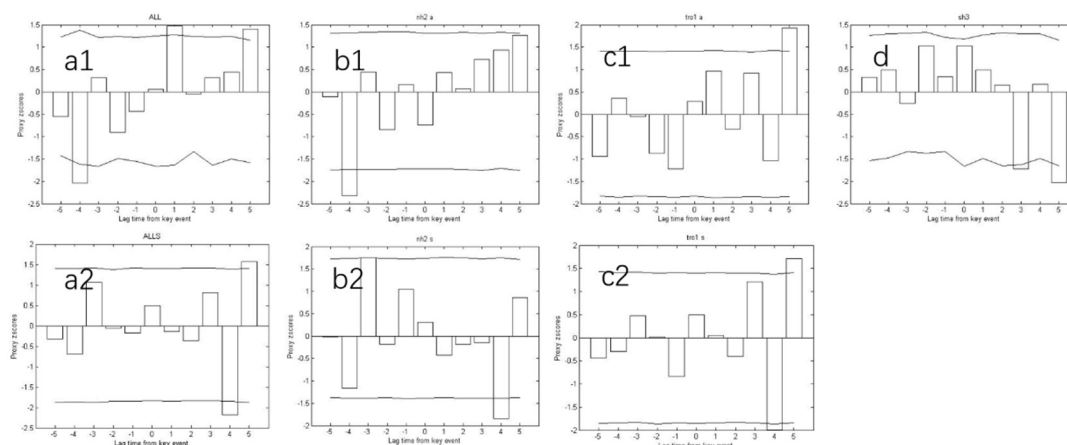
Line 45: 'studies' instead of 'researches'

Line 51: 'The'

Reply: Thank you, we have changed all above as suggested.

Line 102: VEI is not however always correlated with the climate-important sulfur emissions - what would happen if you used a list of eruptions based on the radiative forcing instead (e.g. from Sigl et al. 2015)?

Reply: The global radiative forcing (GVF, Sigl et al. 2015) provides the GVF data in northern hemisphere (high-latitude), tropical and southern hemisphere (high-latitude) eruptions, and the GVF value varies greatly, thus, we analyzed the relationship between our Tmin reconstruction, all the data (i.e. all volcanic eruptions) and some lower data (GVF < -2.5, i.e. strong volcanic eruptions), in this case, there are not strong eruptions in southern hemisphere. the result is shown as follows:



the SEA results of Tmin with GVF in global (a1: all data; a2: strong eruptions), northern hemisphere (b1: all data; b2: strong eruptions), tropical (c1: all data; c2: strong eruptions), and southern hemisphere(d)

It seems that there is not significant relationship between the GVF series (volcanic eruptions) and temperature, except when the eruptions in southern hemisphere, temperature will be decreased in the next 3 and 5 years, however, after strong eruptions, Tmin will be decreased in the next 4 years. This result is different with ours, one reason maybe is that the timing and intensity of volcanic eruptions are different in two series. the VEI chronology from the Smithsonian institution includes more detailed information, such as longitude, latitude, starting and ending dates of volcanic eruptions et al., but the GVF series is not, for example, both the starting year (1812) and the ending year (1815) of the Tambora eruption(VEI 7) are shown in the VEI series, but the GVF series just provides a lower value of -17.2 in 1815, actually, the dates of other confirmed strong volcanic eruptions are different in two series, for examples, the Krakatau in 1883 (1883 in VEI series (VEI 6), 1884 in GVF series(GVF -17.2)), the Santa Maria in 1902 (1902 in VEI series (VEI 6), 1903 in GVF series (GVF -0.62)).

Line 115: As also mentioned by Reviewer #1, more description is needed of the SEA procedure, including how the uncertainty/confidence levels were calculated. Also, are the SEA sensitive to the inclusion or exclusion of one or more events?

Reply: *We have added a further description in line 132-133, page5:*

"The significance of responses is determined by a Monte Carlo resampling procedure (10,000 iterations) (Adams et al., 2003)."

In fact, The SEA method is one of the methods of mathematical statistics, which similar to calculating the average value of a series. The increase and decrease of sample size will lead to the change of degree of freedom, the larger the sample size is, the more stable the value is. however, Because the significance test is based on Monte Carlo method, after 10000 iterations based on Monte Carlo resampling procedure, the sensitivity of the results of significance test to the change of sample size should be not very large.

Line 145: Preferable to report this either as R^2 of calibration or phrase it as 'The reconstruction account for 58% of the variance in the instrumental series during the calibration period'

Reply: *thank you for your comments, it has been modified as you suggested.*

Line 177: It is not clear what this sentence means - please rephrase for clarity or remove if necessary: 'If "high correlation" is defined by a correlation coefficient > 0.6 , the high-correlation zone for the reconstructed T_{min87} is discontinuous and shrunken.'

Reply: *yes, we have removed this sentence in the revision.*

Line 187: I'm not sure what 'the number ratio' means? What are the units in the following line for 46/35 ? If this is simply the ratio of eruptions to years with a temperature decrease in Year 0 or Year 1, it would probably be better to express it the other ways (e.g. number of years with a temperature decrease in Year 0/1 vs. the number of $VEI > 5$)

Reply: *yes, Reviewer #1 mentioned this problem too, we have modified this sentence in the revision, please see it as followed:*

"For most years, large volcanic eruptions ($VEIs > 4$) coincide with a drop in T_{min} across the study area. Of the 46 strong volcanic eruption years, there are 35 event year in which temperature decreases in the year of the eruption or 1, 2, or even 3 years after the event. "

Line 215: suggest rephrasing this to 'One reason for this could be a distortion of the meteorological ...' Alternatively this could be due to the detrending, could it not? You might mention here also that the low or negative value of CE should not influence your conclusions about the high frequency climate response to volcanism.

Reply: *thank you for your comments. Yes, the CE varies largely depending on the different chronologies with different detrending, however the current chronology is the best choice we can find. Actually, the different mean or trend in two split intervals could lead to the negative value of CE, the distortion of instrumental data may mainly lead to the lower value of CE, for example, the relocation of meteorological stations or the equipment replacement will result in the abrupt change of the trend or long-term mean in the instrumental data. We have modified these sentences according to the comments.*

Line 217: Suggest rephrasing this to: 'However, the cross-validation results indicate that the equation is otherwise reliable'

Reply: *it has been modified as you suggested. Please see it in line 229-232:*

"One reason for this could be a distortion of the meteorological data due to the poor management and/or the relocation of meteorological stations during the 1950s and 1960s on the TP. However, the cross-validation results indicate that the equation is otherwise reliable, the negative value of CE should not influence our analysis about the high frequency climate response to volcanism.

"

Line 227: Suggest rephrasing to: 'most strongly correlated'

Reply: *thank you, it has been modified as you suggested.*

Line 255: The reference from Cronin doesn't appear in the reference list but in any case this is not the best reference for this statement - the author might consider the recent paper by Toohey et al comparing the climate impact of extra-tropical and tropical eruptions, and/or the Schneider paper from 2009 which does idealized experiments with Community Climate System Model for tropical and extratropical eruptions. Indeed, I'm not sure this paragraph (through line 261) with a discussion of the stratosphere is really necessary to the discussion - better to ground this in modeling and observational studies of a more recent vintage

Reply: *thank you for your comments, we have modified this sentences as you suggested, please see it in line 279-288, Page 10:*

"Studies have shown that some cold intervals in the eastern and southern TP may be influenced by large volcanic eruption in low-latitude regions (Bi et al., 2020; Duan et al., 2019a; Krusic et al., 2015), and the surface air temperature in the TP were cooling in the first winter based on the ensemble simulation of the climate response to high-latitude volcanic eruption (Oman et al., 2005). Using the fully coupled NCAR Community Climate System Model (CCSM3), Schneider et al. (2009) found there is significant cooling over the continents in summer in both scenarios (tropical and high-latitude volcanism cases) for the period 1250–1300 AD, and new research by Toohey et al. (2019) demonstrated extratropical explosive eruptions since 750 AD have produced stronger hemispheric cooling than tropical eruptions, these results are similar to ours, both strong eruptions in the northern hemisphere and tropical can lead to the cooling of Tmin in our study area, The effects of volcanic eruptions in the northern hemisphere seem to be more pronounced."

Line 262: Suggest rephrasing to: 'influence local temperature'

Reply: *it has been modified as you suggested*

Line 273: Suggest omitting this sentence (it would be surprising if there were NOT interannual variability!): 'There is clear interannual variability in Tmin during the 1380–2014 AD period'

Reply: *thank you for your comment, it has been deleted as you suggested*

Figure 3: it would be preferable to use month names or abbreviations instead of numbers here if possible

Reply: *it has been modified as you suggested*

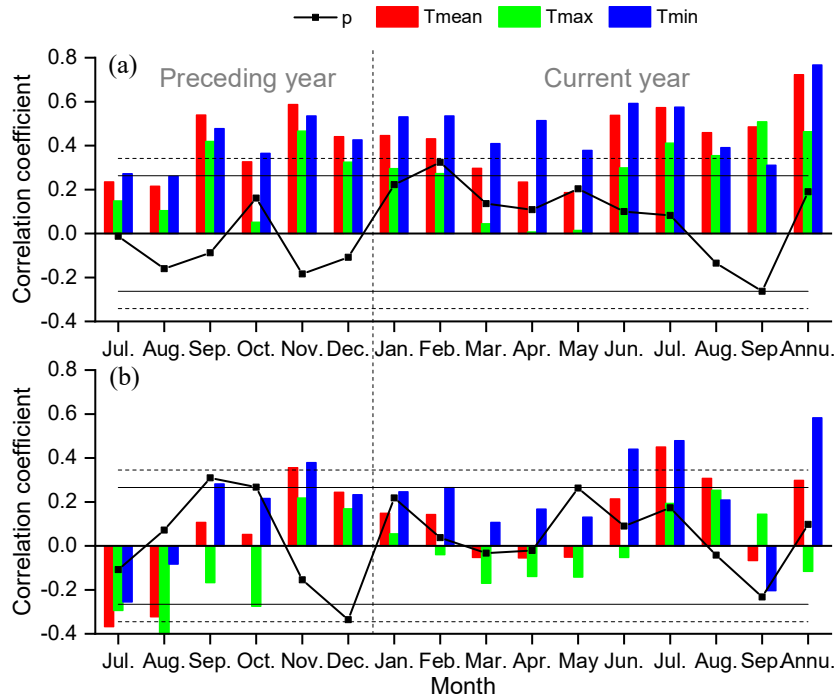


Figure 3. Correlations between (a) the tree-ring width index and climate data and (b) the first-differenced tree-ring width index and climate data. The horizontal solid lines indicate the 0.05 significance level; the horizontal dashed lines show the 0.01 significance level. Annu. indicates previous August to current July

Figure 6: I'm not convinced that this figure add to the argument in the paper - in particular, the arbitrariness of connecting eruptions to relative cold years 0 to several years after seems speculative and not well constrained statistically. More accurate would be to simply draw straight vertical lines associated with each volcanic eruption, and let the reader decide if the relationship in time seems plausible.

Reply: *it has been modified as you suggested*

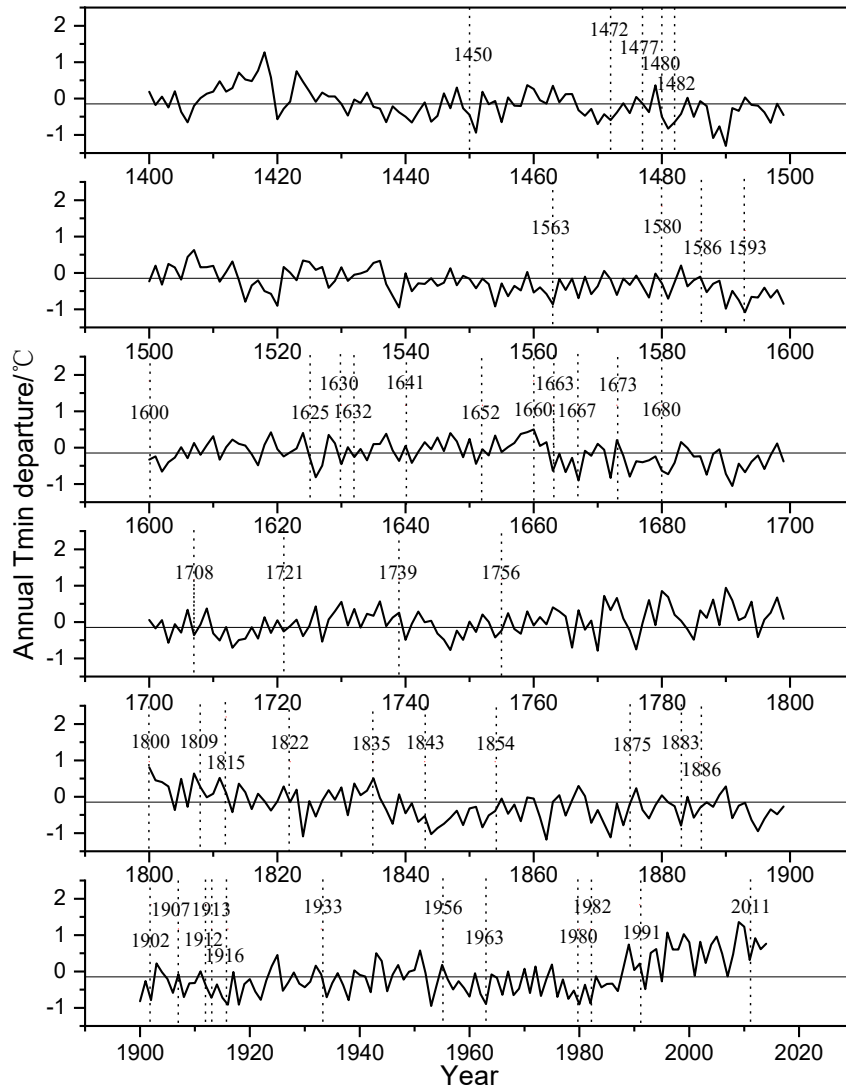


Figure 6. Plot of the VEI of large volcanic eruptions (black triangles) and cold years (black squares) since 1400 CE. The x-axis in each sub-figure indicates the year from the 15th century (top figure) to the 20th century (bottom figure). The dot lines and the numbers indicate the years of 46 volcanic events used in this study.

Figure 7: Caption should also contain more information about how the significance levels were calculated here

Reply: it has been modified as you suggested, the caption modified as follows:

Figure 7. SEA analysis of the impact of volcanic eruptions ($VEI \geq 5$) on T_{min} for the period 1380–2014 AD: (a) global; (b) Northern Hemisphere; (c) Southern Hemisphere; (d) low latitudes 30°S–30°N; (e) Northern Hemisphere mid-latitude 30°N–60°N ; (f) Southern Hemisphere mid-latitude 30°S–60°S; and (g) Northern Hemisphere high latitude. 0 = year of volcanic eruption; –1 = year before eruption; 1 = year after eruption. The solid lines represent 95% confidence limits using Monte Carlo type block bootstrapping (Adams et al., 2003).

Dear Editor:

Thank you very much for your comments and considering our manuscript acceptance after minor revision.

According to your comments, we make the following modifications:

1. We slightly changed our conclusion in the abstract and conclusion, i.e. change "low latitude" to "northern hemisphere", in the revision, we find T_{min} in our study significantly response to both strong eruptions in low latitude and NH, however, the influence of eruption in NH is more significant according to Fig 7, we are very sorry that it was the mistakes in the first version we did not find and modify it.
2. With regarding to editor comments, we made amendments one by one, please see them in the reply above or the marked-up revision below.
3. Because one paragraph in discussion section was rewritten according to the comments, we added some new references in the revision and deleted several references either.
4. According to the comments, we modified figure 3 and figure 6.

We have carefully addressed all of the editor's suggestions and concerns. Should further revision be needed, we are happy to work with you to further improve the manuscript. Thank you very much for your support and understanding.

Sincerely yours,

Yong Zhang, on behalf of all authors

The response of annual minimum temperature on the eastern central Tibetan Plateau to large volcanic eruptions for the period 1380–2014 AD

Yajun Wang^{1,3}, Xuemei Shao^{1,2}, Yong Zhang¹, Mingqi Li¹

¹ Key Laboratory of Land Surface Pattern and Simulation, Institute of Geographic Sciences and Natural Resources, Chinese Academy of Sciences (CAS), Beijing, 100101, China

² University of Chinese Academy of Sciences, Beijing, 100049, China

³ CAS Center for Excellence in Tibetan Plateau Earth Sciences and Institute of Tibetan Plateau Research, Chinese Academy of Sciences (CAS), Beijing, 100101, China

Correspondence to: Yong Zhang (zhangyong@igsnr.ac.cn)

Abstract. Volcanic eruptions have a significant impact on global temperature; their consequences are of particular interest in regions that are especially sensitive to climate change, like the Tibetan Plateau. In this study, we develop a temperature-sensitive tree-ring width standard chronology covering the period 1348–2014 AD using Qilian juniper (*Sabina przewalskii* Kom.) samples collected from Animaqin Mountain on the Tibetan Plateau. We reconstruct the annual (prior August to current July) mean minimum temperature (T_{\min}) since 1380 AD and show that our reconstruction explains 58% of the variance during the 1960–2014 calibration period. Our results demonstrate that in 77.8% of cases in which a volcanic eruption with a volcanic explosivity index of 5 or greater occurs, temperature decreases in the year of or the year following the eruption. The results of the Superposed Epoch Analysis also indicate that there is a high probability that the T_{\min} decreases within 2 years of a large volcanic eruption, especially when such eruptions occur ~~at-in the Northern Hemisphere, low-latitudes.~~

Keywords. Tibetan Plateau, tree rings, minimum temperature, volcanic eruption

1 Introduction

Large volcanic eruptions can affect the climate of the Earth (Robock, 2000) and have played a major role in past global temperature changes (Salzer and Hughes, 2007). Eruptions ~~emit~~ large amounts of ash particles and gases into the atmosphere, much of which are carried to other regions by atmospheric movement. These materials efficiently reflect incident solar radiation, resulting in the cooling of the Earth's surface. However, volcanic eruptions of similar magnitudes do not necessarily result in cooling across all areas of the world. For example, the 1991 eruption of Mount Pinatubo, Philippines, caused summer cooling over much of the globe in 1992, but the

30 temperature in some areas was above average (Robock and Mao, 1992). Thus, it is not necessarily clear to what extent or in what manner a strong volcanic eruption will influence temperature in a particular region.

Often referred to as the “third pole”, the Tibetan Plateau (TP) is especially sensitive to climate change (Yao et al., 2012) and may therefore be more profoundly influenced by volcanic eruptions. As early as 1985, studies of the relationship between large volcanic eruptions (dust veil index > 1000m³) and temperature variations from 1951 to 35 1980 in China (Zhang and Zhang 1985) demonstrated that temperature on the northeastern TP decreased 8, 15, and 18 months after eruptions. However, temperatures in the 6 months immediately following an eruption were found to be relatively high. Jia and Shi (2001) studied climate signals following volcanic eruptions from 1950 to 1997 and found that temperature on the TP dropped within 2 years after eruptions during this period. However, new research focusing on regional differences over China of winter temperature response to large volcanic eruptions 40 with different latitudes and seasons from 1956 to 2005 found that winter volcanic eruptions led to extensive warming of winter temperature over Tibet Plateau (Sun et al., 2019). These studies show that temperature on the TP is affected by volcanic activities, but it is important to note that they are based on instrumental data, which covers a relatively short time span. Temperature changes caused by strong volcanic eruptions can affect tree growth (Tognetti et al., 2012), an influence that can be seen in the rings of certain trees (D'Arrigo et al., 2013; Filion et al., 45 1986; Lamarche and Hirschboeck, 1984) and used to identify past volcanic activity (D'Arrigo et al., 2013; Filion et al., 1986; Lamarche and Hirschboeck, 1984). Especially when long-lived trees are available, tree-rings can serve as temperature-sensitive proxies for investigating climate responses to volcanic eruptions that occurred prior to the instrumental record (D'Arrigo et al., 2013; Salzer and Hughes, 2007).

Tree rings from the TP can potentially be used to study the climate response to volcanic activities. Previous tree-ring based ~~researches~~ studies showed that some cold years can be closely correlated with large volcanic events 50 (Liang et al., 2008; Liang et al., 2016; Zhang et al., 2014). Li et al (2017a) quantitatively assessed the correlation between temperature changes in the southeastern TP and volcanic eruptions and showed that most of the years of extreme cold in the past 304 years occurred 1–2 years after major volcanic eruptions. However, the influence of volcanic eruptions on temperatures on the TP over the long-term is less well understood due to the paucity of data 55 in this region.

The Animaqin Mountains are located on the northeastern TP, many long tree-ring series, with hundreds of years or even thousands of years (Chen et al., 2016; Gou et al., 2007; Gou et al., 2008; Gou et al., 2010), were developed here, and provided a significant proxy for the tree growth response to volcanic dynamics, but the response studying of tree rings to volcanic activity is still rare across this area even the TP. Using tree-ring samples of Qilian juniper 60 (*Sabina przewalskii* Kom.) collected from a new sample site in southeast part of the Animaqin Mountains, a 667-

year tree-ring width chronology is developed, and then is used to reconstruct annual mean minimum temperatures (T_{\min}) across the east-central TP. Finally, this study explores the response of T_{\min} to strong volcanic eruptions (Volcanic Explosivity Index (VEI) ≥ 4) over the past six centuries.

2 Data and methods

2.1 Tree-ring data

Qilian juniper samples were taken from a natural woodland 35km west of Ningmute town, Henan County, Qinghai Province, China (E100.96, N34.62, 3806 m a.s.l). This area is located in the sub-frigid zone and has a semi-humid climate (Zheng et al., 2013). According to climate data of the Henan meteorological station (1960–2015; Table 1), mean annual temperature is 0.31°C and mean annual precipitation is 582 mm. Precipitation is mainly concentrated between May and September. Because the site is close to the Yellow River and the soil layer in the forest area is thick, the moisture conditions of the forest are good. The regional vegetation zone is coniferous forest and the main tree species include *Sabina przewalskii* Kom., *Picea crassifolia* Kom., *Betula spp.*, and *Salix cheilophila*. The study area is located on the southern slope of the Animaqin Mountains and ranges in elevation from 3523 to 3900 m a.s.l. (Figure 1). The gradient of the slope is 30°–40°. A total of 110 cores from 55 trees were drilled at breast height with an increment borer in 2015. (figure 1 near here)

The cores were air-dried, fixed to wooden mounts, polished, and cross-dated. The cores were then measured using a Lintab 6 tree-ring width measuring instrument with a resolution of 0.01 mm. The COFECHA program (Holmes, 1983) was used to check the quality of the cross-dating and the accuracy of the measurements. The signal-free (SF) standardization method (Melvin and Briffa, 2008) was adopted to standardize the tree-ring data in order to minimize trend distortion in the chronologies produced by the straight-line detrending method. The RCSigFree program (<https://www.ldeo.columbia.edu/tree-ring-laboratory/resources/software>) was used to establish the tree-ring width chronology. In this procedure, the age trend curve was fitted to cubic smoothing splines with a 50% cutoff at approximately 67% of the mean segment length. The validity of the SF chronology was assessed using the mean correlation coefficient for the tree-ring series (R_{bar}) and the value of the expressed population signal (EPS).

2.2 Instrumental data

Thirteen meteorological stations were identified in the region of the sampling site: Zhongxinzhan (ZXZ), Dari (DR), Xinghai (XH), Guoluo (GL), Tongde (TD), Guinan (GN), Zeku (ZK), Henan (HN), Jiuzhi (JZ), Tongren (TR), Maqu (MQ), Langmusi (LMS), and Hezuo (HZ). For each station, data for four climate parameters – monthly total precipitation (P), monthly mean temperature (T_{mean}), monthly mean minimum temperature (T_{min}), and monthly mean maximum temperature (T_{max}) – were extracted from the China Meteorological Data Sharing Service System (<http://www.cma.gov.cn/2011qxw/2011qsjgx>). Details are provided in Table 1.

(Table 1 near here)

Because the observation intervals of the stations shown in Table 1 differ, it was necessary to select the longest record to ensure the stability of the correlation function. Seven stations with instrumental data spanning <30 years were excluded: GL, GN, and TR (all of which were established in the 1990s), and ZXZ, TD, ZK, and LMS (all of which ceased monitoring in the 1980s or 90s). Climate data from the other six stations (DR, XH, HN, JZ, MQ, and HZ) were used for the following analysis (Fig. 1). During the quality control of the data from the six stations, we found that there are some problems in the instrumental data from the HN, JZ and XH station. For example, there are some missing values in April and May in 1962 at JZ station. To resolve this problem, the interpolation approach was used to estimate the missing values based on the complete instrumental records from other stations nearby. The detailed relevant information is provided in the supplementary section. Finally, taking the means for the interval 1971–2000 as the references, the precipitation departure percentages and temperature departures were calculated and averaged for all six stations. The mean values calculated in this way are considered to be representative of the regional climate. The monthly climate data from the previous July to the current September were used to analyze the response of tree growth to climate change.

2.3 Volcanic data

Data about volcanic activity were obtained from the Volcanic Explosivity Index (VEI) sequence published by the Smithsonian Institution Global Volcanism Program (<http://volcano.si.edu>). Globally, there have been 46 strong volcanic eruptions ($\text{VEI} \geq 4$) since 1380 AD. For this study, it is important to note that eruptions that occurred in October, November, or December of a given year are marked as being a volcanic event in the following year. This is because tree radial growth mostly stops in October on the TP. We developed 7 sets of volcanic data for further analysis based on geography: (a) global; (b) Northern Hemisphere; (c) Southern Hemisphere; (d) low latitude 30°S–30°N; (e) Northern Hemisphere mid-latitude 30°N–60°N; (f) Southern Hemisphere mid-latitude 30°S–60°S; and (g) Northern Hemisphere high latitude.

2.4 Methods

The correlation function was used to analyze the relationship between the tree-ring width index and climatic factors. A fitted equation was then established using a simple linear regression and verified by the cross-validation method (Michaelsen, 1987) and split-period calibration/verification analysis (Meko and Graybill, 1995). Several statistical tests (sign test, product mean value, reduction error, and coefficient of efficiency) were utilized. The split periods for calibration were 1960–1991 and 1984–2014. The correlations between the observed and reconstructed series and the gridded dataset (TS3.22; Mitchell and Jones, 2005) from the University of East Anglia Climatic Research Unit (CRU) were analyzed using the KNMI Climate Explorer research tool (<http://climexp.knmi.nl>). The Superposed Epoch Analysis (SEA) method (Haurwitz and Brier, 1981) was also used to analyze the influence of volcanic activity on regional temperature. SEA is a statistical method used to resolve significant signal-to-noise problems and is often used to study the link between climate and discrete events such as solar activity, fire events, volcanic activity etc. (Adams et al., 2003; Singh and Badruddin, 2006; Swetnam 1993; Esper et al., 2013;). In this study, the year of a volcanic eruption is regarded as year 0. The years before the volcanic eruption are denoted as -1, -2, -3 and so forth, whereas the years after the eruption regarded as 1, 2, 3, etc.. The impact of volcanic eruption on temperature in the east-central TP was analyzed by comparing differences in temperature in the years leading up to and following an eruption. [The significance of responses is determined by a Monte Carlo resampling procedure \(10,000 iterations\) \(Adams et al., 2003\).](#)

3 Results

3.1 Statistical characteristics of the chronology

The tree-ring width chronology covers the time period from 1348 to 2014 AD (Figure 2a) and has an average length of 325.1 years. The average sensitivity is 0.171; the first-order autocorrelation coefficient is 0.261. The signal-to-noise ratio is 21.870, the EPS is 0.956, and the Rbar ranges between 0.31 and 0.489. The chronology is considered reliable (EPS > 0.85) from 1380 AD, at which point the sample depth is nine.

(Figure 2 near here)

3.2 Correlations between the tree-ring width index and climate factors

Figure 3a shows that the tree-ring width index correlates positively and significantly with precipitation in February, and has a positive correlation with T_{mean} , T_{max} , and T_{min} , most notably with T_{mean} and T_{min} . For the 15-month period from the previous July to the current September, the tree-ring width index correlates significantly

145 and positively with the monthly T_{\min} except for the previous August T_{\min} . Correlation with annual T_{\min} (from previous August through current July; hereafter referred to as $T_{\min 87}$) is at the 0.01 significance level.

The first-differenced correlations between the tree-ring width index and climate data are weak; in some months, the first-order correlations are even negative (Figure 3b). The first-differenced chronology correlates significantly and positively with precipitation of the previous September and the current May, but negatively with precipitation
150 of the previous December. For temperature, the tree-ring width index shows clear correlations with T_{mean} and T_{\min} and correlates significantly and positively with T_{\min} of the previous September and November and current February, June, and July. The positive correlation with the annual T_{\min} is at the 0.01 significance level.

The tree-ring width index is most strongly correlated with $T_{\min 87}$ ($r = 0.767$, $p < 0.001$). This correlation remains strong and positive after first-differencing ($r = 0.583$, $p < 0.001$), which indicates that the tree-ring width index is
155 suitable for reconstructing the $T_{\min 87}$ for the given period.

(Figure 3 near here)

3.3 Reconstruction development and verification

The tree-ring width index for the current year (SF_t) was selected as the predictor to reconstruct the annual mean minimum temperature departure ($T_{\min 87}$):

160
$$T_{\min 87} = -2.497 + 2.348SF_t, \quad (1)$$

~~The reconstruction accounts for 58% of the variance in the instrumental series during the calibration period~~
~~variance for the entire calibration period (1960–2014) is 58.8%, adjusted to 58%.~~ The F value is 74.187, and exceeds the confidence level of 0.001. The transfer function is therefore highly significant (Figure 4a and 4b).

设置了格式: 字体: 11 磅, 英语(美国)

(Figure 4 and Table 2 near here)

165 Cross-validation for the calibration period 1960–2014 shows that the sign test (ST) and the first-difference sign test (FST) are all significant at the 0.01 level (Table 2). ST/FST are also significant for the split periods 1960–1991 and 1984–2014, indicating that the reconstructed $T_{\min 87}$ is in good agreement with the instrumental values for the split periods and for the overall period. The product mean value of 5.13 ($p < 0.01$) implies favorable coincidence
170 in the two series. A reduction error (RE) value of 0.557 for the whole 1960–2014 period indicates a high degree of similarity between the reconstructed and instrumental series. Thus Eq. (1) is suitable for reconstructing changes in $T_{\min 87}$.

3.4 $T_{\min 87}$ change since 1380 AD

The reconstructed $T_{\min 87}$ from 1380–2014 AD (Figure 4c) shows clear interannual variations in temperature. The mean of the reconstructed $T_{\min 87}$ is -0.15°C (standard deviation $\sigma = 0.41$). $T_{\min 87}$ values below the mean 1.5σ are defined here as ‘extreme cold’, and values above the mean 1.5σ are ‘extreme warm’. There are 39 extreme cold years; the five coldest are 1488, 1490, 1824, 1862, and 1872. There are 47 extreme warm years; the five warmest are 1418, 1996, 1999, 2009, and 2010. Cold periods lasting longer than 5 years are 1483–1495, 1555–1568, 1586–1602, 1686–1696, 1840–1854, 1872–1876, 1893–1901, 1910–1920, 1961–1968, and 1975–1983. Of these, 1586–1602 was the longest period and experienced the lowest temperatures, followed by 1840–1854. Warm periods lasting more than 5 years were 1409–1424, 1504–1509, 1655–1659, 1729–1739, 1775–1779, 1781–1813, and 1991–2009. The longest warm period was 1781–1813 and the warmest interval was 1991–2009, followed by 1409–1424. Changes at both high and low frequencies over the study period clearly indicate that the climate on the TP has been warming, especially since the 1980s.

3.5 Spatial representation

Correlations between the reconstructed series, instrumental data, and the CRU gridded annual T_{\min} are high over most of China and even across most of Asia for the period 1960–2014 (Figure 5a and 5b). However, the first-differenced instrumental data only correlate significantly with the CRU gridded data over the TP (Figure 5c), the coverage of the significant first-differenced correlations of reconstructed $T_{\min 87}$ with the CRU grid data is smaller, mainly locating in the central and west part of TP, especially in the Animaqin Mountains (Figure 5d). (Figure 5 near here)

3.6 Relationship between volcanic activity and minimum temperature

A comparison of large volcanic eruption events and the reconstructed $T_{\min 87}$ is shown in Figure 6. For most years, large volcanic eruptions ($\text{VEIs} > 4$) coincide with a drop in T_{\min} across the study area. Of the 46 strong volcanic eruption years, there are 35 event year in which temperature decreases in the year of the eruption or 1, 2, or even 3 years after the event.

(Figure 6 and Figure 7 near here)

Over the period 1380–2014 AD, T_{\min} on the TP has been greatly influenced by large volcanic eruptions, especially those occurring in the Northern Hemisphere. Globally, T_{\min} decreases in the year of an eruption and for one to two years thereafter (Figure 7a). In the year immediately following the eruption, the relationship is at the

0.05 significance level. Eruptions in the Northern and Southern Hemispheres (Figure 7b and 7c) also coincide with a T_{\min} decrease in the year of the eruption and for one to two years thereafter. However, eruptions in the Northern Hemisphere have a more obvious influence on T_{\min} in the study area, as indicated by the strong drop in temperature in the year following an eruption (Figure 7b). Southern Hemisphere mid-latitude eruptions occur at greater distances from the TP and therefore have a correspondingly weaker influence on T_{\min} .

T_{\min} in the study area decreases significantly in the years following volcanic activity at low latitudes (Figure 7d). Eruptions in the mid-latitudes of the Northern Hemisphere clearly coincide with drops in temperature, but the decreases are not statistically significant (Figure 7e). Eruptions in the mid-latitudes of the Southern Hemisphere and in the high latitudes of the Northern Hemisphere also coincide with reduced T_{\min} in the year of the eruption and in the following year, but the decreases are not statistically significant (Figure 7f and 7g).

4 Discussion

4.1 Reliability of the T_{\min} reconstruction

The correlation between the tree-ring width index and climate factors shows that the relationship between tree radial growth and precipitation is not statistically significant except in February. With the thick topsoil and humid climate in spring and summer, the study area meets the needs of trees for radial growth. However, according to instrumental data from the GL weather station (Table 1), the elevation of which is close to that of the sampling site, the annual T_{mean} and T_{\min} are 2.25°C and -6.76°C, respectively. These temperatures are quite low for tree growth, and the statistically significant positive correlation between growth and temperature shows that tree radial growth in this area is restricted by temperature, especially T_{\min} . T_{\min} before and during the growing season may affect tree growth in several ways. In winter and early spring, warmer T_{\min} protects roots from cold damage and triggers earlier snowmelt. Warmer T_{\min} may therefore result in a longer growing season, and trees may experience increased growth in the subsequent growing season (Pederson et al., 2004; Fu et al. 2012; Hollesen et al. 2015; Williams et al. 2015). In the other hand, T_{\min} is known to affect conifer tracheid division and enlargement by controlling the onset and conclusion of xylogenesis during the growing season (Deslauriers et al., 2003; Rossi et al., 2008; Li et al., 2017b; Hosoo et al. 2002; Steppe et al., 2015).

It should be mentioned that the CE value of the validation period remained negative for the period from 1960 to 1983 even though we tested different meteorological stations and different observation intervals in the analysis process. ~~Our preliminary conclusion is that this is probably a result of One reason for this could be a~~ distortion of the meteorological data due to the poor management and/or the relocation of meteorological stations

during the 1950s and 1960s on the TP. However, the cross-validation ~~results-results~~ indicate that the equation is otherwise reliable-, the negative value of CE should not influence our analysis about the high frequency climate response to volcanism.

The results of correlations of the reconstructed series with CRU Tmin reflect the regional significance of the reconstruction in general, however, the consistent warming trend of Tmin over most of Asia (Dong et al., 2017) may result in the large area of significant positive correlations, the results of first-order correlation analysis are therefore more referential, i.e. our reconstruction can reflect the temperature variations in the Animaqin Mountains and the area to the west.

The reconstructed Tmin87 in this study was further compared with minimum temperature reconstructions from other regions of the TP, including HY (northeastern TP; Zhang et al., 2014), QML(ZHD) (central TP; He et al., 2014), HBL (eastern TP; Gou et al., 2007), YS (south-central TP; Liang et al., 2008), and LIT(TAN) (southeastern TP; Li and Li, 2017). As a result of differences in reconstruction factors, study regions, and methods of chronology establishment, there are some differences between the chronologies. For example, there are significant regional differences in Tmin reconstructions over the past 100 years. However, there is also notable consistency at the interannual-multidecadal scale. The correlation coefficients between our reconstruction and each sequence are 0.227 (HY; $p < 0.01$), 0.328 (QML(ZHD); $p < 0.01$), 0.499 (HBL; $p < 0.000$), 0.235 (YS; $p < 0.01$), and 0.317 (LIT(TAN); $p < 0.01$). The closer the sequence is to the study site, the more similar the changes in Tmin are. For example, the Tmin87 of this study is most strongly correlated with the HBL reconstruction (Figure 8d), which is nearest to our study area. Both reconstructions show low-temperature periods at the end of the 16th century and from the 1670s to the 1720s. Although it is located further from the study area, the HY reconstruction also shows cold periods in the late 15th century, at the end of the 16th century, at the beginning of the 18th century, and in the middle of the 19th century (Figure 8a). Similarly, the low-temperature periods in the late 15th and late 16th centuries, the 1670s to 1720s, and the 1960s to 1980s are in agreement with those in the QML(ZHD) reconstruction (Figure 8b). The low-temperature interval in the 1960s–80s coincides with the cold interval in the YS reconstruction (Figure 8c). Finally, although the LIT(TAN) reconstruction is also located in another region of the TP, its low-temperature intervals are consistent with those in our reconstruction (e.g., at the end of the 15th century, 1670s–1720s, 1900s–1920s, and 1960s–80s) (Figure 8f). It is interesting that higher Rbar values appear in some special intervals, i.e., the cold intervals of the 1460s–1500s and 1800s–1820s and the warmest period of 1980–2014. These higher Rbar values indicate a good consistency among tree-ring series during these periods; in fact, these three intervals are evident in tree-ring-based studies from elsewhere on the Tibetan Plateau (Huang et al. 2019; Liang et al. 2016; Shi et al. 2019). The two cold periods identified in our series correspond to period of weaker solar activity

(the Spörer Minimum and the Dalton Minimum), and to a few very strong tropical eruptions (e.g., the Tambora eruption in 1815 and another stratospheric eruption in 1809) (Cole-Dai et al., 2009). Similarly, the warming in 1980-2014 is closely related to the influence of human activities. These responses are indicative of the consistent response of tree growth to strong external forcing factors and of the reliability of our reconstruction.

4.2 The effect of volcanic activity on the reconstructed T_{min}

As shown in Figure 6, the cooling probability in the year of or the year following a large volcanic eruption is very high. The effects of the Tambora volcano in 1815 (VEI = 7) were recorded in many parts of the world. Our reconstruction indicates that temperatures on the TP dropped by about 0.5°C in 1816, the year following the eruption. On the southeastern TP, the cold period from 1816 to 1822 may have also been related to the Tambora eruption (Liang et al., 2008). Other research in the northeastern TP has shown that cold years can be matched with known tropical volcanic events in 15 of 21 cases (Zhang et al., 2014). We compared years of cooling we identified in this study with those identified by Zhang et al. (2014), the cooling years identified by the two studies are either the same or within a year of each other. On the southeastern TP, Liang et al. (2016) showed that the 15 coldest years of the past 304 years occurred mostly within 1-2 years of a major volcanic eruption, nine of these 15 cooling years are also seen in our study. The results of SEA analysis further confirm that the temperature of the TP is affected by strong volcanic eruptions, especially those occurring at the Northern Hemisphere and low latitudes, and that cooling occurs in the study area within a year or two of a major eruption.

Studies have shown that some cold intervals in the eastern and southern TP may be influenced by large volcanic eruption in low-latitude regions (Bi et al., 2020; Duan et al., 2019a; Krusic et al., 2015), and the surface air temperature in the TP were cooling in the first winter based on the ensemble simulation of the climate response to high-latitude volcanic eruption (Oman et al., 2005). Using the fully coupled NCAR Community Climate System Model (CCSM3), Schneider et al. (2009) found there is significant cooling over the continents in summer in both scenarios (tropical and high-latitude volcanism cases) for the period 1250–1300 AD, and new research by Toohey et al. (2019) demonstrated extratropical explosive eruptions since 750 AD have produced stronger hemispheric cooling than tropical eruptions, these results are similar to ours, both strong eruptions in the northern hemisphere and tropical can lead to the cooling of T_{min} in our study area. The effects of volcanic eruptions in the northern hemisphere seem to be more pronounced.

Studies have shown that the influence of low-latitude volcanic activity may be wider and more obvious than that of high-latitude activity (Cronin, 1971). Because the altitude of the troposphere is lowest at the poles, about 8–9

带格式的: 缩进: 首行缩进: 0 字符

km above the Earth's surface, volcanic ash easily passes through the troposphere and into the stratosphere, where the atmosphere is stable. Volcanic ash that enters the stratosphere cannot travel as far and therefore has a smaller spatial influence. Near the equator, the altitude of the troposphere is 17–18 km, about twice as high as at the poles. Thus, volcanic ash more easily enters the troposphere, where it circulates widely and influences wide spatial extents.

The mechanisms related to how volcanic eruptions influence local temperature are undoubtedly complex, and temperature variability is further driven by other factors, such as circulation patterns like ENSO (Breitenmoser et al., 2012; D'Arrigo et al., 2011; Duan et al., 2019b). Cooling on the TP as a result of large volcanic eruptions may be weakened or masked by other influencing factors (Duan et al., 2018), which is likely why a one-to-one correspondence between large eruptions and cooling is not observed. Establishing a deeper understanding of the relationship between eruptions and cooling will depend on expanding the spatial network of long-term, temperature-sensitive chronologies from the TP.

5 Conclusions

This study establishes a 667-year-long tree-ring width chronology for the east-central TP. The anomaly sequence of the annual T_{\min} ($T_{\min 87}$) was reconstructed for the period 1380–2014 AD. ~~There is clear interannual variability in T_{\min} during the 1380–2014 AD period.~~ The lowest temperatures with the longest duration occurred in 1586–1602; the longest and warmest interval was 1991–2009. The T_{\min} on the TP has been increasing, most notably since the 1980s. The SEA analysis shows that T_{\min} decreases in the year following strong volcanic activity ~~at low latitudes in the Northern Hemisphere~~. Thus, the climate across the east-central TP is sensitive to large-scale background climatic factors such as volcanic activity. Further investigations are needed to fully understand the connection between volcanic eruptions and temperature on the TP, and to incorporate this information into regional annual and decadal predictions of temperature.

Author contribution

Yong Zhang and Xuemei Shao took the tree ring samples and designed this study; Yajun Wang and Yong Zhang analysed the data and prepared the manuscript. Mingqi Li prepared the volcanic data and took the tree ring samples.

Acknowledgements

We thank two anonymous reviewers and the guest editor Kevin Anchukaitis for their helpful comments. This study was supported by the National Key R&D Program of China [Grant No. 2016YFA0600401] and the National Natural Science Foundation of China (Grant No. 41630529 and 41430528).

设置了格式: 字体: 11 磅, 英语(美国)

References

Adams, J. B., Brad, A. J., Mann, M. E., and Ammann, C. M.: Proxy evidence for an El Niño-like response to volcanic forcing, Nature, 426, 274-278, 2003.

Bi, Y. F., Cory, W., Fan, Z. X., Yang, J. C., Wu, Z. K., Huang, W., Li, J. W., and Yang, X. F.: Ring-widths of *Abies* at tree-line ecotone reveal three centuries of early winter season temperature changes in Yunnan, China, Clim. Dynam., 55, 945-959, 2020.

Breitenmoser, P., Beer, J., Broennimann, S., Frank, D., Steinhilber, F., and Wanner, H.: Solar and volcanic fingerprints in tree-ring chronologies over the past 2000 years, Palaeogeogr. Palaeoclimatol., 313-314, 127-139, 10.1016/j.palaeo.2011.10.014, 2012.

Chen, F., Zhang, Y., Shao, X. M., Li, M. Q., and Yin, Z. Y.: A 2000-year temperature reconstruction in the Animaqin Mountains of the Tibet Plateau, China, Holocene, 26, 1904-1913, 2016.

Cronin, J. F.: Recent volcanism and the stratosphere, Science, 172, 847-849, 1971.

D'Arrigo, R., Seager, R., Smerdon, J. E., LeGrande, A. N., and Cook, E. R.: The anomalous winter of 1783-1784: was the Laki eruption or an analog of the 2009-2010 winter to blame? Geophys. Res. Lett., 38, L5706, 10-1029, doi:10.1029/2011GL046696, 2011.

D'Arrigo, R., Wilson, R., and Anchukaitis, K. J.: Volcanic cooling signal in tree ring temperature records for the past millennium, J. Geophys. Res.-Atmos., 118, 9000-9010, 2013.

Deslauriers, A., Morin, H., and Begin, Y.: Cellular phenology of annual ring formation of *Abies balsamea* in the Quebec boreal forest (Canada), Can. J. For. Res., 33, 190-200, 2003.

Dong S, Sun Y, Aguilar E, Zhang X, Peterson TC, Song L, and Zhang Y (2017) Observed changes in temperature extremes over Asia and their attribution Clim Dynam., 51(1-2): 339-353, doi:10.1007/s00382-017-3927-z

Duan, J. P., Ma, Z. G., Yuan, N. M., Li, L., and Chen, L.: Extremes in the magnitude of annual temperature cycle on the Tibetan Plateau over the past three centuries, Clim. Dyn., 52, 3599-3608, 2019a.

设置了格式: 字体: (中文)+中文正文(宋体), (中文) 中文(中国)
带格式的: 标题 1, 定义网格后自动调整右缩进, 调整中文与西文文字的间距, 调整中文与数字的间距

设置了格式: 字体: 倾斜

设置了格式: 字体: (中文)+中文正文(宋体), (中文) 中文(中国)

设置了格式: 字体: (中文)+中文正文(宋体), 10 磅, 字体颜色: 黑色, (中文) 中文(中国)

设置了格式: 字体: (中文)+中文正文(宋体), (中文) 中文(中国)

- 345 Duan, J. P., Li, L., Ma, Z. G., Esper, J., Büntgen, U., Xoplaki, E., Zhang, D. J., Wang, L., Yin, H., and Luterbacher, J.: Summer cooling driven by large volcanic eruptions over the Tibetan Plateau, *J. Climate*, 31, 9869-9879, 10.1175/JCLI-D-17-0664.1, 2018.
- ~~Dong S., Sun Y., Aguilar E., Zhang X., Peterson TC, Song L., Zhang Y (2017) Observed changes in temperature extremes over Asia and their attribution *Clim Dynam.*, 51(1-2): 339-353, doi:10.1007/s00382-017-3927-z~~
- 350 Duan, J. P., Wu, P. L., and Ma, Z. G.: Reconciling the discrepancy of post-volcanic cooling estimated from tree-ring reconstructions and model simulations over the Tibetan Plateau, *Atmos.*, 10, 738, 10-3390, 10.3390/atmos10120738, 2019b.
- Esper, J., Schneider, L., Krusic, P.J., Luterbacher, J., Büntgen, U., Timonen, M., Sirocko, F., and Zorita, E.: European summer temperature response to annually dated volcanic eruptions over the past nine centuries, *Bull. Volcanol*, 75 (7), 736. <https://doi.org/10.1007/s00445-013-0736-z>, 2013.
- 355 Filion, L., Payette, S., Gauthier, L., and Boutin, Y.: Light rings in subarctic conifers as a dendrochronological tool, *Quaternary Res.*, 26, 272-279, 1986.
- Fu, Y. H., Campioli, M., Deckmyn, G., and Janssens, I.A.: The impact of winter and spring temperatures on temperate tree budburst dates: results from an experimental climate manipulation, *PLoS One*, 7(10), e47324. <https://doi.org/10.1371/journal.pone.0047324>, 2012.
- 360 Gou, X. H., Chen, F. H., Jacoby, G., Cook, E., Yang, M. X., Peng, J. F., and Zhang, Y.: Rapid tree growth with respect to the last 400 years in response to climate warming, northeastern Tibetan Plateau, *Int. J. Climatol.*, 27, 1497-1503, 2007.
- Gou, X. H., Deng, Y., Chen, F. H., Yang, M. X., Fang, K. Y., Gao, L. L., Yang, T., and Zhang, F.: Tree ring based streamflow reconstruction for the upper Yellow River over the past 1234 years, *Chin. Sci. Bull.*, 55, 4179-4186, 2010.
- Gou, X. H., Peng, J. F., Chen, F. H., Yang, M. X., Levina, D. F., and Li, J. B.: A dendrochronological analysis of maximum summer half-year temperature variations over the past 700 years on the northeastern Tibetan Plateau, *Theor. Appl. Climatol.*, 93, 195-206, 10.1007/s00704-007-0336-y, 2008.
- 365 Haurwitz, M.W., and Brier, G.W.: A critique of the superposed epoch analysis method: its application to solar-weather relations, *Mon. Weather. Rev.*, 109 (10), 2074-2079, 1981.
- He, M. H., Yang, B., and Datsenko, N. M.: A six hundred-year annual minimum temperature history for the central Tibetan Plateau derived from tree-ring width series, *Clim. Dynam.*, 43, 641-655, 2014.
- 370 Holmes, R. L.: Computer-assisted quality control in tree-ring dating and measurement, *Tree-Ring Bull.*, 44, 69-75, 1983.
- ~~Jia, P., Q., and Shi, G. Y.: Study on the effects of volcanic eruption and solar activity on climate in China in recent 50 years, *Plateau Meteorology*, 20, 225-233, 2001. (in Chinese)~~
- Hollesen, J., Buchwal, A., Rachlewicz, G., Hansen, B. U., Hansen, M. O., Stecher, O., and Elberling, B.: Winter warming as an important co-driver for *Betula nana* growth in western Greenland during the past century, *Glob. Change Biol.*, 21(6), 2410-2423. <https://doi.org/10.1111/gcb.12913>, 2015.

Hosoo, Y., Yoshida, M., Imai, T., and Okuyama, T.: Diurnal difference in the amount of immunogold-labeled glucomannans detected with field emission scanning electron microscopy at the innermost surface of developing secondary walls of differentiating conifer tracheids, *Planta*, 215, 1006–1012, 2002.

380 Huang, R., Zhu, H., Liang, E., Liu, B., Shi, J., Zhang, R., Yuan, Y., and Griesinger, J.: A tree ring-based winter temperature reconstruction for the southeastern Tibetan Plateau since 1340 CE, *Clim. Dynam.*, <https://doi.org/10.1007/s00382-019-04695-3>, 2019.

[Jia, P. Q., and Shi, G. Y.: Study on the effects of volcanic eruption and solar activity on climate in China in recent 50 years, *Plateau Meteorology*, 20, 225-233, 2001. \(in Chinese\)](#)

385 [Krusic, P. J., Cook, E. R., Dukpa, D., Putnam, A. E., Rupper, S., and Schaefer, J.: Six hundred thirty-eight years of summer temperature variability over the Bhutanese Himalaya, *Geophys. Res. Lett.*, 42, 2988-2994, 2015.](#)

Lamarche, V. C., and Hirschboeck, K. K.: Frost rings in trees as records of major volcanic eruptions, *Nature*, 307, 121-126, 1984.

Li, M. Q., Huang, L., Yin, Z. Y., and Shao, X. M.: Temperature reconstruction and volcanic eruption signal from tree-ring width and maximum latewood density over the past 304 years in the southeastern Tibetan Plateau, *Int. J. Biometeorol.*, 1-12, 2017a.

390 Li, T., and Li, J. B.: A 564-year annual minimum temperature reconstruction for the east central Tibetan Plateau from tree rings, *Global Planet. Change*, 157, 165-173, 2017.

Li, X., Liang, E., Gričar, J., Rossi, S., Čufar, K., and Ellison, A. M.: Critical minimum temperature limits xylogenesis and maintains treelines on the southeastern Tibetan Plateau, *Science Bulletin*, 62, 804-812, 2017b.

395 Liang, E. Y., Shao, X. M., and Qin, N. S.: Tree-ring based summer temperature reconstruction for the source region of the Yangtze river on the Tibetan Plateau, *Global Planet. Change*, 61, 313-320, 2008.

Liang, H. X., Lyu, L., and Wahab, M.: A 382-year reconstruction of August mean minimum temperature from tree-ring maximum latewood density on the southeastern Tibetan Plateau, China, *Dendrochronologia*, 37, 1-8, 2016.

400 Meko, D., and Graybill, D. A.: Tree-ring reconstruction of upper gila river discharge, *J. Am. Water Resour. As.*, 31, 605-616, 1995.

Melvin, T. M., and Briffa, K. R.: A “signal-free” approach to dendroclimatic standardisation, *Dendrochronologia*, 26, 71-86, 2008.

Michaelsen, J.: Cross-validation in statistical climate forecast models., *J. Appl. Meteorol.*, 26, 1589-1600, 1987.

405 Mitchell, T. D., and Jones, P. D.: An improved method of constructing a database of monthly climate observations and associated high-resolution grids, *Int. J. Climatol.*, 25, 693-712, 2005.

[Oman, L., Robock, A., Stenchikov, G., Schmidt, G. A., and Ruedy, R.: Climatic response to high-latitude volcanic eruptions, *J. Geophys. Res.*, 110, D13103, 2005.](#)

Pederson, N., Cook, E. R., Jacoby, G. C., Peteet, D. M., and Griffin, K. L.: The influence of winter temperatures on the annual radial growth of six northern range margin tree species, *Dendrochronologia*, 22, 7-29, 2004.

410

设置了格式: 字体: (中文)+中文正文 (宋体), (中文) 中文(中国)

设置了格式: 字体: (中文)+中文正文 (宋体), (中文) 中文(中国)

- Robock, A.: Volcanic eruptions and climate, *Rev. Geophys.*, 38, 191-219, 2000.
- Robock, A., and Mao, J.: Winter warming from large volcanic eruptions, *Geophys. Res. Lett.*, 19, 2405-2408, 1992.
- Rossi, S., Deslauriers, A., Grisar, J., Seo, J.W., Rathgeber, C. B. K., Anfodillo, T., Morin, H., Levanic, T., Oven, P., and Jalkanen, R.: Critical temperatures for xylogenesis in conifers of cold climates, *Global. Ecol. Biogeogr.*, 17, 696–707, 2008.
- 415 Salzer, M. W., and Hughes, M. K.: Bristlecone pine tree rings and volcanic eruptions over the last 5000 yr, *Quaternary Res.*, 67, 57-68, 2007.
- Shi, C., Sun, C., Wu, G., Wu, X., Chen, D., Masson-Delmotte, V., Li, J., Xue, J., Li, Z., Ji, D., Zhang, J., Fan, Z., Shen, M., Shu, L., and Ciais, P.: Summer Temperature over the Tibetan Plateau Modulated by Atlantic Multidecadal Variability, *J. Clim.*, 32, 4055-4067, 2019.
- 420 Singh, Y. P., and Badruddin: Statistical considerations in superposed epoch analysis and its applications in space research, *J. Atmos. Sol.-Terr. Phy.*, 68, 803-813, 10.1016/j.jastp.2006.01.007, 2006.
- [Schneider, D. P., Ammann, C. M., Otto-Bliesner, B. L., and Kaufman, D. S.: Climate response to large, high-latitude and low-latitude volcanic eruptions in the Community Climate System Model, *J. Geophys. Res.*, 114, D15101, 2009.](#)
- 425 Stepe, K., Sterck, F., and Deslauriers, A.: Diel growth dynamics in tree stems: linking anatomy and ecophysiology, *Trends Plant Sci.*, 20, 335–343, 2015.
- Sun, D., Zheng, J. Y., Zhang, X. Z., and Hao, Z. X.: The relationship between large volcanic eruptions in different latitudinal zones and spatial patterns of winter temperature anomalies over China, *Clim. Dynam.*, 53, 6437-6452, 2019.
- Swetnam, T.W.: Fire history and climate change in giant Sequoia Groves, *Science*, 262 (5135), 885–889, <https://doi.org/10.1126/science.262.5135.885>, 1993.
- 430 Tognetti, R., Lasserre, B., Battipaglia, G., Saurer, M., Cherubini, P., and Marchetti, M.: Tree-ring responses in *Araucaria araucana* to two major eruptions of Lonquimay Volcano (Chile), *Trees*, 26, 1805-1819, 2012.
- Yao, T. D., Thompson, L. G., Mosbrugger, V., Zhang, F., Ma, Y. M., Luo, T. X., Xu, B. Q., Yang, X. X., Joswiak, D. R., and Wang, W. C.: Third pole environment (TPE), *Environ. Dev.*, 3, 52-64, 2012.
- 435 Williams, C. M., Henry, H. A., and Sinclair, B. J.: Cold truths: how winter drives responses of terrestrial organisms to climate change. *Biol Rev*, 90(1), 214–235, <https://doi.org/10.1111/brev.12105>, 2015.
- Zhang, X. G., and Zhang, F. G.: The relationship between large volcanic eruptions and the dryness/wetness and cold/warm in China, *Acta Meteorol. Sin.*, 3, 196-207, 1985.(in Chinese)
- Zhang, Y., Shao, X. M., Yin, Z. Y., and Wang, Y.: Millennial minimum temperature variations in the Qilian Mountains, China: evidence from tree rings, *Clim. Past*, 10, 1763–1778, 2014.
- 440 Zheng, J. Y., Bian, J. J., and Ge, Q. S.: The climate regionalization in China for 1981-2010, *Chin. Sci. Bull.*, 58, 3088-3099, 2013.

450 **Figures and Tables**

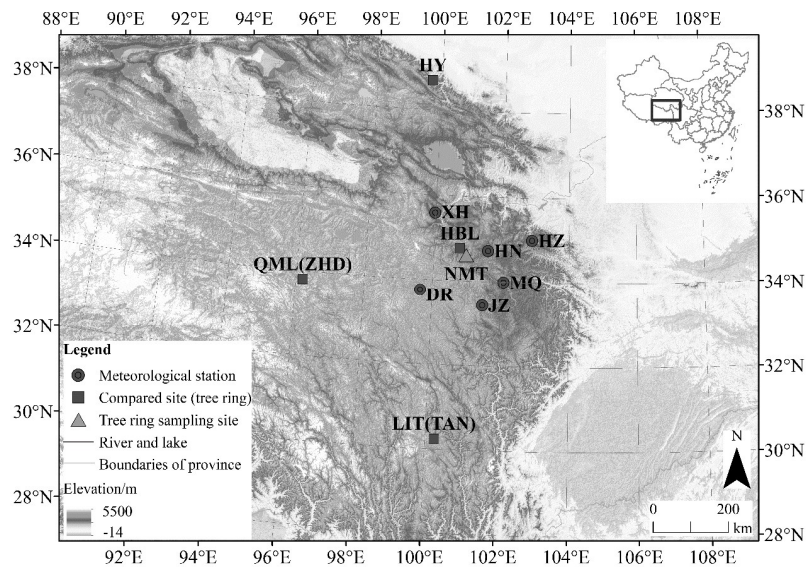


Figure 1. Locations of the sampling site, meteorological stations, and compared sites. The digital elevation model is provided by Geospatial Data Cloud site, Computer Network Information Center, Chinese Academy of Sciences (<http://www.gscloud.cn>).

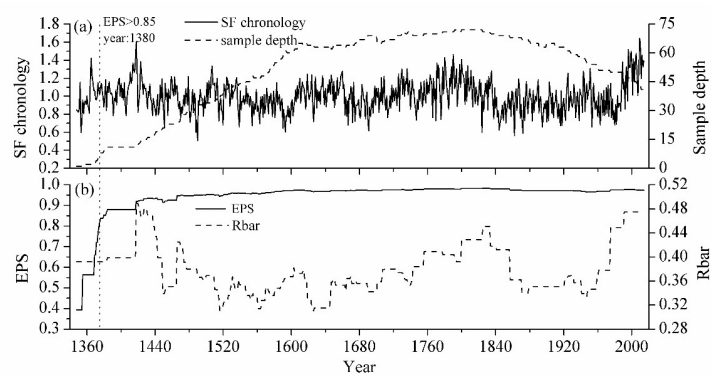


Figure 2. (a) Tree-ring width chronology; (b) EPS and Rbar values. The dotted vertical line denotes the year 1380 CE, which is when the EPS value exceeds the 0.85 threshold.

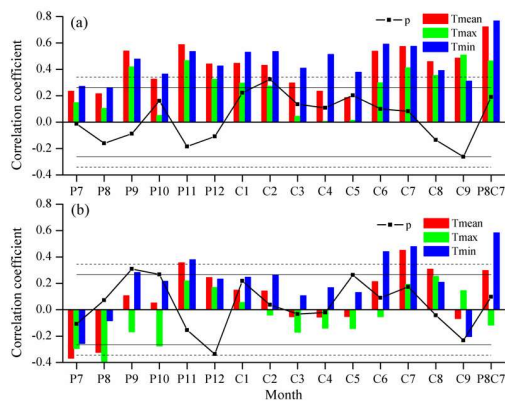
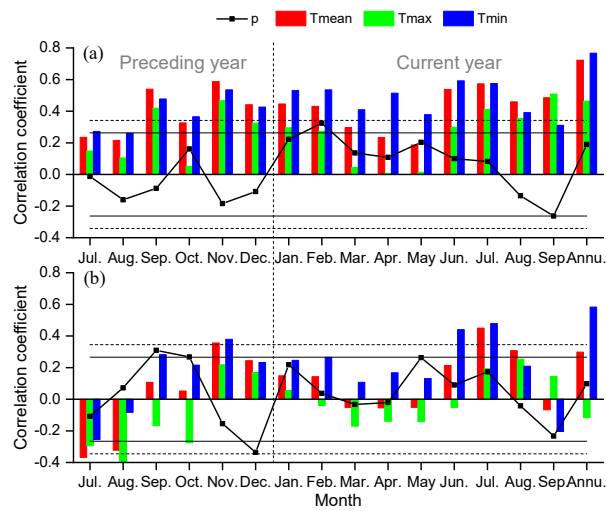


Figure 3. Correlations between (a) the tree-ring width index and climate data and (b) the first-differenced tree-ring width index and climate data. The horizontal solid lines indicate the 0.05 significance level; the horizontal dashed lines show the 0.01 significance level. P=previous year; C=current year; P8C7Annu. =indicates previous August to current July

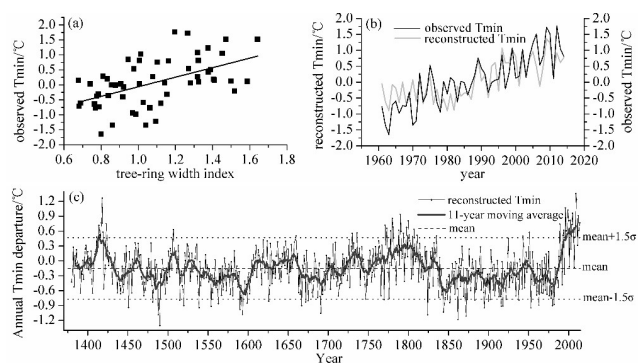


Figure 4. (a) Scatter plot of tree-ring index and instrumental annual T_{min} . (b) Instrumental (black line) and reconstructed (gray line) annual T_{min} . (c) Changes in annual T_{min} since 1380 AD and the 11-year moving average (red line).

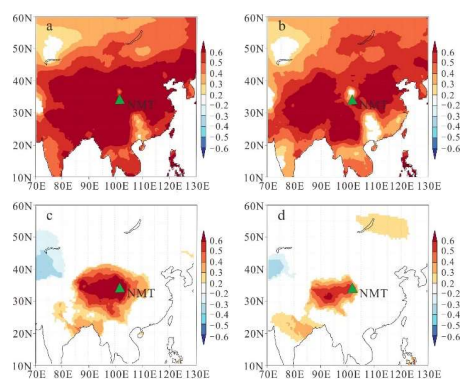
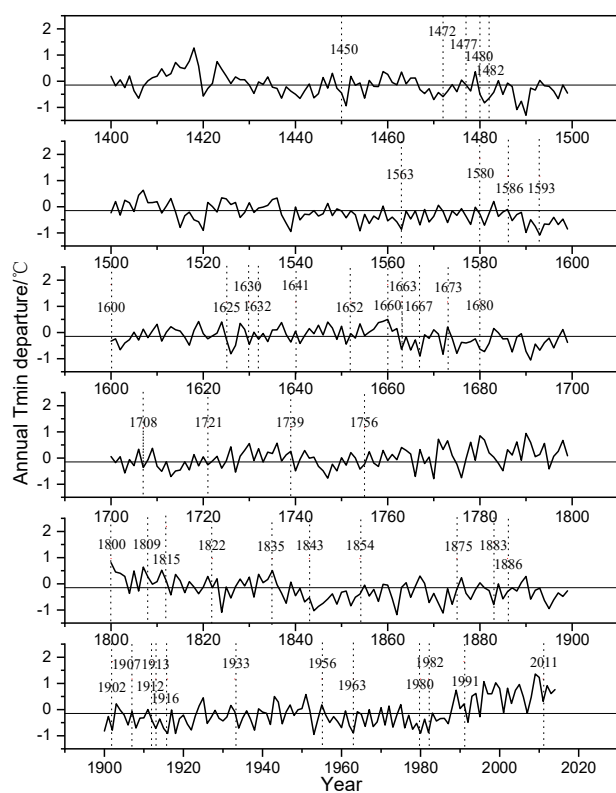


Figure 5. Correlations of CRU $T_{min}87$ with $T_{min}87$: (a) instrumental; (b) reconstructed; (c) first-differenced instrumental; and (d) first-differenced reconstructed



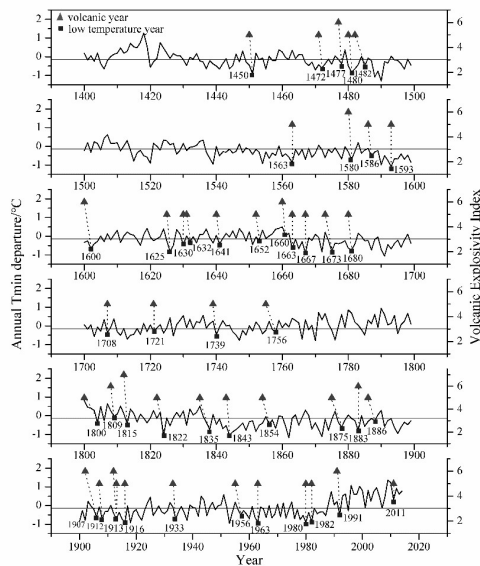


Figure 6. Plot of the VEI of large volcanic eruptions (black triangles) and cold years (black squares) since 1400 CE. The x-axis in each sub-figure indicates the year from the 15th century (top figure) to the 20th century (bottom figure). The dot lines and the numbers indicate the years of the 46 volcanic events used in this study.

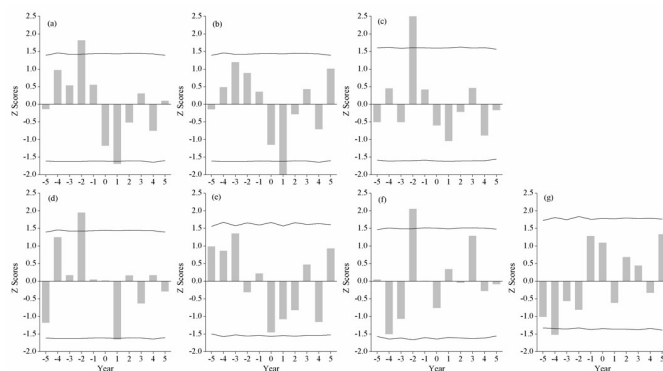


Figure 7. SEA analysis of the impact of volcanic eruptions (VEI ≥ 5) on T_{min} for the period 1380–2014 AD: (a) global; (b) Northern Hemisphere; (c) Southern Hemisphere; (d) low latitudes 30°S–30°N; (e) Northern Hemisphere mid-latitude 30°N–60°N; (f) Southern Hemisphere mid-latitude 30°S–60°S; and (g) Northern Hemisphere high latitude. 0 = year of volcanic eruption; -1 = year before

eruption; 1 = year after eruption. The solid lines represents 95% confidence limits using Monte Carlo type block bootstrapping (Adams et al., 2003), the 0.05 significance level.

设置了格式: 字体: (中文) Times New Roman

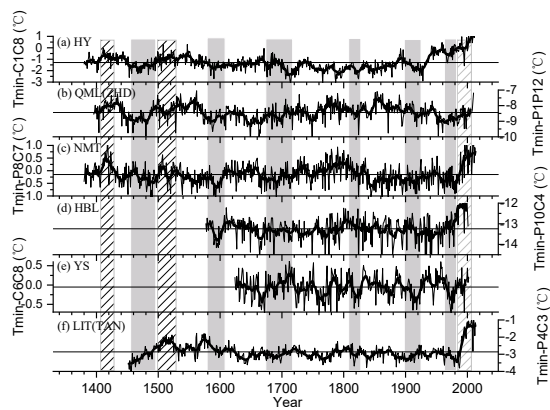


Figure 8. Comparison of our reconstructed T_{min87} with other T_{min} reconstructions on the TP for the period 1380–2014 AD. (a) HY, January–August T_{min} on the northeastern TP (Zhang et al., 2014); (b) QML(ZHD), January–December T_{min} on the central TP (He et al., 2014); (c) Our study; (d) HBL, October–April T_{min} on the eastern TP (Gou et al., 2007); (e) YS, June–August T_{min} on the south-central TP (Liang et al., 2008); (f) LIT(TAN), April–March T_{min} on the southeastern TP (Li and Li, 2017). slash columns indicate warm periods in our reconstruction; grey columns indicate cold periods.

Table 1. Meteorological station details

Station	Longitude	Latitude	Elevation (m)	Observation time span	Annual P (mm)	Annual T_{mean} (°C)	Annual T_{max} (°C)	Annual T_{min} (°C)
ZXZ	99°12'	34°16'	4211.1	1959–1997	459.1	−3.85	3.94	−10.10
DR	99°39'	33°45'	3967.5	1956–2015	551.7	−0.79	6.90	−6.88
XH	99°59'	35°35'	3323.2	1960–2015	362.8	1.44	9.80	−5.79
GL	100°15'	34°28'	3719	1991–2015	512.4	2.25	9.07	−6.76
TD	100°39'	35°16'	3289.4	1954–1998	424.2	0.51	10.00	−7.13
GN	100°45'	35°35'	3120	1999–2015	439.9	2.89	11.76	−3.81
ZK	101°28'	35°02'	3662.8	1957–1990	476.0	−2.18	6.25	−9.15
HN	101°36'	34°44'	3500	1960–2015	581.7	0.31	8.98	−6.58
JZ	101°29'	33°26'	3628.5	1959–2015	748.1	0.74	9.41	−5.71

TR	102°01′	35°31′	2491.5	1991–2015	403.5	6.52	14.0	−1.01
MQ	102°05′	34°00′	3471.4	1967–2015	600.4	1.71	9.13	−4.24
LMS	102°38′	34°05′	3362.7	1957–1988	779.9	1.21	9.00	−4.49
HZ	102°54′	35°00′	2910	1957–2015	546.2	2.55	11.08	−3.57

495 Note: ZXZ=Zhongxinzhai; DR=Dari; XH=Xinghai; GL=Guoluo; TD=Tongde; GN=Guinan; ZK=Zeku; HN=Henan; JZ=Jiuzhi; TR=Tongren; MQ=Maqu; LMS=Langmusi; HZ=Hezuo

Table 2. Statistics of cross-validation and split-period calibration/verification

Calibration					Verification				
Period	r	R ² _{adj}	F	p	Period	ST/FST	PMT	RE	CE
1960–1991	0.470	0.194	8.228	0.008	1992–2014	22+**/18+**	3.651	0.743	0.017
1984–2014	0.740	0.532	35.166	0.000	1960–1983	22+**/17+*	2.945	0.677	−0.589
1960–2014	0.767	0.580	74.187	0.000	1960–2014	45+**/38+**	5.130	0.557	0.557

500 r = Pearson correlation coefficient; R²_{adj} = variance after adjusting; ST/FST = sign test/first difference sign test; PMT = product-mean test; RE = reduction error; CE = coefficient of efficiency.

**p < 0.01; *p < 0.05