

Rebuttal to the review by Andrey Ganopolski

We thank the reviewer for their comments on the manuscript and would hereby like to address the concerns they raised. Comments in italics, below our rebuttal. Page and line numbers refer to the revised manuscript.

5

I appreciate the efforts which the authors made to respond to my criticism and suggestions and in general I am satisfied with their response. The only my major remaining concern I still have is the treatment of the uncertainties of CO2 reconstructions. In response to my comment, the authors explained that under “conservative” estimate of uncertainties they understand the estimate only of one but the main source of uncertainties. If so, the authors believe that their errors in CO2 during the entire Quaternary are not higher than ca 5 ppm and thus they have nearly 100% confidence that during the early Quaternary CO2 never exceeded 300 ppm. However, some reconstructions, including the cited in the manuscript Martinez-Boití et al. (2015), suggest that at the beginning of Quaternary, CO2 most of time was well above 300 ppm (somewhere between 300 and 400 ppm). Needless to say, this is an important difference. I do not expect from the authors to perform “objective” (instead of “conservative”) estimate of their method uncertainties because this is impossible without using a comprehensive water-isotope enabled Earth system model. However, it would be useful to inform potential readers that reported uncertainty is nothing more than the method sensitivity to 0.1 promille change in the benthic $\delta^{18}O$ (which is likely to be over-optimistic estimate for LR04 stack uncertainties, at least, for the early Quaternary) while the real errors of the method can be much larger but, unfortunately, cannot be properly evaluated at this stage.

10

15

20

We agree that it is important to explain to a reader that the error margins reported in our figures and tables are not a reflection of the “true” uncertainty of our reconstruction – which is, of course, much larger, but also difficult to quantify. We will make sure this is made clear in the manuscript.

25

P9, L24-30 (Sect. 3: Experimental set-up and results): added a few lines motivating our choice to investigate only the sensitivity to the prescribed forcing, and how the resulting margin of error relates to the “true” uncertainty in our results.

P19, L6-9 (Sect. 5: Conclusions and discussion): added a few lines reiterating the difference between the reported margins of errors and the (unquantifiable) true uncertainty in our reconstructions.

30

p. 31, l. 12. I do not understand why “a narrower range of sea levels for each CO2 indicating that their ice sheets respond faster to change in climate” (whatever faster means). The close relationship between CO2 and sea level seen also in the data only indicates the existence of strong climate-ice sheets-carbon cycle feedbacks but tells nothing about the rate of ice sheet response to climate change.

In general, the temporal response of an ice-sheet model to a change in prescribed climate will depend on the type of model. A simple linear regression between CO₂ and sea-level describes an instantaneous response, which would give a scatterplot as in Fig. 8 showing a single line, without any spread; a one-to-one relation. An SIA ice model (such as the one used by van de Wal et al., 2011) will have a response time ranging between hundreds to thousands of years, depending (among other things) on the way the ice flow factor and basal sliding are described. This means that the relation between CO₂ and sea level at a specific point in time is no longer one-to-one, which results in a slight spread around the curve in Fig. 8. Many other physical processes will give rise to additional time lags (e.g. glacial thermodynamics, carbon cycle changes related to oceanic cycling of carbon, glacial-isostatic adjustment, etc.), which will increase the spread in the scatterplots.

The aim of the paragraph the reviewer quotes from is to use this fact to try and interpret some of the observed differences between the different models. We agree that this needs some clarification in the manuscript.

P15, L16-22: Added a few sentences explaining the interpretation of the slope and spread of the scatter plots in Fig. 8.

P. 31, l.13. I cannot see on this figure “a relatively narrow range of sea level in the 180-250 ppm CO₂ range” in Willeit et al. (2019). The significance of this fact is also unclear to me.

This, too, has to do with time lag. In Fig. 8, both de Boer et al. (2014) and our study show one or two “trails” of dots at the left-hand end of the scatter plot, corresponding to some of the really cold Late Pleistocene glacial cycles (though indeed that can’t be seen from the graphs, as they don’t show the time stamps of individual data points. We attempted using a color scale for that, but that made the graphs too chaotic to be useful). There, modelled ice-sheet retreat lags the sudden increase in δ18O (and therefore CO₂) immediately after a glacial maximum, such that the dots in the graph move to the right (increasing CO₂) before they start moving up (rising sea level). Compared to de Boer 2014 and our study, the left-hand end of the scatter plot for Willeit 2019 is a bit narrower, indicating that their ice sheets start retreating a bit sooner after CO₂ starts rising.

However, we agree that the difference is very small, and mentioning it without investigating the cause of this difference is not useful for the manuscript. We will remove this sentence.

P16, L14: removed this sentence.

p. 32, l. 1. It is true that in our previous studies (but not in Willeit et al., 2019) we have shown that the threshold for glacial inception depends on both insolation and CO₂ and we have shown in Ganopolski et al. (2016) that the true CO₂ threshold for glaciation is ca. 350 ppm because for higher CO₂ glacial inception would be possible only with such low summer insolation which cannot be achieved with the realistic orbital parameters. This finding not only explains fig. 8f but is also consistent with the data (fig. 8a). However, during most of Quaternary, the interglacial

CO2 level was in the range 240-280 ppm and this is why it is natural that any appreciable sea level drop can only be observed when CO2 was below these values and this is true for all figures in fig. 8 except for Stap et al. (2017). In short, the fact that most of sea level drop during Quaternary occurred for CO2 below 250 ppm does not imply that ice sheets cannot grow under significantly higher CO2 level.

5 We agree that the theory of glacial inception (and terminations!) is more complicated than how it is discussed in our manuscript. Indeed, as both Willeit (2019) and the actual observational data indicate the presence of medium-sized ice sheets under higher CO2 concentrations, this implies that the relation between CO2, insolation and SMB in the models by van de Wal et al. (2011), de Boer et al. (2014) and our study are too simplistic in this regard. We will add a sentence to the manuscript to clarify this.

P16L16 – P17L3: clarified this.

p. 34. l.1 It is not clear to me what “downwelling regions” means

15 In this context, “downwelling regions” are those areas of the oceans where downwelling occurs, and deep ocean water is formed. When Bintanja and van de Wal (2008) created the first inverse-modelling set-up, the idea was that the LR04 benthic d18O stack, while claiming to be made up of a “globally distributed” set of records, is predominantly made up of cores from the Atlantic. The contribution from deep-water temperature to the d18O signal would then be specifically from Atlantic deep-
20 water temperature, which would be related mostly to surface temperatures in the North Atlantic (the downwelling area where this deep water is formed). They therefore related the deep-water temperature d18O component directly to surface temperatures in the Northern hemisphere, which was convenient because this also governed the surface mass balance of the North American and Eurasian ice sheets. Since then, the inverse modelling method has been significantly expanded, particularly by using global climate from a GCM instead of a simple globally uniform temperature offset, such that this parameterisation is now probably
25 too simplistic to be justifiable. We will clarify this in the manuscript.

P18L28 – P18L34: clarified this.

Rebuttal to the comments by the editor, Ed Brook

We thank the editor for their comments on the manuscript and would hereby like to address the concerns they raised. Comments in italics, below our rebuttal. Page and line numbers refer to the revised manuscript.

5

Referee 2 has some concerns about the way uncertainties are described and I also puzzled about this. As I understand it you consider a 0.1 per mil uncertainty in the benthic isotope record only, and that is propagated through the analysis. This is described as "conservative". I think a reader may be confused about whether this means that the uncertainties are likely overestimated or underestimated. Could you clarify this?

10

We have adapted the manuscript to address the concerns the reviewer raised about the reported uncertainties (see above).

Also, I think it would be helpful to describe in more detail why you get some large uncertainties in CO2 in warm climates.

15

We have further clarified the paragraph of the Discussion section dedicated to this issue.

P18, L20-25: clarified this.

20

One other thing, I am wondering if it would be useful for you to cite the ice core mean ocean temperature reconstructions for the LGM (Bereiter et al. 2018, Nature, v. 553).

25

This is certainly an interesting publication. The number they quote for the glacial-interglacial difference in mean ocean temperature of 2.57 +/- 0.24 K is reasonably close to the number we found in our earlier paper about our modelling approach (~2.1 K in Berends et al. 2019). However, our current study does not look into ocean temperatures (we are planning to revisit that in the near future, with a substantial update to our matrix method which we're working on). Adding a section on ocean temperatures would pose a substantial revision of the current manuscript, which we feel would not affect our conclusions.

Reconstructing the Evolution of Ice Sheets, Sea Level and Atmospheric CO₂ During the Past 3.6 Million Years

Constantijn J. Berends¹, Bas de Boer², Roderik S. W. van de Wal^{1,3}

¹ Institute for Marine and Atmospheric research Utrecht, Utrecht University, Utrecht, The Netherlands

² Earth and Climate Cluster, Faculty of Science, Vrije Universiteit Amsterdam, The Netherlands

³ Faculty of Geosciences, Department of Physical Geography, Utrecht University, Utrecht, The Netherlands

Correspondence to: Constantijn J. Berends (c.j.berends@uu.nl)

Abstract. Understanding the evolution of, and the interactions between, ice sheets and the global climate over geological time scales is important for being able to project their future evolution. However, direct observational evidence of past CO₂ concentrations, and the implied radiative forcing, only exists for the past 800,000 years. Records of benthic $\delta^{18}\text{O}$ date back millions of years, but contain signals from both land ice volume and ocean temperature. In recent years, inverse forward modelling has been developed as a method to disentangle these two signals, resulting in mutually consistent reconstructions of ice volume, temperature and CO₂. We use this approach to force a hybrid ice-sheet – climate model with a benthic $\delta^{18}\text{O}$ stack, reconstructing the evolution of the ice sheets, global mean sea level and atmospheric CO₂ during the late Pliocene and the Pleistocene, from 3.6 million years (Myr) ago to the present day. During the warmer-than-present climates of the Late Pliocene, reconstructed CO₂ varies widely, from 320 – 440 ppmv for warm periods, to 235 – 250 ppmv for the early glacial excursion ~3.3 million years ago. Sea level is relatively stable during this period, with maxima of 6 – 14 m, and minima of 12 – 26 m during glacial episodes. Both CO₂ and sea level are within the wide ranges of values covered by available proxy data for this period. Our results for the Pleistocene agree well with the ice-core CO₂ record, as well as with different available sea-level proxy data. During the early Pleistocene, 2.6 – 1.2 Myr ago, we simulate 40 kyr glacial cycles, with interglacial CO₂ decreasing from 280 – 300 ppmv at the beginning of the Pleistocene, to 250 – 280 ppmv just before the Mid-Pleistocene Transition (MPT). Peak glacial CO₂ decreases from 220 – 250 ppmv to 205 – 225 ppmv during this period. After the MPT, when the glacial cycles change from 40 kyr to 80/120 kyr cyclicality, the glacial-interglacial contrast increases, with interglacial CO₂ varying between 250 – 320 ppmv, and peak glacial values decreasing to 170 – 210 ppmv.

25 1 Introduction

Understanding the response of ice sheets and the global climate as a whole to changes in the concentrations of atmospheric CO₂, is important for understanding the future evolution of the climate system. Since large-scale changes in ice sheet geometry typically occur over thousands to tens of thousands of years, sources of information other than direct observational evidence are required. In order to gain more insight in the relation between these components of the Earth system, studying their evolution during the geological past is useful.

One particularly rich source of information is presented by ice cores. The chemical and isotopic content of the ice itself can provide valuable information on the state of the global climate, and in particular on the temperature, at the time the ice was formed (Dansgaard, 1964; Jouzel et al., 1997; Alley, 2000; Kindler et al., 2014). Air bubbles, trapped when the snow compresses first into firn and ultimately into ice, contain tiny samples of the atmosphere from the time the air got trapped. The oldest ice core presently available, the EPICA Dome C core, contains ice, and air bubbles and hydrates, dating back 800 kyr (Bereiter et al., 2015). The information obtained from these ice cores has greatly improved our understanding of the dynamics of the glacial cycles of the Late Pleistocene.

Different methods of relating chemical and isotopic properties of ocean sediments to the atmospheric CO₂ concentration have been used to create proxy data extending back further in time than the ice core record. Many studies have measured $\delta^{11}\text{B}$ of different fossil foraminifera, using the observed relation to seawater pH to calculate atmospheric CO₂ concentrations (Hönisch et al., 2009; Seki et al., 2010; Bartoli et al., 2011; Martinez-Boti et al., 2015; Foster and Rae, 2016; Stap et al., 2016; Chalk et al., 2017; Dyez et al., 2018; Sosdian et al., 2018). Another line of evidence has focused on the $\delta^{13}\text{C}$ of alkenones in fossil foraminifera (Seki et al., 2010; Badger et al., 2013; Zhang et al., 2013), although the reliability of this proxy for CO₂ concentrations lower than ~400 ppmv has recently been called into question (Badger et al., 2019). A different line of work relates the density of stomata on fossil plant leaves to atmospheric CO₂ concentration, providing data throughout the Cenozoic (Kürschner et al., 1996; Wagner et al., 2002; Finsinger and Wagner-Cremer, 2009; Beerling and Royer, 2011; Stults et al., 2011; Bai et al., 2015; Hu et al., 2015). This proxy has been the subject of discussion regarding its reliability (Indermühle et al., 1999; Jordan, 2011; Porter et al., 2019), based on its discrepancies with the ice-core record, and presently unresolved problems due to the influence of other effects such as evolution, extinction, changes in local environment, and immigration of species, although recent work has gone some way to resolving these issues (Franks et al., 2014).

Information about the global glacial state is furthermore obtained from the $\delta^{18}\text{O}$ of fossil benthic foraminifera, which is influenced by both total ice volume and deep-sea temperature. Ocean sediment cores containing foraminiferal shells have been used to create stacks of benthic $\delta^{18}\text{O}$ records dating back 65 Myr (Lisiecki and Raymo, 2005; Zachos et al., 2001, 2008). Fig. 1 shows the LR04 stack of benthic $\delta^{18}\text{O}$ records (Lisiecki and Raymo, 2005), together with the EPICA Dome C CO₂ record (Bereiter et al., 2015) and the Earth's orbital parameters and Northern hemisphere summer insolation (Laskar et al., 2004), during the last 800 kyr.

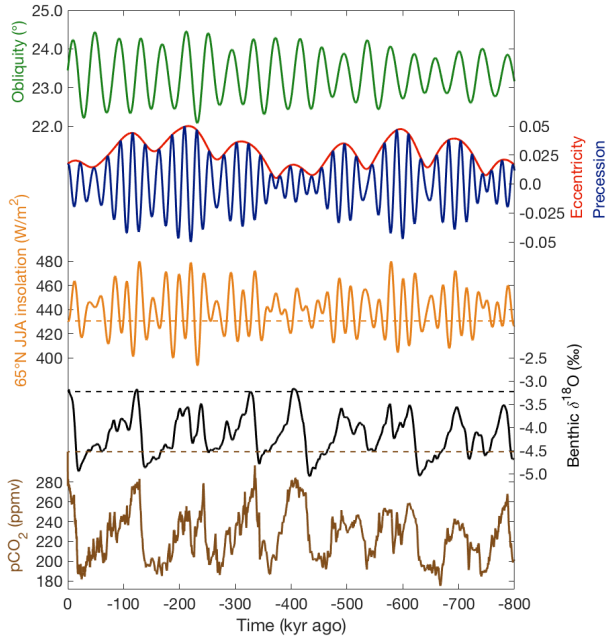


Figure 1: Earth's orbital parameters (obliquity, eccentricity and precession) and the resulting Northern summer insolation (Laskar et al., 2004), benthic $\delta^{18}\text{O}$ (Lisiecki and Raymo, 2005) and ice core CO_2 (Bereiter et al., 2015) during the past 800 kyr.

Since benthic $\delta^{18}\text{O}$ contains both an ice-based and a climate-based signal, using it to understand the evolution of either of these two Earth system components is only possible after disentangling the two contributions. Several studies have aimed at performing this separation by deriving either of the two signals from independent other proxies. One approach has been to derive deep-water temperatures from foraminiferal Mg/Ca ratios (Sosdian et al., 2009; Elderfield et al., 2012; Shakun et al., 2015). Global mean sea level is then solved as a closure term. Alternatively, temperature proxies have been obtained from records of oxygen and hydrogen isotope abundances from ice cores from Greenland (Alley, 2000) and Antarctica (Jouzel et al., 2007). Focusing on the signal from ice volume rather than temperature, Rohling et al. (2014) used planktic $\delta^{18}\text{O}$ in the Mediterranean Sea as a proxy for sea-level at the Strait of Gibraltar, translating the result into a global mean sea-level record spanning the last 5.5 Myr. Grant et al. (2014) applied the same method to the Red Sea, producing a record of sea-level at the Bab-el-Mandab Strait with a higher accuracy, but going back only 500 kyr.

These studies are generally viewed as “data” studies; observed variables (chemical concentrations, isotope ratios, etc.) are used to derive climate parameters (ice volume, global mean temperature, pCO₂, etc.) using relatively simple, time-independent concepts. Discussions about the validity of the results generally focus less on the physical processes described by these simple models, and more on the properties of the data, such as sample contamination and diagenesis, statistical limitations and measurement uncertainty.

A different family are the “model” studies, where physics-based models are used to describe the evolution of (components of) the Earth system (atmosphere, ocean, cryosphere, carbon cycle, etc.) through time. Typically, the aim of a model study is to determine if our understanding of a physical process is good enough to explain the observations, or to use that understanding to make predictions of that process in the future. Several recent studies have aimed to reproduce the evolution of global climate and the cryosphere throughout the Pleistocene, using primarily insolation as forcing (Brovkin et al., 2012; Willeit et al., 2015, 2019). By studying the differences between model results and observations from proxy data, such studies can help with interpreting these data, providing insight into the physical processes that govern the relation between observed and derived variables. In turn, the differences between data and model results can help to assess the importance of physical processes that are not included in the model.

Inverse modelling is a hybrid method, using an approach that combines elements from both these families of research. This method aims to derive the evolution of the entire global climate-cryosphere system through time, based on observations of benthic δ¹⁸O (Bintanja et al., 2005; Bintanja and van de Wal., 2008; de Boer et al., 2010, 2012, 2013, 2014, 2017; van de Wal et al., 2011; Stap et al., 2017, 2017; Berends et al., 2018, 2019). This is done by using ice-sheet models, with climate forcing components varying in complexity from simple parametrisations to fully coupled GCMs, to reconstruct ice-sheet evolution.

Such models can be used to calculate the contributions to the observed benthic δ¹⁸O signal from both ice volume and deep-water temperature over time. By using a tool called an “inverse routine”, the model can be forced to (almost) exactly reproduce the benthic δ¹⁸O signal, providing a reconstruction of global climate *as it should have evolved* in order to explain the observations. The advantage of this approach over other proxy-based reconstructions is that the simulated changes in global climate and ice-sheet evolution are mutually consistent, building on the physical equations within the model framework. Earlier studies adopting this approach used simple, one-dimensional ice-sheet models to represent all ice on Earth or on a single hemisphere, and different parameterisations of the relation between ice volume and climate (e.g. de Boer et al., 2010; Stap et al., 2017). More recent studies have used more elaborate 3-D ice-sheet models covering different regions of the Earth, using more comprehensive mass balance parameterisations and representations of the global climate (e.g. Bintanja and van de Wal, 2008; de Boer et al., 2013, 2017; Berends et al., 2018, 2019). The most recent of these studies, by Berends et al. (2019), used a 3-D ice-sheet-shelf model, forced with output from several different GCM simulations by a so-called “matrix method” of model coupling, to simulate the last four glacial cycles. They showed that their results agreed with geomorphological and proxy-based evidence of ice-sheet volume and extent, benthic δ¹⁸O, deep-water temperature, ice-sheet temperature and atmospheric CO₂.

The work presented here builds on the work by Berends et al. (2019), extending their results to 3.6 Myr ago to produce a time-continuous, self-consistent reconstruction of atmospheric CO₂, global climate, ice-sheet geometry and global mean sea-level, over the period where ice core records of CO₂ are not available. The inverse modelling approach that was adopted to force this model with a benthic δ¹⁸O record is described in Sect. 2.1. The ice-sheet and climate models are described in Sects. 2.2 and 2.3, respectively, while the matrix method used to couple these two models is described in Sect. 2.4. The resulting reconstructions of CO₂, ice volume, temperature and sea-level over the past 3.6 Myr are presented in Sect. 3 and discussed in Sect. 4.

2 Methodology

2.1 Inverse modelling

10 In order to disentangle the contributions to the benthic δ¹⁸O signal from global land ice volume and deep-water temperature changes, we use the inverse modelling method proposed by Bintanja and van de Wal (2008) and refined by de Boer et al. (2013, 2014, 2017) and Berends et al. (2019). The two contributions to the benthic δ¹⁸O signal are not independent; both result from changes in the Earth's climate, driven by changes in insolation and CO₂. A cooling of the global climate will, over time, affect the temperature in the deep ocean, especially when the cooling occurs at high latitudes, where deep water formation occurs. Simultaneously, such a global cooling leads to an increase in ice volume, which affects the δ¹⁸O of the sea water itself. The inverse modelling method is a tool that determines how modelled CO₂ *should have evolved over time* in order to affect the global climate in such a way that the observed benthic δ¹⁸O record is reproduced. The modelled value for CO₂ is used, together with the ice sheets simulated by the ice-sheet model, to determine the global climate by using a matrix method of model forcing. This method was presented by Berends et al. (2018) and refined by Berends et al. (2019), and is described in more detail in Sect. 2.4. The resulting climate is used to determine the surface mass balance over the ice sheets, which forces the ice-sheet model. The resulting global ice volume and deep-water temperature anomaly (which is derived from the high-latitude annual mean surface temperature anomaly, using a moving average of 3,000 yr) are used to calculate a modelled value of benthic δ¹⁸O. This approach is visualized conceptually in Fig. 2.

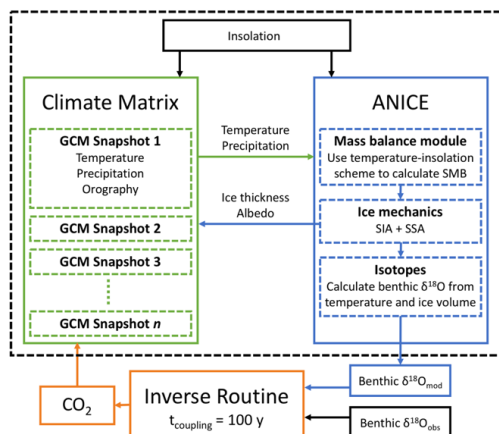


Figure 2: A conceptual visualization of the inverse forward modelling approach. The model is forced externally by an insolation reconstruction and a benthic $\delta^{18}\text{O}$ record (black boxes). pCO_2 is changed over time based on the difference between observed and modelled $\delta^{18}\text{O}$. The climate matrix interpolates between the pre-calculated GCM snapshots, based on the prescribed pCO_2 value and the modelled state of the cryosphere (ice thickness and albedo), to determine the climate that is used to calculate the surface mass balance over the ice sheets. The modelled ice sheets and climate are then used to calculate a modelled benthic $\delta^{18}\text{O}$ value, which is used to update modelled CO_2 in the next time step. Figure adapted from Berends et al. (2019).

The modelled value $\delta^{18}O_{mod}$ is compared to the observed value $\delta^{18}O_{obs}$ at the model time t . A modelled value that is too low indicates that the modelled climate is too warm, or the ice sheets are too small. pCO_2 is then decreased in the next time-step (with an increment proportional to the $\delta^{18}\text{O}$ discrepancy). This relationship is quantified by the following equation:

$$\text{pCO}_2 = \overline{\text{pCO}_2} + \alpha(\delta^{18}O_{mod} - \delta^{18}O_{obs}). \quad (1)$$

Here, $\overline{\text{pCO}_2}$ is the mean modelled pCO_2 over the preceding 8.5 kyr, and α is a scaling parameter which controls how fast modelled CO_2 is allowed to change (serving as a low-pass filter, suppressing overshoot that could result from large changes in the benthic $\delta^{18}\text{O}$ record). In order to calculate $\delta^{18}O_{mod}$, the contributions from modelled ice volume and deep-sea temperature are calculated separately. The spatially variable isotope content of the individual ice-sheets is tracked through time, with the surface isotope balance based on the observed present-day relation between precipitation rates and isotope content according to Zwally and Giovinetto (1997). Benthic $\delta^{18}\text{O}$ is assumed to be linearly dependent on the global mean deep-water temperature anomaly, which is calculated by temporally smoothing the high-latitude annual mean surface temperature anomaly over the preceding 3 kyr and multiplying with a scaling factor of 0.25. Berends et al. (2019) showed that this yields a deep-sea temperature anomaly of 2 – 2.5 K at LGM, in general agreement with proxy-based reconstructions (Shakun et al., 2015). The

values of 8.5 kyr for the length of the CO₂ averaging window, 3 kyr for the deep-water temperature averaging window, and 120 *ppmv* ‰⁻¹ for the δ¹⁸O-CO₂ scaling parameter, were determined experimentally to accurately reproduce the observed benthic δ¹⁸O record.

The combination of this inverse modelling method to reconstruct pCO₂ and the matrix method to determine the global climate has been shown to accurately reproduce changes in benthic δ¹⁸O and the individual contributions from both global ice volume and deep-water temperature, as well as ice-sheet volume and extent, ice-sheet surface temperature and pCO₂ during the last four glacial cycles (Berends et al., 2019).

2.2 Ice-sheet model

The evolution of the ice sheets is simulated using ANICE, a coupled 3-D ice-sheet-shelf model (de Boer et al., 2013; Berends et al., 2018). ANICE uses a combination of the shallow ice approximation (SIA; Morland and Johnson, 1980) for grounded ice and the shallow shelf approximation (SSA; Morland, 1987) for floating ice to solve the ice mechanical equations. Basal sliding is described by a Coulomb sliding law and solved using the SSA, using the hybrid approach by Bueler and Brown (2009), where basal friction is determined by bedrock elevation. Internal ice temperatures, used to calculate ice viscosity, are calculated using a coupled thermodynamical module. The surface mass balance is parameterized based on monthly mean surface temperature and precipitation, where ablation is calculated using the surface temperature-albedo-insolation parameterization, as explained in more detail by Berends et al. (2018). The solution by Laskar et al. (2004) is used to prescribe time- and latitude-dependent insolation at the top of the atmosphere. A combination of the temperature-based formulation by Martin et al. (2011) and the glacial-interglacial parameterization by Pollard & DeConto (2009), is used to calculate sub-shelf melt underneath the Antarctic ice shelves, calibrated by de Boer et al. (2013) to produce realistic present-day Antarctic shelves and grounding lines. A more detailed explanation is provided by de Boer et al. (2013) and references therein. A simple threshold thickness of 200 m is used to describe ice calving, where any shelf ice below this threshold thickness is removed. The model is run on four separate grids simultaneously, covering North America, Eurasia, Greenland and Antarctica, as shown in Fig. 3. The horizontal resolution is 40 km for Antarctica, North America and Eurasia, and 20 km for Greenland.

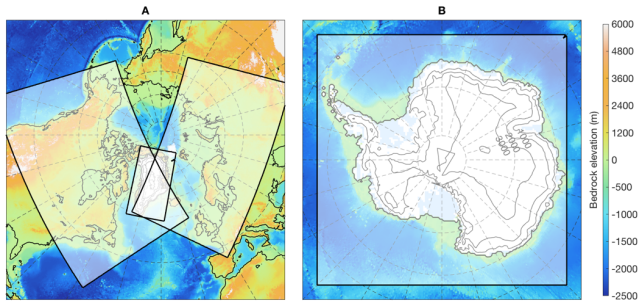


Figure 3: The areas of the world covered by the four model domains of ANICE. In the North America and Eurasia domains, Greenland is omitted. Figure adapted from Berends et al. (2018).

2.3 Climate model

5 HadCM3 is a coupled atmosphere–ocean GCM (Gordon et al., 2000; Valdes et al., 2017), which has been shown to accurately reproduce the present-day climate heat budget (Gordon et al., 2000). It has been used for future climate projections in the IPCC AR4 (Solomon et al., 2007), and paleoclimate reconstructions such as PlioMIP (Haywood and Valdes, 2003; Dolan et al., 2011, 2015; Haywood et al., 2013) and PMIP2 (Braconnot et al., 2007). Atmospheric circulation is calculated at a resolution of 2.5° latitude by 3.75° longitude. The ocean is modelled at a horizontal resolution of 1.25° by 1.25° , with 20 vertical
 10 layers. We use results from several different steady-state time slice simulations with HadCM3 of different climate states to force our ice-sheet model, using the matrix method explained in Sect. 2.4.

2.4 Matrix method

According to Pollard (2010), a climate matrix is a collection of pre-calculated output data from several steady-state GCM simulations, called “snapshots”. These snapshots differ from each other in one or more key parameters, such as orbital
 15 configuration, prescribed atmospheric $p\text{CO}_2$, or ice-sheet configuration. Each of these constitutes a separate dimension of the matrix. When using an ice-sheet model to simulate the evolution of an ice sheet over time, the prescribed climate is determined in every model time-step by combining the GCM snapshots according to the position of the ice-sheet model state in the climate matrix, which is determined by the modelled values of the parameters describing the snapshots. This approach occupies the middle ground between offline forcing and fully coupled ice-sheet – climate models. The different GCM snapshots contain
 20 the key feedback effects of the altitude and albedo on the temperature. In addition, the matrix method captures the effect of ice sheet geometry on large-scale atmospheric circulation and precipitation. The matrix method creates a spatially variable linear interpolation of these snapshots providing a first order approach to the strength of the feedback and the effects of ice-sheet geometry on atmospheric circulation and precipitation.

In this study, we use the matrix method developed by Berends et al. (2018), where temperature fields from the different climate states are combined based on a prescribed value for pCO₂ and on the internally modelled ice-sheets. The feedback of the ice sheets on the climate is calculated via the effect on absorbed insolation through changes in surface albedo. This interpolation is carried out separately for all four ice sheets. The altitude-temperature feedback is parameterized by a constant lapse-rate
5 derived from the GCM snapshots. Precipitation fields are combined based on changes in surface elevation, reflecting the orographic forcing of precipitation and plateau desert effect caused by the presence of a large ice-sheet. The equations describing these calculations are presented in Appendix A, and explained in more detail by Berends et al. (2018), who demonstrated the viability of this method by simulating the evolution of the North American, Eurasian, Greenland and Antarctic ice-sheets throughout the entire last glacial cycle at the same time. They showed that model results agree well with
10 available data in terms of ice-sheet extent, sea-level contribution, ice-sheet surface temperature and contribution to benthic δ¹⁸O. Here, we apply this matrix method to the climate matrix created by Berends et al. (2019), consisting of eleven pre-calculated GCM snapshots, created with HadCM3. Two of these, produced by Singarayer and Valdes (2010), respectively represent the pre-industrial period (PI) and the last glacial maximum (LGM). The other nine, produced by Dolan et al. (2015), represent the global climate during Marine Isotope Stage (MIS) M2 (3.3 My ago), for four different possible ice-sheet
15 geometries and two different pCO₂ concentrations, plus one Pliocene control run. The total set of eleven snapshots allows the climate matrix to disentangle the effects on climate of changes in pCO₂ and changes in ice-sheet extent, and provides information on climates that are both colder and warmer than present-day.

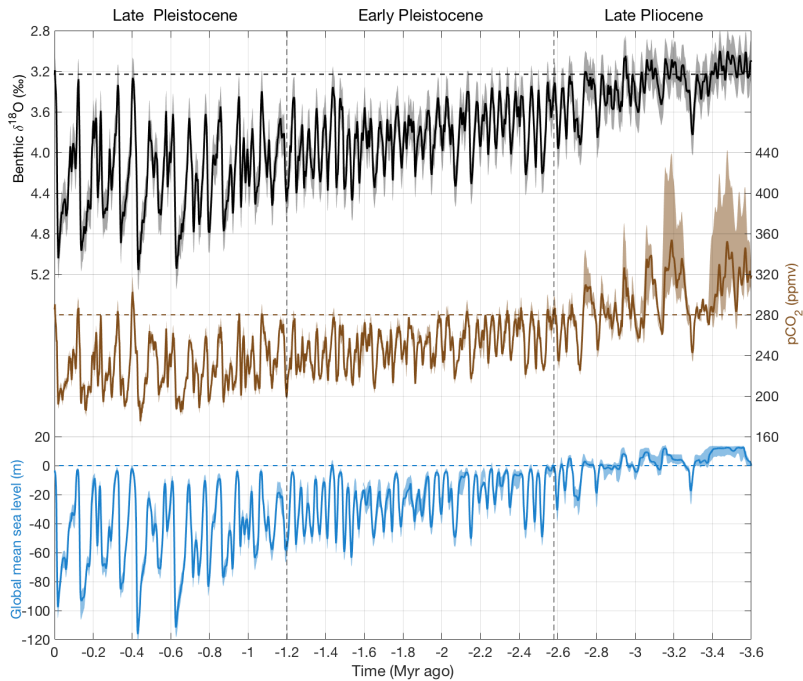
3 Experimental set-up and results

Here, we describe a set of simulations from 3.6 Myr ago to the present day. The choice for this starting point aims to include
20 the end of the Late Pliocene and the inception of the Pleistocene glacial cycles. The model was initialized with the same PRISM3 ice sheets that were used as boundary conditions in several of the HadCM3 simulations by Dolan et al. (2015). The model was forced with the LR04 stack of benthic δ¹⁸O records (Lisiecki and Raymo, 2005). We chose here to perform three simulations: one “default” run, one with the δ¹⁸O forcing adjusted upwards by 0.1 ‰ and one with the forcing adjusting downwards by 0.1 ‰. Berends et al. (2019) showed that the contribution to the uncertainty in the reconstructed CO₂ and sea
25 level arising from the uncertainty in the forcing is the largest of all model parameters. Since simulating such long periods of time is very computationally demanding, we decided that the added value of repeating the sensitivity analysis for other model
parameters by Berends et al., 2019, did not outweigh the computational cost. Margins of error reported here therefore describe
only the uncertainty arising from the uncertainty in the benthic δ¹⁸O record. The true uncertainty in our reconstruction, which
30 includes contributions from many other parameterisations made in our model, is significantly larger, but remains difficult to
quantify.

The resulting reconstructions of CO₂ and global mean sea-level, together with the δ¹⁸O forcing, are shown in Fig. 4. The 40 kyr glacial cycles of the Early Pleistocene, between 2.6 and 1.2 Myr ago, are clearly visible, changing to 80/120 kyr cycles

- Deleted:** ,
- Formatted:** Subscript
- Deleted:** as this uncertainty dominates the total uncertainty in the reconstructed CO₂ and global mean sea-level
- Deleted:** including other simulations (as in the ensemble)
- Deleted:**)
- Deleted:** As a result, uncertainties are conservative in this study, describing
- Deleted:** .

after the MPT. The visibly larger uncertainty for higher CO₂ concentrations, occurring during the warm periods of the late Pliocene, is likely due to the relative sparsity of the climate matrix for warmer-than-present states (three snapshots only) compared to the colder-than-present part (seven snapshots), which might lead to a bias towards larger ice sheets in warm worlds.



5 **Figure 4:** Observed benthic $\delta^{18}\text{O}$ (black; Lisiecki and Raymo, 2005) and reconstructed CO₂ (brown) and global mean sea level (blue) for the entire 3.6 Myr simulation period. The present-day values for the three variables (pre-industrial value of 280 ppmv for CO₂) are shown by horizontal dashed lines. Shaded areas indicate the uncertainty in the LR04 benthic $\delta^{18}\text{O}$ stack, and the resulting uncertainty in the reconstructed CO₂ and sea level.

10 The modelled sea-level is compared to several other reconstructions in Fig. 5. Shown are the reconstructions based on planktic $\delta^{18}\text{O}$ in the Red Sea (Grant et al., 2014) and in the Mediterranean $\delta^{18}\text{O}$ (Rohling et al., 2014), which cover the last 500 kyr and 5.5 Myr, respectively. The reconstruction by de Boer et al. (2014) is based on an ice-sheet model-based decomposition of the benthic $\delta^{18}\text{O}$ signal, very similar to the work presented here. The main difference is the climate forcing applied to the ice-sheet model, which by de Boer et al. (2014) was described by a simple globally uniform temperature offset, and which was replaced

by the climate matrix approach plus inversely modelled CO₂ in our work. Despite this improvement in the climate forcing, which resulted in a simulated ice-sheet at LGM which agrees better with geomorphological evidence (Berends et al., 2018), the sea-level reconstructions are virtually indistinguishable. The reconstruction by Willeit et al. (2019) shown in Fig. 5 is based on a fully coupled ice-sheet – climate – carbon cycle model, forced only with insolation. However, their ice-sheet model only simulated the Northern Hemisphere; the contribution from Antarctica is assumed to be 10 % of that of the northern ice sheets. While this assumption seems to produce good results during the Pleistocene, its validity during the warmer-than-present late Pliocene is questionable. The reconstruction by Elderfield et al. (2012) was made using a Mg/Ca-based reconstruction of sea surface temperature, which was then used to disentangle the ice volume and deep-sea temperature signals in the benthic δ¹⁸O record. Lastly, the reconstruction by Naish et al. (2009), adjusted by Miller et al. (2012) to match results from geological backstripping in New Zealand, suggests a relatively stable sea-level during the late Pliocene, 3.4 – 2.58 Myr ago, which agrees well with our results. Rohling et al. (2014), arguing that geological backstripping can provide information on relative changes in sea-level but not on absolute values, added a +20 m offset to the results by Miller et al. (2012), which made those results agree better with their own reconstruction from the Mediterranean Sea. However, our own results are reasonably close to those by Miller et al. (2011) over the period between 3.4 and 2.6 Myr ago without requiring such a correction. The strong variability in global mean sea-level visible in the results of Rohling et al. (2014) during this period, which suggests the repeated disappearance and reappearance of most of the East Antarctic ice sheet, is not visible in the data of Miller et al. (2012), nor in our own results.

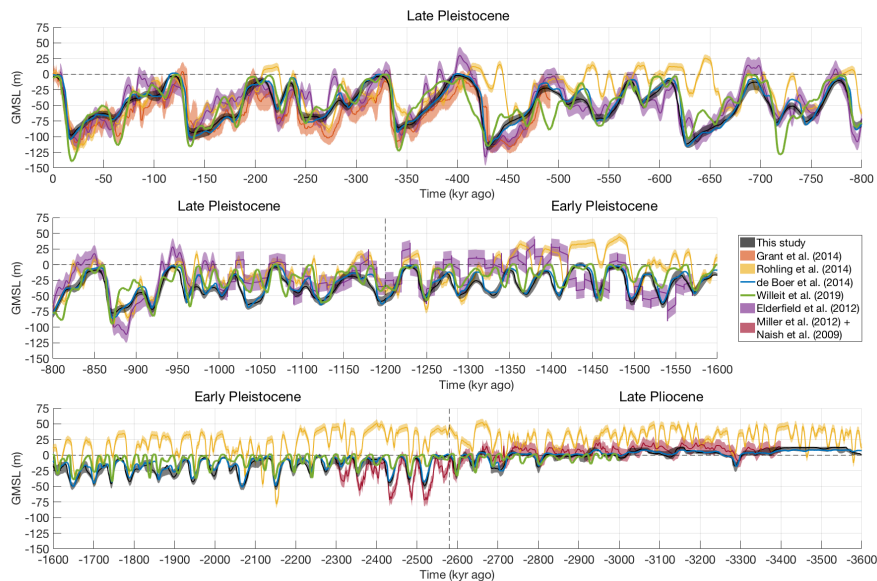


Figure 5: Reconstructed global mean sea-level for the entire simulation period (black), compared to reconstructions based on Red Sea $\delta^{18}\text{O}$ (Grant et al., 2014; red), Mediterranean $\delta^{18}\text{O}$ (Rohling et al., 2014; yellow), an ice-sheet model-based inversion of the global benthic $\delta^{18}\text{O}$ similar to this study (de Boer et al., 2014; blue), an insolation-forced, fully coupled ice-sheet – climate – carbon-cycle model (Willeit et al., 2019; green), a separation of the ice- and temperature-induced $\delta^{18}\text{O}$ signals based on Mg/Ca ratios (Elderfield et al., 2012; purple), and a direct scaling of benthic $\delta^{18}\text{O}$ scaled to match results from geological backstripping (Miller et al. 2012; Naish et al. 2009; dark red). The present-day value of zero is shown by a dashed line.

The CO_2 reconstruction for the past 800 kyr is compared to the EPICA Dome C ice core record (Bereiter et al., 2015) in Fig. 6, as well as to several different model reconstructions and proxy-based reconstructions. The three other model-based reconstructions shown were created by decoupling the benthic $\delta^{18}\text{O}$ signal using a 1-D ice-sheet model (van de Wal et al., 2011; Stap et al., 2017), or by using an insolation-forced, fully coupled ice-sheet – climate – carbon cycle model (Willeit et al., 2019). The geological proxies are based either on alkenones (Seki et al., 2010; Badger et al., 2013; Zhang et al., 2013) or $\delta^{11}\text{B}$ ratios (Hönisch et al., 2009; Seki et al., 2010; Bartoli et al., 2011; Martínez-Botí et al., 2015; Stap et al., 2016; Chalk et al., 2017; Dyez et al., 2018; Sosdian et al., 2018) derived from benthic foraminifera, or based on stomata (Kürschner et al., 1996; Stults et al., 2011; Bai et al., 2015; Hu et al., 2015).

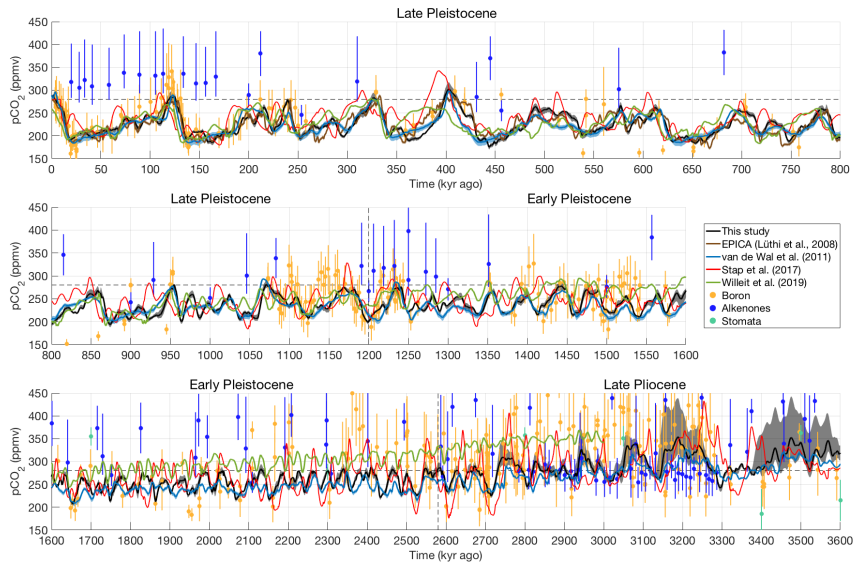


Figure 6: Reconstructed atmospheric CO₂ for the entire simulation period, compared to the EPICA Dome C ice core record (Bereiter et al., 2015), three different reconstructions based on ice-sheet-climate models (van de Wal et al., 2011; Stap et al., 2017; Willeit et al., 2019), as well as to chemical proxies based on ¹¹B ratios (Hönisch et al., 2009; Seki et al., 2010; Bartoli et al., 2011; Martínez-Botí et al., 2015; Stap et al., 2016; Chalk et al., 2017; Dyez et al., 2018; Sosdian et al., 2018), alkenones (Seki et al., 2010; Badger et al., 2013; Zhang et al., 2013) and stomata (Kürschner et al., 1996; Stults et al., 2011; Bai et al., 2015; Hu et al., 2015). The pre-industrial value of 280 ppmv is shown by a dashed line.

Our results broadly match those of van de Wal et al. (2011), who reconstructed CO₂ using 1-D ice models, forced with a simple spatially uniform temperature offset (assuming the strength of all feedbacks in the CO₂-temperature relation to be constant in time) calculated from benthic δ¹⁸O using a similar inverse forward modelling approach. Both our results and those of van de Wal et al. (2011) show values during the late Pliocene that were higher than pre-industrial, but lower than present-day (412 ppmv at the date of writing), though the values by van de Wal et al. (2011) are at the low end of the uncertainty of our own results, as can be seen in Fig. 6. Stap et al. (2017) used a 1-D ice-sheet model set-up very similar to that by van de Wal et al. (2011), but used a more elaborate energy-balance model to represent the global climate. Their results differ markedly from ours, and those of van de Wal et al. (2011). The reconstruction by Willeit et al. (2019), who used a coupled ice-sheet – climate – carbon cycle model, agrees with ours and that by van de Wal et al. (2011) in terms of the glacial-interglacial amplitude both before and after the MPT. However, the downward linear trend in pCO₂, which Willeit et al. (2019) prescribed manually to

induce the inception of northern hemisphere glaciation at 2.6 Myr ago, and the resulting high values during the Early Pleistocene, are not visible in the other reconstructions.

None of the model-based reconstructions agrees better than the others with the available proxy data. A recent study by Badger et al. (2019) showed that the alkenone proxy has only a very low sensitivity to atmospheric CO₂ at low to moderate CO₂ concentrations, as is clearly visible in the top panel of Fig. 6, where the alkenone proxy data show a nearly constant CO₂ concentration throughout the last glacial cycle. They state that the reliability of this proxy for values lower than ~350 ppmv (the entire Pleistocene and large parts of the Late Pliocene) is doubtful. In addition, several studies (Indermühle et al., 1999; Jordan, 2011; Porter et al., 2019) have questioned the reliability of the stomatal proxies. However, even when we disregard both of these proxies, the level of disagreement between the different boron isotope-based proxies is such that using them to choose one model-based reconstruction over another is not possible. The only available data record which is reliable enough to allow such a comparison is the ice-core record (Bereiter et al., 2015). In Table 1, we compare the performance of the different model-based studies at reproducing this CO₂ record. All reconstructions have been prescribed an “optimised time lag” to find the highest possible correlation with the ice core record. Our results show the best agreement in terms of the coefficient of determination $R^2 = 0.74$, the root-mean-square-error RMSE = 13.5 ppmv (both taken over the entire 800 kyr ice-core period), and zero time lag required to obtain these values. To put these numbers into perspective, the same numbers are listed for a simple least-squares linear fit between the LR04 benthic $\delta^{18}O$ stack and the EPICA Dome C record. This statistical “model” yields approximately the same results as our reconstruction in terms of correlation and RMSE, although the resulting post-MPT glacial-interglacial amplitude is about 23 ppmv too small, indicating that the increased glacial-interglacial variability is not properly captured.

Table 1: Statistical comparison of the different model-based CO₂ reconstructions (this study; van de Wal et al., 2011; Stap et al., 2017; Willeit et al., 2019) to the EPICA Dome C ice core record (Bereiter et al., 2015), as well as the glacial-interglacial amplitude in CO₂ both before and after the MPT for the different reconstructions.

	EPICA	Linear regression	This study	Wal2011	Stap2017	Willeit2019
Optimised time lag (kyr)	-	-	0.0	2.0	10.0	9.0
Model-EPICA R ²	-	0.70	0.74	0.64	0.48	0.45
Model-EPICA RMSE (ppmv)	-	13.9	13.5	15.8	24.9	19.9
Pre-MPT amplitude (ppmv)	-	32	48	34	83	37
Post-MPT amplitude (ppmv)	91	68	87	79	104	72

Fig. 7 illustrates the difference between our modelled CO₂ values for the Early and Late Pleistocene. Interglacial CO₂ decreases from 280 – 300 ppmv at the beginning of the Early Pleistocene, to 250 – 280 ppmv just before the MPT. Glacial CO₂ decreases from 220 – 250 ppmv to 205 – 225 ppmv during this period, indicating a background trend of about -20 ppmv in 1.5 Myr. After the MPT, interglacial CO₂ varies between 250 – 320 ppmv, and glacial values decrease to 170 – 210 ppmv, with neither

range showing a clear trend. The reduced glacial-interglacial CO₂ difference of 48 ppmv (averaged over the entire period) that we find in our results agrees with the value of 43 ppmv observed in the boron isotope data by Chalk et al. (2017). The values for all four model-based reconstructions, both before and after the MPT, are shown in Table 1. After the MPT, we find a glacial-interglacial difference of 87 ppmv, which agrees very well with the value of 91 ppmv over the past 800 kyr from the EPICA Dome C ice core record (Bereiter et al., 2015).

The discussion about the nature of the Late Pleistocene glacial cycles is still ongoing. Different studies have proposed that they represent either a strongly amplified response to a weak 100 kyr forcing (Ganopolski and Calov, 2011), a response to the same 40 kyr forcing as in the Early Pleistocene, with an additional threshold mechanism that causes some insolation maxima to be “skipped”, leading to 80/120 kyr cyclicality (Huybers, 2011; Tzedakis et al., 2017), or even as the result of some stochastic process with a collapse threshold, containing no true periodicity (Wunsch, 2003). Since the timing of glaciations and deglaciations in our model is forced by the LR04 benthic δ¹⁸O stack, and thus its depth-age model, no meaningful conclusions regarding this discussion can be drawn from our results.

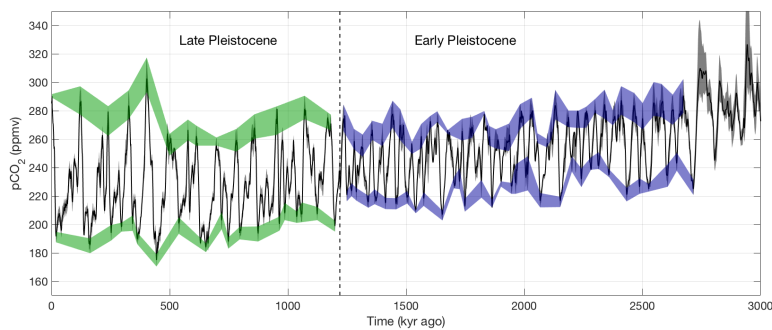


Figure 7: Reconstructed atmospheric CO₂ during the Pleistocene. The coloured regions indicate the glacial and interglacial ranges for the Early (2.6 – 1.2 Myr ago; blue) and Late (1.2 – 0.011 Myr ago; green) Pleistocene.

The non-linear, time-dependent relation between CO₂ and sea level is visualised in Fig. 8, both for the different proxy data (panel A) and the different model reconstructions (panels B-F) using scatter plots. This visualisation contains several useful features: the general shape of the curve shows the sensitivity of the world’s ice sheets to changes in climate, while the spread of the data points around the curve indicates the time lag between the two. An instantaneous response would result in zero spread, while a long lag would yield a wide spread. This time lag is caused by the slow response of ice sheets to climate change, the intrinsic hysteresis of global ice sheet volume under a changing climate, and other slow-responding physical processes such as englacial thermodynamics, glacial-isostatic adjustment, and oceanic carbon cycling.

Deleted: While the lag between changes in CO₂ and changes in global climate is not included in any of the model studies except Willeit et al. (2019), it is too short to be visible in the figure. Instead, the spread of the data points

Deleted: is due to both

Deleted: and

Deleted: .

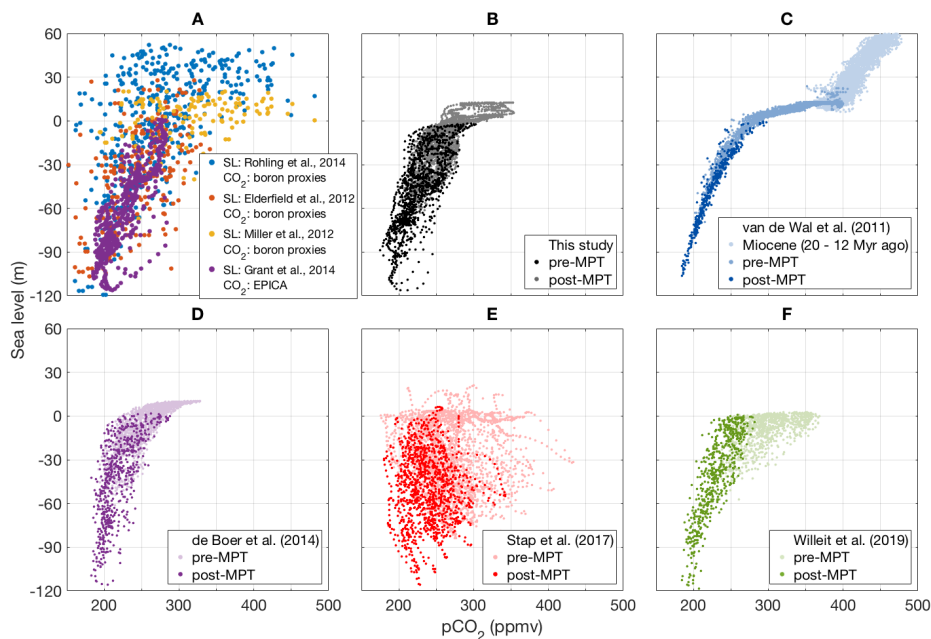


Figure 8: A: Sea level vs atmospheric CO₂ from proxy data. Blue: sea-level data from Rohling et al. (2014; last 5 Myr) vs boron isotope CO₂ data. Red: sea-level data from Elderfield et al. (2012; last 1.5 Myr) vs boron isotope CO₂ data. Gold: sea-level data from Miller et al. (2012) and Naish et al. (2009; 3.4 – 2.3 Myr ago) vs boron isotope CO₂ data. Purple: sea-level data from Grant et al. (2014; last 500 kyr), vs the EPICA Dome C ice core record (Bereiter et al., 2015). B-F: reconstructed sea level and atmospheric CO₂ from different modelling studies (B: this study; C: van de Wal et al., 2011; D: de Boer et al., 2014; E: Stap et al., 2017; F: Willeit et al., 2019), separated into pre- and post-MPT values. de Boer et al. (2014; panel D) did not explicitly model CO₂, calculating only a global mean temperature change. We converted this to CO₂, using the logarithmic relation from van de Wal et al. (2011).

The combination of ice core CO₂ data (Bereiter et al., 2015) and Red Sea sea-level data (Grant et al., 2014), regarded as the two most reliable proxy reconstructions for the colder-than-present worlds of the Late Pleistocene and shown by the purple data points in Panel A, displays a pattern that is very similar to the model results by de Boer et al. (2014), and by this study. The reconstruction by van de Wal et al. (2011) shows a narrower range of sea levels for each CO₂ value, indicating that their ice sheets respond faster to changes in climate. The reconstruction by Willeit et al. (2019) show a wider spread in the 250 – 350 ppmv range, implying the existence of medium-sized ice sheets (~30 m SLE) even when CO₂ is above 280 ppmv. The reconstruction by Stap et al. (2017) shows a vast spread, indicating that their ice sheets respond very slowly. The cause of this is not known (*personal communication with authors*). While both the observational data in Fig. 8A, and the results by Willeit et al. (2019) show the existence of medium-sized ice sheets under CO₂ concentrations as high as 300 ppmv, the results by van

Deleted: also

Deleted: relatively narrow range of sea levels in the 180 – 250 ppmv CO₂ range, but a

Deleted: T

Formatted: Subscript

de Wal et al. (2011), de Boer et al. (2014), and this study all show a “threshold” for glaciation and sea-level drop around 250 ppmv. This indicates that the effects of orbital changes on the global climate, and by extension on the surface mass balance and the timing of glacial inceptions, are underestimated in these models.

The much weaker response of sea level to changes in CO₂ for concentrations higher than 280 ppmv, which is displayed by all models except Stap et al. (2017), seems to be confirmed by the sea-level data by Miller et al. (2012) and the boron isotope CO₂ data. The sea-level data by Rohling et al. (2014) show much more variation, especially during the early Pleistocene. The results by van de Wal et al. (2011) show a very clear threshold around 375 ppmv CO₂, beyond which sea level rises rapidly with increasing CO₂. As indicated by the colours, they only find these warm greenhouse worlds during the first half of the Miocene (20 – 12 Myr ago), which explains why none of the other models, nor the proxy data, display this behaviour. Although some of the boron isotope proxies suggest CO₂ concentrations higher than this 375 ppmv threshold value, the sea level data do not show the associated strong rise.

5 Conclusions and discussion

We have presented a new, time-continuous, self-consistent reconstruction of atmospheric CO₂, ice sheet evolution and global mean sea-level of the last 3.6 Myr, based on the benthic δ¹⁸O glacial proxy. This reconstruction was created by using a hybrid ice-sheet – climate model (Berends et al., 2018) to decouple the contributions from ice volume and deep-water temperature to the benthic δ¹⁸O record (Lisiecki and Raymo, 2005). Our sea-level reconstruction agrees well with similar model-based results (de Boer et al., 2014), the reconstruction based on Red Sea δ¹⁸O by Grant et al. (2014) and the combined results of benthic δ¹⁸O (Naish et al., 2009) and geological backstripping (Miller et al., 2012). Our results agree less well with the reconstruction based on Mediterranean Sea δ¹⁸O by Rohling et al. (2014), which goes back further in time but has a lower signal-to-noise ratio, and with the reconstruction based on benthic δ¹⁸O and Mg/Ca ratios by Elderfield et al. (2012). Although previous studies (van de Wal et al., 2011; de Boer et al., 2014; Stap et al., 2017) used more simple, parameterized ice-sheet and climate models, the resulting sea-level reconstructions are very similar.

Our CO₂ reconstruction agrees well with the EPICA Dome C ice core record (Bereiter et al., 2015), showing the strongest correlation of all four model-based reconstructions. Our results do not agree well with different chemical proxy-based reconstructions based on foraminiferal alkenones (Seki et al., 2010; Badger et al., 2013; Zhang et al., 2013), foraminiferal δ¹¹B ratios (Seki et al., 2010; Martínez-Boti et al., 2015; Stap et al., 2016; Chalk et al., 2017; Dyez et al., 2018; Sosdian et al., 2018) or fossil plant stomata (Kürschner et al., 1996; Stults et al., 2011; Bai et al., 201; Hu et al., 2015). However, the strong spread between those different proxies and the large uncertainty of each individual proxy record do not allow to conclude whether the difference between those proxies, and our model reconstructed values is significant.

Between 2.8 and 1.2 Myr ago, during the early Pleistocene, we simulate 40 kyr glacial cycles with glacial-interglacial sea-level changes of 25 – 50 m. During this period, CO₂ varies between 270 – 280 ppmv during interglacials and 210 – 240 ppmv

Deleted: CO₂

Deleted: , slightly lower than what is indicated by the Grant/EPICA data

Deleted: Willeit et al. (2019) report a threshold for glaciation that depends on both insolation and CO₂. The models used by van de Wal et al. (2011), de Boer et al. (2014), and this study do not explicitly account for the effect of insolation on temperature, but only include an insolation term in the mass balance calculation (and, in this study, in the interpolation in the climate matrix), which might explain this difference

during glacial maxima, with both values decreasing by about 20 ppmv over the 1.4 Myr course of the Early Pleistocene. After the Mid-Pleistocene Transition (MPT), when the glacial cycles change from 40 kyr to 80/120 kyr cyclicity, their sea-level amplitude increases to 70 – 120 m, with CO₂ varying between 250 – 320 ppmv during interglacials and 170 – 210 ppmv during glacial maxima. This implies a glacial-interglacial contrast of about 45 ppmv pre MPT and 85 ppmv post MPT. The two most reliable proxy records, the sea-level reconstruction by Grant et al. (2014) and the EPICA Dome C ice core record (Bereiter et al., 2015), display a relation between sea-level and CO₂ for colder-than-present worlds that matches our model results. For warmer-than-present worlds, the large spread and uncertainty in available proxy data for both sea-level and CO₂, as well as the much larger uncertainty in our model results during these warm periods, prevent us from drawing conclusions on the reliability of our methodology in this regard. We believe that the inverse modelling method of using benthic δ¹⁸O, combined with coupled or hybrid ice-sheet – climate models, as a proxy for past CO₂ and sea-level, can add valuable insights into the evolution of the Earth system during these warm episodes.

During the warm late Pliocene, we find a large variability in CO₂, with a difference of about 100 ppmv between the cold glacial excursion 3.3 Myr ago, and the warm peak around 3.2 Myr ago. The boron isotope-based data by Martínez-Botí et al. (2015), which has the highest temporal resolution and longest temporal range of all proxy records, shows a variability of about 150 ppmv during this period (albeit with an uncertainty of about 100 ppmv in either direction). While the large discrepancies between different proxy records are too large to draw any definitive conclusions, their findings do seem to support strong CO₂ variability during these warm periods. Our results for this period also show a much larger uncertainty range than during the Pleistocene. We suspect that the relative sparsity of our current matrix in this warm regime biases the model towards large ice sheets in warm worlds. The high variability in our reconstructed CO₂ during the late Pliocene can then be explained as a consequence of this bias, and the requirement posed by the inverse modelling approach that the prescribed δ¹⁸O record is reproduced. If a high (warm, little ice) δ¹⁸O is prescribed, but little or no ice-sheet retreat occurs in the model, then this must be compensated for by an additional increase in deep-water temperature, which requires large changes in surface climate, and therefore in CO₂. By adding additional GCM snapshots for worlds with > 400 ppmv CO₂ and smaller-than-present ice sheets (particularly a reduced East Antarctic ice sheet), modelled ice-sheet retreat in warm climates might be increased, reducing simulated CO₂ variability during these periods. While this means that the modelled sea-level rise during this period will be larger, our current results are at the low end of the uncertainties of other reconstructions, implying that a higher modelled value will not immediately lead to a mismatch.

The parameterised relation between the global climate, deep-sea temperature and the resulting contribution to the δ¹⁸O signal could be improved upon. In this study, we used the parameterisation developed by Bintanja and van de Wal (2008), which is based on the fact that the LR04 stack consists predominantly of Atlantic records, and on the assumption that Atlantic deep-water temperature is strongly related to annual mean surface temperature in the North Atlantic, where deep water is formed by

Deleted: This could explain the

Deleted: ;

Deleted: i

Deleted: the observed variability in the δ¹⁸O record must be attributed entirely to

Deleted: changes

Deleted: That contribution is currently derived from the modelled high-latitude annual mean surface temperature anomaly, using a simple 3,000 yr moving average and a constant scaling factor.

downwelling. This constitutes a strong simplification of the complex relation between atmospheric and oceanic temperatures, and one that is no longer necessary in our model, where the globally uniform temperature offset used by Bintanja and van de Wal (2008) has been replaced with the GCM snapshots used in our matrix method. Based on output from available ocean-enabled GCM simulations of the LGM, a more elaborate parameterisation could be constructed, perhaps using surface temperatures over specific downwelling regions. Instead of using a global benthic $\delta^{18}\text{O}$ stack, it might even be possible to separate the records from different ocean basins.

Although the margins of error we report for our CO_2 and global mean sea-level reconstructions are relatively small, these describe only the uncertainty arising from the uncertainty in the prescribed $\delta^{18}\text{O}$ forcing. The true uncertainty in our reconstructions depends on many other factors, including the many parameterisations included in our model (such as the matrix method, and the relation between atmospheric and oceanic temperatures, and benthic $\delta^{18}\text{O}$), and is definitely large than the margins of error reported here. However, the uncertainties arising from these factors are unfortunately not evaluated at this stage.

Our results should not be interpreted as a realistic reconstruction of what the world looked like in terms of global climate, ice sheet geometry, sea level and CO_2 , during these periods of geological history. Rather, we believe they should be viewed as scenarios, which can help to interpret an expected new ice core record. For example, one hypothesised mechanism behind the MPT is regolith erosion, which led to a change in basal conditions from mostly sliding ice to mostly non-sliding ice over North America and Eurasia during the MPT (Clark and Pollard, 1998; Willeit et al., 2019). Basal conditions in our model are constant over time, so that the MPT is entirely attributed to changes in CO_2 . A simulation identical to ours, but including a change in basal conditions, would result in a different pre-MPT CO_2 history. Comparing the new ice core record to these two different scenarios could help determine if regolith erosion was a crucial factor in the transition. Other proposed physical mechanisms, such as regolith erosion leading to a different relation between ice sheet geometry and glaciogenic dust, changes in ocean circulation leading to a different dynamic equilibrium between atmospheric and oceanic carbon, or a slow background decrease in CO_2 caused by weathering or reduced volcanism, could be explored in a similar manner. We believe our modelling approach is very suited for this kind of exploratory analysis.

Data availability. The reconstructed global mean sea-level and atmospheric CO_2 concentration over the past 3.6 Myr are available online at doi.org/10.5281/zenodo.3793592

Appendix A

Here, we briefly summarise the equations governing the matrix method. A more thorough explanation of this approach can be found in the original publication by Berends et al. (2018).

Each GCM snapshot contains data fields describing global monthly mean 2-m air temperature, global monthly mean precipitation, and surface elevation. The interpolation routine for the temperature field uses modelled CO₂ and modelled “absorbed insolation” as weighting parameters to interpolate between snapshots. This approach captures the two most important physical processes through which a change in ice-sheet geometry affects the local and global temperature; the ice-albedo feedback, and the altitude-temperature feedback. Since the absorbed insolation changes not only through changes in albedo, but also through changes in incoming insolation, the effects of orbital forcing are also (indirectly) accounted for. The weighting factor w_{CO_2} is calculated as:

$$w_{CO_2} = \frac{pCO_2 - pCO_{2,LGM}}{pCO_{2,PI} - pCO_{2,LGM}}, \quad (A1)$$

with $pCO_{2,PI} = 280$ ppmv and $pCO_{2,LGM} = 190$ ppmv. Multiplying the modelled surface albedo α with the prescribed insolation at the top of the atmosphere Q_{TOA} yields the absorbed insolation I_{abs} :

$$I_{abs}(x, y) = (1 - \alpha(x, y)) \cdot Q_{TOA}(x, y). \quad (A2)$$

This value is scaled between the PI and LGM reference fields to obtain the weighting parameter w_{ins} :

$$w_{ins}(x, y) = \frac{I_{abs,mod}(x, y) - I_{abs,LGM}(x, y)}{I_{abs,PI}(x, y) - I_{abs,LGM}(x, y)}. \quad (A3)$$

This weighting field is partly smoothed with a 200 km Gaussian filter F , to account for both local and regional effects:

$$w_{ice,T}(x, y) = \frac{1}{7} w_{ins}(x, y) + \frac{3}{7} F(w_{ins}(x, y)) + \frac{3}{7} \overline{w_{ins}}. \quad (A4)$$

This is combined with the scalar pCO₂ weight w_{CO_2} to yield the final temperature weighting parameter w_T :

$$w_T(x, y) = \frac{w_{CO_2} + w_{ice,T}(x, y)}{2}. \quad (A5)$$

This weighting field is used to interpolate both the temperature and orography fields of the GCM snapshots:

$$T_{ref}(x, y) = w_T \cdot T_{PI}(x, y) + (1 - w_T) \cdot T_{LGM}(x, y), \quad (A6)$$

$$h_{ref}(x, y) = w_T \cdot h_{PI}(x, y) + (1 - w_T) \cdot h_{LGM}(x, y). \quad (A7)$$

Orography is interpolated as well, so that it can be used to downscale the temperature field from the low-resolution GCM grid to the higher-resolution ice-model grid, using a simple lapse-rate approach:

$$T(x, y) = T_{ref}(x, y) + \lambda_{LGM}(x, y) (h(x, y) - h_{ref}(x, y)), \quad (A8)$$

5

The spatially variable lapse rate $\lambda_{LGM}(x, y)$ is derived from the temperature field of the GCM snapshot.

The interpolation for precipitation is based on ice thickness rather than absorbed albedo. This reflects the fact that precipitation over the ice sheet is strongly affected by altitude:

10

$$w_{ice,P}(x, y) = \frac{H_{mod}(x, y) - H_{PI}(x, y)}{H_{LGM}(x, y) - H_{PI}(x, y)} \cdot \frac{V_{mod} - V_{PI}}{V_{LGM} - V_{PI}}, \quad (A9)$$

$$w_P(x, y) = \frac{W_{CO2} + w_{ice,P}(x, y)}{2}. \quad (A10)$$

$$P_{ref}(x, y) = e^{(w_P \cdot \log(P_{PI}(x, y)) + (1 - w_P) \cdot \log(P_{LGM}(x, y)))}, \quad (A11)$$

Finally, the precipitation field is downscaled from the low-resolution GCM grid to the higher-resolution ice-model grid, using the precipitation model by Roe and Lindzen (2001) and Roe (2002), to correct for the steeper slopes in the ice model:

$$P(x, y) = P_{ref}(x, y) \frac{P_{Roe}(x, y)}{P_{Roe,ref}(x, y)}. \quad (A12)$$

15

Author contributions. CJB, BdB, and RSWvdW designed the study. CJB created the model set-up and carried out the simulations, with support from RSWvdW. CJB drafted the paper, and all authors contributed to the final version.

Competing interests. The authors declare that they have no conflict of interest.

20

Acknowledgements. The Ministry of Education, Culture and Science (OCW), in the Netherlands, provided financial support for this study via the program of the Netherlands Earth System Science Centre (NESSC). B. de Boer was funded by NWO Earth and Life Sciences (ALW), project 863.15.019. This work was sponsored by NWO Exact and Natural Sciences for the use of supercomputer facilities. Model runs were performed on the LISA Computer Cluster, we would like to acknowledge

SurfSARA Computing and Networking Services for their support. Special thanks go to B. Hönisch for advice on paleo-CO₂ data usage.

References

- Alley, R. B.: The Younger Dryas cold interval as viewed from central Greenland, *Quaternary Science Reviews* 19, 213-226, 2000
- Badger, M. P. S., Schmidt, D. N., Mackensen, A., and Pancost, R. D.: High-resolution alkenone palaeobarometry indicates relatively stable pCO₂ during the Pliocene (3.3-2.8 Ma), *Philosophical Transactions of the Royal Society A* 371, 2013
- Badger, M. P. S., Chalk, T. B., Foster, G. L., Brown, P. R., Gibbs, S. J., Sexton, P. F., Schmidt, D. N., Pälike, H., Mackensen, A., and Pancost, R. D.: Insensitivity of alkenone carbon isotopes to atmospheric CO₂ at low to moderate CO₂ levels, *Climate of the Past* 15, 539-554, 2019
- Bai, Y.-J., Chen, L.-Q., Ranhotra, P. S., Wang, Q., Wang, Y.-F., and Li, C.-S.: Reconstructing atmospheric CO₂ during the Plio-Pleistocene transition by fossil *Typha*, *Global Change Biology* 21, 874-881, 2015
- Bartoli, G., Hönisch, B., and Zeebe, R. E.: Atmospheric CO₂ decline during the Pliocene intensification of Northern Hemisphere glaciations, *Paleoceanography* 26, 2011
- Beerling, D. J. and Royer, D. L.: Convergent Cenozoic CO₂ history, *Nature Geoscience* 4, 418-420, 2011
- Bereiter, B., Eggleston, S., Schmitt, J., Nehrbass-Ahles, C., Stocker, T. F., Fischer, H., Kipfstuhl, S., and Chappellaz, J.: Revision of the EPICA Dome C CO₂ record from 800 to 600 kyr before present, *Geophysical Research Letters* 42, 542-549, 2015
- Berends, C. J., de Boer, B., and van de Wal, R. S. W.: Application of HadCM3@Bristolv1.0 simulations of paleoclimate as forcing for an ice-sheet model, ANICE2.1: set-up and benchmark experiments, *Geoscientific Model Development* 11, 4657-4675, 2018
- Berends, C. J., de Boer, B., Dolan, A. M., Hill, D. J., and van de Wal, R. S. W.: Modelling ice sheet evolution and atmospheric CO₂ during the Late Pliocene, *Climate of the Past* 15, 1603-1619, 2019
- Bintanja, R., van de Wal, R. S. W., and Oerlemans, J.: Global ice volume variations through the last glacial cycle simulated by a 3-D ice-dynamical model, *Quaternary International* 95-96, 11-23, 2002
- Bintanja, R., van de Wal, R., and Oerlemans, J.: Modelled atmospheric temperatures and global sea levels over the past million years, *Nature* 437, 125-128, 2005
- Bintanja, R. and van de Wal, R. S. W.: North American ice-sheet dynamics and the onset of 100,000-year glacial cycles, *Nature* 454, 869-872, 2008
- Braconnot, P., Otto-Bliesner, B., Harrison, S., Joussaume, S., Peterchmitt, J.-Y., Abe-Ouchi, A., Crucifix, M., Driesschaert, E., Fichefet, T., Hewitt, C. D., Kageyama, M., Kitoh, A., Laine, A., Loutre, M.-F., Marti, O., Merkel, U., Ramstein, G., Valdes,

- P. J., Weber, S. L., Yu, Y., and Zhao, Y.: Results of PMIP2 coupled simulations of the Mid-Holocene and Last Glacial Maximum - Part 1: experiments and large-scale features, *Climate of the Past* 3, 261-277, 2007
- Dansgaard, W.: Stable isotopes in precipitation, *Tellus* 16, 436-468, 1964
- de Boer, B., van de Wal, R. S. W., Bintanja, R., Lourens, L. J., and Tuenter, E.: Cenozoic global ice-volume and temperature simulations with 1-D ice-sheet models forced by benthic $\delta^{18}O$ records, *Annals of Glaciology* 51, 23-33, 2010
- de Boer, B., van de Wal, R. S. W., Lourens, L. J., and Bintanja, R.: Transient nature of the Earth's climate and the implications for the interpretation of benthic $\delta^{18}O$ records, *Palaeogeography, Palaeoclimatology, Palaeoecology* 335-336, 4-11, 2012
- de Boer, B., van de Wal, R., Lourens, L. J., Bintanja, R., and Reerink, T. J.: A continuous simulation of global ice volume over the past 1 million years with 3-D ice-sheet models, *Climate Dynamics* 41, 1365-1384, 2013
- de Boer, B., Lourens, L. J., and van de Wal, R. S. W.: Persistent 400,000-year variability of Antarctic ice volume and the carbon cycle is revealed throughout the Plio-Pleistocene, *Nature Communications* 5, 2014
- de Boer, B., Dolan, A. M., Bernales, J., Gasson, E., Goelzer, H., Golledge, N. R., Sutter, J., Huybrechts, P., Lohmann, G., Rogozhina, I., Abe-Ouchi, A., Saito, F., and van de Wal, R. S. W.: Simulating the Antarctic ice sheet in the Late-Pliocene warm period: PLISMIP-ANT, an ice-sheet model intercomparison project, *The Cryosphere* 9, 881-903, 2015
- de Boer, B., Haywood, A. M., Dolan, A. M., Hunter, S. J., and Prescott, C. L.: The Transient Response of Ice Volume to Orbital Forcing During the Warm Late Pliocene, *Geophysical Research Letters* 44, 10,486-10,494, 2017
- Brovkin, V., Ganopolski, A., Archer, D., and Munhoven, G.: Glacial CO₂ cycle as a succession of key physical and biogeochemical processes, *Climate of the Past* 8, 251-264, 2012
- Bueler, E. and Brown, J.: Shallow shelf approximation as a "sliding law" in a thermomechanically coupled ice sheet model, *Journal of Geophysical Research* 114, 2009
- Chalk, T. B., Hain, M. P., Foster, G. L., Rohling, E. J., Sexton, P. F., Badger, M. P. S., Cherry, S. G., Hasenfratz, A. P., Haug, G. H., Jaccard, S. L., Martínez-García, A., Pälike, H., Pancost, R. D., and Wilson, P. A.: Causes of ice age intensification across the Mid-Pleistocene Transition, *Proceedings of the National Academy of Sciences* 114, 13114-13119, 2017
- Clark, P. U. and Pollard, D.: Origin of the middle Pleistocene transition by ice sheet erosion of regolith, *Paleoceanography* 13, 1-9, 1998
- Dolan, A. M., Haywood, A. M., Hill, D. J., Dowsett, H. J., Hunter, S. J., Lunt, D. J., and Pickering, S. J.: Sensitivity of Pliocene ice sheets to orbital forcing, *Palaeogeography, Palaeoclimatology, Palaeoecology* 309, 98-110, 2011
- Dolan, A. M., Haywood, A. M., Hunter, S. J., Tindall, J. C., Dowsett, H. J., Hill, D. J., and Pickering, S. J.: Modelling the enigmatic Late Pliocene Glacial Event - Marine Isotope Stage M2, *Global and Planetary Change* 128, 47-60, 2015
- Dyez, K. A., Hönisch, B., and Schmidt, G. A.: Early Pleistocene Obliquity-Scale pCO₂ Variability at ~1.5 Million Years Ago, *Paleoceanography and Paleoclimatology* 33, 1270-1291, 2018
- Elderfield, H., Ferretti, P., Greaves, M., Crowhurst, S., McCave, I. N., Hodell, D. A., and Piotrowski, A. M.: Evolution of Ocean Temperature and Ice Volume Through the Mid-Pleistocene Climate Transition, *Science* 337, 704-711, 2012

- Finsinger, W. and Wagner-Cremer, F.: Stomatal-based inference models for reconstruction of atmospheric CO₂ concentration: a method assessment using a calibration and validation approach, *The Holocene* 18, 757-764, 2009
- Foster, G. L. and Rae, J. W. B.: Reconstructing Ocean pH with Boron Isotopes in Foraminifera, *Annu. Rev. Earth Planet. Sci.* 44, 207-237, 2016
- 5 Franks, P. J., Royer, D. L., Beerling, D. J., Van de Water, P. K., Cantrill, D. J., Barbour, M. M., and Berry, J. A.: New constraints on atmospheric CO₂ concentration for the Phanerozoic, *Geophysical Research Letters* 41, 4685-4694, 2014
- Ganopolski, A. and Calov, R.: The role of orbital forcing, carbon dioxide and regolith in 100 kyr glacial cycles, *Climate of the Past* 7, 1415-1425, 2011
- Gordon, C., Cooper, C., Senior, C. A., Banks, H., Gregory, J. M., Johns, T. C., Mitchell, J. F. B., and Wood, R. A.: The
10 simulation of SST, sea ice extents and ocean heat transports in a version of the Hadley Centre coupled model without flux adjustments, *Climate Dynamics* 16, 147-168, 2000
- Grant, K. M., Rohling, E. J., Bronk Ramsey, C., Cheng, H., Edwards, R. L., Florindo, F., Heslop, D., Marra, F., Roberts, A. P., Tamisiea, M. E., and Williams, F.: Sea-level variability over five glacial cycles, *Nature Communications* 5, 2014
- Haywood, A. M., Hill, D. J., Dolan, A. M., Otto-Bliesner, B., Bragg, F., Chan, W.-L., Chandler, M. A., Contoux, C., Dowsett,
15 H. J., Jost, A., Kamae, Y., Lohmann, G., Lunt, D. J., Abe-Ouchi, A., Pickering, S. J., Ramstein, G., Rosenbloom, N. A., Salzmann, U., Sohl, L., Stepanek, C., Ueda, H., Yan, Q., and Zhang, Z.: Large-scale features of Pliocene climate: results from the Pliocene Model Intercomparison Project, *Climate of the Past* 9, 191-209, 2013
- Haywood, A. M. and Valdes, P. J.: Modelling Pliocene warmth: contribution of atmosphere, oceans and cryosphere, *Earth and Planetary Science Letters* 218, 363-377, 2003
- 20 Hönisch, B., Hemming, N. G., Archer, D., Siddall, M., and McManus, J. F.: Atmospheric carbon dioxide concentration across the mid-Pleistocene transition, *Science* 324, , 2009
- Hu, J.-J., Xing, Y.-W., Turkington, R., Jacques, F. M. B., Su, T., Huang, Y.-J., and Zhou, Z.-K.: A new positive relationship between pCO₂ and stomatal frequency in *Quercus guyavifolia* (Fagaceae): a potential proxy for palaeo-CO₂ levels, *Annals of Botany* 115, 777-788, 2015
- 25 Huybers, P.: Combined obliquity and precession pacing of late Pleistocene glaciations, *Nature* 480, 229-232, 2011
- Indermühle, A., Stauffer, B., Stocker, T. F., Raynaud, D., and Barnola, J.-M.: Technical Comment: Early Holocene Atmospheric CO₂ Concentrations, *Science* 286, 1999
- Jordan, G. J.: A critical framework for the assessment of biological palaeoproxies: predicting past climate and levels of atmospheric CO₂ from fossil leaves, *New Phytologist* 192, 29-44, 2011
- 30 Jouzel, J., Alley, R. B., Cuffey, K. M., Dansgaard, W., Grootes, P., Hoffmann, G., Johnsen, S. J., Koster, R. D., Peel, D., Shuman, C. A., Stievenard, M., Stuiver, M., and White, J.: Validity of the temperature reconstruction from water isotopes in ice cores, *Journal of Geophysical Research* 102, 26,471-26,487, 1997
- Jouzel, J., Masson-Delmote, V., Cattani, O., Dreyfus, G., Falourd, S., Hoffmann, G., Minster, B., Nouet, J., Barnola, J. M., Chappellaz, J., Fischer, H., Gallet, J. C., Johnsen, S., Leuenberger, M., Loulergue, L., Luethi, D., Oerter, H., Parrenin, F.,

- Raisbeck, G., Raynaud, D., Schilt, A., Schwander, J., Selmo, E., Souchez, R., Spahni, R., Stauffer, B., Steffensen, J. P., Stenni, B., Stocker, T. F., Tison, J. L., Werner, M., and Wolff, E. W.: Orbital and Millennial Antarctic Climate Variability over the Past 800,000 Years, *Science* 317, 793-797, 2007
- Kürschner, W. M., van der Burgh, J., Visscher, H., and Dilcher, D. L.: Oak leaves as biosensors of late Neogene and early Pleistocene paleoatmospheric CO₂ concentrations, *Marine Micropaleontology* 27, 299-312, 1996
- Kindler, P., Guillevic, M., Baumgartner, M., Schwander, J., Landais, A., and Leuenberger, M.: Temperature reconstruction from 10 to 120 kyr b2k from the NGRIP ice core, *Climate of the Past* 10, 887-902, 2014
- Laskar, J., Robutel, P., Gastineau, M., Correia, A. C. M., and Levrard, B.: A long-term numerical solution for the insolation quantities of the Earth, *Astronomy & Astrophysics* 428, 261-285, 2004
- 10 Lisiecki, L. E. and Raymo, M. E.: A Pliocene-Pleistocene stack of 57 globally distributed benthic delta-18-O records, *Paleoceanography* 20, 2005
- Martin, M. A., Winkelmann, R., Haseloff, M., Albrecht, T., Bueler, E., Khroulev, C., and Levermann, A.: The Potsdam Parallel Ice Sheet Model (PISM-PIK) - Part 2: Dynamic equilibrium simulation of the Antarctic ice sheet, *The Cryosphere* 5, 727-740, 2011
- 15 Martínez-Botí, M. A., Foster, G. L., Chalk, T. B., Rohling, E. J., Sexton, P. F., Lunt, D. J., Pancost, R. D., Badger, M. P. S., and Schmidt, D. N.: Plio-Pleistocene climate sensitivity evaluated using high-resolution CO₂ records, *Nature* 518, 49-54, 2015
- Miller, K. G., Wright, J. D., Browning, J. V., Kulpeck, A., Kominz, M., Naish, T., Cramer, B. S., Rosenthal, Y., Peltier, W. R., and Sostdian, S.: High tide of the warm Pliocene: Implications of global sea level for Antarctic deglaciation, *Geology* 40, 407-410, 2012
- 20 Morland, L. W. and Johnson, I. R.: Steady motion of ice sheets, *Journal of Glaciology* 25, 229-246, 1980
- Morland, L. W.: Unconfined ice-shelf flow, in *Dynamics of the West Antarctic Ice Sheet*, edited by C. J. van der Veen, and J. Oerlemans, pp. 99-116, Kluwer Acad., Dordrecht, Netherlands, 1987
- Naish, T., Powell, R., Levy, R., Wilson, G., Scherer, R., Talarico, F., Krissek, L., Niessen, F., Pompilio, M., Wilson, T., Carter, L., DeConto, R. M., Huybers, P., McKay, R. M., Pollard, D., Ross, J., Winter, D., Barrett, P., Browne, G., Cody, R., Cowan, E., Crampton, J., Dunbar, G., Dunbar, N., Florindo, F., Gebhardt, C., Graham, I., Hannah, M., Hansaraj, D., Harwood, D., Helling, D., Henrys, S., Hinnov, L., Kuhn, G., Kyle, P., Laufer, A., Maffioli, P., Magens, D., Mandernack, K., McIntosh, W., Millan, C., Morin, R., Ohneiser, C., Paulsen, T., Persico, D., Raine, I., Reed, J., Riesselman, C. R., Sagnotti, L., Schmitt, D., Sjunneskog, C., Strong, P., Taviani, M., Vogel, S., Wilch, T., and Williams, T.: Obliquity-paced Pliocene West Antarctic ice sheet oscillations, *Nature* 458, 322-328, 2009
- 30 Pollard, D.: A retrospective look at coupled ice sheet-climate modeling, *Climatic Change* 100, 173-194, 2010
- Pollard, D. and DeConto, R. M.: Modelling West Antarctic ice sheet growth and collapse through the past five million years, *Nature* 458, 329-332, 2009

- Porter, A. S., Evans-FitsGerald, C., Yiotis, C., Montañez, I. P., and McElwain, J. C.: Testing the accuracy of new paleoatmospheric CO₂ proxies based on plant stable isotopic composition and stomatal traits in a range of simulated paleoatmospheric O₂:CO₂ ratios, *Geochimica et Cosmochimica Acta* 259, 69-90, 2019
- Rohling, E. J., Foster, G. L., Marino, G., Roberts, A. P., Tamisiea, M. E., and Williams, F.: Sea-level and deep-sea-temperature variability over the past 5.3 million years, *Nature* 508, 477-492, 2014
- 5 Seki, O., Foster, G. L., Schmidt, D. N., Mackensen, A., Kawamura, K., and Pancost, R. D.: Alkenone and boron-based Pliocene pCO₂ records, *Earth and Planetary Science Letters* 292, 201-211, 2010
- Shakun, J. D., Lea, D. W., Lisiecki, L. E., and Raymo, M. E.: An 800-kyr record of global surface ocean δ¹⁸O and implications for ice volume-temperature coupling, *Earth and Planetary Science Letters* 426, 58-68, 2015
- 10 Singarayer, J. S. and Valdes, P. J.: High-latitude climate sensitivity to ice-sheet forcing over the last 120 kyr, *Quaternary Science Reviews* 29, 43-55, 2010
- Solomon, S., Qin, D., Manning, M., Chen, Z., Marquis, M., and Averyt, K. B.: *Climate Change 2007: the Physical Science Basis, Contribution Of Working Group I To The Fourth Assessment Report Of The Intergovernmental Panel On Climate Change*, 2007
- 15 Sosdian, S. and Rosenthal, Y.: Deep-sea temperature and ice volume change across the Pliocene-Pleistocene climate transitions, *Science* 325, 306-310, 2009
- Sosdian, S. M., Greenop, R., Hain, M. P., Foster, G. L., Pearson, P. N., and Lear, C. H.: Constraining the evolution of Neogene ocean carbonate chemistry using the boron isotope pH proxy, *Earth and Planetary Science Letters* 498, 362-376, 2018
- Stap, L. B., de Boer, B., Ziegler, M., Bintanja, R., Lourens, L. J., and van de Wal, R.: CO₂ over the past 5 million years: 20 Continuous simulation and new δ¹¹B-based proxy data, *Earth and Planetary Science Letters* 439, 1-10, 2016
- Stap, L. B., van de Wal, R. S. W., de Boer, B., Bintanja, R., and Lourens, L. J.: The influence of ice sheets on temperature during the past 38 million years inferred from a one-dimensional ice sheet-climate model, *Climate of the Past* 13, 1243-1257, 2017
- Stults, D. Z., Wagner-Cremer, F., and Axsmith, B. J.: Atmospheric paleo-CO₂ estimates based on *Taxodium distichum* (Cupressaceae) fossils from the Miocene and Pliocene of Eastern North America, *Palaeogeography, Palaeoclimatology, Palaeoecology* 309, 327-332, 2011
- 25 Tzedakis, P. C., Crucifix, M., Mitsui, T., and Wolff, E. W.: A simple rule to determine which insolation cycles lead to interglacials, *Nature* 542, 427-444, 2017
- Valdes, P. J., Armstrong, E., Badger, M. P. S., Bradshaw, C. D., Bragg, F., Crucifix, M., Davies-Barnard, T., Day, J. J., Farnsworth, A., Gordon, C., Hopercroft, P. O., Kennedy, A. T., Lord, N. S., Lunt, D. J., Marzocchi, A., Parry, L. M., Pope, V., Roberts, W. H. G., Stone, E. J., Tourte, G. J. L., and Williams, J. H. T.: The BRIDGE HadCM3 family of climate models: 30 HadCM3@Bristol v1.0, *Geoscientific Model Development* 10, 3715-3743, 2017
- Wagner, F., Aaby, B., and Visscher, H.: Rapid atmospheric CO₂ changes associated with the 8,200-years-B.P. cooling event, *Proceedings of the National Academy of Sciences* 99, 12011-12014, 2002

- van de Wal, R. S. W., de Boer, B., Lourens, L. J., Köhler, P., and Bintanja, R.: Reconstruction of a continuous high-resolution CO₂ record over the past 20 million years, *Climate of the Past* 7, 1459-1469, 2011
- Willeit, M., Ganopolski, A., Calov, R., Robinson, A., and Maslin, M.: The role of CO₂ decline for the onset of Northern Hemisphere glaciation, *Quaternary Science Reviews* 119, 22-34, 2015
- 5 Willeit, M., Ganopolski, A., Calov, R., and Brovkin, V.: Mid-Pleistocene transition in glacial cycles explained by declining CO and regolith removal, *Science Advances* 5, 2019
- Winkelmann, R., Martin, M. A., Haseloff, M., Albrecht, T., Bueler, E., Khroulev, C., and Levermann, A.: The Potsdam Parallel Ice Sheet Model (PISM-PIK) - Part 1: Model description, *The Cryosphere* 5, 715-726, 2011
- Wunsch, C.: The spectral description of climate change including the 100 ky energy, *Climate Dynamics* 20, 353-363, 2003
- 10 Zachos, J. C., Pagani, M., Sloan, L., Thomas, E., and Billups, K.: Trends, Rhythms, and Aberrations in Global Climate 65 Ma to Present, *Science* 292, 686-694, 2001
- Zachos, J. C., Dickens, G. R., and Zeebe, R. E.: An early Cenozoic perspective on greenhouse warming and carbon-cycle dynamics, *Nature* 451, 279-283, 2008
- Zhang, Y. G., Pagani, M., Liu, Z., Bohaty, S. M., and DeConto, R. M.: A 40-million year history of atmospheric CO₂, *Philosophical Transactions of the Royal Society A* 371, 2013
- 15 Zwally, H. J. and Giovinetto, M. B.: Areal distribution of the oxygen-isotope ratio in Greenland, *Annals of Glaciology* 25, 208-213, 1997