

# Sensitivity of mid-Pliocene climate to changes in orbital forcing, and PlioMIP's boundary conditions

Eric Samakinwa<sup>1,2,3</sup>, Christian Stepanek<sup>1</sup>, and Gerrit Lohmann<sup>1,4</sup>

<sup>1</sup>Alfred Wegener Institute (AWI), Helmholtz Centre for Polar and Marine Research, Bremerhaven, Germany.

<sup>2</sup>Institute of Geography, University of Bern, Switzerland.

<sup>3</sup>Oeschger Centre for Climate Change Research, University of Bern, Switzerland.

<sup>4</sup>Institute of Environmental Physics, University of Bremen, Germany.

**Correspondence:** Eric Samakinwa (eric.samakinwa@giub.unibe.ch)

**Abstract.** We compare results obtained from modelling the mid-Pliocene warm period using the Community Earth System Models (COSMOS, version: COSMOS-landveg r2413, 2009) with the two different modelling methodologies and sets of boundary conditions prescribed for the two phases of the Pliocene Model Intercomparison Project (PlioMIP), tagged PlioMIP1 and PlioMIP2. Here, we bridge the gap between our contributions to PlioMIP1 (Stepanek and Lohmann, 2012) and PlioMIP2 (Stepanek et al., 2020). We highlight some of the effects that differences in the chosen mid-Pliocene model setup (PlioMIP2 vs. PlioMIP1) have on the climate state as derived with the COSMOS, as this information will be valuable in the framework of the model-model and model-data-comparison within PlioMIP2. We evaluate the model sensitivity to improved mid-Pliocene boundary conditions using PlioMIP's core mid-Pliocene experiments for PlioMIP1 and PlioMIP2, and present further simulations where we test model sensitivity to variations in palaeogeography, orbit and concentration of CO<sub>2</sub>.

5  
10  
15  
20

Firstly, we highlight major changes in boundary conditions from PlioMIP1 to PlioMIP2 and also the challenges recorded from the initial effort. The results derived from our simulations show that COSMOS simulates a mid-Pliocene climate state that is 0.29 °C colder in PlioMIP2, if compared to PlioMIP1 (17.82 °C in PlioMIP1, 17.53 °C in PlioMIP2, values based on simulated surface skin temperature). On one hand, high-latitude warming, which is supported by proxy evidence of the mid-Pliocene, is underestimated in simulations of both PlioMIP1 and PlioMIP2. On the other hand, spatial variations in surface air temperature (SAT), sea surface temperature (SST), as well as the distribution of sea ice suggest improvement of simulated SAT and SST in PlioMIP2 if employing the updated palaeogeography. Our PlioMIP2 mid-Pliocene simulation produces warmer SSTs in the Arctic and North Atlantic Ocean than derived from the respective PlioMIP1 climate state. The difference in prescribed CO<sub>2</sub> accounts for 0.5 °C of temperature difference in the Arctic, leading to an ice-free summer in the PlioMIP1 simulation, and a quasi ice-free summer in PlioMIP2. Beyond the official set of PlioMIP2 simulations, we present further simulations and analyses that sample the phase space of potential alternative orbital forcings that have acted during the Pliocene and may have impacted on geological records. Employing orbital forcing, which differ from that proposed for PlioMIP2 (i.e. corresponding to Pre-Industrial conditions) but falls into the mid-Pliocene time period targeted in the PlioMIP, leads to pronounced annual and seasonal temperature variations. Our result identifies the changes in mid-Pliocene palaeogeography from PRISM3 to PRISM4 as the major driver of the mid-Pliocene warmth within PlioMIP, and not the minor differences in forcings.

## 1 Introduction

In 2050, global population is expected to have increased by 2.7 billion relative to its 2005 value (Bongaarts, 2009). In conjunction with this population increase, energy demand is also rising. While short-term perspectives for a carbon-neutral global economy and effective CO<sub>2</sub> draw-down technologies are absent, a direct implication of population dynamics for the climate system is increased concentration of atmospheric CO<sub>2</sub> through anthropogenic activities, increased waste heat from energy production that hampers the local climate of some parts of the world, loss of polar sea ice, and last but not the least, rising global temperature. Through the continuous release of trace gases that impact on the Earth's energy balance, such as CO<sub>2</sub>, into the atmosphere, and as a result of the vast thermal inertia of the Earth system, future warming is inevitable. In expectation of a warmer climate, it is of utmost importance to quantify climatic conditions that humankind could face in the near future, in order to enable proper preparation and to inform about the need and possibility of mitigation measures, wherever possible. The mid-Pliocene Warm Period (mPWP) (3.264 - 3.025 Million years (Ma) Before Present (BP); Dowsett et al. (2016)) has been suggested as a time-slice which could provide a possible insight to future climate in terms of temperature (Jansen et al., 2007). Climate model simulations of this time-slice suggest global mean temperatures which are 2 - 3 °C higher than today (Haywood and Valdes, 2004; Jansen et al., 2007) with land surface conditions, continental configuration, and atmospheric concentrations of CO<sub>2</sub> that were similar, albeit not identical to present-day (Raymo et al., 1996; Pagani et al., 2010; Kürschner et al., 1996; Haywood et al., 2016). Evidence from the geologic record suggests that in the past the Arctic was more vegetated than today, e.g. during the mid-Pliocene warm period (Rybczynski et al., 2013). These records of the past offer us a glimpse into a climate of increased temperatures in polar regions that may return in the next decades (Overland et al., 2014) as an effect of human influence on climate. Hence, the mid-Pliocene can be considered a useful, but not direct analogue for future warmth (Jansen et al., 2007).

Characteristics of mid-Pliocene climate can be inferred either through records of past climate that were stored in geological archives, or by exposing climate models to boundary conditions and model forcing representative of the Earth system characteristics of the period. These may include altered continental configuration, past land elevation and ocean bathymetry, as well as the atmospheric composition and orbital configuration representative of the period under study. Furthermore, a parameterization of altered vegetation distribution may be necessary if such is not dynamically computed by the model itself. Creating boundary conditions for past time periods is one of the most time consuming tasks faced in palaeoclimate modelling. Assumptions with respect to implementation of details of palaeoclimate boundary conditions can vary amongst researchers, and the mid-Pliocene is not an exceptional time-slice in this respect. To provide common grounds for the model intercomparison in simulating the mPWP, and to reduce the need for repeating simulations with updated model setups, the Pliocene Modelling Intercomparison Project (PlioMIP) provides for phase 1 (PlioMIP1, Haywood et al., 2010, 2011) and 2 (PlioMIP2, Haywood et al., 2016) sets of boundary conditions that are implemented consistently across the model ensemble.

As shown in the framework of PlioMIP1 (e.g. Haywood et al., 2013), the PlioMIP provides a unique opportunity to reconcile our knowledge about the mechanisms in, and the characteristics of, a warmer climate. In this framework, consistency of various climate models' simulations of the mPWP, and their ability in reproducing climate patterns that have been inferred from data

stored in geological climate archives, is sampled and compared in a coordinated effort. To support this ambition in PlioMIP2, we provide in this manuscript important information that relates Community Earth System Models (COSMOS) simulations, contributed to both PlioMIP1 (Stepanek and Lohmann, 2012) and PlioMIP2 (Stepanek et al., 2020), to each other. In this effort we study how differences in the boundary conditions and model forcing, that are present between COSMOS simulations for PlioMIP1 and PlioMIP2 as a result of updates to the relevant PlioMIP/PMIP protocols, influence various large scale climate patterns. To provide boundary conditions for the climate models, and to derive model-independent paleoclimate information, that can be employed for a model-data-comparison, PlioMIP works in alliance with the US Geological Survey's Pliocene Research Interpretation and Synoptic Mapping (PRISM) project that has constantly improved the data basis for Pliocene paleoenvironment over the last 25 years (e.g. Dowsett et al., 2013). All boundary conditions presented in this manuscript are directly based on output from the PRISM project. Following the conclusion of PlioMIP1, PlioMIP2 utilizes state-of-the-art boundary conditions that have emerged over the last few years, with updated reconstructions of ocean bathymetry and land-ice, surface topography, as well as new datasets describing the distribution of mid-Pliocene soils and lakes (Haywood et al., 2016). With the exception of the lake reconstruction, all these datasets are employed in our PlioMIP2 simulations (Stepanek et al., 2020). Lakes cannot be adequately represented in the employed model setup of the COSMOS (Stepanek et al., 2020). While this reduces comparability between COSMOS and other models in PlioMIP2 that employ the full set of boundary conditions provided in the enhanced dataset (Haywood et al., 2016), it improves comparability between COSMOS simulations of PlioMIP2 and PlioMIP1, where also in the latter lakes are not considered. Here, we specifically address improved paleogeography and the change of mPWP concentrations of atmospheric CO<sub>2</sub> from PlioMIP1 to PlioMIP2. Furthermore, we take the opportunity to go beyond the PlioMIP2 protocol (Haywood et al., 2016) and sample the impact of alternative orbital forcing, that could have shaped the reconstructed climate over the time period from 3.26 to 3.025 Ma BP, on our modelled climate state. Our aim is to test the extent to which alternative configurations of the Earth's orbit during the mPWP could potentially improve the agreement of modelled and reconstructed mPWP climate states. For this, we compared two climate states within the mPWP, representative of Marine Isotope Stage(MIS) KM5c and K1. The KM5c has been selected for simulations within PlioMIP2 due to its strong similarity to modern day in terms of orbital forcing (Haywood et al., 2016). MIS K1 on the other hand refers to an interval which witnessed about 0.5 Wm<sup>-2</sup> more annual insolation than modern day (Prescott et al., 2014).

## 2 Methodology

### 2.1 Evolution of mid-Pliocene model Palaeogeography and forcing

Palaeogeographic boundary conditions for simulating the Pliocene have undergone major changes from PlioMIP1 to PlioMIP2. The switch from PRISM3D (Dowsett et al., 2010) to PRISM4 (Dowsett et al., 2016) has led to the introduction of various changes in the mPWP model setup of the COSMOS. Updates to topography and bathymetry reflect changes in dynamic topography, global isostatic adjustment, as well as new findings that suggest a reduced extent of the Greenland Ice Sheet (Haywood et al., 2016; Dowsett et al., 2016). The PRISM4 Antarctic ice-sheet on the other hand remains over East Antarctica consistent with the version suggested by PRISM3D (Haywood et al., 2016, and references therein) (compare Figure 1a and b).

A major difference between the PlioMIP2 and PlioMIP1 model setup is the configuration of two ocean gateways – the Bering Strait, that is closed in PlioMIP2 by separating Bering Sea and Chukchi Sea with a land bridge, and the Canadian Arctic Archipelago – both were open in PlioMIP1 (compare Figure 1a and b). Based on previous work, closing these gateways increases modelled Sea Surface Temperature (SST) in the North Atlantic Ocean, which would reduce the apparent disagreement of models and reconstructions in this region (Dowsett et al., 2013; Otto-Bliesner et al., 2016). Closing the Bering Strait is supported by evidence that this gateway may have been temporarily closed in proximity to the mPWP (Matthiessen et al., 2008).

High concentration of atmospheric CO<sub>2</sub> is often presented as one of the major reasons for the relatively higher than present-day temperatures during the mid-Pliocene (Seki et al., 2010; Pagani et al., 2010). However, the exact concentration of atmospheric CO<sub>2</sub> during this time-slice remains uncertain with various values being suggested (Raymo et al., 1996; Kürschner et al., 1996; Haywood et al., 2010, 2011, 2016), which complicates a comparison between models and reconstructions. Within PlioMIP, the absence of reconstructions for other radiative-active trace gases is acknowledged, and the respective radiative forcing is absorbed into an increased value of CO<sub>2</sub> – yet, this value differs between PlioMIP1 and PlioMIP2 (Haywood et al., 2010, 2016). Furthermore, between PlioMIP1 and PlioMIP2 the concentrations of the Pre-Industrial (PI) control state of the COSMOS changed due to an update of the reference setup to the PMIP4 protocol (Otto-Bliesner et al., 2017), implying small differences in the employed concentrations of methane and nitrous oxide in COSMOS between PlioMIP2 and PlioMIP1. While these changes are small, we do not want to neglect their potential effect on climatic differences between PlioMIP2 and PlioMIP1 COSMOS simulations. Therefore, here we study the effect of differences between the trace-gas forcing of both iterations of PlioMIP on the climate of the mPWP as simulated with COSMOS.

One additional topic addressed in this study is the potential for varying orbital forcing that may have influenced the mPWP over time. Both PlioMIP1 and PlioMIP2 assume a modern orbit for simulations of the mPWP (Haywood et al., 2010, 2011, 2016). This choice represents only one of multiple orbits that were present during the PlioMIP period, spanning Marine Isotope Stage (MIS) G21 to M1 (Haywood et al., 2016). Prescribing present-day orbital forcing, that is very close to the configuration during the KM5c time slice selected for PlioMIP2 (Haywood et al., 2016), may not reproduce the expected warm/cold condition that could have been enabled by an orbit that occurred sometime during the mPWP. This is a side effect of computing an average mPWP condition rather than attempting to study the transient climate evolution of the mPWP within PlioMIP – such study would be a promising approach to identify orbital-forced warm peaks, but is beyond the capabilities of the model-intercomparison. Most of the mis-matches recorded between mid-Pliocene model simulations and interpretation of data stored in geological archives have been attributed to the choice of orbital forcing prescribed for model simulations (Haywood et al., 2013b; Prescott et al., 2014). The need for a more discrete time slice for simulating the mPWP towards an improved model-data comparison has been stated (Haywood et al., 2013). Thus, the KM5c time-slice has been selected, partly on the basis of strong similarity of the orbit at that time to the modern orbital configuration. This is useful towards interpreting paleoenvironments in the context of future warming (Haywood et al., 2016), that is based on anthropogenic activity, and will obviously be set in a near-modern orbital configuration. While acknowledging the utility of the KM5c orbit for the scientific aims of PlioMIP2, here we go beyond the simulation of the KM5c and quantify the effect of an alternative orbital configuration. We create model

5 setups where the prescribed PlioMIP2 model setup for the COSMOS employs an orbital configuration that is representative of MIS K1. The MIS K1 time-slice is one of the lightest isotope excursions found during the mPWP, with the total global annual mean insolation being approximately  $0.5 \text{ W/m}^2$  higher than modern (Prescott et al., 2014). The effect of orbital forcing on the mPWP has been studied by Prescott et al. (2014), with emphasis on Surface Air Temperature (SAT). The novelty in our approach is that we employ the updated PlioMIP2 model setup and test the impact of orbital configuration also on the ocean state, in particular on SST and sea ice. Furthermore, we put differences in orbital forcing into context with varying concentrations of  $\text{CO}_2$ .

## 2.2 Model description COSMOS

10 The coupled atmosphere-ocean model used in producing simulations for this study is the COSMOS, which was developed by the Max Planck Institute for Meteorology (MPI) in Hamburg, Germany. The COSMOS consists of four major components, namely the ECHAM5 atmosphere model (Roeckner et al., 2003), the MPI-OM ocean model (Marsland et al., 2003), the land-vegetation and carbon cycle model JSBACH (Raddatz et al., 2007), and the ocean biogeochemistry model HAMOCC. The later was introduced by Maier-Reimer (1993), but is not used in the production of PlioMIP simulations. For a description of the coupled setup and an evaluation of its performance please refer to Jungclaus et al. (2006). The COSMOS has already proven to be a valuable tool for the study of paleoclimate, also beyond the Pliocene epoch. The various time-slices studied by means of the COSMOS include, but are not limited to, the Last Millennium (Jungclaus et al., 2010), warm climates of the Miocene (e.g., Knorr et al., 2011), the mid-Pliocene (Stepanek and Lohmann, 2012), as well as glacial (e.g., Gong et al., 2013; Kageyema et al., 2013; Zhang et al., 2013) and interglacial climates (e.g., Pfeiffer et al., 2016; Varma et al., 2012; Wei and Lohmann, 2012). A detailed description of the COSMOS model components is given by Stepanek and Lohmann (2012).

## 20 2.3 Experimental designs

The aim of this study is to identify and discuss differences in the modelled climate that occur between the COSMOS simulations contributed to PlioMIP1 and PlioMIP2, and to study the effect of orbits warmer than the configuration applied for PlioMIP. With this aim in mind, we have applied a methodology for setting up simulations as described below. In general, experiments were carried out following PlioMIP1 and PlioMIP2 protocols (Haywood et al., 2010, 2011, 2016), respectively. Yet, for the purpose of this study, small modifications to the proposed official PlioMIP model setups are necessary. Three different orbits are employed here (Table 1). Two of them are similar and representative of modern and PI conditions, respectively – the only difference between them being small deviations that were introduced into the reference setup of the COSMOS between PlioMIP1 and PlioMIP2 via adaptation of the PI orbit in COSMOS according to the PMIP4 protocol (Otto-Bliesner et al., 2017). The third employed configuration represents the orbit of MIS K1, the values of orbital parameters being based on the astronomical solution by Laskar et al. (2004). Earth's orbital parameters are prescribed as constant values of eccentricity, obliquity and the longitude of perihelion as outlined in Table 1. The orbit employed for simulating K1 is consistent with the configuration chosen by Prescott et al. (2014).

Simulations are classified in four different categories, namely; PI, standard PlioMIP1 set-up, standard PlioMIP2 set-up, and

modified PlioMIP2 set-up with adapted (MIS K1) orbit (PlioMIP2\_K1). First in the order as shown in Table 1 is the PI category, which consists of the PI-control simulations (PI\_1 and PI\_2) for PlioMIP1 and PlioMIP2, respectively. Ocean bathymetry and land-sea mask are taken from the standard modern setup of the COSMOS. As described by Jungclauss et al. (2006), this set-up has been generated based on the Earth Topography Five Minute Grid (ETOPO5, National Geophysical Data Center, 1988; Edwards et al., 1992). An identical CO<sub>2</sub> concentration of 280 ppmv is prescribed for PI\_1 and PI\_2, but both experiments differ slightly with respect to orbital parameters and volume mixing ratios of trace gases N<sub>2</sub>O and CH<sub>4</sub> (see Table 1). The constant volume mixing ratios of 270 ppbv N<sub>2</sub>O and 760 ppbv CH<sub>4</sub> are prescribed for PI\_1, while the corresponding values for PI\_2 are set to 273 and 808 ppbv, respectively. Chlorofluorocarbons on the other hand are absent across all simulations. Category PlioMIP1 consists of simulation PlioM1, which is the coupled ocean-atmosphere COSMOS mid-Pliocene experiment within the framework of PlioMIP1 (Stepanek and Lohmann, 2012) and utilizes the PRISM3D land-sea mask, orography and ice-mask. Category PlioMIP2 consists of mid-Pliocene simulations based on PRISM4 boundary conditions with slight differences in either orbital forcing or concentration of atmospheric CO<sub>2</sub>. Simulation Eoi400 is the COSMOS mid-Pliocene experiment for PlioMIP2 (Stepanek et al., 2020) in which CO<sub>2</sub> is prescribed to be 400 ppmv, while simulation Eoi405 is derived from Eoi400 in that the concentration of carbon dioxide is set to the PlioMIP1 CO<sub>2</sub> forcing of 405 ppmv. In comparing them, both simulations enable us to study the impact of the difference of CO<sub>2</sub> forcing between the two phases of PlioMIP on achieved results. Furthermore, simulation Eoi400\_ORB employs the orbital forcing utilized by COSMOS in simulating the mid-Pliocene for PlioMIP1, while retaining other boundary conditions and forcing as prescribed for PlioMIP2. Direct comparison between simulations Eoi400 and Eoi400\_ORB will give an indication of the influence of the slight change in orbital forcing on mid-Pliocene climate as simulated with COSMOS for PlioMIP1 and PlioMIP2. This is important within the framework of PlioMIP, where orbital forcing is described as similar to modern day, but specific PI orbital parameters differ in the case of the COSMOS between PlioMIP1 and PlioMIP2. Simulation Eoi405\_ORB of category PlioMIP2 differs from simulation PlioM1 (Stepanek and Lohmann, 2012) in that it employs the paleoenvironmental reconstruction of PRISM4, and also employs different trace house gas concentrations for methane and nitrous oxide. It differs from simulation Eoi400 on the other hand in both orbital configuration and the prescribed concentration of carbon dioxide (see Table 1). This choice of modelling methodology enables us to infer the relative effects of the improved representation of mid-Pliocene geography from PlioMIP1 to PlioMIP2 on our model, while honouring the presence of other differences in the model setup. Furthermore, in order to study the effect of an alternative orbit on mid-Pliocene warmth, simulation Eoi400\_K1 in category PlioMIP2\_K1 is consistent with the standard mid-Pliocene set-up prescribed for PlioMIP2 and employed in simulation Eoi400, but employs a different orbital forcing which is representative of MIS K1. The choice of our experimental design, enabling a direct comparison between simulations Eoi400 and Eoi400\_K1, provides an indication of orbitally influenced climatic variability within the mid-Pliocene. Ultimately, the total effect of all the improved boundary conditions in PlioMIP2 is examined by comparing simulations PlioM1 and Eoi400. All simulations are integrated for 1,500 years and are well equilibrated before analysed. Figure S1, added as a supplement to this manuscript shows time series of Atlantic Meridional Overturning Circulation index to illustrate equilibration, integration length, and time-period (green shading) where analyses are carried-out for all simulations.

### 3 Results

This section presents results of the mid-Pliocene and PI simulations listed in Table 1, and attempts to investigate and quantify the differences in the mid-Pliocene climate simulations by COSMOS for PlioMIP1 and PlioMIP2, respectively. Furthermore, we present results from our sensitivity experiments which show the relative contributions of newly prescribed PlioMIP2 boundary conditions (Haywood et al., 2016), with respect to that of PlioMIP1 (Haywood et al., 2010, 2011), in the context of deviations of the COSMOS model setup between PlioMIP1 and PlioMIP2 that are not due to the PlioMIP2 protocol. We also show simulated seasonal variability which may occur due to orbital forcing prescribed in simulating the mid-Pliocene climate. This is examined by a direct comparison of climate forced by two distinct orbital configurations representative of two discrete time-slices within the mid-Pliocene, namely MIS K1 and the PlioMIP2 reference orbit MIS KM5c. The MIS KM5c is selected for simulations within the framework of PlioMIP2 due to its strong orbital similarity to present-day (Haywood et al., 2016), and thus, present-day orbital configuration is adopted (Otto-Bliesner et al., 2017). Since the aim of this study is to infer the major driver of the mid-Pliocene warmth, we dedicate our analyses to SAT, SST and sea ice distribution. Anomalies are tested with regard to significance in the context of internal variability in the contributing simulations by means of the autocorrelation method by Matalas and Dawdy (1964). Furthermore, a comparison between simulated precipitation for PlioM1 and Eoi400 (Figure S3), largely shows no appreciable difference spatially and when averaged across latitude.

#### 3.1 Comparison of selected climatic variables between PlioMIP1 and PlioMIP2

At large scale, the COSMOS simulate fairly similar patterns of mid-Pliocene SAT in response to boundary conditions for PlioMIP1 and PlioMIP2 core experiments. Yet, there are noteworthy differences in details of mid-Pliocene SAT anomalies between PlioMIP2 and PlioMIP1. The most pronounced annual average SAT anomaly of mPWP relative to PI occurs in both phases of PlioMIP at high latitudes and in polar regions, providing evidence of a similar, albeit not identical, level of polar amplification in PlioMIP1 and PlioMIP2 mPWP model setups. On average, the COSMOS simulate a mid-Pliocene climate that is 0.29 °C colder in PlioMIP2, with the global average SAT reaching 290.97 °C for PlioMIP1, while the corresponding value for PlioMIP2 is 290.68 °C. It is important to note that aforementioned values are recomputed based on averaging over 100 years, while Stepanek and Lohmann (2012) have, in agreement with the PlioMIP1 analysis protocol, provided averages over 30 years. PlioM1 and Eoi400 show that SAT anomalies are fairly similar over the equatorial oceans, but that there is substantial deviation of SAT over continents and polar regions (Figure 2a, b; 3b). The most pronounced relative warming is seen over Greenland and Antarctica. On the other hand, gradual cooling is present over the Arctic from PlioM1 to Eoi400. Over the oceans, COSMOS simulates warmer SAT over the North Atlantic for Eoi400, while SAT over the Indian Ocean, South Atlantic Ocean, and low-latitude Pacific Ocean is largely unchanged. Generally, both PlioM1 and Eoi400 simulations suggest that land masses are warmer than the ocean, and furthermore that there is presence of substantial polar amplification; the latter is more pronounced in PlioM1 (compare Figure 2a, b and 3b). The strong regional warming simulated over Greenland and Antarctica is linked to changes in albedo and orography over these regions from PlioMIP1 to PlioMIP2 (compare Figure 1a and b). As the magnitude of changes in albedo and elevation over Greenland are more pronounced in Eoi400 than in PlioM1

(Figure 1a, b) due to reduction in the spatial extent of Greenland ice-sheet from PRISM3D to PRISM4 (Dowsett et al., 2016). Consequently, also the regional warming signal is more pronounced in PlioMIP2 (Figure 3b). For PlioM1, a warming of about 15 °C is found over Greenland, while the corresponding value is about 21 °C for Eoi400. This illustrates that the mPWP SAT anomaly simulated with the COSMOS is regionally increased in Eoi400 relative to PlioM1, even though the global average mPWP temperature anomaly is smaller in Eoi400. Antarctic ice-sheet estimates, based on results produced with the British Antarctic Survey Ice Sheet Model utilizing a climate simulation produced with PRISM boundary conditions (Haywood et al., 2010), remain the same for both phases of PlioMIP (Dowsett et al., 2016; Haywood et al., 2016). Over Antarctica, there are strong regional mPWP temperature anomalies, while cooling is evident in the South Pacific, between 60°S - 70°S, extending from 65°W - 150°W for both simulations. This South Pacific cooling is about -1.2 K on average in PlioMIP1 (PlioM1 with respect to PI\_1), but more intense in PlioMIP2 (Eoi400 vs. PI\_2), where the temperature anomaly locally reaches -4 °C and is characterized by a wider spatial extent. In both simulations (Eoi400 and PlioM1), the Indian sector of the Southern Ocean experiences intense warming that extends from 60°E into the South Pacific Ocean. Extreme values of SAT anomalies vary from 25.2 °C in PlioM1 to 23.1 °C in Eoi400 over the adjacent Antarctic landmass. Moving the focus again to the Northern Hemisphere, we highlight that both simulations PlioM1 and Eoi400 are characterized by land-sea masks in which the modern Hudson Bay is absent, while that region is part of the oceans in our PI simulation setups. The change in the land sea mask introduces an annual mean warming in the mid-Pliocene in comparison to PI that is fairly similar in PlioM1 and Eoi400, but slightly stronger in PlioM1.

Analysis of Sea Surface Temperature (SST) for both Eoi400 and PlioM1 shows the presence of the Equatorial Warm Pool, which extends across all ocean basins of the world (Figure 6). This warm pool is characterized as a pattern of warm water at the surface around the equator, and defined as the region where absolute SSTs exceed 28.5°C (Watanabe, 2008). In COSMOS simulations we find no change in the pattern of the equatorial warm pool between Eoi400 and PlioM1, as both realizations of the mid-Pliocene climate state show warm pools of almost identical spatial extent (Figure 6). Beyond the extent of the equatorial warm pool, we find similarity in SST anomalies obtained from the comparison of PlioM1 and Eoi400 to their respective PI control runs in many regions of the world. The Northern Hemisphere surface ocean is – with few exceptions of regional cooling – characterized by regions of increased SST, a pattern that is more pronounced in the Pacific. Evidence from PlioMIP1 (Dowsett et al., 2013) suggests that mid-Pliocene North-Atlantic SST, as derived from geological records, is consistently underestimated by the models. The COSMOS PlioMIP2 mid-Pliocene simulation produces a warmer North-Atlantic than the respective PlioMIP1 simulation (compare Figure 6 a, b). As a result, the model-data-discord in that region, that has been identified by Dowsett et al. (2013), is mitigated to some extent. This is confirmed by obtaining the Root Mean Square Deviation (RMSD) between COSMOS simulated SSTs for both PlioM1 and Eoi400, and the SST reconstruction by Dowsett et al. (2013) taken from their supplementary Table S1), respectively. A RMSD of 5.14 is evident between reconstructed and modelled mid-Pliocene North Atlantic SSTs in PlioMIP1, while a corresponding RMSD of 2.57 is estimated in PlioMIP2 (Stepanek et al., 2020)(See Table 2). A better agreement between reconstructed and simulated North Atlantic SSTs for PlioMIP2 is linked to the strength of the Atlantic Meridional Overturning Circulation (AMOC) at different depths. Increased SSTs are accompanied by enhanced AMOC in the upper cell at about 1,000 m depth, which transports more heat to high latitudes of the Northern



Hemisphere (Figure 7 a, b). Furthermore, the inflow of deep-water from the South-Atlantic, more precisely the transport of the Antarctic Bottom Water, is stronger in Eoi400: AMOC at depths shallower than 3000 m is slightly enhanced from PlioMIP1 to PlioMIP2 (see Figure 7a and b). Further comparisons between simulated SSTs and emerging reconstructions (McClymont et al., 2020; Foley and Dowsett 2019) show better agreement when compared with Eoi400 (Table 2). This highlights that -  
5 independent of the proxy calibration, the chosen width of the time window of the reconstruction, or the proxy recorder type - the updated PlioMIP2 modelling protocol, including updated PRISM4 boundary conditions, improves the agreement between mid-Pliocene climate as simulated in COSMOS and as derived from the geologic record.

Annual mean sea ice is strongly reduced for both PlioMIP1 and PlioMIP2 mid-Pliocene simulations if compared to the respective PI simulation. The general pattern of mid-Pliocene sea ice is rather similar, in that sea ice cover retreats towards the  
10 North Pole. For seasonal analysis of sea ice, the definition of seasons is different from the conventional December to February (boreal winter) and June to August (boreal summer) time period. In this study, with regard to sea ice, winter is rather defined as February to April FMA, and summer rather as the months from August to October ASO (see Figure 11). According to Howell et al. (2016), these are the three-month-periods in which more than half of the PlioMIP1 ensemble simulations show the highest and lowest mean sea ice extent, respectively. There are slight differences in prescribed orbital parameters, both for  
15 PI simulations and the respective mid-Pliocene simulations considered in this study that employ an orbital forcing similar to that of PI. We find that differences in the orbital forcing have no effect on the large scale seasonal pattern of PI Arctic sea ice, as our results show for respective simulations similar spatial extent for both summer and winter (compare Figure 11a and c, 11b and d). With the mPWP boundary conditions prescribed for PlioMIP1 and PlioMIP2, COSMOS simulates a considerably smaller sea ice extent for the mid-Pliocene with respect to PI simulations (compare Figure 11e, f, g, h to Figure 11a, b, c,  
20 d). The most obvious loss of sea ice in the mPWP is present around the Hudson Bay, which is represented as land for mid-Pliocene simulations. In contrast, our PI simulations show that the Hudson Bay is totally ice-free during summer, but sea ice concentration at this location reaches a maximum during winter. The Canadian Arctic Archipelago is totally free of sea ice for mid-Pliocene simulations with PRISM4 geography. In addition to these trivial changes in sea ice, little or no sea ice is present around the Bering Strait during mid-Pliocene boreal summer. The combined effect of mid-Pliocene geography, orbit and CO<sub>2</sub>  
25 (PlioM1 vs Eoi400) shows that the mid-Pliocene Arctic ocean is ice free during summer. Sea ice concentration drops below 15% in PlioM1, while for Eoi400 we find that summer sea ice is quasi absent (compare Figure 11f, h).

### 3.2 Contributions of palaeogeography and changes in CO<sub>2</sub> to PlioMIP2

We suggest that changes in palaeogeography between the two phases of PlioMIP may be the main contributor to the differences between mid-Pliocene SAT for PlioMIP1 and PlioMIP2, as simulated by the COSMOS. Comparison between Eoi405\_ORB  
30 and PlioM1, which accounts for the influence of the PRISM4 geography show interestingly a similar pattern with the total effect of all boundary conditions, the latter deduced from the difference between simulations Eoi400 and PlioM1 (compare Figure 3a and 3b). The major difference between the effect of changed palaeogeography and the total effect of all boundary conditions (including orbit) is noticed in the Arctic region, where cooling of a relatively higher magnitude is observed for the total effect. Furthermore, there are significant differences between these simulations especially in regions where obvious

changes in orography are applied.

Similar to SAT, COSMOS simulates almost the same SST pattern in Eoi400 and PlioM1 when comparing the influence of PRISM4 geography to the total boundary condition effect (constituting geography, orbit, and atmospheric trace gases). Both mid-Pliocene simulations show the expected warming in the Arctic Ocean, North Atlantic Ocean, and also in the Indian and Atlantic sector of the Southern Ocean. In contrast to the total effect of PlioMIP2 boundary conditions, PRISM4 geography produces a warmer Equatorial Pacific when implemented instead of PRISM3D geography together with other PlioMIP1 boundary and initial conditions (see Figure 8a and b). This implies that the effect of geography on Arctic temperatures is different for atmosphere and ocean realms.

The relative contribution of CO<sub>2</sub> difference between PlioMIP1 and PlioMIP2 is investigated by comparing Eoi400 and Eoi405. The difference generally produces a warmer ocean surface in PlioMIP1 in comparison to the setup of PlioMIP2, which is more pronounced in the Southern Ocean (see Figure 9a). When averaged over 100-year period, the North Atlantic show a dipole of warm and cold ocean surface prevails as seen in SAT, with the maximum SST increase amounting to 2.9°C, while maximum cooling reaches -1.3°C as a result of increased CO<sub>2</sub>. In contrast, when averaged a longer time period (200-year), the magnitude of cooling in the region is largely reduced (Figure S1). This cold blob is indeed not stable, hence an artifact of internal variability in the model.

Finally for sea ice, all simulations with PRISM4 geography produce sea ice with larger spatial extent and concentration during summer months than it is the case for their PRISM3D counterpart (PlioM1), irrespective of the specified concentration of atmospheric CO<sub>2</sub> (compare Figure 12b, d, f, h with 11f). Therefore, the change in CO<sub>2</sub> between PlioMIP1 and PlioMIP2 does not affect large-scale patterns of summer sea ice in the Arctic.

### 3.3 Effect of alternative orbit (MIS K1) on mid-Pliocene simulations

Analyzing the effect of a different orbital configuration, that is known to have been present during the mPWP, we find via a comparison between Eoi400\_K1 and Eoi400 that specifying orbital parameters, representative of MIS K1, will produce a mid-Pliocene climate that is warmer at low-and-high latitudes and in the Arctic, but that is colder in the Southern Hemisphere polar region (see Figure 5). While almost all land masses are warming in the annual mean under the influence of MIS K1 orbital forcing, cooling is evident over the southern part of the modern United States, north Greenland, northern Australia and some parts of Eurasia. With the exception of the impact of eccentricity, orbital forcing causes a redistribution of incoming solar radiation across latitudes and seasons, rather than a change of the overall input of solar radiation into the climate system. Hence, it is of particular interest to study the seasonality of the climatic effect. We find that the impact of MIS K1 orbital forcing is stronger at seasonal time scale than in the annual mean. We show time-mean SAT anomalies for boreal summer (JJA) and boreal winter (DJF) in order to analyse the orbital control on seasonality of the mid-Pliocene (Figure 5b and c). Our finding is that in simulating the mid-Pliocene, the choice of orbit has great influence on seasonal patterns of SAT. During boreal winter (Figure 5c), the K1 orbit is warmer with respect to KM5c, with a maximum SAT anomaly of 3.5 °C in comparison to the simulation with KM5c orbit, while averages over boreal summer months provide a colder Northern Hemisphere for Eoi400\_K1. Substantial winter warming is present over Eurasia, North and South America as well as South-West Africa. SAT

over Greenland shows pronounced seasonal variation, with warming during winter and cooling in summer. We note potential implications of relative summer cooling for the state of the Greenland Ice Sheet during the mPWP.

With respect to the impact of K1 orbital forcing on mPWP climate in the Southern Hemisphere, we find that the seasonal dependency of the temperature anomaly is different for Antarctica, where cooling is dominant all year round. SAT changes in the Southern Hemisphere during summer are not statistically significant in many regions, based on the significance test to account for effective degrees of freedom by means of the autocorrelation method of Matalas and Dawdy (1964). This indicates similarity between summer SAT simulated in this region for both K1 and KM5c (see Figure 5b).

Furthermore, Eoi400\_K1 produces warmer Northern Hemisphere oceans than that of Eoi400 with the few but obvious exceptions being the Arctic Ocean beyond the Barents Sea, Greenland Sea, Hudson Bay, as well as the central North Pacific Ocean, where (regional) cooling is observed (Figure 10). The Southern Ocean on the other hand shows mixed signals of warming and cooling under the influence of K1 orbital forcing, with the most pronounced SST increase noticed to the south east of Australia and South America, which is probably related to a shift of the polar fronts, and also between 100°E and 160°E off the Antarctic coast (Figure 10). The North Atlantic pattern is largely similar to that of the difference between Eoi405 and Eoi400, when considering the effect of changes in orbital forcing on mid-Pliocene SSTs (Figure 9b), with the obvious difference being a modification of the warming/cooling pattern and decreased magnitude of SST anomalies. Analyzing the influence of MIS K1 orbital forcing on simulated SSTs of the mPWP, we find that a maximum anomaly of 2.2°C is obtained from the difference between Eoi400\_K1 and Eoi400 in the mid-latitudes (Figure 10).

Allowing variation in orbital configuration within the limits of plausibility during the mPWP by comparing sea ice concentration from Eoi400\_K1 with Eoi400, shows a larger sea ice extent and concentration during boreal summer as a result of the K1 orbital configuration (Figure 12). Enhanced warming in the Northern Hemisphere polar regions during summer is simulated for MIS KM5c (Figure 10). Hence, colder conditions with increased summer sea ice prevail for K1 (see Figure 12). Simulation Eoi400 shows considerable amount of boreal winter sea ice around the pole and a gradual reduction towards the continents. A result that is largely in agreement with Eoi400\_K1, with exception of the Barents sea where MIS K1 orbital forcing leads to reduced winter sea ice in comparison to the PlioMIP2 reference orbit KM5c (compare Figures 11g, 12c).

## 25 4 Discussion

When comparing large scale patterns of mPWP climate simulated by us with COSMOS in the framework of PlioMIP1 and PlioMIP2, we find that the mPWP offers a glimpse into a climate state that is overall warmer than the conditions humankind is currently experiencing. Noteworthy is that relative warmth in the mPWP is possible with a prescribed CO<sub>2</sub> forcing that is actually below the current volume mixing ratio in the atmosphere – 400 ppmv in PlioMIP2's mPWP, about 407 ppmv for 2018 (Friedlingstein et al., 2019, and one reference therein). Yet, we also infer that updates of the model setup from PlioMIP1 to PlioMIP2 lead to both a global and a regional modulation of the overall warmth simulated for the mPWP with respect to PI. One of the main objectives of the PlioMIP is to determine the dominant components of mid-Pliocene warming, derived from the imposed boundary conditions (Haywood et al., 2016). For the COSMOS simulation in response to PlioMIP1 boundary con-

ditions (simulation PlioM1), the most pronounced warming is evident over areas where changes in albedo and orography have been implemented (Stepanek and Lohmann, 2012). This is also the case for PlioMIP2 simulations with the COSMOS, above all for the PlioMIP2 core simulation Eoi400. However, the increased number of simulations with dedicated sensitivity studies in PlioMIP2, in comparison to the approach in PlioMIP1, that considered only one simulation based on the best knowledge on mPWP boundary conditions (Haywood et al., 2010, 2011), allows a proper inference of the main drivers of mid-Pliocene warmth. While the study by Stepanek et al. (2020) aims at unravelling the various contributions of PRISM4 boundary conditions to the mPWP climate anomaly as simulated with COSMOS, with this study we employ further sensitivity experiments that go beyond the PlioMIP2 modelling protocol in order to determine the relative contribution of updates in the boundary conditions COSMOS from PlioMIP1 to PlioMIP2. Our aim is to bridge the gap between COSMOS contributions to PlioMIP1 and PlioMIP2, that are based on model setups that differ beyond the differences between boundary conditions outlined in protocols for PlioMIP1 (Haywood et al., 2010, 2011) and PlioMIP2 (Haywood et al., 2016). Our extended modelling approach allows inference into the contributions of different components to the results achieved with COSMOS in PlioMIP2. Our respective inferences are outlined below.

Generally, we find that the effects of changes in boundary conditions are pronounced in the higher latitudes, while SAT and SST are largely unchanged in the lower latitudes. Hence, for the COSMOS the impact of updates of the modelling methodology from PlioMIP1 to PlioMIP2 (encompassing implementation of PRISM4 boundary conditions with slightly reduced CO<sub>2</sub>, increased detail of mPWP land sea mask and gateway configuration, resolution of climate-vegetation feedbacks via the use of the model's dynamic vegetation module) modifies the polar amplification in the simulated mPWP climate. While regionally the PlioMIP2 core simulation Eoi400 is warmer than the respective climate state of PlioMIP1 (simulation PlioM1), in particular where the ice sheet reconstruction is updated in PRISM4 and regionally in the North Atlantic, the Arctic is generally cooler in our contribution to PlioMIP2. Lower temperature anomaly in the Arctic imprints on sea ice conditions in high latitudes of the Northern Hemisphere and the global average temperature simulated in PlioMIP2, where a small reduction of the modelled temperature anomaly is evident from PlioMIP1 to PlioMIP2. Generally, we find that, in relation to updated gateways, there is a pronounced regional increase of SST in the North Atlantic Ocean, while reduced carbon dioxide leads, as expected, to an overall cooling of the mPWP climate in COSMOS simulations of PlioMIP2. Yet, a comparison of SAT simulated in the framework of a sensitivity study, where the PlioMIP2 core simulation Eoi400 is repeated with the higher CO<sub>2</sub> forcing employed in PlioMIP1 simulation PlioM1, reveals that the impact of radiative forcing by increased CO<sub>2</sub> is hemispherically dependent. In the PlioMIP2 model setup with increased CO<sub>2</sub> (as in PlioMIP1), the North-Atlantic and large parts of Mediterranean and Arctic are actually cooler than in the standard PlioMIP2 model setup with 400 ppmv CO<sub>2</sub>. In contrast, for the Southern Hemisphere, North Atlantic equatorward of 30°N, and most of the North Pacific, a model setup with the higher PlioMIP1 CO<sub>2</sub> forcing would indeed lead to a warmer mPWP state than what is simulated in our PlioMIP2 core simulation Eoi400. Our CO<sub>2</sub> sensitivity study within the framework of PlioMIP1 and PlioMIP2 shows that a difference of 5 ppmv between both phases of PlioMIP causes appreciable changes in SAT over land and oceans. The increase in CO<sub>2</sub> produces warmer oceans in the PRISM4-based model setup, except for parts of the North Atlantic and the Arctic as outlined above. As in the PRISM4 COSMOS model setup the effect of increased CO<sub>2</sub> is opposite to the pronounced mPWP warming simulated in the North Atlantic, that is found

in PlioMIP2 simulation Eoi400 in comparison to PlioMIP1 simulation PlioM1, we conclude that the warmer North Atlantic simulated by us in PlioMIP2 is not influenced so much by changes in greenhouse forcing as it is by the collective contribution of all boundary conditions, in particular reconfiguration of gateways. As a matter of fact, considering the magnitude of the effect that relatively small changes in CO<sub>2</sub> have in the PlioMIP2 mPWP setup of COSMOS on the temperature of the North Atlantic Ocean, leads us to the inference that the gateway effect on North Atlantic Ocean warmth is modulated in our model by greenhouse forcing, and that our PlioMIP2 model setup does not provide a final statement with regard to the strength of the gateway effect that may have impacted on the mPWP temperature signals interpreted from the geologic recorder. This is either due to longwave oceanic variability, or strong internal variability within the model. Hence, averaging over a longer time period greatly reduce the cold anomaly over the North Atlantic (Figure S2) and we suggest that this points rather to internal variability in the model as a cause for the cold blob. Other model configurations with altered greenhouse gas forcing may well produce a larger temperature anomaly than the COSMOS PlioMIP2 core simulation Eoi400. If we extend our focus beyond model performance within PlioMIP2, then we find that a PlioMIP2 COSMOS simulation with the higher volume mixing ratio of 405 ppmv of CO<sub>2</sub> is actually in better agreement with the PlioMIP1 simulation PlioM1 in parts of the North Atlantic Ocean (where that simulation suggests colder SST than the PlioMIP2 core simulation Eoi400). Consequently, our results show that a slightly higher CO<sub>2</sub> forcing provides larger disagreement between modelled and reconstructed SST, as both model setups of PlioMIP1 and PlioMIP2 are, in comparison with temperature data derived from proxy records, too cold.

Changes in modern-day orbital forcing between COSMOS PlioMIP1 and PlioMIP2 model setups and the corresponding mid-Pliocene simulations overall promote polar amplification in the former, with the exception of mid- to high-latitude continental regions and parts of the North Atlantic Ocean (Figure 4b). In particular, parts of the central Arctic are slightly cooler with the updated orbital forcing in PlioMIP2, while parts of the North Atlantic Ocean are warmer. Beyond the impact of details of the modern-like PI orbital forcing in our PlioMIP model setups, orbital forcing can play a major role in achieving warmer or colder simulated mid-Pliocene conditions. It can lead to significant annual and seasonal variations (Prescott et al., 2014). Therefore, prescribing modern day orbital parameters for a mid-Pliocene simulation, and comparing the results with proxy data averaged over multiple time-slices within the mid-Pliocene, could increase the cases of data and model discords (Dowsett et al., 2013). Sensitivity tests of PlioMIP1 ensemble models, reported by Salzmann et al. (2013), identified insufficient temporal constraints hampering the accurate configuration of model boundary conditions as an important factor impacting on data-model discrepancies. Prior to the start of PlioMIP2, a more defined orbital time slice has been suggested to allow a robust evaluation of present climate models to predict warm climates (Prescott et al., 2014). Thus, within the framework of PlioMIP2, a more defined orbital time slice (MIS KM5c) has been specified (Haywood et al., 2016). Even though it reflects a clear signature of MIS KM5c when compared with K1 in the North Atlantic, reconstructions which are available for comparison still reflect signals of multiple time slices within the mid-Pliocene. This could lead to increased cases of model-data mismatch, as our results demonstrate pronounced annual and seasonal variation in SATs and SSTs between two different orbital time-slices (K1 and KM5c) of the mid-Pliocene, although with a more pronounced signature of the KM5c climate state. With the increasing availability of SST reconstructions for time-slices within the mid-Pliocene period, we also compared with the alkenone (U<sup>K</sup><sub>37</sub>) based reconstruction of Foley and Dowsett (2019) which refers to time-windows 10ka and 30ka million years before present,

based on PlioVAR synthesis and the new BAYSPLINE calibration, as well as magnesium-to-calcium ratio (Mg/Ca) based on PlioVAR Synthesis and the new BAYMAG calibration by McClymont et al. (2020). The result shows that PlioMIP2 simulation in COSMOS agrees best with the  $U^{K}_{37}$  BAYSPLINE reconstruction in the North Atlantic.

We also find that mid-Pliocene orography and ocean gateways contribute more relative to the location where they are applied.

- 5 Due to reduction in ice sheet extent, orography over Greenland has been lower by more than 1500 m during the mid-Pliocene relative to present day (Yan et al., 2013). The COSMOS mid-Pliocene simulation with PlioMIP1 boundary conditions shows that warming related to elevation reduction implied by the reconstructed lower than present Greenland Ice Sheet contributes to about 80% of the total warming at this location when compared with the PI (Stepanek and Lohmann, 2012). Assuming a lapse rate of 6.5 K per elevation change of 1000 m, the PlioMIP2 mid-Pliocene core simulation shows that orography contributes
- 10 75% to the mid-Pliocene warming over Greenland, with respect to the prescribed PI simulation.

The PlioMIP1 model ensemble showed a diverse picture of mid-Pliocene AMOC with respect to PI. Only a slight increase of meridional ocean heat transport was found by a small number of models. A consistent increase of AMOC and the related meridional ocean heat transport lacks in the PlioMIP1 model ensemble (Zhang et al., 2013). Even in the COSMOS model, where both AMOC and meridional heat transport are slightly enhanced in PlioMIP1, the simulated warming in the North Atlantic

- 15 Ocean does not reproduce the relative warmth indicated by the available mid-Pliocene SST reconstruction by Dowsett et al. (2013). In an attempt to simulate enhanced mid-Pliocene AMOC, studies suggested that closure of the Bering Strait would lead to enhanced AMOC (Hu et al., 2015). Furthermore, it has been stated that the modification of certain sea floor features could increase the strength of AMOC (Brierley and Fedorov, 2016; Robinson et al., 2011). With respect to the SST of the mPWP, Otto-Bliesner et al. (2016) have explored the climatic effect of adjustments of the Bering Strait, Canadian Arctic Archipelago,
- 20 and Hudson Bay, towards their respective states during the Pliocene. With changes in prescribed geography for PlioMIP2 mPWP simulations, that incorporate the assumed modifications of ocean gateways in the mPWP with respect to modern, we find that COSMOS indeed simulates an enhanced AMOC for PlioMIP2 with respect to PlioMIP1. Enhanced AMOC relates in COSMOS also to a warmer North Atlantic surface ocean in the PlioMIP2 simulation Eoi400. Consequently, the PlioMIP2 mPWP simulation with adjusted (i.e. closed) Bering Strait reduces the model-data mismatch, found by Dowsett et al. (2013).

- 25 With regards to variations of the PI orbital configuration, we note that the extremely small amplitude of the variation of the orbital forcing suggests that at least a part of the SST effect that we derive from the simulations is caused by internal variability in the climate system rather than an imprint of the modified model setup. Although large parts of the anomaly are found to be statistically significant, we cannot exclude the possibility that a part of the simulated SST pattern is not a stable climate feature, but rather an overprint of slow modes of climate variability, whose periodicity is beyond the analysis period of 100
- 30 model years.

From our SAT analyses, we find that PRISM4 palaeogeography seems to be the dominant factor driving the mid-Pliocene warmth. This is shown by comparing the mid-Pliocene simulation with PRISM4 palaeogeography Eoi405\_ORB with the PlioM1 coupled ocean-atmosphere experiment – with the result that the same SAT patterns emerge as generated by the total effect of switching from PlioMIP1 to PlioMIP2 setup (derived from the comparison PlioM1 vs Eoi400). Similar analysis for

- 35 SST (figure 9) shows that PRISM4 palaeogeography is not the only factor producing a warmer North Atlantic, but the com-

bined effect of PlioMIP2 boundary conditions. Donnadieu et al. (2006) demonstrate that land and ocean climates are affected differently by changes in palaeogeography. Within the framework of PlioMIP2, PRISM4 palaeogeography prevents fresher sea water from the Pacific from reaching the North Atlantic via the Arctic due to the closure of the Bering Strait, having significant influence on SSTs in this region.

5 If we turn to the effect of alternative mPWP forcing on climate simulated in the COSMOS, then seasonal analysis of our simulations shows that sea ice and SST are not only sensitive to prescribed CO<sub>2</sub>. Orbital forcing and the state of imposed paleogeography can also influence simulated sea ice extent and concentration. Reduced spatial extent is evident in particular during boreal summer for simulations with KM5c orbit with respect to simulations that are forced by K1 orbit. Simulations with orbital configurations of K1 show colder high latitudes in summer and warmer mid-to-high latitudes, and thus impact on  
10 simulated sea ice in the Arctic. This is attributed to high eccentricity estimated for the K1, leading to a more elliptical orbit around the sun which in turn affects the distribution of insolation for different seasons (Fischer and Jungclauss, 2011). While COSMOS PlioMIP1 simulation PlioM1 shows close to ice free conditions in the Arctic during boreal summer, PlioMIP2 core simulation Eoi400 is characterized by – relatively – increased summer sea ice conditions in the Arctic Ocean – albeit sea ice cover in this simulation being still low in comparison to, for example, the PI control state PI\_2. Our exercise in considering  
15 alternative orbital configurations, that are equally plausible for the mPWP as the reference orbit KM5c, reveals that we can create with the COSMOS a third realisation of mPWP Arctic summer sea ice that differs from both the PlioMIP1 and PlioMIP2 COSMOS mPWP sea ice states. Albeit overall the K1 orbit provides larger total incoming solar shortwave radiation than the Earth receives during modern times (Prescott et al., 2014), under its influence Arctic summer sea ice is enhanced in comparison to the PlioMIP2 core simulation. This effect is even stronger with respect to the mPWP state simulated with COSMOS in  
20 PlioMIP1. These findings highlight the degree of variability that is present in the simulation of Arctic Ocean sea ice conditions across the mPWP – even if only one climate model is considered, that is exposed only to those modifications of boundary conditions that are considered to be within the range of possibility during the mPWP. Consequently, variability of Arctic sea ice in our study reminds us of the temporal variability that sea ice may have been subject to across the Pliocene epoch. Variability of Arctic sea ice, more precisely its temporal evolution, has been linked to the development of the Greenland Ice Sheet (Clotten et al., 2019). Therefore, we highlight the scientific merit that may arise from studying both inter-model- and time-variability of Arctic sea ice across the mPWP. This may be done, for example, in the framework of upcoming iterations of PlioMIP, and may lead us towards a better understanding of the climate transition from Cenozoic "greenhouse" to Pleistocene "icehouse". We highlight that in particular the study of inter-model variability of sea ice evolution across multiple orbital configurations during the mPWP, that is beyond the framework of our publication, should be pursued in future work. While simulations of  
30 MIS KM5c employ the orbital configuration of present day, which has been demonstrated to simulate ice free summer for the mid-Pliocene, there is an appreciable degree of inter-model spread that is at a similar amplitude as uncertainty in proxy-based reconstructions of mPWP Arctic sea ice extent (Howell et al., 2016). Variability in simulated sea ice extent and thickness within the PlioMIP1 ensemble is reported to be the effect of differences in sea ice components of each model (Howell et al., 2016). We conclude our discussion by noting that results of this study suggest that there is an appreciable amplitude of internal variability inherent in mPWP climate simulations produced with the COSMOS – potentially this is also the case for other models,  
35

which could be tested in the future. One of our findings is that relatively small variations of the prescribed climate forcings, that are represented in our study by variations of greenhouse gas concentrations in the order of a few ppmv of CO<sub>2</sub> and very minor modifications of an otherwise PI orbital configuration, can lead to localized, but non-negligible, mPWP climate anomalies. While we did not explicitly study the reasons behind this finding, the small amplitude of the overall forcing anomaly suggests that the linked variation of the mPWP climate anomaly, computed over a time period of 100 model years, is likely at least partly a result of modulation of internal variability in the model that is triggered by alteration of the model forcing. While PlioMIP2 already made a major leap forward by increasing the analysis time period, from 30 years in PlioMIP1 to 100 years in PlioMIP2, this finding highlights that in future intercomparisons it may be worthwhile to further increase the analysis time period towards multicentennial time scales. Our suggestion is motivated by the observation that beyond the common short term climate variability, that occurs for example in the form of the El Niño Southern Oscillation (Christensen et al., 2013, see their Figure 14.13) and North Atlantic Oscillation (Hurrell, 1995, see their Figure 1A), there are certain modes of internal variability that act at ocean basin scale with much larger recurrence time. If the PlioMIP analysis period were at multicentennial time scales, such slow modes of internal variability would be more likely suppressed by averaging over multiple realizations of climate patterns that are related to opposite phases of these modes, hence leading to a clearer emergence of a mean (that means, predominant across time periods of centuries) mPWP climate state.

## 5 Summary and conclusions

In this study, we compared the results of mid-Pliocene simulations within the frameworks of PlioMIP1 and PlioMIP2, that have been carried out with the COSMOS at the Alfred Wegener Institute in Germany. We have tested to which degree changes between the COSMOS model setups of PlioMIP1 and PlioMIP2 are able to create different realizations of simulated mPWP climate, and how different these alternative mPWP climate states are from PlioMIP2 core simulation Eoi400 and PlioM1, both produced with the same climate model as employed in this study. Overall, we find that the global patterns of mPWP climate as expressed in SST and SAT, are similar in PlioMIP2 and PlioMIP1. Yet, in PlioMIP2 we simulate certain differences that impact in particular sea ice conditions in the Arctic and the amplitude of mPWP temperature anomaly in the North Atlantic Ocean. Beyond small changes of the PI orbit reference configuration in COSMOS, and the modification of CO<sub>2</sub> that arises from the transition of PRISM3D to PRISM4 boundary conditions, we carried out sensitivity experiments that address the climatic impact of plausible orbital configurations across the mPWP (MIS KM5c and K1) to assess variability across different discrete time-slices within the mid-Pliocene warm period, using boundary conditions prescribed for PlioMIP2.

From our results, we conclude that palaeogeography is the dominant component of the imposed mid-Pliocene boundary conditions, influencing the climate across the warm period. Its effect on atmosphere and ocean differs as seen in the different pattern of warming and cooling achieved for SAT and SST. We also conclude that the response of atmospheric and oceanic variables differs distinctly when exposed to the same geography. The 5 ppmv difference in CO<sub>2</sub> between PlioMIP1 and PlioMIP2 simulations does not change the general impression of large scale mPWP climate patterns but samples the model strong internal variability, thus PlioMIP1 and PlioMIP2 simulations are mostly impacted by changes in paleogeography from PRISM3 to



PRISM4. The impact of a small amplitude of change in orbital forcing leads us to the suggestion that the simulated PlioMIP climate state may be subject to appreciable internal variability that – while not changing the overall impression on the characteristics of simulated mPWP climate – provides regional patterns of SST and SAT that are worthwhile to be studied in future phases of PlioMIP based on a prolonged multicentennial analysis period.

- 5 Furthermore, the newly prescribed PlioMIP2 boundary conditions play a significant role in achieving warmer North Atlantic SSTs, that were modelled too cold during PlioMIP1, if compared to reconstructions. On the other hand, the PlioMIP2 mPWP reference state simulated with COSMOS (simulation Eoi400) is globally slightly cooler, in agreement with reduced concentrations of CO<sub>2</sub>, and also expresses itself via reduced warmth and resultantly increased summer sea ice conditions in the Arctic Ocean. When considering various modifications of mPWP boundary conditions in our simulations, we find that there is the
- 10 potential for pronounced variability of Arctic summer sea ice conditions during the mPWP. Enhanced AMOC in PlioMIP2 is achieved through the combined effect of PlioMIP2 boundary conditions, contributing to increased meridional transport of warm water from low to mid latitudes in the North Atlantic. We note that details of the model forcing, in particular the exact level of carbon dioxide and the realization of the KM5c orbit surrogate, have an impact on the amplitude of North Atlantic Ocean warming in comparison to results derived with COSMOS in PlioMIP1. With respect to PI conditions, an extended equa-
- 15 torial warm pool, shown in COSMOS simulation PlioM1 for PlioMIP1, is also present in our PlioMIP2 simulation Eoi400 with similar spatial pattern and extent. This is in line with our finding that the effect of changes in mid-Pliocene boundary conditions from PlioMIP1 to PlioMIP2 is minor in low latitudes, and more pronounced in high-latitudes. The magnitude of Arctic warming simulated for PlioMIP1 is reduced in our PlioMIP2 simulation, while increased warming over Greenland and Antarctica is a direct effect of changes in reconstructed orography and albedo from PlioMIP1 to PlioMIP2.
- 20 Employing a different plausible mPWP orbital forcing (MIS K1) in simulating the mid-Pliocene, and comparing the results to those derived based on the standard PI orbital configuration that is used as a surrogate for the MIS KM5c, reveals pronounced climate anomalies that may express themselves via both warming and cooling at various spatial scales – the former mostly at high latitudes, and in particular in the Arctic Ocean, the latter widespread in low- to mid latitudes. Comparison between climate states simulated for both the KM5c and K1 time-slices shows annual and seasonal variations, with RMSD between
- 25 either one of the modelled North Atlantic SSTs for these time slices on one side, and reconstructions of mPWP SSTs on the other side, showing a better agreement between the geologic record and the simulation for MIS KM5c (Eoi400) in contrast to MIS K1. This confirms a more pronounced signal of KM5c climate state in the reconstruction. Yet, in line with statements by previous authors (Dowsett et al., 2016; Haywood et al., 2016; Prescott et al., 2014; Salzmänn et al., 2013), further steps should be taken to reconstruct mid-Pliocene climate within the KM5c time-slice, as this will reduce signals and interferences
- 30 that could be caused by averaging over multiple isotope excursion periods, when comparing with modelled data.

*Data availability.* The COSMOS outputs utilized for this study, i.e. selected model output of simulations Eoi405, Eoi400\_ORB, simulation Eoi405\_ORB, and simulation Eoi400\_K1, will be made available via PANGAEA by the time the review phase of the manuscript has been

concluded. Model output related to PlioMIP1 (simulations PI\_1 and PlioM1) and PlioMIP2 (simulation PI\_2, named E280 in the framework of the study by Stepanek et al. (2020), and simulation Eoi400) are used in the framework of PlioMIP1 and PlioMIP2.

*Author contributions.* E. S., C. S. and G. L. designed the study concept and structure of the work, E.S and C.S implemented model runs, E.S analysed the resulting data and wrote the manuscript, incorporating comments from co-authors. Correspondence should be addressed to E.S.

5 *Competing interests.* The authors declare that there is no conflict of interest.

## References

- Bongaarts J.: Human Population Growth and the Demographic Transition, *Philosophical Transactions of The Royal Society B*, 364, 2985–2990, 2009.
- Brierley, C. M. and Fedorov, A. V.: Comparing the impacts of Miocene–Pliocene changes in inter-ocean gateways on climate: Central American seaway, Bering Strait, and Indonesia, *Earth and Planetary Science Letters*, 444, 116–130, 2016.
- Christensen, J. H., Kumar, K. K., Aldrian, E., An, S.-I., Cavalcanti, I. F. A., de Castro, M., Dong, W., Goswami, P., Hall, A., Kanyanga, J. K., Kitoh, A., Kossin, J., Lau, N.-C., Renwick, J., Stephenson, D. B., Xie S.-P., and Zhou, T.: Climate Phenomena and their Relevance for Future Regional Climate Change. In: *Climate Change 2013: The Physical Science Basis. Contribution of Working Group I to the Fifth Assessment Report of the Intergovernmental Panel on Climate Change* [Stocker, T. F., Qin, D., Plattner, G.-K., Tignor, M., Allen, S. K., Boschung, J., Nauels, A., Xia, Y., Bex, V., and Midgley, P. M. (eds.)], Cambridge University Press, Cambridge, United Kingdom and New York, NY, USA, 2013.
- Clotten, C., Stein, R., Fahl, K., Schreck, M., Risebrobakken, B., and De Schepper, S.: On the causes of Arctic sea ice in the warm Early Pliocene, *Sci Rep*, 9, 989, doi:10.1038/s41598-018-37047-y, 2019.
- Contoux, C., Dumas, C., Ramstein, G., Jost, A., and Dolan, A. M.: Modelling Greenland ice sheet inception and sustainability during the Late Pliocene, *Earth Planet. Sc. Lett.*, 424(C), 295–305, 2015.
- Donnadieu, Y., Pierrehumbert, R., Fluteau, F., Jacob, R.: Modelling the primary control of paleogeography on Cretaceous climate, *Earth Planet. Sci. Lett.*, 248, 426–437, 2006.
- Dolan, A. M., Hunter, S. J., Hill, D. J., Haywood, A. M., Koenig, S. J., Otto-Bliesner, B. L., Abe-Ouchi, A., Bragg, F., Chan, W.-L., Chandler, M. A., Contoux, C., Jost, A., Kamae, Y., Lohmann, G., Lunt, D. J., Ramstein, G., Rosenbloom, N. A., Sohl, L., Stepanek, C., Ueda, H., Yan, Q., and Zhang, Z.: Using results from the PlioMIP ensemble to investigate the Greenland Ice Sheet during the mid-Pliocene Warm Period, *Clim. Past*, 11, 403–424, 2015.
- Dowsett, H.J., Thompson, R., Barron, J., Cronin, T., Fleming, F., Ishman, S., Poore, R.Z., Willard, D. and Holtz, J.: Joint Investigations of the Middle Pliocene Climate: PRISM paleoenvironmental reconstructions. *Global and Planetary Change*, 169-195, 1994.
- Dowsett, H. J. and Robinson, M. M.: Mid-Pliocene equatorial Pacific sea surface temperature reconstruction: a multi-proxy perspective, *Philos. T. R. Soc. A*, 367, 109–125, 2009.
- Dowsett, H., Robinson, M., Haywood, A., Salzmann, U., Sohl, L., Chandler, M., Williams, M., Foley, K., and Stoll, D.: The PRISM3D paleoenvironmental reconstruction, *Stratigraphy*, 7, 123–139, 2010.
- Dowsett, H. J., Robinson, M. M., Haywood, A. M., Hill, D. J., Dolan, A. M., Stoll, D. K., Chan, W.-L., Abe-Ouchi, A., Chandler, M. A., and Rosenbloom, N. A.: Assessing confidence in Pliocene sea surface temperatures to evaluate predictive models, *Nature Climate Change*, 2, 365–371, 2012.
- Dowsett, H. J., Foley, K. M., Stoll, D. K., Chandler, M. A., Sohl, L. E., Bentsen, M., Otto-Bliesner, B. L., Bragg, F. J., Chan, W.-L., Contoux, C., Dolan, A. M., Haywood, A. M., Jonas, J. A., Jost, A., Kamae, Y., Lohmann, G., Lunt, D. J., Nisancioglu, K. H., Abe-Ouchi, A., Ramstein, G., Riesselman, C. R., Robinson, M. M., Rosenbloom, N. A., Salzmann, U., Stepanek, C., Strother, S. L., Ueda, H., Yan, Q., and Zhang, Z.: Sea surface temperature of the mid-Piacenzian Ocean: A data-model comparison, *Sci. Rep.*, 3, 2013.
- Dowsett, H., A. Dolan, D. Rowley, R. Mocha, A.M. Forte, J.X. Mitrovica, M. Pound, U. Salzmann, M. Robinson, M. Chandler, K. Foley, and A. Haywood, 2016: The PRISM4 (mid-Piacenzian) palaeoenvironmental reconstruction. *Clim. Past*, 12, 1519-1538, 2016.

- Edwards, M.: Global Gridded Elevation and Bathymetry, in: Global Ecosystems Database, Version 1.0 (on CD-ROM), Documentation Manual, Disc-A, edited by: Kineman, J. J. and Ohrenschaal, M. A., National Geophysical Data Center, Key to Geophysical Records Documentation No. 26 (incorporated in: Global Change Database, Volume 1), National Oceanic and Atmospheric Administration, Boulder CO, p. A14-1 to A14-4, 1992.
- 5 Fischer N., JungCLAUS J. H.: Evolution of the seasonal temperature cycle in a transient Holocene simulation: orbital forcing and sea-ice, *Clim. Past*, 7, 1139–1148, 2011.
- Foley, K. M., and Dowsett, H.J.: Community sourced mid-Piacenzian sea surface temperature (SST) data: U.S. Geological Survey data release, 2019.
- Friedlingstein, P., Jones, M. W., O’Sullivan, M., Andrew, R. M., Hauck, J., Peters, G. P., Peters, W., Pongratz, J., Sitch, S., Le Quéré, C.,  
 10 Bakker, D. C. E., Canadell, J. G., Ciais, P., Jackson, R. B., Anthoni, P., Barbero, L., Bastos, A., Bastrikov, V., Becker, M., Bopp, L.,  
 Buitenhuis, E., Chandra, N., Chevallier, F., Chini, L. P., Currie, K. I., Feely, R. A., Gehlen, M., Gilfillan, D., Gkritzalis, T., Goll, D. S.,  
 Gruber, N., Gutekunst, S., Harris, I., Haverd, V., Houghton, R. A., Hurtt, G., Ilyina, T., Jain, A. K., Joetzjer, E., Kaplan, J. O., Kato, E.,  
 Klein Goldewijk, K., Korsbakken, J. I., Landschützer, P., Lauvset, S. K., Lefèvre, N., Lenton, A., Lienert, S., Lombardozzi, D., Marland,  
 G., McGuire, P. C., Melton, J. R., Metzl, N., Munro, D. R., Nabel, J. E. M. S., Nakaoka, S.-I., Neill, C., Omar, A. M., Ono, T., Peregón,  
 15 A., Pierrot, D., Poulter, B., Rehder, G., Resplandy, L., Robertson, E., Rödenbeck, C., Séférian, R., Schwinger, J., Smith, N., Tans, P. P.,  
 Tian, H., Tilbrook, B., Tubiello, F. N., van der Werf, G. R., Wiltshire, A. J., and Zaehle, S.: Global Carbon Budget 2019, *Earth Syst. Sci. Data*, 11, 1783–1838, <https://doi.org/10.5194/essd-11-1783-2019>, 2019.
- Gong, X., Knorr, G., Lohmann, G. and Zhang, X.: Dependence of abrupt Atlantic meridional ocean circulation changes on climate background states, *Geophysical Research Letters* 40(14), 3698–3704, 2013.
- 20 Haywood, A. M. and Valdes, P. J.: Modelling Pliocene warmth: Contribution of Atmosphere, Oceans and Cryosphere, *Earth Planet. Sci. Lett.*, 218, 363–377, 2004.
- Haywood, A. M., Dowsett, H. J., Otto-Bliesner, B., Chandler, M. A., Dolan, A. M., Hill, D. J., Lunt, D. J., Robinson, M. M., Rosenbloom, N., Salzmann, U., and Sohl, L. E.: Pliocene Model Intercomparison Project (PlioMIP): Experimental design and boundary conditions (Experiment 1), *Geosci. Model Dev.*, 3, 227–242, 2010.
- 25 Haywood, A. M., Dowsett, H. J., Robinson, M. M., Stoll, D. K., Dolan, A. M., Otto-Bliesner, B., Chandler, M. A.: Pliocene Model Intercomparison Project (PlioMIP): Experimental design and boundary conditions (Experiment 2), *Geosci. Model Dev.*, 4, 571–577, 2011.
- Haywood, A. M., Hill, D. J., Dolan, A. M., Otto-Bliesner, B. L., Bragg, F., Chan, W. L., Chandler, M. A., Contoux, C., Dowsett, H. J., Jost, A., Kamae, Y., Lohmann, G., Lunt, D. J., Abe-Ouchi, A., Pickering, S. J., Ramstein, G., Rosenbloom, N. A., Salzmann, U., Sohl, L., Stepanek, C., Ueda, H., Yan, Q., and Zhang, Z.: Large-scale features of Pliocene climate: results from the Pliocene Model Intercomparison  
 30 Project, *Clim. Past*, 9, 191–209, 2013.
- Haywood, A. M., Dolan, A. M., Pickering, S. J., Dowsett, H. J., McClymont E. L., Prescott C. L., Salzmann U., Hill D. J., Hunter S. J., Lunt D. J., Pope O. J. and Valdes P. J.: On the identification of a Pliocene time slice for data-model comparison, *Philosophical Transactions of the Royal Society A: Mathematical, Physical and Engineering Sciences* 371, 2013.
- Haywood, A. M., Dowsett, H. J., Dolan, A. M., Chandler, M. A., Hunter, S. J. and Lunt, D. J.: The Pliocene Model Intercomparison Project  
 35 (PlioMIP) Phase 2: Scientific Objectives and Experimental Design, *Climate of the Past* 12(3), 663–673, 2016.
- Howell, F. W., Haywood, A. M., Otto-Bliesner, B. L., Bragg, F., Chan, W.-L., Chandler, M. A., Contoux, C., Kamae, Y., Abe-Ouchi, A., Rosenbloom, N. A., Stepanek, C. and Zhang, Z.: Arctic sea ice in the PlioMIP ensemble, *Clim. Past* 12, 749–767, 2016.

- Hu, A., Meehl, G. A., Han, W., Otto-Bliesner, B., Abe-Ouchi, A. and Rosenbloom, N.: Effects of the Bering Strait closure on AMOC and global climate under different background climates, *Progress in Oceanography* 132, 174–196, 2015.
- Hurrell, J. W.: Decadal trends in the north atlantic oscillation: regional temperatures and precipitation, *Science*, 269, 676–679, 1995.
- Jansen, E., Overpeck, J., Briffa, K., Duplessy, J., Joos, F., Masson-Delmotte, V and Olago, D., Otto-Bliesner, B., Peltier, W., Rahmstorf, S., Ramesh, R., Raynaud, D., Rind, D., Solomina, O., Villalba, R., and Zhang, D.: Paleoclimate, in: *Climate Change 2007: The Physical Science Basis. Contribution of Working Group I to the Fourth Assessment Report of the Intergovernmental Panel on Climate Change*, Cambridge University Press, Cambridge, United Kingdom and New York, NY, 433 - 479, 2007.
- Jungclauss, J., Keenlyside, N., Botzet, M., Haak, H., Luo, J.-J., Latif, M., Marotzke, J., Mikolajewicz, U. and Roeckner, E.: Ocean circulation and tropical variability in the coupled model ECHAM5/MPI-OM, *Journal of climate* 19(16), 3952–3972, 2006.
- 10 Jungclauss, J., Lorenz, S., Timmreck, C., Reick, C., Brovkin, V., Six, K., Segschneider, J., Giorgetta, M., Crowley, T., Pongratz, J.: Climate and carbon-cycle variability over the last millennium, *Climate of the Past* 6, 723–737, 2010.
- Kageyama, M., Merkel, U., Otto-Bliesner, B., Prange, M., Abe-Ouchi, A., Lohmann, G., Ohgaito, R., Roche, D., Singarayer, J., Swingedouw, D.: Climatic impacts of fresh water hosing under Last Glacial Maximum conditions: a multi-model study, *Climate of the Past* 9(2), 935–953, 2013.
- 15 Knorr, G., Butzin, M., Micheels, A. and Lohmann, G.: A warm Miocene climate at low atmospheric CO<sub>2</sub> levels, *Geophysical Research Letters* 38(20), 698–708, 2011.
- Kürschner, W. M., van der Burgh, J., Visscher, H., and Dilcher, D. L.: Oak leaves as biosensors of late Neogene and early Pleistocene paleoatmospheric CO<sub>2</sub> concentrations, *Mar. Micropaleontol.*, 27, 299–312, 1996.
- Laskar, J., Robutel, P., Joutel, F., Gastineau, M., Correia, M., Lévraud, B.: A long term numerical solution for the insolation quantities of the Earth, *Astron. Astrophys.*, pp. 261-285, 2004.
- 20 Maier-Reimer, E.: Geochemical cycle in an ocean general circulation model: Preindustrial tracer distributions, *Global Biogeochemical Cycles*, 7, 3, 645 - 677, 1993.
- Matalas N. and Dawdy D.: Analysis of variance, covariance and time series. In: Chow VT, *Handbook of applied hydrology, a compendium of water-resources technology*. New York: McGraw-Hill. pp. 868–890, 1964.
- 25 Matthiessen, J., Knies, J., Vogt, C., and Stein, R.: Pliocene palaeoceanography of the Arctic Ocean and Subarctic Seas, 367(11), 21-48, 2008.
- Marsland, S. J., Haak, H., Jungclauss, J. H., Latif, M., and Röske, F.: The Max-Planck-Institute global ocean/sea ice model with orthogonal curvilinear coordinates, *Ocean Modell.*, 5, 91–127, 2003.
- McClymont, E. L., Ford, H. L., Ho, S. L., Tindall, J. C., Haywood, A. M., Alonso-Garcia, M., Bailey, I., Berke, M. A., Littler, K., Patterson, M., Petrick, B., Peterse, F., Ravelo, A. C., Risebrobakken, B., De Schepper, S., Swann, G. E. A., Thirumalai, K., Tierney, J. E., van der Weijst, C., and White, S.: Lessons from a high CO<sub>2</sub> world: an ocean view from 3 million years ago, *Clim. Past Discuss.*, in review, 2020.
- 30 Otto-Bliesner, B., Jahn, A., Feng, R., Brady, E., Hu, A. and Marcus, L.: Amplified North Atlantic warming in the late Pliocene by changes in Arctic gateways, *Geophysical Research Letters* 44(2), 957-964, 2016.
- Otto-Bliesner, B., Braconnot, P., Harrison, S., Lunt, J., D., Abe-Ouchi, A., Albani, S., Bartlein, P., J., Capron, E., Carlson, A., E., Dutton, A., Fischer, H., Goelzer, H., Govin, Aline., Haywood, A., Joos, F., LeGrande, N., Lipscomb, W., Lohmann, G., Mahowald, N., Nehrbaas-Ahles, C., Pausata, R., S., Peterschmitt, J., Phipps, J., S., Renssen, H. and Zhang, Q.: The PMIP4 contribution to CMIP6 – Part 2: Two interglacials, scientific objective and experimental design for Holocene and Last Interglacial simulations, *Geoscientific Model Development*, 10(11), 3979–4003, 2017.

- Overland, J. E., Wang, M., Walsh, J. E., and Stroeve, J. C.: Future Arctic climate changes: Adaptation and mitigation time scales, *Earth's Future*, 2, 68–74, doi:10.1002/2013EF000162, 2014.
- Pagani, M., Liu, Z., LaRiviere, J., and Ravelo, A. C.: High Earth-system climate sensitivity determined from Pliocene carbon dioxide concentrations, *Nat. Geosci.*, 3, 27–30, 2010.
- 5 Pfeiffer, M. and Lohmann, G., 2016: Greenland Ice Sheet influence on Last Interglacial climate: global sensitivity studies performed with an atmosphere–ocean general circulation model, *Clim. Past*, 12, 1313–1338. doi:10.5194/cp-12-1313-2016.
- Prescott C. L., Haywood, A. M., Dolan, A. M., Hunter, S. J., Pope, J. O., and Pickering, S. J.: Assessing orbitally-forced interglacial climate variability during the mid-Pliocene Warm Period, *Earth Planet. Sci. Lett.*, 400, 261–271, 2014.
- Qing Y., Zhang Z., Wang H., and Zhang R.: Simulation of Greenland ice sheet during the mid-Pliocene warm period, *Chin. Sci. Bull.*, 59(2),  
10 201–211, 2014.
- Raddatz, T. J., Reick, C. H., Knorr, W., Kattge, J., Roeckner, E., Schnur, R., Schnitzler, K.-G., Wetzel, P., and Jungclaus, J.: Will the tropical land biosphere dominate the climate-carbon cycle feedback during the twenty-first century?, *Clim. Dyn.*, 29, 565 – 574, doi:10.1007/s00382-007-0247-8, 2007.
- Raymo, M., Grant, B., Horowitz, M., and Rau, G.: Mid-Pliocene warmth: stronger greenhouse and stronger conveyor, *Mar. Micropaleontol.*,  
15 27, 313–326, 1996.
- Robinson, M. M., Valdes, P. J., Haywood, A. M., Dowsett, H. J., Hill, D. J. and Jones, S. M.: Bathymetric controls on Pliocene North Atlantic and Arctic sea surface temperature and deepwater production, *Palaeogeography, Palaeoclimatology, Palaeoecology* 309(1-2), 92–97, 2011.
- Roeckner, E., Bäuml, G., Bonaventura, L., Brokopf, R., Esch, M., Giorgetta, M., Hagemann, S., Kirchner, I., Kornblueh, L., Manzini, E.:  
The atmospheric general circulation model ECHAM 5. PART I: Model description, 349, 1–140, 2003.
- 20 Rycbynski, N., Gosse, J. C., Harington, C. R., Wogelius, R. A., Hidy, A. J., and Buckley, M.: Mid-Pliocene warm-period deposits in the High Arctic yield insight into camel evolution, *Nat. Commun.*, 4, 1550, doi:10.1038/ncomms2516, 2013.
- Salzmann, U., Dolan, A. M., Haywood, A. M., Chan, W.-L., Voss, J., Hill, D. J., Abe-Ouchi, A., Otto-Bliesner, B., Bragg, F. J., Chandler, M. A., Contoux, C., Dowsett, H. J., Jost, A., Kamae, Y., Lohmann, G., Lunt, D. J., Pickering, S. J., Pound, M. J., Ramstein, G., Rosenbloom, N. A., Sohl, L., Stepanek, C., Ueda, H., and Zhang, Z.: Challenges in quantifying Pliocene terrestrial warming revealed by data-model  
25 discord, *Nature Climate Change*, 3, 969–974, 2013.
- Seki, O., Foster, G. L., Schmidt, D. N., Mackensen, A., Kawamura, K., and Pancost, R. D.: Alkenone and boron-based Pliocene pCO<sub>2</sub> records, *Earth Planet. Sci. Lett.*, 292, 201–211, 2010.
- Stepanek, C. and Lohmann, G.: Modelling mid-Pliocene climate with COSMOS, *Geoscientific Model Development* 5(5), 1221–1243, 2012.
- Stepanek, C., Samakinwa, E., and Lohmann, G.: Contribution of the coupled atmosphere–ocean–sea ice–vegetation model COSMOS to the  
30 PlioMIP2, *Clim. Past Discuss.*, in review, 2020.
- Varma, V., Prange, M., Merkel, U., Kleinen, T., Lohmann, G., Pfeiffer, M., Renssen, H., Wagner, A., Wagner, S. and Schulz, M.: Holocene evolution of the Southern Hemisphere westerly winds in transient simulations with global climate models, *Climate of the Past* 8, 391–402, 2012.
- Watanabe, M.: Two Regimes of the Equatorial Warm Pool. Part I: A Simple Tropical Climate Model. *J. Climate*, 21, 3533–3544, 2008.
- 35 Wei, W. and Lohmann, G.: Simulated Atlantic Multidecadal Oscillation during the Holocene, *Journal of Climate* 25(20), 6989–7002, 2012.
- Zhang, Z.-S., K.H. Nisancioglu, M.A. Chandler, A.M. Haywood, B.L. Otto-Bliesner, G. Ramstein, C. Stepanek, A. Abe-Ouchi, W.-L. Chan, F.J. Bragg, C. Contoux, A.M. Dolan, D.J. Hill, A. Jost, Y. Kamae, G. Lohmann, D.J. Lunt, N.A. Rosenbloom, L.E. Sohl, and H. Ueda, 2013: Mid-Pliocene Atlantic Meridional Overturning Circulation not unlike modern? *Clim. Past*, 9, 1495–1504.

Zhang, X., Lohmann, G., Knorr, G., and Xu, X., 2013: Different ocean states and transient characteristics in Last Glacial Maximum simulations and implications for deglaciation. *Clim. Past*, 9, 2319-2333, doi:10.5194/cp-9-2319-2013.

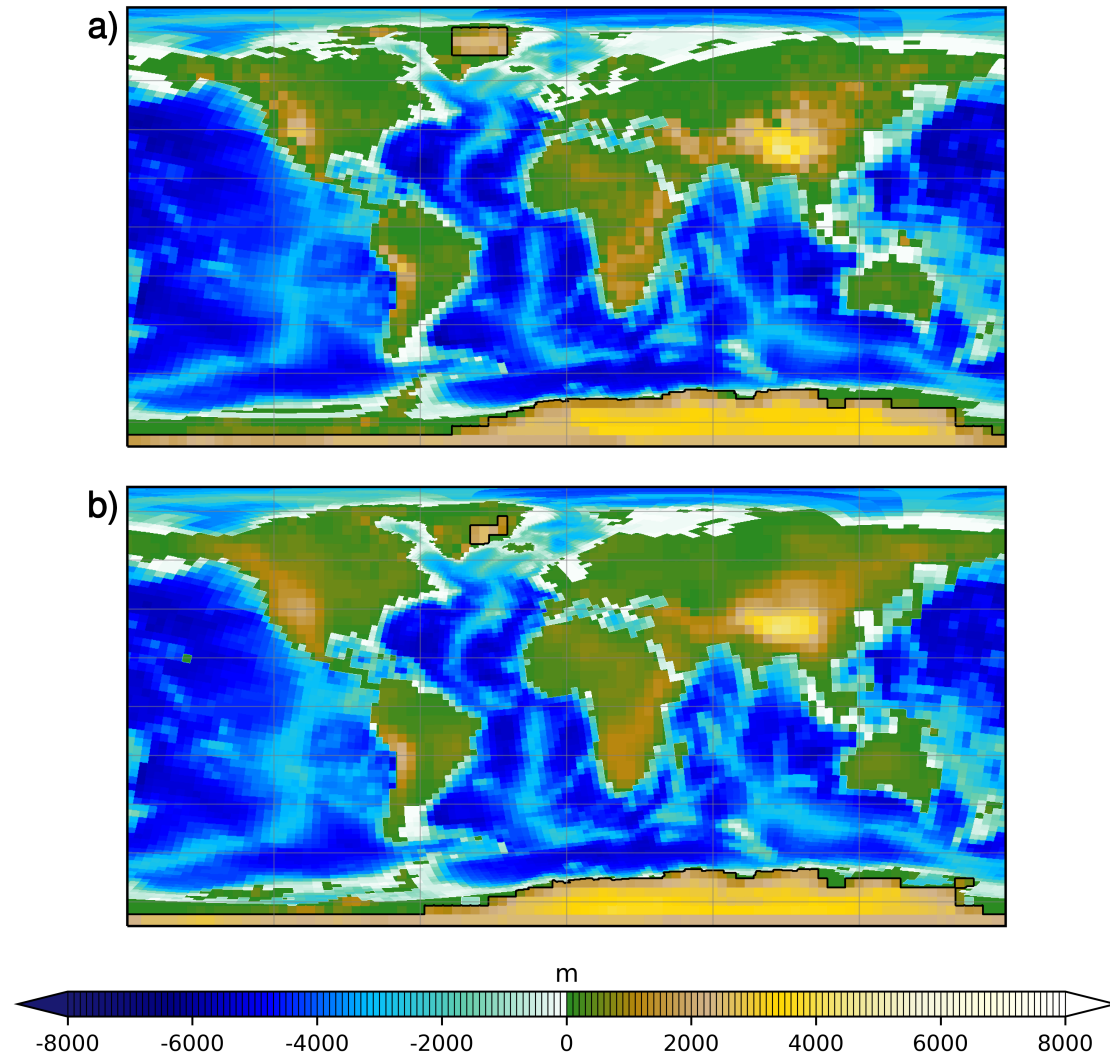
**Table 1.** Detailed description of experiments including category of orbital configuration, based on two different Pre-Industrial (PI) and one mPWP-specific setting, as well as specific parameter values and applied geography.

Category	Exp. ID	Geography	CO <sub>2</sub> (ppmv)	CH <sub>4</sub> (ppbv)	N <sub>2</sub> O (ppbv)	Orbital configuration	Eccentricity	Obliquity (°)	Perihelion (°)
<b>Pre-Industrial</b>	PI_1	ETOPO5	280	760	270	PI 1	0.0167240	23.446000	282.04000
	PI_2	ETOPO5	280	808	273	PI 2	0.0167643	23.459277	280.32687
<b>PlioMIP1</b>	PlioM1	PRISM3D	405	760	270	PI 1	0.0167240	23.446000	282.04000
<b>PlioMIP2</b>	Eoi400	PRISM4	400	808	273	PI 2	0.0167643	23.459277	280.32687
	Eoi405	PRISM4	405	808	273	PI 2	0.0167643	23.459277	280.32687
	Eoi400_ORB	PRISM4	400	808	273	PI 1	0.0167240	23.446000	282.04000
	Eoi405_ORB	PRISM4	405	808	273	PI 1	0.0167240	23.446000	282.04000
<b>PlioMIP2_K1</b>	Eoi400_K1	PRISM4	400	808	273	MIS K1	0.0536210	23.011620	223.15315

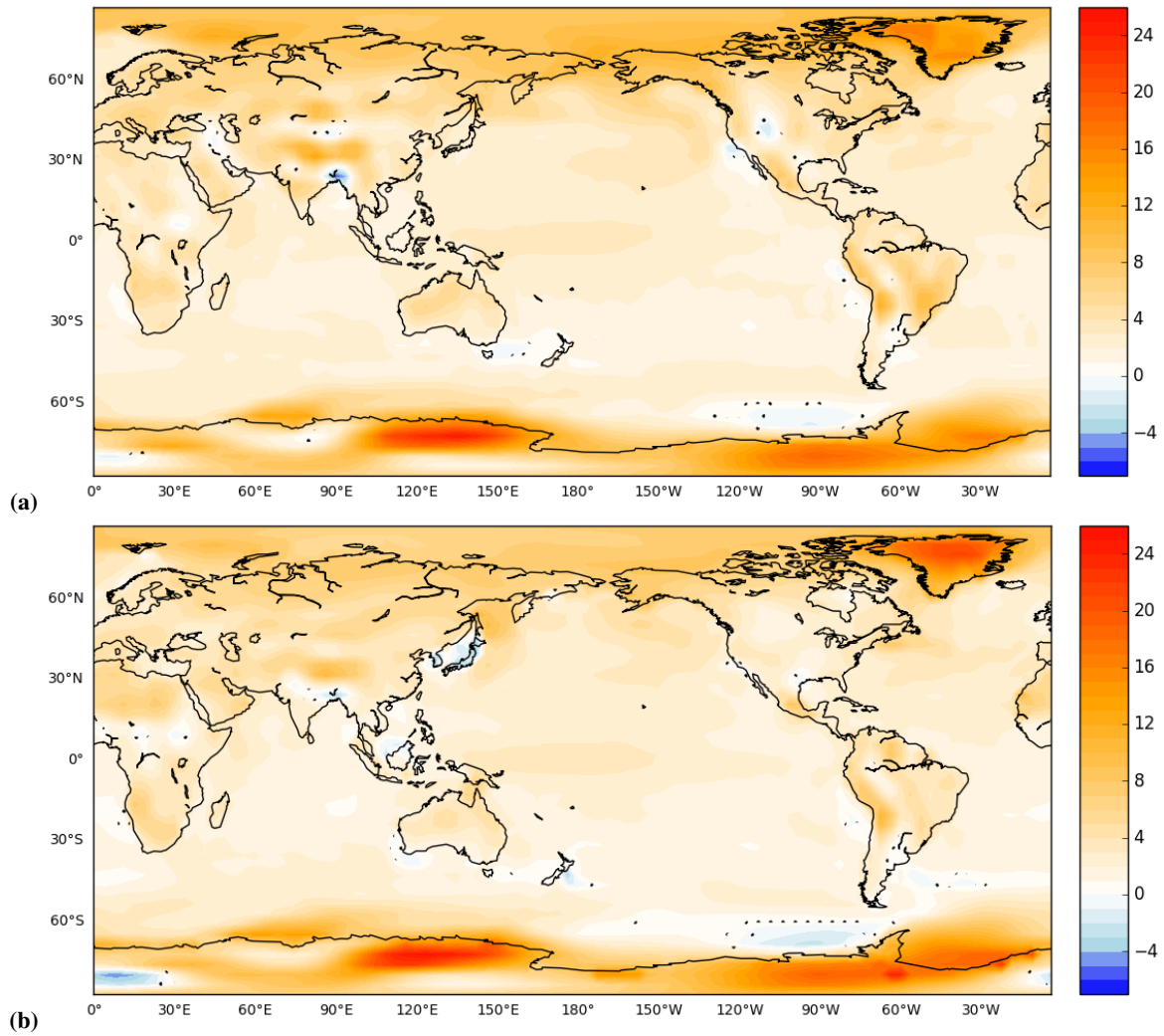
**Table 2.** Root mean square deviation between North Atlantic sea surface temperatures of selected mid-Pliocene simulations (Eoi400, PlioM1 and Eoi400\_K1) and available reconstructions.

SST Reconstruction	Eoi400	PlioM1	Eoi400_K1
Multi-proxy, (Dowsett et al., 2013)	2.57	5.14	3.47
U <sup>K</sup> <sub>37</sub> , 10 ka (Foley and Dowsett, 2019)	3.90	4.30	4.11
U <sup>K</sup> <sub>37</sub> , 30 ka (Foley and Dowsett, 2019)	3.72	4.25	4.05
U <sup>K</sup> <sub>37</sub> , PlioVAR synthesis (McClymont et al., 2020)	2.54	5.02	3.68
U <sup>K</sup> <sub>37</sub> , BAYSPLINE (McClymont et al., 2020)	2.41	4.92	3.24
Mg/Ca, PlioVAR synthesis (McClymont et al., 2020)	3.84	4.26	4.14
Mg/Ca, BAYMAG (McClymont et al., 2020)	5.82	6.94	5.93

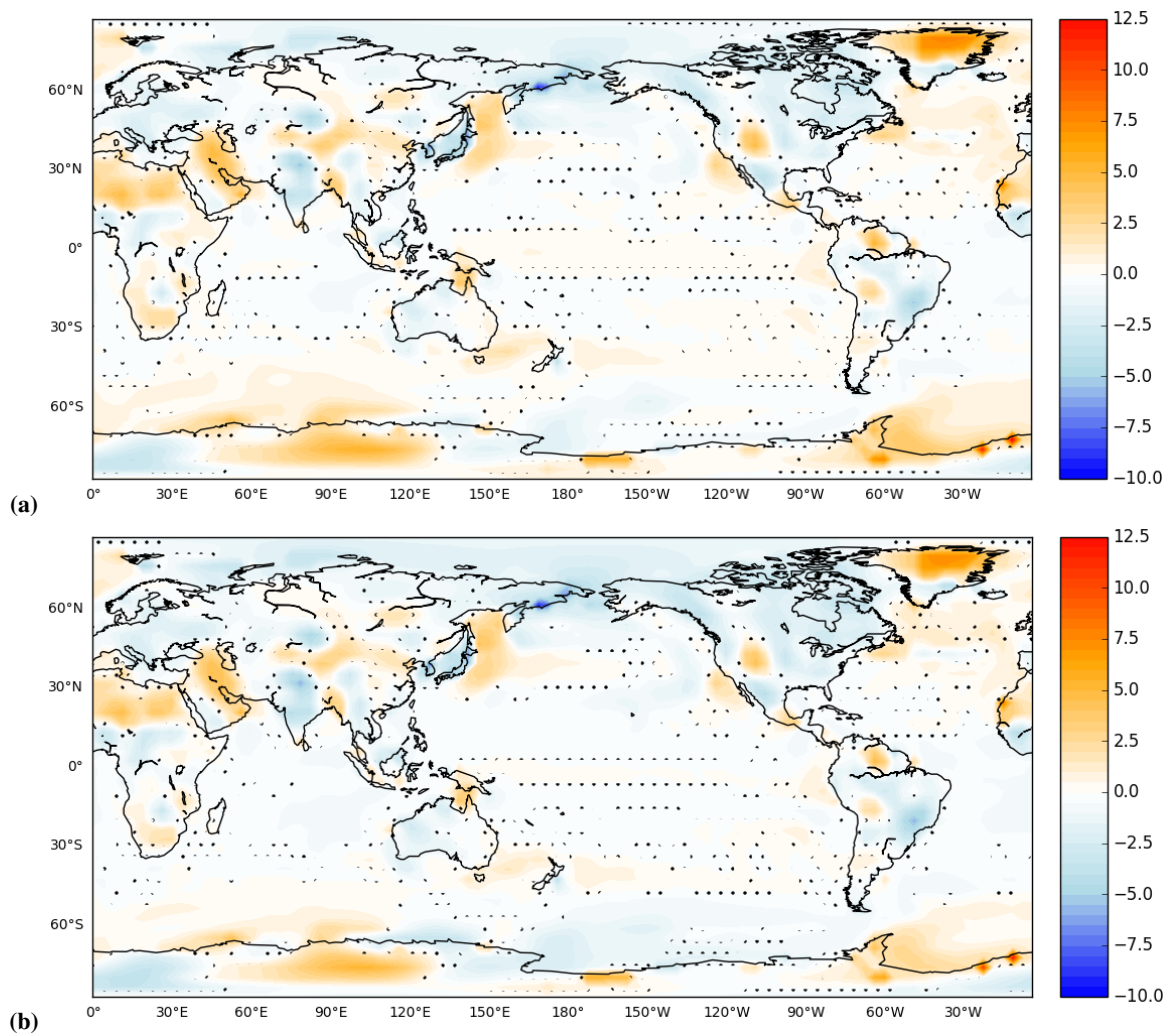




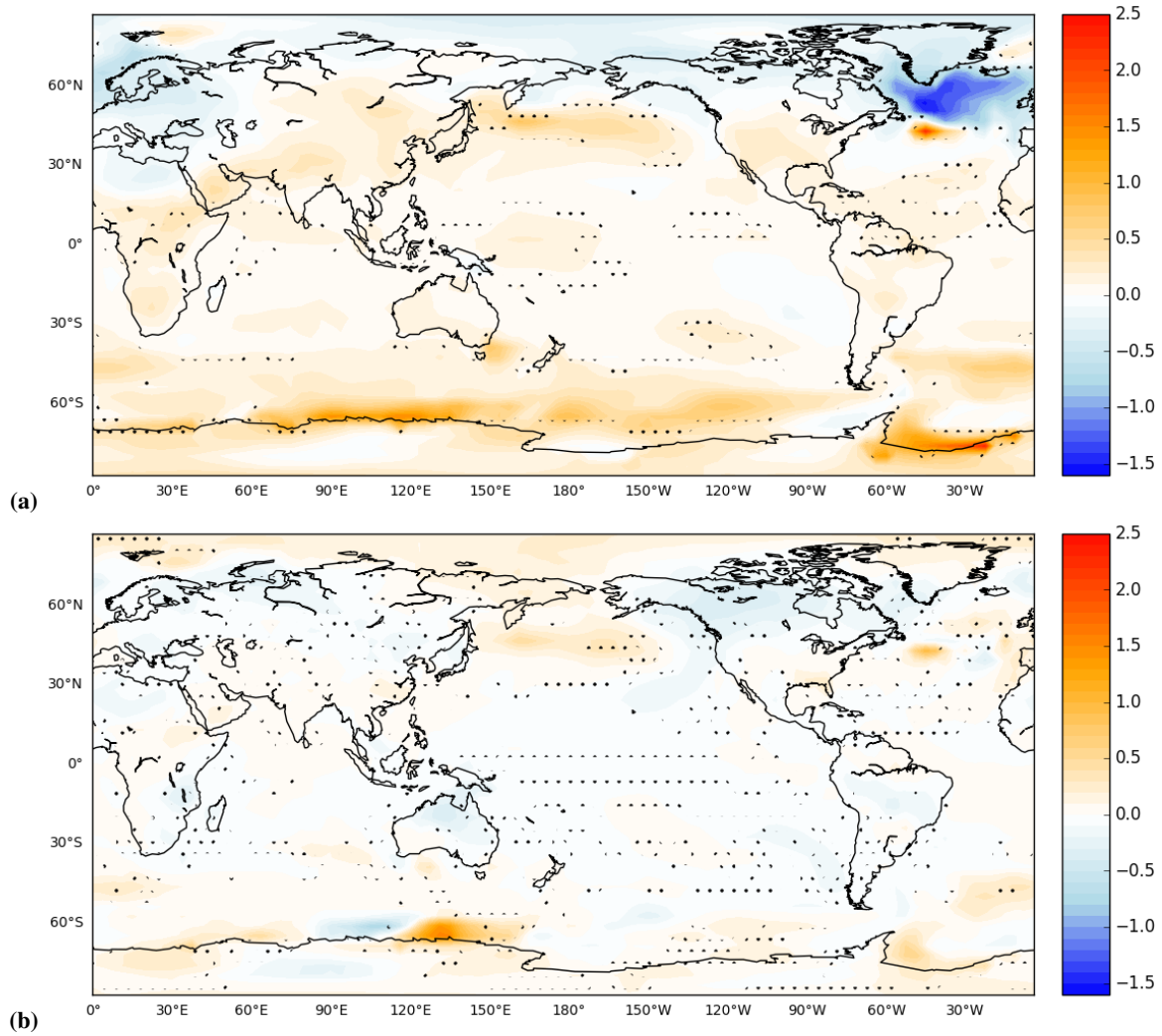
**Figure 1.** (a) PRISM3D land-sea mask implemented in COSMOS simulations for PlioMIP1 based on data provided by Haywood et al. (2010), assuming presence of an open Bering Strait and Canadian Arctic Archipelago. (b) PRISM4 land-sea mask implemented in COSMOS simulations for PlioMIP2 with closed Bering Strait and Canadian Arctic Archipelago as described in the PlioMIP2 protocol (Haywood et al., 2016; Dowsett et al., 2016). Color shading depicts the prescribed land orography and ocean bathymetry (m) for PlioMIP1 and PlioMIP2, respectively. Black isolines depict prescribed mid-Pliocene ice sheets for the respective phases of PlioMIP. Differences over Antarctica are due to the switch from employing a modern land sea mask with minor modifications towards Pliocene conditions in the COSMOS PlioMIP1 simulation, and employing a full Pliocene representation of Antarctic geography in COSMOS for PlioMIP2.



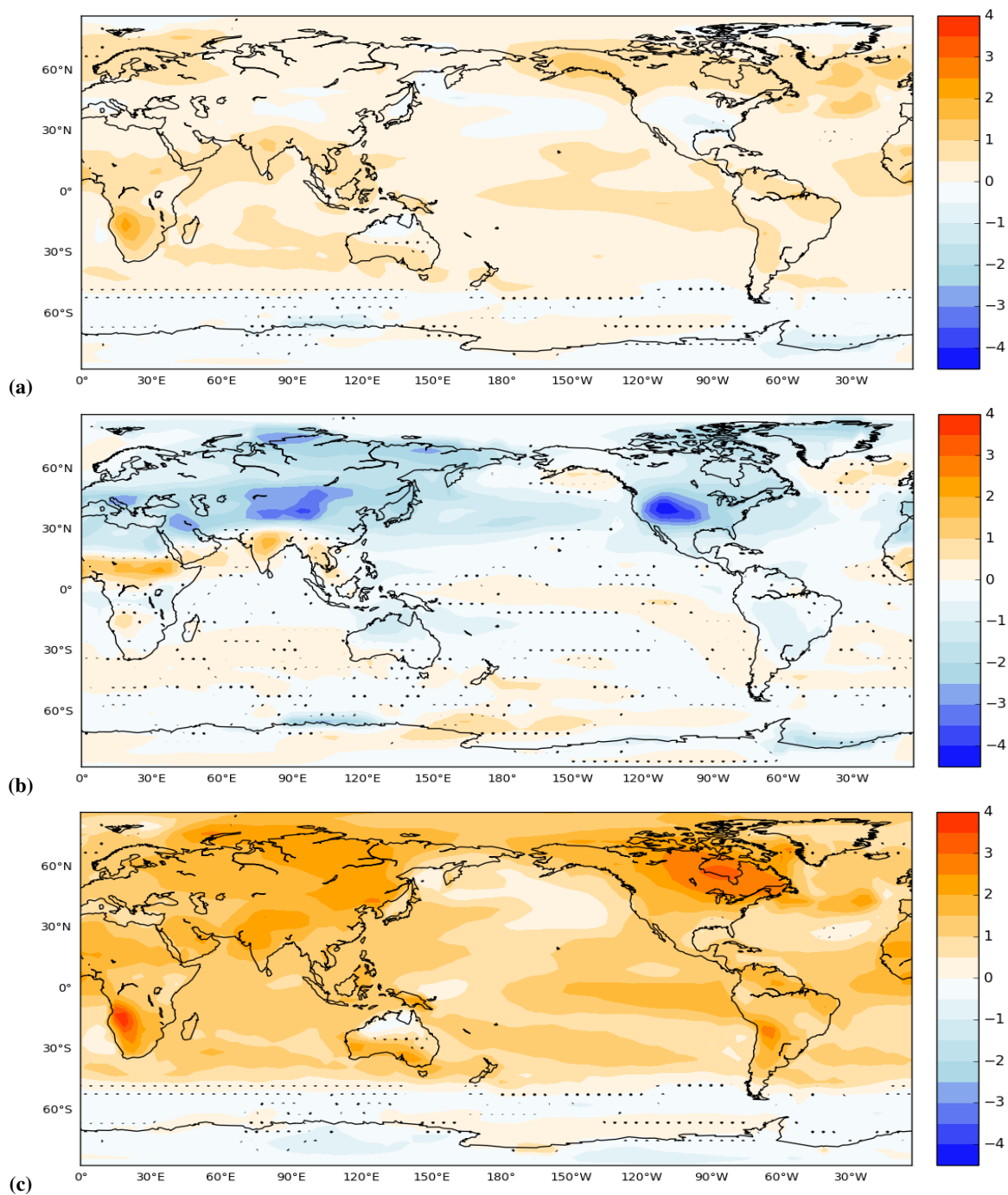
**Figure 2.** Annual mean SAT ( $^{\circ}\text{C}$ ) anomalies between core mid-Pliocene simulations for PlioMIP1 and PlioMIP2, with their respective Pre-Industrial simulations (PI\_1 and PI\_2). **(a)** Climatological anomaly that has been calculated over 100 years for PlioMIP1; **(b)** as a, but for Eoi400. Stipples (black dots) show regions of statistically insignificant differences.



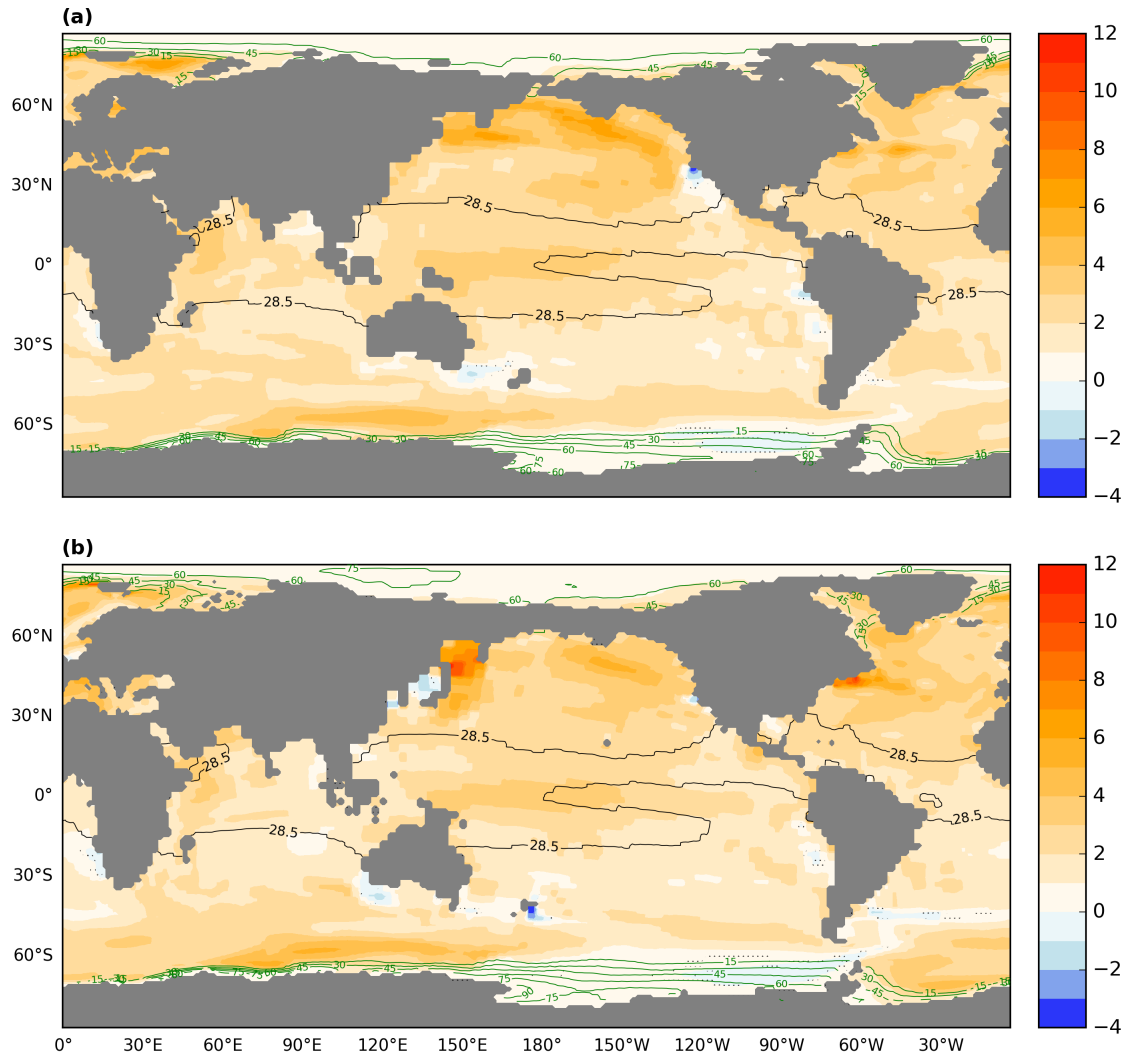
**Figure 3.** Annual mean SAT ( $^{\circ}$ C) anomalies between mid-Pliocene simulations with varying boundary conditions. **(a)** Eoi405\_ORB - PlioM1, which shows the contribution of changes in mid-Pliocene palaeogeography between PlioMIP1 and PlioMIP2; **(b)** Eoi400 - PlioM1. Comparison of mid-Pliocene simulations of both PlioMIP phases, incorporating all the changes from PlioMIP1 to PlioMIP2.



**Figure 4.** Annual mean SAT ( $^{\circ}$ C) anomalies between mid-Pliocene simulations with varying boundary conditions. **(a)** Eoi405 - Eoi400, showing anomalies due to changes in mid-Pliocene CO<sub>2</sub> from 405 to 400 ppmv as utilized for PlioMIP1 and PlioMIP2 respectively, while **(b)** Eoi400\_ORB - Eoi400, show variations caused by changes in mid-Pliocene orbit utilized in COSMOS simulations for PlioMIP1 and PlioMIP2.

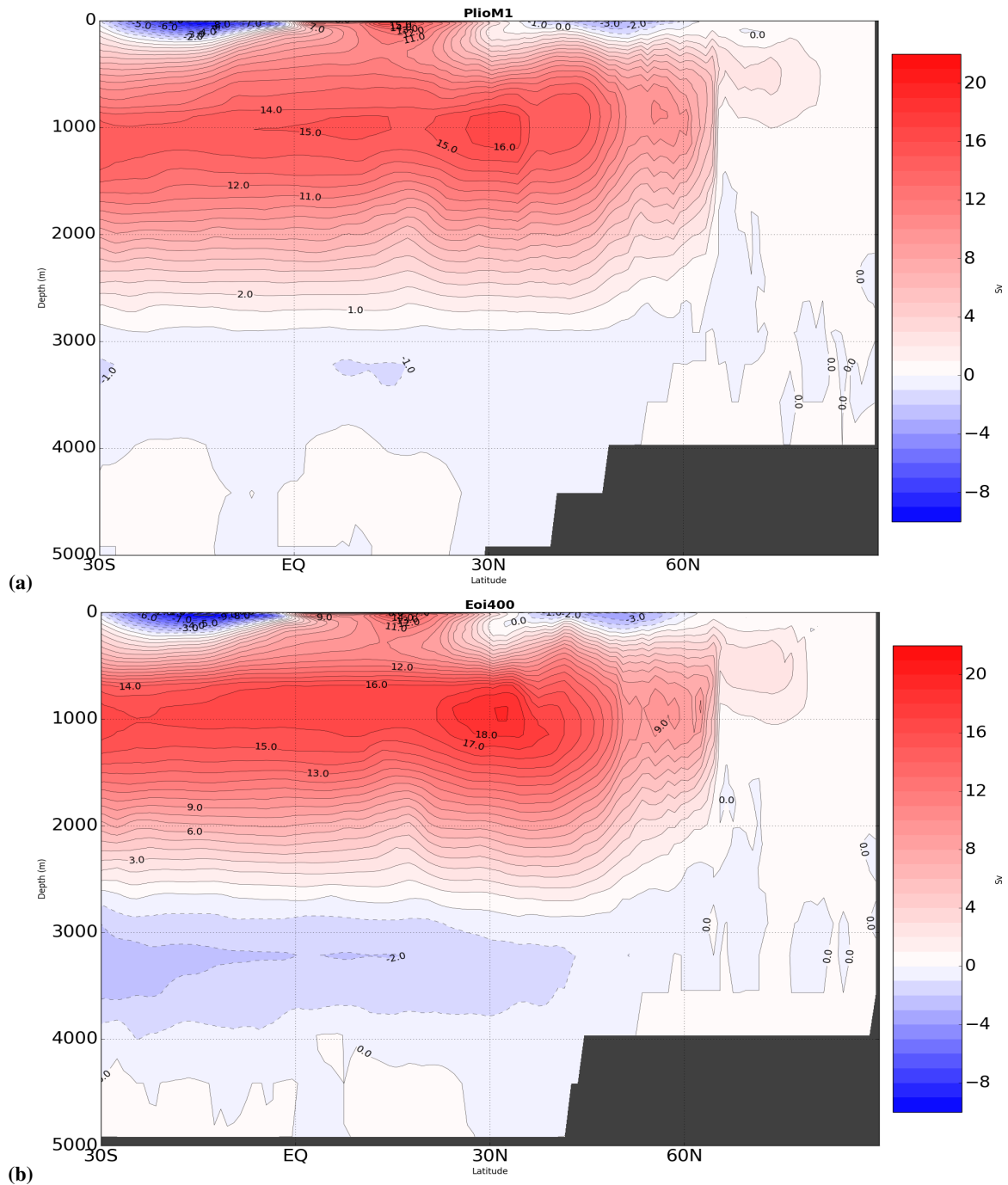


**Figure 5.** Annual and seasonal mean SAT anomalies, due to change in mid-Pliocene orbital forcing between Marine Isotope Stages K1 and KM5c, calculated from Eoi400\_K1 - Eoi400. Shown are (a) annual mean SAT ( $^{\circ}\text{C}$ ), (b) boreal summer (JJA) and (c) boreal winter (DJF).

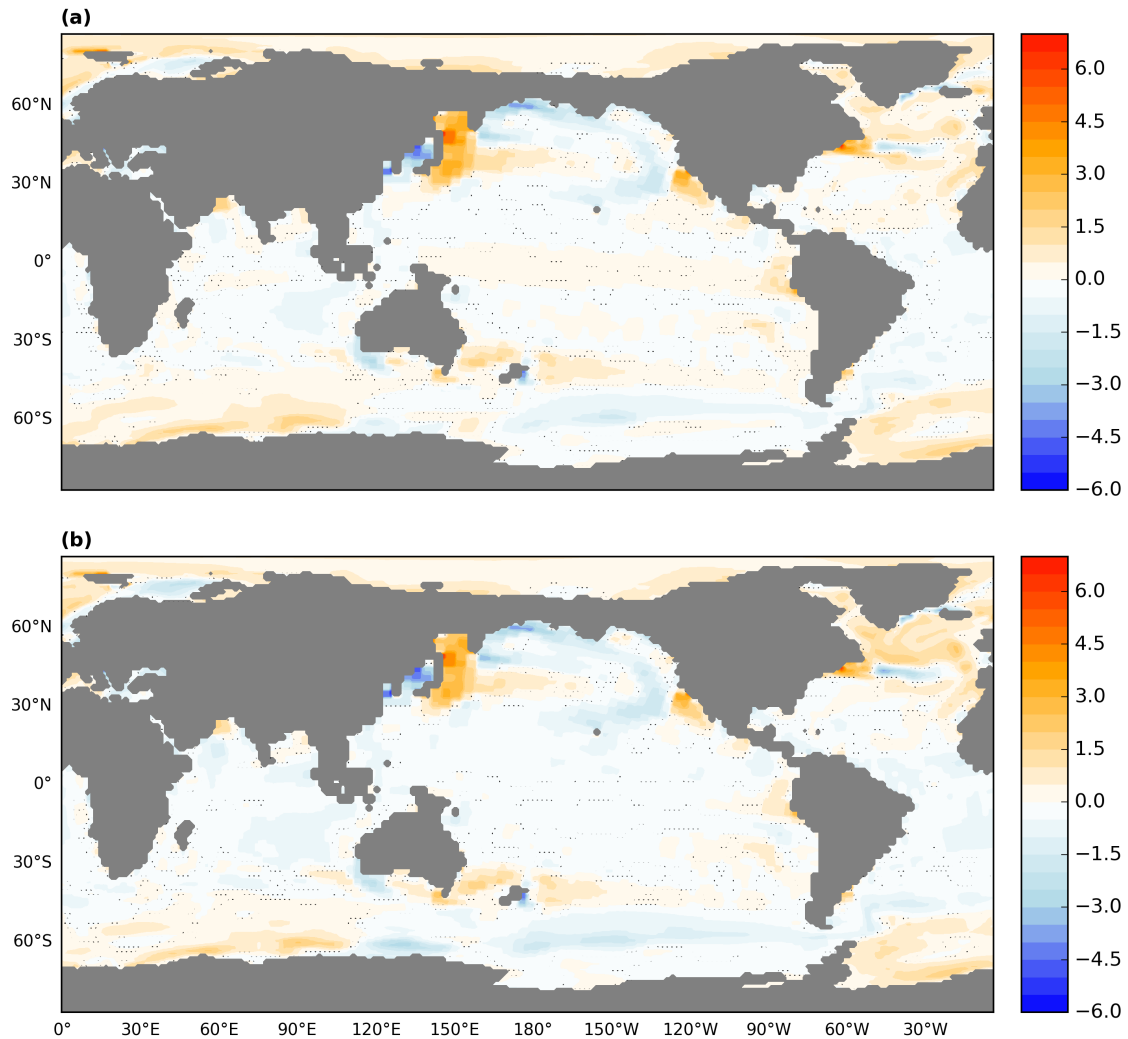


**Figure 6.** Comparison between mid-Pliocene SST ( $^{\circ}\text{C}$ ) anomalies, calculated from 100 years of model output, with respect to PI control simulations as obtained from COSMOS (a) PlioMIP1, and (b) PlioMIP2. Black isolines show the expansion of equatorial warm pool in the mid-Pliocene state while, the green isolines depict absolute annual mean sea ice cover in the mid-Pliocene state. The contour interval for the sea ice isolines is 15%.



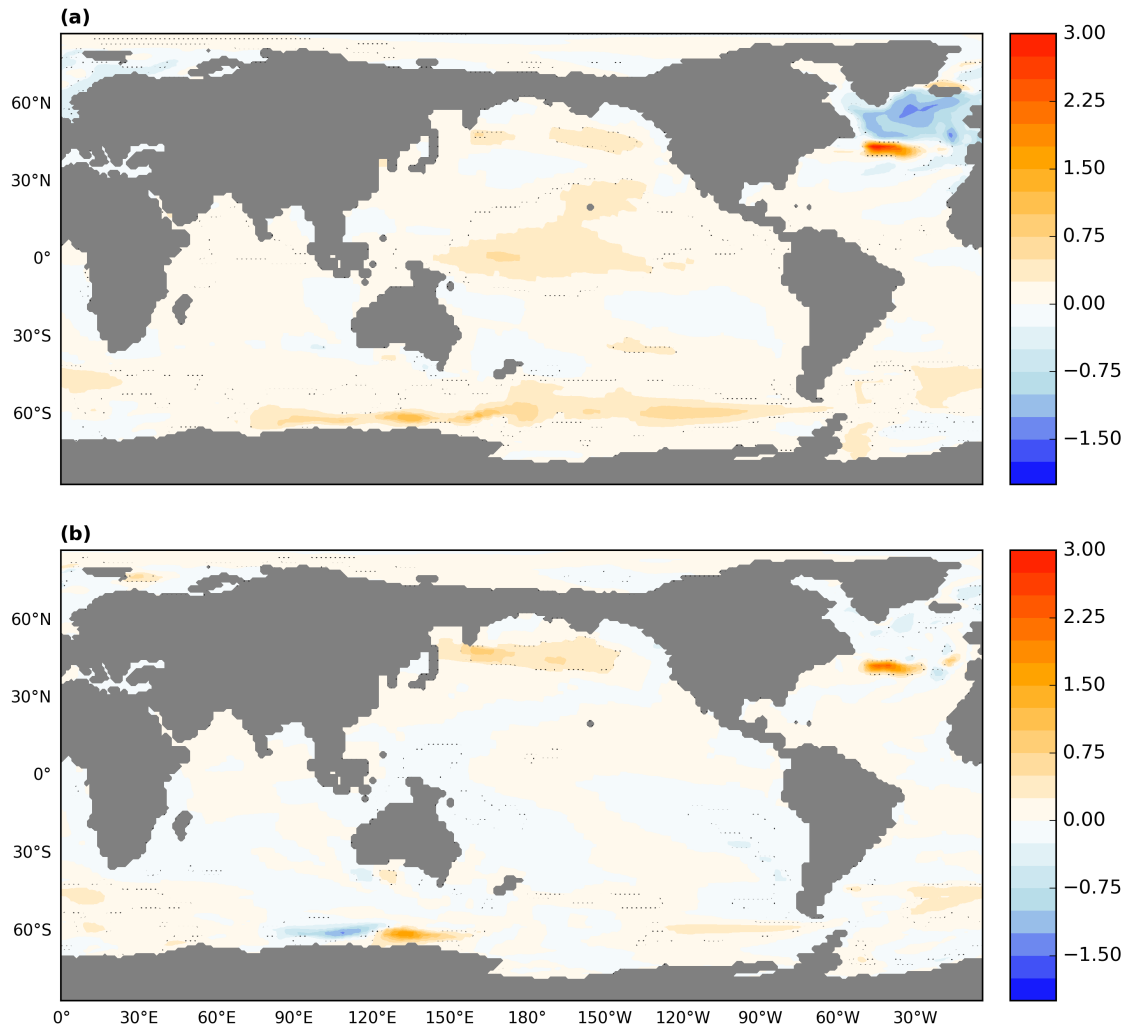


**Figure 7.** COSMOS simulated mid-Pliocene annual mean AMOC in Sv for (a) PlioMIP1 (simulation PlioM1) and (b) PlioMIP2 (simulation Eoi400). Overturning rates are time averages that have been calculated from 100-year model outputs. Positive values represent a clockwise circulation.

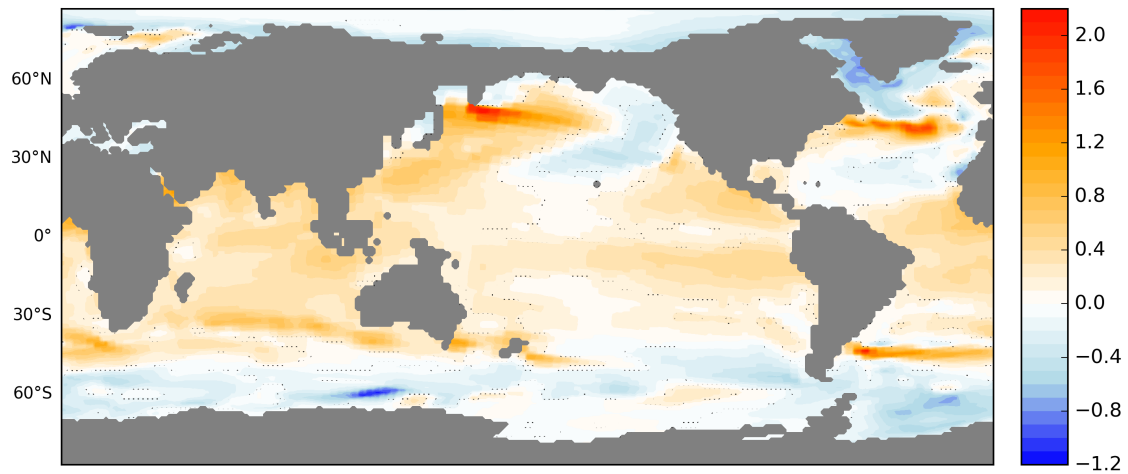


**Figure 8.** Annual mean SST ( $^{\circ}\text{C}$ ) anomalies between mid-Pliocene simulations with varying boundary and initial conditions. (a) Eoi405\_ORB - PlioM1, which shows the contribution of changes in mid-Pliocene palaeogeography between PlioMIP1 and PlioMIP2; (b) Eoi400 - PlioM1, comparing mid-Pliocene simulations of both phases of PlioMIP, incorporating all the changes in paleogeography, orbital and greenhouse gas forcing from PlioMIP1 to PlioMIP2.

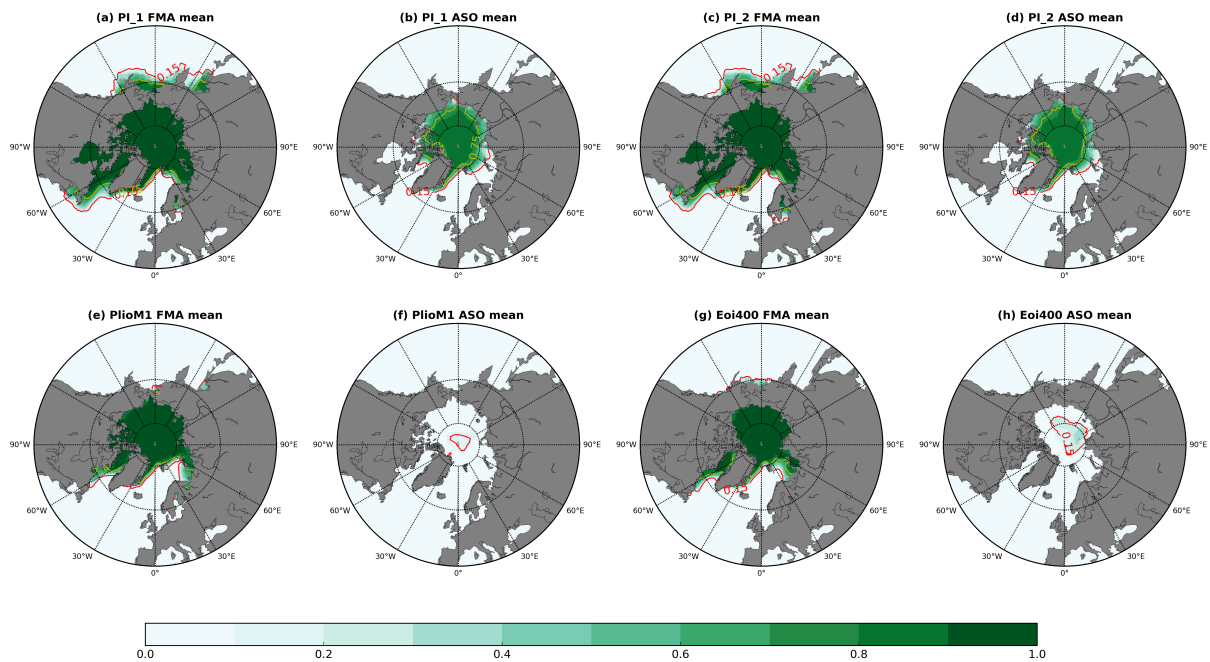




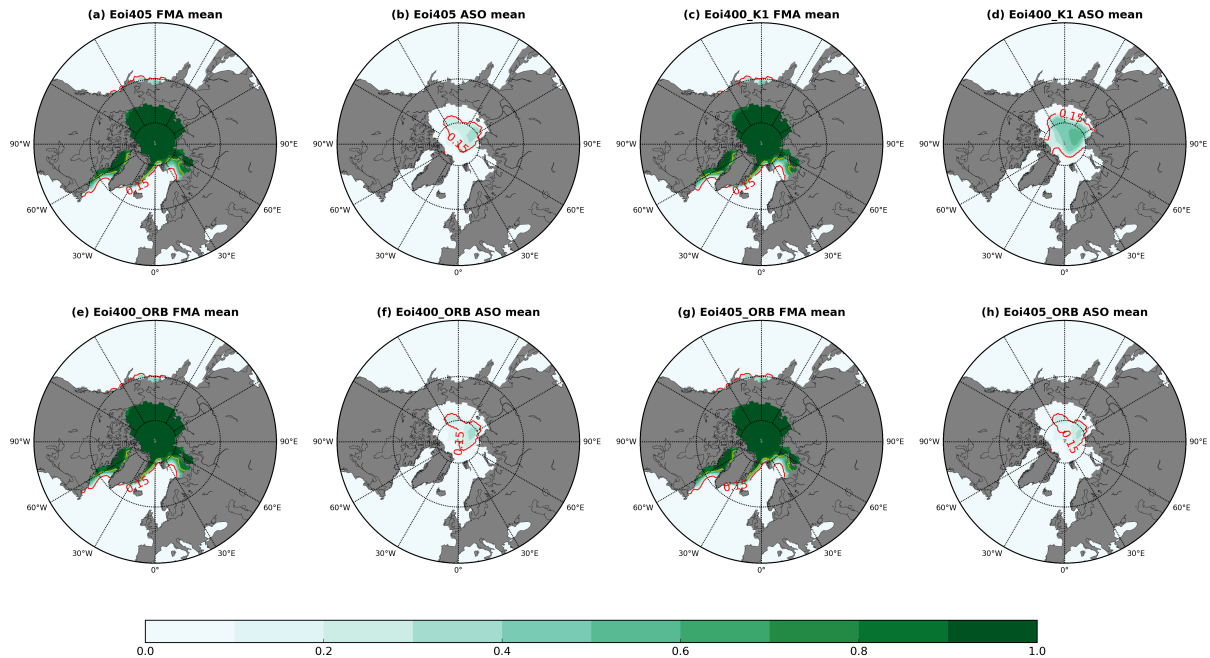
**Figure 9.** Annual mean SST ( $^{\circ}$ C) anomalies between mid-Pliocene simulations with varying boundary conditions. (a) Eoi405 - Eoi400, quantifying anomalies due to changes in mid-Pliocene  $\text{CO}_2$  from 405 to 400 ppmv, as utilized for PlioMIP1 and PlioMIP2 respectively, while (b) Eoi400\_ORB - Eoi400, quantifying changes in the (PI, respectively KM5c) orbital configuration as utilized in COSMOS simulations for PlioMIP1 and PlioMIP2.



**Figure 10.** Annual mean SST anomalies due to change in mid-Pliocene orbital forcing between Marine Isotope Stages K1 and KM5c, calculated from Eoi400\_K1 - Eoi400.



**Figure 11.** Seasonal mean Arctic sea ice concentration averaged over 100 model years as simulated by COSMOS for mid-Pliocene and PI runs in response to boundary conditions prescribed for PlioMIP1 and PlioMIP2. (a), (c), (e) and (g) show winter (FMA) averages, while (b), (d), (f) and (h) show summer (ASO) averages for simulations PI\_1, PI\_2, PlioM1 and Eoi400, respectively. The red contours indicate the 15% isoline of sea ice cover, while yellow contours indicate the 75% isoline of sea ice cover.



**Figure 12.** Seasonal mean Arctic sea ice concentration averaged over 100 model years as simulated by COSMOS for mid-Pliocene simulations in response to changes in PlioMIP's prescribed boundary conditions. (a), (c), (e) and (g) show winter (FMA) averages, while (b), (d), (f) and (h) show summer (ASO) averages for simulations Eoi405, Eoi400\_K1, Eoi400\_ORB and Eoi405\_ORB, respectively. The red contours indicate the 15% iseline of sea ice cover, while yellow contours indicate the 75% iseline of sea ice cover.