

1 **Last 2400 yrs. of environmental changes and human activity recorded in the**  
2 **gyttja-type bottom sediments of the Lake Mlynek (Warmia and Masuria**  
3 **Region, northern Poland)**

4  
5 Fabian Welc (1), Jerzy Nitychoruk (2), Leszek Marks (3), Krzysztof Bińka (3), Anna Rogóż-  
6 Matyszczak (2), Milena Obremska (4), Abdelfattah Zalat (5)

7  
8 1. Institute of Archaeology, Cardinal Stefan Wyszyński University in Warsaw, e-mail: f.welc@uksw.edu.pl.

9 2. Faculty of Economic and Technical Sciences, Pope John Paul II State Higher School of Education, e-mail:  
10 jerzy.nitychoruk@pswbp.pl, annarogoz@interia.pl

11 3. Faculty of Geology, University of Warsaw, e-mail: k.binka@uw.edu.pl, leszek.marks@uw.edu.pl

12 4. Polish Academy of Sciences, Institute of Geological Sciences, e-mail: mobremska@twarda.pan.pl

13 5. Tanta University, Faculty of Science, Tanta University, e-mail: abzalat@science.tanta.edu.eg

14  
15 **Abstract**

16 *In the densely forested Warmia and Masuria region (north Poland) there are many **endorreic** lakes*  
17 *characterized by small size and **slow sedimentation**, which makes them excellent Holocene*  
18 *environmental and palaeoclimatic ~~archives~~. One of them - the Lake Mlynek, located near the*  
19 *village of Janiki Wielkie, has been selected for multi-faceted palaeoenvironmental research based*  
20 *on a precise radiocarbon ~~scale~~. Sediments of this lake also contain unique information about*  
21 *human impact on the environment, because a stronghold has been operating on its northern shore*  
22 *since the early Iron Age to the early Medieval period, ~~which gives~~ opportunity to correlate*  
23 *palaeoenvironmental data with phases of the human activity ~~in the~~ last 2400 years. During 3<sup>rd</sup> and*  
24 *2<sup>nd</sup> century BC ~~in~~ the lake was surrounded by a dense deciduous forest. From the 1<sup>st</sup> century BC to*  
25 *2<sup>nd</sup> century AD the forest around the lake was much reduced, ~~what~~ can be associated with the first*  
26 ***pre roman** (La Tene) and Roman occupation phase ~~attested on~~ the stronghold located close to the*  
27 *lake. From the 2<sup>nd</sup> up to 9<sup>th</sup> century AD, gradual restoration of the forest and decline of human*  
28 *activity ~~is attested~~, along with lake deepening and onset of colder and humid climatic phase which*  
29 *corresponded to global cooling episode known as the Bond 1 Event (1.5 ka BP). The next intensive*  
30 *forest clearing around the lake occurred ~~in~~ the 9<sup>th</sup> - 13<sup>th</sup> century AD as result of human activity*  
31 *(Middle Age settlement phase ~~on~~ the stronghold). This period is marked by a ~~climate change~~*  
32 *towards warming, which ~~is confirmed by~~ a gradual shallowing of the lake (Middle Age Warm*

33 *Period). In latter time, the strong human activity which transformed the landscape caused that*  
34 *possible climate-induced natural environmental changes are not so clear. Only cooling during the*  
35 *Little Ice Age is indicated by the changing sedimentation rate in the lake.*

36  
37 **Keywords:** late Holocene, lake sediments, Lake Młynek, environmental change, human impact, Late Holocene, Iron  
38 Age, Middle Ages, north Poland.

39

## 40 1. Introduction

41 Lake sediments are a useful source of proxies of past environmental and climate changes  
42 in the Holocene (see Brauer, 2004; Zolitschka, 2007; Wanner et al., 2008; Francus et al., 2013;  
43 Ojala et al., 2013; Welc, 2017). The main advantage of lake sediment archives is usually continuous  
44 and uninterrupted accumulation. Well-dated lake sediment columns let to trace both long- and  
45 short-term Holocene palaeoclimate changes (Smol et al., 2001; Tiljander et al., 2002; Valpola and  
46 Ojala, 2006; Czymzik et al., 2010; Elbert et al., 2012; Tylmann et al., 2012; Welc, 2017).  
47 Particularly valuable for palaeoclimate reconstructions are sequences from lakes, without river  
48 spring inflow and outflow (Wetzel, 2001; Stankevica et al., 2015). In northeastern Poland eutrophic  
49 lakes are common, similarly as in northeastern Europe. They are typical for their substantial  
50 primary production (algae and aquatic macrophytes), because of the predominance of nutrient input  
51 over mineralization processes (Cooke et al., 2005). Such intensive bio-productivity results in a  
52 deposition of thick organic sedimentary sequences, mostly of organic gyttja composed of remains  
53 of aquatic plants, plankton and benthic organisms transformed by activity of bacteria and mixed  
54 with mineral components supplied from the lake basin (Kurzo et al., 2004; Stankevica et al., 2015).  
55 There are ca. 1000 freshwater lakes of different size in the Warmia and Mazury Region in north  
56 Poland (Fig. 1). Most of them are located within past glacial tunnel valleys formed by meltwater  
57 erosion at the termination of the Vistulian (Weichselian) Glaciation (ca. 115-12 ka BP). After  
58 deglaciation at the end of the Pleistocene these tunnel valleys were partly filled with deposits and  
59 water, and persisted in the Holocene. Such lake basins have steep slopes and their bottom deposits  
60 are underlain by glaciofluvial sand, gravel and silt or glacial till (Kondracki, 2002; Gałązka, 2009).  
61 Many lakes in the Warmia and Mazury Region are small (<1 ha), with stable sedimentation rate  
62 and without river inflow and outflow. It is among the reasons that palaeoclimatic investigations,  
63 based mainly on pollen analysis are undertaken in this area (e.g., Kupryjanowicz, 2008; Kołaczek  
64 et al., 2013).

65 Lake Mlynek is located near the village of Janiki Wielkie and it was selected for multi-  
66 faceted palaeoenvironmental research (pollen analysis, diatom, chrysophyte cysts, geochemistry,  
67 and other) based on a precise radiocarbon scale, as it is hypothesized that the bottom sediments of  
68 this lake contain a unique record of human impact on environment, as a result of the location of an  
69 Iron Age stronghold on the northern shore, which was active (though not continuously) up until  
70 the early Middle Ages (Fig. 1). Performed analysis provided an opportunity to reconstruct the  
71 transformation of the vegetation around the lake and the changes in the reservoir that occurred  
72 under the influence of the climate (regional significance) and as a result of human activity. Our  
73 results were correlated with geoarchaeological data to determine mutual relations between  
74 environmental and climatic changes with development of human settlement phases in the Warmia  
75 and Mazury Region during the last 2000 years.

76

## 77 2. Study area

78 The Lake Mlynek is a small water body that has occupied a glacial tunnel valley in the Holocene.  
79 The lake is located in the Iława Lakeland in northern Poland, maintains the NNE-SSW course and  
80 it is about 720 m long and 165 m wide. The lake occupies 7.5 ha in area, its water surface rises to  
81 about 101 m a.s.l. and the maximum depth is just over 2 m. The lake Mlynek is surrounded by a  
82 morainic plateau at 120-130 m a.s.l and is surrounded by dense forest (Fig. 1). A large part of the  
83 Iława Lake District is covered with forest, whereas meadows and synanthropic communities which  
84 have a smaller share. The forest covers 41.5% of the area. Among the habitats, a highly-productive  
85 mixed coniferous forest prevails. The basic components of the Iława forest are pine, oak, beech,  
86 alder, birch, in smaller amounts there are spruce, larch, ash, hornbeam, maple and linden. Currently,  
87 the Lakeland is characterized by a transitional climate that shapes the influence of the continental  
88 and maritime climate circulation. The vegetation period lasts about 206 days, and the snow cover  
89 remains for 70-90 days. Average temperature values range from approximately -4.0°C in February  
90 to above 17.0°C in July, maximum from -1.0° to 22.0°C, minimum from approximately -7.0° to  
91 12.0°C. Due to the greater proportion of the polar air masses and a large number of natural water  
92 reservoirs, air humidity is relatively high, ranging from 72% to 89%. The precipitation sums from  
93 500 to 550 mm a year. Throughout the year, SW winds predominate. The westerly winds are  
94 stronger in winter. The highest wind speeds are recorded in the winter months (from 2 to 4 m/s)  
95 and the lowest in the summer (from 2.0 to 3.0 m/s) (Jutrzenka-Trzebiatowski and Polakowski,

96 1997; Stopa-Boryczka et al., 2013). It is important to note, that from the north, a small stream flows  
97 into the Lake Młynek, which is active in winter and dries up almost completely in summer (Fig. 1:  
98 D). ~~Most probably it is~~ an effect of irrigation ~~works~~ related to the construction of ~~the~~ mill in the  
99 15th century, somewhere in the vicinity of the medieval stronghold located on the ~~shore~~ of the lake  
100 (Semrau, 1935, Bińka et al., 2020).

101

### 102 3. Material and methods

#### 103 3.1. Bathymetry

104 Determination of lake bathymetry and thickness of bottom sediments ~~are~~ extremely  
105 important in palaeolimnological research to help locate ~~coring~~ sites. This can be achieved through  
106 the use of GPR sounding (Lin et al., 2009; Sambuelli et al., 2009; Sambuelli and Silvia, 2012). In  
107 Poland winter is a particularly convenient season when ~~ice cover of a lake makes~~ GPR profiling  
108 much easier and ~~improves~~ access and speed of data collection (Hunter et al., 2003). Measurements  
109 along and across the lake were carried out in 2017, directly on a ~~lake ice and a snow cover~~ (Fig. 2).  
110 We used the radar system ProEx of the Malå Geoscience. A radar pulse was generated at a regular  
111 distance interval of 0.02 m (900 samples were recorded from a single pulse). The time window of  
112 recording was between 250 and 300 ns. Prospection was done with ~~use~~ of a shielded monostatic  
113 antenna with 250 MHz nominal frequency of the electromagnetic wave.

114

#### 115 3.2. Coring and sampling

116 Based on the results of the GPR, ~~4 drillings were done at ca 2 m water depth~~ (Fig. 3) to  
117 ~~collect cores~~ according to Givelet et al. (2004) ~~collecting protocol~~. Sediment cores were film-  
118 wrapped in 1 m plastic tubes and transported to the laboratory. These cores (M1-4) were then  
119 subjected to magnetic susceptibility measurements which enabled ~~to select M1~~, the longest and  
120 most continuous core, to carry out detailed analysis. ~~Samples from the~~ 3.5 m long core M-1  
121 (geographic coordinates: 53.82486 N, 19.72419 E) ~~were~~ sub-sampled at 5 cm ~~interval~~ and used for  
122 multi-proxy laboratory analyses.

123

#### 124 3.3. Age-depth model

125 Radiocarbon dating was performed on 4 bulk samples from the core M-1, collected either  
126 from organic-rich gyttja or gyttja with dispersed organic matter (Table 1). The organic matter

127 seems to have been derived both from aquatic and terrestrial sources. AMS dating was done in the  
 128 Poznań Radiocarbon Laboratory in Poland, where <sup>14</sup>C measurements were performed in graphite  
 129 targets (Goslar et al., 2004). Construction of proper and correct age-depth model required an  
 130 assessment of several agents that could disturb constant accumulation of bottom deposits of the  
 131 Lake Młynek. Disturbances could result both from sedimentary and post-sedimentary processes  
 132 (varied rate of deposition and compaction, impact of bioturbation). The varied influx of material  
 133 delivered to the lake from the adjacent area is a very important factor of disturbance. Therefore, a  
 134 Bayesian age-depth routine model was chosen as it takes into account the sedimentation rate and its  
 135 variability (Blaauw and Christen, 2005, 2011; Blaauw et al., 2007) (Fig. 4). The model was based  
 136 on default settings, except for section thickness which was set at 0.05 cm given the length of this  
 137 core. The Bacon model uses the IntCal3 curve (Reimer et al., 2013) to calibrate the radiocarbon  
 138 data.

139

140 Table 1. List of radiocarbon determinations.

| No. | Depth in m | Lab. reference | <sup>14</sup> C yr. BP | Age calibrated<br>95% probability | Material dated |
|-----|------------|----------------|------------------------|-----------------------------------|----------------|
| 1   | 0.95-1.00  | S/JW 1/2015/A  | 435 ± 30               | 1418 – 1494 AD                    | Bulk of gyttja |
| 2   | 1.65-1.70  | S/JW 1/2015/B  | 1015 ± 30              | 971 – 1048 AD                     | Bulk of gyttja |
| 3   | 2.40-2.45  | S/JW 1/2015/C  | 1730 ± 30              | 236 – 386 AD                      | Bulk of gyttja |
| 4   | 3.45-3.50  | S/JW 1/2015/D  | 2275 ± 30              | 401 – 351 BC                      | Bulk of gyttja |

141

### 142 3.4. Palaeobotanical analysis

143

#### 144 3.4.1 Pollen

145 The core M-1 was sampled every 5 cm for pollen analysis. 70 samples (ca. 10 g each) were  
 146 treated with 5% HCl, boiled in 5% KOH and hot 30% HF. They were washed with 15% HCl and  
 147 treated by the standard Erdtman's acetolysis. In each sample about 1000 pollen grains were counted  
 148 using an optical microscope at 400x magnification.

149

#### 150 3.4.2 Diatom and Chrysophyte cysts analysis

151 70 samples were prepared for the analysis of diatoms and chrysophyte cysts. They were  
 152 extracted from 1 g of dry sediment of each sample using the disintegration method in HCl and  
 153 H<sub>2</sub>O<sub>2</sub>, according to the technique proposed by Zalat and Servant-Vildary (2007). For slide

154 preparation, 0.1 ml of the final suspension was dried on coverslips and then mounted onto slides  
155 using Naphrax. Diatoms were identified to species level using a Leica photomicroscope with a  
156 digital camera and equipped with differential interference contrast (DIC) optics at 1000x  
157 magnification with oil immersion. Identification and ecological information of the diatom species  
158 were based primarily upon the published literature (e.g. Kilham et al., 1986; Douglas and Smol,  
159 1999; Witkowski et al., 2000; Hofmann et al., 2011). Recent taxonomic advances split many  
160 diatom taxa of the former genus *Fragilaria sensu lato* into several new genera, including  
161 *Fragilaria*, *Pseudostaurosira*, *Staurosira* and *Staurosirella* spp. (Williams and Round, 1987);  
162 these new names herein collectively referred to as *Fragilaria sensu lato*. Chrysophyte cysts were  
163 described and enumerated following Duff et al. (1995, 1997), Pla (2001) and Wilkinson et al.  
164 (2002). Preliminary results of the diatom studies based on the core M-1 were already published by  
165 Zalat et al. (2018).

166

### 167 3.5. Geochemical analysis

168 ICP-OES spectrometer was used for determination of basic (Al, Ca, Mg, Na, K, Fe, P) and  
169 trace elements (As, Cd, Mn, Th, Ti, U, V, Zn) ~~in the analysed samples~~. Powdered samples were  
170 mineralized in a closed microwave Anton Paar Multiwave PRO reaction system. Mineralization  
171 procedure was based on the procedure of Lacort & Camarero. Characteristics of lake sediments  
172 ~~was done with~~ the extraction method of elements soluble in aquaregia (according to European  
173 Standard CEN/TC 308/WG 1/TG 1, slightly modified). Dry samples of about 0.2 g weight were  
174 transferred to the PTFE vessel and HNO<sub>3</sub>, and HCL Merck Tracepur® was added. The vessels  
175 were placed in a rotor and loaded to a microwave. Finally, the samples were analysed in the Spectro  
176 Blue ICP OES spectrometer at Regional Research Centre for Environment, Agricultural and  
177 Innovative Technologies, Pope John II State School of Higher Education in Biała Podlaska. Berndt  
178 Kraft Spectro Genesis ICAL solution and VHG SM68-1-500 Element Multi Standard 1 in 5%  
179 HNO<sub>3</sub> were used.

180

### 181 3.6. Total organic carbon (TOC)

182 Analyses were done after sample acidification to remove carbonates in the SHIMADZU  
183 SSM 5000A analyser with a solid sample combustion unit. The method was the catalytically aided  
184 combustion oxidation at 900°C with pre-acidification and oven temperature 200°C. A measuring

185 range TC was 0.1 mg to 30 mg carbon. Sample amount was 1 g and aqueous content <0.5 g.  
186 Repeatability: S.D. ±1% of full scale range (www.ssi.shimadzu.com/products/toc-analyzers/ssm-  
187 5000a).

188

### 189 3.7. *Magnetic susceptibility (MS)*

190 The cores from the Lake Młynek were subjected to MS measurements using SM-30  
191 magnetic susceptibility meter (ZH Instruments). Due to very high sensitivity ( $1 \times 10^{-7}$  SI units) this  
192 device was provided with 8 kHz LC oscillator and its pick-up coil sensor was large enough to  
193 measure sufficiently high volume of sediments with very low MS. The measurements were done  
194 at every 5 cm along each core (M1-4).

195

### 196 3.8. *SEM microscopic analysis*

197 All selected samples were analysed using a scanning electron microscope (SEM) HITACHI  
198 TM3000 with an energy dispersive spectrometer (EDS) SWIFT ED 3000 Oxford Instruments. The  
199 samples were not covered with any conductive material. Magnification range was x 20 to x 30 000.  
200 This method was used to perform basic microscopic observations of samples of the core M-1 with  
201 point determination of their chemical composition of major elements.

202

## 203 Results

### 204 4.1. *Archaeological records*

205 Archaeological data were collected from the stronghold Janiki Wielkie, located on a hill at  
206 the north-eastern shore of the Młynek Lake. During the archaeological research carried out in 2013  
207 and 2016, a total of 143 stratigraphic units were distinguished on this site, which were divided into  
208 seven main settlement phases: phase I – early Iron Age, phase II –stronghold abandoned after the  
209 early Iron Age, phase III – early Middle Ages, phase IV – stronghold abandoned in the early Middle  
210 Ages, phase V – settlement activity on the stronghold in the 11th-13th century, phase VI –  
211 stronghold definitely abandoned in the 14th century (Rabiega et al., 2017, Nitychoruk and Welc,  
212 2017).

### 213 4.2 *Bathymetry*

214 A georadar transect across the lake reflects both its bathymetry and lithologic variety of its  
215 bottom (Figs 2 - 3). The superficial layer of the transect is represented by lake ice, ca 25 cm thick

216 and although it is almost not visible on radar images due to its thickness being smaller than a  
217 vertical resolution of measurements, beneath there are abundant horizontal multiple reflections of  
218 energy from the bottom of the ice. Two narrow and vertical zones with small diffraction hyperboles  
219 at 23 and 29 m of the transect indicate upward deformation of bottom sediments at the location  
220 sites of the sounding core and the core M-1 (Fig. 2a). The top of the underlying mineral deposits  
221 (so-called hard bottom) is indicated as a distinct downward-deflected reflection surface (Fig. 2b).  
222 In a central part of the lake it occurs at 2.6 m depth (two-way travel time 290 ns) and indicates the  
223 top of the Holocene organic sediments. Unfortunately, beneath there is a signal-absorption zone  
224 (Fig. 2d), resulting from the fact that most sediments are composed of fine-grained organic material  
225 (gyttja). However, thickness of this layer was determined by drillings to about 5 m. A relief of the  
226 lake bottom in the GPR image reflects a cross-section of a buried glacial tunnel valley that was  
227 eroded mainly in sandy and sandy-gravel deposits. Close to the lake shore (0 to 20 m in the  
228 northwest and 110 to 140 m in the southeast), there are numerous oblique and chaotically parallel  
229 reflection surfaces dipping towards the channel axis. They reflect bedding of the Pleistocene sandy-  
230 gravel series that partly filled a subglacial channel (Fig. 2c).

#### 231 4.3. *Age-depth model*

232 The age-depth model of the core M-1 from the Lake Młynek is shown in Fig. 4. Grey  
233 stippled lines show 95% confidence intervals and the red curve shows the ‘best’ model based on  
234 the weighted mean age for each depth. Good runs of a stationary distribution are shown in the upper  
235 left panel, green curves and grey histograms in the upper middle panel present distributions for the  
236 sediment accumulation rate. The main bottom panel shows the calibrated  $^{14}\text{C}$  dates (transparent  
237 blue) and the age-depth model (darker grey areas) which are indicating calendar ages.

#### 238 4.4. *Lithology*

239 Bottom deposits of the Młynek Lake are organic-rich. The core M-1 is composed of grey-  
240 brown gyttja at 1.8 – 3.6 m depth (Fig. 5). At 1.45 – 1.80 m depth there is grey-brown gyttja-  
241 detritus and at 1.10 – 1.45 m depth algal gyttja is recorded. The uppermost part of the core is  
242 composed of grey-brown (depth 0.4 – 1.1 m) and detritus gyttja (0.0 – 0.4 m).

#### 243 4.5 *Sedimentation rate*

244 The sedimentation rate was calculated based on the age-depth model. Results reflect quite  
245 a stable sedimentary environment with a general rate of 1.5 mm a year. The rate is stable at 3.40 –  
246 1.77 m depth and equal ca 1.5 mm a year. It drops to 1 mm, then rises to 1.3 – 1.8 mm a year at




247 1.77 – 0.30 m. At 0.0 – 0.30 m the sedimentary rate is the highest and equal ca 3 mm a year (Fig.  
248 5).

#### 249 4.6. *Magnetic susceptibility and total organic carbon*

250 MS is highly dependent on lithology and grain size of deposits (Dearing, 1994; Sandgren  
251 and Snowball, 2001). It reflects presence and size of ferromagnetic particles in a sample (Verosub  
252 and Roberts, 1995). Increased content of ferromagnetic minerals such as magnetite, Fe-Ti oxides  
253 or pyrrhotite generates higher MS whereas biotite, pyrite, carbonates and organics result in its lower  
254 values. Total volume of magnetic minerals in lake sediments reflects mostly climatic changes in a  
255 catchment (Bloemdal and deMenocal, 1989; Snowball, 1993; Peck et al., 1994).

256 MS in the core M-1 is varied but due to organic character of the sediments, its values are  
257 relatively low, from 0.002 to  $0.034 \times 10^{-7}$  units SI. In grey-brown gyttja with organic matter at 3.50  
258 – 2.58 m depth, MS rises and drops in turn from 0.01 to  $0.02 \times 10^{-7}$  SI. MS drops from 2.60 m depth,  
259 reaching a minimum at 1.63 m. Higher up, MS rises again, with the highest value at 1.35 m, then  
260 there is a minimum at 1.05 m and the next maximum at 0.69 m depth (Fig. 6).

261 MS is generally low in biogenic sediments as gyttja, which is composed mainly of  
262 microfossil skeletons e.g. diatoms and radiolarians (Thompson and Oldfield, 1986). In the Lake  
263 Młynek there is an apparent negative relationship between TOC and MS. Several intervals show  
264 both higher percentages of TOC and lower MS values. At 1.40 m depth, TOC suddenly drops,  
265 probably due to deforestation and then, MS significantly rises due to increasing input of terrestrial  
266 (non-organic) material to the lake. Such coincidence clearly indicates that TOC is both of  
267 autochthonous and allochthonous derivation (Fig. 6).

268  Changes of MS in the Lake Młynek sediments record most probably an input of clay into  
269 the lake and diagenetic conditions in bottom sediments. Iron oxides are presumably of detrital  
270 origin and were delivered to the basin through deep valleys incised at the north-western shore.  
271 Concentration of ferromagnetic minerals is connected with periodical intensive soil erosion around  
272 the lake. Their higher content depends also on diagenetic processes in bottom sediments. Oxidation  
273 of organic matter in anoxic conditions (by iron-oxide-reducing bacteria) results usually in increased  
274 content of ferromagnetic particles (small particles are removed first). In opposite, oxygenation by  
275 heavy floods stops this process and small magnetic particles are preserved (Jelinowska et al., 1997).

#### 276 4.7. *Water-soluble ions*

277 Various factors influence distribution and accumulation of geochemical elements in lake  
278 sediments. Most important are texture, mineral composition, oxidation/reduction state,  
279 absorption/desorption and physical transportation processes (Ma et al., 2016). Curves of  
280 representative elements are generally used to characterize sedimentary environments. Most  
281 analysed elements do not indicate any clear trend with depth in the Lake Młynek. The curves of S  
282 and TOC show significant rises at 2.0 – 1.4 m depth that are slightly correlated with decreased  
283 contents of Al, Fe, K, Ca, Mg and MS (Fig. 6).

284 Sulphur content is correlated with existence of iron sulphides. In the studied core, Fe is  
285 positively correlated with Al and Ti (Fig. 7). Fe-Ti oxides are noted in SEM EDS analysis. They  
286 are resistant to surface weathering and carry trace elements (Bauer and Velde, 2014). At ca. 3 m,  
287 high frequency peaks of Al, K, Ca, Na, Mg, Fe and S occur (Fig. 6). Such occasional high intensity  
288 events leave a stronger geochemical imprint, because of sedimentation in shallow water (Ivanić et  
289 al., 2018). The highest contents of detrital elements like Al, K, Ca and Mg are to be associated with  
290 sudden delivery of clastic material to the lake e.g. during increasing flood or rainfall (Wirth, et al.,  
291 2013). Especially Al is extremely immobile, that is why it should be regarded as a typical lithogenic  
292 element (Price et al., 1999). Additionally, Al is a major constituent of soils and other sediments as  
293 a structural element of clays. It has a strong positive correlation with many major elements (Fig.  
294 7). The association between Al and other elements can be therefore used as the basis to compare  
295 natural elemental contents in sediments and soils. Ca is well correlated with Al, originated mainly  
296 from terrigenous bicarbonate inputs and was deposited in a lake as a solid carbonate (Miko et al.,  
297 2003). Calcium is evidently more easily removed in solution from a mineral material and it is  
298 highly concentrated in highly erosional periods (Mackereth, 1965).

299 The Fe/Ca ratio is considered as a eutrophication proxy. The highest ratio points out to low  
300 oxygenation, eutrophic or dystrophic reservoirs (i.e. Kraska and Piotrowicz, 2000; Holmes and De  
301 Decker, 2012), whereas the low Fe/Ca ratio in bottom sediments indicates oligotrophic character  
302 of a lake. In the studied core sediments, Fe/Ca ratio varies from 0.808 (depth 3.05 m) to 3.677 (1.2  
303 m). The ratio is low, indicating oligotrophic conditions in bottom sediments which gives conflicting  
304 results with other data. The Fe/Ca ratio can be disturbed by detrital input to the lake (Fig. 6). The  
305 dysaerobic conditions in the lake are confirmed with Th/U ratios (0.03 – 0.41) which are lower  
306 than the critical value of 2 as indicated by Myers and Wignall (1987) and Wignall (1994). The ratio  
307 of total Fe to total P ranges from 13.91 (1.6 m) to 30.82 (0.55 m). The values are typical for other

308 lakes in northern Poland, which vary from 3 to 180 according to Bojakowska (2016). The release  
309 of P follows in reducing conditions. According to Ahlgren et al. (2011) is even up to ten times  
310 greater than in aerobic conditions. However, there is a poor correlation with other redox proxies  
311 i.e. Th/U (R=0.08). It can be caused by presence of Al which forms Al(OH)<sub>3</sub>. In such systems even  
312 though the redox state favours release of P from iron minerals, the P is immobilized by binding  
313 with hydroxides. Thus, the presence of Al(OH)<sub>3</sub> can stop release of P even in an anoxic  
314 hypolimnion (Hupfer and Lewandowski, 2008). It can be a case in the studied sediments as Al  
315 shows positive correlation with P content (R=0.49). Except for Fe/Ca, all counted ratios point out  
316 to anoxic conditions in all studied samples which is typical to eutrophic lakes. Nevertheless, as all  
317 proxies are characterized by extreme values at the 3.05 m depth, they seem to depend on external  
318 load of terrigenous material. It is confirmed with very good positive correlation between Fe and Al  
319 (0.95), Fe and Ti (0.64) Mn and Al (0.46) or Mn and Ti (0.78).

#### 320 4.8. Diatoms and chrysophyte cysts

321 Studies of the Lake Mlynek bottom sediments revealed presence of more than 200 diatom  
322 taxa belonging to 54 genera (Zalat et al., 2018) (Fig. 8). Diatoms were generally abundant and well  
323 to moderately preserved in most samples, although with admixture of mechanically broken valves,  
324 especially in the topmost part of the core. Results of the diatom analysis and relative abundance of  
325 the most dominant taxa enabled subdivision of the M-1 core section into 11 diatom assemblage  
326 zones (Fig. 8) that reflected six phases of lake development (Zalat et al., 2018). Moreover, changes  
327 in chrysophyte cysts distributions along with variation in diatom composition could be related to  
328 changes in pH, climate and trophic status. Stomatocysts can be used as the index of lake-level  
329 changes, habitat availability, metal concentrations and salinity. The periphytic diatom species  
330 dominate the planktonic ones throughout the core. A high proportion of periphyton to plankton  
331 assemblages was reported as indicative for a long-lasting ice-cover (Karst-Riddoch et al., 2005)  
332 whereas a shift from benthic to planktonic diatom taxa is considered for an ecological indicator  
333 that is generally interpreted in high-altitude lakes as record of shorter winter and increased in  
334 temperatures. Common occurrence of benthic forms represented by *Staurosira venter/Staurosirella*  
335 *pinnata* diatom assemblage indicates circumneutral to slightly alkaline shallow water with  
336 lowering lake levels and prolonged ice cover. However, *Aulacoseira* is the most dominant  
337 planktonic genus followed by *Cyclotella* and low frequency of *Cyclostephanos*.

338 Diatom preservation in the upper part of the core (depth 1.40 – 0.15 m) is moderate to  
 339 relatively poor and the recognized assemblage was represented by the occurrence of some  
 340 dissolved and teratological diatoms valves, in particular the topmost part of the core section (0.30-  
 341 0.15 m) (Zalat et al., 2018).

#### 342 4.9. Pollen

343 Based on percentage contents of main trees and terrestrial herbs five local pollen  
 344 assemblage zones (LPAZ M1-M5) were established in the pollen sequence of the Lake Młynek.  
 345 The Pollen levels were determined on the basis of changes in the percentage of individual taxa,  
 346 confirmed by a cluster analysis (Fig. 9):

| Zone     | Depth [m]  | Main features of pollen spectra  |
|----------|------------|--|
| LPAZ M-1 | 345÷315 cm | Pollen grains of <i>Carpinus</i> reached 33.5% and <i>Alnus</i> 25%, <i>Pinus</i> and <i>Betula</i> are <20%. A top border of this zone is indicated by decline of <i>Carpinus</i> .   |
| LPAZ M-2 | 315÷265 cm | The share of <i>Carpinus</i> drops significantly (<10%), contents of <i>Betula</i> , <i>Quercus</i> and <i>Corylus</i> are slightly raised. The percentages of Gramineae significantly increased up to 7.5%. There are continuous curves of <i>Cannabis/Humulus</i> , Chenopodiaceae, <i>Plantago lanceolata</i> , <i>Rumex acetosella</i> and <i>Secale cereale</i> and a top boundary is indicated by decline of Gramineae.  |
| LPAZ M-3 | 195÷265 cm | At the beginning the curve of <i>Betula</i> raises to 24% but then drops <10%. The share of <i>Carpinus</i> and <i>Fagus</i> rises to 19% and 27%, respectively. Content of Gramineae decreased <2% and the curves of <i>Secale cereale</i> , <i>Plantago lanceolata</i> and <i>Rumex acetosella</i> disappear. There are only single pollen grains of Chenopodiaceae and <i>Cannabis/Humulus</i> . A top boundary is indicated by a rise of Gramineae.  |
| LPAZ M-4 | 195÷145 cm | Content of <i>Fagus</i> pollen began gradually decrease. The share of pollen grains of <i>Betula</i> increases and becomes stable at 22-27%. Content of the Gramineae pollen grains increases again to 7%. Curves of <i>Cannabis/Humulus</i> , <i>Plantago lanceolata</i> , <i>Rumex acetosella</i> and <i>Secale</i> raise and a top boundary is marked by a rapid rise of <i>Cannabis/Humulus</i> .  |
| LPAZ M-5 | 145÷15 cm  | Curves of main deciduous trees decline: <i>Carpinus</i> <9%, <i>Fagus</i> <5%, <i>Quercus</i> <5%, <i>Alnus</i> <15%, <i>Betula</i> <14% and content of <i>Pinus</i> increases to 40%. There is significant rise of Gramineae up to 15%. Percentages of <i>Cannabis/Humulus</i> reached absolute maxima (25%) but close to middle part of this zone their strong decline is observed (below 2-3%). The continuous curves of <i>Cerealia undiff.</i> , <i>Centaurea cyanus</i> , <i>Plantago lanceolata</i> , <i>Rumex acetosella</i> , <i>Rumex acetosella</i> appeared, and single pollen grains of <i>Polygonum dumetorum</i> , <i>Polygonum aviculare</i> and <i>Urtica</i> were present. |

347

## 348 5. Discussion

### 349 5.1. Phases of the lake Mlynek development during last 2400 years

350 Based on results of performed analysis and archaeological data, five main environmental  
351 phases of the Lake Mlynek development were distinguished (Fig. 10):

#### 352 5.1. Phase 1: ~2300 – 2100 cal. BP (ca. 4 – 2/1 c. BC). Depth: 3.45 – 3.15 m

353 This phase is recorded in LPAZ M-1 which represents closed forest communities dominated  
354 by hornbeam and alder, which colonized marshland near lake shores. Plants of open spaces are  
355 only rarely noted as well as indicators of anthropogenic activity (e.g. *Plantago lanceolata*). There  
356 is therefore every reason to conclude that vegetation at that time was relatively natural and not  
357 disturbed. A diatom assemblage at the beginning of the diatom subzone DZ1 at 3.45 – 3.40 m depth  
358 (Fig. 8) indicates a shallow and slightly alkaline lake, followed (3.35 – 3.15 m) by a rising lake  
359 level. Common occurrence and domination of *A. granulata* suggests a high trophic status of slightly  
360 alkaline freshwater environment with high silica concentration (Zalat et al., 2018). MS is high and  
361 corresponds to high content of Fe, Ti and Al, indicating increased influx of terrigenous material,  
362 presumably activated by intensive rainfalls.

#### 363 5.2. Phase 2: 2100 – 1830 cal. BP (ca. 1 c. BC – 2 c. AD). Depth: 3.15 – 2.65 m

364 A vicinity of the lake began to change and major changes in the environment were caused  
365 by significant human impact. This phase corresponds with the LPAZ M2, characterized by  
366 reduction and fragmentation of the hornbeam-dominated forest. Birch, pine and hazel expanded  
367 under better lighting conditions in a partly open forest whereas higher oak values resulted from  
368 higher production of pollen. Mid-forest pastures occupied rather small-scale open areas, as can be  
369 notified from higher percentages of *Plantago lanceolata* and other herbaceous plants, e.g.  
370 Gramineae, *Artemisia* and *Rumex acetosa/acetosella*. Cultivated plants as *Cannabis t.* and *Secale*  
371 are rare, however their occurrence is entirely consistent with other indicators present during this  
372 phase. Human occupation is attested by presence of *Cannabis/Humulus*, *Plantago lanceolata*,  
373 *Rumex acetosella*, *Secale* and cereals undiff. This phase is commonly noted and similarly  
374 expressed in numerous palynological sequences in neighbouring areas (see for example  
375 Noryśkiewicz, 1982, 1987, 2013; Bińka et al., 1991; Ralska-Jasiewiczowa et al., 1998). Pollen data  
376 indicate that societies of that time cultivated rye and probably hemp. It is the oldest settlement  
377 phase at Janiki Wielkie stronghold and corresponds to a termination of the La Tène and the early  
378 Roman period. Human communities in the vicinity of the lake can be connected with settlements

379 of the East-Baltic Kurgan Culture (Rabiega et al., 2017). During this phase, planktonic diatoms  
380 were replaced by benthic taxa, accompanied by *Gyrosigma acuminatum* indicating a lower lake  
381 level and dominance of mesotrophic alkaline freshwater environment. The lower stands were  
382 interrupted by a short rise of water level at 2.90 – 2.85 m (Zalat et al., 2018). During this phase  
383 climatic conditions were still similar to ones in the previous phase, but it was drier what is reflected  
384 by ~~shallowing of the lake. Described~~ phase can be correlated with the so-called Roman Climatic  
385 Optimum (see McCormick et al., 2012).

386 *5.3. Phase 3: 1830 – 1150 cal. BP (ca. 2 – 9 c. AD). Depth: 2.65 – 1.95 m*

387 This phase is ~~recorded by the~~ LPAZ M3 when a forest restoration occurred. Absence of human  
388 indicator plants suggest that the settlement in the catchment was abandoned. There are also no traces  
389 of human activity nearby (Rabiega et al., 2017). Reduction of human impact and human-generated  
390 semi-open habitats, allowed for a short-term expansion of birch into empty, open areas, and then  
391 replaced by hornbeam that rebuilt its position to the level as in the LPAZ M1. Also, elm expanded  
392 again in a riparian forest. This restoration of the natural forest was followed by abrupt expansion of  
393 beech in the second half of the LPAZ M3. The area of open herbaceous plants communities,  
394 previously widespread, was limited.

395 Abundant planktonic diatoms occurred in the lake (Fig. 8) what indicates its deepening,  
396 enhanced thermal stratification, reduced mixing and increased thermal stability (Zalat et al., 2018).  
397 Intensified development of a vegetation cover and higher lake water level are indicated by  
398 geochemical indices. A gradual drop of MS corresponds with decreased content of detrital elements  
399 as Fe, Ti, Al and K, accompanied by gradual increase of TOC and the proxy ratio Fe/Ca. Lower MS  
400 and content of Al (acting as a major constituent of soils) accompanied by the higher TOC suggest  
401 limited erosion, in spite of gradually higher precipitation in the lake catchment and therefore, a rise  
402 of its water level (Fig. 6). The climate in this phase has become more humid. Increased rainfall and  
403 decreased evaporation are reflected in lake sedimentation as the lake got deeper, resulting in reduced  
404 deposition, lower productivity and greater stability. This phase could be associated with a global  
405 cooling of the Bond Event 1 (1.5 ka BP) (Bond et al., 1997; Welc, 2019).

406 *5.4 Phase 4: 1150 – 780 cal. BP (ca. 9 – 13 c. AD). Depth: 1.95-1.45 m.*

407 This phase is correlated with the LPAZ M4 and was divided into two subphases 4a and 4b  
408 (Fig. 10). The subphase 4a marks the onset of another settlement phase, resulting in forest clearing,  
409 similarly as in the LPAZ M2. Disturbances took place firstly in a beech forest and less in a

410 hornbeam-dominated one. The anthropogenic activity was only slightly smaller than in the LPAZ  
411 M2 ~~and is~~ reflected by presence of Gramineae, *Artemisia*, *Cannabis/Humulus*, *Plantago*  
412 *lanceolata*, *Rumex acetosella*, *Secale* and cerealia undiff. Diatom assemblages prove deepening of  
413 the lake (Zalat et al., 2018) as indicated by abundance of *Aulacoseira* associated with *Puncticulata*  
414 *radiosa* in the upper part of the diatom zone 5 at 1.85 – 1.70 m depth. The diatom assemblage  
415 suggests a rising lake level, higher trophic and stronger turbulent mixing conditions. Moreover, the  
416 greatest reduction of abundant *Fragilaria sensu lato* accompanied by abundant *A. granulata*, could  
417 resulted from forest clearing around the lake. Higher TOC corresponds with lower content of  
418 detrital material (Fe, Ti, Al and K) and lower MS, and it can reflect a progressing humidity (Fig.  
419 6). This phase can be correlated with the Migration Period and the early Middle Ages. A wooden-  
420 loamy defence rampart was raised at the end of the phase in a settlement close to the lake  
421 (archaeological phase III), after removal of a natural soil developed during abandonment of the  
422 site in the early Roman Period. After a short period, this stronghold was destroyed. A charcoal  
423 from a fired wall that represents destruction at the end of the archaeological phase IIIA, was dated  
424 at  $1245 \pm 25$  cal. BP i.e. 682-870 AD (95.4% probability) and  $1090 \pm 30$  cal. BP i.e. 892-1014 AD  
425 (95.4% probability) (Rabiega et al., 2017).

426 Human impact declines during the subphase 4b (1.70 – 1.45 m depth) onwards. At this time  
427 birch and less intensively poplar occupied temporarily abandoned open areas, especially toward  
428 the end of the zone, when a human activity was less intensive. Alder became more abundant,  
429 probably expanding into exposed marginal areas of the lake. The subphase 4b, corresponds to the  
430 diatom zone 6 which is characterized by abundant benthic *Fragilaria sensu lato* with sporadic  
431 occurrence of planktonic taxa. A diatom assemblage reflects lowering water level and slight  
432 alkaline freshwater, lower nutrient concentrations and low silica content (Zalat et al., 2018). In the  
433 stronghold at the lake shore, the next phase of human activity took place at the end of the 11th  
434 century AD when a new rampart was raised. Wooden constructions were also built, traces of which  
435 were excavated in the gate passage. The settlement was finally abandoned presumably in the first  
436 half of the 13<sup>th</sup> century and then, its ramparts were strongly eroded, with their material moving  
437 towards a yard and the moat (Rabiega et al., 2017). Previous climatic conditions continue in this  
438 phase. The subphase 4b is characterized by ~~climate change towards warming~~, which confirms  
439 gradual shallowing of the lake and increased rate of sedimentation. Human impact on the  
440 environment in this subphase is already so great that reconstruction of a climate change is not

441 clear. There is no doubt, however, that this is a warm period, which should be correlated with the  
442 Medieval Warm Period (Mann et al., 2009).

#### 443 5.5. Phase 5: 780 – 0 cal. BP (13 c. AD – present time). Depth: 1.45 - 0 m

444 This phase starts about 1200 AD and is connected with the early Modern Period of the  
445 Middle Ages. Cultivation and treatment of hemp has been ~~terminated but cultivation of~~ cereals and  
446 presence of synanthropic plants indicate human activity ~~in~~ near the lake. The water level is not high  
447 and slightly changes. There is a drop of TOC and rise of MS caused by increasing input of terrestrial  
448 material at 1.4 m depth, resulting presumably from human deforestation. The small watercourse  
449 which enters the Lake from the north – east appeared most probably during this phase and had the  
450 strong impact on the its water environment (see, Bińka et al, 2020). ~~How it was mentioned,~~ in 15  
451 c. AD a mill was built near the lake using water from ~~the newly created~~ stream. Damming of the  
452 water in the mill reservoir probably contributed to periodical blooms of dinoflagellate populations  
453 in the Lake Młynek. Major blooms of *Tetraedron* which usually preceding blooms of the  
454 dinoflagellate, ~~was~~ most probably main factor that contributed to the decline of settlement on the  
455 stronghold near the shore of the lake (Bińka et al, 2020). ~~Described~~ zone is also characterized by  
456 increased precipitation which is reflected by significantly more intensive terrestrial inflow to the  
457 lake and is confirmed by quasi-linear correlation of MS with contents of Fe and Ti in sediments  
458 (Fig. 6). The modern lake is shallow (2-3 m) and gradually overgrowing. Summing up, the phase  
459 5 is marked by intensive human activity around the lake and therefore, most environmental and  
460 climate changes are obliterated.

#### 461 5.2 Development of the Lake Młynek on regional bedground

462 The above scenario seems to be confirmed by earlier palaeoenvironmental research carried  
463 out in the south-western part of the Warmia-Masuria Lake District (Kupryjanowicz, 2008;  
464 Kołaczek et al., 2013). Previous studies of the lake and paleolake sediments in this region were  
465 based mainly on pollen analysis and enables to compare the Lake Młynek record with other  
466 sequences. The closest site Woryty (Pawlikowski et al., 1982, Noryśkiewicz and Ralska-  
467 Jasiewiczowa, 1989, Ralska-Jasiewiczowa and Latałowa, 1996), just 35 km to the east, is a  
468 reference one. Palaeoenvironmental records delivered by the Lake Młynek core are very similar to  
469 the Woryty palynological succession with distinctive human impact during the Roman Period and  
470 the Medieval Ages. More detailed comparison is impossible, because of low resolution of the  
471 pollen spectrum obtained in Woryty. The second site is the Lake Drużno, located in the Vistula



472 Delta, 35 km to the north of Młynek Lake (Zachowicz et al., 1982; Zachowicz and Kępińska, 1987;  
473 Miotk-Szpiganowicz et al., 2008). Unfortunately, low resolution and lack of the age-depth model  
474 from this lake makes comparison also very difficult. Despite of this and habitat differences between  
475 the Lake Družno and the Lake Młynek, a pollen records obtained in both sites are very similar and  
476 comprises human indicators during the Roman Period and human impact during the Medieval time.  
477 Differences in natural vegetation are local and especially exposed in higher share of alder in a  
478 pollen diagram from the Lake Družno, most probably caused by wet habitats in the Vistula Delta.  
479 The pollen spectrum from the Lake Łańskie (Madeja, 2013), located 55 km to the south-east from  
480 the Lake Młynek, shows higher content of pine and lower share of beech than in the case of the  
481 Lake Młynek. Such divergences are probably not only due to different location and environmental  
482 conditions in the lake vicinity but also depend on different size of these lakes. The Lake Młynek is  
483 a very small (0.7 km<sup>2</sup>) mid-forest basin, whereas the Lake Łańskie is over 10 km<sup>2</sup> large and contains  
484 mostly a regional pollen record. Based on periodical appearances of human plant indicators and  
485 archaeological data between 300 BC and 800 AD, three human phases of West Baltic Barrow,  
486 Wielbark and Prussian cultures were distinguished (Madeja, 2013). In the pollen diagram from the  
487 Lake Młynek (phase 2), the first culture is indicated, including termination of the La Tene and the  
488 Roman Period. Significant growth of human indicators from the beginning of 11<sup>th</sup> century is visible  
489 in diagrams from both sites. A more local record from the Lake Młynek is marked especially by  
490 high content of *Humulus/Cannabis* (to 25%) in 13-15th centuries AD. In the sediments of the Lake  
491 Łańskie, hemp occurred discontinuously and was <1%.

492 Numerous pollen data are available from the area adjacent in the south-west in the Brodnica  
493 Lake District, including the Strażym Lake (Noryśkiewicz, 1987; Noryśkiewicz and Ralska-  
494 Jasiewiczowa, 1989), the Oleczno Lake (Filbrandt-Czaja, 1999; Filbrandt-Czaja et al., 2003) and  
495 the Chełmno Lakeland (Noryśkiewicz, 2013). Pollen record from this region suggests settlements  
496 during La Tene, Roman and Medieval periods. Pollen record from other sites located to the east of  
497 the Lake Młynek indicates differences in a beech content. The *Fagus sylvatica* content changes to  
498 the north-east and its significantly high content in the Lake Młynek sediments represents a very  
499 local record in a small lake. Decline of *Fagus sylvatica* depend on a continental climate and is  
500 noted in pollen diagrams from the lakes: Salet (Szal et al., 2014a), Mikołajki (Ralska-  
501 Jasiewiczowa, 1989), Żabińskie (Wacnik et al., 2016) and Wigry (Kupryjanowicz, 2007). A decline  
502 of beech is accompanied by a rise of *Picea abies*. A record of human activity in pollen spectra from

503 eastern Poland was noted at many sites. The pollen record from the Lake Młynek are similar to the  
504 ones from the Masurian Lakes: Wojnowo, Miłkowskie and Jędzelek, located over 100 km to the  
505 east (Wacnik et al., 2014). Recorded episodes of human impact on vegetation during the Roman  
506 Period and Medieval time are separated by 500-600 years long intervals without cultivation and  
507 with natural reforestation (indicated by strong share of birch which is a pioneer tree). Similar lasting  
508 of human withdrawal in the Lake Młynek section began and terminated earlier than recorded in the  
509 lakes Wojnowo and Miłkowskie. Another history of human activity is represented in a record from  
510 the Lake Sałęt (Szał et al., 2014b). Pollen grains of cultivated and ruderal plants are noted  
511 continuously from the early Iron Age to the early Medieval time. In opposite to the pollen record  
512 from the lakes Młynek, Wojnowo and Miłkowskie, the suggested constant settlement in the  
513 neighbourhood of the Lake Sałęt was interrupted by a single very short decline of human impact  
514 at 880-980 AD (Szał et al., 2014a).

## 515 6. Conclusions

516 6. 1. Based on results of lithological, geochemical, palynological and diatomological analysis,  
517 supplemented with archaeological data, five main environmental phases of the Lake Młynek  
518 development were distinguished (Fig. 10). Radiocarbon ages enabled detailed chronology whereas  
519 pollen data and stratigraphy of the stronghold to the north-east of the lake made correlation of  
520 human activity with environmental data possible for the last 2300 years. From the 1 century BC to  
521 2<sup>nd</sup> century AD the forest around the lake was much reduced, what can be associated with pre  
522 roman and Roman occupation phase (attested also on the stronghold located close to the lake).  
523 From the 2<sup>nd</sup> to 9th century AD is attested gradual restoration of the forest and decline of human  
524 activity along with lake which is deepening due to the advent of more wet climatic conditions. This  
525 colder and humid phase corresponded to the Bond 1 Event (1.5 ka BP) cooling episode. Intensive  
526 forest clearing around the lake occurred in the 9th – 13th century AD as result of next phase human  
527 activity. This period is marked by warming confirmed by a gradual shallowing of the lake (Middle  
528 Age Warm Period). In next 5 strong human impact transformed the local landscape, especially  
529 construction and activity small mill since 15 c. AD. This caused that possible climate-induced  
530 natural environmental changes are not so clear.

531 6. 2. Environmental transformations recorded in bottom lake sediments of the Lake Młynek were  
532 highly dependent on human activity and were especially intensive in the Roman and Middle Age  
533 periods due to favourable climatic conditions.

534 6. 3. Human colonisation deduced from a pollen record of the Lake Młynek is coincident with  
535 archaeological data, including existence of a stronghold and in spite of a local character, it  
536 correlates well with data from other, more regionally significant palynological sites.

537 6. 4. Transformations of the Młynek lake reconstructed based on diatom analysis, not only indicate  
538 changes of the lake water level and correspond with a human impact but also determine episodes  
539 of more humid climate during coolings.

540

#### 541 **Acknowledgments**

542 The research was funded by the National Science Centre in Poland in the project UMO-  
543 2016/21/B/ST10/03059: *Correlation of prehistoric and early medieval settlement phases in north*  
544 *-east Poland with the changes of the natural environment in the light of lacustrine sediments study.*

545

#### 546 **References**

547 Ahlgren, J., Reitzel, K., De Brabandere, H., Gogoll, A., Rydin, E.: Release of organic P forms from  
548 lake sediments, *Water Research*, 45, 565-72. 2011.

549 Bauer, A., Velde, B.: *Geochemistry at the Earth's Surface Movement of Chemical Elements.*  
550 Springer – Verlag, Berlin-Heidelberg, 2014.

551 Bińska, K., Cieśla, A., Łączka, B., Madeyska, T., Marciniak, B., Szeroczyńska, K., Więckowski, K.:  
552 The development of Błędowo Lake (Central Poland) - A palaeoecological study, *Studia*  
553 *Geologica Polonica*, 100, 1-83, 1991.

554 Bińska, K., Welc, F., Nitychoruk, J., Sieradz, D., Lewczuk, A: Unique finds in palynological  
555 spectra: acetolyze resistant vegetative forms of freshwater dinofagellate based on the Lake  
556 Młynek record from northeastern Poland, *Studia Quaternaria* 37/2, 59-67. 2020.

557 Blaauw, M., Christen, J.A.: Flexible Palaeoclimate Age-Depth Models Using an Autoregressive  
558 Gamma Process, *Bayesian Analysis* 6/3, 457–474. 2011

559 Blaauw, M., Christen, J.A., Mauquoy, D., van der Plicht, J., Bennett, K.D.: Testing the timing of  
560 radiocarbon dated events between proxy archives, *The Holocene* 17, 283-288, 2007.

561 Bloemdal, J., deMenocal, P.: Evidence for a change in the periodicity of tropical climate cycles at  
562 2.4 Myr from whole – core magnetic susceptibility measurements, *Nature* 342, 897- 900, 1989.

563 Bojakowska, I.: Phosphorous in lake sediments of Poland – results of monitoring research,  
564 *Limnological Review*, 16, 15-25, 2016.

565 Brauer, A.: Annually laminated lake sediments and their palaeoclimatic relevance. In: The Climate  
566 in Historical Times. Towards a Synthesis of Holocene Proxy Data and Climate Models. GKSS  
567 School of Environmental Research, 111-129, edited by: Fischer, H., Kumke, T., Lohmann, G.,  
568 Flöser, G., Miller, H., von Storch, H., Negendank, J.F.W., Springer Verlag, 2004.

569 Brauer, A., Dulski, P., Mangili, C., Mingram, J., Liu, J.: The potential of varves in high-resolution  
570 palaeolimnological studies, *PAGES News* 17 (3), 96-98, 2009.

571 Brenner M., Whitmore T.J., Curtis J.H., Hodell D.A., Schelske, C.L.: Stable isotope ( $\delta^{13}\text{C}$  and  
572  $\delta^{15}\text{N}$ ) signatures of sedimented organic matter as indicators of historic lake trophic state, *J.*  
573 *Paleolimnol.*, 22, 205-221, 1999.

574 Czymzik, M., Dulski, P., Plessen, B., von Grafenstein, U., Naumann, R., Brauer, A.: A 450-year  
575 record of spring-summer flood layers in annually laminated sediments from Lake Ammersee  
576 (southern Germany), *Water Resour. Res.*, 46, W11528, 2010.

577 Dearing, J. A.: Environmental magnetic susceptibility: using the Bartington MS2, 1994.

578 Douglas, M.S.V., Smol, J.P.: Freshwater diatoms as indicators of environmental change in the High  
579 Arctic, 227–244, in: *The Diatoms: Applications for the Environmental and Earth Sciences*,  
580 edited by: Stoermer, E.F., Smol, J.P., Cambridge Univ. Press, Cambridge, 1999.

581 Duff, K.E., Zeeb, B.A., Smol, J.P.: *Atlas of Chrysophycean Cysts*, 2. Kluwer Academic Publishers,  
582 Dordrecht-Boston-London, 1995.

583 Duff, K.E., Zeeb, B.A., Smol, J.P.: Chrysophyte cyst biogeographical and ecological distributions:  
584 a synthesis, *Journal Biogeography* 24, 791–812, 1997

585 Elbert, J., Grosjean, M., von Gunten, L., Urrutia, R., Fischer, D., Wartenburger, R., Ariztegui, D.,  
586 Fujak, M., Hamann, Y.: Quantitative high-resolution winter (JJA) precipitation reconstruction  
587 from varved sediments of Lago Plomo 47°S, Patagonian Andes, AD 1530-2001, *Holocene* 22  
588 (4), 465-474, 2012.

589 Filbrandt-Czaja A.: Zmiany szaty roślinnej okolic jeziora Oleczno w późnym holocenie pod  
590 wpływem czynników naturalnych i antropogenicznych, in: *Studia nad osadnictwem*  
591 *średniowiecznym ziemi chełmińskiej* 3, 61–68, edited by: W. Chudziak, Toruń, 1999.

592 Filbrandt-Czaja A., Noryśkiewicz B., Piernik A.: Intensification gradient of settlement processes  
593 in pollen diagrams from Dobrzyńsko-Olsztyńskie Lake District, *Ecol. Quest.*, 3, 125-137, 2003.

594 Snowball, I.: Mineral magnetic properties of Holocene lake sediments and soils from the Karsa  
595 Valley, Lappland, Sweden, and their relevance to paleoenvironmental reconstruction, *Terra*  
596 *Nova* 5, 258-270, 1993.

597 Francus, P., von Suchodoletz, H., Dietze, M., Donner, R.V., Bouchard, F., Roy, A.-J., Fagot, M.,  
598 Verschuren, D., Kröopelin, S.: Varved sediments of Lake Yoa (Ounianga Kebir, Chad) reveal  
599 progressive drying of the Sahara during the last 6100 years, *Sedimentology* 60 (4), 911-934,  
600 2013.

601 Gałązka, D.: Szczegółowa mapa geologiczna Polski 1:50 000, ark. Iława (210). *Centr. Arch. Geol.*  
602 *Państw. Inst. Geol.*, [Detailed Geological Map of Poland, scale 1:50 000, Iława sheet (210).  
603 Warsaw, 2009.

604 Givélet, N., Le Roux, G., Cheburkin, A., Chen, B., Frank, J., Goodsite, M. E., Kempter, H.,  
605 Krachler, M., Noernberg, T., Rausch, N., Rheinberger, S., Roos-Barraclough, F., Sapkota, A.,  
606 Scholzb, Ch., Shotyk, W.: Suggested protocol for collecting, handling and preparing peat cores  
607 and peat samples for physical, chemical, mineralogical and isotopic analyses. *J. Environ. Monit.*,  
608 6, 481–492, 2004.

609 Hofmann, G., Werum, M., Lange-Bertalot, H.: Diatomeen im Süßwasser-Benthos von  
610 Mitteleuropa. A.R.G. GantnerVerlag, Rugell, Liechtenstein, 1–908, 2011.

611 Holmes J.A., De Decker P.: The chemical composition of ostracod shells: application in Quaternary  
612 paleoclimatology, in: *Ostracoda as proxies for Quaternary climate change, Developments in*  
613 *Quaternary Science* 12, 131-140, edited by: Horne D., Holmes J.A., Rodriguez-Lazaro J. &  
614 Viehberg F., 2012.

615 Hunter, L. E., Delaney, A. J., Lawson, D. E. Davis, L.; Downhole GPR for high-resolution analysis  
616 of material properties near Fairbanks, Alaska, in: *Ground Penetrating Radar in Sediments,*  
617 *Geological Society, Special Publications* 211, 275-285, edited by: Bristow, C. S., Jol, H. M.,  
618 London, 2003.

619 Ivanić, M., Lojen, S., Grozić, D., Jurina, I., Škapin, S.D., Troskot-Čorbić, T., Mikac, N., Juračić,  
620 M.: Geochemistry of sedimentary organic matter and trace elements in modern lake sediments  
621 from transitional karstic land–sea environment of the Neretva River delta (Kuti Lake, Croatia),  
622 *Quaternary International* 494, 286-299, 2018.

623 Jelinowska, A., Tucholka, P., Wieckowski, K.: Magnetic properties of sediments in a Polish lake:  
624 evidence of a relation between the rock-magnetic record and environmental changes in Late  
625 Pleistocene and Holocene sediments, *Geophys. J. Int.*, 129,727-736, 1997.

626 Karst-Riddoch, T.L., Pisaric, M.F.J., Smol, J.P.: Diatom responses to 20th century climate-related  
627 environmental changes in high elevation mountain lakes of the northern Canadian Cordillera,  
628 *Journal of Paleolimnology* 33, 265–282, 2005.

629 Kilham, P., Kilham, S.S., Hecky, R.E.: Hypothesized resource relationships among African  
630 planktonic diatoms, *Limnology and Oceanography* 31, 1169–1181, 1986.

631 Jutrzenka – Trzebiatowski, A., Hołdyński, A.: *Roślinność rzeczywista Parku Krajobrazowego*  
632 *Pojezierza Iławskiego*. Akademia Rolniczo-Techniczna. Olsztyn: 1–36, 1997.

633 Kołaczek, P., Kuprjanowicz, M., Karpińska-Kołaczek, M., Szal, M., Winter, H., Danel, W.,  
634 Pochocka-Szwarc, K., Stachowicz-Rybka, R.: The Late Glacial and Holocene development of  
635 vegetation in the area of a fossil lake in the Skaliska Basin (north-eastern Poland) inferred from  
636 pollen analysis and radiocarbon dating, *Acta Palaeobot.*, 53(1), 23–52, 2013.

637 Kondracki, J.: *Geografia regionalna Polski*. Wyd. Nauk. PWN, Warszawa, 2002.

638 Kraska M., Piotrowicz R.: Lobelia lakes: specificity, trophy, vegetation and protection, in:  
639 protection of beds and wetlands of Pomerania region 3, 48-52, edited by: Malinowski B., 2000.

640 Kuprjanowicz, M.: Badania palinologiczne w Polsce północno-wschodniej, in: *Człowiek i jego*  
641 *środowisko (Polska północno-wschodnia w holocenie)*, Botanical Guidebooks 30, 77–95, edited  
642 by: Wacnik A., Madeyska, 2008.

643 Kupryjanowicz, M.: Postglacial development of vegetation in the vicinity of the Wigry Lake,  
644 *Geochronometria* 27, 53-66, 2007.

645 Lin, Y.T., Schuettpelez, C.C., Wu, C.H., and Fratta, D.: A combined acoustic and electromagnetic  
646 wave-based techniques for bathymetry and subbottom profiling in shallow waters, *Journal of*  
647 *Applied Geophysics*, 68, 203–218, 2009.

648 Ma, L., Wu, J., Abuduwaili, L., Liu, W.: Geochemical Responses to Anthropogenic and Natural  
649 Influences in Ebinur Lake Sediments of Arid Northwest China, *Plos One*, 13/11(5):e0155819:  
650 doi: 10.137, 2016.

651 Madeja J.: Vegetation changes and human activity around Lake Łańskie (Olsztyn Lake District,  
652 NE Poland) from the mid Holocene, based on palynological study, *Acta Palaeobotanica* 53(2),  
653 235–261, 2013.

654 Mann, M. E., Zhang, Z., Rutherford, S., et al.: (2009). Global Signatures and Dynamical Origins  
655 of the Little Ice Age and Medieval Climate Anomaly, *Science* 326 (5957), 1256–60, 2009.

656 McCormick, M., Büntgen, U., Cane, M.A., Cook, E.R., Harper, K., Huybers, P., Litt, T., Manning,  
657 S.W., Mayewski, P. A., More, A.F.M., Nicolussi, K., Tegel, W.: Climate Change during and  
658 after the Roman Empire: Reconstructing the Past from Scientific and Historical Evidence,  
659 *Journal of Interdisciplinary History* 43:2 (Autumn, 2012), 169–220.

660 Miotk-Szpiganowicz, G., Zachowicz, J., Uścińowicz, S.: Review and reinterpretation of the pollen  
661 and diatom data from the deposits of the Southern Baltic lagoons, *Polish Geological Institute*  
662 *Special Papers*, 23, 45–70, 2008.

663 Myers, K.J., Wignall, P.: Understanding Jurassic Organic-rich Mudrocks—New Concepts using  
664 Gamma-ray Spectrometry and Palaeoecology: Examples from the Kimmeridge Clay of Dorset  
665 and the Jet Rock of Yorkshire, in: *Marine Clastic Sedimentology*, 172-189, edited by: J.K.,  
666 Legett, G., Zauffa, 1987.

667 Nitychoruk, J. Welc, F.: Janiki Wielkie. Środowisko fizyczno-geograficzne, in: *Katalog Grodzisk*  
668 *Warmii i Mazur*, tom 2, 153 – 155, edited by: Kobyliński, Z., Warszawa, 2017.

669 Noryskiewicz, B.: Lake Steklin – a reference site for the Dobrzyń-Chełmno Lake District, N  
670 Poland, Report on palaeoecological studies for the IGCP-Project No. 158B, *Acta Palaeobot.*,  
671 22(1), 65-83, 1982.

672 Noryskiewicz A. M.: *Historia roślinności i osadnictwa Ziemi Chełmińskiej w późnym holocenie*,  
673 *Studium palinologiczne*, Toruń, 2013.

674 Noryskiewicz, B.: History of vegetation during the Late-Glacial and Holocene in Brodnica Lake  
675 District in light of pollen analysis of Lake Strażym deposits, *Acta Palaeobot.*, 27(1), 283-304,  
676 1987.

677 Noryskiewicz, B., Ralska-Jasiewiczowa, M.: Type region P-w: Dobrzyń-Olsztyn lake District,  
678 *Acta Palaeobotanica* 29(2), 85-93, 1989.

679 Ojala, A.E.K., Kosonen, E., Weckström, J., Korkonen, S., Korhola, A.: Seasonal formation of  
680 clastic-biogenic varves: the potential for palaeoenvironmental interpretations, *GFF*, Special  
681 issue: *Varve Genesis Chronol.*, *Paleoclimate* 135 (3/4), 237-247, 2013.

682 Pawlikowski M., Ralska-Jasiewiczowa M., Schönborn W., Stupnicka E., Szeroczyńska K.:  
683 Woryty near Gietrzwałd, Olsztyn Lake District, NE Poland – history and lake development during  
684 the last 12000 years, *Acta Palaeobotanica* 22(1), 85-116, 1982.

685 Peck, J. A., King, J. W., Colman, S. M., Kravchinsky, V. A.:1994. A rock magnetic record from  
686 lake Baikal, Syberia: Evidence for Late Quaternary climate change, *Earth. Planet. Sci. Lett.*,  
687 122, 221-238, 1994.

688 Rabięga, K., Rutyna, M., Wach, D.: Janiki Wielkie. Badania Archeologiczne, w: Katalog Grodzisk  
689 Warmii i Mazur, tom 2. Warszawa, 155–174, edited by: Kobyliński, Z., Warszawa, 2017.

690 Ralska-Jasiewiczowa M.: Type region P-x: Masurian Great Lake Dystrykt. *Acta Palaeobotanica*  
691 29(2), 95-100, 1989.

692 Ralska-Jasiewiczowa M., Latałowa A.: Poland, in: *Palaeoecological events during the Last 15,000*  
693 *years: Regional Synthesis of Palaeoecological Studies of Lakes and Mires in Europe*, 403-472,  
694 edited by: Berglund, B.E., Birks H.J.B., Ralska-Jasiewiczowa, M., Wright H.E., John Wiley &  
695 Sons: Chichester, 1996.

696 Ralska-Jasiewiczowa M, Goslar T, Madeyska T, Starkel L.: Lake Gościąg, Central Poland, a  
697 monographic study, W. Szafer Institute of Botany, Polish Academy of Sciences, Kraków, 1998.

698 Sambuelli, L., Silvia, S.: Case study: A GPR survey on a morainic lake in northern Italy for  
699 bathymetry, water volume and sediment characterization, *Journal of Applied Geophysics* 81,  
700 48-56, 2012.

701 Sambuelli, L., Calzoni, C., Pesenti, M.: Case history: Waterborne GPR survey for estimation  
702 bottom-sediment variability: A survey on the Po River, Turin, Italy, *Geophysics* 74, 95–102,  
703 2009.

704 Sandgren, P., Snowball, I.: Application of mineral magnetic techniques to Paleolimnology, in:  
705 *Tracking environmental change using lake sediments, Physical and geochemical methods 2*,  
706 edited by: Last, W., Smol, J., Kluwer Academic Publishers. Netherlands, 2001.

707 Semrau, A.: *Mitteilungen des Copernicus-Vereins für Wissenschaft und Kunst zu Thorn. Heft 42. Elbing.*  
708 1939.

709 Smol, J.P., Birks, J.B., Last, W.M.: *Tracking Environmental Change Using Lake Sediments,*  
710 *Terrestrial, Algal and Siliceous Indicators* 3, 371, Springer Verlag, 2001.

711 Snowball, I. F.: Mineral magnetic properties of Holocene lake sediments and soils from the Karsa  
712 valley, Lapland, Sweden, and their relevance to palaeoenvironmental reconstruction, *Terra*  
713 *Nova* 5, 258 – 270, 1993.



714 Stankevica, K., Kalnina, L., Klavins, M., Cerina, A., Ustupe, L., Kaup, E.: Reconstruction of the  
715 Holocene Palaeoenvironmental Conditions Accordingly to the Multiproxy Sedimentary  
716 Records from Lake Pilvelis, Latvia, *Quaternary International* 386, 102-15, 2015.

717 Stopa-Boryczka, M., Boryczka, J., Wawer, J., Grabowska, K., Dobrowolska, M., Osowiec, M.,  
718 Błażek, E., Skrzypczuk, J., Grzęda.: Climate of north–eastern Poland based on J. Kondracki and  
719 J. Ostrowski`s Physiographic division. Atlas of interdependence of meteorological and  
720 geographical parameters in Poland. Warsaw University, Warsaw, 2013.

721 Szal M., Kupryjanowicz M., Wyczółkowski M.: Late Holocene changes in vegetation of the  
722 Mrągowo Lakeland (NE Poland) as registered in the pollen record from Lake Salet, *Studia*  
723 *Quaternaria*, 31(1), 51–60, 2014a.

724 Szal M., Kupryjanowicz M., Wyczółkowski M., Tylmann W.: The Iron Age in the Mrągowo Lake  
725 District, Masuria, NE Poland: the Salet settlement microregion as an example of long-lasting  
726 human impact on vegetation. *Veget. Hist. Archaeobot.*, 23, 419–437, 2014b.

727 Thompson, R., Oldfield, F.: *Environmental magnetism*, Allen and Unwin London, 1986.

728 Tiljander, M., Ojala, A.E.K., Saarinen, T., Snowball, I.: Documentation of the physical properties  
729 of annually laminated (varved) sediments at a sub-annual to decadal resolution for  
730 environmental interpretation, *Quat. Int.*, 88 (1), 5-12, 2002.

731 Tylmann, W., Szpakowska, K., Ohlendorf, C., Woszczyk, M., Zolitschka, B.: Conditions for  
732 deposition of annually laminated sediments in small meromictic lakes: a case study of Lake  
733 Suminko (northern Poland), *J. Paleolimnol.*, 47 (1), 55-70, 2012.

734 Valpola, S.E., Ojala, A.E.K.: Post-glacial sedimentation rate and patterns in six lakes of the  
735 Kokemäenjoki upper watercourse, Finland, *Boreal Environ. Res.*, 11, 195-211, 2006.

736 Verosub, K. L., Roberts, A. P.: *Environmental Magnetism: past, present and future*, *Journal of*  
737 *Geophysical Research* 100, 2175-2192, 1995.

738 Wacnik A, Tylmann W, Bonk A et al., Determining the responses of vegetation to natural processes  
739 and human impacts in north-eastern Poland during the last millennium: Combined pollen,  
740 geochemical and historical data, *Vegetation History and Archaeobotany*. Epub ahead of print  
741 17 March. DOI: 10.1007/s00334-016-0565-z, 2016.

742 Wacnik A., Kupryjanowicz M., Mueller-Bieniek A., Karczewski M., Cywa K.: The environmental  
743 and cultural contexts of the late Iron Age and medieval settlement in the Mazurian Lake District,

744 NE Poland: combined palaeobotanical and archaeological data, *Veget. Hist. Archaeobot.*, 23,  
745 439–459, 2014.

746 Welc, F.: Lake sediments and geoarchaeology (editorial), *Studia Quaternaria* 34(1), 3-8, 2017.

747 Welc, F.: Geoarchaeological evidence of late and post-Antiquity (5<sup>th</sup>-9<sup>th</sup> c. AD) climate changes  
748 recorded at the Roman site in Plemići Bay (Zadar region, Croatia), *Studia Quaternaria* 36 (1),  
749 3–17, 2019.

750 Wetzel, R.G.: Past productivity: paleolimnology, in: *Limnology. Lake and River Ecosystems*, third  
751 ed., edited by: Wetzel, R.G., Elsevier, Oxford, 785-804, 2001.

752 Wilkinson, A.N., Zeeb, B.A., Smol, J.P.: *Atlas of chrysophycean cysts*, Kluwer Academic  
753 Publishers, Dordrecht, 2002.

754 Williams, D.M., Round, F.E.: Revision of the genus *Fragilaria*, *Diatom Research* 2, 267–288, 1987.

755 Wirth S.B., Gilli A., Niemann H., Dahl T.W., Ravasi D., Sax N., Hamann Y., Peduzzi R., Peduzzi  
756 S., Tonolla M., Lehmann M.F., Anselmetti F.S.: Combining sedimentological, trace metal (Mn,  
757 Mo) and molecular evidence for reconstructing past water-column redox conditions: the  
758 example of meromictic Lake Cadagno (Swiss Alps), *Geochimica et Cosmochimica Acta*, 120,  
759 220-238, 2013.

760 Witkowski, A., Lange-Bertalot, H., Metzeltin, D.: Diatom flora of marine coasts, I. *Iconographia*  
761 *Diatomologica* 7, 1–925, 2000.

762 Zachowicz J., Kępińska U.: The palaeoecological development of Lake Družno (Vistula Deltaic  
763 Area), *Acta Palaeobotanica* 27(1), 227-249, 1987.

764 Zachowicz J., Przybyłowska-Lange W., Nagler J.: The Late-glacial and Holocene vegetational  
765 history of the Żuławy region, N Poland, A. Biostratigraphic study of Lake Družno sediments,  
766 *Acta Palaeobotanica* 22(1), 141-161, 1982.

767 Zalat, A., Welc, F., Nitychoruk, J., Marsk, L., Chodyka, M., Zbucki, Ł.: Last two millennia water  
768 level changes of the Młynek Lake (Northern Poland) inferred from diatoms and chrysophyte  
769 cysts record, *Studia Quaternaria* 35 (2), 77 – 89, 2018.

770 Zolitschka, B.: Varved lake sediments, in: *Encyclopedia of Quaternary Science*, edited by: Elias,  
771 S.A., Elsevier, Amsterdam, 3105-3114, 2007.

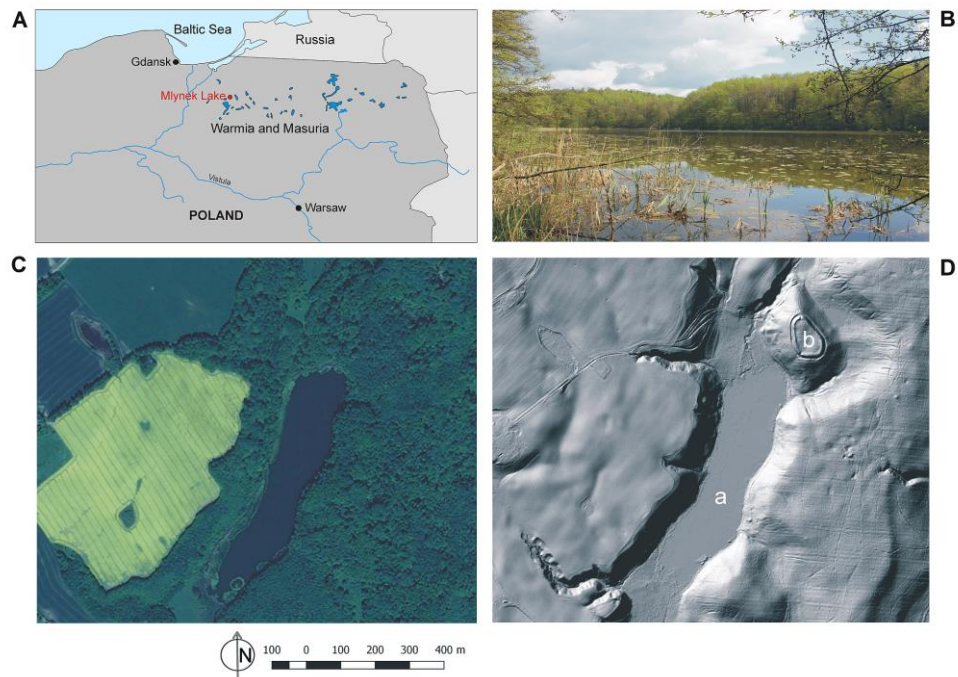
772

773

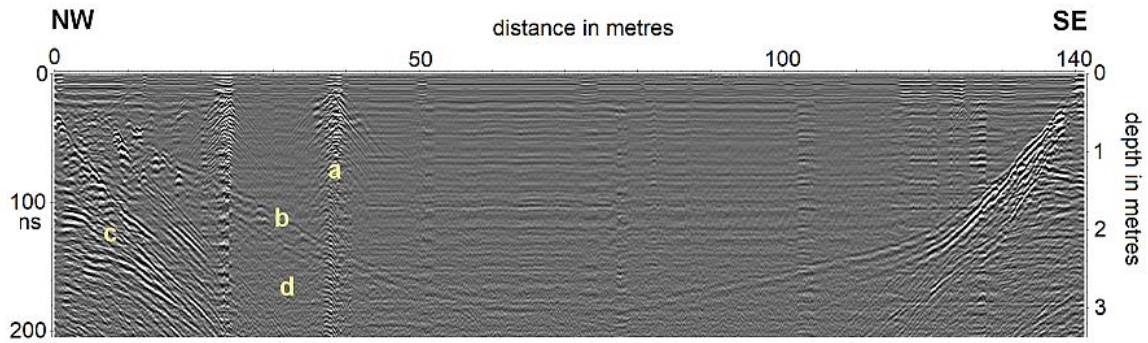
774

775  
776  
777  
778  
779  
780  
781  
782  
783  
784

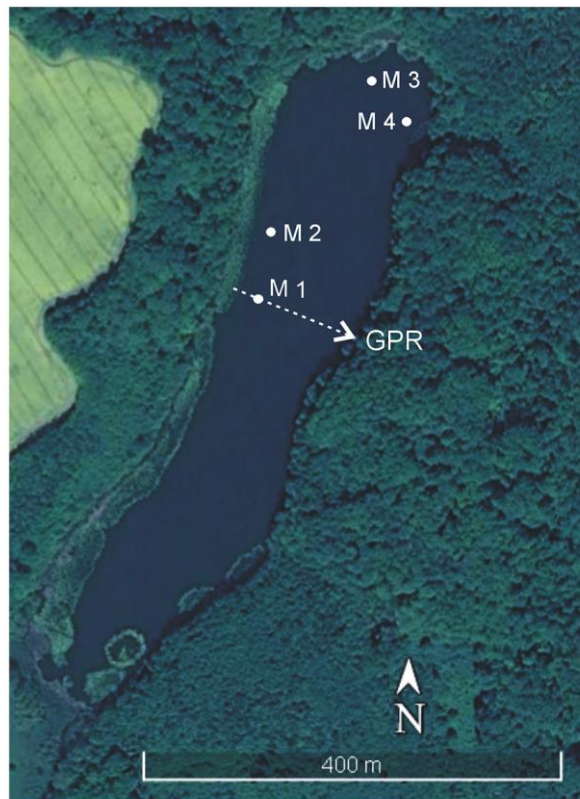
### ILLUSTRATIONS



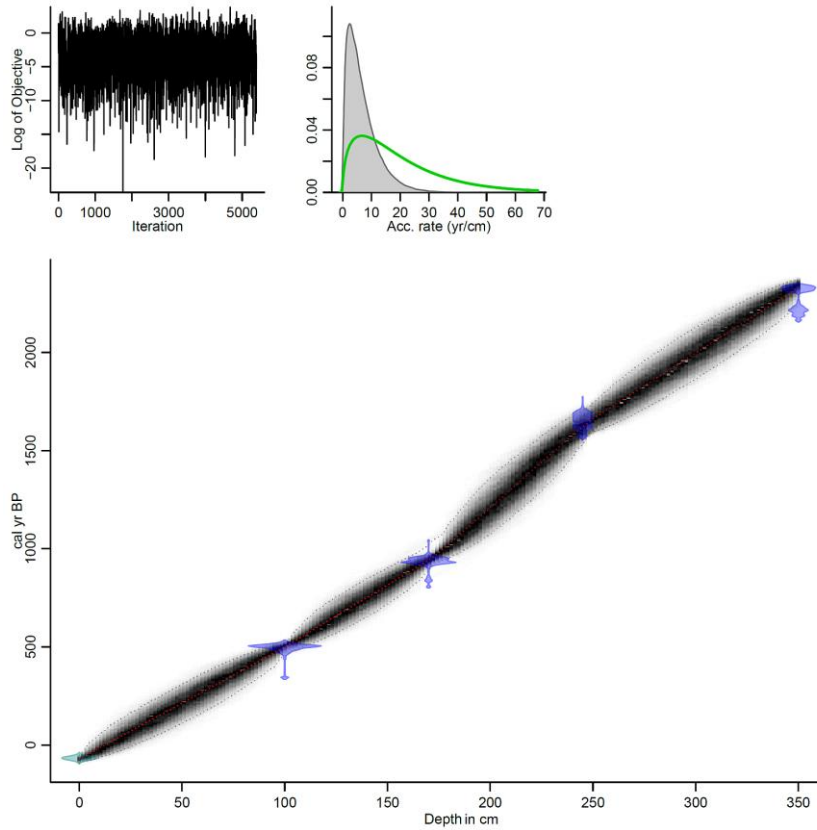
785  
786 Fig. 1. A - location of the Młynek Lake in the Warmia and Mazury Region (north-eastern Poland) (Drawing; Fabian  
787 Welc). B – view of the Młynek Lake from the north-west (Photo: Fabian Welc), C – satellite image of the lake (open  
788 source: ©Google Earth : [www.google.com/intl/pl/earth](http://www.google.com/intl/pl/earth)). D – LIDAR image of the lake: a – lake basin, b – Janiki  
789 Wielkie archaeological site established in early Iron Age (open source: ©Geoportal Poland : [www.geoportal.gov.pl](http://www.geoportal.gov.pl)).  
790  
791  
792



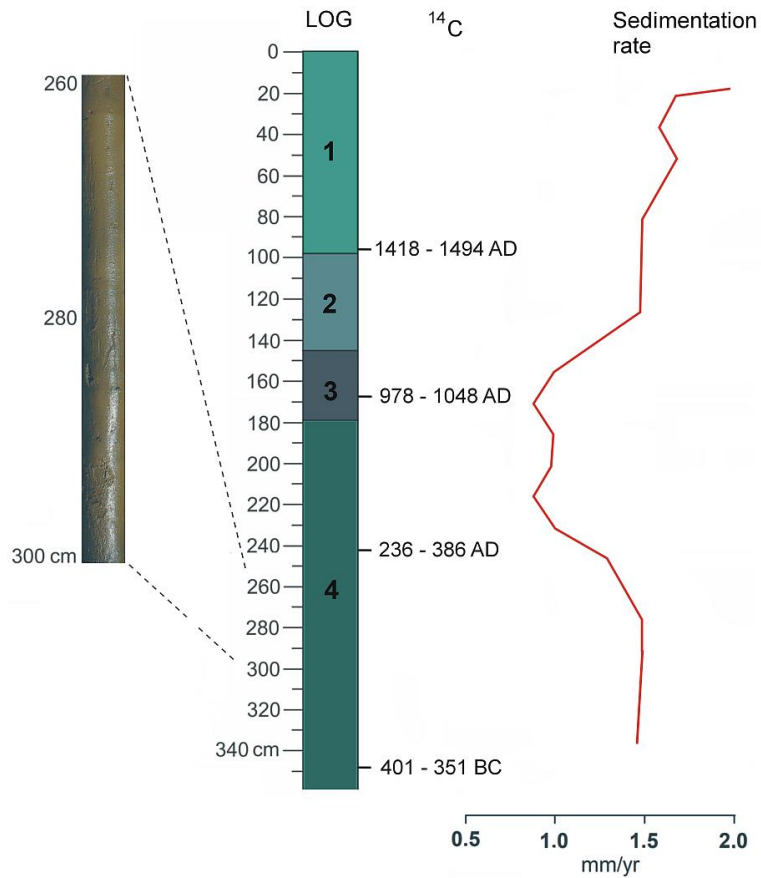
793  
 794 Fig. 2. GPR reflection profile across the Młynek Lake (cf. Fig. 2), a – drilling M-1, b – upper boundary of the so-called  
 795 hard bottom, c –stratified glaciofluvial sandy-gravel beds beneath the lake sediments, d – attenuation zone of  
 796 electromagnetic waves connected with occurrence of organic sediment (gyttja) (measurements, processing and  
 797 interpretation: Fabian Welc).  
 798



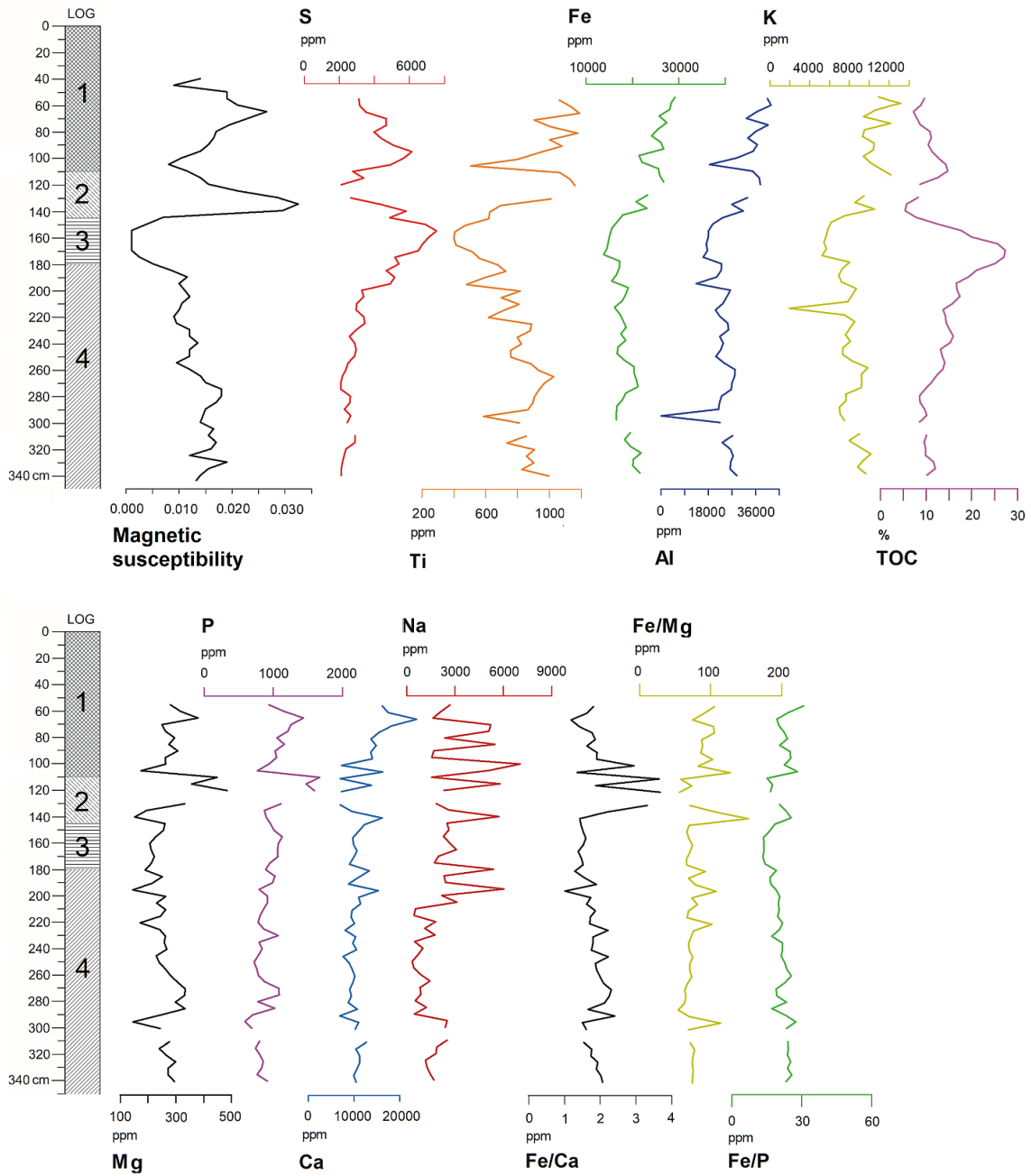
799  
 800 Fig. 3. Młynek Lake: A – location of drillings M 1-4 and transect of GPR sounding (open source: Google Earth©:  
 801 [www.google.com/intl/pl/earth/](http://www.google.com/intl/pl/earth/)).  
 802



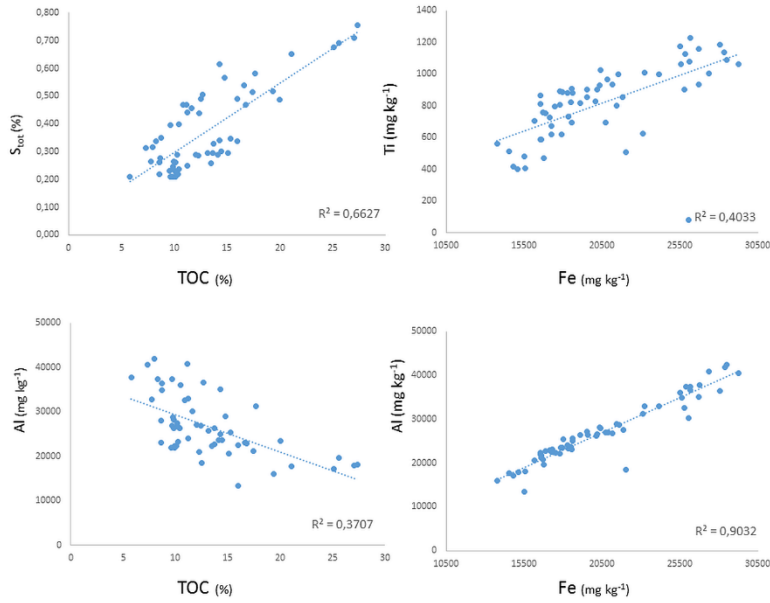
803  
 804 Fig. 4. Age-depth model of the core M-1 from the Młynek Lake. Good runs of a stationary distribution are shown in  
 805 the upper left panel, green curves and grey histograms in the upper right panel present distributions for the sediment  
 806 accumulation rate. The main bottom panel shows the calibrated <sup>14</sup>C dates (transparent blue) and the age-depth model  
 807 (darker gray areas) which are indicating calendar ages. Grey stippled lines show 95% confidence intervals and the red  
 808 curve shows the 'best' model based on the weighted mean age for each depth. The model was created by F. Welc using  
 809 the open Bacon software (Blaauw and Christen, 2011).



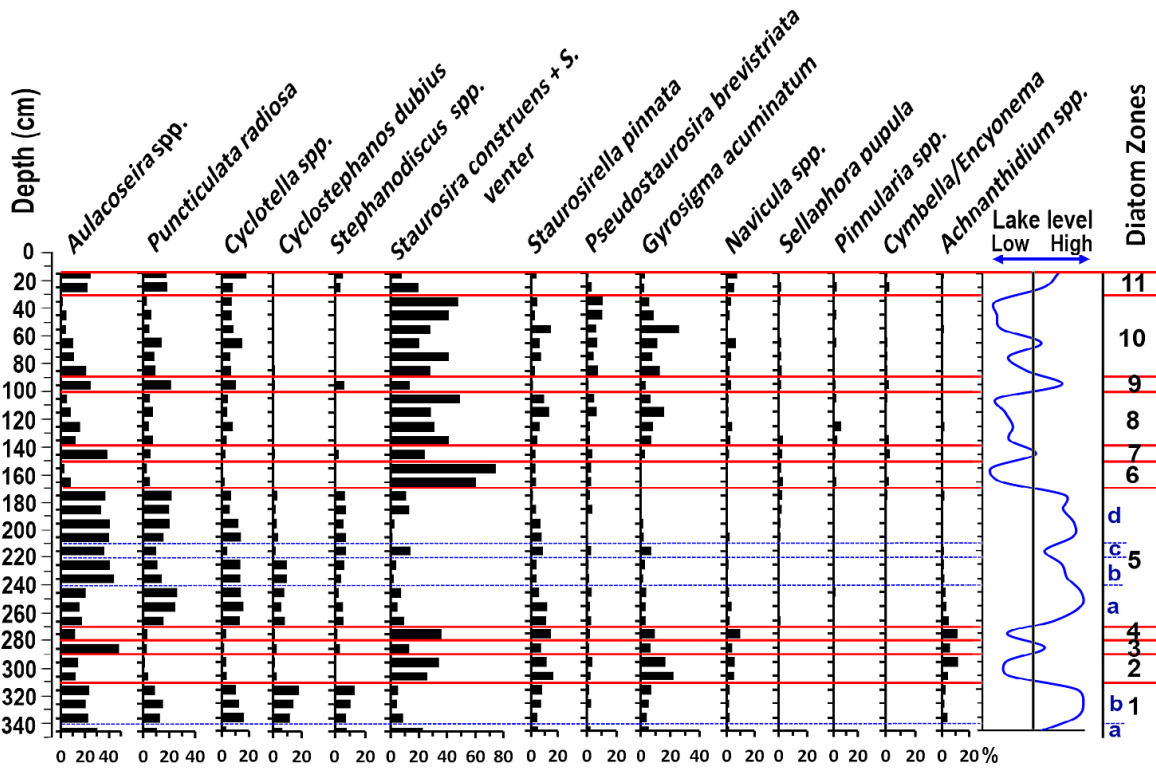
810  
 811 Fig. 5. Lithology of the M-1 borehole with radiocarbon determinations with 95% confidence, close up - photo of the  
 812 log at 2.6 - 3.0 m depth and sedimentary rate (mm/year) estimated based on the age/depth model. Description of LOG:  
 813 1 - hydrated – detritus type gytja, 2 - very plastic - algal gytja, 3 - gray-brown peaty - detritus gytja, 4 - gray-brown  
 814 gytja (Photo and drawing: Fabian Welc).  
 815  
 816



817  
 818 Fig. 6. Concentration depth curves for selected elements and TOC in the core M-1 of the Mlynek Lake sediments.  
 819 Description of LOG: 1 - hydrated – detritus type gytja, 2 - very plastic - algal gytja, 3 - gray-brown peaty - detritus  
 820 gytja, 4 - gray-brown gytja (Drawing: Fabian Welc).

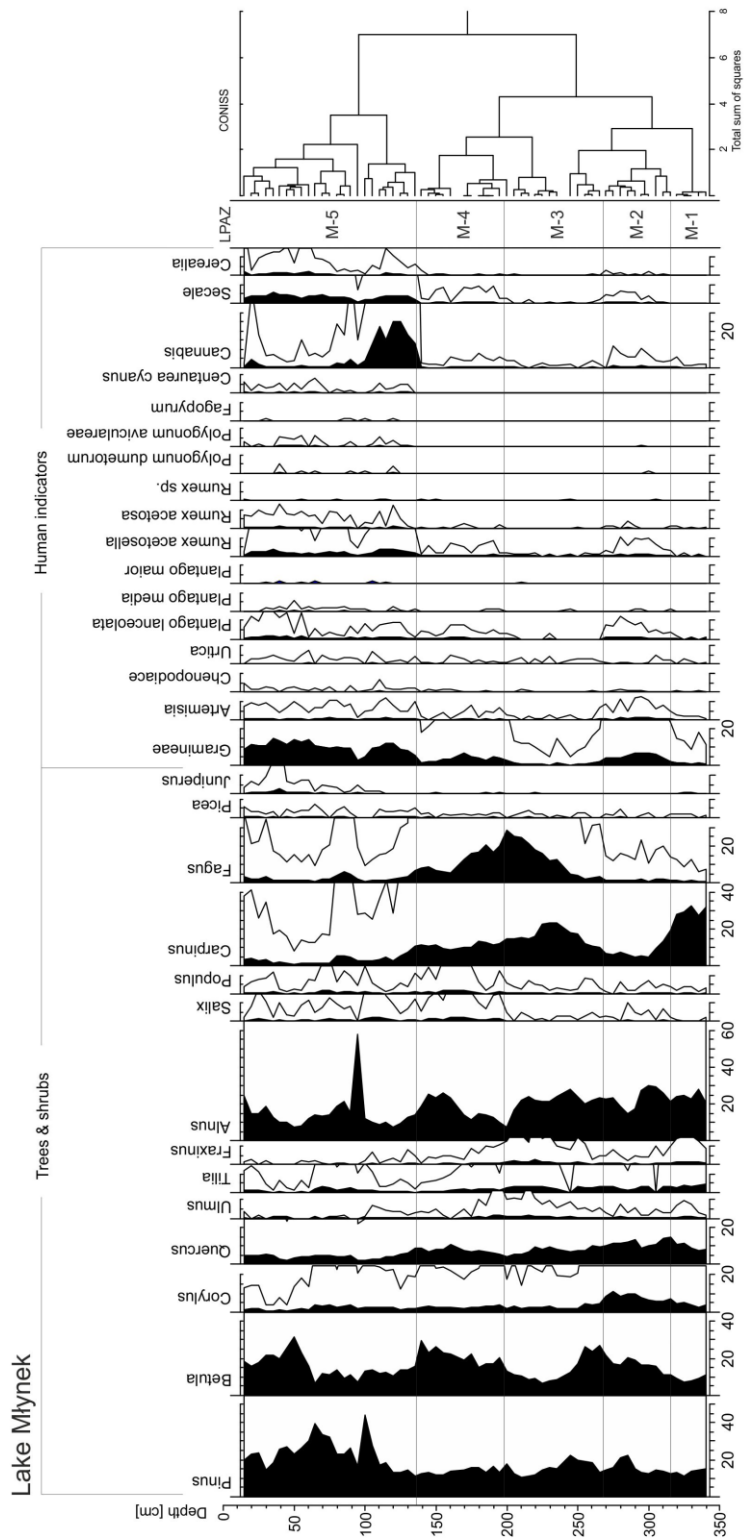


821  
 822 Fig. 7. Scatter plot showing the correlation in the core M-1 between S and TOC, Al and TOC, Ti and Fe, and Ti and  
 823 Fe. (Drawing: Anna Rogóż-Matyszcak)



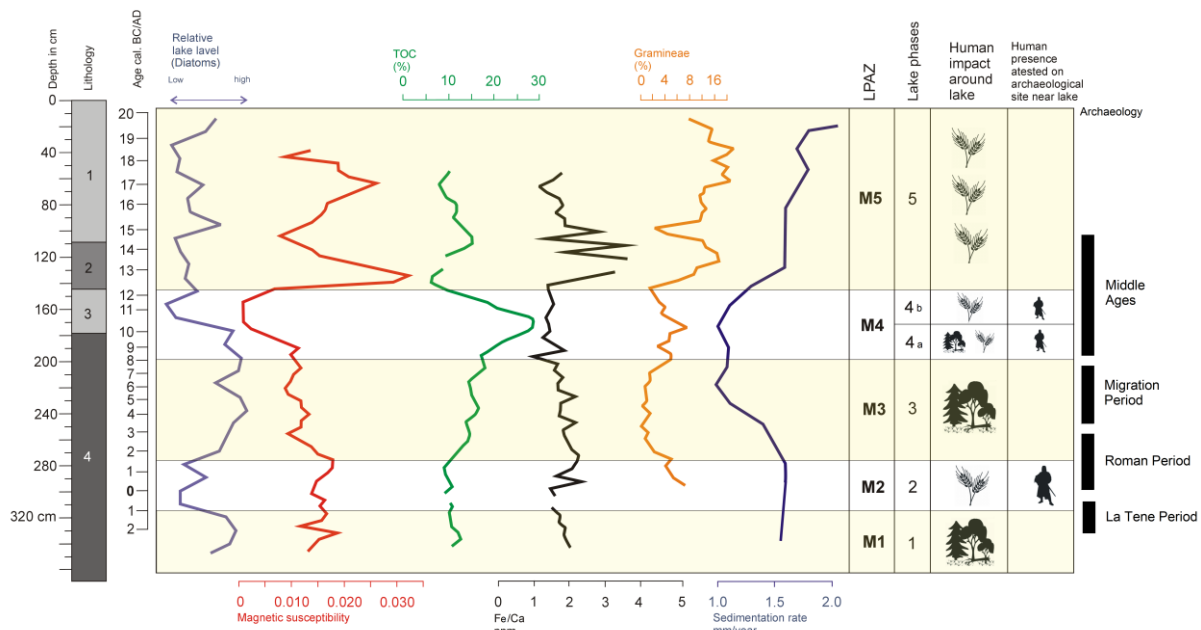
824  
 825 Fig. 8. Diatom stratigraphy of the core M-1, showing diatom zones and lake phases and relative water level changes  
 826 estimated on relation between planktonic and benthonic diatom taxa (Interpretation and drawing: Abdelfattah Zalat).  
 827  
 828





829  
830  
831  
832

Fig. 9. Percentage pollen diagram from core M-1 – selected taxa.



833  
 834 Fig. 10. Diagram with selected palaeoenvironmental proxies including lithology (1 - hydrated – detritus type gyttja, 2  
 835 - very plastic - algal gyttja, 3 - gray-brown peaty - detritus gyttja, 4 - gray-brown gyttja) with phases of human activity  
 836 in the vicinity of the Mlynek Lake, supplemented by archaeological chronology for Poland (Drawing: Fabian Welc).  
 837