



1           **Last 2400 yrs. Environmental changes and human activity**  
2           **recorded in the gyttja-type bottom sediments of the Młynek Lake**  
3           **(Warmia and Masuria Region, northern Poland)**

4  
5           Fabian Welc (1) Jerzy Nitychoruk (2), Leszek Marks (3), Krzysztof Bińka (3), Anna  
6           Rogóż-Matyszczyk (2), Milena Obremska (4) Abdelfattah Zalat (5)

- 7  
8           1. Institute of Archaeology, Cardinal Stefan Wyszyński University in Warsaw: e – mail: f.welc@uksw.edu.pl.  
9           2. Faculty of Economic and Technical Sciences, Pope John Paul II State Higher School of Education: e-mail:  
10           jerzy.nitychoruk@pswbp.pl, annarogoz@interia.pl  
11           3. Faculty of Geology, University of Warsaw: k.binka@uw.edu, leszek.marks@uw.edu.pl: k.binka@uw.edu.pl  
12           4. Polish Academy of Science, Institute of Geological Sciences, mobremska@twarda.pan.pl  
13           5. Tanta University, Faculty of Science, Tanta University: e-mail: abzalat@science.tanta.edu.eg

14  
15  
16           **Abstract**

17  
18           In the densely forested Warmia and Masuria region (north-eastern Poland) there are many lakes  
19           characterized by small size, ~~fast~~ sedimentation and ~~lack of tributaries~~, which makes them a very good  
20           archive of environmental and paleoclimatic data for the Holocene. For this reason, one of them - the Młynek  
21           Lake, located near the village of Janiki Wielkie, has been selected for multi-faceted palaeoenvironmental  
22           research based on a precise radiocarbon scale. Bottom sediments of this reservoir also contain unique  
23           information about anthropogenic activity, because a defensive settlement has been existing on its northern  
24           shore since the early Iron Age to early Medieval period, which gives opportunity to correlate  
25           paleoenvironmental data with phases of the human activity in the last 2400 years. Between 3rd – 2nd  
26           century BC the lake was surrounded by a dense forest with domination of warm and wet climate conditions.  
27           In turn of 2nd century BC – 2nd century AD forest around reservoir was much reduced, what can be  
28           associated with the first - early Iron age - occupation phase attested on the stronghold located close to the  
29           lake. Between 2nd – 9th century AD gradual restoration of forest and decline of human settlements is  
30           attested, along with lake deepening and onset of colder and humid climatic phase which correspond to  
31           global cooling episode known as Bond 1 (1.5 ka BP). Period between 9th – 13th century AD indicates again  
32           intensive forest clearing around the lake in result of human activity (Middle Age settlement phase on  
33           stronghold). This period is characterized by climate change towards warming, which confirms the gradual  
34           shallowing of the lake (Middle Age warming period). Since 13 up to 17th century AD intensive cultivation  
35           activity around lake took place. The landscape was subjected to strong human transformations which means  
36           that environmental and climate changes are not so clear. However, changes in lake sedimentation can be  
37           seen around 1300 AD, which may be associated with so called Little Ice Age - climatic interval.

38  
39  
40           **Keywords:** lake sediments, Lake Młynek, environmental change, human impact, Late Holocene, Iron Age, Middle  
41           Ages.



## 45 1. Introduction

46 Lake sediments are a useful source of proxies of past environmental and climate changes  
47 in the Holocene (see Brauer, 2004; Zolitschka, 2007; Wanner et al., 2008; Francus et al., 2013;  
48 Ojala et al., 2013; Welc, 2017). The main advantage of lake sediment archives is a relatively high  
49 and stable sedimentary rate. Well-dated lake sediment columns (by radiocarbon determination for  
50 instance) let to trace both long and short term Holocene palaeoclimate (Smol et al., 2001; Tiljander  
51 et al., 2002; Valpola and Ojala, 2006; Czymzik et al., 2010; Elbert et al., 2012; Tylmann et al.,  
52 2012; Welc, 2017). Particularly valuable for palaeoclimate reconstructions are sequences from  
53 lakes, without river/spring inflow and outflow (Stankevica et al., 2015). In such water bodies, the  
54 sedimentation rate is relatively stable and ongoing continually since initiation of the lakes and may  
55 contain not only continuous records of lake history but also of its catchment (Wetzel, 2001; Meyers,  
56 2003; Stankevica et al., 2015). In northeastern Poland as in northern Europe, eutrophic lakes  
57 are common. They are typical for their substantial primary production (algae and aquatic  
58 macrophytes), because of the predominance of nutrient input over mineralization processes (Cooke  
59 et al., 2005). Such intensive bio-productivity results in the deposition of thick organic sedimentary  
60 sequences, mostly of organic gyttja composed of the remains of aquatic plants, plankton and  
61 benthic organisms transformed by activity of bacteria and mixed with mineral components supplied  
62 from the lake basin (Kurzo et al., 2004; Stankevica et al., 2015). There are ca. 1000 freshwater  
63 lakes of different size in the Warmia and Mazury Region in north-eastern Poland (Fig. 1). Most of  
64 them are located in glacial tunnel valleys formed by meltwater erosion at the termination of the  
65 Vistulian (Weichselian) Glaciation (ca. 114-11 ka BP). After deglaciation at the end of the  
66 Pleistocene these tunnel valleys were partly filled with deposits and water and persisted in the  
67 Holocene. Such lake basins have steep slopes and the lake deposits are underlain by glaciofluvial  
68 sand, gravel and silt or by glacial till (Kondracki, 2002; Gałazka, 2009). Many lakes in the Warmia  
69 and Mazury Region are small (<1 ha), with stable sedimentation rate and without river inflow and  
70 outflow. It is among the reasons that palaeoclimatic investigations, based mainly on pollen analysis  
71 are undertaken in this area (e.g., Kupryjanowicz, 2008; Kołaczek et al., 2013).

72 Młynek Lake, located near the village of Janiki Wielkie, has been selected for multi-faceted  
73 palaeoenvironmental research based on a precise radiocarbon scale, as it is hypothesized that the  
74 bottom sediments of this lake contain a unique record of human impact, as a result of the location  
75 of an Iron Age stronghold on the northern shore, which was active (though not continuously) up



76 until the early Middle Ages (Fig. 1). Performed lab analysis is defined major lithofacies and the Late  
77 Holocene phases of the lake environmental changes were distinguished, based on reconstruction  
78 of regional environmental transformations that were in turn steered by the above-regional climate  
79 change. Results were correlated with geoarchaeological data to determine mutual relations between  
80 environmental and climatic changes with development of human settlements in the Warmia and  
81 Mazury Region during the last 2000 years.

82

## 83 2. Study area

84 The Młynek is a small water body that has occupied a glacial tunnel valley since the  
85 Holocene. The lake is located in the Iława Lakeland in northern Poland, maintains the NNE-SSW  
86 course and it is about 720 m long and 165 m wide. The Młynek Lake occupies 7.5 ha in area, its  
87 water surface rises to about 101 m a.s.l. and the maximum depth is just over 2 m. The lake is  
88 surrounded by a morainic plateau at 120-130 m a.s.l (Fig. 1).

89

## 90 3. Material and Methods

### 91 3.1. Ground Penetrating Radar

92 Determination of lake bathymetry and thickness of bottom sediments are extremely  
93 important in paleolimnological research to help locate coring sites. This can be achieved through  
94 the use of GPR sounding (Lin et al., 2009; Sambuelli et al., 2009; Sambuelli and Silvia, 2012). In  
95 Poland winter is a particularly convenient season when ice cover of a lake makes sounding much  
96 easier and improves access and speed of data collection (Hunter et al., 2003). Measurements along  
97 and across the lake were carried out in 2017, directly on a lake ice and a snow cover. We used the  
98 radar system ProEx of the Malá Geoscience. A radar pulse was generated at a regular distance  
99 interval of 0.02 m (900 samples were recorded from a single pulse). The time window of recording  
100 was between 250 and 300 ns. Prospection was done with use of a shielded monostatic antenna with  
101 250 MHz nominal frequency of the electromagnetic wave.

102

### 103 3.2. *Coring and sampling*

104 Based on the results of the GPR 4 drillings were done at ca 2 m water depth (Fig. 2) to  
105 collect cores according to the Givelet et al. (2004) collecting protocol. Sediment cores were packed  
106 into film-wrapped 1 m plastic tubes and transported to the laboratory. These cores (M1-4) were



107 then subjected to magnetic susceptibility measurements ~~results of~~ which enabled to select ~~the core~~  
108 ~~M-1 to detailed analyses as the longest and mostly continuous one.~~ Samples from the 3.5 m long  
109 core M-1 (geographic coordinates: 53.82486 N, 19.72419 E) were sub – sampled at 5 cm interval  
110 used for multi-proxy laboratory analyses.

111

### 112 3.3. Age-depth model

113 Radiocarbon dating was performed on 4 bulk samples from the core M-1, collected either  
114 from organic-rich gyttja or gyttja with dispersed organic matter (Table 1). The organic matter  
115 seems to have been derived both from aquatic and terrestrial sources. AMS dating was done in the  
116 Poznań Radiocarbon Laboratory in Poland, where  $^{14}\text{C}$  measurements were performed in graphite  
117 targets (Goslar et al., 2004). Construction of proper and correct age-depth model required an  
118 assessment of several agents that could disturb constant accumulation of bottom deposits of the  
119 Mlynek Lake. Disturbances could result both from sedimentary and post-sedimentary processes  
120 (varied rate of deposition and compaction, impact of bioturbation). The varied influx of material  
121 delivered to the lake from the adjacent area is a very important factor. Therefore, a Bayesian age-  
122 depth routine mode was chosen ~~and used, and~~ it takes into account ~~a deposition~~ rate and its  
123 variability (Blaauw and Christen, 2005; 2011; Blaauw et al., 2007) (Fig. 4). The model was based  
124 on default settings, except for section thickness which was set at 0.05 cm given the ~~long~~ length of  
125 this core. The Bacon ~~mode~~ uses the IntCal3 curve (Reimer et al., 2013) to calibrate the radiocarbon  
126 data.

127

### 128 3.4. Pollen analysis

129 The core M-1 was sampled every 5 cm for pollen analysis. 70 samples (ca. 10 g each) were  
130 treated with 5% HCl, boiled in 5% KOH and hot 30% HF. They were washed with 15% HCl and  
131 treated by the standard Erdtman's acetolysis. In each sample about 1000 pollen grains were counted  
132 using an optical microscope at 400x magnification.

133

### 134 3.5 Diatom and Chrysophyte cysts analysis

135 70 samples were prepared for the analysis of diatoms and chrysophyte cysts. They were  
136 extracted from 1 g of dry sediment of each sample using the disintegration method in HCl and  
137  $\text{H}_2\text{O}_2$ , according to the technique proposed by Zalat and Servant-Vildary (2007). For slide



138 preparation, 0.1 ml of the final suspension was dried on coverslips and then mounted onto slides  
139 using Naphrax. Diatoms were identified to species level using a Leica photomicroscope with a  
140 digital camera and equipped with differential interference contrast (DIC) optics at 1000x  
141 magnification with oil immersion. Identification and ecological information of the diatom species  
142 ~~was~~ based primarily upon the published literature (e.g. Kilham et al., 1986; Douglas and Smol,  
143 1999; Witkowski et al., 2000; Hofmann et al., 2011). Recent taxonomic advances split many  
144 diatom taxa of the former genus *Fragilaria sensu lato* into several new genera, including  
145 *Fragilaria*, *Pseudostaurosira*, *Staurosira* and *Staurosirella* spp. (Williams and Round, 1987);  
146 these new names herein collectively referred to as *Fragilaria sensu lato*. Chrysophyte cysts were  
147 described and enumerated following Duff et al. (1995, 1997), Pla (2001) and Wilkinson et al.  
148 (2002). Preliminary results of the diatom studies based on the core M-1 were already published by  
149 Zalat et al. (2018).

150

### 151 ~~3.5. Atomic emission spectrometer (ICP-OES)~~

152 ICP-OES spectrometer was used for determination of basic chemical elements in the  
153 analyzed samples. Powdered samples were mineralized in a closed microwave Anton Paar  
154 Multiwave PRO reaction system. Mineralization procedure was based on the procedure of Lacort  
155 & Camarero. Characteristics of lake sediments was done with the extraction method of elements  
156 soluble in aquaregia (according to European Standard CEN/TC 308/WG 1/TG 1, slightly  
157 modified). Dry samples of about 0.2 g weight were transferred to the PTFE vessel and HNO<sub>3</sub>, and  
158 HCL Merck Tracepur® was added. The vessels were placed in a rotor and loaded to a microwave.  
159 Finally, the samples were analyzed in the Spectro Blue ICP OES spectrometer at Regional  
160 Research Center for Environment, Agricultural and Innovative Technologies, Pope John II State  
161 School of Higher Education in Biała Podlaska. Berndt Kraft Spectro Genesis ICAL solution and  
162 VHG SM68-1-500 Element Multi Standard 1 in 5% HNO<sub>3</sub> were used. Operating parameters were  
163 as follows: number of measurements: 3, pump speed: 30 Rpm, coolant flow: 12 l/min, auxiliary  
164 flow: 0.90 l/min and nebulizer flow: 0.78 l/min.

165

### 166 3.6. Total organic carbon (TOC)

167 Analyses were done after sample acidification to remove carbonates in the SHIMADZU  
168 SSM 5000A analyzer with a solid sample combustion unit. Method: catalytically aided combustion



169 oxidation at 900°C. Pre-acidification, oven temperature: 250°C. Measuring range: TC: 0.1 mg to  
170 30 mg carbon. Sample Amount: 1 gram - aqueous content < 0.5 g. Repeatability: S.D. ±1% of full  
171 scale range (www.ssi.shimadzu.com/products/toc-analyzers/ssm-5000a).

172

### 173 3.7. *Magnetic susceptibility (MS)*

174 The cores from the Mlynek Lake were subjected to MS measurements using SM-30  
175 magnetic susceptibility meter (ZH Instruments). Due to very high sensitivity ( $1 \times 10^{-7}$  SI units) this  
176 device was provided with 8 kHz LC oscillator and its pick-up coil sensor was large enough to  
177 measure sufficiently high volume of sediments with very low magnetic susceptibility. The  
178 measurements were done at every 5 cm along each core (M1-4).

179

### 180 3.8. *SEM/EDS*

181 This method was used to perform basic microscopic observations of samples of the core M-  
182 1 with point determination of their chemical composition of major elements. All selected samples  
183 were analysed using a scanning electron microscope (SEM) HITACHI TM3000 with an energy  
184 dispersive spectrometer (EDS) SWIFT ED 3000 Oxford Instruments. The samples were not  
185 covered with any conductive material. Magnification range was x 20 to x 30 000, accelerating  
186 voltage 5-15keV.

187

### 188 3.10. *Archaeological records*




189 Archaeological records from the stronghold Janiki Wielkie, built on a hill at the north-  
190 eastern shore of the Mlynek Lake in the early Iron Age referred to successive human phases  
191 detected in the lake sediments, connected with intensified activity of a man near the lake. During  
192 archaeological research carried out in 2013 and 2016, a total of 143 stratigraphic units were  
193 distinguished, which were divided into seven main settlement phases: phase I-early Iron Age, phase  
194 II-leaving the stronghold from the early Iron Age, phase III-early Middle Ages, phase IV-leaving  
195 the stronghold in the early Middle Ages, phase V-settlement activity on the stronghold in the 11th-  
196 13th century and the last VI phase which is marking finale leaving of the stronghold in the 14th  
197 century (Rabiega et al., 2017, Nitychoruk and Welc, 2017)

198

## 199 4. Results




#### 200 4.1. Bathymetry

201 A georadar transect across the lake reflects both its bathymetry and lithologic variety of its  
202 bottom (Figs. 2 - 3). The superficial layer is composed of an ice  er, ca 25 cm thick and although  
203 it is almost not visible on radar images due to its thickness being smaller than a vertical resolution  
204 of measurements, there are beneath abundant horizontal multiple reflections of energy from the  
205 bottom of the ice. Two narrow and vertical zones with small diffraction hyperboles at 23 and 29 m  
206 of the transect indicate upward deformation of bottom sediments at the location sites of the  
207 sounding core and the core M-1 (Fig. 3a). The top of the underlying mineral deposits (so-called  
208 hard bottom) is indicated as a distinct downward-deflected reflection surface (Fig. 3b). In a central  
209 part of the lake it occurs at 2.6 m depth (two-way travel time 290 ns) and indicates the top of the  
210 Holocene organic sediments. Unfortunately, beneath there is a signal-absorption zone (Fig. 3d),  
211 resulting from the fact that most sediments are composed of fine-grained organic material (gyttja).  
212 However, thickness of this layer was determined by drillings to about 5 m. A relief of the lake  
213 bottom in the GPR image reflects a cross-section of a glacial tunnel valley that was eroded mainly  
214 in sandy and sandy-gravel deposits. Close to the lake shore (0 to 20 m in the northwest and 110 to  
215 140 m in the southeast) ~~in this section~~ there are numerous oblique and chaotically parallel reflection  
216 surfaces dipping towards the channel axis. They reflect bedding of the Pleistocene sandy-gravel  
217 series that partly filled a subglacial channel (Fig. 3c).


218

#### 219 4.2. Age-depth model

220 ~~Obtained~~ age-depth model of the core M-1 from the Mlynek Lake ~~present calibrated~~  
221 ~~distributions of the individual dates (blue)~~ (Fig. 4). Grey stippled lines show 95% confidence  
222 intervals and the red curve shows the 'best' model based on the weighted mean age for each depth.  
223 Good runs of a stationary distribution are shown in the upper left panel, green curves and grey  
224 histograms in the upper middle panel present distributions for the sediment accumulation rate and  
225 mem  is indicated in the right panel. The main bottom panel shows the calibrated <sup>14</sup>C dates  
226 (transparent blue) and the age-depth model (darker gray areas) which are indicating calendar ages.

227

#### 228 4.3. Lithology of the lake ments

229 Deposits in the Mlynek Lake are organic-rich. The core M-1 is composed of gray-brown  
230 gyttja at depth 1.8-3.6 m (Fig. 5). On depth 1.45-1.80 m dominated gray-brown peaty  detritus





231 ~~gyttja~~. At 1.10-1.45 m was recorded very plastic - ~~l~~ gyttja. The uppermost part of the core is  
232 composed of ~~gray~~-brown (depth 0.4 -1.1 m) and hydrated-~~l~~ tus type gyttja (0.0-0.4 m).

233

#### 234 4.4. ~~Sedimentary~~ rate

235 The sedimentation rate was calculated based on the age-depth model (Fig. 5). Results reflect  
236 quite a stable sedimentary environment with a general rate of 1.5 mm a year. ~~There are however~~  
237 ~~parts of the core with a higher or lower rate at 3.46-2.42 m~~. The rate is stable and equal ca 1.5 mm  
238 a year, at 2.42-1.77 mm, drops to 1 mm, then rises at 1.77-0.30 m to 1.3-1.8 mm a year. At 0.0-  
239 0.30 m the sedimentary rate is the highest and equal ca 3 mm a year.

240

#### 241 4.5. Magnetic susceptibility and total organic carbon

242 The MS of deposits is highly dependent on their lithological composition and grain size  
243 content (Dearing, 1994; Sandgren and Snowball, 2001). It reflects not only presence but also size  
244 of ferromagnetic particles in a sample (Verosub and Roberts, 1995). Increased content of  
245 ferromagnetic minerals such as magnetite, Fe-Ti oxides or pyrrhotite generates higher MS, whereas  
246 biotite, pyrite, carbonates and organics result in ~~their~~ lower values. Total volume of magnetic  
247 minerals in lake sediments reflects mostly climatic change in ~~a~~ catchment (Bloemdal and  
248 deMenocal, 1989; Snowball, 1993; Peck et al., 1994).

249 The core M-1 shows MS differentiations but due to organic character of the sediments (Fig.  
250 2), its values are relatively low, from 0.002 to  $0.034 \times 10^{-7}$  units SI. At 3.50-2.58 m, MS rises and  
251 drops in turn from 0.01 to  $0.02 \times 10^{-7}$  SI, which partially corresponds to a grey-brown gyttja with  
252 organic matter. MS drops at depth 2.60-1.89 m, reaching a minimum at 1.63 m. Higher up, MS  
253 rises again reaching the highest value at 1.35 m, then there is a minimum at 1.05 m and the next  
254 maximum at 0.69 m.

255 Magnetic susceptibility is generally low in biogenic sediments as gyttja, which is composed  
256 mainly of microfossil skeletons e.g. diatoms and radiolarians (Thompson and Oldfield, 1986). In  
257 Mlynek Lake there is an apparent negative relationship between TOC and MS. Several intervals  
258 show both higher percentages of TOC and lower MS values. At 1.40 m, TOC indicates a sudden  
259 drop, probably due to deforestation and MS is significantly rising due to increasing input of  
260 terrestrial (non-organic) material to the lake. Such coincidence clearly indicates that TOC is both  
261 autochthonous and allochthonous (Fig. 6)





262 Changes in MS in sediments of the Młynek Lake sediments are related most probably to  
263 input of clay into the lake and diagenetic conditions in bottom sediments. Iron oxides in the Młynek  
264 Lake are most probably of detrital origin and were delivered to the basin through incised deep  
265 valleys located at the northwestern shore. Concentration of ferromagnetic minerals is connected  
266 with periodical intensified soil erosion around the lake. Higher content depends also on diagenetic  
267 processes in bottom sediments. Oxidation of organic matter in anoxic conditions (by iron-oxide-  
268 reducing bacteria) results usually in increased content of ferromagnetic particles (small particles  
269 are removed first). In opposite, oxygenation by heavy floods stops this process and small magnetic  
270 particles are preserved (Jelinowska et al., 1997).

271

#### 272 4.6. Water-soluble elements

273 Various factors influence distribution and accumulation of geochemical elements in the lake  
274 sediments. Most important are texture, mineral composition, oxidation/reduction state,  
275 absorption/desorption and physical transportation processes (Ma et al., 2016). Curves of  
276 representative elements are generally used to characterize sedimentary environments. Most  
277 analysed elements do not indicate any clear trend with depth in the Młynek Lake. The curves of S  
278 and TOC show significant rises at 2.0-1.4 m that are slightly correlated with decreased contents of  
279 Al, Fe, K, Ca, Mg and magnetic susceptibility (Fig. 6).

280 Sulphur content is correlated with existence of iron sulphides. SEM/EDS analysis indicated  
281 occurrence of both phramboidal pyrite and euhedral crystals, characterized as an octahedral  
282 crystallized form (Fig. 8). Euhedral crystals are formed as syngenetic in euxinic conditions  
283 (Sageman and Lyons, 2003; Berner et al., 2013; Ivanić et al., 2018), whereas phramboidal ones are  
284 typical for early diagenetic pyrite but they can still occur as syngenetic ones (Goldhaber, 2003).  
285 Phramboids in the examined core are noted at various depths, but they are more common if the  
286 TOC content is higher. In the studied core, Fe is positively correlated with Al and Ti (Fig. 8 and  
287 table 2). Fe-Ti oxides are noted in SEM EDS analysis. They are resistant to surface weathering and  
288 carry trace elements (Bauer and Velde, 2014). At ca. 3 m, high frequency peaks of Al, K, Ca, Na,  
289 Mg, Fe and S occur (Fig. 6). Such occasional high intensity events leave a stronger geochemical  
290 imprint, because of sedimentation in shallow water (Ivanić et al., 2018). The highest contents of  
291 detrital elements like Al, K, Ca and Mg should be associated with sudden delivery of clastic  
292 material to the lake e.g. during increasing flood or rainfall (Wirth, et al., 2013). Especially Al is



293 extremely immobile, that is why it should be regarded as a typical lithogenic element (Price et al.,  
294 1999). Additionally, Al is a major constituent of soils and other sediments as a structural element  
295 of clays. It has a strong positive correlation with many major elements (Fig. 8 and Tab. 2). The  
296 association between Al and other elements can be therefore used as a basis for the comparison of  
297 natural elemental content in sediments and soils. Most elements like Al, K, Fe and Mg are from  
298 terrigenous inputs to the lake. Ca originated mainly from terrigenous bicarbonate inputs and was  
299 deposited in the lake as a solid carbonate (Miko et al., 2003). Calcium is evidently more easily  
300 removed in solution from a mineral material and it is highly concentrated in highly erosional  
301 periods (Mackereth, 1965).

302 The Fe/Ca ratio is considered as the eutrophication proxy. The highest ratio points out to  
303 low oxygenation, eutrophic or dystrophic reservoirs (i.e. Kraska and Piotrowicz, 2000; Holmes and  
304 De Decker, 2012), whereas the low Fe/Ca ratio in bottom sediments indicates oligotrophic  
305 character of a lake. In the studied core sediments, Fe/Ca ratio varies from 0.808 (depth 3.05 m) to  
306 3.677 (1.2 m). The ratio is low, indicating oligotrophic conditions in bottom sediments which gives  
307 conflicting results with other data. The Fe/Ca ratio can be disturbed by detrital input to the lake  
308 (Fig. 6).

309 The Mn/Fe ratio is low (0.004 -0.19) in all studied cores and reflects lower O<sub>2</sub> concentration  
310 in a water column (e.g. López et al., 2006; Naeher et al., 2013), which is typical for eutrophic lakes.  
311 The extremely low value (0.004) at depth 3.05 m is probably a response to Fe delivery with  
312 terrigenous material. The dysaerobic conditions are also confirmed with Th/U ratios (0.03-0.41)  
313 which are lower than the critical value of 2 as indicated by Myers and Wignall (1987) and Wignall  
314 (1994).

315 The ratio of total Fe to total P ranges from 13.91 (1.2 m) to 43.76 (3.05 m). The values are  
316 typical for other lakes in northern Poland, which vary from 3 to 180 according to Bojakowska  
317 (2016). The release of P follows in reducing conditions. According to Ahlgren et al. (2011) is even  
318 up to ten times greater than in aerobic conditions. However, there is a poor correlation with other  
319 redox proxies i.e. Th/U (R=0.08). It can be caused by presence of Al which forms Al(OH)<sub>3</sub>. In such  
320 systems even though the redox state favors release of P from iron minerals, the P is immobilized  
321 by binding with hydroxides. Thus, the presence of Al(OH)<sub>3</sub> can stop release of P even in an anoxic  
322 hypolimnion (Hupfer and Lewandowski, 2008). It can be a case in the studied sediments as Al  
323 shows positive correlation with P content (R=0.49). Except for Fe/Ca, all counted ratios point out



324 to anoxic conditions in all studied cores which is typical to eutrophic lakes. Nevertheless, as all  
325 proxies are characterized by extreme values at the 3.05 m, they seem to depend on external load of  
326 terrigenous material. It is confirmed with very good positive correlation between Fe and Al (0.95),  
327 Fe and Ti (0.64) Mn and Al (0.46) or Mn and Ti (0.78).

328

#### 329 4.7. Diatoms

330 Studies of the Lake Mlynek bottom sediments revealed presence of more than 200 diatom  
331 taxa belonging to 54 genera (Zalat et al., 2018) (Fig. 9). Diatoms were generally abundant and well  
332 to moderately preserved in most samples, although with admixture of mechanically broken valves,  
333 especially in the topmost part of the core. Results of the diatom analysis and relative abundance of  
334 the most dominant taxa enabled subdivision of the M-1 core section into 6 diatom assemblage  
335 zones (Fig. 9) that reflected phases of lake development (Zalat et al., 2018). Moreover, changes in  
336 chrysophyte cysts distributions along with variation in diatom composition could be related to  
337 changes in pH, climate and trophic status. Stomatocysts can be used as the index of lake-level  
338 changes, habitat availability, metal concentrations and salinity. The periphytic diatom species  
339 dominate the planktonic ones throughout the core. The main change in diatom composition is  
340 indicated by a shift from the assemblage dominated by periphytic species through marked intervals  
341 to a planktonic one. A high proportion of periphyton to plankton assemblages was reported as  
342 indicative for a long-lasting ice-cover (Karst-Riddoch et al., 2005) whereas a shift from benthic to  
343 planktonic diatom taxa is considered for an ecological indicator that is generally interpreted in  
344 high altitude lakes as record of shorter winter and increased in temperatures. Common occurrence  
345 of benthic forms represented by *Staurosira venter*/*Staurosirella pinnata* diatom assemblage  
346 indicates circumneutral to slightly alkaline shallow water with lowering lake levels and prolonged  
347 ice cover. However, *Aulacoseira* is the most dominant planktonic genus followed by *Cyclotella*  
348 and low frequency of *Cyclostephanos*. High abundance of eutrophic planktonic taxa in some  
349 interval denotes lake productivity and nutrient concentrations tend to increase with rising water  
350 temperature. The marked fluctuations in the abundance of the periphytic to plankton assemblages  
351 along the core section explained relative water level changes associated with climate change.  
352 Diatom preservation in the upper part of the core (depth 1.40 -0.15 m) is moderate to relatively  
353 poor and the recognized assemblage was represented by the occurrence of some dissolved and  
354 teratological diatoms valves, in particular the topmost part of the core section (0.30-0.15 m). Such



355 dissolution and deformed diatoms may reflect a dramatic decline in water quality, variations in lake  
356 chemistry and shallowness environment beside the increase in human activity and anthropogenic  
357 nutrient additions to the lake system (Zaai et al., 2018).

358

359 4.8. *Pol*

360 Five local pollen assemblage zones (LPAZ M1-M5) were established in the pollen sequence  
361 of the Młynek Lake. They reflect regional as well as local vegetation changes, with varied ratios  
362 of arboreal (AP) and non-arboreal (NAP) pollen that indicate environmental oscillations (Fig. 10):

363

Pollen zones	Depth in meters	Description
M1	3.40-3.20	Zone represents closed forest communities dominated by hornbeam and alder, which colonized marshland near lake shores. Plants of open spaces are only rarely noted as well as indicators of anthropogenic activity (e.g. <i>Plantago lanceolata</i> ). There is therefore every reason to conclude that vegetation at that time was relatively natural and not disturbed
M2	3.15-2.70	This is the period of major changes in the forest surrounding the lake. Anthropogenic impact on vegetation has led to removal of hornbeam and partial opening of the forest or its fragmentation. The resultant clearings were occupied by birch, pine and hazel. Oak also seems to expand in ecological importance however its higher frequency is surely caused by increase in pollination under better lighting condition rather than the real expansion of trees. The light gaps were also occupied by a wide variety of herbaceous types. They include apophytes, anthropophytes or cultivated plants - mainly grasses, mugwort <i>Cannabis/Humulus</i> , <i>Plantago lanceolata</i> , <i>Rumex acetosella</i> , <i>Secale</i> and cereals undiff. All this demonstrates the existence in this area of a clear occupation phase.
M3	2.65-2.05	This is the level of dynamic restoration of forest communities. The decline of settlements and semi-open habitats generated by them, caused short term expansion of birch into abandoned and open areas, and then replaced by hornbeam rebuilding its position to the level observed in the pollen zone M1. Also elm and ash expand again into riparian forest. All this caused decline of content of birch, pine and hazel. During the second half of the zone we can observe abrupt expansion of beech. Herbaceous plants, abundant in the previous zone are only sporadically noted.
M4	2.0-1.45	The lower boundary of the zone marks the onset of another settlement phase and as a result clearing of the forests of similar magnitude as in the M2 pollen zone. First of all disturbances took place in beech forest and to a lesser extent in these dominated by hornbeam. Also in this case open habitats were temporarily occupied by birch (especially toward the end of the zone, when the human activity is lower) and less intensively by poplar. Alder in the second part of the zone increased in abundance, probably expanded into exposed marginal areas of the lake. The level of anthropogenic activity is only slightly lower to that demonstrated in M2 zone. It is distinguished by the presence of Gramineae, <i>Artemisia</i> , <i>Cannabis/Humulus</i> , <i>Plantago lanceolata</i> , <i>Rumex acetosella</i> , <i>Secale</i> and cereale undiff.
M5	1.40-0.15	Pollen zone is characterized by increased intensity of human impact and deforestation. Hornbeam, oak and beech were intensively removed from woodlands. However, in this case the resultant gaps are not occupied by birch. In the two samples, sudden short-term culmination of pine and alder, hard to interpret, are observed. Disturbances in the environment in this level are by far the most substantial. It is clear from the abundant presence of cultivated plant - mainly <i>Cannabis</i> , showing clear peak at the beginning, <i>Secale cereale</i> and other cereals as well as weeds invading the crops. Also herbaceous plants within open areas - including those on pastures are abundantly noted - Gramineae, <i>Artemisia</i> , <i>Plantago lanceolata</i> , <i>P. maior</i> , <i>P. media</i> , <i>Rumex acetosella</i> , <i>R. acetosa</i> and other.

364

## 365 5. Młynek Lake phases of environmental transformation and human activity

366 Based on results of biological, geochemical, palynological and diatomological analysis-  
367 supplemented by archaeological data, 5 main environmental phases of the Lake Młynek  
368 development were distinguished (Fig. 11). Radiocarbon ages supplied with detailed chronology



369 whereas pollen data and stratigraphy of the stronghold to the north-east of the lake enabled  
370 correlation of human activity with environmental data during the last 2400 years.

371

372 5.a. *Phase 1*: ca. 2300 – 2100 cal. BP (3.45-3.15 m)

373 The lake hydrology was stable and it was quite shallow (Fig. 11). This phase corresponds  
374 to LPAZ M-1 which represents closed forest communities dominated by hornbeam and alder.  
375 These species colonized marshland near the lake shore. Open community plants and indicators of  
376 anthropogenic activity (e.g. *Plantago lanceolata*) are rare, and vegetation around the lake was  
377 natural and not disturbed. Diatom assemblage at the beginning of the diatom subzone DZ1 (depth  
378 3.45-3.40 m) indicates a shallow and slightly alkaline lake environment, followed (3.35-3.15 m)  
379 by a rising lake level. Common occurrence and domination of *A. granulata* suggests high trophic  
380 status of slightly alkaline freshwater environment with high silica concentration (Zalat et al., 2018).  
381 MS during this phase is high and it corresponds to high content of Fe, Ti and Al, indicating  
382 increased influx of terrigenous material to the lake, presumably activated by more intensive  
383 rainfall. High  $\delta^{13}C_{org}$  suggest (intensive production of biomass in the lake) relatively wet and warm  
384 climatic phase.

385

386 5.1. Phase 2: ca. 2100 – 1830 cal. BP (3.15-2.75 m)

387 This is the period of major changes in the environment around the lake, with significant  
388 anthropogenic impact. Phase corresponds with the LPAZ M2, characterized by reduction and  
389 fragmentation of the hornbeam-dominated forest. Birch, pine and hazel expanded under better  
390 lighting conditions in a partially open forest whereas oak increase was caused only by higher  
391 production of pollen. Mid-forest pastures occupied rather small-scale open areas, as can be seen  
392 from higher percentages of *Plantago lanceolata* and other herbaceous plant-e.g. Gramineae,  
393 *Artemisia*, *Rumex acetosa/acetosella*. Cultivated plants-*Cannabis* t., and *Secale* are rarely noted,  
394 however their occurrence is entirely consistent with the other indicator present during this phase.  
395 Human occupation is attested by presence of *Cannabis/Humulus*, *Plantago lanceolata*, *Rumex*  
396 *acetosella*, *Secale* and cereals undiff. This period is similarly expressed and commonly noted in  
397 numerous palynological sequences in the neighboring area (see for example Noryśkiewicz, 1982,  
398 1987, 2013; Bińka et al., 1991; Ralska-Jasiewiczowa et al., 1998). During this phase, planktonic  
399 diatoms were replaced by benthic taxa accompanied by *Gyrosigma acuminatum*, which indicates



400 lowering of the lake level and dominance of mesotrophic alkaline freshwater environment. The  
401 lower stands were interrupted by short rising water level episode at 2.90–2.85 m (Zalat et al., 2018).  
402 Low water level is also confirmed by high frequency peaks of Al, K, Ca, Na, Mg, Fe, V, Cd and S,  
403 resulting from delivery of clastic material to the lake, due to reduction of vegetation (cf. Wirth et  
404 al., 2013). Presence of pollen taxa as *Plantagolanceolata*, *Rumexacetosella*, *Secale* and cerealia  
405 undiff., demonstrates human occupation in the vicinity of the lake. Pollen data indicate that  
406 societies of that time cultivated rye and probably hemp. It is the oldest settlement phase at Janiki  
407 Wielkie hillfort that corresponds to the end of the La Tène and the early Roman period (1st century  
408 BC/1st century AD. Human communities of this time living in the vicinity of the lake can be  
409 connected with settlements of the East-Baltic Kurgan Culture (Rabiega et al., 2017).

410 During phase no. 2 climatic conditions were still similar to these forms previous phase, but  
411 more dry - what is reflected by shallowing of the lake. This relatively wet warm climatic phase  
412 should be correlated with so called Roman Climatic Optimum (see., McCormick et al., 2012).

413

#### 414 5.2. Phase 3: 1830 – 1150 cal. BP (2.75-1.95 m)

415 This is the level of dynamic recovery of forest communities. Absence of human impact  
416 indicators shows decline in populations residing in catchment. Reduction of settlements and semi-  
417 open habitats generated by the followed for short term expansion of birch into abandoned and open  
418 areas, and then replaced by hornbeam rebuilding its position to the level observed in the pollen zone  
419 M1. Also, elm and aspens expand again into riparian forest. All this caused decrease of content of birch,  
420 pine and hazel. During the second half of the zone we can observe abrupt expansion of beech.  
421 Herbaceous plants, abundant in the previous zone are only sporadically noted. Diatom phase 3 (2.70-  
422 2.45 m) present great abundance of planktonic diatoms what indicates deepening of the lake,  
423 enhanced thermal stratification, reduced mixing and increased thermal stability (Zalat et al., 2018).  
424 Such gradual rise of humidity and cooling resulted in increased vegetation cover and higher lake  
425 water level, and it is supported by geochemical indices. There is also a gradual drop in MS,  
426 corresponding with decreased content of detrital elements as Fe, Ti, Al and K, accompanied by a  
427 rise in TOC and of the ratio Fe/Ca. Lower MS and content of Al (acting as a major constituent of  
428 soils) with higher TOC suggests extension of vegetation cover, resulting in limited erosion in spite  
429 of gradually higher precipitation in the lake catchment and therefore, rise of its water level. In this  
430 phase there are no traces of human activity ~~at the settlement~~ nearby (Rabiega et al., 2017).



431 The climate in phase 3 is gradually changing towards cooler, but also more humid. There is an  
432 increase in rainfall and a decrease in evaporation, which is reflected in lake sedimentation, where  
433 the lake deepens, resulting in a reduction in the sediment installation showing less productivity and  
434 greater lake stability. This phase should be associated with the global cooling episode known as  
435 Bond 1 (1.5 ka BP) (see., Bond et al., 1997; Welc, 2019)

436

#### 437 5.3 Phase 4: 1150 – 780 cal. BP (1.95-1.45 m)

438 Phase no. 4 is correlated with palynological zone M4 and was divided into two subphases 4a  
439 and 4b (Fig. 11). The lower boundary (subphase 4a) of this zone marks the onset of another  
440 settlement phase and as a result clearing of the forests of similar magnitude as in the M2 pollen  
441 zone. First of all, disturbances took place in beech forest and to a lesser extent in these dominated  
442 by hornbeam. Also, in this zone, birch and less intensively poplar occupied temporarily abandoned  
443 open areas (especially toward the end of the zone, when the human activity is lower). Alder, in  
444 the second part of the zone increased in abundance, probably expanding into exposed marginal  
445 areas of the lake. The level of anthropogenic activity is only slightly lower to that demonstrated in  
446 M2 zone and reflected by the presence of Gramineae, *Artemisia*, *Cannabis/Humulus*, *Plantago*  
447 *lanceolata*, *Rumex acetosella*, *Secale* and cerealia undiff. Diatom assemblages indicate a  
448 deepening of the lake (Zalat et al., 2018). In this time synanthropic plants disappear and they come  
449 back again in the early Middle Ages about 700 AD. Higher TOC corresponds with lower content  
450 of detrital material (Fe, Ti, Al and K) and lower MS, and it can be interpreted as progressing  
451 humidity (Fig. 6). This phase can be correlated with the Migration Period and the early Middle  
452 Ages. At the end of the phase 4 during the early Middle Ages, in the settlement close to the lake  
453 (archaeological phase III) after removal of the layers formed by natural development of a soil (due  
454 to abandonment of the site in the early Roman Period) a defence rampart was raised. At its upper  
455 surface a wooden-loamy wall was constructed. After short period this stronghold was destroyed.  
456 A charcoal from a fired wall represents this destruction phase at the end of the Phase IIIA was  
457 dated at  $1245 \pm 25$  cal. BP i.e. 682-870 AD (95,4% probability) and  $1090 \pm 30$  cal. BP i.e. 892-  
458 1014 AD (95,4% probability) (Rabiega et al., 2017).

459 Subphase 4b (1.70-1.45 m) marks the onset of another settlement phase, resulting in further  
460 forest clearing around the lake and increase in birch invading into open areas. In this period alder  
461 which expanded into exposed marginal areas increased in abundance. This is documented by the





462 great abundance of *Aulacoseira* species associated with *Puncticulata radiosa* in the upper part of  
463 diatom zone 5 at 1.85-1.70 m. The diatom assemblage suggests episode of relative rising lake  
464 level, increased trophic state of the lake and stronger turbulent mixing conditions. Moreover, the  
465 greatest reduction of abundance *Fragilaria sensu lato* accompanied by a high abundance of *A.*  
466 *granulata* could have resulted from forest clearings around the lake caused by settlers. In this time  
467 alder increased its abundance as it probably expanded into exposed marginal areas of the lake. The  
468 anthropogenic activity, expressed by presence of herbaceous plants (including cereals) Gramineae,  
469 *Artemisia*, *Cannabis* t., *Plantago lanceolata*, *Secale* and cerealia undiff. as well as by forest  
470 clearings is only slightly lower than in the zone M2 and generally it resembles those in the Roman  
471 Period. Towards the end of this phase some decline in intensity of human impact is observed.

472 Subphase 4b corresponding to diatom zone 6 which is characterized by high abundant benthic  
473 *Fragilaria sensu lato* species with sporadic occurrence of planktonic taxa. The diatom assemblage  
474 reflects lowering water level and slight alkaline freshwater, lower nutrient concentrations, low  
475 silica content (Zalat et al., 2018). In the strongholds at the lake shore, the next human activity  
476 phase at the end of the 11th century AD when a new rampart was raised. Wooden constructions  
477 were also built, traces of which were excavated in the area of the gate passage. The settlement was  
478 finally abandoned presumably in the first half of the 13<sup>th</sup> century and then, its ramparts were  
479 strongly eroded, with their material mowing towards the yard and the moat (Rabiega et al., 2017).  
480 After the early Middle Ages, the area around the lake was occupied by the Prussian tribe of  
481 Pomezanians and this region named Geria was a borderland. It consisted of network of strongholds  
482 located among others at Bądki, Urowo, Wieprz and Kraga (Szczepański, 2009). In the south the  
483 tribe bordered directly with the Slavic settlement, which includes two strongholds located around  
484 30 km away from Janiki at Łanioch near the Silm Lake in the SSE and Zajączki near Ostróda in  
485 the SE (Grażawski, 2006).

486 Phase 4 is marked by continuation of previous climatic conditions, which are gradually  
487 influenced by human activity. Subphase 4b is characterized by climate change towards warming,  
488 which confirms the gradual shallowing of the lake and increasing the rate of sedimentation. Under  
489 this sub-phase, human impact on the environment is already so great that the picture of climate  
490 change is not clear. There is no doubt, however, that this is a warm period, which should be  
491 correlated with the Medieval Warm Period - MWP (see, Mann et al., 2009).

492



493 5.4. Phase 5: 780 cal. BP (1.45- 0 m)

494 This phase starts about 1200 AD and is connected with the Middle Ages early Modern  
495 Period. Intensive cultivation and treatment of hemp is terminated but cultivation of cereals and  
496 presence of synanthropic plants indicates human activity in a direct vicinity of the lake. The water  
497 level is not high and slightly changes. At 1.4 m there is a drop in TOC, probably due to  
498 deforestation. MS is significantly rising at the same depth as result of increasing input of terrestrial  
499 material to the lake, presumably caused by human activity (deforestation). The intervals of  
500 increased precipitation were reflected by significantly more intensive terrestrial runoff to the lake.  
501 This statement is confirmed by quasi-linear correlation of MS with contents of Fe and Ti in  
502 sediments (Fig. 8). The modern evolution of the lake resulted in development of a shallow (2-3 m)  
503 and gradually overgrowing lake.

504 Phase 5 is a period of increased human activity around the lake, which means that  
505 environmental and climate changes are not so clear. However, changes in lake sedimentation can  
506 be seen around 1500, which may be associated with the development of the Little Ice Age (see.,  
507 Büntgen, U., Hellmann, 2014).

508

509 **5. Conclusions and discussion**

510 The presented scenario of environmental changes in the Mlynek Lake and its vicinity during  
511 the last ca. 2400 years can be recapitulated in the following way. In the phase 1 (3<sup>rd</sup>-2<sup>nd</sup> century  
512 BC) the lake was surrounded by a dense forest and it was not deep. Increased influx of terrigenous  
513 material to the lake can be connected with periods of more intensive local precipitation. A climate  
514 was quite warm and wet. The phase 2 (2<sup>nd</sup> century BC-2<sup>nd</sup> century AD) is a period of major  
515 changes in the environment around the lake, with increasing anthropogenic impact. The forest was  
516 much reduced. Intensive human activity is attested by presence of *Cannabis/Humulus*, *Rumex*  
517 *acetosella*, *Secale* and cereals undiff. Diatoms indicate a drop of the lake water level. The oldest  
518 settlement phase was identified in the stronghold close to the lake (end of the La Tène and the  
519 Roman periods). This relatively wet and warm climatic phase should be correlated with so called  
520 Roman Climatic Optimum. The phase 3 (2<sup>nd</sup>-9<sup>th</sup> century AD) indicates gradual restoration of forest  
521 communities and absence of synanthropic plants what proves a decline of human settlements  
522 around the lake. The middle part of this phase should be associated with the global cooling episode  
523 known as Bond 1 (1.5 ka BP). The next - phase 4 (5<sup>th</sup>-13<sup>th</sup> century AD) is expressed by forest



524 clearing restoration around the lake and onset of the next settlement phase. At the end of this phase  
525 a defence rampart was raised in the stronghold and a wooden-loamy wall was constructed on it.  
526 The lower boundary of phase (10<sup>th</sup>-13<sup>th</sup> century AD) indicates further intensive forest clearing  
527 around the lake. Human activity is marked by presence of Gramineae, *Artemisia*,  
528 *Cannabis/Humulus*, *Plantago lanceolata*, *Secale* and *Cereale* undiff. It corresponds with a  
529 beginning of the next settlement phase in the stronghold (end of 11<sup>th</sup> century AD) when the next  
530 rampart was raised, with wooden constructions at its top. The stronghold was finally abandoned in  
531 the first half of the 13<sup>th</sup> century AD. This period is characterized by climate change towards  
532 warming, which confirms the gradual shallowing of the lake (Middle Age warming period). The  
533 phase 5 (since 13<sup>th</sup> century AD up to present) is reflected by intensive cultivation and treatment of  
534 hemp and cereals close to the lake during intensive colonisation of Warmia and Masuria by  
535 Teutonic state. The water level is not high and changes slightly only, presumably due to  
536 reclamation works. The landscape is subjected to strong transformations connected with  
537 anthropoppression, resulting in significant deforestation of the area. The landscape is subjected to  
538 strong human transformations which means that environmental and climate changes are not so  
539 clear. However, changes in lake sedimentation can be seen around 1500, which may be associated  
540 with so called Little Ice Age - clod interval.

541 The above scenario seems to be confirmed by earlier paleoenvironmental research  
542 conducted in the southwestern part of the Warmia-Masuria Lake District (Kupryjanowicz, 2008;  
543 Kołaczek et al., 2013). Earlier studies of lake sediments in the Warmia and Mazury Region were  
544 based mainly on palynological examination, a comparyson of the Młynek Lake sequence with other  
545 sites must also be based on palynology (Fig. 12). As it was mentioned, the Lake Młynek located in  
546 the wide zone of Lakelands of north-eastern Poland. The closest site Woryty (Pawlikowski et  
547 al., 1982, Noryśkiewicz and Ralska-Jasiewiczowa 1989, Ralska-Jasiewiczowa and Latałowa,  
548 1996), ca. 35 km in a straight line to the east is a reference for this area. The paleoenvironmental  
549 records delivered by the Młynek Lake core is very similar to the Woryty palynological succession  
550 with the human impact during the Roman period and the Medieval time. More detailed comparison  
551 is impossible, because of low resolution of the pollen spectrum at Woryty. The Lake Družno, ca.  
552 35 km to the north (Zachowicz et al. 1982, Zachowicz and Kępińska 1987, Miotk-Szpigianowicz et  
553 al. 2008), is the second closest site with palynological examination to the Młynek Lake. Low  
554 resolution and lack of age-depth model from this lake makes comparison of pollen results between



555 these two sections difficult. Even though the Družno Lake is located in the Vistula Delta  
556 depression, the pollen record for the last 2400 years is similar to the Młynek Lake one with human  
557 impact marked out during the Medieval time and presence of human indicators during the Roman  
558 period. Differences in natural vegetation are local and especially exposed in higher share of alder  
559 in pollen diagram from the Družno Lake, most probably caused by wet habitats in the Vistula Delta.  
560 In the 2013 year were published New palynological data from the Łańskie Lake (Madeja, 2013),  
561 located ca. 55 km to the south-east from the Młynek Lake show higher percentages of pine and  
562 lower share of beech. This record results probably not only from different environmental conditions  
563 in the lake vicinity but also different size of the lakes. The Młynek Lake is a very small (ca. 0.7  
564 km<sup>2</sup>) and mid-forest basin, whereas the Łańskie Lake area is over 10 km<sup>2</sup> and shows much more  
565 regional pollen record. Based on periodical appearances of plant human indicators and  
566 archaeological data between 300 BC and 800 AD Madeja (2013) distinguished three human phases  
567 of West Baltic Barrow, Wielbark and Prussian cultures. In the palynological diagram from the  
568 Młynek Lake (Phase 2) the first is indicated only, including termination of the La Tene and the  
569 Roman Period. Significant growth of human indicators from 1000 yrs. AD is visible in diagrams  
570 from both sites. A more local record from the Młynek Lake is marked especially by high percentage  
571 of *Humulus/Cannabis* pollen grains (up to 25%), in 13-15th centuries. In the sediments of the  
572 Łańskie Lake, presence of pollen grains of hemp was discontinuous and not exceeded 1%.

573 Numerous pollen data are available from the area adjacent to the south-west. The  
574 investigation from the Brodnica Lake District i.e. Strażym Lake (Noryśkiewicz, 1987,  
575 Noryśkiewicz and Ralska-Jasiewiczowa 1989), Oleczno Lake (Filbrandt-Czaja, 1999, Filbrandt-  
576 Czaja et al. 2003) and Chełmno Lakeland (Noryśkiewicz 2013) presents human activity in the  
577 Neolithic. Palynological record from this region evidenced settlement during La Tene, Roman and  
578 Medieval periods. Comparison of the pollen record from other sites located to the east of the  
579 Młynek Lake shows differences in share of a beech. The content of *Fagus sylvatica* pollen grains  
580 changes in the north-eastern direction and significantly high content of *Fagus sylvatica* in the  
581 Młynek Lake sediments is caused by a very local record from a small lake. Decline of *Fagus*  
582 *sylvatica* is related to continental climate and is visible in a pollen diagram from Salęt Lake (Szal  
583 et al. 2014a), Mikołajki Lake (Ralska-Jasiewiczowa 1989), Żabińskie Lake (Wacnik et al. 2016)  
584 and Wigry Lake (Kupryjanowicz 2007). Simultaneously with beech decline, a share of *Picea abies*  
585 increases. A record of human activity in palynological spectra from eastern Poland was noted in



586 many sites. There is similarity between pollen records from the Młynek Lake and far away over  
587 100 km to the east in the Masurian Lakes: Wojnowo, Miłkowskie and Jędrzelek (Wacnik et al.  
588 2014). Recorded shorter or longer human impact on vegetation during Roman Period and Medieval  
589 time is divided by ca. 500-600 years without cultivation and with natural reforestation (and strong  
590 share of birch, a pioneer tree). Similar duration of human regression in the Lake Młynek profile  
591 began and terminated earlier than recorded in the lakes Wojnowo or Miłkowskie. Different history  
592 of human activity shows the results from the Lake Sałęt (Szal et al. 2014b). Pollen grains of  
593 cultivated and ruderal plants are present continuously from the early Iron Age to the early Medieval  
594 time. In opposite to the Młynek Lake or Wojnowo and Miłkowskie pollen record, the suggested  
595 constant settlement in the neighborhood of the Sałęt Lake occurred with a very short decline of  
596 human impact only in 880-980 AD (Szal et al. 2014a). Cited examples of palynological  
597 reconstruction of vegetation changes under climatic conditions and human impact reflect  
598 differences between a record from the Młynek Lake and much larger and predisposed regional  
599 view of environmental history.

600

#### 601 **Acknowledgments**

602

603 The research project has been funded by the National Science Centre in Poland – project: UMO-  
604 2016/21/B/ST10/03059: *Correlation of prehistoric and early medieval settlement phases in north*  
605 *-east Poland with the changes of the natural environment in the light of lacustrine sediments study.*

606

#### 607 **References:**

608

609 Ahlgren, J., Reitzel, K., De Brabandere, H., Gogoll, A., Rydin, E.: Release of organic P  
610 forms from lake sediments, *Water Research*, 45, 565-72. 2011.

611 Bauer, A., Velde, B.: *Geochemistry at the Earth's Surface Movement of Chemical*  
612 *Elements*. Springer – Verlag Berlin Heidelberg, 2014.

613 Bińka, K., Cieśla, A., Łacka, B., Madeyska, T., Marciniak, B., Szeroczyńska, K.,  
614 Więckowski, K.: The development of Błędowo Lake (Central Poland) - A palaeoecological  
615 study, *Studia Geologica Polonica*, 100, 1-83, 1991.



- 616 Blaauw, M., Christen, J.A.: Flexible Paleoclimate Age-Depth Models Using an  
617 Autoregressive Gamma Process, *Bayesian Analysis* 6/3, 457–474, 2011
- 618 Blaauw, M., Christen, J.A., Mauquoy, D., van der Plicht, J., Bennett, K.D.: Testing the  
619 timing of radiocarbon dated events between proxy archives, *The Holocene* 17, 283-288,  
620 2007.
- 621 Bloemdal, J., deMenocal, P.: Evidence for a change in the periodicity of tropical climate  
622 cycles at 2,4 Myr from whole – core magnetic susceptibility measurements, *Nature* 342,  
623 897- 900, 1989.
- 624 Bojakowska, I.: Phosphorous in lake sediments of Poland – results of monitoring research,  
625 *Limnological Review*, 16, 15-25, 2016.
- 626 Brauer, A.: Annually laminated lake sediments and their palaeoclimatic relevance. In: *The*  
627 *Climate in Historical Times. Towards a Synthesis of Holocene Proxy Data and Climate*  
628 *Models*. GKSS School of Environmental Research, 111-129, edited by: Fischer, H.,  
629 Kumke, T., Lohmann, G., Flöser, G., Miller, H., von Storch, H., Negendank, J.F.W.,  
630 Springer Verlag, 2004.
- 631 Brauer, A., Dulski, P., Mangili, C., Mingram, J., Liu, J.: The potential of varves in high-  
632 resolution paleolimnological studies, *PAGES News* 17 (3), 96-98, 2009.
- 633 Brenner M., Whitmore T.J., Curtis J.H., Hodell D.A., Schelske, C.L.: Stableisotope (d13C  
634 and d15N) signatures of sedimented organic matter as indicators of historic lake trophic  
635 state, *J. Paleolimnol.*, 22, 205-221, 1999.
- 636 Büntgen, U., Hellmann, L., *The Little Ice Age in Scientific Perspective: Cold Spells and*  
637 *Caveats*, *Journal of Interdisciplinary History* 44:3, 353–368, 2014.
- 638 Czymzik, M., Dulski, P., Plessen, B., von Grafenstein, U., Naumann, R., Brauer, A.: A 450-  
639 year record of spring-summer flood layers in annually laminated sediments from Lake  
640 Ammersee (southern Germany), *Water Resour. Res.*, 46, W11528, 2010.
- 641 Dearing, J. A.: *Environmental magnetic susceptibility: using the Bartington MS2*, 1994.
- 642 Douglas, M.S.V., Smol, J.P.: Freshwater diatoms as indicators of environmental change in  
643 the High Arctic, 227–244, in: *The Diatoms: Applications for the Environmental and Earth*  
644 *Sciences*, edited by: Stoermer, E.F., Smol, J.P., Cambridge Univ. Press, Cambridge, 1999.
- 645 Duff, K.E., Zeeb, B.A., Smol, J.P.: *Atlas of Chrysophycean Cysts*, 2. Kluwer Academic  
646 Publishers, Dordecht-Boston-London, 1995.



- 647 Duff, K.E., Zeeb, B.A., Smol, J.P.: Chrysophyte cyst biogeographical and ecological  
648 distributions: a synthesis, *Journal Biogeography* 24, 791–812, 1997
- 649 Elbert, J., Grosjean, M., von Gunten, L., Urrutia, R., Fischer, D., Wartenburger, R.,  
650 Ariztegui, D., Fujak, M., Hamann, Y.: Quantitative high-resolution winter (JJA)  
651 precipitation reconstruction from varved sediments of Lago Plomo 47°S, Patagonian  
652 Andes, AD 1530-2001, *Holocene* 22 (4), 465-474, 2012.
- 653 Filbrandt-Czaja A.: Zmiany szaty roślinnej okolic jeziora Oleczno w późnym holocenie  
654 pod wpływem czynników naturalnych i antropogenicznych, in: *Studia nad osadnictwem*  
655 *średniowiecznym ziemi chełmińskiej* 3, 61–68, edited by: W. Chudziak, Toruń, 1999.
- 656 Filbrandt-Czaja A., Noryśkiewicz B., Piernik A.: Intensification gradient of settlement  
657 processes in pollen diagrams from Dobrzyńsko- Olsztyńskie Lake District, *Ecol. Quest.*, 3,  
658 125-137, 2003.
- 659 Snowball, I.: Mineral magnetic properties of Holocene lake sediments and soils from the  
660 Karsa Valley, Lapland, Sweden, and their relevance to paleoenvironmental reconstruction,  
661 *Terra Nova* 5, 258-270, 1993.
- 662 Francus, P., von Suchodoletz, H., Dietze, M., Donner, R.V., Bouchard, F., Roy, A.-J.,  
663 Fagot, M., Verschuren, D., Kröopelin, S.: Varved sediments of Lake Yoa (Ounianga Kebir,  
664 Chad) reveal progressive drying of the Sahara during the last 6100 years, *Sedimentology*  
665 60 (4), 911-934, 2013.
- 666 Gałązka, D.: Szczegółowa mapa geologiczna Polski 1:50 000, ark. Iława (210). *Centr.*  
667 *Arch. Geol. Państw. Inst. Geol.*, [Detailed Geological Map of Poland, scale 1:50 000, Iława  
668 sheet (210). Warsaw, 2009.
- 669 Givélet, N., Le Roux, G., Cheburkin, A., Chen, B., Frank, J., Goodsite, M. E., Kempter,  
670 H., Krachler, M., Noernberg, T., Rausch, N., Rheinberger, S., Roos-Barraclough, F.,  
671 Sapkota, A., Scholzb, Ch., Shoty, W.: Suggested protocol for collecting, handling and  
672 preparing peat cores and peat samples for physical, chemical, mineralogical and isotopic  
673 analyses. *J. Environ. Monit.*, 6, 481–492, 2004.
- 674 Goldhaber, M.B.: Sulfur-rich sediments, in: *Treatise on Geochemistry*, edited by: Holland,  
675 H.D., Turekian, K.K., Pergamon, Oxford, 257-288, 2003.
- 676 Grążawski, K.: Z najnowszych badań pogranicza słowiańsko-pruskiego w rejonie iławsko-  
677 lubawskim. *Pruthenia*, vol. II, Olsztyn, 2006.





- 678 Hofmann, G., Werum, M., Lange-Bertalot, H.: Diatomeen im Süßwasser-Benthos von  
679 Mitteleuropa. A.R.G. GantnerVerlag, Rugell, Liechtenstein, 1–908, 2011.
- 680 Holmes J.A., De Decker P.: The chemical composition of ostracod shells: application in  
681 Quaternary paleoclimatology, in: Ostracoda as proxies for Quaternary climate change,  
682 Developments in Quaternary Science 12, 131-140, edited by: Horne D., Holmes J.A.,  
683 Rodriguez-Lazaro J. & Viehberg F., 2012.
- 684 Hunter, L. E., Delaney, A. J., Lawson, D. E. Davis, L.: Downhole GPR for high-resolution  
685 analysis of material properties near Fairbanks, Alaska, in: Ground Penetrating Radar in  
686 Sediments, Geological Society, Special Publications 211, 275-285, edited by: Bristow, C.  
687 S., Jol, H. M., London, 2003.
- 688 Ivanić, M., Lojen, S., Grozić, D., Jurina, I., Škapin, S.D., Troskot-Čorbić, T., Mikac, N.,  
689 Juračić, M.: Geochemistry of sedimentary organic matter and trace elements in modern lake  
690 sediments from transitional karstic land–sea environment of the Neretva River delta (Kuti  
691 Lake, Croatia), Quaternary International, 494, 286-299, 2018.
- 692 Jelinowska, A., Tucholka, P., Wieckowski, K.: Magnetic properties of sediments in a Polish  
693 lake: evidence of a relation between the rock-magnetic record and environmental changes  
694 in Late Pleistocene and Holocene sediments, Geophys. J. Int., 129,727-736, 1997.
- 695 Karst-Riddoch, T.L., Pisaric, M.F.J., Smol, J.P.: Diatom responses to 20th century climate-  
696 related environmental changes in high elevation mountain lakes of the northern Canadian  
697 Cordillera, Journal of Paleolimnology 33, 265–282, 2005.
- 698 Kilham, P., Kilham, S.S., Hecky, R.E.: Hypothesized resource relationships among African  
699 planktonic diatoms, Limnology and Oceanography 31, 1169–1181, 1986.
- 700 Kołaczek, P., Kuprjanowicz, M., Karpińska -Kołaczek, M., Szal, M., Winter, H., Danel,  
701 W., Pochocka, -Szwarc, K., Stachowicz – Rybka, R.: The Late Glacial and Holocene  
702 development of vegetation in the area of a fossil lake in the Skaliska Basin (north-eastern  
703 Poland) inferred from pollen analysis and radiocarbon dating, Acta Palaeobot., 53(1), 23–  
704 52, 2013.
- 705 Kondracki, J.: Geografia regionalna Polski. Wyd. Nauk. PWN, Warszawa, 2002.
- 706 Kraska M., Piotrowicz R.: Lobelia lakes: specificity, trophy, vegetation and protection, in:  
707 protection of beds and wetlands of Pomerania region 3, 48-52, edited by: Malinowski B.,  
708 2000.



- 709 Kuprjanowicz, M.: Badania palinologiczne w Polsce północno-wschodniej, in: Człowiek i  
710 jego środowisko (Polska północno-wschodnia w holocenie), Botanical Guidebooks 30, 77–  
711 95, edited by: Wacnik A., Madeyska, 2008.
- 712 Kupryjanowicz, M.: Postglacial development of vegetation in the vicinity of the Wigry  
713 Lake, *Geochronometria* 27, 53-66, 2007.
- 714 Lin, Y.T., Schuettelpelz, C.C., Wu, C.H., and Fratta, D.: A combined acoustic and  
715 electromagnetic wave-based techniques for bathymetry and subbottom profiling in shallow  
716 waters, *Journal of Applied Geophysics*, 68, 203–218, 2009.
- 717 López, P., Navarro, E., Marce, R., Ordoñez, J., Caputo, L., Armengol, J.: Elemental ratios  
718 in sediments as indicators of ecological processes in Spanish reservoirs, *Limnetica* 25, 499–  
719 512, 2006.
- 720 Ma, L., Wu, J., Abuduwaili, L., Liu, W.: Geochemical Responses to Anthropogenic and  
721 Natural Influences in Ebinur Lake Sediments of Arid Northwest China, *Plos One*,  
722 13/11(5):e0155819: doi: 10.137, 2016.
- 723 Madeja J.: Vegetation changes and human activity around Lake Łańskie (Olsztyn Lake  
724 District, NE Poland) from the mid Holocene, based on palynological study, *Acta*  
725 *Palaeobotanica* 53(2), 235–261, 2013.
- 726 Mann, M. E., Zhang, Z., Rutherford, S., et al.: (2009). Global Signatures and Dynamical  
727 Origins of the Little Ice Age and Medieval Climate Anomaly, *Science*. 326 (5957), 1256–  
728 60, 2009.
- 729 McCormick, M., Büntgen, U., Cane, M.A., Cook, E.R., Harper, K., Huybers, P., Litt, T.,  
730 Manning, S.W., Mayewski, P. A., More, A.F.M., Nicolussi, K., Tegel, W.: Climate Change  
731 during and after the Roman Empire: Reconstructing the Past from Scientific and Historical  
732 Evidence, *Journal of Interdisciplinary History* 43:2 (Autumn, 2012), 169–220.
- 733 Miotk-Szpiganowicz, G., Zachowicz, J., Uścińowicz, S.: Review and reinterpretation of the  
734 pollen and diatom data from the deposits of the Southern Baltic lagoons, *Polish Geological*  
735 *Institute Special Papers*, 23, 45–70, 2008.
- 736 Myers, K.J., Wignall, P.: Understanding Jurassic Organic-rich Mudrocks—New Concepts  
737 using Gamma-ray Spectrometry and Palaeoecology: Examples from the Kimmeridge Clay  
738 of Dorset and the Jet Rock of Yorkshire, in: *Marine Clastic Sedimentology*, 172-189, edited  
739 by: J.K., Legett, G., Zauffa, 1987.



- 740 Nitychoruk, J. Welc, F.: Janiki Wielkie. Środowisko Fizyczne – geograficzne, in: Katalog  
741 Grodzisk Warmii i Mazur, tom 2, 153 – 155, edited by: Kobyliński, Z., Warszawa, 2017.
- 742 Noryskiewicz, B.: Lake Steklin - a reference site for the Dobrzyń-Chełmno Lake District,  
743 N Poland, Report on palaeoecological studies for the IGCP-Project No. 158B, Acta  
744 Palaeobot., 22(1), 65-83, 1982.
- 745 Noryskiewicz A. M.: Historia roślinności i osadnictwa Ziemi Chełmińskiej w późnym  
746 holocenie, Studium palinologiczne, Toruń, 2013.
- 747 Noryskiewicz, B.: History of vegetation during the Late-Glacial and Holocene in Brodnica  
748 Lake District in light of pollen analysis of Lake Strażym deposits, Acta Palaeobot., 27(1),  
749 283-304, 1987.
- 750 Noryskiewicz, B., Ralska-Jasiewiczowa, M.: Type region P-w: Dobrzyń-Olsztyn lake  
751 District, Acta Palaeobotanica 29(2), 85-93, 1989.
- 752 Ojala, A.E.K., Kosonen, E., Weckström, J., Korkkonen, S., Korhola, A.: Seasonal formation  
753 of clastic-biogenic varves: the potential for palaeoenvironmental interpretations, GFF,  
754 Special issue: Varve Genesis Chronol., Paleoclimate 135 (3/4), 237-247, 2013.
- 755 Pawlikowski M., Ralska-Jasiewiczowa M., Schönborn W., Stupnicka E., Szeroczyńska K.:  
756 Woryty near Gietrzwałd, Olsztyn Lake District, NE Poland - history and lake development  
757 during the last 12000 years, Acta Palaeobotanica 22(1), 85-116, 1982.
- 758 Peck, J. A., King, J. W., Colman, S. M., Kravchinsky, V. A.: 1994. A rock magnetic record  
759 from lake Baikal, Syberia: Evidence for Late Quaternary climate change, Earth. Planet. Sci.  
760 Lett., 122, 221-238, 1994.
- 761 Rabiega, K., Rutyna, M., Wach, D.: Janiki Wielkie. Badania Archeologiczne, w: Katalog  
762 Grodzisk Warmii i Mazur, tom 2. Warszawa, 155 – 174, edited by: Kobyliński, Z.,  
763 Warszawa, 2017.
- 764 Ralska-Jasiewiczowa M.: Type region P-x: Masurian Great Lake Dystrykt. Acta  
765 Palaeobotanica 29(2), 95-100, 1989.
- 766 Ralska-Jasiewiczowa M., Latałowa A.: Poland, in: Palaeoecological events during the Last  
767 15,000 years: Regional Synthesis of Palaeoecological Studies of Lakes and Mires in  
768 Europe, 403-472, edited by: Berglund, B.E., Birks H.J.B., Ralska-Jasiewiczowa, M.,  
769 Wright H.E., John Wiley & Sons: Chichester, 1996.



- 770 Ralska-Jasiewiczowa M, Goslar T, Madeyska T, Starkel L.: Lake Gościąż, Central Poland,  
771 a monographic study, W. Szafer Institute of Botany, Polish Academy of Sciences, Kraków,  
772 1998.
- 773 Sageman B.B., Lyons T.W.: Geochemistry of fine-grained sediments and sedimentary  
774 rocks, in: Treatise on Geochemistry, edited by: Holland, H.D., Turekian, K.K., Pergamon,  
775 Oxford, 115-158, 2003.
- 776 Sambuelli, L., Silvia, S.: Case study: A GPR survey on a morainic lake in northern Italy for  
777 bathymetry, water volume and sediment characterization, Journal of Applied  
778 Geophysics 81, 48-56, 2012.
- 779 Sambuelli, L., Calzoni, C., Pesenti, M.: Case history: Waterborne GPR survey for  
780 estimation bottom-sediment variability: A survey on the Po River, Turin, Italy, Geophysics  
781 74, 95–102, 2009.
- 782 Sandgren, P., Snowball, I.: Application of mineral magnetic techniques to Paleolimnology,  
783 in: Tracking environmental change using lake sediments, Physical and geochemical  
784 methods 2, edited by: Last, W., Smol, J., Kluwer Academic Publishers. Netherlands, 2001.
- 785 Smol, J.P., Birks, J.B., Last, W.M.: Tracking Environmental Change Using Lake  
786 Sediments, Terrestrial, Algal and Siliceous Indicators 3, 371, Springer Verlag, 2001.
- 787 Snowball, I. F.: Mineral magnetic properties of Holocene lake sediments and soils from the  
788 Karsa valley, Lappland, Sweden, and their relevance to palaeoenvironmental  
789 reconstruction, Terra Nova 5, 258 – 270, 1993.
- 790 Stankevica, K., Kalnina, L., Klavins, M., Cerina, A., Ustupe, L., Kaup, E.: Reconstruction  
791 of the Holocene Palaeoenvironmental Conditions Accordingly to the Multiproxy  
792 Sedimentary Records from Lake Pilvelis, Latvia, Quaternary International 386, 102-15,  
793 2015.
- 794 Szal M., Kupryjanowicz M., Wyczółkowski M.: Late Holocene changes in vegetation of  
795 the Mrągowo Lakeland (NE Poland) as registered in the pollen record from Lake Sałęt,  
796 Studia Quaternaria, 31(1), 51–60, 2014a.
- 797 Szal M., Kupryjanowicz M., Wyczółkowski M., Tylmann W.: The Iron Age in the  
798 Mrągowo Lake District, Masuria, NE Poland: the Sałęt settlement microregion as an  
799 example of long-lasting human impact on vegetation. Veget. Hist. Archaeobot., 23, 419–  
800 437, 2014b.



- 801           Szczepański, S.: Średniowieczne założenia obronne okolic Zalewa, Zapiski Zalewskie 16,  
802           2009.
- 803           Thompson, R., Oldfield, F.: Environmental magnetism, Allen and Unwin London, 1986.
- 804           Tiljander, M., Ojala, A.E.K., Saarinen, T., Snowball, I.: Documentation of the physical  
805           properties of annually laminated (varved) sediments at a sub-annual to decadal resolution  
806           for environmental interpretation, *Quat. Int.*, 88 (1), 5-12, 2002.
- 807           Tylmann, W., Szpakowska, K., Ohlendorf, C., Woszczyk, M., Zolitschka, B.: Conditions  
808           for deposition of annually laminated sediments in small meromictic lakes: a case study of  
809           Lake Suminko (northern Poland), *J. Paleolimnol.*, 47 (1), 55-70, 2012.
- 810           Valpola, S.E., Ojala, A.E.K.: Post-glacial sedimentation rate and patterns in six lakes of the  
811           Kokemöenjoki upper watercourse, Finland, *Boreal Environ. Res.*, 11, 195-211, 2006.
- 812           Verosub, K. L., Roberts, A. P.: Environmental Magnetism: past, present and future, *Journal*  
813           *of Geophysical Research* 100, 2175-2192, 1995.
- 814           Wacnik A, Tylmann W, Bonk A et al., Determining the responses of vegetation to natural  
815           processes and human impacts in north-eastern Poland during the last millennium:  
816           Combined pollen, geochemical and historical data, *Vegetation History and Archaeobotany*.  
817           Epub ahead of print 17 March. DOI: 10.1007/s00334-016-0565-z, 2016.
- 818           Wacnik A., Kupryjanowicz M., Mueller-Bieniek A., Karczewski M., Cywa K.: The  
819           environmental and cultural contexts of the late Iron Age and medieval settlement in the  
820           Mazurian Lake District, NE Poland: combined palaeobotanical and archaeological data,  
821           *Veget. Hist. Archaeobot.*, 23, 439–459, 2014.
- 822           Welc, F.: Lake sediments and geoarchaeology (editorial), *Studia Quaternaria* 34(1), 3-8,  
823           2017.
- 824           Welc, F.: Geoarchaeological evidence of late and post-Antiquity (5<sup>th</sup>-9<sup>th</sup> c. AD) climate  
825           changes recorded at the Roman site in Plemići Bay (Zadar region, Croatia), *Studia*  
826           *Quaternaria* 36, no. 1, 3–17, 2019.
- 827           Wetzel, R.G.: Past productivity: paleolimnology, in: *Limnology. Lake and River*  
828           *Ecosystems*, third ed., edited by: Wetzel, R.G., Elsevier, Oxford, 785-804, 2001.
- 829           Wilkinson, A.N., Zeeb, B.A., Smol, J.P.: *Atlas of chrysophycean cysts*, Kluwer Academic  
830           Publishers, Dordrecht, 2002.

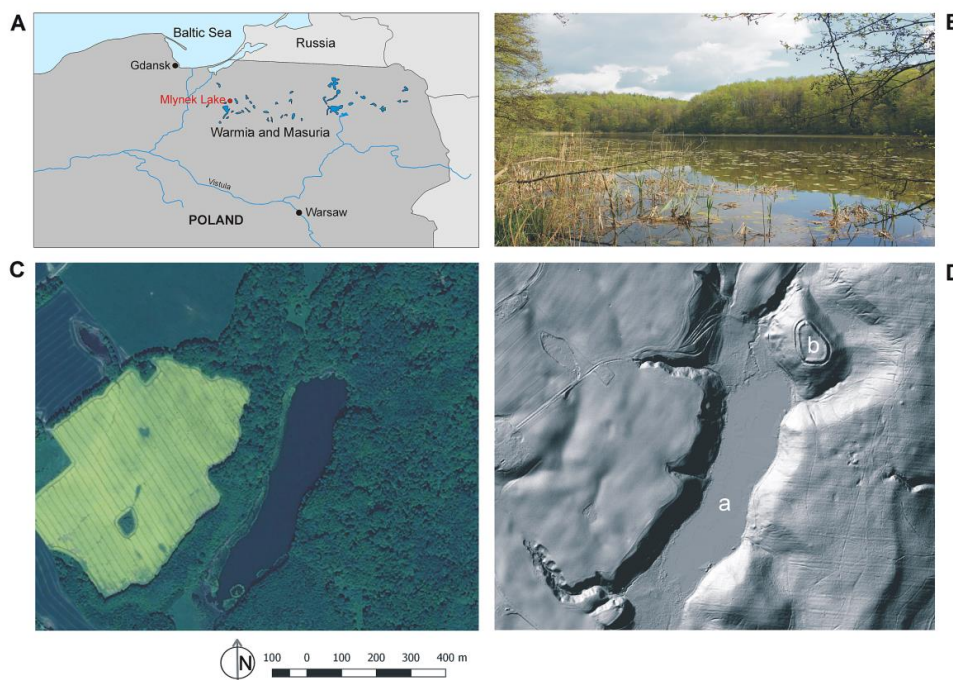


- 831 Williams, D.M., Round, F.E.: Revision of the genus *Fragilaria*, *Diatom Research* 2, 267–  
832 288, 1987.
- 833 Wirth S.B., Gilli A., Niemann H., Dahl T.W., Ravasi D., Sax N., Hamann Y., Peduzzi R.,  
834 Peduzzi S., Tonolla M., Lehmann M.F., Anselmetti F.S.: Combining sedimentological,  
835 trace metal (Mn, Mo) and molecular evidence for reconstructing past water-column redox  
836 conditions: the example of meromictic Lake Cadagno (Swiss Alps), *Geochimica et*  
837 *Cosmochimica Acta*, 120, 220-238, 2013.
- 838 Witkowski, A., Lange-Bertalot, H., Metzeltin, D.: *Diatom flora of marine coasts, I.*  
839 *Iconographia Diatomologica* 7, 1–925, 2000.
- 840 Zachowicz J., Kępińska U.: The palaeoecological development of Lake Drużno (Vistula  
841 Deltaic Area), *Acta Palaeobotanica* 27(1), 227-249, 1987.
- 842 Zachowicz J., Przybyłowska-Lange W., Nagler J.: The Late-glacial and Holocene  
843 vegetational history of the Żuławy region, N Poland, A. Biostratigraphic study of Lake  
844 Drużno sediments, *Acta Palaeobotanica* 22(1), 141-161, 1982.
- 845 Żalat, A., Welc, F., Nitychoruk, J., Marsk, L., Chodyka, M., Zbucki, Ł.: Last two millennia  
846 water level changes of the Młynek Lake (Northern Poland) inferred from diatoms and  
847 chrysophyte cysts record, *Studia Quaternaria* 35/2, 77 – 89, 2018.
- 848 Zolitschka, B.: Varved lake sediments, in: *Encyclopedia of Quaternary Science*, edited by:  
849 Elias, S.A., Elsevier, Amsterdam, 3105-3114, 2007.
- 850  
851  
852  
853  
854  
855  
856  
857  
858  
859  
860  
861



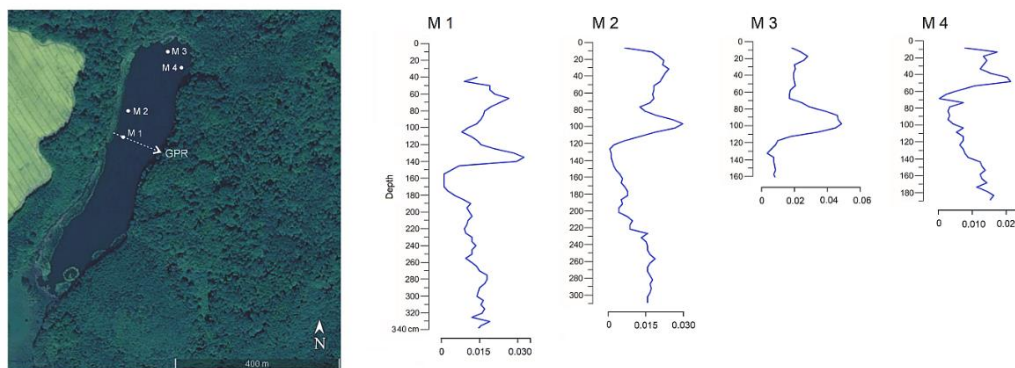


862



863

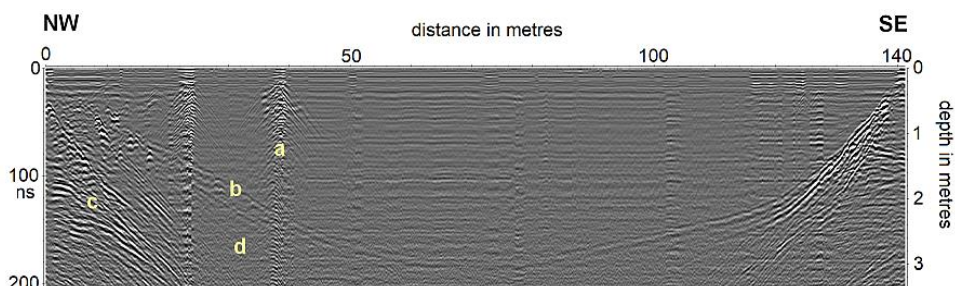
864 Fig. 1. A-location of the Mlynek Lake in the Warmia and Mazury Region (north-eastern Poland) (Drawing; Fabian  
865 Welc). B-view of the Mlynek Lake from the north-west (Photo: Fabian Welc), C-satellite image of the lake (open  
866 source: ©Google Earth : [www.google.com/intl/pl/earth](http://www.google.com/intl/pl/earth)). D-LIDAR image of the lake: a-lake basin, b-Janiki Wielkie  
867 archaeological site established in early Iron Age (open source: ©Geoportal Poland : [www.geoportal.gov.pl](http://www.geoportal.gov.pl)).



868

869 Fig. 2. Mlynek Lake: A-location of drillings M 1-4 and transect of GPR sounding (open source: Google Earth© :  
870 [www.google.com/intl/pl/earth/](http://www.google.com/intl/pl/earth/)). B-results of magnetic susceptibility measurements of the cores M 1-4 (Drawing:  
871 Fabian Welc).



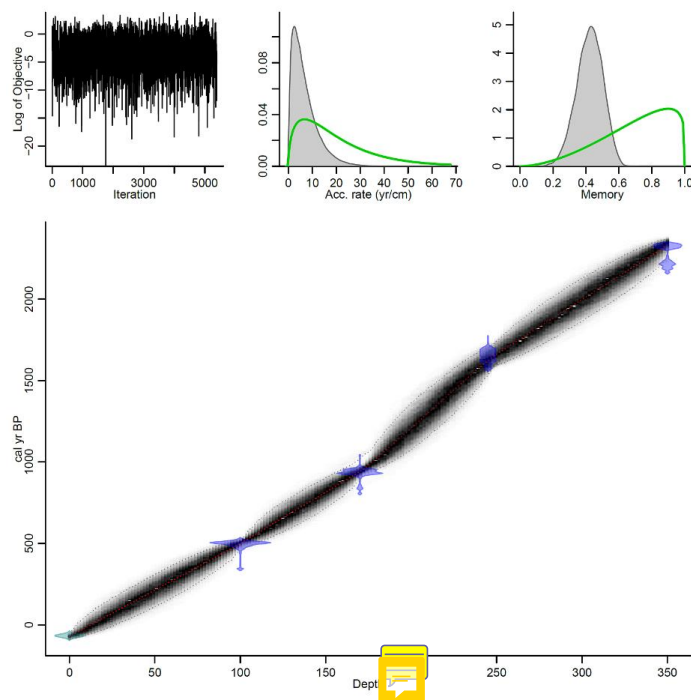


872

873 Fig. 3. GPR reflection profile across the Mlynek Lake (cf. Fig. 2). a-drilling M-1. b-upper boundary of the so-called  
874 hard beds. c-stratified glaciofluvial sandy-gravel beds beneath the lake sediments. d-attenuation zone of  
875 electromagnetic waves connected with occurrence of organic sediment (gyttja) (measurements, processing and  
876 interpretation: Fabian Welc).

877

878

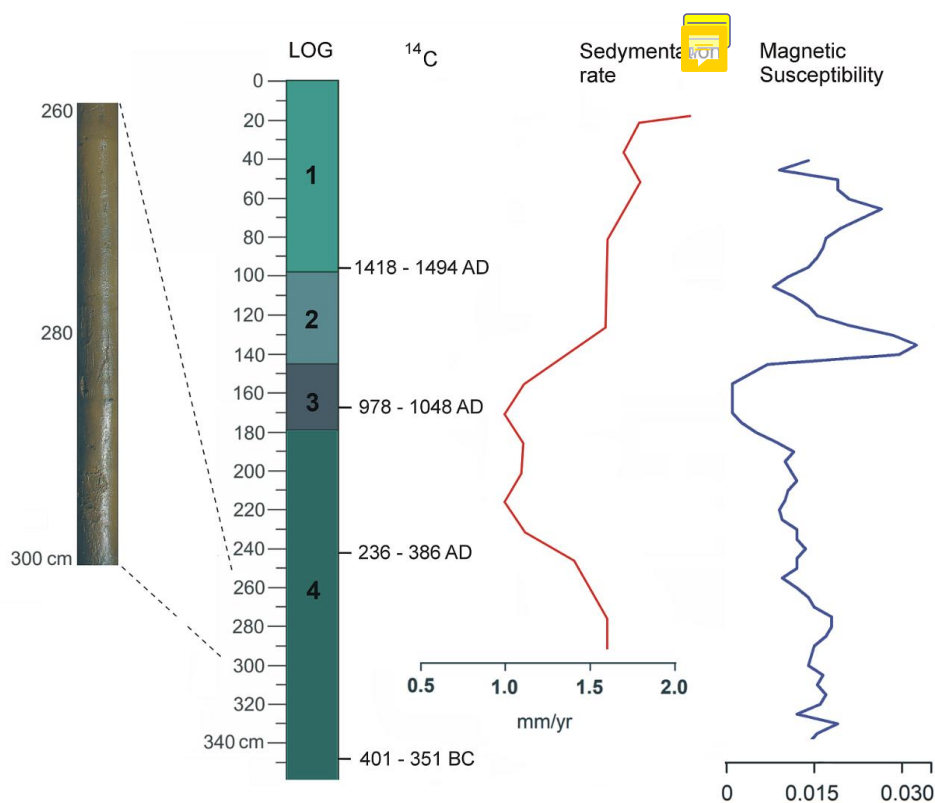


879

880 Fig. 4. Age-depth model of the core M-1 from the Mlynek Lake. Good runs of a stationary distribution are shown in  
881 the upper left panel, green curves and grey histograms in the upper middle panel present distributions for the sediment  
882 accumulation rate and memory is indicated in the right panel. The main bottom panel shows the calibrated  $^{14}\text{C}$  dates  
883 (transparent blue) and the age-depth model (darker gray areas) which are indicating calendar ages. Grey stippled lines  
884 show 95% confidence intervals and the red curve shows the 'best' model based on the weighted mean age for each  
885 depth. The model was created by F. Welc using the open Bacon software (Blaauw and Christen, 2011).

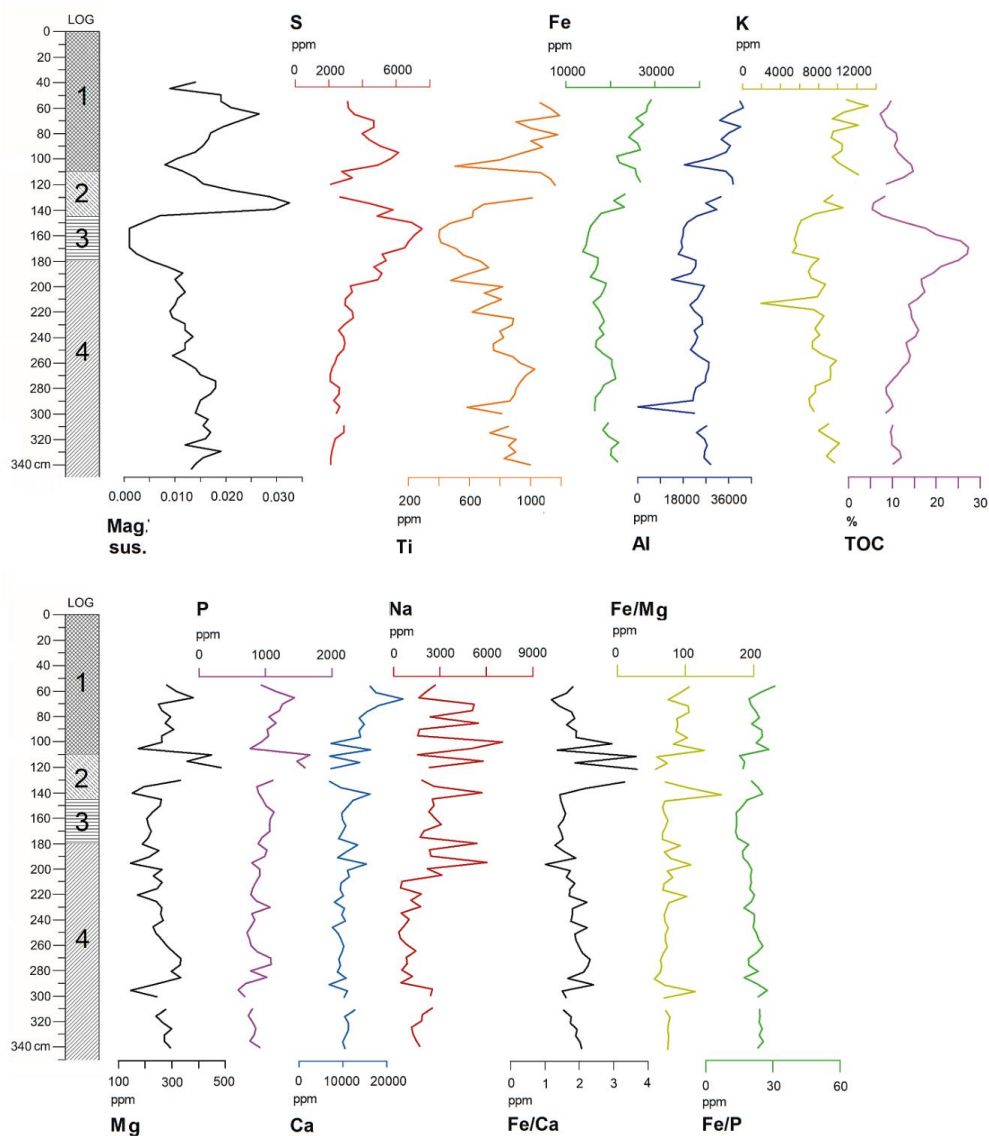


886  
887  
888  
889  
890  
891  
892



893

894 Fig. 5. Lithology of the M-1 borehole with radiocarbon determinations with 95% confidence, close up-photo of the  
895 log at 2.6-3.0 m depth and sedimentary rate (mm/year) estimated based on the age/depth model and magnetic susceptibility.  
896 Description of LOG: 1-hydrated and detritus type gyttja, 2-very plastic-algal gyttja, 3-gray-brown peaty and detritus  
897 gyttja, 4-gray-brown gyttja (Photo and drawing: Fabian Welc).



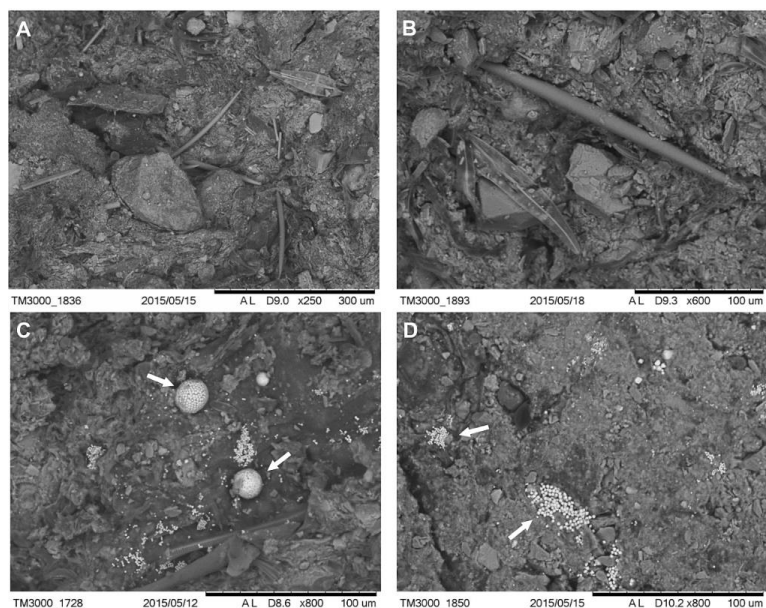
898

899

900 Fig. 6. Concentration depth curves for selected elements and TOC in the core M-1 of the Mlyněk Lake sediments.

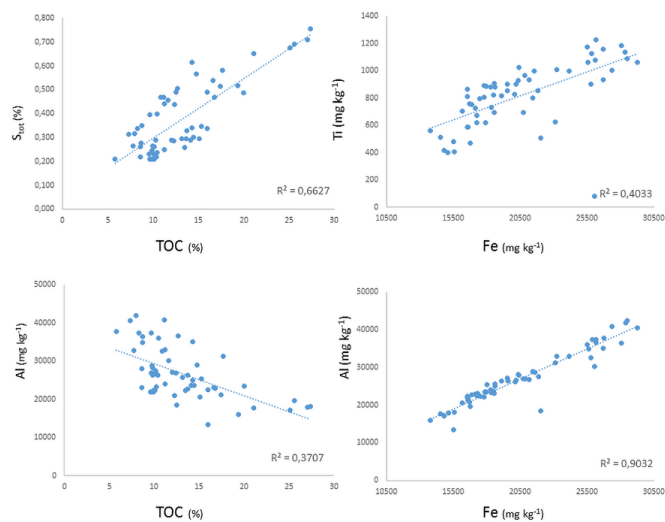
901 Description of LOG: 1-hydrated-detritus type gyttja, 2-very plastic - algal gyttja, 3-gray-brown peaty-detritus gyttja,

902 4-gray-brown gyttja (Drawing: Fabian Welc).



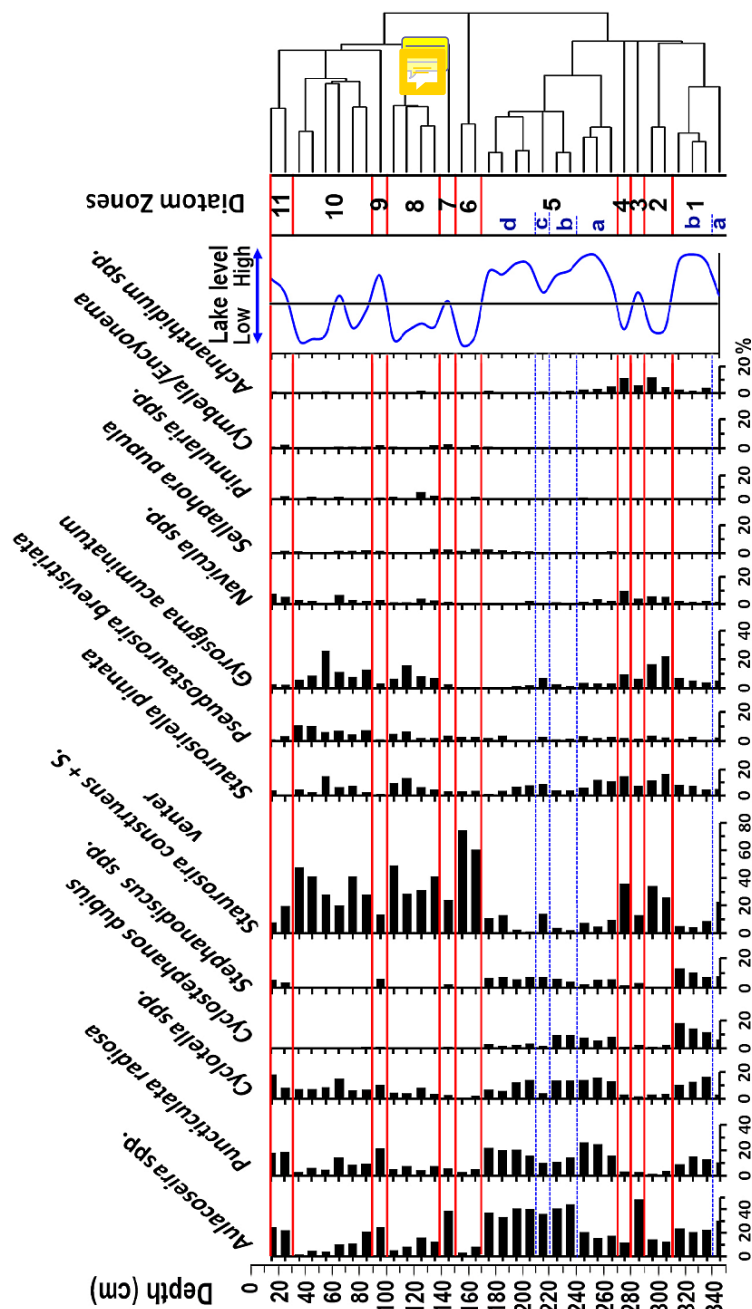
903  
904  
905  
906  
907  
908

Fig. 7. Core M-1 SEM images showing a general view of the Młynek Lake sediments. Pictures A and B present mostly freshwater diatom sponge spicules and plant detritus. Pictures C and D show the characteristic pyrite aggregates marked by arrows (Photos: Anna Rogóż-Matyszczak)



909  
910  
911

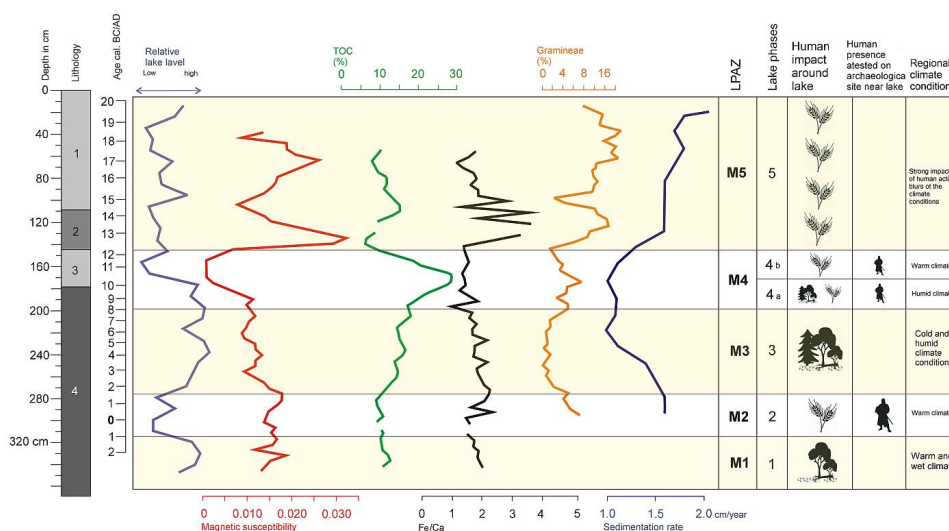
Fig. 8. Scatter plot showing the correlation in the core M-1 between S and TOC, Al and TOC, Ti and Fe, and Ti and Fe. (Drawing: Anna Rogóż-Matyszczak)



912  
 913 Fig. 9. Diatom stratigraphy of the core M-1, showing diatom zones and lake phases and relative water level changes  
 914 estimated on relation between planktonic and benthonic diatom taxa (Interpretation and drawing: Abdelfattah Zalot).







917

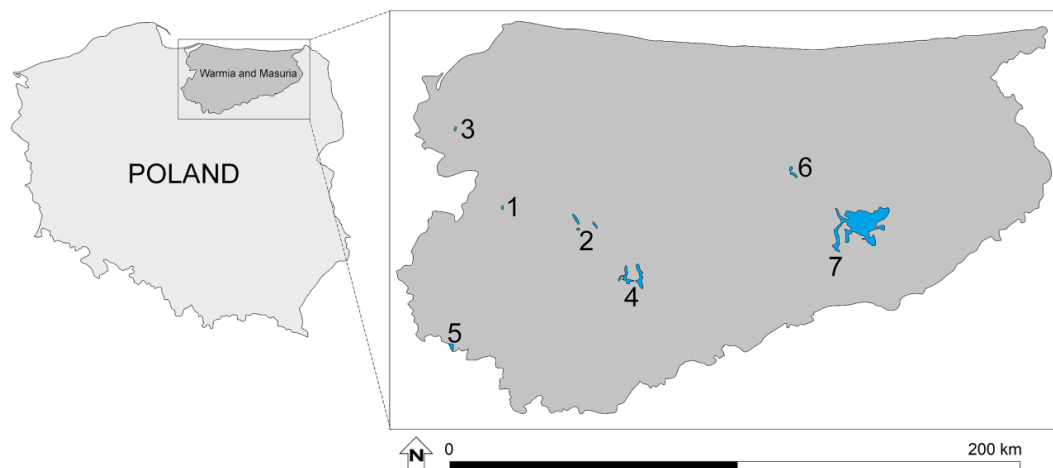
918

919

920

921

**Fig. 11.** Diagram with selected palaeoenvironmental proxies including lithology (1-hydrated – detritus type gyttja, 2-very plastic - algal gyttja, 3-gray-brown peaty-detritus gyttja, 4-gray-brown gyttja) with phases of human activity and local climate conditions dominated in the vicinity of the Młynek Lake 9 (Drawing: Fabian Welc).



922

923

924

925

926

927

928

**Fig. 12.** Map of north-eastern Poland (Warmia and Masuria region) with location of the most important lakes mentioned in text: 1-Młynek Lake, 2-Woryty Lake, 3-Drużno Lake, 4-Łańskie Lake, 5-Strażym Lake, 6-Salent Lake, 7-Mikołajki Lake (Drawing: Fabian Welc).





929 Table 1. List of radiocarbon determinations.

No.	Depth in m	Lab. reference	<sup>14</sup> C yr. BP	Age calibrated 95% probability	Material dated
1	0.95-1.00	S/JW 1/2015/A	435 ± 30	1418 – 1494 AD	Bulk of gyttja
2	1.65-1.70	S/JW 1/2015/B	1015 ± 30	971 – 1048 AD	Bulk of gyttja
3	2.40-2.45	S/JW 1/2015/C	1730 ± 30	236 – 386 AD	Bulk of gyttja
4	3.45-3.50	S/JW 1/2015/D	2275 ± 30	401 – 351 BC	Bulk of gyttja

930

931

932 Table 2. Pearson correlation coefficient (PCC) for selected elements (upper table - A) and proxies (lower table - B).

933 A

	Al	As	Ca	Ce	Cr	Cu	Er	Fe	Ga	La	Li	Mn	Nd	Ni	P	Pb	Pr	Rb	Sc	Sr	U	V	Ti	S	TOC
Al	1.00																								
As	0.37	1.00																							
Ca	0.36	0.12	1.00																						
Ce	0.00	0.61	-0.29	1.00																					
Cr	0.17	-0.05	0.67	-0.08	1.00																				
Cu	0.63	0.24	0.32	-0.20	0.05	1.00																			
Er	0.39	-0.03	-0.17	0.26	-0.07	-0.15	1.00																		
Fe	0.95	0.39	0.52	-0.05	0.29	0.59	0.34	1.00																	
Ga	0.08	-0.36	0.71	-0.54	0.73	0.04	0.01	0.23	1.00																
La	0.15	0.67	0.13	0.44	-0.01	0.01	-0.02	0.22	-0.21	1.00															
Li	0.33	0.35	0.19	0.01	-0.01	0.50	-0.07	0.29	-0.04	0.05	1.00														
Mn	0.46	0.38	-0.35	0.45	-0.38	0.07	0.50	0.38	-0.61	0.30	0.10	1.00													
Nd	0.06	0.58	-0.24	0.95	-0.05	-0.22	0.31	0.02	-0.53	0.43	-0.03	0.52	1.00												
Ni	0.15	-0.01	0.62	-0.01	0.99	0.03	-0.05	0.27	0.66	0.03	-0.01	-0.35	0.02	1.00											
P	0.49	0.14	0.02	-0.15	-0.23	0.21	0.26	0.47	-0.14	0.20	0.12	0.69	-0.06	-0.26	1.00										
Pb	0.41	0.47	-0.05	0.45	-0.18	-0.09	0.30	0.42	-0.45	0.31	0.10	0.71	0.57	-0.16	0.43	1.00									
Pr	0.65	0.45	0.07	0.44	0.07	0.01	0.58	0.66	-0.20	0.28	0.13	0.72	0.56	0.10	0.45	0.85	1.00								
Rb	0.13	-0.19	0.68	-0.22	0.79	-0.13	0.08	0.30	0.81	-0.09	-0.09	-0.34	-0.13	0.73	-0.06	0.02	0.22	1.00							
Sc	0.54	0.85	0.06	0.65	-0.02	0.22	0.14	0.52	-0.44	0.49	0.28	0.57	0.69	0.03	0.19	0.65	0.67	-0.19	1.00						
Sr	0.40	0.90	0.11	0.72	-0.03	0.21	0.02	0.38	-0.47	0.56	0.27	0.45	0.73	0.02	0.06	0.57	0.54	-0.21	0.94	1.00					
U	0.38	0.33	-0.45	0.58	-0.29	-0.02	0.51	0.26	-0.65	0.19	0.08	0.83	0.64	-0.22	0.35	0.66	0.73	-0.36	0.61	0.51	1.00				
V	0.82	0.15	0.72	-0.30	0.45	0.50	0.27	0.91	0.56	0.06	0.23	0.05	-0.23	0.39	0.34	0.22	0.45	0.55	0.24	0.11	-0.09	1.00			
Ti	0.75	0.47	-0.12	0.42	-0.28	0.34	0.54	0.64	-0.48	0.23	0.21	0.78	0.46	-0.27	0.43	0.68	0.73	-0.28	0.70	0.58	0.70	0.38	1.00		
S	-0.12	-0.18	0.22	-0.70	-0.06	0.18	-0.61	-0.06	0.25	-0.17	-0.01	-0.41	-0.70	-0.10	0.17	-0.28	-0.40	0.05	-0.35	-0.33	-0.48	0.06	-0.47	1.00	
TOC	-0.56	-0.24	-0.24	-0.21	-0.18	-0.27	-0.40	-0.58	-0.13	-0.19	-0.12	-0.25	-0.23	-0.17	0.00	-0.26	-0.46	-0.22	-0.34	-0.26	-0.21	-0.52	-0.47	0.40	1.00

934 B

	Al	Ca	Fe	Mn	P	Ti	Fe/Ca	Mn/Fe	Fe/Mn	Fe/P	Th/U
Al	1										
Ca	0.36	1.00									
Fe	0.95	0.52	1.00								
Mn	0.46	-0.35	0.38	1.00							
P	0.49	0.02	0.47	0.69	1.00						
Ti	0.75	-0.12	0.64	0.78	0.43	1.00					
Fe/Ca	0.34	-0.60	0.24	0.67	0.39	0.51	1.00				
Mn/Fe	-0.27	-0.72	-0.39	0.69	0.31	0.27	0.44	1.00			
Fe/Mn	0.08	0.68	0.19	-0.50	-0.24	-0.42	-0.28	-0.59	1.00		
Fe/P	0.38	0.55	0.47	-0.37	-0.52	0.05	-0.15	-0.71	0.61	1.00	
Th/U	-0.06	0.44	0.09	-0.15	0.14	-0.09	-0.33	-0.26	0.27	-0.05	1.00

935

936