

***Interactive comment on “Last 2400 yrs.  
Environmental changes and human activity  
recorded in the gyttja-type bottom sediments of  
the Młynek Lake (Warmia and Masuria Region,  
northern Poland)” by Fabian Welc et al.***

**Fabian Welc et al.**

f.welc@uksw.edu.pl

Received and published: 16 October 2020

Dear Sirs, In the first place, we apologize for the delay in the process of reviewing the article. This was due to the fact that contact with some of the co-authors was difficult, especially in the summer. We would like to thank reviewer for valuable suggestions. We accepted most of them. Their introduction allowed for a significant improvement of the article. We hope that the revised text will meet the expectations of reviewer. We send below responses to reviewers' comments, the corrected text with illustrations, and text that allows you to track changes in the text.

C1

[Printer-friendly version](#)

[Discussion paper](#)



Please also note the supplement to this comment:

<https://cp.copernicus.org/preprints/cp-2020-45/cp-2020-45-AC1-supplement.pdf>

---

Interactive comment on Clim. Past Discuss., <https://doi.org/10.5194/cp-2020-45>, 2020.

CPD

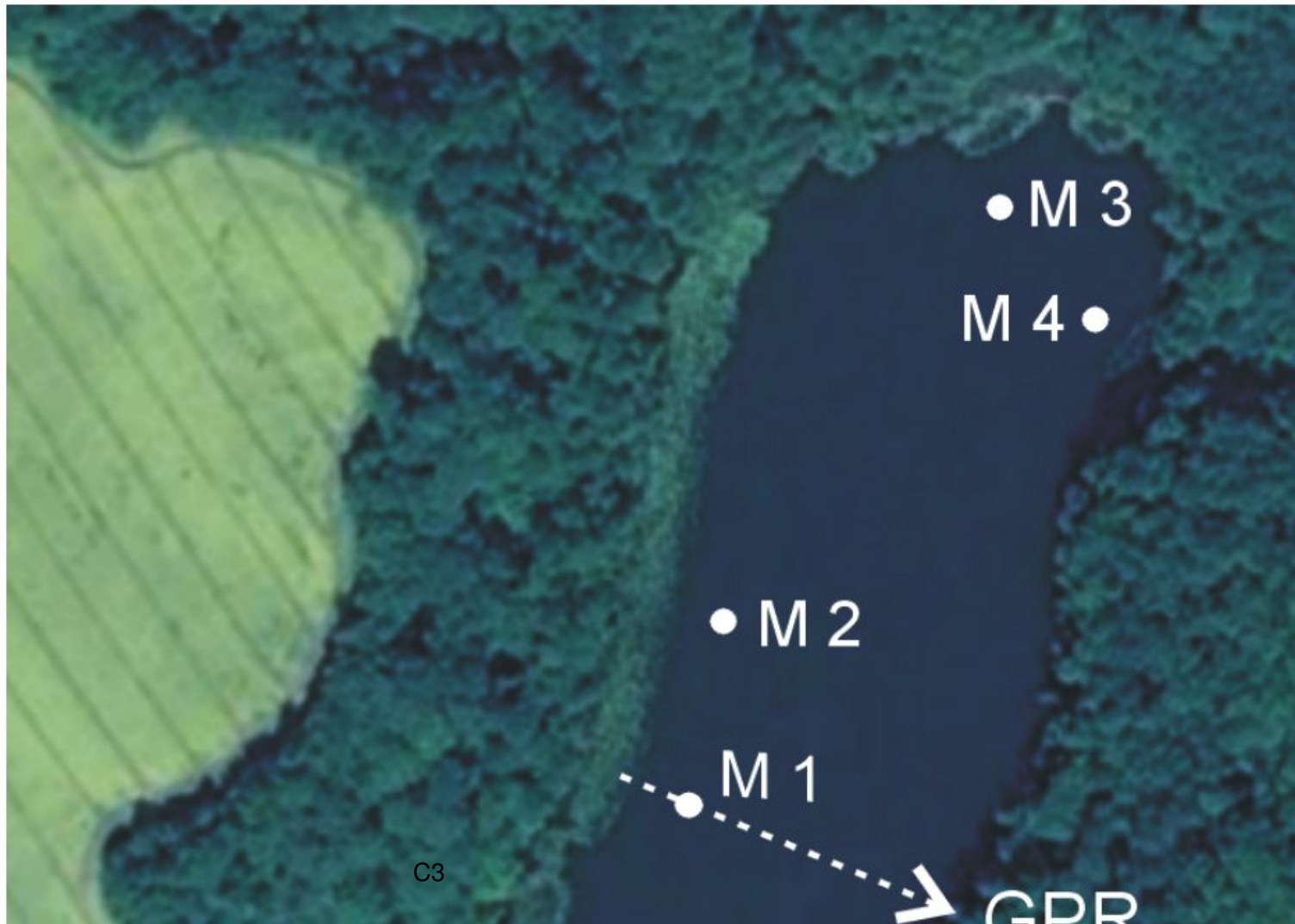
---

Interactive  
comment

Printer-friendly version

Discussion paper





• M 3

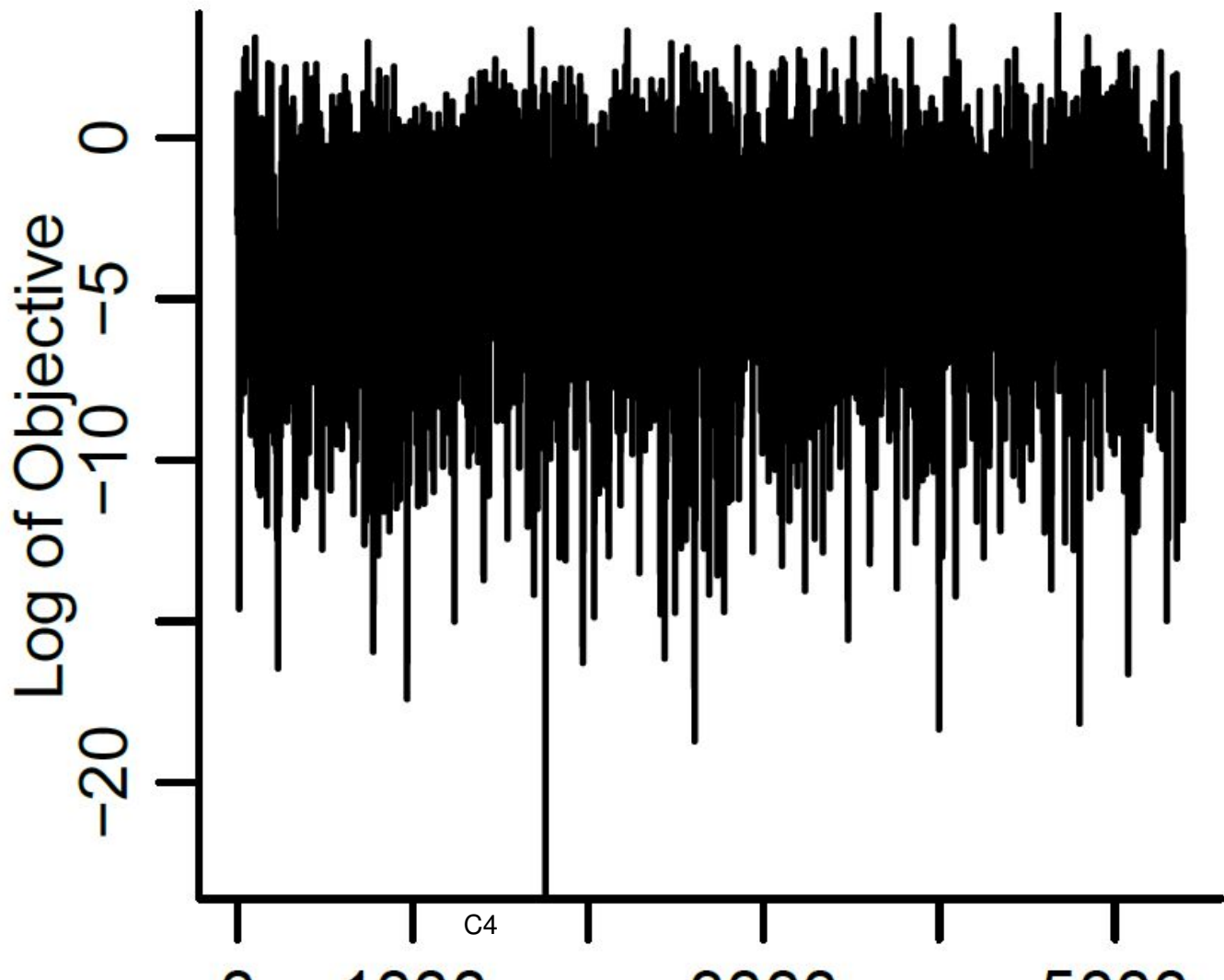
M 4 •

• M 2

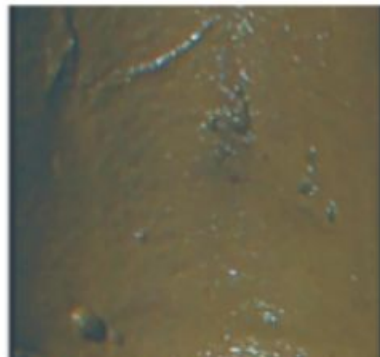
M 1

C3

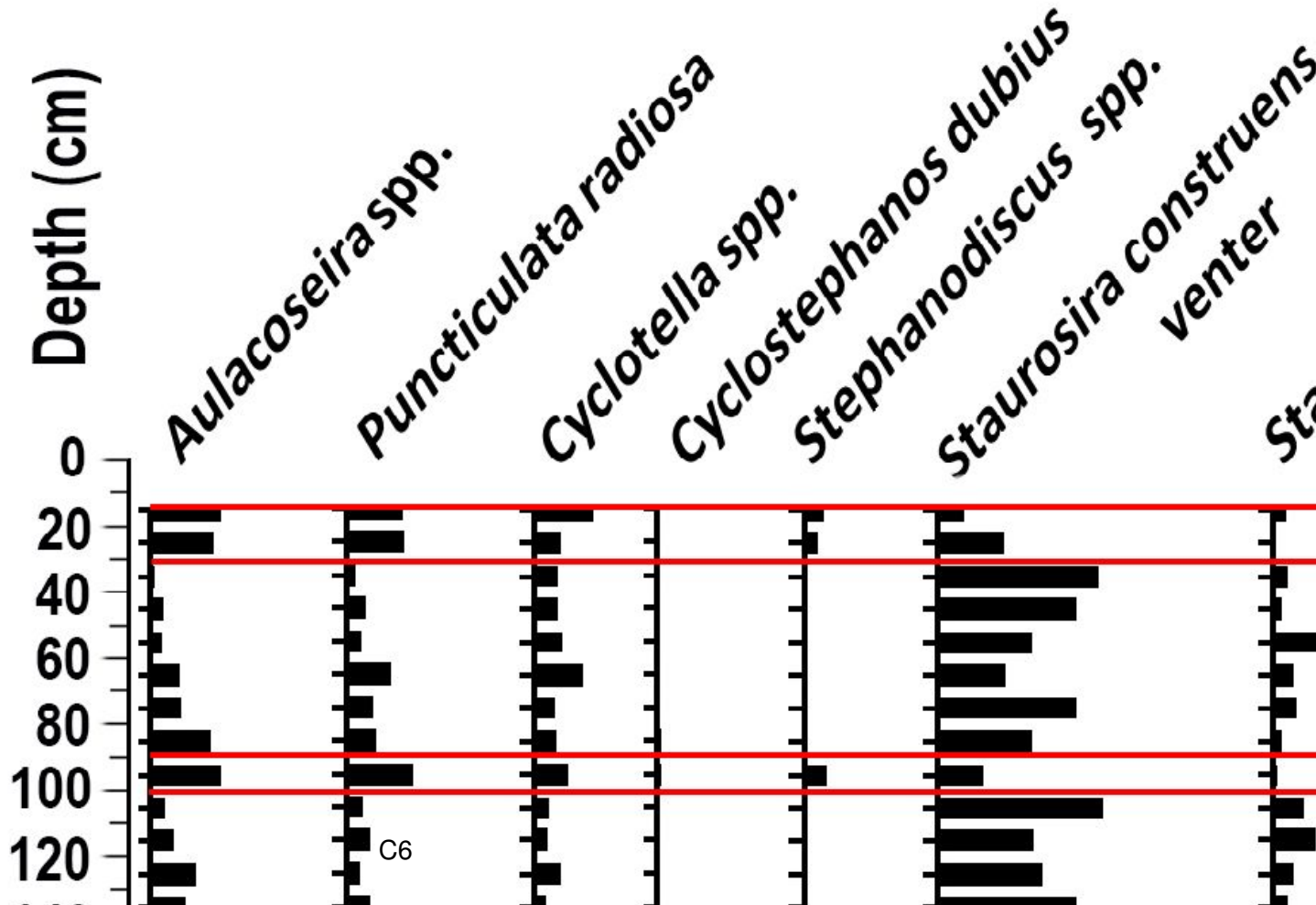
GPR



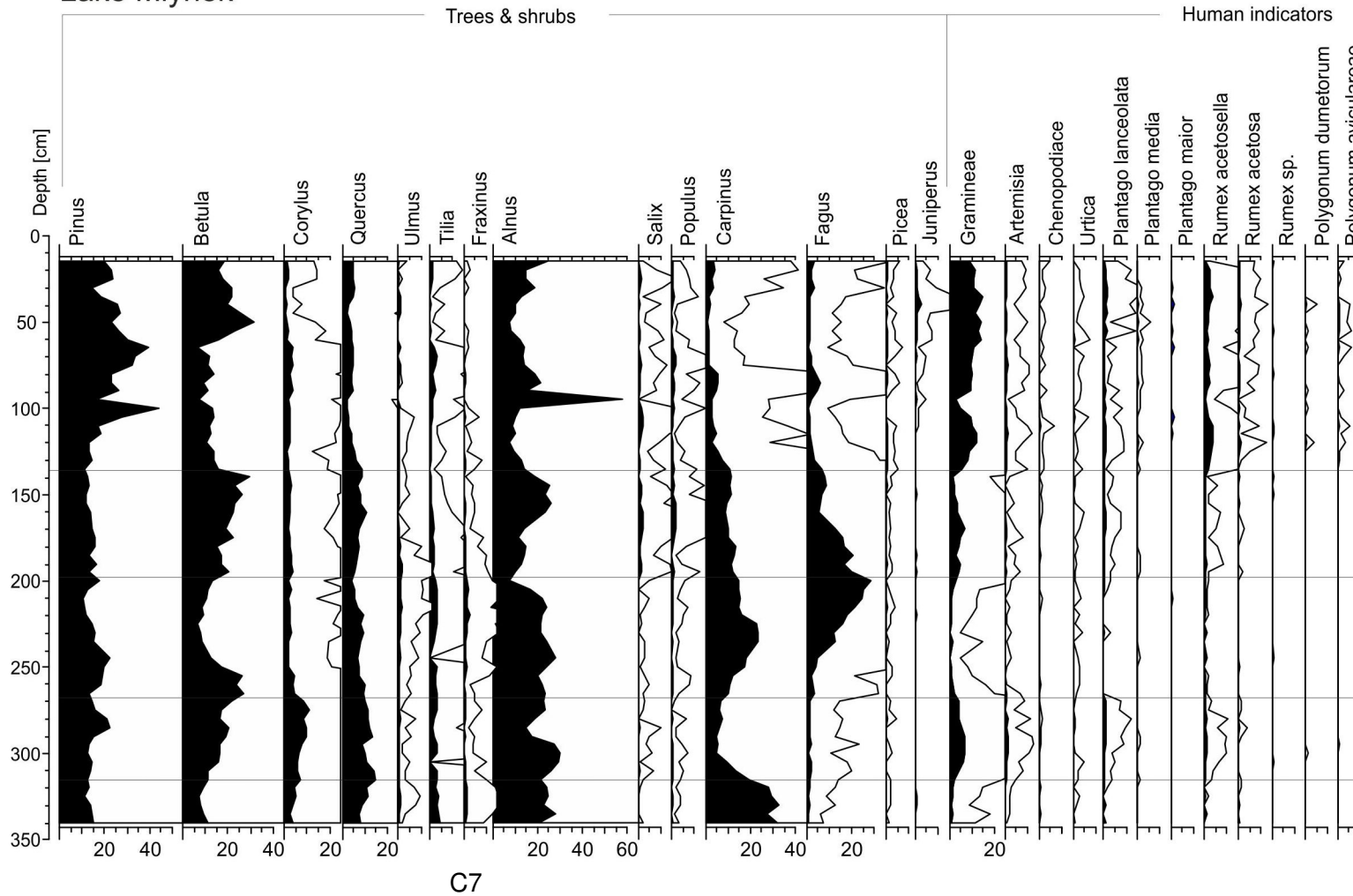
260



C5



# Lake Mlynek



C7

C8

Depth in cm

Lithology

Acco cal BC/AD