

# Assessing the Statistical Uniqueness of the Younger Dryas: A Robust Multivariate Analysis

Henry Nye<sup>1</sup> and Alan Condron<sup>2</sup>

<sup>1</sup>Department of Mathematics and Statistics, Haverford College, PA 19041

<sup>2</sup>Geology and Geophysics, Woods Hole Oceanographic Institution, MA 02543

**Correspondence:** Henry Nye (hnye@haverford.edu), Alan Condron (acondron@whoi.edu)

**Abstract.** During the last glacial period (c. 120-11 kyr BP), dramatic temperature swings, known as Dansgaard-Oeschger (D-O) events, are clearly manifest in high resolution oxygen isotope records from the Greenland ice sheet. Although variability in the Atlantic Meridional Overturning Circulation (AMOC) is often invoked, a unified explanation for what caused these ‘sawtooth shaped’ climate patterns has yet to be accepted. Of particular interest is the most recent D-O shaped climate pattern that occurred from ~14,600 to 11,500 years ago - the Bølling/Allerød (BA) warm interstadial and the subsequent Younger Dryas (YD) cold stadial. Unlike earlier D-O stadials, the YD is frequently considered a unique event, potentially resulting from a rerouting and/or flood of glacial meltwater into the North Atlantic or a meteorite impact. Yet, these mechanisms are less frequently considered as the cause of the earlier stadials. Using a robust multivariate outlier detection scheme - a novel approach for traditional paleoclimate research - we show that the pattern of climate change during the BA/YD is not statistically different from the other D-O events in the Greenland record, and that it should not necessarily be considered unique when investigating the drivers of abrupt climate change. **In so doing, our results thus confirm the ambiguity of the BA/YD’s trigger and present a novel statistical framework for paleoclimatic data analysis.**

*Copyright statement.* TEXT

## 1 Introduction

First noted in 1985 by Willi Dansgaard as “violent oscillations” in Greenland’s DYE-3 and Camp Century oxygen isotope ( $\delta^{18}\text{O}$ ) records, Dansgaard-Oeschger (D-O) events are now well known examples of abrupt climate change during the last glacial period (c. 120-11 ky BP) (see Figure 1) (Dansgaard, 1985). These events are characterized by abrupt warmings of  $\sim 8\text{-}16^\circ\text{C}$ , a subsequent centennial-to-millennial length period of relative warmth (i.e. an interstadial), followed by a gradual, and sometimes abrupt, shift to cooler (stadial) conditions (Rasmussen et al., 2014). Since their discovery three and a half decades ago, countless mechanisms have been proposed to explain D-O cycles (see Li and Born (2019) for a review). Although most hypotheses invoke changes in ocean heat transport as a consequence of variations in the strength of the Atlantic Meridional Overturning Circulation (AMOC) (Broecker et al., 1985), it remains poorly understood as to what would have caused the

overturning cell to undergo such large and rapid changes (Lohmann and Ditlevsen, 2019). While variations in atmospheric circulation, sea ice extent, and ice shelf formation/collapse have all been hypothesized as triggers (Li and Born, 2019), a unifying theory has yet to emerge (Lohmann and Ditlevsen, 2018). Given that D-O events provide compelling evidence that the Earth's climate can rapidly switch from one state to another, it is imperative that we determine the causes of this variability if we are to accurately predict future climate.

In the original work of Dansgaard (Dansgaard, 1985), the most recent saw-tooth shaped interstadial stadial sequence of climate change since 120,000 years ago, associated with the Bølling-Allerød warming and Younger Dryas stadial (abbreviated here to BA/YD) from ~14,600 to 11,700 years BP was labeled as D-O event 1 (Figure 1). Since then, however, a growing body of geological evidence attributing the Younger Dryas cooling to a glacial outburst flood and/or a change in glacial meltwater drainage patterns to the ocean (Broecker et al., 1989; Clark et al., 2001; Keigwin et al., 2018) has sometimes led to this episode being treated as a unique event, rather than as one of the D-O stadials (Li and Born, 2019). Evidence that the YD cooling also might have coincided with a meteorite impact capable of 'blocking out' incoming solar radiation has helped bolster this notion (Firestone et al., 2007). In this paper, we use a multivariate outlier method to re-examine the extent to which the BA/YD should be considered 'unique' in the context of the other D-O events. The motivation for this study derives from the remarkable similarities in shape (~~see further definition of shape below i.e. deviation from center over its timespan~~) between the BA/YD and other D-O events within the last 120,000 years, which leads us to question the uniqueness of the BA/YD in the Greenland record. Our approach is particularly novel for traditional paleoclimate research and we ~~suggest it may be useful in future studies with similar aims argue for the increased implementation of similarly robust statistical methods in future research. Indeed, the application of our statistical method to assessing the 'BA/YD uniqueness' is just one example given that it is exceptionally useful when synthesizing and compare climate records that are both uncertain and complex.~~ It should also be noted that modeling studies suggest that forced and unforced AMOC variations have very similar signatures (Brown and Galbraith, 2016), so the outlier detection technique is not aimed to assess the qualities of D-O events as they result from specific triggers, but rather to provide a framework for situating the BA/YD within a broader context of many other D-O events, each of which may (or may not) have the same underlying trigger.

## 2 Methods

To study abrupt decadal-to-multidecadal changes in climate associated with each of the Dansgaard-Oeschger events, we examined published changes in oxygen isotope ratios ( $\delta^{18}\text{O}$ ) and methane ( $\text{CH}_4$ ) from the NGRIP Greenland ice cores (Rasmussen et al., 2014; Baumgartner et al., 2014) and  $\delta^{18}\text{O}$  and carbon dioxide ( $\text{CO}_2$ ) changes from the EDML, WAIS, Siple Dome, and TALDICE ice cores recovered from Antarctica (Barbante et al., 2006; Bereiter et al., 2015) that span the last 120,000 years of Earth's climate history. ~~Our NGRIP and EDML records both use the GICC05 age scale, and EDML was chosen because its spatial resolution and record length is comparable with the Greenland ice core records.~~ Indeed, the snow accumulation at EDML is two to three times higher than at other deep drilling sites on the East Antarctic plateau, so higher-resolution atmosphere and climate records can be obtained for the last glacial period, making the EDML core especially suitable for studying

decadal-to-millennial climate variations in Antarctica. Including EDML  $\delta^{18}\text{O}$  allows us to observe changes in NGRIP  $\delta^{18}\text{O}$  as distinct in location but similar in meaning. This allows us to make conclusions about how the BA/YD may not have been a unique event in Greenland, but perhaps was so in the southern Atlantic. In general, our choice of records is based on those with the highest spatial resolution and tradition in the field of paleoclimatology of using these to study climate variability during both D-O events and the BA/YD. The high temporal resolution of the ice cores during the last glacial period makes them ideal for use in our work. Both  $^{18}\text{O}$  records (NGRIP and EDML) provide local approximations of climate,  $\text{CH}_4$  is a globally integrated signal indicative of hydrology in wetland regions (Brook et al., 2000) and  $\text{CO}_2$  shows a strong correlation with Antarctic temperature on millennial scales (Bauska et al., 2021). Furthermore, we use both  $\delta^{18}\text{O}$  records (NGRIP and EDML) to provide local approximations of climate, whereas  $\text{CH}_4$  and  $\text{CO}_2$  are more indicative of global hydrology and temperature, respectively.

For the purposes of our study, the timing of each Dansgaard-Oeschger event is taken from the ages published in the INTIMATE (INTEgration of Ice-core, MARine and TERrestrial records) dataset in Table 2 of Rasmussen et al. (2014). We then develop a stratigraphy that emphasizes the large-scale Dansgaard-Oeschger variability as follows: Firstly, all sub-interstadials in the INTIMATE record of Rasmussen et al. (2014) that are labeled by lowercase letters are very small, so we consider these to be part of the larger interstadial, and not unique events. For example, while Greenland Interstadial 1 (i.e. the BA interstadial) comprises of sub-events GI-1a through GI-1e, in our analysis this is simply treated as GI-1. A second set of sub-events in the INTIMATE dataset are also denoted by decimals in Rasmussen et al. (2014). For example, Dansgaard-Oeschger event 2 in the INTIMATE dataset is separated into two sub-events, labeled GS 2.1/GI2.1 and GS 2.2/GI 2.2. Due to their generally high amplitude and tendency to span multi-centennial timescales, these sub-events must at least initially be considered as Dansgaard-Oeschger ‘candidates’, and thus require a more rigorous procedure to be dealt with. Firstly, we consider cases when two sub-events occur in succession and define a duration-based algorithm to determine whether each one should be considered a separate Dansgaard-Oeschger event, both combined into one single event, or omitted from our analysis entirely. Figure 2 outlines this algorithmic consolidation process in the form of a flow chat using parameters  $x, y,$  and  $z$ .

Of the eight Dansgaard-Oeschger events in this period containing two sub-events - namely numbers 2, 5, 15, 16, 17, 19, 21, and 23 - our main analysis leads to the selection of stadial and interstadials found in Table 1. The selection of these events is based on using duration parameter choices:  $x = 300$  yrs,  $y = 300$  yrs,  $z = 200$  yrs, which are at the shorter end of what has previously been accepted as the length of a stadial or interstadial (e.g. Rasmussen et al. (2014)), but our results are not very sensitive to the chosen length. For example, columns 2-3 of Table 1 show that altering these parameters to  $(x, y, z) = (90, 100, 140)$  or  $(x, y, z) = (90, 100, 90)$  yields results that are 86-93% similar.

Taking D-O event 2 as an example, we observe that GI2.2, GS2.2, and GI2.1 span 120, 200, and 120 years respectively, and thus the algorithm in Figure 2 leads to the combination of GI2.2, GS2.2, and GI2.1 into a single interstadial, since the sub-events are less than the parameter choices  $x = 300, y = 300, z = 200$  respectively. In D-O event 5, however, GI5.2, GS5.2, and GI5.1 span 460, 1200, and 240 years, respectively, and thus under the same parameter choices, the interstadial-stadial choice algorithm in Figure 2 dictates that each sub-event should be treated as its own stadial or interstadial. Note that our final results differ minimally based on how sub-cycles are chosen.

90 Beyond  $\sim 104$  kyr BP, the  $\text{CO}_2$  record contains only one data point for about every 500 years. Thus, to ensure the existence of a well-defined and complete record for our chosen data, we restrict our analysis of the last glacial cycle to the period of 104-11 kyr BP containing D-O events 1-23. Of the eight **D-O events** containing sub-events **within this period**, our algorithm discards the second sub-event of four D-O events (i.e., 16.2, 17.2, 21.2, and 23.2), includes two second sub-events as distinct (i.e., 5.2 and 19.2), absorbs GI15.1 into the sub-stadials surrounding it, and absorbs GS2.2 into the sub-interstadials surrounding it (see 95 Table 1 for the algorithm's decisions for other parameter values). This amounts to the consideration of 25 D-O events, four of which are sub-events (i.e., events 5.1, 5.2, 19.1, and 19.2).

To initially examine the uniqueness of the pattern of climate change during Dansgaard-Oeschger event 1 (the BA/YD), we overlaid the NGRIP  $\delta^{18}\text{O}$  record of each D-O event over the BA/YD. To better visualize and compare the shape of each D-O event, we normalized the timescale that covers each D-O event and centered each record at its median. Here the term 100 "normalizing" refers to **rescaling the time axis stretching/shrinking the time over which each D-O event occurred to a consistent number of years**, and "centering" refers to **positioning each D-O event at its median to observe the anomaly relative to the median in time space by subtracting the median value of each record during each D-O event**. We then **narrowed down the number of D-O events (including BA/YD) by visually selected those events that most closely resembled the pattern of NGRIP  $\delta^{18}\text{O}$  during the BA/YD**. This process **does not apply is not related** to the statistical analysis that follows in which all 25 events 105 were included, but **provides** preliminary evidence **for the fact** that the BA/YD's shape in the context of the Greenland records is not unique in terms of the general shape of many D-O events.

In our second, arguably more important line of analysis, we investigate rigorously the shape (i.e., time evolving variability) of each of our chosen climate records (NGRIP  $\delta^{18}\text{O}$ , EDML  $\delta^{18}\text{O}$ , compiled Antarctic  $\text{CO}_2$ , and NGRIP  $\text{CH}_4$ ) during all Dansgaard-Oeschger events (25 including the BA/YD) using **a robust principal component based outlier detection method 110 entitled PCOut (Filzmoser et al., 2008)**. To perform this investigation, we first calculated (i) the magnitude of change from interstadial to stadial (peak-to-trough analysis), (ii) the rate and direction (slope) of change of each record during each stadial, and (iii) the median value of each record during each stadial. Measurements (ii) and (iii) were considered only for stadial periods due to **the following exploratory findings: When measurement (ii) was taken on the interstadial data, no significant variation from the typical sawtooth pattern was found, and thus stadials appeared to be a more ripe area of study. When measurement 115 (iii) was taken on the interstadial data, it mirrored (iii) from the stadial periods, and was thus redundant. The peak-to-trough analysis measured** the amplitude of change from **the** interstadial to **the** stadial by calculating the difference between the mean of the warmest interstadial points and the mean of the coldest stadial points for each D-O event in the NGRIP  $\delta^{18}\text{O}$  record. To ensure that the peak interstadial warmth and maximum stadial cooling are selected, the mean values are calculated using only the upper and lower 10% of the  $\delta^{18}\text{O}$  values, respectively (Figure 3). We calculate this peak-to-trough measure for the other 120 three records by taking the difference of the mean of its values within the time window of NGRIP  $\delta^{18}\text{O}$ 's maximum (minimum) 10% interstadial (stadial) values, acknowledging that some age uncertainty between the records may be present. However, the nature of these age uncertainties is not well known, so we use the aforementioned average of 10% maxima and minima as a robust protection against any age uncertainty. For some records, where no data **exist** in a given short interstadial (stadial) time

125 window, we take the maximum (minimum) of a 300 year moving gaussian filter (250yr for CO<sub>2</sub>, in order to give higher weight to each of the sparser points in the dataset). ~~While not ideal, this~~ is the best approximation that our data limitations can offer.

We estimated the linear slope, and thus overall rate and direction of change, of each record during each of the stadials using ordinary least squares (OLS) regression. ~~In many cases the NGRIP  $\delta^{18}\text{O}$  record behavior during stadial periods is generally flat, so records with highly negative peak-to-trough measurements and stadial slopes close to zero are a good indicator of Dansgaard-Oeschger event behavior.~~ Finally, the median of each record for each stadial in our analysis was calculated. The values of each of these metrics for each record across all 25 chosen D-O events are shown in Tables 2 and 3. It should be noted that all of the above stated measurements are robust to age uncertainties of at least 100 years. Thus, we can be fairly confident that age and delta age uncertainties will not wildly skew our results.

~~PCOut A robust principal component based outlier detection method, entitled PCOut, based on Filzmoser et al. (2008)~~ was then applied to the results from our three metrics to test if the BA/YD is statistically different from other D-O events. This algorithm is proven to be efficient in high dimensions and especially effective in identifying location outliers, which is ideal for ~~the data considered here our data~~. We accept PCOut's slightly higher amount of false positives (i.e., higher size) than other algorithms on the basis that its extremely low level of false negatives (i.e., high power) is more important for this study since the areas in which the Younger Dryas is not unique is of particular interest. PCOut differs from typical principal component analysis schemes in two ways: 1) it ~~robustly~~ transforms the data before extracting principal components, and 2) it computes two measures of variance: one based on ~~center location~~ and the other based on scatter. In short, PCOut first shifts an  $n \times p$  data array by its variable-wise median and scales it by its variable-wise median absolute deviation (MAD), both of which are more robust (i.e., error resistant) estimators of location and scale (respectively) than sample mean and variance (Filzmoser et al., 2008). In our case, we let  $n = 25$  correspond to the number of D-O event observations, and let  $p = 12$  variables denote the result of obtaining the three aforementioned metrics on each of the four records (NGRIP  $\delta^{18}\text{O}$ , CH<sub>4</sub>, and  $\delta^{18}\text{O}$  and CO<sub>2</sub> from Antarctica). PCOut then performs a standard principal component analysis (PCA) procedure to the transformed data that retains the first  $p^*$  components contributing 99% of the data's variance, and subsequently shifts and rescales the principal components once again by their new median and MAD. For an estimate of location exceptionality, PCOut is programmed to weight each of these resulting components  $z_{ij}^*$  by the following robust measure of kurtosis,

$$w_j = \left| \frac{1}{n} \sum_{i=1}^n \frac{(z_{ij}^* - \text{med}(z_{1j}^*, \dots, z_{nj}^*))^4}{\text{MAD}(z_{1j}^*, \dots, z_{nj}^*)^4} - 3 \right| \text{ for } j = 1, \dots, p^* \quad (1)$$

150 and then computes a robust Euclidian distance  $RD_i$  for each of the  $n$  data points using these weights, where  $W = \sum_{j=1}^{p^*} w_j$ , the total weight, and the  $z_{ij}^*$  are the location shifted and rescaled principal components (visualized in panel 1, Figure 4):

$$RD_i = \sqrt{\sum_{j=1}^{p^*} \left( \frac{z_{ij}^* w_j}{W} \right)^2}. \quad (2)$$

This is followed by a further transformation to acquire the final robust distances  $d_i$ , where  $\chi_{p^*,0.5}^2$  is the 50th percentile of a chi-squared distribution with  $p^*$  degrees of freedom:

$$155 \quad d_i = RD_i \cdot \frac{\sqrt{\chi_{p^*,0.5}^2}}{\text{med}(RD_1, \dots, RD_n)}. \quad (3)$$

These  $d_i$ 's represent the degree of separation each of the  $n$  data points (corresponding to D-O cycles) experiences from the center of the data, where each  $RD_i$  is a robust calculation of the  $i$ th data vector's distance from its variable-wise median. Dividing by the median of the  $RD_i$ 's as in eq. 3 measures how much each  $RD_i$  deviates from the median of all such distances. To evaluate these distances as outliers or non-outliers, each data point is assigned a weight  $a_i$  based on its distance  $d_i$  such that

160 higher distances receive a smaller weight so as to avoid outlier masking (visualized in panel 2, Figure 4):

$$a_i = \begin{cases} 0 & d_i \geq c \\ \left(1 - \left(\frac{d_i - M}{c - M}\right)^2\right)^2 & M < d_i < c \\ 1 & d_i \leq M \end{cases} \quad (4)$$

For this  $a_i$  weight, the parameter  $M$  is the  $\frac{1}{3}$  quantile of the distances  $\{d_i\}$ , and

$$c = \text{med}(d_1, \dots, d_n) + 2.5 \cdot \text{MAD}(d_1, \dots, d_n). \quad (5)$$

Finally, PCOut defines another metric  $b_i$  for each data point that uses the same exact procedure as that of  $a_i$ , minus the kurtosis

165 weighting step (i.e., unweighted euclidian distance  $\sqrt{\sum_{j=1}^{p^*} \left(\frac{z_{ij}^*}{W}\right)^2}$  substitutes for eq. 2). Since the non-kurtosis weighted  $d_i$  are proven to follow  $\chi_{p^*}^2$  relatively closely,  $(M^2, c^2) = (\chi_{p^*,.25}^*, \chi_{p^*,.99}^*)$  when eq. 4 is applied to calculate  $b_i$ . In the final test (visualized in panel 3, Figure 4), outliers are then defined as data points where

$$\frac{(a_i + 0.25)(b_i + 0.25)}{(1.25)^2} < 0.25. \quad (6)$$

Essentially, eq. 6 combines the result of kurtosis-weighted and non-kurtosis weighted weights  $a_i$  and  $b_i$  in order to provide a

170 comprehensive measure of exceptionality. The constants 0.25 and 1.25 are added in eq. 6 to ensure that the left of side of this equation is only less than 0.25 if both weights  $a_i$  and  $b_i$  are 0. See Filzmoser et al. (2008) for further details.

PCOut achieves much higher precision than a traditional principal component analysis scheme because of the strategic weighting mechanisms aimed to iteratively reduce the degree which outliers mask their own presence (Filzmoser et al., 2008). Further, its use of robust statistical estimators suits our ~~study constructed dataset~~ well in that the metrics calculated are subject

175 to high uncertainty. For a graphical representation of PCOut's data transformations spanning eq.'s 2-6, see Figure 4.

PCOut is not applicable to single variable data because principal component analysis is not a valid procedure for  $p = 1$ , so outliers in this case are determined using a simpler criterion: if some point  $x_i$  is less than the first quantile of the data minus  $\text{MAD}(x_1, \dots, x_n)$  or greater than the third quantile of the data plus  $\text{MAD}(x_1, \dots, x_n)$ , it is considered an outlier.

### 3 Results

180 Figure 5 shows that the changes in the NGRIP  $\delta^{18}\text{O}$  record during the BA/YA bear a remarkable similarity to the seven D-O events (namely events 7, 8, 11, 12, 13,16, and 19.2) visually selected. Furthermore, the overlay of mean behavior of all D-O events excluding the BA/YD (i.e. 24 as opposed to just the 7 visually selected) corroborates that the BA/YD period is strikingly similar in NGRIP  $\delta^{18}\text{O}$  shape to the average D-O event. In each case, we observe the classic D-O ‘sawtooth’ pattern that is characterized by an abrupt warming at the onset of interstadial conditions, followed by a more gradual cooling and return to  
185 stadial conditions. These overlays are also completed for the other three records (i.e.  $\text{CH}_4$  from Greenland, **composite compiled**  $\text{CO}_2$  from **Antarctica**, and  $\delta^{18}\text{O}$  from EDML). Beginning with NGRIP  $\text{CH}_4$ , Figure 5 indicates no clear overall pattern to the D-O time series, as the mean line is nearly flat. This confirms a similar lack of uniqueness in BA/YD’s  $\text{CH}_4$  record, which our PCOut analysis will later confirm. The BA/YD appears not to strictly follow the trend of the seven time series lines or mean line in the two Antarctic record overlays (EDML  $\delta^{18}\text{O}$  and  $\text{CO}_2$ ), which indicates that further study is required to determine  
190 how the BA/YD might constitute an exceptional event from the perspective of these records.

The results from our PCOut analysis allows for additional categorization of the Younger Dryas either as outlier or non-outlier in all variable subsets when equipped with our three metrics applied to four different chemical record for all 25 D-O cycles under consideration. The rationale for observing the Younger Dryas’ outlier behavior in particular subsets of the 12-variable system is to understand how record subset (NGRIP  $\delta^{18}\text{O}$ , NGRIP  $\text{CH}_4$ , EDML  $\delta^{18}\text{O}$ , compiled Antarctic  $\text{CO}_2$ ), record shape  
195 (peak-to-trough, stadial slope), and record location (median), might individually render the the data for this period unique (or not unique). Given PCOut’s low level of false negatives compared to other tests of its kind, we take non-outlier results seriously as indicators that Younger Dryas is not statistically exceptional as a D-O event. Relevant results pertaining to the BA/YD are summarized in Table 4, which indicates the subsets of records and metrics for which the BA/YD is an outlier or not - “YES” (“NO”) means that the BA/YD is (not) an outlier within that subset. Note we are specifically looking for subsets of records that  
200 PCOut identifies as non-outliers, and are not seeking compare the results of such subsets to one another. Thus, the temptation to tally the results should be resisted - this is not a statistically sound way of determine outlier behavior on a large scale.

Beginning with single variable results, we find that all but two cells in the median column (column 4) of Table 4 exhibit outlier behavior. This result is unsurprising given that the BA/YD occurs during a period of overall warming closer to the Holocene and thus higher percentages of all chemical records compared to other D-O events, which all occurred during the  
205 coldest stretches of the past 120 kyr. Median measurements for other D-O cycles on the edges of the last glacial period also harbor a proportionally higher level of median measurements due to their temporal proximity to warmer periods before and after the last glacial period. In fact, we find that the this same table of median-only PCOut results for D-O events 2, 20, and 23 harbor 47%, 60%, and 53% outliers, respectively, which indicates that we can consistently expect subsets of measurements including the median to be greater for D-O events near the beginning and end of the last glacial period. Thus, we attribute the  
210 a portion of the BA/YD’s outlier behavior in variable subsets including the median to a known temperature increase during the time of its occurrence.

In the single variable stadial slope column (column 3, Table 4), we find particular interest in the fact that all pairs of records including NGRIP  $\delta^{18}\text{O}$  (rows 6-8) do not register as outliers, while all pairs of records not including NGRIP  $\delta^{18}\text{O}$  (rows 9-11) do register as outliers. This exact phenomenon is also reflected in the paired peak-to-peak and stadial slope column (column 1, 215 Table 4), strongly indicating that the presence of NGRIP  $\delta^{18}\text{O}$  within a given variable subset is associated with a lack of outlier behavior of the shape of the BA/YD.

Our main goal is to assess the exceptionality of the BA/YD in the Greenland record. While the single record NGRIP  $\delta^{18}\text{O}$  section (row 12, Table 4) exhibits a mix of measured outliers and non-outliers, it must be taken into account that all variable subsets in this row that cause the BA/YD to become an outlier contain the median measurement, which, as previously stated, 220 contributes significantly to the BA/YD's outlier behavior due to known warming leading up to the Holocene.

The single record NGRIP  $\text{CH}_4$  row (row 15, Table 4) exhibits no outlier behavior whatsoever across the relevant variable subsets. This record generally follows the shape of its NGRIP  $\delta^{18}\text{O}$  counterpart, yet often seems to lag or lead  $\delta^{18}\text{O}$  by centennial timescales (Baumgartner et al., 2014), inevitably causing higher variance in shape metrics chosen in this study. So, a lack of outlier behavior across all NGRIP  $\text{CH}_4$  subsets primarily indicates that Younger Dryas' lag in  $\text{CH}_4$  is not unusual. 225 This lack in the NGRIP  $\text{CH}_4$  single variable median category is also somewhat surprising, and suggests that the magnitude of  $\text{CH}_4$  amongst all D-O cycles is less closely tied to glacial-interglacial cycles than NGRIP  $\delta^{18}\text{O}$ .

Observing the two NGRIP ( $\delta^{18}\text{O}$ ,  $\text{CH}_4$ ) records paired across all metric subsets (row 8, Table 4) leads to further interest: namely, no outlier behavior in metrics other than the pure median exists. ~~Since much of the ice-core based knowledge generated on the Younger Dryas relies on these two records,~~ A lack of outlier behavior in shape is a major result, and confirms our analysis 230 of Figure 5. Thus, the fact that the pair of behaviors of  $\delta^{18}\text{O}$  and  $\text{CH}_4$  during the BA/YD is not unique compared to the pair of behavior for these records in other D-O events is a stronger conclusion than if we were to restrict this analysis to only one record from Greenland. We observe this in the scatterplots of Figure 6, which plot the value of pairs of metrics for the Greenland shape measurements across all 25 D-O events, and clearly indicate that for each such pair, the BA/YD is within the natural scatter range of all other D-O events. In particular, notice that for the paired peak-to-trough scatterplots (third panel 235 down from first column of Figure 6), the distribution of points roughly forms a ring of which BA/YD is a part, since there is always at least one other point in the plot that is more outlying in either direction. Similarly, in the paired slope scatterplots (fourth panel down from second column of Figure 6), the distribution of points forms a roughly straight line of which the BA/YD is also a part. In fact, these plots provide an excellent example of what an outlier would look like, namely, the point far to the far right of all others in this plot, which turns out to be D-O 23. In sum, if the shape of the BA/YD were an outlier in the 240 Greenland record, these scatter plots would display a clear separation of the BA/YD from all other points in the scatter.

Furthermore, it should be noted that this same PCOut procedure was applied to all other D-O cycles under consideration. No clear trends were found amongst these events as a whole, but two main observations can be made. Firstly, and most importantly, it should be noted that no event exhibited non-outlying behavior isolated within the Greenland shape data as did the BA/YD. ~~This suggests that later research may be successful in proving that the BA/YD's data from Antarctic sources is uniquely shaped as compared to other D-O events.~~ Secondly, we find that most data subsets for D-O events in the middle of the observed our 245 timescale (c. 49-28 ky BP) are overwhelmingly non-outlying, whereas data subsets associated with D-O events on the tails



of the ~~observed our~~ timescale are more sporadically outlying and non-outlying. From this we might conclude that the period spanning D-O 3 to D-O 13 generally consisted of regular and "typical" D-O events, whereas D-O events not in this period either have average higher temperature (as previously discussed) or other inconsistencies. This observation does not, however, negate the conclusion that the BA/YD's Greenland data is non-outlying.

Note that we use the stadial/interstadial length parameters  $(x, y, z) = (300, 300, 200)$  to choose 25 D-O cycles for this section, but different parameter choices that output 28-30 D-O cycles for analysis (see Table 1) yield results that are 86-93% similar across all D-O cycles. We find this by applying PCOut to all subsets of the 28 and 30 cycle versions of our algorithm output created by implementing the parameters in columns 2 and 3 of Table 1, then comparing the results to our chosen version.

## 255 4 Discussion

The aim of this study is to precisely and robustly classify the record-based qualities that would render the BA/YD a unique climate event in the context of other abrupt episodes of climate change during the last 120,000 years, known as Dansgaard-Oeschger events. ~~If the BA/YD is to be excluded from the list of D-O events, or assigned its own particular set of triggering mechanisms there must be some statistically sound reason for doing so.~~ Using four chemical records commonly included in assessments of general D-O behavior -  $\delta^{18}\text{O}$  and  $\text{CH}_4$  from NGRIP, Greenland,  $\delta^{18}\text{O}$  from EDML, Antarctica, and compiled  $\text{CO}_2$  from multiple Antarctic records - we ~~refrain from performing traditional cross-correlation analysis to test for lags, and instead~~ employ a ~~more~~ holistic approach that captures the shape of each D-O cycle in terms of multiple variables. Three measurements to characterize both the location (median) and shape (peak-to-trough difference, stadial slope) of each chemical record for each D-O cycle are taken, and inputted into a robust principal component analysis algorithm (PCOut) to test for outliers.

Our main result is as follows: the observed data for the BA/YD is not a unique compared to that of the other D-O events recorded in the Greenland ice core record, other than the fact that its median  $\delta^{18}\text{O}$  levels are higher due to its proximity to deglacial warming into the Holocene. The ~~higher increase in~~ median  $\delta^{18}\text{O}$  is also not unique to the BA/YD, as D-O events 2, 20, and 23 exhibit a similar phenomenon, which we attribute to their occurrence proximal to long term global climate fluctuations. The non-uniqueness of the BA/YD's shape is clearly indicated by the statistical indistinguishability of the changes in the Greenland ice core record with the other D-O events, especially in terms of its  $\delta^{18}\text{O}$  variability, for which one-third of other D-O events appear virtually identical (Figure 5). Thus, the BA/YD's data cannot and should not be distinguished from any other D-O cycle in the last glacial period on the basis of Greenland ice core time series shape. In this context, the BA/YD could be understood as a classic example of a D-O event, and deserves further consideration as such when studying the mechanisms that triggered it. ~~The hypothesized meltwater forcing mechanism sometimes invoked for the BA/YD is seldom considered for the other D-O events, and visa-versa, the major triggering mechanisms for the D-O events are rarely used to explain the BA/YD.~~ Our results suggest that understanding the causes of the BA/YD would benefit from examining the mechanisms used to explain D-O events, rather than relying on the meltwater hypothesis. Indeed, the role of meltwater forcing in triggering the YD has been questioned a number of times since it was first proposed by W. Broecker and others in 1989. For instance, the

280 YD is widely viewed as a time of glacial re-advance and reduced terrestrial meltwater discharge to the ocean, such that it is likely that freshwater forcing was less during this period (Abdul et al., 2016), making it difficult to explain how the overturning circulation remained weakened for the 1000 year duration of the YD stadial (Renssen et al., 2015). In addition, the termination of the YD, and subsequent rapid warming into the Holocene coincide with a time of increasing meltwater runoff to the North Atlantic (e.g. Fairbanks (1989)) as the Laurentide Ice sheet over North America finally collapsed.

285 *Data availability.* **Metric** measurements for this project can be found in Tables 2 and 3. **The data for all the proxy records analyzed are available in the published literature cited in the references.**

*Author contributions.* **HN Author-1** conducted all data analysis, figure creation, and manuscript drafting. **AC Author-2** advised throughout the research process and edited manuscript as necessary.

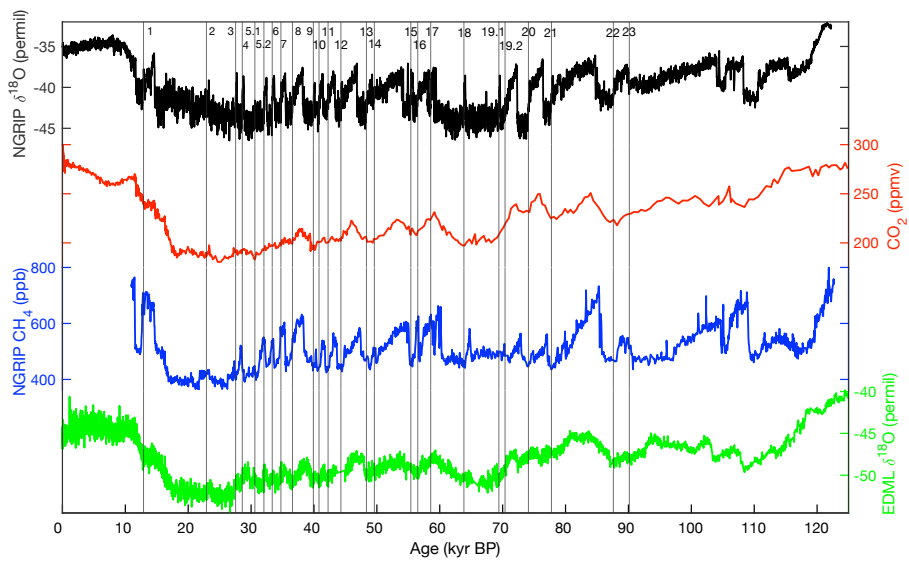
*Competing interests.* The authors declare that they have no conflict of interest.

290 *Acknowledgements.* This study is made possible by the Summer Student Fellow Program at Woods Hole Oceanographic Institution as well as NSF REU OCE-1852460. Special thanks to Carl Wunsch, Olivier Marchal, and Andy Solow for extra advising.

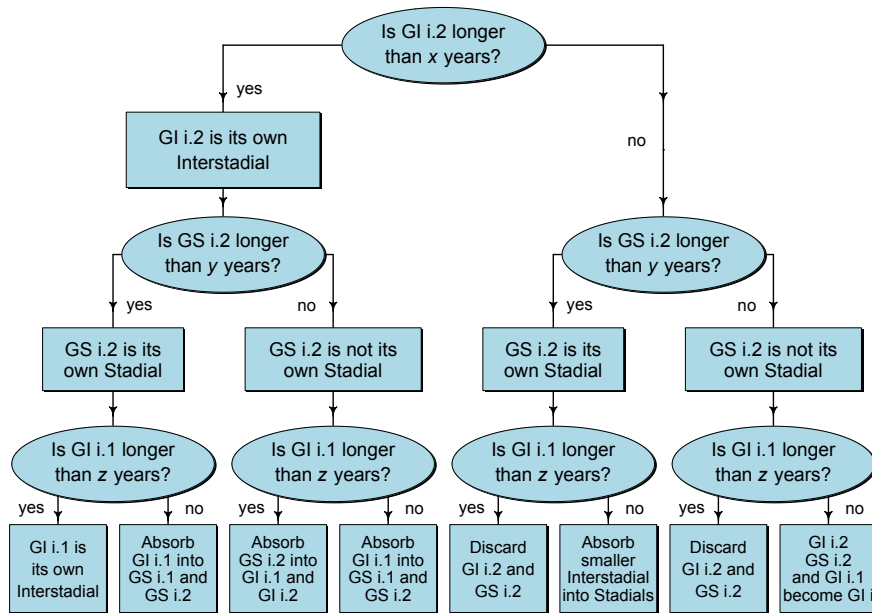
## References

- Abdul, N. A., Mortlock, R. A., Wright, J. D., and Fairbanks, R. G.: Younger Dryas sea level and meltwater pulse 1B recorded in Barbados reef crest coral *Acropora palmata*, *Paleoceanography*, 31, 330–344, <https://doi.org/10.1002/2015PA002847>, 2016.
- 295 Barbante, C., Barnola, J.-M., Becagli, S., Beer, J., Bigler, M., Boutron, C., Blunier, T., Castellano, E., Cattani, O., Chappellaz, J., Dahl-Jensen, D., Debret, M., Delmonte, B., Dick, D., Falourd, S., Faria, S., Federer, U., Fischer, H., Freitag, J., Frenzel, A., Fritzsche, D., Fundel, F., Gabrielli, P., Gaspari, V., Gersonde, R., Graf, W., Grigoriev, D., Hamann, I., Hansson, M., Hoffmann, G., Hutterli, M. A., Huybrechts, P., Isaksson, E., Johnsen, S., Jouzel, J., Kaczmarek, M., Karlin, T., Kaufmann, P., Kipfstuhl, S., Kohno, M., Lambert, F., Lambrecht, A., Lambrecht, A., Landais, A., Lawer, G., Leuenberger, M., Littot, G., Loulergue, L., Lüthi, D., Maggi, V., Marino, F.,
- 300 Masson-Delmotte, V., Meyer, H., Miller, H., Mulvaney, R., Narcisi, B., Oerlemans, J., Oerter, H., Parrenin, F., Petit, J.-R., Raisbeck, G., Raynaud, D., Rothlisberger, R., Ruth, U., Rybak, O., Severi, M., Schmitt, J., Schwander, J., Siegenthaler, U., Siggaard-Andersen, M.-L., Spahni, R., Steffensen, J. P., Stenni, B., Stocker, T. F., Tison, J.-L., Traversi, R., Udisti, R., Valero-Delgado, F., van den Broeke, M. R., van de Wal, R. S. W., Wagenbach, D., Wegner, A., Weiler, K., Wilhelms, F., Winther, J.-G., Wolff, E., and Members, E. C.: One-to-one coupling of glacial climate variability in Greenland and Antarctica, *Nature*, 444, 195–198, <https://doi.org/10.1038/nature05301>, 2006.
- 305 Baumgartner, M., Kindler, P., Eicher, O., Floch, G., Schilt, A., Schwander, J., Spahni, R., Capron, E., Chappellaz, J., Leuenberger, M., Fischer, H., and Stocker, T. F.: NGRIP CH<sub>4</sub> concentration from 120 to 10 kyr before present and its relation to a  $\delta^{15}\text{N}$  temperature reconstruction from the same ice core, *Climate of the Past*, 10, 903–920, <https://doi.org/10.5194/cp-10-903-2014>, 2014.
- Bauska, T. K., Marcott, S. A., and Brook, E. J.: Abrupt changes in the global carbon cycle during the last glacial period, *Nature Geoscience*, 14, 91–96, <https://doi.org/10.1038/s41561-020-00680-2>, <https://doi.org/10.1038/s41561-020-00680-2>, 2021.
- 310 Bereiter, B., Eggleston, S., Schmitt, J., Nehrbass-Ahles, C., Stocker, T. F., Fischer, H., Kipfstuhl, S., and Chappellaz, J.: Revision of the EPICA Dome C CO<sub>2</sub> record and 800 and 600 kyr before present, *Geophysical Research Letters*, 42, 542–549, <https://doi.org/10.1002/2014GL061957>, 2015.
- Broecker, W. S., Peteet, D. M., and Rind, D.: Does the ocean-atmosphere system have more than one stable mode of operation?, *Nature*, 315, 21–26, <https://doi.org/10.1038/315021a0>, 1985.
- 315 Broecker, W. S., Kennett, J. P., Flower, B. P., Teller, J. T., Trumbore, S., Bonani, G., and Wolfli, W.: Routing of meltwater from the Laurentide Ice Sheet during the Younger Dryas cold episode, *Nature*, 341, 318–321, <https://doi.org/10.1038/341318a0>, 1989.
- Brook, E. J., Harder, S., Severinghaus, J., Steig, E. J., and Sucher, C. M.: On the origin and timing of rapid changes in atmospheric methane during the Last Glacial Period, *Global Biogeochemical Cycles*, 14, 559–572, <https://doi.org/10.1029/1999GB001182>, <https://agupubs.onlinelibrary.wiley.com/doi/abs/10.1029/1999GB001182>, 2000.
- 320 Brown, N. and Galbraith, E. D.: Hosed vs. unhosed: interruptions of the Atlantic Meridional Overturning Circulation in a global coupled model, with and without freshwater forcing, *Climate of the Past*, 12, 1663–1679, <https://doi.org/10.5194/cp-12-1663-2016>, <https://cp.copernicus.org/articles/12/1663/2016/>, 2016.
- Clark, P. U., Marshall, S. J., Clarke, G. K. C., Hostetler, S. W., Licciardi, J. M., and Teller, J. T.: Freshwater Forcing of Abrupt Climate Change During the Last Glaciation, *Science*, 293, 283–287, <https://doi.org/10.1126/science.1062517>, 2001.
- 325 Dansgaard, W.: Greenland Ice Core Studies, *Palaeogeography, Palaeoclimatology, Palaeoecology*, 50, 185–187, 1985.
- Fairbanks, R. G.: A 17,000-year glacio-eustatic sea level record: influence of glacial melting rates on the Younger Dryas event and deep-ocean circulation, *Nature*, 342, 637–642, 1989.

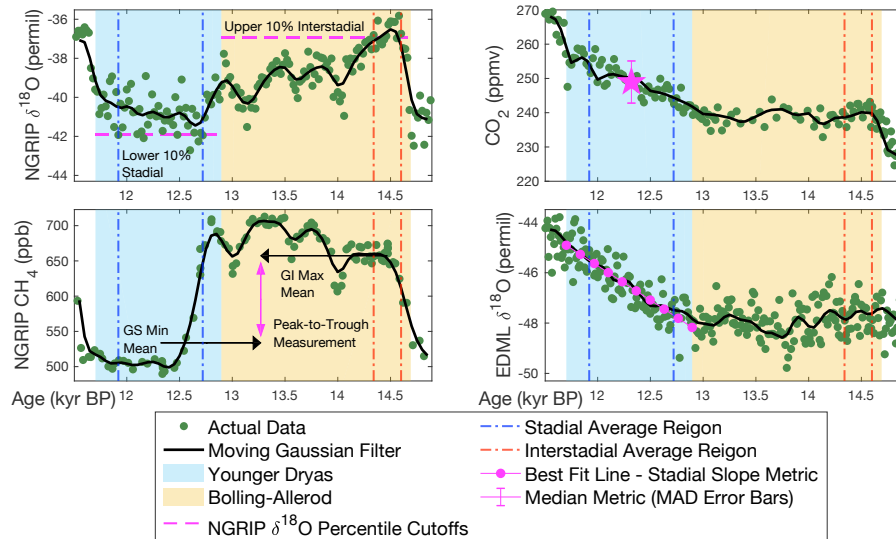
- Filzmoser, P., Maronna, R., and Werner, M.: Outlier identification in high dimensions, *Computational Statistics and Data Analysis*, 52, 1694–1711, <https://doi.org/10.1016/j.csda.2007.05.018>, 2008.
- 330 Firestone, R. B., West, A., Kennett, J. P., Becker, L., Bunch, T. E., Revay, Z. S., Schultz, P. H., Belgia, T., Kennett, D. J., Erlandson, J. M., Dickenson, O. J., Goodyear, A. C., Harris, R. S., Howard, G. A., Kloosterman, J. B., Lechler, P., Mayewski, P. A., Montgomery, J., Poreda, R., Darrah, T., Hee, S. S. Q., Smith, A. R., Stich, A., Topping, W., Wittke, J. H., and Wolbach, W. S.: Evidence for an extraterrestrial impact 12,900 years ago that contributed to the megafaunal extinctions and the Younger Dryas cooling, *Proceedings of the National Academy of Sciences*, 104, 16016–16021, <https://doi.org/10.1073/pnas.0706977104>, 2007.
- 335 Keigwin, L. D., Klotsko, S., Zhao, N., Reilly, B., Giosan, L., and Driscoll, N. W.: Deglacial floods in the Beaufort Sea preceded Younger Dryas cooling, *Nature Geoscience*, 11, 599–604, <https://doi.org/10.1038/s41561-018-0169-6>, 2018.
- Li, C. and Born, A.: Coupled atmosphere-ice-ocean dynamics in Dansgaard-Oeschger events, *Quaternary Science Reviews*, 203, 1–20, <https://doi.org/10.1016/j.quascirev.2018.10.031>, 2019.
- Lohmann, J. and Ditlevsen, P. D.: Random and externally controlled occurrences of Dansgaard–Oeschger events, *Climate of the Past*, 14, 609–617, <https://doi.org/10.5194/cp-14-609-2018>, 2018.
- 340 Lohmann, J. and Ditlevsen, P. D.: Objective extraction and analysis of statistical features of Dansgaard–Oeschger events, *Climate of the Past*, 15, 1771–1792, <https://doi.org/10.5194/cp-15-1771-2019>, 2019.
- Rasmussen, S. O., Bigler, M., Blockley, S. P., Blunier, T., Buchardt, S. L., Clausen, H. B., Cvijanovic, I., Dahl-Jensen, D., Johnsen, S. J., Fischer, H., Gkinis, V., Guillevic, M., Hoek, W. Z., Lowe, J. J., Pedro, J. B., Popp, T., Seierstad, I. K., Steffensen, J. P., Svensson, A. M., 345 Vallelonga, P., Vinther, B. M., Walker, M. J., Wheatley, J. J., and Winstrup, M.: A stratigraphic framework for abrupt climatic changes during the Last Glacial period based on three synchronized Greenland ice-core records: refining and extending the INTIMATE event stratigraphy, *Quaternary Science Reviews*, 106, 14–28, <https://doi.org/10.1016/j.quascirev.2014.09.007>, 2014.
- Renssen, H., Mairesse, A., Goosse, H., Mathiot, P., Heiri, O., Roche, D., Nisancioglu, K., and Valdes, P.: Multiple causes of the Younger Dryas cold period, *Nature Geoscience*, <https://doi.org/10.1038/ngeo2557>, 2015.



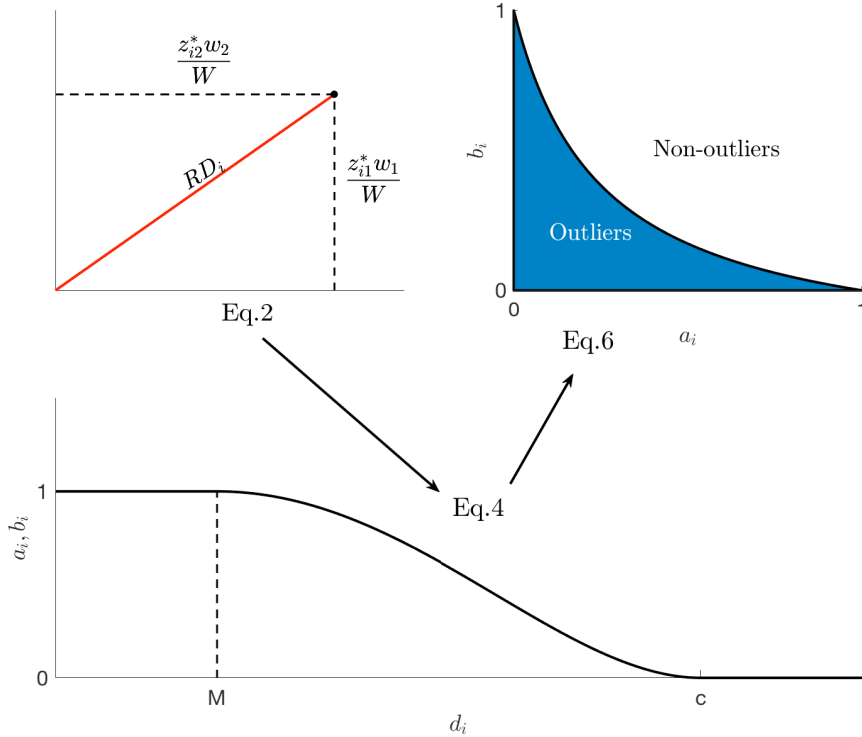
**Figure 1.** Full time series of all four records used. From top down: NGRIP  $\delta^{18}\text{O}$  (Rasmussen et al., 2014), compiled  $\text{CO}_2$  from EDML, WAIS, Siple Dome, and TALDICE (Bereiter et al., 2015), NGRIP  $\text{CH}_4$  (Baumgartner et al., 2014), and EDML  $\delta^{18}\text{O}$  (Barbante et al., 2006). Vertical lines indicate the main 25 interstadial-to-stadial transitions used in this study, labeled by number from Rasmussen et al. (2014).



**Figure 2.** Decision tree for determining which warm/cold intervals couples split up by the INTIMATE stratigraphy can confidently be considered their own unique D-O events. Given the variety of climatic shifts present in the high-resolution INTIMATE NGRIP  $\delta^{18}\text{O}$  stratigraphy, it is necessary to form a rigorous criterion for choosing D-O events to analyze. Since the duration of each D-O event in the INTIMATE stratigraphy is directly tied to the confidence that it exhibit the true characteristics of a D-O interstadial (stadial) period, we employ the above duration-based scheme with flexible parameters ( $x, y, z$ ) in order to determine which D-O cycles to include in this analysis.

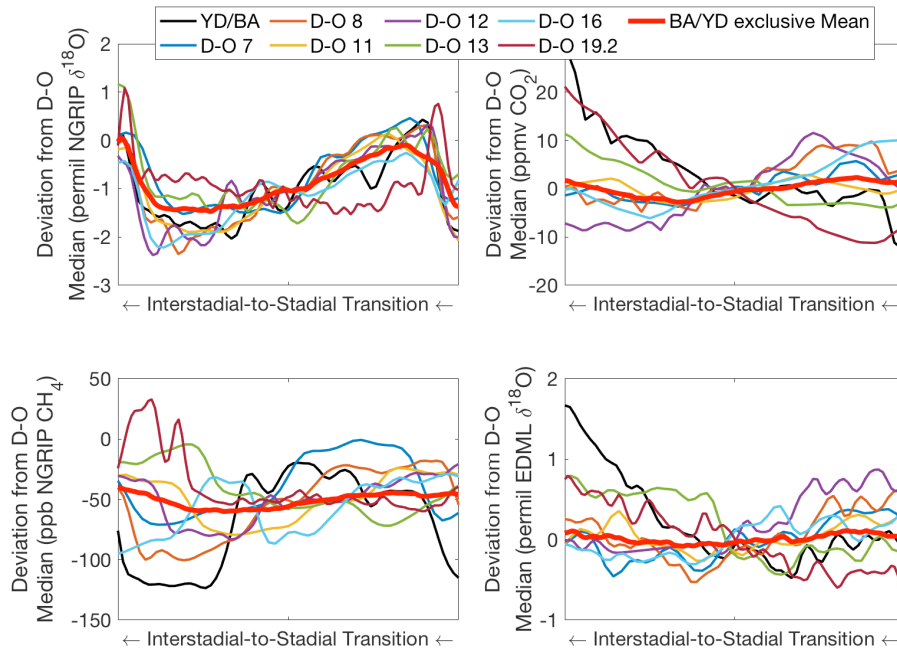


**Figure 3.** Three metrics for capturing the shape and location of D-O cycles across multiple paleoclimate records. In all panels, raw data **are is** presented in green, while interpolated data using a 300yr moving gaussian filter (250yr for  $\text{CO}_2$ , given sparsity of data at points) **are is** presented in black. Blue and orange background shading represents stadal and interstadial conditions, respectively, while pink **arrows and symbols overlays** demonstrate the three measurements taken: in the NGRIP  $\delta^{18}\text{O}$  panel (upper left), the extreme 10% percentiles of the  $\delta^{18}\text{O}$  data are determined, and the time window into which all such data falls are extracted (blue (Stadal) and red (Interstadial) vertical average regions). The difference in means of each record's data within these time windows for any given D-O cycle constitutes our peak-to-trough (**labeled peak-to-peak**) measurement (shown in lower left NGRIP  $\text{CH}_4$  panel). The OLS linear slope of the stadal data determines the stadal slope for each record in each D-O cycle (shown in the lower right EDML  $\delta^{18}\text{O}$  panel). The third **and final** metric **measured** is the stadal median (shown in the upper right panel **with a star**). **The metrics are illustrated in individual panels for convenience, but all are applied to all datasets Despite each panel only displaying one metric, all are applied to the four records examined for all D-O events.**

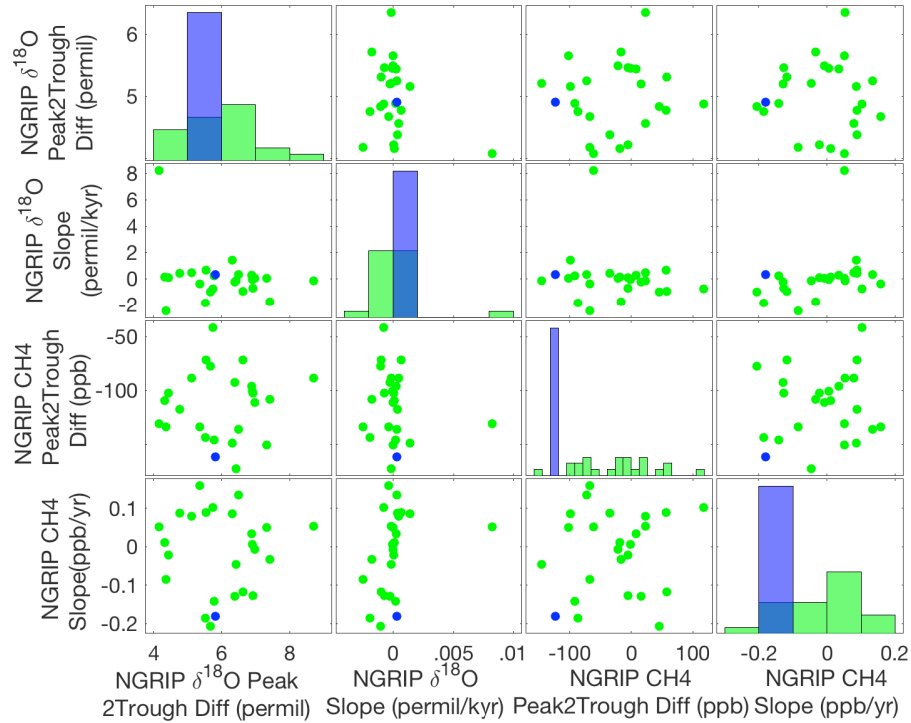


**Figure 4.** PCOut’s main outlier decision steps labeled by equations 2, 4, and 6, with arrows representing transitions between sequential steps of the algorithm . After completing PCA to produce centered and rescaled components  $z_{i,j}^*$ , eq. 2 (visualized in the top left panel) calculates the “distance”  $RD_i$  of the  $i$ th component vector from zero with sums of squares. After rescaling the  $RD_i$ ’s to create new “distances”  $d_i$ , we calculate quantities  $a_i, b_i$  based on the function in the bottom panel (eq. 4), such that large distances  $d_i$  translate into smaller values of  $a_i, b_i$ . Finally, the top right panel illustrates the region by which PCOut classifies  $a_i, b_i$  as indicative of the  $i$ th datapoint being an outlier or not (eq. 6).





**Figure 5.** Shapes of eight D-O events and grand mean (excluding the BA/YD) with respect to all four records. Representing one-third of D-O events during the last glacial period, these D-O events' respective NGRIP  $\delta^{18}\text{O}$  records bear remarkable similarity to that of the BA/YD, despite assumptions of its uniqueness. Additionally, the BA/YD exclusive mean of D-O events' NGRIP  $\delta^{18}\text{O}$  record confirms that the shape of the BA/YD does not visibly deviate from the classic D-O shape. Further, Antarctic records ( $\text{CO}_2$  and EDML  $\delta^{18}\text{O}$ , second column) show varying trends that do not appear particularly synchronized to the D-O sawtooth shape. NGRIP  $\text{CH}_4$  exhibits D-O-like variability, with varying leads and lags. Note: time moves right to left in this figure.



**Figure 6.** Greenland shape scatter grid. Of the 60 multivariate subsets analyzed for outliers, the above represents the essence of our results. Using both peak-to-trough stadial slope and measurements of NGRIP  $\delta^{18}\text{O}$  and  $\text{CH}_4$  (left), we observe minimal outlier behavior from the BA/YD in each pair of the four variable system, which indicates that the shape of the BA/YD's Greenland records is not unique in of itself. Histograms along the diagonal plot the corresponding single-variable distribution, where the horizontal location of the YD's measurement is in purple on a normalized scale (i.e., the height of the purple bar is 1).

**Table 1.** Three different stadial choice situations for different duration parameter choices in Figure 2. The choice results in the first column  $((x, y, z) = (300, 300, 200))$  represent our preferred choices for statistical analysis. Note that basing analysis on the stratigraphic choices represented in the second or third columns yields 86-93% similarity in results.

**Decision Tree Results**

Cycle #	Threshold		
	$(x, y, z) = (300, 300, 200)$	$(x, y, z) = (90, 100, 140)$	$(x, y, z) = (90, 100, 90)$
2	Join GI2.1,2.2, and GS2.2 into GI2	Absorb GI2.1 into GS2.1,2.2	Treat cycles 2.1 and 2.2 as separate
5	Treat cycles 5.1 and 5.2 as separate	Treat cycles 5.1 and 5.2 as separate	Treat cycles 5.1 and 5.2 as separate
15	Absorb GI15.1 into GS15.1,15.2	Absorb GI15.1 into GS15.1,15.2	Treat cycles 15.1 and 15.2 as separate
16	Discard cycle 16.2	Treat cycles 16.1 and 16.2 as separate	Treat cycles 16.1 and 16.2 as separate
17	Discard cycle 17.2	Treat cycles 17.1 and 17.2 as separate	Treat cycles 17.1 and 17.2 as separate
19	Treat cycles 19.1 and 19.2 as separate	Treat cycles 19.1 and 19.2 as separate	Treat cycles 19.1 and 19.2 as separate
21	Discard cycle 21.2	Treat cycles 21.1 and 21.2 as separate	Treat cycles 21.1 and 21.2 as separate
23	Discard cycle 23.2	Treat cycles 23.1 and 23.2 as separate	Treat cycles 23.1 and 23.2 as separate

**Table 2.** Metric measurements for Greenland records by stadal number. Abbreviations for records are given by  $\delta^{18}\text{O}$ =NGRIP  $\delta^{18}\text{O}$  and  $\text{CH}_4$  =NGRIP  $\text{CH}_4$ , and abbreviations for metrics are given by P2T=peak-to-trough, Slp=stadial slope, and Med=median.

Stadial #	$\delta^{18}\text{O}$ P2T	$\delta^{18}\text{O}$ Slp	$\delta^{18}\text{O}$ Med	$\text{CH}_4$ P2T	$\text{CH}_4$ Slp	$\text{CH}_4$ Med
1	-5.82	0.000341	-40.73	-123.59	-0.181	509.80
2	-4.33	0.000126	-41.99	-18.27	0.011	404.95
3	-6.98	0.000011	-43.47	-22.04	-0.008	400.45
4	-6.63	-0.000958	-43.95	56.95	-0.118	470.40
5.1	-4.43	0.000090	-44.28	-5.33	-0.022	419.00
5.2	-6.39	-0.000228	-43.69	15.37	-0.129	475.40
6	-6.93	-0.000713	-43.81	-5.13	-0.128	467.80
7	-5.78	0.000224	-42.71	-91.68	-0.143	467.60
8	-6.42	-0.000144	-43.02	-145.68	-0.046	458.80
9	-5.12	0.000470	-43.08	22.96	0.079	481.20
10	-6.31	0.001404	-42.50	-98.50	0.086	457.80
11	-5.36	-0.000372	-42.29	-67.87	0.158	510.50
12	-6.5	0.000328	-42.68	-72.63	0.134	516.20
13	-5.55	0.000660	-42.87	56.47	0.089	532.20
14	-4.36	-0.002479	-41.52	-67.58	-0.086	486.55
15	-5.75	-0.000763	-42.52	117.16	0.102	581.90
16	-5.52	-0.001892	-42.29	-87.00	-0.185	574.70
17	-5.67	-0.001038	-42.04	45.40	-0.207	610.10
18	-6.89	0.000264	-43.65	7.79	0.034	474.00
19.1	-6.9	-0.000041	-43.87	-1.60	0.005	490.50
19.2	-7.43	-0.001761	-43.96	-16.95	-0.033	496.75
20	-8.71	-0.000154	-44.50	23.18	0.054	519.05
21	-7.32	0.000036	-42.59	-101.45	0.051	515.15
22	-4.76	0.000397	-41.20	-34.71	0.088	489.90
23	-4.16	0.008229	-39.93	-61.53	0.051	512.05

**Table 3.** Metric measurements for Antarctic records **by stadal number**. Abbreviations for records are given by EDML=EDML  $\delta^{18}\text{O}$  and compiled Antarctic  $\text{CO}_2 = \text{CO}_2$ , and abbreviations for metrics are given by P2T=peak-to-trough, Slp=stadial slope, and Med=median.

Stadal #	EDML P2T	EDML Slp	EDML Med	$\text{CO}_2$ P2T	$\text{CO}_2$ Slp	$\text{CO}_2$ Med
1	1.12	0.002738	-46.46	9.12	0.0123	248.95
2	0.22	0.000534	-51.40	8.10	0.0069	202.93
3	-1.58	-0.000035	-52.22	-6.07	-0.0006	186.14
4	-0.85	-0.00087	-50.96	-3.08	-0.0032	189.65
5.1	0.65	0.000850	-50.19	5.90	0.0044	189.83
5.2	-1.17	-0.000367	-50.96	-5.08	-0.0072	191.23
6	-0.49	-0.000420	-50.50	-0.63	-0.0050	196.14
7	-1.19	-0.000516	-50.78	-7.88	-0.0040	196.07
8	-1.02	0.001384	-50.20	-11.34	0.0011	201.78
9	1.15	0.001336	-49.17	11.65	0.0072	206.09
10	-0.42	0.000794	-50.23	-3.42	-0.0202	197.90
11	-0.44	0.001256	-50.08	-3.21	0.0191	201.12
12	-1.61	-0.000310	-49.54	-15.20	-0.0003	202.59
13	0.92	0.001278	-48.25	3.75	0.0043	206.18
14	-1.02	-0.000076	-49.60	-19.76	-0.0247	202.09
15	0.31	0.000001	-48.93	1.46	0.0085	215.38
16	-0.83	0.000161	-49.64	-13.45	0.0079	208.97
17	-0.54	-0.001232	-48.54	-6.58	-0.0038	223.15
18	0.58	0.000539	-49.26	8.49	0.0060	210.57
19.1	-0.53	-0.000012	-50.66	-7.24	-0.0005	202.55
19.2	-2.28	-0.001508	-49.55	-28.21	-0.0093	213.41
20	-0.08	-0.000665	-48.16	-13.03	0.0002	232.54
21	-2.02	-0.000500	-47.44	-8.19	0.0141	231.68
22	0.23	0.000969	-47.17	-3.73	0.0083	226.07
23	-1.11	-0.000438	-47.98	-13.36	0.0000	229.33

**Table 4.** PCOut BA/YD Results. “YES” (“NO”) indicates that the BA/YD is (not) an outlier in the subset indicated by the row/column combination in which it’s located. Rows refer to the record(s) under analysis ( $\delta^{18}\text{O}$ = NGRIP  $\delta^{18}\text{O}$ , compiled Antarctic  $\text{CO}_2 = \text{CO}_2$ , EDML= EDML  $\delta^{18}\text{O}$ , and  $\text{CH}_4 = \text{NGRIP CH}_4$ ), and columns refers to the metric(s) applied to those records (P2T=peak-to-trough, Slp=stadial slope, and Med= median). This amounts to an  $n \times p$ -variate input into PCOut, where  $n$  denotes the number of records included and  $p$  denotes the metrics applied to all such records.

		1	2	3	4
		(P2T,Slp)	(P2T)	(Slp)	(Med)
1	( $\delta^{18}\text{O}, \text{CO}_2, \text{EDML}, \text{CH}_4$ )	YES	NO	YES	NO
2	( $\delta^{18}\text{O}, \text{CO}_2, \text{EDML}$ )	NO	NO	NO	YES
3	( $\delta^{18}\text{O}, \text{CO}_2, \text{CH}_4$ )	NO	YES	NO	YES
4	( $\text{CO}_2, \text{EDML}, \text{CH}_4$ )	YES	YES	YES	YES
5	( $\delta^{18}\text{O}, \text{EDML}, \text{CH}_4$ )	YES	YES	YES	YES
6	( $\delta^{18}\text{O}, \text{CO}_2$ )	NO	NO	NO	YES
7	( $\delta^{18}\text{O}, \text{EDML}$ )	NO	YES	NO	YES
8	( $\delta^{18}\text{O}, \text{CH}_4$ )	NO	NO	NO	YES
9	( $\text{CO}_2, \text{EDML}$ )	YES	NO	YES	YES
10	( $\text{CO}_2, \text{CH}_4$ )	YES	NO	YES	YES
11	( $\text{EDML}, \text{CH}_4$ )	YES	YES	YES	YES
12	( $\delta^{18}\text{O}$ )	NO	NO	NO	YES
13	( $\text{CO}_2$ )	NO	NO	NO	YES
14	( $\text{EDML}$ )	YES	NO	YES	YES
15	( $\text{CH}_4$ )	NO	NO	NO	NO