

Response to the Editor on comments on R1 manuscript entitled: *Contrasting late-glacial paleoceanographic evolution between the upper and lower continental slope of the western South Atlantic*.

Dear Dr Erin McClymont

We are grateful for your reply with comments on our revised manuscript. The new comments on the revision #1 manuscript were taken in consideration and all suggestions incorporated in this revised manuscript, as detailed below.

Leticia G. Luz (on behalf of the co-authors)

Editor comments

Reviewer 2 commented on some duplication of information about the circulation. In the revised manuscript I can see where this arises – it is not word-for-word duplication, but you have a detailed discussion at the start of page 3 about the different water masses in this region and how they interact, which then feeds into how different previous work might have found differing results. I can understand the rationale for providing this information, since it gives a good justification for the study. But when I was reading this I thought “this would make a good section on it’s own”, and yet in Section 2 there is a section called “regional settings” which also talks about circulation patterns and their controls in more depth. I recommend that the authors consider shortening the introduction e.g. by finishing page 2 with a statement of the study aims and then moving onto a “regional setting” section (having used Figure 1 to flag that there is complex circulation). Or, if the Introduction stays as it is, section 2.2 could be more focussed on the direct controls over circulation at these two sites (e.g. section 2.2 describes processes happening at 10-15°S, at 33-38°S etc but some of this is visible in Figure 1).

R. We decided to reduce the Introduction section and to give more details about the characteristics of the BCC in the Regional Settings section

35 The final paragraph of the Introduction includes text (from “our multi-proxy reconstruction indicates...” which explains the findings of the study. I recommend to remove this text which is “Discussion” to keep the focus of the Introduction on the rationale and aims for the study and then what was done.

40 *R. The text mentioned was removed. We only kept the last sentence, because we believe it illustrates a broad context in which our work is inserted.*

I recommend swapping #2.1 and #2.2 so that the information on the sediment cores is directly adjacent to the age model information (#2.3).

45 *R. OK, the change is performed.*

page 4 lines 3-4: place the information about selecting the top 250 cm into it’s own sentence rather than in brackets.

50 *R. OK*

55 You discuss the uncertainty on the d18OIVF-SW results. Could you please flag these in the caption to Figure 3 (and Figure 4), so that it is clear that the variations you are calculating exceed those propagated uncertainties? (even better – show a vertical bar for the size of the uncertainties if you can’t show them on each data point, but I can see that you don’t have much space on this graphic). It could be particularly valuable in Figure 4 to show that both data sets ‘overlap’ or not.

60 *R. We added a vertical bar in Figs 3 and 4 and this information now appears in the figures’ captions. These bars represent the total uncertainty associated with the $^{18}O_{ivf-sw}$ reconstruction. It is noteworthy that even considering the maximum uncertainty in the measure, there are no overlaps in our records during the period of time focused on our manuscript, and hence the proxy changes observed in the cores represent a true climatic signal and not an artifact derived from measure uncertainties.*

65 page 8 line 16: some duplication in the text (“the 101” is stated twice)

R. OK

70 In Discussion (p.10 and Figure 5), where the regional signals are compared, it would also be good to consider the record of Roberts et al. (<https://www.sciencedirect.com/science/article/pii/S0012821X17303825>) from the south west Atlantic. Roberts showed alkenone SST changes upstream of the Drake Passage, and made comparisons between the Santos data cited here as well as data from the Chilean margin, including observations of anti-phase SST patterns (rather than synchronicity noted here). The Roberts paper discusses circulation implications for the south west Atlantic so could provide some interesting comparison.

75

80

85

R. The data from the Roberts et al paper (2007) are incorporated in the new version of the manuscript and a brief discussion based on the paper is included in the caption of Figure 5. In addition, the data from the Chilean margin (MD07-2138; Canu et al. 2011) are also included in this figure, because these authors also discussed the data of Roberts et al (2007). Accordingly, Figure 1 now also show these new cores (CG528 and MD07-3128). The data from the core CG528 corroborate with our interpretation of the relatively higher temperatures during the LGM based on the RJ-1502 data (and the GL-1090). However, we point out that the colder SST temperatures registered in the CG528 along the last deglaciation is not consistent with our data as well as other data from the same period obtained in cores from the Pacific Ocean.

Contrasting late-glacial paleoceanographic evolution between the upper and lower continental slope of the western South Atlantic

Leticia G. Luz¹, Thiago P. Santos², Timothy I. Eglinton³, Daniel Montluçon³, Blanca Ausin^{3,4}, Negar Haghipour³, Silvia M. Sousa⁵, Renata H. Nagai⁶, Renato S. Carreira¹

¹ LabMAM/Departamento de Química, Pontifícia Universidade Católica do Rio de Janeiro (PUC-Rio), Rio de Janeiro, Brasil

² Programa de Geociências (Geoquímica), Universidade Federal Fluminense, Niterói, Brazil

³ Department of Earth Science, Geological Institute, ETH Zürich, Zürich, Switzerland

⁴ Department of Geology, University of Salamanca, Salamanca, Spain

⁵ Instituto de Oceanografia, Universidade de São Paulo, São Paulo, Brasil

⁶ Centro de Estudos do Mar, Universidade Federal do Paraná (UFPR), Paraná, Brasil

Correspondence to: Leticia G. Luz (leticiagluz@gmail.com)

Abstract. The number of sedimentary records collected along the Brazilian Continental Margin has increased significantly in recent years, but relatively few are located in shallow waters and register paleoceanographic processes in the outer shelf-middle slope prior to 10-15 ka BP. For instance, the northward flow up to 23-24 °S of cold and fresh shelf waters sourced from the subantarctic region is an important feature of current hydrodynamics in the subtropical western South Atlantic Ocean, and yet limited information is available for the long-term changes of this system. Herein, we considered a suite of organic and inorganic proxies – alkenones-derived sea surface temperature (SST), δD -alkenones, $\delta^{18}O$ of planktonic foraminifera and ice-volume free seawater $\delta^{18}O_{IVF-SW}$ – in sediment from two cores (RJ-1501 and RJ-1502) collected off the Rio de Janeiro shelf (SE Brazilian continental shelf) to shed light on SST patterns and relative salinity variations since the end of the last glacial cycle in the region and the implications of these processes over a broader spatial scale. The data indicate that, despite the proximity (~ 40 km apart) of both cores, apparently contradictory climatic evolution occurred at the two sites, with the shallower (deeper) core RJ-1501 (RJ-1502) showing consistently cold (warm) and fresh (salt) conditions toward the Last Glacial Maximum and last deglaciation. This can be reconciled by considering that the RJ-1501 core registered a signal from mid- to high-latitudes on the upper slope off Rio de Janeiro represented by the influence of the cold and fresh waters composed of Subantarctic Shelf Water and La Plata Plume Water transported northward by the Brazilian Coastal Current (BCC). The data from core RJ-1502 and previous information for deep-cores from the same region support this interpretation. In addition, alkenone-derived SST and $\delta^{18}O_{IVF-SW}$ suggest a steep thermal and density gradient formed between the BCC and Brazil Current (BC) during the last climate transition which, in turn, may have generated perturbations in the air-sea heat flux with consequences for the regional climate of SE South America. In a scenario of future weakening of the Atlantic Meridional Overturning Circulation, the reconstructed gradient may become a prominent feature of the region.

1 Introduction

The paleoclimatic knowledge accessed through marine sediment cores from the extensive Brazilian continental margin has increased significantly through the last decades (e.g., Arz et al., 1999, 2001; Chiessi et al., 2008; Govin et al., 2014; Jaeschke et al., 2007; Jennerjahn et al., 2004; Lessa et al., 2017; Mulitza et al., 2017; Portilho-Ramos et al., 2015; Rühlemann et al., 1999). The records distributed along the western South Atlantic display considerably heterogeneous features in terms of sedimentation rate and response to the adjacent continental climate, which makes the scientific outputs extremely dependent on the core site location. Those cores located adjacent to the semi-arid NE Brazil allowed several investigations addressing the interplay between changes in the Atlantic Meridional Overturning Circulation (AMOC), the sea surface temperature (SST) of the tropical Atlantic, and the continental climate (in terms of precipitation and vegetation cover) in centennial to millennial time-scales (Behling et al., 2000; Bouimetarhan et al., 2018; Burckel et al., 2015; Crivellari et al., 2019; Venancio et al., 2018; Zhang et al., 2015, 2017). Otherwise, marine records recovered from the subtropical realm (southern to 20 °S) generally do not show obvious sea surface millennial-scale features like those from NE Brazil (Santos et al., 2017a); nonetheless, this area suffers large changes in the wind-driven upwelling patterns, with consequences for regional upper-ocean productivity (Lessa et al., 2019; Portilho-Ramos et al., 2019). The subtropical Brazilian margin may also be a sensitive region to the transmission of the Agulhas rings to the western South Atlantic at the end of glacial periods, highlighting its importance for glacial-interglacial transitions (Santos et al., 2017b; Ballalai et al., 2019). Similarly, the application of cores in the subtropical margin is exception in exploring changes in the water mass composition of the deep Atlantic during the last glacial cycle (Howe et al., 2018; Lund et al., 2015; Oppo et al., 2015; Tessin and Lund, 2013).

Most of these studies were based on intermediate to deep-water cores (> 1500 m) recovered from the mid- to lower-continental slope, and investigations supported by shallower water-depth cores (< 1000 m) are generally limited to the Holocene (e.g., Albuquerque et al., 2016; Lessa et al., 2016; Nagai et al., 2014). Such a shorter-time range from shallow-water cores is due to the fact that wide regions of the continental shelf were exposed during the last glacial cycle, and that the sea-level rise of the last deglaciation provoked massive sedimentological disturbances, preventing the acquisition of well-organized chronological sequences. This hindrance was partially circumvented by cores GeoB2107-3 and GeoB6211-2, retrieved at 1048 m and 657 m, respectively, in which dinocyst assemblage reconstructions were developed (Gu et al., 2017; Gu et al., 2018). These authors verified the presence of eutrophic taxa along the SE Brazilian coast from the late glacial to the last deglaciation and assigned this to the high input of continental nutrients carried by the Brazilian Coastal Current (BCC) that flowed farther from the shore due to the low sea-level. However, a more straightforward hydrographic reconstruction of the eventual influence of the BCC along the southern portion of the Brazilian continental margin is still lacking. This limits the elaboration of detailed knowledge about the regional climatic evolution, mainly for inner parts of the continental margin that might receive the influence of the BCC.

Herein, the data of organic (alkenones-derived SST and δD -Alkenones) and inorganic ($\delta^{18}O$ of planktonic foraminifera and ice-volume free seawater $\delta^{18}O_{IVF-SW}$) proxies obtained from two sediment cores collected in the upper (RJ-

50 1501, 328 m water depth) and lower (RJ-1502, 1598 m water depth) continental slope in the SE Brazilian continental margin are presented. In the core's region the influence of the BCC and BC results in a complex and dynamic circulation pattern (Figure 1). The aim is to reconstruct the BCC evolution during the last glacial-interglacial transition and placing it in the context of the offshore waters influenced by the BC. The data presented herein are intended to increase the knowledge of long-term circulation changes in the south and south-eastern continental margin and highlight the nonlinearity of the climate system
55 in the mid- to high- South Atlantic latitudes, including insights from both the marine and continental realms.

2 Material and Methods

2.1 Regional settings

The current study was carried out with sediment cores collected from the upper and intermediate slopes of the state of Rio de Janeiro, Santos Basin, located in the subtropical western South Atlantic (Figure 1). The offshore circulation in the
60 area is governed by the western portion of the anticyclonic movement of the South Atlantic Subtropical Gyre. The South Equatorial Current reaches the Brazilian margin and is distributed into two surface flows, at approximately 10-15 °S, namely: the North Brazil Current and the BC (Peterson and Stramma, 1991; Stramma and England, 1999). The BC flows south along the Brazilian margin with a total width of 400-500 m, carrying the nutrient-poor Tropical Water (TW: $T > 20$ °C; $S > 36$) in its upper ~ 100 m and the nutrient-rich South Atlantic Central Water (SACW: $T = 6-20$ °C; $S \sim 34.6-36$) between ~ 100 and 600 m
65 water depths (Silveira et al., 2017). At 33-38 °S, the southward flow of the BC meets the northward flow of the Malvinas Current to form the Brazil-Malvinas Confluence (Figure 1). The position of the Brazil-Malvinas Confluence presents a strong seasonality, moving to a lower latitude (~ 34 °S) with a northward penetration of the Malvinas Current during the austral winter and a higher latitude (~ 40 °S) with a southward penetration of the BC during the austral summer (Olson et al., 1988). Both the BC and Malvinas Current are deflected eastward at the Brazil-Malvinas Confluence region, feeding the South Atlantic Current.

70 Over the continental shelf of the subtropical western South Atlantic, water masses are originated by the dilution of open ocean waters from the western boundary currents. Two distinct water masses are identified, the cold and low-salinity Subantarctic Shelf Water and the warm and high-salinity Subtropical Shelf Water (Piola et al., 2008). The origin of the Subantarctic Shelf Water is related to precipitation excess and continental runoff in the southeast Pacific that penetrates the South Atlantic south of Cape Horn, flowing northward. The Subtropical Shelf Water is fed by the detachment of the TW from
75 the surface layer of the BC. At ~ 33 °S, a narrow frontal zone, referred to as the Subtropical Shelf Front, separates the two water masses (Piola et al., 2000). A cross-shelf section indicates no penetration of the Subantarctic Shelf Water north of Subtropical Shelf Front, yet hydrographic and satellite observations indicate that cold (14-17 °C) and low-salinity (33.0-34.0) water tongues can be traced to latitudes as low as 23 °S (Campos et al., 1996). This low-SST and salinity water observed beyond the front is associated with the northward spreading of the La Plata River outflow (Möller et al., 2008). The discharge
80 of the so-called Plata Plume Water produces a major impact on vertical stratification, since northward penetration of the river plume is associated with decreased surface salinity (Palma et al., 2008; Piola et al., 2005).

Along the southern Brazilian margin, the northward movements of the Subantarctic Shelf Water and Plata Plume Water are determined by the BCC. The BCC is a seasonal coastal current flowing northward at the continental shelf from the Argentinean shelf and southern Brazilian shelf that transport a mixture of cold and low-salinity Plata Plume Water (generated by the discharge of the La Plata River) and Subantarctic Shelf Water (derived from the northern extension of the Malvinas Current) (Möller et al., 2008; de Souza and Robinson, 2004). The BCC is forced by the prevailing southern winds allied to the meridional oscillations of the Brazil-Malvinas Confluence (Stevenson et al., 1998). The cold and low-salinity BCC exhibits very contrasting hydrographic patterns compared to those of the warm and high-salinity Brazil Current (BC) (Mendonça et al., 2017). As a consequence, the presence of the BCC over the continental shelf produces a cross-shelf SST gradient of $\sim 1.5^{\circ}\text{C}$ toward the shelf break, where BCC waters meet the opposite flow of the BC. The gradient imposed by this thermal front may disturb atmospheric properties, such as surface wind stress, stability, and air-sea flux exchange, as the sea surface in this region can act as a heat source to the atmosphere (Pezzi et al., 2016).

2.2 Sediment cores

Gravity cores RJ-1501 ($23^{\circ}58'14.3''\text{S}/43^{\circ}06'35.1''\text{W}$, water depth: 328 m, length: 402 cm) and RJ-1502 ($24^{\circ}32'57.6''\text{S}/42^{\circ}55'42.9''\text{W}$, water depth: 1598 m, length: 250 cm) were collected from the slope off southeast Brazilian Continental Margin by RV Inspector II in June 2015 (Figure 1). Due to the chronological limitation of ^{14}C dating, only the first 250 cm of the RJ-1502 core were considered in this study. Both cores were sliced at 3 cm intervals, resulting in 134 and 84 samples for cores RJ-1501 and RJ-1502, respectively. Samples were stored frozen in an aluminium container and subsequently freeze-dried.

2.3 Age model

The RJ-1501 and RJ-1502 core chronologies were obtained through AMS ^{14}C dating over the shells of the surface-dwelling planktic foraminifera *Globigerinoides ruber* and *Trilobatus sacculifer*. The AMS ^{14}C was measured in ten and eight samples of core RJ-1501 and RJ-1502, respectively (Table 1). Each sample comprised roughly 10 cm^3 of sediment, and 50 shells of the mentioned species were handpicked using a stereomicroscope from the $250\text{ }\mu\text{m}$ size-fraction. AMS ^{14}C ages were determined at the ETH Laboratory of Ion Beam Physics (Zurich) using the mini radiocarbon dating System (MICADAS). This system is based on a vacuum insulated acceleration unit that uses a commercially available 200 kV power supply to generate acceleration fields in a tandem configuration. This technique is capable of determining low ^{14}C concentrations due to the high energies employed in the particle accelerator and the magnetic and electrostatic mass analyzers (Synal et al., 2007).

The age-depth model was built using the Bacon v. 2.3 software, which uses Bayesian statistics to reconstruct Bayesian accumulation histories for sedimentary deposits (Blaauw and Christeny, 2011). The ^{14}C ages were calibrated using the IntCal13 curve (Reimer et al., 2013) and modelled with a reservoir age of 375 ± 36 years from ten local records (Figure 2). BACON was run with default parameter settings, except for a higher memory (mem.mean = 0.7) to consider that the sedimentation rate

of a particular depth in the cores depends on the depth above it. Ages were modeled using a student-t distribution, with 33 degrees of freedom (t.a=33, t.b=34) and 10,000 age-depth realizations to estimate median age and 95% confidence intervals at 3 cm resolutions for each core. Mean 95% confidence ranges were of 2588 and 3861 years for cores RJ-1501 and RJ-1502, respectively. One hundred percent off the dates lie within the age-depth model in a 95% range for both cores. According to our age-depth models, cores RJ-1501 and RJ-1502 cover the last 42.44 and 53.57 ka BP (Figure 2). The mean sedimentation rate of core RJ-1501 was around 100 years/cm between 40 and 20 ka BP, with a steep increase to 500 years/cm during the last deglaciation and a return to previous values during the Holocene. A general lower sedimentation rate was found for core RJ-1502, with roughly 200 years/cm between 50 and 20 ka and almost 1000 years/cm during the last deglaciation and Holocene (Figure 2).

2.4 Alkenone analyses and sea surface temperature reconstruction ($U_{37}^{K'}$ -derived SST)

A total of 139 sediment samples were selected for alkenone analyses, considering the two collected cores. Samples were freeze dried and homogenized with a mortar and pestle. An 15-30 g (± 0.1 mg) aliquot of the homogenized material was extracted in a pressurized solvent extractor system (Dionex® ASE-200) using a mixture of dichloromethane (DCM): methanol 9:1 (v/v) at 100 °C and 1000 psi in two cycles, 11 minutes per cycle. Before extractions, a known amount of 2-nonadecanone was added as a surrogate standard. The total lipid extracts were saponified (1M KOH at 110 °C for 2h), and the neutral fraction recovered with *n*-hexane. The neutrals were further fractionated using a Pasteur pipette containing 4 cm of activated silica into three fractions: apolar (4 mL of *n*-hexane), ketones (4 mL of *n*-hexane:DCM, 2:1/v:v) and polar (4 mL of DCM:methanol, 1:1/v:v). The alkenone analyses were performed at the Chemistry Department from PUC-Rio. The alkenones in the ketones fraction were identified and quantified using a Thermo® Focus gas chromatograph equipped with an Agilent DB-5 capillary column (60 m x 250 μ m diameter x 0.25 μ m internal film) and a flame ionization detector. The oven temperature program used started at 50 °C, followed by a 20 °C min⁻¹ ramp up to 80 °C and a second ramp at 8 °C min⁻¹ up to 320 °C, with a final hold at this temperature for 33 min. The extracts (1 μ L) were injected in splitless mode and He was used as the carrier gas at 1.2 mL min⁻¹. Alkenone identification was based on the retention time of authentic standards, whereas quantification followed the internal standard method using *n*-C₃₆ alkane. Analytical precision was estimated as 12% or better, based on triplicate analyses of a sediment sample. The $U_{37}^{K'}$ values were calculated according to Prahl and Wakeham (1987): $U_{37}^{K'} = C_{37:2}/(C_{37:2} + C_{37:3})$ and were then converted to sea surface temperature ($U_{37}^{K'}$ -derived SST) using the Müller et al. (1998) calibration, as follows: $U_{37}^{K'} = 0.033 U_{37}^{K'}\text{-derived SST (}^{\circ}\text{C)} + 0.069$; $r^2 = 0.98$; $n = 149$; $sd = \pm 1.0$ °C). This equation was chosen because it is derived from 149 tropical to subpolar eastern South Atlantic surface sediments and was already used in other studies from the same region (e.g., Ceccopieri et al., 2018).

2.5 Planktic foraminifera oxygen ($\delta^{18}\text{O}$) and carbon ($\delta^{13}\text{C}$) isotopic compositions

The oxygen ($\delta^{18}\text{O}$) and carbon ($\delta^{13}\text{C}$) isotopic compositions were determined in planktic foraminifera *Globigerinoides*
45 *ruber* [white] shells from selected slices of the RJ-1501 and RJ-1502 cores. Approximately 10 mL of sediment were sifted
sequentially using two sieves (63 μm and 150 μm meshes), hand-picking the specimens. Approximately 10-15 shells >150 μm
from each sample were weighed in appropriate glass vials to be injected into an automatic Kiel IV Thermo Fisher Scientific®
system (automatic CO_2 obtainment device from the analyzed carbonate, Geological Institute, ETH-Zurich) for the oxygen and
carbon isotopic analyses. The determination of low ^{18}O and ^{13}C isotope contributions is performed by using the respective
50 ratios with their most abundant elements in the sample. The data were reported by the delta notation in parts per thousand and
relative to the standard Vienna Pee-Dee Belemnite (VPDB). The Kiel IV carbonate device was coupled to a Thermo Fisher
Scientific® Delta V Plus mass spectrometer. The carbonate generated by the shells was vacuum dissolved by applying a
phosphoric acid 103% drip at a temperature of 70 °C and directed to the mass spectrometer. The masses were calibrated with
the international MS2 ($\delta^{18}\text{O}_{\text{VPDB}} = 1.81\text{‰}$, $\delta^{13}\text{C}_{\text{VPDB}} = 2.13\text{‰}$, $n = 14$) and ISOLAB B ($\delta^{18}\text{O}_{\text{VPDB}} = -18.59\text{‰}$, $\delta^{13}\text{C}_{\text{VPDB}} =$
55 10.20‰ , $n = 4$) standards and all results were reported as the conventional delta notation in relation to the VPDB standard.
The standard deviations were $\delta^{18}\text{O} = 0.061$ and $\delta^{13}\text{C} = 0.040$ for the MS2 standard and $\delta^{18}\text{O} = 0.076$ and $\delta^{13}\text{C} = 0.076$ for the
ISOLAB B standard.

2.6 Ocean surface salinity tracers (Alkenone hydrogen isotope and Ice-volume free seawater oxygen isotope)

The $^2\text{H}/^1\text{H}$ isotopic ratios of the $\text{C}_{37:2}$ and $\text{C}_{37:3}$ alkenones (δD -Alkenones) produced by haptophyte algae was used as
60 a proxy for changes in sea surface salinity (SSS). The F2 fraction separated from the organic lipid extract (see section 2.4) was
used to determine the δD -Alkenones by gas chromatography-isotopic ratio mass spectrometry (GC-IRMS; Thermo TraceGC
gas chromatography coupled to a Thermo Delta V Plus mass spectrometer) at the Geological Institute (ETH-Zurich). A
relatively large volume (up to 8 μL) of the extract, corresponding to a 50-300 ng load of the analyte, was injected in a PTV
inlet (Gerstel, CIS-6) set to the solvent-vent mode for a better quantitative transfer into an Agilent VF-1ms column (60 m x
65 0.25 mm x 0.25 μm). The oven temperature programme was set to have the alkenones eluting isothermally at 300 °C in order
to minimize column bleeding. Prior to each sample injection, the high temperature pyrolysis reactor was conditioned with a 4
s pulse of methane through the reactor to maintain the reactor's pyrolysis efficiency (Cao et al., 2012). A standard of $n\text{-C}_{27}$
alkane (Heptacosane#3, $\delta 2\text{HVSMOW} = -172.8\text{‰} \pm 1.6\text{‰}$, from Arnd Schimmelmann, Biogeochemical Laboratory, Indiana
University) was used to construct a calibration curve with a linear response of the IRMS signal up to 100 V. For more intense
70 detector signals (> 100 V), a constant calibration offset was used. Propagated errors on duplicate analysis varied between 2
and 8‰.

To determine the sea water oxygen isotope ($\delta^{18}\text{O}_{\text{sw}}$), we used the *G. ruber* [white] $\delta^{18}\text{O}$ values and U_{37}^K -derived SST
applying the equation: $T(U_{37}^K\text{-derived SST}) = -4.44 * (\delta^{18}\text{O} - \delta^{18}\text{O}_{\text{IVF-SW}}) + 14.20$ (Mulitza et al., 2003)). The effect of global
sea-level changes was subtracted from $\delta^{18}\text{O}_{\text{sw}}$ to generate an ice-volume free seawater $\delta^{18}\text{O}$ ($\delta^{18}\text{O}_{\text{IVF-SW}}$) based on the sea-level

75 reconstruction of Grant et al. (2012) and considering a glacial $\delta^{18}\text{O}$ increment of 0.008 per meter sea-level lowering (Schrage et al., 2002; Simon et al., 2013). A factor of 0.27 ‰ was applied to convert the values from VPDB to Vienna Standard Mean Ocean Water (VSMOW) (Hut, 1987). The $\delta^{18}\text{O}_{\text{IVF-SW}}$ uncertainty considers the uncertainty in the $U_{37}^{K'}$ -derived SST of $\pm 1.0^\circ\text{C}$ – which is equivalent to a 0.22‰ $\delta^{18}\text{O}$ change (Mulitza et al., 2003) – and a 0.06‰ analytical error for calcite $\delta^{18}\text{O}$ measurement. The total propagated cumulative uncertainty was ± 0.20 ‰, consistent with earlier studies that applied this proxy

80 in the vicinity of our study area (e.g., Chiessi et al., 2015). Previous publications have used the combination of $U_{37}^{K'}$ -derived SST and foraminifera $\delta^{18}\text{O}$ to estimate the $\delta^{18}\text{O}_{\text{IVF-SW}}$. In these publications, it is generally assumed that the dominant alkenone producer *Emiliania huxleyi* and *G. ruber* have comparable water depth habitats (e.g., Rostek et al., 1993; Emeis et al., 2000; Carter et al., 2008; Sepulcre et al., 2011; Kasper et al., 2014), which is also the case in the subtropical western South Atlantic (Venancio et al., 2017; Ceccopieri et al., 2018). Seasonal corrections over the $U_{37}^{K'}$ -derived SST before application in

85 $\delta^{18}\text{O}_{\text{IVF-SW}}$ have been considered in regions of extreme seasonal variations in temperature and salinity, as the Mediterranean Sea (e.g., Essallami et al., 2007), which is not the case for the subtropical western South Atlantic.

3 Results

As a general result, the same trend was noted for $\delta^{18}\text{O}$, paleotemperature and relative changes in salinity proxies over the length of cores RJ-1501 and RJ-1502 (Figure 3A-E). Both records indicate similarity throughout MIS3 and MIS1 intervals.

90 Regarding the slope variations (RJ-1501 \rightarrow RJ-1502), $\delta^{18}\text{O}$ (Figure 3A) and $U_{37}^{K'}$ -derived SST (Figure 3C) profiles are in agreement throughout the glacial period until Termination I, when a decoupling occurs and RJ-1501 data display lower temperature results. From the beginning of MIS 2, a discrepancy between the records indicates a genuine change in behaviour by the main environmental conditions. Unlike $\delta^{18}\text{O}$ and $U_{37}^{K'}$ -derived SST profiles, a trend of convergence between the cores $\delta^{13}\text{C}$ data (Figure 3B) can be observed in MIS2, particularly during the last deglaciation. The isotopic composition of *G. ruber*

95 ranged from -0.97‰ to 0.72‰ ($\delta^{18}\text{O}$) and 0.12‰ to 1.65‰ ($\delta^{13}\text{C}$) in core RJ-1501 ($n = 101$) and from -0.84‰ to 0.95‰ ($\delta^{18}\text{O}$) and 0.27‰ to 1.45‰ ($\delta^{13}\text{C}$) in core RJ-1502 ($n = 72$). A well-defined decreasing trend of $\delta^{18}\text{O}$ data is observed after the start of the LGM in the core RJ-1501 – although less evident in the deeper core RJ-1502 – and is accompanied by an increase in $\delta^{13}\text{C}$ values from \sim ca. 12-13 ka in the two cores. The mean $U_{37}^{K'}$ -derived SST was $21.8 \pm 2.5^\circ\text{C}$ ($n = 77$) for core RJ-1501 and $20.7 \pm 1.7^\circ\text{C}$ ($n = 70$) for core RJ-1502. $U_{37}^{K'}$ -derived SST varied by 8.2°C (17.6-25.8 $^\circ\text{C}$) at the location closest

00 to the shelf break and by 8.9°C (16.9-25.8 $^\circ\text{C}$) at the slope, with common positive bias located at ca. 39 ka and from ca. 12 ka until recently. Nevertheless, the modern annual SST means are higher $+0.74^\circ\text{C}$ (RJ-1501) and $+1.19^\circ\text{C}$ (RJ-1502) (data from World Ocean Atlas 2013 - WOA13, Locarnini et al., 2013) compared to our Holocene sea surface temperature estimates (RJ-1501 = $24.6 \pm 0.88^\circ\text{C}$ and RJ-1502 = $24.8 \pm 0.84^\circ\text{C}$).

The relative changes in the sea surface salinity interval obtained by RJ-1501 and RJ-1502 cores data include the late

05 MIS3 to MIS1. Despite the inconsistency of the $\delta^{18}\text{O}_{\text{IVF-SW}}$ and δD -Alkenone patterns between ca. 28 and 25 ka, both relative

changes in salinity parameters display a good agreement and a change in the LGM and last deglaciation separating the local conditions of cores RJ-1501 and RJ-1502 is clearly observed (Figure 3 D-E). The $\delta^{18}\text{O}_{IVF-SW}$ records for RJ-1501 and RJ-1502 are presented in Figure 3D and reveal a millennial scale variability in the last 50 ka. The mean values of this relative salinity proxy were $1.56 (\pm 0.54\text{‰}, n = 63)$ at site RJ-1501 and $1.25 (\pm 0.46\text{‰}, n = 95)$ at RJ-1502. The $\delta\text{D-Alkenone}$ values at RJ-1501 ranged from -181 and -159‰ ($n = 47$) and between -185 and -153‰ at RJ-1502 ($n = 53$) (Figure 3E). Decreasing values are observed during the deglaciation and increasing values during the early Holocene, with high values maintained ($\sim 159\text{‰}$) up to ~ 5.5 ka, with a decreasing trend towards the present (up to ca. 1.7 ka).

4 Discussion

The synthesis of global SST carried out by the MARGO project inferred that the subtropical gyres in the Atlantic Ocean experienced very modest cooling (ca. 1 - 2 °C) in their center during the LGM (Waelbroeck et al., 2009). *G. ruber* Mg/Ca-derived SST estimates from core GL-1090 (24.92 °S, 42.51 °W, 2225 m) agree with the MARGO compilation and did not indicate prominent cooling during the LGM (Santos et al., 2017a). Assuming a longer time-scale, the reported temperatures from core GL-1090 during the LGM verified long-term warming developed since ca. 45 ka. According to Santos et al. (2017a), the absence of prominent cooling during the LGM and heat build-up in the region occurred in response to a progressively slower AMOC and glacial climate advance that stored warm waters in the subtropical South Atlantic gyre while sea-ice and ice-caps expanded in southern and northern high latitudes.

We compared the $U_{37}^{K'}$ -derived SST from cores RJ-1501 and RJ-1502 to the late-glacial context proposed by Santos et al. (2017a) through core GL-1090. Figures 4A and B show that $U_{37}^{K'}$ -derived SST was consistently colder than the Mg/Ca-derived SST throughout the last ca. 50 ka in the area. Despite the obvious deviations in terms of absolute temperature reconstruction that different ecology and calibration proxies will display, it is possible to address a similar pattern that emerges between the most offshore RJ-1502 and GL-1090. Both cores recorded progressive temperature increases since the late-glacial towards the Holocene, without significant cooling during the LGM (Figure 4A). This indicates that alkenones and surface-dwelling *G. ruber* were influenced by the BC core, which carried warm waters retained in the South Atlantic subtropical gyre to the Santos Basin during the end of the last glacial cycle. Interestingly, $U_{37}^{K'}$ -derived SST from RJ-1501 followed an opposite trajectory to that indicated by RJ-1502 and GL-1090 (Figure 4B), where RJ-1501 presented a gradual surface cooling towards the LGM with accentuated warming only after ca. 18.5 ka, despite being separated by only 40 km from RJ-1502. The relative changes in ocean salinity indicated by $\delta^{18}\text{O}_{IVF-SW}$ agree with the patterns indicated by the SST reconstructions, i.e., RJ-1502 and GL-1090 cores displayed progressive ocean surface salinification from the late-glacial period to the Holocene (Figure 4C), while RJ-1501 presented surface freshening, achieving its maximum during the LGM and early-deglaciation (Figure 4D). The reconstructed core RJ-1501 parameters were only similar to those from RJ-1502 and GL-1090 during the Holocene (Figure 4). This is strong evidence that the planktic organisms accumulated in RJ-1501 core were under the influence of another oceanographic regime during the last glacial cycle.

One could argue that RJ-1501 presented a divergent evolution due to the influence of wind-driven shelf-break SACW upwelling. Although $U_{37}^{K'}$ -derived SST has cooled continuously toward the LGM, temperatures were still warmer than those commonly reported for the occurrence of SACW shoaling (ca. 16 °C) (Belem et al., 2013). Through the relative abundance of certain planktic foraminifera species, Lessa et al. (2017) proposed that upwelling in this region from the LGM to the Holocene was rather retracted because the glacial wind-regime (weak NE winds) did not favor the pumping of cold and nutrient-rich central waters to the photic zone. Portilho-Ramos et al. (2019) also consider a higher glacial productivity during earlier intervals of the last glacial (e.g., MIS 3) and from the LGM toward the Holocene the conditions for such productivity declined. Under this scenario, it could be considered that the Cabo Frio upwelling system was already confined to its modern position in inner parts of the continental shelf and far from core RJ-1501. Figure 3B exhibits the planktic *G. ruber* $\delta^{13}\text{C}$ composition of cores RJ-1501 and RJ-1502. Several factors are recognized to influence the carbon isotope composition of planktic foraminifera, such as metabolic vital effects, the presence of symbiont bearing, the ocean carbonate chemistry and global distribution of ^{13}C -depleted carbon between marine and terrestrial reservoirs (e.g., Bijma et al. 1998; Bijma, 2002; Spero et al., 1997; Oliver et al., 2010). The *G. ruber* $\delta^{13}\text{C}$ reconstruction shows that RJ-1501 was slightly more depleted than RJ-1502 prior to ~22 ka, but from the LGM/last deglaciation interval both records present a very similar evolution with a pronounced decline during the last deglaciation that has been suggested as a global imprint caused by the air-sea exchange (Lynch-Stieglitz et al., 2019). If RJ-1501 site were under the influence of strong upwelling of SACW during LGM and last deglaciation, it would be expected that the *G. ruber* $\delta^{13}\text{C}$ of RJ-1501 would have shown a shift from the *G. ruber* $\delta^{13}\text{C}$ of RJ-1502, at least in part, because of the influence of nutrient-enriched SACW compared to the nutrient-depleted surface Tropical Water (Kroopnick, 1985; Venancio et al., 2014). However, the good agreement of both *G. ruber* $\delta^{13}\text{C}$ during the LGM and last deglaciation indicates that it is unlikely that cold and nutrient-rich tongues of SACW accounted for the surface water patterns seen in RJ-1501.

Once this alternative explanation is disregarded, it is remarkable that the temperature evolution of core RJ-1501 (with warming only after 18.5 ka) resembles the deglacial pattern inferred from mid- to high-latitudes records for the Southern Hemisphere. $U_{37}^{K'}$ -derived SST from ODP Site 1233 and MD07-3128 (off southern Chile) presented deglacial warming initiated shortly after 19 ka (Figure 5A and B). Such warming was a combined response of the temperature increase around Antarctica due to the bipolar seesaw during the Heinrich stadial 1 interval and the accentuated release of CO_2 from the deep ocean towards the atmosphere (Lamy et al., 2007; Caniupán et al., 2011) (Figure 5D and E). Mg/Ca-derived SST from core TNO57-21 (SE South Atlantic) indicated deglacial warming from ca. 18.5 ka, also in response to the pattern imposed by the bipolar seesaw mechanism (Barker et al., 2009). The mean air temperature reconstructed through lipids glycerol dialkyl glycerol tetraethers (GDGTs) from core GeoB6211-2 (SE Brazilian coast) displayed significant warming slightly after the records above (ca. 16.5 ka), but still within the main warming interval in Antarctica (Chiessi et al., 2015) (Figure 5C). A glaciolacustrine varved record (FCMC17) that report the dynamics of ice-margin retreat of the Patagonian Ice Sheet indicates that the varve thickness decreases in two-steps after the LGM, denouncing a prominent regional warming between 18 and 17.4 ka (Bendle et al., 2019). According to these authors, this glacial retreat highlights the potential synchronicity in atmospheric warming trends over the

Southern Hemisphere mid- to high-latitudes with the onset of the last deglaciation. Part of the warming responsible for the Patagonian Ice Sheet melting recorded from 18 ka would be the result of unbalanced oceanic heat distribution due to the bipolar seesaw resulting in increasing temperatures in South Atlantic, South Pacific and Antarctica, with subsequent upwelling-driven CO₂ release from the Southern Ocean (EPICA, 2004; Lamy et al., 2007; Lüthi et al., 2008; Barker et al., 2009; Bendle et al., 2019) (Figure 5A-E). In relative disagreement with this pattern is the $U_{37}^{K'}$ -derived SST from core GC528, located in the southern flank of the Malvinas Plateau (Roberts et al., 2017). This core records, similarly to GL-1090, relatively warm SST during the LGM, but this pattern was followed by a persistent cold interval interrupted only very late (ca. 12 ka) in the last deglaciation. The authors argued that a weakening of the “cold water route” would prevent the transport of Pacific cold waters to the GC528 site during the LGM. Eventually, a small portion of this connection was still active during the LGM, transporting such Pacific cold waters very proximal to the South America margin reaching the area where Subantarctic Shelf Water is formed. However, the absence of warming during early-deglaciation is more challenging to fit into this perspective. Despite this, most of the studies suggest that large areas of the northern portion of the Subtropical Front warmed during the early-last deglaciation after the LGM cooling relatively synchronous to Antarctica. It is reasonable to assume that the Malvinas Current, sourced from the northern limb of the Antarctic Circumpolar Current, could have transported this pattern northward, influencing Subantarctic Shelf Water formation. This temperature evolution characterized by a cold LGM and early-deglacial warming can be traced in lower latitudes along the SE Brazilian coast due to the northward-flowing BCC (Figure 5A-E). Apart from the impact of the BCC, cores RJ-1502 and GL-1090 (Santos et al., 2017a) did not record this mid- to high-Southern Hemisphere pattern (Figure 4A and B).

A recent investigation applying a dinocyst assemblage (core GeoB3202-1, 1090 m water depth) in a region near cores RJ-1501, RJ-1502, and GL-1090 also suggests the occurrence of cold SST during the LGM (Gu et al., 2019). These authors explain the discrepancy between their results and those reported by GL-1090 (Santos et al., 2017a) by invoking shifts in the modern wind-driven upwelling area. Instead, we reason that such conflict could be reconciled by simply considering that shallower cores (RJ-1501, this study and GeoB3202-1, Gu et al., 2019) have a much higher chance of being within the BCC influence zone than deeper records (RJ-1502, this study and GL-1090, Santos et al., 2017a).

During the late-glacial period and Heinrich stadial 1 interval, it is very well documented that large areas in adjacent South America experienced wetter conditions due to a noticeable strengthening of the precipitation associated with the South America Monsoon System (SAMS) (Cruz et al., 2005; Strikis et al., 2015; Novello et al., 2017; Gu et al., 2018; Strikis et al., 2018). The increased precipitation volume would be drained by the Parana basin and subsequently discharged into the ocean by the La Plata River, mixing a continental freshwater influence with subantarctic shelf waters, similar to what occurs today (Burone et al., 2013). In this context, BCC waters would carry not only a temperature pattern linked to the thermal evolution of the mid- to high-latitudes of the Southern Hemisphere, but also a sign of low salinity due to higher rainfall throughout the continent. The notion of a fresher surface over the shelf-break area is demonstrated by the $\delta^{18}\text{O}_{\text{IVF-SW}}$ and δD of RJ-1501 core, which became progressively lower throughout the late-glacial interval, producing a clear density contrast with the more saline offshore waters (Figure 5F and G). Hence, a stronger BCC influence would explain the residence of colder and fresher surface

waters over the RJ-1501 site (and other relatively shallow cores e.g., Gu et al. (2019)), but not in cores collected deeper from the continental slope. It is relevant to highlight that *G. ruber* $\delta^{18}\text{O}$ of RJ-1501 and RJ-1502 do not show significant differences throughout the studied period, except for the offset occurred in RJ-1501 to more negative values during the last deglaciation. This means that most of the $\delta^{18}\text{O}_{IVF-SW}$ variability is being controlled by the $U_{37}^{K'}$ -derived SST. Considering that in our interpretation, the $U_{37}^{K'}$ -derived SST of RJ-1501 is sourced from southern areas of the continental shelf, the more substantial influence of the SST upon the $\delta^{18}\text{O}_{IVF-SW}$ constitutes as additional evidence to assume that RJ-1501 recorded a signal from higher latitudes of the western South Atlantic instead of that carried within the Tropical Water.

In order to better demonstrate the contrast between the individual cores during the end of the last glacial cycle, we transferred the RJ-1501 age model to RJ-1502 and subtracted the average around zero (RJ-1502 minus RJ-1501) of $U_{37}^{K'}$ -derived SST and $\delta^{18}\text{O}_{IVF-SW}$ (i.e., $\Delta U_{37}^{K'}$ -derived SST and $\Delta \delta^{18}\text{O}_{IVF-SW}$) (Figure 6). The records were bootstrapped and 2.5th and 97.5th percentiles are also presented (Figure 6). This exercise demonstrates that a sharp SST gradient (reaching $>3^{\circ}\text{C}$ in its superior band) was formed toward the LGM and early-deglaciation, with a maximum between ca. 20 and 15 ka (Figure 6A). This gradient indicates that the BC offshore waters over the RJ-1502 site were ca. 2°C warmer than the inner waters over the RJ-1501 site, which is the double of the annual SST gradient observed today in the region. In the case of the $\Delta \delta^{18}\text{O}_{IVF-SW}$, the difference achieves ca. 0.8 ‰ in the same period, corresponding to approximately a 1.5 salinity unit difference considering the seawater $\delta^{18}\text{O}$ -salinity relationship for the region (Belem et al., 2019).

In regions where steep oceanic fronts develop, like the Southern Benguela where strong intrusions of warm Agulhas Current water occurs (Hardman-Mountford et al., 2003), the air-sea interaction works on a small scale and creates physical mechanisms of atmospheric response to temperature gradients of the sea surface that is reflected mainly over the wind stress and moisture anomalies (Saravanan and Chang, 2019). The across-shelf SST gradient caused by the shearing between the BC and BCC is reported modulating the marine atmospheric boundary layer in the southern Brazilian continental shelf (Mendonça et al., 2017). The atmospheric turbulence caused by heat fluxes from the warm side of the ocean gradient has been investigated as an important factor influencing the weather of coastal regions off southern Brazil (de Camargo et al., 2013; Pezzi et al., 2016). Enhanced SST gradient is suggested as a factor that stimulates air-sea moisture exchange, which fuels annual coastal precipitation along with southern areas of the continental shelf (Reboita et al., 2010; Tirabassi et al., 2015). In a scenario of stronger northward spreading of BCC waters, like the one experienced during the LGM/early-deglaciation, the impacts over regional precipitation could extend to lower latitudes of the area. Therefore, our results demonstrate that the background conditions during the end of the last glacial cycle with a disturbed AMOC, reduced equatorial heat export and enhanced SAMS (leading to an increase in the La Plata river discharge) created conditions to accentuate the hydrographical contrast between the BC and BCC. Considering the future projections of AMOC weakening (Liu et al., 2017) and sea-level rising, the gradient strengthening reported herein may be a likely prospect for the southern Brazilian continental shelf.

5 Conclusions

In this study, we reconstructed the SST and $\delta^{18}\text{O}_{\text{IVF-SW}}$ through organic and inorganic geochemical proxies from two sediment cores collected from the upper (RJ-1501) and lower (RJ-1502) continental slope of the subtropical western South Atlantic. Although only 40 km apart, these records show considerably distinct hydrographic conditions throughout the end of the last glacial cycle. These contrasting results were reconciled assuming that the shallower and closer to the continent core RJ-1501 was under the influence of cold and fresh waters carried by the BCC, while the deeper and more offshore RJ-1502 was under the influence of the warm and saltier BC. A comparison with other records collected in the BC area supports this interpretation. Our results suggest that the conditions experienced during the last glacial transition, i.e., a weak AMOC and strong SAMS, increased the temperature and salinity gradient between the BC and BCC. Depending on the state of AMOC, this scenario may be accentuated in the coming decades.

References

- Albuquerque, A. L., Meyers, P., Belem, A. L., Turcq, B., Siffedine, A., Mendoza, U. and Capilla, R.: Mineral and elemental indicators of post-glacial changes in sediment delivery and deposition under a western boundary upwelling system (Cabo Frio, southeastern Brazil), *Palaeogeogr. Palaeoclimatol. Palaeoecol.*, 445, 72–82, doi:https://doi.org/10.1016/j.palaeo.2016.01.006, 2016.
- Arz, H. W., Pätzold, J. and Wefer, G.: The deglacial history of the western tropical Atlantic as inferred from high resolution stable isotope records off northeastern Brazil, *Earth Planet. Sci. Lett.*, 167(1–2), 105–117, doi:http://dx.doi.org/10.1016/S0012-821X(99)00025-4, 1999.
- Arz, H. W., Gerhardt, S., Pätzold, J. and Röhl, U.: Millennial-scale changes of surface- and deep-water flow in the western tropical Atlantic linked to Northern Hemisphere high-latitude climate during the Holocene, *Geology*, 29(3), 239, doi:10.1130/0091-7613(2001)029<0239:MSCOSA>2.0.CO;2, 2001.
- Ballalai, J. M., Santos, T. P., Lessa, D. O., Venancio, I. M., Chiessi, C. M., Johnstone, H. J. H., Kuhnert, H., Claudio, M. R., Toledo, F., Costa, K. B. and Albuquerque, A. L. S.: Tracking spread of the Agulhas Leakage into the western South Atlantic and its northward transmission during the Last Interglacial, *Paleoceanogr. Paleoclimatology*, 2019PA003653, doi:10.1029/2019PA003653, 2019.
- Barker, S., Diz, P., Vautravers, M. J., Pike, J., Knorr, G., Hall, I. R. and Broecker, W. S.: Interhemispheric Atlantic seesaw response during the last deglaciation., *Nature*, 457(7233), 1097–1102, doi:10.1038/nature07770, 2009.
- Bazin, L., Landais, A., Lemieux-Dudon, B., Toyé Mahamadou Kele, H., Veres, D., Parrenin, F., Martinerie, P., Ritz, C., Capron, E., Lipenkov, V., Loutre, M.-F., Raynaud, D., Vinther, B., Svensson, A., Rasmussen, S. O., Severi, M., Blunier, T., Leuenberger, M., Fischer, H., Masson-Delmotte, V., Chappellaz, J. and Wolff, E.: An optimized multi-proxy, multi-site Antarctic ice and gas orbital chronology (AICC2012): 120–800 ka, *Clim. Past*, 9(4), 1715–1731, doi:10.5194/cp-9-1715-2013, 2013.

- Behling, H., Arz, H. W. and Wefer, G.: Late Quaternary vegetational and climate dynamics in northeastern Brazil , inferences
70 from marine core GeoB 3104-1, *Quat. Sci. Rev.*, 19, 981–994, 2000.
- Belem, A. L., Castelao, R. M. and Albuquerque, A. L.: Controls of subsurface temperature variability in a western boundary
upwelling system, *Geophys. Res. Lett.*, 40(7), 1362–1366, doi:doi:10.1002/grl.50297, 2013.
- Belem, A. L., Caricchio, C., Albuquerque, A. L. S., Venancio, I. M., Zucchi, M. D. R., Santos, T. H. R. and Alvarez, Y. G.:
Salinity and stable oxygen isotope relationship in the Southwestern Atlantic: constraints to paleoclimate reconstructions,
75 *An. Acad. Bras. Cienc.*, 91(3), doi:10.1590/0001-3765201920180226, 2019.
- Bendle, J. M., Palmer, A. P., Thorndycraft, V. R. and Matthews, I. P.: Phased Patagonian Ice Sheet response to Southern
Hemisphere atmospheric and oceanic warming between 18 and 17 ka, *Sci. Rep.*, 9(1), 1–9, doi:10.1038/s41598-019-39750-
w, 2019.
- Bijma, J.: Impact of the ocean carbonate chemistry on living foraminiferal shell weight: Comment on “Carbonate ion
80 concentration in glacial-age deep waters of the Caribbean Sea” by W. S. Broecker and E. Clark, *Geochemistry Geophys.*
Geosystems, 3(11), 1064, doi:10.1029/2002GC000388, 2002.
- Bijma, J., Hemleben, C., Huber, B. T., Erlenkeuser, H. and Kroon, D.: Experimental determination of the ontogenetic stable
isotope variability in two morphotypes of *Globigerinella siphonifera* (d’Orbigny), *Mar. Micropaleontol.*, 35(3–4), 141–
160, doi:10.1016/S0377-8398(98)00017-6, 1998.
- 85 Blaauw, M. and Christeny, J. A.: Flexible paleoclimate age-depth models using an autoregressive gamma process, *Bayesian*
Anal., 6(3), 457–474, doi:10.1214/11-BA618, 2011.
- Bouimetarhan, I., Chiessi, C. M., González-Arango, C., Dupont, L., Voigt, I., Prange, M. and Zonneveld, K.: Intermittent
development of forest corridors in northeastern Brazil during the last deglaciation: Climatic and ecologic evidence, *Quat.*
Sci. Rev., 192, 86–96, doi:10.1016/j.quascirev.2018.05.026, 2018.
- 90 Burckel, P., Waelbroeck, C., Gherardi, J. M., Pichat, S., Arz, H., Lippold, J., Dokken, T. and Thil, F.: Atlantic Ocean circulation
changes preceded millennial tropical South America rainfall events during the last glacial, *Geophys. Res. Lett.*, 42(2), 411–
418, doi:10.1002/2014GL062512, 2015.
- Burone, L., Ortega, L., Franco-Fraguas, P., Mahiques, M., García-Rodríguez, F., Venturini, N., Marin, Y., Brugnoli, E., Nagai,
R., Muniz, P., Bicego, M., Figueira, R. and Salaroli, A.: A multiproxy study between the Río de la Plata and the adjacent
95 South-western Atlantic inner shelf to assess the sediment footprint of river vs. marine influence, *Cont. Shelf Res.*, 55(0),
141–154, doi:http://dx.doi.org/10.1016/j.csr.2013.01.003, 2013.
- de Camargo, R., Todesco, E., Pezzi, L. P. and de Souza, R. B.: Modulation mechanisms of marine atmospheric boundary layer
at the Brazil-Malvinas Confluence region, *J. Geophys. Res. Atmos.*, 118(12), 6266–6280, doi:10.1002/jgrd.50492, 2013.
- Campos, E. J. D., Lorenzzetti, J. A., Stevenson, M. R., Stech, J. L. and de Souza, R. B.: Penetration of waters from the Brazil-
00 Malvinas confluence region along the south american continental shelf up to 23°S, *Acad. Bras. Ciencias*, 68, 49–58, 1996.

- Cao, Y., Liu, W., Sauer, P. E., Wang, Z. and Li, Z.: An evaluation of alumina reaction tube conditioning for high-precision 2H/1H isotope measurements via gas chromatography/thermal conversion/isotope ratio mass spectrometry, *Rapid Commun. Mass Spectrom.*, 26(22), 2577–2583, doi:10.1002/rcm.6378, 2012.
- 05 Carter, L., Manighetti, B., Ganssen, G. and Northcote, L.: Southwest Pacific modulation of abrupt climate change during the Antarctic Cold Reversal-Younger Dryas, *Palaeogeogr. Palaeoclimatol. Palaeoecol.*, 260(1–2), 284–298, doi:10.1016/j.palaeo.2007.08.013, 2008.
- Caniupán, M., Lamy, F., Lange, C. B., Kaiser, J., Arz, H., Kilian, R., Baeza Urrea, O., Aracena, C., Hebbeln, D., Kissel, C., Laj, C., Mollenhauer, G. and Tiedemann, R.: Millennial-scale sea surface temperature and Patagonian Ice Sheet changes off southernmost Chile (53°S) over the past ~60 kyr, *Paleoceanography*, 26(3), doi:10.1029/2010PA002049, 2011.
- 10 Ceccopieri, M., Carreira, R. S., Wagener, A. L. R., Hefter, J. H. and Mollenhauer, G.: On the application of alkenone- and GDGT-based temperature proxies in the south-eastern Brazilian continental margin, *Org. Geochem.*, 126, 43–56, doi:https://doi.org/10.1016/j.orggeochem.2018.10.009, 2018.
- Chiessi, C. M., Mulitza, S., Paul, A., Pätzold, J., Groeneveld, J. and Wefer, G.: South Atlantic interocean exchange as the trigger for the Bølling warm event, *Geology*, 36(12), 919–922, doi:10.1130/G24979A.1, 2008.
- 15 Chiessi, C. M., Mulitza, S., Mollenhauer, G., Silva, J. B., Groeneveld, J. and Prange, M.: Thermal evolution of the western South Atlantic and the adjacent continent during Termination 1, *Clim. Past*, 11(6), 915–929, doi:10.5194/cp-11-915-2015, 2015.
- Crivellari, S., Chiessi, C. M., Kuhnert, H., Häggi, C., Mollenhauer, G., Hefter, J., Portilho-Ramos, R., Schefuß, E. and Mulitza, S.: Thermal response of the western tropical Atlantic to slowdown of the Atlantic Meridional Overturning Circulation, *Earth Planet. Sci. Lett.*, 519, 120–129, doi:10.1016/j.epsl.2019.05.006, 2019.
- 20 Cruz, F. W., Burns, S. J., Karmann, I., Sharp, W. D., Vuille, M., Cardoso, A. O., Ferrari, J. A., Silva Dias, P. L. and Viana, O.: Insolation-driven changes in atmospheric circulation over the past 116,000 years in subtropical Brazil, *Nature*, 434(7029), 63–66, doi:10.1038/nature03365, 2005.
- Emeis, K.-C., Struck, U., Schulz, H.-M., Rosenberg, R., Bernasconi, S., Erlenkeuser, H., Sakamoto, T. and Martinez-Ruiz, F.: Temperature and salinity variations of Mediterranean Sea surface waters over the last 16,000 years from records of planktonic stable oxygen isotopes and alkenone unsaturation ratios, *Palaeogeogr. Palaeoclimatol. Palaeoecol.*, 158(3–4), 259–280, doi:10.1016/S0031-0182(00)00053-5, 2000.
- EPICA, C. M.: Eight glacial cycles from an Antarctic ice core, *Nature*, 429(6992), 623–628, doi:http://www.nature.com/nature/journal/v429/n6992/supinfo/nature02599_S1.html, 2004.
- 30 Essallami, L., Sicre, M. A., Kallel, N., Labeyrie, L. and Siani, G.: Hydrological changes in the Mediterranean Sea over the last 30,000 years, *Geochemistry, Geophys. Geosystems*, 8(7), doi:10.1029/2007GC001587, 2007.
- Govin, A., Chiessi, C. M., Zabel, M., Sawakuchi, A. O., Heslop, D., Hörner, T., Zhang, Y. and Mulitza, S.: Terrigenous input off northern South America driven by changes in Amazonian climate and the North Brazil Current retroflexion during the last 250 ka, *Clim. Past*, 10(2), 843–862, doi:10.5194/cp-10-843-2014, 2014.

- 35 Grant, K. M., Rohling, E. J., Bar-Matthews, M., Ayalon, A., Medina-Elizalde, M., Ramsey, C. B., Satow, C. and Roberts, A.
P.: Rapid coupling between ice volume and polar temperature over the past 150,000 years, *Nature*, 491(7426), 744–747,
doi:10.1038/nature11593, 2012.
- Gu, F., Zonneveld, K. A. F., Chiessi, C. M., Arz, H. W., Pätzold, J. and Behling, H.: Long-term vegetation, climate and ocean
dynamics inferred from a 73,500 years old marine sediment core (GeoB2107-3) off southern Brazil, *Quat. Sci. Rev.*, 172,
40 55–71, doi:https://doi.org/10.1016/j.quascirev.2017.06.028, 2017.
- Gu, F., Chiessi, C. M., Zonneveld, K. A. F. and Behling, H.: Late Quaternary environmental dynamics inferred from marine
sediment core GeoB6211-2 off southern Brazil, *Palaeogeogr. Palaeoclimatol. Palaeoecol.*, 496, 48–61,
doi:https://doi.org/10.1016/j.palaeo.2018.01.015, 2018.
- Gu, F., Pätzold, J. and Behling, H.: Evidence of cooling in the tropical South Atlantic off southeastern Brazil during the last
45 50 kyr, *Rev. Palaeobot. Palynol.*, 104128, doi:10.1016/j.revpalbo.2019.104128, 2019.
- Hardman-Mountford, N. J., Richardson, A. J., Agenbag, J. J., Hagen, E., Nykjaer, L., Shillington, F. A. and Villacastin, C.:
Ocean climate of the South East Atlantic observed from satellite data and wind models, *Prog. Oceanogr.*, 59(2), 181–221,
doi:https://doi.org/10.1016/j.pocean.2003.10.001, 2003.
- Howe, J. N. W., Huang, K.-F., Oppo, D. W., Chiessi, C. M., Mulitza, S., Blusztajn, J. and Piotrowski, A. M.: Similar mid-
50 depth Atlantic water mass provenance during the Last Glacial Maximum and Heinrich Stadial 1, *Earth Planet. Sci. Lett.*,
490, 51–61, doi:https://doi.org/10.1016/j.epsl.2018.03.006, 2018.
- Hut, G.: Consultants' group meeting on stable isotope reference samples for geochemical and hydrological investigations, in
Consultants' group meeting on stable isotope reference samples for geochemical and hydrological investigations,
International Atomic Energy Agency (IAEA). [online] Available from:
55 http://inis.iaea.org/search/search.aspx?orig_q=RN:18075746, 1987.
- Jaeschke, A., Rühlemann, C., Arz, H., Heil, G. and Lohmann, G.: Coupling of millennial-scale changes in sea surface
temperature and precipitation off northeastern Brazil with high-latitude climate shifts during the last glacial period,
Paleoceanography, 22(4), 1–10, doi:10.1029/2006PA001391, 2007.
- Jennerjahn, T. C., Ittekkot, V., Arz, H. W., Behling, H., Pätzold, J. and Wefer, G.: Asynchronous terrestrial and marine signals
60 of climate change during Heinrich events., *Science*, 306(5705), 2236–2239, doi:10.1126/science.1102490, 2004.
- Kasper, S., Van Der Meer, M. T. J., Mets, A., Zahn, R., Sinninghe Damsté, J. S. and Schouten, S.: Salinity changes in the
Agulhas leakage area recorded by stable hydrogen isotopes of C37 alkenones during Termination i and II, *Clim. Past*,
10(1), 251–260, doi:10.5194/cp-10-251-2014, 2014.
- Kroopnick, P. M.: The distribution of ^{13}C of ΣCO_2 in the world oceans, *Deep Sea Res. Part A. Oceanogr. Res. Pap.*, 32(1),
65 57–84, doi:10.1016/0198-0149(85)90017-2, 1985.
- Lamy, F., Kaiser, J., Arz, H. W., Hebbeln, D., Ninnemann, U., Timm, O., Timmermann, A. and Toggweiler, J. R.: Modulation
of the bipolar seesaw in the Southeast Pacific during Termination 1, *Earth Planet. Sci. Lett.*, 259(3–4), 400–413,
doi:10.1016/j.epsl.2007.04.040, 2007.

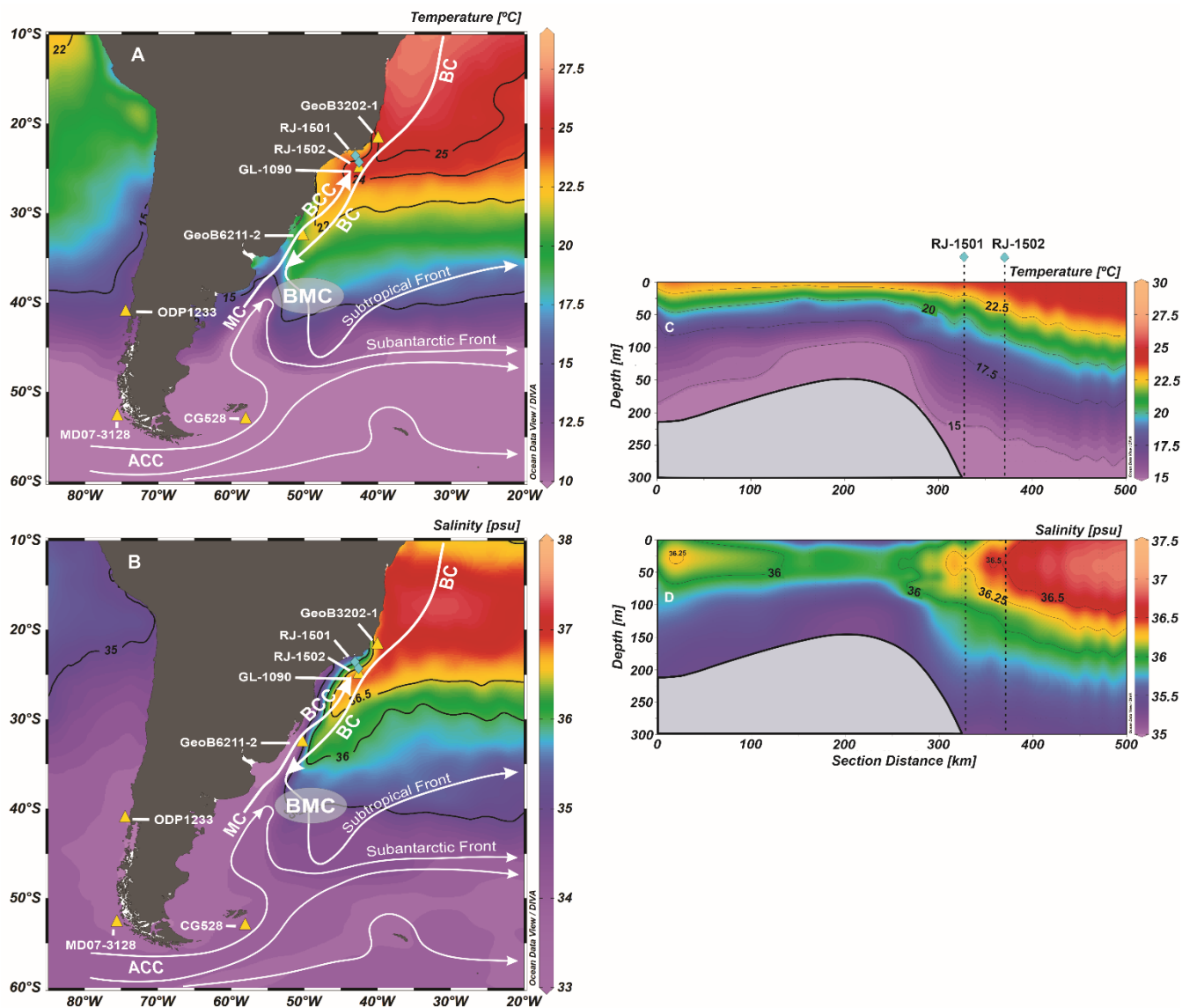
- Lessa, D. V. O., Venancio, I. M., dos Santos, T. P., Belem, A. L., Turcq, B. J., Sifeddine, A. and Albuquerque, A. L. S.:
70 Holocene oscillations of Southwest Atlantic shelf circulation based on planktonic foraminifera from an upwelling system
(off Cabo Frio, Southeastern Brazil), *Holocene*, 26(8), doi:10.1177/0959683616638433, 2016.
- Lessa, D. V. O., Santos, T. P., Venancio, I. M. and Albuquerque, A. L. S.: Offshore expansion of the Brazilian coastal
upwelling zones during Marine Isotope Stage 5, *Glob. Planet. Change*, 158(August), 13–20,
doi:10.1016/j.gloplacha.2017.09.006, 2017.
- 75 Lessa, D. V. O., Santos, T. P., Venancio, I. M., Santarosa, A. C. A., dos Santos Junior, E. C., Toledo, F. A. L., Costa, K. B.
and Albuquerque, A. L. S.: Eccentricity-induced expansions of Brazilian coastal upwelling zones, *Glob. Planet. Change*,
179(May), 33–42, doi:10.1016/j.gloplacha.2019.05.002, 2019.
- Li, M., Hinnov, L. and Kump, L.: Acycle: Time-series analysis software for paleoclimate research and education, *Comput.
Geosci.*, 127(September 2018), 12–22, doi:10.1016/j.cageo.2019.02.011, 2019.
- 80 Liu, W., Xie, S.-P., Liu, Z. and Zhu, J.: Overlooked possibility of a collapsed Atlantic Meridional Overturning Circulation in
warming climate, *Sci. Adv.*, 3(1), e1601666, doi:10.1126/sciadv.1601666, 2017.
- Locarnini, R. A., Mishonov, A. V., Antonov, J. I., Boyer, T. P., Garcia, H. E., Baranova, O. K., Zweng, M. M., Paver, C. R.,
Reagan, J. R., Johnson, D. R., Hamilton, M., Seidov, D. and Technical: World Ocean Atlas 2013, edited by S. Levitus and
M. A., NOAA Atlas NESDIS 73., 2013.
- 85 Lund, D. C., Tessin, A. C., Hoffman, J. L. and Schmittner, A.: Southwest Atlantic water mass evolution during the last
deglaciation, *Paleoceanography*, 30(5), 477–494, doi:10.1002/2014PA002657, 2015.
- Lüthi, D., Le Floch, M., Bereiter, B., Blunier, T., Barnola, J.-M., Siegenthaler, U., Raynaud, D., Jouzel, J., Fischer, H.,
Kawamura, K. and Stocker, T. F.: High-resolution carbon dioxide concentration record 650,000–800,000 years before
present, *Nature*, 453(7193), 379–382, doi:10.1038/nature06949, 2008.
- 90 Lynch-Stieglitz, J., Valley, S. G. and Schmidt, M. W.: Temperature-dependent ocean–atmosphere equilibration of carbon
isotopes in surface and intermediate waters over the deglaciation, *Earth Planet. Sci. Lett.*, 506, 466–475,
doi:10.1016/j.epsl.2018.11.024, 2019.
- Mendonça, L. F., Souza, R. B., Aseff, C. R. C., Pezzi, L. P., Möller, O. O. and Alves, R. C. M.: Regional modeling of the
water masses and circulation annual variability at the Southern Brazilian Continental Shelf, *J. Geophys. Res. Ocean.*,
95 122(2), 1232–1253, doi:10.1002/2016JC011780, 2017.
- Möller, O. O., Piola, A. R., Freitas, A. C. and Campos, E. J. D.: The effects of river discharge and seasonal winds on the shelf
off southeastern South America, *Cont. Shelf Res.*, 28(13), 1607–1624, doi:10.1016/j.csr.2008.03.012, 2008.
- Mulitza, S. and al, et: Temperature surface relationships of planktonic foraminifera collected from surface waters.,
Paleogeography, Palaeoclimatol. Palaeocology, 202(1), 143–152, 2003.
- 00 Mulitza, S., Chiessi, C. M., Schefuß, E., Lippold, J., Wichmann, D., Antz, B., Mackensen, A., Paul, A., Prange, M., Rehfeld,
K., Werner, M., Bickert, T., Frank, N., Kuhnert, H., Lynch-Stieglitz, J., Portilho-Ramos, R. C., Sawakuchi, A. O., Schulz,
M., Schwenk, T., Tiedemann, R., Vahlenkamp, M. and Zhang, Y.: Synchronous and proportional deglacial changes in

- Atlantic meridional overturning and northeast Brazilian precipitation, *Paleoceanography*, 32(6), 622–633, doi:10.1002/2017PA003084, 2017.
- 05 Müller, P. J., Kirst, G., Ruhland, G., von Storch, I. and Rosell-Melé, A.: Calibration of the alkenone paleotemperature index U37K' based on core-tops from the eastern South Atlantic and the global ocean (60°N–60°S), *Geochim. Cosmochim. Acta*, 62(10), 1757–1772, doi:https://doi.org/10.1016/S0016-7037(98)00097-0, 1998.
- Nagai, R. H., Ferreira, P. A. L., Mulkherjee, S., Martins, M. V., Figueira, R. C. L., Sousa, S. H. M. and Mahiques, M. M.: Hydrodynamic controls on the distribution of surface sediments from the southeast South American continental shelf
10 between 23°S and 38°S, *Cont. Shelf Res.*, 89, 51–60, doi:https://doi.org/10.1016/j.csr.2013.09.016, 2014.
- Novello, V. F., Cruz, F. W., Vuille, M., Stríkis, N. M., Edwards, R. L., Cheng, H., Emerick, S., de Paula, M. S., Li, X., Barreto, E. de S., Karmann, I. and Santos, R. V: A high-resolution history of the South American Monsoon from Last Glacial Maximum to the Holocene, *Sci. Rep.*, 7, 44267, doi:10.1038/srep44267.
- Oliver, K. I. C., Hoogakker, B. A. A., Crowhurst, S., Henderson, G. M., Rickaby, R. E. M., Edwards, N. R. and Elderfield, H.:
15 A synthesis of marine sediment core $\delta^{13}\text{C}$ data over the last 150 000 years, *Clim. Past*, 6, 645–673, doi:10.5194/cp-6-645-2010, 2010.
- Olson, D. B., Podestá, G. P., Evans, R. H. and Brown, O. B.: Temporal variations in the separation of Brazil and Malvinas Currents, *Deep Sea Res. Part A. Oceanogr. Res. Pap.*, 35(12), 1971–1990, doi:10.1016/0198-0149(88)90120-3, 1988.
- Oppo, D. W., Curry, W. B. and Mcmanus, J. F.: What do benthic ^{13}C and ^{18}O data tell us about Atlantic circulation during
20 Heinrich Stadial 1?, , 353–368, doi:10.1002/2014PA002667.Received, 2015.
- Palma, E. D., Matano, R. P. and Piola, A. R.: A numerical study of the Southwestern Atlantic Shelf circulation: Stratified ocean response to local and offshore forcing, *J. Geophys. Res. Ocean.*, 113(11), 1–22, doi:10.1029/2007JC004720, 2008.
- Peterson, R. G. and Stramma, L.: Upper-level circulation in the South Atlantic Ocean, *Prog. Oceanogr.*, 26(1), 1–73, doi:https://doi.org/10.1016/0079-6611(91)90006-8, 1991.
- 25 Pezzi, L. P., Souza, R. B., Farias, P. C., Acevedo, O. and Miller, A. J.: Air-sea interaction at the Southern Brazilian Continental Shelf: In situ observations, *J. Geophys. Res. Ocean.*, 121(9), 6671–6695, doi:10.1002/2016JC011774, 2016.
- Piola, A. R., Campos, E. J. D., Möller, O. O., Charo, M. and Martinez, C.: Subtropical Shelf Front off eastern South America, *J. Geophys. Res. Ocean.*, 105(C3), 6565–6578, doi:10.1029/1999JC000300, 2000.
- Piola, A. R., Matano, R. P., Palma, E. D., Möller, O. O. and Campos, E. J. D.: The influence of the Plata River discharge on
30 the western South Atlantic shelf, *Geophys. Res. Lett.*, 32(1), 1–4, doi:10.1029/2004GL021638, 2005.
- Piola, A. R., Möller, O. O., Guerrero, R. A. and Campos, E. J. D.: Variability of the subtropical shelf front off eastern South America: Winter 2003 and summer 2004, *Cont. Shelf Res.*, 28(13), 1639–1648, doi:https://doi.org/10.1016/j.csr.2008.03.013, 2008.
- Portilho-Ramos, R. da C., Ferreira, F., Calado, L., Frontalini, F. and de Toledo, M. B.: Variability of the upwelling system in
35 the southeastern Brazilian margin for the last 110,000years, *Glob. Planet. Change*, 135, 179–189, doi:https://doi.org/10.1016/j.gloplacha.2015.11.003, 2015.

- Portilho-Ramos, R. da C., Pinho, T. M. L., Chiessi, C. M. and Barbosa, C. F.: Understanding the mechanisms behind high glacial productivity in the southern Brazilian margin, *Clim. Past*, 15(3), 943–955, doi:10.5194/cp-15-943-2019, 2019.
- Prahl, F. G. and Wakeham, S. G.: Calibration of unsaturation patterns in long-chain ketone compositions for palaeotemperature assessment, *Nature*, 330(6146), 367–369 [online] Available from: <http://dx.doi.org/10.1038/330367a0>, 1987.
- Reboita, M., Rocha, R., Ambrizzi, T. and Caetano, E.: An assessment of the latent and sensible heat flux on the simulated regional climate over Southwestern South Atlantic Ocean, *Clim. Dyn.*, 34, 873–889, doi:10.1007/s00382-009-0681-x, 2010.
- Reimer, P. J., Bard, E., Bayliss, A., Beck, J. W., Blackwell, P. G. and Ramsey, C. B.: IntCal13 and Marine13 Radiocarbon Age Calibration Curves 0–50,000 Years cal BP, *Radiocarbon*, 55(4), 1869–1887, doi:10.2458/azu_js_rc.55.16947, 2013.
- Roberts, J., McCave, I. N., McClymont, E. L., Kender, S., Hillenbrand, C.-D., Matano, R., Hodell, D. A. and Peck, V. L.: Deglacial changes in flow and frontal structure through the Drake Passage, *Earth Planet. Sci. Lett.*, 474, 397–408, doi:10.1016/j.epsl.2017.07.004, 2017.
- Rostek, F., Ruhland, G., Bassinot, F., Muller, P., Labeyrie, L., Lancelot, Y. and Bard, E.: Reconstructing sea surface temperature and salinity using d18O and alkenone records, *Nature*, 364, 319–321, 1993.
- Rühlemann, C., Mulitza, S., Müller, P. J., Wefer, G. and Zahn, R.: Warming of the tropical Atlantic Ocean and slowdown of thermohaline circulation during the last deglaciation, *Nature*, 402(6761), 511–514, doi:10.1038/990069, 1999.
- Santos, T. P., Lessa, D. O., Venancio, I. M., Chiessi, C. M., Mulitza, S., Kuhnert, H., Govin, A., Machado, T., Costa, K. B., Toledo, F., Dias, B. B. and Albuquerque, A. L. S.: Prolonged warming of the Brazil Current precedes deglaciations, *Earth Planet. Sci. Lett.*, 463, 1–12, doi:<https://doi.org/10.1016/j.epsl.2017.01.014>, 2017a.
- Santos, T. P., Lessa, D. O., Venancio, I. M. and Chiessi, C. M.: The impact of the AMOC resumption in the western South Atlantic thermocline at the onset of the Last Interglacial, , 1–8, doi:10.1002/2017GL074457, 2017b.
- Saravanan, R. and Chang, P.: Chapter 9 - Midlatitude Mesoscale Ocean-Atmosphere Interaction and Its Relevance to S2S Prediction, edited by A. W. Robertson and F. B. T.-S.-S. to S. P. Vitart, pp. 183–200, Elsevier., 2019.
- Schrag, D. P., Adkins, J. F., McIntyre, K., Alexander, J. L., Hodell, D. A., Charles, C. D. and McManus, J. F.: The oxygen isotopic composition of seawater during the Last Glacial Maximum, *Quat. Sci. Rev.*, 21(1–3), 331–342, doi:10.1016/S0277-3791(01)00110-X, 2002.
- Sepulcre, S., Vidal, L., Tachikawa, K., Rostek, F. and Bard, E.: Sea-surface salinity variations in the northern Caribbean Sea across the Mid-Pleistocene Transition, *Clim. Past*, 7(1), 75–90, doi:10.5194/cp-7-75-2011, 2011.
- Simon, M. H., Arthur, K. L., Hall, I. R., Peeters, F. J. C., Loveday, B. R., Barker, S., Ziegler, M. and Zahn, R.: Millennial-scale Agulhas Current variability and its implications for salt-leakage through the Indian-Atlantic Ocean Gateway, *Earth Planet. Sci. Lett.*, 383, 101–112, doi:10.1016/j.epsl.2013.09.035, 2013.
- Silveira, I. C. A., Foloni Neto, H., Costa, T. P., Schmidt, A. C. K., Pereira, A. F., Castro Filho, B. M., Soutelino, R. G. and Grossmann-Matheson, G. S.: 4 - Physical oceanography of Campos Basin continental slope and ocean region, in *Meteorology and Oceanography*, edited by R. P. Martins and G. S. Grossmann-Matheson, pp. 135–189, Campus., 2017.

- de Souza, R. B. and Robinson, I. S.: Lagrangian and satellite observations of the Brazilian Coastal Current, *Cont. Shelf Res.*, 24(2), 241–262, doi:10.1016/j.csr.2003.10.001, 2004.
- Spero, H. J., Bijma, J., Lea, D. W. and Bemis, B. E.: Effect of seawater carbonate concentration on foraminiferal carbon and oxygen isotopes, *Nature*, 390(6659), 497–500, doi:10.1038/37333, 1997.
- 75 Stevenson, M. R., Dias-Brito, D., Stech, J. L. and Kampel, M.: How do cold water biota arrive in a tropical bay near Rio de Janeiro, Brazil?, *Cont. Shelf Res.*, 18(13), 1595–1612, doi:10.1016/S0278-4343(98)00029-6, 1998.
- Stramma, L. and England, M.: On the water masses and mean circulation of the South Atlantic Ocean, *J. Geophys. Res. Ocean.*, 104(C9), 20863–20883, doi:10.1029/1999JC900139, 1999.
- Strikis, N. M., Chiessi, C. M., Cruz, F. W., Vuille, M., Cheng, H., de Souza Barreto, E. A., Mollenhauer, G., Kasten, S.,
80 Karmann, I., Edwards, R. L., Bernal, J. P. and Sales, H. dos R.: Timing and structure of Mega-SACZ events during Heinrich Stadial 1, *Geophys. Res. Lett.*, 42(13), 5477–5484A, doi:doi:10.1002/2015GL064048, 2015.
- Strikis, N. M., Cruz, F. W., Barreto, E. A. S., Naughton, F., Vuille, M., Cheng, H., Voelker, A. H. L., Zhang, H., Karmann, I., Edwards, R. L., Auler, A. S., Santos, R. V. and Sales, H. R.: South American monsoon response to iceberg discharge in the North Atlantic., *Proc. Natl. Acad. Sci. U. S. A.*, 201717784, doi:10.1073/pnas.1717784115, 2018.
- 85 Synal, H.-A., Stocker, M. and Suter, M.: MICADAS: A new compact radiocarbon AMS system, *Nucl. Instruments Methods Phys. Res. Sect. B Beam Interact. with Mater. Atoms*, 259(1), 7–13, doi:https://doi.org/10.1016/j.nimb.2007.01.138, 2007.
- Tessin, A. C. and Lund, D. C.: Isotopically depleted carbon in the mid-depth South Atlantic during the last deglaciation, *Paleoceanography*, 28(2), 296–306, doi:10.1002/palo.20026, 2013.
- Tirabassi, G., Masoller, C. and Barreiro, M.: A study of the air–sea interaction in the South Atlantic Convergence Zone through
90 Granger causality, *Int. J. Climatol.*, 35(12), 3440–3453, doi:10.1002/joc.4218, 2015.
- Venancio, I. M., Belem, A. L., dos Santos, T. H. R., Zucchi, M. do R., Azevedo, A. E. G., Capilla, R. and Albuquerque, A. L. S.: Influence of continental shelf processes in the water mass balance and productivity from stable isotope data on the Southeastern Brazilian coast, *J. Mar. Syst.*, 139(July), 241–247, doi:10.1016/j.jmarsys.2014.06.009, 2014.
- Venancio, I. M., Belem, A. L., Santos, T. P., Lessa, D. O. and Albuquerque, A. L. S.: Calcification depths of planktonic
95 foraminifera from the southwestern Atlantic derived from oxygen isotope analyses of a four - year sediment trap series, *Mar. Micropaleontol.*, 136(August), 37–50, doi:10.1016/j.marmicro.2017.08.006, 2017.
- Venancio, I. M., Mulitza, S., Govin, A., Santos, T. P., Lessa, D. O., Albuquerque, A. L. S., Chiessi, C. M., Tiedemann, R., Vahlenkamp, M., Bickert, T. and Schulz, M.: Millennial- to orbital-scale responses of western equatorial Atlantic thermocline depth to changes in the trade wind system since the Last Interglacial, *Paleoceanogr. Paleoclimatology*, 0(ja),
00 doi:doi:10.1029/2018PA003437, 2018.
- Veres, D., Bazin, L., Landais, A., Toyé Mahamadou Kele, H., Lemieux-Dudon, B., Parrenin, F., Martinerie, P., Blayo, E., Blunier, T., Capron, E., Chappellaz, J., Rasmussen, S. O., Severi, M., Svensson, A., Vinther, B. and Wolff, E. W.: The Antarctic ice core chronology (AICC2012): an optimized multi-parameter and multi-site dating approach for the last 120 thousand years, *Clim. Past*, 9(4), 1733–1748, doi:10.5194/cp-9-1733-2013, 2013.

- 05 Waelbroeck, C., Paul, a., Kucera, M., Rosell-Melé, a., Weinelt, M., Schneider, R., Mix, a. C., Abelmann, a., Armand, L.,
Bard, E., Barker, S., Barrows, T. T., Benway, H., Cacho, I., Chen, M.-T., Cortijo, E., Crosta, X., de Vernal, a., Dokken,
T., Duprat, J., Elderfield, H., Eynaud, F., Gersonde, R., Hayes, a., Henry, M., Hillaire-Marcel, C., Huang, C.-C., Jansen,
E., Juggins, S., Kallel, N., Kiefer, T., Kienast, M., Labeyrie, L., Leclaire, H., Londeix, L., Mangin, S., Matthiessen, J.,
Marret, F., Meland, M., Morey, a. E., Mulitza, S., Pflaumann, U., Pisias, N. G., Radi, T., Rochon, a., Rohling, E. J., Saffi,
10 L., Schäfer-Neth, C., Solignac, S., Spero, H., Tachikawa, K. and Turon, J.-L.: Constraints on the magnitude and patterns
of ocean cooling at the Last Glacial Maximum, *Nat. Geosci.*, 2(2), 127–132, doi:10.1038/ngeo411, 2009.
- Zhang, Y., Chiessi, C. M., Mulitza, S., Zabel, M., Trindade, R. I. F., Hollanda, M. H. B. M., Dantas, E. L., Govin, A.,
Tiedemann, R. and Wefer, G.: Origin of increased terrigenous supply to the NE South American continental margin during
Heinrich Stadial 1 and the Younger Dryas, *Earth Planet. Sci. Lett.*, 432, 493–500, doi:10.1016/j.epsl.2015.09.054, 2015.
- 15 Zhang, Y., Chiessi, C. M., Mulitza, S., Sawakuchi, A. O., Häggi, C., Zabel, M., Portilho-Ramos, R. C., Schefuß, E., Crivellari,
S. and Wefer, G.: Different precipitation patterns across tropical South America during Heinrich and Dansgaard-Oeschger
stadials, *Quat. Sci. Rev.*, 177, 1–9, doi:https://doi.org/10.1016/j.quascirev.2017.10.012, 2017.



25 Figure 1 – Position of marine sediment cores RJ-1501 (23°58'14.3"S/43°06'35.1"W; 328 m water depth) and RJ-1502
 (24°32'57.6" S/42°55'42.9"W; 1598 m water depth) in the upper and lower continental slope of the subtropical western South
 Atlantic and other cores discussed in this study. The maps feature the annual sea surface temperature (A) and sea surface
 salinity (B). The transects on panels (C) and (D) show the annual water mass structure relative to temperature and
 salinity, respectively. Acronyms on panels (A) and (B) define the Brazil Current (BC), Brazilian Coastal Current (BCC), Malvinas
 30 Current (MC), Brazil-Malvinas Confluence (BMC), and Antarctic Circumpolar Current (ACC). Temperature and salinity grids
 are derived from the World Ocean Atlas 2013 (Locarnini et al., 2013; Zweng et al., 2013). This figure was produced using the
 software Ocean Data View (Schlitzer, 2017).

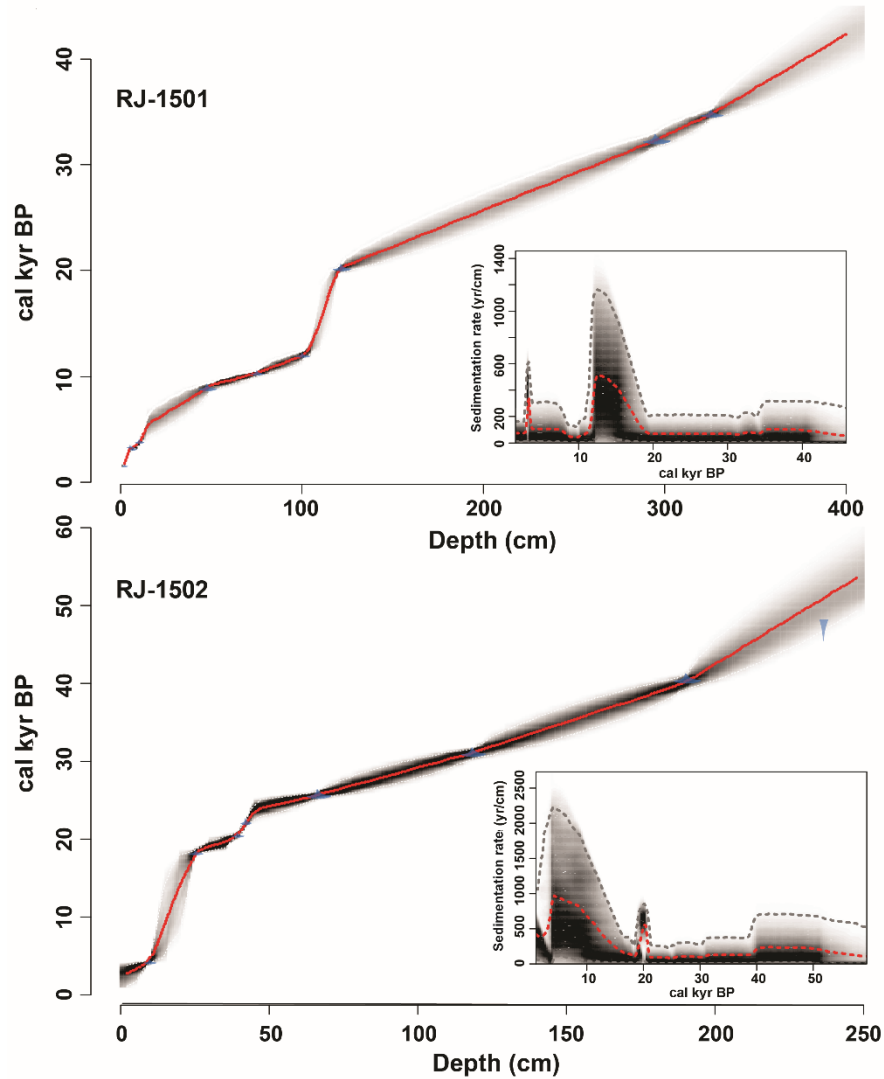
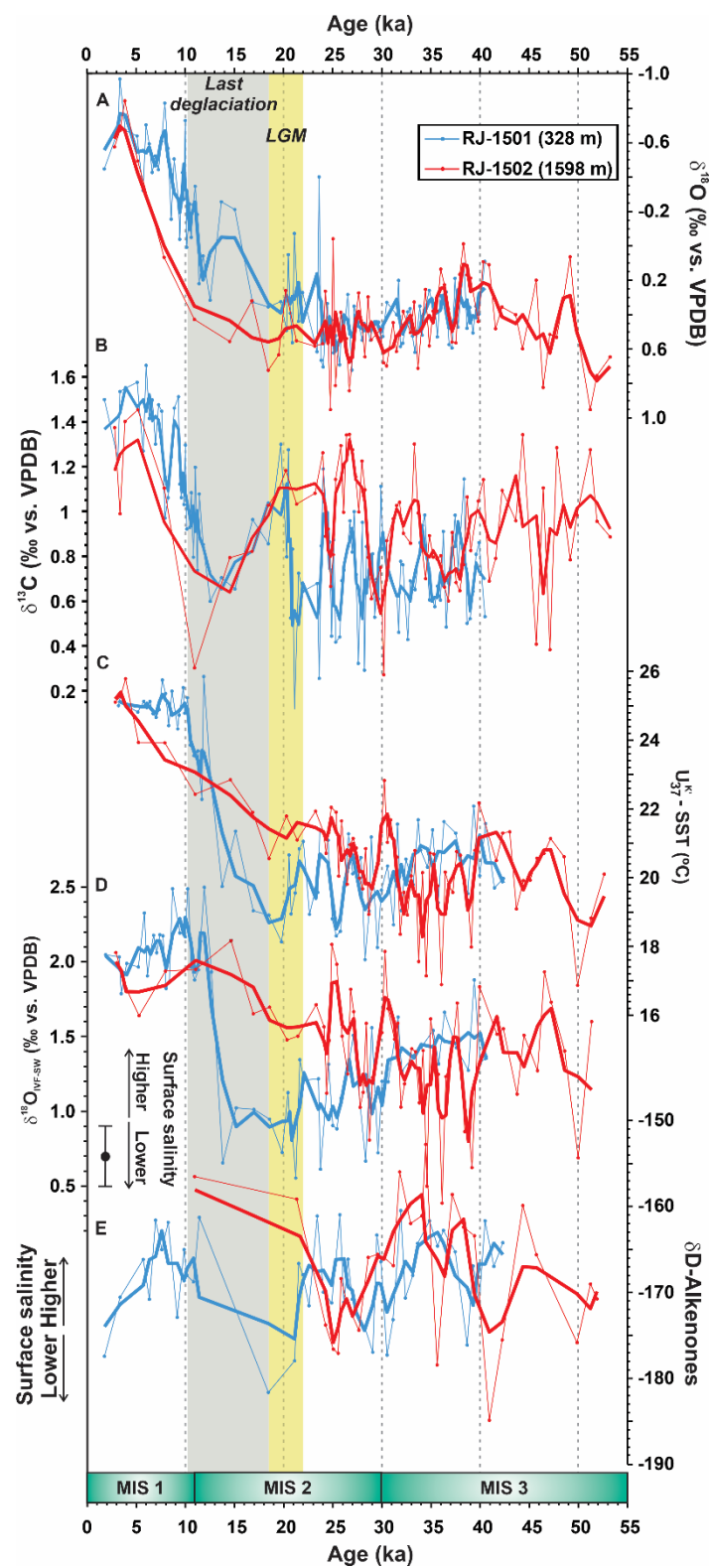
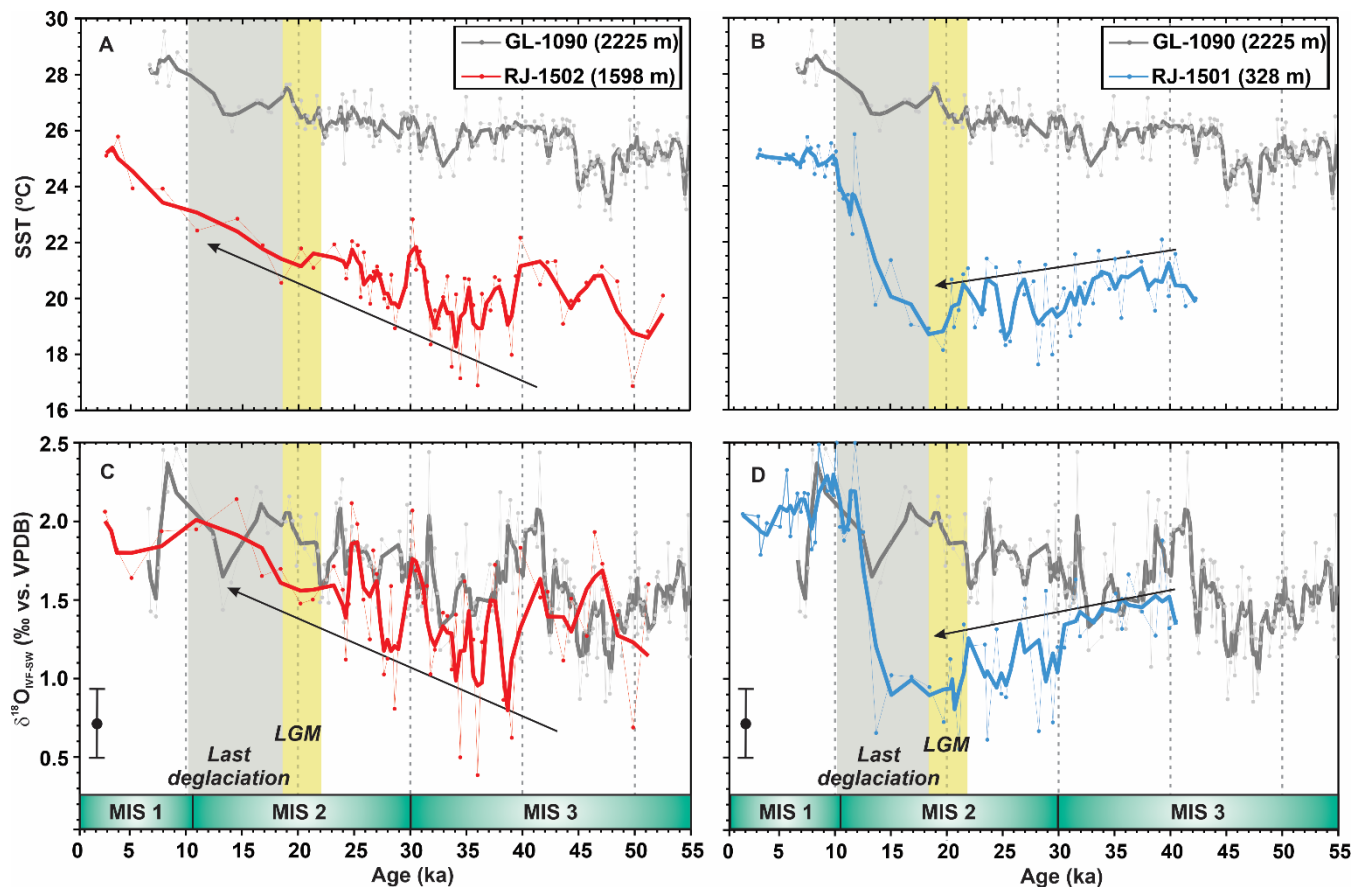


Figure 2 – Bayesian age-depth model and sedimentation rate (years/cm) for cores RJ-1501 (upper panel) and RJ-1502 (lower panel). The ^{14}C ages were calibrated with the curve IntCal13 (Reimer et al., 2013) and modelled with a reservoir age of 375 ± 36 years from ten local records. Thick (larger panels) and dashed (smaller panels) red lines depicted the highest probabilistic model for the ages and accumulation rate, respectively. Dashed (smaller panels) grey lines indicated the upper and bottom limits of the accumulation rate.



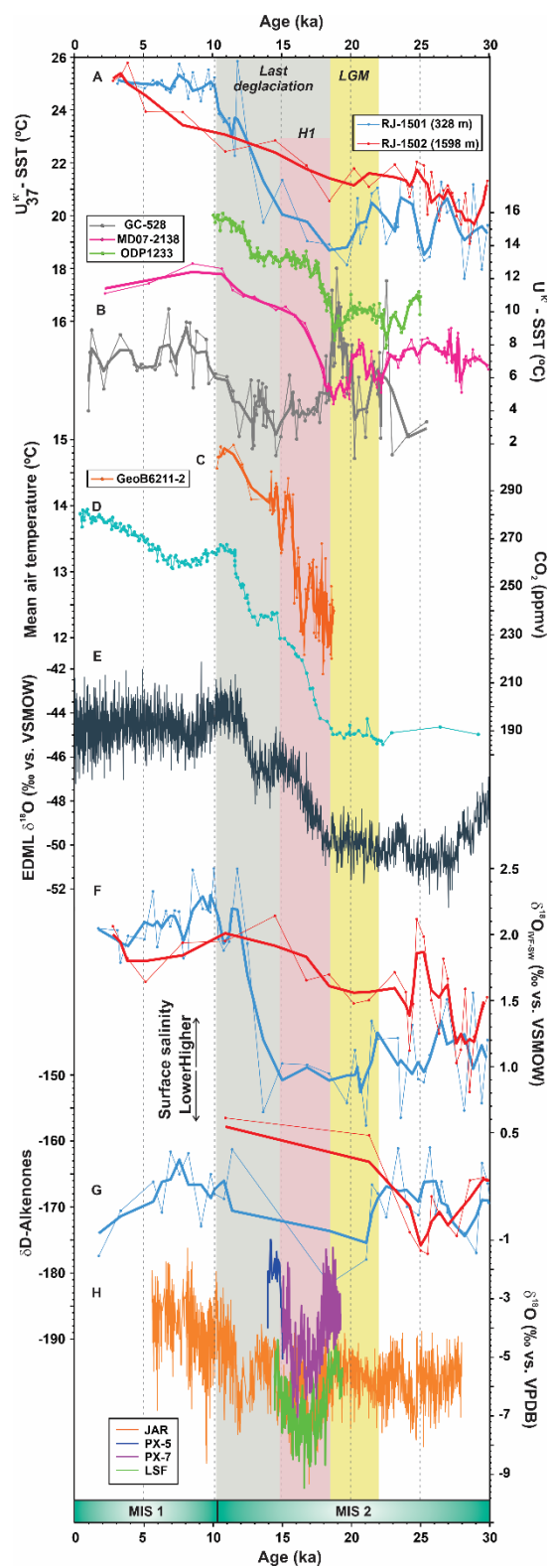
40 Figure 3 – Organic and inorganic proxies developed from marine sediment cores RJ-1501 (blue) and RJ-1502 (red). A: oxygen isotope ($\delta^{18}\text{O}$) of the planktic foraminifera *G. ruber*. B: carbon isotope ($\delta^{13}\text{C}$) of planktic foraminifera *G. ruber*. C: Alkenone (U_{37}^K)-derived sea surface temperature (SST). D: Ice-volume free seawater oxygen isotope ($\delta^{18}\text{O}_{\text{IVF-SW}}$) derived from the $\delta^{18}\text{O}$ composition of *G. ruber* and U_{37}^K -derived SST. E: δD -Alkenones. Records are depicted by the original data (dots and thin line) and the respective three-point running average (thick line). Yellow and grey bars denote the Last Glacial Maximum (LGM) and last deglaciation, respectively. The vertical bar at the left of panel D indicates the total uncertainty associated with the $\delta^{18}\text{O}_{\text{IVF-SW}}$. Marine Isotope Stages (MIS) are indicated at the bottom of the panel.

45



50 Figure 4 – Comparison of the records from marine sediment cores RJ-1501 (blue), RJ-1502 (red) (this study) and GL-1090 (grey) (Santos et al., 2017a). A and B: Alkenone (U_{37}^K)-derived sea surface temperature (SST) from cores RJ-1502 and RJ-1501 and Mg/Ca-derived SST from core GL-1090. C and D: Ice-volume free seawater oxygen isotope ($\delta^{18}\text{O}_{\text{IVF-SW}}$) from cores RJ-1502, RJ-1501 and GL-1090. Records are depicted by the original data (dots and thin line) and the respective three-point running average (thick line). Yellow and grey bars denote the Last Glacial Maximum (LGM) and last deglaciation, respectively. The vertical bars at the left of panel C and D indicate the total uncertainty associated with the $\delta^{18}\text{O}_{\text{IVF-SW}}$. Marine Isotope Stages (MIS) are indicated at the bottom of the panel.

55



60 Figure 5 – Comparison of the marine sediment cores RJ-1501 (blue) and RJ-1502 (red) with other Southern Hemisphere records. A: Alkenone ($U_{37}^{K'}$)-derived sea surface temperature (SST) from cores RJ-1502 and RJ-1501. B: $U_{37}^{K'}$ -derived SST from ODP Site 1233 (green; Lamy et al., 2007), MD07-2138 (purple; Caniupán et al., 2011) and GC528 (grey; Roberts et al., 2017). C: Mean air temperature from GeoB6211-2 (Chiessi et al., 2015). D: Carbon dioxide (CO_2) concentration from Antarctic EPICA Dome C (Lüthi et al., 2008) on the Antarctic Ice Core Chronology (AICC2012) (Veres et al., 2013; Bazin et al., 2013). E: Antarctic oxygen isotope from EDML (EPICA, 2004) on the AICC2012 chronology. F: Ice-volume free seawater oxygen isotope ($\delta^{18}O_{IVF-SW}$) from RJ-1501 and RJ-1502. G: δD -Alkenones from RJ-1501 and RJ-1502. H: Speleothem oxygen isotope from Jaraguá cave (JAR) (Novello et al., 2017) and Paixão (PX-5 and PX-7) and Lapa sem Fim (LSF) caves (Stríkis et al., 2015). Records are depicted by the original data (dots and thin line) and the respective three-point running average (thick line). Yellow, red and grey bars denote the Last Glacial Maximum (LGM), Heinrich stadial 1 and last deglaciation, respectively. Marine Isotope Stages (MIS) are indicated at the bottom of the panel.

65

70

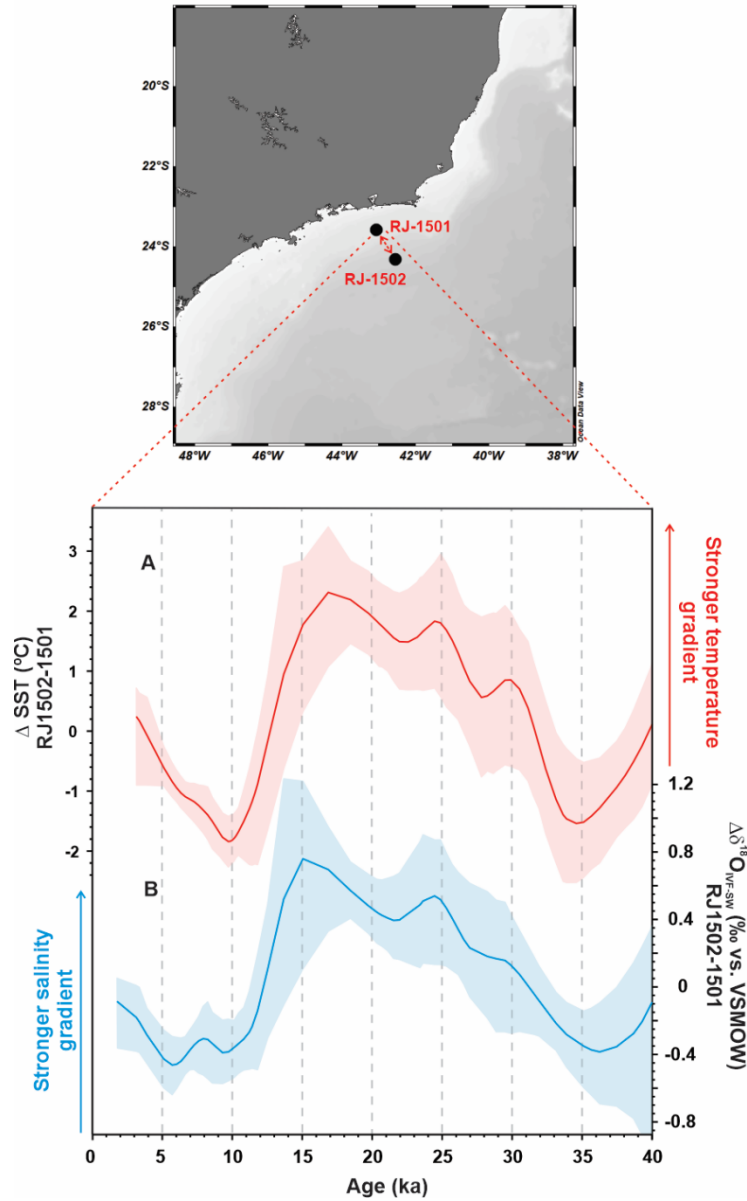


Figure 6 – Sea surface temperature and salinity gradient formed in the area between the marine sediment cores RJ-1501 and RJ-1502 (map in the uppermost panel) during the Last Glacial Maximum and early-deglaciation interval. Records were placed on a common time-scale (RJ-1501) and the mean around zero were subtracted (RJ-1502 minus RJ-1501) to produce $\Delta U_{37}^{K'}$ -derived sea surface temperature (SST) and $\Delta \delta^{18}\text{O}_{\text{IVF-SW}}$. The records were bootstrapped using the Acycle software with a 10% window (Li et al., 2019) and presented with the 2.5th and 97.5th percentiles (red and blue shaded areas). A: $\Delta U_{37}^{K'}$ -derived SST. B: $\Delta \delta^{18}\text{O}_{\text{IVF-SW}}$.

Table 1. Accelerator mass spectrometer radiocarbon (MICADAS) dates and calibrated ages used for age-depth models of cores RJ-1501 and RJ-1502.

Station	Core Depth (cm)	ID-Lab*	Species	Radiocarbon Age (yrBP)	± 1s error	Calibrated Age (calyr BP)	Min-Max (calyr BP)
RJ-1501	2	82195	<i>G. ruber, T. sacculifer</i>	2168	65	1756	1574-1930
	5	84479	<i>G. ruber, T. sacculifer</i>	3647	118	3138	2861-3397
	8	82194	<i>G. ruber, T. sacculifer</i>	3367	68	3361	3202-3558
	11	84478	<i>G. ruber, T. sacculifer</i>	4078	66	3904	3706-4094
	50	85107	<i>G. ruber, T. sacculifer</i>	8649	141	9145	8705-9496
	74	82193	<i>G. ruber, T. sacculifer</i>	9426	84	10273	9984-10533
	101	84477	<i>G. ruber, T. sacculifer</i>	10614	83	12090	11691-12453
	119	82192	<i>G. ruber, T. sacculifer</i>	17050	126	19706	19039-20272
	290	82191	<i>G. ruber, T. sacculifer</i>	28270	282	31955	31244-32779
	323	84476	<i>G. ruber, T. sacculifer</i>	30927	280	34585	34048-35143
RJ-1502	8	84509	<i>G. ruber, T. sacculifer</i>	4055	86	3841	3353-4239
	26	85049	<i>G. ruber, T. sacculifer</i>	15418	111	18454	18123-18793
	38	85048	<i>G. ruber, T. sacculifer</i>	16813	117	20236	19903-20614
	41	85047	<i>G. ruber, T. sacculifer</i>	18392	129	21321	20966-21676
	65	84510	<i>G. ruber, T. sacculifer</i>	21259	153	25523	24939-25966
	116	85106	<i>G. ruber, T. sacculifer</i>	26638	347	30784	29916-31447
	185	84508	<i>G. ruber, T. sacculifer</i>	34791	413	39395	38087-40532
	245	84507	<i>G. ruber, T. sacculifer</i>	49358	597	52887	48659-58741