

Interactive comment on “Climate reconstructions based on GDGT and pollen surface datasets from Mongolia and Siberia: calibrations and applicability to extremely cold-dry environments over the Late Holocene” by Lucas Dugerdil et al.

Lucas Dugerdil et al.

lucas.dugerdil@ens-lyon.fr

Received and published: 3 March 2021

1 Responses to the comments of Reviewer 1 (Anonymous Referee)

1.1 Specific comments:

The Fig. 9 upper part: the unit of of MAP is wrongly marked, and the why the MAP has negative data? It needs some technical checking.

[Printer-friendly version](#)

[Discussion paper](#)



Response: To check the technical problems we found 12 sites with negative precipitation values in our modern pollen dataset. It appears that these points are located in Arid Central Asia (ACA), a region where the weather stations are very scarce. This could explain the problem of interpolation for the climatic parameter selection. A new interpolation applied to these points allows to obtain now more reliable precipitation values.

Applied changes: The legend (Fig.9, or Rebuttal Fig. 1) has been changed to $\text{MAP}(\text{mm}.\text{yr}^{-1})$. For the figure 9 or Rebuttal Fig. 1, we have plotted the figure with new interpolation values for the 12 previously dysfunctional points.

Interactive comment on Clim. Past Discuss., <https://doi.org/10.5194/cp-2020-154>, 2020.

[Printer-friendly version](#)[Discussion paper](#)

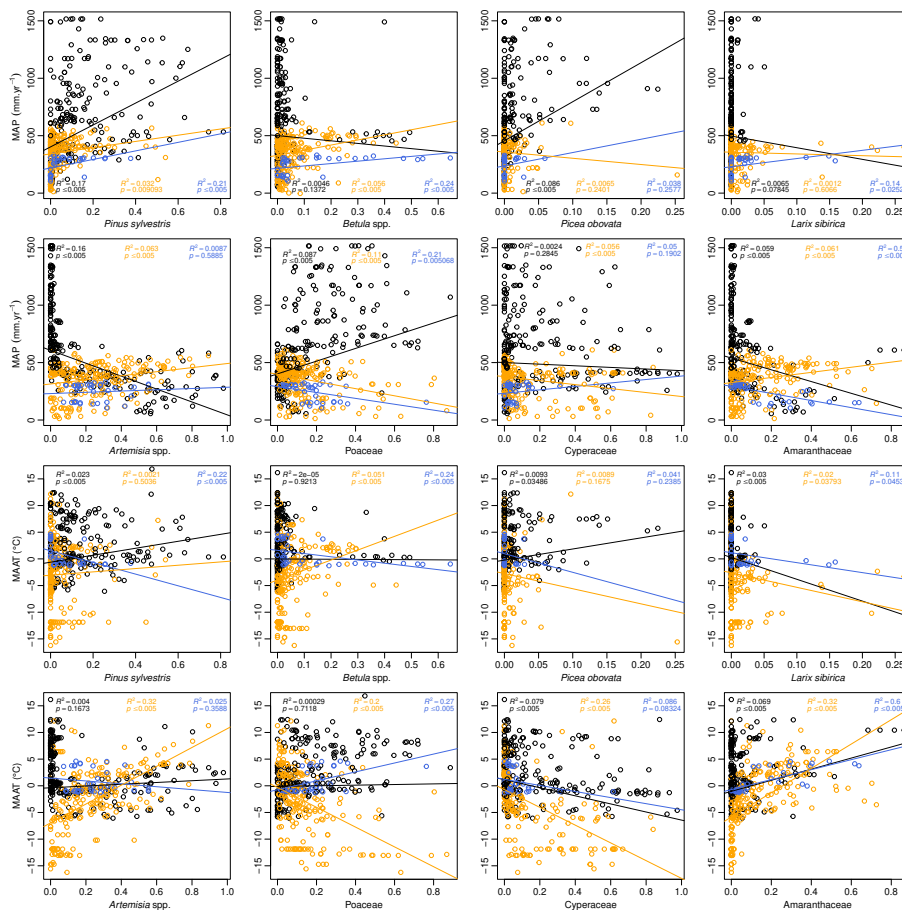


Fig. 1. Relationships between the eight major pollen taxa (%TP) and MAP (mm.yr⁻¹, upper part of the facet plot) and MAAT (°C, lower part).