

Figure S1. Calcium to Sodium ratio in the Samples Between 26 - 40 ka BP. Sea water ratio for $\text{Ca}^{2+}/\text{Na}^{+}$ and the average ratio in the samples are shown using black dashed and plane lines, respectively.

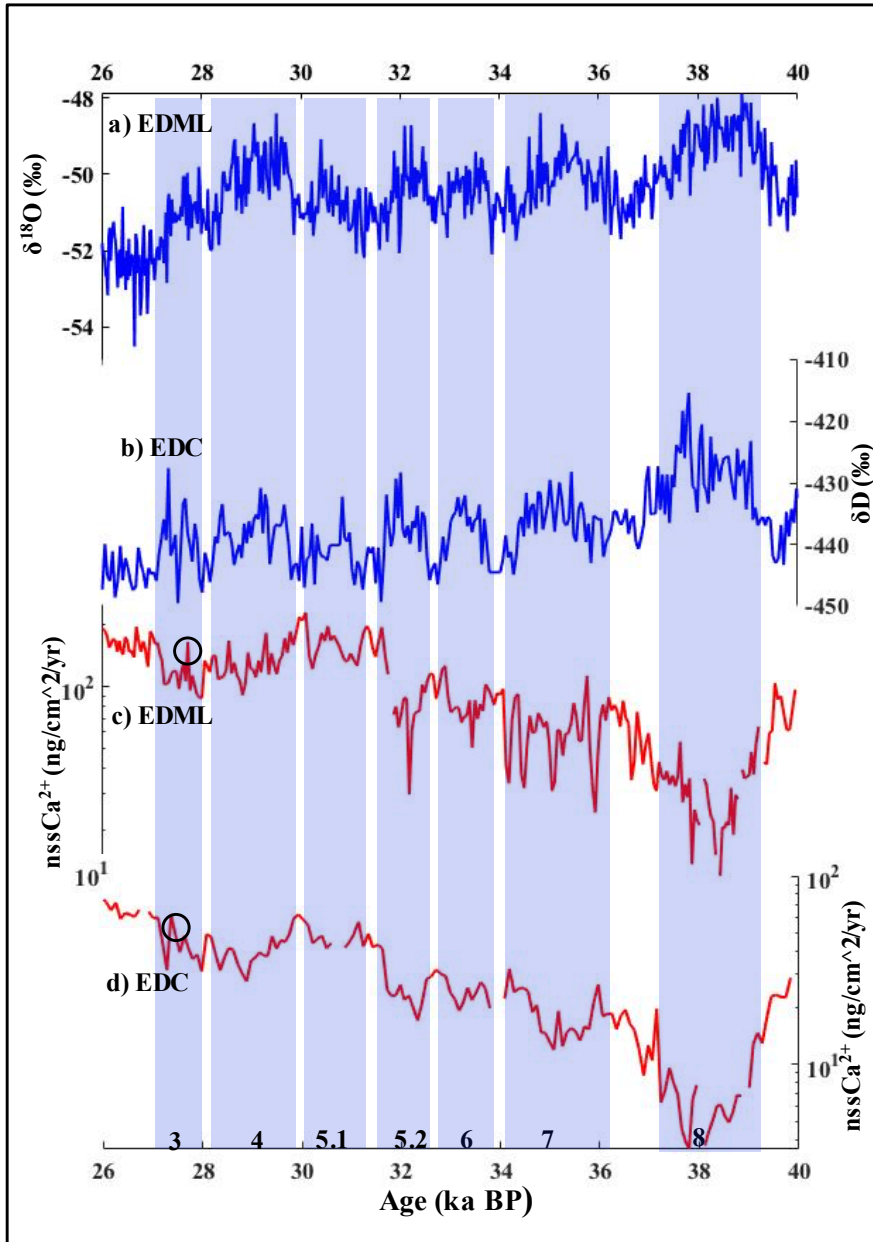


Figure S2. Plot of water isotopes (proxy for temperature) (a, b) and $nssCa^{2+}$ fluxes (c, d) in EPICA Dronning Maud Land (EDML) and EDC from 26 - 40 ka BP (Fischer et al., 2007a). AIM events are shown in blue bars and are numbered at the bottom. Events where $nssCa^{2+}$ flux shows centennial-scale peaks within the millennial-scale drop are indicated using black circles.

5

10