

Dear Editor,

We would like to thank the editor and two anonymous reviewers for their suggestions and comments. Below, we address a point-to-point replay to the comments. All suggested changes to wording and punctuation have been incorporated.

5

On behalf of all co-authors,
Valentina Flores-Aqueveque

10 **Answer to Referee #1**

I am concerned about the use of such a small sample of models (4 models) to draw conclusions about changes in the SPSH. I cannot see why the authors could not use at least 6-8 models that have Last Millennium simulations, even excluding non-CMIP5 models HadCM3 and CSIRO Mk3L.

15

R: We started with seven CMIP5/PMIP3 models but in order to carry out an adequate and rigorous comparison we had to discard the other three due to the impossibility to compare the first ensemble member (r1i1p1) of models for which the (1) Last Millennium simulation, (2) the historical simulation, and (3) the RCP8.5 scenario, were available in open access mode.

20

Even though we understand four model could be a small sample, these four are the only models that fit the criteria described in the methodology, in particular the open access principle.

We are aware of the uncertainties generated, but our results show consistencies in the responses to the forcing. This fact can be observed in the new Figure 3 (previously Figure 2), in which we include the results for each model in addition to the model ensemble mean.

25

When comparing models for LIA, CWP and RCP8.5, it may not be informative to consider only the multi-model mean. If there is large model disagreement, the model mean change does not represent the changes of each model. Instead, calculating changes in a given variable for each model and then comparing these, e.g. using a scatter plot or box and whisker plot, may be more informative. The model spread also provides a measure of uncertainty. (See also specific comment for page 13 below).

30

R: A boxplot and whisker plot would not be statistically meaningful therefore not the best way to show models dispersion in consistency with our sample. As boxplot provides a five-number summary, n=4 models do not meet the minimum requirements for its application. In fact, the minimum recommended sample size for boxplot is $n > 20$.

35

Although, we agree that the multi-model mean may not very informative, consequently for a better visualization of the results, we modify the previous Figure 2 (now, Figure 3) to include the results for each model in addition to multi-model mean.

3. The model evaluation compared with observations or reanalysis should be included earlier in the paper as it provides the justification for using the models to examine past and future climate. That is, swap the order of section 3.2 and 3.3. Then include a few sentences at the end of the model evaluation section about the strengths and weaknesses of models (also add a figure comparing observations and model climatologies).

5 R: We rearrange the order of both sections and included a new paragraph of synthesis about the comparison of our results and previous studies. We also added a new figure (Figure 1) including observations and models climatology.

Specific Comments

10

Page 3, Section 1.1: It would be helpful to include a Figure or schematic showing the regional climatological circulation in austral summer and winter.

A new figure (Figure 1) showing the ERA-Interim climatology for the period 1979-2009, highlighting the main climatic features (SLP, winds) was added.

15

Page 3, line 12: “exceeding 45S” – does this mean extending poleward of 45S? It is not clear.

The phrase “exceeding 45°S” was replaced by “extending poleward of 45°S”

20

Page 4, line 25-28: There is reasonable evidence of a period of synchronous cooling between Northern and Southern Hemispheres, although this does not imply that the signal is synchronous on a regional scale. For example, Neukom et al. (2014) state that “simultaneous cold anomalies in both hemispheres are identified between 1571 and 1722”. Perhaps provide some qualification here, or explain the difference between Southern Hemisphere and South American scale responses.

25 R: A text about the work of Neukom et al. (2014) was included in section 1.2. In addition text was modified highlighting the difference between hemispheric and regional scales.

30

Page 5, line 19: Why did you only use 4 CMIP5/PMIP3 models when there are many more (8+) models available with the required simulations? You should comment on the limitation of relying on such a small number of models.

30 R: To answer the first part of this question please referred above in the answer for comment 1. To answer the second part, a few sentences in ‘Concluding remarks’ about the need of future complementary analyses for reducing the uncertainties were included.

35

Page 6, line 21: You could also cite the new PAGES2K study here (PAGES2K Consortium, Nature Geosciences, 2019).

Thanks for the recommendation. The new reference was added.

Page 8, line 12: I am not sure what is meant by “increment”

The word “increment” was changed by “increase”

Page 11, line 5: How can SLP fields move poleward?

The sentence was replaced by “higher values of SLP would tend to move poleward”

5

Page 11, line 33: Do you mean the 4 models evaluated in this study, or a larger sample of CMIP models?

The sentence was clarified by adding the phrase “the four models analyzed here”

10 Page 12, line 18: “long-term trends”: do you mean spurious (incorrect) long term trends, or actual anthropogenic climate change trends?

R: Swart et al. (2015) found spurious long-term trends in all (6) reanalysis they studied. The term “spurious” was included before “long-term trends” to clarify.

15 Page 12, line 27: Denniston et al. (2016) is a study of the ITCZ in the Indo-Pacific region, so the position of the ITCZ in that study is not directly relevant to the ITCZ over South America.

R: The work of Denniston et al. (2016) was cited here only for characterizing the latitudinal range on movement of the ITCZ in a general way. In addition, we also consider it to complement the observations of Yan et al. (2015) as both authors point out a change in the latitudinal range (contraction-expansion) of the tropical rain belt. While Yan et al. (2015) takes the western Pacific region and Denniston et al. (2015) the Indo-Pacific region, the feature can be interpreted independently of its longitudinal location because the consequence of this effect must be considered to understand the influence of the tropical dynamics at higher latitudes.

20

Page 13, line 8 onwards: the lack of signal in the LIA and CWP comparison based on models may be due to model disagreement. If you are comparing the multi-model mean values only, you may be smoothing out changes in individual models. An alternative way to show the changes might be a scatter plot or box and whisker plot of changes for each individual model (for example, change in location of ITCZ or Hadley Cell edge versus area average change in precipitation). This would be even more informative if more than 4 models were used.

25

R: As we explained in the answer to Comment 2, a sample size of $n < 20$ is not recommended for boxplot and whisker plot. For this reason and to improve the model disagreement comparison, we include as supplementary figure (Supplementary figure 2) the difference of mass stream function between LIA and CWP (LIA-CWP) for the annual mean, DJF and JJA for each individual model. This figure also displays the zonal mean precipitation, zonal mean winds, subtropical ridge position and latitudinal position of maximum zonal winds at 200 hPa.

30

Page 15, line 1-5: How do the model biases impact on the simulated changes in past and future climate? Do they reduce confidence in the results?

35

R: When analyzing past and future changes with respect to historical simulations, we would be considering the same biases and our main point of interest is how different aspects of circulation vary within the same model.

If there are systematic biases in the models, these would be reproduced in historical simulations -which we compared with reanalysis- as well as in past simulations (last millennium) and future projections.

Moreover, the aim of this work is to establish a relative comparison of SA climate under a cold period (LIA), a warm period (CWP), and warmer conditions (RCP8.5) rather than a quantification of these changes.

5 We include a few sentences in 'Concluding Remarks' developing this idea.

Page 15, line 23: You could also comment on the need to improve model performance in the simulation of Southern Hemisphere circulation to provide more robust projections.

R: Thanks for the advice. We included a few sentences about that in Concluding Remarks.

10

Figure 2: I found it difficult to distinguish the red and magenta lines. Perhaps use different colors?

R: We changed magenta for a brighter color (fuchsia) and we darkened the color red to increase contrast between both. In addition, color blue was replaced by cyan.

15

Figure 3: These plots are quite small with very small labels and legends. It is also hard to see the overplotted contour lines. I suggest plotting the zonal mean precipitation and winds in a separate set of plots to make it easier to see (there should be space for more figures as the paper currently only has 4 figures).

R: Due to the close relation between the Hadley Cell, the zonal mean winds and the zonal mean precipitation we determined that these variables must be presented in the same plot. However, to facilitate image viewing we change the color blue (LIA) by cyan which is more contrasting and we enlarge labels and legends.

20

Figure 4: In this study, you do not find a shift in the Atlantic ITCZ and find a southward shift in the Pacific ITCZ as temperatures increase (according to line page 15, lines 15-20) so I am not sure why the ITCZ is plotted south in both sectors during LIA compared with CWP?

R: Figure 6 (formerly Figure 4) shows a scheme resulting from the integration of both, paleoclimate records and model results. As can be read on section 3.4 models fails in representing tropical dynamics which is a known weakness of simulation models. However, reconstructions based on paleoclimate records are consistent among them and in agreement with the expected physical mechanisms exposed in literature (e.g., Sachs et al., 2009; Lee et al., 2011; Schneider et al., 2014). For this reason, Figure 6 displays an ITCZ located in a northern/southern position during the CWP/LIA.

25

30

Supplementary Figure 1: The green and magenta lines appear to be in the same location?

R: Unfortunately, the scale prevents to appreciate better the small variations provided for the models in the position of the ITCZ during the LIA and the CWP in the figure 1S.

However, as the display of the inter-hemispheric temperature differences is priority, we included a global scale map.

35

Supplementary Figure 2: The ERA-Interim climatology and the model climatology should be given in the main paper as this is an important part of evaluating model skill. Also, what are the stars? Also, the austral summer and winter lines appear to be swapped or wrongly labelled.

- 5 R: We added the model climatology and we include it in the main paper (from now Figure 1). In figure caption the meaning of stars (= maximum value of slp) was added, and the labels of summer (red) and winter (blue) lines were corrected.

Technical Corrections

- 10 Page 2, line 9: replace “interplays” with “interplay”

R: The word “interplays” was replaced.

Page 2, line 16: replace “During last decades” with “During recent decades”

R: The word “last” was replaced by “recent”.

15

Page 2, line 25: delete “derived”

R: The word “derived” was deleted.

Page 3, line 6: replace “these evidences” with “this evidence”

- 20 R: The phrase “these evidences” was replaced by “this evidence”.

Page 3, line 25: replace “to higher probability” with “with higher probability”

R: The word “to” was changed by “with”.

- 25 Page 5, line 2: replace “associated to” with “associated with” (and elsewhere)

R: The phrase “associated to” was replaced by “associated with” throughout the entire text.

Page 5, line 5: at the end of this line, I think “LM” is meant to be “LIA”?

R: Yes, thank you. The right initials are “LIA”.

30

Page 5, line 10: replace “several” with “numerous” or “many”

R: “Several” was changed by “many”.

Page 5, line 12: replace “uniform period: :” with “period of uniformly positive temperature trends” for clarity.

- 35 R: The sentence was replaced.

Page 6, line 6: replace “spanning time” with “time period”

R: “Spanning time” was changed by “time period”

Page 13, line 24: this sentence is unclear.

R: The sentence was changed to: "On the other hand, Yan et al. (2015), based on paleohydrology records of western Pacific and climate models, proposed that during the LIA a contraction of the tropical rain belt (i.e., the latitudinal range over which the ITCZ seasonally moves) occurs, instead of a meridional shift as has been described."

Page 15, line 12: figure 5 is actually figure 4.

R: Yes, in fact is figure 4. This error was corrected.

References: Please indent or add space between references to separate.

R: Indent was added to references.

Answer to Referee #2

1.- Based on previous literature, the authors discuss the link between the ITCZ and the SPSH and hypothesize that the differences in the SPSH strength, position and associated SWW between LIA and CWP is related to changes in the ITCZ and Hadley circulation. However, climate models do not simulate the expected changes in the position of the ITCZ and ERA-Interim differs substantially from models. Therefore, the mechanisms proposed here cannot be verified. Even though changes in the ITCZ cannot be supported, Figure 4 depicts a nice schematic with different position in the ITCZ. At least a cautionary note should be added here to not mislead the readers.

R: Figure 4 (now Figure 6) represent the integration of paleorecord information and models results for the extratropical climate features as contains elements of both sources of information.

The misrepresentation of ITCZ in the models used in this work (and other models not analyzed here) is a known weakness of simulation models. However, reconstructions based on paleoclimate records are very consistent among them (all ITCZ reconstructions suggest that ITCZ was located further south during the LIA (n=12) and shifted equatorward in the CWP (n=5)) and in agreement with the expected physical mechanisms (e.g., Sachs et al., 2009; Lee et al., 2011; Schneider et al., 2014).

In order to clarify the integrative character of Figure 6, a note in 'Concluding Remarks' was included.

In addition, few sentences explaining the incongruencies observed for the tropical system between our models and recent observations and therefore, the need of complementary analyses, were also added in this section.

2.- As mentioned in the discussions, extratropical dynamics may also play a role in those changes. For example, could different sea-ice extension between the two periods a possible driver of the SPSH changes? In addition to that, the differential heating between land and ocean (see Fig. S1 for the difference in temperature between the South Pacific and South America) can create a pressure gradient that by geostrophy can accelerate the SWW.

Exploring these other mechanisms could help in the interpretation of the paleoclimate records. Or at least it is worth a discussion in the manuscript.

R: In fact, any factor (e.g., SAM seasonality, ENSO, changes of ice cover in Antarctica) that affects surface temperature can influence the general convection pattern, which controls position and extension of SPSH. In particular, as we discussed in section 3.3, according to Bently et al. (2009) the increase of sea-ice around Antarctica during cold periods would produce an equatorward shift of the SWW. This migration could block the SPSH limiting its expansion and latitudinal movement.

The same 'blockling' effect could be produced by an increase of SWW intensity driven by a decrease in the latitudinal temperature gradient.

We added a few sentences developing this idea in Results and Discussions (section 3.3).

3.- ERA-Interim is used in this study. Note that this reanalysis has been superseded by the newest generation of ECMWF reanalysis, ERA5, and discontinued this year. Not a big deal for this study and the type of analysis presented here, but keep in mind when justifying dataset choice in future studies.

R: Although recently replaced, ERA-Interim is a widely used reanalysis which favors the comparison between our results and other works based on this same data set. Furthermore, we considered Era-Interim due to its spatial scale of $0.75^{\circ} \times 0.75^{\circ}$ which gives a better comparison with the interpolated horizontal scale ($1^{\circ} \times 1^{\circ}$) that we used in the models.

On page 10, p.30, this text needs rewording: "This behaviour can be interpreted as a contraction of the tropics in response to anthropogenic forcing, : : ." It is not intuitive that increase in greenhouse gases would lead to a contraction of the tropics. There is also no mechanism to explain how this can happen. In fact, climate models suggest the opposite, i.e. an expansion of the tropics due to increase in greenhouse gases. Rewording this sentence may be needed.

R: This sentence was simplified and reworded.

On page 15, para 10, there is a citation to Fig. 5 that is not in the manuscript.

R: Yes, it was a mistake. In this revised version we added a new figure at the beginning and the previous Figure 4 is now Figure 6.

Figure 2: The magenta and red lines are hard to distinguish.

R: We changed magenta for a brighter color and we darkened the color red to increase contrast. In addition, color blue was replaced by cyan.

Figure 3: All axis labels need to be enlarged. Lines are too thin, barely can see the dashed lines.

R: We enlarge labels and legends.

South Pacific Subtropical High from the late Holocene to the end of the 21st century: insights from climate proxies and general circulation models

Valentina Flores-Aqueveque^{1,3}, Maisa Rojas^{2,3,4}, Catalina Aguirre^{4,5,6}, Paola A. Arias⁷, Charles González¹

¹ Departamento de Geología, Facultad de Ciencias Físicas y Matemáticas, Universidad de Chile, Plaza Ercilla 803, Santiago, Chile

² Departamento de Geofísica, Facultad de Ciencias Físicas y Matemáticas, Universidad de Chile, Blanco Encalada 2002, Santiago, Chile

³ Millennium Nuclei for Paleoclimate

⁴ Centro de Ciencia del Clima y la Resiliencia (CR²)

⁵ Escuela de Ingeniería Civil Oceánica, Facultad de Ingeniería, Universidad de Valparaíso, Chile

⁶ Centro de Observación Marino para estudios de Riesgos del Ambiente Costero (COSTA-R)

⁷ Grupo de Ingeniería y Gestión Ambiental (GIGA), Escuela Ambiental, Facultad de Ingeniería, Universidad de Antioquia, Medellín, Colombia.

Correspondence to: Valentina Flores-Aqueveque (vfloresa@uchile.cl)

Abstract. The South Pacific Subtropical High (SPSH) is a predominant feature of South American climate. The variability of this high-pressure centre induces changes in the intensity of coastal alongshore winds and precipitation, among others, over southwestern South America. In recent decades, a strengthening and expansion of the SPSH have been observed and attributed to the current global warming. These changes have led to an intensification of the southerly winds along the coast of northern to central Chile, and a decrease in precipitation from central to southern Chile. Motivated by improving our understanding about the regional impacts of climate change in this part of the Southern Hemisphere, we analyzed SPSH changes during the two most extreme climate events of the last millennium: the Little Ice Age (LIA) and the Current Warm Period (CWP: 1970-2005), based on paleoclimate records and CMIP5/PMIP3 model simulations. In order to assess the level of agreement of general circulation models, we also compare them with ERA-Interim reanalysis data for the 1979-2009 period as a complementary analysis. Finally, with the aim of evaluating future SPSH behaviour, we include 21st century projections under a RCP8.5 scenario in our analyses. Our results indicate that during the relative warm (cold) period, the SPSH expands (contracts). Together with this change, alongshore winds intensify (weaken) south (north) of ~35°S; also, Southern Westerly Winds become stronger (weaker) and shift southward (northward). Model results generally underestimate reanalysis data. These changes are in good agreement with paleoclimate records, which suggest that these variations could be related to tropical climate dynamics but also to extratropical phenomena. However, although models adequately represent most of the South American climate changes, they fail in representing the Intertropical Convergence Zone - Hadley Cell system dynamics, [emphasizing the importance to improve the tropical system dynamics in simulations, for a better understanding of its effects on South America](#). Climate model projections indicate that changes recently observed will continue during next decades, highlighting the need to establish effective mitigation and adaptation strategies against their environmental and socio-economic impacts.

1. Introduction

Climate conditions in South America (SA) are the result of the complex interactions among predominant atmospheric circulation patterns, orographic features, latitudinal differential radiation, and heat and water balances. One of the main features dominating climate in this region, in particular its western boundary, is the

South Pacific Subtropical High (SPSH), a quasi-permanent center of high atmospheric pressure developed over the southeastern Pacific Ocean. The present-day behavior of the SPSH is relatively well known. The SPSH varies (intensity and position) at different timescales, from seasonal to interannual, depending on the interplay between forcing from higher and lower latitudes (Grotjahn, 2004) and the superposition of large-scale phenomena at interannual timescales, such as El Niño-Southern Oscillation (ENSO; Cane, 1998), and the Pacific Decadal Oscillation (PDO; Mantua et al., 1997), at interdecadal timescales (Ancapichún and Garcés-Vargas, 2015). SPSH changes, in turn, influence other elements of the ocean-atmosphere dynamics of SA, such as the meridional winds -and the related upwelling along the coastal central Peru to south-central Chile (e.g., Pizarro et al. 1994; Falvey y Garreaud 2009; Rahn and Garreaud, 2013), and precipitation at the western side of the Andes (e.g., Barrett and Hameed, 2017).

Eliminado: s

However, little is known about its past behavior. During recent decades, an intensification of coastal southerly winds and a decrease in precipitation have been observed in southwestern SA. These changes have been related to an intensified and a southward shifted SPSH as a response to the current global warming scenario (Falvey and Garreaud, 2009; Rahn and Garreaud, 2013; Ancapichún and Garcés-Vargas, 2015; Schneider et al., 2017; Boisier et al., 2018; Aguirre et al., 2018). Model projections indicate that this trend will continue during the 21st century for southerly wind intensity (e.g., Garreaud and Falvey, 2009; Belmadani et al., 2014; Aguirre et al., 2018), as well as for precipitation (e.g., Nuñez et al., 2008; Kitoh et al., 2011; Cabré et al., 2016).

Eliminado: last

Given the fundamental role of the SPSH on the alongshore winds, and therefore over wind-driven upwelling along southeastern Pacific (Croquette et al., 2007; Aguirre et al., 2018) and precipitation (Barrett and Hameed, 2017), the study of SPSH past variations is essential for understanding its future behavior and key for diagnosing the impacts of climate change on the eco-hydrologic dynamics and socio-economic activities in this region, such as fisheries.

Eliminado: derived

In this work, we analyze the SPSH past variations and their influence in the climate of western SA during the last millennium -a period where natural and anthropogenic forcing can be evaluated-, from two lines of evidence: paleoclimate proxies and general circulation models (GCMs). In particular, we focus in two extreme climate periods: the cold Little Ice Age (LIA) and the Current Warm Period (CWP) in order to contrast the SPSH behavior under different global/regional temperature conditions. Model data for the CWP period are compared with European Centre for Medium-Range Weather Forecasts (ECMWF) ERA-Interim Reanalysis data to evaluate the degree of agreement between GCMs and recent 'observations'. In addition, with the aim to understand future SPSH conditions and their consequences, we also include 21st century projections under a RCP8.5 scenario in our analyses.

The structure of this paper is organized as follows. First, a climate background of present-day and past changes of SA climate is presented. Section 2 details model and reanalysis data analyzed, and the periods and paleoclimate records considered. Section 3 presents the results obtained from global model simulations, their comparison with reanalysis data as well as with the information interpreted from paleoclimate records, and the discussion of this evidence. Finally, Section 4 summarizes the main findings and conclusions from this work.

Eliminado: these evidences

1.1 Present-day climate of southwestern South America and future projections

In the Southern Hemisphere (SH), the subsiding branch of the Hadley cell (HC) determines the presence of a quasi-permanent belt of high surface pressure around 30°S (e.g., Held and Hou, 1980), whose development over the Pacific Ocean is known as the SPSH. The SPSH extends over much of the Pacific Ocean off the Chilean coast, with a center between 25-30°S and 90-105°W (Pizarro et al., 1994), and an area of influence extending poleward of 45°S during austral summer (Fig. 1), when it strengthens (Fuenzalida, 1971). At the northern edge of the SPSH, the air masses flow westward, producing the belt of the trade winds (tropical easterlies). South of the SPSH, a westerly wind belt, known as the Southern Westerly Winds (SWW), is developed in the mid-latitudes, peaking around 50°S (Varma et al., 2012) (Fig. 1). These prevailing winds, that are responsible of the very high regional precipitation on the windward side of the southern Andes (1000–7000 mm yr⁻¹, Garreaud et al., 2013), are characterized by a remarkable seasonality driven mainly by changes in sea surface temperature (SST) and atmospheric temperature gradients (Sime et al., 2013). Seasonally, the SPSH is strongest in intensity and has a more poleward position during austral summer, and has a more equatorward position, and less intensity during austral winter (Fig. 1), allowing mid-latitude frontal systems to reach further north, bringing winter rains to central Chile (e.g., Quintana and Aceituno, 2012).

The present-day climatic influence of the SPSH over SA is modulated by large-scale climatic phenomena at interannual to decadal timescales. ENSO (Cane, 1998) dominates global climate variations for the Pacific and the global tropics (Rasmusson and Wallace, 1983) on interannual timescales, ranging quasi-regularly from 3 to 6 years and between 2 to 7 years, according to Dettinger et al. (2000) and Cane (2005), respectively. In southwestern SA, this phenomenon is associated with higher probability of heavy rainfall in central Chile during winter season, catastrophic flooding in coastal Peru and drought in the Altiplano of Peru and Bolivia (Cane 2005). At decadal timescales (20 to 30 years; Mantua and Hare, 2002), the influence of the PDO (Mantua et al., 1997; Zhang et al., 1997) plays a major role on South American climate. This climate pattern is described as El Niño-like, mainly because its warm (cold) phases are very similar to those of El Niño (La Niña) events, although of smaller amplitude (Garreaud and Battisti, 1999). In SA, the anomalies of rainfall and temperature related to PDO display a spatial distribution similar to the ENSO-related anomalies (Garreaud et al., 2009).

At higher latitudes, south of 20°S, the Southern Hemisphere Annular Mode (SAM), also referred as the Antarctic Oscillation (AAO), influences climate variability at intermonthly and interannual timescales (Thompson and Wallace, 2000). The SAM is characterized by two pressure anomalies of opposite signs centered in the Antarctica and a circumglobal band at ~40°-50°S, related to the north-south displacement of the SWW (Garreaud et al., 2009). In SA, the influence of this feature is associated with the increase of air temperature between 40° and 60°S, and a decrease of precipitation in southern Chile during its positive phase, related to a southward shift of the SWW (Thompson et al. 2000; Thompson and Solomon 2002; Marshall et al. 2004; Garreaud et al., 2009).

In addition, due to its outstanding orographic features, the southwestern margin of SA could also be influenced by regional-to-local climate variations that superimpose over these large-scale phenomena (e.g., Rutllant et al., 2003; Moy et al., 2009).

Eliminado: exceeding

Eliminado: to

Eliminado: to

In the past decades, several changes have affected the climate of SA. The most important of these variations are a decrease of precipitation in southwestern SA (Boisier et al., 2016; Boisier et al., 2018) and an intensification of coastal upwelling favorable winds (Schneider et al., 2017) that trigger biological and biogeochemical consequences (Anabalón et al., 2016; Aguirre et al., 2018). Several authors have associated changes in alongshore winds to an intensified or expanded SPSH (e.g., Falvey and Garreaud, 2009; Belmadani et al., 2014; Ancapichún and Garcés-Vargas, 2015).

These observed trends are also found in numerous model projections for warming scenarios, suggesting that these changes could continue during this century, as result of changes in the SPSH and precipitation, related to a poleward shift and intensification of the SWW (e.g., Fyfe and Saenko, 2006; Ihara and Kushnir, 2009; Chavailleaz et al., 2013; Bracegirdle et al., 2018). The projection of a poleward displacement of the SPSH that intensifies alongshore winds at the poleward portions of upwelling systems is a clear and robust characteristic at south-central Chile (Ryckaczewski et al., 2015). Furthermore, the upwelling system off south-central Chile exhibits a robust future change in timing, intensity and spatial distribution of alongshore winds as consequence of global warming (Belmadani et al., 2014; Wang et al., 2015; Ryckaczewski et al., 2015).

1.2 Late Holocene climate in South America: global events

The LIA refers to a period of prominent climate anomalies over the past millennium where cold conditions were recorded in most of Europe and parts of North America. It has been established that the LIA developed between 16th and mid-19th centuries (Mann, 2002), being the last cold period recorded on Earth. However, the timing, magnitude and nature of this event vary significantly from region to region (Bradley and Jones, 1993; Mann et al., 1999) and between archives (Chambers et al., 2014).

Unlike the Northern Hemisphere (NH), where the LIA is relatively well understood (e.g., PAGES2k Consortium, 2017), across the SH the evidence and detection of this phenomenon in proxy-climate records is less clear with respect to its timing, regional extent and specific associated climatic changes (e.g., Chambers et al., 2014). The recent annually resolved millennial temperature reconstruction for the SH developed by Neukom et al. (2014) reveals a cold phase (1594 – 1677), coinciding with the peak of the LIA. However, at regional scale, particularly in southern SA, evidence of this event has been poorly documented.

In general terms, the few reconstructions made suggest that in this region the LIA was a period characterized by wetter conditions related to changes in the position of the SWW belt (e.g., Lamy et al., 2001; Moy et al., 2008, 2009; Moreno et al., 2014). Even though, so far there is still not consensus about the trend in temperature during the LIA in this region. Some authors (e.g., Masiokas et al., 2009; Koch and Kilian, 2005; Koch, 2015) have recognized glacier advances in the extratropical SA (17°-55°S) during this period, which can be interpreted as cold conditions. However, recently González-Reyes et al., (submitted), based on glacier equilibrium-line altitude modeling, determine that in the Mediterranean Andes (30°-37°S) there are no marked glacier advances associated with the 'classic' (i.e., NH) LIA. Instead of that, the authors explain that more local factors, such as the Pacific SST variability, would have controlled the glacier mass balance in the region during this period.

Eliminado: in the SH the evidence and detection of this phenomenon in proxy-climate records is less clear with respect to their timing, regional extent and specific associated climatic changes (e.g., Chambers et al., 2014), leading the notion that this event was perhaps not globally synchronous and, therefore, driven by different mechanisms.
In southern SA, evidence of this event has been poorly documented.

Eliminado: However

Eliminado: to

Moreover, CMIP5/PMIP3 Last Millennium (LM) simulations have shown weak temperature anomalies during the LIA, hindering the identification of this period, especially in the SH (e.g., Rojas et al., 2016; Fig. 1S). This has been associated with the fact that this global event is a response to internal climate variability (PAGES2k Consortium, 2013; Neukom et al., 2014) rather than to external forcing.

Eliminado: M

Eliminado: to

5 On the other hand, an increase in mean global temperature from the late 20th century has been observed and highly documented by many authors (e.g., Jones et al., 1998, 2001; Mann et al., 1999, 2003; Briffa, 2000; Crowley and Lowery, 2000; Folland et al., 2001; Hartmann et al., 2013, among many others). This global warming, also referred as the late-20th Century Warmth or the Current Warm Period (CWP), has been defined as a period of uniformly positive temperature trends simultaneous in both hemispheres (e.g., Neukom et al., 10 2014), with no precedent in the last 1000 years (Mann et al., 1999; Jones et al., 1998, 2001; Crowley and Lowery, 2000; Folland et al., 2001; Jones and Mann, 2004; Marcott et al., 2013; Neukom et al., 2014; PAGES2k Consortium, 2017). This characteristic makes the CWP, together with the LIA, the major climate events of the past one or two millennia, a period known as the “late Holocene” (Williams and Wigley, 1983).

Eliminado: several

Eliminado: n uniform period of positive temperature trends simultaneous in both hemispheres

2. Methodology

15 2.1 Climate models for the Last Millennium, the historical period and 21st century projections

In this study, we analyze open access CMIP5/PMIP3 climate model experiments, for which all three types of simulations are available: (1) the Last Millennium simulation (past1000; Schmidt et al. 2011, 2012), which considers observed forcing (orbital parameters, solar irradiance, greenhouse gases, land use change and volcanic aerosols) covering the 850-1850 AD period; (2) the historical simulation, which includes natural and anthropogenic (greenhouse gases concentration and aerosols) forcing over the 1850-2005 AD period; and (3) the anthropogenically-forced Representative Concentration Pathways RCP8.5 scenario (named by the equivalent effect in the radiative forcing by 2100 AD, relative to preindustrial period: +8.5 Wm⁻²), characterized by increasing greenhouse gas emissions over the period 2006-2100 AD (21C). Four models meet these criteria (Table 1). For each of these, we use the first ensemble member (r1i1p1).

Eliminado: four

Eliminado: (Table 1)

25 We particularly analyze different meteorological variables considered to be representative of the main climate components present over western South America. The variables analyzed correspond to monthly mean data for: (a) the SPSH, represented by the sea level pressure (SLP) and the position (latitude, longitude) of its maximum; (b) the intensity of the meridional winds (e.g. approximately alongshore) at 850 hPa; (c) the SWW defined as the latitudinal position of the maximum zonal wind at 850 hPa, between 40°S and 60°S; (d) the Intertropical Convergence Zone (ITCZ) represented by the position of the maximum value of precipitation between 15°N and 8°S; and (e) the Subtropical Jet (STJ), using the latitudinal position of the maximum zonal wind at 200 hPa, north of 48°S.

Eliminado: of the four models considered

30 Additionally, the global HC is computed over the three periods (LIA, CWP, 21C) using the mean meridional mass stream function.

2.2 Global climate events: time periods considered

For the LIA period, we use the time period identified in each model by Rojas et al. (2016), based on the annual temperature anomaly over the NH, with respect to the 1000–1850 CE mean, and the meridional SST gradient between the tropical North and South Atlantic (Table 1).

Eliminado: spanning

5 On the other hand, the definition of the onset of the CWP varies regarding the author. Some of them consider it since 1850 CE (Deng et al., 2017) or the entire 20th century (1901-1990) (Briffa et al., 1995; Briffa, 2000; Jones et al., 1998), while other authors refer to ‘mid-20th century’ (e.g., Crowley and Lowery, 2000; Levitus et al., 2000) or ‘late-20th century’ (e.g., Mann et al., 2003; Jones and Mann, 2004; Osborn and Briffa, 2006). Recently, Díaz and Vera (2018) considered the CWP in South America as the period between 1951 and 2000
10 CE, taking into account also the negative rainfall trend observed in the southern Andes.

According to the last IPCC Special Report (Allen et al., 2018), between 1890 and 2010 almost all the current warming could be attributed to human activities, being, in the absence of strong natural forcing, the solar and volcanic contributions accounting for less than $\pm 0.1^{\circ}\text{C}$ of the temperature increase between 1890 and 2010. The same report states that since 2000, the human-induced warming accounts for the $\sim 80\%$ of total warming, with
15 the $\pm 20\%$ of uncertainty attributed to solar and volcanic contributions.

Whatever the time period considered, all these studies have led to a consensus regarding that in the past few decades, the mean annual NH temperatures are the warmest of the last 1000 or even 2000 years (PAGES2k Consortium, 2019). For this reason, we consider the CWP as the period covering the years 1970-2000 CE.

Finally, in an analogous way, the RCP8.5 scenario in model projections for the end of the 21st century was
20 considered covering the period between years 2070 and 2100.

2.3 Reanalysis data

With the aim of comparing the CMIP5/PMIP3 simulation data for the CWP (historical experiment; 1970-2000) and the present-day climate observational dataset, we use annual and seasonal mean data from ERA-Interim
25 Reanalysis for the period 1979-2009. This project, extensively used in climate research, consists of a global scale dataset that includes recorded climate observations of atmospheric weather (data available online at <https://www.ecmwf.int/en/forecasts/datasets/reanalysis-datasets/era-interim>), with a spatial resolution of $0.75^{\circ} \times 0.75^{\circ}$ (latitude x longitude), approximately, of the most relevant meteorological variables (wind, pressure, temperature, cloud cover, among others). Its primary temporal resolution is 3 hours for surface parameters,
30 starting in 1979 and being continuously updated in near-real time (Dee et al., 2011).

We use ERA-Interim Reanalysis because of its high spatial resolution and the continuous improvement in the quality of their data.

2.4 Climate records of southwestern South America

In order to test the robustness of CMIP5/PMIP3 LM climate simulations, we carry out an integration of the results obtained from model simulations as well as paleoclimate and paleoenvironmental reconstructions of several regional high-resolution records, mainly from southwestern South America, but also from other regions of the world.

We consider records that: (1) provide information about the main climate features affecting southwestern South America, (2) have a minimum length of 500 years to potentially record the LIA and the CWP, and (3) have a resolution at interannual-to-centennial timescales (Fig. 2).

The selected records fulfill at least three criteria defined in PAGES2k-Network. However, we also include records that do not meet these criteria, but are particularly valuable because of its temporal resolution or location, considering the sparseness of records in this region. Detail of the selected records and their main characteristics are presented in Table 2.

3. Results and discussions

3.1 Paleoclimate evidence

Several paleoclimate records analyzed (Table 3, Fig. 2) indicate that important changes have occurred during the late Holocene along the western margin of South America. Salvatecci et al. (2014) analyzed marine laminated sediments off Pisco (14°S/76°W, Perú), interpreting a period of weak alongshore winds related to a contracted SPSH during the LIA and stronger winds due to an expanded anticyclone during the CWP. Recent climatological data seem to support these observations (Falvey and Garreaud, 2009).

In the same area and a slightly further north (Callao, 12°S/77°W; Fig. 2), Sifeddine et al. (2008) also noted an increase (decrease) in the intensity of southerly winds during the CWP (LIA) attributed to a strengthened (weakened) SPSH. These authors suggest that these conditions could be caused by changes in the ITCZ and the SPSH latitudinal position, being both displaced to the north (south) during the warm (cold) period. Changes in alongshore winds are also reported off Central Peru by Gutiérrez et al. (2009) and Briceño-Zuluaga et al. (2016),

and in northern Chile (23°S/70°W; Fig. 2) by Flores-Aqueveque et al. (2015), who interpreted the recent increase in southerly wind intensity trend as a response to an expanded and/or intensified SPSH. According to Gutiérrez et al. (2009) and Briceño-Zuluaga et al. (2016), stronger winds could be related to a northward displacement of the ITCZ-SPSH system during the CWP, and to an intensification of the Walker circulation associated with the current global warming. These authors also stated that during the LIA, the ITCZ was located southward of its modern position, agreeing with the interpreted by Fleury et al. (2015) for the same area (11°-

15°S, Perú; Fig. 2). However, unlike the first authors, Fleury et al. (2015) noted a weakening in the Walker circulation since 1800 CE that suggests the influence of additional processes, probably related to a secular positive trend in tropical SST, accounting for this decrease.

Latitudinal changes in the ITCZ mean position, with a southward displacement during the LIA, have also been recorded in other parts of the world as the Cariaco Basin (10°N/ 66°W; Fig. 2) in northern Venezuela (Haug et

Eliminado: 1

Eliminado: 1

Eliminado: 1

Eliminado: to

Eliminado: 1

Eliminado: 1

al., 2001; Peterson and Haug, 2006), Washington Island (4°N/160°W; Fig. 2), Palau Island (7°N/134°E; Fig. 2) and Galápagos Island (1°S/89°W; Fig. 2) in the Central Pacific (Sachs et al., 2009), Lake Malawi (10°S/34°E; Fig. 2) in eastern Africa (Johnson et al., 2001), and Abaco Island (26°N/77°W; Fig. 2) in northern Bahamas (van Hengstum et al., 2016).

- Eliminado: 1
- Eliminado: 1
- Eliminado: 1
- Eliminado: 1
- Eliminado: 1

5 Changes in the South American climate system are also recorded at higher latitudes. Using lacustrine sediments of Laguna Aculeo (33°S/71°W; Fig. 2), Jenny et al. (2002) observed an increase in precipitation in Mediterranean Central Chile during the LIA, and interpreted it as an intensification of SWW. For the same period but using marine laminated sediments of Southern Chile (41°S/74°W; Fig. 2), Lamy et al. (2001) also noted an **increase of precipitation in southern Andes related to a northward displacement of the SWW, due to a** weakened SPSH. The opposite occurs during a warm period, such as the Medieval Climate Anomaly (MCA).

- Eliminado: 12
- Eliminado: 1
- Eliminado: increment
- Eliminado: the

10 Further south, Sepúlveda et al. (2009) reported a northward shift of the SWW belt during the LIA, according to a marine sedimentary record obtained from the Jacaf Fjord in northern Chilean Patagonia (44°S/73°W; Fig. 2). The same is interpreted from the analysis of a sediment core of Quitalco fjord (46°S/73°W; Fig. 2) by Bertrand et al. (2014), who found that during the LIA (1200-1500 CE), the SWW were gradually shifted northward and slightly moved poleward during the last decades, agreeing with recent trends in observed climatological data (e.g., Shindell and Schmidt, 2004). According to these authors, late Holocene variations (latitudinal position and extent) in SWW were mostly driven by changes in the strength of the Polar Cell, which respond to changes in temperature at higher latitudes in the SH; this is in opposition to Lamy et al. (2001), who explained the changes in SWW based on variations in the tropical climate system (i.e., Hadley cell intensity).

- Eliminado: 1
- Eliminado: 1

20 Evidences of SWW variations are also observed in paleoclimate records at Subantarctic and Antarctic latitudes. The analyses of lacustrine sediments from Lago Guanaco, southwestern Patagonia (51°S/73°W; Fig. 2) developed by Moy et al. (2008) and Moreno et al. (2009) indicate that precipitation increased during the LIA, related to more intense westerly winds. Moy et al. (2008) also suggest a poleward shift of the southern margin of the SWW belt synchronously with this intensification.

- Eliminado: 1

25 On the other hand, Schimpf et al. (2011) noted a decrease in precipitation during the LIA and interpreted it as a southward shift or a weakening in the core of the SWW, according to a stalagmite from the Southernmost Andes (53°S/73°W; Fig. 2). Recently, Browne et al. (2017), based on a fjord sediment core collected from the Auckland Islands (51°S, 166°E; Fig. 2), interpreted a northward (southward) shift of the SWW during the LIA (MCA), suggesting that the synchronous changes in SWW observed on both sides of the Pacific could be controlled by atmospheric teleconnections between the low and high latitudes, modulated by the variability in AAO and ENSO. Finally, Koffman et al. (2014), based on dust particles found in an ice core from western Antarctica (79°S; Fig. 2), interpreted that SWW are less (more) intense and/or displaced equatorward (poleward) during the cold (warm) period, in response to both, surface temperature changes in the tropical Pacific and solar variability.

- Eliminado: 1
- Eliminado: 1
- Eliminado: 1
- Eliminado:

35 The apparent incongruity of the SWW changes observed among paleorecords could be partly explained by their locations. Then, the different proxies could be recording differential changes in the wind intensity between its edges and its core, and/or latitudinal displacements of this belt.

3.2 Model simulations versus present-day atmospheric observations

The analysis of the main present-day (1979-2009) climate features of southwestern SA from ERA-Interim reanalysis shows that some differences arise when comparing this dataset with model simulations for a comparable period (1970-2000). In general terms, [the four models analyzed here](#) seem to underestimate the present day SPSH extension (Fig. 1), especially during austral summer (DJF) when reanalysis shows a SPSH more expanded than simulated conditions, being more similar to 21C projections (Fig. 3). With respect to the location of the SPSH, it can be noted that, although latitudinal SPSH position is very similar in both datasets, major differences can be observed in its longitudinal position (Table S1, Supplementary material). Maximum values of the SLP in reanalysis data locate further west than those of the models at annual as well as seasonal scale, being this difference more remarkable during austral summer, reaching around 11 degrees longitude.

The position of the STJ is another climate feature that differs between reanalysis and climate models. For reanalysis data, the latitudinal position of the STJ when it reaches the continent is around 27°S during the austral winter and 29°S in the annual mean, being between 3° and 6° latitude north, respectively, of those represented by historical simulations (i.e., ~30°S during austral winter and ~35°S in the annual mean) (Fig. 3). According to the results obtained by Hudson (2012), the SH STJ position varied between ~30° and ~45°S between 1979 and 2010. This range is in good agreement with the values obtained from climate models, suggesting that ERA-Interim reanalysis dataset underestimates the STJ meridional position.

At higher latitudes, ERA-Interim reanalysis data differs from models in the representation of the present-day behavior of the SWW (Figs. 1 and 3), indicating a position further south of its core, when this wind belt meets the continent (~54°S) during all year round, showing almost no seasonal differences. Similar results are obtained by Swart et al. (2015), who compared surface winds and satellite-based data, finding that several reanalysis overestimate recent observed trends. Moreover, these authors also found that [spurious](#) long-term trends in SLP and winds observed in diverse reanalysis datasets for the SH, especially in the southeastern Pacific, limit its applicability as a tool for validating these features in model simulations.

3.3 Climate changes over southwestern South America since the Late Holocene according to GCMs

Figure 4 shows the difference between the meridional winds during the CWP and the LIA, [for each model as well as for the 4-model mean](#). In addition, the position of the ITCZ, the upper level STJ, the SWW at 850hPa, and the SPSH locations for the LIA (cyan line), the CWP (fuchsia line) and the 21C (dark red line) are displayed. The four-model ensemble annual and the austral summer and winter means show a strengthening of the SPSH during warm periods, expressed as an expansion of this high-pressure center, mainly to the west and south. [This trend is also observed in individual models \(Fig. 4\), except for the austral winter conditions, and consequently the annual mean, of model MRI-CGCM3](#). The SPSH expansion is more evident when comparing CWP and 21C data, with its southern rim reaching higher latitudes as temperature increases. This behavior was already noted by Garreaud and Falvey (2009) using the PRECIS R2A regional climate model, and Kitoh et al. (2011) in high horizontal resolution (20 and 60 km grid) model projections. The opposite (i.e., a contracted SPSH) is

Eliminado: climate models

Eliminado: S2, Supplementary material

Eliminado: S2, Supplementary material

Eliminado: 2

Eliminado: blue

Eliminado: magenta

observed during the cold period (LIA), except for the austral winter (June-July-August; JJA), when SPSH for LIA and CWP are nearly identical.

With respect to the SPSH position, major differences can be observed in latitude between austral summer (December-January-February; DJF), when the maximum atmospheric pressure locates on average at ~33°S, and austral winter (JJA) when it moves northward at ~27.5°S (Table S1, Supplementary material). This behavior agrees with the seasonal variation observed by Rahn and Garreaud (2013) using the Climate Forecast System Reanalysis (CFSR) data for the period 1979-2010, and by Barrett and Hameed (2017) using NCEP/NCAR reanalysis data for 1980-2013. The southward migration of the SPSH during austral summer would be attributable to a basin-wide increase in SLP around 40°S induced by changes in the latitudinal position of the ITCZ and the presence of the South American monsoon (Rodwell and Hoskins, 2001).

Longitudinal changes are also seen at seasonal scale, with maximum values of SLP located at ~98°W during austral summer (DJF) and moving eastward in austral winter (JJA) at a ~89°W on average (Table S1, Supplementary material). These values are close to those obtained by Rahn and Garreaud (2013) and Ancapichún and Garcés-Vargas (2015). The latter authors, using monthly NCEP/NCAR reanalysis data for the period 1949-2012, identified that over the past decade, the SPSH has intensified (at a rate of 1.36 hPa per decade) and shifted towards the southwest, with its maximum located at ~37°S and ~108°W during February and March, when the SPSH intensity is maximum. On the contrary, during May, when the SPSH shows its weakest intensity, it locates further north (~26°S) and closest to the continent (~86°W). However, these observations are not in agreement with results from Barrett and Hameed (2017), who reported higher SLP values during austral spring (September to November), and an eastward migration during austral summer, whereas weaker values and a westward shift are observed in austral autumn (March to May). Since both works use NCEP/NCAR reanalysis, this discrepancy could arise from the different methodologies used in each study to calculate SPSH position and/or the different periods studied.

Nevertheless, from our results it should be highlighted that, regardless of seasonality, as temperature increases, a poleward and westward shift of the maximum value of SLP is observed, following the expansion trend. This coincides with Gillett and Fyfe (2013), Rykaczewski et al. (2015) and Lu et al. (2007), who indicated that higher values of SLP would tend to move poleward in response to increased greenhouse gas concentrations.

The SPSH expansion during the CWP period is accompanied with weaker meridional winds in front of northern and central Chilean coast at annual scale and during austral summer, where this difference is more remarkable.

In austral winter, the opposite situation is developed, with an intensification of the coastal alongshore winds in northern to central Chile and a reduction of the intensity south of ~35°S (Fig. 4). This phenomenon is observed systematically in each model. This effect could be explained by the fact that the SPSH expands to mid-latitudes and shows no significant changes at subtropical latitudes, producing an enhanced meridional pressure gradient that lead a strengthening of the low-level coastal jet (Garreaud and Falvey, 2009).

Wind intensity changes are also described by Belmadani et al. (2014), who analyzed the effect of global warming on the upwelling-favorable winds along the Peruvian and Chilean coast by using the Laboratoire de Météorologie Dynamique (LMDz; Hourdin et al., 2006) global circulation model downscaled to a resolution of 0.5° x 0.5°. According to these authors, the increase in the alongshore winds from central to southern Chile is

Eliminado: fields

related to a poleward shift and/or an intensification of the maximum latitudinal pressure gradient associated with similar changes in the SPSH or the HC.

According to Garreaud and Falvey (2009), the strengthening of the alongshore wind speed will continue throughout the 21th century. This reinforcement is characterized by a marked seasonality in which the stronger meridional winds occur between 37°-41°S during austral spring-summer, and migrate to subtropical latitudes in the austral fall-winter season, as result of an important increase in SLP (2-3 hPa) developed towards the southern rim of the SPSH. The authors also stated that by the end of this century, austral spring atmospheric coastal jet events will be more frequent and longer in duration than present-day events.

These results agree with the hypothesis of Rykaczewski et al. (2015). This hypothesis postulates that the anthropogenic influence on seasonal changes and shifts of the geographic position of the major atmospheric high-pressure centers will affect the intensity of upwelling-favorable winds.

On the other hand, models fail to represent the position and variations of the upper level STJ which displaces to the north as the temperature increases (Fig. 4). This contradicts not only the general tendency of climate models of a poleward shift under the current global warming (e.g., Meehl et al., 2007; Woollings and Blackburn, 2012), but also findings from recent observations. In fact, the analysis of total ozone measurements from satellite and sounding data discussed by Hudson (2012) estimates a poleward displacement of the STJ of $3.7^{\circ} \pm 0.3$ latitude in NH, and $6.5^{\circ} \pm 0.2$ latitude in SH, between 1979 and 2010.

Changes in SPSH also affect higher latitudes. As can be seen in Fig. 4, the expansion (contraction) of the SPSH observed during relative warmer (colder) periods coincides with a southward (northward) displacement of the core of SWW. This is valid for both seasons and the annual mean of each individual model as well as the 4-model mean, except for the austral winter of model MRI-CGCM3. In addition, the SWW are also stronger (weaker) during warmer (colder) periods (not shown). Therefore, an expanded SPSH acts to 'block' the SWW belt, shifting it southward. This behavior is observed at annual and seasonal mean scales, being more pronounced during austral summer. This is in agreement with Garreaud et al. (2009), who used meteorological station and atmospheric reanalysis, and Swart et al. (2015), who considered thirty CMIP5 models and six reanalysis datasets. Garreaud et al. (2009) also pointed out that a contraction (expansion) of this wind belt occurs in parallel to southward (northward) seasonal shifts. However, since we only analyzed the position of its core, this feature cannot be observed from our results.

At longer timescales, Toggweiler et al. (2006) highlighted the general relationship between the position of the westerlies and global temperature. According to these authors, under warm conditions (e.g., the CWP), the SWW shift poleward while in cold climate periods (e.g., the Last Glacial Maximum), the westerlies move equatorward, due to an increase of sea-ice around Antarctica (Bentley et al., 2009). This northward shift could in turn 'block' the SPSH, limiting its expansion and southward displacement. A similar effect could be produced by an increase of SWW intensity as the result of a decrease in the latitudinal thermal gradient or due to an increased pressure gradient related to the differential heating between SA and South Pacific.

The southward migration, together with the increase of its core strength, experienced by the SWW during the last decades has been related to the shift to an increasingly positive phase of the SAM (e.g., Thompson et al., 2000; Thompson and Solomon, 2002; Marshall et al., 2004; Garreaud et al., 2009; Swart and Fyfe, 2012) as

Eliminado: to

Eliminado: the upper level STJ, present at annual scale and during austral winter, displaces to the north as the temperature increases, which is more evident in the annual mean (Fig. 2). This behavior can be interpreted as a contraction of the tropics in response to anthropogenic forcing, and contradicts

Eliminado: 2

response to changes in stratospheric ozone and greenhouse forcing (Thompson and Solomon, 2002; Gillett and Thompson, 2003; Shindell and Schmidt, 2004; Ihara and Kushnir, 2009; Son et al., 2010; Gillett and Parker, 2013). This confirms what was previously stated by Pittock (1978) and Aceituno et al. (1993) who proposed that the position of the SWW depends on the location of the SPSH and the circum-Antarctic low-pressure belt.

5 The trend in the SWW is also observed in several model projections for the 21st century, which highlight the tendency to a poleward shift and an intensification of the SWW related to the anthropogenic global warming (e.g., Fyfe and Saenko, 2006; Ihara and Kushnir, 2009; Kitoh et al., 2011; Chavaille et al., 2013; Bracegirdle et al., 2018).

10 Changes associated with SWW variations have already shown visible effects in southern SA, as an increase of desertification in northern Chile (Salinas and Mendieta, 2013; Ortega et al., 2019) and a notable decrease of annual precipitation from central Chile to central Patagonia (Boisier et al., 2018), exhibiting important impacts on socio-economic activities in this region. Moreover, our results suggest that consequences related to SWW changes during the next decades, not only in southern SA (e.g., Vera et al., 2006; Meehl et al., 2007) but also at global scale, for example through the release of CO₂ from the Southern Ocean to the atmosphere (e.g., 15 Menviel et al., 2018; Saunders et al., 2018), could be expected.

Summarizing, our results show that the models analyzed in this investigation are consistent among them and generally in good agreement with other models (e.g., Garreaud and Falvey, 2009; Kitoh et al., 2011; Belmadani et al., 2014; Swart et al., 2015) and different sets of reanalysis data (e.g., Barrett and Hameed, 2007; Garreaud et al., 2009; Rahn and Garreaud, 2013; Ancapichún and Garcés-Vargas, 2015). A comparison of our results 20 with these previous works indicates that models that we have considered represent well the SPSH behavior as well as alongshore winds and SWW changes. However, simulations are not in agreement with the position of STJ and its variations. The possible causes of this discrepancy will be explored in the next section.

3.4 The link between the ITCZ and SPSH changes

25 Different paleoclimate studies have linked changes of the ITCZ-SPSH system to variations in the SPSH (Sifeddine et al., 2008, Gutiérrez et al., 2009, Briceño-Zuluaga et al., 2016, Fleury et al., 2015, Flores-Aqueveque et al., 2015). To evaluate the role of the ITCZ on SPSH changes, we analyze the position of the ITCZ during the three considered periods. Figure 4 shows that, in general, model simulations represent an ITCZ that locates north of the equator (~10°N) during austral winter (JJA), and moves southward (~5°S) in austral summer (DJF). This range is very similar to the observed present-day conditions, in which ITCZ displaces 30 seasonally from 9°N to 2°S (Denniston et al., 2016). However, according to Schneider et al. (2014), the ITCZ moves between 9°N in austral winter (JJA) and 2°N in austral summer (DJF) over the central Atlantic and Pacific oceans, suggesting that the considered models locates the ITCZ further south of its present-day position, especially in austral summer. In fact, the bias of global models representing the ITCZ and its different causes has been widely discussed in literature (e.g., Hwang and Frierson, 2013; Hirota and Takayabu, 2013; Colas et 35 al., 2012; Gordon et al., 2000; Ma et al., 1996).

Eliminado: to

Eliminado: 2

In Fig. 4, it can also be observed that, generally, the ITCZ shifts southward over the Pacific as temperature increases, at annual and seasonal scale, being this difference more marked during austral summer. Over the Atlantic, in general, the opposite occurs: the ITCZ migrates slightly to the north during the 21C, but it does not exhibit significant differences between the LIA and the CWP. Furthermore, we analyze the meridional mass stream function (as a proxy of the HC strength) and the zonal mean precipitation during the LIA and the CWP (Fig. 5). Our results show a southern branch of the HC that intensifies during the cold period (LIA) and weakens in the current period at annual and seasonal scale (Fig. 5). In addition, no evident shifts of the northern and southern HC branches are observed between both periods. Generally, the same is observed in all models, however changes in the magnitude of the intensity can be observed among them (Fig. 2S).

Eliminado: 2

Eliminado:

A comparison of the intensity of precipitation rate between the LIA and the CWP indicates no significant differences between periods. However, as can be noted in both cases (Fig. 5), the maximum precipitation during the CWP is slightly higher than in the LIA. In addition, zonal winds at 200 hPa show almost no differences between the LIA and the CWP, but appears to be located southward (equatorward) during the warm (cold) period. Similar results were obtained for each individual model (Fig. 2S).

Eliminado: 3

Eliminado: 3

These results contradict the mechanism proposed by Lee et al. (2011), which states that the ITCZ moves southward and the southern branch of the HC becomes weaker, decreasing the intensity of the STJ, as a response of NH (i.e., North Atlantic) cooling. These authors indicate that a colder NH increases the north-south surface pressure inter-hemispheric gradient, driving an anomalous southward equatorial flow and shifting the annual mean position of the ITCZ southward. According to Sachs et al. (2009), this shift would have reached its southernmost position, of up to 500 km, during the LIA (1400-1850 AD).

Eliminado: 3

According to literature, the ITCZ has shown important changes during the LM. Regarding the ITCZ position, Schneider et al. (2014) stated that during the LIA, the ITCZ experienced a southward shift, explained by a cooling of the NH extratropics relative to its southern counterpart. However, this shift is not always supported by this mechanism. The same authors indicate that ITCZ migrations are modulated by ENSO. In fact, during the transition from La Niña to El Niño, or during strong El Niño events, the NH extratropics warm around 0.08°C more than SH extratropics (Hansen et al., 2010), but contrary to what should be expected, the ITCZ moves southward. Schneider et al. (2014) justify this behavior considering variations in the tropical net energy input to the atmosphere. Slight changes in the atmospheric energy flux can produce substantial ITCZ migrations, being this sensitivity one of the possible explanations for the difficulty that current climate models have in simulating the ITCZ position (Schneider et al., 2014).

On the other hand, Yan et al. (2015), based on paleohydrology records of western Pacific and climate models, proposed that during the LIA the tropical rain belt (i.e., the latitudinal range over which the ITCZ seasonally moves) contracted, instead of a meridional shift as has been described previously (e.g., Lee et al., 2011). More generally, these authors proposed that over the western Pacific, the ITCZ expands and contracts over decadal to centennial timescales in response to external forcing, rather than showing a latitudinal migration. The same is observed by the analysis of stalagmites of southern China discussed by Denniston et al. (2016), who pointed out that the latitudinal movement range of the ITCZ expanded and contracted during the last 3,000 years, in a process that operates at multidecadal to centennial scales.

Eliminado: that instead of a meridional shift, a contraction of the tropical rain belt (i.e., the latitudinal range over which the ITCZ seasonally moves) occurs during the LIA.

Reanalysis data for the 20th century also supports the idea that the ITCZ does not migrate significantly with climate changes. In this sense, D'Agostino and Lionello (2016) indicated that since 1979, the ITCZ shows no significant trend. However, they observed that the southern branch of HC migrates southward mainly during austral summer, while the northern edge shows no clear tendency. This would imply a SH STJ that shifts poleward as temperature increases, features that are not observed in Fig. 4 (which actually shows the opposite) or Fig. 5 (which shows no STJ migrations during the different periods).

Eliminado: 2

Eliminado: 3

The analysis of 21st century climate projections presented by Lu et al. (2007, 2008) and Seo et al. (2014) suggest a weakening of the HC and its poleward expansion, associated with global warming. According to the range of 21st century simulations analyzed by D'Agostino et al. (2017), the HC widens and weakens with global warming, the changes in the tropical mean temperature being the best predictor of HC variations.

Eliminado: to

In summary, our analyses indicate that the climate models considered in this study do not adequately represent the ITCZ and HC changes reported in other studies. According to Schneider et al. (2014), biases in the model representation of important features such as clouds could distort the atmospheric energy flux and account for the difficulties representing ITCZ changes. In particular, Fig. 5 shows that the four models considered in this work exhibit a double peak of maximum precipitation between 8°N and 8°S. This is observed at annual scale, when both peaks present the same amplitude (~6.7 mm/day), as well as in austral winter (JJA), when this behavior is more evident, with a main peak at 8°N, reaching ~8.5 mm/day, and a secondary maximum of ~3.8 mm/day at 6°S. Individual models show generally similar results (Fig. 2S).

Eliminado: 3

Such bias is well-known as the "double ITCZ bias". Although some studies suggest this bias has been reduced from CMIP3 to CMIP5 models (Hirota and Takayabu, 2013), it is still a systematic bias in current climate models (Hwang and Frierson, 2013). Among the different possible causes linked to this bias are a cloud deficit over the southern hemisphere (Hwang and Frierson, 2013), insufficient cooling by ocean mesoscale eddies from the upwelling region (Colas et al., 2012), warm SSTs biases in the coastal upwelling of Peru (Gordon et al., 2000), and an underestimation of stratocumulus clouds over Peru (Ma et al., 1996).

4. Concluding remark

Eliminado: s

Our results suggest important relative changes in major climatic features of the western margin of South America during the Late Holocene. In particular, according to several paleoclimate proxies of southwestern SA and four CMIP5/PMIP3 models, we infer that important differences in SPSH strength and position, alongshore winds intensity and SWW position, occurred between two of the most remarkable global climate events of the LM: the LIA and the CWP. In this sense, it should be noted that this work aims to establish a qualitative comparison between periods characterized by extreme climate conditions.

According to our results the SPSH has changed from a contracted condition during the LIA period to an expanded state, with its southern rim reaching higher latitudes during the CWP. Coinciding with these changes, coastal meridional winds appear to be stronger (weaker) south (north) of ~35° in the prevailing warm conditions (CWP). The opposite is observed during the cold period (LIA). The belt of SWW shows a poleward position in the CWP while it displays a northward shift during the LIA. These changes are in good agreement when

Eliminado: T

comparing model results with proxy evidence from southwestern SA for the LIA and the present-day climate. This is also ratified by paleoclimate reconstructions developed in other places of the SH and the tropical area of the NH. Figure 6 displays a scheme, which integrates the paleoclimate evidence and model results for extratropical latitudes, that summarizes these changes.

Eliminado: 4

5 When evaluating historical experiments against ERA-Interim reanalysis data, important differences can be observed. Reanalysis data presents a SPSH more expanded, especially during austral summer, than that represented by climate models. Reanalysis also differs in representing the present-day behavior of the STJ, which is located some degrees north of those displayed by simulations and observations. In addition, reanalysis shows biases regarding the SWW core, which is located further south when this wind belt meets the continent all year round.

10 The effects of global warming would continue impacting the South American climate. This is suggested by climate model projections, which indicate that SPSH would continue to expand throughout the 21st century. This expansion would also affect the intensity of the alongshore winds and the position and the strength of the SWW belt.

15 According to literature, all these changes seem to be related mainly to changes in the ITCZ position and the Hadley circulation, but also to extratropical atmospheric dynamics. In fact, previous studies have shown that the ITCZ moved southward relative to its mean position during the LIA, as a response of NH cooling, and has been displaced northward (and/or expands its latitudinal range of movement) in the present-day warm conditions (Fig. 6). However, the models considered in this work fail in adequately representing these features,

Eliminado: 5

20 being not consistent with theory or the paleorecord evidence. In particular, model results show a weaker southern branch of the HC during the CWP in comparison to the LIA, and show no significant changes in the Atlantic ITCZ during both periods. Biases in representing some features in models that distort the atmospheric energy flux could account for the difficulties exhibited by the considered climate models in representing correctly the ITCZ. The models analyzed here suggest that the Pacific ITCZ shifts southward as global temperature increases and the STJ changes from a southward position during the LIA to a northward location during the CWP, and continues moving to the north by the end of the 21st century, contradicting the general trend of a poleward shift of the STJ under the current global warming conditions, seen in climate models and recent observations. These unexpected results, emphasize the importance of improving the ability to simulate Southern Hemisphere circulation to produce reliable climate projections, and the need of complementary analyses to reduce uncertainties.

Eliminado: However, these models

30 Finally, our findings provide important insights about the regional impacts of the ongoing climate change in the SH, by integrating paleoclimate records of southwestern South America and global climate models. In view of the results from this work, we highlight the need to establish adequate mitigation and adaptation strategies to prevent the impacts of current and future climate change in southwestern South America.

Eliminado: results

Author contribution

V. Flores-Aqueveque and M. Rojas conceived the central idea of this manuscript. M. Rojas, C. Aguirre and P.A. Arias developed the model code and performed the simulations. V. Flores-Aqueveque carried out the paleoclimate/paleoenvironmental record review. C. González contributed with the reanalysis data. V. Flores-Aqueveque prepared the manuscript and all authors discussed the results and contributed to the final work.

Competing interest

The authors declare that they have no conflict of interest.

Data availability

GCMs and Era-Interim reanalysis data used in this paper can be freely [and openly](#) accessed on line at the following web addresses: <https://esgf-node.llnl.gov/projects/cmip5/> and <https://www.ecmwf.int/en/forecasts/datasets/reanalysis-datasets/era-interim>, respectively.

Acknowledgements

This work was partially funded by Millennium Science Initiative of the Ministry of Economy, Development and Tourism, grant “Nuclei for Paleoclimate”. Valentina Flores-Aqueveque was supported by FONDECYT grant N°1191942 and grants from Santander Universidades (Beca Iberoamérica) and Alianza del Pacífico. Maisa Rojas was supported by FONDECYT N°1171773. Catalina Aguirre acknowledges support by CONICYT through PAI program N° 79150062 and FONDECYT grant N°11171163. Paola A. Arias was funded by grant PRG2017-16264 provided by Comité para el Desarrollo de la Investigación (CODI) at Universidad de Antioquia, Colombia. [Authors also want to thank the editor and two anonymous reviewers for their suggestions and constructive comments, which helped us to improve the manuscript.](#)

References

Aceituno, P., Fuenzalida, H. and Rosenblüth, B.: Climate along the extratropical west coast of South America. In Mooney, H.A., Fuentes, E.R. and Kronberg, B.I., editors, Earth system responses to global change. Academic Press, 61–69, 1993.

Aguirre, C., García-Loyola, S., Testa, G., Silva, D., and Fariás, L.: Insight into anthropogenic forcing on coastal upwelling off south-central Chile. *Elem Sci Anth*, 6: 59. DOI: <https://doi.org/10.1525/elementa.314>, 2018.

Allen, M.R., Dube, O.P., Solecki, W., Aragón-Durand, F., Cramer, W., Humphreys, S., Kainuma, M., Kala, J., Mahowald, N., Mulugetta, Y., Perez, R., Wairiu, M. and Zickfeld, K.: Framing and Context. In: Global Warming of 1.5°C. An IPCC Special Report on the impacts of global warming of 1.5°C above pre-

Con formato

- industrial levels and related global greenhouse gas emission pathways, in the context of strengthening the global response to the threat of climate change, sustainable development, and efforts to eradicate poverty [Masson-Delmotte, V., P. Zhai, H.-O. Pörtner, D. Roberts, J. Skea, P.R. Shukla, A. Pirani, W. Moufouma-Okia, C. Péan, R. Pidcock, S. Connors, J.B.R. Matthews, Y. Chen, X. Zhou, M.I. Gomis, E. Lonnoy, T. Maycock, M. Tignor, and T. Waterfield (eds.)], 2018.
- 5 Anabalón, V., Morales, C.E., Gonzalez, H.E., Menschel, E., Schneider, W., Hormazabal, S., Valencia, L. and Escribano, R.: Micro-phytoplankton community structure in the coastal upwelling zone off Concepción (central Chile): Annual and inter-annual fluctuations in a highly dynamic environment. *Prog. Oceanogr.*, 149, pp. 174-188, 2016.
- 10 Ancapichún, S. and Garcés-Vargas, J.: Variability of the Southeast Pacific Subtropical Anticyclone and its impact on sea surface temperature off northcentral Chile. *Ciencias Marinas* 41 (1). DOI: <http://dx.doi.org/10.7773/cm.v41i1.2338>, 2015.
- Barrett, B.S. and Hameed, S.: Seasonal Variability in Precipitation in Central and Southern Chile: Modulation by the South Pacific High. *Journal of Climate*, 30(1), 55-69, 2017.
- 15 Bentley, M.J., Hodgson, D.A., Smith, J.A., O Cofaigh, C., Domack, E.W., Larter, R.D., Roberts, S.J., Brachfeld, S., Leventer, A., Hjort, C., Hillenbrand, C.-D. and Evans, J.: Mechanisms of Holocene palaeoenvironmental change in the Antarctic Peninsula region. *Holocene* 19, 51-69, 2009.
- Belmadani, A., Echevin, V., Codron, F., Takahashi, K. and Junquas, C.: What dynamics drive future wind scenarios for coastal upwelling off Peru and Chile?, *Clim Dynam* 43: 1893–1914. DOI: 10.1007/s00382-013-2015-2, 2014.
- 20 Bertrand, S., Hughen, K., Sepúlveda, J. and Pantoja, S.: Late Holocene covariability of the southern westerlies and sea surface temperature in northern Chilean Patagonia. *Quaternary Science Reviews* 105, 195–208, 2014.
- Boisier, J.P., Rondanelli, R., Garreaud, R. and Muñoz, F.: Anthropogenic and natural contributions to the Southeast Pacific precipitation decline and recent megadrought in central Chile. *Geophys Res Lett* 43: 413–421. doi: [10.1002/2015GL067265](https://doi.org/10.1002/2015GL067265), 2016.
- 25 Boisier, J.P., Alvarez-Garretón, C., Cordero, R.R., Damiani, A., Gallardo, L., Garreaud, R.D., Lambert, F., Ramallo, C., Rojas, M. and Rondanelli, R.: Anthropogenic drying in central-southern Chile evidenced by long-term observations and climate model simulations. *Elem Sci Anth*, 6(1), p.74. doi: <http://doi.org/10.1525/elementa.328>, 2018.
- 30 Bracegirdle, T. J., Hyder, P. and Holmes, C. R.: CMIP5 diversity in southern westerly jet projections related to historical sea ice area: Strong link to strengthening and weak link to shift. *J. Clim.* 31, 195–211, 2018.
- Bradley, R.S. and Jones, P.D.: ‘Little Ice Age’ Summer Temperature Variations: their Nature and Relevance to Recent Global Warming Trends, *Holocene*, 3, 367–376, 1993.
- 35 Briceño-Zuluaga, F.J., Sifeddine, A., Caquineau, S., Cardich, J., Salvatelli, R., Gutierrez, D., Ortlieb, L., Velasco, F., Boucher H. and Machado, C.: Terrigenous material supply to the Peruvian central continental shelf (Pisco, 14°S) during the last 1000 years: Paleoclimatic implications, *Climate of the Past* Volume 12, Issue 3, 787-798, 2016.

- Briffa, K.R., Jones, P.D., Schweingruber, F.H., Shiyatov, S.G. and Cook, E.R.: Unusual 20th-century summer warmth in a 1,000-year temperature record from Siberia, *Nature*, 376, pp. 156-159, 1995.
- Briffa, K.R.: Annual climate variability in the Holocene: interpreting the message of ancient trees, *Quaternary Science Reviews* 19, 87-105, 2000.
- 5 Browne, I.M, Moy, C.M., Riesselman, C.R., Neil, H.L., Curtin, L.G., Gorman, A.R. and Wilson, G.S.: Late Holocene intensification of the westerly winds at the subantarctic Auckland Islands (51° S), *New Zealand, Clim. Past*, 13, 1301- 1322, <https://doi.org/10.5194/cp-13-1301-2017>, 2017.
- Cabré, M.F., Solman, S. and Núñez, M.: Regional climate change scenarios over southern South America for future climate (2080-2099) using the MM5 Model. Mean, interannual variability and uncertainties.
- 10 *Atmósfera* 29(1), 35-60. doi: 10.20937/ATM.2016.29.01.04, 2016.
- Cane, M.A.: Climate change – a role for the tropical Pacific. *Science* 282 (5386), 60–61, 1998.
- Cane, M.A.: The evolution of El Niño, past and future. *Earth and Planetary Science Letters* 230, 227–240, 2005.
- Chambers, F.M., Brain, S.A., Mauquoy, D., McCarroll, J. and Daley, T.: The ‘Little Ice Age’ in the Southern Hemisphere in the context of the last 3000 years: Peat-based proxy-climate data from Tierra del Fuego.
- 15 *The Holocene* 24: 1649–1656, 2014.
- Chavaillaz, Y., Codron F. and Kageyama, M.: Southern westerlies in LGM and future (RCP4.5) climates. *Climate of the Past* 9, 5117-524, 2013.
- Colas F., McWilliams, J.C., Capet, X. and Kurian, J.: Heat balance and eddies in the Peru-Chile current system. *Climate dynamics* 39(1-2): 509-529, 2012.
- 20 Croquette, M., Eldin, G., Grados, C. and Tamayo, M.: On differences in satellite wind products and their effects in estimating coastal upwelling processes in the south-east Pacific. *Geophys. Res. Lett.* 34(11). <http://dx.doi.org/10.1029/2006GL027538>, 2007.
- Crowley, T.J. and Lowery, T.S.: How warm was the medieval warm period?, *Ambio*, 29, 51 – 54, 2000.
- D’Agostino, R. and Lionello, P.: Evidence of global warming impact on the evolution of the Hadley Circulation in ECMWF centennial reanalyses. *Clim. Dyn.*, Volume 48, Issue 9-10, 3047-3060, 2016.
- 25 D’Agostino, R., Lionello, P., Adam, O. and Schneider, T.: Factors controlling Hadley circulation changes from the Last Glacial Maximum to the end of the 21st century, *Geophys. Res. Lett.*, 44, 8585–8591, doi:10.1002/2017GL074533, 2017.
- Dee, D.P., Uppala, S.M., Simmons, A.J., Berrisford, P., Poli, P., Kobayashi, S., Andrae, U., Balmaseda, M.A., Balsamo, G., Bauer, P., Bechtold, P., Beljaars, A.C.M., van de Berg, L., Bidlot, J., Bormann, N., Delsol, C., Dragani, R., Fuentes, M., Geer, A.J., Haimberger, L., Healy, S.B., Hersbach, H., Holm, E.V., Isaksen, L., Källberg, P., Köhler, M., Matricardi, M., McNally, A.P., Monge-Sanz, B.M., Morcrette, J.-J., Park, B.-K., Peubey, C., de Rosnay, P., Tavolato, C., Thepaut, J.-N. and Vitart, F.: The ERA-Interim reanalysis: configuration and performance of the data assimilation system. *Q. J. R. Meteorol. Soc.* 137: 553–597. DOI:10.1002/qj.828, 2011.
- 35 Deng, W., Liu, X., Chen, X., Wei, G., Zeng, T., Xie, L. and Zhao, J.-X.: A comparison of the climates of the Medieval Climate Anomaly, Little Ice Age, and Current Warm Period reconstructed using coral

- records from the northern South China Sea, *J. Geophys. Res. Oceans*, 122, 264–275, doi:10.1002/2016JC012458, 2017.
- Denniston, R.F., Ummerhofer, C.C., Wanamaker Jr., A.D., Lachniet, M.S., Villarini, G., Asmerom, Y., Polyak, V.J., Passaro, K.J., Cugley, J., Woods, D. and Humphreys, W.F.: Expansion and Contraction of the Indo-Pacific Tropical Rain Belt over the Last Three Millennia, *Sci Rep.* 6: 34485. doi: 10.1038/srep34485, 2016.
- 5 Dettinger, M.D., Battisti, D.S., Garreaud, R.D., McCabe, G.J., and Bitz, C.M.: Interhemispheric effects of interannual and decadal ENSO-like climate variations on the Americas, in V. Markgraf (ed.), *Interhemispheric climate linkages: Present and Past Climates in the Americas and their Societal Effects*: Academic Press, 1–16, 2000.
- 10 Díaz, L.B. and Vera, C.: South American precipitation changes simulated by PMIP3/CMIP5 models during the Little Ice Age and the recent global warming period, *International Journal of Climatology*, 1–13, 2018.
- Falvey, M. and Garreaud, R.: Regional cooling in a warming world: Recent temperature trends in the SE Pacific and along the west coast of subtropical South America (1979–2006). *J. Geophys. Res.*, 114, D04102, doi:10.1029/2008JD010519, 2009.
- 15 Fleury, S., Martinez, P., Crosta, X., Charlier, K., Billy, I., Hanquiez, V., Blanz, T., and Schneider, R.R.: Pervasive multidecadal variations in productivity within the Peruvian Upwelling System over the last millennium, *Quat. Sci. Rev.*, 125, 78–90, doi:10.1016/j.quascirev.2015.08.006, 2015.
- Flores-Aqueveque, V., Alfaro, S., Vargas, G., Rutllant, J.A. and Caquineau, S.: Aeolian particles in marine cores as a tool for quantitative high-resolution reconstruction of upwelling favorable winds along coastal Atacama Desert, Northern Chile, *Progress in Oceanography*, 134, 244–255, 2015.
- 20 Folland, C.K., Rayner, N.A., Brown, S.J., Smith, T.M., Shen, S.S., Parker, D.E., Macadam, I., Jones, P.D., Jones, R.N., Nicholls, N. and Sexton, D.M.H.: Global temperature change and its uncertainties since 1861. *Geophys. Res. Lett.*, Vol. 28, No. 13, 2621–2624, 2001.
- 25 Fuenzalida, H.: *Climatología de Chile*, Publicación interna, Departamento de Geofísica, Univ. de Chile, 73 pp, 1971.
- Fyfe, J.C. and Saenko, O.A.: Simulated changes in the extratropical Southern Hemisphere winds and currents. *Geophys. Res. Lett.*, 33, L06701, doi:10.1029/2005GL025332, 2006.
- 30 Garreaud, R.D. and Battisti, D.S.: Interannual (ENSO) and interdecadal (ENSO-like) variability in the Southern Hemisphere tropospheric circulation. *Journal of Climate* 2, 2113–2123, 1999.
- Garreaud, R. and Falvey, M.: The coastal winds off western subtropical South America in future climate scenarios, *Int. J. Climatol.* 29: 543–554, 2009.
- Garreaud, R.N., Vuille, M., Compagnucci, R. and Matengo, J.: Present-day South American climate. *Palaeogeography, Palaeoclimatology, Palaeoecology* 281, 180–195, 2009.
- 35 Garreaud, R., Lopez, P., Minvielle, M. and Rojas, M.: Large-scale control on the Patagonian climate, *Journal of Climate* 26: 215–230, 2013.
- Gillet, N. and Thompson, D.: Simulation of Recent Southern Hemisphere Climate Change. *Science*, Vol. 302, Issue 5643, pp. 273–275 DOI: 10.1126/science.1087440, 2003.

- Gillett, N.P. and Fyfe, J.C.: Annular mode changes in the CMIP5 simulations, *Geophys. Res. Lett.*, 40, 1189-1193, doi:10.1002/grl.50249, 2013.
- Gillett, N. P. and Parker, D.E.: Attribution of observed sea level pressure trends to greenhouse gas, aerosol, and ozone changes. *Geophys. Res. Lett.*, 40, 2302–2306, doi:10.1002/grl.50500, 2013.
- 5 González-Reyes, A., Bravo, C., Vuille, M., Jacques-Coper, M., Rojas, M., Sagredo, E. and McPhee, J.: Glacier equilibrium line altitude variations during the “Little Ice Age” in the Mediterranean Andes (30° - 37°S), submitted to *Climate of the Past*.
- Gordon C.T., Rosati, A., and Gudgel, R.: Tropical sensitivity of a coupled model to specified ISCCP low clouds. *Journal of Climate* 13(13): 2239-2260, 2000.
- 10 Grotjahn, R.: Remote weather associated with South Pacific Subtropical sea-level High properties. *Int. J. Climatol.* 24: 823–839, 2004.
- Gutiérrez, D., Sifeddine, A., Field, D. B., Ortlieb, L., Vargas, G., Chávez, F. P., Velazco, F., Ferreira, V., Tapia, P., Salvatelli, R., Boucher, H., Morales, M. C., Valdés, J., Reyss, J.-L., Campusano, A., Boussafir, M., Mandeng-Yogo, M., García, M., and Baumgartner, T.: Rapid reorganization in ocean biogeochemistry off Peru towards the end of the Little Ice Age, *Biogeosciences*, 6, 835–848, doi:10.5194/bg-6-835-2009, 2009.
- 15 Hansen, J., Ruedy, R., Sato, M. and Lo, K.: Global surface temperature change. *Rev. Geophys.* 48, RG4004, 2010.
- Hartmann, D.L., Klein Tank, A.M.G., Rusticucci, M., Alexander, L.V., Brönnimann, S., Charabi, Y., Dentener, F.J., Dlugokencky, E.J., Easterling, D.R., Kaplan, A., Soden, B.J., Thorne, P.W., Wild, M. and Zhai, P.M.: Observations: Atmosphere and Surface. In: *Climate Change 2013: The Physical Science Basis. Contribution of Working Group I to the Fifth Assessment Report of the Intergovernmental Panel on Climate Change* [Stocker, T.F., D. Qin, G.-K. Plattner, M. Tignor, S.K. Allen, J. Boschung, A. Nauels, Y. Xia, V. Bex and P.M. Midgley (eds.)]. Cambridge University Press, Cambridge, United Kingdom and New York, NY, USA, 2013.
- 25 Haug, G. H., Hughen, K. A., Sigman, D. M., Peterson, L. C. and Rohl, U.: Southward Migration of the Intertropical Convergence Zone through the Holocene, *Science*, 293, 1304–1307, doi:10.1126/science.1059725, 2001.
- Held, I.M. and Hou, A.Y.: Nonlinear axially symmetric circulations in a nearly inviscid atmosphere. *J. Atmos. Sci.* 37, 515-533, 1980.
- 30 Hirota, N., and Takayabu, Y. N.: Reproducibility of precipitation distribution over the tropical oceans in CMIP5 multi-climate models compared to CMIP3, *Climate Dynamics*, doi 10.1007/s00382-013-1839-0, 1980.
- Hourdin, F., Musat, I., Bony, S., Braconnot, P., Codron, F., Dufresne, J.-L., Fairhead, L., Filiberti, M.-A., Friedlingstein, P., Grandpeix, J.-I., Krinner, G., LeVan, P., Li, Z.X. and Lott, F.: The LMDZ4 general circulation model: climate performance and sensitivity to parametrized physics with emphasis on tropical convection. *Clim Dyn* 27(7–8): 787–813. doi:10.1007/s00382-006-0158-0, 2006.
- 35 Hudson, R.D.: Measurements of the movement of the jet streams at mid-latitudes, in the Northern and Southern Hemispheres, 1979 to 2010. *Atmos. Chem. Phys.*, 12, 7797–7808, 2012.

- Hwang, Y.T. and Frierson, D.M.: Link between the double-Intertropical Convergence Zone problem and cloud biases over the Southern Ocean. *Proceedings of the National Academy of Sciences* 110(13): 4935-4940, 2013.
- Ihara, C., and Kushnir, Y.: Change of mean midlatitude westerlies in 21st century climate simulations, *Geophys. Res. Lett.*, 36, L13701, doi:10.1029/2009GL037674, 2013.
- Jenny, B., Valero-Garcés, B.L., Urrutia, R., Kelts, K., Veit, H., Appleby, P.G. and Geyh, M.: Moisture changes and fluctuations of the Westerlies in Mediterranean Central Chile during the last 2000 years: the Laguna Aculeo record (33°50'S). *Quat. Int.* 87, 3-18, 2002.
- Johnson, T.C., Barry, S.L., Chan, Y. and Wilkinson, P.: Decadal record of climate variability spanning the past 700 yr in the Southern Tropics of East Africa. *Geology* 29, 83 – 86, 2001.
- Jones, P.D., Briffa, K.R., Barnett, T.P. and Tett, S.F.B.: High-resolution palaeoclimatic records for the last millennium: interpretation, integration and comparison with General Circulation Model control run temperatures. *The Holocene* 8, 467-473, 1998.
- Jones, P.D., Osborn, T.J. and Briffa, K.R.: The evolution of climate over the last millennium, *Science*, 292, 662–667, 2001.
- Jones, P.D. and Mann, M.E.: Climate Over Past Millennia, *Reviews of Geophysics*, 42, RG2002, doi: 10.1029/2003RG000143, 2004.
- Kitoh, A., Kusunoki, S. and Nakaegawa, T.: Climate change projections over South America in the late 21st century with the 20 and 60 km mesh Meteorological Research Institute atmospheric general circulation model (MRI-AGCM), *J. Geophys. Res.*, 116, D06105, doi:10.1029/2010JD014920, 2011.
- Koch, J.: Little Ice Age and recent glacier advances in the Cordillera Darwin, Tierra del Fuego, Chile, *Anales Instituto Patagonia (Chile)*, Vol. 43(1): 127-136, 2015.
- Koch, J. and Kilian, R.: ‘Little Ice Age’ glacier fluctuations, Gran Campo Nevado, southernmost Chile. *The Holocene*, 15(1), 20–28, 2005.
- Koffman, B.G., Kreuz, K.J., Breton, D.J., Kane, E.J., Winski, D.A., Birkel, S.D., Kurbatov, A.V. and Handley, M.J.: Centennial-scale variability of the Southern Hemisphere westerly wind belt in the eastern Pacific over the past two millennia, *Clim. Past*, 10, 1125–1144, 2014.
- Lamy, F., Hebbeln, D., Röhl, U. and Wefer, G.: Holocene rainfall variability in southern Chile: a marine record of latitudinal shifts of the Southern Westerlies. *Earth and Planetary Science Letters*, 185(3-4), 369-382, 2001.
- Lee, S-Y., Chiang, J.C.H., Matsumoto, K. and Tokos, K.S.: Southern Ocean wind response to North Atlantic cooling and the rise in atmospheric CO₂: Modeling perspective and paleoceanographic implications. *Paleoceanography*, 26, PA1214, doi:10.1029/2010PA002004, 2011.
- Levitus, S., Antonov, J.I., Boyer, T.P. and Stephens, C.: Warming of the world ocean. *Science* 287, 2225–2229, 2000.
- Lu, J., Vecchi, G.A. and Reichler, T.: Expansion of the Hadley cell under global warming, *Geophys. Res. Lett.*, 34, L06805, doi:10.1029/2006GL028443, 2007.

- Lu, J., Chen, G. and Frierson, D.M.: Response of the zonal mean atmospheric circulation to El Niño versus global warming, *J. Clim.*, 21(22), 5835–5851, 2008.
- Ma, C.C., Mechoso, C.R., Robertson, A.W. and Arakawa, A.: Peruvian stratus clouds and the tropical Pacific circulation: A coupled ocean-atmosphere GCM study. *Journal of Climate* 9(7): 1635-1645, 1996.
- 5 Mann, M.E., Bradley, R.S. and Hughes, M. K.: Northern Hemisphere Temperatures during the Past Millennium: Inferences, Uncertainties, and Limitations, *Geophys. Res. Lett.*, 26, 759–762, 1999.
- Mann, M.E.: Little Ice Age, in *Encyclopedia of Global Environmental Change*, edited by M. C. MacCracken and J. S. Perry, pp. 504 – 509, John Wiley, Chichester, U.K., 2002.
- Mann, M.E., Ammann, C.M., Bradley, R.S., Briffa, K.R., Crowley, T.J., Hughes, M.K., Jones, P.D.,
10 Oppenheimer, M., Osborn, T.J., Overpeck, J.T., Rutherford, S., Trenberth, K.E. and Wigley, T.M.L.: On Past Temperatures and Anomalous Late 20th Century Warmth, *Eos*, 84, 256-258, 2003.
- Mantua, N.J., Hare, S.R., Zhang, Y., Wallace, J.M. and Francis, R.C.: A Pacific interdecadal climate oscillation with impacts on salmon production. *Bulletin of the American Meteorological Society* 78, 1069–1079, 1997.
- 15 Mantua, N.J. and Hare, S.R.: The Pacific Decadal Oscillation, *Journal of Oceanography* 58: 35, 2002.
- Marcott, S.A., Shakun, J.D., Clark, P.U. and Mix, A.C.: A reconstruction of regional and global temperature for the past 11,300 years. *Science*, Vol. 339, Issue 6124, pp. 1198-1201, DOI: 10.1126/science.1228026, 2013.
- Marshall, G.J., Stott, P.A., Turner, J., Connolley, W.M., King, J.C. and Lachlan-Cope, T.A.: Causes of
20 exceptional atmospheric circulation changes in the Southern Hemisphere. *Geophys. Res. Lett.*, 31.L14205, doi:10.1029/2004GL019952, 2004.
- Masiokas, M., Rivera, A., Espizua, L.E., Villalba, R., Delgado, S. and Aravena, J.C.: Glacier fluctuations in extratropical South America during the past 1000 years, *Palaeogeography, Palaeoclimatology, Palaeoecology* 281, 242–268, 2009.
- 25 Meehl G., Tebaldi C., Teng H. and Peterson T.: Current and future U.S. weather extremes and El Niño. *Geophysical Research Letters*, VOL. 34, L20704, doi:10.1029/2007GL031027, 2007.
- Menviel, L., Spence, P., Yu, J., Chamberlain, M.A., Matear, R.J., Meissner, K.J. and England, M.H.: Southern Hemisphere westerlies as a driver of the early deglacial atmospheric CO₂ rise. *Nature Communications*, volume 9, article number: 2503, 2018.
- 30 Moreno, P.I., François, J.P., Villa-Martínez, R. and Moy, C.M.: Millennial-scale variability in Southern Hemisphere westerly wind activity over the last 5000 years in SW Patagonia, *Quaternary Science Reviews* 28(1): 25-38, 2009.
- Moreno, P.I., Vilanova, I., Villa-Martínez, R., Garreaud, R.D., Rojas, M. and De Pol-Holz, R.: Southern
35 Annular Mode-like changes in southwestern Patagonia at centennial timescales over the last three millennia. *Nature Communications* 5: 4375, 2014.
- Moy, C.M., Dunbar, R.B., Moreno, P.I., François, J.P., Villa-Martínez, R., Mucciarone, D.M., Guilderson, T.O. and Garreaud, R.: Isotopic evidence for hydrologic change related to the westerlies in SW Patagonia, Chile, during the last millennium. *Quaternary Science Reviews* 27(13): 1335–1349, 2008.

- Moy, C.M., Moreno, P., Dunbar, R., Kaplan, M., François, J.P., Villalba, R. and Haberzettl, T.: Climate Change in Southern South America During the Last Two Millennia, in: F. Vimeux et al. (eds.), Past Climate Variability in South America and Surrounding Regions, *Developments in Paleoenvironmental Research* 14, pp 353-393, 2009.
- 5 Neukom, R., Gergis, J., Karoly, D., Wanner, H., Curran, M., Elbert, J., González-Rouco, F., Linsley, B., Moy, A.D., Mundo, I.A., Raible, C.C., Steig, E.J., Van Ommen, T., Vance, T., Villalba, R., Zinke, J. and Frank, D.: Inter-hemispheric temperature variability over the past millennium, *Nature Climate Change*, 4, 362–367, doi:10.1038/NCLIMATE2174, 2014.
- Núñez, M.N., Solman, S.A. and Cabré, M.F.: Regional climate change experiments over southern South America. II: Climate change scenarios in the late twenty-first century. *Clim. Dynam.*, 32 (2008), pp. 1081-1095, 2008.
- 10 Ortega, C., Vargas, G., Rojas, M., Rutllant, J.A., Muñoz, P., Lange, C.B., Pantoja, S., Dezileau, L. and Ortlieb, L.: Extreme ENSO-driven torrential rainfalls at the southern edge of the Atacama Desert during the Late Holocene and their projection into the 21st century, *Global and Planetary Change*, <https://doi.org/10.1016/j.gloplacha.2019.02.011>, 2019.
- 15 Osborn, T. J. and Briffa, K. R.: The spatial extent of 20th-century warmth in the context of the past 1200 years, *Science*, 311, 841– 844, 2006.
- PAGES2k Consortium: Continental-scale temperature variability during the past two millennia, *Nat. Geosci.*, 6, 339–346, doi:10.1038/NGEO1797, 2013.
- 20 PAGES2k Consortium: A global multiproxy database for temperature reconstructions of the Common Era. *Sci. Data* 4:170088 doi: 10.1038/sdata.2017.88, 2017.
- [PAGES2k Consortium: Consistent multidecadal variability in global temperature reconstructions and simulations over the Common Era, *Nature Geosciences*, 12, 643–649, 2019.](#)
- Peterson, L.C. and Haug, G.H.: Variability in the mean latitude of the Atlantic Intertropical Convergence Zone as recorded by riverine input of sediments to the Cariaco Basin (Venezuela), *Palaeogeography, Palaeoclimatology, Palaeoecology* 234, 97 – 113, 2006.
- 25 Pittock, A.B.: *Climatic change and variability – a southern perspective*. Cambridge University Press, pp. 455, 1978.
- Pizarro, O., Hormazábal, S., González, A. and Yáñez, E.: Variabilidad del viento, nivel del mar y temperatura en la costa norte de Chile. *Investigaciones Marinas, Valparaíso* 22: 83-101, 1994.
- 30 Quintana, J.M. and Aceituno, P.: Changes in the rainfall regime along the extratropical west coast of South America (Chile): 30–43° S. *Atmosfera* 25(1): 1–22, 2012.
- Rahn, D.A. and Garreaud, R.D.: A synoptic climatology of the near-surface wind along the west coast of South America. *Int. J. Climatol.* 34: 780–792. DOI: <https://doi.org/10.1002/joc.3724>, 2013.
- 35 Rasmusen, E.M. and Wallace, J.M.: Meteorological aspects of the El Niño/Southern Oscillation. *Science*, 222, 1195-1202, 1983.
- Rodwell, M.J. and Hoskins, B.J.: Subtropical anticyclones and summer monsoons. *J. Climate*, 14, 3192–3211, doi:10.1175/1520-0442(2001)014<3192:SAASM>2.0.CO;2, 2001.

- Rojas, M., Arias, P.A., Flores-Aqueveque, V., Seth, A. and Vuille, M.: The South American monsoon variability over the Last Millennium in climate models. *Clim. Past*, 12, 1–11, www.clim-past.net/12/1/2016/doi:10.5194/cp-12-1-2016, 2016.
- Rutllant, J., Fuenzalida, H. and Aceituno, P.: Climate dynamics along the arid northern coast of Chile: the 1997–1998 Dinámica del Clima de la Región de Antofagasta (DICLIMA) experiment. *Journal of Geophysical Research – Atmospheres* 108 (D17), 4358, 2003.
- Rykaczewski, R.R., Dunne, J.P., Sydeman, W.J., García-Reyes, M., Black, B.A. and Bograd, S.J.: Poleward displacement of coastal upwelling-favorable winds in the ocean’s eastern boundary currents through the 21st century, *Geophys. Res. Lett.*, 42, 6424–6431, doi:10.1002/2015GL064694, 2015.
- Sachs, J.P., Sachse, D., Smittenberg, R.H., Zhang, Z., Battisti, D.S. and Golubic, S.: Southward movement of the Pacific intertropical convergence zone AD 1400–1850, *Nature Geoscience* volume 2, 519–525, 2009.
- Salinas, C.X. and Mendieta, J.: Mitigation and adaptation investments for desertification and climate change: an assessment of the socioeconomic return. *Mitig. Adapt Strateg. Glob. Change* 18, 659–672, 2013.
- Salvatteci, R., Gutiérrez, D., Field, D., Sifeddine, A., Ortlieb, L., Bouloubassi, I., Boussafir, M., Boucher, H., and Cetin, F.: The response of the Peruvian Upwelling Ecosystem to centennial-scale global change during the last two millennia, *Clim. Past*, 10, 715–731, doi:10.5194/cp-10-715-2014, 2014.
- Saunders K., Roberts, S., Perren, B., Butz, C., Sime, L., Davies, S., Van Nieuwenhuize, W., Grosjean, M. and Hodgson, D.: Holocene dynamics of the Southern Hemisphere westerly winds and possible links to CO2 outgassing. *Nature Geoscience*, 2018.
- Schimpf, D., Kilian, R., Kronz, A., Simon, K., Spötl, C., Worner, G., Deininger, M. and Mangini, A.: The significance of chemical, isotopic, and detrital components in three coeval stalagmites from the superhumid southernmost Andes (53°S) as high-resolution palaeo-climate proxies. *Quat. Sci. Rev.* 30, 443–459, 2011.
- Schneider, T., Bischoff, T. and Haug, G.H.: Migrations and dynamics of the intertropical convergence zone. *Nature*, 513 (7516), 45–53, 2014.
- Schneider, W., Donoso, D., Garcés-Vargas, J. and Escribano, R.: Water-column cooling and sea surface salinity increase in the upwelling region off central-south Chile driven by a poleward displacement of the South Pacific High. *Progress in Oceanography* 151, 38–48, 2017.
- Seo, K-H., Frierson, D.M. and Son, J-H.: A mechanism for future changes in Hadley circulation strength in cmip5 climate change simulations. *Geophys Res Lett* 41(14): 5251–5258, 2014.
- Sepúlveda, J., Pantoja, S., Huguen, K., Bertrand, S., Figueroa, D., Leon, T., Drenzek, N. and Lange, C.: Late Holocene sea-surface temperature and precipitation variability in northern Patagonia, Chile (Jacaf Fjord, 44°S). *Quaternary Research*. 72. 400–409. 10.1016/j.yqres.2009.06.010, 2009.
- Sifeddine, A., Gutiérrez, D., Ortlieb, L., Boucher, H., Velasco, F., Field, D., Vargas, G., Boussafir, M., Salvatteci, R., Ferreira, V., García, M., Valdés, J., Caquineau, S., Mandeng Yogo, M., Cetin, F., Solís, J., Soler, P. and Baumgartner, T.: Laminated sediments from the central Peruvian continental slope: A

- 500 year record of upwelling system productivity, terrestrial runoff and redox conditions, *Prog. Oceanogr.*, 79, 2–4, 190–197, 2008.
- Shindell, D.T. and Schmidt, G.A.: Southern Hemisphere Climate Response to Ozone Changes and Greenhouse Gas Increases. *Geophysical Research Letters*, 31, L18209. <http://dx.doi.org/10.1029/2004gl020724>, 2004.
- Schmidt, G.A., Jungclauss, J.H., Ammann, C.M., Bard, E., Braconnot, P., Crowley, T.J., Delaygue, G., Joos, F., Krivova, N. A., Muscheler, R., Otto-Bliesner, B.L., Pongratz, J., Shindell, D.T., Solanki, S.K., Steinhilber, F., and Vieira, L.E.A.: Climate forcing reconstructions for use in PMIP simulations of the last millennium (v1.0), *Geosci. Model Dev.*, 4, 33–45, doi:10.5194/gmd-4-33-2011, 2011.
- Schmidt, G.A., Jungclauss, J.H., Ammann, C.M., Bard, E., Braconnot, P., Crowley, T.J., Delaygue, G., Joos, F., Krivova, N. A., Muscheler, R., Otto-Bliesner, B.L., Pongratz, J., Shindell, D.T., Solanki, S.K., Steinhilber, F., and Vieira, L.E.A.: Climate forcing reconstructions for use in PMIP simulations of the Last Millennium (v1.1), *Geosci. Model Dev.*, 5, 185–191, doi:10.5194/gmd-5-185-2012, 2012.
- Sime, L.C., Kohfeld, K.E., Le Quéré, C., Wolff, E.W., de Boer, A.M., Graham, R.M. and Bopp, L.: Southern Hemisphere westerly wind changes during the Last Glacial Maximum: model-data comparison. *Quat. Sci. Rev.* 64, 104-120, 2013.
- Son, S.-W., Gerber, E.P., Perlwitz, J., Polvani, L. M., Gillett, N. P., Seo, K.-H., Eyring, V., Shepherd, T. G., Waugh, D., Akiyoshi, H., Austin, J., Baumgaertner, A., Bekki, S., Braesicke, P., Brühl, C., Butchart, N., Chipperfield, M.P., Cugnet, D., Dameris, M., Dhomse, S., Frith, S., Garny, H., Garcia, R., Hardiman, S.C, Jöckel, P., Lamarque, J.F., Mancini, E., Marchand, M., Michou, M., Nakamura, T., Morgenstern, O., Pitari, G., Plummer, D.A., Pyle, J., Rozanov, E., Scinocca, J.F., Shibata, K., Smale, D., Teysseière, H., Tian, W. and Yamashita, Y.: Impact of stratospheric ozone on Southern Hemisphere circulation change: A multimodel assessment, *J. Geophys. Res.*, 115, D00M07, doi:10.1029/2010JD014271, 2010.
- Swart, N.C. and Fyfe, J.C.: Observed and simulated changes in the Southern Hemisphere surface westerly wind-stress. *Geophys. Res. Lett.*, 39, L16711, doi:10.1029/2012GL052810, 2012.
- Swart, N.C., Fyfe, J.C., Gillett, N. and Marshall, G.J.: Comparing trends in the Southern Annular Mode and surface westerly jet. *Journal of Climate*, 28 (22). 8840-8859, <https://doi.org/10.1175/JCLI-D-15-0334.1>, 2015.
- Thompson, D.W.J. and Wallace, J.M.: Annular modes in the extratropical circulation. Part I: Month-to-month variability. *J. Climate*, 13, 1000-1016, 2000.
- Thompson, D.W.J., Wallace, J.M., and Hegerl, G.C.: Annular modes in the extratropical circulation. Part II: Trends. *J. Climate*, 13, 1018–1036, 2000.
- Thompson, D.W.J. and Solomon, S.: Interpretation of recent Southern Hemisphere climate change. *Science*, 296, 895–899, 2002.
- Toggweiler, J.R.: Climate change: shifting westerlies. *Science* 323 (5920), 1434, 2009.

- van Hengstum, P. J., Donnelly, J.P., Fall, P.L., Toomey, M.R., Albury, N.A. and Kakuk, B.: The intertropical convergence zone modulates intense hurricane strikes on the western North Atlantic margin. *Sci. Rep.* 6, 21728; doi: 10.1038/srep21728, 2016.
- Varma, V., Prange, M., Merkel, U., Kleinen, T., Lohmann, G., Pfeiffer, M., Renssen, H., Wagner, A., Wagner, S. and Schulz, M.: Holocene evolution of the Southern Hemisphere westerly winds in transient simulations with global climate models. *Climate of the Past* 8: 391–402, 2012.
- Vera, C., Silvestri, G., Liebmann, B. and González, P.: Climate change scenarios for seasonal precipitation in South America from IPCC-AR4 models. *Geophysical Research Letters*, 33, L13707. <https://doi.org/10.1029/2006GL025759>, 2006.
- Wang, D., Gouhier, T.C., Menge, B.A. and Ganguly, A.R.: Intensification and spatial homogenization of coastal upwelling under climate change. *Nature* 318: 390–394. doi: 10.1038/nature14235, 2015.
- Williams, L.D., and Wigley, T.M.L.: A comparison of evidence for late Holocene summer temperature variations in the Northern Hemisphere, *Quat. Res.*, 20, 286 – 307, 1983.
- Woollings, T. and Blackburn, M.: The North Atlantic jet stream under climate change and its relation to the NAO and EA patterns, *J. Clim.*, 25(3), 886–902, 2012.
- Yan, H., Wei, W., Soon, W., An, Z., Zhou, W., Liu, Z., Wang, Y. and Carter, R.M.: Dynamics of the intertropical convergence zone over the western Pacific during the Little Ice Age. *Nature Geoscience* volume 8, 315–320, 2015.
- Zhang, Y., Wallace, J.M. and Battisti, D.S.: ENSO-like interdecadal variability: 1900–1993. *Journal of Climate* 10 (5), 1004–1020, 1997.

25

30

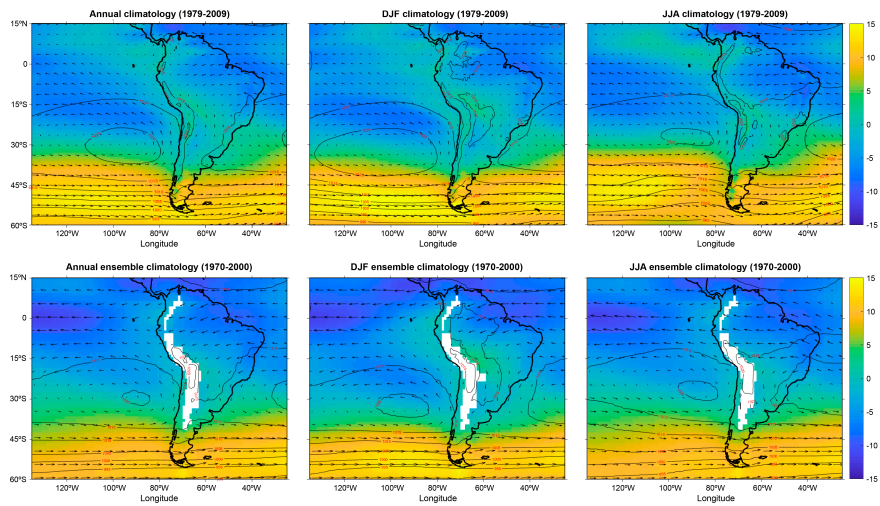


Figure 1: ERA-Interim (1970-2009) and ensemble model (1970-2000) climatology. Magnitude (color) and direction (vectors) denote the wind stress in the eastern Pacific Ocean, for the annual mean, DJF and JJA. The contours show atmospheric pressure at sea level (hPa).

5

10

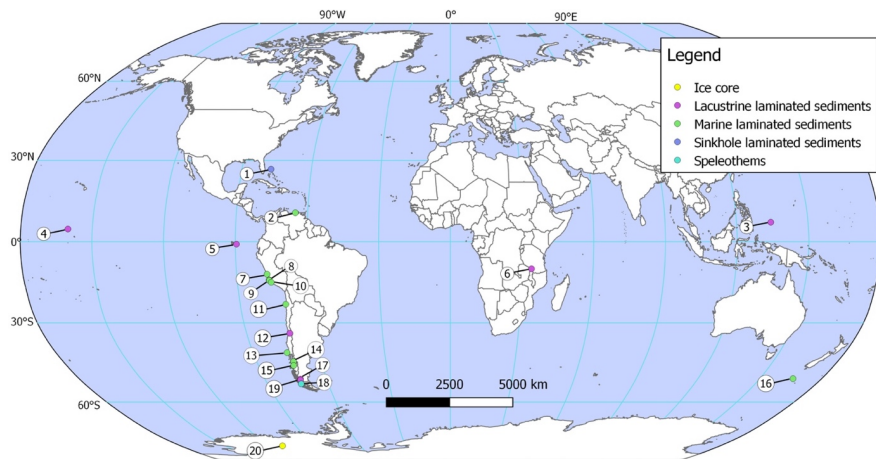


Figure 2: Global distribution of the paleoclimate and paleo-environmental records used in this work. See Table 1 for number identification.

Eliminado: 1

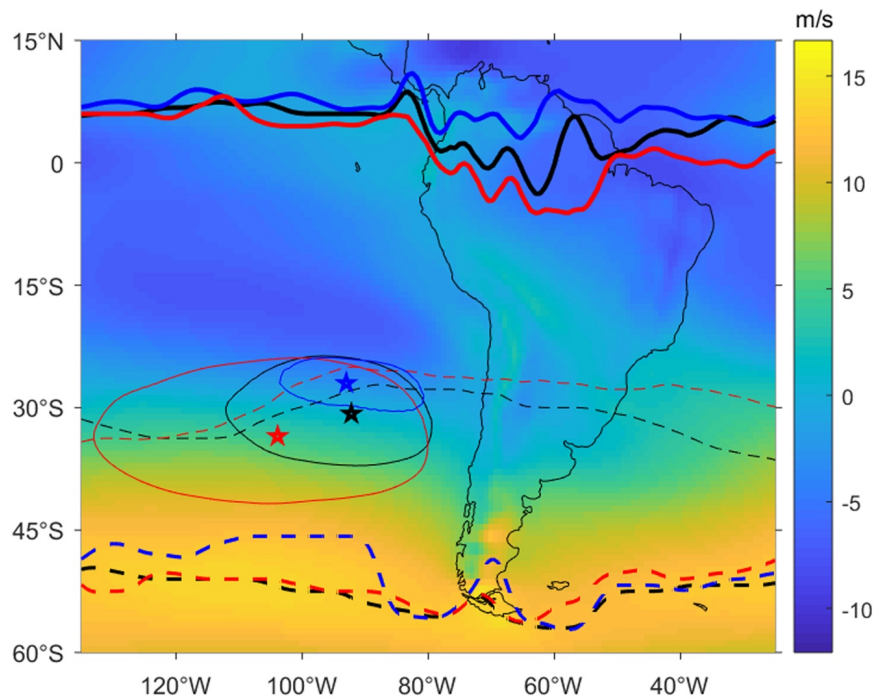


Figure 3: ERA-Interim climatology for the period 1979 to 2009 during austral winter (blue lines), austral summer (red lines) and the annual mean (black lines). Background colors show the zonal winds at 850 hPa. Thick solid lines denote the ITCZ position, thin solid lines indicate the SPSH position, stars show the position of the maximum value of SLP (SPSH center), thin dashed lines correspond to the STJ position and thick dashed lines denote the position of the SWW.

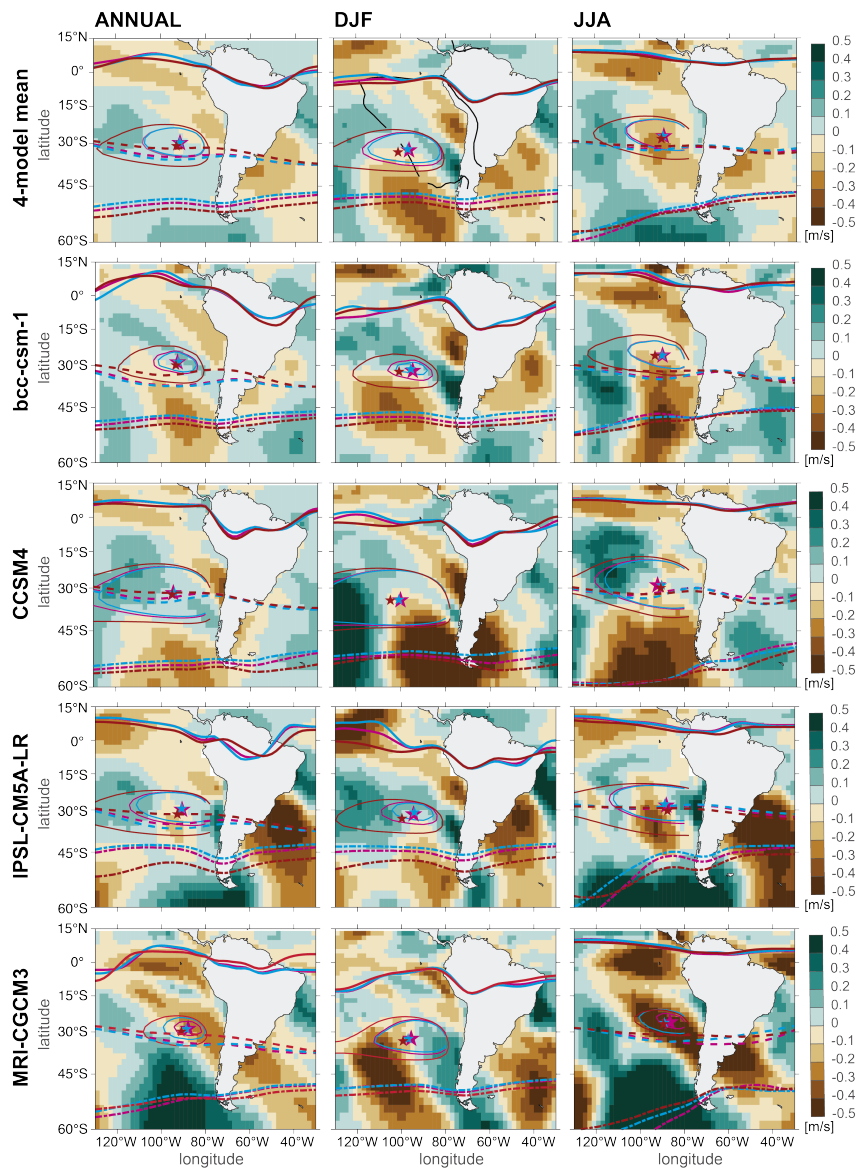


Figure 4: Annual and seasonal means of southwestern South America climate system during the LIA (cyan lines), the CWP (fuchsia lines) and 21C (dark red lines), for the 4-models mean and for each model. Background colors show the meridional winds difference LIA minus CWP. DJF: austral summer, JJA: austral winter, ITCZ: Intertropical Convergence Zone (thick solid lines), SPSH: Subtropical South Pacific High (thin solid lines), STJ: Subtropical jet (dashed lines), SWW: Southern Westerly Winds (dash-dotted lines). Stars indicate the location of maximum SLP over the SPSH (i.e. SPSH location).

Con formato: Descripción

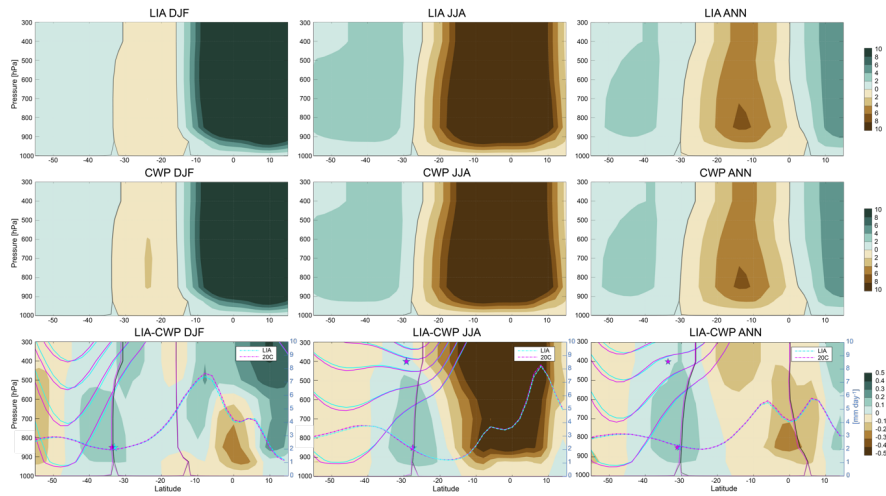


Figure 5: Mass stream function ensemble mean during the LIA, CWP and LIA-CWP (shades), for austral summer (DJF), austral winter (JJA) and annual mean (ANN). Zonal mean precipitation (dash-dotted lines), zonal mean winds (solid lines), subtropical ridge position (lower stars) and latitude of maximum zonal winds at 200 hPa (upper stars) during the LIA (cyan) and the CWP (fuchsia) are also shown.

5

Eliminado: blue

Eliminado: magenta

10

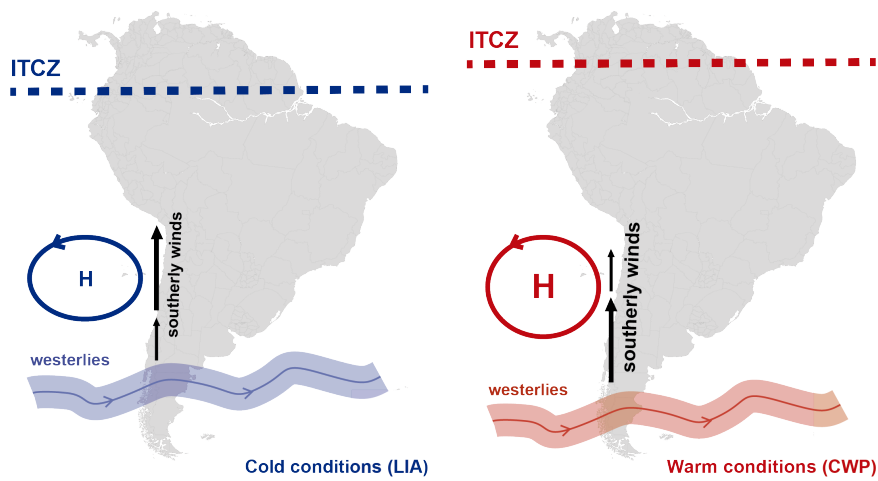


Figure 6: Schematics of the changes proposed in this work. The SPSH has changed from a contracted condition during the LIA period to an expanded state, with its southern rim reaching higher latitudes, during the CWP. Coastal meridional winds appear to be stronger (weaker), south (north) of $\sim 35^\circ$ in the prevailing warm conditions during the CWP. The opposite is observed during the cold period (LIA). The belt of SWW shows a poleward position in the CWP while it displays a northward shift during the LIA.

Eliminado: 4

5

10

15

20

Model	Horizontal resolution	LIA period	Reference
bcc-csm-1	2.8°x2.8°	1590-1790	Wu et al. (2013); Xin et al. (2013)
CCSM4	0.9°x1.25°	1710-1810	Gent et al. (2001)
IPSL-CM5A-LR	1.9°x3.75°	1630-1710	Dufresne et al. (2013)
MRI-CGCM3	1.1°x1.12°	1510-1620	Yukimoto et al. (2011)

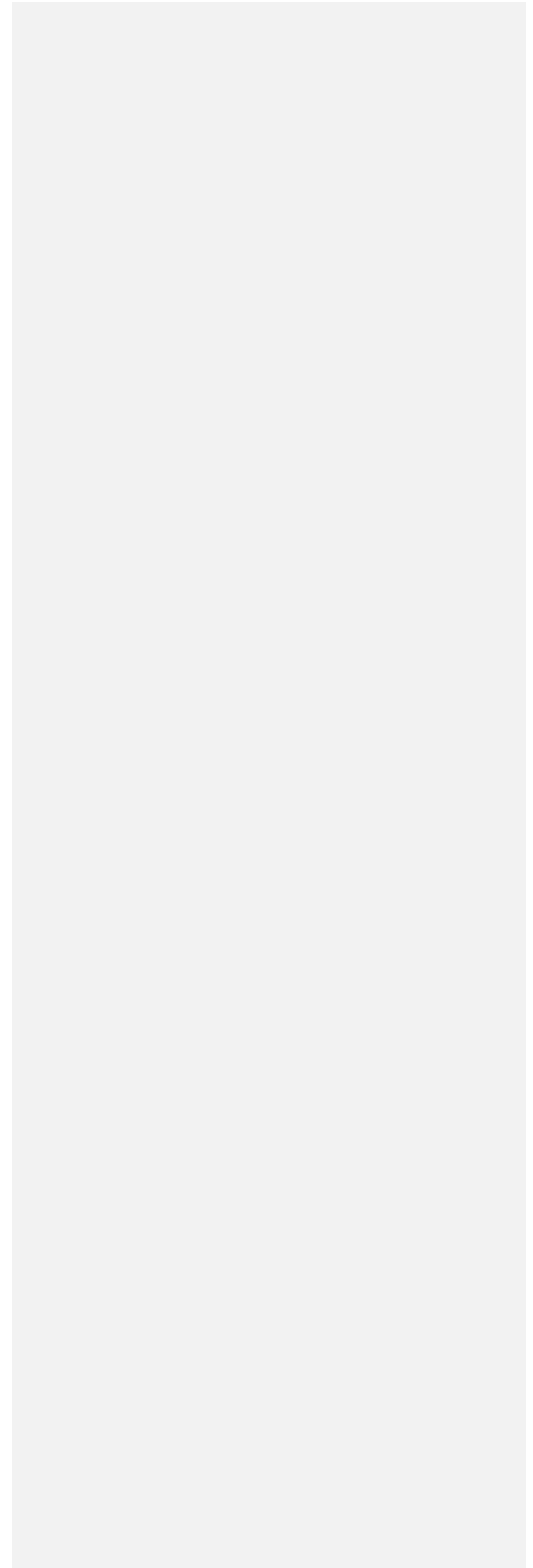
Table 1: Characteristics and definition of the LIA period for each LM model simulation used. Modified from Rojas et al. (2016).

5

10

15

20



Nº	Record type	Location	Lat (°)	Lon (°)	Spanned period	Temporal resolution	Reference
1	Sinkhole laminated sediments	Southeastern North America	26.79	-77.42	last 3000 yrs	Multi-decadal	van Hengstum et al., 2016
2	Marine laminated sediments	Northern South America	10.7	-65.2	last ~14000 yrs	Inter-annual	Haug et al., 2001; Peterson and Haug, 2006
3	Lacustrine laminated sediments	Central western Pacific Ocean	7.2	134.4	last ~5000 yrs	Inter-decadal to centennial	Sachs et al., 2009
4	Lacustrine laminated sediments	Central Pacific Ocean	4.7	-160.2	last 3200 yrs	Inter-decadal to centennial	Sachs et al., 2009
5	Lacustrine laminated sediments	Central eastern Pacific Ocean	-0.9	-89.5	last 1200 yrs	Inter-decadal to centennial	Sachs et al., 2009
6	Lacustrine laminated sediments	Eastern Africa	-10.0	34.1	last 700 yrs	Decadal	Johnson et al., 2001
7	Marine laminated sediments	Southwestern South America	-12.0	-77.2	last 700 yrs	Sub-decadal to inter-decadal	Siffedine et al., 2008; Gutiérrez et al., 2009; Bri
8	Marine laminated sediments	Southwestern South America	-14.1	-76.5	last 700 yrs	Sub-decadal to inter-decadal	Siffedine et al., 2008; Gutiérrez et al., 2009
9	Marine laminated sediments	Southwestern South America	-14.3	-76.4	last ~2000 yrs	Inter-annual to decadal	Salvatecci et al., 2014; Briceño-Zuluaga et al.,
10	Marine laminated sediments	Southwestern South America	-15.0	-75.7	last 1000 yrs	Inter-annual to multi-decadal	Fleury et al., 2015
11	Marine laminated sediments	Southwestern South America	-23.1	-70.5	last ~250 yrs	Annual	Flores-Aqueveque et al., 2015
12	Lacustrine laminated sediments	Southwestern South America	-33.8	-70.9	last 2000 yrs	Decadal to centennial	Jenny et al., 2002
13	Marine laminated sediments	Southwestern South America	-41.0	-74.5	last ~7700	Sub-decadal to inter-decadal	Lamy et al., 2001
14	Marine laminated sediments	Southwestern South America	-44.3	-72.9	last 1750 yrs	Decadal	Sepulveda et al., 2009
15	Marine laminated sediments	Southwestern South America	-45.8	-73.5	last 1400 yrs	Multi-decadal to multi-centennial	Bertrand et al., 2014
16	Marine laminated sediments	Southwestern Pacific	-50.8	166.1	last ~5000 yrs	Centennial to millennial	Browne et al., 2017
17	Lacustrine laminated sediments	Southwestern South America	-51.0	-72.8	last 5000 yrs	Decadal to multi-centennial	Moy et al., 2008; Moreno et al., 2009
18	Lacustrine laminated sediments	Southwestern South America	-51.3	-72.9	last 3000 yrs	Centennial	Moreno et al., 2014
19	Speleothems	Southwestern South America	-52.8	-73.4	last 5000 yrs	Sub-annual	Schimpf et al., 2011
20	Ice core	Western Antarctica	-79.5	-112.1	last 2400 yrs	Sub-annual	Koffman et al., 2014

Table 2: List of paleoclimate and paleoenvironmental records from southern South America and other regions used in this work, and their characteristics.

5

10

15

Period	Latitude	ITCZ	SPSH	Meridional winds	SWW	Reference
Little Ice Age	26.8	Shifted southward	-	-	-	van Hengstum et al., 2009
	10.7	Shifted southward	-	-	-	Haug et al., 2001; Pöyry et al., 2009
	7.2	Shifted southward	-	-	-	Sachs et al., 2009
	4.7	Shifted southward	-	-	-	Sachs et al., 2009
	-0.9	Shifted southward	-	-	-	Sachs et al., 2009
	-10.0	Shifted southward	-	-	-	Johnson et al., 2001
	-12.0	Shifted southward	Shifted southward / Weakened	Weakened	-	Siffedine et al., 2008
	-12.0	Shifted southward	Weakened	-	-	Gutiérrez et al., 2009
	-14.1	Shifted southward	Weakened	Weakened	-	Briceno-Zuluaga et al., 2011
	-14.3	Shifted southward	Contracted	Weakened	-	Salvatecci et al., 2011
	-15.0	Shifted southward	-	-	-	Fleury et al., 2015
	-33.8	-	Weakened	-	Intensified and/or shifted northward	Jenny et al., 2002
	-41.0	-	Weakened	-	Intensified and shifted northward	Lamy et al., 2001
	-44.3	-	-	-	Shifted northward	Sepúlveda et al., 2014
	-45.8	-	-	-	Shifted northward	Bertrand et al., 2014
	-50.8	-	-	-	Shifted northward	Browne et al., 2017
-51.0	-	-	-	Intensified and (southern edge) shifted southward	Moy et al., 2008	
-51.0	-	-	-	Intensified	Moreno et al., 2009	
-52.8	-	-	-	Weakened	Schimpf et al., 2011	
-79.5	Shifted southward	-	-	Weakened and/or shifted northward	Koffman et al., 2014	
-	Shifted southward	Weakened/contracted	Weakened	Shifted northward	-	
Current Warm Period (1970-2000)	26.8	Shifted northward	-	-	-	van Hengstum et al., 2009
	-12	-	-	Strengthened	-	Siffedine et al., 2008
	-12	Shifted northward	Shifted northward / strengthened	Strengthened	-	Gutiérrez et al., 2009
	-14.1	Shifted northward	Shifted northward / strengthened	Strengthened	-	Briceno-Zuluaga et al., 2011
	-14.3	Shifted northward	Strengthened	Strengthened	-	Salvatecci et al., 2011
	-15	Shifted northward	-	-	-	Fleury et al., 2015
	-23.1	-	Strengthened or expanded	Strengthened	-	Flores-Aqueveque et al., 2014
	-45.8	-	-	-	Shifted southward	Bertrand et al., 2014
-51.3	-	-	-	Intensified and shifted southward	Moreno et al., 2014	
-79.5	-	-	-	Intensified and shifted southward	Koffman et al., 2014	
-	Shifted northward	Strengthened/expanded	Strengthened	Shifted southward	-	

Table 3: Climate reconstructions of southwestern South America for the LIA and the CWP based on paleoclimate records.