

A new age model for the Pliocene of the Southern North Sea Basin: a multi proxy climate reconstruction

Emily Dearing Crampton-Flood^{1*}, Lars J. Noorbergen², Damian Smits¹, R. Christine Boschman¹, Timme H. Donders⁴, Dirk K. Munsterman⁵, Johan ten Veen⁵, Francien Peterse¹,
5 Lucas Lourens¹, Jaap S. Sinninghe Damsté^{1,3}

¹Department of Earth Sciences, Utrecht University, Utrecht, The Netherlands

²Department of Earth Sciences, VU University Amsterdam, Amsterdam, The Netherlands

³Department of Marine Microbiology and Biogeochemistry, NIOZ Royal Netherlands Institute for Sea Research and Utrecht University, The Netherlands

10 ⁴Department of Physical Geography, Utrecht University, Utrecht, The Netherlands

⁵TNO-Geological Survey of the Netherlands, Utrecht, The Netherlands

Correspondence to: Emily Dearing Crampton-Flood (emily.dearingcrampton-flood@manchester.ac.uk)

*Present address: School of Earth and Environmental Sciences, The University of Manchester, Manchester, The United Kingdom

15

Abstract

The mid-Piacenzian Warm Period (mPWP, 3264–3025 ka) represents the most recent interval in Earth's history where atmospheric CO₂ levels were similar to today. The reconstruction of sea surface temperatures (SSTs) and climate modelling studies have shown that global
20 temperatures were 2–4 °C warmer than present. However, detailed reconstructions of marginal seas and/or coastal zones, linking the coastal and continental climate evolution, are lacking. This is in part due to the absence of precise age models for coastal sedimentary successions, as they are generally formed by dynamic depositional systems with varying sediment and freshwater inputs. Here, we present a multi-proxy record of Pliocene climate change in the
25 coastal Southern North Sea Basin (SNSB) based on the sedimentary record from borehole Hank, the Netherlands. The marginal marine setting of the Hank borehole during the late Pliocene provides an excellent opportunity to correlate marine and terrestrial signals, due to continental sediment input mainly derived from the proto-Rhine-Meuse river. We improve the existing low-resolution palynology-based age model for the Hank borehole using stable oxygen

and carbon isotope ($\delta^{18}\text{O}$ and $\delta^{13}\text{C}$) measurements of the endobenthic foraminifera species *Cassidulina laevigata*, integrated with biochrono- and seismostratigraphy. Identification of hiatuses and freshwater effects in the record allows us to isolate glacial-interglacial climate signals to tune the endobenthic oxygen stable isotope record to a global benthic $\delta^{18}\text{O}$ stack. This results in a tuned age framework for the SNSB for the Late Pliocene (~3190–2770 ka). Our multi-proxy climate reconstruction for the interval which covers part of the mPWP (~3190–3000 ka) shows a strong agreement between lipid biomarker and palynology-based terrestrial temperature proxies, which suggest a stable climate, 1–2 °C warmer than present. In the marine realm, however, biomarker-based SSTs show a large range of variation (10 °C). Nevertheless, the fluctuation is comparable to other SST records from the North Atlantic and Nordic Seas, suggesting that a common factor, possibly ocean circulation, exerted a strong influence over SSTs in the North Atlantic and the North Sea at this time.

1. Introduction

The Pliocene epoch (5.33–2.6 Ma) is a frequently targeted interval for palaeoenvironmental reconstructions because it is considered an analogue for future climate change. For example, atmospheric CO_2 concentrations (380–420 ppmv; Seki et al., 2010; Zhang et al., 2013) and continental configurations during the Pliocene were largely similar to present. Detailed proxy and model comparisons for the so-called mid-Piacenzian Warm Period (mPWP, 3264–3025 ka) have been the focus of the Pliocene Research, Interpretation and Synoptic Mapping (PRISM) group (Dowsett et al., 2010, 2013), and reveal that global temperatures were on average 2–4 °C warmer than present (Haywood et al., 2013). This makes the mPWP an excellent interval to investigate a warmer world associated with the scenarios for our (near) future summarized by the Intergovernmental Panel on Climate Change (IPCC, 2014).

Our understanding of Pliocene climate is largely based on sea surface temperature (SST) reconstructions (e.g. Dowsett et al., 2012), which indicate that global SSTs were 2–6 °C warmer than present. Relatively fewer temperature records exist for the terrestrial realm (Zagwijn, 1992; Salzmann et al., 2013). These records also indicate climate was warmer than present, however, these temperatures are less well constrained due to potential confounding influence of humidity on the temperature reconstructions (Guiot, 1990), and the poorer age control on terrestrial sediment sequences. There are even fewer studies that examine the phase relations and amplitude of variability in coupled land-sea changes (e.g. Kuhlmann et al., 2006), although this

information is of key interest for understanding heat transport and the hydrological cycle during the Pliocene. Sediments on continental shelves receive inputs from both the terrestrial and marine environment, and would thus contain an archive of land-sea climate evolution. The North Sea Basin shelf is a site that potentially hosts a combined record of SST evolution and climate change in the North Western (NW) European continent during the Pliocene due to input of terrestrial material by large European rivers and the active subsidence that provides sediment accumulation space (Gibbard, 1988). Moreover, significant warming of its waters since the second half of the 20th century (0.6 °C rise on average in the period 1962–2001; Perry et al., 2005) indicates the sensitivity of the area for recording climate change. The region has been a type area for Pliocene and early Pleistocene terrestrial stages (see overview in Zagwijn, 1992), but most studied sections lack absolute dating and land-sea correlation as they target fragmentary fluvial successions (Donders et al., 2007; Kemna and Westerhoff, 2007). However, the shallow marine deposits of the Southern North Sea Basin (SNSB) allow better chronostratigraphy building through integrated palaeomagnetic, isotope, and biostratigraphic approaches (e.g. Kuhlmann et al., 2006; Noorbergen et al., 2015; Donders et al., 2018).

Despite the promising preconditions that should enable Pliocene climate reconstruction using the sedimentary archive of the SNSB, the generation of an independently calibrated age model for coastal zone sediments is often complicated by complex interactions between sea level, sediment supply, and biotic factors (e.g. Krantz, 1991; Jacobs, 2008; Noorbergen et al., 2015; Donders et al., 2018), which may alter sedimentation rates or cause hiatuses resulting from periods with erosion or non-deposition. Indeed, the Pliocene SNSB was a dynamic system in which multiple westward advances of the Eridanos and Rhine-Meuse Rivers generated clinoform successions (Jansen et al., 2004; Kuhlmann and Wong, 2008; Harding, 2015). The sedimentary record thus needs to be critically evaluated on its stratigraphic continuity before it can be compared with records from adjacent areas, such as the Nordic Seas and the North Atlantic. Munsterman (2016) reported a Pliocene-age sequence of coastal marine sediments from Hank, located in the South West of the Netherlands. The current age framework for the sequence is based on first (FODs) and last occurrence dates (LODs) of dinoflagellate cysts (Dearing Crampton-Flood et al., 2018). Due to the lack of an independent age constraint in the SNSB, FODs and LODs were inferred from those in the Nordic Seas and the North Atlantic, introducing an unknown range of age uncertainty to the biostratigraphic age model (Dearing Crampton-Flood et al., 2018). Furthermore, the resolution of the age model is too low (9 biostratigraphic age tie points for the interval ~ 4.5–2.5 Ma) to identify possible hiatuses or

95 changes in deposition, preventing comparison of the record to other archives from the Northern Hemisphere.

The established method for age model construction involves measuring the stable oxygen isotope content ($\delta^{18}\text{O}$) of foraminiferal tests and matching the variability to a global benthic $\delta^{18}\text{O}$ reference stack, such as LR04 (Lisiecki and Raymo, 2005). However, in coastal settings this method is complicated due to isotopically lighter freshwater input, which alters the $\delta^{18}\text{O}$ value of the foraminiferal tests (Delaygue et al., 2001; Lubinski et al., 2001). Recently, Noorbergen et al. (2015) were successful in creating a tuned age model for the early Quaternary shallow marine interval of borehole Noordwijk, also located in the SNSB, using the $\delta^{18}\text{O}$ and $\delta^{13}\text{C}$ values of the endobenthic foraminifera (*Bulimina aculeata*, *Cassidulina laevigata*, and *Elphidiella hannai*). The depth habitat of endobenthic foraminifera in the sediment provides a moderate degree of shelter from disturbances such as reworking by bottom currents and freshwater input. Although vital and microhabitat effects still influenced the absolute $\delta^{18}\text{O}$ values of these foraminifera and caused an offset towards more positive values, the trends in $\delta^{18}\text{O}$ at Noordwijk clearly resembled those of LR04 (Lisiecki and Raymo, 2005; Noorbergen et al., 2015).

In this study, we follow the approach of Noorbergen et al. (2015) and establish $\delta^{18}\text{O}$ and $\delta^{13}\text{C}$ records measured from the endobenthic foraminifera *Cassidulina laevigata* in the Hank borehole to improve the current low-resolution biostratigraphic age model (Dearing Crampton-Flood et al., 2018) for the Pliocene SNSB. Reconstruction of the age model is further supported by the identification of hiatuses based on seismic information and gamma ray logging. Subsequently, we complement the existing mean annual temperature (MAT) record for Pliocene NW Europe based on soil bacterial membrane lipid distributions stored in the Hank sediments (Dearing Crampton-Flood et al., 2018), with multi-proxy records of SST, prevailing vegetation, and terrestrial input based on lipid biomarker proxies, pollen, and dinoflagellate cysts. This enables us to for the first time directly compare marine and terrestrial climate evolution of the SNSB and continental NW Europe during the mid-Piacenzian Warm Period.

2. Methods

2.1 Geological setting and study site

125 The Pliocene North Sea was confined by several landmasses, except towards the North, where
it opened into the Atlantic (Ziegler, 1990). At times, there may have also been a connection via
the English Channel to the North Atlantic, indicated by planktonic elements and bryozoan-
dominated deposits in the Pliocene Coralline Crag formation in Eastern England (Fig. 1;
Funnel, 1996) that bear resemblance to modern deposits. However, the connection of the North
130 Sea to North Atlantic via the English Channel may only have existed during periods of high sea
level (Gibbard and Lewin, 2016). Modern modelled transport estimates from the Hybrid
Coordinate Ocean Model (HYCOM) indicate that the total mean inflow at the northern
boundary is approximately 14 times higher than that of the English Channel (Winther and
Johannessen, 2006). Thus, water inflow/outflow through the English Channel was probably
135 limited, regardless of whether there was an opening to the North Atlantic or not. In addition to
a main marine water supply via the North Atlantic, the Eridanos River, draining the
Fennoscandian shield, and the proto-Rhine-Meuse River, draining North Western Europe
delivered freshwater to the North Sea in the Pliocene (Fig. 1). The proto-Rhine-Meuse river
system existed for a large part of the Pliocene, initially draining the Rhenish Massif and later
140 making a connection with the Alps in the latest Pliocene (Boenigk, 2002). During the Pliocene,
the sediment supply by the Eridanos River system to the Ruhr Valley Rift system was limited,
such that the Rhine-Meuse river system was the predominant supplier of sediments in the study
area (Westerhoff, 2009). The water depth of the North Sea during the Pliocene and the
Pleistocene was approximately 100–300 m in the central part of the basin (Donders et al., 2018),
145 and approximately 60–100 m in the southern North Sea Basin (Overeem et al., 2001).

The study site (51°43'N, 4°55'E) is located within the current Rhine-Meuse-Scheldt
delta in the municipality of Hank, the Netherlands. The Hank site is located within the Ruhr
Valley Rift: a region that experienced relatively high tectonic subsidence during the late
Cenozoic (Van Balen et al., 2000). The current drainage area of the Rhine-Meuse-Scheldt river
150 system is 221,000 km², however it was likely smaller in the Pliocene (van den Brink et al.,
1993; Boenigk, 2002). In 2001, air-lifting well technology was used to drill the Hank borehole
(B44E0146) to a base of 404 m. Intervals were drilled every 1 m, such that each sample taken
from the meter intervals is an integrated mixture. The gamma ray log of the borehole is readily
accessible from an online database (dinoloket.nl). In addition, a seismic section is available and
155 covers an east-west transect of the River Meuse (Maas2002 survey, nlog.nl). The lithology of
the Hank borehole (Fig. 2a) is described by the Geological Survey of the Netherlands (TNO)
and Dearing Crampton-Flood et al. (2018). In short, the base of the succession corresponds to

the upper part of the shallow marine Breda Formation, followed by the sandy, occasionally silty and clay-rich marine delta front deposits sometimes containing shell fragments, or so-called ‘craggs’, belonging to the Oosterhout Formation. The overlying Maassluis Formation contains silty shell bearing deltaic to estuarine deposits. For this study, the interval 404–136 m was considered, covering ~4.5–2.5 Myr based on the biostratigraphic age model of Dearing Crampton-Flood et al. (2018).

2.2 Stable isotopes

Deep sea $\delta^{18}\text{O}$ and $\delta^{13}\text{C}$ records generally oscillate in anti-phase during the Quaternary, due to the waxing and waning of large ice caps on the Northern Hemisphere (e.g. Ruddiman, 2001). During glacial periods, benthic foraminifera incorporate relatively more $\delta^{18}\text{O}$ in their calcite test, since more ^{16}O has been stored in the ice sheets and bottom water temperatures are cold. At the same time, they also incorporate more ^{12}C because the total amount of vegetation on land has been reduced during glacial periods causing an enrichment of the dissolved inorganic carbon (DIC) pool of the oceans. Besides, a reduced thermohaline circulation (THC) during glacial periods may have reduced the contribution of ^{12}C -depleted North Atlantic Deep Water to the deep ocean with respect to the ^{12}C -enriched Antarctic Bottom Water component. Hence, for the intervals that the trends in $\delta^{18}\text{O}$ and $\delta^{13}\text{C}$ records of the Hank borehole move in anti-phase, we interpreted these changes as being the result of glacial-interglacial variability. However, when the $\delta^{18}\text{O}$ and $\delta^{13}\text{C}$ are not inversely related, i.e. show a positive correlation, other factors such as riverine freshwater inflow, reworking, and diagenetic influences were most likely the dominant control.

Sediment samples ($n = 269$) from the interval 404–136 m were washed and passed over a series of sieves, after which the $>125\ \mu\text{m}$ and $>63\ \mu\text{m}$ fractions were collected and dried at $40\ ^\circ\text{C}$. Well preserved (i.e. shiny tests) foraminifera of the endobenthic species *Cassidulina laevigata* of around the same size were picked from the $>125\ \mu\text{m}$ fraction. Due to the scarcity of foraminifera in some samples, tests were left uncrushed in order to conserve enough material for isotope analysis. The foraminifera were washed ultrasonically in water before weighing. Between 10 and $60\ \mu\text{g}$ of intact tests were weighed per sample. The $\delta^{18}\text{O}$ and $\delta^{13}\text{C}$ values were measured on a Thermo Gas Bench II (ThermoFisher Scientific) connected to a Delta V mass spectrometer. An in-house NAXOS standard and an internationally accepted NBS-19 standard

($\delta^{18}\text{O} = -2.20\text{‰}$, $\delta^{13}\text{C} = 1.95\text{‰}$) were used to calibrate measured isotope ratios to the Vienna Pee Dee Belemnite (VPDB) standard.

2.3 Palynology

Organic-walled dinoflagellates that form a cyst during their life cycle are referred to as dinocysts, and they are preserved in sediments (Head, 1996). Dinocyst assemblages in marine sediments are investigated to infer environmental parameters such as temperature and productivity in surface waters (Rochon et al., 1999; Zonneveld et al., 2013), and can be used as such to reconstruct past climate changes in downcore sediment records (e.g. Pross and Brinkhuis, 2005; Hennissen et al., 2014; 2017). Terrestrial palynomorphs are derived from vegetation and are delivered to coastal marine sediments through wind or river runoff. The pollen and spore (or sporomorph) assemblage in a downcore sediment record like the coastal marine Hank site can thus indicate the type of vegetation in the nearby continent, which can then be used to infer precipitation and/or temperature regimes of the source area (e.g. Heusser and Shackleton, 1979; Donders et al., 2009; Kotthoff et al., 2014).

Standard palynological techniques were used to process 82 selected samples. HCl and HF digestion followed by 15 μm sieving were carried out according to Janssen and Dammers (2008). Both dinocysts and sporomorphs were counted under a light microscope at 400x magnification until a minimum of 200 specimens was found. Rare species were identified during a final scan of the microscope slide. For dinocysts, the taxonomy of Williams et al. (2017) is used.

Some dinocyst taxa prefer cooler (sub)polar waters, hence we take the sum of those taxa and use that as an indicator for SST in the SNSB. We calculate % cold-adapted dinocysts as the sum of the following species over the sum of all dinocysts in the Hank borehole: *Bitectatodinium* spp., *Habibacysta tectata*, *Filisphaera filifera*, *Headinium* spp., *Filisphaera* spp., *Islandinium* spp., *Habibacysta* spp., *Islandinium euaxum*, and *Bitectatonium tepikiense* following the approach adopted by Versteegh and Zonneveld (1994), Donders et al. (2009; 2018), and De Schepper et al. (2011).

A subset of 25 samples was analysed for detailed pollen assemblages to provide independent long-term trends in climate and vegetation cover. Late Neogene pollen types can, in most cases, be related to extant genera and families (e.g. Donders et al., 2009; Larsson et al.,

2011). Percent abundances are calculated based on total pollen and spores excluding bisaccate taxa, freshwater algae, and *Osmunda* spores due to peak abundance in one sample of the latter. Bisaccate pollen abundances are excluded because they are heavily influenced by on- to offshore trends (Mudie and McCarthy, 1994), and therefore do not primarily represent tree abundance.

The terrestrial/marine ($T/(T+M)$) ratio of palynomorphs takes the sum of all sporomorphs and divides by the sum of all sporomorphs and dinocysts. The sum of sporomorphs excludes bisaccate taxa. The T/M ratio is commonly used as a relative measure of sea level variations and therefore distance to the coast (e.g. Donders et al., 2009; Kotthoff et al., 2014).

2.4 Lipid biomarkers and proxies

We use three independent organic temperature proxies for sea surface temperature based on different lipid biomarkers. The TEX₈₆ is a proxy based on the temperature sensitivity of isoprenoidal glycerol dialkyl glycerol tetraethers (isoGDGTs), membrane lipids of marine archaea (Schouten et al., 2002). An increase in the relative abundance of isoGDGTs containing more cyclopentane moieties was found to correlate with SSTs (Schouten et al., 2002). Here we use the global core-top calibration of Kim et al. (2010) to translate TEX₈₆ values to SSTs. Since isoGDGTs are also produced in soils, albeit in minor amounts, they may alter the marine temperature signal during periods with large contributions from land. The relative input of (fluvially discharged) terrestrial organic matter (OM) can be determined using the ratio of branched GDGTs (brGDGTs), which are produced in soils (Sinninghe Damsté et al., 2000; Weijers et al., 2007) and rivers (Zell et al., 2013), with crenarchaeol, an isoGDGT exclusively produced by marine Thaumarchaeota (Sinninghe Damsté et al., 2002). This ratio is quantified in the Branched and Isoprenoid Tetraether (BIT) index (Hopmans et al., 2004), where high BIT indicates a high continental OM input and vice versa. A BIT index >0.3 is generally used as a cut-off for the validity of TEX₈₆-based SST estimates (Weijers et al., 2006). Secondly, the U^{K'}₃₇ index is used as a proxy for SST based on the degree of unsaturation of C₃₇ alkenones produced by marine haptophyte algae (Prah and Wakeham, 1987). An increased abundance of the tri- relative to the di-unsaturated C₃₇ alkenones, expressed as the U^{K'}₃₇ index, is linked with decreasing temperature, an adaptation thought to retain membrane fluidity in cooler environments (Marlowe et al., 1984). U^{K'}₃₇ values can be converted to SSTs using the global

core top calibration of Müller et al. (1998), with a calibration error of 1.5 °C. Finally, SSTs can be reconstructed based on the relative distribution of long chain diols, which are dihydroxylated lipids with 22–38 carbon atoms. The C₂₈ 1,13- C₃₀ 1,13- and C₃₀ 1,15 diols are most commonly found in seawater, and have a putative phytoplankton source (Volkman et al., 1992; Rampen et al., 2007; Rampen et al., 2011). The distribution of these three diols are used to formulate the long chain diol index (LDI), which can be converted to SST using the calibration of Rampen et al. (2012), with a calibration error of 2.0 °C. Furthermore, since freshwater eustigmatophyte algae produce C₃₂ diols (Volkman et al., 1992, 1999; Gelin et al., 1997), the percentage of the C₃₂ diol versus that of the marine C₂₈ 1,13- C₃₀ 1,13- and C₃₀ 1,15 diols can be used as an indicator for freshwater discharge (Lattaud et al., 2017).

Lipid biomarkers were previously extracted from the sediments (n = 155) and separated into polarity fractions (Dearing Crampton-Flood et al., 2018). The polar fractions, containing GDGTs, were analysed on an Agilent 1260 Infinity ultra-high performance liquid chromatography instrument (UHPLC) coupled to an Agilent 6130 single quadrupole mass detector with settings following Hopmans et al. (2016). For more details on method and solvent program see Dearing Crampton-Flood et al. (2018). Selected ion monitoring (SIM) was used to detect [M-H]⁺ ions of the isoGDGTs: *m/z* 1302, 1300, 1298, 1296, 1292.

After GDGT analysis, polar fractions were silylated by the addition of N,O-bis(trimethylsilyl)trifluoroacetamide (BSTFA) and pyridine (60 °C, 20 min). A Thermo trace gas chromatograph (GC) coupled to a Thermo DSQ mass spectrometer (MS) was used to analyse long chain diol distributions in SIM mode (*m/z* 299, 313, 327, 341) at the Royal NIOZ. The temperature program was: 70 °C for one min, then ramp to 130 °C at 20 °C/min, then ramp to 320 °C at 4 °C/min, then held for 25 minutes.

Ketone fractions, containing the C₃₇ alkenones, were analysed using gas chromatography with flame ionisation detection (GC-FID). Samples were injected (1 µL) manually on a Hewlett Packard 6890 series GC system equipped with a CP-Sil-5 fused silica capillary column (25 m x 0.32 mm, film thickness 0.12 µm) and a 0.53 mm pre-column. The oven temperature program was similar to that used for long chain diol analysis.

3. Results

3.1 Stable isotopes of *Cassidulina laevigata*

Foraminifera preservation in the intervals 404–386 and 204–136 meters was either very low or non-existent. Furthermore, the low abundance and poor preservation of foraminifera in the crag material (220–205 m, Fig. 2c) also presented a challenge for picking. The $\delta^{18}\text{O}_{\text{cass.}}$ values of foraminifera in the sediment from the remaining intervals ($n = 136$) ranges from -1.0–3.6 ‰ (Fig. 2c). The variability in $\delta^{18}\text{O}_{\text{cass.}}$ values between maxima and adjacent minima in the Hank record ranges from ~ 1–4 ‰. The stable carbon isotope record varies between -3.8–0.6 ‰ (Fig. 2d), and the variability is ~0.3–2.3 ‰. Discounting the sample at 206 m, the variability in the $\delta^{13}\text{C}_{\text{cass.}}$ record is approximately ~1 ‰ (Fig. 2d). The $\delta^{18}\text{O}_{\text{cass.}}$ and $\delta^{13}\text{C}_{\text{cass.}}$ records show anti-phase relationships in the intervals 378–360, 345–310, 304–292, 282–279, 275–270, 252–242, 232–227, and 224–218 m (Fig. S1a).

3.2 Seismic profile

The ~15 km east to west seismic profile of the Meuse River, including the location of the Hank borehole, spans a depth of >500 m (Maas2002 survey, nlog.nl; Fig. 3). Comparison of the formations of the Hank borehole with the seismic depth profile in Fig. 4 indicates that the Breda Formation at 404–370 m is characterized by horizontal-reflection patterns, likely indicating shallow marine conditions. The eastern continuation of the seismic line reveals that these horizontal strata can be interpreted as shelf toesets of westward prograding deltaic clinoforms.

3.3 Palynology

The palynomorphs in the Hank sediments are well preserved. The borehole can be divided into three main intervals according to the (co)dominance of the marine/terrestrial palynomorphs: 1, 2, and 3, which roughly correspond to the early Pliocene (1), mid-Pliocene (2) and late Pliocene/early Pleistocene (3). In the deepest part of the borehole (404–330 m, 1), the marine component of the palynomorph assemblage clearly exceeds the terrestrial, as evidenced by the low T/M values (Fig. 4c). An isolate sporomorph peak and (sub)polar dinocyst peak is visible at 383 m (Figs. 2f, 4c). Interval 2 from 330–187 m shows a fluctuating ratio between the marine and terrestrial elements (Fig. 4c). The cold-adapted dinocysts also show fluctuations indicating alternating warmer and cooler periods (Fig. 2f). One striking feature is the increase in cold-adapted dinocyst abundance and simultaneous *Osmunda* acme at 305 m (Figs. 2f, 4j). The third interval 3 spans the upper part of the borehole (187–136 m), and sporomorphs in particular

dominate this interval, visible by the consistently high T/M (Fig. 4c). Interval 3 shows an increased occurrence of coastal marine genera, like *Lingulodinium*. The increased gamma ray values at ~175 m (Fig 2b) are the result of the abundance of (shell) concretions, not clays, and as such, do not indicate a more distal environment but rather a development toward a more proximal environment. At 154–153 m, the marine indicators in the borehole are reduced to just 0.5 % of the total sum of palynomorphs. However, the highest abundance of cold- adapted dinocysts, mostly composed of taxa like *Habibacysta tectata*, is at 154 m (Fig. 2f). This depth is also marked by the complete disappearance of dinocyst genus *Barssidinium* spp. with an LOD at 157 m (Dearing Crampton-Flood et al., 2018). (Sub)tropical species like *Lingulodinium machaeophorum*, *Operculodinium israelianum*, *Spiniferites mirabilis*, *Tectatodinium pellitum*, and *Tuberculodinium vancampoe* are missing at this depth. The uppermost (154–136 m) interval indicates an estuarine to deltaic environment, due to the presence of freshwater and brackish water algae species *Pediastrum* and *Botryococcus*. In contrast, the freshwater indicators are (almost) absent in intervals 1 and 2. The assemblages of interval 3 are also characterized by a fluctuating abundance of cold-adapted dinocysts (Fig. 2f).

The pollen assemblages are dominated by tree pollen, particularly conifers (*Pinus*, *Picea*, *Abies*, *Taxodioidae*-type (including *Glyptostrobus* and *Taxodium*), *Sciatopitys*, and *Tsuga*), but with increasing proportions of grasses (Poaceae, Cyperaceae), and heather (Ericales) in interval 2, and significantly increased amounts of fern spores from 260 m and up (Fig. S1). Exclusion of the bisaccate types from the percentage sum (to counter effects of sea level change on the diverse transport capacity of pollen; Neves effect) causes the percentage pollen sum to be relatively low (~100 grains/sample). The current pollen record should therefore be used for main quantitative trends and not to delineate individual ranges of taxa. The angiosperm tree abundances averages about 20% and shows no significant long-term change towards the top of the sequence (Fig. 4e). The angiosperm tree pollen record is diverse, although few taxa are continuously present, and consists mostly of *Quercus robur*-type with significant proportions of *Pterocarya*, *Fagus*, *Carpinus* and, above 240 m, *Ulmus* (Fig. S1). The *Taxodioidae*-type shows a distinct long-term decline superimposed by three shorter minima in the end of interval 2 and beginning of 3, occurring at 205, 235 and 170 m (Figs. 4d, S2).

3.4 Lipid biomarkers

IsoGDGTs are present in high abundances throughout the borehole, as evidenced by the high total organic carbon (TOC)-normalized concentrations of crenarchaeol (0.2–130 $\mu\text{g g}^{-1}$ TOC; Dearing Crampton-Flood et al., 2018). IsoGDGT-based SSTs are reconstructed for those sediments where BIT < 0.3, i.e. between 404–219 m (n = 66). TEX₈₆^H-reconstructed SSTs range between 7 and 13 °C, but do not show a clear trend over time (Fig. 2e).

Alkenones are present in the majority (n = 111) of the samples. However, they are below the detection limit in many of the sediments from 250–200 m. Alkenones re-emerge in the interval from 197–178 m. The U₃₇^{K'} index values range between 0.30–0.83, and correspond to a SST range of 8–24 °C (Fig. 2e). In the early Pliocene (1), the U₃₇^{K'} SST record shows the largest fluctuations in temperature ($\Delta T = 15$ °C), and an average SST of 19 °C. Similar variability ($\Delta T = 14$ °C) is observed in interval 2 (middle-late Pliocene), although the average SST drops slightly to 17 °C. Alkenones are present around or below the detection limit in 3 (late Pliocene/early Pleistocene), so no SSTs can be calculated. Notably, U₃₇^{K'} SSTs show a warming of 11 °C during the interval between 290–260 m (Fig. 2e).

Long chain diols are below the detection limit in a large proportion of the Hank borehole. SSTs can be reconstructed for a select few samples in intervals 1 and 3, and they show scattered temperatures in a range of 13 °C (Fig. 2e). The sediments in interval 2 contain enough diols to enable a semi-continuous SST reconstruction. The range of LDI SSTs in this section is 4–18 °C (Fig. 2e). The record shows a strong warming trend of ~12 °C from 295–263 m, coeval with the trend in the U₃₇^{K'} record (Fig. 2). The %C₃₂ diol is generally high (~36–57%) in 1 and 2 (Early-Mid Pliocene; Fig 4c), indicating a modest to strong freshwater input (cf. Lattaud et al., 2017). The %C₃₂ diol slightly decreases (10%) over 294–264 m, indicating a gradually decreasing influence of riverine OM and/or an increase in the abundance of the C₂₈ 1,13- C₃₀ 1,13- and C₃₀ 1,15 marine diols. In interval 3, the %C₃₂ diol exhibits a strong increasing (21–59%) trend (187–136 m; Fig. 4c).

4. Discussion

4.1 Depositional record and unconformities

The changes in depositional environment in the Hank borehole from open marine to coastal marine, and successively estuarine conditions are based upon the BIT, TOC, and $\delta^{13}\text{C}_{\text{org}}$ records

presented in Dearing Crampton-Flood et al. (2018), and the biological changes in the abundances of typical marine (dinocysts and test linings of foraminifera), estuarine/freshwater algae species, and sporomorph assemblages (Munsterman, 2016), summarized in the T/M ratio. A transition of marine OM during the Pliocene to more terrestrial OM input towards the Pleistocene starts approximately at 190 m as evidenced by these indicators (Fig. 4c). This reflects the increasing influence of the Rhine-Meuse River to the site. This progradation of the Rhine-Meuse River is confirmed by the westward progradation of the depositional (delta) system that can be seen in the seismic section (Section 3.2, Fig. 3).

Toward the long term shallowing trend in the borehole, several depositional changes and unconformable surfaces are recognized in the seismic profile which need to be taken into account regarding the construction of a valid age model. The transition from the Breda Formation to the overlying Oosterhout Formation is marked by a distinct angular unconformity referred to as the Late Miocene Unconformity (LMU; Munsterman et al., 2019; Fig. 3). The seismic data of the overlying Oosterhout Formation (Mid-Late Pliocene) indicates a twofold subdivision. The lower unit of the subdivision at 370–314 m is characterized by convex downward reflection patterns that correspond to an open marine signature (with corresponding low sedimentation rates). This is confirmed by the transition to finer grained sediments (silts) over 381–352 m attributed to a more distal setting (Fig. 2a). This interval is also characterized by an increased abundance of dinocysts with a preference for open marine conditions, like the genus *Spiniferites*. The facies of interval 352–338 m indicates shallow to open marine conditions with a temperate to (sub)tropical SST. A coarsening upward trend is corroborated by the gradual decrease in gamma ray values (Fig. 2b). In the second Oosterhout unit from 314–157 m the environment is shallow marine, and several stacked clinoform sets are visible in the seismic profile (Fig. 3). The transition between the two Oosterhout units is clearly visible as a downlap surface around 314 m that corresponds to a sequence boundary, and possible hiatus (Fig. 3). This is coupled with a dramatic decrease in sedimentation rate in the initial age model, which places this interval within the scope of the M2 glacial event (~3.3 Ma; Dearing Crampton-Flood, 2018).

Above the sequence boundary at 314 m, an increase in water depth to ~ 80–100 m can be deduced from the height of the clinoforms where the topsets represent the fluvial system debouching at the coastline. This water depth estimate is comparable to the estimate for Pliocene water depth from an integrated seismo-stratigraphic study of the SNSB (Overeem et al., 2001). The topset beds in the Hank borehole show an abundance of shell crag facies material

corroborating the coastal setting (Figs. 2a, 3). The stratigraphic stacking is first purely progradational (clinoforms) and changes to both progradational and aggradational higher up, suggesting progressive fluvial influence replacing the marine environment. In the Hank borehole, this change is marked by a distinct clay layer at 292–271 m (Fig. 2a). In the upper part of the second Oosterhout Formation at depths of 260 m and upwards, the increased proportion of heather and grasses is generally considered indicative of colder and drier terrestrial climate (Faegri et al., 1989; Fig. 4). The decrease in *Taxodioidae*-type pollen over interval 2 (Fig. 4d) and the Oosterhout to the Maassluis Formations further indicates a cooling terrestrial climate, and is classically recognized as the top Pliocene (Late Reuverian) in the continental zonation of Zagwijn (1960), although in the onshore type area the sequences are most likely fragmented time intervals bounded by several hiatuses (Donders et al., 2007).

At the transition of the Oosterhout Formation to the Maassluis Formation, concave downward reflection patterns may reflect channel incisions into the topsets of the Oosterhout Formation (Fig. 3). The Maassluis Formation (late Pliocene-early Pleistocene, <2.6 Ma) is composed of horizontal and channel-like strata in the seismic profile (Fig. 3). The environment of the Maassluis Formation becomes more fluvio-deltaic, characterized by the decreased abundance of dinoflagellate cysts and steep rise in the number of sporomorphs, manifested by the high T/M values (Fig. 4c). Further warm-temperate trees in the Maassluis interval of the record such as *Carya*, *Liquidambar*, *Nyssa* disappeared in NW Europe in the earliest Pleistocene (Donders et al., 2007), most likely slightly above the level of the top of the Hank sequence. In contrast, land based studies in the Dutch-German border area (cf. Donders et al., 2007; Westerhoff, 2009) are characterized by relatively more abrupt last occurrences of warm-temperate taxa due to the probably incomplete preservation of the early Pleistocene sequences.

The Plio-Pleistocene transition (2.6 Ma) occurs between 200–154 m (Dearing Crampton-Flood et al., 2018). This transition is accompanied by a peak in gamma ray values at ~175 m (Fig. 2b). However, the coastal marine depositional setting for the Hank borehole in the interval (upper Oosterhout Formation) during the late Pliocene/Early Pleistocene above 200 m strongly indicates that these successions are likely not continuous, but consist of successive fragments of sedimentation representing short time windows that are bounded by hiatuses (cf. Donders et al., 2007).

4.2 M2 event

440 There is global evidence for a large sea level drawdown during the M2, but the estimates of the magnitude of its extent vary greatly (38–65 m; Dwyer and Chandler, 2009; Naish and Wilson, 2009; Miller et al., 2011; Miller et al., 2012). However, large uncertainties in the estimation of ice volume prohibit any meaningful estimates of sea level for the Pliocene using the stable isotope measurements of foraminifera (Raymo et al., 2018).

445 The hiatus at Hank representing the M2 glacial is also recognized in sequences from the Coralline Crag in the English North Sea (Williams et al., 2009), the Poederlee and Lillo formations in the Belgium North Sea (De Schepper et al., 2009; Louwye and De Schepper, 2010), and possibly the Nordic Seas (Fig. 1, Risebrobakken et al., 2016). In the Poederlee and Lillo formations of neighbouring Belgium (located 80 km from Hank in the present day), De
450 Schepper et al. (2009) and Louwye and De Schepper (2010) hypothesize that the MIS M2 is correlated with a sequence boundary Pia1 at approximately 3.21 Ma. In addition, equivocal temperature/assemblage signals in the Coralline Crag Formation are hypothesized to be a result of sea-level change associated with the M2, which would have decreased or ceased sedimentation entirely (Williams et al., 2009). A Pliocene benthic $\delta^{18}\text{O}$ record adjacent to the
455 NS in the Nordic Seas (ODP hole 642B; Risebrobakken et al., 2016) also does not record any strong evidence of the M2 event, and the authors postulated that the M2 might have occurred during a hiatus in the borehole, or may have been a less extreme event in this region compared to other regions (Lisiecki and Raymo, 2005). Due to the M2 being a globally recognized event (De Schepper et al., 2014), the records from the East of England, Belgium, and the Hank site
460 indicates that a hiatus likely exists over the most acute part of the glacial in SNSB sediment successions. Thus, the coolest interval (with the presumed lowest sea level and high hinterland sediment supply) of the M2 might have not been recorded at Hank because of erosion.

In the sediments occurring above the hiatus marked by the sequence boundary in Fig. 3, large variability in $\delta^{18}\text{O}_{\text{cass.}}$ indicates fluctuating climate conditions that may be associated
465 with the onset or the recovery of the M2. The fluctuations match those in the records of the BIT index and $\delta^{13}\text{C}$ of organic matter (see Dearing Crampton-Flood et al., 2018), which indicate a closer proximity of the coast to the site, likely as a result of sea level change. The major peak of *Osmunda* spores (outside of pollen percentage sum) after the hiatus at ~3210 ka (306 m) could then represent a pioneer phase of marsh vegetation related to a rapid sea level lowering.
470 The (sub)polar dinocyst acme and increase of *Operculodinium centrocarpum* (Figs. 2, 6a) at 305 m may then represent the restoration of the location of the Hank site to a more distal marine setting within the confinement of the Rhine Valley Graben. The sea level drop associated with

the M2 event may have decreased the inflow of Atlantic bottom water currents originating from the Northern opening of the North Sea (Kuhlmann et al., 2006). After the M2 event, isostasy may have then strengthened the connection to the North Atlantic (possibly also via the English Channel), which would have allowed the inflow of relatively warmer and saline Atlantic Water fed by the North Atlantic Current (NAC) into the North Sea. The dinocysts of *Operculodinium centrocarpum* are generally used as a tracer for the NAC in the North Atlantic (De Schepper et al., 2009b; Fig. 6a), and may tentatively be linked to the increasing influence of the North Atlantic to the study site after the hiatus associated with the M2 event. However, *Operculodinium centrocarpum* is a cosmopolitan species, and in the modern day with a connection via the English Channel to the North Sea, it is not commonly found (Marret et al., 2003; Zonneveld et al., 2013). Thus, the re-emergence of *Operculodinium centrocarpum* over the mPWP interval (Fig. 6) more likely reflects the restoration of marine conditions in the shallow SNSB after the M2.

The acme of *Osmunda* spores coincides with the occurrence of dinocysts characteristic of (sub)polar watermasses at ~3210 ka, further indicating cold conditions (Fig. 6). In addition, the distinct decrease in *Taxodioidae*-type pollen at the same time indicates that climate conditions were also cold(er) on the continent (Fig. 6c), which is supported by low terrestrial mean air temperatures of 6 °C, independently reconstructed based on brGDGTs (Fig. 6f; Dearing Crampton-Flood et al., 2018). In contrast, all SST reconstructions remain stable during this M2 deglaciation/recovery period (Fig. 6d), suggesting that cold periods on land are better recorded in the sedimentary record than those in the marine realm. Indeed, terrestrial proxies should represent an integrated signal over longer time and larger space (NW Europe), compared to that of the marine proxies, which are confined to the shallow SNSB basin and potentially mostly record warm periods (Sect. 4.3).

4.3 Glacial-interglacial variability and tuning

Based upon the age model of Dearing Crampton-Flood et al. (2018), it is clear that the sample resolution is too low to resolve a stable isotope tuning on Milankovitch time scales for the older succession including the Breda and lower Oosterhout Formations (404–330 m), but it is sufficient (i.e. <6 kyr) to resolve individual cycles in particular above 314 m. Notwithstanding the low resolution between 390–314 m, the $\delta^{18}\text{O}_{\text{cass.}}$ and $\delta^{13}\text{C}_{\text{cass.}}$ records move in opposite directions suggesting that global glacial-interglacial ice volume changes were largely

505 influencing the open (shallow) marine environment at Hank during that time. In the upper part of the Hank borehole (314–200 m), the trends in $\delta^{18}\text{O}_{\text{cass.}}$ and $\delta^{13}\text{C}_{\text{cass.}}$ do not show a continuous inversed relationship (Fig. S1a), indicating that the ice volume influence is likely obscured by other factors such as riverine freshwater inflow.

The absolute values of the oxygen isotope measurements on *Cassidulina laevigata* 510 recorded in Hank are substantially lower by approximately 1–1.5 ‰ than the composite benthic $\delta^{18}\text{O}$ values in the LR04 stack (Lisiecki and Raymo, 2005), as well as those of a nearby Pliocene benthic oxygen isotope record from the Nordic Seas (~2–3 ‰; Risebrobakken et al., 2016). The offset in absolute values is unlikely due to a species-dependant effect, as $\delta^{18}\text{O}_{\text{cass.}}$ values in a nearby Quaternary-age core from Noordwijk (Noorbergen et al., 2015) were comparable to the 515 LR04 stack (Lisiecki and Raymo, 2005). Hence, the relatively low $\delta^{18}\text{O}_{\text{cass.}}$ values in the Hank sediments likely reflect the influence of freshwater input at this site, which is proximal to the mouth of the paleo Rhine-Meuse River (e.g. Delaygue et al., 2001; Lubinski et al., 2001; Westerhoff, 2009; Fig. 1). Similarly, low benthic and planktic $\delta^{18}\text{O}$ values in sediments from the Ionian Sea coinciding with sapropel deposition were attributed to increased freshwater 520 influence at this time (Schmiedl et al., 1998). Furthermore, the large $\delta^{18}\text{O}_{\text{cass.}}$ variability in the Hank record (~1–4 ‰) compared to that in the LR04 stack record (0.2–0.7 ‰ during the Pliocene; Lisiecki and Raymo, 2005) indicates that the $\delta^{18}\text{O}$ isotopic signature of shallow seawater at the Hank site is sensitive to freshwater input. At the delta front, wave action and winnowing contribute to the mixing of freshwater input in the relatively shallow water column, 525 which explains why an endobenthic species may be affected by freshwater influence which results in relatively lower absolute $\delta^{18}\text{O}_{\text{cass.}}$ values at the Hank site. Thus, salinity changes and sensitivity to freshwater input affect the oxygen isotopes incorporated into *Cassidulina* species at the Hank site, regardless of the endobenthic habitat.

The upper (Plio-Pleistocene transition) and lower (M2 glacial) stratigraphic boundaries 530 identified in Sections 4.1 and 4.2 provide a contextual framework to construct a higher resolution age model for the mPWP (3264–3025 ka) using stable isotopes of *Cassidulina laevigata*. The open marine signature and relatively horizontally deposited clinoform sets in the second unit of the Oosterhout subdivision from ~305–200 m (Fig. 3) represents a relatively continuous sedimentary record that may be suitable for age model reconstruction, keeping in 535 mind the potential freshwater influence on the $\delta^{18}\text{O}_{\text{cass.}}$ record.

In order to use the $\delta^{18}\text{O}_{\text{cass.}}$ record for tuning purposes, an understanding of the North Sea hydrogeography and circulation patterns during the Pliocene must be taken into consideration. During cold periods, the North Sea circulation slows due to the reduced sea level and inflow of Atlantic water (Kuhlmann et al., 2006). Stratification in the North Sea due to freshwater input from rivers combined with the sluggish circulation and weak influence of the Atlantic waters make cooler periods problematic to tune to due to a $\delta^{18}\text{O}$ signature that is probably highly localized and erratic. Moreover, Donders et al. (2007) noted that the coldest phase of glacials of the Plio-Pleistocene climate development of coastal areas in the NS is likely to be marked by substantial hiatuses caused by non-deposition and erosion, which may also preclude the use of the transition between the warmer and cooler periods as a tuning anchor. During warmer periods, an increased freshwater input from river outflows is also expected, due to the supposedly wetter climate conditions during interglacials. However, Kuhlmann et al. (2006) linked warmer periods in the Pliocene in the central section of the southern North Sea with the occurrence of *Cassidulina laevigata*, whose habitat in the modern North Sea is located in the northern part with a strong connection to the Atlantic (Murray, 1991). Thus, tuning the warmer periods in the $\delta^{18}\text{O}_{\text{cass.}}$ record at the Hank site with warm periods in the LR04 benthic stack is preferable due to the strong(er) connection to the Atlantic (Kuhlman, 2004), resulting in a relatively more regional signature of the $\delta^{18}\text{O}_{\text{cass.}}$ values (Kuhlmann et al., 2006). Moreover, the chance of disturbance/hiatuses that affect the continuity of the sediment record at Hank is decreased in warmer periods.

Using the above reasoning, the sample with the lowest $\delta^{18}\text{O}_{\text{cass.}}$ value in each cycle between ~314–200 m in the Hank record can be tuned to the lowest $\delta^{18}\text{O}$ value between the M2 event associated with the hiatus at 314 m (~3.3 Ma) and the Plio-Pleistocene boundary (Sections 4.1, 4.2) in the LR04 stack, assuming that the low $\delta^{18}\text{O}$ values in the Hank borehole represent the warmest part of each interglacial (Fig 5). Further investigation in the variation of the $\delta^{18}\text{O}_{\text{cass.}}$ cycles in the Hank borehole isotope record reveals unique saw tooth structures, differing from the more symmetrical pattern of cyclicity that is seen in the Pleistocene interval of the LR04 stack. Specifically, cycles G19, G17, and G15 display these reversed saw-tooth patterns in the global benthic stack, and help pinpoint corresponding cycles in the Hank borehole record (Fig. 5). The reconstructed time window spans ~3190–2770 ka, and thus most of the mPWP. Based on the tuned oxygen isotope age model, the LOD of *Invertocysta lacrymosa* and *Operculodinium? eirikianum* in the SNSB can be constrained to ~3040 and <2768 ka, respectively (see Dearing Crampton-Flood et al., 2018).

4.4 Late Pliocene climate reconstruction

4.4.1 Marine proxy interpretation

Despite the fact that all three lipid biomarker proxies (TEX_{86} , $U^{K'}_{37}$, and LDI) are calibrated to SST, the records that they generate show remarkable differences and are offset in temperature (Fig. 2e). The Pliocene TEX_{86}^H SSTs are 10 °C on average, which is the same temperature as the modern mean SST of the North Sea (Locarnini et al., 2013), and contrasts with other North Sea Pliocene temperature estimates based on ostracod, mollusc, foraminiferal, and dinocyst assemblages (Wood et al., 1993; Kuhlman et al., 2006; Johnson et al., 2009; Williams et al., 2009), all suggesting that the SST of the North Sea was 2–4 °C warmer than present at that time. However, present day TEX_{86} reconstructions for core top sediments in the North Sea range between 4.1–9.1 °C (Kim et al., 2010), and thus underestimate the observed modern SST. Lower-than-expected TEX_{86} values found elsewhere have been explained by a contribution of isoGDGTs produced by a subsurface community (Huguet et al., 2007), but given the shallow water depth (80–100 m) of the SNSB in the Pliocene (Hodgson and Funnel, 1987; Long and Zalasiewicz, 2011; Overeem et al., 2001; this study), it seems unlikely that such a community would have played a role here. This can be further confirmed by calculating the ratio of isoGDGT-2/isoGDGT-3 ([2]/[3]; Taylor et al., 2013), whose value increases with increasing isoGDGT input from subsurface dwelling archaea. The [2]/[3] ratio in the Hank borehole is 2.1 on average, and always well below the value associated with a deep-water archaea community overprint (>5; Taylor et al., 2013). Instead, the low TEX_{86}^H SSTs are likely a result of seasonal production of isoGDGTs. In the modern North Sea, the main period of Thaumarchaeotal blooms and associated isoGDGT production is in the winter months where ammonia is available and competition with phytoplankton is minimal (Herfort et al., 2006; Pitcher et al., 2011), which likely introduces a cold bias in TEX_{86} -based SST estimates for the SNSB. If the TEX_{86} -derived SSTs are interpreted as a winter signal as we argue, then the Hank Pliocene SSTs are approximately 3–6 °C warmer than modern winter SSTs (van Aken, 2008).

Conversely, $U^{K'}_{37}$ reconstructed SSTs are 16 °C on average, and thus 2–4 °C higher than the temperature estimates based on ostracod, mollusc, and foraminiferal assemblages (Wood et al., 1993; Kuhlmann et al., 2006; Johnson et al., 2009; Williams et al., 2009) and ca. 6 °C higher than modern annual mean SST. These higher-than-expected $U^{K'}_{37}$ SSTs could in part be caused by a species effect as a result of a contribution from alkenones produced by freshwater

haptophyte algae that have little to no correlation of $U^{K'}_{37}$ with temperature (Theroux et al., 2010; Toney et al., 2010). Moreover, the influence of freshwater input on salinity may alter the main alkenone producing communities in coastal regions (Fujine et al., 2006; Harada et al., 2008), and thus affect the reliability of SST estimates based on the open ocean calibration specifically adapted for Group III alkenone producers (e.g. *Emiliania huxleyi*). Indeed, strong temperature fluctuations of 10 °C in a Holocene $U^{K'}_{37}$ record from the Sea of Okhotsk were linked to periods with low sea surface salinity, which were in turn correlated to high $U^{K'}_{37}$ -derived SSTs (Harada et al., 2008). In contrast, a recent study showed that alkenone producers in particulate organic matter (POM) in a coastal bay in Rhode Island were unaffected by a lower salinity, further illustrated by the excellent match of the 300-year $U^{K'}_{37}$ SST record with instrumental temperature records, despite the proximity to the river (Salacup et al., 2019). Further, Blanz et al. (2005) showed that sediment samples from a salinity transect covering the Baltic Sea to the North Sea showed no relationship between $U^{K'}_{37}$ and SST in the Baltic Proper. Only in the transition zone at Skagerrak, the SSTs were within 1 °C of the global calibration of Müller et al. (1998). Although the high variability in the $U^{K'}_{37}$ SST record and the higher-than-expected reconstructed temperatures at Hank fit with a freshwater input as observed in the Sea of Okhotsk, low BIT index values and T/M ratios in the Hank borehole (Fig. 4) suggest that the organic matter has a primarily marine origin. In addition, the absence of the $C_{37:4}$ alkenone in the Hank sediments, a biomarker tentatively linked with coastal or freshwater haptophytes (Cacho et al., 1999), suggests that the $U^{K'}_{37}$ should mostly represent SSTs, although studies from the Baltic Sea indicate that the relative contribution of $C_{37:4}$ alkenones only increases at salinities lower than 8 psu (Schulz et al., 2000; Kaiser et al., 2017). Thus, the moderate relation between the % C_{32} diol and $U^{K'}_{37}$ derived SST for the tuned interval ($n = 26$; $R^2 = 0.32$), suggests that freshwater input may at times have influenced the $U^{K'}_{37}$ SSTs.

Alternatively, the higher $U^{K'}_{37}$ SSTs can be a result of increased production in the spring or summer (Chapman et al., 1996; Rodrigo-Gámiz et al., 2014). Indeed, summer temperatures in the Oosterhout Formation (Ouwerkerk, Netherlands) and contemporaneous Lillo Formation in Belgium (Valentine et al., 2011) recorded from benthic bivalves range from 14.9–20.4 °C, which is similar to the range of $U^{K'}_{37}$ SSTs in Fig. 2e. This would mean that summer SSTs were high and very variable during the Pliocene. Although quite variable in the earlier (~3250–3150 ka) part of the record, $U^{K'}_{37}$ SSTs warmed by approximately 10 °C over the latter part of the tuned interval from 3150 to 3050 ka (Fig. 6d). Reconstructed modern SSTs from surface

sediments in Skagerrak region near the opening to the Baltic sea range from 10–12 °C, slightly higher than observed annual SSTs, and resemble those of May to June more (Blanz et al., 2005).

Thus, there is evidence in the modern North Sea adjacent area for the $U^{K'}_{37}$ recording summer temperatures (coinciding with haptophyte blooms).

LDI SSTs are at first 2 °C cooler than the TEX_{86} record, and then increase toward the same absolute SSTs as in the $U^{K'}_{37}$ record (Figs. 2, 6d). Large discrepancies of 9 °C between TEX_{86} and LDI-derived SSTs have been observed in the Quaternary of South Eastern Australia (Lopes dos Santos et al., 2013), which the authors attributed to seasonal production of isoGDGTs in the cooler months and long chain diols in the warmer months. In late Pliocene sediments from the central Mediterranean, LDI SST estimates were slightly lower than $U^{K'}_{37}$ SSTs, however this was within the error range of the proxies (Plancq et al., 2015). Due to the recent advent of the LDI proxy, and the scarcity of other multi-proxy studies (De Bar et al., 2018; Lattaud et al., 2018) comparing the LDI to $U^{K'}_{37}$ and TEX_{86} SSTs in the same sediment samples, further discussion on this topic is limited.

4.4.2 mPWP climate

The mPWP is almost entirely covered by the oxygen isotope age-tuned interval of the Hank record, which starts after the hiatus that marks the M2 event. This mPWP interval is correlated with the Poederlee Formation and Oorderen Sands Member (of the Lillo formation) located in Belgium (De Schepper et al., 2009; Louwye and De Schepper, 2010). The average TEX_{86} (10 °C) and $U^{K'}_{37}$ (16 °C) reconstructed SSTs over the mPWP interval show good agreement with the PRISM3 model reconstructions for February (10.4 °C) and August (16.7 °C; Dowsett et al., 2009). A common feature of the $U^{K'}_{37}$ and LDI SST records is the gradual warming between ~3150–3050 ka (Fig. 6d), seen most clearly in the LDI record. Before the SST warming from 3150–3050 ka, %C₃₂ diol decreases slowly (Fig. 6e), indicating a decrease in freshwater discharge and/or an increased distance to the coast. The low T/M ratios and the presence of a clay layer from 292–271 m in Fig. 4c (corresponding to 3155–3053 ka; Fig. 6) at this time further indicate increased marine influence, likely as a result of sea level rise. Differences in the absolute degree of warming recorded by the $U^{K'}_{37}$ and LDI SST proxies could be attributed to the different season in which they are produced, as well as by lateral transport of certain biomarkers (Benthien and Müller, 2000; Ohkouchi et al., 2002). For example, the change in

currents in the North Sea after the M2 event, bringing in warmer waters from the North Atlantic
665 may have brought alkenones and/or diols with a warmer signature to the SNSB. This would
then further contribute to the high SSTs reflected by the $U^{K'}_{37}$ and LDI proxies compared to
those recorded by the TEX_{87}^H (Fig. 6).

Notably, where the TEX_{86}^H -derived SST record suggests relatively stable winter
temperatures, the LDI and $U^{K'}_{37}$ SST records reflect highly variable SSTs during the mPWP
670 (Fig. 6d). Such high variability is also seen in all other currently available $U^{K'}_{37}$ SST records
from the North Atlantic (8 °C, Lawrence et al., 2009; 6 °C, Naafs et al., 2010; 14 °C, Clotten et
al., 2018; Fig. S3), and has been explained by a change in the strength of the NAC (Lawrence
et al., 2009; Naafs et al., 2010) and orbital forcing (Lawrence et al., 2009). In addition, high
variability in the $U^{K'}_{37}$ record from the Iceland Sea was linked to the frequent occurrence of
675 spring sea ice cover and ice-free summers linked to freshwater input (Clotten et al., 2018). At
Hank, the influence of changes in the direction and strength of the NAC on $U^{K'}_{37}$ SSTs cannot
be unambiguously identified, despite the re-occurrence of *Operculodinium centrocarpum*
during the mPWP. Most of the variation may instead be explained by the varying influence of
freshwater input from the proto-Rhine-Meuse River system in combination with the relatively
680 shallow coastal location of Hank, which makes it sensitive to fluctuations in temperature. The
influence of orbital forcing on pacing the variation of the NAC (Naafs et al., 2010), and possibly
the environmental conditions in the SNSB requires further analysis, which is currently not
possible in the Hank borehole due to the short length of the tuned interval.

In contrast to the variable marine climate, the terrestrial climate proxies indicate that
685 climate of land was fairly stable. The presence of Taxodioidae-type pollen (*Taxodium*,
Glyptostrobus) throughout most of the mPWP (Fig. 6c) indicates that land temperatures were
generally not low enough for prolonged winter frosts. Minimum Taxodioidae-type pollen
abundance of 10% has been associated with a mean temperature of the coldest month of >5 °C
(Fauquette et al., 1998). Both the MAT record (Dearing Crampton-Flood et al., 2018) and the
690 *Taxodioidae*-type pollen covary throughout the whole record (Fig. 4d), and the absolute MATs
and the increased proportion of Taxodioidae-type pollen in the mPWP interval (Fig. 6) support
the presumed relatively stable climate conditions on land (Draut et al., 2003; Lisiecki and
Raymo, 2005).

695 Importantly, the new chronology for the Hank sediments provides an opportunity to
correlate the stratigraphy concept of the local (Netherlands) qualitative Pliocene-Pleistocene
Taxodioidae-type temperature curves proposed by Zagwijn (1960; 1992). It should be noted
that the original terrestrial Pliocene stages as summarized by Zagwijn (1992) have not yet been
dated independently, and in the type area of the South East Netherlands, they likely represent
700 much smaller intervals of time compared to the Hank sequence. Zagwijn et al. (1992) inferred
mean July temperatures between 15–20 °C for the Reuverian, which he placed approximately
between 3.1–2.5 Ma, with short lived cool pulses down to ~12 °C that can also be recognized
in the brGDGT MAT record (Fig. 6f). Maximum Taxodioidae abundance and mean July
temperatures in excess of 20 °C were reconstructed for the Brunssumian placed approximately
705 between 3.4–3.1 Ma. These reconstructed summer temperatures compare broadly to the SSTs
reconstructed using the (presumably) partially summer-biased U^{K}_{37} proxy, which range
between ~10–25 °C in the tuned interval (Fig. 6d). Further correlation and dating studies in
proximal boreholes and marine sediment sequences will aid in deciphering the Reuverian A-C
substages and assigning absolute ages to the zonation of Zagwijn et al. (1992).

710 **5. Conclusions**

The age framework for the mid-to-late Pliocene of the Southern North Sea Basin (SNSB)
constructed here reveals that the M2 glacial is represented as a hiatus, confirming interpretations
at proximal sites in Belgium and the English North Sea coast. Sea surface temperatures were
715 variable, which may be caused by the sensitivity of the shallow Pliocene North Sea to climate
change and the influence of freshwater input on lipid biomarker SST proxies. Nevertheless, the
variability in SSTs matches that in all other currently available SST records from the North
Atlantic, indicating that the marine realm was highly dynamic during the mPWP, probably as
a result of shifting currents caused by a reorganization/diversion of the North Atlantic Current.
720 Our terrestrial multi-proxy climate records show a highly consistent signal between lipid
biomarker temperatures and pollen assemblages, which show stable terrestrial temperatures of
10–12 °C, and the continued presence of warm-adapted tree species during the end of the
mPWP. Importantly, the chronology presented here allows placing earlier terrestrial
temperature reconstructions for Pliocene NW Europe (Zagwijn et al., 1992) in time. This
725 indicates that the Reuverian Stage concept, characterized by abundant *Taxodioidae* and

Sciadopitys and rare *Sequoia*, is dated to ~3.2–2.8 Ma. Further high-resolution analysis will attempt to resolve and date the Reuverian A–C substages in this marine setting.

Data availability

730 The research data presented in this paper is available to download in the supplementary information.

Author contribution

EDCF, FP and JSSD designed the research. CB and DS carried out the geochemical analyses
735 under supervision of EDCF, LN, FP, LL, and JSSD. DM and THD analysed and interpreted the palynological data. JtV provided seismic interpretations. EDCF integrated the data and prepared the manuscript with contributions from all authors.

Competing interests

740 The authors declare that they have no conflict of interest.

Acknowledgements

The authors would like to thank Nico Janssen for processing palynological samples, Giovanni Dammers and Natasja Welters for preparation of foraminifera samples, Arnold van Dijk for
745 help with isotope measurements, and Anita van Leeuwen and Dominika Kasjaniuk for assistance in the organic geochemistry lab. Stefan Schouten and Annelieke Mets at the Royal NIOZ assisted with the analysis of long chain diols. This work was supported by funding from the Netherlands Earth System Science Center (NESSC) through gravitation grant NWO 024.002.001 from the Dutch Ministry for Education, Culture and Science to Jaap S. Sinninghe
750 Damsté and Lucas Lourens. Two anonymous reviewers and Stijn de Schepper are thanked for providing constructive comments and suggestions that greatly improved the manuscript.

References

- 755 Benthien, A. and Müller, P.J.: Anomalous low alkenone temperatures caused by lateral particle and sediment transport in the Malvinas Current region, western Argentine Basin, *Deep Sea Research Part I: Oceanographic Research Papers*, 47, 2369-2393, [https://doi.org/10.1016/S0967-0637\(00\)00030-3](https://doi.org/10.1016/S0967-0637(00)00030-3), 2000.
- Blanz, T., Emeis, K. C., and Siegel, H.: Controls on alkenone unsaturation ratios along the salinity gradient between the open ocean and the Baltic Sea, *Geochim. Cosmochim. Ac.*, 69, 3589-3600, <https://doi.org/10.1016/j.gca.2005.02.026>, 2005.
- 760 Boenigk, W.: The Pleistocene drainage pattern in the Lower Rhine basin, *Neth. J. Geosci.*, 81, 201-209, 2002.
- Cacho, I., Pelejero, C., Grimalt, J.O., Calafat, A. and Canals, M.: C 37 alkenone measurements of sea surface temperature in the Gulf of Lions (NW Mediterranean), *Org. Geochem.*, 30, 557-566, [https://doi.org/10.1016/S0146-6380\(99\)00038-8](https://doi.org/10.1016/S0146-6380(99)00038-8), 1999.
- 765 Chapman, M.R., Shackleton, N.J., Zhao, M. and Eglinton, G.: Faunal and alkenone reconstructions of subtropical North Atlantic surface hydrography and paleotemperature over the last 28 kyr. *Paleoceanography*, 11, 343-357, <https://doi.org/10.1029/96PA00041>, 1996.
- 770 Clotten, C., Stein, R., Fahl, K. and De Schepper, S.: Seasonal sea ice cover during the warm Pliocene: Evidence from the Iceland Sea (ODP Site 907), *Earth Planet. Sc. Lett.*, 481, 61-72, <https://doi.org/10.1016/j.epsl.2017.10.011>, 2018.
- De Bar, M.W., Stolwijk, D.J., McManus, J.F., Sinninghe Damsté, J.S. and Schouten, S.: A Late Quaternary climate record based on long-chain diol proxies from the Chilean margin, *Clim. Past*, 14, 783-1803, <https://doi.org/10.5194/cp-14-1783-2018>, 2018.
- 775 De Schepper, S., Head, M. J., and Louwye, S.: Pliocene dinoflagellate cyst stratigraphy, palaeoecology and sequence stratigraphy of the Tunnel-Canal Dock, Belgium, *Geol. Mag.*, 146, 92-112, <https://doi.org/10.1017/S0016756808005438>, 2009a.

- 780 De Schepper, S., Head, M.J. and Groeneveld, J.: North Atlantic Current variability through
marine isotope stage M2 (circa 3.3 Ma) during the mid- Pliocene, *Paleoceanography and*
Paleoclimatology, 24, <https://doi.org/10.1029/2008PA001725>, 2009b.
- De Schepper, S., Fischer, E.I., Groeneveld, J., Head, M.J. and Matthiessen, J.: Deciphering the
palaeoecology of Late Pliocene and Early Pleistocene dinoflagellate cysts, *Palaeogeogr.*
785 *Palaeocl.*, 309, 17-32, <https://doi.org/10.1016/j.palaeo.2011.04.020>, 2011.
- De Schepper, S., Gibbard, P.L., Salzmann, U. and Ehlers, J.: A global synthesis of the marine
and terrestrial evidence for glaciation during the Pliocene Epoch, *Earth-Sci. Rev.*, 135,
83-102, <https://doi.org/10.1016/j.earscirev.2014.04.003>, 2014.
- Dearing Crampton-Flood, E., Peterse, F., Munsterman, D. and Sinninghe Damsté, J.S.: Using
790 tetraether lipids archived in North Sea Basin sediments to extract North Western
European Pliocene continental air temperatures, *Earth Planet. Sc. Lett.*, 490, 193-205,
<https://doi.org/10.1016/j.epsl.2018.03.030>, 2018.
- Delaygue, G., Bard, E., Rollion, C., Jouzel, J., Stiévenard, M., Duplessy, J.C. and Ganssen, G.:
Oxygen isotope/salinity relationship in the northern Indian Ocean, *J. Geophys. Res.-*
795 *Oceans*, 106, 4565-4574, <https://doi.org/10.1029/1999JC000061>, 2001.
- Donders, T.H., Kloosterboer-van Hoeve, M.L., Westerhoff, W., Verreussel, R.M. and Lotter,
A.F.: Late Neogene continental stages in NW Europe revisited, *Earth-Sci. Rev.*, 85,
161-186, <https://doi.org/10.1016/j.earscirev.2007.06.004>, 2007.
- Donders, T. H., Weijers, J. W. H., Munsterman, D. K., Kloosterboervan Hoeve, M. L., Buckles,
800 L. K., Pancost, R. D., Schouten, S., Sinninghe Damsté, J. S., and Brinkhuis, H.: Strong
climate coupling of terrestrial and marine environments in the Miocene of northwest
Europe, *Earth Planet. Sc. Lett.*, 281, 215–225,
<https://doi.org/10.1016/j.epsl.2009.02.034>, 2009.
- Donders, T.H., van Helmond, N.A., Verreussel, R., Munsterman, D., ten Veen, J., Speijer, R.,
805 Weijers, J.W., Sangiorgi, F., Peterse, F., Reichart, G.J. and Sinninghe-Damsté, J.S.:
Land-sea coupling of early Pleistocene glacial cycles in the southern North Sea exhibit
dominant Northern Hemisphere forcing, *Clim. Past*, 14, 397-411, DOI: 10.5194/cp-14-
397-2018, 2018.

- 810 Dowsett, H.J., Robinson, M.M. and Foley, K.M.: Pliocene three-dimensional global ocean temperature reconstruction, *Clim. Past*, 5, 769-783, <https://doi.org/10.5194/cp-5-769-2009>, 2009.
- Dowsett, H., Robinson, M., Haywood, A.M., Salzmann, U., Hill, D., Sohl, L.E., Chandler, M., Williams, M., Foley, K. and Stoll, D.K.: The PRISM3D paleoenvironmental reconstruction, *Stratigraphy*, 7, 123-139, 2010.
- 815 Dowsett, H.J., Robinson, M.M., Haywood, A.M., Hill, D.J., Dolan, A.M., Stoll, D.K., Chan, W.L., Abe-Ouchi, A., Chandler, M.A., Rosenbloom, N.A. and Otto-Bliesner, B.L.: Assessing confidence in Pliocene sea surface temperatures to evaluate predictive models, *Nat. Clim. Change*, 2(5), 365, DOI: 10.1038/NCLIMATE1455, 2012.
- 820 Dowsett, H.J., Robinson, M.M., Stoll, D.K., Foley, K.M., Johnson, A.L., Williams, M. and Riesselman, C.R.: The PRISM (Pliocene palaeoclimate) reconstruction: time for a paradigm shift, *Phil. Trans. R. Soc. A*, 371, 20120524, DOI: 10.1098/rsta.2012.0524, 2013.
- 825 Draut, A.E., Raymo, M.E., McManus, J.F. and Oppo, D.W.: Climate stability during the Pliocene warm period, *Paleoceanography*, 18, <https://doi.org/10.1029/2003PA000889>, 2003.
- Dwyer, G. S., & Chandler, M. A. Mid-Pliocene sea level and continental ice volume based on coupled benthic Mg/Ca palaeotemperatures and oxygen isotopes, *Philos. T. Roy. Soc. A*, 367, 157-168, <https://doi.org/10.1098/rsta.2008.0222>, 2009.
- 830 Faegri, K., Iversen, J., Kaland, P. E., and Krzywinski, K.: Text book of pollen analysis, IV Edition, The Blackburn Press, New Jersey, USA, 328, 1989.
- Fauquette, S., Guiot, J. and Suc, J.P.: A method for climatic reconstruction of the Mediterranean Pliocene using pollen data. *Palaeogeogr. Palaeocl.*, 144, 183-201, [https://doi.org/10.1016/S0031-0182\(98\)00083-2](https://doi.org/10.1016/S0031-0182(98)00083-2), 1998.
- 835 Fujine, K., Yamamoto, M., Tada, R. and Kido, Y.: A salinity-related occurrence of a novel alkenone and alkenoate in Late Pleistocene sediments from the Japan Sea, *Org. Geochem.*, 37, 1074-1084, <https://doi.org/10.1016/j.orggeochem.2006.05.004>, 2006.

- Funnell, B.M.: Plio-Pleistocene palaeogeography of the southern North Sea basin (3.75-0.60 Ma), *Quaternary Sci. Rev.*, 15, 391-405, [https://doi.org/10.1016/0277-3791\(96\)00022-4](https://doi.org/10.1016/0277-3791(96)00022-4), 1996.
- 840 Gelin, F., Boogers, I., Noordeloos, A.A., Sinninghe Damsté, J.S., Riegman, R. and De Leeuw, J.W.: Resistant biomacromolecules in marine microalgae of the classes Eustigmatophyceae and Chlorophyceae: geochemical implications, *Org. Geochem.*, 26, 659-675, [https://doi.org/10.1016/S0146-6380\(97\)00035-1](https://doi.org/10.1016/S0146-6380(97)00035-1), 1997.
- Gibbard, P.L.: The history of the great northwest European rivers during the past three million
845 years, *Phil. Trans. R. Soc. Lond. B*, 318, 559-602, <https://doi.org/10.1098/rstb.1988.0024>, 1988.
- Gibbard, P.L. and Lewin, J.: The history of the major rivers of southern Britain during the Tertiary, *J. Geol. Soc. London*, 160, 829-845, <https://doi.org/10.1144/0016-764902-137>, 2003.
- 850 Gibbard, P.L. and Lewin, J.: Filling the North Sea Basin: Cenozoic sediment sources and river styles (André Dumont medallist lecture 2014), *Geol. Belg.*, <http://dx.doi.org/10.20341/gb.2015.017>, 2016.
- Guiot, J.: Methodology of the last climatic cycle reconstruction in France from pollen data, *Palaeogeogr. Palaeocl.*, 80, 49-69, [https://doi.org/10.1016/0031-0182\(90\)90033-4](https://doi.org/10.1016/0031-0182(90)90033-4),
855 1990.
- Harada, N., Sato, M. and Sakamoto, T.: Freshwater impacts recorded in tetraunsaturated alkenones and alkenone sea surface temperatures from the Okhotsk Sea across millennial-scale cycles, *Paleoceanography*, 23, <https://doi-org.proxy.library.uu.nl/10.1029/2006PA001410>, 2008.
- 860 Harding, R.: Evolution of the Giant Southern North Sea Shelf-Prism: Testing sequence stratigraphic concepts and the global sea level curve with full-three dimensional control (Doctoral dissertation, The University of Manchester (United Kingdom)), 2015.
- Haywood, A.M., Hill, D.J., Dolan, A.M., Otto-Bliesner, B.L., Bragg, F., Chan, W.L., Chandler, M.A., Contoux, C., Dowsett, H.J., Jost, A. and Kamae, Y.: Large-scale features of
865 Pliocene climate: results from the Pliocene Model Intercomparison Project, *Clim. Past*, 9, 191, DOI:10.5194/cp-9-191-2013, 2013.

- Head, M. J.: Modern dinoflagellate cysts and their biological affinities, in: *Palynology: Principles and Application*, Vol. 3, edited by: Jansonius, J. and McGregor, D. C., American Association of Stratigraphic Palynologists Foundation, College Station, Texas, USA, 1197–1248, 1996.
- Head, M.J.: Pollen and dinoflagellates from the Red Crag at Walton-on-the-Naze, Essex: evidence for a mild climatic phase during the early Late Pliocene of eastern England, *Geol. Mag.*, 135, 803-817, 1998.
- Hennissen, J.A., Head, M.J., De Schepper, S. and Groeneveld, J.: Palynological evidence for a southward shift of the North Atlantic Current at ~2.6 Ma during the intensification of late Cenozoic Northern Hemisphere glaciation, *Paleoceanography and Paleoclimatology*, 29, 564-580, <https://doi.org/10.1002/2013PA002543>, 2014.
- Hennissen, J.A., Head, M.J., De Schepper, S. and Groeneveld, J.: Dinoflagellate cyst paleoecology during the Pliocene–Pleistocene climatic transition in the North Atlantic. *Palaeogeogr., Palaeocl.*, 470, 81-108, <https://doi.org/10.1016/j.palaeo.2016.12.023>, 2017.
- Herfort, L., Schouten, S., Boon, J.P., Woltering, M., Baas, M., Weijers, J.W. and Sinninghe Damsté, J.S.: Characterization of transport and deposition of terrestrial organic matter in the southern North Sea using the BIT index, *Limnol. Oceanogr.*, 51, 2196-2205, <https://doi.org/10.4319/lo.2006.51.5.2196>, 2006.
- Heusser, L.E. and Shackleton, N.J.: Direct marinecontinental correlation: 150,000-year oxygen isotope-pollen record from the North Pacific, *Science*, 204, 837–839, <https://doi.org/10.1126/science.204.4395.837>, 1979.
- Hodgson, G.E. and Funnell, B.M.: Foraminiferal biofacies of the early Pliocene Coralline Crag. *Micropalaeontology of Carbonate Environments*, British Micropalaeontological Society Series. Ellis Horwood Ltd., Chichester, UK, 44-73, 1987.
- Hopmans, E.C., Weijers, J.W., Schefuß, E., Herfort, L., Sinninghe Damsté, J.S. and Schouten, S.: A novel proxy for terrestrial organic matter in sediments based on branched and isoprenoid tetraether lipids, *Earth Planet. Sc. Lett.*, 224, 107-116, <https://doi.org/10.1016/j.epsl.2004.05.012>, 2004.

- Hopmans, E.C., Schouten, S. and Sinninghe Damsté, J.S.: The effect of improved chromatography on GDGT-based palaeoproxies, *Org. Geochem.*, 93, 1-6, <https://doi.org/10.1016/j.orggeochem.2015.12.006>, 2016.
- 900 Huguet, C., Schimmelmann, A., Thunell, R., Lourens, L.J., Sinninghe Damsté, J.S.: A study of the TEX86 paleothermometer in the water column and sediments of the Santa Barbara Basin, California, *Paleoceanography*, 22, <https://doi.org/10.1029/2006PA001310>, 2007.
- 905 IPCC, 2014: Climate Change 2014: Synthesis Report. Contribution of Working Groups I, II and III to the Fifth Assessment Report of the Intergovernmental Panel on Climate Change [Core Writing Team, R.K. Pachauri and L.A. Meyer (eds.)], IPCC, Geneva, Switzerland, 151 pp.
- Jacobs, Z.: Luminescence chronologies for coastal and marine sediments, *Boreas*, 37, 508-535, <https://doi-org.proxy.library.uu.nl/10.1111/j.1502-3885.2008.00054.x>, 2008.
- 910 Jansen, H.S.M., Huizer, J., Dijkmans, J.W.A., Mesdag, C. and Van Hinte, J.E.: The geometry and stratigraphic position of the Maassluis Formation (western Netherlands and southeastern North Sea), *Neth. J. of Geosci.*, 83, 93-99, <https://doi-org.proxy.library.uu.nl/10.1017/S0016774600020060>, 2004.
- Janssen, N., and Dammers, G.: Sample Processing for Pre-Quaternary Palynology, Internal TNO Report, 2008.
- 915 Johnson, A.L., Hickson, J.A., Bird, A., Schöne, B.R., Balson, P.S., Heaton, T.H. and Williams, M.: Comparative sclerochronology of modern and mid-Pliocene (c. 3.5 Ma) *Aequipecten opercularis* (Mollusca, Bivalvia): an insight into past and future climate change in the north-east Atlantic region, *Palaeogeogr., Palaeocl.*, 284, 164-179, <https://doi.org/10.1016/j.palaeo.2009.09.022>, 2009.
- 920 Kaiser, J., van der Meer, M. T., and Arz, H. W.: Long-chain alkenones in Baltic Sea surface sediments: new insights, *Org. Geochem.*, 112, 93-104, <https://doi.org/10.1016/j.orggeochem.2017.07.002>, 2017.
- 925 Kemna, H.A. and Westerhoff, W.E.: Remarks on the palynology-based chronostratigraphical subdivision of Pliocene terrestrial deposits in NW-Europe, *Quatern. Int.*, 164, 184-196, <https://doi.org/10.1016/j.quaint.2006.10.017>, 2007.

- Kim, J.H., Van der Meer, J., Schouten, S., Helmke, P., Willmott, V., Sangiorgi, F., Koç, N., Hopmans, E.C. and Sinninghe Damsté, J.S.: New indices and calibrations derived from the distribution of crenarchaeal isoprenoid tetraether lipids: Implications for past sea surface temperature reconstructions, *Geochim. Cosmochim. Ac.*, 74, 4639-4654, <https://doi.org/10.1016/j.gca.2010.05.027>, 2010.
- Kotthoff, U., Greenwood, D. R., McCarthy, F. M. G., MüllerNavarra, K., Prader, S., and Hesselbo, S. P.: Late Eocene to middle Miocene (33 to 13 million years ago) vegetation and climate development on the North American Atlantic Coastal Plain (IODP Expedition 313, Site M0027), *Clim. Past*, 10, 1523–1539, <https://doi.org/10.5194/cp-10-1523-2014>, 2014.
- Krantz, D.E.: A chronology of Pliocene sea-level fluctuations: The US Middle Atlantic Coastal Plain record, *Quaternary Sci. Rev.*, 10, 163-174, [https://doi.org/10.1016/0277-3791\(91\)90016-N](https://doi.org/10.1016/0277-3791(91)90016-N), 1991.
- Kuhlmann, G.: High resolution stratigraphy and paleoenvironmental changes in the southern North Sea during the Neogene – an integrated study of Late Cenozoic marine deposits from the northern part of the Dutch offshore area, PhD Thesis, Utrecht University, 2004.
- Kuhlmann, G., Langereis, C., Munsterman, D., van Leeuwen, R.J., Verreussel, R., Meulenkamp, J. and Wong, T.: Chronostratigraphy of Late Neogene sediments in the southern North Sea Basin and paleoenvironmental interpretations, *Palaeogeogr., Palaeoclimatol., 239*, 426-455, 2006.
- Kuhlmann, G. and Wong, T.E.: Pliocene paleoenvironment evolution as interpreted from 3D-seismic data in the southern North Sea, Dutch offshore sector, *Mar. Petrol. Geol.*, 25, 173-189, <https://doi.org/10.1016/j.marpetgeo.2007.05.009>, 2008.
- Larsson, L.M., Dybkjær, K., Rasmussen, E.S., Piasecki, S., Utescher, T. and Vajda, V.: Miocene climate evolution of northern Europe: A palynological investigation from Denmark, *Palaeogeogr., Palaeoclimatol.*, 309, 161-175, <https://doi.org/10.1016/j.palaeo.2011.05.003>, 2011.
- Lattaud, J., Kim, J.H., De Jonge, C., Zell, C., Sinninghe Damsté, J.S. and Schouten, S.: The C₃₂ alkane-1, 15-diol as a tracer for riverine input in coastal seas, *Geochim. Cosmochim. Ac.*, 202, 146-158, <https://doi.org/10.1016/j.gca.2016.12.030>, 2017.

- Lattaud, J., Lo, L., Huang, J.J., Chou, Y.M., Gorbarenko, S.A., Sinninghe Damsté, J.S. and Schouten, S.: A Comparison of Late Quaternary Organic Proxy-Based Paleotemperature Records of the Central Sea of Okhotsk, *Paleoclim.*, 33, 732-744, <https://doi-org.proxy.library.uu.nl/10.1029/2018PA003388>, 2018.
- 960 Lawrence, K.T., Herbert, T.D., Brown, C.M., Raymo, M.E. and Haywood, A.M.: High-amplitude variations in North Atlantic sea surface temperature during the early Pliocene warm period, *Paleoceanography*, 24, <https://doi.org/10.1029/2008PA001669>, 2009.
- Lisiecki, L.E. and Raymo, M.E.: A Pliocene-Pleistocene stack of 57 globally distributed benthic $\delta^{18}\text{O}$ records, *Paleoceanography*, 20, <https://doi.org/10.1029/2004PA001071>,
 965 2005.
- Locarnini, R. A., A. V. Mishonov, J. I. Antonov, T. P. Boyer, H. E. Garcia, O. K. Baranova, M. M. Zweng, C. R. Paver, J. R. Reagan, D. R. Johnson, M. Hamilton, and D. Seidov.: *World Ocean Atlas 2013, Volume 1: Temperature*. S. Levitus, Ed., A. Mishonov Technical Ed.; NOAA Atlas NESDIS 73, 40, 2013.
- 970 Long, P.E. and Zalasiewicz, J.A.: The molluscan fauna of the Coralline Crag (Pliocene, Zanclean) at Raydon Hall, Suffolk, UK: palaeoecological significance reassessed, *Palaeogeogr.*, *Palaeocl.*, 309, 53-72, <https://doi.org/10.1016/j.palaeo.2011.05.039>, 2011.
- Lopes Dos Santos, R.A., Spooner, M.I., Barrows, T.T., De Deckker, P., Sinninghe Damsté, J.S.S. and Schouten, S.: Comparison of organic (UK'37, TEXH86, LDI) and faunal proxies (foraminiferal assemblages) for reconstruction of late Quaternary sea surface temperature variability from offshore southeastern Australia, *Paleoceanography*, 28, 377-387, <https://doi-org.proxy.library.uu.nl/10.1002/palo.20035>, 2013.
- 975
- Louwye, S., and De Schepper, S.: The Miocene–Pliocene hiatus in the southern North Sea Basin (northern Belgium) revealed by dinoflagellate cysts, *Geol. Mag.*, 147, 760-776, <https://doi.org/10.1017/S0016756810000191>, 2010.
- 980
- Lubinski, D.J., Polyak, L. and Forman, S.L.: Freshwater and Atlantic water inflows to the deep northern Barents and Kara seas since ca 13 14C ka: foraminifera and stable

- isotopes, *Quaternary Sci. Rev.*, 20, 1851-1879, [https://doi.org/10.1016/S0277-3791\(01\)00016-6](https://doi.org/10.1016/S0277-3791(01)00016-6), 2001
- 985
- Marlowe, I.T., Green, J.C., Neal, A.C., Brassell, S.C., Eglinton, G. and Course, P.A.: Long chain (n-C37–C39) alkenones in the Prymnesiophyceae. Distribution of alkenones and other lipids and their taxonomic significance, *Brit. Phycol. J.*, 19, 203-216, <https://doi-org.proxy.library.uu.nl/10.1080/00071618400650221>, 1984.
- 990
- Marret, F., and Zonneveld, K. A.: Atlas of modern organic-walled dinoflagellate cyst distribution. *Rev. Palaeobot. Palyno.*, 125, 1-200, [https://doi.org/10.1016/S0034-6667\(02\)00229-4](https://doi.org/10.1016/S0034-6667(02)00229-4), 2003.
- Miller, K.G., Mountain, G.S., Wright, J.D. and Browning, J.V.: A 180-million-year record of sea level and ice volume variations from continental margin and deep-sea isotopic records, *Oceanography*, 24, 40-53, 2011.
- 995
- Miller, K.G., Wright, J.D., Browning, J.V., Kulpecz, A., Kominz, M., Naish, T.R., Cramer, B.S., Rosenthal, Y., Peltier, W.R. and Sossian, S.: High tide of the warm Pliocene: Implications of global sea level for Antarctic deglaciation, *Geology*, 40, 407-410, <https://doi.org/10.1130/G32869.1>, 2012.
- 1000
- Mudie, P. J. and McCarthy, F. M. G.: Late Quaternary pollen transport processes, western North Atlantic: Data from box models, cross-margin and N-S transects, *Mar. Geol.*, 118, 79–105, [https://doi.org/10.1016/0025-3227\(94\)90114-7](https://doi.org/10.1016/0025-3227(94)90114-7), 1994.
- Müller, P.J., Kirst, G., Ruhland, G., Von Storch, I. and Rosell-Melé, A.: Calibration of the alkenone paleotemperature index U₃₇ K' based on core-tops from the eastern South Atlantic and the global ocean (60°N–60°S), *Geochim. Cosmochim. Ac.*, 62, 1757-1772, [https://doi.org/10.1016/S0016-7037\(98\)00097-0](https://doi.org/10.1016/S0016-7037(98)00097-0), 1998.
- 1005
- Munsterman, D.K.: Towards a higher resolution: The Plio-Pleistocene palynostratigraphy of well B44E0146 (Hank), interval 45-404 m, Extended and updated version, including an additional set of 20 samples, TNO report 2016 R11106: 17, 2016.
- 1010
- Munsterman, D.K., Ten Veen, J.H., Menkovic, A., Deckers, J., Witmans, N., Verhaegen, J., Kersthoud-Boegehold, S.J., Van de Ven, T., and Busschers, F.: An updated and revised stratigraphic framework for the Miocene and earliest Pliocene strata of the Roer Valley Graben and adjacent blocks, *Neth. J. Geosci.*, 2019.

- Murray, J.W.: Ecology and palaeoecology of benthic foraminifera. Routledge, 1: 408, 2014.
- 1015 Naafs, B.D.A., Stein, R., Hefter, J., Khélifi, N., De Schepper, S. and Haug, G.H.: Late Pliocene changes in the North Atlantic current, *Earth Planet. Sci. Lett.*, 298, 434-442, <https://doi.org/10.1016/j.epsl.2010.08.023>, 2010.
- Naish, T. R., & Wilson, G. S.: Constraints on the amplitude of Mid-Pliocene (3.6–2.4 Ma) eustatic sea-level fluctuations from the New Zealand shallow-marine sediment record, *Philos. T. Roy. Soc. A.*, 367, 169-187, <https://doi.org/10.1098/rsta.2008.0223>, 2009.
- 1020 Noorbergen, L.J., Lourens, L.J., Munsterman, D.K. and Verreussel, R.M.C.H.: Stable isotope stratigraphy of the early Quaternary of borehole Noordwijk, southern North Sea, *Quaternary Int.*, 386, 148-157, <https://doi.org/10.1016/j.quaint.2015.02.045>, 2015.
- Ohkouchi, N., Eglinton, T.I., Keigwin, L.D. and Hayes, J.M.: Spatial and temporal offsets between proxy records in a sediment drift, *Science*, 298, 1224-1227, DOI: 10.1126/science.1075287, 2002.
- 1025 Overeem, I., Weltje, G.J., Bishop-Kay, C. and Kroonenberg, S.B.: The Late Cenozoic Eridanos delta system in the Southern North Sea Basin: a climate signal in sediment supply? *Basin Res.*, 13, 293-312, 2001.
- 1030 Perry, A.L., Low, P.J., Ellis, J.R. and Reynolds, J.D.: Climate change and distribution shifts in marine fishes, *Science*, 308, 1912-1915, DOI: 10.1126/science.1111322, 2005.
- Pitcher, A., Wuchter, C., Siedenberg, K., Schouten, S. and Sinninghe Damsté, J.S.: Crenarchaeol tracks winter blooms of ammonia-oxidizing Thaumarchaeota in the coastal North Sea, *Limnol. Ocean.*, 56, 2308-2318, <https://doi.org/10.4319/lo.2011.56.6.2308>, 2011.
- 1035 Plancq, J., Grossi, V., Pittet, B., Huguet, C., Rosell-Melé, A. and Mattioli, E.: Multi-proxy constraints on sapropel formation during the late Pliocene of central Mediterranean (southwest Sicily), *Earth Planet. Sci. Lett.*, 420, 30-44, <https://doi.org/10.1016/j.epsl.2015.03.031>, 2015.
- 1040 Prahl, F.G. and Wakeham, S.G.: Calibration of unsaturation patterns in long-chain ketone compositions for palaeotemperature assessment, *Nature*, 330, 367, 1987.

- Pross, J. and Brinkhuis, H.: Organic-walled dinoflagellate cysts as paleoenvironmental indicators in the Paleogene; a synopsis of concepts, *Palaeont. Z.*, 79, 53-59, <https://doi-org.proxy.library.uu.nl/10.1007/BF03021753>, 2005.
- 1045 Rampen, S.W., Schouten, S., Wakeham, S.G. and Sinninghe Damsté, J.S.: Seasonal and spatial variation in the sources and fluxes of long chain diols and mid-chain hydroxy methyl alkanoates in the Arabian Sea. *Org. Geochem.*, 38, 165-179, <https://doi.org/10.1016/j.orggeochem.2006.10.008>, 2007.
- 1050 Rampen, S.W., Schouten, S. and Sinninghe Damsté, J.S.: Occurrence of long chain 1, 14-diols in *Apedinella* radians, *Org. Geochem.*, 42, 572-574, <https://doi.org/10.1016/j.orggeochem.2011.03.009>, 2011.
- 1055 Rampen, S.W., Willmott, V., Kim, J.H., Uliana, E., Mollenhauer, G., Schefuß, E., Sinninghe Damsté, J.S. and Schouten, S.: Long chain 1, 13-and 1, 15-diols as a potential proxy for palaeotemperature reconstruction, *Geochim. Cosmochim. Acta*, 84, 204-216, <https://doi.org/10.1016/j.gca.2012.01.024>, 2012.
- Raymo, M.E.: The initiation of Northern Hemisphere glaciation. *Annu. Rev. Earth Pl. Sc.*, 22, 353-383, 1994.
- 1060 Raymo, M.E., Kozdon, R., Evans, D., Lisiecki, L., and Ford, H.L.: The accuracy of mid-Pliocene $\delta^{18}O$ -based ice volume and sea level reconstructions, *Earth-Sci. Rev.*, 177, 291-302, <https://doi.org/10.1016/j.earscirev.2017.11.022>, 2018.
- Risebrobakken, B., Andersson, C., De Schepper, S. and McClymont, E.L.: Low-frequency Pliocene climate variability in the eastern Nordic Seas, *Paleoceanography*, 31, 1154-1175, <https://doi.org/10.1002/2015PA002918>, 2016.
- 1065 Rochon, A., Vernal, A.D., Turon, J.L., Matthießen, J. and Head, M.J.: Distribution of recent dinoflagellate cysts in surface sediments from the North Atlantic Ocean and adjacent seas in relation to sea-surface parameters, *American Association of Stratigraphic Palynologists Contribution Series*, 35, 1-146, 1999.
- Rodrigo-Gámiz, M., Martínez-Ruiz, F., Rampen, S.W., Schouten, S. and Sinninghe Damsté, J.S.: Sea surface temperature variations in the western Mediterranean Sea over the last

- 1070 20 kyr: A dual-organic proxy (UK' 37 and LDI) approach, *Paleoceanography*, 29, 87-98, <https://doi.org/10.1002/2013PA002466>, 2014.
- Ruddiman, W.F.: *Earth's Climate: past and future*, Macmillan, 2001.
- Salacup, J.M., Farmer, J.R., Herbert, T.D. and Prell, W.L.: Alkenone Paleothermometry in Coastal Settings: Evaluating the Potential for Highly Resolved Time Series of Sea Surface Temperature, *Paleoceanography and Paleoclimatology*, <https://doi-org.proxy.library.uu.nl/10.1029/2018PA003416>, 2019.
- 1075
- Salzmann, U., Dolan, A.M., Haywood, A.M., Chan, W.L., Voss, J., Hill, D.J., Abe-Ouchi, A., Otto-Bliesner, B., Bragg, F.J., Chandler, M.A. and Contoux, C.: Challenges in quantifying Pliocene terrestrial warming revealed by data-model discord, *Nat. Clim. Change*, 3, 969, <https://doi-org.proxy.library.uu.nl/10.1038/nclimate2008>, 2013.
- 1080
- Schmiedl, G., Hemleben, C., Keller, J., and Segl, M.: Impact of climatic changes on the benthic foraminiferal fauna in the Ionian Sea during the last 330, 000 years, *Paleoceanography*, 13, 447-458, <https://doi.org/10.1029/98PA01864>, 1998.
- Schouten, S., Hopmans, E.C., Schefuß, E. and Sinninghe Damsté, J.S.: Distributional variations in marine crenarchaeotal membrane lipids: a new tool for reconstructing ancient sea water temperatures? *Earth Planet. Sci. Lett.*, 204, 265-274, [https://doi.org/10.1016/S0012-821X\(02\)00979-2](https://doi.org/10.1016/S0012-821X(02)00979-2), 2002.
- 1085
- Schulz, H. M., Schöner, A., and Emeis, K. C.: Long-chain alkenone patterns in the Baltic Sea—an ocean-freshwater transition, *Geochim. Cosmochim. Acta.*, 64, 469-477, [https://doi.org/10.1016/S0016-7037\(99\)00332-4](https://doi.org/10.1016/S0016-7037(99)00332-4), 2000.
- 1090
- Seki, O., Foster, G.L., Schmidt, D.N., Mackensen, A., Kawamura, K. and Pancost, R.D.: Alkenone and boron-based Pliocene pCO₂ records, *Earth Planet. Sci. Lett.*, 292, 201-211, <https://doi.org/10.1016/j.epsl.2010.01.037>, 2010.
- Sinninghe Damsté, J.S., Hopmans, E.C., Pancost, R.D., Schouten, S. and Geenevasen, J.A.: Newly discovered non-isoprenoid glycerol dialkyl glycerol tetraether lipids in sediments, *Chem. Comm.*, 17, 1683-1684, DOI: 10.1039/B004517I, 2000.
- 1095
- Sinninghe Damsté, J.S., Schouten, S., Hopmans, E.C., van Duin, A.C. and Geenevasen, J.A.: Crenarchaeol the characteristic core glycerol dibiphytanyl glycerol tetraether membrane

- lipid of cosmopolitan pelagic crenarchaeota, *J. Lipid Res.*, 43, 1641-1651, doi: 10.1194/jlr.M200148-JLR200, 2002.
- 1100
- Sinninghe Damsté, J.S., Rampen, S., Irene, W., Rijpstra, C., Abbas, B., Muyzer, G. and Schouten, S.: A diatomaceous origin for long-chain diols and mid-chain hydroxy methyl alkanoates widely occurring in Quaternary marine sediments: Indicators for high-nutrient conditions, *Geochim. Cosmochim. Ac.*, 67, 1339-1348, 1105 [https://doi.org/10.1016/S0016-7037\(02\)01225-5](https://doi.org/10.1016/S0016-7037(02)01225-5), 2003
- Taylor, K.W., Huber, M., Hollis, C.J., Hernandez-Sanchez, M.T. and Pancost, R.D.: Re-evaluating modern and Palaeogene GDGT distributions: Implications for SST reconstructions, *Global Planet. Change*, 108, 158-174, <https://doi.org/10.1016/j.gloplacha.2013.06.011>, 2013.
- 1110 Theroux, S., D'Andrea, W.J., Toney, J., Amaral-Zettler, L. and Huang, Y.: Phylogenetic diversity and evolutionary relatedness of alkenone-producing haptophyte algae in lakes: implications for continental paleotemperature reconstructions, *Earth Planet. Sci. Lett.*, 300, 311-320, <https://doi.org/10.1016/j.epsl.2010.10.009>, 2010.
- Thöle, H., Gaedicke, C., Kuhlmann, G. and Reinhardt, L.: Late Cenozoic sedimentary evolution of the German North Sea—A seismic stratigraphic approach, *Newsl. Stratigr.*, 47, 299- 1115 329, DOI: <https://doi.org/10.1127/0078-0421/2014/0049>, 2014.
- Tierney, J.E. and Tingley, M.P.: A Bayesian, spatially-varying calibration model for the TEX86 proxy. *Geochim. Cosmochim. Ac.*, 127, 83-106, <https://doi.org/10.1016/j.gca.2013.11.026>, 2014.
- 1120 Toney, J.L., Huang, Y., Fritz, S.C., Baker, P.A., Grimm, E. and Nyren, P.: Climatic and environmental controls on the occurrence and distributions of long chain alkenones in lakes of the interior United States, *Geochim. Cosmochim. Ac.*, 74, 1563-1578, <https://doi.org/10.1016/j.gca.2009.11.021>, 2010.
- Uhl, D., Klotz, S., Traiser, C., Thiel, C., Utescher, T., Kowalski, E. and Dilcher, D.L.: Cenozoic paleotemperatures and leaf physiognomy—a European perspective, *Palaeogeogr., Palaeoclimatol., 1125 248, 24-31, https://doi.org/10.1016/j.palaeo.2006.11.005*, 2007.

- Utescher, T., Mosbrugger, V. and Ashraf, A.R.: Terrestrial climate evolution in northwest Germany over the last 25 million years, *Palaios*, 15, 430-449, [https://doi.org/10.1669/0883-1351\(2000\)015<0430:TCEING>2.0.CO;2](https://doi.org/10.1669/0883-1351(2000)015<0430:TCEING>2.0.CO;2), 2000.
- 1130 Valentine, A., Johnson, A.L., Leng, M.J., Sloane, H.J. and Balson, P.S.: Isotopic evidence of cool winter conditions in the mid-Piacenzian (Pliocene) of the southern North Sea Basin, *Palaeogeogr.*, *Palaeocl.*, 309, 9-16, <https://doi.org/10.1016/j.palaeo.2011.05.015>, 2011.
- 1135 van Aken, H. M.: Variability of the water temperature in the western Wadden Sea on tidal to centennial time scales, *J. Sea Res.*, 60, 227-234, <https://doi.org/10.1016/j.seares.2008.09.001>, 2008.
- 1140 Van Balen, R.T., Houtgast, R.F., Van der Wateren, F.M., Vandenberghe, J. and Bogaart, P.W.: Sediment budget and tectonic evolution of the Meuse catchment in the Ardennes and the Roer Valley Rift System, *Global Planet. Change*, 27, 113-129, [https://doi.org/10.1016/S0921-8181\(01\)00062-5](https://doi.org/10.1016/S0921-8181(01)00062-5), 2000.
- Van den Brink, F.W.B., De Leeuw, J.P.H.M., Van der Velde, G. and Verheggen, G.M.: Impact of hydrology on the chemistry and phytoplankton development in floodplain lakes along the Lower Rhine and Meuse, *Biogeochemistry*, 19, 103-128, 1992.
- 1145 Versteegh, G.J. and Zonneveld, K.A.: Determination of (palaeo-) ecological preferences of dinoflagellates by applying detrended and canonical correspondence analysis to Late Pliocene dinoflagellate cyst assemblages of the south Italian Singa section, *Rev. Palaeobot. Palyno.*, 84, 181-199, [https://doi.org/10.1016/0034-6667\(94\)90050-7](https://doi.org/10.1016/0034-6667(94)90050-7), 1994.
- 1150 Vignols, R.M., Valentine, A.M., Finlayson, A.G., Harper, E.M., Schöne, B.R., Leng, M.J., Sloane, H.J. and Johnson, A.L.: Marine climate and hydrography of the Coralline Crag (early Pliocene, UK): isotopic evidence from 16 benthic invertebrate taxa, *Chem. Geol.*, 526, 62-83, <https://doi.org/10.1016/j.chemgeo.2018.05.034>, 2018.
- Volkman, J.K., Barrett, S.M., Dunstan, G.A. and Jeffrey, S.W.: C₃₀ C₃₂ alkyl diols and unsaturated alcohols in microalgae of the class Eustigmatophyceae, *Org. Geochem.*, 18, 131-138, [https://doi.org/10.1016/0146-6380\(92\)90150-V](https://doi.org/10.1016/0146-6380(92)90150-V), 1992.
- 1155 Volkman, J.K., Barrett, S.M. and Blackburn, S.I.: Eustigmatophyte microalgae are potential sources of C₂₉ sterols, C₂₂–C₂₈ n-alcohols and C₂₈–C₃₂ n-alkyl diols in freshwater

environments, *Org. Geochem.*, 30, 307-318, [https://doi.org/10.1016/S0146-6380\(99\)00009-1](https://doi.org/10.1016/S0146-6380(99)00009-1), 1999.

1160 Weijers, J.W., Schouten, S., Spaargaren, O.C. and Sinninghe Damsté, J.S.: Occurrence and distribution of tetraether membrane lipids in soils: Implications for the use of the TEX86 proxy and the BIT index, *Org. Geochem.*, 37, 1680-1693, <https://doi.org/10.1016/j.orggeochem.2006.07.018>, 2006.

1165 Weijers, J.W., Schouten, S., van den Donker, J.C., Hopmans, E.C. and Sinninghe Damsté, J.S.: Environmental controls on bacterial tetraether membrane lipid distribution in soils. *Geochim. Cosmochim. Ac.*, 71, 703-713, <https://doi.org/10.1016/j.gca.2006.10.003>, 2007.

Westerhoff, W.E.: Stratigraphy and sedimentary evolution: The lower Rhine-Meuse system during the Late Pliocene and Early Pleistocene (southern North Sea Basin). PhD Thesis, Vrije Universiteit Amsterdam, 2009.

1170 Williams, M., Haywood, A.M., Harper, E.M., Johnson, A.L., Knowles, T., Leng, M.J., Lunt, D.J., Okamura, B., Taylor, P.D. and Zalasiewicz, J.: Pliocene climate and seasonality in North Atlantic shelf seas, *Philos. T. Roy. Soc. A.*, 367, 85-108, DOI: 10.1098/rsta.2008.0224, 2009.

1175 Williams, G.L., Fensome, R.A. and Macrae, R.A.: Lentin and Williams index of fossil dinoflagellates, *AASP Contribution series*, 48: 1097, 2017.

Winther, N. G., and Johannessen, J. A.: North Sea circulation: Atlantic inflow and its destination, *J. Geophys. Res.: Oceans*, 11, <https://doi.org/10.1029/2005JC003310>, 2006.

1180 Wood, A.M., Whatley, R.C., Cronin, T.M. and Holtz, T.: Pliocene palaeotemperature reconstruction for the southern North Sea based on Ostracoda, *Quaternary Sci. Rev.*, 12, 747-767, [https://doi.org/10.1016/0277-3791\(93\)90015-E](https://doi.org/10.1016/0277-3791(93)90015-E), 1993.

Zagwijn, W.H.: Aspects of the Pliocene and Early Pleistocene vegetation in the Netherlands, *Mededelingen Geologische Stichting, C*, 3, 1-78, 1960.

1185 Zagwijn, W.H.: The beginning of the ice age in Europe and its major subdivisions, *Quaternary Sci. Rev.*, 11, 583-591, [https://doi.org/10.1016/0277-3791\(92\)90015-Z](https://doi.org/10.1016/0277-3791(92)90015-Z), 1992.

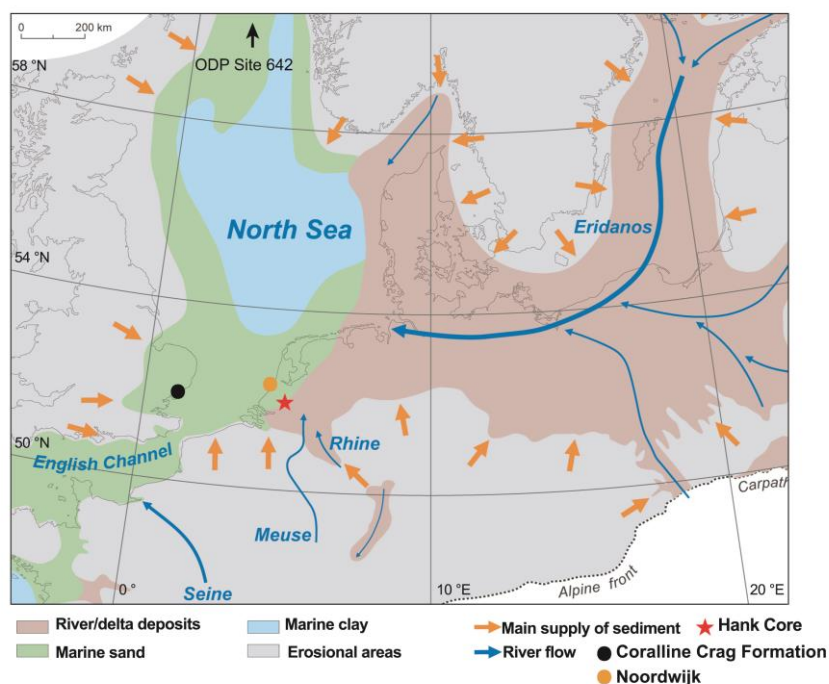
Zell, C., Kim, J.H., Moreira-Turcq, P., Abril, G., Hopmans, E.C., Bonnet, M.P., Sobrinho, R.L. and Sinninghe Damsté, J.S.: Disentangling the origins of branched tetraether lipids and crenarchaeol in the lower Amazon River: Implications for GDGT-based proxies, *Limnol. Ocean.*, 58, 343-353, <https://doi-org.proxy.library.uu.nl/10.4319/lo.2013.58.1.0343>, 2013.

Zhang, Y.G., Pagani, M., Liu, Z., Bohaty, S.M. and DeConto, R.: A 40-million-year history of atmospheric CO₂, *Phil. Trans. R. Soc. A*, 371, 20130096, DOI: 10.1098/rsta.2013.0096, 2013.

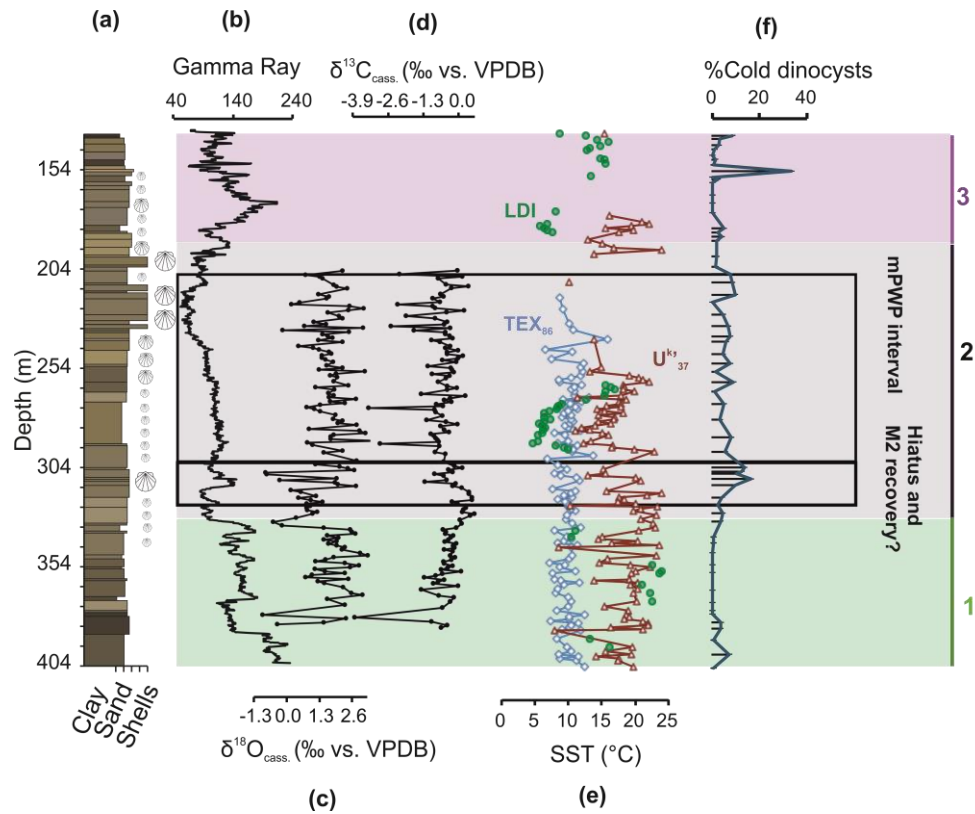
Ziegler, P.A.: Geological Atlas of Western and Central Europe. (2nd edn), Geological Society Publishing House, 239, 1990.

Zonneveld, K.A., Marret, F., Versteegh, G.J., Bogus, K., Bonnet, S., Bouimetarhan, I., Crouch, E., de Vernal, A., Elshanawany, R., Edwards, L. and Esper, O.: Atlas of modern dinoflagellate cyst distribution based on 2405 data points, *Rev. Palaeobot. Palyno.*, 191, 1-197, <https://doi.org/10.1016/j.revpalbo.2012.08.003>, 2013.

Figures



1215 Fig. 1. Pliocene paleogeography in the North Sea basin (Gibbard and Lewin, 2003; Knox et al., 2010). The location of the Hank borehole is represented by a red star. Major rivers and sediment inputs are represented by blue and orange arrows, respectively. Other locations mentioned in the text are indicated. Figure modified from Gibbard and Lewin (2016).



1220 Fig 2. Marine proxies for the Hank borehole. (a) The depth and lithology of the Hank sediments,
 with shell material qualitatively indicated by shell symbols. (b) The smoothed gamma ray (GR)
 log (dinoloket.nl). (c) Stable oxygen and (d) stable carbon isotope records for the endobenthic
Cassidulina laevigata. (e) SST records based on TEX₈₆ (blue diamonds), U^{K'}₃₇ (red triangles),
 and LDI (green squares). (f) %Cold taxa of dinoflagellate cysts. Intervals 1, 2 and 3 discussed
 1225 in the text are indicated by green (Early Pliocene), grey (mid-Pliocene), and purple (late
 Pliocene-early Pleistocene). The tuned interval and the position of the hiatus marking the M2
 are represented by a black line.

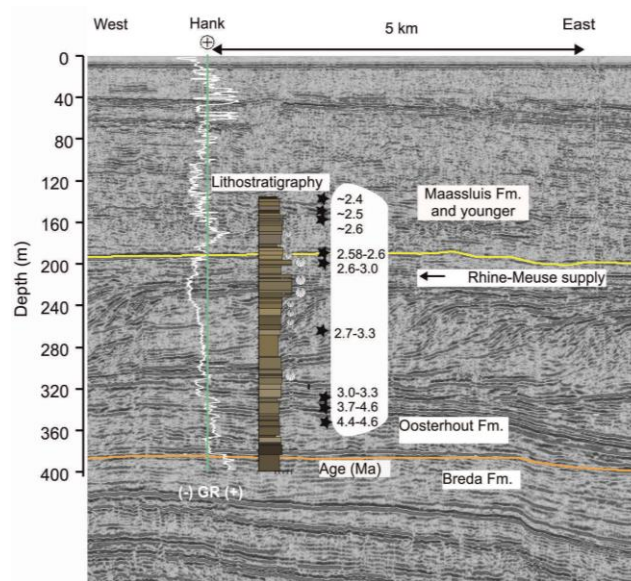


Fig. 3. Seismic east to west depth profile at the River Maas (from Maas2002 survey, nlog.nl) with the location of the Hank borehole (B44E0146) and corresponding formations indicated. The smoothed Gamma ray log (from dinoloket.nl, white), and lithology of the borehole are provided for context. Stars and age ranges refer to the biostratigraphic age model of Dearing Crampton-Flood et al. (2018). The orange and yellow lines represent the boundaries of the Breda and Oosterhout (revised), and the Oosterhout and Maassluis formations, respectively.

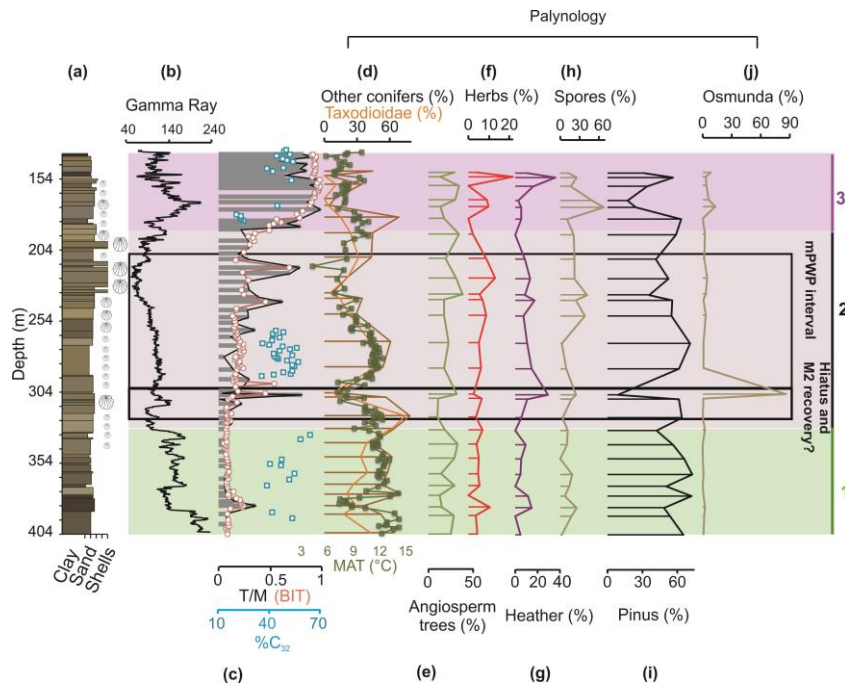


Fig. 4. Terrestrial proxies for the Hank borehole. (a) The depth and lithology of the Hank
 1240 sediments, with shell material qualitatively indicated by shell symbols. (b) The smoothed
 gamma ray (GR) log (from dinoloket.nl), (c) the relative input of terrestrial organic material to
 the Hank sediments based on the terrestrial/marine ratio of palynomorphs (black line), the
 Branched and Isoprenoid Tetraether (BIT) index (orange circles), and the %C₃₂ diol (blue
 1245 squares). Pollen records expressed as % of total pollen: (d) Other conifers (brown line),
 Taxodioidae (orange line) and MAT (°C; green line; Dearing Crampton-Flood et al., 2018), (e)
 angiosperm trees, (f) herbs, (g) heather, (h) spores, (i) Pinus, and (j) Osmunda. Intervals 1, 2
 and 3 discussed in the text are indicated by green (Early Pliocene), grey (mid-Pliocene), and
 purple (late Pliocene-early Pleistocene). The tuned interval and the position of the hiatus
 marking the M2 are represented by a black line.

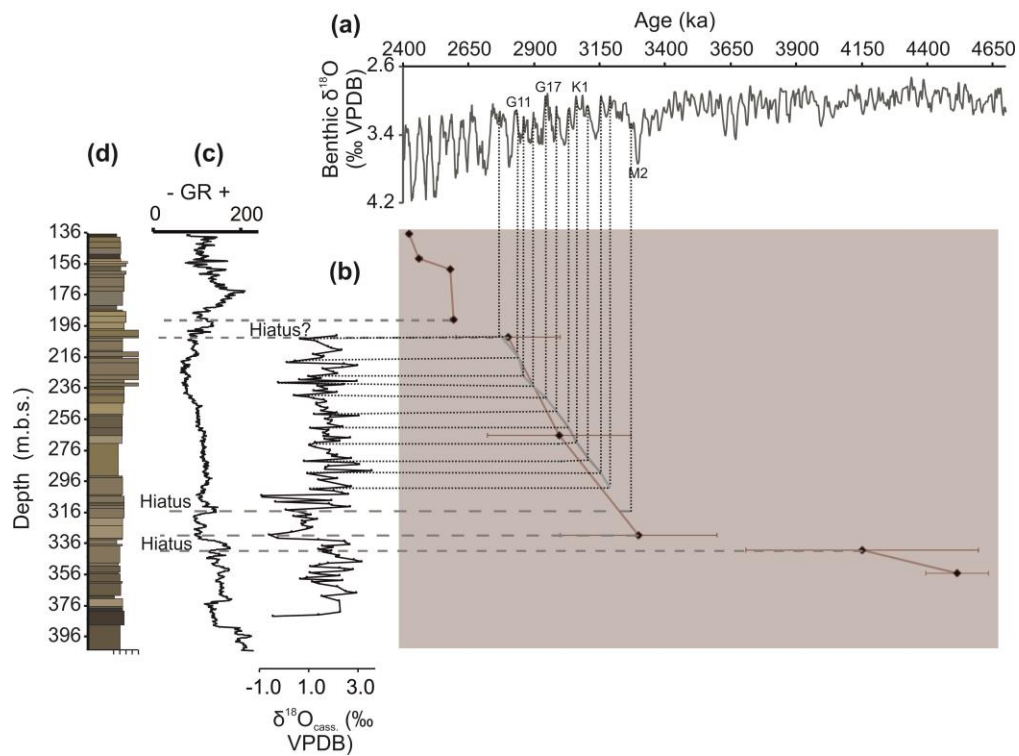


Fig. 5. Age framework for the Pliocene southern North Sea Basin. Correlations of the interglacials of the (a) LR04 stack (Lisiecki and Raymo, 2005) to the interglacials in the (b) $\delta^{18}\text{O}_{\text{cass.}}$ record for Hank. (c) Smoothed gamma ray (GR), (d) lithology, and depth of Hank sediments. Grey dotted lines indicate tie points based on $\delta^{18}\text{O}$ values, whereas the dashed line at ~314 m is based on correlation of sequence boundary with the Poederlee Formation (De Schepper et al., 2009; Louwye and De Schepper, 2010). Biostratigraphic age estimates (Dearing Crampton-Flood et al., 2018) are shown in purple.

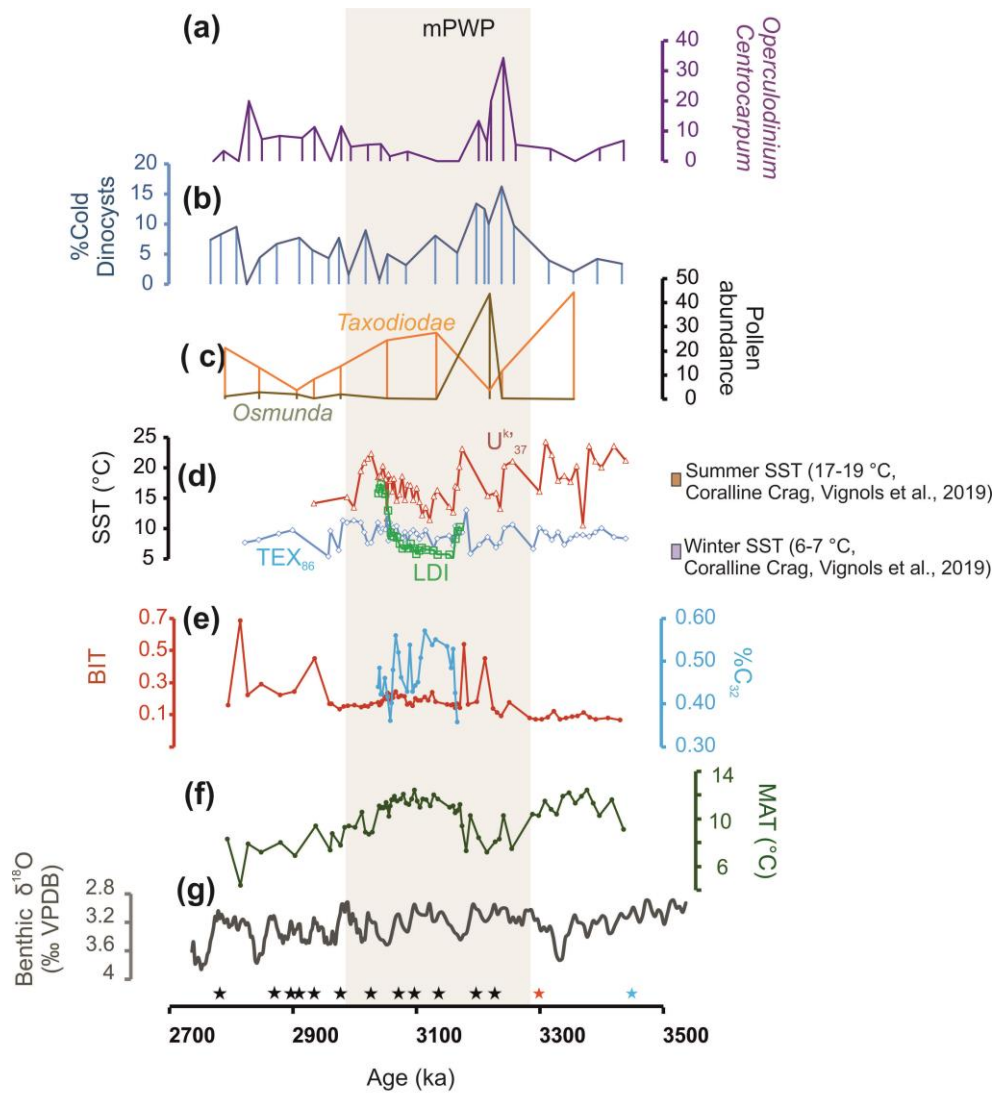


Fig. 6. Climate proxy records for the southern North Sea Basin for the late Pliocene. Age tie points (stars) based on oxygen isotope stratigraphy (black), sequence boundary correlation (red), and biostratigraphy (blue) are indicated. The depth interval covered by the age tying points is 206–330 m. (a) the relative abundance of *Operculodinium centrocarpum* expressed as a percent total of dinocysts, (b) %Cold dinocysts, (c) pollen abundances for *Taxodioidae* (orange) and *Osmunda* (dark yellow) as a percentage of the pollen sum, (d) SST records based on the TEX₈₆, U^K₃₇ and LDI proxies, together with estimates (dotted lines) from oxygen isotope measurements of bivalves (Vignols et al., 2019), (e) the relative input of terrestrial organic material to the Hank sediments based on the Branched and Isoprenoid Tetraether (BIT) index (Dearing Crampton-Flood et al., 2018) and the input of fresh water based on %C32 diol, (f) mean air temperature based on brGDGT-paleothermometry (Dearing Crampton-Flood et al., 2018), and (g) the benthic oxygen isotope stack of Lisiecki and Raymo (2005).