

Dear Dr. Stenni,

thank you very much for reconsidering our manuscript. We revised the manuscript taking into account all of the referee's suggested modifications. We also shortened it by about 1.5 pages, but were unfortunately not able to shorten it any further without impacting the quality and completeness. The abstract is still up-to-date. Below you can find our answer to the referee comments.

Concerning the data availability, the principal data is not yet fully publicly available for the whole glacial period, but will be published soon by colleagues at Physics of Ice, Climate and Earth of the University of Copenhagen. Until then, the data can be requested from the authors. We updated the data availability statement accordingly. All relevant data generated by our study is published as part of the manuscript, as well as the relevant algorithms that were written by the authors (in the appendix).

Best regards,
Johannes Lohmann

Response to the referee:

“The authors take a different view on what the words “control” and “determine” mean than I do. The majority of readers will be interested in DO climate dynamics and physics rather than statistics, and so these words need to be changed to bring them into alignment with how the majority of readers would understand them. “

In the revised manuscript, we do not use the word control anymore when talking about specific results. The word determined was to be understood as in “coefficient of determination”. Nevertheless we replaced it according to suggestions by the referee.

Our paper is not a mere exercise in statistics. However, any reader with a climate dynamics and physics background should be able to follow our reasoning based on statistics, which after all is the foundation of empirical science.

“The authors still confuse causation with correlation. In the old manuscript they claim that cooling rates “control” the interstadial durations – in reality they are merely correlated. In the revised manuscript they have simply changed the word “control” into “govern”. This is unacceptable. Simply changing a word does not solve the underlying scientific fallacy. There is no mechanistic link given by which cooling rates control/govern the interstadial duration. More likely, both are controlled by a third parameter. The authors concede this point. This must be corrected, because both words imply (mechanistic) causality, which is not proven or even made plausible. The authors suggest that their words must be interpreted in a statistical context. I am not entirely sure what that means, but to the majority of readers this will not be how they interpret the word “govern”. “

As detailed in our previous response we are well aware of this potential pitfall and do not imply mechanistic causality from the rates to the durations, or any other correlation presented in the paper. Instead, we use the statistical analysis as a tool to uncover or suggest such potential causal relationships, which need to be checked elsewhere.

For the case of the interstadial rates and durations, we clarified the following interpretation of our statistical results in the revised manuscript (P25L19ff): *“We interpret this such that after interstadial*

onset a large-scale reorganization of the climate system takes place on a timescale, which, even though very different from event to event, can be inferred from the cooling rate and stays consistent throughout the interstadial. We suggest that this reorganization is a major driving force of the DO cycle because its timescale predicts with reasonable accuracy when the interstadial-stadial transition takes place, which as a result cannot be purely noise-induced.”

So in our interpretation we only imply that there must be an underlying process that determines the interstadial durations, and this process is diagnosed by the cooling rate. Thus, it should be clear that no direct causal link from the cooling rates to the durations is implied.

Similarly, we write in P17L12ff: *“Our interpretation is that the cooling rate is an indicator of a timescale of large-scale climate reorganization, which can already be measured relatively early in the interstadial and which remains approximately constant. Although we can see that there are exceptions, we conclude that for most events the interstadial duration can be predicted a few hundred years after the rapid warming.”*

We furthermore changed passages containing the word “govern”.

P25L16ff: Because these durations ~~are much more strongly governed by the cooling rates than by the cooling amplitudes~~ correlate better with... they can be predicted to a good approximation as soon as the cooling rates have stabilized.

P16L17ff: If the ~~rates govern the durations much more so than the cooling amplitudes~~ durations are correlated much stronger with the cooling rates than with the amplitudes, they can already be approximately predicted as soon as the rate is established, which might happen early in the interstadial.

*“The authors maintain that it is conceivable that the interstadial duration is “determined” hundreds to thousands of years ahead of time. The correct word here is “can be predicted”. They give an example of walking towards a town at a fixed rate. My arrival time can be predicted once my speed is known, but it is not yet “determined”. I could decide to take a 1 hour coffee break. The outcome of a democratic election can be *predicted* by polling the voters, it is not yet *determined* by this process. Likewise, once several hundred years have elapsed within an interstadial, the cooling rate can be estimated reliably, which means the duration of that interstadial can be *predicted* because the cooling rate is *correlated* with the duration (it does *not* control/govern it). This does not mean that the duration is already determined – volcanic eruptions, ice shelf collapse, or any number of things could happen that influence the true duration. “*

We agree that there are of course other factors that influence the true duration. We do not claim that the duration is absolutely, precisely determined from the rates, but from our statistical analysis it follows that they are the dominant determining factor, since they explain a very large part of the variance of the durations. The part of the stadial duration variance that cannot be explained by the rates estimated from 150-350 years after GI onset indeed reflects other processes that influence the durations. However, from our results it follows that for the majority of DO events these factors are negligible compared to the basic timescale set by the cooling rates shortly after interstadial onset.

We added in Sec. 4.1.3: *“Some of the unexplained variance of this prediction is due to other factors influencing the interstadial duration that are not diagnosed by the linear cooling rate, but, e.g., by the cooling amplitude.”*

We also changed the wording in the Discussion: *“We suggest that this reorganization is a major driving force of the DO cycle because its time scale predicts with reasonable accuracy when the interstadial-stadial transition takes place, which as a result cannot be purely noise-induced.”*

“The discussion section is still just a summary of the work, now with a single paragraph of true discussion added (last one). This is not the function of a discussion section.”

We agree that some elements of a summary are present, which have been shortened significantly in the revised manuscript. But we would like to point out that there is more “discussion” than just the last paragraph. Also some of the individual results of our study need to be synthesized to draw conclusions, which we believe is most appropriate in the Discussion section. We hope to have improved the manuscript by the following restructuring of the Discussion section:

The first two paragraphs highlight some possible shortcomings with the method and analysis. The remaining paragraphs synthesize the individual statistical results and compare them with previous work, and interpret our results in the context of more realistic modeling and other data studies.

“The authors have not attempted to shorten the paper. I still think this is appropriate, but I’ll leave this up to the editor. “

We have now shortened the paper by roughly 1.5 pages, which is unfortunately the best we can do without compromising the completeness of our analysis.

“Data availability. The authors are not compliant with the CP data policy, which states that “Copernicus Publications requests depositing data that correspond to journal articles in reliable (public) data repositories, assigning digital object identifiers, and properly citing data sets as individual contributions.” The 5yr data series should be publicly archived in a long-term database. These data have been used in several papers now, and requiring readers to contact a colleague of the authors (who is close to retirement age and not known for his reliability in responding to email) is not an acceptable form of archiving.”

We agree that the data has to be made public and colleagues in Copenhagen are in the process of making the complete data set available together with a data description paper. We hope this to be finished within a few months. Until then, we suggest that researchers interested in the data contact the corresponding author. We have changed the data statement to clarify why the data is not publicly available yet.

Objective extraction and analysis of statistical features of Dansgaard-Oeschger events

Johannes Lohmann¹ and Peter D. Ditlevsen¹

¹Physics of Ice, Climate and Earth, Niels Bohr Institute, University of Copenhagen, Denmark

Correspondence: Johannes Lohmann (johannes.lohmann@nbi.ku.dk)

Abstract. The strongest mode of centennial to millennial climate variability in the paleoclimatic record are the Dansgaard-Oeschger (DO) cycles. Despite decades of research their dynamics and physical mechanism remain poorly understood. Valuable insights can be obtained by studying high-resolution Greenland ice core proxies, such as the NGRIP $\delta^{18}\text{O}$ record. However, conventional statistical analysis is complicated by the high noise level, the cause of which is partly due to glaciological effects unrelated to climate, and which is furthermore changing over time. We remove the high-frequency noise and extract the most robust features of the DO cycles, such as rapid warming and interstadial cooling rates, by fitting a consistent piecewise-linear model to ~~three~~ Greenland ice core records. With statistical hypothesis tests we aim to obtain an empirical understanding of what controls the ~~of~~ amplitudes and durations of the DO cycles. To this end, we investigate distributions of and correlations in between different features, as well as modulations of them in time by external climate factors, such as CO_2 and insolation. Our analysis suggests different mechanisms underlying warming and cooling transitions due to contrasting distributions and external influences of the stadial and interstadial durations, as well as the fact that the interstadial durations can be predicted to some degree by the linear cooling rates already shortly after interstadial onset.

1 Introduction

Different physical mechanism(s) underlying Dansgaard-Oeschger (DO) events have been proposed in the literature. Most of these are characterized by changes in between different modes of operation of the Atlantic Meridional Overturning Circulation (AMOC) that accompany the warm and cold phases of a DO cycle. This is supported by marine sediment data evidence linking DO cycles and changes in the AMOC (Henry et al., 2016; Lynch-Stieglitz, 2017). Different drivers for these AMOC changes have been proposed including North Atlantic freshwater forcing (Ganopolski and Rahmstorf, 2001; Timmermann et al., 2003; Kageyama et al., 2013), variations in ice sheet topography (Zhang et al., 2014) and atmospheric CO_2 (Zhang et al., 2017). On the other hand, unforced millennial-scale oscillations involving the AMOC have been reported in comprehensive climate models (Vettoretti and Peltier, 2016; Klockmann et al., 2018). In these oscillations, sea ice variability in ocean convection areas plays an important role, which has been proposed previously (Li et al., 2010; Dokken et al., 2013; Petersen et al., 2013) and is supported by recent proxy records (Sadatzki et al., 2019). Another scenario underlying DO cycles might be spontaneous climate transitions due to extremes in the chaotic atmospheric dynamics (Drijfhout et al., 2013; Kleppin et al., 2015).

Modeling of DO events is guided by proxy records, among which the stable water isotope records from Greenland ice cores are very prominent. DO-type transitions in models range in their dynamics from stochastic to excitable and oscillatory, and are sensitive to different forcings. A statistical analysis of the DO cycles extracted from Greenland ice core records can thus be useful to evaluate the proposed models. The records are noisy, and since there are no established theories about how they should evolve, there is no obvious filter to extract the large-scale climate signal. A common characteristic of the DO cycles seems to be an abrupt temperature increase from the cold stadial conditions to a maximum temperature in the warm interstadial state followed by a gradual cooling until there is another abrupt jump back into the stadial state. This is referred to as the saw-tooth shape of the events.

Due to the high noise level in the record it is however difficult to discern this specific structure in all of the events. Some events do not seem to follow the generic shape. Furthermore, there are very short events where it is difficult to speak of a gradual cooling episode. Even other events are interrupted by shorter cooling episodes, referred to as sub-events (Capron et al., 2010). As interpretation of noisy time series are often biased, subjective and one is prone to recognize patterns that can arise by chance, we seek a quantitative evaluation of the record. Assuming the saw-tooth shape of the events, we develop an algorithm for fitting the saw-tooth shape to the entire NGRIP $\delta^{18}\text{O}$ record of the last glacial, similar to ramp-fitting a jump in a noisy record.

First, our method gives an objective basis of the validity of the generic saw-tooth description of the DO cycles and identifies which individual cycles fall outside this description. Secondly, with a piecewise-linear fit, we obtain estimates for the stadial and interstadial levels, the abruptness of the transitions and the gradual cooling rate in the interstadial periods. By bootstrapping, we estimate the uncertainty in extracting these parameters from the noisy background. Finally, we perform a comprehensive statistical analysis of the fit parameters across the DO events and their relation to external forcings, in order to obtain an empirical understanding of what controls the evolution of amplitudes and durations of the DO cycles. This can potentially be used for identifying or excluding proposed mechanisms and for bench-marking model results.

Previous efforts to extract robust DO event features from the record were conducted on only part of the record and were focused on single or very few features. In Schulz (2002), linear fits to the interstadials were used to infer the cooling rates starting with Greenland interstadial 14 (GI-14). Estimates for abruptness of warming transitions and durations of interstadials have been derived by Rousseau et al. (2017), starting at GI-17.1. A comprehensive survey of onset times of all interstadial and stadial periods is given in Rasmussen et al. (2014). Our work is different in that we derive all features that can be extracted from a saw-tooth shaped fit to all events at once, by using a fit that is consistent and continuous throughout the record. Thus, our results are not sensitive to subjective choices of cutting the record at predefined times before and after a transition. We do, however, not define the DO events themselves from the NGRIP $\delta^{18}\text{O}$ record, but instead use the set of all previously classified events in Rasmussen et al. (2014), which have been derived from three ice cores and two proxy records each.

In this study, we show that a characteristic saw-tooth waveform can be fit to all DO cycles. However, almost half of the cycles do not actually display a significant rapid cooling episode after the more gradual interstadial cooling. A subsequent statistical analysis of DO event features hints at different mechanisms underlying warming and cooling transitions. First, this follows from the distributions of the durations of the stadials as well as the rapid DO warmings on the one hand, and of the interstadials

on the other hand. Secondly, the influence of external forcing is contrasting, with stronger evidence for insolation influence on stadials and CO₂ or ice volume influence on interstadials. Thirdly, the interstadial durations can be predicted to some degree by the linear cooling rates within a few hundred years after interstadial onset. In contrast, the stadial and rapid warming durations are consistent with the stadial-interstadial transitions as spontaneous, noise-induced escapes from a metastable state.

5 The paper is structured in the following way: In Sec. 2 we introduce the data used in the study and its pre-processing, the iterative fitting algorithm, the features we extract from the saw-tooth shape fit to the events and the statistical tools to analyze these features. In Sec. 3 we report the results of the fit. Section 3.1 discusses the appropriateness of the saw-tooth fit to the events, and Sections 3.2 and 3.3 treat the uncertainty in estimating the fit parameters and the derived features. In Sec. 4 we analyze in detail the features characterizing the stadial, interstadial and abrupt warming periods. The results of the fit and the
10 implications of the subsequent data analysis are discussed in Sec. 5. We conclude in Sec. 6.

2 Methods and Materials

2.1 Data

~~The basis of our study is~~ This study is based on the $\delta^{18}O$ Greenland ice core record of the last glacial period (120 - 12 kyr BP, kyr BP = one thousand years before present). In the NGRIP ice core, $\delta^{18}O$ has been measured in 5 cm samples (NGRIP
15 Members, 2004; Gkinis et al., 2014; Rasmussen et al., 2014). ~~These~~ The raw depth measurements are transferred to the GICC05
~~time scale (Svensson et al., 2006). This results~~ timescale (Svensson et al., 2006), resulting in an unevenly spaced time series
with a resolution of 3 years at the end to 10 or more years at the beginning of the ~~last glacial period. Because it greatly~~
~~simplifies our analysis,~~ glacial. To simplify the analysis we transfer this to an evenly-spaced time series by oversampling to 1
20 any variability. For subsequent comparison, the high-resolution $\delta^{18}O$ record from the GRIP ice core on the GICC05 ~~time scale~~
~~has been~~ timescale is used (Johnsen et al., 1997; Rasmussen et al., 2014), and processed in the same way.

Our ~~fit is performed on~~ method uses a previously classified set of events from Greenland, which has been reported by Rasmussen et al. (2014) together with the time stamps. These time stamps are used to initialize our iterative ~~fitting procedure~~ routine,
and are subsequently refined during the process. We do not treat sub-events, which are small dips ~~to colder conditions during~~
25 ~~a warm period during interstadials~~, as separate events, but instead fit them as part of the ~~interstadial periods~~ interstadials. On
the other hand, we do include the interstadials 22 and 13, which follow the stadials 23.1 and 14 (denoted 'quasi-stadials' by
Rasmussen et al. (2014)). These ~~interstadials~~ have some resemblance to the so-called rebound events of, e.g., interstadials 12,
8 and 7. However, they are longer and larger in amplitude. Even though the stadials 23.1 and 14 do not fully reach the ~~low~~
30 the resulting gradual linear cooling is not representative of the actual trends. Our choice to consider them as separate events is
difficult to justify on the basis of the NGRIP $\delta^{18}O$ record alone. Nevertheless, it is unlikely to change the conclusions of our
analysis, which are based on statistical robustness tests.

~~In our data analysis, we use several~~ Our analysis uses other data sets that are not derived from Greenland ice cores. These are ~~loosely~~ referred to as external forcings, although not all are truly external to the climate system, but rather obtained from independent data sources. As proxy for global ice volume, we use the LR04 ocean sediment stack (Raymo and Lisiecki, 2005). To represent Antarctic temperatures, we choose the $\delta^{18}O$ record of the EDML ice core on the AICC12 ~~time scale~~ timescale (EPICA Community Members, 2010). This data was processed by interpolation to an equidistant 20 year grid and subsequently smoothing ~~by convolution~~ with a 600 year Hamming window. Greenhouse gas forcing is represented by a composite CO₂ record from different Antarctic ice cores on the AICC12 gas ~~time scale~~ timescale (Bereiter et al., 2015). Furthermore, we consider changes in insolation due to orbital variations. Firstly, we use incoming solar radiation at 65 degree North integrated over the summer (referred to as 65Nint hereafter), which we define as the annual sum of the radiation on days exceeding an average of 350 W/m² (Huybers, 2006). Secondly, we use incoming solar radiation at 65 degree North at summer solstice (referred to as 65Nss hereafter) (Laskar et al., 2004). In addition, we ~~also~~ consider the raw orbital parameters of obliquity, eccentricity, and precession index (Laskar et al., 2004).

2.2 Fitting routine

~~A naive approach to obtain a~~ We aim to fit a continuous piecewise-linear ~~fit of the whole record could proceed in the following~~ way: Considering the stadials as constant, first cut ~~waveform to the record. This is not possible by simply cutting~~ the time series ~~at a predefined beginning and end of two consecutive stadials. Then fit a saw-tooth shape to the event within the two stadials. The end of the fit to this event then determines the start of the next stadal, used to fit the following event. However, the point at which one initially cut the stadials influences the constant levels of the two stadials that have been used to determine the fit to the event. For a consistent fit, the start and end points of a stadal must rather be determined by the fits to two neighboring~~ events. In this way, the fit to each event depends on both its neighboring events before and after, and we cannot fit the events sequentially. One solution is to fit into DO cycles and fitting each cycle individually because the points where the time series is cut need to be defined from the fit and in turn influence the fit. Fitting the whole time series at once to a piecewise linear model with 186 parameters, corresponding to 6 parameters for each of the 31 DO events. ~~However, due to high noise and abundance of sub-event features, such a fit,~~

~~will be difficult to achieve without invoking very complicated constraints.~~ , because of a high noise and abundance of sub-event features. Instead, we propose ~~an~~ the following iterative fitting routine that converges to a consistent fit, ~~as detailed in the following.~~ We start with a guess for the stadal onset and end times, which determine the constant stadal levels. Then we fit a saw-tooth shape individually to each event. Thereafter, we update the stadal onset and end times according to the fit and repeat the procedure. When after some iterations the onset and end times do not change significantly anymore the fit has converged and is consistent.

~~We start with an~~ The initial guess of the stadial onsets and ends ~~of the stadal periods, are~~ based on the timings reported by Rasmussen et al. (2014), ~~which are kept fixed throughout the iterations of our algorithm.~~ The time series is divided in segments at these times, which are kept fixed throughout an iteration. For each event i , we take a segment consisting of a stadal and interstadial period plus the following stadal period. These segments are fitted individually to a piecewise-linear model, as shown in Fig. 1. The model starts with a constant line at the beginning of the stadal. The constant is fixed to the mean level

of the stadial l_i^s , where the stadial beginnings and ends are determined by the initial guess, or the previous iteration. A first break point (parameter b_1) of this constant is determined, followed by a linear up-slope (parameter s_1). The slope ends at the second break point (parameter b_2). After this break point there is a linear down-slope (parameter s_2), which ends at a break point (parameter b_3). After this break point there is a steeper down-slope until a last break point (parameter b_4), which is at the level of the next stadial l_{i+1}^s that is determined from the previous iteration. After all events have been fit, the parameters b_4 and b_1 of each event update the beginnings and ends of the stadials. The updated stadials yield a new segmentation of the time series and new stadial levels, which are then used as constant segments in the next iteration. The [idea of this approach](#) [hope](#) is that if the problem is well behaved, the beginnings and ends of the stadials do not change significantly anymore after a certain number of iterations, meaning that a consistent fit of the entire time series is obtained. An algorithm for this routine, along with details of the optimization procedure to fit each event, is given in Appendix A.

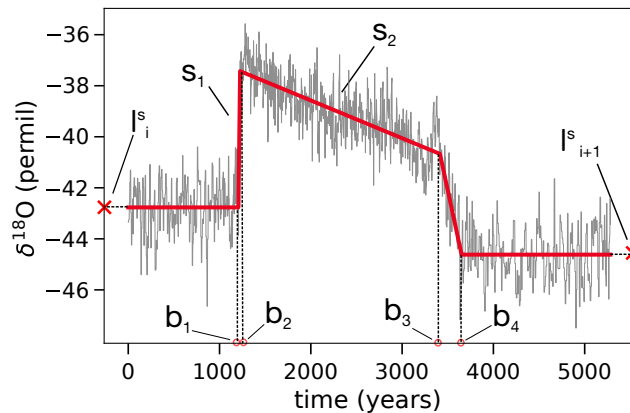


Figure 1. Piecewise-linear model fit to DO event 20, where the time series consists of GS-21.1, GI-20 and GS-20. The parameters of the piecewise-linear model are the four break-points $b_{1,2,3,4}$, the up-slope s_1 and the down-slope s_2 . The constant levels l_i^s and l_{i+1}^s of GS-21.1 and GS-20 are constant during an iteration of the fitting routine, and are updated when after each iteration all breakpoints have been determined.

The fitting procedure outlined above yields a single best fit that we hope to be close to the absolute global minimum of the optimization problem and furthermore as consistent as possible, meaning that the stadial sections that were used for the fit in the last iteration are identical to the stadial sections defined by the resulting fit. Additionally to this best fit we assess the uncertainty in each of the parameters that arise due to noise in the record. We cannot estimate this from the output of our fitting procedure in a straightforward way. Instead, we use bootstrapping to repeatedly generate synthetic data for each transition and optimize the parameters. Like this, we yield a distribution on each parameter. Due to computational demands, we do not combine this with our iterative procedure, but rather resample and fit every transition independently. Thus, we neglect the co-variance structure of the errors in the parameters of neighboring transitions. However, we still consider it to be a very good estimate of the uncertainty due to the noise in the record. The detailed procedure is given in Appendix C.

2.3 DO event features

From the best fit parameters of each DO cycle a variety of features follow, ~~which form the core of our analysis~~. For each rapid warming period, gradual interstadial cooling period, as well as rapid cooling period at the end of an interstadial, we consider the duration, rate of change and the amplitude. Furthermore, several absolute levels are of interest, including the constant stadial levels, the interstadial levels after the abrupt warming and the interstadial level before the rapid cooling. As a level relative to each event, we consider the level before the rapid cooling above the previous stadial level, which is given by the rapid warming amplitude minus the gradual cooling amplitude. Finally, the gradual cooling amplitude divided by the rapid warming amplitude measures the position of the point of rapid cooling within the event amplitude. In total, we consider 15 interdependent features, which are listed in Tab. 1.

10

Table 1. List of DO event features obtained from the fit that are analyzed in this study.

Feature	Definition
Warming duration	$b_2 - b_1$
Warming rate	s_1
Warming amplitude	$A \equiv s_1(b_2 - b_1)$
Gradual cooling dur.	$D_I \equiv b_3 - b_2$
Gradual cooling rate	$\lambda_c \equiv -s_2$
Gradual cooling ampl.	$s_2(b_2 - b_3)$
Fast cooling dur.	$b_4 - b_3$
Fast cooling rate	$\frac{s_1(b_2 - b_1) + s_2(b_3 - b_2) - (l_{i+1}^s - l_i^s)}{(b_4 - b_3)}$
Fast cooling ampl.	$s_1(b_2 - b_1) + s_2(b_3 - b_2) - (l_{i+1}^s - l_i^s)$
Stadial duration	b_1
Stadial level	l^s
Interstadial level	$s_2(b_2 - b_3) + l^s$
Interstadial end level	$s_1(b_2 - b_1) + s_2(b_3 - b_2) + l^s$
Relative Int. end level	$s_1(b_2 - b_1) + s_2(b_3 - b_2)$
Cooling/warming ampl.	$s_2(b_2 - b_3) \cdot [s_1(b_2 - b_1)]^{-1}$

2.4 Data analysis

Our aim is to develop an empirical understanding of the evolution of the DO cycles. To this end, we employ several tools to search for relations between different features, as well as between features and external climate factors. Additionally, the distributions of the individual features themselves hold important information, especially when there is no strong external modulation in time. We test the distributions using Anderson-Darling (AD), Cramer-von Mises and Kolmogorov-Smirnov tests. Since the AD test is typically most powerful, and the other tests yield qualitatively unchanged results in all of our analyses, we only report ~~results~~ p-values for the AD test.

Because of the large number of possible combinations of features, we first pre-select significant and potentially relevant relationships and thereafter investigate in detail, whether the results are robust to outliers, among other things. In some cases we also consider relationships of features and forcing that are not significant for the whole data set, but for a large subset. This might highlight that there were qualitatively different periods within the last glacial, or that some DO events are of different nature than most.

We first consider Pearson and Spearman correlation coefficients r_p and r_s of pairs of features and external climate factors. We pre-select combinations with p-values $p < 0.1$, which are estimated by permutation tests that assume independent samples. For a given number of data points in a sequence, the true p-values should often be higher due to autocorrelation. Along with other potential artifacts, this is investigated individually for the pre-selected combinations.

Next, in order to find relations between more than two variables, we search for multiple linear regression models to explain selected features of the data. ~~For this~~ Here, we often use logarithmic quantities because ~~with many features~~ it is otherwise often unlikely to find linear relationships that are not dominated by outliers. Given a feature as response variable, we fit pre-select models with the largest coefficients of determination linear regression models of combinations of two other features or forcings ~~and pre-select models with the largest coefficients of determination, in order to further analyze the fit, and then further analyze them.~~

Furthermore, in order to find subsets of events that have distinct properties or relationships that are only valid in part of the data, we perform a clustering analysis on the data, using two different algorithms (K-means and Agglomerative Hierarchical Clustering). Given our sample size of 31 events, we search for clusterings with 2 or 3 clusters. ~~Potentially relevant clusterings are pre-selected~~ Clusterings are assessed by considering the mean Silhouette coefficient, which is a distance-based measure for the validity of clusters. With the abovementioned tools, we perform an analysis on the entire set of features and forcings. From the results obtained, we report selected findings, which are most robust and relevant, in Sec. 4 of this paper.

~~It is important to be aware of the problem of multiple comparisons when interpreting the~~ The significance of such an analysis must be view in the light of the multiple comparisons problem. Tests for significant correlations of many pairs of features using, e.g., the Spearman correlation coefficient, yield a non-negligible number of false positives when using confidence levels that are reasonable for our purposes. We consider both features of the same and neighboring events, yielding $\frac{15 \cdot 14}{2} = 105$ and $15 \cdot 15 = 225$ tests, respectively. Furthermore, we test the correlation of all features and forcings, yielding another $15 \cdot 8 = 120$ tests. Assuming these are all independent tests, the ~~total~~ expected number of false positives is 45 at 90%, 22.5 at 95%, and 4.5 at 99% confidence. Since we derive 15 features from only ~~7 independent parameters (including stadial levels)~~ 6 independent parameters for each DO cycle, many pairs of features ~~within the same DO cycle~~ are related and thus we expect true positives for correlation tests. For instance, this is true for warming amplitude and interstadial level, or relative interstadial level and gradual cooling amplitude. Similarly, due to the constraints on the fit parameters, the rates and durations of fast and gradual cooling are correlated. These types of correlations are not relevant and thus ~~this reduces~~ reduce the number of pairwise correlations to consider. For combinations of amplitude, duration and rates of a given linear segment we also expect correlation, because they are trivially related: $\text{duration} = \text{amplitude} \cdot (\text{rate})^{-1}$. However, it is interesting to test whether the rates or the amplitudes

~~more strongly determine the durations, which essentially depends on which of the two has a larger variability~~are more strongly correlated with the durations. We investigate this for the different periods of the DO cycles below.

There are sophisticated methods to control the multiple comparisons problem. These could be helpful to better detect false positives from our analysis, but depend on being able to properly estimate the significance of individual correlations in between features with autocorrelation and assess the statistical dependence of the hypothesis tests due to the dependence of some of the features. For simplicity, we do not consider such an analysis, but consider individually significant correlations as suggestions to be investigated further.

3 Piecewise-linear fit of NGRIP record

The ~~iterative~~ fitting routine is performed for 40 iterations, so that ~~the~~ initial fluctuations in the parameters have died out and converged to a consistent fit, as detailed in Appendix B. ~~In Fig. 2, Figure 2 superimposes~~ the resulting fit ~~is superimposed~~ onto the high-resolution NGRIP time series. We fit 31 DO events in total, starting with DO 24.2 and ending at DO 2.2, excluding the two outermost events of the last glacial, because they are very non-stationary in their stadial parts. Table 2 shows all parameters obtained from the fit. Instead of $b_{1,2,3,4}$ for each transition, we show the corresponding times of stadial end, interstadial onset, interstadial end and stadial onset.

15 3.1 Saw-tooth shape of DO events

In our fit, all transitions follow the characteristic saw-tooth shape. For a few events, this is because of the constraints we use in the fitting algorithm. Typically, the constraints do not strictly bound the best fit parameters, but they force the fit into another local minimum that is consistent with the saw-tooth shape, which often yields parameters that are still clearly within the constraints. There are, however, four events ~~where the best fit parameters actually lie very~~with parameters close to the bounds~~set by the constraints~~. This happens for GI-5.1 and GI-3, which both have ratios of rapid to gradual cooling rates very close to the constraint value of 2.0. Similarly, for GI-15.2 and GI-6 the ratio of gradual to rapid cooling duration is close to 2.0. Detailed pictures of each transition and the corresponding fit are shown in Fig. S2 in the supplementary material.

The fact that ~~some~~ constraints are needed ~~in order~~ to ensure that ~~the fit of~~ each event follows a saw-tooth shape can be used to classify which events fall outside of this description. To this end, we perform another run of the iterative fitting routine without using constraints 3, 4, 6 and 7 listed in Appendix A. From the resulting fit we then analyze, which of the events are not consistent with the saw-tooth shape. For this, we use 4 criteria: 1. The abrupt cooling rate is at least twice as large as the gradual cooling rate. 2. The gradual cooling lasts at least twice as long as the abrupt cooling. 3. There is gradual cooling after the rapid warming, i.e., the gradual cooling rate is negative. 4. The abrupt cooling amplitude is larger than 0.5 permil. Criterion 1 is not met by events 23.1, 19.2, 15.1, 11, 5.1, 3 and 2.2, criterion 2 by events 21.2, 19.2, 17.2, 15.2, 15.1, 11, 10, 9, 8, 6, 5.1, 3 and 2.2, criterion 3 by event 11, and criterion 4 by events 23.1 and 15.1. By demanding that all of these criteria are met, we thus conclude that the following 14 out of 31 events fall outside of the saw-tooth description: 23.1, 21.2, 19.2, 17.2, 15.2, 15.1, 11, 10, 9, 8, 6, 5.1, 3 and 2.2.

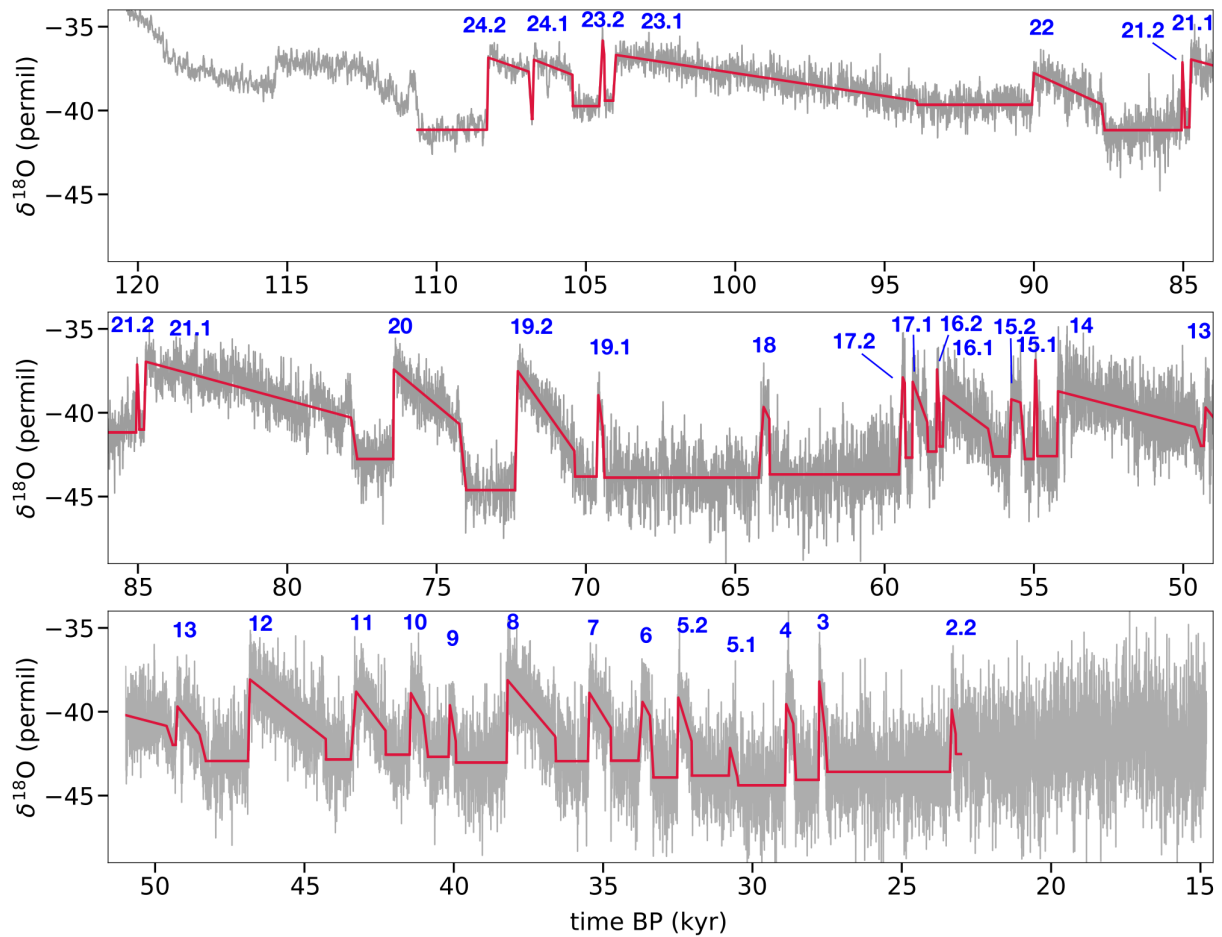


Figure 2. High-resolution NGRIP $\delta^{18}\text{O}$ time series and the piecewise-linear fit obtained by our method. The numbers above the interstadials indicate the names of the DO cycles considered in this study.

3.2 Uncertainty of fit parameters and features

From the best fit, we estimate the uncertainty of each parameter via bootstrapping, as explained in Appendix C. ~~As an example, we show distributions~~ Distributions of the parameters for DO event 20 are shown in Fig. 3. ~~In Tab. 3 we show~~ Table 3 lists the durations and amplitudes of the ~~rapid~~ warmings for each event along with a bootstrap confidence interval consisting of the 16- and 84-percentiles, which would correspond to the $\pm\sigma$ range if the distributions were Gaussian. The actual distributions are often skewed, so that the best fit values lie close to the edges of the confidence intervals, or even outside of the intervals. ~~In these cases, the $\pm\sigma$ confidence intervals are not the best indicator for the uncertainty, because they barely include the mode of the very skewed distributions.~~

The ~~magnitude of the~~ uncertainty varies from event to event. In the case of the warming durations, the average bootstrap standard deviation is 20.0 years, with a minimum of 3.4 years for GI-16.2 and a maximum of 57.4 years for GI-18. ~~We observe~~

Table 2. Parameters resulting from the fitting routine on the NGRIP data.

Event	Stadial End (yr BP)	Interstadial Onset (yr BP)	Interstadial End (yr BP)	Stadial Onset (yr BP)	Warming Rate (permil/yr)	Cooling Rate (permil/yr)
24.2	108313	108270	106914	106810	0.0992	0.00062
24.1	106790	106743	105452	105439	0.0744	0.00069
23.2	104556	104441	104387	104366	0.0340	0.01555
23.1	104090	103996	93916	93898	0.0290	0.00027
22	90069	89999	87743	87631	0.0270	0.00082
21.2	85060	85027	84964	84952	0.1230	0.03992
21.1	84799	84737	77866	77659	0.0655	0.00049
20	76452	76434	74245	74009	0.2935	0.00148
19.2	72377	72280	70385	70365	0.0730	0.00251
19.1	69646	69587	69443	69381	0.0831	0.01262
18	64212	64051	63858	63846	0.0262	0.00367
17.2	59520	59390	59323	59294	0.0446	0.00503
17.1	59076	59061	58571	58549	0.2951	0.00491
16.2	58266	58245	58168	58162	0.2340	0.03107
16.1	58051	58023	56536	56364	0.1059	0.00131
15.2	55821	55759	55449	55296	0.0554	0.00062
15.1	55011	54950	54892	54887	0.0981	0.05104
14	54228	54193	49617	49410	0.1092	0.00046
13	49315	49253	48517	48301	0.0367	0.00223
12	46890	46826	44286	44277	0.0761	0.00140
11	43450	43271	42285	42278	0.0225	0.00236
10	41479	41439	41024	40864	0.0910	0.00326
9	40175	40131	39933	39928	0.0699	0.01096
8	38231	38199	36602	36583	0.1549	0.00210
7	35508	35461	34741	34735	0.0859	0.00289
6	33822	33681	33434	33314	0.0250	0.00334
5.2	32521	32485	32039	32028	0.1324	0.00583
5.1	30794	30752	30514	30473	0.0394	0.00695
4	28908	28871	28635	28544	0.1302	0.00485
3	27786	27765	27572	27492	0.2762	0.01529
2.2	23389	23328	23196	23191	0.0607	0.01098

that shorter-Shorter warmings typically also have smaller uncertainties. As comparison, the durations of the rapid coolings at the end of an interstadial have a larger uncertainty with an average bootstrap standard deviation of 53.6 years. This is expected, because the rapid cooling is typically less well pronounced in the record compared to the rapid warming. The coolings also have a larger spread in the bootstrap standard deviations with a minimum of 4.6 years for GI-16.2 and a maximum of 209.9 years for GI-23.1, because some events have a very clearly defined rapid cooling, while others do not. Similarly, the onset times of the rapid warmings have an average bootstrap standard deviation of 11.4 years, whereas the onset of the stadial periods-stadial onsets have a corresponding average uncertainty of 31.7 years.

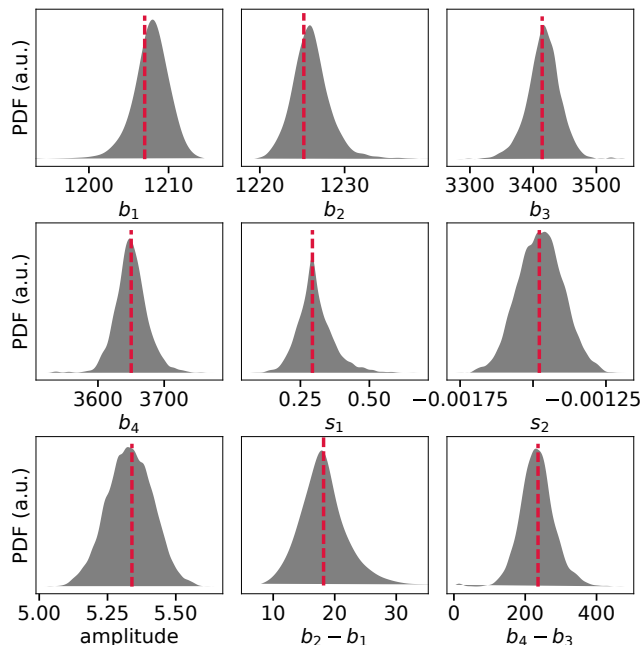


Figure 3. Gaussian kernel density of the density of model parameters and some derived quantities for the DO event 20 after 5000 iterations of the bootstrap resampling procedure. The parameter values for the best fit, as reported in Sec. 3, are indicated with *red dashed* lines. The amplitude feature is given by $s_1(b_2 - b_1)$.

3.3 Comparison of NGRIP and GRIP records

As complementary approach to assess the uncertainties of the features, we compare them to those derived in the same way from another Greenland ice core. We chose the $\delta^{18}\text{O}$ record of the GRIP ice core, which is measured at a similar resolution to the NGRIP record and has been transferred to the GICC05 ~~time scale~~ timescale starting at the onset of GI-23-1. We ~~thus started~~ fitting the record from GS-22 fit the record with 40 iterations of our algorithm, using the same constraints and hyperparameters. Again, the algorithm converges to a consistent fit, where each of the events is well approximated by a saw-tooth shape. We now describe how well the features of NGRIP and GRIP correspond for the 26 mutual events starting at GS-22.

For the gradual cooling rates, ~~the Pearson (Spearman) correlation is~~ we find $r_p = 0.64$ ~~(and~~ $r_s = 0.65$). Here, the discrepancy ~~in between the two records~~ is only due to a handful of short events that show a clear linear cooling slope in one record, but are more plateau-like in the other. This happens for the interstadials 18, 16.2 and 5.1, which don't show a slope in GRIP, and 17.2, which doesn't show a strong slope in NGRIP. ~~If we remove these events,~~ Removing these events yields $r_p = 0.97$ and $r_s = 0.98$. The warming durations ~~show a correlation of~~ yield $r_p = 0.55$ and $r_s = 0.63$. There are no outliers, but a rather large spread, indicating that the warming duration is a less robust feature compared to the cooling rate. With 69 years on average, the GRIP warmings are 8 years shorter than ~~the NGRIP average in NGRIP~~. The average absolute deviation of warming durations in the two cores is 31 years, with a maximum discrepancy of 103 years for GI-10, where we find a warming

Table 3. Durations and amplitudes of the rapid warmings inferred from the fit, together with a confidence interval obtained by bootstrapping.

Event	Warming duration (yr)			Amplitude (permil)		
	Best fit	16-p	84-p	Best fit	16-p	84-p
24.2	43.4	36.3	47.8	4.30	4.23	4.40
24.1	47.4	34.9	45.0	3.53	3.42	3.61
23.2	115.2	96.1	126.1	3.92	3.72	4.11
23.1	94.1	78.9	127.3	2.73	2.69	2.75
22	70.0	70.3	91.8	1.89	1.78	1.95
21.2	33.0	25.7	39.9	4.06	3.61	4.10
21.1	61.7	53.5	79.6	4.05	3.98	4.09
20	18.2	14.7	21.6	5.34	5.25	5.42
19.2	97.2	74.3	98.1	7.09	6.93	7.19
19.1	58.5	37.7	60.0	4.86	4.45	4.97
18	161.0	74.6	194.0	4.21	3.99	4.51
17.2	129.7	83.7	158.0	5.79	5.47	6.20
17.1	15.3	13.9	27.0	4.53	4.14	4.72
16.2	21.0	18.6	24.0	4.92	4.59	5.19
16.1	28.4	28.9	84.0	3.01	2.88	3.16
15.2	61.6	39.0	100.0	3.41	3.38	3.67
15.1	60.6	56.4	69.2	5.94	5.68	6.12
14	35.5	38.0	79.0	3.87	3.78	3.95
13	62.4	63.4	101.2	2.29	2.07	2.60
12	63.9	45.7	73.8	4.86	4.71	4.94
11	179.5	143.0	201.0	4.05	3.86	4.17
10	40.3	41.3	80.2	3.67	3.40	3.97
9	44.2	37.5	86.4	3.09	2.66	3.22
8	31.7	29.8	53.0	4.91	4.78	4.98
7	47.4	45.3	90.2	4.07	3.86	4.27
6	140.4	110.6	172.1	3.51	3.41	3.92
5.2	36.0	31.1	54.6	4.76	4.45	4.93
5.1	41.8	41.4	82.0	1.65	1.51	1.89
4	37.2	27.1	41.8	4.84	4.47	5.11
3	21.3	18.0	25.0	5.88	5.40	5.92
2.2	61.2	42.0	91.6	3.72	3.21	3.75

of with 40 years for in NGRIP and 143 years for in GRIP. Such deviations can arise if there is a slight step in the record before the most rapid warming and the algorithm includes this in the fit.

The warming amplitudes are very well correlated with $r_p = 0.87$ and $r_s = 0.83$. The average amplitude of 3.87 permil in GRIP is 0.45 permil lower than the NGRIP average in NGRIP. The stadial levels are also well correlated with $r_p = 0.78$ and $r_s = 0.66$. There is a quite consistent offset in between the cores of 1.84 permil due to differences in altitude and latitude of the GRIP and NGRIP sites. Exceptions include GS-21.1, which does not follow the offset but is at a very-similar level in both GRIP and NGRIP, and GS-14, which is difficult to define and thus vulnerable to give different results due to different noise in the cores.

The rapid cooling durations, i.e. $b_4 - b_3$, show an average absolute deviation in between the two cores of 59 years, with $r_p = 0.46$ and $r_s = 0.53$. This corroborates the fact that this feature is harder to define than the rapid warmings. The break points b_3 and b_4 are very susceptible to noise and can yield qualitatively different results for different cores. As a result, the

abrupt cooling of GI-19.2 lasts 208 ~~years in GRIP and only (20 years in NGRIP)~~ years in GRIP (NGRIP), and for GI-12 294 ~~years in GRIP and only (9 years in NGRIP)~~ years in GRIP (NGRIP). Conversely, the abrupt coolings of GI-19.1, GI-10 and GI-6 last much longer in NGRIP, with 62, 160 and 120 years in NGRIP versus 2, 5 and 2 years in GRIP, respectively. Consequently, we do not report any results concerning the rapid cooling period in this paper.

5 The stadial and interstadial durations are very well correlated with $r_s = 0.99$ and $r_s = 0.97$, respectively. The average absolute deviation is 59 years for interstadials and 73 years for stadials, which is small compared to the average durations. The biggest discrepancies in between the two cores come from the indeterminacy in the rapid coolings of certain events, as described above.

In summary, the uncertainties obtained by bootstrapping and by comparison with the GRIP ice core are compatible, giving
10 confidence in the estimates of the former method. The average bootstrap standard deviation of rapid warming and cooling durations is 20 and 54 years, respectively. This compares well to the average absolute deviation in between GRIP and NGRIP of warming and cooling durations of 31 and 59 years, respectively. The discrepancy of 31 years for warming durations also includes a systematic bias of on average 8 year longer warmings in GRIP. Thus the unbiased uncertainty is likely even closer to the one obtained by bootstrapping. Shorter ~~time scale~~ timescale features like rapid warming durations are not fully represent-
15 tative for every single event in one core. However, the overall trends are consistent, as seen by significant correlation. Features on longer ~~time scale~~ timescale, such as most of the cooling slopes and stadial levels, ~~are clearly representative. The same holds~~
~~for as well as the~~ stadial and interstadial durations, are clearly representative.

4 Statistical analysis of DO event features

In Fig. 4 we show histograms of all the DO event features derived from the fit parameters that we consider in this study, as
20 defined in Sec. 2.3. ~~From the histograms we can see~~ The histograms show that the features have different types of distributions. Whether an event feature should be considered an independent sample from a distribution depends on whether it shows a significant trend over time. If we consider the event-wise sequence of one feature as evenly spaced time series we can calculate the autocorrelation and determine by a permutation test, whether the value at a given lag is significantly larger than what could be expected in an uncorrelated sample for a given confidence. By considering autocorrelations up to lag 5, we find that the three
25 different levels (stadial, interstadial and level before rapid cooling) show significant autocorrelation at 95% confidence until a lag of 3. We also find significant autocorrelation for four other features at only one specific lag value each, which we believe are false positives. ~~In fact, when~~ When independently testing the hypothesis of significant autocorrelation at 95% confidence for 15 different time series (features) at 5 lags, there is an expected value of 3.75 false positives. The corresponding data is shown in Fig. S3 in the Supplementary material. As a result, in most cases we can consider the features of each event as independent
30 samples. This helps to assess the significance of correlations between features with permutation tests. A general overview of the correlations between different features and forcings can be seen in Fig. 5, and is explained further in Appendix D, The most important results of our statistical analysis are presented in the following Sections.

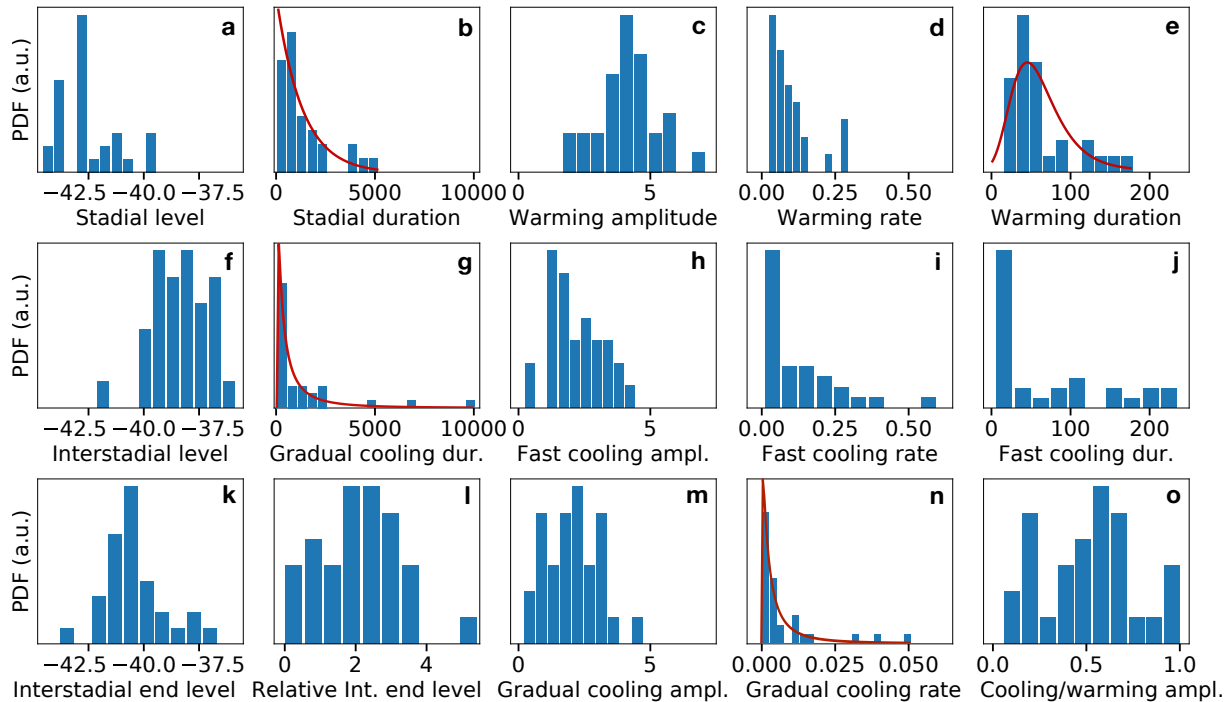


Figure 4. Histograms of our sample of 31 events for all features considered in this study, as defined in Tab. 1. The *red* curves in panels b) and e) are fits with the exponential and Gumbel distributions, respectively, whereas those in panels g) and n) are fits with the log-normal distribution.

4.1 Interstadial periods

4.1.1 Cooling Relationship of cooling rates govern interstadial, amplitudes and durations

We focus on the factors influencing the durations of the interstadial periods $D_I = b_3 - b_2$. In our fit, these durations are furthermore defined by $D_I = A\lambda_c^{-1}$, where A is the amplitude and λ_c the rate of the gradual cooling. If for every interstadial the gradual cooling would be perfectly linear and the jump **back** to stadial conditions would always occur after the same magnitude-amplitude of cooling \bar{A} , the **interstadial**-duration would be inversely proportional to the cooling rate $D_I = \bar{A}\lambda_c^{-1}$. Conversely, if the interstadials would have a fixed cooling rate $\bar{\lambda}_c$ and the jump **back** to stadial conditions happened after variable cooling magnitudes, the **interstadial**-durations would be proportional to the cooling amplitudes $D_I = A\bar{\lambda}_c^{-1}$.

We test which of the two scenarios is better supported by the data. This depends on whether either the cooling amplitudes or the cooling rates have a larger spread than the other. The coefficient of variation for the amplitudes is $CV = 0.51$, whereas for the rates we find $CV = 1.49$. The **Spearman**-correlation of durations and cooling rates is $(r_s = -0.89, \text{which})$ is clearly significant given the samples size of 31 events and weak autocorrelation of the sequence of interstadial durations and rates. On the contrary This confirms and extends the finding by Schulz (2002) to the whole glacial period. On the other hand, for

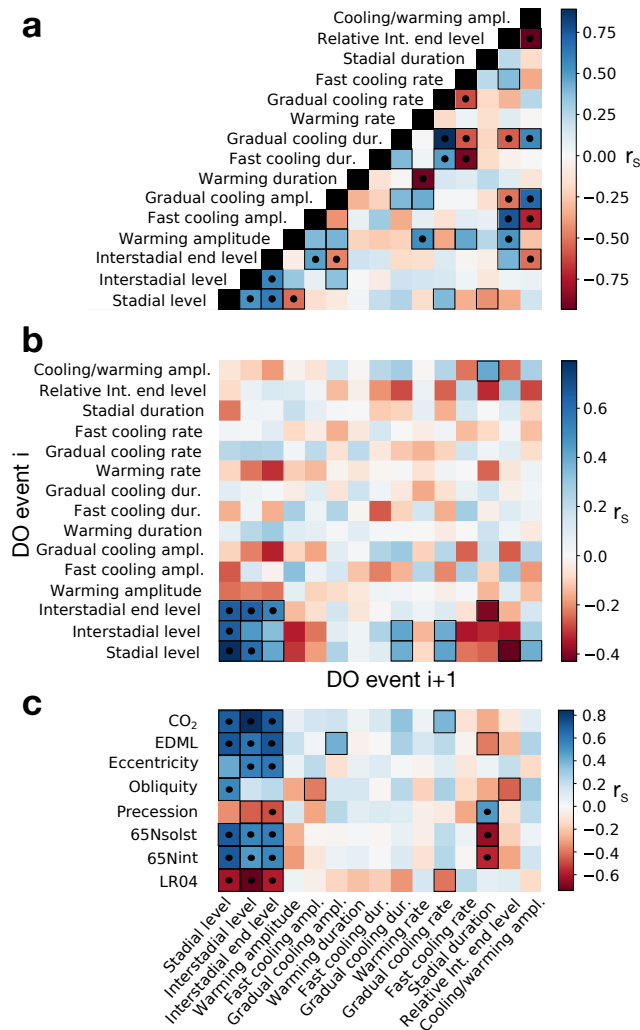


Figure 5. Spearman correlation heat map of **a**) pairs of features within the same DO cycle, **b**) pairs of features in adjacent DO cycles, and **c**) pairs of one feature and one external forcing at the relevant time point of the feature. Correlations that are significant at 95% (99%) according to a permutation test are highlighted with a black frame (dot).

durations and cooling amplitudes we find $r_s = 0.40$, which is mainly due to two outliers, the two longest interstadials GI-23.1 and GI-21.1. Removing these reduces the correlation to $r_s = 0.30$, which is not significant at 95% confidence. As a result, there is no relationship between durations and amplitudes that goes beyond outlier events, as opposed to durations and cooling rates. Furthermore, the correlation of cooling amplitudes and rates is not significant. Thus, from the perspective of linear interstadial cooling, the interstadial durations over the entire glacial are indeed largely governed by the cooling rates, in agreement with the findings for the younger half of the glacial obtained by Schulz (2002) from the GISP2 ice core.

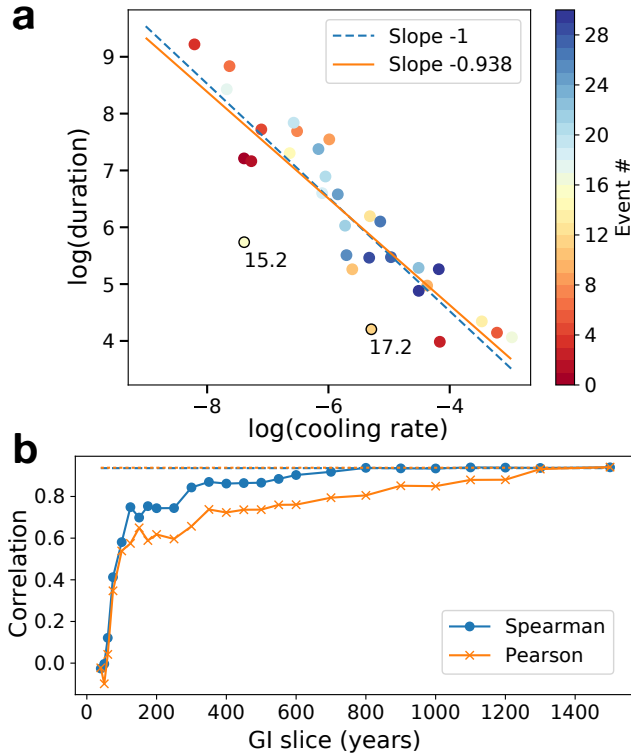


Figure 6. a) Scatterplot of the logarithms of interstadial durations and cooling rates. The color coding indicates the temporal sequence of the events starting with GI-24.2 as event #0. Two linear fits obtained by ordinary least squares are shown. For one of them we fixed the slope to -1 and varied only the intercept. **b)** Correlation coefficients of the logarithms of interstadial duration and the linear slope fitted to a slice of the beginning of the interstadial as a function of the length of that slice. The values of the Spearman (Pearson) correlation coefficients using slopes obtained from the full interstadials is marked with a *dashed (dotted)* line.

In Fig. 6a we show a scatterplot of $\log \lambda_c$ and $\log D_I$ along with a linear regression yielding a slope of -0.94. The 95% confidence interval of this slope obtained via bootstrapping is [-1.12, -0.75]. Because we do not account for errors in the rates estimated from the data the regressed slope is biased towards 0 due to attenuation and the true slope will be closer to -1. The model $D_I \propto \lambda_c^{-1}$ is consistent with the data, where the spread is caused by the fact that the jump back to stadial conditions happens after varying cooling amplitudes, which have a mean of 2.04 and standard deviation of 1.04.

4.1.2 Distribution of interstadial cooling rates and durations

The relationship between interstadial durations and cooling rates also manifests itself in the respective distributions. As seen in Fig.'s 4g and 4n, both features ~~have strongly skewed histograms~~ are strongly skewed. Both are consistent with log-normal distributions ~~as shown by AD tests~~ with $p = 0.47$ and $p = 0.89$ for durations and rates, respectively. A fit with this distribution is illustrated in the figure. Because the two features are approximately inversely related with $D_I = \bar{A} \cdot \lambda_c^{-1}$, the fact that one

is a log-normal random variable implies that the other is, too. If D_I is distributed log-normally with parameters μ and σ , then λ_c^{-1} follows a log-normal distribution with parameters $-\mu + \ln(\bar{A})$ and σ . In our data this relation holds: We estimate μ and σ from the data D_I and use the observed average amplitude $\bar{A} = 2.04$. ~~An AD test with $p = 0.33$ shows that the~~ The data λ_c^{-1} is consistent are consistent ($p = 0.33$) with a log-normal distribution with $-\mu + \ln(2)$ and σ .

5 As opposed to other skewed distributions like ~~the~~ exponential, Gumbel and power law, both durations and cooling rates are also consistent with an inverse Gaussian distribution. The observation that the durations and rates are both well fitted by the inverse Gaussian despite their inverse relation is explained by the similar shape of the reciprocal inverse Gaussian distribution. If a variable is ~~distributed as~~ inverse Gaussian $X \sim IG(x)$, then the distribution of $Y = \frac{\bar{A}}{X}$ is reciprocal inverse Gaussian $Y \sim \frac{\bar{A}}{x^2} IG(\bar{A}/x)$. A moderately sized sample of Y is still likely to be consistent with an inverse Gaussian distribution, due to
10 the similarity of the two. The inverse Gaussian could make an appealing model for the ~~interstadial durations~~ interstadials, since it arises as distribution of first hitting times of a constant level for Brownian motion with a constant drift. However, the proxy time series in interstadials look qualitatively different than what is expected from this model, because they are quite linear and yet have strongly varying slopes. In order for the model to produce roughly linear time series, the drift has to be high, which results in very similar slopes of the time series with the resulting distribution of first hitting times converging to a Gaussian. We
15 leave a further discussion on which mechanism could yield log-normal or inverse Gaussian distributions of durations or cooling rates for upcoming studies. Instead, in the following we focus on implications of the approximate linearity of the interstadial time series.

4.1.3 Predictability of interstadial durations

The strong relationship of interstadial durations and cooling rates might have some implications ~~on the understanding of~~ for DO
20 event dynamics. If the ~~rates govern the durations much more so than the cooling amplitudes, then the durations~~ durations are correlated much stronger with the cooling rates than with the amplitudes, they can already be approximately predicted as soon as the rate is established, which might happen early in the interstadial. ~~This is different from the idea that the interstadial-stadial transition is a noise-induced escape from one metastable state to another.~~ To test this, we take small slices of the beginnings of each interstadial, fit a linear slope s to them and then calculate how well these slopes correlate with the durations of the full
25 interstadials as we increase the length of the slices. Due to noise in the beginning of the interstadials, for some interstadials a small positive slope is being detected. We ~~reset~~ set these slopes instead to $s = -0.0001$, because in our analysis we use the logarithms of slopes and durations. For the relatively short events 15.2 and 17.2, no negative slopes are obtained when fitting the whole interstadial part independently, as opposed to the slopes obtained in the fit of the entire time series. We thus have to exclude these two outliers in the following. In Fig. 6b we show how the correlation between the logarithm of the slopes
30 $-\log(-s)$ of these slices and the durations $\log D_I$ evolves as we increase the length of the slices. The correlation of the slopes estimated from the full interstadials and the durations, when excluding events 15.2 and 17.2, is $r_s = 0.94$ ($r_p = 0.94$), and is indicated by a dashed (dotted) line. We can see that the correlation rapidly increases up to a length of 150 years. Thereafter the correlation stabilizes until another more rapid increase at ~~a length of~~ 350 years. The rapid increase in correlation is partly due to a non-negligible number of events already being at full length (6 events at 150 years and 12 events at 350 years). Still,

also the slopes of the remaining events already correlate well with the durations. At 350 years, the ~~durations are almost as well determined by correlation of the durations with~~ the slopes estimated from the slices ~~as they are is almost as good as with the slopes~~ from the full interstadials. ~~The remaining indeterminacy comes from~~ ~~There remain~~ a handful of longer interstadials (23.2, 22, 14 and 11) that do not settle to a clear negative slope after 350 years. For the latter three events, this is due to
5 sub-events that occur shortly after the interstadial onset.

Our interpretation is that the cooling rate is an indicator of a timescale of large-scale climate reorganization, which can already be measured relatively early in the interstadial and which remains approximately constant. Although we can see that there are exceptions, we conclude that for most events the interstadial duration ~~is determined~~ ~~can be predicted~~ a few hundred years after the rapid warming. ~~Some of the unexplained variance of this prediction is due to other factors influencing the interstadial duration that are not diagnosed by the linear cooling rate, but, e.g., by the cooling amplitude.~~
10 ~~interstadial duration that are not diagnosed by the linear cooling rate, but, e.g., by the cooling amplitude.~~

4.1.4 Influence of external forcing

Given the previous result, we investigate whether the variability in the timescale associated with the cooling rate can be explained by other features of the DO cycles, or by external forcing. Among correlations of the cooling rates with other features deemed significant by a permutation test, none of them are relevant, either because they are caused by few outliers or
15 else directly due to their definition and parameter constraints.

Considering external climate factors, we find ~~a correlation of~~ $r_s = 0.40$ and $r_p = 0.35$ ~~of for~~ the logarithm of the cooling rates with LR04 at the time of the interstadial maximum. This correlation is, however, influenced by a common trend of the two quantities, and is not significant anymore at 90% confidence when removing a linear trend. On the other hand, there is a large sub-set of events which appears to be linearly related.

As shown in Fig. 7a and c, the furthest outliers from an approximate linear relationship are the interstadials 23.2, 21.2, 16.2 and 15.1. ~~When removing these outliers, the correlation is~~ ~~Removing these outliers yields~~ $r_p = 0.79$, which clearly goes beyond a common trend with $r_p = 0.63$ after linearly detrending. ~~When only considering~~ ~~For~~ the younger half of the record starting with GI-14 ~~, the correlation is we find~~ $r_p = 0.84$. ~~This corresponds, corresponding~~ to the finding by Schulz (2002), who reports that the interstadial cooling rates starting from GI-14 are forced by global sea level. We note, however, that the
25 correlation after GI-14 is largely due to common trend, as we find $r_p = 0.37$ after linear detrending, which is not significant at 90% confidence. Nevertheless, as shown above, when discarding a few outliers there is evidence for significant correlation as we include older parts of the record.

A better predictor of the interstadial cooling rates of the more recent DO cycles is given by the CO₂ composite record. Whereas for the older half of the glacial there is no significant correlation, when starting at GI-14, we find ~~a linear relationship~~
30 ~~with~~ $r_p = -0.93$ and $r_p = -0.81$ after linear detrending. In Fig. 7e we illustrate how well the cooling rates of this period can be predicted from CO₂ by linearly regressing CO₂ onto the logarithm of the cooling rates and then exponentiating the result.

Additionally, in a subset of the events, there is a linear relationship between the logarithm of the cooling rates and EDML at the interstadial onsets. While the ~~correlation of~~ the entire data set is not significant ~~correlated~~ at 90% confidence ~~with~~ ($r_p = -0.19$ and $r_s = -0.23$, ~~when~~), removing events 24.2, 23.2, 23.1, 21.2, 16.2 and 15.1 ~~, the remaining events appear to~~

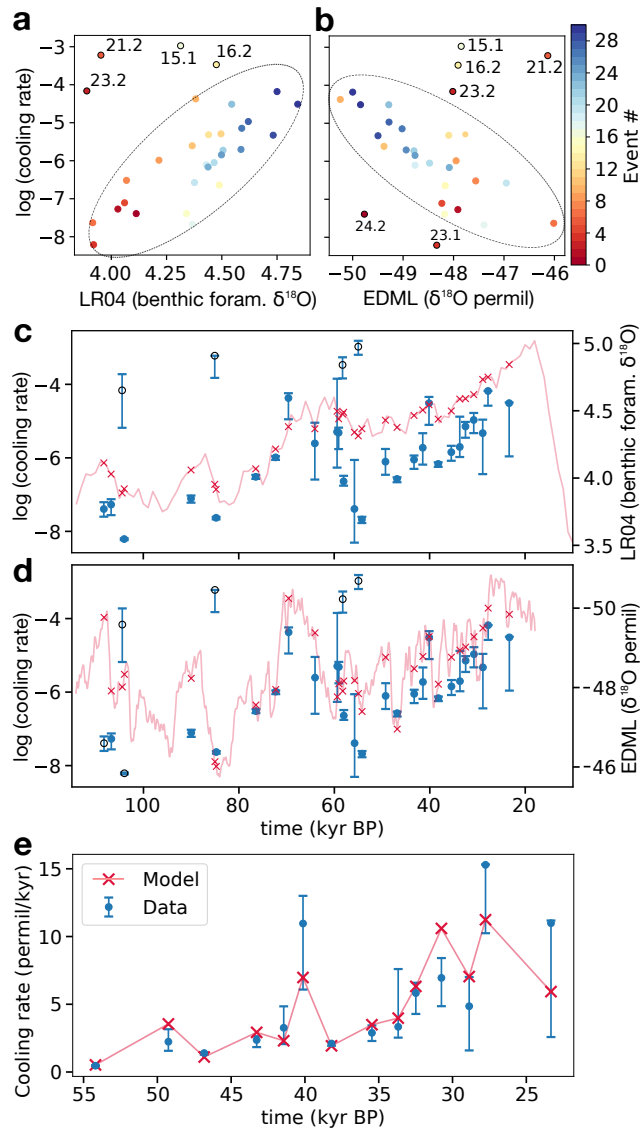


Figure 7. a-b) Scatterplot of the logarithm of the interstadial cooling rates and the **a)** LR04 and **b)** EDML at time points corresponding to the interstadial onsets. **c)** Time series of the cooling rates (*dots*) and the LR04 stack (*crosses*). The error bars on the cooling rates are given by the 16- to 84-percentile obtained by bootstrapping. **d)** Time series of the cooling rates (*dots*) and the EDML stack (*crosses*). Note the inverted axis for EDML. **e)** Time series of the interstadial cooling rates starting at GI-14 and of a linear regression model of the CO_2 record fitted to the logarithm of the cooling rates.

have an yield and approximate linear relationship, as indicated in Fig. 7b and d. The correlation then becomes $r_p = -0.81$ and $r_s = -0.78$, or $r_p = -0.72$ and $r_s = -0.61$ after linearly detrending, which is significant at 99% confidence. Thus, in this subset there is evidence for anti-correlation beyond a simple linear trend. Again, the linear relationship is strongest for the

younger half of the record, which starts at GI-14 and does not have outliers. Here, we find $r_p = -0.89$, and $r_p = -0.70$ after linearly detrending, which is significant at 99% confidence.

A corresponding linear relationship between the logarithms of interstadial durations and Antarctic temperature in different ice cores has been noted before by Buizert and Schmittner (2015). In our data we find ~~correlations of these quantities of~~ $r_p = 0.29$ and $r_s = 0.27$ ~~which are for these quantities, which is~~ not significant at 90% confidence. This disagreement comes from the fact that Buizert and Schmittner (2015) view each of the interstadials 24, 23, 21, 17, 16, 15 and 2 as one event, whereas we consider these as two events each, as suggested by the analysis of Rasmussen et al. (2014). ~~If we remove~~ Removing the events 24.2, 23.2, 23.1, 21.2, 17.2, 16.2 and 15.1 ~~, we find a~~ yields strong linear relationship of $r_p = 0.91$, comparable to the findings by Buizert and Schmittner (2015). It is robust to linear detrending with $r_p = 0.87$. Most of these outliers are very short events, and discarding them removes a lot of the variability of the interstadial durations, similar to lumping them together with adjacent longer events.

4.2 Stadial periods

4.2.1 Stadial duration distribution

The stadial periods are defined to start after the rapid cooling and end at the onset of the rapid warming, and their duration is thus b_1 . ~~These durations are highly variable, ranging from 20 years for GS-24.2~~ Due to 5169 years for GS-19.1, ~~with an average of 1328 years. Due to our definition of stadials this definition~~ GS-24.2 is exceptionally short ~~, because~~ with 20 years, as the proxy shows rapid warming again right after the rapid cooling without stabilizing. ~~Figure 4b shows that the stadial duration~~ Thus, the durations are highly variable, ranging up to 5169 years for GS-19.1, with an average of 1328 years. The distribution is skewed, as seen in Figure 4b, where also an exponential fit is given. The data are consistent with an exponential ($p = 0.79$ ~~with AD test~~) and a log-normal distribution ($p = 0.18$). ~~A~~ Among these two distributions, the exponential is preferred by a relative likelihood test ~~prefers the exponential distribution~~ by a factor of 16 ~~over the log-normal. An exponential fit to the data is illustrated in Fig. 4b. This distribution might be relevant in this context~~ 16. This distribution is relevant for climate dynamics, as it arises in the low noise limit of noise-induced escape times from asymptotically stable equilibria in dynamical systems (Day, 1987).

4.2.2 Influence of stadial levels and forcing on durations

In the following we discuss whether the stadial duration variability is influenced by other features in the data, or external factors. Among external factors, the ~~stadial~~ durations are best correlated with 65Nss ($r_s = -0.64$). The only DO feature that is significantly and robustly correlated with the ~~stadial~~ durations, is the stadial levels with $r_s = -0.43$. In Fig. 8a we ~~show a scatterplot of~~ plot the stadial levels ~~and~~ against the logarithms of the durations. If one discards the first 6 events of the record, there is a linear anti-correlation of $r_p = -0.80$, or $r_p = -0.76$ after linear detrending. This could be either due to common forcing or ~~due to the levels directly influencing a~~ direct influence on the durations.

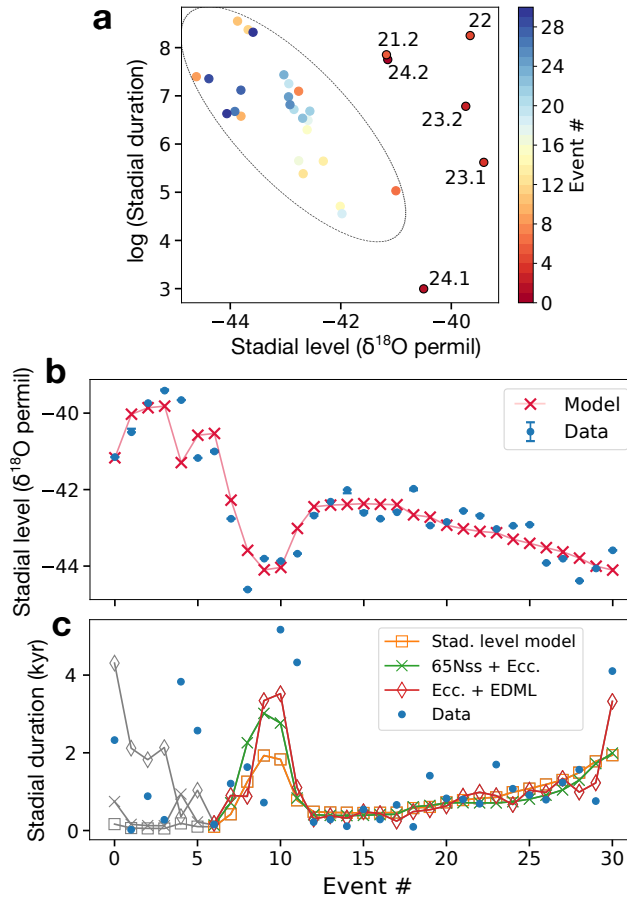


Figure 8. **a)** Scatterplot of stadial levels and logarithmic durations. Outliers from an approximate linear relationship are labeled. **b)** Event series of observed stadial levels and those modeled by $L_{mod} = 3.52 \cdot X_1 + 98.84 \cdot X_2 - 57.96$, where X_1 is 65Nint and X_2 the eccentricity. **c)** Models predicting the observed stadial durations (*crosses*). The first 6 events, indicated by *gray* markers, were discarded when fitting the models. The model based on predicted stadial levels from insolation (*squares*) is given by $\log(D_{mod}) = -0.90 \cdot L_{mod} - 32.18$. The second model (*circles*) is given by $\log(D_{mod}) = -0.037 \cdot X_1 - 27.11 \cdot X_2 + 25.24$, where X_1 is 65Nss and X_2 eccentricity. The third model (*diamonds*) is given by $\log(D_{mod}) = -0.90 \cdot X_1 + 75.39 \cdot X_2 + 38.71$, where X_1 is EDML and X_2 eccentricity.

While the stadial levels correlate well with LR04 and EDML due to a common linear trend, there is better correlation with insolation, as seen by $r_p = 0.60$ (~~GS-24.2 and GS-22 are outliers~~) for 65Nss. Removing outliers GS-24.2 and GS-22 yields $r_p = 0.82$, which does not change when linearly detrending. To see whether this forcing explains most of the correlation of durations and levels, we remove a linear fit to 65Nss from each variable and find ~~a remaining correlation of~~ $r_p = -0.38$. Even though the significance of this correlation is unclear due to the autocorrelation of the stadial levels, this could imply that there is more information in the stadial levels about the durations than simply common insolation forcing. On the other hand, insolation components in addition to 65Nss might explain more of the observed variability.

We investigate whether multiple linear regression models with two predictors explain the stadial levels and durations ~~significantly~~ better. A model comprised of 65Nint and eccentricity determines the ~~stadial~~ levels very well ($R^2 = 0.86$), as shown in Fig. 8b. These modeled levels ~~also~~ correlate well with the logarithm of the stadial durations ($r_p = -0.64$ when excluding the earliest 6 events). ~~We check whether this is a good~~ As model for the durations ~~by linearly regressing~~, we linearly
5 regress the modeled levels onto the ~~logarithm of the durations and exponentiating the result~~ log-durations and exponentiate. In Fig. 8c ~~we compare this~~ the result is compared to two other models that directly regress external forcings on the ~~logarithm of~~
~~the durations~~ log-durations. None of the models fits the first 6 events adequately. Thereafter, all three models produce a similar trend. The model based on predicted stadial levels, and a model with direct forcing by 65Nss and eccentricity show similar skill with $R^2 = 0.29$ and $R^2 = 0.30$, respectively. The third model based on eccentricity and the EDML record is slightly better
10 with $R^2 = 0.46$, mainly because it fits two of the longest stadials better. Still, all of the models ~~fit only~~ only fit the overall trend ~~and leave unexplained variability~~ on top of ~~it~~ which variability is left unexplained. Unless the correlation is nearly perfect, a linear correlation of the logarithm still leaves a lot of room for scatter in the original scale.

The exponential tail in the variability of the stadial durations is not a result of the modulation by the external forcings we consider. To demonstrate this, we remove the forcing influence by fitting a linear model of one or more forcings to the
15 ~~logarithm of the stadial durations~~. ~~We obtain detrended data~~ log-durations. Detrended data is obtained by adding the mean of the logarithmic data to the residuals of the fit and then exponentiating. When using 65Nss as forcing, we find $p = 0.15$ ~~in~~
~~an AD test on~~ for the exponential distribution. With the model of both eccentricity and 65Nss, as introduced above, we find $p = 0.29$. Thus, the distribution of the detrended data is still long-tailed and consistent with an exponential distribution.

4.2.3 Are stadials with Heinrich events special?

20 Besides DO events, Heinrich events are the other major mode of glacial millennial-scale climate variability ~~during the last~~
~~glacial period~~. ~~These events~~. They correspond to massive discharges of ice rafted debris found in ocean sediment cores (Heinrich, 1988), with large climatic impacts that are well-documented in numerous proxy records at various locations. While constraints on their duration and timing need to be improved, we follow Seierstad et al. (2014) for the temporal link of Heinrich events and the GICC05 chronology. This yields the set of Heinrich events H2, H3, H4, H5a, H5, H6, H7a, H7b and H8, which
25 overlap with stadials 3, 5.2, 9, 13, 15.1, 18, 20, 21.1 and 22, respectively. Since some ~~of these Heinrich events might be~~ Heinrich
events are less established in the community, we also look at the reduced set of H2, H3, H4, H5 and H6.

We test whether these 'Heinrich stadials' have significantly different properties than the remaining stadials, such as longer durations, by randomly sampling 9 stadials (5 for the reduced set) from the entire set without replacement and calculating the mean duration of this subset. ~~We repeat many times~~ This is repeated until we can estimate the probability of trials yielding a
30 higher mean duration than the actual set of 'Heinrich stadials'. If this is less than 5% (corresponding to $p = 0.05$) we reject the hypothesis that 'Heinrich stadials' have the same mean duration as the remaining stadials at 95% confidence. This test gives essentially the same results as a one-sided t-test.

For the full (reduced) set of Heinrich events we find $p = 0.028$ ($p = 0.022$). It is not obvious whether this should be considered significant in the sense of a hypothesis that Heinrich events prolong stadials. A better statistical test is needed, since if the

events were to occur randomly during the course of stadials they would naturally be found preferentially in longer stadials. We leave a resolution of this for upcoming work. Based on the idea that 'Heinrich stadials' are colder than normal, ~~we perform~~ a test on the stadal levels ~~yielding yields~~ $p = 0.052$ ($p = 0.047$). Again, this is probably not significant since Heinrich events mostly occur in the younger glacial half with generally lower levels. We can reject the notion that DO events following Heinrich events are 'stronger'. A ~~statistical~~ test on the DO warming amplitudes yields $p = 0.102$ ($p = 0.472$), whereas a test on the interstadial durations yields $p = 0.403$ ($p = 0.583$). This might depend on the precise timing of H3, which in our analysis precedes the especially weak GI-5.1.

4.3 Abrupt warming periods

4.3.1 Warming durations

10 The rapid warming transitions in NGRIP as determined by our ~~piecewise-linear fit method~~ have an average duration of 63.2 years. There is ~~quite~~ a large spread with a minimum duration of 15.3 years for GI-17.1 and a maximum of 179.5 years for GI-11. ~~There is, but~~ no clear trend, as we find both short and long warmings in early and later parts of the record. The distribution is skewed as seen in Fig. 4e. ~~We find~~ 5 transitions ~~that last for more than last over~~ a hundred years (interstadials 6, 11, 17.2, 18, 23.2). For each of them there is not only a single abrupt warming, but also a systematic departure from stadal to warmer values before, as can be seen in Fig. S1 of the supplemental material. Our algorithm includes these early ~~warming~~ trends into the warming transition. ~~Clearly, other~~ ~~Other~~ methods to define the abrupt warmings might give different results in these cases. ~~In Rousseau et al. (2017), Rousseau et al. (2017) define~~ the transition onsets ~~are defined by the derivative of the signal via the derivative~~ and consequently the ~~warming~~ transitions into interstadials 6 and 11 are reported ~~to be~~ much shorter. Given our definition of abrupt warmings, we can at least argue that the longest warming transitions are not a result of ~~local~~ noise, because
20 in our fit of the GRIP record the same transitions are also among the longest and ~~are~~ clearly above average.

~~Within the framework of our analysis, In our analysis~~ we cannot identify any DO cycle features, external forcings, or combinations thereof that ~~can~~ explain a significant part of the variability in the warming durations. Thus, we aim to infer something about the mechanism of the warming transitions from the distribution of their durations. ~~AD tests show that the~~ ~~The~~ log-normal ($p = 0.63$), Gumbel ($p = 0.053$) and inverse Gaussian ($p = 0.95$) distributions cannot be rejected at 95% confidence
25 by the data. A fit with the Gumbel distribution is illustrated in Fig. 4e. ~~By computing the relative likelihood from~~ ~~The relative likelihood of~~ the Akaike information criterion ~~we find shows~~ that the inverse Gaussian distribution is 9.7 times more likely than the Gumbel distribution, and the log-normal distribution is 7.6 times more likely than the Gumbel distribution. We cannot choose in between log-normal and inverse Gaussian with any confidence.

4.3.2 A model for the stadal-interstadial transition

30 In the following we compare the warming durations to what is expected in the framework of noise-induced transitions in multi-stable systems. The DO ~~warming durations~~ ~~warmings~~ are much shorter than the time spent in the stadal state. If we consider the stadal-interstadial transition as a noise-induced transition from one metastable state to another, starting at the stadal onset,

most of the time is spent in the vicinity of the stadial state. The part of the trajectory that leaves this vicinity for the last time and then moves towards the other state (interstadial) is referred to as the reactive trajectory. Because of the high noise level in the record, an unknown part of which is non-climatic or regional and changes over time, we do not estimate reactive trajectories by defining neighborhoods of two metastable states. Instead, we believe the warming periods obtained by our piecewise-linear fit are reasonable estimates. Figure 9a illustrates the reactive trajectory (in green) leading up to GI-20. In Fig. 9b the different parts of this stadial-interstadial transition are projected onto an arbitrary potential that features two metastable states. For overdamped motion driven by additive noise in such a potential, it has been proven that the reactive trajectory durations converge to a Gumbel distribution in the zero noise limit (Cérou et al., 2013). Similarly, there is numerical evidence for the Gumbel distribution applying to one-dimensional spatially extended systems for low noise (Rolland et al., 2016). Because in our data we cannot separate true climatic noise, potentially driving the observed large-scale climate transitions, from other types of noise, it is hard to say whether a low noise condition is met and a Gumbel distribution should be expected.

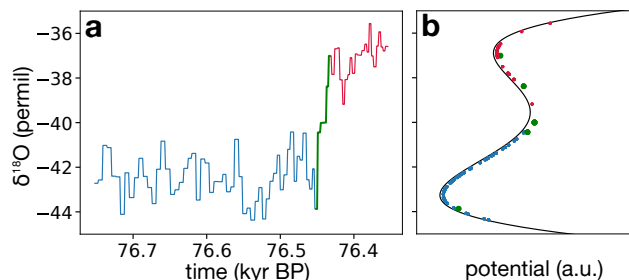


Figure 9. **a)** Stadial-interstadial transition leading up to GI-20 (*red*) including our estimate of the so-called reactive part of the trajectory (*green*) preceded by 350 years of the stadial GS-21.1. **b)** Data points of the same time series projected onto an arbitrary one-dimensional potential function with two minima as conceptual model for the transition.

With a small numerical experiment we address the case of finite noise levels and small sample sizes. We use stochastic motion in a double well potential as generic model for a noise-induced transition out of a metastable state to another. It is given by the stochastic differential equation $dX_t = \left(-\frac{dV(X_t)}{dx}\right) dt + \sigma dW_t$, with the potential $V(x) = x^4 - x^2$ and the Wiener process W_t . For zero noise, there are two fixed points at $x = -1$ and $x = 1$. We initialize the system at $x = -1$ and repeatedly collect reactive trajectories, which start when they last leave $x < -0.9$ and end as they enter $x > 0.9$. Small samples of 31 reactive trajectory durations are indeed typically consistent with a Gumbel distribution for a range of different noise levels, but can be consistent with other distributions, too.

To show this, we collect p-values of AD tests on many small samples. For the Gumbel distribution at a low noise level of $\sigma = 0.00045$, 96.3% of the p-values are above 0.05. Thus, in this case, very rarely a sample of 31 reactive trajectory durations is rejected by a hypothesis test on the Gumbel distribution. For a higher noise level of $\sigma = 0.5$, still 80.1% yield $p > 0.05$. However, the log-normal distribution fits equally well with 95.4% (93.6%) yielding $p > 0.05$ for $\sigma = 0.00045$ ($\sigma = 0.5$). The distribution that most reliably fits the data is the inverse Gaussian with >99.9% (>99.9%) yielding $p > 0.05$ for $\sigma = 0.00045$ ($\sigma = 0.5$), despite the fact that in the zero noise limit the correct distribution is Gumbel. It has been noted that the inverse

Gaussian also fits well for large sample sizes (Cérou et al., 2011). Even non-skewed distribution can be consistent with the samples, as seen for the Gaussian distribution, with 55.1% (22.8%) yielding $p > 0.05$ for $\sigma = 0.00045$ ($\sigma = 0.5$). Similar values are obtained for the logistic distribution.

5 ~~These results imply that from~~ This implies that a small sample of 31 reactive trajectories ~~we~~ cannot reliably identify the true distribution and thus a potential mechanism. Still, the data are at least consistent with the expected behavior of noise-induced escape from a metastable state. ~~Clearly, other~~ Other simple mechanisms can be consistent with the data, too. For example, as mentioned above, the inverse Gaussian is the distribution of time elapsed for a Brownian motion with drift to reach a fixed level.

4.3.3 Warming amplitudes

10 The average amplitude of the ~~rapid~~ warmings is 4.2 permil, with most events clustering around this value. The most extreme values are 7.1 permil for GI-19.2 and 1.7 permil for GI-5.1. ~~The latter is not surprising, because GI-5.1, which~~ is almost not visually discernible as an event in the $\delta^{18}\text{O}$ series. ~~We find an anti-correlation of the warming amplitudes and~~ The warming amplitudes anti-correlate with the preceding stadial levels. When discarding GI-5.1, ~~the correlation this~~ is significant at 99% confidence with $r_s = -0.63$, which is largely due to GI-19.2 being preceded by a very deep stadial, and GS-23.1 and GS-22, 15 which are preceded by very shallow stadials, as they happen early in the glacial. When discarding these events the remaining correlation is still significant at 99% confidence with $r_s = 0.50$. Thus, to some degree, the warming amplitudes are predictable in a statistical sense: When residing in a shallow stadial, the amplitude of the next DO warming will be small, and vice versa for a deep stadial. We also assess whether the variability can be explained by external forcing. Our analysis does not show a relationship between the DO ~~event~~ amplitudes and global ice volume (LR04), as has been proposed by McManus et al. (1999); 20 Schulz et al. (1999). It should be noted, however, that these studies have a quite different notion of DO event amplitudes. Our approach, based on fitting high resolution data, seems well suited to estimate the actual amplitude of rapid transitions, as opposed to low-pass filtering that reduces the amplitude of shorter events. ~~Instead of ice volume,~~ we find a correlation with 65Nint of $r_p = -0.36$ and $r_s = -0.31$, which is significant at 90% confidence. However, the correlation is visually not striking. Removing GI-19.2, which occurs close to an insolation minimum, yields a correlation that is not significant at 90% confidence.

25 5 Discussion

This work presents a statistical analysis of DO event features based on best fit parameters of a piecewise-linear ~~fit for the high-resolution waveform to the~~ NGRIP $\delta^{18}\text{O}$ ~~record of the last glacial period, where each DO event receives a saw-tooth shaped fit. Not for all events this is necessarily the overall best piecewise-linear fit, since there are transitions that do not have a significant rapid-cooling period at the end of the interstadials, but rather cool gradually until reaching roughly constant stadial values. In Sec. 3.1 we showed that 14 out of the 31 DO events analyzed in this study do not strictly follow the saw-tooth shape that is often reported as being generic for all DO events.~~

The uncertainties of the fit parameters are assessed with a bootstrap resampling technique (Sec. 3.2) and alternatively by comparison to a different ice core (GRIP, Sec. 3.3). The results are very similar, giving confidence in the uncertainty estimates of the former method. However, it follows O record. An assessment of the parameter uncertainties shows that some shorter time-seale timescale features have to be taken with care, such as the rapid warming durations. Here, not all individual values might be reliable. However, the-comparison-with-GRIP-a-comparison-with-a-fit-to-the-GRIP-record shows that the overall trends and distributions, also of the shorter time-seale timescale features, are robust. Still, different methods or models to define the features might alter the results. As an example, our piecewise-linear method yields quite different estimates of the abrupt warming durations as compared to Rousseau et al. (2017), where abrupt warmings are defined by an estimated derivative of the time series. Our results have an average absolute deviation of 25 years (26 years) compared to their algorithmically (visually) determined warming durations starting at GI-17.1.

~~From the fit parameters, we derived different features characterizing each DO cycle and performed an extensive statistical analysis on these and various forcings. This could provide a basis for future modeling studies to compare characteristics of modeled DO cycles to the ice core data. Even though most features develop rather irregularly from event to event, and show only weak correlations with each other and external forcings, some useful information can be extracted from the analysis.~~

Furthermore, the work relies on the classification of Greenland ice core centennial to millennial variability into a set of DO events by Rasmussen et al. (2014). This classification includes short events such as 23.2 and 21.2, which occur early in the glacial and are surrounded by the longest interstadials, as well as 18, 17.2 and 15.2, which are short, but do not show a clear gradual cooling. In our analysis, these interstadials frequently show up as outliers. Their presence either showcases the strong irregularity and variability of the processes underlying DO cycles, or could indicate that the events are caused by a different trigger and do not represent large-scale reorganizations of the climate system in the same way as longer events. Some of our conclusions might change if all short events were systematically discarded. They do not appear to be local to Greenland, since they are seen in atmospheric methane records (Rhodes et al., 2017) and speleothem records from the Alps (Boch et al., 2011; Moseley et al., 2014) and Asia (Cheng et al., 2016). However, their significance in comparison to longer DO events is an open problem that needs to be evaluated as more precisely dated, high-resolution records from outside of Greenland become available.

Our analysis suggests that the mechanisms underlying warming and cooling transitions are likely different, due to contrasting statistical properties. The stadial duration distribution closely resembles an exponential, and its large dispersion cannot be explained by external forcing alone (Sec. 4.2.2). This is expected in systems with noise-induced escape from a metastable state to another (Sec. 4.2.1). Furthermore, also the distribution of DO warming durations is consistent with the durations of so-called reactive trajectories in noise-induced transitions (Cérou et al., 2013; Rolland et al., 2016) (Sec. 4.3.2). Thus, the stadial-interstadial transition, i.e., the stadial plus the rapid warming phase, is consistent with a noise-induced escape from a metastable state, and thus with spontaneous, unforced climate transitions, such as the ones observed in Drijfhout et al. (2013) and Kleppin et al. (2015). However, evidence for a different scenario might arise with new data or analyses, as in the studies by Rypdal (2016) and Boers (2018) who suggest a bifurcation in a fast climate sub-system before DO warmings, evidenced by increases in high-frequency variance of the ice core record prior to some events. If this is the case, it would mean that the

transitions are not purely noise-induced, but predictable to some degree and potentially part of a self-sustained oscillation such as in the model experiments by Vettoretti and Peltier (2016) and Klockmann et al. (2018).

5 The ~~interstadial periods have highly variable durations and~~ situation is different for the interstadial-stadial transition. Although the interstadial durations are also highly variable, they are characterized by a roughly linear cooling with rates that ~~vary strongly from one DO cycle to the next (Sec. 4.1.1). Because these durations are much more strongly governed by the cooling rates than by the cooling amplitudes they~~ correlate strongly with the durations. Because this correlation is much stronger than that of the durations and the amplitudes before the rapid DO coolings, the interstadial-stadial transition can be predicted to a good approximation as soon as the ~~cooling rates have stabilized. We estimate from the data that for most DO cycles this, which~~ happens within the first 150 to 350 years of the interstadial for most DO cycles (Sec. 4.1.3). ~~Our interpretation is~~ We interpret this ~~such~~ such that after interstadial onset a large-scale reorganization of the climate system takes place on a ~~time scale~~ timescale, which, even though very different from event to event, can be inferred from the cooling rate and stays ~~constant~~ consistent throughout the interstadial. ~~This reorganization is the~~ We suggest that this reorganization is a major driving force ~~that determines of the DO cycle because its timescale predicts with reasonable accuracy~~ when the interstadial-stadial transition takes place, which as a result cannot be purely noise-induced.

15 External forcing might explain the large ~~variation of this time scale from event to event~~ variability of this timescale, as proposed by Schulz (2002), who argues that the interstadial cooling rates are controlled by global sea level ~~based on the GISP2 ice core record of in~~ the younger half of the last glacial. We find this relation to be weak in the older half of the glacial ~~For the older glacial, this relation is weak~~ due to a number of outliers (Sec. 4.1.4). A physical pathway for such a forcing might be influences of global ice volume on ~~the~~ strength and stability of the interstadial (strong) mode of the AMOC. However, ~~studies with coupled climate models~~ climate model studies show that enlargement of Northern Hemisphere ice sheets actually enhances the stability of the strong AMOC state (Zhang et al., 2014; Ullman et al., 2014; Muglia and Schmittner, 2015). Intuitively, this would result in longer interstadials, which is in contrast to what the ice core data suggest. This has been addressed by Buizert and Schmittner (2015), where Southern Ocean processes are invoked to influence interstadial durations. We find that the correlation of Antarctic temperature and interstadial ~~durations~~ duration reported in this study is only valid ~~if certain outliers are discarded. Finally, for the younger half of the glacial starting at GI-14, we find that atmospheric CO₂ is a much better predictor of the cooling rates. A sensitive dependence of the strong AMOC state to CO₂ has been verified in model experiments by Kawamura et al. (2017). However, more model experiments with active carbon cycle are needed to clarify whether CO₂ should be considered as forcing or response to the DO cycle. Yet other model experiments~~ another model showed that changes in CO₂ could in fact even be the trigger ~~for of~~ for of DO-type transitions (Zhang et al., 2017).

30 ~~The stadials have different properties compared to the interstadials, going beyond the approximately constant temperature within stadials. The duration distribution closely resembles an exponential, and its large dispersion cannot be explained by external forcing alone. Instead, the distribution is still consistent with an exponential after detrending with the best fit to insolation forcing (Sec. 4.2.2). The stadial durations are thus consistent with noise-induced escape from a metastable state to another (Sec. 4.2.1). This is corroborated by our finding that the distribution of DO warming durations is consistent with the~~

~~durations of so-called reactive trajectories in systems with noise-induced escapes in between multiple metastable equilibria (Cérou et al., 2013; Rolland et al., 2016) (Sec. 4.3.2).~~

Thus, the ~~stadial-interstadial transition is consistent with a noise-induced escape from a metastable state, and thus with spontaneous, unforced climate transitions, such as the ones observed in Drijfhout et al. (2013); Kleppin et al. (2015). However, evidence for a different scenario might arise with new data or analyses, as in the studies by Rypdal (2016) and Boers (2018) who suggest that there is a bifurcation in a fast climate sub-system before DO warmings, evidenced by critical slowing down in the high-frequencies of the ice core record prior to some events. If this is the case, it would mean that the transitions are not purely noise-induced, but predictable to some degree and potentially part of a self-sustained oscillation such as in the model experiments by Vettoretti and Peltier (2016) and Klockmann et al. (2018).~~

Our analysis, however, allows for the interpretation of the DO cycle as a manifestation of an excitable system, as proposed by Ganopolski and Rahmstorf (2002) and Timmermann et al. (2003), with a noise-induced transition out of the stadial state to the marginally unstable interstadial state, and a deterministic excursion back to the stadial state. However, the vastly different time scales for this excursion still need an explanation.

The mechanisms underlying warming and cooling transitions are furthermore likely to be different, because the influence of external forcing is different for stadial and interstadial periods, with more evidence for insolation forcing on stadials and ice volume or CO₂ on interstadials, which is related to the findings by Lohmann and Ditlevsen (2018). Except for a common forcing envelope of stadial and interstadial levels, there is no strong relationship in between features across the different periods of the DO cycle.

In this work we rely on the classification of Greenland ice core centennial to millennial variability into a set of DO events by Rasmussen et al. (2014). Notably, this classification includes short events such as 23.2 and 21.2, which occur early in the glacial and are surrounded by the longest interstadials, as well as the events 18, 17.2, 15.2, which are short, but do not show a clear gradual cooling. In our analysis, these interstadials frequently show up as outliers. Their presence either showcases the strong irregularity and variability of the processes underlying the DO cycle, or could indicate that the events are caused by a different trigger and do not represent large-scale reorganizations of the climate system in the same way as longer events do. Some conclusions of our work might change if all short events were systematically discarded. They do not appear to be local to Greenland, since they are seen in atmospheric methane records (Rhodes et al., 2017) and speleothem records from the Alps (Boch et al., 2011; Moseley et al., 2014) and Asia (Cheng et al., 2016). However, their significance in comparison to longer DO events is an open problem that needs to be evaluated as more precisely dated, high-resolution records from outside of Greenland become available. the vastly different timescales for this excursion still need an explanation.

6 Conclusion

We developed a method to fit a continuous piecewise-linear waveform to the entire last glacial NGRIP $\delta^{18}\text{O}$ record that can fit a characteristic saw-tooth shape to every DO event. However, we find that for many of the transitions this is ad-hoc. Almost half of the events do not show a distinct and significant rapid cooling episode after the more gradual interstadial cooling. An analysis of the DO event features derived from the fit confirms the irregularity and randomness that is evident from visual inspection of the record. There is hardly any evidence for relationships linking the features that describe the stadial, interstadial and abrupt warming periods, except for a common envelope that governs the stadial and interstadial levels via external forcing. A statistical analysis hints at different mechanisms underlying warming and cooling transitions. This follows from the distributions of the stadial and rapid DO warming durations on the one hand, and the interstadial durations on the other hand. It is furthermore supported by the different importance of CO_2 , ice volume and insolation forcing to explain the stadial and interstadial properties, as well as the fact that the interstadial durations can be predicted to some degree by the linear cooling rates shortly after interstadial onset.

Data availability. This work is based on the high-resolution NGRIP oxygen isotope record of the entire last glacial period. The data up until 60 kyr BP is available at http://iceandclimate.nbi.ku.dk/data/NGRIP_d18O_and_dust_5cm.xls, whereas the older parts of the record are currently in the process of being published by colleagues at Physics of Ice, Climate and Earth of the University of Copenhagen. Until then, the data can be requested from the authors. The insolation data 65Nint is publicly available as supporting online material to Huybers (2006) (DOI:10.1126/science.1125249) and the orbital forcing parameters from Laskar et al. (2004) as well as 65Nss insolation is available at <http://vo.imcce.fr/insola/earth/online/earth/earth.html>. The ice volume data from Lisiecki and Raymo (2005) are publicly available at <https://doi.pangaea.de/10.1594/PANGAEA.704257>. The Antarctic EDML oxygen isotope record is available at <https://doi.org/10.1594/PANGAEA.754444> whereas the Antarctic composite CO_2 record is available at <https://www1.ncdc.noaa.gov/pub/data/paleo/icecore/antarctica/antarctica2015co2composite.txt>

Appendix A: Iterative algorithm to fit piecewise-linear model

Algorithm 1 Pseudocode for fitting algorithm

```

1: while  $j < J$  do
2:   if  $j = 0$  then
3:      $\{t_i^b\} = \{t_i^{b0}\}; \{t_i^e\} = \{t_i^{e0}\}$ 
4:   else
5:     Set Stadial durations:  $\{D_i^{St}\} = \{b_{1,i} + t_i^b - t_{i-1}^b - b_{4,i-1}\}$ 
6:     Set Interstadial durations:  $\{D_i^{Is}\} = \{b_{4,i} - b_{1,i}\}$ 
7:     Set Stadial beginning times:  $\{t_i^b\} = \left\{ \sum_{n=0}^{i-1} (D_n^{St} + D_n^{Is}) \right\}$ 
8:     Set Stadial end times:  $\{t_i^e\} = \left\{ \sum_{n=0}^i D_n^{St} + \sum_{n=0}^{i-1} D_n^{Is} \right\}$ 
9:   end if
10:  Define Stadial levels:  $\{l_i^s\} = \left\{ \left\langle X_{t_i^b, \dots, t_i^e} \right\rangle \right\}$ 
11:  Cut into segments:  $\{s_i\} = \left\{ X_{t_i^b, \dots, t_{i+1}^e} \right\}$ 
12:  while  $i < N$  do
13:    if  $j=0$  then
14:      Initial conditions:  $\theta_i^* = \theta_i^0$ 
15:    else
16:      Initial conditions:  $\theta_i^* = \theta_i$ 
17:    end if
18:    Find optimal  $\theta_i^{new}$  of segment  $s_i$  with  $\theta_i^*, l_i^s$  and  $l_{i+1}^s$ 
19:     $i = i + 1$ 
20:  end while
21:  Update parameters  $\{\theta_i\} = \{\theta_i^{new}\}$ 
22:   $j = j + 1$ 
23: end while

```

In the following, we detail the optimization procedure to find the best saw-tooth shaped fit for each event, i.e., line 18 of the algorithm above. To determine the 6 parameters at each transition, we minimize the root mean squared deviation of the fit from the time series segment. Due to the high noise level, there are many local minima in this optimization problem. Thus, either a

5 brute-force parameter search on a grid or an advanced algorithm is needed to find a global minimum. We chose an algorithm called basin-hopping, which is described in Olson et al. (2012) and is included in the Scientific Python package `scipy.optimize`, where it can also be customized. The basic idea of the algorithm is the following: Given a initial coordinates in terms of the parameter vector θ_0 , one searches for a local minimum of the goal function $f(\theta)$, e.g., with a Newton, quasi-Newton or other method. The argument to this local minimum θ_n is then randomly perturbed by a Kernel to yield new coordinates θ^* , which

are the starting point of a new local minimization. Next, there is a Metropolis accept or reject step: We accept the argument of the local minimization θ_{n+1} as new coordinates if the local minimum is deeper than the previous one $f(\theta_{n+1}) < f(\theta_n)$, or else with probability $e^{-(f(\theta_{n+1})-f(\theta_n))/T}$, where T is a parameter relating to the typical difference in depth of adjacent local minima. Now we go back to the perturbation step either with old coordinates θ_n or, if accepted, with new coordinates θ_{n+1} ,
5 and repeat. The iterative procedure is repeated for a large number of iterations and the result is the argument to the lowest function value found.

Within basin-hopping, one has the freedom of choosing any local minimizer as well as perturbation Kernel. These have to be adapted to our optimization problem. We have several constraints on the parameters that need to be satisfied by the optimization. For instance, we demand that all segments of the fit are present and do not overlap ($b_1 < b_2 < b_3 < b_4$). Other constraints ensure
10 that the characteristic shape of DO events is fit as good as possible for all events. Among other things, we thus demand the gradual slope to be significantly longer and less steep than the fast cooling transition at the end of an interstadial. An overview of all the constraints we used is given further below. To satisfy them, we chose a multivariate Gaussian perturbation Kernel, which is truncated at the respective parameter constraints. The local minimizer choice requires further consideration. Our goal function landscape is very rough and not differentiable. Thus, methods like gradient descent give very poor results in our
15 case. A method that does not depend on derivatives and can handle constraints is called Constrained Optimization by Linear Approximation (COBYLA), and we found it to work well in our case.

Two hyper-parameters have to be specified in the basin-hopping algorithm: The variance of the perturbation Kernel, and the parameter T used in the Metropolis criterion. These should both be comparable to typical differences in goal function (temperature) and arguments (perturbation width) of neighboring local minima in the minimization problem. We chose these
20 parameters empirically by observing how the goal function changes as we slightly change the fit. Although this varies significantly from transition to transition, we determined single values as a compromise for all transitions. For the Kernel variance in the directions of $b_{1,2,3,4}$ we chose a value of 15, and for s_1 and s_2 we chose 0.004 and 0.0015, respectively.

The following list contains all constraints used in the optimization problem in order to ensure convergence of the algorithm to a fit within the qualitative limits of the desired characteristic waveform. Specifically, constraints 3 and 4 shall guarantee that
25 there is a distinction in between gradual cooling and rapid cooling at the end of an interstadial. With these constraints we can prevent that our algorithm splits an interstadial in half with two very similar slopes, which can easily happen because there are interstadials which arguably have a rather gradual cooling all the way down to the next stadial with no easily discernable steep cooling at the end. The lower limit of constraint 6 shall help to only fit to the steep part of warming transitions, which might have a slight warming prior to it. The upper limit of constraint 7 is needed in order to force a small negative slope on very short
30 transitions which otherwise could also be viewed as plateaus.

1. No overlap of segments:

$$b_2 > b_1, b_3 > b_2 \text{ and } b_4 > b_3$$

2. Gradual slope cannot go below following stadial level l_{i+1}^s :

$$s_1(b_2 - b_1) + s_2(b_4 - b_3) > l_{i+1}^s$$

3. Gradual slope must be twice as long as steep drop:

$$b_3 - b_2 > 2 \cdot (b_4 - b_3)$$

4. Drop at end of interstadial must be at least twice as steep as gradual slope:

$$2 \cdot s_2 < \frac{s_1(b_2 - b_1) + s_2(b_3 - b_2) - l_{i+1}^s + l_i^s}{b_4 - b_3}$$

5 5. Stadial period not shorter than 20 years:

$$b_1 > 20, b_2 > 20, b_3 < (D^{St} + D^{Is} - 20)$$

and $b_4 < (D^{St} + D^{Is} - 20)$

6. Limit steepness of up-slope (permil y^{-1}):

$$0.02 < s_1 < 1.5$$

10 7. Limit steepness of down-slope (permil y^{-1}):

$$-0.3 < s_2 < -0.0001$$

For the basin-hopping algorithm we use a multivariate Gaussian Kernel of fixed variance with $\sigma_{b_1} = 15$, $\sigma_{b_2} = 15$, $\sigma_{b_3} = 15$, $\sigma_{b_4} = 15$, $\sigma_{s_1} = 0.004$ and $\sigma_{s_2} = 0.0015$.

Appendix B: Convergence of iterative fitting routine

15 We repeatedly run our iterative fitting routine and monitor whether the individual parameters converge, so that a consistent fit is obtained in the end. Critical for obtaining a consistent fit is that the stadial levels do not change substantially, as explained in the Methods section. In Fig. B1a we show the evolution over 40 iterations of the incremental deviations of the stadial levels compared to the previous iteration. Most stadial levels converge rapidly so that their increments stay below 0.05 permil. Two short stadials keep fluctuating until around iteration 20 before they converge. Because of the convergence of stadial levels, we
20 consider our fit to be consistent. Furthermore, the best fit parameters are robust, which can be seen in Fig. B1b. Here, we show the average absolute incremental deviations to the break point parameters at each iteration. After 15 iterations the procedure is stable, with average incremental deviations of roughly 0.4 years for b_1 and b_2 to 0.5 years for b_3 and b_4 , which result from the stochastic fitting algorithm. Note that these values are already well below the smallest sample spacing of the original unevenly spaced time series.

25 Appendix C: Uncertainty estimation of fitting parameters

Because of the nature of the data, care has to be taken when generating synthetic data. The properties of the data changes throughout the record and are also quite different in between adjacent stadials and interstadials. Stadials have both a larger variance and a larger effective sample spacing in time than the interstadials. For this reason, synthetic data will be created for each stadial and interstadial period individually. The original data is unevenly spaced, which would provide difficulties on its

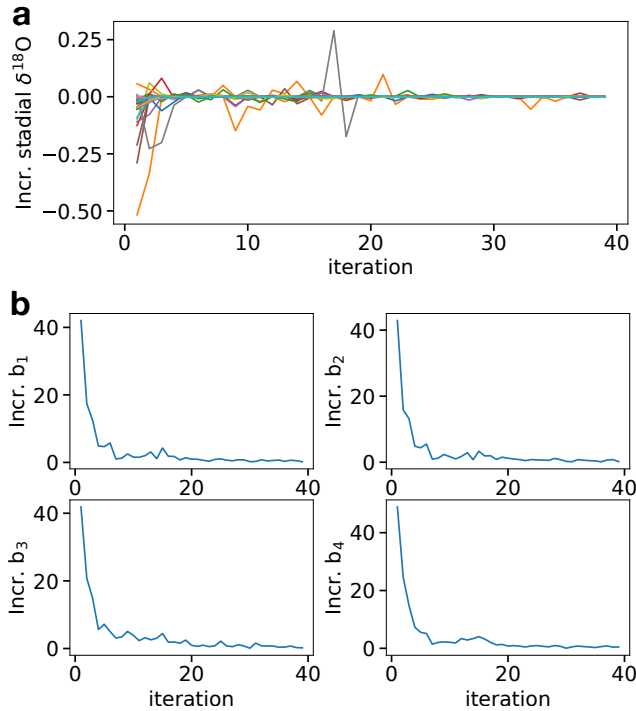


Figure B1. **a)** Evolution of the incremental change of all stadial levels compared to the previous iteration for all 40 iterations of the fitting routine. **b)** Average over all transitions of the incremental change (absolute value) of the break point parameters b_1 , b_2 , b_3 and b_4 .

own, while our data is nearest-neighbor interpolated and oversampled to a 1-year resolution. This means that there typically are multiple neighboring point with the same value, making it challenging to find a valid autoregressive or ARMA model for the residuals to generate synthetic data. Instead, we use a block bootstrap resampling technique to keep all relevant structure in the data. We chose a simple block bootstrap where non-overlapping blocks of fixed length of the time series are randomly ordered, because it preserves the correct mean of the individual stadial and interstadial residuals. More involved methods, such as the stationary bootstrap, could be applied, but it likely will not change any of our conclusions.

In the following, we present the procedure for uncertainty estimation. We denote the original data time series of a given transition as $\{X_t\}$, the fit obtained by the data as $\{Y_t\}$ and the residuals to the fit as $\{R_t\} = \{X_t - Y_t\}$. We furthermore use the break points $b_{1,2,3,4}$ obtained in the fit of this transition.

1. Divide the residuals into four segment R_t^i at the breakpoints:

$$\{R_t^i\} = \{R_t\}_{t=b_{i-1} \dots b_i} \text{ for } i = 1 \dots 4, \text{ where } b_0 = 0.$$

Denote the length of $\{R_t^i\}$ as n_i .

2. For each segment: Divide into n_i/l blocks of length l .

Append remaining data points to last block if n_i/l non-integer.

- The block length l is determined by the length of the segment, as explained below.

3. For each segment: Randomly sample blocks without replacement and concatenate until all blocks have been used. This yields resampled segments $\{\bar{R}_t^i\}$.
4. Concatenate the four resampled segments and add the fit to get synthetic data
$$\{X_t^*\} = \{Y_t\} + \{\{\bar{R}_t^1\}, \{\bar{R}_t^2\}, \{\bar{R}_t^3\}, \{\bar{R}_t^4\}\}$$
5. Fit $\{X_t^*\}$ to a piecewise-linear model with the basin-hopping algorithm.
6. Repeat from step 2.

In order to also be able to resample the shortest segments, while also preserving the autocorrelative structure in all but the shortest segments, we choose the following scheme for the block length l : If the segment length n_i is larger than 40 years, choose $l = 20$. If $40 > n_i \geq 20$ choose $l = 10$. If $20 > n_i \geq 10$ choose $l = 5$. If $n_i < 10$ do not resample and simply return original segment. The scheme has been determined by looking at the residuals of each segments in all transitions and observing that the autocorrelation drops to non-significant values for all segments after 10-15 years. It thus seems reasonable to use the same block length rule for all transitions and segments.

Appendix D: Correlation analysis of features and forcings

In the following, we give an overview of the pairwise correlations in between different features and forcings. We show the Spearman correlation coefficients of all tests and their significance in Fig. 5. Considering Spearman correlations with $p < 0.05$, we find 81 positives at 95% and 50 positives at 99% confidence, which is clearly more than expected by chance. However, as detailed in the Methods Section, many of these are due to construction and will not be discussed here. We will furthermore omit correlations which are not robust due to the presence of outliers.

Among features within the same DO cycle, the three different levels yield a strong correlation with each other. However, the significance is overestimated due to their autocorrelation, and after linear detrending, the correlations are not significant anymore. Thus, the correlation comes mostly from a common trend associated with evolution of the background climate state during the glacial. Furthermore, we find significant correlations of fast cooling, gradual cooling and warming amplitudes, and a correlation of interstadial levels and gradual cooling amplitudes. This implies a certain consistency of DO cycles, where a large amplitude warming is typically also followed by a large amplitude cooling (gradual and/or fast). This is equivalent to the fact that the stadial levels are autocorrelated. In Sec. 4 we furthermore discuss the correlation of the gradual cooling durations with the gradual cooling amplitudes and rates, as well as the correlation of the stadials levels with the stadial durations and warming amplitudes.

For features in adjacent DO cycles, we do not expect any true positives a priori, because no features are related by construction. Significant correlations at 99% confidence are only found for the levels. Due to their autocorrelation, the significance determined by permutation tests are not reliable, however. Detrending shows that the correlations are dominated by a common linear trend due to the slowly changing background climate state. The remaining 8 correlations significant at 95% confidence

could either be false positives, or a result of common external forcing. This is because 7 of the 8 correlations involve the levels, which are clearly influenced by forcing, as detailed below.

We furthermore correlate the features with all forcings at the onset times of the respective periods within the DO cycles. The tests indicate clearly more significant correlations than expected by chance. However, due to autocorrelation, the significance is overestimated by permutation tests. In particular, the levels yield significant correlation with most forcings, however, both are autocorrelated. By linearly detrending and discarding outliers where necessary, we find that the interstadial levels are best correlated with LR04, EDML and CO₂, the interstadial end levels with 65Nss and precession, and the stadial levels with LR04, 65Nint, 65Nss, obliquity and eccentricity. Additional significant correlations we found are discussed in Sec. 4 and include those of gradual cooling rates with the LR04 and CO₂ forcings, as well as those of stadial durations and different insolation forcings.

Competing interests. The authors declare no competing interests.

Acknowledgements. We gratefully acknowledge discussions of this work with Sune O. Rasmussen. This project has received funding from the European Union's Horizon 2020 research and innovation Programme under the Marie Skłodowska-Curie grant agreement No 643073.

References

- Bereiter, B., Eggleston, S., Schmitt, J., Nehrbass-Ahles, C., Stocker, T. F., Fischer, H., Kipfstuhl, S., and Chappellaz, J.: Revision of the EPICA Dome C CO₂ record from 800 to 600 kyr before present, *Geophys. Res. Lett.*, 42, 542–549, 2015.
- Boch, R., Cheng, H., Spötl, C., Edwards, R. L., Wang, X., and Häuselmann, P.: NALPS: a precisely dated European climate record 120–60 ka, *Clim. Past*, 7, 1247–1259, 2011.
- Boers, N.: Early-warning signals for Dansgaard-Oeschger events in a high-resolution ice core record, *Nature Comm.*, 9, 2556, 2018.
- Buizert, C. and Schmittner, A.: Southern Ocean control of glacial AMOC stability and Dansgaard-Oeschger interstadial duration, *Paleoceanography*, 30, 1595–1612, 2015.
- Capron, E., Landais, A., Chappellaz, J., Schilt, A., Buiron, D., Dahl-Jensen, D., Johnsen, S. J., Jouzel, J., Lemieux-Dudon, B., Loulergue, L., Leuenberger, M., Masson-Delmotte, V., Meyer, H., Oerter, H., and Stenni, B.: Millennial and sub-millennial scale climatic variations recorded in polar ice cores over the last glacial period, *Clim. Past*, 6, 345–365, 2010.
- Cérou, F., Guyader, A., Lelièvre, T., and Pommier, D.: A multiple replica approach to simulate reactive trajectories, *J. Chem. Phys.*, 134, 054 108, 2011.
- Cérou, F., Guyader, A., Lelièvre, T., and Malrieu, F.: On the length of one-dimensional reactive paths, *ALEA, Lar. Am. J. Probab. Math. Stat.*, 10, 359–389, 2013.
- Cheng, H. et al.: The Asian monsoon over the past 640,000 years and ice age terminations, *Nature*, 534, 640–646, 2016.
- Day, M. V.: Recent progress on the small parameter exit problem, *Stochastics*, 20, 121–150, 1987.
- Dokken, T. M., Nisancioglu, K. H., Li, C., Battisti, D. S., and Kissel, C.: Dansgaard-Oeschger cycles: Interactions between ocean and sea ice intrinsic to the Nordic seas, *Paleoceanography*, 28, 491–502, 2013.
- Drijfhout, S., Gleeson, E., Dijkstra, H. A., and Livina, V.: Spontaneous abrupt climate change due to an atmospheric blocking–sea-ice–ocean feedback in an unforced climate model simulation, *PNAS*, 110, 19 713–19 718, 2013.
- EPICA Community Members: Stable oxygen isotopes of ice core EDML, PANGAEA, p. <https://doi.org/10.1594/PANGAEA.754444>, 2010.
- Ganopolski, A. and Rahmstorf, S.: Rapid changes of glacial climate simulated in a coupled climate model, *Nature*, 409, 153–158, 2001.
- Ganopolski, A. and Rahmstorf, S.: Abrupt Glacial Climate Changes due to Stochastic Resonance, *Phys. Rev. Lett.*, 88, 038 501, 2002.
- Gkinis, V., Simonsen, S. B., Buchardt, S. L., White, J. W. C., and Vinther, B. M.: Water isotope diffusion rates from the NorthGRIP ice core for the last 16,000 years – Glaciological and paleoclimatic implications, *Earth and Plan. Sc. Lett.*, 405, 132–141, 2014.
- Heinrich, H.: Origin and Consequences of Cyclic Ice Rafting in the Northeast Atlantic Ocean During the Past 130,000 Years, *Quaternary Research*, 29, 142–152, 1988.
- Henry, L. G., McManus, J. F., Curry, W. B., Roberts, N. L., Piotrowski, A. M., and Keigwin, L. D.: North Atlantic ocean circulation and abrupt climate change during the last glaciation, *Science*, 353, 470–474, 2016.
- Huybers, P.: Early Pleistocene Glacial Cycles and the Integrated Summer Insolation Forcing, *Science*, 313, 508–511, 2006.
- Johnsen, S. J., Clausen, H. B., Dansgaard, W., Gundestrup, N., Hammer, C. U., et al.: The $\delta^{18}\text{O}$ record along the Greenland Ice Core Project deep ice core and the problem of possible Eemian climatic instability, *J. Geoph. Research*, 102, 26 397–26 410, 1997.
- Kageyama, M., Merkel, U., Otto-Bliesner, B., Prange, M., Abe-Ouchi, A., Lohmann, G., Ohgaito, R., Roche, D., Singarayer, J., Swingedouw, D., and Zhang, X.: Climatic impacts of fresh water hosing under Last Glacial Maximum conditions: a multi-model study, *Clim. Past*, 9, 935–953, 2013.

- Kawamura, K. et al.: State dependence of climatic instability over the past 720,000 years from Antarctic ice cores and climate modeling, *Sci. Adv.*, 3, e1600446, 2017.
- Kleppin, H., Jochum, M., Otto-Bliesner, B., Shields, C. A., and Yeager, S.: Stochastic Atmospheric Forcing as a Cause of Greenland Climate Transitions, *J. Climate*, 28, 7741–7763, 2015.
- 5 Klockmann, M., Mikolajewicz, U., and Marotzke, J.: Two AMOC States in Response to Decreasing Greenhouse Gas Concentrations in the Coupled Climate Model MPI-ESM, *J. Climate*, 31, 7969–7984, 2018.
- Laskar, J., Robutel, P., Joutel, F., Gastineau, M., Correia, A. C. M., and Levrard, B.: A long term numerical solution for the insolation quantities of the Earth, *Astronomy and Astrophysics*, pp. 261–285, 2004.
- Li, C., Battisti, D. S., and Bitz, C. M.: Can North Atlantic Sea Ice Anomalies Account for Dansgaard–Oeschger Climate Signals?, *J. Climate*, 10 23, 5457–5475, 2010.
- Lohmann, J. and Ditlevsen, P. D.: Random and externally controlled occurrences of Dansgaard–Oeschger events, *Clim. Past*, 14, 609–617, 2018.
- Lynch-Stieglitz, J.: The Atlantic Meridional Overturning Circulation and Abrupt Climate Change, *Annu. Rev. Mar. Sci.*, 9, 83–104, 2017.
- McManus, J. F., Oppo, D. W., and Cullen, J. L.: A 0.5-Million-Year Record of Millennial-Scale Climate Variability in the North Atlantic, 15 *Science*, 283, 971–975, 1999.
- Moseley, G. E., Spötl, C., Svensson, A., Cheng, H., Brandstätter, S., and Edwards, R. L.: Multi-speleothem record reveals tightly coupled climate between central Europe and Greenland during Marine Isotope Stage 3, *Geology*, 42, 1043–1046, 2014.
- Muglia, J. and Schmittner, A.: Glacial Atlantic overturning increased by wind stress in climate models, *Geophys. Res. Lett.*, 42, 9862–9869, 2015.
- 20 NGRIP Members: High-resolution record of Northern Hemisphere climate extending into the last interglacial period, *Nature*, 431, 147–151, 2004.
- Olson, B., Hashmi, I., Molloy, K., and Shehu, A.: Basin Hopping as a General and Versatile Optimization Framework for the Characterization of Biological Macromolecules, *Advances in Artificial Intelligence*, 2012, 674–832, 2012.
- Petersen, S. V., Schrag, D. P., and Clark, P. U.: A new mechanism for Dansgaard–Oeschger cycles, *Paleoceanography*, 28, 24–30, 2013.
- 25 Rasmussen, S. O. et al.: A stratigraphic framework for abrupt climatic changes during the Last Glacial period based on three synchronized Greenland ice-core records: refining and extending the INTIMATE event stratigraphy, *Quat. Sc. Rev.*, 106, 14–28, 2014.
- Raymo, M. E. and Lisiecki, L. E.: A Pliocene–Pleistocene stack of 57 globally distributed benthic $\delta^{18}\text{O}$ records, *Paleoceanography*, 20, PA1003, 2005.
- Rhodes, R. H., Brook, E. J., McConnell, J. R., Blunier, T., Sime, L. C., Fañ, X., and Mulvaney, R.: Atmospheric methane variability: 30 Centennial-scale signals in the Last Glacial Period, *Global Biochem. Cycles*, 31, 575–590, 2017.
- Rolland, J., Bouchet, F., and Simonnet, E.: Computing Transition Rates for the 1-D Stochastic Ginzburg–Landau–Allen–Cahn Equation for Finite-Amplitude Noise with a Rare Event Algorithm, *J. Stat. Phys.*, 162, 277–311, 2016.
- Rousseau, D.-D., Boers, N., Sima, A., Svensson, A., Bigler, M., Lacroix, F., Taylor, S., and Antoine, P.: (MIS3 & 2) millennial oscillations in Greenland dust and Eurasian aeolian records - A paleosol perspective, *Quat. Sc. Rev.*, 169, 99–113, 2017.
- 35 Rypdal, M.: Early-Warning Signals for the Onsets of Greenland Interstadials and the Younger Dryas–Preboreal Transition, *J. Climate*, 29, 4047–4056, 2016.
- Sadatzi, H., Dokken, T. M., Berben, S. M. P., Muschitiello, F., Stein, R., Fahl, K., Menviel, L., Timmermann, A., and Jansen, E.: Sea ice variability in the southern Norwegian Sea during glacial Dansgaard–Oeschger climate cycles, *Sci. Adv.*, 5, eaau6174, 2019.

- Schulz, M.: The tempo of climate change during Dansgaard-Oeschger interstadials and its potential to affect the manifestation of the 1470-year climate cycle, *Geophys. Res. Lett.*, 29, 1002, 2002.
- Schulz, M., Berger, W. H., Sarntheim, M., and Grootes, P. M.: Amplitude variations of 1470-year climate oscillations during the last 100,000 years linked to fluctuations of continental ice mass, *Geophys. Res. Lett.*, 26, 3385–3388, 1999.
- 5 Seierstad, I. K. et al.: Consistently dated records from the Greenland GRIP, GISP2 and NGRIP ice cores for the past 104 ka reveal regional millennial-scale $\delta^{18}\text{O}$ gradients with possible Heinrich event imprint, *Quat. Sc. Rev.*, 106, 29–46, 2014.
- Svensson, A. et al.: The Greenland Ice Core Chronology 2005, 15–42 ka. Part 2: comparison to other records, *Quat. Sc. Rev.*, 25, 3258–3267, 2006.
- Timmermann, A., Gildor, H., Schulz, M., and Tziperman, E.: Coherent Resonant Millennial-Scale Climate Oscillations Triggered by Massive
10 Meltwater Pulses, *J. Climate*, 16, 2569–2585, 2003.
- Ullman, D. J., LeGrande, A. N., Carlson, A. E., Anslow, F. S., and Licciardi, J. M.: Assessing the impact of Laurentide Ice Sheet topography on glacial climate, *Clim. Past*, 10, 487–507, 2014.
- Vettoretti, G. and Peltier, W. R.: Thermohaline instability and the formation of glacial North Atlantic super polynyas at the onset of Dansgaard-Oeschger warming events, *Geophys. Res. Lett.*, 43, 5336–5344, 2016.
- 15 Zhang, X., Lohmann, G., Knorr, G., and Purcell, C.: Abrupt glacial climate shifts controlled by ice sheet changes, *Nature*, 512, 290–294, 2014.
- Zhang, X., Knorr, G., Lohmann, G., and Barker, S.: Abrupt North Atlantic circulation changes in response to gradual CO₂ forcing in a glacial climate state, *Nat. Geoscience*, 10, 518–523, 2017.