

# Application and evaluation of the dendroclimatic process-based model MAIDEN during the last century in Canada and Europe

Jeanne Rezsöhazy<sup>1,2</sup>, Hugues Goosse<sup>1</sup>, Joël Guiot<sup>2</sup>, Fabio Gennaretti<sup>3</sup>, Etienne Boucher<sup>4</sup>, Frédéric André<sup>5</sup>, and Mathieu Jonard<sup>5</sup>

<sup>1</sup>Université catholique de Louvain (UCLouvain), Earth and Life Institute (ELI), Georges Lemaître Centre for Earth and Climate Research (TECLIM), Place Louis Pasteur, B-1348 Louvain-la-Neuve, Belgium

<sup>2</sup>Aix Marseille University, CNRS, IRD, INRA, Collège de France, CEREGE, Aix-en-Provence, France

<sup>3</sup>Institut de recherche sur les forêts, UQAT, Rouyn-Noranda, Québec, J9X 5E4, Canada

<sup>4</sup>Université du Québec à Montréal, Dépt. of Geography and GEOTOP, Montreal, H2V 1C7, Canada

<sup>5</sup>Université catholique de Louvain (UCLouvain), Earth and Life Institute (ELI), Croix du Sud 2, L7.05.09, B-1348 Louvain-la-Neuve, Belgium

**Correspondence:** J. Rezsöhazy (jeanne.rezsohazy@uclouvain.be)

**Abstract.** Tree-ring archives are one of the main sources of information to reconstruct climate variations over the last millennium with annual resolution. The links between tree-ring proxies and climate have usually been estimated using statistical approaches, assuming linear and stationary relationships. Both assumptions may be inadequate but this issue can be overcome by ecophysiological modelling based on mechanistic understanding. In this respect, the model MAIDEN (Modeling and Analysis In DENdroecology) simulating tree ring growth from daily temperature and precipitation, considering carbon assimilation and allocation in forest stands, may constitute a valuable tool. However, the lack of local meteorological data and the limited characterisation of tree species traits can complicate the calibration and validation of such complex model, which may hamper paleoclimate applications. The goal of this study is to test the applicability of the MAIDEN model in a paleoclimate context using as a test case tree ring observations covering the twentieth century from twenty-one Eastern Canadian taiga sites and three European sites. More specifically, we investigate the model sensitivity to parameters calibration and to the quality of climatic inputs and evaluate the model performance using a validation procedure. We also examine the added value of using MAIDEN in paleoclimate applications compared to a simpler tree-growth model, VS-Lite. A bayesian calibration of the most sensitive model parameters provides good results at most of the selected sites with high correlations between simulated and observed tree-growth. Although MAIDEN is found to be sensitive to the quality of the climatic inputs, simple bias-correction and downscaling techniques of these data improve significantly the performance of the model. The split-sample validation of MAIDEN gives encouraging results but requires long tree-ring and meteorological series to give robust results. We also highlight a risk of overfitting in the calibration of model parameters that increases with short series. Finally, MAIDEN has shown higher calibration and validation correlations in most cases compared to VS-Lite. Nevertheless, this latter model turns out to be more stable over calibration and validation periods. Our results provide a protocol for the application of MAIDEN to potentially any site with tree-ring width data in the extratropical region.

## 1 Introduction

Instrumental data inform on past climate only back to the nineteenth century because few continuous records exist before this period (Harris et al., 2014; University of East Anglia Climatic Research Unit (CRU), 2017). Complementary, indirect climate records from natural archives such as tree rings offer a longer-term perspective. In this context, dendroclimatology, defined as the science that allows the inference of past climates from tree-rings, enables climate reconstructions at high temporal resolution (annual), over several centuries or millennia (Fritts, 1976; Hughes et al., 2011). Thanks to the availability of tree-ring observations in many regions, they represent the main data source in most large scale hemispheric reconstructions covering the last millennium (e.g. Cook et al., 1999; Jones et al., 2009; Mann et al., 2009; Anchukaitis et al., 2017; Wilson et al., 2016; PAGES 2k Consortium, 2017; St. George and Esper, 2019; Esper et al., 2018).

Reconstructing past climate on the basis of tree-rings first requires to establish a relationship between measured variables, such as tree ring width or density, and climate. This has been classically done using statistical approaches (Fritts, 1976; Cook and Kairiukstis, 1990), often reducing the problem to empirical linear relationships. Consequently, numerous temperature reconstructions are based on multiple linear regressions, calibrated using temperature during the instrumental period (e.g. Fritts, 1991; Jones et al., 1998; Mann et al., 1999, 2008). When using those statistical models for the entire period covered by dendroclimatic data, we assume both linear and stationary relationships (Guiot et al., 2014), while those assumptions may be inadequate for many records (Briffa et al., 1998; Wilson and Elling, 2004; Wilson et al., 2007; D'Arrigo et al., 2008).

Process-based tree-growth models are able to overcome those limitations of statistical models, by explicitly representing the processes at the origin of the recorded signal (Guiot et al., 2014). They are also one kind of a larger group of models called Proxy System Models (PSM). PSMs simulate the development of measured variables (here, in tree rings) based on climatic variables as inputs. They integrate a simplified representation of the mechanisms governing the relationship between climate and observations used to capture paleoclimatic information (Evans et al., 2013). These models can be applied in an inverse mode to estimate the climatic conditions that gave rise to the measured characteristics (Guiot et al., 2014; Boucher et al., 2014). Alternatively, they can be forced by climate model results (direct mode), allowing thereby to compare model results with indirect climate records, without the need to reconstruct the climate from these observations (Evans et al., 2013; Dee et al., 2016). In addition to major advantages for model-data comparisons, proxy system models can facilitate the assimilation of proxy data in long climate model runs (Dee et al., 2016; Goosse, 2016). In paleoclimatology, the objective of data assimilation is to optimally combine the results of one climate model and the observations to obtain an estimate of the state of the climate system as accurate as possible (Kalnay, 2003). This technique is now used regularly to obtain reanalysis providing estimates of different climatic variables, such as temperature, precipitations, atmospheric and ocean circulation for the last decades. Similar procedures are being developed in palaeoclimatology (e.g Goosse et al., 2012; Franke et al., 2017; Tardif et al., 2018). However, so far, physically-based tree-rings PSMs have not been used in published reconstructions based on data assimilation using actual data. This implies additional uncertainties when reconstructing temperatures.

Several models developed to simulate tree growth have been applied in dendroclimatology (Guiot et al., 2014). Among them, the VS-Lite model is a deterministic numerical model that simulates the primary response of ring width to climate based on the principle of limiting climatic factors (i.e. temperature and soil moisture; Tolwinski-Ward et al., 2011). Because of its simplicity and the small number of inputs required, it has been used in a wide range of conditions in a large number of paleoclimate studies (e.g Breitenmoser et al., 2014; Lavergne et al., 2015; Dee et al., 2016; Steiger and Smerdon, 2017; Seftigen et al., 2018; Fang and Li, 2019). However, VS-Lite is not able to reproduce tree-growth observations for numerous sites, particularly when the dependence on climatic conditions is complex (Breitenmoser et al., 2014). More comprehensive models such as the full Vaganov-Shashkin model (Vaganov et al., 2006) or MAIDEN (Modeling and Analysis In DENdroecology; Misson, 2004) could be more adapted to those conditions. One of the strengths of the MAIDEN model is to include the influence of atmospheric CO<sub>2</sub> concentration on growth. This is essential when we know that the atmospheric concentration of CO<sub>2</sub> increased by 30% during the last fifty years (Myhre et al., 2013; Boucher et al., 2014). As models are calibrated over this recent period, not taking into account CO<sub>2</sub> concentration could potentially induce stationarity problems which can, ultimately, have an impact on the calibration of parameters, such as the ones related to temperature or water use efficiency that can covariate with CO<sub>2</sub>. Unfortunately, those more comprehensive models including explicitly complex biological processes such as photosynthesis and carbon allocation may need careful initialisation and calibration for each set. They may thus require specific information on the sites that may not be available. This may then hamper a systematic application of the model on a large number of sites as done for instance with VS-Lite (Breitenmoser et al., 2014).

Before applying a mechanistic model to a wide range of tree ring records covering the past centuries, testing its applicability over the twentieth century when data allow an estimation of the model skill appears necessary, which is the goal of our study. For a specific study site, local meteorological data and measurements of several ecophysiological variables allow a precise calibration of many individual processes included in the model. However, this is a rare case and likely one of the main limitations in the application of the model to a wide range of sites and soil conditions or when driven by climate model results that have known biases (Flato et al., 2013). We first present in Sect. 2.1 the two dendroclimatic models that are compared in this study, namely the complex model MAIDEN and the more simple model VS-Lite. MAIDEN and VS-Lite are applied to selected sites of the Northern Hemisphere (described in Sect. 2.2), covering a range of environmental conditions and tree species. A first set of data consists of a large number of sites from the same region with similar environmental conditions but with low in situ replication, while a second set only contains a few sites but with good replication. In this way, we test the applicability of MAIDEN to two datasets contrasted in terms of site documentation that allow us to evaluate the extent to which MAIDEN can be applied. We compare the calibration methods adopted for VS-Lite (Tolwinski-Ward et al., 2013) and MAIDEN (Hartig et al., 2019) in Sect. 2.3. Different strategies to select the value for the most sensitive parameters of the MAIDEN model as well as the sensitivity of parameters calibration to the quality of climatic inputs are tested in Sect. 3.1, 3.2 and 3.3. Finally, we compare calibration and validation statistics of both models and discuss their applicability to a wide range of sites and species in Sect. 3.4 and 3.5.

## 2 Material and Methods

### 2.1 Tree growth models

#### 2.1.1 The MAIDEN model

90 The dendroclimatic model MAIDEN has initially been developed by Misson (2004). It explicitly includes biological processes, namely photosynthesis and carbon allocation to different tree compartments, to simulate an annual tree growth increment. The model uses daily climatic inputs (i.e. CO<sub>2</sub> atmospheric concentration, precipitations and minimum and maximum air temperature). Up to now, MAIDEN has been applied in the Mediterranean (Gea-Izquierdo et al., 2015) and temperate regions (Misson, 2004; Boucher et al., 2014), in the Eastern Canadian taiga (Gennaretti et al., 2017) and in Argentina (Lavergne et al., 2017). Currently, there are two versions of the model from Gea-Izquierdo et al. (2015), developed for the Mediterranean forests, and Gennaretti et al. (2017) for boreal tree species. A unified version from those two versions has also been developed by Fabio Gennaretti (unpublished). In this study, all tests have been conducted using the unified version of MAIDEN. This unified version gives the opportunity to choose between the version from Gennaretti et al. (2017) and from Gea-Izquierdo et al. (2015) and, if needed, to test equations from both versions to evaluate their impact. However, here, only the version from 100 Gennaretti et al. (2017) is used as it is the most adapted to the selected sites.

MAIDEN simulates photosynthesis on a daily basis and allocates the daily available carbon from photosynthesis and stored non-structural carbohydrates to different pools (leaves, roots, stem and storage). The allocation is based on functional rules defined following the ongoing phenological phase (five phases per year: winter 1 with no accumulation of growing degree days (GDD), winter 2 with active GDD accumulation, budburst, summer and fall). At the end of the year, the model sums 105 all the daily carbon inputs allocated to the stem to get an annual tree growth increment (yearly Dstem, hereafter Dstem, in grams of carbon per square meter of stand per year). Dstem is assumed to be proportional to tree-ring growth so that we can build simulated tree-ring index time series and compare it with tree-ring width (hereafter TRW) observations (Sect. 2.3.1) (Gea-Izquierdo et al., 2015; Gennaretti et al., 2017). The structure of the MAIDEN model is provided online ([https://figshare.com/articles/MAIDEN\\_ecophysiological\\_forest\\_model/5446435/1](https://figshare.com/articles/MAIDEN_ecophysiological_forest_model/5446435/1)) and its modules are available upon request.

110 Tree-ring observations site and climate station (corresponding to a single location or grid cell as a function of the climatic dataset) constants of the MAIDEN model (Table S1) are derived from observations, as far as possible. For practical reasons, we were not able to retrieve slope and aspect informations from a Digital Elevation Model, for example, because it requires field knowledge of the site and for each sample, that we cannot systematically obtain, given our global scale goals. Thus, slope and aspect constants are set to zero. The soil is divided in four layers (1-15cm; 15-30cm; 30-65cm; 65-100cm). Clay and sand fractions are extracted from the Harmonized World Soil Database (hereafter HWSD) v1.2 at 30 arc-second resolution 115 (FAO/IIASA/ISRIC/ISSCAS/JRC, 2012) at the nearest cell with observed value which is always at a distance smaller than 100 km to the site and assigned as follows: 1-30cm parameters from the HWSD for the two first soil layers in MAIDEN; 30-100cm parameters from the HWSD for the two deepest soil layers in MAIDEN. Soil layers thickness is fixed at the same values for all sites, as for fine roots fractions.

## 120 2.1.2 The VS-Lite model

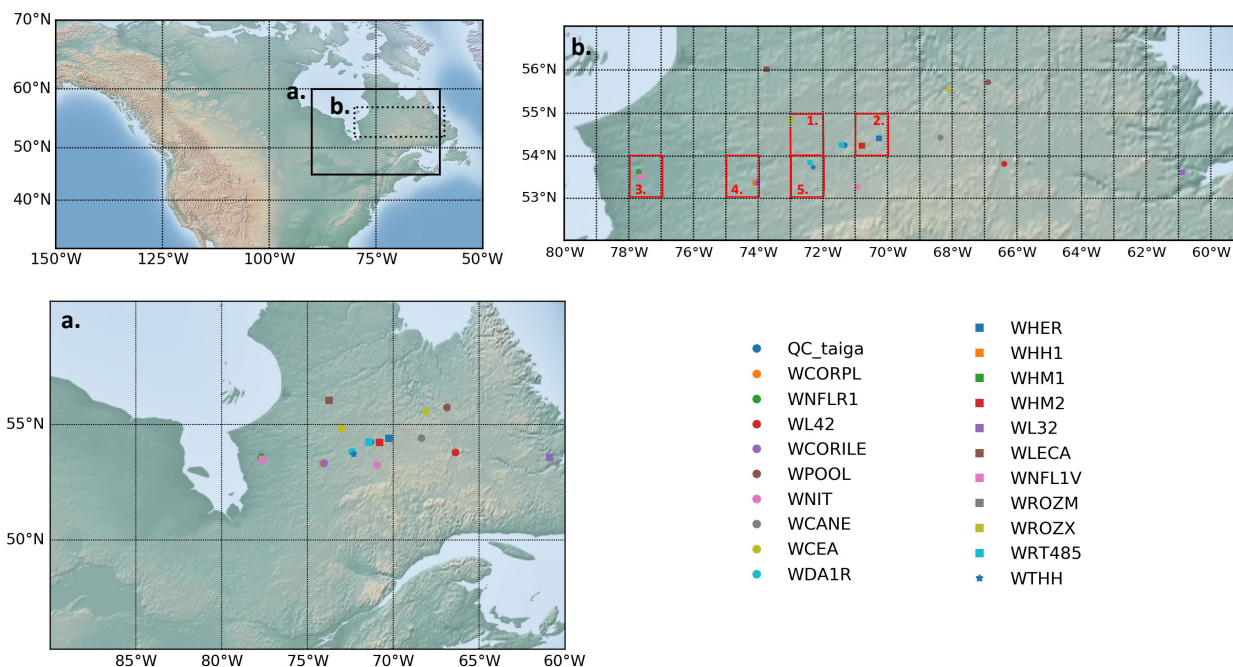
VS-Lite was developed by Tolwinski-Ward et al. (2011) as a simplified version of the full Vaganov-Shashkin model (Vaganov et al., 2006). The model reproduces the primary response of ring width to climate using an approach based on the limiting factors principle (i.e. temperature and soil moisture) and on threshold growth response functions. It does not model any biological processes explicitly so that it cannot be considered fully mechanistic. The model needs monthly climate data (cumulated  
125 precipitations and average temperature) as inputs as well as latitude of the study site. The main output of VS-Lite used here is a unitless annual tree-growth increment (Tolwinski-Ward et al., 2011).

## 2.2 Study sites and climate data

### 2.2.1 Study sites

A network of tree-ring width chronologies of *Picea mariana* collected in similar conditions is available for the Eastern Canadian  
130 taiga (Nicault et al., 2014; Boucher et al., 2017, <http://dendro-qc-lab.ca/trw.html>). We use here the tree-ring series directly derived from this compilation, without any modification. The chronologies have been previously standardized using the Age-Band Regional Curve Standardization (or RCS) method proposed by Briffa et al. (2001) and further applied to a similar boreal dataset by Nicault et al. (2014). We also use the Eastern Canadian taiga chronology for *Picea mariana* from Gennaretti et al. (2017) (hereafter *QC\_taiga*), standardized using a site-specific RCS (Gennaretti et al., 2014b). The latter is highly replicated  
135 (Gennaretti et al., 2014b) compared to the other Eastern Canadian sites from Nicault et al. (2014) and Boucher et al. (2017), which cover a broader spatial range, and provides additional observations to calibrate the model. From this network, we have only selected sites from Nicault et al. (2014) and Boucher et al. (2017) ending at least in 2000, with an expressed population signal (defined as the amount of variance of a population chronology infinitely replicated explained by a finite subsample; Buras, 2017) equal to or above 0.8 and replication equal to or above 15. We have also kept the site from Gennaretti et al. (2017)  
140 as a control site. At the end of the selection process, we get twenty-one sites (Fig. 1a). In order to increase replication, the Canadian sites from Nicault et al. (2014) and Boucher et al. (2017) are aggregated based on a one degree grid by averaging tree-ring width chronologies (Fig. 1b). From this, we get five aggregated sites (Table 1). Note that *QC\_taiga* is not included into the aggregation process to keep it as a reference. The aggregation allows us to get relatively good inter-sites correlations inside the same one-degree grid, ranging from 0.442 to 0.732 with an average of 0.558. This observational network represents an  
145 archetypal example of a singular species that covers an important hydroclimatic gradient. Sites located along the western (near James Bay, WNFLV1, Fig. 1a) and eastern (near Labrador sea, WL32, Fig. 1a) margins of the study area present the warmest growing seasons in the network (864 growing degree-days above 5°C for the 1976-2005 period, Hutchinson et al. (2009)). Sites located in the center of the Quebec-Labrador peninsula (WHM2, Fig. 1a) present a much shorter growing season (692 growing degree-days above 5°C), much like the sites located further north (WLECA, Fig. 1a, 573 growing degree-days above  
150 5°C). Annual precipitation increases from west to east, passing from 668 mm (WNFLV1, Fig. 1a) to 907 mm (WL32, Fig. 1a), and significantly decreases with latitude, reaching only 567 mm at WLECA (Fig. 1a) for the 1976-2005 period (Hutchinson et al., 2009). This makes this network a relevant candidate for our calibration and validation exercises.

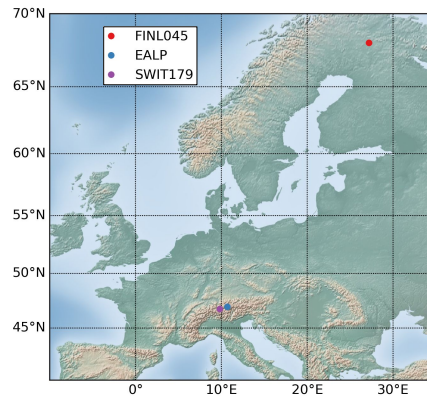
Three additional tree-ring width chronologies (hereafter European sites) are used to perform tests on sites with good replication, especially at the European Alps site, and long nearby series from meteorological stations (Fig. 2): EALP (47N/10.7E; 2050m; European Alps; *Pinus cembra* and *Larix decidua*; Büntgen et al., 2011; processed data available in the PAGES2k database (PAGES 2k Consortium, 2017)); SWIT179 (46.77N/9.82E; 1800m; *Picea abies*; standardized with a cubic-smoothing spline with a 50% frequency cut-off at 35 years; Seftigen et al., 2018; unprocessed data archived at the International Tree Ring Data Bank, <https://www.ncdc.noaa.gov/data-access/paleoclimatology-data>) and FINL045 (68.07N/27.2E; *Pinus sylvestris*; standardized using a spline with a 50% frequency cut-off response at 32 years; Babst et al., 2013; processed data available in the supplementary materials of Babst et al. (2013)). Similarly to the Eastern Canadian taiga chronologies, the tree-ring series were not modified here. Those three European sites exemplify a situation where we only have access to individual sites with different species and from different environmental conditions that are not part of a larger network of tree-ring width observations.



**Figure 1.** Location of (a) twenty-one Eastern Canadian taiga sites (20 sites from Nicault et al. (2014) and Boucher et al. (2017); 1 site called here *QC\_taiga* from Gennaretti et al. (2017)) (b) aggregated Eastern Canadian taiga sites from Nicault et al. (2014) and Boucher et al. (2017) based on a 1° grid (red numbered grid cells). Background map from Hunter (2007).

**Table 1.** Aggregated Eastern Canadian taiga sites based on the individual sites from Nicault et al. (2014) and Boucher et al. (2017) (Fig. 1a and b).

Aggregated site name	Individual sites	Grid cell number
WROZ	WROZM, WROZX	1
WH	WHER, WHH1, WHM1, WHM2	2
WNFL	WNFL1V, WNFLR1	3
WCOR	WCORILE, WCORPL	4
WDA1R_WTHH	WDA1R, WTHH	5



**Figure 2.** Location of three European sites with tree-ring width observations used in this study. Background map from Hunter (2007).

## 2.2.2 Climate data

165 Daily climatic inputs are needed to run MAIDEN (Sect. 2.1.1). Monthly climatic inputs for VS-Lite are computed from those  
daily data. Note that monthly average temperature has been computed by averaging daily maximum and minimum temperature,  
which could lead to a small bias. Three daily climatic datasets with different spatial resolution (Table 2) were selected for our  
analysis on the Eastern Canadian taiga network (Fig. 1a and b). First, a dataset at a high spatial resolution of 5 minutes from  
the gridded interpolated Canadian database of daily minimum-maximum temperature and precipitation (Hutchinson et al.,  
170 2009, hereafter NRCAN). The *Global Meteorological Forcing Dataset for land surface modeling* (<http://hydrology.princeton.edu/data.php>; Sheffield et al., 2006) at 1° resolution is used as a mid-resolution climatic dataset (hereafter GMF). The NOAA-  
CIRES 20th Century Reanalysis V2c ([https://www.esrl.noaa.gov/psd/data/gridded/data.20thC\\_ReanV2c.monolevel.html](https://www.esrl.noaa.gov/psd/data/gridded/data.20thC_ReanV2c.monolevel.html)) at 2°  
resolution is used as a low-resolution dataset (hereafter 20CRv2c). Finally, the 20CRv2c dataset was modified to match the  
monthly mean seasonal cycle of the high-resolution dataset NRCAN (hereafter 20CRv2c corr.). This simple bias correction  
175 and downscaling to the location of the site is done by removing the difference between the monthly mean seasonal cycle of

20CRv2c (2°) and NRCAN (5') from the maximum and minimum temperature data. In order to avoid negative values, daily precipitations are multiplied by the ratio between the monthly mean seasonal cycle of NRCAN (5') and 20CRv2c (2°). The time series are extracted from the grid cells nearest to the studied individual sites. The climatic data are averaged over the individual sites data for the aggregated Eastern Canadian sites (Table 1).

180 The Global Historical Climate Network Daily (Table 2; see Table S2 for details on selected stations; Menne et al., 2012a, b; hereafter GHCN) is used to perform analysis on the European sites (FINL045, EALP, SWIT179, Fig. 2).

Daily atmospheric CO<sub>2</sub> concentration data are linearly interpolated from the annual data from Sato and Schmidt (<https://data.giss.nasa.gov/modelforce/ghgases/>).

**Table 2.** Description of all daily climatic datasets used in this study (Abbreviation, Climatic dataset, Spatial resolution and Source), time periods on which MAIDEN and VS-Lite simulations are performed with each specific climatic dataset (Time period) and sites where climate data are used (Sites). European and Canadian sites refer to Fig. 1 and 2 respectively.

Abbreviation	Climatic dataset	Spatial resolution	Source	Time period	Sites
<b>GHCN</b>	Global Historical Climate Network Daily	station	Menne et al., 2012a, b	1909-1944 or 1910-1949;1950-2000	European sites
<b>NRCAN</b>	Canadian database of daily minimum-maximum temperature and precipitation	5 minutes	Hutchinson et al., 2009	1950-2000	Canadian sites
<b>GMF</b>	Global Meteorological Forcing Dataset for land surface modeling	1 degree	Sheffield et al., 2006	1950-2000	Canadian sites
<b>20CRv2c</b>	NOAA-CIRES 20th Century Reanalysis V2c	2 degrees	NOAA-CIRES	1950-2000;1900-2000	Canadian sites
<b>20CRv2c corr.</b>	NOAA-CIRES 20th Century Reanalysis V2c corrected for bias in the mean seasonal cycle based on NRCAN	2 degrees	-	1950-2000;1900-2000	Canadian sites



## 2.3 Calibration

### 185 2.3.1 The MAIDEN model

We have developed a protocol to systematically and automatically calibrate the model, through a bayesian procedure with Markov Chain Monte Carlo sampling carried out using the DREAMzs algorithm (Hartig et al., 2019). The calibration procedure focusses on the most sensitive parameters of the model identified in Gennaretti et al. (2017): six parameters influencing the simulated stand growth primary production and twelve parameters involved in the modelling of the daily quantity of carbon allocated to different tree compartments (Table S3). Those 6+12 parameters are calibrated by comparison between simulated Dstem and tree-ring width observations. The comparison relies on the computation of the model likelihood defined as the sum of the logarithms of the normal probability densities of the residuals between the model simulation and the observations. The prior distributions of the 6+12 parameters are assumed to be uniform over an acceptable range, as in Gennaretti et al. (2017). The calibration procedure is made up of three steps. During the first step, we calibrate the twelve carbon allocation parameters, while fixing the six photosynthesis parameters to arbitrary values in their acceptable ranges. We run three Markov chains of 10 000 iterations with a five iterations thinning (i.e. we only consider one random sample out of five) to calibrate the parameters. During the second step, we fix the twelve carbon allocation parameters at the values obtained from the first step. We calibrate the six photosynthesis parameters by also running three Markov chains of 10 000 iterations with a five iterations thinning. Finally, during the third step, the six photosynthesis parameters are fixed at the values obtained from the second step and the twelve carbon allocation parameters are calibrated, by running three Markov chains of 30 000 iterations, with a five iterations thinning as well. Each of those nine chains starts from random initial values of the parameters in their acceptable ranges. At the end of each calibration step, we select the set of parameters with the highest posterior (Maximum A Posteriori value or MAP, Hartig et al., 2019) from all iterations considering a burn-in period (i.e. the number of initial iterations of a chain that are not considered in the calibration) of 1000 iterations (first and second steps) and 3000 iterations (third step). At the end of the calibration process, we thus have six calibrated parameters from the second calibration step and twelve carbon allocation parameters from the third one. The calibration method has been tested for convergence of Markov chains with Gelman-Rubin statistical indicators (Hartig et al., 2019).

The MAIDEN model was calibrated at the twenty-one Eastern Canadian taiga sites and at the five aggregated sites over the 1950-2000 time period using the high- (NRCAN), mid- (GMF) and low-resolution (20CRv2c) datasets as inputs, as well as the bias-corrected low-resolution dataset (20CRv2c corr.), and over the 1900-2000 time period using the 20CRv2c and 20CRv2c corr. datasets as climatic inputs. MAIDEN was also calibrated at the three European sites using GHCN station data over 1950-2000 (FINL045; EALP; SWIT179), 1909-1944 (FINL045) and 1910-1949 (EALP and SWIT179). Calibrated parameters values for the 1950-2000 time period are available in Tables S4–S7. Parameter posterior frequency distributions for the NRCAN (5') high-resolution climatic dataset are available on Fig. S6–S63. Pearson correlation coefficients between observed TRW and simulated Dstem were computed, as well as the corresponding confidence level. To compare observed and simulated tree-ring growth data after the optimization of the model parameters, both observed tree-ring width series and simulated time series have been normalized to unitless indexes. Ideally, an exhaustive quantitative evaluation of MAIDEN would require a comparison

of the variable simulated by MAIDEN to represent tree-growth directly with observations. However, this would imply the use of other tree-growth observations such as tree-rings density measurements, while tree-ring width represents the most widely available tree-growth observations which makes it a relevant candidate given our global scale goals. The disadvantage is that this normalization forbids us to assess error in the variance. This is why we only analyse the correlations for simplicity as using other metrics like the RMSE would not help us in this aspect.

### 2.3.2 The VS-Lite model

The VS-Lite parameters are calibrated at each location following a bayesian approach described in Tolwinski-Ward et al. (2013). In this study, four VS-Lite parameters, corresponding to the lower and upper temperature (respectively  $T_1$  and  $T_2$  in Tolwinski-Ward et al. (2011)) and soil moisture (respectively  $M_1$  and  $M_2$  in Tolwinski-Ward et al. (2011)) thresholds of the model, have been optimized. The other parameters were fixed to default values. The method is based on a standard Markov chain Monte Carlo approach, a Metropolis-Hastings algorithm embedded within a Gibbs sampler. The VS-Lite model was calibrated at the same sites and over the same time periods as MAIDEN, using the same climatic data (Sect. 2.3.1). Calibrated parameters values for the 1950-2000 period are available in Tables S8–S11. Pearson correlation coefficients between TRW observations and simulated tree-growth indexes were also computed. Observed time series have been normalized to unitless indexes as well.

Running MAIDEN takes around 2.5 seconds on one CPU for a 50 years time span while running VS-Lite takes around 0.30 seconds. Currently, calibrating MAIDEN with our method takes around 18 hours on one CPU for a site due to the high number of iterations and calibrated parameters, while the calibration method used for VS-Lite and developed by Tolwinski-Ward et al. (2013) takes only a few seconds.

### 2.4 Validation

Split-sample validation are performed by dividing the available data into two subperiods, one for calibration and one for validation, and vice-versa. In order to test the influence of time series length, we validate the two models for both short (1950-1974 and 1975-2000) and long (1909-1944 and 1950-2000 or 1910-1949 and 1950-2000) time periods. For each validation experiment, pearson correlation coefficients between observed TRW and simulated tree-growth indexes were computed, as well as the corresponding confidence level.

Split-sample validation was preferred over other validation methods such as h-block Jack-knife which are computationally intensive. Additionally, removing years may be inappropriate for the validation because of the autocorrelation characterizing yearly TRW observations. Similar problems arise from a bootstrap technique (Gea-Izquierdo et al., 2017).

## 3 Results and Discussion

Our results and discussion are structured into five sections that allow together to fulfil our objective of testing the applicability of MAIDEN over the twentieth century (Table 3). At first, we want to determine the best set of parameters for MAIDEN at

**Table 3.** Description of each experiment performed in our study: experiment name; sites and climate dataset used for the experiment; time period of the experiment; short description of the experiment. Information on climate datasets can be found in Table 2. Individual and aggregated Eastern Canadian taiga sites refer to Fig. 1 and European sites refer to Fig. 2.

Experiment name	Sites	Climate dataset	Time period	Description
<b>Calibration strategies for MAIDEN</b>				
Application of prior MAIDEN parameters to all Canadian sites (Sect. 3.1)	Individual and aggregated Eastern Canadian taiga sites	NRCAN	1950-2000	We apply <i>QC_taiga</i> parameters as calibrated by Gennaretti et al. (2017) to all Eastern Canadian taiga sites
Site-specific calibration of the MAIDEN parameters and sensitivity to the quality of climatic inputs (Sect. 3.2)	Individual and aggregated Eastern Canadian taiga sites	NRCAN, GMF, 20CRv2c, 20CRv2c corr.	1950-2000 ;1900-2000 (20CRv2c and 20CRv2c corr. only)	We calibrate each Eastern Canadian taiga sites with a bayesian procedure and evaluate the sensitivity of the calibration to the climate inputs quality
Regional calibration of MAIDEN (Sect. 3.3)	Individual and aggregated Eastern Canadian taiga sites	NRCAN	1950-2000	We evaluate the performance of MAIDEN at the Eastern Canadian taiga sites using a regional calibration
<b>Validation of MAIDEN</b>				
Split-sample validation of MAIDEN calibration (Sect. 3.4)	Aggregated Eastern Canadian taiga sites (AC) and European sites (E)	NRCAN (AC); GHCN (E)	1950-1974/1975-2000 (AC, E); 1909-1944 or 1910-1949/1950-2000 (E)	We validate our calibration procedure for MAIDEN using a split-sample method
<b>Comparison between models</b>				
Comparison between VS-Lite and MAIDEN (Sect. 3.5)	Individual Eastern Canadian taiga sites (IC) and European sites (E)	NRCAN (IC); GHCN (E)	1950-1974/1975-2000 (E); 1909-1944 or 1910-1949/1950-2000 (E); 1950-2000 (IC)	We compare VS-Lite and MAIDEN calibration and validation statistics

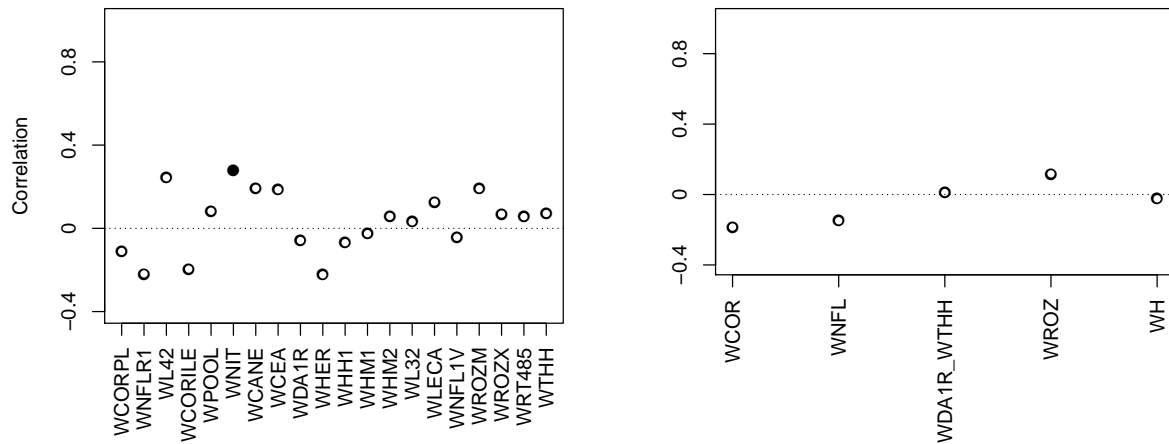
our study sites and test the sensitivity of calibration to the quality of climatic inputs (Sect. 3.1, 3.2 and 3.3). In a context of paleoclimate model-data comparison where MAIDEN will be driven by climate models outputs at low resolution, this is a crucial point of our analysis. For example, bias-correction and downscaling techniques could be good options to improve the robustness of the model calibration if the model is sensitive to the quality of climatic inputs.

We first test the possibility of using calibrated parameters from a well-documented site at other similar sites in terms of environment (here, the Eastern Canadian taiga) and tree species (here, *Picea mariana*), in Sect. 3.1. Another option is to calibrate each site individually, as in Sect. 3.2 following the calibration protocol detailed in Sect. 2.3.1. We thirdly test in Sect. 3.3 an alternative calibration method which consists in calibrating the MAIDEN model over the mean of a tree-ring width observations network with similar environmental conditions and then applying the resulting calibrated parameters to the individual sites. From another perspective, this experiment could also be seen as an alternative method for the validation of the MAIDEN model when the climate and/or tree-ring width observations time-series are too short for a split-sample validation. In this case, the individual sites are considered as nearly independent validation data. To test the sensitivity of the model to the quality of climatic inputs, we have selected four climatic datasets at different spatial resolution (Sect. 2.2.2, Table 2) that will be used in Sect. 3.2 to drive MAIDEN at the Eastern Canadian taiga sites. As a second sensitivity experiment, we have applied the parameters calibrated with MAIDEN using the high-resolution climatic data (NRCAN) to the Eastern Canadian taiga sites driven by the low-resolution data without or with bias-correction (20CRv2c and 20CRv2c corr.).

The validation of MAIDEN in Sect. 3.4 is essential to evaluate the robustness of the calibration. The last section of our study consists in comparing the performance of the complex model MAIDEN with the performance of the simple model VS-Lite so as to assess the benefits of using a complex tree-growth model as MAIDEN for past climate reconstruction compared to a simple one (Sect. 3.5).

### 3.1 Application of prior MAIDEN parameters to all Canadian sites

At first, the *QC\_taiga* parameters as calibrated by Gennaretti et al. (2017) (twelve carbon allocation and six photosynthesis parameters) were applied to the other twenty Eastern Canadian sites and five aggregated sites from Nicault et al. (2014) and Boucher et al. (2017) using the NRCAN (5') climate data (Table 2) over the 1950-2000 time period. Correlations between observations and simulations with MAIDEN using *QC\_taiga* calibrated parameters (Fig. 3) are low and non-significant at most sites. Several reasons can explain the low skill of MAIDEN using those parameters. These results could be linked to the lower replication level at the sites from Nicault et al. (2014) and Boucher et al. (2017) - even when aggregated - compared to the site from Gennaretti et al. (2017), that weakens the climatic signal in the series. This may also be due to a high sensitivity of parameters calibration to an unstable climate-species relationship among sites that are different from each other in many aspects (such as soil type, vegetation, nutrient availability, for example). Additionally, the long-term trends of forest growth in the Eastern Canadian taiga mostly depend on the past fire history (e.g. Payette et al., 2008; Gennaretti et al., 2014a; Erni et al., 2017). This represents the main natural disturbance factor that has shaped the North American boreal ecosystem by determining forest structure and composition as well as carbon stocks, and interacting with climate on a long time-scale. Yet, MAIDEN does not account for disturbances. To evaluate the effect of those disturbances on our experiment, the long-term decadal trends have been removed in both observations and simulations following Gennaretti et al. (2017) (Fig. S1). With only the high frequency signal, the agreement between TRW observations and simulations with MAIDEN using *QC\_taiga* calibrated parameters is far better for most individual and aggregated sites.



**Figure 3.** Pearson correlation coefficients between tree growth observations and simulations at the Eastern Canadian taiga sites (Fig. 1) with MAIDEN using NRCAN (5') as climatic inputs (Table 2) for the 1950-2000 period with *QC\_taiga* calibrated parameters from Gennaretti et al. (2017). Individual (left) and aggregated sites (right). White inner circles stand for non-significant correlations (p-value > 0.05). Plain circles stand for significant correlations (p-value < 0.05).

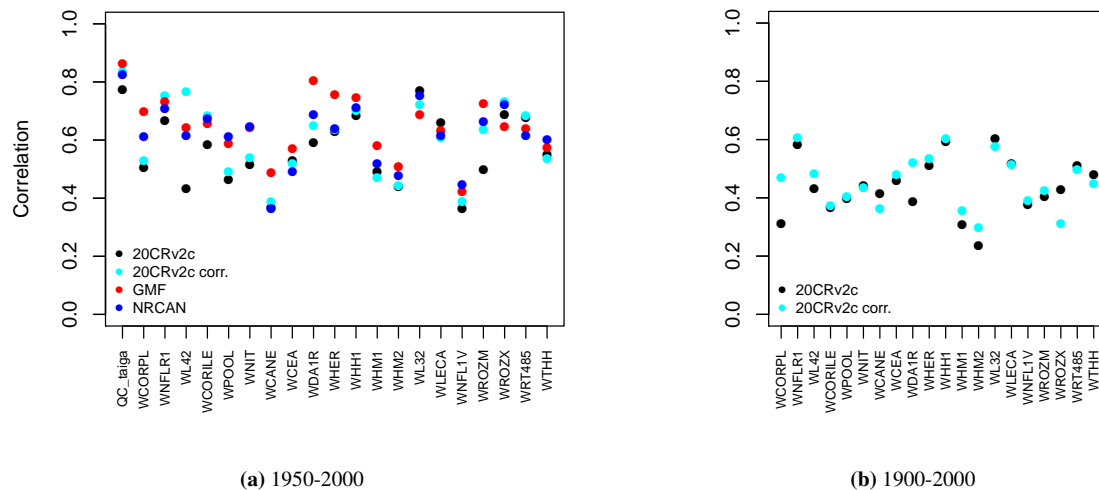
### 3.2 Site-specific calibration of the MAIDEN parameters and sensitivity to the quality of climatic inputs

A second option is to calibrate each of the twenty-one Eastern Canadian taiga sites as well as the five aggregated Eastern Canadian taiga sites (Fig. 1) using the calibration procedure detailed in Sect. 2.3.1. Correlations between tree growth observations and simulations with MAIDEN for the 1950-2000 calibration period at the Eastern Canadian taiga sites are good and significant for all the climatic datasets (Fig. 4a). Correlations are in general slightly higher for the higher resolution datasets (NRCAN (5') and GMF (1°) datasets, with an average correlation of 0.62 and 0.65 respectively compared with 0.57 for 20CRv2c (2°) and 0.61 for 20CRv2c corr. (2°)). At the aggregated sites (Fig. 5a), correlations for each dataset increase a little bit compared to the average of individual correlations but the general picture is the same. The bias-correction (20CRv2c corr. (2°)) can slightly improve correlations for the 20CRv2c (2°) climatic dataset in some cases (e.g. WL42 and WROZM). Consequently, those results do not indicate that using higher resolution datasets increase effectively correlations. This is likely due to the calibration procedure that might be able to compensate for specific biases in each climatic dataset. This implies large variations of calibrated parameters between experiments (Fig. S2 and S3), questioning the robustness of the selected values. The calibration method can also compensate potential biases of tree-ring observations and of sampling procedures which have important impacts on long-term decadal trends (e.g. biases due to disturbance origin and tree selection criteria) (Johnson and Abrams, 2009; Gennaretti et al., 2014a; Duchesne et al., 2019).

Many potential biases of tree-ring observations due to the specific physiology of selected trees – that may not be representative of forest processes – and the chronology building process exist that may dampen the comparison with what MAIDEN simulates, i.e forest carbon accumulation and not forest demographic processes (Johnson and Abrams, 2009; Duchesne et al., 2019). Ideally, considering those biases, we should find a better way to transform tree-ring data in time series with meaningful

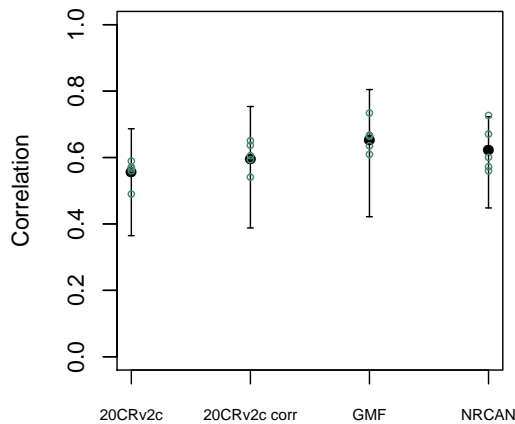
305 units to improve model-data comparisons. For example, Gennaretti et al. (2018) compute a wood biomass production index, which is closer to what MAIDEN simulates. This implies to have access to both tree-ring width and density measurements.

Pearson correlations coefficients between TRW observations and tree-growth index simulations by MAIDEN for the 1900-2000 calibration period (Fig. 4b) are in most cases lower than those of the 1950-2000 calibration period. The bias-correction can slightly improve correlations in some cases but the latter stay smaller. At the aggregated sites (Fig. 5b), correlations for each dataset decrease slightly compared to the mean of individual correlations. The low correlation for the whole twentieth century can be explained by the large uncertainty of the 20CRv2c ( $2^\circ$ ) climatic dataset before 1950 there, as measured by the large spread of the 20CRv2c ensemble spread at that time (Fig. S4).

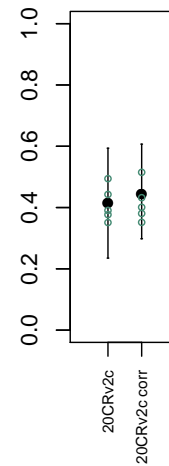


**Figure 4.** Pearson correlation coefficients between tree growth observations and simulations at the Eastern Canadian taiga sites (Fig. 1a) with MAIDEN using the different climatic datasets described in Table 2 as inputs for the 1950-2000 (a) and 1900-2000 (b) calibration periods. White inner circles stand for non-significant correlations ( $p$ -value  $> 0.05$ ). Here, all circles are plain because correlations are all significant.

When applying the parameters calibrated using the highest resolution dataset NRCAN ( $5'$ ) as climatic inputs to the Eastern Canadian taiga sites driven by 20CRv2c ( $2^\circ$ ) dataset (Fig. 6, right, in red), correlations are in average much lower. Mean correlation is 0.17 in that case compared to 0.57 when the parameters are calibrated using 20CRv2c ( $2^\circ$ ) as climatic inputs. With the 20CRv2c corr. ( $2^\circ$ ) dataset as climatic inputs – i.e. the low-resolution dataset corrected for bias in the mean seasonal cycle – (Fig. 6, left, in red) we see that the performance of the MAIDEN model when applying NRCAN ( $5'$ ) parameters is less good compared to the case when the parameters are calibrated using 20CRv2c corr. ( $2^\circ$ ) as climatic inputs (in black). Nevertheless, correlations are far better than with 20CRv2c ( $2^\circ$ ) (Fig. 6, right, in red). Indeed, the mean correlation is 0.36 when applying NRCAN ( $5'$ ) parameters and 0.61 when applying 20CRv2c corr. ( $2^\circ$ ) parameters. Consequently, the bias-correction of the 20CRv2c ( $2^\circ$ ) increases the robustness of the calibration of the MAIDEN parameters. Additionally, this shows that the MAIDEN model parameters calibration is highly sensitive to the quality of the climatic dataset used as inputs.



(a) 1950-2000



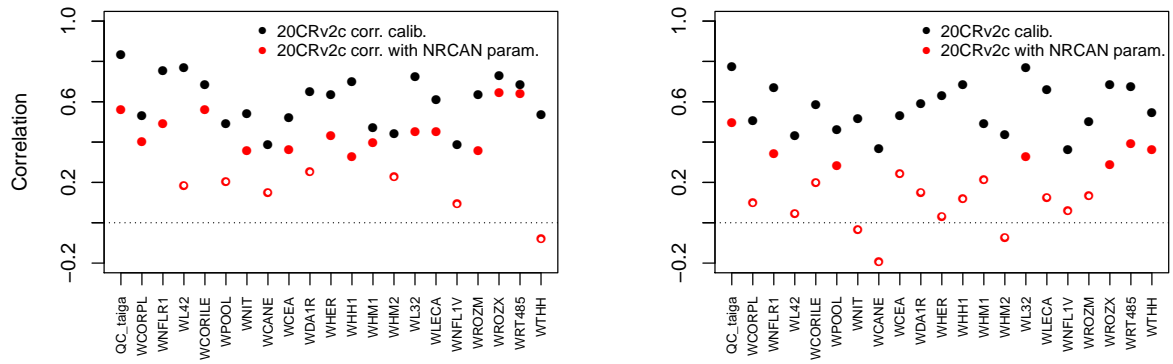
(b) 1900-2000

**Figure 5.** Pearson correlation coefficients (aggregated Eastern Canadian taiga sites (Fig. 1b), green circles), and mean and range of correlations (individual Eastern Canadian taiga sites used in aggregation (Fig. 1a and b), in black) between tree growth observations and simulations with MAIDEN using the different climatic datasets described in Table 2 as inputs for the 1950-2000 (a) and 1900-2000 (b) calibration periods.

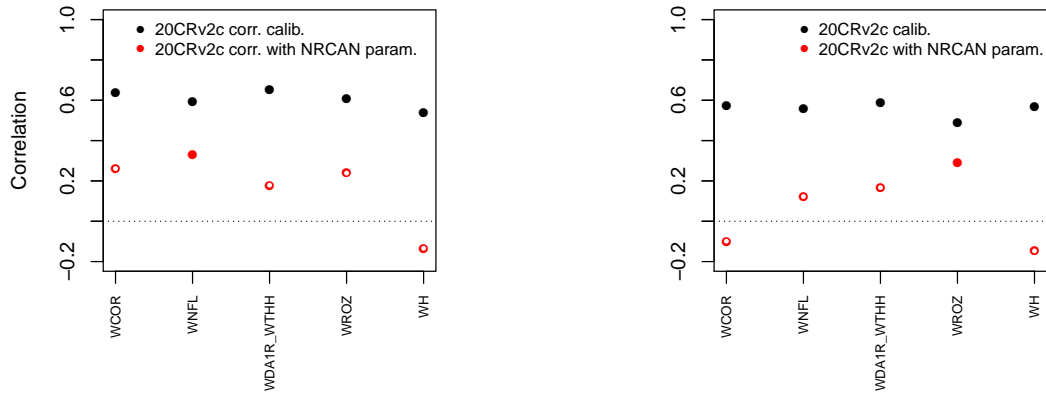
At the aggregated sites (Fig. 7), the general picture is the same but with far lower correlations. The mean correlations are 0.07 when applying the parameters calibrated using NRCAN ( $5'$ ) to the aggregated sites driven by 20CRv2c ( $2^\circ$ ) dataset and 0.56 when the parameters are calibrated using 20CRv2c ( $2^\circ$ ). With the 20CRv2c corr. ( $2^\circ$ ) dataset as climatic inputs, mean correlations are respectively 0.18 and 0.61 with NRCAN ( $5'$ ) and 20CRv2c corr. ( $2^\circ$ ) parameters. Those results would require a case-by-case analysis as it seems that higher replication does not provide better performance in this specific experiment.

### 3.3 Regional calibration of MAIDEN

At last, we apply the parameters calibrated against the mean of TRW observations from the twenty Eastern Canadian taiga sites (Fig. 8) to the five aggregated sites (Fig. 8, right) and to the individual sites used in the aggregation procedure (Fig. 8, left). For this experiment, we use the NRCAN ( $5'$ ) climate data (Sect. 2.2.2, Table 2) averaged over individual sites for each aggregated site (Table 1). The main parameters linked to site conditions and control parameters (Table S1) are fixed to their mode (soil parameters), mean (site latitude, elevation and isohyet, station elevation and isohyet) or common value (*exp\_site*, slope and aspect parameters). Overall, correlations between TRW observations and simulations by MAIDEN with parameters calibrated based on the mean of the observed TRW time series are low and non-significant for the individual sites (Fig. 8, left). At the more replicated aggregated sites (Fig. 8, right), correlations between TRW observations and simulations get better with three significant correlations out of five sites. However, this result should be viewed in parallel with the individual correlations (Fig. 8, left) and sites implied in the aggregation (Table 1). Indeed, aggregated sites with higher correlations are made up of



**Figure 6.** Pearson correlation coefficients between tree growth observations and simulations at the Eastern Canadian taiga sites (Fig. 1a) with MAIDEN using the 20CRv2c corr. ( $2^\circ$ ) (left) or 20CRv2c ( $2^\circ$ ) (right) climatic dataset for the 1950-2000 period with parameters calibrated using NRCAN ( $5'$ ) (with NRCAN param.) climatic inputs and with parameters calibrated using 20CRv2c corr. ( $2^\circ$ ) (left) or 20CRv2c ( $2^\circ$ ) (right) (calib.) climatic inputs (Table 2). White inner circles stand for non-significant correlations (p-value > 0.05).



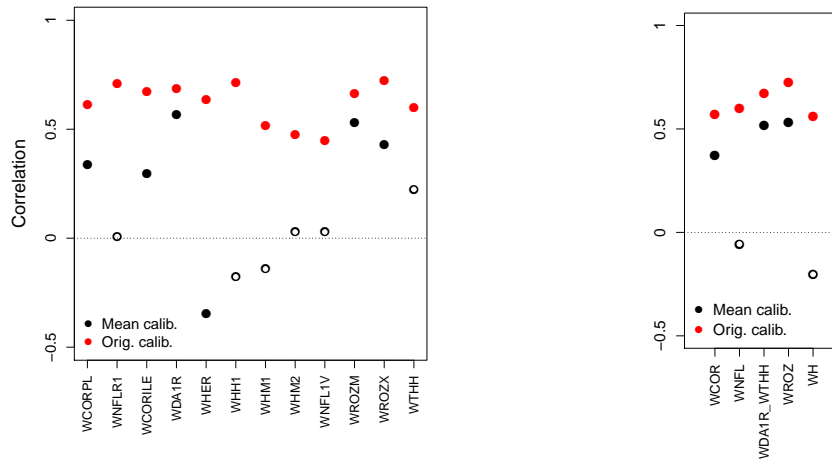
**Figure 7.** Pearson correlation coefficients between tree growth observations and simulations at the aggregated Eastern Canadian taiga sites (Fig. 1b) with MAIDEN using the 20CRv2c corr. ( $2^\circ$ ) (left) or 20CRv2c ( $2^\circ$ ) (right) climatic dataset for the 1950-2000 period with parameters calibrated using NRCAN ( $5'$ ) (with NRCAN param.) climatic inputs and with parameters calibrated using 20CRv2c corr. ( $2^\circ$ ) (left) or 20CRv2c ( $2^\circ$ ) (right) (calib.) climatic inputs (Table 2). White inner circles stand for non-significant correlations (p-value > 0.05).

individual sites with higher correlations as well. It means that probably not only higher replication is at the origin of higher correlations for most aggregated sites but also the specific conditions at each individual site as well as site ecological history, as previously mentioned (Sect. 3.1).

### 3.4 Split-sample validation of MAIDEN calibration

Depending on the available years, we have selected different time periods at the European sites (Table 4) and at the aggregated Eastern Canadian taiga sites (Table 5), using each period once for the calibration and once for the validation. At the European





**Figure 8.** Pearson correlation coefficients between tree growth observations and simulations at the individual (left) and aggregated Eastern Canadian taiga sites (right) (Fig. 1a and b) with MAIDEN using the NRCAN (5') climatic dataset (Table 2) with site-specific calibration of the parameters (Orig. calib., in red) and with parameters calibrated based on the mean of the observed TRW time series (Mean calib.) for the 1950-2000 period. White inner circles stand for non-significant correlations ( $p$ -value > 0.05).

345 sites, twenty-five years is clearly a too short period of time to get robust results while the validation is generally successful for the longer period as indicated by the significant correlations – except in one case – (Table 4). Similarly, at the aggregated Eastern Canadian sites – where we only have fifty years of reliable climate data (see Sect. 3.2) –, a twenty-five years subperiod is not enough for a robust calibration and validation (Table 5). However, even on the long time period (Table 4), we can see a clue of some overfitting, especially at the SWIT179 site, where the correlation for the validation period is far lower compared to  
 350 the correlation for the calibration period. Those results show that because of the large number of parameters, the validation of MAIDEN is difficult. It requires long observation series but the skill of the model still decreases significantly for the validation period.

### 3.5 Comparison with VS-Lite

In average, over the 1950-2000 calibration period at the individual Eastern Canadian taiga sites, VS-Lite has lower correlations  
 355 for the highest resolution dataset (NRCAN) compared with MAIDEN, i.e. 0.106 and 0.62 mean correlations for VS-Lite and MAIDEN respectively (Fig. 9). Results for the other climatic datasets over the 1950-2000 (GMF (1°), 20CRv2c (2°) and 20CRv2c corr. (2°)) and over the 1900-2000 calibration periods (20CRv2c (2°) and 20CRv2c corr. (2°) climatic datasets) also show lower correlations compared to MAIDEN (Fig. S5). As for split-sample validation over the long time period, the performance of VS-Lite is more stable (less fall of validation from calibration correlation) compared with MAIDEN (Table  
 360 4) even if correlations are, except for SWIT179, lower than MAIDEN. Similarly, over the short time period, the performance of VS-Lite is less good than over the long time period but still more stable than MAIDEN (Table 4). Compared to VS-Lite, MAIDEN has shown lower skill over short time period validation that indicates that we should only use MAIDEN when a long

**Table 4.** Pearson correlation coefficients between tree growth observations and simulations at the European sites (Fig. 2) with MAIDEN and VS-Lite using GHCN as climatic inputs (Table 2) for the 1950-1974 and 1975-2000 and for the 1910-1949 (EALP, SWIT179) or 1909-1944 (FINL045) and 1950-2000 calibration and validation periods and vice-versa. Asterisks stand for significant correlations (p-value < 0.05).

European sites	Model	1950-1974		1975-2000	
		Calibration	Validation	Calibration	Validation
EALP	MAIDEN	0.831*	0.443*	0.886*	0.546*
	VS-Lite	0.629*	0.618*	0.603*	0.599*
SWIT179	MAIDEN	0.744*	0.284	0.783*	0.325
	VS-Lite	0.260	0.181	0.435*	0.396*
FINL045	MAIDEN	0.827*	0.0358	0.610*	0.135
	VS-Lite	0.415*	0.209	0.271	0.143

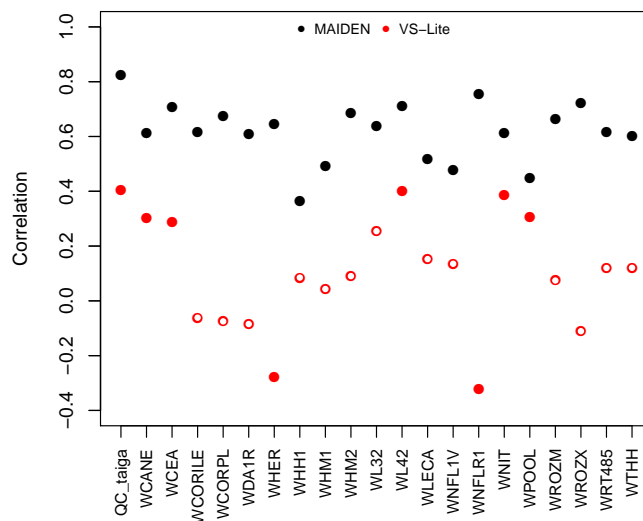
		1910-1949 or 1909-1944		1950-2000	
		Calibration	Validation	Calibration	Validation
EALP	MAIDEN	0.880*	0.626*	0.856*	0.569*
	VS-Lite	0.491*	0.487*	0.656*	0.656*
SWIT179	MAIDEN	0.721*	0.163	0.659*	0.306*
	VS-Lite	0.490*	0.489*	0.350*	0.353*
FINL045	MAIDEN	0.751*	0.428*	0.670*	0.394*
	VS-Lite	0.320	0.304	0.315*	0.263

enough period is available for validation. As for long validation period, MAIDEN has shown a stronger decrease in correlations compared to VS-Lite but still with higher correlations than VS-lite on average. This would indicate that MAIDEN calibration is not always prone to overfitting.

As our objective is to provide a first test of our calibration methodology using only a few sets of tree-ring sites, the obtained results only give an incomplete view of the MAIDEN model performance and its comparison with VS-Lite, focussing over a limited range of climate regimes. More experiments in different conditions are required in the future to exhaustively evaluate and compare the performance of both models.

**Table 5.** Pearson correlation coefficients between tree growth observations and simulations at the aggregated Eastern Canadian sites (Fig. 1b) with MAIDEN using NRCAN (5') as climatic inputs (Table 2) for the 1950-1974 and 1975-2000 calibration and validation periods and vice-versa. Asterisks stand for significant correlations (p-value < 0.05).

Canadian sites	1950-1974		1975-2000	
	Calibration	Validation	Calibration	Validation
WCOR	0.693*	0.146	0.783*	0.589*
WNFL	0.619*	0.103	0.804*	0.429*
WDA1R_WTHH	0.480*	0.737*	0.610*	0.332
WROZ	0.674*	0.577*	0.841*	0.270
WH	0.549*	0.008	0.718*	-0.011



**Figure 9.** Pearson correlation coefficients between tree growth observations and simulations at the Eastern Canadian taiga sites (Fig. 1a) with VS-Lite (in red) and MAIDEN (in black) using NRCAN (5') as climatic inputs (Table 2) for the 1950-2000 calibration period. White inner circles stand for non-significant correlations (p-value > 0.05).

## 370 4 Conclusions

In this paper we have tested the applicability of the ecophysiological tree-growth model MAIDEN for potential dendroclimatic applications during the twentieth century at twenty-one Eastern Canadian taiga sites and three European sites using tree-ring width observations. Our results provide a protocol for the application of MAIDEN to potentially any site with tree-ring width data in the extratropical region, from climatic data selection to validation step, through automatised bayesian calibration

375 of the most sensitive parameters. As the ultimate goal is to use MAIDEN in a context of paleoclimatic reconstruction, forced  
by low-resolution climate models outputs, we also analysed the sensitivity of the model to parameters calibration and to the  
quality of climatic inputs. The performance of MAIDEN was compared to the one of a simple tree-growth model, VS-Lite, to  
evaluate the advantages of using a complex tree-growth model for past climate reconstruction.

Different strategies have been tested to select the value for the most sensitive parameters of the MAIDEN model. When  
380 applying calibrated parameters from a well-documented site at other sites with same species and similar environmental condi-  
tions, very low correlations between tree-ring width observations and simulations by the MAIDEN model are found. However,  
when removing the long-term trend to account for the past disturbance-history of these sites that is not represented in MAIDEN,  
correlations get higher. In the future, this strategy can be used by selecting sites carefully to avoid disturbances. At our study  
sites, the bayesian calibration of the most sensitive parameters of the model can provide good and significant correlations  
385 between tree-growth observations and simulations.

Secondly, sensitivity of the MAIDEN model parameters calibration to the quality of the climatic data used as inputs has  
been highlighted. In a context of paleoclimatic applications, where MAIDEN will be used driven by climate models outputs  
at low resolution, bias-correction and downscaling techniques could be good options to improve climate inputs and calibration  
quality, leading thereby to reasonable correlations with observed tree-ring width.

390 Our split-sample validation experiments are encouraging. However, when a calibration interval of only a few decades is  
available, the calibration display large overfitting for individual sites as indicated by the very low correlation with observations  
over the validation period. Similar split-sample experiments on longer series show much better results, with potentially some  
overfitting but still with relatively high and generally significant correlations over the validation period. When working with a  
network of similar sites, the alternative validation technique, i.e. applying calibrated parameters from the mean of a network of  
395 tree-ring width observations series with same species and environmental conditions to the individual sites, should be preferred  
if not enough data (climate and TRW observations) are available for split-sample validation.

Lastly, at our study sites, MAIDEN has shown higher calibration and validation correlations in most cases compared to  
VS-Lite. VS-Lite correlations over the calibration period are especially far lower for sites with low replication (i.e. the Eastern  
Canadian taiga sites from Nicault et al. (2014) and Boucher et al. (2017)). However, VS-Lite stays more stable over both  
400 calibration and validation periods. Consequently, VS-Lite has a lower ability to reproduce tree growth at our sites but is less  
prone to overfitting than MAIDEN. Most importantly, we have shown that, to limit overfitting, MAIDEN should not be used  
with short and low-replicated tree-ring width observations time series. VS-Lite is less risky to use in such situations as there is  
potentially less overfitting in the calibration and probably easier to apply over a large network of tree-ring width time series.  
However, VS-Lite does not include neither CO<sub>2</sub> nor biological processes and may thus not be able to take into account changes  
405 in conditions between the recent calibration period and the more distant past.

In the future, MAIDEN will be applied at a larger spatial scale in a systematic way using the protocol that has been developed  
here, by selecting hundreds of sites from the commonly used databases in paleoclimate reconstruction based on tree-ring  
proxies, covering a wide range of environmental conditions and tree species, such as PAGES2k (PAGES 2k Consortium,  
2017) and NTREND (Anchukaitis et al., 2017; Wilson et al., 2016). This broader analysis will allow us to refine the protocol

410 developed here in order to identify the sites where MAIDEN can be successfully applied and estimate the uncertainty associated with the use of MAIDEN for many more different sites.

Although some limitations could remain in our calibration protocol, we have shown the ability of MAIDEN to simulate tree-growth index time series that can fit robustly tree-ring width observations under certain conditions (well-replicated tree-ring width observations time series, high-resolution or downscaled climate data, long time period), as well as its potential to be used  
415 as a complex mechanistic proxy system model in paleoclimatic applications and more specifically in data assimilation.

*Competing interests.* The authors declare that there is no conflict of interest.

*Acknowledgements.* JR is F.R.S-FNRS Research Fellow, Belgium; HG is Research Director at F.R.S.-FNRS, Belgium; JG is Research Director at CNRS, France. This publication has received partial funding from Laboratory of Excellence OT-Med (project ANR-11- LABEX-0061, A\*MIDEX project 11-IDEX-0001-02) as well as from F.R.S-FNRS and Fonds de recherche Société et culture Québec through the  
420 ClimHuNor project. Computational resources have been provided by the supercomputing facilities of the Université catholique de Louvain (CISM/UCL) and the Consortium des Équipements de Calcul Intensif en Fédération Wallonie Bruxelles (CÉCI) funded by the Fond de la Recherche Scientifique de Belgique (F.R.S.-FNRS) under convention 2.5020.11 and by the Walloon Region.

## References

- Anchukaitis, K. J., Wilson, R., Briffa, K. R., Büntgen, U., Cook, E. R., D'Arrigo, R., Davi, N., Esper, J., Frank, D., Gunnarson, B. E., Hegerl, G., Helama, S., Klesse, S., Krusic, P. J., Linderholm, H. W., Myglan, V., Osborn, T. J., Zhang, P., Rydval, M., Schneider, L., Schurer, A., Wiles, G., and Zorita, E.: Last millennium Northern Hemisphere summer temperatures from tree rings: Part II, spatially resolved reconstructions, *Quaternary Science Reviews*, 163, 1–22, <https://doi.org/10.1016/j.quascirev.2017.02.020>, 2017.
- Babst, F., Poulter, B., Trouet, V., Tan, K., Neuwirth, B., Wilson, R., Carrer, M., Grabner, M., Tegel, W., Levanić, T., Panayotov, M., Urbinati, C., Bouriaud, O., Ciais, P., and Frank, D.: Site- and species-specific responses of forest growth to climate across the European continent, *Global Ecology and Biogeography*, 22, 706–717, <https://doi.org/10.1111/geb.12023>, 2013.
- Boucher, E., Guiot, J., Hatté, C., Daux, V., Danis, P. A., and Dussouillez, P.: An inverse modeling approach for tree-ring-based climate reconstructions under changing atmospheric CO<sub>2</sub> concentrations, *Biogeosciences*, 11, 3245–3258, <https://doi.org/10.5194/bg-11-3245-2014>, 2014.
- Boucher, E., Nicault, A., Arseneault, D., Bégin, Y., and Karami, M. P.: Decadal variations in Eastern Canada's taiga wood biomass production forced by ocean-atmosphere interactions, *Scientific Reports*, 7, 1–13, <https://doi.org/10.1038/s41598-017-02580-9>, 2017.
- Breitenmoser, P., Brönnimann, S., and Frank, D.: Forward modelling of tree-ring width and comparison with a global network of tree-ring chronologies, *Climate of the Past*, 10, 437–449, <https://doi.org/10.5194/cp-10-437-2014>, 2014.
- Briffa, K. R., Schweingruber, F. H., Jones, P. D., Osborn, T. J., Harris, I. C., Shiyatov, S. G., Vaganov, E. A., and Grudd, H.: Trees tell of past climates: but are they speaking less clearly today?, *Philosophical Transactions of the Royal Society of London. Series B: Biological Sciences*, 353, 65–73, <https://doi.org/10.1098/rstb.1998.0191>, <https://doi.org/10.1098/rstb.1998.0191>, 1998.
- Briffa, K. R., Osborn, T. J., Schweingruber, F. H., Harris, I. C., Jones, P. D., Shiyatov, S. G., and Vaganov, E. A.: Low-frequency temperature variations from a northern tree ring density network, *Journal of Geophysical Research Atmospheres*, 106, 2929–2941, <https://doi.org/10.1029/2000JD900617>, 2001.
- Büntgen, U., Tegel, W., Nicolussi, K., McCormick, M., Frank, D., Trouet, V., Kaplan, J. O., Herzig, F., Heussner, K.-U., Wanner, H., Luterbacher, J., and Esper, J.: 2500 Years of European Climate Variability and Human Susceptibility, *Science*, 331, 578 – 582, <https://doi.org/10.1126/science.1197175>, <http://science.sciencemag.org/content/331/6017/578.abstract>, 2011.
- Buras, A.: A comment on the expressed population signal, *Dendrochronologia*, 44, 130–132, <https://doi.org/10.1016/j.dendro.2017.03.005>, <http://dx.doi.org/10.1016/j.dendro.2017.03.005>, 2017.
- Cook, E. R. and Kairiukstis, L.: *Methods of dendrochronology: Applications in the Environmental Sciences*, Kluwer Academic, Boston, [https://doi.org/10.1016/0048-9697\(91\)90076-q](https://doi.org/10.1016/0048-9697(91)90076-q), 1990.
- Cook, E. R., Meko, D. M., Stahle, D. W., and Cleaveland, M. K.: Drought reconstructions for the continental United States, *Journal of Climate*, 12, 1145–1163, [https://doi.org/10.1175/1520-0442\(1999\)012<1145:drftcu>2.0.co;2](https://doi.org/10.1175/1520-0442(1999)012<1145:drftcu>2.0.co;2), 1999.
- D'Arrigo, R., Wilson, R., Liepert, B., and Cherubini, P.: On the 'Divergence Problem' in Northern Forests: A review of the tree-ring evidence and possible causes, *Global and Planetary Change*, 60, 289–305, <https://doi.org/10.1016/j.gloplacha.2007.03.004>, 2008.
- Dee, S. G., Steiger, N. J., Emile-Geay, J., and Hakim, G. J.: On the utility of proxy system models for estimating climate states over common era, *Journal of Advances in Modeling Earth Systems*, 8, 1164–1179, <https://doi.org/10.1002/2013MS000282>.Received, 2016.
- Duchesne, L., Houle, D., Ouimet, R., Caldwell, L., Gloor, M., and Brienens, R.: Large apparent growth increases in boreal forests inferred from tree-rings are an artefact of sampling biases, *Scientific Reports*, 9, 1–9, <https://doi.org/10.1038/s41598-019-43243-1>, 2019.

- Erni, S., Arseneault, D., Parisien, M. A., and Bégin, Y.: Spatial and temporal dimensions of fire activity in the fire-prone eastern Canadian taiga, *Global Change Biology*, 23, 1152–1166, <https://doi.org/10.1111/gcb.13461>, 2017.
- 460 Esper, J., George, S. S., Anchukaitis, K., D'Arrigo, R., Ljungqvist, F., Luterbacher, J., Schneider, L., Stoffel, M., Wilson, R., and Büntgen, U.: Large-scale, millennial-length temperature reconstructions from tree-rings, *Dendrochronologia*, 50, 81–90, <https://doi.org/10.1016/j.dendro.2018.06.001>, <http://linkinghub.elsevier.com/retrieve/pii/S1125786518300687>, 2018.
- Evans, M. N., Tolwinski-Ward, S. E., Thompson, D. M., and Anchukaitis, K. J.: Applications of proxy system modeling in high resolution paleoclimatology, *Quaternary Science Reviews*, 76, 16–28, <https://doi.org/10.1016/j.quascirev.2013.05.024>, <http://dx.doi.org/10.1016/j.quascirev.2013.05.024>, 2013.
- 465 Fang, M. and Li, X.: An Artificial Neural Networks-Based Tree Ring Width Proxy System Model for Paleoclimate Data Assimilation, *Journal of Advances in Modeling Earth Systems*, 11, 892–904, <https://doi.org/10.1029/2018MS001525>, 2019.
- FAO/IIASA/ISRIC/ISSCAS/JRC: Harmonized World Soil Database (version 1.2). FAO, Rome, Italy and IIASA, Laxenburg, Austria, 2012.
- 470 Flato, G., Marotzke, J., Abiodun, B., Braconnot, P., Chou, S., Collins, W., Cox, P., Driouech, F., Emori, S., Eyring, V., Forest, C., Gleckler, P., Guilyardi, E., Jakob, C., Kattsov, V., Reason, C., and Rummukainen, M.: Evaluation of Climate Models, in: *Climate Change 2013: The Physical Science Basis. Contribution of Working Group I to the Fifth Assessment Report of the Intergovernmental Panel on Climate Change*, Cambridge University Press, Cambridge, United Kingdom and New York, USA., <https://doi.org/10.1017/CBO9781107415324>, 2013.
- 475 Franke, J., Brönnimann, S., Bhend, J., and Brugnara, Y.: A monthly global paleo-reanalysis of the atmosphere from 1600 to 2005 for studying past climatic variations, *Scientific Data*, 4, 1–19, <https://doi.org/10.1038/sdata.2017.76>, 2017.
- Fritts, H. C.: *Tree rings and climate*, Academic Press, London, 1976.
- Fritts, H. C.: *Reconstructing large-scale climatic patterns from tree-ring data: A diagnostic analysis.*, University of Arizona Press, Tucson, Arizona, USA, 1991.
- 480 Gea-Izquierdo, G., Guibal, F., Joffre, R., Ourcival, J. M., Simioni, G., and Guiot, J.: Modelling the climatic drivers determining photosynthesis and carbon allocation in evergreen Mediterranean forests using multiproxy long time series, *Biogeosciences Discussions*, 12, 2745–2786, <https://doi.org/10.5194/bgd-12-2745-2015>, 2015.
- Gea-Izquierdo, G., Nicault, A., Battipaglia, G., Dorado-Liñán, I., Gutiérrez, E., Ribas, M., and Guiot, J.: Risky future for Mediterranean forests unless they undergo extreme carbon fertilization, *Global Change Biology*, 23, 2915–2927, <https://doi.org/10.1111/gcb.13597>, 2017.
- 485 Gennaretti, F., Arseneault, D., and Bégin, Y.: Millennial disturbance-driven forest stand dynamics in the Eastern Canadian taiga reconstructed from subfossil logs, *Journal of Ecology*, 102, 1612–1622, <https://doi.org/10.1111/1365-2745.12315>, 2014a.
- Gennaretti, F., Arseneault, D., Nicault, A., Perreault, L., and Bégin, Y.: Volcano-induced regime shifts in millennial tree-ring chronologies from northeastern North America, *Proceedings of the National Academy of Sciences*, 111, 10077–10082, <https://doi.org/10.1073/pnas.1324220111>, <http://www.pnas.org/cgi/doi/10.1073/pnas.1324220111>, 2014b.
- 490 Gennaretti, F., Gea-Izquierdo, G., Boucher, E., Berninger, F., Arseneault, D., and Guiot, J.: Ecophysiological modeling of the climate imprint on photosynthesis and carbon allocation to the tree stem in the North American boreal forest, *Biogeosciences*, 14, 4851–4866, <https://doi.org/10.5194/bg-2017-51>, 2017.
- Gennaretti, F., Boucher, E., Nicault, A., Gea-Izquierdo, G., Arseneault, D., Berninger, F., Savard, M. M., Bégin, C., and Guiot, J.: Underestimation of the Tambora effects in North American taiga ecosystems, *Environmental Research Letters*, 13, <https://doi.org/10.1088/1748-9326/aaac0c>, 2018.
- 495

- Goosse, H.: An additional step toward comprehensive paleoclimate reanalyses, *Journal of Advances in Modeling Earth Systems*, 6, 1501–1503, <https://doi.org/10.1002/2013MS000282>. Received, 2016.
- Goosse, H., Crespin, E., Dubinkina, S., Loutre, M. F., Mann, M. E., Renssen, H., Sallaz-Damaz, Y., and Shindell, D.: The role of forcing and internal dynamics in explaining the "Medieval Climate Anomaly", *Climate Dynamics*, 39, 2847–2866, <https://doi.org/10.1007/s00382-012-1297-0>, 2012.
- 500 Guiot, J., Boucher, E., and Gea-Izquierdo, G.: Process models and model-data fusion in dendroecology, *Frontiers in Ecology and Evolution*, 2, 1–12, <https://doi.org/10.3389/fevo.2014.00052>, <http://journal.frontiersin.org/article/10.3389/fevo.2014.00052/abstract>, 2014.
- Harris, I., Jones, P. D., Osborn, T. J., and Lister, D. H.: Updated high-resolution grids of monthly climatic observations - the CRU TS3.10 Dataset, *International Journal of Climatology*, 34, 623–642, <https://doi.org/10.1002/joc.3711>, 2014.
- 505 Hartig, F., Minunno, F., and Paul, S.: BayesianTools: General-Purpose MCMC and SMC Samplers and Tools for Bayesian Statistics. R package version 0.1.6., <https://github.com/florianhartig/BayesianTools>, 2019.
- Hughes, M. K., Swetnam, T. W., and Diaz, H. F.: *Dendroclimatology: Progress and Prospects*, vol. 11, New York, springer edn., 2011.
- Hunter, J. D.: Matplotlib: A 2D graphics environment, *Computing in Science and Engineering*, 9, 90–95, <https://doi.org/10.1109/MCSE.2007.55>, 2007.
- 510 Hutchinson, M. F., McKenney, D. W., Lawrence, K., Pedlar, J. H., Hopkinson, R. F., Milewska, E., and Papadopol, P.: Development and testing of Canada-wide interpolated spatial models of daily minimum-maximum temperature and precipitation for 1961–2003, *Journal of Applied Meteorology and Climatology*, 48, 725–741, <https://doi.org/10.1175/2008JAMC1979.1>, 2009.
- Johnson, S. E. and Abrams, M. D.: Age class, longevity and growth rate relationships: Protracted growth increases in old trees in the eastern United States, *Tree Physiology*, 29, 1317–1328, <https://doi.org/10.1093/treephys/tpp068>, 2009.
- 515 Jones, P. D., Briffa, K. R., Barnett, T. P., and Tett, S. F. B.: High-resolution palaeoclimatic records for the last millennium, *The Holocene*, 4, 455–471, 1998.
- Jones, P. D., Briffa, K. R., Osborn, T. J., Lough, J. M., Van Ommen, T. D., Vinther, B. M., Luterbacher, J., Wahl, E. R., Zwiers, F. W., Mann, M. E., Schmidt, G. A., Ammann, C. M., Buckley, B. M., Cobb, K. M., Esper, J., Goosse, H., Graham, N., Jansen, E., Kiefer, T., Kull, C., Küttel, M., Mosley-Thompson, E., Overpeck, J. T., Riedwyl, N., Schulz, M., Tudhope, A. W., Villalba, R., Wanner, H., Wolff, E., and
- 520 Xoplaki, E.: High-resolution palaeoclimatology of the last millennium: A review of current status and future prospects, *Holocene*, 19, 3–49, <https://doi.org/10.1177/0959683608098952>, 2009.
- Kalnay, E.: *Atmospheric Modeling, Data Assimilation and Predictability*, Cambridge University Press, 2003.
- Lavergne, A., Daux, V., Villalba, R., and Barichivich, J.: Temporal changes in climatic limitation of tree-growth at upper tree-line forests: Contrasted responses along the west-to-east humidity gradient in Northern Patagonia, *Dendrochronologia*, 36, 49–59, <https://doi.org/10.1016/j.dendro.2015.09.001>, <http://dx.doi.org/10.1016/j.dendro.2015.09.001>, 2015.
- 525 Lavergne, A., Gennaretti, F., Risi, C., Daux, V., Savard, M., Naulier, M., Villalba, R., Begin, C., Lavergne, A., Gennaretti, F., Risi, C., Daux, V., Boucher, E., Lavergne, A., Gennaretti, F., Risi, C., Daux, V., Boucher, E., and Savard, M. M.: Modelling tree ring cellulose  $\delta^{18}\text{O}$  variations in two temperature-sensitive tree species from North and South America, *Climate of the Past*, pp. 1515–1526, 2017.
- Mann, M. E., Bradley, R. S., and Hughes, M. K.: Northern Hemisphere temperatures during the past millennium, *Climate Change: Evaluating recent and future climate change*, 26, 759–762, 1999.
- 530 Mann, M. E., Zhang, Z., Hughes, M. K., Bradley, R. S., Miller, S. K., Rutherford, S., and Ni, F.: Proxy-based reconstructions of hemispheric and global surface temperature variations over the past two millennia, *Proceedings of the National Academy of Sciences*, 105, 13 252–13 257, <https://doi.org/10.1073/pnas.0805721105>, 2008.



- Mann, M. E., Zhang, Z., Rutherford, S., Bradley, R. S., Hughes, M. K., Shindell, D., Ammann, C., Faluvegi, G., and Ni, F.:  
535 Global Signatures and Dynamical Origins of the Little Ice Age and Medieval Climate Anomaly, *Science*, 326, 1256–1260,  
<https://doi.org/10.1126/science.1166349>, 2009.
- Menne, M., Durre, I., Korzeniewski, B., McNeal, S., Thomas, K., Yin, X., Anthony, S., Ray, R., Vose, R., Gleason, B., and Houston, T.:  
Global Historical Climatology Network - Daily (GHCN-Daily), Version 3.24. NOAA National Climatic Data Center., 2012a.
- Menne, M. J., Durre, I., Vose, R. S., Gleason, B. E., and Houston, T. G.: An overview of the global historical climatology network-daily  
540 database, *Journal of Atmospheric and Oceanic Technology*, 29, 897–910, <https://doi.org/10.1175/JTECH-D-11-00103.1>, 2012b.
- Misson, L.: MAIDEN: a model for analyzing ecosystem processes in dendroecology, *Canadian Journal of Forest Research*, 34, 874–887,  
<https://doi.org/10.1139/x03-252>, <http://www.nrcresearchpress.com/doi/abs/10.1139/x03-252>, 2004.
- Myhre, G., Shindell, D., Bréon, F.-M., Collins, W., Fuglestedt, J., Huang, J., Koch, D., Lamarque, J.-F., Lee, D., Mendoza, B.,  
Nakajima, T., Robock, A., Stephens, G., Takemura, T., and Zhang, H.: Anthropogenic and Natural Radiative Forcing, in: *Climate*  
545 *Change 2013: The Physical Science Basis. Contribution of Working Group I to the Fifth Assessment Report of the Intergovernmental*  
*Panel on Climate Change*, Cambridge University Press, Cambridge, United Kingdom and New York, USA., <https://doi.org/10.1017/CBO9781107415324.018>, 2013.
- Nicault, A., Boucher, E., Tapsoba, D., Arseneault, D., Berninger, F., Bégin, C., DesGranges, J., Guiot, J., Marion, J., Wicha, S., and Bégin,  
Y.: Spatial analysis of black spruce (*Picea mariana* (Mill.) B.S.P.) radial growth response to climate in northern Québec – Labrador  
550 Peninsula, Canada, *Canadian Journal of Forest Research*, 45, 343–352, <https://doi.org/10.1139/cjfr-2014-0080>, 2014.
- PAGES 2k Consortium: A global multiproxy database for temperature reconstructions of the Common Era, *Scientific Data*, 4, 1–33,  
<https://doi.org/DOI:10.1038/sdata.2017.88>, 2017.
- Payette, S., Filion, L., and Delwaide, A.: Spatially explicit fire-climate history of the boreal forest-tundra (Eastern Canada) over the last 2000  
555 years, *Philosophical Transactions of the Royal Society B: Biological Sciences*, 363, 2301–2316, <https://doi.org/10.1098/rstb.2007.2201>,  
2008.
- Seftigen, K., Frank, D. C., Björklund, J., Babst, F., and Poulter, B.: The climatic drivers of normalized difference vegetation index and  
tree-ring-based estimates of forest productivity are spatially coherent but temporally decoupled in Northern Hemispheric forests, *Global*  
*Ecology and Biogeography*, 27, 1352–1365, <https://doi.org/10.1111/geb.12802>, 2018.
- Sheffield, J., Goteti, G., and Wood, E. F.: Development of a 50-year high-resolution global dataset of meteorological forcings for land surface  
560 modeling, *Journal of Climate*, 19, 3088–3111, <https://doi.org/10.1175/JCLI3790.1>, 2006.
- St. George, S. and Esper, J.: Concord and discord among Northern Hemisphere paleotemperature reconstructions from tree rings, *Quaternary*  
*Science Reviews*, 203, 278–281, <https://doi.org/S0277379118307170>, 2019.
- Steiger, N. J. and Smerdon, J. E.: A pseudoproxy assessment of data assimilation for reconstructing the atmosphere-ocean dynamics of  
hydroclimate extremes, *Climate of the Past*, 13, 1435–1449, <https://doi.org/10.5194/cp-13-1435-2017>, 2017.
- 565 Tardif, R., Hakim, G. J., Perkins, W. A., Horlick, K. A., Erb, M. P., Emile-Geay, J., Anderson, D. M., Steig, E. J., and Noone, D.: Last  
Millennium Reanalysis with an expanded proxy database and seasonal proxy modeling, *Climate of the Past Discussions*, pp. 1–37,  
<https://doi.org/10.5194/cp-2018-120>, <https://www.clim-past-discuss.net/cp-2018-120/>, 2018.
- Tolwinski-Ward, S. E., Evans, M. N., Hughes, M. K., and Anchukaitis, K. J.: An efficient forward model of the climate controls on interannual  
variation in tree-ring width, *Climate Dynamics*, 36, 2419–2439, <https://doi.org/10.1007/s00382-010-0945-5>, 2011.
- 570 Tolwinski-Ward, S. E., Anchukaitis, K. J., and Evans, M. N.: Bayesian parameter estimation and interpretation for an intermediate model of  
tree-ring width, *Climate of the Past*, 9, 1481–1493, <https://doi.org/10.5194/cp-9-1481-2013>, 2013.

University of East Anglia Climatic Research Unit (CRU): CRU TS4.01: Climatic Research Unit (CRU) Time-Series (TS) version 4.01 of high-resolution gridded data of month-by-month variation in climate (Jan. 1908 - Dec. 2016), Centre for Environmental Data Analysis (CEDA), 2017.

- 575 Vaganov, E. A., Hughes, M. K., and Shashkin, A.: Growth dynamics of conifer tree rings, New York, springer edn., 2006.
- Wilson, R. and Elling, W.: Temporal instability in tree-growth/climate response in the Lower Bavarian Forest region: Implications for dendroclimatic reconstruction, *Trees - Structure and Function*, 18, 19–28, <https://doi.org/10.1007/s00468-003-0273-z>, 2004.
- Wilson, R., D'Arrigo, R., Buckley, B., Büntgen, U., Esper, J., Frank, D., Luckman, B., Payette, S., Vose, R., and Youngblut, D.: A matter of divergence: Tracking recent warming at hemispheric scales using tree ring data, *Journal of Geophysical Research Atmospheres*, 112, 1–17, <https://doi.org/10.1029/2006JD008318>, 2007.
- 580 Wilson, R., Anchukaitis, K., Briffa, K. R., Büntgen, U., Cook, E., D'Arrigo, R., Davi, N., Esper, J., Frank, D., Gunnarson, B., Hegerl, G., Helama, S., Klesse, S., Krusic, P. J., Linderholm, H. W., Myglan, V., Osborn, T. J., Rydval, M., Schneider, L., Schurer, A., Wiles, G., Zhang, P., and Zorita, E.: Last millennium northern hemisphere summer temperatures from tree rings: Part I: The long term context, *Quaternary Science Reviews*, 134, 1–18, <https://doi.org/10.1016/j.quascirev.2015.12.005>, 2016.