

# **Changes in high intensity precipitation on the Northern Apennines (Italy) as revealed by multidisciplinary data over the last 9000 years**

Stefano Segadelli<sup>1</sup>, Federico Grazzini<sup>2</sup>, Margherita Aguzzi<sup>2</sup>, Alessandro Chelli<sup>3</sup>, Veronica Rossi<sup>4</sup>, Maria T. De Nardo<sup>1</sup>, Roberto Francese<sup>3</sup>, Silvia Marvelli<sup>5</sup>, Marco Marchesini<sup>5</sup>, Sandro Nanni<sup>2</sup>

<sup>1</sup> Geological, Seismic and Soil Service, Emilia-Romagna Region Administration, Bologna, Italy.

<sup>2</sup> Regional Agency for Prevention, Environment and Energy of Emilia-Romagna, Hydro-Meteo-Climate Service (ARPAE-SIMC), Bologna, Italy.

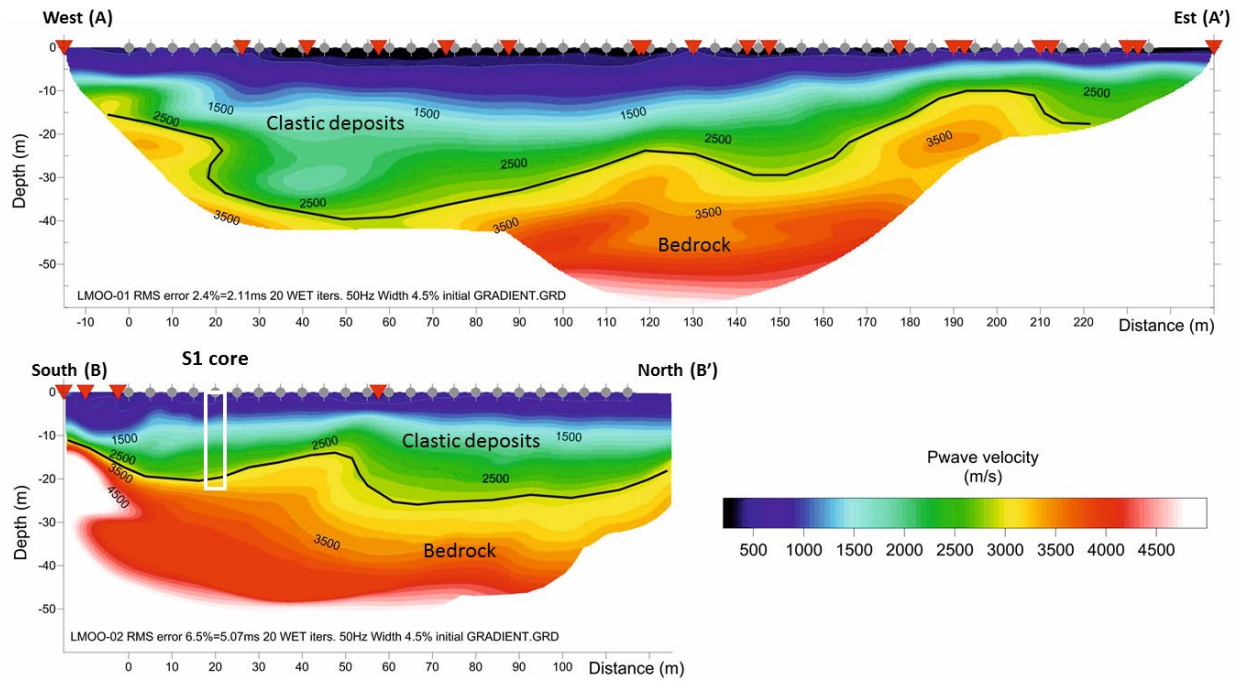
<sup>3</sup> Department of Chemistry, Life Sciences and Environmental Sustainability, University of Parma, Italy.

<sup>4</sup> Department of Biological, Geological, and Environmental Sciences - BiGeA, Alma Mater Studiorum University of Bologna, Bologna, Italy.

<sup>5</sup> Laboratory of Palynology and Archaeobotany - C.A.A. Giorgio Nicoli, San Giovanni in Persiceto (Bologna, Italy).

*Correspondence to:* Federico Grazzini ([fgrazzini@arpae.it](mailto:fgrazzini@arpae.it))

## Supplementary Material



**Figure SUP1.** Seismic tomography of the underground lake Moo basin. For geophysical surveys tracks see Fig.2.

Lab. code	Core code	Core depth (cm)	Material	Age (Cal year BP)	Cal a AD (± sigma)
LTL17681A	S1	113	Organic matter  (not determinable)	82±45	1680AD (29.4%) 1764AD  1801AD (66.0%) 1939AD
LTL18275A	S2	237	Trunk grass (not determinable)	178.69±0.55 pMC	
LTL18275Abis	S3	233-237	Organic matter (not determinable)	It was not possible to date, poor presence of organic matter	
LTL18274A	S4	279-281	Organic matter (not determinable)	80±40	1681AD (26.5%) 1737AD  1804AD (68.9%) 1936AD
LTL18575A	S5	310-314	Small wood fragment (not determinable)	102.12±0.50	
LTL17682A	S6	455	Pinus wood fragments	3659±45	2194BC (2.2%) 2175BC  2144BC (93.2%) 1911BC
LTL18273A	S7	500-502	Organic matter  (not determinable)	4779±45	3649BC (85.7%) 3505BC  3427BC (9.7%) 3380BC
LTL18277A	S8	760	Organic matter and small wood fragment (not determinable)	5686±45	4683BC (6.0%) 4631BC  4623BC (87.6%) 4446BC  4418BC (1.8%) 4400BC
LTL18278A	S9	860-865	Abies alba wood fragment	6065±45	5205BC (4.1%) 5165BC  5077BC (91.3%) 4835BC
LTL18577A	S11	949	Organic matter (not determinable)	6363±45	5470BC (88.8%) 5291BC
LTL18272A	S12	959	Organic matter (not determinable)	159.33±0.48 pMC	
LTL17683A	S13	1044	Plant fragments carboniosi (not determinable)	8600±45	7722BC (95.4%) 7551BC

**Table TS2** Full list of Radiocarbon sample age and description details.