

Interactive comment on “Changes in high intensity precipitation on the Northern Apennines (Italy) as revealed by multidisciplinary data over the last 9000 years” by Stefano Segadelli et al.

Stefano Segadelli et al.

fgrazzini@arpae.it

Received and published: 1 April 2020

Dear reviewers, we are strongly indebted for your positive and constructive comments which really helped to improve our manuscript.

Please see attached the individual point-by-point responses, accompanied by the relevant new figures as requested. Full documentation with all the edits is going to be added with the revised manuscript. These will take into account, not only of referees opinions but also of other short comments received.

If some replays to reviewers' comments are unclear, please do not hesitate to contact

[Printer-friendly version](#)

[Discussion paper](#)



me.

Best regards, Federico Grazzini, on behalf of all co-authors

Please also note the supplement to this comment:

<https://www.clim-past-discuss.net/cp-2019-135/cp-2019-135-AC1-supplement.pdf>

Interactive comment on Clim. Past Discuss., <https://doi.org/10.5194/cp-2019-135>, 2019.

CPD

Interactive
comment

Printer-friendly version

Discussion paper



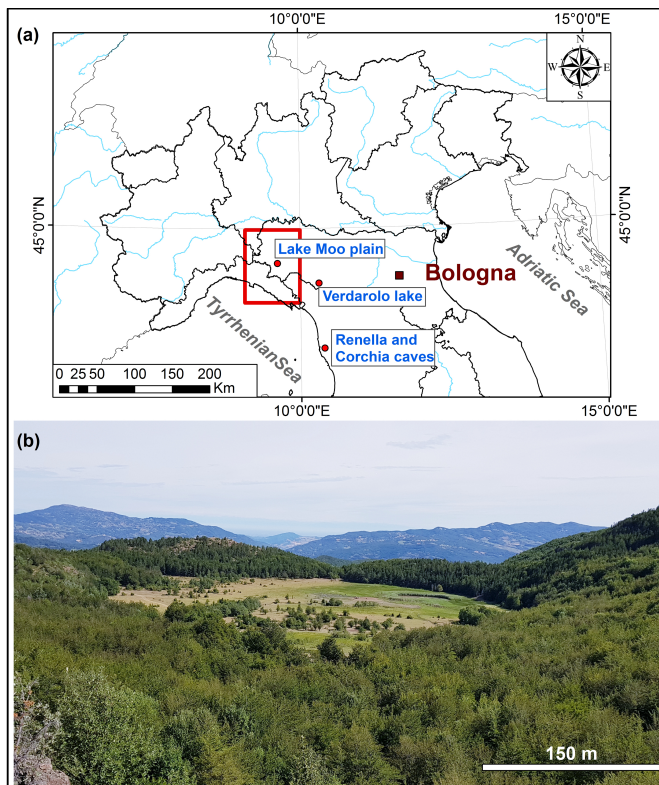


Fig. 1. Figure 1 New

Printer-friendly version

Discussion paper



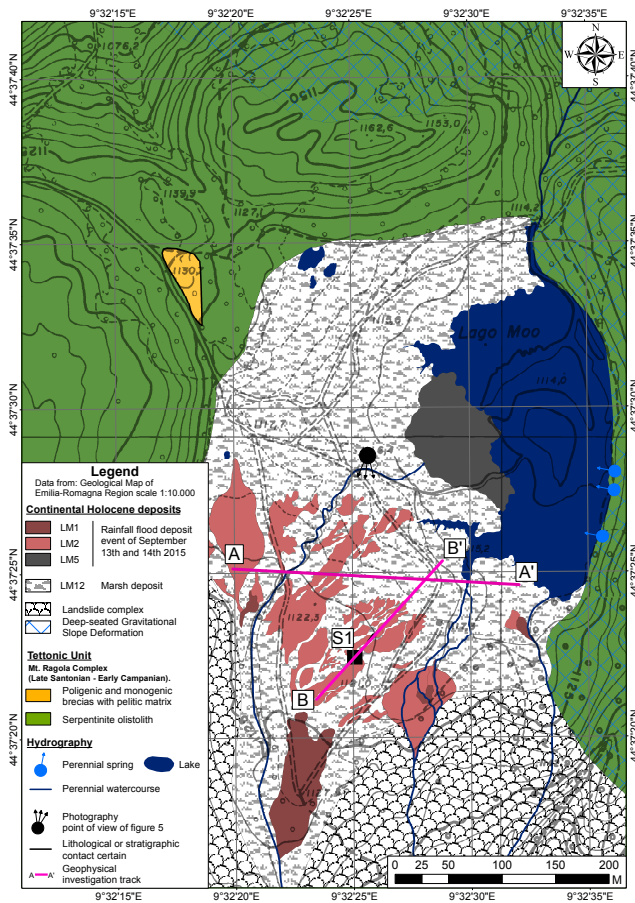


Fig. 2. Figure 2 New

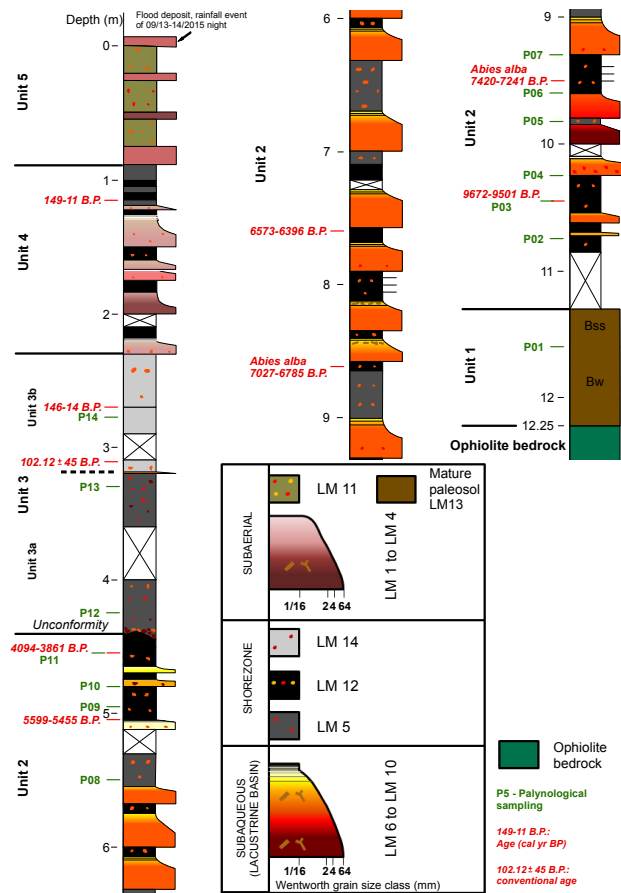


Fig. 3. Figure 3 New

Printer-friendly version

Discussion paper



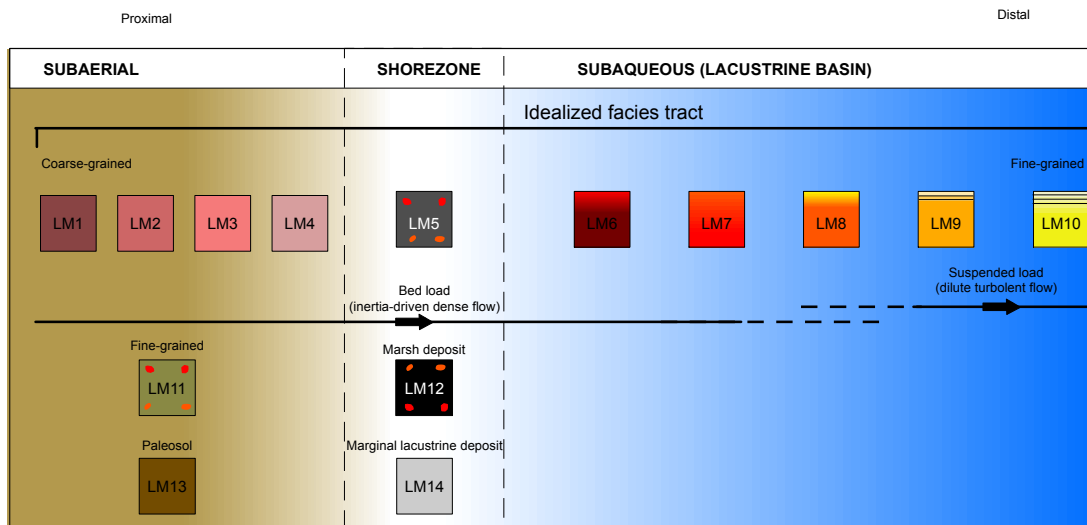


Fig. 4. Figure 4 New



Fig. 5. Figure 5 New

Printer-friendly version

Discussion paper



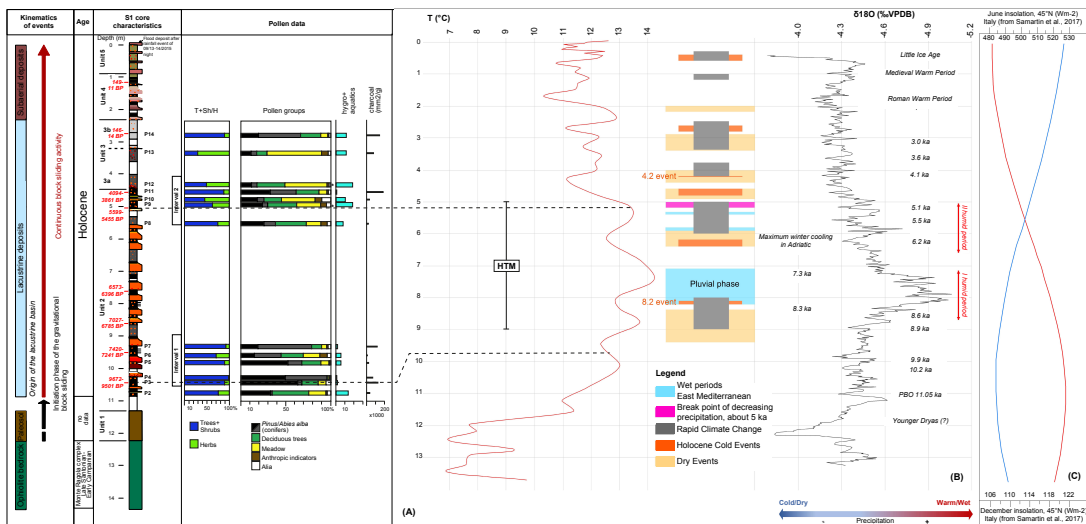


Fig. 7. Figure 7 New

Printer-friendly version

Discussion paper



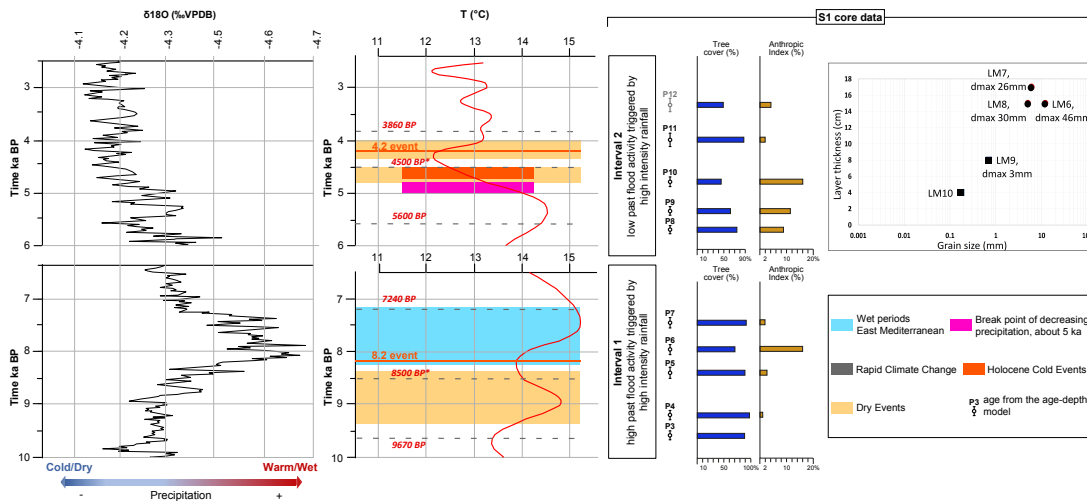


Fig. 8. Figure 10 New

Printer-friendly version

Discussion paper

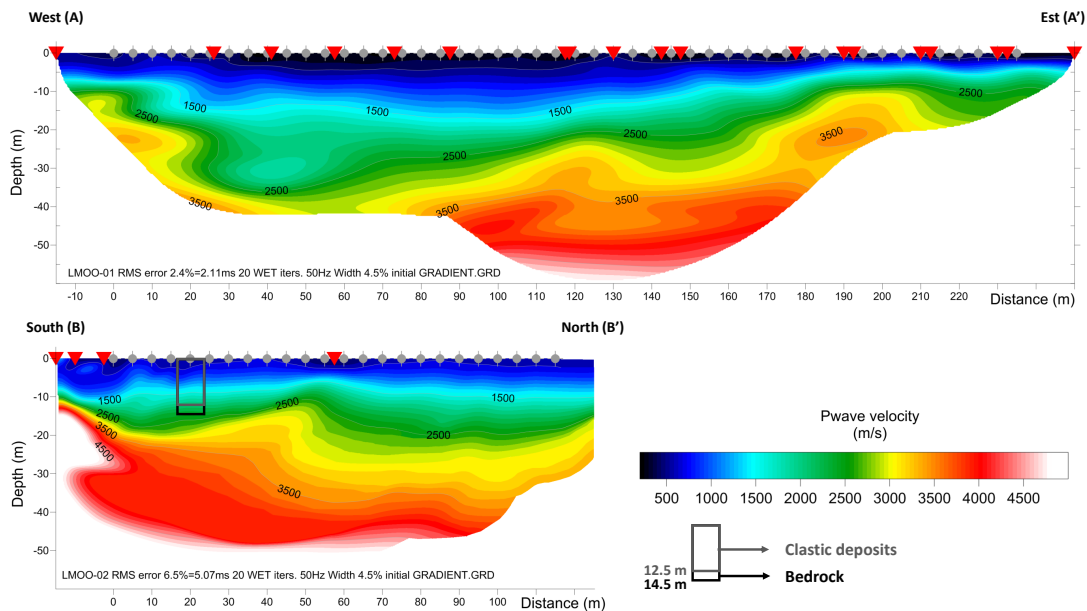


Fig. 9. Figure SUP1 New

Lab. code	Core code	Core depth (cm)	Material	Conventional age (year BP)	Calibrated age BP (± 2 sigma)	Calibrated range BC/AD (± 2 sigma)
LTL17681A	S1	113	Peaty deposit	82±45	149-11	1680AD (29.4%) 1764AD 1801AD (66.0%) 1939AD
LTL18275A	S2	237	Plant fragments (not determinable)	178.69±0.55 pMC	-	after 1950AD
LTL18275A	S3	233-237	Peaty deposit	It was not possible to date, poor presence of organic matter	-	-
LTL18274A	S4	279-281	Plant fragments (not determinable)	80±40	146-14	1681AD (26.5%) 1737AD 1804AD (68.9%) 1936AD
LTL18575A	S5	310-314	Plant fragments (not determinable)	102.12±0.50	-	-
LTL17682A	S6	455	<i>Pinus</i> wood fragments (small twigs)	3659±45	4094-3861	2194BC (2.2%) 2175BC 2144BC (93.2%) 1911BC 3649BC (85.7%) 3505BC 3627BC (83.7%) 3380BC
LTL18273A	S7	500-502	Peaty deposit	4779±45	5599-5455	4683BC (6.0%) 4631BC 4623BC (87.6%) 4446BC 4418BC (1.8%) 4403BC 5205BC (1.1%) 5165BC 5077BC (91.3%) 4835BC
LTL18277A	S8	760	Peaty deposit including small wood fragments (not determinable)	5686±45	6573-6396	5559BC (95.4%) 5373BC 5266BC (6.6%) 5228BC
LTL18278A	S9	860-865	<i>Abies alba</i> wood fragments (small twigs)	6065±45	7027-6785	
LTL18276A	S10	930-933	<i>Abies alba</i> wood fragments (small twigs)	6518±45	7420-7241	
LTL18272A	S12	959	Peaty deposit	159.23±0.48 pMC	-	after 1950AD
LTL17683A	S13	1044	Plant fragments (not determinable)	8600±45	9672-9501	7722BC (95.4%) 7551BC

Fig. 10. Table TS2 New

Printer-friendly version

Discussion paper

