



1 Historical droughts in the Qing dynasty (1644-1911) of China and
2 the role of human interventions

3
4 Kuan-Hui Elaine Lin^{1*}, Pao K. Wang^{2*}, Pi-Ling Pai³, Yu-Shiuan Lin², Chih-Wei Wang²

5
6 ¹Graduate Institute of Environmental Education, National Taiwan Normal University,
7 Taipei, Taiwan

8 ²Research Center for Environmental Changes, Academia Sinica, Taipei, Taiwan

9 ³Research Center for Humanities and Social Sciences, Academia Sinica, Taipei,
10 Taiwan

11 *Corresponding author

12

13 Abstract

14

15 This study presents a new epistemology to analyze drought chronology through a
16 clear-cut methodology for reconstructing past drought series as well as series for other
17 associated ecological and societal variables. Instead of building grading system based
18 on mixed criteria, this method can facilitate transparency in the reconstruction process
19 and can enable statistical examinations of all variables when building the series. The
20 data used is from the REACHES database, however other archival documentary and
21 index data from independent sources are also applied to understand drought narratives
22 and to cross check and validate the analysis derived from the REACHES. From time
23 series analysis, six severe drought periods are identified in the Qing dynasty, and then
24 spatial analysis is performed to demonstrate spatial distribution of drought and other
25 variables in the six periods as well as social network analysis to reveal connections
26 between drought and other ecological and societal variables. Research results clearly
27 illustrate the role of human intervention to influence the impacts of drought on
28 societal consequences. Particularly, the correlation between drought and
29 socioeconomic is not strong; crop failure and famine are important intermediate
30 factors, meanwhile ecological factor such as locust and disaster relief measures are all
31 imperative to intervene between crop production and famine. Implications of the
32 study on drought impact are provided as well as its significance on historical climate
33 reconstruction studies.

34

35 Keywords: drought, documentary records, human intervention, historical climatology,
36 climate reconstruction

37

38



1 1. Introduction
2
3 Global warming is expected to influence the earth's hydrological cycle and put higher
4 stress on water resources. Climate simulations reveal a wide expansion of dry areas
5 over land and an intensification of wet-dry contrast at lower latitudes (Held and Soden,
6 2006; Schewe et al., 2014). The projections of the enlarging wet-dry pattern and
7 amplified drought have been subtly detected in the recent observations. However, less
8 well understood is the interannual or decadal scale changing pattern of regional
9 precipitation and duration and magnitude of drought at fine resolution. Moreover,
10 large uncertainty of hydroclimate projections still resists due to limitation of
11 instrumental meteorological data to assess climate models (Cook et al., 2014;
12 Ljungqvist et al., 2016).
13
14 Drought and flood are two extremes of the hydrological cycle. Both of them can
15 induce severe environmental and socioeconomic consequences. Flood which
16 generally represents sudden onset of excessive water can lead to immediate loss of
17 lives and material damages. The formation of drought, on the contrary, normally
18 refers to a slower and longer water deficiency process that can result in a more
19 chronologically extended range of impacts on agriculture and water scarcity
20 contributing to catastrophic socioeconomic outcomes (Brázdil et al., 2019). Given the
21 intensified drought condition in the future scenarios, there is a necessity to study past
22 drought, especially the severe drought cases to decipher their occurrence, duration,
23 magnitude, and the associated ecological and societal consequences for implications
24 of future adaptation.
25
26 Studying past drought and humidity has been a long practiced subject in historical
27 climatology and paleoclimatology. In the instrumental era, drought can be relatively
28 easier to be defined based on the temperature and precipitation measurements. And
29 the instrumental era can be tracked back to the mid or late 19th century when many
30 national weather services started (Broennimann et al., 2018). Some early instrumental
31 meteorological data might be acquired in some regions dated back to the late 17th or
32 early 18th century. However, prior to the instrumental era, there are primarily two
33 sources of data that can be used to build temporally highly resolved drought series
34 data: tree rings and documented records (Brázdil et al., 2018). Tree rings provide
35 abundant information about moisture, and sometimes temperature, for reconstructing
36 millennial long hydroclimate indices to infer drought. The most well-known work
37 include Old World Drought Atlas using tree ring data calibrated with Palmer Drought
38 Severity Index (PDSI)(Cook et al., 2015), Monsoon Asia Drought Atlas (Cook et al.,



1 2010), and megadroughts over North America (Stahle et al., 2007). Yet, tree ring
2 reconstruction usually suffers from growing seasonality of trees and blurred
3 interpretation of isotopes.
4
5 Documentary records reflect direct human observations of weather condition; it can
6 be less ambiguous when used for reconstructing past climate. And some records can
7 convey as detailed information as daily, monthly or seasonal weather, environmental,
8 phonological, and socioeconomic situations in specific locations, allowing
9 comprehensive analysis on drought events, scales, and contexts (Brázdil et al., 2019;
10 Huang et al., 2019). There are also some critiques about inferring drought from
11 documented records. For example, some argue that drought records are sometimes
12 vague in the content, hard to distinguish if the drought refers to rainfall deficiency,
13 hydrological process or cropping need. Several studies thus purpose four categories
14 of drought: meteorological drought caused by significant reduction of precipitation for
15 weeks or months compared to mean precipitation, agricultural drought associated with
16 lack of water for plant growing for a period lasting from weeks to 6-9 months,
17 hydrological drought characterized by a shortage or absence of water in water courses,
18 reservoirs or aquifers, and socioeconomic drought amplified by negative effect of
19 drought to influence everyday life, social system and stability (Brázdil et al., 2018;
20 Heim, 2002). There exists also a progressive view suggesting drought as a
21 complicated process of water shortage caused and modified by human processes (Van
22 Loon et al., 2016).
23
24 Given the multifaceted nature of drought, reconstruction of past drought in the last
25 millennium still heavily relies on the information that we can retrieve from tree rings
26 and especially from the documentary records. Brazdil et al. (2018) have elaborately
27 outlined a number of various types of documentary evidences that can be used for
28 such an investigation. Notably, all records are qualitative or narrative in the nature;
29 strategies are thus imperative to transform them into inferable numeric drought series.
30 Three-, five- or seven-scaled grading system based on duration and severity of
31 drought is the most commonly practiced method, so that every single quotation of
32 drought record can be given a specific value according to the criteria. And a drought
33 index system can be formed accordingly. However, in reality, the transformation
34 process can be controversial and disputable because a wide spectrum of how different
35 grades should be formed and for what purposes exists (detailed information see
36 (Brázdil et al., 2005; Pfister et al., 1999). In China, a dryness-wetness (sometimes
37 called drought/flood) index has been prevailingly used in recent decades for
38 reconstructing past climate (Hao et al., 2016; Shi et al., 2018; Tan and Liao, 2012; Yi



1 et al., 2012; Zheng et al., 2014). The index was initially built by the Academy of
2 Chinese Meteorological Science (CMA, 1981) and was sequentially expanded by
3 several Chinese scholars (Zhang, 2003)(more details see Hao et al., 2019). Yet, its
4 five-scaled grade system ranging from 1=very wet, 2=wet, 3=normal, 4= dry to
5 5=very dry has been sustained and, importantly, presented plural acknowledge of
6 grade judgment from climatic, ecological and societal phenomena. Below exemplifies
7 some of the criteria and typical descriptions in the archives for the grades (mainly
8 adopted from Yi et al. 2012, and modified from Zheng et al. 2014 and Tan et al.
9 2013).

10

11 Grade 1 (very wet): Prolonged heavy rain (e.g. excessive rain continued over a month
12 in spring or summer), Extensive flood (e.g. heavy rain for several days, land
13 flooded, boating on land), Unusually heavy typhoon rain (e.g. cropland and
14 houses of several counties inundated by typhoon rainfall)

15 Grade 2 (wet): Spring or autumn prolonged rain with moderate damage (e.g.
16 protracted rain in spring or autumn), Local flood (e.g. counties flooded for
17 months, drought in spring but heavy rain in summer)

18 Grade 3 (normal): Favorable weather (e.g. good weather for crops, bumper harvest)

19 Grade 4 (dry): Light drought disaster in single season (e.g. drought in spring or
20 autumn), Local light drought disaster (e.g. short rainfall in summer, drought in
21 other months, drought and locust plague)

22 Grade 5 (very dry): Continued drought for more than one season or for several
23 months (e.g. drought from spring to summer or from summer to autumn, no rain
24 in four months and rivers dried out), Severe drought over extensive area (e.g. a
25 thousand miles of barren land, severe drought throughout south of the Yangtze
26 River lower reach), Famine (e.g. tens of thousands starved to die on the street, ate
27 tree roots or soils)

28

29 The mixed identification of drought grade in China's dryness-wetness index system
30 though likely efficient in evaluating drought severity illustrates a difficulty to identify
31 specific drought categories in the records as mentioned earlier. Lacking explicit
32 explanations to identify if a certain drought event was directly associated with
33 meteorological deficiency of rainfall or had more implications on the agricultural
34 needs can make interpretation of drought records inexplicit or biased. It also prevents
35 from substantive statistical analyses on the examinations of the associations among
36 those different drought categories (each as independent variable) and from building
37 narratives for comprehensively understanding drought contexts and their impacts.
38



1 This study thus aims to propose a new epistemology to analyze drought chronology
2 through a clear-cut methodology for reconstructing past drought series as well as
3 series for other associated ecological and societal variables. Our goal is not to stress
4 on the drought grading method for building chronology and identifying severe events.
5 Contrarily, our objective is to make every drought and associated variables as literally
6 clear and operationally independent as possible. This method can facilitate statistical
7 examinations of the variables and can enable transparency in the reconstruction
8 process for building past drought series. Moreover, we are also able to perform
9 contextual analysis for severe drought events through analyzing the strengths of the
10 relations among variables and to identify their spatial characteristics. More archival
11 data from historical documents are also applied to further explain the narratives of the
12 governmental and societal responses to the severe events. In the following sections,
13 we will briefly introduce the data used for analysis (section 2), methods (section 3),
14 and the analytical results illustrating reconstructed time series of those variables, six
15 severe drought periods and their spatiotemporal patterns and the narratives (section 4).
16 Discussions on the climate-society interactions are provided, as well as limitation and
17 future application of the proposed methodology and the analysis (section 5).

18

19 2. Data

20 2.1 Drought and associated data from REACHES database

21

22 The data source of this study mainly comes from the REACHES database, illustrating
23 a wealth of Chinese historical documents in the dynasties of the last two millennia
24 (Wang et al., 2018). In the total of the 93,415 records (database version
25 VOL34-V3.1-04-E2) of the Qing dynasty (1644-1911 CE), the last dynasty of China,
26 we used the database code system to systematically retrieve drought and other
27 associated records including locust, famine, crop failure (presenting agriculture
28 drought), and socioeconomic turmoil (along with famine presenting socioeconomic
29 drought in the categories). Locust is traditionally viewed as an important ecological
30 indicator, closely related to drought and famine since detailing locusts could consume
31 great quantities of crops resulting in cannibalism (Huang et al., 2019). However,
32 statistical examinations of it and drought are not adequate.

33

34 REACHES has a sophisticated code system to completely encode as much
35 information as conveyed in the vocabularies of the historical records. In the 9-digits
36 code series, first 2 digits describe main category, 2 following digits describe
37 subcategory, 3 subsequent digits depict vocabularies, and the last 2 digits are designed
38 for magnitude and time information. For example, a code series like 300130156 can



1 be deciphered as follows: the first 30 illustrate the quotation belonging to the drought
2 category, the following 01 reveal its subcategory as drought (others like watercourse
3 dried out as 11), the remaining digits 301 indicates its vocabulary as major drought
4 (亢旱, *Kang Hang*), and the last two digits denote magnitude and time-duration
5 information. In this case, 5 means the magnitude as heavy and multiple times and 6
6 means the duration between 60 and 90 days.

7
8 As for mentioned, drought is encoded as a category with code digit 30 under hazard
9 domain in the REACHES database. Famine is also a category under hazard domain
10 with code 35. Locust is a subcategory (code 01) under pest/vermin category (code 32),
11 thus the complete code to retrieve locust records is 3201. Crop is a category (code 33)
12 under hazard domain but the category comprises various degrees of harvest conditions
13 and species. Thus we had to use vocabulary tracking codes to retrieve those codes
14 ranging from 100 to 499. Socioeconomic turmoil is a category with code 71, and we
15 specifically retrieved the most relevant subcategories including
16 immigration/displacement (code 03, total retrieval code as 7103), battle/war (code 05),
17 impoverishment (09), death/severe hurt (code 10), human trafficking (code 12), and
18 abandoned settlements (code 16). Notably, Chinese writing sometimes uses negative
19 tense to describe absence of some phenomenon which should take place around the
20 time, such as no drought (無旱, *Wu Hang*). In this case, it would be encoded under
21 drought category with magnitude code 8 denoting no happening. Since no drought
22 should not be taken into drought variable in this study of question, we have carefully
23 dealt with all those records with magnitude code 8 for all variables and removed them
24 from the data sets.

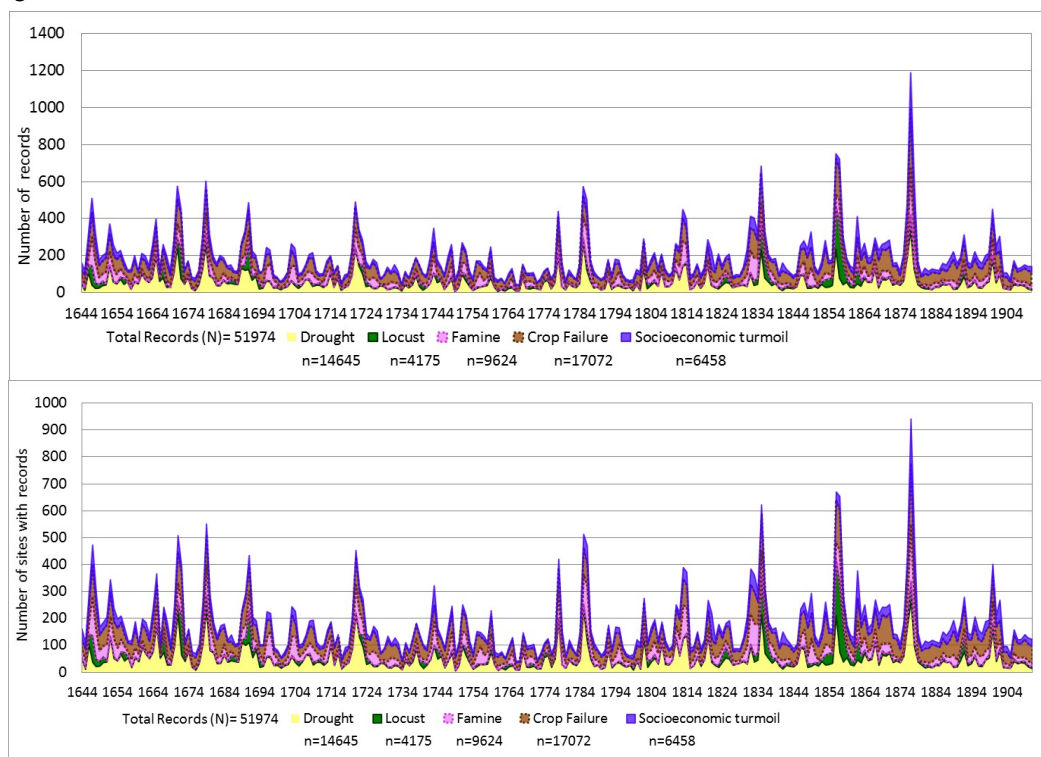
25
26 Finally, and importantly, all records of the REACHES are from the Compendium of
27 Chinese Meteorological Records of the Last 3,000 Years (Zhang, 2013), which means
28 that only records that have direct (or indirect) implications or linkages with
29 meteorological phenomena would be collected in the compendium. It points out that
30 care should be extraordinarily taken when using and analyzing the socioeconomic
31 variables in the REACHES since the potentially biased sampling. Other sources of
32 relevant socioeconomic data are strongly recommended to cross check and validate
33 the analysis.

34
35 In total, we retrieved 51,974 records from the REACHES database (version
36 VOL34-V3.1-04-E2). Figure 1a shows time evolution of records for the drought,
37 locust, famine, crop failure and socioeconomic turmoil variables, and 1b shows
38 number of sites (i.e. counties, cities and prefectures, in REACHES total n of



1 sites=1,660) that have the corresponding records of the year. The two diagrams are
2 almost identical showing good consistency and the records likely evenly distributed
3 over the sites. Notably, all data derived from the REACHES database and pertinent to
4 this study will be deposited at a repository (DOI assigned later).

5



6

7 Figure 1 Statistics of drought and associated records from the REACHES database. 1a
8 (upper panel) shows number of records per year; 1b (lower panel) shows number of
9 sites (counties, cities or prefectures) that have records of the year. Thus one site may
10 have more than one record of the year.

11

12 2.2 Other archival and index data

13

14 To comprehensively compare and analyze drought and associated data series from the
15 REACHES with other socioeconomic variables from independent data sources,
16 several archival and index data were also collected for analysis. The archival data
17 include Draft History of the Qing Dynasty (清史稿, *Qingshi Gao*), Actual Veritable
18 Records of Emperors of the Qing Dynasty (清實錄, *Qing Shilu*), Gazetteers of
19 Xunzhou Prefecture (Tongzhi reign edition) ([同治]潯州府志, [*Tong Zhi*] *Xun Zhou*



1 *Fu Zhi*), Gazetteers of Gui County (Guangxu reign edition) ([光緒]貴縣志, [*Guang*
2 *Xu*] *Gui Xian Zhi*), Gazetteers of Pingnan County (Guangxu reign edition) ([光緒]
3 平南縣志, [*Guang Xu*] *Ping Nan Xian Zhi*), and Gazetteers of Yongchun County
4 (Chinese Republican Period edition) ([民國]永淳縣志, [Min Guo] *Yong Chun Xian*
5 *Zhi*). These documents have recorded meticulously social, economic and institutional
6 events of the times. Local gazetteers particularly recorded detailed information about
7 social unrests such as the massive rebellion, Taiping Civil War (太平天國 [Tai Ping
8 Tien Guo]), in the mid 19th century.

9
10 Additionally, we also collected grain price, civil war and population indices for
11 further analysis. Grain price data (1738-1911) was gained from Qing Dynasty Grain
12 Price Database, based on monthly grain price reports preserved at the First Historical
13 Archives of China in Beijing and the National Palace Museum in Taipei, edited by
14 Yeh-Chien Wang, Academia Sinica (Wang, 2009). Civil war data reveals frequency
15 of civil wars in the Qing Dynasty, acquired from Chronology of China's Ancient
16 Wars (Chinese military history writing group, 1985). And population data comprises
17 several different sources. Provincial population statistics 1661-1776 CE are from
18 Encyclopedia of Official Documents of the Qing Dynasty (清朝文獻通考, *Qingchao*
19 *Wenxian Tongkao*). Provincial population statistics 1780-1890 are from Annual
20 Registers of Quantities of Provincial Population and Grain Storage by the Ministry of
21 Revenue (戶部匯奏各省民數穀數清冊, Gesheng Minshu Gushu Qingce) and from
22 The History of Population in China, Vol. 5 Qing Period (中國人口史第五卷清時期,
23 *Zhongguo Renkoushi Diwujuan Qingshiqi*)(Cao, 2001).

24

25 3. Methods

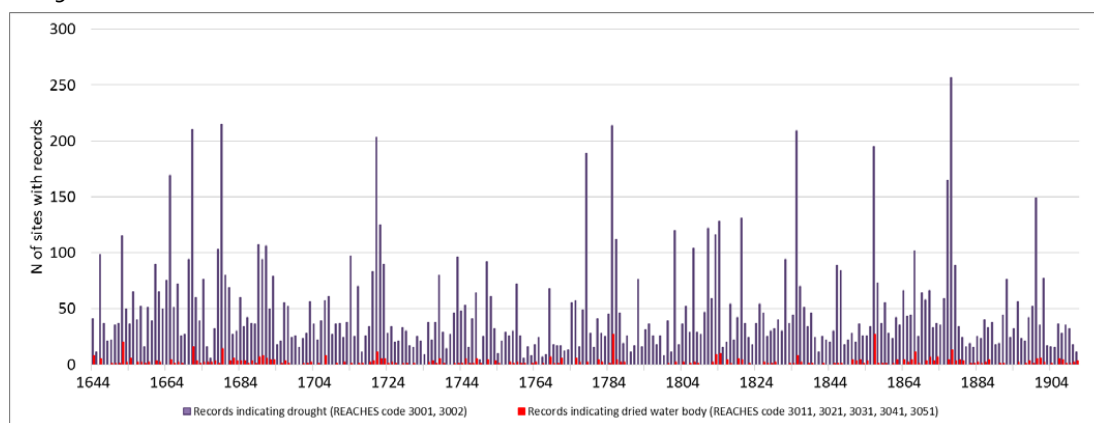
26 3. Time series and cross checking of the variables

27

28 We used the retrieved records to build several time series for different variables and
29 performed tests to cross check reliability and robustness of the drought data. First of
30 all, we gave strict definitions for drought variable. In our analysis, drought variable
31 only contains records with the Chinese vocabularies of drought (e.g. 天旱 *Tien Han*、
32 亢旱 *Kang Han*、苦旱 *Ku Han*)(category code 3001), enduring scorching sun, sultry
33 weather (e.g. 恆陽 *Heng Yang*、恒暘 *Heng Yang*) (code 3002), and dried out of
34 different types of water body including dried watercourses (e.g. 水竭 *Shuei Jyue*,
35 code 3011), dried tide/sea water, (e.g. 潮水涸 *Chao Shuei He*, code 3021), dried
36 lake/pond (e.g. 湖涸 *Hu He*, code 3031), dried underground water (e.g. 無泉 *Wu*
37 *Cyuan*, code 3041) and dried river/creek (e.g. 河水絕 *He Shuei Jyue*, code 3051).
38 And we further separated the drought variable into two groups; one group that only

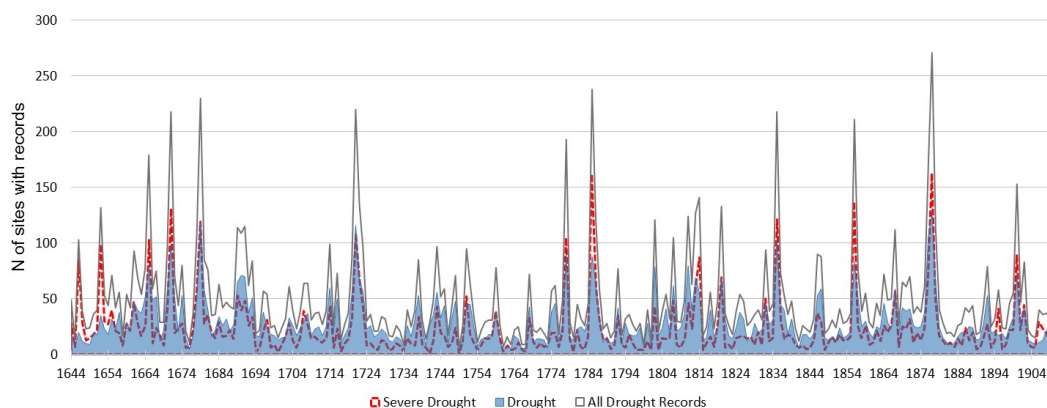


1 considers pure drought vocabularies (code 3001 and 3002) is interpreted as
2 meteorological drought, and the other that stresses dried water body (code 3011-3051)
3 is interpreted as hydrological drought. Figure 2 shows the comparison of the time
4 series. It is found that the occurrence of higher number of hydrological drought
5 records mostly appears in the years having more meteorological drought records.
6 Correlation coefficient of the two is 0.67, and the coefficient increases to 0.77 when
7 only severe drought (will be explained later) is considered rather than the drought
8 records.



10 Figure 2 Comparison of drought records that indicate pure drought vocabularies
11 (interpreted as meteorological drought) and dried water body (interpreted as
12 hydrological drought).

13
14 To further investigate distributions of different drought types, we purposively
15 distinguished drought and severe drought. The criteria are also based on the Chinese
16 vocabulary attribution and the duration described in the records. Nominally, severe
17 drought reflects Chinese vocabularies indicating extreme/severe drought (magnitude
18 code 2 and 5) or the event last for more than two months (time-duration code 6 and 7,
19 and we also used starting and ending date information to identify the length of every
20 event). In contrast to severe drought, drought reflects those plainly described in the
21 records with magnitude information falling into uncertain magnitude or light or the
22 duration less than two months. Figure 3 shows the time series and it is obvious that
23 severe drought and drought series have good consistency and match very well
24 especially for the peak years of the drought events. Remarkably, those peak drought
25 years mostly appeared in the mid to late 17th century and after late 18th century.



1 Figure 3 Time evolution of severe drought, drought, and all drought records in the
2 REACHES.

3.2 Spatial analysis of Kernel density estimation

3
4
5
6 The integral information of when and where the records were recorded can assist
7 comprehensive spatial analysis to analyze spatiotemporal patterns. To perform the
8 analysis, statistics of the records were converted into site-based data format, and there
9 are in total 1,660 sites representing cities, counties, or prefectures in the REACHES
10 database. Every site was calculated number of certain records per year and the number
11 was then summed according to the time period defined for the analysis. For example,
12 in the 1720-1740 severe drought, Paoshan of Shanghai City had three drought records
13 separately occurred in the years of 1720, 1723 and 1724. Then the frequency for the
14 period of Paoshan would be three. We then used ArcGIS (version 10.4) to relate the
15 data into the maps and implemented Kernel density function to conduct spatial
16 analysis.

17
18 Kernel density estimation is a non-parametric method to estimate the probability
19 density function of a random variable. In ArcGIS it is often used to calculate density
20 of point features around each raster cell depending on the geographic distance and
21 value of certain features. Namely, every cell value is the highest at the location of the
22 point features and diminishes with increasing distance from the point and reaches zero
23 at the search radius distance, called bandwidth, from the point. On very data point, a
24 Kernel function K can be expressed as below:

$$\hat{f}(x, y) = \frac{1}{nh^2} \sum_{i=1}^n K\left(\frac{d_i(x, y)}{h}\right)$$

26
27 Where $\hat{f}(x, y)$ is the estimated density value at location (x, y) , n is the value of the
28 point under concern (for example in the case, n is the number of drought records



1 during the period), h is a measure of bandwidth (for a circular Kernel it is the radius
2 of the circle), $d_i(x, y)$ is the distance between event point i and location (x, y) , and
3 K is a density function characterizing how the contribution of point i varies as a
4 function of $d_i(x, y)$.
5
6 Thus, the method estimates a smoothly curved Kernel surface fitted over each point
7 depending on the point value and values of its neighboring points within desired
8 bandwidth. The choice of bandwidth is therefore important since larger bandwidth
9 would result in more smoothed surface by considering point value of larger distance.
10 In the environment of ArcGIS, the Kernel density estimation is based on the quadratic
11 (biweight) Kernel function (Silverman, 1986).

12

13 3.3 Social network analysis

14

15 To explore statistical characteristics of the relations between every variable and other
16 associated variables, we used social network analysis to discover the underlying
17 relations of all variables. Social network is a statistical method widely applied in
18 sociology to explore how different agents are connected with each other so as to
19 decide their distinctive network types and to analyze if and how various types of
20 networks would influence individual behaviors and performances (Lin, 1999; Scott,
21 2017). In this study, we treated each variable as an independent agent and then
22 calculated their statistical relations.

23

24 Generally, social network analysis adopts a pairwise approach to calculate relations
25 between variables (e.g. if agent A is linked with agent B). Thus, to implement the
26 analysis, data transformation is needed to display and inventory events (with specific
27 codes) under every single record. For example, a record says that 'in 1833, Quang
28 Ling county of Shanxi Province, [the year] started in misery of drought, then
29 inundated in rainfall, later damaged in frost, rice price up to thousands of dollars per
30 dou (tradition unit, equivalently 10 kilograms modern unit), none of previous price in
31 the last decades have reached the highest' (1832 年。山西省廣靈縣。始苦於旱，繼
32 潦於雨，終隕於霜，斗米千錢，數十年來未有如是之極也)(record ID 2945-25). For
33 this specific record, since detailed time information is missing for every
34 meteorological event, the events would be decomposed and then displayed in a way
35 that drought linked with rainfall, drought linked with frost, drought linked with rice
36 price, rainfall linked with rice price, frost linked with rice price and so on to further
37 calculate their pairwise coefficients. When all events of every record have been
38 decomposed and restructured following the algorithm, then the analysis could be



1 performed to estimate the magnitude of every event (i.e. variable) and to calculate the
2 strength of connections among those variables during certain time period. The
3 function of edge list was applied to perform this analysis under Gephi software.

4

5 4. Results

6 4.1 Chronologies of drought and multiple variables

7

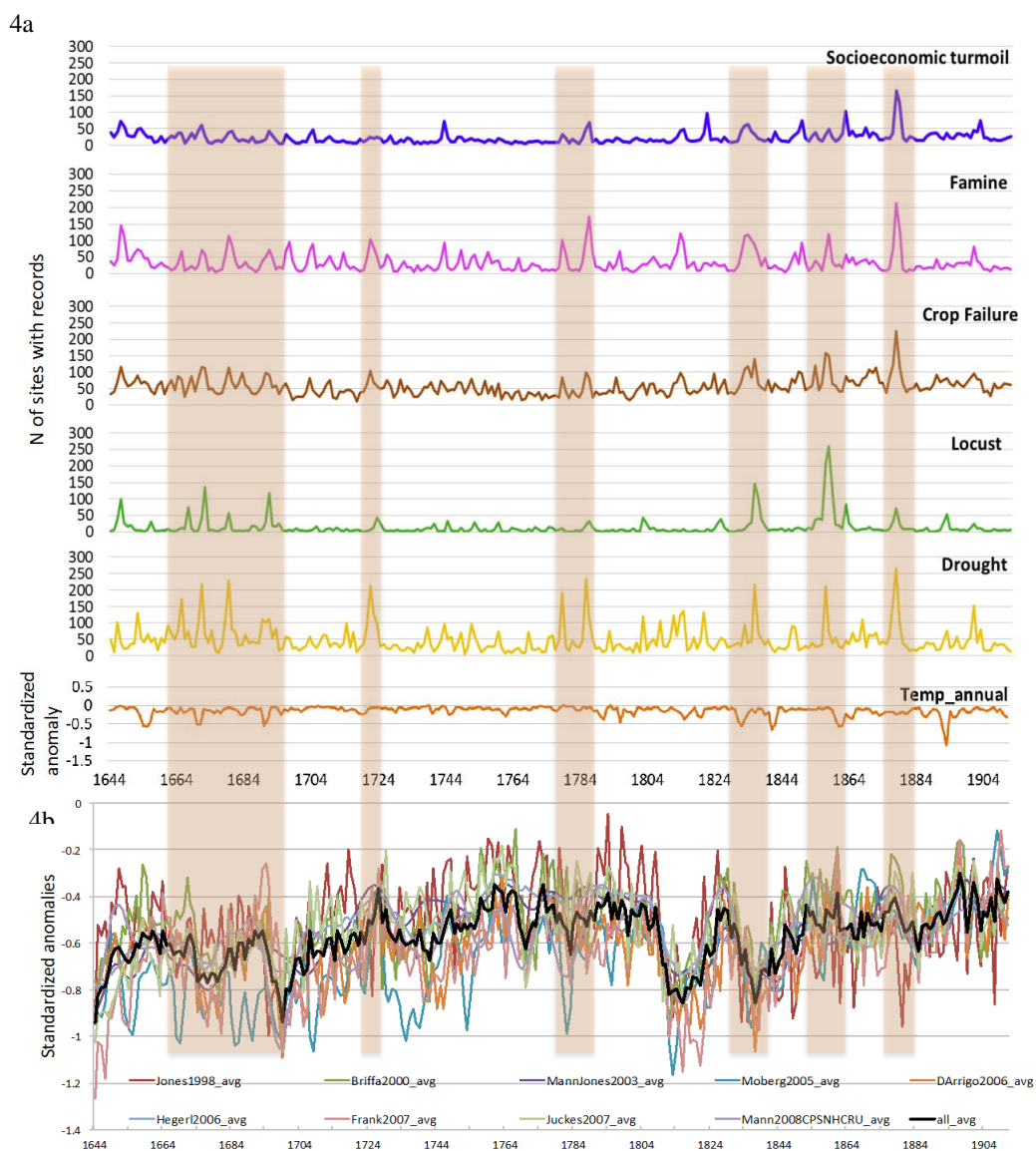
8 Figure 4a shows annual time series of all variables reconstructed from the REACHES
9 database. It is obvious that while all variables have their natural fluctuations over the
10 time period between 1644 and 1911, there are some observable multidecadal or
11 centennial trend during the period. Mid to late 17th century and late 18th into 19th
12 century present higher anomalies than the early half of the 18th century. The trend is
13 particularly remarkable for drought and locust variables. Although not so strong in
14 signal, similar trend can also be observed for crop failure, famine and socioeconomic
15 turmoil variables. If taken drought variable as a major concern, there is only one spike
16 around 1720 in the earlier half of the 18th century and some increasing frequency
17 around 1730-1750. To further understand the multidecadal and centennial trend, the
18 series were compared with two temperature series, one reconstructed from REACHES
19 (Lin et al., 2019) and the other North Hemisphere ensemble temperature from Frank
20 et al. (2010) (Figure 4b). It is intriguingly found that higher frequency of drought and
21 associated variables coincidentally appeared with lower temperature anomalies in the
22 17th century and after late 18th century. The two studies both show similar temperature
23 anomaly trend in this time scale.

24

25 Figure 4a also indicates synchronization of high frequency events (peak numbers of
26 variables, shaded in light brown color) appeared in the same time periods. We
27 further conducted 9-years running variance for the time series. Figure 5 explicitly
28 indicates significant overlay of the variables in several identifiable periods:
29 1660-1680, 1714-1724, 1770-1790, 1830s, 1850s, 1870s. It is notified that the
30 intensities of drought in these six periods are all significant, however, other variables
31 like locust, famine, crop failure and socioeconomic turmoil displayed heterogeneity
32 over the periods. Locust plague was more significant in the 1660-1680 and 1830s and
33 then reached a peak in the 1850s. Famine, while presenting increases in the 1600s,
34 was relatively more significant in the 1770-1790 and 1800s and doubled in the 1870s.
35 Socioeconomic turmoil presented a trend with sporadic increases in the early and mid
36 Qing dynasty and a dramatic propagation in the late 1800s. Table 1 shows correlation
37 coefficients among all those variables. Clearly, drought is highly correlated with crop
38 failure and famine, and is less correlated with locust and socioeconomic turmoil.



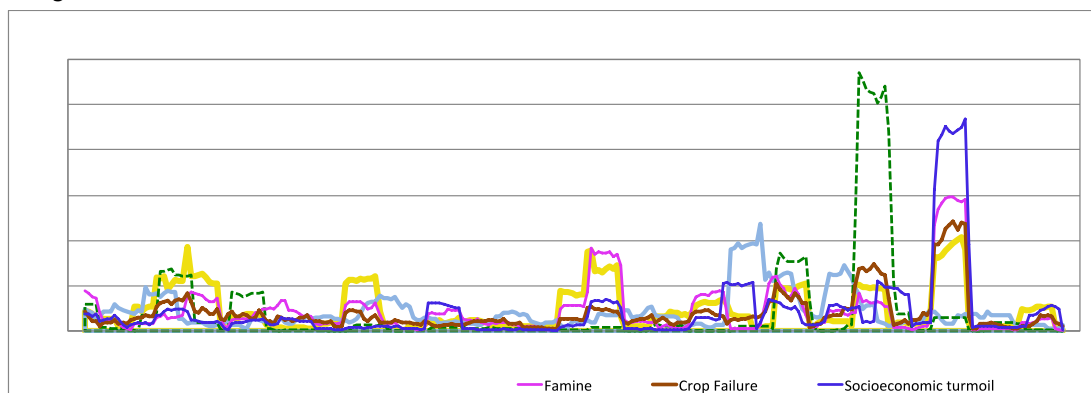
- 1 Locust is more related with crop failure. And socioeconomic turmoil is highly
- 2 correlated with crop failure and famine. Crop failure is highly correlated with famine.
- 3 This likely indicates that while drought can have a significant impact on crop failure
- 4 and famine, its direct correlations with social turmoil and locust can be less evident.
- 5 More analysis on the narratives of the severe drought events and the impacts is thus
- 6 necessary.



7



1 Figure 4 Time series of multiple variables. 4a shows series of the variables
 2 reconstructed from the REACHES. Temp_annual denotes annual temperature
 3 anomalies reconstructed in Eastern China. 4b shows ensemble North Hemisphere
 4 temperature anomalies from Frank et al. 2010.
 5



6 Figure 5 The 9-Years running variance for the multiple variables of the REACHES.

7

8 Table 1 Correlation coefficients of REACHES multiple variables

	Drought	Locust	Socioeconomic turmoil	Crop Failure	Famine
Drought	1.000				
Locust	0.375	1.000			
Socioeconomic turmoil	0.442	0.287	1.000		
Crop Failure	0.626	0.511	0.685	1.000	
Famine	0.618	0.379	0.718	0.675	1.000

9 *All coefficients have P-value <0.001. High correlation coefficients are shaded with
 10 dark gray and medium correlation coefficients are shaded with light gray.

11

12 4.2 Six severe drought periods and spatial patterns

13

14 According to the previous analysis, we identified six severe drought periods as
 15 follows: 1665-1691, 1720-1740, 1770-1790, 1830-1850, 1850-1870, and 1870-1890.

16 Notably, those severe drought periods are defined primarily based on the drought
 17 frequency and severity, but the temporal definitions for every period are slightly
 18 modified according to the supporting narratives that we collected from other archival
 19 documents (will be explained later). For example, during 1720-1740, the severe
 20 drought mainly occurred around 1720 but we extended the period till 1740 due to



1 continuous drought in the 1730s and 1740s and their socioeconomic effects were
2 closely linked. For three severe drought periods in the 1800s, one may argue that three
3 periods can be viewed as an enduring mega drought from 1830 to 1890. This view can
4 be acceptable, however we separated them because three peaks in every two decades
5 can be clearly identified and the spatial patterns as well as social contexts of them are
6 heterogeneous.

7
8 For the spatial patterns (Figure 6), severe drought in the late 1600s had the most
9 intensive and widest spread condition over the whole eastern China, from north of
10 Hebei Province down to Guangdong Province. Drought especially clustered in the
11 Yellow River plain and lower and middle reaches of the Yangtze River plain. In the
12 meantime, severe locust plague extensively invaded in these regions where crop
13 failure and famine coincidentally happened. Socioeconomic turmoil occurred
14 countrywide but had higher frequency agglomerating in the low reach of Yangtze
15 River into Huai River.

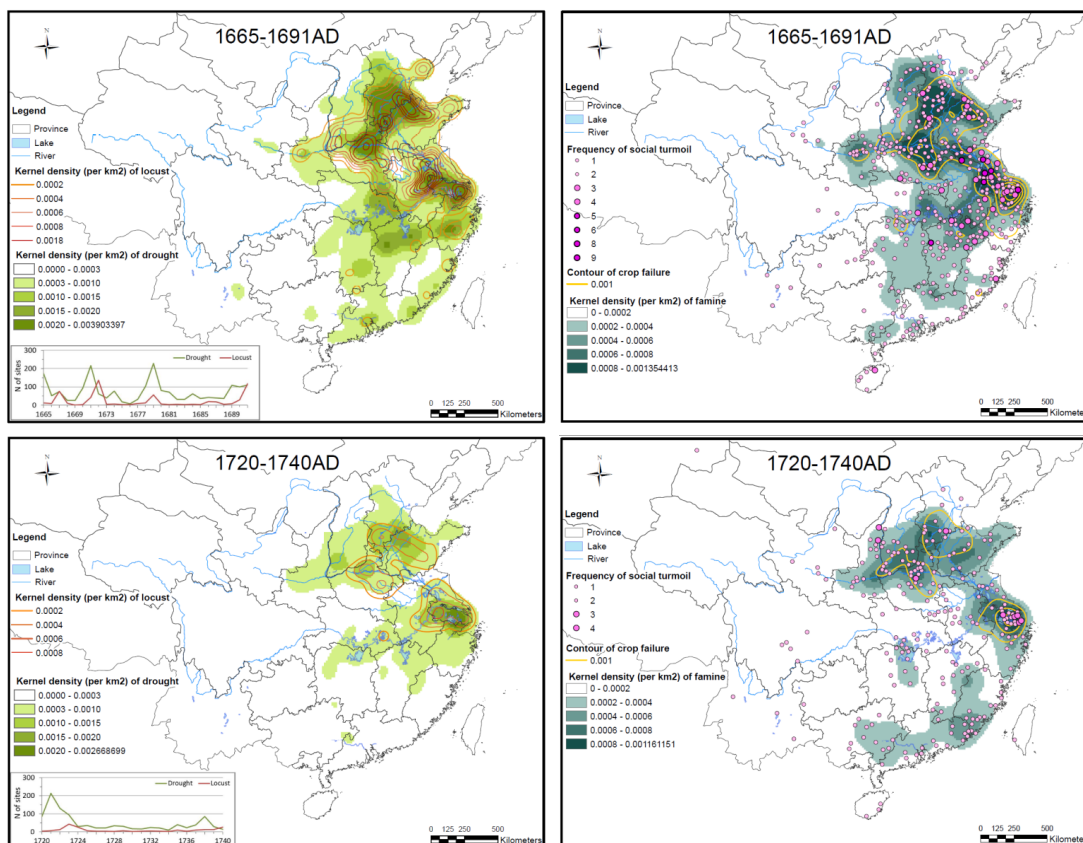
16
17 The 1720-1740 drought was relatively much lighter than the 1600s one, mainly
18 focusing on the lower reaches of the Yellow River and Yangtze River plains. From
19 density distribution, drought in the lower reach of Yangtze River plain was more
20 intensive than in the Yellow River plain, and so were locust plague, famine and
21 socioeconomic turmoil. However, interpretation of the spatial pattern at regional and
22 local scales should be very careful, because distribution of record is subject to the
23 nature that the phenomena must be recorded by some persons in certain places. Thus
24 places have higher population density such as big cities or capitals can have an
25 amplified effect in recording than other villages or remote areas. Therefore, within
26 regional scale, it might not be proper to interpret that drought in lower reach of
27 Yangtze River plain (where Shanghai, Suzhou, and Hangzhou are located) was
28 definitely severer than in the neighboring counties due to this amplification effect.
29 However, for regional comparison, the spatial distribution can undoubtedly reveal
30 overall density pattern across eastern China.

31
32 The 1770-1790 drought also presented a prevailing pattern but with less severity,
33 spreading from Yellow River plain to Guangdong Province. Other variables such as
34 locust plague and famine were also widely distributed but intriguingly crop failure
35 was not as significant as others. Socioeconomic turmoil still sporadically appeared
36 and with a tendency to occur more frequently in the south, central-west, and north
37 parts of China. The 1830-1850 drought also manifested a big area distributing mainly
38 in the Yellow River and Yangtze River plains, with a small area in the south of

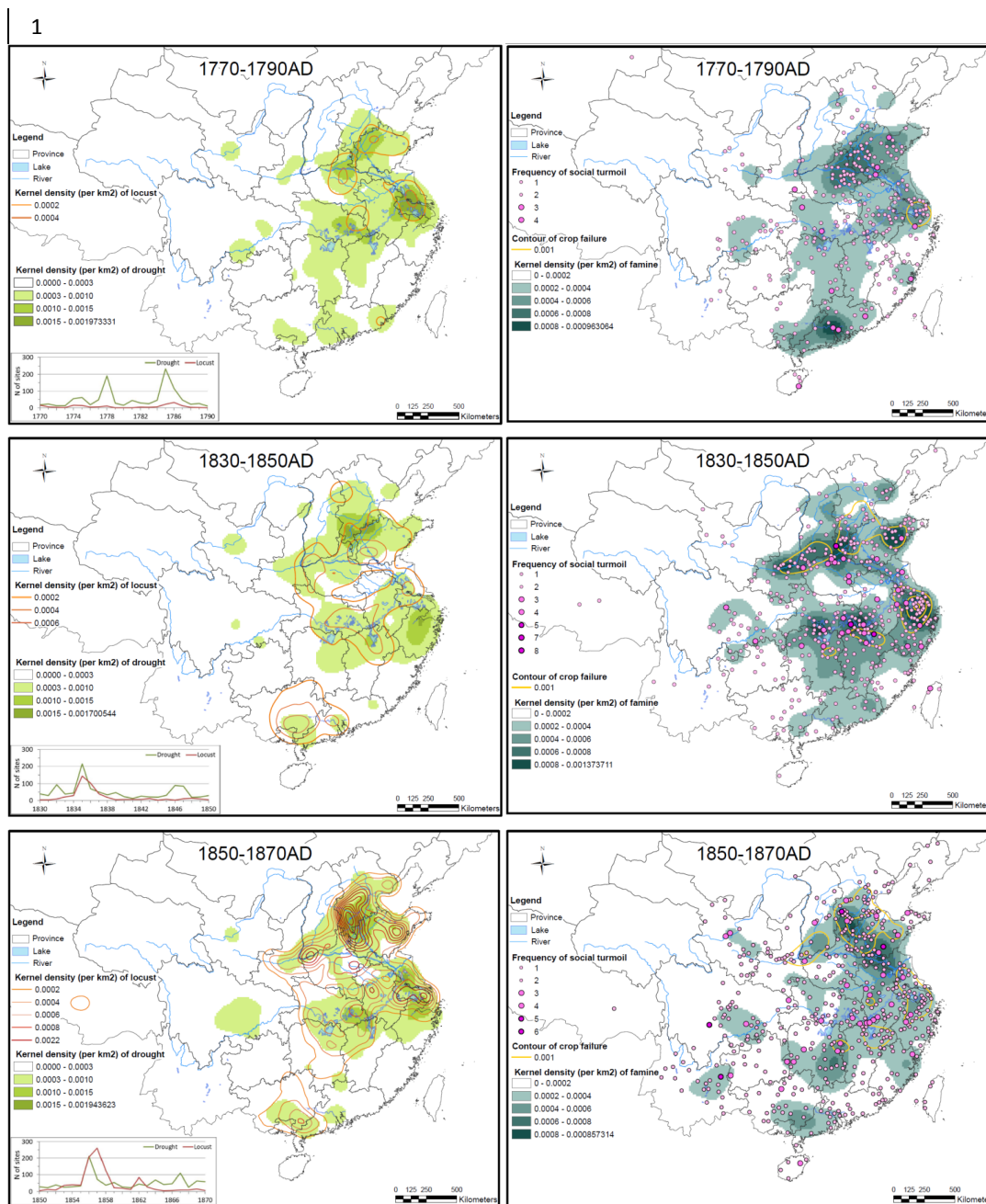


1 Guangdong and Guandxi Provinces. The most noted phenomenon of the period was
 2 the wide invasion of locust plague and famine that spread deeply into the central-west
 3 (e.g. Sichuan Province). Socioeconomic turmoil also developed substantively along
 4 the Yangtze River plain into its middle reach. Locust plague deteriorated and reached
 5 its peak in the 1850-1870 during which severe famine continued and socioeconomic
 6 turmoil spread across the whole country. In the 1870-1890 drought, lower
 7 mid-latitude seemed to have relieved from severe drought where famine and crop
 8 failure along with drought mostly appeared in the Yellow River plain, Yangtze River
 9 delta, Sichuan Province. Socioeconomic turmoil clustered also in the Yellow River
 10 plain.

6a 11



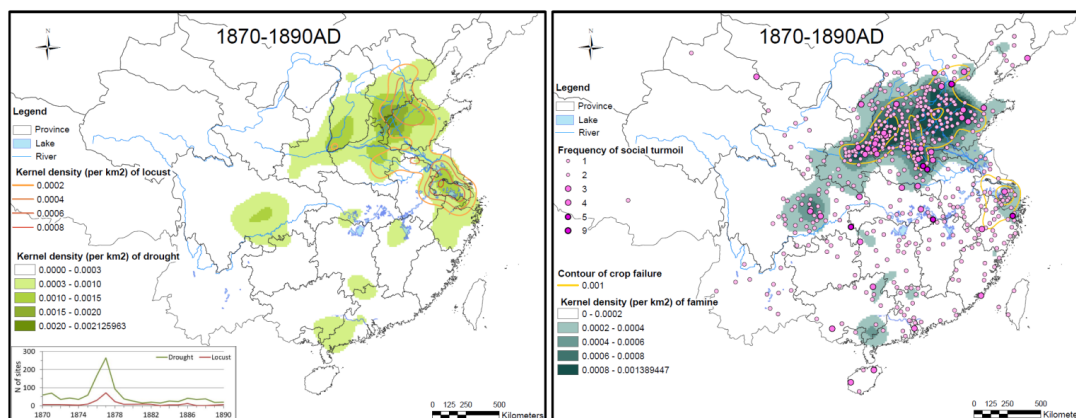
33
 34
 35
 36
 37



2
 3
 4
 5
 6



1



6b

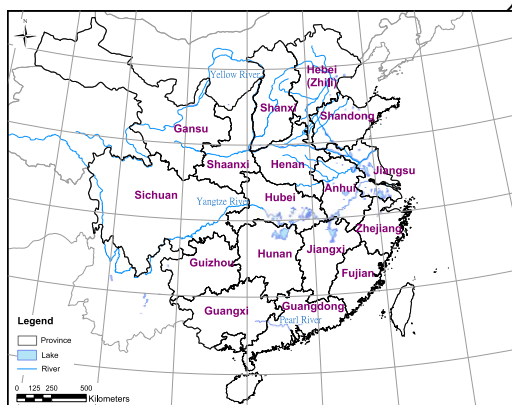


Figure 6 Kernel density distributions of drought & locust (6a left panels) and famine, crop failure, and social turmoil (6b right panels) records in the six severe drought periods. 6b shows provincial boundaries and names. Using Esri World latitude and longitude grids dataset and the provincial and city/county boundary and river shapfiles are from China

13

14 National Bureau of Mapping and Surveying, Digital Map Database of China, Beijing,
15 China, 1990.

16

17 4.3 Narratives of the six severe drought periods

18

19 To further investigate how drought was associated with locust, food production and
20 social responses, we built up narratives of the six periods to reveal their contexts and
21 important factors. The content of the narratives were from the archival documents
22 mentioned in the data section. Since those are from independent sources, the built
23 narratives can also be viewed as good material to cross check and validate the
24 REACHES reconstructed series and analysis.

25

26 The first three of the six severe drought periods occurred during the golden era
27 (1683-1839 CE) of the Qing dynasty, which represented the most prosperous era of
28 the dynasty under ruling emperors of *Kang Xi*, *Yong Zheng*, and *Qian Long*



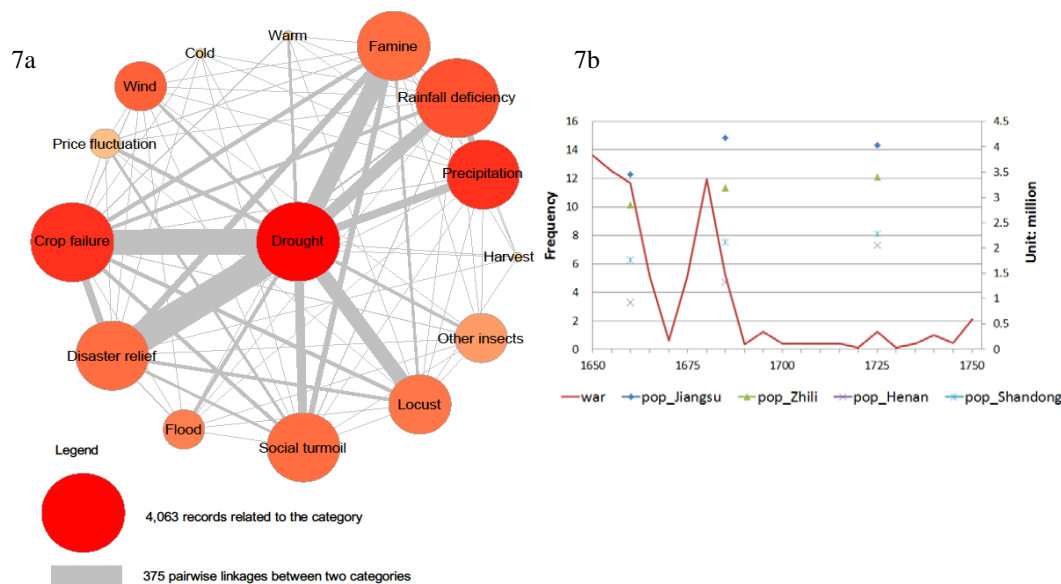
1 sequentially. In the era, the society experienced fast population growth and
2 stabilization of social order for the first time in the decades after numerous wars and
3 battles in the dynastical transition from Ming to Qing in the 1644. Meanwhile,
4 centralization of monarch power was greatly strengthened and governmental policies
5 including disaster relief such as grain dispatching, tax exemption and procedures for
6 locust mitigation were effectively implemented. By the end of the golden era,
7 however, unfortunately the succeeding emperors were not as capable and the country
8 also faced grand challenges of western force invasion especially after the first Opium
9 War (1840-1842) when Qing was then forced to sign an unequal treaty with the
10 United Kingdom. Prevailing civil rebellions blossomed across the country and the
11 dynasty collapsed in the early 20th century.

12

13 4.3.1 1665-1691 drought (Emperor *Kang Xi* reign)

14

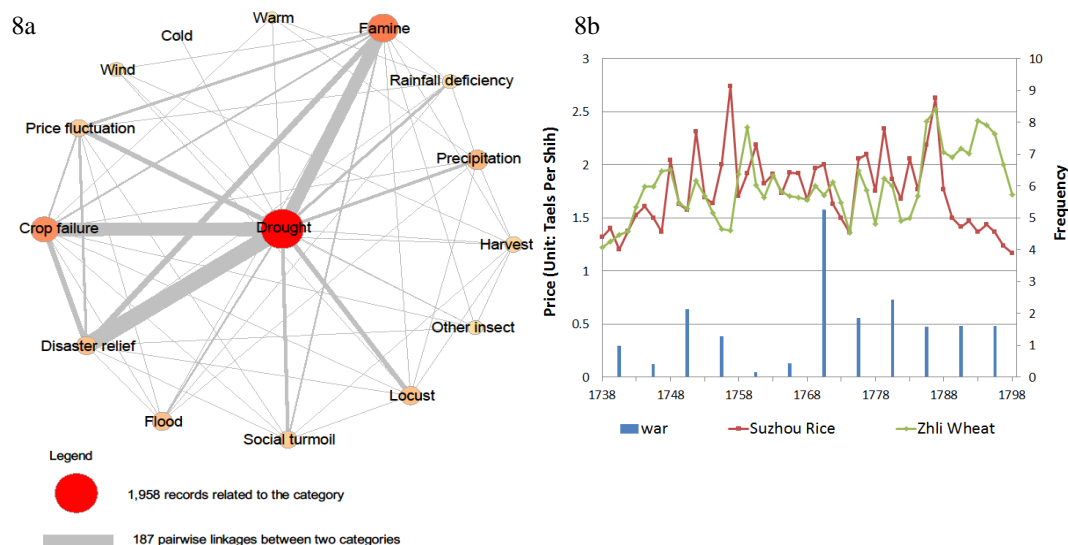
15 After the wars of the Ming-Qing transition, population continued to reduce in the
16 decades. Frequent civil wars still occurred in the 1670-1680 and 1690 (Figure 7). Qing
17 governments had to put great efforts to conquer various local revolts especially in the
18 south and northwest of China, such as suppressing the revolts of the Three
19 Feudatories and Chakhar Mongols. When severe drought and locust plagues occurred
20 from 1670 to 1672, areas around Zhili (previous name of Hebei), Shandon, Henan,
21 Anhui and Jiangsu were seriously affected. Amplified droughts and locust plagues
22 appeared again in the 1679, and 1689-1691, expanding to wider regions including
23 Hubei and Shanxi. Although droughts and locust plagues caused poor harvest and
24 famine from time to time and could be associated with socioeconomic turmoil, the
25 severity seemed not to cause significant population decline and social impacts. As
26 shown in Figure 7b, population grew slowly during this period. And Figure 7a also
27 shows that while the circle of socioeconomic turmoil is large, the connections
28 between it and drought or famine or crop failure is not such strong. This might
29 indicate that socioeconomic turmoil of the time could be linked to other social
30 processes. In fact, in the reign of the Emperor *Kang Xi*, governmental policies for
31 disaster relief, such as food supply, stabilizing grain price and tax exemption were
32 accurately implemented including a notified command to catch locusts for preventing
33 from enhanced crop damage. Therefore, while having severe natural disasters,
34 documents showed that governmental effectiveness seemed to contribute to mitigating
35 further damages and avoiding people from displacement and amplified social unrests.



1
2 Figure 7 The 1665-1691 drought network analysis and socioeconomic context. 7a
3 shows network analysis for variables retrieved from REACHES database. The size of
4 circle represents the number of records in a category. The thickness of the line
5 connecting two different circles represents how frequent they are mentioned together
6 in the records. Social turmoil is shortened term for socioeconomic turmoil. 7b shows
7 population and war frequency in 1650-1750.
8
9 4.3.2 1720-1740 drought (Late *Kang Xi* to *Yong Zheng* and early *Qian Long* reign)
10
11 In the late years of the *Kang Xi* reign, population continued to grow and land prices
12 also increased. This had resulted in the increasing cost of the agricultural products and
13 the gaps between rich and poor also substantially widened. In the meantime, drought
14 and occasional locust plagues happened and significantly affected agricultural
15 production. In 1723, drought and locust plagues occurred in Shandon, Anhui and
16 Jiangsu, which was probably related to the continuation of the 1721 drought. Regional
17 drought and locust plagues still had a certain influence on the affected areas.
18 According to the 1725 population record, Shandong's population grew slowly at this
19 time, and the population of Jiangsu showed a downward (Figure 8). After that, famine
20 appeared in the north of the Huai River around 1738 lasting for several years, which
21 was also related to drought. During this period, socioeconomic turmoil was only
22 sporadic, individual, and small in scale (Figure 8), and was easy to suppress. Besides,
23 governmental policies on disaster relief remained effective, including porridge



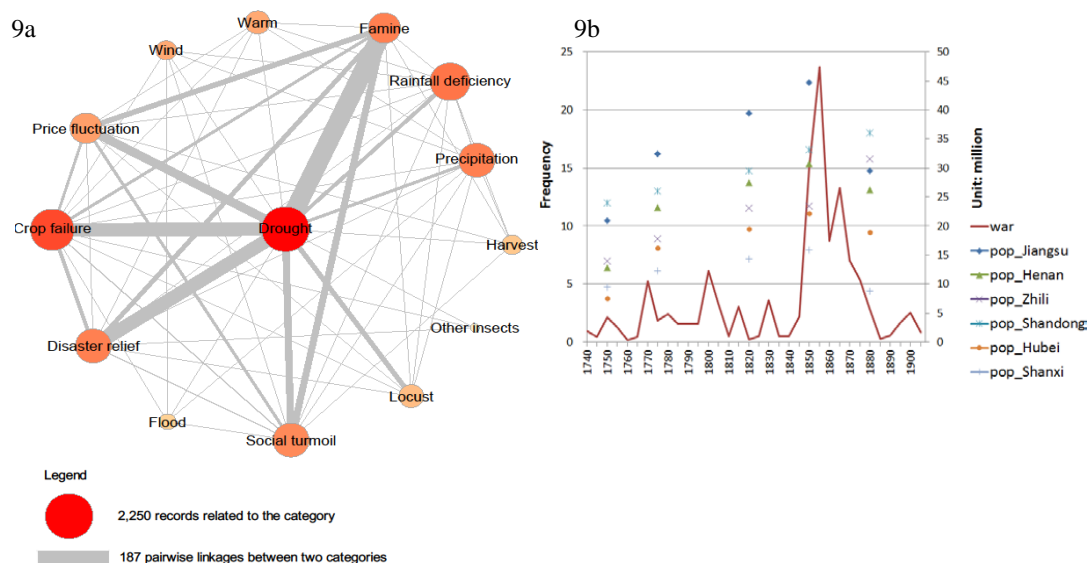
- 1 releasing, grain dispatching and tax exemption, and more forceful commands to catch
- 2 locusts were implemented.



3
4 Figure 8 The 1720-1740 drought network analysis and socioeconomic context. 8a
5 shows network analysis for variables retrieved from REACHES database. The size of
6 circle represents the number of records in a category. The thickness of the line
7 connecting two different circles represents how frequent they are mentioned together
8 in the records. Social turmoil is shortened term for socioeconomic turmoil. 8b shows
9 grain price in Suzhou (Jiangsu Province) and Zhili and and war frequency in
10 1738-1798.

11 12 4.3.3 1770-1790 drought (*Qian Long* reign)

13
14 In the middle of the *Qian Long* reign, population returned to the size of the Ming
15 Dynasty (Figure 9). However, social inequality and gaps between poor and rich
16 enlarged that sequentially resulted in frequent social unrests with longer and wider
17 social impacts. Fortunately, during the *Qian Long* reign, the government's ruling
18 power still maintained functional to stabilize society. According to the historical
19 documents, locust plagues were once severe during the period. Then the government
20 enforced strict locust catching command emphasizing eradication of locusts before the
21 insects grew their wings. This policy was likely to be effectively implemented so
22 that the threat of locust plagues was substantively mitigated. However, drought still
23 led to a reduction in crop yields resulting in famine and rise of grain price around
24 1779 and 1786 (Figure 8b).



1

2 Figure 9 The 1770-1790 drought network analysis and socioeconomic context. 9a
3 shows network analysis for variables retrieved from REACHES database. The size of
4 circle represents the number of records in a category. The thickness of the line
5 connecting two different circles represents how frequent they are mentioned together
6 in the records. Social turmoil is shortened term for socioeconomic turmoil. 9b shows
7 population and war frequency in 1740-1905.

8

9 4.3.4 1830-1850 drought (Emperor *Dao Guang* reign)

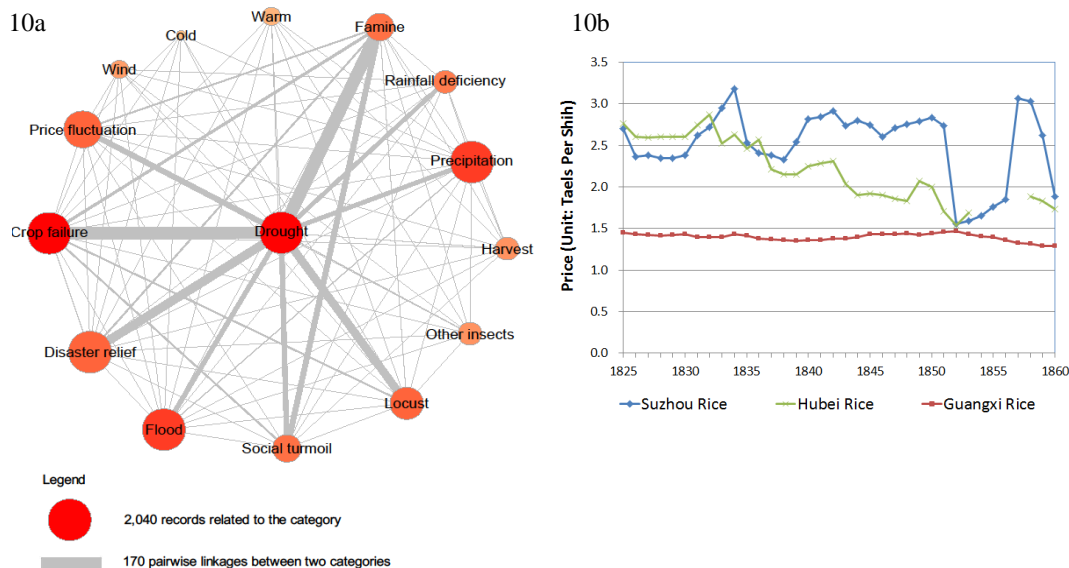
10

11 After the golden era, population continued to grow for several decades (Figure 9b)
12 but per capital arable land presented a significant decline in the 19th century, therefore
13 the society was under great stress of resource competition. When the Qing dynasty
14 signed unequal financial treaty with the United Kingdom in 1842 and later more
15 treaties with other foreign countries, the imperial power was also stuck in serious
16 political corruption that had eventually led to massive uprisings across the country
17 (Figure 10). The most well-known revolt was the Taiping civil war which was related
18 to a construction of Taiping Heavenly Kingdom (1851-1864) founded in Guiping
19 (Guangxi Province) and Guangxi in 1847, and gradually expended northward to
20 Hunan and Hubei. As a matter of fact, historical documents revealed that the
21 beginning of the Taiping rebellion could be associated with deteriorated locust
22 plagues in the region. According to the Guangxi records, a large-scale locust plague
23 occurred in 1833-1836; after that, the area around Guiping was noted with serious



1 drought and locust plagues in 1845-1848, and by 1850, rice price rose and famine
2 appeared. Besides, Hubei also had serious famine, drought and locust plagues in 1832
3 that continued in 1835.

4
5 However, the trajectory of rice price in different regions presented very different
6 patterns (Figure 10b). Rice price did not fluctuate greatly in Guangxi over the
7 period. In Hubei, rice price showed a slight increase in 1832 and then maintained a
8 decline trend. In Suzhou, rice price firstly increased in 1834 and then drop till an
9 increase in 1840-1851. The regional difference of price fluctuation is likely to indicate
10 that food production and consumption of the time was restricted to local scale without
11 much inter-regional interactions. This separation might also influence food supply and
12 allocation during disaster relief.



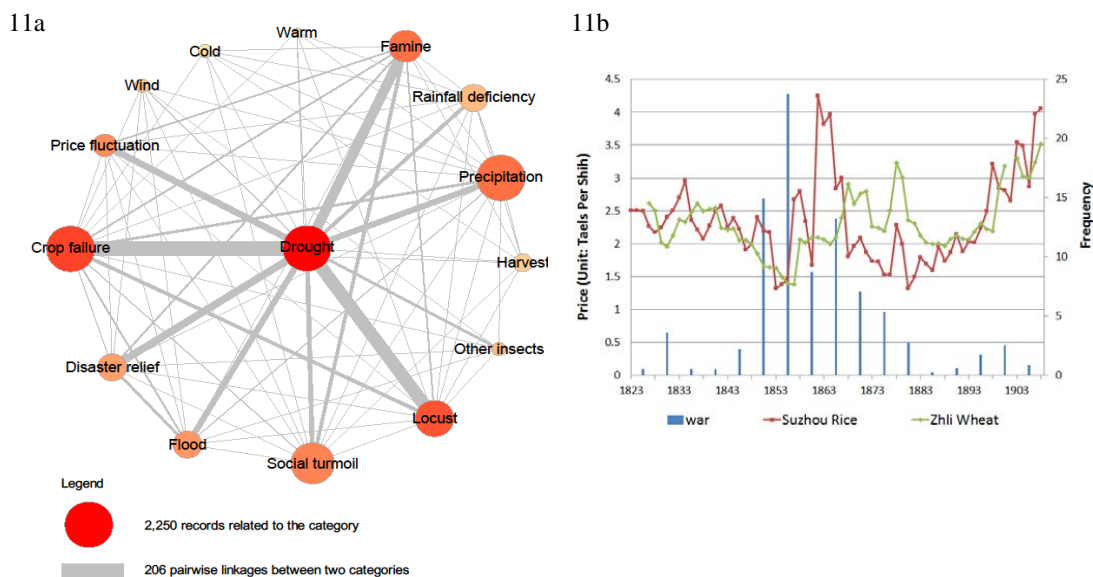
13
14 Figure 10 The 1830-1850 drought network analysis and socioeconomic context. 10a
15 shows network analysis for variables retrieved from REACHES database. The size of
16 circle represents the number of records in a category. The thickness of the line
17 connecting two different circles represents how frequent they are mentioned together
18 in the records. Social turmoil is shortened term for socioeconomic turmoil. 10b shows
19 grain price of Suzhou, Hubei and Guangxi in 1825-1860.

20 21 4.3.5 1850-1870 drought (*Dao Guang* to *Tong Zhi* reign)

22
23 When the Taiping Army rose in the south, northern China was also tormented by the



1 Nien Rebellion (1853-1868) that sequentially resulted in significant population
2 decline especially in the Provinces of Jiangsu, Zhejiang, Anhui, Jiangxi, Zhili, Hubei,
3 Shanxi, Shaanxi and Gansu (Figure 11). In 1856-1858 severe drought happened with
4 amplified locust plague disasters. The most affected regions including Zhili, Hubei
5 and Shandon were also where frequent battles occurred during the period.
6 Socioeconomic unrests and drought cooperatively resulted in a dramatic food shortage
7 and increase of grain price (Figure 11b). Jiangsu, the main rice market of China, had
8 the most sudden increase of rice price. During this period, population continued to
9 decrease, governmental policies for disaster relief mainly referred to limited food
10 allocation to impacted regions and population immigration (and displacement).



11
12 Figure 11 The 1850-1870 drought network analysis and socioeconomic context. 11a
13 shows network analysis for variables retrieved from REACHES database. The size of
14 circle represents the number of records in a category. The thickness of the line
15 connecting two different circles represents how frequent they are mentioned together
16 in the records. Social turmoil is shortened term for socioeconomic turmoil. 11b shows
17 grain price and war frequency in 1823-1908.

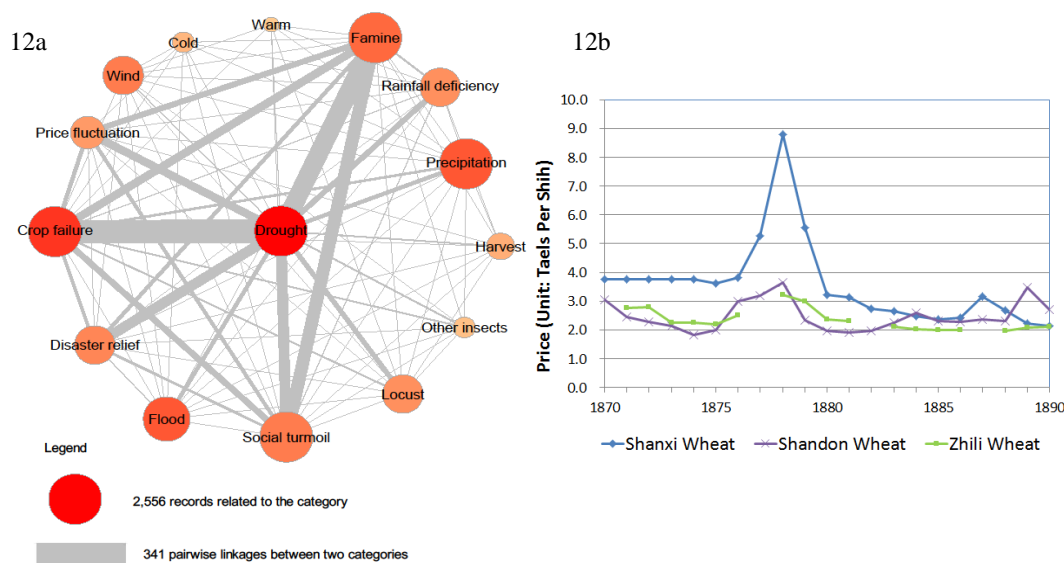
18 19 4.3.6 1870-1890 drought (*Tong Zhi* to *Guang Xu* reign)

20
21 When severe drought occurred in northern China from 1876 to 1879, the affected
22 regions mainly clustered in Shanxi, Henan, Shaanxi, Zhili, and Shandong. Grain
23 prices in these provinces also rose sharply (Figure 12b) and population continued to



1 decline (Figure 9b). Although drought did not cause significant civil wars, famine still
2 caused serious social unrests as figure 12a shows that during this period
3 socioeconomic turmoil had strong connections with drought and famine. And
4 importantly the wars between Qing dynasty and the foreign powers continued to
5 expand.
6
7 However, according to some historical research (Wang, 1972), disaster relief in the
8 late 1800s could be more effective than in the earlier 1800s. The main reason was the
9 integration of the grain market to link North China with Yangtze River plain that
10 substantially strengthened inter-regional grain product movement and exchange. From
11 the disaster relief perspective, efficient food interexchange and allocation could
12 greatly alleviate food shortage problems in the affected regions avoiding further death
13 and social impacts. And notably, spatial integration of grain market was benefited
14 from transportation development due to military and financial needs of the time under
15 threats of foreign country invasion.

16



17
18 Figure 12 The 1870-1890 drought network analysis and socioeconomic context. 12a
19 shows network analysis for variables retrieved from REACHES database. The size of
20 circle represents the number of records in a category. The thickness of the line
21 connecting two different circles represents how frequent they are mentioned together
22 in the records. Social turmoil is shortened term for socioeconomic turmoil. 12b shows
23 grain price of Shanxi, Shandon and Zhili in 1870-1890.

24



1 5. Discussions and conclusions

2

3 This study presents a novelty in the methodology to analyze historical droughts and
4 their relations with other associated ecological, agricultural, and socioeconomic
5 variables. Instead of building mixed criteria to evaluate drought severity by artificial
6 and often subjective judgment on the texts of the written records and assign them into
7 different grades, this study adopts a clear-cut methodology to build a transparent
8 procedure for studying and reconstructing drought chronology. Drought and its
9 associated variables including locust, famine, crop failure and socioeconomic turmoil
10 are carefully defined and separately dealt with to build their distinctive chronologies.
11 The advantage of this method is the transparency of the approach, which also allows
12 cross check among variables and thorough statistical examinations on the relations.

13

14 There are several important methodological innovations and new findings in this
15 study. Firstly, we examined the literal meaning of drought mentioned in the written
16 records by considering the four categories of drought as defined by the scholars
17 (Brázdil et al., 2018; Heim, 2002). We found that, in the Chinese literature context,
18 metrological drought and hydrological drought can be closely correlated with each
19 other ($R=0.67$); especially hydrological drought had even stronger correlation
20 coefficient ($R=0.77$) with severe drought. This can be easily understandable since
21 hydrological drought needs more time to develop and dry after prolonged lack of
22 rainfall or any type of water infusion. Agricultural drought denoted by crop failure in
23 this study also presented high correlation ($R=0.63$) with meteorological drought.
24 Socioeconomic drought estimated separately by famine ($R=0.62$) and socioeconomic
25 turmoil ($R=0.44$) has relatively less correlations.

26

27 Secondly, by using the proposed method, we found a distinct multi-decadal to
28 centennial scale hydroclimate fluctuations in the 1644-1911. Higher frequency of
29 drought and associated events coincidentally appeared with lower temperature
30 anomalies in the 17th century and after the late 18th century. The lower temperature
31 anomalies are consistent in REACHES and other studies (Frank et al., 2010; Ge et al.,
32 2017). Additionally, while several previous studies in China have clearly pointed out
33 that 16th and 17th century had more frequent droughts than the later two centuries (Ge
34 et al., 2016; Shen et al., 2007; Song, 2000; Yi et al., 2012; Zheng et al., 2006), seldom
35 of them were able to identify intrinsic drought events at interannual and decadal
36 resolutions. In this study, six severe drought events are identified including
37 1665-1691, 1720-1740, 1770-1790, 1830-1850, 1850-1870, and 1870-1890 drought
38 periods.



1

2 Thirdly, to explore spatial pattern of the variables, we performed Kernel density
3 estimation, which explicitly uncovers spatial distribution of drought and all other
4 variables in the six severe drought periods. The spatial distribution is very powerful to
5 reveal spatial autocorrelations of drought and other variables and to compare their
6 distribution and severity among these six periods. Moreover, social network analysis
7 reveals the relative magnitude of those variables in the six periods and the strength of
8 connections among them.

9

10 Fourthly, and importantly, to build narratives for the six severe drought periods, we
11 applied a great quantity of archival and index data from independent sources to
12 further investigate the social and economic contexts of the severe drought events. In
13 addition to the empirical implications (which we will elaborate later), research results
14 show a good consistency between the content retrieved from the archival data and the
15 analysis derived from the REACHES. For example, heavily impacted regions shown
16 on the maps are very consistent to those provinces and cities or counties mentioned in
17 the archival data. Interpretation of social network analysis for the six periods can be a
18 little controversial since the patterns do not always reflect the contexts as recorded in
19 the archival data. For example, in the 1665-1691 drought period, socioeconomic
20 turmoil presents a big circle however the historical documents recorded that drought
21 disaster was though severe but was controlled under governmental effectiveness. In
22 this regard, we could also interpret that socioeconomic turmoil while was frequently
23 recorded in the REACHES database but the connections between it and drought or
24 famine is relatively weaker than the later periods as shown in the network analysis. In
25 other words, it suggests that the socioeconomic turmoil in this period could be more
26 associated with other social process than direct connections with natural disasters. An
27 opposite example is the socioeconomic turmoil in the 1870-1890 in which the variable
28 was strongly connected with drought and famine. Nonetheless, the comparison
29 between REACHES and other independent data validates the reliability of the
30 REACHES database.

31

32 In addition to the methodological innovation, there are also two important
33 implications from the analysis. One is from the disaster risk perspective, and the other
34 is the highlight for historical climate reconstruction. Our analysis suggests that
35 drought though can be connected with socioeconomic turmoil; the correlations
36 between them are not direct, straightforward or inevitable. It is obvious that crop
37 failure and famine are the most important and intermediate variables to influence if
38 drought would develop to result in the amplified social impacts. This correlation is not



1 only revealed in their coefficients as shown in Table 1 but also clearly demonstrated
2 in the narratives of the six severe periods. Moreover, locust plague and disaster relief
3 are two imperative factors to influence between the magnitudes of crop failure and
4 famine. This clearly points out that human intervention is an important determinant in
5 shaping the socioeconomic as well as environmental feedbacks to the drought and
6 their impacts.

7
8 Comparing two severe drought periods in the 1700s and other three periods in the
9 1800s, apparently the magnitude of crop failure was quite different even if the
10 severity and spatial distribution of drought were not dramatically discrepant. While
11 there could be some other environmental and social factors to influence crop
12 production, it is obvious that locust mitigation policy in the 1700s could play an
13 important role to avoid enhanced crop failure during the period so as to alleviate
14 severe famine due to food shortage. From the disaster relief perspective,
15 governmental capabilities to implement disaster relief policies were also important
16 factor to mediate severity of famine. Disaster relief policies such as grain dispatching,
17 porridge relief and tax exemption when effectively implemented as in the gold era
18 could greatly reduce death and stabilize grain prices, which were all important to
19 maintain social order. After the golden era, governmental capabilities and social
20 stabilities rapidly degraded and threats from foreign forces had worsened. When
21 enduring drought occurred, the society had less capability to respond so that locust,
22 crop failure, famine and socioeconomic turmoil had strongly linked together to form
23 catastrophic disaster impacts.

24
25 It is also noted that while socioeconomic turmoil was frequently recorded in the
26 REACHES database, estimate of statistical correlations based on the frequencies of
27 drought and socioeconomic turmoil does not necessarily reflect the real situations.
28 Namely, it is inappropriate, and even dangerous, to interpret the relations between the
29 two simply based on the statistics. As mentioned earlier, large number of
30 socioeconomic turmoil records in the 1665-1991 drought had more relations with
31 post-Ming rebellions and social unrests. The two natural and social events
32 coincidentally happened at the same time. However, another case from Taiping civil
33 war was clearly triggered by famine and locust plagues in Guangxi. Even Guangxi
34 was not the most serious drought area at the time, ineffectiveness of the local
35 government to motivate resources for mitigating disaster eventually led to social
36 unrests. Similar context also applied to the 1856-1858 and 1876-1879 droughts.
37 Therefore, caution should be taken beyond statistics to investigate any relationships
38 between natural and social processes.



1

2 Some highlights for historical climate reconstruction include interpretation of drought
3 chronology and the meaning of severe drought in the climate reconstruction. It is very
4 often that when an analysis delivers a drought chronology then the periods (mostly
5 decades or centuries) with higher frequency of drought would be easily interpreted as
6 a dry weather. As a matter of fact, this interpretation could be inadequate and biased.
7 As shown in figure 5 in which we purposively reserve flood series for demonstration,
8 it is obvious that the fluctuation of flood series has good consistency with drought
9 series especially in the mid-17th and early 19th centuries. It is thus likely that these two
10 periods have more extreme hydroclimate events than other centuries and time periods.
11 Moreover, this also illustrates the importance to separately deal with drought and
12 flood events instead of integrating them into one single index as practiced in many
13 previous studies. Future studies can also use spatial distribution of those extreme
14 hydroclimate variables to reconstruct their spatial patterns so as to investigate the
15 climatic factors and atmospheric conditions. More specific insights can also be
16 derived from using the data to analyze atmospheric circulation and eastern Asian
17 monsoon in these intervals of little ice age. Data series reconstructed in this study will
18 be deposited at NOAA World Data Center.

19

20

21 **References**

22

23 Brázdil, R., Dobrovolný, P., Trnka, M., Řezníčková, L., Dolák, L., and Kotyza, O.:
24 Extreme droughts and human responses to them: the Czech Lands in the
25 pre-instrumental period, *Clim. Past*, 15, 1-24, <https://doi.org/10.5194/cp-15-1-2019>,
26 2019.

27 Brázdil, R., Kiss, A., Luterbacher, J., Nash, D. J., and Řezníčková L.: Documentary data
28 and the study of past droughts: a global state of the art, *Clim. Past*, 14, 1915–1960,
29 <https://doi.org/10.5194/cp-14-1915-2018>, 2018.

30 Brázdil, R., Pfister, C., Wanner, H., Storch, H. V., and Luterbacher J.: Historical
31 climatology in Europe – the state of the art, *Climatic Change*, 70, 363-430,
32 <https://doi.org/10.1007/s10584-005-5924-1>, 2005.

33 Broennimann, S., Martius, O., Rohr, C., Bresch, D., and Lin, K-HE.: Historical weather
34 data for climate risk assessment, *Annals of the New York Academy of Sciences*, 1436,
35 121-137, <https://doi.org/10.1111/nyas.13966>, 2018.

36 Cao, S. J. (ed.): *History of Population in China*, Vol. 5 Qing Dynasty, Fudan University
37 Press, Shanghai , China, 2001.



- 1 Chinese military history writing group: Chronology of China's Ancient Wars Chinese
2 People's Liberation Army Publishing House, Beijing, China, 1985.
- 3 CMA: Yearly charts of dryness/wetness in China for the last 500-year period in
4 Administration CM (ed.), Cartographic Publishing House, Beijing, China, 1981.
- 5 Cook, B. I., Smerdon J. E., Seager, R., and Coats, S.: Global warming and 21st century
6 drying, *Climate Dynamics*, 43, 2607-2627,
7 <https://doi.org/10.1007/s00382-014-2075-y>, 2014.
- 8 Cook, E. R., Anchukaitis, K. J., Buckley, B. M., D'Arrigo, R. D., Jacoby, G. C., and Wright,
9 W. E.: Asian Monsoon Failure and Megadrought During the Last Millennium, *Science*,
10 328, 486-489, <http://dx.doi.org/10.1126/science.1185188>, 2010.
- 11 Cook, E. R., Seager, R., Kushnir, Y., Briffa, K. R., Büntgen, U., Frank, D., Krusic, P. J.,
12 Tegel, W., van der Schrier, G., Andreu-Hayles, L., Baillie, M., Baittinger, C., Bleicher,
13 N., Bonde, N., Brown, D., Carrer, M., Cooper, R., Čufar, K., Dittmar, C., Esper, J.,
14 Griggs, C., Gunnarson, B., Günther, B., Gutierrez, E., Haneca, K., Helama, S., Herzig, F.,
15 Heussner, K-U., Hofmann, J., Janda, P., Kontic, R., Köse, N., Kyncl, T., Levanič, T.,
16 Linderholm, H., Manning, S., Melvin, T.M., Miles, D., Neuwirth, B., Nicolussi, K., Nola,
17 P., Panayotov, M., Popa, I., Rothe, A., Seftigen, K., Seim, A., Svarva, H., Svoboda, M.,
18 Thun, T., Timonen, M., Touchan, R., Trotsiuk, V., Trouet, V., Walder, F., Ważny, T.,
19 Wilson, R., and Zang, C.: Old World megadroughts and pluvials during the Common
20 Era, *Science Advances*, 1, 1:e1500561, <https://doi.org/10.1126/sciadv.1500561>,
21 2015.
- 22 Frank, D. C., Esper, J., Raible, C. C., Büntgen, U., Trouet, V., Stocker, B., and Joos, F.:
23 Ensemble reconstruction constraints on the global carbon cycle sensitivity to climate,
24 *Nature*, 463, 527-530, <https://doi.org/10.1038/nature08769>, 2010.
- 25 Ge, Q., Liu, H., Ma, X., Zheng, J., and Hao, Z.: Characteristics of temperature change
26 in China over the last 2000 years and spatial patterns of dryness/wetness during cold
27 and warm periods, *Advances in Atmospheric Sciences*, 34, 941-951,
28 <https://doi.org/10.1007/s00376-017-6238-8>, 2017.
- 29 Ge, Q., Zheng, J., Hao, Z., Liu, Y., and Li, M.: Recent advances on reconstruction of
30 climate and extreme events in China for the past 2000 years, *Journal of Geographical
31 Sciences*, 26, 827-854, <https://doi.org/10.1007/s11442-016-1301-4>, 2016.
- 32 Hao, Z., Wu, M., Zheng, J., Chen, J., Zhang, X., and Luo, S.: Extreme droughts/floods
33 and their impacts on harvest derived from historical documents in Eastern China
34 during 801–1910, *Clim. Past Discuss.*, <https://doi.org/10.5194/cp-2019-14>, in review,
35 2019.
- 36 Hao, Z., Zheng, J., Zhang, X., Liu, H., Li, M., and Ge, Q.: Spatial patterns of
37 precipitation anomalies in eastern China during centennial cold and warm periods of



- 1 the past 2000 years, *International Journal of Climatology*, 36, 467-475,
2 <https://doi.org/10.1002/joc.4367>, 2016.
- 3 Heim, R. R.: A review of twentieth-century drought indices used in the United States,
4 *Bulletin of the American Meteorological Society*, 83, 1149-1166,
5 <https://doi.org/10.1175/1520-0477-83.8.1149>, 2002.
- 6 Held, I. M., and Soden, B. J.: Robust responses of the hydrological cycle to global
7 warming, *Journal of Climate*, 19, 5686-5699, <https://doi.org/10.1175/JCLI3990.1>,
8 2006.
- 9 Huang, B., Li, G., Li, F., Kong, D., and Wang, Y.: The 1855 to 1859 locust plague in
10 China, *Natural Hazards*, 95, 529-545, <https://doi.org/10.1007/s11069-018-3498-2>,
11 2019.
- 12 Lin, K-HE, Wang, P. K., Lin, Y. H., and Wang, C. W.: Experiments on the reconstruction
13 methods and calibration of the climate series derived from REACHES historical
14 database of China in 1644-1911, *European Geosciences Union General Assembly*,
15 Vienna, Austria, 7-12 April 2019, EGU2019-12868, 2019.
- 16 Lin, N.: Social networks and status attainment, *Annual Review of Sociology*, 25,
17 467-488, <https://www.jstor.org/stable/223513>, 1999.
- 18 Ljungqvist, F. C., Krusic, P. J., Sundqvist, H. S., Zorita, E., Brattström, G., and Frank, D.:
19 Northern Hemisphere hydroclimate variability over the past twelve centuries, *Nature*,
20 532, 94-98, <https://doi.org/10.1038/nature17418>, 2016.
- 21 Pfister, C., Brázdil, R., Glaser, R., Barriendos, M., Camuffo, D., Deutsch, M.,
22 Dobrovolný, P., Enzi, S., Guidoboni, E., Kotyza, O., Militzer, S., Rácz, L., and Rodrigo, F.
23 S.: Documentary evidence on climate in sixteenth-century Europe, *Climatic Change*,
24 43, 55-110, <https://doi.org/10.1023/A:1005540707792>, 1999.
- 25 Schewe, J., Heinke, J., Gerten, D., Haddeland, I., Arnell, N. W., Clark, D. B., Dankers, R.,
26 Eisner, S., Fekete, B. M., Colón-González, F. J., Gosling, S. N., Kim, H., Liu, X., Masaki,
27 Y., Portmann, F. T., Satoh, Y., Stacke, T., Tang, Q., Wada, Y., Wisser, D., Albrecht, T.,
28 Frieler, K., Piontek, F., Warszawski, L., and Kabat, P.: Multimodel assessment of
29 water scarcity under climate change, *Proceedings of the National Academy of*
30 *Sciences*, 111, 3245-3250, <https://doi.org/10.1073/pnas.1222460110>, 2014.
- 31 Scott, J.: *Social Network Analysis*, Sage Publications, London, United Kingdom, 2017.
- 32 Shen, C., Wang, WC., Hao, Z., and Gong W.: Exceptional drought events over eastern
33 China during the last five centuries, *Climatic Change*, 85, 453-471,
34 <https://doi.org/10.1007/s10584-007-9283-y>, 2007.
- 35 Shi, H., Wang, B., Cook, E. R., Liu, J., and Liu, F.: Asian Summer Precipitation over the
36 Past 544 Years Reconstructed by Merging Tree Rings and Historical Documentary
37 Records, *Journal of Climate*, 31, 7845-7861,
38 <https://doi.org/10.1175/JCLI-D-18-0003.1>, 2018.



- 1 Silverman, B. W.: Density Estimation for Statistics and Data Analysis, Chapman and
- 2 Hall/CRC Publications, New York, United States, 1986.
- 3 Song, J.: Changes in dryness/wetness in China during the last 529 years, International
- 4 Journal of Climatology, 20, 1003-1016,
- 5 [https://doi.org/10.1002/1097-0088\(200007\)20:9<1003::AID-JOC529>3.0.CO;2-S](https://doi.org/10.1002/1097-0088(200007)20:9<1003::AID-JOC529>3.0.CO;2-S),
- 6 2000.
- 7 Stahle, D. W., Fye, F. K., Cook, E. R., and Griffin, R. D.: Tree-ring reconstructed
- 8 megadroughts over North America since A.D. 1300, Climatic Change, 83, 133,
- 9 <https://doi.org/10.1007/s10584-006-9171-x>, 2007.
- 10 Tan, P-H., and Liao, H-M.: Reconstruction of temperature, precipitation and weather
- 11 characteristics over the Yangtze River Delta Area in Ming Dynasty, Journal of
- 12 Geographical Research, 57, 61-87,
- 13 <http://rportal.lib.ntnu.edu.tw:80/handle/20.500.12235/23617>, 2012.
- 14 Van Loon, A. F., Gleeson, T., Clark, J., Van Dijk, A. I. J. M., Stahl, K., Hannaford, J., Di
- 15 Baldassarre, G., Teuling, A. J., Tallaksen, L. M., Uijlenhoet, R., Hannah, D. M.,
- 16 Sheffield, J., Svoboda, M., Verbeiren, B., Wagener, T., Rangecroft, S., Wanders, N.,
- 17 and Van Lanen, H. A. J.: Drought in the Anthropocene, Nature Geoscience, 9, 89-91,
- 18 <https://doi.org/10.1038/ngeo2646>, 2016.
- 19 Wang, P. K., Lin, K-HE, Liao, Y. C., Liao, H. M., Lin, Y. S., Hsu, C. T., Hsu, S. M., Wan, C.
- 20 W., Lee, S. Y., Fan, I. C., Tan, P. H., and Ting, T. T.: Construction of the REACHES
- 21 climate database based on historical documents of China, Scientific Data, 5,180288,
- 22 <https://doi.org/10.1038/sdata.2018.288>, 2018.
- 23 Wang, Y. C.: The secular trend of prices during the Ch'ing period (1644-1911), Journal
- 24 of Chinese Studies, 5, 347-371, 1972.
- 25 Wang, Y. C.: Qing Dynasty Grain Price Database, Institute of Modern History,
- 26 Academia Sinica, Taipei.
- 27 Yi, L., Yu, H., Ge, J., Lai, Z., Xu, X., Qin, L., and Peng, S.: Reconstructions of annual
- 28 summer precipitation and temperature in north-central China since 1470 AD based
- 29 on drought/flood index and tree-ring records, Climatic Change, 110, 469-498,
- 30 <https://doi.org/10.1007/s10584-011-0052-6>, 2012.
- 31 Zhang, D.: Supplement for the yearly chart of dryness/wetness in China for the last
- 32 500 years, J. Appl. Meteorol. Sci., 14, 379-388, 2003.
- 33 Zhang, D.: A Compendium of Chinese Meteorological Records of the Last 3,000 Years,
- 34 Phoenix House.Ltd. , Jiangsu, People's Republic of China, 2013 (First edition
- 35 published in 2004).
- 36 Zheng, J., Wang, W. C., Ge, Q., Man, Z., and Zhang, P.: Precipitation variability and



1 extreme events in Eastern China during the past 1500 years, *Terrestrial, Atmospheric*
2 *and Oceanic Sciences*, 17, 579-592, [https://doi.org/10.3319/TAO.2006.17.3.579\(A\)](https://doi.org/10.3319/TAO.2006.17.3.579(A)),
3 2006.
4 Zheng, J. Y., Ge, Q. S., Hao, Z. X., Liu, H. L., Man, Z., Hou, Y. J., and Fang, X. Q.:
5 Paleoclimatology proxy record in historical documents and methods for
6 reconstruction on climate change, *Quaternary Sciences*, 34, 1186-1196,
7 <http://www.dsjyj.com.cn/EN/10.3969/j.issn.1001-7410.2014.06.07>, 2014.
8
9
10