

Climate Induced Speleothem Radiocarbon Variability on Socotra Island from the Last Glacial Maximum to the Younger Dryas

Steffen Therre¹, Jens Fohlmeister^{2,3}, Dominik Fleitmann⁴, Albert Matter⁵, Stephen J. Burns⁶, Jennifer Arps¹, Andrea Schröder-Ritzrau¹, Ronny Friedrich⁷, Norbert Frank¹

5 ¹Institute of Environmental Physics, Heidelberg University, Heidelberg, Germany

²Potsdam Institute for Climate Impact Research, Potsdam, Germany

³GFZ German Research Centre for Geosciences, Section Climate Dynamics and Landscape Development, Potsdam, Germany

⁴Department of Environmental Sciences, University of Basel, Basel, Switzerland

⁵Institute of Geological Sciences, University of Bern, Bern, Switzerland

10 ⁶Department of Geosciences, University of Massachusetts, Amherst, USA

⁷Curt-Engelhorn-Center Archaeometry gGmbH, Mannheim, Germany

Correspondence to: Steffen Therre (stherre@iup.uni-heidelberg.de)

Abstract. In this study, the dead carbon fraction (DCF) variations in stalagmite M1-5 from Socotra Island in the western Arabian Sea were investigated through a new set of high-precision U-series and radiocarbon (¹⁴C) dates. The data reveal an extreme case of very high and also climate-dependent DCF. For M1-5 an average DCF of 56.2 ± 3.4 % is observed between 27 and 18 kyr BP. Such high DCF values indicate high influence of aged soil organic matter (SOM) and nearly completely closed system carbonate dissolution conditions. Towards the end of the last glacial period decreasing Mg/Ca ratios suggest an increase in precipitation which caused a marked change in the soil carbon cycling as indicated by sharply decreasing DCF. This is in contrast to the relation of soil infiltration and DCF as seen in stalagmites from temperate zones. For Socotra Island, which is influenced by the East African–Indian monsoon, we propose that more humid conditions and enhanced net-infiltration after the Last Glacial Maximum (LGM) led to dense vegetation and thus lowered the DCF by increasing ¹⁴CO₂ input into the soil zone. At the onset of the Younger Dryas (YD) a sudden change in DCF towards much higher, and extremely variable values is observed. Our study highlights the dramatic variability of soil carbon cycling processes and vegetation feedback on Socotra Island manifested in stalagmite DCF on both long-term trends and sub-centennial timescales, thus providing evidence for climate influence on stalagmite radiocarbon. This is of particular relevance for speleothem studies that aim to reconstruct past atmospheric ¹⁴C (e.g. for the purposes of ¹⁴C calibration), as these would rely on largely climate-independent soil carbon cycling above the cave.

1 Introduction

Radiocarbon (¹⁴C hereafter) dating has fundamentally changed our knowledge on the timing of events and rates of change in archaeological and climate proxy records ever since it was pioneered in the late 1940s (Arnold and Libby, 1949). To provide more accurate data for ¹⁴C calibration beyond the tree-ring record, speleothems gained importance as a source of information

on atmospheric ^{14}C . Stalagmite records from tropical and temperate climate zones overlapping the (floating) tree-ring data (Beck et al., 2001; Hoffmann et al., 2010; Southon et al., 2012) have been included in the most recent comprehensive ^{14}C intercalibration data set IntCal13 (Reimer et al., 2013). Radiocarbon calibration based on speleothems relies on the assumption of a low and constant dead carbon fraction (DCF) in the stalagmite, even though one of the included calibration records showed DCF variation by almost a factor of 2 during the YD (Beck et al., 2001; Hoffmann et al., 2010). A unique speleothem calibration record was recently published by Cheng et al., 2018 who presented a continuous atmospheric $^{14}\text{CO}_2$ reconstruction from stalagmites with a very low (<6 %) and constant DCF. They further showed that variations of speleothem ^{14}C at Hulu Cave, China, coincide with floating tree-ring ^{14}C variations, proving that even small decadal-scale carbon cycle changes and atmospheric ^{14}C are captured by stalagmites (Adolphi et al., 2017). However, such a situation is unusual, as significant impacts on DCF can arise from carbonate dissolution, or climate- and carbon cycle changes. By combining ^{14}C dating and elemental Mg/Ca analysis, a connection between precipitation/net-infiltration and stalagmite DCF was observed. Several studies attributed this relation to changes in open- vs. closed-system conditions of limestone dissolution which controls the contribution of very old host rock carbonate to drip water dissolved inorganic carbon (DIC) (Griffiths et al., 2012; Noronha et al., 2014). In a recent study DCF values exceeding 50 % in a Holocene stalagmite from Corchia Cave, Italy have been reported (Bajo et al., 2017). Such high DCF values are above the theoretical limit for closed system carbonate dissolution systems and were attributed to enhanced host rock dissolution by sulphuric acid. Two studies focusing on the direct influence of decomposing soil organic matter (SOM) on soil CO_2 , found that aging SOM leads to depleted soil gas $^{14}\text{CO}_2$ concentration and consequently higher DCF in the stalagmite calcite (Fohlmeister et al., 2011; Rudzka et al., 2011).

The Arabian Sea and Indian Ocean have been the focus of numerous paleoclimate studies in recent years (DiNezio et al., 2018; Fleitmann et al., 2003, 2007; Shakun et al., 2007) particularly concerning the potential impact of climatic changes in the North Atlantic region on the intensity of the Indian summer monsoon and low-latitude climate conditions. For this study, we selected a speleothem (sample M1-5) from Socotra Island, which documents a significant increase in monsoonal rainfall during the Bølling-Allerød (Shakun et al., 2007). These findings were recently corroborated by DiNezio et al., 2018 who postulated a unique Indian Ocean climate dipole behavior linked to the monsoon during the last glacial. This dipole pattern, which seems predominantly driven by the exposure of the Sunda and Sahul shelves, causes a marked cooling and reduction in moisture availability in the Arabian Sea, leading to dry conditions in the region around Socotra Island during the last glacial period. Here we present a study of a stalagmite from Socotra Island, with the aim of investigating changes in the local climate regime across the last deglaciation (Termination I). As the climate shifted towards more humid conditions after the LGM, synchronous changes in vegetation and soil carbon cycling may be expected. Hence, we investigate the temporal evolution of the DCF and hydro-proxies of stalagmite M1-5 from the LGM to the beginning of the Holocene to study the links between above-cave hydrology and soil carbon cycling. Our study shows that increasing moisture on Socotra Island is associated with decreasing DCF and proves that the input of $^{14}\text{CO}_2$ into the soil zone through denser vegetation above the cave is the determining factor for soil carbon cycling.

2.1 Socotra Island

Socotra Island is the largest island of the eponymous archipelago of four islands on the western margin of the Arabian Sea. It is situated 230 to 360 km east of the Horn of Africa (Somalia) and 380 km south of the Arabian Peninsula (**Fig. 1**). Socotra Island is approximately 130 km long and 30 km wide. Its topography varies from coastal plains in the North and South of the island to elevated plateaus several hundred meters above sea level (m a.s.l.). The innermost part of the island consists of a mountainous area with elevations up to 1500 m a.s.l. The archipelago is mainly made up of Precambrian basement rocks that are in part overlain by Cretaceous or Tertiary plateau limestone (Schlüter, 2006). The maritime climate of Socotra Island is under strong influence of the East African–Indian monsoon system reflected in the bi-annual migration of the ITCZ between its Northern Hemisphere winter position in the southern Indian Ocean and its summer position in the Arabian Sea (Shakun et al., 2007) (**Fig. 1a, b**). This migration is responsible for the bimodal distribution of precipitation. More than 20 % of total annual rainfall on the island occurs in April/May when the northward migrating ITCZ crosses the island. The second annual crossing of the ITCZ during the time October to December accounts for more than 50 % of the annual rainfall (Scholte and De Geest, 2010). Today, total precipitation can be as low as 67 mm per year near the coastal plains, while more than 500 mm rainfall can occur in the mountainous areas in the inner island with elevations of more than 1000 m a.s.l. (Scholte and De Geest, 2010).

2.2 Stalagmite M1-5

Stalagmite M1-5 was collected from Moomi Cave in 2002, which lies on a limestone plateau (Moomi Plateau, c. 500m a.s.l.) in the eastern part of Socotra Island (12°32'04'' N, 54°19'00'' E, **Fig. 1c**). Moomi Cave is approximately 1 km long, largely horizontal and overlain by ~20m of bedrock (Burns, 2003). Stalagmite M1-5 is approximately 2.2 m long and 10 to 15 cm wide and grew roughly 1 km from the cave entrance. It was sectioned along its growth axis down to the base (**Fig. 2**) and polished to make the growth layers more visible (Shakun et al., 2007). On the macroscopic scale, there are significant differences visible in the texture and stratigraphy of the stalagmite. The lower part of the stalagmite from its base to approximately 1.5 m distance from the top (dft) shows distinct changes in layer coloring and generally has a larger width of approximately 15 cm. In younger parts, the carbonate is brighter and the width rarely exceeds 10 cm. Another visible change can be seen in the uppermost 10 cm where the layering is much darker, which Shakun et al., 2007 found to occur shortly after an apparent hiatus.

3 Methods

3.1 U-series Dating

Forty samples were analyzed at the Heidelberg Institute of Environmental Physics for this study. M1-5 was previously U-series dated at the Isotope Geology Laboratory, University of Bern. In total 62 age data points are presently available, in addition to the previous age determination efforts by Shakun et al., 2007. For the sample treatment in Heidelberg, approximately 80 to 120 mg of speleothem calcite were cut with a diamond wire saw or drilled along growth layers. Chemical sample preparation, U and Th purification, and mass spectrometric measurements follow the procedures described in detail in Arps, 2017; Douville et al., 2010; Wefing et al., 2017. Activity ratios were determined using a Thermo Fisher Neptune Plus multi-collector inductively coupled plasma mass spectrometer (MC-ICP-MS) at the Institute of Environmental Physics, Heidelberg University, Germany. Multiple measurements of the HU-1 standard resulted in a value of 1.00002 ± 0.00082 for ($^{234}\text{U}/^{238}\text{U}$) and 1.00004 ± 0.00082 for ($^{230}\text{Th}/^{238}\text{U}$) for 517 samples over 22 months. The HU-1 standards used to bracket the sample measurements accordingly yield a reproducibility of 0.82 permil for ($^{234}\text{U}/^{238}\text{U}$) and ($^{230}\text{Th}/^{238}\text{U}$). Full procedural blanks were found to be smaller than 0.04 fg for ^{230}Th and 0.4 fg for ^{234}U . The calculations for the radiometric ages were performed using the half-lives from Cheng et al., 2000 to maintain comparability with the record from Shakun et al., 2007. More recent half-life values do not significantly change radiometric age estimates (see results section). For detrital ^{230}Th correction, a $^{232}\text{Th}/^{238}\text{U}$ weight ratio of 3.8 ± 1.9 and secular radioactive equilibrium within the uranium decay chain was assumed.

3.2 Radiocarbon Dating

For ^{14}C measurements, approximately 10 mg of calcite were cut with a diamond wire saw or drilled from the stalagmite along the growth layers. To avoid contamination by ambient air, the cut samples were leached in 4 % hydrochloric acid before hydrolysis, whereas the powder from drilled samples was immediately processed after sampling. Hydrolysis was carried out on an evacuated glass line ($p < 10^{-3}$ mbar) by adding 0.5 ml of 11 % hydrochloric acid. The emerging water vapor during hydrolysis was removed by dry ice/acetone freezing traps. The acquired CO_2 was subsequently reduced to graphite over 3-4 hours at 575°C on a separate setup by adding H_2 and the CO_2 from the previous step to a reactor containing iron powder as a catalyst. Detailed descriptions of the sample preparation routine can be found in Fohlmeister et al., 2011 and Unkel, 2006. After the reaction, the resulting graphite-iron compound was pressed into targets. A 200kV tandem MICADAS AMS at Curt-Engelhorn-Center Archaeometry in Mannheim, Germany was used for the measurements (Kromer et al., 2013; Synal et al., 2007). Process blanks from marble were prepared using the same method applied for regular samples to account for possible contamination during chemical preparation or sample handling before the eventual measurement in the AMS and yielded apparent blank activities consistently lower than 0.25 pmC (apparent blank ^{14}C ages 48–56 kyr). Oxalic acid-II standards were graphitized from previously extracted CO_2 gas and used for measurement calibration. Other international and in-house calcite standards were prepared and measured frequently to determine the full analytical measurement reproducibility. In our case,

the IAEA C2 standard was measured over two years with a reproduced value of 40.77 ± 0.36 pmC compared to the assigned literature value of 41.14 ± 0.03 pmC.

125 3.3 Elemental Analysis

For measurements of Mg/Ca ratios, approximately 1 to 2 mg of calcite was drilled from the stalagmite at each ^{14}C sample point. At the Institute of Environmental Physics at Heidelberg University a Thermo Fisher iCAP Q Inductively Coupled Plasma Quadrupole MS (ICPQMS) was used, while data were also collected at the Institute of Earth Sciences at Heidelberg University using an ICP optical emission spectrometer (ICP-OES) 720. For the ICPQMS, the 1σ -reproducibility of the Mg/Ca ratio of two measured standards is $<1\%$. For the OES setup, the internal 1σ -standard deviation is $<1\%$ for Ca^{2+} and Mg^{2+} . Here SPS SW2 is used as a standard, and the long-term 1σ -reproducibility is 2.0% for Ca^{2+} and 3.3% for Mg^{2+} (Warken et al., 2018). Comparability of the results from both setups was ensured by normalizing the Mg/Ca ratios with respect to a series of internal standard measurements that were carried out in both laboratories.

4 Results

135 4.1 U-series Chronology

The U concentration in M1-5 ranges from 700.5 ± 2.9 to 2913.8 ± 9.3 ppb, ^{232}Th concentrations are between 15.04 ± 0.88 and 21042 ± 36 ppt.

All U-series ages in this study are reported in “years before present (yr BP)” or “kilo years before present (kyr BP)” where BP is referring to the year 1950. High ^{238}U and low ^{232}Th concentration in most samples allow for very precise U-series ages without major corrections or age reversals. U-series ages range from 27.11 ± 0.20 kyr BP to 10.890 ± 0.034 kyr BP with 2σ -age uncertainties from 0.2 to 1.0% . The resulting chronology is in good agreement with previous results from the same sample (Shakun et al., 2007), but the higher resolution of the new U-series dates reveals the growth history in much closer detail. Except for two outliers almost all U-series ages are in stratigraphic order and were utilized for age-depth modeling (**Fig. 3**). Replicate U-series age subsamples for seven different depths all agree within their 2σ -errors.

Age-depth modeling was performed using a stepwise implementation of StalAge (Scholz and Hoffmann, 2011) between the resolved growth discontinuities. The growth rate of stalagmite M1-5 is fairly constant during the last glacial termination as well as interstadials from approximately 17.2 kyr until 11.7 kyr BP at an average growth rate of roughly 0.23 mm yr^{-1} . A distinct 800 yr hiatus was identified at 110 mm (from top), from 11.7 to 10.9 kyr BP (henceforth referred to as discontinuity “D1”). Above this hiatus, the stalagmite growth continued at a high rate of approximately 0.30 mm yr^{-1} for a short period at the beginning of the Holocene. Dating results obtained by Shakun et al., 2007, and the rapid texture and color changes of the growth layers in the uppermost part of the stalagmite above 5 cm from the top, indicate sporadic growth throughout the Holocene. For the older part of the stalagmite a lower growth rate is observed: From 27.2 to 17 kyr BP, the average rate is 0.086 mm yr^{-1} with another 1200 year-long hiatus after 23.5 kyr BP (discontinuity “D2”). Overall, the growth is mostly

continuous with two discontinuities of multi-centennial duration with an overall rate of approximately 0.130 mm yr⁻¹ between 155 27.2 and 11 kyr BP implying a high temporal resolution of 7.5 yr mm⁻¹.

The initial $\delta^{234}\text{U}$ at the time of deposition ($\delta^{234}\text{U}_{\text{init}}$) can be calculated from the measured $\delta^{234}\text{U}_{\text{meas}}$ by correcting it for ^{234}U decay with the determined age t :

$$\delta^{234}\text{U}_{\text{init}} = \delta^{234}\text{U}_{\text{meas}} \cdot \exp(\lambda_{234} \cdot t) \quad (1)$$

160 $\delta^{234}\text{U}_{\text{init}}$ of stalagmite M1-5 is consistently below zero with minimal values of around -130 ‰, which implies a strongly leached and subsequently ^{234}U -depleted host rock. $\delta^{234}\text{U}_{\text{init}}$ increases from the ^{234}U -depleted LGM ~21 kyr BP towards the Bølling-Allerød warm period (-25 ‰ ~15 kyr BP) where the growth rate is significantly higher.

4.2 Radiocarbon Results

A total of 78 stalagmite ^{14}C measurements were performed on stalagmite M1-5, including 6 duplicates for which all steps including the subsampling, preparation and measurement were repeated. The measured ^{14}C activities ($a^{14}\text{C}_{\text{meas}}$) range between 165 19.52 ± 0.20 pmC and 2.846 ± 0.035 pmC. The reproducibility of ^{14}C results is assessed by long-time measurements of the international IAEA C2 standard. The resulting statistical error is used as an overall reproducibility. The total uncertainty is then calculated as the square root of the squared sum of the statistical error and overall reproducibility. Each sample was assigned a U-Th modeled age (t_{mod}) from the StalAge model, revealing a generally decreasing ^{14}C activity for older parts of M1-5 but also large variations on decadal timescales. For comparison with atmospheric ^{14}C levels, the data are converted to 170 conventional radiocarbon years ($t_{14\text{C}}$).

$$t_{14\text{C}} = -8033 \text{ yr} \cdot \ln(a^{14}\text{C}_{\text{meas}}) \quad (2)$$

The ^{14}C ages of stalagmite M1-5 are significantly older than the contemporaneous atmospheric ^{14}C calibration curve (Reimer et al., 2013). Throughout the literature, this effect in stalagmites has been referred to and quantified in many different ways. For this manuscript we follow the definition of “DCF” as given by Genty et al., 1999 notwithstanding that all results can be 175 understood as an equivalent “reservoir age” in the unit “ ^{14}C years”. The reporting of reservoir ages in ^{14}C studies on speleothems is described in detail by Soulet et al., 2016. In this study, the DCF varies substantially, as seen in comparison to the Hulu Cave speleothem record (Cheng et al., 2018) (**Fig. 4a**). Based on the StalAge model for M1-5, the initial ^{14}C activity ($a^{14}\text{C}_{\text{init}}$), at the time when the respective stalagmite layer was deposited, was reconstructed.

$$a^{14}\text{C}_{\text{init}} = a^{14}\text{C}_{\text{meas}} \cdot \exp(t_{\text{mod}}/8267 \text{ yr}) \quad (3)$$

180 DCF was calculated by comparing each $a^{14}\text{C}_{\text{init}}$ to the atmospheric ^{14}C level ($a^{14}\text{C}_{\text{atm}}$) at the respective time, obtained from Reimer et al., 2013. 1σ -errors were calculated using a Monte Carlo approach following the procedure described in Griffiths et al., 2012.

$$DCF = \left[1 - \frac{a^{14}c_{init}}{a^{14}c_{atm}} \right] \cdot 100 \% \quad (4)$$

DCF values for stalagmite M1-5 range from $27.33 \pm 0.24 \%$ at approximately 13 kyr BP to values as high as $64.6 \pm 1.1 \%$ at 185 20.7 kyr BP (**Fig. 4b**). The M1-5 DCF record shows very high values before 18 kyr BP and a decreasing trend towards lower DCF values until 13 kyr BP. The following period between 13 and 11 kyr BP is characterized by higher, and highly variable, DCF values of between 40 and 50 % and exhibit rapid fluctuations on decadal time scales as seen in a 9 % drop in a time interval of only 60 yr modeled age at approximately 11.9 kyr BP.

4.3 Mg/Ca Ratio

190 Mg/Ca ratios range from 0.01100 ± 0.00033 to 0.03217 ± 0.00097 and display a continuous decrease from 22 to 12 kyr BP. After this decrease, Mg/Ca ratios rise sharply to their highest values around D1. After a few very high values, the ratio drops back to the level measured before the major excursion (**Fig. 5**).

5 Discussion

5.1 U-series Dating and Age-Depth Model

195 The revised chronology for stalagmite M1-5 is far more accurate and precise in comparison to the previously published chronology which was based on much fewer U-series ages (Shakun et al., 2007). Average uncertainties of the corrected U-series ages have decreased from $1.19 \pm 0.30 \%$ in Shakun et al., 2007 to $0.408 \pm 0.161 \%$ in this study. The refined age record helped to identify the two growth discontinuities (see **Fig. 3**). ^{238}U concentrations remain fairly constant around 2 ppm before 14 kyr BP when a dilution effect is visible and concentrations decrease to less than 1 ppm at ~11 kyr BP. The StalAge model 200 reveals a general trend towards higher growth rates in the younger part of the stalagmite with the highest growth rates of 0.30 mm yr^{-1} at around 13 kyr BP, more than a factor of 2 higher than during the last glacial period. The general growth patterns can even be distinguished by mere optical examination of the stalagmite lamination. At a depth of ~1.5 m (17 kyr BP), a transition from marked lamination and darker colors to lighter layer coloring is visible. Synchronously, the width of the stalagmite decreases gradually from more than 15 cm to less than 10 cm in the younger half (see **Fig. 2**), where the growth 205 rate is highest. According to stalagmite growth modeling studies (Dreybrodt, 1999; Kaufmann, 2003; Kaufmann and Dreybrodt, 2004), higher drip rates and higher temperatures cause a larger stalagmite diameter and higher growth rates. A rise in temperature on Socotra Island of about 2–3.5 °C from the LGM to the Holocene was postulated by Shakun et al., 2007. A parallel increase in precipitation, will be discussed in section 5.3. For stalagmite M1-5 a smaller diameter is observed in a time 210 of highest growth rates correlate with both increasing precipitation and temperatures.

5.2 DCF and Implications for Radiocarbon Calibration

With the implemented age model for stalagmite M1-5, the DCF can be accurately assessed for the time interval of stalagmite growth overlapping with both the dendrochronological records till 12.4 kyr BP and the wiggle-matched floating Late Glacial pine tree-ring chronology going back to 14 kyr BP (Hua et al., 2009; Schaub et al., 2008). Both are a substantial part of the intercalibration record IntCal13 (Reimer et al., 2013). For this reference time, the atmospheric ^{14}C concentration is well known. **Figure 6** compares the record of M1-5 to the speleothem based ^{14}C records previously implemented in IntCal13 (Reimer et al., 2013). For the time interval overlapping with the tree-ring based atmospheric ^{14}C calibration data (including floating tree-ring chronologies) stalagmite M1-5 reveals high DCF variability over centennial and decadal time scales: between 27 % at approximately 13 kyr BP and 50 % at approximately 11.9 kyr BP. A doubling of DCF values is observed at the onset of the YD around 12.9 kyr BP (**Fig. 6**). Furthermore, rapid increases and decreases by a few percent DCF occur frequently between 12.9 and 11.9 kyr BP. The data implicating these fluctuations have been replicated several times to exclude the possibility of outliers. This highlights the large DCF variability of stalagmite M1-5 on sub-centennial time scales which puts this ^{14}C record in stark contrast to the IntCal13 stalagmite records.

For instance, no comparable variability is visible in the Hulu cave speleothem H82, in which the DCF remains rather constant at 5.6 ± 0.8 % (Southon et al., 2012). The Bahamas stalagmite records show substantial and systematic changes in DCF between 11.2 and 12.7 kyr BP (Hoffmann et al., 2010) which coincides with the YD cold reversal and was therefore attributed by the authors to vast changes in local vegetation and climatic conditions. Regardless of these effects and the resulting large uncertainty in the corrected atmospheric ^{14}C concentrations, the Bahamas record was included in the IntCal13 data, as the benchmark Hulu cave record was not available. The ^{14}C record of stalagmite M1-5 does not predominantly reflect atmospheric ^{14}C variations due to the large offset to the atmosphere and the high variability across the tree-ring based period. Hence, M1-5 cannot be used as a contribution to atmospheric ^{14}C calibration. This finding is in contrast to the Hulu cave speleothems which come from an *a priori* comparable temperate setting which is under the influence of pronounced monsoonal patterns (Southon et al., 2012).

Potential atmospheric ^{14}C variations are overprinted in stalagmite M1-5 by sub-centennial changes in DCF, which must be driven by site-specific factors such as changes of soil carbon age, open vs. closed system conditions (Fohlmeister et al., 2011; Griffiths et al., 2012) or short-term developments affecting soil carbon dynamics above Moomi Cave. Other potentially relevant mechanisms include the influence of non-carbonic acids such as sulfuric acid (Bajo et al., 2017). Since most of the aforementioned factors are influenced by climate, stalagmite M1-5 provides an excellent opportunity to study climatic controls on the DCF values in stalagmites.

5.3 Climatic controls of DCF at Moomi Cave

Low DCF values in stalagmites are primarily caused by open system recharge conditions, with enhanced uptake of soil CO_2 and limited water-bedrock interaction. Both conditions prevail at Hulu cave, where the seepage water percolates through

predominantly sandstone rather than carbonate limestone (Cheng et al., 2018). In our study very high average DCF values of
245 56.2 ± 3.4 % are revealed during the last glacial period between 18 and 27 kyr BP with a maximum of 65 % approximately
20.6 kyr BP (**Fig. 7a**). Such high DCF values are only conceivable under closed system limestone dissolution conditions
(Hendy, 1971). However, in the conventional approach, considering only the two carbon end-members from near-atmospheric
soil gas CO₂ and the ¹⁴C-free carbonate from dissolved limestone, DCF can reach maximum values of 50 % (Fohlmeister et
al., 2011; Griffiths et al., 2012; Hendy, 1971). DCF higher than 50 % have been recently reported in a speleothem from Corchia
250 Cave (Italy) as a suggested consequence of additional dead carbon input by enhanced limestone carbonate contribution to DIC
through the presence of other organic or non-organic (sulfuric) acids in the soil zone (Bajo et al., 2017). This process also
influences stable carbon isotopes in the stalagmite calcite, i.e. $\delta^{13}\text{C}$, which shift values towards those observed in the limestone
host rock. However, overall $\delta^{13}\text{C}$ in M1-5 (**Fig. 7c**) primarily ranges between -4 and -8 permil (average -6.2 ± 1.4 permil) with
corresponding DCF values varying from 27 to 65 %. Furthermore, no significant correlation between $\delta^{13}\text{C}$ and DCF can be
255 observed ($r^2 = 0.206$, $p < 0.01$) in M1-5. It is therefore unlikely that increased limestone dissolution by sulfuric acids is the key
factor for DCF variations in stalagmite M1-5. Alternatively, aged SOM could cause the observed enhanced DCF values (Genty
et al., 2001). Fresh labile soil organic matter, as well as older carbon stocks in deeper soil layers on the Moomi Plateau, may
have contributed to soil gas CO₂, creating ¹⁴C-depleted CO₂ (Fohlmeister et al., 2011; Trumbore, 2009). The presence of
(aging) organic matter in the soil above the cave is corroborated by several studies describing the modern vegetation on Socotra
260 Island and its limestone plateaus (Mies and Beyhl, 1996; Popov, 2008). They observed a mixture of annual grass vegetation
and permanent scrubland on the limestone plateaus as well as populations of the endemic *Dracaena cinnabari* species.
Moreover, in sheltered valleys, where the soil is well developed, dense thickets occur. In the rocky surface on the limestone
plateaus, pockets of dark rich soil can form (Popov, 2008) giving rise to stabilizing carbon pools, where soil matter can
aggregate and decay over long periods, thus contributing to the soil CO₂ reservoir.

265 Together with nearly closed-system karst dissolution conditions, the ¹⁴C-depleted CO₂ can cause DCF higher than 50 %. For
instance, if an extreme case baseline DCF of 50 % under closed system conditions is assumed for the record before 18 kyr BP,
an age of the active carbon pool of 2500-3000 yr can generate DCF values between 63 and 65 %. If the carbon pool is composed
of one young (root respiration) and one old carbon reservoir (microbial decomposition of aged SOM) in equal proportions, the
aged carbon contributing to soil CO₂ must be older than 5000 yr and contribute a share of 50 % to the soil gas budget to cause
270 such extreme DCF values. None of these scenarios have been reported before in a study on speleothem ¹⁴C which makes M1-
5 a unique record in terms of aged SOM contribution to stalagmite DCF.

All available geochemical proxies (shown in **Fig. 7**) including DCF (**7a**) reflect a clear climate signal: The LGM is manifested
in this stalagmite by low net-infiltration levels and rather low precipitation on the archipelago (Shakun et al., 2007). In a recent
study by DiNezio et al., 2018 it was argued that the exposure of the Sahul shelf during the Last Glacial Maximum created a
275 positive ocean-atmosphere feedback-loop causing a drier/wetter dipole across the Indian Ocean and subsequent hydroclimate
changes, i.e. reduced moisture levels in the Arabian Sea. The M1-5 multi-proxy record suggests that towards the end of the
glacial period the regional climatic conditions on Socotra Island likely shifted to a higher net-infiltration which is reflected in

a systematic long-term decrease of the Mg/Ca ratio from approximately 20–15 kyr BP. We interpret the Mg/Ca decrease here as a proxy for incongruent host rock dissolution and prior calcite precipitation effect reflecting shifts from drier to wetter conditions above the cave (Fairchild et al., 2000), while peaks in Mg/Ca coincide with the two growth discontinuities and thus dry periods. This interpretation is supported by numerous studies that showed a negative correlation between Mg/Ca ratio in stalagmite calcite and precipitation amount (Fairchild and Treble, 2009; Flohr et al., 2017; Noronha et al., 2014; Warken et al., 2018).

$\delta^{234}\text{U}_{\text{init}}$ can also be used to derive changes in infiltration and thus drip rate (Dreybrodt, 1999). In our study, the increasing but still negative values in $\delta^{234}\text{U}_{\text{init}}$ (**Fig. 7e**) after 22 kyr BP point to a shift towards less leached host rocks or a stronger contribution of excess ^{234}U from the leached rocks. This change coincides with a doubling of the growth rate from slightly below 0.10 mm yr^{-1} to more than 0.20 mm yr^{-1} , suggesting that $\delta^{234}\text{U}_{\text{init}}$ is influenced by infiltration changes. It may also be affected by the geochemical composition of the seepage water (Zhou et al., 2005). However, in comparison to the other proxies for this record, it appears most likely that the drip rate in Moomi Cave has increased due to higher net-infiltration. Therefore, our record contrasts with the findings of Dreybrodt, 1999 and Kaufmann and Dreybrodt, 2004 where higher drip rate is correlated to increased stalagmite width. Stalagmite M1-5, on the other hand, decreases in width (see **Fig. 2**) towards higher infiltration in a time where temperatures have increased by $2\text{--}3.5 \text{ }^{\circ}\text{C}$ and precipitation rises (Shakun et al., 2007). This climatic shift is initiated during peak glacial conditions 20 kyr BP and is also reflected in higher seepage water excess ^{234}U , marked through the vanishing depletion of ^{234}U (-25 permil after 16 kyr BP).

The inferred increase in precipitation over Socotra Island after the LGM coincides with the steady warming of the southern hemisphere until 15 kyr BP. Synchronously $\delta^{13}\text{C}$ decreases by 2‰ and reveals sub-centennial variability of the speleothem calcite composition. During the time in which the northern hemispheric climate goes through swings between the warm and humid B/A and cold and dry YD (Ivanochko et al., 2005; Schulz et al., 1998), $\delta^{13}\text{C}$ and Mg/Ca in M1-5 remain at their respective lowest values. In contrast to $\delta^{13}\text{C}$ values, the $\delta^{18}\text{O}$ values show a moderate decrease by 1.5‰ across Termination I (20–11 kyr BP), which occurs rather suddenly at $\sim 14.8\text{--}15 \text{ kyr BP}$. Stalagmite M1-5 $\delta^{18}\text{O}$ values are mainly interpreted in terms of the so-called “amount effect” describing the negative correlation between rainfall amount and $\delta^{18}\text{O}$ (Dykoski et al., 2005; Griffiths et al., 2010). Shakun et al., 2007 have used this relation to infer a rise in rainfall towards the end of the last glacial, especially after 15 kyr BP. Both stable isotopes thus share a common deglacial climate trend with punctuated strong correlation during growth perturbations (dry events), but differ significantly through the period from 19–14 kyr BP, indicating a dominant influence of vegetation above the cave which affected $\delta^{13}\text{C}$, but not $\delta^{18}\text{O}$. The decoupling of $\delta^{18}\text{O}$ and $\delta^{13}\text{C}$ might also be a representation of regional moisture dynamics as described by Cheng et al., 2016 for a monsoon stalagmite record from central Asia. In that study, the correlation of $\delta^{13}\text{C}$ and Mg/Ca in combination with out-of-phase $\delta^{18}\text{O}$ suggested wetter hydrological conditions, but not necessarily an increase in precipitation amount. Similar observations were made by Myers et al., 2015 for Northeastern Indian stalagmites where $\delta^{18}\text{O}$ was attributed to reflect changes in monsoonal moisture transport routes or sources rather than rainfall amount. On Socotra Island, seasonal shifts towards more distributed rainfall at the end of

the Last Glacial may have changed the soil net-infiltration without significant amount changes visible in $\delta^{18}\text{O}$ and thus cause wetter conditions above Moomi Cave.

Although all available proxies point to an increase in precipitation or net-infiltration after the LGM, M1-5 ^{14}C data do not reflect the processes predicted if the established dependence of calcite dissolution systematics on soil infiltration holds. In contrast to studies from zones more humid compared to Socotra Island (Genty et al., 2001; Griffiths et al., 2012; Lechleitner et al., 2016; Noronha et al., 2014), the predicted positive feedback of rainfall amount on DCF does not appear to apply here. Instead, increasing rainfall and the respective increase in infiltration seem to go along with a shift to a less closed carbonate dissolution system and an increased forcing towards higher ^{14}C levels in the soil gas CO_2 by enhanced root respiration compared to a decreasing contribution by CO_2 , which originates from the decomposition of aged SOM. This decoupling of precipitation and DCF is evidence for a climate-induced forcing on stalagmite ^{14}C which is at least to some extent independent of the direct influence of soil humidity on calcite dissolution. On Socotra Island the precipitation is sparse and occurs only seasonally when the ITCZ crosses the archipelago. A proposed scenario for the interpretation of M1-5 is that the vegetation in (semi-)arid regions like Socotra Island (in contrast to temperate, more humid settings), is much more sensitive to small changes in net-infiltration. Previous studies showed that an increased monsoonal activity during Termination I (Gupta et al., 2003; Overpeck et al., 1996; Shakun et al., 2007) can have dramatic effects on the prevalence and spread of plants in arid and semi-arid areas (Lotsch et al., 2003). Hence, for this study an increase in soil CO_2 input by active vegetation caused by increasing net-infiltration or precipitation at the end of the last glacial period is most likely the cause for the observed soil carbon dynamics, ultimately causing strongly decreased DCF.

Since the ITCZ passes Socotra Island twice a year causing increased precipitation, the question arises whether the observed trends are linked to a shift in the seasonal patterns of either summer or winter monsoon season or the intermediate ITCZ migration. Overall, we can only speculate on the role of the monsoon in shifting the local climate from a glacial, possibly southern hemisphere driven, state with a stable state aged soil carbon pool (summer monsoon driven) to a northern (or mixed) hemisphere state beyond 15.5 kyr BP with an increasingly labile, non-steady state soil carbon age profile.

Consequently, we have traced a clear multi-millennial increase in precipitation on the archipelago from the LGM to the 15 kyr northern hemisphere sudden warming, which is accompanied by major changes in soil activity and thus vegetation.

5.4 Glacial Termination Climate Dynamics on Socotra Island

Beyond the strong B/A warming, the tracers resolve sub-centennial variability of DCF, $\delta^{234}\text{U}_{\text{init}}$, and Mg/Ca. This is possibly indicative of a strong local climate-monsoon coupling that is only resolved in the area with the highest temporal data density in the record. Nonetheless, one striking feature stands out: At approximately 13 kyr BP, DCF abruptly jumps to values higher than 40 % indicating sudden changes in soil carbon cycling. It was argued that sudden events caused by climatic variations or wildfires can have a major influence on soil carbon dynamics (Treble et al., 2016; Trumbore, 2009). For instance, an event like a wildfire or landslide could have drastically changed the soil configuration by depleting active vegetation and thus halting CO_2 input at near-atmospheric $^{14}\text{C}/^{12}\text{C}$ ratio (Coleborn et al., 2016; Markowska et al., 2019), and could, therefore, account for

the sudden increase in DCF. Except for short-term excursions, all other proxies remain at virtually the same level on average
345 over the event with Mg/Ca ratios indicating persistent high precipitation during the YD. Hence, this feature of the M1-5 record
is only visible in the ^{14}C data.

The high resolution data from speleothem M1-5 (exemplified by DCF and Mg/Ca records in **Fig. 8**) reveal marked variability
in DCF on sub-centennial timescales, exemplified by a sudden decrease of almost 10 % within less than 100 yr. Several of
these peaks can be seen throughout the whole period of high temporal resolution, although they are not represented in Mg/Ca
350 variations and correlation in this period is insignificant ($r^2=0.231$, $p<0.01$). The high DCF volatility suggests a pronounced
influence of local effects on the soil carbon dynamics on the Moomi plateau. Other proxies, while still showing some sub-
centennial variability, do not suggest a persistent change for the YD. $\delta^{13}\text{C}$ values remain at comparable levels at the end of the
glacial period which indicates a high influence of organic or biogenic CO_2 on stalagmite formation and contradicts enhanced
limestone carbonate dissolution. $\delta^{18}\text{O}$ values remain roughly within the state which suggests intensified precipitation during
355 B/A which was attributed to a stronger monsoon (Shakun et al., 2007). Hence, a persistent change in climatic conditions on
Socotra Island appears not likely for the YD. Although from our data we cannot conclusively derive the direct cause for the
observed fluctuations in DCF which are not represented in hydrological proxies, we propose that labile conditions of the soil
carbon pool above the cave or short-term changes in carbonate dissolution systematics might have played a vital role.

6 Conclusions

360 Stalagmite M1-5 from Moomi Cave, Socotra Island, might at face value seem similar to other speleothems that have been used
for atmospheric ^{14}C calibration. Precise U-series dating revealed an overall growth rate of more than 0.13 mm yr^{-1} . The
geographical setting in a subtropical climate in the Western Arabian Sea under the influence of the East African–Indian
monsoon is comparable to those of the Bahamas and Hulu Cave speleothems (Beck et al., 2001; Hoffmann et al., 2010; Southon
et al., 2012) that have contributed to ^{14}C calibration. However, the DCF values of M1-5 are very high, being among the highest
365 that have been reported, and additionally show distinct trends over the entire growth period of the stalagmite, thus proving the
climatic impact on speleothem ^{14}C . Large short-term DCF changes on sub-centennial time scales emphasize the importance of
local carbon-cycling variability on stalagmite ^{14}C . Whereas the Hulu Cave record (Cheng et al., 2018; Southon et al., 2012)
with its low DCF, that remains constant even during pronounced climate changes, has been referred to as the “Holy Grail of
 ^{14}C dating”, records like M1-5 are crucial for the understanding of soil carbon cycling and karst hydro-geochemistry.

370 We conclude that M1-5 grew under near-closed conditions with a high influence of aged SOM prevailing throughout the LGM.
This causes the DCF to exceed its theoretical maximum of 50 % before increasing precipitation and wetter conditions triggered
a gradual increase in ^{14}C enriched CO_2 input, most likely caused by denser vegetation coverage on the plateau above the cave.
With most proxies pointing to a higher net-infiltration rate towards Termination I, M1-5 shows a trend opposed to previous
observations suggesting a positive correlation between soil humidity and DCF due to the influence of hydrology on carbonate
375 dissolution. Rather, the data reveal a probable intensified vegetation occurrence on the Moomi plateau causing a higher influx

of CO₂ at high ¹⁴C levels into the soil gas regime that shifts DCF to lower levels. These findings motivate the implementation of ¹⁴C in stalagmites as a tracer for vegetation and emphasize the distinction between temperate and humid settings and semi-arid or arid regions when assessing the influence of precipitation changes on DCF in stalagmites. Soil carbon dynamics and the influence of vegetation and SOM seem to exert significant forcings on DCF, exemplified in our record by both the long-
380 term trend towards Termination I and the significant variability on sub-centennial time scales during YD.

Our work is an important contribution to future efforts to understand soil dynamics and their connection to stalagmite DCF, in particular as this bears on the search for suitable ¹⁴C calibration records.

Data Availability

The data presented in this paper were uploaded to the PANGAEA data library and are available at
385 <https://doi.org/10.1594/PANGAEA.906003>.

Author Contributions

The scientific project was designed and conducted by ST, JF, and NF. ST performed the sampling for all measurements and the data evaluation and wrote the paper with contributions by the other co-authors. JA performed the U-series measurements and quality assessment. AM and SJB played a major role in the investigations and expedition that led to the collection of the
390 stalagmite. RF conducted the ¹⁴C measurements. ASR performed the elemental measurements. All co-authors contributed to the discussion of the results and interpretations.

Conflict of Interest

The authors declare that they have no conflict of interest.

Acknowledgements

395 This study was funded by the DFG Research Project Grant FR1341/3 and the DFG large equipment grant INST35-1143-1 FUGG. We thank René Eichstädter at the Institute of Environmental Physics for conducting the MC ICP-MS measurements with the help of Sandra Rybakiewicz, Hanna Rosenthal and Carla Roesch as well as Marleen Lausecker for the ICPQMS measurements. We are grateful to Silvia Rheinberger and Christian Scholz for the elemental measurements at the Institute of Earth Sciences at Heidelberg University. We thank Evan C. Border for his help concerning the language of the manuscript.

400 The authors are very grateful to the editor Luke Skinner and to two anonymous referees for their constructive feedback and suggestions. Their comments considerably improved the quality of our manuscript.

References

- Adolphi, F., Muscheler, R., Friedrich, M., Gütler, D., Wacker, L., Talamo, S. and Kromer, B.: Radiocarbon calibration uncertainties during the last deglaciation: Insights from new floating tree-ring chronologies, *Quat. Sci. Rev.*, doi:10.1016/j.quascirev.2017.06.026, 2017.
- Arnold, J. R. and Libby, W. F.: Age determinations by radiocarbon content: Checks with samples of known age, *Science*, 110(2869), 678–680, doi:10.1126/science.110.2869.678, 1949.
- Arps, J.: Towards ϵ -Precision of U-series Age Determinations of Secondary Carbonates, Heidelberg University., 2017.
- Bajo, P., Borsato, A., Drysdale, R., Hua, Q., Frisia, S., Zanchetta, G., Hellstrom, J. and Woodhead, J.: Stalagmite carbon isotopes and dead carbon proportion (DCP) in a near-closed-system situation: An interplay between sulphuric and carbonic acid dissolution, *Geochim. Cosmochim. Acta*, 210, 208–227, doi:10.1016/j.gca.2017.04.038, 2017.
- Beck, J. W., Richards, D. A., Edwards, R. L., Silverman, B. W., Smart, P. L., Donahue, D. J., Hererra-Osterheld, S., Burr, G. S., Calsoyas, L., Jull, A. J. T. and Biddulph, D.: Extremely large variations of atmospheric ^{14}C concentration during the last glacial period., *Science*, 292(5526), 2453–2458, doi:10.1126/science.1056649, 2001.
- Burns, S. J.: Indian Ocean Climate and an Absolute Chronology over Dansgaard/Oeschger Events 9 to 13, *Science*, 301(5638), 1365–1367, doi:10.1126/science.1086227, 2003.
- Cheng, H., Edwards, R. L., Hoff, J., Gallup, C. D., Richards, D. A. and Asmerom, Y.: The half-lives of uranium-234 and thorium-230, in *Chemical Geology*, vol. 169, pp. 17–33., 2000.
- Cheng, H., Spötl, C., Breitenbach, S. F. M., Sinha, A., Wassenburg, J. A., Jochum, K. P., Scholz, D., Li, X., Yi, L., Peng, Y., Lv, Y., Zhang, P., Votintseva, A., Loginov, V., Ning, Y., Kathayat, G. and Edwards, R. L.: Climate variations of Central Asia on orbital to millennial timescales, *Sci. Rep.*, 6(1), 36975, doi:10.1038/srep36975, 2016.
- Cheng, H., Lawrence Edwards, R., Southon, J., Matsumoto, K., Feinberg, J. M., Sinha, A., Zhou, W., Li, H., Li, X., Xu, Y., Chen, S., Tan, M., Wang, Q., Wang, Y. and Ning, Y.: Atmospheric $^{14}\text{C}/^{12}\text{C}$ changes during the last glacial period from hulu cave, *Science*, 362(6420), 1293–1297, doi:10.1126/science.aau0747, 2018.
- Coleborn, K., Spate, A., Tozer, M., Andersen, M. S., Fairchild, I. J., MacKenzie, B., Treble, P. C., Meehan, S., Baker, A. and Baker, A.: Effects of wildfire on long-term soil CO_2 concentration: implications for karst processes, *Environ. Earth Sci.*, doi:10.1007/s12665-015-4874-9, 2016.
- DiNezio, P. N., Tierney, J. E., Otto-Bliesner, B. L., Timmermann, A., Bhattacharya, T., Rosenbloom, N. and Brady, E.: Glacial changes in tropical climate amplified by the Indian Ocean, *Sci. Adv.*, doi:10.1126/sciadv.aat9658, 2018.
- Douville, E., Sallé, E., Frank, N., Eisele, M., Pons-Branchu, E. and Ayrault, S.: Rapid and accurate U-Th dating of ancient carbonates using inductively coupled plasma-quadrupole mass spectrometry, *Chem. Geol.*, 272(1–4), 1–11, doi:10.1016/j.chemgeo.2010.01.007, 2010.
- Dreybrodt, W.: Chemical kinetics, speleothem growth and climate, *Boreas*, 28(3), 347–356, doi:10.1080/030094899422073, 1999.

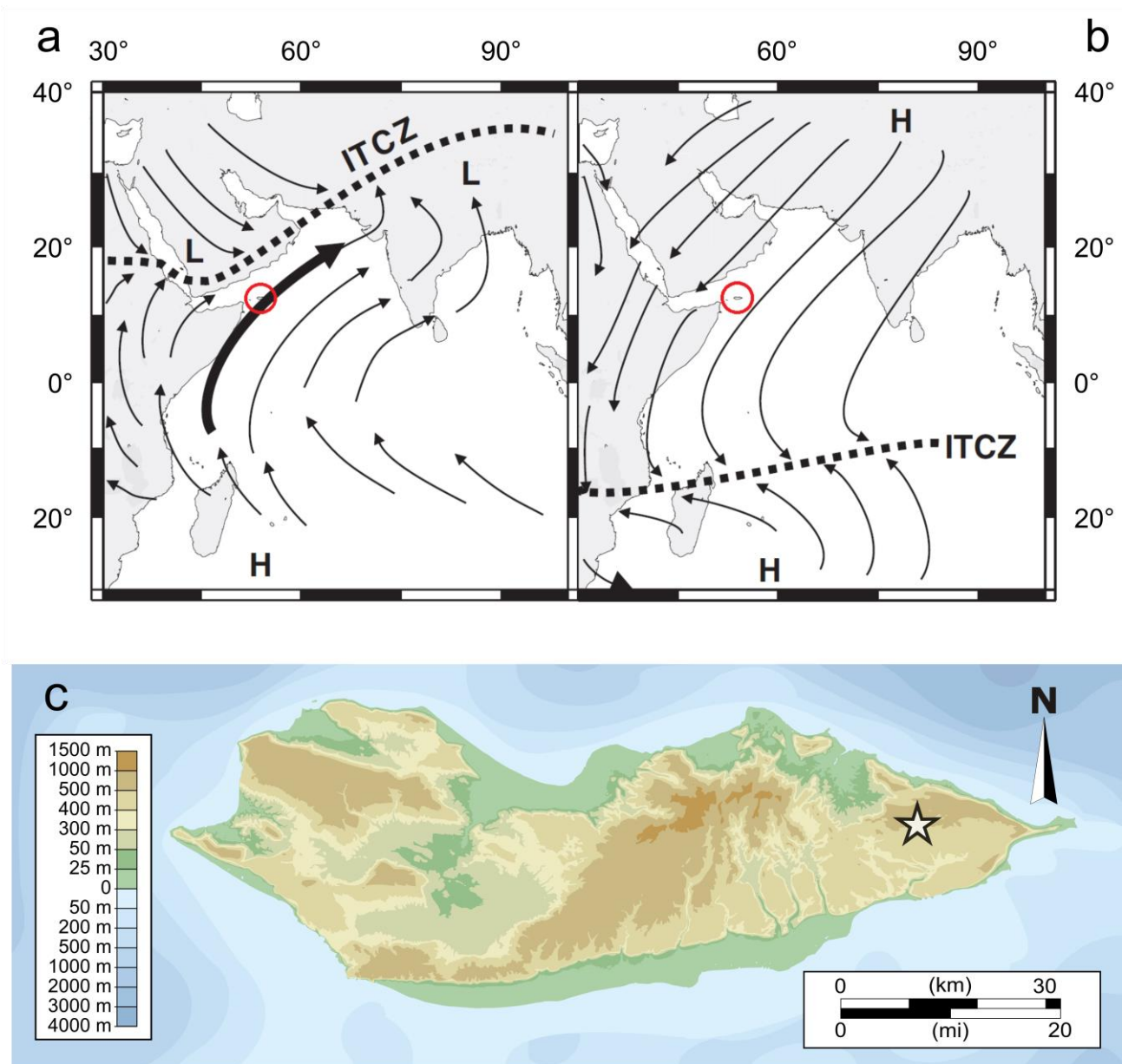
- 435 Dykoski, C. A., Edwards, R. L., Cheng, H., Yuan, D., Cai, Y., Zhang, M., Lin, Y., Qing, J., An, Z. and Revenaugh, J.: A high-resolution, absolute-dated Holocene and deglacial Asian monsoon record from Dongge Cave, China, *Earth Planet. Sci. Lett.*, 233(1–2), 71–86, doi:10.1016/j.epsl.2005.01.036, 2005.
- Fairchild, I. J. and Treble, P. C.: Trace elements in speleothems as recorders of environmental change, *Quat. Sci. Rev.*, doi:10.1016/j.quascirev.2008.11.007, 2009.
- 440 Fairchild, I. J., Borsato, A., Tooth, A. F., Frisia, S., Hawkesworth, C. J., Huang, Y., McDermott, F. and Spiro, B.: Controls on trace element (Sr-Mg) compositions of carbonate cave waters: Implications for speleothem climatic records, *Chem. Geol.*, doi:10.1016/S0009-2541(99)00216-8, 2000.
- Fleitmann, D., Burns, S. J., Mudelsee, M., Neff, U., Kramers, J., Mangini, A. and Matter, A.: Holocene forcing of the Indian monsoon recorded in a stalagmite from southern Oman., *Science*, 300(5626), 1737–9, doi:10.1126/science.1083130, 2003.
- 445 Fleitmann, D., Burns, S. J., Mangini, A., Mudelsee, M., Kramers, J., Villa, I., Neff, U., Al-Subbary, A. A., Buettner, A., Hippler, D. and Matter, A.: Holocene ITCZ and Indian monsoon dynamics recorded in stalagmites from Oman and Yemen (Socotra), *Quat. Sci. Rev.*, 26(1), 170–188, doi:10.1016/j.quascirev.2006.04.012, 2007.
- Flohr, P., Fleitmann, D., Zorita, E., Sadekov, A., Cheng, H., Bosomworth, M., Edwards, L., Matthews, W. and Matthews, R.: Late Holocene droughts in the Fertile Crescent recorded in a speleothem from northern Iraq, *Geophys. Res. Lett.*, doi:10.1002/2016GL071786, 2017.
- 450 Fohlmeister, J., Kromer, B. and Mangini, A.: The influence of soil organic matter age spectrum on the reconstruction of atmospheric ^{14}C levels via stalagmites, *Radiocarbon*, 53(1), 99–115, 2011.
- Genty, D., Massault, M., Gilmour, M., Baker, A., Verheyden, S. and Kepens, E.: Calculation of past dead carbon proportion and variability by the comparison of AMS(^{14}C) and TIMS U/Th ages on two holocene stalagmites, *Radiocarbon*, 41(3), 251–270, 1999.
- 455 Genty, D., Baker, A., Massault, M., Proctor, C., Gilmour, M., Pons-Branchu, E. and Hamelin, B.: Dead carbon in stalagmites: Carbonate bedrock paleodissolution vs. ageing of soil organic matter. Implications for ^{13}C variations in speleotherms, *Geochim. Cosmochim. Acta*, 65(20), 3443–3457, doi:10.1016/S0016-7037(01)00697-4, 2001.
- Griffiths, M. L., Drysdale, R. N., Gagan, M. K., Frisia, S., Zhao, J. xin, Ayliffe, L. K., Hantoro, W. S., Hellstrom, J. C., Fischer, M. J., Feng, Y. X. and Suwargadi, B. W.: Evidence for Holocene changes in Australian-Indonesian monsoon rainfall from stalagmite trace element and stable isotope ratios, *Earth Planet. Sci. Lett.*, doi:10.1016/j.epsl.2010.01.002, 2010.
- 460 Griffiths, M. L., Fohlmeister, J., Drysdale, R. N., Hua, Q., Johnson, K. R., Hellstrom, J. C., Gagan, M. K. and Zhao, J. x.: Hydrological control of the dead carbon fraction in a Holocene tropical speleothem, *Quat. Geochronol.*, 14, 81–93, doi:10.1016/j.quageo.2012.04.001, 2012.
- 465 Gupta, A. K., Anderson, D. M. and Overpeck, J. T.: Abrupt changes in the Asian southwest monsoon during the holocene and their links to the North Atlantic Ocean, *Nature*, doi:10.1038/nature01340, 2003.
- Hendy, C.: The isotopic geochemistry of speleothems - I. The calculation of the effects of different modes of formation on the isotopic composition of speleothems and their applicability as paleoclimatic indicators, *Geochim. Cosmochim. Acta*, 35(386),

- 801–824, doi:10.1016/0016-7037(71)90127-X, 1971.
- 470 Hoffmann, D. L., Beck, J. W., Richards, D. A., Smart, P. L., Singarayer, J. S., Ketchmark, T. and Hawkesworth, C. J.: Towards radiocarbon calibration beyond 28 ka using speleothems from the Bahamas, *Earth Planet. Sci. Lett.*, 289(1–2), 1–10, doi:10.1016/j.epsl.2009.10.004, 2010.
- Hua, Q., Barbetti, M., Fink, D., Kaiser, K. F., Friedrich, M., Kromer, B., Levchenko, V. A., Zoppi, U., Smith, A. M. and Bertuch, F.: Atmospheric ^{14}C variations derived from tree rings during the early Younger Dryas, *Quat. Sci. Rev.*,
475 doi:10.1016/j.quascirev.2009.08.013, 2009.
- Ivanochko, T. S., Ganeshram, R. S., Brummer, G. J. A., Ganssen, G., Jung, S. J. A., Moreton, S. G. and Kroon, D.: Variations in tropical convection as an amplifier of global climate change at the millennial scale, *Earth Planet. Sci. Lett.*, doi:10.1016/j.epsl.2005.04.002, 2005.
- Kaufmann, G.: Stalagmite growth and palaeo-climate: The numerical perspective, *Earth Planet. Sci. Lett.*, doi:10.1016/S0012-
480 821X(03)00369-8, 2003.
- Kaufmann, G. and Dreybrodt, W.: Stalagmite growth and palaeo-climate: An inverse approach, *Earth Planet. Sci. Lett.*, doi:10.1016/j.epsl.2004.05.020, 2004.
- Kromer, B., Lindauer, S., Synal, H. A. and Wacker, L.: MAMS - A new AMS facility at the Curt-Engelhorn-Centre for Achaemetry, Mannheim, Germany, *Nucl. Instruments Methods Phys. Res. Sect. B Beam Interact. with Mater. Atoms*, 294,
485 11–13, doi:10.1016/j.nimb.2012.01.015, 2013.
- Lechleitner, F. A., Baldini, J. U. L., Breitenbach, S. F. M., Fohlmeister, J., McIntyre, C., Goswami, B., Jamieson, R. A., van der Voort, T. S., Prufer, K., Marwan, N., Culleton, B. J., Kennett, D. J., Asmerom, Y., Polyak, V. and Eglinton, T. I.: Hydrological and climatological influences on a very high resolution tropical stalagmite radiocarbon record, *Geochim. Cosmochim. Acta*, 194, 233–252, doi:http://dx.doi.org/10.1016/j.gca.2016.08.039, 2016.
- 490 Lotsch, A., Friedl, M. A., Anderson, B. T. and Tucker, C. J.: Coupled vegetation-precipitation variability observed from satellite and climate records, *Geophys. Res. Lett.*, doi:10.1029/2003GL017506, 2003.
- Markowska, M., Fohlmeister, J., Treble, P. C., Baker, A., Andersen, M. S. and Hua, Q.: Modelling the ^{14}C bomb-pulse in young speleothems using a soil carbon continuum model, *Geochim. Cosmochim. Acta*, 261, 342–367, doi:10.1016/J.GCA.2019.04.029, 2019.
- 495 Mies, B. and Beyhl, F. E.: Remarks on the vegetation ecology of Socotra, in *First international scientific symposium on Socotra Island: present and future*, pp. 25–62., 1996.
- Myers, C. G., Oster, J. L., Sharp, W. D., Bennartz, R., Kelley, N. P., Covey, A. K. and Breitenbach, S. F. M.: Northeast Indian stalagmite records Pacific decadal climate change: Implications for moisture transport and drought in India, *Geophys. Res. Lett.*, doi:10.1002/2015GL063826, 2015.
- 500 Noronha, A. L., Johnson, K. R., Hu, C., Ruan, J., Southon, J. R. and Ferguson, J. E.: Assessing influences on speleothem dead carbon variability over the Holocene: Implications for speleothem-based radiocarbon calibration, *Earth Planet. Sci. Lett.*, 394, 20–29, doi:10.1016/j.epsl.2014.03.015, 2014.

- Overpeck, J., Anderson, D., Trumbore, S. and Prell, W.: The southwest Indian Monsoon over the last 18000 years, *Clim. Dyn.*, doi:10.1007/BF00211619, 1996.
- 505 Popov, G. B.: The vegetation of Socotra, *Bot. J. Linn. Soc.*, 55(362), 706–720, doi:https://doi.org/10.1111/j.1095-8339.1957.tb00031.x, 2008.
- Reimer, P. J., Bard, E., Bayliss, A., Beck, J. W., Blackwell, P. G., Bronk Ramsey, C., Buck, C. E., Cheng, H., Edwards, R. L., Friedrich, M., Grootes, P. M., Guilderson, T. P., Haflidason, H., Hajdas, I., Hatté, C., Heaton, T. J., Hoffmann, D. L., Hogg, A. G., Hughen, K. A., Kaiser, K. F., Kromer, B., Manning, S. W., Niu, M., Reimer, R. W., Richards, D. A., Scott, E. M.,
- 510 Southon, J. R., Staff, R. A., Turney, C. S. M. and van der Plicht, J.: IntCal13 and Marine13 Radiocarbon Age Calibration Curves 0–50,000 Years cal BP, *Radiocarbon*, 55(4), 1869–1887, doi:10.2458/azu_js_rc.55.16947, 2013.
- Rudzka, D., McDermott, F., Baldini, L. M., Fleitmann, D., Moreno, A. and Stoll, H.: The coupled $\delta^{13}\text{C}$ -radiocarbon systematics of three Late Glacial/early Holocene speleothems; insights into soil and cave processes at climatic transitions, *Geochim. Cosmochim. Acta*, doi:10.1016/j.gca.2011.05.022, 2011.
- 515 Schaub, M., Büntgen, U., Kaiser, K. F., Kromer, B., Talamo, S., Andersen, K. K. and Rasmussen, S. O.: Lateglacial environmental variability from Swiss tree rings, *Quat. Sci. Rev.*, doi:10.1016/j.quascirev.2007.01.017, 2008.
- Schlüter, T.: *Geological Atlas of Africa: with Notes on Stratigraphy, Tectonics, Economic Geology, Geohazard and Geosites of Each Country.*, 2006.
- Scholte, P. and De Geest, P.: The climate of Socotra Island (Yemen): A first-time assessment of the timing of the monsoon
- 520 wind reversal and its influence on precipitation and vegetation patterns, *J. Arid Environ.*, 74(11), 1507–1515, doi:10.1016/j.jaridenv.2010.05.017, 2010.
- Scholz, D. and Hoffmann, D. L.: StalAge - An algorithm designed for construction of speleothem age models, *Quat. Geochronol.*, 6(3–4), 369–382, doi:10.1016/j.quageo.2011.02.002, 2011.
- Schulz, H., van Rad, U. and Erlenkeuser, H.: Correlation between Arabian Sea and Greenland climate oscillations of the past
- 525 110,000 years, *Nature*, 393(May), 54–57, doi:10.1038/31750, 1998.
- Shakun, J. D., Burns, S. J., Fleitmann, D., Kramers, J., Matter, A. and Al-Subbary, A. A.: A high-resolution, absolute-dated deglacial speleothem record of Indian Ocean climate from Socotra Island, Yemen, *Earth Planet. Sci. Lett.*, 259(3), 442–456, doi:10.1016/j.epsl.2007.05.004, 2007.
- Soulet, G., Skinner, L. C., Beaupré, S. R. and Galy, V.: A note on reporting of reservoir ^{14}C disequilibria and age offsets,
- 530 *Radiocarbon*, doi:10.1017/RDC.2015.22, 2016.
- Southon, J., Noronha, A. L., Cheng, H., Edwards, R. L. and Wang, Y.: A high-resolution record of atmospheric ^{14}C based on Hulu Cave speleothem H82, *Quat. Sci. Rev.*, 33, 32–41, doi:10.1016/j.quascirev.2011.11.022, 2012.
- Synal, H. A., Stocker, M. and Suter, M.: MICADAS: A new compact radiocarbon AMS system, *Nucl. Instruments Methods Phys. Res. Sect. B Beam Interact. with Mater. Atoms*, 259(1), 7–13, doi:10.1016/j.nimb.2007.01.138, 2007.
- 535 Treble, P. C., Fairchild, I. J., Baker, A., Meredith, K. T., Andersen, M. S., Salmon, S. U., Bradley, C., Wynn, P. M., Hankin, S. I., Wood, A. and McGuire, E.: Roles of forest bioproductivity, transpiration and fire in a nine-year record of cave dripwater

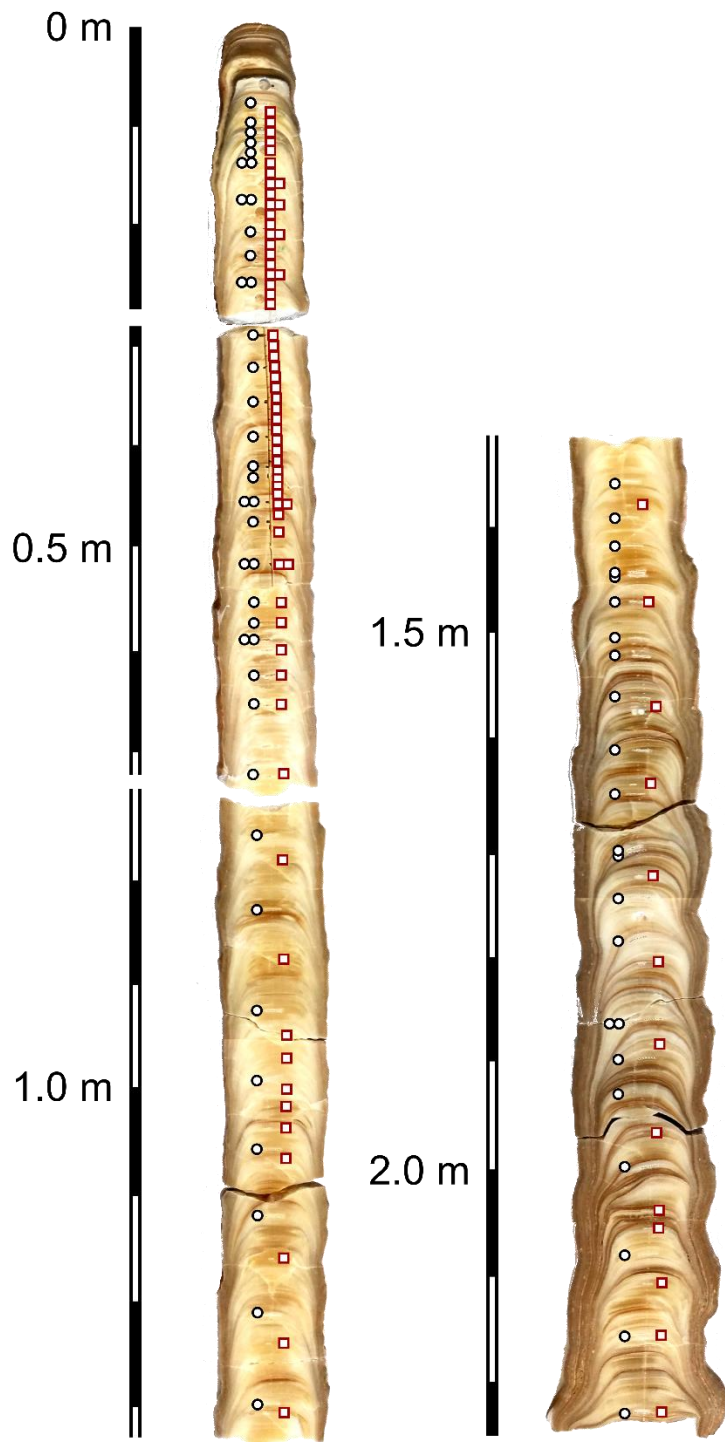
- chemistry from southwest Australia, *Geochim. Cosmochim. Acta*, 184, 132–150, doi:10.1016/j.gca.2016.04.017, 2016.
- Trumbore, S.: Radiocarbon and Soil Carbon Dynamics, *Annu. Rev. Earth Planet. Sci.*, doi:10.1146/annurev.earth.36.031207.124300, 2009.
- 540 Unkel, I.: AMS-14C-Analysen zur Rekonstruktion der Landschafts- und Kulturgeschichte in der Region Palpa (S-Peru), Heidelberg University., 2006.
- Warken, S. F., Fohlmeister, J., Schröder-Ritzrau, A., Constantin, S., Spötl, C., Gerdes, A., Esper, J., Frank, N., Arps, J., Terente, M., Riechelmann, D. F. C., Mangini, A. and Scholz, D.: Reconstruction of late Holocene autumn/winter precipitation variability in SW Romania from a high-resolution speleothem trace element record, *Earth Planet. Sci. Lett.*, 499, 122–133, doi:10.1016/j.epsl.2018.07.027, 2018.
- 545 Wefing, A. M., Arps, J., Blaser, P., Wienberg, C., Hebbeln, D. and Frank, N.: High precision U-series dating of scleractinian cold-water corals using an automated chromatographic U and Th extraction, *Chem. Geol.*, 475, 140–148, doi:10.1016/j.chemgeo.2017.10.036, 2017.
- Zhou, J., Lundstrom, C. C., Fouke, B., Panno, S., Hackley, K. and Curry, B.: Geochemistry of speleothem records from southern Illinois: Development of $(^{234}\text{U})/(^{238}\text{U})$ as a proxy for paleoprecipitation, *Chem. Geol.*, 221(1–2), 1–20, doi:10.1016/j.chemgeo.2005.02.005, 2005.
- 550

Figures



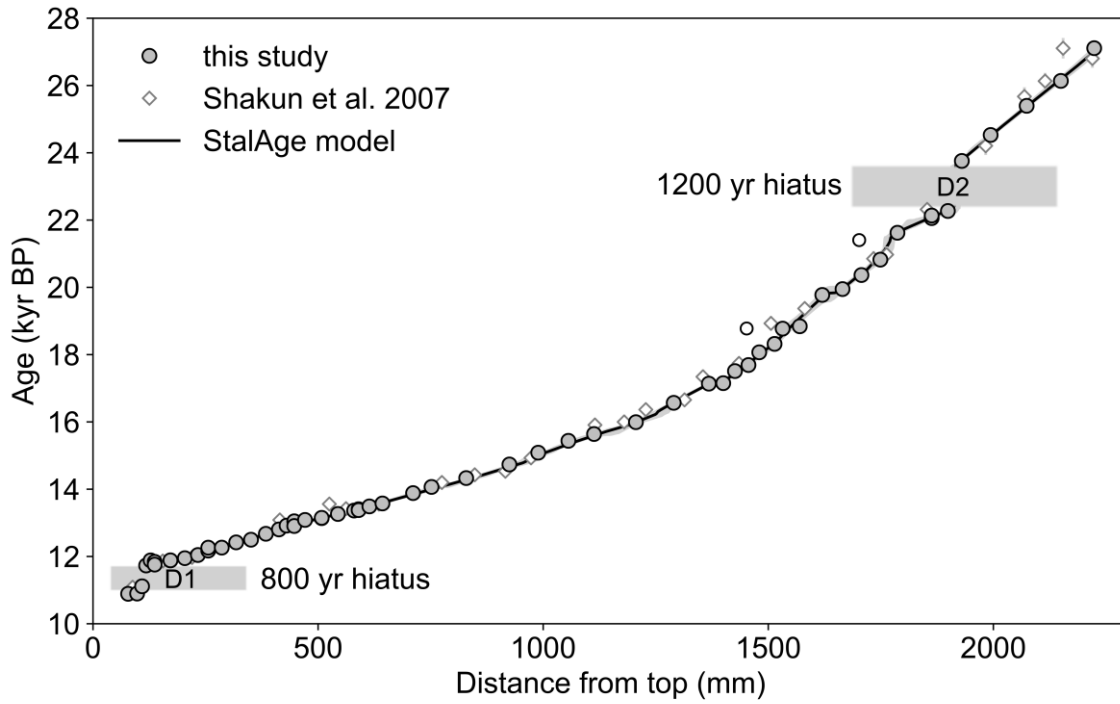
555

Figure 1: uppermost figures show the geographic position of the Socotra archipelago (red circle) in the Western Arabian Sea, east of the coast of Somalia with the prevailing monsoonal surface wind patterns in boreal summer (a) and boreal winter (b) relative to the ITCZ (graphic adapted from Fleitmann et al., 2007). In a topographic map (c), the position of Moomi Cave in the East of Socotra Island on the Moomi Plateau is indicated by a white star.



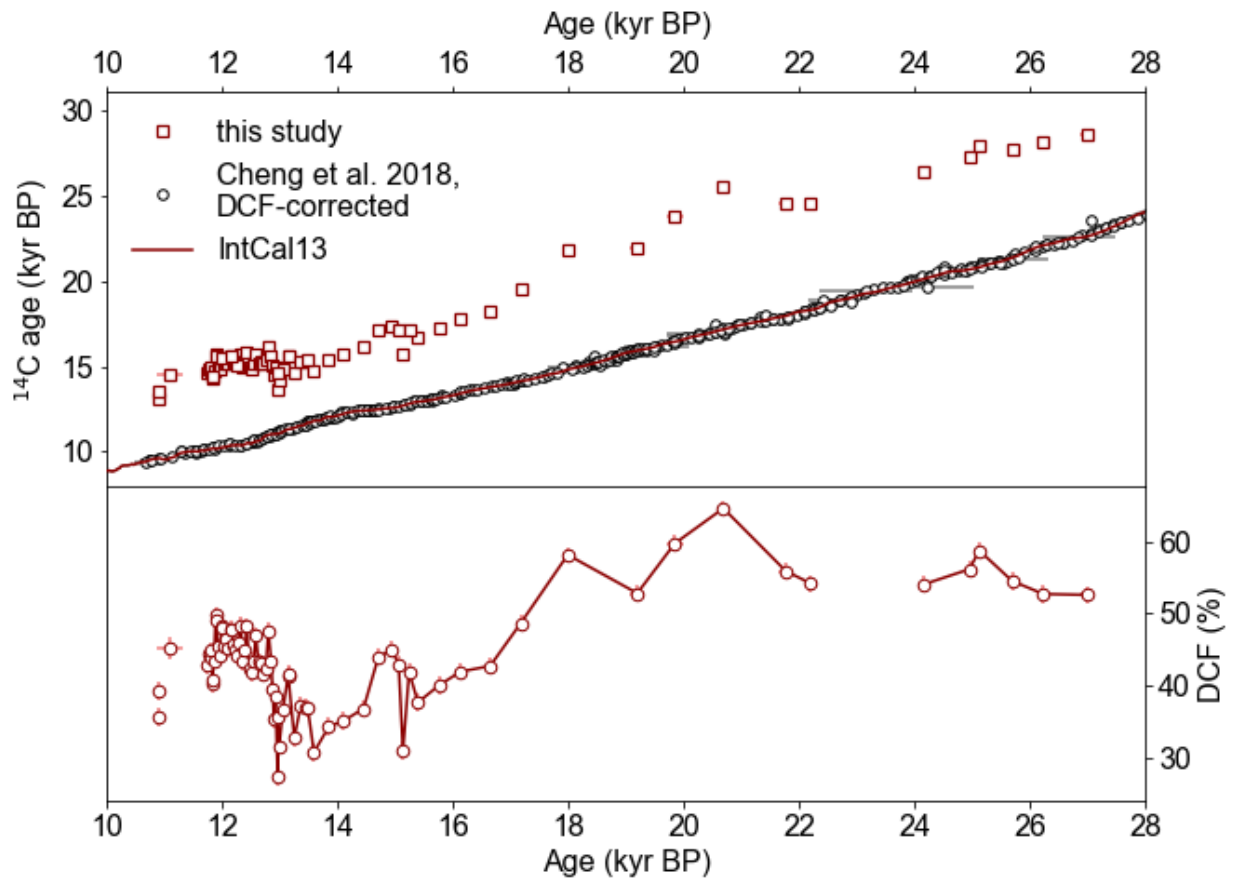
560

Figure 2: Composite photograph of stalagmite M1-5 from Moomi Cave. Black circles indicate where U-series dating samples were taken, red squares represent ¹⁴C sample locations.

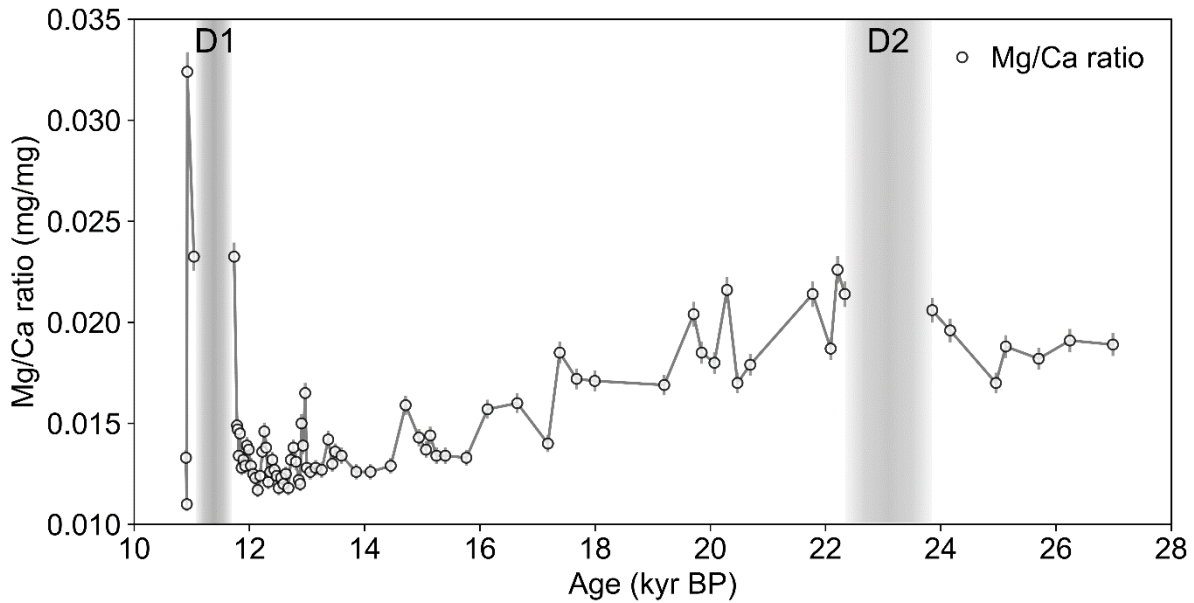


565

Figure 3: U-series ages vs. depth. Error bars reflect 2σ statistical uncertainty but are mostly covered by the data points. The solid line represents the established age model obtained by sectional implementation of the StalAge algorithm (Scholz and Hoffmann, 2011). Two data points implying age inversions (empty circles) in an otherwise steady record were omitted. Diamonds represent data from a previous study (Shakun et al., 2007). Growth discontinuities D1 and D2 are highlighted by grey bars.

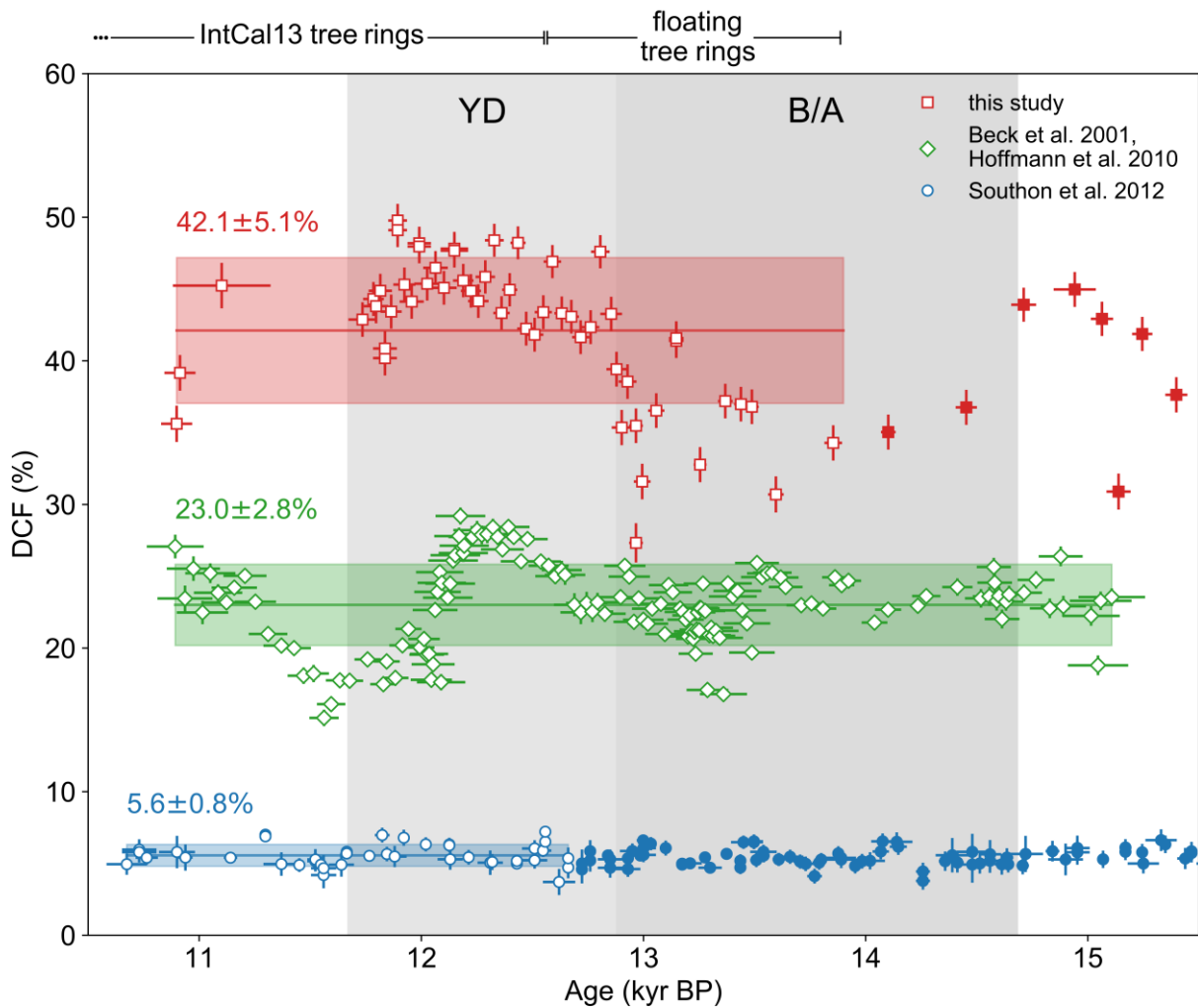


570 **Figure 4: Upper graph (a) shows the ^{14}C ages of stalagmite M1-5 (red squares) plotted vs. age derived from the StalAge model. Error bars are mostly smaller than sign size. Also shown is the atmospheric ^{14}C age (solid red line) from Reimer et al., 2013, with the recently published DCF-corrected stalagmite record from Cheng et al., 2018. The DCF of stalagmite M1-5 is shown in the bottom figure (b).**

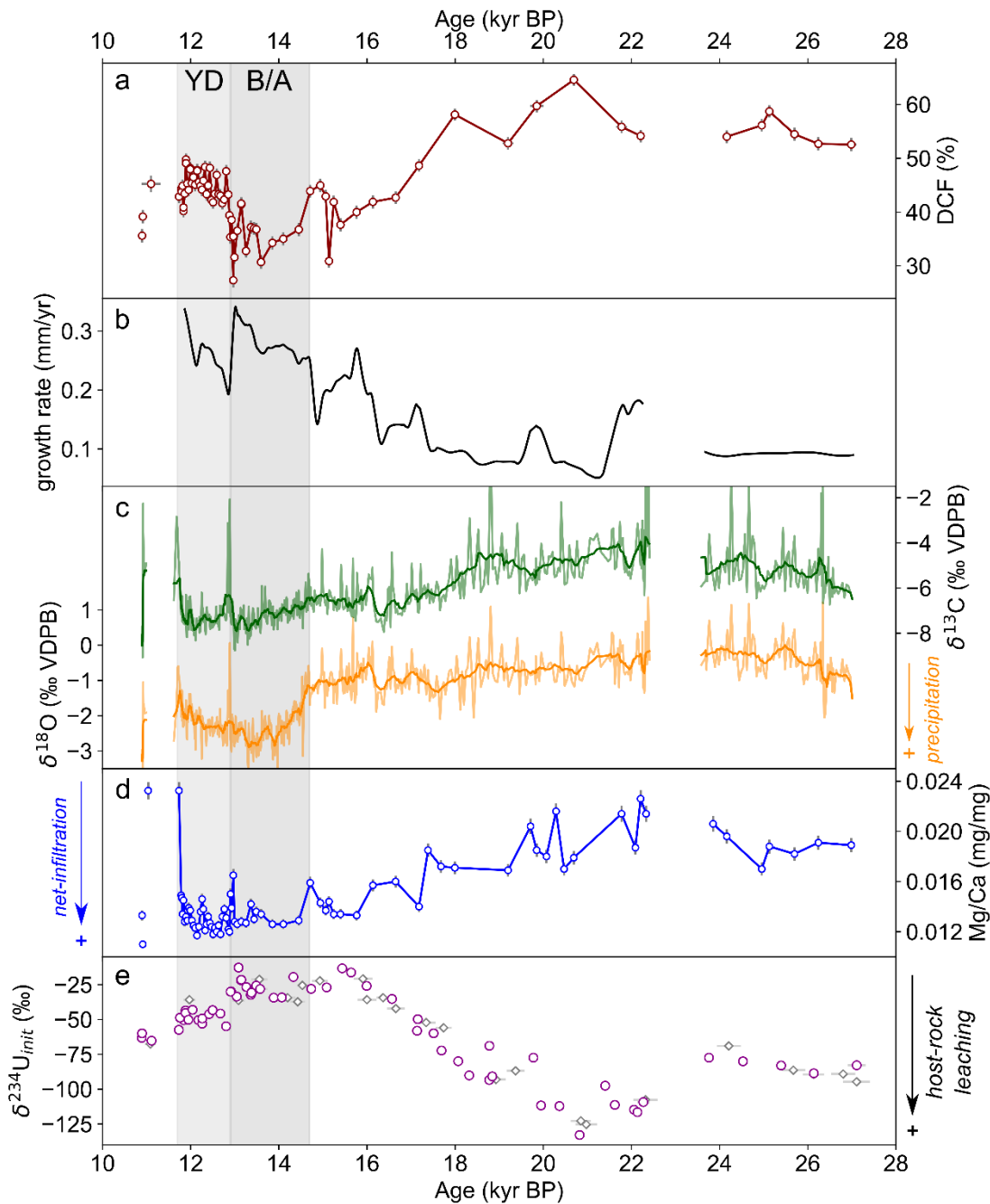


575

Figure 5: Mg/Ca ratio of stalagmite carbonate vs. modeled age. Error bars reflect the data reproducibility (overall 3 % of measured values). Growth discontinuities D1 and D2 are highlighted by grey bars. The data show a general decreasing trend from the LGM towards Termination I which is interrupted by highly increased values around D1 at approximately 11.7 kyr BP. Both hiatuses inferred from U-series dating are shaded in grey.

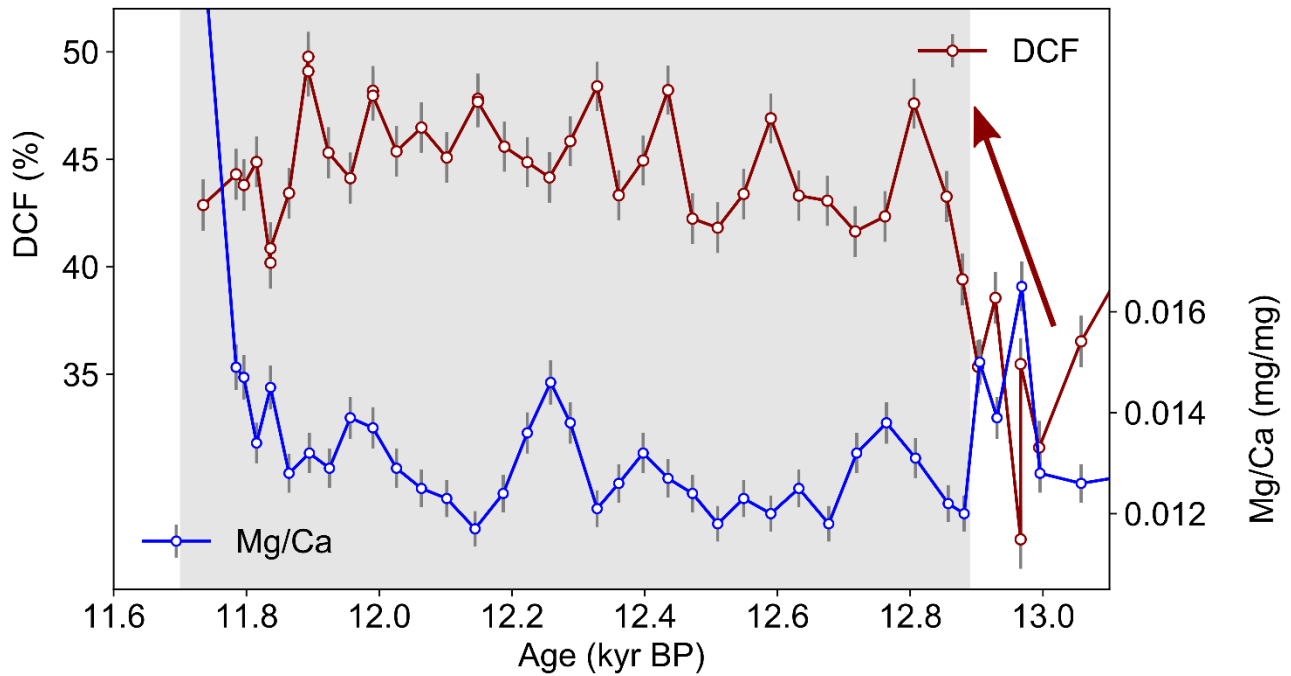


580 **Figure 6: Very high and varying DCF for stalagmite M1-5 (this study) in comparison to records included in calibration data sets (Beck et al., 2001; Hoffmann et al., 2010; Southon et al., 2012). Whereas H82 DCF values are low and constant, the Bahamas DCF are higher and show non-random structures between 11.2 and 12.7 kyr BP. Empty signs indicate the used reference area for the respective calibration study, the shaded colored areas represent mean values and standard deviation of DCF values in the respective reference areas. Areas of available tree-ring records (Reimer et al., 2013) are indicated on top of the graph.**



585 **Figure 7: Combined results from stalagmite M1-5. DCF (a), growth rate from StalAge modelling (b), adapted stable isotope data from Shakun et al., 2007 (c), Mg/Ca mass ratio (d) and $\delta^{234}\text{U}$ from this study (violet circles) and Shakun et al., 2007 (grey diamonds) (e). The grey bars indicate Bølling-Allerød interstadial (B/A) and Younger Dryas (YD) cold reversal. Oxygen data were interpreted as an increase in monsoonal rainfall over Termination I. This is corroborated by Mg/Ca precipitation proxy data, showing its lowest values in the YD, where growth rate is highest, with a decreasing trend over the end of the last glacial period. DCF shows an obvious decreasing trend after the LGM until it increases at the onset of YD. $\delta^{18}\text{O}$ reaches its lowest values during the B/A warm period, indicating an intensified monsoonal precipitation (Shakun et al., 2007).**

590



595 **Figure 8: DCF and Mg/Ca of stalagmite M1-5 for the YD (grey area). DCF increases sharply at the onset of the YD (red arrow). The high data resolution reveals pronounced changes in DCF on extremely short time periods, highlighting the vast soil dynamics during the YD where growth rate is the very high ($>0.20 \text{ mm yr}^{-1}$). The hydrological proxy Mg/Ca remains relatively low, indicating a high infiltration rate. The correlation between DCF and Mg/Ca is insignificant in this time ($r^2=0.23$, $p<0.01$).**