

The 4.2 cal ka BP Event in Northeastern China: A Geospatial Perspective

Louis A. Scuderi¹, Xiaoping Yang², Samantha E. Ascoli¹, and Hongwei Li²

¹Department of Earth and Planetary Sciences, University of New Mexico, Albuquerque, NM, USA

²School of Earth Sciences, Zhejiang University, Hangzhou, Zhejiang Province, P. R. China

Correspondence: Louis A. Scuderi (tree@unm.edu)

Abstract. The Hunshandake Sandy Lands of northeastern China, currently a semi-arid lightly-vegetated region, were characterized by perennial lakes and forest stands in the early and middle Holocene. Well-developed dark grassland-type paleosols (mollisols) at the southern edge of the Hunshandake, OSL-dated to between 6.93 ± 0.61 and 4.27 ± 0.38 cal ka BP along with lacustrine sands in higher elevations that date to between 5.7 ± 0.3 and 5.2 ± 0.2 cal ka BP, and thick gray lacustrine sediments suggest a wetter climate. Between 4.2 and 3.8 cal ka BP the region experienced extreme drying that was exacerbated by lake overflow drainage and sapping that depleted the groundwater table. The region supported a robust population, the Hongshan Culture, but depopulated post-4.2 cal ka BP with migration likely to the Yellow River Valley where the Hongshan introduced their characteristic cultural elements to early Chinese civilization. Evidence for extreme and sudden environmental change in northeastern China, at and following the 4.2 cal ka BP event, and like that we document in the Hunshandake, is widespread. However, no comprehensive overview of this climatic episode exists. Here we discuss the relevant events in northeastern China and capture them in a spatially explicit Geographic Information Systems database that can be used to analyze the timing and spatial pattern of climate and environmental change associated with the 4.2 cal ka BP event. This approach could serve as a prototype for a Global 4.2 cal ka BP event database.

Copyright statement. TEXT

15 1 Introduction

The Hunshandake Sandy Lands of northeastern China (Fig. 1) are currently characterized by grasslands that overlie semi-stabilized aeolian deposits in its southern and eastern regions, and by aeolian sand sheets and dunes in its western region. The current desert-like landscape was covered by lakes and forests during the early and middle Holocene (Jiang et al., 2006; Yang and Scuderi, 2010; Yang et al., 2015; Xiao et al., 2018) with bioclimatic regimes reflecting significantly wetter conditions associated with an intensified monsoon precipitation up to 50% higher than current conditions (Yang et al., 2011, 2013). The region supported a significant population that lived in small communities and relied on fishing and hunting (Liu and Feng, 2012; Wagner, et al., 2013).

A sudden shift from wet to dry conditions in the Hunshandake, and for most of northeastern China, occurs at ~ 4.2 cal ka BP (Yang et al., 2015). While the primary driver appears to be linked to global scale change occurring at that time, in the Hunshandake it was exacerbated by rapid groundwater drawdown resulting from drainage capture. This combined climatic and hydrologic reorganization led to a rapid loss of surface water and a shift from green to sandy conditions over a few hundred
5 years. This environmental shift produced regional depopulation with significant abandonment of sites across the region lasting until ~ 3.6 cal ka BP (Liu and Feng, 2012; Wagner, et al., 2013; Yang et al., 2015).

The change in environmental conditions in the Hunshandake is not unique within China. Evidence for a putative 4.2 cal ka BP event appears at sites across China's deserts (Feng et al., 2006) and in many records from northeast China (Hong et al., 2001; Liu et al., 2002, 2010; Xiao et al., 2018). Globally, the underlying cause for this event is controversial (Weiss and
10 Bradley, 2010; Weiss, 2016, 2017). Part of the problem in deciphering this event includes a lack of understanding of the drivers of the global climate system at ca. 4.2 cal ka BP, the spatial and temporal coherence of this event, and the sensitivity of different ecologic, hydrologic and geomorphic systems to forcings of this magnitude.

In this paper we review the environmental change that took place in the Hunshandake bracketing the 4.2 cal ka BP event and place it in context relative to other records from northeastern China. To better understand the event's temporal and spatial
15 characteristics we analyzed the existent literature, developed a geospatially explicit Geographic Information System database from this literature and used it to map evidence for the 4.2 cal ka BP event. We conclude with a discussion of how such a data structure and analysis approach might be used to better understand the 4.2 cal ka BP event globally and we provide the dataset for evaluation and analysis as an online supplement.

1.1 Study Area

China is characterized by a broad swath of deserts that extend between 38° and 46° N. This desert belt is roughly divided at the Helan Mountains into a western portion of "true" hyper-arid and arid deserts, and a slightly wetter eastern portion consisting of lightly vegetated and stabilized semiarid to dry subhumid "Sandy Lands". The Hunshandake Sandy Lands (Fig. 1, elevation 1100-1400m), along with the Horqin and Hulun Buir, are found on the eastern edge of this desert belt in northeastern
20 China. Ecologically the Hunshandake is a semi-arid grassland ecosystem underlain primarily by aeolian sandy soils. Monthly temperatures range from -18.3°C in January to $+18.5^{\circ}\text{C}$ in July with a annual precipitation across the region between 150 and
25 450 mm, and falling primarily during the summer months.

1.2 Holocene Climatic History

The Hunshandake Sandy Lands can be subdivided into southern, western and eastern units. The southern part of the region is characterized by low hills vegetated by a thin cover of grasses and shrubs and has an absence of standing water. The western
30 part of the region is primarily low hills with a grassland cover and standing lakes while the eastern portion is grassland and low rolling vegetated dunes with dry lake beds. While all three are currently semi-arid and lightly vegetated, they differed significantly in their response to climate change at 4.2 cal ka BP.

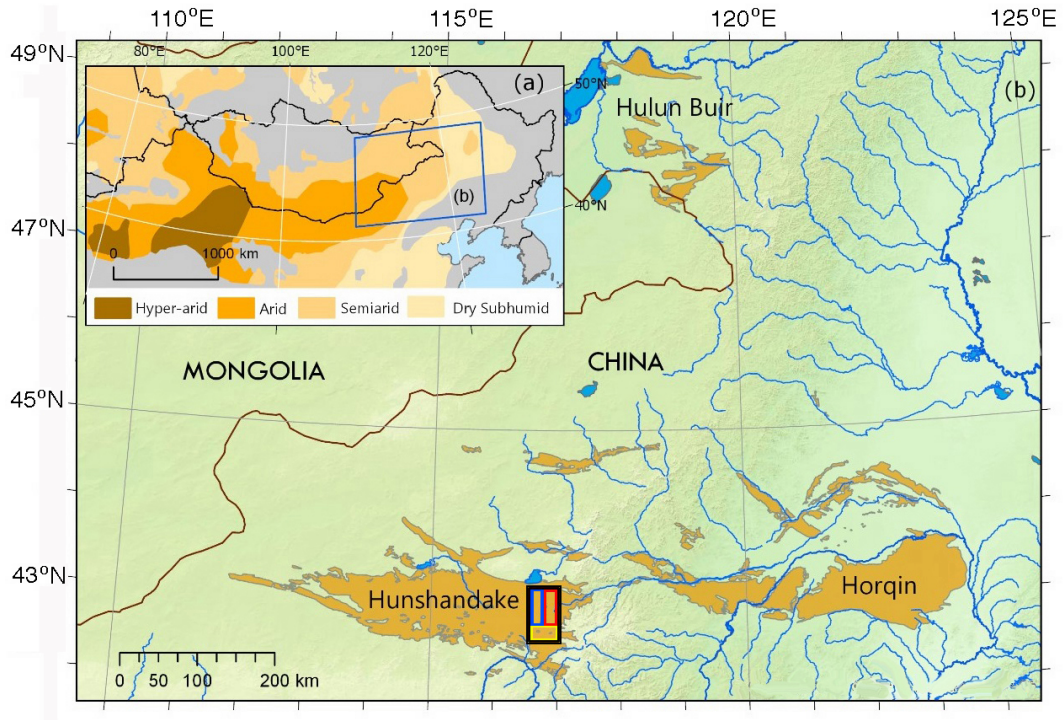


Figure 1. Sandy Lands of northeastern China. Inset a. Distribution of deserts across China by climate type. b. Sandy land distribution. Boxed area in Hunshandake Sandy Lands is study area reported in this study. Regions: South -yellow, West - blue, East- red



Figure 2. Southern Hunshandake. Left: Section P from Yang et al. (2015) showing paleosols and sandy units which overlie an earlier lacustrine unit. Right: Sampled exposure showing the two paleosols.

The Holocene environment of this area is discussed in detail in Yang et al. (2015). We briefly summarize the findings below. Figure 2 illustrates two well-developed dark grassland-type paleosols (mollisols) at the southern edge of the Hunshandake that are identifiable and can be traced across the entire region. Lacustrine sands underlying these paleosols indicate an earlier lake/wetland environment. The lower paleosol is OSL-dated to between 6.93 ± 0.61 and 4.27 ± 0.38 ka BP and suggests a
5 period of wetter climate that rapidly transitioned to dry conditions at ca. 4.2 cal ka BP. The southern part of the Hunshandake, as indicated by a second paleosol dated to between 2.82 ± 0.26 and 1.54 ± 0.14 ka BP, returned to green conditions again at ca. 2.8 ka BP and maintained this state for $\sim 1,500$ yrs. Dune sediments reflecting an active aeolian environment have dominated since ~ 1.3 cal ka BP.

The eastern Hunshandake (Figs. 3 and 4), while exhibiting evidence of the 4.2 cal ka BP event in terms of paleosols and
10 abandoned shoreline features, does not exhibit a return to grassland conditions between ~ 2.8 and 1.5 ka BP with sandy conditions persisting since the onset of the 4.2 cal ka BP event. As Yang et al. (2015) found this difference was associated with redirection of drainage from its northerly flow towards Dali Lake at ca. 4.5 cal ka BP by capture of surface water and the groundwater table by the Xilamulun River. This may be reflected in the longest period of low stands of both Dali (Xiao et al., 2008, 2018) and Daihai (Xiao et al., 2004, 2006) lakes between ca. 4.5 and 3.8 cal ka BP. The eastward drainage shift
15 resulting from this capture, coupled with channel entrenchment via groundwater sapping resulted in long-term drying of the eastern Hunshandake, likely moisture enhancement of the downstream Horqin Sandy Land, and abandonment of the region by the Hongshan culture (Peterson et al., 2010) ca 4.5-4.2 cal ka BP. Recent mapping has revealed a lack of artifacts in the eastern Hunshandake between 4.3 and 3.5 cal ka BP (Liu and Feng, 2012; Wagner, et al., 2013). In the eastern Hunshandake Sandy Lands, Hongshan artifacts are found primarily within and below the 4.2 cal ka BP paleosols and shorelines while Bronze Age
20 artifacts (Fig. 3b), which appear in the region ca 3.6 cal ka BP (Wagner et al., 2013), lie on or above the 4.2 cal ka BP paleosol.

2 Results

2.1 Deriving and Understanding the Regional Signal in Northeast China

The 4.2 cal ka BP event continues to puzzle scientists with respect to its spatial extent, triggering mechanisms, and regional to
global characteristics. As shown above, the difference in response between sites within the Hunshandake separated by less than
25 100 km illustrates some of the complications that can arise from point source reconstructions. In northeastern China records are dominated by evidence from sediments and pollen from lacustrine and aeolian environments. At times these records present conflicting views of the 4.2 cal ka BP event. In the following we discuss some of the issues with interpreting regional mappings of this diverse set of records and provide an approach to reconstructing the regional signal of this event.

Parmesan and Yohe (2003) note that detection of a climate change signal is a search for spatially and temporally coherent
30 sign-switching patterns. This search is complicated by the time transgressive and rate response differing nature of complex interacting systems as well as possible spatially diffusive responses across a landscape. While records from individual sites provide snapshots of what occurred at a given locality, interpretation is often complicated by significant uncertainty in dating and possible regionalization of the observed signal.

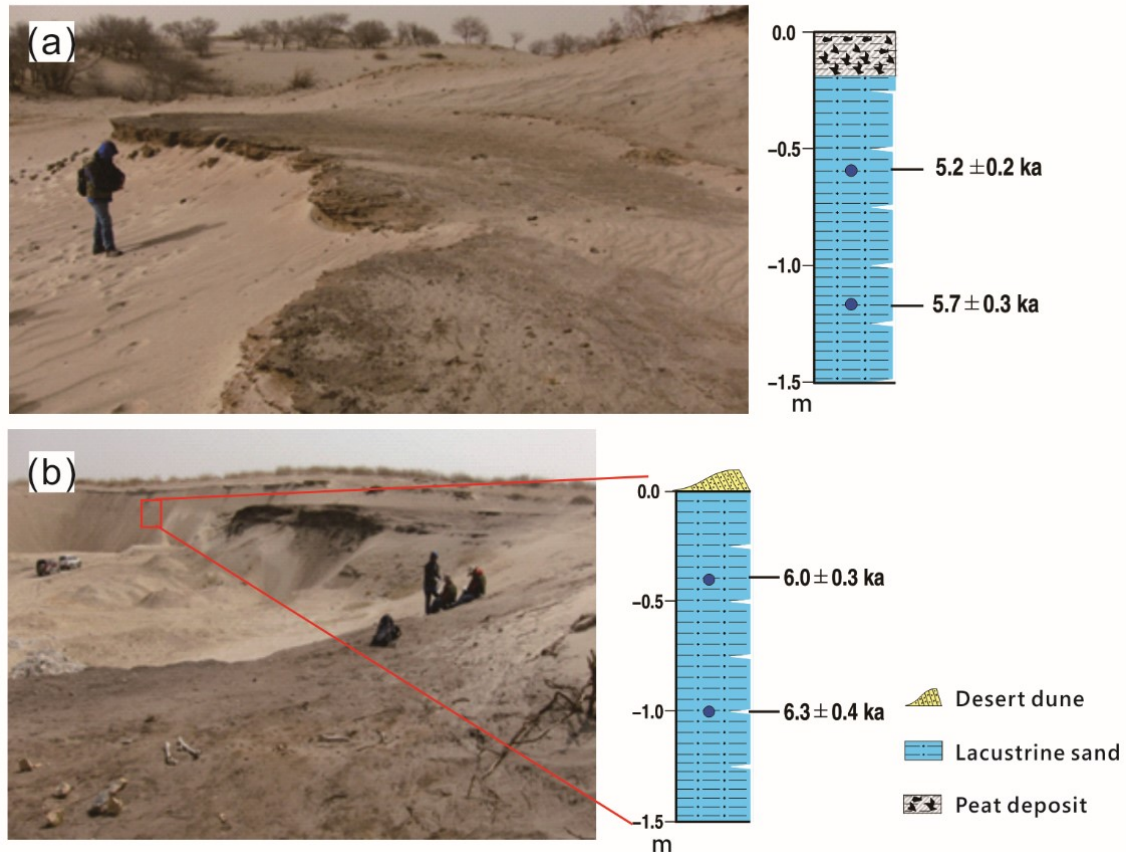


Figure 3. Eastern Hunshandake lacustrine deposits capped by paleosols. a. Eastern Hunshandake Paleosol/lakeshore (Section I from Yang et al., 2015) b. Bronze age burial (lower left) on the surface of the lake shore exposed by deflation (Section E from Yang et al., 2015).

2.2 Database Creation

Placing the Hunshandake record in context relative to northeast China, and within the larger global context, requires the assembly of records from many diverse sources into a single data repository/database with well-defined and consistent terminology. Without such efforts such “databases” are simply collections of facts and observations rather than knowledge generation tools.

- 5 To “redefine” the problem and to minimize database problems associated with definitional confusion (semantic) and locational (spatial) and dating (temporal) uncertainty, we approached the 4.2 cal ka BP event from a different perspective, namely by letting the body of existing data define the parameters and structure of the information space we were exploring. To do so we utilized conceptual spaces for defining the informational architecture of our reconstruction of the 4.2 cal ka BP event in northeast China. We note that such information context extraction may be useful in the identification of similar and differing
- 10 responses between regions and understanding how these expressions of the 4.2 cal ka BP event may have varied spatially and temporally.

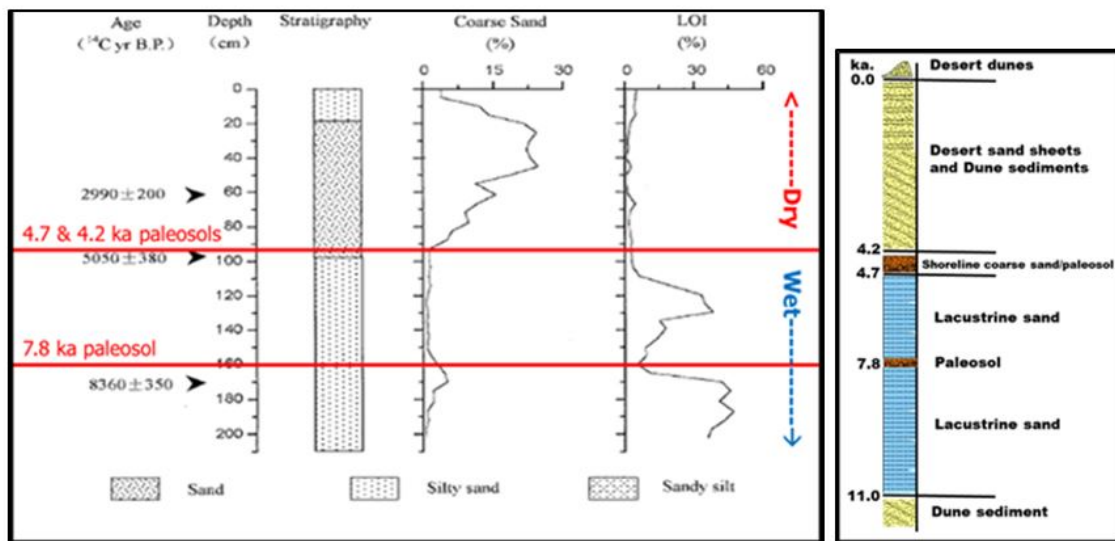


Figure 4. Left: Core records from Xiaoniuchang (after Liu et al., 2002). Right: General Holocene reconstruction of eastern Hunshandake Sandy Lands (Yang et al., 2015). The coarse sand fraction increases significantly following the 4.2 cal ka BP event with sediments dominated by desert sand sheets and dunes.

We collected and analyzed 60 peer reviewed articles (listed 1-60 in the online Supplementary material references) pertaining to middle-to-late Holocene climate and environmental conditions in northeast China. Duplicate records reflecting multiple papers dealing with the same site were eliminated unless we believed that the given paper introduced a new analysis/interpretation for a given site. This analysis included text, figures and tables. Using a web enabled open access semantic parser (Word Count Tool: High Star App, 2017: <https://wordcounttools.com/>) we extracted ~430,000 words (excluding simple words- a, it, the, etc. as well as dates). While the word counter provides extensive information about word use and structure, in our analysis we used only raw word count statistics. From this output we identified the 30 most used words from each article (224 critical words distributed across the 60 articles). These critical words appear 28,289 times (~6.5%) in the articles analyzed.

We organized the words by similarity and number of occurrences (Fig. 5) and derived database tables (Fig. 6) with explicit geocoding that were input into ARCInfo (ESRI, 2018) for geospatial analysis. We also included paleoclimate reconstructions of Mid-Holocene (6.0 ka BP) climatic parameters derived from the Coupled Model Intercomparison Project 5 (CMIP5) data. This downscaled data (30-second resolution) was calibrated (bias corrected) using WorldClim 1.4 (Hijmans et al., 2005) as a baseline for 'current' climate and was used as a reference for conditions prior to 4.2 cal ka BP. Using ARCGIS we clipped the output for each of these models to our study area (Fig. 1) and included them in our database. This includes layers for monthly average minimum temperature, monthly average maximum temperature, monthly total precipitation, and 19 bioclimatic variables derived from WorldClim data (Source: <http://worldclim.org/bioclim>). An example showing modelled 6.0 ka BP annual precipitation from the Beijing Climate Center Climate System Model (BCC-CSM1.1) (Fig. 7) is useful for illustrating the wide

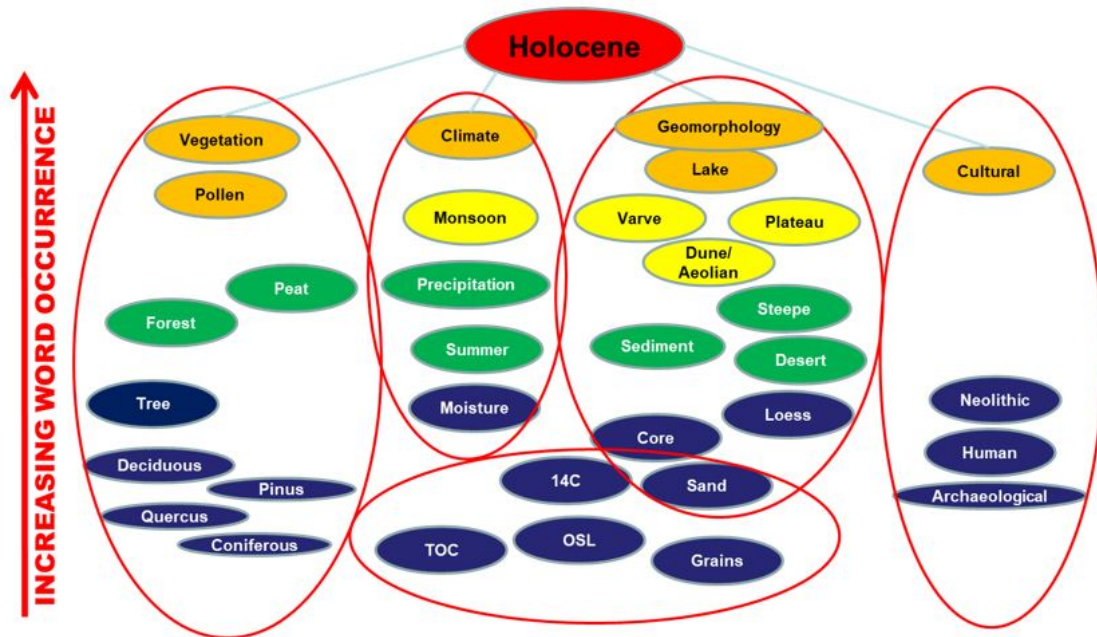


Figure 5. Topic Map. Word extraction organized by number of words (Left axis) and topics (Ovals: Red highest, Blue lowest) and by four major Topic Groups (Bottom Axis: Left- Vegetation, Left Middle- Climate, Right Middle- Geomorphic/Sedimentologic Type, Right – Cultural). Lower Center- Analysis Type.

range of a single climatic variable across our northeast China study area (~1500 km²) and the potential difficulties arising from using individual site (point) data in assessing the impact of the 4.2 cal ka BP event.

Longitude	Latitude	Number	First_Autho	Title	Year	Journal	Vol	Pages	Words	W1	W2	W3	W4	W5	W6
121.15	42.71	1	An	Asynchronous t	2000	Quaternary Scien	19(8)	743-762	14538	monsoon	china	precipitati	region	summer	lake
120.15	41.25	2	An	Dry or humid? f	2006	Quaternary Scien	25(3)	351-361	4680	holocene	lake	arid	dry	desert	china
120.85	43.19	3	Chen	Holocene climat	2005	The Holocene	15(5)	915-924	4990	pollen	holocene	core	delta	zone	sediment
120.85	43.19	4	Chen	Holocene moist	2008	Quaternary Scien	27(3)	351-364	6620	holocene	moisture	lake	asia	records	climate
122.17	41.64	5	Chen	Middle-Late Hol	2012	Quaternary Interr	254	68-72	3123	pollen	culture	climate	profile	longshan	neolithic
119.85	42.31	6	Chen	Mid-to late-Hol	2015	The Holocene	25(3)	454-468	9994	lake	eam	δ13corg	pollen	changes	mar
121.43	41.7	7	Cosford	East Asian mon	2008	Earth and Planeta	275(3)	296-307	15015	6180	stalagmite	cave	time	circulation	monsoon
119.85	42.54	8	Dykoski	A high-resolutio	2005	Earth and Planeta	233(1)	73-86	8294	monsoon	180	holocene	cave	d4	growth
121.94	41.51	9	Feng	Holocene climat	2006	The Holocene	16(1)	119-130	12009	holocene	plateau	site	lake	climate	arid
121.87	42.21	10	Hao	Varied respons	2014	Paleogeography, l	409	239-248	5897	pollen	vegetator	forest	lake	sediment	monsoon
120.11	43.17	11	He	Asynchronous t	2004	Quaternary Reses	61(1)	52-63	6608	climatic	china	holocene	ice	data	monsoon
120.15	42.19	12	Hong	A 6000-year rec	2001	Earth and Planeta	185(1)	111-119	3553	n13c	peat	climate	plants	values	drought

Database Tables

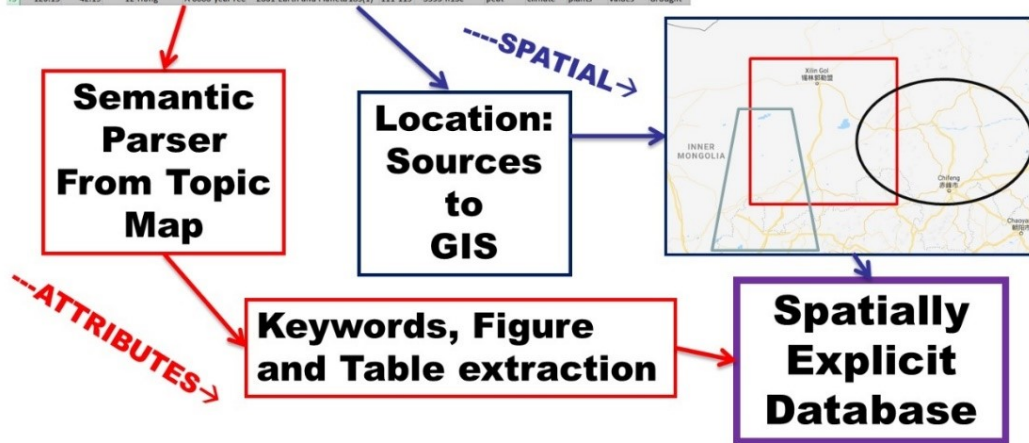


Figure 6. Overview of the processing schema for database production. Each article was geocoded and combined with tables derived from keywords to produce the final GIS compatible spatially explicit database for analysis.

Finally, following the lead of Parmesan and Yohe (2003), we identified the 4.2 cal ka BP state change (yes, no) and rate and direction of change (rates: +2 to -2 with 0 being no change, and positive or negative indicating an increase or decrease in the measured variable) from the text and figures in each article and linked them in the database to the specific topic group they were derived from. This allows analysis and mapping of the distribution, intensity and directionality of 4.2 cal ka BP marker events, or lack thereof, of the different types of evidence available.

3 Analysis

An example of regional results for change at 4.2 cal ka BP (presence or absence of 4.2 cal ka BP event) is illustrated in Fig. 8. It is clear from the distribution of points that the signature of a 4.2 cal ka BP event is strong but not universal at all sites with ~ 23% (18/77) reported showing inconclusive or no evidence of the 4.2 cal ka BP event. Spatial analysis of the distribution of these records reveals an interesting pattern with both coastal sites and sites over 750km from the coast showing consistent evidence for change at 4.2 cal ka BP. However, an intermediate band of higher elevation sites between 300 and 500km from the coast that are primarily derived from measures of vegetation type or abundance shows inconsistent evidence for the 4.2 cal ka BP event. Determining whether this is the result of interpretation errors, lack of sensitivity and/or temporal resolution, or is due to the actual absence of environmental markers for the event will require additional research.

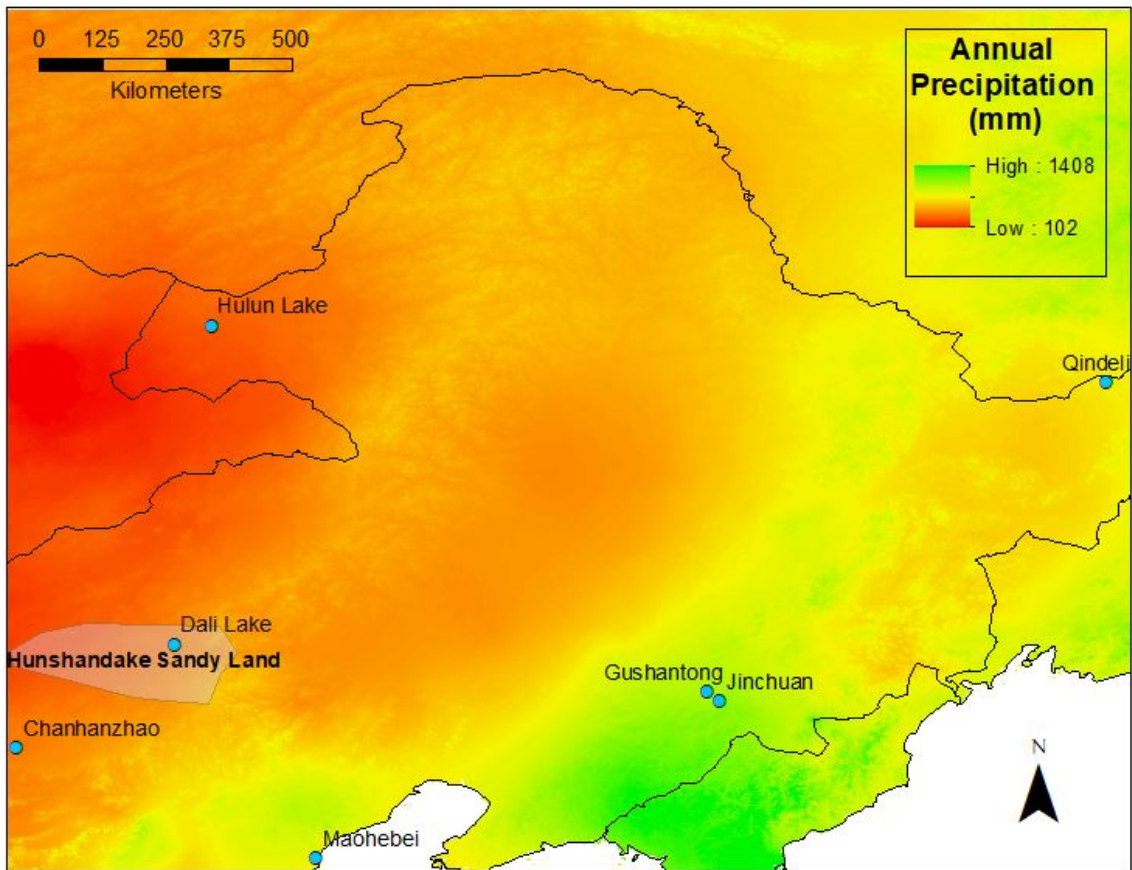


Figure 7. Modelled annual precipitation (mm) for 6.0 ka BP (Hijmans, et al. 2005) from the Beijing Climate Center Climate System Model (Version 1.1). Seven sites derived from An et al. (2000) are shown (green dots) to illustrate the incomplete spatial distribution of records within individual research records across the region.

While there appears to be a significant level of coherence that suggests a relatively strong 4.2 cal ka BP signature across northeast China there are examples of local results that are inconsistent with this generalization. As we report in this paper, and in Yang et al. (2015), within the Hunshandake sites separated by as little as 100km (Haoluku 42.95N, 116.76E, Xiaoniuchang 42.62N, 116.82E) exhibit signals that differ significantly. Liu, et al. (2002) suggested, that these differences might be due to a combination of elevation (Xiaoniuchang 1460m, Haoluku 1295m), local conditions (Xiaoniuchang at the edge of a lake and Haoluku at its center) and transport of sediment due to changing environmental conditions (Xiaoniuchang dried up earlier than Haoluku which was still experiencing inflow of coarse sediments). Dating precision and uncertainty, as well as variability in local groundwater conditions and local and regional differences in topographic relief, may also result in apparent differences between local sequences both within the Hunshandake and in other localities that we document. While we currently do not have the ability to recognize different parts of the 4.2 cal ka BP event in northeast China, as has been done for the central and

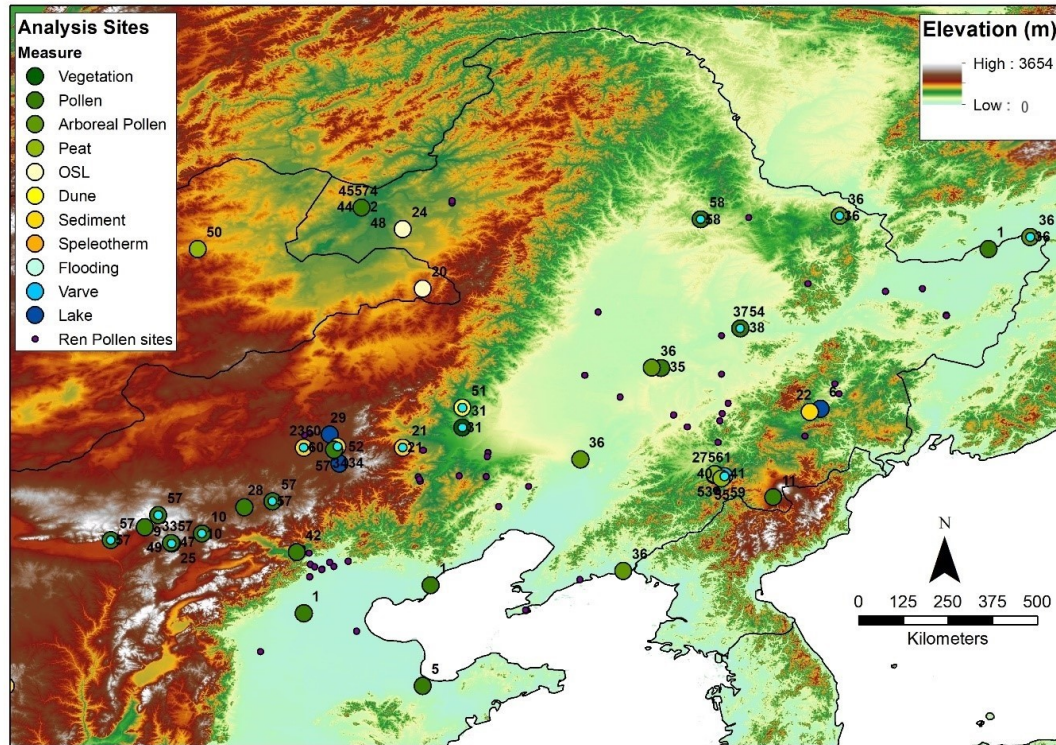


Figure 8. 4.2 cal ka BP event analysis sites by type of evidenced measure (numbered site information can be found in online Appendix 1). Note the lack of sites in the northern portion of the region (Heilongjiang Province and NE inner Mongolia). Light blue dots within individual measures indicate sites with no change across the 4.2 cal ka BP event. Small purple dots are pollen sites from Ren and Zhang (1998) derived from published work and unpublished dissertations. While not all sites cover the 4.2 cal ka BP event we include the Ren and Zhang data to show the distribution of late-Holocene paleoclimatic reconstruction work in NE China.

western Mediterranean region (Magny et al., 2009), it is clear from the records we analyzed that the event is likely to have had multiple phases in northeast China.

4 Conclusions

Lack of integration of data into a scientifically credible, globally assembled, information platform with consistent terminology and definitions to guide scientific inquiry hinders understanding of the 4.2 cal ka BP event. Creation of such an information platform can allow researchers to ask questions about the spatial distribution and environmental indicators that characterize this event. Such a platform can expand the range of research questions that can be tackled, encourage innovative and collaborative

research, allow data sharing and comparison of results and facilitate development of innovative analytic tools. As Yin (2005) noted, the end goal of this type of research “is a data structure that sits firmly upon the deep-seated, some might say, hard-wired, natural structures of the information architecture”.

Using this database approach, we showed the presence of a strong and coherent signal for the 4.2 cal ka BP event in northeastern China, albeit with local and regional variation that complicates interpretation. Much of this “complication” may be the result of the use of different standards, differing interpretations of the data, data gaps, and differential spatial and temporal responses of indicators analyzed and reported. We note three important issues that “broaden” any palaeoclimatic estimate and introduce additional uncertainty to this analysis, namely, 1) Temporal Resolution- different resolution between different dating techniques, 2) Localization versus Regionalization- some measures are “local” while others integrate “regional” conditions (for instance sediment in a small isolated lake basin versus a lake that is the terminal sink of a large area respectively) and, 3) Lagged Response- the possibility of differential and lagged responses for different measures of the same event.

While much work remains, our prototype database approach, guided by semantic analysis of the literature and georeferencing of existent data sources, can serve as a guide to the assembly of a larger scale global 4.2 cal ka BP database that should allow better understanding of this climatic event. The reader is encouraged to use the dataset found in the online supplement to both explore 4.2 cal ka BP relationships in northeast China and to possibly guide the development of similar databases for other regions.

Appendix A

A1

Author contributions. LS and SA developed the Geographic Information System database and LS performed the model runs. LS and HL prepared graphics. LS prepared the manuscript with contributions from all co-authors. We also thank two anonymous reviewers for excellent
5 comments and suggestions that improved the final manuscript.

Competing interests. No competing interests

Acknowledgements. The authors would like to thank the 4.2 cal ka BP Conference organizers for providing a venue for this work. LS and SA would like to thank the University of New Mexico for travel and computing support. XP and HL would like to thank the School of Earth Sciences, Zhejiang University, Hangzhou, Zhejiang Province, P. R. China for continued support. SA would like to thank the Leonard
10 Foundation for research support.

References

- An, Z., Porter, S.C., Kutzbach, J.E., Xihao, W., Suming, W., Xiaodong, L., Xiaoqiang, L. and Weijian, Z.: Asynchronous Holocene optimum of the East Asian monsoon. *Quat. Sci. Rev.*, 19(8), 743-762, 2000.
- ESRI: ArcInfo 10.5.1, Redlands CA., 2018.
- 15 Feng, Z.D., An, C.B., and Wang, H.B.: Holocene climatic and environmental changes in the arid and semi-arid areas of China: a review, *The Holocene*, 16, 119-130, 2006. Hijmans, R.J., Cameron, S.E., Parra, J.L., Jones, P.G., and Jarvis, A.: Very high resolution interpolated climate surfaces for global land areas. *Int. J. Clim.* 25, 1965-1978, 2005.
- Hong, Y.T., Wang, Z.G., Jiang, H.B., Lin, Q.H., Hong, B., Zhu, Y.X., Wang, Y., Xu, L.S., Leng, X.T., and Li, H.D.: A 6000-year record of changes in drought and precipitation in northeastern China based on a $\delta^{13}\text{C}$ time series from peat cellulose,
20 *Earth Planet. Sci. Lett.*, 185, 111-119, 2001.
- Jiang, W., Guo, Z., Sun, X., Wu, H., Chu, G., Yuan, B., Hatté, C., and Guiot, J.: Reconstruction of climate and vegetation changes of Lake Bayanchagan (Inner Mongolia): Holocene variability of the East Asian monsoon, *Quat. Res.*, 65, 411-420, 2006.
- Liu, F. and Feng, Z.: A dramatic climatic transition at 4000 cal. yr BP and its cultural responses in Chinese cultural domains,
25 *The Holocene*, 22, 1181-1197, 2012.
- Liu, H., Xu, L., and Cui, H.: Holocene history of desertification along the woodland-steppe border in northern China, *Quat. Res.*, 57, 259-270, 2002.

- Liu, H., Yin, Y., Zhu, J., Zhao, F., and Wang, H.: How did the forest respond to Holocene climate drying at the forest–steppe ecotone in northern China?, *Quat. Int.*, 227, 46-52, 2010.
- Magny, M., Vanni re, B., Zanchetta, G., Fouache, E., Touchais, G., Petrika, L., Coussot, C., Walter-Simonnet, A.V., and Arnaud, F.: Possible complexity of the climatic event around 4300-3800 cal. BP in the central and western Mediterranean, *The Holocene*, 19, 823-833, 2009.
- Parmesan, C. and Yohe, G.: A globally coherent fingerprint of climate change impacts across natural systems, *Nature*, 421, 37-42, 2003.
- Peterson, C.E., Lu, X., Drennan, R.D., and Zhu, D.: Hongshan chiefly communities in Neolithic northeastern China, *PNAS*, 107, 5756-5761, 2010.
- Ren, G. and Zhang, L.: A preliminary mapped summary of Holocene pollen data for Northeast China, *Quat. Sci. Rev.*, 17, 669-688, 1998.
- Wagner, M., Tarasov, P., Hosner, D., Fleck, A., Ehrich, R., Chen, X., and Leipe, C.: Mapping of the spatial and temporal distribution of archaeological sites of northern China during the Neolithic and Bronze Age, *Quat. Int.*, 290, 344-357, 2013.
- Weiss, H.: Global megadrought, societal collapse and resilience at 4.2-3.9 ka BP across the Mediterranean and west Asia, *PAGES Mag.* 24, 62-63, 2016.
- Weiss, H. ed.: *Megadrought and Collapse: From Early Agriculture to Angkor*. Oxford University Press, 2017.
- Weiss, H. and Bradley, R.S.: What drives societal collapse?, *Science*, 291, 609-610, 2010.
- Xiao, J.L., Xu, Q.H., Nakamura, T., Yang, X.L., Liang, W.D. and Inouchi, Y.: Holocene vegetation variation in the Daihai Lake region of north-central China: a direct indication of the Asian monsoon climatic history. *Quat. Sci. Rev.* 23, 1669–79, 2004.
- Xiao, J.L., Wu, J.T., Si, B., Liang, W.D., Nakamura, T., Liu, B.L. and Inouchi, Y.: Holocene climate changes in the monsoon/arid transition reflected by carbon concentration in Daihai Lake of Inner Mongolia. *The Holocene* 16, 551–60, 2006.
- Xiao, J.L., Si, B., Zhai, D.Y., Itoh, S. and Lomtatidze, Z.: Hydrology of Dali Lake in central-eastern Inner Mongolia and Holocene East Asian monsoon variability. *J. Paleolimn.* 40, 519–28, 2008.
- Xiao, J., Zhang, S., Fan, J., Wen, R., Zhai, D., Tian, Z. and Jiang, D.: The 4.2 ka BP event: multi-proxy records from a closed lake in the northern margin of the East Asian summer monsoon, *Climate of the Past*, 14(10), 1417-1425, 2018.
- Yang, X. and Scuderi, L.A.: Hydrological and climatic changes in deserts of China since the late Pleistocene, *Quat. Res.*, 73, 1-9, 2010.
- Yang, X., Scuderi, L., Paillou, P., Liu, Z., Li, H., and Ren, X.: Quaternary environmental changes in the drylands of China—a critical review, *Quat. Sci. Rev.*, 30, 3219-3233, 2011.
- Yang, X., Wang, X., Liu, Z., Li, H., Ren, X., Zhang, D., Ma, Z., Rioual, P., Jin, X., and Scuderi, L.: Initiation and variation of the dune fields in semi-arid China—with a special reference to the Hunshandake Sandy Land, Inner Mongolia, *Quat. Sci. Rev.*, 78, 369-380, 2013.

Yang, X., Scuderi, L.A., Wang, X., Scuderi, L.J., Zhang, D., Li, H., Forman, S., Xu, Q., Wang, R., Huang, W., and Yang, S.: Groundwater sapping as the cause of irreversible desertification of Hunshandake Sandy Lands, Inner Mongolia, northern China, PNAS, 112, 702-706, 2015.

Yin, M.: "Preface to Hierarchy Papers", July 14, 2005. On the web at: <http://wiki.osafoundation.org/bin/view/Journal/PrefaceToHierarchyPapers>, 2005.