

Eemian Greenland Surface Mass Balance strongly sensitive to **SMB** model choice

Andreas Plach¹, Kerim H. Nisancioglu^{1,2}, Sébastien Le clec'h^{3,4}, Andreas Born^{1,5,6}, Petra M. Langebroek⁷, Chuncheng Guo⁷, Michael Imhof^{8,5}, and Thomas F. Stocker^{5,6}

¹Department of Earth Science, University of Bergen and Bjerknes Centre for Climate Research, Bergen, Norway

²Centre for Earth Evolution and Dynamics, University of Oslo, Oslo, Norway

³Laboratoire des Sciences du Climat et de l'Environnement, LSCE/IPSL, CEA-CNRS-UVSQ, Université Paris-Saclay, F-91191 Gif-sur-Yvette, France

⁴Earth System Science and Department Geografie, Vrije Universiteit Brussel, Brussels, Belgium

⁵Climate and Environmental Physics, Physics Institute, University of Bern, Bern, Switzerland

⁶Oeschger Centre for Climate Change Research, University of Bern, Bern, Switzerland

⁷Uni Research Climate and Bjerknes Centre for Climate Research, Bergen, Norway

⁸Laboratory of Hydraulics, Hydrology and Glaciology, ETH Zürich, Zürich, Switzerland

Correspondence to: Andreas Plach (andreas.plach@uib.no)

Abstract. Understanding the behavior of the Greenland ice sheet in a warmer climate, and particularly its surface mass balance (SMB), is important for assessing Greenland's potential contribution to future sea level rise. The Eemian interglacial period, the most recent warmer-than-present period in Earth's history approximately 125,000 years ago, provides an analogue for a warm summer climate over Greenland. The Eemian is characterized by a positive Northern Hemisphere summer insolation anomaly, which ~~introduces uncertainties in Eemian SMB when using~~ complicates Eemian SMB calculations based on positive degree day estimates. In this study, we use Eemian global and regional climate simulations in combination with three types of SMB models — a simple positive degree day, an intermediate complexity, and a full surface energy balance model — to evaluate the importance of regional climate and model complexity for estimates of Greenland SMB. We find that all SMB models perform well under the relatively cool pre-industrial and late Eemian. For the relatively warm early Eemian, the differences between SMB models are large which is associated with ~~the representation of insolation whether insolation is included~~ in the respective models. For all simulated time slices there is a systematic difference between globally and regionally forced SMB models, due to the different representation of the regional climate over Greenland. We conclude that both the resolution of the simulated climate as well as the method used to estimate the SMB, are important for an accurate simulation of Greenland's SMB. Whether model resolution or SMB method is most important depends on the climate state and in particular the prevailing insolation pattern. We suggest that future Eemian climate model ~~inter-comparison studies are combined with different SMB models to quantify Eemian SMB uncertainty estimates~~ intercomparison studies should include SMB estimates and a scheme to capture SMB uncertainties.

1 Introduction

The projections of future sea level rise remain uncertain, especially the magnitude and the rate of the contributions from the Greenland Ice Sheet (GrIS) and the Antarctic Ice Sheet (Church et al., 2013; Mengel et al., 2016). In addition to improving dynamical climate models, it is important to test their ability to simulate documented warm climates. Past ~~interglacials~~ interglacial periods are relevant examples as these were periods of the recent past with relatively stable warm climates persisting over several millennia, ~~providing a benchmark~~. They provide benchmarks for testing key dynamical processes and feedbacks ~~given under~~ a different background climate state. Quaternary ~~interglacials~~ interglacial periods exhibit a geological configuration similar to today (e.g., gateways and topography), and have been frequently used as analogues for future climates (e.g., Yin and Berger, 2015). In particular, the most recent interglacial period, the Eemian (approx. 130 to 116 ka) has been used to better understand ice sheet behavior during a warm climate.

Compared to the pre-industrial period, the Eemian is estimated to have had less Arctic summer sea ice, warmer Arctic summer temperatures, and up to 2°C warmer annual global average temperatures (CAPE Last Interglacial Project Members, 2006; Otto-Bliesner et al., 2013; Capron et al., 2014). Ice core records from NEEM (the North Greenland Eemian Ice Drilling project in northwest Greenland) indicate a local warming of $8.5 \pm 2.5^\circ\text{C}$ (Landais et al., 2016) compared to pre-industrial levels. ~~While~~ However, total gas content measurements from the deep Greenland ice cores GISP2, GRIP, NGRIP, and NEEM indicate that the Eemian surface elevation at these locations was no more than a few hundred meters lower than present (Raynaud et al., 1997; NEEM community members, 2013). Proxy data derived from coral reefs show a global mean sea level at least 4 m above the present level (Overpeck et al., 2006; Kopp et al., 2013; Dutton et al., 2015).

Several studies have investigated the Eemian GrIS. Nevertheless, there is no consensus on the extent to which the GrIS retreated during the Eemian. Scientists have applied ice core reconstructions (e.g., Letréguilly et al., 1991; Greve, 2005), Global ~~Circulation Climate~~ Models (GCMs) of various complexities (e.g., Otto-Bliesner et al., 2006; Stone et al., 2013) combined with regional models (e.g., Robinson et al., 2011; Helsen et al., 2013) to create Eemian temperature and precipitation forcing over Greenland. Based on these reconstructed or simulated climates, different models have been used to calculate the ~~Surface-Mass Balance~~ surface mass balance (SMB) over Greenland for the Eemian. The vast majority of these use the ~~Positive-Degree-Day~~ positive degree day (PDD) method introduced by Reeh (1989), which is based on an empirical relation between melt and temperature. PDD has been shown to work well under present-day conditions (e.g., Braithwaite, 1995) and has been widely used by the community due to its simplicity and ease of integration with climate and ice sheet models. More recent studies employ physically-based approaches to calculate the SMB, ranging from empirical models (e.g., Robinson et al., 2010) to ~~Surface-Energy-Balance~~ surface energy balance (SEB) models (e.g., Helsen et al., 2013).

It is important to note that the relatively warm summer (and cold winter) in the Northern Hemisphere during the early Eemian (130-125 ka) was caused by a different insolation regime compared to today, not ~~due to~~ increased concentrations of greenhouse gases (GHGs) which ~~is the reason are~~ are primarily responsible for the recent observed global warming (e.g., Langebroek and Nisancioglu, 2014). The early Eemian was characterized by a positive solar insolation anomaly during Northern summer caused by a higher obliquity and eccentricity compared to present, as well as a favourable precession giving warm Northern Hemi-

sphere summers at high latitudes (Yin and Berger, 2010). The higher summer insolation over Greenland, compared to today, adds snow/ice melt which is not included in the PDD approach (e.g., Van de Berg et al., 2011). These limitations should be kept in mind when using past warm periods as analogues for future warming (e.g., Ganopolski and Robinson, 2011; Lunt et al., 2013). However, the higher availability of proxy data compared to preceding ~~interglacials~~ interglacial periods makes the Eemian a better candidate to investigate warmer conditions over Greenland (Yin and Berger, 2015). Furthermore, ~~the amplification of~~ Masson-Delmotte et al. (2011) find a similar Arctic summer warming over Greenland ~~has been found to be effective regardless of whether the warming is caused by higher insolation or increased GHGs concentrations (Masson-Delmotte et al., 2011)~~ with the higher Eemian insolation as for a future doubling of atmospheric CO₂ given fixed pre-industrial insolation.

In this study we assess the importance of the representation of small-scale climate features and the impact of the SMB model complexity (i.e., using three SMB models) when calculating the SMB for warm climates such as the Eemian. High-resolution pre-industrial and Eemian Greenland climate is provided by downscaling global time slice simulations with the Norwegian Earth System Model (NorESM) using the Regional Climate Model (RCM) MAR (Modèle Atmosphérique Régional). Based on these global and regional climate simulations three different SMB models are applied, including (1) a simple, empirical PDD model, (2) an intermediate complexity SMB model explicitly accounting for solar insolation, as well as (3) the full Surface Energy Balance (SEB) model implemented in MAR.

The models, data, and experimental design are described in Sec. 3, followed by a review of previous Eemian GrIS studies in Sec. 2. The results of the pre-industrial and Eemian simulations are presented in Sec. 4 and 5, respectively. The challenges and uncertainties are discussed in Sec. 6. Finally, a summary of the study is given in Sec. 7.

2 Comparison of previous Eemian Greenland studies

Scientists started modeling the Eemian GrIS more than 25 years ago (Létréguilly et al., 1991). However, a clear picture of the minimum extent and the shape of the ~~GrIS during this critical period of the past~~ Eemian GrIS is still missing. The estimated contributions ~~of from~~ the GrIS to the Eemian sea level rise differ largely and vary between 0.4 and 5.6 m. An overview of previous studies and their estimated Eemian sea level rise from Greenland is given in Fig. 1.

Early studies ~~use~~ used Eemian temperature anomalies derived from ice core records and perturb a present-day temperature field in order to get estimated Eemian temperatures over Greenland. This index method ~~is~~ was either based on single Greenland ice cores (Létréguilly et al., 1991; Ritz et al., 1997) or a composite of ice cores from Greenland and Antarctica (Cuffey and Marshall, 2000; Huybrechts, 2002; Tarasov and Peltier, 2003; Lhomme et al., 2005; Greve, 2005). All these "index studies" ~~employ~~ employed a present-day precipitation field ~~when modeling Greenland during the Eemian. In the mid-2000s scientists started using climate models to simulate Eemian climate~~ for modeling Eemian Greenland. This empirical approach was followed by the usage of climate models. The first studies ~~use~~ used GCM output directly to force SMB models (Otto-Bliesner et al., 2006; Fyke et al., 2011; Born and Nisancioglu, 2012; Stone et al., 2013). Later studies ~~use~~ used statistical (Robinson et al., 2011; Calov et al., 2015) and dynamical downscaling of GCM simulations (Helsen et al., 2013) to create climate input for SMB

models. Quiquet et al. (2013) ~~use~~used an adapted index method employing a Eemian temperature and precipitation anomalies from two GCMs.

~~To estimate the Eemian ice sheet extent and volume changes these studies use various ice sheet models~~Various ice sheet models were used in these studies to estimate the Eemian ice sheet evolution. However, all ~~used~~ ice sheet models ~~that used~~ are based on similar ice flow equations ~~;~~— either the Shallow Ice Approximation (SIA) or a combination of the SIA and the Shallow Shelf Approximation (SSA)~~;~~, i.e., Therefore, the choice of ~~ice sheet models~~the ice sheet model can not explain the differences between ~~the studies~~ . Therefore, we are not discussing these studies and hence the ice dynamics ~~used is not discussed~~ further. For more details on ice dynamic approximations see Greve and Blatter (2009). Here, we focus on the choice of the climate forcing and ~~calculation of SMB~~the SMB calculation.

The ~~studies using climate models apply different~~ strategies to account for climate-ice~~sheet interaction~~ sheet interaction in the "climate models studies" vary. The early studies ~~employ a~~employed an one-way coupling by directly forcing the ice sheet model with an Eemian climate ~~without any feedback between the ice sheet and the~~neglecting any feedbacks between ice and climate (Otto-Bliesner et al., 2006; Fyke et al., 2011; Born and Nisancioglu, 2012; Quiquet et al., 2013). Later studies ~~use~~used more advanced coupling by performing GCM simulations with various Eemian ice sheet topographies and interpolating in between the different GCM states according to the evolution of the ice sheet model (Stone et al., 2013) or changing the GrIS topography in the RCM simulations every 1.5 ka following the topography evolution in an ice sheet model (Helsen et al., 2013).

The SMB in most of the previous ~~studies of the Eemian is~~Eemian studies was calculated with the empirical PDD model. The exceptions are Robinson et al. (2011) and Calov et al. (2015) who ~~use~~used an intermediate complexity statistical down-scaling with ~~an adapted PDD a~~linearized energy-balance scheme to also include shortwave radiation. Furthermore, Helsen et al. (2013) ~~use~~used a full surface energy balance model (included in a RCM). ~~While Goelzer et al. (2016) employ~~Finally, Goelzer et al. (2016) employed a fully-coupled (coarse resolution) GCM-ice sheet model to simulate the ~~evolution of the GrIS during the Eemian~~ , they also use Eemian GrIS evolution while employing a PDD model ~~to calculate the SMB for the SMB calculation~~.

A comparison of the minimum ~~Greenland ice sheet shapes and extents during the Eemian, as simulated by several studies~~ Eemian Greenland ice sheets from several studies is shown in Fig. 2. The estimated ice sheet extent and the volume loss (expressed as sea level rise contribution) vary strongly between the studies. All models show large ice loss in the southwest~~of the ice sheet~~, and several studies show a separation of the ice sheet into a northern and a southern dome. Additionally, some studies also exhibit extensive ice loss in the north, while ~~others almost show no retreat there~~this northern ice loss is absent in other studies. Overall, the estimated Eemian sea level rise contribution from Greenland remains uncertain due to the big differences between these studies. ~~It~~However, it is important to emphasize that the early studies ~~did not have the same proxy data partly lacked proxy data to constrain model results~~ (i.e. ice core records) available to constrain their models, as in the which was available to more recent studies. As an example, Otto-Bliesner et al. (2006) ~~assume~~assumed an ice-free Dye-3 location during the Eemian as an evaluation criteria for their simulations. However, scientists now argue that there is indeed Eemian ice at the bottom of all deep ice core sites (Johnsen and Vinther, 2007; Willerslev et al., 2007).

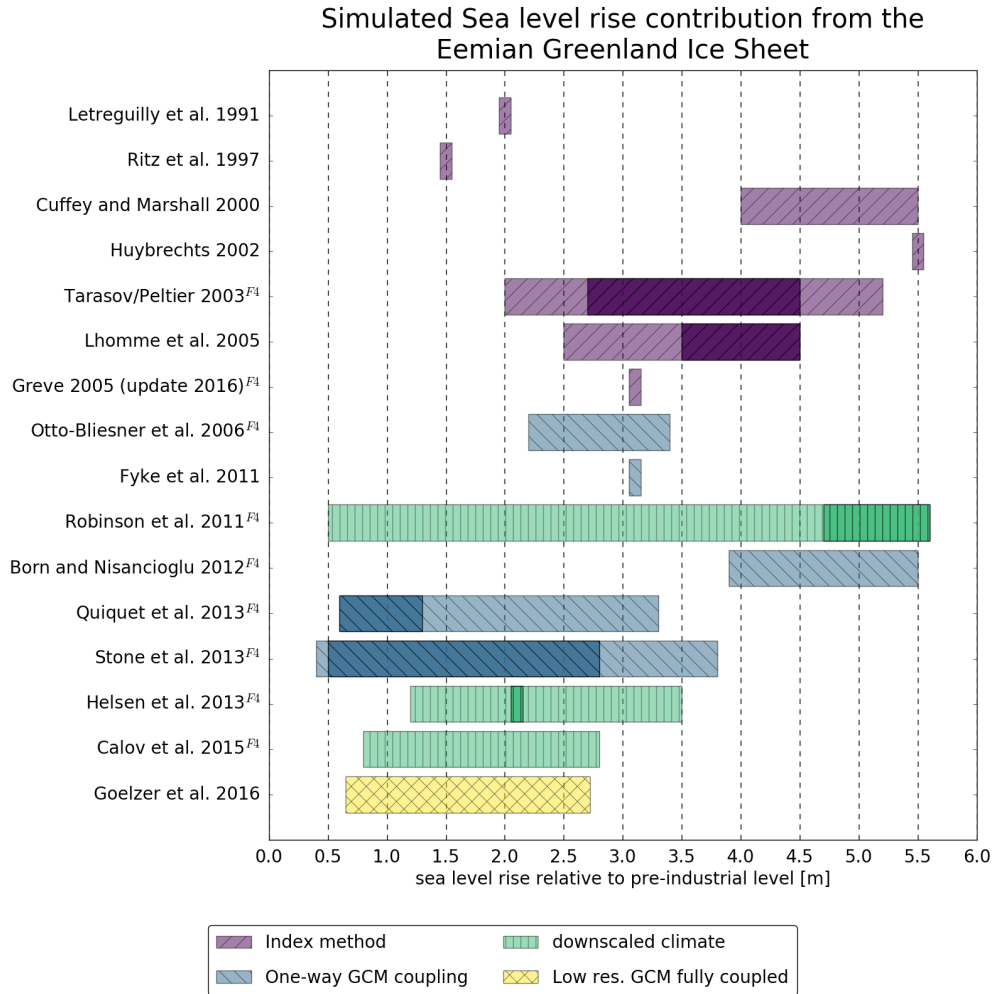


Figure 1. Overview of previously published GrIS contributions to the Eemian sea level high stand. The studies are color-coded according to the atmospheric forcing used. More likely values are indicated with darker colors if provided in the respective studies. Different conversions from melted ice volume to sea level rise are used and therefore the contributions are transformed to a common conversion if sufficient data (i.e. [the](#) pre-industrial ice volume for the respective simulations) is available. Due to this conversion some of the values in this figure are slightly different from the original publications. We use a simple uniform distribution of the water volume on a spherical Earth. The common sea level rise conversion is performed for Greve (2005), Robinson et al. (2011), Born and Nisancioglu (2012), Quiquet et al. (2013), Helsen et al. (2013), and Calov et al. (2015). The minimum ice extent and topography of studies marked with *F4* are shown in Fig. 2

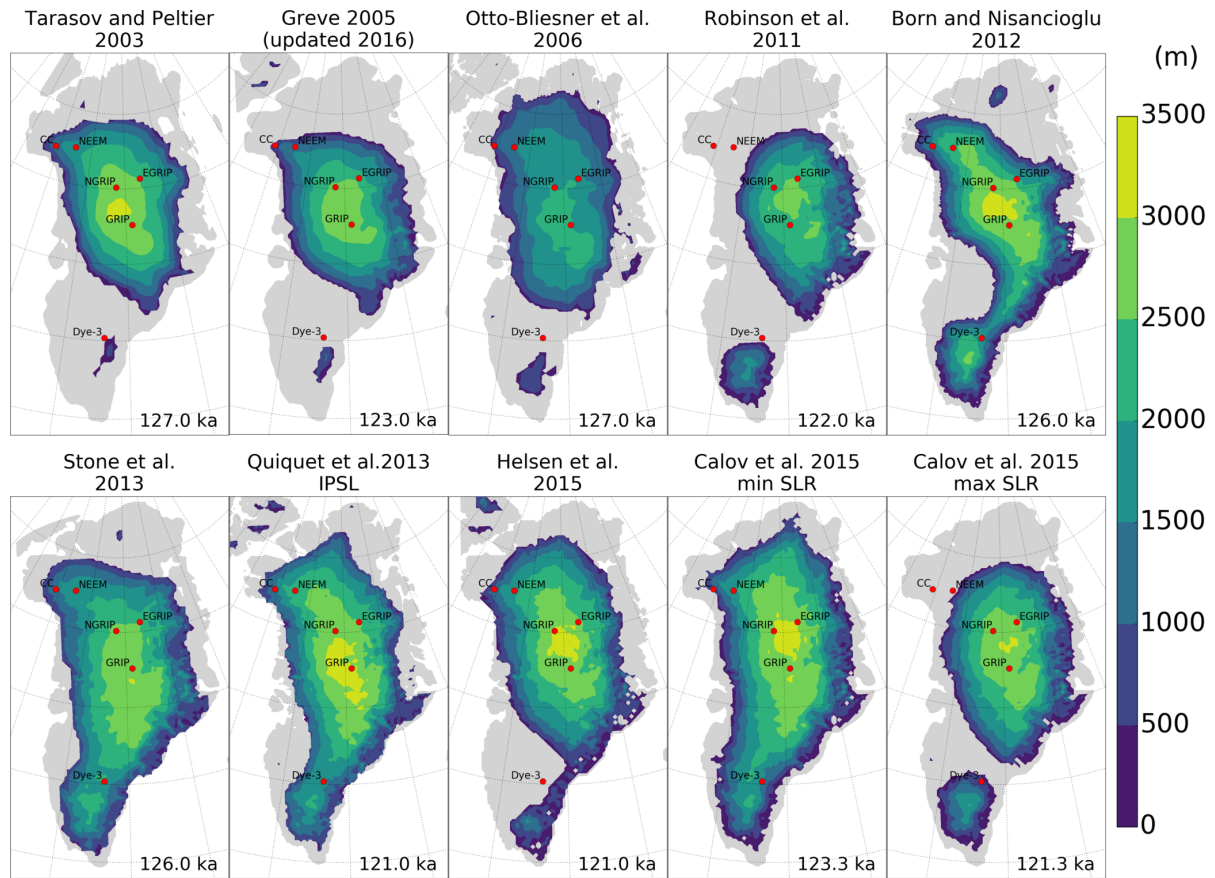


Figure 2. Overview of previously modeled minimum ice extent and topography of the Eemian GrIS. The number in the lower right corner of each panel refers to the timing of the minimum ice extent in the respective simulation. Deep ice core locations are indicated with red circles.

3 Models and methods

3.1 Model description

We use the output of an Earth System Model (ESM) and a Regional Climate Model (RCM) to assess the influence of the model resolution on the simulated SMB over Greenland. The regional model is forced with the output from the global model at its boundaries global model output (i.e., the regional model is constrained by the global model simulations at its boundaries). Furthermore, we test three different SMB models of various complexity , all are tested, forced with the simulated global and global as well as the regional climates. Throughout this study we refer to the two simulated climates as global (from the ESM) and regional (from the RCM).

Norwegian Earth System Model (NorESM)

The Norwegian Earth System Model (NorESM) was first introduced by Bentsen et al. (2013) and included as version NorESM1-M in phase 5 of the Climate Model Intercomparison Project (CMIP5; Taylor et al., 2011). NorESM is based on the Community Climate System Model version 4 (CCSM4; Gent et al., 2011) but was modified to include an isopycnic coordinate ocean
5 general circulation model that originates from the Miami Isopycnic Coordinate Ocean Model (MICOM; Bleck et al., 1992), an atmosphere component with advanced chemistry-aerosol-cloud-radiation schemes known as the Oslo version of the Community Atmosphere Model (CAM4-Oslo; Kirkevåg et al., 2013), and the HAMburg Ocean Carbon Cycle (HAMOCC) model (Maier-Reimer, 1993; Maier-Reimer et al., 2005) adapted to the isopycnic ocean model framework.

In this work, we use a newly established variation of NorESM1-M, named ~~NorESM1-MF~~ NorESM1-F (Guo et al., in prep.),
10 that retains the resolution (2-degree atmosphere/land, 1-degree ocean/sea ice) and the overall quality of NorESM1-M, but is a computationally efficient configuration that is designed for multi-millennial and ensemble simulations. In ~~NorESM1-MF~~ NorESM1-F, the model complexity is reduced by replacing CAM4-Oslo with the standard ~~prescribed~~ aerosol chemistry of CAM4. The coupling frequency between atmosphere–sea ice and atmosphere–land is reduced from half-hourly to hourly, and the dynamic sub-cycling of the sea ice is reduced from 120 to 80 sub-cycles. These changes speed up the model by ~30%, while hav-
15 ing a relatively small effect on the model’s overall climate. In addition, some recent code developments for NorESM CMIP6 are implemented, as documented in detail by Guo et al. (in prep.). Especially, the updated ocean physics in ~~NorESM1-MF~~ NorESM1-F leads to improvements over NorESM1-M in the simulated strength of the Atlantic Meridional Overturning Circulation and Arctic sea ice, both of which are important metrics when simulating past and future climates.

Positive Degree Day (PDD) model

20 The Positive Degree Day (PDD) method was introduced by Reeh (1989). The model is based on an empirical relationship between ~~near-surface~~ temperature and surface melt. Its minimum requirements are ~~monthly-near-surface-temperature-and-the~~ monthly near-surface air temperature and the total precipitation. Due to its simplicity and low input requirements, it is often used in paleo studies where the data availability is limited and the timescales of interest are long. Here, we use the PDD model as a legacy baseline with commonly used melt factors for snow and ice (e.g., Letréguilly et al., 1991; Ritz et al., 1997; Lhomme
25 et al., 2005; Born and Nisancioglu, 2012).

The model integrates the number of days with temperatures above freezing into a PDD variable, which is multiplied by empirically based melt factors to calculate the amount of snow and ice melt. Different factors for snow and ice are applied to account for the differences in albedo. The temperature variability during a month is simulated assuming a Gaussian distribution. The most important PDD model parameters are summarized in Tab. 1. Since a PDD model exclusively uses temperature to
30 calculate melt, it only accounts for the terms in the surface energy balance which are directly related to temperature. It does not directly account for shortwave radiation, ~~which means that i.e.,~~ a PDD model is always tuned to present-day insolation conditions. This is of particular relevance in studies of past climates, such as the Eemian, which exhibit different seasonal

Table 1. Model parameters of the empirical PDD model

PDD model parameters	
PDD snow melt factor	3 mm/ PDD <u>K/day</u>
PDD ice melt factor	8 mm/ PDD <u>K/day</u>
maximum snow refreeze <u>refreezing</u>	60 %
maximum ice refreeze <u>refreezing</u>	0 %
all snow temperature	-10°C
all rain temperature	7°C
standard deviation of the near surface temperature	4.5 °C

insolation patterns compared to today. Van de Berg et al. (2011) show that a PDD model underestimates melt compared to a full SEB model, when using PDD melt factors tuned to present-day conditions.

Here, we use a PDD model introduced by Seguinot (2013) and modify it to our needs. The PDD model uses the total monthly precipitation and calculates the snow fraction and accumulation via two threshold temperatures. If the temperature is below
5 -10°C all precipitation falls as snow, and if the temperature is above 7°C all precipitation falls as rain and does not contribute to the accumulation. In between these extremes, a linear relation is applied to calculate the snow fraction.

Ber/ge/n Snow Simulator (BESSI)

The intermediate complexity SMB model, Ber/ge/n Snow Simulator (BESSI) is designed to be computationally efficient and to be forced by low complexity climate models. It uses only daily mean values of three input fields: ~~surface~~ near-surface temperature, precipitation
10 and downward shortwave radiation. Furthermore, outgoing longwave radiation is calculated prognostically while incoming longwave radiation is calculated with a Stefan-Boltzmann law using the input ~~surface~~ near-surface air temperature and a globally constant air emissivity. BESSI is introduced in Imhof (2016); Born et al. (in prep.). It is a physically consistent multi-layer SMB model with firn compaction. The firn column is modeled on a mass-following, Lagrangian grid. BESSI uses a surface energy balance that includes heat diffusion in the firn, retention of liquid water, and refreezing. ~~The only process it~~
15 ~~neglects is~~ However, it neglects sublimation which is of low importance for the mass balance of Greenland. Firn densification is ~~realized~~ simulated with models commonly used in ice core research, following Herron and Langway (1980) for densities below 550 kg/m³ and Barnola et al. (1990) for densities above 550 kg/m³. There is no water routing on the surface, but the firn can hold up to 10% of its pore volume in water. All excess water percolates into the next grid box below and if it reaches the bottom of the firn layer it is removed from the system. Tab. 2 summarizes the most important BESSI model parameters.

Table 2. Model parameters of the intermediate complexity model BESSI

BESSI model parameters	
albedo dry snow	0.85
albedo wet snow	0.70
albedo ice	0.40
bulk coefficient sensible heat flux	5.0 W/m ² /K
air emissivity	0.87
pore volume available to liquid water	0.1
number of snow layers	15

Modèle Atmosphérique Régional (MAR)

We use the Modèle Atmosphérique Régional (MAR) to produce high resolution SMB over the GrIS during the Eemian [interglacial](#) period. MAR is a regional atmospheric model fully coupled to the land surface model SISVAT which includes a detailed snow energy balance model (Gallée and Duynkerke, 1997). The atmospheric part of MAR uses the solar radiation
5 scheme of Morcrette et al. (2008) and accounts for the atmospheric hydrological cycle (including a cloud microphysical model) based on Lin et al. (1983) and Kessler (1969). The snow-ice part of MAR is derived from the snowpack model Crocus (Brun et al., 1992). This 1-D model simulates fluxes of mass and energy between snow layers, and reproduces snow grain properties and their effect on surface albedo.

The present work uses MAR version 3.6 in a similar model setup as in Le clec'h et al. (2017) with a fixed present-day ice
10 sheet topography. We use a horizontal resolution of 25 x 25 km covering the Greenland domain (6600 grid points; Stereographic Oblique Projection with its origin at 40°W and 70.5°N) from 60° W to 20° W and from 58° N to 81° N. The model has 24 atmospheric layers from the surface to an altitude of 16 km. SISVAT has 30 layers to represent the snowpack (with a depth of at least 20 m over the permanent ice area) and 7 levels for the soil in the tundra area. The snowpack initialization is described in Fettweis et al. (2005).

15 MAR has often been validated against in situ observations, e.g., in Fettweis (2007); Fettweis et al. (2013, 2017). Lateral boundary conditions can be provided either by reanalysis datasets (such as ERA-interim or NCEP) to reconstruct the recent GrIS climate (1900-2015) (Fettweis et al., 2017) or by GCMs (e.g., Fettweis et al., 2013). In this study, the initial topography of the GrIS as well as the surface types (ocean, tundra and permanent ice) are derived from Bamber et al. (2013). At its lateral boundaries, MAR is forced every 6 hours with [NorESM](#) atmospheric fields (temperature, humidity, wind and surface pressure)
20 and at the ocean surface, [NorESM](#) sea surface temperature and [NorESM](#) sea ice extent ~~from the NorESM output~~ are prescribed. ~~For this all~~ [All needed](#) NorESM output is ~~linearly~~ [bilinearly](#) interpolated on the 25 x 25 km MAR grid.

For the SMB calculation, MAR assumes ice coverage after all firn has melted. The calculated SMB is weighted by a ratio-of-glaciation mask derived from Bamber et al. (2013). For consistency, this mask is used for all PDD- and BESSI-derived SMBs

as well. Regions with less than 50% permanent ice cover are not considered for our analysis (~~same as Fettweis et al., 2017~~) (same as in Fettweis et al., 2017).

3.2 Experimental design, model spin-up and terminology

Model experiment setup

- 5 We use five NorESM time slice simulations ~~;~~ a pre-industrial control run and four runs representing Eemian conditions at 130, 125, 120, and 115 ka, respectively. All five NorESM runs are dynamically downscaled with MAR, i.e., MAR is constrained with NorESM output at its boundaries. All ~~five runs from climate simulations in this study use a static pre-industrial ice sheet. The output from all~~ NorESM and MAR runs are used to force the different SMB models.

The NorESM pre-industrial experiment is spun up for 1000 years to reach a quasi-equilibrium state, followed by another
10 model run of 1000 years representing the pre-industrial control simulation. The four Eemian time slice experiments (130, 125, 120, 115 ka) are branched off after the 1000 years spin-up experiment and run for another 1000 years each. The simulations are close to equilibrium at the end of the integration, with very small trends in, e.g., top of the atmosphere radiation imbalance (0.02, 0.04, 0.02, 0.02 W/m² per century, respectively, between model years 1801-2000; all trends are statistically not significant) and global mean ocean temperature (-0.008, -0.01 -0.03, -0.03 K per century, respectively, between model years 1801-2000;
15 all trends are statistically significant except for the 130 ka case). Statistical significance of the calculated trends is tested using the Student's *t*-test with the number of degrees of freedom, accounting for autocorrelation, calculated following Bretherton et al. (1999). Trends with *p* values < 0.05 are considered to be statistically significant.

The model configurations follow the protocols of the third phase of the Paleoclimate Modeling Intercomparison Project (PMIP3). Compared with the experimental setup of the pre-industrial control simulation, only the orbital forcing and the
20 greenhouse gas concentrations are changed in the four Eemian experiments. The greenhouse gas concentrations and the orbital parameters used ~~for the five time slice experiments (NorESM as well as MAR)~~ are listed in Tab. 3.

For the MAR experiments, NorESM is run for another 30 years for each of the five experiments and the output is saved 6-hourly. ~~This~~ These 30 years are used as boundary forcing for MAR. The first four years are disregarded as spin-up and the final 26 years are used for the analysis here.

- 25 BESSI is forced with daily fields of temperature, precipitation, and ~~downwards~~ downward shortwave radiation of these final 25 climate model years of NorESM and MAR, respectively. The forcing is applied cyclically (forwards and backwards) 6 times until SMB values reach an equilibrium. The SMBs of the final 7th cycle are used to calculate annual means over 25 years which are used in the analysis.

Experiment terminology

- 30 We force the PDD model with monthly near-surface air temperature and precipitation fields from NorESM and MAR ~~respectively~~, and refer to the resulting SMBs as NorESM-PDD and MAR-PDD respectively. MAR has a full surface energy balance (SEB) model implemented and its derived SMB is ~~referred~~ referred to as MAR-SEB. Additionally, we force the intermediate complex-

Table 3. Greenhouse [gas](#) concentrations and orbital parameters used for the NorESM and MAR climate simulations (PI...pre-industrial)

	130 ka	125 ka	120 ka	115 ka	PI
CO ₂ [ppm]	257.0	276.0	269.0	273.0	284.7
CH ₄ [ppb]	512.0	640.0	573.0	472.0	791.6
N ₂ O [ppb]	239.0	263.0	262.0	251.0	275.7
CFC-11 [ppt]	0	0	0	0	12.5
CFC-12 [ppt]	0	0	0	0	0
Eccentricity	0.0382	0.0400	0.0410	0.0414	0.0167
Obliquity [deg]	24.24	23.79	23.12	22.40	23.44
Long. of perih. [deg]	228.32	307.13	27.97	110.87	102.72

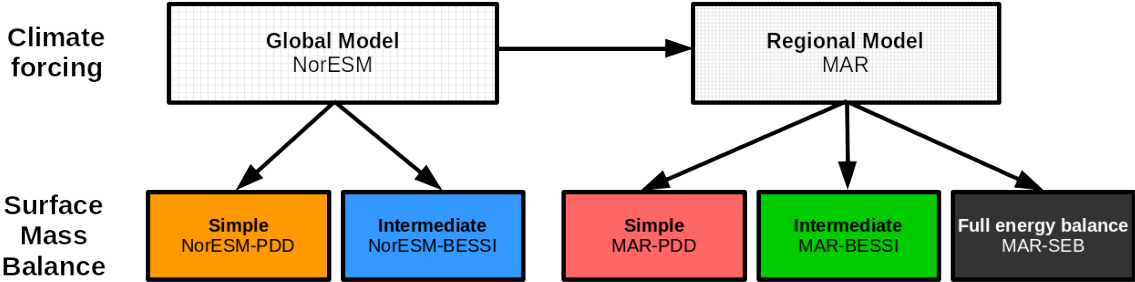


Figure 3. Overview of the experimental design. The simple PDD and intermediate BESSI SMB simulations are forced with output of our global climate (from NorESM) and the regional climate (from MAR). Additionally a SMB is derived from the SEB model implemented in MAR. This flow of experiments is performed in the same way for all five time slices (130, 125, 120, 115 ka, pre-industrial).

ity SMB model, BESSI, with daily NorESM and MAR [near-surface air](#) temperature, precipitation and the downward shortwave radiation, and call its output NorESM-BESSI and MAR-BESSI, respectively. An overview of the experimental design is shown in Fig. 3.

For lack of observational data with a comprehensive coverage, we use the most complex model, MAR-SEB, as our reference SMB model. The standard PDD experimental setup (see Tab. 1) is tuned to present-day Greenland. The intermediate complexity SMB model, BESSI, is tuned to the MAR-SEB under pre-industrial conditions in terms of SMB and refreezing. The first tuning goal is the total integrated SMB within +/- 50 Gt and the smallest possible Root Mean Square (RMS) error. From the set of model parameters which fulfill this goal we choose the set which ~~showed~~ [shows](#) the best fit of ~~refreeze~~ [refreezing](#) (total amount and RMS error). The most important model parameters for the empirical PDD and the intermediate SMB model, BESSI, are summarized in Tab. 1 and 2, respectively.

We compare the five SMB model experiments (NorESM-PDD, MAR-PDD, NorESM-BESSI, MAR-BESSI, and MAR-SEB) under pre-industrial conditions and analyze the evolution of their respective SMB components during the Eemian interglacial period.

Interpolation of temperature fields to a higher resolution grid

5 To derive realistic ~~near-surface~~ near-surface air temperatures on a higher-than-climate-model resolution (e.g., an ice sheet model grid, but also from ~~NorESM to the~~ NorESM to the MAR grid) it is necessary to account for the ~~coarse~~ coarser topography in the initial climate model. In this study, the NorESM temperature is bilinearly interpolated on the MAR grid and a temperature lapse rate correction is applied to account for the height difference caused by the different resolutions.

The model topographies of Greenland in NorESM and MAR are shown in Fig. 4 (panel a and c). Both represent the present-
10 day ice sheet, but in different spatial resolutions. The difference to the observed, high-resolution topography (Schaffer et al., 2016) is also shown in Fig. 4 (panel b and d). Due to the lower spatial resolution of NorESM and the resulting smoothed model topography, differences between model and observations are large and cover extensive areas. On the contrary, the differences for the MAR topography to observations are localized at the margins of the ice sheet and much smaller. The strong resemblance of the MAR topography and the observations allows us to use the MAR temperature directly, without any
15 correction. Furthermore, we perform a sensitivity test for PDD-derived SMB comparing various temperature lapse rates and discuss its results in Sec. 4.2.

4 Pre-industrial simulation results

4.1 Pre-industrial climate

The pre-industrial annual mean NorESM and MAR near-surface air temperatures are compared with the observations in Fig. 5
20 (top row). The observations are taken from a collection of shallow ice core records and coastal weather station data compiled by Faber (2016). The data covers the time period from 1890 to 2014. However, individual stations cover only parts of this period. DMI_1 stations provide annual mean temperature and precipitation whereas DMI_2 stations only provide temperature. The NorESM temperature is bilinearly interpolated to the MAR grid and corrected to the MAR topography with a model consistent, temporally and spatially varying lapse rate derived from NorESM, i.e., we use the lapse rate of the NorESM atmosphere above
25 each grid cell. Sensitivity experiments with various lapse rates are discussed in Sec. 4.2. Due to ~~a~~ the lack of observations, we are not comparing the exact same period here, resulting in an inherent offset between climate model and observations.

The NorESM and MAR temperatures agree well with the observations from the coastal regions. However, MAR simulates warmer temperatures than NorESM at the northern rim of Greenland, an area which is underrepresented in the observations. The cold temperatures in the interior are better captured by MAR than by NorESM. ~~The total~~
30 The annual mean NorESM and MAR precipitation, under pre-industrial conditions, is shown in Fig. 5 (bottom row). Compared to the observations, both climate models overestimate precipitation. This overestimation is visible due to the fact that

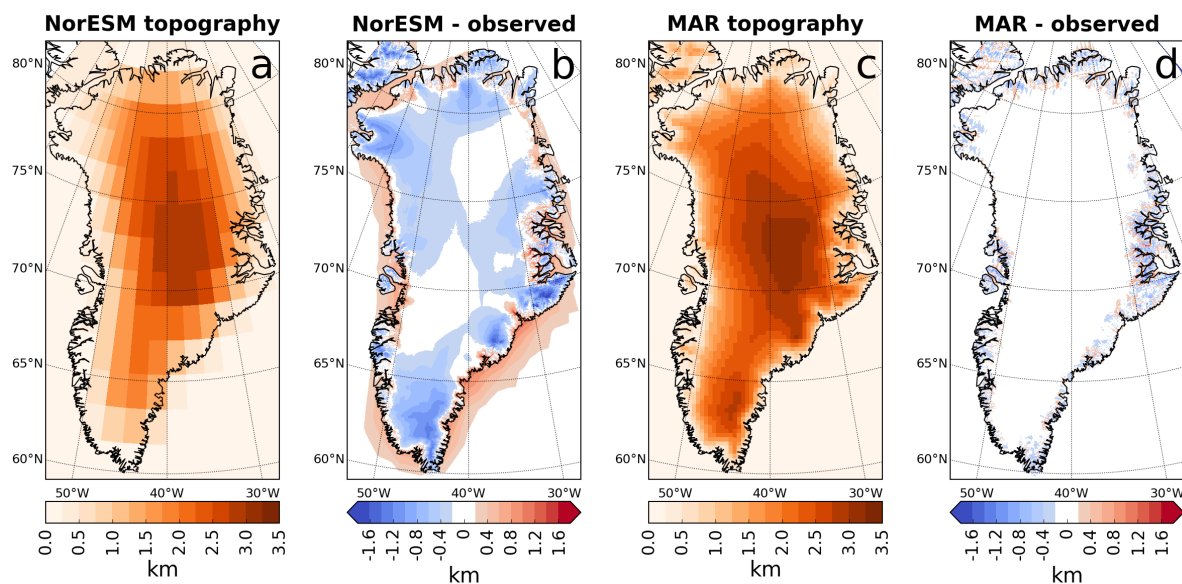


Figure 4. Greenland model topographies and differences to observed Greenland topography from Schaffer et al. (2016). a) NorESM Greenland topography (on original resolution of $1.9 \times 2.5^\circ$ (latitude/longitude)) b) NorESM minus observed c) MAR Greenland topography (on original resolution of 25×25 km) d) MAR minus observed.

most scatter points are above the gray 1:1 diagonal, indicating a too high model value. However, it is important to note that observations from ice cores represent accumulation (i.e. precipitation minus snow drift, sublimation, and similar processes) rather than precipitation, which ~~can partly explain an~~ partly explains the overestimation at the ice core locations. ~~The~~ In general, the MAR precipitation shows less spread and is closer to the observations than NorESM. The precipitation pattern of NorESM is related to its coarse representation of ~~the topography. MAR on~~ Greenland's topography. On the other hand, MAR with its finer resolution resolves coastal and local maxima. Unfortunately, the locations with the highest precipitation rates are not covered by the observations.

4.2 Sensitivity of PDD-derived SMB to temperature lapse rate correction

~~To compare the temperature fields, which are computed at different model grid resolutions~~ For a consistent comparison of the NorESM and MAR temperatures, calculated on different model grids, a temperature lapse rate correction is applied ~~accounting to the NorESM temperatures to account~~ for the elevation difference of the model surfaces. ~~Often~~ Previous studies often use spatially uniform values between $5^\circ\text{C}/\text{km}$ (e.g., Abe-Ouchi et al., 2007; Fyke et al., 2011) and close to $8^\circ\text{C}/\text{km}$ (e.g., Huybrechts, 2002) ~~are used~~. Temporally varying temperature lapse rates are used by Quiquet et al. (2013) and Stone et al. (2013). We use $6.5^\circ\text{C}/\text{km}$ as our default lapse rate (e.g., Born and Nisancioglu, 2012). However, we test spatially and temporally uniform lapse rates between 5 and $10^\circ\text{C}/\text{km}$. Additionally, we derive the lapse rate of the free troposphere from the NorESM vertical

atmospheric air column above each grid cell (i.e., minimum lapse rate above the surface inversion layer). We refer to this as the 3D lapse rate. Furthermore, we calculate the moist adiabatic lapse rate (MALR; American Meteorological Society, 2018) from the thermodynamic state of the NorESM surface air layer via pressure, humidity and temperature. The MALR is the rate of temperature decrease with height along a moist adiabat. Both the 3D lapse rate and the MALR, as well as the MALR vary in time and space.

The integrated PDD-derived SMB over-on Greenland, using these different lapse rates, is compared in Fig. 6. Greenland is split into four sectors along 72.5° N and 42.5° W to investigate regional differences. We first focus Focusing on the temporally and spatially uniform lapse rates, shown in red colors. Overall, the different lapse rates have little effect, reveals little effects on the PDD-derived SMB, except in the SE — higher lapse rates give lower SMB in southeast Greenland. The extremely high lapse rate of 10°C/km shows the strongest reduction in SMB. The regional contributions do not change much, except in the SE sector: higher lapse rates give lower SMB in southeast Greenland. For the uncorrected temperature fields of NorESM (gray columns), the relative contribution of the SE and SW sectors of Greenland are switched, giving a larger SMB contribution from SE Greenland. In this uncorrected case, ablation is almost completely absent in the SE sector, even in the lowest coastal regions (not shown), which is not realistic (compare our reference MAR-SEB results in Fig. 7e). Furthermore, the ablation SMB in the SW reaches much lower values is much more negative than our reference MAR-SEB results.

The general pattern for the PDD-derived SMB fields SMBs, calculated using a uniform temperature lapse rate, is that the SMB is reduced as the lapse rate increases, mainly due to the decrease in SMB in SE Greenland. This might seem counter intuitive, since most of the NorESM topography is lower than observations (blue colors in Fig. 4). However, a closer look at Fig. 4 reveals that large parts of the margins are higher than observations (red colors) which results in a warming when applying the lapse rate correction. Additionally, the margins are also the major melt regions. Therefore, higher lapse rates lead to warmer margins, and as a result, to a lower SMB.

Both, the The 3D lapse rate and the MALR corrections as well as the MALR correction (blue colors) lead to SMB values (result in total and regional contributions) which lie between what follows from using SMBs between which follow from using the uniform lapse rates of 6.5 and 8°C/km as uniform lapse rates. This makes sense since the mean values of the 3D lapse rate and MALR are close to 6.5 and 8°C/km, respectively. Not just In general, the total SMB, but also as well as the spatial pattern of the SMB over Greenland on Greenland (not shown) is similar with all the lapse rate corrections (not shown). Only the SMB derived with uncorrected temperatures shows a different pattern —. A different SMB pattern is only seen when employing the uncorrected temperatures — the contributions from the SE and SW are switched, i.e., there is more extensive melt in the SW and less in the SE because the coastal small-scale features are absent in the uncorrected NorESM temperature due to its relatively coarse resolution.

We conclude that it is necessary to apply a temperature lapse rate correction to lower-resolution lower-resolution temperature fields to obtain a realistic spatial SMB pattern. Using Because, using GCM temperature directly in a PDD model results in a coarse representation of the SMB — a wide ablation zone in the west and virtually no ablation on the east coast (not shown). However, the exact value of the lapse rate is less important when using a PDD model. For the comparison of NorESM temperature and observations in Fig. 5 we use the model consistent 3D lapse rate.

The influence of the lapse rate correction on the PDD-derived SMB is minimal and the results from the 3D lapse rate and the uniform 6.5°C/km (which was used before) are very similar, therefore ~~are we using~~ we use the latter in our PDD calculations. We do not aim to adapt PDD in this study but rather use it as a legacy baseline. The correction is applied to NorESM-PDD and NorESM-BESSI. MAR temperature is not corrected, since the MAR topography represents observations sufficiently well (see Fig. 4).

4.3 Pre-industrial Surface Mass Balance

The simulated pre-industrial SMB from all five model combinations is shown in Fig. 7. Panel 7e shows our reference, MAR-SEB, which we compare all model experiments to. Both NorESM-derived SMBs, NorESM-PDD and NorESM-BESSI (panel 7a and 7c), show a stronger and spatially more extensive positive SMB anomaly compared to the other experiments. The accumulation in the south looks similar to the NorESM precipitation pattern in Fig. 5, which leads to ~~a~~ this positive SMB anomaly. Since NorESM ~~can not~~ is unable to resolve the narrow precipitation band in the southeast correctly, the accumulation is spread out over a larger region reaching further inland. The narrow ablation zone in the southeast (as simulated by MAR-SEB), is much less pronounced in all four simpler model experiments. Similar to the NorESM-derived SMBs, MAR-PDD and MAR-BESSI also show a positive SMB anomaly on the margins, but not in the southern interior.

Figure 7f shows the Greenland-integrated SMB components. All models are compared on a common ice mask (i.e., less than 50% permanent ice cover in MAR; see Sec. 3.1). The NorESM-forced ~~model~~ experiments, NorESM-PDD and NorESM-BESSI, show the higher total integrated SMBs (gray bars) as a result of the high accumulation (green bars) and low melt (red bars). Both are related to the lower resolution of NorESM (i.e., ~~the~~ the narrow precipitation band in the southeast is not captured and the precipitation is smeared over the whole southern tip of Greenland). Furthermore, the lower resolution of NorESM causes its ice mask to reach beyond the common MAR ice mask (not shown) ~~;~~ and potential NorESM ablation regions are partly cut off. The ~~MAR-forced models~~ MAR-forced experiments, MAR-PDD, MAR-BESSI, and MAR-SEB, show better agreement with each other, but the simpler models underestimate melt and ~~refreeze~~ refreezing. This is generally true for ~~all~~ the four simpler models. In particular, the ~~refreeze~~ refreezing values are much lower than in our reference, MAR-SEB. It is not surprising that the PDD model does not capture ~~refreeze~~ refreezing as it uses a very simple parameterization (i.e., ~~refreeze is limited to 60 % of the monthly accumulation; following Reeh, 1989~~) (i.e., the refreezing is limited to 60 % of the monthly . The intermediate model, BESSI, has a firn model implemented (see Sec. 3.1), but also shows much less ~~refreeze~~ refreezing than our reference, MAR-SEB.

5 Eemian simulation results

5.1 NorESM Eemian simulations

Simulated changes of annual mean, boreal winter (December-January-February, DJF), and boreal summer (June-July-August, JJA) ~~near-surface~~ near-surface air temperatures for the four Eemian time slices are shown in Fig. 8. Annual mean tempera-

ture changes are relatively small compared to the seasonal changes due to the strong seasonal insolation anomalies during the Eemian interglacial period. However, there was a total annual irradiation surplus at high latitudes during the Eemian (Past Interglacials Working Group of PAGES, 2016, Fig. 5d therein) and scientists analyzing proxy data conclude with high confidence that high latitude surface temperature, averaged over several thousand years, was at least 2°C warmer than present during the Eemian (Masson-Delmotte et al., 2013). The annual warming signal at high latitudes is not ~~this-as~~ pronounced in the NorESM simulations. However, a strong summer warming is simulated over the Northern Hemisphere, which is particularly important for the Eemian melt season and therefore Greenland's SMB. Especially during the early Eemian (130/125 ka), a strong seasonality is simulated globally, with extensive DJF cooling and JJA warming in general on the Northern Hemisphere landmass. In the Southern Ocean, near surface temperatures are ~~warmer/cooler at 125~~cooler/warmer at 130/125 ka than the pre-industrial climate, respectively, the former associated with an ice free Weddell Sea in austral winter. Arctic warming ~~/amplification is~~ absent or not pronounced in both seasons in the early Eemian. The seasonal changes of ~~surface-near-surface~~ temperature during the late Eemian (120/115 ka) are more modest compared to the early Eemian. During DJF, high latitude cooling is simulated in both hemispheres, with enhanced warming in most of the Northern Hemisphere subtropical land region at 115 ka. During JJA, an overall hemisphere-asymmetric cooling pattern is simulated, with especially enhanced cooling simulated in the Northern Hemisphere land region at 115 ka.

Simulated anomalies of Arctic sea ice concentrations and thicknesses during the four Eemian time slices (Fig. 9) largely reflect the changes of surface temperature in this region. During the early Eemian, the March sea ice extent is close to the pre-industrial distribution, with ~~ice thickness thinner~~thinner ice near the central Arctic ~~and~~, around the coast of Greenland, and Canadian Archipelago, ~~whereas~~. The September sea ice has a smaller extent on the Pacific side of the Arctic, with even thinner sea ice across the whole Arctic, especially north of Greenland and the Canadian Archipelago (>1.5 m ice thickness reduction). During the late Eemian, the March sea ice extent is also similar to the pre-industrial simulation, whereas the September sea ice extent is larger on the Pacific side of the Arctic. ~~Sea ice are~~The sea ice is thicker in both seasons, especially for 115 ka, ~~ice thickness reduction~~the ice thickness increase is greater than 1.5 m in the central Arctic in March and almost across the whole Arctic in September.

5.2 Eemian Greenland climate

The evolution of the simulated Eemian Greenland mean JJA temperature is shown in Fig. 10. As temperature during the melt season strongly influences the SMB, JJA temperature is a good indicator for the evolution of the SMB. The 125 ka time slice is the warmest for both climate models. While NorESM (top panels) shows a maximum summer warming of up to 3°C in the interior, MAR anomalies (bottom panels) reach up to 5°C at 125 ka. During the two earliest and warmest Eemian time slices, 130 and 125 ka, MAR shows particular warm and localized anomalies on the eastern and northeastern coast. The locations of these anomalies overlap with MAR regions without permanent ice cover. This localized warm anomaly is absent in NorESM. The later Eemian time slices, 120 and 115 ka, are both cooler than the pre-industrial.

The evolution of the simulated Eemian precipitation relative to the simulated pre-industrial ~~conditions~~precipitation is shown in Fig. 11. The warmest periods of the Eemian, 130 and 125 ka, show more precipitation in the northwest. Especially MAR

shows a positive anomaly of up to 50% in this region ~~in the at~~ 125 ka ~~time slice~~. The coldest Eemian period, 115 ka, shows a small decrease of 10-20% in precipitation for large parts of Greenland and 120 ka shows the smallest anomalies of all the time slices. Overall NorESM and MAR show the same precipitation trends, but the MAR changes are more pronounced and show stronger regional differences which can be attributed to the higher resolution of MAR compared to NorESM.

5 5.3 Eemian Surface Mass Balance

The MAR-SEB simulation is ~~again used as also~~ our SMB reference, ~~also~~ for the Eemian. The 130 ka MAR-SEB (Fig. 12e) shows a relative uniform reduction in SMB all around the Greenland margins (c.f., ~~the~~ MAR-SEB pre-industrial run; Fig. 7e). The strongest reduction can be seen in the southwest, where the main ablation zone is located (similar to pre-industrial). However, there is also a noteworthy SMB reduction in the northeast. The comparison of the other four SMB models at 130 ka relative to the 130 ka MAR-SEB reference ~~experiment~~ is given in Fig. 12a to d. The 130 ka ~~experiment~~ results are shown here in detail since all model experiments show their respective lowest SMBs for this time slice, i.e., they represent our most extreme Eemian SMBs; in spite of 125 ka showing higher summer temperatures (see Fig. 10) than 130 ka. This is related to the stronger positive insolation anomaly in spring at 130 ka compared to 125 ka (not shown), giving a prolonged melt season early in the Eemian. Under 130 ka conditions there are 60 days with a daily mean shortwave insolation above 275 W/m^2 , in contrast to 54 days at 125 ka and only 19 for pre-industrial conditions (calculated between 58 and 70°N in the MAR domain). In regions between 40 and 70°N an insolation threshold of 275 W/m^2 ~~can be used as is~~ an indicator for temperatures close to the freezing point (Huybers, 2006).

The NorESM-forced SMB models, NorESM-PDD and NorESM-BESSI (Fig. 12a and 12c), show a more positive SMB anomaly at the southern tip of Greenland, which is in contrast to all other model experiments. This NorESM-specific feature corresponds to a less negative SMB in the ablation zone at the margins and a more positive SMB in the interior accumulation zone relative to MAR-SEB. The coarser resolution of NorESM causes accumulation to be smeared out over the whole southern domain, instead of being localized to the southeast margin, where the highest accumulation rates are reached in the higher resolution MAR-forced experiments. Due to this resolution effect, also the total integrated SMB of the NorESM-forced experiments is higher than the MAR-forced experiments. However, NorESM-BESSI (Fig. 12c) shows a lower SMB in the northeast than MAR-SEB, which causes its total SMB to be less positive than NorESM-PDD.

From the MAR-forced experiments, MAR-PDD (Fig. 12b) shows a similar spatial SMB pattern as NorESM-PDD. However, MAR-PDD shows more ablation in the north than NorESM-PDD and there is also no resolution-related accumulation surplus in the south. The higher integrated SMB compared to the MAR-SEB reference ~~experiments~~ is therefore mostly related to less ablation. Since MAR-SEB and MAR-PDD are forced with the same temperature and precipitation fields, it can be concluded that the missing ablation ~~of in~~ MAR-PDD is caused by ~~not accounting for insolation neglecting shortwave radiation~~ in the PDD model. MAR-BESSI (panel d) shows a lower SMB further inland including large areas in the north. This is a feature of both BESSI experiments, but less pronounced in NorESM-BESSI. ~~In terms of total integrated SMB,~~

The integrated SMB (gray bars; Fig. 12f) of MAR-BESSI fits MAR-SEB best, but however the spatial SMB pattern is different. The common ice mask is applied, i.e., more than 50% permanent ice cover in MAR. MAR-BESSI has less ablation

around the margins, but the lower ablation is more than compensated by stronger melt in the north resulting in a SMB more than 100 Gt/yr lower compared to MAR-SEB.

The integrated SMB components over Greenland (including grid cells with more than 50% permanent ice cover in MAR) are shown in The accumulation (green bars; Fig. 12f). The accumulation (green bars) remains relatively unchanged compared to pre-industrial conditions simulations (Fig. 7f), ~~both~~ the total amount and as well as the difference between the individual SMB ~~model~~ experiments. The NorESM-forced experiments are slightly higher show slightly higher accumulation, while MAR-PDD shows the lowest accumulation. ~~These differences are due to~~ The accumulation differences between PDD and BESSI are a result of the different snow/rain threshold temperature temperatures in PDD and BESSI, which are necessary due to different ~~SMB~~ model time steps. NorESM-PDD is less affected because the NorESM temperature is lower in all time slices compared to MAR (Fig. 10). The melt (red bars) ~~is larger by a factor of~~; Fig. 12f) is a factor 2 for all model larger for all experiments compared to their respective pre-industrial ~~run~~ experiments. MAR-SEB shows the highest melt, followed by MAR-BESSI. The three other ~~model experiments~~ models show much less melt.

Note that the amount of ~~refreeze~~ refreezing is doubled for most model experiments compared to pre-industrial conditions. MAR-SEB shows the largest amount of ~~refreeze, the BESSI model experiments follow~~ refreezing, followed by the BESSI experiments with around 1/3 of the ~~refreeze amount of~~ MAR-SEB ~~refreezer~~ refreezing. The PDD models show come last with around 1/6 of the MAR-SEB ~~refreezer~~ refreezing. Interestingly, NorESM-BESSI ~~estimates almost as much refreeze as and~~ MAR-BESSI ~~, in contrast to~~ show very similar refreezing at 130 ka, whereas the difference under pre-industrial conditions ~~where NorESM-BESSI refreeze is only half of MAR-BESSI refreeze. While the (Fig. 7f) is much more pronounced.~~

The integrated SMB at 130 ka ~~SMB~~ is negative for ~~MAR-BESSI and MAR-SEB~~, ~~the SMB in the other model experiments~~ are positive, even under the warmer conditions with reduced precipitation. Again and MAR-BESSI, while the simpler models show positive SMBs. Similar to the pre-industrial experiments, the NorESM-forced experiments are most positive, related to ~~the their coarse representation of accumulation and the fact that the~~ their coarse climate resolution (i.e., coarse accumulation representation, common ice mask cuts off ~~parts of the NorESM ablation regions (NorESM ablation zones; see discussion in~~ Sec. 4.2).

Finally, an overview of the Greenland-integrated SMB components for all model setups and time slices is shown in Fig. 13. The accumulation (Fig. 13a) shows a slight increase in warmer periods (130 ka, 125 ka) for all ~~model~~ experiments. There is a clear distinction between experiments using the PDD and BESSI models: the PDD models show lower values than their respective BESSI models (NorESM-PDD vs. NorESM-PDD and MAR-PDD vs. MAR-BESSI). This is related to the different temporal forcing (PDD: monthly; BESSI: daily) and different snow/rain temperature thresholds (see Sec. 3.1). The relatively high values ~~for the NorESM models can be explained of the NorESM-forced experiments are caused~~ by the lower resolution of NorESM ~~, which can not resolve the relatively narrow precipitation bands at the margins of the Greenland ice sheet. Instead, the precipitation is distributed over larger regions (see discussion in Sec. 4.2).~~

Melt (Fig. 13b) and runoff (Fig. 13c) are highest in the early, warm Eemian. All 130 ka shows experiments show more melt and runoff than the 125 ka which is related to experiments, which is caused by the prolonged melt season at 130 ka, ~~discussed~~ earlier in this section. The ~~refreeze~~ refreezing (Fig. 13d), which is basically the difference between melt and runoff, is much

higher in MAR-SEB than in all other ~~model~~-experiments: approximately 1/3 of the melt water refreezes during the early, warm Eemian time slices; and around 1/2 refreezes during the following colder periods. The other ~~model experiments estimate experiments show~~ only a fraction of this ~~refreeze~~refreezing. However, the ~~experiments using BESSI~~BESSI experiments show slightly higher values than ~~experiments using PDD~~the PDD experiments. The spatial pattern of ~~refreeze~~refreezing (not shown) is similar between MAR-SEB and MAR-BESSI during colder time slices (120, 115 ka, and pre-industrial), but very different during the warmer Eemian time slices (130 and 125 ka). The MAR-SEB ~~refreeze~~refreezing pattern remains similar for all time slices, with an intensification ~~in the warmer Eemian time slices~~ all around the margins of Greenland, ~~but~~ particularly in the south of Greenland, in the warmer Eemian time slices. In contrast, most MAR-BESSI ~~refreeze~~refreezing during the two warm time slices occurs along the southeastern and northeastern margins. The MAR-BESSI experiments in general show smaller ~~refreeze~~refreezing quantities, while also increasing in the two warm time slices.

The ~~total SMB (panel integrated SMB (Fig. 13e))~~ shows a clear difference between NorESM- and MAR-forced models. ~~NorESM-based~~NorESM-forced models are offset towards positive values ~~due to higher accumulation and less melt~~. The SMB of the MAR-BESSI experiment is consistent with MAR-SEB for all time slices. MAR-PDD is consistent with MAR-SEB for the cold time slices (120, 115, and pre-industrial), but ~~does not capture the same~~ is unable to capture the negative SMBs at 130 and 125 ka.

~~These results, particularly the differences in melt during the warmer Eemian time slices indicate two things. Firstly, it is challenging not to include shortwave radiation in a SMB model when investigating the Eemian, because the melt might be underestimated. Secondly, a SMB model can not fix shortcomings of a global climate forcing (i.e., low resolution like here, or other deficiencies). Both, the climate as well as the type of SMB, are important for an accurate simulation of Greenland's SMB, while either of the two can be more important depending on the climate state and particularly the prevailing insolation pattern.~~

6 Discussion

The Eemian interglacial period is characterized by a positive Northern Hemisphere summer insolation anomaly giving warmer summers ~~over on~~ Greenland. This ~~challenges the~~ complicates PDD-derived Eemian SMB estimates ~~based on PDD as insolation changes are not implicitly included since insolation is included in PDD models~~. Here, we assess how the ~~resolution of the climate forcing and the choice of SMB model influences Eemian Greenland SMB estimates~~ A relatively high resolution climate forcing resolution and the SMB model choice influences Eemian SMB estimates on Greenland. A Eemian global climate simulation (with NorESM) is combined with regional dynamical downscaling (with MAR). Previous studies, ~~employing downscaled SMB over using downscaled SMB on~~ Greenland, use either low complexity models (Robinson et al., 2011; Calov et al., 2015), or ~~forcing fields~~ climate forcing from low resolution global climate models (Helsen et al., 2013) as input. Unfortunately, the uncertainties associated with the global climate ~~simulation~~ simulations add a major constraint to any high resolution Greenland SMB estimate. For example, Eemian global climate model spread has been hypothesized to be related to differences in the simulated Eemian sea ice cover (Merz et al., 2016). Furthermore, sensitivity experiments with global climate models by

Merz et al. (2016) show that sea ice cover in the Nordic Seas is crucial for Greenland temperatures (i.e., a substantial reduction in sea ice cover is necessary to simulate warmer Eemian Greenland temperatures in agreement with ice core proxy data). However, the quantification of Eemian global climate simulation uncertainties is beyond the scope of this paper and we refer the reader to Earth System Model intercomparisons focusing on the Eemian (Lunt et al., 2013; Bakker et al., 2013), as well as studies seeking to merge data and models (e.g., Buizert et al., 2018), for details on efforts to improve Eemian climate estimates and reduce global climate uncertainties.

The Eemian climate simulations, with NorESM and MAR, ~~use the~~ are steady-state simulations with a fixed present-day topography of Greenland, neglecting any topography ~~change,~~ changes or freshwater forcing from a melting ice sheet. Given the lack of a reliable Eemian Greenland topography or meltwater estimate, this is a shortcoming we choose to accept. Merz et al. (2014a) discuss global climate steady-state simulations using various reduced Eemian Greenland topographies without finding any major changes of the large-scale climate pattern. However, there is a clear impact of Greenland topography changes on the local ~~surface~~ near-surface air temperature, given that the surface energy balance is strongly dependent on the local topography (e.g., due to changes in local wind patterns and surface albedo changes as a region becomes deglaciated). The same is true for the relationship between Greenland's topography and Eemian precipitation patterns ~~Merz et al. (2014b)~~ (Merz et al., 2014b) — large-scale patterns are fairly independent of the topography, but local, orographic precipitation follows the slopes of the ice sheet. The impact of orographic precipitation is also clear when transitioning from low to high resolution in models: as an example, for the pre-industrial simulation with MAR in Fig. 11 the higher resolution topography results in enhanced precipitation along the better resolved sloping margins of the Greenland ice sheet (e.g., ~~note~~ the southeast margin).

Furthermore, Ridley et al. (2005) find an additional surface warming in Greenland in transient coupled 4xCO₂ ice sheet-GCM simulations compared to uncoupled simulations caused by an albedo-temperature feedback. Similarly, Robinson and Goelzer (2014) show that 30% of the additional insolation-induced Eemian melt is caused by the albedo-melt feedback. Somewhat unexpectedly, given the higher temperatures, Ridley et al. (2005) find more melting in stand-alone ice sheet simulations than in the coupled simulations. The local climate change in the coupled runs results in a negative feedback that likely causes reduced melting and enhanced precipitation. They propose the formation of a convection cell over the newly ice-free margins in summer which causes air to rise at the margins and descent over the high-elevation ice sheet (too cold for increased ablation). This leads to stronger katabatic winds which cool the lower regions and prevent warm air from penetrating towards the ice sheet. An increased strength of katabatic winds can also be caused by steeper ice sheet slopes (Gallée and Pettré, 1998; Le clec'h et al., 2017)

At 130 ka the Greenland ice sheet was likely larger than today, as the climate was transitioning from a glacial to an interglacial state. A smaller sized ice sheet leads to higher simulated temperatures ~~over~~ on Greenland due to the lower altitude of the surface and the albedo feedback in non-glaciated regions. Additionally, neglecting the meltwater influx to the ocean from the retreating glacial ice sheet gives warmer simulated ~~air temperatures~~ temperatures (the light meltwater would form a fresh surface layer on the ocean and isolate the warm sub-surface water from the atmosphere). As a result, the simulated 130 ka temperatures are ~~assumed to be warmer than they were in the past, causing a low~~ likely warmer than the actual temperatures, resulting in a lower simulated SMB. Similarly, the present-day ice sheet, and particularly the ice mask, is likely misrepre-

5 sending the 125 ka state of Greenland. A larger ice sheet will include regions of potentially highly negative SMB, lowering the integrated SMB, i.e., the simulated integrated 125 ka SMBs are likely also too low to be realistic. Basically, only a fully coupled ice sheet-atmosphere-ocean simulation would be able to realistically account for evolving ice sheet configuration and meltwater input to the ocean. Here, the simulated 130 ka SMB is discussed in more detail, not because it is assumed to be the most realistic, but because it provides the most extreme SMB cases within our Eemian climate simulations. Furthermore, the spatial SMB pattern does not change significantly between 130 and 125 ka in our simulations, i.e., conclusions drawn for 130 ka are also true for 125 ka.

The comparison of different SMB models requires a common ice sheet mask which is always a compromise. Vernon et al. (2013) show that approximately a third of the intermodel SMB variation between four different regional climate models is due to ice mask variations at low altitude (models forced with 1960-2008 reanalysis data over Greenland). Resolution-dependent ice sheet mask differences between NorESM- and MAR-derived SMBs are important here. Due to the larger NorESM grid cells, the NorESM ice mask extends beyond the common MAR ice mask (not shown), and as a result the NorESM ablation zone is partly cut off when using the common MAR ice mask. As a consequence there is less ablation in the NorESM-forced SMB model experiments than in the MAR-forced experiments. The direct comparison between NorESM- and MAR-derived SMBs is therefore challenging. However, the PDD and BESSI models are run with both climate forcing resolutions to allow a consistent comparison, independent of the ice mask.

For the “

20 The results discussed in Sec. 5.3, particularly the differences in melt during the warmer Eemian time slices indicate two things. Firstly, it is problematic not to include shortwave radiation in a SMB model when investigating the Eemian, because the melt might be underestimated. Secondly, a SMB model can not fix shortcomings of a global climate forcing (i.e., low resolution like here). Both the climate and the type of SMB are important for an accurate simulation of Greenland’s SMB, while either of the two can be more important depending on the climate state and particularly the prevailing insolation pattern.

25 For the cooler climate states “, similar to pre-industrial (i.e., 120 and 115 ka), the different resolution of the climate forcing, and pre-industrial) the different climate forcing resolution shows the largest influences on the ~~derived~~-SMBs. The complexity and physics of the SMB model is of secondary importance during these periods. This comes as no surprise, as the PDD parameters employed are based on modern observations, and the intermediate model, BESSI, was tuned to represent MAR-SEB under pre-industrial conditions. As discussed earlier, the resolution-dependent difference is caused by higher accumulation in the south, but also less ablation due to the differences in ~~ice sheet mask~~the ice sheet masks.

30 In the “warmer climate states “(i.e., 130 and 125 ka) the complexity of the SMB model becomes the dominant factor for the ~~derived~~-SMBs. SMB model experiments including solar insolation and forced with the high resolution climate ~~-, and a representation of solar insolation, show spatially show~~ integrated Eemian SMBs which are negative. Testing the SMB models with two ~~different~~-climate forcing resolutions as input illustrates that it is essential illustrates the necessity to resolve local climate features — an inaccurate climate (e.g., due to coarse topography) will result in an inaccurate SMB. Besides coarse representation of Greenland’s topography, changes in ice sheet topography and sea ice cover are likely to have a major impact

on the climate over Greenland during the Eemian. However, as mentioned above, it is beyond the scope of this study to evaluate the uncertainty in the simulated Eemian climate forcing.

~~The biggest differences between SMB components, both between the individual models and between the climate time slices, arise for melt and refreeze (runoff basically represents~~ Melt and refreezing show the biggest differences of the SMB components

5 ~~(runoff is basically~~ the difference of these two) ~~in between individual models as well as in between the time slices~~. The PDD-derived experiments lack melting compared to the other experiments, due to ~~neglecting the neglected~~ insolation. MAR-PDD shows slightly more melt partly because it uses the higher resolution climate (i.e., a climate derived with better representation of surface processes and surface albedo). NorESM-PDD and MAR-PDD show the least ~~refreezer~~refreezing, related to the simple ~~refreeze-refreezing~~ parameterization, but also due to the smaller amount of melt. The intermediate model, BESSI, shows more
10 melt in the warm Eemian, and almost matches the values of the MAR-SEB reference experiments if forced with the regional climate. However, BESSI can not compensate for the shortcomings of the lower resolution climate in NorESM-BESSI. In general, BESSI shows slightly more ~~refreeze-refreezing~~ than PDD, but ~~refreeze-refreezing~~ remains underrepresented compared to MAR-SEB. This is likely related to a fairly crude representation of the changing albedo (i.e., albedo is changed with a step function from dry to wet snow to glacier ice — a more accurate albedo representation is in development). BESSI also
15 does not have a daily cycle, e.g., ~~neglecting it neglects~~ colder temperatures at night where ~~refreeze-refreezing~~ might occur. Furthermore, BESSI shows ~~wide-large~~ regions where the ~~complete~~-snow cover is melting away ~~completely~~, exposing glacier ice and prohibiting any further ~~refreeze-refreezing~~ in these regions (particularly under warm Eemian conditions). As a result, the shift in albedo causes more melting in these regions (e.g., areas with negative SMB anomaly in the 130 ka MAR-BESSI experiment in Fig 12c).

20 MAR-SEB stands out with the highest values of melt and ~~refreezer~~refreezing. Particularly, ~~the-refreeze-refreezing~~ is much larger ~~as-than~~ in all other experiments. During cooler time slices (120, 115 ka, pre-industrial) MAR-SEB shows twice the ~~refreeze-refreezing~~ amount as MAR-BESSI. During warmer times slices (130, 125 ka) the ratio goes up to at least triple the amount. This can partly be explained ~~by the fact that MAR uses~~ ~~due to MAR using~~ a higher temporal resolution, i.e., MAR is forced with 6-hourly NorESM climate and runs with a model time step of 180 seconds. BESSI on the other hand uses
25 daily time steps to calculate its SMB. The lower temporal resolution of the BESSI forcing causes a smoothing of extreme temperatures resulting in less melt and ~~refreezer~~refreezing. Tests forcing BESSI with a daily climatology instead of a daily transient, annually varying climate, show less ~~refreeze-refreezing~~ for similar smoothing reasons (not shown). During the cooler periods, MAR-SEB produces more melt and ~~refreeze-refreezing~~ than the other model experiments. This occurs all around the margins of Greenland, similar ~~as-in-to~~ the MAR-BESSI experiment (but lower values in MAR-BESSI). Under the warmer
30 Eemian conditions, MAR-SEB simulates a ~~refreeze-refreezing~~ intensification in the same regions, with particularly strong ~~refreeze-refreezing~~ in the south. In contrast, MAR-BESSI shows most ~~refreeze-refreezing~~ in the southeast and the northwest.

Comparing the differences between SMB models under pre-industrial (Fig. 7) and Eemian conditions (Fig. 12) indicates that the inclusion of solar insolation in the calculations of Eemian SMB is important. If this were not the case, the differences between the individual SMB experiments would be more similar for pre-industrial and the Eemian conditions, and the two
35 latter figures would look more similar. However, any model that accounts for solar insolation strongly relies on a correct

representation of the atmosphere (e.g., the most sensitive parameter of BESSI is the emissivity of the atmosphere, Tab. 2). This high dependency on a correct atmospheric representation (e.g., cloud cover) is also true for a full surface energy model like in MAR-SEB. It is essential to keep this in mind when evaluating simple and more advanced SMB models for paleo applications. The PDD approach for example has been used extensively to calculate paleo SMBs, but it also has been criticized often.

5 However, ~~the most reliable paleoclimate proxies are air temperature and precipitation, and it is hard to argue why a energy balance model which needs poorly constrained information (e.g., net radiation) would produce more reliable results for paleo ablation than a simple PDD model (Fausto et al., 2009)~~in the absence of well-constrained input data, the additional complexity of more comprehensive models may be disadvantageous to the uncertainty of the simulation.

The comparison of previous Eemian studies in Sec. 2 shows the importance of the climate forcing for estimating the ice sheet extent and sea level rise contribution. Most studies used a combination of the positive degree day method and proxy-derived or global model climate and the estimated ice sheets differ strongly in shape. All studies use similar ice dynamics approximations. Therefore, it is a fair ~~assumption~~inference that the differences are a result of the climate used. The more recent studies with further developed climate and SMB forcing, also lack a coherent picture. But since they use different climate downscaling and different SMB models, it is hard to separate the influence of climate and SMB model. The present study reveals strong differences between SMB model types particularly during the warm, early Eemian. However, it remains challenging to quantify the uncertainty contributions related to global climate forcing (not tested here) and to SMB model choice. More sophisticated SMB models might seem like ~~a~~an obvious choice for future studies of the Eemian Greenland ice sheet due to their advanced representation of atmospheric and surface processes. However, ~~as long as~~ the uncertainty of Eemian global climate simulations ~~can not be narrowed down further~~will always play an important role for SMB calculations in paleo applications (e.g., cloud cover and other poorly constrained atmospheric variables~~which influence the surface energy balance~~different SMB models should be included in Eemian ice sheet simulations to capture uncertainties related to model selection in paleo applications). Since it is not feasible to perform transient fully-coupled climate-ice sheet model runs with several regional climate models, it is desirable to perform Eemian ice sheet simulations within a model intercomparison covering a range of different ~~(high resolution) climate forcings and a range of SMB models to capture uncertainties in the best possible way~~climate forcings (ideally finer than 1°

20 to capture orographic precipitation and narrow ablation zones). However, it is also essential to capture SMB uncertainties in such a model intercomparison. This could for example be realized by employing several SMB models and/or by performing sensitivity experiments of highly uncertain SMB model parameters (e.g., emissivity or melt factors). For the early Eemian it appears to be essential that the SMB models include shortwave radiation. Furthermore, if lower resolution global climate is used, it might be worth to investigate options for correcting not just the temperature, but also the precipitation/accumulation fields.

30

7 Conclusions

In this study a ~~relatively high resolution~~ global climate model (NorESM) and a regional climate model (MAR), constrained by the global climate ~~fields~~output, are used to estimate the surface mass balance (SMB) during the Eemian interglacial period em-

5 plying three types of SMB models — a simple positive degree day (PDD) model, an intermediate complexity model (BESSI),
 and a full surface energy balance model (implemented in MAR). The Eemian ~~interglacial~~ is characterized by a warm sum-
 mer climate caused by a positive Northern Hemisphere summer insolation anomaly which renders insolation representation
 in SMB models important. While all SMB models ~~work similarly well~~ show similar results during cooler climate conditions
 10 (120, 115 ka and pre-industrial), forcing the various SMB models with the two climate resolutions reveals the importance of
 representing regional climate features, like the narrow southeastern precipitation band typical for Greenland. During the warm
 early Eemian the SMB model choice becomes very important, due to different representation of insolation in the models. The
 full surface energy balance model forced with the regional climate exhibits the largest values for melt and ~~refreeze~~ refreezing
 compared to all other experiments in the present model pool. Despite ~~the~~ the most sophisticated representation of surface pro-
 15 cesses and topography in this study, the results is also dependent on the global climate simulations. While the individual SMB
 components are very different between SMB models we recognize that a further improved intermediate complexity SMB
 model (i.e. albedo parameterization) would be very useful for forcing ice sheet models on paleo time scales. If the overall
 SMB pattern is simulated correctly without using full energy balance models, then ice sheet models will presumably produce
 similar results, since the individual components (e.g. meltwater and ~~refreeze~~ refreezing) are only used to a limited degree by
 20 state-of-the-art paleo ice sheet models. In conclusion, both the climate as well as the type of SMB model are important for
 an accurate simulation of Greenland's SMB. Which of the two becomes most important is dependent on the climate state and
 particularly the prevailing insolation pattern. To improve the Eemian SMB estimate, ~~further effort needs to be put~~ enhanced
~~efforts are needed~~ in developing fully-coupled ~~regional~~ climate-ice sheet models ~~and making them~~ efficient enough to be run
 over ~~whole glacial-interglacial cycles. We deem Eemian climate model intercomparisons combining with various SMB models~~
~~to be the best way to evaluate and ultimately lower Eemian SMB uncertainties.~~
glacial timescales (~100 kyr), capturing the evolution of the interglacial as well as the preceding glacial ice sheets and
the corresponding surface and topography changes (both are essential for estimating the Eemian sea level rise contribution).
These coupled climate model runs could be downscaled at key time steps covering the Eemian period with a regional climate
model, providing more accurate SMB estimates. In a next step, intermediate models like BESSI, could be used to provide SMB
 25 uncertainty estimates of this best guess SMB via model parameter sensitivity tests. To capture the uncertainty in the simulated
global climate from GCMs, it would be an advantage to include dedicated experiments in a climate model intercomparison
project.

8 Code availability

The NorESM model code can be obtained upon request. Instructions on how to obtain a copy are given at: <https://wiki.met.no/norasm/gitbestpractice>. The PDD python script is available at: <https://github.com/juseg/pyppdd>. BESSI is under active develop-
 30 ment. For more information contact Andreas Born (andreas.born@uib.no). The MAR code is available at: <http://mar.cnrs.fr>.

9 Data availability

The full set of NorESM model data will be made publicly available through the Norwegian Research Data Archive at: <https://archive.norstore.no> upon publication. The MAR, BESSI, PDD experiment simulations are available upon request from the corresponding author.

- 5 *Author contributions.* AP and KHN designed the study with contributions from AB and PML. CG and KHN provided the NorESM simulations. SLC performed the MAR simulations. MI and AB wrote the BESSI code with contributions from TS. AP made the figures and wrote the text with input from KHN, AB, PML, CG (Sec. 3.1 and 5.1), and SLC (Sec. 3.1). All authors commented on the final version of the manuscript.

Competing interests. The authors declare that they have no conflict of interest.

- 10 *Acknowledgements.* The research leading to these results has received funding from the European Research Council under the European Community's Seventh Framework Programme (FP7/2007-2013) / ERC grant agreement 610055 as part of the ice2ice project. We would like to thank all authors cited in Fig. 1 and 2 for sharing their Eemian Greenland ice sheet results. We would like to thank Anne-Katrine Faber for providing the shallow ice core data she compiled during her PhD. Furthermore, we would like to thank Tobias Zolles for discussions of the BESSI results. PML's contribution was supported by the RISES project of the Centre for Climate Dynamics at the Bjerknes Centre
- 15 for Climate Research. We thank Steven Phipps for editing this manuscript. Furthermore, we thank Alexander Robinson and an anonymous referee for their comments which significantly improved this manuscript.

References

- Abe-Ouchi, A., Segawa, T., and Saito, F.: Climatic conditions for modelling the Northern Hemisphere ice sheets throughout the ice age cycle, *Clim. Past*, 3, 423–438, <https://doi.org/10.5194/cp-3-423-2007>, 2007.
- American Meteorological Society: Moist-adiabatic lapse rate. Glossary of Meteorology, http://glossary.ametsoc.org/wiki/Moist-adiabatic_lapse_rate, last accessed: 2018-02-20, 2018.
- 5 Bakker, P., Stone, E. J., Charbit, S., Gröger, M., Krebs-Kanzow, U., Ritz, S. P., Varma, V., Khon, V., Lunt, D. J., Mikolajewicz, U., Prange, M., Renssen, H., Schneider, B., and Schulz, M.: Last interglacial temperature evolution – a model inter-comparison, *Clim. Past*, 9, 605–619, <https://doi.org/10.5194/cp-9-605-2013>, 2013.
- Bamber, J. L., Griggs, J. A., Hurkmans, R. T. W. L., Dowdeswell, J. A., Gogineni, S. P., Howat, I., Mouginot, J., Paden, J., Palmer, S., Rignot, E., and Steinhage, D.: A new bed elevation dataset for Greenland, *The Cryosphere*, 7, 499–510, <https://doi.org/10.5194/tc-7-499-2013>, 2013.
- 10 Barnola, J.-M., Pimienta, P., Raynaud, D., and Korotkevich, Y. S.: CO₂-climate relationship as deduced from the Vostok ice core: a re-examination based on new measurements and on a re-evaluation of the air dating, *Tellus*, 43B, 83–90, 1990.
- Bentsen, M., Bethke, I., Debernard, J. B., Iversen, T., Kirkevåg, A., Seland, Ø., Drange, H., Roelandt, C., Seierstad, I. A., Hoose, C., and Kristjánsson, J. E.: The Norwegian Earth System Model, NorESM1-M – Part 1: Description and basic evaluation of the physical climate, *Geoscientific Model Development*, 6, 687–720, <https://doi.org/10.5194/gmd-6-687-2013>, 2013.
- 15 Bleck, R., Rooth, C., Hu, D., and Smith, L. T.: Salinity-driven Thermocline Transients in a Wind- and Thermohaline-forced Isopycnic Coordinate Model of the North Atlantic, *Journal of Physical Oceanography*, 22, 1486–1505, [https://doi.org/10.1175/1520-0485\(1992\)022<1486:SDTTIA>2.0.CO;2](https://doi.org/10.1175/1520-0485(1992)022<1486:SDTTIA>2.0.CO;2), 1992.
- 20 Born, A. and Nisancioglu, K. H.: Melting of Northern Greenland during the last interglaciation, *The Cryosphere*, 6, 1239–1250, <https://doi.org/10.5194/tc-6-1239-2012>, 2012.
- Born, A., Imhof, M., and Stocker, T. F.: A Energy and Mass Balance Firn Model for Simulations over Multiple Glacial Cycles, in prep.
- Braithwaite, R. J.: Positive degree-day factors for ablation on the Greenland ice sheet studied by energy-balance modelling, *Journal of Glaciology*, 41, 153–160, <https://doi.org/10.3189/S0022143000017846>, 1995.
- 25 Bretherton, C. S., Widmann, M., Dymnikov, V. P., Wallace, J. M., and Bladé, I.: The Effective Number of Spatial Degrees of Freedom of a Time-Varying Field, *Journal of Climate*, 12, 1990–2009, [https://doi.org/10.1175/1520-0442\(1999\)012<1990:TENOSD>2.0.CO;2](https://doi.org/10.1175/1520-0442(1999)012<1990:TENOSD>2.0.CO;2), 1999.
- Brun, E., David, P., Sudul, M., and Brunot, G.: A numerical model to simulate snow-cover stratigraphy for operational avalanche forecasting, *Journal of Glaciology*, 38, 13–22, <https://doi.org/10.3189/S0022143000009552>, 1992.
- Buizert, C., Keisling, B. A., Box, J. E., He, F., Carlson, A. E., Sinclair, G., and DeConto, R. M.: Greenland-Wide Seasonal Temperatures During the Last Deglaciation, *Geophysical Research Letters*, p. 2017GL075601, <https://doi.org/10.1002/2017GL075601>, 2018.
- 30 Calov, R., Robinson, A., Perrette, M., and Ganopolski, A.: Simulating the Greenland ice sheet under present-day and palaeo constraints including a new discharge parameterization, *The Cryosphere*, 9, 179–196, <https://doi.org/10.5194/tc-9-179-2015>, 2015.
- CAPE Last Interglacial Project Members: Last Interglacial Arctic warmth confirms polar amplification of climate change, *Quaternary Science Reviews*, 25, 1383–1400, <https://doi.org/10.1016/j.quascirev.2006.01.033>, 2006.
- 35 Capron, E., Govin, A., Stone, E. J., Masson-Delmotte, V., Mulitza, S., Otto-Bliesner, B., Rasmussen, T. L., Sime, L. C., Waelbroeck, C., and Wolff, E. W.: Temporal and spatial structure of multi-millennial temperature changes at high latitudes during the Last Interglacial, *Quaternary Science Reviews*, 103, 116–133, <https://doi.org/10.1016/j.quascirev.2014.08.018>, 2014.

- Church, J. A., Clark, P. U., Cazenave, A., Gregory, J. M., Jevrejeva, S., Levermann, A., Merrifield, M. A., Milne, G. A., Nerem, R. S., Nunn, P. D., Payne, A. J., Pfeffer, W. T., Stammer, D., and Unnikrishnan, A. S.: Sea Level Change, in: *Climate Change 2013: The Physical Science Basis. Contribution of Working Group I to the Fifth Assessment Report of the Intergovernmental Panel on Climate Change* [Stocker, T.F., D. Qin, G.-K. Plattner, M. Tignor, S.K. Allen, J. Boschung, A. Nauels, Y. Xia, V. Bex and P.M. Midgley (eds.)], pp. 1137–1216, Cambridge University Press, Cambridge, United Kingdom and New York, NY, USA, https://www.ipcc.ch/pdf/assessment-report/ar5/wg1/WG1AR5_Chapter13_FINAL.pdf, 2013.
- Cuffey, K. M. and Marshall, S. J.: Substantial contribution to sea-level rise during the last interglacial from the Greenland ice sheet, *Nature*, 404, 591–594, <https://doi.org/10.1038/35007053>, 2000.
- Dutton, A., Carlson, A. E., Long, A. J., Milne, G. A., Clark, P. U., DeConto, R., Horton, B. P., Rahmstorf, S., and Raymo, M. E.: Sea-level rise due to polar ice-sheet mass loss during past warm periods, *Science*, 349, aaa4019, <https://doi.org/10.1126/science.aaa4019>, 2015.
- Faber, A.: Isotopes in Greenland precipitation. Isotope-enabled AGCM modelling and a new Greenland database of observations and ice core measurements, Ph.D. thesis, Centre for Ice and Climate, University of Copenhagen, 2016.
- Fausto, R. S., Ahlstrøm, A. P., Van As, D., Bøggild, C. E., and Johnsen, S. J.: A new present-day temperature parameterization for Greenland, *Journal of Glaciology*, 55, 95–105, <https://doi.org/10.3189/002214309788608985>, 2009.
- Fettweis, X.: Reconstruction of the 1979–2006 Greenland ice sheet surface mass balance using the regional climate model MAR, *The Cryosphere*, 1, 21–40, <https://doi.org/10.5194/tc-1-21-2007>, 2007.
- Fettweis, X., Gallée, H., Lefebvre, F., and Ypersele, J.-P. v.: Greenland surface mass balance simulated by a regional climate model and comparison with satellite-derived data in 1990–1991, *Climate Dynamics*, 24, 623–640, <https://doi.org/10.1007/s00382-005-0010-y>, 2005.
- Fettweis, X., Franco, B., Tedesco, M., Angelen, J. H. v., Lenaerts, J. T. M., Broeke, M. R. v. d., and Gallée, H.: Estimating the Greenland ice sheet surface mass balance contribution to future sea level rise using the regional atmospheric climate model MAR, *The Cryosphere*, 7, 469–489, <https://doi.org/10.5194/tc-7-469-2013>, 2013.
- Fettweis, X., Box, J. E., Agosta, C., Amory, C., Kittel, C., Lang, C., van As, D., Machguth, H., and Gallée, H.: Reconstructions of the 1900–2015 Greenland ice sheet surface mass balance using the regional climate MAR model, *The Cryosphere*, 11, 1015–1033, <https://doi.org/10.5194/tc-11-1015-2017>, 2017.
- Fyke, J. G., Weaver, A. J., Pollard, D., Eby, M., Carter, L., and Mackintosh, A.: A new coupled ice sheet/climate model: description and sensitivity to model physics under Eemian, Last Glacial Maximum, late Holocene and modern climate conditions, *Geoscientific Model Development*, 4, 117–136, <https://doi.org/10.5194/gmd-4-117-2011>, 2011.
- Gallée, H. and Duynkerke, P. G.: Air-snow interactions and the surface energy and mass balance over the melting zone of west Greenland during the Greenland Ice Margin Experiment, *Journal of Geophysical Research: Atmospheres*, 102, 13 813–13 824, <https://doi.org/10.1029/96JD03358>, 1997.
- Gallée, H. and Pettré, P.: Dynamical Constraints on Katabatic Wind Cessation in Adélie Land, Antarctica, *Journal of the Atmospheric Sciences*, 55, 1755–1770, [https://doi.org/10.1175/1520-0469\(1998\)055<1755:DCOKWC>2.0.CO;2](https://doi.org/10.1175/1520-0469(1998)055<1755:DCOKWC>2.0.CO;2), 1998.
- Ganopolski, A. and Robinson, A.: Palaeoclimate: The past is not the future, *Nature Geoscience*, 4, 661–663, <https://doi.org/10.1038/ngeo1268>, 2011.
- Gent, P. R., Danabasoglu, G., Donner, L. J., Holland, M. M., Hunke, E. C., Jayne, S. R., Lawrence, D. M., Neale, R. B., Rasch, P. J., Vertenstein, M., Worley, P. H., Yang, Z.-L., and Zhang, M.: The Community Climate System Model Version 4, *Journal of Climate*, 24, 4973–4991, <https://doi.org/10.1175/2011JCLI4083.1>, 2011.

- Goelzer, H., Huybrechts, P., Loutre, M.-F., and Fichet, T.: Last Interglacial climate and sea-level evolution from a coupled ice sheet–climate model, *Clim. Past*, 12, 2195–2213, <https://doi.org/10.5194/cp-12-2195-2016>, 2016.
- Greve, R.: Relation of measured basal temperatures and the spatial distribution of the geothermal heat flux for the Greenland ice sheet, *Annals of Glaciology*, 42, 424–432, <https://doi.org/10.3189/172756405781812510>, 2005.
- 5 Greve, R. and Blatter, H.: Dynamics of ice sheets and glaciers, Springer, <https://doi.org/10.1007/978-3-642-03415-2>, 2009.
- Guo et al.: Evaluation of NorESM1-F: A fast version of the Norwegian Earth System Model (NorESM), manuscript to be submitted to Geoscientific Model Development, in prep.
- Helsen, M. M., Berg, W. J. v. d., Wal, R. S. W. v. d., Broeke, M. R. v. d., and Oerlemans, J.: Coupled regional climate–ice-sheet simulation shows limited Greenland ice loss during the Eemian, *Clim. Past*, 9, 1773–1788, <https://doi.org/10.5194/cp-9-1773-2013>, 2013.
- 10 Herron, M. M. and Langway, C. C.: Firn Densification: An Empirical Model, *Journal of Glaciology*, 25, 373–385, <https://doi.org/10.3189/S0022143000015239>, 1980.
- Huybers, P.: Early Pleistocene Glacial Cycles and the Integrated Summer Insolation Forcing, *Science*, 313, 508–511, <http://doi.org/10.1126/science.1125249>, 2006.
- Huybrechts, P.: Sea-level changes at the LGM from ice-dynamic reconstructions of the Greenland and Antarctic ice sheets during glacial cycles, *Quaternary Science Reviews*, 21, 203–231, [https://doi.org/10.1016/S0277-3791\(01\)00082-8](https://doi.org/10.1016/S0277-3791(01)00082-8), 2002.
- 15 Imhof, M.: An Energy and Mass Balance Firn Model coupled to the Ice Sheets of the Northern Hemisphere, master’s thesis, Physics Institute, University of Bern, 2016.
- Johnsen, S. J. and Vinther, B. M.: ICE CORE RECORDS | Greenland Stable Isotopes, in: *Encyclopedia of Quaternary Science*, edited by Elias, S. A., pp. 1250–1258, Elsevier, Oxford, <https://doi.org/10.1016/B0-44-452747-8/00345-8>, 2007.
- 20 Kessler, E.: On the Distribution and Continuity of Water Substance in Atmospheric Circulations, in: *On the Distribution and Continuity of Water Substance in Atmospheric Circulations*, Meteorological Monographs, pp. 1–84, American Meteorological Society, Boston, MA, https://doi.org/10.1007/978-1-935704-36-2_1, 1969.
- Kirkevåg, A., Iversen, T., Seland, Ø., Hoose, C., Kristjánsson, J. E., Struthers, H., Ekman, A. M. L., Ghan, S., Griesfeller, J., Nilsson, E. D., and Schulz, M.: Aerosol–climate interactions in the Norwegian Earth System Model – NorESM1-M, *Geosci. Model Dev.*, 6, 207–244, <https://doi.org/10.5194/gmd-6-207-2013>, 2013.
- 25 Kopp, R. E., Simons, F. J., Mitrovica, J. X., Maloof, A. C., and Oppenheimer, M.: A probabilistic assessment of sea level variations within the last interglacial stage, *Geophysical Journal International*, p. ggt029, <https://doi.org/10.1093/gji/ggt029>, 2013.
- Landais, A., Masson-Delmotte, V., Capron, E., Langebroek, P. M., Bakker, P., Stone, E. J., Merz, N., Raible, C. C., Fischer, H., Orsi, A., Prié, F., Vinther, B., and Dahl-Jensen, D.: How warm was Greenland during the last interglacial period?, *Clim. Past*, 12, 1933–1948, <https://doi.org/10.5194/cp-12-1933-2016>, 2016.
- 30 Langebroek, P. M. and Nisancioglu, K. H.: Simulating last interglacial climate with NorESM: role of insolation and greenhouse gases in the timing of peak warmth, *Clim. Past*, 10, 1305–1318, <https://doi.org/10.5194/cp-10-1305-2014>, 2014.
- Le clec’h, S., Fettweis, X., Quiquet, A., Dumas, C., Kageyama, M., Charbit, S., Wyard, C., and Ritz, C.: Assessment of the Greenland ice sheet – atmosphere feedbacks for the next century with a regional atmospheric model fully coupled to an ice sheet model, *The Cryosphere Discuss.*, 2017, 1–31, <https://doi.org/10.5194/tc-2017-230>, 2017.
- 35 Letréguilly, A., Reeh, N., and Huybrechts, P.: The Greenland ice sheet through the last glacial-interglacial cycle, *Palaeogeogr., Palaeoclimatol., Palaeoecol. (Global Planet. Change Sect.)*, 90, 385–394, [https://doi.org/10.1016/S0031-0182\(12\)80037-X](https://doi.org/10.1016/S0031-0182(12)80037-X), 1991.

- Lhomme, N., Clarke, G. K. C., and Marshall, S. J.: Tracer transport in the Greenland Ice Sheet: constraints on ice cores and glacial history, *Quaternary Science Reviews*, 24, 173–194, <https://doi.org/10.1016/j.quascirev.2004.08.020>, 2005.
- Lin, Y.-L., Farley, R. D., and Orville, H. D.: Bulk Parameterization of the Snow Field in a Cloud Model, *Journal of Climate and Applied Meteorology*, 22, 1065–1092, [https://doi.org/10.1175/1520-0450\(1983\)022<1065:BPOTSF>2.0.CO;2](https://doi.org/10.1175/1520-0450(1983)022<1065:BPOTSF>2.0.CO;2), 1983.
- 5 Lunt, D. J., Abe-Ouchi, A., Bakker, P., Berger, A., Braconnot, P., Charbit, S., Fischer, N., Herold, N., Jungclaus, J. H., Khon, V. C., Krebs-Kanzow, U., Langebroek, P. M., Lohmann, G., Nisancioglu, K. H., Otto-Bliesner, B. L., Park, W., Pfeiffer, M., Phipps, S. J., Prange, M., Rachmayani, R., Renssen, H., Rosenbloom, N., Schneider, B., Stone, E. J., Takahashi, K., Wei, W., Yin, Q., and Zhang, Z. S.: A multi-model assessment of last interglacial temperatures, *Clim. Past*, 9, 699–717, <https://doi.org/10.5194/cp-9-699-2013>, 2013.
- Maier-Reimer, E.: Geochemical cycles in an ocean general circulation model. Preindustrial tracer distributions, *Global Biogeochemical Cycles*, 7, 645–677, <https://doi.org/10.1029/93GB01355>, 1993.
- 10 Maier-Reimer, E., Kriest, I., Segschneider, J., and Wetzel, P.: The HAMburg Ocean Carbon Cycle Model HAMOCC 5.1 - Technical Description Release 1.1, Tech. rep., Max Planck Institute for Meteorology, Hamburg, Germany, http://www.mpimet.mpg.de/fileadmin/publikationen/erdsystem_14.pdf, 2005.
- Masson-Delmotte, V., Braconnot, P., Hoffmann, G., Jouzel, J., Kageyama, M., Landais, A., Lejeune, Q., Risi, C., Sime, L., Sjolte, J., Swingedouw, D., and Vinther, B.: Sensitivity of interglacial Greenland temperature and $\delta^{18}\text{O}$: ice core data, orbital and increased CO_2 climate simulations, *Clim. Past*, 7, 1041–1059, <https://doi.org/10.5194/cp-7-1041-2011>, 2011.
- 15 Masson-Delmotte, V., Schulz, M., Abe-Ouchi, A., Beer, J., Ganopolski, A., González Rouco, J., Jansen, E., Lambeck, K., Luterbacher, J., Naish, T., Osborn, T., Otto-Bliesner, B., Quinn, T., Ramesh, R., Rojas, M., Shao, X., and Timmermann, A.: Information from Paleoclimate Archives, in: *Climate Change 2013: The Physical Science Basis. Contribution of Working Group I to the Fifth Assessment Report of the Intergovernmental Panel on Climate Change* [Stocker, T.F., D. Qin, G.-K. Plattner, M. Tignor, S.K. Allen, J. Boschung, A. Nauels, Y. Xia, V. Bex and P.M. Midgley (eds.)], pp. 383–464, Cambridge University Press, Cambridge, United Kingdom and New York, NY, USA, https://www.ipcc.ch/pdf/assessment-report/ar5/wg1/WG1AR5_Chapter05_FINAL.pdf, 2013.
- 20 Mengel, M., Levermann, A., Frieler, K., Robinson, A., Marzeion, B., and Winkelmann, R.: Future sea level rise constrained by observations and long-term commitment, *Proceedings of the National Academy of Sciences*, 113, 2597–2602, <https://doi.org/10.1073/pnas.1500515113>, 2016.
- 25 Merz, N., Born, A., Raible, C. C., Fischer, H., and Stocker, T. F.: Dependence of Eemian Greenland temperature reconstructions on the ice sheet topography, *Clim. Past*, 10, 1221–1238, <https://doi.org/10.5194/cp-10-1221-2014>, 2014a.
- Merz, N., Gfeller, G., Born, A., Raible, C. C., Stocker, T. F., and Fischer, H.: Influence of ice sheet topography on Greenland precipitation during the Eemian interglacial, *Journal of Geophysical Research: Atmospheres*, 119, 10,749–10,768, <https://doi.org/10.1002/2014JD021940>, 2014b.
- 30 Merz, N., Born, A., Raible, C. C., and Stocker, T. F.: Warm Greenland during the last interglacial: the role of regional changes in sea ice cover, *Clim. Past*, 12, 2011–2031, <https://doi.org/10.5194/cp-12-2011-2016>, 2016.
- Morcrette, J.-J., Barker, H. W., Cole, J. N. S., Iacono, M. J., and Pincus, R.: Impact of a New Radiation Package, McRad, in the ECMWF Integrated Forecasting System, *Monthly Weather Review*, 136, 4773–4798, <https://doi.org/10.1175/2008MWR2363.1>, 2008.
- 35 NEEM community members: Eemian interglacial reconstructed from a Greenland folded ice core, *Nature*, 493, 489–494, <https://doi.org/10.1038/nature11789>, 2013.
- Otto-Bliesner, B. L., Marshall, S. J., Overpeck, J. T., Miller, G. H., and Hu, A.: Simulating Arctic climate warmth and icefield retreat in the last interglaciation, *science*, 311, 1751–1753, <https://doi.org/10.1126/science.1120808>, 2006.

- Otto-Bliesner, B. L., Rosenbloom, N., Stone, E. J., McKay, N. P., Lunt, D. J., Brady, E. C., and Overpeck, J. T.: How warm was the last interglacial? New model–data comparisons, *Phil. Trans. R. Soc. A*, 371, 20130097, <https://doi.org/10.1098/rsta.2013.0097>, 2013.
- Overpeck, J., Otto-Bliesner, B. L., Miller, G., Muhs, D., Alley, R., and Kiehl, J.: Paleoclimatic Evidence for Future Ice-Sheet Instability and Rapid Sea-Level Rise, *Science*, 311, 1747–1750, <https://doi.org/10.1126/science.1115159>, 2006.
- 5 Past Interglacials Working Group of PAGES: Interglacials of the last 800,000 years, *Reviews of Geophysics*, 54, 162–219, <https://doi.org/10.1002/2015RG000482>, 2016.
- Quiquet, A., Ritz, C., Punge, H. J., and Salas y Mélia, D.: Greenland ice sheet contribution to sea level rise during the last interglacial period: a modelling study driven and constrained by ice core data, *Clim. Past*, 9, 353–366, <https://doi.org/10.5194/cp-9-353-2013>, 2013.
- Raynaud, D., Chappellaz, J., Ritz, C., and Martinerie, P.: Air content along the Greenland Ice Core Project core: A record of surface climatic parameters and elevation in central Greenland, *Journal of Geophysical Research: Oceans*, 102, 26 607–26 613, <https://doi.org/10.1029/97JC01908>, 1997.
- 10 Reeh, N.: Parameterization of melt rate and surface temperature on the Greenland ice sheet, *Polarforschung*, 59, 113–128, <http://hdl.handle.net/10013/epic.13107>, 1989.
- Ridley, J. K., Huybrechts, P., Gregory, J. M., and Lowe, J. A.: Elimination of the Greenland Ice Sheet in a High CO₂ Climate, *Journal of Climate*, 18, 3409–3427, <https://doi.org/10.1175/JCLI3482.1>, 2005.
- 15 Ritz, C., Fabre, A., and Letréguilly, A.: Sensitivity of a Greenland ice sheet model to ice flow and ablation parameters: consequences for the evolution through the last climatic cycle, *Climate Dynamics*, 13, 11–23, <https://doi.org/10.1007/s003820050149>, 1997.
- Robinson, A. and Goelzer, H.: The importance of insolation changes for paleo ice sheet modeling, *The Cryosphere*, 8, 1419–1428, <http://doi.org/10.5194/tc-8-1419-2014>, 2014.
- 20 Robinson, A., Calov, R., and Ganopolski, A.: An efficient regional energy-moisture balance model for simulation of the Greenland Ice Sheet response to climate change, *The Cryosphere*, 4, 129–144, <https://doi.org/10.5194/tc-4-129-2010>, 2010.
- Robinson, A., Calov, R., and Ganopolski, A.: Greenland ice sheet model parameters constrained using simulations of the Eemian Interglacial, *Clim. Past*, 7, 381–396, <https://doi.org/10.5194/cp-7-381-2011>, 2011.
- Schaffer, J., Timmermann, R., Arndt, J. E., Kristensen, S. S., Mayer, C., Morlighem, M., and Steinhage, D.: A global, high-resolution data set of ice sheet topography, cavity geometry, and ocean bathymetry, *Earth System Science Data*, 8, 543–557, <https://doi.org/10.5194/essd-8-543-2016>, 2016.
- 25 Seguinot, J.: Spatial and seasonal effects of temperature variability in a positive degree-day glacier surface mass-balance model, *Journal of Glaciology*, 59, 1202–1204, <https://doi.org/10.3189/2013JoG13J081>, 2013.
- Stone, E. J., Lunt, D. J., Annan, J. D., and Hargreaves, J. C.: Quantification of the Greenland ice sheet contribution to Last Interglacial sea level rise, *Clim. Past*, 9, 621–639, <https://doi.org/10.5194/cp-9-621-2013>, 2013.
- 30 Tarasov, L. and Peltier, W. R.: Greenland glacial history, borehole constraints, and Eemian extent, *Journal of Geophysical Research: Solid Earth*, 108, 2143, <https://doi.org/10.1029/2001JB001731>, 2003.
- Taylor, K. E., Stouffer, R. J., and Meehl, G. A.: An Overview of CMIP5 and the Experiment Design, *Bulletin of the American Meteorological Society*, 93, 485–498, <https://doi.org/10.1175/BAMS-D-11-00094.1>, 2011.
- 35 Van de Berg, W. J., van den Broeke, M., Ettema, J., van Meijgaard, E., and Kaspar, F.: Significant contribution of insolation to Eemian melting of the Greenland ice sheet, *Nature Geoscience*, 4, 679–683, <https://doi.org/10.1038/ngeo1245>, 2011.
- Vernon, C. L., Bamber, J. L., Box, J. E., van den Broeke, M. R., Fettweis, X., Hanna, E., and Huybrechts, P.: Surface mass balance model intercomparison for the Greenland ice sheet, *The Cryosphere*, 7, 599–614, <http://doi.org/10.5194/tc-7-599-2013>, 2013.

- Willerslev, E., Cappellini, E., Boomsma, W., Nielsen, R., Hebsgaard, M. B., Brand, T. B., Hofreiter, M., Bunce, M., Poinar, H. N., Dahl-Jensen, D., Johnsen, S., Steffensen, J. P., Bennike, O., Schwenninger, J.-L., Nathan, R., Armitage, S., Hoog, C.-J. d., Alfimov, V., Christl, M., Beer, J., Muscheler, R., Barker, J., Sharp, M., Penkman, K. E. H., Haile, J., Taberlet, P., Gilbert, M. T. P., Casoli, A., Campani, E., and Collins, M. J.: Ancient Biomolecules from Deep Ice Cores Reveal a Forested Southern Greenland, *Science*, 317, 111–114, <https://doi.org/10.1126/science.1141758>, 2007.
- 5 Yin, Q. and Berger, A.: Interglacial analogues of the Holocene and its natural near future, *Quaternary Science Reviews*, 120, 28–46, <https://doi.org/10.1016/j.quascirev.2015.04.008>, 2015.
- Yin, Q. Z. and Berger, A.: Insolation and CO₂ contribution to the interglacial climate before and after the Mid-Brunhes Event, *Nature Geoscience*, 3, 243–246, <https://doi.org/10.1038/ngeo771>, 2010.

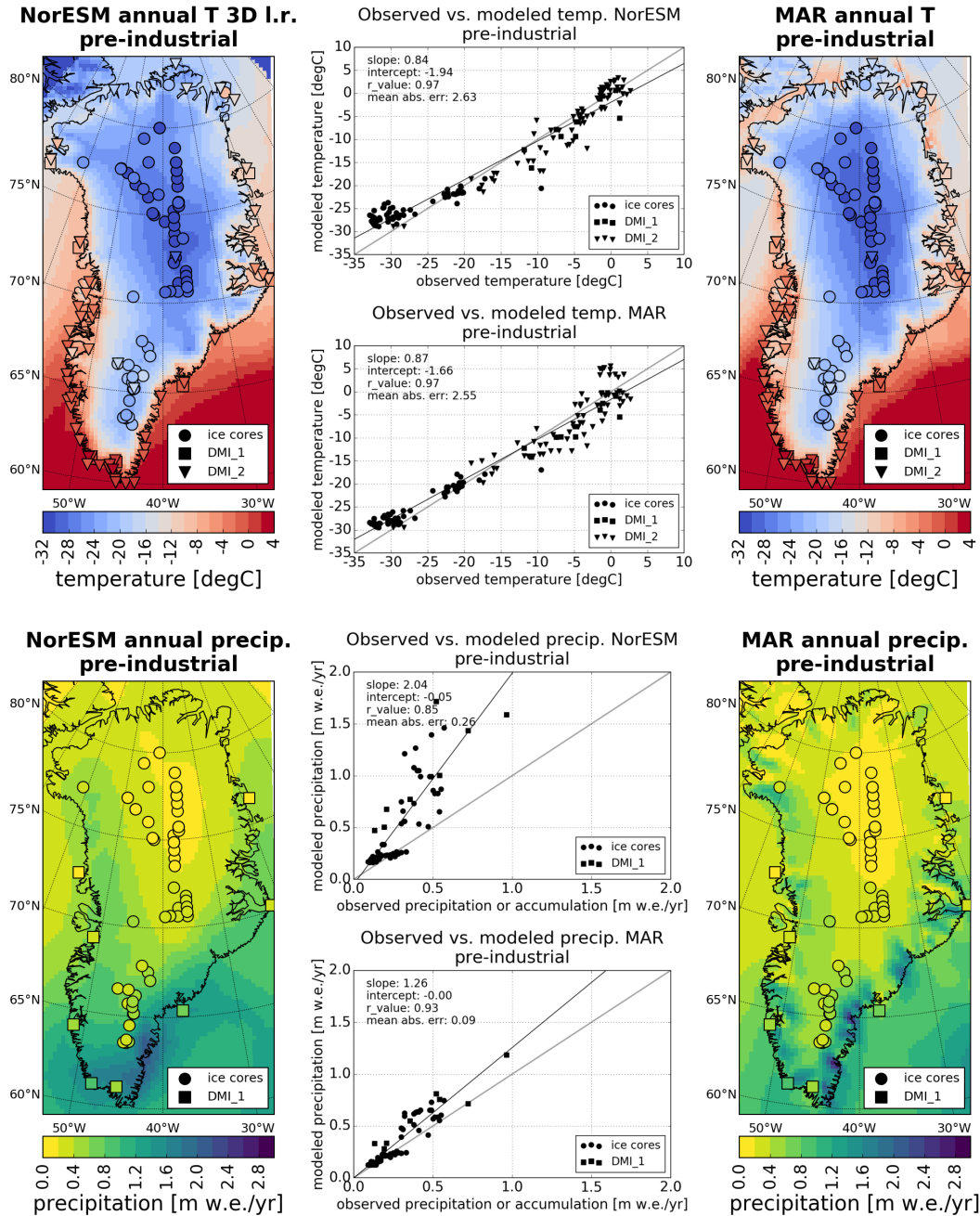


Figure 5. Annual mean ~~near-surface~~ near-surface air temperature and precipitation simulated with NorESM and MAR for pre-industrial conditions. The NorESM temperature is corrected with the temporally and spatially varying 3D lapse rate (see Sec. 4.2). The top row shows modeled temperatures with observations from ice cores and weather stations plotted on top. Additionally, scatter plots of observed vs. modeled temperature for each model are presented. The bold gray lines represent the 1:1 diagonal and hence a perfect fit between model and observations. The bottom row shows the same for annual mean precipitation.

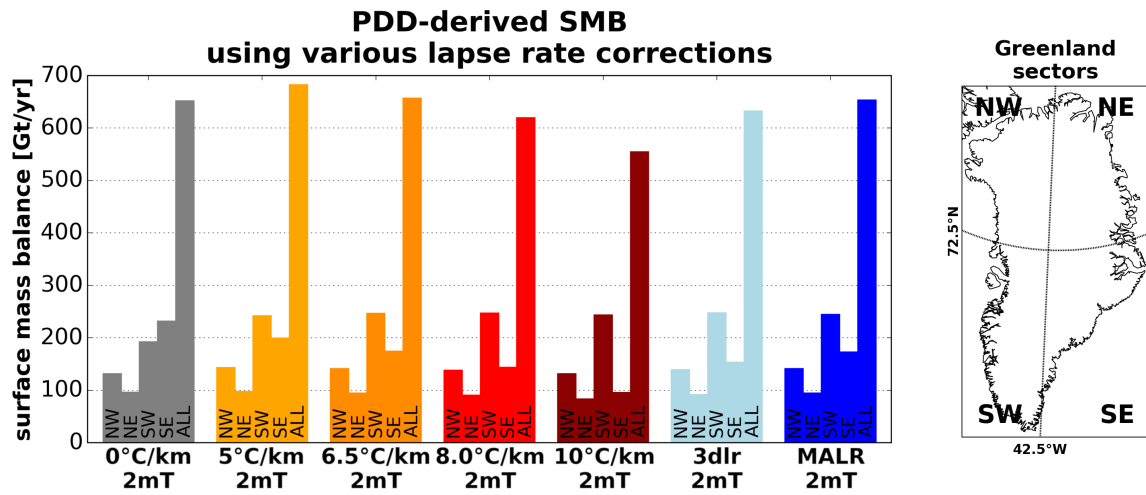


Figure 6. Sensitivity of the PDD-derived SMB to the applied temperature lapse rate correction (to low resolution climate). The bars show the integrated SMB over the GrIS, and its regional contributions. $0^{\circ}\text{C}/\text{km}$ refers to the uncorrected temperature, 5 to $10^{\circ}\text{C}/\text{km}$ represent spatially uniform temperature lapse rates, $3dlr$ is the 3D lapse rate derived from the vertical NorESM temperature column, and $MALR$ is the moist adiabatic lapse rate calculated from the thermodynamic state of the NorESM surface air layer.

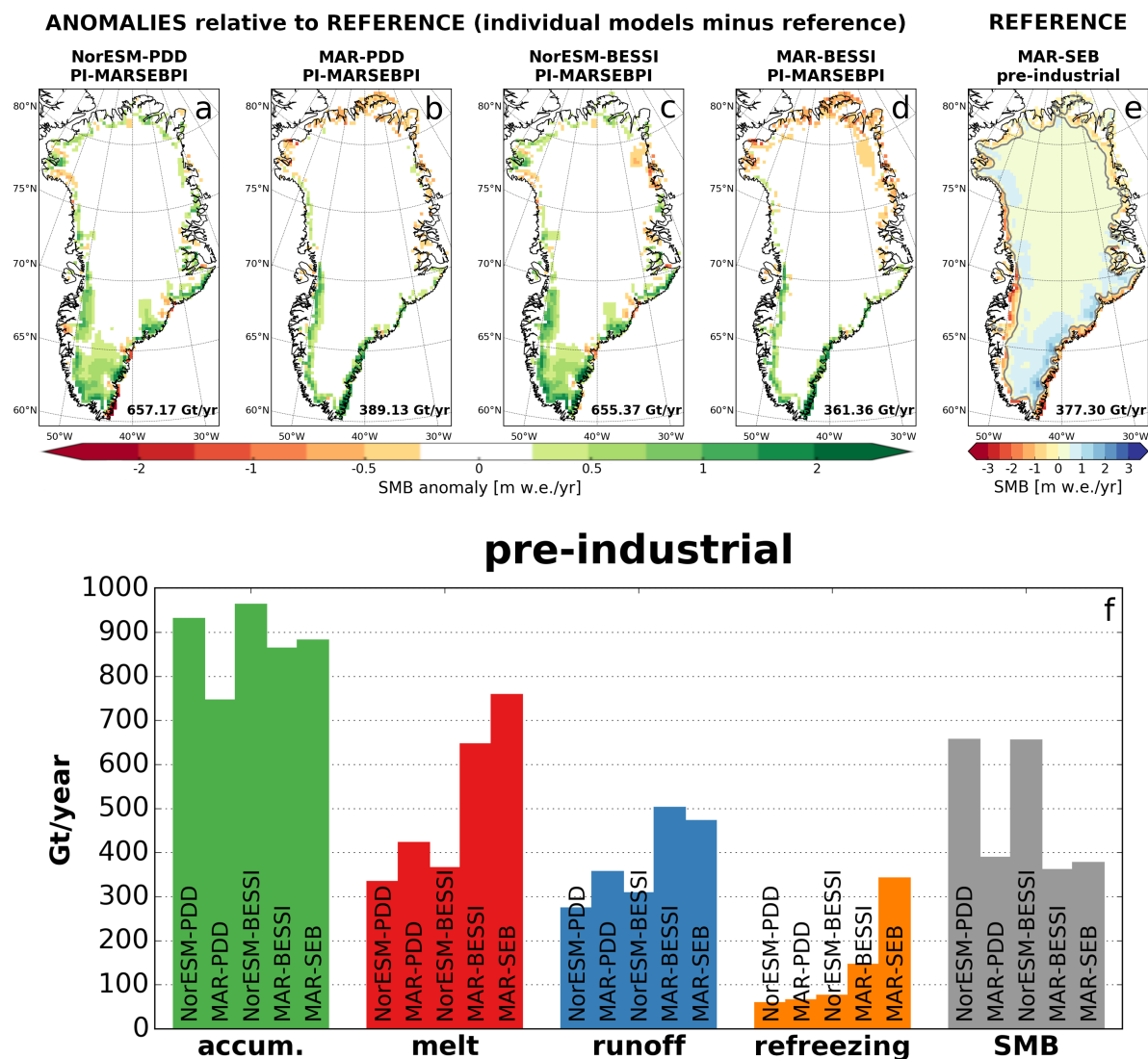


Figure 7. Comparison of the simulated **pre-industrial** SMB from all five model setups. The first row shows the spatial map of SMB for NorESM-PDD, MAR-PDD, NorESM-BESSI, MAR-BESSI, and MAR-SEB, respectively. Our reference, MAR-SEB (**panel-e**), is shown in absolute values, while the four simpler models (**panel-a-d**) are shown as anomalies to MAR-SEB. The total SMB integrated over all of Greenland (including grid cells with more than 50% permanent ice) is given in numbers on each panel. The same ice mask is used for the bar plots **in-panel-f**. The bar plots show the individual components contributing to the total SMB (in Gt/year) for each model.

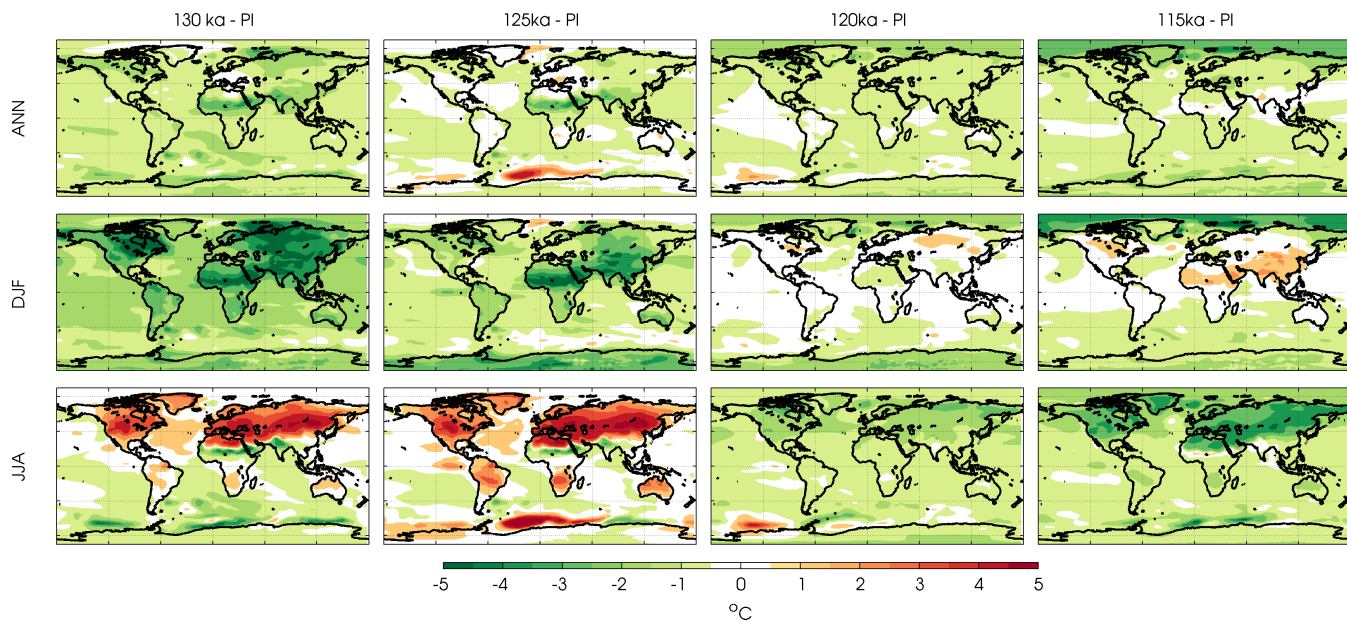


Figure 8. Simulated changes of ~~near-surface~~near-surface air temperature for the Eemian experiments relative to the pre-industrial experiment (PI). The top row shows the annual mean, and the middle and lower rows show the DJF and JJA mean, respectively. The columns show the temperature changes for the 130, 125, 120, 115 ka from left to right. Model results are annual means over the last 100 years of model integration. A Latitude/Longitude grid is indicated with dashed lines with a 60° spacing.

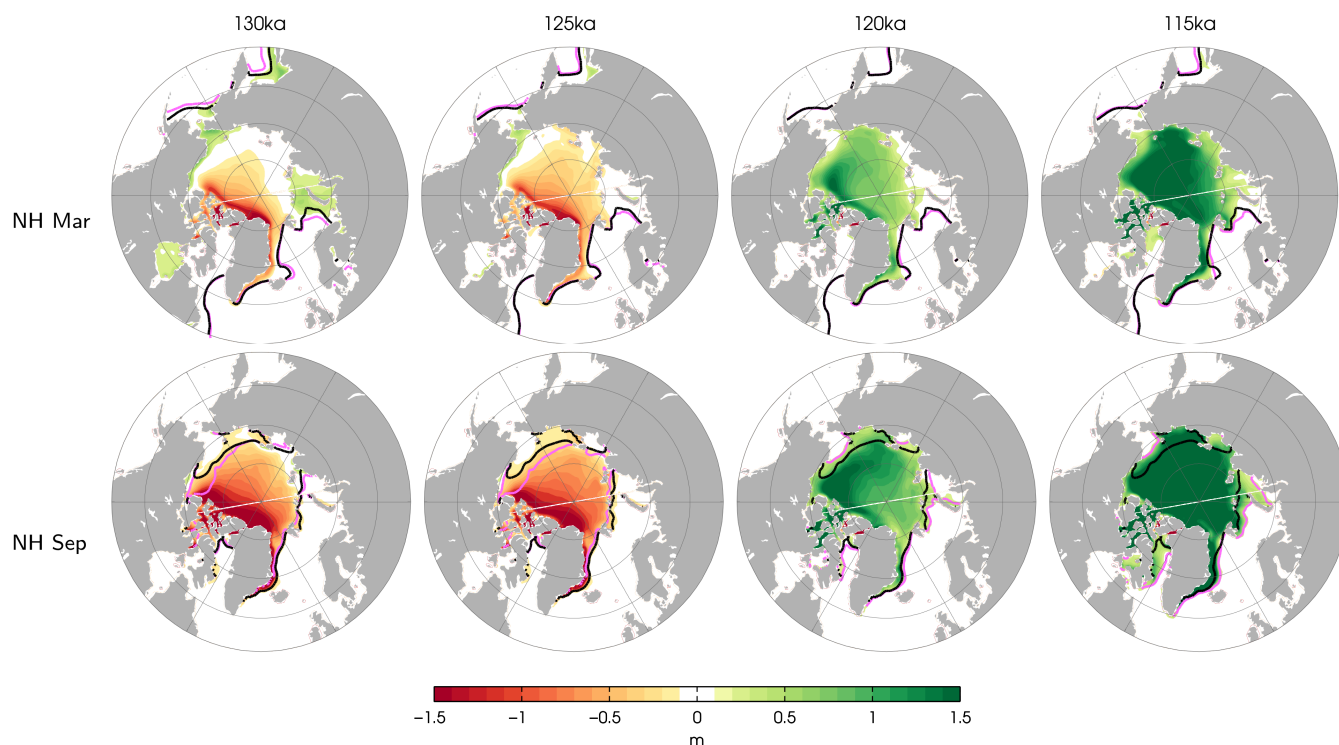


Figure 9. Simulated changes of Arctic sea ice thickness for the four Eemian experiments relative to the pre-industrial experiment. The top and bottom row show the sea ice changes in March and September, respectively. The left to right columns show the sea ice changes for the 130, 125, 120, 115 ka experiments, respectively. The solid ~~black and~~ magenta and black contour lines show the 15% sea ice concentration for each Eemian experiment and the pre-industrial experiment, respectively. Model results are annual means from the last 100 years of model integration. A Latitude/Longitude grid is indicated with gray lines with a 10/60° spacing.

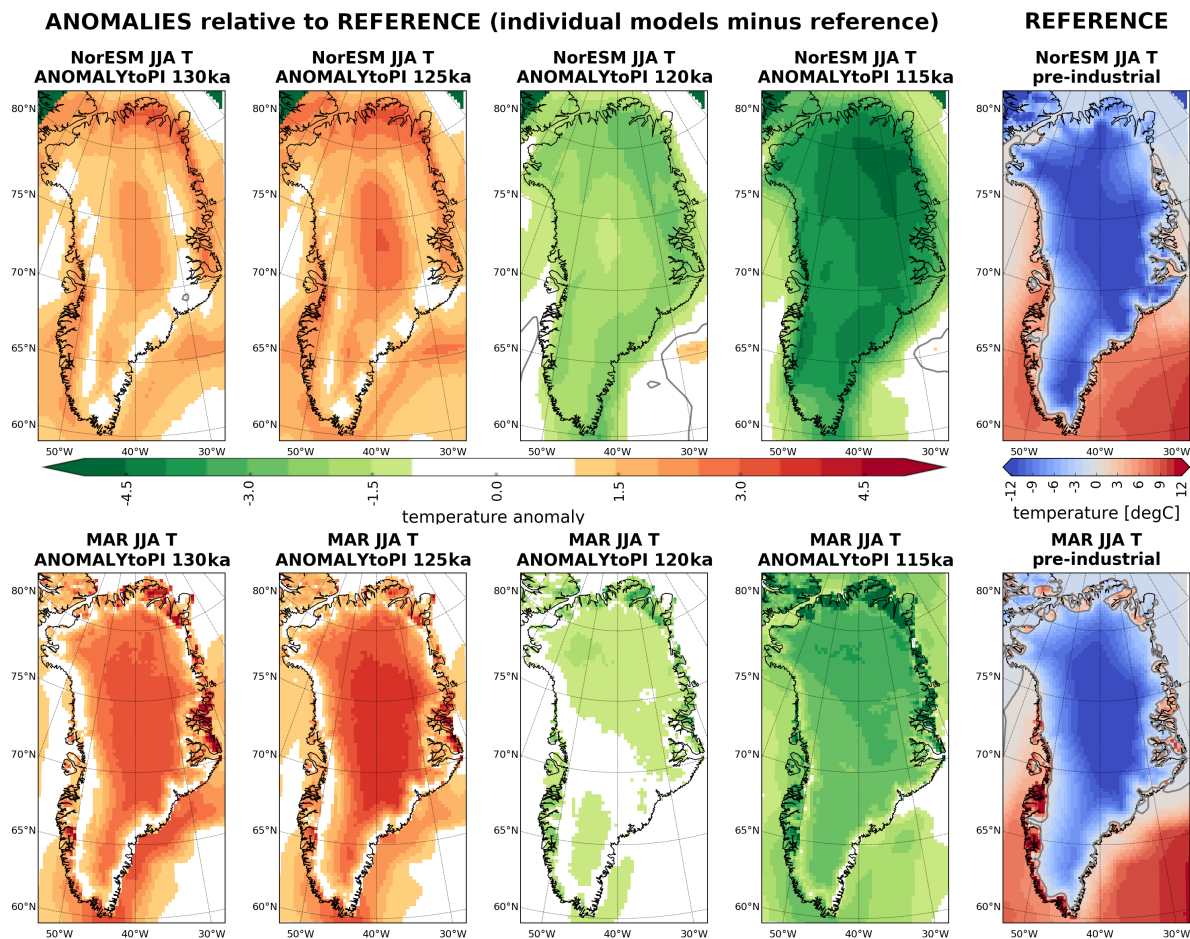


Figure 10. Evolution of the simulated **summer temperature (June-July-August; JJA) over Greenland** during the Eemian Interglacial period. NorESM results for Greenland are shown in the top temperatures (the temperature is lapse rate corrected; see Sec. 3.2) are shown in the top and MAR temperatures in the bottom row. The Eemian temperatures are shown as anomalies relative to the pre-industrial simulation. The solid gray line indicates the 0°C isotherm.

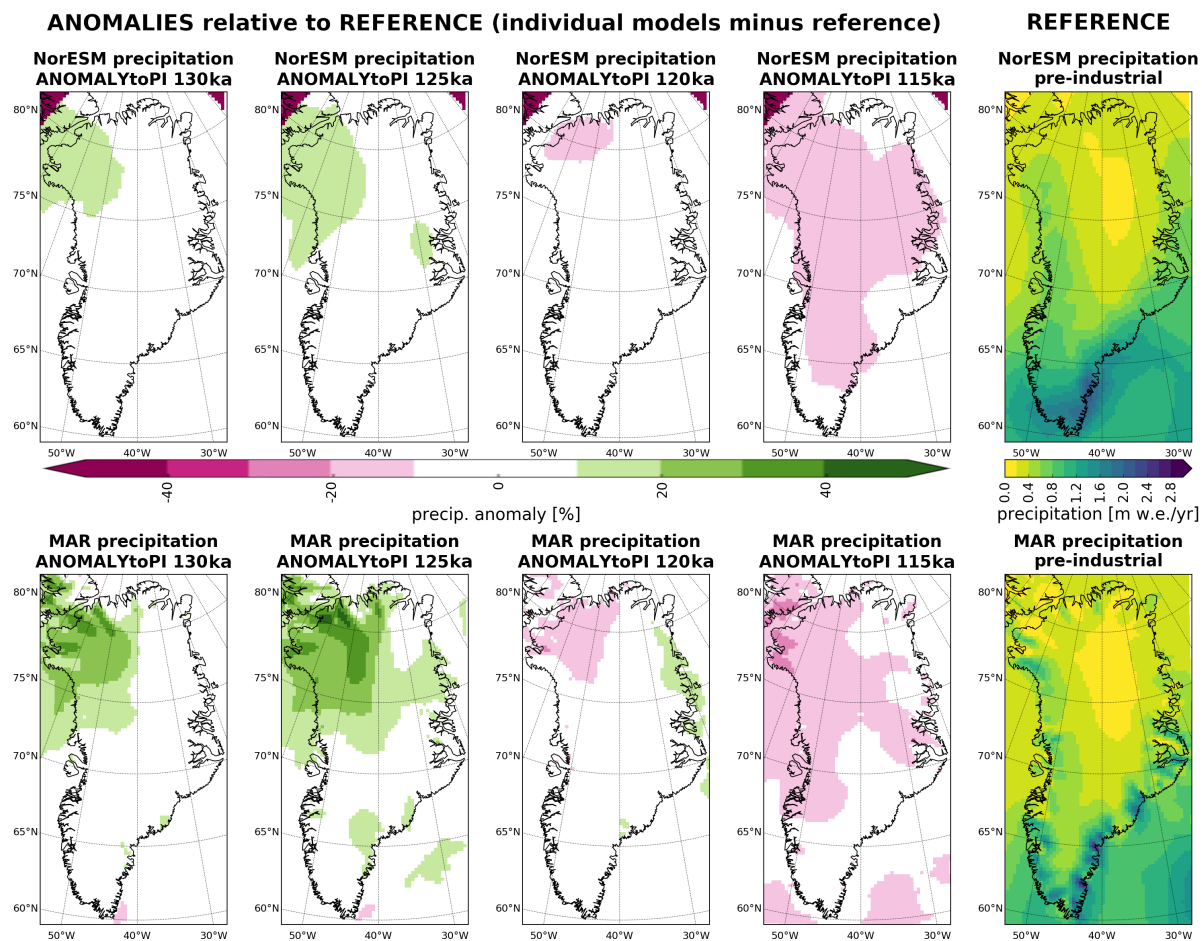


Figure 11. Evolution of the simulated **annual precipitation** during the Eemian **Interglacial** period. NorESM **precipitation** is shown in the top and MAR **precipitation** in the bottom row. Eemian time slices are shown as anomalies relative to the pre-industrial simulation.

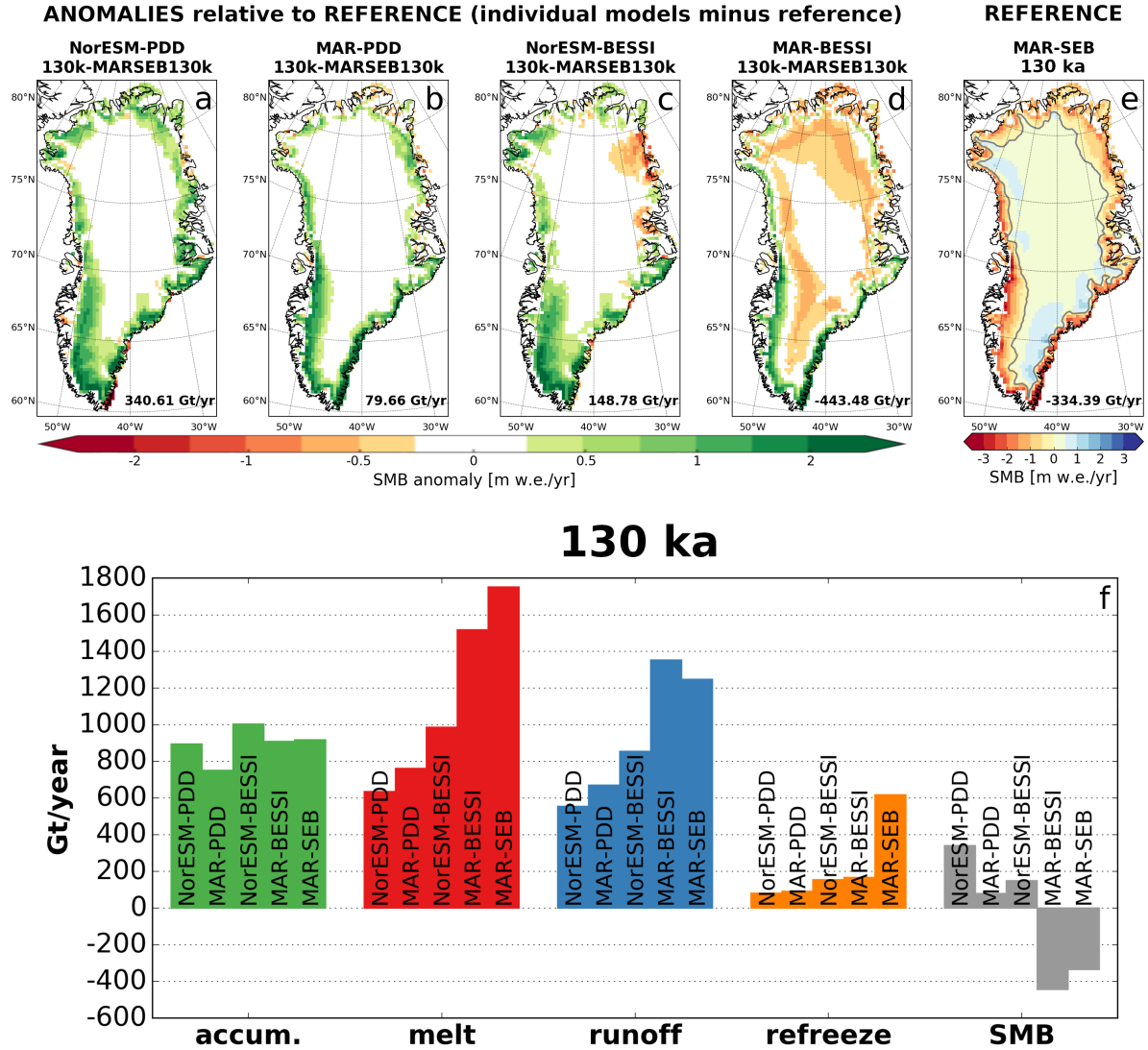


Figure 12. Comparison of the simulated 130 ka SMB relative to the 130 ka MAR-SEB with all five model combinations. The first row shows the spatial map of SMB for NorESM-PDD (panel-a), MAR-PDD (b), NorESM-BESSI (c), MAR-BESSI (d), and MAR-SEB (e), respectively. Our reference, MAR-SEB, is shown in absolute values, while the four simpler models (panel-a-d) are shown as anomalies to MAR-SEB. The total SMB is integrated over all of Greenland (including grid cells with more than 50% permanent ice). The same mask is used for the bar plots in panel(f). The bar plots show the absolute values for each component of the SMB for the same experiments.

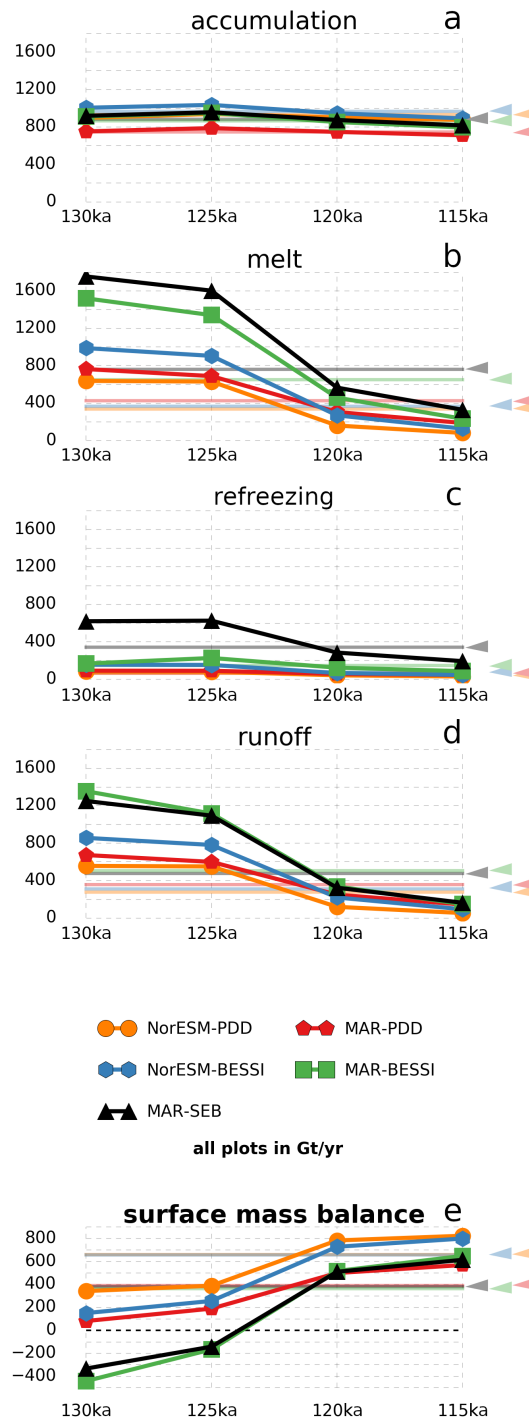


Figure 13. Eemian evolution of the SMB components (integrated over grid cells with more than 50% ice cover in MAR; Gt/yr). Pre-industrial values for each model are shown as shaded lines in the background and as triangles on the side.