

***Interactive comment on* “The ENSO teleconnections to the Indian summer monsoon climate through the Last Millennium as simulated by the PMIP3” by Charan Teja Tejavath et al.**

Charan Teja Tejavath et al.

ashokkarumuri@uohyd.ac.in

Received and published: 11 May 2018

General Comment:

In your manuscript “The ENSO teleconnections to the Indian summer monsoon climate through the Last Millennium as simulated by the PMIP3” you present results on the relation between the El Niño Southern Oscillation (ENSO) and the climate on the Indian subcontinent during the Indian Summer Monsoon (ISM) season in simulations over the last millennium. You find differences in the occurrence of El Niños and La Niñas between warmer and colder periods during the last millennium, i.e., between your definition of the Medieval Warm Period and the Little Ice Age. You find differences

[Printer-friendly version](#)

[Discussion paper](#)



in ISM rainfall (ISMR) between these two periods. You find different efficiencies of El Niño and La Niña in influencing Indian climate between both periods. You analyse the velocity potential between both periods and identify changes in the Walker Circulation. As for the two previous versions of the manuscript there are various small issues which in parts have already been identified by the editor in his initial evaluation of your manuscript.

Response:

Dear Dr. Oliver Bothe, we greatly appreciate your very useful suggestions which we carefully incorporated, and your continuous encouragement. We carefully revised the manuscript in light of these comments, and believe that the current revision meets your expectations. We have also incorporated the suggestions from Prof. Goosse and reviewer 2. We had submitted the responses already, and repeat them below.

Major Comment:

You still use all events larger zero in the analyses leading to Table 4 and related results (see Page 11 Line 6ff). This still incorrectly puts neutral ENSO events in one of the categories of El Niño or La Niña. Please redo this with your latter classification using an 0.5 standard deviation criterion. Relatedly it is unclear what you mean by all El Niños or all La Niñas later in the manuscript thus making it impossible to evaluate whether the description of your results is correct.

Response:

To avoid any further confusion, we remove the discussion and a relevant table of 'all'-ENSO events. We retain only information related to only those with a magnitude of 0.5σ threshold and above, and focus mainly on 'strong' (1σ) events. All discussion about 'neutral' events has been removed.

Minor Comments:

Comment B1:

[Printer-friendly version](#)

[Discussion paper](#)



Your focus on anthropogenic forcings (e.g., Page 2 Line 8) appears as if you are ignoring natural forcings. Overall this is not the case, but by already starting the introduction this way it gives the reader this impression.

Response:

We revised the text. Now it reads as “Interestingly, reports based on a large number of publication points out to significant centennial climate variations during the last two millennia (PAGES 2k Consortium, 2013; TS-IPCC13).” We removed the relevant text about anthropogenic forcing.

Comment B2:

P3 L32: As in previous versions, it remains unclear which modelling studies you mean here.

Response:

Thank you. For better clarity, we cite the relevant references at the end of the erstwhile sentence P3L33. Former sentences P3L32-33 now read as “Thus, the variability of Indian summer monsoon during the LM has been relatively less studied, particularly from the modelling perspective. It is also noticeable that all the model studies cited above (Kitoh et al., 2007; Prasad et al., 2014) primarily employed single GCMs.”

Comment B3:

P4 L1: You do not really reconcile simulations and proxies.

Response:

Thank you. We remove the statement.

Comment B4:

P6 L12: As your bootstrapping procedure still remains unclear, I think the reader needs more details.

[Printer-friendly version](#)

[Discussion paper](#)



Response:

We have carried out a bootstrapping test with 1000-simulations by randomizing (through NCL) the model-simulate ISMR & NINO3.4 SSTA for MWP, and those for LIA. The bootstrapping correlations are significant at 0.01 level in both MWP and LIA for all models. The difference of the synthetic correlations between the ISMR & NINO3.4 index from the simulations was ordered as per magnitude to find out the significance levels of the correlation difference. We find that the difference of ISMR-NINO3.4 correlations between the MWP and LIA in four models (CCSM4, HADCM3, IPSL and MPI) is statistically significant at 0.1 level.

In this context, we have modified and added the following text on bootstrapping in methodology in section 2. The new text is “We employ a bootstrapping test with 1000-simulations. We use the bootstrapping subroutine “bootstrap_correl”, provided by the freely available NCL package from NCAR <<https://www.ncl.ucar.edu/Applications/bootstrap.shtml>>. This routine takes the two input timeseries (the model-simulated ISMR & NINO3.4 SSTA for MWP, for example, in our case) for which the correlations need to be obtained. Based on these input series, it generates 1000 timeseries pairs randomly, and computes correlations between each pair. After that, the correlations are ordered as per magnitude. Once this is done, the 5th highest correlation, for example, gives us the 0.005 significance level (i.e. 99.5% confidence level) for the correlations. In case of correlation differences between two simulations, such as the MWP & LIA simulations by the same model, the differences of correlations are ordered as per magnitude to identify the significant threshold values.

Comment B5:

Please ensure that Figures which are essential for your argument are part of the general manuscript while those only of supporting relevance are in the appendix. For example, is Figure A1 correctly placed in the Appendix or should part of it be in the main manuscript. Similarly, is Figure A2 essential or not? Please check this for all

Printer-friendly version

Discussion paper



Figures.

Response:

Considering the comments from you and another reviewer, we placed the essential pictures in main manuscript and moved rest of them to supplementary part accordingly. Now the manuscript contains 10 Figures in main part and 6 Figures in supplementary part.

Comment B6:

P6 L21ff: I don't understand the reference in this sentence. If I understand it correctly, you refer to the Figures of Stocker et al. (2013) and IPCC (2013). Then you should put them as, e.g., Stocker et al. (2013, their Figures ...).

Response:

Thank you. We have made changes appropriately.

Comment B7:

P6 21ff (and elsewhere): I still don't get the point of most of your discussions of standard deviations. This is especially the case here, where I don't see whether this is your result or an IPCC-result or a result of Stocker et al.

Response:

Thank you. This part of the text has been revised. Now it reads as "Further, we find that the observed as well as the simulated trends are significantly above the corresponding interannual standard deviations (Figure A1).

Comment B8:

P6 L28: One cannot really identify the trends from this Figure

Response:

[Printer-friendly version](#)

[Discussion paper](#)



We have carried out Mann-Kendall test to identify the trends, which identifies the decreasing trend as simulated by three models, namely, CCSM4, MPI and FS2 are statistically significant. For clarity, we present a new figure (Figure R1) with the observed ISMR for the 1980-2005 when it is prominent and corresponding individual simulated ISMR trends for the analogous period. This figure shows that the models qualitatively reproduce the observed trend in the ISMR.

Comment B9:

P7 L1: This is hardly visible in the Figure.

Response:

Thank you. The figure has been revised. Further, in the revised sentence, we cite Table S1 appropriately along with Figure 2Ac for clarity.

Table S1, reproduced below, shows number of Strong (only events whose amplitude is above 1σ) ENSO events after CE 1950 (Attached as Figure R3).

Comment B10:

P7 L17: I cannot follow your writing of “seven (five) models”. Figure 1 shows 6 significant models - though it’s unclear at which level.

Response:

We modified the sentence. Now it reads as “Corresponding correlations for seven (five) models are statistically significant at 0.1 (0.05) level from a 2-tailed Student’s t-test, though they vary over a wide range of values varying from 0.13 to 0.74 (Figure 1a).”

Comment B11:

The legend for Figure 1 and its caption contradict each other with respect to which significance level is shown.

[Printer-friendly version](#)

[Discussion paper](#)



Response:

Thank you for pointing out this important aspect. We have modified the legend accordingly.

Comment B12:

P7 L30: Maybe it would help to state your criteria earlier.

Response:

Accordingly, we have added the following sentence in the methodology.

“Specifically, the criteria we adopt for validation of the historical model simulations are, the ability of the models to reproduce the observed trends in surface temperature and rainfall over India during the summer monsoon season, and ability to simulate the observed negative correlation between the ISMR and the concurrent NINO3.4 Index.”

Comment B13:

P8 L5: I think the formulation “of the corresponding statistic” is ambiguous. Maybe try to clarify.

Response:

The sentence was an inadvertent leftover from the multi-model mean statistics; as the reviewer had advised on an earlier version, we have removed most of the relevant text. We rewrite the relevant sentence as “The standard deviations of surface temperature, rainfall and NINO3.4 index are more or less comparable across the models, except for the σ of the simulated NINO3.4 index from the FGOALS-s2 model, which is relatively higher.”

Comment B14:

P8 L10: I'd like to note again as for the previous version: If I see it correctly, you use the GISS data uncorrected (compare <https://www.clim-past-discuss.net/8/C393/2012/cpd->

Printer-friendly version

Discussion paper



8-C393-2012.pdf), I don't think that's too much of a problem, but you may note this somewhere. Sorry, that I didn't note this in my first review.

Response:

Thank you for the comment. We have rechecked the data for clarity. As we had already mentioned in the section 2, we have generated an ensemble mean of the above data, after filling in the missing values through CDO.

Comment B15:

Paragraph: P8 L17ff: Calculating anomalies is a standard procedure. You don't tease out the signal with it. You just visualize the evolution more clearly. The reference to seasonal prediction is unnecessary. If there are outliers, then there are two outliers viewed globally. However, I don't think you validly can call them outliers especially considering that the models' 20th century evolution are much closer to each other than the past millennium data suggest. I also wouldn't speak of bias here.

Response:

Accordingly, we replaced the text of the first sentence "To tease out the signal more clearly...." with "To visualise the evolution more clearly....". The sentence now reads as "To visualise the evolution more clearly, we calculated the 101-year running mean of temporal anomalies of the TG (presented in Figure 4c) and TI (presented in Figure 4d)". We also removed the text on seasonal prediction and bias.

Comment B16:

P8 L25: You do not show this agreement with (paleo-)observations.

Response

Thanks. We modified the text to reflect the general agreement with the relevant discussion from paleo-observations presented in the technical section 5 of Stoker et al., 2013.

Comment B17:

Paragraph P8 L29ff: The discussion of the climatology-temperatures are interesting, but don't serve a purpose. We learn something about the models, but not about your topic. Further, line 32, it is not "interestingly", but obviously that the anomalies align better - you removed the climatological mean from the series.

Response:

The purpose of the discussion about the climatology-temperature was to compare the relative spread among the models during LM over global and Indian regions. Nonetheless, as indicated by the reviewer, we remove the text "Figures 2a and 2b indicate that the global mean temperature varies roughly 13°C to 16°C across the models through the LM. The corresponding range for the Indian subcontinent is 25°C to 29°C".

Further, in the erstwhile line 32, "interestingly" has been replaced by "Obviously", in light of the above comment.

Comment B18:

P9 L1: We know which volcanic eruption it likely was. See <https://doi.org/10.1073/pnas.1307520110>, <https://www.nature.com/articles/srep34868>, doi:10.1038/ngeo2875. We also know that other volcanic eruptions resulted in potentially decades long cooling episodes. One example of a potential reference is doi:10.1038/nature14565.

Response:

We cited the name of the volcanic eruption and added a sentence mentioning the decade long cooling effect of volcanic eruptions, all with relevant references, including the above.

Comment B19:

P9 L6: Well, some agreement. Are there further paleo-observations to show the agree-

[Printer-friendly version](#)[Discussion paper](#)

ment?

Response:

Thank you for the comment. The dataset we plotted is the most relevant, and publicly available. However, we have also cited all the available paleo-observational studies appropriately.

Comment B20:

Figure A3: What is plotted here? Global or Indian temperature? Is panel (a) just copied from the original publication or did you produce the Figure yourself. It looks strange. If you just adopt it, the publisher probably has to check the copyright?

Response:

As we have plotted the data in Fig. A3b after inferring the data from the original figure by using Digitizing software <<http://getdata-graph-digitizer.com/>>. Therefore, as you have indicated, we now remove the reproduction of the Figure A3a.

Comment B21:

P9 L12: Do you mean “MPI shows an insignificant weak decreasing trend”?

Response:

Yes, we do.

Comment B22:

P9 L15: I wouldn't speak of a limitation in this context. A spread is expected, the difference in signal between different periods may be seen as a limitation.

Response:

We removed the statement.

Comment B23:

P9 L22: I only count 5 simulations.

Response:

Table A3 clearly shows four such models, as mentioned in the sentence next to P9L22 of the earlier version. To avoid confusion, we removed the first sentence of the paragraph.

Comment B24:

P9 L24: I don't think the comparison of absolute values between different time-periods between historical observations and the simulations is valid. If you also provided the difference between the historical simulations and the historical observations, one could evaluate it against the general precipitation bias.

Response:

Thank you. We have verified and added relevant text on historical simulations and differences from the corresponding observations.

Comment B25:

P10 L7ff: I wonder under which circumstances the Indian subcontinent could have a colder absolute mean temperature than the globe as a whole. That is, I still don't see that this paragraph tells us anything of relevance.

Response:

We removed the text.

Comment B26:

Paragraph: P10 L11: If the standard deviations didn't change much, why is there a need to discuss them?

Response:

[Printer-friendly version](#)

[Discussion paper](#)



In our humble opinion, the finding, that the simulated standard deviations did not change much, is a result important enough to be documented at least briefly, as we did.

Comment B27:

P10 L29ff: If I understand you correctly, you're saying that the bootstrapping shows that the difference between correlation coefficients is significant in a number of models. Are you saying that the 0.05 in Figure A7 is the significance level? If so, please highlight it more clearly. This is the interesting result of the bootstrapping. Maybe it's just the caption that is unclear.

Response:

Thank you. As we mentioned in the caption of Figure A7, 0.05 is the correlation value representing 0.01 significance level (i.e. 90% confidence level) from a2-tailed Student's t-test

Comment B28:

My major concern implies that I don't think the sentences P11 L10 to L16 are valid as long as they relate to all events.

Response:

Indeed, accordingly, the revised discussion now pertains to only strong ENSO events (with magnitude greater than one standard deviation).

Comment B29:

P11 L14ff: The sentence should qualify that this holds for some simulations. Anyway, I am not sure I can follow your argument or even what you are referring to. Let me summarise what I see from your table - if I counted correctly: In the MWP there are in all models more El Niño (EN) than La Niña (LN). In the LIA five models have more or equal number of LN than EN. Two have more EN than LN. The absolute difference in

[Printer-friendly version](#)

[Discussion paper](#)



numbers between both types of events is larger for six models in the MWP and for one model in the LIA.

Response:

Thank you for pointing this out. We have cleaned up the text for clarity. Now it reads as “Interestingly, a majority of the PMIP3 models in this study indicate more strong El Niños as compared to strong La Niñas during the MWP than those of during LIA (Table 4). On the other hand, the number of strong La Niñas are marginally more than that of strong El Niños in all models during LIA than those of during MWP. Further, majority of models consistently simulate more number of strong El Niños (La Niñas) in MWP (LIA) as compared to the number of strong El Niños (La Niñas) in LIA (MWP); this result is statistically significant at 0.05 level from a 2-tailed Student’s t-test carried out for difference of means.”

Comment B30:

P11 L16ff: Didn’t you state the BCC result in line 12 already?

Response:

We removed the statement.

Comment B31:

P11 L22: I am not sure whether the comparison between long term means and inter-annual variability is helpful.

Response:

We agree and remove the relevant reference.

Comment B32:

P14 L16ff: Different resolutions and structures of the models imply that patterns of change are not exactly the same - especially for precipitation.

[Printer-friendly version](#)

[Discussion paper](#)



Response:

Accordingly, we have added a sentence “To some extent, this disagreement in the distribution of anomalous changes in precipitation may be attributed to different resolutions and the physics of the models.” after the statements that discuss of this different rainfall patterns.

Comment B33:

P14 L26: Your comparison is to the Last Millennium, isn't it? Thus, you cannot diagnose change relative to the historical period from this Figure, can you?

Response:

Thank you. We corrected it accordingly.

Comment B34:

L14 L26ff: This equatorial Indian Ocean change is hard to identify. It may be helpful to elaborate what you are referring to.

Response:

We modified the statement as suggested. Now it reads as “An anomalous divergence center over India resulted in relatively lesser rainfall during the LIA compared to the both MWP and LM.”

Comment B35:

P15 L3: A 0.2 level is rather uncommon.

Response:

Indeed, 0.2 significance level is uncommon. Therefore, we rewrite the sentence and the one following that, emphasizing the rather weak correlation, as “This is also evidenced by the positive correlations between the LSTG at 850 hPa, derived from the ERA-20CM skin temperature (Hersbach et al. 2015) datasets, with the ISMR for the period

1901-2005, but statistically significant only at 0.2 level from a 2-tailed Student's t-test (Figure 8a). To account for the better reanalysis quality, we repeat the analysis for the 1950-1981 period, and these correlations are significant at 0.1 confidence level (Figure 8a).”

Comment B36:

P15 L8: Which negative correlations are you talking off? You don't show these, do you?

Response:

The LSTG-ISMR has the negative correlation during JJAS season. We have not shown a figure or table in the manuscript for the sake of brevity. Therefore, we have added “Figure not shown” to the text appropriately. A figure (Figure R2) with the correlations is provided below for your perusal.

Comment B37:

P15 L8: You mention the JJAS season, but do you show anything about the LSTG-ISMR-relationship then?

Response:

Kindly see the above response.

Comment B38:

P16 L1: Well, there are more climate forcings than just the anthropogenic.

Response:

Modified it accordingly. Removed sentence related to the forcings. Now the modified text reads as “The global climate has experienced significant centennial climate variations in the last two millennia (IPCC, 2013)”

Comment B39:

P16 L14ff: This sentence is still not relevant.

Response:

We removed the sentence.

Comment B40:

P16 L20: What do you mean by: “statistically significant . . . in comparison to the current day climate”?

Response:

We modified the sentence.

Comment B41:

P16 L24ff: You find this modulation in some simulations.

Response:

For clarity, we merged this sentence and next one. The revision now reads as “Indeed, we find a multi-centennial modulation of the simulated ENSO-ISMR correlations; at least four models suggest a decreasing ENSO-ISMR (as well as that with the Indian summer temperatures)....”

Comment B42:

P16 L27: Does this refer to all events? If so, my major concern applies.

Response:

Modified the relevant text to talk about only strong events.

Comment B43:

P16 L28: Why is it “despite” the occurrence?

Response:

[Printer-friendly version](#)

[Discussion paper](#)



In the current period, El Niños are normally associated with a westward shift. Therefore, the use of “despite”.

Comment B44:

P16 L28: Is this relatively high compared to the Last Millennium? Did you present this change relative to the full period?

Response:

Sorry for the typo. We modified the statement. It refers to LIA not LM.

Comment B45:

P17 L5: What do mean by “the spatial distribution . . . is . . . higher”?

Response:

For clarity, we have rewritten the sentence as follows “The simulated surface temperature over India is only modestly higher during the MWP as compared to the corresponding LM average, owing to the spread of the signals across the models.”

Comment B46:

P17 L18: Does this relate to all events including neutral? See my major concern.

Response:

This relates to only strong events. We modified the text as suggested.

Technical Issues:

Comment C1

Please improve the quality of the Figures. For example, produce them in the correct aspect ratio and do not rescale them in a graphics software.

Response:

[Printer-friendly version](#)

[Discussion paper](#)



We improved the picture quality as suggested.

Comment C2

Please be consistent in using Figure or Table AN or SN, i.e., please check that you always use the abbreviation A for Appendix.

Response:

We have gone through it and corrected accordingly. They are now labelled properly.

Comment C3

There are a number of typos etc. but I leave those for the copy-editor. There are also further unclear formulations. Some of these appear to have survived from the last two revisions.

Response:

We have revisited the manuscript carefully and eliminated the typos.

Comment C4

P6 L30: Remove “We revise the text accordingly”

Response:

Sorry for this faux pas. Removed it.

Comment C5

P8 L25: I again think your reference is incorrectly formulated here. There are further instances of this.

Response:

Corrected it.

Comment C6

[Printer-friendly version](#)

[Discussion paper](#)



P11 L23: This sentence is already in the beginning of the paragraph.

Response:

We removed it.

Comment C7

P12 L14: Please check that this paragraph, the captions, and the content of Figure 5 and Table 5 are correct.

Response:

We made necessary modifications.

Comment C8

Paragraph P13 L23ff. Shouldn't this come before the Paragraph P13 L10ff?

Response:

Thank you. We modified it.

Comment C9

Figure A15: The second Figure A15 should be Figure A16, I guess.

Response:

Ok. Modified it accordingly.

Comment C10

P15 Footnote: This should be Figure A16.

Response:

Done.

Comment C11

[Printer-friendly version](#)

[Discussion paper](#)



P15 L27: I would write “such as volcanic eruptions” instead of “such as more volcanic eruptions during the LIA”.

Response:

Done.

Comment C12

P17 all: You mix the results for Temperature and Precipitation in a way that may confuse the reader. Restructuring this section may help.

Response:

Thank you. We have now separated this text into two paragraphs. The first paragraph is mainly about the rainfall, as suggested. The second paragraph discusses temperature changes, and plausible reasons for the warm and wet conditions over India during MWP (e.g. Lehmann et al., 2015; Goswami et al., 2006).

Comment C13

P17 L18: seven out of seven should possibly read all?

Response:

Corrected it.

Figure R1: ISMR trend lines for Historical simulations by using Mann-Kendall test for CE 1980-2005.

Figure R2: Correlation between LSTG-ISMR during JJAS season for both MWP and LIA.

Please also note the supplement to this comment:

<https://www.clim-past-discuss.net/cp-2018-7/cp-2018-7-AC1-supplement.pdf>

Printer-friendly version

Discussion paper



[Printer-friendly version](#)

[Discussion paper](#)



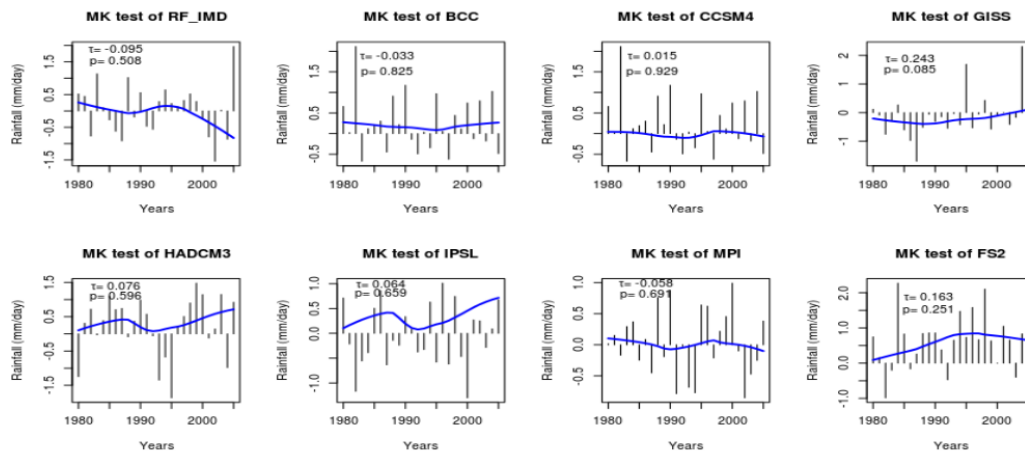


Fig. 1. Figure R1: ISMR trend lines for Historical simulations by using Mann-Kendall test for CE 1980-2005.

Printer-friendly version

Discussion paper



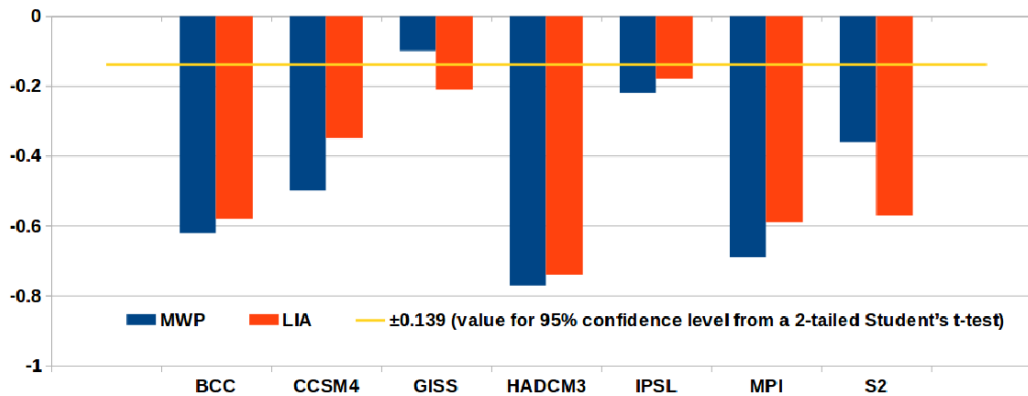


Fig. 2. Figure R2: Correlation between LSTG-ISMR during JJAS season for both MWP and LIA.

[Printer-friendly version](#)[Discussion paper](#)

BCC		CCSM4		GISS		HADCM3		IPSL		MPI		FS2	
El Niño s	La Niña s	El Niño s	La Niña s	El Niño s	La Niña s	El Niño s	La Niña s	El Niño s	La Niña s	El Niño s	La Niña s	El Niño s	La Niña s
12	9	12	5	13	10	5	2	14	7	10	6	16	7

Fig. 3. Table S1 Number of Strong (only events whose amplitude is above 1σ) ENSO events after CE 1950.

Printer-friendly version

Discussion paper

