

Dear Dr. Skinner,

Thank you very much for the effort you put in this manuscript, we really appreciate it. You will find below the description of the changes we made according to your comments.

P.4, line 3: some of these references refer to peat/permafrost carbon, yet you define these reservoirs as being part of the ‘active’ carbon pool, rather than the ‘geological’ carbon pool. Please reconcile, or clarify.

We removed the references for peat/permafrost

P.4, line 13: Perhaps: “: : allows for some first order estimates of changes in: : : These estimates suggest that large changes in both carbon and: : .”

Modified accordingly

P.4, line 18: I think at this point, given the length and complexity of the manuscript, it might be useful to provide a sort of ‘key’ to what follows, e.g. “ In section 2 we provide an overview of: : . In section 3 we present our reconstruction... and methods: : : In section 4 we describe some modelling scenarios: : : etc: : :”

done

P.4, line 24: “These quantitative constraints: : : past changes in the global carbon and alkalinity budgets.”

corrected

P.5, line 23: shells and shell fragments? Should we describe coccoliths as shells?

True, the use of « shell » for cocco’s isn’t appropriate. reformulated.

P.5, line 26: “: : with increasing pressure and therefore water depth.”

modified

P.9, line 3: In general, when referring to carbon, please be specific as to organic carbon, carbonate, or both.

Modified into « Corg » although note that this section is only about organic carbon as stated in the title of the section. Note we have also changed ‘carbonate’ to CaCO₃ throughout.

P.10, line 10: Are you saying that the most recent rapid sea level drop was at the start of the last deglaciation? Please correct or clarify.

True, the sentence was unclear : reformulated it and added references.

P.10, line 13: there has been a recent proposal that this value might be more positive, closer to arc volcanoes at -3 permil (Mason et al., 2017). Is this worth noting? Does it make a difference to your calculations?

Thanks for pointing this out - indeed, changing the $\delta^{13}C$ of volcanic emission from -5 to -3 should reduce the amplitude of the changes due to volcanic emission on the active carbon pool. Although, this has already been partly explored in {Roth, 2012 #2709} in their exploration of uncertainty in the $\delta^{13}C$ of emissions, and the effect of volcanic emission remains low compared organic carbon fluxes (see figure 10). Note that we don't discuss the isotopic impact of any kind of deglacial pulse as it would differ depending on the nature of such a pulse. I nevertheless added a reference to {Roth, 2012 #2709} in the corresponding section 4.4.

P.11, line 1: please change to 'the glacial' or 'glacials'.

P.11, line 2: ditto: : :

Corrected

P.11, line 4: Please break up the sentence. E.g. “: : although this too has been debated (von Blanckenburg et al., 2015). It is also possible that: : : lower temperature, offsetting any increase in physical erosion and allowing global erosion to remain relatively stable: : :”

Done

P.11, line 6: Note also some new perspectives on the glacial weathering and the temperature feedback (e.g. Torres et al., PNAS 2017).

Thanks, reference was inserted.

P.12, line 10: I suggest to formulate this as a 'bulleted' list, allowing the intervening sentences: 1): : ; 2): : ; and 3)

Done

P.12, line 21: assumes.

Corrected

P.12, line 22: replace nor with or. I think you can cut “which would be expected to alter etc: : :” Perhaps instead at this stage it is worth making a brief note on the complicating effects of a world always out of equilibrium, contra the approach adopted here?

We added some consideration on the non equilibrium issue.

P.14, line 19: “: : (no change), while: : :”

Corrected

P.21, lines 10-21: this whole paragraph is very unclear. Please have a go at clarifying what is meant.

We reformulated this paragraph for more clarity.

P.22, line 9: On P.18, line 6 it is stated that “we chose to correct for compaction.. by assuming.. global bulk burial rate was equal during the late Holocene and MIS5e: : :” It seems wrong to then ‘report’ that mean deep sea carbonate burial was not different from modern during MIS5e, or have I missed something? Please correct or clarify.

*We only assume equivalent Bulk MAR for Holocene and MIS5. No assumption is made for the carbonate content. We clarified this issue in the text: “In part, the similarity of CaCO₃ burial between MIS 5 and the Holocene reflects our assumption that **bulk** sediment MAR during MIS 5 and the Holocene were similar, which underlies our detrending. However, MIS5 and the Holocene are also indistinguishable in the burial flux reconstruction estimated from CaCO₃ concentration alone (Figure 5D), in which MIS 4-2 also stands out as having significantly reduced burial. “*

P.23, line 3: The phrasing here is not optimal I think; please consider re-phrasing.

This section was rephrased

P.23: Here is a more substantial issue: the ‘model’ is not adequately described. Indeed, one of the reviewers asked for equations, and this has not been addressed as far as I can tell. The equation that is provided simply aims at describing the general notion of mass balance, though it needs to be corrected since a rate of change of concentration [C] cannot be equal to the difference between two concentrations; different symbols/nomenclature must be used to distinguish [C] from d[C]/dt, and to include the relevance of reservoir size etc... Furthermore, it is important that the air-sea partitioning scheme and shallow/deep partitioning scheme are fully described, and that equations for the rate of change of e.g. [C] in the atmosphere, shallow and deep ocean etc: : : be provided.

We agree that the formulation we used was inappropriate to correctly describe the model simulation. Here we used the very basic and well known 3 box model described in {Sarmiento, 1984 #3094} then in {Toggweiler, 1999 #3210} with the exact same parameters used by {Toggweiler, 1999 #3210}. We think that providing the detailed equation without further discussion would obfuscate our message with no added value. Furthermore, the 3-box model really doesn't do much – the inventory results are essentially the outcome of the mass balance calculations, and the use of the 3-box model is a legacy from an early version of the paper that reported changes in atmospheric CO₂. Thus we have reformulated this section to provide all information required by referring to the original publications clearly, and also mention the fact that the impact of the 3-box model on the results is negligible.

P.23, line 16: please consider rephrasing, e.g.: “: : :we have not considered variable erosion fluxes, due to a paucity of consistent observational constraints on these: : :”

reformulated

P.24: I think that at this stage in the manuscript it would be useful to provide a short

overview of the various scenarios that are considered and why (i.e. of what is to come in the next subsections). E.g. “Next we consider X different model scenarios where we calculate XYZ, on the basis of assumed inputs XYZ etc etc: : : . We label/name each of these scenarios KJH, as listed in table 3: : : Our goal with these scenarios is to: : :”

P.25: Is it possible to clearly link each of these sub-sections to the relevant model scenarios, e.g. in the title, or in the first few lines? I think it would be helpful.

Done. ; I also changed the table 3 to make it more clear (bold characters for variable flux over times)

P.25, line 12: Please add another word or two to this line to specify why the minimum is a robust outcome of the CaCO₃ burial fluxes. The minimum is close to the minimum in carbonate/ALK output, which would be counter-intuitive given constant input fluxes, though I suspect that the minimum in ALK in fact occurs just before the minimum in carbonate burial (MIS4) and results from the sustained high/peak outputs leading up to the MIS5/4 transition. Please clarify.

I modified the text : what we meant to be robust here is not the timing of the changes, but the general increase in alk from MIS4 to MIS2 which is the direct consequence of reduced burial during that period.

A minimum or a maximum in the alk occurs when the net alkalinity budget is equal to 0 (not shown in figures). Depending on the absolute value and shape of the removal flux, the period when the net alkalinity flux =0 can shift slightly. The amplitude of the minimum/maximum depends on the integral of the net alkalinity budget.

Fig. 7: In this figure (and the others) please identify the vertical shaded bars. Also, it might be useful to clarify that ‘net C source’ is the net flux of carbon from the geological to the active carbon reservoirs, as defined here: : : if indeed this is correct.

Correct and done!

Fig. 7, caption: I think it would be clearer to write: “A. Variable deep sea CaCO₃. B. Variable deep sea..” etc.. The same goes for the other figures.

Done

P.26, line 3: “: : : experiments, the mean..”

Done

P.26, line 4: is it worth noting by how much 500PgC exceeds the modern flux, and that this would imply a downward drift in atmospheric CO₂ across a glacial cycle if it was not actually realised?

Done.

I added a reference to figure 1 and quote the value.

P.32, line 8: This is a sentence fragment; please amend. E.g. “Although the preserved: : : (appendix A), our broad spatial: : :”

Modified accordingly

P.32, line 12: remove 'then': : : Though I think this could be stated much more clearly with a different construction: e.g. "Absolute changes in CaCO₃ burial were obtained by scaling/multiplying reconstructed relative changes in CaCO₃ MAR to/by the modern MAR. Uncertainties were estimated: : :"

Modified accordingly

P32, line 17: is 'very large' necessary?

Removed

P.32, line 18: again, was it not assumed a priori that MIS5 CaCO₃ burial was the same as modern/late Holocene? Hence, for example: "on the assumption that it was the same during MIS5 and the late Holocene, CaCO₃ burial dropped to the lowest rates: : :".

As mentioned above, the long term trend correction is based only on the bulk MAR. Thus, we did not actually assume equal CaCO₃ MAR for holocene and MIS5. I have now detailed this on p24.

P.32, line 23: this is an odd set of citations. Lynch-Stieglitz et al. (2007) is spot on, but Hain et al. did not present observations, and Guihou et al., is mainly about the glacial inception. There is a wealth of arguments for shoaled NADW during the LGM based on proxy data going back to Duplessy, Curry, Boyle etc: : :

modified accordingly

P.33, line 4: " : : : which would be expected to increase: : :"

corrected

P.33, line 7: " : : : in the Atlantic Ocean during the last glacial: : :"

corrected

P.33, line 16: please evaluate the plausibility of post depositional dissolution removing the evidence everywhere, otherwise it seems like a throw-away comment.

removed

P.34, line 9: "even more counterintuitive" : : : than what?

removed

P.34, line 14: CO₃²⁻ is only approximately equal to ALK-DIC. Also, throughout the manuscript carbonate ion concentrations should be referred to as [CO₃²⁻], as was suggested by the reviewers I think.

corrected

P.35, line 6: would it be more precise to refer to changes in shallow/deep carbon partitioning, or changes in deep sea respired carbon storage?

modified

P.35, line 10: “: :are of the same order as the [observed: : : simulated??] CO32- excursions...”

corrected

P.35, line 12: an alternative suggestion: “The discrepancy between inferred and observed [CO32-] changes across the last glacial cycle emphasises the likely importance of changes in the distribution of carbon within the ocean: : :”

modified accordingly

P.36, line 7: As proposed by a reviewer, please avoid starting a new sentence and subsection with “Yet: : :”. Indeed, it might be better to write: “Even if the climatic impact: : :”

modified

P.37, line 27: “: :during the Holocene: : : compared to the glacial..”

Modified

P.38, line 26: “: :unquestionably would have increased the ‘active’ carbon...” Incidentally, I wonder, is there a ‘non-active’ ALK inventory? A question of definition no doubt.

True, I changed the formulation to avoid any confusion.

P.38, line 27: “: :followed by the reduction of these inventories: : : and rapid shelf burial resumed.”

modified

P.41, line 2: “Each record may be biased relative to its local”? What does this mean?

We reformulated the sentence for more clarity.

Please note that, in addition to the changes noted above, we have made a number of further text changes throughout the manuscript, in order to improve clarity and readability. None of these makes a substantive change in the results, interpretations or conclusions.

Carbon burial in deep-sea sediment and implications for oceanic inventories of carbon and alkalinity over the last glacial cycle

Olivier Cartapanis^{1,2}, Eric D. Galbraith^{1,3,4}, Daniele Bianchi⁵, and Samuel L. Jaccard²

1. Earth and Planetary Sciences McGill University, Montreal H3A 2A7, Canada.

5 2. Institute of Geological Sciences and Oeschger Centre for Climate Change Research, University of Bern, 3012 Bern, Switzerland;

3. Institució Catalana de Recerca i Estudis Avançats (ICREA), Pg. Lluís Companys 23, 08010 Barcelona, Spain

10 4. Institut de Ciència i Tecnologia Ambientals (ICTA) and Department of Mathematics, Universitat Autònoma de Barcelona, 08193 Barcelona, Spain

5. Department of Atmospheric and Oceanic Sciences, University of California Los Angeles, Los Angeles, CA 90095-1565, USA

Correspondence to: Olivier Cartapanis (olivier.cartapanis@geo.unibe.ch)

Abstract. Although it has long been assumed that the glacial-interglacial cycles of atmospheric CO₂ occurred due to increased storage of CO₂ in the ocean, with no change in the size of the ‘active’ carbon inventory, there are signs that the geological CO₂ supply rate to the active pool varied significantly. However, changes of the carbon inventory cannot be assessed without constraining the rate of carbon removal from the system, which largely occurs in marine sediments. The oceanic supply of alkalinity is also removed by the burial of calcium carbonate in marine sediments, which plays a major role in air-sea partitioning of the carbon inventory. Here, we present the first global reconstruction of carbon and alkalinity burial in deep-sea sediments over the last glacial cycle. Although subject to large uncertainties, the reconstruction provides a first order constraint on the effects of changes in deep-sea burial fluxes on global carbon and alkalinity inventories over the last glacial cycle. The results suggest that reduced burial of carbonate in the Atlantic Ocean was not entirely compensated by the increased burial in the Pacific basin during the last glacial period, which would have caused a gradual buildup of alkalinity in the ocean. We also consider the magnitude of possible changes in the larger but poorly-constrained rates of burial on continental shelves, and show that these could have been significantly larger than the deep burial changes. The burial-driven inventory variations are sufficiently large to have significantly altered the $\delta^{13}\text{C}$ of the ocean-atmosphere carbon, as well as changing the average DIC and

15
20
25

5 | alkalinity concentrations of the ocean by more than 100 μM , confirming that carbon burial fluxes were a dynamic, interactive component of the glacial cycles that significantly modified the size of the active carbon pool. Our results also suggest that geological sources and sinks were significantly unbalanced during the late Holocene, leading to a slow net removal flux on the order of 0.1 PgC y^{-1} prior to the rapid input of carbon during the industrial period.

Eric Galbraith 12/10/y 12:59

Supprimé: approximately

1. Introduction

The atmospheric CO₂ reservoir, which plays an important role in climate, exchanges on a relatively short timescale (10⁰ – 10³ y) with the carbon dissolved in oceanic and land surface waters, and the organic carbon bound within biomass and soils. Here we consider these rapidly-exchanging reservoirs as constituting, together, the climatically ‘active’ inventory of carbon. To simplify the discussion, we arbitrarily include shallow groundwater, permafrost and peatland carbon within the ‘active’ pool, even though some permafrost and deep groundwater might only exchange on very long timescales. The natural release of carbon from the solid earth supplies carbon to the active pool and is balanced, on long timescales, by the removal of carbon through burial in marine sediments (Broecker, 1982; Opdyke and Walker, 1992; Sigman and Boyle, 2000; Wallmann et al., 2016). Thus, we conceptualize two carbon pools, the active and the ‘geological’, that exchange via the fluxes shown in Figure 1.

The marine burial of carbon occurs via two very different forms. Dissolved inorganic carbon (DIC) is extracted from seawater by photosynthetic organisms and transformed into organic carbon (C_{org}), while calcifying organisms use DIC to produce carbonate minerals (CaCO₃). Most of the C_{org} and a large fraction of the CaCO₃ is then recycled within the ocean, but a small portion escapes to be buried at the seafloor, in both coastal and pelagic environments. While C_{org} burial only removes carbon from the ocean, CaCO₃ burial removes alkalinity (ALK) as well as carbon. Because higher alkalinity increases the solubility of CO₂ in seawater, increasing the removal rate of alkalinity through more rapid burial of CaCO₃ tends to transfer carbon from the ocean to the atmosphere.

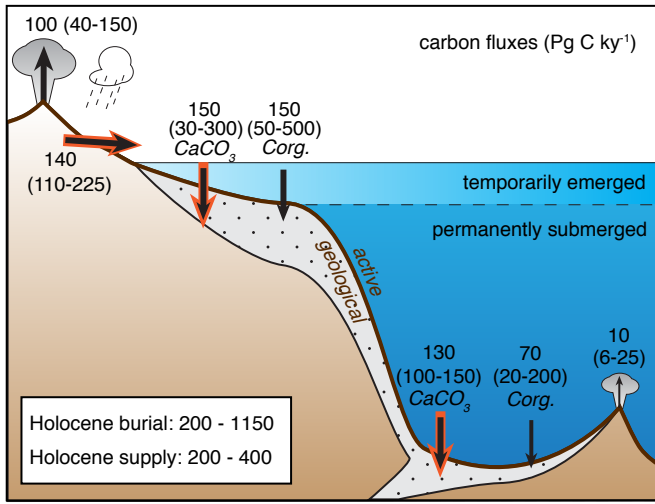


Figure 1: Estimated modern global transfers of carbon between the geological and active inventories. Here, ‘active’ refers to carbon in the ocean, atmosphere and terrestrial biosphere, including peatland and permafrost. Sea level variations on glacial-interglacial timescales distinguish two fundamentally different domains of seafloor on which carbon burial has occurred: surfaces fringing the continents that emerged as ice sheets grew, and the permanently-submerged surfaces of continental slopes and the deep sea. As discussed in section 2, the modern fluxes are highly uncertain. Ranges in parentheses show the values found in the literature, above which representative modal values are shown. The total carbon inventory in the pre-industrial ocean, atmosphere and biosphere is estimated to have been ~41,000 PgC, 93% of which was located in the ocean (Hain et al., 2014b). Red arrows highlight fluxes that remove or supply alkalinity to the ocean, in addition to carbon.

Because these marine burial fluxes dominate the removal of carbon from the active inventory and thus affect the air-sea partitioning of CO₂ via alkalinity, they place a first-order control on the long-term carbon cycle. The burial of CaCO₃ in the deep sea is thought to play a pivotal role by responding to changes in the deep ocean [CO₃²⁻] concentration (approximately equal to ALK-DIC) with enhanced dissolution or preservation, adjusting the deep ocean ALK to ‘compensate’ for the perturbation with an e-folding timescale of a few thousand years (Broecker and Peng, 1987), but the details of this process

remain poorly quantified. Anthropogenic carbon emissions are significantly altering the marine carbon cycle and air-sea partitioning by injecting carbon into the system very rapidly, with respect to natural changes (Orr et al., 2005; Hoegh-Guldberg et al., 2007; Keil, 2017). Despite their much slower rates, natural changes that occurred in the recent geological past can help inform basic process understanding of the carbon cycle, and thereby contribute to reducing uncertainties in long-term future climate projections.

Several mechanisms that have been proposed to explain low glacial atmospheric CO₂ concentrations involve decreased CaCO₃ burial (Vecsei and Berger, 2004; Hain et al., 2014b), which would have raised ALK and thereby increased CO₂ solubility. This postulated decrease of burial could have occurred due to changes in ocean circulation (Boyle, 1988; Jaccard et al., 2009) or biological production (Archer et al., 2000; Omta et al., 2013) that raised the DIC in the deep ocean and therefore lowered deep ocean [CO₃²⁻]. This acidification of the deep ocean would have required the ocean to compensate by dissolving CaCO₃ until the alkalinity was raised sufficiently to restore [CO₃²⁻] and re-balance burial with the alkalinity supplied by weathering (Broecker and Peng, 1987; Yu et al., 2014). Another proposal is that the rapid burial of CaCO₃ in coral reefs and carbonate platforms would have been curtailed by falling sea level as ice sheets grew (Berger, 1982; Opdyke and Walker, 1992; Vecsei and Berger, 2004; Wallmann et al., 2016). However, it has been suggested that the reduction of burial on shelves would have been compensated by opposite changes in the deep sea (Opdyke and Walker, 1992; Roth and Joos, 2012) and therefore could have had a minor overall impact. Meanwhile, it is typically assumed that the active carbon inventory was constant over glacial cycles in most carbon budgeting exercises (Sigman and Boyle, 2000; Hain et al., 2014a), and although it has been suggested that geological carbon inputs contributed to the deglacial rise of CO₂ (Marchitto et al., 2007; Huybers and Langmuir, 2009; Stott et al., 2009; Ciais et al., 2012; Zech, 2012; Lund et al., 2016), any such input could have been buffered by changes in deep-sea carbonate burial and the resulting feedback on ocean alkalinity.

Although a number of modeling studies have considered these inventory-altering mechanisms (Opdyke and Walker, 1992; Wallmann et al., 2016), they have often been considered in isolation, and quantitative reconstruction of the entwined controls on the carbon and alkalinity inventories has been hampered by a lack of observational constraints on the four burial fluxes shown in Fig. 1. Recently, a

- olivier cartapanis 12/10/y 12:28
Supprimé: (Orr et al., 2005; Hoegh-Guldberg et al., 2007; Keil, 2017)
- olivier cartapanis 12/10/y 12:28
Supprimé: of
- olivier cartapanis 12/10/y 12:28
Supprimé: (Vecsei and Berger, 2004; Hain et al., 2014b)
- olivier cartapanis 12/10/y 12:28
Supprimé: One
- olivier cartapanis 12/10/y 12:28
Supprimé: these calls on
- olivier cartapanis 12/10/y 12:28
Supprimé: (Boyle, 1988; Jaccard et al., 2009)
- olivier cartapanis 12/10/y 12:28
Supprimé: ; Omta et al., 2013)
- olivier cartapanis 12/10/y 12:28
Supprimé: to have
- olivier cartapanis 12/10/y 12:28
Supprimé: have
- olivier cartapanis 12/10/y 12:28
Supprimé: .
- olivier cartapanis 12/10/y 12:28
Supprimé: .
- olivier cartapanis 12/10/y 12:28
Supprimé: (Broecker and Peng, 1987; Yu et al., 2014)
- olivier cartapanis 12/10/y 12:28
Supprimé: Opdyke and Walker, 1992
- olivier cartapanis 12/10/y 12:28
Supprimé: Vecsei and Berger, 2004
- olivier cartapanis 12/10/y 12:28
Supprimé: Wallmann et al., 2016
- olivier cartapanis 12/10/y 12:28
Supprimé: (Opdyke and Walker, 1992; Roth and Joos, 2012)
- olivier cartapanis 12/10/y 12:28
Supprimé: (Sigman and Boyle, 2000; Hain et al., 2014a)
- olivier cartapanis 12/10/y 12:28
Supprimé: (Marchitto et al., 2007; Huybers and Langmuir, 2009; Stott et al., 2009; Ciais et al., 2012; Zech, 2012; Lund et al., 2016)
- olivier cartapanis 12/10/y 12:28
Supprimé: (Opdyke and Walker, 1992; Wallmann et al., 2016)

reconstruction of global deep-sea burial of C_{org} was reported (Cartapanis et al., 2016), providing a record for one of these fluxes. Here, we present a new reconstruction of global deep sea (deeper than ≈ 200 m) burial of $CaCO_3$, completing the deep sea budgets of carbon and alkalinity burial. This reconstruction constrains the net result of carbonate compensation and allows for first order estimates of changes in carbon and alkalinity inventories to be illustrated. These estimates suggest that large changes in both carbon and alkalinity inventories would have been driven by changes in burial, and highlight the potentially important role of variations in shelf burial fluxes, which remain poorly constrained.

olivier cartapanis 12/10/y 12:28
Supprimé: (Cartapanis et al., 2016)

The organization of this paper is as follows. In section 2, we provide an overview of natural sinks and sources of carbon in the climatic system. Section 3 presents the global deep sea $CaCO_3$ burial reconstruction, including the analytical strategy used and a detailed evaluation of the role of bulk mass accumulation rate and $CaCO_3$ concentrations in the reconstruction. In section 4 we explore the implication of the carbonate burial reconstruction on carbon and alkalinity inventories using simple modeling scenarios, and also include feasible changes in shelf burial and geological carbon release. Finally, we discuss the implications of our results in section 5.

olivier cartapanis 12/10/y 12:28
Supprimé: some

olivier cartapanis 12/10/y 12:28
Supprimé: -

olivier cartapanis 12/10/y 12:28
Supprimé: expectations for

olivier cartapanis 12/10/y 12:28
Supprimé: expectations show a high likelihood

olivier cartapanis 12/10/y 12:28
Supprimé: change

olivier cartapanis 12/10/y 12:28
Supprimé:

2. Natural sinks and sources of carbon in the climatic system

The removal of dissolved inorganic carbon (DIC) from the ocean occurs via two very different phases, C_{org} and calcium carbonate minerals, with distinct responses to environmental conditions. Meanwhile, most of the carbon input to the active pool can be summarized as belonging to two sources: geological emissions of carbon dioxide (from igneous and metamorphic sources), and weathering of carbon-bearing sediments on continental surfaces. Here we review each of these source and sink terms, including estimates of their respective mass fluxes and carbon stable isotopic composition. These quantitative constraints on the absolute fluxes, including the partitioning between coastal and open ocean settings, and the isotopic compositions, will be used in section 4 to estimate past changes in the global carbon and alkalinity budgets.

olivier cartapanis 12/10/y 12:28
Supprimé: climatic system

olivier cartapanis 12/10/y 12:28
Supprimé: constrain

olivier cartapanis 12/10/y 12:28
Supprimé: ,

olivier cartapanis 12/10/y 12:28
Supprimé: composition

2.1 Carbonate burial in oceanic sediment

2.1.1 Benthic carbonate production and burial in shallow water

Benthic organisms are the main producers of CaCO_3 in warm water reef and carbonate platform ecosystems. Estimating the global burial rates of CaCO_3 in the heterogeneous coastal environments of the world has proven a challenge. For example, according to Vecsei and Berger (2004), the CaCO_3 buried in coral reef environments during the last 6 kyr was equivalent to 28 PgC/kyr, and had been twice as high during the early Holocene (50 PgC/kyr). Earlier, it had been estimated that the volume of CaCO_3 associated with Holocene reefs was much larger than this, with 168-228 PgC/kyr burial over the last 5 kyr, and an additional 53 PgC/kyr burial occurring over shallow water carbonate platforms (Opdyke and Walker, 1992). An intermediate value for late Holocene reefs was reported by (Ryan et al., 2001) who suggested that there was a twofold decrease of total inorganic carbon burial from the early- to the late Holocene, with average values for the Holocene of 156 PgC/kyr. Using a different approach, based on the carbon budget of coastal zones, Bauer et al. (2013) estimated that inorganic carbon burial in coastal sediments was 150 PgC/kyr, consistent with the Ryan et al. (2001) estimates. A similar figure was also reached by Milliman (1993), who estimated that half of the global carbonate burial (180 out of 360 PgC/kyr) occurs in shallow water environments.

Thus, even though these studies use different approaches, and do not cover exactly the same depositional settings and temporal intervals, the estimates for modern inorganic carbon burial in shallow water environments suggest a central value near 150 PgC/kyr (ranging between 30 and 300 PgC/kyr).

2.1.2 Production, export and burial of carbonates in open Ocean settings

In open ocean sediments, coccolithophorid and foraminiferal fragments are the main source of CaCO_3 . The burial of CaCO_3 in deep-sea sediment is controlled by the production and export of CaCO_3 minerals from the surface ocean on one hand, and by the preservation of these phases at the seafloor on the other (Dunne et al., 2012). The CaCO_3 saturation state increases with the *in situ* concentration of Ca^{2+} and $[\text{CO}_3^{2-}]$, and decreases with increasing pressure, and therefore water depth. The accumulation of respired carbon in deep water along the pathway of the global ocean circulation tends to acidify more poorly-ventilated parts of the deep ocean, thereby reducing CaCO_3 preservation with water mass aging

olivier cartapanis 12/10/y 12:28

Supprimé: carbonates

olivier cartapanis 12/10/y 12:28

Supprimé: carbonate

olivier cartapanis 12/10/y 12:28

Supprimé: Vecsei and Berger (2004)

olivier cartapanis 12/10/y 12:28

Supprimé: carbonate

olivier cartapanis 12/10/y 12:28

Supprimé: carbonates

olivier cartapanis 12/10/y 12:28

Supprimé: (Opdyke and Walker, 1992)

olivier cartapanis 12/10/y 12:28

Supprimé: (Ryan et al., 2001)

olivier cartapanis 12/10/y 12:28

Supprimé: as

olivier cartapanis 12/10/y 12:28

Supprimé: Ryan et al. (2001)

olivier cartapanis 12/10/y 12:28

Supprimé: Milliman (1993)

olivier cartapanis 12/10/y 12:28

Supprimé: converge to an average

olivier cartapanis 12/10/y 12:28

Supprimé: of

olivier cartapanis 12/10/y 12:28

Supprimé: carbonates are mostly associated with

olivier cartapanis 12/10/y 12:28

Supprimé: shell

olivier cartapanis 12/10/y 12:28

Supprimé: .

olivier cartapanis 12/10/y 12:28

Supprimé: carbonates

olivier cartapanis 12/10/y 12:28

Supprimé: carbonate

olivier cartapanis 12/10/y 12:28

Supprimé: (Dunne et al., 2012)

olivier cartapanis 12/10/y 12:28

Supprimé: carbonate

olivier cartapanis 12/10/y 12:28

Supprimé: ;

olivier cartapanis 12/10/y 12:28

Supprimé: , thus with

olivier cartapanis 12/10/y 12:28

Supprimé: carbonate

as shown in Fig. 2. Thus, CaCO_3 burial in the modern ocean is high in the Atlantic, where the carbonate compensation depth (CCD) is relatively deep, in the eastern equatorial Pacific, where production is high, and in the southern Indian Ocean where high productivity coincides with elevated topographic features.

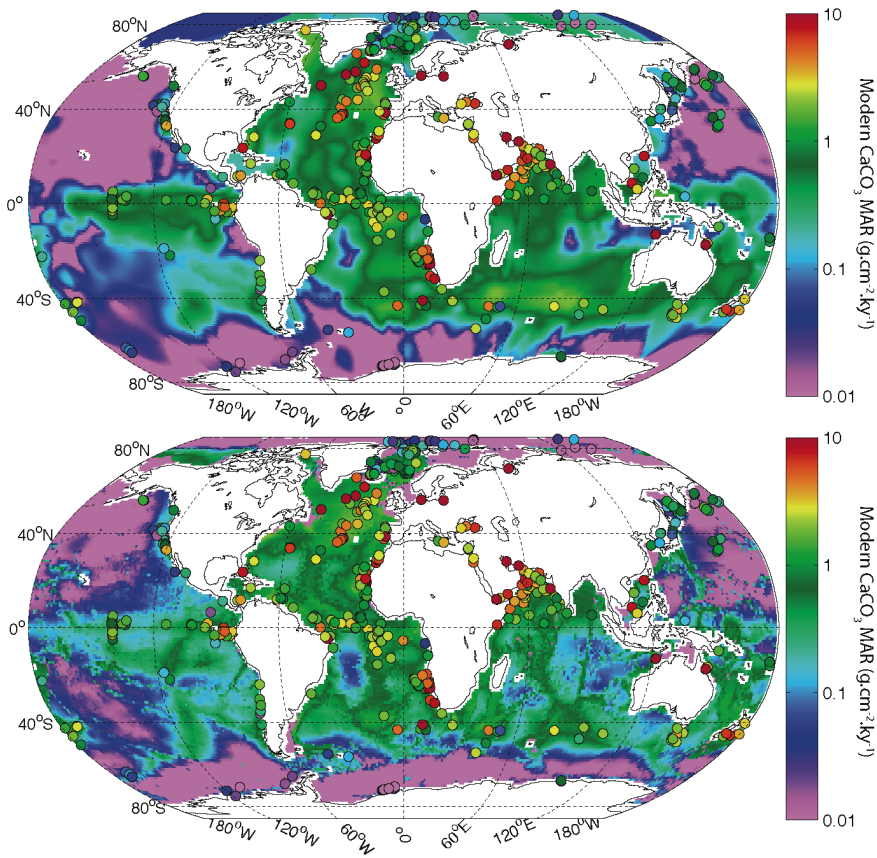
olivier cartapanis 12/10/y 12:28

Supprimé: carbonate

olivier cartapanis 12/10/y 12:28

Supprimé: environment

5



8

Figure 2: Top. [Deep-sea CaCO₃ burial based on sedimentary data](#); Bottom. CaCO₃ burial based on a metamodel optimized to fit the sedimentary data ([Dunne et al., 2012](#)). Filled circles show Holocene CaCO₃ burial from sediment cores used in the reconstruction of past burial fluxes, using the same colour scale. Note that many sediment cores were collected at sites with accumulation rates that exceed the local average sedimentation rate, a common practice to obtain high temporal resolution records for paleoceanographic studies (see appendices A1 and A4).

olivier cartapanis 12/10/y 12:28
Supprimé: (Dunne et al., 2012)

By contrast, the deep north Pacific, bathed by aged, DIC-rich waters, shows very low [CaCO₃ burial rates](#). The fraction of pelagic CaCO₃ exported from the surface ocean that is eventually buried in sediments is estimated to vary between 0.6 and 0.06, depending on surface export, bottom water [chemistry, sedimentary respiration rates](#) and lithogenic flux (Dunne et al., 2012).

olivier cartapanis 12/10/y 12:28
Supprimé: carbonate

Based on [the modern surface sediment composition and estimates of bulk sediment burial rate](#), and also considering the export flux of CaCO₃ from the surface ocean, the modern CaCO₃ burial in deep sea environments has been estimated to be between 100 and 150 PgC/kyr ([Catubig et al., 1998; Sarmiento and Gruber, 2006; Dunne et al., 2012](#)). Thus, modern estimates suggest that carbonate burial is roughly equally distributed between shallow- and deep-sea environments, but with significant uncertainty in their ratio (at least a factor of 2).

olivier cartapanis 12/10/y 12:28
Supprimé: (Catubig et al., 1998; Sarmiento and Gruber, 2006; Dunne et al., 2012)

2.1.3 Isotopic composition of carbonates

The globally-averaged carbon isotopic signature ($\delta^{13}\text{C}$) of [CaCO₃ buried in marine sediment](#) is surprisingly poorly-constrained. While the $\delta^{13}\text{C}$ composition of marine carbonates has been studied intensively, those studies generally consider [only specific fractions of the carbonate material](#), such as benthic or planktic foraminifera, while the $\delta^{13}\text{C}$ of the bulk carbonate is [rarely reported](#). However, it is often assumed that carbonate precipitates with an isotopic composition close to that of the ambient dissolved inorganic carbon, while some modeling experiments suggests a fractionation of 0.78 ‰ as compared to ambient DIC ([Kump and Arthur, 1999](#)).

olivier cartapanis 12/10/y 12:28
Supprimé: carbonate

olivier cartapanis 12/10/y 12:28
Supprimé: some

olivier cartapanis 12/10/y 12:28
Supprimé: only

olivier cartapanis 12/10/y 12:28
Supprimé: (Kump and Arthur, 1999)

2.2 Organic carbon burial in marine sediment

2.2.1 Fluxes and fate of organic carbon in the ocean and in the sediment

The C_{org} buried in marine sediments is supplied by photosynthetic carbon fixation by marine phytoplankton and terrestrial plants. Marine C_{org} production by phytoplankton in the surface ocean has been estimated as ~45 PgC/yr in pelagic ecosystems (92 % of the total ocean surface), whereas ~9 PgC/yr is produced in coastal ecosystems (8 % of the total ocean surface, continental margins being defined here as regions shallower than 1,000 m) (Sarmiento and Gruber, 2006) and references therein. However, only a minor fraction of the organic matter produced in the sunlit surface ocean reaches the sediment before being respired by heterotrophs (estimated as 0.34 PgC/yr for open ocean settings and 2.5 PgC/yr for continental margins (Sarmiento et al., 2002)). Because organic matter is further consumed by benthic organisms on the sea floor and in the uppermost layers of the sediment, very little is permanently buried in sediments, with the highest burial fractions occurring in rapidly-accumulating oxygen-depleted sediments on continental margins (Sarmiento and Gruber, 2006). Meanwhile, terrestrial organic matter may represent up to a third of the total organic matter buried in marine sediment, with the majority of terrestrial organic material burial occurring in deltaic and continental margin sediment (Burdige, 2005).

The available estimates for modern burial of C_{org} show large ranges. As shown by Burdige (2007), global C_{org} burial estimates vary by more than one order of magnitude (50-2600 PgC/kyr), with several estimates significantly higher than the commonly cited range of 120-210 PgC/kyr (Berner, 1989; Hedges and Keil, 1995; Sarmiento and Gruber, 2006). These discrepancies are probably linked to an incomplete understanding of the sedimentary environments in coastal regions, and to the different integration time of the measurements used to determine global burial on shelves (Burdige, 2007). Attempting to account for these weaknesses, Burdige (2007) suggests a total global C_{org} burial flux of 310 PgC/kyr.

2.2.2 Organic carbon burial distribution in marine sediment

In contrast with $CaCO_3$ burial, which shows relatively similar distributions between deep-sea and shelf environments, studies have generally shown that C_{org} burial is strongly focused over continental shelves.

olivier cartapanis 12/10/y 12:28

Supprimé: amounts to

olivier cartapanis 12/10/y 12:28

Supprimé: (Sarmiento and Gruber, 2006)

olivier cartapanis 12/10/y 12:28

Supprimé: (Sarmiento et al., 2002)

olivier cartapanis 12/10/y 12:28

Supprimé: (Sarmiento and Gruber, 2006)

olivier cartapanis 12/10/y 12:28

Supprimé: Burdige (2007)

olivier cartapanis 12/10/y 12:28

Supprimé: Hedges and Keil, 1995

olivier cartapanis 12/10/y 12:28

Supprimé: Sarmiento and Gruber, 2006

olivier cartapanis 12/10/y 12:28

Supprimé: (Burdige, 2007)

olivier cartapanis 12/10/y 12:28

Supprimé: Burdige (2007)

olivier cartapanis 12/10/y 12:28

Supprimé: By

olivier cartapanis 12/10/y 12:28

Supprimé: carbonate

olivier cartapanis 12/10/y 12:28

Supprimé: that

olivier cartapanis 12/10/y 12:28

Supprimé: burial rates over

olivier cartapanis 12/10/y 12:28

Supprimé: sediment

olivier cartapanis 12/10/y 12:28

Supprimé: shallow

The reason for this contrast is that heterotrophic organisms rapidly consume organic matter, so that sinking fluxes decrease sharply with water depth, whereas carbonate minerals sink relatively unimpeded through the water column. For example, according to the estimates of [Dunne et al. \(2007\)](#), burial of C_{org} is 480 PgC/kyr in near-shore deposits (< 50 m), 190 PgC/kyr on shelves (50-200 m), and 100 PgC/kyr on slopes (200-2000 m), greatly exceeding the burial of 12 PgC/kyr on deep-sea rises and plains, even though the deep-sea sediment covers nearly 90 % of the ocean floor. [Burdige \(2007\)](#) estimated that burial of 250 PgC/kyr occurs on continental margins < 2,000 m water depth, with a remaining 60 PgC/kyr in deeper waters. We note that [Muller-Karger et al. \(2005\)](#) estimated that roughly 40 % of the total burial occurs in margin sediments between 50 m and 2,000 m (ignoring the shallowest 50 m), while the remainder is buried in deep-sea sediment, which represents a much greater deep-sea burial proportion than other studies.

- olivier cartapanis 12/10/y 12:28
Supprimé: Dunne et al. (2007)
- olivier cartapanis 12/10/y 12:28
Supprimé: carbon
- olivier cartapanis 12/10/y 12:28
Supprimé: Burdige (2007)
- olivier cartapanis 12/10/y 12:28
Supprimé: Muller-Karger et al. (2005)
- olivier cartapanis 12/10/y 12:28
Supprimé: around
- olivier cartapanis 12/10/y 12:28
Supprimé: rest

2.2.3 Isotopic composition of organic carbon

Because carbon stable isotope fractionation occurs during photosynthesis, organic matter $\delta^{13}C$ is markedly different than the carbon pool from which it was formed ([Degens, 1969; Freeman and Hayes, 1992](#)). $\delta^{13}C$ of organic matter in modern marine surface sediment reflects a variety of factors, and ranges between -20 and -22.5 ‰ ([Wang and Druffel, 2001](#)). Using our database, we extracted all the $\delta^{13}C$ measurements performed on marine sediment organic matter within the uppermost 10 cm of the sediment. We estimated the mean $\delta^{13}C$ of organic matter in the first 10 cm of the sediment as -22.2 ‰ with a standard deviation of 2.3 ‰, consistent with prior literature ([Sundquist and Visser, 2003](#)).

- olivier cartapanis 12/10/y 12:28
Supprimé: (Degens, 1969; Freeman and Hayes, 1992)
- olivier cartapanis 12/10/y 12:28
Supprimé: (Wang and Druffel, 2001)
- olivier cartapanis 12/10/y 12:28
Supprimé: at

2.3 Geological CO₂ emissions

Modern estimates of volcanic emission of CO₂ range between 6 and 14 PgC/kyr for mid-oceanic ridges alone ([Chavrit et al., 2014](#)) and 44 PgC/kyr for mid-oceanic ridges plus volcanic arcs ([Coltice et al., 2004](#)). Estimated emissions on geological timescales are notably higher, ranging from 40 to 150 PgC/kyr ([Sundquist and Visser, 2003; Burton et al., 2013](#)), consistent with relatively quiet volcanic activity during the late Holocene ([Gerlach, 2011](#)). It has been suggested that increased emission during deglaciations, owing to mantle decompression caused by ablation of glaciers and ice caps could have

- olivier cartapanis 12/10/y 12:28
Supprimé: the
- olivier cartapanis 12/10/y 12:28
Supprimé: (Sundquist and Visser, 2003)
- olivier cartapanis 12/10/y 12:28
Supprimé: (Chavrit et al., 2014)
- olivier cartapanis 12/10/y 12:28
Supprimé: (Coltice et al., 2004)
- olivier cartapanis 12/10/y 12:28
Supprimé: (Gerlach, 2011)

reached 200 PgC/kyr (Huybers and Langmuir, 2009; Roth and Joos, 2012). Continental rifting zones could also represent a significant source of exogenic carbon to the climatic system, amounting to 14 to 26 PgC/kyr, (Lee et al., 2016). Notably, a recent study significantly increased the potential contribution of solid earth outgassing as compared to previous estimates (see details in Burton et al. (2013) and references therein), a revision that highlights the large degree of uncertainty in this important flux.

olivier cartapanis 12/10/y 12:28
Supprimé: (Huybers and Langmuir, 2009; Roth and Joos, 2012)
olivier cartapanis 12/10/y 12:28
Supprimé: (Lee et al., 2016)
olivier cartapanis 12/10/y 12:28
Supprimé: estimations

Some reconstructions for past global volcanic activity have suggested a tight coupling between glacial ice volume and volcanic eruption frequency (Jellinek et al., 2004). Increased eruption frequency among subaerial volcanoes appears to have occurred following the highest rate of sea level rise (with a 4 kyr lag), presumably in response to mass unloading and isostatic adjustment (Huybers and Langmuir, 2009; Roth and Joos, 2012; Kutterolf et al., 2013). Subsea volcanism at mid ocean ridges also appears to vary in response to isostatic loading as ice sheets grow and sea level drops. Lund et al. (2016) suggested that the maximum rates of CO₂ emission could occur approximately 10 ky after a sharp sea level drop, which occurred most recently at the start of the last glacial maximum (Lambeck and Chappell, 2001; Waelbroeck et al., 2002; Grant et al., 2012) and which would therefore be roughly coincident with the start of deglaciation. The isotopic composition of volcanic emissions has been estimated at around -5 ‰ (Kump and Arthur, 1999; Cartigny et al., 2001; Deines, 2002; Roth and Joos, 2012).

olivier cartapanis 12/10/y 12:28
Supprimé: (Jellinek et al., 2004)
olivier cartapanis 12/10/y 12:28
Supprimé: (Huybers and Langmuir, 2009; Roth and Joos, 2012; Kutterolf et al., 2013)
olivier cartapanis 12/10/y 12:28
Supprimé: Lund et al. (2016)

2.4 Erosion of continental surfaces.

The second main source of geological carbon to the active pool consists in the transfer of carbon from exposed rocks through physical and chemical weathering. Carbonate rock weathering has been estimated to currently add between 70 PgC/kyr (Hartmann et al., 2014) and 155 PgC/kyr (Gaillardet et al., 1999) to the active pool, while the petrogenic particulate C_{org} flux to the ocean is thought to amount to between 40 PgC/kyr (Copard et al., 2007; Galy et al., 2015) and 70 PgC/kyr (Petsch, 2014). Alkalinity fluxes from the continent to the ocean also impact the carbon system. Most of the alkalinity released from the continental surface corresponds to the weathering of carbonate (63 to 74 %, (Gaillardet et al., 1999)), with the remainder supplied by silicate weathering. Total alkalinity fluxes to the ocean amount to between 30 Pmol equ/kyr (Amiotte Suchet et al., 2003) and 40 Pmol equ/kyr (Gaillardet et al., 1999).

olivier cartapanis 12/10/y 12:28
Supprimé: (Kump and Arthur, 1999; Cartigny et al., 2001; Deines, 2002; Roth and Joos, 2012)
olivier cartapanis 12/10/y 12:28
Supprimé: ocean-atmosphere system
olivier cartapanis 12/10/y 12:28
Supprimé: adds
olivier cartapanis 12/10/y 12:28
Supprimé: (Hartmann et al., 2014)
olivier cartapanis 12/10/y 12:28
Supprimé: (Gaillardet et al., 1999)
olivier cartapanis 12/10/y 12:28
Supprimé: ocean/atmosphere system
olivier cartapanis 12/10/y 12:28
Supprimé: (Copard et al., 2007; Galy et al., 2015)
olivier cartapanis 12/10/y 12:28
Supprimé: (Petsch, 2014)
olivier cartapanis 12/10/y 12:28
Supprimé: (Gaillardet et al., 1999)
olivier cartapanis 12/10/y 12:28
Supprimé: (Gaillardet et al., 1999)

The degree to which weathering varied over glacial-interglacial cycles is highly uncertain. An early modelling study estimated that global chemical erosion was 20 % higher during the LGM ([Gibbs and Kump, 1994](#)), mostly because of enhanced erosion of newly exposed continental shelves. However, [Vance et al. \(2009\)](#) have argued that silicate chemical weathering was much lower during [glacials](#). It is commonly assumed that physical erosion of continental surfaces was [more rapid](#) during [glacials](#) because of enhanced action of ice sheets at high latitude ([Herman et al., 2013](#)) and the exposure of shelves, although this too has been debated ([von Blanckenburg et al., 2015](#)). It is [also possible](#) that chemical weathering could have been reduced, [or changed in nature](#) ([Torres et al., 2017](#)), due to lower temperature so that global erosion remained relatively stable over glacial interglacial timescales (Foster and Vance, 2006).

The isotopic composition of the global erosion flux [is mostly determined by the ratio](#) of C_{org} to carbonate weathering, and has been estimated to range between -8.5 ‰ and -5 ‰ ([Kump and Arthur, 1999](#); [Roth and Joos, 2012](#)).

- olivier cartapanis 12/10/y 12:28
Supprimé: (Gibbs and Kump, 1994)
- olivier cartapanis 12/10/y 12:28
Supprimé: Vance et al. (2009)
- olivier cartapanis 12/10/y 12:28
Supprimé: glacial
- olivier cartapanis 12/10/y 12:28
Supprimé: higher
- olivier cartapanis 12/10/y 12:28
Supprimé: glacial
- olivier cartapanis 12/10/y 12:28
Supprimé: (Herman et al., 2013)
- olivier cartapanis 12/10/y 12:28
Supprimé: (von Blanckenburg et al., 2015)
- olivier cartapanis 12/10/y 12:28
Supprimé: , while it
- olivier cartapanis 12/10/y 12:28
Supprimé: likely
- olivier cartapanis 12/10/y 12:28
Supprimé: depends on
- olivier cartapanis 12/10/y 12:28
Supprimé: balance
- olivier cartapanis 12/10/y 12:28
Supprimé: (Kump and Arthur, 1999; Roth and Joos, 2012)

3. Global carbonate burial reconstruction

3.1 Analytical strategy overview

Sediment cores sample only a tiny fraction of the global seafloor. In order to use these unevenly distributed observations to infer integrated changes in global carbon burial, we need to take into account the following aspects: (1) the limited spatial extent that is integrated by each core; (2) the fact that accumulation rates at an individual site may not be representative of the accumulation within a broader region; and (3) the fact that carbonate accumulation rates vary widely between different parts of the world.

To account for these potential shortcomings, our quantification of global carbonate burial includes 3 elements:

(1) An estimate of the spatial variations in global carbonate mass accumulation rate (MAR) in the modern ocean derived from sediment core tops and process modeling (Dunne et al., 2012).

(2) Subdivision of the ocean into coherent biogeochemical provinces, in order to account for the spatial and bathymetric heterogeneities in the sedimentary carbonate burial record. Because they take into account spatial structure in carbonate production and preservation, the province approach is likely to be an improvement over simple interpolation, especially in regions where measurements are scarce (see details in appendix A), though future work may be useful to quantify exactly how the approaches differ.

(3) Reconstruction of the relative variation of the carbonate MAR in each province over time, based on a compilation of available marine sediment proxy records. These relative changes are then multiplied by the modern CaCO₃ MAR estimate in each province, and integrated to assess the global history of deep-sea carbonate burial (see also Cartapanis et al. (2016) for further details). We note that the last step implicitly assumes that carbonate currently present in modern sediment is in equilibrium with its surrounding environment, and is not being gradually dissolved (Berelson et al., 2007) or precipitated (Sun and Turchyn, 2014), which is not universally correct. In future, this limitation could perhaps be overcome by assimilating the observed MAR into a mechanistically-based sediment module coupled with carbonate production and ocean chemistry, though this is beyond the scope of the present work.

olivier cartapanis 12/10/y 12:28
Supprimé :

olivier cartapanis 12/10/y 12:28
Supprimé : (Dunne et al., 2012)

olivier cartapanis 12/10/y 12:28
Supprimé :

olivier cartapanis 12/10/y 12:28
Supprimé : A subdivision

olivier cartapanis 12/10/y 12:28
Supprimé : we believe

olivier cartapanis 12/10/y 12:28
Supprimé :

olivier cartapanis 12/10/y 12:28
Supprimé : Cartapanis et al. (2016)

olivier cartapanis 12/10/y 12:28
Supprimé : assume

olivier cartapanis 12/10/y 12:28
Supprimé : nor

olivier cartapanis 12/10/y 12:28
Supprimé : (Sun and Turchyn, 2014)

olivier cartapanis 12/10/y 12:28
Supprimé : , which would be expected to alter modern CaCO₃ MAR to some degree.

3.2 Modern carbonate MAR map

We use two different, but closely-related maps of modern carbonate MAR (Fig. 2), both of which were previously published by [Dunne et al. \(2012\)](#). The first is based only on observations and was determined by multiplying the carbonate concentration in surface sediments by the bulk sediment accumulation rate. The carbonate concentration map was generated by combining several literature sources ([Seiter et al., 2004](#); [Dunne et al., 2007](#)), whereas the bulk MAR map was determined based on the geometric mean of two pre-existing maps ([Jahnke, 1996](#)) and other unpublished data, see details in ([Dunne et al., 2007](#); [Dunne et al., 2012](#)). It is important to note that the observationally-based estimates of both the carbonate concentration and MAR have insufficient spatial resolution to adequately resolve continental margins (Fig. 2 top panel). The second map was generated using a metamodel derived from a process-based approach (including satellite-derived carbonate export production, and water-chemistry-dependent dissolution in the water column and sediments) that was minimally-tuned using the sedimentary data ([Dunne et al., 2012](#)). The metamodel map shows similar patterns in the deep sea, but better resolves the bathymetric imprint on carbonate preservation (Fig. 2 bottom panel). The two approaches provide slightly different spatial distributions of burial, allowing a test of the sensitivity of our reconstructions to this uncertainty (see Table 1). Although the absolute values differ, the relative changes in our reconstructed global carbonate burial over time are insensitive to the choice of maps (see appendix A).

The two modern maps attempt to accurately represent the spatial distribution of the modern CaCO_3 burial flux. Sediment cores, however, [are often situated to](#) target rapidly accumulating depocenters in order to provide greater temporal resolution for paleocenographic reconstructions. As a result, we expect a bias towards high accumulation rates, which is confirmed in Fig. 2. We address this sampling bias when evaluating uncertainties (see appendices A1 to A4).

olivier cartapanis 12/10/y 12:28

Supprimé:

olivier cartapanis 12/10/y 12:28

Supprimé: Dunne et al. (2012)

olivier cartapanis 12/10/y 12:28

Supprimé: (Seiter et al., 2004; Dunne et al., 2007)

olivier cartapanis 12/10/y 12:28

Supprimé: (Jahnke, 1996)

olivier cartapanis 12/10/y 12:28

Supprimé: (Dunne et al., 2007; Dunne et al., 2012)

olivier cartapanis 12/10/y 12:28

Supprimé: (Dunne et al., 2012)

	Sed. Data	Metamodel
Atlantic	41%	48%
Pacific	25%	27%
Indian	34%	24%
Arctic	1%	1%
Antarctic	0%	0%
Sum (gCaCO ₃ /yr)	1.14 10 ¹⁵	1.05 10 ¹⁵

Table 1: Estimates of the modern global deep-sea CaCO₃ burial flux. The fractional contribution of each basin is shown, in per cent, and the total estimated burial flux shown in g CaCO₃ y⁻¹. The two columns correspond to the two estimates shown in Fig. 2, and the basin areas correspond to the province map 1 shown in Fig. A1.

5 3.3 Relative changes in burial rate from sediment core database

We created a database including surface- and downcore sediment datasets, retrieved from the NOAA (ftp://ftp.ncdc.noaa.gov/pub/data/paleo/paleocean/sediment_files/) and PANGAEA (<http://www.pangaea.de>) online repositories. All the datasets that contained CaCO₃ concentrations, CaCO₃ accumulation rates, age models and sediment density values were taken into consideration (for a complete detailed description of the procedure and quality control, the reader is referred to [Cartapanis et al. \(2016\)](#)). Whenever available, ²³⁰Th-normalized sediment accumulation rates were used. Where these measurements were not available, sedimentation rates were determined at the depth of each carbonate measurement from the reported age-depth relationship. When possible, we used reported dry bulk density values. Otherwise, we assumed a constant value of 0.9 g cm⁻³, to convert linear accumulation rates to MAR. Each sedimentary record was expressed as a fraction of the respective mean Holocene value.

The mean LGM:Holocene (18-25 ka and 0-10 ka respectively) ratio was determined for each province, and multiplied by the corresponding modern burial rate to estimate the absolute value of carbonate burial during the LGM. Note that we used the geometric mean of available records in each province, given that the LGM:Holocene ratios of individual cores are log-normally distributed. Moreover, if in a single province we have two MAR records, one showing 2 times higher MAR during the glacial while the other shows only half of modern during the glacial, the best guess would be that the true change in sedimentation was negligible. This is better represented by the geometric mean of $(2 \cdot 0.5) = 1$ (no

olivier cartapanis 12/10/y 12:28
Supprimé: Ocean basin contribution to
 olivier cartapanis 12/10/y 12:28
Supprimé: modern
 olivier cartapanis 12/10/y 12:28
Supprimé: for
 olivier cartapanis 12/10/y 12:28
Supprimé: approaches (see also

olivier cartapanis 12/10/y 12:28
Supprimé: Cartapanis et al. (2016)

olivier cartapanis 12/10/y 12:28
Supprimé: *

olivier cartapanis 12/10/y 12:28
Supprimé: ;
 olivier cartapanis 12/10/y 12:28
Supprimé:)=

change), whereas the arithmetic mean $(2, 0.5) = 1.25$ would bias the result toward high values. The carbonate burial of all provinces is summed to provide the LGM global burial rate.

The same procedure was applied to calculate global carbonate sediment content and bulk MAR at every 1 kyr time step over the past 150 kyr. Any time interval within a sediment record for which no measurement was present over a period longer than 10 kyr was excluded from the calculation of the regional stacks, leading to a total of 637 sediment time-series, from which 370 records were used to calculate the LGM:Holocene ratio (Fig. 3-4), while 170 to 130 records were used for periods older than 40 kyr. When no record was available for a specific province, and/or for a specific time period, the province flux was assumed to be constant and equal to modern values. The provinces for which no downcore record was available represent 0 to 18 % of the ocean surface, corresponding to 0 to 12 % of modern burial (this metric will be referred as “coverage” in the following discussion) for the LGM (18-25 kyr, Fig. 3). As a consequence, the reduction of the coverage during older periods tends to diminish the difference from the modern situation, a conservative assumption that may bias our reconstruction toward smaller changes than actually occurred. The available records are distributed over the entire depth range (100 records shallower than 1,000 m, 103 records between 1,000 and 2,000 m, 137 records between 2,000 and 3,000 m, 290 records between 3,000 and 4,000 m, and 106 records below 4,000 m deep).

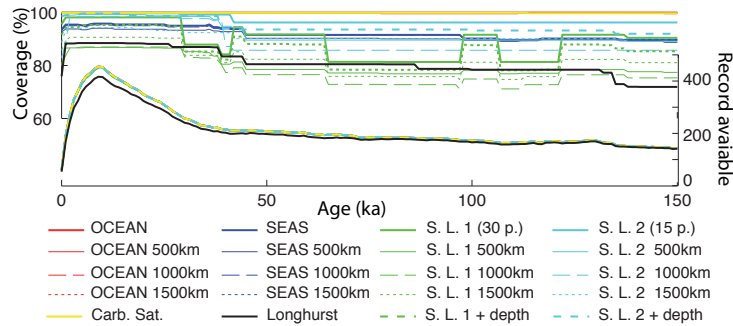


Figure 3: Coverage and number of records used for each province-map. Coverage is calculated by summing the modern burial rates in each province (Fig A1) for which at least one sedimentary record is available, divided by the modern burial flux. The modern map used corresponds to the top panel of Fig 2.

olivier cartapanis 12/10/y 12:28
 Supprimé:) while
 olivier cartapanis 12/10/y 12:28
 Supprimé: ;
 olivier cartapanis 12/10/y 12:28
 Supprimé:)=
 olivier cartapanis 12/10/y 12:28
 Supprimé: final mean

olivier cartapanis 12/10/y 12:28
 Supprimé: times

3.4 Assessing changes in Deep Ocean MAR and their role on the global estimates

Since carbonate MAR depends on both the sedimentation rate and sedimentary carbonate concentration, we first calculate the global bulk MAR by considering only relative changes in the sedimentation rates and a modern bulk MAR map (Jahnke, 1996). This reconstruction (Fig. 4, 5A, and Table 3) shows generally higher bulk sediment burial during peak glacials and deglaciations, broadly consistent with previous studies (Covault and Graham, 2010). However, the reconstructions display a pronounced increasing trend towards the present for all the province-map scenarios (Fig 5A). This is partly due to the absence of density data for many cores, which tends to underestimate burial for older, more compacted sediment. Moreover, the apparent sedimentation rate decreases as a power law function of the intervals between two age controls (Schumer and Jerolmack, 2009), suggesting that sedimentation rates are likely underestimated as age increases, when the age model accuracy is generally lower compared to more recent periods.

olivier cartapanis 12/10/y 12:28
Supprimé: (Jahnke, 1996)

olivier cartapanis 12/10/y 12:28
Supprimé: (Covault and Graham, 2010)

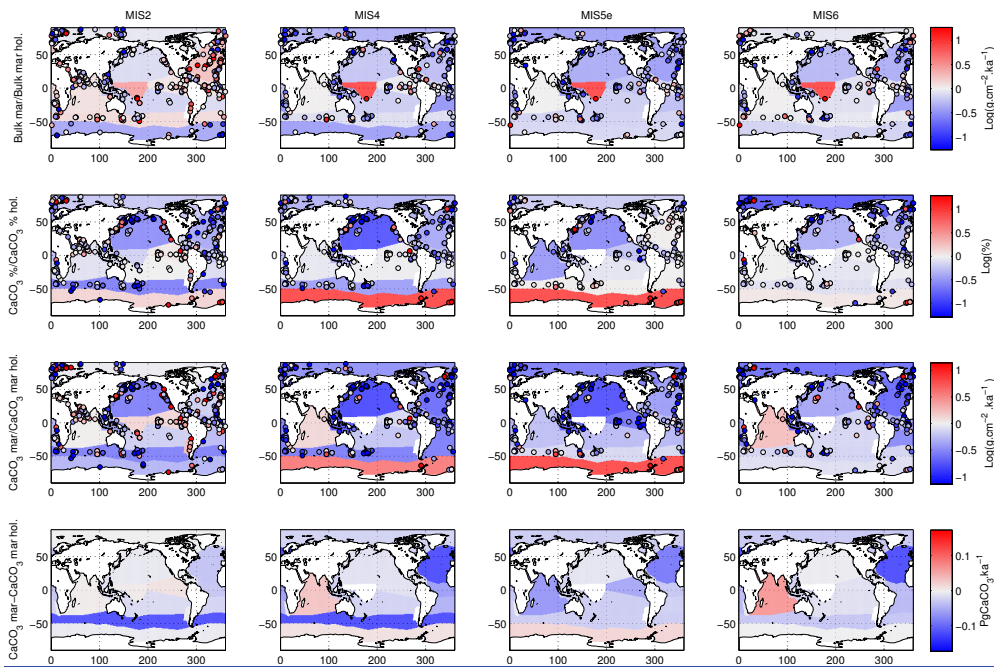


Figure 4: Example of calculated changes in deep-sea sedimentation relative to the Holocene using one province map.

The first three rows show relative changes in bulk sediment MAR, carbonate content, and carbonate MAR, while the last row shows absolute changes in carbonate MAR. Changes are shown for the Last Glacial Maximum (LGM) and Marine Isotope Stages 4, 5e and 6. Note that the absolute carbonate flux refers to the integrated burial over the province (not area normalized). The modern map used here corresponds to the top panel of Fig 2, and the province map is S.L.2. Note that the data shown here are not corrected for the long-term trend of accumulation rate, as the correction is calculated and applied at the global burial level.

10 Because of the lack of density information for individual cores, we chose to correct for compaction at the global scale by assuming that the global bulk burial rate was equal during the late Holocene and MIS5e, and subtracting the intervening trend, an assumption that could be revisited in future work as more information becomes available. Given this assumption, we corrected the long-term trend of the global aggregate bulk sedimentation rate for each province-map using a least squares spline (Fig. 5 A

- olivier cartapanis 12/10/y 12:28
- Supprimé:** Relative
- olivier cartapanis 12/10/y 12:28
- Supprimé:** and
- olivier cartapanis 12/10/y 12:28
- Supprimé:** province map S.L.2
- olivier cartapanis 12/10/y 12:28
- Supprimé:** for LGM, MIS4, MIS5e and MIS6 (note)
- olivier cartapanis 12/10/y 12:28
- Supprimé:** is

and B). The detrended CaCO₃ MAR reconstruction (Fig. 5F) is much more similar to the globally-flux-weighted CaCO₃ concentration record (Fig. 5D) and suggests that global bulk MAR in deep sea sediment peaked during glacial maxima and deglaciations, as well as during MIS4 (114 %, 104 % and 105 % relative to the Holocene MAR for the LGM, MIS4 and MIS5e (119ka-124ka), respectively).

The LGM to Holocene change is consistent with, but is smaller than, a recent estimate (125 % +/- 15 %) using a smaller but partially overlapping set of cores that included C_{org} measurements (Cartapanis et al., 2016).

We performed a Principal Component Analysis (PCA) on the MAR time series in order to assess the overall spatial and temporal variability (Fig. 6). For this calculation we used only the records that cover at least 80 % of the studied interval. The first principal component (PC) of the bulk MAR shows variability that is similar to the bulk MAR reconstruction, and the sedimentation rate time series are broadly correlated with the sedimentation rate PC1, without showing any consistent geographic pattern.

We then performed a similar analysis, using only the relative changes in the sedimentary carbonate concentration (assuming constant sedimentation rates), and the modern carbonate MAR map as a reference (Dunne et al., 2012). This analysis shows that the CaCO₃ content in deep-sea sediment

(weighted by modern carbonate MAR) was consistently lower during glacials compared to interglacials, with the lowest values reported during MIS4 and MIS2 (Fig. 4, Fig. 5D and 6). The first PC of the carbonate content records is similar to the global reconstruction, and the correlation map between

CaCO₃ concentration time series and CaCO₃ concentration PC1 shows a clear anti-phasing between the eastern Pacific and the rest of the world ocean (Fig. 6). While CaCO₃ concentrations were lower during the glacial in the Atlantic, they were substantially higher in the eastern Pacific.

olivier cartapanis 12/10/y 12:28
Supprimé:)
olivier cartapanis 12/10/y 12:28
Supprimé: that was made
olivier cartapanis 12/10/y 12:28
Supprimé: (Cartapanis et al., 2016)

olivier cartapanis 12/10/y 12:28
Supprimé: content
olivier cartapanis 12/10/y 12:28
Supprimé: (Dunne et al., 2012)
olivier cartapanis 12/10/y 12:28
Supprimé: carbonate

olivier cartapanis 12/10/y 12:28
Supprimé: carbonate content
olivier cartapanis 12/10/y 12:28
Supprimé: carbonate content
olivier cartapanis 12/10/y 12:28
Supprimé: carbonate content was
olivier cartapanis 12/10/y 12:28
Supprimé: it was

experiment	CARB MAR corrected											
	MIS2			MIS4			MIS5			MIS6		
	# rec	cov.	MAR%	# rec	cov.	MAR%	# rec	cov.	MAR%	# rec	cov.	MAR%
Longhurst	343	88	99	196	80	96	175	78	101	170	78	102
OCEAN1000KM	370	100	80	209	100	69	182	100	92	174	100	88
OCEAN1500KM	370	100	84	209	100	74	182	100	92	174	100	87
OCEAN500KM	370	100	72	209	100	64	182	100	90	174	100	84
OCEAN	370	100	78	209	100	65	182	100	90	174	100	83
SEAS1000KM	370	95	82	209	92	73	182	90	95	174	90	94
SEAS1500KM	370	95	84	209	92	79	182	90	96	174	90	95
SEAS500KM	370	94	75	209	90	70	182	90	94	174	90	94
SEAS	370	95	78	209	92	71	182	90	94	174	90	93
S. L. 1_1000KM	368	87	91	209	77	84	181	76	98	173	76	95
S. L. 1_1500KM	368	91	90	209	82	89	181	82	94	173	82	94
S. L. 1_500KM	368	87	87	209	79	80	181	78	99	173	78	95
S. L. 1	368	98	93	209	92	85	181	92	98	173	92	98
S. L. 1_depth	368	95	91	209	88	81	181	88	98	173	88	97
Carb Sat	370	100	76	209	100	63	182	100	91	174	100	83
S. L. 2_1000KM	369	98	92	209	86	83	181	86	96	173	86	95
S. L. 2_1500KM	369	94	88	209	90	87	181	90	91	173	90	94
S. L. 2_500KM	369	99	84	209	90	80	181	90	94	173	90	96
S. L. 2	369	100	87	209	96	89	181	96	91	173	96	96
S. L. 2_depth	369	99	87	209	94	82	181	93	92	173	93	97
Mean	368	96	85	208	91	78	181	91	94	173	90	93
Standard Dev.	5.9	4.5	6.9	2.9	7.3	9.2	1.5	7.5	3.3	0.9	7.5	5.3

Table 2: Summary of estimated changes in carbonate MAR for each province map. The number of records used, mean coverage (%), and mean MAR (in % of modern value) are shown for four intervals (LGM, MIS4, MIS5e and MIS6), for each province-map. The results correspond to the calculations of temporal variability shown in Fig. 5 F.

5 The modern burial map used for all calculations corresponds to the top panel of Fig. 2.

olivier cartapanis 12/10/y 12:28

Supprimé: corrected from long-term trend

olivier cartapanis 12/10/y 12:28

Supprimé: Number

olivier cartapanis 12/10/y 12:28

Supprimé:),

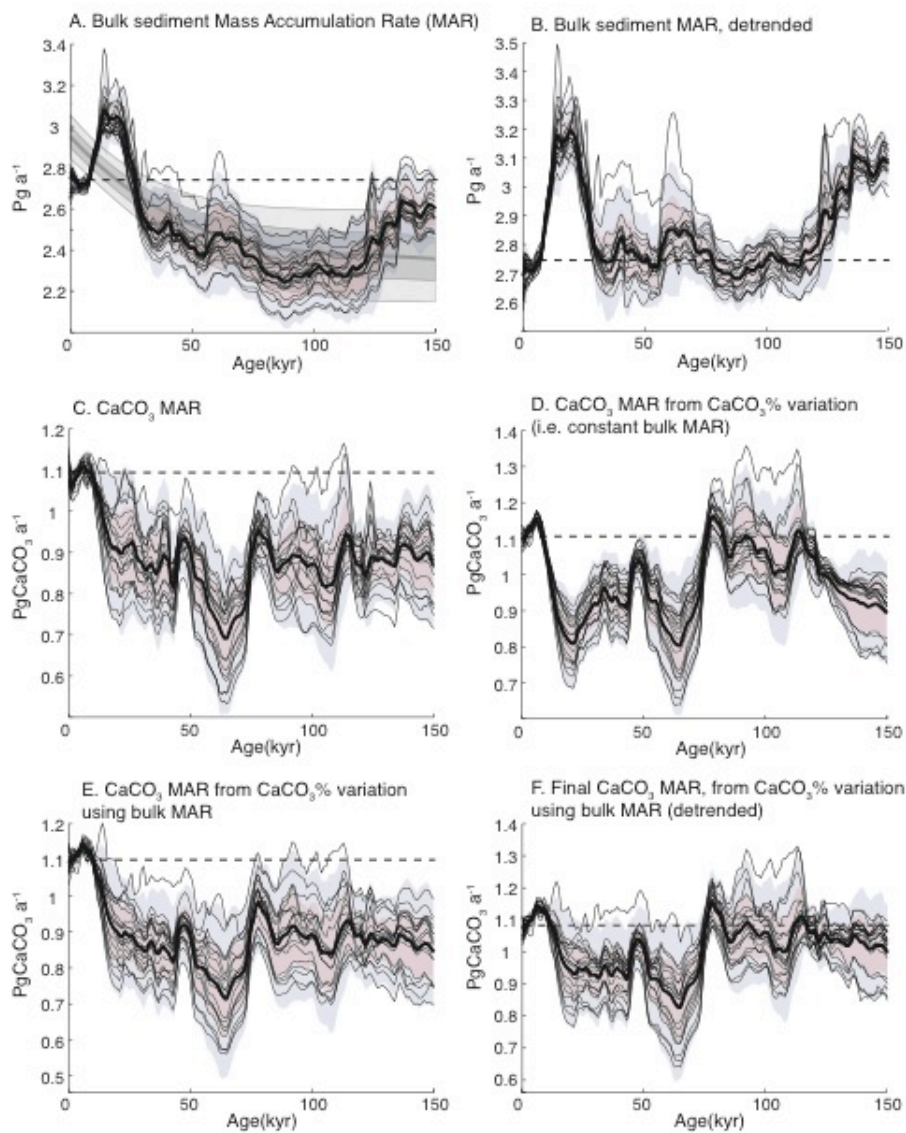


Figure 5: CaCO₃ MAR timeseries, considering different aspects of variability. A. Bulk sediment MAR time series distribution based on the 20 province-map scenarios (mean, black line; $\pm 1\sigma$, red area; $\pm 2\sigma$, blue area), and the distribution of the long term-trend correction for each province-map (mean, black line; $\pm 1\sigma$, dark grey; $\pm 2\sigma$, light grey) using a least-squares spline model. B. Bulk sediment MAR as in panel A, but with the modeled long-term trend removed. C. Global CaCO₃ MAR reconstruction without detrending. D. Global CaCO₃ MAR reconstruction calculated only from variations in CaCO₃ concentration, assuming a constant bulk sedimentation rate. E. Global CaCO₃ MAR reconstruction obtained from the bulk MAR and variations in CaCO₃ concentrations. F. As in panel E, but with MAR corrected for the long-term trend. In all panels, the thin black lines correspond to the 20 individual province-map scenarios. The modern map used for all calculations corresponds to the top panel of Fig 2.

In order to assess the impacts of variations of both bulk MAR and CaCO₃ concentration in our reconstruction, we calculated global carbonate MAR variations using 2 different methods. First we calculated global CaCO₃ MARs using the relative changes in individual sedimentary carbonate MAR time series (Fig. 4, Fig. 5C). Second, we made the simpler calculation of taking the product of the reconstructed CaCO₃ concentration with the average relative changes in bulk MAR reconstruction for each scenario (Fig. 5E).

As both methods provided very similar results, we calculated CaCO₃ MAR using the simpler of the two, taking the product of the relative changes in corrected bulk sediment MAR (Fig. 5B) and the reconstruction of CaCO₃ concentration (Fig. 5D). This final reconstruction (Fig. 5F, see details in Fig. A4) thus accounts for variations in the bulk MAR, as well as variations in the concentration, and is corrected for the long-term trend directly inferred from the bulk MAR.

- olivier cartapanis 12/10/y 12:28
Supprimé: bark
- olivier cartapanis 12/10/y 12:28
Supprimé: square
- olivier cartapanis 12/10/y 12:28
Supprimé: As
- olivier cartapanis 12/10/y 12:28
Supprimé: corrected for
- olivier cartapanis 12/10/y 12:28
Supprimé: based on CaCO₃ uncorrected MAR timeseries. D.
- olivier cartapanis 12/10/y 12:28
Supprimé: content
- olivier cartapanis 12/10/y 12:28
Supprimé: by multiplying relative changes in
- olivier cartapanis 12/10/y 12:28
Supprimé: with
- olivier cartapanis 12/10/y 12:28
Supprimé: MAR based on CaCO₃ content time series only
- olivier cartapanis 12/10/y 12:28
Supprimé: On each panel

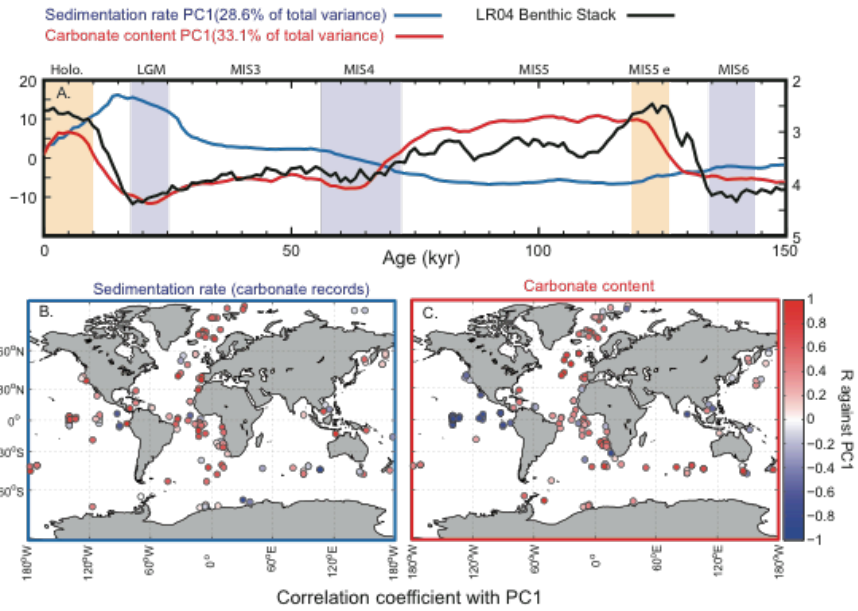


Figure 6: Principal Components of temporal variation in sediment mass accumulation rates and CaCO_3 concentrations. The first principal component (PC1) is displayed in the top panel for both sedimentation rates and carbonates content and explains 28.6 % and 33.1 % of the total variance, respectively. Yellow vertical bars corresponds to Holocene and MIS5e, blue vertical bars are for LGM, MIS4 and MIS6. The bottom panels show the correlation coefficients for individual records of sedimentation rates and carbonate content, against their respective PC1. In this analysis, we used only records that cover 80 % of the studied interval.

olivier cartapanis 12/10/y 12:28
Supprimé: respectively.

As shown in Fig. 5 F, the reconstruction indicates that global mean deep-sea CaCO_3 burial was not significantly different from present-day throughout Marine Isotopic Stage (MIS) 5, dropped to the lowest rates during MIS 4, and then remained below interglacial rates until the deglaciation. In part, the similarity of CaCO_3 burial between MIS 5 and the Holocene reflects our assumption that bulk sediment MAR during MIS 5 and the Holocene were similar, which underlies our detrending. However, MIS5 and the Holocene are also indistinguishable in the burial flux reconstruction estimated from CaCO_3

olivier cartapanis 12/10/y 12:28
Supprimé: 5

olivier cartapanis 12/10/y 12:28
Supprimé:),

concentration alone (Figure 5D), in which MIS 4-2 also stands out as having significantly reduced burial.

4. Implications for global inventories of carbon and alkalinity

4.1 Mass balance calculation

5 In order to estimate the impact of the reconstructed carbonate flux on the carbon and alkalinity budgets, we made a simple running-sum calculation of carbon and alkalinity sources and sinks over the full last glacial cycle. We did so within the numerical framework of a simple 3 box model (3 oceanic boxes and the atmosphere) using the input and output fluxes for both carbon and alkalinity as illustrated in Figure 1, and model settings described in (Toggweiler, 1999), following the equations detailed in (Sarmiento and Toggweiler, 1984). Briefly, the model tracks the mass budget for inorganic carbon in three well-mixed ocean boxes (surface high and low-latitudes, and deep ocean) and in the atmosphere. The C cycle is linked to the cycles of alkalinity and nutrients (phosphate) in the ocean boxes. For simplicity, nutrients are prescribed in the surface boxes, and water mass transports between boxes are kept constant. Exchange of CO₂ between the surface boxes and the atmosphere exchange is based on aqueous carbon chemistry and a constant piston velocity (Sarmiento and Gruber, 2006). The deep sea [CO₃²⁻] concentration was calculated based on aqueous carbon chemistry (Sarmiento and Toggweiler, 1984; Dickson and Goyet, 1994), and can be very well approximated by the difference between dissolved inorganic carbon and alkalinity. We emphasize that the use of the 3-box model here only provides a very small modification of the results obtained with the simple running-sums, providing average deep ocean values that vary slightly due to changes in air-sea partitioning; very similar results would be obtained by considering simply the mass balance of global alkalinity and carbon inventories, without calculating their distributions between ocean and atmosphere.

15 The two input fluxes to the active pool are the geological outgassing of CO₂ and the erosion of continental surfaces (due to the dissolution of carbonate and oxidation of sedimentary C_{org}), while the four output terms represent carbon burial in sediment divided into four components: both C_{org} and CaCO₃, for each of the shelf and deep-sea environments. The input flux of alkalinity is assumed to be

25

- Eric Galbraith 12/10/y 13:10
Supprimé: used
- Eric Galbraith 12/10/y 13:10
Supprimé: es
- Eric Galbraith 12/10/y 13:10
Supprimé: over 5 the last full glacial cycle
- Eric Galbraith 12/10/y 13:11
Supprimé: . T
- Eric Galbraith 12/10/y 13:11
Supprimé: of the model are
- Eric Galbraith 12/10/y 13:13
Supprimé: 3

due to the erosion of continental surfaces, including both carbonate and silicate weathering, while the flux out of the system is given by burial of CaCO₃ in marine sediment.

Our mass-balance simulations prescribe a range of possible scenarios for variable input and output fluxes, in order to estimate the resulting transient changes of carbon and alkalinity inventories and $\delta^{13}\text{C}$.

5 | The deep-sea burial fluxes are derived from our sedimentary reconstructions, while the shelf burial fluxes and the input flux are varied in order to illustrate hypothetical (yet realistic) scenarios. In total we include 8 different scenarios, to illustrate the impact of each variable in isolation, as well as in combination with others (Table 3). In all cases, we vary the fluxes over feasible ranges using a Monte Carlo approach (1,000 transient simulations per experiment).

olivier cartapanis 12/10/y 12:28
Supprimé: output
olivier cartapanis 12/10/y 12:28
Supprimé: shallow output

10 | It is important to note that we do not consider temporally-variable erosion fluxes, but instead hold them constant over time in any given simulation, due to a paucity of consistent observational constraints. von Blanckenburg et al. (2015) have argued that erosion was, indeed, constant over glacial cycles, while others have argued that erosion was lower (Vance et al., 2009) or higher (Herman et al., 2013) during glacial. Erosion contributes both carbon and alkalinity, and although it remains difficult to evaluate the
15 | global impacts of changes in erosion, they may have been substantial.

A key feature of the simulations is that they assume long-term balance over a full glacial cycle. The fact that CO₂ and $\delta^{13}\text{C}$ display very stationary mean values over several glacial cycles (Zeebe and Caldeira, 2008) suggests that the system is indeed close to steady state over each full glacial cycle, so that the assumption is unlikely to introduce a large bias. Therefore, assuming that the system was at steady state
20 | over the last glacial cycle, we calculated the input fluxes of carbon and alkalinity that would have been necessary to balance the prescribed burial (as well as prescribed input changes, if any) over the full glacial cycle for a given scenario, and provided those as a constant input flux throughout the cycle. Thus, although the carbon and alkalinity fluxes are out of balance at each point within the cycle, they always integrate to zero net change between 0 and 123 kyr. Similarly, the isotopic composition of the
25 | system is prescribed by setting the $\delta^{13}\text{C}$ of the erosion flux at a value that balances the other fluxes, consistent with the long-term steady state assumption. Although forcing the carbon isotopes to be equal at start and end points does ignore a small long-term drift in whole-ocean $\delta^{13}\text{C}$ (Oliver et al., 2009), it provides a clearer illustration of the isotopic implications of inventory changes over a single glacial

olivier cartapanis 12/10/y 12:28
Supprimé: A critical component
olivier cartapanis 12/10/y 12:28
Supprimé: the requirement for
olivier cartapanis 12/10/y 12:28
Supprimé: (Zeebe and Caldeira, 2008)

olivier cartapanis 12/10/y 12:28
Supprimé: (Oliver et al., 2009)

cycle. We note that this strategy results in different total input fluxes (and therefore different residence times of the active pool) for each experiment.

To account for uncertainties in the modern fluxes (Fig. 1), the relative changes in the prescribed time series are multiplied by an estimate of the global modern flux, which is generated using a distribution that represents the uncertainty in modern global burial estimates (see Table 3, and appendices B and Fig. A6). The forcing thus accounts for our reconstruction and their uncertainties, as well as the uncertainties in the modern burial estimates. The same procedure was applied for C_{org} burial variations in the deep ocean as shown in (Cartapanis et al., 2016), but using a different distribution (Table 3, see details figure A6).

In the following sections, we consider 8 different scenarios in which we calculate the total mass and $\delta^{13}C$ of the active carbon pool, as well as the oceanic alkalinity inventory, according to different combinations of temporally-varying input and output fluxes for carbon and alkalinity. In experiment 1 and 2, we isolate the impact of reconstructed deep ocean inorganic (this study) and organic carbon burial (Cartapanis et al., 2016), respectively, and combine them in experiment 3. Experiment 4 only considers scenarios for shelf burial variations, while experiment 5 combines experiment 3 and 4, thus including variations of burial in both deep and shallow environment. Experiment 6 depicts a hypothetical deglacial carbon pulse based on Huybers and Langmuir (2009), and is combined with experiment 3 (burial in the deep sediment) in experiment 7, and with experiment 5 (burial in deep and shallow sediment) in experiment 8. Thus, these scenarios incrementally explore the impact of the different forcing and their interactions on the carbon and alkalinity budgets over the last glacial cycle.

olivier cartapanis 12/10/y 12:28

Supprimé: accounts for

olivier cartapanis 12/10/y 12:28

Supprimé: (Cartapanis et al., 2016)

	exp. 1	exp. 2	exp. 3	exp. 4	exp. 5	exp. 6	exp. 7	exp. 8
	Deep carb	Deep toc	exp1+exp2	Shelves	exp3+exp4	Volc.	exp6+exp3	exp5+exp6
Shelves TOC	150	150	150	150	150	150	150	150
Shelves TOC (std)	0	0	0	γ distr. 1	γ distr. 1	0	0	γ distr. 1
Shelves CaCO ₃	150	150	150	130	130	150	150	130
Shelves CaCO ₃ (std)	0	0	0	40	40	0	0	40
Deep TOC	70	70	70	70	70	0.16	70	70
Deep TOC (std)	0	γ distr. 2	γ distr. 2	0	γ distr. 2	0	0	γ distr. 2
Deep CaCO ₃	130	130	130	130	130	130	130	130
Deep CaCO ₃ (std)	30	0	30	0	30	0	0	30
Deglacial pulse	no	no	no	no	no	yes	yes	yes

Table 3: Modern burial distribution ($\text{PgC}_{\text{ky}}^{-1}$) used for the Monte Carlo simulations (mean and standard deviation). When the distribution type is not specified, a normal distribution was used. **Boldface indicates **variable fluxes** over times. Results of experiments 1 and 2, 3 to 5, and 6 to 8, are shown in figure 7, 8, and 10 respectively. The gamma distributions (γ distr) used for C_{org} burial are shown in Fig. A6.**

4.2 Deep sea burial impact on carbon and alkalinity inventories (experiments 1 to 3)

Assuming a constant alkalinity flux to the ocean, and all other factors being equal, our reconstruction of deep-sea CaCO₃ burial in the deep ocean coupled with uncertainties in modern fluxes (Table2) implies changes in the alkalinity inventory that could reach up to 100 $\mu\text{eq}/\text{kg}$, with a minimum centered around ~ 70 kyr near the MIS4/MIS5 transition, gradually rising to a maximum during the early deglaciation at ~ 15 kyr (Fig. 7 A, experiment 1). This increasing trend is a robust consequence of the low reconstructed carbonate burial from MIS4 to MIS2, with a most probable amplitude of 70 +/-30 $\mu\text{eq}/\text{kg}$. Note that the $[\text{CO}_3^{2-}]$ changes shown in all of our experiments ignore possible changes in ocean circulation or biology, nor do they consider contributions to alkalinity other than HCO_3^- and CO_3^{2-} , and are therefore not expected to be accurate – they are simply illustrations of the purely inventory-driven expectations of deep sea $[\text{CO}_3^{2-}]$ change. The actual, realized changes of $[\text{CO}_3^{2-}]$ that occurred over the last glacial cycle have been shown to have been quite small (Yu et al., 2010), which would reflect the net result of any inventory changes plus other processes such as ocean circulation and biology-driven changes.

Changes in C_{org} burial in the deep sea followed a markedly different progression, with larger (rather than smaller) burial during peak glacial and deglaciation (Cartapanis et al., 2016), causing the C

- olivier cartapanis 12/10/y 12:28
Supprimé: .kyr
- olivier cartapanis 12/10/y 12:28
Supprimé: , and "cte"
- olivier cartapanis 12/10/y 12:28
Supprimé: constant flux
- olivier cartapanis 12/10/y 12:28
Supprimé: carbonate
- olivier cartapanis 12/10/y 12:28
Supprimé: general
- olivier cartapanis 12/10/y 12:28
Supprimé: very
- olivier cartapanis 12/10/y 12:28
Supprimé: our
- olivier cartapanis 12/10/y 12:28
Supprimé: :
- olivier cartapanis 12/10/y 12:28
Supprimé: Figs. 7, 8 and 10 do not take into account
- olivier cartapanis 12/10/y 12:28
Supprimé: :
- olivier cartapanis 12/10/y 12:28
Supprimé: One would expect that the
- olivier cartapanis 12/10/y 12:28
Supprimé: , which were
- olivier cartapanis 12/10/y 12:28
Supprimé: (Yu et al., 2010)
- olivier cartapanis 12/10/y 12:28
Supprimé: to have been
- olivier cartapanis 12/10/y 12:28
Supprimé: the
- olivier cartapanis 12/10/y 12:28
Supprimé: (Cartapanis et al., 2016)

inventory to rise over MIS 5 by 400 (150 to 950) PgC, equivalent to 20 (10 to 50) $\mu\text{mol kg}^{-1}$ in the global ocean (Fig. 7 B, [experiment 2](#)), and to decrease by the same amount from MIS3 to the early Holocene. Summing the two deep sea burial fluxes together leads to a slightly muted change in the carbon inventory (Fig. 8A, [experiment 3](#)). The changes in deep sea C_{org} burial would have decreased the isotopic composition of the active carbon pool during the early glacial, by 0.2 (0.1 to 0.5) ‰ during MIS4, but with a negligible change between LGM and late Holocene (Fig. [8A](#)). It is important to note that for these 3 first experiments, [the](#) mean C input flux required to compensate for the outputs is close to 500 PgC/kyr, which exceeds the standard estimates for present-day carbon input ([150-390 PgC/kyr](#), [Fig. 1](#)). [This discrepancy arises from the relatively large estimates of present-day carbon burial, combined with the absence of much lower deep sea burial fluxes during the glacial – either the present-day input fluxes are underestimated, the present-day burial is overestimated, or there were additional changes in the fluxes over the glacial cycle. Thus, we turn next to possible changes in burial on the shelves.](#)

olivier cartapanis 12/10/y 12:28

Supprimé: /

olivier cartapanis 12/10/y 12:28

Supprimé: 8 A

olivier cartapanis 12/10/y 12:28

Supprimé: .

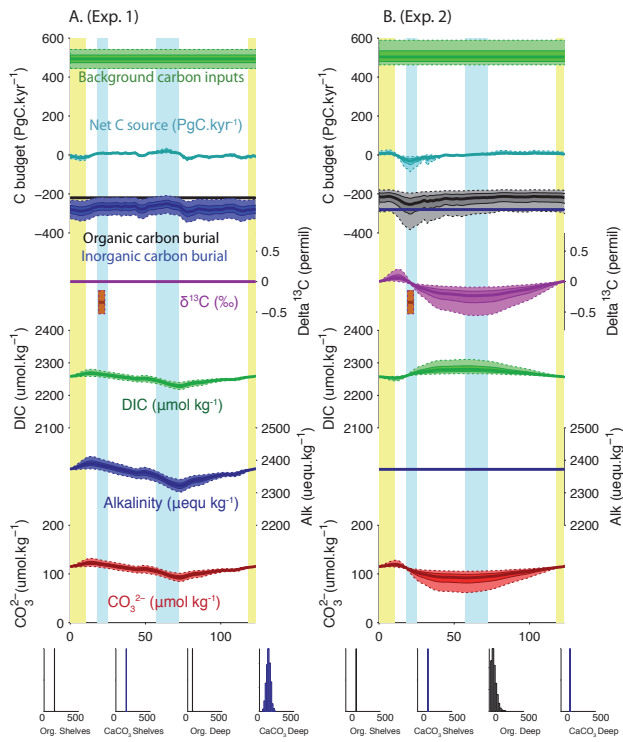


Figure 7: Simulated impacts of reconstructed **deep burial** fluxes on **carbon and alkalinity inventories**. **A. Variable deep sea CaCO₃ burial**, **B. Variable deep sea C_{org} burial**. For each panel, the uppermost curves show the carbon budget terms (constant background carbon input, organic, inorganic carbon burial, and **net flux from the geological to the active carbon reservoir**) used to force the simulations. For each time series, the mean of the scenarios (thick line), $\pm 1\sigma$, and $\pm 2\sigma$ are shown. Below are shown the simulated $\delta^{13}\text{C}$ of the total active carbon pool, deep ocean alkalinity, deep ocean DIC, **implied deep ocean [CO₃²⁻]** ($\mu\text{mol.kg}^{-1}$). The [CO₃²⁻] only reflects changes in the alkalinity and DIC inventories, not changes in ocean circulation or biology. An estimate for the whole ocean $\delta^{13}\text{C}$ by **Peterson et al. (2014)** during the last glacial maximum is also shown in orange (with upper and lower estimate). **Vertical bars highlight cold periods (MIS 2/LGM and MIS 4) in blue and full interglacial conditions (Holocene and MIS 5e) in yellow**. The distribution of the modern fluxes used to drive the scenarios is shown by the histograms at the bottom of each panel.

- olivier cartapanis 12/10/y 12:28
Supprimé: geological
- olivier cartapanis 12/10/y 12:28
Supprimé: the global
- olivier cartapanis 12/10/y 12:28
Supprimé: cycle.
- olivier cartapanis 12/10/y 12:28
Supprimé: Deep
- olivier cartapanis 12/10/y 12:28
Supprimé: only
- olivier cartapanis 12/10/y 12:28
Supprimé: Deep
- olivier cartapanis 12/10/y 12:28
Supprimé: only
- olivier cartapanis 12/10/y 12:28
Supprimé: sum
- olivier cartapanis 12/10/y 12:28
Supprimé: .
- olivier cartapanis 12/10/y 12:28
Supprimé: /
- olivier cartapanis 12/10/y 12:28
Supprimé: .
- olivier cartapanis 12/10/y 12:28
Supprimé: Peterson et al. (2014)

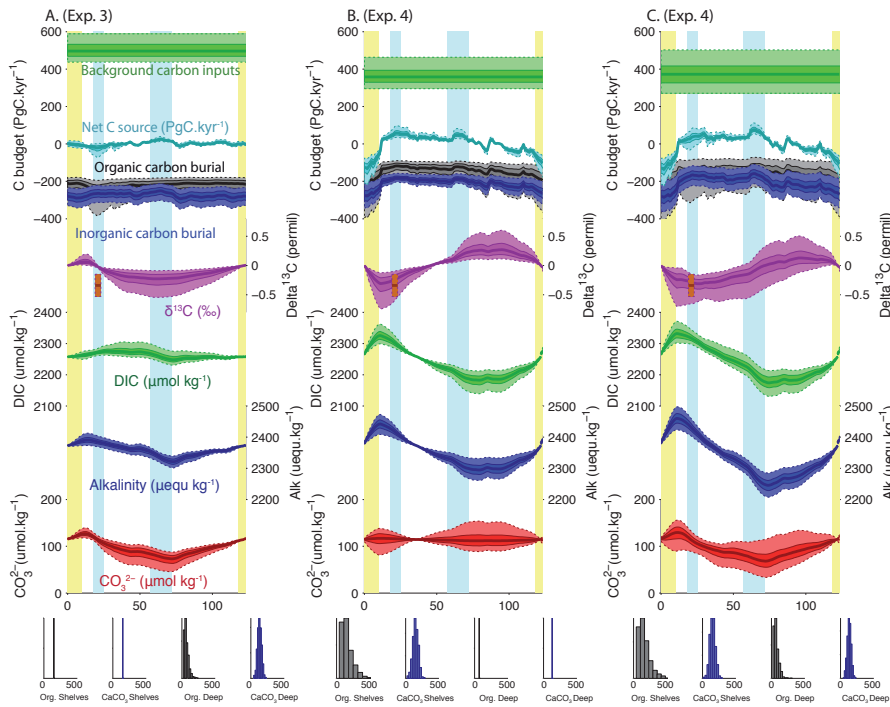


Figure 8: Simulated impacts of deep and shelf burial fluxes on carbon and alkalinity inventories. A. Variable deep sea burial (carbonate plus C_{org}). B. Variable shelf burial. C. Variable total marine burial (deep + shelf). All quantities and bars plotted as in Fig.7

4.3 Shelf burial impact on carbon and alkalinity inventories (experiments 4 and 5)

The burial of CaCO₃ and C_{org} on continental shelves depends both on their production rate and their preservation. Preservation is particularly difficult to estimate, given the importance of sediment transport and redeposition in dynamic coastal environments. Here, we use the very simple illustrative

- olivier cartapanis 12/10/y 12:28
Supprimé: reconstructed geological
- olivier cartapanis 12/10/y 12:28
Supprimé: the global
- olivier cartapanis 12/10/y 12:28
Supprimé: cycle
- olivier cartapanis 12/10/y 12:28
Supprimé: Deep
- olivier cartapanis 12/10/y 12:28
Supprimé: Shelf
- olivier cartapanis 12/10/y 12:28
Supprimé: only
- olivier cartapanis 12/10/y 12:28
Supprimé: Total
- olivier cartapanis 12/10/y 12:28
Supprimé: carbonate

assumption that, globally, the burial over shelves was linearly proportional to the changes in the surface area available for sediment production and accumulation. Although this is a gross simplification of reality, and may overestimate the actual changes, it allows a first-order estimate of the potential magnitude of shelf burial changes on the global carbon cycle (Wallmann et al., 2016).

5 We calculated the relative changes in the surface area bounded by the 0 and 100 m isobaths as well as the 0 and 200 m isobaths over time, using ETOPO01 (Amante and Eakins, 2009) and a global sea level reconstruction curve (Grant et al., 2012). Because of the distribution of the global hypsometric curve (Fig. 9 A), the surface area of the 0-100 m depth range was reduced by up to 60 % during the last glacial, which is certain to have led to reduced burial (Fig. 9 B), consistent with (Vecsei and Berger, 10 2004).

Our results show that variations of C_{org} and $CaCO_3$ burial fluxes driven by changes in sea level could have increased DIC and alkalinity inventories by up to 150 $\mu\text{mol/kg}$ and 150 $\mu\text{eq/kg}$ from MIS5 to the last deglaciation, because of reduced burial during times of lower sea level (Fig. 8 B, experiment 4). The ALK and DIC inventories change in parallel because of our assumption that both burial fluxes 15 would have varied in proportion to the shelf area, which leads to relatively small changes in the $[\text{CO}_3^{2-}]$ (the difference between DIC and ALK). Despite these parallel changes, the fact that C_{org} burial is strongly focused in shallow environments, in contrast to the equal partitioning of carbonate burial between shallow and deep environments, means that the global proportion of C_{org} to carbonate burial would have varied with changing shelf area (Wallmann et al., 2016). Our calculations suggest that the 20 relative reduction of C_{org} burial cause by limited shelf area during glacials would have lowered the $\delta^{13}\text{C}$ of the active carbon pool by up to 1 % from MIS5 to the early deglaciation. The large uncertainties in modern burial fluxes result in large uncertainties in the ratio of DIC:ALK changes, with important implications.

olivier cartapanis 12/10/y 12:28
Supprimé: (Wallmann et al., 2016)

olivier cartapanis 12/10/y 12:28
Supprimé: (Grant et al., 2012)

olivier cartapanis 12/10/y 12:28
Supprimé: organic and inorganic MAR

olivier cartapanis 12/10/y 12:28
Supprimé: glacial

olivier cartapanis 12/10/y 12:28
Supprimé: 9

olivier cartapanis 12/10/y 12:28
Supprimé: :

olivier cartapanis 12/10/y 12:28
Supprimé: (Wallmann et al., 2016)

olivier cartapanis 12/10/y 12:28
Supprimé: reduced

olivier cartapanis 12/10/y 12:28
Supprimé: burial

olivier cartapanis 12/10/y 12:28
Supprimé: reduced

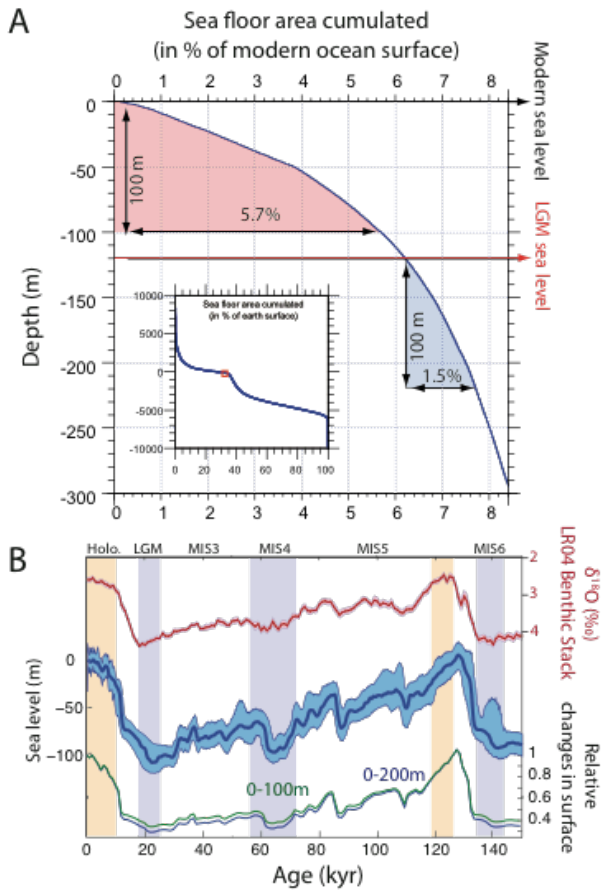


Figure 9: A. Global hypsometric curve based on ETOPO01 (Amante and Eakins, 2009); B. LR04 benthic stack (Lisiecki and Raymo, 2005); sea level reconstruction (Grant et al., 2012); and calculated changes in the surface of the 0-100m and 0-200m depth interval relatively to modern situation. Vertical bars as in figure 6.

olivier cartapanis 12/10/y 12:28

Supprimé: (Lisiecki and Raymo, 2005)

olivier cartapanis 12/10/y 12:28

Supprimé: (Grant et al., 2012)

4.4. Combined impact of sedimentary burial and carbon input variations (experiment 6 to 8)

It has been suggested that the rate of carbon input to the active pool from volcanic sources increased during glacial maxima (Lund et al., 2016; Ronge et al., 2016) and/or deglaciations (Huybers and Langmuir, 2009; Stott et al., 2009). Note that, for the purpose of this discussion, we consider peatlands and permafrost part of the 'active' pool, but not surficial marine sediments. The magnitude of these postulated volcanic carbon input variations is highly uncertain, and reconstructions of relative changes in subaerial volcanic outgassing rates over time suggest that the volcanic carbon input was notably delayed, relative to the deglacial increase in pCO₂ recorded in ice cores, requiring other mechanisms to be important at this time (Huybers and Langmuir, 2009; Roth and Joos, 2012). Nonetheless, it would appear likely that changes in geological carbon inputs over the glacial cycle were significant. We do not attempt to provide an exhaustive test of the existing hypotheses for temporally-variable carbon input. Instead we simply apply a pulse of carbon input to our mass-balance calculation during the deglaciation, which follows the temporal changes given by the reconstruction of changes in terrestrial volcanic emission (Huybers and Langmuir, 2009) to produce an illustrative variable carbon input to the active pool.

As shown in Fig. 10A (experiment 6), the simulation with only variable carbon input produces similar results over the deglaciation to those estimated by Huybers and Langmuir (2009) (see also (Roth and Joos, 2012)). However, within our broader perspective it is clear that, when viewed over the glacial cycle (and given our requirement that the carbon inventory be the same at the beginning and end of the cycle), a major effect of a temporally-variable carbon input is to lower the implied background input rate. As a result, the carbon inventory gradually declines from interglacial to glacial maximum, and is then rapidly increased by the volcanic pulse (Fig. 10A).

When our reconstructed deep burial variations are also included, the magnitude of the MIS 5-4 [CO₃²⁻] peak is reduced relative to the deep-burial-only case (Fig. 10B, experiment 7). When shelf burial changes are also included, the mean carbonate ion variations are altered little, but the δ¹³C changes significantly (Fig. 10C, experiment 8). In this case, the δ¹³C of the ocean during the LGM is similar to that observed, even with no change in the terrestrial biosphere, as discussed further below.

olivier cartapanis 12/10/y 12:28
Supprimé: (Lund et al., 2016; Ronge et al., 2016)
olivier cartapanis 12/10/y 12:28
Supprimé: (Huybers and Langmuir, 2009; Stott et al., 2009)
olivier cartapanis 12/10/y 12:28
Supprimé: For

olivier cartapanis 12/10/y 12:28
Supprimé: (Huybers and Langmuir, 2009; Roth and Joos, 2012)
olivier cartapanis 12/10/y 12:28
Supprimé: , nor do we consider peat and permafrost changes which could have played important additional roles (Zech, 2012).

olivier cartapanis 12/10/y 12:28
Supprimé: (Huybers and Langmuir, 2009)

olivier cartapanis 12/10/y 12:28
Supprimé: The results can generally be extended to any kind of carbon inputs, though the isotopic impacts would differ.

olivier cartapanis 12/10/y 12:28
Supprimé: ,

olivier cartapanis 12/10/y 12:28
Supprimé: Huybers and Langmuir (2009)

olivier cartapanis 12/10/y 12:28
Supprimé: . When

olivier cartapanis 12/10/y 12:28
Supprimé: ,

olivier cartapanis 12/10/y 12:28
Supprimé: , the main

olivier cartapanis 12/10/y 12:28
Supprimé: carbonate ion

olivier cartapanis 12/10/y 12:28
Supprimé: .

olivier cartapanis 12/10/y 12:28
Supprimé: (Fig. 10C).

Notably, only the experiments including variable shelf burial (Fig. 8B and C and 10C) simulate Holocene input fluxes that overlap with the observational estimates summarized in Figure 1. This is because only the variable-shelf experiments provide a sufficient reduction of carbon burial fluxes during glacial periods to allow the full cycle carbon budget to be balanced with the relatively small modern estimates of the carbon input fluxes. Although this should not be taken as proof that the changes are correct, it shows encouraging consistency with the reconstructed and conjectured evolution of the carbon inventory over time.

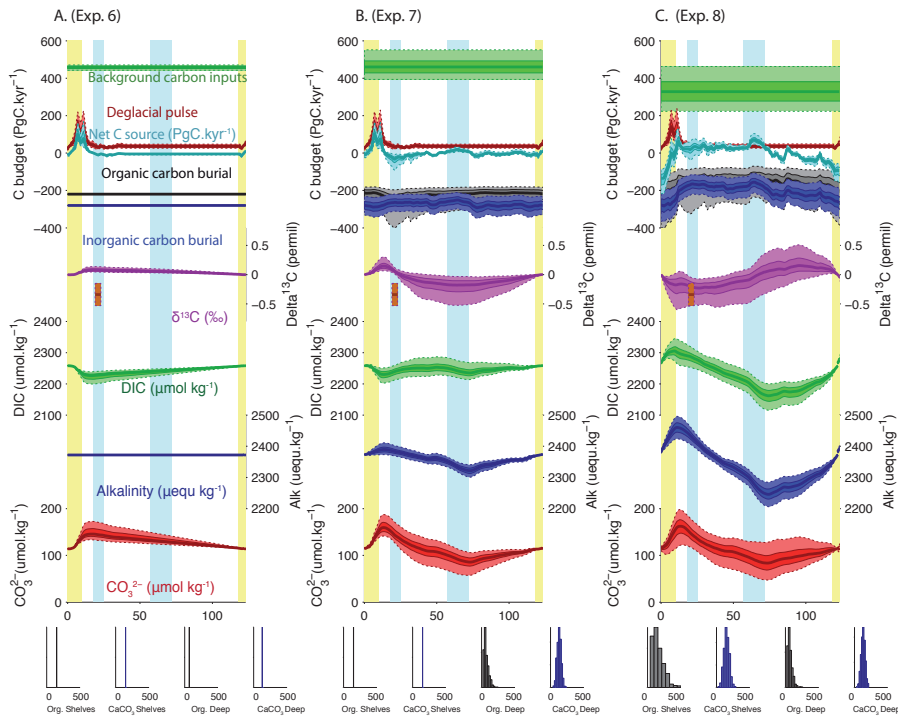


Figure 10: Simulated impacts of variable burial and outgassing fluxes on carbon and alkalinity inventories. A. Deglacial carbon input pulses; B. Variable deep sea burial plus deglacial carbon input pulses; C. All variable (deep sea burial, shelf burial and deglacial carbon input pulses). All quantities and bars are plotted as in Fig.7, with the

- olivier cartapanis 12/10/y 12:28
- ~~Supprimé: reconstructed geological~~
- olivier cartapanis 12/10/y 12:28
- ~~Supprimé: the global~~
- olivier cartapanis 12/10/y 12:28
- ~~Supprimé: cycle.~~
- olivier cartapanis 12/10/y 12:28
- ~~Supprimé: only~~
- olivier cartapanis 12/10/y 12:28
- ~~Supprimé: Deep~~
- olivier cartapanis 12/10/y 12:28
- ~~Supprimé: variables (Deep)~~
- olivier cartapanis 12/10/y 12:28
- ~~Supprimé: shelves~~
- olivier cartapanis 12/10/y 12:28
- ~~Supprimé: Figure~~

addition of time-varying carbon input pulses based on subaerial volcanic emission (Huybers and Langmuir, 2009) in red.

olivier cartapanis 12/10/y 12:28
Supprimé: (Huybers and Langmuir, 2009)

5. Discussion

5.1 Carbonate burial in the deep ocean

5 The calculations shown above are based on individual time series of CaCO₃ mass accumulation rate (MAR) from hundreds of sediment cores, using previously-reported sedimentary CaCO₃ content, sedimentation rates and dry bulk density when available (SI). Following the method of Cartapanis et al. (2016), we used these individual records to calculate, at each 1 kyr time step over the past 150 kyr, the CaCO₃ MAR in oceanographically-defined provinces as a fraction of their Holocene values. Notably, 10 these sediment cores record the actual, realized burial, not just a proxy thereof. Although the preserved record may under-represent transient deposition and dissolution events, and the available sediment cores are undoubtedly subject to multiple biases (appendix A), our broad spatial reconstruction should tend to minimize locally obfuscating factors, providing a robust reconstruction of carbonate burial, globally. Absolute changes in CaCO₃ burial were obtained by scaling reconstructed relative changes in CaCO₃ MAR to the modern MAR (Fig. 2 and A1). Uncertainty in the global burial flux was estimated using a bootstrap technique (appendix A). The resulting reconstruction is sure to contain biases, and will 15 hopefully be improved in future, however it represents the most comprehensive such undertaking to date and it is not obvious to us how the reconstruction could be improved significantly without a major expansion of the existing dataset.

20 As shown in Fig. 11, the reconstruction indicates that global mean deep-sea CaCO₃ burial was not significantly different from present-day throughout MIS 5, dropped to the lowest rates during MIS 4, and then remained below interglacial rates until the deglaciation. The spatial pattern of change, which displays the well-known deep Pacific-Atlantic antiphasing (Farrell and Prell, 1989; Hain et al., 2010), (Fig. 6), is consistent with a previously reported shoaling of well-ventilated North Atlantic Deep Water (NADW) (Boyle and Keigwin, 1982; Curry et al., 1988; Labeyrie et al., 1992; Lynch-Stieglitz et al., 2007; Guihou et al., 2011) and an enhanced soft tissue pump at the start of MIS 4 (Kohfeld and Chase, 2017). The associated increase of DIC-rich Antarctic Bottom Waters (AABW) would have decreased

olivier cartapanis 12/10/y 12:28
Supprimé: We calculated
olivier cartapanis 12/10/y 12:28
Supprimé: for
olivier cartapanis 12/10/y 12:28
Supprimé: Cartapanis et al. (2016)

olivier cartapanis 12/10/y 12:28
Supprimé:). However,
olivier cartapanis 12/10/y 12:28
Supprimé: would

olivier cartapanis 12/10/y 12:28
Supprimé: The modern flux in each province (Fig. 2 and A1) was then multiplied by the corresponding time-series of relative change, to obtain absolute changes in burial by province, and the uncertainty

olivier cartapanis 12/10/y 12:28
Supprimé: was

olivier cartapanis 12/10/y 12:28
Supprimé: very large

olivier cartapanis 12/10/y 12:28
Supprimé: Marine Isotopic Stage 5 (

olivier cartapanis 12/10/y 12:28
Supprimé:),

olivier cartapanis 12/10/y 12:28
Supprimé: (Farrell and Prell, 1989; Hain et al., 2010)

olivier cartapanis 12/10/y 12:28
Supprimé:)

olivier cartapanis 12/10/y 12:28
Supprimé: (Lynch-Stieglitz et al., 2007; Hain et al., 2010; Guihou et al., 2011)

olivier cartapanis 12/10/y 12:28
Supprimé: (Kohfeld and Chase, 2017)

[CO₃²⁻] and favoured the dissolution of CaCO₃ in deep Atlantic sediments. An increased rain of organic matter to the deep sea, or a change in the rain ratio, such as may have resulted from a postulated shift toward proportionally more siliceous phytoplankton (Brzezinski et al., 2002) or a mid-latitude temperature decrease (Dunne et al., 2012), could have accentuated the DIC increase (Boyle, 1988; Hain et al., 2010; Yu et al., 2014; Galbraith and Jaccard, 2015).

Consequently, the reduced rate of alkalinity removal in the Atlantic during the glacial would have increased the total alkalinity inventory of the ocean, which would be expected to have increased [CO₃²⁻] and consequently carbonate preservation elsewhere, a compensation long understood to have occurred in the Pacific Ocean (Farrell and Prell, 1989), and consistent with our observed Atlantic-Pacific antiphasing. However, our calculations suggest that reduced burial in the Atlantic Ocean during the last glacial was not entirely compensated in the Pacific Ocean, leaving glacial carbonate burial rates lower than for the Holocene (Fig 6 and 11). This implies that, if the alkalinity inputs from weathering had remained constant (as assumed in our mass balance calculations), excess alkalinity in the global ocean would have built up during glacials as compared to interglacials. Additionally, despite notable pulses of CaCO₃ burial in the deep ocean in some locations during the deglaciation (Jaccard et al., 2005; Dubois et al., 2010; Rickaby et al., 2010; Jaccard et al., 2013), and in contrast with expectations (Broecker and Peng, 1987; Boyle, 1988; Sigman and Haug, 2003), our reconstructions suggest that preserved deep sea CaCO₃ burial itself did not drastically peak during the last deglaciation, although post depositional dissolution cannot be excluded.

- olivier cartapanis 12/10/y 12:28
Supprimé: -
- olivier cartapanis 12/10/y 12:28
Supprimé: (Brzezinski et al., 2002)
- olivier cartapanis 12/10/y 12:28
Supprimé: (Dunne et al., 2012)
- olivier cartapanis 12/10/y 12:28
Supprimé: (Boyle, 1988; Hain et al., 2010; Yu et al., 2014; Galbraith and Jaccard, 2015)
- olivier cartapanis 12/10/y 12:28
Supprimé: The
- olivier cartapanis 12/10/y 12:28
Supprimé: flux
- olivier cartapanis 12/10/y 12:28
Supprimé: have been
- olivier cartapanis 12/10/y 12:28
Supprimé: increase
- olivier cartapanis 12/10/y 12:28
Supprimé: -
- olivier cartapanis 12/10/y 12:28
Supprimé: (Farrell and Prell, 1989)
- olivier cartapanis 12/10/y 12:28
Supprimé: -
- olivier cartapanis 12/10/y 12:28
Supprimé: must
- olivier cartapanis 12/10/y 12:28
Supprimé: Yet, this apparently did not lead to significantly higher rates of carbonate burial.
- olivier cartapanis 12/10/y 12:28
Supprimé: (Jaccard et al., 2005; Dubois et al., 2010; Rickaby et al., 2010; Jaccard et al., 2013)
- olivier cartapanis 12/10/y 12:28
Supprimé: (Broecker and Peng, 1987; Boyle, 1988; Sigman and Haug, 2003)

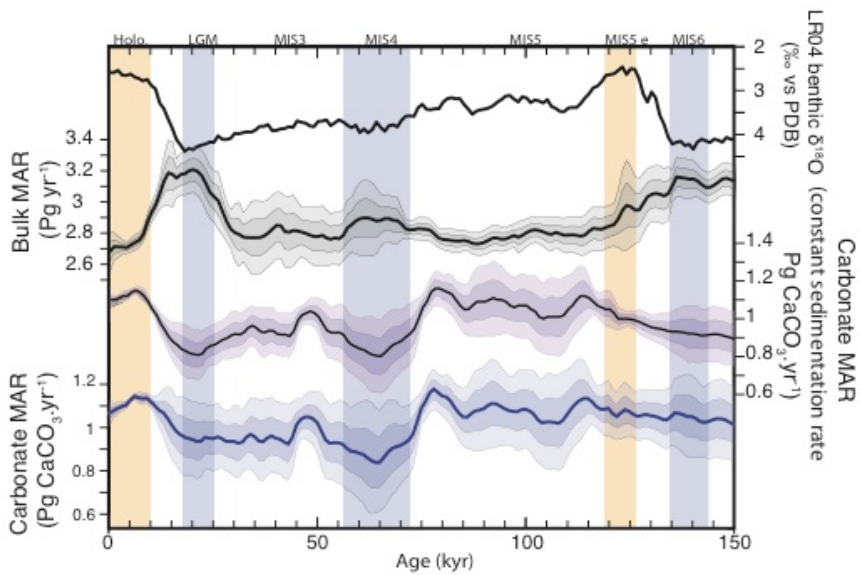


Figure 11: Global changes in deep sea carbonate burial over the last glacial cycle. Curves show, from top to bottom, a global stack of benthic foraminifera $\delta^{18}\text{O}$ (Lisiecki and Raymo, 2005) reconstructed bulk sediment mass accumulation rate (MAR); CaCO_3 MAR assuming constant sedimentation rate; CaCO_3 MAR using reconstructed sedimentation rate. The latter three curves show the mean, $\pm 1\sigma$, and $\pm 2\sigma$, see details in SI). Vertical bars highlight cold periods (MIS 2/LGM, MIS 4, and MIS 6) in blue and full interglacial conditions (Holocene and MIS 5e) in yellow.

5.2 Changes in deep sea $[\text{CO}_3^{2-}]$

The fact that deep-sea CaCO_3 burial did not increase during the glacial, despite the loss of marginal carbonate depocenters on shelves due to sea level fall, may seem counterintuitive. If the alkalinity input flux from weathering had remained constant (Gibbs and Kump, 1994), the loss of the coastal alkalinity sink should have led to a build-up of ocean alkalinity and a compensatory increase in deep-sea CaCO_3 burial (Opdyke and Walker, 1992). However, this chain of expectations does not consider possible increases in the DIC of the deep sea that could have counterbalanced the impact of an alkalinity increase on the $[\text{CO}_3^{2-}]$ there. Because the $[\text{CO}_3^{2-}]$ is dependent not only on ALK, but also on DIC (since $[\text{CO}_3^{2-}]$

- olivier cartapanis 12/10/y 12:28
Supprimé: (Lisiecki and Raymo, 2005)
- olivier cartapanis 12/10/y 12:28
Supprimé: .
- olivier cartapanis 12/10/y 12:28
Supprimé: .
- olivier cartapanis 12/10/y 12:28
Supprimé: even more
- olivier cartapanis 12/10/y 12:28
Supprimé: (Gibbs and Kump, 1994)
- olivier cartapanis 12/10/y 12:28
Supprimé: (Opdyke and Walker, 1992)
- olivier cartapanis 12/10/y 12:28
Supprimé: .
- olivier cartapanis 12/10/y 12:28
Supprimé: .
- olivier cartapanis 12/10/y 12:28
Supprimé: =

≈ALK – DIC), large changes in DIC will cause $[CO_3^{2-}]$ to change in addition to changes caused by variations in ALK. In fact, it seems likely that deep sea DIC changes would have arisen both from enhanced carbon sequestration by saturation, soft tissue and disequilibrium carbon storage (Eggleston and Galbraith, 2017; Ödalen et al., 2018), and changes in the active carbon inventory (Yu et al., 2013).

olivier cartapanis 12/10/y 12:28

Supprimé: any compensation... CO_3^{2-} to d... [1]

As mentioned above, our mass balance calculations resolve only changes in the total inventories due to geological inputs and outputs, and do not include redistributions of carbon. As a result, they infer changes in $[CO_3^{2-}]$ that are unrealistically large, and disagree with the relatively small changes in $[CO_3^{2-}]$ that have been reconstructed from foraminiferal proxies (Yu et al., 2013; Yu et al., 2014). We suggest that the main reason for this discrepancy is that large increases of soft tissue and disequilibrium DIC occurred in the deep sea during glacial periods. In support of this, simulations with complex Earth system models driven with glacial boundary conditions have shown increases of both soft tissue and disequilibrium DIC of the same order as the $[CO_3^{2-}]$ excursions calculated here (order 40 μ M each, (Eggleston and Galbraith, 2017)), which would have been further supplemented by the greater solubility of CO_2 in cold water. Thus, the discrepancy between inferred and observed $[CO_3^{2-}]$ changes across the last glacial cycle can likely be resolved with the long-suspected changes in the glacial storage of carbon within the deep ocean.

olivier cartapanis 12/10/y 12:28

Supprimé: all additional changes in deep s... [2]

5.3. Important uncertainties in shelf burial

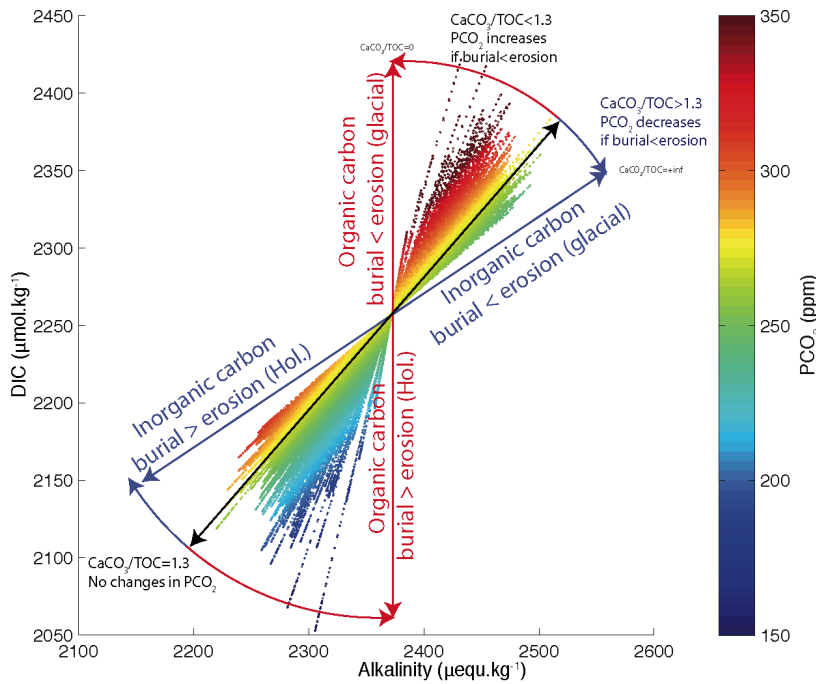
As shown in Figure 1, modern estimates suggest that approximately half of the global $CaCO_3$ burial, and most of the C_{org} burial, occurs on continental margins. Unfortunately we do not have direct records of changes in shelf burial over time, so have instead evaluated the likely impact of global shelf burial changes by considering a simple but illustrative scenario, assuming linear relation between shelf surface variation and burial (Fig. 9).

However, organic and inorganic carbon burials have opposing effects on $[CO_3^{2-}]$, with the buildup of DIC during low sea level counteracting the buildup of alkalinity, so that the net effect depends on the $CaCO_3/C_{org}$ ratio of net burial. For a $CaCO_3/C_{org}$ ratio of approximately 1.3 (mol/mol), the opposing effects of DIC and alkalinity perfectly compensate, leading to muted changes of $[CO_3^{2-}]$ and atmospheric CO_2 , even with large burial and inventory changes. This sensitivity to the shelf burial ratio

olivier cartapanis 12/10/y 12:28

Supprimé: , with the buildup of DIC d... [3]

is illustrated in Figure 12. Given that estimates of the shelf burial ratio range widely and may have changed significantly over time, it does not appear possible to definitively conclude whether the net effect was to raise or lower CO₂ during glacial periods without improved observational constraints.



5 Figure 12: Atmospheric PCO₂, DIC and alkalinity in the deep ocean for the shelf scenarios (Fig. 8 B). Each experiment appears as a straight line of dots and each dot corresponds to a 1 kyr timestep. The tilt of the individual scenario lines depends on the CaCO₃/C_{org} burial ratio in shelf sediments. Blue and red lines correspond to 100 % carbonate and 100 % C_{org} burial respectively.

5.4 Implications of geological fluxes for whole ocean δ¹³C and terrestrial biosphere

10 | Because the changes in burial on shelves would have changed the global C_{org}:CaCO₃ burial, they must have left a signature in δ¹³C of the active carbon inventory, with a strong likelihood for lower δ¹³C during MIS 3-2. This isotopic effect arises from the fact that C_{org} burial (which removes carbon with

- olivier cartapanis 12/10/y 12:28
Supprimé: Yet even if climatic impact of burial
- olivier cartapanis 12/10/y 12:28
Supprimé: were muted, it
- olivier cartapanis 12/10/y 12:28
Supprimé: significant
- olivier cartapanis 12/10/y 12:28
Supprimé: δ¹³C

very low $\delta^{13}\text{C}$) is strongly focused on continental margins, compared to carbonate burial, which is more evenly distributed between margins and the deep sea. Higher C_{org} burial in the deep sea during glacial maxima (Cartapanis et al., 2016) was insufficient to compensate for reduced burial on shelves. The smaller proportion of low- $\delta^{13}\text{C}_{\text{org}}$ buried during periods of low sea level would have produced a downward drift of the $\delta^{13}\text{C}$ of the active carbon inventory (Wallmann et al., 2016) while enhanced volcanic activity could have raised $\delta^{13}\text{C}$ during deglaciation (Huybers and Langmuir, 2009; Roth and Joos, 2012).

This result, previously identified by Wallmann (2016), is important given the frequently-applied technique of calculating changes in the terrestrial biosphere using reconstructed changes in whole-ocean $\delta^{13}\text{C}$ and assuming a constant inventory (Shackleton, 1977; Bird et al., 1996; Ciais et al., 2012; Menviel et al., 2012; Peterson et al., 2014; Schmittner and Somes, 2016). The magnitude of ocean $\delta^{13}\text{C}$ changes that result from changes in shelf burial is highly uncertain, given the large range in estimated modern burial fluxes, but could potentially exceed the observed glacial-interglacial change of 0.32 ‰ (Wallmann et al., 2016). Unfortunately, this invalidates the use of $\delta^{13}\text{C}$ as a direct monitor of changes in the terrestrial biosphere, and requires that new types of constraints on changes in terrestrial biosphere be developed.

Although the uncertainties are large, our mass balance calculations suggest that the terrestrial biosphere during the LGM was most likely larger than implied by the constant-inventory assumption. We note that using the highest modern C_{org} burial flux (on the order of 500 PgC ky^{-1}) would imply a change of the $\delta^{13}\text{C}$ of the system on the order of 1 ‰ (Fig. 8 and 10), which is higher than reconstructed variability for $\delta^{13}\text{C}$ in the deep ocean, in which most of the carbon resides (Oliver et al., 2009; Peterson et al., 2014). This suggests that either the highest estimates for modern burial over shelves (above 500 PgC ky^{-1}) are inconsistent with the assumption of a 60 % decrease of the shelf burial during peak glacial, or that the terrestrial biosphere actually contained more biomass during the glacial than today, opposite the standard assumption. Although this is highly uncertain, such a change could have occurred through an expansion of peatlands and permafrost carbon during the glacial (Ciais et al., 2012). An expansion of terrestrial carbon storage in a colder state would perhaps be more consistent with the

olivier cartapanis 12/10/y 12:28
Supprimé: (Cartapanis et al., 2016)

olivier cartapanis 12/10/y 12:28
Supprimé: (Wallmann et al., 2016)

olivier cartapanis 12/10/y 12:28
Supprimé: (Huybers and Langmuir, 2009; Roth and Joos, 2012)

olivier cartapanis 12/10/y 12:28
Supprimé:)

olivier cartapanis 12/10/y 12:28
Supprimé: (Shackleton, 1977;

olivier cartapanis 12/10/y 12:28
Supprimé: ; Ciais et al., 2012; Menviel et al., 2012; Peterson et al., 2014; Schmittner and Somes, 2016)

olivier cartapanis 12/10/y 12:28
Supprimé: can

olivier cartapanis 12/10/y 12:28
Supprimé: (Wallmann et al., 2016)

olivier cartapanis 12/10/y 12:28
Supprimé: (Oliver et al., 2009; Peterson et al., 2014)

olivier cartapanis 12/10/y 12:28
Supprimé: (Ciais et al., 2012)

general expectation for carbon release from peatland and permafrost under anthropogenic warming (Ipcc, 2014), though it should be viewed as a highly speculative possibility.

olivier cartapanis 12/10/y 12:28
Supprimé: (Ipcc, 2014)

5.5 Non-steady-state Holocene carbon cycle

Our results show that the removal rate of carbon from the active pool was higher during the Holocene (prior to anthropogenic carbon release) compared to the glacial (Fig 10C). This result, which emerges primarily from the fact that CaCO_3 burial, both on the shelves and in the deep sea, was faster than it had been during the glacial, indicates that the active carbon inventory was shrinking prior to anthropogenic inputs. The estimates suggest that this imbalance was mostly attributable to the shelf burial, though at a rate that was very slow compared to subsequent fossil fuel emissions ($\sim 100 \text{ PgC kyr}^{-1}$ net loss vs. present-day emissions of $\sim 10,000 \text{ PgC kyr}^{-1}$).

olivier cartapanis 12/10/y 12:28
Supprimé: both shelf

olivier cartapanis 12/10/y 12:28
Supprimé: carbonate burial were reduced

olivier cartapanis 12/10/y 12:28
Supprimé: -200

In support of this large glacial-interglacial variation in carbon burial rates, we find that only mass-balance calculations that include reduced burial during the glacial infer background inputs of carbon that are consistent with the $<400 \text{ PgC kyr}^{-1}$ geological inputs estimated in the literature (Fig. 1). Essentially, without slower burial during the glacial, modern-day burial estimates would require larger carbon input fluxes than supported by observational estimates in order to balance the long-term inventory. Although this consistency does not amount to proof, it provides encouraging support for the emergent picture of a geological carbon cycle that is dynamic on the timescale of glacial cycles.

6. Conclusions

We have made use of an extensive, quality-controlled database for marine sedimentary proxies, to present the first global quantitative reconstruction of carbon and alkalinity burial in deep-sea sediments over the last glacial cycle. Our reconstructions of carbonate and C_{org} burial in the deep ocean provide the first dynamic estimate of these major components of carbon removal over a full glacial cycle.

Our reconstruction indicates that CaCO_3 removal fluxes in deep-sea sediment remained indistinguishable from the Holocene through MIS5, dropped to their lowest value during MIS4 (78 % \pm 9 % of Holocene value), and remained lower than the Holocene during MIS2 (85 % \pm 7 %). The reduction of carbonate burial in the Atlantic Ocean during the glacial, was not entirely compensated by

olivier cartapanis 12/10/y 12:28
Supprimé: due to

increased burial in the Pacific Ocean, implying the build-up of alkalinity in the glacial ocean ([given the assumption that the alkalinity supply](#) from weathering remained constant). We suggest that this weak compensation of burial was [primarily](#) related to the parallel accumulation of DIC in the deep sea, which counteracted the alkalinity build-up to prevent high $[\text{CO}_3^{2-}]$. Moreover, the reduction of shelf burial during sea level lowstands would have unquestionably grown the active carbon and [oceanic](#) alkalinity inventories, followed by reduction of the inventories when sea level rose and rapid [shelf](#) burial resumed. The consequent changes in the global ratio of $C_{\text{org}}:\text{CaCO}_3$ burial would have produced significant changes in the $\delta^{13}\text{C}$ of the active carbon pool, [invalidating the simple](#) use of whole ocean $\delta^{13}\text{C}$ to reconstruct changes in the terrestrial biosphere.

olivier cartapanis 12/10/y 12:28

Supprimé: , assuming input fluxes

olivier cartapanis 12/10/y 12:28

Supprimé: .

olivier cartapanis 12/10/y 12:28

Supprimé: .

olivier cartapanis 12/10/y 12:28

Supprimé: /carbonate

olivier cartapanis 12/10/y 12:28

Supprimé: raising important uncertainties in

The emergent picture of these results suggests that geological carbon fluxes are more dynamic than frequently assumed, and that this includes not just the input fluxes but also the output fluxes through marine burial. As a result, these fluxes need to be considered as an integral part of glacial-interglacial cycles.

7. Acknowledgements

O.C. and S.L.J. were funded by the Swiss National Science Foundation (grants PP00P2-144811 and PP00P2_172915). O.C. and D.B. were funded by the Canadian Institute for Advanced Research (CIFAR). E.D.G. acknowledges financial support from the Spanish Ministry of Economy and Competitiveness, through the María de Maeztu Programme for Centres/Units of Excellence in R&D (MDM-2015-0552). [The author would like to thank editor L. Skinner, anonymous referees, and A. Schmittner for their valuable comments and suggestions that greatly improved the quality of the paper.](#)

8. Appendices

A: Uncertainties in global bulk sediment and carbonate burial in the deep ocean over the past 150 kyr

Our reconstructions are affected by multiple sources of uncertainty. We identify four different types of uncertainty in section A, and indicate whether each error is expected to be independent of the others. We then estimate the contributions from the most important sources of uncertainty using bootstrap analyses (see section B).

A.1 Uncertainty in the sedimentary records

First, there is some uncertainty associated with the quantification of past changes in the CaCO_3 accumulation rate in each downcore record. This can be further subdivided into three uncertainties:

a: Measurement of CaCO_3 concentration. Analytical error order 3%. Independent.

b: Linear sediment accumulation rate. Potentially large over periods less than age control point spacing, but small (a few percent) when integrated over the span of multiple age control points. Independent.

c: Sediment density. Based on the literature, and using our database, we attempted to understand the relationships between depth in the sediment, sediment composition and sediment density. The density of the sediment is partly dependent on the carbonate content, but carbonate content influence on the density depends also on the density of the other components of the sediment (Reghellin et al., 2013), so that it was not possible to accurately infer density variations from the changes in the carbonate content alone. Attempts to estimate density from other sedimentary variables based on existing calibrations (Dadey et al., 1992; Weber et al., 1997; Fortin et al., 2013) were not successful. Unassessed changes of sediment density are therefore likely to introduce uncertainty for many records, although the largest and most systematic change is likely to be the long-term increasing trend caused by compaction, which is addressed by the long-term trend correction. This source of uncertainties is mostly independent, though it could possibly correlates with CaCO_3 content.

We assume that these errors are small (probably less than 10% relative error) and un-correlated with the other, larger sources of error given below, and therefore do not formally assess them.

olivier cartapanis 12/10/y 12:28

Supprimé: (Reghellin et al., 2013)

olivier cartapanis 12/10/y 12:28

Supprimé: (Dadey et al., 1992; Weber et al., 1997; Fortin et al., 2013)

A.2 Representativity of local regions by sedimentary records

Each downcore record may be biased [relatively](#) to its [surrounding environment](#). Many paleoceanographic cores are purposefully collected from rapidly-accumulating sites, in order to maximize temporal resolution. This intentional collection bias towards high sedimentation rate sites could affect the representativity of:

a: CaCO₃ concentration, due to differential transport and/or preservation of CaCO₃. Magnitude unknown, though the fact that paleoceanographers very frequently use high accumulation rate sites in order to infer regional changes in sediment composition implies that it is generally thought to be minor. Possibly correlated with 2b, through differential transport of CaCO₃ vs. other sediment fractions.

b: Mass accumulation rate, if the accumulation rate in the cored location varies in a way that is not proportional to variation of sedimentation rates in the local region. Magnitude unknown, but presumably large for some very rapidly-accumulating ‘drift’ sites where sediment focusing changes over time. These changes will cancel each other out to some degree if multiple cores in the same region are considered, since a relative decrease in sedimentation rate at one site must be compensated by a relative increase elsewhere, although there is no guarantee that the available sampling density is sufficient to achieve this. Possibly correlated with 2a.

The uncertain representativity at the local scale (including both 2a and 2b) is addressed by bootstrap resampling of the available sedimentary records (see A4 and fig. A2).

A.3 Province-maps

In order to account for spatial coherence in the geographic and bathymetric variability in global carbonate burial, we subdivided the world ocean into contiguous regions we refer to ‘provinces’. As any subdivision will introduce inherent bias, we used a total of 20 different province-maps, allowing us to analyze the dependency of our results on the province-map used (Fig. A1). The first two maps simply subdivide the world ocean into major ocean basins (map 1), as well as a finer subdivision into seas based on the International Hydrographic Organization [\(1953\)](#) definition (map 3). Because carbonate export from the ocean surface largely depends on the biogeochemical conditions at the surface, we also used the annual climatology of the ocean biogeochemical provinces based on [\(Longhurst, 1995\)](#),

olivier cartapanis 12/10/y 12:28

Supprimé: relative

olivier cartapanis 12/10/y 12:28

Supprimé: local

olivier cartapanis 12/10/y 12:28

Supprimé: (1953)

olivier cartapanis 12/10/y 12:28

Supprimé: (Longhurst, 1995)

recently updated by [Reygondeau et al. \(2013\)](#) (map 4). This map distinguishes 56 coherent provinces from a biogeochemical perspective. We simplified and adapted this map to match our sample distribution and came up with 2 sets of maps subdivided in 15 and 30 provinces, respectively (map 5 and 7). Water depth is also important for carbonate, given that carbonate solubility varies as a direct result of pressure. In order to resolve the possible influence of depth on our reconstruction, we separated the two modified Longhurst maps into a shallow and deep component, following the 1,500 m isobaths (map 6 and 8). Furthermore, given the potential importance of changes in carbonate preservation due to changes of water column chemistry, we subdivided the ocean according to the carbonate saturation state at ocean bottom ($\Omega_{\text{cal}} < 0.8$; $0.8 < \Omega_{\text{cal}} < 1.2$; $\Omega_{\text{cal}} > 1.2$) ([Dunne et al., 2012](#)) (map 2). Finally, in order to account for the potential heterogeneity close to coasts, we subdivided the ocean map, the sea map, and the two simplified Longhurst maps into coastal and open ocean provinces, using three different thresholds of distance from the closest shoreline: 500 km, 1000 km and 1500 km (maps 9 to 20; see details of the results for individual provinces maps in figure A2, A4 and A5).

olivier cartapanis 12/10/y 12:28
Supprimé: Reygondeau et al. (2013)

olivier cartapanis 12/10/y 12:28
Supprimé: (Dunne et al., 2012)

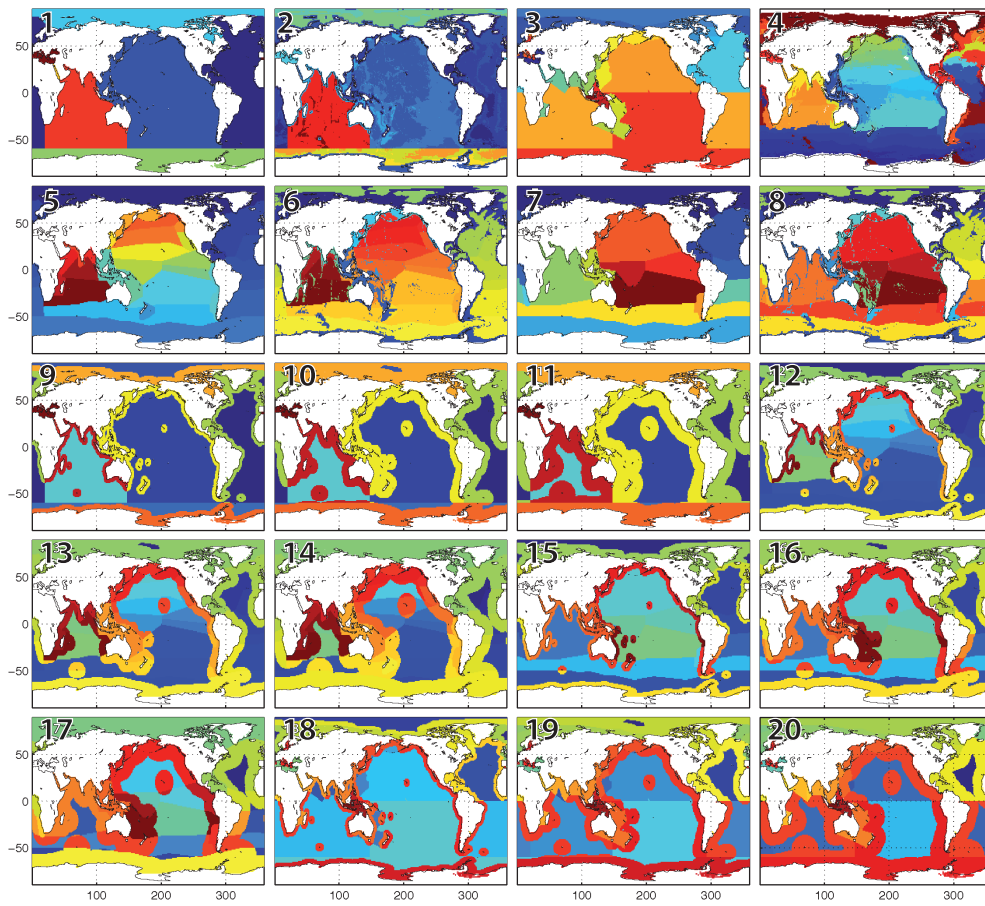


Figure A1: Province maps used in this study, see details in text. 1. Ocean; 2. Carbonate saturation; 3. Seas; 4. Longhurst; 5. Simplified Longhurst 1 (S.L.1). 6. S.L.1+depth; 7. S.L.2; 8. SL2+depth; 9. Ocean 500 km; 10. Ocean 1000 km; 11. Ocean 1500 km; 12. S.L.1 500 km; 13. S.L.1 1000 km; 14. S.L.1 1500 km; 15. S.L.2 500 km; 16. S.L.2 1000 km; 17. S.L.2 1500 km; 18. Seas 500 km; 19. Seas 1000 km; 20. Seas 1500 km.

A.4 Heterogeneity within provinces

As discussed above, sediment cores represent local regions within provinces. Temporal trends in the burial flux of CaCO_3 within any given local region will differ, to some degree, from the trend of the larger province in which the region is located. The larger the province, the more severe this problem is likely to be. This heterogeneity is alleviated, to some degree, by averaging multiple records within a given province (Fig A1).

It is important to consider that there may be a systematic bias, given that cores tend to be located in the most rapidly-accumulating regions of provinces, including continental slopes. However, although this would lead to incorrect inferences regarding changes in CaCO_3 MAR in the slowly-accumulating regions of the province, it is less of a problem for estimating the total CaCO_3 MAR within the province, given that the rapidly-accumulating regions are more important for the overall burial flux, and therefore it is most important that they be well-constrained.

The heterogeneity uncertainty is independent of the others, and is addressed by the bootstrap resampling across multiple configurations of the province maps (Section B).

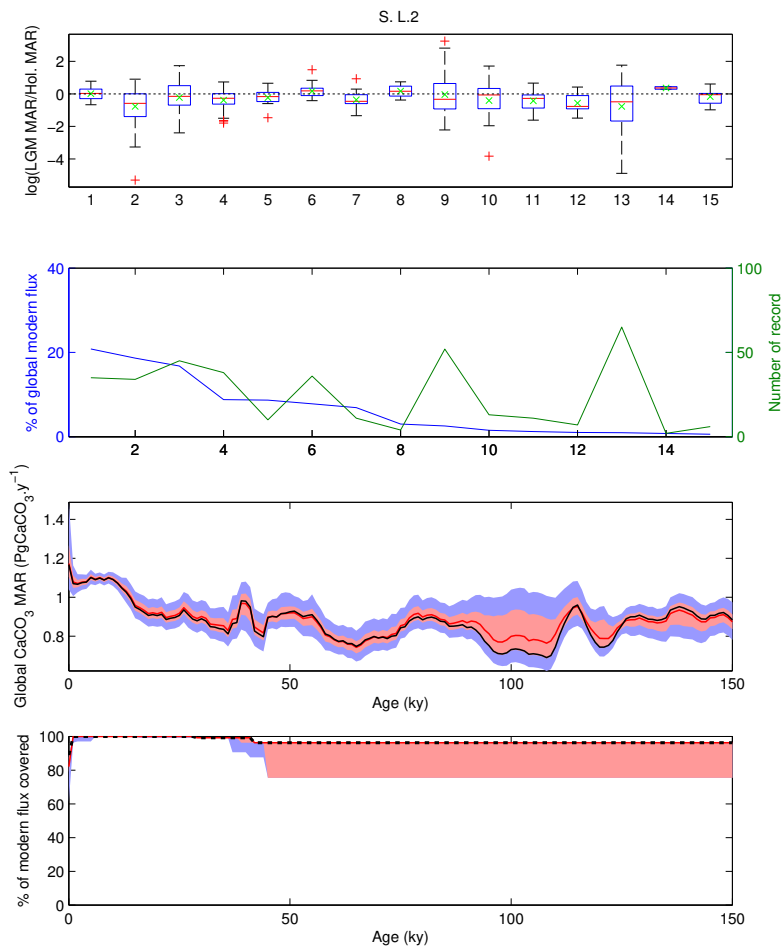


Figure A2: Illustrative summary figure for the province-map S.L.2. Top panel shows relative changes in downcore CaCO_3 MAR ($\ln(\text{LGM}/\text{Holocene})$) in each province. Box plot shows 0 % (bottom whiskers), 25 %, 50 % (median; red lines), 75 %, and 100 % (top whiskers) quantiles, as well as mean (green cross) and outliers (red cross), for each province. The second panel shows the contribution by province to modern CaCO_3 MAR, in descending order (blue curve) and the number of records used in each province (green). Panel 3 shows the history of absolute changes in CaCO_3 MAR for the last 150kyr, based on the bootstrap experiment (5th, 25th, 75th and 95th percentile ranges are

shaded, and the bootstrap mean plotted in red) compared to the calculation using all available records (black). Panel 4 shows the temporal variations in coverage, based on the bootstrap experiment. 5th, 25th, 75th and 95th percentiles are shaded, and the bootstrap mean is plotted in red. Black dotted line corresponds to the coverage variations using all available records.

5 A.5 Uncertainty in map reconstructions

Inaccuracy in the spatial distribution of CaCO₃ burial in the modern map reconstruction will incorrectly weight the relative changes in different provinces in calculating the global burial flux. This uncertainty is independent of the others.

We discussed this aspect above (Fig. A2 and Table 1) and include it in the bootstrap below by repeating the calculations with the two available maps. Given that the two maps are constrained with the same data, this is likely an underestimate of the true uncertainty. In the future, this could be revisited when new data-constrained maps of CaCO₃ burial flux become available. Nonetheless, our results indicate very similar temporal patterns for the two modern maps used, suggesting that our reconstruction is relatively insensitive to this uncertainty (Table 1). Given that this uncertainty is independent of the others, it is not likely to be highly significant for the final outcome.

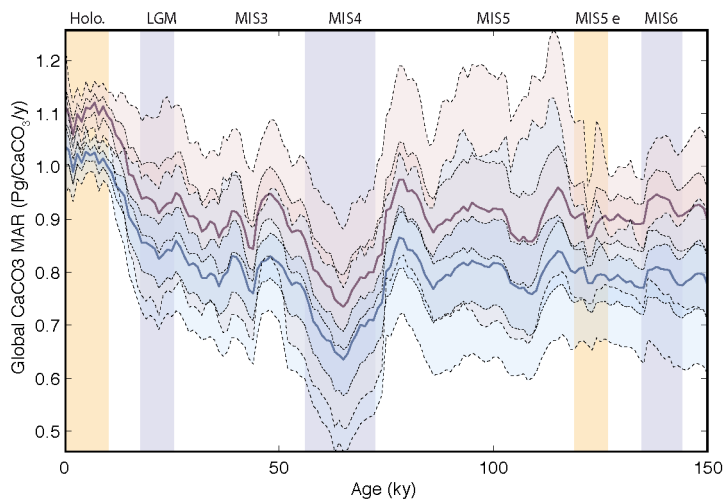


Figure A3: Global carbonate burial using two different modern MAR maps. Lines and shaded areas show the reconstructed time histories of global carbonate burial using a modern carbonate MAR map based on sedimentary data (red) and on a metamodel tuned to fit the sedimentary data (blue). See also Fig. 2. The distribution shown by dotted lines and shaded areas (5 th, 25 th, 50 th, 75th and 95th percentiles), was calculated from a bootstrap experiment performed on the 20 province maps used in the study.

B. Quantifying the uncertainties

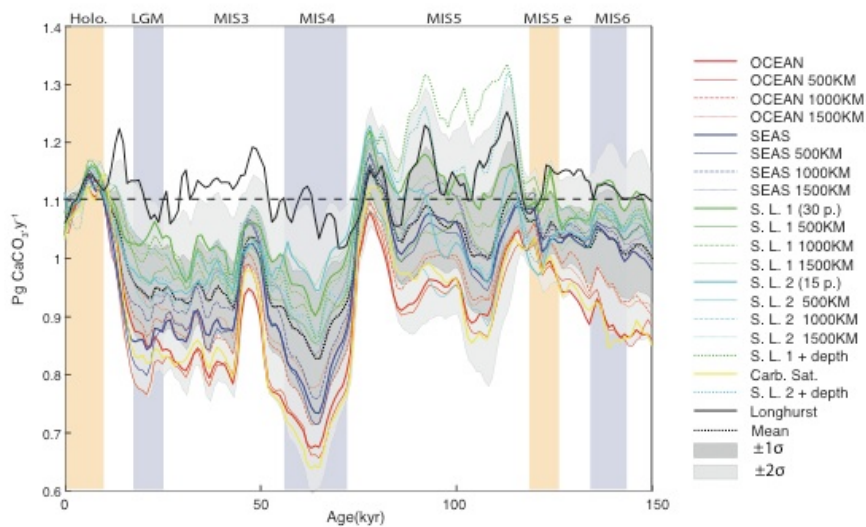
In order to quantitatively estimate the impact of uncertainties itemized above on our reconstruction, we performed a series of bootstrap experiments and the 20 province map set. Each experiment consisted of repeating the entire calculation for each province-map by randomly selecting n records out of the n available records in each province, allowing a single record to be selected multiple times. Each record was expressed as the relative deviation over time from the mean Holocene value. The geometric mean of the new set of n time series was subsequently multiplied by modern MAR in the province, at each time step. For any time period in which no downcore records were available within a province, the MAR for that province was set at the modern value. The coverage was calculated at each time step, as the sum of the modern MAR for provinces where downcore records were available, divided by the global modern MAR. This operation was repeated 10000 times for each province-map.

We also tested the influence of the modern MAR map by using the two modern MAR maps shown in Fig. 2. These two maps have different absolute modern CaCO_3 MAR and also distribute the modern MAR differently among provinces (Table1), allowing a test of the robustness of our method to different modern MAR distributions (Fig. A3). The relative changes in our reconstructed global carbonate burial over time do not depend on the choice of maps, as shown in Fig. A3.

The results of the bootstrap experiment for each province-map, using modern map 1, are shown in Fig. A3, and a summary of the results is displayed in Fig. A3. It is important to keep in mind that the coverage calculated here can only be equal or lower than the normal calculation using all records, due to bootstrap resampling (Fig. A2, panel 4).

The province-map scenarios that result in the lowest amplitude during MIS2 and MIS4 are also the ones that have the lowest coverage, as a higher proportion of the total burial is set as constant for these maps (see Table 2, Fig. A5). This effect also explains the lower amplitude affecting MIS6-MIS5 transition as

compared to MIS2-MIS1. Using the mean and the standard deviation of the 20 province maps scenarios, which do not cover exactly the same surfaces, tends to decrease the variability of the mean curve while increasing the standard deviation such as the final distribution of the burial is rather conservative.



5 Figure A4: Detail of Fig. 6, panel f, corresponding to the final reconstruction.

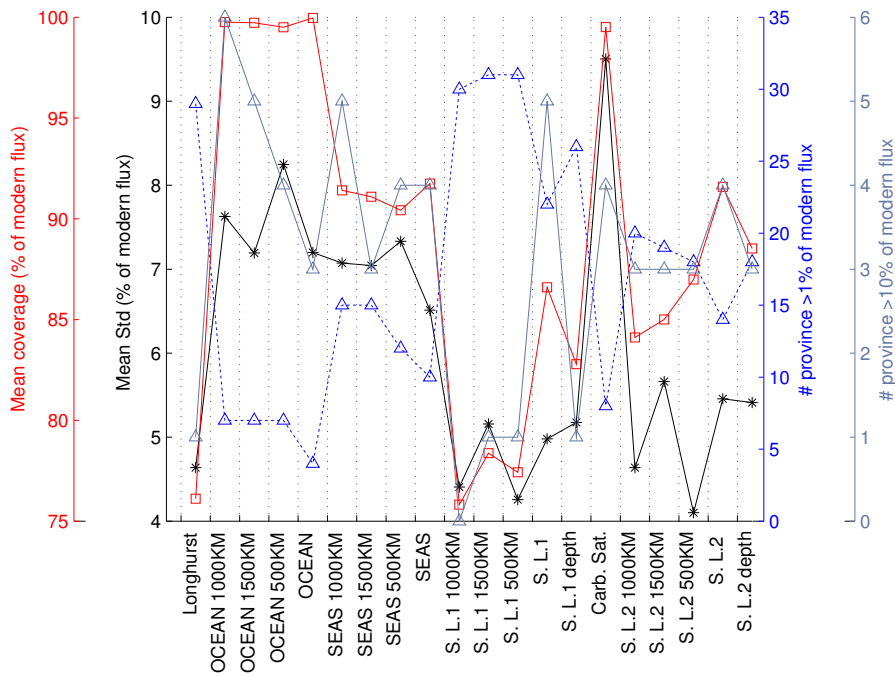


Figure A5: Summary of province-map experiments. Black symbols show the mean of the standard deviation at each time step of the bootstrap experiment, for each province-map. Red symbols show the mean coverage for the bootstrap experiment, for each province-map. The number of provinces accounting for more than 1% and 10% of the modern flux for each province-map are shown by the blue and grey symbols, respectively.

Although we could use these bootstrap reconstructions to provide a mean and standard deviation of the forcings, we instead use the timeseries using all available records, in order to make as complete a use as possible of the available data. Given that the individual province-map scenarios are distributed quite symmetrically around the mean scenario (Fig. A4 and A6), we used the relative changes in the mean reconstruction as shown in Fig. A6 panel A, to which we add, at each time steps, a normally distributed fraction of the relative standard deviations calculated from the 20 province-map scenarios. Note that the mean standard deviation used here (equal to the mean of the mean standard deviation calculated from

the 20 province maps scenarios at each time step, equivalent to approximately 7 % of the modern global burial flux) is in the higher range of the mean standard deviation calculated from the bootstrap experiment for each province map (Fig. A5). Thus, although we do not use the bootstrap results here directly, they are consistent with the uncertainty range applied. The timeseries are prescribed as 5 variations relative to the modern global burial flux (Fig A6, panel B and C).

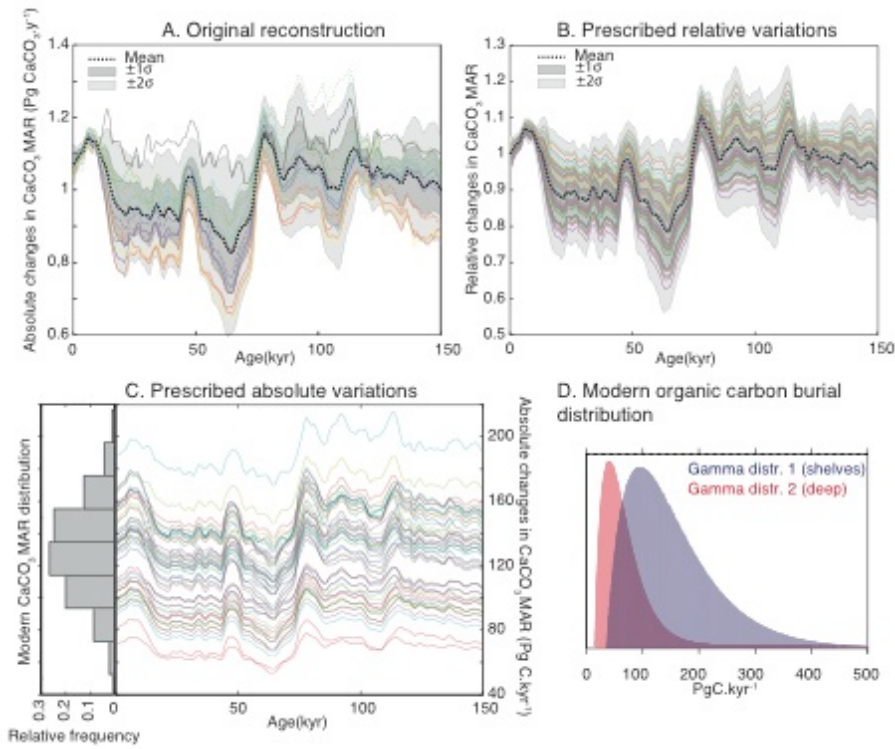


Figure A6: Construction of time series for scenarios. A. Original reconstruction from the 20 province maps scenarios. B. Prescribed relative variations derived from the distribution in A. C. Prescribed absolute variations derived from the product of B and the assigned modern burial distribution (see details in Table 3). D. Prescribed modern C_{org}

burial distribution over shelf (gamma distr. 1, mean=160; median=140; mode=100; std=80) and permanently submerged deep-sea environments (gamma distr. 2, mean =70; median =60; mode =40; std =40).

9. References

- Amante, C., and Eakins, B. W.: ETOPO1 1 arc-minute global relief model: procedures, data sources and analysis, US Department of Commerce, National Oceanic and Atmospheric Administration, National Environmental Satellite, Data, and Information Service, National Geophysical Data Center, Marine Geology and Geophysics Division Colorado, 2009.
- 5 Amiotte Suchet, P., Probst, J.-L., and Ludwig, W.: Worldwide distribution of continental rock lithology: Implications for the atmospheric/soil CO₂ uptake by continental weathering and alkalinity river transport to the oceans, *Global Biogeochem. Cycles*, 17, n/a-n/a, 10.1029/2002GB001891, 2003.
- 10 Archer, D., Winguth, A., Lea, D., and Mahowald, N.: What caused the glacial/interglacial atmospheric pCO₂ cycles?, *Rev. Geophys.*, 38, 159-189, 10.1029/1999rg000066, 2000.
- Bauer, J. E., Cai, W.-J., Raymond, P. A., Bianchi, T. S., Hopkinson, C. S., and Regnier, P. A. G.: The changing carbon cycle of the coastal ocean, *Nature*, 504, 61-70, 10.1038/nature12857, 2013.
- 15 Berelson, W. M., Balch, W. M., Najjar, R., Feely, R. A., Sabine, C., and Lee, K.: Relating estimates of CaCO₃ production, export, and dissolution in the water column to measurements of CaCO₃ rain into sediment traps and dissolution on the sea floor: A revised global carbonate budget, *Global Biogeochem. Cycles*, 21, 10.1029/2006gb002803, 2007.
- Berger, W. H.: Increase of carbon dioxide in the atmosphere during deglaciation: the coral reef hypothesis, *Naturwissenschaften*, 69, 87-88, 10.1007/BF00441228, 1982.
- 20 Berner, R. A.: The Long Term Stability of the Earth System Biogeochemical cycles of carbon and sulfur and their effect on atmospheric oxygen over phanerozoic time, *Palaeogeogr., Palaeoclimatol., Palaeoecol.*, 75, 97-122, [http://dx.doi.org/10.1016/0031-0182\(89\)90186-7](http://dx.doi.org/10.1016/0031-0182(89)90186-7), 1989.
- Bird, M. I., Llyod, J., and Farquhar, G. D.: Terrestrial carbon-storage from the Last Glacial Maximum to the present, *Chemosphere*, 33, 1675-1685, 1996.
- 25 Boyle, E. A., and Keigwin, L. D.: Deep circulation of the North Atlantic over the last 200,000 years: Geochemical evidence, *Science*, 218, 784-787, 1982.
- Boyle, E. A.: Vertical oceanic nutrient fractionation and glacial/interglacial CO₂ cycles, *Nature*, 331, 55-56, 1988.
- 30 Broecker, W. S.: Ocean chemistry during glacial time, *Geochim. Cosmochim. Acta*, 46, 1689-1705, [http://dx.doi.org/10.1016/0016-7037\(82\)90110-7](http://dx.doi.org/10.1016/0016-7037(82)90110-7), 1982.
- Broecker, W. S., and Peng, T. H.: The oceanic salt pump: Does it contribute to the glacial-interglacial difference in atmospheric CO₂ content?, *Global Biogeochem. Cycles*, 1, 251-259, 10.1029/GB001i003p00251, 1987.
- 35 Brzezinski, M. A., Pride, C. J., Franck, V. M., Sigman, D. M., Sarmiento, J. L., Matsumoto, K., Gruber, N., Rau, G. H., and Coale, K. H.: A switch from Si(OH)₄ to NO₃- depletion in the glacial Southern Ocean, *Geophys. Res. Lett.*, 29, 1564, 10.1029/2001gl014349, 2002.
- Burdige, D. J.: Burial of terrestrial organic matter in marine sediments: A re-assessment, *Global Biogeochem. Cycles*, 19, n/a-n/a, 10.1029/2004GB002368, 2005.
- Burdige, D. J.: Preservation of Organic Matter in Marine Sediments: Controls, Mechanisms, and an Imbalance in Sediment Organic Carbon Budgets?, *Chem. Rev.*, 107, 467-485, 10.1021/cr050347q, 2007.

- Burton, M. R., Sawyer, G. M., and Granieri, D.: Deep carbon emissions from volcanoes, *Rev. Mineral. Geochem.*, 75, 323-354, 2013.
- Cartapanis, O., Bianchi, D., Jaccard, S. L., and Galbraith, E. D.: Global pulses of organic carbon burial in deep-sea sediments during glacial maxima, *Nat Commun.*, 7, 10.1038/ncomms10796, 2016.
- 5 Cartigny, P., Jendrzewski, N., Pineau, F., Petit, E., and Javoy, M.: Volatile (C, N, Ar) variability in MORB and the respective roles of mantle source heterogeneity and degassing: the case of the Southwest Indian Ridge, *Earth. Planet. Sci. Lett.*, 194, 241-257, [http://dx.doi.org/10.1016/S0012-821X\(01\)00540-4](http://dx.doi.org/10.1016/S0012-821X(01)00540-4), 2001.
- Catubig, N. R., Archer, D. E., Francois, R., deMenocal, P., Howard, W., and Yu, E. F.: Global deep-sea burial rate of calcium carbonate during the last glacial maximum, *Paleoceanography*, 13, 298-310, 10.1029/98pa00609, 1998.
- 10 Chavrit, D., Humler, E., and Grasset, O.: Mapping modern CO₂ fluxes and mantle carbon content all along the mid-ocean ridge system, *Earth. Planet. Sci. Lett.*, 387, 229-239, <http://dx.doi.org/10.1016/j.epsl.2013.11.036>, 2014.
- 15 Ciais, P., Tagliabue, A., Cuntz, M., Bopp, L., Scholze, M., Hoffmann, G., Lourantou, A., Harrison, S. P., Prentice, I. C., Kelley, D. I., Koven, C., and Piao, S. L.: Large inert carbon pool in the terrestrial biosphere during the Last Glacial Maximum, *Nature Geosci.*, 5, 74-79, <http://www.nature.com/ngeo/journal/v5/n1/abs/ngeo1324.html-supplementary-information>, 2012.
- Coltice, N., Simon, L., and Lécuyer, C.: Carbon isotope cycle and mantle structure, *Geophys. Res. Lett.*, 31, n/a-n/a, 10.1029/2003GL018873, 2004.
- 20 Copard, Y., Amiotte-Suchet, P., and Di-Giovanni, C.: Storage and release of fossil organic carbon related to weathering of sedimentary rocks, *Earth. Planet. Sci. Lett.*, 258, 345-357, <http://dx.doi.org/10.1016/j.epsl.2007.03.048>, 2007.
- Covault, J. A., and Graham, S. A.: Submarine fans at all sea-level stands: Tectono-morphologic and climatic controls on terrigenous sediment delivery to the deep sea, *Geology*, 38, 939-942, 10.1130/g31081.1, 2010.
- 25 [Curry, W. B., Duplessy, J.-C., Labeyrie, L., and Shackleton, N. J.: Changes in the distribution of \$\delta^{13}C\$ of deep water \$\Sigma CO_2\$ between the last glaciation and the Holocene, *Paleoceanography and Paleoclimatology*, 3, 317-341, 1988.](http://dx.doi.org/10.1016/j.epsl.2007.03.048)
- 30 Dadey, K., Janeczek, T., and Klaus, A.: Dry-bulk density: its use and determination, *Proceedings of the ocean drilling program, Scientific Results*, 1992, 551-554,
- Degens, E. T.: Biogeochemistry of Stable Carbon Isotopes, in: *Org. Geochem.*, edited by: Eglinton, G., and Murphy, M. J., Springer Berlin Heidelberg, 304-329, 1969.
- Deines, P.: The carbon isotope geochemistry of mantle xenoliths, *Earth-Sci. Rev.*, 58, 247-278, [http://dx.doi.org/10.1016/S0012-8252\(02\)00064-8](http://dx.doi.org/10.1016/S0012-8252(02)00064-8), 2002.
- 35 [Dickson, A. G., and Goyet, C.: Handbook of methods for the analysis of the various parameters of the carbon dioxide system in sea water. Version 2, 1994.](http://dx.doi.org/10.1016/S0012-8252(02)00064-8)
- Dubois, N., Kienast, M., Kienast, S., Calvert, S. E., Francois, R., and Anderson, R. F.: Sedimentary opal records in the eastern equatorial Pacific: It is not all about leakage, *Global Biogeochem. Cycles*, 24, 10.1029/2010gb003821, 2010.
- 40

- Dunne, J. P., Sarmiento, J. L., and Gnanadesikan, A.: A synthesis of global particle export from the surface ocean and cycling through the ocean interior and on the seafloor, *Global Biogeochem. Cycles*, 21, GB4006, 10.1029/2006GB002907, 2007.
- 5 Dunne, J. P., Hales, B., and Toggweiler, J. R.: Global calcite cycling constrained by sediment preservation controls, *Global Biogeochem. Cycles*, 26, GB3023, 10.1029/2010GB003935, 2012.
- Eggleston, S., and Galbraith, E. D.: The devil's in the disequilibrium: sensitivity of ocean carbon storage to climate state and iron fertilization in a general circulation model, *Biogeosciences Discuss.*, 2017, 1-29, 10.5194/bg-2017-328, 2017.
- 10 Farrell, J. W., and Prell, W. L.: Climatic change and CaCO₃ preservation: an 800,000 year bathymetric reconstruction from the central equatorial Pacific Ocean, *Paleoceanography*, 4, 447-466, 1989.
- Fortin, D., Francus, P., Gebhardt, A. C., Hahn, A., Kliem, P., Lisé-Pronovost, A., Roychowdhury, R., Labrie, J., and St-Onge, G.: Destructive and non-destructive density determination: method comparison and evaluation from the Laguna Potrok Aike sedimentary record, *Quat. Sci. Rev.*, 71, 147-153, <http://dx.doi.org/10.1016/j.quascirev.2012.08.024>, 2013.
- 15 Foster, G. L., and Vance, D.: Negligible glacial-interglacial variation in continental chemical weathering rates, *Nature*, 444, 918-921, http://www.nature.com/nature/journal/v444/n7121/supinfo/nature05365_S1.html, 2006.
- Freeman, K. H., and Hayes, J. M.: Fractionation of carbon isotopes by phytoplankton and estimates of ancient CO₂ levels, *Global Biogeochem. Cycles*, 6, 185-198, 10.1029/92GB00190, 1992.
- 20 Gaillardet, J., Dupré, B., Louvat, P., and Allègre, C. J.: Global silicate weathering and CO₂ consumption rates deduced from the chemistry of large rivers, *Chem. Geol.*, 159, 3-30, [http://dx.doi.org/10.1016/S0009-2541\(99\)00031-5](http://dx.doi.org/10.1016/S0009-2541(99)00031-5), 1999.
- Galbraith, E. D., and Jaccard, S. L.: Deglacial weakening of the oceanic soft tissue pump: global constraints from sedimentary nitrogen isotopes and oxygenation proxies, *Quat. Sci. Rev.*, 109, 38-48, <http://dx.doi.org/10.1016/j.quascirev.2014.11.012>, 2015.
- 25 Galy, V., Peucker-Ehrenbrink, B., and Eglinton, T.: Global carbon export from the terrestrial biosphere controlled by erosion, *Nature*, 521, 204-207, 10.1038/nature14400 <http://www.nature.com/nature/journal/v521/n7551/abs/nature14400.html> - supplementary-information, 2015.
- 30 Gerlach, T.: Volcanic versus anthropogenic carbon dioxide, *Eos, Trans. AGU*, 92, 201-202, 10.1029/2011EO240001, 2011.
- Gibbs, M. T., and Kump, L. R.: Global chemical erosion during the Last Glacial Maximum and the present: Sensitivity to changes in lithology and hydrology, *Paleoceanography*, 9, 529-543, 10.1029/94PA01009, 1994.
- 35 Grant, K. M., Rohling, E. J., Bar-Matthews, M., Ayalon, A., Medina-Elizalde, M., Ramsey, C. B., Satow, C., and Roberts, A. P.: Rapid coupling between ice volume and polar temperature over the past 150,000 years, *Nature*, 491, 744-747, doi:10.1038/nature11593, 2012.
- Guihou, A., Pichat, S., Govin, A., Nave, S., Michel, E., Duplessy, J.-C., Telouk, P., and Labeyrie, L.: Enhanced Atlantic Meridional Overturning Circulation supports the Last Glacial Inception, *Quat. Sci. Rev.*, 30, 1576-1582, 2011.
- 40 Hain, M. P., Sigman, D. M., and Haug, G. H.: Carbon dioxide effects of Antarctic stratification, North Atlantic Intermediate Water formation, and subantarctic nutrient drawdown during the last ice age:

- Diagnosis and synthesis in a geochemical box model, *Global Biogeochem. Cycles*, 24, GB4023, 10.1029/2010GB003790, 2010.
- Hain, M. P., Sigman, D. M., and Haug, G. H.: 8.18 - The Biological Pump in the Past A2 - Holland, Heinrich D, in: *Treatise on Geochemistry (Second Edition)*, edited by: Turekian, K. K., Elsevier, Oxford, 485-517, 2014a.
- 5 Hain, M. P., Sigman, D. M., and Haug, G. H.: 8.18 - The Biological Pump in the Past, in: *Treatise on Geochemistry (Second Edition)*, edited by: Turekian, H. D. H., Karl K., Elsevier, Oxford, 485-517, 2014b.
- Hartmann, J., Moosdorf, N., Lauerwald, R., Hinderer, M., and West, A. J.: Global chemical weathering and associated P-release — The role of lithology, temperature and soil properties, *Chem. Geol.*, 363, 145-163, <http://dx.doi.org/10.1016/j.chemgeo.2013.10.025>, 2014.
- 10 Hedges, J. I., and Keil, R. G.: Sedimentary organic matter preservation: an assessment and speculative synthesis, *Mar. Chem.*, 49, 81-115, [http://dx.doi.org/10.1016/0304-4203\(95\)00008-F](http://dx.doi.org/10.1016/0304-4203(95)00008-F), 1995.
- Herman, F., Seward, D., Valla, P. G., Carter, A., Kohn, B., Willett, S. D., and Ehlers, T. A.: Worldwide acceleration of mountain erosion under a cooling climate, *Nature*, 504, 423-426, 10.1038/nature12877 <http://www.nature.com/nature/journal/v504/n7480/abs/nature12877.html> - supplementary-information, 2013.
- 15 Hoegh-Guldberg, O., Mumby, P. J., Hooten, A. J., Steneck, R. S., Greenfield, P., Gomez, E., Harvell, C. D., Sale, P. F., Edwards, A. J., Caldeira, K., Knowlton, N., Eakin, C. M., Iglesias-Prieto, R., Muthiga, N., Bradbury, R. H., Dubi, A., and Hatzilios, M. E.: Coral Reefs Under Rapid Climate Change and Ocean Acidification, *Science*, 318, 1737-1742, 10.1126/science.1152509, 2007.
- Huybers, P., and Langmuir, C.: Feedback between deglaciation, volcanism, and atmospheric CO₂, *Earth. Planet. Sci. Lett.*, 286, 479-491, <http://dx.doi.org/10.1016/j.epsl.2009.07.014>, 2009.
- 25 *Ipcce: Climate Change 2014: Impacts, Adaptation, and Vulnerability. Part A: Global and Sectoral Aspects. Contribution of Working Group II to the Fifth Assessment Report of the Intergovernmental Panel on Climate Change* [Field, C.B., V.R. Barros, D.J. Dokken, K.J. Mach, M.D. Mastrandrea, T.E. Bilir, M. Chatterjee, K.L. Ebi, Y.O. Estrada, R.C. Genova, B. Girma, E.S. Kissel, A.N. Levy, S. MacCracken, P.R. Mastrandrea, and L.L. White (eds.)], Cambridge University Press, Cambridge, United Kingdom and New York, NY, USA, 1132 pp., 2014.
- 30 Jaccard, S., Haug, G., Sigman, D., Pedersen, T., Thierstein, H., and Röhl, U.: Glacial/interglacial changes in subarctic North Pacific stratification, *Science*, 308, 1003-1006, 2005.
- Jaccard, S., Hayes, C. T., Martínez-García, A., Hodell, D., Anderson, R. F., Sigman, D., and Haug, G.: Two modes of change in Southern Ocean productivity over the past million years, *Science*, 339, 1419-1423, 2013.
- 35 Jaccard, S. L., Galbraith, E. D., Sigman, D. M., Haug, G. H., Francois, R., Pedersen, T. F., Dulski, P., and Thierstein, H. R.: Subarctic Pacific evidence for a glacial deepening of the oceanic respired carbon pool, *Earth. Planet. Sci. Lett.*, 277, 156-165, <http://dx.doi.org/10.1016/j.epsl.2008.10.017>, 2009.
- Jahnke, R. A.: The global ocean flux of particulate organic carbon: Areal distribution and magnitude, *Global Biogeochem. Cycles*, 10, 71-88, 10.1029/95GB03525, 1996.
- 40 Jellinek, A. M., Manga, M., and Saar, M. O.: Did melting glaciers cause volcanic eruptions in eastern California? Probing the mechanics of dike formation, *Journal of Geophysical Research: Solid Earth*, 109, n/a-n/a, 10.1029/2004JB002978, 2004.

- Keil, R.: Anthropogenic Forcing of Carbonate and Organic Carbon Preservation in Marine Sediments, *Annual Review of Marine Science*, 9, 151-172, 10.1146/annurev-marine-010816-060724, 2017.
- Kohfeld, K. E., and Chase, Z.: Temporal evolution of mechanisms controlling ocean carbon uptake during the last glacial cycle, *Earth. Planet. Sci. Lett.*, 472, 206-215, <https://doi.org/10.1016/j.epsl.2017.05.015>, 2017.
- 5 Kump, L. R., and Arthur, M. A.: Interpreting carbon-isotope excursions: carbonates and organic matter, *Chem. Geol.*, 161, 181-198, [http://dx.doi.org/10.1016/S0009-2541\(99\)00086-8](http://dx.doi.org/10.1016/S0009-2541(99)00086-8), 1999.
- Kutterolf, S., Jegen, M., Mitrovica, J. X., Kwasnitschka, T., Freundt, A., and Huybers, P. J.: A detection of Milankovitch frequencies in global volcanic activity, *Geology*, 41, 227-230, 10.1130/g33419.1, 2013.
- 10 [Labeyrie, L. D., Duplessy, J.-C., Duprat, J., Juillet-Leclerc, A., Moyes, J., Michel, E., Kallel, N., and Shackleton, N. J.: Changes in the vertical structure of the North Atlantic Ocean between glacial and modern times, *Quat. Sci. Rev.*, 11, 401-413, 1992.](#)
- [Lambeck, K., and Chappell, J.: Sea Level Change Through the Last Glacial Cycle, *Science*, 292, 679-686, 10.1126/science.1059549, 2001.](#)
- 15 Lee, H., Muirhead, J. D., Fischer, T. P., Ebinger, C. J., Kattenhorn, S. A., Sharp, Z. D., and Kianji, G.: Massive and prolonged deep carbon emissions associated with continental rifting, *Nature Geosci*, 9, 145-149, 10.1038/ngeo2622 <http://www.nature.com/ngeo/journal/v9/n2/abs/ngeo2622.html-supplementary-information>, 2016.
- Lisiecki, L. E., and Raymo, M. E.: A Pliocene-Pleistocene stack of 57 globally distributed benthic delta O-18 records, *Paleoceanography*, 20, 10.1029/2005pa001164|issn 0883-8305, 2005.
- 20 Longhurst, A.: Seasonal cycles of pelagic production and consumption, *Prog. Oceanogr.*, 36, 77-167, [http://dx.doi.org/10.1016/0079-6611\(95\)00015-1](http://dx.doi.org/10.1016/0079-6611(95)00015-1), 1995.
- Lund, D. C., Asimow, P. D., Farley, K. A., Rooney, T. O., Seeley, E., Jackson, E. W., and Durham, Z. M.: Enhanced East Pacific Rise hydrothermal activity during the last two glacial terminations, *Science*, 351, 478-482, 10.1126/science.aad4296, 2016.
- 25 Lynch-Stieglitz, J., Adkins, J. F., Curry, W. B., Dokken, T., Hall, I. R., Herguera, J. C., Hirschi, J. J. M., Ivanova, E. V., Kissel, C., Marchal, O., Marchitto, T. M., McCave, I. N., McManus, J. F., Mulitza, S., Ninnemann, U., Peeters, F., Yu, E. F., and Zahn, R.: Atlantic meridional overturning circulation during the Last Glacial Maximum, *Science*, 316, 66-69, 10.1126/science.1137127|ISSN 0036-8075, 2007.
- 30 Marchitto, T. M., Lehman, S. J., Ortiz, J. D., Fluckiger, J., and van Geen, A.: Marine radiocarbon evidence for the mechanism of deglacial atmospheric CO₂ rise, *Science*, 316, 1456-1459, 10.1126/science.1138679|ISSN 0036-8075, 2007.
- Menviel, L., Joos, F., and Ritz, S. P.: Simulating atmospheric CO₂, ¹³C and the marine carbon cycle during the Last Glacial-Interglacial cycle: possible role for a deepening of the mean remineralization depth and an increase in the oceanic nutrient inventory, *Quat. Sci. Rev.*, 56, 46-68, <http://dx.doi.org/10.1016/j.quascirev.2012.09.012>, 2012.
- 35 Milliman, J. D.: Production and accumulation of calcium carbonate in the ocean: Budget of a nonsteady state, *Global Biogeochem. Cycles*, 7, 927-957, 10.1029/93GB02524, 1993.
- Muller-Karger, F. E., Varela, R., Thunell, R., Luerssen, R., Hu, C., and Walsh, J. J.: The importance of continental margins in the global carbon cycle, *Geophys. Res. Lett.*, 32, n/a-n/a, 10.1029/2004GL021346, 2005.
- 40

- Ödalen, M., Nycander, J., Oliver, K. I. C., Brodeau, L., and Ridgwell, A.: The influence of the ocean circulation state on ocean carbon storage and CO₂ drawdown potential in an Earth system model, *Biogeosciences*, 15, 1367-1393, 10.5194/bg-15-1367-2018, 2018.
- 5 Oliver, K. I. C., Hoogakker, B. A. A., Crowhurst, S., Henderson, G. M., Rickaby, R. E. M., Edwards, N. R., and Elderfield, H.: A synthesis of marine sediment core $\delta^{13}\text{C}$ data over the last 150 000 years, *Clim. Past Discuss.*, 5, 2497-2554, 10.5194/cpd-5-2497-2009, 2009.
- Omta, A. W., K. van Voorn, G. A., M. Rickaby, R. E., and Follows, M. J.: On the potential role of marine calcifiers in glacial-interglacial dynamics, *Global Biogeochem. Cycles*, 27, 692-704, 10.1002/gbc.20060, 2013.
- 10 Opdyke, B. N., and Walker, J. C. G.: Return of the coral reef hypothesis: Basin to shelf partitioning of CaCO₃ and its effect on atmospheric CO₂, *Geology*, 20, 733-736, 10.1130/0091-7613(1992)020<0733:rotcrh>2.3.co;2, 1992.
- Organization, I. H.: *Limits of Oceans and Seas*, International Hydrographic Organization, Special Publication, 23, hdl:10013/epic.37175.d001 1953.
- 15 Orr, J. C., Fabry, V. J., Aumont, O., Bopp, L., Doney, S. C., Feely, R. A., Gnanadesikan, A., Gruber, N., Ishida, A., Joos, F., Key, R. M., Lindsay, K., Maier-Reimer, E., Matear, R., Monfray, P., Mouchet, A., Najjar, R. G., Plattner, G.-K., Rodgers, K. B., Sabine, C. L., Sarmiento, J. L., Schlitzer, R., Slater, R. D., Totterdell, I. J., Weirig, M.-F., Yamanaka, Y., and Yool, A.: Anthropogenic ocean acidification over the twenty-first century and its impact on calcifying organisms, *Nature*, 437, 681, 10.1038/nature04095
- 20 [https://http://www.nature.com/articles/nature04095 - supplementary-information](https://http://www.nature.com/articles/nature04095-supplementary-information), 2005.
- Peterson, C. D., Lisiecki, L. E., and Stern, J. V.: Deglacial whole-ocean $\delta^{13}\text{C}$ change estimated from 480 benthic foraminiferal records, *Paleoceanography*, 29, 549-563, 10.1002/2013PA002552, 2014.
- Petsch, S. T.: 12.8 - Weathering of Organic Carbon A2 - Holland, Heinrich D, in: *Treatise on Geochemistry (Second Edition)*, edited by: Turekian, K. K., Elsevier, Oxford, 217-238, 2014.
- 25 Reghelin, D., Dickens, G. R., and Backman, J.: The relationship between wet bulk density and carbonate content in sediments from the Eastern Equatorial Pacific, *Mar. Geol.*, 344, 41-52, <http://dx.doi.org/10.1016/j.margeo.2013.07.007>, 2013.
- Reygondeau, G., Longhurst, A., Martinez, E., Beaugrand, G., Antoine, D., and Maury, O.: Dynamic biogeochemical provinces in the global ocean, *Global Biogeochem. Cycles*, 27, 1046-1058, 10.1002/gbc.20089, 2013.
- 30 Rickaby, R. E. M., Elderfield, H., Roberts, N., Hillenbrand, C. D., and Mackensen, A.: Evidence for elevated alkalinity in the glacial Southern Ocean, *Paleoceanography*, 25, n/a-n/a, 10.1029/2009PA001762, 2010.
- Ronge, T. A., Tiedemann, R., Lamy, F., Kohler, P., Alloway, B. V., De Pol-Holz, R., Pahnke, K., Southon, J., and Wacker, L.: Radiocarbon constraints on the extent and evolution of the South Pacific glacial carbon pool, *Nat Commun*, 7, 10.1038/ncomms11487, 2016.
- 35 Roth, R., and Joos, F.: Model limits on the role of volcanic carbon emissions in regulating glacial-interglacial CO₂ variations, *Earth. Planet. Sci. Lett.*, 329-330, 141-149, <http://dx.doi.org/10.1016/j.epsl.2012.02.019>, 2012.
- 40 Ryan, D. A., Opdyke, B. N., and Jell, J. S.: Holocene sediments of Wistari Reef: towards a global quantification of coral reef related neritic sedimentation in the Holocene, *Palaeogeogr., Palaeoclimatol., Palaeoecol.*, 175, 173-184, [http://dx.doi.org/10.1016/S0031-0182\(01\)00370-4](http://dx.doi.org/10.1016/S0031-0182(01)00370-4), 2001.

- Sarmiento, J. L., and Toggweiler, J. R.: A new model for the role of the oceans in determining atmospheric PCO₂, *Nature*, 308, 621-624, 1984.
- Sarmiento, J. L., Dunne, J., Gnanadesikan, A., Key, R. M., Matsumoto, K., and Slater, R.: A new estimate of the CaCO₃ to organic carbon export ratio, *Global Biogeochem. Cycles*, 16, 10.1029/2002gb001919, 2002.
- Sarmiento, J. L., and Gruber, N.: *Ocean Biogeochemical Dynamics*, edited by: Press, P. U., Princeton University Press, 2006.
- Schmittner, A., and Somes, C.: *Complementary Constraints from Carbon (13C) and Nitrogen (15N) Isotopes on the Glacial Ocean's Soft-Tissue Biological Pump*, *Paleoceanography*, 2016.
- Schumer, R., and Jerolmack, D. J.: Real and apparent changes in sediment deposition rates through time, *Journal of Geophysical Research: Earth Surface*, 114, 10.1029/2009JF001266, 2009.
- Seiter, K., Hensen, C., Schröter, J., and Zabel, M.: Organic carbon content in surface sediments—defining regional provinces, *Deep-Sea Res. Part I Oceanogr. Res. Pap.*, 51, 2001-2026, <http://dx.doi.org/10.1016/j.dsr.2004.06.014>, 2004.
- Shackleton, N. J.: Carbon-13 in *Uvigerina* : Tropical rain forest history and the equatorial Pacific carbonate dissolution cycle, *The fate of fossil fuel CO₂ in the oceans*, 401-428, 1977.
- Sigman, D. M., and Boyle, E. A.: Glacial/interglacial variations in atmospheric carbon dioxide, *Nature*, 407, 859-869, 2000.
- Sigman, D. M., and Haug, G. H.: 6.18 - The Biological Pump in the Past, in: *Treatise on Geochemistry*, edited by: Heinrich, D. H., and Karl, K. T., Pergamon, Oxford, 491-528, 2003.
- Stott, L., Southon, J., Timmermann, A., and Koutavas, A.: Radiocarbon age anomaly at intermediate water depth in the Pacific Ocean during the last deglaciation, *Paleoceanography*, 24, 10.1029/2008pa001690, 2009.
- Sun, X., and Turchyn, A. V.: Significant contribution of authigenic carbonate to marine carbon burial, *Nature Geosci*, 7, 201-204, 10.1038/ngeo2070 <http://www.nature.com/ngeo/journal/v7/n3/abs/ngeo2070.html - supplementary-information>, 2014.
- Sundquist, E. T., and Visser, K.: 8.09 - The Geologic History of the Carbon Cycle, in: *Treatise on Geochemistry*, edited by: Holland, H. D., and Turekian, K. K., Pergamon, Oxford, 425-472, 2003.
- Toggweiler, J. R.: *Variation of atmospheric CO₂ by ventilation of the ocean's deepest water*, *Paleoceanography*, 14, 571-588, 10.1029/1999PA900033, 1999.
- Torres, M. A., Moosdorf, N., Hartmann, J., Adkins, J. F., and West, A. J.: *Glacial weathering, sulfide oxidation, and global carbon cycle feedbacks*, *Proceedings of the National Academy of Sciences*, 2017.
- Vance, D., Teagle, D. A. H., and Foster, G. L.: Variable Quaternary chemical weathering fluxes and imbalances in marine geochemical budgets, *Nature*, 458, 493-496, http://www.nature.com/nature/journal/v458/n7237/supinfo/nature07828_S1.html, 2009.
- Vecsei, A., and Berger, W. H.: Increase of atmospheric CO₂ during deglaciation: Constraints on the coral reef hypothesis from patterns of deposition, *Global Biogeochem. Cycles*, 18, GB1035, 10.1029/2003GB002147, 2004.
- von Blanckenburg, F., Bouchez, J., Ibarra, D. E., and Maher, K.: Stable runoff and weathering fluxes into the oceans over Quaternary climate cycles, *Nature Geosci*, 8, 538-542, 10.1038/ngeo2452 <http://www.nature.com/ngeo/journal/v8/n7/abs/ngeo2452.html - supplementary-information>, 2015.

Waelbroeck, C., Labeyrie, L., Michel, E., Duplessy, J. C., McManus, J. F., Lambeck, K., Balbon, E., and Labracherie, M.: Sea-level and deep water temperature changes derived from benthic foraminifera isotopic records, *Quat. Sci. Rev.*, 21, 295-305, 2002.

- 5 Wallmann, K., Schneider, B., and Sarnthein, M.: Effects of eustatic sea-level change, ocean dynamics, and nutrient utilization on atmospheric pCO₂ and seawater composition over the last 130 000 years: a model study, *Clim. Past*, 12, 339-375, 10.5194/cp-12-339-2016, 2016.
- Wang, X.-C., and Druffel, E. R. M.: Radiocarbon and stable carbon isotope compositions of organic compound classes in sediments from the NE Pacific and Southern Oceans, *Mar. Chem.*, 73, 65-81, [http://dx.doi.org/10.1016/S0304-4203\(00\)00090-6](http://dx.doi.org/10.1016/S0304-4203(00)00090-6), 2001.
- 10 Weber, M. E., Niessen, F., Kuhn, G., and Wiedicke, M.: Calibration and application of marine sedimentary physical properties using a multi-sensor core logger, *Mar. Geol.*, 136, 151-172, 1997.
- Yu, J., Broecker, W. S., Elderfield, H., Jin, Z., McManus, J., and Zhang, F.: Loss of Carbon from the Deep Sea Since the Last Glacial Maximum, *Science*, 330, 1084, 2010.
- Yu, J., Anderson, R. F., Jin, Z., Rae, J. W. B., Opydyke, B. N., and Eggins, S. M.: Responses of the deep ocean carbonate system to carbon reorganization during the Last Glacial–interglacial cycle, *Quat. Sci. Rev.*, 76, 39-52, <http://dx.doi.org/10.1016/j.quascirev.2013.06.020>, 2013.
- 15 Yu, J., Anderson, R. F., and Rohling, E. J.: Deep Ocean Carbonate Chemistry and Glacial-Interglacial Atmospheric CO₂ Changes *Oceanography*, 27, 16–25, <http://dx.doi.org/10.5670/oceanog.2014.04>, 2014.
- 20 Zech, R.: A permafrost glacial hypothesis—Permafrost carbon might help explaining the Pleistocene ice ages, *Quaternary Science Journal*, 61, 84-92, 2012.
- Zeebe, R. E., and Caldeira, K.: Close mass balance of long-term carbon fluxes from ice-core CO₂ and ocean chemistry records, *Nature Geosci*, 1, 312-315, http://www.nature.com/ngeo/journal/v1/n5/supinfo/ngeo185_S1.html, 2008.

25