

Response for the Anonymous Referee #1 on “The effect of high dust amount on the surface temperature during the Last Glacial Maximum: A modelling study using MIROC-ESM” by Rumi Ohgaito et al.

We wish to express our appreciation for the referee for the constructive comments and suggestions. We modified the manuscript following your suggestions one by one.

The referee’s comments are written in black and our replies are written in characters in blue color.

I realise figures 6 & 7 were in the first submission, but I think they need the LGM.a – PI.a anomalies. This would make it consistent with figures 2-5 and 9-12 and the rest of the paper.

10

LGMglac.a-PI.a and LGM.a-PI.a maps are added in Figure 6 and 7 because we agree that anomaly from PI is one of important interests. Descriptions are added in the manuscript.

It would also help to redress the emphasis from analysing the glaciogenic effect alone, to a more general paper about LGM dust, which is what the introduction leads the reader to expect, and which was commented on by the other reviewer in the first round. This would also make sense given the artificial nature of the glaciogenic dust inputs used.

We agree your suggestion. We renamed Sec. 3.2 and discussion about general LGM-PI anomaly is added.

I now realise I don’t understand the difference between Figure 10 (Change of net radiative perturbation by dust at the surface) and figure 7 (Change in (a) net, (b) longwave, and (c) shortwave downward radiation at the surface).

Figure 10 represents that the radiative perturbation induced by dust (aerosol-radiation and aerosol-cloud interactions), whereas Figure 7 shows that the anomaly of downward radiation at the surface, not only by dust but also by all changes, cooled air temperature, humidity, cloud, precipitation, circulation and so on. But the similarity of Figure 7 (a, d, g) and Figure 10 (a, d, g) suggests clearly that the radiation anomaly between LGMglac.a and LGM.a stems from aerosol-radiation + aerosol-cloud interactions of glaciogenic dust.

Page 13, lines 13-19: Is there a longwave aerosol-cloud effect in the northern hemisphere also? E.g. looking at figure 7b or 10e? Otherwise, I don't understand why this only occurs in the southern hemisphere. From figure 7c and 7a, is it possible that in the northern hemisphere it is offset by a short-wave effect, hence it doesn't show up in figure C?

5 There is long wave perturbation as seen in Figure 10 (e). But in the northern high latitudes, the amplitude is comparable to Figure 10 (f). One of the reasons would be the dust load enhanced already in LGM.a in the northern hemisphere relative to P1.a whereas reduced in the southern hemisphere. By adding glaciogenic dust, dust load enhanced in the both hemispheres but drastic change occurred in the southern hemisphere (reduction to enhancement). Other reason would be the difference of circumstances of the glaciogenic dust sites. In the southern hemisphere, glaciogenic dust is quickly transported over the Southern Ocean, where wind speed tends to be high and some of the dust could reach high
10 altitude. On the other hand, in the northern hemisphere, the glaciogenic dust emission occurs over the continents, where the glaciogenic dust is easier to deposit at the vicinity land grids and also the higher land fraction in the northern hemisphere possibly prevents dust to reach high troposphere. This is written in Sect. 3.1.

Technical comments

15 Abstract, line 15: remove 'found'.

It is removed.

Page 2, line 7: "Global warming is considered an important driver in investigations seeking to clarify the mechanisms of climate change, as stated
20 repeatedly by the Intergovernmental Panel on Climate Change (IPCC) in their assessment reports (IPCC, 2013)."

This doesn't really make sense. Perhaps change to:

"Global climate modelling is an essential tool in investigations seeking to clarify the mechanisms of climate change, as stated in Intergovernmental Panel on Climate Change (IPCC) assessment reports (IPCC, 2013)."

25 Thank you for the suggestion. The sentence is modified to "Climate modelling is an essential tool in investigations seeking to clarify the mechanisms of climate change, as stated in Intergovernmental Panel on Climate Change (IPCC) assessment reports (IPCC, 2013)."

Page 4, line 15: Make this sentence more direct. Change: "Previous studies that have investigated the effect of glaciogenic dust have not taken

into account the feedback of the dust to the atmosphere via the oceanic thermohaline circulation. “ to highlight something like: previous studies have included a dynamic ocean in this context, so the impacts on ocean circulation globally are unknown.

Thank you for your suggestion. The sentence is changed to

5 “Previous studies have not included a dynamic ocean in this context, so the impacts on global ocean circulation are unknown”

Page 4, line 16: Move this sentence: “Moreover, Lambert et al. (2013) identified the possibility of polar amplification attributable to dust.” to earlier where you discuss polar amplification, and explain what Lambert did in 1 sentence or so.

10 We agree that this is located unsuitable part of introduction. Now, A sentence “Lambert et al 2013 demonstrated two General Circulation Models coupled with online aerosol models underestimated dust flux and radiative forcing globally but especially pronounced over the polar regions and suggested the possibility of underestimate of polar amplification for LGM.” Is inserted after the reviewing Mahowald and Takemura’s studies.

Page 6, line 9: Change “and it was emitted constantly independent of the other conditions “, to “The fluxes estimated by Mahowald were added as
15 time-invariant sources into the simulations, and are not dependent on modelled land surface or atmospheric conditions”.

Thank you for your suggestion. The sentence is modified as you suggested.

Page 12, line 19: “The panels clarify that the effect of snow ageing on the radiative perturbation is minor.”

20 This sentence seems to contradict the results shown in figure 6 and the discussion starting on page 10 line 18?

Figure C shows that the radiative perturbation by dust loading in the atmosphere. Similarity of the right and left columns of Figure C suggests that the radiative perturbation by dust in the atmosphere is independent from ageing effect of snow surface. Hence, the surface warming in the northern hemisphere is not by dust aloft but by the deposited dust on snow. The sentence is modified to “The panels clarify that the effect of snow
25 ageing is independent from radiative perturbation by dust load in the atmosphere.”

Page 14, line 15-16: You might mention that some of this model-data disagreement is related to reconstructed warming in Alaska, which is not

resolved in either LGM or LGMglac.

Thank you for the suggestion. A sentence is modified as follows, “Pronounced discrepancy is evident in the northern high latitudes around 70 °N with some proxy data over Alaska suggesting warmer temperatures than PI, which is not resolved in all our LGM experiment and the other LGM
5 experiment of the PMIP3 models.”

Page 17, line 3: I don’t think Claquin et al 2003, looked at snow albedo effect of dust?

Thank you for pointing it out. Their model includes ageing effect of snow following Douville et al. (1995a, b). However, they did not mention
10 how the ageing affected specifically. We decide this is not a crucial sentence and thus removed it.

Page 17, line 5-7. To support this statement, you need to include the LGMglac.a – PI.a anomaly in figure 6.

Thank you for your suggestion. Figure 6 is expanded including LGM-PI panels and explained in Sec. 3.2.

15

20

Response for the Anonymous Referee #2 on “The effect of high dust amount on the surface temperature during the Last Glacial Maximum: A modelling study using MIROC-ESM” by Rumi Ohgaito et al.

5 We wish to express our appreciation for the referee for the constructive comments and suggestions. We modified the manuscript following your suggestions one by one.

The referee’s comments are written in black and our replies are written in characters in blue color.

10 The revised version of the manuscript is clearly improved in comparing to existing work and organizing the discussion of some key variables. I still have a few minor comments dealing with the clarification of certain aspects discussed in the main text.

6/2-5: could you mention explicitly what those values are?

15 The refractive index of dust aerosol is set $1.530-2.00 \times 10^{-3}i$ at 0.55 micrometer dust. The number is added in the manuscript. The formulations concerning number concentration of cloud droplets and ice crystals are in Takemura et al. 2005, 2009. The references are inserted in the manuscript.

12/7: Please clarify that you refer to the surface, e.g. “The change at the surface is similar ...”

20 “at the surface” is inserted following your suggestion.

12/3-8: You compare to other studies for surface values, but what at TOA? See also a recent review (Albani, S., Balkanski, Y., Mahowald, N. et al. Curr Clim Change Rep (2018) 4: 99. <https://doi.org/10.1007/s40641-018-0100-7>)

25 Thank you for letting us know about a latest review paper. Albani et al. (2018) is included in the introduction and this part of the text and discussion is included.

16/5: The net RADIATIVE effect ... is negative

Thank you for your suggestion. The “radiative” is inserted.

16/16-17: This sentence is not very clear, please rephrase

5 The sentence is modified as the following.

“The effect of mineral dust aerosol on climate is highly uncertain but cooling is relatively likely (IPCC, 2013). Our results suggest the effect of dust on climate is dependent on background condition. However, our glaciogenic dust worked different from that demonstrated by Mahowald et al. (2006b) in the zonal mean.”

10 17/9-10: An alternative explanation is that some of these observational estimates might be affected by significant uncertainties, notably related to the potential presence of non-aeolian material such as ice rafted debris (Kohfeld et al., 2013)

Kohfeld et al. 2013 said that they excluded marine sediment sites affected by IRD. However, we agree that it is worth mentioning it here.

15 18/1: I do not understand this sentence, please rephrase

Thank you for pointing it out. We agree that this sentence doesn’t make sense. This and the next sentences are removed.

20 Figure 12: This relevant figure is quite hard to read. My suggestion would be to try to size it up and/or remove the line contours, which are largely redundant with the color contours and makes it quite difficult to distinguish the circles corresponding to the observations

The figures are replaced with the version of no contours for (a) (b) (d) (e). Thank you for your suggestion.

Table 1: the integration length column is only indicated for panel (a). Please add to panel (b) as well.

25

The integration length for .a experiments are written in the text but in order to clarify, the column is added in Table 1 (b).

Effect of high dust amount on surface temperature during the Last Glacial Maximum: A modelling study using MIROC-ESM

Rumi Ohgaito¹, Ayako Abe-Ouchi^{2,1}, Ryouta O'ishi², Toshihiko Takemura³, Akinori Ito¹, Tomohiro Hajima¹, Shingo Watanabe¹, Michio Kawamiya¹

¹Japan Agency for Marine-Earth Science and Technology, Yokohama, 236-0001, Japan

²Atmosphere Ocean Research Institute, University of Tokyo, Kashiwa, Chiba 277-8564, Japan

³Research Institute for Applied Mechanics, Kyushu University, Fukuoka, 816-8580 Japan

Correspondence to: Rumi Ohgaito (ohgaito@jamstec.go.jp)

10 **Abstract.** The effect of aerosols is one of many uncertain factors in projections of future climate. However, the behaviour of mineral dust aerosols (dust) can be investigated within the context of past climate change. The Last Glacial Maximum (LGM) is known to have had enhanced dust deposition in comparison with the present, especially over polar regions. Using the Model for Interdisciplinary Research on Climate Earth System Model (MIROC-ESM), we conducted a standard LGM experiment following the protocol of the Paleoclimate Modelling Intercomparison Project phase 3 and sensitivity experiments. We imposed glaciogenic dust on the standard

15 LGM experiment and we investigated the impacts of glaciogenic dust and of non-glaciogenic dust on the LGM climate. Global mean radiative perturbations by glaciogenic and non-glaciogenic dust were both negative, consistent with previous studies. However, glaciogenic dust behaved differently in specific regions, e.g., it resulted in less cooling over the polar regions. One of the major reasons for reduced cooling is the ageing of snow or ice, which results in albedo reduction via high dust deposition, especially near sources of high glaciogenic dust emission. Although the net radiative perturbations in the lee of high glaciogenic dust provenances are negative,

20 warming by ageing of snow overcomes this radiative perturbation in the Northern Hemisphere. In contrast, the radiative perturbation due to high dust loading in the troposphere acts to warm the surface in areas surrounding Antarctica, primarily via the longwave aerosol–cloud interaction of dust and it is likely the result of the greenhouse effect attributable to the enhanced cloud fraction in the upper troposphere. Although our analysis focused mainly on the results of experiments using the atmospheric part of the MIROC-ESM, we also conducted full MIROC-ESM experiments for an initial examination of the effect of glaciogenic dust on the oceanic

25 general circulation module. A long-term trend of enhanced warming was observed in the Northern Hemisphere with increased

削除: found

glaciogenic dust; however, the level of warming around Antarctica remained almost unchanged, even after extended coupling with the ocean.

1 Introduction

The Last Glacial Maximum (c.a. 21,000 years before present; LGM), which is the most recent period featuring maximum expansion of the land ice sheets in the Northern Hemisphere, has been investigated thoroughly using various paleo-proxy records and via modelling studies (Braconnot et al., 2007a,b, Kageyama et al., 2006, 2017). Climate modelling is an essential tool in investigations seeking to clarify the mechanisms of climate change, as stated in the Intergovernmental Panel on Climate Change (IPCC) assessment reports (IPCC, 2013). Therefore, it is especially important to evaluate the capability of numerical models to capture past climatic conditions.

Paleo-proxy data and modelling studies are both required for proper understanding of past climates; however, the focus of this study was on modelling. General circulation models (GCMs) are one of the tools used most widely for investigation of the mechanisms of both climate and climate change. The improvement of computational resources has allowed the development of models with high complexity that permit interactive coupling of various climatic components. In comparison with proxy data, previous modelling experiments targeting the LGM have tended to underestimate the magnitude of cooling, especially over high latitudes (Masson-Delmotte et al., 2006, 2010). The importance of feedback related to dust and vegetation has been identified in Chapter 5 of the IPCC's Fifth Assessment Report (IPCC, 2013).

It is recognized that uncertainty over the effect of aerosols is one of the most important factors regarding the radiative perturbation in estimates of global warming. Mineral dust is the most abundant atmospheric aerosol, even in the present climate. For example, Mahowald et al. (2010) investigated the trend of the amount of atmospheric dust in the 20th century based on observations and

删除: Global wa
删除: considere
删除: important
删除: repeatedly
删除: in their

modelling. They reported correlation between an increase of desert dust and a net negative radiative perturbation. Examination of proxy data has suggested clear enhancement of dust during the LGM, which was especially pronounced at high latitudes, i.e., reaching levels more than 20 times greater than the present day over Antarctica (Lambert et al., 2008, Lamy et al., 2014, Dome Fuji Ice Core Project members 2017). Although the enhancement of dust deposition was found less over lower latitudes, it was still several times
5 higher in comparison with the present day (Winckler et al., 2008).

Although earlier studies (Mahowald et al., 1999, Lunt and Valdes, 2002, Claquin et al., 2003) have estimated higher dust amounts during the LGM in comparison with the pre-industrial (PI) period, dust amounts over Antarctica have tended to be underestimated. Claquin et al. (2003) estimated the radiative perturbation at the top of the atmosphere (TOA). They reported a cooling effect attributable to dust, but they also found a warming effect due to dust deposition on snow. Later, Mahowald et al. (2006a,b) estimated
10 the glaciogenic dust flux and the aerosol–radiation interaction. Their standard LGM experiment simulated underestimation of dust deposition flux, especially over high latitudes, in comparison with the DIRTMAP proxy data archive (Kohfeld and Harrison 2001). Then, they considered the effect of sources of glaciogenic dust surrounding the ice sheets and glaciers. Such areas are supposed to generate substantial amounts of glacial flour during glacial periods (Bullard et al. 2016). The study considered the emission of various fluxes of dust from these glaciogenic source areas and a best fit to the DIRTMAP deposition distribution was obtained. Although this
15 estimate could conceal other possible and non-introduced processes of dust sources, it constitutes an important step forward in the determination of a reasonable representation of both the atmospheric loading and the depositional distribution of dust during the LGM. However, they did not estimate the effects of aerosol–cloud interaction. Takemura et al. (2009) used the Model for Interdisciplinary Research on Climate (MIROC) Atmospheric GCM (AGCM) with an online aerosol module to determine both the aerosol–radiation and the aerosol–cloud interactions for LGM and PI periods at both the surface and the tropopause. However, they underestimated the

amount of dust deposition over Antarctica, probably because they did not consider glaciogenic dust. [Lambert et al. \(2013\)](#) demonstrated two General Circulation Models coupled with online aerosol models underestimated dust flux and radiative forcing globally but more pronounced over the polar regions and suggested the possibility of underestimate of polar amplification for LGM and future projections. Yue et al. (2011) used an AGCM to estimate the aerosol–radiation interaction for dust and they reported an evident cooling effect. Albani et al. (2014) supposed high erodibility areas to obtain better representation of LGM dust. They also highlighted the importance of the optical properties and size distribution of dust aerosols. In comparison with the control setting, Sagoo and Strelvmo (2017) applied an emission factor of 3.4 to the dust emissions in an LGM level CO₂ experiment (i.e., the land sea mask and ice sheets were unchanged from the control) to mimic the high dust situation during the LGM and they estimated the aerosol–cloud interaction. Hopcroft et al. (2015) investigated the aerosol–radiation interaction at the TOA using an AGCM and the land module of an earth system model (ESM), based on which they suggested the necessity of further analyses of aerosol–cloud interaction as future work. They also summarized the global mean dust emissions and loadings of the PI and LGM periods reported in previous studies. It was suggested that the amount of dust is highly dependent on the model used, not only during the LGM but also in the PI period. [The latest review of previous studies is also in Albani et al. \(2018\).](#)

Another aspect of dust is related to ageing of the snow surface, which possibly modulates the surface temperature via albedo reduction. Krinner et al. (2006) discussed the importance of the ageing effect of snow, particularly over eastern Siberia. Their ageing scheme was based on that of Warren and Wiscombe (1981) and Wiscombe and Warren (1981). Moreover, Ganopolski et al. (2010) simulated the glacial–interglacial cycle using an intermediate complexity model, in which the ageing effect was implemented via simple scaling.

[Previous studies have not included dynamic ocean in this context, so the impacts on global ocean circulation are unknown.](#)

In summary, we claim that the evaluation of the total effect of dust on the LGM surface temperature is incomplete. Therefore, this study addressed the problem by incorporating the effects of aerosol–radiation interaction, aerosol–cloud interaction, snow ageing, and dust–ocean interaction. We undertook AGCM simulations and full ESM simulations of the LGM with sensitivity experiments targeting the effects of dust on climate.

5 The following section explains the modelling and experimental set-ups. The resulting estimations of dust amount and dust depositional distribution are presented in Sect. 3.1 and the influence of dust on surface temperature is described in Sect. 3.2. To investigate how dust might modulate the atmospheric state, the radiative perturbation attributable to dust is described in Sect. 3.3 and the effect of glaciogenic dust on the ocean is discussed in Sect. 3.4. The results of the simulations are summarized and discussed in Sect. 4.

2 Model and experimental design

10 2.1 Description of the MIROC-ESM

The MIROC-ESM (Watanabe et al., 2011) used in this study was the version submitted to both the Coupled Model Intercomparison Project phase 5 (CMIP5) and the Paleoclimate Modelling Intercomparison Project phase 3 (PMIP3). The resolution of the atmosphere in the model is T42 with 80 vertical levels, while that of the ocean is about 1° (256×192). Although the model is capable of prognosis of the amount of CO_2 in the atmosphere, we prescribed the level of atmospheric CO_2 in our experimental set-up. The spatially explicit individual-based Dynamic Global Vegetation Model (SEIB-DGVM) (Sato et al., 2007) was implemented to simulate global vegetation dynamics and terrestrial carbon cycling in the system, but it returns only the leaf area index (LAI) to the Minimal Advanced Treatments of Surface Interaction and Runoff (MATSIRO) land module (Takata et al., 2003). In this model, the SEIB-DGVM received several variables from the AGCM, but it returned only the carbon flux to the atmosphere. Also implemented was the Spectral Radiation–

15

上へ移動 [1]:

削除: (2013) id
attributable to du

Transport Model for Aerosol Species (SPRINTARS) on-line aerosol module (Takemura et al., 2000, 2002, 2005, and 2009), which explicitly treats organic, black carbon, and mineral dust, sea-salt aerosols, and sulfate and its precursor gases. This module was coupled with the radiation and cloud microphysical schemes to calculate the aerosol–radiation and aerosol–cloud interactions. In the calculation of the former, refractive indices depending on wavelengths, size distributions, and hygroscopic growth were considered. The refractive index of dust aerosols was taken from Deepak and Gerber (1983) but its imaginary part was reduced for consistency with recent measurements of weaker shortwave absorption, to $1.530-2.00 \times 10^{-3}i$ at 0.55 micro-meter dust (Takemura et al. 2005). Number concentrations of both cloud droplets and ice crystals are prognostic variables as are their mass mixing ratios and the changes in their radii and precipitation rates were calculated. Thus, the aerosol–cloud interaction was taken into account, (See Takemura et al. (2009) for more details). The processes controlling dust generation are the surface wind, vegetation type, soil moisture, LAI, and snow cover.

10 Once dust is generated, it is transported via the atmospheric circulation and deposited via the processes of wet/dry deposition and gravitational settling. In this study, glaciogenic dust was imposed for the sensitivity experiments. The generation of glaciogenic dust flux followed the estimate of Mahowald et al. (2006a). This flux was added as time-invariant sources into the simulations and are not dependent on modelled land surface or atmospheric conditions.

削除: .

削除: .

削除: 2006a and

In the MATSIRO module, the effect of dirt in snow (i.e., snow ageing) was considered based on the work of both Yang et al. (1997) and Warren and Wiscombe (1981). The magnitude of dirt concentration at the snow surface was varied to fit an observed relation between snow albedo and dirt concentration (Aoki et al., 2006). The dirt concentration in snow was calculated from the deposition fluxes of dust and soot calculated in the SPRINTARS module. The relative strength of the absorption coefficients for dust and soot were weighted to the deposition fluxes to obtain radiatively effective amounts of dirt in the snow.

2.2 Experimental design

We performed eight experiments: five using the AGCM part of the MIROC-ESM and three using the full MIROC-ESM. The specific experiments labelled PI.a and PI.e represent the 1850 A.D. control climate of the PI era, with PI.e having been submitted to CMIP5. The previous 100-year climatology of sea surface temperature (SST) and of sea ice of the period submitted to CMIP5 was used as boundary conditions for PI.a. The experiments labelled LGM.e and LGM.a represent the LGM climate following the PMIP3 protocol (Abe-Ouchi et al., 2015). The LGM.e experiment was submitted to CMIP5/PMIP3 (Sueyoshi et al., 2013). The LGM.a experiment was the AGCM experiment using the SST and sea ice taken from the PMIP3 LGM experiment (LGM.e). The LGM.e experiment was extended for a further 800 years beyond the PMIP3 period (Fig. 1). The LGMglac.a experiment was a new experiment based on the same conditions as LGM.a, but with an additional glaciogenic dust flux following Mahowald et al. (2006a). The LGMglac.naging.a and LGM.naging.a experiments had the same settings as LGMglac.a and LGM.a, but without the effect of snow ageing. The LGMglac.e experiment was the full ESM version of LGMglac.a, which branched from the LGM.e experiment 40 years prior to the period submitted to CMIP5/PMIP3 (Fig. 1). The glaciogenic dust flux from each area was set identical to the estimates of Mahowald et al. (2006a) and the emission areas were defined to follow their work as closely as possible (see supplementary Fig. A), i.e., the three areas of strongest emission were the Pampas of South America, central North America, and eastern Siberia. In contrast to non-glaciogenic dust, the emission of glaciogenic dust was independent of dust emission conditions and it was emitted constantly for consistency with the dust flux in Mahowald et al. (2006a) (Table 3(b)). Once emitted into the atmosphere, the treatment of glaciogenic dust was identical to non-glaciogenic dust. The integration of LGMglac.e was performed for 940 years. Table 1 lists the details of all the experiments.

3 Results

3.1 Dust amount and comparison with data archives

The emission flux of dust ($\text{g m}^{-2} \text{y}^{-1}$) is shown in Fig. 2 for the PI.a, LGM.a, and LGMglac.a experiments. For the PI.a experiment, the major dust sources are the Saharan, Arabian, Gobi, and Taklamakan deserts. A minor source is also found in the mid-latitude region of South America. While these dust sources look reasonable based on the present-day situation, there is too little dust emission from the other plausible dust sources such as Australia, southern Africa, and southwestern North America. The wet bias over these areas in the PI.a experiment leads to excess vegetation, which prevents dust emission, and persists in the LGM.a and LGMglac.a experiments. In the LGM.a and LGMglac.a experiments, the dust emission flux in the Saharan, Gobi, and Taklamakan deserts is significantly enhanced, which is the result of a windier and drier climate during the LGM, with additional emission flux evident from northern Siberia. In contrast, the emission flux from South America is reduced, which is probably because of increased soil moisture resulting from enhanced precipitation in this region. For the LGMglac.a experiment, glaciogenic dust emission is evident surrounding the extended ice sheets during the LGM. The total emission amount is 2540 (Tg y^{-1}) for the PI.a experiment, 7250 (Tg y^{-1}) for the LGM.a experiment, and 13,400 (Tg y^{-1}) for the LGMglac.a experiment. The total simulated emissions and atmospheric loads are listed in Table 3.

The global dust budget can be compared with the findings of previous studies. Hopcroft et al. (2015) summarized it in their Table 1. They clarified that the dust amount is highly dependent on the model, not only for the LGM experiments but also for the PI experiments. Our emission and load values fall in the middle of the ranges determined by previous studies. However, they are close to those of Takemura et al. (2009) for PI.a and LGM.a, probably because the models adopted are from the same model family and use the same

aerosol module. The emission of LGMglac.a is close to that of Mahowald et al. (2006a), most likely because we adopted their glaciogenic dust, but the load (39 Tg) is significantly smaller (62 Tg), which suggests overestimation of immediate dust deposition rates near the source areas (Fig. 4) attributable to our assumption of the independence of dust emission from wind speed. The change in the zonal mean dust loading in the atmosphere for the ratios LGM.a/PI.a and LGMglac.a/PI.a is shown in Fig. 3(a) and 3(b),
5 respectively. In the LGM.a experiment, the dust mass concentration in the Northern Hemisphere is enhanced, but decreased in the Southern Hemisphere compared with the PI.a experiment. In contrast, the mass concentration is enhanced significantly in both the northern and the southern high latitudes in the LGMglac.a experiment. The glaciogenic dust reached higher levels of the troposphere in the Southern Hemisphere compared with the Northern Hemisphere. This can be attributed to the different conditions of the strong dust sources. In the Southern Hemisphere, they are exposed to stronger winds because of the lack of continental land, whereas in the
10 Northern Hemisphere, the strong sources of glaciogenic dust are located over continents that are subject to lower wind speeds. The distribution of dust deposition for each experiment is shown in Fig. 4(a)–(c) and the ratio to PI.a is shown in Fig. 5 for comparison with the archives of ice and sediment core data, as indicated by the coloured circles (Kohfeld et al., 2013, Albani et al., 2014). The scatter plots shown in Fig. 4(d)–(f) compare the data with the modelled deposition rate at the grids corresponding to the data locations. The colours and mark types are used for categorization according to the area and the type of core data. Reasonable correlation is seen
15 for the PI.a experiment, except in the grids over the Southern Ocean, which are mostly located in the southern Pacific Ocean region. The main source of the dust deposited in this region is expected to be Australia (Li et al., 2010, Albani et al., 2012), where our model underestimates the emission. In the LGM.a experiment, the dust deposition flux is underestimated in North America, Eurasia, the South Pacific, the Southern Ocean, and Antarctica. In contrast, in the LGMglac.a experiment, the underestimation is generally improved. The model–data linear correlation coefficients in the logarithmic scale are 0.79, 0.62, and 0.80 for the PI.a, LGM.a, and

LGMglac.a experiments, respectively. The differences in the deposition flux between the PI.a and PI.e experiments, LGM.a and LGM.e experiments, and LGMglac.a and LGMglac.e experiments are almost negligible.

3.2 Surface temperature at LGM and the effect of glaciogenic dust

The surface temperature anomaly for LGM.a-PI.a is presented in Fig. 6 (a). The cooling is about 2 °C over the tropics and increase towards high latitude. The pronounced cooling is seen over the ice sheets in the northern hemisphere. This general view is also seen in Fig. 6 (b) which shows temperature anomaly for LGMglac.a to PI.a. Fig. 7 (b) and (c) show the anomaly of the downward radiation for LGM to PI for these experiments. Cooled atmosphere at LGM reduced longwave reaching the earth's surface in consistent distribution to the temperature anomalies in Fig. 6.

Now, we focus on imposed glaciogenic dust. The surface temperature at the height of 2 m is influenced by glaciogenic dust and the difference of LGMglac.a relative to LGM.a is presented in Fig. 6 (c). The warming (i.e., less cooling compared with the PI.a results) is pronounced in the high latitudes in contrast to the expectation of the likely cooling effect of the dust (IPCC, 2013).

The changes in the LGMglac.a result relative to the LGM.a result for the net, longwave, and shortwave downward radiation at the surface are presented in Fig. 7 (a), (d) and (g). The figures represent the total effect of the atmospheric loading of glaciogenic dust on radiation toward the earth surface. Figure 7(c) shows a negative anomaly in shortwave radiation near the strong sources of glaciogenic dust, as well as in the northern high latitudes and the edge of Antarctica. In contrast, a positive anomaly of longwave radiation in the LGMglac.a experiment is pronounced around Antarctica and in the northern high latitudes, (Fig. 7 (d)). While the negative anomaly in shortwave radiation dominates the net change near the areas of glaciogenic dust emission, the positive longwave anomaly dominates the region surrounding Antarctica. The radiative perturbation attributable to the glaciogenic dust is detailed in the next section.

削除: on

削除: .

削除: results

削除: results

削除: 7. It repres

削除: .

Figure 8 shows that warming of LGMglac.a–LGM.a south of 55° S is evident without the inclusion of the effects of the ageing of snow (LGMglac.naging.a–LGM.naging.a). This suggests the warming around Antarctica is not the result of snow ageing but that it follows from the change in the radiation balance in the atmosphere. Moreover, the magnitude of the warming is not significantly affected by ocean coupling (LGMglac.e–LGM.e). In contrast, more than 80 % of the warming in the Northern Hemisphere is the result of ageing of the snow surface, as is evident by inspection of the LGMglac.naging.a–LGM.naging.a results (Fig. 8). The high dust deposition rate reduces the surface albedo (Supplementary Fig. B) and leads to reduction of reflected shortwave radiation, which overcomes the cooling effect of the dust loading in the atmosphere, resulting in warming (Fig. 6(c)). The warming in the Northern Hemisphere is most pronounced over eastern Siberia and central North America, where large amounts of glaciogenic dust are deposited, and therefore where the albedo of the LGMglac.a experiment is reduced significantly. The snow in the LGMglac.a experiment thaws earlier in the year than in the LGM.a experiment over eastern Siberia. Substantial snowmelt over a large area within this region accelerates warming via albedo reduction. This is consistent with the results of Krinner on the point of snow ageing preventing the accumulation of snow in this region. In contrast, in central North America, the snow is reduced compared with the LGM.a experiment but it is still significantly higher than the PI.a experiment. The position of the -2°C isopleth averaged over June–August, which is the threshold of ice sheet retreat–extension (Ohmura et al. 1996), shifted northward by about 1° latitude, which is significantly less than the model resolution. Therefore, the effect of our dust flux on climate is lesser melting of the Laurentide Ice Sheet. However, we question whether the model is able to represent the appropriate ageing of snow under such a high dust deposition flux. As this is beyond the scope of this study, further evaluation of the effects of snow ageing are required.

删除:)

3.3 Aerosol–radiation and aerosol–cloud interactions by dust

The aerosol–radiation and aerosol–cloud interactions were estimated using the same method as Takemura et al. (2009). The aerosol–radiation interaction was estimated based on the difference between a standard experiment and another experiment under the same conditions but without the dust affecting radiation. The aerosol–cloud interaction was estimated based on the difference between a standard experiment and another experiment under the same condition but without dust.

The net global mean radiative perturbation (aerosol–radiation and aerosol–cloud) of dust is one of cooling at the earth’s surface for all the experiments, i.e., PI.a: -0.99 W m^{-2} , LGM.a: -1.50 W m^{-2} , and LGMglac.a: -1.71 W m^{-2} . The breakdown of the LGM experiments relative to the PI experiment for the change in the global mean radiative perturbation is listed in Table 2. The net change of the global mean aerosol–radiation interaction at the TOA is slightly positive for the LGM.a–PI.a and it amounts to 0.12 W m^{-2} for the LGMglac.a–PI.a results. Albani et al. (2018) summarized the previous studies about aerosol-radiation interaction at TOA. Our positive anomaly at TOA is located around the upper end of the previous studies ranging from about -3 to 0.1 W m-2. On the other hand, the change at the surface is negative both with (-0.21 W m^{-2}) and without (-0.30 W m^{-2}) glaciogenic dust. The change at the surface is of similar magnitude to the findings of previous studies (e.g., -0.25 and -0.56 W m^{-2} with and without glaciogenic dust in Mahowald et al. (2006b), -0.23 W m^{-2} in Takemura et al. (2009), and -0.26 W m^{-2} in Albani et al. (2014)), and it is caused primarily by changes in shortwave radiation. The net change of the global mean aerosol–cloud interaction at the TOA for the LGM.a–PI.a result is -0.36 W m^{-2} . Both the shortwave and the longwave radiation increased with glaciogenic dust, resulting in a net change of -0.39 W m^{-2} . At the surface, without glaciogenic dust, there is net negative reduction in comparison with the TOA. With the inclusion of glaciogenic dust, however, the change at the surface is slightly more negative than the change at the TOA. Considering the total effect

削除: results

削除: However

of dust, but without glaciogenic dust, the radiative perturbation change at the TOA relative to the surface is small, whereas the inclusion of glaciogenic dust results in surface cooling via aerosol–radiation interaction.

Figure 9 shows the spatial distribution of radiative perturbation by dust at the TOA, which has a smaller difference between the LGMglac.a and LGM.a results compared with the surface (Fig. 10 (a)). At the TOA, although the influence of glaciogenic dust from the Pampas region is distributed over the Southern Ocean, the positive longwave and negative shortwave radiation almost cancel each other out. There are local negative effects over the strong sources of glaciogenic dust but the amplitudes are much smaller than at the surface (Figs. 9 (a) and 10 (a)). Supplementary Fig. C shows the LGMglac.a–LGM.a anomaly of aerosol–radiation and aerosol–cloud interactions for the TOA and the surface; it also presents the same information but without the snow ageing effect. The panels clarify that the effect of snow ageing is independent from radiative perturbation by dust load in the atmosphere. The figure also clarifies that the anomaly of the aerosol–radiation interaction tends to be significant at the level of 0.1 W m^{-2} , whereas the significance of the anomaly of the aerosol–cloud interaction is difficult to determine. Nevertheless, the positive anomaly around Antarctica at the surface is significant. Therefore, although glaciogenic dust changes the TOA radiation budget only marginally, it heats/cool the atmosphere and causes a greater change in the radiation budget at the surface. The global mean change resulting from the addition of glaciogenic dust is cooling (-0.19 W m^{-2}), but with local atmospheric heating over the high latitudes. Hereafter, we investigate the changes in the spatial distribution and strength of radiation at the surface under different climatic conditions.

Figure 10 shows the change of the net radiative perturbation at the surface for the LGMglac.a–LGM.a, LGMglac.a–PI.a, and LGM.a–PI.a experiments. The aerosol–radiation interaction dominates near the massive dust sources, e.g., the Sahara Desert. Except for such regions, the aerosol–cloud interaction dominates the radiative perturbation. The addition of glaciogenic dust acts to reduce shortwave radiation. The negative radiative perturbation is distinct near the emission areas. In contrast, for longwave radiation, a

删除: on the

删除: is minor

general positive radiative perturbation resulting from glaciogenic dust is obvious, especially near the strong sources of dust and at the edge of Antarctica. The negative shortwave radiation forcing overcomes the positive longwave radiation forcing near the sources of glaciogenic dust. However, the positive longwave radiative perturbation plays a role in the regions surrounding Antarctica. The higher dust loading in the higher troposphere in the Southern Hemisphere promotes the generation of cloud ice nucleation and high-level clouds, especially in the regions surrounding Antarctica, likely resulting in an enhanced greenhouse effect, which warms the lower troposphere (Figs. 3(c) and 11). Because the dust deposition flux of the standard LGM.a experiment is higher than the PI.a experiment in the Northern Hemisphere but lower in the Southern Hemisphere, the impact of glaciogenic dust might be more efficient in the Southern Hemisphere. Sagoo and Strelvmo (2017) reported global mean cooling in a “high” dust experiment, consistent with our results (Table 2). The discrepancies could arise because of different cloud ice nuclei schemes, of their experimental setting (no change of land from their control) and because their sources of high dust emission were located mainly in desert areas, whereas our glaciogenic dust sources are located in the high latitudes.

3.4 Influence of glaciogenic dust on the ocean

We extended the LGM.e experiment by 800 years beyond the original PMIP3 period (Fig. 1) and the LGMglac.e experiment was conducted for 940 years. Because the temperatures become quasi-stable after year 600 in Fig. 1, the average of the final 300 years is used for the analyses. The strength of the Atlantic Meridional Overturning Circulation (AMOC) of LGM.e reduced by about 10 Sv in the analysis period compared with the spin-up period and LGMglac.e. The different behaviour of the AMOC might be attributable to higher dust deposition resulting in enhanced snow ageing in LGMglac.e. The strength of the abyssal cells (Supplementary Fig. D) is more stable but with differences of a few Sverdrup between LGM.e and LGMglac.e reflecting the AMOC state. The surface air

temperature and SST changes according to the LGMglac.e–LGM.e results are presented in Fig. 12. The zonal mean anomaly of air temperature over land and scatter plots of the anomaly of the proxy data (Bartlein et al., 2011) and of the anomaly of the corresponding model grids are shown in Supplementary Fig. E. It illustrates the level of agreement between the model and the proxy archives. Pronounced discrepancy is evident in the northern high latitudes around 70 °N with some proxy data over Alaska suggesting warmer temperatures than PI, which is not resolved in all our LGM experiment and the other LGM experiment in PMIP3 models. Although the differences between LGM.e and LGMglac.e appear minor in comparison with the pollen proxy archive, LGMglac.e generally exhibits slightly closer agreement with the proxy data.

Warming of the SST by the increased air temperature is obvious in the northern high latitudes, but the magnitude of the SST change is mostly below 0.5 °C. Locally strong warming along the Gulf Stream can be attributed to differences in the strength of the thermohaline circulation. Although investigation of the effect of dust on the thermohaline circulation is left for future work, we note there might be a possibility of an effect of strong snow ageing in the Northern Hemisphere. In contrast, almost no change is calculated in the SST around Antarctica (Fig. 12(f)), which confirms that warming around Antarctica is not attributable to a change in the temperature of the ocean surface. Even after the extended integration times of our simulations, the high plateau over the Antarctica, which is often the location of ice core sites, does not warm further (e.g., see circled letters in Fig. 12(a)–(c)). The LGMglac.e cooling from the PI.e results for this area is largely within the range of observational estimates (–7 to –10 °C) (Stenni et al., 2010, Uemura et al., 2012).

The SST anomaly in both the LGM.e-PI.e and the LGMglac.e-PI.e experiments appear reasonable in comparison with the LGM SST reconstruction shown by coloured circles (MARGO project members, 2009) (Fig. 12(d) and (e)). Local cooling of the ocean

削除: whereas

削除: model sho

temperature is seen in the lee of the source of glaciogenic dust in Argentina, which would be caused by the negative radiative perturbation (Figs. 7 and 10(a)).

The zonal mean potential temperature and salinity anomalies in the Atlantic and Pacific oceans for the LGM.e-PI.e and LGMglac.e-PI.e experiments are presented in Supplementary Figs. F and G. The positive anomalies in the Northern Hemisphere in Supplementary Figs. F(c) and G(c) are attributable to the difference in the strength of the AMOC between LGM.e and LGMglac.e. The minor negative anomaly in the upper 100 m around 30° S in the Atlantic basin can be attributed to the effect of glaciogenic dust from the Pampas area.

4 Conclusions and discussion

This study used the MIROC-ESM to investigate the effect of mineral dust aerosols on the glacial climate. The representations of climatology by the PI.a and PI.e simulations are considered reasonable for a state-of-the-art ESM (Watanabe et al. 2011). The cooling evident in the LGM.e experiment in comparison with the PI.e results is also generally comparable with paleo-proxy archives (Fig. 12). The net radiative effect of global mean dust during the LGM is negative, which is the same trend as reported in previous studies (Mahowald et al. 2006b, Albani et al. 2014, Hopcroft 2015, Sahoo and Strelvmo 2017). The global mean value is dominated by high emission of dust from subtropical deserts. Takemura et al. (2009) suggested an LGM-PI anomaly of -0.9 W m^{-2} for the global mean aerosol–cloud interaction, whereas our anomaly is -0.36 W m^{-2} (Table 2), even though the results are based on models from the same model family. This difference in the global mean value is derived mainly from the different boundary conditions used for the PI experiment. The SST used by Takemura et al. (2009) (Ohgaito et al. 2009; Fig. 1) over the warm pool was about 1° warmer than the

SST used in this study (Sueyoshi et al. 2013; Fig. 4), suggesting different convective activity and consequently, different amounts of cloud ice and cloud water. This tropical difference influences the global mean value, suggesting that the SST bias of the control experiment could affect both regional and global mean radiative perturbations.

The focus of this study was on the high latitudes, with investigation of the effect of glaciogenic dust based on new LGMglac.a and LGM.a experiments using the AGCM part of the MIROC-ESM. The effect of the addition of glaciogenic dust on climate is evident mainly as warming in the high latitudes. The effect of mineral dust aerosol on climate is highly uncertain but cooling is relatively likely (IPCC, 2013). Our results suggest the effect of dust on climate is dependent on background condition. However, our glaciogenic dust worked different from that demonstrated by Mahowald et al. (2006b) in the zonal mean. Especially for the northern high latitudes, areas are warmed via albedo reduction because of snow ageing and because of prolonged disappearance of snow at certain periods, which is especially pronounced in eastern Siberia. Although the longwave radiative perturbation is negative near the strong sources of glaciogenic dust flux, the snow ageing effect overcomes this cooling, resulting in a net increase in temperature. The possibility of overestimation of ageing of snow effect or our simple emission method may influence the result.

The warming effect resulting from the addition of glaciogenic dust is also seen in areas surrounding Antarctica; however, it is not attributable to snow ageing but to longwave aerosol–cloud interactions. Accounting for this effect would alter the distribution of the scatter evident in Fig. 5.5(d) in the IPCC’s Fifth Assessment Report, which shows the correlation of eastern Antarctic cooling during the LGM with the future projection.

We adopted additional dust sources from Mahowald et al. (2006a, b) as a first step, where their glaciogenic dust flux was identified as a best fit to the DIRTMAP data archive. Nevertheless, as noted, their deposition flux does not correspond well to new proxy data at locations in the Southern Ocean. However, in our case, this mismatch can also be attributed to a feature of our model, i.e., insufficient

削除: are

削除: likely cool

削除: The finding effect of snow ageing (2003).

dust emission from Australia and South Africa, which is caused mainly by overestimation of soil moisture and the resulting excess of vegetation. It should be noted that there is still a possibility of contamination by ice rafted debris at the edge of sea ice extent. Our study draws attention to the high dust loading over the Southern Ocean that affects the increase in surface temperature in areas surrounding Antarctica, implying the necessity of investigation of climate sensitivity to the amount of dust emission in future work.

5 However, over the Southern Ocean, SST is affected minimally (Fig. 8) by the surface radiation change (Figs. 7(a) and 10(a)), probably because of the large heat capacity of the ocean.

Glaciogenic dust was imposed constantly in this study, which is not realistic. In reality, temporal variability of glaciogenic dust should be dependent on changes both in wind speed and in the threshold wind friction velocity at which dust emission is initiated. Thus, the independence of dust emission from wind speed might cause overestimation of dust deposition rates at the grids close to emission

10 areas and under low atmospheric loading. However, our results are in good agreement with the measurements of deposition flux in general. It will be necessary to implement a better scheme for glaciogenic dust in subsequent research. Sagoo and Strevmo (2017) prescribed a globally “idealized high” dust emission factor for their LGM-like experiment. Because our glaciogenic dust sources are located in the high latitudes, the influence of glaciogenic dust emission on the surface temperature around Antarctica is likely more pronounced in our simulation results.

15 In the tropics, the effect of enhanced dust input on the surface temperature is similar to what Mahowald et al. (2010) reported in their study of the mid- to late 20th century but with contrasting effects at high latitudes. The major difference is that dust is enhanced at low latitudes, i.e., the Sahara–Sahel drought in the 20th century perturbation compared with the additional high dust inputs at high latitudes in our study, where the background albedo is high because of the extended areas of snow and ice cover.

削除: , but result

削除: We note t
cause low bias in
Thus, we suggest
Antarctica is und

In the MIROC-ESM, snow cover in the PI.e (PI.a) experiment tends to persist in boreal spring over Siberia in comparison with reanalysis data (Supplementary Fig. H). This positive bias might influence the change we see in the LGM.e (LGM.a) and LGMglac.e (LGMglac.a) experiments.

The strong effect of snow ageing is especially significant in the Northern Hemisphere. Because snow ageing has been tuned to fit modern observations in Hokkaido, Japan (Aoki et al., 2003, 2006) in the MIROC-ESM, a strong dust provenance near snow-covered areas is lacking, e.g., as in the glaciogenic dust situation seen in eastern Siberia. Therefore, evaluation of the quantitative influence of snow ageing using various observational sites is needed. The albedo impurity relationship provided by Aoki et al. (2003, 2006), in which ageing starts to work when the impurity is ≥ 10 ppmw, explains the reason for the considerable snow ageing in the Northern Hemisphere but lack of snow ageing over Antarctica. The deposition flux over Antarctica is 3–4 orders of magnitude smaller than the regions of high dust emission in the Northern Hemisphere. The threshold of activation of snow ageing is in between the high dust deposition in the Northern Hemisphere and the low deposition flux around Antarctica.

Although we were unable to treat the effect of Fe supply to the ocean in this model, activating the Fe-fertilization effect and enhancing the amount of plankton would influence CO₂ uptake, especially over the Southern Ocean (Martin, 1990). Improved representation of the distribution of dust deposition is possible as a boundary condition for off-line biogeochemical models to investigate CO₂ uptake, e.g., in a more realistic version of the experiments by Oka et al. (2011). Further investigation of the non-negligible effect of the change in the size distribution of dust as identified by Albani et al. (2014), Mahowald et al. (2014), and Hopcroft et al. (2015) might also be necessary.

Plant functional types are considered in the dynamic vegetation module but not returned to the land module in the MIROC-ESM; i.e., the climate–vegetation interaction is limited. The importance of full vegetation coupling was highlighted by O’ishi and Abe-Ouchi

(2013), who suggested the necessity for future models to evaluate the changes of plant functional types and especially, their effect on dust cycles.

Under global warming, the amount of dust emission remains uncertain (Woodward et al., 2005, Tegen et al., 2004, Jacobson and Streets, 2009, Liao et al., 2009, Mahowald et al., 2006a, Ito and Kok, 2017). Therefore, improving the understanding of dust processes
5 in models of the past climate would be a practical way to reduce the uncertainty of projections into the future.

Author Contributions: ROH, AA and ROI discussed the paleoclimate motivations on LGM dust and experimental design. ROH designed, conducted, analysed experiments and documented the manuscript. TT and AI advised the analyses on the aerosol module. SW, TH, and MK developed MIROC-ESM. All authors contributed discussions.

10

Acknowledgements:

This research was supported by the “Integrated Research Program for Advancing Climate Models (TOUGOU program)” from the Ministry of Education, Culture, Sports, Science and Technology (MEXT), Japan, and was also partly supported by the Japan Society for the Promotion of
15 Science (JSPS) KAKENHI under Grant Number 17H06104. The model experiments were conducted on the Earth Simulator of JAMSTEC. The authors are grateful for the help and inspiring discussions offered by the MIROC development team of JAMSTEC/U, Tokyo/NIES, especially Dr. K. Takata on her help to understand the MATSIRO land module. We appreciate two anonymous reviewers for their constructive and shrewd comments which improved this study significantly. We also thank James Buxton MSc from Edanz Group (www.edanzediting.com/ac) for English reviewing of the manuscript.

20

削除: understand

Conflicts of Interest: The authors declare that they have no conflict of interest.

References

- Abe-Ouchi A., Saito F., Kageyama M., Braconnot P., Harrison S. P., Lambeck K., Otto-Bliesner B. L., Peltier W. R., Tarasov L., Peterschmitt J. Y. and Takahashi K. : Ice-sheet configuration in the CMIP5/PMIP3 Last Glacial Maximum experiments., *Geoscientific Model Development*, 8, 3621-3637, <https://doi.org/10.5194/gmd-8-3621-2015>, 2015.
- [Albani, S., Balkanski, Y., Mahowald, N. Winckler, G., Maggi, V., Delmonte, B. *Curr Clim Change Rep.* 4: 99. <https://doi.org/10.1007/s40641-018-0100-7>, 2018](#)
- [Albani S.](#) Mahowald N. M., Delmonte B., Maggi V. and Winckler G. : Comparing modeled and observed changes in mineral dust transport and deposition to Antarctica between the Last Glacial Maximum and current climates., *Climate Dynamics*, 38, 1731-1755, <https://doi.org/10.1007/s00382-011-1139-5>, 2012.
- Albani S., Mahowald N. M., Perry A. T., Scanza R. A., Zender C. S., Heavens N. G., Maggi V., Kok J. F. and Otto-Bliesner B. L. : Improved dust representation in the Community Atmosphere Model., *Journal of Advances in Modeling Earth Systems*, 6, 541-570, <https://doi.org/10.1002/2013ms000279>, 2014.
- Aoki T., Hachikubo A. and Hori M. : Effects of snow physical parameters on shortwave broadband albedos., *Journal of Geophysical Research-Atmospheres*, 108, <https://doi.org/10.1029/2003jd003506>, 2003.
- Aoki T., Motoyoshi H., Kodama Y., Yasunari T. J., Sugiura K. and Kobayashi H. : Atmospheric Aerosol Deposition on Snow Surfaces and Its Effect on Albedo., *Sola*, 2, 13-16, <https://doi.org/10.2151/sola.2006-004>, 2006.
- Bartlein P. J., Harrison S. P., Brewer S., Connor S., Davis B. A. S., Gajewski K., Guiot J., Harrison-Prentice T. I., Henderson A., Peyron O., Prentice I. C., Scholze M., Seppä H., Shuman B., Sugita S., Thompson R. S., Vial A. E., Williams J. and Wu H. : Pollen-based continental climate reconstructions at 6 and 21 ka: a global synthesis., *Climate Dynamics*, 37, 775-802, <https://doi.org/10.1007/s00382-010-0904-1>, 2011.
- Braconnot P., Otto-Bliesner B., Harrison S., Joussaume S., Peterchmitt J. Y., Abe-Ouchi A., Crucifix M., Driesschaert E., Fichefet T., Hewitt C. D., Kageyama M., Kitoh A., Laine A., Loutre M. F., Marti O., Merkel U., Ramstein G., Valdes P., Weber S. L., Yu Y. and Zhao Y. : Results of PMIP2 coupled simulations of the Mid-Holocene and Last Glacial Maximum - Part 1: experiments and large-scale features., *Climate of the Past*, 3, 261-277, <https://doi.org/10.5194/cp-3-261-2007>, 2007a.
- Braconnot P., Otto-Bliesner B., Harrison S., Joussaume S., Peterchmitt J. Y., Abe-Ouchi A., Crucifix M., Driesschaert E., Fichefet T., Hewitt C.

削除:
Albani S.,

- D., Kageyama M., Kitoh A., Loutre M. F., Marti O., Merkel U., Ramstein G., Valdes P., Weber L., Yu Y. and Zhao Y. : Results of PMIP2 coupled simulations of the Mid-Holocene and Last Glacial Maximum - Part 2: feedbacks with emphasis on the location of the ITCZ and mid- and high latitudes heat budget., *Climate of the Past*, 3, 279-296, <https://doi.org/10.5194/cp-3-279-2007>, 2007b.
- Bullard J. E. and Austin M. J. : Dust generation on a proglacial floodplain, West Greenland., *Aeolian Research*, 3, 43-54, <https://doi.org/10.1016/j.aeolia.2011.01.002>, 2011.
- 5 Claquin T., Roelandt C., Kohfeld K. E., Harrison S. P., Tegen I., Prentice I. C., Balkanski Y., Bergametti G., Hansson M., Mahowald N., Rodhe H. and Schulz M. : Radiative forcing of climate by ice-age atmospheric dust., *Climate Dynamics*, 20, 193-202, <https://doi.org/10.1007/s00382-002-0269-1>, 2003.
- Dee D. P., Uppala S. M., Simmons A. J., Berrisford P., Poli P., Kobayashi S., Andrae U., Balmaseda M. A., Balsamo G., Bauer P., Bechtold P., Beljaars A. C. M., Van De Berg L., Bidlot J., Bormann N., Delsol C., Dragani R., Fuentes M., Geer A. J., Haimberger L., Healy S. B., Hersbach H., Holm E. V., Isaksen L., Kallberg P., Kohler M., Matricardi M., McNally A. P., Monge-Sanz B. M., Morcrette J. J., Park B. K., Peubey C., De Rosnay P., Tavolato C., Thepaut J. N. and Vitart F. : The ERA-Interim reanalysis: configuration and performance of the data assimilation system. *Quarterly Journal of the Royal Meteorological Society* 137, 553-597, <https://doi.org/10.1002/qj.828>, 2011.
- 10 Deepak A., and Gerber H. E., Report of the experts meeting on aerosols and their climatic effects WCP-55, Int. Council Sci. Unions, WMO, 1983.
- 15 Dome Fuji Ice Core Project members: Kawamura K., Abe-Ouchi A., Motoyama H., Ageta Y., Aoki S., Azuma N., Fujii Y., Fujita K., Fujita S., Fukui K., Furukawa T., Furusaki A., Goto-Azuma K., Greve R., Hirabayashi M., Hondoh T., Hori A., Horikawa S., Horiuchi K., Igarashi M., Iizuka Y., Kameda T., Kanda H., Kohno M., Kuramoto T., Matsushi Y., Miyahara M., Miyake T., Miyamoto A., Nagashima Y., Nakayama Y., Nakazawa T., Nakazawa F., Nishio F., Obinata I., Ohgaito R., Oka A., Okuno J., Okuyama J., Oyabu I., Parrenin F., Pattyn F., Saito F., Saito T., Sakurai T., Sasa K., Seddik H., Shibata Y., Shinbori K., Suzuki K., Suzuki T., Takahashi A., Takahashi K., Takahashi S., Takata M., Tanaka Y., Uemura R., Watanabe G., Watanabe O., Yamasaki T., Yokoyama K., Yoshimori M., Yoshimoto T. and Dome Fuji Ice Core P. : State dependence of climatic instability over the past 720,000 years from Antarctic ice cores and climate modeling. *Science Advances* 3, <https://doi.org/10.1126/sciadv.1600446>, 2017.
- 20 Ganopolski, A., Calov, R., and Claussen, M.: Simulation of the last glacial cycle with a coupled climate ice-sheet model of intermediate complexity, *Climate of the Past*, 6(2), 229-244, 2010.
- 25 Hopcroft P. O., Valdes P. J., Woodward S. and Joshi M. M. : Last glacial maximum radiative forcing from mineral dust aerosols in an Earth system model. *Journal of Geophysical Research-Atmospheres* 120, 8186-8205, <https://doi.org/10.1002/2015jd023742>, 2015.
- IPCC, 2013: Climate Change 2013: The Physical Science Basis. Contribution of Working Group I to the Fifth Assessment Report of the Intergovernmental Panel on Climate Change [Stocker, T.F., D. Qin, G.-K. Plattner, M. Tignor, S.K. Allen, J. Boschung, A. Nauels, Y. Xia, V. Bex

- and P.M. Midgley (eds.)). Cambridge University Press, Cambridge, United Kingdom and New York, NY, USA, 1535 pp, <https://doi.org/10.1017/CBO9781107415324>, 2013.
- Ito A. and Kok J. F.: Do dust emissions from sparsely vegetated regions dominate atmospheric iron supply to the Southern Ocean? *Journal of Geophysical Research-Atmospheres* 122, 3987-4002, <https://doi.org/10.1002/2016JD025939>, 2017.
- 5 Kageyama M., Albani S., Braconnot P., Harrison S. P., Hopcroft P. O., Ivanovic R. F., Lambert F., Marti O., Peltier W. R., Peterschmitt J. Y., Roche D. M., Tarasov L., Zhang X., Brady E. C., Haywood A. M., Legrande A. N., Lunt D. J., Mahowald N. M., Mikolajewicz U., Nisancioglu K. H., Otto-Bliesner B. L., Renssen H., Tomas R. A., Zhang Q., Abe-Ouchi A., Bartlein P. J., Cao J., Li Q., Lohmann G., Ohgaito R., Shi X. X., Volodin E., Yoshida K. and Zheng W. P. : The PMIP4 contribution to CMIP6-Part 4: Scientific objectives and experimental design of the PMIP4-CMIP6 Last Glacial Maximum experiments and PMIP4 sensitivity experiments. *Geoscientific Model Development* 10, 4035-4055,
 10 <https://doi.org/10.5194/gmd-10-4035-2017>, 2017.
- Jacobson, M. Z., and Streets, D. G.: Influence of future anthropogenic emissions on climate, natural emissions, and air quality. *Journal of Geophysical Research-Atmospheres*, 114, <https://doi.org/10.1029/2008JD011476>, 2009.
- Kageyama M., Laine A., Abe-Ouchi A., Braconnot P., Cortijo E., Crucifix M., De Vernal A., Guiot J., Hewitt C. D., Kitoh A., Kucera M., Marti O., Ohgaito R., Otto-Bliesner B., Peltier W. R., Rosell-Mele A., Vettoretti G., Weber S. L., Yu Y. and Members M. P. : Last Glacial Maximum
 15 temperatures over the North Atlantic, Europe and western Siberia: a comparison between PMIP models, MARGO sea-surface temperatures and pollen-based reconstructions. *Quaternary Science Reviews* 25, 2082-2102, <https://doi.org/10.1016/j.quascirev.2006.02.010>, 2006.
- Kohfeld K. E., Graham R. M., De Boer A. M., Sime L. C., Wolff E. W., Le Quere C. and Bopp L. : Southern Hemisphere westerly wind changes during the Last Glacial Maximum: paleo-data synthesis. *Quaternary Science Reviews* 68, 76-95, <https://doi.org/10.1016/j.quascirev.2013.01.017>, 2013.
- 20 Lambert F., Delmonte B., Petit J. R., Bigler M., Kaufmann P. R., Hutterli M. A., Stocker T. F., Ruth U., Steffensen J. P. and Maggi V. : Dust-climate couplings over the past 800,000 years from the EPICA Dome C ice core. *Nature* 452, 616-619, <https://doi.org/10.1038/nature06763>, 2008.
- Lambert F., Kug J. S., Park R. J., Mahowald N., Winckler G., Abe-Ouchi A., O'ishi R., Takemura T. and Lee J. H.: The role of mineral-dust aerosols in polar temperature amplification. *Nature Climate Change* 3, 487-491, <https://doi.org/10.1038/nclimate1785>, 2013.
- Lamy F., Gersonde R., Winckler G., Esper O., Jaeschke A., Kuhn G., Ullermann J., Martinez-Garcia A., Lambert F. and Kilian R. : Increased Dust
 25 Deposition in the Pacific Southern Ocean During Glacial Periods. *Science* 343, 403-407, <https://doi.org/10.1126/science.1245424>, 2014.
- Li F. Y., Ramaswamy V., Ginoux P., Broccoli A. J., Delworth T. and Zeng F. R.: Toward understanding the dust deposition in Antarctica during the Last Glacial Maximum: Sensitivity studies on plausible causes. *Journal of Geophysical Research-Atmospheres* 115, <https://doi.org/10.1029/2010JD014791>, 2010.

- Liao H., Zhang Y., Chen W. T., Raes F. and Seinfeld J. H.: Effect of chemistry-aerosol-climate coupling on predictions of future climate and future levels of tropospheric ozone and aerosols. *Journal of Geophysical Research-Atmospheres* 114, 10.1029/2008JD010984 2009.
- Lunt D. J. and Valdes P. J.: Dust deposition and provenance at the Last Glacial Maximum and present day. *Geophysical Research Letters* 29, <https://doi.org/10.1029/2002gl015656>, 2002.
- 5 Mahowald N., Kohfeld K., Hansson M., Balkanski Y., Harrison S. P., Prentice I. C., Schulz M. and Rodhe H. : Dust sources and deposition during the last glacial maximum and current climate: A comparison of model results with paleodata from ice cores and marine sediments. *Journal of Geophysical Research-Atmospheres* 104, 15895-15916, <https://doi.org/10.1029/1999jd900084>, 1999.
- Mahowald N. M., Muhs D. R., Levis S., Rasch P. J., Yoshioka M., Zender C. S. and Luo C. : Change in atmospheric mineral aerosols in response to climate: Last glacial period, preindustrial, modern, and doubled carbon dioxide climates. *Journal of Geophysical Research-Atmospheres* 111, <https://doi.org/10.1029/2005jd006653>, 2006a.
- 10 Mahowald N. M., Yoshioka M., Collins W. D., Conley A. J., Fillmore D. W. and Coleman D. B. : Climate response and radiative forcing from mineral aerosols during the last glacial maximum, pre-industrial, current and doubled-carbon dioxide climates. *Geophysical Research Letters* 33, <https://doi.org/10.1029/2006gl026126>, 2006b.
- Mahowald N. M., Kloster S., Engelstaedter S., Moore J. K., Mukhopadhyay S., McConnell J. R., Albani S., Doney S. C., Bhattacharya A., Curran
- 15 M. A. J., Flanner M. G., Hoffman F. M., Lawrence D. M., Lindsay K., Mayewski P. A., Neff J., Rothenberg D., Thomas E., Thornton P. E. and Zender C. S. : Observed 20th century desert dust variability: impact on climate and biogeochemistry. *Atmospheric Chemistry and Physics* 10, 10875-10893, <https://doi.org/10.5194/acp-10-10875-2010>, 2010.
- MARGO project members: Waelbroeck C., Paul A., Kucera M., Rosell-Mele A., Weinelt M., Schneider R., Mix A. C., Abelmann A., Armand L., Bard E., Barker S., Barrows T. T., Benway H., Cacho I., Chen M. T., Cortijo E., Crosta X., De Vernal A., Dokken T., Duprat J., Elderfield H.,
- 20 Eynaud F., Gersonde R., Hayes A., Henry M., Hillaire-Marcel C., Huang C. C., Jansen E., Juggins S., Kallel N., Kiefer T., Kienast M., Labeyrie L., Leclaire H., Londeix L., Mangin S., Matthiessen J., Marret F., Meland M., Morey A. E., Mulitza S., Pflaumann U., Pisias N. G., Radi T., Rochon A., Rohling E. J., Sbaffi L., Schaefer-Neth C., Solignac S., Spero H., Tachikawa K., Turon J. L. and Members M. P. : Constraints on the magnitude and patterns of ocean cooling at the Last Glacial Maximum. *Nature Geoscience* 2, 127-132, <https://doi.org/10.1038/ngeo411>, 2009.
- Martin, J. H.: Glacial-Interglacial CO₂ change: The iron hypothesis. *Paleoceanography*, 5(1), 1-13, <https://doi.org/10.1029/PA005i001p00001>,
- 25 1990.
- Masson-Delmotte V., Kageyama M., Braconnot P., Charbit S., Krinner G., Ritz C., Guilyardi E., Jouzel J., Abe-Ouchi A., Crucifix M., Gladstone R. M., Hewitt C. D., Kitoh A., Legrande A. N., Marti O., Merkel U., Motoi T., Ohgaito R., Otto-Bliesner B., Peltier W. R., Ross I., Valdes P. J., Vettoretti G., Weber S. L., Wolk F. and Yu Y. : Past and future polar amplification of climate change: climate model intercomparisons and ice-

- core constraints. *Climate Dynamics* 26, 513-529, <https://doi.org/10.1007/s00382-005-0081-9>, 2006.
- Masson-Delmotte V., Stenni B., Pol K., Braconnot P., Cattani O., Falourd S., Kageyama M., Jouzel J., Landais A., Minster B., Barnola J. M., Chappellaz J., Krinner G., Johnsen S., Rothlisberger R., Hansen J., Mikolajewicz U. and Otto-Bliesner B.: EPICA Dome C record of glacial and interglacial intensities. *Quaternary Science Reviews* 29, 113-128, <https://doi.org/10.1016/j.quascirev.2009.09.030>, 2010.
- 5 Ohgaito, R., and Abe-Ouchi, A.: The effect of sea surface temperature bias in the PMIP2 AOGCMs on mid-Holocene Asian monsoon enhancement. *Climate Dynamics*, 33(7-8), 975-983, 2009.
- O'Ishi, R., and Abe-Ouchi, A.: Influence of dynamic vegetation on climate change and terrestrial carbon storage in the Last Glacial Maximum. *Climate of the Past*, 9(4), 1571-1587, <https://doi.org/10.5194/cp-9-1571-2013>. 2013.
- Oka A., Abe-Ouchi A., Chikamoto M. O. and Ide T. : Mechanisms controlling export production at the LGM: Effects of changes in oceanic physical fields and atmospheric dust deposition. *Global Biogeochemical Cycles* 25, <https://doi.org/10.1029/2009gb003628>, 2011.
- 10 Sato, H., Itoh, A., and Kohyama, T.: SEIB-DGVM: A new dynamic global vegetation model using a spatially explicit individual-based approach. *Ecological Modelling*, 200(3-4), 279-307, 2007.
- Stenni B., Masson-Delmotte V., Selmo E., Oerter H., Meyer H., Rothlisberger R., Jouzel J., Cattani O., Falourd S., Fischer H., Hoffmann G., Iacumin P., Johnsen S. J., Minster B. and Udisti R. : The deuterium excess records of EPICA Dome C and Dronning Maud Land ice cores (East Antarctica). *Quaternary Science Reviews* 29, 146-159, <https://doi.org/10.1016/j.quascirev.2009.10.009>, 2010.
- 15 Sueyoshi T., Ohgaito R., Yamamoto A., Chikamoto M. O., Hajima T., Okajima H., Yoshimori M., Abe M., O'ishi R., Saito F., Watanabe S., Kawamiya M. and Abe-Ouchi A.: Set-up of the PMIP3 paleoclimate experiments conducted using an Earth system model, MIROC-ESM. *Geoscientific Model Development* 6, 819-836, <https://doi.org/10.5194/gmd-6-819-2013>, 2013.
- Takata, K., Emori, S., and Watanabe, T.: Development of the minimal advanced treatments of surface interaction and runoff. *Global and Planetary Change*, 38(1-2), 209-222., 2003
- 20 Takemura T., Egashira M., Matsuzawa K., Ichijo H., O'ishi R. and Abe-Ouchi A.: A simulation of the global distribution and radiative forcing of soil dust aerosols at the Last Glacial Maximum. *Atmospheric Chemistry and Physics* 9, 3061-3073, <https://doi.org/10.5194/acp-9-3061-2009>, 2009.
- Takemura T., Nakajima T., Dubovik O., Holben B. N. and Kinne S.: Single-scattering albedo and radiative forcing of various aerosol species with a global three-dimensional model. *Journal of Climate* 15, 333-352, [https://doi.org/10.1175/1520-0442\(2002\)015<0333:ssarf>2.0.co;2](https://doi.org/10.1175/1520-0442(2002)015<0333:ssarf>2.0.co;2), 2002.
- 25 Takemura T., Nozawa T., Emori S., Nakajima T. Y. and Nakajima T. : Simulation of climate response to aerosol direct and indirect effects with aerosol transport-radiation model. *Journal of Geophysical Research-Atmospheres* 110, <https://doi.org/10.1029/2004JD005029>, 2005.

- Takemura T., Okamoto H., Maruyama Y., Numaguti A., Higurashi A. and Nakajima T.: Global three-dimensional simulation of aerosol optical thickness distribution of various origins. *Journal of Geophysical Research-Atmospheres* 105, 17853-17873, <https://doi.org/10.1029/2000jd900265>, 2000.
- Tegen I., Werner M., Harrison S. P. and Kohfeld K. E. : Relative importance of climate and land use in determining present and future global soil dust emission. *Geophysical Research Letters* 31, 2004.
- Uemura R., Masson-Delmotte V., Jouzel J., Landais A., Motoyama H. and Stenni B.: Ranges of moisture-source temperature estimated from Antarctic ice cores stable isotope records over glacial-interglacial cycles. *Climate of the Past* 8, 1109-1125, <https://doi.org/10.5194/cp-8-1109-2012>, 2012.
- Warren, S. G., and Wiscombe, W. J.: A MODEL FOR THE SPECTRAL ALBEDO OF SNOW .2. SNOW CONTAINING ATMOSPHERIC AEROSOLS. *Journal of the Atmospheric Sciences*, 37(12), 2734-2745, 1980.
- Watanabe S., Hajima T., Sudo K., Nagashima T., Takemura T., Okajima H., Nozawa T., Kawase H., Abe M., Yokohata T., Ise T., Sato H., Kato E., Takata K., Emori S. and Kawamiya M. : MIROC-ESM 2010: model description and basic results of CMIP5-20c3m experiments. *Geoscientific Model Development* 4, 845-872, <https://doi.org/10.5194/gmd-4-845-2011>, 2011.
- Werner M., Tegen I., Harrison S. P., Kohfeld K. E., Prentice I. C., Balkanski Y., Rodhe H. and Roelandt C. : Seasonal and interannual variability of the mineral dust cycle under present and glacial climate conditions. *Journal of Geophysical Research-Atmospheres* 107, <https://doi.org/10.1029/2002jd002365>, 2002.
- Winckler G., Anderson R. F., Fleisher M. Q., Mcgee D. and Mahowald N. : Covariant glacial-interglacial dust fluxes in the equatorial Pacific and Antarctica. *Science* 320, 93-96, <https://doi.org/10.1126/science.1150595>, 2008.
- Wiscombe, W. J., and Warren, S. G.: A MODEL FOR THE SPECTRAL ALBEDO OF SNOW .1. PURE SNOW. *Journal of the Atmospheric Sciences*, 37(12), 2712-2733, 1980.
- Woodward S., Roberts D. L. and Betts R. A.: A simulation of the effect of climate change-induced desertification on mineral dust aerosol. *Geophysical Research Letters* 32, <https://doi.org/10.1029/2005GL023482> 2005.
- Yue X., Wang H. J., Liao H. and Jiang D. B.: Simulation of the Direct Radiative Effect of Mineral Dust Aerosol on the Climate at the Last Glacial Maximum. *Journal of Climate* 24, 843-858, <https://doi.org/10.1175/2010jcli3827.1>, 2011.
- Yang, Z. L., Dickinson, R. E., Robock, A., and Vinnikov, K. Y.: Validation of the snow submodel of the biosphere-atmosphere transfer scheme with Russian snow cover and meteorological observational data. *Journal of Climate*, 10(2), 353-373, 1997.

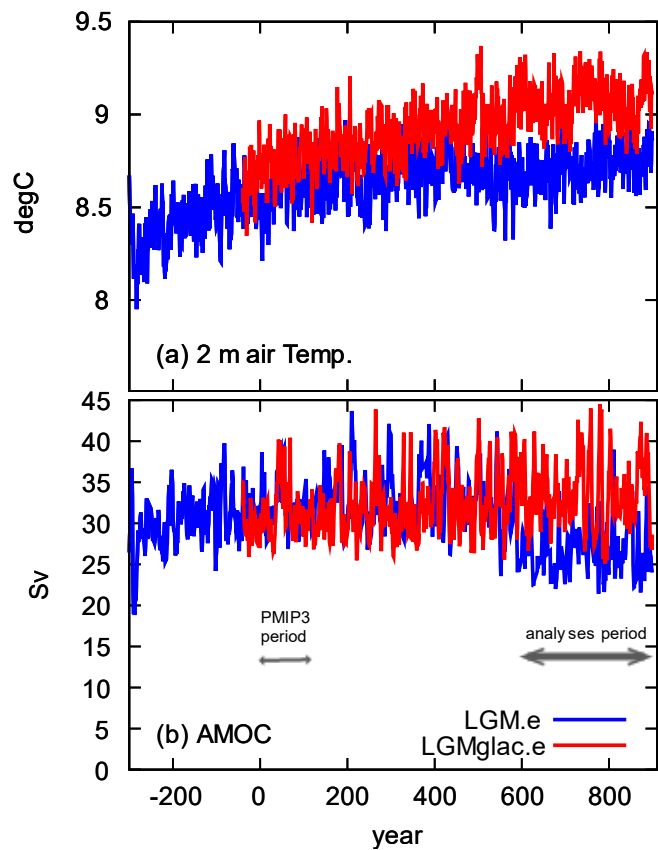


Figure 1: Time series of (a) global mean annual mean temperature at 2 m height ($^{\circ}\text{C}$) and (b) peak strength of the Atlantic meridional overturning circulation (AMOC; Sv) for LGM.e and LGMglac.e. The year zero was set to the beginning of the period submitted to CMIP5.

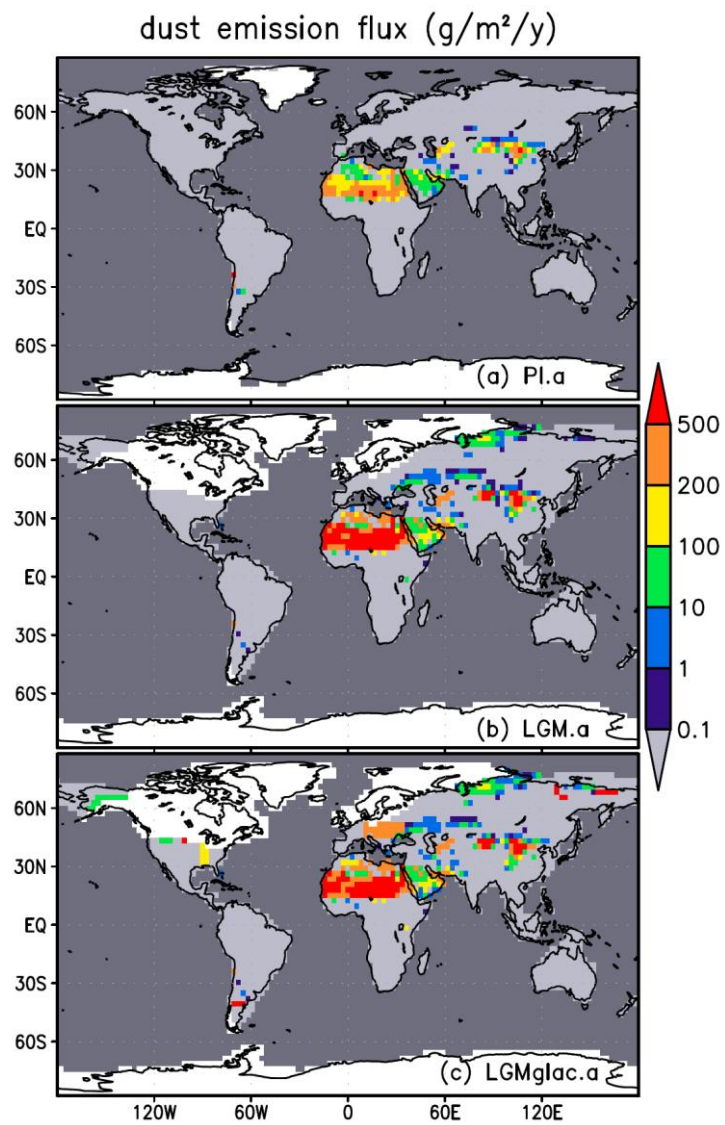


Figure 2: Dust emission flux ($\text{g m}^{-2} \text{y}^{-1}$) for (a) PI.a, (b) LGM.a, and (c) LGMglac.a. Ocean areas are dark grey and ice sheets are white.

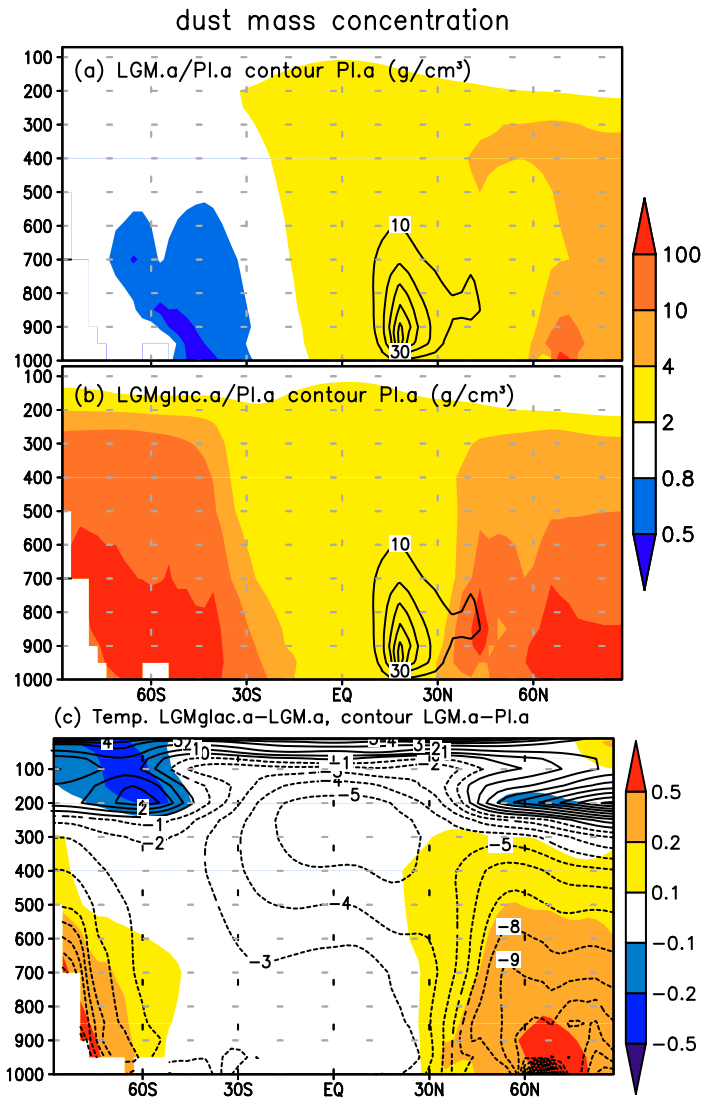


Figure 3: All panels are zonal mean height plots. Ratio of the dust mass concentration for (a) LGM.a/PI.a, (b) LGMglac.a/PI.a, and (c) temperature change for LGMglac.a-LGM.a. Contour lines in (a) and (b) show the dust mass concentration for PI.a (g cm^{-3}) and in (c) the temperature change for LGM.a-PI.a ($^{\circ}\text{C}$).

deposition flux ($\text{g}/\text{m}^2/\text{y}$)

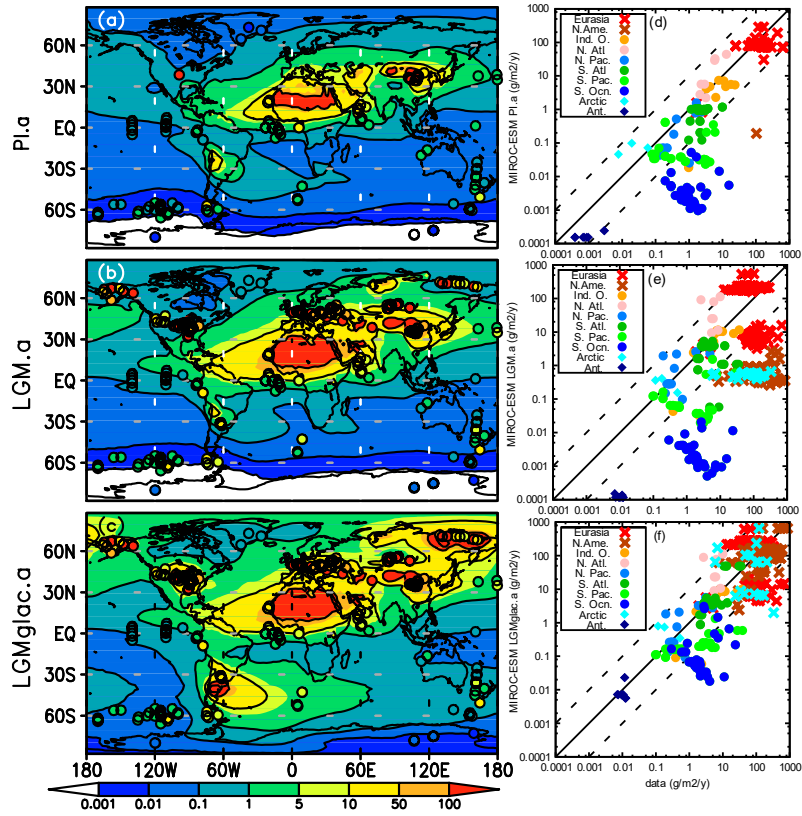
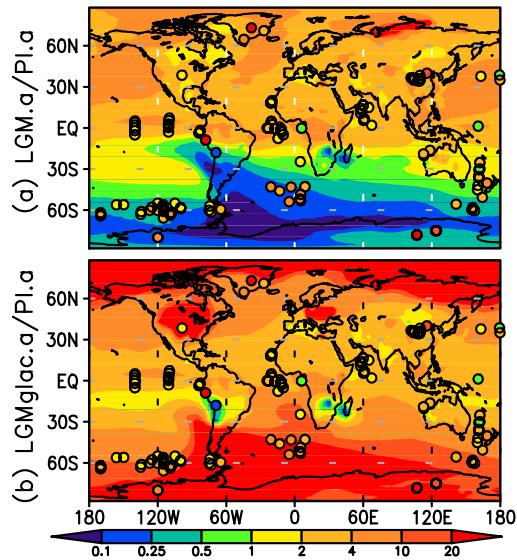
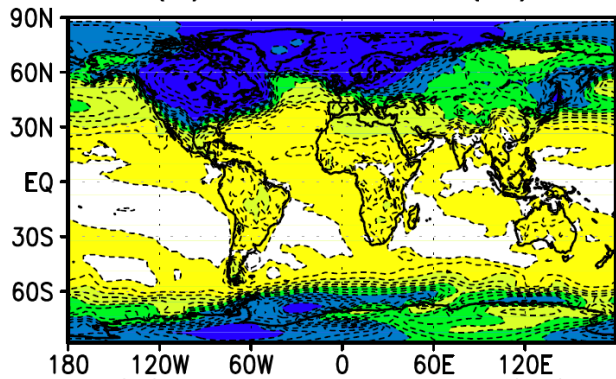


Figure 4: Model–data comparison of dust deposition flux ($\text{g m}^{-2} \text{y}^{-1}$) estimated from the ice and sediment core data archives obtained from Kohfeld et al. (2013) and bulk data from Albani et al. (2014): (a) PI.a, (b) LGM.a, and (c) LGMglac.a. Model–data scatter plots for (d) PI.a, (e) LGM.a, and (f) LGMglac.a. Colours and marks represent areas and core types, i.e., red: Eurasia, brown: North America, orange: Indian Ocean, pink and light blue: Atlantic and Pacific oceans in the Northern Hemisphere, respectively, green and light green: Atlantic and Pacific oceans in the Southern Hemisphere, respectively, blue: Southern Ocean, turquoise blue: Arctic, and dark blue: Antarctica. Crosses, circles, and diamonds represent terrestrial, marine core, and ice core sediments, respectively.

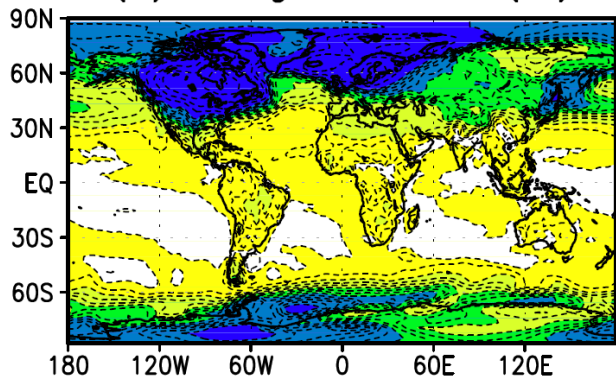


10 Figure 5: Model–data comparison of ratio of dust deposition flux estimated from the ice and sediment core data archives obtained from Kohfeld et al. (2013) and Albani et al. (2014): (a) LGM.a/PI.a and (b) LGMglac.a/PI.a.

air temperature at 2 m
(a) LGM.a-PI.a (°C)



(b) LGMglac.a-PI.a (°C)



(c) LGMglac.a-LGM.a (°C)

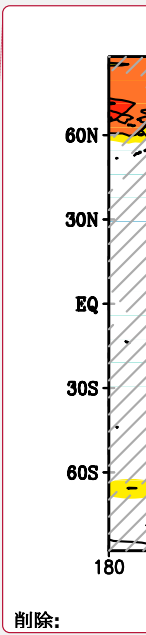
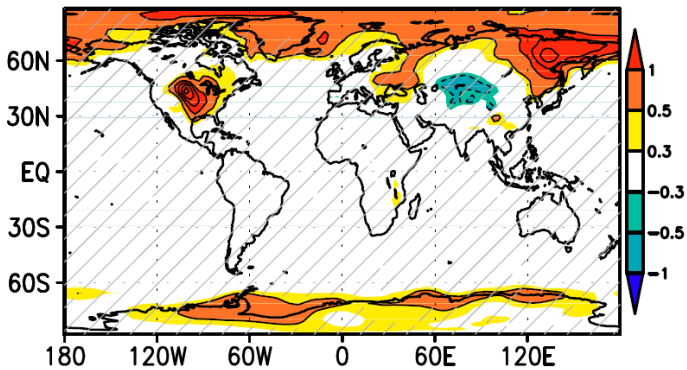
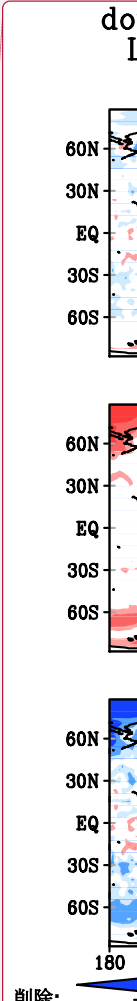
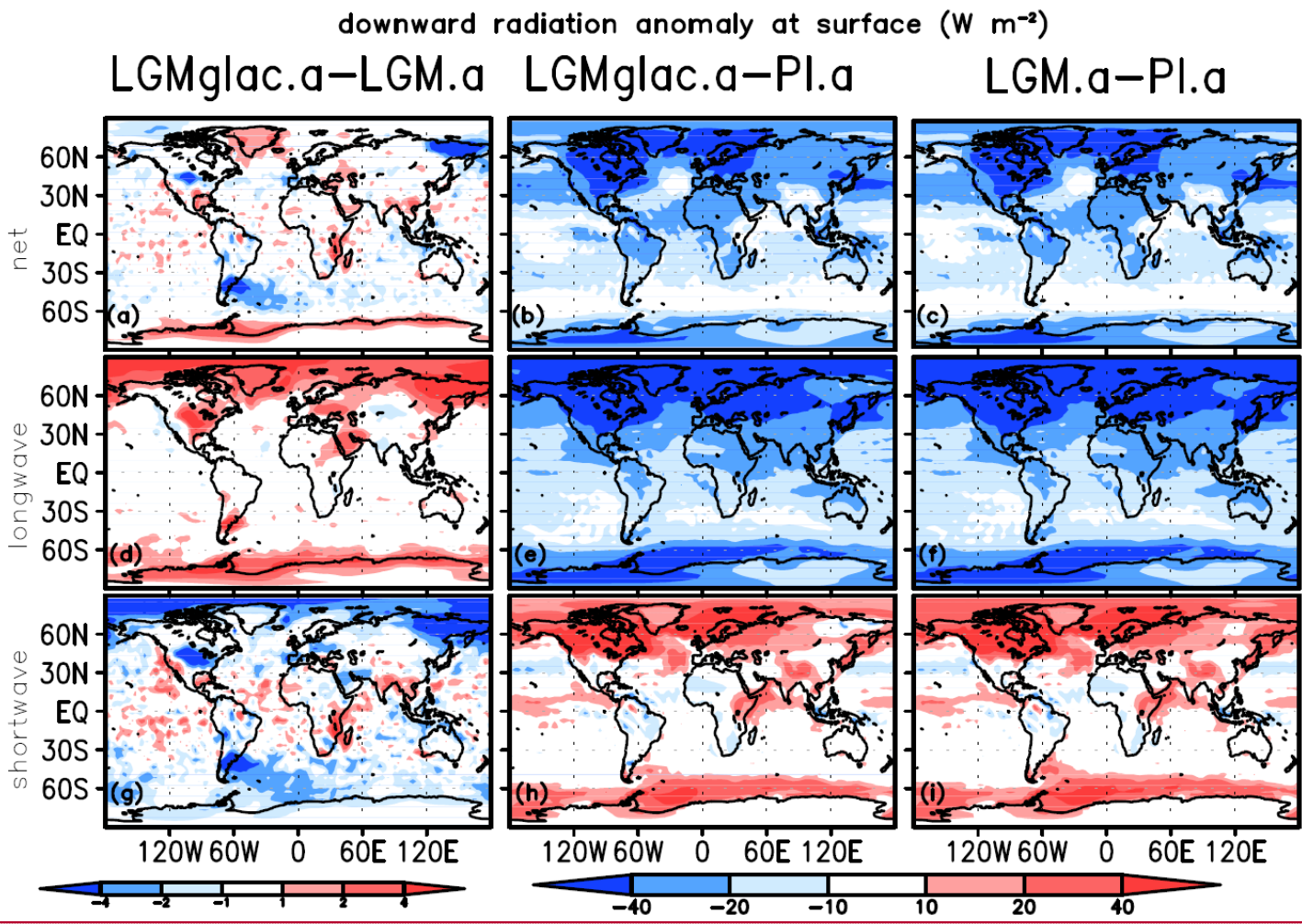


Figure 6: Difference of surface temperature at 2 m height (degree C) for (a) LGM.a-PI.a (b) LGMglac.a-PI.a and (c) LGMglac.a-LGM.a. Change is considered not significant at the 95 % confidence level in the hatched area based on a t-test.

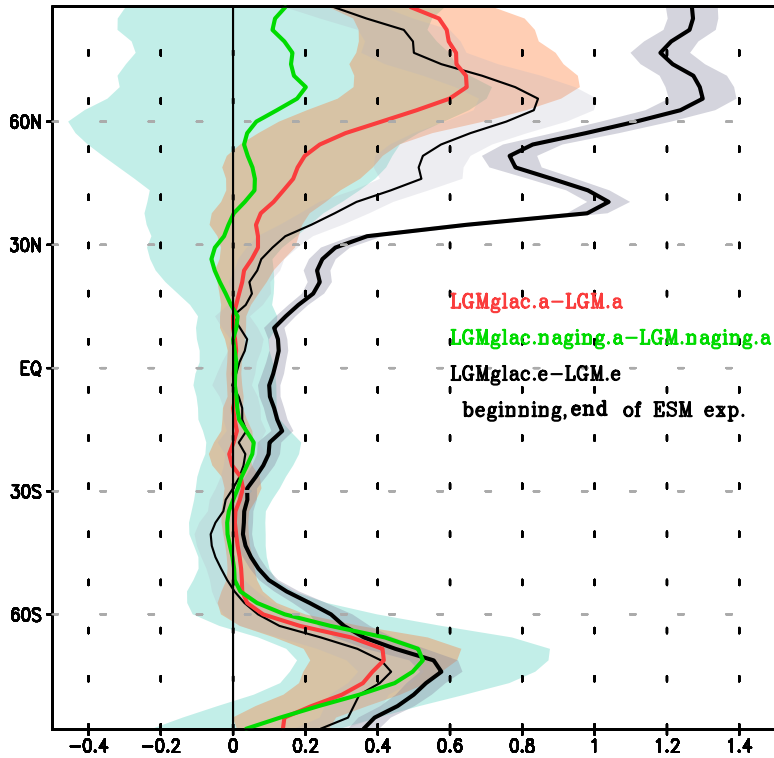
削除: for



削除:
削除: b
削除: c

5 Figure 7: Change in (a) net, (d) longwave, and (g) shortwave downward radiation at the surface LGMglac.a-LGM.a ($W m^{-2}$) (downward, positive). The same (b), (e) and (h) for LGMglac.a-PI.a, and (c), (f) and (i) for LGM.a-PI.a.

zonal mean temperature (°C) LGMglac-LGM



5 Figure 8: Difference in 2 m air temperature between LGMglac and LGM. Red line denotes LGMglac.a-LGM.a. Green line denotes LGMglac.naging.a-LGM.naging.a, which means the change is not attributable to the ageing effect of snow. Thin and thick black lines denote LGMglac.e-LGM.e at the beginning (average of year 1 to 100 in Fig. 1) and the end (average of year 701 to 900) of the experiments, respectively. Shading represents the year-to-year standard deviation.

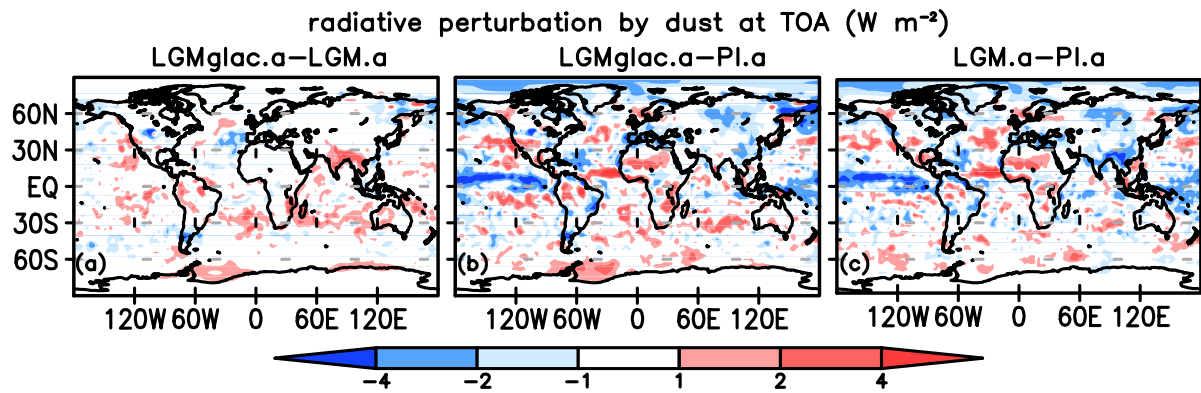


Fig. 9: Change of net radiative perturbation by dust at the top of the atmosphere (TOA): (a) LGMglac.a-LGM.a, (b) LGMglac.a-PI.a, and (c) LGM.a-PI.a.

5

radiative perturbation by dust at surface ($W m^{-2}$)

LGMglac.a-LGM.a LGMglac.a-Pl.a LGM.a-Pl.a

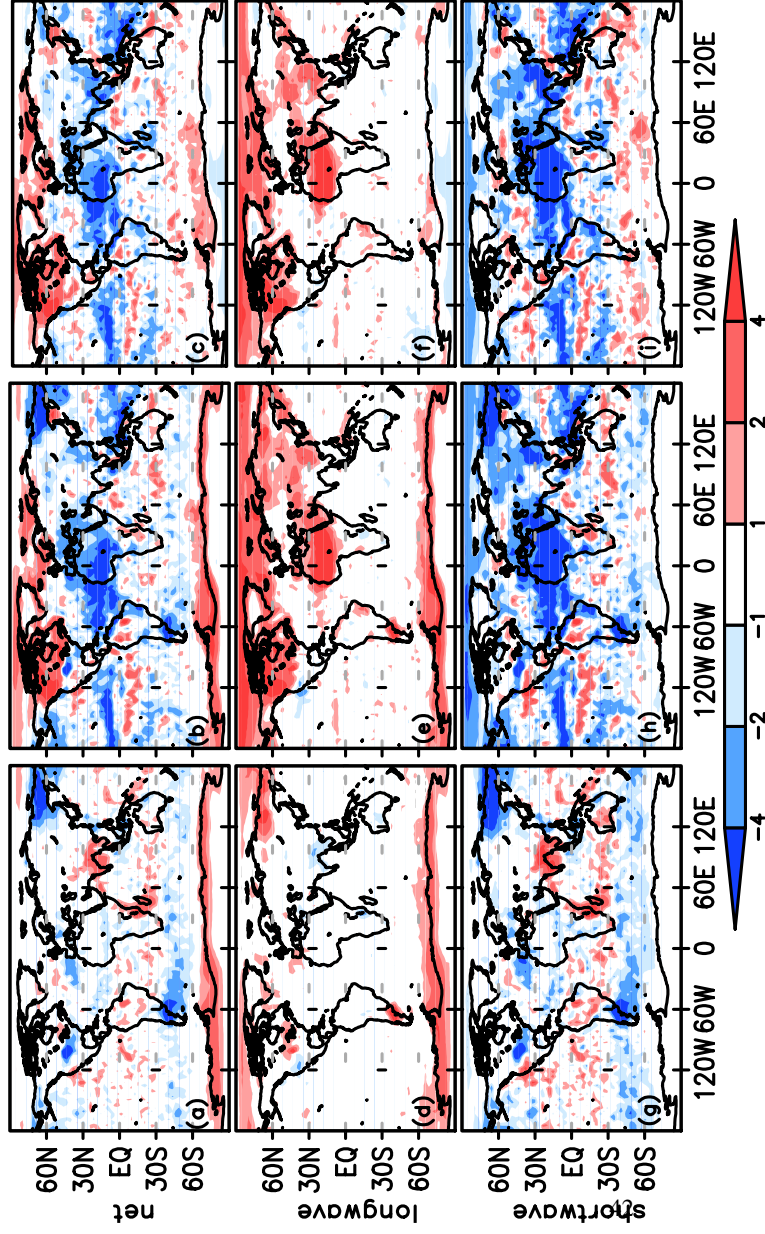


Figure 10: Change of net radiative perturbation by dust at the surface: (a) LGMglac.a–LGM.a, (b) LGMglac.a–PI.a, and (c) LGM.a–PI.a. Decomposition of net change for the longwave: (d) LGMglac.a–LGM.a, (e) LGMglac.a–PI.a, and (f) LGM.a–PI.a and for the shortwave: (g) LGMglac.a–LGM.a, (h) LGMglac.a–PI.a, and (i) LGM.a–PI.a.

5

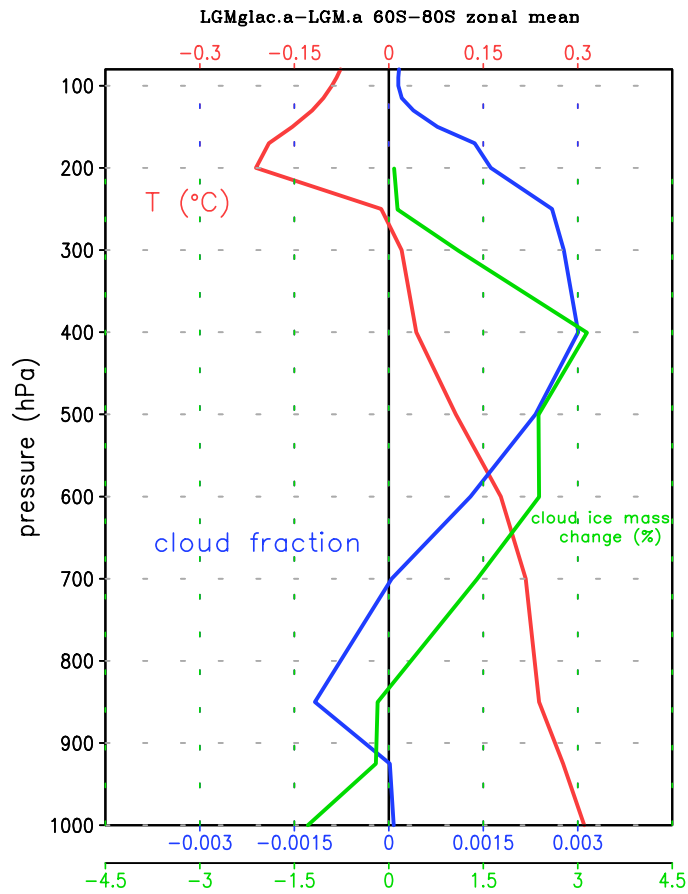
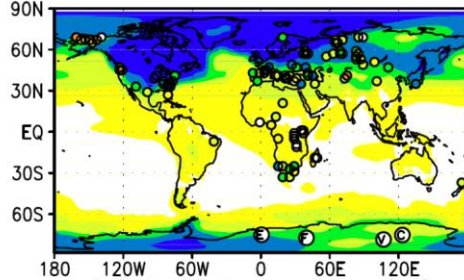
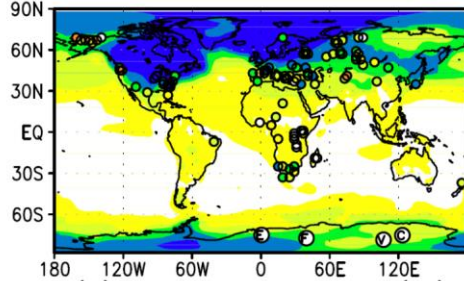


Figure 11: Averaged value height plot (60°–80° S) for change in LGMglac.a–LGM.a for temperature (red), cloud fraction (blue), and cloud ice mass concentration (green). Note the cloud ice mass concentration is plotted only at values exceeding $1e-8 \text{ kg kg}^{-1}$ in LGM.a.

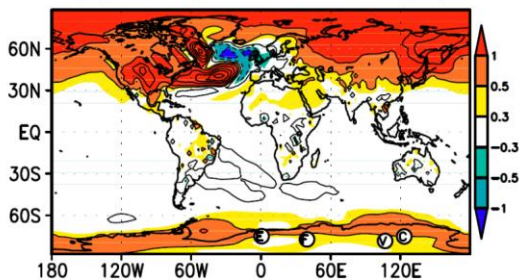
air temperature at 2 m
(a) LGM.e–PI.e (°C)



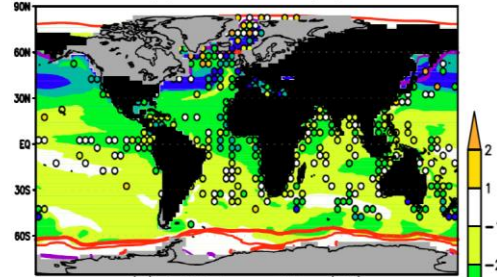
(b) LGMglac.e–PI.e (°C)



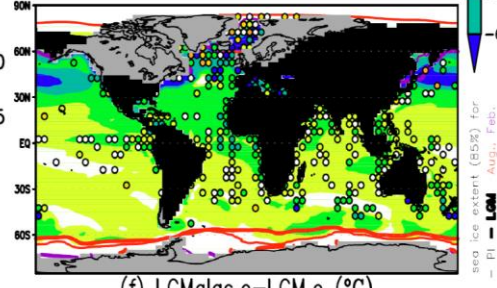
(c) LGMglac.e–LGM.e (°C)



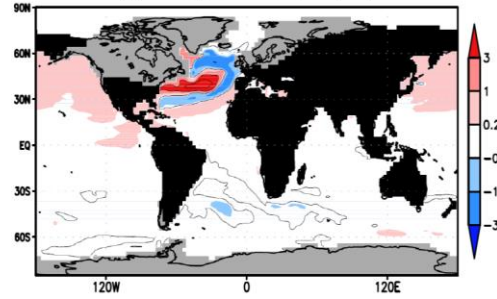
(d) LGM.e–PI.e (°C)



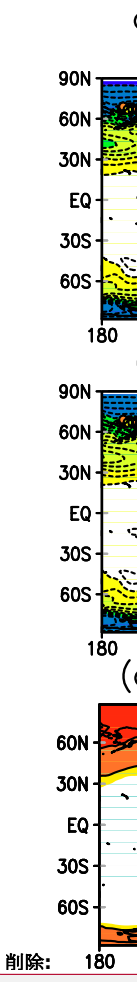
(e) LGMglac.e–PI.e (°C)



(f) LGMglac.e–LGM.e (°C)



5 Figure 12: Difference of surface temperature at 2 m height: (a) LGM.e–PI.e, (b) LGMglac.e–PI.e, and (c) LGMglac.e–LGM.e. Coloured circles represent reconstructed temperature change by pollen proxy archives (Bartlein et al., 2011). Circled letters in Antarctica represent four ice core locations: E for EDML, F for Dome Fuji, V for Vostok, and C for Dome C. Sea surface temperature (SST) changes: (d) LGM.e–PI.e, (e) LGMglac.e–PI.e, and (f) LGMglac.e–LGM.e. Purple and red lines in (d) and (e) are 85 % sea ice



削除: 180

concentration in February and August for PI (thin) and LGM (thick), respectively. Coloured circles represent MARGO SST reconstruction (MARGO project members, 2009). Light grey represents ice sheet areas.

5 **Table 1: List of experiments**

(a) Experiment using MIROC-ESM

Experiment names	Explanation	Integration length (years)
PI.e	The piControl experiment submitted to CMIP5	530
LGM.e	The lgm experiment submitted to CMIP5/PMIP3. The integration is extended further 800 years from the end of PMIP3 period	1200
LGMglac.e	LGM.e + adding glaciogenic dust flux following Mahowald et al. (2006a)	940

(b) Experiments using AGCM part of MIROC-ESM

Experiment names	Explanation	Integration length (years)
PI.a	Pre-industrial control, SST, sea ice and LAI are taken from the climatology of	<u>25</u>
LGM.a	The lgm experiment submitted to CMIP5/PMIP3. The integration is extended further 800 years	<u>25</u>
LGMglac.a	LGM.e + adding glaciogenic dust flux following Mahowald et al. (2006a)	<u>25</u>
LGM.naging.a	LGM.a + no ageing of snow albedo	<u>25</u>
LGMglac.naging.a	LGMglac.a + no ageing of snow albedo	<u>25</u>

挿入されたセル

10 **Table 2: LGMglac.a-PI.a and LGM.a-PI.a changes in global mean radiative perturbation by dust: (a) at the surface and (b) at the top of the atmosphere (TOA) ($W m^{-2}$)**

(a) surface	LGMglac.a-PI.a Aerosol-radiation	LGM.a-PI.a Aerosol-radiation	LGMglac.a-PI.a Aerosol-cloud	LGM.a-PI.a Aerosol-cloud
net	-0.30	-0.21	-0.42	-0.28
Long wave	0.37	0.28	0.50	0.34
Short wave	-0.67	-0.50	-0.92	-0.62

(b) TOA	LGMglac.a-PI.a Aerosol-radiation	LGM.a-PI.a Aerosol-radiation	LGMglac.a-PI.a Aerosol-cloud	LGM.a-PI.a Aerosol-cloud
net	0.12	0.07	-0.39	-0.36

Long wave	0.17	0.14	0.62	0.26
Short wave	-0.05	-0.07	-1.01	-0.63

Table 3: (a) Simulated total dust emissions (Tg y^{-1}) and atmospheric burden (Tg) for PI.a, LGM.a, and LGMglac.a

Experiment	PI.a	LGM.a	LGMglac.a
Emission	2540	7250	13400
Burden	11.09	30.65	39.20

(b) Glaciogenic dust flux (Tg y^{-1}) (Mahowald et al. 2006a) from the areas shown in Supplementary Fig. A in longitudinal order

area	Glaciogenic dust flux (Tg y^{-1})
Europe	288
Eastern Siberia	3320
Alaska	39
Western North America	17
Central North America	841
Mississippi river basin	92
Pampas	1935

5