

## Supplementary figures

### **The longest homogeneous series of grape harvest dates, Beaune 1354-2018, and its significance for the understanding of past and present climate**

Thomas Labbé,<sup>1,2</sup> Christian Pfister,<sup>3</sup> Stefan Brönnimann,<sup>3,4</sup> Daniel Rousseau,<sup>5</sup> Jörg Franke,<sup>3,4</sup>  
Benjamin Bois<sup>6,7</sup>

<sup>1</sup>Leibniz Institute for the History and Culture of Eastern Europe (GWZO), University of Leipzig, Specks Hof,  
Reichsstraße 4-6, 04109 Leipzig, Germany

<sup>2</sup>Maison des Sciences de l'Homme de Dijon, USR 3516 CNRS, University of Burgundy, 6 Esplanade Erasme, BP  
26611, 21066 Dijon cedex, France

<sup>3</sup>Oeschger Centre for Climate Change Research, University of Bern, Hochschustrasse 4, 3012 Bern, Switzerland

<sup>4</sup>Institute of Geography, University of Bern, Hallerstrasse 12, 3012 Bern, Switzerland

<sup>5</sup>Conseil Supérieur de la Météorologie, 73 avenue de Paris, 94160 Saint-Mandé, France

<sup>6</sup>Biogéosciences UMR 6282 CNRS, University of Burgundy, 6 boulevard Gabriel, 21000 Dijon, France

<sup>7</sup>Institut Universitaire de la Vigne et du Vin, University of Burgundy, 1 rue Claude Ladrey, 21000 Dijon, France

*Correspondence to:* [thomas.labbe@u-bourgogne.fr](mailto:thomas.labbe@u-bourgogne.fr)

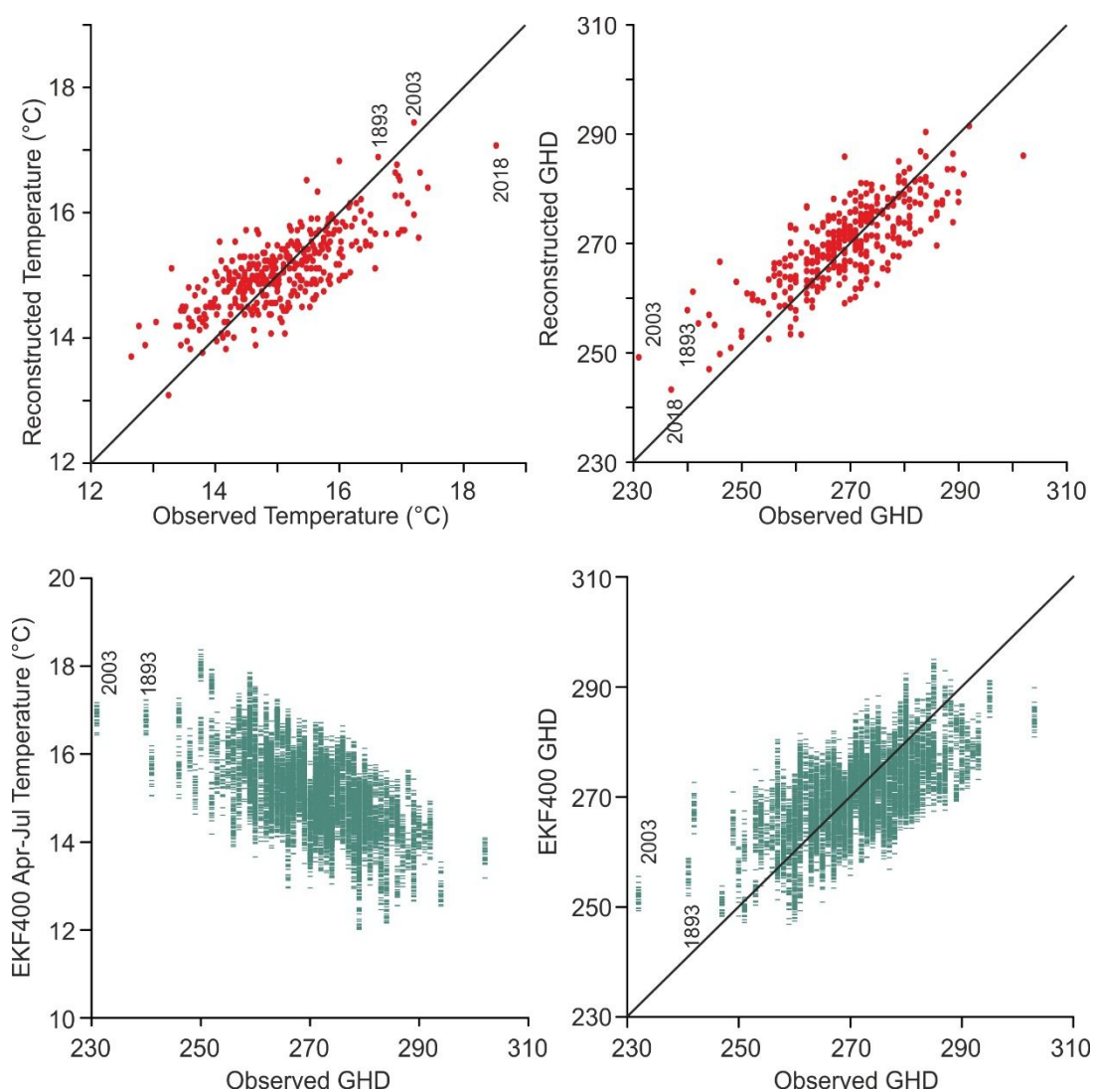


Figure S 1 : Scatter plot showing (top left) the reconstruction of April-to-July temperature from GHD using model A versus observed temperature, (top right) the reconstruction of GHD from observed temperature using model B versus observed GHD, (bottom left) the April-to-July temperature in EKF400 versus observed GHD and (bottom right) GHD from EKF400 using model B versus observed GHD. All lines are one-to-one lines. The 3 earliest harvest dates are marked.