

Dear Editor

The manuscript is now revised according to the reviewers and your suggestions. I have pasted the point-by-point replies again below. Changes to the manuscript are indicated with tracked changes. Also, I have added comments in the manuscript to point out where some of the 'major' comments of the reviewers are addressed. I also include the proof of the accepted JQS paper.

Sincerely,

Flor Vermassen and co-authors

We thank the reviewer for their valuable comments and suggestions, and find them very helpful for improving and clarifying the manuscript.

*It is not immediately clear why the sedimentological information referred to (particle size and IRD) has not been presented in this paper also. This data is often used to interpret glacier retreat rates – I suspect it would make for a much stronger final paper by combining with the faunal data. There may end up being overlap with paper submitted to Journal of Quaternary Science referred to in the manuscript.*

Sedimentological data (i.e. IRD) is indeed often used in combination with foraminiferal data to assess the relationship between oceanic changes and glacier activity (iceberg calving). A standard approach would be to show the grain-size/IRD data from this core, present it as a proxy for glacier calving and then attempt to interpret their relationship. Thus I can see it comes across as somewhat strange that I did not present the IRD record in this paper.

The main reason for this is that when we investigated IRD patterns in the fjord (based on multiple sediment cores) we found that the relationship between IRD and glacier behavior is not as straightforward as is often assumed. Therefore we decided to write an article specifically discussing the relation between IRD and glacier behavior (i.e. the JQS paper), and as such IRD was not addressed in the current article. We think that in this way the article presented here can focus more clearly on the question 'does/did ocean variability affect glacier behavior. Also, in this study we rely on historical glacier front positions available, which are probably more accurate than interpretation of the often complex relationship between glacier dynamics and IRD (see section above). Nevertheless, we agree that it is still be worthwhile to show the reader the IRD data, so I have included this in the revised article (figure 7).

*Presentation of the foraminiferal data. As above this is a fundamental part of the paper and the key interpretation and conclusions are based on the presentation of foraminiferal data. Calcareous foraminifera are presented separately from agglutinated species (Figure 5), however, the % calculation is based on the combined counts of calcareous and agglutinated specimens. As acknowledged in the paper the calcareous species are influenced by dissolution (most severely between 10 and 25 cm). Hence the relative proportions of the various species will be strongly influenced by preservation of the calcareous fauna rather than by bottom water preference. It would make sense to at least present an additional set of graphs showing the % abundance of agglutinated species based on agglutinated counts only. This would remove the influence of dissolution and would make trends in the proportion of Atlantic influenced vs Arctic influenced species clearer to identify. The same could be tried with the calcareous assemblage, though for parts of the core there would not be enough specimens to present a robust % curve. If these plots do not show any clear/useful trends, then they could at least be included in the Supp Info section so that interested readers could see that the analysis had been done.*

*A key aspect of this paper is the use for benthic foraminiferal data to interpret changes in bottom water conditions – specifically changes in relative importance of Atlantic Water flux across the shelf. The paper classifies the benthic foraminifera species into groups linked to bottom water conditions based on published studies (Atlantic influenced, Arctic and Indifferent). This is presented in a supplementary table. However, it is not always clear what the rationale for the choice of grouping is as for some species there is more than one potential group designation suggested in the literature. As this is such a key element of the paper I think it would be useful if the groupings and rationale were presented as part of the main paper. Or, alternatively, at least have a table in the main paper with species composition of the three groups stated, then refer to Supp Info for the more detailed rationale.*

We agree that the grouping rationale was indeed too briefly explained. The table that lists all identified species and references to which ecological habit that species have been previously assigned is now moved to the main document. For species that have been assigned as both Atlantic and Arctic water indicators, we used the most recent studies (but also listing the contradicting references). It is important to note that we use these previously attributed ecological preferences mostly as a tool to investigate our dataset (i.e. to investigate whether species with similar proposed environmental preferences indeed display similar 'groupings' within Upernavik fjord. We then found that the general variation within the dataset is largely driven by the proportion of calcareous vs. agglutinated taxa present (as seen by results of the PCA analysis). PCA analysis run for each group (calcareous taxa, agglutinated taxa) seems inconclusive with regards to grouping of species by environmental preferences (Atlantic/Arctic) and we have now shown this analysis in the supplementary information (i.e. the requested abundances and PCA plots). Within the calcareous assemblage, a lack of grouping according to environmental preference can probably be explained because the info provided by species shifts is limited since calcareous species are nearly absent in a large interval. Also, little regard has been given in the literature to the sensitivity of agglutinated assemblages to environmental conditions (one of the few studies is Lloyd et al., 2006), and only one species in our agglutinated assemblage (>0.5% of total abundance) has been proposed as an indicator of Atlantic waters. Therefore, in our discussion the interpretation relies predominantly on the calcareous/agglutinated ratio, rather than the environmental preferences assigned to the species as proposed by previous work. I have rewritten parts of the results and discussion, which I hope will make this reasoning more clear.

*I don't think these considerations will change the actual interpretation and conclusions of the paper, I think these are valid and generally supported by the data. Some of the points outlined above might help support your conclusions.*

*The key conclusion based on the faunal data is that bottom water conditions control dissolution – increased dissolution of calcareous fauna during times of colder Arctic Water influence, then reduced dissolution during periods of stronger Atlantic Water influx. This makes sense, but ought to also consider possible influence of sedimentation rate – increased sedimentation rate will lead to improved preservation of calcareous fauna (buried before dissolve). This has been identified from studies immediately in front of Jakobhavns Isbrae in Disko Bay (Lloyd et al 2005 and Lloyd 2006). You may conclude that sedimentation rate does not vary in your core, but I think this possibility ought to be presented.*

We agree and have included a line about the effect variations in sedimentation rate may have on the preservation of calcareous fauna.

*Section 5.2. Comparison with climatic records. This discussion is essentially based on the % Calcareous Fauna (ie preservation, Figure 7b). The manuscript suggests warm bottom waters during 1920-1960, but the basal sample from 1925 actually has a very low calcareous abundance (10%). This should be classified as cold water indicating...*

This has been changed accordingly in the manuscript.

*The high calcareous percentages actually seem to stretch from 1930 – 1970 based on Fig 7b. So based on the data the warm bottom waters seem to be from 1930 – 1970... I think the description/discussion ought to reflect this more clearly. The early part of the 20th Century still seems to correlate reasonably well with previous reconstructions (Figure 8f) and the AMO (Figure 8g) – particularly given some error margins in age model generation.*

We agree and have rewritten this section of the discussion accordingly.

*Section 5.3 Retreat of Upernavik Isstrøm and ocean forcing. The record after 2000 seems mixed, seems to be major increase after 2005 for Upernavik 1 and 2 at least, while the ocean forcing is earlier. There is some discussion about the possible role of seafloortopography—it would be useful to provide a little more information here. Have previous studies identified topographic variability as important in controlling retreat rates for the four different ice streams? Does fjord side wall configuration have an impact on retreat rates? It might also help to put a smoothing line through fig 8f so that it is more directly comparable with your ocean record resolution.*

Subglacial topography indeed plays a major role in controlling the dynamics of marine terminating glaciers and there is some research available for Upernavik Isstrøm. Sidewall configuration plays a role but is less well understood. I have expanded this section in the discussion, but to address all of the literature on the subject would be beyond the scope of this study. We hope the reviewers agree that we have found the right balance in the revised manuscript.

*Minor points In the introduction the authors refer to previous research identifying rapid retreat and acceleration of tidewater glaciers in SE and NW Greenland – I think it would be worth making a distinction between NW and central west Greenland. The first studies identified this response from Jakobshavns Isbrae – this is probably better referred to as central west rather than northwest Greenland..*

We agree and included this distinction in the introduction.

*Reference by Ribergaard et al., 2008 does not seem complete*

Reference is completed.

Figure 8. It would be useful to say what the colours in panels a) to d) represent (times when the glaciers split up?).

These colours indeed refer to the periods when glaciers were still together (grey) and when they split. We describe this better in the caption now.

*Page 9 line 21: ‘...perturb glacier front’, I wonder if it might be better to say ‘...reach glacier front’?*

Agreed and this has been rewritten.

We thank the reviewer for their comments and suggestions. We believe that incorporating these comments will lead to an improved manuscript.

*Vermassen et al. present a nice paper on the palaeoceanography of a Greenlandic fjord. In my opinion, the paper is relevant and a good fit for Climate of the Past. However, there are some issues that need addressing and resolving before the paper can be published.*

*1. I think the paper suffers from focusing solely on one proxy (benthic foraminifera), especially since relatively major oceanographic/environmental changes are inferred from the data. Supporting data, for example TIC/TOC, biogenic silica, stable isotopes of oxygen and carbon etc. would greatly strengthen the interpretations, especially those regarding productivity. Although this may be outside the scope of this study, I still find it surprising that such relatively standard sedimentary analyses were omitted here.*

We certainly agree that multi-proxy analysis can add value to sediment core analysis. Unfortunately, due to time constraints as well as limited available sediment, we cannot complete further additional analysis.

*2. One paper – Vermassen et al. (submitted to JQS) is quoted repeatedly, with many of the authors overlapping with the present manuscript; however, this paper is under review and so presumably not available yet. Is the JQS paper focussing on the same core, and if so, what was the reason for publishing it separately rather than having it as one, stronger paper? I think this issue should be addressed, as relevant data from the JQS manuscript may strengthen the current one.*

The quoted article (JQS) has meanwhile been accepted for publication and is in production. The JQS article investigates IRD variations from multiple cores in Upernavik fjord, also including this core. The main reason that the IRD data is not incorporated in this article (Climate of the Past) is that we found that the relationship between IRD and glacier behavior is not as straightforward as is often assumed. Therefore we decided to write a 'proxy-evaluation' article that specifically discusses the relation between IRD and glacier behavior (i.e. the JQS paper), and this is why the IRD is not addressed in this paper. This allows this Climate of the Past paper to focus more clearly on the question 'does/did ocean variability affect glacier behavior'. Nevertheless, I agree that it would still be good to at least also show the IRD data in this article, so I include this now in Fig. 7.

*3. Since your core was collected at 900 m depth, your benthics record bottom water conditions only. You mention planktonic foraminifera in passing, however [section 4.3; lines 11-12]. Although planktonics may be sparse, I still think this is important and should be expanded on, as they may give you a clue as to the validity of your overall interpretations.*

We agree that the way the planktonic species were mentioned was not very clear. Some planktonics were found, but in very low abundances. I expand this section and add the variability in total no. of planktonic foraminifera per gram to Figs. 5 and 7.

*4. The dissolution of calcareous foraminifera also depends on depth – for example, there are almost no calcareous foraminifera in deeper Baffin Bay waters.*

We have added a line about this to the manuscript.

*5. You identify organic linings in your samples and assign them to Elphidium excavatum. How confident are you that these linings are those of E. excavatum? Did you dissolve specimens of this species to check this? What about the linings of other planispiral species? If you get foraminiferal linings in your samples, you must have more than one type present – what are they? I think the link between linings and a specific*

*foraminiferal species should be demonstrated more clearly, as this forms the basis of your argument regarding dissolution later on [section 5.1], and, especially, the link to Atlantic water inflow.*

We agree that identifying a species solely based on organic lining is too tentative and removed mentioning *E. clavatum* as the main species. We did not intend to present the variability in organic linings as the main argument for deriving an effect of dissolution on the faunal assemblage. Rather, we derive the importance of dissolution based on the distinct variation between agglutinated/calcareous species and the fact that this has been reported as a very important processes in Arctic waters/fjords. I have rewritten the discussion to make it more clear that the variation in organic linings is not the main argument for the effect of dissolution, but is rather one element that supports our interpretation.

*6. Also regarding linings, the abundance in Fig. 5 are rather on the low side (max. ' 15 linings/g) – is this correct? Does this include all linings or just those of planispiral species? How do you make the leap between dissolution and lining presence, especially in periods that have plenty of calcareous proportions but also the highest rates of linings (e.g., 1920-1960 on Fig. 5)?*

The numbers of linings per gram are correct. Tests that were partly dissolved but still showed enough features to be identified were identified, otherwise they were counted as organic linings (the amount of partly dissolved test was very low though, most linings showed no remnants of carbonate test). The organic linings were nearly all planispiral, but some unidentified organic tubes were also included in the count number (very few however). For thorough analysis of organic linings the samples should be prepared as palynological slides, but here we use them simply as a (rough) indication of dissolution of the calcareous assemblage.

*7. Inflow of Atlantic waters into Baffin Bay and adjacent regions are inferred in previous palaeo-studies (e.g., Knudsen et al. 2012, Boreas). How similar or dissimilar are the benthic assemblages in these studies compared to the present one.*

The benthic assemblage is very similar to that of Lloyd et al., (2012) and this has now been cited in the text. This can be expected since this study is most comparable study available with regard to proximity, investigated time interval, water depth and sample preparation.

*8. The inference of nutrient levels in the fjord [section 5.1, line 24 onwards] is tentative in my opinion, since you don't have other palaeoproductivity indicators (TOC,  $\delta^{13}C$ ) to support this notion. True, there are some species in your record which indicate high flux of organic matter to the seafloor, but this is mostly *N. labradorica*. I think these inferences between dissolution, Atlantic water inflow, and nutrients should be done with greater caution, therefore.*

I agree this interpretation would have indeed be stronger with additional paleo-productivity proxies and the link with productivity is somewhat speculative. I have rewritten this section to incorporate a bit more caution with regard to the interpretation. In general we still believe that this is a point worth suggesting, in particular since these data might confirm recent research that has showed a strong link between Atlantic water inflow and (modern) productivity (Meire et al., 2017) .

*9. This figure is a bit confusing and should be modified for ease of reading. For ' example, are the abundances shown relative or absolute? What are the stippled lines (very faint!)? I suggest adding lines or points to the silhouette graphs so the number of samples/datapoints can be seen more clearly.*

We adjust the figure so it is clear these are absolute abundances. The stippled lines are merely for visual support to compare the different abundances. We add a symbols for data points.

*10. Unless I missed it, a list of all species found, including taxonomic designations, should be added to the paper.*

This list is now present and placed main this the main document (Table 1).

# A reconstruction of warm water inflow to Upernavik Isstrøm since AD 1925 and its relation to glacier retreat.

Flor Vermassen<sup>1,2</sup>, Nanna Andreassen<sup>1,3</sup>, David J. Wangner<sup>1,2</sup>, Nicolas Thibault<sup>3</sup>, Marit-Solveig Seidenkrantz<sup>4</sup>, Rebecca Jackson<sup>1</sup>, Sabine M. Schmidt<sup>5</sup>, Kurt H. Kjær<sup>2</sup>, Camilla S. Andresen<sup>1</sup>.

<sup>1</sup>Department of Glaciology and Climate, Geological Survey of Denmark and Greenland (GEUS), Copenhagen, Denmark

<sup>2</sup>Centre for GeoGenetics, Natural History Museum, University of Copenhagen, Copenhagen, Denmark;

<sup>3</sup>Department of Geosciences and Natural Resource Management, University of Copenhagen, Copenhagen, Denmark;

<sup>4</sup>Centre for Past Climate Studies, Arctic Research Centre, and iClimate Aarhus University Interdisciplinary Centre for Climate Change, Department of Geoscience, Aarhus University, Aarhus, Denmark;

<sup>5</sup>CNRS, OASU, EPOC, UMR5805, Pessac Cedex, France

Correspondence to: Flor Vermassen (flv@geus.dk)

**Abstract.** The mass loss from the Greenland Ice Sheet has increased over the past two decades. Marine-terminating glaciers contribute significantly to this mass loss due to increased melting and ice discharge. Periods of rapid retreat periods of these tidewater glaciers have been linked to the concurrent inflow of warm, Atlantic-~~derived-sourced~~ waters. However, little is known about the variability of these Atlantic-derived waters within ~~thesethe~~ fjords, due to a lack of multi-annual, in situ measurements. Thus, to better understand the potential role of ocean warming on glacier retreat, reconstructions that characterize the variability of Atlantic water inflow to ~~thesethe~~ fjords are required. Here, we investigate foraminiferal assemblages in a sediment core from Upernavik Fjord, West Greenland, in which the major ice stream Upernavik Isstrøm terminates. We ~~investigate the environmental characteristicsconclude~~ that ~~control species diversity and derive that itthe~~ foraminiferal assemblage is predominantly controlled by changes in bottom water ~~variability. Hence, we~~ composition and provide a reconstruction of Atlantic water inflow to Upernavik Fjord, spanning the period 1925-2012. ~~This reconstruction reveals peak Atlantic water inflowinflux during the 1930s and again after 2000, a pattern that is similarcomparable to the~~ Atlantic Multidecadal Oscillation (AMO). ~~We compare~~The comparison of these results to historical observations of front positions of Upernavik Isstrøm. ~~This~~ reveals that inflow of warm, Atlantic-derived waters ~~indeed~~ likely contributed to high retreat rates in the 1930s and after 2000. However, moderate retreat rates of Upernavik Isstrøm also prevailed in the 1960s/1970s, showing that glacier retreat continued despite a reduced Atlantic water inflow, albeit at a lower rate. Considering the link between bottom water variability and the AMO in Upernavik Fjord, and the fact that a persistent negative phase of the AMO is expected for the next decade, Atlantic water inflow into the fjord may decrease in the ~~next ~10 years-coming decade,~~ potentially minimizing or stabilizing the retreat of Upernavik Isstrøm during this time interval.

Formateret: Authors



## 1 Introduction

Mass loss from the Greenland Ice Sheet (GrIS) has accelerated over the ~~past two~~ recent decades, raising its contribution to the ongoing global sea-level rise. Currently, about one third of the mass loss is attributed to dynamic loss in the form of ice discharge from large tidewater glaciers (van den Broeke et al., 2016). The processes controlling the instability of these glaciers are however still not well understood, and therefore the capability of computational models to predict the rate of future mass loss remains limited. ~~During the early 2000's a rapid retreat of tidewater glaciers along the south-eastern (SE) sector of the GrIS was observed, followed by retreat of glaciers in the north-western (NW) sector (Joughin et al., 2013; Khan et al., 2010; Kjør et al., 2012; Straneo et al., 2013). This retreat coincided with a warming of the ocean waters in SE and NW Greenland and has~~During the early 2000s a rapid retreat of tidewater glaciers along the south-eastern (SE) sector (Rignot et al., 2004), ~~central west sector (Holland et al., 2008) and northwest (NW) sector (Bjørk et al., 2012; Joughin et al., 2013; Khan et al., 2010) was observed. This retreat coincided with a warming of the ocean waters in SE and W Greenland and~~ led to the hypothesis that shifting ocean currents exert a major control on the dynamic behaviour of these glaciers (Holland et al., 2008; Straneo et al., 2013). Several studies have examined past ice-ocean interactions to investigate the importance of ocean forcing on a longer timescale (Andresen et al., 2010, 2011, 2017; Dyke et al., 2017; Lloyd et al., 2011; Wangner et al., 2018) but few have the temporal resolution needed for an in-depth study of (sub-)decadal dynamics (Andresen et al., 2012b; Drinkwater et al., 2014). In West Greenland specifically, only a few observations or detailed reconstructions of bottom water temperatures throughout the 20<sup>th</sup> century exist (Lloyd et al., 2011; Ribergaard et al., 2008). Sediment records in Greenlandic fjords with marine-terminating glaciers are usually characterised by relatively high sedimentation rates (Dowdeswell et al., 1998), thus allowing environmental reconstructions with a high temporal resolution. Benthic foraminiferal communities, ~~in particular,~~ are ~~particularly~~ sensitive to environmental conditions, and shifts in species ~~assemblages~~ composition can be used to reconstruct relative changes of bottom water masses (Murray, 2006).

Here, we investigate foraminiferal assemblages in a marine sediment core ~~in from~~ Upernavik Fjord, NW Greenland. We evaluate which environmental factors influence ~~species~~the foraminiferal assemblages and reconstruct Atlantic water inflow to Upernavik Isstrøm since 1925. These results are compared to historical records of the Upernavik Isstrøm ice front retreat in order to ~~asses~~evaluate whether periods of increased Atlantic water inflow in the fjord are associated with glacier retreat.

## 2 Study area and previous research

Upernavik Fjord has a length of ~60 km and is 5-7 km wide. The fjord floor has been mapped with a Multibeam Echo Sounder System (MBES) as part of NASA's Oceans Melting Greenland mission (NASA OMG Mission, 2016). The outer part of the fjord is characterised by steep side walls and a flat fjord floor at ~900m water depth: (Fig. 1).

Recent CTD measurements have revealed a stratified water column in Upernavik Isfjord with evidence for warm-water entrainment at depth near the glacier front (below ~250m) (Andresen et al., 2014; Fenty et al., 2016). This warm-water layer

flows below a colder and fresher surface water layer. The stratification is the result of two ocean currents that influence the hydrography of the fjord (Fig. 1). The West Greenland Current (WGC) flows northward as a subsurface current along the West Greenland margin and transports relatively warm, saline waters (mean temperature  $>4^{\circ}\text{C}$ , mean salinity  $>34.91$  psu; Myers et al., 2007). The West Greenland Current originates from the Irminger Current (IC) in the Atlantic Ocean (Fig. 1). Along its path from east to west, the Irminger current (and subsequently West Greenland Current) mix with colder and fresher waters of the East Greenland Current, which transports cold and less saline waters from the Arctic Ocean as a near-surface current ( $<1^{\circ}\text{C}$ ,  $<34.9$  psu; Sutherland and Pickart, 2008). Local waters, heavily influenced by meltwater from the Greenland Ice Sheet, are found at the very surface of the West Greenland Current. The West Greenland Current reaches Upernavik Fjord via a deep trough ( $\sim 700\text{m}$ ) (Fig. 1).

Upernavik Isstrøm is a major ice stream in NW Greenland, draining a significant part of the Greenland Ice sheet ( $\sim 65,000\text{ km}^2$ ) (Haubner et al., 2018) (Fig. 1). In 1886, Upernavik Isstrøm was characterised by a single glacier front, but since then it has retreated into different branches of the fjord (Weidick et al. 1958). Currently, four glaciers calve into the fjord waters (named Upernavik 1 to 4, Fig. 2).

Upernavik Isstrøm is one of few outlet glaciers in Greenland with historical observations of its ice-front position throughout the 20<sup>th</sup> century. A compilation of these shows retreat of Upernavik Isstrøm starting in 1930 (Khan et al., 2013; Weidick, 1958). These observations were used to prescribe a 3D model that estimated mass loss between 1849-2012 (Haubner et al., 2018). This revealed a period with near zero mass loss between 1849–1932, mass loss dominated by ice dynamical flow between 1932-1998, and finally a total mass loss due to an increased negative surface mass balance as well as increased ice dynamical loss, with a magnitude twice that of any earlier period between 1998-2012. A study of aerial photographs revealed a shift in mass loss dominated by thinning of the southern glaciers between 1985-2005, to mass loss mainly due to thinning of the northern glaciers between 2005-2010 (Kjær et al., 2012). Asynchronous behaviour of the different glaciers after 2005 was also described by Larsen et al. (2016); this study showed an acceleration of Upernavik 1 and Upernavik 2 in 2006 and 2009, respectively, while the southern glaciers Upernavik 3 and 4 remained stable. Sediment cores from Upernavik fjord were investigated for their IRD content and compared to historical glacier front observations (Vermassen et al., in press.). This study demonstrated that the spatial variability of IRD patterns are high, and that randomness inherent to ice-rafting largely overprints the glaciological signal (i.e. iceberg calving) within this fjord. Their use as an indicator of glacier stability was improved by producing a composite record based on multiple cores, but due the complexities associated with the interpretation of the IRD record we focus on comparing the results of the benthic foraminifera analysis with historical observations of glacier margins in this study.

**Kommenterede [VF1]:** This section addresses the reviewers comments about why the sedimentological data were not presented in this paper: we explain here that they were investigated as part of a previous paper from which we concluded that the direct glacier observations provide a better comparison to our foraminifera study.

### 3 Methods

#### 3.1. Core collection

Sediment core POR13-05 (172 cm, 72.945 N, 55.620 W) was collected from 900 m water depth in August 2013 during a cruise with *R/V Porsild*. Coring was undertaken with a Rumohr corer (Meischner and Ruhmohr, 1974). This type of device is specifically designed to avoid sediment disturbance during coring, thereby ensuring preservation of the core top. ~~Foraminifera assemblages were investigated in~~ This study focuses on the top 50 cm of the core.

#### 3.2. Grain-size analysis

The core was sampled continuously every centimetre for grain size analysis. In order to calculate the water content, sample weight was measured before and after freeze-drying. Wet-sieving was performed on all samples, separating them into three grain-size fractions (<63  $\mu\text{m}$ , 63-125  $\mu\text{m}$ , and >125  $\mu\text{m}$ ). For the >125  $\mu\text{m}$  fraction, singular pebbles >0.01g were discarded from the measurements to avoid distortion of the analysis due to the occurrence of an individual large grain (Wangner et al., 2018). The different fractions were weighed and the individual percentages were calculated relative to the total dry weight. A detailed discussion and methodology of IRD variability can be found in Vermassen et al., (in press).

#### 3.3. Age model

Sediment ages were determined with  $^{210}\text{Pb}$  dating. Seven samples each obtained from a 1 cm interval were freeze-dried and 4–6 g of ~~drydried~~ sediment was then conditioned in sealed vials. A well-type gamma detector Cryocycle-I (Canberra) at the laboratory UMR5805 EPOC (University of Bordeaux, France) was used to measure  $^{210}\text{Pb}$ ,  $^{226}\text{Ra}$  and  $^{137}\text{Cs}$ . Estimated errors of radionuclide activities are based on 1 standard deviation counting statistics. Excess  $^{210}\text{Pb}$  ( $^{210}\text{Pb}_{\text{ex}}$ ) is calculated by subtracting the activity supported by its parent isotope,  $^{226}\text{Ra}$ , from the total  $^{210}\text{Pb}$  activity in the sediment. The CF-CS (constant flux, constant sedimentation) model was applied to calculate a sedimentation rate. The sedimentation rate was then used to calculate sediment ages. The sediment surface was assumed to represent the year of core acquisition (2013).

#### 3.4. Foraminifera analysis

Sediment slices (1 centimeter) were sub-sampled for foraminiferal studies (6-13 g of wet sediment), so that they each contained an estimated amount of ~300~500 tests. Foraminiferal assemblage analysis was performed on 26 samples from the top 50 cm of the core. This corresponds to a time-resolution of ~4 years between samples. ~~Samples~~ The fresh samples were soaked overnight in a light alkaline solution ( $\text{Na}_2\text{CO}_3$ , 15g/l) to disintegrate silt and clay clumps in the samples. Subsequently, they were wet-sieved with a 63  $\mu\text{m}$  sieve and stored with a storage solution, consisting of distilled water, ethanol and sodium carbonate. In order to preserve the most fragile species, the foraminifera were wet-counted (Bergsten, 1994). ~~This also~~

~~allowed~~) together with foraminiferal organic linings. Partially dissolved tests were counted as organic linings if the tests did not display enough features to allow species identification ~~of organic linings, mainly belonging to *E. clavatum*.~~ A minimum of 300 tests ~~waswere~~ counted ~~forin~~ each sample. Based on previous research, species were categorised into three groups: ~~warm(chilled)~~ Atlantic water indicators, ~~cold~~Arctic water indicators, and those with no ~~apparent~~ specific environmental preference (see ('indifferent')). ~~We use these previously proposed categorisations to explore whether these groupings are also evident in our dataset (i.e. whether species with similar environmental preferences display similar variability in Upernavik Fjord). It should be noted that for some species, different environmental preferences have been suggested in the literature (Table S41). In those cases, we categorise the species according to the most recent literature and in accordance with sites most comparable to our study, but also list the contradicting references (Table 1).~~ A principal component analysis (PCA) of species abundances >0.5% was performed with the software PAST (Hammer et al., 2001). This was done to simplify analysis and ~~visualisation of the~~visualise variation within the dataset. Abundances were normalised before ~~the~~ PCA analysis by calculating z-scores to avoid skewing of the data by species with large abundances. Correlations of time series were calculated in Microsoft Excel using the Pearson correlation function.

**Kommenterede [VF2]:** Deleted identification of organic linings

**Kommenterede [VF3]:** This section explains better why and how we categorised species.

## 4 Results

### 4.1. Core lithology and sedimentology

Visual observations of the core section reveal a brown mud (code 10 R 5/6 (Munsell, 1912)) with sub-angular to sub-rounded pebbles interspersed throughout the core (Fig. 3). The split core surface shows no sign of bioturbation, ~~as also~~ confirmed by the X-ray image and the age model. Grain-size measurements and the X-ray image show that the lower part (172-90 cm) of core POR13-05 is characterised by an alternation of mud-supported diamicton versus homogeneous mud without pebbles. The mid-section of the core contains a thick, sandy turbidite, characterized by a fining-upwards trend (90–70 cm), capped by a muddy, pebble-free unit at 68-53 cm (Fig. 3). The upper-part of the core (53–0 cm) is composed of massive, mud-supported diamicton, predominantly comprising of clay (>90 %) interspersed with larger clasts up to pebble size.

### 4.2. Age model

The 50 cm display a logarithmic decay of  $^{210}\text{Pb}$ , indicating continuous sedimentation (Fig. 4). Based on the CF-CS model a sedimentation rate of 0.58 cm/yr was derived. This corresponds to an age of  $1925 \pm \text{yr}$  at 50 cm depth. The turbidite at 70-50 cm hinders dating further downcore.

### 4.3. Foraminifera assemblage variability

A total of 35 benthic foraminiferal species were identified, of which 16 species are calcareous and 19 agglutinated. ~~Three (see Table 1 for full species names). The planktonic species were identified foraminifera *Neoglobobulimina pachyderma* (sinistral) is only present in two distinct intervals, between 1-8 cm and 44-50 cm, albeit at very low abundances (<5 counts/g).~~

Due to relatively low counts, the percentage-distribution of each species is calculated relative to the total benthic assemblage, i.e. both calcareous and agglutinated specimens (Fig. 5). ~~four samples, but these~~ The species representing >0.5% of the total assemblage are presented. However, the counts and percentages of species with lower abundances can be found in the supplementary material (Table S2). As the calcareous vs. agglutinated foraminiferal concentrations may also be affected by dissolution of calcareous tests and post-mortem degradation of agglutinated specimens, we also show percentage data of calcareous species relative to only the calcareous fauna and agglutinated species only relative to the agglutinated assemblages in the supplementary material (Fig. S1). Samples with <70 specimens are excluded from ~~the~~ these calculations. ~~due to the high uncertainties related to low count numbers (Fig. S1).~~

We base our habitat categorisation on previous studies from Disko Bay ~~Bugt~~ (Lloyd et al., 2007, 2011, Perner et al., 2011, 2013; Wangner et al., 2018) (Lloyd et al., 2007, 2011, Perner et al., 2011, 2013; Wangner et al., 2018), the central West Greenland slope (Jennings et al., 2017) and the continental shelf (Sheldon et al., 2016). ~~The percentage-distribution of each species is calculated relative to the total benthic assemblage, i.e. both calcareous and agglutinated specimens (Fig. 5). Species representing >0.5% of the total assemblage are presented in Fig. 5. The counts and percentages of species with lower abundances can be found in the supplementary material.~~ The agglutinated assemblage >0.5% comprises 1 species that is indicative of Atlantic waters (*Adereotryma* ~~A.~~ *glomerata*), the others are indicative of Arctic waters or are non-indicative (Fig. 5, Table S1). Within the calcareous assemblage (>0.5%), 2 species are indicative of ~~warm(chilled)~~ Atlantic waters (*N. labradorica*, *N. auricula*), 3 of Arctic water conditions, ~~3 of cold water conditions~~, (*S. feylingi*, *S. concava*, *E. clavatum*), and 2 are non-indicative (*C. reniforme*, *B. pseudopunctata*) (Fig. 5, Table S2) ~~–1~~.

Agglutinated species generally dominate the assemblage and range between 45-99% ~~of the total assemblage~~. Among these *Textularia*, *T. earlandi* and *Spiroplectammina* ~~S.~~ *biformis* are the most abundant species, with a median of 17% and 14% ~~%, respectively~~. The other agglutinated species are markedly less abundant with medians ~~lower than~~ ≤ 5%. The most abundant calcareous species are *Stainforthia* ~~S.~~ *feylingi* and *Elphidium* ~~E.~~ *clavatum*, with a median of 16% and 4% of the total count, respectively. The median percentage of other calcareous species is lower than 2%.

The variability in species assemblage is broadly characterised by three intervals. Between 50 and 25 cm, the percentage of calcareous species is high, varying between 40-70% (Fig. 5). Between 25 and 12 cm, calcareous abundances are low (<20% ~~%)~~ with almost none present between 16-12 cm. Between 12 and 0 cm, the amount of calcareous species increases again up to 40%, and high values of 40-50% occur between 6 and 0 cm. The concentration of foraminifera, expressed as counts/gram (g) of wet sediment, varies generally between 60-150 counts/g. Outliers with anomalous low and high counts/g are present at 45 cm (21 counts/g) and 1 cm (308 counts/g), -respectively. The amount of organic linings per gram shows a

Formateret: Skriftype: Fed

Formateret: Skriftype: Fed

Kommenterede [VF4]: The requested list of species and references to their species habitats is now included in the main document (see below)

Formateret: Engelsk (USA)

trend that is inversely proportional to the percentage of calcareous species. Since very few calcareous species are present between 7-22 cm, this interval does not allow potential changes in bottom waters masses to be estimated from the calcareous assemblage. Within the agglutinated fauna (>0.5%), there is only one Atlantic Water indicator, which also questions whether shifts within the agglutinated assemblage alone can be used as a reliable reconstruction of Atlantic vs. Arctic Water masses. Also, ecological preferences of agglutinated species have received less regard than those of calcareous fauna.

#### 4.4. PCA analysis

Principal components 1 and 2 explain 28.6% and 16.8% of the variance in the dataset, respectively. The loadings plot reveals a clustering of ~~broadly~~-three main groups of foraminiferal species (Fig. 6). The first group ~~consists of calcareous species~~ is characterised by strongly negative PC1 loadings (group 1). ~~This group consists of calcareous species, both cold(chilled) Atlantic Water and warm-waterArctic indicators.~~ The second group consists of cold-water agglutinated species, characterised by strongly positive PC1 loadings (group 2). The third group consists mostly of species that are not indicative of a specific water mass (group 3). These species have low loadings for PC1 and strongly negative loadings for PC2. These results show that variability within the dataset can be predominantly explained by shifts between calcareous vs. agglutinated species (i.e. PC1). However, to investigate relative shifts within the respective assemblages, we also show abundances and PCA analysis relative to wall composition (Fig S2 and S3).

Kommenterede [VF5]: As requested

## 5 Discussion

### 5.1. Environmental controls on species abundance in Upernavik Fjord

Foraminifera species are sensitive to changes in water depth, substrate, bottom water characteristics (temperature, salinity) and nutrient flux (Lloyd, 2006; Murray, 2006). Species displaying the same pattern of variability respond to similar environmental changes. ~~To determine which environmental parameters control species abundances in Upernavik Fjord we compare our PCA results with the ecological preferences of species as suggested in the literature.~~

Foraminifera are sensitive to changes in water depth, substrate, bottom water characteristics (temperature, salinity) and nutrient flux (Lloyd, 2006b; Murray, 2006). Species displaying the same pattern of variability respond to similar environmental changes. To determine which environmental parameters control species abundances in Upernavik Fjord, we compare our PCA results with the ecological preferences of species as suggested in the literature.

PC 1 is dominated by the ~~opposition in the~~opposing trends observed in the abundance of agglutinated and calcareous species (Fig. 6). The fact that the agglutinated species *T. torquata*, *S. bifurcata*, *P. bipolaris*, and *R. turbinatus* show similar trends is expected since the literature suggests they thrive in similar environmental conditions, i.e. cold, ~~arctic~~Arctic waters (Table S4). ~~However, it is~~. It should be noted that ~~while the investigations that we compiled attribute even though previous studies attributed~~

these species to Arctic waters, ~~some of these species~~ they have also been identified in sediments in Gullmar Fjord, SE Sweden (Höglund, 1947; Polovodova Asteman et al., 2013). Therefore, we add a cautionary note that these species could in fact be more cosmopolitan than commonly assumed. Nevertheless, to remain consistent with recent studies in West Greenland we consider them here indicative of Arctic waters.

5 In the calcareous assemblage the Arctic-water indicators *S. concava* and *S. feylingi* display similar trends as the (chilled) Atlantic water indicators *N. labradorica* and *N. auricula*. ~~We propose that their similar trends can be explained because these species have been suggested as indicators of high-productivity environments (except *N. auricula*), i.e. *auricula* (Lloyd, 2006b; Lloyd et al., 2007; Wangner et al., 2018) . Similar trends in these species could also be because they have all (except *N. auricula*) been suggested as indicators of high-productivity environments, i.e.~~ they thrive when the flux of organic material from surface waters is high (Jennings et al., 2017 and references therein). ~~This is also evidenced because of the similarity~~ Similarity with the pattern of -abundance of *B. pseudopunctata*; a species that is considered indifferent to changes in Atlantic/Arctic waters but sensitive to surface water productivity (Sheldon et al., 2016); ~~further supports this interpretation.~~ Thus, the PCA results suggest that the assemblage diversity is influenced both by environmental factors that control the ratio of agglutinated/calcareous species, as well as by changes of the primary productivity in the fjord.

15 The ~~opposition~~ ratio between calcareous and agglutinated foraminifera is ~~not surprising~~ often used as ~~both a proxy for environmental change, as these two~~ groups have different environmental preferences and preservation potential; ~~similar patterns in large~~ shifts between agglutinated and calcareous species are commonly seen in Arctic records (~~Andresen et al., 2012; Seidenkrantz et al., 2007~~)(Andresen et al., 2012a; Seidenkrantz et al., 2007). An important factor controlling the abundance of calcareous foraminifera is the concentration of  $\text{HCO}_3^{2-}$  in the ambient water. In cold waters the calcification process may be limited by a lack of  $\text{HCO}_3^{2-}$ , while warmer waters promote calcification. In addition, and perhaps more importantly, the preservation of calcareous specimens can be influenced by post-mortem dissolution. Colder waters contain more  $\text{CO}_2$  and are thus less alkaline than warmer waters; this promotes dissolution of calcareous tests. Test dissolution is common in Arctic waters and ~~is likewise~~ appears similarly important in Upernavik Fjord; ~~implied by the strong variation of the total calcareous abundance and an interval dominated by agglutinated fauna (7-22 cm).~~ The fact that post-mortem dissolution plays an important role in explaining the patterns of our dataset is further supported by the inverse relationship between the percentage of calcareous species and foraminiferal test linings (Fig. 6). Organic linings are less susceptible to dissolution than calcareous tests and remain better preserved under corrosive conditions. Hence, during periods with relatively warm waters entering the fjord, carbonate ~~test~~ tests are better preserved, whereas colder water conditions will result in a higher abundance of organic linings. Warm subsurface (bottom) waters prevail in the fjord when the Atlantic-derived portion of the West Greenland Current is high. Conversely, when the Atlantic portion of the West Greenland Current is low and contribution of Arctic-~~derived~~ sourced waters (i.e. East Greenland Current) is high, colder bottom waters will corrode calcareous benthic ~~foraminifer~~ foraminiferal tests. Therefore, we suggest that the abundance of calcareous foraminifera represents here a proxy for the inflow of warm, Atlantic-derived waters to the fjord. This interpretation is strengthened by a similar study in the Ameralik Fjord (SW Greenland); where the percentage of calcareous foraminifera was used as a proxy for the influx of warm,

Atlantic-derived waters (Seidenkrantz et al., 2007). ~~In that study it was suggested that calcification of benthic foraminifera~~(Seidenkrantz et al., 2007; Seidenkrantz, 2013). In that study, it was suggested that calcification of benthic foraminifera tests is prevented at times of sea-ice growth due to the associated formation of CO<sub>2</sub> rich brine waters. In Upernavik Fjord we also suggest an influence of bottom water alkalinity on foraminifer assemblage, but it should be noted that the mechanism by which corrosive cold water currents circulate in the fjord is probably different. In contrast to Ameralik Fjord, the absence of a sill separating Upernavik Fjord from the Baffin Bay allows a more direct connection to the open ocean. This permits shelf currents to enter the fjord, and together with outflowing surface meltwater this results in a strong circulation in the fjord (buoyancy-driven circulation; Cowton et al., 2016). Thus, bottom waters are likely well-ventilated and influenced directly by inflowing bottom waters rather than by the sinking of brine waters. It is important to note, however, that high sedimentation rates may shield calcareous fauna from dissolution; fast burial of benthic fauna limits the time available for dissolution by bottom waters and this has been observed in the glaciomarine environment (Lloyd, 2006a; Lloyd et al., 2005). Since the age model of core POR13-05 reveals a constant sedimentation rate, variations in sedimentation rate probably do not affect preservation of the calcareous fauna in this study.

Furthermore, we ~~infer and propose a possible~~ influence of Atlantic waters on the nutrient level in the fjord, ~~and hence on which~~ in turn affects the ~~composition of~~ benthic calcareous species assemblage. Recent research showed that primary productivity in a fjord with a marine-terminating glacier is predominantly controlled by rising subsurface meltwater plumes entraining ambient nutrient-rich deep water to the surface (Meire et al., 2017). Productivity in a fjord with a land-terminating glacier- (Young Sound, NE Greenland) and one with marine-terminating glaciers (Godthåbsfjord, SW Greenland) were compared, revealing that the limiting amount of nutrients available for phytoplankton in these fjords is predominantly delivered through upwelling of Atlantic-derived waters (Meire et al., 2017). Periods with more Atlantic water inflow would thus lead to a higher primary productivity, which in turn would favour meso- and eutrophic benthic species at the sea-floor. Such a mechanism ~~would thus might~~ explain the similar abundance trends of the Atlantic indicators *N. labradorica* and *N. auricula* together with the cold-water productivity indicators *S. feylingi* and *S. concava* and with the mesotrophic indicator *B. pseudopunctatopseudopunctata*, all species essentially responding here to variations in bottom-water nutriency (Fig. ~~5 and 6~~). 5 and 6). However, these inferences with regard to nutrient level in the fjord and its relation to benthic fauna should be substantiated with additional proxies that reconstruct primary productivity, and future research in glacial fjords is required to confirm this interpretation.

The planktonic foraminifera *N. pachyderma* (sinistral) occurs concurrently with high abundances of benthic calcareous species in POR13-05 and also simultaneously with the highest temperatures observed in the West Greenland current (Ribergaard et al., 2008), i.e. during AD 1925-1935 AD and after AD 2000 (Fig. 8). *N. pachyderma* is a polar species that typically dominates the planktonic assemblage high latitude environments (Schiebel et al., 2017). However, planktonic foraminifera in general do not tolerate reduced salinities and the Arctic types of *N. pachyderma* seems to avoid salinities <32 psu (Carstens et al., 1997). The presence of planktonic foraminifera may thus be considered a proxy for the influx of oceanic water. In Upernavik Fjord, the upper water layer is enriched by glacial meltwater, leading to a relatively fresh upper water layer (Fenty et al., 2016) and

**Kommenterede [VF6]:** Added comment about sed. rate and dissolution

**Kommenterede [VF7]:** We acknowledge this interpretation could benefit from additional evidence

**Kommenterede [VF8]:** Added a discussion about the potential indications that planktic foraminifers provide in this study



to generally unfavourable conditions for planktonic foraminifera. Hence, we suggest that when the Atlantic-derived water layer increases and thickens, reaching shallower depths and increasing salinity levels, this may allow *N. pachyderma* (sinistral) to inhabit Upernavik Fjord. A similar scenario has been described in northern Baffin Bay, where changes in the abundance of *N. pachyderma* (sinistral) has been linked to variable freshwater flux and associated salinity changes (Knudsen et al., 2008).

5 In summary, we suggest that the dominant control on the composition of the foraminiferal assemblage essentially relates to (post-mortem) dissolution of calcareous species, controlled by variations in the alkalinity of the West Greenland Current and associated contribution of Atlantic water. As a potential second control, an increased inflow of Atlantic waters ~~results in more~~ is associated with upwelling of nutrients and thus ~~in~~ higher primary productivity, ~~favouring which could favour~~ benthic species that thrive under a high supply of organic matter from surface waters. The latter control should be confirmed in future research.

10 Based on these results, we use ~~the percentage of total calcareous foraminifera~~ foraminiferal concentration as a proxy for Atlantic water inflow to Upernavik Fjord. The presence of *N. pachyderma* (sinistral) associated with the maximal West Greenland Current temperatures may also be used to reconstruct the inflow of Atlantic-sourced water.

## 5.2. Comparison ~~to~~ of Atlantic water inflow with climatic records

The foraminiferal record ~~suggests~~ indicates cold bottom water masses in the early 1920s, followed by a rapid warming that   
15 peaks in the mid 1930s and subsequently cooling during the 1940s (Fig. 7). After the 1940s relatively warm bottom water masses during 1920-1960, interrupted by a minor cooling around 1940 (Fig. 7). After 1960 prevail, followed by a stronger strong cooling occurs with that commences in the mid 1960s and reaches minimal temperature values between 1980 the mid 1970s and 1990. In the early '90s. From the mid '90s onwards 1990s a rapid warming occurs, reaching peak values after 2005. Our reconstructed record is supported by the measured bottom water temperatures at Fylla Banke (400-600m), located   
20 offshore Nuuk in SW Greenland, ~~which show a similar pattern~~ (Fig. 1 and 7; Ribergaard et al., 2008), which shows a similar pattern. This gives confidence in our reconstruction and confirms that bottom water changes in Upernavik Fjord are linked to the variability of the West-Greenland Current. The presence of *N. pachyderma* (sinistral) during 1920s-mid 1930s and after 2000 could suggest that the inflow of Atlantic water into Upernavik Fjord was more intense during these periods than during 1950-1965, when relatively high amount of calcareous species are present but *N. pachyderma* (sinistral) is absent.

25 A previous foraminifera-based reconstruction of Atlantic-water influx in Disko Bugt (Lloyd et al., 2011) ~~also~~ shows an overall comparable Atlantic Water inflow pattern, except for the period 1950-1975, during which our reconstruction of warm bottom water masses in Upernavik ~~Fjord contrast~~ contrasts with the colder conditions in Disko Bugt (Fig. 7). Potentially, this is related due to age uncertainties in both records, or subtle differences in the sensitivity of the ~~foraminifer~~ foraminiferal assemblages to the prevailing bottom water mass.

30 The pattern of bottom water variations reconstructed here is also similar to the pattern of the Atlantic Multidecadal Oscillation (NOAA ESRL, 2018; Enfield et al., 2001), with a Pearson's correlation coefficient  $r=0.42$  and significance levels significant at  $p=0.05$ . The AMO is a 55-70 year cyclical pattern in Atlantic water temperature, usually considered as an expression of the variability of the overall Atlantic Ocean circulation (Kerr, 2000; Knudsen et al., 2011; Schlesinger and Ramankutty, 1994;

Trenberth and Shea, 2006). A link between the physical oceanography of West Greenland and Atlantic SSTs has indeed been suggested previously: a positive phase of the AMO is related to an increase of warm Atlantic waters flowing towards and along the SE and W Greenland shelf (Drinkwater et al., 2014; Lloyd et al., 2011). Our data ~~indeed~~ supports that the AMO ~~influences~~ is related to bottom water temperature variability along the West Greenland shelf and shows that this influence is strong within Upernavik Fjord.

### 5.3. Retreat of Upernavik Isstrøm and ocean forcing

The retreat history of Upernavik Isstrøm is relatively well constrained from historical observations (Fig. 2). ~~Nevertheless,~~ although some care should be taken in interpreting this record because of the relatively low temporal resolution for the older parts of the record. By comparing this record to our reconstruction of bottom water variability, we evaluate whether ocean warming was concurrent with periods of retreat throughout the 20<sup>th</sup>/21<sup>st</sup> century. (Fig 7).

Despite differences in the timing and magnitude of the retreat of the different glaciers, they broadly share the same retreat history. High retreat rates occurred between the mid '30s and mid '40s (400-800m/yr), moderate retreat rates between 1965-1985 (~200 m/yr, except for Upernavik 3) and high retreat rates again after 2000 (>200 m/yr) (Fig. 8). The largest difference between individual glaciers occurred after 2005, when the northern glaciers Upernavik 1 and Upernavik 2 retreated and thinned fast, but the southern glaciers Upernavik 3 and Upernavik 4 remained relatively stable (Kjær et al., 2012; Larsen et al., 2016) (Fig. 8).

Our reconstruction reveals that relatively warm, Atlantic-derived bottom waters prevailed in Upernavik Fjord in the 1930s and after 1995-AD. Warm water inflow may ~~thus~~ have triggered the substantial retreat that was observed during these periods. However, the cause of these periods of retreat cannot be attributed solely to ocean forcing since air temperatures mostly co-vary with the reconstructed bottom water variability (Fig. 8). ~~Therefore, disentangling~~ Disentangling the relative importance between oceanic and atmospheric forcing remains challenging (Straneo and Heimbach, 2013). (Straneo and Heimbach, 2013). Both processes are inherently linked not only due to a common regional forcing of both (AMO), but also because increased glacier run-off (due to warmer air temperatures) can strengthen fjord circulation and thus increase inflow of Atlantic waters (Carroll et al., 2016; Christoffersen et al., 2011). Moderate retreat rates during 1960-1985 coincided with cooling of bottom waters, showing that retreat occurred despite a stabilising effect from decreasing ocean water temperatures. ~~Instead, retreat during this period was potentially perpetuated by a negative surface mass balance (Haubner et al 2018) or potentially due to a dynamic response to variations in bed topography. Thus, these~~ Modelling of the ice thickness and velocity changes of Uperavik Isstrøm showed that retreat during this period was most likely perpetuated by dynamic ice discharge (Haubner et al., 2018), which is in part the result of changes in glacier dynamics due to variations in bed topography. Bed topography can play indeed play a major role on glacier retreat; on reverse bed slopes glaciers are considered unstable because of the increased ice discharge associated with retreat into deeper bedrock (Jamieson et al., 2012; Nick et al., 2013). A conclusive evaluation of the role of

bedrock topography during this timeframe would require a higher temporal resolution of glacier front observations, however, and is not within the scope of this study.

Altogether, our findings emphasise that the timing and magnitude of the retreat of Upernavik Isstrøm throughout the 20<sup>th</sup>/21<sup>st</sup> century is not simply a function of bottom water temperature variability but reflects a complex response to multiple foreing mechanisms.

Finally, we note that even when the inflow of Atlantic water to the fjord is high, variations in fjord bathymetry can determine whether the warm waters are able to ~~perturb~~breach the glacier front(s). This could, for example, explain the differential response of the northern glaciers (Upernavik 1 and 2) versus the southern glaciers (Upernavik 3 and 4) after 2000 AD, ~~as was suggested by Andresen et al. (2014) (Andresen et al., 2014)~~. The northern glaciers (Upernavik 1 and 2) are positioned on a deep bed (~900m), whereas the southern glaciers (Upernavik 3 and 4) are positioned on a shallower bed (<400 m water depth). Because the Atlantic water layer flows at 400-~~900m~~900 m depth, the southern glaciers would ~~thus~~ not have been affected by warming of the Atlantic layer, in contrast to the northern glaciers.

## 6 Conclusions

In this study, we show that the abundance and diversity of ~~foraminifer~~foraminiferal species in the outer region of Upernavik Fjord is predominantly controlled by the preservation potential of calcareous species, depending on the alkalinity of the prevailing bottom water mass, which is in turn related to variations in water temperature. Therefore, we use the percentage of calcareous species as a proxy for the inflow of the warm, Atlantic component of the West Greenland Current. This reconstruction spans the period 1925-2012 and broadly displays the same pattern of variability as the Atlantic Multidecadal Oscillation. Comparison of our bottom water record with historical observations of glacier front positions reveals that warm subsurface waters were associated with ~~marked retreat~~periods of increased retreat rates of Upernavik Isstrøm during the 1930s and after 1995 AD. Conversely, moderate retreat rates of Upernavik Isstrøm during 1960-1985 was associated with cooling bottom waters, showing that this retreat was not simply a function of bottom water variability. Thus, our study shows that while warming of ocean waters in Upernavik fjord likely contributed to the retreat phases during the 1930s and early 2000s, ocean warming is not a prerequisite for retreat of Upernavik Isstrøm. The similar pattern of our bottom water reconstruction ~~with~~and the Atlantic Multidecadal Oscillation shows that ocean currents interacting with Upernavik Isstrøm depend on ocean circulation changes originating in the North-Atlantic, a finding that is consistent with a study in Disko ~~Bay~~Bugt, located ~450km further south of our study site (Lloyd et al., 2011). This is important since it implies that the future potential oceanic forcing of Upernavik Isstrøm ~~will depend on changes related to~~can be assessed from observed circulation changes in the North Atlantic (~~i.e. the AMO~~). Since the Atlantic meridional overturning circulation strength and associated heat transport is currently declining (Frajka-Williams et al., 2017), this may lead to cooling ~~bottom waters during the next decade in Upernavik Fjord and most likely also other fjords in West Greenland of the West Greenland during the next decade. As a result, this~~

**Kommenterede [VF9]:** An additional section on the role of bedrock topography

cooling could potentially and temporarily minimise the retreat of Upernavik Isstrøm and other marine-terminating glaciers along the West Greenland coast, as has been recently observed for Jakobshavn Isbræ (Khazendar et al., 2019).

**7 Acknowledgements:**

5 This study is a contribution to the VILLUM FONDEN project ‘Past and Future Dynamics of the Greenland Ice Sheet: what is the ocean hiding?’ (10100).  
MSS was supported by the Independent Research Fund Denmark (G-Ice project Grant No. 7014-00113B/FNU).

**8 Data availability**

10 All data produced for this study will be uploaded to Pangaea (<https://www.pangaea.de/>)

**9 Conflicts of interest**

15 Marit-Solveig Seidenkrantz is a co-editor-in-chief for Climate of the Past but was not involved in the editorial process of this article.

**10 Author contributions**

FV interpreted all data, performed sediment lab work, and wrote the manuscript. NA counted foraminifer species and contributed to data interpretation. RJ and DJW helped with identification of the species and contributed to analysis of the data.  
20 NT contributed to data interpretation. CSA and KK designed the study. SS developed the age model. MSS revised the identification of the foraminiferal species and contributed to their interpretation. All co-authors contributed to the writing of the manuscript.

25

## 11 References

- Andresen, C. S., Nørgaard-Pedersen, N., Jensen, J. B., Larsen, B. and Nørgaard-Pedersen, N.: Bathymetry, shallow seismic profiling and sediment coring in Sermilik near Helheimgletscher, South-East Greenland, *Geol. Surv. Denmark Greenl. Bull.*, 20, 83–86, 2010.
- 5 Andresen, C. S., McCarthy, D. J., Valdemar Dylmer, C., Seidenkrantz, M.-S., Kuijpers, A. and Lloyd, J. M.: Interaction between subsurface ocean waters and calving of the Jakobshavn Isbrae during the late Holocene, *The Holocene*, 21(2), 211–224, doi:10.1177/0959683610378877, 2011.
- Andresen, C. S., Hansen, M. J., Seidenkrantz, M.-S., Jennings, A. E., Knudsen, M. F., Nørgaard-Pedersen, N., Larsen, N. K., Kuijpers, A. and Pearce, C.: Mid- to late-Holocene oceanographic variability on the Southeast Greenland shelf, *The Holocene*, 10 23(2), 167–178, doi:10.1177/0959683612460789, ~~2012~~2012a.
- [Andresen, C. S., Straneo, F., Ribergaard, M. H., Bjørk, A. A., Andersen, T. J., Kuijpers, A., Nørgaard-Pedersen, N., Kjær, K. H., Schjøth, F., Weckström, K. and Ahlstrøm, A. P.: Rapid response of Helheim Glacier in Greenland to climate variability over the past century, \*Nat. Geosci.\*, 5\(1\), 37–41, 2012b.](#)
- Andresen, C. S., Kjeldsen, K. K., Harden, B., Nørgaard-Pedersen, N. and Kjær, K. H.: Outlet glacier dynamics and bathymetry at Upernavik Isstrøm and Upernavik Isfjord, North-West Greenland, *Geol. Surv. Denmark Greenl. Bull.*, ~~34(August 2013)~~, 15 79–82, 2014.
- Andresen, C. S., Kokfelt, U., Sicre, M.-A., Knudsen, M. F., Dyke, L. M., Klein, V., Kaczmar, F., Miles, M. W. and Wangner, D. J.: Exceptional 20th century glaciological regime of a major SE Greenland outlet glacier, *Sci. Rep.*, 7(1), 13626, doi:10.1038/s41598-017-13246-x, 2017.
- 20 Bjørk, A. A., Kjær, K. H., Korsgaard, N. J., Khan, S. A., Kjeldsen, K. K., Andresen, C. S., Box, J. E., Larsen, N. K. and Funder, S.: An aerial view of 80 years of climate-related glacier fluctuations in southeast Greenland, *Nat. Geosci.*, 5(6), 427–432, doi:10.1038/ngeo1481, 2012.
- van den Broeke, M. R., Enderlin, E. M., Howat, I. M., Kuipers Munneke, P., Noël, B. P. Y., Jan Van De Berg, W., Van Meijgaard, E. and Wouters, B.: On the recent contribution of the Greenland ice sheet to sea level change, *Cryosphere*, 10(5), 25 1933–1946, doi:10.5194/tc-10-1933-2016, 2016.
- Cappelen, J.: DMI Monthly Climate Data Collection 1768–2010: Denmark, The Faroe Islands and Greenland., Danish Meteorological Institute Centre for Ocean and Ice, 2011.
- Carroll, D., Sutherland, D. A., Hudson, B., Moon, T., Catania, G. A., Shroyer, E. L., Nash, J. D., Bartholomäus, T. C., Felikson, D., Stearns, L. A., ~~Noël, B. P. Y.~~ Noël, B. P. Y. and van den Broeke, M. R.: The impact of glacier geometry on meltwater plume structure and submarine melt in Greenland fjords, *Geophys. Res. Lett.*, 43(18), 9739–9748, doi:10.1002/2016GL070170, 2016.
- 30 [Carstens, J., Hebbeln, D. and Wefer, G.: Distribution of planktic foraminifera at the ice margin in the Arctic \(Fram Strait\), \*Mar. Micropaleontol.\*, 29\(3–4\), 257–269, doi:10.1016/S0377-8398\(96\)00014-X, 1997.](#)

- Christoffersen, P., Mugford, R. I., Heywood, K. J., Joughin, I., Dowdeswell, J. A., Syvitski, J. P. M., Luckman, A. and Benham, T. J.: Warming of waters in an East Greenland fjord prior to glacier retreat: Mechanisms and connection to large-scale atmospheric conditions, *Cryosphere*, 5(3), 701–714, doi:10.5194/tc-5-701-2011, 2011.
- Dowdeswell, J. A., Elverhøi, A. and Spielhagen, R.: Glacimarine sedimentary processes and facies on the Polar North Atlantic margins, *Quat. Sci. Rev.*, 17(1–3), 243–272, 1998.
- Drinkwater, K. F., Miles, M., Medhaug, I., Otterå, O. H., Kristiansen, T., Sundby, S. and Gao, Y.: The Atlantic Multidecadal Oscillation: Its manifestations and impacts with special emphasis on the Atlantic region north of 60°N, *J. Mar. Syst.*, 133, 117–130, doi:10.1016/j.jmarsys.2013.11.001, 2014.
- Dyke, L. M., Andresen, C. S., Seidenkrantz, M.-S., Hughes, A. L. C., Hiemstra, J. F., Murray, T., Bjørk, A. A., Sutherland, D. A. and Vermassen, F.: Minimal Holocene retreat of large tidewater glaciers in Køge Bugt, southeast Greenland, *Sci. Rep.*, 7(1), doi:10.1038/s41598-017-12018-x, 2017.
- Enfield, D. B., Mestas-Núñez, A. M. and Trimble, P. J.: The Atlantic multidecadal oscillation and its relation to rainfall and river flows in the continental U.S, *Geophys. Res. Lett.*, doi:10.1029/2000GL012745, 2001.
- Fenty, I., Willis, J., Khazendar, A., Dinardo, S., Forsberg, R., Fukumori, I., Holland, D., Jakobsson, M., Moller, D., Morison, J., Münchow, A., Rignot, E., Schodlok, M., Thompson, A., Tinto, K., Rutherford, M. and Trenholm, N.: Oceans Melting Greenland: Early Results from NASA’s Ocean-Ice Mission in Greenland, *Oceanography*, 29(4), 72–83, 2016.
- Frajka-Williams, E., Beaulieu, C. and Duchez, A.: Emerging negative Atlantic Multidecadal Oscillation index in spite of warm subtropics, *Sci. Rep.*, 7(1), 1–8, doi:10.1038/s41598-017-11046-x, 2017.
- Haubner, K., Box, J. E., Schlegel, N. J., Larour, E. Y., Morlighem, M., Solgaard, M., Kjeldsen, K. K. and Larsen, S. H.: Simulating ice thickness and velocity evolution of Upernavik Isstrøm 1849–2012 by forcing prescribed terminus positions in ISSM, *Cryosph. Discuss.*, (July), 1–16, doi:https://doi.org/10.5194/tc-2017-121, 2017.
- Höglund, H.: Foraminifera in the Gullmar Fjord and the Skagerak, *Zool. Bidr. från Uppsala*, 26, 1947.
- Holland, D. M., Thomas, R. H., de Young, B., Ribergaard, M. H. and Lyberth, B.: Acceleration of Jakobshavn Isbræ triggered by warm subsurface ocean waters, *Nat. Geosci.*, 1(10), 659–664, doi:10.1038/ngeo316, 2008.
- Jamieson, S. S. R., Vieli, A., Livingstone, S. J., Cofaigh, C. Ó., Stokes, C., Hillenbrand, C.-D. and Dowdeswell, J. A.: Ice-stream stability on a reverse bed slope, *Nat. Geosci.*, 5, 799, 2012.
- Jennings, A. E., Andrews, J. T., Ó Cofaigh, C., Onge, G. S., Sheldon, C., Belt, S. T., Cabedo-Sanz, P. and Hillaire-Marcel, C.: Ocean forcing of Ice Sheet retreat in central west Greenland from LGM to the early Holocene, *Earth Planet. Sci. Lett.*, 472, 1–13, doi:10.1016/j.epsl.2017.05.007, 2017.
- Joughin, I., Alley, R. B. and Holland, D. M.: Ice-Sheet Response to Oceanic Forcing, *Science*, 338(6111), 1172–6, doi:10.1126/science.1226481, 2013.
- Kerr, R. A.: A North Atlantic climate pacemaker for the centuries., *Science*, 288(5473), 1984–5, doi:10.1126/science.288.5473.1984, 2000.

Khan, S. A., Wahr, J., Bevis, M., Velicogna, I. and Kendrick, E.: Spread of ice mass loss into northwest Greenland observed by GRACE and GPS, *Geophys. Res. Lett.*, 37(6), 1–5, doi:10.1029/2010GL042460, 2010.

Khan, S. A., Kjør, K. H., Korsgaard, N. J., Wahr, J., Joughin, I. R., Timm, L. H., Bamber, J. L., Van Den Broeke, M. R., Stearns, L. A., Hamilton, G. S., Csatho, B. M., Nielsen, K., Hurkmans, R. and Babonis, G.: Recurring dynamically induced thinning during 1985 to 2010 on Upernavik Isstrøm, West Greenland, *J. Geophys. Res. Earth Surf.*, 118(1), 111–121, doi:10.1029/2012JF002481, 2013.

Khazendar, A., Fenty, I. G., Carroll, D., Gardner, A., Lee, C. M., Fukumori, I., Wang, O., Zhang, H., Seroussi, H., Moller, D., Noël, B. P. Y., van den Broeke, M. R., Dinardo, S. and Willis, J.: Interruption of two decades of Jakobshavn Isbrae acceleration and thinning as regional ocean cools, *Nat. Geosci.*, 12(4), 277–283, doi:10.1038/s41561-019-0329-3, 2019.

Kjør, K. H., Khan, S. A., Korsgaard, N. J., Wahr, J., Bamber, J. L., Hurkmans, R., van den Broeke, M., Timm, L. H., Kjeldsen, K. K., Bjørk, A. A., Larsen, N. K., Jorgensen, L. T., Faerch-Jensen, A. and Willerslev, E.: Aerial Photographs Reveal Late-20th-Century Dynamic Ice Loss in Northwestern Greenland, *Science* (80-. ), 337(6094), 569–573, doi:10.1126/science.1220614, 2012.

Knudsen, K. L., Stabell, B., Seidenkrantz, M.-S., Eiríksson, J. and Blake, W.: Deglacial and Holocene conditions in northernmost Baffin Bay: sediments, foraminifera, diatoms and stable isotopes, *Boreas*, 37(3), 346–376, doi:10.1111/j.1502-3885.2008.00035.x, 2008.

Knudsen, M. F., Seidenkrantz, M. S., Jacobsen, B. H. and Kuijpers, A.: Tracking the Atlantic Multidecadal Oscillation through the last 8,000 years, *Nat. Commun.*, 2(1), 178, doi:10.1038/ncomms1186, 2011.

Larsen, S. H., Khan, S. A., Ahlstrøm, A. P., Hvidberg, C. S., Willis, M. J. and Andersen, S. B.: Increased mass loss and asynchronous behavior of marine-terminating outlet glaciers at Upernavik Isstrøm, NW Greenland, *J. Geophys. Res. F Earth Surf.*, 121(2), 241–256, doi:10.1002/2015JF003507, 2016.

Kucera, M.: Planktonic Foraminifera as Tracers of Past Oceanic Environments, chapter 6, page. In: Hillaire-Marcel, C. and Anne de Vernal, A. (eds), *Proxies in Late Cenozoic Paleooceanography. Developments in Marine Geology, Volume 1*, page 213-262. Doi: 10.1016/S1572-5480(07)01011-1, 2007.

Lloyd, J. M.: Late Holocene environmental change in Disko Bugt, west Greenland: interaction between climate, ocean circulation and Jakobshavn Isbrae, *Boreas*, 35(1), 35–49, doi:10.1080/03009480500359061, 2006a.

Lloyd, J. M.: Modern Distribution of Benthic Foraminifera From Disko Bugt, West Greenland, *J. Foraminifer. Res.*, 36(4), 315–331, doi:10.2113/gsjfr.36.4.315, 20062006b.

Lloyd, J. M., Park, L. a., Kuijpers, A. and Moros, M.: Early Holocene palaeoceanography and deglacial chronology of Disko Bugt, West Greenland, *Quat. Sci. Rev.*, 24(14–15), 1741–1755, doi:10.1016/j.quascirev.2004.07.024, 2005.

Lloyd, J. M., Kuijpers, A., Long, A., Moros, M. and Park, L. a: Foraminiferal reconstruction of mid- to late-Holocene ocean circulation and climate variability in Disko Bugt, West Greenland, *The Holocene*, 17(8), 1079–1091, doi:10.1177/0959683607082548, 2007.

Lloyd, J. M., Moros, M., Perner, K., Telford, R. J., Kuijpers, A. and Mccarthy, D.: supplementary lloyd 2011 geology., 2008.

- Lloyd, J. M., Moros, M., Perner, K., Telford, R. J., Kuijpers, A., Jansen, E. and McCarthy, D.: A 100 yr record of ocean temperature control on the stability of Jakobshavn Isbrae, West Greenland, *Geology*, 39(9), 867–870, doi:10.1130/G32076.1, 2011.
- Meire, L., Mortensen, J., Meire, P., Juul-Pedersen, T., Sej, M. K., Rysgaard, S., Nygaard, R., Huybrechts, P. and Meysman, F. J. R.: Marine-terminating glaciers sustain high productivity in Greenland fjords, *Glob. Chang. Biol.*, 23(12), 5344–5357, doi:10.1111/gcb.13801, 2017.
- Munsell, A. H.: A Pigment Color System and Notation, *Am. J. Psychol.*, 23(2), 236–244, 1912.
- Murray, J. W.: Ecology and applications of benthic foraminifera, [Cambridge University Press](#), 2006.
- Myers, P. G., Kulan, N. and Ribergaard, M. H.: Irminger water variability in the West Greenland Current, *Geophys. Res. Lett.*, 34(17), 2–7, doi:10.1029/2007GL030419, 2007.
- NOAA ESRL, Climate timeseries: AMO timeseries, <https://www.esrl.noaa.gov/psd/data/timeseries/AMO/> (data accessed 03-01-2018)
- Nick, F. M., Vieli, A., Andersen, M. L., Joughin, I., Payne, A., Edwards, T. L., Pattyn, F. and Van De Wal, R. S. W.: Future sea-level rise from Greenland's main outlet glaciers in a warming climate, *Nature*, 497(7448), 235–238, doi:10.1038/nature12068, 2013.
- Perner, K., Moros, M., Lloyd, J. M., Kuijpers, A., Telford, R. J. and Harff, J.: Centennial scale benthic foraminiferal record of late Holocene oceanographic variability in Disko Bugt, West Greenland, *Quat. Sci. Rev.*, 30(19–20), 2815–2826, doi:10.1016/j.quascirev.2011.06.018, 2011.
- Perner, K., Moros, M., Jennings, A. E., Lloyd, J. M. and Knudsen, K.: Holocene palaeoceanographic evolution off West Greenland, *The Holocene*, 23(3), 374–387, doi:10.1177/0959683612460785, 2013.
- Polovodova Asteman, I., Nordberg, K. and Fipsson, H. L.: The Little Ice Age: Evidence from a sediment record in Gullmar Fjord, Swedish west coast, *Biogeosciences*, 10(3), 1275–1290, doi:10.5194/bg-10-1275-2013, 2013.
- Ribergaard, M. H., Olsen, S. M. and Mortensen, J.: Oceanographic Investigations off West Greenland 2007, [Danish Meteorological Institute Centre for Ocean and Ice, Copenhagen](#), 2008.
- Rignot, E., Braaten, D., Gogineni, S. P., Krabill, W. B. and McConnell, J. R.: Rapid ice discharge from southeast Greenland glaciers, *Geophys. Res. Lett.*, 31(10), 2–5, doi:10.1029/2004GL019474, 2004.
- Schiebel, R., Spielhagen, R. F., Garnier, J., Hagemann, J., Howa, H., Jentzen, A., Martínez-garcía, A., Meilland, J., Michel, E., Repschläger, J., Salter, I., Yamasaki, M. and Haug, G.: Modern planktic foraminifers in the high-latitude ocean, *Mar. Micropaleontol.*, 136(February), 1–13, doi:10.1016/j.marmicro.2017.08.004, 2017.
- Schlesinger, M. E. and Ramankutty, N.: An oscillation in the global climate system of period 65–70 years, *Nature*, 367(6465), 723–726, doi:10.1038/367723a0, 1994.
- Seidenkrantz, M.-S., Aagaard-Sørensen, S., Sulsbrück, H., Kuijpers, A., Jensen, K. G. and Kunzendorf, H.: Hydrography and climate of the last 4400 years in a SW Greenland fjord: implications for Labrador Sea palaeoceanography, *The Holocene*, 17(3), 387–401, doi:10.1177/0959683607075840, 2007.



Seidenkrantz, M. S.: Benthic foraminifera as palaeo sea-ice indicators in the subarctic realm - examples from the Labrador Sea-Baffin Bay region, *Quat. Sci. Rev.*, 79, 135–144, doi:10.1016/j.quascirev.2013.03.014, 2013.

Sheldon, C., Jennings, A. E., Andrews, J. T., Ó Cofaigh, C., Hogan, K., Dowdeswell, J. A. and Seidenkrantz, M. S.: Ice stream retreat following the LGM and onset of the west Greenland current in Ummannaq Trough, west Greenland, *Quat. Sci. Rev.*, 147, 27–46, doi:10.1016/j.quascirev.2016.01.019, 2016.

Straneo, F. and Heimbach, P.: North Atlantic warming and the retreat of Greenland's outlet glaciers, *Nature*, 504(7478), 36–43 [online] Available from: <http://www.ncbi.nlm.nih.gov/pubmed/24305146>, doi:10.1038/nature12854, 2013.

Straneo, F., Heimbach, P., Sergienko, O., Hamilton, G., Catania, G., Griffies, S., Hallberg, R., Jenkins, A., Joughin, I., Motyka, R., Pfeffer, W. T., Price, S. F., Rignot, E., Scambos, T., Truffer, M. and Vieli, A.: Challenges to understanding the dynamic response of Greenland's marine terminating glaciers to oceanic and atmospheric forcing, *Bull. Am. Meteorol. Soc.*, 94(8), 1131–1144, doi:10.1175/BAMS-D-12-00100.1, 2013.

Sutherland, D. A. and Pickart, R. S.: The East Greenland Coastal Current: Structure, variability, and forcing, *Prog. Oceanogr.*, 78(1), 58–77, doi:10.1016/j.pocean.2007.09.006, 2008.

Trenberth, K. E. and Shea, D. J.: Atlantic hurricanes and natural variability in 2005, *Geophys. Res. Lett.*, doi:10.1029/2006GL026894, 2006.

Vermassen, F., Wangner, D. J., Dyke, L. M., Schmidt, S., Cordua, A., Schmidt, S., Haubner, K. E., Kjær, K. H., and Haubner, K. H., Andresen, C. S.: Evaluating ice-rafted debris as a proxy for iceberg glacier calving —results from Upenavik Isfjord. *Manuscript under revisions for the, north-west Greenland*, *Journal of Quaternary Science*, in press.

Wangner, D. J., Jennings, A. E., Vermassen, F., Dyke, L. M., Hogan, K. A., Schmidt, S., Kjær, K. H., Knudsen, M. F. and Andresen, C. S.: A 2000-year record of ocean influence on Jakobshavn Isbræ calving activity, based on marine sediment cores, *Holocene*, 28(11), 1731–1744, doi:10.1177/0959683618788701, 2018.

Weidick, A.: Frontal Variations at Upenaviks Isstrøm in the Last 100 Years, *Meddelser fra Dansk Geol. Foren. København*, 14, 52–60, 1958.

**Formateret:** Skrifttype: Fed, Skriftfarve: Sort, Knibning med 16 pkt

1412 Tables

Table 1: overview of environmental preferences of the benthic foraminiferal species identified in this study.

Agglutinated species	First description	Atlantic influenced	References	Arctic	References2	Indifferent	Reference3	Productivity	References3
<a href="#">Adercotryma glomerata</a>	<a href="#">(Brady, 1878)</a>	x	<a href="#">Lloyd (2006)</a> , <a href="#">Lloyd et al. (2011)</a> , <a href="#">Perner et al. (2013)</a> , <a href="#">Sheldon et al. (2016)</a> , <a href="#">Wangner et al. (2018)</a>						
<a href="#">Cribrostomoides crassimargo</a>	<a href="#">(Norman, 1858)</a>			x	<a href="#">Sheldon et al. (2016)</a>	x	<a href="#">Lloyd (2006)</a> , <a href="#">Lloyd et al. (2011)</a> , <a href="#">Perner et al. (2011, 2013)</a> , <a href="#">Wangner et al. (2018)</a>		
<a href="#">Cuneata arctica</a>	<a href="#">(Brady, 1881)</a>			x	<a href="#">Lloyd, (2006)</a> , <a href="#">Lloyd et al. (2011)</a> , <a href="#">Sheldon et al. (2016)</a>				
<a href="#">Portatrochammina bipolaris (often described as Portatrochammina karica)</a>	<a href="#">Brönnimann &amp; Whittaker, 1980</a>			x	<a href="#">Jennings et al. (2017)</a>				
<a href="#">Reophax catella</a>	<a href="#">Höglund, 1947</a>	x	<a href="#">Jennings et al. (2017)</a> , <a href="#">Sheldon et al. (2016)</a>			x	<a href="#">Wangner et al. (2018)</a>		
<a href="#">Reophax catenata</a>	<a href="#">Höglund, 1947</a>	x	<a href="#">Jennings et al. (2017)</a>			x	<a href="#">Wangner et al. (2018)</a>		
<a href="#">Reophax subfusiformis</a>	<a href="#">Earland, A. 1933</a>	x	<a href="#">Jennings et al. (2017)</a> , <a href="#">Wangner et al. (2018)</a>						
<a href="#">Lagenammina difflugiformis / Reophax difflugiformis</a>	<a href="#">(Brady, 1879)</a>	x	<a href="#">Perner et al. (2013)</a> , <a href="#">Jennings et al. (2017)</a> , <a href="#">Sheldon et al. (2016)</a> , <a href="#">Wangner et al. (2018)</a>						

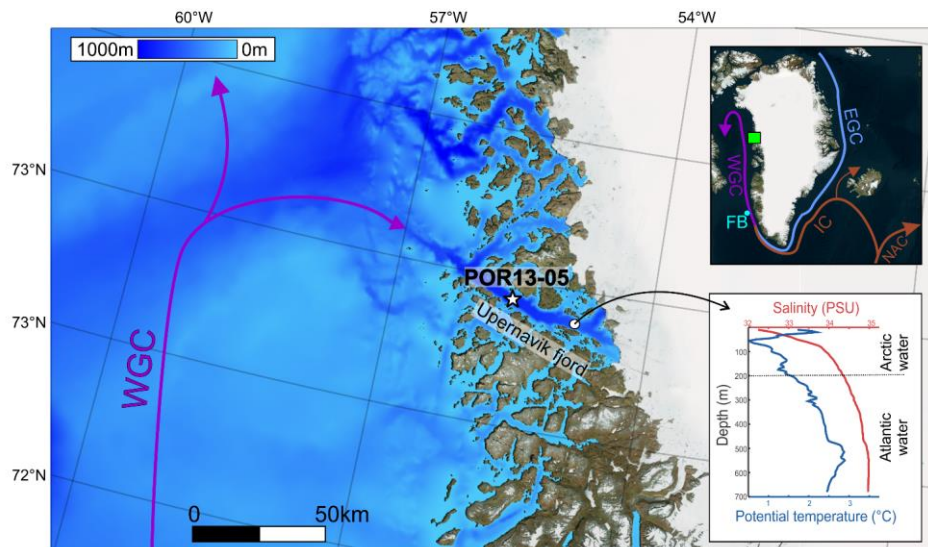
<u>Spiroplectammina biformis</u>	(Parker & Jones, 1865)			x	Lloyd (2006), Lloyd et al. (2011), Perner et al. (2011), Jennings et al. (2017), Wangner et al. (2018)
<u>Textularia earlandi</u>	Parker, 1952	x	Jennings et al. (2017)	x	Lloyd (2006), Lloyd et al. (2011), Jennings et al. (2017), Sheldon et al. (2016), Wangner et al. (2018)
<u>Cuneata arctica</u>	(Brady, 1881)			x	Lloyd (2006), Lloyd et al. (2011), Perner et al. (2011), Perner et al. (2013), Jennings et al. (2017), Wangner et al. (2018)
<u>Textularia torquata</u>	Parker, 1952			x	Perner et al. (2013), Sheldon et al. (2016), Wangner et al. (2018)
				x	Lloyd (2006), Lloyd et al. (2011), Perner et al. (2011)

<u>Calcareous species</u>	<u>First description</u>	<u>Atlantic influenced</u>	<u>References</u>	<u>Arctic</u>	<u>References2</u>	<u>Indifferent</u>	<u>Reference3</u>	<u>Productivity</u>	<u>References3</u>
<u>Bolivina pseudopuncata</u>	(Höglund, 1947)	x	Lloyd (2006)			x	Lloyd et al. (2011), Perner et al. (2011), Perner et al. (2013)	x	Sheldon et al. (2016)

<u>Buccella frigida</u>	(Cushman, 1922)	x	Jennings et al. (2017)		x	Lloyd et al. (2011), Perner et al. (2011), Perner et al. (2013)	x	Jennings et al. (2017)
<u>Cassidulina reniforme</u>	Cushman, 1930	x	Lloyd et al. (2011), Perner et al. (2011), Perner et al. (2013), Jennings et al. (2017)	x	Sheldon et al. (2016)			
<u>Cibicides lobatulus</u>	(Walker & Jacob, 1798)				x	Lloyd (2006), Lloyd et al. (2011), Perner et al. (2011), Perner et al. (2013)		
<u>Elphidium clavatum</u>	Cushman, 1930			x	Lloyd et al. (2011), Perner et al. (2011), Perner et al. (2013), Jennings et al. (2017), Sheldon et al. (2016)	x	Wangner et al. (2018)	
<u>Epistominella takayanagi</u>	Iwasa, 1955							
<u>Globobulimina auriculata arctica</u>	Höglund, 1947					x	Perner et al. (2013)	
<u>Islandiella helenae</u>	Feyling-Hanssen & Buzas, 1976			x	Lloyd (2006), Perner et al. (2011), Perner et al. (2013), Jennings et al. (2017), Wangner et al. (2018)		x	Jennings et al. (2017)
<u>Islandiella norcrossi</u>	(Cushman, 1933)	x	Perner et al. (2011), Perner et al. (2013), Jennings et al. (2017), Sheldon et al. (2016), Wangner et al. (2018)	x	Lloyd (2006)			
<u>Melonis barleeanus</u>	(Williamson, 1858)	x	Lloyd (2006), Jennings et al. (2017), Sheldon et al. (2016), Wangner et al. (2018)			x	Perner et al. (2013)	Jennings et al. (2017), Sheldon et al. (2016)
<u>Nonionellina auricula</u>	Heron-Allen & Earland, 1930		au					

<a href="#"><u>Nonionellina labradorica</u></a>	<a href="#"><u>(Dawson, 1860)</u></a>	x	<a href="#"><u>Lloyd (2006), Wangner et al. (2018)</u></a>	x	<a href="#"><u>Lloyd et al. (2011), Perner et al. (2011), Perner et al. (2013)</u></a>	<a href="#"><u>Jennings et al. (2017), Sheldon et al. (2016)</u></a>
<a href="#"><u>Nonionellina turgida</u></a>	<a href="#"><u>Williamson, W.C. (1858)</u></a>	x	<a href="#"><u>Jennings et al. (2017)</u></a>			<a href="#"><u>Jennings et al. (2017)</u></a>
<a href="#"><u>Pullenia osloensis</u></a>	<a href="#"><u>Feyling- Hanssen, 1954</u></a>	x	<a href="#"><u>Lloyd et al. (2011), Perner et al. (2011), Perner et al. (2013), Sheldon et al. (2016)</u></a>			<a href="#"><u>Sheldon et al. (2016)</u></a>
<a href="#"><u>Reussoolina laevis</u></a>	<a href="#"><u>(Montagu, 1803)</u></a>					
<a href="#"><u>Silicosigmoilina groenlandica</u></a>	<a href="#"><u>Loeblich &amp; Tappan, 1953</u></a>					
<a href="#"><u>Stainforthia concava</u></a>	<a href="#"><u>(Höglund, 1947)</u></a>		x	<a href="#"><u>Lloyd (2006), Jennings et al. (2017)</u></a>	x	<a href="#"><u>Jennings et al. (2017), Sheldon et al. (2016)</u></a>
<a href="#"><u>Stainforthia feylingi</u></a>	<a href="#"><u>Knudsen &amp; Seidenkrantz, 1994</u></a>		x	<a href="#"><u>Lloyd (2006), Lloyd et al. (2011), Perner et al. (2011), Perner et al. (2013), Jennings et al. (2017), Wangner et al. (2018)</u></a>	x	<a href="#"><u>Jennings et al. (2017), Sheldon et al. (2016)</u></a>
<a href="#"><u>Trifarina fluens</u></a>	<a href="#"><u>(Todd, 1948)</u></a>	x	<a href="#"><u>Lloyd (2006), Wangner et al. (2018)</u></a>	x	<a href="#"><u>Perner et al. (2013)</u></a>	

### 13 Figures



**Figure 1.** Position of core site POR13-05 (star) in Upernavik Fjord together with the surrounding bathymetry (Morlighem et al., 2017). The inset figure indicates the ocean currents around Greenland (Bing satellite map, 2017). IC = Irminger Current, EGC= East Greenland Current, WGC = West Greenland Current, NAC= North Atlantic Current, FB= Fylla Banke. The green box in the inset marks the position of Upernavik Fjord, the light blue circle marks the position Fylla Banke. CTD profile is from Andresen et al. (2014).

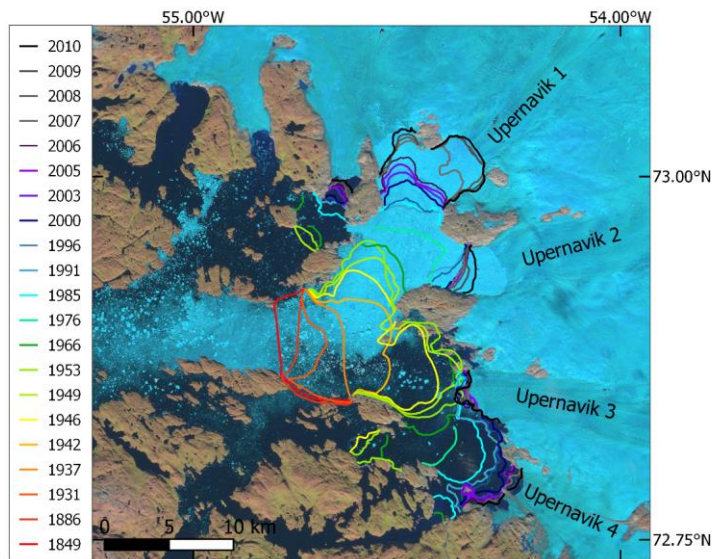
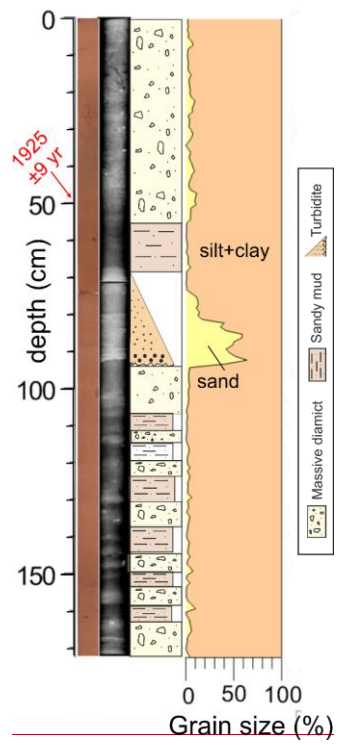


Fig.2. Satellite image (2018-07-31, Sentinel-2B) with the historical record of front observations of Upernavik Isstrøm (Weidick, 1958; Khan et al., 2013; Andresen et al., 2014).





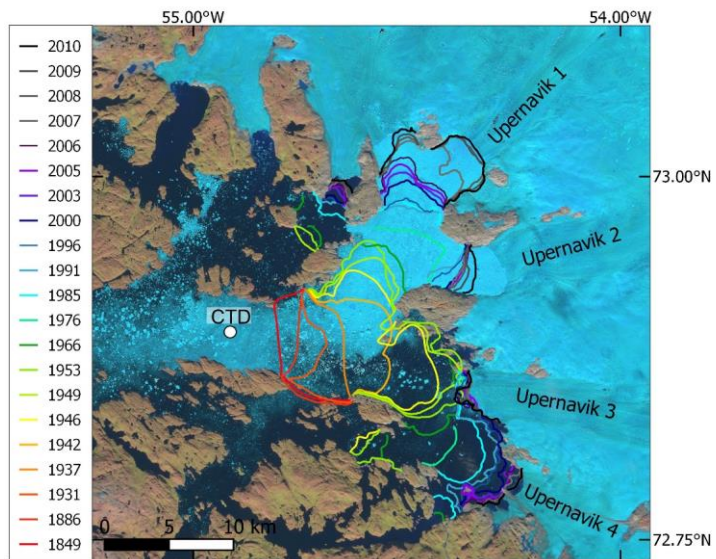
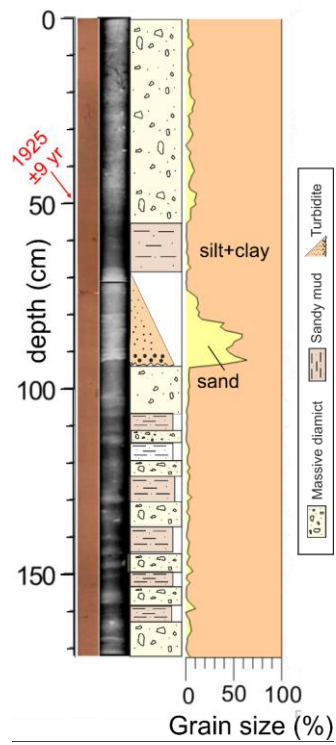
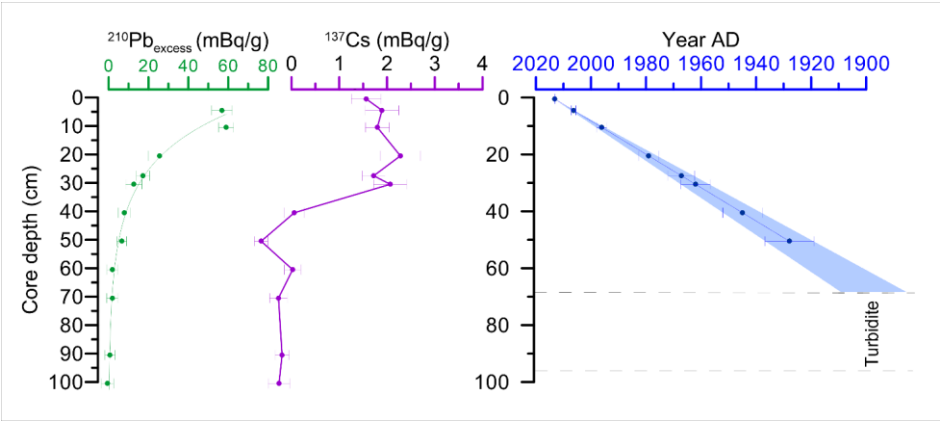


Fig.

**Figure 2. Satellite image (2018-07-31, Sentinel-2B) with the historical record of front observations of Upernavik Isstrøm and location of CTD profile, presented in Fig. 1 (Andresen et al., 2014; Khan et al., 2013; Weidick, 1958).**



**Figure 3.** Linescan and X-Ray image of sediment core POR13-05, together with grain-size measurements. The top 50 cm was dated with the  $^{210}\text{Pb}$  method.



**Fig.Figure 4.** Left) Measurements of  $^{210}\text{Pb}_{\text{ss}}$  and  $^{137}\text{Cs}$  in core POR13-05 according to core depth. Right) Age model calculated with the CS-CF model.

Formateret: Billedtekst

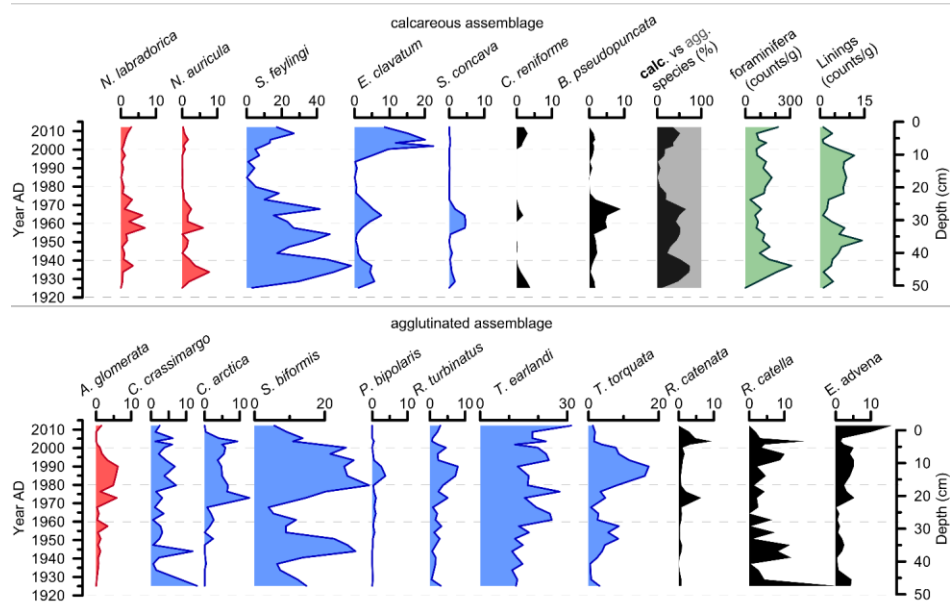
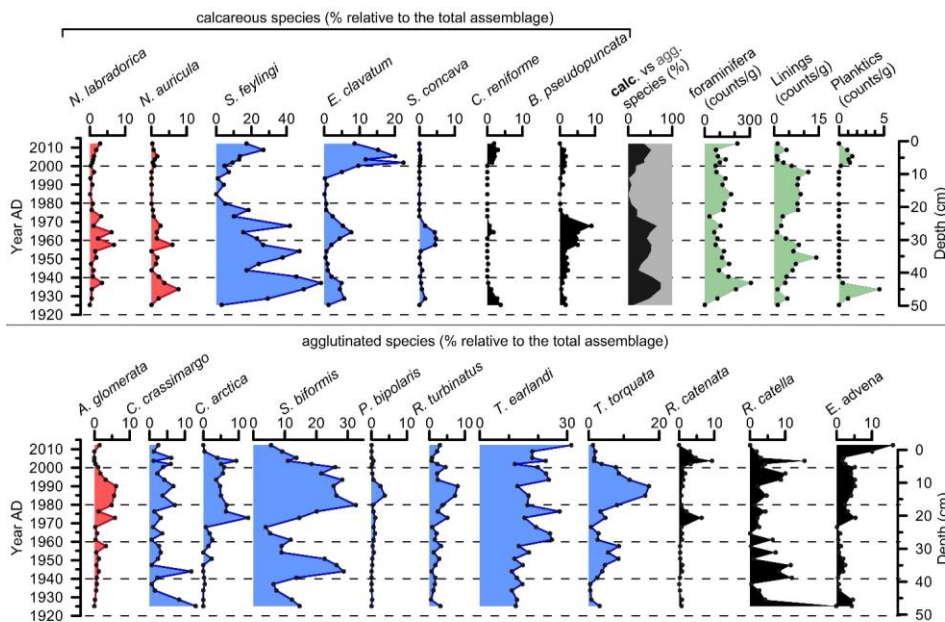


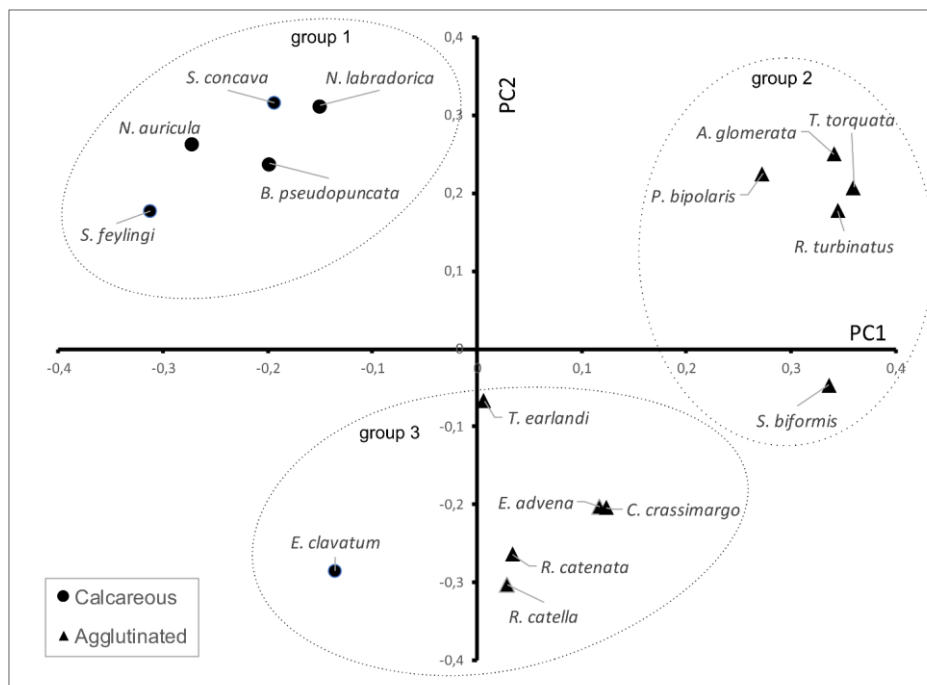
Fig.



**Figure 5.** Abundances of calcareous species (top) and agglutinated benthic foraminiferal species (bottom), plotted versus age/depth in core POR13-05. Abundances are calculated relative to the total (calcareous and agglutinated) counts of benthic foraminifera. Red colors indicate (chilled) Atlantic water indicator species, blue colors represent Arctic water indicators. Only species representing >0.5% of the total assemblage are shown. Total count of foraminifera and organic linings per gram are also indicated (green, top). Stippled lines are a visual aid for comparing the different trends.

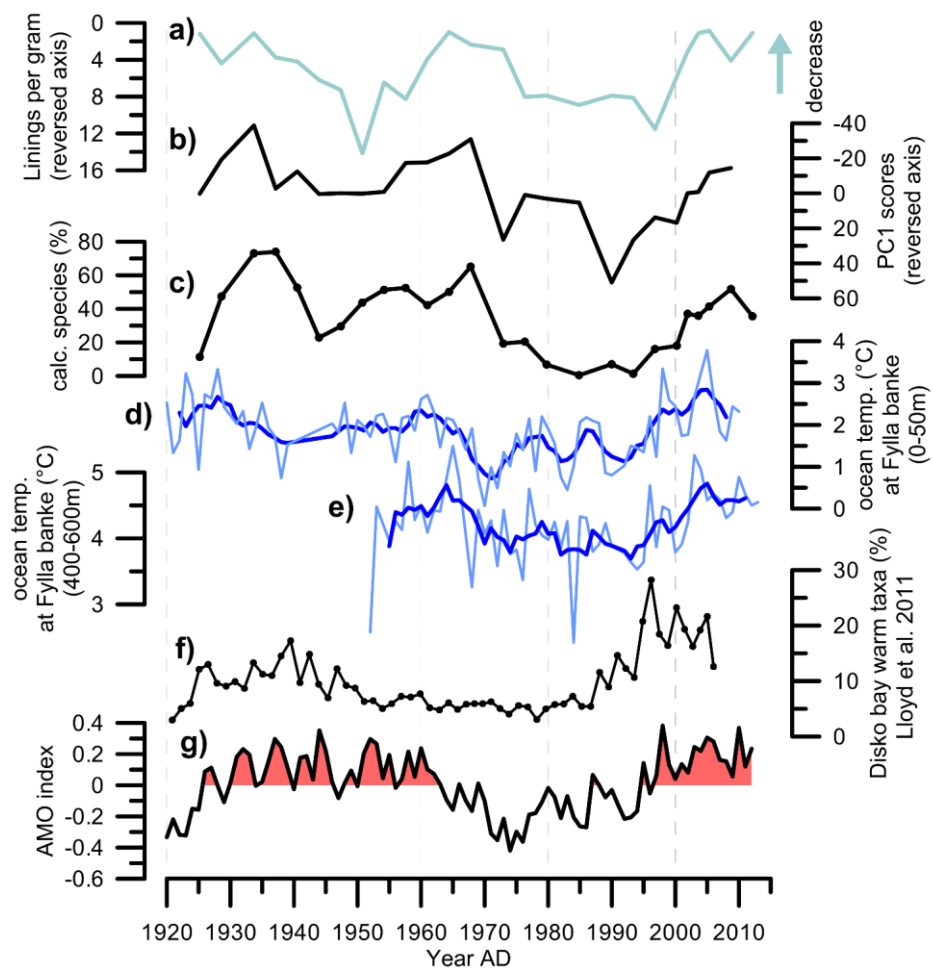
**Kommenterede [VF10]:** included reviewers comments on foraminifera representation

**Formateret:** Billedtekst



**Fig.Figure 6.** Loadings plot resulting from the principal component analysis, of the foraminiferal assemblages in POR13-05. PC1 and PC2 explain 28.6% and 16.8% of the variance, respectively. Only species representing >0.5% of the total amount of counted tests were taken into account for PCA analysis.

Formateret: Billedtekst



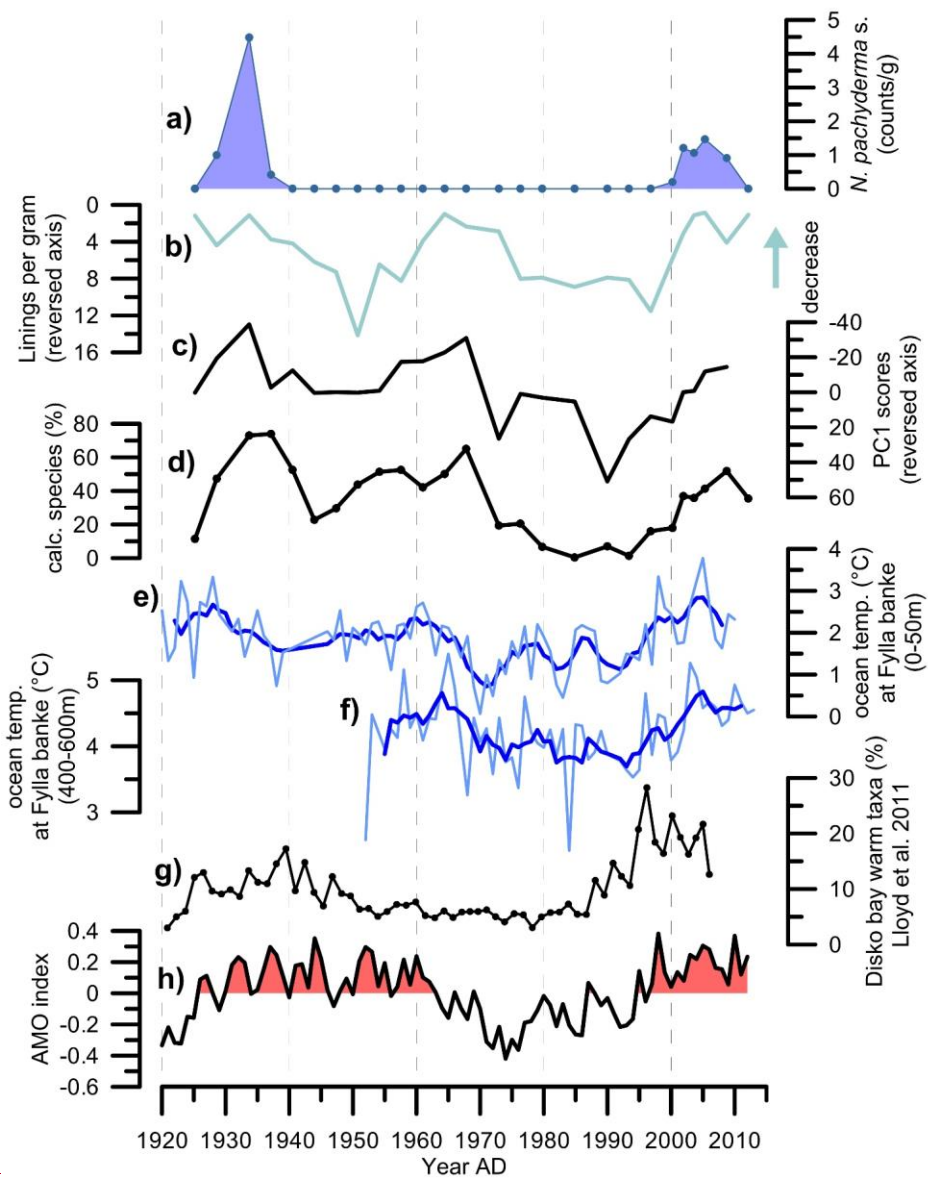


Fig.



Figure 7. Comparison of results from this study of core POR13-05 (a-d) with climate records (e, f) and reconstructions from West-Greenland (g) and the Atlantic Multidecadal Oscillation (AMO) (a-h). a) Abundance of *N. pachyderma* (sinistral) (counts/g). b) Number of organic linings per gram. b, c) Scores of PC1 based on analysis of species abundances. c, d) Percentage of calcareous foraminifera. de) Water temperatures (0-40m, June) measured from trawl surveys at Fylla Banke; data before 1950 were extended back to 1861 based observations from a wider area (Ribergaard et al., 2008). Dark blue line indicates the 3-year running average. e) Measured temperatures at Fylla Banke (400-600m). Dark blue line indicates the 3-year running average. f) Percentage of Atlantic water indicators from a benthic foraminifera study in Disko Bay. f) Measured temperatures at Fylla Banke (400-600m) (Ribergaard et al., 2008). Dark blue line indicates the 3-year running average. g) Percentage of Atlantic water indicators from a benthic foraminifera study in Disko Bugt, West Greenland (Lloyd et al., 2011). gh) AMO index is based on the definition by Enfield et al. (2001). Stippled lines are a visual aid for comparing the different records.

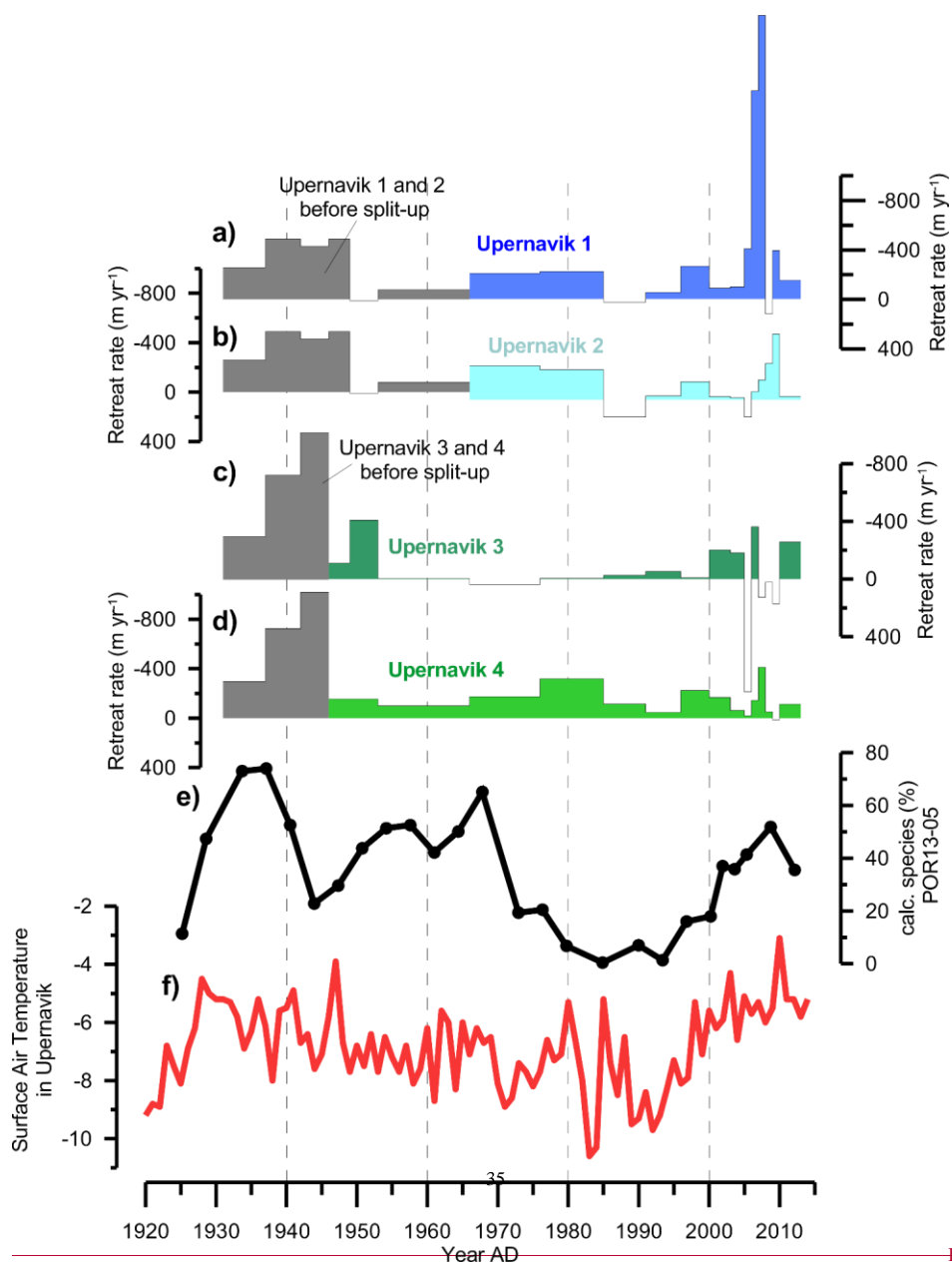
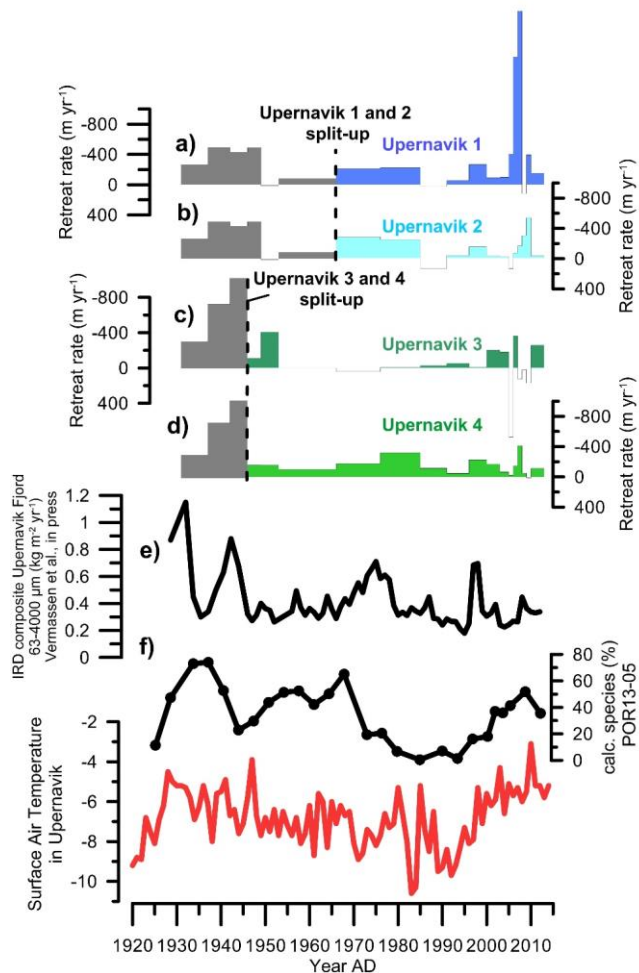


Fig.



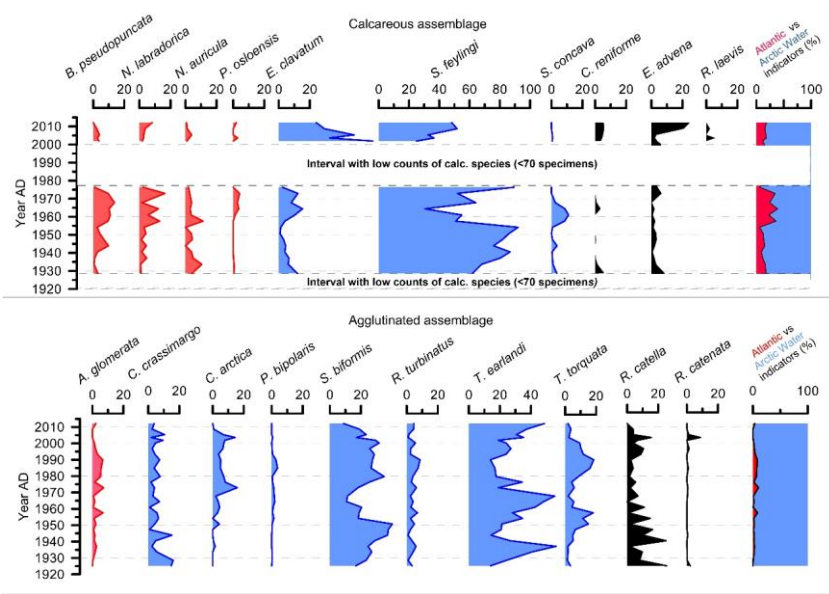
**Figure 8.** Comparison of retreat rates of Upernavik Isstrøm's glaciers (Andresen et al., 2014) with reconstructed inflow of Atlantic water to Upernavik fjord (this study) and measured surface air temperatures in Upernavik (Cappelen, 2011). a) to d) Retreat rates of Upernavik 1, Upernavik 2, Upernavik 3, and Upernavik 4, respectively (Andresen et al., 2014). e) Percentage calcareous foraminifera in core POR13-05, used as a proxy for Atlantic water inflow. f) Observed surface air temperatures in Upernavik. a) to

**Kommenterede [VF11]:** Included IRD data and clarified the plot as requested

**Formateret:** Billedtekst

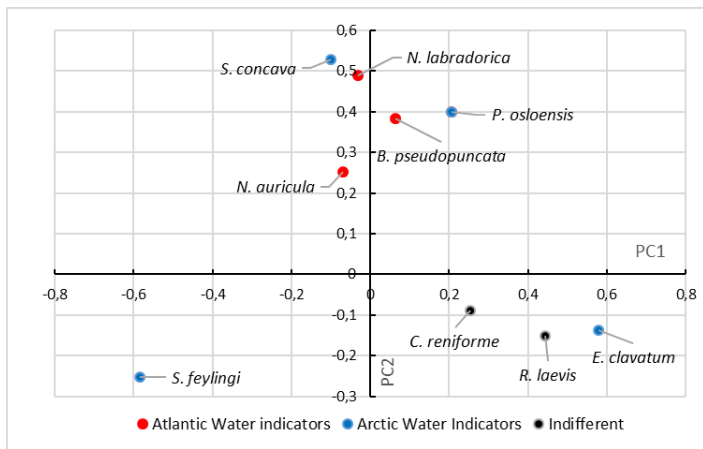
d) Retreat rates of Upernavik 1, Upernavik 2, Upernavik 3, and Upernavik 4, respectively (Andresen et al., 2014). Grey colours indicate periods when the northern glaciers and southern glaciers were still joined together, stippled lines indicate when these split up. e) Composite record of IRD variability based on multiple sediment cores in Upernavik Fjord (Vermassen et al., in press). f) Percentage of calcareous foraminifera in core POR13-05, used as a proxy for Atlantic water inflow. g) Observed surface air temperatures in Upernavik (Cappelen, 2011).

#### 14 Supplementary Figures

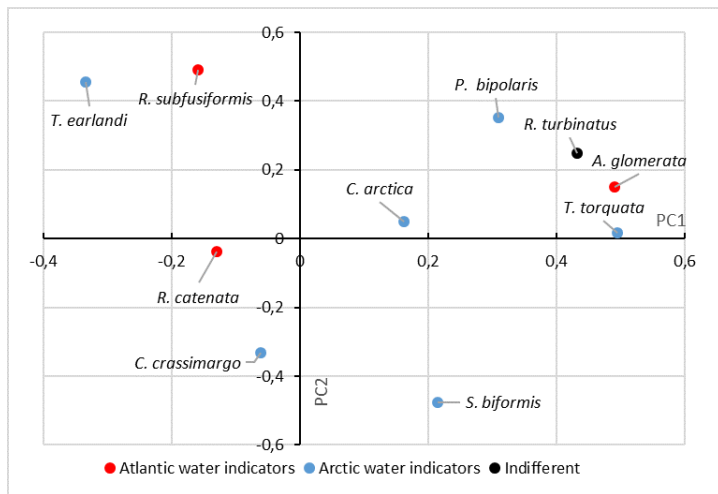


**Figure S1.** Abundances of calcareous species (top) and agglutinated (bottom) species in core POR13-05. Abundances are calculated relative to the calcareous (top) and agglutinated fauna (bottom), respectively. Red colors indicate (chilled) Atlantic water indicator species, blue colors represent Arctic water indicators. Intervals with <70 specimens are not displayed.

**Kommenterede [VF12]:** Species abundances calculated relative to total assemblages, as requested by the reviewers, and also the PCA analysis based on these (below)



**Figure S2. Loadings plot resulting from principal component analysis performed on the calcareous assemblage in POR13-05.**



**Figure S3. Loadings plot resulting from principal component analysis performed on the agglutinated assemblage in POR13-05.**