

Sedproxy: a forward model for sediment archived climate proxies

Andrew M. Dolman¹ and Thomas Laepple¹

¹Alfred Wegener Institute, Helmholtz Centre for Polar and Marine Research, Germany.

Correspondence: Andrew M. Dolman (andrew.dolman@awi.de)

Abstract. Climate reconstructions based on proxy records recovered from marine sediments, such as alkenone records or geochemical parameters measured on foraminifera, play an important role in our understanding of the climate system. They provide information about the state of the ocean ranging back hundreds to millions of years and form the backbone of paleo-oceanography.

5 However, there are many sources of uncertainty associated with the signal recovered from sediment archived proxies. These include seasonal or depth habitat biases in the recorded signal, a frequency dependent reduction in the amplitude of the recorded signal due to bioturbation of the sediment, aliasing of high frequency climate variation onto a nominally annual, decadal or centennial resolution signal, and additional sample processing and measurement error introduced when the proxy signal is recovered.

10 Here we present a forward model for sediment archived proxies that jointly models the above processes so that the magnitude of their separate and combined effects can be investigated. Applications include the interpretation and analysis of uncertainty in existing proxy records, parameter sensitivity analysis to optimize future studies, and the generation of pseudo-proxy records that can be used to test reconstruction methods. We provide examples, such as the simulation of individual foraminifera records, that demonstrate the usefulness of the forward model for paleoclimate studies. The model is implemented as an open-source R
15 package, *sedproxy*, to which we welcome collaborative contributions. We hope that use of *sedproxy* will contribute to a better understanding of both the limitations and potential of marine sediment proxies to inform about past climate.

1 Introduction

Climate proxies are an imperfect record of the earth's past climate. Climate variations are encoded by geo- or bio-chemical processes into a medium which survives, archived, until it is sampled and the physical or chemical signal decoded back into
20 estimates of direct climate variables. For example, the ratio of magnesium to calcium in the shells (tests) of foraminifera varies with the water temperature at which they calcify and thus encodes a temperature signal (Nürnberg et al., 1996). Upon death, these shells (the carrier) become buried (archived) in the sediment. They can later be recovered from sediment cores and their Mg/Ca ratio measured. Using the modern day relationship between foraminiferal Mg/Ca and temperature, down-core variations in the Mg/Ca ratio in foraminiferal tests can then be decoded back into an estimate of temperature variations back in
25 time (Anand et al., 2003; Elderfield and Ganssen, 2000; Barker et al., 2005).

The climate signal is distorted and obscured at many points during the encoding, archiving and subsequent reading of a climate proxy, and these diverse sources of noise and error need to be taken into account when estimating the true past climate from proxy records. One way to develop, test, and improve our ability to reconstruct climate from proxies is to create mechanistic forward models. These models attempt to simulate the key processes on the entire path from the climate signal to the reconstructed climate: from the encoding of the signal, its archiving in e.g. ice, sediments, wood or coral, recovery of the archived material, cleaning and processing of samples, measurement of the physical or chemical proxy, and its conversion back into units of climate variables such as temperature. Models that attempt to cover this entire process are known as proxy system models (PSMs) (Evans et al., 2013) and detailed PSMs have recently been proposed and implemented for oxygen isotope proxies archived in ice, trees, speleothems and corals (Dee et al., 2015).

Climate proxies recovered from sediment cores are widely used to reconstruct past climate evolution on time-scales from centuries (Black et al., 2007) up to millions of years (Zachos et al., 2001). Several processes affecting the climate signal during recording, recovery and measurement have been described in the literature and analysed in specific studies. Examples include the influence of seasonal recording (Schneider et al., 2010; Leduc et al., 2010; Lohmann et al., 2013), the effect of bioturbation (Berger and Heath, 1968; Goreau, 1980), the sample size of foraminifera (Killingley et al., 1981; Schiffelbein and Hills, 1984), measurement uncertainty (Greaves et al., 2008; Rosell-Melé et al., 2001), and inter-test variability (Sadokov et al., 2008). Despite this body of knowledge, in practice these processes are often considered only in isolation, or not at all, when marine proxy records are interpreted, or when model-data comparisons are made.

The R package *sedproxy* provides a forward model for sediment archived climate proxies so that the above processes can be considered during study design, the interpretation of marine proxy records and when comparing models with data. *sedproxy* is based on and expands the model described and used by Laepple and Huybers 2013 to explain differences in variance between alkenone (Uk'37) and Mg/Ca based climate reconstructions. We first give an overview of the stages of sedimentary proxy record creation and then describe how these are implemented in *sedproxy*. We then demonstrate how to use the package with a diverse series of use-cases. The source code for the specific version of *sedproxy* used to generate the examples used in this paper is contained in supplement S2, and the latest version of the code and R package are available on Bitbucket <https://bitbucket.org/ecus/sedproxy>.

2 Creation of sediment archived proxy records

The creation of a proxy climate record can be thought of as having three stages: sensor, archive and observation (Evans et al., 2013). Here we describe, for sediment archived proxy records, the key processes that occur in each of these stages and outline which of these are included in *sedproxy*.

2.1 Sensor stage

In the context of a climate proxy, a sensor is a physical, biological or chemical process that is sensitive to climate (e.g. temperature), and creates a measurable record of the climate signal. For example, the widths of tree growth rings are sensitive

to temperature and water availability and are preserved in tree trunks (Douglass, 1919). Our forward model can be used for any proxy sensor that records water conditions and is then deposited and archived in the sediment. We consider here, as examples, two climate sensors: the Mg/Ca ratio in the tests of foraminifera, and the alkenone unsaturation index (Uk'37). Foraminifera are single celled protozoa that exude a calcite shell (test) in which a certain proportion of the calcium ions are substituted for magnesium. The ratio of Mg to Ca ions is dependent on the ambient temperature during the process of calcite formation, and thus the Mg/Ca ratio in foraminiferal tests acts as a proxy for temperature during their creation (Nürnberg et al., 1996). Similarly, alkenones are a class of large organic molecules synthesised by some Haptophyte phytoplankton species. The proportion of unsaturated carbon to carbon bonds in the synthesised molecules is temperature dependent and thus the relative unsaturation of alkenone molecules found in sediments can be used as a proxy for temperature (Prahl and Wakeham, 1987). Secondary effects such as the effect of salinity on the Mg/Ca of foraminifera (Hönisch et al., 2013), or nutrient availability on the Uk'37 recorded by the alkenone producers (Conte et al., 1998), might further effect the recorded proxy signal.

2.1.1 Seasonal and habitat bias in the sensor

One source of uncertainty common to most climate proxies is a bias towards recording the climate during periods of the year when the proxy generating process is most active (Mix, 1987). Both the foraminifera and the alkenone producing haptophytes have growth rates, abundances and rates of export to the sediment that vary predictably throughout the year (Jonkers and Kučera, 2015; Leduc et al., 2010; Uitz et al., 2010), and hence bias these proxies towards recording the climate during their respective periods of peak production and export. Furthermore, the proxy creating organisms do not necessarily live at and record the surface of the ocean. The producers of alkenones are restricted to the photic zone and thus are close to the surface; however, for foraminifera, the preferred habitat depth and the depth at which their shells calcify is strongly species dependent and can vary from being close to the surface, to the thermocline or deeper (Fairbanks and Wiebe, 1980; Kretschmer et al., 2017). Therefore, the recorded temperature will not necessarily reflect the sea surface temperature (Jonkers and Kučera, 2017). Whether or not these biases represents an error will depend on how the resulting proxy record is interpreted. However, even when a proxy is interpreted as representing a particular season or depth habitat, the season and depth that a given proxy represents will rarely be known with certainty. Furthermore, it is likely that the seasonal and depth habitat preferences of proxy producing organisms will respond to changes in the climate, i.e. they will show homeostasis or habitat tracking (Mix, 1987; Jonkers and Kučera, 2017) which will likely damp the climate variations in proxy records (Fraile et al., 2009).

2.2 Archive stage

After the creation of proxy carriers such as foraminiferal shells or alkenone molecules, a proportion of these are exported to and buried in the sediment. The upper few centimetres of marine sediments are typically mixed by burrowing organisms down to a depth of around 2-15 cm (Boudreau, 1998, 9.8 ± 4.5 cm (1 SD)) (Teal et al., 2010; Trauth et al., 1997, 8.37 ± 6.19 cm), although laminated sediments absent of bioturbation do exist. Marine sediment accumulation rates vary over many orders of magnitude (Sadler, 1999; Sommerfield, 2006) but rates at core locations used for climate reconstructions are typically of the order 1-100 cm ka⁻¹. Thus, bioturbation can mix and smooth the climate signal over a period of decades to millennia and have

a strong effect on the effective temporal resolution that can be recovered from a sediment archived proxy (Anderson, 2001; Goreau, 1980).

Other processes occurring during the archive stage may influence the proxy, for example differential dissolution of Mg/Ca in foraminiferal shells (Barker et al., 2007; Rosenthal and Lohmann, 2002; Mekik et al., 2007) and preferential degradation of Uk'37 (Hoefs et al., 1998; Conte et al., 2006).

2.3 Observation stage

During the observation phase, samples of sediment are taken at intervals along a core and material is recovered in which the proxy signal has been encoded. For Uk'37 extraction and foraminifera picking, these samples are typically taken from 1-2 cm thick sediment layers. Therefore, even in the absence of bioturbation the proxy record will be smoothed by a time period determined by the sedimentation rate and layer thickness.

2.3.1 Aliasing of inter- and intra-annual climate variation

For proxy signals embedded in the tests of foraminifera, measurements are typically made on relatively small samples of about 5-30 individuals. Due to both bioturbation and the width of the sampled sediment layer, these individuals will be a mixed sample that integrate the climate signal over an extended time period; however, individual planktonic foraminifera live for a period of only 2-4 weeks (Bijma et al., 1990; Spero, 1998) and hence each encodes climate at an approximately monthly resolution. Therefore, if a measurement is made on a sample containing 30 individuals mixed together from a period of 100 years, the resulting value is a noisy 100-year mean and hence inter- and intra-annual scale climate variation is aliased into the nominally centennial-resolution proxy record (Laepple and Huybers, 2013; Schiffelbein and Hills, 1984). This effect may be particularly strong for high latitude cores where the seasonal temperature cycle is large. However the stronger the seasonal climate cycle, the more likely an organism is to grow preferentially during a specific season (Jonkers and Kučera, 2015), and thus aliasing will be reduced, while seasonal bias is increased. For organic proxies such as Uk'37, samples comprise many thousands of molecules and aliasing is likely a minor issue, although clustering in sediment export and distribution is possible (Wörmer et al., 2014).

2.3.2 Other non-climate variability: inter-individual variation, cleaning/processing and instrumental error.

The measurement of proxy values on material recovered from sediment cores will necessarily involve some amount of error. In particular, foraminiferal tests need to be cleaned prior to Mg/Ca measurements and this is an imprecise process. Too little cleaning risks leaving Mg rich mineral phases (Barker et al., 2003), too much may bias the Mg/Ca downwards. Some cleaning, processing and measurement errors will be independent between samples while others may be correlated, for example due to differences between labs (Greaves et al., 2008). In addition to measurement error, there will also be inter-individual variation between foraminifera in their recording of the same climate signal (Haarmann et al., 2011; Sadekov et al., 2008). For example, test Mg/Ca ratios vary between individual foraminifera even when grown under identical conditions (e.g., Dueñas-Bohórquez

et al., 2011). Similar inter-individual variation and "vital effects" also occur for $\delta^{18}\text{O}$ (Duplessy et al., 1970; Schiffelbein and Hills, 1984).

3 Implementation

Here we give an overview of the model implementation, describing which features of proxy creation can be simulated with *sedproxy*. The essential input data, variables and parameters are listed in Table 1 and described in the following paragraphs. Additional optional function arguments are described in the *sedproxy* package documentation.

3.1 Input climate matrix (`clim.signal`)

sedproxy takes as input an assumed "true" climate signal, which may come from a climate model or instrumental readings, and returns a simulated proxy value for each of a set of requested timepoints. The input climate signal is required as a matrix $C_{y,h}$ where y rows are the years and the h columns resolve the habitats being modelled. For example, to model seasonal biases in the recording process and noise aliased from monthly climate variation, there should be 12 columns representing 12 months of the year. To include other habitat effects, e.g. foraminiferal depth habitats, this matrix can be extended to have e.g. $12 \times z$ columns, where z is the number of discrete depths to be included.

$$\begin{pmatrix} C_{y_1,h_1} & C_{y_1,h_2} & \cdots & C_{y_1,h_{12z}} \\ C_{y_2,h_1} & C_{y_2,h_2} & \cdots & C_{y_2,h_{12z}} \\ \vdots & \vdots & \ddots & \vdots \\ C_{y_n,h_1} & C_{y_n,h_2} & \cdots & C_{y_n,h_{12z}} \end{pmatrix}$$

3.2 Sensor-model / calibration

The input climate signal can be converted to proxy units using a transfer function based on an established temperature calibration. If the argument `calibration.type` is set to either 'Uk37' or 'MgCa', the input climate matrix will be converted using the global Uk'37 to temperature calibration from Müller et al. (1998), or the multispecies Mg/Ca to temperature calibrations from Anand et al. (2003), respectively. The argument `calibration` can be used to specify one of the taxon specific calibrations from Anand et al. (2003). If `calibration.type` is left at its default value of 'identity', then no transformation takes place. This gives the option for the input climate matrix to be pre-transformed into any proxy type by the user.

Uncertainty in the relationship between temperature and proxy units can be modelled by requesting multiple replicate pseudo-proxies. For each replicate, a random set of calibration parameters are drawn from a bivariate normal distribution that represents the uncertainty in the fitted calibration model. The bivariate distributions are parametrised by mean values for the regression coefficients and corresponding variance-covariance matrices. We have estimated these variance-covariance matrices for the supplied calibrations by refitting regression models to the calibration data used in the original publications. Due

to small differences in the data sets and methods, our parameter estimates deviated slightly from the published values, but for consistency the mean parameter values are set to the published values.

As *sedproxy* does not explicitly model the differential dissolution of foram tests, nor preferential degradation of Uk'37, the implicit assumption is made that that, where is is used, these effect are either minimal or otherwise corrected for during sample processing (e.g. by exclusion of extensively dissolved foram tests). Where a bias due to differential dissolution can be estimated, this could be corrected for using a custom dissolution-correcting temperature calibration (e.g., Mekik et al., 2007; Rosenthal and Lohmann, 2002).

Both the Mg/Ca and Uk'37 calibration functions will accept optional arguments that replace their default parameter values and variance-covariance matrices. For alternative calibration models that have a different functional form, the function `ProxyConversion` would need to be modified.

3.3 Weights matrix

While conceptually *sedproxy* modifies the climate signal according to a sequence of sensor, archive and observation processes, in practice the value of the simulated proxy at a given timepoint is calculated in a single step as the mean of a weighted sample from the original climate signal, plus some independent error term. For each requested timepoint, a matrix of weights, $W_{y,h}$, is constructed which determines the probability of sampling any particular value from the climate matrix.

The elements of the weights matrix $W_{y,h}$ are the product of annual weights, w_y , which depend on bioturbation, and either a vector or matrix of habitat weights, w_h or $w_{y,h}$, corresponding to "static" or "dynamic" habitat weights respectively. Static weights correspond to habitat preferences (e.g. depth or season) that do not vary over time with climate. Dynamic weights correspond to season and habitat preferences that change in response to climate - such as might be expected from organisms adapting to changing water temperatures by altering their depth in the water column or the timing of their production.

3.3.1 Habitat weights (`habitat.weights`)

Static habitat weights, w_h , are given by a user defined vector defining the seasonality and potentially the depth habitat of the proxy recording process. It has the same length as the number of columns in the input climate signal. Dynamic habitat weights can be specified either by passing a named function that will calculate these weights from the input climate matrix, or by passing a pre-calculated matrix of weights of the same size as the input climate matrix. Non-static habitat weights could be generated using either the simple Gaussian response approach of Mix (1987), or something more advanced such as the proposed FAME module (Roche et al., 2017). *sedproxy* includes an R implementation of the `growth_rate_109` function from the FAME v1.0 Python module (Roche et al., 2017) that can be used to predict habitat weights from water temperatures for several foraminifera taxa. More complex models, such as FORAMCLIM (Lombard et al., 2011) or PLAFOM (Fraile et al., 2008), could also be used outside of R to pre-calculate the weights matrix.

There is considerable potential for lateral transport of proxy carriers, particularly the organic proxies such as Uk'37 (Mollenhauer et al., 2003; Benthien and Müller, 2000) and potentially also foraminifera (van Sebille et al., 2015), so that proxy material in given sediment core may have come from a different location or be a mixed sample representing an area of ocean

of considerable size. Lateral transport of proxy material in the water column or at the sediment surface could be modelled by using an input climate matrix with columns for multiple spatial locations, and habitat weights representing the probability that material was transported from a given location.

3.3.2 Annual weights (bioturbation)

- 5 For simplicity, *sedproxy* assumes complete mixing within the bioturbated layer, a constant sedimentation rate in the region of each sampled timepoint, and a constant concentration of the proxy carrying material. Under these assumptions, the origin (pre-bioturbation) of material recovered from a given focal depth is described by the impulse response function Eq. (1) (Berger and Heath, 1968). This function is equivalent to an exponential probability density function, with mean equal to the focal depth and standard deviation equal to the bioturbation depth divided by the sedimentation rate. The value of a proxy measured on
- 10 material recovered from a given depth can thus be viewed as a weighted mean of material originally deposited over a range of depths, with weights given by Eq. (1) (Fig. 1). By assuming a locally constant sediment accumulation rate, α , around each focal point, and a fixed bioturbation depth, δ , the bioturbation function can be expressed in units of time rather than space/depth.

- In this model, the probability that a particle found at a given focal depth was mixed down from a distance greater than the bioturbation depth, δ , is zero. Theoretically, particles can have been brought up from any distance below the focal depth, but
- 15 for computational reasons the annual weights vector is restricted to a distance of three bioturbation depths below the focal horizon; this region contains 99% of the mass of the impulse response function.

$$wy_t = \begin{cases} \frac{\alpha \cdot e^{\lambda y_f - \lambda y_t - 1}}{\delta} & y_t - y_f + \frac{\delta}{\alpha} \geq 0 \\ 0 & y_t - y_f + \frac{\delta}{\alpha} < 0 \end{cases} \quad (1)$$

where:

α = sediment accumulation rate in cm a⁻¹

- 20 δ = bioturbation depth in cm

$$\lambda = \frac{\alpha}{\delta}$$

y_f = the focal year

- To account for the fact that foraminiferal tests are collected, or Uk'37 extracted, from a layer of sediment of a certain thickness (`layer.width`). The bioturbation function is convolved with a uniform probability density function with a width
- 25 equal to the layer thickness (Eq. 2). The effect of `layer.width` is small unless the bioturbation depth is small relative to the layer width.

$$wy_t = \begin{cases} 0 & z < -L \\ \frac{e^{-\lambda L - \lambda z} \cdot (e^{\lambda L + \lambda z} - 1)}{2L} & -L \leq z \leq L \\ \frac{(e^{2\lambda L} - 1) \cdot e^{-\lambda L - \lambda z}}{2L} & z > L \end{cases} \quad (2)$$

where:

$$z = y_t - y_f + \frac{\delta}{\alpha}$$

$$L = \text{layer.width}/2$$

While the assumption of complete mixing with a sharp cutoff is unlikely to be true, the general effects of bioturbation should also apply under conditions of incomplete mixing and the code could be modified to use a more complex bioturbation model (e.g., Guinasso and Schink, 1975; Steiner et al., 2016). However, when sedimentation rates are low relative to mixing rates, more complex mixing models converge to the simple box type model that employed here (Matisoff, 1982). *sedproxy* further assumes a constant bioturbation depth over time, as the bioturbation depth is generally not known for each setting and cannot easily be reconstructed down-core. Bioturbation depth may be related to productivity and sedimentation rate, but its predictability for a given core seems to be low (Trauth et al., 1997). The recent development of radiocarbon measurements on small samples (Wacker et al., 2010) might allow the extent of bioturbation to be constrained using replicate measurements from individual depth layers (e.g. Loughheed et al., 2017) and such information could be included in *sedproxy* in the future.

3.3.3 Summing or sampling

For proxies such as foraminiferal Mg/Ca, where typically a small number of foraminiferal tests (N) are cleaned and measured for each depth/timepoint in a sediment core, the proxy at time t , Pr_t , is the mean of a random sample of N elements of the input climate matrix C , with the probability that a particular element is sampled given by the weights matrix W , plus some independent error term ε (Eq. 3).

$$Pr_t = \frac{1}{N} \sum_{i=1}^{i=N} \{C^{(i)}, W^{(i)}\} + \varepsilon \quad (3)$$

For proxies such as Uk'37, it is assumed that there are effectively infinite samples taken for each timepoint at which the proxy is evaluated. In this case the proxy at time y Pr_t is the sum of the element-wise product of the climate and weights matrices (Eq. 4).

$$Pr_t = \sum (C \circ W) + \varepsilon \quad (4)$$

3.4 Independent error (`sigma.meas`, `sigma.ind`)

The error term ε is added as an independent Gaussian random variable with mean $\mu = 0$ and standard deviation σ . The value of σ is controlled by the parameters `sigma.meas` (σ_{meas}), and `sigma.ind` (σ_{ind}). σ_{meas} describes both the analytical error of the measurement process and any other sources of error that are introduced during the preparation of the sample (e.g. cleaning for Mg/Ca). σ_{ind} quantifies inter-individual variation for proxies that are measured on samples of discrete individuals

such as foraminifera, and its contribution to ε is scaled by the square root of the number of individuals in the sample, N (Eq. 5).

$$\sigma = \sqrt{\sigma_{meas}^2 + \frac{\sigma_{ind}^2}{N}} \quad (5)$$

Appropriate values for these error parameters will depend on the proxy type, and for σ_{ind} in particular they may also be site and species dependent, although the empirical estimates of the sum of both error terms in Laepple and Huybers 2013 suggested similar values between study sites. We propose that σ_{meas} should be set to typical lab values for the reproducibility of measurements on real world material. For Uk'37 we use a value of 0.23°C, which was the mean replicate error of all Uk'37 studies used in Laepple and Huybers 2013. For foraminiferal Mg/Ca we use 0.26°C for σ_{meas} , which corresponds to about 0.07 - 0.11 mmol/mol at 20 and 25°C respectively and lies within the typical reported range (Skinner and Elderfield, 2005; Groeneveld et al., 2014).

The value of σ_{ind} is less constrained as it depends on how much of this variation has been explicitly modelled, e.g. via a seasonally and depth resolved input climate signal and habitat weights. We use 2°C for σ_{ind} , as most examples here do not explicitly include depth habitat. This value is similar to the inter-test variability of approximately 1.6°C estimated for fresh *Globigerinoides ruber* samples by Sadekov et al. (2008). Assuming a typical number of 30 foraminifera individuals per sample, these two sources add up to approximately 0.45°C, the mean replicate error across all Mg/Ca studies used in Laepple and Huybers 2013. For Uk'37 we set σ_{ind} to zero as we typically assume an infinite sample size.

Values of σ_{meas} and σ_{ind} are entered in units of °C by default, but can be entered in proxy units if `scale.noise` is set to FALSE.

3.5 Replication

Multiple replicate proxy records can be simulated with a single set of parameters. Due to the stochastic sampling of habitats and depths, the random noise terms, and the randomly sampled calibration parameters, replicates will not be identical. An additional random bias can be added to each replicate simulated proxy record. This bias is drawn from a Gaussian distribution with mean = 0 and a user definable standard deviation (`meas.bias` defaults to 0). This bias will be constant for all points in a given replicate and can be used to include additional uncertainty in the proxy calibration, or inter-lab variation in analytical results.

4 Using *sedproxy*

To illustrate the use of *sedproxy* we provide here a number of examples together with the R code to execute them.

4.1 Example 1: A foraminiferal Mg/Ca pseudo-proxy record for sediment core MD97-2141

In this first example, we demonstrate how to simulate an already measured proxy record as closely as possible. We use the foraminiferal Mg/Ca based temperature reconstruction for sediment core MD97-2141 (Table 2) in the Sulu Sea (Rosenthal et al., 2003).

5 As an input climate signal we take the monthly sea surface temperature output from the TraCE-21ka "Simulation of Transient Climate Evolution over the last 21,000 years" (Liu et al., 2009), using the grid cell closest to core MD97-2141.

We use an Mg/Ca calibration with user supplied mean values for the slope and intercept set to those used by Rosenthal et al. (2003) which reduce a bias due to partial dissolution. The seasonality of *Globigerinoides ruber*, the foraminifera for which test Mg/Ca ratios were measured, is taken from the dynamic population model PLAFOM, driven with modern climatology (Fraile et al., 2008) (Fig. 2a). Sediment accumulation rates were estimated from the depth and age data associated with core MD97-2141 and provided in the supplemental data to Shakun et al 2012. These data are included in the *sedproxy* R package as example data and are also used in the later examples.

10 The function `ClimToProxyClim` is used to forward model a proxy record from an assumed climate. We request values of the proxy at the timepoints of the observed proxy. Descriptions of the main function arguments can be found in Table 1, other optional arguments are described in the package documentation. From the R console type `?ClimToProxyClim` to see the help page.

```
library(sedproxy)
```

```

# Reverse matrix so that top row is most recent year,
# also convert from Kelvin to °C
N41.t21k.climate.in <- N41.t21k.climate[nrow(N41.t21k.climate):1, ] - 273.15

# Convert matrix to a ts object and set start to most recent year,
# in this case -39 (1989 in years "before" 1950)
N41.t21k.climate.in <- ts(N41.t21k.climate.in, start = -39)

# Set seed of random number generator so that the results are reproducible.
set.seed(20170824)

# Call the forward model
Mg_Ca.cal <- ClimToProxyClim(
  clim.signal = N41.t21k.climate.in,
  timepoints = N41.proxy$Published.age,
  calibration.type = "MgCa",

  # Custom calibration parameters from Rosenthal et al. (2003)
  slp.int.means = c(0.095, log(0.28)),

  sed.acc.rate = N41.proxy$Sed.acc.rate.cm.ka,
  plot.sig.res = 1,
  habitat.weights = N41.G.ruber.seasonality,
  sigma.meas = 0.26, sigma.ind = 2,
  n.samples = 30)

```

In addition to the estimated pseudo-proxy timeseries, *sedproxy* calculates and returns the unobserved intermediate stages of proxy creation to assist in the interpretation of the simulated proxy. We provide a plotting function `PlotPFMs` which will display the output from `ClimToProxyClim`, together with an observed proxy record if this is added to the plotting data. `PlotPFMs` returns a `ggplot` object that can be customised using the standard `ggplot` functions (Wickham, 2009). For brevity, we show here only code to generate the default figure, complete code for the publication figure is provided as supplementary material.

```

plot.dat <- Mg_Ca.cal$everything

# Rescale timepoints to ka for plotting
plot.dat$timepoints <- plot.dat$timepoints / 1000

# Add observed proxy record
obs.proxy <- data.frame(timepoints = N41.proxy$Published.age / 1000,
                        value = N41.proxy$Proxy.value,
                        stage = "observed.proxy",
                        scale = "Proxy units",
                        replicate = 1)

plot.dat <- rbind(plot.dat, obs.proxy)

PlotPFMs(plot.dat)

```

Fig. 3 shows the forward modelled Mg/Ca proxy record for core MD97-2141 (5), together with the input climate signal smoothed to annual resolution (1), the intermediate stages of proxy creation (2-4), and the observed proxy reconstruction as published in Rosenthal et al. 2003. Although the observed (*) and forward modelled (5) proxy records appear to have similar variance, the simulated bioturbation first removes most features of the input climate signal before the aliasing and noise term increase the variability again. In this example, the median sediment accumulation rate is 25.6 cm ka^{-1} , which, assuming a bioturbation depth of 10 cm, corresponds to an expected standard deviation in the ages of individual foraminifera recovered from a single depth of 390 years. Trends remain visible at temporal resolutions of approximately 2 ka and greater, as does a centennial-to-millennial scale feature present in the input climate signal at around 12.5 ka BP.

The combination of the seasonal temperature cycle present in the monthly TraCE-21ka simulation, and the seasonality of *G.ruber* taken from PLAFOM (Fraile et al., 2008), shifts the forward modelled proxy by about $-0.26 \text{ }^\circ\text{C}$ (Fig. 3, 2-3). This shift varies from -0.29 to $-0.16 \text{ }^\circ\text{C}$ depending on the strength of the seasonal cycle, which changes due to the variations in the orbital parameters.

The centennial-to-millennial scale feature still visible in the bioturbated signal at 12.5 ka BP is first obscured by noise due to aliasing of annual and intra-annual variance onto the proxy record. Further measurement error erases any trace of these centennial-to-millennial scale features in the final forward modelled proxy; only multimillennial and greater scale trends remain visible.

The resolution of features that can be seen in the final forward-modelled proxy is consistent with Rosenthal et al. 2003's interpretation of the observed Mg/Ca proxy, from which they estimate the LGM-Holocene temperature increase, but find no

other significant features. However, the features visible in a forward modelled proxy are of course dependent on both the input climate signal - in this case the TraCE-21ka simulation - and parameter values used in the proxy simulation.

4.1.1 Example 1b: Dynamic habitat weights

To illustrate the use of dynamic habitat weights we compare here the static weights (derived from PLAFOM with modern climatology) with weights computed using the R implementation of the `growth_rate_109` function from the FAME v1.0 Python module (Roche et al., 2017) included in *sedproxy*. For this comparison we run the forward model with an 'identity' calibration, i.e. without converting the input climate to proxy units. All other arguments remain the same.

```
# growth_rate_109_R requires temperatures in Kelvin
wts.fame.R <- growth_rate_109_R("ruber", N41.t21k.climate.in + 273.15)

FAME <- ClimToProxyClim(clim.signal = N41.t21k.climate.in,
                       timepoints = N41.proxy$Published.age,
                       calibration.type = "identity",
                       habitat.weights = wts.fame.R,
                       sed.acc.rate = N41.proxy$Sed.acc.rate.cm.ka,
                       sigma.meas = 0.26, sigma.ind = 2,
                       n.samples = 30)
```

Using dynamic habitat weighting from the FAME parametrisation results in an apparent mean temperature change between the earliest 2000 years of this record (18-20 ka BP) and the most recent 2000 years (4-6 ka BP) of 1.61 °C, compared to 1.72 °C using static weights derived using PLAFOM with modern day conditions (Fig. 5). In this example, the difference between static and dynamic weights is small but still illustrates the potential for adaptive behaviour of proxy signal carriers to lead to an underestimation of the magnitude of climate shifts. This effect could be larger for a record from a region with a larger seasonal cycle and/or taxon with a more pronounced seasonality in its productivity, also, for comparability with PLAFOM, we used only SST values and not a depth resolved climate, which would offer further potential for habitat tracking. Note that when creating dynamic weights as a function of temperature, care should also be taken to restrict the occurrence of taxa to their apparent calcification depths.

4.2 Example 2: Influence of the number of foraminifera per sample

To examine the influence of the number of individual foraminifera per timepoint on the uncertainty due to seasonal aliasing, we simulate two artificial Mg/Ca records with 1 and 30 individual foraminifera per sample. For comparison, we also simulate a Uk'37 record, for which the sample size per timepoint is assumed to be infinite. For simplicity we assume that alkenones are produced uniformly throughout the year.

```

Mg_Ca.1 <- ClimToProxyClim(
  clim.signal = N41.t21k.climate.in,
  timepoints = N41.proxy$Published.age,
  sed.acc.rate = N41.proxy$Sed.acc.rate.cm.ka,
  habitat.weights = N41.G.ruber.seasonality,
  sigma.meas = 0.26, sigma.ind = 2,
  n.samples = 1, n.replicates = 3)

Uk37 <- ClimToProxyClim(
  clim.signal = N41.t21k.climate.in,
  timepoints = N41.proxy$Published.age,
  sed.acc.rate = N41.proxy$Sed.acc.rate.cm.ka,
  sigma.meas = 0.23,
  n.samples = Inf, n.replicates = 3)

```

The output from three replicate runs with these parametrisations is shown in Fig. 6. For brevity, code to generate the figure and perform the simulation with 30 individuals is not shown here but complete code for all examples is provided as supplementary material.

4.3 Example 3: Correlation between two proxy types.

5 *sedproxy* can be used to explore the expected correlation between pairs of proxy records. Here we correlate Mg/Ca and Uk'37 based proxies generated for the same hypothetical sediment core. Records from different locations could be compared by supplying a different input climate matrix for each site.

To emphasise the potential effect of contrasting proxy seasonality on the correlation between two records we use hypothetical seasonal weights. The Uk'37 proxy is again assumed to have a constant production with no seasonality, while production of
 10 the Mg/Ca proxy is heavily weighted towards August and September.

We again use the same TraCE-21ka input climate but for simplicity we use a constant sedimentation rate and request proxy values at equally spaced timepoints. One thousand replicate proxy records are simulated of each type.

```
# 1000 replicates of a hypothetical Uk'37 and Mg/Ca record
```

```

Uk37.reps <- ClimToProxyClim(
  clim.signal = N41.t21k.climate.in,
  calibration.type = "Uk37",
  timepoints = seq(100, 21000, by = 1000),
  sed.acc.rate = 25, habitat.weights = rep(1/12, 12),
  sigma.meas = 0.23,
  n.samples = Inf, n.replicates = 1000)

MgCa.reps <- ClimToProxyClim(
  clim.signal = N41.t21k.climate.in,
  calibration.type = "MgCa",
  timepoints = seq(100, 21000, by = 1000),
  sed.acc.rate = 25,
  habitat.weights = c(0, 0, 0, 0, 0, 0, 0.2, 0.7, 1, 0.6, 0, 0),
  sigma.meas = 0.26, sigma.ind = 2,
  n.samples = 30, n.replicates = 1000)

proxies <- bind_rows("Mg/Ca"=MgCa.reps$everything,
                    "Uk'37"=Uk37.reps$everything,
                    .id = "Proxy")

proxies <- filter(proxies, stage %in% c("reconstructed.climate"))

```

The Mg/Ca based artificial records show greater variance than Uk'37 due to a combination of aliasing caused by the finite number of foraminiferal tests and an assumption of higher measurement error (Fig. 7). In addition to a mean offset between the two proxy types, the hypothetical Mg/Ca proxy shows a much stronger glacial-interglacial transition because the effect of the bias towards recording summer climate increases when the amplitude of the seasonal cycle is larger and this was maximal at around 10 ka BP.

Fig. 8 shows the distribution of correlations between replicated pairs of hypothetical Mg/Ca, Uk'37, and Mg/Ca-Uk'37 records, calculated over both the past 10k years (Holocene), and the past 21k years which include the de-glaciation. Over the Holocene, the average correlation between simulated pairs of proxy records is low, even for pairs of the same proxy type. The average correlation between Mg/Ca and Uk'37 proxy records is even negative, due to the simulated warming annual mean temperature, sampled by the Uk'37 record, but slightly cooling summer temperature sampled here by the hypothetical summer growing foraminifera. Similar contrasting trends have been observed between real Mg/Ca and Uk'37 records over the Holocene (Leduc et al., 2010). Correlations between Uk'37 pairs are slightly higher than those between Mg/Ca pairs, due to the lower

measurement noise and lack of aliasing we assume for Uk'37. When the proxy records include a large climate transition, such as the deglaciation between 21ka BP and 10ka BP, correlations between all pairs become high.

4.4 Example 4: Individual Foraminiferal Analysis

In individual foraminiferal analysis (IFA), the population statistics (e.g. standard deviation or range) of proxy values measured on individual foraminifera recovered from the same depth, are used to infer changes in climate variability - such as changes in the El Niño Southern Oscillation (ENSO) system (e.g., Koutavas and Joanides, 2012; Killingley et al., 1981), or changes in the amplitude of the seasonal cycle (e.g., Ganssen et al., 2011; Wit et al., 2010). *sedproxy* can be used to simulate IFA by setting `n.samples = 1` and `n.replicates` to the number of individuals measured per timepoint. This approach bears some similarity with INFAUNAL (Thirumalai et al., 2013); however, while INFAUNAL was designed to test the sensitivity of IFA to the seasonal cycle and inter-annual variability, and therefore includes a specific analysis on the simulated IFA distributions, *sedproxy* is more general and also includes the effects of bioturbation and habitat weighting.

Motivated by the study from Scussolini et al. 2013, which examined changes in the IFA distribution of $\delta^{18}\text{O}$ during the penultimate deglaciation, we simulate a case study that demonstrates the effect of bioturbation on the IFA distribution.

To mimic the reconstructed climate signal of Scussolini et al. (2013) we generate an input climate signal in units of $\delta^{18}\text{O}$. We assume a logistic shaped climate transition from 1.4 ‰ at 131 ka BP, to 2.6 ‰ at 135 ka BP. To this signal we add stochastic climate variability following power law scaling with slope = 1 (Laepple and Huybers, 2014) and variance = 0.0025. In this region, the foraminifera *Globorotalia truncatulinoides* (sinistral coiling variety) calcifies at a mean depth of approximately 520 m, with a standard deviation of 50 m (Scussolini and Peeters, 2013). We model individual variation arising from this using an input climate matrix with 13 columns representing depths from 370 - 670 m, with $\delta^{18}\text{O}$ anomalies corresponding to the observed $\delta^{18}\text{O}$ gradient of approximately 0.003 ‰ m^{-1} and habitat weights from a Gaussian distribution with mean = 520, SD = 50. The sedimentation rate is set to 1.3 cm ka^{-1} . We run the forward model with bioturbation depths of 3, 5 and 10 cm and simulate 20 foraminiferal tests for the IFA analysis, 45 foraminiferal tests for the bulk measurements. We set measurement noise (`sigma.meas`) to $0.1 \text{ ‰ } \delta^{18}\text{O}$ for the IFA and the bulk measurements and add no additional individual variation (`sigma.ind = 0`). These choices reproduce similar IFA and bulk variance as those shown in Scussolini et al. (2013) (Fig. 9). As in Scussolini et al. (2013), for each simulated IFA sample we calculate the variance between individual foraminiferal $\delta^{18}\text{O}$ and subtract the variance due to measurement error.

At the observed sediment accumulation rate of 1.3 cm ka^{-1} and with assumed bioturbation depths of 3, 5 or 10 cm, the expected standard deviation in ages of material found at a given depth is approximately 2300, 3800 and 7700 years respectively. Thus, bioturbation mixes material across the deglaciation so that samples with a mean age of between 110 and 140 ka BP contain a mixture of glacial and inter-glacial material, and hence show a higher standard deviation in $\delta^{18}\text{O}$, with a peak at around 135 ka BP (Fig. 10). The peak in variance remains clear for bioturbation depths as low as 3 cm, but its absolute value and width are a little lower than that seen in Fig. 2 of Scussolini et al. (2013). At the same time, at bioturbation depths of 3 and 5 cm, the apparent speed of the climate transition is consistent with the sharpness of transition (approximately 8 ka) seen in the bulk record for *G. truncatulinoides*, but for 10 cm of bioturbation the transition is too spread out. The forward modelling

exercise therefore indicates that bioturbation is a possible alternative mechanism for the variance peak, but also indicates that the conclusions are sensitive to the parametrisation.

Forward modelling cannot disprove enhanced Agulhas leakage as the source of increased IFA variance across the MIS 5-6 transition, and there is other evidence for increased leakage such as the tight coupling between the Agulhas rings proxy and the $\delta^{18}\text{O}$ of *G. truncatulinoides* Scussolini et al. (2015). However, given that bioturbation depths as low as 3 cm still produce a quite visible variance peak we argue that bioturbation is at least a plausible mechanism behind some of the change in variance over the MIS 5-6 transition.

5 Discussion and conclusions

We present the first forward model for the simulation of sediment based proxy records from climate data. We include the main well constrained processes affecting sedimentary signals while keeping it general enough to be usable for a large set of problems in paleo-oceanography. The *sedproxy* model is implemented as a user-friendly R package in an open-source framework (R Core Team, 2017).

Our forward model relies on and extends the work of many previously published studies and models concerning single processes in the formation of sedimentary records. For example, several prior studies have suggested or investigated the effect of seasonality and/or depth habitat on the recorded proxy signal (e.g., Leduc et al., 2010; Liu et al., 2014; Lohmann et al., 2013; Schneider et al., 2010). Others have examined how bioturbation reduces the amplitude of recorded signals and, in combination with noise, puts a limit on the temporal resolution of climate events that can be resolved in proxy records (Anderson, 2001; Goreau, 1980). Further studies have investigated the effect on the resulting record of sampling a small number of foraminiferal tests (Schiffelbein and Hills, 1984; Thirumalai et al., 2013). By integrating these key features of proxy formation into a single model, *sedproxy* allows the interactions and combined effect of these processes on the proxy record to be studied for the first time. The relative importance of bioturbation, seasonal biases, aliasing and other noise sources will vary according to the physical characteristics of the sediment core (e.g. sediment accumulation rate), the length of the record, the amplitude of the seasonal cycle, and the amplitude of the signal that is being reconstructed (e.g. a glacial-interglacial transition vs. ENSO). Most importantly, the type of information that is sought from the proxy record will determine whether these errors are important.

sedproxy has many potential applications in paleoclimate research, not limited to those in the examples given above. It can serve as a forward model to create more realistic surrogate records that can be used to test climate field reconstruction methods (e.g., Smerdon et al., 2011) and it can further act as a forward model for inversion based climate reconstructions methods for example using Bayesian hierarchical models (Tingley and Huybers, 2009) or data assimilation schemes (e.g., Klein and Goosse, 2017). Importantly, it allows quantification of the full uncertainty of proxy records related to the processes included in the model. By providing an ensemble of surrogate (pseudo) proxy realizations, rather than single error values, the full temporal structure of the uncertainty can be characterized. Proxy uncertainty can be determined as a function of time-scale, thus separating uncertainties affecting long-term means or time-slices, such as the seasonal recording effects, from temporarily

independent noise, such as that caused by aliasing of the seasonal cycle. This enables more quantitative comparisons to be made between climate models and proxy data than would classical direct comparison.

The ability to analyse intermediate stages of the simulated proxy (see example 1) allows the effects of different error sources to be evaluated. Used in this way, *sedproxy* can help optimize and test sampling strategies for sediment cores by evaluating the effect of e.g. the sample thickness, number of foraminifera or analytical uncertainty on the final record. This information can be used to improve the design of studies and to test, prior to a study, whether signals of interest such as centennial scale climate variations could theoretically be resolved by the proxy record.

While *sedproxy* largely relies on well understood processes that have been previously described in the literature, there is a strong need to refine this and other proxy system models and to confront them with observational data. For this purpose, more systematic multiproxy studies comparing independent proxies from the same archives (e.g., Ho and Laepple, 2016; Laepple and Huybers, 2013; Weldeab et al., 2007; Cisneros et al., 2016) would be useful. Studies analysing replicability inside and between sediment cores in analogue to studies for ice and coral based proxies (DeLong et al., 2013; Smith et al., 2006; Münch et al., 2016) would allow better constraint of the sample error parameter. Likewise, further investigation of potentially important processes occurring during the preservation of archived proxy signals (e.g., Münch et al., 2017; Zonneveld et al., 2007; Kim et al., 2009) would allow these to be included in proxy system models. Finally, modern core-top studies of individual foraminifera distributions (e.g., Haarmann et al., 2011) would allow further testing of the assumption that there is a direct link between proxy variability and climate variability.

We hope that this tool will be useful to the paleoclimate research community and we hope that it can provide a starting point for a more complete future proxy system model for sediment proxies. We invite external contributions via the Bitbucket repository, <https://bitbucket.org/ecus/sedproxy>.

Code and data availability. The forward model *sedproxy* is implemented as an R package and its source code is available from the public git repository at <https://bitbucket.org/ecus/sedproxy>. The R package also contains the data needed for the examples. R code to run all the examples in this manuscript is contained in supplement S1. Source code for the specific *sedproxy* version used to create the examples in this manuscript is contained in supplement S2. An interactive example showing the main features of *sedproxy* can be accessed at <https://limnolrgy.shinyapps.io/sedproxy-shiny/>

Competing interests. The authors declare that they have no conflict of interest.

Acknowledgements. This work was supported by the German Federal Ministry of Education and Research (BMBF) as a Research for Sustainability initiative (FONA) through the Palmod project (FKZ: 01LP1509C). T. Laepple was supported from the European Research Council (ERC) under the European Union's Horizon 2020 research and innovation programme (grant agreement no. 716092) and the Initiative and Networking Fund of the Helmholtz Association grant VG-NH900. We thank Guillaume Leduc for suggesting example uses of the forward

model and Jeroen Groeneveld, Michal Kučera and Lukas Jonkers for helpful comments on the manuscript and advice during development of the ideas. We also thank Brett Metcalfe and one anonymous referee for their suggestions which significantly improved this work.

References

- Anand, P., Elderfield, H., and Conte, M. H.: Calibration of Mg/Ca Thermometry in Planktonic Foraminifera from a Sediment Trap Time Series, *Paleoceanography*, 18, 1050, <https://doi.org/10.1029/2002PA000846>, 2003.
- Anderson, D. M.: Attenuation of Millennial-Scale Events by Bioturbation in Marine Sediments, *Paleoceanography*, 16, 352–357, 2001.
- 5 Barker, S., Greaves, M., and Elderfield, H.: A Study of Cleaning Procedures Used for Foraminiferal Mg/Ca Paleothermometry, *Geochemistry, Geophysics, Geosystems*, 4, 8407, <https://doi.org/10.1029/2003GC000559>, 2003.
- Barker, S., Cacho, I., Benway, H., and Tachikawa, K.: Planktonic Foraminiferal Mg/Ca as a Proxy for Past Oceanic Temperatures: A Methodological Overview and Data Compilation for the Last Glacial Maximum, *Quaternary Science Reviews*, 24, 821–834, <https://doi.org/10.1016/j.quascirev.2004.07.016>, 2005.
- 10 Barker, S., Broecker, W., Clark, E., and Hajdas, I.: Radiocarbon Age Offsets of Foraminifera Resulting from Differential Dissolution and Fragmentation within the Sedimentary Bioturbated Zone, *Paleoceanography*, 22, PA2205, <https://doi.org/10.1029/2006PA001354>, 2007.
- Benthien, A. and Müller, P. J.: Anomalous Low Alkenone Temperatures Caused by Lateral Particle and Sediment Transport in the Malvinas Current Region, Western Argentine Basin, *Deep Sea Research Part I: Oceanographic Research Papers*, 47, 2369–2393, [https://doi.org/10.1016/S0967-0637\(00\)00030-3](https://doi.org/10.1016/S0967-0637(00)00030-3), 2000.
- 15 Berger, W. H. and Heath, G. R.: Vertical Mixing in Pelagic Sediments, *Journal of Marine Research*, 26, 134–143, 1968.
- Bijma, J., Erez, J., and Hemleben, C.: Lunar and Semi-Lunar Reproductive Cycles in Some Spinose Planktonic Foraminifers, *Journal of foraminiferal research*, 20, 117–127, 1990.
- Black, D. E., Abahazi, M. A., Thunell, R. C., Kaplan, A., Tappa, E. J., and Peterson, L. C.: An 8-Century Tropical Atlantic SST Record from the Cariaco Basin: Baseline Variability, Twentieth-Century Warming, and Atlantic Hurricane Frequency, *Paleoceanography*, 22, PA4204, <https://doi.org/10.1029/2007PA001427>, 2007.
- 20 Boudreau, B. P.: Mean Mixed Depth of Sediments: The Wherefore and the Why, *Limnology and Oceanography*, 43, 524–526, 1998.
- Cisneros, M., Cacho, I., Frigola, J., Canals, M., Masqué, P., Martrat, B., Casado, M., Grimalt, J. O., Pena, L. D., Margaritelli, G., and Lirer, F.: Sea Surface Temperature Variability in the Central-Western Mediterranean Sea during the Last 2700 Years: A Multi-Proxy and Multi-Record Approach, *Climate of the Past*, 12, 849–869, <https://doi.org/10.5194/cp-12-849-2016>, 2016.
- 25 Conte, M. H., Thompson, A., Lesley, D., and Harris, R. P.: Genetic and Physiological Influences on the Alkenone/Alkenoate versus Growth Temperature Relationship in *Emiliania Huxleyi* and *Gephyrocapsa Oceanica*, *Geochimica et Cosmochimica Acta*, 62, 51–68, 1998.
- Conte, M. H., Sicre, M.-A., Rühlemann, C., Weber, J. C., Schulte, S., Schulz-Bull, D., and Blanz, T.: Global Temperature Calibration of the Alkenone Unsaturation Index (UK'37) in Surface Waters and Comparison with Surface Sediments, *Geochemistry Geophysics Geosystems*, 7, Q02 005, <https://doi.org/10.1029/2005GC001054>, 2006.
- 30 Dee, S., Emile-Geay, J., Evans, M. N., Allam, A., Steig, E. J., and Thompson, D.: PRYSM: An Open-Source Framework for PRoxY System Modeling, with Applications to Oxygen-Isotope Systems, *Journal of Advances in Modeling Earth Systems*, 7, 1220–1247, <https://doi.org/10.1002/2015MS000447>, 2015.
- DeLong, K. L., Quinn, T. M., Taylor, F. W., Shen, C.-C., and Lin, K.: Improving Coral-Base Paleoclimate Reconstructions by Replicating 350 Years of Coral Sr/Ca Variations, *Palaeogeography, Palaeoclimatology, Palaeoecology*, 373, 6–24, <https://doi.org/10.1016/j.palaeo.2012.08.019>, 2013.
- 35 Douglass, A. E.: *Climatic Cycles and Tree-Growth*, Carnegie Institution of Washington, Washington, 1919.

- Dueñas-Bohórquez, A., da Rocha, R. E., Kuroyanagi, A., de Nooijer, L. J., Bijma, J., and Reichart, G.-J.: Interindividual Variability and Ontogenetic Effects on Mg and Sr Incorporation in the Planktonic Foraminifer *Globigerinoides Sacculifer*, *Geochimica et Cosmochimica Acta*, 75, 520–532, <https://doi.org/10.1016/j.gca.2010.10.006>, 2011.
- Duplessy, J. C., Lalou, C., and Vinot, A. C.: Differential Isotopic Fractionation in Benthic Foraminifera and Paleotemperatures Reassessed, *Science*, 168, 250–251, <https://doi.org/10.1126/science.168.3928.250>, 1970.
- Elderfield, H. and Ganssen, G.: Past Temperature and $\Delta^{18}\text{O}$ of Surface Ocean Waters Inferred from Foraminiferal Mg/Ca Ratios, *Nature*, 405, 442–445, <https://doi.org/10.1038/35013033>, 2000.
- Evans, M. N., Tolwinski-Ward, S. E., Thompson, D. M., and Anchukaitis, K. J.: Applications of Proxy System Modeling in High Resolution Paleoclimatology, *Quaternary Science Reviews*, 76, 16–28, <https://doi.org/10.1016/j.quascirev.2013.05.024>, 2013.
- 10 Fairbanks, R. G. and Wiebe, P. H.: Foraminifera and Chlorophyll Maximum: Vertical Distribution, Seasonal Succession, and Paleoceanographic Significance, *Science*, 209, 1524–1526, <https://doi.org/10.1126/science.209.4464.1524>, 1980.
- Fraile, I., Schulz, M., Mulitza, S., and Kucera, M.: Predicting the Global Distribution of Planktonic Foraminifera Using a Dynamic Ecosystem Model, *Biogeosciences*, 5, 891–911, 2008.
- Fraile, I., Mulitza, S., and Schulz, M.: Modeling Planktonic Foraminiferal Seasonality: Implications for Sea-Surface Temperature Reconstructions, *Marine Micropaleontology*, 72, 1–9, <https://doi.org/10.1016/j.marmicro.2009.01.003>, 2009.
- 15 Ganssen, G. M., Peeters, F. J. C., Metcalfe, B., Anand, P., Jung, S. J. A., Kroon, D., and Brummer, G.-J. A.: Quantifying Sea Surface Temperature Ranges of the Arabian Sea for the Past 20 000 Years, *Climate of the Past*, 7, 1337–1349, <https://doi.org/10.5194/cp-7-1337-2011>, 2011.
- Goreau, T. J.: Frequency Sensitivity of the Deep-Sea Climatic Record, *Nature*, 287, 620, <https://doi.org/10.1038/287620a0>, 1980.
- 20 Greaves, M., Caillon, N., Rebaubier, H., Bartoli, G., Bohaty, S., Cacho, I., Clarke, L., Cooper, M., Daunt, C., Delaney, M., deMenocal, P., Dutton, A., Eggins, S., Elderfield, H., Garbe-Schoenberg, D., Goddard, E., Green, D., Groeneveld, J., Hastings, D., Hathorne, E., Kimoto, K., Klinkhammer, G., Labeyrie, L., Lea, D. W., Marchitto, T., Martínez-Botí, M. A., Mortyn, P. G., Ni, Y., Nuernberg, D., Paradis, G., Pena, L., Quinn, T., Rosenthal, Y., Russell, A., Sagawa, T., Sosdian, S., Stott, L., Tachikawa, K., Tappa, E., Thunell, R., and Wilson, P. A.: Interlaboratory Comparison Study of Calibration Standards for Foraminiferal Mg/Ca Thermometry, *Geochemistry Geophysics*
- 25 *Geosystems*, 9, 27 PP, [https://doi.org/2008%002010.1029/2008GC001974%0020\[Citation\]](https://doi.org/2008%002010.1029/2008GC001974%0020[Citation]), 2008.
- Groeneveld, J., Hathorne, E., Steinke, S., DeBey, H., Mackensen, A., and Tiedemann, R.: Glacial Induced Closure of the Panamanian Gateway during Marine Isotope Stages (MIS) 95–100 (~2.5 Ma), *Earth and Planetary Science Letters*, 404, 296–306, <https://doi.org/10.1016/j.epsl.2014.08.007>, 2014.
- Guinasso, N. L. G. and Schink, D. R.: Quantitative Estimates of Biological Mixing Rates in Abyssal Sediments, *Journal of Geophysical*
- 30 *Research*, 80, PP. 3032–3043, <https://doi.org/197510.1029/JC080i021p03032>, 1975.
- Haarmann, T., Hathorne, E. C., Mohtadi, M., Groeneveld, J., Kölling, M., and Bickert, T.: Mg/Ca Ratios of Single Planktonic Foraminifer Shells and the Potential to Reconstruct the Thermal Seasonality of the Water Column, *Paleoceanography*, 26, PA3218, <https://doi.org/10.1029/2010PA002091>, 2011.
- Ho, S. L. and Laepple, T.: Flat Meridional Temperature Gradient in the Early Eocene in the Subsurface Rather than Surface Ocean, *Nature*
- 36 *Geoscience*, 9, 606–610, <https://doi.org/10.1038/ngeo2763>, 2016.
- Hoefs, M. J. L., Versteegh, G. J. M., Rijpstra, W. I. C., de Leeuw, J. W., and Damsté, J. S. S.: Postdepositional Oxidic Degradation of Alkenones: Implications for the Measurement of Palaeo Sea Surface Temperatures, *Paleoceanography*, 13, PP. 42–49, <https://doi.org/199810.1029/97PA02893>, 1998.

- Hönisch, B., Allen, K. A., Lea, D. W., Spero, H. J., Eggins, S. M., Arbuszewski, J., deMenocal, P., Rosenthal, Y., Russell, A. D., and Elderfield, H.: The Influence of Salinity on Mg/Ca in Planktic Foraminifers – Evidence from Cultures, Core-Top Sediments and Complementary $\delta^{18}\text{O}$, *Geochimica et Cosmochimica Acta*, 121, 196–213, <https://doi.org/10.1016/j.gca.2013.07.028>, 2013.
- Jonkers, L. and Kučera, M.: Global Analysis of Seasonality in the Shell Flux of Extant Planktonic Foraminifera, *Biogeosciences*, 12, 2207–2226, <https://doi.org/10.5194/bg-12-2207-2015>, 2015.
- Jonkers, L. and Kučera, M.: Quantifying the Effect of Seasonal and Vertical Habitat Tracking on Planktonic Foraminifera Proxies, *Climate of the Past*, 13, 573–586, <https://doi.org/10.5194/cp-13-573-2017>, 2017.
- Killingley, J. S., Johnson, R. F., and Berger, W. H.: Oxygen and Carbon Isotopes of Individual Shells of Planktonic Foraminifera from Ontong-Java Plateau, Equatorial Pacific, *Palaeogeography, Palaeoclimatology, Palaeoecology*, 33, 193–204, [https://doi.org/10.1016/0031-0182\(81\)90038-9](https://doi.org/10.1016/0031-0182(81)90038-9), 1981.
- Kim, J.-H., Huguet, C., Zonneveld, K. A., Versteegh, G. J., Roeder, W., Sinninghe Damsté, J. S., and Schouten, S.: An Experimental Field Study to Test the Stability of Lipids Used for the TEX86 and Palaeothermometers, *Geochimica et Cosmochimica Acta*, 73, 2888–2898, <https://doi.org/10.1016/j.gca.2009.02.030>, 2009.
- Klein, F. and Goose, H.: Reconstructing East African Rainfall and Indian Ocean Sea Surface Temperatures over the Last Centuries Using Data Assimilation, *Climate Dynamics*, pp. 1–21, <https://doi.org/10.1007/s00382-017-3853-0>, 2017.
- Koutavas, A. and Joannides, S.: El Niño–Southern Oscillation Extrema in the Holocene and Last Glacial Maximum, *Paleoceanography*, 27, PA4208, <https://doi.org/10.1029/2012PA002378>, 2012.
- Kretschmer, K., Jonkers, L., Kucera, M., and Schulz, M.: Modeling Seasonal and Vertical Habitats of Planktonic Foraminifera on a Global Scale, *Biogeosciences Discussions*, pp. 1–37, <https://doi.org/10.5194/bg-2017-429>, 2017.
- Laepple, T. and Huybers, P.: Reconciling Discrepancies between Uk37 and Mg/Ca Reconstructions of Holocene Marine Temperature Variability, *Earth and Planetary Science Letters*, 375, 418–429, <https://doi.org/10.1016/j.epsl.2013.06.006>, 2013.
- Laepple, T. and Huybers, P.: Ocean Surface Temperature Variability: Large Model–Data Differences at Decadal and Longer Periods, *Proceedings of the National Academy of Sciences*, 111, 16682–16687, <https://doi.org/10.1073/pnas.1412077111>, 2014.
- Leduc, G., Schneider, R., Kim, J., and Lohmann, G.: Holocene and Eemian Sea Surface Temperature Trends as Revealed by Alkenone and Mg/Ca Paleothermometry, *Quaternary science reviews*, 29, 989–1004, 2010.
- Liu, Z., Otto-Bliesner, B. L., He, F., Brady, E. C., Tomas, R., Clark, P. U., Carlson, A. E., Lynch-Stieglitz, J., Curry, W., Brook, E., Erickson, D., Jacob, R., Kutzbach, J., and Cheng, J.: Transient Simulation of Last Deglaciation with a New Mechanism for Bølling–Allerød Warming, *Science*, 325, 310–314, <https://doi.org/10.1126/science.1171041>, 2009.
- Liu, Z., Zhu, J., Rosenthal, Y., Zhang, X., Otto-Bliesner, B. L., Timmermann, A., Smith, R. S., Lohmann, G., Zheng, W., and Timm, O. E.: The Holocene Temperature Conundrum, *Proceedings of the National Academy of Sciences*, 111, E3501–E3505, <https://doi.org/10.1073/pnas.1407229111>, 2014.
- Lohmann, G., Pfeiffer, M., Laepple, T., Leduc, G., and Kim, J.-H.: A Model–Data Comparison of the Holocene Global Sea Surface Temperature Evolution, *Clim. Past*, 9, 1807–1839, <https://doi.org/10.5194/cp-9-1807-2013>, 2013.
- Lombard, F., Labeyrie, L., Michel, E., Bopp, L., Cortijo, E., Retailliau, S., Howa, H., and Jorissen, F.: Modelling Planktic Foraminifer Growth and Distribution Using an Ecophysiological Multi-Species Approach, *Biogeosciences*, 8, 853–873, <https://doi.org/10.5194/bg-8-853-2011>, 2011.

- Lougheed, B. C., Metcalfe, B., Ninnemann, U. S., and Wacker, L.: Moving beyond the Age-Depth Model Paradigm in Deep Sea Palaeoclimate Archives: Dual Radiocarbon and Stable Isotope Analysis on Single Foraminifera, *Clim. Past Discuss.*, 2017, 1–16, <https://doi.org/10.5194/cp-2017-119>, 2017.
- Matisoff, G.: Mathematical Models of Bioturbation, in: *Animal-Sediment Relations: The Biogenic Alteration of Sediments*, edited by McCall, P. L. and Tevesz, M. J. S., pp. 289–330, Springer, New York, 1982.
- Mekik, F., François, R., and Soon, M.: A Novel Approach to Dissolution Correction of Mg/Ca–Based Paleothermometry in the Tropical Pacific, *Paleoceanography*, 22, n/a–n/a, <https://doi.org/10.1029/2007PA001504>, 2007.
- Mix, A.: The Oxygen-Isotope Record of Glaciation, in: *North America and Adjacent Oceans during the Last Deglaciation.*, vol. K-3 of *Geology of North America*, pp. 111–135, Geological Society of America, 1987.
- 10 Mollenhauer, G., Eglinton, T. I., Ohkouchi, N., Schneider, R. R., Müller, P. J., Grootes, P. M., and Rullkötter, J.: Asynchronous Alkenone and Foraminifera Records from the Benguela Upwelling System, *Geochimica et Cosmochimica Acta*, 67, 2157–2171, [https://doi.org/10.1016/S0016-7037\(03\)00168-6](https://doi.org/10.1016/S0016-7037(03)00168-6), 2003.
- Müller, P. J., Kirst, G., Ruhland, G., von Storch, I., and Rosell-Melé, A.: Calibration of the Alkenone Paleotemperature Index U37K' Based on Core-Tops from the Eastern South Atlantic and the Global Ocean (60 N-60 S), *Geochimica et Cosmochimica Acta*, 62, 1757–1772, [https://doi.org/10.1016/S0016-7037\(98\)00097-0](https://doi.org/10.1016/S0016-7037(98)00097-0), 1998.
- 15 Münch, T., Kipfstuhl, S., Freitag, J., Meyer, H., and Laepple, T.: Regional Climate Signal vs. Local Noise: A Two-Dimensional View of Water Isotopes in Antarctic Firn at Kohnen Station, Dronning Maud Land, *Clim. Past*, 12, 1565–1581, <https://doi.org/10.5194/cp-12-1565-2016>, 2016.
- Münch, T., Kipfstuhl, S., Freitag, J., Meyer, H., and Laepple, T.: Constraints on Post-Depositional Isotope Modifications in East Antarctic Firn from Analysing Temporal Changes of Isotope Profiles, *The Cryosphere*, 11, 2175–2188, <https://doi.org/10.5194/tc-11-2175-2017>, 2017.
- 20 Nürnberg, D., Bijma, J., and Hemleben, C.: Assessing the Reliability of Magnesium in Foraminiferal Calcite as a Proxy for Water Mass Temperatures, *Geochimica et Cosmochimica Acta*, 60, 803–814, [https://doi.org/10.1016/0016-7037\(95\)00446-7](https://doi.org/10.1016/0016-7037(95)00446-7), 1996.
- Prahl, F. G. and Wakeham, S. G.: Calibration of Unsaturation Patterns in Long-Chain Ketone Compositions for Palaeotemperature Assessment, *Nature*, 330, 367, <https://doi.org/10.1038/330367a0>, 1987.
- 25 R Core Team: R: A Language and Environment for Statistical Computing, Vienna, Austria, 2017.
- Roche, D. M., Waelbroeck, C., Metcalfe, B., and Caley, T.: FAME (v1.0): A Simple Module to Simulate the Effect of Planktonic Foraminifer Species-Specific Habitat on Their Oxygen Isotopic Content, *Geosci. Model Dev. Discuss.*, 2017, 1–22, <https://doi.org/10.5194/gmd-2017-251>, 2017.
- 30 Rosell-Melé, A., Bard, E., Emeis, K.-C., Grimalt, J. O., Müller, P., Schneider, R., Bouloubassi, I., Epstein, B., Fahl, K., Fluegge, A., Freeman, K., Goñi, M., Güntner, U., Hartz, D., Hellebust, S., Herbert, T., Ikehara, M., Ishiwatari, R., Kawamura, K., Kenig, F., de Leeuw, J., Lehman, S., Mejanelle, L., Ohkouchi, N., Pancost, R. D., Pelejero, C., Prahl, F., Quinn, J., Rontani, J.-F., Rostek, F., Rullkötter, J., Sachs, J., Blanz, T., Sawada, K., Schulz-Bull, D., Sikes, E., Sonzogni, C., Ternois, Y., Versteegh, G., Volkman, J., and Wakeham, S.: Precision of the Current Methods to Measure the Alkenone Proxy UK'37 and Absolute Alkenone Abundance in Sediments: Results of an Interlaboratory Comparison Study, *Geochemistry Geophysics Geosystems*, 2, Paper number 2000GC0, 2001.
- 35 Rosenthal, Y. and Lohmann, G. P.: Accurate Estimation of Sea Surface Temperatures Using Dissolution-Corrected Calibrations for Mg/Ca Paleothermometry, *Paleoceanography*, 17, 1044, <https://doi.org/10.1029/2001PA000749>, 2002.

- Rosenthal, Y., Oppo, D. W., and Linsley, B. K.: The Amplitude and Phasing of Climate Change during the Last Deglaciation in the Sulu Sea, Western Equatorial Pacific, *Geophysical Research Letters*, 30, 1428, <https://doi.org/10.1029/2002GL016612>, 2003.
- Sadekov, A., Eggins, S. M., De Deckker, P., and Kroon, D.: Uncertainties in Seawater Thermometry Deriving from Intratest and Intertest Mg/Ca Variability in *Globigerinoides Ruber*: UNCERTAINTIES Mg/Ca SEAWATER THERMOMETRY, *Paleoceanography*, 23, n/a–n/a, <https://doi.org/10.1029/2007PA001452>, 2008.
- Sadler, P. M.: The Influence of Hiatuses on Sediment Accumulation Rates, in: *GeoResearch Forum*, vol. 5, 1999.
- Schiffelbein, P. and Hills, S.: Direct Assessment of Stable Isotope Variability in Planktonic Foraminifera Populations, *Palaeogeography, Palaeoclimatology, Palaeoecology*, 48, 197–213, [https://doi.org/10.1016/0031-0182\(84\)90044-0](https://doi.org/10.1016/0031-0182(84)90044-0), 1984.
- Schneider, B., Leduc, G., and Park, W.: Disentangling Seasonal Signals in Holocene Climate Trends by Satellite-Model-Proxy Integration, *Paleoceanography*, 25, PA4217, <https://doi.org/10.1029/2009PA001893>, 2010.
- Scussolini, P. and Peeters, F. J. C.: A Record of the Last 460 Thousand Years of Upper Ocean Stratification from the Central Walvis Ridge, South Atlantic, *Paleoceanography*, 28, 426–439, <https://doi.org/10.1002/palo.20041>, 2013.
- Scussolini, P., van Sebille, E., and Durgadoo, J. V.: Paleo Agulhas Rings Enter the Subtropical Gyre during the Penultimate Deglaciation, *Climate of the Past*, 9, 2631–2639, <https://doi.org/10.5194/cp-9-2631-2013>, 2013.
- Scussolini, P., Marino, G., Brummer, G.-J. A., and Peeters, F. J. C.: Saline Indian Ocean Waters Invaded the South Atlantic Thermocline during Glacial Termination II, *Geology*, 43, 139–142, <https://doi.org/10.1130/G36238.1>, 2015.
- Shakun, J. D., Clark, P. U., He, F., Marcott, S. A., Mix, A. C., Liu, Z., Otto-Bliesner, B., Schmittner, A., and Bard, E.: Global Warming Preceded by Increasing Carbon Dioxide Concentrations during the Last Deglaciation, *Nature*, 484, 49–54, <https://doi.org/10.1038/nature10915>, 2012.
- Skinner, L. C. and Elderfield, H.: Constraining Ecological and Biological Bias in Planktonic Foraminiferal Mg/Ca and $\delta^{18}\text{O}_{\text{cc}}$: A Multi-species Approach to Proxy Calibration Testing, *Paleoceanography*, 20, PA1015, <https://doi.org/10.1029/2004PA001058>, 2005.
- Smerdon, J. E., Kaplan, A., Zorita, E., González-Rouco, J. F., and Evans, M. N.: Spatial Performance of Four Climate Field Reconstruction Methods Targeting the Common Era, *Geophysical Research Letters*, 38, L11 705, <https://doi.org/10.1029/2011GL047372>, 2011.
- Smith, J., Quinn, T., Helmle, K., and Halley, R.: Reproducibility of Geochemical and Climatic Signals in the Atlantic Coral *Montastraea Faveolata*, *Paleoceanography*, 21, 2006.
- Sommerfield, C. K.: On Sediment Accumulation Rates and Stratigraphic Completeness: Lessons from Holocene Ocean Margins, *Continental Shelf Research*, 26, 2225–2240, <https://doi.org/10.1016/j.csr.2006.07.015>, 2006.
- Spero, H. J.: Life History and Stable Isotope Geochemistry of Planktonic Foraminifera, *The Paleontological Society Papers*, 4, 7–36, <https://doi.org/10.1017/S1089332600000383>, 1998.
- Steiner, Z., Lazar, B., Levi, S., Tsroya, S., Pelled, O., Bookman, R., and Erez, J.: The Effect of Bioturbation in Pelagic Sediments: Lessons from Radioactive Tracers and Planktonic Foraminifera in the Gulf of Aqaba, Red Sea, *Geochimica et Cosmochimica Acta*, 194, 139–152, <https://doi.org/10.1016/j.gca.2016.08.037>, 2016.
- Teal, L., Bulling, M., Parker, E., and Solan, M.: Global Patterns of Bioturbation Intensity and Mixed Depth of Marine Soft Sediments, *Aquatic Biology*, 2, 207–218, <https://doi.org/10.3354/ab00052>, 2010.
- Thirumalai, K., Partin, J. W., Jackson, C. S., and Quinn, T. M.: Statistical Constraints on El Niño Southern Oscillation Reconstructions Using Individual Foraminifera: A Sensitivity Analysis, *Paleoceanography*, 28, 401–412, <https://doi.org/10.1002/palo.20037>, 2013.

- Tingley, M. P. and Huybers, P.: A Bayesian Algorithm for Reconstructing Climate Anomalies in Space and Time. Part I: Development and Applications to Paleoclimate Reconstruction Problems, *Journal of Climate*, 23, 2759–2781, <https://doi.org/10.1175/2009JCLI3015.1>, 2009.
- 5 Trauth, M. H., Sarnthein, M., and Arnold, M.: Bioturbational Mixing Depth and Carbon Flux at the Seafloor, *Paleoceanography*, 12, 517–526, <https://doi.org/10.1029/97PA00722>, 1997.
- Uitz, J., Claustre, H., Gentili, B., and Stramski, D.: Phytoplankton Class-Specific Primary Production in the World’s Oceans: Seasonal and Interannual Variability from Satellite Observations, *Global Biogeochemical Cycles*, 24, n/a–n/a, <https://doi.org/10.1029/2009GB003680>, 2010.
- 10 van Sebille, E., Scussolini, P., Durgadoo, J. V., Peeters, F. J. C., Biastoch, A., Weijer, W., Turney, C., Paris, C. B., and Zahn, R.: Ocean Currents Generate Large Footprints in Marine Palaeoclimate Proxies, *Nature Communications*, 6, 6521, <https://doi.org/10.1038/ncomms7521>, 2015.
- Wacker, L., Bonani, G., Friedrich, M., Hajdas, I., Kromer, B., Nemeč, N., Ruff, M., Suter, M., Synal, H.-A., and Vockenhuber, C.: MICADAS: Routine and High-Precision Radiocarbon Dating, *Radiocarbon*, 52, 252–262, 2010.
- 15 Weldeab, S., Schneider, R. R., and Müller, P.: Comparison of Mg/Ca- and Alkenone-Based Sea Surface Temperature Estimates in the Fresh Water–Influenced Gulf of Guinea, Eastern Equatorial Atlantic, *Geochemistry, Geophysics, Geosystems*, 8, Q05P22, <https://doi.org/10.1029/2006GC001360>, 2007.
- Wickham, H.: *Ggplot2: Elegant Graphics for Data Analysis*, Springer-Verlag New York, 2009.
- Wit, J. C., Reichert, G.-J., A Jung, S. J., and Kroon, D.: Approaches to Unravel Seasonality in Sea Surface Temperatures Using Paired Single-Specimen Foraminiferal $\delta^{18}\text{O}$ and Mg/Ca Analyses, *Paleoceanography*, 25, PA4220, <https://doi.org/10.1029/2009PA001857>, 2010.
- 20 Wörmer, L., Elvert, M., Fuchser, J., Lipp, J. S., Buttigieg, P. L., Zabel, M., and Hinrichs, K.-U.: Ultra-High-Resolution Paleoenvironmental Records via Direct Laser-Based Analysis of Lipid Biomarkers in Sediment Core Samples, *Proceedings of the National Academy of Sciences*, 111, 15 669–15 674, <https://doi.org/10.1073/pnas.1405237111>, 2014.
- Zachos, J., Pagani, M., Sloan, L., Thomas, E., and Billups, K.: Trends, Rhythms, and Aberrations in Global Climate 65 Ma to Present, *Science*, 292, 686–693, <https://doi.org/10.1126/science.1059412>, 2001.
- 25 Zonneveld, K. A., Bockelmann, F., and Holzwarth, U.: Selective Preservation of Organic-Walled Dinoflagellate Cysts as a Tool to Quantify Past Net Primary Production and Bottom Water Oxygen Concentrations, *Marine Geology*, 237, 109–126, <https://doi.org/10.1016/j.margeo.2006.10.023>, 2007.

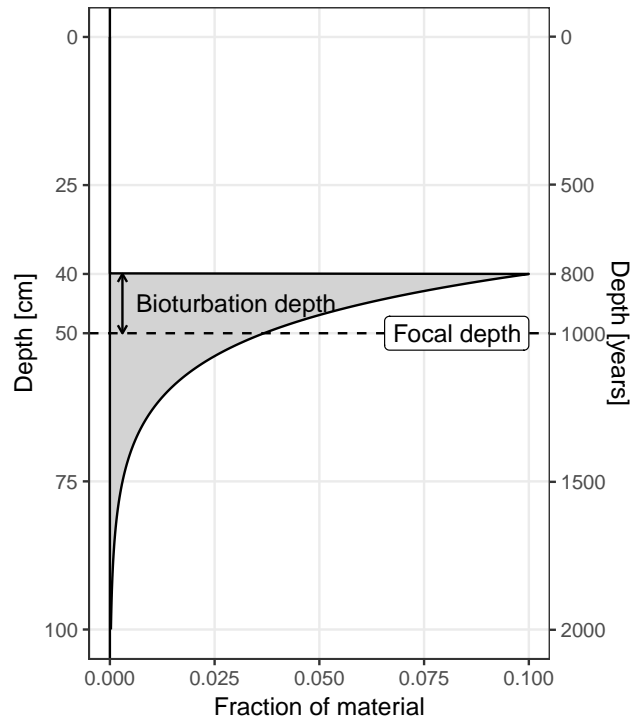


Figure 1. The origin of material archived at a focal core depth of 50 cm. In this example the bioturbation depth is 10 cm, and the sediment accumulation rate is 50 cm ka^{-1}

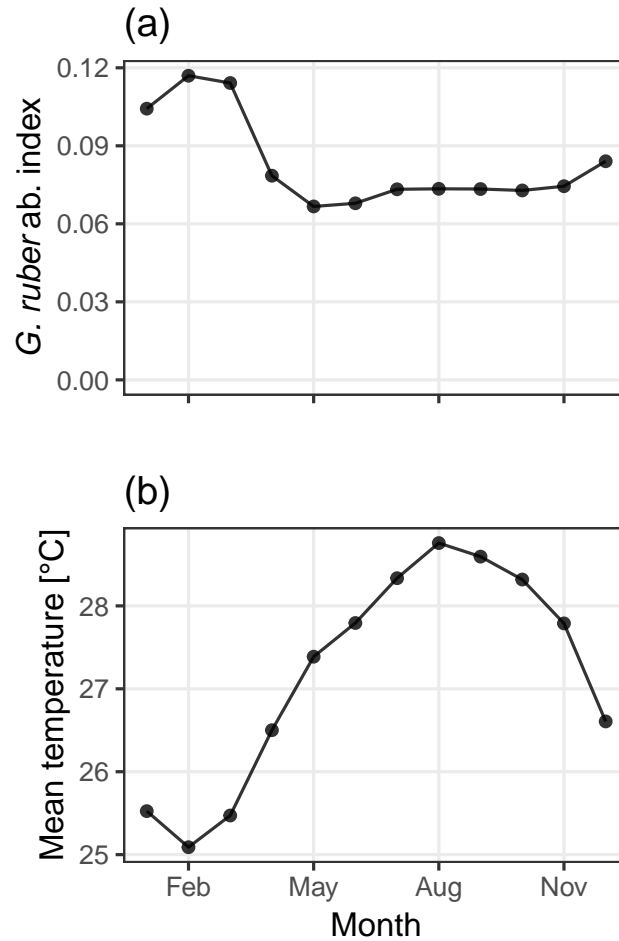


Figure 2. Abundance index of *G. ruber* from PLAFOM (Fraile et al., 2008) (a), and the mean monthly sea surface temperature in the TraCE21ka simulation at MD97-2141 (b). In this model, *G. ruber* occurs over the whole year with a small maximum during the cooler months of Jan-March, therefore biasing the recorded temperature towards colder temperatures.

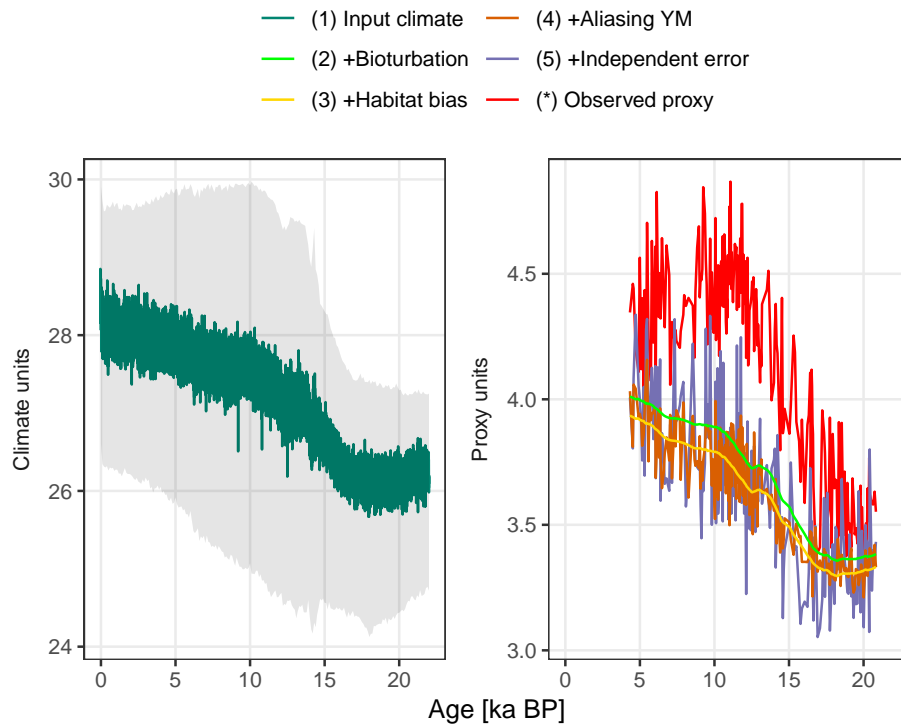


Figure 3. A forward modelled foraminiferal Mg/Ca pseudo-proxy record together with the observed Mg/Ca proxy record at core MD97-2141 in the Sulu Sea. The input climate is shown at annual resolution with the full monthly input timeseries in grey.

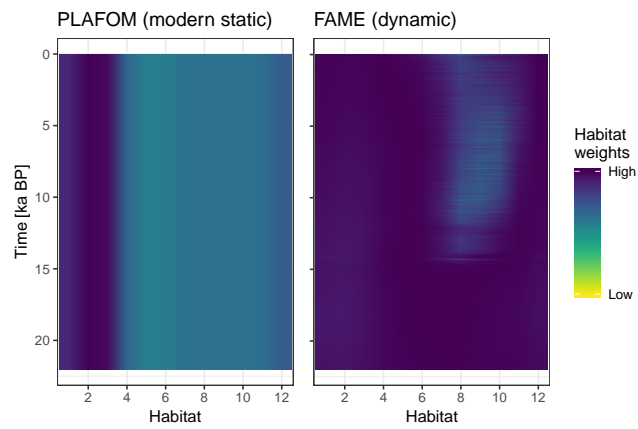


Figure 4. A comparison of static and dynamic monthly weights generated by PLAFOM driven by modern climatology, and FAME driven by the input climate matrix.

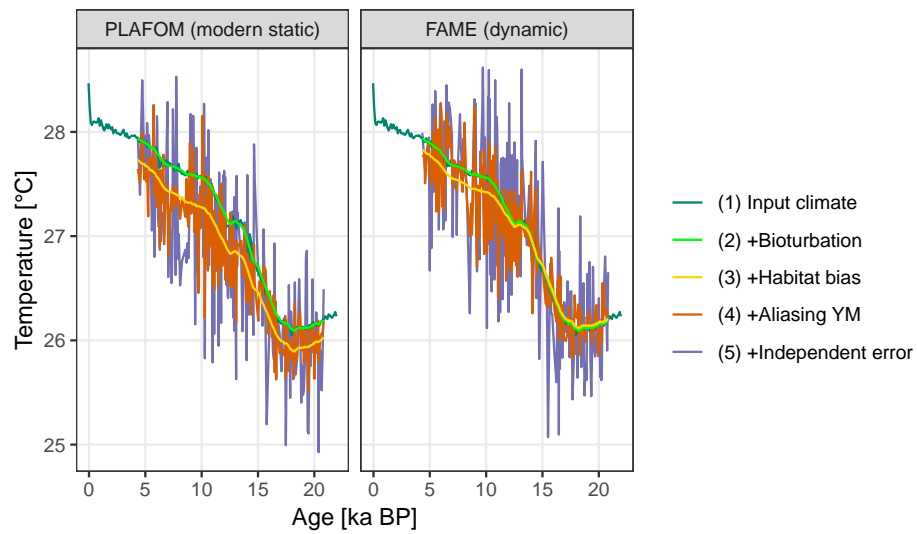


Figure 5. A comparison of forward modelled Mg/Ca based pseudo-proxies using static and dynamic seasonal weighting.

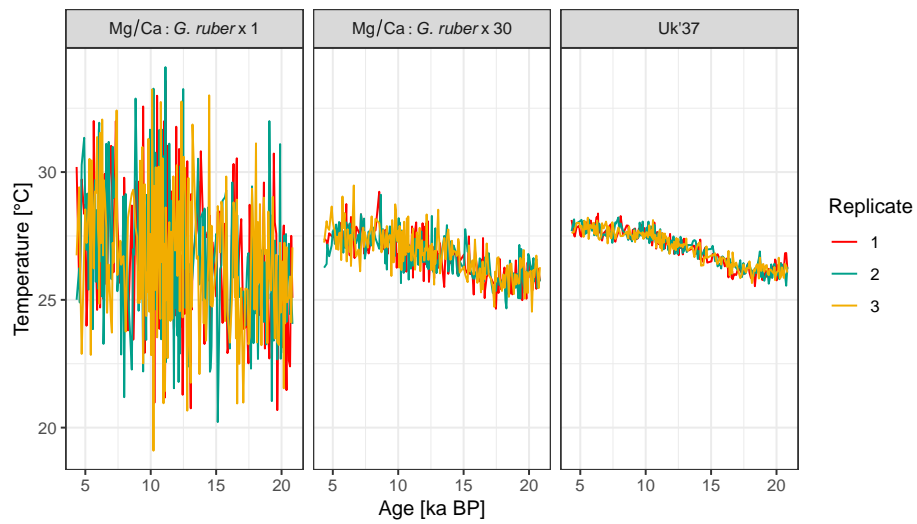


Figure 6. Forward modelled proxy based temperature reconstructions for Mg/Ca with 1 and 30 tests of *G.ruber*, and for Uk'37. Three replicate runs of the forward model are shown.

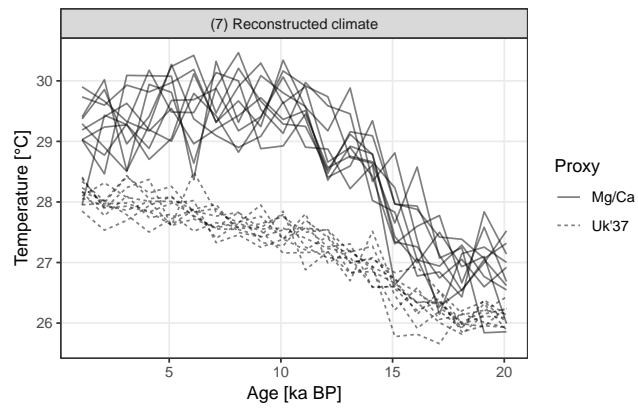


Figure 7. Replicate hypothetical Mg/Ca and Uk'37 based records. The two proxy types sample different parts of the seasonal cycle. Ten replicate records are shown for each proxy.

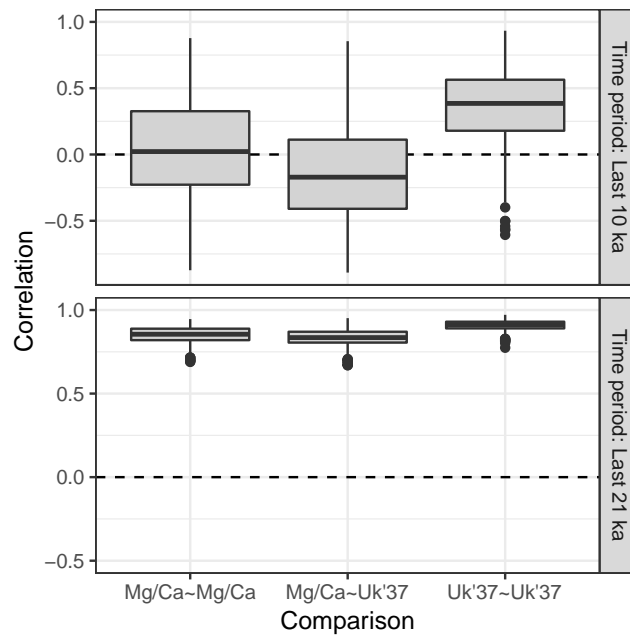


Figure 8. Correlation between replicate pairs of forward modelled proxy records.

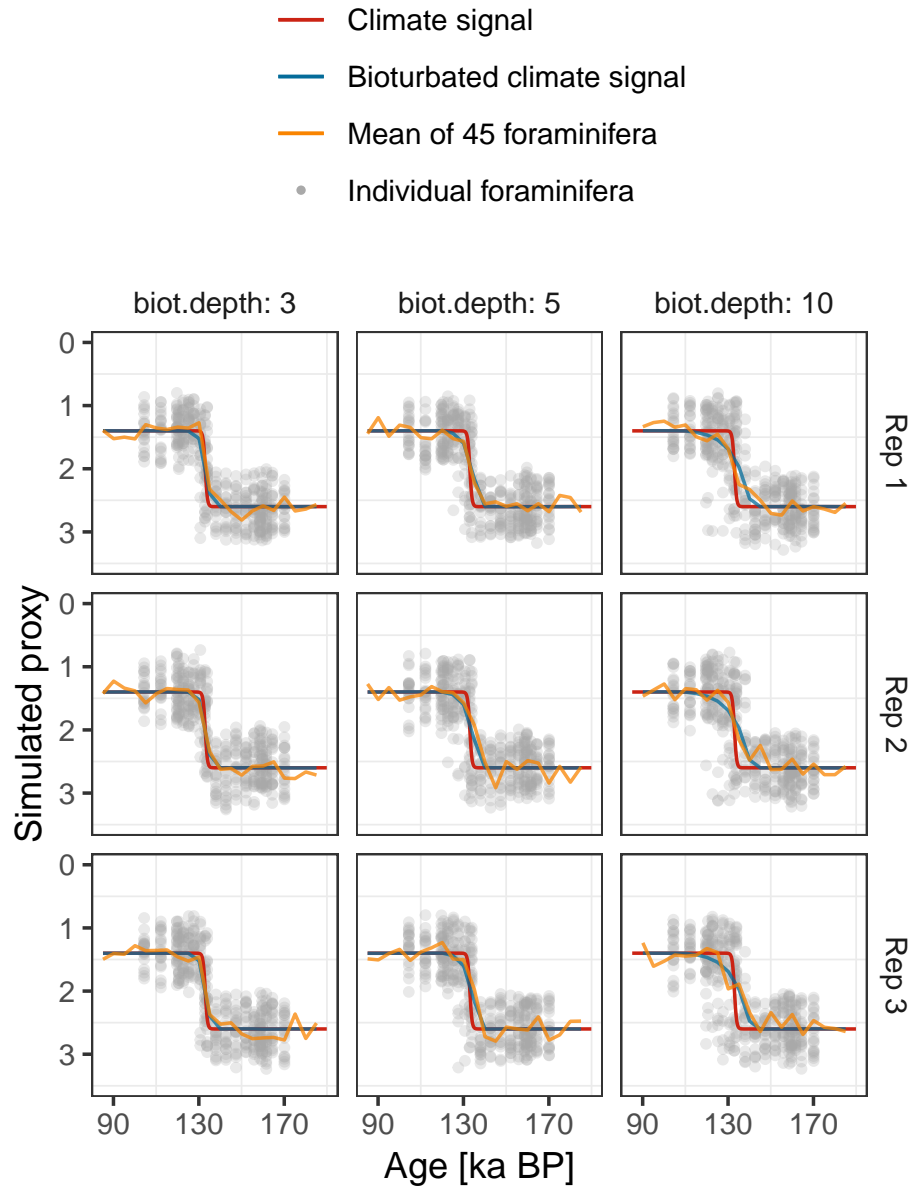


Figure 9. Simulated $\delta^{18}\text{O}$ measured from single foraminiferal tests (circles) and bulk samples (lines). Subplots show six replications with the same parameterisation.

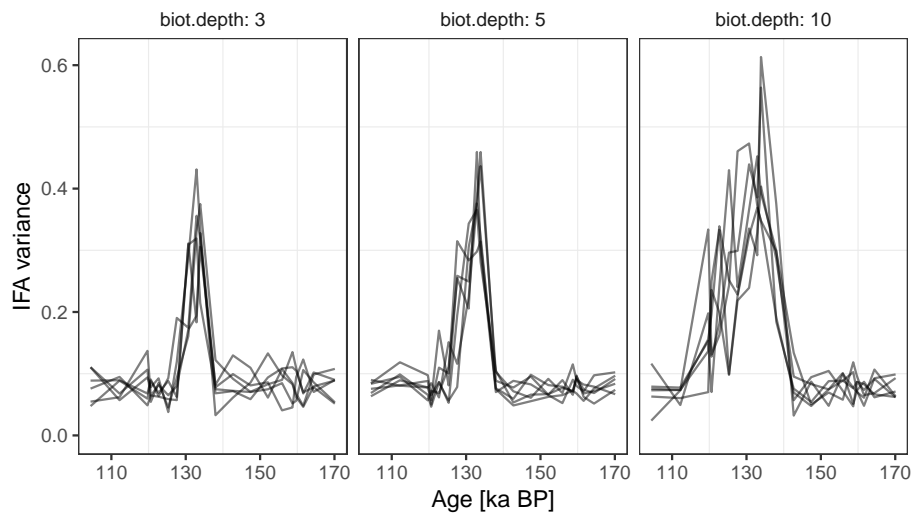


Figure 10. Variance in simulated $\delta^{18}\text{O}$ measured on sets of 20 individual foraminiferal tests. Lines show six replications with the same parametrisation.

Table 1. Required input data and parameters to generate a pseudo-proxy record with *sedproxy*. The final argument controls the experimental design rather than the proxy record creation process itself.

Function argument	Description	Possible sources	Default
clim.signal	Input climate signal from which a pseudo-proxy will be forward modelled.	Climate model, instrumental record.	
timepoints	Timepoints at which to generate pseudo-proxy values.	Arbitrary, or to match an existing proxy record.	
calibration.type	Type of proxy, e.g. Uk'37 or MgCa, to which the clim.signal is converted before the archiving and measurement of the proxy is simulated. Defaults to "identity" which means no conversion takes place.		identity
habitat.weights	Habitat weights provide information on seasonal and habitat (e.g. depth) differences in the amount of proxy material produced. This allows seasonal and habitat biases in the recorded climate to be modelled.	Sediment trap data, dynamic population / biogeochemical model (e.g. Fraile et al., 2008; Uitz et al., 2010), or temperature dependent growth function (e.g. from FAME, Roche et al. 2017).	equal for all
bio.depth	Bioturbation depth in cm, the depth down to which the sediment is mixed by burrowing organisms.	Estimated from radiocarbon or from global distribution (Teal et al., 2010).	10
sed.acc.rate	Sediment accumulation rate in cm ka^{-1} .	Sediment core age model.	50
layer.width	Width of the sediment layer in cm from which samples were taken, e.g. foraminifera were picked or alkenones were extracted.	Core sampling protocol.	1
n.samples	No. of e.g. foraminifera sampled per timepoint. A single number or a vector with one value for each timepoint. Can be set to Inf for non-discrete proxies, e.g. Uk'37.	Core sampling protocol.	30
sigma.meas	Standard deviation of measurement error.	Reproducibility of measurements on real world material.	
sigma.ind	Standard deviation of individual variation.		
n.replicates	Number of replicate pseudo-proxy time-series to simulate from the climate signal.		

Table 2. Details for sediment core MD97-2141

Core	Location	Lat	Lon	Proxy	Foram.sp	Reference
MD97-2141	Sulu Sea	8.78° N	121.28° E	Mg/Ca	<i>G. ruber</i>	Rosenthal et al., 2003