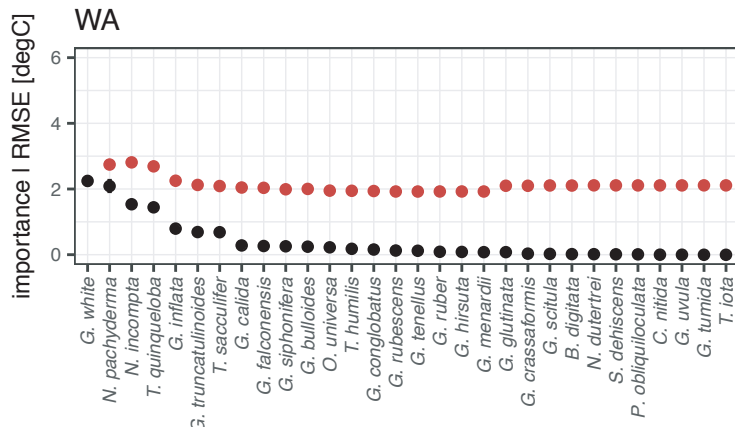
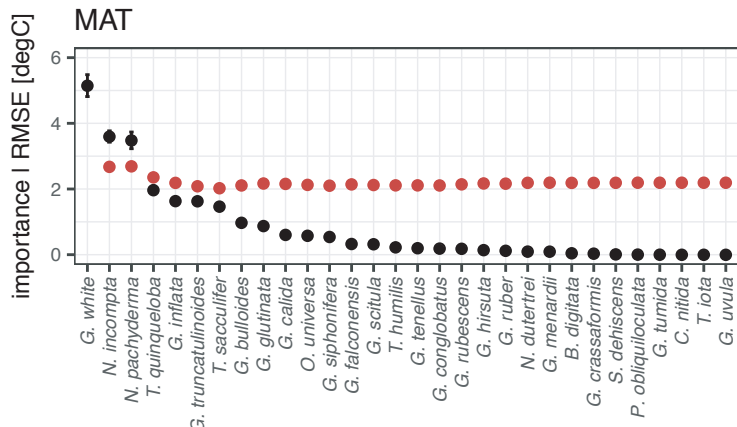


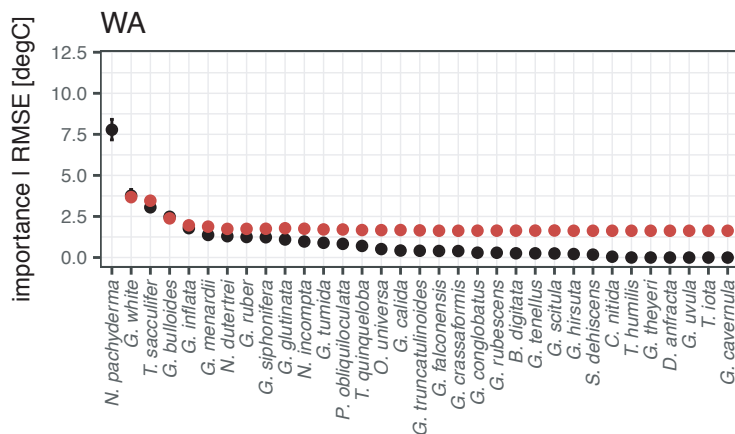
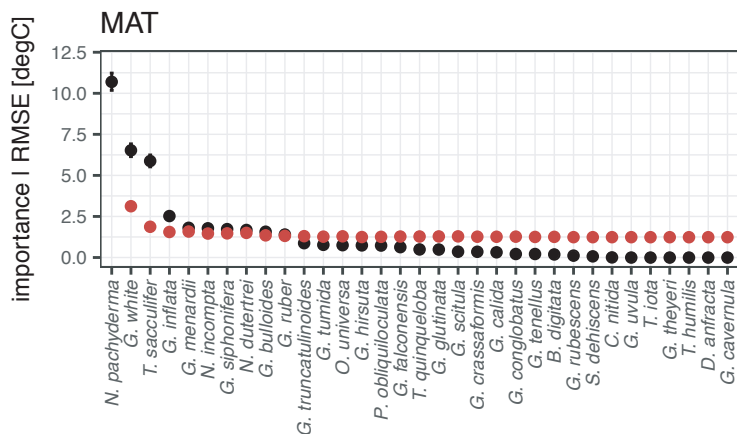
Supplement to Jonkers and Kucera 'Sensitivity to species selection indicates the effect of nuisance variables on marine microfossil transfer functions'.

Species importance and transfer function performance for individual ocean basins (following Kucera et al., 2005, QSR).

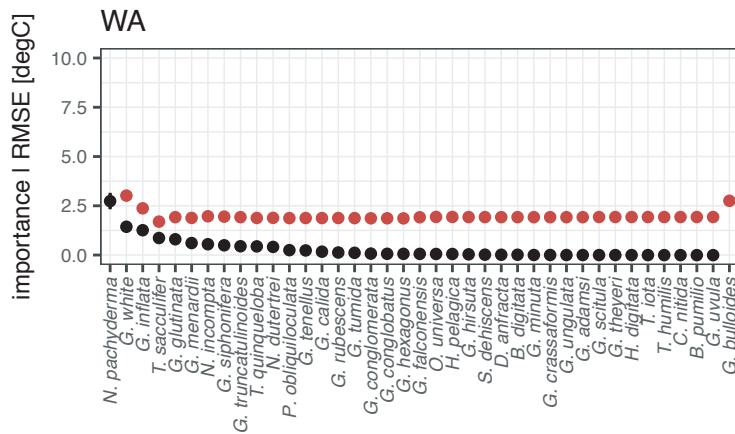
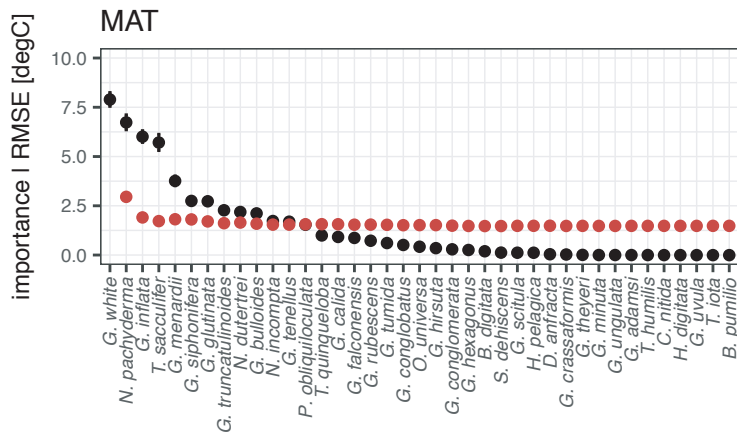
Mediterranean (including part of the North Atlantic)



South Atlantic



Indian Ocean



Pacific Ocean

