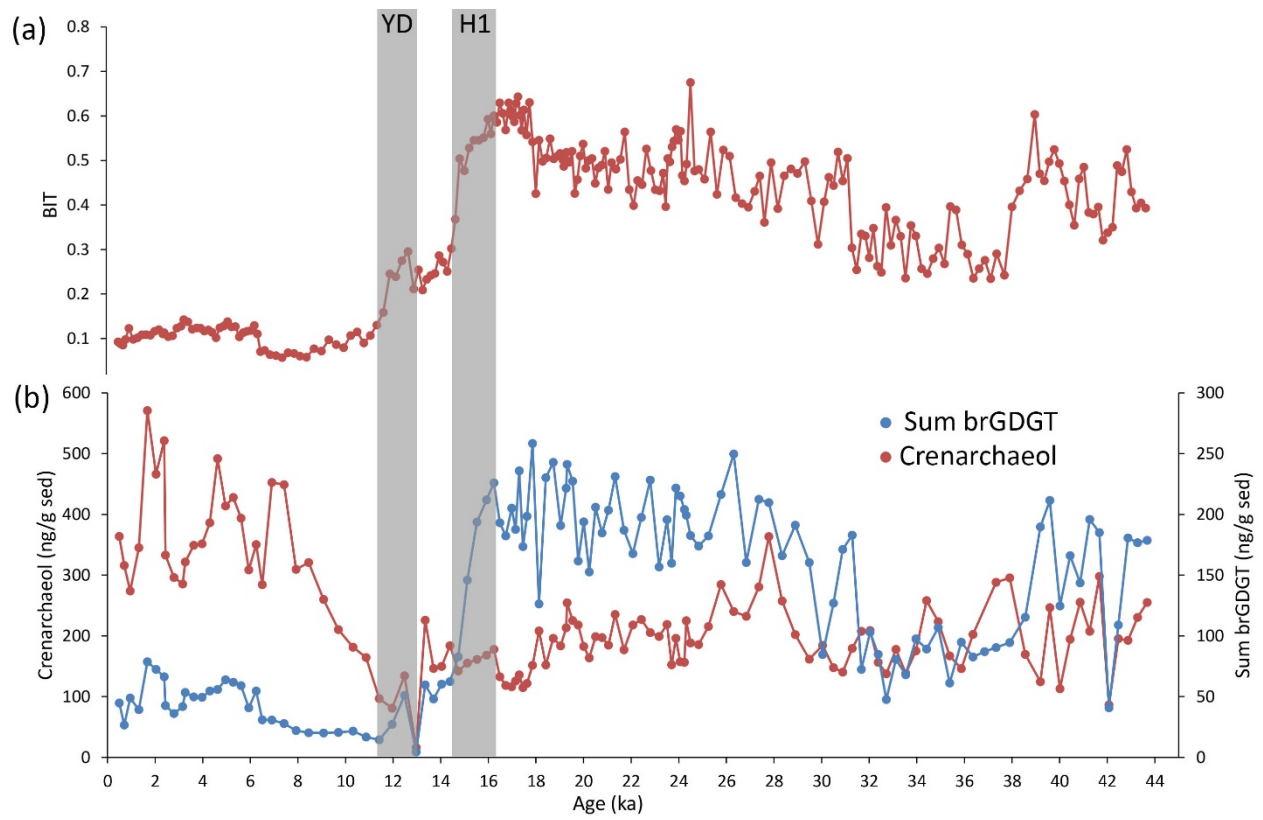
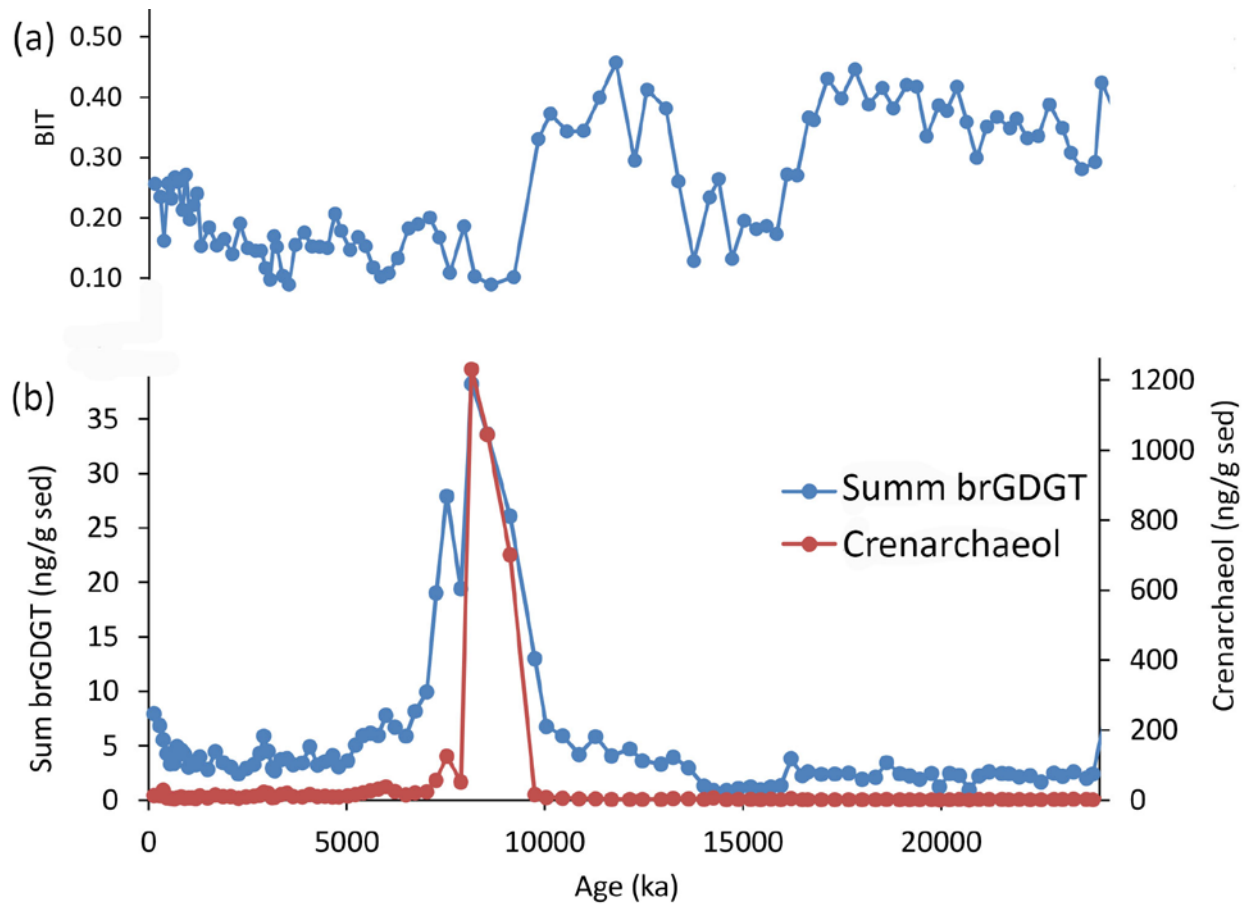


S1: (a) #ring tetra of core 64PE304-80, (b) reconstructed pH of core 64PE304-80, (c) #ring tetra of core Geob7702-3 and (d) reconstructed pH of core Geob7702-3.



S2: (a) BIT index of core 64PE304-60 (from Kasper et al., 2015) and (b) Crenarchaeol of brGDGT concentration in core 64PE304-60.



S3: (a) BIT index of core GeoB7702-3 (from Castañeda et al., 2010) and (b) Crenarchaeol and brGDGT concentration in core GeoB7702-3.