

**Table S1. All records identified within Australasia that span the Common Era. State refers to the political state, country, or geographic region where the record originates: NSW=New South Wales, VIC=Victoria, SA=South Australia, WA=Western Australia, NT=Northern Territory, QLD=Queensland, TAS=Tasmania, ACT=Australian Capitol Territory, TS=Torres Strait, INDO=Indonesia, NZ=New Zealand, PNG=Papua New Guinea, Pacific= Pacific Ocean Islands, ANT= Antarctica, BS=Bass Strait; Elevation is in meters above sea level; Resolution refers to average number of samples per year, where indicated by the original authors or calculated from the published text.**

Record Name	State	Latitude	Longitude	Elevation	Classification	Oldest Year	Youngest Year	Resolution	Reference
Richmond River	QLD	-28.48	152.97	100	LakeWetland	5451YBP(+/-133)	-57YBP(+/-1)	NA	Logan et al., 2011
Theresa/Capella Creek	QLD	-23.00	148.04	Various	LakeWetland	791YBP(+/-69)	-48YBP	10	Hughes et al., 2009
Mill Creek	NSW	-33.39	151.04	4	LakeWetland	10458YBP(+/-215)	-40YBP	NA	Dodson and Thom, 1992
Mill Creek	NSW	-33.39	151.04	4	LakeWetland	684YBP(+/-106)	-43YBP(+/-0)	7	Johnson, 2000
Yarlington Tier	TAS	-42.52	147.29	650	LakeWetland	10174YBP(+/-395)	NA	NA	Harle et al., 1993
Rooty Breaks Swamp	VIC	-37.21	148.86	1100	LakeWetland	6249YBP(+/-309)	NA	NA	Ladd, 1979b
Diggers Creek Bog	NSW	-36.23	148.48	1690	LakeWetland	11817YBP(+/-573)	NA	156	Martin, 1999
Nullabor - N145	SA	-32.07	127.85	15	LakeWetland	24161YBP(+/-2219)	NA	NA	Martin, 1973
Nullabor - Madura	WA	-31.98	127.04	27	LakeWetland	8708YBP(+/-846)	NA	NA	Martin, 1973
Nullabor - Norina	WA	-32.03	126.67	19	LakeWetland	10661YBP(+/-475)	1142YBP(+/-162)	NA	Martin, 1973
Cave Bay	TAS	-40.53	144.77	15	LakeWetland	26885YBP(+/-776)	0YBP	NA	Hope, 1978
Mullins Swamp	SA	-37.52	140.13	13	LakeWetland	4900YBP(+/-138)	NA	NA	Haynes et al., 2007
Lake Bonney	SA	-37.75	140.33	10	LakeWetland	4800YBP(+/-500)	NA	NA	Haynes et al., 2007
Lake Frome	SA	-30.62	139.87	1	LakeWetland	NA	NA	NA	Haynes et al., 2007
Macquarie Harbour	TAS	-42.30	145.42	1	LakeWetland	NA	NA	NA	McMinn et al., 2003
Orielton Lagoon	TAS	-42.79	147.07	20	LakeWetland	3YBP	-52YBP	5	Saunders et al., 2007
Lake King	VIC	-37.88	147.80	0	LakeWetland	60YBP	-55YBP	1	Saunders et al., 2008
Tuckean Swamp	NSW	-28.98	153.40	10	LakeWetland	7443YBP(+/-4)	-4YBP(+/-5)	NA	Taffs et al., 2008
North Stromatolite Lake	SA	-36.17	139.67	10	LakeWetland	NA	-46YBP	NA	Edwards et al. 2006
Lake Hiawatha	NSW	-29.81	153.26	5	LakeWetland	NA	NA	NA	Lane, 1999
Eighteen Mile Swamp	QLD	-27.62	153.46	8	LakeWetland	650YBP	0YBP	NA	Mettam, 2011
Native Companion Lagoon	QLD	-27.67	153.41	20	LakeWetland	25000YBP	0YBP	67	Petherick et al., 2009
Killalea Lagoon	NSW	-34.60	150.87	22	LakeWetland	675YBP(+/-202)	120YBP	78	Dodson et al., 1993
Ajkwa 1	INDO	-4.87	136.97	1	LakeWetland	6105YBP(+/-175)	NA	167	Ellison, 2005
Ajkwa 2	INDO	-4.87	136.97	1	LakeWetland	9150YBP(+/-450)	NA	165	Ellison, 2005
Ajkwa 3	INDO	-4.87	136.97	1	LakeWetland	NA	NA	76	Ellison, 2005
Ajkwa 4	INDO	-4.87	136.97	1	LakeWetland	NA	NA	142	Ellison, 2005
Ajkwa 5	INDO	-4.87	136.97	1	LakeWetland	NA	NA	125	Ellison, 2005
Sundown Point	TAS	-41.17	144.67	5	LakeWetland	3500YBP	NA	NA	Hope, 1999
Kurnell Fen	NSW	-34.01	151.20	15	LakeWetland	8818YBP(+/-177)	NA	NA	Martin, 1994
Badu - Waruid	TS	-10.07	142.15	5	LakeWetland	6000YBP	0YBP	120	Rowe, 2007
Badu - Bar-20	TS	-10.13	142.15	18	LakeWetland	2652YBP(+/-267)	0YBP	470	Rowe, 2007

Argan Swamp	TS	-10.05	142.06	3	LakeWetland	NA	NA	NA	Rowe, 2006
Boigu Gawat 1	TS	-10.10	142.14	10	LakeWetland	2604YBP(+/-244)	0YBP	200	Rowe, 2007
Talita Kupai	TS	-10.10	142.12	33	LakeWetland	NA	NA	NA	Rowe, 2006
Caution Bay - Core1	PNG	-9.30	147.00	4	LakeWetland	1715YBP	0YBP	NA	Rowe et al., 2013
Caution Bay - Core3	PNG	-9.30	147.00	4	LakeWetland	2000YBP	0YBP	NA	Rowe et al., 2013
Four Mile Billabong	NT	-13.87	136.82	1	LakeWetland	11488YBP(+/-260)	908YBP(+/-349)	37	Schulmeister, 1992
Swan-Canning Estuary	WA	-31.72	116.00	-1	LakeWetland	70YBP	-40YBP	NA	Gerritse et al., 1998
Burrill Lake	NSW	-35.35	150.43	1	LakeWetland	NA	NA	NA	Jones et al., 2003
Lake Macquarie	NSW	-33.05	151.60	0	LakeWetland	NA	NA	8	Peters et al., 1999
French Island	VIC	-38.31	145.30	1	LakeWetland	35YBP	-50YBP	NA	Rogers et al., 2005
Kooweerup	VIC	-38.23	145.40	1	LakeWetland	100YBP	-50YBP	NA	Rogers et al., 2005
Quail Island	VIC	-38.24	145.30	1	LakeWetland	72YBP	-50YBP	NA	Rogers et al., 2005
Rhyll	VIC	-38.45	145.29	1	LakeWetland	52YBP	-50YBP	NA	Rogers et al., 2005
Bodundara Swamp	NSW	-36.25	150.06	75	LakeWetland	NA	NA	NA	Hope et al., 2006a
Koumac	Pacific	-20.65	164.28	2	LakeWetland	NA	NA	NA	Hope et al., 1999
Greens Bush	VIC	-38.43	144.93	160	LakeWetland	NA	NA	NA	Jenkins, 1992
Lake Bumbo	NSW	-36.06	150.03	0	LakeWetland	NA	NA	NA	Tibby, 1996; Tibby, 1998
Bathurst Harbour	TAS	-43.34	146.18	-1	LakeWetland	264YBP	-55YBP	4.5	Saunders et al., 2013b
Beelbi Creek	QLD	-25.25	152.67	5	LakeWetland	NA	NA	NA	Logan and Taffs, 2013
Bells Creek	QLD	-26.82	153.07	14	LakeWetland	NA	NA	NA	Logan and Taffs, 2013
Belongil Creek	QLD	-28.62	153.60	5	LakeWetland	NA	NA	NA	Logan and Taffs, 2013
Deeral Landing	QLD	-17.20	145.90	5	LakeWetland	NA	NA	NA	Crowley and Gagan, 1995
Mutcherro	QLD	-17.20	145.90	5	LakeWetland	NA	NA	NA	Crowley and Gagan, 1995
Fitzroy River	QLD	-23.50	150.79	Various	LakeWetland	8390YBP(+/-73)	8YBP(+/-35)	NA	Bostock et al., 2007
Cotters Lake	VIC	-38.9	146.25	5	LakeWetland	4475YBP(+/-380)	NA	NA	Hope, 1974
Darby Beach	VIC	-38.95	146.25	5	LakeWetland	6660YBP(+/-223)	NA	NA	Hope, 1974
Tidal River	VIC	-39.02	146.33	10	LakeWetland	5696YBP(+/-222)	NA	NA	Hope, 1974
Bolin Billabong	SA	-37.77	145.67	50	LakeWetland	830YBP	-50YBP(+/-2)	15	Leahy et al., 2005
Doge Doge	Pacific	-17.91	177.28	8	LakeWetland	NA	NA	NA	Hope et al., 2009b
North Torbreck	VIC	-37.48	146.95	564	LakeWetland	14035YBP(+/-1071)	NA	500	McKenzie, 2002
Wyelangta	VIC	-38.65	143.46	450	LakeWetland	NA	NA	250	McKenzie and Kershaw, 2000
Lake Habbema	PNG	-4.12	138.70	3120	LakeWetland	11375YBP(+/-175)	NA	NA	Haberle and Ledru, 2001
Rawa Danau	INDO	-6.18	105.97	100	LakeWetland	15860YBP(+/-360)	410YBP(+/-100)	NA	Haberle and Ledru, 2001
Lake Majo	PNG	-1.47	127.48	140	LakeWetland	4765YBP(+/-105)	1220YBP(+/-70)	NA	Haberle and Ledru, 2001
Lake Nicholls	TAS	-42.67	146.63	1020	LakeWetland	NA	-41YBP	18	Cameron et al., 1993
Willsmere Billabong	VIC	-37.78	145.03	20	LakeWetland	414YBP(+/-90)	-51YBP(+/-0.5)	1	Gell et al., 2005
Lake Fryxell	ANT	-77.61	163.14	800	LakeWetland	48000YBP	0YBP	260	Konfirst et al., 2011
Lake Curlip	VIC	-37.83	148.30	5	LakeWetland	7776YBP(+/-151)	-27YBP(+/-3)	213	MacGregor et al., 2005

Burrinjuck Reservoir	NSW	-34.99	148.60	364	LakeWetland	25YBP	-33YBP	1	Tibby, 2001
Kangaroo Creek Reservoir	SA	-34.87	138.77	260	LakeWetland	-21YBP	-51YBP	1	Tibby et al., 2010
Callamondah Billabong	VIC	-36.55	146.12	215	LakeWetland	3770YBP	-44YBP	NA	Tibby et al., 2003
Lake Ainsworth	NSW	-28.77	153.58	8	LakeWetland	127YBP(+/-7)	-49YBP(+/-2)	NA	Tibby et al., 2007
Lake Surprise	VIC	-38.06	141.92	93	LakeWetland	1388YBP(+/-110)	-53YBP(+/-2)	4	Barr et al., 2014
Lake Elingamite	VIC	-38.35	143.00	121	LakeWetland	1500YBP(+/-123)	-52YBP(+3)	5	Barr et al., 2014
Lake Bullenmerri	VIC	-38.24	143.11	142	LakeWetland	9288YBP(+/-252)	NA	NA	De Deckker, 1982
Lake Gnotuk	VIC	-38.22	143.10	102	LakeWetland	8686YBP (+/-729)	1040YBP(+/-266)	NA	De Deckker, 1982
Lake Keilambete	VIC	-38.21	142.88	120	LakeWetland	11018YBP(+/-594)	NA	NA	De Deckker, 1982
Lake Purrumbete	VIC	-38.27	143.22	132	LakeWetland	NA	NA	NA	De Deckker, 1982
Lake Baraba	NSW	-34.22	150.22	305	LakeWetland	NA	NA	105	Black et al., 2006
Carlisle Perched Lake	VIC	-37.92	143.67	70	LakeWetland	NA	NA	NA	Bottomley, 1994
Lake Condah	VIC	-38.07	141.83	60	LakeWetland	11400YBP(+/-440)	NA	525	Builth et al., 2008
Lake Surprise	VIC	-38.06	141.92	93	LakeWetland	28840YBP(+/-370)	2160YBP(+/-100)	150	Builth et al., 2008
Penrith Lakes	NSW	-33.71	150.68	18	LakeWetland	37600YBP	0YBP	380	Charlson and Martin, 2008
Rottnest Island	WA	-32.00	115.50	8	LakeWetland	NA	NA	NA	Churchill, 1968
Perth	WA	-31.96	115.85	-20	LakeWetland	NA	NA	NA	Churchill, 1968
Fremantle	WA	-32.03	115.75	43	LakeWetland	NA	10000YBP	NA	Churchill, 1968
Myalup Swamp	WA	-33.12	115.72	10	LakeWetland	NA	NA	NA	Churchill, 1968
Weld Swamp	WA	-34.68	116.52	150	LakeWetland	NA	NA	NA	Churchill, 1968
West Lake Muir	WA	-34.47	116.60	170	LakeWetland	NA	NA	NA	Churchill, 1968
Flinders Bay Swamp	WA	-34.32	115.15	15	LakeWetland	NA	NA	NA	Churchill, 1968
Scott River Swamp	WA	-34.30	115.28	30	LakeWetland	NA	NA	NA	Churchill, 1968
Boggy Lake	WA	-35.17	116.63	107	LakeWetland	NA	NA	NA	Churchill, 1968
Poets Hill	TAS	-41.88	145.56	600	LakeWetland	13371YBP(+/-2156)	NA	700	Colhoun, 1992
Lake Bolac	VIC	-37.70	142.75	220	LakeWetland	13460YBP(+/-550)	110YBP	250	Cook, 2009
Lake Turangmoroke	VIC	-37.73	142.89	220	LakeWetland	90000YBP(+/-5000)	110YBP	113	Cook, 2009
Freshwater Lake	VIC	-37.58	142.32	220	LakeWetland	7000YBP	NA	NA	Crowley, 1994
Fiery Creek	VIC	-37.73	142.88	215	LakeWetland	4232YBP(+/-298)	NA	NA	Crowley and Kershaw, 1994
Lake Turangmoroke	VIC	-37.73	142.89	220	LakeWetland	20000YBP	NA	NA	Crowley and Kershaw, 1994
Warrananga	NSW	-33.97	141.56	22	LakeWetland	53400YBP(+/-8000)	0YBP	270	Cupper, 2005
Warrananga	NSW	-33.97	141.56	22	LakeWetland	5079YBP(+/-208)	0YBP	540	Cupper et al., 2000
Pine Camp	NSW	-34.75	141.13	21	LakeWetland	32000YBP(+/-1900)	0YBP	340	Cupper, 2005
Lake Tower Hill	VIC	-38.30	142.35	10	LakeWetland	22074YBP(+/-613)	NA	30	D'Costa et al., 1989
Solomans Jewel	TAS	-41.80	146.27	1185	LakeWetland	NA	NA	NA	Dodson, 2001
Lake Bullenmerri	VIC	-38.24	143.11	142	LakeWetland	19358YBP(+/-396)	8000YBP	10	Dodson, 1979
Bondi Lake	NSW	-36.81	149.94	22	LakeWetland	2062YBP(+/-237)	-43YBP	78	Dodson et al., 1993
Lake Leake	SA	-37.60	140.58	85	LakeWetland	10713YBP(+/-414)	0YBP	NA	Dodson, 1974

Byenup Lagoon	WA	-34.51	116.67	175	LakeWetland	5282YBP(+/-301)	-47YBP	NA	Dodson and Lu, 2000
Cuddie Springs	NSW	-30.38	147.31	127	LakeWetland	39182YBP(+/-5240)	1334YBP(+/-149)	NA	Field et al., 2002
Rawa Danau	INDO	-6.18	105.97	100	LakeWetland	15674YBP(+/-752)	NA	381	Van der Kaars et al., 2001
Lake Fidler	TAS	-42.50	145.66	1	LakeWetland	8699YBP(+/-279)	2012YBP(+/-136)	265	Harle et al., 1999
Lake Wangoom	VIC	-38.35	142.60	100	LakeWetland	200000YBP(+60/-40)	2344YBP(+/-358)	1000	Harle et al., 2002b
Tagamaucia	Pacific	-16.49	-179.56	820	LakeWetland	34000YBP	NA	NA	Hope, 1996a; Hope et al., 2009b
Lac Suprin	Pacific	-22.29	166.98	235	LakeWetland	34355YBP(+/-1611)	NA	NA	Hope and Pask, 1998
Lac Xere Wapo	Pacific	-22.29	166.98	235	LakeWetland	36531YBP(+/-1037)	NA	NA	Hope and Pask, 1998
Lac Emeric	Pacific	-22.29	166.98	230	LakeWetland	34392YBP(+/-881)	NA	NA	Hope and Pask, 1998
Lac Boulet	Pacific	-22.29	166.98	228	LakeWetland	33280YBP(+/-1027)	NA	NA	Hope and Pask, 1998
Lake St Clair	TAS	-42.10	146.19	737	LakeWetland	NA	NA	450	Hopf et al., 2000
Two Mile Lake	WA	-34.51	118.27	140	LakeWetland	8893YBP(+/-243)	NA	250	Itzstein-Davey, 2004
Terragong Swamp	NSW	-34.67	150.83	1	LakeWetland	4932YBP(+/-345)	NA	NA	Jones, 1990
Lynch's Crater	QLD	-17.62	146.17	760	LakeWetland	230000YBP	3385YBP(+/-172)	NA	Kershaw, 1983; Kershaw et al., 2007a
Lake Curlip	VIC	-37.83	148.30	5	LakeWetland	5963YBP(+/-314)	NA	NA	Ladd, 1978
Old Lake Coomboo	QLD	-25.22	153.20	90	LakeWetland	NA	81YBP(+/-54)	1000	Longmore, 1997
Lake Tiberias	TAS	-42.37	147.37	440	LakeWetland	NA	NA	NA	Macphail, 1979
Lake Vera	TAS	-42.53	145.87	1443	LakeWetland	13294YBP(+/-488)	NA	350	Macphail, 1979
Tarn Shelf	TAS	-42.67	146.50	1185	LakeWetland	11102YBP(+/-604)	NA	810	Macphail, 1979
Eagle Tarn	TAS	-42.67	146.50	1033	LakeWetland	13214YBP(+/-484)	NA	240	Macphail, 1979
Beatties Tarn	TAS	-42.67	146.50	990	LakeWetland	NA	NA	430	Macphail, 1979
Den Plane	TAS	-41.50	146.34	350	LakeWetland	2610YBP(+/-90)	-44YBP	200	Moss et al., 2007
Loch McNess Swamp	WA	-31.53	115.67	68	LakeWetland	10067YBP(+/-1056)	NA	NA	Newsome and Pickett, 1993
Boggy Lake	WA	-35.03	116.65	83	LakeWetland	4926YBP(+/-386)	NA	NA	Newsome and Pickett, 1993
Lake George	NSW	-35.00	149.42	673	LakeWetland	730000YBP	0YBP	NA	Singh and Geissler, 1985
Lake Frome	SA	-30.50	139.50	40	LakeWetland	20549YBP(+/-782)	NA	NA	Luly, 2001; Singh and Luly, 1991
Xere Wapo B	Pacific	-22.29	166.97	220	LakeWetland	NA	NA	NA	Stevenson and Hope, 2005
Salt Lake	VIC	-36.54	141.81	109	LakeWetland	10137YBP(+/-350)	NA	295	Thomas et al. 2001
Bridgewater Lake	VIC	-38.30	141.38	20	LakeWetland	7519YBP(+/-186)	NA	NA	Head, 1988
Barker Swamp	WA	-32.00	115.51	0	LakeWetland	8004YBP(+/-380)	NA	NA	Backhouse, 1993
Lake Johnson	TAS	-41.52	145.44	900	LakeWetland	10660YBP(+/-410)	NA	43	Anker et al., 2001
Breadalbane - NW	NSW	-34.80	149.52	694	LakeWetland	NA	NA	NA	Dodson, 1986
Breadalbane - NE	NSW	-34.80	149.52	694	LakeWetland	1240YBP	60YBP	NA	Dodson, 1986
Breadalbane - SE	NSW	-34.80	149.52	694	LakeWetland	NA	0YBP	NA	Dodson, 1986
Wet Lagoon	NSW	-34.47	149.25	700	LakeWetland	5000YBP	0YBP	NA	Dodson, 1986
Black Mountain Lagoon	NSW	-30.18	151.20	1335	LakeWetland	34YBP	-41YBP	5	Haworth et al., 1999
Lake Fryxell	ANT	-77.61	163.14	800	LakeWetland	48000YBP	65YBP(+/-70)	260	Wagner et al., 2006
Burrinjuck Reservoir	NSW	-35.02	148.58	364	LakeWetland	25YBP	-32YBP	NA	Wasson et al., 1987

Ranu Lamongan	INDO.	-7.98	113.38	240	LakeWetland	731YBP	-48YBP	1	Crausbay et al., 2006
Vanderlin Island	QLD	-15.68	137.03	6	LakeWetland	9410YBP(+/-150)	NA	NA	Prebble et al., 2005
Lake Selina	TAS	-41.88	145.60	516	LakeWetland	30120YBP	NA	NA	Colhoun et al., 1999
Lake Couridjah	NSW	-34.23	150.54	310	LakeWetland	NA	NA	NA	Clark and Hope, 1997
Dove Lake	TAS	-41.66	145.96	934	LakeWetland	NA	NA	NA	Dyson, 1995
Aguai Ramata	INDO	-6.56	145.21	1950	LakeWetland	NA	NA	NA	Haberle, 2007
Sondambile	PNG	-6.35	147.11	2850	LakeWetland	NA	NA	NA	Haberle et al., 2005
Wanum	PNG	-6.64	146.80	35	LakeWetland	NA	NA	NA	Haberle et al., 2005
Lake Horden	VIC	-38.78	143.47	3	LakeWetland	NA	NA	NA	Head and Stuart, 1980; Head, 1985
Anggi Lake	INDO	-1.40	133.90	1945	LakeWetland	NA	NA	NA	Hope, 2007b
Evoran Pond	Pacific	-18.76	169.01	194	LakeWetland	NA	NA	NA	Hope, G.S., Unpub.
Hogayaku	PNG	-3.98	137.38	3580	LakeWetland	NA	NA	NA	Hope, 2007a
Mountain Lagoon	NSW	-33.50	150.52	604	LakeWetland	NA	NA	NA	Robbie, 1998
Lashmars Lagoon	SA	-35.80	138.07	2	LakeWetland	9624YBP(+/-1128)	NA	NA	Singh et al., 1981; Illman, 1997
Hopwoods Lagoon	NSW	-33.22	150.99	38	LakeWetland	NA	NA	NA	Smeulders, 1999
Quambie Lagoon	NT	-12.50	131.17	20	LakeWetland	NA	NA	NA	Stevenson, J., Unpub.
Redhead Lagoon	NSW	-32.98	151.72	85	LakeWetland	79100YBP(+/-5200)	3290YBP(+/-69)	115	Williams et al., 2006
Worimi Swamp	NSW	-32.52	152.33	8	LakeWetland	2796YBP	-20YBP	26	Mooney and Maltby, 2006
Gorge Weir	SA	-31.92	139.90	214	LakeWetland	NA	-46YBP	NA	Gell et al., 1999
Lake McKenzie	QLD	-25.45	153.05	90	LakeWetland	36179YBP(+/-604)	-55YBP (+/-2)	208	Hembrow et al., 2014
Lake Euramoo	QLD	-17.16	145.63	718	LakeWetland	22680YBP(+/-750)	-49YBP	240	Tibby and Haberle, 2007
West Basin Lake	VIC	-38.32	143.43	120	LakeWetland	11431YBP(+/-546)	NA	540	Gell et al., 1994
Lake Alexandria	SA	-35.35	139.38	0	LakeWetland	7822YBP(+/-553)	28YBP	NA	Fluin et al., 2007
Coorong	SA	-35.62	139.05	0	LakeWetland	7155YBP(+/-136)	12YBP	NA	Fluin et al., 2007
Tareena Billabong	NSW	-33.9	141.00	20	LakeWetland	5531YBP(+/-200)	NA	1000	Gell et al., 2005
Native Companion Lagoon	QLD	-27.67	153.41	20	LakeWetland	25000YBP	538YBP(+/-18)	30	McGowan et al., 2008
Lake McKenzie	QLD	-25.45	153.05	90	LakeWetland	37300YBP(+/-400)	-55YBP(+/-5)	208	Woltering et al., 2014
Myall Lakes	NSW	-32.50	152.00	8	LakeWetland	793YBP(+/-106)	-51YBP	13	Leyden et al., 2011
Hogan's Billabong	NSW	-36.03	146.72	152	LakeWetland	1400YBP(+/-120)	NA	80	Reid et al, 2007
East Basin Lake	VIC	-38.32	143.45	120	LakeWetland	NA	NA	NA	Last and De Deckker, 1990
West Basin Lake	VIC	-38.32	143.43	120	LakeWetland	NA	NA	NA	Last and De Deckker, 1990
Blue Lake	SA	-37.01	140.01	24	LakeWetland	5690YBP(+/-185)	0YBP	45	Gouramanis et al., 2010
Jacka Lake	VIC	-36.80	141.80	132	LakeWetland	7721YBP(+/-1000)	-50YBP	60	Kemp et al., 2012
Northwest Jacka	VIC	-36.80	141.80	132	LakeWetland	11395YBP	0YBP	197	Kemp et al., 2012
Lake Gnotuk	VIC	-38.17	143.30	102	LakeWetland	11561YBP	0YBP	140	Wilkins et al., 2013
Barker Swamp	WA	-32.00	115.51	0	LakeWetland	7900YBP(+/-150)	130YBP	118	Gouramanis et al., 2012
Lake Lading	INDO.	-8.01	138.31	324	LakeWetland	852YBP	-50YBP	8.5	Konecky et al., 2013
Lake Wangoom	VIC	-30.35	142.60	15	LakeWetland	46513YBP(+/-2572)	NA	390	Edney et al., 1990

Lake Euramoo	QLD	-17.16	145.63	718	LakeWetland	22680YBP(+/-750)	-49YBP	31	Haberle, 2005
Quincan Crater	QLD	-17.30	145.58	630	LakeWetland	8031YBP(+/-350)	NA	3800	Kershaw, 1971
Lake Tyrrell	VIC	-35.30	142.78	42	LakeWetland	10000YBP	NA	NA	Luly et al., 1986; Luly, 1993
Blue Lake	NSW	-36.40	148.32	1850	LakeWetland	NA	NA	250	Raine, 1974
Crown Lagoon	TAS	-42.28	147.63	375	LakeWetland	NA	NA	NA	Sigleo and Colhoun, 1981
Lake Eacham	QLD	-17.27	145.63	720	LakeWetland	-28YBP	-35YBP	NA	Goodfield, 1983; Grindrod, 1979
Lake Colac	VIC	-38.30	143.58	115	LakeWetland	6055YBP(+/-25)	-58YBP(+/-0)	10	Mills et al., 2011
Lake Purrumbete	VIC	-38.27	143.22	132	LakeWetland	5665YBP(+/-75)	-58YBP(+/-0)	10	Mills et al., 2011
Lake Tower Hill	VIC	-38.30	142.35	10	LakeWetland	5080YBP(+/-205)	NA	10	Mills et al., 2011
Lake Modewarre	VIC	-38.24	144.11	111	LakeWetland	10340YBP(+/-100)	-59YBP(+/-0)	10	Mills et al., 2011
Lake Purrumbete	VIC	-38.27	143.22	132	LakeWetland	7937YBP(+/-89)	50YBP	8	Tibby et al., 2012
Lake Dora	TAS	-41.93	145.65	756	LakeWetland	139YBP	-49YBP(+/-1)	6	Harle et al., 2002a
Club Lake	NSW	-36.41	148.29	1955	LakeWetland	796YBP(+/-129)	0YBP	7	Dodson et al., 1994a
Lake Allom	QLD	-25.23	153.17	100	LakeWetland	NA	-53YBP	45	Donders et al., 2006
Lake Keilambete	VIC	-38.21	142.88	120	LakeWetland	2000YBP	265YBP	45	Mooney, 1997
Brownes Lake	SA	-37.75	140.75	80	LakeWetland	NA	NA	NA	Dodson, 1975
Crescent Lagoon	QLD	-23.40	150.48	7	LakeWetland	30YBP	-53YBP	3	Douglas et al., 2010
Hidden Lake	QLD	-25.23	153.17	100	LakeWetland	421YBP(+/-121)	-24YBP	1	Longmore et al., 1983; Torgersen and Longmore, 1984
Pelican Island	NSW	-33.3	151.48	0	LakeWetland	9000YBP(+/-400)	NA	88	Macreadie et al., 2015
Chittaway Bay	NSW	-33.3	151.45	0	LakeWetland	6000YBP(+/-240)	NA	76	Macreadie et al., 2015
Lake Logung	INDO.	-8.04	113.31	215	LakeWetland	1336YBP	-59YBP	9	Rodysill et al., 2013
Rebecca Lagoon	TAS	-41.18	144.68	8	LakeWetland	3654YBP	-58YBP	12	Saunders et al., 2012
Duckhole Lake	TAS	-43.36	146.87	150	LakeWetland	850YBP	-58YBP	2	Saunders et al., 2013a
Myall Lakes	NSW	-32.50	152.00	8	LakeWetland	12508YBP	1603YBP	NA	Skilbeck et al., 2005
Lake Tali Karng	VIC	-37.58	146.78	915	LakeWetland	70YBP	-32YBP	NA	Smith and Hamilton, 1985; Salas, 1981
Blue Lake	NSW	-36.40	148.32	1850	LakeWetland	12200YBP	100YBP(+/-40)	125	Stanley and De Deckker, 2002
Lake Barrine	QLD	-17.25	145.63	721	LakeWetland	5160YBP(+/-292)	-37YBP(+/-1)	6	Walker, 2011
Lake Keilambete	VIC	-38.21	142.88	120	LakeWetland	9542YBP(+/-200)	-54YBP	50	Wilkins et al., 2013
Lake Tabourie	NSW	-35.42	150.41	5	LakeWetland	NA	NA	NA	Fitzgerald, 1998
Lake Minnie Water	NSW	-29.78	153.26	27	LakeWetland	NA	NA	NA	Lane, 1999; Allan, 2006
Lake Conjola	NSW	-35.24	150.45	1	LakeWetland	NA	NA	NA	Packwood, 1999
Lake Coleman	VIC	-38.17	147.30	20	LakeWetland	NA	NA	NA	Penny, 1993
Lake Cullulleraine	VIC	-34.27	141.75	57	LakeWetland	NA	NA	NA	Reid et al., 2003
Lake Dunn	QLD	-22.60	145.68	-2	LakeWetland	NA	NA	NA	Sim, 2004
Lake Cudgen	NSW	-28.33	153.56	10	LakeWetland	NA	NA	NA	Wills, 2001
Lake Terang	VIC	-38.25	142.92	130	LakeWetland	75000YBP	2094YBP(+/-254)	NA	D'Costa and Kershaw, 1995
Noreikora Swamp	PNG	-6.33	145.83	1750	LakeWetland	5085YBP(+/-215)	240YBP	NA	Haberle and Ledru, 2001
Haeapugua	PNG	-5.83	142.78	1650	LakeWetland	31818YBP(+/-818)	240YBP	NA	Haberle, 1998

Tyrendarra Swamp	VIC	-38.20	141.76	13	LakeWetland	31950YBP(+/-280)	NA	1800	Builth et al., 2008
Noreikora Swamp	PNG	-6.33	145.83	1750	LakeWetland	5085YBP(+/-215)	240YBP	NA	Harberle, 1996a
Brown Marsh	TAS	-42.22	146.57	750	LakeWetland	NA	NA	NA	Macphail, 1979
Brown Marsh	TAS	-42.22	146.57	750	LakeWetland	NA	NA	NA	Macphail et al., 2001
The Gap and Coturaundee	NSW	-30.00	142.67	120	LakeWetland	7377YBP(+/-102)	219YBP(+/-219)	NA	Allen et al., 2000
Flinders Ranges	SA	-30.32	139.39	120	LakeWetland	12742YBP(+/-173)	594YBP(+/-134)	NA	McCarthy et al., 1996
Northern Flinders Ranges	SA	-30.32	139.39	175	LakeWetland	8460YBP(+/-235)	0YBP	NA	McCarthy and Head, 2001
Kings Waterhole	NSW	-33.02	150.67	280	LakeWetland	6250YBP(+/-240)	30YBP	28	Black and Mooney, 2007
Wilson Bog	SA	-34.97	138.69	425	LakeWetland	7730YBP(+/-590)	0YBP	17	Buckman et al., 2009
Ijomba	PNG	-4.03	137.22	3630	LakeWetland	16625YBP(+/-375)	7350YBP(+/-80)	NA	Haberle and Ledru, 2001
Tugupugua	PNG	-5.67	142.61	2300	LakeWetland	15225YBP(+/-975)	810YBP(+/-100)	NA	Haberle and Ledru, 2001
Jibbon Lagoon	NSW	-34.08	151.15	65	LakeWetland	1600YBP	-49YBP	14	Mooney et al., 2001
Cascade Bog	VIC	-37.85	146.32	1370	LakeWetland	NA	NA	NA	Strickland, 1980
Hawkesbury Valley	NSW	-33.40	151.03	30	LakeWetland	NA	-50YBP	1	McMinn et al., 2004
Butcher Swamp	NSW	-31.92	151.40	1230	LakeWetland	13061YBP(+/-243)	0YBP	NA	Dodson, 1987
Horse Swamp	NSW	-31.92	151.37	1260	LakeWetland	12887YBP(+/-326)	NA	NA	Dodson, 1987
Boggy Swamp	NSW	-29.96	151.50	1170	LakeWetland	10383YBP(+/-705)	0YBP	NA	Dodson, 1987
Top Swamp	NSW	-31.90	151.40	1500	LakeWetland	3541YBP(+/-178)	NA	NA	Dodson, 1987
Polblue Swamp	NSW	-31.97	151.42	1450	LakeWetland	6118YBP(+/-793)	NA	NA	Dodson, 1987
Killer Bog	NSW	-32.07	151.55	1320	LakeWetland	1152YBP(+/-360)	0YBP	NA	Dodson, 1987
Sapphire Swamp	NSW	-32.07	151.57	1280	LakeWetland	223YBP(+/-223)	NA	NA	Dodson, 1987
Clive Swamp	NSW	-31.98	151.45	1275	LakeWetland	223YBP(+/-223)	NA	NA	Dodson, 1987
Melaleuca Tin Mine	TAS	-43.42	146.16	100	LakeWetland	5719YBP(+/-4758)	428YBP(+/-105)	NA	Macphail et al., 1999
Tadpole Swamp	VIC	-38.13	145.28	60	LakeWetland	9455YBP(+/-167)	NA	350	Aitken and Kershaw, 1992
Tiger Snake Swamp	VIC	-38.13	145.28	60	LakeWetland	NA	NA	NA	Aitken and Kershaw, 1992
Fred South Swamp	VIC	-38.14	141.78	27	LakeWetland	16500YBP(+/-540)	NA	2000	Builth et al., 2008
Burralow Creek Swamp	NSW	-33.58	150.63	320	LakeWetland	NA	0YBP	60	Chalson and Martin, 2009
Ingar Swamp	NSW	-33.77	150.46	584	LakeWetland	7188YBP(+/-90)	0YBP	NA	Chalson and Martin, 2009
Katoomba Swamp	NSW	-33.72	150.31.31 86	950	LakeWetland	12558YBP(+/-170)	NA	NA	Chalson and Martin, 2009
Kings Tableland Swamp	NSW	-33.73	150.48	780	LakeWetland	NA	NA	250	Chalson and Martin, 2009
Newnes Swamp	NSW	-33.38	150.22	1060	LakeWetland	11038YBP(+/-160)	0YBP	970	Chalson and Martin, 2009
Notts Swamp	NSW	-33.81	150.41	682	LakeWetland	6478YBP(+/-80)	0YBP	420	Chalson and Martin, 2009
Warrimoo Swamp	NSW	-33.72	150.62	195	LakeWetland	4668YBP(+/-140)	738YBP(+/-80)	230	Chalson and Martin, 2009
Blue Mountain Bog	NSW	-33.80	150.57	790	LakeWetland	NA	NA	NA	Chalson, 1991
Dublin Bog	TAS	-41.73	146.23	710	LakeWetland	16044YBP(+/-1266)	NA	186	Colhoun et al., 1991
Darwin Crater	TAS	-42.28	145.67	245	LakeWetland	NA	NA	NA	Colhoun and van de Geer, 1988
Lake Flannigan	BS	-39.60	143.95	40	LakeWetland	NA	NA	NA	D'Costa, 1997
Black Swamp	NSW	-30.02	151.48	1450	LakeWetland	9634YBP(+/-486)	NA	NA	Dodson, 1987

Upper Ringarooma River	TAS	-41.30	147.67	900	LakeWetland	1000YBP	NA	NA	Dodson et al., 1998
Cobrico Swamp	VIC	-38.30	143.03	140	LakeWetland	1500YBP	-39YBP	50	Dodson et al., 1994b
Mt Burr Swamp	SA	-37.62	140.53	77	LakeWetland	8211YBP(+/-188)	NA	NA	Dodson and Wilson, 1975
Blue Tea Tree Swamp	SA	-37.62	140.53	77	LakeWetland	9615YBP(+/-288)	NA	NA	Dodson and Wilson, 1975
Whitehaven Swamp	QLD	-20.30	148.90	45	LakeWetland	7740YBP(+/-60)	NA	NA	Genever et al., 2003
Laukutu Swamp	Pacific	-9.48	160.09	20	LakeWetland	2019YBP(+/-289)	NA	NA	Haberle, 1996
Mela Swamp	Pacific	-9.48	160.09	20	LakeWetland	2029YBP(+/-282)	NA	NA	Haberle, 1996
Tugupugua	PNG	-5.67	142.61	2300	LakeWetland	15225YBP(+/-975)	810YBP(+/-100)	NA	Haberle, 1998
Kelela Swamp	INDO	-4.02	138.91	1650	LakeWetland	7775YBP(+/-165)	NA	165	Haberle et al., 1991
Supulah Hill	PNG	-4.12	138.97	1580	LakeWetland	37369YBP(+/-2387)	NA	100	Hope, 1998
Loch Sport Swamp	VIC	-37.97	147.68	2	LakeWetland	8024YBP(+/-604)	NA	NA	Hooley, 1980
Wanda	INDO	-2.33	121.23	440	LakeWetland	37877YBP(+/-2570)	NA	NA	Hope, 2001
Stockyard Swamp	TAS	-40.55	144.75	65	LakeWetland	3480YBP(+/-214)	NA	NA	Hope, 1999
Mago Island	Pacific	-17.44	179.16	2	LakeWetland	7500YBP	5625YBP(+/-305)	NA	Hope et al., 2009b
Sari	Pacific	-16.63	179.50	67	LakeWetland	6500YBP(+/-930)	NA	NA	Hope et al., 2009b
Yacata	Pacific	-17.16	179.51	4	LakeWetland	6485YBP(+/-1015)	NA	NA	Hope et al., 2009b
Lake Hordorli	PNG	-2.53	140.55	680	LakeWetland	38544YBP(+/-2280)	NA	855	Hope and Tulip, 1994
Caledonia Fen	VIC	-37.33	146.73	1280	LakeWetland	68000YBP(+/-8000)	NA	275	Kershaw et al., 2007b
Five Mile Beach	VIC	-38.95	146.47	20	LakeWetland	13000YBP	NA	650	Ladd, 1979b
Morwell Swamp	VIC	-38.25	146.42	40	LakeWetland	9854YBP(+/-331)	NA	NA	Lloyd and Kershaw, 1997
Adamsons Peak	TAS	-43.35	146.82	960	LakeWetland	NA	NA	NA	Macphail, 1979
Ben Lomond	TAS	-41.33	147.75	850	LakeWetland	NA	NA	NA	Macphail, 1975
Oaks Creek	NSW	-37.59	146.17	610	LakeWetland	6347YBP(+/-327)	NA	420	McKenzie, 2002
Buxton	VIC	-37.45	145.66	235	LakeWetland	6634YBP(+/-222)	NA	185	McKenzie, 2002
Lake Mountain	VIC	-37.47	145.88	1450	LakeWetland	7418YBP(+/-153)	0YBP	230	McKenzie, 1997
Powelltown	VIC	-37.87	145.70	168	LakeWetland	6613YBP(+/-287)	NA	310	McKenzie, 2002
Snobs Creek	VIC	-37.56	145.93	775	LakeWetland	12460YBP(+/-355)	NA	NA	McKenzie, 1997
Storm Creek	VIC	-37.45	145.80	1177	LakeWetland	20921YBP(+/-674)	NA	435	McKenzie, 1997
Tom Burns	VIC	-37.38	145.82	1075	LakeWetland	35387YBP(+/-961)	853YBP(+/-109)	540	McKenzie, 1997
Chapple Vale Swamp	VIC	-38.63	143.32	30	LakeWetland	6697YBP(+/-191)	NA	75	McKenzie and Kershaw, 1997
Camerons Lagoon	TAS	-41.96	148.67	1045	LakeWetland	8593YBP(+/-388)	NA	430	Thomas and Hope, 1994
Pemerak Swamp	INDO	0.79	112.05	40	LakeWetland	32958YBP(+/-2352)	292YBP (+/-140)	40	Anshari et al., 2001
Goochs Crater Swamp	NSW	-33.45	150.26	960	LakeWetland	12190YBP(+/-140)	NA	175	Black and Mooney, 2006
Tea Tree Swamp	VIC	-37.20	148.83	900	LakeWetland	2930YBP(+/-429)	10YBP	60	Gell et al., 1993
Micalong Swamp	NSW	-35.32	148.52	980	LakeWetland	16000YBP	NA	NA	Kemp and Hope, 2014
Willigobung Swamp	NSW	-35.66	148.04	780	LakeWetland	12580YBP(+/-170)	NA	260	Kemp and Hope, 2014
Brooks Ridge Fen	NSW	-36.16	148.59	1450	LakeWetland	1500YBP	NA	NA	Mooney et al., 1997
Saint Louis Lac	Pacific	-22.23	166.55	5	LakeWetland	7470YBP(+/-200)	600YBP(+/-90)	NA	Stevenson, 2004



Bogong Creek Swamp	ACT	-35.75	148.95	1001	LakeWetland	11004YBP(+/-143)	NA	NA	Hope et al., 2009a
Rotten Swamp	ACT	-35.70	148.88	1445	LakeWetland	6300YBP(+/-90)	0YBP	NA	Hope et al., 2009a
Cotter Source Bog	ACT	-35.97	148.82	1755	LakeWetland	10148YBP(+/-123)	0YBP	NA	Hope et al., 2009a
Ginini Flats	ACT	-35.31	148.46	1590	LakeWetland	3395YBP(+/-73)	NA	NA	Hope et al., 2009a
Echo Flat	TAS	-37.47	145.87	1440	LakeWetland	6500YBP	0YBP	NA	Ashton and Hargreaves, 1983
Rotten Swamp	ACT	-35.70	148.88	1445	LakeWetland	NA	NA	NA	Clark, 1986
Soleve	Pacific	-17.25	179.49	2	LakeWetland	NA	NA	NA	Clark and Hope, 1997
Wingecarribee Swamp	NSW	-34.57	150.52	685	LakeWetland	NA	NA	NA	de Montford, 2008
Yawi Ti	PNG	-6.61	143.89	1150	LakeWetland	NA	NA	NA	Haberle, 2007
Bonatoa	FIJI	-18.07	178.53	4	LakeWetland	5053YBP(+/-243)	NA	NA	Hope et al., 2009b
Blundells Flat	NSW	-35.19	148.49	762	LakeWetland	NA	NA	NA	Hope et al., 2006b
Gallaher Swamp	NSW	-34.29	150.43	535	LakeWetland	NA	NA	NA	Hope, 2005a
Mulloon Creek Swamp	NSW	-35.44	149.56	799	LakeWetland	NA	NA	NA	Hope, G.S., Unpub.
Roch Arch Swamp	NSW	-34.30	150.39	575	LakeWetland	NA	NA	NA	Hope, 2005a
Snowy Flats	NSW	-35.54	148.47	1618	LakeWetland	NA	NA	NA	Hope et al., 2005
Tom Gregory Swamp	NSW	-35.38	148.49	1024	LakeWetland	NA	NA	NA	Hope, 2005b
Anumon Swamp	Pacific	-20.16	169.00	45	LakeWetland	NA	NA	NA	Hope, 1996b
Grey Pole Swamp	NSW	-32.61	152.32	9	LakeWetland	NA	NA	NA	Hom, 2005
Wildes Meadow Swamp	NSW	-34.62	150.51	670	LakeWetland	NA	NA	NA	Kodela, 1996
South Salvation Creek Swamp	NSW	-33.63	151.26	132	LakeWetland	NA	NA	NA	Kodela and Dodson, 1988
Howes' Waterhole Swamp	NSW	-33.02	150.67	280	LakeWetland	NA	NA	NA	Mason, 2004
Queens Swamp	NSW	-33.90	150.59	665	LakeWetland	NA	NA	NA	Mooney, S., Unpub
Poley Creek	VIC	-37.41	145.22	630	LakeWetland	NA	NA	NA	Pittock, 1989
Ryans Swamp	NSW	-35.09	150.39	8	LakeWetland	NA	NA	NA	Radclyffe, 1993
McKenzie Road Bog	VIC	-38.43	146.77	50	LakeWetland	NA	NA	NA	Robertson, 1986
Nursery Swamp	NSW	-35.41	148.58	1092	LakeWetland	NA	NA	NA	Rogers and Hope, 2006
Jackson's Bog	NSW	-37.10	149.13	750	LakeWetland	NA	NA	NA	Kershaw et al., 1979; Oaks, 1981; Southern, 1982
Plum Swamp	Pacific	-22.26	166.61	40	LakeWetland	NA	NA	NA	Stevenson, 1998
Giandarra Bog	NSW	-35.80	148.48	1390	LakeWetland	NA	NA	NA	Thomas, 1991
Muellers Rock	NSW	-35.39	148.50	1102	LakeWetland	NA	NA	NA	Worthy et al., 2005
Upper Snowy Mountains	NSW	-36.46	148.30	1940	LakeWetland	6493YBP	4YBP	16	Marx et al., 2011
Upper Ruined Hut Bog	NZ	-45.45	169.20	1420	LakeWetland	7779YBP	134YBP	38	Marx et al., 2009
Louisa Creek	QLD	-24.87	147.18	440	LakeWetland	917YBP(+/-145)	NA	40	Bell et al., 1989
Smelter Creek	TAS	-42.12	145.15	210	LakeWetland	13600YBP(+/-202)	NA	NA	Colhoun et al, 1992
Thirlmere Lakes	NSW	-34.40	150.54	590	LakeWetland	NA	NA	NA	Rose and Martin, 2007
Hogan's Island	TAS	-39.30	147.25	1	LakeWetland	NA	NA	NA	Scarlett et al. 1974
Boambee Creek	NSW	-30.32	153.07	40	LakeWetland	NA	NA	NA	Logan and Taffs, 2013
Annaburroo Billabong	NT	-12.92	131.67	20	LakeWetland	636YBP(+/-46)	-48YBP(+/-4)	15	Zhang et al., 2011

Balranald Weir	NSW	-34.66	143.50	65	LakeWetland	NA	NA	NA	Gell and Little, 2006
Erskine Creek	NSW	-33.85	150.50	190	LakeWetland	NA	NA	NA	Metcalf, 1999
Cox River	NSW	-33.73	150.18	432	LakeWetland	NA	NA	NA	Organo, 2000
Dalhousie Springs	SA	-26.42	135.50	150	LakeWetland	1621YBP(+/-200)	NA	NA	Boyd, 1990
Griffith Swamp	NSW	-33.28	151.00	15	LakeWetland	6300YBP	-50YBP	90	Mooney et al., 2007
Bobundara Swamp	NSW	-36.42	150.10	5	LakeWetland	NA	NA	NA	Hope et al., 2006a
Jaffray Swamp	SA	-36.14	139.76	25	LakeWetland	NA	55YBP	200	Taffs, 2001
Airport Swamp	NSW	-31.54	159.08	10	LakeWetland	2615YBP(+/-130)	-62YBP	1	Martin et al., 2014
Pinetrees Swamp	NSW	-31.50	159.08	10	LakeWetland	5520YBP(+/-50)	-62YBP	1	Martin et al., 2014
Old Settlement 1	NSW	-31.50	159.08	5	LakeWetland	NA	-62YBP	1	Martin et al., 2014
Old Settlement 3	NSW	-31.50	159.08	5	LakeWetland	613YBP(+/-38)	-62YBP	1	Martin et al., 2014
North Bay H1	NSW	-31.50	159.08	5	LakeWetland	485YBP(+/-35)	-62YBP	1	Martin et al., 2014
Boat Harbour Creek Swamp	SA	-35.59	138.28	290	LakeWetland	8218YBP(+/-545)	16YBP	470	Bickford and Gell, 2005
Big Scrub	NSW	-28.78	153.29	30	LakeWetland	784YBP(+/-135)	NA	NA	Boyd, 1999
Magela Floodplain	NT	-12.50	132.80	3	LakeWetland	4803YBP(+/-233)	NA	NA	Clark and Guppy, 1988
Wyvuri Swamp	QLD	-17.30	146.00	7	LakeWetland	NA	NA	NA	Crowley and Gagan, 1995
Airport Swamp	NSW	-31.54	159.08	1	LakeWetland	NA	NA	NA	Dodson, 1982
Old Settlement Swamp	NSW	-31.54	159.08	1	LakeWetland	NA	NA	NA	Dodson, 1982
North Stradbroke Island	QLD	-27.62	153.46	25	LakeWetland	NA	NA	NA	Flood, 1984
Bega Swamp	NSW	-36.59	149.47	NA	LakeWetland	2740YBP	41YBP	30	Haberle, S., Unpub.
Boomer Swamp	VIC	-38.20	141.30	9	LakeWetland	7406YBP(+/-200)	NA	NA	Head, 1988
Long Swamp	VIC	-38.1	141.10	5	LakeWetland	6742YBP(+/-238)	399YBP(+/-93)	NA	Head, 1988
Shipwreck Rock	VIC	-38.1	141.10	5	LakeWetland	NA	NA	NA	Head, 1988
Hidden Swamp - Sperm Whale Head	VIC	-38.04	147.59	5	LakeWetland	7683YBP(+/-254)	NA	NA	Hooley, 1980
Bromfield Swamp	QLD	-17.38	145.55	752	LakeWetland	12210YBP(+/-140)	677YBP(+/-112)	175	Kershaw, 1975
Killiecrankie Swamp	BS	-39.84	147.84	10	LakeWetland	445YBP(+/-289)	NA	NA	Ladd, 1992
Middle Patriarch Swamp	BS	-39.98	148.20	19	LakeWetland	11614YBP(+/-1111)	NA	NA	Ladd, 1992
Delegate River	NSW	-37.02	148.94	740	LakeWetland	NA	NA	400	Ladd, 1979a
Native Companion Lagoon	QLD	-27.68	153.41	27	LakeWetland	31100YBP	640YBP	605	Moss et al., 2013
Tortoise Lagoon	QLD	-27.52	153.47	39	LakeWetland	37000YBP	0YBP	740	Moss et al., 2013
Welsby Lagoon	QLD	-27.44	153.45	29	LakeWetland	26000YBP	190YBP	295	Moss et al., 2013
Mua - Tiam Point	TS	-10.20	142.30	3	LakeWetland	7630YBP(+/-108)	0YBP	75	Rowe, 2007
Zurath	TS	-10.27	142.10	3	LakeWetland	NA	0YBP	162	Rowe, 2007
Waterhouse Marsh	TAS	-40.85	147.65	50	LakeWetland	12213YBP(+/-495)	NA	655	Thomas and Kirkpatrick, 1996
Burruga Swamp	NSW	-31.92	151.42	985	LakeWetland	2117YBP(+/-190)	0YBP	68	Dodson et al., 1994c
Burruga Swamp	NSW	-31.92	151.42	985	LakeWetland	42203YBP(+/-837)	NA	1000	Sweller and Martin, 2001
Bungawalbin Creek	QLD	-29.11	153.22	1	LakeWetland	7463YBP(+/-126)	NA	NA	McGrath and Boyd, 1998
Bundjalung National Park	QLD	-29.19	153.38	10	LakeWetland	8460YBP(+/-235)	NA	NA	McGrath and Boyd, 1998

Magela Floodplain	NT	-12.50	132.80	3	LakeWetland	950YBP	-50YBP	40	Wasson et al., 2007
Tullabardine Dam	TAS	-41.70	145.68	230	LakeWetland	NA	0YBP	620	Colhoun et al., 1986
Ambathala shearing shed	QLD	-25.97	145.33	330	LakeWetland	20YBP	-45YBP	NA	Witt et al., 2006
Tooperoopna	NSW	-34.01	141.64	30	LakeWetland	NA	NA	NA	Cupper et al., 2000
Nadrau	Pacific	-17.75	177.88	680	LakeWetland	2046YBP(+/-122)	NA	NA	Hope et al., 2009b
Aire Crossing	VIC	-38.65	143.48	180	LakeWetland	9797YBP(+/-352)	NA	280	McKenzie and Kershaw, 2004
Badu 15	TS	-10.10	142.15	20	LakeWetland	8930YBP(+/-158)	0YBP	260	Rowe, 2007
King River	TAS	-42.14	145.65	200	LakeWetland	NA	NA	25	Van der Geer et al., 1991
Newall Creek	TAS	-42.07	145.44	140	LakeWetland	NA	NA	NA	Van der Geer et al., 1989
Robe	SA	-37.22	139.81	<10	LakeWetland	9210YBP(+/-230)	2000YBP(+/-160)	NA	Cann et al., 1999
Ngardmau	Pacific	7.61	134.57	10	LakeWetland	NA	NA	NA	Athens and Ward, 2005
Ngerchau	Pacific	7.63	134.52	9	LakeWetland	NA	NA	NA	Athens and Ward, 2005
Hgerdok	Pacific	7.52	134.60	25	LakeWetland	NA	NA	NA	Athens and Ward, 2005
Nekkeng	Pacific	7.45	134.52	9	LakeWetland	NA	NA	NA	Athens and Ward, 2005
Ngerkell	Pacific	7.61	134.63	10	LakeWetland	NA	NA	NA	Athens and Ward, 2005
Olbed 1	Pacific	7.50	134.54	20	LakeWetland	NA	NA	NA	Athens and Ward, 2005
Yano	Pacific	7.38	134.54	40	LakeWetland	NA	NA	NA	Athens and Ward, 2005
Rennix Gap	NSW	-36.22	148.30	1570	LakeWetland	NA	NA	NA	Hope, G.S., Unpub.
Wangil - Aru	INDO	-5.92	134.20	1	LakeWetland	7725 YBP(+/-75)	0YBP	40	Hope and Aplin, 2005
Boulder Flat	VIC	-37.45	148.92	25	LakeWetland	NA	NA	NA	Kenyon, 1989
Loveday Wetland	SA	-34.25	140.24	20	LakeWetland	NA	NA	NA	Gell et al, 2007
Loch Luna	SA	-34.25	140.24	20	LakeWetland	200YBP	NA	NA	Gell et al, 2007
Bonneys Camp	SA	-36.14	139.76	25	LakeWetland	NA	55YBP	30	Taffs, 2001
Reedy Lake	SA	-36.14	139.76	25	LakeWetland	NA	55YBP	NA	Taffs, 2001
Billabong 21	VIC	-36.75	145.51	172	LakeWetland	NA	NA	NA	Ogden, 2000
Billabong 23	VIC	-36.75	145.51	172	LakeWetland	NA	NA	NA	Ogden, 2000
Billabong 25	VIC	-36.75	145.51	172	LakeWetland	NA	NA	NA	Ogden, 2000
Billabong 32	VIC	-36.00	145.98	133	LakeWetland	NA	NA	NA	Ogden, 2000
Billabong 38	VIC	-35.80	145.57	112	LakeWetland	NA	NA	NA	Ogden, 2000
Billabong 9	VIC	-35.75	147.75	492	LakeWetland	NA	NA	NA	Ogden, 2000
Kingston Common	NSW	-29.05	167.95	2	LakeWetland	6176YBP(+/-427)	NA	NA	Macphail et al., 2001; Macphail and Hope, 1997; Macphail and Neale, 1996
Baw Baw	VIC	-37.85	146.27	1524	LakeWetland	NA	NA	NA	Strickland, 1980
Bomen Lagoon	NSW	-35.00	147.01	168	LakeWetland	NA	NA	NA	Gell and Little, 2006
Berry Jerry Lagoon	NSW	-35.02	147.06	175	LakeWetland	NA	NA	NA	Gell and Little, 2006
Yanco Agricultural High Weir	NSW	-34.63	146.39	142	LakeWetland	NA	NA	NA	Gell and Little, 2006
Coonancoocabil Lagoon	NSW	-34.62	146.29	140	LakeWetland	NA	NA	NA	Gell and Little, 2006
Gooragool Lagoon	NSW	-34.58	146.10	130	LakeWetland	NA	NA	NA	Gell and Little, 2006
McKenna's Lagoon	NSW	-34.42	145.51	105	LakeWetland	NA	NA	NA	Gell and Little, 2006

Homestead Lagoon	NSW	-34.54	145.74	125	LakeWetland	NA	NA	NA	Gell and Little, 2006
Ajax Achilles	SA	-34.33	140.58	20	LakeWetland	NA	NA	NA	Gell et al., 2009
Byron Bay	NSW	-28.63	Boulder	10	LakeWetland	NA	NA	NA	Logan, 2003
Crystal Bog	VIC	-36.73	146.78	1350	LakeWetland	NA	NA	NA	Williams, 1980
Bunyip Swamp	VIC	-36.69	146.77	1300	LakeWetland	NA	NA	NA	Binder and Kershaw, 1978
Anbangbang 1 and Djuwarr 1	NT	-13.00	133.00	320	LakeWetland	NA	NA	NA	Clark, 1985
Tanyaka Creek	SA	-34.23	140.77	20	LakeWetland	NA	NA	NA	Fluin and Gell, 2008
Mundic Wetland	SA	-34.21	140.79	20	LakeWetland	NA	NA	NA	Fluin and Gell, 2008
Tawonga Bog	VIC	-36.68	147.40	NA	LakeWetland	NA	NA	NA	Kershaw and Green, 1983, Rowe, 1968
Fingal Bay	NSW	-32.74	152.17	4	LakeWetland	NA	NA	NA	Macphail, 1973
Lake Kwornicup	WA	-32.13	115.73	10	LakeWetland	NA	NA	NA	Morris, 1996
Ki'ina	NT	-12.85	132.55	1	LakeWetland	NA	NA	NA	Russell-Smith, 1985; Hope et al., 1985
Lake Osborne	TAS	-43.21	146.76	924	LakeWetland	6452YBP	-61YBP	33	Fletcher et al., 2014
Mount Quincan	QLD	-17.30	145.58	730	LakeWetland	6900YBP	NA	8	Burrows et al., 2014
Wombat Pool	TAS	-41.67	145.96	1057	LakeWetland	17055YBP	-61YBP	113	Stahle et al., 2016
Vunimoli	Pacific	-18.22	177.88	251	LakeWetland	2820YBP	NA	NA	Hope et al., 1999; Hope et al., 2009b
Waitabu	Pacific	-18.23	178.78	43	LakeWetland	NA	NA	NA	Latham et al., 1983
Western Sumatra	INDO	-0.78	99.90	-517	Marine	45330YBP	60YBP	47	Mohtadi et al., 2014
GeoB10065-7 - Sunda Islands	INDO	-9.23	118.90	-1296	Marine	5956YBP(+/-149)	-54YBP(+/-6)	10	Steinke et al., 2014
G5-2-056P	INDO.	-3.58	132.18	-2113	Marine	14700YBP	0YBP	20	Brijker et al., 2007
MD9821-60 - Makassar Strait	INDO.	-5.20	117.49	-1185	Marine	946YBP	110YBP	10	Newton et al., 2006
MD98-2177 - Makassar Strait	INDO.	1.40	119.08	-968	Marine	1949YBP	-42YBP	20	Newton et al., 2011
MD98-2176	INDO.	-5.01	133.43	-2382	Marine	21010YBP	126YBP	34	Stott et al., 2004; Stott et al., 2007
MD98-2181	INDO.	6.45	125.83	-2114	Marine	21869YBP	3YBP	33	Stott et al., 2004; Stott et al., 2007
Makassar Strait	INDO.	-5.20	117.48	-480	Marine	2316YBP	-37YBP	10	Oppo et al., 2009
13GGC - Makasaar Strait	INDO.	-7.37	119.40	-594	Marine	10575YBP	123YBP	38	Linsley et al., 2010
Murray River	SA	-35.52	138.79	0	Marine	NA	NA	275	Cann et al., 2000
Murray Canyon	SA	-37.26	137.36	-2420	Marine	32513YBP	0YBP(+53)	40	Moros et al, 2009
Gulf of St Vincent	SA	-35.23	138.02	-40	Marine	38657YBP(+/-1118)	1560YBP(+/-220)	NA	Cann et al, 2006
Apollo Bay	TAS	-43.15	147.28	0	Marine	30YBP	-52YBP	8	Edgar and Samson, 2004
Birchs Bay	TAS	-43.17	147.25	0	Marine	55YBP	-52YBP	8	Edgar and Samson, 2004
Geilston Bay	TAS	-42.84	147.34	-9	Marine	50YBP	-50YBP	20	Edgar and Samson, 2004
Kangaroo Bay	TAS	-42.88	147.36	14.5	Marine	50YBP	-50YBP	20	Edgar and Samson, 2004
Makassar Strait	INDO.	-3.88	119.45	-460	Marine	2281YBP	-48YBP	33	Tierney et al., 2010
Banda Sea	INDO	-5.77	126.97	-3163	Marine	168000YBP	0YBP	2200	Van der Kaars et al., 2000
Core Fr10/95-GC-17	INDO	-22.05	113.50	-1093	Marine	100000YBP	0YBP	NA	Van der Kaars and De Deckker, 2002
Core E55-6	VIC	-38.51	141.01	-55	Marine	125000YBP	0YBP	NA	Harle, 1997
MD-28	QLD	-11.19	139.96	-62	Marine	NA	410YBP	NA	Chivas et al., 2001

MD-29	QLD	-10.79	138.72	-60	Marine	NA	11200YBP	NA	Chivas et al., 2001
MD-30	QLD	-12.27	138.75	-60	Marine	NA	12094YBP	NA	Chivas et al., 2001
MD-31	QLD	-12.07	138.75	-59	Marine	12020YBP	7420YBP	NA	Chivas et al., 2001
MD-32	QLD	-12.31	139.98	-64	Marine	125000YBP(+/-12000)	NA	NA	Chivas et al., 2001
MD-33	QLD	-12.39	140.34	-68	Marine	18570YBP	17120YBP	NA	Chivas et al., 2001
G4-K4P1	INDO	-0.95	127.75	NA	Marine	NA	NA	NA	Van der Kaars, 1989
G4-K4P3	INDO	-0.97	127.75	NA	Marine	NA	NA	NA	Van der Kaars, 1989
G6-2 Argo Abyssal	INDO	-12.47	118.57	NA	Marine	NA	NA	NA	Van der Kaars, 1989
AIMS1260	QLD	-19.30	147.35	-14	Marine	-10YBP(+/-5)	-46YBP(+/-0)	2	Cavanagh et al., 1999
AIMS1262	QLD	-18.41	146.17	-5	Marine	NA	NA	NA	Cavanagh et al., 1999
AIMS1450	QLD	-18.53	146.38	-10	Marine	-11YBP(+/-16)	-46YBP(+/-0)	1	Cavanagh et al., 1999
Offshore Borneo	INDO	-9.23	118.90	-1296	Marine	34368YBP(+/-225)	0YBP	120	Dubois et al., 2014
Lombok Ridge	INDO	-10.78	118.07	-3510	Marine	290000YBP	0YBP	1500	Wang et al., 1999
MD97-2140	Pacific	2.07	142.27	-2547	Marine	360000	0YBP	1900	Thevenon et al., 2004
Adelie Land	ANT	-66.05	138.56	-746	Marine	10843YBP	1000YBP	15	Crosta et al., 2007
Kau Bay	INDO.	1.00	127.50	-377	Marine	3332YBP	180YBP	50	Langton et al., 2008
Wet Cave	SA	-37.10	140.80	95	Speleothem	60000YBP(+/-1)	-50YBP(+/-1)	NA	Macken et al., 2013
Blanch Cave	SA	-37.10	140.80	95	Speleothem	60000YBP(+/-1)	-50YBP(+/-1)	NA	Macken et al., 2013
Niue Island	Pacific	-19.00	169.80	65	Speleothem	195YBP	-52YBP(+/-0)	1	Rasbury and Aharon, 2006
Gunung Buda	INDO.	4.03	114.80	150	Speleothem	26430YBP	0YBP	65	Partin et al., 2007
Liang Luar	INDO.	-8.32	120.43	550	Speleothem	12649YBP(+/-120)	-52YBP(+/-4)	8	Griffiths et al., 2009
Liang Luar	INDO.	-8.32	120.43	550	Speleothem	23800YBP(+/-500)	50YBP(+/-10)	100	Ayliffe et al., 2013
Chillagoe Cave	QLD	-17.20	144.51	409	Speleothem	724YBP	-53YBP	1	Haig et al., 2014; Nott et al., 2007
KNI-51 (Kimberley)	WA	-15.30	128.62	100	Speleothem	8727YBP(+/-172)	-60YBP(+/-1)	15	Denniston et al., 2013
Cape Range	WA	-22.07	113.98	206	Speleothem	1439YBP	-53YBP	1	Haig et al., 2014
Moondyne	WA	-34.20	115.05	120	Speleothem	39YBP	-42YBP	1	Treble et al., 2005
Taurius Cave	Pacific	-15.50	167.00	230	Speleothem	391YBP(+/-12)	-55YBP(+/-0)	1	Partin et al., 2013
Forestry Cave	Pacific	-9.49	159.97	200	Speleothem	527YBP(+/-8.8)	-60YBP(+/-9)	1	Maupin et al., 2014
Shoalhaven River	NSW	-34.85	150.75	10	Geomorphology	7800YBP (+/-55)	2340YBP(+/-90)	NA	Umitsu et al., 2001
Gulf of Carpentaria	QLD	-15.21	141.64	10	Geomorphology	5950YBP(+/-95)	47YBP (+/-1)	NA	Rhodes et al., 1980
Ramsay Bay	QLD	-18.28	146.27	20	Geomorphology	5850YBP(+/-110)	810YBP(+/-110)	NA	Pye and Rhodes, 1985
Crowley Beach	QLD	-17.65	146.14	6.5	Geomorphology	5685YBP(+/-400)	145YBP(+/-10)	NA	Nott et al., 2009
Lady Elliot Island	QLD	-24.11	152.71	5	Geomorphology	3230YBP(+/-90)	0YBP(+/-70)	NA	Chivas et al., 1986
Beachmere	QLD	-27.09	153.09	1	Geomorphology	2600YBP(+/-130)	140YBP(+/-50)	NA	Brooke et al., 2008a
Lake Blanche	SA	-29.30	139.50	8	Geomorphology	26200YBP(+/-3000)	1700YBP(+/-600)	NA	Nanson et al., 1998
Lake Frome	SA	-30.30	139.80	25	Geomorphology	69600YBP(+/-2600)	54900YBP(+/-4800)	NA	Nanson et al., 1998
Lake Callabonna	SA	-29.80	140.10	6	Geomorphology	2200YBP(+/-200)	1000YBP(+/-200)	NA	Nanson et al., 1998
Lake Eyre South	SA	-29.30	137.50	12	Geomorphology	70000YBP(+/-15400)	26200YBP(+/-3700)	NA	Nanson et al., 1998

Le Fevre	SA	-34.81	138.49	5	Geomorphology	7890YBP(+/-460)	610YBP(+/-90)	NA	Bowman and Harvey, 1986
Murray River	SA	-35.60	139.00	Various	Geomorphology	329000YBP	2620YBP(+/-160)	NA	Bourman et al., 2000
Guichen Bay	SA	-37.16	139.76	5	Geomorphology	5400YBP(+/-230)	1800YBP(+/-80)	NA	Bristow and Pucillo, 2006
Tirari Desert	SA	-28.06	137.61	Various	Geomorphology	87500YBP(+/-5300)	190YBP(+/-20)	NA	Fitzsimmons et al., 2007
Strzelecki Desert	SA	-27.00	140.00	Various	Geomorphology	186000YBP(+/-10000)	120YBP(+/-20)	NA	Fitzsimmons et al., 2007
Ross River	NT	-23.75	133.50	Various	Geomorphology	9200YBP(+/-900)	695YBP(+/-60)	NA	Patton et al., 1993
Lake George	NSW	-35.00	149.42	600	Geomorphology	14100YBP(+/-900)	130YBP(+/-20)	NA	Fitzsimmons and Barrows, 2010
Snowy Mountains	NSW	-36.00	148.00	1100-2100	Geomorphology	31000YBP(+/-2300)	120YBP	NA	Costin, 1972
Cape Arnhem	NT	-12.35	136.97	NA	Geomorphology	15200YBP(+/-2100)	2700YBP(+/-300)	NA	Lees et al., 1995
Voli Voli	NZ	-18.16	177.49	2	Geomorphology	2680YBP(+/-180)	220YBP(+/-80)	NA	Dickinson et al., 1998
Keppel Bay	QLD	-23.42	150.80	2	Geomorphology	1460YBP(+/-125)	60YBP	NA	Brooke et al., 2008b
Lake Callabonna	SA	-29.56	140.70	2	Geomorphology	199000YBP(+/-22000)	1050YBP(+/-70)	NA	Cohen et al., 2012
Lake Callabonna	SA	-29.56	140.70	4	Geomorphology	27200YBP(+/-2500)	900YBP(+/-100)	NA	Gliganic et al., 2014
Cape St Lambert	WA	-13.92	127.08	NA	Geomorphology	13400YBP(+/-1000)	400YBP(+/-200)	NA	Lees et al., 1992
Victoria Delta	WA	-14.87	128.87	NA	Geomorphology	6310YBP(+/-90)	660YBP(+/-225)	NA	Lees, 1992
Groote Eylandt	NT	-13.91	136.79	NA	Geomorphology	136000YBP(+/-17000)	220YBP(+/-1680)	NA	Shulmeister and Lees, 1992
Rosie Creek	QLD	-15.44	136.13	Various	Geomorphology	58400YBP(+/-6600)	5900YBP(+/-700)	NA	Nott et al., 1999
North Stomatolite Lake	SA	-36.17	139.66	1	Geomorphology	7070YBP(+/-95)	5620YBP(+/-40)	NA	Mee et al., 2007
Old Man Lake	SA	-37.26	139.82	2	Geomorphology	7660YBP(+/-55)	700YBP(+/-30)	NA	Mee et al., 2007
Lake Amy	SA	-37.21	139.78	3	Geomorphology	4580YBP(+/-70)	505YBP(+/-20)	NA	Mee et al., 2007
Naas River	ACT	-35.72	149.08	1300-600	Geomorphology	14000YBP(+/-2150)	360YBP(+/-40)	NA	Eriksson et al., 2006
Bellinger River	NSW	-30.47	152.48	Various	Geomorphology	20103YBP(+/-147)	182YBP(+/-52)	NA	Cohen et al., 2008
Macquarie Marshes	NSW	-30.59	147.69	Various	Geomorphology	59000YBP(+/-10000)	240YBP(+/-90)	NA	Yonge and Hesse, 2009
Manning River	NSW	-31.89	152.41	Various	Geomorphology	400YBP(+/-70)	346YBP(+/-70)	NA	Nanson, 1986
Clyde River	NSW	-35.69	150.17	Various	Geomorphology	2650YBP(+/-90)	820YBP(+/-70)	NA	Nanson, 1986
Wangrah Creek	NSW	-35.90	149.25	1300	Geomorphology	34166YBP(+/-1100)	0YBP	NA	Prosser et al., 1994
Barmah Choke	NSW	-36.00	145.00	100	Geomorphology	19080YBP(+/-1040)	550YBP(+/-30)	NA	Stone, 2006
Wolumla Creek	NSW	-36.75	149.79	100-200	Geomorphology	5590YBP(+/-80)	1410YBP(+/-40)	NA	Fryirs and Brierley, 1998
Widden Brook	NSW	-32.50	150.35	Various	Geomorphology	16699YBP(+/-565)	241YBP(+/-18)	NA	Cheetham et al., 2010
Mulloon Creek	NSW	-35.33	149.59	Various	Geomorphology	12528YBP(+/-89)	3440YBP(+/-90)	NA	Johnston and Brierley, 2006
Lake Illawarra	NSW	-34.50	150.86	0.5	Geomorphology	786YBP(+/-97)	0YBP	NA	Chenhall et al., 1995
Lake Illawarra	NSW	-34.50	150.86	0.5	Geomorphology	7600YBP(+/-340)	40YBP(+/-10)	NA	Sloss et al., 2005
Woody Bay - Iluka	NSW	-29.35	153.36	5	Geomorphology	4753YBP(+/-245)	345YBP(+/-42)	NA	Goodwin et al., 2006
Fitzroy River	WA	-18.03	125.75	NA	Geomorphology	1685YBP(+/-153)	398YBP(+/-102)	NA	Wohl et al., 1994
Margaret River	WA	-18.43	126.58	NA	Geomorphology	1474YBP(+/-144)	146YBP(+/-146)	NA	Wohl et al., 1994
Katherine River	NT	-14.29	132.39	100	Geomorphology	2219YBP(+/-133)	0YBP	NA	Sandercock and Wyrwoll, 2005
Windjana Gorge	WA	-17.41	124.94	100	Geomorphology	2910YBP(+/-1040)	1530YBP(+/-760)	NA	Gillieson et al., 1991
Cairns Region	QLD	-16.92	145.78	Various	Geomorphology	88000YBP(+/-6000)	330YBP(+/-30)	NA	Thomas et al., 2007

Nambucca River	NSW	-30.59	152.71	Various	Geomorphology	NA	NA	NA	Doyle, 2003
Shark Bay	WA	-26.39	114.16	6	Geomorphology	3960YBP(+/-77)	595YBP(+/-45)	NA	Jahnert et al., 2012
Davys Creek	NSW	-33.50	148.66	Various	Geomorphology	1615YBP(+/-75)	155YBP(+/-155)	NA	Carthew and Drysdale, 2003
Georges River	NSW	-33.98	151.08	NA	Geomorphology	NA	NA	NA	Napoli, 1996
Eurunderee	NSW	-32.50	152.33	NA	Geomorphology	NA	NA	NA	Thom et al., 1978
Fens, Port Stephens	NSW	-32.60	152.26	NA	Geomorphology	NA	NA	NA	Thom et al., 1978
Newcastle Bight	NSW	-32.87	151.81	NA	Geomorphology	NA	NA	NA	Thom et al., 1978
Woy Woy	NSW	-33.53	151.33	NA	Geomorphology	NA	NA	NA	Thom et al., 1978
Bherwerre	NSW	-35.16	150.66	NA	Geomorphology	NA	NA	NA	Thom et al., 1978
Moruya	NSW	-35.87	150.15	NA	Geomorphology	NA	NA	NA	Thom et al., 1978
Wonboyn	NSW	-37.26	149.95	NA	Geomorphology	NA	NA	NA	Thom et al., 1978
Adelaide River	NT	-12.22	131.22	0	Geomorphology	NA	NA	NA	Iles, 1998
Ki'ina	NT	-12.85	132.55	1	Geomorphology	NA	NA	NA	Russell-Smith, 1985; Hope et al., 1985
Eighteen Mile Swamp	QLD	-27.62	153.46	8	Geomorphology	NA	NA	NA	Boyd, 1993
Ambathala shearing shed	QLD	-25.97	145.33	330	Geomorphology	20YBP	-45YBP	NA	Witt et al., 2006
Coorong Calcrete	SA	-36.00	139.00	0	Geomorphology	NA	NA	NA	Ahmad, 1996
Clark's Junction	NZ	-45.72	170.11	520	LakeWetland	NA	NA	NA	McGlone, 2001
Potters Bog	NZ	NA	NA	1200	LakeWetland	NA	NA	NA	McGlone, 2001
Pomahaka Road	NZ	-46.00	169.20	875	LakeWetland	NA	NA	NA	McGlone, 2001
Teviot Swamp	NZ	NA	NA	980	LakeWetland	NA	NA	NA	McGlone, 2001
Ajax Bog	NZ	-46.42	169.29	650	LakeWetland	NA	NA	NA	McGlone, 2009
Travis Swamp	NZ	-43.40	172.69	2	LakeWetland	NA	NA	NA	McGlone, 2009
Pleasant River	NZ	-45.50	173.70	5	LakeWetland	NA	NA	NA	McGlone, 2001
Kettlehole Bog	NZ	-43.05	171.79	600	LakeWetland	16340YBP(+/-520)	0YBP	195	McGlone et al., 2004
Glendhu Bog	NZ	-45.84	169.73	600	LakeWetland	12000YBP	-40YBP	NA	McGlone and Wilmshurst, 1999
Kohuora	NZ	-36.57	174.52	73	LakeWetland	32000YBP	NA	100	Newnham et al., 2007
Waikaremoana	NZ	-38.45	177.02	582	LakeWetland	1850YBP(+/-10)	0YBP	100	Newnham et al., 1998
Lake Pupke	NZ	-37.31	175.28	130	LakeWetland	7040	0YBP	11	Heyng et al., 2012
Tokerau Beach	NZ	-34.90	173.40	3	Geomorphology	4935YBP (+/-100)	341YBP(+/-44)	NA	Brook, 1999a
Te Werahi	NZ	-34.40	172.60	NA	Geomorphology	4703YBP(+/-170)	462YBP(+/-87)	NA	Brook, 1999b
Lake Tauanui	NZ	-35.50	175.86	230	LakeWetland	4165YBP(+/-174)	0YBP	105	Elliot et al., 1998
Harataonga	NZ	-36.17	175.50	15	LakeWetland	6000YBP	0YBP	520	Horrocks et al., 2002
Mt. Hauhungatahi - Site 1020	NZ	-39.20	175.40	1000	LakeWetland	NA	NA	NA	Horrocks and Ogden, 1998
Mt. Hauhungatahi - Site 1140	NZ	-39.20	175.40	1150	LakeWetland	NA	NA	NA	Horrocks and Ogden, 1998
Mt. Hauhungatahi - Site 1170	NZ	-39.20	175.40	1200	LakeWetland	NA	NA	NA	Horrocks and Ogden, 1998
Gibsons's Swamp	NZ	-39.42	175.42	810	LakeWetland	NA	NA	NA	Horrocks and Ogden, 1998
Gray's Swamp	NZ	-36.21	175.47	10	LakeWetland	7000YBP	0YBP	NA	Horrocks et al., 1999
Curreen's Paddock	NZ	-36.21	175.47	0	LakeWetland	6870YBP(+/-110)	0YBP	NA	Horrocks et al., 1999

Awana Swamp	NZ	-36.20	175.47	3	LakeWetland	NA	NA	NA	Horrocks et al., 2000a
Kaitoke Swamp	NZ	-36.23	175.44	1	LakeWetland	7295YBP(+/-75)	0YBP	NA	Horrocks et al., 2000c
Police Station Swamp	NZ	-36.24	175.45	5	LakeWetland	5200YBP	0YBP	NA	Horrocks et al., 2000c
Forsythes' Paddock	NZ	-36.26	175.47	1	LakeWetland	7500YBP	0YBP	NA	Horrocks et al., 2000b
Blackwells' Bush	NZ	-36.24	175.47	1	LakeWetland	3000YBP	0YBP	NA	Horrocks et al., 2000b
Lake Pupuke	NZ	-36.79	175.77	5	LakeWetland	9500YBP	NA	NA	Horrocks et al., 2005
Lake Pupuke	NZ	-36.79	175.77	5	LakeWetland	7110YBP	1320YBP	23	Heyng et al., 2015
Lake Pupuke	NZ	-36.79	175.77	5	LakeWetland	134YBP	-50YBP	5	Augustinus et al., 2006
Northern Awana	NZ	-36.20	175.47	NA	LakeWetland	650YBP	500YBP	NA	Horrocks et al., 2001
Curreen's Gate	NZ	-36.21	175.47	NA	LakeWetland	700YBP	550YBP	NA	Horrocks et al., 2001
Kaitoke Tongue	NZ	-36.23	175.44	NA	LakeWetland	1000YBP	0YBP	NA	Horrocks et al., 2001
Rangihoua	NZ	-35.17	174.08	2	LakeWetland	7400YBP	0YBP	NA	Horrocks, 2007
NZ rivers	NZ	NA	NA	NA	Geomorphology	1764YBP	-34YBP	NA	Grant, 1985
Waatarua wetland	NZ	-36.90	174.82	40	LakeWetland	6000YBP	NA	NA	Horrocks et al., 2002a
Lake Maratoto	NZ	-37.88	175.30	52	LakeWetland	16300YBP (+/-250)	NA	NA	Green and Lowe, 1985
Lake Tutira	NZ	-39.23	176.89	150	LakeWetland	7200YBP	NA	NA	Page, 2010
Lake Tutira	NZ	-39.23	176.89	150	LakeWetland	6800YBP	36YBP(+/-36)	100	Eden and Page, 1998; Gomez et al., 2012
Lake Tutira	NZ	-39.23	176.89	150	LakeWetland	1939YBP	NA	NA	Wilmshurst et al., 1997
Lake Poukawa	NZ	-39.78	176.72	20	LakeWetland	113000YBP(+/-7000)	1800YBP	NA	Carter, 2002
Lake Poukawa	NZ	-39.78	176.72	20	LakeWetland	6500YBP	NA	NA	McGlone, 2002a
Lake Poukawa	NZ	-39.78	176.72	20	LakeWetland	3700YBP	0YBP	113	Harper et al., 1986
Papamoia Bog	NZ	-37.70	176.30	8	LakeWetland	4620YBP(+/-80)	NA	60	Newnham et al., 1995
Waihi Beach	NZ	-37.41	175.93	8	LakeWetland	2900YBP(+/-100)	0YBP	60	Newnham et al., 1995
Rangitaiki - Site 1	NZ	-37.90	176.90	NA	LakeWetland	2100YBP	NA	NA	Campbell et al., 1973
Rangitaiki - Site 2	NZ	-37.90	176.90	NA	LakeWetland	5200YBP	NA	NA	Campbell et al., 1973
Rangitaiki - Site 3	NZ	-37.70	176.20	NA	LakeWetland	2700YBP	NA	NA	Campbell et al., 1973
NZ speleothem synthesis	NZ	NA	NA	NA	Speleothem	30000YBP	0YBP	NA	Williams et al., 2010
Paranoa Swamp	NZ	-34.40	172.80	6	LakeWetland	17000YBP	NA	NA	Dodson et al., 1988
Te Werahi Swamp	NZ	-34.48	172.71	15	LakeWetland	3700YBP	NA	NA	Dodson et al., 1988
Harataonga	NZ	-36.17	175.49	5	LakeWetland	6500YBP	0YBP	NA	Nichol et al., 2007
Moanatuatua Bog	NZ	-37.93	175.37	60	LakeWetland	15000YBP	0YBP	550	Haenfling et al., 2016
Ahukawakawa Swamp	NZ	-39.20	174.00	920	LakeWetland	3630YBP(+/-80)	NA	NA	McGlone et al., 1988
Potaema Bog	NZ	-39.30	174.20	670	LakeWetland	3510YBP(+/-110)	NA	NA	McGlone et al., 1988
Repongaere Swamp	NZ	-38.59	177.87	18	LakeWetland	5430YBP(+/-60)	NA	NA	Wilmshurst et al., 1999
Poverty Bay	NZ	-38.67	178.34	-63	Marine	NA	NA	NA	Wilmshurst et al., 1999
Glendhu	NZ	-45.83	169.75	602	LakeWetland	12000YBP	-40YBP	NA	McGlone and Wilmshurst, 1999
Eweburn Bog	NZ	-45.32	167.81	362	LakeWetland	11000YBP	NA	NA	Wilmshurst et al., 2002
Wairehu	NZ	-39.00	175.60	610	LakeWetland	15000YBP	NA	NA	McGlone and Topping, 1977



Otamangakau Canal	NZ	-39.00	175.60	600	LakeWetland	15000YBP	10300YBP	NA	McGlone and Topping, 1977; McGlone and Topping, 1983
Holden's Bay Site 1	NZ	-38.12	176.30	285	LakeWetland	NA	NA	NA	McGlone, 1983
Holden's Bay Site 2	NZ	-38.12	176.30	285	LakeWetland	4000YBP	64YBP	2350	McGlone, 1983
Merrivale	NZ	-46.00	167.80	60	LakeWetland	12000YBP	NA	NA	McGlone and Bathgate, 1983
Longwood	NZ	-46.20	167.80	670	LakeWetland	12000YBP	NA	NA	McGlone and Bathgate, 1983
Earnscleugh Cave	NZ	-45.30	169.20	540	Geomorphology	2176YBP(+/-76)	NA	NA	Clark et al., 1996
Toitoi	NZ	-47.10	169.98	35	LakeWetland	10100YBP	0YBP	NA	McGlone and Wilson, 1996
Halfmoon Bay	NZ	-46.80	169.10	15	LakeWetland	7300YBP	-31YBP	NA	McGlone and Wilson, 1996
Rakeahua	NZ	-46.90	167.90	681	LakeWetland	NA	NA	NA	McGlone and Wilson, 1996
Rocky Bay	NZ	-52.57	169.15	130	LakeWetland	13000YBP	NA	NA	McGlone et al., 1997b; McGlone, 2002a
Hooker Cliffs	NZ	-52.57	169.15	90	LakeWetland	12950YBP(+/-200)	NA	NA	McGlone et al., 1997b; McGlone, 2002a
Ruined Hut	NZ	-45.45	169.20	1400	LakeWetland	6774YBP(+/-75)	NA	557	McGlone et al., 1997a
Hyde Rock	NZ	-45.40	169.20	1540	LakeWetland	7463YBP(+/-97)	NA	400	McGlone et al., 1997a
Campbell Creek	NZ	-45.40	169.20	1250	LakeWetland	NA	NA	122	McGlone et al., 1997a
Idaburn	NZ	-45.00	169.70	420	LakeWetland	7500YBP	0YBP	NA	McGlone and Moar, 1998
Duncan Stream	NZ	-44.10	170.00	900	LakeWetland	7996YBP(+/-93)	0YBP	NA	McGlone and Moar, 1998
Ben Dhu	NZ	-44.40	169.80	600	LakeWetland	800YBP	0YBP	NA	McGlone and Moar, 1998
Oropuke	NZ	-44.00	176.50	290	LakeWetland	14000YBP	520YBP(+/-60)	NA	McGlone, 2002a
Deas Head Forest	NZ	-50.50	166.20	20	LakeWetland	11080YBP(+/-120)	NA	NA	McGlone, 2002a; McGlone et al., 2000
Deas Head Bog	NZ	-50.50	166.20	20	LakeWetland	11951YBP(+/-95)	NA	NA	McGlone, 2002a; McGlone et al., 2000
Ranui Cove	NZ	-50.50	166.20	5	LakeWetland	NA	NA	NA	McGlone, 2002
Cropp Hut	NZ	-43.08	170.97	895	LakeWetland	7837YBP	0YBP	NA	McGlone and Basher, 2012
Tarkus Knob	NZ	-43.08	170.97	950	LakeWetland	9337YBP	0YBP	NA	McGlone and Basher, 2012
Steadman Creek	NZ	-43.08	170.97	820	LakeWetland	10295YBP(+/-95)	NA	NA	McGlone and Basher, 2012
Round Lake	NZ	-39.65	176.97	40	LakeWetland	3507YBP(+/-134)	0YBP	8	Chester and Prior, 2004
Rotonuiaha	NZ	-38.90	177.00	270	LakeWetland	1821YBP	41YBP	44	Wilmshurst et al., 1997
Quagmire Tarn	NZ	-43.30	171.10	740	LakeWetland	11900YBP(+/-200)	NA	NA	Burrows and Russell, 1990
Windy Tarn	NZ	-43.30	171.10	750	LakeWetland	NA	NA	NA	Burrows and Russell, 1990
Letham Burn	NZ	-45.60	167.99	460	LakeWetland	12599YBP(+/-150)	NA	NA	Vandergoes et al., 1997
Southern Alp Glaciers	NZ	-43.60	170.20	750	Geomorphology	6520YBP(+/-360)	160YBP(+/-30)	NA	Schaefer et al., 2009
Southern Alp Glaciers	NZ	Various	Various	Various	Geomorphology	2588YBP(+/-161)	13YBP(+/-20)	NA	Lorrey et al., 2008
Lake Waiiau Swamp	NZ	-39.78	174.67	56	LakeWetland	2789YBP(+/-430)	0YBP	140	Bussell, 1988
Waverley Beach	NZ	-39.83	174.62	0	LakeWetland	7000YBP(+/-100)	5570YBP(+/-80)	43	Bussell, 1988
Candle Light	NZ	-42.50	171.10	70	LakeWetland	NA	NA	NA	Moar and Suggate, 1996
Sunday Creek	NZ	-42.70	171.10	NA	LakeWetland	50000YBP	NA	NA	Moar and Suggate, 1996
Ferguson's Pond	NZ	-42.50	171.20	NA	LakeWetland	130000YBP	NA	NA	Moar and Suggate, 1996
Bullock Creek	NZ	-42.10	171.30	NA	LakeWetland	486000YBP	NA	NA	Moar and Suggate, 1996
Martin's Quarry	NZ	-41.75	171.50	NA	LakeWetland	NA	NA	NA	Moar and Suggate, 1996

Hatter's Creek	NZ	-42.70	171.10	NA	LakeWetland	NA	NA	NA	Moar and Suggate, 1996
BA Road	NZ	-42.70	171.10	NA	LakeWetland	NA	NA	NA	Moar and Suggate, 1996
Shantytown	NZ	-42.50	171.20	NA	LakeWetland	23700YBP(+/-600)	NA	NA	Moar and Suggate, 1996
Paroa	NZ	-42.50	171.20	NA	LakeWetland	NA	NA	NA	Moar and Suggate, 1996
Blue Spur Road	NZ	-42.70	171.00	NA	LakeWetland	NA	NA	NA	Moar and Suggate, 1996
Chesterfield Road	NZ	-42.70	171.10	NA	LakeWetland	NA	NA	NA	Moar and Suggate, 1996
GDK Corner	NZ	-42.70	171.10	NA	LakeWetland	NA	NA	NA	Moar and Suggate, 1996
Kumara Cemetery	NZ	-42.70	171.10	NA	LakeWetland	NA	NA	NA	Moar and Suggate, 1996
Graham's Terrace	NZ	-42.50	171.40	NA	LakeWetland	18500YBP(+/-350)	NA	NA	Moar and Suggate, 1996
Wilson's Lead Road	NZ	41.70	171.40	NA	LakeWetland	NA	NA	NA	Moar and Suggate, 1996
Maria's Mire	NZ	-42.50	171.50	NA	LakeWetland	NA	NA	NA	Moar and Suggate, 1996
Nan's Kettle	NZ	-42.50	171.50	NA	LakeWetland	9230YBP(+/-100)	NA	NA	Moar and Suggate, 1996
Lake Mudgie	NZ	-42.70	171.10	NA	LakeWetland	NA	NA	NA	Moar and Suggate, 1996
Adelaide Tam	NZ	-40.56	172.32	1250	LakeWetland	15900YBP(+/-700)	0YBP	140	Jara et al., 2015
Lake Ohau	NZ	-44.23	169.85	520	LakeWetland	24YBP	-61YBP	1	Roop et al., 2016
North Island Speleothem record	NZ	Various	Various	Various	Speleothem	NA	NA	NA	Lorrey et al., 2008
South Island Speleothem record	NZ	Various	Various	Various	Speleothem	NA	NA	NA	Lorrey et al., 2008
Waipuna Cave	NZ	-38.30	NA	320	Speleothem	NA	-40YBP	NA	Williams et al., 1999
Max's Cave	NZ	-38.30	NA	325	Speleothem	3900YBP(+/-190)	-40YBP	NA	Williams et al., 1999
Gardner's Gut Cave	NZ	-38.30	NA	100	Speleothem	10220YBP(+/-530)	-40YBP	150	Williams et al., 1999

### References for records listed in Table S1

Ahmad, R.: Late Holocene major Australian arid period revealed by direct sedimentological evidence from lakes in the Coorong region of south Australia, *Geology*, 24, 619-622, 2, 1996.

Aitken, D. L., and Kershaw, A. P.: Holocene vegetation and environmental history of Cranbourne Botanic Garden, Victoria, *Proceedings of the Royal Society of Victoria*, 105, 67-80, 1992.

Allan, T.: Examining diatoms as biological indicators of water quality within 2 coastal lakes, Third year undergraduate report, School of Environmental Science and Management, Southern Cross University, Lismore, 2006.

Allen, V., Head, L., Medlin, G., and Witter, D.: Palaeo-ecology of the Gap and Coturaundee Ranges, western New South Wales, using stick-nest rat (*Leporillus* spp.) (Muridae) middens, *Austral Ecol.*, 25, 333-343, 2000.

Anker, S. A., Colhoun, E. A., Barton, C. E., Peterson, M., and Barbetti, M.: Holocene vegetation and paleoclimatic and paleomagnetic history from Lake Johnston, Tasmania, *Quat. Res.*, 56, 264-274, 2001.

Anshari, G., Kershaw, A. P., and van der Kaars, S.: A Late Pleistocene and Holocene pollen and charcoal record from peat swamp forest, Lake Sentarum Wildlife Reserve, West Kalimantan, Indonesia, *Paleogeogr. Paleoclimatol. Paleoecol.*, 171, 213-228, 2001.

- Ashton, D., and Hargreaves, G.: Dynamics of subalpine vegetation at Echo Flat, Lake Mountain, Victoria, Proceedings of the Ecological Society of Australia[PROC. ECOL. SOC. AUST.]. 1983., 1983.
- Athens, J. S., and Ward, J. V.: Palau Compact Road archaeological investigations, Babeldaob Island, Republic of Palau, U.S. Army Corps of Engineers, Pacific Ocean Division, Hawai'i, Honolulu, 2005.
- Augustinus, P., Reid, M., Andersson, S., Deng, Y., and Horrocks, M.: Biological and geochemical record of anthropogenic impacts in recent sediments from Lake Pupuke, Auckland City, New Zealand, *J. Paleolimn.*, 35, 789-805, 2006.
- Ayliffe, L. K., Gagan, M. K., Zhao, J.-x., Drysdale, R. N., Hellstrom, J. C., Hantoro, W. S., Griffiths, M. L., Scott-Gagan, H., Pierre, E. S., Cowley, J. A., and Suwargadi, B. W.: Rapid interhemispheric climate links via the Australasian monsoon during the last deglaciation, *Nat Commun*, 4, 2013.
- Backhouse, J.: Holocene vegetation and climate record from Barker Swamp, Rottnest Island, Western Australia, *Journal of the Royal Society of Western Australia*, 76, 53-61, 1993.
- Barr, C., Tibby, J., Gell, P., Tyler, J., Zawadzki, A., and Jacobsen, G. E.: Climate variability in south-eastern Australia over the last 1500 years inferred from the high-resolution diatom records of two crater lakes, *Quat. Sci. Rev.*, 95, 115-131, 2014.
- Bell, C. J. E., Finlayson, B. L., and Kershaw, A. P.: Pollen analysis and dynamics of a peat deposit in Carnarvon National Park, central Queensland, *Aust. J. Ecol.*, 14, 449-456, 1989.
- Bickford, S., and Gell, P.: Holocene vegetation change, Aboriginal wetland use and the impact of European settlement on the Fleurieu Peninsula, South Australia, *Holocene*, 15, 200-215, 2005.
- Binder, R., and Kershaw, A. P.: Late Quaternary pollen diagram from southeastern highlands of Australia, *Search*, 9, 44-45, 1978.
- Black, M. P., and Mooney, S. D.: Holocene fire history from the Greater Blue Mountains World Heritage Area, New South Wales, Australia: the climate, humans and fire nexus, *Reg. Envir. Chang.*, 6, 41-51, 2006.
- Black, M. P., Mooney, S. D., and Martin, H. A.: A > 43,000-year vegetation and fire history from Lake Baraba, New South Wales, Australia, *Quat. Sci. Rev.*, 25, 3003-3016, 2006.
- Black, M. P., and Mooney, S. D.: The response of aboriginal burning practices to population levels and El Nino-Southern oscillation events during the mid- to late-Holocene: a case study from the Sydney basin using charcoal and pollen analysis, *Aust. Geogr.*, 38, 37-52, 2007.
- Bostock, H. C., Brooke, B. P., Ryan, D. A., Hancock, G., Pietsch, T., Packett, R., and Harle, K.: Holocene and modern sediment storage in the subtropical macrotidal Fitzroy River estuary, Southeast Queensland, Australia, *Sediment. Geol.*, 201, 321-340, 2007.
- Bottomley, C.: Late Quaternary palaeoenvironments of Carlisle Perched Lake in the Otway Ranges, Victoria, BA (Hons) thesis, Department of Geography and Environmental Science, Monash University, Melbourne, 1994.
- Bourman, R. P., Murray-Wallace, C. V., Belperio, A. P., and Harvey, N.: Rapid coastal geomorphic change in the river Murray Estuary of Australia, *Mar. Geol.*, 170, 141-168, 2000.

- Bowman, G., and Harvey, N.: Geomorphic evolution of a Holocene beach-ridge complex, Lefevre Peninsula, South Australia, *J. Coast. Res.*, 2, 345-362, 1986.
- Boyd, W. E.: Quaternary pollen analysis in the arid zone of Australia - Dalhousie Springs, Central Australia, *Rev. Palaeobot. Palynology*, 64, 331-341, 1990.
- Boyd, W. E.: Proto-Swan Bay: A palaeogeographical model of the Late Holocene Eighteen Mile Swamp, North Stradbroke Island, S.E. Queensland, *Proceedings of the Royal Society of Queensland*, 103, 75-83, 1993.
- Boyd, W. E., Stubbs, B. J., and Averill, C.: The 'grasses' of the Big Scrub District of North-eastern New South Wales: A sedimentary record of late Holocene grasslands in a subtropical forest landscape, *Aust. Geogr.*, 30, 331-336, 1999.
- Brijker, J. M., Jung, S. J. A., Ganssen, G. M., Bickert, T., and Kroon, D.: ENSO related decadal scale climate variability from the Indo-Pacific Warm Pool, *Earth Planet. Sci. Lett.*, 253, 67-82, 2007.
- Bristow, C. S., and Pucillo, K.: Quantifying rates of coastal progradation from sediment volume using GPR and OSL: the Holocene fill of Guichen Bay, south-east South Australia, *Sedimentology*, 53, 769-788, 2006.
- Brook, F. J.: Stratigraphy and landsnail faunas of Late Holocene coastal dunes, Tokerau Beach, northern New Zealand, *J. R. Soc. N.Z.*, 29, 337-359, 1999a.
- Brook, F. J.: Stratigraphy, landsnail faunas, and paleoenvironmental history of coastal dunefields at Te Werahi, northernmost New Zealand, *J. R. Soc. N.Z.*, 29, 361-393, 1999b.
- Brooke, B., Lee, R., Cox, M., Olley, J., and T., P. W.: Rates of shoreline progradation during the last 1700 years at Beachmere, Southeastern Queensland, Australia, based on optically stimulated luminescence dating of beach ridges, *J. Coast. Res.*, 24, 640-648, 2008a.
- Brooke, B., Ryan, D., Pietsch, T., Olley, J., Douglas, G., Packett, R., Radke, L., and Flood, P.: Influence of climate fluctuations and changes in catchment land use on Late Holocene and modern beach-ridge sedimentation on a tropical macrotidal coast: Keppel Bay, Queensland, Australia, *Mar. Geol.*, 251, 195-208, 2008b.
- Buckman, S., Brownlie, K. C., Bourman, R. P., Murray-Wallace, C. V., Morris, R. H., Lachlan, T. J., Roberts, R. G., Arnold, L. J., and Cann, J. H.: Holocene palaeofire records in a high-level, proximal valley-fill (Wilson Bog), Mount Lofty Ranges, South Australia, *Holocene*, 19, 1017-1029, 2009.
- Builth, H., Kershaw, A. P., White, C., Roach, A., Hartney, L., McKenzie, M., Lewis, T., and Jacobsen, G.: Environmental and cultural change on the Mt Eccles lava-flow landscapes of southwest Victoria, Australia, *Holocene*, 18, 413-424, 2008.
- Burrows, C., and Russell, J.: Aranuian vegetation history of the Arrowsmith Range, Canterbury I. Pollen diagrams, plant macrofossils, and buried soils from Prospect Hill, New Zealand *journal of botany*, 28, 323-345, 1990.
- Burrows, M. A., Fenner, J., and Haberle, S. G.: Humification in northeast Australia: Dating millennial and centennial scale climate variability in the late Holocene, *Holocene*, 24, 1707-1718, 10.1177/0959683614551216, 2014.
- Bussell, M. R.: Mid and late Holocene pollen diagrams and Polynesian deforestation, Wanganui District, New Zealand, *New Zealand Journal of Botany*, 26, 431-451, 1988.

- Cameron, N. G., Tyler, P. A., Rose, N. L., Hutchinson, S., and Appleby, P. G.: The recent paleolimnology of Lake Nicholls, Mount Field National Park, Tasmania, *Hydrobiologia*, 269, 361-370, 1993.
- Campbell, E. O., Heine, J. C., and Pullar, W.: Identification of plant fragments and pollen from peat deposits in Rangitaiki Plains and Maketu Basins, *New Zealand journal of botany*, 11, 317-330, 1973.
- Cann, J. H., Murray-Wallace, C. V., Belperio, A. P., and Brenchley, A. J.: Evolution of Holocene coastal environments near Robe, southeastern South Australia, *Quat. Int.*, 56, 81-97, 1999.
- Cann, J. H., Bourman, R. P., and Barnett, E. J.: Holocene foraminifera as indicators of relative estuarine-lagoonal and oceanic influences in estuarine sediments of the River Murray, South Australia, *Quat. Res.*, 54, 439-439, 2000.
- Cann, J. H., Murray-Wallace, C. V., Riggs, N. J., and Belperio, A. P.: Successive foraminiferal faunas and inferred palaeoenvironments associated with the postglacial (Holocene) marine transgression, Gulf St Vincent, South Australia, *Holocene*, 16, 224-234, 2006.
- Carter, J. A.: Phytolith analysis and paleoenvironmental reconstruction from Lake Poukawa Core, Hawkes Bay, New Zealand, *Glob. Planet. Change*, 33, 257-267, 2002.
- Carthew, K. D., and Drysdale, R. N.: Late Holocene fluvial change in a tufa-depositing stream: Davys Creek, New South Wales, Australia, *Aust. Geogr.*, 34, 123-139, 2003.
- Cassidy, H.: The water quality history of Lake Hiawatha, northern NSW, using diatoms as bioindicators., Third Year Undergraduate Report, School of Environmental Science and Management, Southern Cross University, Lismore, 2001.
- Cavanagh, J. E., Burns, K. A., Brunskill, G. J., and Coventry, R. J.: Organochlorine pesticide residues in soils and sediments of the Herbert and Burdekin river regions, North Queensland - Implications for contamination of the Great Barrier Reef, *Mar. Pollut. Bull.*, 39, 367-375, 1999.
- Chalson, J. M.: The late Quaternary vegetation and climatic history of the Blue Mountains, NSW, PhD thesis, UNSW, Kensington, 1991.
- Chalson, J. M., and Martin, H. A.: A 38,000 year history of the Vegetation at Penrith Lakes, New South Wales, *Proceedings of The Linnean Society of New South Wales*, 129, 97-111, 2008.
- Chalson, J. M., and Martin, H. A. A.: A Holocene history of the vegetation of the Blue Mountains, New South Wales, *Proceedings of The Linnean Society of New South Wales*, 130, 77-109, 2009.
- Cheetham, M. D., Bush, R. T., Keene, A. F., Erskine, W. D., and Fitzsimmons, K. E.: Longitudinal correlation of Late Quaternary terrace sequences of Widden Brook, southeastern Australia, *Aust. J. Earth Sci.*, 57, 97-109, 2010.
- Chenhall, B. E., Yassini, I., Depers, A. M., Caitcheon, G., Jones, B. G., Batley, G. E., and Ohmsen, G. S.: Anthropogenic marker evidence for accelerated sedimentation in Lake Illawarra, New South Wales, Australia, *Environmental Geology*, 26, 124-135, 1995.
- Chester, P. I., and Prior, C. A.: An AMS C-14 pollen-dated sediment and pollen sequence from the late holocene, southern coastal Hawke's Bay, New Zealand, *Radiocarbon*, 46, 721-731, 2004.

- Chivas, A., Chappell, J., Polach, H., Pillans, B., and Flood, P.: Radiocarbon evidence for the timing and rate of island development, beach rock formation and phosphatization at Lady Elliot Island, Queensland, Australia, *Mar. Geol.*, 69, 273-287, 1986.
- Chivas, A. R., Garcia, A., van der Kaars, S., Couapel, M. J. J., Holt, S., Reeves, J. M., Wheeler, D. J., Switzer, A. D., Murray-Wallace, C. V., Banerjee, D., Price, D. M., Wang, S. X., Pearson, G., Edgar, N. T., Beaufort, L., De Deckker, P., Lawson, E., and Cecil, C. B.: Sea-level and environmental changes since the last interglacial in the Gulf of Carpentaria, Australia: an overview, *Quat. Int.*, 83-5, 19-46, 2001.
- Churchill, D. M.: Distribution and prehistory of *Eucalyptus Diversicolor* F. Muell., *E. Marginata* Donn Ex Sm., and *E. Calophylla* R.Br. in relation to rainfall, *Aust. J. Bot.*, 16, 125-151, 1968.
- Clark, A.: A preliminary archaeobotanical analysis of the Anbangbang I Site, in: *Archaeological Research in Kakadu National Park*, edited by: Jones, R., Australian National Parks and Wildlife Service, Canberra, 1985.
- Clark, G. R., Petchey, P., McGlone, M. S., and Bristow, P.: Faunal and floral remains from Earnsclough cave, central Otago, New Zealand, *J. R. Soc. N.Z.*, 26, 363-380, 1996.
- Clark, G. R., and Hope, G. S.: Preliminary report on archaeological and palaeoenvironmental investigations in northern Lau (Mago, Yacata-Kaibu, and Vatuvara), Fiji, 1997.
- Clark, R. L.: *The fire history of Rotten Swamp*, A.C.T., CSIRO, Canberra, 1986.
- Clark, R. L., and Guppy, J. C.: A transition from mangrove forest to freshwater wetland in the monsoon tropics of Australia, *J. Biogeogr.*, 15, 665-684, 1988.
- Cohen, T. J., and Nanson, G. C.: Topographically associated but chronologically disjunct late Quaternary floodplains and terraces in a partly confined valley, south-eastern Australia, *Earth Surf. Process. Landf.*, 33, 424-443, 2008.
- Cohen, T. J., Nanson, G. C., Jansen, J. D., Gliganic, L. A., May, J. H., Larsen, J. R., Goodwin, I. D., Browning, S., and Price, D. M.: A pluvial episode identified in arid Australia during the Medieval Climatic Anomaly, *Quat. Sci. Rev.*, 56, 167-171, 2012.
- Colhoun, E. A., and Vandeger, G.: Holocene to middle last glaciation vegetation history at Tullabardine Dam, western Tasmania, *Proceedings of the Royal Society Series B-Biological Sciences*, 229, 177-207, 1986.
- Colhoun, E. A., Barbetti, M., and Geography, U. o. N. N. S. W. D. o.: *Cainozoic vegetation of Tasmania: handbook prepared for 7 International Palynological Congresses, 28 August - 3 September 1988, excursion LB2*, Department of Geography, University of Newcastle, Newcastle, NSW, 1988.
- Colhoun, E. A., Geer, G. V. D., and Hannan, D.: Late Glacial and Holocene Vegetation History at Dublin Bog North-Central Tasmania, *Australian Geographical Studies*, 29, 337-354, 1991.
- Colhoun, E. A.: Late glacial and Holocene vegetation history at Poet's Hill Lake, western Tasmania, *Aust. Geogr.*, 23, 11-23, 1992.
- Colhoun, E. A., Vandeger, G., and Fitzsimons, S. J.: Late Quaternary organic deposits at Smelter Creek and vegetation history of the Middle King Valley, western Tasmania, *J. Biogeogr.*, 19, 217-227, 1992.

- Colhoun, E. A., Pola, J. S., Barton, C. E., and Heijnis, H.: Late Pleistocene vegetation and climate history of Lake Selina, western Tasmania, *Quat. Int.*, 57-8, 5-23, 1999.
- Cook, E. J.: A record of late Quaternary environments at lunette-lakes Bolac and Turangmoroake, Western Victoria, Australia, based on pollen and a range of non-pollen palynomorphs, *Rev. Palaeobot. Palynology*, 153, 185-224, 2009.
- Costin, A. B.: Carbon-14 dates from the Snowy Mountains area, south eastern Australia, and their interpretation, *Quat. Res.*, 2, 579-590, 1972.
- Crausbay, S. D., Russell, J. M., and Schnurrenberger, D. W.: A ca. 800-year lithologic record of drought from sub-annually laminated lake sediment, East Java, *J. Paleolimn.*, 35, 641-659, 2006.
- Crosta, X., Debret, M., Denis, D., Courty, M. A., and Ther, O.: Holocene long- and short-term climate changes off Adelie Land, East Antarctica, *Geochem. Geophys. Geosyst.*, 8, Q11009, 2007.
- Crowley, G. M.: Quaternary soil salinity events and Australian vegetation history, *Quat. Sci. Rev.*, 13, 15-22, 1994.
- Crowley, G. M., and Kershaw, A. P.: Late Quaternary environmental change and human impact around Lake Bolac, Western Victoria, Australia, *J. Quat. Sci.*, 9, 367-377, 1994.
- Crowley, G. M., and Gagan, M. K.: Holocene evolution of coastal wetlands in wet-tropical northeastern Australia, *Holocene*, 5, 385-399, 1995.
- Cupper, M. L., Drinnan, A. N., and Thomas, L.: Holocene palaeoenvironments of salt lakes in the Darling Anabranch region, south-western New South Wales, Australia, *J. Biogeogr.*, 27, 1079-1094, 2000.
- Cupper, M. L.: Last glacial to Holocene evolution of semi-arid rangelands in southeastern Australia, *Holocene*, 15, 541-553, 2005.
- D'Costa, D. M., Edney, P., Kershaw, A. P., and De Deckker, P.: Late Quaternary paleoecology of Tower Hill, Victoria, Australia, *J. Biogeogr.*, 16, 461-482, 1989.
- D'Costa, D. M., and Kershaw, A. P.: A Late Pleistocene and Holocene pollen record from Lake Terang, Western Plains of Victoria, Australia, *Palaeogeography, Palaeoclimatology, Palaeoecology*, 113, 57-67, 1995.
- D'Costa, D. M.: The reconstruction of Quaternary vegetation and climate on King Island, Bass Strait, Australia, PhD thesis, Monash University, Melbourne, 1997.
- De Deckker, P.: Holocene ostracods, other invertebrates and fish remains from cores of four maar lakes in southeastern Australia, *Proceedings of the Royal Society of Victoria*, 94, 183-220, 1982.
- de Montford, M.: Lake Holocene fire history: Human impacts and climate variability at Wingecarribee Swamp, BSc Honours thesis, School of Biological, Earth, and Environmental Sciences, UNSW, Kensington, 2008.
- Denniston, R. F., Wyrwoll, K.-H., Polyak, V. J., Brown, J. R., Asmerom, Y., Wanamaker Jr, A. D., LaPointe, Z., Ellerbroek, R., Barthelmes, M., Cleary, D., Cugley, J., Woods, D., and Humphreys, W. F.: A Stalagmite record of Holocene Indonesian–Australian summer monsoon variability from the Australian tropics, *Quat. Sci. Rev.*, 78, 155-168, 2013.
- Dickinson, W. R., Burley, D. V., Nunn, P. D., Anderson, A., and et al.: Geomorphic and archaeological landscapes of the Sigatoka Dune Site, Viti Levu, Fiji: Interdisciplinary investigations, *Asian Perspectives*, 37, 1-31, 1998.

- Dodson, J. R.: Vegetation history and water fluctuations at Lake Leake, southeastern South Australia. 10,000BP to Present, *Aust. J. Bot.*, 22, 719-741, 1974.
- Dodson, J. R.: The presettlement vegetation of the Mount Gambier area, South Australia, *Transactions of The Royal Society of South Australia*, 99, 1975.
- Dodson, J. R., and Wilson, I. B.: Past and present vegetation of Marshes Swamp in southeastern South Australia, *Aust. J. Bot.*, 23, 123-150, 1975.
- Dodson, J. R.: Late Pleistocene vegetation and environments near Lake Bullenmerri, western Victoria, *Aust. J. Ecol.*, 4, 419-427, 1979.
- Dodson, J. R.: Modern pollen rain and recent vegetation history on Lord Howe Island - evidence of human impact, *Rev. Palaeobot. Palynology*, 38, 1-21, 1982.
- Dodson, J. R.: Holocene vegetation and environments in Goulburn, New South Wales, *Aust. J. Bot.*, 34, 231-249, 1986.
- Dodson, J. R.: Mire development and environmental change, Barrington Tops, New South Wales, Australia, *Quat. Res.*, 27, 73-81, 1987.
- Dodson, J. R., Enright, N. J., and McLean, R. F.: A late Quaternary vegetation history for far northern New Zealand *J. Biogeogr.*, 15, 647-656, 1988.
- Dodson, J. R., and Thom, B. G.: Holocene vegetation history from the Hawkesbury Valley, New South Wales, *Proceedings of The Linnean Society of New South Wales*, 113, 1992.
- Dodson, J. R., McRae, V. M., Molloy, K., Roberts, F., and Smith, J. D.: Late holocene human impact on two coastal environments in New South Wales, Australia: a comparison of Aboriginal and European impacts, *Veget Hist Archaeobot*, 2, 89-100, 1993.
- Dodson, J. R., de Salis, T., Myers, C. A., and Sharp, A. J.: A thousand years of environmental change and human impact in the alpine zone at Mt Kosciusko, New South Wales, *Aust. Geogr.*, 25, 77-87, 1994a.
- Dodson, J. R., Frank, K., Fromme, M., Hickson, D., McRae, V., Mooney, S., and Smith, J. D.: Environmental Systems and Human Impact at Cobrico Crater, South-western Victoria, *Australian Geographical Studies*, 32, 27-40, 1994b.
- Dodson, J. R., Roberts, F. K., and Desalis, T.: Paleoenvironments and human impact at Burruga Swamp in montane rainforest, Barrington Tops National Park, New South Wales, Australia, *Aust. Geogr.*, 25, 161-169, 1994c.
- Dodson, J. R., Mitchell, F. J. G., Bogenholz, H., and Julian, N.: Dynamics of temperate rainforest from fine resolution pollen analysis, Upper Ringarooma River, northeastern Tasmania, *Aust. J. Ecol.*, 23, 550-561, 1998.
- Dodson, J. R., and Lu, J. J.: A late Holocene vegetation and environment record from Byenup Lagoon, south-western Australia, *Aust. Geogr.*, 31, 41-54, 2000.
- Dodson, J. R.: A vegetation and fire history in a subalpine woodland and rain-forest region, Solomons Jewel Lake, Tasmania, *Holocene*, 11, 111-116, 2001.
- Donders, T. H., Wagner, F., and Visscher, H.: Late Pleistocene and Holocene subtropical vegetation dynamics recorded in perched lake deposits on Fraser Island, Queensland, Australia, *Paleogeogr. Paleoclimatol. Paleoecol.*, 241, 417-439, 2006.



- Douglas, G. B., Kuhnen, M., Radke, L. C., Hancock, G., Brooke, B., Palmer, M. J., Pietsch, T., Ford, P. W., Trefry, M. G., and Packett, R.: Delineation of sediment sources to a coastal wetland in the Great Barrier Reef catchment: influence of climate variability and land clearing since European arrival, *Environ. Chem.*, 7, 190-206, 2010.
- Doyle, C. J.: Fluvial geomorphology of the Nambucca Catchment: Late Quaternary change, post settlement channel degradation, and proposal for rehabilitation, PhD thesis, University of Wollongong, Wollongong, 2003.
- Dubois, N., Oppo, D. W., Galy, V. V., Mohtadi, M., van der Kaars, S., Tierney, J. E., Rosenthal, Y., Eglinton, T. I., Luckge, A., and Linsley, B. K.: Indonesian vegetation response to changes in rainfall seasonality over the past 25,000 years, *Nat. Geosci.*, 7, 513-517, 2014.
- Dyson, W. D.: A pollen and vegetation history from Lake Dove, western Tasmania, Honours Thesis, UNSW, Kensington, 1995.
- Eden, D. N., and Page, M. J.: Palaeoclimatic implications of a storm erosion record from late Holocene lake sediments, North Island, New Zealand, *Palaeogeography, Palaeoclimatology, Palaeoecology*, 139, 37-58, 1998.
- Edgar, G., and Samson, C.: Catastrophic decline in mollusc diversity in eastern Tasmania and its concurrence with shellfish fisheries, *Conservation Biology*, 18, 1579-1588, 2004.
- Edney, P. A., Kershaw, A. P., and De Deckker, P.: A late Pleistocene and Holocene vegetation and environmental record from Lake Wangoon, western plains of Victoria, Australia, *Paleogeogr. Paleoclimatol. Paleoecol.*, 80, 325-343, 1990.
- Edwards, S., McKirdy, D. M., Bone, Y., Gell, P. A., and Gostin, V. A.: Diatoms and ostracods as mid-Holocene palaeoenvironmental indicators, North Stromatolite Lake, Coorong National Park, South Australia, *Aust. J. Earth Sci.*, 53, 651-663, 2006.
- Elliot, M. B., Flenley, J. R., and Sutton, D. G.: A late Holocene pollen record of deforestation and environmental change from the Lake Tauanui catchment, Northland, New Zealand, *J. Paleolimn.*, 19, 23-32, 1998.
- Ellison, J.: Holocene palynology and sea-level change in two estuaries in Southern Irian Jaya, *Paleogeogr. Paleoclimatol. Paleoecol.*, 220, 291-309, 2005.
- Eriksson, M. G., Olley, J. M., Kilham, D. R., Pietsch, T., and Wasson, R. J.: Aggradation and incision since the very late Pleistocene in the Naas River, south-eastern Australia, *Geomorphology*, 81, 66-88, 2006.
- Field, J. H., Dodson, J. R., and Prosser, I. P.: A Late Pleistocene vegetation history from the Australian semi-arid zone, *Quat. Sci. Rev.*, 21, 1023-1037, 2002.
- Fitzgerald, F.: The impact of European settlement on two lagoons in New South Wales, Australia, Masters thesis, University of Wollongong, Wollongong, 1998.
- Fitzsimmons, K. E., Rhodes, E. J., Magee, J. W., and Barrows, T. T.: The timing of linear dune activity in the Strzelecki and Tirari Deserts, Australia, *Quat. Sci. Rev.*, 26, 2598-2616, 2007.
- Fitzsimmons, K. E., and Barrows, T. T.: Holocene hydrologic variability in temperate southeastern Australia: An example from Lake George, New South Wales, *Holocene*, 20, 585-597, 2010.
- Fletcher, M. S., Wolfe, B. B., Whitlock, C., Pompeani, D. P., Heijnis, H., Haberle, S. G., Gadd, P. S., and Bowman, D.: The legacy of mid-Holocene fire on a Tasmanian montane landscape, *J. Biogeogr.*, 41, 476-488, 2014.

- Flood, P.: A review of Holocene sea level data, southeastern Queensland, Focus on Stradbroke Island. Brisbane, Queensland, Australia: Boolarong, 132-135, 1984.
- Fluin, J., Gell, P., Haynes, D., Tibby, J., and Hancock, G.: Palaeolimnological evidence for the independent evolution of neighbouring terminal lakes, the Murray Darling Basin, Australia, *Hydrobiologia*, 591, 117-134, 2007.
- Fluin, J., and Gell, P. A.: Sediment derived scenarios of wetland status and change, the lower Murray River, SA, Final report to the South Australian Murray-Darling Basin Natural Resources Management Board, 2008.
- Fryirs, K., and Brierley, G.: The character and age structure of valley fills in upper Wolumla creek catchment, south coast, New South Wales, Australia, *Earth Surf. Process. Landf.*, 23, 271-287, 1998.
- Gell, P., Wallbrink, P., Tassicker, G., and Illman, M.: Secrets in the sediments: a history of sediment and pollution loads in the Lower Torrens River, S.A., in: *Second Australian Stream Management Conference: the Challenge of Rehabilitating Australia's Streams*, edited by: Rutherford, I., and Bartley, R., CRC Catchment Hydrology, Melbourne, 287-292, 1999.
- Gell, P., Tibby, J., Fluin, J., Leahy, P., Reid, M., Adamson, K., Bulpin, S., MacGregor, A., Wallbrink, P., Hancock, G., and Walsh, B.: Accessing limnological change and variability using fossil diatom assemblages, south-east Australia, *River Res. Appl.*, 21, 257-269, 2005.
- Gell, P., and Little, F.: Long term water quality changes in Murrumbidgee floodplain wetlands revealed by fossil diatom assemblages, *Murrumbidgee Wetland Forum*, Leeton, NSW, 22 Nov 2006, 2006.
- Gell, P., Tibby, J., Little, F., Baldwin, D., and Hancock, G.: The impact of regulation and salinisation on floodplain lakes: the lower River Murray, Australia, *Hydrobiologia*, 591, 135-146, 2007.
- Gell, P., Fluin, J., Tibby, J., Hancock, G., Harrison, J., Zawadzki, A., Haynes, D., Khanum, S., Little, F., and Walsh, B.: Anthropogenic acceleration of sediment accretion in lowland floodplain wetlands, Murray-Darling Basin, Australia, *Geomorphology*, 108, 122-126, 2009.
- Gell, P. A., Stuart, I.-M., and Smith, J. D.: The response of vegetation to changing fire regimes and human activity in East Gippsland, Victoria, Australia, *The Holocene*, 3, 150-160, 1993.
- Gell, P. A., Barker, P. A., De Deckker, P., Last, W. M., and Jelicic, L.: The Holocene history of West Basin Lake, Victoria, Australia; chemical changes based on fossil biota and sediment mineralogy, *J. Paleolimn.*, 12, 235-258, 1994.
- Genever, M., Grindrod, J., and Barker, B.: Holocene palynology of Whitehaven Swamp, Whitsunday Island, Queensland, and implications for the regional archaeological record, *Paleogeogr. Paleoclimatol. Paleoecol.*, 201, 141-156, 2003.
- Gerritse, R. G., Wallbrink, P. J., and Murray, A. S.: Accumulation of phosphorus and heavy metals in the Swan-Canning Estuary, Western Australia, *Estuarine Coastal and Shelf Science*, 47, 165-179, 1998.
- Gillieson, D., Smith, D. I., Greenaway, M., and Ellaway, M.: Flood history of the Limestone Ranges in the Kimberley region, Western Australia, *Appl. Geogr.*, 11, 105-123, 1991.
- Gliganic, L. A., Cohen, T. J., May, J.-H., Jansen, J. D., Nanson, G. C., Dosseto, A., Larsen, J. R., and Aubert, M.: Late-Holocene climatic variability indicated by three natural archives in arid southern Australia, *The Holocene*, 24, 104-117, 2014.

- Gomez, B., Carter, L., Orpin, A. R., Cobb, K. M., Page, M. J., Trustrum, N. A., and Palmer, A. S.: ENSO/SAM interactions during the middle and late Holocene, *Holocene*, 22, 23-30, 2012.
- Goodfield, M. L.: A Holocene pollen analytical study of Lake Eacham, Atherton Tableland, north-east Queensland, BSc Honours thesis, Department of Geography, Monash University, Melbourne, 1983.
- Goodwin, I. D., Stables, M. A., and Olley, J. M.: Wave climate, sand budget and shoreline alignment evolution of the Iluka-Woody Bay sand barrier, northern New South Wales, Australia, since 3000 yr BP, *Mar. Geol.*, 226, 127-144, 2006.
- Gouramanis, C., Wilkins, D., and De Deckker, P.: 6000 years of environmental changes recorded in Blue Lake, South Australia, based on ostracod ecology and valve chemistry, *Paleogeogr. Paleoclimatol. Paleoecol.*, 297, 223-237, 2010.
- Gouramanis, C., Dodson, J., Wilkins, D., De Deckker, P., and Chase, B. M.: Holocene palaeoclimate and sea level fluctuation recorded from the coastal Barker Swamp, Rottnest Island, south-western Western Australia, *Quat. Sci. Rev.*, 54, 40-57, 2012.
- Grant, P. J.: Major periods of erosion and alluvial sedimentation in New Zealand during the Late Holocene, *J. R. Soc. N.Z.*, 15, 67-121, 1985.
- Green, J. D., and Lowe, D. J.: Stratigraphy and development of c.17000 year old Lake Maratoto, North Island, New Zealand, with some inferences about postglacial climatic change, *New Zealand Journal of Geology and Geophysics*, 28, 675-699, 1985.
- Griffiths, M. L., Drysdale, R. N., Gagan, M. K., Zhao, J. X., Ayliffe, L. K., Hellstrom, J. C., Hantoro, W. S., Frisia, S., Feng, Y. X., Cartwright, I., Pierre, E. S., Fischer, M. J., and Suwargadi, B. W.: Increasing Australian-Indonesian monsoon rainfall linked to early Holocene sea-level rise, *Nat. Geosci.*, 2, 636-639, 2009.
- Grindrod, J.: Frozen sediments from a tropical lake: a palaeoecological study of Lake Eacham, north-east Queensland, BSc Honours thesis, Department of Geography, Monash University, Melbourne, 1979.
- Haberle, S.: Palaeoenvironmental changes in the eastern highlands of Papua New Guinea, *Archaeology in Oceania*, 31, 1-11, 1996a.
- Haberle, S.: Explanations for palaeoecological changes on the northern plains of Guadalcanal, Solomon Islands: The last 3200 years, *Holocene*, 6, 333-338, 1996b.
- Haberle, S.: Was the early Holocene characterised by 'El Niño-like' or 'La Niña-like' conditions? Evidence from terrestrial archives in the western Pacific Warm Pool region., *Quat. Int.*, 167-168 (Supplement XVII INQUA Congress), 2007.
- Haberle, S. G., Hope, G. S., and Defretes, Y.: Environmental change in the Baliem Valley, montane Irian Jaya, Republic of Indonesia, *J. Biogeogr.*, 18, 25-40, 1991.
- Haberle, S. G.: Late Quaternary vegetation change in the Tari Basin, Papua New Guinea, *Palaeogeography, Palaeoclimatology, Palaeoecology*, 137, 1-24, 1998.
- Haberle, S. G., and Ledru, M. P.: Correlations among charcoal records of fires from the past 16,000 years in Indonesia, Papua New Guinea, and Central and South America, *Quat. Res.*, 55, 97-104, 2001.
- Haberle, S. G.: A 23,000-yr pollen record from Lake Euramoo, Wet Tropics of NE Queensland, Australia, *Quat. Res.*, 64, 343-356, 2005.

- Haberle, S. G., Stevenson, J., Black, M. P., Mooney, S. D., Sniderman, J. M. K., Willis, K. J., and Bennett, K. D.: Fire in the tropics: a paleoclimatic assessment of charcoal records from the Western Pacific Warm Pool region, In Prog. Abstracts of the AGU Chapman, 2005.
- Haenfling, C., Newnham, R., Rees, A., Jara, I., Homes, A., and Clarkson, B.: Holocene history of a raised bog, northern New Zealand, based on plant cuticles, *The Holocene*, 2016.
- Haig, J., Nott, J., and Reichart, G.-J.: Australian tropical cyclone activity lower than at any time over the past 550-1,500 years, *Nature*, 505, 667-671, 2014.
- Harle, K. J., Kershaw, A. P., Macphail, M. K., and Neyland, M. G.: Paleocological analysis of an isolates stand of *Nothofagus Cunninghamii* (Hook) Oerst. in eastern Tasmania, *Aust. J. Ecol.*, 18, 161-170, 1993.
- Harle, K. J.: Late Quaternary vegetation and climate change in southeastern Australia: palynological evidence from marine core E55-6, *Paleogeogr. Paleoclimatol. Paleocol.*, 131, 465-483, 1997.
- Harle, K. J., Hodgson, D. A., and Tyler, P. A.: Palynological evidence for Holocene palaeoenvironments from the lower Gordon River Valley, in the World Heritage Area of southwest Tasmania, *Holocene*, 9, 149-162, 1999.
- Harle, K. J., Britton, K., Heijnis, H., Zawadzki, A., and Jenkinson, A. V.: Mud, mines and rainforest: a short history of human impact in western Tasmania, using pollen, trace metals and lead-210, *Aust. J. Bot.*, 50, 481-497, 2002a.
- Harle, K. J., Heijnis, H., Chisari, R., Kershaw, A. P., Zoppi, U., and Jacobsen, G.: A chronology for the long pollen record from Lake Wangoom, western Victoria (Australia) as derived from uranium/thorium disequilibrium dating, *J. Quat. Sci.*, 17, 707-720, 2002b.
- Harper, M. A., Howorth, R., and McLeod, M.: Late Holocene diatoms in Lake Poukawa - Effects of airfall tephra and changes in depth, *New Zealand Journal of Marine and Freshwater Research*, 20, 107-118, 1986.
- Haworth, R. J., Gale, S. J., Short, S. A., and Heijnis, H.: Land use and lake sedimentation on the New England tablelands of New South Wales, Australia, *Aust. Geogr.*, 30, 51-73, 1999.
- Haynes, D., Gell, P., Tibby, J., Hancock, G., and Goonan, P.: Against the tide: the freshening of naturally saline coastal lakes, southeastern South Australia, *Hydrobiologia*, 591, 165-183, 2007.
- Head, L., and Stuart, I. M. F.: Change in the Aire - Palaeoecology and prehistory in the Aire Basin, Southwestern Victoria, *Monash Publications in Geography*, 24, 1-97, 1980.
- Head, L.: Further discussion of *Phyllocladus* and its pollen in Victoria during the Holocene, *Aust. J. Ecol.*, 10, 73-76, 1985.
- Head, L.: Holocene vegetation, fire and environmental history of the Discovery Bay region, south-western Victoria, *Aust. J. Ecol.*, 13, 21-49, 1988.
- Hembrow, S. C., Taffs, K. H., Atahan, P., Parr, J., Zawadzki, A., and Heijnis, H.: Diatom community response to climate variability over the past 37,000 years in the sub-tropics of the Southern Hemisphere, *Sci. Total Environ.*, 468, 774-784, 2014.
- Heyng, A. M., Mayr, C., Lucke, A., Striewski, B., Wastegard, S., and Wissel, H.: Environmental changes in northern New Zealand since the Middle Holocene inferred from stable isotope records ( $\delta N-15$ ,  $\delta C-13$ ) of Lake Pupuke, *J. Paleolimn.*, 48, 351-366, 2012.

- Heyng, A. M., Mayr, C., Lucke, A., Moschen, R., Wissel, H., Striewski, B., and Bauersachs, T.: Middle and Late Holocene paleotemperatures reconstructed from oxygen isotopes and GDGTs of sediments from Lake Pupuke, New Zealand, *Quat. Int.*, 374, 3-14, 2015.
- Hom, D.: The fire history of Broughton Island, BSc Honours thesis, School of Biological, Earth, and Environmental Sciences, UNSW, Kensington, 2005.
- Hooley, A. D., Southern, W., and Kershaw, A. P.: Holocene vegetation and environments of Sperm Whale Head, Victoria, Australia, *J. Biogeogr.*, 7, 349-362, 1980.
- Hope, G., and Tulip, J.: A long vegetation history from lowland Irian-Jaya, Indonesia, *Paleogeogr. Paleoclimatol. Paleoecol.*, 109, 385-398, 1994.
- Hope, G.: Early fire and forest change in the Baliem Valley, Irian Jaya, Indonesia, *J. Biogeogr.*, 25, 453-461, 1998.
- Hope, G., and Pask, J.: Tropical vegetational change in the late Pleistocene of New Caledonia, *Paleogeogr. Paleoclimatol. Paleoecol.*, 142, 1-21, 1998.
- Hope, G.: Vegetation and fire response to late Holocene human occupation in island and mainland north west Tasmania, *Quat. Int.*, 59, 47-60, 1999.
- Hope, G.: Environmental change in the Late Pleistocene and later Holocene at Wanda site, Soroako, South Sulawesi, Indonesia, *Paleogeogr. Paleoclimatol. Paleoecol.*, 171, 129-145, 2001.
- Hope, G.: Rock Arch and Gallaher's Swamps: core samples collected in the Avon/Robertson Catchments, 17 March 2005, Unpublished Report to Sydney Water, 2005a.
- Hope, G., Macphail, M., and Keaney, B.: Snowy Flat and Ginini Bogs, Brindabella Range, Australian Capital Territory, Unpublished Report to Environment ACT and Ecowise Services, 2005.
- Hope, G., Nanson, R., and Flett, I.: The peat-forming mires of the Australian Capitol Territory, Territory and Municipal Services, Canberra, 2009a.
- Hope, G., Stevenson, J., and Southern, W.: Vegetation histories from the Fijian Islands: alternative records of human impact, *The Early Prehistory of Fiji (Terra Australis 31)* ed by G. Clark and A. Anderson. ANU ePress, Canberra, Australia, 63-86, 2009b.
- Hope, G., Stevenson, J., and Southern, W.: Vegetation histories from the Fijian Islands: Alternative records of human impact, *Early Prehistory of Fiji*, 31, 63-86, 2009c.
- Hope, G. S.: Vegetation history from 6000BP to Present of Wilson's Promontory, Victoria, Australia, *New Phytol.*, 73, 1035-1053, 1974.
- Hope, G. S.: Late Pleistocene and Holocene vegetational history of Hunter Island, northwestern Tasmania, *Aust. J. Bot.*, 26, 493-514, 1978.
- Hope, G. S., Hughes, P. J., and Russell-Smith, J.: Geomorphological fieldwork and the evolution of the landscape of Kakadu National Park, in: *Archaeological Research in Kakadu National Park*, edited by: Jones, R., Australian National Parks and Wildlife Service, Canberra, 1985.

- Hope, G. S.: Quaternary change and historical biogeography of Pacific Island, in: *The Origin and Evolution of Pacific Island Biotas, New Guinea to Eastern Polynesia: Patterns and Process*, edited by: Keast, A., and Miller, S. E., SPB Publishers, Amsterdam, 165-190, 1996a.
- Hope, G. S.: A reconnaissance survey of potential sites for pollen analysis on Aneityum Island, southern Vanuatu, Unpublished report to Vanuatu Cultural Centre, Vanuatu, 1996b.
- Hope, G. S., O'Dea, D., and Southern, W.: Holocene vegetation histories in the Western Pacific - alternative records of human impact, in: *Colonisation of the Pacific 3000-2000 BP*, edited by: Lilley, I., and Galipaud, J. C., ORSTOM, Port Villa, 1999.
- Hope, G. S.: Tom Gregory Bog, and infilled meander of the upper Cotter River, Australian Capital Territory, Unpublished Report to Ecowise ACT and Environment ACT, 2005b.
- Hope, G. S., and Aplin, K.: Environmental Change in the Aru Islands, in: *The Archaeology of the Aru Islands Eastern Indonesia*, edited by: O'Connor, S., Spriggs, M., and Veth, P., Pandanus Press, Canberra, 25-40, 2005.
- Hope, G. S., Coddington, J., and O'Dea, D.: Estuarine development and human occupation at Bobundara Swamp, Tilba Tilba, New South Wales, Australia, in: *Wetland Archaeology and Environments: Regional Issues, Global Perspectives*, edited by: Lillie, M., and Ellis, S., Oxbow, Oxford, 258 - 274, 2006a.
- Hope, G. S., Stevenson, J., and Haberle, S.: Palaeoecology of Blundells Fltat, ACT, Unpublished Report to Ecowise Services and ACT Forests, 2006b.
- Hope, G. S.: Palaeoecology and Palaeoenvironments of Papua, in: *The Ecology of Papua, Part 1*, edited by: Marshall, A. J., and Beehler, B. M., Periplus Editions (HK) Ltd., Singapore, 2007a.
- Hope, G. S.: The history of human impact on New Guinea, in: *The Ecology of Papua, Part 2*, edited by: Marshall, A. J., and Beehler, B. M., Periplus Editions (HK) Ltd., Singapore, 1087-1097, 2007b.
- Hopf, F. V. L., Colhoun, E. A., and Barton, C. E.: Late-glacial and Holocene record of vegetation and climate from Cynthia Bay, Lake St Clair, Tasmania, *J. Quat. Sci.*, 15, 725-732, 2000.
- Horrocks, M., and Ogden, J.: The effects of the Taupo Tephra eruption of c. 1718 BP on the vegetation of Mt Hauhungatahi, central North Island, New Zealand, *J. Biogeogr.*, 25, 649-660, 10.1046/j.1365-2699.1998.2540649.x, 1998.
- Horrocks, M., Ogden, J., Nichol, S., Alloway, B., and Sutton, D.: The palynology and sedimentology of a coastal swamp at Awana, Great Barrier Island, New Zealand, from c. 7000 yr BP to present, *J. R. Soc. N.Z.*, 29, 213-233, 1999.
- Horrocks, M., Deng, Y., Ogden, J., and Sutton, D. G.: A reconstruction of the history of a Holocene sand dune on Great Barrier Island, northern New Zealand, using pollen and phytolith analyses, *J. Biogeogr.*, 27, 1269-1277, 2000a.
- Horrocks, M., Ogden, J., Nichol, S., Alloway, B., and Sutton, D.: Palynology, sedimentology and environmental significance of Holocene swamps at northern Kaitoke, Great Barrier Island, New Zealand, *J. R. Soc. N.Z.*, 30, 27-47, 2000b.
- Horrocks, M., Ogden, J., Nichol, S., Alloway, B., and Sutton, D.: A Late Quaternary palynological and sedimentological record from two coastal swamps at southern Kaitoke, Great Barrier Island, New Zealand, *J. R. Soc. N.Z.*, 30, 49-68, 2000c.

- Horrocks, M., Deng, Y., Ogden, J., Alloway, B. V., Nichol, S. L., and Sutton, D. G.: High spatial resolution of pollen and charcoal in relation to the c600-year-BP Kaharoa Tephra: Implications for Polynesian settlement of Great Barrier Island, Northern New Zealand, *J. Archaeol. Sci.*, 28, 153-168, 2001.
- Horrocks, M., Deng, Y., Nichol, S. L., Shane, P. A., and Ogden, J.: A palaeoenvironmental record of natural and human change from the Auckland Isthmus, New Zealand, during the late Holocene, *J. R. Soc. N.Z.*, 32, 337-353, 2002a.
- Horrocks, M., Nichol, S. L., and Shane, P. A.: A 6000-year palaeoenvironmental record from Harataonga, Great Barrier Island, New Zealand, *New Zealand Journal of Botany*, 40, 123-135, 2002b.
- Horrocks, M., Augustinus, P., Deng, Y. B., Shane, P., and Andersson, S.: Holocene vegetation, environment, and tephra recorded from Lake Pupuke, Auckland, New Zealand, *New Zealand Journal of Geology and Geophysics*, 48, 85-94, 2005.
- Horrocks, M., Nichol, S. L., D'Costa, D. M., Augustinus, P., Jacobi, T., Shane, P. A., and Middleton, A.: A late quaternary record of natural change and human impact from Rangihoua Bay, Bay of Islands, northern New Zealand, *J. Coast. Res.*, 23, 592-604, 2007.
- Hughes, A. O., Olley, J. M., Croke, J. C., and McKergow, L. A.: Sediment source changes over the last 250 years in a dry-tropical catchment, central Queensland, Australia, *Geomorphology*, 104, 262-275, 2009.
- Iles, M. T.: Catchment impacts of mining in the Adelaide River region, Northern Territory, Australia, Honours thesis, Charles Darwin University, 1998.
- Illman, M.: A reconstruction of the Lake Holocene Palaeosalinity and palaeoecology of Lashmar's Lagoon, Kangaroo Island, South Australia, Honours Thesis, Department of Geography, University of Adelaide, Adelaide, 1997.
- Itzstein-Davey, F.: An early Holocene palaeoenvironmental record from Two Mile Lake, South-Western Australia, *Aust. Geogr.*, 35, 317-332, 2004.
- Jahnert, R., de Paula, O., Collins, L., Strobach, E., and Pevzner, R.: Evolution of a coquina barrier in Shark Bay, Australia by GPR imaging: Architecture of a Holocene reservoir analog, *Sediment. Geol.*, 281, 59-74, 2012.
- Jara, I. A., Newnham, R. M., Vandergoes, M. J., Foster, C. R., Lowe, D. J., Wilmshurst, J. M., Moreno, P. I., Renwick, J. A., and Homes, A. M.: Pollen-climate reconstruction from northern South Island, New Zealand ( 41 degrees S), reveals varying high- and low-latitude teleconnections over the last 16 000 years, *J. Quat. Sci.*, 30, 817-829, 2015.
- Jenkins, M. A.: A Holocene vegetation record from an interdunal swamp, Mornington Peninsula, Victoria, Master of Environmental Science Thesis, Department of Geography and Environmental Science, Monash University, Melbourne, 1992.
- Johnson, A. G.: Fine resolution palaeoecology confirms anthropogenic impact during the Late Holocene in the lower Hawkesbury Valley, NSW, *Aust. Geogr.*, 31, 209-235, 2000.
- Johnston, P., and Brierley, G.: Late Quaternary river evolution of floodplain pockets along Mulloon Creek, New South Wales, Australia, *The Holocene*, 16, 661-674, 2006.
- Jones, B. G., Killian, H. E., Chenhall, B. E., and Sloss, C. R.: Anthropogenic effects in a coastal lagoon: Geochemical characterization of Burrill Lake, NSW, Australia, *J. Coast. Res.*, 19, 621-632, 2003.

- Jones, R. L.: Late Holocene vegetational changes on the Illawarra coastal plain, New South Wales, Australia, *Rev. Palaeobot. Palynology*, 65, 37-46, 1990.
- Kemp, J., Radke, L. C., Olley, J., Juggins, S., and De Deckker, P.: Holocene lake salinity changes in the Wimmera, southeastern Australia, provide evidence for millennial-scale climate variability, *Quat. Res.*, 77, 65-76, 2012.
- Kemp, J., and Hope, G.: Vegetation and environments since the Last Glacial Maximum in the Southern Tablelands, New South Wales, *J. Quat. Sci.*, 29, 778-788, 2014.
- Kenyon, C. E.: A late Pleistocene and Holocene palaeoecological record from Boulder Flat, East Gippsland, BSc Honours thesis, Department of Botany and Zoology, Monash University, Melbourne, 1989.
- Kershaw, A. P.: Pollen diagram from Quincan Crater, northeast Queensland, Australia, *New Phytol.*, 70, 669-681, 1971.
- Kershaw, A. P.: Stratigraphy and pollen analysis of Bromfield Swamp, northeastern Queensland, Australia, *New Phytol.*, 75, 173-191, 1975.
- Kershaw, A. P., Dunkerly, D. L., Quinn, M., and Southern, W.: A scientific and environmental investigation of Jackson's Bog, Southern Tablelands of N.S.W., Unpublished Report to National Parks and Wildlife Service of N.S.W., 1979.
- Kershaw, A. P.: A Holocene pollen diagram from Lynch's Crater, northeastern Queensland, Australia, *New Phytol.*, 94, 669-682, 1983.
- Kershaw, A. P., and Green, J. E.: Tawonga Bog revisited: the history of a low altitude peat deposit, *Victorian Naturalist*, 100, 256-259, 1983.
- Kershaw, A. P., Bretherton, S. C., and van der Kaars, S.: A complete pollen record of the last 230 ka from Lynch's Crater, north-eastern Australia, *Paleogeogr. Paleoclimatol. Paleoecol.*, 251, 23-45, 2007a.
- Kershaw, A. P., McKenzie, G. M., Porch, N., Roberts, R. G., Brown, J., Heijnis, H., Orr, M. L., Jacobsen, G., and Newallt, P. R.: A high-resolution record of vegetation and climate through the last glacial cycle from Caledonia Fen, southeastern highlands of Australia, *J. Quat. Sci.*, 22, 481-500, 2007b.
- Kodala, P. G., and Dodson, J. R.: A late Holocene vegetation and fire record from Kuring-gai Chase National Park, NSW, *Proceedings of The Linnean Society*, 110, 317-326, 1988.
- Kodala, P. G.: The vegetation of the Robertson Plateau, New South Wales: historical and contemporary issues, PhD thesis, UNSW, Kensington, 1996.
- Konecky, B. L., Russell, J. M., Rodysill, J. R., Vuille, M., Bijaksana, S., and Huang, Y. S.: Intensification of southwestern Indonesian rainfall over the past millennium, *Geophys. Res. Lett.*, 40, 386-391, 2013.
- Konfirst, M. A., Sjunneskog, C., Scherer, R. P., and Doran, P. T.: A diatom record of environmental change in Fryxell Basin, Taylor Valley, Antarctica, late Pleistocene to present, *J. Paleolimn.*, 46, 257-272, 2011.
- Ladd, P. G.: Vegetation history at Lake Curlip in lowland eastern Victoria, from 5200 B.P to present, *Aust. J. Bot.*, 26, 393-414, 1978.
- Ladd, P. G.: Short pollen diagram from rainforest in highland eastern Victoria, *Aust. J. Ecol.*, 4, 229-237, 1979a.



- Ladd, P. G.: Past and present vegetation on the Delegate River in the highlands of eastern Victoria. 2. Vegetation and climatic history from 12,000BP to Present, *Aust. J. Bot.*, 27, 185-202, 10.1071/bt9790185, 1979b.
- Ladd, P. G.: Holocene vegetation record from the eastern side of Wilson's Promontory, Victoria, *New Phytol.*, 82, 265-276, 1979c.
- Ladd, P. G., Orchiston, D. W., and Joyce, E. B.: Holocene vegetation history of Flinder's Island, *New Phytol.*, 122, 757-767, 1992.
- Lane, C.: The use of diatoms as biological indicators of water quality in two coastal dune lakes, northern NSW, Honours thesis, Southern Cross University, Lismore, 1999.
- Langton, S. J., Linsley, B. K., Robinson, R. S., Rosenthal, Y., Oppo, D. W., Eglinton, T. I., Howe, S. S., Djajadihardja, Y. S., and Syamsudin, F.: 3500 yr record of centennial-scale climate variability from the Western Pacific Warm Pool, *Geology*, 36, 795-798, 2008.
- Last, W. M., and De Deckker, P.: Modern and Holocene carbonate sedimentology of two saline volcanic maar lakes, southern Australia, *Sedimentology*, 37, 967-981, 1990.
- Latham, M., Hughes, P. J., Hope, G., and Brookfield, M.: Sedimentation in the swamps of Lakeba and its implications for erosion and human occupation of the island, in: *The Eastern Islands of Fiji - a study of the natural environment, its use, and man's influence on its evolution*, edited by: Latham, M., and Brookfield, H. C., *Travaux et Documents de l'ORSTOM*, Paris, 103-120, 1983.
- Leahy, P. J., Tibby, J., Kershaw, A. P., Heijnis, H., and Kershaw, J. S.: The impact of European settlement on Bolin Billabong, a Yarra River floodplain lake, Melbourne, Australia, *River Res. Appl.*, 21, 131-149, 2005.
- Lees, B. G.: The development of a chenier sequence on the Victoria Delta, Joseph Bonaparte Gulf, northern Australia, *Mar. Geol.*, 103, 215-224, 1992.
- Lees, B. G., Lu, Y. C., and Price, D. M.: Thermoluminescence dating of dunes at Cape St. Lambert, East Kimberleys, Northwestern Australia, *Mar. Geol.*, 106, 131-139, 1992.
- Lees, B. G., Stanner, J., Price, D. M., and Yanchou, L.: Thermoluminescence dating of dune podzols at Cape Arnhem, northern Australia, *Mar. Geol.*, 129, 63-75, 1995.
- Leyden, E., Tibby, J., Garcia, A., and Zawadzki, A.: Unexpected post-settlement freshening and increase in charophytes in Bombah Broadwater (Myall Lakes, New South Wales, Australia), *J. Paleolimn.*, 46, 637-647, 2011.
- Linsley, B. K., Rosenthal, Y., and Oppo, D. W.: Holocene evolution of the Indonesian throughflow and the western Pacific warm pool, *Nat. Geosci.*, 3, 578-583, 2010.
- Lloyd, P. J., and Kershaw, A. P.: Late quaternary vegetation and early Holocene quantitative climate estimates from Morwell Swamp, Latrobe Valley, south-eastern Australia, *Aust. J. Bot.*, 45, 549-563, 1997.
- Logan, B.: Palaeoenvironmental reconstruction of a wetland in west Byron Bay and the establishment of pre-European conditions, Honours thesis, Southern Cross University, Lismore, 2003.

- Logan, B., Taffs, K. H., Eyre, B. D., and Zawadski, A.: Assessing changes in nutrient status in the Richmond River estuary, Australia, using paleolimnological methods, *J. Paleolimn.*, 46, 597-611, 2011.
- Logan, B., and Taffs, K. H.: Relationship between diatoms and water quality (TN, TP) in sub-tropical east Australian estuaries, *J. Paleolimn.*, 50, 123-137, 2013.
- Longmore, M. E., O'Leary, B. M., and Rose, C. W.: Caesium-137 profiles in the sediments of a partial-meromictic lake on Great Sandy Island (Fraser Island), Queensland, Australia, *Hydrobiologia*, 103, 21-27, 1983.
- Longmore, M. E.: Quaternary palynological records from perched lake sediments, Fraser Island, Queensland, Australia: Rainforest, forest history and climatic control, *Aust. J. Bot.*, 45, 507-526, 1997.
- Lorrey, A., Williams, P., Salinger, J., Martin, T., Palmer, J., Fowler, A., Zhao, J. X., and Neil, H.: Speleothem stable isotope records interpreted within a multi-proxy framework and implications for New Zealand palaeoclimate reconstruction, *Quat. Int.*, 187, 52-75, 2008.
- Luly, J. G., Bowler, J. M., and Head, M. J.: A radiocarbon chronology from the playa Lake Tyrrell, northwestern Victoria, Australia, *Paleogeogr. Paleoclimatol. Paleocol.*, 54, 171-180, 1986.
- Luly, J. G.: Holocene Palaeoenvironments Near Lake Tyrrell, Semi-Arid Northwestern Victoria, Australia, *J. Biogeogr.*, 20, 587-598, 1993.
- Luly, J. G.: On the equivocal fate of Late Pleistocene *Callitris* Vent. (Cupressaceae) woodlands in arid South Australia, *Quat. Int.*, 83-5, 155-168, 2001.
- MacGregor, A. J., Gell, P. A., Wallbrink, P. J., and Hancock, G.: Natural and post-European settlement variability in water quality of the lower Snowy River floodplain, eastern Victoria, Australia, *River Res. Appl.*, 21, 201-213, 2005.
- Macken, A. C., Staff, R. A., and Reed, E. H.: Bayesian age-depth modelling of Late Quaternary deposits from Wet and Blanche Caves, Naracoorte, South Australia: A framework for comparative faunal analyses, *Quat. Geochronol.*, 17, 26-43, 2013.
- Macphail, M.: Pollen analysis of a buried organic deposit on the backshore of Fingal Bay, Port Stevens, New South Wales, *Proceedings of The Linnean Society of New South Wales*, 98, 222-233, 1973.
- Macphail, M.: Late Pleistocene environments in Tasmania, *Search*, 6, 295-300, 1975.
- Macphail, M., and Neale, J.: Kingston Swamp, Norfolk Swamp, Norfolk Island: a unique natural archive of SW Pacific prehistory, Interim Report prepared for the Australian Heritage Commission, 1996.
- Macphail, M. K.: Vegetation and climates in southern Tasmania since the last glaciation, *Quat. Res.*, 11, 306-341, 1979.
- Macphail, M. K., and Hope, G. S.: Palynological report, Core site KCA, Kingston Swamp, Norfolk Island, Unpublished Report to Australian Heritage Commission, 1997.
- Macphail, M. K., Pemberton, M., and Jacobson, G.: Peat mounds of southwest Tasmania: possible origins, *Aust. J. Earth Sci.*, 46, 667-677, 1999.
- MacPhail, M. K., Hope, G. S., and Anderson, A.: Polynesian plant introductions in the southwest Pacific: Initial pollen evidence from Norfolk Island, *Records of the Australian Museum, Supplement 27*, 123-134, 2001.

- Macreadie, P. I., Rolph, T. C., Schröder-Adams, C., Boyd, R., and Skilbeck, C. G.: Holocene record of Tuggerah Lake estuary development on the Australian east coast: Sedimentary responses to sea-level fluctuations and climate variability, *GeoResJ*, 5, 57-73, 2015.
- Martin, A. R. H.: Kurnell Fen - An eastern Australian coastal wetland, its Holocene vegetation, relevant to sea level change and aboriginal land use, *Rev. Palaeobot. Palynology*, 80, 311-332, 1994.
- Martin, A. R. H.: Pollen analysis of Digger's Creek Bog, Kosciuszko National Park: Vegetation history and tree-line change, *Aust. J. Bot.*, 47, 725-744, 1999.
- Martin, H. A.: Palynology and historical ecology of some cave excavations in Australian Nullarbor, *Aust. J. Bot.*, 21, 283-316, 1973.
- Martin, L., Mooney, S., and Goff, J.: Coastal wetlands reveal a non-synchronous island response to sea-level change and a palaeostorm record from 5.5 kyr to present, *Holocene*, 24, 569-580, 2014.
- Marx, S. K., McGowan, H. A., and Kamber, B. S.: Long-range dust transport from eastern Australia: A proxy for Holocene aridity and ENSO-type climate variability, *Earth Planet. Sci. Lett.*, 282, 167-177, 10.1016/j.epsl.2009.03.013, 2009.
- Marx, S. K., Kamber, B. S., McGowan, H. A., and Denholm, J.: Holocene dust deposition rates in Australia's Murray-Darling Basin record the interplay between aridity and the position of the mid-latitude westerlies, *Quat. Sci. Rev.*, 30, 3290-3305, 2011.
- Mason, S.: Late Holocene fire activity at Mellong Swamp, Wollemi National Park, NSW, BSc Honours thesis, School of Biological, Earth, and Environmental Sciences, UNSW, Kensington, 2004.
- Maupin, C. R., Partin, J. W., Shen, C. C., Quinn, T. M., Lin, K., Taylor, F. W., Banner, J. L., Thirumalai, K., and Sinclair, D. J.: Persistent decadal-scale rainfall variability in the tropical South Pacific Convergence Zone through the past six centuries, *Clim. Past.*, 10, 1319-1332, 2014.
- McCarthy, L., Head, L., and Quade, J.: Holocene palaeoecology of the northern Flinders ranges, south Australia, based on stick-nest rat (*Leporillus* spp) middens: A preliminary overview, *Paleogeogr. Paleoclimatol. Paleoecol.*, 123, 205-218, 1996.
- McCarthy, L., and Head, L.: Holocene variability in semi-arid vegetation: new evidence from *Leporillus* middens from the Flinders Ranges, South Australia, *Holocene*, 11, 681-689, 2001.
- McGlone, M. S., and Topping, W. W.: Aranuiian (postglacial) pollen diagrams from Tongariro Region, North Island, New Zealand, *New Zealand Journal of Botany*, 15, 749-&, 1977.
- McGlone, M. S.: Holocene pollen diagrams, Lake Rotorua, North Island, New Zealand, *J. R. Soc. N.Z.*, 13, 53-65, 1983.
- McGlone, M. S., and Bathgate, J. L.: Vegetation and climate history of the Longwood Range, South Island, New Zealand, 12000 BP to the Present, *New Zealand Journal of Botany*, 21, 293-315, 1983.
- McGlone, M. S., and Topping, W. W.: Late Quaternary vegetation Tongariro Region, central North Island, New Zealand, *New Zealand Journal of Botany*, 21, 53-76, 1983.
- McGlone, M. S., Neall, V. E., and Clarkson, B. D.: The effect of recent volcanic events and climatic changes on the vegetation of Mt Egmont (Mt Taranaki), New Zealand, *New Zealand Journal of Botany*, 26, 123-144, 1988.

- McGlone, M. S., and Wilson, H. D.: Holocene vegetation and climate of Stewart Island, New Zealand, *New Zealand Journal of Botany*, 34, 369-388, 1996.
- McGlone, M. S., Moar, N. T., and Meurk, C. D.: Growth and vegetation history of alpine mires on the Old Man Range, Central Otago, New Zealand, *Arct. Alp. Res.*, 29, 32-44, 1997a.
- McGlone, M. S., Moar, N. T., Wardle, P., and Meurk, C. D.: Late-glacial and Holocene vegetation and environment of Campbell Island, far southern New Zealand, *Holocene*, 7, 1-12, 1997b.
- McGlone, M. S., and Moar, N. T.: Dryland Holocene vegetation history, Central Otago and the Mackenzie Basin, South Island, New Zealand, *New Zealand Journal of Botany*, 36, 91-111, 1998.
- McGlone, M. S., and Wilmshurst, J. M.: A Holocene record of climate, vegetation change and peat bog development, east Otago, South Island, New Zealand, *J. Quat. Sci.*, 14, 239-254, 1999.
- McGlone, M. S., Wilmshurst, J. M., and Wisser, S. K.: Lateglacial and Holocene vegetation and climatic change on Auckland Island, Subantarctic New Zealand, *Holocene*, 10, 719-728, 2000.
- McGlone, M. S.: The origin of the indigenous grasslands of southeastern South Island in relation to pre-human woody ecosystems, *N. Z. J. Ecol.*, 25, 1-15, 2001.
- McGlone, M. S.: A Holocene and latest Pleistocene pollen record from Lake Poukawa, Hawke's Bay, New Zealand, *Glob. Planet. Change*, 33, 283-299, 2002a.
- McGlone, M. S.: The late quaternary peat, vegetation and climate history of the southern oceanic islands of New Zealand, *Quat. Sci. Rev.*, 21, 683-707, 2002b.
- McGlone, M. S., Turney, C. S. M., and Wilmshurst, J. M.: Late-glacial and Holocene vegetation and climatic history of the Cass basin, central south island, New Zealand, *Quat. Res.*, 62, 267-279, 2004.
- McGlone, M. S.: Postglacial history of New Zealand wetlands and implications for their conservation, *N. Z. J. Ecol.*, 33, 1-23, 2009.
- McGlone, M. S., and Basher, L.: Holocene vegetation change at treeline, Cropp Valley, Southern Alps, New Zealand, in: *Peopled Landscapes: Archaeological and Biogeographic Approaches to Landscapes*, edited by: Haberle, S. G., and David, B., Terra Australis, Australian Natl Univ, Canberra Act, 343-358, 2012.
- McGowan, H. A., Petherick, L. M., and Kamber, B. S.: Aeolian sedimentation and climate variability during the late Quaternary in southeast Queensland, Australia, *Palaeogeography, Palaeoclimatology, Palaeoecology*, 265, 171-181, 2008.
- McGrath, R., and Boyd, W. E.: Holocene vegetation history of Bundjalung National Park and Bungawalbin creek, northeastern New South Wales, *Aust. Geogr.*, 29, 205-221, 1998.
- McKenzie, G. M.: The late Quaternary vegetation history of the south-central highlands of Victoria, Australia .1. Sites above 900 m, *Aust. J. Ecol.*, 22, 19-36, 1997.
- McKenzie, G. M., and Kershaw, A. P.: A vegetation history and quantitative estimate of Holocene climate from Chapple Vale, in the Otway region of Victoria, Australia, *Aust. J. Bot.*, 45, 565-581, 1997.

- McKenzie, G. M., and Kershaw, A. P.: The last glacial cycle from Wyelangta, the Otway region of Victoria, Australia, *Paleogeogr. Paleoclimatol. Paleoecol.*, 155, 177-193, 2000.
- McKenzie, G. M.: The late Quaternary vegetation history of the south-central highlands of Victoria, Australia. II. Sites below 900 m, *Austral Ecol.*, 27, 32-54, 2002.
- McKenzie, G. M., and Kershaw, A. P.: A Holocene pollen record from cool temperate rainforest, Aire crossing, the Otway region of Victoria, Australia, *Rev. Palaeobot. Palynology*, 132, 281-290, <http://dx.doi.org/10.1016/j.revpalbo.2004.07.006>, 2004.
- McMinn, A., Augustinus, P., and Barton, C.: Diatom analysis of late Holocene sediment cores from Macquarie Harbour, Tasmania, *Alcheringa*, 27, 135-153, 2003.
- McMinn, A., Heijnis, H., Murray, A., and Hallegraeff, G.: Diatom and dinoflagellate assemblages of the Hawkesbury River, NSW, over the last two centuries: evidence for changes in hydrology, *Alcheringa*, 28, 505-514, 2004.
- Mee, A. C., McKirdy, D. M., Williams, M. A. J., and Krull, E. S.: New radiocarbon dates from spropels in three Holocene lakes of the Coorong coastal plain, southeastern Australia, *Aust. J. Earth Sci.*, 54, 825-835, 2007.
- Metcalf, G. D.: Without a paddle: a study of the effects of landuse and urban development in the Erskine Creek catchment, Honours thesis, University of Wollongong, Wollongong, 1999.
- Mettam, P., Tibby, J., Barr, C., and Marshall, J.: Development of Eighteen Mile Swamp, North Stradbroke Island: a palaeolimnological study, *Proceedings of the Royal Society of Queensland*, 117, 119-131, 2011.
- Mills, K., Gell, P., and Kershaw, P.: The recent Victorian drought and its impact: without precedent?, Australian Government: Rural Industries, Research, and Development Corporation Project No. PRJ-005440, 2011.
- Moar, N. T., and Suggate, R. P.: Vegetation history from the Kaihinu (last) interglacial to the present, west coast, South Island, New Zealand, *Quat. Sci. Rev.*, 15, 521-547, 1996.
- Mohtadi, M., Prange, M., Oppo, D. W., De Pol-Holz, R., Merkel, U., Zhang, X., Steinke, S., and Lückge, A.: North Atlantic forcing of tropical Indian Ocean climate, *Nature*, 509, 76-80, 2014.
- Mooney, S.: A fine-resolution paleoclimatic reconstruction of the last 2000 years, from Lake Keilambete, southeastern Australia, *Holocene*, 7, 139-149, 1997.
- Mooney, S. D., Watson, J. R., and Dodson, J. R.: Late Holocene environmental change in an upper montane area of the Snowy Mountains, New South Wales, *Aust. Geogr.*, 28, 185-200, 1997.
- Mooney, S. D., Radford, K. L., and Hancock, G.: Clues to the 'burning question': Pre-European fire in the Sydney coastal region from sedimentary charcoal and palynology, *Ecological Management & Restoration*, 2, 203-212, 2001.
- Mooney, S. D., and Maltby, E. L.: Two proxy records revealing the late Holocene fire history at a site on the central coast of New South Wales, Australia, *Austral Ecol.*, 31, 682-695, 2006.
- Mooney, S. D., Webb, M., and Attenbrow, V.: A comparison of charcoal and archaeological information to address the influences on Holocene fire activity in the Sydney Basin, *Aust. Geogr.*, 38, 177-194, 2007.
- Moros, M., De Deckker, P., Jansen, E., Perner, K., and Telford, R. J.: Holocene climate variability in the Southern Ocean recorded in a deep-sea sediment core off South Australia, *Quat. Sci. Rev.*, 28, 1932-1940, 2009.

- Morris, A.: The biogeography of plant communities at Woodman Point, WA, Postgraduate Diploma of Science thesis, University of Western Australia, Perth, 1996.
- Moss, P. T., Thomas, I., and Macphail, M.: Late Holocene vegetation and environments of the Mersey Valley, Tasmania, *Aust. J. Bot.*, 55, 74-82, 2007.
- Moss, P. T., Tibby, J., Petherick, L., McGowan, H., and Barr, C.: Late Quaternary vegetation history of North Stradbroke Island, Queensland, eastern Australia, *Quat. Sci. Rev.*, 74, 257-272, 2013.
- Nanson, G. C.: Episodes of vertical accretion and catastrophic stripping - A model of disequilibrium floodplain development, *Geol. Soc. Am. Bull.*, 97, 1467-1475, 1986.
- Nanson, G. C., Callen, R. A., and Price, D. M.: Hydroclimatic interpretation of Quaternary shorelines on south Australian playas, *Paleogeogr. Paleoclimatol. Paleoecol.*, 144, 281-305, 1998.
- Napoli, M.: The contaminant chronologies of Prospect Creek and Salt Pan Creek as recorded in their sediments, Honours thesis, University of Sydney, Sydney, 1996.
- Newnham, R. M., Lowe, D. J., and Wigley, G. N. A.: Late Holocene palynology and palaeovegetation of tephra-bearing mires at Papamoa and Waihi Beach, Western Bay of Plenty, North Island, New Zealand, *J. R. Soc. N.Z.*, 25, 283-300, 1995.
- Newnham, R. M., Lowe, D. J., and Matthews, B. W.: A late-Holocene and prehistoric record of environmental change from Lake Waikaremoana, New Zealand, *Holocene*, 8, 443-454, 1998.
- Newnham, R. M., Lowe, D. J., Giles, T., and Alloway, B. V.: Vegetation and climate of Auckland, New Zealand, since ca. 32 000 cal. yr ago: support for an extended LGM, *J. Quat. Sci.*, 22, 517-534, 2007.
- Newsome, J. C., and Pickett, E. J.: Palynology and paleoclimatic implications of 2 Holocene sequences from southwestern Australia, *Paleogeogr. Paleoclimatol. Paleoecol.*, 101, 245-261, 1993.
- Newton, A., Thunell, R., and Stott, L.: Climate and hydrographic variability in the Indo-Pacific Warm Pool during the last millennium, *Geophys. Res. Lett.*, 33, L19710, 2006.
- Newton, A., Thunell, R., and Stott, L.: Changes in the Indonesian Throughflow during the past 2000 yr, *Geology*, 39, 63-66, 2011.
- Nichol, S. L., Lian, O. B., Horrocks, M., and Goff, J. R.: Holocene record of gradual, catastrophic, and human-influenced sedimentation from a backbarrier wetland, northern New Zealand, *J. Coast. Res.*, 23, 605-617, 2007.
- Nott, J., Bryant, E., and Price, D.: Early-Holocene aridity in tropical northern Australia, *Holocene*, 9, 231-236, 1999.
- Nott, J., Haig, J., Neil, H., and Gillieson, D.: Greater frequency variability of landfalling tropical cyclones at centennial compared to seasonal and decadal scales, *Earth Planet. Sci. Lett.*, 255, 367-372, 2007.
- Nott, J., Smithers, S., Walsh, K., and Rhodes, E.: Sand beach ridges record 6000 year history of extreme tropical cyclone activity in northeastern Australia, *Quat. Sci. Rev.*, 28, 1511-1520, 2009.
- Oakes, G. M.: The Jacksons Bog peat deposits, N.S.W. Geological Survey, 1981.
- Ogden, R. W.: Modern and historical variation in aquatic macrophyte cover of billabongs associated with catchment development, *Regul. Rivers-Res. Manage.*, 16, 497-512, 2000.

- Oppo, D. W., Rosenthal, Y., and Linsley, B. K.: 2,000-year-long temperature and hydrology reconstructions from the Indo-Pacific warm pool, *Nature*, 460, 1113-1116, 2009.
- Organo, R. J.: The spatial and temporal distribution of pollution in the Cox's river, NSW, Honours thesis, University of Wollongong, Wollongong, 2000.
- Packwood, A.: An environmental investigation of Lake Conjola, South Coast, NSW, Honours thesis, University of Wollongong, Wollongong, 1999.
- Page, M. J., Trustrum, N. A., Orpin, A. R., Carter, L., Gomez, B., Cochran, U. A., Mildenhall, D. C., Rogers, K. M., Brackley, H. L., Palmer, A. S., and Northcote, L.: Storm frequency and magnitude in response to Holocene climate variability, Lake Tutira, North-Eastern New Zealand, *Mar. Geol.*, 270, 30-44, 2010.
- Partin, J. W., Cobb, K. M., Adkins, J. F., Clark, B., and Fernandez, D. P.: Millennial-scale trends in west Pacific warm pool hydrology since the Last Glacial Maximum, *Nature*, 449, 452-455, 2007.
- Partin, J. W., Quinn, T. M., Shen, C.-C., Emile-Geay, J., Taylor, F. W., Maupin, C. R., Lin, K., Jackson, C. S., Banner, J. L., Sinclair, D. J., and Huh, C.-A.: Multidecadal rainfall variability in South Pacific Convergence Zone as revealed by stalagmite geochemistry, *Geology*, 41, 1143-1146, 2013.
- Patton, P. C., Pickup, G., and Price, D. M.: Holocene paleofloods of the Ross River, central Australia, *Quat. Res.*, 40, 201-212, 1993.
- Penny, D.: Palaeoecology and human impact at Lake Coleman, East Gippsland, Victoria, Honours thesis, Monash University, Melbourne, 1993.
- Peters, G. M., Maher, W. A., Jolley, D., Carroll, B. I., Gomes, V. G., Jenkinson, A. V., and McOrist, G. D.: Selenium contamination, redistribution and remobilisation in sediments of Lake Macquarie, NSW, *Org. Geochem.*, 30, 1287-1300, 1999.
- Petherick, L. M., McGowan, H. A., and Kamber, B. S.: Reconstructing transport pathways for late Quaternary dust from eastern Australia using the composition of trace elements of long traveled dusts, *Geomorphology*, 105, 67-79, 2009.
- Pittock, J.: Palaeoenvironments of the Mt. Disappointment Plateau (Kinglake West, Victoria), from the late Pleistocene, BSc Honours thesis, Department of Geography and Environmental Science, Monash University, Melbourne, 1989.
- Prebble, M., Sim, R., Finn, J., and Fink, D.: A Holocene pollen and diatom record from Vanderlin Island, Gulf of Carpentaria, lowland tropical Australia, *Quat. Res.*, 64, 357-371, 2005.
- Prosser, I. P., Chappell, J., and Gillespie, R.: Holocene valley aggradation and gully erosion in headwater catchments, southeastern highlands of Australia, *Earth Surf. Process. Landf.*, 19, 465-480, 10.1002/esp.3290190507, 1994.
- Pye, K., and Rhodes, E. G.: Holocene development of an episodic transgressive dune barrier, Ramsay Bay, north Queensland, Australia, *Mar. Geol.*, 64, 189-202, 1985.
- Radclyffe, E.: Fire and People in Jervis Bay: toward a fire history in an occupied landscape, BA Honours thesis, Department of Geography, Australian National University, Canberra, 1993.
- Raine, J. I.: Pollen sedimentation in relation to Quaternary vegetation history of the Snowy Mountains of New South Wales, Dissertation, Australian National University, Canberra, 1974.

- Rasbury, M., and Aharon, P.: ENSO-controlled rainfall variability records archived in tropical stalagmites from the mid-ocean island of Niue, South Pacific, *Geochem. Geophys. Geosyst.*, 7, 15, 2006.
- Reid, M., Fluin, J., Ogden, R., Tibby, J., and Kershaw, A.: Long-term perspectives on human impacts on floodplain-river ecosystems, Murray-Darling Basin, Australia, 2002.
- Reid, M. A., Sayer, C. D., Kershaw, A. P., and Heijnis, H.: Palaeolimnological evidence for submerged plant loss in a floodplain lake associated with accelerated catchment soil erosion (Murray River, Australia), *J. Paleolimn.*, 38, 191-208, 2007.
- Rhodes, E. G., Polach, H. A., Thom, B. G., and Wilson, S. R.: Age structure of Holocene coastal sediments - Gulf of Carpentaria, Australia, *Radiocarbon*, 22, 718-727, 1980.
- Robbie, A.: The history of the vegetation from the palynology of Mountain Lagoon, Blue Mountains, New South Wales, BSc thesis, UNSW, Kensington, 1998.
- Robertson, M.: Fire regimes and vegetation dynamics: a case study examining the potential of fine resolution palaeoecological techniques, BA Honours thesis, Department of Geography, Monash University, Melbourne, 1986.
- Rodysill, J. R., Russell, J. M., Crausbay, S. D., Bijaksana, S., Vuille, M., Edwards, R. L., and Cheng, H.: A severe drought during the last millennium in East Java, Indonesia, *Quat. Sci. Rev.*, 80, 102-111, 2013.
- Rogers, J., and Hope, G. S.: The Holocene infill of Nursery Swamp, a large sedgelend in the Australian Capital Territory, Unpublished Report to Environment ACT, 2006.
- Rogers, K., Saintilan, N., and Heijnis, H.: Mangrove encroachment of salt marsh in Western Port Bay, Victoria: The role of sedimentation, subsidence, and sea level rise, *Estuaries*, 28, 551-559, 2005.
- Roop, H. A., Levy, R., Dunbar, G. B., Vandergoes, M. J., Howarth, J., Fitzsimons, S., Moon, H., Zammit, C., Ditchburn, R., Baisden, T., and Yoon, H. I.: A hydroclimate-proxy model based on sedimentary facies in an annually laminated sequence from Lake Ohau, South Island, New Zealand, *J. Paleolimn.*, 55, 1-16, 2016.
- Rose, S., and Martin, H. A.: The vegetation history of the Holocene at Dry Lake, Thirlmere, New South Wales, *Proceedings of The Linnean Society of New South Wales*, 128, 15-55, 2007.
- Rowe, C.: A Holocene history of vegetation change in the western Torres Strait region, Queensland, Australia, PhD Thesis, School of Geography and Environmental Science, Monash University, Melbourne, 2006.
- Rowe, C.: A palynological investigation of Holocene vegetation change in Torres Strait, seasonal tropics of northern Australia, *Paleogeogr. Paleoclimatol. Paleoecol.*, 251, 83-103, 2007.
- Rowe, C., McNiven, I. J., David, B., Richards, T., and Leavesley, M.: Holocene pollen records from Caution Bay, southern mainland Papua New Guinea, *Holocene*, 23, 1130-1142, 2013.
- Rowe, R. K.: Rare bog community at Tawonga, Victoria, *Victorian Naturalist*, 85, 123-124, 1968.
- Russell-Smith, J.: A record of change: studies of Holocene vegetation history in the South Alligator River region, Northern Territory, *Proceedings of the Ecological Society of Australia*, 13, 191-202, 1985.
- Salas, M. R.: A reconnaissance survey of the vegetation and sedimentary record of Lake Tali Karing, Honours thesis, Monash University, Melbourne, 1981.



- Sandercock, P., and Wyrwoll, K. H.: The historical and palaeoflood record of Katherine river, northern Australia: evaluating the likelihood of extreme discharge events in the context of the 1998 flood, *Hydrol. Process.*, 19, 4107-4120, 2005.
- Saunders, K. M., McMinn, A., Roberts, D., Hodgson, D. A., and Heijnis, H.: Recent human-induced salinity changes in Ramsar-listed Orielton Lagoon, south-east Tasmania, Australia: a new approach for coastal lagoon conservation and management, *Aquat. Conserv.-Mar. Freshw. Ecosyst.*, 17, 51-70, 2007.
- Saunders, K. M., Hodgson, D. A., Harrison, J., and McMinn, A.: Palaeoecological tools for improving the management of coastal ecosystems: a case study from Lake King (Gippsland Lakes) Australia, *J. Paleolimn.*, 40, 33-47, 2008.
- Saunders, K. M., Kamenik, C., Hodgson, D. A., Hunziker, S., Siffert, L., Fischer, D., Fujak, M., Gibson, J. A. E., and Grosjean, M.: Late Holocene changes in precipitation in northwest Tasmania and their potential links to shifts in the Southern Hemisphere westerly winds, *Glob. Planet. Change*, 92-93, 82-91, 2012.
- Saunders, K. M., Grosjean, M., and Hodgson, D. A.: A 950 yr temperature reconstruction from Duckhole Lake, southern Tasmania, Australia, *Holocene*, 23, 771-783, 2013a.
- Saunders, K. M., Harrison, J. J., Butler, E. C. V., Hodgson, D. A., and McMinn, A.: Recent environmental change and trace metal pollution in World Heritage Bathurst Harbour, southwest Tasmania, Australia, *J. Paleolimn.*, 50, 471-485, 2013b.
- Scarlett, N. H., Hope, G. S., and Calder, D. M.: Natural history of the Hogan Group Part 3: floristics and plant communities, *Papers and Proceedings of the Royal Society of Tasmania*, 107, 83-98, 1974.
- Schaefer, J. M., Denton, G. H., Kaplan, M. R., Putnam, A., Finkel, R. C., Barrell, D. J. A., Andersen, B. G., Schwartz, R., Mackintosh, A., Chinn, T., and Schluchter, C.: High-Frequency Holocene Glacier Fluctuations in New Zealand Differ from the Northern Signature, *Science*, 324, 622-625, 2009.
- Shulmeister, J.: A Holocene Pollen record from Lowland Tropical Australia, *The Holocene*, 2, 107-116, 1992.
- Shulmeister, J., and Lees, B. G.: Morphology and chronostratigraphy of a coastal dunefield - Groote Eylandt, northern Australia, *Geomorphology*, 5, 521-534, 1992.
- Sigleo, W. R., and Colhoun, E. A.: A short pollen diagram from Crown Lagoon in the midlands of Tasmania, *Papers and Proceedings of the Royal Society of Tasmania*, 115, 181-188, 1981.
- Sim, A. K.: The investigation of vegetation thickening in central Queensland using palaeoecological techniques, Honours thesis, UNSW, Kensington, 2004.
- Singh, G., and Geissler, E. A.: Late Cainozoic History of Vegetation, Fire, Lake Levels and Climate, at Lake George, New South Wales, Australia, *Philosophical Transactions of the Royal Society of London. Series B, Biological Sciences*, 311, 379-447, 1985.
- Singh, G., and Luly, J.: Changes in vegetation and seasonal climate since the last full glacial at Lake Frome, South Australia, *Paleogeogr. Paleoclimatol. Paleoecol.*, 84, 75-&, 1991.
- Skilbeck, C. G., Rolph, T. C., Hill, N., Woods, J., and Wilkens, R. H.: Holocene millennial/centennial-scale multiproxy cyclicity in temperate eastern Australian estuary sediments, *J. Quat. Sci.*, 20, 327-347, 2005.
- Sloss, C. R., Jones, B. G., Murray-Wallace, C. V., and McClennen, C. E.: Holocene sea level fluctuations and the sedimentary evolution of a barrier estuary: Lake Illawarra, New South Wales, Australia, *J. Coast. Res.*, 21, 943-959, 2005.

- Smeulders, D. M.: A late Holocene environmental reconstruction using lake sediments from Hopwood's Lagoon, NSW, BSc Honours thesis, School of Geography, UNSW, Kensington, 1999.
- Smith, J. D., and Hamilton, T. F.: Modeling of Pb210 behavior in the catchment and sediment of Lake Tali Karing, Victoria, and estimation of recent sedimentation rates, *Australian Journal of Marine and Freshwater Research*, 36, 15-22, 1985.
- Southern, W.: Late Quaternary vegetation and environments of Jackson's Bog and the Monaro Tablelands, New South Wales, MSc thesis, Monash University, Melbourne, 1982.
- Stahle, L. N., Whitlock, C., and Haberle, S. G.: A 17,000-year-long record of vegetation and fire from Cradle Mountain National Park, Tasmania, *Frontiers in Ecology and Evolution*, 4, 2016.
- Stanley, S., and De Deckker, P.: A Holocene record of allochthonous, aeolian mineral grains in an Australian alpine lake; implications for the history of climate change in southeastern Australia, *J. Paleolimn.*, 27, 207-219, 2002.
- Steinke, S., Prange, M., Feist, C., Groeneveld, J., and Mohtadi, M.: Upwelling variability off southern Indonesia over the past two millennia, *Geophys. Res. Lett.*, 41, 2014.
- Stevenson, J.: Late Quaternary environmental change and the impact of Melanesian colonisation in New Caledonia, PhD thesis, UNSW, Kensington, 1998.
- Stevenson, J.: A late-Holocene record of human impact from the southwest coast of New Caledonia, *Holocene*, 14, 888-898, 2004.
- Stevenson, J., and Hope, G.: A comparison of late Quaternary forest changes in New Caledonia and northeastern Australia, *Quat. Res.*, 64, 372-383, 2005.
- Stone, T.: The late-Holocene origin of the modern Murray River course, southeastern Australia, *Holocene*, 16, 771-778, 2006.
- Stott, L., Cannariato, K., Thunell, R., Haug, G. H., Koutavas, A., and Lund, S.: Decline of surface temperature and salinity in the western tropical Pacific Ocean in the Holocene epoch, *Nature*, 431, 56-59, 2004.
- Stott, L. D.: Comment on "Anomalous radiocarbon ages for foraminifera shells" by W. Broecker et al.: A correction to the western tropical Pacific MD9821-81 record, *Paleoceanography*, 22, 2007.
- Strickland, K. M.: Studies on the relationship between the pollen rain and vegetation in the vicinity of Cascade Creek on the Baw Baw Plateau, Victoria, BSc Honours thesis, Department of Botany and Zoology, Monash University, Melbourne, 1980.
- Sweller, S., and Martin, H. A.: A 40,000 year vegetation history and climatic interpretations of Burruga Swamp, Barrington Tops, New South Wales, *Quat. Int.*, 83-5, 233-244, 2001.
- Taffs, K. H.: Diatoms as indicators of wetland salinity in the Upper South East of South Australia, *Holocene*, 11, 281-290, 2001.
- Taffs, K. H., Farago, L. J., Heijnis, H., and Jacobsen, G.: A diatom-based Holocene record of human impact from a coastal environment: Tuckean Swamp, eastern Australia, *J. Paleolimn.*, 39, 71-82, 2008.
- Thevenon, F., Bard, E., Williamson, D., and Beaufort, L.: A biomass burning record from the West Equatorial Pacific over the last 360 ky: methodological, climatic and anthropic implications, *Paleogeogr. Paleoclimatol. Paleoecol.*, 213, 83-99, 2004.
- Thom, B. G., Polach, H. A., and Bowman, G. M.: Holocene age structure of coastal sand barriers in New South Wales, Royal Military College, Duntroon, ACT, 1978.

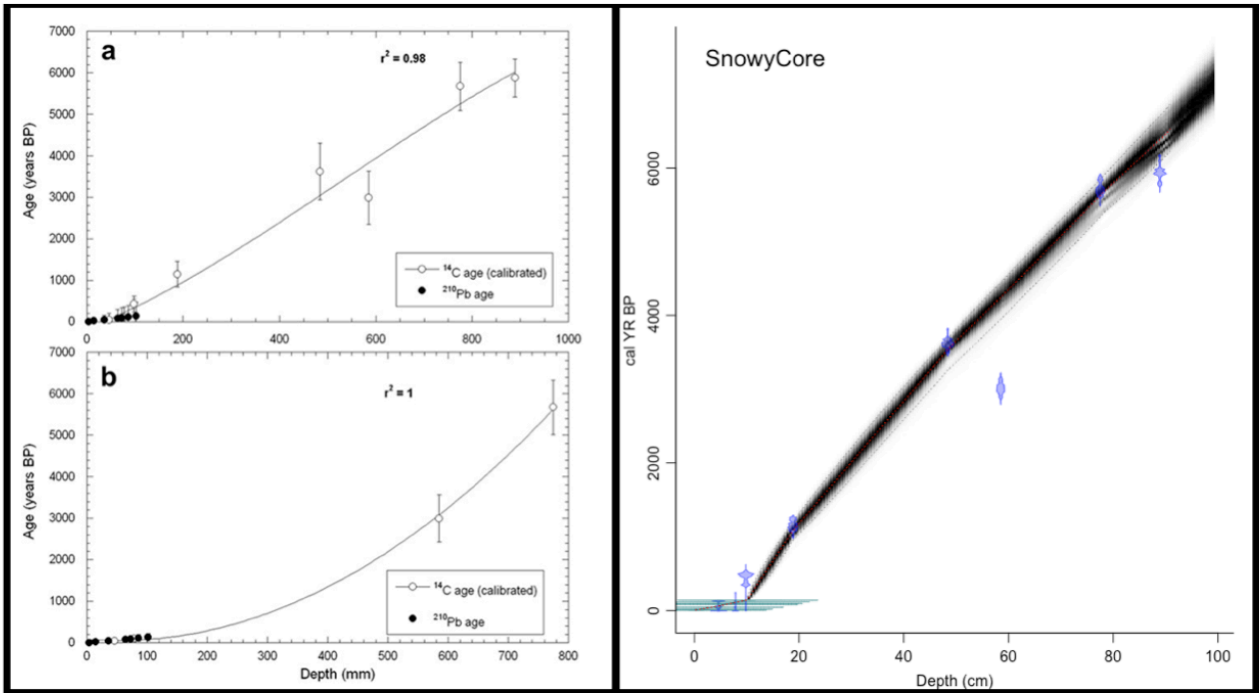
- Thomas, A.: Giandarra Bog, NSW - A natural record of environmental change, BSc Honours thesis, Australian Defense Force Academy, Canberra, 1991.
- Thomas, I., and Hope, G.: An example of Holocene vegetation stability from Cameron's Lagoon, a near treeline site on the Central Plateau, Tasmania, *Aust. J. Ecol.*, 19, 150-158, 1994.
- Thomas, I., and Kirkpatrick, J. B.: The roles of coastlines, people and fire in the development of heathlands in northeast Tasmania, *J. Biogeogr.*, 23, 717-728, 1996.
- Thomas, I., Enright, N. J., and Kenyon, C. E.: The Holocene history of mediterranean-type plant communities, Little Desert National Park, Victoria, Australia, *Holocene*, 11, 691-697, 2001.
- Thomas, M. F., Nott, J., Murray, A. S., and Price, D. M.: Fluvial response to late quaternary climate change in NE Queensland, Australia, *Paleogeogr. Paleoclimatol. Paleoecol.*, 251, 119-136, 10.1016/j.palaeo.2007.02.021, 2007.
- Tibby, J.: A mid- to late-Holocene diatom and pollen palaeoecology of the Tuross Lake system, South Coast, New South Wales, *Monash Publications in Geography*, 46, 1-62, 1996.
- Tibby, J.: A mid-Holocene to present palaeoecological study of the Tuross Lakes system, south coast, New South Wales, *First Australian Diatom Workshop*, Warnambool, Australia, 1998, 92-103.
- Tibby, J.: Diatoms as indicators of sedimentary processes in Burrinjuck reservoir, New South Wales, Australia, *Quat. Int.*, 83-5, 245-256, 2001.
- Tibby, J., Reid, M. A., Fluin, J., Hart, B. T., and Kershaw, A. P.: Assessing long-term pH change in an Australian river catchment using monitoring and palaeolimnological data, *Environ. Sci. Technol.*, 37, 2003.
- Tibby, J., and Haberle, S. G.: A late glacial to present diatom record from Lake Euramoo, wet tropics of Queensland, Australia, *Paleogeogr. Paleoclimatol. Paleoecol.*, 251, 46-56, 2007.
- Tibby, J., Lane, M. B., and Gell, P. A.: Local knowledge and environmental management: a cautionary tale from Lake Ainsworth, New South Wales, Australia, *Environ. Conserv.*, 34, 334-341, 2007.
- Tibby, J., Gell, P., Hancock, G., and Clark, M.: Complex reservoir sedimentation revealed by an unusual combination of sediment records, Kangaroo Creek Reservoir, South Australia, *J. Paleolimn.*, 43, 535-549, 2010.
- Tibby, J. C., Penny, D., Leahy, P. J., and Kershaw, P. A.: Vegetation and water quality responses to Holocene climate variability in Lake Purrumbete, western Victoria, in: *Peopled landscapes: archaeological and biogeographic approaches to landscapes*, edited by: Haberle, S. G. D., B., *Terra Australis*, 359-373, 2012.
- Tierney, J. E., Oppo, D. W., Rosenthal, Y., Russell, J. M., and Linsley, B. K.: Coordinated hydrological regimes in the Indo-Pacific region during the past two millennia, *Paleoceanography*, 25, 2010.
- Torgersen, T., and Longmore, M.: <sup>137</sup>Cs diffusion in the highly organic sediment of Hidden Lake, Fraser Island, Queensland, *Mar. Freshw. Res.*, 35, 537-548, 1984.
- Treble, P. C., Chappell, J., Gagan, M. K., McKeegan, K. D., and Harrison, T. M.: In situ measurement of seasonal delta O-18 variations and analysis of isotopic trends in a modern speleothem from southwest Australia, *Earth Planet. Sci. Lett.*, 233, 17-32, 2005.

- Umitsu, M., Buman, M., Kawase, K., and Woodroffe, C. D.: Holocene palaeoecology and formation of the Shoalhaven River deltaic-estuarine plains, southeast Australia, *The Holocene*, 11, 407-418, 2001.
- van de Geer, G., Fitzsimons, S. J., and Colhoun, E. A.: Holocene to Middle Last Glaciation vegetation history at Newall Creek, wester Tasmania, *New Phytol.*, 111, 549-558, 1989.
- van der Geer, G., Fitzsimons, S. J., and Colhoun, E. A.: Holocene vegetation history from King River railway bridge, Western Tasmania, *Papers and Proceedings of the Royal Society of Tasmania*, 125, 73-77, 1991.
- Van der Kaars, S.: Late Quaternary vegetation and climate of Australasia as reflected by the palynology of eastern Indonesian deep sea piston-cores, PhD thesis, Department of Palynology and Palaeoecology, University of Amsterdam, Amsterdam, 1989.
- van der Kaars, S., Wang, X., Kershaw, P., Guichard, F., and Setiabudi, D. A.: A Late Quaternary palaeoecological record from the Banda Sea, Indonesia: patterns of vegetation, climate and biomass burning in Indonesia and northern Australia, *Paleogeogr. Paleoclimatol. Paleoecol.*, 155, 135-153, 2000.
- van der Kaars, S., Penny, D., Tibby, J., Fluin, J., Dam, R. A. C., and Suparan, P.: Late Quaternary palaeoecology, palynology and palaeolimnology of a tropical lowland swamp: Rawa Danau, West-Java, Indonesia, *Palaeogeography, Palaeoclimatology, Palaeoecology*, 171, 185-212, 2001.
- van der Kaars, S., and De Deckker, P.: A Late Quaternary pollen record from deep-sea core Fr10/95, GC17 offshore Cape Range Peninsula, northwestern Western Australia, *Rev. Palaeobot. Palynology*, 120, 17-39, 2002.
- Vandergoes, M. J., Fitzsimons, S. J., and Newnham, R. M.: Late glacial to Holocene vegetation and climate change in the eastern Takitimu Mountains, western Southland, New Zealand, *J. R. Soc. N.Z.*, 27, 53-66, 1997.
- Wagner, B., Melles, M., Doran, P. T., Kenig, F., Forman, S. L., Pierau, R., and Allen, P.: Glacial and postglacial sedimentation in the Fryxell Basin, Taylor Valley, southern Victoria Land, Antarctica, *Paleogeogr. Paleoclimatol. Paleoecol.*, 241, 320-337, 2006.
- Walker, D.: The frequency of lamination in the sediments of Lake Barrine, tropical north-east Australia, during the last five millennia, *Paleogeogr. Paleoclimatol. Paleoecol.*, 299, 214-226, 2011.
- Wang, X., van der Kaars, S., Kershaw, P., Bird, M., and Jansen, F.: A record of fire, vegetation and climate through the last three glacial cycles from Lombok Ridge core G6-4, eastern Indian Ocean, Indonesia, *Paleogeogr. Paleoclimatol. Paleoecol.*, 147, 241-256, 1999.
- Wasson, R., Bayliss, P., and Clelland, S.: River flow and climate in the 'top end' of Australia for the last 1000 years, and the Asian-Australian monsoon, *Kakadu National Park Landscape Symposia Series*, 2007, 15-31.
- Wasson, R. J., Clark, R. L., Nanninga, P. M., and Waters, J.: Pb-210 as a chronometer and tracer, Burrinjuck Reservoir, Australia, *Earth Surf. Process. Landf.*, 12, 399-414, 1987.
- Wilkins, D., Gouramanis, C., De Deckker, P., Fifield, L. K., and Olley, J.: Holocene lake-level fluctuations in Lakes Keilambete and Gnotuk, southwestern Victoria, Australia, *Holocene*, 23, 784-795, 2013.
- Williams, J. M.: Crystal Bog, Mount Buffalo: a palaeoecological study of a subalpine peat deposit, Department of Geography, Monash University, Melbourne, 1980.

- Williams, N. J., Harle, K. J., Gale, S. J., and Heijnis, H.: The vegetation history of the last glacial-interglacial cycle in eastern New South Wales, Australia, *J. Quat. Sci.*, 21, 735-750, 2006.
- Williams, P., Marshall, A., Ford, D., and Jenkinson, A.: Palaeoclimatic interpretation of stable isotope data from Holocene speleothems of the Waitomo district, North Island, New Zealand, *The Holocene*, 9, 649-657, 1999.
- Williams, P. W., Neil, H. L., and Zhao, J. X.: Age frequency distribution and revised stable isotope curves for New Zealand speleothems: palaeoclimatic implications, *International Journal of Speleology*, 39, 99-112, 2010.
- Wills, N.: A palaeolimnological analysis of Lake Cudgen, northern NSW: directions for future management, Third year undergraduate report, School of Environmental Science and Management, Southern Cross University, Lismore, 2001.
- Wilmshurst, J. M., McGlone, M. S., and Partridge, T. R.: A late Holocene history of natural disturbance in lowland podocarp/hardwood forest, Hawke's Bay, New Zealand, *New Zealand Journal of Botany*, 35, 79-96, 1997.
- Wilmshurst, J. M., Eden, D. N., and Froggatt, P. C.: Late Holocene forest disturbance in Gisborne, New Zealand: a comparison of terrestrial and marine pollen records, *New Zealand Journal of Botany*, 37, 523-540, 1999.
- Wilmshurst, J. M., McGlone, M. S., and Charman, D. J.: Holocene vegetation and climate change in southern New Zealand: Linkages between forest composition and quantitative surface moisture reconstructions from an ombrogenous bog, *J. Quat. Sci.*, 17, 653-666, 2002.
- Witt, G. B., Luly, J., and Fairfax, R. J.: How the west was once: vegetation change in south-west Queensland from 1930 to 1995, *J. Biogeogr.*, 33, 1585-1596, 2006.
- Wohl, E. E., Fuertsch, S. J., and Baker, V. R.: Sedimentary records of late Holocene floods along the Fitzroy and Margaret Rivers, Western Australia, *Aust. J. Earth Sci.*, 41, 273-280, 1994.
- Woltering, M., Atahan, P., Grice, K., Heijnis, H., Taffs, K., and Dodson, J.: Glacial and Holocene terrestrial temperature variability in subtropical east Australia as inferred from branched GDGT distributions in a sediment core from Lake McKenzie, *Quat. Res.*, 82, 132-145, 2014.
- Worthy, M., Macphail, M., Wasson, R., Hope, G., and Olley, J.: Environmental change in the alluvial infill of Muellers Rock Creek, upper Cotter Valley, ACT, Unpublished Report to Ecowise ACT and Environment ACT, 2005.
- Yonge, D., and Hesse, P. P.: Geomorphic environments, drainage breakdown, and channel and floodplain evolution on the lower Macquarie River, central-western New South Wales, *Aust. J. Earth Sci.*, 56, 35-53, 2009.
- Zhang, X., Heijnis, H., Dodson, J., Zawadzki, A., and Buchanan, G.: Environmental changes indicated by grain-size and trace-metal analysis over the past 700 years at Annaburroo Billabong, NT, Australia, *Quaternary Australasia*, 28, 3, 2011.

Figure S1. Comparison of the two possible age models published by the original authors for the Upper Snowy Mountain core (left) (Marx et al., 2011), and the BACON-derived age model for the same core (right).

Figure S2. Comparison of the published CLAM-derived, classical statistics based age model for Lake Elingamite (left) (Barr et al., 2014) and the BACON-derived, Bayesian statistics based age model created for this study (right).



5

