

Climate of the Past Final Submission
Authors Response
Wednesday, September 27, 2017

To the Editor and to Whom it may concern:

My coauthors and I are please to resubmit our manuscript “Episodic Neoglacial expansion and rapid 20th Century retreat of a small ice cap on Baffin Island, Arctic Canada and modeled temperature change” along with responses to reviewer and editor corrections.

I have addressed all of the corrections suggested by the editor in the revised manuscript and detail here responses to both editor and reviewer comments (which overlapped). I have added a ‘Data Availability’ section directing readers to a Pangaea.de data repository containing all the data from the study as well as model code and primary model input and output (DOI forthcoming). Vertical GPS uncertainties were added to Fig. 3, per editor and reviewer suggestions. References were updated and completed where necessary.

An anonymous reviewer had some more specific comments which are addressed below. A table added to the Data Repository and Figures S2, S4, and S5 in the supplement all show glacier model performance under a range of parameter values and provide justification for the final selected parameter configuration.

We agree with the reviewer that submitting a not-yet-completed model run for comparison to our model is odd, but necessary given the deadlines associated with this this special publication of CoP. However, the full model simulation was included in the revised manuscript that went back to the editor and out for review again, and subjected to peer review. If inclusion of the completed simulation was inappropriate, it would have been voiced during this process. Also, given previous runs of the model we were confident that the complete 2ka model run would not deviate from previous iterations.

Lastly, we would point the reviewer to section 5 of the supplemental information for discussion regarding superimposed ice. Additionally, given the dearth of in situ observations of refreeze (or of standard meteorological conditions) we felt inclusion of a refreeze component (even parameterized) would only add to the uncertainty in the model. Also, given the small nature of the ice cap and apparent efficient supraglacial drainage, it is unclear the magnitude of the role refreeze may play.

I have confirmed with Pangaea.de that my data repository will be archived there, and I will submit the DOI when I receive it from them.

Attached below is the revised manuscript with track changes showing the major changes from initial submission.

Sincerely,

Simon Pendleton

PhD Student
University of Colorado Boulder
Dept. of Geological Sciences
UCB 399
Boulder, CO 80309-0399
simon.pendleton@colorado.edu

Episodic Neoglacial expansion and rapid 20th Century retreat of a small ice cap on Baffin Island, Arctic Canada and modeled temperature change

Simon L. Pendleton¹, Gifford H. Miller¹, Robert A. Anderson¹, Sarah E. Crump¹, Yafang Zhong², Alexandra Jahn³, Áslaug Geirsdóttir⁴, Scott Lehman¹

¹INSTAAR and Department of Geological Sciences, University of Colorado, Boulder, CO 80309-0450, USA.
²Space Science and Engineering Center, University of Wisconsin-Madison, Madison, WI 53706, USA.
³INSTAAR and Department of Atmospheric and Oceanic Sciences University of Colorado, Boulder, CO 80309-0450, USA.
⁴Department of Earth Sciences, University of Iceland, Askja, Sturlugata 7, 101 Reykjavík, Iceland

Correspondence to: Simon L. Pendleton (simon.pendleton@colorado.edu)

Abstract. Records of Neoglacial glacier activity in the Arctic constructed from moraines are often incomplete due to a preservation bias toward the most extensive advance, often the Little Ice Age. Recent warming in the Arctic has caused extensive retreat of glaciers over the past several decades, exposing preserved landscapes complete with *in situ* tundra plants previously entombed by ice. The radiocarbon ages of these plants define the timing of snowline depression and glacier advance across the site, in response to local summer cooling. Erosion rapidly removes most dead plants that have been recently exposed by ice retreat, but where erosive processes are unusually weak, dead plants may remain preserved on the landscape for decades. In such settings, a transect of plant radiocarbon ages can be used to construct a near-continuous chronology of past ice margin advance. Here we present radiocarbon dates from the first such transect on Baffin Island, which directly dates the advance of a small ice cap over the past two millennia. The nature of ice expansion between 20 BCE and ~1000 CE is still uncertain, but episodic advances at ~1000, ~1200, and ~1500 CE led to the maximum Neoglacial dimensions ~1900 CE. We employ a two-dimensional numerical glacier model calibrated using the plant radiocarbon ages ice margin chronology to assess the sensitivity of the ice cap to temperature change. Model experiments show that at least ~0.44°C of cooling over the past 2 ka is required for the ice cap to reach its 1900 CE margin, and that the period from ~1000 to 1900 CE must have been at least 0.25°C cooler than the previous millennium; results that agree with regional temperature reconstructions and climate model simulations. However, significant warming since 1900 CE is required to explain retreat to its present position, and, at the same rate of warming, the ice cap will disappear before 2100 CE.

Deleted: Although

Deleted: are rapidly removed from the landscape by erosion,

Deleted:

Deleted: to reconstruct the pattern of ice expansion

Deleted: inferred from the

Deleted: and

Deleted:

Deleted: to

Deleted: explore the

1. Introduction

Although summer insolation in the Northern Hemisphere has declined steadily through the Holocene, favoring cryosphere expansion, glaciers worldwide are currently losing mass (Stocker et al., 2013). Globally, summer temperatures have been increasing over the last 60 years, a trend that is more pronounced at high latitudes due to strong positive feedbacks (Serreze and Barry, 2011). Since summer temperatures are the dominant control on glacier mass balance in the Canadian Arctic (Koerner, 2005), the reversal of late Holocene cooling (Kaufman et al., 2009) has caused recent retreat of ice caps and glaciers in the region. This continued shrinkage of the cryosphere reinforces the need for records of past glacier and climate change to provide context for contemporary warming.

Patterns of Neoglacial advance and retreat in the Arctic remain poorly constrained (Solomina et al., 2015, and references therein), largely because the most recent advance, during the Little Ice Age (LIA; 1250-1850 CE) was, for most of the Arctic, also the most extensive, and therefore obliterated most evidence of previous advances. Other archives, such as lake sediment records provide continuous records of climate, but typically require glacial activity to be inferred indirectly. 'Threshold' lakes record a glacier entering and exiting a well-defined catchment, but provide the timing of a glacier margin at a single point

(Briner et al., 2010). Lichenometric surface exposure dating, often used on glacial landforms, provides relative age information, but conversion to absolute exposure age has large uncertainties (e.g., Osborn et al., 2015; Rosenwinkel et al., 2015). Furthermore, even though significant advances have been made improving analytical measurements for cosmogenic radionuclide (CRN) exposure ages of moraine boulders, the technique can be compromised by issues of nuclide inheritance, and post-depositional moraine destabilization (Crump et al., 2017; Pendleton et al., 2017) (Crump et al., *in press*; Pendleton et al., 2016). Consequently, moraines can be difficult to date precisely, and moraine records by nature are discontinuous.

Recent ice-margin retreat of cold-based ice caps on Baffin Island is exposing preserved landscapes. The radiocarbon ages of *in situ* plants on these preserved lands record the time when snowline lowering and/or ice advance covered the site, killing and entombing the plants beneath the glacier. Commonly, the re-exposure of dead plants leaves them highly susceptible to erosion, most often by meltwater flowing along the margins of cold-based ice, but also by blowing snow in winter. The ephemeral nature of these re-exposed dead plants means that their ages are representative of the most recent snowline advance at that location; multiple exposures and burials are unlikely (Miller et al., 2013).

However, in certain topographic settings, where plant removal by meltwater has been inefficient, dead plants may remain for decades. A transect of dead plant radiocarbon ages perpendicular to a receding ice margin can provide a more reliable and more continuous record of ice advance than is possible from moraine records (Miller et al., 2017). The occurrence of long-preserved ice-killed tundra plants under optimal circumstances hundreds of meters beyond retreating ice margins provides an opportunity to derive near-continuous records of ice-margin advance through the Neoglacial period. Here we present a chronology of ice-margin advance from Divide Ice Cap (informal name), a small mountain ice cap in southeastern Baffin Island, derived from radiocarbon-dated dead plants, and utilize numerical modeling to estimate the changes in summer temperature required to reproduce the observed record of ice margin advance.

Deleted: ,

Deleted: ,

Deleted: Lake

Deleted: allow

Deleted: (Briner et al., 2010)

Deleted: ,

Deleted: movement, and

Deleted: degradation

Deleted: n.d.

Formatted: Font:Italic

Deleted: (Crump et al., *in review*)

Deleted: .

2. Neoglaciation in the Eastern Canadian Arctic

There is substantial evidence of repeated glacier advances on Baffin Island during Neoglaciation (~5 ka through Little Ice Age; Miller et al., 2005) as summer temperatures declined, but absolute chronologies remain sparse and imprecise. Foundational mapping and initial chronologies derived from lichenometry from nested moraines show that some glaciers were approaching their Neoglacial maximum dimensions as early as 3.5 ka (Davis, 1985; Miller, 1973). [Radiocarbon ages of tundra plants killed by snowline depression, and only now re-emerging from beneath cold-based ice, show that glaciers began to expand as early as ~5 ka, followed by episodic intensifications culminating in the Little Ice age \(Anderson et al., 2008; Miller et al., 2012; 2013; Margreth et al., 2014\).](#) Although most studies conclude that glaciers reached their maximum Neoglacial dimensions during the LIA, Young et al. (2015) produced a CRN chronology of nested moraines in northeastern Baffin Island that suggests that Naqsaq glacier advanced to a position similar to that of its LIA extent at ~1050 CE. However, moraine chronologies hinting at the nature of pre-LIA temperature change are sparse, and the chronology from an individual site can be influenced by non-climatic factors; thus, other datasets that provide direct evidence of Neoglacial ice advance are needed.

Deleted: Radiocarbon ages of tundra plants killed by snowline depression, and only now re-emerging from beneath cold-based ice, show that glaciers began to expand as early as ~5 ka, followed by episodic intensifications culminating in the Little Ice age (Anderson et al., 2008; Miller et al., 2012; 2013; Margreth et al., 2014)

3. Field Setting: Divide Ice Cap

Divide Ice Cap (DIC) is situated ~60 km southwest of the settlement of Qikitarjuaq on eastern Baffin Island (Fig. 1; [Glacier Atlas of Canada 46204L11/12, 46204M247/248](#)). The ice cap currently mantles the northern slope of a local summit between ~1550 and 1180 m asl, spilling down into a local saddle, where it separates into two outlet glaciers flowing down either side of the saddle, orthogonal to the main ice cap flow. A vegetation trimline high on the south-facing slope on the opposite side of the saddle defines the maximum LIA limit (Fig. 1). [The uniform nature and clarity of this trimline as well as the southerly aspect of the slope all suggest that the trimline is indeed the result of an ice margin and not persistent snow.](#) Aerial imagery from 1960 shows the ice margin ~15 m below this trimline (Fig. 1; National Air Photo Library, 1960). ~~The 2015 ice margin lies 60 m below the LIA trimline. Our sample transect runs from the modern ice margin upslope toward the LIA trimline and is aligned with the topographic drainage divide where ice growth upslope is driven by internal deformation (Fig. 2). Between the ice margin and the trimline, the land surface is carpeted by till boulders amidst finer-grained morainal debris. The presence of preserved plants still in growth position exposed by the retreating ice margin is evidence for a high degree of subglacial landscape preservation, indicating a cold-based, non-erosive basal regime for DIC at our transect.~~ Until now, the majority of studies utilizing dates on previously ice-entombed plants rely on plants collected close to the ice margin at multiple ice caps to build a composite dataset that highlights periods of regional cooling (e.g., [Margreth et al., 2014; Miller et al., 2013](#)). However, because meltwater erosion at the location of our transect was inefficient, *in situ* dead plants remain preserved from the ice margin to the trimline, although with decreasing abundance at higher elevations as the trimline is approached (Fig. 1). Miller et al. (2017) recently employed a similar method on Svalbard by collecting a transect of six, dead, *in situ* mosses up to 250 m away from the 2013 CE ice margin. The radiocarbon ages of these plants provide evidence of an episodically advancing ice margin over the last ~1200 years.

Formatted: Font:+Theme Body (Times New Roman)

Deleted: 1).

Formatted: Font:+Theme Body (Times New Roman)

Deleted: .

Deleted: the

Deleted: (e.g., Anderson et al., 2008; Miller et al., 2013; Margreth et al., 2014).

Formatted: English (US)

4. Methods

4.1. Vegetation Collection

In August 2015, when seasonal melt was at its maximum, 11 *in situ* dead mosses were collected along a ~200 m transect between the 2015 CE ice margin (1185 m asl) and the LIA trimline (1238 m asl) (Fig. 1). Within ~5 m of the ice margin, all exposed vegetation was dead. Regrowth and recolonization of plants began ~30 m from the ice margin, with dead plants increasingly rare, and living plants increasingly abundant up the transect. A single ice margin plant was also collected on the western margin of the ice cap in August of 2014. During field collection, plants are closely inspected for spontaneous regrowth, which is discernable in the field based on plant color (La Farge et al., 2013). Woody plants were avoided because of their higher survival potential and because their stems have an average radiocarbon age that is older than the actual kill date. In the previous year, we collected *in situ* dead vegetation at the western margin of the ice cap, closer to the summit (sample #12; Fig. 1).

Between 1 and 3 filaments from each sampled plant were washed with deionized water and freeze dried before being graphitized at the Laboratory for AMS Radiocarbon Preparation and Research (NSRL). Graphite targets were measured at the W.M. Keck Carbon Cycle Accelerator Mass Spectrometry Laboratory at the University of California Irvine. Final radiocarbon dates were calibrated using OxCal 4.2.4 (Bronk-Ramsey, 2009; Reimer et al., 2013) and reported here as the weighted mean, 1σ , and 2σ uncertainties.

4.2. Glacier Model

We employ a two-dimensional finite difference numerical model in conjunction with the *in situ* vegetation to further investigate the evolution of the Divide Ice Cap over the last ~2000 years. The model, modified from Kessler et al. (2006), calculates an ice thickness on a two-dimensional terrain model governed by explicit equations for ice flux and mass balance using shallow-ice physics (e.g., Blatter et al., 2011), an approach similar to Ákesson et al. (2017)(Ákesson et al., 2016).

4.2.1. Terrain Production

Prior to model implementation, a terrain model of the bedrock surface is required. This involves removing (to the best approximation) the modern DIC from an existing digital elevation product. ASTER digital elevation data from 2011 CE was used as a base for the two-dimensional terrain model, resampled to a 60 m pixel size. The ASTER data product was retrieved from the online Data Pool, courtesy of the NASA Land Processes Distributed Active Archive Center (LP DAAC), USGS/Earth Resources Observation and Science (EROS) Center, Sioux Falls, South Dakota, https://lpdaac.usgs.gov/data_access/data_pool. The resulting surface was smoothed using a 7x7 mean filter to remove artifacts in the raw data that would lead to instabilities in the model. Modern ice, including DIC Divide Ice Cap and the ice on the surrounding summits, had to be removed to create an ice-free terrain to model upon. Using the best approximation of basal

Deleted: ,

Deleted: southern

Deleted: 1438 m asl

Formatted: English (UK)

shear stress (τ_b) to be ~100 kPa (Haerberli, 2016)(Haerberli, 2016), current ice thicknesses (H) were calculated following Cuffey and Paterson (2010)Cuffey and Paterson (2010):

$$H = \frac{\tau_b}{\rho g \theta}$$

where ρ is the density of ice (917 kg m^{-3}), g is gravitational acceleration (9.81 m s^{-2}) and θ is the surface slope of the modern ice surface. Calculated thicknesses were then subtracted from the modern terrain surface to produce an ice-free surface. Eventual model runs show that calculated and modeled modern ice thickness are the same within 10% of each other.

4.2.2. Mass Balance

Kessler et al. (2006) drove ice formation with a climate dictated by an equilibrium line altitude (ELA), a mass balance gradient with elevation, and a maximum positive balance (maximum accumulation). However, the overall low accumulation rates of our high-latitude site and the variable aspect of the DICE Divide Ice Cap, which increases the influence of solar radiation during the melt season, necessitates a different approach (Benn and Evans, 2010)(Benn and Evans, 2010). Ice core records, observational studies in the eastern Canadian Arctic, and previous modeling work suggest a maximum accumulation of 0.3 m water equivalent (m.w.e.) per year throughout the Holocene (Hooke, 1976; Serreze et al., 1995; Anklin et al., 1998; Mair et al., 2005), which, given the limited elevation range of the DICE Divide Ice Cap location, is applied as the annual accumulation across the whole model surface.

Although precipitation records are sparse near the study site, ice core records from the summit of the Greenland Ice Cap show that regionally, precipitation varied by only ~6% over the last 1200 years (Alley, 2004). Given the relatively low accumulation rates, summer temperature is likely the dominant driver of glacier advance and retreat at DICE Divide Ice Cap (Koerner, 2005). Temperature index melt models generally capture the majority of summer melt due to the strong relationship between air temperature and components of the surface energy balance (Braithwaite and Olesen, 1989; Lang and Braun, 1990)(Braithwaite and Olesen, 1989; Lang and Braun, 1990), and have been successfully applied on larger scales in the eastern Canadian Arctic (Marshall and Sharp, 2009). However, the relatively low accumulation rates, small elevation range, and variable aspect and slope at DICE Divide Ice Cap along with the asymmetric trimlines surrounding summits (Fig. 14) suggests that the glacier system is sensitive to small temperature changes and that incoming solar radiation is an important factor in the overall glacier mass balance. Additionally, previous studies of the orientation of cirque glaciers on Baffin Island (Williams, 1975) and summertime snow patch distribution in the eastern Canadian arctic (Lauriol et al., 1986) emphasize the role of solar energy in enhancing melt on southerly aspects. Wind redistribution of snow could be another factor in the more positive mass balance of northerly aspect of the Divide Ice Cap. However, available meteorological wind direction data from Clyde River to the north and Iqaluit to the southwest both show the prevailing winds to be north-north westerly (Gearheard et al., 2010; Nawri and Stewart, 2010). While these observations do not rule out the possibility that local winds at DICE Divide Ice Cap differ, and move snow from south-facing to north-facing slopes, they strongly suggest that the dominant wind patterns cannot explain the asymmetric mass balance. In areas of overall low accumulation and relatively low relief where the snowline is only just below mountaintops,

solar radiation modulated by slope and aspect can exert a strong control on the annual pattern of accumulation (Benn and Evans, 2010)(Benn and Evans, 2010).

Given the above concerns regarding melt driven by temperature and solar radiation, we calculate the summer melt rate (M , mm day^{-1}) using a radiation modified positive degree day melt model for air temperatures (T) above 0°C (Hock, 2005; Jonsell et al., 2012; Kane et al., 1997):

$$M = \begin{cases} m_T(PDD) + m_R(1 - \alpha)R; & T > 0^{\circ}\text{C} \\ 0 & ; T < 0^{\circ}\text{C} \end{cases}$$

The melt contribution from air temperature is calculated using the product of a degree-day melt factor (m_T , $6.3 \text{ mm day}^{-1} ^{\circ}\text{C}^{-1}$; Braithwaite, 1981) with positive-degree days (PDD) over the terrain surface. Using a prescribed sea-level mean annual temperature (MAT), a MAT at elevation is calculated using a near surface lapse rate of $-4.9^{\circ}\text{C km}^{-1}$ (derived from Candian Arctic glaciers; Gardner et al., 2009). Annual temperature cycles are then calculated at all elevations using an amplitude of 20°C (based upon daily temperature records from Dewar Lakes meteorological data from 1959-2015) around the MAT . Integration of the portion of the curve where $T > 0^{\circ}\text{C}$ provides the PDD for each location on the terrain surface.

Calculation of the melt contribution from radiation employs the product of a radiation melt factor (m_R , $0.036 \text{ mm day}^{-1} (\text{W m}^{-2})^{-1}$; obtained via model calibration, see below section 5.3.1.) with that portion of the incident solar radiation (R ; W m^{-2}) that is not reflected from the surface (albedo = $a = 0.5$ (Benn and Evans, 2010)(Benn and Evans, 2010)). Solar radiation (R) for the DIC Divide Ice Cap latitude and elevation is calculated following Kustas et al. (1994 and Kumar et al. (1997). In this case, radiation is also modulated based on slope and aspect (Cuffey and Paterson, 2010; Hock, 2005; Kumar et al., 1997)(Cuffey and Paterson, 2010; Hock, 2005; Kumar et al., 1997). Melt from solar radiation only takes place when $T > 0^{\circ}\text{C}$, which is calculated from the annual temperature cycle from the PDD component. Net mass balance is then calculated as the winter mass balance (accumulation) minus the summer mass balance (melt).

4.2.3. Modeling Modelling Ice Surfaces

Driven by the above mass balance, the model, following Kessler et al. (2006) calculates an ice surface on the supplied 2-D terrain surface using explicit equations for ice flux and mass conservation (equations 1 and 8 respectively in Kessler et al. (2006)). Using a shallow ice approximation and the recommended coefficient for Glen's flow law for polar ice of $3.5 \times 10^{-25} \text{ Pa}^{-1}\text{s}^{-1}$ (Cuffey and Paterson, 2010) Using a shallow ice approximation and the recommended coefficient for Glen's flow law for polar ice of $3.5 \times 10^{-25} \text{ Pa}^{-1}\text{s}^{-1}$ (Cuffey and Paterson, 2010), ice discharge is driven by the shear stress associated with ice thickness and surface slope. Field observations of the highly-preserved land surface, including vegetation still in growth position, justify a no-slip basal boundary condition. Sliding was therefore disallowed, and ice moves only by internal deformation.

Formatted: Font:Italic

5. Results and Interpretation

5.1. Plant Ages

The single *in situ* sample collected on the western margin of DIC produced a calibrated age of 26 +29/-21 CE (Fig. 1, Table 1). Calibrated radiocarbon ages of plant material from the transect become younger away from DIC, ranging from 942 +41/-36 and 1029 +33/-3 CE at the 2015 ice margin to 1780 +111/-165 CE near the trimline. The ages of four samples closest to the 2015 ice margin, although collected up to ~20 m away from the margin, overlap at $\pm 2\sigma$ (Table 1). A single plant collected near the LIA trimline returned a post-bomb age; this likely reflects random death of a plant that recolonized after deglaciation (Fig. 1, Table 1).

5.2. Neoglacial Divide Ice Cap Expansion and 20th Century recession

The kill date at the western margin of DIC indicates ice expansion across that location ~2 ka and continuous ice-cover until 2014 CE. The ages near the 2015 CE ice margin (henceforth the 1000 CE margin) define DIC expansion at ~1000 CE. Since the ages define the time when ice advanced through that location, the distribution of ages requires that the rate of ice margin expansion increase around ~1000, 1200, and 1500 CE (Fig. 3). These periods of accelerated ice expansion with periods of enhanced regional cooling and ice expansion shown in the compilation of dated ice-entombed mosses from Baffin Island from Miller et al. (2013) and Margreth et al. (2014) (Fig. 3). This correlation between the transect ages and periods of regional expansion shows that DIC responded similarly to regional cooling as the rest of the cryosphere on Baffin Island. Given that each transect plant age represents the time when the ice margin advanced through that position (not necessarily a standstill such as a moraine deposit would represent), the distribution of plant ages, at minimum, requires a change in the rate of ice margin expansion between samples sites (dashed line; Fig. 3). The resolution of our transect does not allow for the definitive detection of any periods of ice margin standstill, but the change in rate of ice margin advance between transect ages indicates that DIC episodically advanced over the past ~1000 years. Possible explanations for the change in rate of ice margin advance include continued expansion, ice margin stasis, or ice recession. However, the spatial and temporal distribution of the transect data and their correspondence with regional ice-expansion records supports our interpretation that DIC expanded episodically between ~1000 and 1900 CE. The proximity of the highest elevation radiocarbon sample to the trimline suggests that DIC approached its Neoglacial maximum position sometime between ~1600 CE and the end of the 19th century. Aerial photographs from 1960 show that the ice margin had already retreated ~15 m vertically from its maximum extent (trimline), indicating abandonment of its Neoglacial maximum position prior to 1960 (Fig. 1).

Moved down [1]: The model, modified from Kessler et al. (2006), calculates an ice thickness on a two-dimensional terrain model governed by explicit equations for ice flux and mass balance using shallow-ice physics (Blatter et al., 2011).

Deleted: Here we briefly describe the model setup; for a detailed explanation see Supplemental information. The model, modified from Kessler et al. (2006), calculates an ice thickness on a two-dimensional terrain model governed by explicit equations for ice flux and mass balance using shallow-ice physics (Blatter et al., 2011). Modern ice was removed (using an approximation of basal shear stress of ~1 bar) from 2011 ASTER digital elevation data to create the base terrain on which glacier growth was modeled. [... [1]

Deleted: southern

Deleted: as

Deleted:

Deleted:)

Deleted: , it is not included in the summary figures

Deleted: .

Deleted: southern

Deleted: The transect ages track expansion of DIC beginning ~1000 CE (Fig. 3).

Deleted: The progressively younger ages upslope along the transect record the episodic advance of the ice margin by accretion and internal deformation, rather than sliding. The ages near the 2015 CE ice margin (henceforth the 1000 CE margin) define DIC expansion ~1000 CE. The remaining kill dates align with periods of enhanced regional cooling shown in the composite population of dated ice-entombed mosses from the Cumberland Peninsula region, centered on ~1000, 1200, and 1500 CE (Fig. 3; Anderson et al., 2008; Miller et al., 2013; Margreth et al., 2014; this study).

Deleted: Possible explanations for the discontinuities between moss dates include

Deleted:

Deleted: .

5.3. Ice Cap Modeling

Using the above spatial and temporal constraints on ice margin movement over the last ~2000 years, model simulations can be used to explore the climate sensitivity of the Divide Ice Cap system, and to estimate the temperature changes required to reproduce the observed advance and retreat cycle.

Deleted: Modelling

Deleted: -

Moved (insertion) [1]

Deleted: Using the above spatial and temporal constraints on ice margin movement over the last ~2000 years, model simulations can be used to explore the climate sensitivity of the Divide Ice Cap system, and to estimate the temperature changes required to reproduce the observed advance and retreat cycle.

Deleted: The model, modified from Kessler et al. (2006), calculates an ice thickness on a two-dimensional terrain model governed by explicit equations for ice flux and mass balance using shallow-ice physics (Blatter et al., 2011).

5.3.1. Model Calibration

Prior to running full simulations of the last ~2000 years, the model must be calibrated for an appropriate solar radiation melt factor (m_R). Traditionally this value is calibrated using in situ solar flux and melt rate data. However, since that information is lacking here, a different approach must be taken.

Given the transect chronology observed, the simplest (and most likely) history involves continuous ice advance (though likely at varying rates) from ~26 BCE – 1900 CE followed by modern retreat from ~1900 to present. Given this scenario, the model was calibrated to the observed transect chronology and run to maximum Holocene extent conditions (or at ~1900, culmination of the LIA) using a range of accepted m_R (Jonsell et al., 2012) values. In other words, we iteratively tested m_R values to most closely match the maximum LIA dimensions. With this approach, we find that a m_R value of $0.036 \text{ mm day}^{-1} (\text{W m}^{-2})^{-1}$ provides the best reproduction of Holocene maximum ice extent (Fig. 4). Values of m_R values above or below $0.036 \text{ mm day}^{-1} (\text{W m}^{-2})^{-1}$ produced far too much or too little ice, respectively (Supplemental Fig. 1), making this value our closest approximation.

5.3.2. Full Simulation

Using the calibrated model from above, it is possible to reproduce the full history of advance and retreat at Divide Ice Cap over the last ~2000 years. Assuming a stable ice cap with a margin just inside sample #12, the model requires an average minimum summer cooling of 0.19°C persisting for 1000 years to grow ice across the sample #12 location and reach the 1000 CE margin in the allotted ~1000 years. A subsequent additional cooling of $\sim 0.25^\circ\text{C}$ is required for ice to advance across the 1000 CE margin to the LIA trimline by 1900 CE. It is of course likely that some decades were much colder than others; our modeling suggests that a minimum average cumulative summer cooling of $\sim 0.44^\circ\text{C}$ over the ~1900 years is required to advance the observed DIC ice margin through the constraints provided by the kill dates.

Building upon the ice expansion simulations, the model was used to investigate recent warming and ice retreat. DIC likely began receding around ~1900 CE, retreating from its maximum extent to its modern position over the past ~100 years. Under a simple linear warming scenario of $0.028^\circ\text{C yr}^{-1}$, the modeled DIC retreats from the LIA trimline to its 2015 position in 105 years (Fig. 5). This rate of warming is slightly higher than the $0.014^\circ\text{C yr}^{-1}$ (since 1959 CE) documented from the interior Dewar Lakes weather station ~320 km to the northwest, but significantly lower than the recent warming rate from Qikiqtarjuaq ($0.87^\circ\text{C yr}^{-1}$ 1995-2009 CE). The modeled rate of warming amounts to $\sim 2.77^\circ\text{C}$ of cumulative warming over the last century, which is similar to values recorded elsewhere in the Eastern Canadian Arctic (Bekryaev et al., 2010; Stocker et al., 2013).

Compared to the simulations of glacier advance up through the LIA, it would appear that the last century of elevated warming

Deleted: A solar radiation melt factor of $0.036 \text{ mm day}^{-1} (\text{W m}^{-2})^{-1}$ produced the closest match to the Neoglacial maximum extent geometry (Supplement Fig. 3).

Deleted: southern

Deleted: 8

has reversed the last ~1000 years of advance from slow cooling. Continuing under the same rate of warming, DIC will disappear by ~2100, and sooner if local warming accelerates.

The temperature changes reported here are minimum values due to assumptions made in the model. The best available data was used for both model initial conditions and mass balance forcings, but limitations in these data introduce uncertainty to the model (see Supplemental Information). However, the general agreement of ice cap simulations to observational data in the region support the first-order model results presented here.

6. Discussion

6.1. Regional Comparisons

The timing of episodes of ice expansion found here agree well with those found by Miller et al. (2017) at ~1100 and 1500 CE, using a similar transect method in Svalbard. The episodic nature of ice advance in Svalbard and in this study, in the face of steadily decreasing Northern Hemisphere insolation, indicates additional mechanisms and feedbacks are likely significantly influencing local climate. Also, similar to the Svalbard study, plant radiocarbon ages and aerial imagery suggests that study, that DIC reached its maximum Neoglacial extent during the LIA and that warming since the early 1900s has reduced glacier dimensions to a smaller size than any time since 1000 CE. Across the North Atlantic, episodic cryosphere expansion despite steadily declining insolation is not unique. Balascio et al. (2015) Balascio et al. (2015) found that glaciers in southeast Greenland periodically advanced throughout the late Holocene at similar times as DIC. The authors pointed to large ice rafting events and changes in the Atlantic Meridional Overturning Circulation as the likely driver of regional coolings. Glacier records from the North Atlantic also show episodic advances over the past ~1000 years, suggesting strong climate connections across the region (Solomina et al., 2015). Additionally, the magnitude of temperature change from the glacier model agrees well with a reconstruction of Arctic temperatures over the past 2000 years from Kaufman et al. (2009) (Fig. 6).

The magnitude of Neoglacial glacier advances and derived climate interpretations presented here differ somewhat from those based on the Naqsaq valley moraine suite farther north on Baffin Island. Based on sets of tightly clustered ¹⁰Be ages on moraines boulders in a nested moraine complex, Young et al. (2015) suggests that the Naqsaq glacier reached a position similar to that of its LIA extent at ~1050 CE. This led the authors to suggest that the climate was similar, with little or no additional cooling from ~1050 CE through the LIA. This interpretation differs from both the observed significant expansion of DIC from ~1000 CE to its LIA maximum, and the model simulations requiring that the same time period must have been, on average, ~0.25°C cooler than the preceding millennium.

This discrepancy between the two records may be explained by non-climatic factors affecting the deposition and preservation of moraines. Glaciers with a majority of their area at high elevations relative to the glacier tongue may not respond uniformly to equilibrium line altitude (ELA) fluctuations (e.g., Pedersen and Egholm, 2013). At the site studied by Young et al. (2015), the majority of the glacier area resides on a high plateau, with a narrow outlet glacier occupying a deeply incised valley, terminating in an open, wide valley floor. Although the moraine chronology developed by Young et al. (2015) itself is

Deleted: significant

Deleted: agree

Deleted: s

Deleted: (

Deleted: ,

Deleted: Miller et al. (2016)

Deleted: work

Deleted: , we find

Deleted: (

Deleted: ,

Deleted: (

Deleted: ,

Deleted:

convincingconvincing, it is possible that the terminalterminal position is relatively insensitive to small Late Holocene ELA changes. This is because once the ELA drops below the plateau and is within the narrow outlet glacier, each incremental ELA lowering increases the accumulation area only slightly. In contrast, DIC has a more symmetric hypsometry (i.e., the glacierized area is more evenly distributed over glacier elevation). Consequently, we expect that the correlation between ELA change and glacier dimension response should be more linear than for Naqsaq Glacier. Both the plant radiocarbon dates and glacier model simulations require increased summer cooling between ~1000 CE and the LIA.

6.2. Climate model/glacier model comparisons

A recent climate simulation with an earth system model provides a test of our glacier-model derived estimate of temperature change over the past 2 ka. Here we make use of a new 1-2005 CE simulation with the Community Earth System Model (CESM) (Hurrell et al., 2013), which adopts the same model version of the CESM as used for the CESM – Last Millennium Ensemble (Otto-Bliesner et al., 2016) driven by natural (i.e. orbital parameters, solar irradiance, and volcanic eruptions) and anthropogenic forcings (i.e. greenhouse gases and land-use) compiled by the PMIP4 working group (Jungclauss et al., 2016). The past2k CESM simulation suggests that the period from 0-1000 CE was, on average, ~0.24°C cooler than 1 CE control conditions (Fig. 6), and that the period from 1000-1900 CE was on average ~0.30°C cooler than the preceding millennium, meaning that the period from 1000-1900 CE was, on average, ~0.54°C cooler than 1 CE conditions, and that the second millennium CE temperature decline was dominated by cooling through the LIA (Fig. 6). The period encapsulating the LIA, from 1250-1850 CE, was on average 0.40°C cooler than 1-1000 CE. In general, these temperature trends agree well with the glacier model outputs in this study (Table 2). The past2k CESM61900,10001900,611In general these temperature trends agree well with the glacier model outputs in this study (Table 2).

Both the CESM simulation and Kaufman et al. (2009) Arctic temperature reconstructions show less overall warming following the LIA up to present than the cumulative warming from the glacier model. It is possible that the imposed linear warming in our glacier model does not accurately capture the non-linear warming that is likely taking place in the region, or that the CESM simulation and temperature reconstruction may not capture local factors influencing warming at DIC. However, the overall agreement between the climate and glacier models and the similarity of both to regional temperature reconstructions (Fig. 6, Table 2) supports the contention that the record of DIC expansion derived from the death ages of entombed plants faithfully records the average cooling that occurred in the region over the past 2000 years.

7. Conclusions

We have used radiocarbon-dated *in situ* tundra plants exposed by retreating ice margins to construct a spatially and temporally constrained record of ice cap expansion over the past 2 ka. DIC grew between ~26 BCE and 1000 CE, then advanced episodically at ~1000, 1200, and 1500 CE, reaching its Neoglacial maximum during the LIA. The LIA was terminated by the warming of the 20th century.

Deleted: strong

Deleted: terminal

Deleted: R

Deleted: ecent

Deleted: 0-1270 CE

Deleted: (Hurrell et al. 2013)

Deleted: ,

Deleted: (LME)

Deleted:

Deleted:

Deleted: (Jungclauss et al., 2016)

Deleted: .

Deleted: When combined with years 850-1850 CE from the CESM LME ensemble member 12 (Otto-Bliesner et al., 2016), the composite simulation allows us to quantify the average cooling in the North Atlantic Arctic air temperature during JJA from 0-1850 CE. When combining the two simulations, we use their temperature difference during the overlap period to correct for a systematic temperature offset (see Supplemental information). The corrected and combined

Deleted: simulation suggests that the period from 0-1000 CE was, on average, ~0.24°C cooler than 1 CE control conditions (Fig.

Deleted: 4

Deleted:), and that the period from 1000-

Deleted: 1850

Deleted: CE was on average ~0.30°C cooler than the preceding millennium, meaning that the period from

Deleted: 0

Deleted: -

Deleted: 1850

Deleted: CE was, on average, ~0.54°C cooler than 1 CE conditions, and that the second millennium CE temperature decline was dominated by cooling through the LIA (Fig.

Deleted: 4

Deleted:). The period encapsulating the LIA, from 1250-1850 CE, was on average 0.40°C cooler than

Deleted: 0

Deleted: -1000 CE.

Deleted: (

Deleted: ,

Deleted: The climate model simulations are in agreement with the glacier-model derived summer temperature change estimates presented above, supporting our

Glacier model simulations show that a minimum average cooling of ~0.44°C is required to match the radiocarbon constrained pattern of ice expansion over the last 2000 years, with the period from 1000 to 1850 CE being on average ~0.25°C colder than the preceding ~1000 years. A climate model simulation for the past 2ka driven by natural and anthropogenic forcings, as well as reconstructed Arctic temperatures, show similar summer temperature decreases, reinforcing the glacier modeling conclusions. Both the radiocarbon record and climate model simulations indicate that the coldest interval of the past ~2000 years was during the LIA (1250-1850 CE). Glacier model simulations matching observed ice-cap retreat since 1900 CE suggest that a cumulative warming of 2.77°C over the last ~100 years has reversed ~1000 years of ice cap expansion under only ~0.25°C cooling, suggesting modern warming is unprecedented over the past 2 ka.

At the present rate of warming, DIC will likely disappear before ~2100. Future collection of *in situ* plants exposed as DIC continues to retreat will both extend the record of ice cap advance and provide more constraints for modeling of ice cap activity and climate perturbations during Neoglaciation.

DataCode Availability
All data, The Matlab code for the glacier model code, and primary model input and output are utilized here is available in a Pangea Data Repository. (DOI to be inserted here) at <https://github.com/paleo-glacier/DivideGlacier>.

Acknowledgements.

The authors thank Nicolás Young for assistance in the field, Polar Continental Shelf Project and Universal Helicopters for logistical support, and the Inuit of Qikiqtarjuaq for permission to conduct research on their lands and field assistance. John Southon provided additional radiocarbon analyses. This project was supported by NSF award ARC-1204096. Contributions of R.S.A. were supported by NSF award EAR-1548725. Climate Modeling was supported by RANNIS ANATILS award 141573-052 and NSF-PLR1418040. The CESMpast2K simulation were performed on the high-performance supercomputer Yellowstone (ark:/85065/d7wd3xhc) provided by NCAR's Computational and Information Systems Laboratory, sponsored by the National Science Foundation.

References

Åkesson, H., Nisancioglu, K. H., Giesen, R. H. and Morlighem, M.: Simulating asymmetric growth and retreat of Hardangerjøkulen ice cap in southern Norway since the mid-Holocene, Cryosph. Discuss., doi:10.5194/tc-2016-62, 2016.

Alley, R. B.: GISP2 ice core temperature and accumulation data, IGBP PAGES/World Data Cent. Paleoclimatology Data Contrib. Ser., 13, 2004.

- Deleted: C
- Deleted: limate
- Deleted: simulation
- Deleted: s
- Deleted:
- Deleted: of ~
- Deleted: 3

Formatted: Font:Bold

Deleted: Scott Lehman and

- Deleted:
- Deleted: 1 CE and
- Deleted: simulation
- Deleted: s

- Anderson, R. K., Miller, G. H., Briner, J. P., Lifton, N. A. and DeVogel, S. B.: A millennial perspective on Arctic warming from 14C in quartz and plants emerging from beneath ice caps, *Geophys. Res. Lett.*, 35(1), 2008.
- Anklin, M., Bales, R. C., Mosley-Thompson, E. and Steffen, K.: Annual accumulation at two sites in northwest Greenland during recent centuries, *J. Geophys. Res. Atmos.*, 103(D22), 28775–28783, doi:10.1029/98JD02718, 1998.
- 5 Balascio, N. L., D’Andrea, W. J. and Bradley, R. S.: Glacier response to North Atlantic climate variability during the Holocene, *Clim. Past Discuss.*, 11(3), 2009–2036, doi:10.5194/cpd-11-2009-2015, 2015.
- Bekryaev, R. V., Polyakov, I. V. and Alexeev, V. A.: Role of polar amplification in long-term surface air temperature variations and modern arctic warming, *J. Clim.*, 23(14), 3888–3906, doi:10.1175/2010JCLI3297.1, 2010.
- Benn, D. I. and Evans, D. J. A.: *Glaciers and glaciation.*, 2010.
- 10 Blatter, H., Greve, R. and Abe-Ouchi, A.: Present State and Prospects of Ice Sheet and Glacier Modelling, *Surv. Geophys.*, 32(4–5), 555–583, doi:10.1007/s10712-011-9128-0, 2011.
- Braithwaite, R. J.: On glacier energy balance, ablation, and air temperature., *J. Glaciol.*, 27(97), 381–391, 1981.
- Braithwaite, R. J. and Olesen, O. B.: Calculation of glacier ablation from air temperature, West Greenland, Springer., 1989.
- Briner, J. P., Stewart, H. A. M., Young, N. E., Philipps, W. and Losee, S.: Using proglacial-threshold lakes to constrain
 15 fluctuations of the Jakobshavn Isbr?? ice margin, western Greenland, during the Holocene, *Quat. Sci. Rev.*, 29(27–28), 3861–3874, doi:10.1016/j.quascirev.2010.09.005, 2010.
- Bronk-Ramsey, C.: Bayesian Analysis of Radiocarbon Dates, *Radiocarbon*, 51(1), 337–360, doi:10.2458/azu_js_rc.51.3494, 2009.
- Crump, S. E., Anderson, L. S., Miller, G. H. and Anderson, R. S.: Interpreting exposure ages from ice-cored moraines: A
 20 Neoglacial case study on Baffin Island, Arctic Canada, n.d.
- Cuffey, K. M. and Paterson, W. S. B.: *The physics of glaciers*, Academic Press., 2010.
- Davis, P. T.: Neoglacial moraines on Baffin Island, *Quat. Environ. East. Can. Arctic, Baffin Bay West. Greenland*. Allen Unwin, Bost., 682–718, 1985.
- La Farge, C., Williams, K. H. and England, J. H.: Regeneration of Little Ice Age bryophytes emerging from a polar glacier
 25 with implications of totipotency in extreme environments, *Proc. Natl. Acad. Sci.*, 110(24), 9839–9844, doi:10.1073/pnas.1304199110, 2013.
- Gardner, A. S., Sharp, M. J., Koerner, R. M., Labine, C., Boon, S., Marshall, S. J., Burgess, D. O. and Lewis, D.: Near-surface temperature lapse rates over arctic glaciers and their implications for temperature downscaling, *J. Clim.*, 22(16), 4281–4298, doi:10.1175/2009JCLI2845.1, 2009.
- 30 Gearheard, S., Pocernich, M., Stewart, R., Sanguya, J. and Huntington, H. P.: Linking Inuit knowledge and meteorological station observations to understand changing wind patterns at Clyde River, Nunavut, *Clim. Change*, 100(2), 267–294, doi:10.1007/s10584-009-9587-1, 2010.
- Haerberli, W.: Brief communication: On area- and slope-related thickness estimates and volume calculations for unmeasured glaciers, *Cryosph. Discuss.*, (January), doi:10.5194/tc-2015-222, 2016.

- Hock, R.: Glacier melt: a review of processes and their modelling, *Prog. Phys. Geogr.*, 29(3), 362–391, doi:10.1191/0309133305pp453ra, 2005.
- Hooke, R. L.: Pleistocene ice at the base of the Barnes Ice Cap, Baffin Island, NWT, Canada, *J. 0/Glaciology*, 17(75), 1976.
- Hurrell, J. W., Holland, M. M., Gent, P. R., Ghan, S., Kay, J. E., Kushner, P. J., Lamarque, J.-F., Large, W. G., Lawrence, D.
5 and Lindsay, K.: The community earth system model: a framework for collaborative research, *Bull. Am. Meteorol. Soc.*, 94(9), 1339–1360, 2013.
- Jonsell, U., Navarro Valero, F. J., Bañón, M., Izargain, L., Jesús, J. and Otero García, J.: Sensitivity of a distributed temperature-radiation index melt model based on AWS observations and surface energy balance fluxes, *Hurd Peninsula glaciers, Livingston Island, Antarctica, Cryosph.*, 6(3), 539–552, 2012.
- 10 Jungclaus, J. H., Bard, E., Baroni, M., Braconnot, P., Cao, J., Chini, L. P., Egorova, T., Evans, M., González-Rouco, J. F., Goosse, H., Hurtt, G. C., Joos, F., Kaplan, J. O., Khodri, M., Klein Goldewijk, K., Krivova, N., LeGrande, A. N., Lorenz, S. J., Luterbacher, J., Man, W., Meinshausen, M., Moberg, A., Nehrbass-Ahles, C., Otto-Bliesner, B. I., Phipps, S. J., Pongratz, J., Rozanov, E., Schmidt, G. A., Schmidt, H., Schmutz, W., Schurer, A., Shapiro, A. I., Sigl, M., Smerdon, J. E., Solanki, S. K., Timmreck, C., Toohey, M., Usoskin, I. G., Wagner, S., Wu, C.-Y., Yeo, K. L., Zanchettin, D., Zhang,
15 Q. and Zorita, E.: The PMIP4 contribution to CMIP6 - Part 3: the Last Millennium, Scientific Objective and Experimental Design for the PMIP4 past1000 simulations, *Geosci. Model Dev. Discuss.*, 2016, 1–34, doi:10.5194/gmd-2016-278, 2016.
- Kane, D. L., Gieck, R. E. and Hinzman, L. D.: Snowmelt modeling at small Alaskan Arctic watershed, *J. Hydrol. Eng.*, 2(4), 204–210, 1997.
- 20 Kaufman, D. S., Schneider, D. P., McKay, N. P., Ammann, C. M., Bradley, R. S., Briffa, K. R., Miller, G. H., Otto-Bliesner, B. L., Overpeck, J. T. and Vinther, B. M.: Recent warming reverses long-term arctic cooling., *Science*, 325(5945), 1236–9, doi:10.1126/science.1173983, 2009.
- Kessler, M. A., Anderson, R. S. and Stock, G. M.: Modeling topographic and climatic control of east-west asymmetry in Sierra Nevada glacier length during the Last Glacial Maximum, *J. Geophys. Res. Earth Surf.*, 111(2), 1–15,
25 doi:10.1029/2005JF000365, 2006.
- Koerner, R. M.: Mass balance of glaciers in the Queen Elizabeth Islands, Nunavut, Canada, *Ann. Glaciol.*, 42(1), 417–423, 2005.
- Kumar, L., Skidmore, A. K. and Knowles, E.: Modelling topographic variation in solar radiation in a GIS environment, *Int. J. Geogr. Inf. Sci.*, 11(5), 475–497, doi:10.1080/136588197242266, 1997.
- 30 Kustas, W. P., Rango, A. and Uijlenhoet, R.: A simple energy budget algorithm for the snowmelt runoff model, *Water Resour. Res.*, 30(5), 1515–1527, doi:10.1029/94WR00152, 1994.
- Lang, H. and Braun, L.: On the information content of air temperature in the context of snow melt estimation, *IAHS Publ*, 190, 347–354, 1990.
- Lauriol, B., Carrier, Y., Beaudet, H. and Binda, G.: The residual snow cover in the Canadian Arctic in July: a means to evaluate

- the regional maximum snow depth in winter, Arctic, 39(4), 309–315 [online] Available from: <http://www.jstor.org/stable/40511027>, 1986.
- Mair, D., Burgess, D. and Sharp, M.: Thirty-seven year mass balance of Devon Ice Cap, Nunavut, Canada, determined by shallow ice coring and melt modeling, J. Geophys. Res. Earth Surf., 110(1), 1–13, doi:10.1029/2003JF000099, 2005.
- 5 Margreth, A., Dyke, A. S., Gosse, J. C. and Telka, A. M.: Neoglacial ice expansion and late Holocene cold-based ice cap dynamics on Cumberland Peninsula, Baffin Island, Arctic Canada, Quat. Sci. Rev., 91, 242–256, doi:10.1016/j.quascirev.2014.02.005, 2014.
- Marshall, S. J. and Sharp, M. J.: Temperature and melt modeling on the Prince of Wales Ice Field, Canadian high arctic, J. Clim., 22(6), 1454–1468, doi:10.1175/2008JCLI2560.1, 2009.
- 10 Miller, G. H.: Late Quaternary glacial and climatic history of northern Cumberland Peninsula, Baffin Island, N.W.T., Canada, Quat. Res., 3(4), 561–583, doi:[http://dx.doi.org/10.1016/0033-5894\(73\)90031-8](http://dx.doi.org/10.1016/0033-5894(73)90031-8), 1973.
- Miller, G. H., Wolfe, A. P., Briner, J. P., Sauer, P. E. and Nesje, A.: Holocene glaciation and climate evolution of Baffin Island, Arctic Canada, Quat. Sci. Rev., 24(14–15), 1703–1721, doi:10.1016/j.quascirev.2004.06.021, 2005.
- Miller, G. H., Geirsdóttir, Á., Zhong, Y., Larsen, D. J., Otto-Bliesner, B. L., Holland, M. M., Bailey, D. A., Refsnider, K. A.,
 15 Lehman, S. J. and Southon, J. R.: Abrupt onset of the Little Ice Age triggered by volcanism and sustained by sea-ice/ocean feedbacks, Geophys. Res. Lett., 39(2), 2012.
- Miller, G. H., Lehman, S. J., Refsnider, K. A., Southon, J. R. and Zhong, Y.: Unprecedented recent summer warmth in Arctic Canada, Geophys. Res. Lett., 40(21), 5745–5751, 2013.
- Miller, G. H., Landvik, J. Y., Lehman, S. J. and Southon, J. R.: Episodic Neoglacial snowline descent and glacier expansion
 20 on Svalbard reconstructed from the 14C ages of ice-entombed plants, Quat. Sci. Rev., 155, 67–78, doi:10.1016/j.quascirev.2016.10.023, 2017.
- National Air Photo Library.: A17014. Photos: 83-84 Ottawa: Department of Energy, Mines and Resources, 1960.
- Nawri, N. and Stewart, R. E.: Climatological features of orographic low-level jets over Frobisher Bay, Atmosphere-Ocean, 44(4), 397–413, doi:10.3137/ao.440405, 2010.
- 25 Osborn, G., McCarthy, D., LaBrie, A. and Burke, R.: Lichenometric dating: Science or pseudo-science?, Quat. Res., 83(1), 1–12, 2015.
- Otto-Bliesner, B. L., Brady, E. C., Fasullo, J., Jahn, A., Landrum, L., Stevenson, S., Rosenbloom, N., Mai, A. and Strand, G.: Climate variability and change since 850 CE: an ensemble approach with the community earth system model, Bull. Am. Meteorol. Soc., 97(5), 787–801, doi:10.1175/BAMS-D-14-00233.1, 2016.
- 30 Pedersen, V. K. and Egholm, D. L.: Glaciations in response to climate variations preconditioned by evolving topography, Nature, 493(7431), 206–210, doi:10.1038/nature11786, 2013.
- Pendleton, S. L., Briner, J. P., Kaufman, D. S. and Zimmerman, S. R.: Using cosmogenic ¹⁰Be exposure dating and lichenometry to constrain Holocene glaciation in the central Brooks Range, Alaska, Arctic, Antarct. Alp. Res., 49(1), 115–132, 2016.

- Reimer, P. J., Bard, E., Bayliss, A., Beck, J. W., Blackwell, P. G., Bronk Ramsey, C., Buck, C. E., Cheng, H., Edwards, R. L., Friedrich, M., Grootes, P. M., Guilderson, T. P., Hafliðason, H., Hajdas, I., Hatté, C., Heaton, T. J., Hoffmann, D. L., Hogg, A. G., Hughen, K. A., Kaiser, K. F., Kromer, B., Manning, S. W., Niu, M., Reimer, R. W., Richards, D. A., Scott, E. M., Southon, J. R., Staff, R. A., Turney, C. S. M. and van der Plicht, J.: IntCal13 and Marine13 Radiocarbon Age Calibration Curves 0–50,000 Years cal BP, *Radiocarbon*, 55(4), 1869–1887, doi:10.2458/azu_js_rc.55.16947, 2013.
- 5 Rosenwinkel, S., Korup, O., Landgraf, A. and Dzhumabaeva, A.: Limits to lichenometry, *Quat. Sci. Rev.*, 129, 229–238, doi:10.1016/j.quascirev.2015.10.031, 2015.
- Serreze, M. C. and Barry, R. G.: Processes and impacts of Arctic amplification: A research synthesis, *Glob. Planet. Change*, 77(1–2), 85–96, doi:10.1016/j.gloplacha.2011.03.004, 2011.
- 10 Serreze, M. C., Rehder, M. C., Barry, R. G., Walsh, J. E. and Robinson, D. A.: Variations in aerologically derived Arctic precipitation and snowfall, *Ann. Glaciol.*, 21, 77–82, 1995.
- Solomina, O. N., Bradley, R. S., Hodgson, D. A., Ivy-Ochs, S., Jomelli, V., Mackintosh, A. N., Nesje, A., Owen, L. A., Wanner, H., Wiles, G. C. and Young, N. E.: Holocene glacier fluctuations, *Quat. Sci. Rev.*, 111, 9–34, doi:10.1016/j.quascirev.2014.11.018, 2015.
- 15 Stocker, T. F., Qin, D., Plattner, G.-K., Tignor, M., Allen, S. K., Boschung, J., Nauels, A., Xia, Y., Bex, V. and Midgley, P. M.: *Climate change 2013: The physical science basis*, Intergov. Panel Clim. Chang. Work. Gr. I Contrib. to IPCC Fifth Assess. Rep. (AR5)(Cambridge Univ Press. New York), 2013.
- Williams, L. D.: The variation of corrie elevation and equilibrium line altitude with aspect in eastern Baffin Island, NWT, Canada, *Arct. Alp. Res.*, 169–181, 1975.
- 20 Young, N. E., Schweinsberg, A. D., Briner, J. P. and Schaefer, J. M.: Glacier maxima in Baffin Bay during the Medieval Warm Period coeval with Norse settlement, *Sci. Adv.*, (December), doi:10.1126/sciadv.1500806, 2015.

Figure 1

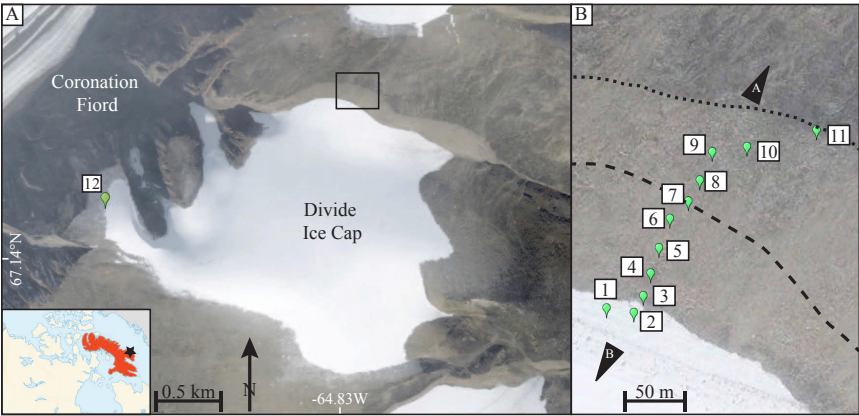


Figure 1: A) A map view of Divide Ice Cap, with location in inset map; note prominent asymmetric trimlines and location of sample #12. B) Detail of sampling transect along which mosses were collected (sample numbers noted), with trimline (dotted line) and 1960 ice margin (dashed line; based on aerial photographs) shown. Locations of camera angles for Figure 2 are also noted with black triangles with panel letters. Imagery courtesy DigitalGlobe, 2011.

Deleted: C) Example of sampled in situ preserved moss along transect (sample #5).

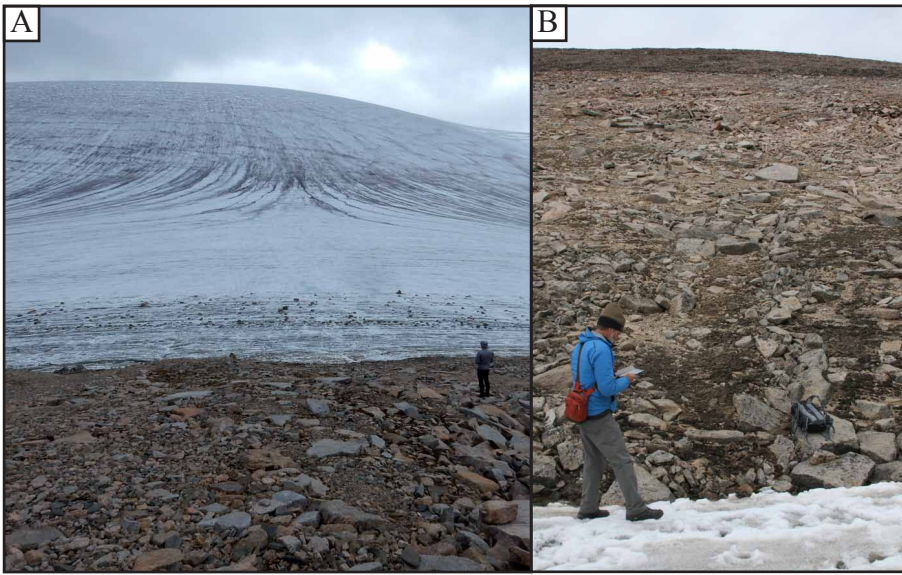


Figure 2: A) View south towards north aspect of DIC, with supraglacial channels demarcating the modern topographic divide. B) View north along transect up towards the maximum Neoglacial DIC extent; note large mats of dead vegetation diminish away from current ice margin.

Figure 3

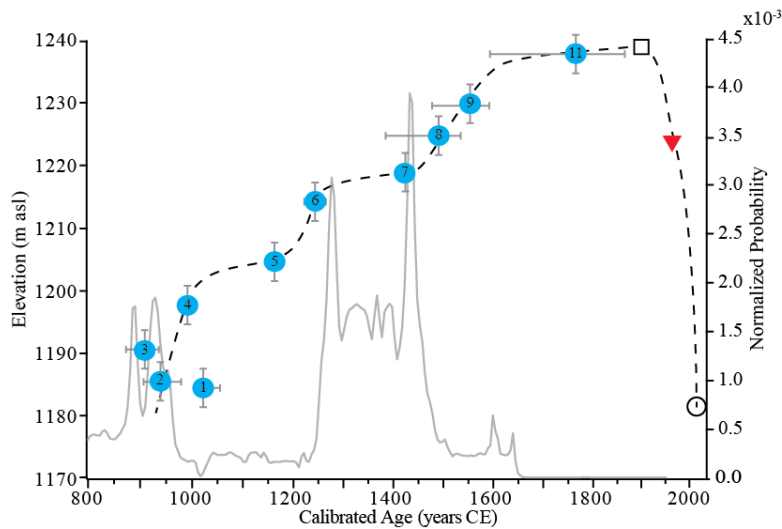


Figure 3: Plot of transect radiocarbon ages with elevation, showing median age (dots with sample numbers) and 1-sigma uncertainty (gray bars). Position of ~1900 CE Neoglacial maximum extent (square) also shown. The position of the DIC margin interpreted from 1960 aerial photography is shown (triangle), as well as its observed 2015 position (circle). The inferred ice margin history (dashed line) plotted through samples ages illustrates the episodic nature of ice margin advance. The episodic nature of DIC expansion agrees well with the normalized probability compilation of recently exposed ice margin *in situ* plant ages from Baffin Island (gray line), which shows periods of regional ice expansion (Margreth et al., 2014; Miller et al., 2013; see supplement for data).

Deleted: <sp>

Deleted: photographs

Formatted: Check spelling and grammar

Deleted: Also plotted is the aggregate normalized yearly probability for dated *in situ* plant samples in the Cumberland Peninsula region (gray line; $n=70$), including those from Miller et al. (2013) and Margreth et al. (2014). The inferred ice margin history (dashed line) plotted through samples ages illustrates the episodic nature of ice margin advance.

Field Code Changed

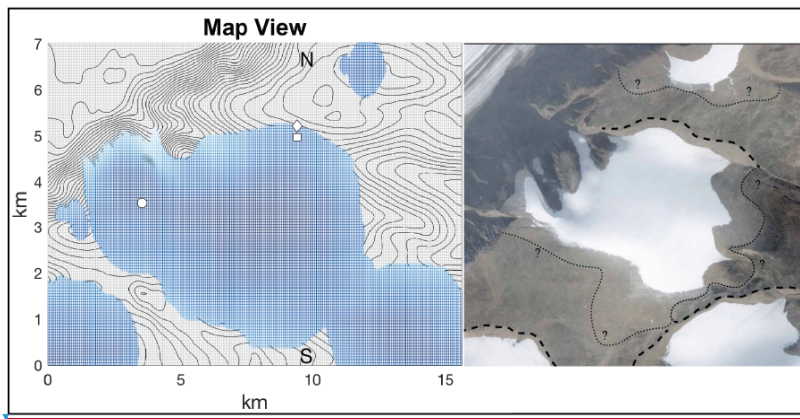
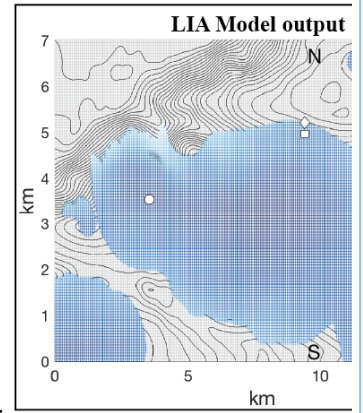


Figure 4: Map view of simulation (left panel) output showing the modeled maximum Neoglacial extent (contour interval is 30 m. N and S show the the north-south line along with the transect was modeled). Also shown is sample #12 (circle), 1000 CE margin (square), and Neoglacial maximum trimline (diamond). Right panel shows a google earth 2011 image (most recent available) with Neoglacial maximum extent trimlines (dashed lines) and approximate trimlines (dotted lines) shown.



Deleted:

Formatted: Font:9 pt

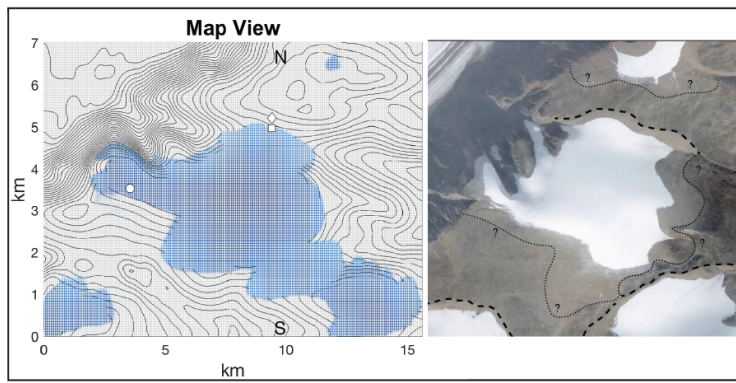
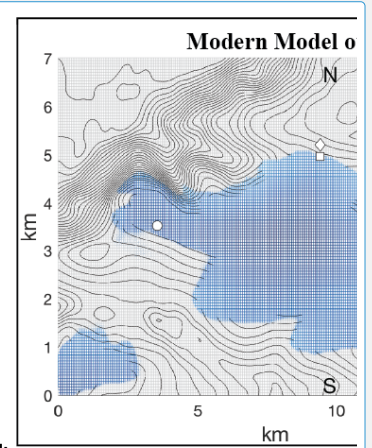


Figure 5: Left panel: final output from the full simulation model showing the modeled modern (2015 CE) extent of the ice cap following the advance and retreat scenarios outlined in text. Right panel shows a google earth 2011 image with Neoglacial maximum extent trimlines (dashed lines) and approximate trimlines (dotted lines) shown. Note similarities between model output and satellite imagery along the northern margin, but disagreements in other areas (east and west).



Deleted:

Formatted: Centered

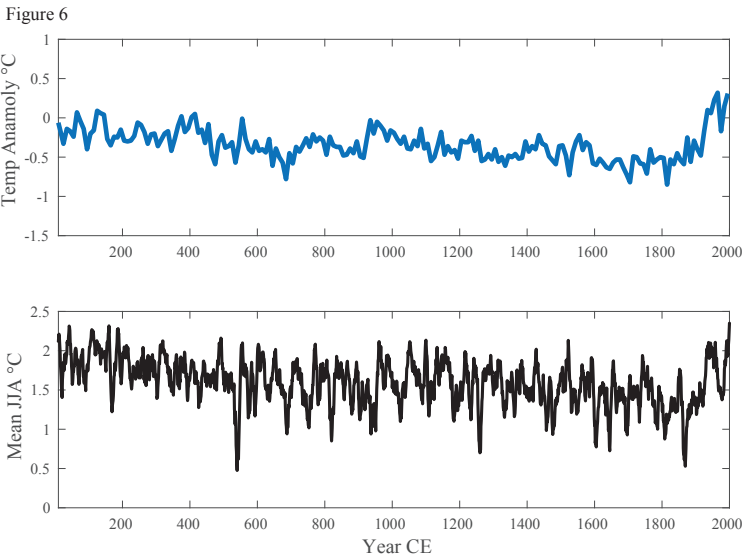


Figure 6: Top Panel: CESM-simulated decadal 2 m air temperature (°C) during JJA spanning the terrestrial region of the Atlantic Arctic (60-90°N, 90°W-60°E). Overall, the CESM modeled temperature shows similar coolings to the glacier model results presented here. Bottom Panel: Reconstructed Arctic-wide late Holocene temperatures (relative to the 1961-1990 instrumental mean; Kaufman et al. (2009)) showing similar structure and magnitude of change to the CESM simulation and our glacier model. ~~Top Panel: CESM modelled temperature shows similar coolings to the glacier model results presented here. Bottom Panel: Reconstructed Arctic-wide late Holocene temperatures (relative to the 1961-1990 instrumental mean; Kaufman et al. (2009)) showing similar structure and magnitude of change to the CESM simulation and our glacier model.~~

Deleted: Figure
Deleted: 4
Deleted: :
Deleted: ESM-simulated decadal 2 m air temperature (°C) during JJA spanning the terrestrial region of the Atlantic Arctic (60-90°N, 90°W-60°E).
Deleted: Years 0-1270 CE are a part of the past2K run while 1271-1850 CE are from the CESM-LME (Otto-Bliesner et al., 2016). Together, the CESM simulations report similar average coolings to the glacier model results.
Formatted: Check spelling and grammar
Formatted: English (US)
Field Code Changed
Deleted: (
Formatted: Font:Bold
Deleted: ,

Table 1: Plant Radiocarbon Ages

Table 1													
Sample # (Fig. 1)	Lab ID	Field ID	Latitude	Longitude	Altitude (m asl)	Distance from 2015 ice margin	¹⁴ C age (yr)	± (yr)	Calibrated Median Age (yr CE)	1σ Uncertainty (-yr)	1σ Uncertainty (+yr)	2σ Uncertainty (-yr)	2σ Uncertainty (+yr)
1	UCIAMS-167159	M15-B072V	67.15198	-64.82164	1185	0	1005	25	1029	3	33	118	43
2	NSRL-28798	M15-B071V	67.15195	-64.82115	1186	0	1100	15	942	36	41	45	47
3	NSRL-28797	M15-B070V	67.15207	-64.82098	1191	16	1145	15	910	39	28	61	132
4	NSRL-28796	M15-B069V	67.15223	-64.82084	1198	34	1055	15	996	16	9	23	23
5	NSRL-28795	M15-B068V	67.15241	-64.82069	1205	53	880	5	1172	11	13	35	16
6	NSRL-28794	M15-B067V	67.15261	-64.82049	1215	79	770	20	1254	20	24	22	30
7	NSRL-28793	M15-B066V	67.15273	-64.82016	1219	95	505	15	1424	6	7	13	13
8	NSRL-28792	M15-B065V	67.15288	-64.81995	1225	114	380	15	1505	104	50	113	56
9	NSRL-28791	M15-B064V	67.15308	-64.81972	1230	143	310	15	1569	72	45	75	53
10	NSRL-28790	M15-B062V	67.15312	-64.81909	1229	157	1.4933*	0.0025*	1971	8	1	N/A	N/A
11	NSRL-28799	M15-B076V	67.15323	-64.81783	1238	202	175	15	1780	165	111	170	113
12	NSRL-26071	M14-B0170	67.14353	-64.87985	1483	NA	1975	20	26	21	29	29	44

*Sample M15-B062V returned a post-bomb ¹⁴C measurement; Fraction modern and uncertainty shown here. Age calculated using OxCal v4.2.4 Bronk and Ramsey (2013) with Post-bomb atmospheric NH1 curve (Hua et al., 2013).

Table 2	0-1000 CE (°C)*	1000-1900 CE (°C)*	Total (°C)
Glacier Model	0.19	0.25	0.44
CESM	0.24	0.3	0.54
Kaufman et al. (2009)	0.22	0.22	0.44

*Cooling relative to preceding millennium

Here we briefly describe the model setup; for a detailed explanation see Supplemental information. The model, modified from Kessler et al. (2006), calculates an ice thickness on a two-dimensional terrain model governed by explicit equations for ice flux and mass balance using shallow-ice physics (Blatter et al., 2011). Modern ice was removed (using an approximation of basal shear stress of ~ 1 bar) from 2011 ASTER digital elevation data to create the base terrain on which glacier growth was modeled.

Glacier growth on the base terrain was driven using a modified distributed mass-balance approach. Annual accumulation is assumed to be uniform (0.3 m water equivalent) across the ice cap, given the small area and limited elevation range (Fisher et al., 1998; WGMS, 2012). Annual melt is calculated using a positive degree day method (Hock, 2005) with an additional component from incoming solar radiation (Jonsell et al., 2012). We apply a positive degree day melt factor of $6.3 \text{ mm day}^{-1} \text{ }^{\circ}\text{C}^{-1}$ (Braithwaite, 1981). Solar radiation melt factors ($\text{mm day}^{-1} (\text{W m}^{-2})^{-1}$) are traditionally calibrated using measurements of mass balance (e.g., Jonsell et al., 2012); at this study site we lack such measurements. However, using the temporal and spatial constraints above, including the maximum Neoglacial ice configuration recorded by trimlines, the local solar radiation melt factor can be approximated from the model run that produces the best-fit ice extent to the observed Neoglacial maximum extent.