

Dr James U.L. Baldini
Associate Professor (Reader)
Department of Earth Sciences
University of Durham
Durham DH1 3LE, UK
+44 (0) 191 334 2334
james.baldini@durham.ac.uk

04 June 2018

Dear Dr Thornalley,

Thank you for your continued consideration of our manuscript entitled 'Evaluating the link between the sulphur-rich Laacher See volcanic eruption and the Younger Dryas climate anomaly' for publication in *Climate of the Past*. We have now addressed the minor comments made by the reviewers, as well as your editorial comments.

We greatly appreciate you taking the time to make in-depth comments, which have helped improve the manuscript and will undoubtedly increase the profile of any paper that may arise. Below this cover letter you will find our responses to the points raised. We have also made some unsolicited cosmetic changes that improve readability, and that generally improve the manuscript (please see the manuscript version with tracked changes, below as well).

Please do let us know if you require any further details on any of the changes made, if you would like to discuss any aspect further, or if you have any other questions regarding our revised resubmission.

Best regards,



Dr James Baldini
(Corresponding author)

Responses to Reviewer and Editorial comments (responses are organised in the order presented in the editor's comments)

We thank the reviewers for their additional comments that have continued to improve the manuscript. We would also like to thank the editor, whose in-depth and useful comments have significantly improved the manuscript. We have chosen to incorporate most of the recent set of comments into the text, but in some instances we have opted not to make these revisions. In these cases, we provide the reasons why we chose not to make the suggested revision, but we are happy to discuss these points further, particularly if we have misinterpreted any of the reviewer/editor comments.

Comment 1: Review 2 (Prof. David Pyle) provides some straight-forward additions. Please implement.

Comment 1a: The relationship between eruption size and sulphur release has been recently updated in a paper by Carn et al (Multi-decadal satellite measurements of global volcanic degassing, JVGR 311, 99 - 134, 2016 <https://doi.org/10.1016/j.jvolgeores.2016.01.002>) (their fig. 11). This supports the point made by the authors - broadly sulphur release scales with eruption size, but there is more than 2 orders of magnitude variation between high-S and low-S eruptions of a given size.

Response: We thank Prof. Pyle for suggesting this relevant new paper, and we have changed the text to include this reference. The new text reads:

“However, variability of almost three orders of magnitude exists in the amount of sulphur released amongst equivalently sized explosive eruptions (Carn et al., 2016), and consequently eruption size is not the only predictor of total sulphur released. In the case of the LSE, all the existing evidence suggests that it was anomalously enriched in sulphur relative to its magnitude (Baales et al., 2002; Scaillet et al., 2004), and that it therefore should have produced significant NH cooling.”

Comment 1b: In the reference list the citation of Nowell et al. (2006) should be ' J. Quaternary Sci., Vol. 21 pp. 645–675'

Response: Thank you. This has been corrected.

Comment 2: Review 3 suggests that a condition for publication should be highlighting, in the abstract, that the volcanic trigger hypothesis needs testing and following up with rigorous modelling studies, similar to what was done for the meltwater hypothesis, since, in its current format, this idea is speculative. Review 1 makes a similar point, but also adds that the claims need to be toned down and the speculative nature made clear i.e. this idea is, as yet, conjecture. I think both these requests can be dealt with adequately by adding a couple of explicit sentences at the end of the abstract (and also the introduction) that clearly state the speculative/conjectural nature of this idea and the urgent need to test it with relevant, specific modelling studies.

Response: We have added the following text to the end of the abstract:

“However, we recommend that future studies prioritise climate modelling of high latitude volcanism during deglacial boundary conditions to test this hypothesis further.”

We have also added the following text to the end of the introduction:

“Although more research is clearly needed to thoroughly investigate this hypothesis, the apparent coincidence of a large, very sulphur-rich eruption with the beginning of YD cooling is compelling, and well worth exploring further.”

We still have a long discussion in the conclusions regarding future research, and the claims have been toned down throughout the text (please see tracked changes). We have avoided the use of the word ‘speculative’ in the abstract as we feel that, despite being under-researched, this hypothesis has just as much factual support as any of the others. Whereas the other hypotheses are far better researched, no universal agreement exists as to whether a meltwater pulse or a bolide impact even occurred, which is clearly not the case for the LSE. There is also very little doubt that the eruption would have caused substantial NH cooling for 1-3 years, or that the eruption coincided with the onset of YD cooling. The uncertainties with the hypothesis are mostly limited to the nature of the positive feedback, which is also the case for both of the other hypotheses that are normally not labelled by authors as ‘speculative’. It is clear from our text where the uncertainties exist, and we are concerned that using the term ‘speculative’ in the abstract would discourage other researchers from following up our hypothesis, which we do feel has merit and is well supported. However, we have used this word in other places in the text where appropriate, and of course we are happy to discuss this further.

Comment 3: I would also add to this, that I strongly suggest towards the end of the introduction you mention something along the lines of: "A number of studies have suggested that the YD, like DO events, may be caused by internal oscillation of the climate system when it is an intermediate glacial state, such as midway through deglaciation. Yet, external forcing may also play an important role in controlling the precise timing of the transition into the YD and, by itself, external forcing has also been proposed as the underlying trigger for the YD. Here, we suggest that a volcanic eruption trigger (in this case the Laacher See eruption) should be considered as a viable hypothesis for triggering the onset of the YD." This would alert the reader to your later text, at the end of the discussion, where you discuss the possibility of the YD not requiring an abrupt external forcing, and it also provides a more complete synthesis of the state of the art (ie plenty of work negates the need for an abrupt external trigger for the YD (and DO events more generally) - as discussed earlier in the review process. As stated in the earlier review round, I am concerned about the general validity of a concept that calls exclusively upon external triggers for the YD, and DO events more generally (as is implied at times in your text).

Response: We have added text and a reference to Sima et al. 2004 in the introduction:

“Finally, still other research proposes that the YD resulted from internal oceanic processes, and that no external forcing was required to trigger the observed climate shifts (Sima et al., 2004).”

Of course you cannot have a pronounced cooling event unless the climate was warmer to begin with, and from this perspective D-O events (or any other event warmer than the glacial baseline) are critical. Thus, abundant literature does exist discussing internally forced D-O events, as discussed in the manuscript. We agree that there was cooling following on from the B-A, and that this cooling was probably largely internally forced. However, at 12.880 ka BP a very large number of records show an inflection point towards accelerated cooling (discussed in manuscript, and evident in many published figures, e.g., Fig. 1 in Buizert et al. 2014, *Science* and Fig. 2 in Bahr et al 2018 *Global and Planetary Change*). In most cases, the cooling into the YD is distinct from the preceding cooling (and sometimes warming) trend. In our manuscript, we are mostly discussing this conventionally defined YD (or GS-1) starting at 12.880 ka BP rather than the long-term cooling trend that started following peak B-A warming. We agree that this post-B-A cooling was probably internally forced, and this perspective is now discussed in more detail in the manuscript.

Comment 5: This is because there is a strong statistical link between the rate of cooling during preceding DO warm periods (for the YD, the BA) and their duration. This means that the approximate timing of the transition from DO interstadial to stadial is predictable. Theoretical concepts have been put forward to explain this relationship (from Schulz et al 2001 up to Buizert & Schmittner 2015, with many in between). It is relatively simple to incorporate a role for a common external forcing, like certain types of volcanic eruption, into these models, such that the general timing of the transition is determined by the evolving state/stability of components of the climate system, but the precise timing (ie why 100 years earlier not later etc) is affected by the occurrence of eg volcanic eruptions. What is difficult to reconcile would be a more dominant controlling role on the timing of DO stadials by volcanic events and a much more extensive theoretical framework would need to be developed to incorporate all the observations and features of DO events and the YD-BA. The problem is perhaps best put as: "The approximate timing of the end of a DO interstadial is predictable once its rate of cooling is established. If the underlying cause for this transition is invoked to be a volcanic eruption, it logically follows that the approximate timing of the eruption can be predicted. Ie during MIS 3 we could use cooling of DO interstadials to predict when the next major eruption will occur....this would certainly need to be explained/discussed, because it is a very provocative inference"

Response: We feel that perhaps the editor misinterprets some of our discussion, possibly because of ambiguity inherent in our text. The editorial comment states:

“The approximate timing of the end of a DO interstadial is predictable once its rate of cooling is established. If the underlying cause for this transition is invoked to be a volcanic eruption, it logically follows that the approximate timing of the eruption can be predicted. Ie during MIS 3 we could use cooling of DO interstadials to

predict when the next major eruption will occur....this would certainly need to be explained/discussed, because it is a very provocative inference.”

We do not believe that we can predict when a volcanic eruption may occur based on the characteristics of a D-O event. The end of D-O warming is to a certain extent predictable, but considerable uncertainties do exist, and a broad range of D-O cooling durations are possible for any given D-O warming, even after the cooling rate is established (see Figure 2 in Ganopolski and Rahmstorf, 2001, for example). We are not arguing that a volcanic eruption, like the LSE, immediately ends a D-O event. Rather, post D-O cooling (probably internally forced) occurs, permitting an estimation of the duration of that D-O warming event based on the initial cooling rate. However, any large, sulphur-rich northern hemisphere volcanic eruption increases the rate of cooling, and hastens the end of a D-O event. Clear inflection points exist during the cooling following several D-O temperature maxima (e.g., GI-1, GI-20, etc.). In the case of the transition into the YD, it is apparent from numerous studies that cooling did not occur at a constant rate following peak B-A warmth. We therefore argue that a volcanic eruption was responsible for some of the difference between the predicted time for the climate system to return to a glacial baseline state and the actual return time. We hope that the changes made during this most recent revision clarify these points.

Comment, L1280: Please may I suggest that you reword "The most widely accepted explanation for the YD" to "A common explanation for the YD". A minor change but there are many who do not accept freshwater pulses as the YD trigger. Technically fine as you have it though.

Response: This has been changed.

Comment, L1618: - You shouldn't rule out all ocean forcing just because AMOC might not weaken during the LIA (note - in addition to Rahmstorf et al 2015 showing no AMOC weakening during LIA, we have also recently shown no AMOC weakening during the LIA - Thornalley et al 2018, Nature). There are many ways the ocean can influence climate other than the AMOC, such as subpolar gyre circulation (as pointed out by the earlier suggested reference to Moreno-Chamorro et al 17, which, if you are discussing the LIA, I would still recommend including). Therefore change text to something along the lines of "related to sea-ice, atmosphere, or ocean changes other than the AMOC".

Response: We thank the editor for bringing their recent paper to our attention, and for highlighting the Moreno-Chamorro paper, and have now included the following text:

“This implies that the drivers of Little Ice Age cooling were related to sea-ice, atmosphere, or oceanic (other than the AMOC, e.g., horizontal subpolar gyre circulation (Moreno-Chamorro et al., 2017)) changes, although this requires further research to confirm.”

Comment, L1895: Please alter this text because its underlying inference is incorrect: an abrupt cooling does not require an abrupt forcing. The fact that there is gradual cooling and then a switch to a more abrupt cooling at the onset of the YD does not imply that the gradual cooling had one cause, and then the more abrupt stage, another. As shown by many model studies, climate and the AMOC can display non-linear behaviour and tipping points, for which DO events and the BA-YD have been studied in this context. There can be gradual cooling, and then a threshold is crossed in which the climate can shift to another mode of operation. Ocean convection in the North Atlantic - weakening in the Nordic Seas then switching to south of Iceland - in relation to DO events is often thought of as a classic example of this (eg Ganopolski and Rahmstorf 2001 Nature).

Response: There are uncertainties associated with predicting the end of a D-O warming event; these uncertainties may be due to thresholds being crossed (as noted in this comment and many published papers) or a volcanic eruption (as we and others, e.g. Polyak et al., 2017 Geology, propose). We agree that there is more than one way of increasing the cooling rate, and have now clarified this in the text:

“However, the gradual cooling after the B-A differs from the rapid cooling observed at around 12.9 ka BP clearly visible in the NGRIP d18O and nitrogen isotope data as well as in numerous other North Atlantic records, raising the possibility that the LSE (or other external forcing) expedited the final cooling into the YD. It is also possible however that the increased cooling rate reflects non-linearity inherent in Atlantic oceanic circulation, potentially linked to transitions across key thresholds between different modes of oceanic circulation (e.g., Ganopolski and Rahmstorf, 2001).”

Comment, L1903: Your summary of why some terminations do not have a YD needs revising/updating so that it includes the concept that the anomaly in some terminations is not the YD-like events but rather the BA-type events. As described by Cheng et al 2009 (Science), but also in other earlier studies (see Carlson 2008, QSR, and refs therein), some terminations are characterised by a very long (Heinrich) stadial period, and then transition into interglacial. These terminations have strong insolation forcing that is thought to keep AMOC suppressed throughout the deglacial, possibly due to continued meltwater input. Other terminations (eg T1 and 3), where insolation forcing is weaker, enable a brief recovery of AMOC midway through deglaciation, in the form of a transient BA type event. Therefore, in addition to your speculation that whether a YD events occurs during a termination or not depends on if a volcanic eruption occurs during an intermediate climate state, you should also discuss the widely supported suggestion that the differing terminations are due to the occurrence (or lack)

of a BA-type event interrupting the (Heinrich) stadial event that is thought to be integral to a termination (e.g. Wolff et al 2009 Nat Geo., Barker et al 2010 and 2011).

Response: We thank the editor for highlighting this, and we agree that it is important to include some additional/revised text. We have now included the text:

“Additionally, the absence of a YD-type event during some terminations may simply reflect the absence of preceding B-A-type event and the presence of a very long stadial interval which then transitioned directly into an interglacial (Cheng et al., 2009; Carlson, 2008). Terminations lacking a YD-type event tend to have a strong insolation forcing that may have suppressed AMOC throughout the termination, preventing the development of a B-A-type event and decreasing the possibility of a YD-type event following after peak B-A-type warming (Wolff et al., 2010; Barker et al., 2011; Barker et al., 2010).”

5 **ERe-evaluating the link between the sulphur-rich Laacher See volcanic eruption and the Younger Dryas climate anomaly**

James U.L. Baldini¹, Richard J. Brown¹, and Natasha Mawdsley¹
¹Department of Earth Sciences, University of Durham, Durham, DH1 3LE, UK.

10 *Correspondence to:* James Baldini (james.baldini@durham.ac.uk)

Abstract. The Younger Dryas ~~is is considered~~ the ~~most-archetypal well-documented~~ millennial-scale ~~cooling climate change~~ event ~~of the Quaternary, and determining~~ identifying its cause is fundamental for thoroughly understanding ~~glacial climate~~ systematics during deglaciations. ~~However, the but the~~ mechanisms responsible for its initiation remain elusive, ~~and both of the two~~ most researched triggers (a meltwater pulse or a bolide impact) are controversial. ~~Here we consider the problem from~~ a different perspective, and explore a hypothesis that Younger Dryas climate shifts were catalysed by the unusually sulphur-rich 12.880 ka BP eruption of the Laacher See volcano (Germany). ~~Here w~~We use ~~the most a~~ recently revised chronology for GISP2 ice core ion dataset from the Greenland ice sheet to identify a large volcanic sulphur spike coincident with both the ~~unusually sulphur-rich~~ Laacher See ~~volcanic~~ eruption and the onset of Younger Dryas-related cooling in Greenland (i.e., the most recent abrupt Greenland millennial-scale cooling event, Greenland Stadial-1; ‘GS-1’). ~~Previously published~~ Lake sediment and stalagmite records confirm that the eruption’s timing was indistinguishable from the onset of cooling across the North Atlantic, but that it preceded westerly wind repositioning over central Europe by ~200 years. We suggest that the initial short-lived volcanic sulphate aerosol cooling was amplified by oceanic circulation shifts and/or sea ice expansion, gradually cooling the North Atlantic region and incrementally shifting the mid-latitude westerlies to the south. The aerosol-related cooling probably only lasted 1-3 years, and ~~we propose that~~ the majority of Younger Dryas-related cooling ~~was may have been~~ was due to the sea ice-ocean circulation positive feedback, which was particularly effective during the intermediate ice volume conditions characteristic of ~13 ka BP. ~~We conclude that the large and sulphur-rich Laacher See eruption should be considered a viable trigger for the Younger Dryas.~~ Furthermore, the eruption itself may have resulted from lithospheric unloading associated with the last deglaciation, and therefore similar volcanic forcings may not be spatiotemporally random, but instead may represent an integral part of deglaciation that often leads to YD-type events. ~~We conclude that the large and sulphur-rich Laacher See eruption should be considered a viable trigger for the Younger Dryas. However, we recommend that future studies should prioritise climate modelling of high latitude volcanism during deglacial boundary conditions in order to test this hypothesis further, and to determine the climate response to other sulphur rich eruptions under deglacial boundary conditions.~~

1 Introduction

35 The Younger Dryas (YD) ~~represents the archetypal millennial-scale climate shift. The YD climate anomaly~~ occurred ~~during near the end of~~during the last deglaciation and is often described as a brief return to near-glacial conditions in northern Europe.

Research now indicates that the YD was indeed characterised by cold conditions across the North Atlantic and Europe (Carlson et al., 2007; von Grafenstein et al., 1999), but also by a southward-shifted westerly wind belt over Europe (Bakke et al., 2009; Brauer et al., 2008; Lane et al., 2013a; Baldini et al., 2015b), a southward-shifted Intertropical Convergence Zone (Shakun et al., 2007; Chiang and Bitz, 2005; Bahr et al., 2018), increased moisture across the southwest of North America (Polyak et al., 2004; Asmerom et al., 2010), and potential warming in parts of the Southern Hemisphere (Bereiter et al., 2018; Kaplan et al., 2010).

~~A common~~ ~~The most widely accepted~~ explanation for the YD involves meltwater-induced weakening of Atlantic Meridional Overturning Circulation (AMOC) (Berger, 1990; Alley, 2000; Broecker et al., 2010; Johnson and McClure, 1976; Schenk et al., 2018). Initial support for this theory included elevated $\delta^{18}\text{O}$ values in Gulf of Mexico sediment dating from the early YD (implying that meltwater was rerouted elsewhere) (Broecker et al., 1988; Flower and Kennett, 1990; Teller, 1990). The meltwater was originally proposed to have travelled to the North Atlantic via the St Lawrence Valley, but results have so far revealed only limited geological evidence for a massive flux of freshwater coincident with the YD initiation (Broecker, 2006a; Rayburn et al., 2011). The freshwater pulse may have followed another route to the ocean, and other research has proposed the Mackenzie Valley (Condrón and Winsor, 2012; Murton et al., 2010) as a possible alternative, and the Fennoscandian Ice Sheet as an alternate source (Muschitiello et al., 2015). ~~V~~~~However,~~ very recent surface exposure ages suggest that the route to the North Atlantic from Lake Agassiz was indeed free of ice before the YD initiation (Leydet et al., 2018), coinciding with evidence for freshening of the Gulf of St Lawrence (Levac et al., 2015), illustrating that meltwater could indeed have followed the St Lawrence Valley route to the North Atlantic. ~~However~~~~Nevertheless,~~ the issue concerning the routing of a meltwater pulse illustrates a key uncertainty inherent to the meltwater pulse hypothesis. Another complication is that efforts to model the AMOC response to freshwater inputs under deglacial boundary conditions have yielded equivocal results (e.g., Meissner, 2007). Consequently, although meltwater forcing remains the most widely researched cause of the YD, it is not universally accepted. Broad agreement does exist that AMOC weakening was associated with the YD onset (Lynch-Stieglitz, 2017), but the driver of this weakening remains unclear.

Other recent research has proposed that a large impact event, or events, over North America may have triggered the YD (Firestone et al., 2007; Kennett et al., 2009). The Younger Dryas Impact Hypothesis (YDIH) is supported by the discovery of iridium, shocked quartz, platinum, and millions of tons of impact spherules at the YD boundary layer (Kennett et al., 2009; Wittke et al., 2013; Wu et al., 2013). Wolbach et al. (2018a) use charcoal and soot evidence from 152 sedimentary sequences and elevated concentrations of platinum at 26 sites (including Greenland) to argue that a cometary impact at the beginning of the YD triggered the largest wildfires of the Quaternary, consuming 9% of global terrestrial biomass. The YDIH has proven remarkably controversial, and different researchers suggest either terrestrial origins for the same evidence, that the evidence is not unique to the YD boundary, or that the YD boundary layer was misidentified (e.g., Pinter et al., 2011; van Hoesel et al.,

2015; Holliday, 2015; Scott et al., 2017; Daulton et al., 2017). Finally, still other research proposes that the YD resulted from internal oceanic processes, and that no external forcing was required to trigger the observed climate shifts (Sima et al., 2004).

Here we summarise but do not argue extensively for or against any of these established hypotheses. Instead, we investigate the hypothesis that the YD was triggered by the ~12.9 ka BP eruption of the Laacher See volcano, located in the East Eifel Volcanic Field (Germany). Earlier research briefly alluded to the eruption as a possible causative mechanism for the YD (e.g., Berger, 1990; Bogaard et al., 1989). However, because the meltwater pulse hypothesis was already popularised, and because the effects of volcanic eruptions on climate would escape detailed quantification until after the 1991 Pinatubo eruption, the concept of the ~12.9 ka BP Laacher See eruption as a YD trigger never gained traction. Importantly, the concept was effectively dismissed after lacustrine evidence across central Europe appeared to indicate that the YD's clearest expression appeared ~200 years after the Laacher See Tephra within the same sediments (e.g., Brauer et al., 2008; Brauer et al., 1999a; Hajdas et al., 1995). For example, Schmincke et al. (1999) state that "The Younger Dryas cooling period clearly was not triggered by LSE as formerly thought because it started ca. 180 years after the eruption", reflecting the accepted sequence of events at that time. However, the identification of the Vedde Ash chronostratigraphic unit within Meerfelder Maar (Germany) lake sediments has ~~permitted-improved correlations~~ with Greenland ice core records, which ~~also~~ contain the same ash (Lane et al., 2013a). This revised chronological framework now strongly suggests that the 12.880 ka BP Laacher See eruption was in fact synchronous with cooling associated with the YD onset (i.e., the most recent abrupt Greenland millennial-scale cooling event, Greenland Stadial-1; 'GS-1'), but preceded major atmospheric circulation shifts over central Europe (Rach et al., 2014).

~~Furthermore~~Additionally, we utilise ion data from the Greenland ice core GISP2 (Zielinski et al., 1997) on the most recent chronological model for the core (the GICC05modelext chronology (Seierstad et al., 2014)) to identify a large volcanogenic sulphate spike whose timing coincides with both the Laacher See eruption and the initiation of GS-1 related cooling. We ~~argue~~ suggest that the initial, short-lived volcanogenic aerosol cooling triggered a sea-ice/AMOC positive feedback that caused both basin-wide cooling and the dynamical climate shifts most closely associated with the YD. Should future research confirm a volcanically-forced YD, it would strengthen our understanding of the processes operating during deglaciations, and underscore the strong role that volcanic aerosols can play in moderating global climate. Although more research is clearly needed to thoroughly investigate this hypothesis, the apparent coincidence of a large, very sulphur-rich eruption with the beginning of YD cooling is intriguingcompelling, and well worth exploring further. Therefore we are 're-evaluating' the Laacher See eruption's role in triggering the YD, building on research that initially briefly mentioned the eruption as a causative mechanism for the YD, and later research that dismissed the original version of the concept.

2 Background

105 Laacher See volcano, Germany, is situated in the East Eifel Volcanic Field, which is part of the West European rift system (Baales et al., 2002; de Klerk et al., 2008) (Figure 1). The Laacher See Eruption (LSE) occurred at $\sim 12.880 \pm 0.040$ ka BP based on the position of tephra within regional varved lake sequences (e.g., Wulf et al., 2013; Brauer et al., 1999a; Lane et al., 2015; Bronk Ramsey et al., 2015), consistent with radiocarbon (12.934 ± 0.165 cal ka BP (Baales et al., 2002)) and $^{40}\text{Ar}/^{39}\text{Ar}$ (12.9 ± 0.50 ka BP (van den Bogaard, 1995)) ages for the eruption; the absolute age of the eruption is therefore well constrained.

110 The eruption was one of the largest in Europe during the late Quaternary and dispersed over 20 km^3 of pumice and ash over $>230,000 \text{ km}^2$ of central Europe and beyond (Baales et al., 2002; Bogaard and Schmincke, 1985). The eruption consisted of alternating Plinian and phreatomagmatic phases; Plinian columns exceeded 20 km height and injected ash and volcanic gas into the stratosphere (Harms and Schmincke, 2000). Direct effects of the LSE included ash deposition, acid rain, wildfires, and increased precipitation, all of which could have affected the local and far-field ecology and cultures at the time (de Klerk et al., 2008; Baales et al., 2002; Engels et al., 2016; Engels et al., 2015).

115

The LSE discharged up to 6.3 km^3 of unusually sulphate-rich, evolved phonolite and sulphide-rich mafic phonolite magma from a strongly compositionally zoned reservoir (Harms and Schmincke, 2000). Estimating SO_2 release from eruptions preserved in the geologic record is difficult and relies on petrologic comparisons between the sulphur content of melt inclusions (the magma at depth) and the sulphur content of glass in erupted products (the degassed magma) (Devine et al., 1984; Scaillet et al., 2004; Textor et al., 2003; Vidal et al., 2016). Petrologic methods can lead to underestimations of total sulphur release by up to two orders of magnitude relative to satellite data (Gerlach et al., 1996; Scaillet et al., 2004). For example, satellite-derived estimates of the 1991 Pinatubo eruption's SO_2 content ($15\text{--}20$ megatonnes (Mt)), are considerably higher than the 0.11 Mt petrologic estimate (Sheng et al., 2015), and similar discrepancies between petrologic and satellite-derived estimates of

120 SO_2 emissions exist for other modern eruptions (Scaillet et al., 2004) (Figure 2). The consensus is that this excess sulphur is contained in a sulphur-rich vapour phase that is released prior to and during the eruption (Gerlach et al., 1996; Wallace, 2001). Petrologic studies by Harms and Schmincke (2000) suggest that the LSE released 3.8 Mt of SO_2 , but considering a sulphur-rich vapour phase they concluded that the eruption released at least 20 megatons of SO_2 into the stratosphere. Textor et al. (2003) suggested that the eruption released between 6.76 and 104.8 Mt of SO_2 , when considering uncertainties regarding the

125 oxidation state of the vapour phase. Despite these unknowns, the amount of SO_2 released by the LSE was considerably higher than the petrologic estimates, and Schmincke et al. (1999) speculated a maximum release of 300 Mt SO_2 , assuming the same relationship between petrologic and observed values as for the Pinatubo eruption. We utilise a similar but more comprehensive approach, taking the mean value of the relationship between petrologic and observed values of the 16 non-basaltic explosive eruptions catalogued by Shinohara (2008) plus estimated values for the large 1257 AD Samalas eruption

130 (Vidal et al., 2016) to estimate that the LSE released ~ 83 Mt SO_2 , although the range in possible values is substantial. A variety of estimated values clearly exist, but the eruption almost certainly released more SO_2 than the Pinatubo eruption (~ 20 Mt), and possibly even more than the 1815 Tambora eruption (~ 70 Mt) (Figure 2). However, unlike the Pinatubo and Tambora eruptions,

135

sulphate aerosols produced by the LSE were largely restricted to the Northern Hemisphere (NH) (Figure 3), leading to strong cooling in the stratosphere that affected the NH disproportionately (Graf and Timmreck, 2001).

Both Pinatubo and the LSE were Magnitude 6 (M6) eruptions, where ‘magnitude’ is a measure of eruption size referring to the amount of material erupted (Deligne et al., 2010) on a logarithmic scale. However, the cooling effects of a volcanic eruption are controlled by the amount of sulphur released, and not necessarily the eruption size (Rampino and Self, 1982). In general, magnitude and erupted sulphur amounts are well correlated (Oppenheimer, 2003; Carn et al., 2016), and therefore magnitude is often used as a surrogate for sulphur yield. However, variability of almost three orders of magnitude exists in the amount of sulphur released amongst equivalently sized explosive eruptions (Carn et al., 2016), and consequently eruption size is not the only predictor of total sulphur released. ~~All+ In the case of the he available evidence suggests that if the LSE, all the existing evidence deviates from this trend suggests that,~~ it was anomalously enriched in sulphur relative to its magnitude (Baales et al., 2002; Scaillet et al., 2004), and that it therefore should have produced significant NH cooling.

3 Results and Discussion

3.1 The timing of the Laacher See Eruption relative to the Younger Dryas

Key research using European lake sediment archives containing the Laacher See Tephra (LST) suggested that the LSE preceded the YD onset by ~200 years (Hajdas et al., 1995; Brauer et al., 1999a). For example, the LST appears very clearly in the Meerfelder Maar sediment core (Germany), and it does indeed appear to predate the YD (e.g., Brauer et al., 1999a). However, the recent discovery of the Icelandic Vedde Ash in Meerfelder Maar sediments has revised the relative timing of key climate archives around the North Atlantic (Lane et al., 2013a). It is now apparent that the clearest hydroclimatic expression of the YD in central Europe lags Greenland cooling associated with GS-1 by 170 years (Figure 4). Specifically, several lake sediment cores from different latitudes have revealed that westerly wind repositioning was time transgressive, ~~and~~ with winds gradually shiftinged- to the south following the initiation of GS-1 cooling (Bakke et al., 2009; Lane et al., 2013a; Brauer et al., 2008; Muschitiello and Wohlfarth, 2015).

Although the LSE preceded the most clearly expressed dynamical climatic change associated with the YD in central Europe, its timing (12.880 ± 0.040 ka BP) is indistinguishable from the Greenland temperature decrease leading into GS-1, beginning at 12.870 ± 0.138 ka BP (Rach et al., 2014; Steffensen et al., 2008; Rasmussen et al., 2014) (GS-1 is defined as starting at 12.846 in the NGRIP record, but abrupt cooling predates this by ~24 years) (Figure 4). In central Europe, hydrogen isotope ratios of land plant-derived lipid biomarkers from Lake Meerfelder Maar confirm that North Atlantic atmospheric cooling began at ~12.880 ka BP (Rach et al., 2014), synchronous with both the onset of Greenland GS-1 related cooling and the LSE, but preceding the atmospheric response associated with meridionally displaced westerly winds at the same site (importantly,

in MFM the first data point suggesting cooling occurs immediately above the LST (Rach et al., 2014)). This observation is further supported by speleothem $\delta^{18}\text{O}$ records from La Garma and El Pindal caves in northern Spain (Baldini et al., 2015b; Moreno et al., 2010), Swiss lake sediment $\delta^{18}\text{O}$ records (Lotter et al., 1992), Lithuanian lake sediment trace element profiles (Andronikov et al., 2015), and Swiss lake organic molecule-based (BIT and TEX₈₆) temperature reconstructions (Blaga et al., 2013), all showing North Atlantic cooling beginning ~~with~~immediately after the LSE (Figure 4). Some lacustrine proxy records suggest that cooling began a few years after the LSE (e.g., the Gerzensee $\delta^{18}\text{O}$ stack (van Raden et al., 2013)). The existence of a short lag between the temperature signal and the recording of that signal in some lacustrine archives may reflect differences in the type of archive used (i.e., terrestrial versus lacustrine-~~archives~~), a decadal-scale residence time of groundwater feeding certain lakes, or differences in moisture source regions for different lakes. The trigger responsible for the cooling must coincide with (or predate) the earliest evidence for the cooling, and a lag must logically exist between the forcing and any later response (rather than the effect preceding the cause).

Recent work used volcanic marker horizons to transfer the GICC05modelext to the GISP2 ice core (previously on the Meese/Sowers chronology) (Seierstad et al., 2014), thereby improving comparisons with records of volcanism (Figure 5) and facilitating a direct comparison between the GISP2 volcanic sulphate record (Zielinski et al., 1997) and both the GISP2 and the NGRIP $\delta^{18}\text{O}$ records (Figure 5). For the interval around the Younger Dryas initiation, very little chronological difference between this timescale and IntCal13 exists (Muscheler et al., 2014), suggesting the timescale is robust. We find that a large sulphate spike at 12.867 ka BP in the GISP2 record on the GICC05modelext timescale is contemporaneous with the LSE's timing based on *i*) dates for the eruption based on varved lake deposits (12.880 ± 0.05 ka BP (Lane et al., 2015)) and *ii*) layer counting from the Vedde Ash within NGRIP (Figure 5); we therefore ascribe this sulphate spike to the Laacher See eruption. Earlier research also briefly considered this spike based on absolute dating (Brauer et al., 1999b), but because of the concept that the LSE preceded the YD boundary by ~200 years, concluded that an earlier sulphate spike most likely represented the LSE. Utilising the GICC05modelext chronology (Seierstad et al., 2014) as well as recent layer counts within the MFM sediment (Lane et al., 2013a), we ~~now~~ suggest that the sulphate spike at 12.867 ka BP represents the LSE, and that the earlier one tentatively identified by Brauer et al. (1999b) may represent a small eruption of the Icelandic volcano Hekla, consistent with the interpretation of Muschitiello et al. (2017). Although the coincidence between our identified sulphate spike, the date of the LSE, and the onset of North Atlantic cooling associated with the YD is compelling, detailed tephrochronological analyses are required to definitively ascribe this sulphate spike to the LSE.

3.2 A complex response of climate to volcanic eruptions

Explosive volcanic eruptions can inject large amounts of sulphur-rich gases as either SO_2 or H_2S into the stratosphere, which are gradually oxidised to form sulphuric acid vapour (Rampino and Self, 1984). Within a few weeks, the vapour can condense

205 with water to form an aerosol haze (Robock, 2000), which is rapidly advected around the globe. Once in the atmosphere, sulphate aerosols induce summer cooling by scattering incoming solar radiation back to space (Timmreck and Graf, 2006; Baldini et al., 2015a). An eruption's sulphur content, rather than its explosivity, determines most of the climate response (Robock and Mao, 1995; Sadler and Grattan, 1999). Furthermore, recent research has also highlighted the role of volcanogenic halogens, such as Cl, Br, and F, in depleting stratospheric ozone (Cadoux et al., 2015; Klobas et al., 2017; Kutterolf et al., 210 2013; Vidal et al., 2016; LeGrande et al., 2016). Ozone absorbs solar ultraviolet and thermal infrared radiation, and thus depletion in ozone can result in surface cooling, and would act to ~~reinforce-amplify~~ the radiative effects of volcanogenic sulphate aerosols (Cadoux et al., 2015).

Although the radiative effects associated with volcanic aerosols are reasonably well understood, the systematics of how 215 volcanic eruptions affect atmospheric and oceanic circulation are less well constrained. Research suggests that volcanic eruptions affect a wide variety of atmospheric phenomenon, but the exact nature of these links remains unclear. For example, Pausata et al. (2015) used a climate model to conclude that high latitude NH eruptions trigger an El Niño event within 8-9 months by inducing a hemispheric temperature asymmetry leading to southward Intertropical Convergence Zone (ITCZ) migration and a restructuring of equatorial winds. The model also suggests that these eruptions could lead to AMOC shifts 220 after several decades, consisting of an initial 25-year strengthening followed by a 35-year weakening, illustrating the potential for climate effects extending well beyond sulphate aerosol atmospheric residence times. Several modelling studies based on historical data suggest that eruptions may strengthen AMOC (Ottera et al., 2010; Swingedouw et al., 2014; Ding et al., 2014) but also increase North Atlantic sea ice extent for decades to centuries following the eruption due to the albedo feedback and reductions in surface heat loss (Ding et al., 2014; Swingedouw et al., 2014). Other models suggest that AMOC may intensify 225 initially, but then weaken after about a decade (Mignot et al., 2011). A modelling study by Schleussner and Feulner (2013) suggested that volcanic eruptions occurring during the last millennium increased Nordic Sea sea ice extent, which weakened AMOC and eventually cooled the entire North Atlantic Basin. Importantly, Schleussner and Feulner (2013) concluded that short-lived volcanic aerosol forcings triggered “a cascade of sea ice-ocean feedbacks in the North Atlantic, ultimately leading to a persistent regime shift in the ocean circulation”. Other research finds that North Atlantic sea ice growth following a 230 negative forcing weakened oceanic convection and northward heat export during the Little Ice Age (Lehner et al., 2013). Quantifying the long-term influences of single volcanic eruptions is confounded by the effects of subsequent eruptions and other factors (e.g., solar variability, El Niño events), which can overprint more subtle feedbacks. For example, model results looking at recent eruptions found evidence that different types of eruptions can either constructively or destructively interfere with AMOC strength (Swingedouw et al., 2014). Therefore, despite increasingly clear indications that volcanic eruptions have 235 considerable long-term consequences for atmospheric and oceanic circulation, the full ~~scale of these shifts is currently not well understood even over the last two millennia, and is~~ scale of these shifts is currently not well understood even over the last two millennia, and is essentially unknown under ~~g~~Glacial boundary conditions.

240 However, indications that volcanism may have had particularly long-term climate effects during the last ~~g~~Glacial do exist. Bay et al. (2004) found a very strong statistical link between evidence for Southern Hemisphere (SH) eruptions and rapid Greenland warming associated with Dansgaard-Oeschger (DO) events, although no causal mechanism was proposed. More recent research determined that every large, radiometrically-dated SH eruption (five eruptions) across the interval 30-80 ka BP occurred within dating uncertainties of a DO event (Baldini et al., 2015a). The same research also found a strong statistical correlation between large NH volcanic eruptions and the onset of Greenland stadials over the same 30-80 ka BP interval
245 (Baldini et al., 2015a), and proposed that during intermediate ice volume conditions, a positive feedback involving sea ice extension, atmospheric circulation shifts, and/or AMOC weakening may have amplified the initial aerosol injection. This positive feedback continued to operate until it was superseded by another ~~external~~-forcing promoting warming at high latitudes in the NH, or an equilibrium was reached. This also appears consistent with observations during the YD: *i*) a sulphur-rich NH volcanic eruption, *ii*) long-term NH high latitude cooling, *iii*) NH mid-latitude westerly wind migration to the south, and *iv*)
250 slow recuperation out of the event following rising 65°N insolation and/or a SH meltwater pulse.

The LSE erupted twice the volume of magma as, and potentially injected considerably more ~~SO₂~~-sulphur into the stratosphere than, the 1991 AD Pinatubo eruption (Baales et al., 2002; Schmincke, 2004). The Pinatubo eruption cooled surface temperatures by 0.5°C globally, and up to 4°C across Greenland, Europe, and parts of North America, for two years following
255 the eruption (Schmincke, 2004), while aerosols persisted in the stratosphere for ~three years (Diallo et al., 2017). ~~An E~~Existing models ~~suggests~~ that the LSE created a sulphate aerosol veil wrapping around the high northern latitudes (Graf and Timmreck, 2001) (Figure 3). The model suggests that NH summer temperatures dropped by 0.4°C during the first summer following the eruption, though it assumes that the eruption released substantially less SO₂ (15 Mt SO₂ (Graf and Timmreck, 2001)) than current maximum ~~estimates~~^[J2] (104.8 Mt SO₂ (Textor et al., 2003)) (Figure 2) ~~(Textor et al., 2003)~~, which rival the ~~sulphur~~
260 ~~SO₂~~-amount delivered to the stratosphere by the 1815 ~~AD~~ Tambora eruption. Actual aerosol-induced cooling may far exceed these estimates, a perspective supported by Bogaard et al. (1989) who estimate that the environmental impacts of the eruption of the sulphur-rich phonolite melt may even have exceeded those of the far larger (but silicic) Minoan eruption of Santorini (~1613 BC). It does not seem unreasonable that an eruption of this size, sulphur content, and geographic location, occurring during a transitional climate state, could have catalysed a significant climate anomaly.

265

3.3 The nature of the positive feedback

Volcanogenic sulphate aerosols typically settle out of the atmosphere within three years; aerosol-induced cooling alone therefore cannot explain the YD's extended duration. We suggest that aerosol forcing related to the LSE initiated North Atlantic cooling, which consequently triggered a positive feedback as proposed for earlier Greenland stadials (Baldini et al., 2015a).
270 Existing evidence strongly suggests that North Atlantic sea ice extent increased (Bakke et al., 2009; Baldini et al., 2015b; Broecker, 2006b; Cabedo-Sanz et al., 2013) and AMOC weakened (Broecker, 2006b; McManus et al., 2004; Bondevik et al., 2006) immediately after the GS-1 onset, and therefore both could have provided a powerful feedback. The feedback may have

resided entirely in the North Atlantic, and involved sea ice expansion, AMOC weakening, and increased albedo, as previously suggested within the context of meltwater forcing (Broecker et al., 2010). Alternatively, it has been noted that hemispherically asymmetrical volcanic sulphate loadings induced ITCZ migration away from the hemisphere of the eruption (Ridley et al., 2015; Hwang et al., 2013; Colose et al., 2016), and it is possible that these ITCZ shifts forced wholesale shifts in atmospheric circulation cells. This hypothesised mechanism is broadly consistent with that advanced by Chiang et al. (2014) where a forcing at a high northerly latitude subsequently drives southward ITCZ migration, which then affects global atmospheric circulation. Within the context of GS-1, LSE aerosol-related NH cooling could have shifted the ITCZ to the south, thereby expanding the NH Polar Cell and shifting the NH Polar Front to the south. Sea ice tracked the southward shifted Polar Front, resulting in more NH cooling, a weakened AMOC, and a further southward shift in global atmospheric circulation cells (Baldini et al., 2015a). Such a scenario is consistent with recent results based on tree ring radiocarbon measurements suggesting that GS-1 was not caused exclusively by long-term AMOC weakening, but instead was forced by NH Polar Cell expansion and southward NH Polar Front migration (Hogg et al., 2016).

Our hypothesis that the YD was triggered by the LSE and amplified by a positive feedback is further supported by modelling results suggesting that a combination of a moderate negative radiative cooling, AMOC weakening, and altered atmospheric circulation best explain the YD (Renssen et al., 2015). AMOC consists of both thermohaline and wind-driven components, and atmospheric circulation changes can therefore dramatically affect oceanic advection of warm water to the North Atlantic. Recent modelling suggests that reduced wind stress can immediately weaken AMOC, encouraging southward sea ice expansion and promoting cooling (Yang et al., 2016), illustrating a potential amplification mechanism following an initial aerosol-induced atmospheric circulation shift. Twentieth Century instrumental measurements further support this by demonstrating that westerly winds strength over the North Atlantic partially modulates AMOC (Delworth et al., 2016).

Initiation of the proposed positive feedback would requires volcanic aerosols to remain in the atmosphere for at least one summer season. Evidence based on the seasonal development of vegetation covered by the LST suggests that the LSE occurred during late spring or early summer (Schmincke et al., 1999), and varve studies similarly suggest a late spring or early summer eruption (Merkt and Muller, 1999). Available evidence therefore suggests that the eruption occurred just prior to maximum summer insolation values, maximising the potential scattering effects of the volcanogenic sulphate aerosols. Even if it were a winter eruption, for historical eruptions similar in magnitude to the Laacher See eruption, aerosols remained in the atmosphere longer than one year, regardless of the eruption's latitude. For example, aerosols remained in the atmosphere for ~three years after the Pinatubo eruption (15°N, 120°E) (Diallo et al., 2017), which probably released considerably less SO₂ than the LSE (Figure 2). Measurable quantities of aerosols remained in the atmosphere for approximately three years even after the 1980 Mount St. Helen's eruption (46°N, 122°W) (Pitari et al., 2016), which ~~injected-produced~~ only 2.1 Mt SO₂ (Baales et al., 2002; Pitari et al., 2016) and erupted laterally (Eychenne et al., 2015). In short, the LSE eruption probably occurred during the late

spring or early summer, but even if the eruption were a winter eruption, the LSE's aerosols would have certainly persisted over at least the following summer, with the potential to catalyse the positive feedback we invoke.

It is worth highlighting that a similar mechanism may have also contributed to Little Ice Age cooling (Miller et al., 2012), with research suggesting that a coupled sea ice/AMOC mechanism could extend the cooling effects of volcanic aerosols by over 100 years during the Little Ice Age (Zhong et al., 2011). This perspective is supported by modelling results suggesting that a large volcanic forcing is required to explain Little Ice Age cooling (Slawinska and Robock, 2017). Lehner et al. (2013) identify a sea ice/AMOC/atmospheric feedback that amplified an initial negative radiative forcing to produce the temperature pattern characterising the Little Ice Age. However, Rahmstorf et al. (2015) argue that no identifiable change in AMOC occurred during the Little Ice Age, and Thornalley et al. (2018) similarly suggest that AMOC only weakened near the end of the Little Ice Age. This suggesting implies that the drivers of Little Ice Age cooling were ~~related to sea ice and related to sea-ice, atmosphere, or oceanic (other than the AMOC, e.g., horizontal subpolar gyre circulation (Moreno-Chamarro et al., 2017)) changes (Moreno-Chamarro et al., 2017) atmospheric rather than oceanic,~~ although this requires further research to confirm. Large volcanic eruptions in 536, 540, and 547 AD are hypothesised to have triggered a coupled sea ice/ocean circulationAMOC feedback that led to an extended cold period (Buntgen et al., 2016). Recent research also highlights the possibility that volcanism followed by a coupled sea ice/ocean circulation positive feedback triggered hemispheric-wide centennial- to millennial-scale variability during the Holocene (Kobashi et al., 2017). If a feedback was active following volcanic eruptions during the 6th Century, the Little Ice Age, and the Holocene, the intermediate ice volume and transitional climate characteristic of the last deglaciation should have amplified any volcanic aerosol forcing~~their effects~~. This perspective is consistent with previous observations, including those of Zielinski et al. (1996) who noted that when the climate system is in a state of flux it is more sensitive to external forcing, and that any post-volcanic cooling would be longer lived. Importantly, Rampino and Self (1992) stated "Volcanic aerosols may also contribute a negative feedback during glacial terminations, contributing to brief episodes of cooling and glacial readvance such as the Younger Dryas Interval". Our results are entirely consistent with this perspective, and here we highlight a sulphur-rich volcanic eruption whose timing coincided with the onset of YD-related cooling. However, despite increasingly tangible evidence that eruptions can affect AMOC-ocean circulation~~strength~~ and sea ice extent, the exact nature of any positive feedback is still unclear. Future research should prioritize the identification and characterisation of this elusive, but potentially commonplace, feedback that amplifies otherwise subtle NH temperature shifts.

3.4 Sensitivity to ice volume

Magnitude 6 (M6) eruptions such as the LSE are large but not rare; for example, over the last two thousand years, twelve M6 or larger eruptions are known (Brown et al., 2014), but none produced a cooling event as pronounced as the YD. Abrupt millennial scale climate change is characteristic of glacial intervals, and the forcing responsible only appears to operate during intervals when large ice sheets are present. The lack of large-scale and prolonged climate responses to external forcing over the Holocene implies either the absence of the forcing (e.g., lack of large meltwater pulses), ~~or~~ a reduced sensitivity to a

340 temporally persistent forcing (e.g., volcanism), or the existence of an internal forcing mechanism particular to glacial climates.
The subdued climate response to volcanic eruptions over the recent past could reflect low ice volume conditions and the absence (or muting) of the requisite positive feedback mechanism. However, millennial-scale climate change was also notably absent during the Last Glacial Maximum (~20-30 ka BP), implying that very large ice sheets also discourage millennial-scale climate shifts.

345 The apparent high sensitivity of the climate system to millennial-scale climate change during times of intermediate ice volume is well documented (e.g., Zhang et al., 2014; Zhang et al., 2017), and here we investigate this further by examining the timing of Greenland Stadials relative to ice volume (estimated using Red Sea sea level (Siddall et al., 2003)). The timings of 55 stadial initiations as compiled in the INTIMATE (INTEgration of Ice core, MARine, and TERrestrial) initiative (Rasmussen et al.,
350 2014) are compared relative to ice volume, and indeed a strong bias towards intermediate ice volume conditions exists, with 73% of the millennial scale cooling events occurring during only 40% of the range of sea level across the interval from 0-120 ka BP (Figure 6). The distribution of events suggests that the most sensitive conditions are linked to ice volume associated with a sea level of -68.30 m below modern sea level. This intermediate ice volume was commonplace from 35-60 ka BP, and particularly from 50-60 ka BP. However, over the interval from 0-35 ka BP, these ideal intermediate ice volume conditions
355 only existed during a short interval from 11.8-13.7 ka BP, and optimal conditions were centred at 13.0 ka BP (Figure 6). These results are broadly consistent with previous research (e.g., Zhang et al., 2014; Zhang et al., 2017), but the timing and duration of the most sensitive interval of time, and the likelihood that a forcing produces a longer-term cooling event, may ultimately depend on a ~~more~~ complex interplay between ice volume and atmospheric CO₂ (Zhang et al., 2017). Atmospheric pCO₂ during the YD initiation was relatively high (~240 ppmv) and could therefore affect the timing of ideal conditions for abrupt climate
360 change in conjunction with ice volume, but their precise interdependence is still unclear. Finally, a frequency distribution of the sea level change rate associated with each stadial indicates that whatever mechanism is responsible for triggering a stadial operates irrespective of whether sea level (i.e., ice volume) is increasing or decreasing (Figure 6b). Because active ice sheet growth should discourage meltwater pulses, this observation seemingly argues against meltwater pulses as the sole trigger for initiating stadials.

365 **3.5. Comparison with the climate response to the Toba supereruption**

Comparing the LSE to another well-dated Quaternary eruption occurring under different background conditions provides information regarding the nature of the relevant forcings. The magnitude > 8 (i.e., ~100x greater than the LSE) Toba supereruption occurred approximately ~74 ka BP and was the largest eruption of the Quaternary (Brown et al., 2014). Despite
370 its size, the climate response to the eruption remains vigorously debated, with some researchers suggesting that the eruption triggered the transition to Greenland Stadial 20 (GS-20) (Polyak et al., 2017; Baldini et al., 2015a; Carolin et al., 2013; Williams et al., 2009) but others arguing for only a small climate response (Haslam and Petraglia, 2010). However, it does not appear that the eruption triggered a sustained global volcanic winter (Lane et al., 2013b; Svensson et al., 2013), and therefore

globally homogenous long-term aerosol-induced cooling probably did not occur. The Toba supereruption occurred during an orbitally-modulated cooling trend with intermediate ice volume (-71 m below modern sea level, very near the sea level associated with the most sensitive ice volume conditions (-68.3 m below modern sea level, as suggested here)), and it is possible that the eruption expedited the transition to GS-20 through a combination of an initial short-lived aerosol-induced cooling amplified by a positive feedback lasting hundreds of years.

In this analysis we use the timing of the Toba eruption relative to the NGRIP record suggested by Svensson et al., (2013) (their NGRIP sulphate spike ‘T2’), but the timing remains uncertain. If future research revises the timing relative to NGRIP, this would necessarily affect the interpretations discussed below. Assuming the Toba eruption was responsible for the sulphate spike T2, the eruption was followed by high latitude NH cooling accompanied by southward ITCZ migration and Antarctic warming, consistent with sea ice growth across the North Atlantic and a weakened AMOC. The cooling rates of cooling into GS-1 (the YD) after the LSE and GS-20 after the Toba eruption are nearly identical (Figure 7), consistent with the possibility that a similar process was responsible for the cooling in both instances. The cooling rate may reflect the nature of the post-eruptive positive feedback, which was potentially independent of the initial radiative cooling effects of the two eruptions, provided that they were large enough to trigger a feedback. The reconstructed climate responses following the LSE and Toba eruptions diverge after the achievement of maximum cooling. In the case of Toba, cold conditions persisted for ~1.7 ka before the very rapid temperature increase characteristic of the onset of Greenland Interstadial (an abrupt Greenland warming event) 19 (GI-19) (Figure 7). GS-1 ended after ~1.2 ka, but unlike GS-20 which had stable cold temperatures throughout, based on available $\delta^{18}\text{O}$ (Baldini et al., 2015b; Steffensen et al., 2008) and nitrogen isotope data (Buizert et al., 2014), suggest that the coldest conditions around the North Atlantic occurred near the beginning of the early within GS-1 and were followed by gradual warming. The LSE and Toba eruptions occurred under different orbital configurations, and the contrasting topologies characteristic of GS-1 and GS-20 may reflect differing insolation trends. At ~13 ka BP, summer insolation at 65°N was increasing, rather than decreasing as during the Toba eruption ~74 ka BP. The Toba eruption may have triggered a shift to the insolation-mediated baseline (cold) state, whereas the LSE may have catalysed a temporary shift to cold conditions opposed to the insolation-driven warming trend characteristic of that time interval, resulting in a short-lived cold event followed by gradual warming. Radiative cooling events in the Southern Hemisphere (e.g., a SH eruption, an Antarctic meltwater pulse, etc.) may have abruptly terminated both GS-1 and GS-20; the GS-1 termination is broadly consistent with the putative timing of Meltwater Pulse 1B (MWP-1B) (Ridgwell et al., 2012), whereas any SH trigger for the termination of GS-20 is unidentified. MWP-1B (or another SH cooling event) may have cooled the SH and strengthened AMOC, prompting northward migration of the ITCZ and NH mid-latitude westerlies to achieve equilibrium with high insolation conditions, thereby rapidly reducing sea ice extent and warming Greenland, but this requires further research, particularly because the source, duration, timing, and even existence of MWP-1B are still debated. Reduced oceanic salt export within the North Atlantic subtropical gyre, characteristic of stadials, may have preconditioned the North Atlantic toward vigorous AMOC following the initial migration of atmospheric circulation back to the north (Schmidt et al., 2006).

The residence time of aerosols within the atmosphere is not critical within the context of this model provided the positive
 410 feedback is activated, and a sufficiently high aerosol-related cooling over only one summer and one hemisphere could suffice.
 The feedback's strength ~~of the feedback~~ may also depend on the amount of hemispheric temperature asymmetry caused by the
 eruption. Consequently, the high latitude LSE may actually have induced a stronger hemispheric temperature asymmetry than
 the low latitude Toba eruption, although the Toba eruption would have resulted in considerably more overall aerosol-induced
 cooling. The long-term (e.g., hundreds to thousands of years) climate response will-may depend on the climate background
 415 conditions; if a NH eruption occurs during an orbitally-induced cooling trend (as may have been the case for Toba), the eruption
will-may catalyse cooling towards the insolation-mediated baseline. If the NH eruption occurs during rising insolation and
 intermediate ice volume (e.g., Laacher See), we suggest that the eruption will trigger the feedback which any post-eruption
feedback will continue until it is overcome by a sufficiently high positive insolation forcing, or a SH cooling event. Although
 the size of the two eruptions differed by two orders of magnitude, the residence time of the respective aerosols in the
 420 stratosphere was probably broadly similar: ~three years for the LSE (similar to that of the Pinatubo eruption) and ~10 years
 for Toba (Timmreck et al., 2012; Robock et al., 2009). Although modelling results suggest that Toba resulted in ~10 degrees
 C of cooling (Timmreck et al., 2012), compared to probably around ~1 degree Celsius for the LSE, we argue that both eruptions
 were able to cool climate sufficiently to trigger sea ice growth, weaken AMOC, and thereby initiate the positive feedback.

425 A useful way of visualising this is to consider two extreme scenarios: *i*) very high CO₂ concentrations and no ice (e.g., the
 Cretaceous) and *ii*) very low CO₂, low insolation, and very high ice volume (e.g., the Last Glacial Maximum). An eruption the
 size of the LSE would probably not significantly affect climate beyond the atmospheric residence time of the sulphate aerosols
 during either scenario. Under the background conditions characteristic of the first scenario, insufficient aerosol forcing would
 occur to trigger ice growth anywhere, and consequently no positive feedback would result. In the case of the second scenario,
 430 the eruption would cause ice growth and cooling for the lifetime of aerosols in atmosphere before conditions returned to the
 insolation-mediated equilibrium. In contrast to these extreme scenarios, an injection of volcanogenic sulphate aerosols into the
 NH atmosphere would most effectively trigger a feedback during intermediate CO₂ and ~~consequently~~ ice volume conditions;
 in other words, during a transition from one ice volume state to another when the climate system was in a state of
 disequilibrium. Under these conditions, we suggest that activation of the feedback would occur even if the sulphate aerosols
 435 settled out of the atmosphere after just one year. Therefore, although the Toba and Laacher See eruptions were of very different
 magnitudes, the nature of the positive feedback would depend largely on the background conditions present during the
 individual eruptions. We argue that both eruptions were large enough, and contained enough sulphur, to activate the positive
 feedback under their respective background conditions. The positive feedback's strength ~~of the positive feedback~~ was then
 controlled by background conditions rather than eruption magnitude (or amount of SO₂ sulphur released). Furthermore, we
 440 predict that the more asymmetric the hemispheric distribution of the aerosols, the stronger the feedback. For these reasons, the
 long-term (centennial- to millennial-scale) climate response following the extremely large but low latitude Toba eruption may

have approximated those of the far smaller but high latitude Laacher See eruption. Therefore, the long-term climate repercussions to very large volcanic eruptions may not consist of prolonged radiative cooling (i.e., ‘volcanic winter’) but rather of geographically disparate dynamical shifts potentially not proportional to eruption magnitude.

445

3.6 Response to other late Quaternary eruptions

The strongest argument against the LSE contributing to YD ~~cooling-climate change~~ is that several other similar or larger magnitude eruptions must have occurred during the last deglaciation, and that therefore the LSE was not unusual. However, the LSE *i*) was unusually sulphur-rich, *ii*) was high-latitude, and *iii*) coincided with ideal ice volume conditions. It is in fact the only known sulphur-rich, high latitude eruption coinciding with the most sensitive ice volume conditions during the last deglaciation. Early work noted that because the 1963 ~~AD~~ Agung eruption was very sulphur-rich, it forced cooling of a similar magnitude as the 1815 Tambora eruption, despite Tambora ejecting considerably more fine ash (~150 times more) into the upper atmosphere (Rampino and Self, 1982). Although estimates of total sulphur released vary, it is clear that the LSE was also unusually sulphur-rich (~~probably~~ releasing more ~~SO₂~~ than Agung (Figure 2)), so had the potential to exert a considerable forcing on climate disproportionate to its magnitude. Furthermore, other eruptions may also have contributed to climate change but current chronological uncertainties preclude establishing definitive links. For example, the ~14.2 ka BP Campi Flegrei eruption may have caused ~~some~~ cooling, ~~(potentially related to the Older Dryas at ~14 ka BP)~~ but this is impossible to confirm with eruption age uncertainties of ± 1.19 ka.

Other large sulphate spikes exist in the GISP2 sulphate record, and in fact the two spikes at 12.6 ka BP and 13.03 ka BP are both larger than the potential LSE sulphate spike. The size of the sulphate spike is not necessarily proportional to the size of the eruption, and the sulphate spike at 13.03 ka BP is likely related to the small eruption of Hekla (Iceland) (Muschitiello et al., 2017), which deposited sulphate in the nearby Greenland ice but was climatologically insignificant. Similarly, the spike at 12.6 ka BP may also reflect the influence of a small but proximal unknown eruption. Alternatively, a large eruption of Nevado de Toluca, Mexico, is dated at 12.45 ± 0.35 ka BP (Arce et al., 2003), and could correspond to the large sulphate spike at 12.6 ka BP within the GISP2 ice core. The eruption was approximately the same size as the LSE, so the lack of long-term cooling may reflect a different climate response due to the eruption’s latitude, which caused a more even distribution of aerosols across both hemispheres. Although there is no long-term cooling following the 12.6 ka BP sulphate spike, it is associated with a short cooling event; therefore the lack of long-term cooling ~~at 12.6 ka BP~~ may ~~simply~~ reflect the fact that temperatures had already reached the lowest values possible under the insolation and carbon dioxide baseline conditions characteristic of that time.

3.7 Compatibility with other hypotheses

A substantial amount of research has now characterised the YD climate, and several hypotheses exist attempting to explain the excursion. The most well-researched hypothesis involves a freshwater pulse from the large proglacial Lake Agassiz ~~severally~~substantially reducing AMOC strength (Alley, 2000; Broecker, 1990; Broecker et al., 2010). Weakened AMOC

475

would result in a colder North Atlantic, a southward displaced ITCZ, and Antarctic warming, all features characteristic of the YD. However, direct geological evidence for a meltwater pulse originating from Laurentide proglacial lakes coincident with the YD onset remains elusive (Broecker et al., 2010; Petaev et al., 2013). Recent research suggests that meltwater from Lake Agassiz could have had an ice-free route to the North Atlantic ~~during at the time of the~~ YD initiation (Leydet et al., 2018), revising earlier ice sheet reconstructions suggesting that the Laurentide Ice Sheet blocked the most obvious meltwater pathways to the North Atlantic (Lowell et al., 2005). Although direct evidence that a meltwater pulse ~~occurred along this route occurred immediately preceding the at the YD's onset of the YD along this route~~ is limited, some sediment core evidence suggesting that floods through the St Lawrence Valley coincided with the YD initiation ~~does exist~~ (Levac et al., 2015; Rayburn et al., 2011). A northward meltwater flowpath along the MacKenzie Valley to the Arctic Ocean is also possible (Murton et al., 2010; Not and Hillaire-Marcel, 2012; Tarasov and Peltier, 2005). This is supported by both geological and modelling evidence, which suggests that a freshwater pulse into the Arctic Ocean could have weakened AMOC by >30%, considerably more than the <15% resulting from a similar pulse injected into the North Atlantic (Condrón and Winsor, 2012). Still other evidence implicates meltwater from the Fennoscandian Ice Sheet (FIS) as the YD trigger (Muschitiello et al., 2015; Muschitiello et al., 2016), highlighting meltwater provenance as a key uncertainty intrinsic to the meltwater hypothesis. Intriguingly, Muschitiello et al. (2015) find that the FIS-derived meltwater pulse ended at 12.880 ka BP, coinciding with the LSE. It is therefore ~~possible conceivable~~ that the meltwater pulse resulted from insolation-controlled melting of the FIS, until the cooling associated with the LSE and associated positive feedback reversed this trend, though currently this remains speculative. Finally, evidence from a sediment site SW of Iceland very strongly suggests that cooling into stadials precedes evidence for iceberg discharges, and that therefore North Atlantic iceberg-related surface water freshening was not the trigger for stadial events (Barker et al., 2015). Despite these issues, a meltwater pulse is still widely considered as the leading hypothesis for the initiation of the YD, although the meltwater source, destination, and duration are still vigorously debated.

Iridium-rich magnetic grains, nanodiamonds, and carbon spherules coinciding with a carbon-rich black layer at approximately 12.9 ka BP were interpreted by Firestone et al. (2007) as evidence that an extraterrestrial impact (or impacts) may have contributed to the YD. The consequences of the impact (possibly a cometary airburst) were hypothesised to have destabilised the Laurentide Ice Sheet, cooled NH climate, and contributed to megafaunal extinction characteristic of the period (Firestone et al., 2007; Kennett et al., 2009). The discovery of significant amounts of impact-derived spherules scattered across North America, Europe, Africa, and South America at $\sim 12.80 \pm 0.15$ ka BP further supports the Younger Dryas Impact Hypothesis (YDIH) (Wittke et al., 2013), as does apparently extraterrestrially-derived platinum, found initially in Greenland ice (Petaev et al., 2013) and subsequently globally (Moore et al., 2017), coincident with the YD onset. However, other research questions the evidence for an impact, focussing on perceived errors in dating of the YD boundary layer (Holliday, 2015; Meltzer et al., 2014), misidentification of terrestrially-derived carbon spherules, ~~and~~ shocked quartz, ~~and nanodiamonds~~ as extraterrestrial (Pinter et al., 2011; van Hoesel et al., 2015; Tian et al., 2011), non-uniqueness of YD nanodiamond evidence (Daulton et al., 2017), and inconsistencies regarding the physics of bolide trajectories and impacts (Boslough et al., 2013). Despite these

510 criticisms, independent researchers have linked spherules found within the YD boundary layer to an impact (LeCompte et al., 2012), and identified the source of the spherules as northeastern North America (Wu et al., 2013), not only supporting the hypothesis, but also suggesting an impact site proximal to the southern margin of the Laurentide Ice Sheet (Wu et al., 2013). Most recently, Wolbach et al. (2018a, 2018b) catalogue extensive evidence for global wildfires they argue were ignited by the impact of fragments of a >100 km diameter comet. According to Wolbach et al. (2018a, 2018b), 9% of global biomass burned,
515 considerably more than that following the end of Cretaceous impact event. Despite this growing catalogue of evidence for an impact event, the YDIH remains extremely controversial. Possibly due to this controversy, the majority of research relating to the YDIH has focussed on verifying the evidence for an impact, and the possible climate repercussions stemming from an impact remain relatively poorly constrained.

520 Of these proposed triggers, only the Laacher See eruption is universally accepted as having occurred near the YD/Allerød boundary, and strong evidence now exists dating the eruption precisely at the onset of YD-related North Atlantic cooling (GS-1). However, we emphasise that these hypotheses are not mutually exclusive. For example, meltwater releases into the North Atlantic and Arctic Ocean undoubtedly did occur during the last deglaciation, and a meltwater pulse and a volcanic eruption occurring within a short time of each other could conceivably result in an amplified climate response. Similarly, available
525 evidence suggests that an impact event may have occurred within a few decades of the LSE, and in fact Wolbach et al. (2018) date the impact to 12.854 ± 0.056 ka BP based on a Bayesian analysis of 157 dated records interpreted as containing evidence for the impact. This date is just 26 years after the 12.880 ka BP LSE (and well within dating uncertainty) and the two events could therefore have both contributed to environmental change associated with the YD. Conversely, the LSE could also be directly responsible for some of the evidence for an impact, a possibility that has not been investigated thoroughly due to the
530 widespread, but incorrect, concept that the eruption predates the evidence for an impact by ~200 years. An impact event (independently or in conjunction with YD cooling) is suggested to explain North American megafaunal extinctions (Firestone et al., 2007; Wolbach et al., 2018a; Wolbach et al., 2018b), though recent research has built a compelling case that anthropogenic factors such as overhunting and disease were largely responsible for the demise of many species of large mammalian fauna (Sandom et al., 2014; Bartlett et al., 2016; van der Kaars et al., 2017; Cooper et al., 2015; Metcalf et al.,
535 2016). Notably, megafaunal extinction dates appear correlated with the timing of human colonisation of the Western Hemisphere (Surovell et al., 2016), a result inconsistent with an impact-driven extinction. However, even if future research determines-confirms that megafaunal extinctions were caused by human activity rather than a bolide impact, this does not reduce the YDIH's explanatory power as a YD trigger. Again, it is conceivable that the LSE, a bolide impact, and/or a meltwater pulse occurred within a short interval, reinforcing each other. A similar eruption-impact mechanism has been
540 proposed for major mass extinctions through geological time (Tobin, 2017; White and Saunders, 2005; Keller, 2005), but these involved long-term flood basalt (e.g., the Deccan Traps) emplacement rather than a single, short-lived explosive eruption. The probability of multiple triggers occurring within a short time of each other is low, but the possibility cannot be excluded outright.

545 A key issue with the YDIH however is that YD-~~type~~like events apparently occurred during previous terminations, such as TIII, (Broecker et al., 2010; Cheng et al., 2009; Sima et al., 2004) that are not reasonably attributable to other extraterrestrial impacts. However, TIII would also likely have experienced at least one high latitude Northern Hemisphere M > 6 volcanic eruption. Termination II lacked a YD-~~like~~type event, possibly because extremely rapid sea level rise (and ice volume decreases) and very high insolation levels (Carlson, 2008) ~~may have~~ discouraged a strong post-eruptive positive feedback and/or shortened the ‘window’ of ideal ice volume conditions. Another issue with the YDIH is that the YD was simply not that anomalous of a cold event, and therefore does not require an unusually powerful trigger. Over the last 120 ka, 26 Greenland Stadial (GS) events occurred (Rasmussen et al., 2014), of which the YD was the most recent. This does not exclude the possibility that the YD was forced by an impact event, but the most parsimonious explanation is that most stadial events had similar origins, implying a much more commonplace trigger than an impact. Furthermore, nitrogen isotopes suggest that Greenland temperature was 4.5°C colder during the Oldest Dryas (18 to 14.7 ka BP) than the YD (Buizert et al., 2014), again suggesting the transition to the YD does not require an extreme forcing. It is also worth noting that the YD may actually represent a return to the insolation-~~controlled-mediated~~ baseline, and that potentially the Bølling-Allerød (B-A) warm interstadial (i.e., GI-1, from 14.642 to 12.846 ka BP), immediately preceding the YD, was the anomaly (Thornalley et al., 2011; Sima et al., 2004). Although an in-depth discussion of the B-A is outside the scope of this study, the B-A may represent an interval with a temporarily invigorated AMOC (an ‘overshoot’) (Barker et al., 2010), which, after reaching peak strength, began to slow down back towards its glacial state because of the lack of a concomitant rise in insolation (Knorr and Lohmann, 2007; Thornalley et al., 2011). The rate of this slowdown was independent of the final trigger ~~of the into the~~ YD, and indeed much of the cooling back to the glacial baseline was achieved by ~13 ka BP. Consequently, only a small ‘nudge’ may have been required to expedite the return to the cold baseline state, consistent with a very sulphur-rich volcanic eruption (occurring every few hundred years) but not necessarily with a rare, high-consequence event. In other words, the B-A may represent the transient anomaly, and the conditions within the YD represented typical near-glacial conditions, obviating the need for an extreme YD triggering mechanism. ~~However, the~~ gradual cooling after the B-A ~~cannot account~~differs from ~~for~~ the rapid cooling observed at around 12.9 ka BP clearly visible in the NGRIP $\delta^{18}\text{O}$ and nitrogen isotope data as well as in numerous other North Atlantic records, ~~indicating raising the possibility that another forcing~~the LSE (or other external forcing) expedited the final cooling into the YD, ~~which we argue was the LSE. Alternatively, it~~ It is also possible however that the increased cooling rate reflects non-linearity inherent in Atlantic oceanic circulation, potentially linked to transitions across key thresholds between different modes of oceanic circulation (e.g., Ganopolski and Rahmstorf, 2001).

575 A possible scenario is therefore that many glacial terminations were characterised by B-A-~~type~~like events that were then followed by gradual cooling back to near-glacial conditions. This gradual cooling was sometimes interrupted and accelerated by YD-type~~like~~ events forced by high latitude volcanism, possibly linked to crustal stresses induced by deglaciation (Zielinski

et al., 1996). ~~Some~~ deglaciations did not experience a YD-~~type~~~~like~~ event, and we speculate that this was perhaps due to ~~the~~ ~~to~~-short-lived ideal ice volume conditions not coinciding with an eruption. We stress however that deglaciations were also characterised by large meltwater pulses, and consequently the presence of a YD-~~type~~~~like~~ event during multiple deglaciations is consisted with either mechanism. Additionally, the absence of a YD-type event during some terminations may simply reflect the absence of preceding B-A-type event and the presence of a very long stadial interval which then transitioned directly into an interglacial (Cheng et al., 2009; Carlson, 2008). Terminations lacking a YD-type event tend to have a strong insolation forcing that may have suppressed AMOC throughout the termination, preventing the development of a B-A-type event and decreasing the possibility of a YD-type event following- after peak B-A-type warming (Wolff et al., 2010; Barker et al., 2011; Barker et al., 2010).

4 Conclusions

We propose that the unusually sulphur-rich 12.880 ± 0.040 ka BP Laacher See volcanic eruption ~~contributed-initiated~~ GS-1 cooling and the atmospheric reorganisation associated with the YD event ~~(beginning at 12.870 ± 0.138 ka BP in NGRIP; GS-1 is defined as starting at 12.846 ka BP, but cooling began somewhat earlier)~~. Recent revisions to the chronological framework of key European climate archives now strongly suggest that the onset of GS-1 related North Atlantic cooling occurred simultaneously with the LSE. We have identified a large volcanic sulphur spike within the GISP2 ion data (Zielinski et al., 1997) on the recent GICC05modelext chronology that coincides with both ~~the date of the LSE timing and of the LSE and the~~ onset of GS-1 cooling as recorded within the same ice core and the date of the LSE. Lipid biomarker hydrogen isotope ratios from Lake Meerfelder Maar further corroborate that GS-1 atmospheric cooling began at 12.880 ka BP, coincident with the Laacher See Tephra within the same sediment but preceding the larger dynamical atmospheric response associated with the YD in central Europe by ~170 years (Rach et al., 2014). Aerosol-induced cooling immediately following the eruption may have ~~triggered-caused~~ a positive feedback involving sea ice expansion and/or AMOC weakening, as previously proposed for other Greenland stadials over the interval 30-80 ka BP (Baldini et al., 2015a), the 6th Century AD (Buntgen et al., 2016), the Little Ice Age (Zhong et al., 2011; Miller et al., 2012), and the Holocene (Kobashi et al., 2017). Viewed from this perspective, the YD was simply the latest, and last, manifestation of a Last Glacial stadial.

The strongly asymmetric nature of the sulphate aerosol veil released by the LSE cooled the Northern Hemisphere preferentially, inducing a strong hemispheric temperature asymmetry and potentially triggering a cascade of dynamical climate shifts across both hemispheres, including a southward shifted ITCZ and Hadley Cells. Intermediate ice volume conditions around ~13 ka BP, driven by rising insolation during the Last Glacial termination, may have promoted a positive feedback following the LSE's injection of between 6.76 and 104.8 megatonnes of SO₂ into the stratosphere (Textor et al., 2003). This is also consistent with observations that YD-~~like-type~~ events were not unique to the last deglaciation, but existed during older deglaciations as well (Broecker et al., 2010). At least one high-latitude M6 eruption likely occurred during most deglacial

intervals, and therefore GS-1 and earlier ~~stadials~~-YD-type events may simply reflect the convergence of large, sulphate-rich high latitude NH eruptions with intermediate ice volume conditions. NH continental ice sheet decay induced continental lithospheric unloading, and may have triggered high latitude NH volcanism (Zielinski et al., 1997; Sternai et al., 2016), highlighting the intriguing possibility that eruptions such as the LSE were not randomly distributed geographically and temporally, but instead were intrinsically linked to deglaciation. This perspective is strongly supported by a previous observation that the three largest eruptions (including the LSE) in the ~~E~~eastern Eifel ~~V~~olcanic ~~F~~ield (Germany) were all associated with warming during glacial terminations and the reduction in ice mass in northern Europe (Nowell et al., 2006).

The hypothesis that the Laacher See eruption triggered the YD is testable. Detailed tephrochronological studies of the ice containing the sulphate spike identified here could confirm the source of the sulphate, and, if it is confirmed as the LSE rather than a smaller Icelandic eruption, this would provide an important step towards attributing GS-1 and the YD to volcanic forcing (although ~~evidence for~~ GS-1 cooling already seems to occur immediately above the LST in central Europe). Similarly, volcanic sulphate ‘triple’ isotope ratios of sulphur and oxygen provide information regarding the residence time of volcanic plumes in the stratosphere. The majority of atmospheric processes encourage mass dependent fractionation; however rare mass-independent fractionation processes produce isotope ratios that do not behave according to predictions based on mass dependent processes (Martin et al., 2014). Historical volcanic eruptions where sulphate aerosols reached the stratosphere have been successfully identified in ice cores (Baroni et al., 2008; Savarino et al., 2003), indicating that the technique is effective at distinguishing large explosive eruptions from smaller local ones. This technique could also determine if the sulphate in the potential LSE sulphate spike reached the stratosphere. Although this would not necessarily confirm the LSE as the source, it would strongly suggest that the sulphate was ~~sourced-derived~~ from a climatologically significant eruption rather than a smaller Icelandic one. Most importantly, more climate modelling studies of high latitude, large, and sulphur-rich eruptions under deglacial boundary conditions are needed to constrain the climate effects of volcanism during deglaciation. The role of halogen emissions are particularly understudied, and modelling efforts should also quantify their effects on climate. Finally, accurate dating of other large volcanic eruptions during intermediate ice volume conditions is key to testing the link between volcanism and other Greenland stadials; this information could eventually also support, or refute, the LSE’s role in triggering the YD.

More research is clearly necessary to better characterize the sensitivity of Last Glacial climate to volcanic eruption latitude, sulphur content, and magnitude. Due to perceived chronological mismatches, the concept that the YD was triggered by the LSE is vastly understudied compared to both the Younger Dryas Impact Hypothesis and the meltwater forcing hypothesis. However, the concept that the LSE triggered the YD has clear advantages compared to other hypotheses: *i*) there is no disagreement that the eruption occurred, *ii*) available evidence suggests that the eruption occurred synchronously with the initiation of YD cooling, *iii*) a volcanic trigger is consistent with the relatively high frequency of similar, and often more severe, cooling events during intermediate ice volume conditions, *iv*) volcanic aerosol cooling followed by a prolonged positive feedback has been implicated in other cooling events, and *v*) events similar to the YD occurred over other deglaciations.

645 ~~seemingly arguing against an extremely low probability, high-consequence event as a trigger, but~~ supporting a relatively
commonplace trigger such as volcanism. Future research may well demonstrate that the Laacher See eruption did not play any
role in catalysing the YD, but the coincidence of a large, high-latitude, and anomalously sulphur-rich eruption with the
initiation of YD-related cooling ~~certainly merits a closer~~ serious further consideration ~~look~~.

650 Acknowledgments: We thank four anonymous reviewers, and David Pyle, and Xu Zhang, and Evžen Stuchlik for constructive
comments that greatly improved the manuscript. We also thank David Thornalley for his editorial handling and suggestions
which also helped improved the manuscript. Early versions of the ~~research~~ manuscript benefitted from comments by Bob
Hilton, Erin McClymont, and Lisa Baldini. Ed Llewellyn is thanked for comments that helped finalise the manuscript.

References

655 Alley, R. B.: The Younger Dryas cold interval as viewed from central Greenland, Quaternary Sci. Rev., 19, 213-226, doi:
10.1016/S0277-3791(99)00062-1, 2000.

Andronikov, A. V., Rudnickait, E., Lauretta, D. S., Andronikova, I. E., Kaminskas, D., Sinkunas, P., and Melesyte, M.:
Geochemical evidence of the presence of volcanic and meteoritic materials in Late Pleistocene lake sediments of Lithuania,
Quatern. Int., 386, 18-29, 2015.

660 Arce, J. L., Macias, J. L., and Vazquez-Selem, L.: The 10.5 ka Plinian eruption of Nevado de Toluca volcano, Mexico:
Stratigraphy and hazard implications, Geol. Soc. Am. Bull., 115, 230-248, 2003.

Asmerom, Y., Polyak, V. J., and Burns, S. J.: Variable winter moisture in the southwestern United States linked to rapid
glacial climate shifts, Nat. Geosci., 3, 114-117, Doi 10.1038/Ngeo754, 2010.

665 Baales, M., Joris, O., Street, M., Bittmann, F., Weninger, B., and Wiethold, J.: Impact of the late glacial eruption of the
Laacher See volcano, Central Rhineland, Germany, Quaternary Res., 58, 273-288, DOI 10.1006/qres.2002.2379, 2002.

Bahr, A., Hoffmann, J., Schönfeld, J., Schmidt, M. W., Nürnberg, D., Batenburg, S. J., and Voigt, S.: Low-latitude
expressions of high-latitude forcing during Heinrich Stadial 1 and the Younger Dryas in northern South America, Global and
Planet. Change, 160, 1-9, <https://doi.org/10.1016/j.gloplacha.2017.11.008>, 2018.

670 Bakke, J., Lie, O., Heegaard, E., Dokken, T., Haug, G. H., Birks, H. H., Dulski, P., and Nilsen, T.: Rapid oceanic and
atmospheric changes during the Younger Dryas cold period, Nat. Geosci., 2, 202-205, 2009.

- Baldini, J. U. L., Brown, R. J., and McElwaine, J. N.: Was millennial scale climate change during the Last Glacial triggered by explosive volcanism?, *Sci. Rep.*, 5, 17442, doi: 10.1038/srep17442, 2015a.
- Baldini, L. M., McDermott, F., Baldini, J. U. L., Arias, P., Cueto, M., Fairchild, I. J., Hoffmann, D. L., Matthey, D. P., Müller, W., Nita, D. C., Ontañón, R., García-Moncó, C., and Richards, D. A.: Regional temperature, atmospheric circulation, and sea-ice variability within the Younger Dryas Event constrained using a speleothem from northern Iberia, *Earth Planet. Sci. Lett.*, 419, 101-110, doi.org/10.1016/j.epsl.2015.03.015, 2015b.
- Barker, S., Knorr, G., Vautravers, M. J., Diz, P., and Skinner, L. C.: Extreme deepening of the Atlantic overturning circulation during deglaciation, *Nat. Geosci.*, 3, 567, 10.1038/ngeo921, 2010.
- Barker, S., Knorr, G., Edwards, R. L., Parrenin, F., Putnam, A. E., Skinner, L. C., Wolff, E., and Ziegler, M.: 800,000 years of abrupt climate variability, *Science*, 334, 347-351, 2011.
- Barker, S., Chen, J., Gong, X., Jonkers, L., Knorr, G., and Thornalley, D.: Icebergs not the trigger for North Atlantic cold events, *Nature*, 520, 333-338, Doi 10.1038/Nature14330, 2015.
- Baroni, M., Savarino, J., Cole-Dai, J. H., Rai, V. K., and Thiemens, M. H.: Anomalous sulfur isotope compositions of volcanic sulfate over the last millennium in Antarctic ice cores, *Journal of Geophysical Research-Atmospheres*, 113, 2008.
- Bartlett, L. J., Williams, D. R., Prescott, G. W., Balmford, A., Green, R. E., Eriksson, A., Valdes, P. J., Singarayer, J. S., and Manica, A.: Robustness despite uncertainty: regional climate data reveal the dominant role of humans in explaining global extinctions of Late Quaternary megafauna, *Ecography*, 39, 152-161, 10.1111/ecog.01566, 2016.
- Bay, R. C., Bramall, N., and Price, P. B.: Bipolar correlation of volcanism with millennial climate change, *Proc. Natl. Acad. Sci. U. S. A.*, 101, 6341-6345, 10.1073/pnas.0400323101, 2004.
- Bereiter, B., Shackleton, S., Baggenstos, D., Kawamura, K., and Severinghaus, J.: Mean global ocean temperatures during the last glacial transition, *Nature*, 553, 39, 10.1038/nature25152, 2018.
- Berger, W. H.: The Younger Dryas cold spell - a quest for causes, *Global and Planet. Change*, 89, 219-237, 1990.
- Blaga, C. I., Reichert, G. J., Lotter, A. F., Anselmetti, F. S., and Damste, J. S. S.: A TEX86 lake record suggests simultaneous shifts in temperature in Central Europe and Greenland during the last deglaciation, *Geophys. Res. Lett.*, 40, 948-953, doi: 10.1002/grl.50181, 2013.

- Bogaard, P., and Schmincke, H. U.: Laacher See Tephra - a widespread isochronous Late Quaternary tephra layer in central and northern Europe, *Geol. Soc. Am. Bull.*, 96, 1554-1571, doi: 10.1130/0016-7606(1985)96<1554:Lstawi>2.0.Co;2, 1985.
- Bogaard, P. v. D., Schmincke, H. U., Freundt, A., and Park, C.: Thera and the Aegean World, Third International Congress, Santorini, Greece, 1989, 463-485, published 1990.
- 700 Bondevik, S., Mangerud, J., Birks, H. H., Gulliksen, S., and Reimer, P.: Changes in North Atlantic radiocarbon reservoir ages during the Allerød and Younger Dryas, *Science*, 312, 1514-1517, 2006.
- Boslough, M., Harris, A. W., Chapman, C., and Morrison, D.: Younger Dryas impact model confuses comet facts, defies airburst physics, *Proc. Natl. Acad. Sci. U. S. A.*, 110, E4170-E4170, 10.1073/pnas.1313495110, 2013.
- Brauer, A., Endres, C., Gunter, C., Litt, T., Stebich, M., and Negendank, J. F. W.: High resolution sediment and vegetation
705 responses to Younger Dryas climate change in varved lake sediments from Meerfelder Maar, Germany, *Quaternary Sci. Rev.*, 18, 321-329, Doi 10.1016/S0277-3791(98)00084-5, 1999a.
- Brauer, A., Endres, C., and Negendank, J.: Lateglacial calendar year chronology based on annually laminated sediments from Lake Meerfelder Maar, Germany, 17-25 pp., 1999b.
- Brauer, A., Haug, G. H., Dulski, P., Sigman, D. M., and Negendank, J. F. W.: An abrupt wind shift in western Europe at the
710 onset of the Younger Dryas cold period, *Nat. Geosci.*, 1, 520-523, doi: 10.1038/ngeo263, 2008.
- Broecker, W. S., Andree, M., Wolfli, W., Oeschger, H., Bonani, G., Kennett, J., and Peteet, D.: The chronology of the last deglaciation: Implications to the cause of the Younger Dryas Event, *Paleoceanography*, 3, 1-19, doi: 10.1029/Pa003i001p00001, 1988.
- Broecker, W. S.: Salinity history of the Northern Atlantic during the last deglaciation, *Paleoceanography*, 5, 459-467,
715 10.1029/Pa005i004p00459, 1990.
- Broecker, W. S.: Was the younger dryas triggered by a flood?, *Science*, 312, 1146-1148, DOI 10.1126/science.1123253, 2006a.
- Broecker, W. S.: Abrupt climate change revisited, *Global and Planet. Change*, 54, 211-215, 10.1016/j.gloplacha.2006.06.019, 2006b.
- 720 Broecker, W. S., Denton, G. H., Edwards, R. L., Cheng, H., Alley, R. B., and Putnam, A. E.: Putting the Younger Dryas cold event into context, *Quaternary Sci. Rev.*, 29, 1078-1081, doi.org/10.1016/j.quascirev.2010.02.019, 2010.

- Bronk Ramsey, C., Albert, P. G., Blockley, S. P. E., Hardiman, M., Housley, R. A., Lane, C. S., Lee, S., Matthews, I. P., Smith, V. C., and Lowe, J. J.: Improved age estimates for key Late Quaternary European tephra horizons in the RESET lattice, *Quaternary Sci. Rev.*, 118, 18-32, doi: /10.1016/j.quascirev.2014.11.007, 2015.
- 725 Brown, S., Crosweller, H., Sparks, R. S., Cottrell, E., Deligne, N., Guerrero, N., Hobbs, L., Kiyosugi, K., Loughlin, S., Siebert, L., and Takarada, S.: Characterisation of the Quaternary eruption record: analysis of the Large Magnitude Explosive Volcanic Eruptions (LaMEVE) database, *Journal of Applied Volcanology*, 3, 5, 2014.
- Buizert, C., Gkinis, V., Severinghaus, J. P., He, F., Lecavalier, B. S., Kindler, P., Leuenberger, M., Carlson, A. E., Vinther, B., Masson-Delmotte, V., White, J. W. C., Liu, Z. Y., Otto-Bliesner, B., and Brook, E. J.: Greenland temperature response to
730 climate forcing during the last deglaciation, *Science*, 345, 1177-1180, 2014.
- Buntgen, U., Myglan, V. S., Ljungqvist, F. C., McCormick, M., Di Cosmo, N., Sigl, M., Jungclaus, J., Wagner, S., Krusic, P. J., Esper, J., Kaplan, J. O., de Vaan, M. A. C., Luterbacher, J., Wacker, L., Tegel, W., and Kirdyanov, A. V.: Cooling and societal change during the Late Antique Little Ice Age from 536 to around 660 AD, *Nat. Geosci.*, 9, 231-U163, 10.1038/NGEO2652, 2016.
- 735 Cabedo-Sanz, P., Belt, S. T., Knies, J., and Husum, K.: Identification of contrasting seasonal sea ice conditions during the Younger Dryas, *Quaternary Sci. Rev.*, 79, 74-86, 2013.
- Cadoux, A., Scaillet, B., Bekki, S., Oppenheimer, C., and Druitt, T. H.: Stratospheric ozone destruction by the Bronze-Age Minoan eruption (Santorini Volcano, Greece), *Sci. Rep.*, 5, 2015.
- Carlson, A. E., Clark, P. U., Haley, B. A., Klinkhammer, G. P., Simmons, K., Brook, E. J., and Meissner, K. J.: Geochemical
740 proxies of North American freshwater routing during the Younger Dryas cold event, *Proc. Natl. Acad. Sci. U. S. A.*, 104, 6556-6561, doi: 10.1073/pnas.0611313104, 2007.
- Carlson, A. E.: Why there was not a Younger Dryas-like event during the Penultimate Deglaciation, *Quaternary Sci. Rev.*, 27, 882-887, DOI 10.1016/j.quascirev.2008.02.004, 2008.
- Carn, S. A., Clarisse, L., and Prata, A. J.: Multi-decadal satellite measurements of global volcanic degassing, *J. Volcanol. Geotherm. Res.*, 311, 99-134, <https://doi.org/10.1016/j.jvolgeores.2016.01.002>, 2016.
745
- Carolin, S. A., Cobb, K. M., Adkins, J. F., Clark, B., Conroy, J. L., Lejau, S., Malang, J., and Tuen, A. A.: Varied response of western Pacific hydrology to climate forcings over the Last Glacial period, *Science*, 340, 1564-1566, DOI 10.1126/science.1233797, 2013.

- Cheng, H., Edwards, R. L., Broecker, W. S., Denton, G. H., Kong, X. G., Wang, Y. J., Zhang, R., and Wang, X. F.: Ice age terminations, *Science*, 326, 248-252, 2009.
- Chiang, J. C. H., and Bitz, C. M.: Influence of high latitude ice cover on the marine Intertropical Convergence Zone, *Clim. Dynam.*, 25, 477-496, 2005.
- Chiang, J. C. H., Lee, S. Y., Putnam, A. E., and Wang, X. F.: South Pacific Split Jet, ITCZ shifts, and atmospheric North-South linkages during abrupt climate changes of the last glacial period, *Earth Planet. Sci. Lett.*, 406, 233-246, DOI 10.1016/j.epsl.2014.09.012, 2014.
- Colose, C. M., LeGrande, A. N., and Vuille, M.: Hemispherically asymmetric volcanic forcing of tropical hydroclimate during the last millennium, *Earth Syst. Dynam.*, 7, 681-696, 10.5194/esd-7-681-2016, 2016.
- Condron, A., and Winsor, P.: Meltwater routing and the Younger Dryas, *Proc. Natl. Acad. Sci. U. S. A.*, 109, 19928-19933, DOI 10.1073/pnas.1207381109, 2012.
- Cooper, A., Turney, C., Hughen, K. A., Brook, B. W., McDonald, H. G., and Bradshaw, C. J. A.: Abrupt warming events drove Late Pleistocene Holarctic megafaunal turnover, *Science*, 349, 602-606, 2015.
- Daulton, T. L., Amari, S., Scott, A. C., Hardiman, M., Pinter, N., and Anderson, R. S.: Comprehensive analysis of nanodiamond evidence relating to the Younger Dryas Impact Hypothesis, *J. of Quaternary Sci.*, 32, 7-34, 10.1002/jqs.2892, 2017.
- de Klerk, P., Janke, W. F., Kuehn, P., and Theuerkauf, M.: Environmental impact of the Laacher See eruption at a large distance from the volcano: Integrated palaeoecological studies from Vorpommern (NE Germany), *Palaeogeography Palaeoc.*, 270, 196-214, doi: 10.1016/j.palaeo.2008.09.013, 2008.
- Deligne, N., Coles, S., and Sparks, R.: Recurrence rates of large explosive volcanic eruptions, *J Geophys Res*, 115, B06203, 2010.
- Delworth, T. L., Zeng, F., Vecchi, G. A., Yang, X., Zhang, L., and Zhang, R.: The North Atlantic Oscillation as a driver of rapid climate change in the Northern Hemisphere, *Nature Geosci*, 9, 509-512, doi: 10.1038/ngeo2738, 2016.
- Devine, J. D., Sigurdsson, H., Davis, A. N., and Self, S.: Estimates of Sulfur and Chlorine Yield to the Atmosphere from Volcanic-Eruptions and Potential Climatic Effects, *Journal of Geophysical Research*, 89, 6309-6325, 1984.

- Diallo, M., Ploeger, F., Konopka, P., Birner, T., Muller, R., Riese, M., Garny, H., Legras, B., Ray, E., Berthet, G., and Jegou, F.: Significant contributions of volcanic aerosols to decadal changes in the stratospheric circulation, *Geophys. Res. Lett.*, 44, 10780-10791, 2017.
- Ding, Y. N., Carton, J. A., Chepurin, G. A., Stenchikov, G., Robock, A., Sentman, L. T., and Krasting, J. P.: Ocean response to volcanic eruptions in Coupled Model Intercomparison Project 5 simulations, *J Geophys. Res-Oceans*, 119, 5622-5637, 2014.
- Engels, S., van Geel, B., Buddelmeijer, N., and Brauer, A.: High-resolution palynological evidence for vegetation response to the Laacher See eruption from the varved record of Meerfelder Maar (Germany) and other central European records, *Rev Palaeobot Palyno*, 221, 160-170, 10.1016/j.revpalbo.2015.06.010, 2015.
- Engels, S., Brauer, A., Buddelmeijer, N., Martin-Puertas, C., Rach, O., Sachse, D., and Van Geel, B.: Subdecadal-scale vegetation responses to a previously unknown late-Allerod climate fluctuation and Younger Dryas cooling at Lake Meerfelder Maar (Germany), *J. of Quaternary Sci.*, 31, 741-752, 2016.
- Eychenne, J., Cashman, K., Rust, A., and Durant, A.: Impact of the lateral blast on the spatial pattern and grain size characteristics of the 18 May 1980 Mount St. Helens fallout deposit, *Journal of Geophysical Research-Solid Earth*, 120, 6018-6038, 2015.
- Firestone, R. B., West, A., Kennett, J. P., Becker, L., Bunch, T. E., Revay, Z. S., Schultz, P. H., Belgia, T., Kennett, D. J., Erlandson, J. M., Dickenson, O. J., Goodyear, A. C., Harris, R. S., Howard, G. A., Kloosterman, J. B., Lechler, P., Mayewski, P. A., Montgomery, J., Poreda, R., Darrah, T., Hee, S. S. Q., Smitha, A. R., Stich, A., Topping, W., Wittke, J. H., and Wolbach, W. S.: Evidence for an extraterrestrial impact 12,900 years ago that contributed to the megafaunal extinctions and the Younger Dryas cooling, *Proc. Natl. Acad. Sci. U. S. A.*, 104, 16016-16021, doi: 10.1073/pnas.0706977104, 2007.
- Flower, B. P., and Kennett, J. P.: The Younger Dryas Cool Episode in the Gulf of Mexico, *Paleoceanography*, 5, 949-961, doi: 10.1029/Pa005i006p00949, 1990.
- Ganopolski, A., and Rahmstorf, S.: Rapid changes of glacial climate simulated in a coupled climate model, *Nature*, 409, 153-158, 2001.
- Gerlach, T. M., Westrich, H. R., and Symonds, R. B.: Preeruption vapor in magma of the climactic Mount Pinatubo eruption: Source of the giant stratospheric sulfur dioxide cloud, in: *Fire and Mud: eruptions and lahars of Mount Pinotubo*, Philippines, edited by: Newhall, C. G., and Punongbayan, R. S., University of Washington Press, Seattle, 415-433, 1996.

- Graf, H. F., and Timmreck, C.: A general climate model simulation of the aerosol radiative effects of the Laacher See eruption (10,900 BC), *Journal of Geophysical Research-Atmospheres*, 106, 14747-14756, doi: 10.1029/2001jd900152, 2001.
- Hajdas, I., IvyOchs, S. D., Bonani, G., Lotter, A. F., Zolitschka, B., and Schluchter, C.: Radiocarbon age of the Laacher See Tephra: 11,230 \pm 40 BP, *Radiocarbon*, 37, 149-154, 1995.
- 805 Harms, E., and Schmincke, H. U.: Volatile composition of the phonolitic Laacher See magma (12,900 yr BP): implications for syn-eruptive degassing of S, F, Cl and H₂O, *Contrib. Mineral. Petrol.*, 138, 84-98, doi: 10.1007/Pl00007665, 2000.
- Haslam, M., and Petraglia, M.: Comment on "Environmental impact of the 73 ka Toba super-eruption in South Asia" by MAJ Williams, SH Ambrose, S. van der Kaars, C. Ruehlemann, U. Chattopadhyaya, J. Pal and PR Chauhan, *Palaeogeography Palaeoc.*, 296, 199-203, 10.1016/j.palaeo.2010.03.057, 2010.
- 810 Hogg, A., Southon, J., Turney, C., Palmer, J., Ramsey, C. B., Fenwick, P., Boswijk, G., Friedrich, M., Helle, G., Huguen, K., Jones, R., Kromer, B., Noronha, A., Reynard, L., Staff, R., and Wacker, L.: Punctuated Shutdown of Atlantic Meridional Overturning Circulation during Greenland Stadial 1, *Sci. Rep.*, 6, doi: 10.1038/Srep25902, 2016.
- Holliday, V. T.: Problematic dating of claimed Younger Dryas boundary impact proxies, *Proc. Natl. Acad. Sci. U. S. A.*, 112, E6721-E6721, 10.1073/pnas.1518945112, 2015.
- 815 Hwang, Y. T., Frierson, D. M. W., and Kang, S. M.: Anthropogenic sulfate aerosol and the southward shift of tropical precipitation in the late 20th century, *Geophys. Res. Lett.*, 40, 2845-2850, doi: 10.1002/Grl.50502, 2013.
- Johnson, R. G., and McClure, B. T.: Model for Northern Hemisphere continental ice sheet variation, *Quaternary Res.*, 6, 325-353, Doi 10.1016/0033-5894(67)90001-4, 1976.
- Kaplan, M. R., Schaefer, J. M., Denton, G. H., Barrell, D. J. A., Chinn, T. J. H., Putnam, A. E., Andersen, B. G., Finkel, R.
- 820 C., Schwartz, R., and Doughty, A. M.: Glacier retreat in New Zealand during the Younger Dryas stadial, *Nature*, 467, 194-197, doi: 10.1038/nature09313, 2010.
- Keller, G.: Impacts, volcanism and mass extinction: random coincidence or cause and effect?, *Aust J Earth Sci*, 52, 725-757, 2005.
- Kennett, D. J., Kennett, J. P., West, A., Mercer, C., Hee, S. S. Q., Bement, L., Bunch, T. E., Sellers, M., and Wolbach, W. S.:
- 825 Nanodiamonds in the Younger Dryas Boundary Sediment Layer, *Science*, 323, 94-94, doi: 10.1126/science.1162819, 2009.

- Klobas, J. E., Wilmouth, D. M., Weisenstein, D. K., Anderson, J. G., and Salawitch, R. J.: Ozone depletion following future volcanic eruptions, *Geophys. Res. Lett.*, 44, 7490-7499, 2017.
- Knorr, G., and Lohmann, G.: Rapid transitions in the Atlantic thermohaline circulation triggered by global warming and meltwater during the last deglaciation, *Geochemistry, Geophysics, Geosystems*, 8, n/a-n/a, 10.1029/2007GC001604, 2007.
- 830 Kobashi, T., Menviel, L., Jeltsch-Thömmes, A., Vinther, B. M., Box, J. E., Muscheler, R., Nakaegawa, T., Pfister, P. L., Döring, M., Leuenberger, M., Wanner, H., and Ohmura, A.: Volcanic influence on centennial to millennial Holocene Greenland temperature change, *Sci. Rep.*, 7, 1441, 10.1038/s41598-017-01451-7, 2017.
- Kutterolf, S., Hansteen, T. H., Appel, K., Freundt, A., Kruger, K., Perez, W., and Wehrmann, H.: Combined bromine and chlorine release from large explosive volcanic eruptions: A threat to stratospheric ozone?, *Geol.*, 41, 707-710, 2013.
- 835 Lane, C. S., Brauer, A., Blockley, S. P. E., and Dulski, P.: Volcanic ash reveals time-transgressive abrupt climate change during the Younger Dryas, *Geol.*, 41, 1251-1254, doi: 10.1130/G34867.1, 2013a.
- Lane, C. S., Chorn, B. T., and Johnson, T. C.: Ash from the Toba supereruption in Lake Malawi shows no volcanic winter in East Africa at 75 ka, *Proc. Natl. Acad. Sci. U. S. A.*, 110, 8025-8029, doi: 10.1073/pnas.1301474110, 2013b.
- Lane, C. S., Brauer, A., Martín-Puertas, C., Blockley, S. P. E., Smith, V. C., and Tomlinson, E. L.: The Late Quaternary tephrostratigraphy of annually laminated sediments from Meerfelder Maar, Germany, *Quaternary Sci. Rev.*, 122, 192-206, doi: 10.1016/j.quascirev.2015.05.025, 2015.
- 840 LeCompte, M. A., Goodyear, A. C., Demitroff, M. N., Batchelor, D., Vogel, E. K., Mooney, C., Rock, B. N., and Seidel, A. W.: Independent evaluation of conflicting microspherule results from different investigations of the Younger Dryas impact hypothesis, *Proc. Natl. Acad. Sci. U. S. A.*, 109, E2960-E2969, 10.1073/pnas.1208603109, 2012.
- 845 LeGrande, A. N., Tsigaridis, K., and Bauer, S. E.: Role of atmospheric chemistry in the climate impacts of stratospheric volcanic injections, *Nat. Geosci.*, 9, 652, 10.1038/ngeo2771, 2016.
- Lehner, F., Born, A., Raible, C. C., and Stocker, T. F.: Amplified Inception of European Little Ice Age by Sea Ice-Ocean-Atmosphere Feedbacks, *J Climate*, 26, 7586-7602, 2013.
- Levac, E., Lewis, M., Stretch, V., Duchesne, K., and Neulieb, T.: Evidence for meltwater drainage via the St. Lawrence River Valley in marine cores from the Laurentian Channel at the time of the Younger Dryas, *Global and Planet. Change*, 130, 47-65, 10.1016/j.gloplacha.2015.04.002, 2015.
- 850

- Leydet, D. J., Carlson, A. E., Teller, J. T., Breckenridge, A., Barth, A. M., Ullman, D. J., Sinclair, G., Milne, G. A., Cuzzone, J. K., and Caffee, M. W.: Opening of glacial Lake Agassiz's eastern outlets by the start of the Younger Dryas cold period, *Geol.*, 46, 155-158, 10.1130/G39501.1, 2018.
- 855 Litt, T., Brauer, A., Goslar, T., Merkt, J., Balaga, K., Muller, H., Ralska-Jasiewiczowa, M., Stebich, M., and Negendank, J. F. W.: Correlation and synchronisation of Lateglacial continental sequences in northern central Europe based on annually laminated lacustrine sediments, *Quaternary Sci. Rev.*, 20, 1233-1249, 2001.
- Lotter, A. F., Eicher, U., Siegenthaler, U., and Birks, H. J. B.: Late-glacial climatic oscillations as recorded in Swiss lake sediments, *J. of Quaternary Sci.*, 7, 187-204, 10.1002/jqs.3390070302, 1992.
- 860 Lowell, T., Waterson, N., Fisher, T., Loope, H., Glover, K., Comer, G., Hajdas, I., Denton, G., Schaefer, J., Rinterknecht, V., Broecker, W., and Teller, J.: Testing the Lake Agassiz meltwater trigger for the Younger Dryas, *Eos, Transactions American Geophysical Union*, 86, 365-372, 10.1029/2005EO400001, 2005.
- Lynch-Stieglitz, J.: The Atlantic Meridional Overturning Circulation and Abrupt Climate Change, *Annual Review of Marine Science*, 9, 83-104, 10.1146/annurev-marine-010816-060415, 2017.
- 865 Martin, E., Bekki, S., Ninin, C., and Bindeman, I.: Volcanic sulfate aerosol formation in the troposphere, *Journal of Geophysical Research-Atmospheres*, 119, 12660-12673, 2014.
- McManus, J. F., Francois, R., Gherardi, J. M., Keigwin, L. D., and Brown-Leger, S.: Collapse and rapid resumption of Atlantic meridional circulation linked to deglacial climate changes, *Nature*, 428, 834-837, doi: 10.1038/nature02494, 2004.
- Meissner, K. J.: Younger Dryas: A data to model comparison to constrain the strength of the overturning circulation, *Geophys. Res. Lett.*, 34, doi: 10.1029/2007gl031304, 2007.
- 870 Meltzer, D. J., Holliday, V. T., Cannon, M. D., and Miller, D. S.: Chronological evidence fails to support claim of an isochronous widespread layer of cosmic impact indicators dated to 12,800 years ago, *Proc. Natl. Acad. Sci. U. S. A.*, 111, E2162-E2171, 10.1073/pnas.1401150111, 2014.
- Merkt, J., and Muller, H.: Varve chronology and palynology of the Lateglacial in Northwest Germany from lacustrine
875 sediments of Hamelsee in Lower Saxony, *Quatern. Int.*, 61, 41-59, Doi 10.1016/S1040-6182(99)00016-6, 1999.
- Metcalf, J. L., Turney, C., Barnett, R., Martin, F., Bray, S. C., Vilstrup, J. T., Orlando, L., Salas-Gismondi, R., Loponte, D., Medina, M., De Nigris, M., Civalero, T., Fernandez, P. M., Gasco, A., Duran, V., Seymour, K. L., Otaola, C., Gil, A., Paunero, R., Prevosti, F. J., Bradshaw, C. J. A., Wheeler, J. C., Borrero, L., Austin, J. J., and Cooper, A.: Synergistic roles of

- climate warming and human occupation in Patagonian megafaunal extinctions during the Last Deglaciation, *Sci. Adv.*, 2, 8,
880 10.1126/sciadv.1501682, 2016.
- Mignot, J., Khodri, M., Frankignoul, C., and Servonnat, J.: Volcanic impact on the Atlantic Ocean over the last millennium, *Clim Past*, 7, 1439-1455, 2011.
- Miller, G. H., Geirsdóttir, Á., Zhong, Y., Larsen, D. J., Otto-Bliesner, B. L., Holland, M. M., Bailey, D. A., Refsnider, K. A.,
Lehman, S. J., Southon, J. R., Anderson, C., Björnsson, H., and Thordarson, T.: Abrupt onset of the Little Ice Age triggered
885 by volcanism and sustained by sea-ice/ocean feedbacks, *Geophys. Res. Lett.*, 39, L02708, 10.1029/2011GL050168, 2012.
- Moore, C. R., West, A., LeCompte, M. A., Brooks, M. J., Daniel Jr, I. R., Goodyear, A. C., Ferguson, T. A., Ivester, A. H.,
Feathers, J. K., Kennett, J. P., Tankersley, K. B., Adedeji, A. V., and Bunch, T. E.: Widespread platinum anomaly
documented at the Younger Dryas onset in North American sedimentary sequences, *Sci. Rep.*, 7, 44031, 10.1038/srep44031,
2017.
- 890 Moreno-Chamarro, E., Zanchettin, D., Lohmann, K., and Jungclaus, J. H.: An abrupt weakening of the subpolar gyre as
trigger of Little Ice Age-type episodes, *Clim. Dynam.*, 48, 727-744, 2017.
- Moreno, A., Stoll, H., Jimenez-Sanchez, M., Cacho, I., Valero-Garces, B., Ito, E., and Edwards, R. L.: A speleothem record
of glacial (25-11.6 kyr BP) rapid climatic changes from northern Iberian Peninsula, *Global and Planet. Change*, 71, 218-231,
doi: 10.1016/j.gloplacha.2009.10.002, 2010.
- 895 Mortensen, A. K., Bigler, M., Gronvold, K., Steffensen, J. P., and Johnsen, S. J.: Volcanic ash layers from the Last Glacial
Termination in the NGRIP ice core, *J. of Quaternary Sci.*, 20, 209-219, 2005.
- Murton, J. B., Bateman, M. D., Dallimore, S. R., Teller, J. T., and Yang, Z. R.: Identification of Younger Dryas outburst
flood path from Lake Agassiz to the Arctic Ocean, *Nature*, 464, 740-743, doi: 10.1038/Nature08954, 2010.
- Muscheler, R., Adolphi, F., and Knudsen, M. F.: Assessing the differences between the IntCal and Greenland ice-core time
900 scales for the last 14,000 years via the common cosmogenic radionuclide variations, *Quaternary Sci. Rev.*, 106, 81-87, 2014.
- Muschitiello, F., Pausata, F. S. R., Watson, J. E., Smittenberg, R. H., Salih, A. A. M., Brooks, S. J., Whitehouse, N. J.,
Karatou-Charalampopoulou, A., and Wohlfarth, B.: Fennoscandian freshwater control on Greenland hydroclimate shifts at
the onset of the Younger Dryas, *Nat Commun*, 6, doi: 10.1038/ncomms9939, 2015.
- Muschitiello, F., and Wohlfarth, B.: Time-transgressive environmental shifts across Northern Europe at the onset of the
905 Younger Dryas, *Quaternary Sci. Rev.*, 109, 49-56, doi: 10.1016/j.quascirev.2014.11.015, 2015.

- Muschitiello, F., Lea, J. M., Greenwood, S. L., Nick, F. M., Brunnberg, L., MacLeod, A., and Wohlfarth, B.: Timing of the first drainage of the Baltic Ice Lake synchronous with the onset of Greenland Stadial 1, *Boreas*, 45, 322-334, 10.1111/bor.12155, 2016.
- 910 Muschitiello, F., Pausata, F. S. R., Lea, J. M., Mair, D. W. F., and Wohlfarth, B.: Enhanced ice sheet melting driven by volcanic eruptions during the last deglaciation, *Nat Commun*, 8, 1020, 10.1038/s41467-017-01273-1, 2017.
- Not, C., and Hillaire-Marcel, C.: Enhanced sea-ice export from the Arctic during the Younger Dryas, *Nat Commun*, 3, 10.1038/ncomms1658, 2012.
- Nowell, D. A. G., Jones, M. C., and Pyle, D. M.: Episodic Quaternary volcanism in France and Germany, *J. of Quaternary Sci.*, 21, 645-675, 2006.
- 915 Oppenheimer, C.: Ice core and palaeoclimatic evidence for the timing and nature of the great mid-13th century volcanic eruption, *Int J Climatol*, 23, 417-426, Doi 10.1002/Joc.891, 2003.
- Ottera, O. H., Bentsen, M., Drange, H., and Suo, L. L.: External forcing as a metronome for Atlantic multidecadal variability, *Nat. Geosci.*, 3, 688-694, 2010.
- Pausata, F. S. R., Chafik, L., Caballero, R., and Battisti, D. S.: Impacts of high-latitude volcanic eruptions on ENSO and 920 AMOC, *Proc. Natl. Acad. Sci. U. S. A.*, 112, 13784-13788, 2015.
- Petaev, M. I., Huang, S. C., Jacobsen, S. B., and Zindler, A.: Large $\delta^{18}O$ anomaly in the Greenland ice core points to a cataclysm at the onset of Younger Dryas, *Proc. Natl. Acad. Sci. U. S. A.*, 110, 12917-12920, DOI 10.1073/pnas.1303924110, 2013.
- Pinter, N., Scott, A. C., Daulton, T. L., Podoll, A., Koeberl, C., Anderson, R. S., and Ishman, S. E.: The Younger Dryas 925 impact hypothesis: A requiem, *Earth Sci. Rev.*, 106, 247-264, doi: 10.1016/j.earscirev.2011.02.005, 2011.
- Pitari, G., Di Genova, G., Mancini, E., Visionsi, D., Gandolfi, I., and Cionni, I.: Stratospheric aerosols from major volcanic eruptions: a composition-climate model study of the aerosol cloud dispersal and e-folding time, *Atmosphere-Basel*, 7, 2016.
- Polyak, V. J., Rasmussen, J. B. T., and Asmerom, Y.: Prolonged wet period in the southwestern United States through the Younger Dryas, *Geol.*, 32, 5-8, doi: 10.1130/G19957.1, 2004.
- 930 Polyak, V. J., Asmerom, Y., and Lachniet, M. S.: Rapid speleothem $\delta^{13}C$ change in southwestern North America coincident with Greenland stadial 20 and the Toba (Indonesia) supereruption, *Geol.*, 45, 843-846, 2017.

- Rach, O., Brauer, A., Wilkes, H., and Sachse, D.: Delayed hydrological response to Greenland cooling at the onset of the Younger Dryas in western Europe, *Nat. Geosci.*, 7, 109-112, doi: 10.1038/NGEO2053, 2014.
- 935 Rampino, M. R., and Self, S.: Historic eruptions of Tambora (1815), Krakatau (1883), and Agung (1963), their stratospheric aerosols, and climatic impact, *Quaternary Res.*, 18, 127-143, [https://doi.org/10.1016/0033-5894\(82\)90065-5](https://doi.org/10.1016/0033-5894(82)90065-5), 1982.
- Rampino, M. R., and Self, S.: Sulfur-rich volcanic-eruptions and stratospheric aerosols, *Nature*, 310, 677-679, Doi 10.1038/310677a0, 1984.
- Rampino, M. R., and Self, S.: Volcanic winter and accelerated glaciation following the Toba super-eruption, *Nature*, 359, 50-52, 1992.
- 940 Rasmussen, S. O., Andersen, K. K., Svensson, A. M., Steffensen, J. P., Vinther, B. M., Clausen, H. B., Siggaard-Andersen, M. L., Johnsen, S. J., Larsen, L. B., Dahl-Jensen, D., Bigler, M., Rothlisberger, R., Fischer, H., Goto-Azuma, K., Hansson, M. E., and Ruth, U.: A new Greenland ice core chronology for the last glacial termination, *Journal of Geophysical Research-Atmospheres*, 111, D06102, doi: 10.1029/2005JD006079, 2006.
- 945 Rasmussen, S. O., Bigler, M., Blockley, S. P., Blunier, T., Buchardt, S. L., Clausen, H. B., Cvijanovic, I., Dahl-Jensen, D., Johnsen, S. J., Fischer, H., Gkinis, V., Guillevic, M., Hoek, W. Z., Lowe, J. J., Pedro, J. B., Popp, T., Seierstad, I. K., Steffensen, J. P., Svensson, A. M., Vallenga, P., Vinther, B. M., Walker, M. J. C., Wheatley, J. J., and Winstrup, M.: A stratigraphic framework for abrupt climatic changes during the Last Glacial period based on three synchronized Greenland ice-core records: refining and extending the INTIMATE event stratigraphy, *Quaternary Sci. Rev.*, 106, 14-28, doi: 10.1016/j.quascirev.2014.09.007, 2014.
- 950 Rayburn, J. A., Cronin, T. M., Franzi, D. A., Knuepfer, P. L. K., and Willard, D. A.: Timing and duration of North American glacial lake discharges and the Younger Dryas climate reversal, *Quaternary Res.*, 75, 541-551, doi: 10.1016/j.yqres.2011.02.004, 2011.
- Renssen, H., Mairesse, A., Goosse, H., Mathiot, P., Heiri, O., Roche, D. M., Nisancioglu, K. H., and Valdes, P. J.: Multiple causes of the Younger Dryas cold period, *Nat. Geosci.*, 8, 946-U980, doi: 10.1038/NGEO2557, 2015.
- 955 Ridgwell, A., Maslin, M., and Kaplan, J. O.: Flooding of the continental shelves as a contributor to deglacial CH₄ rise, *J. of Quaternary Sci.*, 27, 800-806, 10.1002/jqs.2568, 2012.
- Ridley, H. E., Asmerom, Y., Baldini, J. U. L., Breitenbach, S. F. M., Aquino, V. V., Prufer, K. M., Culleton, B. J., Polyak, V., Lechleitner, F. A., Kennett, D. J., Zhang, M., Marwan, N., Macpherson, C. G., Baldini, L. M., Xiao, T., Peterkin, J. L.,

- Awe, J., and Haug, G. H.: Aerosol forcing of the position of the intertropical convergence zone since AD1550, *Nat. Geosci.*, 8, 195–200, doi: 10.1038/ngeo2353, 2015.
- Robock, A., and Mao, J. P.: The volcanic signal in surface temperature observations, *J Climate*, 8, 1086-1103, doi: 10.1175/1520-0442(1995)008<1086:Tvsist>2.0.Co;2, 1995.
- Robock, A.: Volcanic eruptions and climate, *Rev. Geophys.*, 38, 191-219, 2000.
- Robock, A., Ammann, C. M., Oman, L., Shindell, D., Levis, S., and Stenchikov, G.: Did the Toba volcanic eruption of similar to 74 ka BP produce widespread glaciation?, *Journal of Geophysical Research-Atmospheres*, 114, 10.1029/2008jd011652, 2009.
- Sadler, J. P., and Grattan, J. P.: Volcanoes as agents of past environmental change, *Global and Planet. Change*, 21, 181-196, doi: 10.1016/S0921-8181(99)00014-4, 1999.
- Sandom, C., Faurby, S., Sandel, B., and Svenning, J. C.: Global late Quaternary megafauna extinctions linked to humans, not climate change, *Proceedings of the Royal Society B-Biological Sciences*, 281, 10.1098/rspb.2013.3254, 2014.
- Savarino, J., Bekki, S., Cole-Dai, J. H., and Thiemens, M. H.: Evidence from sulfate mass independent oxygen isotopic compositions of dramatic changes in atmospheric oxidation following massive volcanic eruptions, *Journal of Geophysical Research-Atmospheres*, 108, 2003.
- Scaillet, B., Luhr, J. F., and Carroll, M. R.: Petrological and volcanological constraints on volcanic sulfur emissions to the atmosphere, in: *Volcanism and the Earth's Atmosphere (Geophysical Monograph Series)*, edited by: Robock, A., and Oppenheimer, C., 11-40, 2004.
- Schenk, F., Välranta, M., Muschitiello, F., Tarasov, L., Heikkilä, M., Björck, S., Brandefelt, J., Johansson, A. V., Näslund, J.-O., and Wohlfarth, B.: Warm summers during the Younger Dryas cold reversal, *Nat Commun*, 9, 1634, 10.1038/s41467-018-04071-5, 2018.
- Schleussner, C. F., and Feulner, G.: A volcanically triggered regime shift in the subpolar North Atlantic Ocean as a possible origin of the Little Ice Age, *Clim Past*, 9, 1321-1330, 2013.
- Schmidt, M. W., Vautravers, M. J., and Spero, H. J.: Rapid subtropical North Atlantic salinity oscillations across Dansgaard-Oeschger cycles, *Nature*, 443, 561-564, 2006.

- Schmincke, H. U., Park, C., and Harms, E.: Evolution and environmental impacts of the eruption of Laacher See Volcano (Germany) 12,900 a BP, *Quatern. Int.*, 61, 61-72, doi: 10.1016/S1040-6182(99)00017-8, 1999.
- Schmincke, H. U.: *Volcanism*, Springer-Verlag, Berlin, 327 pp., 2004.
- Scott, A. C., Hardiman, M., Pinter, N., Anderson, R. S., Daulton, T. L., Ejarque, A., Finch, P., and Carter-champion, A.: Interpreting palaeofire evidence from fluvial sediments: a case study from Santa Rosa Island, California, with implications for the Younger Dryas Impact Hypothesis, *J. of Quaternary Sci.*, 32, 35-47, 10.1002/jqs.2914, 2017.
- 990 Seierstad, I. K., Abbott, P. M., Bigler, M., Blunier, T., Bourne, A. J., Brook, E., Buchardt, S. L., Buizert, C., Clausen, H. B., Cook, E., Dahl-Jensen, D., Davies, S. M., Guillevic, M., Johnsen, S. J., Pedersen, D. S., Popp, T. J., Rasmussen, S. O., Severinghaus, J. P., Svensson, A., and Vinther, B. M.: Consistently dated records from the Greenland GRIP, GISP2 and NGRIP ice cores for the past 104 ka reveal regional millennial-scale delta O-18 gradients with possible Heinrich event imprint, *Quaternary Sci. Rev.*, 106, 29-46, doi: 10.1016/j.quascirev.2014.10.032, 2014.
- 995 Shakun, J. D., Burns, S. J., Fleitmann, D., Kramers, J., Matter, A., and Al-Subary, A.: A high-resolution, absolute-dated deglacial speleothem record of Indian Ocean climate from Socotra Island, Yemen, *Earth Planet. Sci. Lett.*, 259, 442-456, 2007.
- Sheng, J. X., Weisenstein, D. K., Luo, B. P., Rozanov, E., Arfeuille, F., and Peter, T.: A perturbed parameter model ensemble to investigate Mt. Pinatubo's 1991 initial sulfur mass emission, *Atmos. Chem. Phys.*, 15, 11501-11512, doi: 10.5194/acp-15-11501-2015, 2015.
- 1000 Shinohara, H.: Excess Degassing from Volcanoes and Its Role on Eruptive and Intrusive Activity, *Rev Geophys*, 46, 2008.
- Siddall, M., Rohling, E. J., Almogi-Labin, A., Hemleben, C., Meischner, D., Schmelzer, I., and Smeed, D. A.: Sea-level fluctuations during the last glacial cycle, *Nature*, 423, 853-858, doi: 10.1038/Nature01690, 2003.
- Sima, A., Paul, A., and Schulz, M.: The Younger Dryas - an intrinsic feature of late Pleistocene climate change at millennial timescales, *Earth Planet. Sci. Lett.*, 222, 741-750, 2004.
- 1005 Slawinska, J., and Robock, A.: Impact of volcanic eruptions on decadal to centennial fluctuations of Arctic sea ice extent during the last millennium and on initiation of the Little Ice Age, *J Climate*, early online release, 10.1175/jcli-d-16-0498.1, 2017.
- Steffensen, J. P., Andersen, K. K., Bigler, M., Clausen, H. B., Dahl-Jensen, D., Fischer, H., Goto-Azuma, K., Hansson, M., 1010 Johnsen, S. J., Jouzel, J., Masson-Delmotte, V., Popp, T., Rasmussen, S. O., Rothlisberger, R., Ruth, U., Stauffer, B.,

- Siggaard-Andersen, M. L., Sveinbjornsdottir, A. E., Svensson, A., and White, J. W. C.: High-resolution Greenland Ice Core data show abrupt climate change happens in few years, *Science*, 321, 680-684, DOI 10.1126/science.1157707, 2008.
- Sternai, P., Caricchi, L., Castellort, S., and Champagnac, J. D.: Deglaciation and glacial erosion: A joint control on magma productivity by continental unloading, *Geophys. Res. Lett.*, 43, 1632-1641, 2016.
- 1015 Stuiver, M., Grootes, P. M., and Braziunas, T. F.: The GISP2 $\delta^{18}\text{O}$ climate record of the past 16,500 years and the role of the Sun, ocean, and volcanoes, *Quaternary Research*, 44, 341-354, 1995.
- Surovell, T. A., Pelton, S. R., Anderson-Sprecher, R., and Myers, A. D.: Test of Martin's overkill hypothesis using radiocarbon dates on extinct megafauna, *Proceedings of the National Academy of Sciences*, 113, 886-891, 10.1073/pnas.1504020112, 2016.
- 1020 Svensson, A., Bigler, M., Blunier, T., Clausen, H. B., Dahl-Jensen, D., Fischer, H., Fujita, S., Goto-Azuma, K., Johnsen, S. J., Kawamura, K., Kipfstuhl, S., Kohno, M., Parrenin, F., Popp, T., Rasmussen, S. O., Schwander, J., Seierstad, I., Severi, M., Steffensen, J. P., Udisti, R., Uemura, R., Vallelonga, P., Vinther, B. M., Wegner, A., Wilhelms, F., and Winstrup, M.: Direct linking of Greenland and Antarctic ice cores at the Toba eruption (74 ka BP), *Clim Past*, 9, 749-766, DOI 10.5194/cp-9-749-2013, 2013.
- 1025 Swingedouw, D., Mignot, J., Labetoulle, S., Guilyardi, E., and Madec, G.: Initialisation and predictability of the AMOC over the last 50 years in a climate model (vol 40, pg 2381, 2013), *Clim. Dynam.*, 42, 555-556, 2014.
- Tarasov, L., and Peltier, W. R.: Arctic freshwater forcing of the Younger Dryas cold reversal, *Nature*, 435, 662-665, Doi 10.1038/Nature03617, 2005.
- Teller, J. T.: Meltwater and precipitation runoff to the North Atlantic, Arctic, and Gulf of Mexico from the Laurentide Ice Sheet and adjacent regions during the Younger Dryas, *Paleoceanography*, 5, 897-905, doi: 10.1029/Pa005i006p00897, 1990.
- 1030 Textor, C., Sachs, P. M., Graf, H.-F., and Hansteen, T. H.: The 12,900 years BP Laacher See eruption: estimation of volatile yields and simulation of their fate in the plume, *Geological Society, London, Special Publications*, 213, 307-328, 10.1144/gsl.sp.2003.213.01.19, 2003.
- Thornalley, D. J. R., Barker, S., Broecker, W. S., Elderfield, H., and McCave, I. N.: The Deglacial Evolution of North Atlantic Deep Convection, *Science*, 331, 202-205, 2011.

- Thornalley, D. J. R., Oppo, D. W., Ortega, P., Robson, J. I., Brierley, C. M., Davis, R., Hall, I. R., Moffa-Sanchez, P., Rose, N. L., Spooner, P. T., Yashayaev, I., and Keigwin, L. D.: Anomalously weak Labrador Sea convection and Atlantic overturning during the past 150 years, *Nature*, 556, 227-230, 10.1038/s41586-018-0007-4, 2018.
- 1040 Tian, H., Schryvers, D., and Claeys, P.: Nanodiamonds do not provide unique evidence for a Younger Dryas impact, *Proceedings of the National Academy of Sciences*, 108, 40-44, 10.1073/pnas.1007695108, 2011.
- Timmreck, C., and Graf, H. F.: The initial dispersal and radiative forcing of a Northern Hemisphere mid-latitude super volcano: a model study, *Atmos. Chem. Phys.*, 6, 35-49, 2006.
- Timmreck, C., Graf, H. F., Zanchettin, D., Hagemann, S., Kleinen, T., and Kruger, K.: Climate response to the Toba super-eruption: Regional changes, *Quatern. Int.*, 258, 30-44, 10.1016/j.quaint.2011.10.008, 2012.
- 1045 Tobin, T. S.: Recognition of a likely two phased extinction at the K-Pg boundary in Antarctica, *Sci. Rep.*, 7, 2017.
- van den Bogaard, P.: $^{40}\text{Ar}/^{39}\text{Ar}$ ages of sanidine phenocrysts from Laacher See Tephra (12,900 Yr Bp): chronostratigraphic and petrological significance, *Earth Planet. Sci. Lett.*, 133, 163-174, doi: 10.1016/0012-821x(95)00066-L, 1995.
- van der Kaars, S., Miller, G. H., Turney, C. S. M., Cook, E. J., Nurnberg, D., Schonfeld, J., Kershaw, A. P., and Lehman, S. J.: Humans rather than climate the primary cause of Pleistocene megafaunal extinction in Australia, *Nat Commun*, 8, 7, 10.1038/ncomms14142, 2017.
- 1050 van Hoesel, A., Hoek, W. Z., Pennock, G. M., Kaiser, K., Plumper, O., Jankowski, M., Hamers, M. F., Schlaak, N., Kuster, M., Andronikov, A. V., and Drury, M. R.: A search for shocked quartz grains in the Allerod-Younger Dryas boundary layer, *Meteorit. Planet. Sci.*, 50, 483-498, doi: 10.1111/maps.12435, 2015.
- van Raden, U. J., Colombaroli, D., Gilli, A., Schwander, J., Bernasconi, S. M., van Leeuwen, J., Leuenberger, M., and Eicher, U.: High-resolution late-glacial chronology for the Gerzensee lake record (Switzerland): $\delta^{18}\text{O}$ correlation between a Gerzensee-stack and NGRIP, *Palaeogeography Palaeoc.*, 391, Part B, 13-24, doi: 10.1016/j.palaeo.2012.05.017, 2013.
- 1055 Vidal, C. M., Métrich, N., Komorowski, J.-C., Pratomo, I., Michel, A., Kartadinata, N., Robert, V., and Lavigne, F.: The 1257 Samalas eruption (Lombok, Indonesia): the single greatest stratospheric gas release of the Common Era, *Sci. Rep.*, 6, 34868, 10.1038/srep34868, 2016.
- 1060 von Grafenstein, U., Erlenkeuser, H., Brauer, A., Jouzel, J., and Johnsen, S. J.: A mid-European decadal isotope record from 15,500 to 5,000 years B.P, *Science*, 284, 1654-1657, 1999.

- Wallace, P. J.: Volcanic SO₂ emissions and the abundance and distribution of exsolved gas in magma bodies, *J. Volcanol. Geotherm. Res.*, 108, 85-106, 2001.
- White, R. V., and Saunders, A. D.: Volcanism, impact and mass extinctions: incredible or credible coincidences?, *Lithos*, 79, 299-316, 2005.
- Williams, M. A. J., Ambrose, S. H., van der Kaars, S., Ruehlemann, C., Chattopadhyaya, U., Pal, J., and Chauhan, P. R.: Environmental impact of the 73 ka Toba super-eruption in South Asia, *Palaeogeography Palaeoc.*, 284, 295-314, 10.1016/j.palaeo.2009.10.009, 2009.
- Wittke, J. H., Weaver, J. C., Bunch, T. E., Kennett, J. P., Kennett, D. J., Moore, A. M. T., Hillman, G. C., Tankersley, K. B., Goodyear, A. C., Moore, C. R., Daniel, I. R., Ray, J. H., Lopinot, N. H., Ferraro, D., Israde-Alcantara, I., Bischoff, J. L., DeCarli, P. S., Hermes, R. E., Kloosterman, J. B., Revay, Z., Howard, G. A., Kimbel, D. R., Kletetschka, G., Nabelek, L., Lipo, C. P., Sakai, S., West, A., and Firestone, R. B.: Evidence for deposition of 10 million tonnes of impact spherules across four continents 12,800 y ago, *Proc. Natl. Acad. Sci. U. S. A.*, 110, E2088-E2097, doi: 10.1073/pnas.1301760110, 2013.
- Wolbach, W. S., Ballard, J. P., Mayewski, P. A., Adedeji, V., Bunch, T. E., Firestone, R. B., French, T. A., Howard, G. A., Israde-Alcantara, I., Johnson, J. R., Kimbel, D., Kinzie, C. R., Kurbatov, A., Kletetschka, G., LeCompte, M. A., Mahaney, W. C., Melott, A. L., Maiorana-Boutillier, A., Mitra, S., Moore, C. R., Napier, W. M., Parlier, J., Tankersley, K. B., Thomas, B. C., Wittke, J. H., West, A., and Kennett, J. P.: Extraordinary Biomass-Burning Episode and Impact Winter Triggered by the Younger Dryas Cosmic Impact approximate to 12,800 Years Ago. 1. Ice Cores and Glaciers, *Journal of Geology*, 126, 165-184, 2018a.
- Wolbach, W. S., Ballard, J. P., Mayewski, P. A., Parnell, A. C., Cahill, N., Adedeji, V., Bunch, T. E., Dominguez-Vazquez, G., Erlandson, J. M., Firestone, R. B., French, T. A., Howard, G., Israde-Alcantara, I., Johnson, J. R., Kimbel, D., Kinzie, C. R., Kurbatov, A., Kletetschka, G., LeCompte, M. A., Mahaney, W. C., Melott, A. L., Mitra, S., Maiorana-Boutillier, A., Moore, C. R., Napier, W. M., Parlier, J., Tankersley, K. B., Thomas, B. C., Wittke, J. H., West, A., and Kennett, J. P.: Extraordinary Biomass-Burning Episode and Impact Winter Triggered by the Younger Dryas Cosmic Impact approximate to 12,800 Years Ago. 2. Lake, Marine, and Terrestrial Sediments, *Journal of Geology*, 126, 185-205, 2018b.
- Wolff, E. W., Chappellaz, J., Blunier, T., Rasmussen, S. O., and Svensson, A.: Millennial-scale variability during the last glacial: The ice core record, *Quaternary Sci. Rev.*, 29, 2828-2838, 2010.
- Wu, Y. Z., Sharma, M., LeCompte, M. A., Demitroff, M. N., and Landis, J. D.: Origin and provenance of spherules and magnetic grains at the Younger Dryas boundary, *Proc. Natl. Acad. Sci. U. S. A.*, 110, E3557-E3566, doi: 10.1073/pnas.1304059110, 2013.

- Wulf, S., Ott, F., Slowinski, M., Noryskiewicz, A. M., Drager, N., Martin-Puertas, C., Czymzik, M., Neugebauer, I., Dulski, P., Bourne, A. J., Blaszkiewicz, M., and Brauer, A.: Tracing the Laacher See Tephra in the varved sediment record of the Trzechowskie palaeolake in central Northern Poland, *Quaternary Sci. Rev.*, 76, 129-139, doi: 10.1016/j.quascirev.2013.07.010, 2013.
- 1095 Yang, H., Wang, K., Dai, H., Wang, Y., and Li, Q.: Wind effect on the Atlantic meridional overturning circulation via sea ice and vertical diffusion, *Clim. Dynam.*, 46, 3387-3403, doi: 10.1007/s00382-015-2774-z, 2016.
- Zhang, X., Lohmann, G., Knorr, G., and Purcell, C.: Abrupt glacial climate shifts controlled by ice sheet changes, *Nature*, 512, 290-294, doi: 10.1038/nature13592, 2014.
- Zhang, X., Knorr, G., Lohmann, G., and Barker, S.: Abrupt North Atlantic circulation changes in response to gradual CO₂ forcing in a glacial climate state, *Nat. Geosci.*, 10, 518, 10.1038/ngeo2974, 2017.
- 1100 Zhong, Y., Miller, G. H., Otto-Bliesner, B. L., Holland, M. M., Bailey, D. A., Schneider, D. P., and Geirsdottir, A.: Centennial-scale climate change from decadal-paced explosive volcanism: a coupled sea ice-ocean mechanism, *Clim. Dynam.*, 37, 2373-2387, 10.1007/s00382-010-0967-z, 2011.
- Zielinski, G. A., Mayewski, P. A., Meeker, L. D., Whitlow, S., and Twickler, M. S.: A 110,000-Yr Record of Explosive Volcanism from the GISP2 (Greenland) Ice Core, *Quaternary Res.*, 45, 109-118, 1996.
- 1105 Zielinski, G. A., Mayewski, P. A., Meeker, L. D., Gronvold, K., Germani, M. S., Whitlow, S., Twickler, M. S., and Taylor, K.: Volcanic aerosol records and tephrochronology of the Summit, Greenland, ice cores, *J Geophys. Res-Oceans*, 102, 26625-26640, doi: 10.1029/96jc03547, 1997.

1110

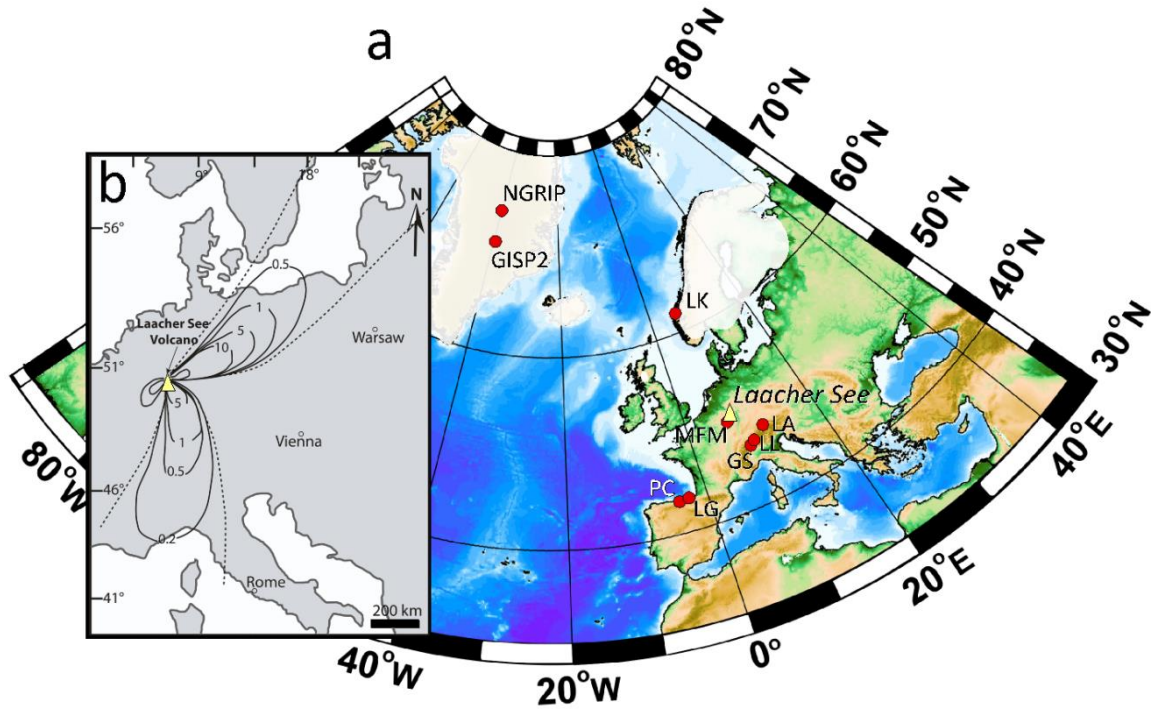


Figure 1. a) Map with the locations of sites discussed and (b) an isopach map of the Laacher See tephra fall deposits across central Europe. Semi-transparent white areas in (a) demarcate continental glaciers, and the reconstruction and map are adapted from Baldini et al. (2015b). The sites shown are: Laacher See volcano (yellow triangle); LG, La Garma Cave; MFM, Meerfelder Maar; LA, Lake Ammersee; PC, El Pindal Cave; LK, Lake Krakenes; LL, Lake Lucerne; GS, Gerzensee; NGRIP, NGRIP ice core. The dashed line in (b) is the outer detection limits of the distal tephra layers (adapted from Bogaard and Schmincke, 1985). Isopach line labels in (b) are in cm.

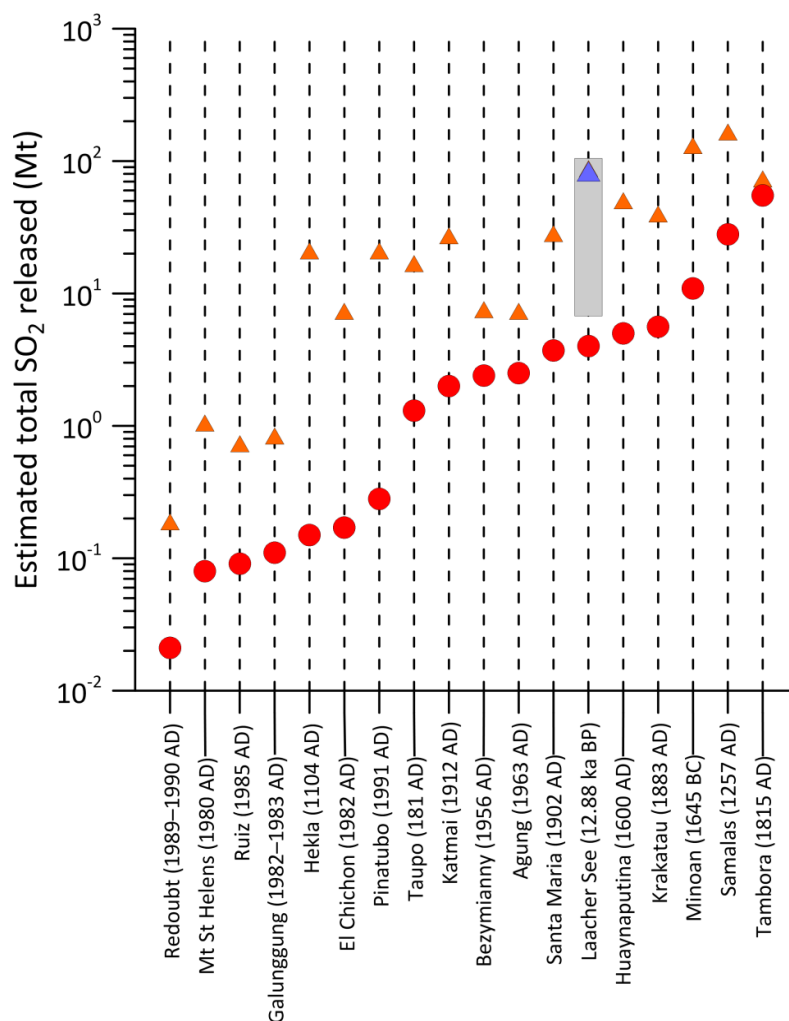


Figure 2: The SO₂ yield of climatologically significant late Holocene eruptions (Shinohara, 2008). Red circles represent petrologic estimates of SO₂ release, and orange triangles represent estimated actual values, calculated from either satellite or ice core data (Shinohara, 2008). The grey bar represents the range of values for the Laacher See eruption as suggested by Textor et al. (2003; Schenk et al., 2018; Bahr et al., 2018), and the blue triangle in the Laacher See column represents the total estimated SO₂ emitted by the Laacher See eruption (83.6 Mt) assuming that the actual SO₂ emitted is 20.9 times the petrologic estimate, calculated here as the mean value of 17 non-basaltic explosive eruptions (the 16 listed in Shinohara (2008) plus the 1257 AD Samalas eruption (Vidal et al., 2016)).

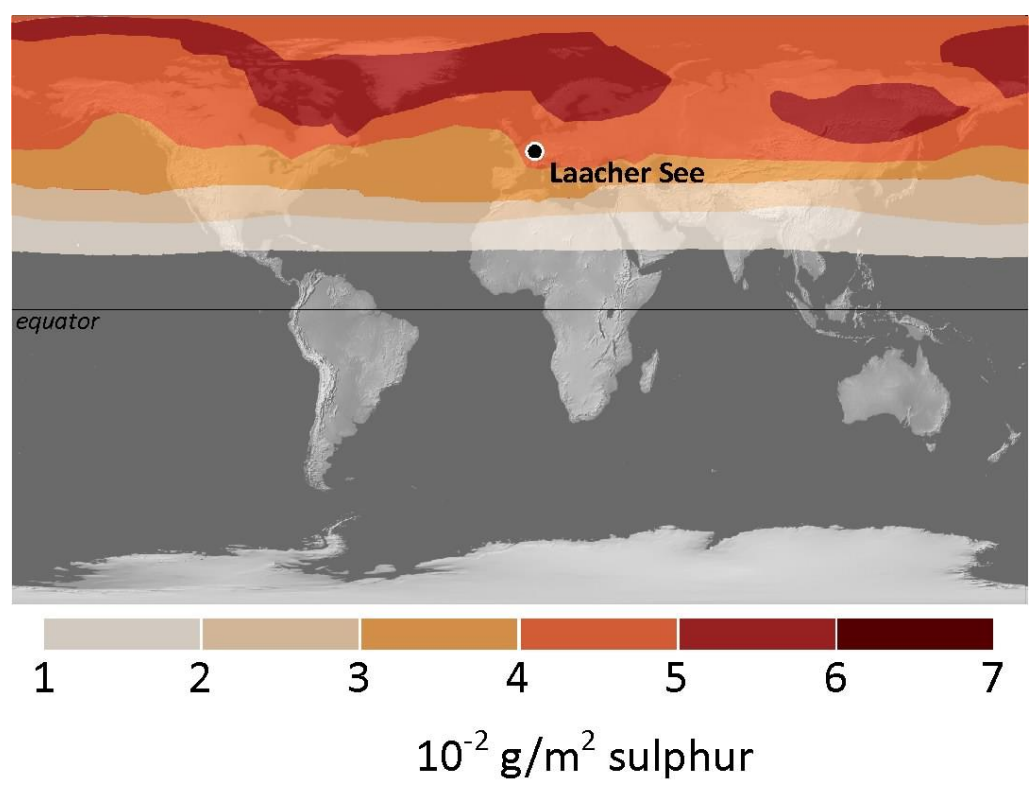


Figure 3. The distribution of the Laacher See volcanic cloud six months after the ~12.9 ka BP eruption based on existing climate model outputs (MAECHAM4 model) (Graf and Timmreck, 2001). The figure is redrawn based on the original in Graf and Timmreck (2001), which contains details regarding the model and simulation. This simulation assumed that the eruption injected 15 Mt SO₂ into the lower stratosphere, ~7x less than the maximum estimate of Textor et al. (2003a).

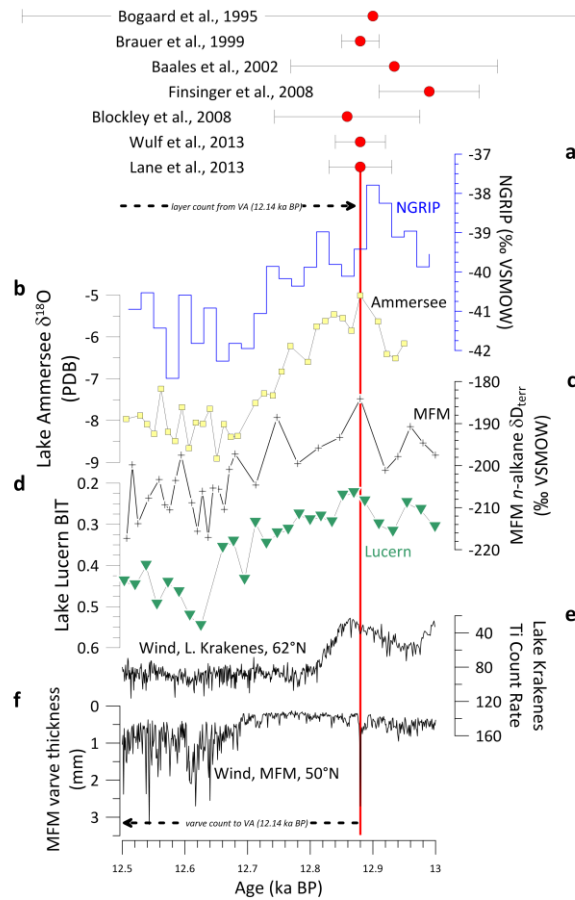


Figure 4. Temperature (a-d) and wind strength (e, f) proxy records from the North Atlantic and Europe. a) NGRIP ice core $\delta^{18}\text{O}$ (Greenland, GICC05) (Rasmussen et al., 2006). **b)** precipitation $\delta^{18}\text{O}$ reconstructed using deep lake ostracods from Lake Ammersee, southern Germany. **c)** Meerfelder Maar (MFM) (Eifel Volcanic Field, Germany) n -alkanes $\delta\text{D}_{\text{terr}}$ (terrestrial lipid biomarkers) (Rach et al., 2014; Litt et al., 2001), **d)** Lake Lucern, Switzerland, isoprenoid tetraether (BIT) record (Blaga et al., 2013). **e)** wind strength as reconstructed using Ti count rate in Lake Kråkenes (Norway); three-point moving average shown. **f)** Wind strength as reconstructed using MFM varve thickness data (Brauer et al., 2008; Mortensen et al., 2005). The records are arranged so that cooling is down for all the records. The LST (vertical red line) is present or inferred within the MFM, Lake Ammersee, and Lake Lucern cores. The LST is not evident in the NGRIP or Lake Kråkenes cores, and the eruption's timing relative to NGRIP $\delta^{18}\text{O}$ and Lake Kråkenes Ti is based on layer counting from the Vedde Ash ('VA'), a tephrochronological marker (12.140 ± 0.04 ka BP) also found in MFM (Lane et al., 2013a; Brauer et al., 2008). The published chronologies for Lake Ammersee and Lake Lucern were shifted slightly by a uniform amount (0.115 and -0.093 ka, respectively) to ensure the contemporaneity of the LSE in all the records. This adjustment does not affect the LSE's timing relative to the Lake Ammersee or Lake Lucern climate records. Published radiometric dates for the LSE are shown (red circles) with errors, although the absolute age is not as important as its timing relative to the apparent climate shifts.

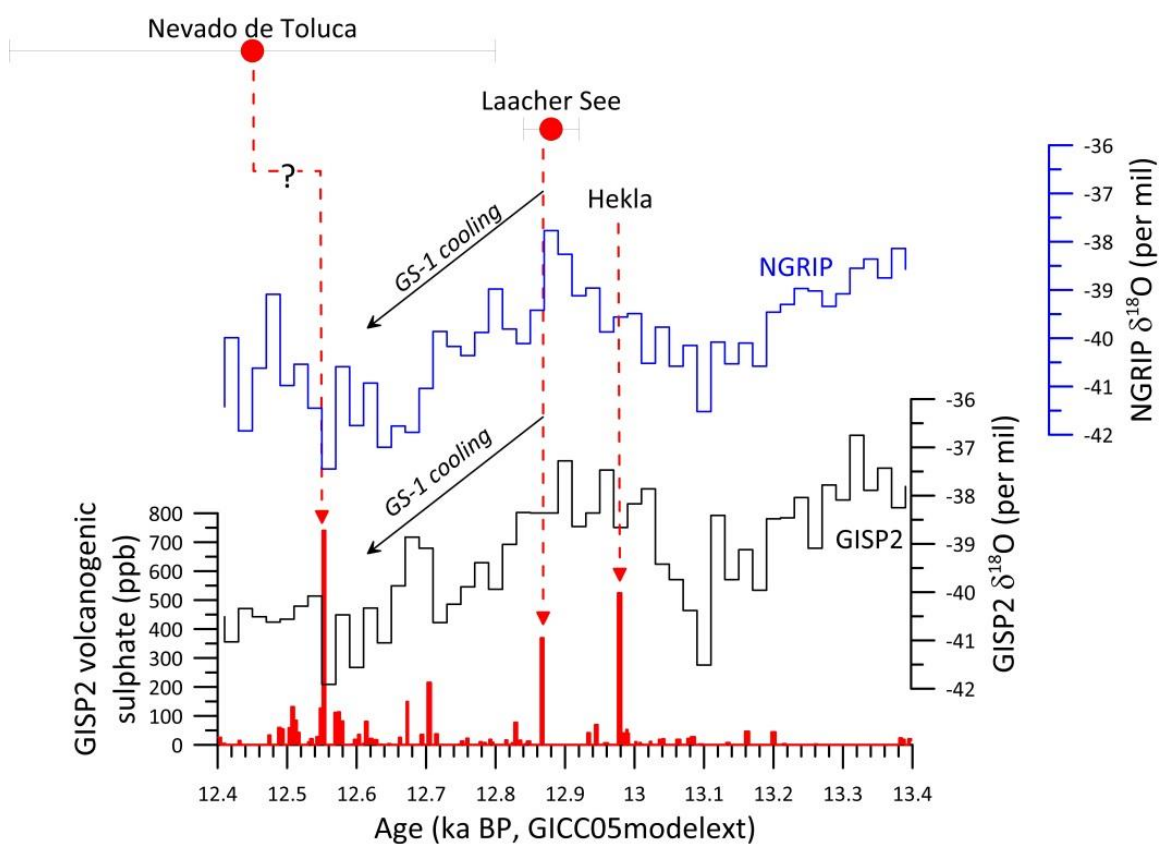


Figure 5. The GISP2 (bidecadal (Stuiver et al., 1995)) (black) and NGRIP (blue) ice core $\delta^{18}\text{O}$ records synchronised on the GICC05modelext chronology (Seierstad et al., 2014). The red bars indicate GISP2 volcanological sulphate record (also synchronised on the GICC05 timescale). The maximum counting error of the ice core chronology is 0.138 ka at 12.9 ka BP (Seierstad et al., 2014). The best age estimate of the LSE is shown (red circle) (Brauer et al., 2008; Lane et al., 2015) and a possible correlation to a synchronous sulphate spike highlighted by the vertical dashed arrow. The large spike at ~13 ka BP represents a smaller but more proximal Icelandic eruption (Hekla) associated with a volcanic ash layer (Mortensen et al., 2005; Bereiter et al., 2018).

1120

1125

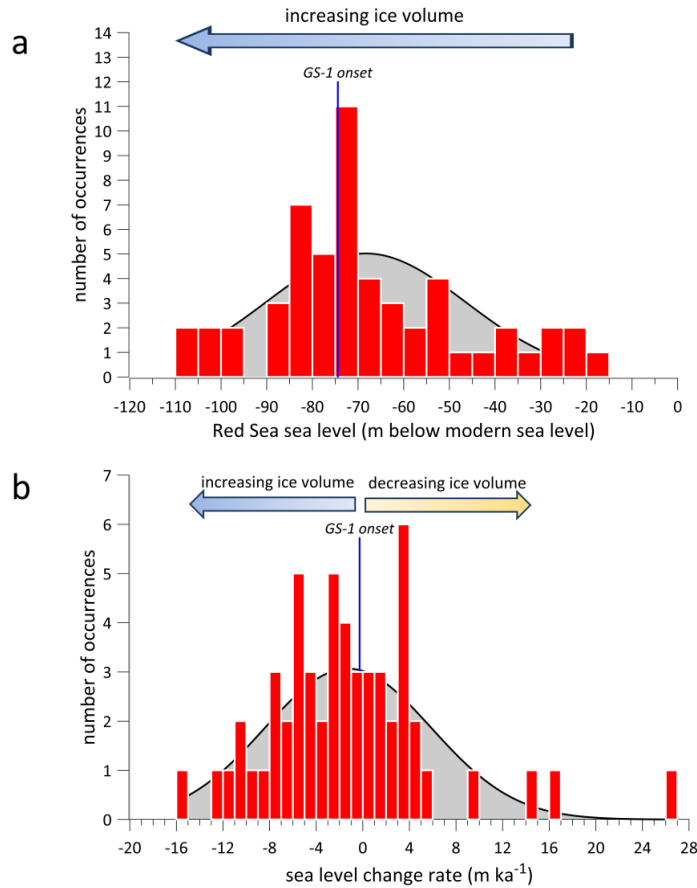


Figure 6: Histogram of the frequency of abrupt Greenland cooling events relative to ice volume and ice volume change. Red Sea sea level (Siddall et al., 2003) is used as a proxy for ice volume and to determine (a) the distribution of ice volume conditions associated with all Greenland cooling events identified by Rasmussen et al. (2014) over the last 120 ka ($n = 55$). A Gaussian best-fit curve describes the distribution (grey-filled curve) (mean = -68.30 m, $\sigma = 21.85$ m), and sea level during the GS-1 onset is marked with a blue dashed line. b) The distribution of sea level change rates (reflecting global ice volume shifts) associated with 55 Greenland cooling events over the last 120 ka. This distribution is also described by a Gaussian best-fit curve (grey-filled curve) (mean = -1.35493 m ka^{-1} , $\sigma = 7.19$ m ka^{-1}); 21 events are associated with decreasing ice volume, and 34 are associated with increasing ice volume.

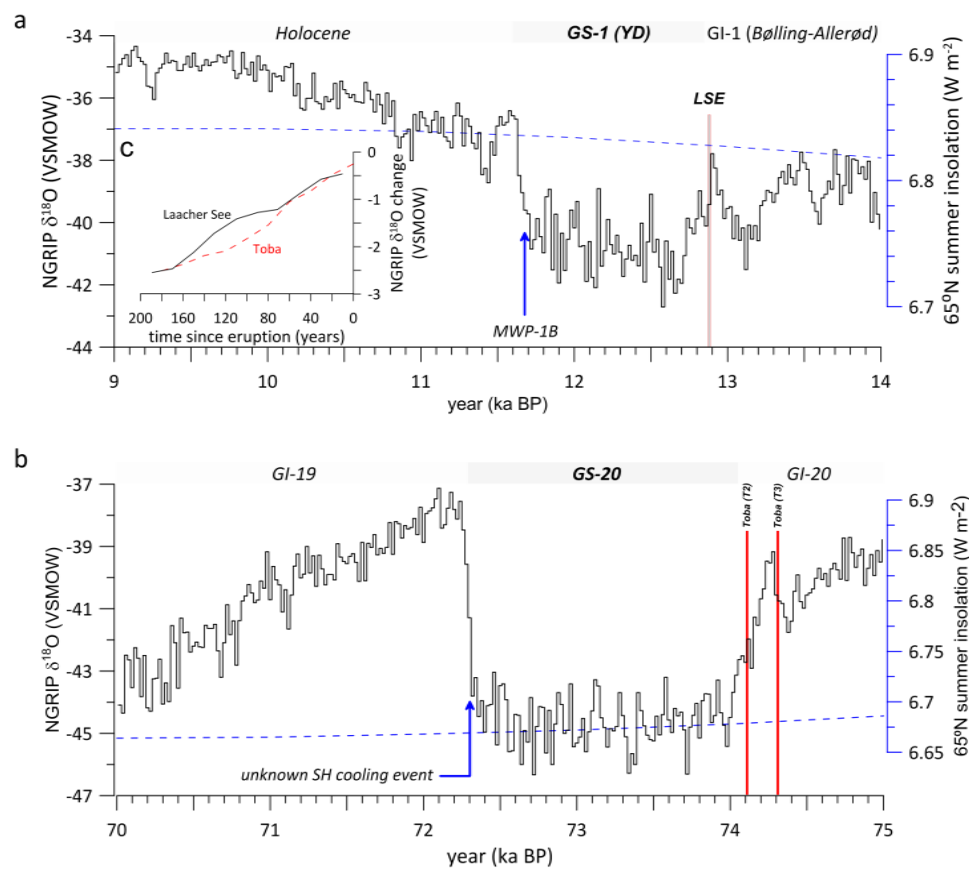


Figure 7: Two five-ka intervals of the NGRIP $\delta^{18}\text{O}$ record bracketing (a) the ~12.9 ka BP Laacher See Eruption and (b) the ~74 ka BP Toba supereruption (Rasmussen et al., 2006). The two eruptions are among the most well-dated eruptions of the Quaternary. The LST is not apparent in the NGRIP core (although we identify a candidate sulphate spike in the GISP2 record; see Figure 5), and the timing of the LST relative to the NGRIP $\delta^{18}\text{O}$ record is based on the difference in ages between the LST and the Vedde Ash found in European lake sediments (Lane et al., 2013a). The timing of the Toba eruption relative to NGRIP is based on the position of the most likely sulphate spike identified by Svensson et al. (2013). Blue arrows indicate the timing of possible SH cooling events. The timing of Meltwater Pulse-1B is based on Ridgwell et al, 2012, but the source, timing, and even occurrence of the meltwater pulse are still debated. The inset panel (c) shows NGRIP $\delta^{18}\text{O}$ during the 200 years immediately following the two eruptions (the sulphate spike T2 is assumed to represent Toba, as suggested by Svensson et al. (2013)).