

Fig. S1: Pollen diagram of the taxa found in ODP Hole 1239A which occurred in at least 10% of the samples, and core top samples from Hole 1239B. Ages after Tiedemann et al. (2007).

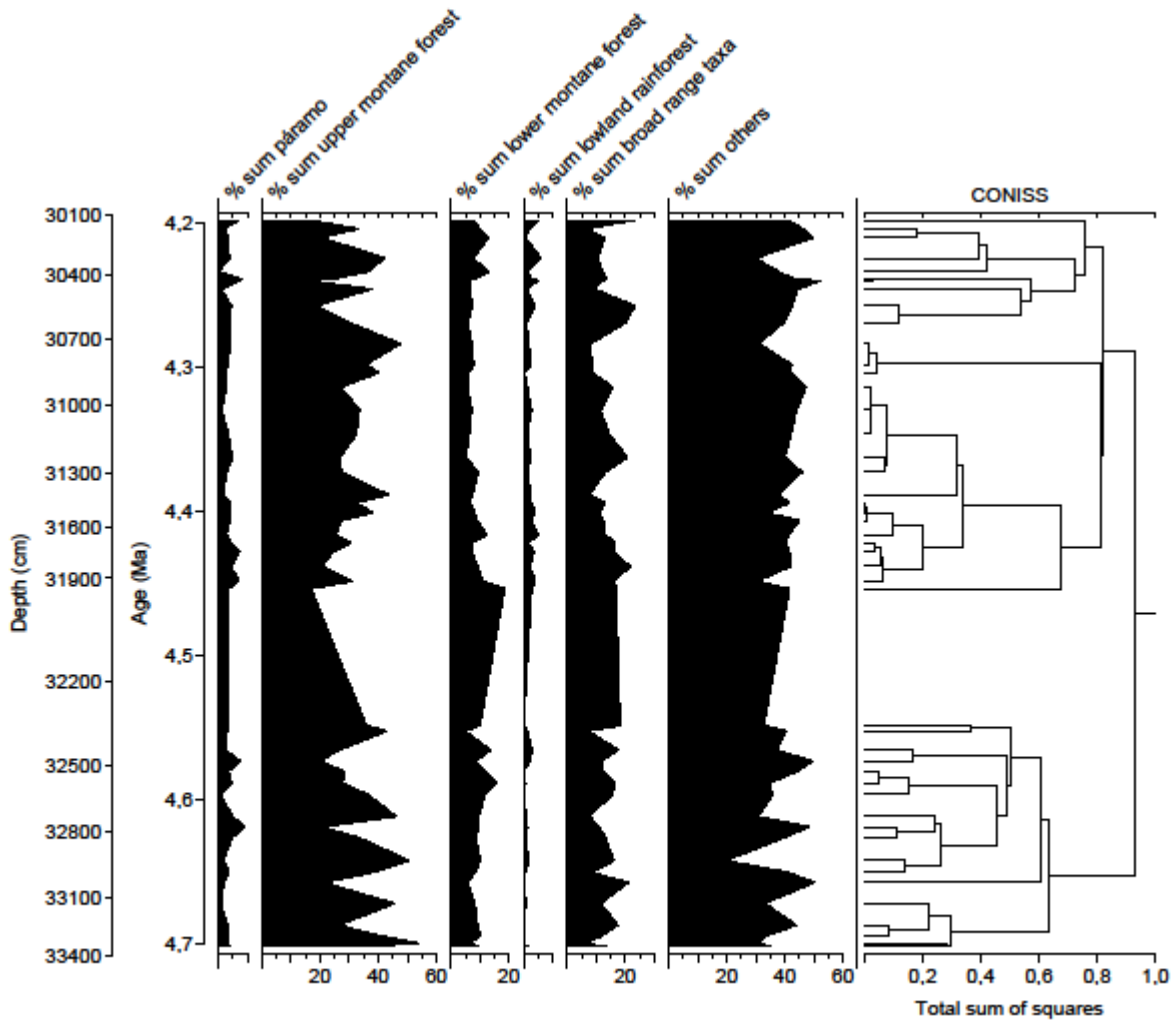


Fig. S2: Percentages of páramo, upper montane forest, lower montane forest, lowland rainforest, broad range taxa, and others, based on the pollen and spores sum from samples of ODP Hole 1239A. CONISS analysis showing the zonation of the diagram. Ages after Tiedemann et al. (2007).

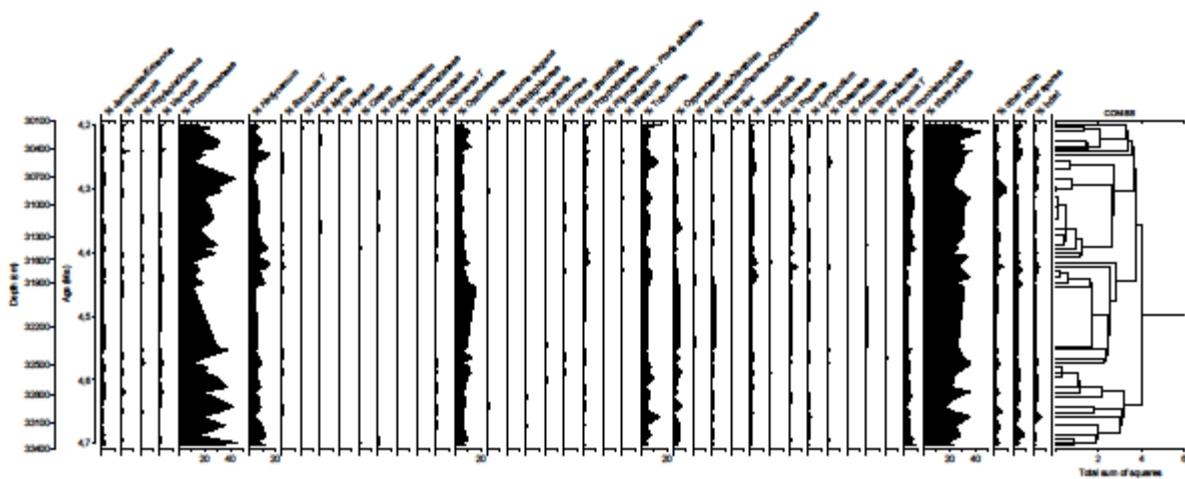


Fig. S3: Pollen diagram of the identified taxa found in ODP Hole 1239A which were used for the calculation of the total sum of squares (CONISS). Ages after Tiedemann et al. (2007).