

# Reinforcing the North Atlantic backbone: revision and extension of the composite splice at ODP Site 982

Anna Joy Drury<sup>1</sup>, Thomas Westerhold<sup>1</sup>, David Hodell<sup>2</sup>, Ursula Röhl<sup>1</sup>

<sup>1</sup>MARUM - Center for Marine Environmental Sciences, University of Bremen, Germany

5 <sup>2</sup>Department of Earth Sciences, University of Cambridge, Cambridge CB2 3EQ, UK

*Correspondence to:* Anna Joy Drury (ajdrury@marum.de)

**Abstract.** Ocean Drilling Programme (ODP) Site 982 represents a key location for understanding the evolution of climate in the North Atlantic over the past 12 Ma. However, concerns exist about the validity and robustness of the underlying stratigraphy and astrochronology, which currently limits the adequacy of this site for high-resolution climate studies. To resolve this uncertainty, we verify and extend the early Pliocene to late Miocene shipboard composite splice at Site 982 using high-resolution XRF core scanning data and establish a robust high-resolution stable isotope stratigraphy and astrochronology between 4.5 and 8.0 Ma. Splice revisions and verifications resulted in ~11 m of gaps in the original Site 982 isotope stratigraphy. Our new stratigraphy reveals previously unseen benthic  $\delta^{18}\text{O}$  excursions, particularly prior to 6.65 Ma. The benthic  $\delta^{18}\text{O}$  record displays distinct, asymmetric cycles between 7.7 and 6.65 Ma, confirming that high-latitude climate is a prevalent forcing during this interval. An intensification of the 41-kyr beat in both the benthic  $\delta^{13}\text{C}$  and  $\delta^{18}\text{O}$  is also observed ~6.4 Ma, marking a strengthening in the cryosphere-carbon cycle coupling. A large ~0.7‰ double excursion is revealed ~6.4-6.3 Ma, which also marks the onset an interval of average higher  $\delta^{18}\text{O}$  and large precession and obliquity-dominated  $\delta^{18}\text{O}$  excursions between 6.4-5.4 Ma, coincident with the culmination of the late Miocene cooling. The two largest benthic  $\delta^{18}\text{O}$  excursions ~6.4-6.3 Ma and TG20/22 coincide with the coolest alkenone-derived SST estimates from Site 982, suggesting a strong connection between the late Miocene global cooling and deep-sea cooling and dynamic ice sheet expansion. The splice revisions and revised astrochronology resolve key stratigraphic issues that have hampered correlation between Site 982, the equatorial Atlantic and the Mediterranean. Comparisons of the revised Site 982 stratigraphy to high-resolution astronomically tuned benthic  $\delta^{18}\text{O}$  stratigraphies from ODP Site 926 (equatorial Atlantic) and Ain el Beida (north western Morocco) show that prior inconsistencies in short-term excursions are now resolved. The identification of key new cycles at Site 982 further highlights the requirement for the current scheme for late Miocene marine isotope stages to be redefined. Our new integrated deep-sea benthic stable isotope stratigraphy and astrochronology from Site 982 will facilitate future high-resolution late Miocene to early Pliocene climate research.

## 1 Introduction

The North Atlantic remains a crucial location for understanding past climate change. It has been a prime region of deep water formation since at least the middle Miocene (Woodruff and Savin, 1989) and a key location for correlating between the progressively enclosed Mediterranean basin and the major oceanic basins (Hodell et al., 2001; Andersson and Jansen, 2003). North Atlantic Ocean Drilling Programme (ODP) Site 982, situated on the Rockall Plateau, was recovered to document the evolution of intermediate water circulation in the North Atlantic Basin (Shipboard Scientific Party Leg 162, 1996). Palaeoclimate records generated at this location have been fundamental to improving our understanding of climate for the past 12 Ma (Venz et al., 1999; Hodell et al., 2001; Venz and Hodell, 2002; Lisiecki and Raymo, 2005; Hodell and Venz-Curtis, 2006; Lawrence et al., 2009; Bolton et al., 2011; Khélifi et al., 2014; Herbert et al., 2016). In particular, the late Miocene benthic stable isotope stratigraphy and astrochronology (Hodell et al., 2001) has been used as the basic stratigraphy and/or age model for a wide range of studies (Bickert et al., 2004; Hodell and Venz-Curtis, 2006; Drury et al., 2016; Herbert et al., 2016; Kontakiotis et al., 2016; De Vleeschouwer et al., 2017). However, there is an ongoing debate about the presence of potential stratigraphic issues in the Pliocene successions of Site 982 (Khelifi et al., 2012; Lawrence et al., 2013) and concerns exist that individual cycles may be missing from the late Miocene isotope stratigraphy (Bickert et al., 2004; van der Laan et al., 2005; van der Laan et al., 2012); however, these concerns have not yet been resolved.

Site 982 is characterised by high carbonate content, which is above 90% for most of the Pliocene and Miocene (Shipboard Scientific Party Leg 162, 1996; Hodell et al., 2001). The standard shipboard physical properties measurements, such as spectral reflectance, gamma ray attenuation (GRA) bulk density, magnetic susceptibility and natural gamma radiation are difficult to use for stratigraphic correlation in such high carbonate settings. At Site 982, the early Pliocene to late Miocene composite splice was constructed using solely GRA bulk density and spectral reflectance in the 650-700-nm band; however, the shipboard composite record for this interval has never been independently verified. The stratigraphic discrepancies between Site 982 and other deep-sea and Mediterranean sites could originate from errors in the shipboard composite record and verification of the shipboard composite splice is essential to resolve these issues. Non-destructive X-ray Fluorescence (XRF) core scanning is an ideal technique for recovering the high quality and high-resolution data that are required for composite splice verification.

Here, we aim to verify and establish a robust high-resolution stable isotope stratigraphy and astrochronology at Site 982 that can continue as a reference section for North Atlantic climate change. Firstly, we use XRF core scanning to successfully test and extend the early Pliocene to late Miocene shipboard splice at Site 982. Following splice revision, we generate new benthic stable isotope data to fill gaps in the existing stable isotope stratigraphy at Site 982. Using the new complete benthic  $\delta^{18}\text{O}$  and  $\delta^{13}\text{C}$  stratigraphy, we generate a new astrochronology for Site 982 between 4.5 and 8.0 Ma. Finally, comparing the new stable isotope stratigraphy to stable isotope stratigraphies from ODP Site 926 (equatorial Atlantic) and Ain El Beida (northwest Morocco) allows us to assess whether previous stratigraphic issues are resolved. This study intends to reinforce Site 982, and the climate records generated there, as a backbone for palaeoceanographic research in the North Atlantic.

## 2 Materials and Methods

All data are archived as supplementary tables in the open access PANGAEA database (<https://doi.org/10.1594/PANGAEA.884300>) and at *Climate of the Past*. The composite core photos and a complete CODD experiment for Site 982 are also available from PANGAEA.

### 5 2.1 ODP Site 982

This study utilises early Pliocene to late Miocene sediments recovered from ODP Site 982 (Figure 1; 57°30.992'N, 15°52.001'W; 1134 m water depth) drilled on the Rockall Plateau in the North Atlantic during ODP Expedition 162 (Shipboard Scientific Party Leg 162, 1996). Site 982 was cored to reconstruct Neogene intermediate-water circulation in the North Atlantic. A continuous shipboard composite section was developed until approximately 248 metres composite depth (mcd) back to the late Miocene. The late Miocene through early Pliocene sediments predominantly consist of biogenic carbonate (nannofossil ooze), with minor amounts of clay and biogenic silica, interspersed with occasional ash layers (Shipboard Scientific Party Leg 162, 1996; Wallrabe-Adams and Werner, 1999). Carbonate content is high, averaging 90.8% in the late Miocene to early Pliocene sequences. A high-resolution, astronomically-tuned, benthic stable isotope record (temporal sampling ~2.5 kyr) from this location was published between 4.6 and 8.9 Ma (Hodell et al., 2001). Considering the site's location in the North Atlantic, this isotope record is important for comparing to isotopic records from the Mediterranean basin (Hodell et al., 2001; van der Laan et al., 2005).

### 2.2 X-Ray fluorescence core scanning and core composite images

XRF Core Scanner data were collected every 2 cm down-core over a 1 cm<sup>2</sup> area with down-core slit size of 12 mm (Run 1: 50 kV, 1.0 mA, 15 s count time; Run 2: 10 kV, 0.2 mA, 15 s count time) directly at the split core surface of the ODP 982 archive halves with XRF Core Scanner II (AVAATECH Serial No. 2) at the MARUM - University of Bremen. The split core surface was covered with a 4 µm thick SPEXCerti Prep Ultralene1 foil to avoid contamination of the XRF measurement unit and desiccation of the sediment. The reported data were acquired by a Canberra X-PIPS Silicon Drift Detector (SDD; Model SXD 15C-150-500) with 150eV X-ray resolution, the Canberra Digital Spectrum Analyzer DAS 1000, and an Oxford Instruments 50W XTF5011 X-Ray tube with rhodium (Rh) target material. Raw X-ray spectra were processed using Iterative Least square software (WIN AXIL) package from Canberra Eurisys. The data was collected between April 2014 and June 2016, during which time the X-Ray tube was replaced. To account for differences in measurement intensity, a number of sections were re-measured and a linear regression between the two datasets was used to calibrate the data collected in 2014 to the data collected in 2015-2016 (see Supplementary Information and Supplementary Figure 1). The shipboard composite depth section (in mcd) was scanned between 120.13 to 271.58 mcd (Shipboard Scientific Party Leg 162, 1996). All XRF core scanning Si and Zr intensity data are reported in Supplementary Table 1.

## 2.3 CODD image processing and core composite image generation

To assist with splice verification and data interpretation, core composite images for Site 982 were compiled from core table photos using Code for Ocean Drilling Data (CODD – [www.codd-home.net](http://www.codd-home.net); (Wilkens et al., 2017)). For each hole, every section from the individual core table images (downloaded from JANUS) were cut, compiled and scaled to mcd using the Includes\_Core\_Table\_Photos functions within CODD. A lighting correction was also applied to account for the single point lighting source used in core table photos.

## 2.4 Stable isotope analyses

To fill the observed gaps in the original Hodell et al. (2001) stable isotope stratigraphy and re-establish a robust stratigraphy for the North Atlantic, an additional 263 samples were taken for isotope analysis between 200 and 280 revised m composite depth (rmcd). These samples were selected to fill the 11 m of missing sections in the original stable isotope stratigraphy, as well as overlapping with the original data to ensure the two datasets could be integrated. Each measurement consisted of 1-6 translucent specimens of *Cibicidoides (C.) mundulus* or *C. wuellerstorfi* (250-500  $\mu\text{m}$ ), which were analysed for carbon ( $\delta^{13}\text{C}$ ) and oxygen ( $\delta^{18}\text{O}$ ) isotopes using a Kiel I carbonate preparation device attached to a Finnigan MAT 251 at MARUM (University of Bremen, Germany), with an analytical precision of 0.03‰ for  $\delta^{13}\text{C}$  and 0.06‰ for  $\delta^{18}\text{O}$ . All results are reported against Vienna Peedee Belemnite (VPDB) using the standard  $\delta$  notation (per mille ‰), determined using calibrated in-house standards and NBS-19. All data were corrected to equilibrium using the species-specific constants listed in Supplementary Table 2 (Shackleton et al., 1984; Shackleton et al., 1995). No offsets were found between the new  $\delta^{13}\text{C}$  and  $\delta^{18}\text{O}$  measurements and the existing records at Sites 982. In graphic representation, only  $\delta^{13}\text{C}$  data obtained on *C. wuellerstorfi* was used because Hodell et al. (2001) found that  $\delta^{13}\text{C}$  values from *C. mundulus* become more negative than paired  $\delta^{13}\text{C}$  values of *C. wuellerstorfi* during intervals of lower  $\delta^{13}\text{C}$ . All raw and corrected isotope data are provided in Supplementary Table 3.

## 3 Results

### 3.1 XRF core scanning data and splice revision

The natural logarithm of the Si intensity data ( $\ln(\text{Si})$ ) shows significant variability on both  $\sim 0.8$  and  $\sim 1.6$  m scale, which coincides well with darker sedimentary layers, as seen on the composite core photos (Figure 2.a; Supplementary Figure 2). Among Holes 982A, 982B and 982C, the cycles visible in the  $\ln(\text{Si})$  and core photos are remarkably consistent (Figure 2.a), which shows these are ideal for verifying the shipboard composite splice.

The XRF  $\ln(\text{Si})$  records and core photos reveal mismatches, overlaps and gaps in the shipboard composite section (Figure 2.a and 3.a; Supplementary Figure 2 and 3). Following splice revision, the agreement of the composite core photos and  $\ln(\text{Si})$  is remarkable between the three holes (Figure 2.b. and 3.a; Supplementary Figure 2 and 3). The shipboard

composite splice is altered and verified between 120.13 to 271.58 revised metres composite depth (rmcd) and additionally extended to 280.23 rmcd (Supplementary Figure 2; Tables 1 and 2). The splice revisions resulted in ~11 m of gaps in the published isotope data (Hodell et al., 2001), predominantly in the late Miocene (Figure 3.b; Supplementary Figure 3). Some individual gaps and overlaps are as large as ~2-3 meters, which is equivalent to ~40-50 kyr on the original Hodell et al. (2001) age model (Figure 3.b; Supplementary Figure 3). The revised offset and splice tables are presented in Tables 1 and 2, and are digitally available on PANGAEA and in Supplementary Tables 4 and 5.

On the revised composite splice, the ln(Si) data shows strong ~1.6 m cyclicity throughout the record, which is particularly strong between 180 and 240 rmcd (Figure 4.c). Additionally, strong ~0.8 m cyclicity is strong between 140 and 220 rmcd (Figure 4.c). In addition to strong ~0.8 and ~1.6 m cyclicity, some ln(Si) peaks coincide with high Zr peaks, and darker sedimentary layers, reflecting the presence of ash layers at Site 982 (pink bars - Figure 4.c, d and e)

### 3.2 Revised Site 982 stable isotope stratigraphy

Using the new isotope data produced here (Figure 3.b), the resulting Site 982 benthic  $\delta^{18}\text{O}$  stratigraphy display little long-term variation (0.2-0.3 ‰), which is characteristic of this late Miocene interval (Figure 4.b). Throughout the record ~1.6 m cycles of ~0.5-0.6‰ are observed, in particular between 270 and 235 rmcd and again between 215 to 160 rmcd (Figure 4.b; Figure 5.a). Between 210 and 160 rmcd ~0.8 m cycles are particularly strong in the 982 benthic  $\delta^{18}\text{O}$  record (Figure 4.b; Figure 5.a). The complete Site 982  $\delta^{13}\text{C}$  stratigraphy displays greater long-term variability, most notably with the negative -1‰ shift between 265 and 220 rmcd (Figure 4.a). The  $\delta^{13}\text{C}$  record displays strong ~1.6 m cycles of ~0.5‰, although longer 3.8-5.0 m cycles also appear in the upper section above ~170 rmcd (Figure 4.a; Figure 5.b and c). The  $\delta^{18}\text{O}$  and  $\delta^{13}\text{C}$  records generally display an antiphase relationship on the scale of ~1.6 m cycles (Figure 4.a and b). A comparison of the 982 stable isotope stratigraphy with the XRF Zr record shows that there is no effect of the ash layers on the isotope record (Figure 4).

## 4 Astrochronology

The original astrochronology presented in Hodell et al. (2001) was constructed by respectively tuning the benthic  $\delta^{18}\text{O}$  record filtered at 41 kyr to obliquity and the GRA bulk density record filtered at 21 kyr to summer insolation at 65°N. The obliquity and 65°N summer insolation tuning targets were taken from the La90(1,1) astronomical solution (Laskar et al., 1993). Although the differences between the La90(1,1) and La2004(1,1) solutions are not large in the last 10 Ma, small offsets are noticeable (Laskar et al., 2004). The original Hodell et al. (2001) astrochronology was updated when De Vleeschouwer et al. (2017) incorporated the Site 982 benthic  $\delta^{18}\text{O}$  stratigraphy as the 5.174-8.560 Ma interval of the Neogene megasplice and returned the original stratigraphy to the La2004 obliquity solution as part of this process. However, as our splice revisions revealed duplicated cycles, as well as 11 m of gaps in the original spliced composite section, the new stable isotope stratigraphy presented here requires a new astrochronology.

Constructing an astrochronology at Site 982 was an iterative process. To establish whether the strong cyclicity observed in the benthic  $\delta^{18}\text{O}$  and  $\delta^{13}\text{C}$  records in the depth domain related to orbital forcing, first-order age control was provided by a 5<sup>th</sup> order polynomial fit through 13 shipboard nannofossil and planktonic foraminiferal datums (Supplementary Table 6). The initial age control shows that the ~0.8 m cycles observed in the ln(Si) and benthic  $\delta^{18}\text{O}$  record are consistent with precession forcing and the more dominant ~1.6 m cycles observed throughout the  $\delta^{18}\text{O}$  and  $\delta^{13}\text{C}$  records are consistent with obliquity forcing (Figure 5.a). Additionally, the 3.8-5.0 m cycles observed in the upper parts of the  $\delta^{13}\text{C}$  record correspond to eccentricity forcing (Figure 5.b and c). The presence of these orbitally-forced cyclicities supports that the  $\delta^{18}\text{O}$  and  $\delta^{13}\text{C}$  records are suitable for astronomical tuning.

To construct the astrochronology for Site 982, we correlated the benthic  $\delta^{18}\text{O}$  series on depth to computed variations in the Earth's orbit on age, since the benthic  $\delta^{18}\text{O}$  in particular showed strong variability at precession and obliquity timescales. Due to the presence of both strong obliquity and precession driven cycles, we chose a tuning target composed of equally weighted eccentricity, tilt and Northern Hemisphere precession (E+T-P, from Laskar et al., 2004). No phase shift was applied to account for possible lags between  $\delta^{18}\text{O}$  and insolation forcing due to the response time of ice sheets, as this response time is unknown for the Miocene (Holbourn et al., 2007).

Initially, a minimal tuning strategy was applied (see also Holbourn et al., 2007; Drury et al., 2017), where distinctive  $\delta^{18}\text{O}$  minima were visually correlated to E+T-P maxima using 20 tie points (purple lines - Figure 6; Supplementary Figure 4 and Table 7), facilitated by the tuning functions available in CODD (Wilkins et al., 2017). The shipboard biostratigraphic datums (Supplementary Table 6) were used to initially guide the minimal tuning process, but were not included as fixed tie points. Although the shipboard datum ages were updated to the astronomically tuned Neogene timescale (GTS2012; Hilgen et al., 2012), the Site 982 minimal tuning is negligibly influenced by the GTS2012 calibration, as the shipboard datums have large depth errors ( $\pm 0.25$ -2.5m; Supplementary Table 6) and were not used as definitive tie points. The exact minimal tuning tie points were selected to align  $\delta^{18}\text{O}$  minima-E+T-P maxima as best as possible between individual ties. Additionally, consecutive ties were ideally placed at least ~100 kyr apart (actual range 90-377 kyr), as recommended by Zeeden et al. (2015) to avoid the introduction of frequency modulation through the astronomical tuning process. Finally, a fine-tuning strategy was applied (see also Drury et al., 2017), where an additional 41 tie points were added to correlate the remaining distinctive  $\delta^{18}\text{O}$  minima to E+T-P maxima (grey lines - Figure 6; Supplementary Table 7). This fine-tuning age model provides higher-resolution age control and removes remaining  $\delta^{18}\text{O}$  minima-E+T-P maxima misalignments in between the initial minimal tuning tie points (Figure 6).

## 5 Discussion

### 30 5.1 New excursions and deep-sea cooling: insights from benthic isotope stratigraphy at Site 982

Surprisingly, following splice revision, the new, complete, high-resolution (~2.5 kyr) benthic  $\delta^{18}\text{O}$  and  $\delta^{13}\text{C}$  records from Site 982 show a number of large excursions that have not been observed previously (Figure 7.b.). Spectral analyses of

both records confirm that obliquity is the dominant forcing across the entire interval, although precession is additionally present (Figure 5, Figure 7.d and e). Many of the new excursions occur between 7.7 and 6.65 Ma, when the benthic  $\delta^{18}\text{O}$  record shows a strong response to obliquity forcing (Figure 7.c and e.), confirmed by the strength of the obliquity spectral peak (Figure 5.d.). The timing and shape of the  $\delta^{18}\text{O}$  cycles in particular coincides with the distinctive saw-tooth obliquity driven cycles observed between 7.7-6.9 Ma at eastern equatorial Pacific IODP Site U1337 (Drury et al., 2017). The asymmetry of the  $\delta^{18}\text{O}$  cycles seen at Site U1337, coincident with antiphase obliquity cycles in  $\delta^{18}\text{O}$  and  $\delta^{13}\text{C}$ , were associated with high-latitude climate forcing, although the asymmetry could partly also result from the interference pattern between strong obliquity forcing and the influence of minor precession (Drury et al., 2017). The distinct cycles at Site 982 between 7.7 and 6.65 Ma also display asymmetry and coincide with a strong antiphase relationship between the Site 982  $\delta^{18}\text{O}$  and  $\delta^{13}\text{C}$  records (Figure 7.b-f), supporting that high-latitude climate forcing is strong during this interval of the late Miocene. However, the precessional influence observed at Site U1337 is not as developed in the Site 982  $\delta^{18}\text{O}$  records during the 7.7-6.9 Ma interval (Figure 5.d, Figure 7.c and e). In addition to the dominance of obliquity over precession forcing (Figure 5.d), the obliquity-driven  $\delta^{18}\text{O}$  cycles at Site 982 continue until 6.65 Ma, indicating an extended influence of high-latitude processes until 6.65 Ma. Between ~7.6 and 6.7 Ma, the Site 982 benthic  $\delta^{13}\text{C}$  record is characterised by the Late Miocene Carbon Isotope Shift (LMCIS) (Figure 7.b): a globally expressed negative ~1‰ shift that is thought to reflect a global change in the  $\delta^{13}\text{C}$  of the oceanic reservoir (Keigwin, 1979; Haq et al., 1980; Hodell and Venz-Curtis, 2006). When compared to the high-resolution  $\delta^{13}\text{C}$  stratigraphy from ODP Site 926 (equatorial Atlantic), this confirms that the timing of the onset and termination of the LMCIS was globally synchronous within a few kyr (Figure 8.b), as shown between Site 926 and Site U1337 (equatorial Pacific) (Drury et al., 2017).

The Site 982  $\delta^{18}\text{O}$  and  $\delta^{13}\text{C}$  records shows minimal variability between 6.65 and 6.5 Ma during a long-term obliquity node; however, obliquity forcing strongly manifests itself again ~6.5 Ma in the  $\delta^{18}\text{O}$  record. This is shortly followed by a remarkably large double excursion in the Site 982 benthic  $\delta^{18}\text{O}$  spanning two obliquity cycles between ~6.3-6.4 Ma (~210-214 rmc), which marks a rapid increase of ~0.7‰ (black arrow - Figure 7.c; Figure 4.b). This excursion coincides with the first occurrence of strong obliquity forcing in the  $\delta^{13}\text{C}$  record as well as the  $\delta^{18}\text{O}$  record (Figure 5.e and f, Figure 7.b-f), confirming a strengthening of the antiphase cryosphere-carbon cycle coupling and an intensification of the 41-kyr beat indicated at Site U1337 after 6.4 Ma (Drury et al., 2017). The large  $\delta^{18}\text{O}$  excursion marks the onset of a strong response to both obliquity and northern hemisphere precession in particularly the Site 982  $\delta^{18}\text{O}$  record between 6.4 and 5.4 Ma, with strong obliquity forcing continuing until at least 4.6 Ma (Figure 7.d). The interplay between precession and obliquity forcing on the  $\delta^{18}\text{O}$  record between 6.4 and 5.4 Ma could account for the presence of well-expressed power in the 24, 22 and 19-kyr bandwidth seen in the MTM power spectra (Figure 5.d)

Between 6.4 and 5.4 Ma, the  $\delta^{18}\text{O}$  stratigraphy is characterised by average higher  $\delta^{18}\text{O}$ , and the greatest variability seen throughout the record. This interval at Site 982 was associated with the latest Miocene glaciation by Hodell et al. (2001). In addition to the new excursion ~6.4-6.3 Ma, marine isotope stages TG12/14 (~5.5-5.6 Ma) and TG20/22 (~5.7-5.8 Ma) are also clearly expressed at Site 982 (Figure 7.b). This high- $\delta^{18}\text{O}$ , high-variability interval coincides with end of the late

Miocene cooling interval associated with declining atmospheric CO<sub>2</sub> concentrations identified by Herbert et al. (2016). Notably, the two biggest drops in alkenone-derived sea surface temperatures (SSTs) from Site 982, when surface waters were only ~12-13°C, coincide with the two largest excursions in benthic δ<sup>18</sup>O, namely the new excursion revealed ~6.4-6.3 Ma and TG20/22. The previous absence of the 6.4-6.3 Ma excursion in benthic δ<sup>18</sup>O record of Site 982 is attributed to  
5 missing section in the shipboard splice, which accounts for why the late Miocene global cooling observed by Herbert et al. (2016) did not seem to be associated with any response in deep-sea temperatures or global ice volume expansion. However, the synchronicity between the 6.4 Ma intensification of the 41-kyr beat in both the δ<sup>13</sup>C and δ<sup>18</sup>O records, the new 6.4-6.3 Ma δ<sup>18</sup>O excursion, the greatest cooling in the alkenone SST records (Figure 7), suggests that the late Miocene cooling seen in the high-latitudes lead to a combination of deep-sea cooling, dynamic ice sheet expansion and a stronger coupling  
10 between the cryosphere and the carbon cycle.

## 5.2 Integrating the Mediterranean and North Atlantic

Site 982 is a key reference section for palaeoceanographic and palaeoclimate study, as it is the only deep-sea location in the North Atlantic with high-resolution benthic oxygen isotope stratigraphies for the late Miocene to early Pliocene. As such,  
15 it is frequently used as a North Atlantic end member to investigate past deep-sea circulation (Hodell et al., 2001; Bickert et al., 2004; Hodell and Venz-Curtis, 2006; Khélifi et al., 2014; Drury et al., 2016). Additionally it reflects a crucial link to tie regional records of the enclosed Mediterranean basin, such as those from Ain el Beida and Salé Briqueterie to the global signal preserved more strongly in deep-sea sediments (Hodell et al., 1994; Hodell et al., 2001; van der Laan et al., 2005; van der Laan et al., 2012; Kontakiotis et al., 2016). However, although the long-term trends at Site 982 remained useful for  
20 investigating long-term, million-year changes in deep-water circulation patterns, on inspection at higher-resolution, misalignments between distinct excursions become apparent (Bickert et al., 2004; van der Laan et al., 2005). Bickert et al. (2004) constructed their ODP Site 999 age model by correlating their isotope data to the isotope stratigraphy from Site 982; however, to account for obvious mismatches between Site 999 and nearby ODP Site 926, they had to adjust the original Site 982 astrochronology to account for some inconsistencies with respect to obliquity. The isotope stratigraphy at 926 has  
25 recently been extended back to ~8.0 Ma, following splice verification and revision and validation of the original Shackleton and Hall (1997) astrochronology (Zeeden et al., 2013; Drury et al., 2017; Wilkens et al., 2017). Although there is overall agreement in long-term trends and the onset of the LMCIS, inconsistencies between distinctive short-term events in the original Site 982 shipboard stratigraphy and the updated Site 926 stratigraphy are evident (Figure 8.a). Disagreement between the δ<sup>13</sup>C records from Sites 926 and 982 is particularly pronounced before 7.3 Ma, between 6.3-6.9 Ma (the  
30 termination of the LMCIS) and between 5.9-5.1 Ma (Figure 8.a). Following splice revision and the new astronomical calibration, the new Site 982 stratigraphy shows far better agreement throughout, both in terms of the long-term trends, the onset and termination of the LMCIS, and especially with respect to individual excursions (Figure 8.b). This considerable



improvement between these two Atlantic deep-sea benthic stratigraphies strongly supports the revised astrochronologies at both sites.

Comparisons between late Miocene Mediterranean records and Site 982 also raised concerns about the validity of the original astrochronology and splice. A high-resolution comparison between stable isotope data from Ain el Beida (AEB; northwest Morocco) and Site 982 indicated that there were both mismatches in the number of cycles present at both locations, as well as inconsistencies between the age models with respect to the age of clearly identical cycles (Figure 8.c; van der Laan et al., 2005). Again, following the splice revisions and new orbital tuning, the agreement between these two records is radically improved (Figure 8.d). The misalignment in age between TG12/14 (~5.5-5.6 Ma) at Site 982 highlighted by van der Laan et al. (2005) (Figure 8.c) has been resolved when using the new benthic stratigraphy (Figure 8.d). Furthermore, by the addition of an extra cycle through the revision of the splice at Site 982, the agreement between AEB and Site 982 is improved between TG34 and C3An. $\delta^{18}\text{O}$ 14/16 (\*\*14/16 in Figure 8.c and d). Older than stage C3An. $\delta^{18}\text{O}$ 16, between 6.5 and 6.3 Ma, correlation between Site 982 and AEB was difficult based on the original stratigraphies, with the trends diverging and poor agreement between individual excursions (Figure 8.c; van der Laan et al., 2005). With the identification of the large new double excursion in benthic  $\delta^{18}\text{O}$  at Site 982 between ~6.3-6.4 Ma (Figure 7.b), the benthic  $\delta^{18}\text{O}$  records from AEB and Site 982 now show remarkable agreement in this interval (Figure 8.d). This is further indication that this event marks a major global event, preceding the coolest temperatures as identified by Herbert et al. (2016).

The new stratigraphy does not resolve all misalignments between Site 982 and AEB. Between TG12/14 and TG20/22, van der Laan et al. (2005) identified an additional cycle at Site 982 that was not visible in AEB (Figure 8.c). In the new stratigraphy, the agreement between Site 982 and AEB is still not perfect, with Site 982 displaying 1-2 cycles more than AEB (Figure 8.d). Low sedimentation rates at AEB in this interval (van der Laan et al., 2005), as well as lower sampling resolution, could indicate cycles may be missing at this location. Splice uncertainty at Site 982 is unlikely to be the cause of this discrepancy, as the XRF core scanning splice verifications show that the splice is robust in this interval. Also the interval where Site 982 shows additional cycles compared to AEB occurs within a single core. Although sedimentary disturbances cannot be excluded and are difficult to identify in low-contrast deep-sea pelagic sediments with high carbonate content, the stable isotope and XRF core scanning datasets support that the sedimentary succession at Site 982 in this interval is undisturbed.

Our study has resolved many of the issues surrounding the stratigraphy and astrochronology at Site 982. New cycles were identified, which correlate well with isotope records from the Mediterranean and equatorial Atlantic. Past attempts have been made to extend the Marine Isotope Stage (MIS) identification scheme first developed by Shackleton et al. (1995) into the late Miocene (van der Laan et al., 2005; Drury et al., 2016). The identification of the new cycles at Site 982 highlights the need for a redefinition of the current MIS scheme for this interval. Considering the number of high-resolution, robust benthic foraminiferal stratigraphies that now exist for the latest Miocene (Vidal et al., 2002; Bickert et al., 2004; Westerhold et al., 2005; Drury et al., 2016; Drury et al., 2017), a redefinition of late Miocene MIS should soon be attempted, following the global approach applied for the Pliocene by Lisiecki and Raymo (2005).

## 6 Conclusions

Here, we present a new high-resolution benthic stable isotope stratigraphy and astrochronology for ODP Site 982. Splice revisions using XRF core scanning data resulted in ~11 m of gaps in the original Site 982 isotope stratigraphy, with some gaps/overlaps as large as ~2-3 meters, equivalent to ~40-50 kyr on the original age model. Our complete stratigraphy reveals previously unseen benthic  $\delta^{18}\text{O}$  excursions, particularly in the late Miocene section. The benthic  $\delta^{18}\text{O}$  record displays distinct, asymmetric cycles between 7.7 and 6.65 Ma, supporting evidence from the Pacific that high-latitude climate forcing is strong during this interval. Additionally, the intensification of the 41-kyr beat in both the benthic Site 982  $\delta^{18}\text{O}$  and  $\delta^{13}\text{C}$  records confirm that a strengthening of the cryosphere-carbon cycle coupling occurred ~6.4 Ma.

Around 6.4-6.3 Ma, the splice revisions also reveal a significant ~0.7‰ double excursion in the Site 982  $\delta^{18}\text{O}$  stratigraphy covering two obliquity cycles. This excursion marks the onset of the 6.4-5.4 Ma interval characterised by average higher  $\delta^{18}\text{O}$  and greater short-term variability dominated by obliquity and minor precessional influence. This long-term  $\delta^{18}\text{O}$  maximum and associated high short-term variability strongly coincides with the maximum of late Miocene cooling associated with declining  $\text{CO}_2$  (Herbert et al., 2016). In particular, the two largest benthic  $\delta^{18}\text{O}$  excursions ~6.4-6.3 Ma and TG20/22 coincide with the coolest alkenone-derived SST estimates from Site 982. This suggests that the late Miocene global cooling coincided with deep-sea cooling and dynamic ice sheet expansion. At 6.4 Ma, the intensification of the 41-kyr beat, the onset of high benthic  $\delta^{18}\text{O}$  variability and greatest alkenone SST cooling at Site 982, strongly supports that the hypothesised decline in atmospheric  $\text{CO}_2$  concentrations and late Miocene cooling led to deep-sea cooling, dynamic ice sheet expansion and a stronger coupling between the cryosphere and the carbon cycle.

The revised splice and astrochronology resolve key stratigraphic issues that have hampered correlation between Site 982 and other locations. Comparisons of the revised Site 982  $\delta^{18}\text{O}$  stratigraphy to benthic  $\delta^{18}\text{O}$  stratigraphies from ODP Site 926 and Ain el Beida show that prior inconsistencies in short-term excursions are now resolved. Individual excursions show remarkable agreement between the north and equatorial Atlantic Ocean, as well as the north Atlantic and the Mediterranean basin, thereby strongly supporting the revised astrochronology. The identification of new cycles at Site 982 also highlights the need for a redefinition and extension of the current late Miocene MIS scheme. Finally, our new deep-sea stratigraphy will enable Site 982 to continue as a key North Atlantic sequence for high-resolution study of the palaeoceanography of the late Miocene to early Pliocene.

## Data Availability and Code

All data, including a Site 982 CODD experiment and all composite core images, are available on the open access PANGAEA database at <https://doi.org/10.1594/PANGAEA.884300>. The supplementary data tables are also available from

the supplementary information at *Climate of the Past*. CODD functions for IGOR Pro™ used in this paper (Wilkins et al., 2017) are available for download from <https://www.codd-home.net>.

### Author Contributions

5 The project was designed by AJD, TW and DH. AJD, TW and UR contributed to the XRF dataset, AJD and TW generated the stable isotope record and AJD cut the core images from the core box photos. All authors contributed to data collection, quality control and analysis. All authors were involved in scientific discussions. AJD and TW wrote the manuscript with additional contributions from all authors.

### Acknowledgements

10 This research used data acquired at the XRF Core Scanner Lab at the MARUM – Center for Marine Environmental Sciences, University of Bremen, Germany. We thank Vera Lukies (MARUM) for assistance with XRF core scanning, Henning Kuhnert and his team (MARUM) for stable isotope analyses, Alex Wülbers and Walter Hale (IODP Bremen Core Repository) for core handling, and Barbara Donner (MARUM) for providing foraminiferal expertise. This research used samples and data provided by the Ocean Drilling Program (ODP), sponsored by the US National Science Foundation (NSF) and participating countries. The Deutsche Forschungsgemeinschaft (DFG) provided financial support for this research (We5479/1). All datasets are available from the supplementary information and from PANGAEA (<https://doi.org/10.1594/PANGAEA.884300>). A complete CODD experiment of Site 982 and the composite core photos are additionally available at PANGAEA.

### References

- 20 Andersson, C., and Jansen, E., 2003, A Miocene (8–12 Ma) intermediate water benthic stable isotope record from the northeastern Atlantic, ODP Site 982: *Paleoceanography*, v. 18, no. 1, doi: 10.1029/2001PA000657.
- Bickert, T., Haug, G.H., and Tiedemann, R., 2004, Late Neogene benthic stable isotope record of Ocean Drilling Program Site 999: Implications for Caribbean paleoceanography, organic carbon burial, and the Messinian Salinity Crisis: *Paleoceanography*, v. 19, no. 1, doi: 10.1029/2002PA000799.
- 25 Bolton, C.T., Lawrence, K.T., Gibbs, S.J., Wilson, P.A., and Herbert, T.D., 2011, Biotic and geochemical evidence for a global latitudinal shift in ocean biogeochemistry and export productivity during the late Pliocene: *Earth and Planetary Science Letters*, v. 308, no. 1–2, p. 200–210, doi: 10.1016/j.epsl.2011.05.046.
- Drury, A.J., John, C.M., and Shevenell, A.E., 2016, Evaluating climatic response to external radiative forcing during the late

- Miocene to early Pliocene: New perspectives from eastern equatorial Pacific (IODP U1338) and North Atlantic (ODP 982) locations: *Paleoceanography*, v. 31, no. 1, p. 167–184, doi: 10.1002/2015PA002881.
- Drury, A.J., Westerhold, T., Frederichs, T., Tian, J., Wilkens, R., Channell, J.E.T., Evans, H., John, C.M., Lyle, M., and Röhl, U., 2017, Late Miocene climate and time scale reconciliation: Accurate orbital calibration from a deep-sea perspective: *Earth and Planetary Science Letters*, v. 475, no. C, p. 254–266, doi: 10.1016/j.epsl.2017.07.038.
- Grinsted, A., Moore, J.C., and Jevrejeva, S., 2004, Application of the cross wavelet transform and wavelet coherence to geophysical time series: *Nonlinear Processes in Geophysics*, v. 11, no. 5–6, p. 561–566.
- Haq, B., Worsley, T., and Burckle, L., 1980, Late Miocene marine carbon-isotopic shift and synchronicity of some phytoplanktonic biostratigraphic events: *Geology*, v. 8, p. 427–431.
- Herbert, T.D., Lawrence, K.T., Tzanova, A., Peterson, L.C., Caballero-Gill, R., and Kelly, C.S., 2016, Late Miocene global cooling and the rise of modern ecosystems: *Nature Geosci*, v. advance on, no. September 2016, doi: 10.1038/NGEO2813.
- Hilgen, F.J., Lourens, L.J., Van Dam, J.A., Beu, A.G., Boyes, A.F., Cooper, R.A., Krijgsman, W., Ogg, J.G., Piller, W.E., and Wilson, D.S., 2012, The Neogene Period: Felix M. Gradstein, James G. Ogg, Mark Schmitz and Gabi Ogg.
- Hodell, D.A., Benson, R.H., Kent, D. V, Boersma, A., and Bied, K.R.E., 1994, Magnetostratigraphic, biostratigraphic, and stable-isotope stratigraphy of an upper Miocene drill core from the Sale-Briqueterie (northwestern Morocco) - a high-resolution chronology for the Messinian stage: *Paleoceanography*, v. 9, no. 6, p. 835–855, doi: 10.1029/94pa01838.
- Hodell, D.A., Curtis, J.H., Sierro, F.J., and Raymo, M.E., 2001, Correlation of late Miocene to early Pliocene sequences between the Mediterranean and North Atlantic: *Paleoceanography*, v. 16, no. 2, p. 164–178, doi: 10.1029/1999pa000487.
- Hodell, D.A., and Venz-Curtis, K.A., 2006, Late Neogene history of deepwater ventilation in the Southern Ocean: *Geochemistry Geophysics Geosystems*, v. 7, no. 9, p. (Q09001), doi: 10.1029/2005GC001211.
- Holbourn, A., Kuhnt, W., Schulz, M., Flores, J.A., and Andersen, N., 2007, Orbitally-paced climate evolution during the middle Miocene “Monterey” carbon-isotope excursion: *Earth and Planetary Science Letters*, v. 261, no. 3–4, p. 534–550, doi: 10.1016/j.epsl.2007.07.026.
- Keigwin, L.D., 1979, Late Cenozoic stable isotope stratigraphy and paleoceanography of DSDP sites from the east equatorial and central North Pacific Ocean: *Earth and Planetary Science Letters*, v. 45, no. 2, p. 361–382, doi: 10.1215/03616878-2682650.
- Khélifi, N., Sarnthein, M., Frank, M., Andersen, N., and Garbe-Schönberg, D., 2014, Late Pliocene variations of the Mediterranean outflow: *Marine Geology*, v. 357, p. 182–194, doi: 10.1016/j.margeo.2014.07.006.
- Khelifi, N., Sarnthein, M., and Naafs, B.D.A., 2012, Technical note: Late Pliocene age control and composite depths at ODP Site 982, revisited: *Climate of the Past*, v. 8, no. 1, p. 79–87, doi: 10.5194/cp-8-79-2012.
- Kontakiotis, G., Karakitsios, V., Mortyn, P.G., Antonarakou, A., Drinia, H., Anastasakis, G., Agiadi, K., Kafousia, N., and De Rafelis, M., 2016, New insights into the early Pliocene hydrographic dynamics and their relationship to the climatic

- evolution of the Mediterranean Sea: *Palaeogeography, Palaeoclimatology, Palaeoecology*, v. 459, p. 348–364, doi: 10.1016/j.palaeo.2016.07.025.
- van der Laan, E., Gaboardi, S., Hilgen, F.J., and Lourens, L.J., 2005, Regional climate and glacial control on high-resolution oxygen isotope records from Ain el Beida (latest Miocene, northwest Morocco): A cyclostratigraphic analysis in the depth and time domain: *Paleoceanography*, v. 20, no. 1, p. PA1001, doi: 10.1029/2003PA000995.
- van der Laan, E., Hilgen, F.J., Lourens, L.J., de Kaenel, E., Gaboardi, S., and Iaccarino, S., 2012, Astronomical forcing of Northwest African climate and glacial history during the late Messinian (6.5–5.5Ma): *Palaeogeography, Palaeoclimatology, Palaeoecology*, v. 313–314, no. 2012, p. 107–126, doi: 10.1016/j.palaeo.2011.10.013.
- Laskar, J., Joutel, F., and Boudin, F., 1993, Orbital, precessional, and insolation quantities for the Earth from -20 to +10 Myr: *Astronomy & Astrophysics*, v. 270, no. 1–2, p. 522–533.
- Laskar, J., Robutel, P., Joutel, F., Gastineau, M., Correia, a. C.M., and Levrard, B., 2004, A long-term numerical solution for the insolation quantities of the Earth: *Astronomy and Astrophysics*, v. 428, no. 1, p. 261–285, doi: 10.1051/0004-6361:20041335.
- Lawrence, K.T., Bailey, I., and Raymo, M.E., 2013, Re-evaluation of the age model for North Atlantic Ocean Site 982 - Arguments for a return to the original chronology: *Climate of the Past*, v. 9, no. 5, p. 2391–2397, doi: 10.5194/cp-9-2391-2013.
- Lawrence, K.T., Herbert, T.D., Brown, C.M., Raymo, M.E., and Haywood, A.M., 2009, High-amplitude variations in north atlantic sea surface temperature during the early pliocene warm period: *Paleoceanography*, v. 24, no. 2, p. 1–15, doi: 10.1029/2008PA001669.
- Lisiecki, L.E., and Raymo, M.E., 2005, A Pliocene-Pleistocene stack of 57 globally distributed benthic  $\delta^{18}\text{O}$  records: *Paleoceanography*, v. 20, no. 1, p. PA1003, doi: 10.1029/2004PA001071.
- Meyers, S.R., 2014, *Astrochron: An R Package for Astrochronology*:
- Shackleton, N.J., and Hall, M.A., 1997, The Late Miocene Stable Isotope Record, Site 926, *in* Shackleton, N.J., Curry, W.B., Richter, C., and Bralower, T.J. eds., *Proceedings of the Ocean Drilling Program, Scientific Results, College Station, TX (Ocean Drilling Program)*, p. 367–373.
- Shackleton, N.J., Hall, M.A., and Boersma, A., 1984, Oxygen and carbon isotope data from Leg 74 foraminifers: Initial Reports of the Deep Sea Drilling Project, v. 74, p. 599–612, doi: 10.2973/dsdp.proc.74.115.1984.
- Shackleton, N.J., Hall, M.A., and Pate, D., 1995, Pliocene Stable Isotope Stratigraphy of Site 846 (N. G. Pisias, L. A. Mayer, T. R. Janecek, A. Palmer-Julson, & T. H. van Andel, Eds.): *Proceedings of the Ocean Drilling Program, Scientific Results*, v. 138, p. 337–355.
- Shipboard Scientific Party Leg 162, 1996, Site 982, *in* Jansen, E., Raymo, M.E., Blum, P., and 162', 'Shipboard Scientific Party Exp. eds., *Proceedings of the Ocean Drilling Program, Initial Reports*,.
- Venz, K.A., and Hodell, D.A., 2002, New evidence for changes in Plio-Pleistocene deep water circulation from Southern Ocean ODP Leg 177 Site 1090: *Palaeogeography Palaeoclimatology Palaeoecology*, v. 182, no. 3–4, p. 197–220, doi:

10.1016/s0031-0182(01)00496-5.

- Venz, K.A., Hodell, D.A., Stanton, C., and Warnke, D.A., 1999, A 1.0 Myr record of Glacial North Atlantic Intermediate Water variability from ODP site 982 in the northeast Atlantic: *Paleoceanography*, v. 14, no. 1, p. 42–52, doi: 10.1029/1998PA900013.
- 5 Vidal, L., Bickert, T., Wefer, G., and Röhl, U., 2002, Late Miocene stable isotope stratigraphy of SE Atlantic ODP Site 1085: Relation to Messinian events: *Marine Geology*, v. 180, no. 1–4, p. 71–85, doi: 10.1016/s0025-3227(01)00206-7.
- De Vleeschouwer, D., Vahlenkamp, M., Crucifix, M., and P?like, H., 2017, Alternating Southern and Northern Hemisphere climate response to astronomical forcing during the past 35 m.y: *Geology*, v. 45, no. 4, p. 375–378, doi: 10.1130/G38663.1.
- 10 Wallrabe-Adams, H.-J., and Werner, R., 1999, Data Report : Chemical Composition of Middle Miocene – Lower Pliocene Ash From Sites 982 and 985: *Proceedings Ocean Drilling Program, Scientific Results*, v. 162, p. 217–230.
- Westerhold, T., Bickert, T., and Röhl, U., 2005, Middle to late Miocene oxygen isotope stratigraphy of ODP site 1085 (SE Atlantic): New constrains on Miocene climate variability and sea-level fluctuations: *Palaeogeography, Palaeoclimatology, Palaeoecology*, v. 217, no. 3–4, p. 205–222, doi: 10.1016/j.palaeo.2004.12.001.
- 15 Wilkens, R.H., Westerhold, T., Drury, A.J., Lyle, M., Gorgas, T., and Tian, J., 2017, Revisiting the Ceara Rise, equatorial Atlantic Ocean: isotope stratigraphy of ODP Leg 154 from 0 to 5 Ma: *Climate of the Past*, v. 13, p. 779–793, doi: <https://doi.org/10.5194/cp-13-779-2017>.
- Woodruff, F., and Savin, S.M., 1989, Miocene Deepwater Oceanography: *Paleoceanography*, v. 4, no. 1, p. 87–140, doi: 10.1029/PA004i001p00087.
- 20 Zeeden, C., Hilgen, F., Westerhold, T., Lourens, L., Röhl, U., and Bickert, T., 2013, Revised Miocene splice, astronomical tuning and calcareous plankton biochronology of ODP Site 926 between 5 and 14.4 Ma: *Palaeogeography, Palaeoclimatology, Palaeoecology*, v. 369, p. 430–451, doi: 10.1016/j.palaeo.2012.11.009.
- Zeeden, C., Meyers, S.R., Lourens, L.J., and Hilgen, F.J., 2015, Testing astronomically tuned age models: *Paleoceanography*, v. 30, no. 4, p. 369–383, doi: 10.1002/2014PA002762.

25

**Table 1: Revised and Shipboard offsets for ODP Site 982 (Holes A-D)**

**Key**    **BOLD = changes compared to shipboard**    *Italics = shipboard splice, but shifted to accommodate new offsets higher in the section.*

Core	Depth (mbsf [m CSF-])	Shipboard (m)	Revised (m)	Change in (m)	shipboard composite depth (mcd [m CCSF-A])	Revised composite depth (rmcd [m rCCSF-A])
<b>162-982A-</b>						
1H	0.00	0.00	0.00	0.00	0.00	0.00
2H	8.20	1.30	1.30	0.00	9.50	9.50
3H	17.70	2.08	2.08	0.00	19.78	19.78
4H	27.20	2.50	2.50	0.00	29.70	29.70
5H	36.70	3.93	3.93	0.00	40.63	40.63
6H	46.20	6.53	6.53	0.00	52.73	52.73
7H	55.70	7.97	7.97	0.00	63.67	63.67
8H	65.20	8.78	8.78	0.00	73.98	73.98
9H	74.70	9.83	9.83	0.00	84.53	84.53
10H	84.20	11.43	11.43	0.00	95.63	95.63
11H	93.70	12.35	12.35	0.00	106.05	106.05
12H	103.20	13.49	13.49	0.00	116.69	116.69
13H	<b>112.70</b>	<b>14.92</b>	<b>14.82</b>	<b>-0.10</b>	<b>127.62</b>	<b>127.52</b>
14H	122.20	15.82	15.72	-0.10	138.02	137.92
15H	<b>131.70</b>	<b>17.28</b>	<b>16.99</b>	<b>-0.29</b>	<b>148.98</b>	<b>148.69</b>
16H	<b>141.20</b>	<b>18.12</b>	<b>17.97</b>	<b>-0.15</b>	<b>159.32</b>	<b>159.17</b>
17H	150.70	19.00	18.85	-0.15	169.70	169.55
18H	160.20	19.50	19.35	-0.15	179.70	179.55
19H	<b>169.70</b>	<b>20.78</b>	<b>20.70</b>	<b>-0.08</b>	<b>190.48</b>	<b>190.40</b>
20H	<b>179.20</b>	<b>20.34</b>	<b>21.70</b>	<b>1.36</b>	<b>199.54</b>	<b>200.90</b>
21H	<b>188.70</b>	<b>21.05</b>	<b>22.96</b>	<b>1.91</b>	<b>209.75</b>	<b>211.66</b>
22H	<b>198.20</b>	<b>21.93</b>	<b>23.51</b>	<b>1.58</b>	<b>220.13</b>	<b>221.71</b>
23H	<b>207.70</b>	<b>23.20</b>	<b>24.84</b>	<b>1.64</b>	<b>230.90</b>	<b>232.54</b>
24H	<b>217.20</b>	<b>24.19</b>	<b>25.24</b>	<b>1.05</b>	<b>241.39</b>	<b>242.44</b>
25H	<b>226.70</b>	<b>25.38</b>	<b>27.93</b>	<b>2.55</b>	<b>252.08</b>	<b>254.63</b>
26H	<b>236.20</b>	<b>25.38</b>	<b>29.66</b>	<b>4.28</b>	<b>261.58</b>	<b>265.86</b>
27H	245.70	25.38	34.46	9.08	271.08	280.16
<b>162-982B-</b>						
1H	0.00	0.00	0.00	0.00	0.00	0.00
2H	5.50	1.32	1.32	0.00	6.82	6.82
3H	15.00	2.16	2.16	0.00	17.16	17.16
4H	24.50	3.08	3.08	0.00	27.58	27.58
5H	34.00	4.08	4.08	0.00	38.08	38.08
6H	43.50	5.51	5.51	0.00	49.01	49.01
7H	53.00	5.77	5.77	0.00	58.77	58.77
8H	62.50	6.83	6.83	0.00	69.33	69.33
9H	72.00	7.94	7.94	0.00	79.94	79.94
10H	81.50	9.21	9.21	0.00	90.71	90.71
11H	91.00	10.07	10.07	0.00	101.07	101.07
12H	100.50	10.49	10.49	0.00	110.99	110.99
13H	110.00	11.54	11.54	0.00	121.54	121.54
14H	119.50	12.60	12.50	-0.10	132.10	132.00
15H	<b>129.00</b>	<b>14.06</b>	<b>13.70</b>	<b>-0.36</b>	<b>143.06</b>	<b>142.70</b>
16H	138.50	14.74	14.45	-0.29	153.24	152.95
17H	148.00	15.59	15.44	-0.15	163.59	163.44
18H	157.50	16.58	16.43	-0.15	174.08	173.93
19H	<b>167.00</b>	<b>17.79</b>	<b>17.52</b>	<b>-0.27</b>	<b>184.79</b>	<b>184.52</b>
20H	<b>176.50</b>	<b>18.66</b>	<b>18.37</b>	<b>-0.29</b>	<b>195.16</b>	<b>194.87</b>
21H	<b>186.00</b>	<b>19.60</b>	<b>19.46</b>	<b>-0.14</b>	<b>205.60</b>	<b>205.46</b>
22H	<b>195.50</b>	<b>19.01</b>	<b>20.62</b>	<b>1.61</b>	<b>214.51</b>	<b>216.12</b>
23H	<b>205.00</b>	<b>20.42</b>	<b>21.96</b>	<b>1.54</b>	<b>225.42</b>	<b>226.96</b>
24H	<b>214.50</b>	<b>19.45</b>	<b>23.39</b>	<b>3.94</b>	<b>233.95</b>	<b>237.89</b>
25H	<b>224.00</b>	<b>20.59</b>	<b>25.09</b>	<b>4.50</b>	<b>244.59</b>	<b>249.09</b>
26H	<b>233.50</b>	<b>20.59</b>	<b>26.89</b>	<b>6.30</b>	<b>254.09</b>	<b>260.39</b>
27X	<b>243.00</b>	<b>20.59</b>	<b>28.42</b>	<b>7.83</b>	<b>263.59</b>	<b>271.42</b>
28X	<b>249.30</b>	<b>20.59</b>	<b>29.60</b>	<b>9.01</b>	<b>269.89</b>	<b>278.90</b>
29X	258.90	20.59	29.67	9.08	279.49	288.57
30X		20.59	29.67	9.08		
31X	278.20	20.59	29.67	9.08	298.79	307.87

32X	287.80	20.59	29.67	9.08	308.39	317.47
33X	297.40	20.59	29.67	9.08	317.99	327.07
34X	307.10	20.59	29.67	9.08	327.69	336.77
35X	316.70	20.59	29.67	9.08	337.29	346.37
36X	326.30	20.59	29.67	9.08	346.89	355.97
37X	336.00	20.59	29.67	9.08	356.59	365.67
38X	345.60	20.59	29.67	9.08	366.19	375.27
39X	355.20	20.59	29.67	9.08	375.79	384.87
40X	364.90	20.59	29.67	9.08	385.49	394.57
41X	374.50	20.59	29.67	9.08	395.09	404.17
42X	384.10	20.59	29.67	9.08	404.69	413.77
43X	393.80	20.59	29.67	9.08	414.39	423.47
44X	403.40	20.59	29.67	9.08	423.99	433.07
45X	413.00	20.59	29.67	9.08	433.59	442.67
46X	422.60	20.59	29.67	9.08	443.19	452.27
47X	432.20	20.59	29.67	9.08	452.79	461.87
48X	441.80	20.59	29.67	9.08	462.39	471.47
49X	451.40	20.59	29.67	9.08	471.99	481.07
50X	461.00	20.59	29.67	9.08	481.59	490.67
51X	470.60	20.59	29.67	9.08	491.19	500.27
52X	480.20	20.59	29.67	9.08	500.79	509.87
53X	489.70	20.59	29.67	9.08	510.29	519.37
54X	499.30	20.59	29.67	9.08	519.89	528.97
55X	508.90	20.59	29.67	9.08	529.49	538.57
56X	518.50	20.59	29.67	9.08	539.09	548.17
57X	528.10	20.59	29.67	9.08	548.69	557.77
58X	537.70	20.59	29.67	9.08	558.29	567.37
59X		20.59	29.67	9.08		
60X	557.00	20.59	29.67	9.08	577.59	586.67
61X	566.70	20.59	29.67	9.08	587.29	596.37
62X	576.40	20.59	29.67	9.08	596.99	606.07
63X		20.59	29.67	9.08		
64X		20.59	29.67	9.08		
65X		20.59	29.67	9.08		
<b>162-982C-</b>						
1H	0.00	0.15	0.15	0.00	0.15	0.15
2H	3.80	-0.80	0.80	1.60	3.00	4.60
3H	13.30	-0.02	0.02	0.04	13.28	13.32
4H	22.80	3.52	3.52	0.00	26.32	26.32
5H	32.30	3.26	3.26	0.00	35.56	35.56
6H	41.80	4.58	4.58	0.00	46.38	46.38
7H	51.30	5.65	5.65	0.00	56.95	56.95
8H	60.80	5.79	5.79	0.00	66.59	66.59
9H	70.30	5.82	5.82	0.00	76.12	76.12
10H	79.80	7.19	7.19	0.00	86.99	86.99
11H	89.30	8.17	8.17	0.00	97.47	97.47
12H	98.80	9.05	9.05	0.00	107.85	107.85
13H	108.30	10.45	10.45	0.00	118.75	118.75
14H	117.80	11.13	11.13	0.00	128.93	128.93
<b>15H</b>	<b>127.30</b>	<b>13.08</b>	<b>12.92</b>	<b>-0.16</b>	<b>140.38</b>	<b>140.22</b>
16H	136.80	13.88	13.52	-0.36	150.68	150.32
17H	146.30	14.45	14.30	-0.15	160.75	160.60
18H	155.80	15.89	15.74	-0.15	171.69	171.54
19H	165.30	16.43	16.16	-0.27	181.73	181.46
<b>20H</b>	<b>174.80</b>	<b>18.41</b>	<b>17.97</b>	<b>-0.44</b>	<b>193.21</b>	<b>192.77</b>
<b>21H</b>	<b>184.30</b>	<b>19.90</b>	<b>18.95</b>	<b>-0.95</b>	<b>204.20</b>	<b>203.25</b>
<b>22H</b>	<b>193.80</b>	<b>18.88</b>	<b>20.39</b>	<b>1.51</b>	<b>212.68</b>	<b>214.19</b>
23H	203.30	19.79	21.33	1.54	223.09	224.63
24H	212.80	19.60	23.54	3.94	232.40	236.34
<b>25H</b>	<b>222.30</b>	<b>20.66</b>	<b>25.23</b>	<b>4.57</b>	<b>242.96</b>	<b>247.53</b>
26H	231.80	20.66	26.96	6.30	252.46	258.76
<b>27H</b>	<b>241.30</b>	<b>20.66</b>	<b>29.74</b>	<b>9.08</b>	<b>261.96</b>	<b>271.04</b>
<b>162-982D-</b>						
1H	20	2.18	2.18	0.00	22.18	22.18



**Table 2: Revised Splice for ODP Site 982**

<b>Key</b>		<b>BOLD = new splice tie point</b>		<i>Italics = old splice tie point with revised composite depth</i>		
<b>Upper core tie point</b>				<b>Lower core tie point ID</b>		
<b>ID</b>	<b>Depth</b>			<b>ID</b>	<b>Depth</b>	
<i>Hole, core, section, interval (cm)</i>	<i>(mbsf [m CSF-A])</i>	<i>(rmcd [m revised CCSF-A])</i>		<i>Hole, core, section, interval (cm)</i>	<i>(mbsf [m CSF-A])</i>	<i>(rmcd [m revised CCSF-A])</i>
<b>162-</b>				<b>162-</b>		
U982A-1H-6, 18	7.68	7.68	Tie to	U982B-2H-1, 86	6.36	7.68
U982B-2H-7, 2	14.52	15.84	Tie to	U982C-3H-2, 106	15.86	15.84
U982C-3H-4, 90	18.7	18.68	Tie to	U982B-3H-2, 2	16.52	18.68
U982B-3H-5, 140	22.4	24.56	Tie to	U982D-1H-2, 120	22.63	24.56
U982D-1H-5, 29	26.22	28.15	Tie to	U982B-4H-1, 57	25.07	28.15
U982B-4H-6, 74	32.74	35.82	Tie to	U982C-5H-1, 26	32.56	35.82
U982C-5H-3, 58	35.88	39.14	Tie to	U982B-5H-1, 106	35.06	39.14
U982B-5H-6, 90	42.4	46.48	Tie to	U982C-6H-1, 10	41.9	46.48
U982C-6H-3, 66	45.46	50.04	Tie to	U982B-6H-1, 103	44.53	50.04
U982B-6H-6, 98	51.98	57.49	Tie to	U982A-6H-4, 26	50.96	57.49
U982A-6H-5, 98	53.18	59.71	Tie to	U982B-7H-1, 94	53.94	59.71
U982B-7H-5, 146	60.46	66.23	Tie to	U982A-7H-2, 106	58.26	66.23
U982A-7H-4, 138	61.58	69.55	Tie to	U982B-8H-1, 22	62.72	69.55
U982B-8H-5, 3	68.53	75.36	Tie to	U982A-8H-1, 138	66.58	75.36
U982A-8H-5, 98	72.18	80.96	Tie to	U982B-9H-1, 102	73.02	80.96
U982B-9H-6, 131	80.81	88.75	Tie to	U982C-10H-2, 26	81.56	88.75
U982C-10H-7, 4	88.84	96.03	Tie to	U982B-10H-4, 82	86.82	96.03
U982B-10H-6, 26	89.26	98.47	Tie to	U982A-10H-2, 134	87.04	98.47
U982A-10H-6, 82	92.52	103.95	Tie to	U982B-11H-2, 138	93.88	103.95
U982B-11H-6, 74	99.24	109.31	Tie to	U982A-11H-3, 26	96.96	109.31
U982A-11H-5, 24	99.94	112.29	Tie to	U982B-12H-1, 130	101.8	112.29
U982B-12H-7, 12	109.62	120.11	Tie to	U982A-12H-3, 42	106.62	120.11
U982A-12H-5, 125	110.45	123.94	Tie to	U982B-13H-2, 90	112.4	123.94
U982B-13H-6, 74	118.24	129.78	Tie to	U982A-13H-2, 76	114.96	129.78
U982A-13H-4, 122	118.42	133.24	Tie to	U982B-14H-1, 124	120.74	133.24
U982B-14H-7, 34	128.44	140.94	Tie to	U982C-15H-1, 72	128.02	140.94
U982C-15H-3, 26	130.56	143.48	Tie to	U982B-15H-1, 78	129.78	143.48
U982B-15H-6, 50	137	150.7	Tie to	U982A-15H-2, 51	133.71	150.7
U982A-15H-5, 76	138.44	155.43	Tie to	U982B-16H-2, 98	140.98	155.43
U982B-16H-6, 82	146.82	161.27	Tie to	U982A-16H-2, 60	143.3	161.27
U982A-16H-6, 84	149.54	167.51	Tie to	U982B-17H-3, 107	152.07	167.51
U982B-17H-6, 18	155.68	171.12	Tie to	U982A-17H-2, 7	152.27	171.12
U982A-17H-6, 51	158.71	177.56	Tie to	U982B-18H-3, 63	161.13	177.56
U982B-18H-6, 66	165.66	182.09	Tie to	U982A-18H-2, 104	162.74	182.09
U982A-18H-6, 52	168.22	187.57	Tie to	U982B-19H-3, 5	170.05	187.57
U982B-19H-7, 8	176.08	193.6	Tie to	U982C-20H-1, 83	175.63	193.6
U982C-20H-4, 7	179.37	197.34	Tie to	U982B-20H-2, 97	178.97	197.34
U982B-20H-6, 2	184.02	202.39	Tie to	U982A-20H-1, 149	180.69	202.39
U982A-20H-6, 53	187.23	208.93	Tie to	U982B-21H-3, 47	189.47	208.93
U982B-21H-6, 42	193.9	213.36	Tie to	U982A-21H-2, 20	190.4	213.36
U982A-21H-6, 81	197.01	219.97	Tie to	U982C-22H-4, 128	199.58	219.97
U982C-22H-6, 91	202.21	222.6	Tie to	U982A-22H-1, 89	199.09	222.6
U982A-22H-5, 111	205.31	228.82	Tie to	U982B-23H-2, 36	206.86	228.82
U982B-23H-5, 112	212.12	234.08	Tie to	U982A-23H-2, 4	209.24	234.08
U982A-23H-6, 12	215.32	240.16	Tie to	U982B-24H-2, 77	216.77	240.16
U982B-24H-5, 39	220.89	244.28	Tie to	U982A-24H-2, 34	219.04	244.28
U982A-24H-6, 33	225.03	250.27	Tie to	U982B-25H-1, 118	225.18	250.27
U982B-25H-5, 136	231.36	256.45	Tie to	U982A-25H-2, 32	228.52	256.45
U982A-25H-6, 30	234.5	262.43	Tie to	U982B-26H-2, 54	235.54	262.43
U982B-26H-5, 101	240.51	267.4	Tie to	U982A-26H-2, 4	237.74	267.4
U982A-26H-6, 33	244.03	273.69	Tie to	U982C-27H-2, 115	243.95	273.69
U982C-27H-7, 4	250.34	280.08	Tie to	U982B-28X-1, 118	250.48	280.08
U982B-62X-1, 39	576.79	597.38				

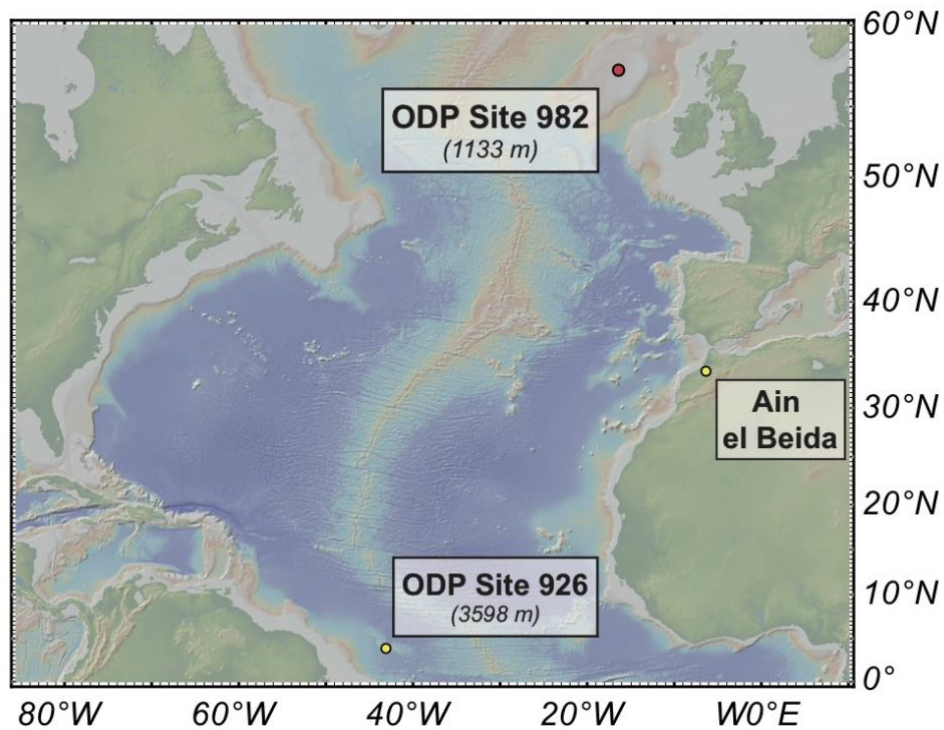


Figure 1: Map showing the location of ODP Sites 982 and 926, as well as the Ain el Beida quarry section. Red site locations indicate new data was produced, yellow site locations indicate the use of published data.

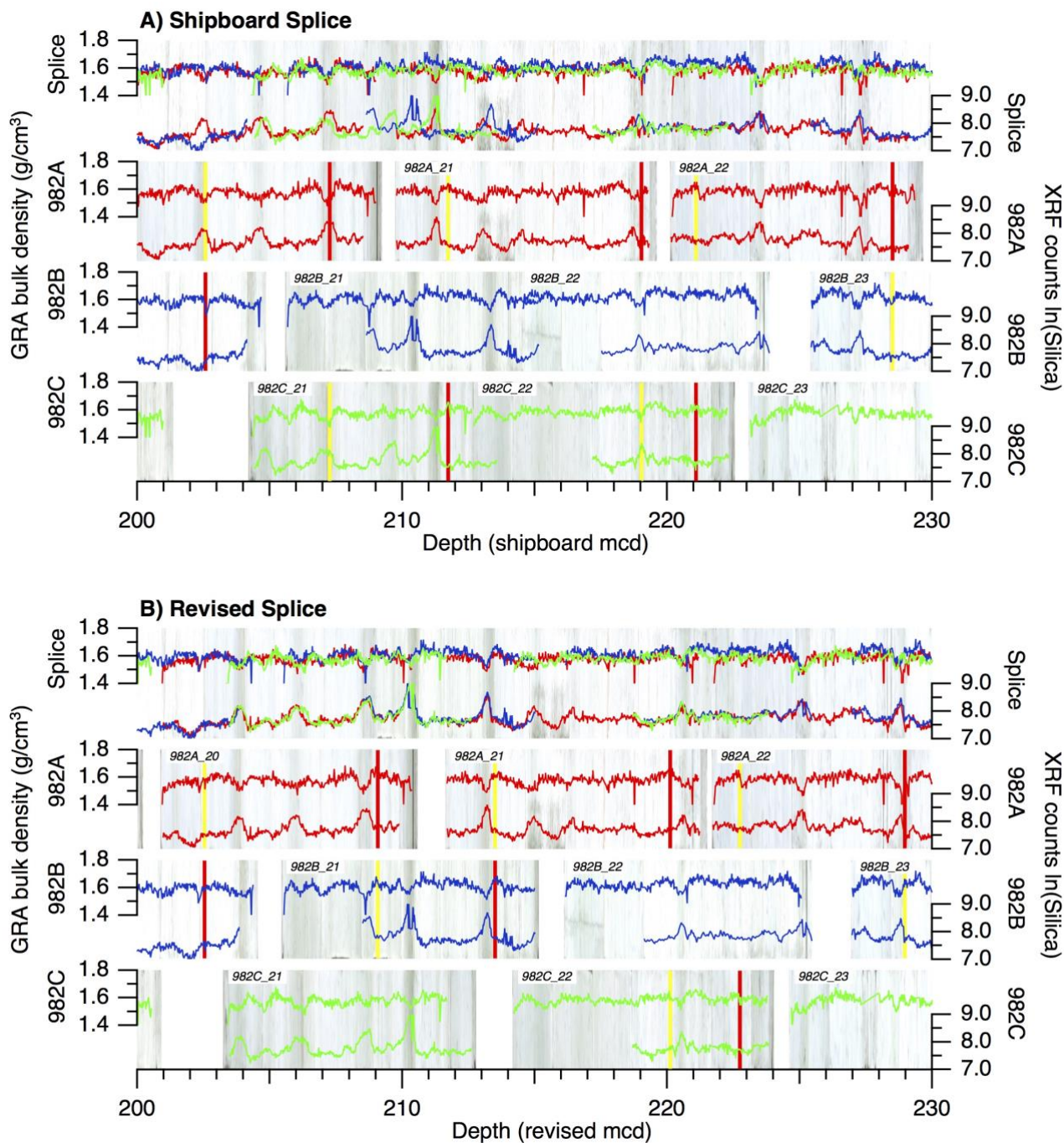
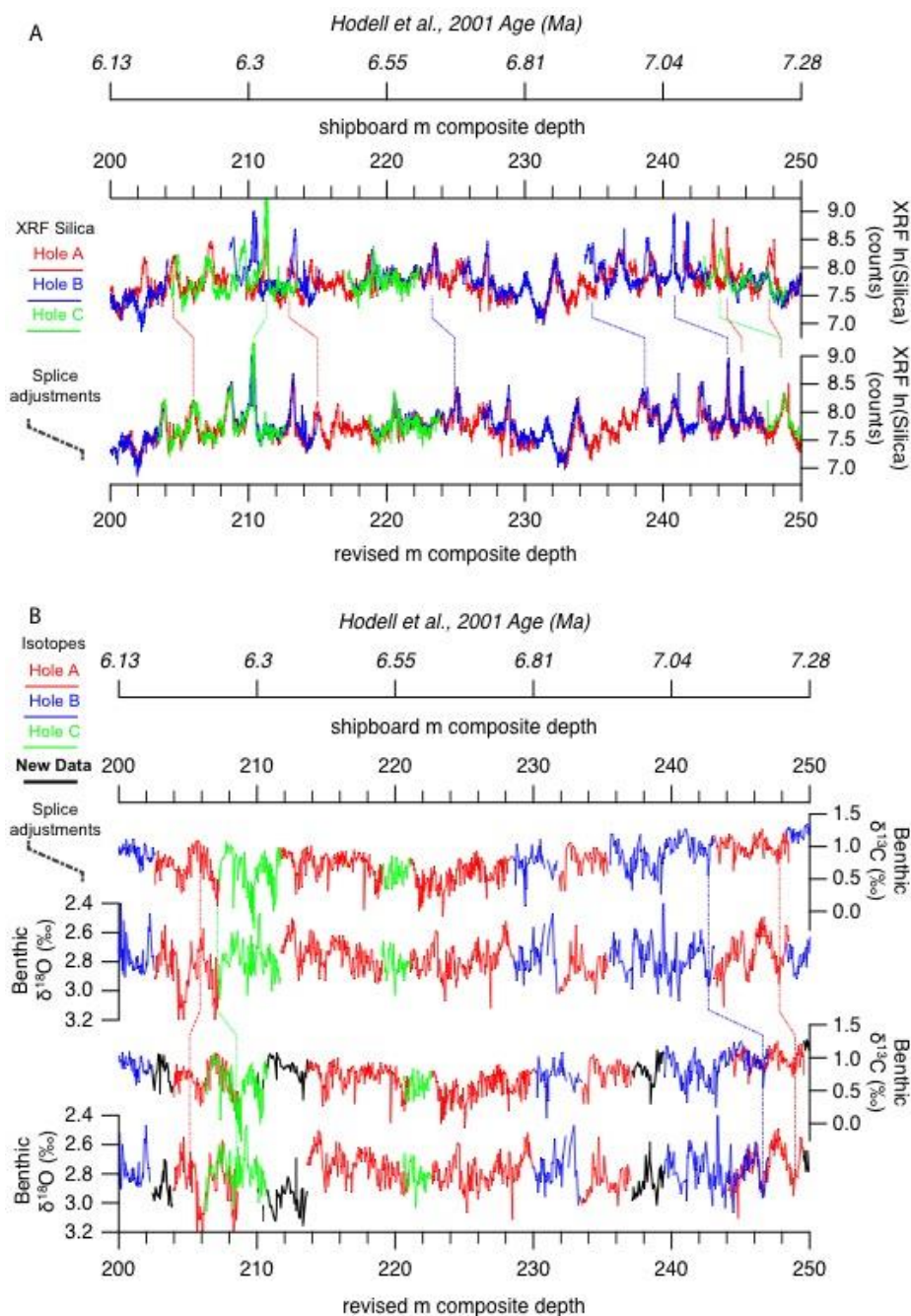
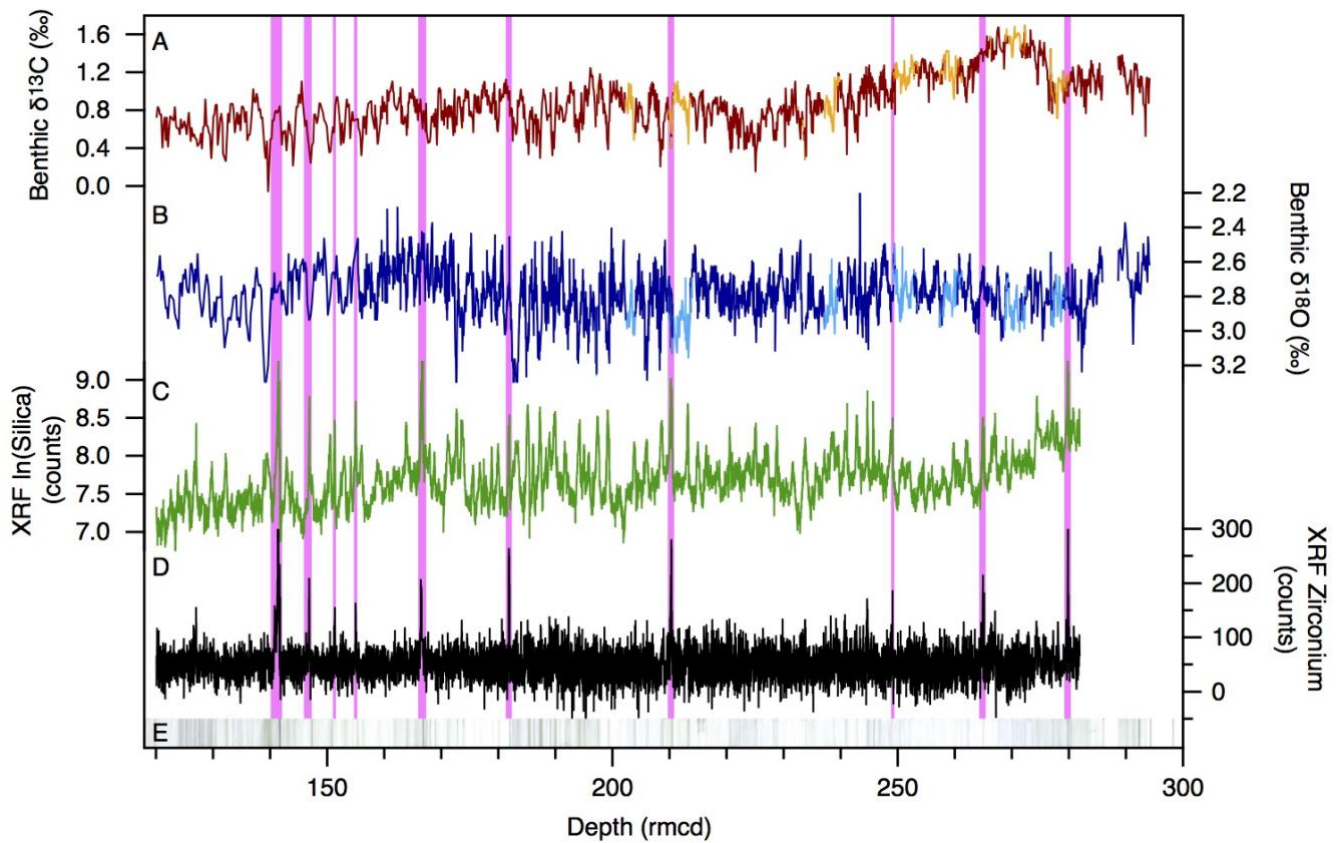


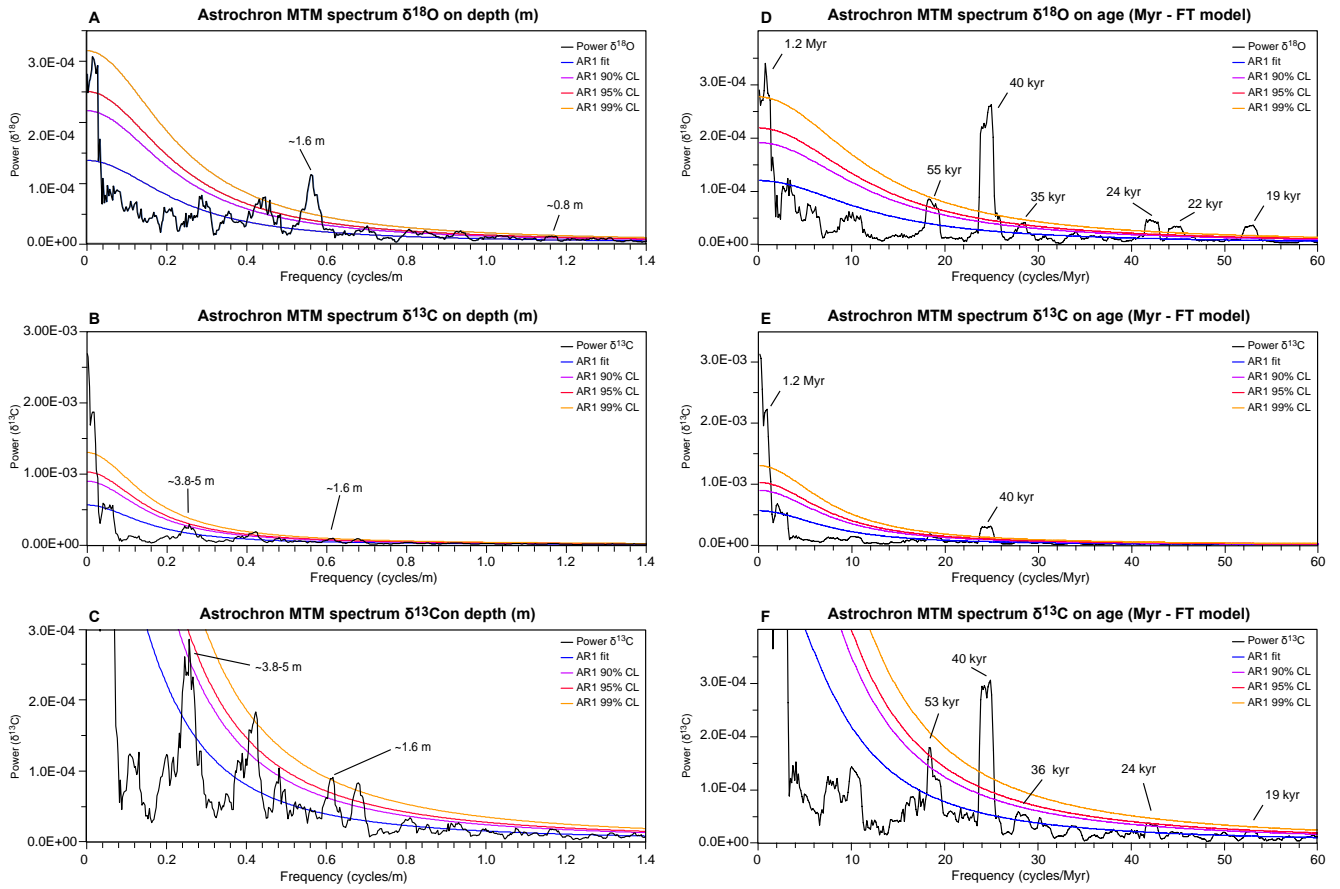
Figure 2: Panels showing A) the shipboard composite splice and B) the revised splice between 200 and 230 m composite depth. Each panel consists of the composite core images of the Site 982 splice and Holes 982A, 982B and 982C, with the shipboard GRA bulk density data and the new XRF ln(Silica) counts) record. Tie point locations are shown by yellow (upper tie point within a core) and red (lower tie point within a core) lines. See Supplementary Figure 2 for images of the entire revised splice interval. We could not include the reflectance data, since it was not present in the ODP database, but instead was archived as damaged data.



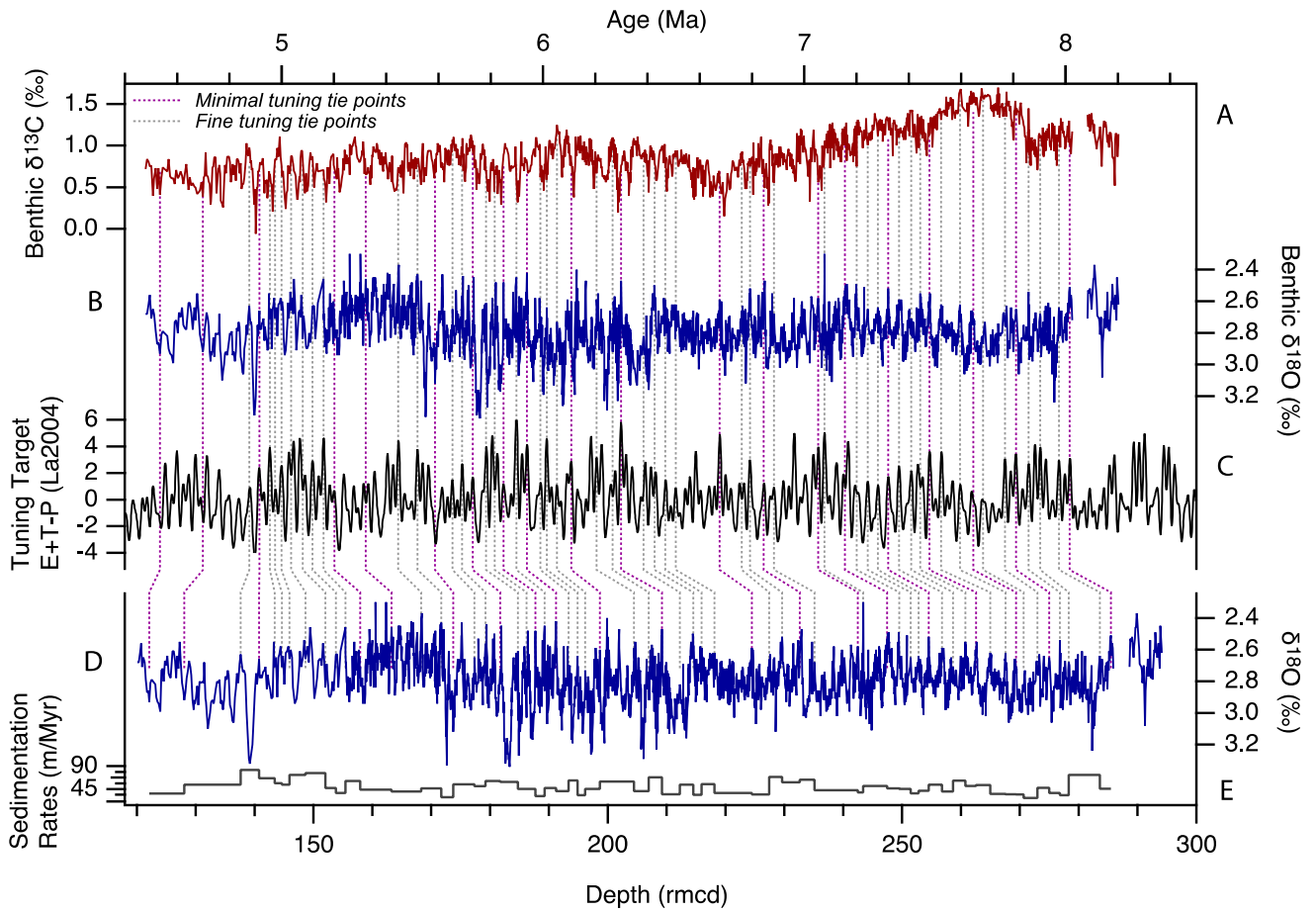
5 **Figure 3:** A) XRF In(Silica counts) for the individual holes at Site 982 on the shipboard composite depth with the corresponding Hodell et al. (2001) age on the top axis, and on the revised composite depth on the bottom axis. B) Stable isotope  $\delta^{13}\text{C}$  and  $\delta^{18}\text{O}$  records for the individual holes at Site 982 published in Hodell et al. (2001) on the shipboard composite depth with the corresponding age on the top axis. On the bottom axis, the published stable isotope data is plotted on the revised composite depth, together with the new stable isotope data (black lines) produced in this study. Vertical lines show how the splice was adjusted and highlight the effect of these adjustments on the agreement between the XRF data from the three holes. See Supplementary Figure 3 for **images** of the entire revised splice interval.



5 **Figure 4: Overview of the new XRF and updated stable isotope datasets on the revised composite depth at Site 982. The complete benthic A)  $\delta^{13}\text{C}$  records from this study (orange) and Hodell et al. (2001) (red) and B)  $\delta^{18}\text{O}$  records from this study (light blue) and Hodell et al. (2001) (dark blue), the XRF counts for C) In(Silica) (green) and D) Zirconium (Zr) (black), and E) the composite splice image for Site 982. Pink intervals highlight the location of ash layers, based on the presence of Zr peaks, which affect the XRF data, but show no influence on the stable isotope records.**

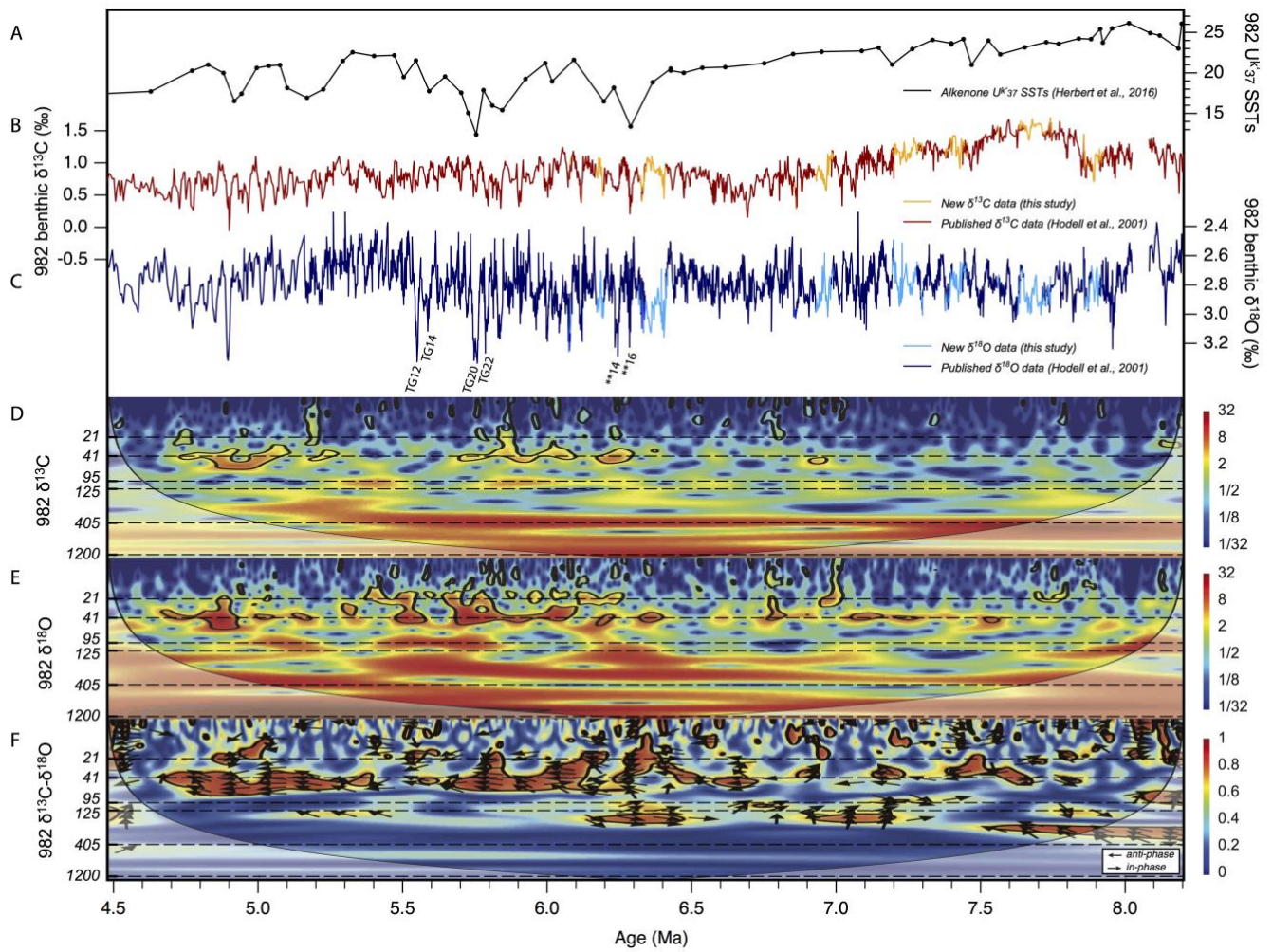


**Figure 5: Multitaper** method (MTM) power spectra generated using Astrochron (Meyers, 2014; for the specific code, please see the Supplementary Information) for  $\delta^{18}\text{O}$  in A)/D) and  $\delta^{13}\text{C}$  with a full vertical axis shown in B)/E) and vertically expanded in C)/F) to show the same vertical axis extent as in A)/D). The red noise fit (AR1) and 90, 95 and 99% confidence limits (CL) relative to red noise are also indicated. The periods of different peaks are annotated. The MTM spectra are shown in the depth domain in A), B) and C) and in the time domain in D) E) and F).



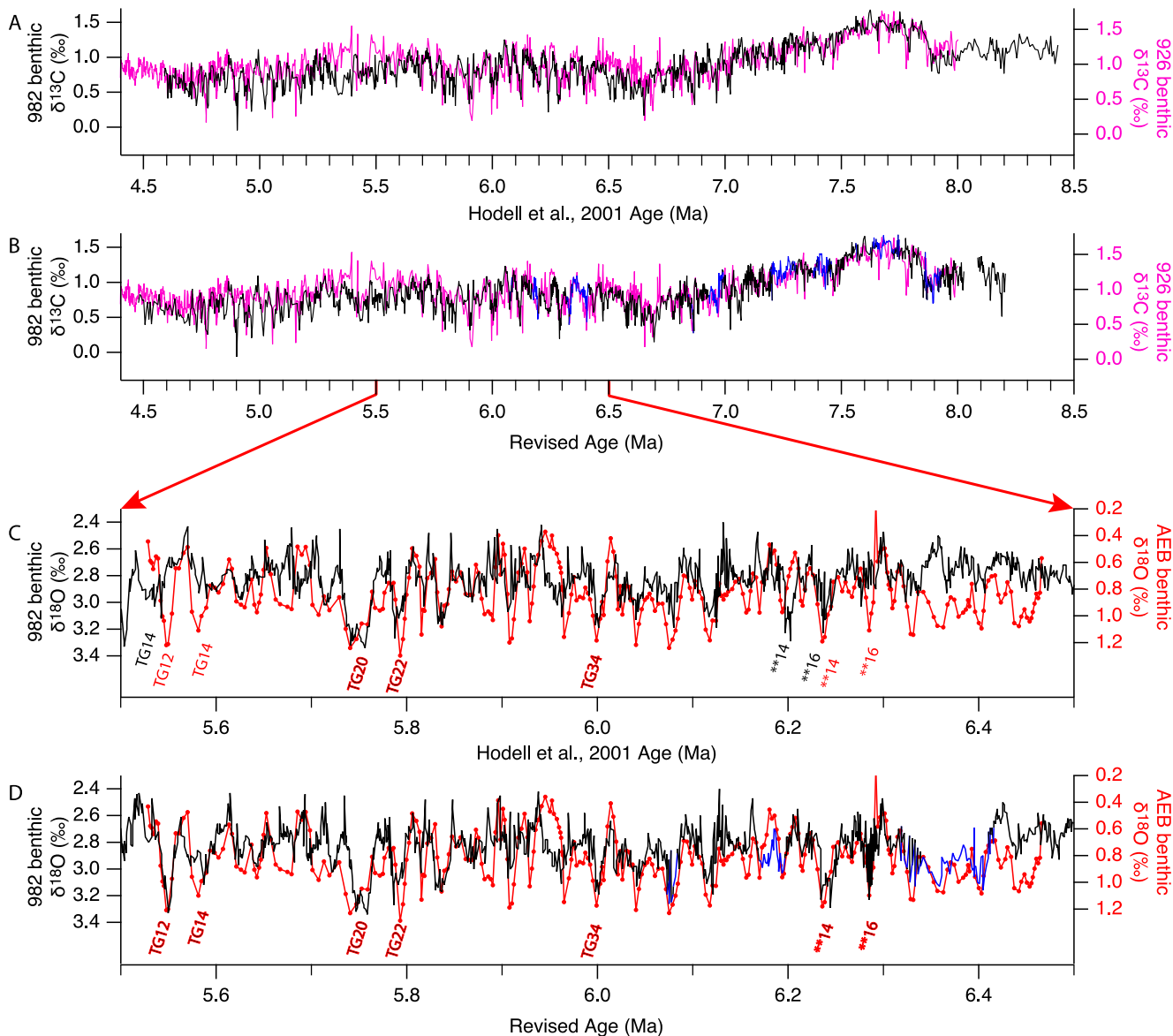
**Figure 6: Fine-tuned astrochronology for Site 982, with minimal tuning tie points indicated in purple and fine-tuning tie points indicated in grey. A) Fine-tuned benthic foraminiferal  $\delta^{13}\text{C}$  (in ‰ versus VPDB). B) Fine-tuned benthic foraminiferal  $\delta^{18}\text{O}$  (in ‰ versus VPDB). C) Eccentricity+Tilt-Precession tuning target (E+T-P) from Laskar et al. (2004) D) Benthic foraminiferal  $\delta^{18}\text{O}$  (in ‰ versus VPDB) on depth rmcd. E) Fine-tuned sedimentation rates (in m/Myr) on depth rmcd.**

5



5 **Figure 7:** A) Alkenone  $U^{k}_{37}$ -derived SSTs from Site 982 (Herbert et al., 2016). B) Fine-tuned Site 982 benthic foraminiferal  $\delta^{13}C$  (in ‰ versus VPDB). C) Fine-tuned Site 982 benthic foraminiferal  $\delta^{18}O$  (in ‰ versus VPDB). D) Wavelet analysis of the Site 982 benthic  $\delta^{13}C$  data (in ‰ versus VPDB) on the fine tuned astrochronology. E) Wavelet analysis of the Site 982 benthic  $\delta^{18}O$  data (in ‰ versus VPDB) on the fine tuned astrochronology. F) Coherence wavelet analysis of the Site 982 benthic  $\delta^{13}C$  and  $\delta^{18}O$ , with the black arrows to the left indicating anti-phase and the black arrows to the right indicating in-phase. Prominent MIS are annotated, with \*\* standing for C3An. $\delta^{18}O$ . All wavelets were generated using (Grinsted et al., 2004).





5  
10  
Figure 8: A) The benthic  $\delta^{13}\text{C}$  record from ODP Site 982 published in Hodell et al. (2001) on its original age model, compared to the benthic  $\delta^{13}\text{C}$  record from ODP Site 926 on its astronomical age model (Zeeden et al., 2013; Drury et al., 2017; Wilkens et al., 2017). B) The revised benthic  $\delta^{13}\text{C}$  record, with new data indicated in blue, on the revised age model, compared to the benthic  $\delta^{13}\text{C}$  record from ODP 926 on its astronomical age model (Zeeden et al., 2013; Drury et al., 2017; Wilkens et al., 2017). C) The benthic  $\delta^{18}\text{O}$  record from ODP Site 982 published in Hodell et al. (2001) on its original age model, compared to the benthic  $\delta^{18}\text{O}$  record from Ain El Beida on its astronomical age model (van der Laan et al., 2005; van der Laan et al., 2012). D) The revised benthic  $\delta^{18}\text{O}$  record, with new data indicated in blue, on the revised age model, compared to the benthic  $\delta^{18}\text{O}$  record from Ain El Beida on its astronomical age model (van der Laan et al., 2005; van der Laan et al., 2012). In panels C) and D), MIS are indicated as they were originally identified in by Hodell et al. (2001) in black and by van der Laan et al. (2005) in red. Where the identification of an MIS agrees, either in the original or revised chronology, the stage is indicated in two-tone red and black. The \*\* is short for C3An. $\delta^{18}\text{O}$  (see van der Laan et al. (2005) for further details).