

Figure S1. Geothermal heat flux data from Davies (2013).

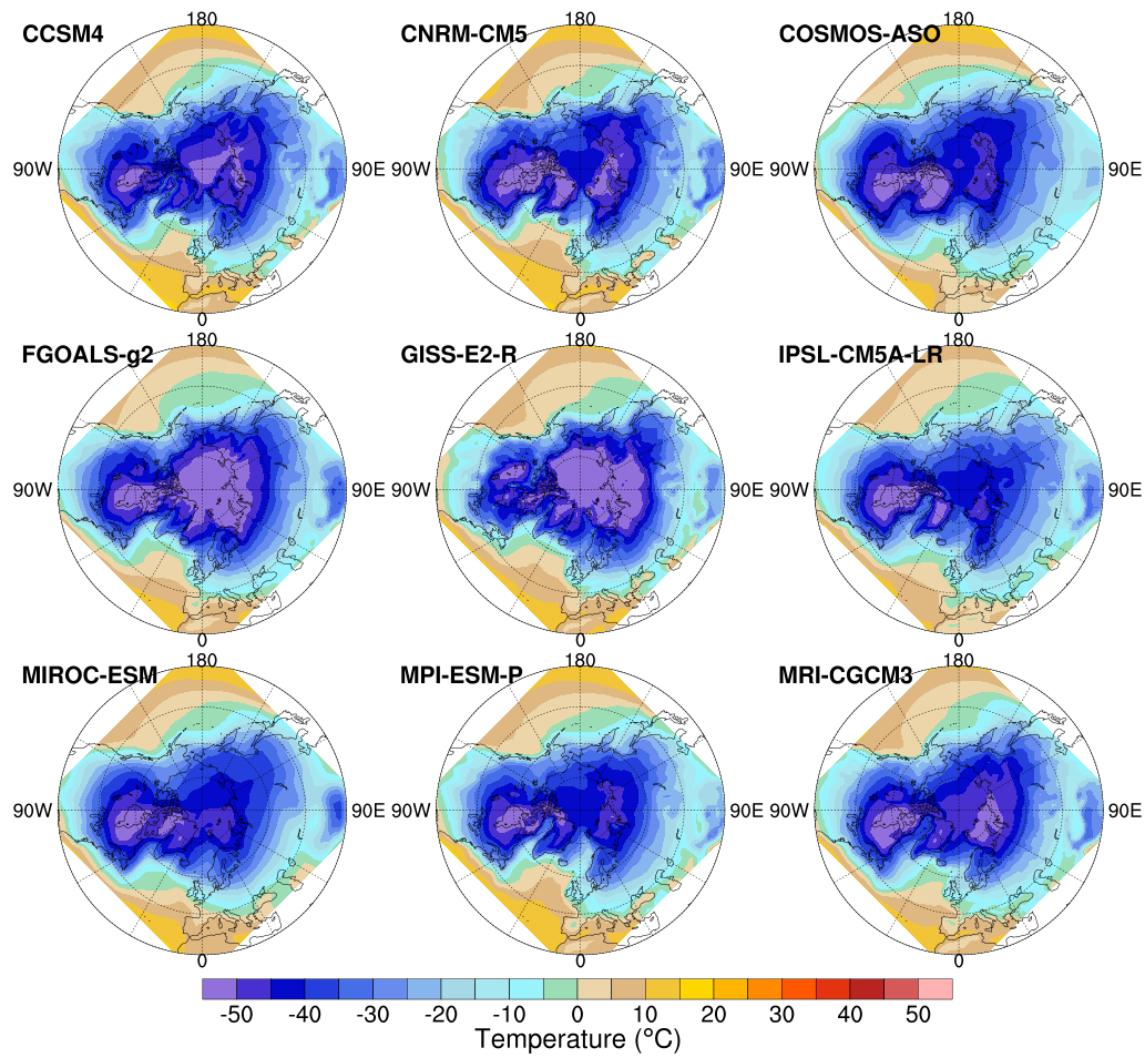


Figure S2. The surface air temperature (SAT) at the Last Glacial Maximum (LGM) in boreal winter (DJF) in different models participating in PMIP3.

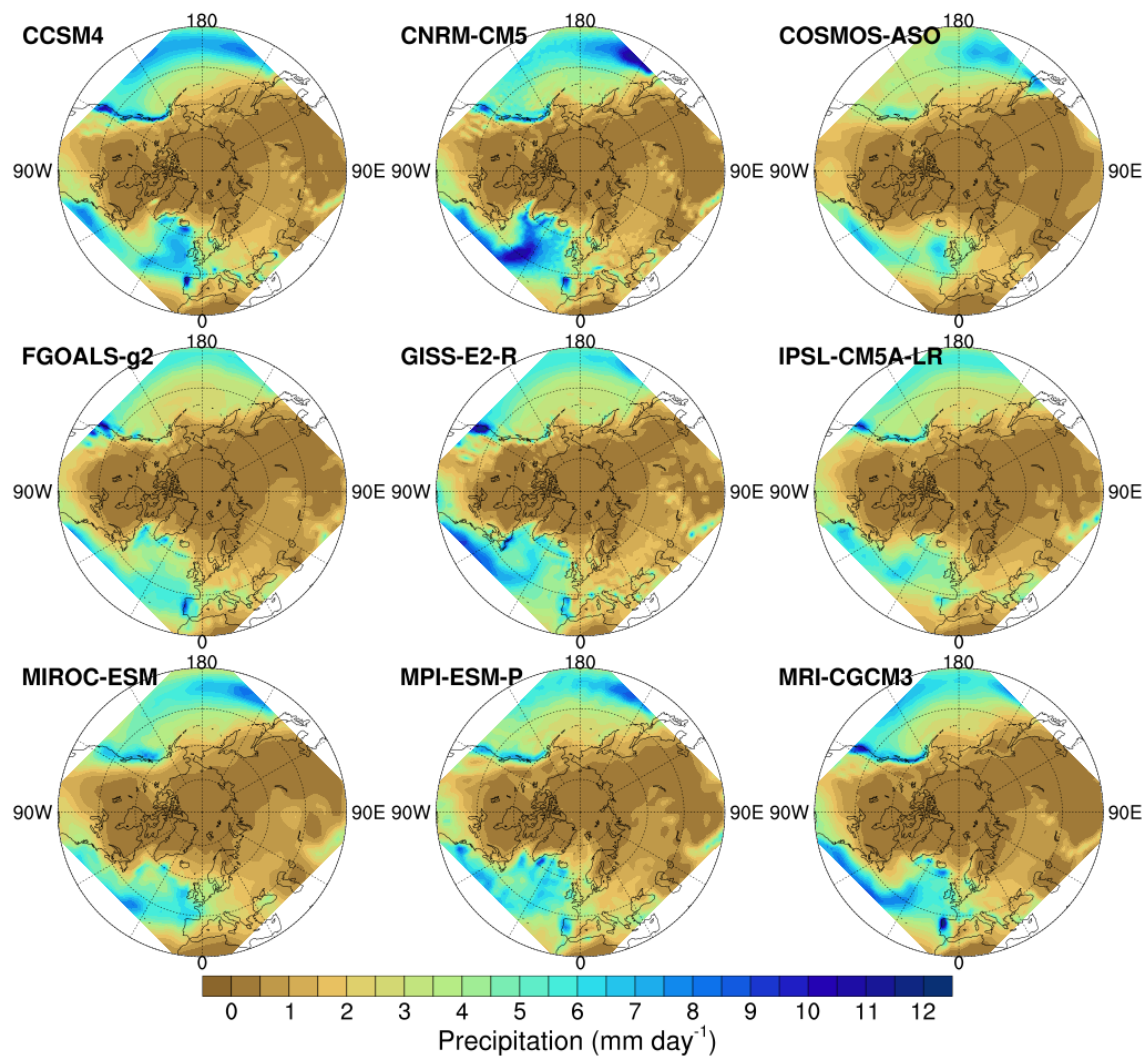


Figure S3. Same as Fig. S2, but for precipitation.

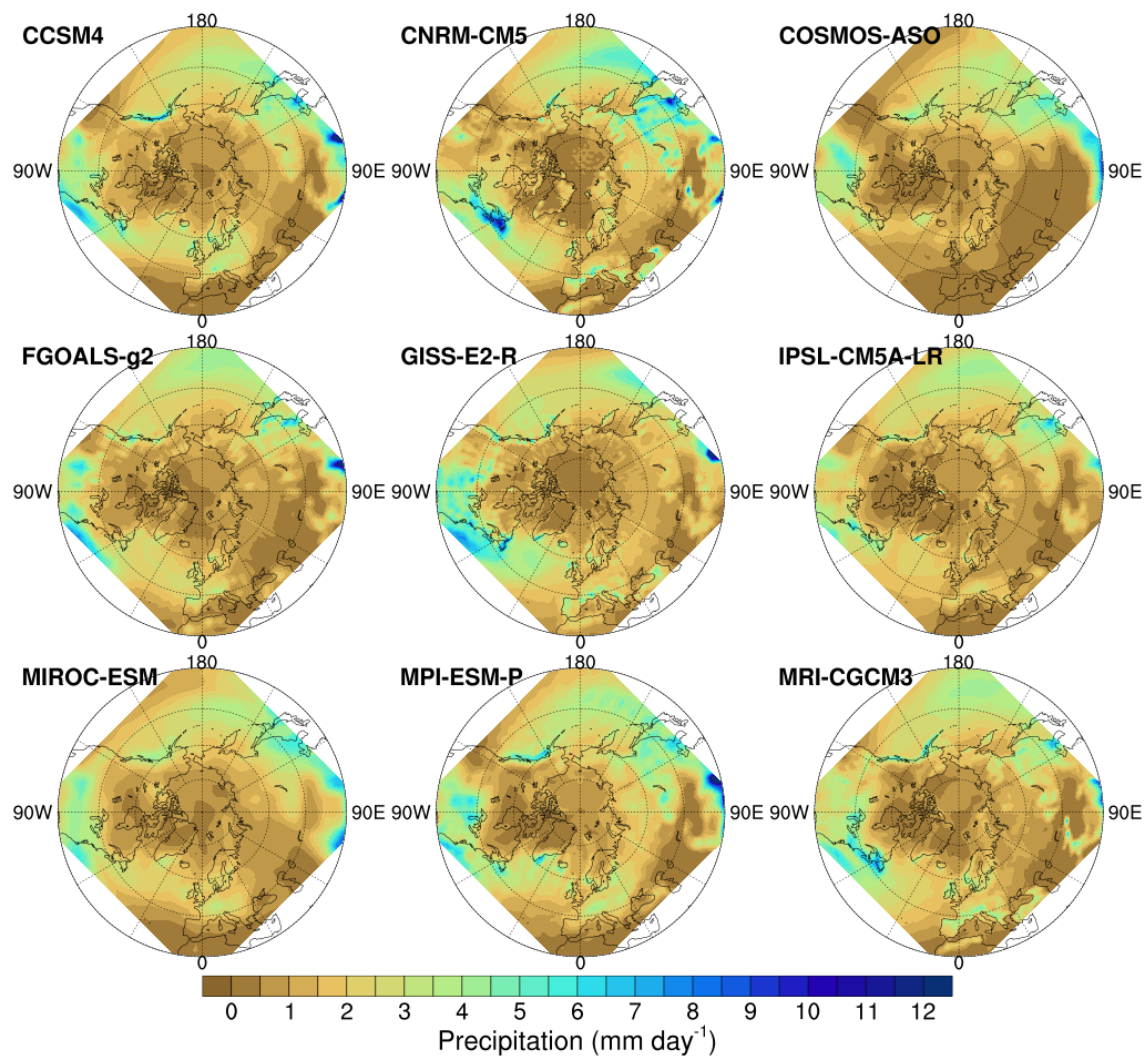


Figure S4. Same as Fig. S3, but for boreal summer (JJA).

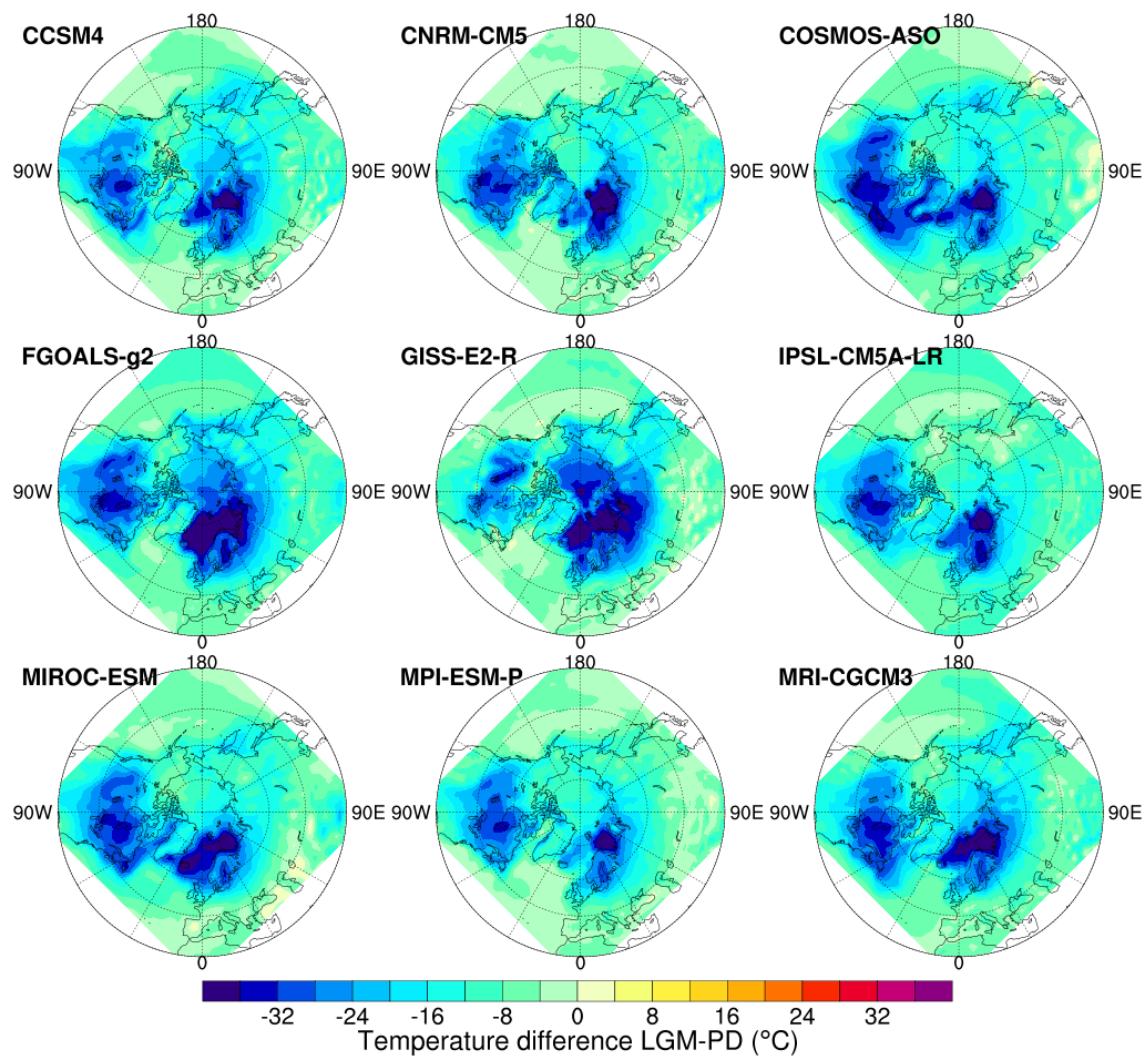


Figure S5. The surface air temperature (SAT) difference between Last Glacial Maximum (LGM) and Present Day (PD) in winter (DJF) in different models participating in PMIP3 (LGM minus PD).

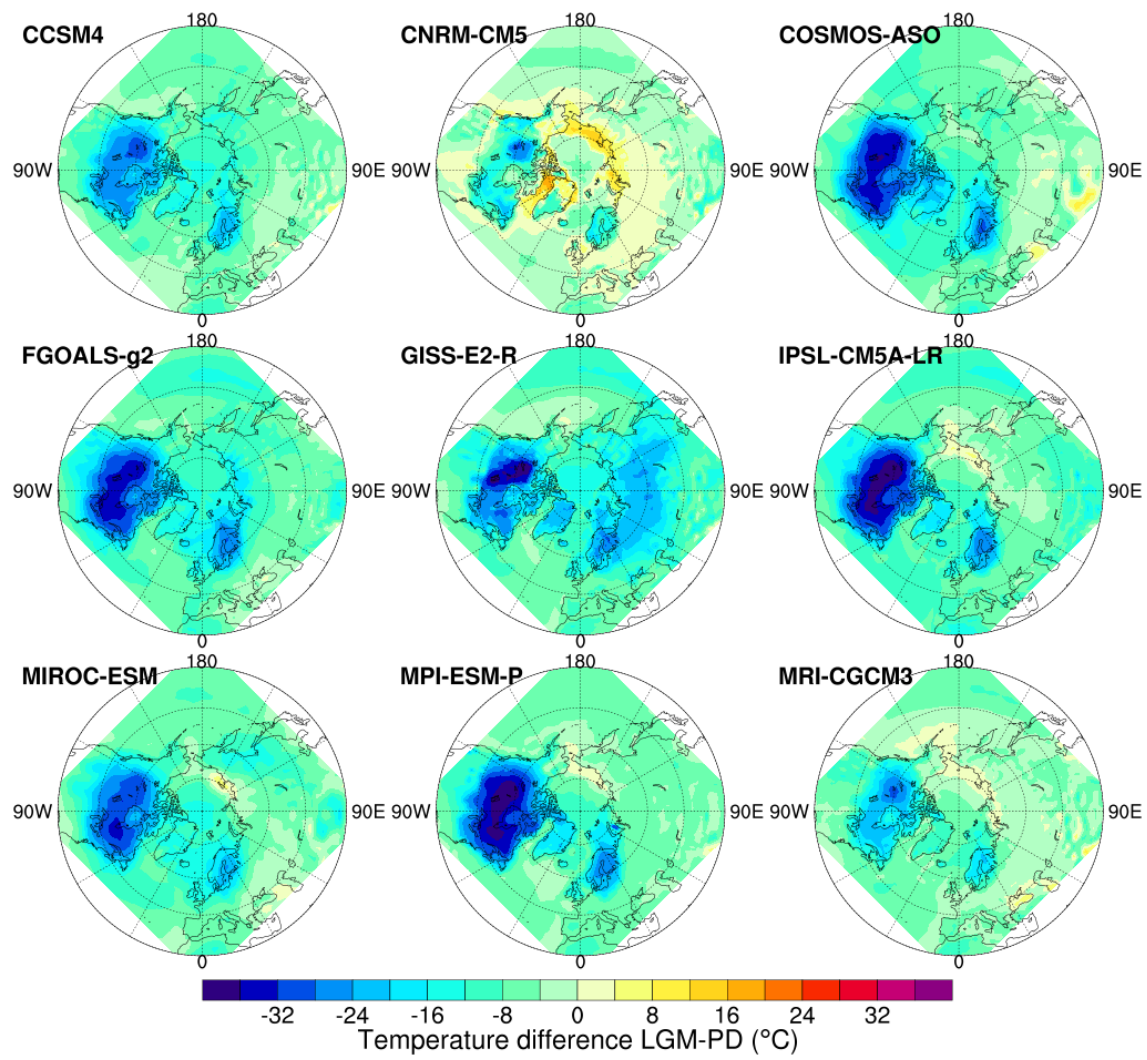


Figure S6. Same as Fig. S5, but for boreal summer (JJA).

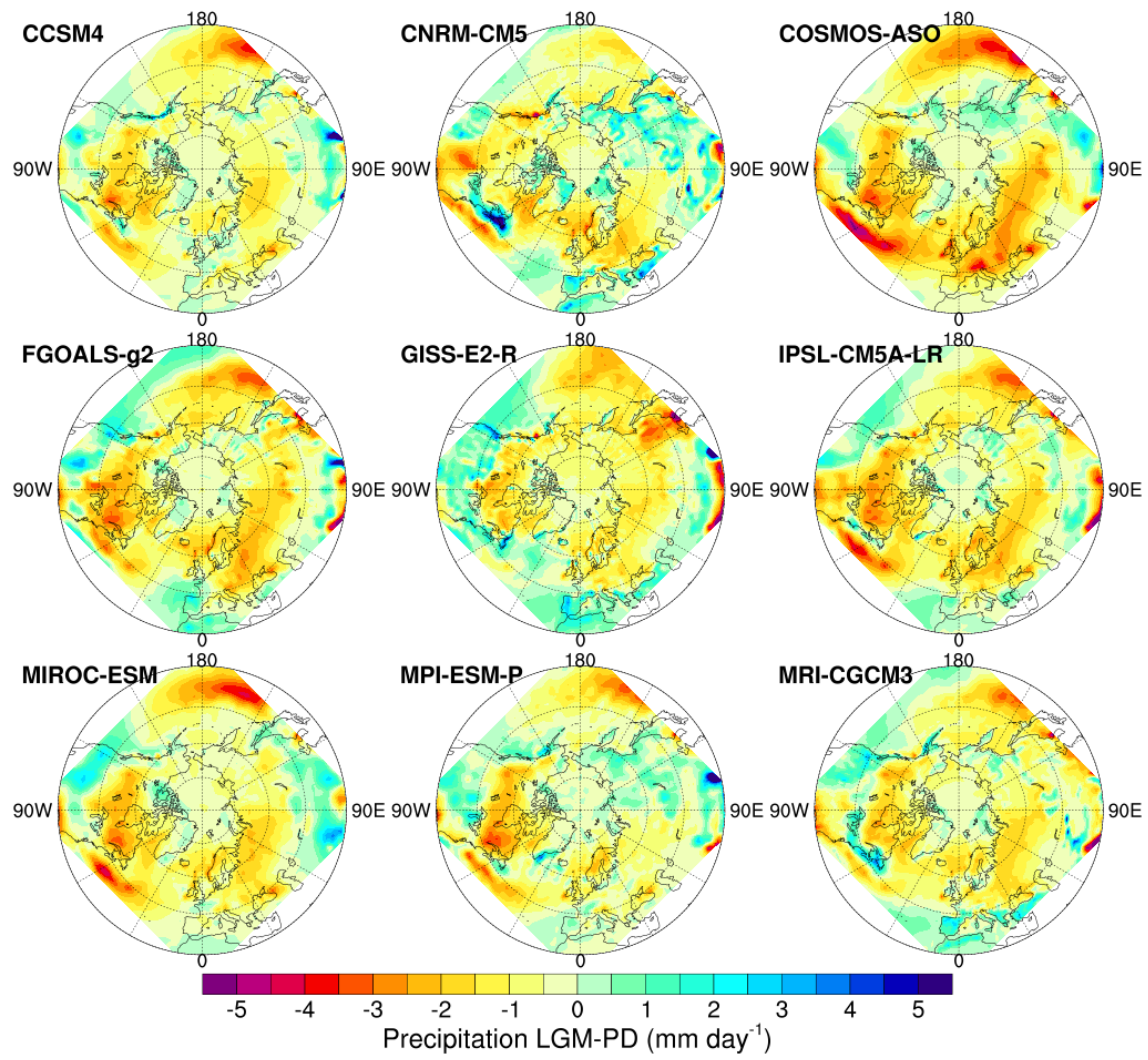


Figure S7. Same as Fig. S6, but for precipitation.